

Table 10.1

## Kaposi Sarcoma

## Number of Cases

By SEER Location and Year of Diagnosis, 1975-2014

All Races, Males, All Ages

## Year of Diagnosis

SEER Location	1975- 1979	1980- 1981	1982- 1983	1984- 1985	1986- 1987	1988- 1989	1990- 1991	1992- 1993	1994- 1995	1996- 1997	1998- 1999	2000- 2001	2002- 2003	2004- 2005	2006- 2007	2008- 2009	2010- 2011	2012- 2014
SEER 9 <sup>b</sup>	134	80	324	888	1,571	2,132	2,231	2,055	1,801	842	393	403	338	371	339	345	349	483
SEER 9 except SF-Oakland	102	45	86	261	428	776	841	975	875	465	246	266	225	245	242	252	251	361
San Francisco- Oakland SMSA <sup>c</sup>	32	35	238	627	1,143	1,356	1,390	1,080	926	377	147	137	113	126	97	93	98	122
San Francisco City/County	15	21	198	539	951	1,077	1,089	792	689	254	85	82	72	82	62	61	66	68

Age-Adjusted Cancer Incidence Rates<sup>a</sup>

By SEER Location and Year of Diagnosis, 1975-2014

All Races, Males, All Ages

## Year of Diagnosis

SEER Location	1975- 1979	1980- 1981	1982- 1983	1984- 1985	1986- 1987	1988- 1989	1990- 1991	1992- 1993	1994- 1995	1996- 1997	1998- 1999	2000- 2001	2002- 2003	2004- 2005	2006- 2007	2008- 2009	2010- 2011	2012- 2014
SEER 9 <sup>b</sup>	0.4	0.6	1.7	4.2	7.1	9.2	9.3	8.1	7.0	3.2	1.5	1.5	1.3	1.4	1.3	1.3	1.2	1.1
SEER 9 except SF-Oakland	0.4	0.4	0.6	1.6	2.3	4.0	4.2	4.6	4.0	2.1	1.1	1.2	1.0	1.1	1.1	1.1	1.1	1.0
San Francisco- Oakland SMSA <sup>c</sup>	0.7	1.3	6.9	17.2	30.0	34.1	34.0	25.6	22.0	9.0	3.5	3.1	2.7	2.9	2.3	2.1	2.2	1.7
San Francisco City/County	1.1	3.1	24.8	65.2	111.0	125.0	125.9	89.1	77.4	28.3	9.4	8.9	8.0	9.1	6.8	6.6	7.0	4.5

<sup>a</sup> Rates are per 100,000 males and are age-adjusted to the 2000 US Std Population (19 age groups - Census P25-1130).

<sup>b</sup> The SEER 9 areas are San Francisco-Oakland SMSA, Connecticut, Detroit, Hawaii, Iowa, New Mexico, Seattle, Utah and Atlanta.

<sup>c</sup> The San Francisco-Oakland SMSA represents 15% of all persons in the SEER areas. For this age group, all SEER areas may not be generalizable to the United States for Kaposi Sarcoma.

- Statistic not shown. Rate based on less than 4 cases for the time interval.

Table 10.2

## Kaposi Sarcoma

## Number of Cases

By SEER Location and Year of Diagnosis, 1975-2014

All Races, Males, Ages 20-54

## Year of Diagnosis

SEER Location	1975- 1979	1980- 1981	1982- 1983	1984- 1985	1986- 1987	1988- 1989	1990- 1991	1992- 1993	1994- 1995	1996- 1997	1998- 1999	2000- 2001	2002- 2003	2004- 2005	2006- 2007	2008- 2009	2010- 2011	2012- 2014
SEER 9 <sup>b</sup>	13	27	252	805	1,478	1,995	2,102	1,921	1,675	756	320	349	264	309	272	253	249	359
SEER 9 except SF-Oakland	11	6	36	207	379	695	772	909	810	411	199	228	186	202	199	186	176	282
San Francisco- Oakland SMSA <sup>c</sup>	<4	21	216	598	1,099	1,300	1,330	1,012	865	345	121	121	78	107	73	67	73	77
San Francisco City/County	<4	18	190	519	921	1,041	1,051	748	647	237	75	75	54	72	53	49	54	46

Age-Adjusted Cancer Incidence Rates<sup>a</sup>

By SEER Location and Year of Diagnosis, 1975-2014

All Races, Males, Ages 20-54

## Year of Diagnosis

SEER Location	1975- 1979	1980- 1981	1982- 1983	1984- 1985	1986- 1987	1988- 1989	1990- 1991	1992- 1993	1994- 1995	1996- 1997	1998- 1999	2000- 2001	2002- 2003	2004- 2005	2006- 2007	2008- 2009	2010- 2011	2012- 2014
SEER 9 <sup>b</sup>	0.1	0.3	2.4	7.4	13.1	16.9	17.1	14.9	12.6	5.6	2.3	2.5	1.9	2.3	2.0	1.9	1.8	1.7
SEER 9 except SF-Oakland	0.1	0.1	0.4	2.2	3.9	6.9	7.4	8.4	7.2	3.6	1.7	2.0	1.6	1.8	1.7	1.6	1.5	1.6
San Francisco- Oakland SMSA <sup>c</sup>	-	1.3	11.9	32.3	57.2	64.6	64.0	46.9	40.1	15.9	5.4	5.3	3.4	4.9	3.3	3.0	3.3	2.2
San Francisco City/County	-	5.3	47.3	125.1	213.7	239.9	240.8	165.5	142.3	51.8	15.9	15.9	11.4	15.8	11.5	10.5	11.5	6.1

<sup>a</sup> Rates are per 100,000 males aged 20-54 and are age-adjusted to the 2000 US Std Population (19 age groups - Census P25-1130).

<sup>b</sup> The SEER 9 areas are San Francisco-Oakland SMSA, Connecticut, Detroit, Hawaii, Iowa, New Mexico, Seattle, Utah and Atlanta.

<sup>c</sup> The San Francisco-Oakland SMSA represents 15% of all persons in the SEER areas. For this age group, all SEER areas may not be generalizable to the United States for Kaposi Sarcoma.

- Statistic not shown. Rate based on less than 4 cases for the time interval.

Table 10.3  
Kaposi Sarcoma

## Number of Cases

By SEER Location and Year of Diagnosis, 1975-2014

All Races, Males, Ages 55+

## Year of Diagnosis

SEER Location	1975- 1979	1980- 1981	1982- 1983	1984- 1985	1986- 1987	1988- 1989	1990- 1991	1992- 1993	1994- 1995	1996- 1997	1998- 1999	2000- 2001	2002- 2003	2004- 2005	2006- 2007	2008- 2009	2010- 2011	2012- 2014
SEER 9 <sup>b</sup>	121	53	71	82	92	135	129	133	126	86	73	53	74	61	67	90	96	124
SEER 9 except SF-Oakland	91	39	49	54	49	81	69	65	65	54	47	37	39	42	43	64	72	79
San Francisco- Oakland SMSA <sup>c</sup>	30	14	22	28	43	54	60	68	61	32	26	16	35	19	24	26	24	45
San Francisco City/County	14	<4	8	20	30	35	38	44	42	17	10	7	18	10	9	12	11	22

Age-Adjusted Cancer Incidence Rates<sup>a</sup>

By SEER Location and Year of Diagnosis, 1975-2014

All Races, Males, Ages 55+

## Year of Diagnosis

SEER Location	1975- 1979	1980- 1981	1982- 1983	1984- 1985	1986- 1987	1988- 1989	1990- 1991	1992- 1993	1994- 1995	1996- 1997	1998- 1999	2000- 2001	2002- 2003	2004- 2005	2006- 2007	2008- 2009	2010- 2011	2012- 2014
SEER 9 <sup>b</sup>	1.9	1.9	2.4	2.5	2.5	3.6	3.6	3.3	3.0	2.1	1.7	1.3	1.5	1.2	1.3	1.6	1.6	1.2
SEER 9 except SF-Oakland	1.7	1.7	2.0	2.0	1.8	2.7	2.4	2.0	1.9	1.7	1.3	1.1	1.0	1.0	1.0	1.3	1.4	1.0
San Francisco- Oakland SMSA <sup>c</sup>	2.9	3.1	4.6	4.7	6.4	8.1	9.6	10.1	9.0	4.8	3.7	2.3	4.5	2.3	2.8	2.9	2.4	2.7
San Francisco City/County	4.7	-	5.6	12.9	19.8	23.5	26.4	30.4	29.8	11.5	6.7	4.4	10.8	5.7	4.8	6.3	5.2	6.9

<sup>a</sup> Rates are per 100,000 males aged 55+ and are age-adjusted to the 2000 US Std Population (19 age groups - Census P25-1130).

<sup>b</sup> The SEER 9 areas are San Francisco-Oakland SMSA, Connecticut, Detroit, Hawaii, Iowa, New Mexico, Seattle, Utah and Atlanta.

<sup>c</sup> The San Francisco-Oakland SMSA represents 15% of all persons in the SEER areas. For this age group, all SEER areas may not be generalizable to the United States for Kaposi Sarcoma.

- Statistic not shown. Rate based on less than 4 cases for the time interval.

Table 10.4  
Kaposi Sarcoma

Age-adjusted SEER Incidence<sup>a</sup> Rates by Year, Race and Sex

Year of Diagnosis:	All Races			Whites			Blacks		
	Total	Males	Females	Total	Males	Females	Total	Males	Females
1975-2014	1.61	3.16	0.12	1.66	3.23	0.11	2.14	4.35	0.24
1975	0.23	0.56	-	0.22	0.56	-	-	-	-
1976	0.25	0.47	-	0.24	0.48	-	-	-	-
1977	0.29	0.54	-	0.30	0.55	-	-	-	-
1978	0.24	0.35	0.17	0.23	0.34	-	-	-	-
1979	0.18	0.30	-	0.18	0.30	-	-	-	-
1980	0.28	0.56	-	0.31	0.62	-	-	-	-
1981	0.32	0.54	-	0.34	0.61	-	-	-	-
1982	0.65	1.20	0.18	0.70	1.30	0.18	-	-	-
1983	1.07	2.18	-	1.18	2.39	-	-	-	-
1984	1.81	3.59	-	1.99	3.91	-	1.27	2.89	-
1985	2.46	4.86	0.16	2.79	5.47	0.18	1.09	2.24	-
1986	3.27	6.52	-	3.70	7.32	-	1.65	3.59	-
1987	3.80	7.60	-	4.25	8.44	-	2.09	4.29	-
1988	4.43	8.87	0.15	4.82	9.56	0.15	3.40	7.28	-
1989	4.77	9.54	0.14	5.13	10.18	-	4.64	9.84	-
1990	4.62	9.22	0.18	5.05	10.00	0.16	3.65	7.54	-
1991	4.70	9.40	0.19	5.04	10.00	0.18	4.59	9.53	-
1992	4.37	8.66	0.18	4.59	8.99	0.18	5.02	10.59	-
1993	3.86	7.64	0.17	4.05	7.96	0.15	4.28	8.60	-
1994	3.78	7.46	0.17	3.86	7.56	0.13	4.25	8.63	-
1995	3.30	6.46	0.20	3.25	6.33	0.17	5.03	10.46	-
1996	2.24	4.41	0.16	2.00	3.98	-	4.67	9.21	-
1997	1.08	2.09	0.14	0.91	1.77	-	2.73	5.43	-
1998	0.81	1.58	-	0.70	1.34	-	1.79	3.78	-
1999	0.79	1.48	0.14	0.66	1.25	-	1.94	3.72	-
2000	0.80	1.55	-	0.67	1.30	-	1.99	4.00	-
2001	0.83	1.52	0.17	0.67	1.20	0.15	2.02	4.03	-
2002	0.69	1.29	0.12	0.58	1.07	-	1.51	3.05	-
2003	0.67	1.29	-	0.60	1.13	-	1.52	3.21	-
2004	0.70	1.35	-	0.60	1.16	-	1.69	3.41	-
2005	0.78	1.47	0.12	0.61	1.16	-	2.03	4.01	-
2006	0.62	1.21	-	0.53	1.01	-	1.44	2.93	-
2007	0.69	1.32	-	0.58	1.07	-	1.73	3.57	-
2008	0.68	1.33	-	0.57	1.11	-	1.66	3.22	-
2009	0.64	1.21	0.11	0.54	1.03	-	1.48	2.89	-
2010	0.65	1.22	0.09	0.45	0.84	-	1.85	3.76	-
2011	0.65	1.27	-	0.46	0.90	-	1.99	4.13	-
2012	0.67	1.28	0.09	0.49	0.93	-	1.85	3.71	-
2013	0.52	0.97	-	0.38	0.72	-	1.44	2.78	-
2014	0.58	1.08	0.10	0.38	0.71	-	1.71	3.24	-

<sup>a</sup> SEER 9 areas (San Francisco, Connecticut, Detroit, Hawaii, Iowa, New Mexico, Seattle, Utah, and Atlanta). Rates are per 100,000 and are age-adjusted to the 2000 US Std Population (19 age groups - Census P25-1130).  
- Statistic not shown. Rate based on less than 16 cases for the time interval.

Table 10.5  
Kaposi Sarcoma

SEER Incidence<sup>a</sup> Rates, Age-Adjusted and Age-Specific Rates, by Race and Sex

	All Races			Whites			Blacks		
	Total	Males	Females	Total	Males	Females	Total	Males	Females
<u>SEER Incidence</u>									
<u>Age at Diagnosis</u>									
Age-Adjusted Rates, 2010-2014									
All ages	0.5	0.9	0.1	0.4	0.8	0.1	1.1	2.2	0.2
Under 65	0.4	0.9	0.0	0.3	0.6	0.0	1.2	2.3	0.1
65 and over	0.9	1.5	0.5	0.9	1.5	0.5	0.5	1.0	-
All ages (WHO world std) <sup>b</sup>	0.4	0.8	0.1	0.3	0.6	0.0	1.1	2.1	0.1
Age-Specific Rates, 2010-2014									
<1	-	-	-	-	-	-	-	-	-
1-4	-	-	-	-	-	-	-	-	-
5-9	-	-	-	-	-	-	-	-	-
10-14	-	-	-	-	-	-	-	-	-
15-19	-	-	-	-	-	-	-	-	-
20-24	0.3	0.5	-	0.1	0.1	-	1.3	2.6	-
25-29	0.5	1.0	-	0.3	0.6	-	2.1	4.0	-
30-34	0.9	1.7	-	0.6	1.1	-	2.9	6.0	-
35-39	0.7	1.4	-	0.5	1.0	-	2.0	4.0	-
40-44	0.9	1.6	-	0.6	1.2	-	2.0	3.7	-
45-49	0.9	1.9	-	0.8	1.6	-	1.9	3.9	-
50-54	0.6	1.2	-	0.6	1.1	-	1.1	2.0	-
55-59	0.5	0.9	-	0.4	0.7	-	0.7	1.3	-
60-64	0.5	0.9	-	0.4	0.8	-	0.8	1.7	-
65-69	0.5	0.9	-	0.5	0.9	-	-	-	-
70-74	0.7	1.3	0.3	0.7	1.1	-	-	-	-
75-79	0.9	1.5	0.5	1.0	1.6	0.5	-	-	-
80-84	1.4	2.3	0.7	1.4	2.3	0.7	-	-	-
85+	1.9	2.7	1.4	1.8	2.7	1.4	-	-	-

<sup>a</sup> SEER 18 areas. Rates are per 100,000 and are age-adjusted to the 2000 US Std Population (19 age groups - Census P25-1130), unless noted.

<sup>b</sup> Rates are per 100,000 and are age-adjusted to the world (WHO 2000-2025) standard million.

- Statistic not shown. Rate based on less than 16 cases for the time interval.

Table 10.6  
Kaposi Sarcoma

5-Year Relative and Period Survival (Percent) by Race, Sex, Diagnosis Year, Stage and Age

	All Races			Whites			Blacks		
	Total	Males	Females	Total	Males	Females	Total	Males	Females
5-Year Relative Survival (Percent)									
Year of Diagnosis:									
1960-1963 <sup>a</sup>	-	-	-	-	-	-	-	-	-
1970-1973 <sup>a</sup>	-	-	-	-	-	-	-	-	-
1975-1977 <sup>b</sup>	80.7 <sup>f</sup>	80.1 <sup>f</sup>	-	79.9 <sup>f</sup>	79.0 <sup>f</sup>	-	-	-	-
1978-1980 <sup>b</sup>	78.3 <sup>f</sup>	79.4 <sup>f</sup>	73.1 <sup>g</sup>	78.0 <sup>f</sup>	78.4 <sup>f</sup>	72.5 <sup>g</sup>	-	-	-
1981-1983 <sup>b</sup>	35.7	33.4	64.3 <sup>g</sup>	34.0	31.6	64.2 <sup>g</sup>	-	-	-
1984-1986 <sup>b</sup>	13.0	11.7	70.5 <sup>g</sup>	12.7	11.4	70.2 <sup>g</sup>	16.8	15.7	-
1987-1989 <sup>b</sup>	9.9	9.3	68.5 <sup>g</sup>	9.4	8.8	72.3 <sup>g</sup>	12.4	11.3	-
1990-1992 <sup>b</sup>	9.3	8.5	53.9 <sup>f</sup>	8.8	8.1	55.4 <sup>f</sup>	11.5	10.5	-
1993-1995 <sup>b</sup>	21.7	21.0	53.8 <sup>f</sup>	22.1	21.2	62.1 <sup>g</sup>	17.5	16.7	-
1996-1998 <sup>b</sup>	52.4	51.5	72.2 <sup>g</sup>	57.0	55.7	86.5 <sup>f</sup>	39.9	39.3	-
1999-2001 <sup>b</sup>	58.2	57.7	61.0 <sup>f</sup>	64.6	63.0	79.2 <sup>f</sup>	43.9	45.5	-
2002-2006 <sup>b</sup>	68.0	67.5	70.7 <sup>f</sup>	78.5	77.9	78.4 <sup>f</sup>	46.4	46.3	-
2007-2013 <sup>b</sup>	75.9 <sup>e</sup>	76.0	72.3 <sup>f</sup>	80.2	80.2	74.6 <sup>f</sup>	66.3	67.0	-
5-Year Period Survival (Percent) <sup>cd</sup>									
2013	74.2	73.9	75.7	76.7	75.9	80.5	67.5	69.5	-
5-Year Relative Survival (Percent), 2007-2013 <sup>c</sup>									
Age at Diagnosis:									
Ages <45	67.8	68.4	44.2 <sup>f</sup>	71.1	71.3	-	61.4	62.5	39.0 <sup>g</sup>
Ages 45-54	73.3	73.6	-	73.1	72.9	-	70.2	72.0	-
Ages 55-64	79.4	78.5	-	79.8	77.8	-	72.7 <sup>f</sup>	75.1 <sup>f</sup>	-
Ages 65-74	83.6	82.8	84.2 <sup>f</sup>	84.7	83.6	87.5 <sup>f</sup>	-	-	-
Ages 75+	85.9	89.0	78.4 <sup>f</sup>	86.1	89.6	77.4 <sup>f</sup>	-	-	-
Ages <65	70.6	71.0	60.7 <sup>f</sup>	72.9	72.7	82.2 <sup>f</sup>	64.2	65.4	46.1 <sup>f</sup>
Ages 65+	85.9	87.6	81.4 <sup>f</sup>	86.4	88.2	81.2 <sup>f</sup>	69.6 <sup>g</sup>	-	-

<sup>a</sup> Based on End Results data from a series of hospital registries and one population-based registry.  
<sup>b</sup> SEER 9 areas (San Francisco, Connecticut, Detroit, Hawaii, Iowa, New Mexico, Seattle, Utah, Atlanta).  
Based on follow-up of patients into 2014.  
<sup>c</sup> SEER 18 areas (San Francisco, Connecticut, Detroit, Hawaii, Iowa, New Mexico, Seattle, Utah, Atlanta, San Jose-Monterey, Los Angeles, Alaska Native Registry, Rural Georgia, California excluding SF/SJM/LA, Kentucky, Louisiana, New Jersey and Georgia excluding ATL/RG).  
Based on follow-up of patients into 2014.  
<sup>d</sup> Period survival provides a 2013 estimate of survival by piecing together the most recent conditional survival estimates from several cohorts. It is computed here using three year calendar blocks (2010-2012: 0-1 year survival), (2009-2011: 1-2 year survival), (2008-2010: 2-3 year survival), (2007-2009: 3-4 year survival), (2006-2008: 4-5 years survival).  
<sup>e</sup> The difference between 1975-1977 and 2007-2013 is statistically significant (p<.05).  
<sup>f</sup> The standard error is between 5 and 10 percentage points.  
<sup>g</sup> The standard error is greater than 10 percentage points.  
- Statistic could not be calculated due to fewer than 25 cases during the time period.

Table 10.7  
Kaposi SarcomaSEER<sup>a</sup> Relative Survival (Percent)  
By Year of Diagnosis

All Races, Males and Females

Year of Diagnosis

	1975- 1979	1980- 1984	1985- 1989	1990- 1994	1995	1996	1997	1998	1999	2000	2001	2002	2003	2004	2005	2006	2007	2008	2009	2010	2011	2012	2013
Survival Time																							
1-year	95.0	65.4	59.0	59.0	61.8	69.0	72.9	73.8	76.7	74.1	80.4	77.8	75.3	82.6	81.9	81.6	82.8	79.6	82.3	83.4	85.1	80.5	86.4
2-year	89.6	44.5	32.8	29.3	46.7	60.4	65.1	65.5	65.1	66.3	73.3	70.7	72.5	73.5	78.5	78.9	80.3	75.6	79.5	77.4	81.2	80.4	
3-year	88.7	36.1	19.8	18.2	42.8	54.1	62.1	61.1	61.5	60.1	67.5	67.1	66.9	70.9	74.7	76.6	78.7	74.4	76.3	74.7	79.8		
4-year	83.8	32.0	13.8	13.9	38.5	51.6	58.9	59.0	56.7	57.0	65.5	66.0	65.0	69.3	73.9	75.9	76.6	74.4	74.7	73.0			
5-year	83.8	28.0	10.6	11.7	35.7	48.4	56.6	58.5	55.8	54.1	63.9	60.2	64.7	68.2	71.9	73.8	74.7	73.9	74.7				
6-year	76.9	24.5	8.9	10.8	35.1	45.6	54.5	55.7	53.4	52.6	63.6	58.4	64.4	66.9	70.3	72.9	73.3	73.2					
7-year	76.8	23.5	7.7	10.2	33.3	44.9	49.7	53.1	52.8	52.6	62.8	58.4	60.7	66.8	68.2	71.8	72.2						
8-year	76.8	20.6	6.8	9.8	32.1	44.5	46.9	50.4	52.3	52.0	61.4	56.5	58.5	66.6	67.0	70.0							
9-year	76.8	19.2	6.1	9.5	31.0	42.7	44.5	49.8	52.3	50.5	59.3	56.4	56.8	65.4	65.2								
10-year	76.8	17.2	5.9	9.3	29.8	42.7	43.4	49.8	51.4	48.5	56.6	56.4	56.3	63.0									
11-year	74.7	15.9	5.7	9.1	28.7	42.3	42.0	49.1	50.2	46.2	56.6	56.4	55.6										
12-year	74.7	15.6	5.6	9.1	27.9	41.9	40.9	49.1	50.2	45.5	55.0	56.4											
13-year	74.7	14.7	5.2	9.1	27.4	41.9	39.9	47.7	50.2	45.0	52.6												
14-year	74.7	14.7	5.0	8.8	26.8	40.6	39.8	45.3	48.8	45.0													
15-year	74.7	14.7	4.9	8.6	26.2	40.4	39.8	44.1	48.1														
16-year	74.7	14.7	4.8	8.4	25.6	40.1	39.8	42.4															
17-year	74.7	14.4	4.8	8.3	25.3	38.9	38.4																
18-year	74.7	13.2	4.8	8.1	25.2	38.1																	
19-year	74.7	13.2	4.6	7.9	25.2																		
20-year	74.7	13.2	4.5	7.6																			

<sup>a</sup> Based on the SEER 9 areas (San Francisco, Connecticut, Detroit, Hawaii, Iowa, New Mexico, Seattle, Utah, and Atlanta).

Table 10.8  
Kaposi SarcomaSEER<sup>a</sup> Relative Survival (Percent)  
By Year of Diagnosis

All Races, Males

Year of Diagnosis

	1975- 1979	1980- 1984	1985- 1989	1990- 1994	1995	1996	1997	1998	1999	2000	2001	2002	2003	2004	2005	2006	2007	2008	2009	2010	2011	2012	2013
Survival Time																							
1-year	95.2	63.6	58.7	58.6	60.9	68.8	72.7	73.0	76.7	73.8	79.8	76.6	75.8	81.3	82.9	81.0	82.7	80.9	82.0	83.3	83.9	81.8	86.9
2-year	89.1	41.8	32.1	28.7	45.4	59.8	64.2	64.0	64.6	65.6	73.7	69.8	72.7	72.0	79.2	78.1	80.4	76.9	80.0	77.4	80.7	81.6	
3-year	86.8	33.7	19.0	17.5	41.8	53.8	60.7	59.6	61.0	59.5	68.5	66.9	67.4	69.0	75.7	76.0	78.4	75.6	76.5	74.2	78.9		
4-year	83.7	29.6	13.0	13.2	37.5	51.2	57.0	57.0	55.7	56.7	66.1	66.4	65.2	67.1	74.8	75.4	76.0	75.6	75.1	72.0			
5-year	83.6	25.9	9.7	11.0	35.0	48.1	55.6	56.1	54.6	54.1	63.8	60.1	64.8	65.6	72.7	73.1	73.7	75.0	75.1				
6-year	74.2	22.1	8.0	10.1	34.3	45.4	53.3	54.0	51.7	53.0	63.8	58.3	64.4	63.9	70.8	72.1	71.9	74.3					
7-year	74.1	20.8	6.8	9.5	32.4	44.6	49.1	52.4	51.0	53.0	63.6	58.3	60.3	63.9	68.5	70.9	70.7						
8-year	74.1	18.5	6.0	9.1	31.2	44.2	46.4	50.7	50.9	52.4	62.3	57.4	58.5	63.9	67.2	68.9							
9-year	74.1	17.2	5.4	8.8	30.2	42.3	43.9	50.1	50.9	50.7	60.5	57.1	58.0	63.9	65.8								
10-year	74.1	15.4	5.2	8.6	29.1	42.2	42.5	50.1	50.3	49.2	57.4	57.1	57.5	62.7									
11-year	69.0	14.1	5.0	8.4	28.2	41.9	41.5	49.3	48.9	46.8	57.3	57.1	56.8										
12-year	68.9	13.9	4.9	8.3	27.3	41.4	40.3	49.3	48.9	45.9	55.2	57.1											
13-year	68.9	13.1	4.6	8.3	26.7	41.4	39.3	47.8	48.6	45.4	53.2												
14-year	68.9	13.1	4.5	8.0	26.2	40.4	39.2	45.2	46.7	45.4													
15-year	68.9	13.1	4.4	7.8	25.8	40.2	39.2	43.9	45.7														
16-year	68.9	12.9	4.3	7.7	25.2	39.9	39.2	42.0															
17-year	68.9	12.9	4.3	7.5	25.0	38.7	37.7																
18-year	68.9	12.4	4.3	7.3	25.0	37.9																	
19-year	68.9	12.4	4.1	7.1	25.0																		
20-year	68.9	12.4	4.0	6.9																			

<sup>a</sup> Based on the SEER 9 areas (San Francisco, Connecticut, Detroit, Hawaii, Iowa, New Mexico, Seattle, Utah, and Atlanta).



Table 10.9  
Kaposi SarcomaSEER<sup>a</sup> Relative Survival (Percent)  
By Year of Diagnosis

All Races, Females

Year of Diagnosis

	1975- 1979	1980- 1984	1985- 1989	1990- 1994	1995	1996	1997	1998	1999	2000	2001	2002	2003	2004	2005	2006	2007	2008	2009	2010	2011	2012	2013
Survival Time																							
1-year	92.6	90.0	80.4	80.5	87.2	78.4	74.9	85.4	75.8	78.0	86.3	88.7	64.5	100.0	64.3	89.8	83.7	45.7	86.0	81.6	98.3	64.4	76.5
2-year	90.4	84.0	79.0	63.7	85.9	78.4	74.9	85.4	69.6	76.5	67.5	78.2	64.5	97.2	64.3	89.8	78.0	45.7	71.8	76.9	86.1	64.4	
3-year	90.4	73.4	74.3	57.8	74.5	64.5	74.9	85.0	65.8	67.3	52.1	66.4	55.9	97.2	57.0	82.8	78.0	45.7	71.8	76.9	86.1		
4-year	83.5	69.5	73.6	54.5	71.4	64.5	74.9	85.0	65.8	61.5	52.1	54.7	55.9	97.2	57.0	82.8	78.0	45.7	67.6	76.9			
5-year	81.4	61.0	73.6	53.3	53.7	55.2	69.1	85.0	65.8	52.5	52.1	54.7	55.9	97.2	57.0	82.8	78.0	45.7	59.4				
6-year	81.4	61.0	73.6	49.7	53.7	49.3	69.1	80.8	65.8	43.3	52.1	54.7	55.9	97.2	57.0	82.8	78.0	45.7					
7-year	81.4	61.0	73.6	49.7	53.7	49.3	58.1	54.5	65.8	43.3	50.9	54.7	55.9	97.2	57.0	82.8	78.0						
8-year	81.4	54.1	66.7	49.7	53.7	49.3	51.9	19.5	65.8	43.3	45.9	40.1	55.9	77.2	57.0	82.8							
9-year	81.4	51.0	66.1	48.3	50.7	49.3	51.9	19.5	65.8	43.3	38.5	40.1	21.2	77.2	54.0								
10-year	81.4	45.4	59.7	48.3	48.1	49.3	51.9	19.5	62.8	35.5	38.5	40.1	21.2	51.4									
11-year	81.4	42.7	59.7	48.3	40.3	49.3	46.8	19.5	62.8	35.5	38.5	40.1	21.2										
12-year	81.4	41.9	57.0	48.3	40.3	49.3	46.8	19.5	62.8	35.5	38.5	40.1											
13-year	81.4	41.0	52.4	48.3	40.3	38.4	46.8	19.5	62.8	35.5	0.0												
14-year	81.4	41.0	39.3	48.3	39.0	38.4	46.8	19.5	62.8	35.5													
15-year	81.4	41.0	33.4	48.3	27.5	38.4	46.8	19.5	62.8														
16-year	81.4	41.0	33.4	48.3	27.5	38.4	46.8	19.5															
17-year	81.4	29.3	33.4	48.3	15.6	38.4	46.8																
18-year	80.2	16.6	33.4	48.3	0.0	38.4																	
19-year	80.2	16.6	33.4	48.3	0.0																		
20-year	80.2	16.6	33.4	48.3																			

<sup>a</sup> Based on the SEER 9 areas (San Francisco, Connecticut, Detroit, Hawaii, Iowa, New Mexico, Seattle, Utah, and Atlanta).

Table 10.10  
Kaposi Sarcoma

Risk of Being Diagnosed With Cancer in 10, 20 and 30 Years,  
Lifetime Risk of Being Diagnosed with Cancer Given Alive and Cancer-Free at Current Age, and  
Lifetime Risk of Dying from Cancer Given Alive at Current Age  
Both Sexes, 2012-2014 By Race/Ethnicity

Race/ Ethnicity	Current Age	Risk of Being Diagnosed with Cancer				Risk of Dying from Cancer	Race/ Ethnicity	Current Age	Risk of Being Diagnosed with Cancer				Risk of Dying from Cancer
		+10 yrs	+20 yrs	+30 yrs	Ever				+10 yrs	+20 yrs	+30 yrs	Ever	
All Races	0	0.00	0.00	0.00	0.12	0.00	Asian/ Pacific Islander	0	0.00	0.00	0.00	0.06	0.00
	10	0.00	0.00	0.00	0.12	0.00		10	0.00	0.00	0.00	0.06	0.00
	20	0.00	0.00	0.00	0.12	0.00		20	0.00	0.00	0.00	0.06	0.00
	30	0.00	0.00	0.01	0.12	0.00		30	0.00	0.00	0.00	0.06	0.00
	40	0.00	0.01	0.03	0.12	0.00		40	0.00	0.00	0.01	0.06	0.00
	50	0.01	0.03	0.07	0.12	0.00		50	0.00	0.01	0.03	0.06	0.00
	60	0.02	0.07	0.11	0.12	0.00		60	0.01	0.03	0.05	0.06	0.00
	70	0.05	0.10	-	0.11	0.00		70	0.02	0.04	-	0.06	0.00
80	0.06	-	-	0.08	0.00	80	0.03	-	-	0.05	0.00		
White	0	0.00	0.00	0.00	0.13	0.00	American Indian/ Alaska Native <sup>a</sup>	0	0.00	0.00	0.00	0.07	0.00
	10	0.00	0.00	0.00	0.13	0.00		10	0.00	0.00	0.00	0.07	0.00
	20	0.00	0.00	0.00	0.13	0.00		20	0.00	0.00	0.00	0.07	0.00
	30	0.00	0.00	0.01	0.13	0.00		30	0.00	0.00	0.01	0.07	0.00
	40	0.00	0.01	0.03	0.13	0.00		40	0.00	0.01	0.02	0.07	0.00
	50	0.01	0.03	0.08	0.13	0.00		50	0.01	0.01	0.05	0.07	0.00
	60	0.02	0.08	0.12	0.13	0.00		60	0.01	0.04	0.06	0.07	0.01
	70	0.06	0.11	-	0.13	0.00		70	0.04	0.06	-	0.07	0.01
80	0.07	-	-	0.09	0.00	80	0.04	-	-	0.04	0.01		
Black	0	0.00	0.00	0.00	0.05	0.01	Hispanic <sup>b</sup>	0	0.00	0.00	0.00	0.13	0.01
	10	0.00	0.00	0.00	0.05	0.01		10	0.00	0.00	0.00	0.13	0.01
	20	0.00	0.00	0.00	0.05	0.01		20	0.00	0.00	0.00	0.13	0.01
	30	0.00	0.00	0.01	0.05	0.01		30	0.00	0.00	0.01	0.13	0.01
	40	0.00	0.01	0.02	0.06	0.00		40	0.00	0.01	0.03	0.13	0.01
	50	0.01	0.02	0.04	0.06	0.00		50	0.01	0.03	0.07	0.13	0.01
	60	0.01	0.03	0.05	0.06	0.00		60	0.02	0.07	0.11	0.12	0.01
	70	0.02	0.04	-	0.05	0.00		70	0.05	0.10	-	0.11	0.01
80	0.03	-	-	0.04	0.00	80	0.07	-	-	0.08	0.01		

Devcan 6.7.5, April 2017, National Cancer Institute (<https://surveillance.cancer.gov/devcan/>).

Source: Incidence data are from the SEER 18 areas (San Francisco, Connecticut, Detroit, Hawaii, Iowa, New Mexico, Seattle, Utah, Atlanta, San Jose-Monterey, Los Angeles, Alaska Native Registry, Rural Georgia, California excluding SF/SJM/LA, Kentucky, Louisiana, New Jersey, and Georgia excluding ATL/RG). Mortality data are from the NCHS public use data file for the total US.

<sup>a</sup> Underlying incidence and mortality data for American Indian/Alaska Native are based on the CHSDA (Contract Health Service Delivery Area) counties.

<sup>b</sup> Hispanic is not mutually exclusive from whites, blacks, Asian/Pacific Islanders, and American Indians/Alaska Natives. Underlying incidence data for Hispanics are based on NHIA and exclude cases from the Alaska Native Registry.

- Statistic could not be calculated.

A percent of 0.00 represents a value that is below 0.005.

Table 10.11  
Kaposi Sarcoma

Risk of Being Diagnosed With Cancer in 10, 20 and 30 Years,  
Lifetime Risk of Being Diagnosed with Cancer Given Alive and Cancer-Free at Current Age, and  
Lifetime Risk of Dying from Cancer Given Alive at Current Age  
Males, 2012-2014 By Race/Ethnicity

Race/ Ethnicity	Current Age	Risk of Being Diagnosed with Cancer				Risk of Dying from Cancer	Race/ Ethnicity	Current Age	Risk of Being Diagnosed with Cancer				Risk of Dying from Cancer
		+10 yrs	+20 yrs	+30 yrs	Ever				+10 yrs	+20 yrs	+30 yrs	Ever	
All Races	0	0.00	0.00	0.00	0.19	0.01	Asian/ Pacific Islander	0	0.00	0.00	0.00	0.09	0.00
	10	0.00	0.00	0.00	0.19	0.01		10	0.00	0.00	0.00	0.09	0.00
	20	0.00	0.00	0.00	0.19	0.01		20	0.00	0.00	0.00	0.09	0.00
	30	0.00	0.00	0.01	0.19	0.00		30	0.00	0.00	0.00	0.09	0.00
	40	0.00	0.01	0.04	0.20	0.00		40	0.00	0.00	0.01	0.09	0.00
	50	0.01	0.04	0.11	0.20	0.00		50	0.00	0.01	0.04	0.09	0.00
	60	0.03	0.11	0.19	0.21	0.00		60	0.01	0.04	0.08	0.09	0.00
	70	0.09	0.18	-	0.20	0.00		70	0.03	0.07	-	0.08	0.00
80	0.13	-	-	0.15	0.00	80	0.05	-	-	0.07	0.00		
White	0	0.00	0.00	0.00	0.21	0.00	American Indian/ Alaska Native <sup>a</sup>	0	0.00	0.00	0.00	0.14	0.01
	10	0.00	0.00	0.00	0.21	0.00		10	0.00	0.00	0.00	0.14	0.01
	20	0.00	0.00	0.00	0.21	0.00		20	0.00	0.00	0.01	0.14	0.01
	30	0.00	0.00	0.01	0.21	0.00		30	0.00	0.01	0.02	0.14	0.01
	40	0.00	0.01	0.04	0.22	0.00		40	0.01	0.02	0.03	0.15	0.01
	50	0.01	0.04	0.13	0.22	0.00		50	0.01	0.03	0.10	0.15	0.01
	60	0.04	0.13	0.21	0.23	0.00		60	0.02	0.09	0.14	0.15	0.01
	70	0.10	0.20	-	0.22	0.00		70	0.09	0.15	-	0.15	0.01
80	0.14	-	-	0.17	0.00	80	0.09	-	-	0.10	0.02		
Black	0	0.00	0.00	0.00	0.08	0.01	Hispanic <sup>b</sup>	0	0.00	0.00	0.00	0.21	0.02
	10	0.00	0.00	0.00	0.08	0.01		10	0.00	0.00	0.00	0.21	0.02
	20	0.00	0.00	0.00	0.08	0.01		20	0.00	0.00	0.00	0.21	0.02
	30	0.00	0.00	0.01	0.09	0.01		30	0.00	0.00	0.01	0.21	0.02
	40	0.00	0.01	0.03	0.09	0.01		40	0.00	0.01	0.05	0.21	0.01
	50	0.01	0.02	0.05	0.09	0.00		50	0.01	0.04	0.12	0.21	0.01
	60	0.02	0.05	0.08	0.09	0.00		60	0.04	0.11	0.20	0.22	0.01
	70	0.04	0.08	-	0.09	0.00		70	0.08	0.18	-	0.20	0.01
80	0.07	-	-	0.09	0.00	80	0.13	-	-	0.16	0.02		

Devcan 6.7.5, April 2017, National Cancer Institute (<https://surveillance.cancer.gov/devcan/>).

Source: Incidence data are from the SEER 18 areas (San Francisco, Connecticut, Detroit, Hawaii, Iowa, New Mexico, Seattle, Utah, Atlanta, San Jose-Monterey, Los Angeles, Alaska Native Registry, Rural Georgia, California excluding SF/SJM/LA, Kentucky, Louisiana, New Jersey, and Georgia excluding ATL/RG). Mortality data are from the NCHS public use data file for the total US.

<sup>a</sup> Underlying incidence and mortality data for American Indian/Alaska Native are based on the CHSDA (Contract Health Service Delivery Area) counties.

<sup>b</sup> Hispanic is not mutually exclusive from whites, blacks, Asian/Pacific Islanders, and American Indians/Alaska Natives. Underlying incidence data for Hispanics are based on NHIA and exclude cases from the Alaska Native Registry.

- Statistic could not be calculated.

A percent of 0.00 represents a value that is below 0.005.

Table 10.12  
Kaposi Sarcoma

Risk of Being Diagnosed With Cancer in 10, 20 and 30 Years,  
Lifetime Risk of Being Diagnosed with Cancer Given Alive and Cancer-Free at Current Age, and  
Lifetime Risk of Dying from Cancer Given Alive at Current Age  
Females, 2012-2014 By Race/Ethnicity

Race/ Ethnicity	Current Age	Risk of Being Diagnosed with Cancer				Risk of Dying from Cancer	Race/ Ethnicity	Current Age	Risk of Being Diagnosed with Cancer				Risk of Dying from Cancer
		+10 yrs	+20 yrs	+30 yrs	Ever				+10 yrs	+20 yrs	+30 yrs	Ever	
All Races	0	0.00	0.00	0.00	0.05	0.00	Asian/ Pacific Islander	0	0.00	0.00	0.00	0.04	0.00
	10	0.00	0.00	0.00	0.05	0.00		10	0.00	0.00	0.00	0.04	0.00
	20	0.00	0.00	0.00	0.05	0.00		20	0.00	0.00	0.00	0.04	0.00
	30	0.00	0.00	0.01	0.05	0.00		30	0.00	0.00	0.00	0.04	0.00
	40	0.00	0.01	0.02	0.05	0.00		40	0.00	0.00	0.00	0.04	0.00
	50	0.01	0.01	0.03	0.05	0.00		50	0.00	0.00	0.02	0.04	0.00
	60	0.01	0.03	0.04	0.05	0.00		60	0.00	0.02	0.02	0.04	0.00
	70	0.02	0.04	-	0.04	0.00		70	0.01	0.02	-	0.04	0.00
80	0.02	-	-	0.03	0.00	80	0.01	-	-	0.03	0.00		
White	0	0.00	0.00	0.00	0.06	0.00	American Indian/ Alaska Native <sup>a</sup>	0	0.00	0.00	0.00	0.00	0.00
	10	0.00	0.00	0.00	0.06	0.00		10	0.00	0.00	0.00	0.00	0.00
	20	0.00	0.00	0.00	0.06	0.00		20	0.00	0.00	0.00	0.00	0.00
	30	0.00	0.00	0.01	0.06	0.00		30	0.00	0.00	0.00	0.00	0.00
	40	0.00	0.01	0.02	0.06	0.00		40	0.00	0.00	0.00	0.00	0.00
	50	0.01	0.02	0.04	0.06	0.00		50	0.00	0.00	0.00	0.00	0.00
	60	0.01	0.03	0.05	0.05	0.00		60	0.00	0.00	0.00	0.00	0.00
	70	0.02	0.04	-	0.05	0.00		70	0.00	0.00	-	0.00	0.00
80	0.02	-	-	0.03	0.00	80	0.00	-	-	0.00	0.00		
Black	0	0.00	0.00	0.00	0.03	0.00	Hispanic <sup>b</sup>	0	0.00	0.00	0.00	0.06	0.00
	10	0.00	0.00	0.00	0.03	0.00		10	0.00	0.00	0.00	0.06	0.00
	20	0.00	0.00	0.00	0.03	0.00		20	0.00	0.00	0.00	0.06	0.00
	30	0.00	0.00	0.00	0.03	0.00		30	0.00	0.00	0.01	0.06	0.00
	40	0.00	0.00	0.01	0.03	0.00		40	0.00	0.01	0.02	0.06	0.00
	50	0.00	0.01	0.02	0.03	0.00		50	0.01	0.01	0.03	0.06	0.00
	60	0.01	0.02	0.03	0.03	0.00		60	0.01	0.03	0.04	0.05	0.00
	70	0.01	0.02	-	0.02	0.00		70	0.02	0.04	-	0.05	0.00
80	0.01	-	-	0.01	0.00	80	0.02	-	-	0.03	0.00		

Devcan 6.7.5, April 2017, National Cancer Institute (<https://surveillance.cancer.gov/devcan/>).

Source: Incidence data are from the SEER 18 areas (San Francisco, Connecticut, Detroit, Hawaii, Iowa, New Mexico, Seattle, Utah, Atlanta, San Jose-Monterey, Los Angeles, Alaska Native Registry, Rural Georgia, California excluding SF/SJM/LA, Kentucky, Louisiana, New Jersey, and Georgia excluding ATL/RG). Mortality data are from the NCHS public use data file for the total US.

<sup>a</sup> Underlying incidence and mortality data for American Indian/Alaska Native are based on the CHSDA (Contract Health Service Delivery Area) counties.

<sup>b</sup> Hispanic is not mutually exclusive from whites, blacks, Asian/Pacific Islanders, and American Indians/Alaska Natives. Underlying incidence data for Hispanics are based on NHIA and exclude cases from the Alaska Native Registry.

- Statistic could not be calculated.

A percent of 0.00 represents a value that is below 0.005.

Table 10.13  
Kaposi Sarcoma

SEER Incidence  
Age-Adjusted Rates and Trends<sup>a</sup>  
By Race/Ethnicity and Sex

SEER Incidence	SEER 18 Areas <sup>b</sup>			SEER 13 Areas <sup>b</sup>			SEER 9 Areas <sup>b</sup>		
	Rate 2010-2014			Trend 2005-2014 <sup>c</sup>			Trend 2005-2014 <sup>d</sup>		
	Rate per 100,000 persons			AAPC (%)			AAPC (%)		
RACE/ETHNICITY	Total	Males	Females	Total	Males	Females	Total	Males	Females
All Races	0.5	0.9	0.1	-2.5*	-2.6*	2.1	-1.8*	-1.8*	-3.8*
White	0.4	0.8	0.1	-3.4*	-3.5*	-4.4*	-2.7*	-2.7*	-5.0*
White Hispanic <sup>e</sup>	0.7	1.2	0.2	-4.5*	-4.0*	-4.0*	-	-	-
White Non-Hispanic <sup>e</sup>	0.3	0.6	0.1	-3.5*	-3.6*	-5.3*	-	-	-
Black	1.1	2.2	0.2	-1.4	-1.5*	5.5	-0.1	-0.5	-
Asian/Pacific Islander	0.2	0.4	-	-0.7	0.1	-	-	-	-
Amer Ind/Alaska Nat <sup>f</sup>	-	-	-	-	-	-	-	-	-
Hispanic <sup>e</sup>	0.7	1.2	0.2	-3.5*	-4.0*	-3.0*	-	-	-

The AAPC is the Average Annual Percent Change over the time interval. The AAPCs are calculated by the Joinpoint Regression Program Version 4.3.0.0, April 2016, National Cancer Institute.

- Statistic not shown. Rate based on less than 16 cases for the time interval.

Trend based on less than 10 cases for at least one year within the time interval.

<sup>a</sup> Rates are age-adjusted to the 2000 US Std Population (19 age groups - Census P25-1130). Trends are based on rates age-adjusted to the 2000 US Std Population (19 age groups - Census P25-1130).

<sup>b</sup> The SEER 9 areas are San Francisco, Connecticut, Detroit, Hawaii, Iowa, New Mexico, Seattle, Utah, and Atlanta.

The SEER 13 areas comprise the SEER 9 areas plus San Jose-Monterey, Los Angeles, the Alaska Native Registry, and Rural Georgia.

The SEER 18 areas comprise the SEER 13 areas plus California excluding SF/SJM/LA, Kentucky, Louisiana, New Jersey, and Georgia excluding ATL/RG.

<sup>c</sup> The 2005-2014 AAPC estimates are based on a Joinpoint analysis with up to 4 Joinpoints over diagnosis years 1992-2014.

<sup>d</sup> The 2005-2014 AAPC estimates are based on a Joinpoint analysis with up to 5 Joinpoints over diagnosis years 1975-2014.

<sup>e</sup> Hispanic and Non-Hispanic are not mutually exclusive from whites, blacks, Asian/Pacific Islanders, and American Indians/Alaska Natives. Incidence data for Hispanics and Non-Hispanics are based on NHIA and exclude cases from the Alaska Native Registry.

<sup>f</sup> Incidence data for American Indian/Alaska Native are based on the CHSDA (Contract Health Service Delivery Area) counties.

\* The APC is significantly different from zero (p<.05).

Table 10.14  
Kaposi Sarcoma

Age-Adjusted SEER Incidence Rates<sup>a</sup>  
By Registry, Race and Sex

	All Races			Whites			Blacks		
	Total	Males	Females	Total	Males	Females	Total	Males	Females
<u>SEER Incidence Rates<sup>a</sup>, 2010-2014</u>									
California	0.58	1.09	0.10	0.57	1.05	0.10	1.01	1.95	-
Greater Bay Area	0.78	1.43	0.16	0.94	1.69	0.18	1.16	2.18	-
San Francisco-Oakland	0.98	1.88	0.12	1.19	2.23	-	1.25	2.52	-
San Jose-Monterey	0.43	0.63	0.23	0.51	0.77	-	-	-	-
Los Angeles	0.85	1.62	0.11	0.77	1.40	0.14	1.42	2.96	-
Greater California	0.38	0.71	0.07	0.37	0.70	0.05	0.62	1.12	-
Connecticut	0.33	0.59	-	0.27	0.51	-	-	-	-
Detroit	0.52	1.00	-	0.28	0.52	-	1.01	2.12	-
Georgia	0.83	1.58	0.09	0.36	0.64	-	1.77	3.68	-
Atlanta	1.75	3.43	-	0.81	1.49	-	3.10	6.59	-
Rural Georgia	-	-	-	-	-	-	-	-	-
Greater Georgia	0.27	0.50	-	0.17	0.28	-	0.54	1.13	-
Hawaii	0.27	0.54	-	-	-	-	-	-	-
Iowa	0.10	-	-	-	-	-	-	-	-
Kentucky	0.24	0.45	-	0.19	0.37	-	-	-	-
Louisiana	0.48	0.93	-	0.33	0.62	-	0.78	1.56	-
New Jersey	0.40	0.70	0.14	0.31	0.55	0.10	0.67	1.20	-
New Mexico	0.30	0.54	-	0.26	0.49	-	-	-	-
Seattle-Puget Sound	0.45	0.84	-	0.45	0.88	-	-	-	-
Utah	-	-	-	-	-	-	-	-	-
SEER 9 Areas <sup>b</sup>	0.61	1.16	0.09	0.43	0.82	0.06	1.76	3.52	0.24
SEER 13 Areas <sup>b</sup>	0.65	1.23	0.10	0.51	0.95	0.08	1.66	3.32	0.20
SEER 18 Areas <sup>b</sup>	0.51	0.95	0.09	0.41	0.76	0.07	1.11	2.17	0.16

<sup>a</sup> Rates are per 100,000 and are age-adjusted to the 2000 US Std Population (19 age groups - Census P25-1130)

<sup>b</sup> The SEER 9 areas are San Francisco, Connecticut, Detroit, Hawaii, Iowa, New Mexico, Seattle, Utah and Atlanta.

The SEER 13 areas comprise the SEER 9 areas plus San Jose-Monterey, Los Angeles, the Alaska Native Registry and Rural Georgia.

The SEER 18 areas comprise the SEER 13 areas plus California excluding SF/SJM/LA, Kentucky, Louisiana, New Jersey and Georgia excluding ATL/RG.

- Statistic not shown. Rate based on less than 16 cases for the time interval.

Table 10.15  
Kaposi SarcomaEstimated United States Cancer Prevalence Counts<sup>a</sup> on January 1, 2014  
By Race/Ethnicity, Sex and Years Since Diagnosis

WARNING: The Prevalence Estimates presented on this page utilize a different tumor selection criteria from previous CSR releases and are NOT directly comparable to estimates from previous CSR releases.  
Please see the Prevalence Comparison Chapter of this CSR for more information.

Years Since Diagnosis		0 to <5	5 to <10	10 to <15	15 to <20	20 to <25	25 to <30	0 to <22 <sup>a</sup>	0 to <39 <sup>e</sup>	>=39 <sup>g</sup>	Complete <sup>h</sup>
<u>Race</u>	<u>Sex</u>										
All Races <sup>b</sup>	Both Sexes	7,712	6,496	4,744	6,724	2,381	793	27,686	29,172	+	+
	Males	7,119	6,056	4,495	6,572	2,241	793	26,112	27,520	+	+
	Females	593	440	249	152	140	0	1,574	1,652	+	+
White <sup>b</sup>	Both Sexes	4,729	4,618	3,370	5,399	1,954	680	19,762	21,002	+	+
	Males	4,344	4,302	3,166	5,305	1,848	680	18,657	19,831	+	+
	Females	385	316	204	94	106	0	1,105	1,171	+	+
Black <sup>b</sup>	Both Sexes	2,413	1,579	1,167	882	276	36	6,280	6,388	+	+
	Males	2,296	1,476	1,133	859	253	36	5,981	6,089	+	+
	Females	117	103	34	23	23	0	299	299	+	+
Asian/ Pacific Islander <sup>c</sup>	Both Sexes	149	116	80	85	+	+	439	+	+	+
	Males	144	109	80	85	+	+	427	+	+	+
	Females	5	7	0	0	+	+	12	+	+	+
Hispanic <sup>d</sup>	Both Sexes	1,291	1,120	898	1,198	+	+	4,767	+	+	+
	Males	1,141	1,046	844	1,167	+	+	4,453	+	+	+
	Females	150	74	54	31	+	+	314	+	+	+

Estimated prevalence percent<sup>a</sup> on January 1, 2014, of the SEER<sup>c</sup> population diagnosed in the previous 22 years  
By Age at Prevalence, Race/Ethnicity and Sex

Age at Prevalence		All Ages	0-9	10-19	20-29	Age Specific (Crude)					Age-Adjusted <sup>f</sup>	
						30-39	40-49	50-59	60-69	70-79	80+	All Ages
<u>Race</u>	<u>Sex</u>											
All Races <sup>c</sup>	Both Sexes	0.0093%	-	-	0.0012%	0.0061%	0.0171%	0.0239%	0.0146%	0.0112%	0.0187%	0.0087%
	Males	0.0179%	-	-	0.0023%	0.0119%	0.0337%	0.0479%	0.0297%	0.0212%	0.0351%	0.0172%
	Females	0.0009%	-	-	-	0.0002%	0.0007%	0.0009%	0.0009%	0.0030%	0.0088%	0.0008%
White <sup>c</sup>	Both Sexes	0.0092%	-	-	0.0006%	0.0046%	0.0156%	0.0247%	0.0152%	0.0119%	0.0205%	0.0084%
	Males	0.0176%	-	-	0.0012%	0.0088%	0.0300%	0.0489%	0.0304%	0.0220%	0.0385%	0.0164%
	Females	0.0010%	-	-	-	-	0.0007%	0.0007%	0.0009%	0.0034%	0.0096%	0.0008%
Black <sup>c</sup>	Both Sexes	0.0144%	-	-	0.0053%	0.0188%	0.0351%	0.0325%	0.0170%	0.0115%	0.0099%	0.0149%
	Males	0.0289%	-	-	0.0101%	0.0389%	0.0741%	0.0670%	0.0371%	0.0241%	0.0153%	0.0308%
	Females	0.0011%	-	-	-	-	-	0.0024%	-	-	0.0073%	0.0011%
Asian/ Pacific Islander <sup>c</sup>	Both Sexes	0.0025%	-	-	-	0.0019%	0.0041%	0.0051%	0.0051%	0.0033%	0.0065%	0.0023%
	Males	0.0050%	-	-	-	0.0039%	0.0086%	0.0111%	0.0110%	0.0075%	0.0132%	0.0049%
	Females	0.0002%	-	-	-	-	-	-	-	-	-	0.0001%
Hispanic <sup>d</sup>	Both Sexes	0.0090%	-	-	0.0008%	0.0071%	0.0202%	0.0288%	0.0180%	0.0188%	0.0480%	0.0115%
	Males	0.0166%	-	-	0.0015%	0.0137%	0.0387%	0.0568%	0.0372%	0.0340%	0.0748%	0.0218%
	Females	0.0012%	-	-	-	-	0.0009%	0.0016%	-	0.0074%	0.0318%	0.0019%

<sup>a</sup> US 2014 cancer prevalence counts are based on 2014 cancer prevalence proportions from the SEER registries and 1/1/2014 US population estimates based on the average of 2013 and 2014 population estimates from the US Bureau of the Census.  
<sup>b c d</sup> Prevalence was calculated using the first invasive tumor for each cancer site diagnosed during the previous 39/22 years. Statistics based on (b) SEER 9 Areas (c) SEER 13 Areas excluding the Alaska Native Registry

(d) NHIA for Hispanic for SEER 13 Areas excluding the Alaska Native Registry.

<sup>e</sup> Maximum limited-duration prevalence: 39 years for 1975-2014 SEER 9 data; 22 years for 1992-2014 SEER 13 data (excluding the Alaska Native Registry) used to calculate prevalence for Hispanics and Asian Pacific Islanders.

<sup>f</sup> Percentages are age-adjusted to the 2000 US Standard Population (19 age groups - Census P25-1130) by 5-year age groups.

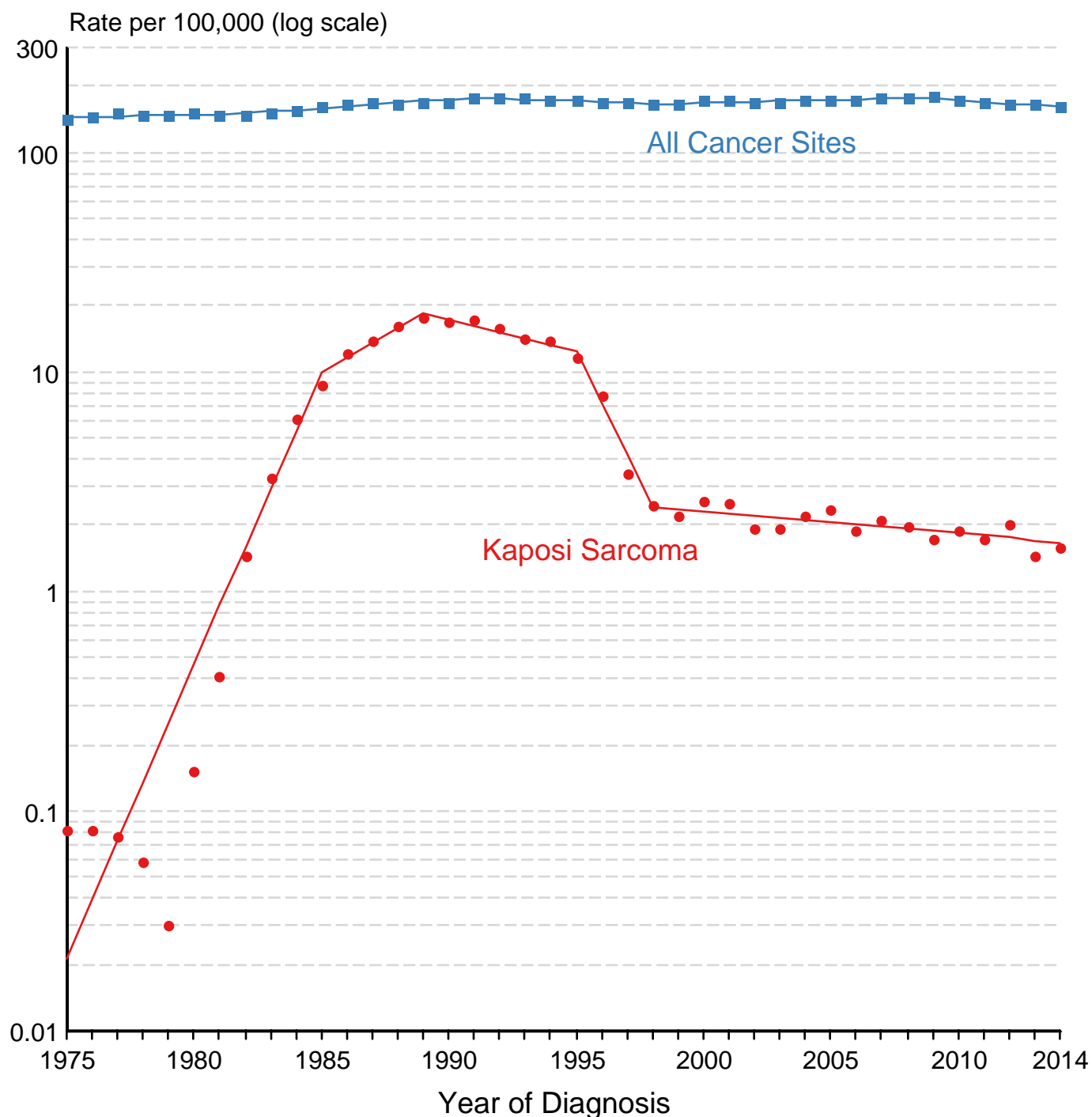
<sup>g h i</sup> (g) Cases diagnosed more than 39 years ago were estimated using the completeness index method (Capocaccia et. al. 1997, Merrill et. al. 2000). (h) Complete prevalence is obtained by summing 0 to <39 and >=39. (i) Age-specific completeness index was approximated using empirical data from historical Connecticut tumor registry.

- Statistic not shown. Statistic based on fewer than 5 cases estimated alive in SEER for the time interval.

+ Not available.

Figure 10.1

# All Cancer Sites vs Kaposi Sarcoma SEER Incidence Rates, 1975-2013 Males, Ages 20-54



Source: SEER 9 areas.  
Rates are age-adjusted to the 2000 US Std Population (19 age groups - Census P25-1103).  
Regression lines are calculated using the Joinpoint Regression Program Version 4.4, January 2017,  
National Cancer Institute.

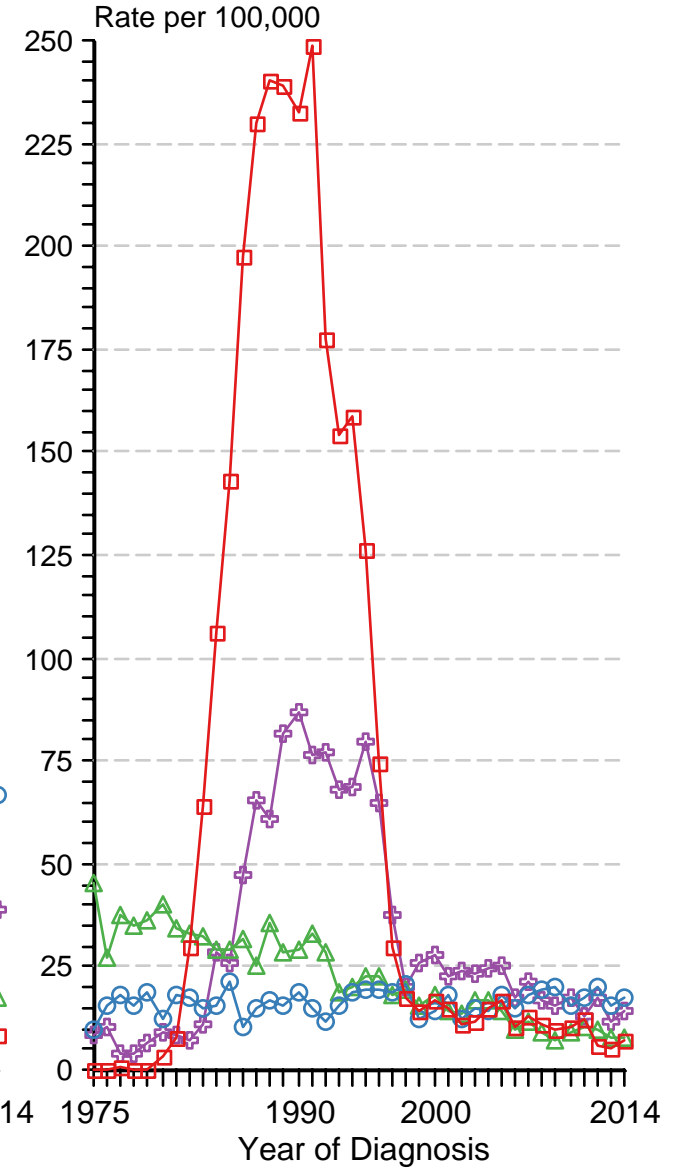
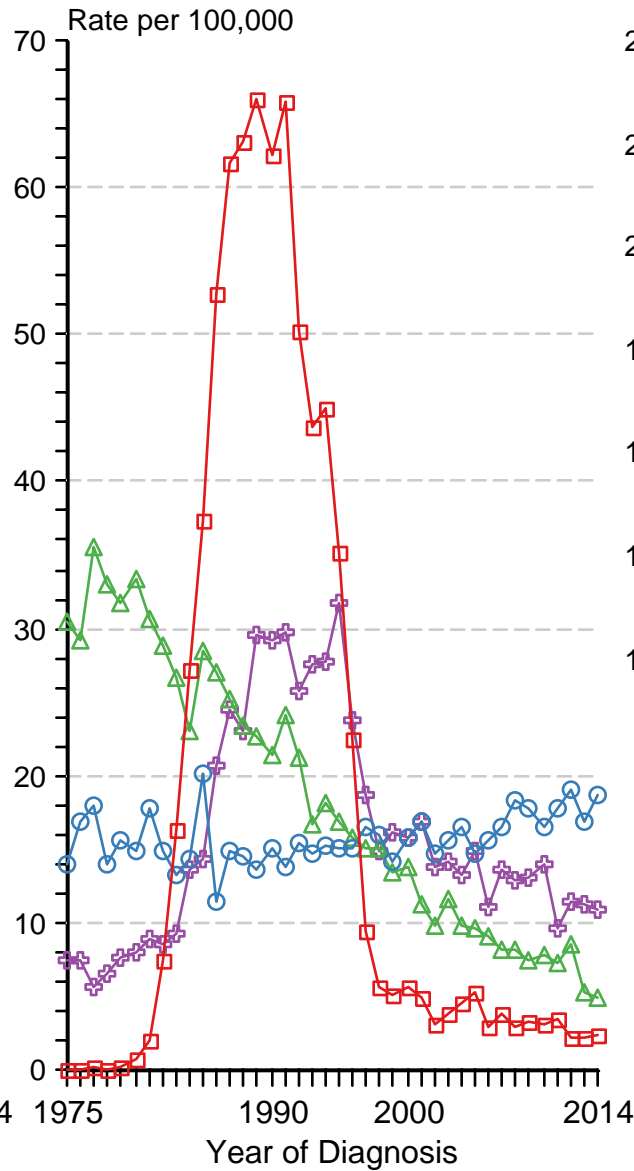
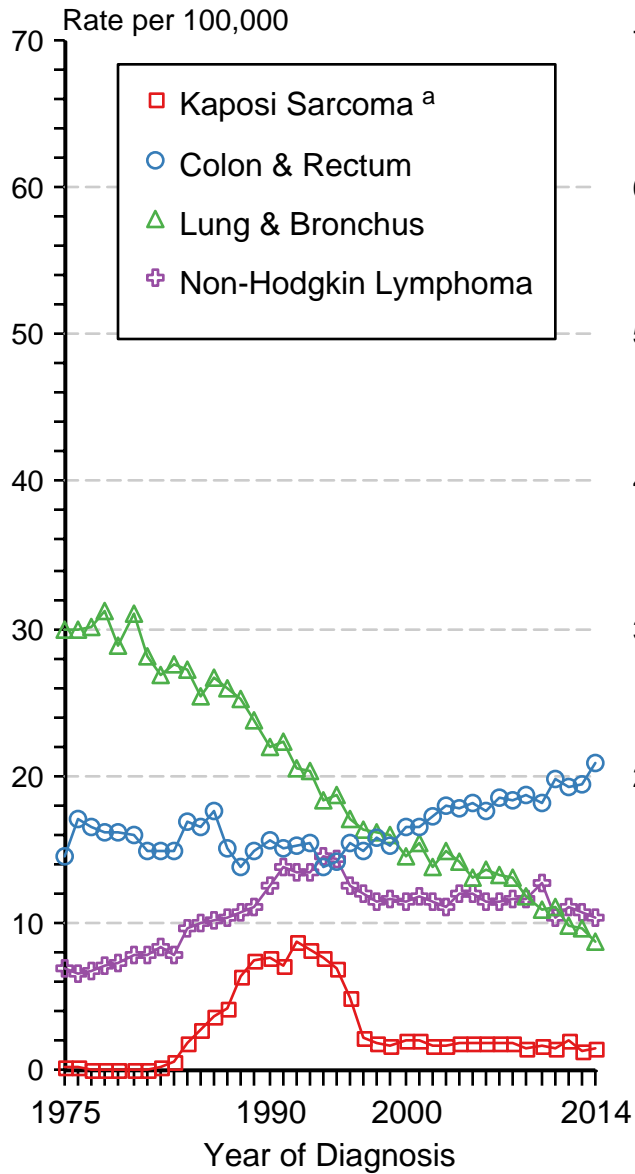


Figure 10.2

All SEER excluding  
San Francisco/Oakland  
Males, Ages 20-54  
1975-2014

San Francisco/Oakland  
Males, Ages 20-54  
1975-2014

San Francisco County/City  
Males, Ages 20-54  
1975-2014



Source: SEER 9 areas. Rates are age-adjusted to the 2000 US Std Population (19 age groups - Census P25-1103).

<sup>a</sup> Kaposi Sarcoma cases are excluded from Colon & Rectum, Lung & Bronchus, and Non-Hodgkin Lymphoma cases.