

Table 1.26
Age-Adjusted U.S. Death Rates and Trends for the Top 15 Cancer Sites^a by Race/Ethnicity
Both Sexes

	All Races		White		Black	
	Rate ^b 2012-2016	APC ^c 2007-2016	Rate ^b 2012-2016	APC ^c 2007-2016	Rate ^b 2012-2016	APC ^c 2007-2016
All Sites	161.0	-1.5*	161.5	-1.4*	185.6	-2.1*
Lung and Bronchus	41.9	-2.9*	42.7	-2.8*	44.3	-3.3*
Colon and Rectum	14.2	-2.3*	13.8	-2.2*	18.9	-2.9*
Breast	11.4	-1.7*	11.1	-1.7*	16.4	-1.7*
Pancreas	11.0	0.1	10.9	0.2*	14.3	-3.5*
Prostate ^f	7.8	-2.0*	7.4	-1.8*	13.3	-0.5*
Leukemia	6.5	-1.4*	6.8	-1.3*	8.4	1.9*
Liver & IBD ^g	6.5	2.4*	6.1	2.6*	6.2	-0.5
Non-Hodgkin Lymphoma	5.6	-2.2*	5.9	-2.2*	5.5	-3.1*
Brain and ONS ^g	4.4	0.6*	4.8	0.7*	5.5	-1.8*
Urinary Bladder	4.4	-0.2	4.6	0.0	5.0	1.9*
Esophagus	4.0	-1.0*	4.2	-0.4*	4.1	-1.6*
Ovary ^f	3.9	-2.5*	4.0	-2.5*	3.6	-1.8*
Kidney and Renal Pelvis	3.8	-1.0*	3.9	-0.8*	3.6	-1.5*
Myeloma	3.3	-0.4	3.1	-0.4	3.5	-0.6
Stomach	3.1	-2.0*	2.9	-1.7*	3.3	-4.7*
	Asian/Pacific Islander		American Indian/Alaska Native ^d		Hispanic ^e	
	Rate ^b 2012-2016	APC ^c 2007-2016	Rate ^b 2012-2016	APC ^c 2007-2016	Rate ^b 2012-2016	APC ^c 2007-2016
All Sites	100.0	-1.4*	146.7	-1.3*	113.5	-1.2*
Lung and Bronchus	22.7	-2.1*	34.8	-2.8*	18.3	-2.7*
Colon and Rectum	9.8	-2.3*	15.6	-1.4	11.2	-2.1*
Liver & IBD ^g	9.3	-1.0*	10.6	2.2*	9.3	1.3*
Pancreas	7.6	-0.2	8.9	0.5	8.5	-0.2
Breast	6.3	-0.2	8.0	-1.0	7.9	-0.8*
Stomach	5.3	-3.3*	7.8	-0.7	6.4	-2.4*
Non-Hodgkin Lymphoma	3.9	-1.3*	5.7	-2.5*	5.1	-2.0*
Leukemia	3.6	-1.6	5.0	-1.5	4.8	-1.9*
Prostate ^f	3.5	-2.3*	4.4	-0.6	4.7	-0.8
Ovary ^f	2.5	-1.1	4.1	-3.3*	3.5	-0.5
Brain and ONS ^g	2.2	3.2*	3.5	0.7	3.0	0.9*
Oral Cavity and Pharynx	2.0	1.0	3.5	-1.3	2.9	-2.0*
Kidney and Renal Pelvis	1.8	-2.0*	3.1	1.3	2.8	-0.2
Urinary Bladder	1.7	0.1	2.4	0.8	2.3	-0.7
Corpus and Uterus, NOS ^f	1.7	2.6*	2.4	-2.2	2.1	2.6*

Source: US Mortality Files, National Center for Health Statistics, Centers for Disease Control and Prevention.

^a Top 15 cancer sites selected based on 2012-2016 age-adjusted rates for the race/ethnic group.

^b Rates are per 100,000 and age-adjusted to the 2000 US Std Population (19 age groups - Census P25-1130).

^c The APC is the Annual Percent Change over the time interval.

Trends are based on rates age-adjusted to the 2000 US Std Population (19 age groups - Census P25-1130).

^d Rates for American Indian/Alaska Native are based on the Purchased/Referred Care Delivery Area (PRCDA) counties.

^e Hispanic is not mutually exclusive from whites, blacks, Asian/Pacific Islanders, and American Indians/Alaska Natives.

^f The rates for sex-specific cancer sites are calculated using the population for both sexes combined.

^g IBD = Intrahepatic Bile Duct. ONS = Other Nervous System.

* The APC is significantly different from zero (p<.05).

- Statistic not shown. Rate based on less than 16 cases for the time interval. Trend based on less than 10 cases for at least one year within the time interval.

Table 1.27
Age-Adjusted U.S. Death Rates and Trends for the Top 15 Cancer Sites^a by Race/Ethnicity

			Males					
All Races			White			Black		
	Rate ^b	APC ^c		Rate ^b	APC ^c		Rate ^b	APC ^c
	2012-2016	2007-2016		2012-2016	2007-2016		2012-2016	2007-2016
All Sites	193.1	-1.8*	All Sites	193.0	-1.6*	All Sites	233.5	-2.8*
Lung and Bronchus	51.6	-3.5*	Lung and Bronchus	51.7	-3.4*	Lung and Bronchus	62.1	-4.0*
Prostate	19.2	-2.7*	Prostate	18.0	-2.5*	Prostate	38.9	-4.2*
Colon and Rectum	16.9	-2.4*	Colon and Rectum	16.5	-2.3*	Colon and Rectum	23.8	-2.9*
Pancreas	12.6	0.1	Pancreas	12.6	0.2*	Pancreas	14.8	-0.4
Liver & IBD ^f	9.6	2.2*	Leukemia	9.1	-1.4*	Liver & IBD ^f	13.2	1.5*
Leukemia	8.8	-1.5*	Liver & IBD ^f	8.9	2.4*	Stomach	8.2	-3.1*
Urinary Bladder	7.6	-0.3*	Urinary Bladder	8.0	-0.2	Myeloma	7.4	-0.8*
Non-Hodgkin Lymphoma	7.3	-2.1*	Non-Hodgkin Lymphoma	7.6	-2.0*	Leukemia	7.2	-2.2*
Esophagus	7.1	-1.1*	Esophagus	7.5	-0.6*	Esophagus	5.6	-5.3*
Kidney and Renal Pelvis	5.5	-0.8*	Brain and ONS ^f	5.8	0.7*	Kidney and Renal Pelvis	5.5	-0.9
Brain and ONS ^f	5.4	0.6*	Kidney and Renal Pelvis	5.7	-0.7*	Urinary Bladder	5.4	-0.1
Stomach	4.2	-2.4*	Melanoma of the Skin	4.3	-1.7*	Non-Hodgkin Lymphoma	5.2	-1.9*
Myeloma	4.2	-0.6*	Myeloma	4.0	-0.5*	Oral Cavity and Pharynx	4.7	-2.1*
Oral Cavity and Pharynx	3.9	0.6*	Oral Cavity and Pharynx	3.8	1.0*	Brain and ONS ^f	3.2	1.2
Melanoma of the Skin	3.7	-2.0*	Stomach	3.7	-2.4*	Larynx	3.1	-3.8*
<hr/>			<hr/>			<hr/>		
Asian/Pacific Islander			American Indian/Alaska Native ^d			Hispanic ^e		
	Rate ^b	APC ^c		Rate ^b	APC ^c		Rate ^b	APC ^c
	2012-2016	2007-2016		2012-2016	2007-2016		2012-2016	2007-2016
All Sites	118.6	-1.9*	All Sites	176.3	-1.2*	All Sites	138.1	-1.6*
Lung and Bronchus	30.2	-2.7*	Lung and Bronchus	42.0	-3.4*	Lung and Bronchus	25.3	-3.6*
Liver & IBD ^f	13.8	-0.9*	Prostate	19.2	-1.2	Prostate	15.8	-2.8*
Colon and Rectum	11.6	-2.4*	Colon and Rectum	19.1	0.7	Colon and Rectum	14.4	-1.9*
Prostate	8.6	-2.5*	Liver & IBD ^f	14.4	1.4	Liver & IBD ^f	13.3	1.2*
Pancreas	8.2	-0.4	Pancreas	9.9	0.3	Pancreas	9.4	-0.2
Stomach	6.8	-3.7*	Kidney and Renal Pelvis	8.1	-2.1	Stomach	6.5	-2.9*
Non-Hodgkin Lymphoma	4.9	-1.3*	Stomach	6.9	-1.2	Non-Hodgkin Lymphoma	6.1	-1.3*
Leukemia	4.7	-1.1	Esophagus	6.2	1.3	Leukemia	6.0	-0.7
Oral Cavity and Pharynx	3.1	1.3	Non-Hodgkin Lymphoma	5.8	2.2	Kidney and Renal Pelvis	5.0	-0.5
Urinary Bladder	2.9	-0.1	Leukemia	5.4	-2.9	Urinary Bladder	3.8	-1.0
Esophagus	2.7	-1.9*	Urinary Bladder	3.9	-0.2	Esophagus	3.7	-2.4*
Kidney and Renal Pelvis	2.7	-2.0*	Oral Cavity and Pharynx	3.7	3.2	Brain and ONS ^f	3.5	0.7
Brain and ONS ^f	2.6	1.9*	Myeloma	3.4	-1.2	Myeloma	3.4	0.0
Myeloma	2.0	-2.2*	Brain and ONS ^f	2.8	-0.9	Oral Cavity and Pharynx	2.4	0.0
Soft Tissue including Heart	1.0	0.3	Larynx	1.6	-	Larynx	1.5	-2.4*

Source: US Mortality Files, National Center for Health Statistics, Centers for Disease Control and Prevention.

^a Top 15 cancer sites selected based on 2012-2016 age-adjusted rates for the race/ethnic group.

^b Rates are per 100,000 and age-adjusted to the 2000 US Std Population (19 age groups - Census P25-1130).

^c The APC is the Annual Percent Change over the time interval.

Trends are based on rates age-adjusted to the 2000 US Std Population (19 age groups - Census P25-1130).

^d Rates for American Indian/Alaska Native are based on the Purchased/Referred Care Delivery Area (PRCDA) counties.

^e Hispanic is not mutually exclusive from whites, blacks, Asian/Pacific Islanders, and American Indians/Alaska Natives.

^f IBD = Intrahepatic Bile Duct. ONS = Other Nervous System.

* The APC is significantly different from zero (p<.05).

- Statistic not shown. Rate based on less than 16 cases for the time interval. Trend based on less than 10 cases for at least one year within the time interval.

Table 1.28
Age-Adjusted U.S. Death Rates and Trends for the Top 15 Cancer Sites^a by Race/Ethnicity

Females

All Races	Rate ^b		APC ^c	White	Rate ^b		APC ^c	Black	Rate ^b		APC ^c
	2012-2016	2007-2016			2012-2016	2007-2016			2012-2016	2007-2016	
All Sites	137.7	-1.4*		All Sites	138.3	-1.3*		All Sites	156.0	-1.6*	
Lung and Bronchus	34.4	-2.3*		Lung and Bronchus	35.6	-2.2*		Lung and Bronchus	32.4	-2.5*	
Breast	20.6	-1.5*		Breast	20.1	-1.5*		Breast	28.1	-1.6*	
Colon and Rectum	11.9	-2.4*		Colon and Rectum	11.7	-2.2*		Colon and Rectum	15.5	-3.1*	
Pancreas	9.6	0.1		Pancreas	9.4	0.1		Pancreas	12.2	-0.5*	
Ovary	7.0	-2.3*		Ovary	7.3	-2.3*		Corpus and Uterus, NOS	8.5	2.2*	
Leukemia	4.9	-1.5*		Leukemia	5.1	-1.3*		Ovary	6.1	-1.6*	
Corpus and Uterus, NOS	4.7	2.0*		Non-Hodgkin Lymphoma	4.5	-2.6*		Myeloma	5.4	-0.3	
Non-Hodgkin Lymphoma	4.4	-2.6*		Corpus and Uterus, NOS	4.4	1.8*		Liver & IBD ^f	4.7	2.6*	
Liver & IBD ^f	3.9	2.6*		Brain and ONS ^f	3.9	0.6*		Leukemia	4.4	-1.6*	
Brain and ONS ^f	3.6	0.6*		Liver & IBD ^f	3.7	2.8*		Stomach	3.8	-3.6*	
Myeloma	2.7	-0.4		Kidney and Renal Pelvis	2.4	-1.4*		Cervix Uteri	3.5	-3.1*	
Kidney and Renal Pelvis	2.3	-1.6*		Myeloma	2.4	-0.5		Non-Hodgkin Lymphoma	3.3	-1.3*	
Cervix Uteri	2.3	-0.6*		Urinary Bladder	2.2	-0.4		Urinary Bladder	2.4	-1.4*	
Stomach	2.3	-1.8*		Cervix Uteri	2.2	0.1		Kidney and Renal Pelvis	2.3	-2.5*	
Urinary Bladder	2.1	-0.6*		Stomach	2.0	-1.6*		Brain and ONS ^f	2.1	0.6	
Asian/Pacific Islander				American Indian/Alaska Native ^d				Hispanic ^e			
	Rate ^b	APC ^c		Rate ^b	APC ^c		Rate ^b	APC ^c			
	2012-2016	2007-2016		2012-2016	2007-2016		2012-2016	2007-2016			
All Sites	86.6	-1.0*		All Sites	124.9	-1.5*		All Sites	96.2	-0.9*	
Lung and Bronchus	17.3	-1.3*		Lung and Bronchus	29.4	-2.3*		Breast	14.2	-0.7*	
Breast	11.2	-0.1		Breast	14.3	-0.7		Lung and Bronchus	13.1	-1.6*	
Colon and Rectum	8.4	-2.3*		Colon and Rectum	13.0	-3.4*		Colon and Rectum	8.8	-2.3*	
Pancreas	7.1	0.0		Pancreas	8.0	0.5		Pancreas	7.7	-0.1	
Liver & IBD ^f	5.8	-0.9		Liver & IBD ^f	7.4	2.9		Liver & IBD ^f	6.0	1.4*	
Ovary	4.4	-0.9		Ovary	6.3	-0.8		Ovary	5.2	-1.8*	
Stomach	4.2	-2.9*		Kidney and Renal Pelvis	3.8	-3.3		Stomach	4.0	-1.0*	
Non-Hodgkin Lymphoma	3.1	-1.5*		Stomach	3.6	-1.5		Corpus and Uterus, NOS	3.9	2.8*	
Corpus and Uterus, NOS	3.1	2.8*		Corpus and Uterus, NOS	3.5	0.5		Leukemia	3.8	-0.9	
Leukemia	2.8	-2.4*		Non-Hodgkin Lymphoma	3.3	-3.6		Non-Hodgkin Lymphoma	3.8	-2.7*	
Brain and ONS ^f	1.9	4.5*		Leukemia	3.0	-4.4		Cervix Uteri	2.6	-1.2*	
Cervix Uteri	1.7	-1.1		Myeloma	2.8	3.6		Brain and ONS ^f	2.6	1.1	
Myeloma	1.2	-1.2		Cervix Uteri	2.8	-4.4*		Myeloma	2.3	-0.6	
Oral Cavity and Pharynx	1.2	0.3		Brain and ONS ^f	2.1	-2.3		Kidney and Renal Pelvis	2.3	-0.8	
Kidney and Renal Pelvis	1.1	-2.1		Gallbladder	1.6	-1.2		Urinary Bladder	1.2	-0.1	

Source: US Mortality Files, National Center for Health Statistics, Centers for Disease Control and Prevention.

^a Top 15 cancer sites selected based on 2012-2016 age-adjusted rates for the race/ethnic group.

^b Rates are per 100,000 and age-adjusted to the 2000 US Std Population (19 age groups - Census P25-1130).

^c The APC is the Annual Percent Change over the time interval.

Trends are based on rates age-adjusted to the 2000 US Std Population (19 age groups - Census P25-1130).

^d Rates for American Indian/Alaska Native are based on the Purchased/Referred Care Delivery Area (PRCDA) counties.

^e Hispanic is not mutually exclusive from whites, blacks, Asian/Pacific Islanders, and American Indians/Alaska Natives.

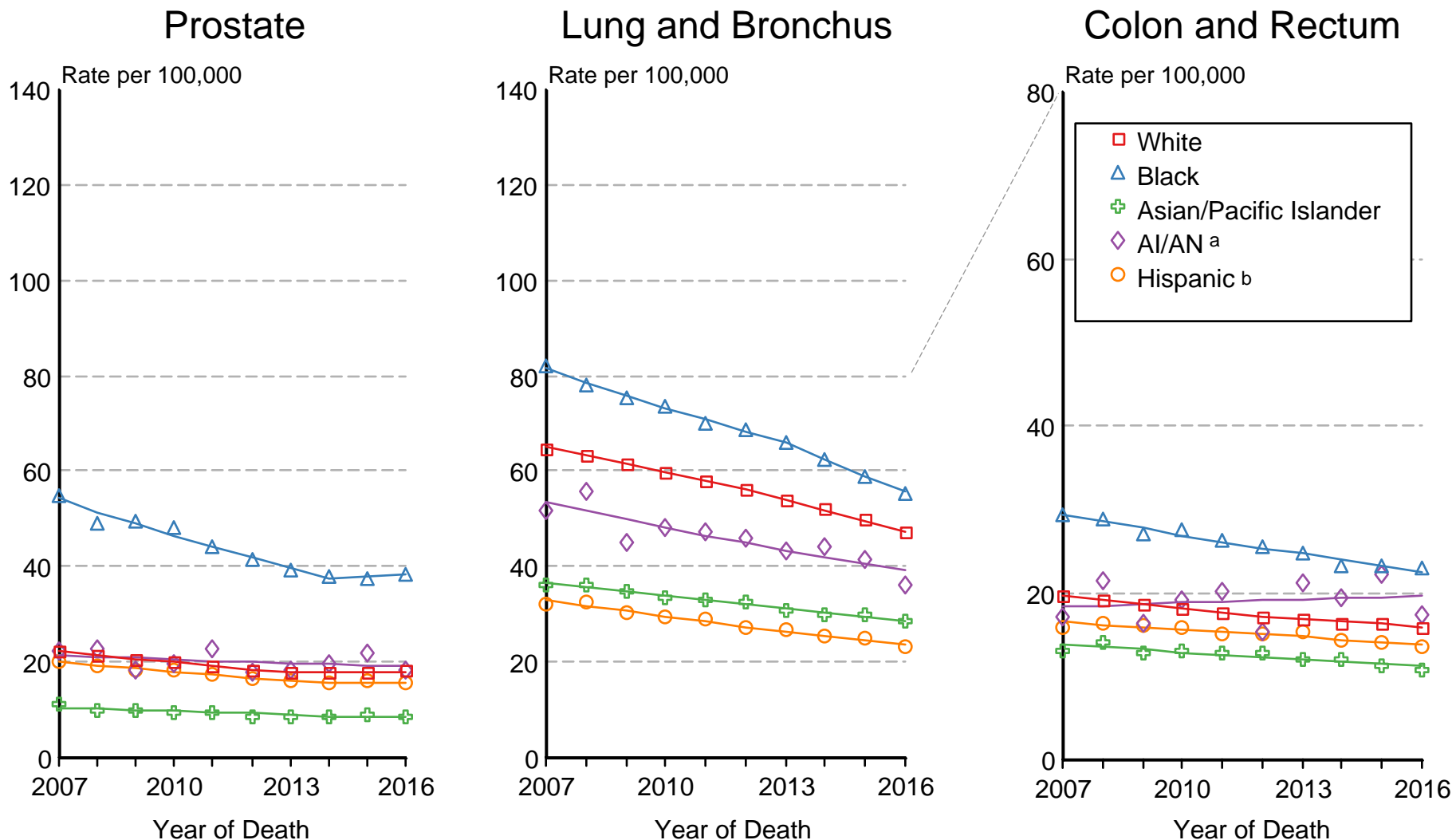
^f IBD = Intrahepatic Bile Duct. ONS = Other Nervous System.

* The APC is significantly different from zero (p<.05).

- Statistic not shown. Rate based on less than 16 cases for the time interval. Trend based on less than 10 cases for at least one year within the time interval.

Figure 1.15

US Mortality 2007-2016 Males by Race/Ethnicity



Source: US Mortality Files, National Center for Health Statistics, Centers for Disease Control and Prevention.

Rates are age-adjusted to the 2000 US Std Population (19 age groups - Census P25-1103).

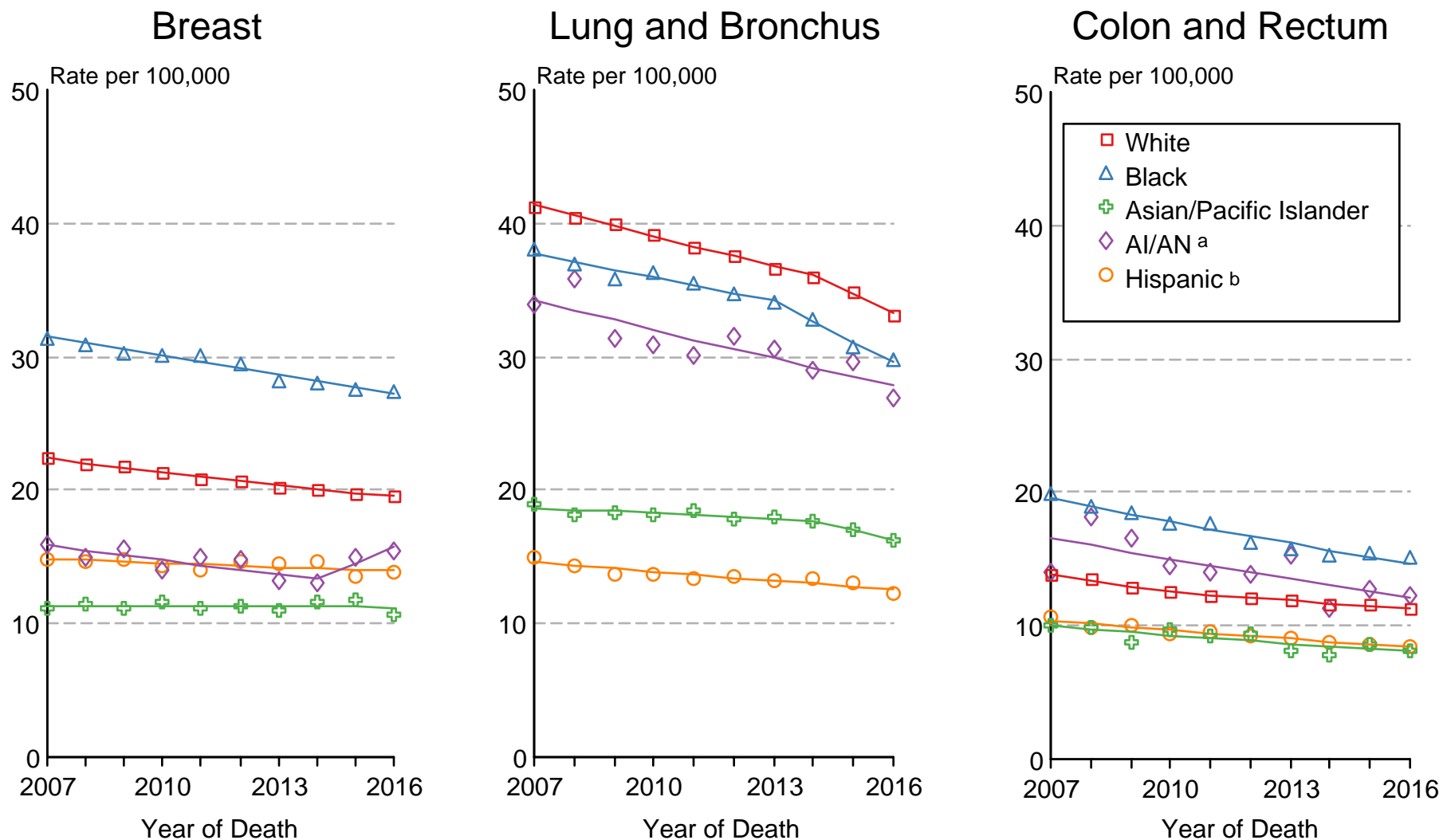
Regression lines are calculated using the Joinpoint Regression Program Version 4.7, February 2019, National Cancer Institute.

^a Mortality rates for American Indian/Alaska Native (AI/AN) are based on the CHSDA (Contract Health Service Delivery Area) counties.

^b Hispanic is not mutually exclusive from whites, blacks, Asian/Pacific Islanders, and American Indians/Alaska Natives.

Figure 1.16

US Mortality 2007-2016 Females by Race/Ethnicity



Source: US Mortality Files, National Center for Health Statistics, Centers for Disease Control and Prevention.

Rates are age-adjusted to the 2000 US Std Population (19 age groups - Census P25-1103).

Regression lines are calculated using the Joinpoint Regression Program Version 4.7, February 2019, National Cancer Institute.

^a Mortality rates for American Indian/Alaska Native (AI/AN) are based on the CHSDA (Contract Health Service Delivery Area) counties.

^b Hispanic is not mutually exclusive from whites, blacks, Asian/Pacific Islanders, and American Indians/Alaska Natives.