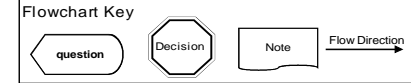


Head and Neck Multiple Primary Rules-Flowchart

(C000-C148, C300-C329)

(Excludes lymphoma and leukemia M9590-9989 and Kaposi sarcoma M9140)



* Prepare one abstract. Use the histology coding rules to assign the appropriate histology code.

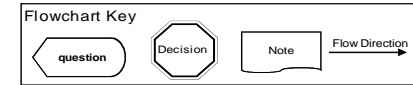
** Prepare two or more abstracts. Use the histology coding rules to assign the appropriate histology code to each case abstracted.

UNKNOWN IF SINGLE OR MULTIPLE TUMORS	DECISION	NOTES
<p>M1</p>	<p>SINGLE Primary*</p> <p>End of instructions for Unknown if Single or Multiple Tumors</p>	<p>Use this rule only after all information sources have been exhausted.</p> <p><i>Example 1:</i> History and physical exam states large tumor in nasopharynx. Biopsy base of tongue shows squamous cell carcinoma. No further information available. Abstract as a single primary.</p> <p><i>Example 2:</i> Pathology report states extensive squamous cell carcinoma involving nasopharynx and larynx. Fragments of epiglottis positive for squamous cell carcinoma. No other information available. Abstract as a single primary.</p>
SINGLE TUMOR	DECISION	NOTES
<p>M2</p>	<p>SINGLE Primary*</p> <p>End of instructions for Single Tumor.</p>	<p>NOTES</p> <p>1. Tumor not described as metastasis. 2. Includes combinations of in situ and invasive</p> <p>The tumor may overlap onto or extend into adjacent/contiguous site or subsite.</p>

Head and Neck Multiple Primary Rules-Flow chart

(C000-C148, C300-C329)

(Excludes lymphoma and leukemia M9590-9989 and Kaposi sarcoma M9140)



* Prepare one abstract. Use the histology coding rules to assign the appropriate histology code.

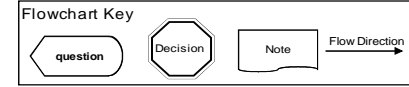
** Prepare two or more abstracts. Use the histology coding rules to assign the appropriate histology code to each case abstracted.

MULTIPLE TUMORS	DECISION	NOTES
Multiple tumors may be a single primary or multiple primaries.		<p>1. Tumors not described as metastases. 2. Includes combinations of in situ and invasive.</p>
<p>M3 Are there tumors in both the left and right sides of a paired site?</p>	<p>YES → MULTIPLE Primaries**</p>	<p>See Table 1 for list of paired sites.</p>
<p>M4 Are there tumors on the upper lip (C000 or C003) and the lower lip (C001 or C004)?</p>	<p>YES → MULTIPLE Primaries**</p>	
<p>M5 Are there tumors on the upper gum (C030) and the lower gum (C031)?</p>	<p>YES → MULTIPLE Primaries**</p>	
<p>M6 Are there tumors in the nasal cavity (C300) and the middle ear (C301)?</p>	<p>YES → MULTIPLE Primaries**</p>	
<p>Next Page</p>		

Head and Neck Multiple Primary Rules-Flowchart

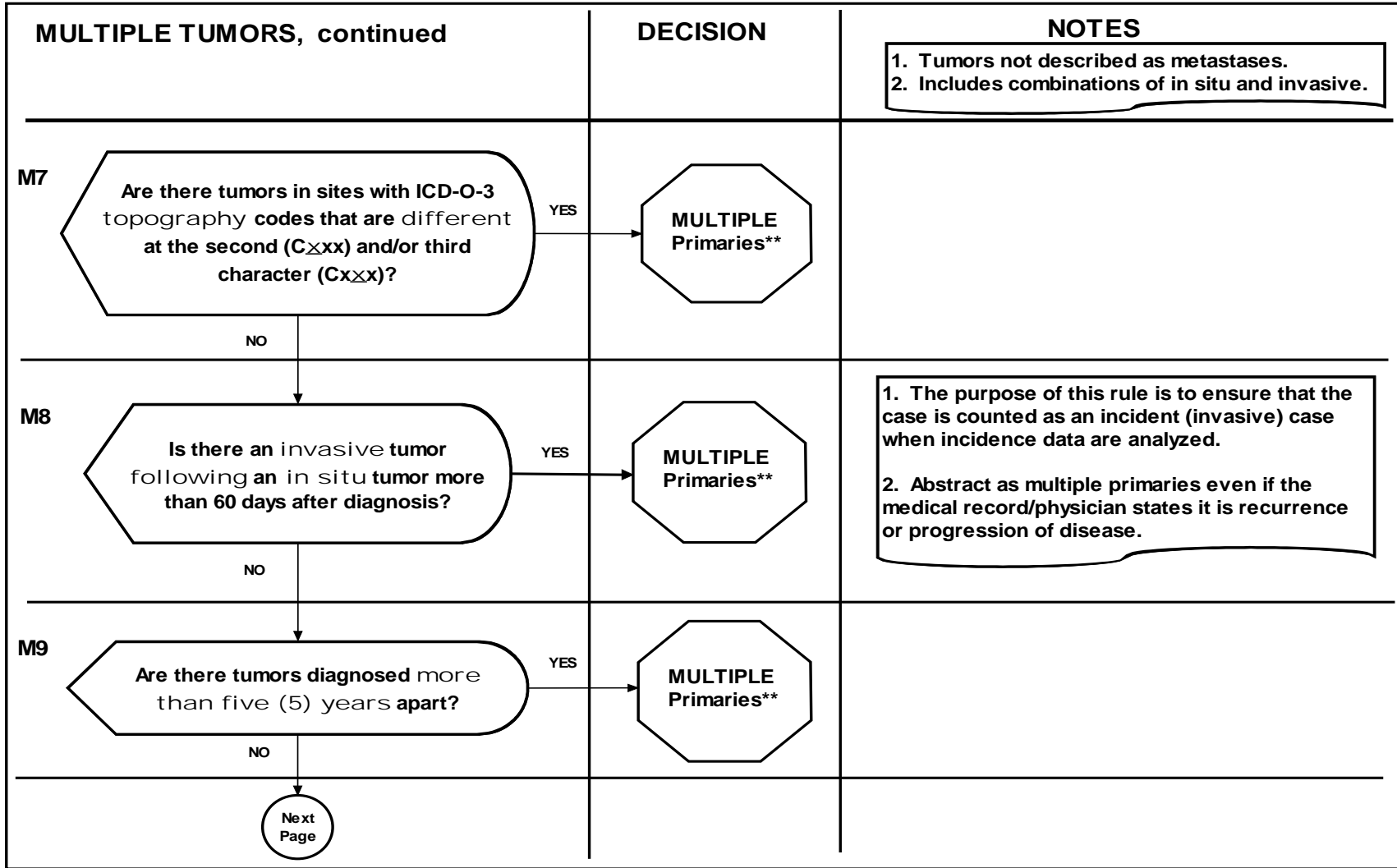
(C000-C148, C300-C329)

(Excludes lymphoma and leukemia M9590-9989 and Kaposi sarcoma M9140)



* Prepare one abstract. Use the histology coding rules to assign the appropriate histology code.

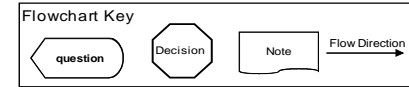
** Prepare two or more abstracts. Use the histology coding rules to assign the appropriate histology code to each case abstracted.



Head and Neck Multiple Primary Rules-Flowchart

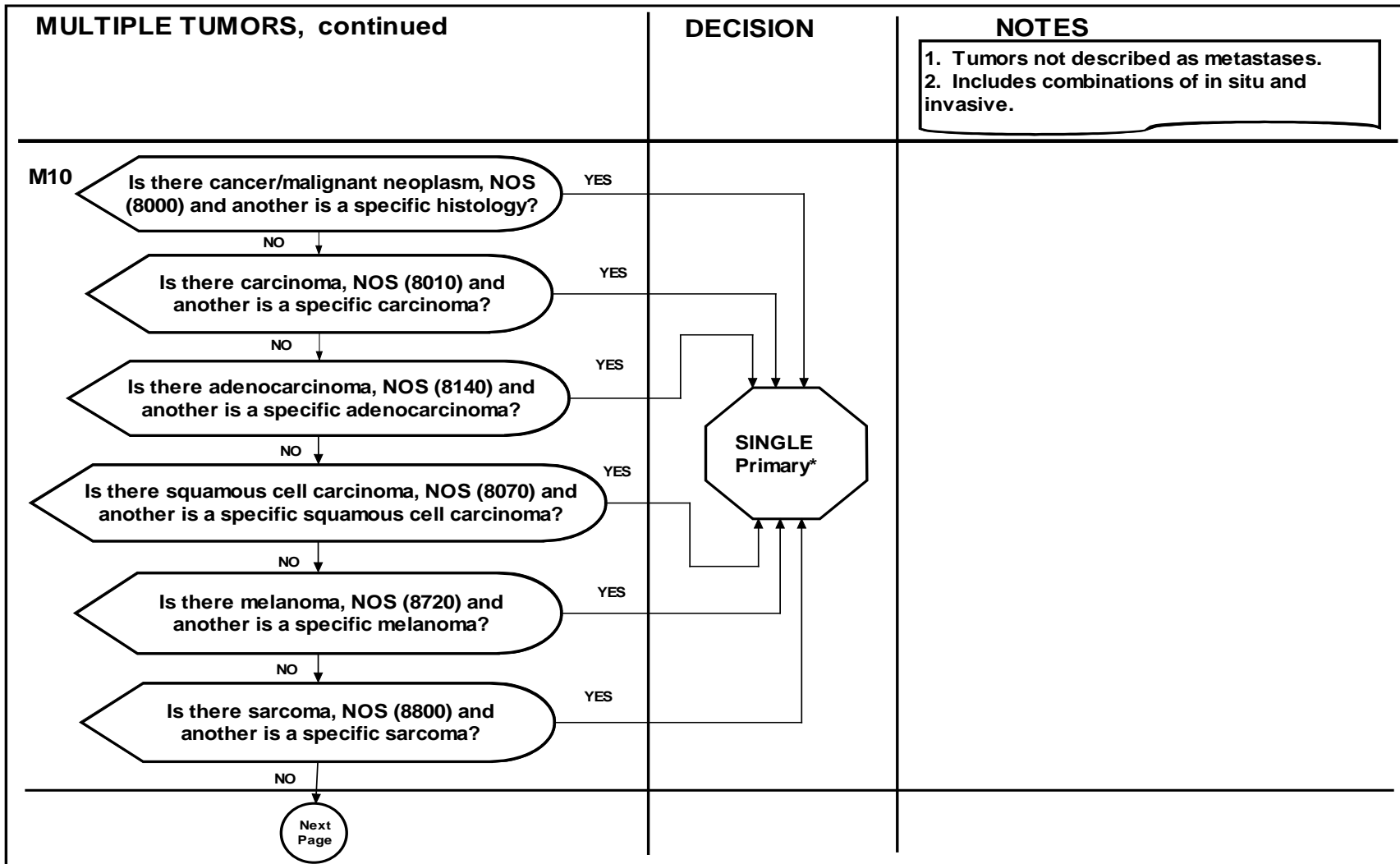
(C000-C148, C300-C329)

(Excludes lymphoma and leukemia M9590-9989 and Kaposi sarcoma M9140)



* Prepare one abstract. Use the histology coding rules to assign the appropriate histology code.

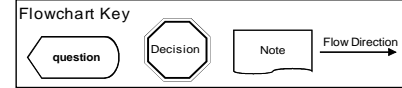
** Prepare two or more abstracts. Use the histology coding rules to assign the appropriate histology code to each case abstracted.



Head and Neck Multiple Primary Rules

(C000-C148, C300-C329)

(Excludes lymphoma and leukemia M9590-9989 and Kaposi sarcoma M9140)



* Prepare one abstract. Use the histology coding rules to assign the appropriate histology code.

** Prepare two or more abstracts. Use the histology coding rules to assign the appropriate histology code to each case abstracted.

MULTIPLE TUMORS, continued	DECISION	NOTES
<p>M11</p>		
<p>M12</p>	<p>End of instructions for Multiple Tumors.</p>	
<p>Rule M12 Examples: The following are examples of cases that use Rule M12. This is NOT intended to be an exhaustive set of examples; there are other cases that may be classified as a single primary. Warning: Using only these case examples to determine the number of primaries can result in major errors.</p>		
<p>Example 1. Multifocal tumors in floor of mouth</p>	<p>Example 2. An in situ and invasive tumor diagnosed within 60 days</p>	<p>Example 3. In situ following an invasive tumor more than 60 days apart</p>