

Table XV-1
LUNG AND BRONCHUS CANCER (Invasive)

TRENDS IN SEER INCIDENCE AND U.S. MORTALITY USING THE JOINPOINT REGRESSION PROGRAM, 1973-1997
WITH UP TO THREE JOINPOINTS BY RACE AND SEX

	<u>All Races</u>		<u>Whites</u>		<u>Blacks</u>	
	<u>Year</u>	<u>APC</u>	<u>Year</u>	<u>APC</u>	<u>Year</u>	<u>APC</u>
<u>SEER Cancer Incidence</u>						
Sex - Male and Female	1973-76	4.1★	1973-76	4.3★	1973-85	3.0★
	1976-82	2.4★	1976-82	2.4★	1985-97	-1.0★
	1982-91	0.9★	1982-91	1.0★		
	1991-97	-1.5★	1991-97	-1.4★		
Sex - Male	1973-81	1.9★	1973-80	1.9★	1973-84	2.9★
	1981-92	-0.5★	1980-91	-0.3	1984-97	-1.8★
	1992-97	-3.2★	1991-97	-2.9★		
Sex - Female	1973-76	9.1★	1973-76	10.6★	1973-90	5.0★
	1976-83	5.2★	1976-88	4.7★	1990-97	-1.5
	1983-91	3.1★	1988-97	0.9★		
	1991-97	0.0				
<u>U.S. Cancer Mortality</u>						
Sex - Male and Female	1973-80	2.9★	1973-80	2.8★	1973-82	3.3★
	1980-90	1.7★	1980-90	1.7★	1982-90	1.6★
	1990-97	-0.5★	1990-97	-0.4★	1990-97	-1.1★
Sex - Male	1973-78	2.2★	1973-80	1.8★	1973-82	2.9★
	1978-84	1.0★	1980-90	0.5★	1982-90	1.1★
	1984-90	0.3★	1990-97	-1.6★	1990-97	-2.1★
	1990-97	-1.7★				
Sex - Female	1973-78	6.8★	1973-76	7.5★	1973-81	6.6★
	1978-83	5.6★	1976-83	5.9★	1981-90	4.1★
	1983-90	4.0★	1983-91	3.8★	1990-97	1.0★
	1990-97	1.3★	1991-97	1.0★		

The APC is the Annual Percent Change based on rates age-adjusted to the 1970 U.S. standard population using the Joinpoint Regression Program.

★ The APC is significantly different from zero (p<.05).

Table XV-2
 SMALL CELL LUNG AND BRONCHUS CANCER (Invasive) AND NON-SMALL CELL LUNG AND BRONCHUS CANCER (Invasive)

TRENDS IN SEER INCIDENCE USING THE JOINPOINT REGRESSION PROGRAM, 1973-1997
WITH UP TO THREE JOINPOINTS BY RACE AND SEX

	<u>All Races</u>		<u>Whites</u>		<u>Blacks</u>	
	<u>Year</u>	<u>APC</u>	<u>Year</u>	<u>APC</u>	<u>Year</u>	<u>APC</u>
<u>SEER Cancer Incidence for Small Cell Lung and Bronchus</u>						
Sex - Male and Female	1973-81	7.0*	1973-81	7.3*	1973-86	4.8*
	1981-88	1.7*	1981-88	1.8*	1986-97	-3.1*
	1988-97	-2.3*	1988-97	-2.1*		
Sex - Male	1973-80	6.6*	1973-80	6.6*	1973-86	4.2*
	1980-88	0.4	1980-88	0.4	1986-97	-4.5*
	1988-97	-3.7*	1988-97	-3.6*		
Sex - Female	1973-82	9.4*	1973-82	10.0*	1973-91	5.5*
	1982-89	3.5*	1982-89	3.5*	1991-97	-6.3
	1989-97	-1.2	1989-97	-0.9		
<u>SEER Cancer Incidence for Non-Small Cell Lung and Bronchus</u>						
Sex - Male and Female	1973-81	2.3*	1973-77	3.3*	1973-84	3.0*
	1981-92	0.9*	1977-91	1.3*	1984-97	-0.6*
	1992-97	-1.6*	1991-97	-1.2*		
Sex - Male	1973-80	1.5*	1973-80	1.2*	1973-84	2.6*
	1980-92	-0.3*	1980-92	-0.3*	1984-97	-1.6*
	1992-97	-3.0*	1992-97	-3.0*		
Sex - Female	1973-76	8.8*	1973-76	9.8*	1973-90	4.9*
	1976-84	4.4*	1976-88	4.3*	1990-97	-1.0
	1984-91	3.2*	1988-97	1.4*		
	1991-97	0.5				

The APC is the Annual Percent Change based on rates age-adjusted to the 1970 U.S. standard population using the Joinpoint Regression Program.

* The APC is significantly different from zero (p<.05).

Table XV-3
LUNG AND BRONCHUS CANCER (Invasive)

SEER INCIDENCE RATES, AGE-ADJUSTED AND AGE-SPECIFIC RATES, BY RACE AND SEX

	All Races			Whites			Blacks		
	Total	Males	Females	Total	Males	Females	Total	Males	Females
<u>AGE-ADJUSTED RATES</u>									
<u>YEAR OF DIAGNOSIS:</u>									
1973	42.4	73.2	18.2	41.6	72.4	17.8	58.7	104.6	20.9
1974	43.9	74.5	19.9	43.4	74.1	19.8	58.8	101.8	21.7
1975	45.3	76.2	21.5	45.1	75.9	21.8	56.5	101.0	20.6
1976	47.8	79.3	23.8	47.2	78.4	23.8	62.5	110.7	25.2
1977	48.9	80.7	24.7	48.3	80.0	24.6	64.2	108.7	28.9
1978	50.2	82.0	26.2	49.7	81.1	26.5	65.0	113.5	27.1
1979	50.9	81.4	27.8	50.4	80.7	27.9	65.3	111.5	29.4
1980	52.3	84.4	28.1	51.2	82.2	28.2	76.0	131.0	33.8
1981	53.9	84.5	30.8	53.4	83.4	31.3	73.2	126.1	33.0
1982	54.9	85.1	32.3	54.6	83.8	33.3	71.1	123.5	31.4
1983	55.0	84.1	33.3	54.5	82.2	34.4	75.9	130.8	34.7
1984	56.8	86.5	34.7	55.7	84.2	34.8	82.7	140.4	39.8
1985	56.1	83.8	35.3	55.5	82.0	35.9	79.0	131.3	40.2
1986	56.9	83.6	37.0	56.4	81.9	37.7	81.4	134.2	43.0
1987	58.5	85.3	38.6	58.6	84.3	39.8	74.4	124.0	38.4
1988	58.7	83.3	40.3	58.8	82.3	41.6	77.8	126.0	42.8
1989	58.0	82.2	40.1	58.0	81.1	41.1	78.2	123.5	45.6
1990	58.6	81.6	41.5	58.8	80.9	42.5	76.2	117.5	46.8
1991	59.5	81.7	43.1	59.3	80.1	44.1	81.4	125.1	49.7
1992	59.5	81.5	43.1	59.1	79.3	44.3	81.8	127.4	48.7
1993	57.8	78.5	42.3	57.9	77.1	43.8	75.1	115.7	45.7
1994	57.0	75.3	43.3	57.1	74.4	44.4	76.0	112.5	49.2
1995	56.5	74.4	43.0	56.7	72.6	44.8	73.9	116.4	43.2
1996	55.6	71.8	43.3	55.8	70.4	44.8	71.8	104.5	48.2
1997	54.4	69.1	43.1	54.7	67.6	45.0	68.4	104.2	42.6
<u>AGE-ADJUSTED RATES, 1993-97</u>									
<u>AGE AT DIAGNOSIS:</u>									
All ages	56.2	73.7	43.0	56.4	72.3	44.5	72.9	110.5	45.7
Under 65	24.4	29.2	20.0	24.0	27.6	20.5	37.9	54.0	24.8
65 and over	346.8	480.5	253.2	352.7	480.7	264.0	392.8	626.1	236.6
All ages (world std.) [§]	44.0	56.7	33.9	44.0	55.4	35.2	58.6	87.4	37.3
<u>AGE-SPECIFIC RATES, 1993-97</u>									
<u>AGE AT DIAGNOSIS:</u>									
0-4	0.0	0.0	0.0	0.0	0.0	0.0	0.0	0.0	0.0
5-9	0.0	0.0	0.0	0.0	0.0	0.0	0.0	0.0	0.0
10-14	0.0	0.0	0.0	0.0	0.1	0.0	0.0	0.0	0.0
15-19	0.1	0.1	0.0	0.1	0.1	0.1	0.0	0.0	0.0
20-24	0.3	0.3	0.3	0.3	0.2	0.3	0.5	0.7	0.3
25-29	0.6	0.7	0.5	0.6	0.6	0.5	0.8	1.3	0.5
30-34	1.7	1.8	1.6	1.6	1.7	1.6	2.5	3.2	1.9
35-39	5.0	5.3	4.7	4.5	4.4	4.5	10.1	13.1	7.6
40-44	12.2	14.3	10.1	10.4	11.6	9.2	26.0	35.8	17.6
45-49	30.1	33.0	27.3	28.5	30.0	27.1	53.0	66.8	41.0
50-54	68.6	79.1	58.6	65.6	72.7	58.6	120.2	163.7	83.3
55-59	128.3	154.2	104.1	127.0	145.9	108.8	197.2	298.4	115.8
60-64	211.7	262.4	165.9	213.3	256.2	173.5	292.9	424.1	190.4
65-69	309.1	400.8	232.2	316.1	399.5	245.0	367.1	533.4	237.7
70-74	378.9	507.9	278.7	384.0	502.0	292.0	454.8	725.9	263.3
75-79	399.1	559.2	287.4	407.7	565.0	298.5	417.3	685.3	243.8
80-84	365.6	549.8	259.0	370.7	555.9	265.7	380.6	705.1	205.5
85+	245.2	446.0	163.2	242.9	451.7	161.3	245.0	425.5	164.9

§ SEER Program. Rates are per 100,000 and are age-adjusted to the 1970 U.S. standard population, except where noted.

§ SEER Program. Rates are per 100,000 and are age-adjusted to the world standard population.

Table XV-4
SMALL CELL LUNG AND BRONCHUS CANCER (Invasive)

SEER INCIDENCE RATES, AGE-ADJUSTED AND AGE-SPECIFIC RATES[§], BY RACE AND SEX

	All Races			Whites			Blacks		
	Total	Males	Females	Total	Males	Females	Total	Males	Females
<u>AGE-ADJUSTED RATES</u>									
<u>YEAR OF DIAGNOSIS:</u>									
1973	5.1	8.1	2.6	5.1	8.1	2.7	6.9	12.0	2.8
1974	5.5	8.7	3.0	5.7	9.0	3.1	5.1	8.2	2.5
1975	6.0	9.1	3.5	6.2	9.5	3.6	5.3	7.9	3.2
1976	6.3	10.0	3.5	6.4	10.1	3.6	7.3	11.1	4.4
1977	6.9	10.8	3.9	7.0	11.2	3.9	7.3	9.9	5.3
1978	7.8	11.8	4.6	8.0	12.0	4.9	7.2	12.8	2.8
1979	7.8	11.5	4.9	8.1	12.0	5.1	6.9	10.6	4.0
1980	8.1	12.5	4.7	8.3	12.7	5.0	8.9	15.3	4.1
1981	8.7	12.8	5.6	9.0	13.0	5.9	8.6	14.5	4.1
1982	9.2	12.9	6.5	9.6	13.2	6.9	8.8	14.3	4.5
1983	9.2	13.0	6.4	9.6	13.1	6.9	8.3	13.3	4.6
1984	9.6	13.3	6.7	9.9	13.6	7.1	9.7	14.0	6.4
1985	9.3	13.1	6.4	9.6	13.4	6.7	10.0	15.7	5.7
1986	9.9	13.6	7.1	10.2	13.9	7.4	11.3	16.0	7.8
1987	9.5	12.2	7.5	10.0	12.6	8.1	8.7	12.8	5.7
1988	10.2	13.4	7.7	10.6	13.6	8.4	9.5	15.8	5.0
1989	10.0	12.8	7.8	10.3	13.1	8.3	10.6	14.8	7.7
1990	9.4	11.9	7.5	9.9	12.4	8.1	8.4	12.2	5.7
1991	10.0	12.1	8.4	10.4	12.4	8.8	11.0	13.8	9.0
1992	9.2	11.5	7.5	9.7	11.9	8.0	8.9	11.5	7.0
1993	8.8	10.7	7.4	9.2	10.9	8.0	8.4	11.6	6.2
1994	8.6	10.0	7.5	9.0	10.3	8.1	8.8	11.8	6.7
1995	8.6	10.4	7.1	9.1	10.8	7.7	8.0	11.5	5.6
1996	8.4	10.3	7.0	8.9	10.6	7.6	7.5	9.7	6.0
1997	8.2	9.1	7.5	8.7	9.3	8.2	6.7	9.2	5.0
<u>AGE-ADJUSTED RATES, 1993-97</u>									
<u>AGE AT DIAGNOSIS:</u>									
All ages	8.5	10.1	7.3	9.0	10.4	7.9	7.9	10.7	5.9
Under 65	4.1	4.5	3.7	4.3	4.6	4.0	4.0	5.1	3.2
65 and over	49.1	61.2	40.5	51.5	62.8	43.7	43.1	61.9	30.7
All ages (world std.) [§]	6.8	7.9	5.9	7.2	8.2	6.4	6.3	8.4	4.8
<u>AGE-SPECIFIC RATES, 1993-97</u>									
<u>AGE AT DIAGNOSIS:</u>									
0-4	0.0	0.0	0.0	0.0	0.0	0.0	0.0	0.0	0.0
5-9	0.0	0.0	0.0	0.0	0.0	0.0	0.0	0.0	0.0
10-14	0.0	0.0	0.0	0.0	0.0	0.0	0.0	0.0	0.0
15-19	0.0	0.0	0.0	0.0	0.0	0.0	0.0	0.0	0.0
20-24	0.0	0.0	0.0	0.0	0.0	0.0	0.0	0.0	0.0
25-29	0.0	0.0	0.0	0.0	0.0	0.1	0.0	0.0	0.0
30-34	0.1	0.0	0.2	0.1	0.0	0.1	0.2	0.2	0.1
35-39	0.5	0.5	0.5	0.5	0.5	0.5	0.9	1.0	0.9
40-44	1.6	1.7	1.4	1.6	1.7	1.5	1.7	2.0	1.5
45-49	4.4	4.7	4.1	4.8	5.0	4.6	3.7	3.6	3.8
50-54	11.4	12.6	10.2	11.9	12.9	10.8	13.1	16.1	10.5
55-59	22.5	25.2	19.9	23.8	25.8	21.9	21.7	29.6	15.3
60-64	36.5	40.6	32.9	39.1	42.1	36.2	34.2	43.4	27.1
65-69	49.5	58.2	42.3	52.6	59.9	46.3	44.9	58.8	34.1
70-74	56.4	67.6	47.7	59.3	69.1	51.8	47.5	67.3	33.5
75-79	54.4	70.3	43.3	56.8	73.1	45.4	48.2	63.8	38.1
80-84	42.2	58.2	32.9	43.5	58.7	34.8	37.3	73.4	17.9
85+	17.3	33.2	10.9	17.5	33.4	11.3	14.6	34.9	5.6

[§] SEER Program. Rates are per 100,000 and are age-adjusted to the 1970 U.S. standard population, except where noted.
[§] SEER Program. Rates are per 100,000 and are age-adjusted to the world standard population.

Table XV-5
NON-SMALL CELL LUNG AND BRONCHUS CANCER (Invasive)

SEER INCIDENCE RATES, AGE-ADJUSTED AND AGE-SPECIFIC RATES[§], BY RACE AND SEX

	All Races			Whites			Blacks		
	Total	Males	Females	Total	Males	Females	Total	Males	Females
<u>AGE-ADJUSTED RATES</u>									
<u>YEAR OF DIAGNOSIS:</u>									
1973	37.3	65.0	15.6	36.5	64.3	15.1	51.8	92.6	18.2
1974	38.4	65.8	16.9	37.7	65.1	16.8	53.7	93.7	19.2
1975	39.3	67.0	18.0	38.9	66.4	18.2	51.2	93.1	17.4
1976	41.5	69.4	20.3	40.8	68.3	20.2	55.2	99.6	20.8
1977	42.0	69.9	20.8	41.2	68.8	20.7	56.9	98.8	23.7
1978	42.4	70.2	21.5	41.8	69.1	21.6	57.8	100.6	24.3
1979	43.1	69.9	22.9	42.3	68.7	22.8	58.4	100.8	25.4
1980	44.2	71.9	23.4	42.9	69.5	23.3	67.0	115.7	29.7
1981	45.2	71.7	25.3	44.5	70.3	25.4	64.6	111.6	28.9
1982	45.6	72.2	25.9	45.0	70.6	26.4	62.4	109.2	26.9
1983	45.7	71.1	26.9	44.9	69.1	27.5	67.6	117.5	30.2
1984	47.2	73.2	27.9	45.8	70.5	27.8	73.0	126.4	33.4
1985	46.8	70.7	28.9	45.9	68.6	29.2	69.1	115.6	34.5
1986	47.0	70.1	29.9	46.2	68.0	30.3	70.1	118.2	35.3
1987	49.0	73.0	31.1	48.7	71.8	31.7	65.7	111.2	32.7
1988	48.6	70.0	32.6	48.2	68.6	33.3	68.3	110.2	37.8
1989	48.1	69.4	32.2	47.7	68.0	32.8	67.7	108.6	37.9
1990	49.2	69.7	34.0	48.8	68.5	34.4	67.7	105.3	41.1
1991	49.5	69.5	34.7	48.9	67.7	35.3	70.4	111.3	40.6
1992	50.3	70.0	35.6	49.5	67.4	36.3	72.9	115.9	41.7
1993	49.0	67.8	34.9	48.7	66.1	35.8	66.6	104.1	39.5
1994	48.4	65.3	35.8	48.1	64.1	36.3	67.1	100.7	42.6
1995	47.9	63.9	35.9	47.6	61.8	37.0	65.9	104.9	37.7
1996	47.2	61.6	36.3	46.8	59.8	37.2	64.3	94.8	42.2
1997	46.2	60.0	35.6	46.1	58.3	36.8	61.7	95.1	37.6
<u>AGE-ADJUSTED RATES, 1993-97</u>									
<u>AGE AT DIAGNOSIS:</u>									
All ages	47.7	63.7	35.7	47.4	62.0	36.6	65.1	99.8	39.9
Under 65	20.3	24.7	16.3	19.6	23.0	16.5	33.9	49.0	21.7
65 and over	297.8	419.3	212.7	301.2	417.9	220.3	349.7	564.2	205.9
All ages (world std.) [§]	37.2	48.8	28.1	36.8	47.2	28.8	52.3	79.0	32.5
<u>AGE-SPECIFIC RATES, 1993-97</u>									
<u>AGE AT DIAGNOSIS:</u>									
0-4	0.0	0.0	0.0	0.0	0.0	0.0	0.0	0.0	0.0
5-9	0.0	0.0	0.0	0.0	0.0	0.0	0.0	0.0	0.0
10-14	0.0	0.0	0.0	0.0	0.1	0.0	0.0	0.0	0.0
15-19	0.1	0.1	0.0	0.1	0.1	0.1	0.0	0.0	0.0
20-24	0.3	0.3	0.3	0.3	0.2	0.3	0.5	0.7	0.3
25-29	0.6	0.7	0.4	0.5	0.6	0.5	0.8	1.3	0.5
30-34	1.6	1.8	1.5	1.6	1.7	1.4	2.3	3.0	1.7
35-39	4.5	4.8	4.2	4.0	4.0	4.0	9.2	12.1	6.7
40-44	10.6	12.6	8.7	8.8	9.9	7.7	24.3	33.8	16.1
45-49	25.7	28.3	23.2	23.8	25.0	22.5	49.3	63.2	37.2
50-54	57.3	66.4	48.4	53.7	59.7	47.8	107.2	147.6	72.8
55-59	105.9	129.0	84.2	103.1	120.0	86.9	175.5	268.8	100.5
60-64	175.1	221.8	133.0	174.3	214.1	137.3	258.7	380.7	163.3
65-69	259.6	342.6	189.9	263.6	339.7	198.6	322.2	474.6	203.6
70-74	322.5	440.3	231.0	324.6	433.0	240.2	407.2	658.6	229.8
75-79	344.7	488.8	244.1	350.9	491.8	253.0	369.2	621.5	205.7
80-84	323.5	491.6	226.2	327.2	497.1	230.9	343.3	631.8	187.6
85+	227.9	412.8	152.3	225.3	418.3	150.0	230.4	390.6	159.3

[§] SEER Program. Rates are per 100,000 and are age-adjusted to the 1970 U.S. standard population, except where noted.
[§] SEER Program. Rates are per 100,000 and are age-adjusted to the world standard population.

Table XV-6
LUNG AND BRONCHUS CANCER (Invasive)

U.S. MORTALITY RATES, AGE-ADJUSTED AND AGE-SPECIFIC RATES*, BY RACE AND SEX

	All Races			Whites			Blacks		
	Total	Males	Females	Total	Males	Females	Total	Males	Females
<u>AGE-ADJUSTED RATES</u>									
<u>YEAR OF DEATH:</u>									
1973	34.8	62.4	13.3	34.3	61.6	13.3	40.8	75.1	13.6
1974	36.0	64.1	14.3	35.5	63.2	14.3	42.5	78.5	14.2
1975	36.8	65.1	15.2	36.4	64.2	15.3	43.3	79.7	14.9
1976	38.1	66.7	16.4	37.7	65.7	16.5	44.7	82.0	15.9
1977	39.2	68.2	17.3	38.6	66.8	17.4	47.8	87.8	17.3
1978	40.4	69.5	18.6	39.9	68.2	18.7	48.5	88.8	17.9
1979	41.1	70.1	19.4	40.5	68.8	19.5	49.4	89.7	19.2
1980	42.5	71.5	20.9	41.9	70.0	21.0	51.8	92.7	21.4
1981	43.0	71.7	21.7	42.3	70.0	21.8	53.1	95.5	21.9
1982	44.2	72.9	23.0	43.6	71.3	23.2	54.6	97.9	23.0
1983	44.9	72.9	24.4	44.3	71.3	24.6	55.7	98.0	25.0
1984	45.8	73.9	25.1	45.1	72.0	25.4	56.9	102.1	24.5
1985	46.6	74.1	26.4	46.0	72.3	26.8	57.5	101.6	26.0
1986	47.1	74.3	27.2	46.4	72.4	27.5	58.3	102.6	27.0
1987	48.1	75.1	28.3	47.4	73.3	28.5	59.8	104.6	28.4
1988	48.6	74.8	29.4	48.0	73.0	29.8	59.9	104.1	29.3
1989	49.3	74.7	30.8	48.7	72.6	31.2	61.6	106.7	30.3
1990	50.1	75.2	31.6	49.4	73.2	32.0	62.5	107.0	31.8
1991	50.0	74.4	32.2	49.5	72.5	32.6	61.6	104.6	32.0
1992	49.9	72.9	33.1	49.4	71.0	33.5	61.5	102.4	33.4
1993	50.1	72.5	33.5	49.7	70.7	34.1	60.9	102.3	32.3
1994	49.5	70.8	33.7	49.2	69.1	34.4	60.0	99.1	33.2
1995	49.2	69.4	34.2	48.9	67.9	34.8	59.3	97.0	33.4
1996	48.8	68.1	34.3	48.6	66.6	35.0	58.3	94.3	33.4
1997	48.3	66.6	34.5	48.1	65.3	35.1	57.6	91.2	34.5
<u>AGE-ADJUSTED RATES, 1993-97</u>									
<u>AGE AT DEATH:</u>									
All ages	49.2	69.4	34.0	48.9	67.9	34.7	59.2	96.7	33.4
Under 65	20.3	26.4	14.7	19.9	25.1	15.0	28.2	43.6	16.1
65 and over	312.7	462.5	210.1	313.9	458.2	214.7	342.1	580.7	191.3
All ages (world std.)N	38.0	52.9	26.5	37.7	51.5	27.0	46.8	75.4	26.5
<u>AGE-SPECIFIC RATES, 1993-97</u>									
<u>AGE AT DEATH:</u>									
0-4	0.0	0.0	0.0	0.0	0.0	0.0	0.0	0.0	0.0
5-9	0.0	0.0	0.0	0.0	0.0	0.0	0.0	0.0	0.0
10-14	0.0	0.0	0.0	0.0	0.0	0.0	0.0	0.0	0.0
15-19	0.0	0.0	0.0	0.0	0.0	0.0	0.1	0.1	0.1
20-24	0.1	0.1	0.1	0.1	0.1	0.1	0.1	0.1	0.1
25-29	0.2	0.2	0.2	0.2	0.2	0.2	0.3	0.4	0.2
30-34	1.0	1.1	0.9	1.0	1.1	0.9	1.4	1.7	1.1
35-39	3.4	3.8	2.9	3.1	3.4	2.8	5.4	7.2	3.9
40-44	9.2	11.2	7.3	8.4	9.9	7.0	16.6	23.4	10.7
45-49	23.5	28.7	18.4	22.0	25.9	18.1	40.2	58.7	24.6
50-54	55.8	70.5	42.0	53.9	65.8	42.5	85.5	131.3	48.1
55-59	107.5	139.4	78.1	105.6	133.1	79.7	147.8	230.5	83.2
60-64	182.8	245.4	127.2	181.8	238.4	130.4	228.7	364.0	126.9
65-69	264.0	365.5	179.8	265.2	361.0	184.5	298.4	469.8	170.9
70-74	332.4	471.5	225.4	332.3	464.3	229.7	387.0	635.5	217.8
75-79	359.5	530.7	241.7	362.1	527.2	247.7	371.6	648.0	201.9
80-84	359.8	583.1	233.5	362.3	581.4	238.2	361.2	693.0	190.8
85+	277.0	523.2	179.4	277.9	525.3	181.0	278.6	556.0	164.3

* NCHS public use tape. Rates are per 100,000 and are age-adjusted to the 1970 U.S. standard population, except where noted.

N NCHS public use tape. Rates are per 100,000 and are age-adjusted to the world standard population.

Table XV-7
LUNG AND BRONCHUS CANCER (Invasive)

SURVIVAL RATES, BY RACE, SEX, DIAGNOSIS YEAR, STAGE AND AGE

	All Races			Whites			Blacks		
	Total	Males	Females	Total	Males	Females	Total	Males	Females
5-YR RELATIVE SURVIVAL RATES									
YEAR OF DIAGNOSIS:									
1960-63 ^a	-	-	-	8	7	11	5	5	6
1970-73 ^a	-	-	-	10	9	14	7	6	10
1974-76 ^b	12.4	11.2	15.8	12.5	11.1	16.0	11.5	11.1	13.2
1977-79 ^b	13.4	11.8	17.2	13.7	12.1	17.3	11.1	9.1	17.1
1980-82 ^b	13.4	12.1	16.2	13.5	12.2	16.3	12.2	11.0	15.5
1983-85 ^b	13.6	11.9	16.9	13.9	12.1	17.1	11.4	10.2	14.2
1986-88 ^b	13.3	12.0	15.4	13.5	12.1	15.9	11.9	12.0	11.8
1989-96 ^b	14.1S	12.6S	16.3S	14.4S	12.9S	16.6S	11.3	10.1	13.5
1989-96 ^b									
ALL STAGES	14.1	12.6	16.3	14.4	12.9	16.6	11.3	10.1	13.5
LOCALIZED	48.5	45.1	52.5	49.1	45.7	52.9	41.9	38.2	47.6
REGIONAL	20.3	18.7	22.7	20.7	19.3	22.9	15.7	14.6	17.8
DISTANT	2.3	2.0	2.7	2.3	1.9	2.7	2.4	2.1	2.7
UNSTAGED	8.2	6.9	9.9	8.2	6.9	9.9	8.8	7.6	10.8
STAGE DISTRIBUTION (%) 1989-96^b									
ALL STAGES									
Number of cases	98,738	59,103	39,635	82,937	48,817	34,120	10,495	6,838	3,657
Percent	100%	100%	100%	100%	100%	100%	100%	100%	100%
LOCALIZED	15	14	16	15	14	16	13	12	14
REGIONAL	23	24	22	23	24	22	24	24	23
DISTANT	48	48	47	47	48	46	51	51	51
UNSTAGED	14	14	15	15	14	15	12	12	12
5-YR RELATIVE SURVIVAL RATES, 1989-96^b									
AGE AT DIAGNOSIS:									
<45	21.3	17.5	26.5	23.3	19.4	28.4	15.5	11.1	23.5
45-54	17.2	15.2	20.0	18.0	15.8	20.7	12.8	11.8	14.6
55-64	15.7	13.9	18.4	16.1	14.5	18.5	12.3	10.3	16.1
65-74	14.0	12.7	15.9	14.3	12.8	16.4	10.5	10.6	10.4
75+	9.2	7.7	10.9	9.5	7.9	11.3	6.5	5.0	8.6
Under 65	16.5	14.5	19.5	17.1	15.2	19.9	12.8	10.8	16.7
65 and over	12.3	11.1	14.0	12.6	11.2	14.4	9.4	9.1	9.9

^a Rates are based on End Results data from a series of hospital registries and one population-based registry.
^b Rates are from the SEER Program. They are based on data from population-based registries in Connecticut, New Mexico, Utah, Iowa, Hawaii, Atlanta, Detroit, Seattle-Puget Sound and San Francisco-Oakland. Rates are based on follow-up of patients through 1997.
S The difference in rates between 1974-76 and 1989-96 is statistically significant ($p < .05$).
 \uparrow The standard error of the survival rate is between 5 and 10 percentage points.
 $\uparrow\uparrow$ The standard error of the survival rate is greater than 10 percentage points.
 $-$ Statistic could not be calculated.

Table XV-8
SMALL CELL LUNG AND BRONCHUS CANCER (Invasive)

SURVIVAL RATES, BY RACE, SEX, DIAGNOSIS YEAR, STAGE AND AGE

	All Races			Whites			Blacks		
	Total	Males	Females	Total	Males	Females	Total	Males	Females
<u>5-YR RELATIVE SURVIVAL RATES</u>									
YEAR OF DIAGNOSIS:									
1974-76 ^b	3.6	3.0	4.9	3.6	2.9	4.9	3.4	3.6	3.1
1977-79 ^b	4.5	3.3	6.9	4.6	3.3	6.9	3.8	3.4	4.8
1980-82 ^b	4.7	3.8	6.3	4.9	4.1	6.2	4.0	3.0	6.4
1983-85 ^b	4.9	3.6	6.8	4.9	3.7	6.8	4.7	2.5	8.6
1986-88 ^b	5.0	3.9	6.5	5.2	4.0	6.8	3.9	3.4	4.6
1989-96 ^b	6.0 ^S	4.9 ^S	7.2 ^S	6.0 ^S	4.8 ^S	7.3 ^S	4.6 ^S	4.2 ^S	4.9
1989-96 ^b									
ALL STAGES	6.0	4.9	7.2	6.0	4.8	7.3	4.6	4.2	4.9
LOCALIZED	18.3	16.8	20.0	18.5	16.9	20.3	12.1	7.0	17.6 [↑]
REGIONAL	11.9	10.6	13.2	12.2	10.7	13.5	8.2	7.6	8.1
DISTANT	2.2	1.7	2.8	2.2	1.7	2.7	1.6	1.7	1.0
UNSTAGED	9.7	7.4	12.2	9.8	7.1	12.7	11.5	11.2	10.8 [↑]
<u>STAGE DISTRIBUTION (%) 1989-96^b</u>									
ALL STAGES									
Number of cases	15,999	8,860	7,139	14,105	7,699	6,406	1,241	723	518
Percent	100%	100%	100%	100%	100%	100%	100%	100%	100%
LOCALIZED	7	7	6	6	6	6	7	7	8
REGIONAL	18	17	20	18	17	20	21	20	23
DISTANT	62	64	61	63	64	61	62	62	61
UNSTAGED	13	12	13	13	13	13	9	10	8
<u>5-YR RELATIVE SURVIVAL RATES, 1989-96^b</u>									
AGE AT DIAGNOSIS:									
<45	8.1	7.9	8.8	8.7	8.0	9.9	6.4	8.2 [↑]	-
45-54	9.2	7.9	11.0	9.2	7.9	10.8	9.1	7.5	11.6
55-64	6.7	4.9	8.8	6.7	4.7	9.0	4.2	3.4	5.3
65-74	5.5	4.4	6.7	5.5	4.4	6.9	3.5	3.2	1.9
75+	3.3	2.9	3.5	3.2	3.0	3.3	4.6	2.7	6.4
Under 65	7.4	5.9	9.3	7.5	5.8	9.4	5.4	5.0	6.0
65 and over	4.8	4.0	5.7	4.8	4.0	5.7	3.7	3.3	3.8

^b Rates are from the SEER Program. They are based on data from population-based registries in Connecticut, New Mexico, Utah, Iowa, Hawaii, Atlanta, Detroit, Seattle-Puget Sound and San Francisco-Oakland. Rates are based on follow-up of patients through 1997.

^S The difference in rates between 1974-76 and 1989-96 is statistically significant ($p < .05$).

[↑] The standard error of the survival rate is between 5 and 10 percentage points.

^{↑↑} The standard error of the survival rate is greater than 10 percentage points.

- Statistic could not be calculated.

Table XV-9
NON-SMALL CELL LUNG AND BRONCHUS CANCER (Invasive)

SURVIVAL RATES, BY RACE, SEX, DIAGNOSIS YEAR, STAGE AND AGE

	All Races			Whites			Blacks		
	Total	Males	Females	Total	Males	Females	Total	Males	Females
5-YR RELATIVE SURVIVAL RATES									
YEAR OF DIAGNOSIS:									
1974-76 ^b	13.9	12.4	17.8	14.0	12.4	18.1	12.4	11.8	15.1
1977-79 ^b	15.1	13.3	19.4	15.5	13.7	19.6	12.0	9.7	19.3
1980-82 ^b	15.2	13.6	18.5	15.4	13.8	18.8	13.3	12.1	16.9
1983-85 ^b	15.5	13.5	19.3	15.9	13.8	19.8	12.3	11.2	15.2
1986-88 ^b	15.1	13.6	17.7	15.5	13.8	18.2	13.1	13.1	13.1
1989-96 ^b	15.8 S	14.0 S	18.4 S	16.3 S	14.4 S	18.8 S	12.2	10.8	14.9
1989-96 ^b									
ALL STAGES	15.8	14.0	18.4	16.3	14.4	18.8	12.2	10.8	14.9
LOCALIZED	50.9	47.3	55.2	51.5	48.0	55.6	44.2	40.3	50.4
REGIONAL	21.5	19.7	24.5	22.1	20.3	24.8	16.6	15.2	19.2
DISTANT	2.4	2.1	2.7	2.3	2.0	2.7	2.5	2.2	3.0
UNSTAGED	7.9	6.8	9.4	7.9	6.9	9.3	8.5	7.2	10.8
STAGE DISTRIBUTION (%) 1989-96^b									
ALL STAGES									
Number of cases	82,739	50,243	32,496	68,832	41,118	27,714	9,254	6,115	3,139
Percent	100%	100%	100%	100%	100%	100%	100%	100%	100%
LOCALIZED	16	15	18	17	15	19	13	13	15
REGIONAL	24	25	23	24	25	23	24	25	23
DISTANT	45	46	44	44	45	43	50	50	49
UNSTAGED	15	14	15	15	15	15	13	13	13
5-YR RELATIVE SURVIVAL RATES, 1989-96^b									
AGE AT DIAGNOSIS:									
<45	23.1	18.8	29.0	25.6	21.1	31.3	16.4	11.5	25.3
45-54	18.8	16.6	21.9	19.9	17.6	23.1	13.3	12.3	15.2
55-64	17.7	15.7	21.0	18.4	16.6	21.2	13.5	11.1	18.3
65-74	15.8	14.3	18.1	16.2	14.5	18.8	11.6	11.5	11.8
75+	10.2	8.4	12.3	10.5	8.6	12.8	6.8	5.3	9.0
Under 65	18.5	16.2	22.0	19.4	17.2	22.6	13.8	11.5	18.3
65 and over	13.8	12.3	15.9	14.2	12.5	16.4	10.3	9.9	10.9

^b Rates are from the SEER Program. They are based on data from population-based registries in Connecticut, New Mexico, Utah, Iowa, Hawaii, Atlanta, Detroit, Seattle-Puget Sound and San Francisco-Oakland. Rates are based on follow-up of patients through 1997.

S The difference in rates between 1974-76 and 1989-96 is statistically significant ($p < .05$).

↑ The standard error of the survival rate is between 5 and 10 percentage points.

↑↑ The standard error of the survival rate is greater than 10 percentage points.

- Statistic could not be calculated.

Table XV-10
LUNG AND BRONCHUS CANCER (Invasive)
INCIDENCE, MORTALITY, AND SURVIVAL RATES

By Year of Diagnosis/Death
 All Races, Males and Females

	Year of Diagnosis/Death																					
	1976	1977	1978	1979	1980	1981	1982	1983	1984	1985	1986	1987	1988	1989	1990	1991	1992	1993	1994	1995	1996	1997
Incidence																						
SEER	47.8	48.9	50.2	50.9	52.3	53.9	54.9	55.0	56.8	56.1	56.9	58.5	58.7	58.0	58.6	59.5	59.5	57.8	57.0	56.5	55.6	54.4
Mortality																						
U.S.	38.1	39.2	40.4	41.1	42.5	43.0	44.2	44.9	45.8	46.6	47.1	48.1	48.6	49.3	50.1	50.0	49.9	50.1	49.5	49.2	48.8	48.3
SEER	37.2	37.4	38.1	39.4	40.0	40.2	41.5	42.5	42.0	43.4	42.4	43.7	44.5	44.8	44.2	45.7	44.7	44.2	44.0	43.2	42.3	41.7
Relative Survival Rates (SEER)																						
1-year	36.1	37.1	38.6	37.4	38.3	37.7	39.2	39.5	39.0	39.7	40.3	39.8	40.2	40.4	40.4	41.3	41.1	40.8	40.9	41.3	40.5	
2-year	21.4	22.0	22.6	22.2	22.2	22.2	22.9	23.5	22.6	23.0	23.2	22.9	23.3	23.5	23.6	24.0	24.7	24.6	24.5	24.9		
3-year	16.8	16.8	17.4	17.1	17.0	16.9	18.0	18.1	17.5	17.8	17.7	17.1	17.7	17.6	18.0	18.7	18.9	18.8	19.0			
4-year	14.5	14.5	15.0	14.9	14.4	14.7	15.6	15.5	14.8	15.2	14.8	14.9	15.1	15.3	15.2	15.9	16.1	16.0				
5-year	13.0	13.1	13.6	13.5	13.0	13.3	13.9	14.1	13.2	13.7	13.2	13.3	13.4	13.9	13.7	14.0	14.2					
6-year	12.0	12.4	12.5	12.5	12.1	12.1	12.5	12.9	12.1	12.7	12.1	12.2	12.2	12.9	12.6	13.0						
7-year	11.5	11.7	11.7	11.9	11.2	11.1	11.9	11.9	11.2	11.7	11.4	11.1	11.2	11.9	11.7							
8-year	10.8	11.1	11.2	11.1	10.4	10.3	11.1	11.1	10.4	10.9	10.6	10.5	10.5	11.1								
9-year	10.2	10.6	10.5	10.4	9.7	9.6	10.5	10.4	9.7	10.3	10.1	9.8	9.8									
10-year	9.7	10.0	9.9	9.6	8.9	9.1	10.0	9.8	9.2	9.7	9.4	9.4										
11-year	9.1	9.5	9.5	9.2	8.4	8.8	9.6	9.4	8.9	9.3	8.9											
12-year	8.6	9.1	9.1	8.8	8.0	8.5	9.0	8.9	8.5	8.8												
13-year	8.2	8.7	8.9	8.4	7.5	7.9	8.7	8.5	8.1													
14-year	7.8	8.5	8.4	8.2	7.1	7.5	8.3	8.3														
15-year	7.4	8.0	8.0	7.6	6.8	7.2	7.9															
16-year	7.3	7.7	7.9	7.3	6.6	6.7																
17-year	7.1	7.6	7.7	6.9	6.3																	
18-year	6.8	7.3	7.5	6.5																		
19-year	6.3	7.1	7.3																			
20-year	6.0	6.8																				
21-year	5.6																					

Note: Incidence and mortality rates are per 100,000 and are age-adjusted to the 1970 U.S. standard population.
 Survival rates are relative rates expressed as percents.

Table XV-11
LUNG AND BRONCHUS CANCER (Invasive)
INCIDENCE, MORTALITY, AND SURVIVAL RATES

By Year of Diagnosis/Death

All Races, Males

Year of Diagnosis/Death

	1976	1977	1978	1979	1980	1981	1982	1983	1984	1985	1986	1987	1988	1989	1990	1991	1992	1993	1994	1995	1996	1997
Incidence																						
SEER	79.3	80.7	82.0	81.4	84.4	84.5	85.1	84.1	86.5	83.8	83.6	85.3	83.3	82.2	81.6	81.7	81.5	78.5	75.3	74.4	71.8	69.1
Mortality																						
U.S.	66.7	68.2	69.5	70.1	71.5	71.7	72.9	72.9	73.9	74.1	74.3	75.1	74.8	74.7	75.2	74.4	72.9	72.5	70.8	69.4	68.1	66.6
SEER	63.7	63.1	64.2	65.5	65.9	65.3	65.6	67.0	65.3	66.5	64.8	65.5	65.8	65.4	63.8	64.2	62.9	61.7	60.9	58.1	56.4	54.8
Relative Survival Rates (SEER)																						
1-year	34.2	35.2	36.3	35.2	36.7	35.7	37.3	37.6	37.2	37.1	38.3	38.4	38.2	38.1	38.1	39.0	39.2	38.2	38.5	39.2	38.8	
2-year	19.9	20.4	20.8	20.4	20.9	20.3	21.2	21.3	20.9	21.1	21.1	21.8	21.8	22.1	21.4	22.0	23.3	22.2	22.0	23.3		
3-year	15.3	15.5	15.5	15.5	15.9	15.1	16.4	16.0	15.7	15.7	16.0	16.0	16.4	16.2	16.0	17.0	17.7	16.5	16.6			
4-year	13.2	13.0	13.1	13.3	13.5	13.0	14.0	13.7	13.1	13.0	13.1	13.8	13.6	14.0	13.4	14.0	14.8	13.9				
5-year	11.8	11.9	11.7	11.9	12.1	11.7	12.4	12.4	11.5	11.8	11.6	12.4	12.0	12.7	11.9	12.4	13.1					
6-year	10.7	11.4	10.7	11.0	11.3	10.7	11.2	11.3	10.5	10.8	10.7	11.4	10.7	11.9	10.9	11.6						
7-year	10.2	10.6	9.9	10.5	10.5	9.7	10.4	10.4	9.6	9.9	10.0	10.5	9.8	11.1	10.2							
8-year	9.5	10.2	9.5	9.7	9.6	8.9	9.7	9.7	8.8	9.2	9.1	9.9	9.0	10.5								
9-year	9.1	9.6	8.8	9.1	8.9	8.3	9.2	8.9	8.3	8.7	8.7	9.3	8.5									
10-year	8.7	8.9	8.2	8.6	8.2	7.8	8.7	8.3	7.8	8.2	8.1	8.8										
11-year	8.2	8.4	7.8	8.0	7.8	7.5	8.4	7.9	7.6	7.9	7.5											
12-year	7.7	7.8	7.5	7.7	7.2	7.2	8.0	7.5	7.4	7.5												
13-year	7.2	7.5	7.2	7.3	6.9	6.6	7.8	7.1	7.2													
14-year	6.9	7.3	6.8	7.2	6.7	6.2	7.5	6.8														
15-year	6.4	7.0	6.2	6.8	6.4	5.9	7.1															
16-year	6.1	6.6	6.2	6.6	6.2	5.5																
17-year	6.0	6.6	6.1	6.1	5.8																	
18-year	5.7	6.4	6.0	5.7																		
19-year	5.2	6.2	5.8																			
20-year	5.0	5.8																				
21-year	4.6																					

Note: Incidence and mortality rates are per 100,000 and are age-adjusted to the 1970 U.S. standard population.
Survival rates are relative rates expressed as percents.

Table XV-12
LUNG AND BRONCHUS CANCER (Invasive)
INCIDENCE, MORTALITY, AND SURVIVAL RATES

By Year of Diagnosis/Death

All Races, Females

Year of Diagnosis/Death

	1976	1977	1978	1979	1980	1981	1982	1983	1984	1985	1986	1987	1988	1989	1990	1991	1992	1993	1994	1995	1996	1997
Incidence																						
SEER	23.8	24.7	26.2	27.8	28.1	30.8	32.3	33.3	34.7	35.3	37.0	38.6	40.3	40.1	41.5	43.1	43.1	42.3	43.3	43.0	43.3	43.1
Mortality																						
U.S.	16.4	17.3	18.6	19.4	20.9	21.7	23.0	24.4	25.1	26.4	27.2	28.3	29.4	30.8	31.6	32.2	33.1	33.5	33.7	34.2	34.3	34.5
SEER	17.2	18.1	18.5	19.9	20.6	21.6	23.7	24.5	24.9	26.4	25.9	27.5	28.9	29.7	29.9	32.2	31.2	31.3	31.5	32.1	31.8	31.9
Relative Survival Rates (SEER)																						
1-year	41.4	42.1	44.5	42.7	42.3	42.3	43.3	43.5	42.6	44.9	44.0	42.4	43.5	44.3	44.0	44.9	44.1	44.6	44.0	44.2	42.9	
2-year	25.4	26.1	27.4	26.3	25.2	26.1	26.5	27.7	25.8	26.8	27.1	24.7	25.7	25.8	27.2	26.9	26.7	27.9	27.8	27.1		
3-year	20.7	20.3	22.1	21.0	19.6	20.8	21.2	22.2	21.0	21.6	20.6	19.0	19.6	19.8	21.0	21.2	20.7	22.1	22.1			
4-year	17.8	18.3	19.6	18.4	16.6	18.2	18.9	19.0	18.0	19.2	17.8	16.6	17.4	17.3	18.0	18.6	18.0	19.0				
5-year	16.1	16.1	18.3	17.2	14.9	16.5	16.9	17.2	16.3	17.3	15.9	14.9	15.6	15.7	16.3	16.2	15.7					
6-year	15.2	15.1	16.7	15.7	13.8	15.0	15.1	15.9	15.0	16.1	14.6	13.6	14.3	14.5	15.0	14.9						
7-year	14.4	14.3	15.7	15.0	12.8	13.9	14.7	14.6	14.1	14.7	13.8	12.2	13.4	13.1	13.8							
8-year	13.6	13.3	14.9	14.1	12.1	13.1	13.7	13.7	13.3	13.9	12.9	11.5	12.6	11.9								
9-year	12.8	12.8	14.2	13.0	11.6	12.2	12.8	13.0	12.1	13.0	12.4	10.5	11.8									
10-year	12.1	12.3	13.7	11.7	10.4	11.6	12.2	12.3	11.6	12.3	11.4	10.3										
11-year	11.1	12.1	13.0	11.4	9.8	11.1	11.7	11.9	11.0	11.5	11.0											
12-year	10.6	11.7	12.4	11.0	9.6	10.8	10.6	11.3	10.3	11.0												
13-year	10.3	11.2	12.2	10.6	8.7	10.2	10.2	10.8	9.6													
14-year	9.6	10.8	11.4	9.9	7.8	9.9	9.7	10.6														
15-year	9.5	10.0	11.3	9.1	7.4	9.3	9.0															
16-year	9.5	10.0	10.9	8.7	7.3	8.7																
17-year	9.1	9.5	10.7	8.3	7.2																	
18-year	8.8	8.8	10.2	7.9																		
19-year	8.4	8.6	10.0																			
20-year	7.9	8.5																				
21-year	7.4																					

Note: Incidence and mortality rates are per 100,000 and are age-adjusted to the 1970 U.S. standard population.
 Survival rates are relative rates expressed as percents.

Table XV-13

LUNG AND BRONCHUS CANCER (Invasive)

AGE-SPECIFIC CANCER SEER INCIDENCE RATES§ AND 25-YEAR TRENDS, 1973-97

By Race, Sex and Age Group

Sex/Age	All Races				Whites				Blacks			
	Average	Rate⊕	% Change	EAPC	Average	Rate⊕	% Change	EAPC	Average	Rate⊕	% Change	EAPC
	1973-74	96-97	73-97	73-97	1973-74	96-97	73-97	73-97	1973-74	96-97	73-97	73-97
Males & Females	43.2	55.0	27.3	1.1★	42.5	55.2	30.0	1.2★	58.8	70.1	19.3	1.0★
0-54:	10.5	7.8	-26.0	-1.4★	9.9	7.3	-26.3	-1.5★	18.1	13.5	-25.2	-1.2★
0-14	0.0	0.0	-8.6	-	0.0	0.0	3.9	-	0.1	0.0	-	-
15-34	0.7	0.5	-27.3	-0.4	0.6	0.5	-24.3	-0.4	0.8	0.7	-12.5	1.3
35-44	13.8	8.5	-38.3	-2.5★	13.1	7.3	-44.3	-2.9★	21.0	17.3	-17.6	-1.5★
45-54	58.6	45.1	-23.1	-1.3★	55.7	43.3	-22.1	-1.3★	105.1	76.9	-26.8	-1.2★
55-64	145.2	161.8	11.4	0.5★	143.3	161.9	13.0	0.6★	204.5	231.1	13.0	0.8★
65+:	217.0	343.4	58.3	2.1★	216.2	349.3	61.6	2.2★	257.3	385.1	49.6	2.2★
65-74	227.0	335.1	47.6	1.8★	226.8	341.8	50.7	1.9★	283.3	391.1	38.0	1.9★
75+	200.6	356.8	77.9	2.7★	198.7	361.6	81.9	2.8★	215.0	375.3	74.5	2.7★
Males	73.8	70.5	-4.5	-0.2	73.3	69.0	-5.8	-0.2	103.2	104.4	1.1	0.2
0-54:	14.6	8.6	-41.2	-2.4★	13.7	7.8	-43.2	-2.5★	27.8	17.5	-37.1	-1.8★
0-14	0.0	0.0	-8.6	-	0.0	0.0	1.4	-	0.0	0.0	-	-
15-34	0.8	0.6	-28.4	-0.3	0.7	0.5	-21.9	-0.2	1.5	1.1	-29.5	0.1
35-44	17.3	9.5	-44.7	-2.8★	16.2	7.8	-51.9	-3.2★	29.3	23.0	-21.4	-1.8★
45-54	84.1	49.7	-40.9	-2.3★	79.2	45.9	-42.0	-2.5★	164.1	98.4	-40.0	-1.9★
55-64	227.9	197.2	-13.5	-0.6★	224.0	189.3	-15.5	-0.7★	352.1	345.5	-1.9	0.0
65+:	417.1	460.9	10.5	0.5★	422.1	459.8	8.9	0.4★	491.1	593.5	20.8	1.2★
65-74	414.9	428.6	3.3	0.2	420.6	424.9	1.0	0.1	529.8	565.1	6.6	0.7★
75+	420.7	513.4	22.0	0.9★	424.7	516.5	21.6	0.9★	428.1	639.8	49.5	2.0★
Females	19.1	43.2	126.7	3.6★	18.8	44.9	138.9	3.8★	21.3	45.4	112.7	3.6★
0-54:	6.6	7.0	6.1	0.0	6.3	6.9	8.6	0.0	9.3	10.1	8.7	0.2
0-14	0.1	0.1	-8.3	-	0.1	0.1	5.4	-	0.2	0.0	-	-
15-34	0.6	0.4	-26.2	-0.6	0.6	0.4	-27.4	-0.6	0.2	0.4	108.6	-
35-44	10.4	7.5	-28.1	-2.2★	10.0	6.8	-32.4	-2.5★	13.7	12.3	-9.9	-1.1
45-54	34.5	40.7	17.8	0.5	33.3	40.8	22.5	0.6	51.5	58.6	13.7	0.4
55-64	68.6	129.3	88.5	2.8★	69.2	136.1	96.6	2.9★	70.7	141.2	99.7	3.7★
65+:	75.6	260.6	244.6	5.6★	74.3	272.3	266.4	5.8★	74.1	245.8	231.9	5.7★
65-74	79.8	259.5	225.3	5.2★	79.2	273.6	245.2	5.4★	72.6	262.4	261.2	6.0★
75+	68.8	262.4	281.1	6.3★	66.2	270.1	307.8	6.6★	76.4	218.8	186.3	5.5★

The EAPC is the Estimated Annual Percent Change over the time interval.

§ SEER Program. Rates are per 100,000 and are age-adjusted to the 1970 U.S. standard population. Each rate has been age-adjusted by 5-year age groups.

⊕ The Average Rate is the Average Annual Rate over the specified two-year period.

★ The EAPC is significantly different from zero ($p < .05$).

- Statistic could not be calculated.

Table XV-14

LUNG AND BRONCHUS CANCER (Invasive)

AGE-SPECIFIC CANCER U.S. MORTALITY RATES* AND 25-YEAR TRENDS, 1973-97

By Race, Sex and Age Group

Sex/Age	All Races				Whites				Blacks			
	Average	Rate [⊕]	% Change	EAPC	Average	Rate [⊕]	% Change	EAPC	Average	Rate [⊕]	% Change	EAPC
	1973-74	96-97	73-97	73-97	1973-74	96-97	73-97	73-97	1973-74	96-97	73-97	73-97
Males & Females	35.4	48.5	37.1	1.5★	34.9	48.3	38.4	1.5★	41.7	58.0	39.1	1.6★
0-54:	8.3	6.2	-25.4	-1.4★	7.8	5.9	-24.3	-1.3★	13.7	9.9	-27.7	-1.4★
0-14	0.0	0.0	-67.2	-2.7	0.0	0.0	-62.7	-2.0	0.0	0.0	-76.4	-
15-34	0.4	0.3	-30.7	-1.4★	0.4	0.3	-29.0	-1.4★	0.5	0.3	-38.4	-1.4★
35-44	10.7	6.4	-39.8	-2.6★	10.0	5.9	-41.1	-2.7★	17.2	11.2	-34.9	-2.2★
45-54	47.3	36.9	-22.0	-1.1★	44.4	35.4	-20.4	-1.1★	78.5	58.1	-25.9	-1.2★
55-64	119.0	136.4	14.6	0.8★	116.9	134.9	15.4	0.9★	149.2	178.0	19.3	0.9★
65+:	179.9	314.2	74.7	2.5★	181.3	316.0	74.4	2.5★	171.6	340.9	98.7	3.2★
65-74	184.5	292.8	58.7	2.1★	185.4	294.2	58.7	2.1★	184.5	330.3	79.0	2.8★
75+	172.4	349.1	102.5	3.2★	174.4	351.5	101.5	3.2★	150.5	358.3	138.1	4.0★
Males	63.3	67.4	6.5	0.3★	62.4	66.0	5.8	0.3★	76.8	92.8	20.7	1.0★
0-54:	12.4	7.6	-38.7	-2.2★	11.5	7.0	-38.7	-2.2★	23.0	14.5	-37.1	-1.9★
0-14	0.0	0.0	-64.7	-	0.0	0.0	-62.2	-	0.0	0.0	-69.6	-
15-34	0.5	0.3	-38.8	-2.0★	0.4	0.3	-35.5	-2.0★	0.8	0.4	-53.5	-2.2★
35-44	15.0	7.4	-50.4	-3.2★	13.8	6.6	-52.2	-3.4★	27.2	14.9	-45.1	-2.8★
45-54	72.0	45.9	-36.3	-2.0★	66.5	42.6	-35.9	-2.0★	133.8	86.7	-35.3	-1.8★
55-64	198.8	177.9	-10.5	-0.3	193.4	171.1	-11.5	-0.3	273.0	279.8	2.5	0.1
65+:	354.4	454.8	28.3	1.1★	358.2	451.7	26.1	1.0★	336.5	561.6	66.9	2.5★
65-74	350.5	403.2	15.0	0.6★	352.7	399.0	13.2	0.5★	355.8	515.6	44.9	1.9★
75+	360.8	539.0	49.4	1.8★	367.3	537.5	46.4	1.7★	305.0	636.7	108.7	3.5★
Females	13.8	34.4	149.2	4.1★	13.8	35.1	153.8	4.2★	13.9	34.0	144.1	4.1★
0-54:	4.5	4.8	8.6	0.2	4.3	4.8	10.8	0.3	5.8	6.1	4.9	0.1
0-14	0.0	0.0	-70.6	-1.6	0.0	0.0	-63.4	-	0.0	0.0	-	-
15-34	0.3	0.2	-17.9	-0.5	0.3	0.2	-19.4	-0.6	0.3	0.3	0.0	-0.1
35-44	6.5	5.4	-16.6	-1.5★	6.3	5.2	-17.5	-1.6★	8.9	8.0	-10.6	-1.1★
45-54	24.4	28.3	16.3	0.6	23.8	28.4	19.4	0.7★	31.7	34.7	9.4	0.3
55-64	48.5	98.9	103.7	3.3★	49.0	101.4	107.1	3.3★	46.3	100.5	117.0	3.7★
65+:	58.2	216.8	272.8	6.1★	58.9	221.6	276.3	6.1★	50.2	200.8	299.8	6.4★
65-74	57.2	204.0	256.9	5.8★	57.8	208.8	261.0	5.8★	51.5	197.8	283.9	6.4★
75+	59.8	237.6	297.5	6.5★	60.6	242.4	300.2	6.6★	48.1	205.5	327.6	6.5★

The EAPC is the Estimated Annual Percent Change over the time interval.

* NCHS public use tape. Rates are per 100,000 and are age-adjusted to the 1970 U.S. standard population. Each rate has been age-adjusted by 5-year age groups.

⊕ The Average Rate is the Average Annual Rate over the specified two-year period.

★ The EAPC is significantly different from zero (p<.05).

- Statistic could not be calculated.

Table XV-15
LUNG AND BRONCHUS CANCER (Invasive)

Percent Diagnosed With Cancer In 10, 20 and 30 Years and In Remaining Lifetime,
 Given Cancer Free At Current Age By Race and Sex

Lifetime Risk (Percent) of Being Diagnosed With Cancer and
 Lifetime Risk (Percent) of Dying From Cancer

9 SEER Areas, 1995-97

All Races

Current Age	Males				Females				
	+10 yrs	+20 yrs	+30 yrs	Eventually	+10 yrs	+20 yrs	+30 yrs	Eventually	
0	0.00	0.00	0.00	8.09	0.00	0.00	0.00	5.78	
10	0.00	0.00	0.04	8.17	0.00	0.00	0.03	5.83	
20	0.00	0.04	0.25	8.23	0.00	0.03	0.20	5.85	
30	0.04	0.25	1.25	8.35	0.03	0.20	0.94	5.88	
40	0.22	1.24	3.75	8.50	0.17	0.92	2.63	5.90	
50	1.07	3.68	6.86	8.62	0.77	2.51	4.60	5.85	
60	2.84	6.29	7.97	8.22	1.83	4.04	5.17	5.35	
Lifetime Risk of Being Diagnosed =				8.09%	Lifetime Risk of Being Diagnosed =				5.78%
Lifetime Risk of Dying =				6.73%	Lifetime Risk of Dying =				4.62%

Whites

Current Age	Males				Females				
	+10 yrs	+20 yrs	+30 yrs	Eventually	+10 yrs	+20 yrs	+30 yrs	Eventually	
0	0.00	0.00	0.01	8.13	0.00	0.00	0.00	6.08	
10	0.00	0.01	0.04	8.20	0.00	0.00	0.03	6.12	
20	0.00	0.03	0.22	8.24	0.00	0.03	0.20	6.13	
30	0.03	0.22	1.17	8.34	0.03	0.20	0.97	6.16	
40	0.19	1.16	3.67	8.48	0.17	0.95	2.77	6.18	
50	1.00	3.61	6.81	8.58	0.79	2.65	4.85	6.11	
60	2.81	6.27	7.95	8.18	1.95	4.26	5.41	5.58	
Lifetime Risk of Being Diagnosed =				8.13%	Lifetime Risk of Being Diagnosed =				6.08%
Lifetime Risk of Dying =				6.84%	Lifetime Risk of Dying =				4.84%

Blacks

Current Age	Males				Females				
	+10 yrs	+20 yrs	+30 yrs	Eventually	+10 yrs	+20 yrs	+30 yrs	Eventually	
0	0.00	0.00	0.01	8.57	0.00	0.00	0.00	4.80	
10	0.00	0.01	0.09	8.75	0.00	0.00	0.04	4.89	
20	0.01	0.09	0.52	8.86	0.00	0.04	0.30	4.91	
30	0.08	0.53	2.25	9.15	0.04	0.29	1.14	4.96	
40	0.47	2.28	5.21	9.53	0.26	1.12	2.69	5.01	
50	1.99	5.21	8.44	9.96	0.90	2.55	4.18	4.98	
60	3.85	7.70	9.28	9.51	1.81	3.62	4.33	4.50	
Lifetime Risk of Being Diagnosed =				8.57%	Lifetime Risk of Being Diagnosed =				4.80%
Lifetime Risk of Dying =				6.90%	Lifetime Risk of Dying =				3.96%

Table XV-16
LUNG AND BRONCHUS (Invasive)

AGE-ADJUSTED SEER INCIDENCE AND U.S. MORTALITY RATES

By Race/Ethnicity and Sex

Incidenceⁱ

RACE/ETHNICITY	Rate 1990-1997			Trend 1990-1997		
	Rate per 100,000 persons			EAPC (%)		
	Total	Males	Females	Total	Males	Females
All Races	55.2	73.3	41.6	-1.6★	-2.8★	-0.1
White	55.4	71.9	43.3	-1.5★	-3.0★	0.2
White Hispanic	28.5	40.0	20.3	-3.3★	-4.3★	-2.4★
White Non-Hispanic	58.4	75.2	45.9	-1.3★	-2.8★	0.5★
Black	73.3	111.1	45.8	-1.9★	-2.4★	-1.3
Asian/Pacific Islander	35.5	51.9	22.5	-1.1	-1.2	-0.3
American Indian	18.4	25.1	13.3	-2.2	0.6	-6.1★
Hispanic [⊙]	27.1	38.0	19.4	-3.5★	-4.3★	-2.7★

Mortality[❖]

RACE/ETHNICITY	Rate 1990-1997			Trend 1990-1997		
	Rate per 100,000 persons			EAPC (%)		
	Total	Males	Females	Total	Males	Females
All Races	49.5	71.1	33.4	-0.5★	-1.7★	1.2★
White	49.1	69.5	34.0	-0.4★	-1.6★	1.3★
White Hispanic	20.8	33.2	11.6	-0.9★	-1.7★	0.5
White Non-Hispanic	50.3	70.8	35.0	-0.2	-1.4★	1.6★
Black	60.1	99.5	33.0	-1.1★	-2.2★	1.0★
Asian/Pacific Islander	23.4	34.2	14.9	-1.0★	-1.6★	0.7
American Indian	29.0	40.9	19.8	2.2★	1.4	3.1★
Hispanic [⊙]	19.8	31.6	11.0	-1.3★	-2.1★	0.1

- The EAPC is the Estimated Annual Percent Change over the time interval.
- Statistic not shown. Rate based on less than 25 cases for the time interval. Trend based on less than 10 cases for at least one year within the time interval.
- ⁱ Incidence data are from the 11 SEER areas (San Francisco, Connecticut, Detroit, Hawaii, Iowa, New Mexico, Seattle, Utah, Atlanta, San Jose-Monterey, and Los Angeles). Unless specified, other tables use data from 9 SEER areas (San Francisco, Connecticut, Detroit, Hawaii, Iowa, New Mexico, Seattle, Utah, and Atlanta).
- [⊙] Hispanic is not mutually exclusive from whites, blacks, Asian Pacific Islanders, and American Indians. For incidence, all 11 SEER areas are included. For mortality, information is included for all states except Connecticut, Oklahoma, Louisiana, and New Hampshire.
- [❖] Mortality data are analyzed from a public-use file provided by the National Center for Health Statistics (NCHS).
- [★] The EAPC is significantly different from zero (p<.05).

Table XV-17
LUNG AND BRONCHUS CANCER (Invasive)

AGE-ADJUSTED SEER INCIDENCE RATES[§] AND SEER MORTALITY RATES*
By Registry, Race and Sex

	All Races			Whites			Blacks		
	Total	Males	Females	Total	Males	Females	Total	Males	Females
<u>SEER INCIDENCE RATES[§], 1993-97</u>									
REGISTRY									
11 registries	53.9	70.2	41.6	54.2	68.8	43.4	71.0	106.4	45.2
9 registries	56.2	73.7	43.0	56.4	72.3	44.5	72.9	110.5	45.7
San Francisco-Oakland	53.5	66.5	43.6	55.7	65.7	48.2	67.5	96.3	45.9
Connecticut	59.3	75.4	47.7	59.3	74.3	48.6	64.1	98.7	40.3
Metropolitan Detroit	68.9	93.3	51.1	66.2	87.3	51.3	80.4	121.1	50.9
Hawaii	43.8	59.6	29.9	57.3	70.1	45.6	-	-	-
Iowa	57.8	82.2	39.4	57.6	81.8	39.4	-	-	-
New Mexico	39.9	51.7	30.7	41.4	53.3	32.0	-	-	-
Seattle-Puget Sound	60.3	73.5	50.2	61.2	73.6	51.7	73.5	100.3	48.3
Utah	26.2	35.9	18.2	26.0	35.6	18.3	-	-	-
Metropolitan Atlanta	63.5	89.8	45.3	62.1	83.2	47.4	70.2	119.4	39.0
San Jose-Monterey	47.5	59.0	38.9	49.7	59.8	42.5	65.6	97.6	38.3
Los Angeles	48.0	61.6	37.8	47.9	58.8	39.9	66.9	97.7	44.2
<u>SEER MORTALITY RATES*, 1993-97</u>									
REGISTRY									
11 registries	41.7	56.1	31.0	42.0	55.2	32.4	56.2	87.1	34.0
9 registries	43.1	58.3	31.7	43.3	57.5	32.9	56.7	88.3	34.1
San Francisco-Oakland	41.7	53.1	33.2	43.7	53.1	36.9	56.0	80.4	38.2
Connecticut	43.6	58.0	33.6	43.6	57.3	34.2	47.5	74.2	29.1
Metropolitan Detroit	50.4	70.4	36.0	48.4	65.9	35.9	59.6	91.8	36.5
Hawaii	33.0	45.2	22.4	44.9	56.6	34.1	-	-	-
Iowa	45.6	66.2	30.4	45.5	65.9	30.5	-	-	-
New Mexico	35.0	46.4	26.1	36.3	47.9	27.1	-	-	-
Seattle-Puget Sound	46.7	59.4	37.1	47.5	59.7	38.3	51.6	76.3	28.5
Utah	21.0	29.8	13.8	20.8	29.4	13.8	-	-	-
Metropolitan Atlanta	48.8	71.7	33.0	46.6	64.8	34.1	59.2	105.3	30.6
San Jose-Monterey	36.4	46.1	29.3	38.4	47.3	32.0	47.6	76.2	25.7
Los Angeles	38.6	51.2	29.2	38.6	49.1	30.8	55.5	85.4	34.2

Note: San Jose-Monterey and Los Angeles are new SEER areas as of 1992 and their data are only used in tables where indicated.
[§] SEER Program. Incidence rates are per 100,000 and are age-adjusted to the 1970 U.S. standard population.
^{*} NCHS public use tape. Mortality rates are per 100,000 and are age-adjusted to the 1970 U.S. standard population.
 - Statistic could not be calculated or populations are inadequate.

Table XV-18
LUNG AND BRONCHUS CANCER (Invasive)

AVERAGE ANNUAL AGE-ADJUSTED CANCER MORTALITY* RATES BY STATE, 1993-97

All Races, Males and Females

State	Rate	SE	Rank	PD	State	Rate	SE	Rank	PD
TOTAL U.S.	49.2	0.06							
High Five States									
Kentucky	67.9⊕*	0.56	(01)	38.0					
Arkansas	61.3⊕*	0.64	(02)	24.6					
West Virginia	61.0⊕*	0.71	(03)	24.0					
Tennessee	60.0⊕*	0.45	(04)	22.0					
Louisiana	59.4⊕*	0.51	(05)	20.7					
Low Five States									
Idaho	38.3⊕*	0.79	(47)	-22.2					
Colorado	35.2⊕*	0.44	(48)	-28.5					
New Mexico	35.0⊕*	0.63	(49)	-28.9					
Hawaii	33.0⊕*	0.70	(50)	-32.9					
Utah	21.0⊕*	0.51	(51)	-57.3					
Alabama	53.7⊕*	0.47	(16)	9.1	Montana	43.2⊕*	0.91	(39)	-12.2
Alaska	51.9*	1.79	(22)	5.5	Nebraska	42.9⊕*	0.67	(40)	-12.8
Arizona	44.0⊕*	0.42	(37)	-10.6	Nevada	56.7⊕*	0.82	(08)	15.2
Arkansas	61.3⊕*	0.64	(02)	24.6	New Hampshire	51.7*	0.93	(23)	5.1
California	42.6⊕*	0.17	(41)	-13.4	New Jersey	47.2⊕	0.31	(33)	-4.1
Colorado	35.2⊕*	0.44	(48)	-28.5	New Mexico	35.0⊕*	0.63	(49)	-28.9
Connecticut	43.6⊕*	0.47	(38)	-11.4	New York	44.1⊕*	0.20	(36)	-10.4
Delaware	59.3⊕*	1.21	(06)	20.5	North Carolina	54.0⊕*	0.37	(14)	9.8
District of Columbia	52.7*	1.28	(19)	7.1	North Dakota	38.6⊕*	1.01	(46)	-21.5
Florida	50.8⊕	0.23	(24)	3.3	Ohio	53.8⊕*	0.29	(15)	9.3
Georgia	54.2⊕*	0.40	(13)	10.2	Oklahoma	56.0⊕*	0.54	(10)	13.8
Hawaii	33.0⊕*	0.70	(50)	-32.9	Oregon	50.0	0.52	(28)	1.6
Idaho	38.3⊕*	0.79	(47)	-22.2	Pennsylvania	48.4	0.25	(29)	-1.6
Illinois	50.2	0.28	(27)	2.0	Rhode Island	53.0*	0.95	(18)	7.7
Indiana	55.2⊕*	0.41	(12)	12.2	South Carolina	52.3⊕*	0.51	(21)	6.3
Iowa	45.6⊕*	0.51	(35)	-7.3	South Dakota	41.1⊕*	0.97	(44)	-16.5
Kansas	46.3*	0.56	(34)	-5.9	Tennessee	60.0⊕*	0.45	(04)	22.0
Kentucky	67.9⊕*	0.56	(01)	38.0	Texas	50.3	0.24	(26)	2.2
Louisiana	59.4⊕*	0.51	(05)	20.7	Utah	21.0⊕*	0.51	(51)	-57.3
Maine	56.3⊕*	0.88	(09)	14.4	Vermont	48.4	1.25	(30)	-1.6
Maryland	53.2⊕*	0.45	(17)	8.1	Virginia	52.7⊕*	0.39	(20)	7.1
Massachusetts	48.1	0.37	(31)	-2.2	Washington	47.7	0.41	(32)	-3.0
Michigan	50.5	0.31	(25)	2.6	West Virginia	61.0⊕*	0.71	(03)	24.0
Minnesota	39.9⊕*	0.40	(45)	-18.9	Wisconsin	41.3⊕*	0.38	(43)	-16.1
Mississippi	56.8⊕*	0.62	(07)	15.4	Wyoming	42.2⊕*	1.30	(42)	-14.2
Missouri	55.5⊕*	0.42	(11)	12.8					

* NCHS public use tape. Rates are per 100,000 and are age-adjusted to the 1970 U.S. standard population.
SE Standard error of the rate.
PD Percent difference between state rate and total U.S. rate.
* Absolute difference between state rate and total U.S. rate is 5% or more.
⊕ Difference between state rate and total U.S. rate is statistically significant (p<=.0002).

Table XV-19
LUNG AND BRONCHUS CANCER (Invasive)

AVERAGE ANNUAL AGE-ADJUSTED CANCER MORTALITY* RATES BY STATE, 1993-97

All Races, Males

State	Rate	SE	Rank	PD	State	Rate	SE	Rank	PD
TOTAL U.S.	69.4	0.10							
High Five States									
Kentucky	100.7⊕*	1.02	(01)	45.1					
Arkansas	94.6⊕*	1.18	(02)	36.3					
Tennessee	93.5⊕*	0.85	(03)	34.7					
Louisiana	90.5⊕*	0.96	(04)	30.4					
Mississippi	90.5⊕*	1.20	(05)	30.4					
Low Five States									
Idaho	51.2⊕*	1.34	(47)	-26.2					
Colorado	48.2⊕*	0.77	(48)	-30.5					
New Mexico	46.4⊕*	1.08	(49)	-33.1					
Hawaii	45.2⊕*	1.21	(50)	-34.9					
Utah	29.8⊕*	0.89	(51)	-57.1					
Alabama	84.7⊕*	0.89	(09)	22.0	Montana	56.1⊕*	1.52	(42)	-19.2
Alaska	65.9*	2.94	(30)	-5.0	Nebraska	62.6⊕*	1.20	(35)	-9.8
Arizona	59.2⊕*	0.73	(39)	-14.7	Nevada	69.0	1.33	(26)	-0.6
Arkansas	94.6⊕*	1.18	(02)	36.3	New Hampshire	68.6	1.60	(27)	-1.2
California	54.7⊕*	0.28	(45)	-21.2	New Jersey	64.5⊕*	0.56	(33)	-7.1
Colorado	48.2⊕*	0.77	(48)	-30.5	New Mexico	46.4⊕*	1.08	(49)	-33.1
Connecticut	58.0⊕*	0.81	(40)	-16.4	New York	61.1⊕*	0.36	(37)	-12.0
Delaware	81.0⊕*	2.13	(12)	16.7	North Carolina	84.9⊕*	0.70	(08)	22.3
District of Columbia	79.1*	2.43	(15)	14.0	North Dakota	54.8⊕*	1.75	(44)	-21.0
Florida	69.4	0.39	(25)	0.0	Ohio	76.9⊕*	0.52	(18)	10.8
Georgia	85.2⊕*	0.77	(07)	22.8	Oklahoma	82.7⊕*	0.98	(10)	19.2
Hawaii	45.2⊕*	1.21	(50)	-34.9	Oregon	63.8⊕*	0.87	(34)	-8.1
Idaho	51.2⊕*	1.34	(47)	-26.2	Pennsylvania	70.1	0.45	(24)	1.0
Illinois	71.7	0.50	(22)	3.3	Rhode Island	74.7*	1.68	(19)	7.6
Indiana	80.2⊕*	0.75	(13)	15.6	South Carolina	81.7⊕*	0.97	(11)	17.7
Iowa	66.2	0.91	(28)	-4.6	South Dakota	61.3*	1.74	(36)	-11.7
Kansas	66.1	1.00	(29)	-4.8	Tennessee	93.5⊕*	0.85	(03)	34.7
Kentucky	100.7⊕*	1.02	(01)	45.1	Texas	73.0⊕*	0.43	(21)	5.2
Louisiana	90.5⊕*	0.96	(04)	30.4	Utah	29.8⊕*	0.89	(51)	-57.1
Maine	77.0*	1.53	(17)	11.0	Vermont	64.6*	2.14	(31)	-6.9
Maryland	73.6⊕*	0.80	(20)	6.1	Virginia	77.4⊕*	0.72	(16)	11.5
Massachusetts	64.6⊕*	0.65	(32)	-6.9	Washington	61.1⊕*	0.69	(38)	-12.0
Michigan	70.6	0.55	(23)	1.7	West Virginia	87.0⊕*	1.28	(06)	25.4
Minnesota	54.0⊕*	0.69	(46)	-22.2	Wisconsin	57.3⊕*	0.66	(41)	-17.4
Mississippi	90.5⊕*	1.20	(05)	30.4	Wyoming	55.1⊕*	2.18	(43)	-20.6
Missouri	79.8⊕*	0.76	(14)	15.0					

* NCHS public use tape. Rates are per 100,000 and are age-adjusted to the 1970 U.S. standard population.
SE Standard error of the rate.
PD Percent difference between state rate and total U.S. rate.
* Absolute difference between state rate and total U.S. rate is 5% or more.
⊕ Difference between state rate and total U.S. rate is statistically significant (p<=.0002).

Table XV-20
LUNG AND BRONCHUS CANCER (Invasive)

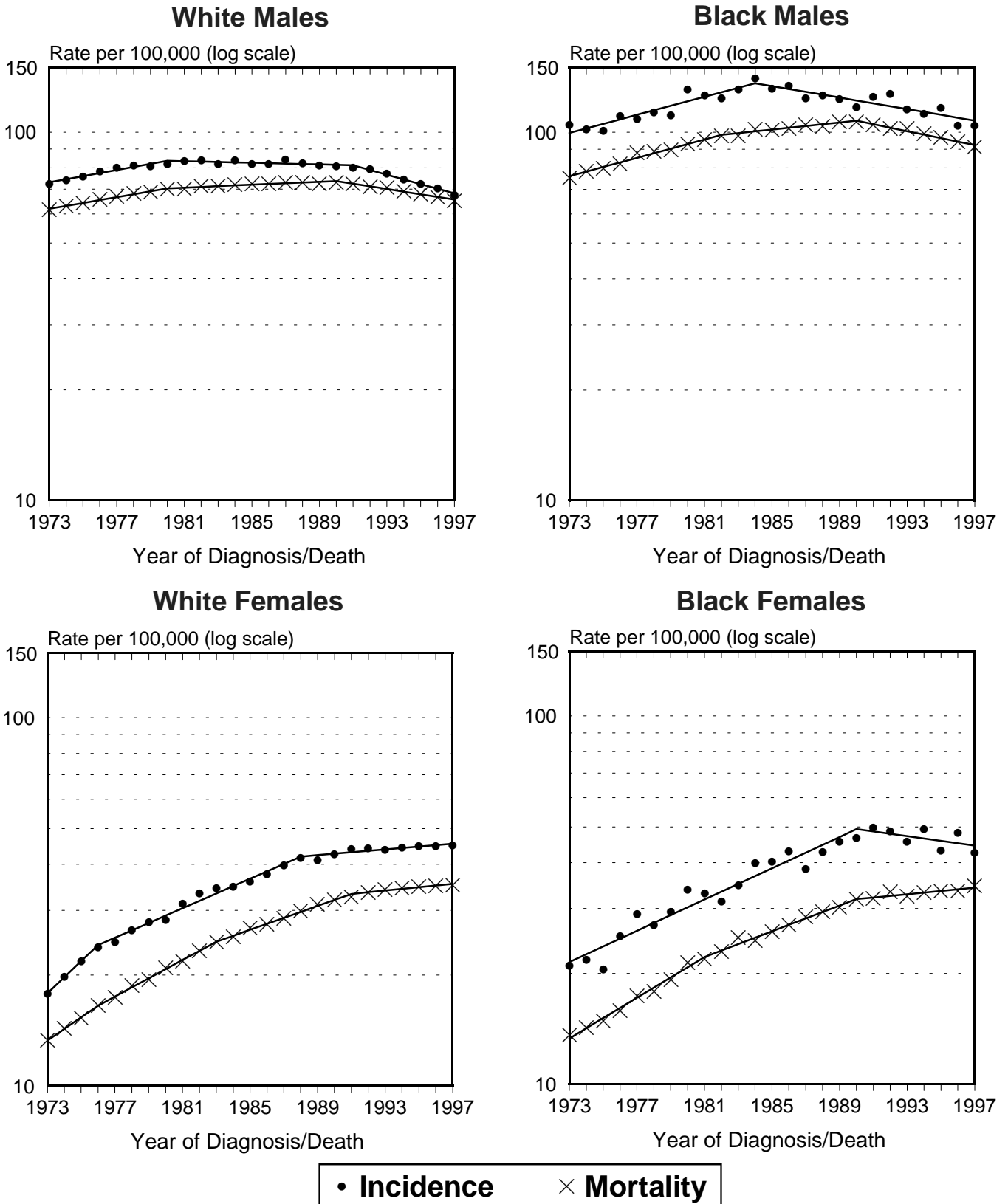
AVERAGE ANNUAL AGE-ADJUSTED CANCER MORTALITY* RATES BY STATE, 1993-97

All Races, Females

State	Rate	SE	Rank	PD	State	Rate	SE	Rank	PD
TOTAL U.S.	34.0	0.07							
High Five States									
Nevada	46.0⊕*	1.03	(01)	35.3					
Kentucky	43.8⊕*	0.61	(02)	28.8					
Delaware	42.8⊕*	1.39	(03)	25.9					
West Virginia	42.3⊕*	0.80	(04)	24.4					
Maine	40.9⊕*	1.01	(05)	20.3					
Low Five States									
North Dakota	25.6⊕*	1.16	(47)	-24.7					
Colorado	25.6⊕*	0.50	(48)	-24.7					
South Dakota	24.9⊕*	1.05	(49)	-26.8					
Hawaii	22.4⊕*	0.79	(50)	-34.1					
Utah	13.8⊕*	0.56	(51)	-59.4					
Alabama	31.4⊕	0.48	(38)	-7.6	Montana	32.8	1.10	(30)	-3.5
Alaska	38.7*	2.13	(08)	13.8	Nebraska	27.8⊕*	0.74	(44)	-18.2
Arizona	31.7	0.49	(37)	-6.8	Nevada	46.0⊕*	1.03	(01)	35.3
Arkansas	35.8	0.66	(20)	5.3	New Hampshire	39.3*	1.12	(07)	15.6
California	33.4	0.20	(28)	-1.8	New Jersey	34.9	0.36	(23)	2.6
Colorado	25.6⊕*	0.50	(48)	-24.7	New Mexico	26.1⊕*	0.74	(46)	-23.2
Connecticut	33.6	0.56	(27)	-1.2	New York	32.0⊕	0.23	(35)	-5.9
Delaware	42.8⊕*	1.39	(03)	25.9	North Carolina	31.8⊕	0.38	(36)	-6.5
District of Columbia	34.7	1.38	(25)	2.1	North Dakota	25.6⊕*	1.16	(47)	-24.7
Florida	36.0⊕	0.26	(19)	5.9	Ohio	36.9⊕	0.32	(14)	8.5
Georgia	32.3	0.41	(33)	-5.0	Oklahoma	36.1	0.59	(17)	6.2
Hawaii	22.4⊕*	0.79	(50)	-34.1	Oregon	39.4⊕*	0.64	(06)	15.9
Idaho	27.8⊕*	0.93	(45)	-18.2	Pennsylvania	32.8	0.28	(31)	-3.5
Illinois	34.5	0.31	(26)	1.5	Rhode Island	37.9*	1.09	(10)	11.5
Indiana	37.0⊕	0.46	(13)	8.8	South Carolina	31.0⊕	0.52	(40)	-8.8
Iowa	30.4⊕*	0.57	(41)	-10.6	South Dakota	24.9⊕*	1.05	(49)	-26.8
Kansas	31.4	0.63	(39)	-7.6	Tennessee	35.5	0.46	(21)	4.4
Kentucky	43.8⊕*	0.61	(02)	28.8	Texas	33.2	0.26	(29)	-2.4
Louisiana	36.8⊕	0.54	(15)	8.2	Utah	13.8⊕*	0.56	(51)	-59.4
Maine	40.9⊕*	1.01	(05)	20.3	Vermont	36.0	1.47	(18)	5.9
Maryland	38.1⊕*	0.51	(09)	12.1	Virginia	34.7	0.43	(24)	2.1
Massachusetts	36.7⊕	0.44	(16)	7.9	Washington	37.3⊕	0.50	(12)	9.7
Michigan	35.5	0.35	(22)	4.4	West Virginia	42.3⊕*	0.80	(04)	24.4
Minnesota	29.4⊕*	0.48	(42)	-13.5	Wisconsin	29.3⊕*	0.43	(43)	-13.8
Mississippi	32.6	0.63	(32)	-4.1	Wyoming	32.1	1.56	(34)	-5.6
Missouri	37.5⊕*	0.47	(11)	10.3					

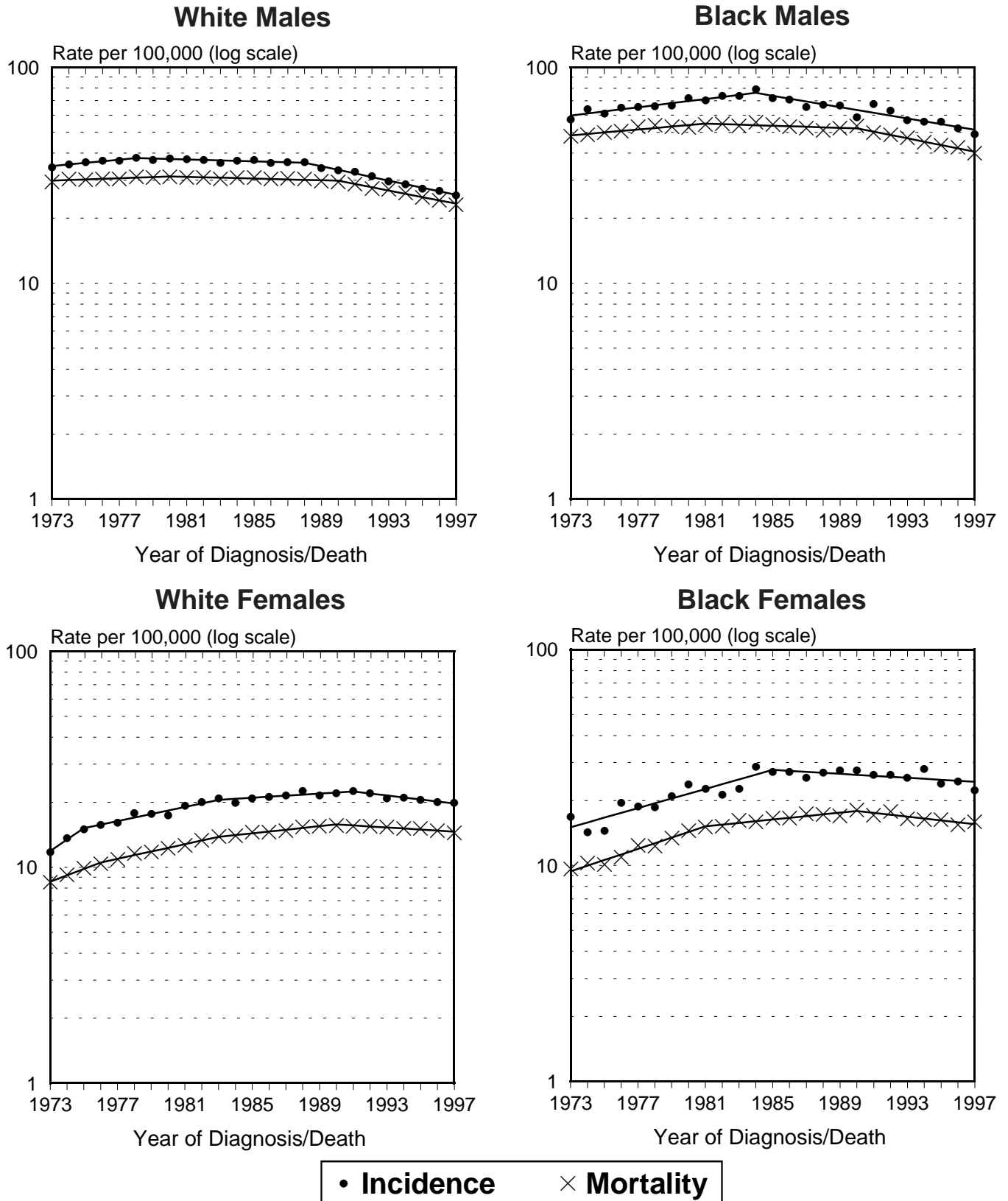
* NCHS public use tape. Rates are per 100,000 and are age-adjusted to the 1970 U.S. standard population.
SE Standard error of the rate.
PD Percent difference between state rate and total U.S. rate.
* Absolute difference between state rate and total U.S. rate is 10% or more.
⊕ Difference between state rate and total U.S. rate is statistically significant (p<=.0002).

SEER Incidence and U.S. Mortality Rates[†] Lung and Bronchus, All Ages



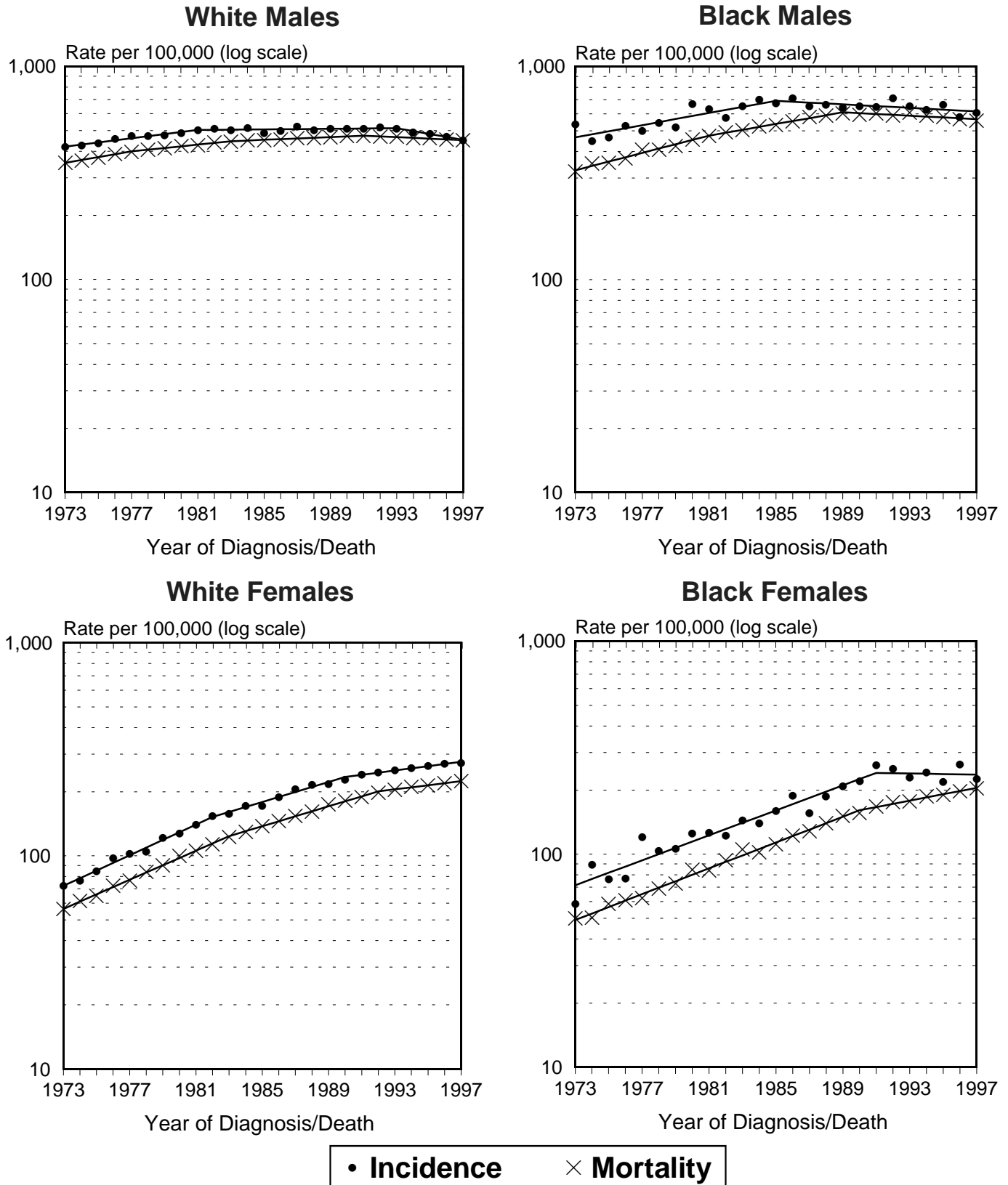
[†] Rates are age-adjusted to the 1970 U.S. standard million population. Regression lines are calculated using the Joinpoint Regression Program.

SEER Incidence and U.S. Mortality Rates⁺ Lung and Bronchus, Under 65 Years of Age



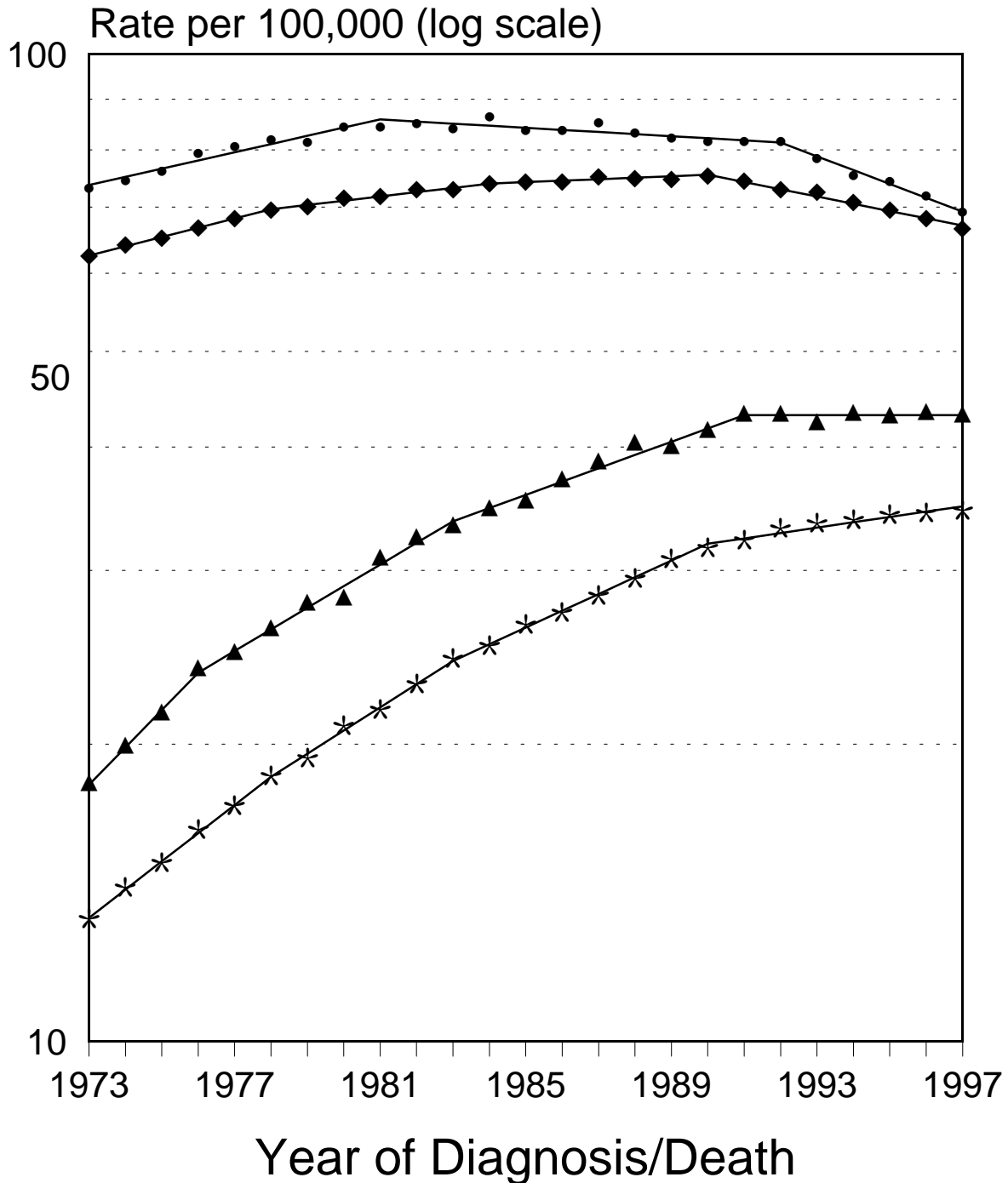
⁺ Rates are age-adjusted to the 1970 U.S. standard million population. Regression lines are calculated using the Joinpoint Regression Program.

SEER Incidence and U.S. Mortality Rates⁺ Lung and Bronchus, Ages 65 and Over



⁺ Rates are age-adjusted to the 1970 U.S. standard million population. Regression lines are calculated using the Joinpoint Regression Program.

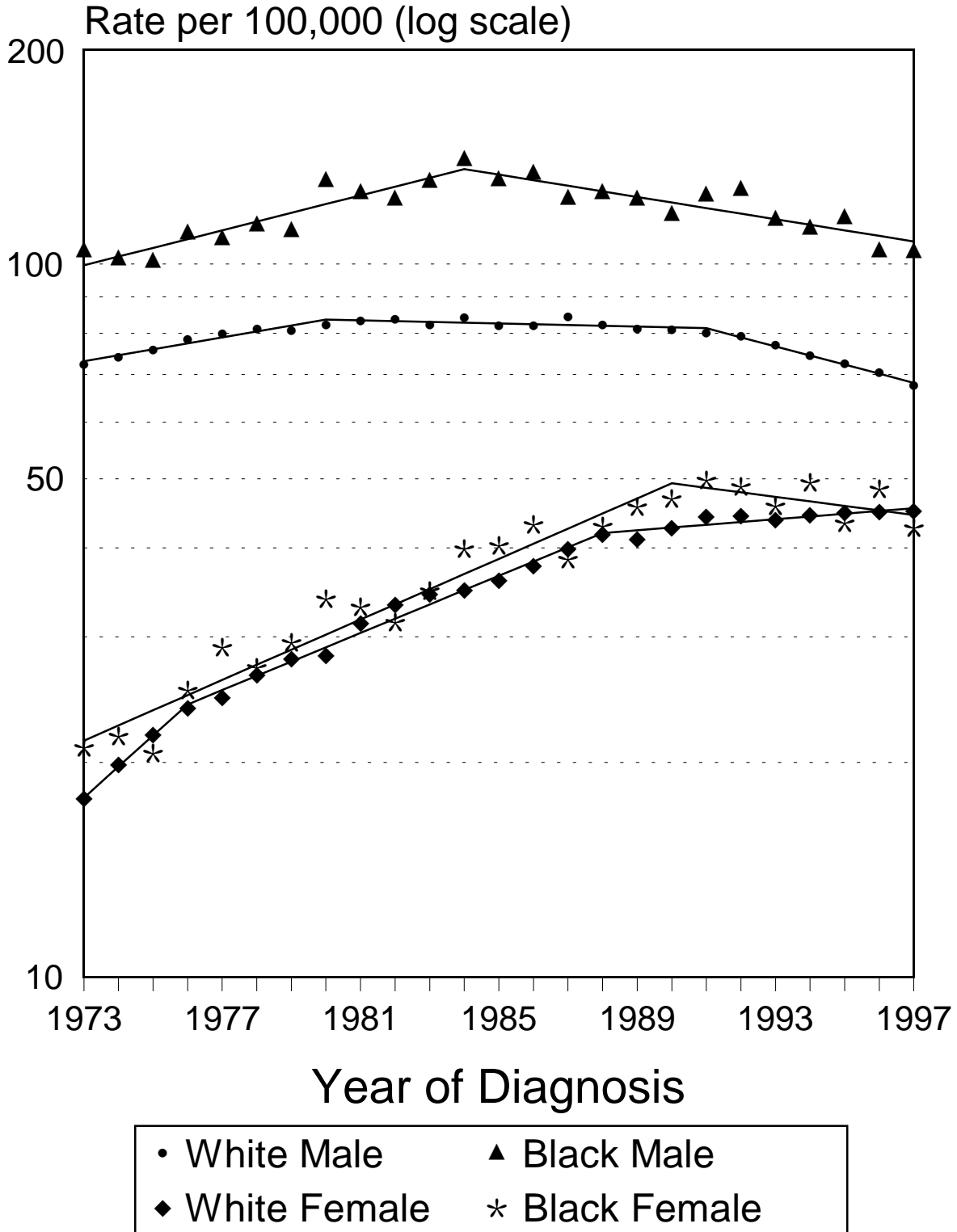
Cancer of the Lung & Bronchus SEER Incidence & U.S. Mortality Rates, 1973-1997 By Sex, All Races



- | | |
|------------------|--------------------|
| • Male Incidence | ▲ Female Incidence |
| ◆ Male Mortality | * Female Mortality |

Rates are age-adjusted to the 1970 U.S. standard million population. Regression lines are calculated using the Joinpoint Regression Program.

Cancer of the Lung & Bronchus SEER Incidence, 1973-1997 By Sex and Race



Rates are age-adjusted to the 1970 U.S. standard million population. Regression lines are calculated using the Joinpoint Regression Program.