

Table XIII-1
LEUKEMIA (Invasive)

TRENDS IN SEER INCIDENCE^a AND U.S. MORTALITY^b USING THE JOINPOINT REGRESSION PROGRAM, 1975-2000
WITH UP TO THREE JOINPOINTS BY RACE AND SEX

		<u>Joinpoint Segment 1</u>		<u>Joinpoint Segment 2</u>		<u>Joinpoint Segment 3</u>		<u>Joinpoint Segment 4</u>	
		Year	APC	Year	APC	Year	APC	Year	APC
<u>SEER Cancer Incidence^a</u>									
All Races	Male and Female	1975-1995	0.0	1995-2000	-1.8 ^c				
All Races	Male	1975-1997	-0.2	1997-2000	-3.4				
All Races	Female	1975-2000	-0.2 ^c						
White	Male and Female	1975-1995	0.1	1995-2000	-1.9 ^c				
White	Male	1975-1997	-0.1	1997-2000	-4.1				
White	Female	1975-2000	-0.1						
Black	Male and Female	1975-2000	-0.6 ^c						
Black	Male	1975-2000	-0.5						
Black	Female	1975-2000	-0.7 ^c						
<u>SEER Delay-Adjusted Incidence^a</u>									
White	Male	1975-2000	0.3 ^c						
White	Female	1975-2000	0.5 ^c						
Black	Male	1975-2000	0.0						
Black	Female	1975-2000	-0.1						
<u>U.S. Cancer Mortality^b</u>									
All Races	Male and Female	1975-1980	0.3	1980-2000	-0.3 ^c				
All Races	Male	1975-2000	-0.3 ^c						
All Races	Female	1975-1980	0.7	1980-2000	-0.4 ^c				
White	Male and Female	1975-2000	-0.3 ^c						
White	Male	1975-2000	-0.3 ^c						
White	Female	1975-2000	-0.3 ^c						
Black	Male and Female	1975-1991	0.6 ^c	1991-2000	-1.0 ^c				
Black	Male	1975-1990	1.1 ^c	1990-2000	-0.9 ^c				
Black	Female	1975-1983	1.3	1983-2000	-0.4 ^c				

The APC is the Annual Percent Change based on rates age-adjusted to the 2000 U.S. standard population by 5-year age groups using the Joinpoint Regression Program.

^a Trends are from the SEER 9 areas.

^b Trends are from the NCHS public use data file.

^c The APC is significantly different from zero (p<.05).

Table XIII-2
LEUKEMIA

SEER INCIDENCE RATES, AGE-ADJUSTED AND AGE-SPECIFIC RATES^a, BY RACE AND SEX

	All Races			Whites			Blacks		
	Total	Males	Females	Total	Males	Females	Total	Males	Females
<u>AGE-ADJUSTED RATES</u>									
YEAR OF DIAGNOSIS:									
1975	12.8	16.9	10.0	13.1	17.5	10.1	11.5	16.2	8.5
1976	13.5	18.5	10.2	13.8	19.1	10.3	11.3	14.2	9.4
1977	12.7	16.3	10.2	13.2	17.0	10.5	10.2	13.6	7.7
1978	12.9	17.2	9.8	13.5	18.3	10.3	9.2	11.4	7.5
1979	12.5	16.8	9.7	13.0	17.5	10.0	10.6	13.6	8.6
1980	12.9	17.3	9.8	13.2	17.9	10.1	12.2	16.0	9.5
1981	12.4	16.5	9.6	12.7	17.0	9.8	12.2	14.5	10.3
1982	13.1	18.2	9.7	13.5	18.7	9.9	10.7	15.1	7.9
1983	13.1	17.8	9.8	13.4	18.4	10.0	12.5	16.0	10.1
1984	12.9	17.0	10.1	13.4	17.8	10.3	10.6	11.8	9.6
1985	13.3	17.6	10.4	13.7	18.1	10.6	12.2	16.8	9.3
1986	12.8	17.4	9.5	13.3	18.2	9.9	10.3	13.0	8.4
1987	13.3	17.6	10.3	13.7	18.3	10.5	12.6	17.6	9.3
1988	12.8	17.3	9.6	13.2	18.0	9.8	11.6	13.9	9.6
1989	13.3	17.5	10.3	13.8	18.1	10.8	11.0	15.6	7.8
1990	12.7	17.1	9.6	13.3	18.0	10.1	11.0	14.4	8.6
1991	12.9	16.6	10.2	13.5	17.4	10.5	10.9	11.9	10.2
1992	12.8	17.3	9.7	13.4	18.3	9.9	10.6	13.9	8.3
1993	12.8	16.7	9.9	13.3	17.5	10.2	11.4	15.1	8.8
1994	12.7	16.5	9.9	13.3	17.3	10.3	9.7	12.6	7.7
1995	13.2	17.4	10.1	14.0	18.4	10.8	9.3	12.5	7.0
1996	12.6	16.4	9.9	13.1	17.0	10.3	10.4	13.7	8.4
1997	12.5	16.8	9.5	13.3	17.8	10.0	9.6	13.1	7.4
1998	12.4	16.2	9.6	13.0	16.8	10.2	9.6	13.9	6.9
1999	11.8	15.7	8.9	12.3	16.3	9.2	9.4	12.6	7.3
2000	11.9	15.2	9.4	12.4	15.8	9.8	10.6	12.5	9.0
<u>AGE-ADJUSTED RATES, 1996-2000</u>									
AGE AT DIAGNOSIS:									
All ages	12.2	16.0	9.5	12.8	16.7	9.9	9.9	13.2	7.8
Under 65	5.9	7.1	4.8	6.1	7.3	5.0	4.7	5.6	3.9
65 and over	56.0	78.1	41.5	59.0	82.1	43.9	46.0	65.5	34.4
All ages (world std.) ^b	8.8	11.0	6.9	9.2	11.5	7.2	6.9	8.8	5.5
<u>AGE-SPECIFIC RATES, 1996-2000</u>									
AGE AT DIAGNOSIS:									
<1	3.8	4.1	3.6	3.6	3.7	-	-	-	-
1-4	8.3	9.3	7.3	9.2	10.2	8.3	3.4	-	-
5-9	3.9	4.0	3.7	4.2	4.4	4.0	2.4	-	-
10-14	2.5	2.8	2.2	2.4	2.6	2.2	2.5	-	-
15-19	2.3	2.7	1.9	2.3	2.8	1.9	-	-	-
20-24	2.4	2.7	2.1	2.6	2.9	2.3	-	-	-
25-29	2.4	3.0	1.8	2.2	2.7	1.7	2.6	-	-
30-34	2.7	3.3	2.0	2.6	3.2	2.0	3.1	4.2	-
35-39	3.7	4.3	3.2	3.6	4.1	3.1	3.9	4.6	-
40-44	4.2	5.1	3.3	4.4	5.1	3.6	3.8	5.7	-
45-49	6.9	7.9	6.0	6.9	8.1	5.8	7.8	8.1	7.5
50-54	11.1	13.4	8.9	11.4	13.9	8.9	8.7	9.9	7.7
55-59	15.8	19.4	12.4	16.2	19.9	12.7	12.2	12.9	11.6
60-64	23.8	30.7	17.5	25.4	32.2	19.0	15.7	21.5	11.0
65-69	36.9	49.0	26.5	39.2	51.7	28.4	32.3	45.2	22.6
70-74	48.9	68.5	33.6	51.8	71.7	36.0	39.9	56.2	29.0
75-79	60.9	82.3	46.0	64.7	87.5	48.7	46.3	67.0	33.2
80-84	72.2	101.7	54.7	75.5	106.3	57.2	57.9	84.4	44.3
85+	85.5	127.3	68.4	88.3	133.2	70.4	74.2	105.4	62.4

^a SEER 9 areas. Rates are per 100,000 and are age-adjusted to the 2000 U.S. standard population by 5-year age groups, unless noted.

^b SEER 9 areas. Rates are per 100,000 and are age-adjusted to the world standard population.

- Statistic not shown. Rate based on less than 25 cases for the time interval.

Table XIII-3
ACUTE LYMPHOCYTIC LEUKEMIA

SEER INCIDENCE RATES, AGE-ADJUSTED AND AGE-SPECIFIC RATES^a, BY RACE AND SEX

	All Races			Whites			Blacks		
	Total	Males	Females	Total	Males	Females	Total	Males	Females
<u>AGE-ADJUSTED RATES</u>									
YEAR OF DIAGNOSIS:									
1975	0.9	1.1	0.8	1.0	1.2	0.8	-	-	-
1976	1.1	1.3	0.9	1.1	1.3	0.9	-	-	-
1977	1.1	1.3	0.9	1.2	1.4	1.0	-	-	-
1978	1.0	1.2	0.8	1.1	1.3	0.9	-	-	-
1979	1.0	1.2	0.9	1.1	1.2	1.0	-	-	-
1980	1.1	1.4	0.9	1.2	1.5	0.9	-	-	-
1981	1.2	1.3	1.2	1.3	1.4	1.2	-	-	-
1982	1.2	1.5	1.0	1.3	1.6	1.0	-	-	-
1983	1.3	1.5	1.1	1.4	1.7	1.2	-	-	-
1984	1.3	1.5	1.2	1.3	1.5	1.2	-	-	-
1985	1.3	1.5	1.1	1.4	1.6	1.1	-	-	-
1986	1.3	1.7	1.0	1.4	1.8	1.0	-	-	-
1987	1.3	1.5	1.2	1.4	1.6	1.2	-	-	-
1988	1.4	1.8	1.1	1.4	1.8	1.1	-	-	-
1989	1.6	1.8	1.4	1.7	1.9	1.5	1.0	-	-
1990	1.4	1.7	1.2	1.5	1.8	1.3	-	-	-
1991	1.4	1.7	1.1	1.5	2.0	1.1	-	-	-
1992	1.3	1.6	1.1	1.4	1.7	1.1	0.9	-	-
1993	1.3	1.4	1.1	1.4	1.6	1.1	-	-	-
1994	1.2	1.5	0.9	1.3	1.6	1.0	-	-	-
1995	1.5	1.8	1.2	1.6	1.9	1.3	0.9	-	-
1996	1.4	1.6	1.2	1.4	1.7	1.2	0.8	-	-
1997	1.3	1.5	1.2	1.4	1.6	1.3	0.8	-	-
1998	1.5	1.6	1.3	1.6	1.7	1.4	0.9	-	-
1999	1.3	1.5	1.1	1.4	1.6	1.2	-	-	-
2000	1.4	1.5	1.3	1.5	1.6	1.4	0.9	-	-
<u>AGE-ADJUSTED RATES, 1996-2000</u>									
AGE AT DIAGNOSIS:									
All ages	1.4	1.5	1.2	1.5	1.6	1.3	0.8	1.0	0.7
Under 65	1.4	1.6	1.2	1.5	1.7	1.3	0.8	1.0	0.7
65 and over	1.3	1.4	1.2	1.3	1.5	1.2	-	-	-
All ages (world std.) ^b	1.7	1.9	1.5	1.9	2.1	1.7	1.0	1.1	0.8
<u>AGE-SPECIFIC RATES, 1996-2000</u>									
AGE AT DIAGNOSIS:									
<1	1.8	-	-	-	-	-	-	-	-
1-4	7.0	7.9	6.2	8.0	8.8	7.1	2.6	-	-
5-9	3.3	3.4	3.1	3.6	3.9	3.3	1.9	-	-
10-14	1.7	1.8	1.5	1.7	1.8	1.6	-	-	-
15-19	1.2	1.6	0.9	1.3	1.7	1.0	-	-	-
20-24	0.7	0.8	-	0.7	0.8	-	-	-	-
25-29	0.5	0.7	-	0.6	0.7	-	-	-	-
30-34	0.5	0.7	-	0.5	0.6	-	-	-	-
35-39	0.5	0.5	0.5	0.5	-	-	-	-	-
40-44	0.3	-	-	0.4	-	-	-	-	-
45-49	0.6	0.7	-	0.6	0.7	-	-	-	-
50-54	0.8	0.9	0.7	0.8	1.0	-	-	-	-
55-59	0.7	-	-	0.7	-	-	-	-	-
60-64	0.9	1.1	-	0.9	-	-	-	-	-
65-69	1.2	-	1.2	1.3	-	-	-	-	-
70-74	1.3	1.5	-	1.2	-	-	-	-	-
75-79	1.1	-	-	1.2	-	-	-	-	-
80-84	1.4	-	-	1.5	-	-	-	-	-
85+	1.5	-	-	1.5	-	-	-	-	-

^a SEER 9 areas. Rates are per 100,000 and are age-adjusted to the 2000 U.S. standard population by 5-year age groups, unless noted.

^b SEER 9 areas. Rates are per 100,000 and are age-adjusted to the world standard population.

- Statistic not shown. Rate based on less than 25 cases for the time interval.

Table XIII-4
CHRONIC LYMPHOCYTIC LEUKEMIA

SEER INCIDENCE RATES, AGE-ADJUSTED AND AGE-SPECIFIC RATES^a, BY RACE AND SEX

	All Races			Whites			Blacks		
	Total	Males	Females	Total	Males	Females	Total	Males	Females
<u>AGE-ADJUSTED RATES</u>									
YEAR OF DIAGNOSIS:									
1975	4.3	5.9	3.3	4.5	6.1	3.4	4.8	6.9	-
1976	4.6	6.7	3.1	4.7	7.1	3.1	4.3	-	-
1977	4.2	5.7	3.1	4.4	6.0	3.3	3.8	5.8	-
1978	4.4	5.9	3.4	4.7	6.4	3.6	3.3	-	-
1979	4.0	5.7	2.9	4.3	6.1	3.1	3.1	-	-
1980	4.5	6.3	3.3	4.7	6.5	3.4	4.5	7.1	-
1981	4.2	6.3	2.9	4.4	6.6	3.0	3.7	5.4	-
1982	4.3	6.1	3.0	4.5	6.4	3.2	3.7	6.5	-
1983	4.4	6.4	3.1	4.6	6.8	3.2	4.2	6.1	-
1984	4.4	6.2	3.1	4.6	6.7	3.2	3.5	4.5	-
1985	4.4	6.1	3.3	4.7	6.5	3.5	4.1	6.1	-
1986	4.4	6.2	3.2	4.8	6.7	3.5	2.7	4.1	-
1987	4.6	6.7	3.0	4.9	7.1	3.3	4.0	6.1	-
1988	4.4	6.2	3.0	4.6	6.6	3.1	4.4	5.2	3.5
1989	4.6	6.3	3.4	4.8	6.7	3.6	3.8	5.3	-
1990	4.4	6.1	3.3	4.7	6.5	3.5	4.3	5.7	3.4
1991	4.4	6.0	3.3	4.8	6.5	3.5	3.4	-	3.2
1992	4.4	6.5	3.0	4.8	7.1	3.3	3.2	5.0	-
1993	4.2	5.8	3.0	4.5	6.1	3.2	4.3	6.5	2.7
1994	4.3	5.7	3.2	4.6	6.2	3.4	3.1	4.1	-
1995	4.3	6.1	2.9	4.6	6.6	3.2	3.0	4.5	-
1996	4.2	5.7	3.1	4.5	6.1	3.4	3.3	5.2	-
1997	4.0	5.5	2.9	4.3	6.0	3.1	2.8	4.4	-
1998	3.6	5.1	2.5	3.8	5.4	2.7	2.6	-	-
1999	3.4	5.0	2.2	3.6	5.3	2.4	2.9	4.8	-
2000	3.4	4.7	2.4	3.7	5.1	2.6	2.5	3.2	-
<u>AGE-ADJUSTED RATES, 1996-2000</u>									
AGE AT DIAGNOSIS:									
All ages	3.7	5.2	2.6	4.0	5.6	2.8	2.8	4.2	2.0
Under 65	1.3	1.7	0.8	1.4	1.8	0.9	0.9	1.3	0.6
65 and over	20.6	29.1	15.0	22.3	31.3	16.3	16.0	24.3	11.2
All ages (world std.) ^b	2.3	3.1	1.6	2.5	3.4	1.7	1.7	2.5	1.2
<u>AGE-SPECIFIC RATES, 1996-2000</u>									
AGE AT DIAGNOSIS:									
<1	-	-	-	-	-	-	-	-	-
1-4	-	-	-	-	-	-	-	-	-
5-9	-	-	-	-	-	-	-	-	-
10-14	-	-	-	-	-	-	-	-	-
15-19	-	-	-	-	-	-	-	-	-
20-24	-	-	-	-	-	-	-	-	-
25-29	-	-	-	-	-	-	-	-	-
30-34	-	-	-	-	-	-	-	-	-
35-39	0.3	0.5	-	0.3	-	-	-	-	-
40-44	0.7	0.9	-	0.7	1.1	-	-	-	-
45-49	1.8	2.3	1.3	1.9	2.5	1.4	-	-	-
50-54	3.7	5.0	2.4	3.9	5.2	2.6	-	-	-
55-59	6.3	8.5	4.3	7.0	9.3	4.7	-	-	-
60-64	9.0	12.5	5.7	9.6	13.0	6.4	7.1	-	-
65-69	14.3	19.2	10.1	15.6	20.9	11.1	10.6	-	-
70-74	18.4	26.6	12.1	20.0	28.2	13.5	15.2	23.7	-
75-79	21.9	30.5	15.9	23.8	33.3	17.2	16.8	-	-
80-84	25.6	35.1	20.0	27.2	36.9	21.4	20.3	-	-
85+	31.0	46.6	24.5	33.1	50.8	26.0	23.5	-	-

^a SEER 9 areas. Rates are per 100,000 and are age-adjusted to the 2000 U.S. standard population by 5-year age groups, unless noted.

^b SEER 9 areas. Rates are per 100,000 and are age-adjusted to the world standard population.

- Statistic not shown. Rate based on less than 25 cases for the time interval.

Table XIII-5
ACUTE MYELOID LEUKEMIA

SEER INCIDENCE RATES, AGE-ADJUSTED AND AGE-SPECIFIC RATES^a, BY RACE AND SEX

	All Races			Whites			Blacks		
	Total	Males	Females	Total	Males	Females	Total	Males	Females
<u>AGE-ADJUSTED RATES</u>									
YEAR OF DIAGNOSIS:									
1975	3.4	4.2	3.0	3.5	4.3	3.0	2.5	-	-
1976	3.5	4.4	2.9	3.5	4.5	2.9	2.6	-	-
1977	3.5	4.2	3.1	3.6	4.4	3.1	1.9	-	-
1978	3.4	4.4	2.7	3.5	4.6	2.8	2.7	-	-
1979	3.3	4.1	2.8	3.4	4.2	2.9	3.4	-	3.4
1980	3.1	4.1	2.4	3.2	4.1	2.5	2.9	-	-
1981	3.2	4.0	2.6	3.2	4.1	2.7	3.1	-	-
1982	3.4	4.8	2.6	3.5	4.9	2.6	2.5	-	-
1983	3.2	4.2	2.5	3.2	4.3	2.4	2.9	-	-
1984	3.3	4.1	2.7	3.4	4.2	2.8	2.4	-	-
1985	3.3	4.1	2.9	3.2	4.0	2.8	3.7	4.9	3.0
1986	3.0	3.9	2.4	3.0	3.9	2.4	3.2	4.0	2.7
1987	3.0	4.0	2.5	3.0	4.0	2.5	3.0	4.7	-
1988	3.0	3.8	2.5	3.1	3.9	2.5	2.8	3.1	2.5
1989	3.2	4.0	2.6	3.3	4.1	2.8	2.2	3.8	-
1990	3.1	3.9	2.5	3.1	4.1	2.5	2.5	-	-
1991	3.3	3.9	2.9	3.4	3.9	3.0	3.3	4.4	2.6
1992	3.2	3.9	2.8	3.3	4.1	2.8	3.0	3.0	3.0
1993	3.5	4.3	2.9	3.5	4.4	2.9	2.5	-	2.5
1994	3.5	4.1	3.0	3.5	4.2	3.0	2.9	3.2	2.7
1995	3.7	4.2	3.3	3.8	4.4	3.4	2.5	-	2.6
1996	3.5	4.4	2.9	3.5	4.3	2.9	3.2	4.0	2.7
1997	3.5	4.6	2.8	3.7	4.8	2.9	3.0	3.7	2.6
1998	3.9	4.9	3.2	4.1	5.1	3.3	3.0	4.6	2.0
1999	3.7	4.4	3.1	3.8	4.5	3.2	3.0	3.4	2.6
2000	3.9	4.8	3.3	3.9	4.7	3.3	4.3	4.8	3.9
<u>AGE-ADJUSTED RATES, 1996-2000</u>									
AGE AT DIAGNOSIS:									
All ages	3.7	4.6	3.1	3.8	4.7	3.1	3.3	4.1	2.8
Under 65	1.8	1.9	1.6	1.8	1.9	1.6	1.5	1.7	1.3
65 and over	17.2	23.4	13.1	17.7	24.0	13.6	15.7	21.2	12.6
All ages (world std.) ^b	2.6	3.1	2.2	2.6	3.1	2.2	2.2	2.7	1.9
<u>AGE-SPECIFIC RATES, 1996-2000</u>									
AGE AT DIAGNOSIS:									
<1	-	-	-	-	-	-	-	-	-
1-4	0.9	1.0	0.8	0.8	-	-	-	-	-
5-9	0.4	-	-	0.5	-	-	-	-	-
10-14	0.7	0.8	-	0.5	-	-	-	-	-
15-19	0.8	0.8	0.7	0.8	0.8	-	-	-	-
20-24	1.2	1.3	1.2	1.4	1.5	1.2	-	-	-
25-29	1.1	1.3	0.9	0.9	1.1	0.8	-	-	-
30-34	0.9	1.0	0.8	0.9	1.0	0.8	-	-	-
35-39	1.4	1.3	1.5	1.3	1.3	1.4	-	-	-
40-44	1.6	1.7	1.5	1.7	1.7	1.7	-	-	-
45-49	2.3	2.2	2.3	2.1	2.1	2.1	2.9	-	-
50-54	3.2	3.5	2.9	3.3	3.7	2.9	-	-	-
55-59	4.5	4.8	4.2	4.6	4.9	4.2	-	-	-
60-64	7.3	8.6	6.1	7.8	9.0	6.7	-	-	-
65-69	11.5	15.2	8.3	12.3	16.2	8.9	9.4	-	-
70-74	16.3	22.4	11.6	17.0	23.0	12.2	12.7	-	-
75-79	19.8	25.0	16.1	20.4	25.8	16.6	17.7	-	-
80-84	22.2	30.1	17.4	22.3	29.6	18.1	21.8	-	-
85+	21.3	32.7	16.6	21.3	33.4	16.4	25.3	-	-

^a SEER 9 areas. Rates are per 100,000 and are age-adjusted to the 2000 U.S. standard population by 5-year age groups, unless noted.

^b SEER 9 areas. Rates are per 100,000 and are age-adjusted to the world standard population.

- Statistic not shown. Rate based on less than 25 cases for the time interval.

Table XIII-6
CHRONIC MYELOID LEUKEMIA

SEER INCIDENCE RATES, AGE-ADJUSTED AND AGE-SPECIFIC RATES^a, BY RACE AND SEX

	All Races			Whites			Blacks		
	Total	Males	Females	Total	Males	Females	Total	Males	Females
<u>AGE-ADJUSTED RATES</u>									
YEAR OF DIAGNOSIS:									
1975	2.0	2.9	1.3	2.0	3.0	1.3	-	-	-
1976	1.9	2.5	1.6	1.9	2.4	1.5	1.9	-	-
1977	1.7	2.1	1.4	1.7	2.1	1.4	-	-	-
1978	1.7	2.3	1.3	1.7	2.3	1.4	-	-	-
1979	1.9	2.5	1.4	1.9	2.5	1.5	1.9	-	-
1980	1.7	2.1	1.5	1.7	2.1	1.5	1.5	-	-
1981	1.6	2.0	1.4	1.6	1.9	1.4	2.4	-	-
1982	1.7	2.2	1.4	1.7	2.2	1.3	1.7	-	-
1983	1.7	2.2	1.3	1.6	2.1	1.3	2.5	-	-
1984	1.7	2.4	1.2	1.6	2.4	1.1	2.6	-	-
1985	2.0	2.8	1.4	2.0	2.8	1.5	2.1	-	-
1986	1.7	2.2	1.3	1.7	2.3	1.3	1.5	-	-
1987	1.9	2.3	1.6	1.9	2.4	1.6	2.1	-	-
1988	1.9	2.5	1.5	1.9	2.6	1.5	2.1	-	-
1989	1.7	2.2	1.3	1.7	2.2	1.3	2.2	-	-
1990	1.7	2.5	1.2	1.7	2.5	1.2	2.5	3.6	-
1991	1.9	2.4	1.5	1.9	2.5	1.5	1.6	-	-
1992	1.8	2.2	1.5	1.8	2.3	1.5	1.5	-	-
1993	1.9	2.5	1.5	1.9	2.5	1.5	2.3	3.6	-
1994	1.8	2.4	1.4	1.9	2.4	1.5	1.7	-	-
1995	1.8	2.5	1.3	1.9	2.6	1.3	1.5	-	-
1996	1.8	2.4	1.4	1.8	2.5	1.3	2.0	-	-
1997	1.8	2.6	1.2	1.9	2.6	1.3	1.6	-	-
1998	1.6	1.9	1.3	1.6	1.9	1.4	1.6	-	-
1999	1.7	2.2	1.2	1.6	2.2	1.2	1.6	-	-
2000	1.6	2.1	1.2	1.6	2.1	1.2	1.4	-	-
<u>AGE-ADJUSTED RATES, 1996-2000</u>									
AGE AT DIAGNOSIS:									
All ages	1.7	2.2	1.3	1.7	2.3	1.3	1.6	2.1	1.3
Under 65	0.8	1.0	0.7	0.8	0.9	0.7	0.9	1.1	0.7
65 and over	7.7	11.1	5.4	7.9	11.4	5.6	6.7	9.6	5.0
All ages (world std.) ^b	1.1	1.4	0.8	1.1	1.4	0.9	1.2	1.5	0.9
<u>AGE-SPECIFIC RATES, 1996-2000</u>									
AGE AT DIAGNOSIS:									
<1	-	-	-	-	-	-	-	-	-
1-4	-	-	-	-	-	-	-	-	-
5-9	-	-	-	-	-	-	-	-	-
10-14	-	-	-	-	-	-	-	-	-
15-19	-	-	-	-	-	-	-	-	-
20-24	0.3	-	-	-	-	-	-	-	-
25-29	0.5	0.8	-	0.6	0.8	-	-	-	-
30-34	0.8	1.0	0.5	0.7	1.0	-	-	-	-
35-39	0.9	1.1	0.7	0.9	1.0	0.7	-	-	-
40-44	0.8	1.1	0.5	0.8	1.0	-	-	-	-
45-49	1.3	1.3	1.2	1.2	1.3	1.1	-	-	-
50-54	1.7	1.7	1.8	1.7	1.6	1.9	-	-	-
55-59	2.2	2.6	1.8	2.0	2.4	1.7	-	-	-
60-64	3.3	4.2	2.5	3.4	4.1	2.7	-	-	-
65-69	5.4	7.4	3.6	5.2	7.3	3.4	7.2	-	-
70-74	6.3	9.1	4.1	6.6	9.4	4.3	-	-	-
75-79	7.5	11.0	5.1	7.8	11.4	5.3	-	-	-
80-84	10.8	16.8	7.3	11.4	17.9	7.6	-	-	-
85+	12.4	17.1	10.5	12.7	17.4	10.9	-	-	-

^a SEER 9 areas. Rates are per 100,000 and are age-adjusted to the 2000 U.S. standard population by 5-year age groups, unless noted.

^b SEER 9 areas. Rates are per 100,000 and are age-adjusted to the world standard population.

- Statistic not shown. Rate based on less than 25 cases for the time interval.

Table XIII-7
LEUKEMIAU.S. DEATH RATES, AGE-ADJUSTED AND AGE-SPECIFIC RATES^a, BY RACE AND SEX

	All Races			Whites			Blacks		
	Total	Males	Females	Total	Males	Females	Total	Males	Females
<u>AGE-ADJUSTED RATES</u>									
<u>YEAR OF DEATH:</u>									
1975	8.1	11.0	6.2	8.3	11.3	6.3	6.6	8.6	5.1
1976	8.1	10.9	6.2	8.3	11.2	6.3	6.8	8.5	5.5
1977	8.1	10.8	6.3	8.3	11.1	6.3	6.8	8.8	5.5
1978	8.0	10.8	6.1	8.2	11.1	6.3	6.7	9.2	4.9
1979	8.3	11.1	6.4	8.4	11.4	6.5	7.0	8.9	5.7
1980	8.4	11.2	6.5	8.5	11.5	6.6	7.0	9.1	5.7
1981	8.1	10.9	6.2	8.2	11.2	6.3	7.1	8.9	5.9
1982	8.2	11.0	6.3	8.3	11.3	6.4	7.1	9.4	5.7
1983	8.1	10.9	6.3	8.2	11.2	6.3	7.2	9.2	5.9
1984	8.1	10.7	6.4	8.2	10.9	6.5	7.1	9.2	5.7
1985	8.1	10.8	6.3	8.2	11.0	6.4	7.1	9.6	5.4
1986	8.0	10.7	6.2	8.1	11.0	6.2	7.3	9.3	5.9
1987	7.8	10.3	6.1	7.9	10.5	6.2	7.2	9.4	5.9
1988	7.8	10.6	6.0	8.0	10.8	6.1	7.2	9.8	5.6
1989	8.0	10.6	6.2	8.1	10.8	6.3	7.4	10.3	5.5
1990	8.0	10.7	6.2	8.1	10.9	6.3	7.4	10.0	5.8
1991	8.0	10.5	6.3	8.1	10.6	6.4	7.4	10.0	5.8
1992	8.0	10.7	6.1	8.1	10.9	6.2	7.2	9.4	5.7
1993	7.9	10.7	6.1	8.0	10.8	6.2	7.4	9.8	5.8
1994	7.9	10.6	6.0	8.0	10.8	6.1	7.1	9.6	5.5
1995	7.9	10.8	6.0	8.0	11.0	6.0	7.2	9.8	5.5
1996	7.8	10.5	6.1	8.0	10.7	6.1	7.5	10.1	5.9
1997	7.7	10.4	5.9	7.9	10.7	6.0	6.8	9.2	5.3
1998	7.6	10.1	5.8	7.7	10.3	5.9	7.0	9.4	5.6
1999	7.7	10.2	6.0	7.9	10.5	6.1	6.7	8.8	5.4
2000	7.7	10.3	5.9	7.9	10.6	6.1	6.7	9.1	5.3
<u>AGE-ADJUSTED RATES, 1996-2000</u>									
<u>AGE AT DEATH:</u>									
All ages	7.7	10.3	5.9	7.9	10.6	6.0	7.0	9.3	5.5
Under 65	2.6	3.1	2.1	2.6	3.1	2.1	2.9	3.5	2.3
65 and over	42.9	60.2	32.1	44.2	62.0	33.0	35.1	49.2	27.3
All ages (world std.) ^b	4.7	6.0	3.6	4.7	6.2	3.7	4.5	5.8	3.5
<u>AGE-SPECIFIC RATES, 1996-2000</u>									
<u>AGE AT DEATH:</u>									
<1	0.8	0.7	0.9	0.9	0.8	1.0	-	-	-
1-4	0.8	0.9	0.8	0.9	0.9	0.9	0.7	0.7	0.7
5-9	0.7	0.8	0.6	0.8	0.9	0.7	0.6	0.7	0.6
10-14	0.9	1.1	0.8	0.9	1.1	0.8	0.8	0.9	0.7
15-19	1.1	1.3	0.9	1.1	1.3	0.9	1.1	1.3	0.8
20-24	1.3	1.6	1.0	1.3	1.6	1.0	1.3	1.6	1.1
25-29	1.2	1.4	1.0	1.2	1.4	1.0	1.4	1.7	1.2
30-34	1.3	1.5	1.1	1.3	1.5	1.1	1.7	2.2	1.2
35-39	1.6	1.8	1.4	1.6	1.8	1.4	2.0	2.3	1.7
40-44	2.2	2.4	1.9	2.1	2.4	1.9	2.5	3.0	2.1
45-49	3.2	3.8	2.7	3.2	3.7	2.7	4.0	4.8	3.3
50-54	4.8	5.6	4.0	4.8	5.5	4.0	5.6	6.8	4.6
55-59	8.2	10.0	6.5	8.3	10.1	6.5	8.9	10.8	7.3
60-64	13.4	17.1	10.2	13.6	17.2	10.3	14.4	19.1	10.8
65-69	21.6	29.1	15.3	22.2	30.0	15.5	19.7	25.7	15.3
70-74	33.5	46.2	23.6	34.4	47.3	24.2	29.9	42.0	21.9
75-79	46.5	64.6	34.0	48.1	66.7	35.1	36.0	51.3	26.8
80-84	62.3	88.6	47.1	64.0	91.2	48.2	50.7	69.4	41.5
85+	80.9	117.5	66.3	83.3	121.5	68.2	60.5	88.8	49.8

^a NCHS public use data file. Rates are per 100,000 and are age-adjusted to the 2000 U.S. standard population by 5-year age groups, unless noted.

^b NCHS public use data file. Rates are per 100,000 and are age-adjusted to the world standard population.

- Statistic not shown. Rate based on less than 25 cases for the time interval.

Table XIII-8
LEUKEMIA

SURVIVAL RATES, BY RACE, SEX, DIAGNOSIS YEAR AND AGE

	All Races			Whites			Blacks		
	Total	Males	Females	Total	Males	Females	Total	Males	Females
<u>5-YR RELATIVE SURVIVAL RATES</u>									
YEAR OF DIAGNOSIS:									
1960-1963 ^a	-	-	-	14	-	-	-	-	-
1970-1973 ^a	-	-	-	22	-	-	-	-	-
1974-1976 ^b	34.4	33.2	36.0	35.2	33.9	36.8	31.2	32.2	30.2
1977-1979 ^b	37.2	36.5	38.2	38.1	37.3	39.1	30.4	29.2	31.6
1980-1982 ^b	38.7	38.4	39.1	39.5	39.6	39.4	32.9	30.1	36.2
1983-1985 ^b	40.7	40.2	41.5	42.1	41.6	42.6	33.6	32.3	35.0
1986-1988 ^b	43.2	44.2	41.8	44.2	45.5	42.5	38.1	36.5	39.8
1989-1991 ^b	44.8	44.5	45.1	46.1	46.6	45.6	34.4	29.6	39.9
1992-1999 ^b	46.3 ^c	47.1 ^c	45.3 ^c	47.6 ^c	48.3 ^c	46.6 ^c	39.2	38.5	40.1
<u>5-YR RELATIVE SURVIVAL RATES, 1992-1999^b</u>									
AGE AT DIAGNOSIS:									
<45	60.6	59.7	62.0	62.3	61.3	63.9	51.7	48.8	55.5
45-54	55.0	56.8	52.3	57.7	58.8	56.0	42.2	43.1 ^d	40.8 ^d
55-64	49.1	51.1	45.9	51.6	53.9	47.8	35.5	35.8 ^d	35.9 ^d
65-74	41.7	40.1	44.0	43.6	41.5	46.4	33.4	32.6	34.0
75+	27.8	27.4	28.1	29.0	28.8	29.3	15.2	7.8	19.6
Under 65	56.0	56.4	55.4	58.0	58.3	57.4	46.3	44.8	48.6
65 and over	35.2	34.8	35.5	36.6	36.1	37.2	26.5	25.4	27.5

^a

Rates are based on End Results data from a series of hospital registries and one population-based registry.

^b

Rates are from the SEER 9 areas. They are based on data from population-based registries in Connecticut, New Mexico, Utah, Iowa, Hawaii, Atlanta, Detroit, Seattle-Puget Sound and San Francisco-Oakland. Rates are based on follow-up of patients into 2000.

^c

The difference in rates between 1974-1976 and 1992-1999 is statistically significant (p<.05).

^d

The standard error of the survival rate is between 5 and 10 percentage points.

^e

The standard error of the survival rate is greater than 10 percentage points.

-

Statistic could not be calculated.

Table XIII-9
LYMPHOCYTIC LEUKEMIA

SURVIVAL RATES, BY RACE, SEX, DIAGNOSIS YEAR AND AGE

	All Races			Whites			Blacks		
	Total	Males	Females	Total	Males	Females	Total	Males	Females
ACUTE LYMPHOCYTIC LEUKEMIA									
<u>5-YR RELATIVE SURVIVAL RATES</u>									
YEAR OF DIAGNOSIS:									
1974-1976 ^a	38.3	34.3	43.9	38.6	34.4	44.6	27.7 ^c	-	-
1977-1979 ^a	51.0	47.6	55.8	52.1	49.5	55.9	40.9 ^c	-	-
1980-1982 ^a	53.2	49.5	58.2	53.4	49.8	58.5	39.5 ^c	34.1 ^c	44.6 ^d
1983-1985 ^a	51.3	48.1	55.4	52.4	49.3	56.5	35.2 ^c	37.8 ^c	-
1986-1988 ^a	55.2	53.6	57.6	55.6	53.6	58.6	46.9 ^c	41.5 ^c	50.9 ^c
1989-1991 ^a	58.9	57.4	61.1	59.7	58.7	61.0	49.6 ^c	53.0 ^c	46.3 ^c
1992-1999 ^a	63.5 ^b	61.6 ^b	66.1 ^b	63.4 ^b	61.4 ^b	66.2 ^b	59.8 ^b	56.6 ^c	63.0 ^c
ACUTE LYMPHOCYTIC LEUKEMIA									
<u>5-YR RELATIVE SURVIVAL RATES, 1992-1999^a</u>									
AGE AT DIAGNOSIS:									
<45	73.2	70.4	77.3	73.8	70.8	78.2	65.1	61.4 ^c	69.8 ^c
45-54	27.0	22.7 ^c	34.9 ^c	22.3	18.8 ^c	30.2 ^c	-	-	-
55-64	19.4	20.2 ^c	18.7 ^c	18.7	22.8 ^c	12.6 ^c	-	-	-
65-74	11.2	11.0	12.4	13.1	12.5 ^c	14.9 ^c	-	-	-
75+	3.5	5.7	-	2.5	3.4	-	-	-	-
Under 65	68.1	65.1	72.4	68.3	65.1	73.1	62.3	58.7 ^c	66.3 ^c
65 and over	8.0	9.4	6.9	8.5	9.6	7.8	-	-	-
CHRONIC LYMPHOCYTIC LEUKEMIA									
<u>5-YR RELATIVE SURVIVAL RATES</u>									
YEAR OF DIAGNOSIS:									
1974-1976 ^a	68.2	65.6	71.7	68.5	65.6	72.4	63.2 ^c	64.5 ^c	61.3 ^c
1977-1979 ^a	70.1	68.3	72.3	71.3	69.2	73.9	51.0 ^c	53.8 ^c	47.6 ^c
1980-1982 ^a	68.4	67.8	69.3	69.2	69.2	69.2	57.5 ^c	50.7 ^c	69.2 ^c
1983-1985 ^a	73.5	72.0	75.6	73.9	72.4	76.1	68.0 ^c	65.9 ^c	67.4 ^c
1986-1988 ^a	73.4	72.1	75.2	74.3	73.4	75.7	65.5	62.7 ^c	69.8 ^c
1989-1991 ^a	73.0	72.0	74.4	74.2	73.1	75.7	55.6	50.9 ^c	60.7 ^c
1992-1999 ^a	73.5 ^b	72.9 ^b	74.5	74.7 ^b	74.1 ^b	75.5	57.7	55.3	61.4 ^c
CHRONIC LYMPHOCYTIC LEUKEMIA									
<u>5-YR RELATIVE SURVIVAL RATES, 1992-1999^a</u>									
AGE AT DIAGNOSIS:									
<45	83.4	83.7	82.4 ^c	84.7	84.8	83.6 ^c	-	-	-
45-54	84.0	82.9	86.5	86.2	85.2	88.3	63.8 ^c	56.1 ^c	-
55-64	83.2	82.7	84.5	85.1	85.4	84.7	66.7 ^c	59.7 ^c	-
65-74	76.4	72.4	81.9	77.1	72.8	83.0	66.0 ^c	63.1 ^c	69.7 ^c
75+	58.1	55.9	60.0	59.4	57.0	61.5	28.0 ^c	15.1 ^c	34.9 ^c
Under 65	83.5	82.8	85.0	85.4	85.2	85.8	66.6 ^c	60.5 ^c	81.6 ^c
65 and over	68.1	65.8	70.6	69.0	66.4	71.8	50.9 ^c	49.1 ^c	52.5 ^c

^a Rates are from the SEER 9 areas. They are based on data from population-based registries in Connecticut, New Mexico, Utah, Iowa, Hawaii, Atlanta, Detroit, Seattle-Puget Sound and San Francisco-Oakland. Rates are based on follow-up of patients into 2000.

^b The difference in rates between 1974-1976 and 1992-1999 is statistically significant (p<.05).

^c The standard error of the survival rate is between 5 and 10 percentage points.

^d The standard error of the survival rate is greater than 10 percentage points.

- Statistic could not be calculated.

Table XIII-10
MYELOID LEUKEMIA

SURVIVAL RATES, BY RACE, SEX, DIAGNOSIS YEAR AND AGE

	All Races			Whites			Blacks		
	Total	Males	Females	Total	Males	Females	Total	Males	Females
ACUTE MYELOID LEUKEMIA									
<u>5-YR RELATIVE SURVIVAL RATES</u>									
YEAR OF DIAGNOSIS:									
1974-1976 ^a	6.0	5.5	6.4	6.1	6.1	6.2	7.3	2.7	10.7
1977-1979 ^a	8.4	7.5	9.4	7.5	6.4	8.8	15.7	15.0 ^c	16.4 ^c
1980-1982 ^a	8.6	7.6	9.9	7.9	6.2	10.0	11.3	14.1 ^c	8.1
1983-1985 ^a	11.4	10.8	12.1	11.0	10.6	11.5	9.9	9.1	10.7
1986-1988 ^a	11.7	9.2	14.5	11.7	9.7	14.0	11.0	4.9	16.9
1989-1991 ^a	13.7	11.8	15.9	13.1	11.9	14.6	12.0	7.9	17.6 ^c
1992-1999 ^a	18.7 ^b	17.5 ^b	20.0 ^b	18.2 ^b	16.8 ^b	19.8 ^b	20.8 ^b	22.0 ^b	19.0
ACUTE MYELOID LEUKEMIA									
<u>5-YR RELATIVE SURVIVAL RATES, 1992-1999^a</u>									
AGE AT DIAGNOSIS:									
<45	42.1	40.8	43.6	43.2	41.3	45.2	38.8	39.5 ^c	37.6 ^c
45-54	28.0	25.7	30.5	28.7	25.8	32.0	25.2 ^c	24.5 ^c	24.8 ^c
55-64	13.4	11.6	15.7	14.5	12.5	17.2	5.5	-	5.0
65-74	5.6	4.6	6.8	6.0	4.9	7.4	1.3	2.4	-
75+	2.1	1.7	2.5	1.7	1.5	1.9	-	-	-
Under 65	30.8	28.7	33.1	31.1	28.4	34.2	29.9	31.3 ^c	28.0
65 and over	3.9	3.4	4.5	4.0	3.5	4.5	1.5	1.5	-
CHRONIC MYELOID LEUKEMIA									
<u>5-YR RELATIVE SURVIVAL RATES</u>									
YEAR OF DIAGNOSIS:									
1974-1976 ^a	22.6	19.7	26.5	22.2	18.7	27.0	24.9 ^c	28.3 ^c	20.2 ^c
1977-1979 ^a	23.5	22.3	25.0	23.1	22.4	23.9	25.4 ^c	18.4 ^c	33.8 ^c
1980-1982 ^a	31.1	28.3	34.2	32.2	30.4	34.0	26.7 ^c	18.3 ^c	36.8 ^c
1983-1985 ^a	24.8	22.1	28.3	25.5	22.6	29.3	23.2	20.7 ^c	26.1 ^c
1986-1988 ^a	28.9	29.7	27.9	28.5	29.5	27.1	37.4 ^c	33.4 ^c	42.4 ^c
1989-1991 ^a	32.9	30.5	36.0	33.1	32.3	34.2	31.5 ^c	19.9 ^c	45.8 ^c
1992-1999 ^a	34.9 ^b	35.0 ^b	34.9 ^b	34.9 ^b	35.0 ^b	34.8 ^b	35.4	31.4	41.1 ^c
CHRONIC MYELOID LEUKEMIA									
<u>5-YR RELATIVE SURVIVAL RATES, 1992-1999^a</u>									
AGE AT DIAGNOSIS:									
<45	52.0	50.2	55.2	52.6	50.7	56.0	48.8 ^c	39.4 ^c	66.8 ^d
45-54	48.0	45.4	50.9	50.6	46.4	55.6 ^c	37.6 ^d	-	-
55-64	34.6	34.9	34.1	34.4	35.1	33.2	27.0 ^d	-	-
65-74	26.4	25.0	28.2	27.1	26.4	28.1	27.5 ^c	21.3 ^c	34.1 ^d
75+	15.2	14.1	16.1	15.8	14.7	16.8	12.8 ^c	-	-
Under 65	45.9	44.9	47.5	46.3	45.0	48.4	42.1	37.7 ^c	49.5 ^c
65 and over	21.2	20.4	22.0	21.7	21.2	22.2	23.3 ^c	17.4 ^c	29.3 ^c

^a Rates are from the SEER 9 areas. They are based on data from population-based registries in Connecticut, New Mexico, Utah, Iowa, Hawaii, Atlanta, Detroit, Seattle-Puget Sound and San Francisco-Oakland. Rates are based on follow-up of patients into 2000.

^b The difference in rates between 1974-1976 and 1992-1999 is statistically significant (p<.05).

^c The standard error of the survival rate is between 5 and 10 percentage points.

^d The standard error of the survival rate is greater than 10 percentage points.

- Statistic could not be calculated.

Table XIII-11

LEUKEMIAINCIDENCE, DEATH, AND SURVIVAL RATES^c

By Year of Diagnosis/Death

All Races, Males and Females

Year of Diagnosis/Death

	1975- 1979	1980- 1984	1985	1986	1987	1988	1989	1990	1991	1992	1993	1994	1995	1996	1997	1998	1999	2000
Incidence																		
SEER ^a	12.9	12.9	13.3	12.8	13.3	12.8	13.3	12.7	12.9	12.8	12.8	12.7	13.2	12.6	12.5	12.4	11.8	11.9
Mortality																		
U.S. ^b	8.1	8.2	8.1	8.0	7.8	7.8	8.0	8.0	8.0	8.0	7.9	7.9	7.9	7.8	7.7	7.6	7.7	7.7
SEER ^a	8.2	8.1	8.1	7.6	7.9	7.8	7.8	7.6	7.9	7.7	7.8	7.7	7.8	7.7	7.3	7.5	7.4	7.6
Relative Survival Rates (SEER ^a)																		
1-year	61.4	63.7	64.9	64.9	64.3	66.7	65.0	66.9	66.4	67.4	67.0	66.4	67.6	67.7	66.7	64.5	62.9	
2-year	50.8	53.5	55.8	55.2	54.1	57.0	56.1	56.2	57.0	58.3	57.7	57.6	58.1	58.7	58.2	55.2		
3-year	44.5	47.7	49.5	49.4	48.8	51.3	51.1	51.4	51.4	53.4	53.9	53.2	53.4	54.2	53.6			
4-year	39.8	43.1	45.8	45.4	45.3	47.8	46.6	48.1	47.1	49.9	50.4	49.8	49.8	50.7				
5-year	35.8	39.2	42.6	42.2	42.2	45.1	44.0	45.8	44.6	47.0	47.1	47.1	47.1					
6-year	32.7	36.7	40.1	40.0	40.3	42.8	41.1	42.1	42.7	44.6	45.0	44.7						
7-year	30.7	34.3	38.1	37.9	37.6	40.0	38.4	39.6	40.3	41.9	42.2							
8-year	28.6	32.3	36.1	35.7	35.4	37.6	36.6	37.6	38.0	39.8								
9-year	26.9	30.7	33.6	34.2	33.8	36.2	34.8	36.2	36.7									
10-year	25.5	29.3	32.9	33.0	32.2	35.0	33.4	34.8										
11-year	24.3	28.3	31.0	31.6	31.4	33.2	32.0											
12-year	23.2	27.3	30.6	30.9	29.9	32.1												
13-year	22.6	26.5	30.2	30.3	28.9													
14-year	22.0	26.2	29.2	29.6														
15-year	21.5	25.6	28.7															
16-year	20.8	24.9																
17-year	20.4																	
18-year	20.1																	
19-year	19.7																	
20-year	19.2																	

^a Rates are from the SEER 9 areas.^b Rates are from the NCHS public use data file.^c Incidence and death rates are per 100,000 and are age-adjusted to the 2000 U.S. standard population by 5-year age groups. Survival rates are relative rates expressed as percents.

Table XIII-12

LEUKEMIAINCIDENCE, DEATH, AND SURVIVAL RATES^c

By Year of Diagnosis/Death

All Races, Males

Year of Diagnosis/Death

	1975- 1979	1980- 1984	1985	1986	1987	1988	1989	1990	1991	1992	1993	1994	1995	1996	1997	1998	1999	2000
Incidence																		
SEER ^a	17.1	17.4	17.6	17.4	17.6	17.3	17.5	17.1	16.6	17.3	16.7	16.5	17.4	16.4	16.8	16.2	15.7	15.2
Mortality																		
U.S. ^b	10.9	10.9	10.8	10.7	10.3	10.6	10.6	10.7	10.5	10.7	10.7	10.6	10.8	10.5	10.4	10.1	10.2	10.3
SEER ^a	11.2	11.0	10.8	10.7	10.2	10.5	10.2	10.3	10.2	10.6	10.5	10.1	10.1	10.0	9.8	10.3	10.0	10.1
Relative Survival Rates (SEER ^a)																		
1-year	61.2	64.0	65.6	64.8	66.0	67.9	65.2	67.7	67.5	68.0	68.4	68.3	69.3	69.2	67.9	64.3	63.9	
2-year	50.3	53.5	55.8	55.1	56.6	57.9	57.2	56.4	58.0	58.7	59.3	58.9	60.0	60.7	59.8	55.8		
3-year	43.7	47.4	48.7	48.6	50.9	52.0	51.9	50.9	52.1	53.4	55.6	53.7	55.3	56.6	54.3			
4-year	39.0	42.5	44.7	44.9	47.7	48.5	47.4	47.4	46.8	50.3	52.2	51.3	51.3	53.0				
5-year	34.8	38.7	42.3	41.8	44.2	46.4	45.0	44.0	44.6	48.1	48.3	48.2	47.7					
6-year	31.7	36.1	39.7	39.9	41.5	44.1	42.2	40.1	43.0	45.1	46.5	45.2						
7-year	29.4	33.7	37.3	37.4	38.6	41.4	39.0	37.7	40.4	42.1	43.3							
8-year	27.1	31.5	35.1	35.2	37.1	38.8	37.2	35.4	38.2	40.0								
9-year	25.2	29.7	32.8	33.1	35.8	37.2	35.3	34.2	37.0									
10-year	23.9	28.6	31.8	31.7	33.7	35.6	33.8	32.5										
11-year	22.5	27.6	30.0	30.9	32.9	34.5	32.2											
12-year	21.4	27.1	29.5	30.1	31.1	33.3												
13-year	21.0	26.4	29.4	29.8	29.8													
14-year	20.3	26.1	29.0	29.7														
15-year	19.9	25.6	27.8															
16-year	19.2	24.9																
17-year	19.0																	
18-year	18.6																	
19-year	18.1																	
20-year	17.1																	

^a Rates are from the SEER 9 areas.^b Rates are from the NCHS public use data file.^c Incidence and death rates are per 100,000 and are age-adjusted to the 2000 U.S. standard population by 5-year age groups. Survival rates are relative rates expressed as percents.

Table XIII-13

LEUKEMIAINCIDENCE, DEATH, AND SURVIVAL RATES^c

By Year of Diagnosis/Death

All Races, Females

Year of Diagnosis/Death

	1975- 1979	1980- 1984	1985	1986	1987	1988	1989	1990	1991	1992	1993	1994	1995	1996	1997	1998	1999	2000
Incidence																		
SEER ^a	10.0	9.8	10.4	9.5	10.3	9.6	10.3	9.6	10.2	9.7	9.9	9.9	10.1	9.9	9.5	9.6	8.9	9.4
Mortality																		
U.S. ^b	6.2	6.3	6.3	6.2	6.1	6.0	6.2	6.2	6.3	6.1	6.1	6.0	6.0	6.1	5.9	5.8	6.0	5.9
SEER ^a	6.2	6.2	6.2	5.4	6.4	6.0	6.2	5.8	6.2	5.7	6.0	6.0	6.2	6.0	5.6	5.6	5.6	5.8
Relative Survival Rates (SEER ^a)																		
1-year	61.7	63.3	64.0	65.0	62.2	65.1	64.8	65.9	65.0	66.5	65.3	63.9	65.3	65.6	65.1	64.7	61.5	
2-year	51.4	53.4	55.7	55.4	50.9	55.8	54.8	56.1	55.7	57.7	55.6	55.8	55.5	56.1	56.1	54.4		
3-year	45.6	48.2	50.5	50.4	46.1	50.3	50.1	52.1	50.6	53.4	51.7	52.5	50.9	51.3	52.7			
4-year	40.9	43.7	47.1	46.1	42.1	46.7	45.6	49.0	47.5	49.3	48.1	48.0	47.8	47.8				
5-year	37.1	39.7	42.9	42.7	39.5	43.3	42.6	48.2	44.7	45.6	45.5	45.7	46.3					
6-year	33.9	37.4	40.7	40.1	38.7	41.1	39.7	44.8	42.4	44.0	43.1	44.1						
7-year	32.2	35.0	39.0	38.6	36.3	38.0	37.7	42.1	40.2	41.6	40.8							
8-year	30.4	33.4	37.2	36.5	33.4	36.0	35.9	40.6	37.7	39.6								
9-year	28.9	31.9	34.6	35.7	31.2	34.9	34.2	38.8	36.4									
10-year	27.5	30.3	34.1	34.6	30.3	34.2	33.0	37.8										
11-year	26.4	29.2	32.3	32.5	29.5	31.3	31.7											
12-year	25.4	27.6	31.8	32.1	28.4	30.5												
13-year	24.5	26.6	31.3	30.9	27.9													
14-year	23.9	26.2	29.5	29.4														
15-year	23.3	25.5	29.5															
16-year	22.5	25.0																
17-year	22.1																	
18-year	21.9																	
19-year	21.6																	
20-year	21.5																	

^a Rates are from the SEER 9 areas.^b Rates are from the NCHS public use data file.^c Incidence and death rates are per 100,000 and are age-adjusted to the 2000 U.S. standard population by 5-year age groups. Survival rates are relative rates expressed as percents.

Table XIII-14

LEUKEMIA

Percent Diagnosed With Cancer In 10, 20 and 30 Years and In Remaining Lifetime,
Given Cancer Free At Current Age By Race and Sex

Lifetime Risk (Percent) of Being Diagnosed (12 SEER Areas) With Cancer and
Lifetime Risk (Percent) of Dying (Total U.S.) From Cancer

1998-2000

All Races

Current Age	Males				Females			
	+10 yrs	+20 yrs	+30 yrs	Eventually	+10 yrs	+20 yrs	+30 yrs	Eventually
0	0.06	0.09	0.12	1.45	0.05	0.08	0.10	1.03
10	0.03	0.06	0.09	1.41	0.03	0.05	0.07	1.00
20	0.03	0.06	0.13	1.39	0.02	0.05	0.09	0.97
30	0.04	0.10	0.24	1.38	0.03	0.07	0.17	0.95
40	0.06	0.20	0.50	1.37	0.05	0.14	0.31	0.94
50	0.14	0.45	0.91	1.35	0.10	0.27	0.54	0.91
60	0.33	0.82	1.20	1.30	0.18	0.46	0.75	0.85

Lifetime Risk of Being Diagnosed = 1.45%
Lifetime Risk of Dying = 0.94%

Lifetime Risk of Being Diagnosed = 1.03%
Lifetime Risk of Dying = 0.72%

Whites

Current Age	Males				Females			
	+10 yrs	+20 yrs	+30 yrs	Eventually	+10 yrs	+20 yrs	+30 yrs	Eventually
0	0.07	0.10	0.13	1.55	0.06	0.09	0.11	1.09
10	0.03	0.06	0.10	1.50	0.03	0.05	0.08	1.05
20	0.03	0.06	0.13	1.48	0.02	0.05	0.10	1.02
30	0.04	0.10	0.24	1.46	0.03	0.07	0.17	1.00
40	0.06	0.21	0.52	1.45	0.05	0.14	0.33	0.98
50	0.15	0.48	0.97	1.43	0.10	0.28	0.57	0.95
60	0.35	0.88	1.27	1.37	0.20	0.49	0.79	0.89

Lifetime Risk of Being Diagnosed = 1.55%
Lifetime Risk of Dying = 0.99%

Lifetime Risk of Being Diagnosed = 1.09%
Lifetime Risk of Dying = 0.75%

Blacks

Current Age	Males				Females			
	+10 yrs	+20 yrs	+30 yrs	Eventually	+10 yrs	+20 yrs	+30 yrs	Eventually
0	0.03	0.05	0.07	0.89	0.02	0.04	0.06	0.74
10	0.02	0.04	0.08	0.89	0.02	0.04	0.06	0.74
20	0.02	0.06	0.12	0.88	0.02	0.04	0.08	0.72
30	0.04	0.10	0.21	0.88	0.02	0.06	0.15	0.71
40	0.06	0.18	0.41	0.87	0.04	0.13	0.26	0.70
50	0.12	0.38	0.65	0.87	0.09	0.23	0.43	0.69
60	0.29	0.61	0.83	0.86	0.14	0.37	0.57	0.65

Lifetime Risk of Being Diagnosed = 0.89%
Lifetime Risk of Dying = 0.62%

Lifetime Risk of Being Diagnosed = 0.74%
Lifetime Risk of Dying = 0.54%

Table XIII-15
LEUKEMIA (Invasive)

AGE-ADJUSTED SEER INCIDENCE AND U.S. DEATH RATES

By Race/Ethnicity and Sex

Incidence^a

RACE/ETHNICITY	Rate 1996-2000			Trend 1992-2000		
	Rate per 100,000 persons			APC (%)		
	Total	Males	Females	Total	Males	Females
All Races	12.1	15.8	9.3	-1.3 ^d	-1.5 ^d	-1.0
White	12.7	16.6	9.9	-1.2 ^d	-1.6 ^d	-0.7
White Hispanic ^b	9.7	12.1	7.9	-0.5	-0.2	-0.6
White Non-Hispanic ^b	12.6	16.7	9.6	-1.3 ^d	-1.7 ^d	-1.0
Black	9.9	13.0	7.8	-1.0	-0.9	-0.9
Asian/Pacific Islander	7.9	10.1	6.2	-0.8	0.4	-1.9
Amer Ind/Alaska Nat	5.0	5.9	4.2	3.0	-	-
Hispanic ^b	9.3	11.6	7.6	-0.4	-0.1	-0.5

Mortality^c

RACE/ETHNICITY	Rate 1996-2000			Trend 1992-2000		
	Rate per 100,000 persons			APC (%)		
	Total	Males	Females	Total	Males	Females
All Races	7.7	10.3	5.9	-0.5 ^d	-0.7 ^d	-0.5 ^d
White	7.9	10.6	6.0	-0.4 ^d	-0.6 ^d	-0.4
White Hispanic ^b	5.6	7.0	4.5	0.5	1.1	-0.2
White Non-Hispanic ^b	8.0	10.7	6.1	-0.4 ^d	-0.6 ^d	-0.3
Black	7.0	9.3	5.5	-1.0 ^d	-0.9	-0.8
Asian/Pacific Islander	4.2	5.3	3.3	-1.2	-1.3	-0.9
Amer Ind/Alaska Nat	4.0	5.2	3.3	-1.7	-2.2	-1.4
Hispanic ^b	5.4	6.8	4.4	0.6	1.0	0.0

The APC is the Annual Percent Change over the time interval.

- Statistic not shown. Rate based on less than 25 cases for the time interval. Trend based on less than 10 cases for at least one year within the time interval.

^a Incidence data are from the 12 SEER areas (San Francisco, Connecticut, Detroit, Hawaii, Iowa, New Mexico, Seattle, Utah, Atlanta, San Jose-Monterey, Los Angeles, and Alaska Native Registry).

^b Hispanic and Non-Hispanic are not mutually exclusive from whites, blacks, Asian Pacific Islanders, and American Indians/Alaska Natives. Incidence data for Hispanics and Non-Hispanics do not include cases from Detroit, Hawaii and Alaska Native Registry. For mortality, information is included for all states except Connecticut, Oklahoma, New York, and New Hampshire.

^c Mortality data are analyzed from a public use file provided by the National Center for Health Statistics (NCHS).

^d The APC is significantly different from zero (p<.05).

Table XIII-16

ALL LEUKEMIAAGE-ADJUSTED SEER INCIDENCE RATES^a AND SEER DEATH RATES^b
By Registry, Race and Sex

	<u>All Races</u>			<u>Whites</u>			<u>Blacks</u>		
	<u>Total</u>	<u>Males</u>	<u>Females</u>	<u>Total</u>	<u>Males</u>	<u>Females</u>	<u>Total</u>	<u>Males</u>	<u>Females</u>
<u>SEER INCIDENCE RATES^a, 1996-2000</u>									
REGISTRY									
12 registries	12.1	15.8	9.3	12.7	16.6	9.9	9.9	13.0	7.8
11 registries	12.1	15.8	9.3	12.7	16.6	9.9	9.9	13.0	7.8
9 registries	12.2	16.0	9.5	12.8	16.7	9.9	9.9	13.2	7.8
San Francisco-Oakland	11.1	14.2	8.7	12.0	15.2	9.6	9.2	11.6	7.5
Connecticut	12.0	16.0	9.2	12.1	16.1	9.3	9.2	13.1	7.6
Metropolitan Detroit	13.9	17.7	11.3	14.6	18.6	11.8	10.9	13.8	9.1
Hawaii	9.8	12.1	7.8	12.0	15.2	9.1	-	-	-
Iowa	14.1	19.3	10.2	14.0	19.3	10.2	-	-	-
New Mexico	10.6	13.8	8.2	11.0	14.1	8.7	-	-	-
Seattle-Puget Sound	13.9	18.3	10.6	14.2	18.6	10.9	11.4	14.9	8.8
Utah	10.8	14.0	8.1	10.8	14.1	8.1	-	-	-
Metropolitan Atlanta	9.8	12.7	7.8	10.4	13.1	8.5	8.6	12.6	6.1
San Jose-Monterey	11.1	14.4	8.7	11.7	15.5	9.0	-	-	-
Los Angeles	11.7	15.4	9.0	12.6	16.6	9.7	9.8	12.7	7.9
<u>SEER DEATH RATES^b, 1996-2000</u>									
REGISTRY									
12 registries	7.4	10.0	5.7	7.8	10.5	5.9	7.1	9.2	5.7
11 registries	7.4	10.0	5.7	7.8	10.5	5.9	7.1	9.2	5.7
9 registries	7.5	10.0	5.7	7.8	10.4	5.9	7.1	9.4	5.6
San Francisco-Oakland	7.1	9.5	5.5	7.6	10.0	5.9	6.8	9.6	4.9
Connecticut	7.3	10.1	5.5	7.4	10.1	5.5	6.4	9.7	4.6
Metropolitan Detroit	8.0	10.4	6.3	8.0	10.7	6.3	7.5	9.4	6.4
Hawaii	5.7	7.4	4.3	7.6	9.2	6.0	-	-	-
Iowa	8.3	11.3	6.2	8.2	11.4	6.1	-	-	-
New Mexico	6.9	9.2	5.1	7.2	9.4	5.3	-	-	-
Seattle-Puget Sound	8.0	10.7	6.2	8.2	11.0	6.3	6.5	-	-
Utah	7.1	9.8	5.2	7.2	9.8	5.2	-	-	-
Metropolitan Atlanta	7.4	9.8	6.0	7.8	10.2	6.3	6.6	8.8	5.2
San Jose-Monterey	6.7	9.1	5.1	7.2	9.9	5.5	-	-	-
Los Angeles	7.4	10.0	5.6	8.0	10.9	5.9	7.2	9.0	6.0

Note: San Jose-Monterey and Los Angeles are new SEER areas as of 1992 and their data are only used in tables where indicated.

^a SEER 9 areas. Incidence rates are per 100,000 and are age-adjusted to the 2000 U.S. standard population by 5-year age groups.

^b NCHS public use data file. Death rates are per 100,000 and are age-adjusted to the 2000 U.S. standard population by 5-year age groups.

- Statistic could not be calculated or populations are inadequate.

Table XIII-17
LEUKEMIAAVERAGE ANNUAL AGE-ADJUSTED CANCER DEATH^a RATES BY STATE, 1996-2000

All Races, Males and Females

State	Rate	SE	Rank	PD	State	Rate	SE	Rank	PD
TOTAL U.S.	7.7	0.02							
High Five States									
North Dakota	9.0 ^b	0.50	(01)	16.9					
Wyoming	8.6	0.62	(02)	11.7					
West Virginia	8.6	0.29	(03)	11.7					
Wisconsin	8.5 ^c	0.18	(04)	10.4					
Minnesota	8.4 ^c	0.19	(05)	9.1					
Low Five States									
Maine	7.0	0.32	(47)	-9.1					
New Mexico	6.9	0.29	(48)	-10.4					
District of Columbia	6.7	0.49	(49)	-13.0					
Arizona	6.7 ^c	0.17	(50)	-13.0					
Hawaii	5.7 ^{bc}	0.31	(51)	-26.0					
Alabama	7.6	0.19	(36)	-1.3	Montana	8.3	0.42	(06)	7.8
Alaska	7.9	0.83	(26)	2.6	Nebraska	7.9	0.30	(23)	2.6
Arizona	6.7 ^c	0.17	(50)	-13.0	Nevada	7.6	0.32	(32)	-1.3
Arkansas	8.1	0.24	(15)	5.2	New Hampshire	7.9	0.37	(25)	2.6
California	7.3 ^c	0.07	(43)	-5.2	New Jersey	7.9	0.14	(22)	2.6
Colorado	7.6	0.21	(34)	-1.3	New Mexico	6.9	0.29	(48)	-10.4
Connecticut	7.3	0.20	(40)	-5.2	New York	7.3 ^c	0.09	(41)	-5.2
Delaware	8.2	0.47	(12)	6.5	North Carolina	7.5	0.14	(37)	-2.6
District of Columbia	6.7	0.49	(49)	-13.0	North Dakota	9.0 ^b	0.50	(01)	16.9
Florida	7.4 ^c	0.09	(39)	-3.9	Ohio	8.2 ^c	0.12	(10)	6.5
Georgia	7.2	0.15	(44)	-6.5	Oklahoma	8.3	0.22	(07)	7.8
Hawaii	5.7 ^{bc}	0.31	(51)	-26.0	Oregon	7.8	0.21	(28)	1.3
Idaho	7.8	0.37	(27)	1.3	Pennsylvania	8.0	0.11	(20)	3.9
Illinois	8.1	0.12	(16)	5.2	Rhode Island	7.2	0.36	(45)	-6.5
Indiana	8.2	0.17	(11)	6.5	South Carolina	7.6	0.20	(35)	-1.3
Iowa	8.3	0.22	(08)	7.8	South Dakota	8.2	0.45	(09)	6.5
Kansas	8.0	0.24	(19)	3.9	Tennessee	8.1	0.17	(13)	5.2
Kentucky	7.7	0.20	(30)	0.0	Texas	7.7	0.10	(29)	0.0
Louisiana	8.1	0.20	(14)	5.2	Utah	7.1	0.31	(46)	-7.8
Maine	7.0	0.32	(47)	-9.1	Vermont	7.6	0.50	(33)	-1.3
Maryland	7.7	0.18	(31)	0.0	Virginia	7.5	0.16	(38)	-2.6
Massachusetts	7.3	0.15	(42)	-5.2	Washington	7.9	0.17	(24)	2.6
Michigan	8.0	0.13	(18)	3.9	West Virginia	8.6	0.29	(03)	11.7
Minnesota	8.4 ^c	0.19	(05)	9.1	Wisconsin	8.5 ^c	0.18	(04)	10.4
Mississippi	8.0	0.25	(17)	3.9	Wyoming	8.6	0.62	(02)	11.7
Missouri	7.9	0.17	(21)	2.6					

^a NCHS public use data file. Rates are per 100,000 and are age-adjusted to the 2000 U.S. standard population by 5-year age groups.

^b Absolute percent difference between state rate and total U.S. rate is 15% or more.

^c Difference between state rate and total U.S. rate is statistically significant ($p \leq .0002$).

SE Standard error of the rate.

PD Percent difference between state rate and total U.S. rate.

Table XIII-18
LEUKEMIAAVERAGE ANNUAL AGE-ADJUSTED CANCER DEATH^a RATES BY STATE, 1996-2000

All Races, Males

State	Rate	SE	Rank	PD	State	Rate	SE	Rank	PD
TOTAL U.S.	10.3	0.04							
High Five States									
North Dakota	12.7 ^b	0.91	(01)	23.3					
Wyoming	12.1 ^b	1.16	(02)	17.5					
South Dakota	11.7	0.83	(03)	13.6					
Minnesota	11.5	0.35	(04)	11.7					
West Virginia	11.4	0.53	(05)	10.7					
Low Five States									
Alaska	9.3	1.42	(47)	-9.7					
Maine	9.3	0.58	(48)	-9.7					
New Mexico	9.2	0.52	(49)	-10.7					
Arizona	8.5 ^{bc}	0.29	(50)	-17.5					
Hawaii	7.4 ^{bc}	0.52	(51)	-28.2					
Alabama	9.9	0.34	(39)	-3.9	Montana	11.2	0.76	(07)	8.7
Alaska	9.3	1.42	(47)	-9.7	Nebraska	10.1	0.53	(34)	-1.9
Arizona	8.5 ^{bc}	0.29	(50)	-17.5	Nevada	9.6	0.55	(46)	-6.8
Arkansas	10.9	0.44	(18)	5.8	New Hampshire	11.0	0.70	(14)	6.8
California	9.7 ^c	0.13	(44)	-5.8	New Jersey	10.8	0.25	(21)	4.9
Colorado	10.4	0.40	(28)	1.0	New Mexico	9.2	0.52	(49)	-10.7
Connecticut	10.1	0.37	(36)	-1.9	New York	9.8	0.16	(43)	-4.9
Delaware	10.9	0.89	(16)	5.8	North Carolina	10.2	0.28	(33)	-1.0
District of Columbia	9.9	0.99	(40)	-3.9	North Dakota	12.7 ^b	0.91	(01)	23.3
Florida	9.7 ^c	0.15	(45)	-5.8	Ohio	11.1	0.22	(11)	7.8
Georgia	9.8	0.30	(41)	-4.9	Oklahoma	11.1	0.40	(08)	7.8
Hawaii	7.4 ^{bc}	0.52	(51)	-28.2	Oregon	10.0	0.37	(37)	-2.9
Idaho	11.0	0.68	(12)	6.8	Pennsylvania	10.7	0.20	(25)	3.9
Illinois	10.7	0.22	(23)	3.9	Rhode Island	10.3	0.68	(29)	0.0
Indiana	10.7	0.31	(22)	3.9	South Carolina	10.1	0.39	(35)	-1.9
Iowa	11.3	0.41	(06)	9.7	South Dakota	11.7	0.83	(03)	13.6
Kansas	10.3	0.43	(31)	0.0	Tennessee	10.9	0.33	(17)	5.8
Kentucky	11.0	0.38	(13)	6.8	Texas	10.6	0.18	(27)	2.9
Louisiana	11.1	0.38	(09)	7.8	Utah	9.8	0.56	(42)	-4.9
Maine	9.3	0.58	(48)	-9.7	Vermont	11.0	0.97	(15)	6.8
Maryland	10.3	0.34	(32)	0.0	Virginia	10.3	0.30	(30)	0.0
Massachusetts	10.0	0.28	(38)	-2.9	Washington	10.6	0.32	(26)	2.9
Michigan	10.7	0.24	(24)	3.9	West Virginia	11.4	0.53	(05)	10.7
Minnesota	11.5	0.35	(04)	11.7	Wisconsin	11.1	0.32	(10)	7.8
Mississippi	10.9	0.46	(19)	5.8	Wyoming	12.1 ^b	1.16	(02)	17.5
Missouri	10.8	0.31	(20)	4.9					

^a NCHS public use data file. Rates are per 100,000 and are age-adjusted to the 2000 U.S. standard population by 5-year age groups.

^b Absolute percent difference between state rate and total U.S. rate is 15% or more.

^c Difference between state rate and total U.S. rate is statistically significant ($p \leq .0002$).

SE Standard error of the rate.

PD Percent difference between state rate and total U.S. rate.

Table XIII-19
LEUKEMIAAVERAGE ANNUAL AGE-ADJUSTED CANCER DEATH^a RATES BY STATE, 1996-2000

All Races, Females

State	Rate	SE	Rank	PD	State	Rate	SE	Rank	PD
TOTAL U.S.	5.9	0.03							
High Five States									
West Virginia	6.8 ^b	0.34	(01)	15.3					
Wisconsin	6.7 ^c	0.21	(02)	13.6					
Alaska	6.6	1.01	(03)	11.9					
Indiana	6.5	0.19	(04)	10.2					
Kansas	6.4	0.29	(05)	8.5					
Low Five States									
Arizona	5.3	0.20	(47)	-10.2					
Utah	5.2	0.35	(48)	-11.9					
New Mexico	5.1	0.34	(49)	-13.6					
District of Columbia	4.8 ^b	0.53	(50)	-18.6					
Hawaii	4.3 ^{bc}	0.37	(51)	-27.1					
Alabama	6.0	0.22	(26)	1.7	Montana	6.3	0.49	(14)	6.8
Alaska	6.6	1.01	(03)	11.9	Nebraska	6.4	0.35	(08)	8.5
Arizona	5.3	0.20	(47)	-10.2	Nevada	6.0	0.38	(28)	1.7
Arkansas	6.2	0.28	(18)	5.1	New Hampshire	5.9	0.42	(31)	0.0
California	5.5 ^c	0.08	(40)	-6.8	New Jersey	6.1	0.16	(24)	3.4
Colorado	5.7	0.24	(33)	-3.4	New Mexico	5.1	0.34	(49)	-13.6
Connecticut	5.5	0.23	(42)	-6.8	New York	5.7	0.10	(36)	-3.4
Delaware	6.4	0.54	(09)	8.5	North Carolina	5.7	0.16	(34)	-3.4
District of Columbia	4.8 ^b	0.53	(50)	-18.6	North Dakota	6.3	0.56	(13)	6.8
Florida	5.6	0.10	(38)	-5.1	Ohio	6.4	0.14	(10)	8.5
Georgia	5.6	0.17	(37)	-5.1	Oklahoma	6.4	0.25	(11)	8.5
Hawaii	4.3 ^{bc}	0.37	(51)	-27.1	Oregon	6.1	0.25	(22)	3.4
Idaho	5.4	0.41	(44)	-8.5	Pennsylvania	6.2	0.12	(17)	5.1
Illinois	6.4	0.14	(07)	8.5	Rhode Island	5.3	0.41	(46)	-10.2
Indiana	6.5	0.19	(04)	10.2	South Carolina	6.0	0.24	(25)	1.7
Iowa	6.2	0.26	(21)	5.1	South Dakota	5.9	0.51	(30)	0.0
Kansas	6.4	0.29	(05)	8.5	Tennessee	6.3	0.20	(12)	6.8
Kentucky	5.5	0.22	(41)	-6.8	Texas	5.8	0.11	(32)	-1.7
Louisiana	6.2	0.23	(19)	5.1	Utah	5.2	0.35	(48)	-11.9
Maine	5.4	0.37	(45)	-8.5	Vermont	5.5	0.57	(43)	-6.8
Maryland	5.9	0.21	(29)	0.0	Virginia	5.7	0.18	(35)	-3.4
Massachusetts	5.6	0.17	(39)	-5.1	Washington	6.0	0.20	(27)	1.7
Michigan	6.2	0.15	(16)	5.1	West Virginia	6.8 ^b	0.34	(01)	15.3
Minnesota	6.4	0.22	(06)	8.5	Wisconsin	6.7 ^c	0.21	(02)	13.6
Mississippi	6.3	0.28	(15)	6.8	Wyoming	6.2	0.70	(20)	5.1
Missouri	6.1	0.19	(23)	3.4					

^a NCHS public use data file. Rates are per 100,000 and are age-adjusted to the 2000 U.S. standard population by 5-year age groups.

^b Absolute percent difference between state rate and total U.S. rate is 15% or more.

^c Difference between state rate and total U.S. rate is statistically significant ($p \leq .0002$).

SE Standard error of the rate.

PD Percent difference between state rate and total U.S. rate.

Table XIII-20
LEUKEMIA (Invasive)Estimated United States Cancer Prevalence Counts^a on January 1, 2000
By Race/Ethnicity, Sex and Years Since Diagnosis

Years Since Diagnosis	0 to <5	5 to <10	10 to <15	15 to <20	20 to <25	0 to <10	0 to <25	>=25 ^f	Complete ^g
<u>Race/Sex</u>									
All Races ^b	75,378	43,008	25,059	14,578	8,315	118,386	166,338	12,068	178,406
Males	43,595	24,187	14,236	7,980	4,088	67,782	94,086	5,870	99,956
Females	31,783	18,821	10,823	6,598	4,227	50,604	72,252	6,198	78,450
White ^b	67,138	38,946	22,845	13,340	7,749	106,084	150,018	11,773	161,791
Males	38,725	22,203	13,063	7,333	3,874	60,928	85,198	5,748	90,946
Females	28,413	16,743	9,782	6,007	3,875	45,156	64,820	6,025	70,845
Black ^b	4,988	2,528	1,207	786	418	7,516	9,927	912	10,839
Males	2,813	1,164	618	431	-	3,977	5,185	420	5,605
Females	2,175	1,364	589	355	-	3,539	4,742	492	5,234
Asian/Pacific Islander ^c	1,590	828	+	+	+	2,418	+	+	+
Males	926	427	+	+	+	1,353	+	+	+
Females	664	401	+	+	+	1,065	+	+	+
Hispanic ^d	5,615	3,121	+	+	+	8,736	+	+	+
Males	3,241	1,837	+	+	+	5,078	+	+	+
Females	2,374	1,284	+	+	+	3,658	+	+	+

Estimated prevalence percent^a on January 1, 2000, of the SEER 11 population diagnosed in the previous 10 years
By Age at Prevalence, Race/Ethnicity and Sex

Age at Prevalence	Age Specific (Crude)										Age-Adjusted ^e
	All Ages	0-9	10-19	20-29	30-39	40-49	50-59	60-69	70-79	80+	All Ages
<u>Race/Sex</u>											
All Races ^c	0.0387%	0.0284%	0.0273%	0.0119%	0.0131%	0.0208%	0.0482%	0.0959%	0.1502%	0.1582%	0.0412%
Males	0.0452%	0.0303%	0.0299%	0.0136%	0.0155%	0.0253%	0.0616%	0.1282%	0.2058%	0.2133%	0.0522%
Females	0.0323%	0.0265%	0.0246%	0.0101%	0.0106%	0.0164%	0.0355%	0.0675%	0.1087%	0.1295%	0.0323%
White ^c	0.0433%	0.0315%	0.0297%	0.0134%	0.0133%	0.0216%	0.0518%	0.1060%	0.1653%	0.1700%	0.0448%
Males	0.0505%	0.0333%	0.0327%	0.0155%	0.0156%	0.0264%	0.0664%	0.1404%	0.2261%	0.2318%	0.0568%
Females	0.0362%	0.0297%	0.0265%	0.0112%	0.0109%	0.0168%	0.0376%	0.0749%	0.1195%	0.1385%	0.0350%
Black ^c	0.0206%	0.0113%	0.0168%	0.0052%	0.0113%	0.0162%	0.0364%	0.0581%	0.0917%	0.0878%	0.0255%
Males	0.0236%	0.0130%	0.0180%	-	0.0144%	0.0166%	0.0482%	0.0816%	0.1164%	-	0.0316%
Females	0.0180%	0.0096%	0.0156%	-	0.0086%	0.0159%	0.0264%	0.0396%	0.0755%	0.0781%	0.0210%
Asian/Pacific Islander ^c	0.0217%	0.0306%	0.0239%	0.0096%	0.0114%	0.0164%	0.0241%	0.0327%	0.0520%	0.0540%	0.0233%
Males	0.0253%	0.0342%	0.0252%	0.0106%	0.0138%	0.0204%	0.0234%	0.0401%	0.0794%	0.0744%	0.0278%
Females	0.0184%	0.0268%	0.0226%	0.0086%	0.0092%	0.0127%	0.0247%	0.0267%	0.0312%	-	0.0195%
Hispanic ^d	0.0254%	0.0312%	0.0319%	0.0127%	0.0135%	0.0174%	0.0308%	0.0485%	0.0848%	0.0934%	0.0307%
Males	0.0287%	0.0329%	0.0363%	0.0159%	0.0153%	0.0205%	0.0364%	0.0670%	0.1139%	0.1099%	0.0371%
Females	0.0220%	0.0295%	0.0271%	0.0090%	0.0115%	0.0143%	0.0256%	0.0334%	0.0641%	0.0847%	0.0252%

^a US 2000 cancer prevalence counts are based on 2000 cancer prevalence proportions from the SEER registries and 1/1/2000 US population estimates based on the average of 1999 and 2000 population estimates from the US Bureau of the Census. Prevalence was calculated using the First Malignant Primary Only for a person.

^{b c d} Statistics based on b) SEER 9 Areas c) SEER 11 Areas d) SEER 11 Areas excluding Hawaii and Detroit.

^e Percentages are age-adjusted to the 2000 US standard population by 5-year age groups.

^{f g} (f) Cases diagnosed 25 years or more ago were estimated using the completeness index method (Capocaccia et. al. 1997, Merrill et. al. 2000). (g) Complete prevalence is obtained by summing 0 to <25 with >=25.

- Statistics not shown. Rate based on less than 25 cases estimated alive for the time interval.

+ Not available.

Table XIII-21
ACUTE LYMPHOCYTIC LEUKEMIA (Invasive)

Estimated United States Cancer Prevalence Counts^a on January 1, 2000
By Race/Ethnicity, Sex and Years Since Diagnosis

Years Since Diagnosis	0 to <5	5 to <10	10 to <15	15 to <20	20 to <25	0 to <10	0 to <25	>=25 ^f	Complete ^g
<u>Race/Sex</u>									
All Races ^b	13,335	9,125	7,885	5,839	3,771	22,460	39,955	+	+
Males	7,637	5,043	4,474	2,973	1,888	12,680	22,015	+	+
Females	5,698	4,082	3,411	2,866	1,883	9,780	17,940	+	+
White ^b	11,467	7,970	6,914	5,268	3,516	19,437	35,135	+	+
Males	6,507	4,517	3,966	2,698	1,791	11,024	19,479	+	+
Females	4,960	3,453	2,948	2,570	1,725	8,413	15,656	+	+
Black ^b	1,035	641	497	319	-	1,676	2,648	+	+
Males	641	-	-	-	-	926	1,414	+	+
Females	394	356	-	-	-	750	1,234	+	+
Asian/Pacific Islander ^c	550	371	+	+	+	921	+	+	+
Males	340	170	+	+	+	510	+	+	+
Females	210	201	+	+	+	411	+	+	+
Hispanic ^d	2,791	1,681	+	+	+	4,472	+	+	+
Males	1,597	998	+	+	+	2,595	+	+	+
Females	1,194	683	+	+	+	1,877	+	+	+

Estimated prevalence percent^a on January 1, 2000, of the SEER 11 population diagnosed in the previous 10 years
By Age at Prevalence, Race/Ethnicity and Sex

Age at Prevalence	Age Specific (Crude)										Age-Adjusted ^e
	All Ages	0-9	10-19	20-29	30-39	40-49	50-59	60-69	70-79	80+	All Ages
<u>Race/Sex</u>											
All Races ^c	0.0088%	0.0250%	0.0230%	0.0055%	0.0026%	0.0015%	0.0019%	0.0021%	0.0013%	-	0.0087%
Males	0.0101%	0.0269%	0.0251%	0.0071%	0.0030%	0.0016%	0.0021%	0.0025%	-	-	0.0096%
Females	0.0076%	0.0230%	0.0207%	0.0037%	0.0022%	0.0014%	0.0016%	-	-	-	0.0077%
White ^c	0.0097%	0.0281%	0.0257%	0.0064%	0.0029%	0.0016%	0.0020%	0.0021%	-	-	0.0097%
Males	0.0110%	0.0299%	0.0282%	0.0083%	0.0033%	0.0016%	0.0022%	0.0028%	-	-	0.0108%
Females	0.0083%	0.0261%	0.0230%	0.0042%	0.0025%	0.0016%	0.0017%	-	-	-	0.0086%
Black ^c	0.0045%	0.0093%	0.0124%	-	-	-	-	-	-	-	0.0038%
Males	0.0053%	0.0109%	0.0135%	-	-	-	-	-	-	-	0.0043%
Females	0.0037%	0.0078%	0.0113%	-	-	-	-	-	-	-	0.0033%
Asian/Pacific Islander ^c	0.0077%	0.0253%	0.0179%	0.0039%	-	-	-	-	-	-	0.0078%
Males	0.0087%	0.0289%	0.0190%	-	-	-	-	-	-	-	0.0085%
Females	0.0066%	0.0216%	0.0168%	-	-	-	-	-	-	-	0.0071%
Hispanic ^d	0.0133%	0.0286%	0.0273%	0.0059%	0.0031%	-	-	-	-	-	0.0104%
Males	0.0150%	0.0306%	0.0306%	0.0081%	-	-	-	-	-	-	0.0117%
Females	0.0115%	0.0265%	0.0238%	-	-	-	-	-	-	-	0.0090%

^a US 2000 cancer prevalence counts are based on 2000 cancer prevalence proportions from the SEER registries and 1/1/2000 US population estimates based on the average of 1999 and 2000 population estimates from the US Bureau of the Census. Prevalence was calculated using the First Malignant Primary Only for a person.

^{b c d} Statistics based on b) SEER 9 Areas c) SEER 11 Areas d) SEER 11 Areas excluding Hawaii and Detroit.

^{f g} (f) Cases diagnosed 25 years or more ago were estimated using the completeness index method (Capocaccia et. al. 1997, Merrill et. al. 2000). (g) Complete prevalence is obtained by summing 0 to <25 with >=25.

- Statistics not shown. Rate based on less than 25 cases estimated alive for the time interval.

+ Not available.

SEER Incidence, Delay Adjusted Incidence and US Death Rates+ Leukemia, by Race and Sex

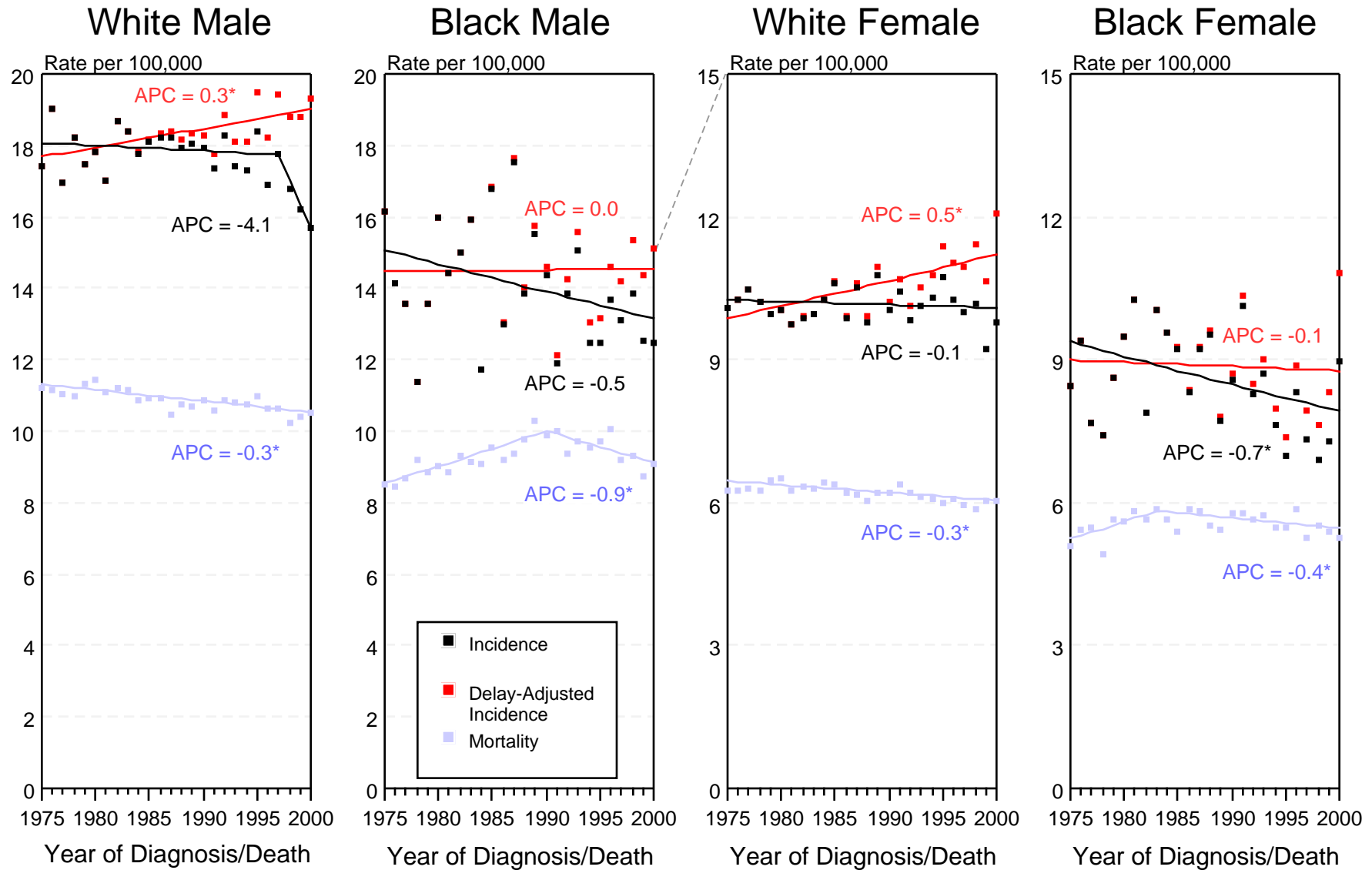


Figure XIII-1

+ Source: SEER 9 areas and NCHS public use data file. Rates are age-adjusted to the 2000 US standard million population by 5-year age groups. Regression lines and APCs are calculated using the Joinpoint Regression Program. The APC is the Annual Percent Change for the regression line segments. The APC shown on the graph is for the most recent trend.

* The APC is significantly different from zero ($p < 0.05$).

SEER Incidence Rates⁺ Lymphocytic and Myeloid Leukemia (Acute and Chronic), by Sex

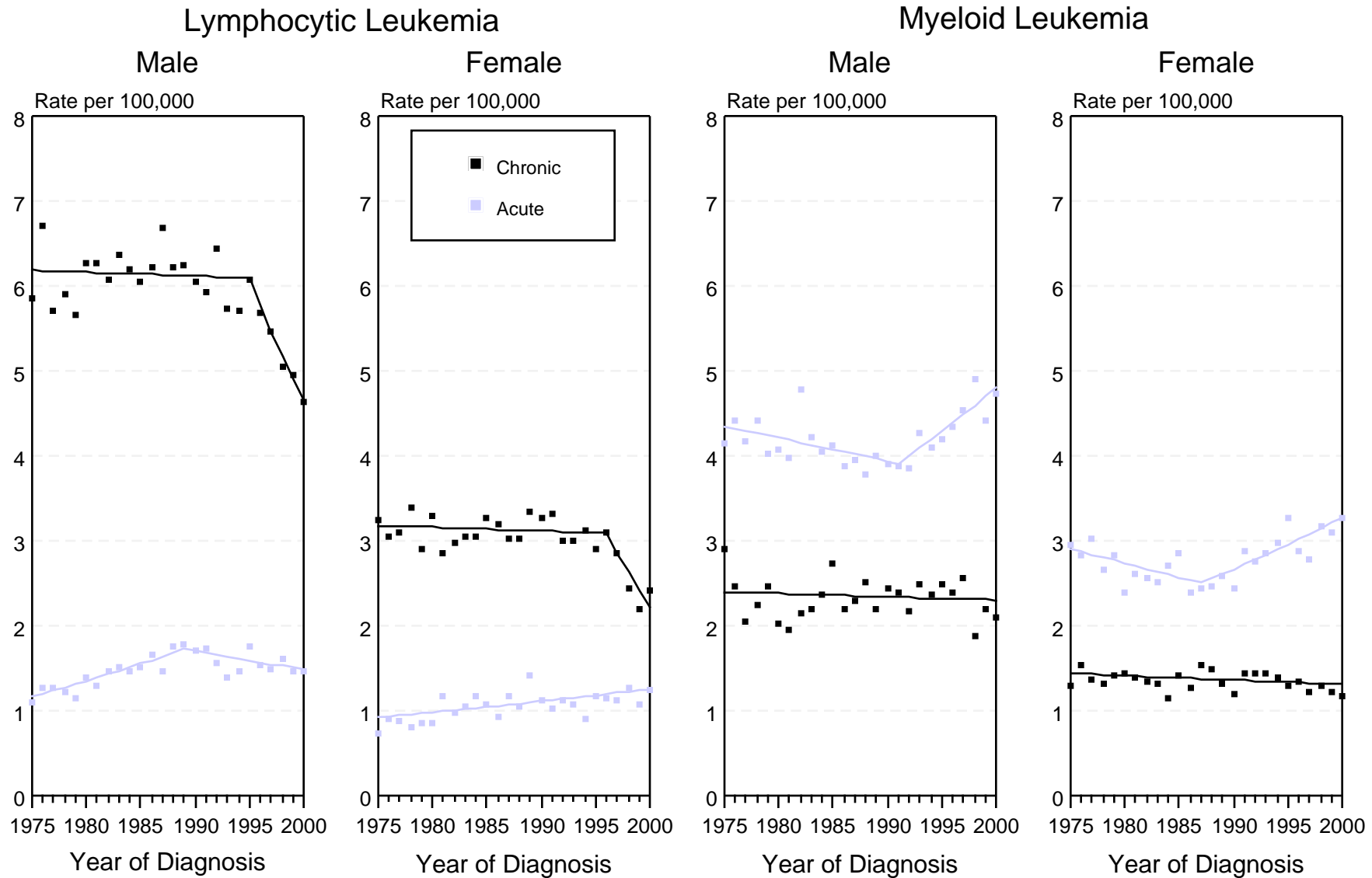


Figure XIII-2

⁺ Source: SEER 9 areas. Rates are age-adjusted to the 2000 U.S. standard million population by 5-year age groups. Regression lines are calculated using the Joinpoint Regression Program.