

Table XIV-1
LIVER AND INTRAHEPATIC BILE DUCT CANCER (Invasive)

TRENDS IN SEER INCIDENCE^a AND U.S. MORTALITY^b USING THE JOINPOINT REGRESSION PROGRAM, 1975-2002
WITH UP TO THREE JOINPOINTS BY RACE AND SEX

		Joinpoint Segment 1		Joinpoint Segment 2		Joinpoint Segment 3		Joinpoint Segment 4	
		Year	APC	Year	APC	Year	APC	Year	APC
<u>SEER Cancer Incidence^a</u>									
All Races	Male and Female	1975-1984	1.4	1984-1999	4.6 ^c	1999-2002	-2.4		
All Races	Male	1975-1984	1.7	1984-1999	4.5 ^c	1999-2002	-2.1		
All Races	Female	1975-1983	0.6	1983-1999	4.3 ^c	1999-2002	-3.2		
White	Male and Female	1975-1986	1.4 ^c	1986-1999	5.0 ^c	1999-2002	-3.6		
White	Male	1975-1987	1.9 ^c	1987-1999	5.1 ^c	1999-2002	-4.3		
White	Female	1975-1985	0.8	1985-1999	4.1 ^c	1999-2002	-3.5		
Black	Male and Female	1975-2002	2.8 ^c						
Black	Male	1975-2002	3.1 ^c						
Black	Female	1975-2002	2.3 ^c						
<u>SEER Delay-Adjusted Incidence^a</u>									
All Races	Male and Female	1975-1984	1.4	1984-1999	4.7 ^c	1999-2002	-0.8		
All Races	Male	1975-1984	1.7	1984-1999	4.5 ^c	1999-2002	-0.7		
All Races	Female	1975-1983	0.5	1983-1999	4.3 ^c	1999-2002	-1.4		
White	Male and Female	1975-1986	1.4 ^c	1986-1999	5.1 ^c	1999-2002	-2.0		
White	Male	1975-1987	1.8 ^c	1987-1998	5.5 ^c	1998-2002	-1.0		
White	Female	1975-1985	0.8	1985-1999	4.2 ^c	1999-2002	-1.6		
Black	Male and Female	1975-2002	3.0 ^c						
Black	Male	1975-2002	3.3 ^c						
Black	Female	1975-2002	2.5 ^c						
<u>U.S. Cancer Mortality^b</u>									
All Races	Male and Female	1975-1978	-0.8	1978-1987	1.7 ^c	1987-1995	4.0 ^c	1995-2002	1.4 ^c
All Races	Male	1975-1986	1.7 ^c	1986-1995	3.9 ^c	1995-2002	1.6 ^c		
All Races	Female	1975-1978	-1.5	1978-1988	1.4 ^c	1988-1995	3.9 ^c	1995-2002	0.4
White	Male and Female	1975-1978	-1.2	1978-1987	1.6 ^c	1987-1995	4.0 ^c	1995-2002	1.5 ^c
White	Male	1975-1985	1.3 ^c	1985-1995	3.9 ^c	1995-2002	1.7 ^c		
White	Female	1975-1978	-1.9	1978-1988	1.1 ^c	1988-1995	3.8 ^c	1995-2002	0.4
Black	Male and Female	1975-1988	0.8 ^c	1988-1995	3.1 ^c	1995-2002	0.6		
Black	Male	1975-2002	1.6 ^c						
Black	Female	1975-2002	1.7 ^c						

Joinpoint Regression Program Version 3.0, April 2005, National Cancer Institute. (<http://srab.cancer.gov/joinpoint/>).

The APC is the Annual Percent Change based on rates age-adjusted to the 2000 US Std Population (19 age groups - Census P25-1130).

^a Trends are from the SEER 9 areas.

^b Trends are from the NCHS public use data file for the total US.

^c The APC is significantly different from zero (p<.05).

Table XIV-2
LIVER AND INTRAHEPATIC BILE DUCT CANCER (Invasive)

SEER INCIDENCE RATES, AGE-ADJUSTED AND AGE-SPECIFIC RATES^a, BY RACE AND SEX

	All Races			Whites			Blacks		
	Total	Males	Females	Total	Males	Females	Total	Males	Females
<u>AGE-ADJUSTED RATES</u>									
YEAR OF DIAGNOSIS:									
1975	2.6	3.9	1.6	2.2	3.2	1.4	4.7	6.5	-
1976	2.7	3.8	1.8	2.3	3.2	1.6	4.0	6.2	-
1977	2.7	4.2	1.5	2.2	3.6	1.3	3.5	5.0	-
1978	2.7	4.2	1.6	2.2	3.3	1.4	4.2	6.8	-
1979	2.7	4.1	1.7	2.2	3.3	1.5	4.1	7.1	-
1980	2.6	3.9	1.7	2.2	3.3	1.5	3.6	5.0	-
1981	2.9	4.6	1.7	2.5	3.9	1.5	4.6	7.1	-
1982	2.9	4.4	1.9	2.4	3.5	1.6	3.9	5.4	-
1983	2.9	4.7	1.6	2.4	3.7	1.4	4.1	6.3	-
1984	2.9	4.3	1.9	2.3	3.4	1.6	3.3	5.3	-
1985	3.2	5.1	1.7	2.6	4.1	1.5	4.0	7.6	-
1986	3.2	4.8	2.0	2.6	3.9	1.7	5.0	7.6	3.1
1987	3.4	4.8	2.2	2.7	3.6	1.9	5.3	7.7	3.5
1988	3.4	5.4	1.8	2.7	4.2	1.6	4.8	8.9	-
1989	3.6	5.6	2.2	2.9	4.3	1.9	5.3	9.1	2.6
1990	3.9	6.0	2.3	3.1	4.7	1.9	6.5	10.6	3.5
1991	4.3	6.7	2.6	3.5	5.6	2.1	6.0	9.2	3.5
1992	4.0	6.1	2.4	3.2	4.8	1.9	5.6	8.4	3.4
1993	4.5	7.1	2.5	3.7	5.9	2.1	6.2	10.2	3.1
1994	4.4	7.0	2.5	3.6	5.6	2.1	5.1	9.6	-
1995	4.5	6.8	2.8	3.6	5.4	2.2	6.0	8.6	3.9
1996	5.4	8.3	3.2	4.4	6.8	2.6	6.7	10.8	3.6
1997	5.4	8.0	3.2	4.4	6.5	2.6	7.4	11.4	4.4
1998	5.5	8.3	3.1	4.6	6.9	2.6	6.5	9.6	4.1
1999	5.8	8.8	3.3	4.7	7.2	2.7	7.6	12.1	4.3
2000	5.6	8.4	3.2	4.7	7.0	2.7	6.8	11.4	3.4
2001	5.3	8.2	3.0	4.1	6.2	2.5	7.7	13.5	3.2
2002	5.5	8.4	3.1	4.4	6.7	2.5	7.3	12.3	3.5
<u>AGE-ADJUSTED RATES, 1998-2002</u>									
AGE AT DIAGNOSIS:									
All ages	5.5	8.4	3.2	4.5	6.8	2.6	7.2	11.8	3.7
Under 65	2.8	4.4	1.2	2.1	3.3	0.9	4.4	7.6	1.7
65 and over	24.8	36.6	16.5	21.2	31.3	14.1	26.8	41.3	17.7
All ages(IARC world std) ^b	3.8	5.8	2.1	3.0	4.5	1.7	5.2	8.6	2.6
<u>AGE-SPECIFIC RATES, 1998-2002</u>									
AGE AT DIAGNOSIS:									
<1	-	-	-	-	-	-	-	-	-
1-4	0.6	-	-	0.5	-	-	-	-	-
5-9	-	-	-	-	-	-	-	-	-
10-14	-	-	-	-	-	-	-	-	-
15-19	-	-	-	-	-	-	-	-	-
20-24	-	-	-	-	-	-	-	-	-
25-29	0.3	-	-	-	-	-	-	-	-
30-34	0.4	0.5	-	-	-	-	-	-	-
35-39	0.8	1.1	0.5	0.5	-	-	-	-	-
40-44	1.9	3.1	0.8	1.5	2.2	0.7	-	-	-
45-49	6.0	10.0	2.2	4.7	7.7	1.7	10.2	18.4	-
50-54	8.2	13.8	2.8	6.2	10.3	2.2	15.4	27.7	-
55-59	10.8	17.7	4.2	8.2	13.4	3.1	20.3	35.1	7.9
60-64	15.2	23.0	8.0	11.3	17.3	5.6	20.9	33.8	10.5
65-69	20.0	28.5	12.6	16.0	23.0	9.7	27.6	40.0	18.4
70-74	25.4	37.7	15.8	21.4	32.3	12.6	27.6	44.1	16.4
75-79	27.9	41.7	18.1	24.2	35.1	16.5	26.9	42.5	-
80-84	27.8	39.5	20.7	25.0	35.8	18.5	25.4	-	-
85+	25.1	40.1	18.6	23.0	36.3	17.5	24.5	-	-

^a SEER 9 areas. Rates are per 100,000 and are age-adjusted to the 2000 US Std Population (19 age groups - Census P25-1130), unless noted.

^b SEER 9 areas. Rates are per 100,000 and are age-adjusted to the IARC world standard population.

- Statistic not shown. Rate based on less than 25 cases for the time interval.

Table XIV-3
LIVER AND INTRAHEPATIC BILE DUCT CANCER (Invasive)

U.S. DEATH RATES, AGE-ADJUSTED AND AGE-SPECIFIC RATES^a, BY RACE AND SEX

	All Races			Whites			Blacks		
	Total	Males	Females	Total	Males	Females	Total	Males	Females
<u>AGE-ADJUSTED RATES</u>									
YEAR OF DEATH:									
1975	2.8	3.8	2.0	2.6	3.5	2.0	4.3	6.3	2.7
1976	2.7	3.8	2.0	2.5	3.5	1.9	4.5	6.8	2.7
1977	2.8	3.8	2.0	2.6	3.4	1.9	4.5	7.2	2.5
1978	2.7	3.9	1.9	2.5	3.5	1.8	4.6	7.0	2.8
1979	2.8	3.9	2.0	2.6	3.5	2.0	4.4	6.6	2.7
1980	2.8	3.9	2.0	2.6	3.5	1.9	4.5	6.8	2.8
1981	2.9	4.1	2.0	2.7	3.8	1.9	4.4	6.7	2.7
1982	2.9	4.2	2.1	2.7	3.8	1.9	4.7	7.2	2.9
1983	2.9	4.2	2.0	2.6	3.7	1.9	4.8	7.3	3.0
1984	3.0	4.3	2.1	2.7	3.8	2.0	4.8	7.9	2.7
1985	3.1	4.4	2.2	2.8	3.9	2.1	4.6	7.2	2.7
1986	3.1	4.5	2.2	2.9	4.1	2.0	4.7	7.3	2.9
1987	3.2	4.6	2.2	2.9	4.1	2.0	4.8	6.9	3.2
1988	3.3	4.8	2.2	3.0	4.4	2.1	4.8	7.2	3.0
1989	3.4	5.0	2.3	3.1	4.5	2.2	5.1	8.0	3.1
1990	3.6	5.3	2.4	3.3	4.7	2.2	5.3	7.8	3.6
1991	3.7	5.3	2.5	3.4	4.8	2.3	5.3	8.0	3.5
1992	3.9	5.7	2.6	3.6	5.2	2.4	5.4	8.5	3.3
1993	4.0	5.8	2.7	3.7	5.3	2.6	5.5	8.1	3.6
1994	4.1	6.0	2.7	3.8	5.4	2.6	5.7	8.9	3.5
1995	4.4	6.3	2.9	4.0	5.7	2.7	6.2	9.3	4.1
1996	4.4	6.5	2.9	4.1	5.9	2.7	5.9	9.1	3.7
1997	4.5	6.5	3.0	4.1	5.9	2.8	6.0	8.9	3.9
1998	4.6	6.7	2.9	4.2	6.1	2.7	6.4	10.1	3.7
1999	4.5	6.5	2.9	4.1	6.0	2.7	5.9	8.8	3.8
2000	4.6	6.8	2.9	4.2	6.1	2.7	6.1	9.5	3.6
2001	4.7	6.9	3.0	4.3	6.3	2.7	6.2	9.1	4.1
2002	4.9	7.2	3.0	4.5	6.5	2.8	6.3	10.0	3.6
<u>AGE-ADJUSTED RATES, 1998-2002</u>									
AGE AT DEATH:									
All ages	4.7	6.8	3.0	4.3	6.2	2.7	6.2	9.5	3.8
Under 65	1.8	2.8	0.9	1.6	2.3	0.8	3.1	5.1	1.4
65 and over	24.2	34.5	17.0	23.0	33.0	16.1	27.6	40.0	20.0
All ages(IARC world std) ^b	2.9	4.3	1.8	2.6	3.9	1.6	4.1	6.5	2.3
<u>AGE-SPECIFIC RATES, 1998-2002</u>									
AGE AT DEATH:									
<1	-	-	-	-	-	-	-	-	-
1-4	0.1	0.2	0.1	0.2	0.2	0.1	-	-	-
5-9	0.0	-	-	-	-	-	-	-	-
10-14	0.0	0.1	-	0.0	-	-	-	-	-
15-19	0.1	0.1	0.1	0.1	0.1	-	-	-	-
20-24	0.1	0.1	0.1	0.1	0.1	0.1	-	-	-
25-29	0.2	0.2	0.1	0.1	0.1	0.1	0.3	0.4	-
30-34	0.3	0.3	0.2	0.2	0.2	0.2	0.5	0.7	-
35-39	0.5	0.7	0.3	0.4	0.5	0.3	0.9	1.3	0.6
40-44	1.3	2.0	0.7	1.1	1.6	0.5	2.3	3.5	1.2
45-49	3.5	5.7	1.4	2.9	4.7	1.2	6.6	11.4	2.4
50-54	5.5	9.0	2.3	4.6	7.3	2.0	10.5	18.4	3.9
55-59	7.5	11.3	3.9	6.3	9.4	3.4	13.4	22.0	6.3
60-64	11.3	16.7	6.5	10.2	14.9	5.8	14.9	23.4	8.2
65-69	16.4	23.9	10.0	15.2	22.1	9.1	20.6	32.1	12.0
70-74	21.8	31.5	14.1	20.5	29.7	13.1	26.5	40.4	17.4
75-79	27.0	38.8	18.7	25.9	37.4	17.8	29.0	41.7	21.4
80-84	31.5	44.8	23.6	30.5	43.6	22.7	34.3	50.6	26.1
85+	32.9	45.0	27.9	32.0	44.1	27.0	35.5	41.6	33.2

^a NCHS public use data file for the total US. Rates are per 100,000 and are age-adjusted to the 2000 US Std Population (19 age groups - Census P25-1130), unless noted.

^b NCHS public use data file for the total US. Rates are per 100,000 and are age-adjusted to the IARC world standard population.

- Statistic not shown. Rate based on less than 25 cases for the time interval.

Table XIV-4
LIVER AND INTRAHEPATIC BILE DUCT CANCER (Invasive)

SURVIVAL RATES, BY RACE, SEX, DIAGNOSIS YEAR, STAGE AND AGE

	All Races			Whites			Blacks		
	Total	Males	Females	Total	Males	Females	Total	Males	Females
<u>5-YR RELATIVE SURVIVAL RATES</u>									
YEAR OF DIAGNOSIS:									
1960-1963 ^a	-	-	-	-	-	-	-	-	-
1970-1973 ^a	-	-	-	-	-	-	-	-	-
1974-1976 ^b	3.8	2.4	6.1	4.4	2.7	6.9	1.0	0.0	3.3
1977-1979 ^b	3.7	2.1	6.6	3.3	2.1	5.2	4.8	3.3	8.5 ^e
1980-1982 ^b	3.4	2.6	4.8	3.8	2.9	5.1	1.5	2.2	0.0
1983-1985 ^b	5.7	4.2	8.8	6.0	4.5	8.6	3.9	1.1	10.9 ^e
1986-1988 ^b	6.1	4.0	10.1	6.9	4.4	11.0	5.7	4.6	7.4
1989-1991 ^b	5.1	3.9	7.4	5.7	4.0	8.6	2.3	1.3	3.9
1992-1994 ^b	5.7	5.5	6.0	6.0	5.6	6.9	3.7	3.2	4.8
1995-2001 ^b	9.0 ^d	8.4 ^d	10.1 ^d	8.5 ^d	7.4 ^d	10.6 ^d	5.1 ^d	5.5	4.6 ^d
1995-2001 ^b									
All Stages	9.0	8.4	10.1	8.5	7.4	10.6	5.1	5.5	4.6
Localized	19.0	18.3	20.9	19.2	16.8	25.5	10.0	14.1	2.4
Regional	6.6	6.8	6.5	5.9	5.8	6.3	4.5	3.4	7.9
Distant	3.4	2.4	5.3	2.8	1.6	5.2	2.9	3.2	0.0
Unstaged	3.3	1.9	5.3	3.2	2.1	4.6	0.0	0.0	0.0

5-YR PERIOD SURVIVAL RATES^{bc}

YEAR OF DIAGNOSIS:									
1995-2001	10.0	9.4	11.3	9.8	8.5	12.6	5.0	6.7	2.8

STAGE DISTRIBUTION (%) 1995-2001^b

All Stages									
Number of cases	7,653	5,185	2,468	4,993	3,331	1,662	890	630	260
Percent	100%	100%	100%	100%	100%	100%	100%	100%	100%
Localized	31	31	30	30	31	29	29	27	32
Regional	26	27	23	23	24	21	30	32	25
Distant	22	23	22	23	23	21	25	25	24
Unstaged	22	20	25	25	22	29	17	16	18

5-YR RELATIVE SURVIVAL RATES, 1995-2001^b

AGE AT DIAGNOSIS:									
<45	22.1	18.2	30.4	25.7	21.2	32.7 ^e	14.1	11.8 ^e	-
45-54	11.2	10.0	15.6	12.6	10.8	19.0	2.7	-	6.4
55-64	8.1	7.8	9.0	7.7	7.5	8.5	5.4	5.7	-
65-74	7.1	6.7	7.7	5.2	3.9	7.8	4.6	7.9	-
75+	4.6	4.2	5.0	4.4	3.2	5.4	-	-	-
Under 65	11.9	10.5	16.3	12.7	10.8	18.4	5.8	4.9	8.9
65 and over	6.1	6.0	6.3	4.8	3.7	6.5	3.3	6.4	-

^a Rates are based on End Results data from a series of hospital registries and one population-based registry.

^b Rates are from the SEER 9 areas (San Francisco, Connecticut, Detroit, Hawaii, Iowa, New Mexico, Seattle, Utah, Atlanta). Rates are based on follow-up of patients into 2002.

^c Period survival provides a more up-to-date estimate of survival by piecing together the most recent conditional survival estimates from several cohorts. It is computed here using three calendar year blocks (1999-2001: 0-1 year survival), (1998-2000: 1-2 year survival), (1997-1999: 2-3 year survival), (1996-1998: 3-4 year survival), (1995-1997: 4-5 years survival).

^d The difference in rates between 1974-1976 and 1995-2001 is statistically significant ($p < .05$).

^e The standard error of the survival rate is between 5 and 10 percentage points.

^f The standard error of the survival rate is greater than 10 percentage points.

- Statistic could not be calculated.

Table XIV-5
LIVER AND INTRAHEPATIC BILE DUCT CANCER (Invasive)

SURVIVAL RATES^a

By Year of Diagnosis

All Races, Males and Females

Year of Diagnosis

	1975- 1979	1980- 1984	1985	1986	1987	1988	1989	1990	1991	1992	1993	1994	1995	1996	1997	1998	1999	2000	2001
Relative Survival Rates (SEER ^b)																			
1-year	14.4	15.6	19.4	16.8	22.0	16.7	18.7	20.7	22.9	20.6	21.1	25.4	23.8	25.6	28.3	27.4	28.3	29.2	31.4
2-year	7.1	8.7	11.5	9.2	12.2	9.3	8.1	11.5	13.2	12.6	11.1	14.8	13.9	15.5	17.7	17.2	17.8	19.8	
3-year	4.9	6.2	8.2	7.7	9.3	7.3	5.8	9.3	9.7	8.5	8.0	9.3	9.5	11.1	12.6	13.1	14.1		
4-year	4.2	4.8	8.0	6.2	8.2	6.5	4.2	6.7	7.8	7.0	6.2	7.9	7.0	9.5	10.3	10.7			
5-year	3.7	4.1	7.1	6.1	6.7	5.6	3.2	5.5	6.3	5.6	4.5	6.8	5.7	8.5	8.0				
6-year	3.2	3.8	7.1	5.5	6.5	5.2	2.9	5.0	6.0	5.1	3.7	6.1	5.1	7.4					
7-year	3.1	3.4	6.9	5.1	6.5	5.2	2.8	4.7	5.3	4.7	3.4	5.7	4.5						
8-year	3.1	3.3	6.7	5.0	6.0	4.9	2.3	4.7	5.1	4.6	3.3	5.5							
9-year	2.9	3.3	6.7	4.7	5.8	4.7	2.3	4.7	5.0	4.6	3.2								
10-year	2.9	3.3	6.7	4.7	5.4	4.2	2.3	4.2	5.0	4.6									
11-year	2.9	3.1	6.7	4.7	5.4	3.9	2.3	3.8	4.9										
12-year	2.9	3.1	6.7	4.7	5.4	3.6	2.3	3.7											
13-year	2.9	3.0	6.7	4.7	5.4	3.6	2.2												
14-year	2.9	3.0	6.7	4.7	5.4	3.3													
15-year	2.9	3.0	6.7	4.7	5.4														
16-year	2.9	3.0	6.7	4.7															
17-year	2.9	3.0	6.7																
18-year	2.8	3.0																	
19-year	2.8																		
20-year	2.8																		

^a Survival rates are relative rates expressed as percents.
^b Rates are from the SEER 9 areas.

Table XIV-6
LIVER AND INTRAHEPATIC BILE DUCT CANCER (Invasive)

SURVIVAL RATES^a

By Year of Diagnosis

All Races, Males

Year of Diagnosis

	1975- 1979	1980- 1984	1985	1986	1987	1988	1989	1990	1991	1992	1993	1994	1995	1996	1997	1998	1999	2000	2001
Relative Survival Rates (SEER ^b)																			
1-year	12.0	13.4	17.1	14.0	19.5	14.0	14.1	18.0	21.5	20.2	19.0	24.7	22.0	25.5	27.5	26.4	29.6	28.7	30.3
2-year	5.4	6.7	9.5	6.5	8.7	7.4	5.7	9.1	13.2	12.6	9.8	13.8	12.7	16.2	16.6	16.2	17.9	18.8	
3-year	3.3	5.0	6.6	4.8	6.1	6.3	4.0	7.7	9.8	8.0	6.9	8.6	9.0	11.4	12.0	11.9	13.6		
4-year	2.9	3.7	6.4	3.6	5.1	5.6	2.5	5.3	7.6	6.2	5.4	8.0	6.2	9.4	9.7	10.4			
5-year	2.2	3.0	5.1	3.5	3.8	4.8	1.5	4.2	5.6	5.1	4.3	7.0	5.0	8.0	7.7				
6-year	1.9	2.8	5.1	2.9	3.6	4.7	0.9	3.5	5.2	4.8	4.0	6.5	4.4	7.0					
7-year	1.6	2.4	5.1	2.6	3.6	4.7	0.9	3.5	4.6	4.3	3.6	6.0	3.9						
8-year	1.6	2.2	5.1	2.6	3.1	4.7	0.7	3.5	4.3	4.2	3.4	5.7							
9-year	1.6	2.2	5.1	2.4	3.1	4.5	0.7	3.5	4.1	4.2	3.3								
10-year	1.6	2.2	5.1	2.4	3.1	4.5	0.7	3.5	4.0	4.2									
11-year	1.6	2.1	5.1	2.4	3.1	4.2	0.7	3.2	4.0										
12-year	1.6	2.0	5.1	2.4	3.1	4.0	0.4	3.0											
13-year	1.6	1.8	5.1	2.4	3.1	4.0	0.4												
14-year	1.6	1.8	5.1	2.4	3.1	3.5													
15-year	1.6	1.8	5.1	2.4	3.1														
16-year	1.6	1.8	5.1	2.4															
17-year	1.6	1.8	5.1																
18-year	1.6	1.8																	
19-year	1.6																		
20-year	1.6																		

^a Survival rates are relative rates expressed as percents.
^b Rates are from the SEER 9 areas.

Table XIV-7
LIVER AND INTRAHEPATIC BILE DUCT CANCER (Invasive)

SURVIVAL RATES^a

By Year of Diagnosis

All Races, Females

Year of Diagnosis

	1975- 1979	1980- 1984	1985	1986	1987	1988	1989	1990	1991	1992	1993	1994	1995	1996	1997	1998	1999	2000	2001
Relative Survival Rates (SEER ^b)																			
1-year	19.0	19.6	24.6	21.9	26.5	22.6	27.0	26.1	25.7	21.3	25.4	26.9	27.4	25.9	29.8	29.8	25.5	30.2	34.1
2-year	10.4	12.4	15.9	14.2	18.6	13.4	12.5	16.4	13.3	12.7	13.8	17.1	16.4	14.1	19.8	19.3	17.5	21.9	
3-year	7.9	8.6	11.7	12.9	15.1	9.5	9.0	12.6	9.6	9.3	10.4	10.6	10.4	10.5	13.7	15.5	15.1		
4-year	6.8	6.9	11.2	10.9	13.7	8.3	7.3	9.5	8.2	8.4	7.8	7.9	8.3	9.6	11.5	11.2			
5-year	6.4	5.9	11.2	10.6	11.9	7.4	6.1	8.3	7.6	6.4	5.0	6.4	7.1	9.5	8.7				
6-year	5.5	5.6	11.0	10.2	11.6	6.4	6.1	8.0	7.4	5.7	3.3	5.2	6.1	8.2					
7-year	5.5	5.1	9.8	9.5	11.6	5.9	6.0	7.1	6.7	5.5	2.9	5.0	5.8						
8-year	5.5	5.1	9.4	9.1	10.9	5.3	5.0	6.7	6.4	5.3	2.9	5.0							
9-year	5.3	5.1	9.4	8.7	10.4	4.8	5.0	6.5	6.4	5.3	2.9								
10-year	5.3	5.0	9.4	8.7	9.1	3.4	5.0	5.5	6.4	5.3									
11-year	5.3	4.9	9.4	8.7	9.1	3.4	5.0	5.1	6.3										
12-year	5.3	4.9	9.4	8.7	9.1	2.7	5.0	5.1											
13-year	4.9	4.9	9.4	8.7	9.1	2.7	5.0												
14-year	4.9	4.9	9.4	8.7	9.1	2.7													
15-year	4.9	4.9	9.4	8.7	9.1														
16-year	4.9	4.9	9.4	8.7															
17-year	4.8	4.9	9.4																
18-year	4.2	4.9																	
19-year	4.2																		
20-year	4.2																		

^a Survival rates are relative rates expressed as percents.
^b Rates are from the SEER 9 areas.

Table XIV-8
LIVER AND INTRAHEPATIC BILE DUCT CANCER (Invasive)

Percent Diagnosed With Cancer In 10, 20 and 30 Years and In Remaining Lifetime,
Given Cancer Free At Current Age By Race and Sex

Lifetime Risk (Percent) of Being Diagnosed (13 SEER Areas) With Cancer and
Lifetime Risk (Percent) of Dying (Total U.S.) From Cancer

2000-2002

All Races

Current Age	Males				Females			
	+10 yrs	+20 yrs	+30 yrs	Eventually	+10 yrs	+20 yrs	+30 yrs	Eventually
0	0.00	0.00	0.01	0.89	0.00	0.01	0.01	0.43
10	0.00	0.00	0.01	0.90	0.00	0.00	0.01	0.43
20	0.00	0.01	0.08	0.91	0.00	0.01	0.02	0.43
30	0.01	0.08	0.24	0.92	0.00	0.02	0.06	0.43
40	0.07	0.24	0.48	0.92	0.02	0.06	0.17	0.43
50	0.18	0.43	0.71	0.88	0.04	0.16	0.30	0.42
60	0.28	0.57	0.73	0.76	0.12	0.27	0.37	0.39

Lifetime Risk of Being Diagnosed = 0.89%
Lifetime Risk of Dying = 0.65%

Lifetime Risk of Being Diagnosed = 0.43%
Lifetime Risk of Dying = 0.37%

Whites

Current Age	Males				Females			
	+10 yrs	+20 yrs	+30 yrs	Eventually	+10 yrs	+20 yrs	+30 yrs	Eventually
0	0.00	0.00	0.00	0.71	0.00	0.01	0.01	0.36
10	0.00	0.00	0.01	0.72	0.00	0.00	0.01	0.35
20	0.00	0.01	0.06	0.72	0.00	0.00	0.02	0.35
30	0.01	0.06	0.19	0.73	0.00	0.02	0.05	0.35
40	0.05	0.18	0.37	0.74	0.01	0.05	0.13	0.35
50	0.13	0.33	0.56	0.71	0.03	0.12	0.24	0.35
60	0.21	0.46	0.59	0.61	0.09	0.22	0.30	0.33

Lifetime Risk of Being Diagnosed = 0.71%
Lifetime Risk of Dying = 0.61%

Lifetime Risk of Being Diagnosed = 0.36%
Lifetime Risk of Dying = 0.35%

Blacks

Current Age	Males				Females			
	+10 yrs	+20 yrs	+30 yrs	Eventually	+10 yrs	+20 yrs	+30 yrs	Eventually
0	0.00	0.00	0.00	0.95	0.00	0.00	0.00	0.35
10	0.00	0.00	0.02	0.97	0.00	0.00	0.01	0.36
20	0.00	0.02	0.12	0.98	0.00	0.01	0.02	0.36
30	0.01	0.12	0.39	1.00	0.00	0.02	0.08	0.36
40	0.11	0.39	0.66	1.02	0.02	0.08	0.17	0.36
50	0.30	0.59	0.84	0.98	0.06	0.16	0.27	0.36
60	0.33	0.62	0.76	0.79	0.11	0.23	0.30	0.32

Lifetime Risk of Being Diagnosed = 0.95%
Lifetime Risk of Dying = 0.69%

Lifetime Risk of Being Diagnosed = 0.35%
Lifetime Risk of Dying = 0.38%

Devcan Version 6.0, April 2005, National Cancer Institute (<http://srab.cancer.gov/devcan/>).

Source: Incidence data are from the SEER 13 areas (San Francisco, Connecticut, Detroit, Hawaii, Iowa, New Mexico, Seattle, Utah, Atlanta, San Jose-Monterey, Los Angeles, Alaska Native Registry, Rural Georgia). Mortality data are from the NCHS public use data file for the total US.

Table XIV-9
LIVER AND INTRAHEPATIC BILE DUCT CANCER (Invasive)

SEER INCIDENCE AND U.S. MORTALITY
AGE-ADJUSTED RATES AND TRENDS^a
By Race/Ethnicity and Sex

Incidence^b

RACE/ETHNICITY	Rate 1998-2002			Trend 1992-2002		
	Rate per 100,000 persons			APC (%)		
	Total	Males	Females	Total	Males	Females
All Races	6.2	9.3	3.6	3.3 ^e	3.0 ^e	3.3 ^e
White	5.0	7.4	2.9	3.5 ^e	2.9 ^e	3.7 ^e
White Hispanic ^c	10.0	14.6	6.3	3.2 ^e	2.1 ^e	4.9 ^e
White Non-Hispanic ^c	4.2	6.2	2.5	2.8 ^e	2.3 ^e	2.9 ^e
Black	7.3	12.1	3.7	3.5 ^e	4.5 ^e	1.4
Asian/Pacific Islander	14.0	21.4	7.9	0.6	1.0	0.2
Amer Ind/Alaska Nat	6.7	8.7	5.2	-2.7	-	-
Hispanic ^c	9.7	14.1	6.1	3.4 ^e	2.2 ^e	5.0 ^e

Mortality^d

RACE/ETHNICITY	Rate 1998-2002			Trend 1992-2002		
	Rate per 100,000 persons			APC (%)		
	Total	Males	Females	Total	Males	Females
All Races	4.7	6.8	3.0	1.9 ^e	2.1 ^e	1.2 ^e
White	4.3	6.2	2.7	2.0 ^e	2.1 ^e	1.1 ^e
White Hispanic ^c	7.8	11.0	5.3	2.0 ^e	1.6 ^e	2.1 ^e
White Non-Hispanic ^c	4.1	5.9	2.6	1.8 ^e	2.0 ^e	0.9 ^e
Black	6.2	9.5	3.8	1.3 ^e	1.3 ^e	0.7
Asian/Pacific Islander	10.5	15.4	6.5	-0.7	-0.6	-0.7
Amer Ind/Alaska Nat	5.9	7.9	4.3	2.2	1.6	1.7
Hispanic ^c	7.6	10.7	5.1	2.0 ^e	1.6 ^e	2.1 ^e

- The APC is the Annual Percent Change over the time interval.
- Statistic not shown. Rate based on less than 25 cases for the time interval. Trend based on less than 10 cases for at least one year within the time interval.
- ^a Rates are age-adjusted to the 2000 US Std Population (19 age groups - Census P25-1130). Trends are based on rates age-adjusted to the 2000 US Std Population (19 age groups - Census P25-1130).
- ^b Incidence data are from the 13 SEER areas (San Francisco, Connecticut, Detroit, Hawaii, Iowa, New Mexico, Seattle, Utah, Atlanta, San Jose-Monterey, Los Angeles, Alaska Native Registry and Rural Georgia).
- ^c Hispanic and Non-Hispanic are not mutually exclusive from Whites, Blacks, Asian Pacific Islanders, and American Indians/Alaska Natives. Incidence data for Hispanics and Non-Hispanics do not include cases from Detroit, Hawaii, Alaska Native Registry and Rural Georgia. For mortality, information is included for all states except Connecticut, Maine, Maryland, Minnesota, New Hampshire, New York, North Dakota, Oklahoma and Vermont.
- ^d Mortality data are analyzed from a public use file provided by the National Center for Health Statistics (NCHS).
- ^e The APC is significantly different from zero (p<.05).

Table XIV-10
LIVER AND INTRAHEPATIC BILE DUCT CANCER (Invasive)

AGE-ADJUSTED SEER INCIDENCE RATES AND SEER DEATH RATES^a
By Registry, Race and Sex

	All Races			Whites			Blacks		
	Total	Males	Females	Total	Males	Females	Total	Males	Females
<u>SEER INCIDENCE RATES^b, 1998-2002</u>									
REGISTRY									
13 SEER Areas	6.2	9.3	3.6	5.0	7.4	2.9	7.3	12.1	3.7
11 SEER Areas	6.2	9.3	3.6	5.0	7.4	2.9	7.4	12.2	3.8
9 SEER Areas	5.5	8.4	3.2	4.5	6.8	2.6	7.2	11.8	3.7
San Francisco-Oakland	7.7	11.7	4.1	5.4	8.0	3.0	9.1	14.4	4.7
Connecticut	4.7	7.5	2.6	4.5	7.1	2.5	6.6	12.3	-
Metropolitan Detroit	5.8	9.1	3.3	5.1	7.9	3.0	7.6	12.9	3.7
Hawaii	8.9	13.3	5.0	5.3	8.7	-	-	-	-
Iowa	3.4	5.2	2.0	3.3	5.0	1.9	-	-	-
New Mexico	6.0	8.8	3.5	5.8	8.5	3.4	-	-	-
Seattle-Puget Sound	5.9	8.5	3.6	4.8	7.1	2.9	10.5	16.8	-
Utah	3.1	4.3	2.1	2.9	3.9	2.0	-	-	-
Metropolitan Atlanta	4.4	6.9	2.4	3.4	5.5	1.8	5.1	7.9	3.3
San Jose-Monterey	7.5	11.3	4.2	5.6	8.4	3.2	-	-	-
Los Angeles	7.9	11.8	4.8	6.5	9.3	4.1	7.7	13.1	3.9
<u>SEER DEATH RATES^c, 1998-2002</u>									
REGISTRY									
13 SEER Areas	5.3	7.7	3.4	4.5	6.4	2.9	6.5	10.0	3.8
11 SEER Areas	5.3	7.7	3.4	4.5	6.4	2.9	6.5	10.1	3.9
9 SEER Areas	4.9	7.2	3.1	4.2	6.1	2.7	6.2	9.6	3.7
San Francisco-Oakland	6.5	9.4	4.0	5.1	7.2	3.1	7.8	11.9	4.3
Connecticut	4.0	6.2	2.5	3.9	5.9	2.4	5.6	9.0	-
Metropolitan Detroit	5.3	8.2	3.2	4.9	7.4	3.0	6.7	10.7	3.8
Hawaii	7.0	9.8	4.5	4.6	6.9	-	-	-	-
Iowa	3.3	4.7	2.1	3.1	4.5	2.1	-	-	-
New Mexico	5.5	7.9	3.4	5.2	7.5	3.3	-	-	-
Seattle-Puget Sound	4.9	6.9	3.3	4.3	6.0	2.9	7.6	11.9	-
Utah	3.3	4.4	2.4	3.1	4.1	2.2	-	-	-
Metropolitan Atlanta	4.4	6.6	2.8	3.8	5.8	2.4	4.6	6.5	3.1
San Jose-Monterey	5.8	8.3	3.7	4.5	6.3	2.9	-	-	-
Los Angeles	6.6	9.4	4.3	5.5	7.6	3.8	7.3	11.3	4.3

^a Incidence and death rates are per 100,000 and are age-adjusted to the 2000 US Std Population (19 age groups - Census P25-1130).

^b The SEER 9 areas are San Francisco, Connecticut, Detroit, Hawaii, Iowa, New Mexico, Seattle, Utah, and Atlanta. The SEER 11 areas comprise the SEER 9 areas plus San Jose-Monterey and Los Angeles. The SEER 13 areas comprise the SEER 11 areas plus the Alaska Native Registry and Rural Georgia.

^c NCHS public use data file for the total US with analyses limited to the SEER geographic areas.

- Statistic could not be calculated or populations are inadequate.

Table XIV-11
LIVER AND INTRAHEPATIC BILE DUCT CANCER (Invasive)

AVERAGE ANNUAL AGE-ADJUSTED CANCER DEATH^a RATES BY STATE, ALL RACES, 1998-2002

Males and Females

State	Rate	SE	Rank	PD
TOTAL U.S.	4.7	0.02		
High Five States				
Hawaii	7.0 ^{bc}	0.33	(01)	48.9
District of Columbia	6.6 ^{bc}	0.49	(02)	40.4
Louisiana	6.2 ^{bc}	0.17	(03)	31.9
Texas	6.2 ^{bc}	0.08	(04)	31.9
Mississippi	5.8 ^{bc}	0.21	(05)	23.4
Low Five States				
Idaho	3.5 ^{bc}	0.24	(47)	-25.5
Utah	3.3 ^{bc}	0.20	(48)	-29.8
Vermont	3.3 ^{bc}	0.32	(49)	-29.8
Iowa	3.3 ^{bc}	0.14	(50)	-29.8
Nebraska	3.1 ^{bc}	0.19	(51)	-34.0

Males

State	Rate	SE	Rank	PD
TOTAL U.S.	6.8	0.03		
High Five States				
District of Columbia	10.7 ^{bc}	0.97	(01)	57.4
Hawaii	9.8 ^{bc}	0.58	(02)	44.1
Louisiana	9.2 ^{bc}	0.33	(03)	35.3
Texas	9.0 ^{bc}	0.16	(04)	32.4
Mississippi	8.2 ^{bc}	0.39	(05)	20.6
Low Five States				
Iowa	4.7 ^{bc}	0.26	(47)	-30.9
Idaho	4.7 ^{bc}	0.42	(48)	-30.9
Utah	4.4 ^{bc}	0.36	(49)	-35.3
Wyoming	4.2 ^{bc}	0.63	(50)	-38.2
Nebraska	4.1 ^{bc}	0.33	(51)	-39.7

Females

State	Rate	SE	Rank	PD
TOTAL U.S.	3.0	0.02		
High Five States				
Hawaii	4.5 ^{bc}	0.36	(01)	50.0
Alaska	4.4 ^b	0.76	(02)	46.7
Mississippi	4.0 ^{bc}	0.22	(03)	33.3
Louisiana	3.9 ^{bc}	0.18	(04)	30.0
Texas	3.9 ^{bc}	0.09	(05)	30.0
Low Five States				
North Dakota	2.2 ^b	0.33	(47)	-26.7
Kansas	2.2 ^{bc}	0.17	(48)	-26.7
Nebraska	2.2 ^{bc}	0.21	(49)	-26.7
Iowa	2.1 ^{bc}	0.15	(50)	-30.0
Vermont	1.8 ^{bc}	0.31	(51)	-40.0

For additional detailed cancer statistics by state, please visit the State Cancer Profiles website. <http://statecancerprofiles.cancer.gov/>

- ^a NCHS public use data file. Rates are per 100,000 and are age-adjusted to the 2000 US Std Population (19 age groups - Census P25-1130).
^b Absolute percent difference between state rate and total U.S. rate is 15% or more.
^c Difference between state rate and total U.S. rate is statistically significant (p<=.0002).
SE Standard error of the rate.
PD Percent difference between state rate and total U.S. rate.

Table XIV-12
LIVER AND INTRAHEPATIC BILE DUCT CANCER (Invasive)

Estimated United States Cancer Prevalence Counts^a on January 1, 2002
By Race/Ethnicity, Sex and Years Since Diagnosis

Years Since Diagnosis	0 to <5	5 to <10	10 to <15	15 to <20	20 to <25	0 to <12 ^e	0 to <27 ^e	>=27 ^g	Complete ^h
<u>Race/Sex</u>									
All Races ^b	11,552	1,743	908	685	221	13,738	15,152	360	15,512
Males	7,508	1,082	401	300	85	8,836	9,437	61	9,498
Females	4,044	661	507	385	136	4,902	5,715	299	6,014
White ^b	8,299	1,281	722	568	150	9,922	11,049	182	11,231
Males	5,252	772	285	240	58	6,196	6,639	87 ⁱ	6,726
Females	3,047	509	437	328	92	3,726	4,410	95 ⁱ	4,505
Black ^b	1,550	151	108	73	47	1,743	1,922	+	+
Males	1,083	101	61	37	23	1,203	1,301	+	+
Females	467	50	47	36	24	540	621	+	+
Asian/Pacific Islander ^c	1,466	245	+	+	+	1,756	+	+	+
Males	1,014	157	+	+	+	1,199	+	+	+
Females	452	88	+	+	+	557	+	+	+
Hispanic ^d	1,480	267	+	+	+	1,779	+	+	+
Males	964	166	+	+	+	1,147	+	+	+
Females	516	101	+	+	+	632	+	+	+

Estimated prevalence percent^a on January 1, 2002, of the SEER 11 population diagnosed in the previous 10 years
By Age at Prevalence, Race/Ethnicity and Sex

Age at Prevalence	Age Specific (Crude)										Age-Adjusted ^f
	All Ages	0-9	10-19	20-29	30-39	40-49	50-59	60-69	70-79	80+	All Ages
<u>Race/Sex</u>											
All Races ^c	0.0057%	0.0016%	0.0005%	0.0005%	0.0010%	0.0040%	0.0114%	0.0221%	0.0262%	0.0172%	0.0061%
Males	0.0076%	0.0015%	0.0006%	0.0005%	0.0012%	0.0057%	0.0179%	0.0316%	0.0381%	0.0242%	0.0088%
Females	0.0039%	0.0018%	0.0004%	0.0006%	0.0007%	0.0023%	0.0052%	0.0137%	0.0172%	0.0134%	0.0039%
White ^c	0.0044%	0.0016%	0.0005%	0.0004%	0.0008%	0.0032%	0.0084%	0.0151%	0.0185%	0.0130%	0.0045%
Males	0.0057%	0.0014%	0.0007%	0.0004%	0.0008%	0.0044%	0.0130%	0.0214%	0.0261%	0.0174%	0.0063%
Females	0.0031%	0.0018%	0.0004%	0.0005%	0.0007%	0.0020%	0.0040%	0.0094%	0.0127%	0.0106%	0.0030%
Black ^c	0.0044%	-	-	-	-	0.0035%	0.0146%	0.0208%	0.0255%	0.0079%	0.0058%
Males	0.0065%	-	-	-	-	0.0056%	0.0249%	0.0347%	0.0414%	-	0.0093%
Females	0.0025%	-	-	-	-	0.0017%	0.0060%	0.0098%	0.0150%	-	0.0031%
Asian/Pacific Islander ^c	0.0158%	0.0029%	-	0.0011%	0.0026%	0.0102%	0.0282%	0.0704%	0.0824%	0.0619%	0.0176%
Males	0.0222%	0.0020%	-	-	0.0044%	0.0156%	0.0474%	0.1036%	0.1251%	0.0857%	0.0265%
Females	0.0099%	0.0037%	-	-	-	0.0053%	0.0113%	0.0429%	0.0507%	0.0456%	0.0104%
Hispanic ^d	0.0045%	0.0015%	0.0007%	0.0004%	0.0008%	0.0051%	0.0142%	0.0340%	0.0380%	0.0241%	0.0085%
Males	0.0056%	0.0014%	0.0011%	-	0.0010%	0.0072%	0.0235%	0.0445%	0.0551%	0.0259%	0.0117%
Females	0.0033%	0.0016%	-	-	-	0.0030%	0.0055%	0.0253%	0.0259%	0.0231%	0.0057%

- ^a US 2002 cancer prevalence counts are based on 2002 cancer prevalence proportions from the SEER registries and 1/1/2002 US population estimates based on the average of 2001 and 2002 population estimates from the US Bureau of the Census. Prevalence was calculated using the First Malignant Primary Only for a person.
- ^{b c d} Statistics based on b) SEER 9 Areas c) SEER 11 Areas and Rural Georgia d) SEER 11 Areas excluding Hawaii and Detroit.
- ^e Maximum limited-duration prevalence: 27 years for 1975-2002 SEER 9 data; 12 years for 1990-2002 SEER 11 data (used to calculate prevalence for Hispanics and Asian Pacific Islanders).
- ^f Percentages are age-adjusted to the 2000 US standard population by 5-year age groups.
- ^{g h i} (g) Cases diagnosed more than 27 years ago were estimated using the completeness index method (Capocaccia et. al. 1997, Merrill et. al. 2000). (h) Complete prevalence is obtained by summing 0 to <27 and >=27. (i) Age-specific completeness index was approximated using empirical data from historical Connecticut tumor registry.
- Statistic not shown. Statistic based on fewer than 5 cases estimated alive in SEER for the time interval.
- + Not available.

SEER Incidence and Delay Adjusted Incidence Rates+ Liver and Intrahepatic Bile Duct Cancer, by Race and Sex

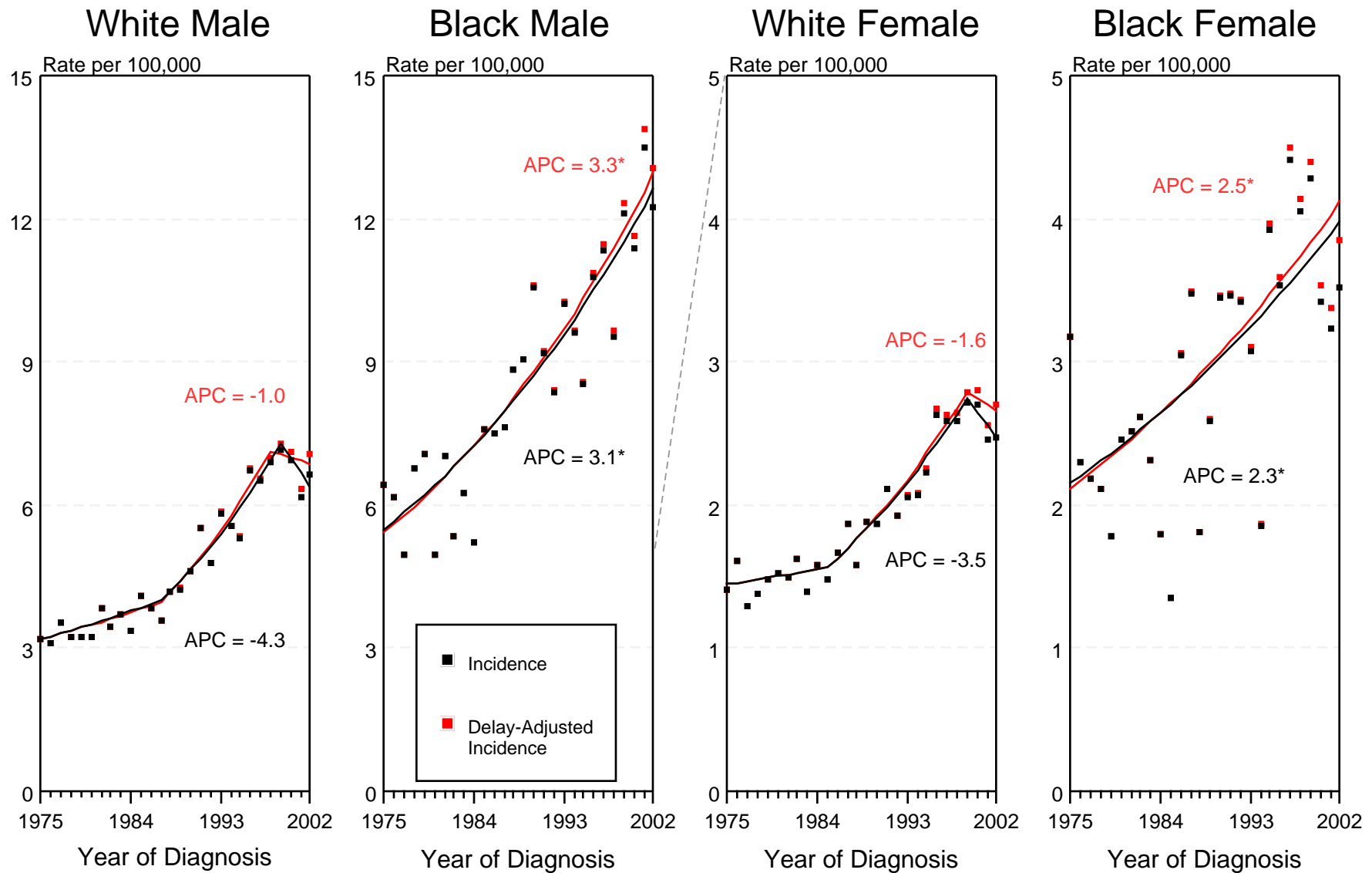


Figure XIV-1

+ Source: SEER 9 areas. Rates are age-adjusted to the 2000 US Std Population (19 age groups - Census P25-1103). Regression lines and APCs are calculated using the Joinpoint Regression Program Version 3.0, April 2005, National Cancer Institute. The APC is the Annual Percent Change for the regression line segments. The APC shown on the graph is for the most recent trend.

* The APC is significantly different from zero ($p < 0.05$).

SEER Incidence and US Death Rates + Liver and Intrahepatic Bile Duct Cancer, Both Sexes

Joinpoint Analyses for 1975-2002 for Whites and Blacks

Rates for 1992-2002 for Asian/Pacific Islander, American Indian/Alaska Native and Hispanic

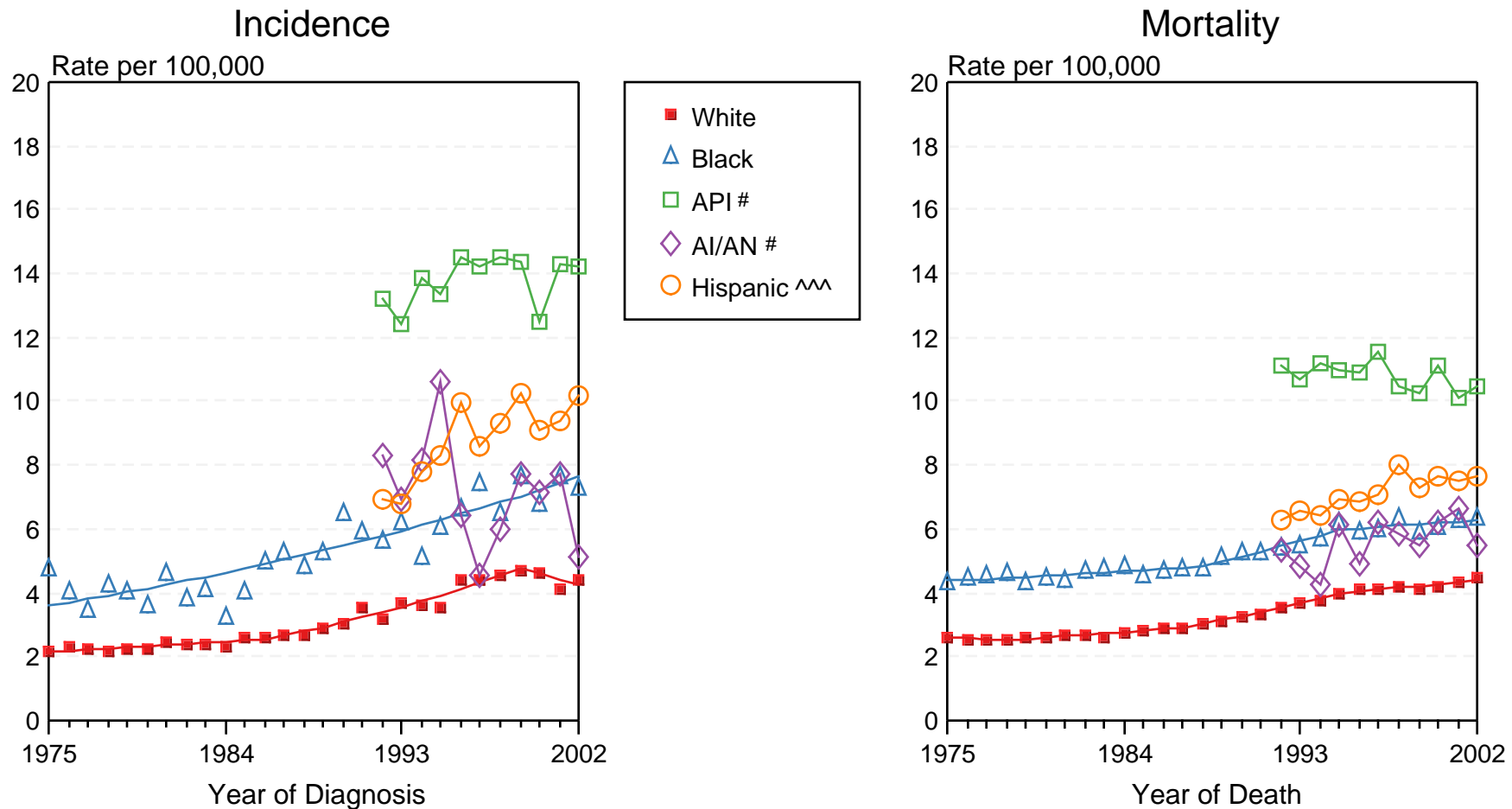


Figure XIV-2

+ Source: Incidence data for whites and blacks is from the SEER 9 areas (San Francisco, Connecticut, Detroit, Hawaii, Iowa, New Mexico, Seattle, Utah, Atlanta). Incidence data for Asian/Pacific Islanders, American Indian/Alaska Natives and Hispanics is from the SEER 13 Areas (SEER 9 Areas, San Jose-Monterey, Los Angeles, Alaska Native Registry and Rural Georgia). Mortality data is from NCHS public use data file for the total US. Rates are age-adjusted to the 2000 US Std Population (19 age groups - Census P25-1103). Regression lines for whites and blacks are calculated using the Joinpoint Regression Program Version 3.0, April 2005, National Cancer Institute.

API = Asian/Pacific Islander. AI/AN = American Indian/Alaska Native.

^^ Hispanic is not mutually exclusive from Whites, Blacks, Asian/Pacific Islanders, and American Indians/Alaska Natives. Incidence data for Hispanics excludes cases from Detroit, Hawaii, Alaska Native Registry and Rural Georgia. Mortality data for Hispanics excludes cases from Connecticut, Maine, Maryland, Minnesota, Oklahoma, New Hampshire, New York, North Dakota, and Vermont.