

Table VI-1
COLON AND RECTUM CANCER (Invasive)

TRENDS IN SEER INCIDENCE^a AND U.S. MORTALITY^b USING THE JOINPOINT REGRESSION PROGRAM, 1975-2003
WITH UP TO THREE JOINPOINTS BY RACE AND SEX

		Joinpoint Segment 1		Joinpoint Segment 2		Joinpoint Segment 3		Joinpoint Segment 4	
		Year	APC	Year	APC	Year	APC	Year	APC
<u>SEER Cancer Incidence^a</u>									
All Races	Male and Female	1975-1985	0.8*	1985-1995	-1.8*	1995-1998	1.3	1998-2003	-2.4*
All Races	Male	1975-1986	1.1*	1986-1995	-2.1*	1995-1998	1.1	1998-2003	-2.8*
All Races	Female	1975-1985	0.3	1985-1995	-1.9*	1995-1998	1.7	1998-2003	-2.2*
White	Male and Female	1975-1985	0.8*	1985-1995	-2.0*	1995-1998	1.5	1998-2003	-2.7*
White	Male	1975-1986	1.1*	1986-1995	-2.3*	1995-1998	1.3	1998-2003	-3.3*
White	Female	1975-1985	0.3	1985-1995	-2.1*	1995-1998	2.0	1998-2003	-2.4*
Black	Male and Female	1975-1980	3.4*	1980-2003	-0.2*				
Black	Male	1975-1980	4.6	1980-2003	-0.1				
Black	Female	1975-2003	-0.1						
<u>SEER Delay-Adjusted Incidence^a</u>									
All Races	Male and Female	1975-1985	0.8*	1985-1995	-1.8*	1995-1998	1.2	1998-2003	-2.1*
All Races	Male	1975-1986	1.1*	1986-1995	-2.1*	1995-1998	1.0	1998-2003	-2.5*
All Races	Female	1975-1985	0.3	1985-1995	-1.8*	1995-1998	1.7	1998-2003	-1.9*
White	Male and Female	1975-1985	0.8*	1985-1995	-1.9*	1995-1998	1.5	1998-2003	-2.3*
White	Male	1975-1986	1.1*	1986-1995	-2.3*	1995-1998	1.3	1998-2003	-2.8*
White	Female	1975-1985	0.3	1985-1995	-2.0*	1995-1998	2.0	1998-2003	-2.0*
Black	Male and Female	1975-1980	3.2*	1980-2003	-0.1				
Black	Male	1975-1980	4.4	1980-2003	0.0				
Black	Female	1975-2003	-0.1						
<u>U.S. Cancer Mortality^b</u>									
All Races	Male and Female	1975-1978	0.2	1978-1985	-0.8*	1985-2001	-1.8*	2001-2003	-2.8*
All Races	Male	1975-1978	0.8	1978-1984	-0.4	1984-1990	-1.3*	1990-2003	-2.1*
All Races	Female	1975-1984	-1.0*	1984-2003	-1.9*				
White	Male and Female	1975-1984	-0.6*	1984-2003	-1.9*				
White	Male	1975-1978	0.7	1978-1984	-0.5	1984-1990	-1.5*	1990-2003	-2.2*
White	Female	1975-1984	-1.2*	1984-2003	-2.0*				
Black	Male and Female	1975-1990	0.7*	1990-2003	-0.9*				
Black	Male	1975-1990	1.3*	1990-2003	-0.8*				
Black	Female	1975-1986	0.7*	1986-2003	-0.9*				

Joinpoint Regression Program Version 3.1, April 2006, National Cancer Institute. (<http://srab.cancer.gov/joinpoint/>).

The APC is the Annual Percent Change based on rates age-adjusted to the 2000 US Std Population (19 age groups - Census P25-1130).

^a Trends are from the SEER 9 areas (San Francisco, Connecticut, Detroit, Hawaii, Iowa, New Mexico, Seattle, Utah, and Atlanta).

^b Trends are from the NCHS public use data file for the total US.

* The APC is significantly different from zero (p<.05).

Table VI-2
COLON CANCER (Invasive) AND RECTUM CANCER (Invasive)

TRENDS IN SEER INCIDENCE^a USING THE JOINPOINT REGRESSION PROGRAM, 1975-2003
WITH UP TO THREE JOINPOINTS BY RACE AND SEX

		<u>Joinpoint Segment 1</u>		<u>Joinpoint Segment 2</u>		<u>Joinpoint Segment 3</u>		<u>Joinpoint Segment 4</u>	
		<u>Year</u>	<u>APC</u>	<u>Year</u>	<u>APC</u>	<u>Year</u>	<u>APC</u>	<u>Year</u>	<u>APC</u>
<u>SEER Cancer Incidence for Colon^a</u>									
All Races	Male and Female	1975-1985	1.2*	1985-1995	-1.7*	1995-1998	0.8	1998-2003	-2.1*
All Races	Male	1975-1985	1.8*	1985-2003	-1.6*				
All Races	Female	1975-1985	0.7*	1985-1988	-3.0	1988-2003	-0.9*		
White	Male and Female	1975-1985	1.1*	1985-1995	-1.9*	1995-1998	1.1	1998-2003	-2.4*
White	Male	1975-1986	1.6*	1986-1995	-2.2*	1995-1998	0.9	1998-2003	-3.3*
White	Female	1975-1985	0.7*	1985-1988	-3.4	1988-2003	-0.9*		
Black	Male and Female	1975-1980	3.7*	1980-2003	-0.2				
Black	Male	1975-1987	1.8*	1987-2003	-0.5				
Black	Female	1975-2003	-0.1						
<u>SEER Cancer Incidence for Rectum^a</u>									
All Races	Male and Female	1975-1987	-0.3	1987-1995	-2.4*	1995-1998	2.9	1998-2003	-3.0*
All Races	Male	1975-1989	-0.3	1989-1994	-3.5*	1994-1999	1.1	1999-2003	-3.6*
All Races	Female	1975-1984	-0.2	1984-1995	-2.2*	1995-1998	3.0	1998-2003	-3.3*
White	Male and Female	1975-1985	-0.1	1985-1995	-2.3*	1995-1998	2.7	1998-2003	-3.3*
White	Male	1975-1989	-0.3	1989-1994	-4.0*	1994-1999	1.2	1999-2003	-4.0*
White	Female	1975-1984	-0.2	1984-1995	-2.3*	1995-1998	3.2	1998-2003	-3.7*
Black	Male and Female	1975-2003	-0.1						
Black	Male	1975-2003	0.1						
Black	Female	1975-2003	-0.2						

Joinpoint Regression Program Version 3.1, April 2006, National Cancer Institute. (<http://srab.cancer.gov/joinpoint/>).

The APC is the Annual Percent Change based on rates age-adjusted to the 2000 US Std Population (19 age groups - Census P25-1130).

^a Trends are from the SEER 9 areas (San Francisco, Connecticut, Detroit, Hawaii, Iowa, New Mexico, Seattle, Utah, and Atlanta).

* The APC is significantly different from zero ($p < .05$).

Table VI-3
COLON AND RECTUM CANCER (Invasive)

AGE ADJUSTED SEER INCIDENCE^a RATES BY YEAR, RACE AND SEX

	All Races			Whites			Blacks		
	Total	Males	Females	Total	Males	Females	Total	Males	Females
<u>AGE-ADJUSTED RATES</u>									
YEAR OF DIAGNOSIS:									
1975	59.5	68.3	53.6	60.1	69.7	54.0	56.8	59.2	54.7
1976	61.3	71.7	54.1	62.1	72.6	55.0	55.1	58.5	51.3
1977	62.4	73.5	54.9	63.1	74.3	55.7	60.6	75.8	51.3
1978	62.0	72.3	55.2	62.7	73.9	55.5	62.2	65.7	60.6
1979	62.3	74.1	54.5	62.9	75.2	54.9	58.5	61.6	56.2
1980	63.7	74.5	56.5	63.9	74.9	56.8	70.4	79.2	63.8
1981	64.2	75.8	56.5	64.9	76.7	57.1	62.8	72.8	55.9
1982	62.8	75.2	54.5	63.4	76.2	55.0	61.3	69.0	55.9
1983	63.6	75.6	55.6	64.2	76.5	56.0	66.6	75.5	61.1
1984	64.8	77.6	56.0	65.8	79.2	56.7	62.2	70.1	58.0
1985	66.3	79.0	57.4	67.1	80.1	58.4	63.8	74.1	56.2
1986	64.1	77.8	54.7	64.6	78.9	54.7	64.4	72.6	58.6
1987	62.7	77.5	52.6	62.9	78.2	52.6	66.2	77.4	59.0
1988	61.4	75.2	51.8	61.5	75.8	51.7	63.1	72.3	56.9
1989	61.7	74.9	52.4	62.0	75.4	52.7	64.2	79.0	54.5
1990	60.6	74.2	51.2	60.6	74.6	51.0	66.5	74.4	61.6
1991	59.4	72.8	50.0	59.2	73.0	49.6	65.6	76.3	58.2
1992	58.0	70.4	49.2	57.8	70.7	48.7	65.5	78.5	57.3
1993	56.8	68.4	48.3	56.3	68.0	47.8	64.2	77.8	55.0
1994	55.6	66.3	47.7	55.4	66.4	47.2	64.0	74.8	57.6
1995	54.0	63.7	46.9	53.6	63.3	46.5	61.9	71.1	56.0
1996	54.7	65.4	46.6	54.6	65.8	46.3	58.2	66.4	52.5
1997	56.3	68.0	47.9	56.3	67.8	48.0	64.0	76.7	55.6
1998	56.6	66.7	49.2	56.5	66.9	48.9	62.6	73.6	55.7
1999	55.3	65.5	47.8	55.1	65.5	47.2	63.0	71.9	57.8
2000	53.9	63.4	46.4	53.6	63.0	46.2	63.5	73.1	57.2
2001	53.1	62.4	45.8	52.5	61.9	45.1	63.1	73.7	56.3
2002	52.4	60.6	46.0	51.6	59.3	45.4	62.0	72.9	55.1
2003	49.5	58.0	42.8	49.0	57.1	42.4	60.4	72.6	52.5
1975-2003	58.7	69.8	50.7	58.9	70.2	50.8	62.9	72.7	56.4

^a SEER 9 areas (San Francisco, Connecticut, Detroit, Hawaii, Iowa, New Mexico, Seattle, Utah, and Atlanta). Rates are per 100,000 and are age-adjusted to the 2000 US Std Population (19 age groups - Census P25-1130).

- Statistic not shown. Rate based on less than 16 cases for the time interval.

Table VI-4
COLON CANCER (Invasive)

AGE ADJUSTED SEER INCIDENCE^a RATES BY YEAR, RACE AND SEX

	All Races			Whites			Blacks		
	Total	Males	Females	Total	Males	Females	Total	Males	Females
<u>AGE-ADJUSTED RATES</u>									
YEAR OF DIAGNOSIS:									
1975	41.3	45.4	38.9	41.7	46.1	39.1	42.8	44.0	41.6
1976	43.1	47.8	39.9	43.4	48.2	40.4	43.1	43.6	42.0
1977	44.0	49.5	40.3	44.7	50.0	41.2	45.4	58.4	37.6
1978	43.8	49.1	40.6	44.1	49.9	40.6	47.8	48.8	47.9
1979	43.8	50.2	39.6	44.1	51.0	39.7	44.7	45.6	44.0
1980	45.6	50.7	42.3	45.6	50.9	42.3	55.0	58.0	52.7
1981	45.5	51.3	41.7	45.9	52.0	42.1	46.8	50.6	44.3
1982	45.7	53.4	40.7	46.1	54.1	40.9	48.3	52.5	45.2
1983	46.1	53.0	41.6	46.4	53.4	41.9	50.2	58.5	45.2
1984	46.5	54.6	41.3	47.0	55.6	41.6	48.6	54.0	45.8
1985	47.9	55.0	43.0	48.4	55.5	43.7	49.8	57.3	44.1
1986	46.8	54.3	41.5	47.0	55.2	41.5	49.1	54.9	45.5
1987	45.2	54.4	39.2	45.1	54.5	39.1	51.3	59.7	45.7
1988	44.3	52.6	38.7	44.3	52.9	38.4	48.9	54.0	45.6
1989	44.4	52.4	39.0	44.5	52.5	39.2	48.8	60.3	41.4
1990	44.1	51.8	38.9	44.0	51.9	38.7	52.0	57.7	48.5
1991	43.6	51.8	37.9	43.3	51.8	37.4	51.7	57.8	47.7
1992	42.3	49.7	37.2	42.0	49.8	36.7	50.9	60.4	45.2
1993	41.6	48.9	36.3	41.1	48.6	35.7	51.1	60.3	45.0
1994	40.8	46.9	36.3	40.7	47.1	35.8	49.7	56.5	45.9
1995	39.6	45.0	35.8	39.3	44.6	35.4	48.7	54.6	45.4
1996	39.3	45.3	34.8	39.2	45.7	34.4	44.4	48.3	41.8
1997	41.1	48.3	35.9	41.1	48.2	36.1	48.8	58.4	42.3
1998	40.9	46.6	37.0	40.8	46.8	36.5	47.4	54.2	43.8
1999	39.7	45.3	35.6	39.5	45.2	35.1	48.3	54.9	44.5
2000	39.1	44.2	35.2	38.8	43.8	34.9	50.3	56.5	46.4
2001	38.9	43.6	35.2	38.5	43.3	34.7	48.2	55.0	43.9
2002	38.1	42.7	34.6	37.4	41.5	34.1	48.6	56.2	43.7
2003	36.0	40.4	32.5	35.7	39.7	32.3	46.0	54.4	40.8
1975-2003	42.4	48.6	38.0	42.4	48.8	38.0	48.5	55.0	44.5

^a SEER 9 areas (San Francisco, Connecticut, Detroit, Hawaii, Iowa, New Mexico, Seattle, Utah, and Atlanta). Rates are per 100,000 and are age-adjusted to the 2000 US Std Population (19 age groups - Census P25-1130).

- Statistic not shown. Rate based on less than 16 cases for the time interval.

Table VI-5
RECTUM CANCER (Invasive)

AGE ADJUSTED SEER INCIDENCE^a RATES BY YEAR, RACE AND SEX

	All Races			Whites			Blacks		
	Total	Males	Females	Total	Males	Females	Total	Males	Females
<u>AGE-ADJUSTED RATES</u>									
YEAR OF DIAGNOSIS:									
1975	18.1	23.0	14.7	18.4	23.6	14.9	14.0	15.2	13.0
1976	18.3	23.9	14.2	18.7	24.4	14.6	12.0	14.9	9.4
1977	18.4	23.9	14.6	18.5	24.2	14.5	15.3	17.3	13.8
1978	18.1	23.2	14.6	18.6	24.0	14.9	14.4	16.9	12.8
1979	18.6	23.9	14.9	18.8	24.2	15.2	13.8	16.1	12.2
1980	18.1	23.8	14.2	18.3	24.0	14.5	15.4	21.2	11.1
1981	18.8	24.5	14.8	19.0	24.7	15.0	15.9	22.2	11.6
1982	17.0	21.7	13.8	17.4	22.2	14.2	13.0	16.5	10.7
1983	17.5	22.6	13.9	17.8	23.1	14.1	16.4	16.9	15.9
1984	18.3	23.0	14.7	18.8	23.7	15.1	13.6	16.1	12.1
1985	18.4	24.1	14.3	18.8	24.5	14.7	14.0	16.8	12.1
1986	17.4	23.4	13.1	17.5	23.7	13.2	15.2	17.7	13.2
1987	17.5	23.0	13.5	17.7	23.7	13.5	14.9	17.6	13.3
1988	17.1	22.6	13.1	17.3	22.9	13.3	14.2	18.4	11.3
1989	17.3	22.5	13.4	17.5	22.9	13.5	15.4	18.8	13.1
1990	16.5	22.4	12.3	16.6	22.8	12.3	14.5	16.7	13.0
1991	15.9	21.0	12.1	16.0	21.2	12.3	13.9	18.5	10.5
1992	15.7	20.8	12.0	15.8	20.9	12.0	14.6	18.1	12.1
1993	15.2	19.5	12.0	15.3	19.4	12.1	13.1	17.5	10.0
1994	14.8	19.3	11.4	14.7	19.3	11.3	14.4	18.3	11.7
1995	14.4	18.7	11.1	14.4	18.7	11.1	13.2	16.5	10.6
1996	15.4	20.1	11.8	15.4	20.1	12.0	13.8	18.1	10.7
1997	15.3	19.6	12.0	15.3	19.6	11.9	15.2	18.4	13.4
1998	15.7	20.1	12.2	15.7	20.1	12.4	15.2	19.4	11.9
1999	15.6	20.2	12.2	15.7	20.4	12.0	14.7	17.0	13.2
2000	14.7	19.2	11.2	14.8	19.1	11.3	13.2	16.6	10.8
2001	14.2	18.8	10.6	14.0	18.6	10.4	14.9	18.7	12.4
2002	14.3	18.0	11.4	14.2	17.8	11.3	13.4	16.7	11.3
2003	13.5	17.6	10.2	13.3	17.4	10.1	14.3	18.3	11.7
1975-2003	16.3	21.2	12.7	16.5	21.4	12.9	14.3	17.7	11.9

^a SEER 9 areas (San Francisco, Connecticut, Detroit, Hawaii, Iowa, New Mexico, Seattle, Utah, and Atlanta). Rates are per 100,000 and are age-adjusted to the 2000 US Std Population (19 age groups - Census P25-1130).

- Statistic not shown. Rate based on less than 16 cases for the time interval.

Table VI-6
COLON AND RECTUM CANCER (Invasive)

AGE-ADJUSTED U.S. DEATH^a RATES BY YEAR, RACE AND SEX

	All Races			Whites			Blacks		
	Total	Males	Females	Total	Males	Females	Total	Males	Females
<u>AGE-ADJUSTED RATES</u>									
YEAR OF DEATH:									
1975	28.1	32.8	25.0	28.3	33.2	25.1	26.8	30.1	24.6
1976	28.6	33.3	25.4	28.7	33.8	25.5	28.2	31.2	26.3
1977	28.2	33.2	24.9	28.3	33.5	25.0	27.6	31.4	24.9
1978	28.5	33.7	25.1	28.7	34.1	25.2	27.9	31.2	25.7
1979	28.1	33.6	24.6	28.2	33.9	24.6	28.2	31.6	26.0
1980	28.1	33.7	24.4	28.1	34.0	24.3	28.8	33.2	25.9
1981	27.5	33.0	24.0	27.5	33.2	23.9	28.9	32.8	26.3
1982	27.2	33.0	23.6	27.2	33.1	23.4	29.1	33.7	26.1
1983	27.1	33.1	23.2	27.1	33.3	23.1	28.7	32.9	25.8
1984	27.3	33.0	23.6	27.3	33.1	23.5	29.6	34.6	26.2
1985	26.9	32.7	23.1	26.8	32.7	22.8	30.5	34.1	28.0
1986	26.2	32.1	22.3	26.0	32.0	22.1	29.8	35.4	26.3
1987	25.9	31.9	22.0	25.7	31.8	21.6	29.8	35.1	26.5
1988	25.3	31.1	21.5	25.1	31.0	21.2	29.2	34.3	25.9
1989	25.0	30.8	21.2	24.7	30.5	20.8	30.1	36.4	26.1
1990	24.6	30.8	20.6	24.3	30.4	20.2	30.8	37.6	26.6
1991	24.0	29.6	20.3	23.6	29.4	19.8	30.0	35.8	26.5
1992	23.6	29.3	19.9	23.2	29.0	19.4	29.5	36.2	25.4
1993	23.3	28.6	19.8	22.9	28.2	19.3	29.8	35.8	26.0
1994	22.9	28.3	19.3	22.5	27.9	18.8	29.0	35.7	24.9
1995	22.6	27.7	19.1	22.1	27.2	18.6	29.5	36.3	25.5
1996	21.9	26.7	18.5	21.4	26.3	18.0	28.6	34.5	24.9
1997	21.5	26.2	18.1	20.9	25.7	17.6	28.8	35.1	24.8
1998	21.2	25.6	18.0	20.7	25.1	17.5	28.3	33.9	24.8
1999	20.9	25.5	17.8	20.4	25.0	17.2	28.5	34.5	24.7
2000	20.7	25.0	17.5	20.1	24.4	17.0	28.1	35.0	23.9
2001	20.1	24.3	17.1	19.5	23.7	16.5	27.7	33.2	24.2
2002	19.6	23.8	16.5	19.1	23.2	16.0	26.9	33.4	22.8
2003	19.0	23.0	16.1	18.5	22.4	15.5	26.4	32.1	22.7
1975-2003	24.2	29.3	20.7	23.9	29.1	20.4	28.8	34.2	25.4

^a NCHS public use data file for the total US. Rates are per 100,000 and are age-adjusted to the 2000 US Std Population (19 age groups - Census P25-1130).

- Statistic not shown. Rate based on less than 16 cases for the time interval.

Table VI-7
COLON AND RECTUM CANCER (Invasive)

SEER INCIDENCE^a AND U.S. DEATH^b RATES, AGE-ADJUSTED AND AGE-SPECIFIC RATES, BY RACE AND SEX

	All Races			Whites			Blacks		
	Total	Males	Females	Total	Males	Females	Total	Males	Females
<u>SEER INCIDENCE</u>									
<u>AGE AT DIAGNOSIS</u>									
AGE-ADJUSTED RATES, 2000-2003									
All ages	52.4	61.7	45.3	52.0	61.4	44.7	62.8	72.9	56.1
Under 65	18.5	21.4	15.8	17.9	20.8	15.1	25.1	28.3	22.5
65 and over	287.0	340.8	248.8	288.0	342.0	249.4	323.4	381.0	288.4
All ages(IARC world std) ^c	32.0	37.8	27.2	31.6	37.4	26.7	39.6	45.6	35.2
AGE-SPECIFIC RATES, 2000-2003									
<1	-	-	-	-	-	-	-	-	-
1-4	-	-	-	-	-	-	-	-	-
5-9	-	-	-	-	-	-	-	-	-
10-14	-	-	-	-	-	-	-	-	-
15-19	0.2	0.2	0.2	0.2	0.3	0.2	-	-	-
20-24	0.7	0.7	0.7	0.8	0.8	0.7	-	-	-
25-29	1.8	1.9	1.7	1.8	1.9	1.7	1.4	1.5	1.3
30-34	3.8	4.0	3.6	3.8	4.0	3.7	3.6	3.6	3.6
35-39	7.5	8.2	6.8	7.2	7.8	6.6	8.6	9.6	7.7
40-44	14.2	14.8	13.5	13.5	14.1	12.8	18.4	19.9	17.1
45-49	27.3	29.5	25.1	26.1	28.4	23.8	36.3	38.2	34.7
50-54	52.1	59.5	45.1	49.8	57.6	42.2	73.4	80.4	67.5
55-59	80.1	94.9	66.1	77.1	92.0	62.9	112.6	130.7	97.5
60-64	124.7	151.2	100.4	122.1	148.8	97.3	171.5	201.3	147.5
65-69	188.9	228.8	154.6	188.0	228.0	153.0	226.5	262.2	199.3
70-74	249.3	305.0	205.0	250.7	307.2	204.9	280.4	329.9	246.1
75-79	322.2	385.0	278.2	323.7	385.1	280.5	362.8	436.4	317.2
80-84	377.2	435.8	340.8	378.2	436.6	342.0	427.1	495.3	390.2
85+	415.9	475.0	389.5	419.6	480.9	392.6	437.6	520.6	404.8
<u>U.S. MORTALITY</u>									
<u>AGE AT DEATH</u>									
AGE-ADJUSTED RATES, 2000-2003									
All ages	19.8	24.0	16.8	19.3	23.4	16.2	27.3	33.4	23.4
Under 65	5.5	6.5	4.6	5.2	6.2	4.2	8.9	10.6	7.6
65 and over	118.8	144.7	101.2	117.0	142.6	99.3	154.2	191.0	132.9
All ages(IARC world std) ^c	11.1	13.5	9.2	10.8	13.1	8.8	16.0	19.5	13.5
AGE-SPECIFIC RATES, 2000-2003									
<1	-	-	-	-	-	-	-	-	-
1-4	-	-	-	-	-	-	-	-	-
5-9	-	-	-	-	-	-	-	-	-
10-14	-	-	-	-	-	-	-	-	-
15-19	0.1	0.1	0.0	0.1	0.1	-	-	-	-
20-24	0.2	0.2	0.1	0.2	0.2	0.1	0.2	0.3	-
25-29	0.4	0.5	0.4	0.4	0.5	0.4	0.5	0.5	0.5
30-34	1.0	1.0	0.9	0.9	1.0	0.8	1.3	1.5	1.1
35-39	2.1	2.3	1.9	1.9	2.1	1.7	3.2	3.4	2.9
40-44	3.9	4.4	3.5	3.6	4.0	3.1	6.6	7.5	5.8
45-49	8.0	9.0	7.1	7.3	8.3	6.3	14.2	15.8	12.9
50-54	14.5	16.8	12.3	13.5	15.8	11.3	24.2	28.0	21.0
55-59	24.4	29.6	19.4	22.9	28.1	18.0	40.5	48.9	33.6
60-64	40.0	49.3	31.5	38.4	47.4	30.0	60.5	75.1	49.1
65-69	61.3	77.3	47.6	59.6	75.4	45.8	86.3	108.6	69.8
70-74	87.7	109.3	70.5	85.7	107.3	68.2	121.3	150.9	101.5
75-79	120.7	149.9	100.1	118.6	147.6	97.8	163.0	204.0	138.5
80-84	165.7	202.2	143.7	163.6	199.4	141.8	214.2	272.4	184.2
85+	252.0	290.6	235.5	251.3	289.7	234.9	287.3	339.0	267.5

^a SEER 17 areas. Rates are per 100,000 and are age-adjusted to the 2000 US Std Population (19 age groups - Census P25-1130), unless noted.

^b NCHS public use data file for the total US. Rates are per 100,000 and are age-adjusted to the 2000 US Std Population (19 age groups - Census P25-1130), unless noted.

^c Rates are per 100,000 and are age-adjusted to the IARC world standard population.

- Statistic not shown. Rate based on less than 16 cases for the time interval.

Table VI-8
 COLON CANCER (Invasive) and RECTUM CANCER (Invasive)

SEER INCIDENCE^a RATES, AGE-ADJUSTED AND AGE-SPECIFIC RATES, BY RACE AND SEX

	All Races			Whites			Blacks		
	Total	Males	Females	Total	Males	Females	Total	Males	Females
<u>COLON INCIDENCE</u>									
<u>AGE AT DIAGNOSIS</u>									
AGE-ADJUSTED RATES, 2000-2003									
All ages	37.9	43.1	34.0	37.6	42.7	33.6	48.5	55.3	44.0
Under 65	11.9	13.2	10.7	11.4	12.7	10.1	17.9	19.8	16.4
65 and over	218.0	250.1	195.3	218.4	250.2	195.7	259.4	301.0	234.5
All ages(IARC world std) ^b	22.5	25.6	19.9	22.1	25.2	19.5	29.9	33.9	27.1
AGE-SPECIFIC RATES, 2000-2003									
<1	-	-	-	-	-	-	-	-	-
1-4	-	-	-	-	-	-	-	-	-
5-9	-	-	-	-	-	-	-	-	-
10-14	-	-	-	-	-	-	-	-	-
15-19	0.2	0.2	0.2	0.2	-	-	-	-	-
20-24	0.5	0.5	0.4	0.5	0.5	0.5	-	-	-
25-29	1.2	1.2	1.1	1.2	1.2	1.1	0.8	-	-
30-34	2.4	2.5	2.3	2.4	2.5	2.3	2.6	2.7	2.5
35-39	4.5	4.7	4.3	4.3	4.5	4.1	5.7	5.9	5.5
40-44	8.7	8.7	8.7	8.2	8.3	8.2	12.4	12.8	12.1
45-49	16.6	17.2	16.0	15.7	16.6	14.9	24.8	24.5	25.1
50-54	32.7	35.6	30.0	30.8	34.1	27.6	52.6	54.9	50.6
55-59	51.4	58.6	44.7	49.2	56.3	42.4	80.3	93.2	69.6
60-64	84.4	97.9	72.2	82.3	95.9	69.7	127.5	148.1	111.0
65-69	133.9	156.8	114.3	132.1	154.8	112.3	175.0	197.6	157.7
70-74	184.1	218.0	157.2	185.0	219.0	157.4	220.0	253.1	197.1
75-79	245.3	283.0	218.9	246.3	282.2	221.0	292.5	346.4	259.1
80-84	296.7	330.1	275.9	297.4	330.8	276.6	348.1	399.0	320.6
85+	335.2	372.9	318.2	338.1	376.3	321.3	366.7	435.9	339.4
<u>RECTUM INCIDENCE</u>									
<u>AGE AT DIAGNOSIS</u>									
AGE-ADJUSTED RATES, 2000-2003									
All ages	14.5	18.6	11.2	14.5	18.6	11.1	14.3	17.5	12.1
Under 65	6.6	8.2	5.1	6.5	8.0	5.0	7.2	8.5	6.0
65 and over	69.0	90.6	53.5	69.6	91.8	53.6	64.0	80.0	53.9
All ages(IARC world std) ^b	9.6	12.2	7.3	9.5	12.2	7.2	9.6	11.7	8.1
AGE-SPECIFIC RATES, 2000-2003									
<1	-	-	-	-	-	-	-	-	-
1-4	-	-	-	-	-	-	-	-	-
5-9	-	-	-	-	-	-	-	-	-
10-14	-	-	-	-	-	-	-	-	-
15-19	-	-	-	-	-	-	-	-	-
20-24	0.2	0.2	0.3	0.3	0.3	0.3	-	-	-
25-29	0.6	0.6	0.6	0.6	0.7	0.6	-	-	-
30-34	1.4	1.5	1.4	1.4	1.4	1.3	1.0	-	-
35-39	3.0	3.5	2.5	2.9	3.3	2.5	2.9	3.7	2.2
40-44	5.5	6.1	4.8	5.3	5.9	4.6	6.0	7.0	5.1
45-49	10.7	12.3	9.1	10.4	11.8	8.9	11.5	13.7	9.6
50-54	19.4	23.9	15.1	19.0	23.4	14.7	20.8	25.4	16.9
55-59	28.6	36.3	21.4	27.9	35.7	20.4	32.3	37.5	27.9
60-64	40.2	53.4	28.3	39.8	53.0	27.6	43.9	53.2	36.5
65-69	55.0	72.1	40.3	55.9	73.3	40.6	51.5	64.5	41.6
70-74	65.1	86.9	47.8	65.7	88.2	47.5	60.4	76.8	49.1
75-79	76.9	102.0	59.3	77.4	102.9	59.5	70.3	90.0	58.1
80-84	80.5	105.6	64.9	80.8	105.8	65.3	79.0	96.2	69.6
85+	80.8	102.0	71.3	81.5	104.7	71.3	70.9	84.7	65.5

^a SEER 17 areas. Rates are per 100,000 and are age-adjusted to the 2000 US Std Population (19 age groups - Census P25-1130), unless noted.

^b Rates are per 100,000 and are age-adjusted to the IARC world standard population.

- Statistic not shown. Rate based on less than 16 cases for the time interval.

Table VI-9
COLON AND RECTUM CANCER (Invasive)

SURVIVAL RATES, BY RACE, SEX, DIAGNOSIS YEAR, STAGE AND AGE

	All Races			Whites			Blacks		
	Total	Males	Females	Total	Males	Females	Total	Males	Females
<u>5-YR RELATIVE SURVIVAL RATES</u>									
YEAR OF DIAGNOSIS:									
1960-1963 ^a	-	-	-	-	-	-	-	-	-
1970-1973 ^a	-	-	-	-	-	-	-	-	-
1975-1977 ^b	50.6	49.7	51.5	50.8	50.1	51.5	46.0	44.3	47.1
1978-1980 ^b	52.4	51.5	53.2	52.8	51.9	53.7	46.0	44.1	47.4
1981-1983 ^b	55.4	55.1	55.6	55.8	55.8	55.8	47.6	43.9	50.4
1984-1986 ^b	58.4	58.3	58.6	59.2	59.2	59.3	49.0	48.0	49.8
1987-1989 ^b	60.5	60.8	60.2	61.0	61.6	60.5	53.3	51.0	55.3
1990-1992 ^b	62.4	62.5	62.4	63.2	63.2	63.2	53.8	55.7	52.2
1993-1995 ^b	61.5	61.6	61.4	62.2	62.2	62.1	53.2	52.8	53.5
1996-2002 ^b	65.1 ^e	66.0 ^e	64.3 ^e	66.2 ^e	67.0 ^e	65.4 ^e	55.4 ^e	56.8 ^e	54.3 ^e
<u>5-YR PERIOD SURVIVAL RATES^{cd}</u>									
YEAR OF DIAGNOSIS:									
1996-2002	64.8	65.8	63.8	66.1	67.2	65.0	54.6	55.5	53.9
<u>STAGE DISTRIBUTION (%) 1996-2002^c</u>									
All Stages									
Number of cases	145,771	73,357	72,414	119,572	60,440	59,132	14,323	6,610	7,713
Percent	100%	100%	100%	100%	100%	100%	100%	100%	100%
Localized	39	40	38	40	41	39	35	35	35
Regional	37	36	37	37	36	37	35	34	35
Distant	19	19	19	19	19	18	24	25	23
Unstaged	5	4	5	5	4	5	6	6	7
<u>5-YR RELATIVE SURVIVAL RATES, 1996-2002^c</u>									
AGE AT DIAGNOSIS:									
<45	64.6	64.5	64.7	67.0	65.9	68.3	55.0	57.9	52.2
45-54	66.4	66.1	66.8	67.4	66.7	68.4	59.9	60.8	59.0
55-64	66.2	66.2	66.3	67.2	67.3	67.2	57.3	56.3	58.4
65-74	66.4	66.4	66.3	67.3	67.0	67.6	57.3	58.2	56.6
75+	59.7	62.1	58.1	60.9	63.8	59.0	44.2	43.4	44.6
Under 65	66.0	65.9	66.2	67.3	66.9	67.8	57.8	58.1	57.6
65 and over	63.1	64.6	61.8	64.1	65.7	62.7	51.4	52.5	50.7
STAGE:									
All Stages	64.1	65.0	63.2	65.1	66.0	64.2	54.7	55.6	53.9
Localized	90.4	91.3	89.5	90.9	91.9	89.9	84.5	85.9	83.4
Regional	68.1	68.9	67.3	69.0	69.9	68.2	60.2	62.2	58.6
Distant	9.8	9.8	9.9	10.1	10.0	10.3	7.4	7.7	7.2
Unstaged	34.6	39.7	30.0	34.8	40.2	30.0	35.1	37.5	32.6

^a Rates are based on End Results data from a series of hospital registries and one population-based registry.

^b Rates are from the SEER 9 areas (San Francisco, Connecticut, Detroit, Hawaii, Iowa, New Mexico, Seattle, Utah, Atlanta).

Rates are based on follow-up of patients into 2003.

^c Rates are from the SEER 17 areas (San Francisco, Connecticut, Detroit, Hawaii, Iowa, New Mexico, Seattle, Utah, Atlanta, San Jose-Monterey, Los Angeles, Alaska Native Registry, Rural Georgia, California excluding SF/SJM/LA, Kentucky, Louisiana and New Jersey). California excluding SF/SJM/LA, Kentucky, Louisiana, and New Jersey contribute cases for diagnosis years 2000-2002. The remaining 13 SEER Areas contribute cases for the entire period 1996-2002. Rates are based on follow-up of patients into 2003.

^d Period survival provides a more up-to-date estimate of survival by piecing together the most recent conditional survival estimates from several cohorts. It is computed here using three calendar year blocks (2000-2002: 0-1 year survival), (1999-2001: 1-2 year survival), (1998-2000: 2-3 year survival), (1997-1999: 3-4 year survival), (1996-1998: 4-5 years survival).

^e The difference in rates between 1975-1977 and 1996-2002 is statistically significant ($p < .05$).

^f The standard error of the survival rate is between 5 and 10 percentage points.

^g The standard error of the survival rate is greater than 10 percentage points.

- Statistic could not be calculated due to fewer than 16 cases during the time period.

Table VI-10
COLON CANCER (Invasive)

SURVIVAL RATES, BY RACE, SEX, DIAGNOSIS YEAR, STAGE AND AGE

	All Races			Whites			Blacks		
	Total	Males	Females	Total	Males	Females	Total	Males	Females
<u>5-YR RELATIVE SURVIVAL RATES</u>									
YEAR OF DIAGNOSIS:									
1960-1963 ^a	-	-	-	43	42	44	34	32	35
1970-1973 ^a	-	-	-	49	47	50	37	36	38
1975-1977 ^b	51.3	50.7	51.9	51.6	51.1	52.0	46.3	45.3	46.7
1978-1980 ^b	53.4	52.4	54.2	53.6	52.6	54.4	49.5	47.7	50.7
1981-1983 ^b	56.4	56.9	56.0	56.7	57.5	56.0	49.7	46.0	52.4
1984-1986 ^b	59.0	59.4	58.7	59.8	60.2	59.4	49.8	49.4	50.1
1987-1989 ^b	61.2	61.8	60.6	61.7	62.5	60.9	53.2	51.6	54.5
1990-1992 ^b	63.2	63.7	62.7	64.0	64.5	63.6	54.4	56.2	53.0
1993-1995 ^b	61.3	61.8	60.9	62.1	62.5	61.7	52.5	52.2	52.6
1996-2002 ^b	64.8 ^e	66.3 ^e	63.5 ^e	66.1 ^e	67.6 ^e	64.8 ^e	54.3 ^e	56.3 ^e	52.7 ^e
<u>5-YR PERIOD SURVIVAL RATES^{cd}</u>									
YEAR OF DIAGNOSIS:									
1996-2002	64.4	66.0	63.0	65.9	67.6	64.4	54.1	55.6	52.9
<u>STAGE DISTRIBUTION (%) 1996-2002^c</u>									
All Stages									
Number of cases	103,458	49,526	53,932	84,847	40,852	43,995	10,824	4,812	6,012
Percent	100%	100%	100%	100%	100%	100%	100%	100%	100%
Localized	37	38	36	38	39	37	33	34	33
Regional	38	37	39	38	37	38	36	35	36
Distant	21	21	20	20	21	20	26	26	25
Unstaged	4	4	5	4	4	5	5	5	6
<u>5-YR RELATIVE SURVIVAL RATES, 1996-2002^c</u>									
AGE AT DIAGNOSIS:									
<45	62.9	64.9	60.5	65.6	65.4	65.8	52.6	60.1	45.9
45-54	64.2	64.6	63.6	65.1	65.5	64.6	58.0	57.9	58.2
55-64	65.3	65.5	65.2	66.6	67.0	66.1	55.8	55.6	55.9
65-74	66.3	66.8	65.9	67.4	67.3	67.4	58.5	61.1	56.5
75+	60.6	63.8	58.7	61.9	65.5	59.9	44.3	44.1	44.3
Under 65	64.6	65.1	64.0	66.0	66.3	65.6	56.0	57.1	55.1
65 and over	63.4	65.5	61.8	64.5	66.6	63.0	51.9	54.3	50.5
STAGE:									
All Stages	63.7	65.2	62.4	64.9	66.3	63.6	53.8	55.7	52.4
Localized	91.5	93.1	90.1	92.4	94.0	90.8	84.2	85.6	83.0
Regional	69.8	71.4	68.5	70.7	72.2	69.3	62.6	65.9	60.2
Distant	10.4	10.6	10.2	10.7	10.8	10.7	7.7	8.1	7.5
Unstaged	28.6	34.3	24.3	29.5	34.6	25.6	26.6	33.2 ^f	21.9

^a Rates are based on End Results data from a series of hospital registries and one population-based registry.

^b Rates are from the SEER 9 areas (San Francisco, Connecticut, Detroit, Hawaii, Iowa, New Mexico, Seattle, Utah, Atlanta).

Rates are based on follow-up of patients into 2003.

^c Rates are from the SEER 17 areas (San Francisco, Connecticut, Detroit, Hawaii, Iowa, New Mexico, Seattle, Utah, Atlanta, San Jose-Monterey, Los Angeles, Alaska Native Registry, Rural Georgia, California excluding SF/SJM/LA, Kentucky, Louisiana and New Jersey). California excluding SF/SJM/LA, Kentucky, Louisiana, and New Jersey contribute cases for diagnosis years 2000-2002. The remaining 13 SEER Areas contribute cases for the entire period 1996-2002. Rates are based on follow-up of patients into 2003.

^d Period survival provides a more up-to-date estimate of survival by piecing together the most recent conditional survival estimates from several cohorts. It is computed here using three calendar year blocks (2000-2002: 0-1 year survival), (1999-2001: 1-2 year survival), (1998-2000: 2-3 year survival), (1997-1999: 3-4 year survival), (1996-1998: 4-5 years survival).

^e The difference in rates between 1975-1977 and 1996-2002 is statistically significant ($p < .05$).

^f The standard error of the survival rate is between 5 and 10 percentage points.

^g The standard error of the survival rate is greater than 10 percentage points.

- Statistic could not be calculated due to fewer than 16 cases during the time period.

Table VI-11
RECTUM CANCER (Invasive)

SURVIVAL RATES, BY RACE, SEX, DIAGNOSIS YEAR, STAGE AND AGE

	All Races			Whites			Blacks		
	Total	Males	Females	Total	Males	Females	Total	Males	Females
<u>5-YR RELATIVE SURVIVAL RATES</u>									
YEAR OF DIAGNOSIS:									
1960-1963 ^a	-	-	-	38	36	41	27	28	27
1970-1973 ^a	-	-	-	45	43	48	30	20	40
1975-1977 ^b	49.0	47.9	50.3	49.2	48.3	50.3	45.0	41.6	47.8
1978-1980 ^b	50.2	49.7	50.7	51.1	50.6	51.7	35.1	35.0	34.9
1981-1983 ^b	52.9	51.4	54.7	53.7	52.3	55.3	40.9	38.2	43.5
1984-1986 ^b	57.1	56.3	58.2	57.9	57.2	58.8	46.4	44.0	48.7
1987-1989 ^b	58.9	58.8	59.2	59.5	59.8	59.2	53.6	49.0	58.0
1990-1992 ^b	60.5	59.8	61.4	61.3	60.6	62.2	52.0	54.2	49.4
1993-1995 ^b	61.9	61.0	62.9	62.4	61.6	63.3	55.4	53.7	57.2
1996-2002 ^b	65.9 ^e	65.6 ^e	66.3 ^e	66.4 ^e	66.0 ^e	66.9 ^e	58.6 ^e	57.9 ^e	59.2 ^e
<u>5-YR PERIOD SURVIVAL RATES^{cd}</u>									
YEAR OF DIAGNOSIS:									
1996-2002	65.7	65.4	66.1	66.5	66.3	66.8	56.4	55.7	56.9
<u>STAGE DISTRIBUTION (%) 1996-2002^c</u>									
All Stages									
Number of cases	42,313	23,831	18,482	34,725	19,588	15,137	3,499	1,798	1,701
Percent	100%	100%	100%	100%	100%	100%	100%	100%	100%
Localized	44	44	45	45	44	45	41	40	43
Regional	34	35	34	34	35	34	31	31	31
Distant	15	16	14	15	15	14	18	20	16
Unstaged	6	6	7	6	5	6	9	9	10
<u>5-YR RELATIVE SURVIVAL RATES, 1996-2002^c</u>									
AGE AT DIAGNOSIS:									
<45	67.4	63.7	71.8	69.2	66.6	72.4	60.0	53.3 ^f	67.7
45-54	69.9	68.0	72.7	70.9	68.3	74.9	63.9	66.0	61.1
55-64	67.9	67.4	68.8	68.5	67.7	69.7	61.0	57.5	65.3
65-74	66.6	65.7	67.8	67.3	66.5	68.4	53.4	49.9	56.5
75+	56.7	57.6	55.9	57.3	59.0	55.9	43.2	40.5 ^f	44.7
Under 65	68.5	67.0	70.7	69.4	67.7	71.9	61.9	59.9	64.3
65 and over	62.2	62.6	61.7	62.8	63.6	61.8	49.5	46.8	51.0
STAGE:									
All Stages	65.1	64.7	65.6	65.7	65.5	65.9	57.0	55.6	58.4
Localized	88.1	88.3	87.9	88.1	88.2	88.0	85.1	86.0	83.9
Regional	63.8	63.7	63.8	64.9	64.9	64.8	52.1	52.1	51.9
Distant	8.0	7.4	8.8	8.3	7.7	9.1	6.4	6.6	5.9
Unstaged	43.7	46.2	40.6	43.1	46.7	38.4	47.9	42.3 ^f	52.9 ^f

^a Rates are based on End Results data from a series of hospital registries and one population-based registry.

^b Rates are from the SEER 9 areas (San Francisco, Connecticut, Detroit, Hawaii, Iowa, New Mexico, Seattle, Utah, Atlanta).

Rates are based on follow-up of patients into 2003.

^c Rates are from the SEER 17 areas (San Francisco, Connecticut, Detroit, Hawaii, Iowa, New Mexico, Seattle, Utah, Atlanta, San Jose-Monterey, Los Angeles, Alaska Native Registry, Rural Georgia, California excluding SF/SJM/LA, Kentucky, Louisiana and New Jersey). California excluding SF/SJM/LA, Kentucky, Louisiana, and New Jersey contribute cases for diagnosis years 2000-2002. The remaining 13 SEER Areas contribute cases for the entire period 1996-2002. Rates are based on follow-up of patients into 2003.

^d Period survival provides a more up-to-date estimate of survival by piecing together the most recent conditional survival estimates from several cohorts. It is computed here using three calendar year blocks (2000-2002: 0-1 year survival), (1999-2001: 1-2 year survival), (1998-2000: 2-3 year survival), (1997-1999: 3-4 year survival), (1996-1998: 4-5 years survival).

^e The difference in rates between 1975-1977 and 1996-2002 is statistically significant ($p < .05$).

^f The standard error of the survival rate is between 5 and 10 percentage points.

^g The standard error of the survival rate is greater than 10 percentage points.

- Statistic could not be calculated due to fewer than 16 cases during the time period.

Table VI-12
COLON AND RECTUM CANCER (Invasive)

SURVIVAL RATES^a

By Year of Diagnosis

All Races, Males and Females

Year of Diagnosis

	1975- 1979	1980- 1984	1985	1986	1987	1988	1989	1990	1991	1992	1993	1994	1995	1996	1997	1998	1999	2000	2001	2002
Relative Survival Rates (SEER ^b)																				
1-year	74.7	78.1	79.9	81.3	80.9	80.3	81.3	81.9	82.5	81.8	80.9	81.8	80.3	82.1	81.2	82.8	83.0	82.7	83.8	84.0
2-year	63.7	67.9	70.8	72.0	71.9	71.8	72.4	73.5	74.0	73.4	72.8	73.2	72.3	74.4	73.4	75.7	75.6	75.4	76.7	
3-year	57.5	61.5	65.0	66.6	66.4	66.4	67.7	68.4	68.5	67.9	67.9	68.5	66.9	69.8	68.6	70.8	71.3	71.4		
4-year	53.8	57.6	61.3	62.8	62.5	62.9	63.7	64.3	65.0	64.4	64.1	64.5	63.3	66.4	65.8	68.0	68.6			
5-year	51.3	54.9	58.9	60.4	60.1	60.4	61.0	62.0	62.8	62.4	61.5	61.7	61.3	64.3	63.2	65.2				
6-year	49.6	53.0	57.2	58.4	58.5	58.8	59.7	60.7	61.0	61.1	60.1	60.3	59.0	63.1	61.6					
7-year	48.6	51.6	55.9	56.9	56.8	57.5	58.3	59.2	59.6	59.6	58.7	59.1	57.6	62.3						
8-year	47.7	50.7	55.1	55.8	56.1	56.6	57.3	58.0	58.5	58.2	57.8	58.3	57.2							
9-year	47.2	50.0	54.2	55.1	55.4	55.9	56.6	57.5	57.6	57.6	57.0	58.2								
10-year	46.6	49.3	53.6	54.8	54.9	55.2	55.9	57.1	57.2	57.0	56.6									
11-year	46.1	48.8	53.1	54.6	54.8	54.7	55.3	56.8	57.1	56.5										
12-year	45.7	48.5	53.0	54.6	54.4	54.1	55.2	56.6	57.1											
13-year	45.4	48.4	52.8	54.2	53.4	53.4	54.9	56.4												
14-year	45.0	48.0	52.6	53.8	53.4	53.4	54.9													
15-year	44.7	47.9	51.9	53.7	53.1	52.9														
16-year	44.4	47.6	51.9	53.5	52.9															
17-year	44.2	47.3	51.4	53.0																
18-year	43.9	47.2	51.1																	
19-year	43.9	47.0																		
20-year	43.9																			

^a Survival rates are relative rates expressed as percents.

^b Rates are from the SEER 9 areas (San Francisco, Connecticut, Detroit, Hawaii, Iowa, New Mexico, Seattle, Utah, and Atlanta).

Table VI-13
COLON AND RECTUM CANCER (Invasive)

SURVIVAL RATES^a

By Year of Diagnosis

All Races, Males

Year of Diagnosis

	1975- 1979	1980- 1984	1985	1986	1987	1988	1989	1990	1991	1992	1993	1994	1995	1996	1997	1998	1999	2000	2001	2002
Relative Survival Rates (SEER ^b)																				
1-year	74.7	79.0	81.1	82.5	81.8	81.1	82.1	83.0	83.3	82.8	81.6	82.9	81.8	83.5	82.2	83.1	84.3	84.7	85.9	84.1
2-year	63.8	68.3	72.1	73.2	73.1	73.3	73.3	74.4	75.0	74.3	73.5	74.2	73.7	76.1	74.9	76.0	76.5	77.7	78.7	
3-year	57.0	61.7	66.3	67.5	67.3	67.4	68.4	69.7	69.3	68.6	68.5	69.6	68.1	71.2	69.7	70.5	72.2	73.8		
4-year	52.9	57.3	62.1	63.6	62.8	62.8	64.3	65.1	65.3	64.6	64.3	64.9	64.5	67.1	67.2	67.5	69.5			
5-year	50.2	54.4	59.3	61.0	60.3	60.5	61.5	62.3	62.7	62.3	61.5	61.6	61.7	64.7	64.6	64.9				
6-year	48.2	52.3	57.5	58.5	58.9	58.8	60.0	60.8	60.3	61.0	60.3	60.1	59.2	63.6	62.9					
7-year	47.0	50.7	55.8	57.3	57.1	57.4	58.7	59.0	58.7	59.8	59.0	59.1	57.9	62.6						
8-year	46.1	49.6	55.2	56.3	56.3	56.5	58.1	57.9	57.6	58.2	58.3	57.8	57.6							
9-year	45.5	48.8	54.2	55.6	55.5	55.8	57.2	57.8	57.1	57.6	57.2	57.6								
10-year	44.7	48.1	53.6	55.4	55.2	55.4	56.3	57.6	56.8	57.2	56.6									
11-year	44.3	47.6	53.3	55.4	55.1	55.4	55.7	57.5	56.8	56.8										
12-year	43.7	47.3	53.2	55.3	54.4	55.0	55.6	57.5	56.8											
13-year	43.4	47.2	53.0	55.1	54.1	54.7	55.4	57.5												
14-year	42.8	46.8	52.8	54.8	54.1	54.7	55.3													
15-year	42.7	46.8	52.6	54.4	54.1	54.7														
16-year	42.3	46.8	52.4	54.4	54.1															
17-year	42.1	46.8	52.4	54.4																
18-year	42.0	46.8	52.4																	
19-year	42.0	46.8																		
20-year	42.0																			

^a Survival rates are relative rates expressed as percents.

^b Rates are from the SEER 9 areas (San Francisco, Connecticut, Detroit, Hawaii, Iowa, New Mexico, Seattle, Utah, and Atlanta).

Table VI-14
COLON AND RECTUM CANCER (Invasive)

SURVIVAL RATES^a

By Year of Diagnosis

All Races, Females

Year of Diagnosis

	1975- 1979	1980- 1984	1985	1986	1987	1988	1989	1990	1991	1992	1993	1994	1995	1996	1997	1998	1999	2000	2001	2002
Relative Survival Rates (SEER ^b)																				
1-year	74.8	77.2	78.8	80.0	79.9	79.4	80.5	80.6	81.7	80.6	80.2	80.7	78.7	80.7	80.1	82.6	81.7	80.8	81.6	83.9
2-year	63.7	67.5	69.5	70.7	70.7	70.2	71.4	72.5	73.0	72.4	72.1	72.3	70.9	72.6	71.9	75.5	74.7	73.1	74.7	
3-year	58.1	61.4	63.6	65.6	65.5	65.4	66.8	67.2	67.6	67.2	67.2	67.3	65.7	68.4	67.3	71.1	70.5	69.0		
4-year	54.6	57.8	60.5	62.0	62.1	63.0	63.2	63.4	64.8	64.2	63.9	64.1	62.1	65.7	64.4	68.5	67.6			
5-year	52.3	55.4	58.6	59.9	59.9	60.2	60.5	61.7	62.9	62.5	61.6	61.8	60.9	63.9	61.8	65.5				
6-year	50.9	53.7	57.0	58.2	58.0	58.9	59.3	60.6	61.6	61.0	59.9	60.5	58.9	62.7	60.3					
7-year	49.9	52.4	56.1	56.5	56.5	57.6	57.9	59.4	60.6	59.4	58.4	59.1	57.2	61.9						
8-year	49.2	51.6	55.1	55.2	56.0	56.7	56.5	58.2	59.5	58.2	57.3	58.8	56.8							
9-year	48.7	51.0	54.2	54.7	55.3	56.0	56.0	57.1	58.1	57.6	56.9	58.7								
10-year	48.2	50.4	53.6	53.9	54.5	55.1	55.3	56.6	57.6	56.7	56.7									
11-year	47.7	50.0	52.9	53.8	54.4	53.8	54.7	56.0	57.0	56.1										
12-year	47.4	49.6	52.9	53.8	54.4	53.2	54.7	55.7	56.9											
13-year	47.2	49.4	52.6	53.4	52.8	52.2	54.4	55.2												
14-year	46.8	49.0	52.4	52.6	52.6	51.4	54.4													
15-year	46.4	48.7	51.3	52.6	51.8	51.0														
16-year	46.1	48.0	50.8	52.4	51.3															
17-year	45.9	47.8	50.1	51.2																
18-year	45.4	47.5	49.4																	
19-year	45.4	47.1																		
20-year	45.4																			

^a Survival rates are relative rates expressed as percents.

^b Rates are from the SEER 9 areas (San Francisco, Connecticut, Detroit, Hawaii, Iowa, New Mexico, Seattle, Utah, and Atlanta).

Table VI-15
COLON AND RECTUM CANCER (Invasive)

Percent Diagnosed With Cancer In 10, 20 and 30 Years and In Remaining Lifetime,
 Given Cancer Free At Current Age By Race and Sex

Lifetime Risk (Percent) of Being Diagnosed (17 SEER Areas) With Cancer and
 Lifetime Risk (Percent) of Dying (Total U.S.) From Cancer

2001-2003

Race/ Ethnicity	Current Age	Males				Females			
		+10 yrs	+20 yrs	+30 yrs	Eventually	+10 yrs	+20 yrs	+30 yrs	Eventually
All Races	0	0.00	0.00	0.02	5.79	0.00	0.00	0.01	5.37
	10	0.00	0.02	0.08	5.87	0.00	0.01	0.07	5.43
	20	0.01	0.07	0.29	5.90	0.01	0.07	0.26	5.44
	30	0.06	0.28	0.98	5.96	0.05	0.25	0.77	5.45
	40	0.22	0.93	2.41	6.01	0.20	0.73	1.81	5.45
	50	0.74	2.27	4.34	6.01	0.54	1.64	3.35	5.37
	60	1.67	3.91	5.39	5.73	1.16	2.96	4.61	5.09
White	0	0.00	0.00	0.02	5.79	0.00	0.00	0.01	5.34
	10	0.00	0.02	0.07	5.86	0.00	0.01	0.07	5.39
	20	0.01	0.07	0.28	5.89	0.01	0.07	0.25	5.41
	30	0.06	0.27	0.94	5.95	0.05	0.24	0.74	5.42
	40	0.21	0.90	2.37	5.99	0.19	0.69	1.75	5.41
	50	0.71	2.24	4.32	5.99	0.51	1.60	3.31	5.33
	60	1.65	3.90	5.39	5.71	1.14	2.94	4.60	5.06
Black	0	0.00	0.00	0.01	5.17	0.00	0.00	0.01	5.41
	10	0.00	0.01	0.08	5.31	0.00	0.01	0.07	5.53
	20	0.01	0.08	0.35	5.36	0.01	0.07	0.33	5.54
	30	0.07	0.35	1.23	5.49	0.06	0.32	1.05	5.58
	40	0.29	1.20	2.77	5.60	0.27	1.01	2.34	5.62
	50	0.98	2.66	4.44	5.69	0.78	2.17	3.89	5.59
	60	1.96	4.04	5.20	5.50	1.53	3.42	4.87	5.29
Asian/ Pacific Islander	0	0.00	0.00	0.02	6.16	0.00	0.00	0.01	5.50
	10	0.00	0.02	0.09	6.22	0.00	0.01	0.06	5.55
	20	0.02	0.08	0.28	6.24	0.01	0.06	0.26	5.56
	30	0.07	0.27	0.89	6.27	0.05	0.25	0.72	5.56
	40	0.20	0.83	2.15	6.25	0.19	0.67	1.53	5.54
	50	0.64	1.98	4.07	6.17	0.48	1.35	2.79	5.41
	60	1.41	3.59	5.31	5.80	0.90	2.39	4.10	5.09
Hispanic ^a	0	0.00	0.00	0.01	5.03	0.00	0.00	0.01	4.48
	10	0.00	0.01	0.06	5.09	0.00	0.01	0.06	4.53
	20	0.01	0.06	0.22	5.12	0.01	0.06	0.21	4.54
	30	0.05	0.21	0.76	5.17	0.05	0.20	0.60	4.54
	40	0.17	0.72	1.97	5.19	0.15	0.55	1.40	4.52
	50	0.57	1.86	3.63	5.19	0.41	1.27	2.54	4.45
	60	1.38	3.28	4.59	4.95	0.89	2.20	3.55	4.19

Race/Ethnicity	Lifetime Risk of Developing		Lifetime Risk of Dying	
	Males	Females	Males	Females
All Races	5.79%	5.37%	0.05%	0.10%
White	5.79%	5.34%	0.05%	0.10%
Black	5.17%	5.41%	0.04%	0.11%
Asian/Pacific Islander	6.16%	5.50%	0.11%	0.13%
Hispanic ^a	5.03%	4.48%	0.09%	0.19%

Devcan Version 6.1.0, April 2006, National Cancer Institute (<http://srab.cancer.gov/devcan/>).

Source: Incidence data are from the SEER 17 areas (San Francisco, Connecticut, Detroit, Hawaii, Iowa, New Mexico, Seattle, Utah, Atlanta, San Jose-Monterey, Los Angeles, Alaska Native Registry, Rural Georgia, California excluding SF/SJM/LA, Kentucky, Louisiana and New Jersey). Mortality data are from the NCHS public use data file for the total US.

^a Hispanic is not mutually exclusive from Whites, Blacks, Asian/Pacific Islanders, and American Indians/Alaska Natives. Underlying incidence data for Hispanics are based on NHIA and exclude cases from Hawaii, Seattle, Alaska Native Registry and Kentucky. Underlying mortality data for Hispanics exclude deaths from Minnesota, New Hampshire and North Dakota.

Table VI-16
COLON AND RECTUM CANCER (Invasive)

SEER INCIDENCE AND U.S. MORTALITY
AGE-ADJUSTED RATES AND TRENDS^a
 By Race/Ethnicity and Sex

SEER Incidence

RACE/ETHNICITY	Rate 2000-2003 ^b			Trend 1994-2003 ^c		
	Rate per 100,000 persons			APC (%)		
	Total	Males	Females	Total	Males	Females
All Races	52.4	61.7	45.3	-1.0*	-1.3*	-0.8*
White	52.0	61.4	44.7	-1.1*	-1.5*	-0.8*
White Hispanic ^d	39.6	48.0	33.1	-0.8	-0.9	-0.9
White Non-Hispanic ^d	53.2	62.7	45.7	-1.0*	-1.4*	-0.7
Black	62.8	72.9	56.1	-0.3	-0.1	-0.4
Asian/Pacific Islander	42.4	51.2	35.7	-0.7	-0.9*	-0.3
Amer Ind/Alaska Nat ^e	46.5	52.7	41.9	-1.4	-2.4	-0.4
Hispanic ^d	39.0	47.3	32.7	-0.7	-0.8	-0.8

U.S. Mortality^f

RACE/ETHNICITY	Rate 2000-2003			Trend 1994-2003		
	Rate per 100,000 persons			APC (%)		
	Total	Males	Females	Total	Males	Females
All Races	19.8	24.0	16.8	-1.9*	-2.1*	-1.9*
White	19.3	23.4	16.2	-2.0*	-2.2*	-2.0*
White Hispanic ^d	14.3	18.0	11.7	-0.5*	-0.9*	-0.3
White Non-Hispanic ^d	19.6	23.8	16.5	-2.0*	-2.2*	-2.0*
Black	27.3	33.4	23.4	-1.0*	-1.0*	-1.1*
Asian/Pacific Islander	12.6	15.4	10.5	-1.7*	-1.5*	-1.9*
Amer Ind/Alaska Nat	13.0	15.6	11.0	-1.9	-1.5	-2.3
Hispanic ^d	13.8	17.3	11.3	-0.5*	-1.0*	-0.3

- The APC is the Annual Percent Change over the time interval.
- Statistic not shown. Rate based on less than 16 cases for the time interval. Trend based on less than 10 cases for at least one year within the time interval.
- ^a Rates are age-adjusted to the 2000 US Std Population (19 age groups - Census P25-1130). Trends are based on rates age-adjusted to the 2000 US Std Population (19 age groups - Census P25-1130).
- ^b Incidence data used in calculating the rates are from the 17 SEER areas (San Francisco, Connecticut, Detroit, Hawaii, Iowa, New Mexico, Seattle, Utah, Atlanta, San Jose-Monterey, Los Angeles, Alaska Native Registry, Rural Georgia, California excluding SF/SJM/LA, Kentucky, Louisiana and New Jersey).
- ^c Incidence data used in calculating the trends are from the 13 SEER areas (San Francisco, Connecticut, Detroit, Hawaii, Iowa, New Mexico, Seattle, Utah, Atlanta, San Jose-Monterey, Los Angeles, Alaska Native Registry and Rural Georgia).
- ^d Hispanic and Non-Hispanic are not mutually exclusive from Whites, Blacks, Asian/Pacific Islanders, and American Indians/Alaska Natives. Incidence data for Hispanics and Non-Hispanics are based on NHIA and exclude cases from Hawaii, Seattle, Alaska Native Registry and Kentucky. The 2000-2003 Hispanic and Non-Hispanic death rates exclude deaths from Minnesota, New Hampshire and North Dakota. The 1994-2003 Hispanic and Non-Hispanic mortality trends exclude deaths from Maine, Minnesota, New Hampshire, North Dakota, and Oklahoma.
- ^e Incidence data for American Indians/Alaska Natives include cases from Connecticut, Detroit, Iowa, New Mexico, Seattle, Utah, Atlanta, and the Alaska Native Registry. Incidence rates are for diagnosis years 1999-2002. Incidence trends are for diagnosis years 1994-2002.
- ^f Mortality data are analyzed from a public use file provided by the National Center for Health Statistics (NCHS).
- * The APC is significantly different from zero (p<.05).

Table VI-17
COLON CANCER (Invasive) and RECTUM CANCER (Invasive)

SEER INCIDENCE
AGE-ADJUSTED RATES AND TRENDS^a
 By Race/Ethnicity and Sex

Colon Incidence

RACE/ETHNICITY	Rate 2000-2003 ^b			Trend 1994-2003 ^c		
	Rate per 100,000 persons			APC (%)		
	Total	Males	Females	Total	Males	Females
All Races	37.9	43.1	34.0	-1.0*	-1.4*	-0.8*
White	37.6	42.7	33.6	-1.1*	-1.6*	-0.8*
White Hispanic ^d	27.5	32.0	24.1	-0.4	-0.4	-0.7
White Non-Hispanic ^d	38.5	43.9	34.3	-1.1*	-1.5*	-0.8
Black	48.5	55.3	44.0	-0.2	0.1	-0.5
Asian/Pacific Islander	28.6	33.3	25.1	-0.6	-0.8	-0.4
Amer Ind/Alaska Nat ^e	32.5	34.0	31.5	-2.0	-3.6	-0.5
Hispanic ^d	27.1	31.4	23.9	-0.4	-0.3	-0.6

Rectum Incidence

RACE/ETHNICITY	Rate 2000-2003 ^b			Trend 1994-2003 ^c		
	Rate per 100,000 persons			APC (%)		
	Total	Males	Females	Total	Males	Females
All Races	14.5	18.6	11.2	-0.9	-1.3*	-0.7
White	14.5	18.6	11.1	-1.0	-1.3*	-0.9
White Hispanic ^d	12.1	16.0	9.0	-1.6*	-1.9*	-1.3
White Non-Hispanic ^d	14.7	18.8	11.3	-0.9	-1.3*	-0.7
Black	14.3	17.5	12.1	-0.5	-1.0	0.1
Asian/Pacific Islander	13.8	18.0	10.6	-0.8	-1.3	-0.1
Amer Ind/Alaska Nat ^e	14.0	18.7	10.4	-0.6	-0.7	-
Hispanic ^d	11.9	15.8	8.8	-1.4	-1.8	-1.2

- The APC is the Annual Percent Change over the time interval.
 - Statistic not shown. Rate based on less than 16 cases for the time interval. Trend based on less than 10 cases for at least one year within the time interval.
 a Rates are age-adjusted to the 2000 US Std Population (19 age groups - Census P25-1130). Trends are based on rates age-adjusted to the 2000 US Std Population (19 age groups - Census P25-1130).
 b Incidence data used in calculating the rates are from the 17 SEER areas (San Francisco, Connecticut, Detroit, Hawaii, Iowa, New Mexico, Seattle, Utah, Atlanta, San Jose-Monterey, Los Angeles, Alaska Native Registry, Rural Georgia, California excluding SF/SJM/LA, Kentucky, Louisiana and New Jersey).
 c Incidence data used in calculating the trends are from the 13 SEER areas (San Francisco, Connecticut, Detroit, Hawaii, Iowa, New Mexico, Seattle, Utah, Atlanta, San Jose-Monterey, Los Angeles, Alaska Native Registry and Rural Georgia).
 d Hispanic and Non-Hispanic are not mutually exclusive from Whites, Blacks, Asian/Pacific Islanders, and American Indians/Alaska Natives. Incidence data for Hispanics and Non-Hispanics are based on NHIA and exclude cases from Hawaii, Seattle, Alaska Native Registry and Kentucky.
 e Incidence data for American Indians/Alaska Natives include cases from Connecticut, Detroit, Iowa, New Mexico, Seattle, Utah, Atlanta, and the Alaska Native Registry. Incidence rates are for diagnosis years 1999-2002. Incidence trends are for diagnosis years 1994-2002.
 * The APC is significantly different from zero (p<.05).

Table VI-18
 COLON AND RECTUM CANCER (Invasive)
 AGE-ADJUSTED SEER INCIDENCE RATES^a
 By Registry, Race/Ethnicity and Sex

	All Races			Whites		Blacks		Asian/Pacific Islanders		Hispanics ^b	
	Total	Males	Females	Males	Females	Males	Females	Males	Females	Males	Females
<u>SEER INCIDENCE RATES^a, 2000-2003</u>											
REGISTRY											
17 SEER Areas ^c	52.4	61.7	45.3	61.4	44.7	72.9	56.1	51.2	35.7	47.3	32.7
13 SEER Areas ^c	51.1	59.8	44.4	59.0	43.8	71.6	54.9	54.7	37.9	45.9	30.9
11 SEER Areas ^c	51.1	59.7	44.3	59.0	43.8	71.6	55.0	54.7	37.9	45.9	30.9
9 SEER Areas ^c	52.2	61.0	45.2	60.2	44.8	73.0	55.2	55.9	37.6	51.6	34.2
San Francisco-Oakland	48.0	56.3	41.4	56.2	41.2	57.6	43.9	50.6	38.0	50.4	31.9
Connecticut	57.3	67.9	49.4	67.9	48.8	63.0	54.0	46.3	17.9	65.1	45.1
Metropolitan Detroit	56.8	66.9	49.5	63.4	46.7	82.3	61.2	44.7	26.5	47.1	28.7
Hawaii	52.2	66.0	40.8	62.3	41.0	-	-	67.1	40.5	-	-
Iowa	60.1	69.8	52.2	69.5	51.8	86.1	57.6	-	-	22.1	29.7
New Mexico	42.7	50.9	35.7	52.1	36.7	38.5	36.7	-	-	54.3	33.5
Seattle-Puget Sound	48.7	55.5	43.0	56.1	43.2	55.8	49.5	43.4	37.8	-	-
Utah	41.8	47.5	37.1	47.6	37.4	-	-	48.0	24.2	41.7	34.0
Metropolitan Atlanta	50.7	59.0	44.9	53.7	40.8	79.2	56.1	41.3	29.6	30.2	37.5
San Jose-Monterey	45.0	51.9	39.6	53.5	40.8	54.9	37.3	43.1	31.8	45.7	27.2
Los Angeles	49.0	57.5	42.5	56.2	41.1	68.7	55.3	56.3	39.9	42.0	29.3
Rural Georgia	52.7	67.0	43.1	62.8	39.0	75.5	49.9	-	-	-	-
California exclud. SF/SJM/LA	46.9	55.6	40.0	56.3	40.3	58.7	49.5	41.2	29.7	46.8	32.3
Kentucky	60.8	71.5	53.1	70.9	52.2	83.6	70.0	76.9	-	-	-
Louisiana	59.4	72.6	49.7	71.1	46.6	77.9	59.2	49.7	40.3	43.9	35.2
New Jersey	60.4	71.7	52.1	71.4	51.6	79.0	56.9	44.0	29.9	57.6	44.2

^a Rates are per 100,000 and are age-adjusted to the 2000 US Std Population (19 age groups - Census P25-1130)

^b Hispanic is not mutually exclusive from Whites, Blacks, Asian/Pacific Islanders, and American Indians/Alaska Natives.

Incidence data for Hispanics are based on NHIA and exclude cases from Hawaii, Seattle, Alaska Native Registry and Kentucky.

^c The SEER 9 areas are San Francisco, Connecticut, Detroit, Hawaii, Iowa, New Mexico, Seattle, Utah and Atlanta.

The SEER 11 areas comprise the SEER 9 areas plus San Jose-Monterey and Los Angeles.

The SEER 13 areas comprise the SEER 11 areas plus the Alaska Native Registry and Rural Georgia.

The SEER 17 areas comprise the SEER 13 areas plus California excluding SF/SJM/LA, Kentucky, Louisiana and New Jersey

- Statistic not shown. Rate based on less than 16 cases for the time interval.

Table VI-19
COLON AND RECTUM CANCER (Invasive)

AGE-ADJUSTED SEER DEATH RATES^a
By Registry, Race/Ethnicity and Sex

	All Races			Whites		Blacks		Asian/Pacific Islanders		Hispanics ^b	
	Total	Males	Females	Males	Females	Males	Females	Males	Females	Males	Females
<u>SEER DEATH RATES^a, 2000-2003</u>											
REGISTRY											
17 SEER Areas ^c	19.1	22.9	16.3	22.6	15.9	32.8	24.1	16.8	11.0	16.4	10.5
13 SEER Areas ^c	18.0	21.5	15.4	21.1	15.1	31.1	22.9	17.7	11.4	17.0	10.7
11 SEER Areas ^c	18.0	21.5	15.4	21.2	15.1	31.1	22.8	17.7	11.5	17.0	10.7
9 SEER Areas ^c	18.4	21.9	15.8	21.5	15.4	30.6	22.5	18.7	11.9	20.0	12.2
San Francisco-Oakland	17.5	20.4	15.3	20.2	15.3	28.3	20.9	18.0	12.4	16.3	9.9
Connecticut	19.1	23.0	16.4	23.1	16.1	25.6	21.1	-	-	14.9	9.1
Metropolitan Detroit	20.0	24.4	17.0	22.9	15.5	32.0	23.1	-	-	26.2	-
Hawaii	16.7	21.7	12.7	21.4	13.3	-	-	22.1	12.6	28.5	24.2
Iowa	20.7	24.9	17.7	24.8	17.7	44.9	-	-	-	-	-
New Mexico	17.5	21.2	14.4	21.5	14.7	-	-	-	-	24.0	15.6
Seattle-Puget Sound	17.1	19.8	14.8	19.9	14.7	24.0	23.7	13.2	11.9	-	-
Utah	15.3	17.8	13.5	17.7	13.6	-	-	-	-	20.9	-
Metropolitan Atlanta	18.3	21.7	16.3	18.1	13.3	33.8	24.4	16.2	-	-	-
San Jose-Monterey	14.6	17.9	12.1	18.8	12.7	30.9	21.2	12.7	8.5	16.7	7.9
Los Angeles	17.5	21.0	15.0	20.3	14.5	32.6	23.8	17.5	11.4	14.8	10.0
Rural Georgia	20.8	26.6	16.4	23.6	11.3	32.3	26.2	-	-	-	-
California exclud. SF/SJM/LA	17.5	20.6	15.1	20.8	15.1	28.7	24.9	15.4	10.4	15.0	10.1
Kentucky	23.5	28.9	19.8	28.5	19.1	37.5	32.5	-	-	-	-
Louisiana	23.6	30.0	19.0	27.5	16.8	39.3	25.8	-	-	16.3	-
New Jersey	22.1	26.7	18.9	26.6	18.7	32.5	23.5	11.1	7.3	18.6	11.2
Total U.S.	19.8	24.0	16.8	23.4	16.2	33.4	23.4	15.4	10.5	17.3	11.3

^a NCHS public use data file for the total US. Rates are per 100,000 and are age-adjusted to the 2000 US Std Population (19 age groups - Census P25-1130).

^b Hispanic is not mutually exclusive from Whites, Blacks, Asian/Pacific Islanders, and American Indians/Alaska Natives. The 2000-2003 Hispanic death rates do not include deaths from Minnesota, New Hampshire and North Dakota.

^c The SEER 9 areas are San Francisco, Connecticut, Detroit, Hawaii, Iowa, New Mexico, Seattle, Utah and Atlanta.

The SEER 11 areas comprise the SEER 9 areas plus San Jose-Monterey and Los Angeles.

The SEER 13 areas comprise the SEER 11 areas plus the Alaska Native Registry and Rural Georgia.

The SEER 17 areas comprise the SEER 13 areas plus California excluding SF/SJM/LA, Kentucky, Louisiana and New Jersey

- Statistic not shown. Rate based on less than 16 cases for the time interval.

Table VI-20
COLON AND RECTUM CANCER (Invasive)

AVERAGE ANNUAL AGE-ADJUSTED CANCER DEATH^a RATES BY STATE, ALL RACES, 2000-2003

Males and Females

State	Rate	SE	Rank	PD	State	Rate	SE	Rank	PD
TOTAL U.S.	19.8	0.04							
High Five States									
District of Columbia	24.8 ^{bc}	1.06	(01)	25.3					
Louisiana	23.6 ^{bc}	0.38	(02)	19.2					
Kentucky	23.5 ^{bc}	0.38	(03)	18.7					
West Virginia	23.1 ^{bc}	0.52	(04)	16.7					
Mississippi	22.3 ^{bc}	0.45	(05)	12.6					
Low Five States									
Arizona	17.3 ^{bc}	0.29	(47)	-12.6					
California	17.3 ^{bc}	0.12	(48)	-12.6					
Hawaii	16.7 ^{bc}	0.56	(49)	-15.7					
Idaho	16.0 ^{bc}	0.57	(50)	-19.2					
Utah	15.3 ^{bc}	0.49	(51)	-22.7					
Alabama	19.0	0.32	(38)	-4.0	Montana	18.3	0.68	(41)	-7.6
Alaska	20.1	1.32	(30)	1.5	Nebraska	20.9	0.53	(18)	5.6
Arizona	17.3 ^{bc}	0.29	(47)	-12.6	Nevada	21.8 ^{bc}	0.56	(08)	10.1
Arkansas	21.3	0.43	(13)	7.6	New Hampshire	20.4	0.64	(26)	3.0
California	17.3 ^{bc}	0.12	(48)	-12.6	New Jersey	22.1 ^{bc}	0.25	(06)	11.6
Colorado	17.5 ^{bc}	0.35	(45)	-11.6	New Mexico	17.5 ^{bc}	0.50	(46)	-11.6
Connecticut	19.1	0.35	(37)	-3.5	New York	20.5 ^c	0.16	(23)	3.5
Delaware	20.5	0.79	(24)	3.5	North Carolina	19.3	0.25	(33)	-2.5
District of Columbia	24.8 ^{bc}	1.06	(01)	25.3	North Dakota	19.5	0.81	(32)	-1.5
Florida	17.9 ^c	0.15	(43)	-9.6	Ohio	21.6 ^c	0.21	(10)	9.1
Georgia	19.5	0.27	(31)	-1.5	Oklahoma	20.4	0.38	(25)	3.0
Hawaii	16.7 ^{bc}	0.56	(49)	-15.7	Oregon	18.1 ^c	0.35	(42)	-8.6
Idaho	16.0 ^{bc}	0.57	(50)	-19.2	Pennsylvania	21.7 ^c	0.19	(09)	9.6
Illinois	22.1 ^{bc}	0.21	(07)	11.6	Rhode Island	20.6	0.65	(22)	4.0
Indiana	21.5 ^c	0.30	(11)	8.6	South Carolina	20.7	0.36	(21)	4.5
Iowa	20.7	0.39	(20)	4.5	South Dakota	21.1	0.78	(16)	6.6
Kansas	19.2	0.41	(36)	-3.0	Tennessee	21.2 ^c	0.30	(15)	7.1
Kentucky	23.5 ^{bc}	0.38	(03)	18.7	Texas	18.9 ^c	0.17	(39)	-4.5
Louisiana	23.6 ^{bc}	0.38	(02)	19.2	Utah	15.3 ^{bc}	0.49	(51)	-22.7
Maine	21.2	0.60	(14)	7.1	Vermont	20.2	0.89	(28)	2.0
Maryland	21.4 ^c	0.33	(12)	8.1	Virginia	20.2	0.28	(29)	2.0
Massachusetts	20.7	0.27	(19)	4.5	Washington	17.7 ^{bc}	0.28	(44)	-10.6
Michigan	19.2	0.22	(35)	-3.0	West Virginia	23.1 ^{bc}	0.52	(04)	16.7
Minnesota	18.4 ^c	0.30	(40)	-7.1	Wisconsin	19.3	0.29	(34)	-2.5
Mississippi	22.3 ^{bc}	0.45	(05)	12.6	Wyoming	20.4	1.04	(27)	3.0
Missouri	21.0 ^c	0.29	(17)	6.1					

^a NCHS public use data file. Rates are per 100,000 and are age-adjusted to the 2000 US Std Population (19 age groups - Census P25-1130).

^b Absolute percent difference between state rate and total U.S. rate is 10% or more.

^c Difference between state rate and total U.S. rate is statistically significant ($p \leq .0002$).

SE Standard error of the rate.

PD Percent difference between state rate and total U.S. rate.

Table VI-21
COLON AND RECTUM CANCER (Invasive)

AVERAGE ANNUAL AGE-ADJUSTED CANCER DEATH^a RATES BY STATE, ALL RACES, 2000-2003

Males

State	Rate	SE	Rank	PD	State	Rate	SE	Rank	PD
TOTAL U.S.	24.0	0.07							
High Five States									
District of Columbia	31.4 ^{bc}	1.95	(01)	30.8					
Louisiana	30.0 ^{bc}	0.68	(02)	25.0					
Kentucky	28.9 ^{bc}	0.69	(03)	20.4					
West Virginia	27.5 ^{bc}	0.90	(04)	14.6					
Illinois	27.5 ^{bc}	0.38	(05)	14.6					
Low Five States									
Washington	20.7 ^{bc}	0.47	(47)	-13.8					
California	20.5 ^{bc}	0.20	(48)	-14.6					
Wyoming	20.5 ^b	1.60	(49)	-14.6					
Idaho	19.4 ^{bc}	0.96	(50)	-19.2					
Utah	17.8 ^{bc}	0.82	(51)	-25.8					
Alabama	24.3	0.59	(26)	1.3	Montana	22.7	1.16	(39)	-5.4
Alaska	24.2	2.32	(28)	0.8	Nebraska	25.0	0.91	(22)	4.2
Arizona	20.8 ^{bc}	0.48	(46)	-13.3	Nevada	26.6 ^d	0.94	(10)	10.8
Arkansas	26.3	0.75	(12)	9.6	New Hampshire	24.8	1.12	(25)	3.3
California	20.5 ^{bc}	0.20	(48)	-14.6	New Jersey	26.7 ^{bc}	0.43	(08)	11.3
Colorado	20.8 ^{bc}	0.61	(45)	-13.3	New Mexico	21.2 ^b	0.84	(44)	-11.7
Connecticut	23.0	0.61	(36)	-4.2	New York	25.1 ^c	0.28	(20)	4.6
Delaware	25.1	1.38	(21)	4.6	North Carolina	23.5	0.44	(32)	-2.1
District of Columbia	31.4 ^{bc}	1.95	(01)	30.8	North Dakota	23.0	1.36	(35)	-4.2
Florida	21.6 ^{bc}	0.24	(42)	-10.0	Ohio	25.9 ^c	0.37	(13)	7.9
Georgia	23.8	0.49	(30)	-0.8	Oklahoma	25.6	0.67	(15)	6.7
Hawaii	21.7	0.96	(41)	-9.6	Oregon	21.7 ^c	0.59	(40)	-9.6
Idaho	19.4 ^{bc}	0.96	(50)	-19.2	Pennsylvania	26.7 ^{bc}	0.33	(09)	11.3
Illinois	27.5 ^{bc}	0.38	(05)	14.6	Rhode Island	23.8	1.12	(29)	-0.8
Indiana	27.0 ^{bc}	0.53	(07)	12.5	South Carolina	25.3	0.64	(19)	5.4
Iowa	24.9	0.67	(24)	3.8	South Dakota	25.4	1.33	(18)	5.8
Kansas	22.8	0.70	(38)	-5.0	Tennessee	26.4 ^{bc}	0.55	(11)	10.0
Kentucky	28.9 ^{bc}	0.69	(03)	20.4	Texas	23.0	0.29	(37)	-4.2
Louisiana	30.0 ^{bc}	0.68	(02)	25.0	Utah	17.8 ^{bc}	0.82	(51)	-25.8
Maine	24.9	1.02	(23)	3.8	Vermont	23.2	1.49	(34)	-3.3
Maryland	25.6	0.57	(14)	6.7	Virginia	24.2	0.49	(27)	0.8
Massachusetts	25.5	0.48	(16)	6.3	Washington	20.7 ^{bc}	0.47	(47)	-13.8
Michigan	23.4	0.38	(33)	-2.5	West Virginia	27.5 ^{bc}	0.90	(04)	14.6
Minnesota	21.5 ^{bc}	0.52	(43)	-10.4	Wisconsin	23.8	0.51	(31)	-0.8
Mississippi	27.2 ^{bc}	0.80	(06)	13.3	Wyoming	20.5 ^d	1.60	(49)	-14.6
Missouri	25.5	0.52	(17)	6.3					

^a NCHS public use data file. Rates are per 100,000 and are age-adjusted to the 2000 US Std Population (19 age groups - Census P25-1130).

^b Absolute percent difference between state rate and total U.S. rate is 10% or more.

^c Difference between state rate and total U.S. rate is statistically significant ($p \leq .0002$).

SE Standard error of the rate.

PD Percent difference between state rate and total U.S. rate.

Table VI-22
COLON AND RECTUM CANCER (Invasive)

AVERAGE ANNUAL AGE-ADJUSTED CANCER DEATH^a RATES BY STATE, ALL RACES, 2000-2003

Females

State	Rate	SE	Rank	PD	State	Rate	SE	Rank	PD
TOTAL U.S.	16.8	0.05							
High Five States									
District of Columbia	20.9 ^b	1.25	(01)	24.4					
Wyoming	19.9 ^b	1.36	(02)	18.5					
Kentucky	19.8 ^{bc}	0.45	(03)	17.9					
West Virginia	19.8 ^{bc}	0.63	(04)	17.9					
Mississippi	19.0 ^{bc}	0.54	(05)	13.1					
Low Five States									
Arizona	14.5 ^{bc}	0.35	(47)	-13.7					
New Mexico	14.4 ^{bc}	0.60	(48)	-14.3					
Utah	13.5 ^{bc}	0.61	(49)	-19.6					
Idaho	13.3 ^{bc}	0.69	(50)	-20.8					
Hawaii	12.7 ^{bc}	0.66	(51)	-24.4					
Alabama	15.5	0.38	(40)	-7.7	Montana	14.8 ^d	0.82	(46)	-11.9
Alaska	17.2	1.63	(29)	2.4	Nebraska	17.8	0.64	(17)	6.0
Arizona	14.5 ^{bc}	0.35	(47)	-13.7	Nevada	17.8	0.68	(16)	6.0
Arkansas	17.8	0.51	(18)	6.0	New Hampshire	17.4	0.78	(24)	3.6
California	14.9 ^{bc}	0.15	(44)	-11.3	New Jersey	18.9 ^{bc}	0.30	(07)	12.5
Colorado	15.1 ^{bc}	0.43	(43)	-10.1	New Mexico	14.4 ^{bc}	0.60	(48)	-14.3
Connecticut	16.4	0.43	(34)	-2.4	New York	17.5 ^c	0.19	(23)	4.2
Delaware	17.2	0.95	(28)	2.4	North Carolina	16.5	0.30	(33)	-1.8
District of Columbia	20.9 ^b	1.25	(01)	24.4	North Dakota	16.8	1.00	(31)	0.0
Florida	14.9 ^{bc}	0.18	(45)	-11.3	Ohio	18.4 ^c	0.25	(10)	9.5
Georgia	16.7	0.32	(32)	-0.6	Oklahoma	16.8	0.45	(30)	0.0
Hawaii	12.7 ^{bc}	0.66	(51)	-24.4	Oregon	15.3	0.43	(41)	-8.9
Idaho	13.3 ^{bc}	0.69	(50)	-20.8	Pennsylvania	18.2 ^c	0.23	(13)	8.3
Illinois	18.4 ^c	0.25	(09)	9.5	Rhode Island	18.6 ^b	0.81	(08)	10.7
Indiana	17.6	0.35	(22)	4.8	South Carolina	17.2	0.43	(27)	2.4
Iowa	17.7	0.47	(20)	5.4	South Dakota	17.9	0.96	(15)	6.5
Kansas	16.3	0.50	(35)	-3.0	Tennessee	17.6	0.36	(21)	4.8
Kentucky	19.8 ^{bc}	0.45	(03)	17.9	Texas	15.8 ^c	0.20	(39)	-6.0
Louisiana	19.0 ^{bc}	0.44	(06)	13.1	Utah	13.5 ^{bc}	0.61	(49)	-19.6
Maine	18.3	0.72	(12)	8.9	Vermont	18.0	1.10	(14)	7.1
Maryland	18.3 ^c	0.39	(11)	8.9	Virginia	17.3	0.33	(26)	3.0
Massachusetts	17.4	0.32	(25)	3.6	Washington	15.3 ^c	0.35	(42)	-8.9
Michigan	16.2	0.26	(36)	-3.6	West Virginia	19.8 ^{bc}	0.63	(04)	17.9
Minnesota	16.1	0.38	(37)	-4.2	Wisconsin	16.0	0.35	(38)	-4.8
Mississippi	19.0 ^{bc}	0.54	(05)	13.1	Wyoming	19.9 ^d	1.36	(02)	18.5
Missouri	17.7	0.35	(19)	5.4					

^a NCHS public use data file. Rates are per 100,000 and are age-adjusted to the 2000 US Std Population (19 age groups - Census P25-1130).

^b Absolute percent difference between state rate and total U.S. rate is 10% or more.

^c Difference between state rate and total U.S. rate is statistically significant ($p \leq .0002$).

SE Standard error of the rate.

PD Percent difference between state rate and total U.S. rate.

Table VI-23
COLON AND RECTUM CANCER (Invasive)

Estimated United States Cancer Prevalence Counts^a on January 1, 2003
By Race/Ethnicity, Sex and Years Since Diagnosis

Years Since Diagnosis	0 to <5	5 to <10	10 to <15	15 to <20	20 to <25	0 to <13 ^e	0 to <28 ^e	>=28 ^g	Complete ^h
Race/Sex									
All Races ^b	416,089	238,065	165,688	108,697	61,523	762,462	1,012,722	55,476	1,068,198
Males	207,662	117,724	82,105	52,008	25,932	379,236	494,463	20,326	514,789
Females	208,427	120,341	83,583	56,689	35,591	383,226	518,259	35,150	553,409
White ^b	358,288	208,250	146,687	97,237	55,369	662,584	886,271	49,625	935,896
Males	180,179	103,668	73,262	46,809	23,467	331,729	435,544	18,337	453,881
Females	178,109	104,582	73,425	50,428	31,902	330,855	450,727	31,288	482,015
Black ^b	39,757	20,776	13,531	8,332	4,347	69,195	88,244	3,816	92,060
Males	17,689	9,203	5,991	3,451	1,585	30,968	38,475	1,289	39,764
Females	22,068	11,573	7,540	4,881	2,762	38,227	49,769	2,527	52,296
Asian/Pacific Islander ^c	12,355	6,306	+	+	+	21,142	+	+	+
Males	6,533	3,376	+	+	+	11,139	+	+	+
Females	5,822	2,930	+	+	+	10,003	+	+	+
Hispanic ^d	18,538	9,092	+	+	+	31,876	+	+	+
Males	10,067	4,834	+	+	+	17,043	+	+	+
Females	8,471	4,258	+	+	+	14,833	+	+	+

Estimated prevalence percent^a on January 1, 2003, of the SEER 11 population diagnosed in the previous 10 years
By Age at Prevalence, Race/Ethnicity and Sex

Age at Prevalence	Age Specific (Crude)										Age-Adjusted ^f
	All Ages	0-9	10-19	20-29	30-39	40-49	50-59	60-69	70-79	80+	All Ages
Race/Sex											
All Races ^c	0.2008%	-	0.0002%	0.0036%	0.0192%	0.0718%	0.2483%	0.6476%	1.2394%	1.6585%	0.2179%
Males	0.2037%	-	0.0002%	0.0036%	0.0201%	0.0748%	0.2828%	0.7802%	1.4976%	1.8458%	0.2544%
Females	0.1980%	-	0.0003%	0.0035%	0.0183%	0.0689%	0.2156%	0.5293%	1.0450%	1.5567%	0.1896%
White ^c	0.2122%	-	0.0003%	0.0033%	0.0186%	0.0684%	0.2366%	0.6446%	1.2561%	1.6855%	0.2174%
Males	0.2140%	-	0.0002%	0.0034%	0.0193%	0.0713%	0.2717%	0.7812%	1.5130%	1.8739%	0.2541%
Females	0.2105%	-	0.0003%	0.0033%	0.0178%	0.0655%	0.2024%	0.5196%	1.0592%	1.5846%	0.1883%
Black ^c	0.1552%	-	-	0.0038%	0.0186%	0.0871%	0.3176%	0.7551%	1.2116%	1.4315%	0.2275%
Males	0.1470%	-	-	0.0031%	0.0180%	0.0895%	0.3580%	0.8357%	1.3377%	1.4488%	0.2473%
Females	0.1626%	-	-	0.0044%	0.0192%	0.0850%	0.2841%	0.6919%	1.1288%	1.4233%	0.2135%
Asian/Pacific Islander ^c	0.1760%	-	-	0.0044%	0.0219%	0.0775%	0.2564%	0.5698%	1.1153%	1.5422%	0.2039%
Males	0.1918%	-	-	0.0054%	0.0259%	0.0835%	0.2851%	0.7035%	1.4523%	1.8013%	0.2480%
Females	0.1611%	-	-	0.0033%	0.0181%	0.0720%	0.2312%	0.4584%	0.8712%	1.3675%	0.1708%
Hispanic ^d	0.0700%	-	-	0.0032%	0.0147%	0.0482%	0.1741%	0.4576%	0.8753%	1.0560%	0.1508%
Males	0.0726%	-	-	0.0035%	0.0149%	0.0468%	0.1971%	0.5863%	1.1661%	1.2298%	0.1856%
Females	0.0673%	-	-	0.0027%	0.0145%	0.0496%	0.1529%	0.3513%	0.6677%	0.9583%	0.1251%

- ^a US 2003 cancer prevalence counts are based on 2003 cancer prevalence proportions from the SEER registries and 1/1/2003 US population estimates based on the average of 2002 and 2003 population estimates from the US Bureau of the Census. Prevalence was calculated using the First Malignant Primary Only for a person.
- ^{b c d} Statistics based on (b) SEER 9 Areas (c) SEER 11 Areas and Rural Georgia (d) NHIA for Hispanic for SEER 11 Areas and Rural Georgia excluding Hawaii and Seattle.
- ^e Maximum limited-duration prevalence: 28 years for 1975-2003 SEER 9 data; 13 years for 1990-2003 SEER 11 data (used to calculate prevalence for Hispanics and Asian Pacific Islanders).
- ^f Percentages are age-adjusted to the 2000 US standard population by 5-year age groups.
- ^{g h} (g) Cases diagnosed more than 28 years ago were estimated using the completeness index method (Capocaccia et. al. 1997, Merrill et. al. 2000). (h) Complete prevalence is obtained by summing 0 to <28 and >=28.
- Statistic not shown. Statistic based on fewer than 5 cases estimated alive in SEER for the time interval.
- + Not available.

SEER Incidence, Delay Adjusted Incidence and US Death Rates+ Colon and Rectum Cancer, by Race and Sex

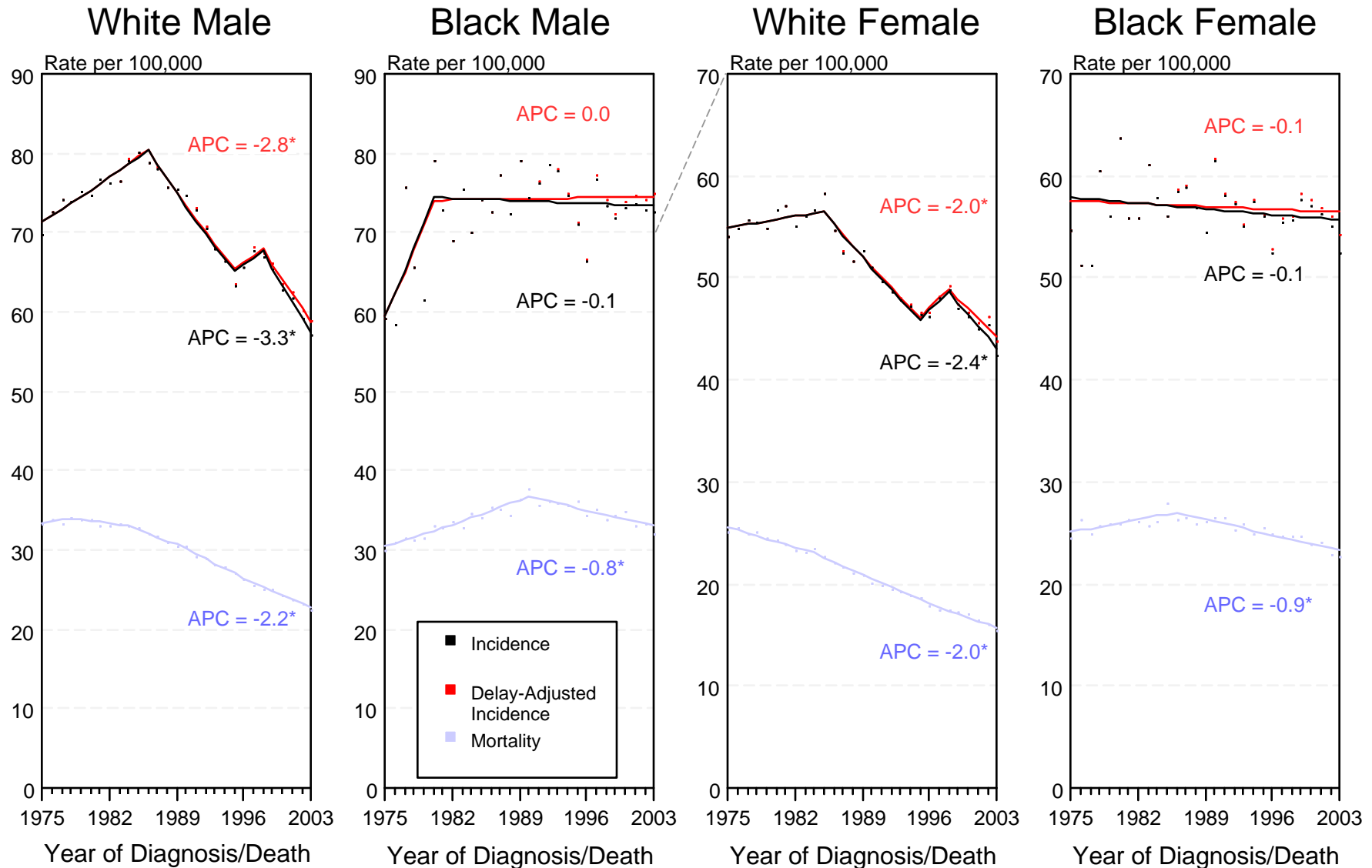


Figure VI-1

+ Source: SEER 9 areas and NCHS public use data file for the total US. Rates are age-adjusted to the 2000 US Std Population (19 age groups - Census P25-1103). Regression lines and APCs are calculated using the Joinpoint Regression Program Version 3.1, April 2006, National Cancer Institute.

The APC is the Annual Percent Change for the regression line segments. The APC shown on the graph is for the most recent trend.

* The APC is significantly different from zero ($p < 0.05$).

SEER Incidence and US Death Rates* Colon and Rectum Cancer, Both Sexes

Joinpoint Analyses for Whites and Blacks from 1975-2003

and for Asian/Pacific Islanders, American Indians/Alaska Natives and Hispanics from 1992-2003

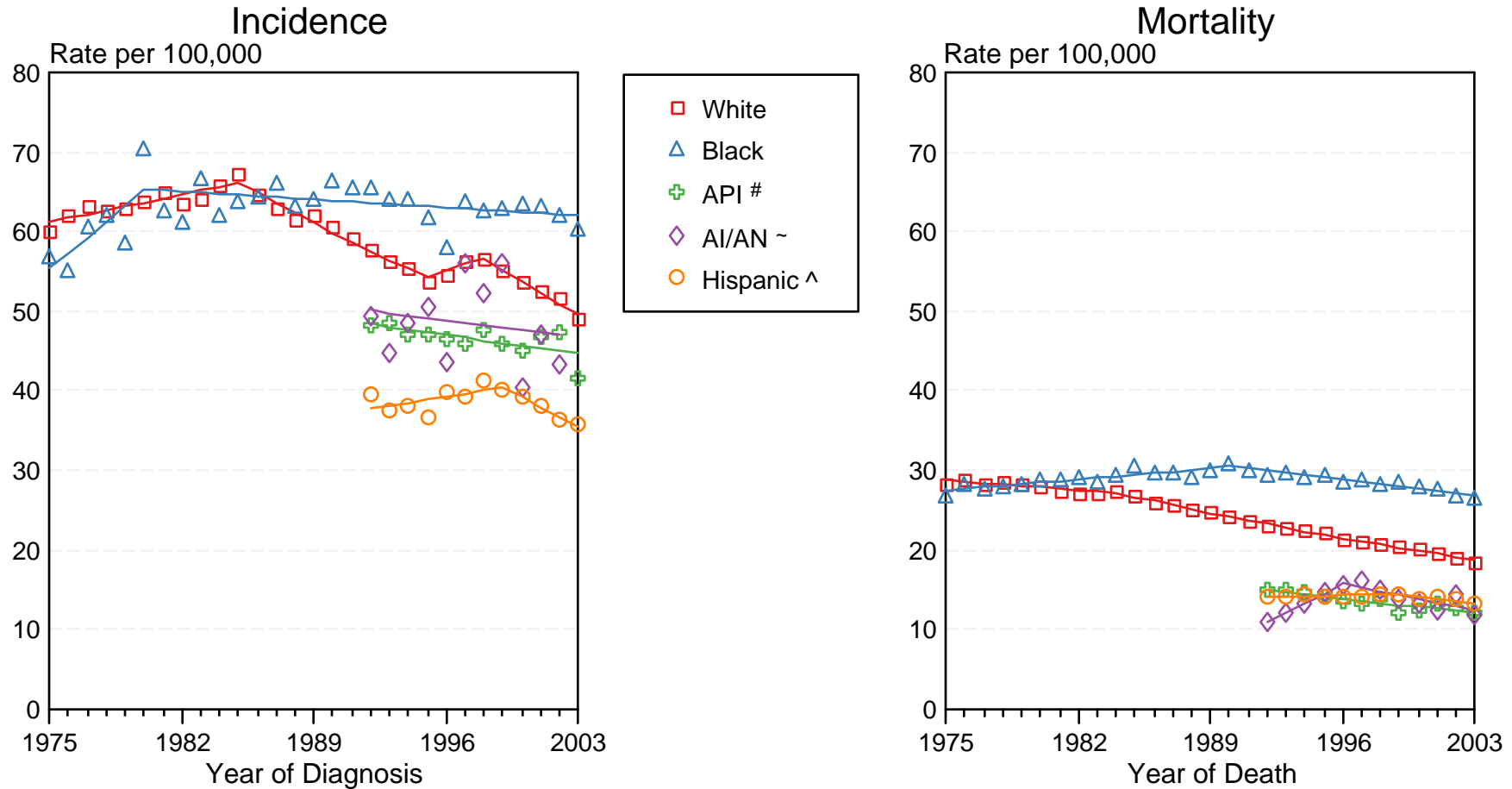


Figure VI-2

Source: Incidence data for Whites and Blacks are from the SEER 9 areas (San Francisco, Connecticut, Detroit, Hawaii, Iowa, New Mexico, Seattle, Utah, Atlanta). Incidence data for Asian/Pacific Islanders and Hispanics are from the SEER 13 Areas (SEER 9 Areas, San Jose-Monterey, Los Angeles, Alaska Native Registry and Rural Georgia). Mortality data are from NCHS public use data file for the total US.

* Rates are age-adjusted to the 2000 US Std Population (19 age groups - Census P25-1103).

Regression lines are calculated using the Joinpoint Regression Program Version 3.1, April 2006, National Cancer Institute.

API = Asian/Pacific Islander.

~ AI/AN = American Indian/Alaska Native. Incidence data for AI/AN include cases from Connecticut, Detroit, Iowa, New Mexico, Seattle, Utah, Atlanta and the Alaska Native Registry for the time period 1992-2002. Mortality data are from the entire US for the time period 1992-2003.

^ Hispanic is not mutually exclusive from Whites, Blacks, Asian/Pacific Islanders, and American Indians/Alaska Natives. Incidence data for Hispanics are based on NHIA and exclude cases from Hawaii, Seattle, and the Alaska Native Registry. Mortality data for Hispanics exclude cases from Connecticut, Maine, Maryland, Minnesota, New Hampshire, New York, North Dakota, Oklahoma, and Vermont.