

Table XVII-1

MESOTHELIOMAS (Invasive)AGE-ADJUSTED SEER CANCER INCIDENCE RATES^a, 1980-2003

By Race, Sex and Year of Diagnosis

Race/Sex	Year of Diagnosis											
	1980- 1981	1982- 1983	1984- 1985	1986- 1987	1988- 1989	1990- 1991	1992- 1993	1994- 1995	1996- 1997	1998- 1999	2000- 2001	2002- 2003
All Races												
Both Sexes	0.9	0.9	1.0	1.0	1.1	1.1	1.1	1.2	1.1	1.1	1.1	1.0
Males	1.6	1.6	1.9	1.7	2.0	2.1	2.3	2.2	2.0	2.1	2.0	1.8
0-54	0.3	0.3	0.3	0.2	0.3	0.2	0.2	0.3	0.2	0.2	0.1	0.1
55-64	3.7	3.7	4.5	3.5	3.1	4.4	3.7	3.3	4.2	3.7	2.7	2.8
65-74	8.2	7.2	8.6	8.3	11.8	9.6	10.6	10.3	9.0	9.8	9.1	7.6
75-84	10.0	11.7	12.0	12.6	12.7	17.2	16.1	17.8	15.1	16.8	19.7	16.7
85+	-	-	-	-	12.8	12.0	20.5	12.4	15.8	15.9	14.0	12.5
Females	0.3	0.4	0.4	0.4	0.4	0.4	0.4	0.4	0.4	0.4	0.4	0.4
0-54	-	0.1	-	0.1	0.1	0.1	-	0.1	0.1	0.2	0.1	0.1
55-64	0.9	1.0	0.8	1.0	-	0.9	0.9	1.2	0.8	-	-	0.9
65-74	-	2.1	1.4	1.4	1.7	1.4	1.3	1.6	1.5	1.6	1.2	1.5
75-84	-	2.0	3.1	2.3	1.7	3.0	2.8	2.6	2.3	2.1	2.8	2.6
85+	-	-	-	-	-	-	-	-	-	-	2.8	-
Whites												
Both Sexes	0.9	1.0	1.1	1.0	1.1	1.2	1.2	1.2	1.2	1.2	1.2	1.1
Males	1.7	1.7	2.0	1.8	2.2	2.3	2.5	2.3	2.2	2.3	2.3	2.0
Females	0.3	0.5	0.4	0.5	0.4	0.5	0.4	0.5	0.4	0.4	0.4	0.4
Blacks												
Both Sexes	-	0.6	0.6	0.6	0.7	0.7	0.7	0.9	0.7	0.6	0.4	0.4
Males	-	-	-	-	-	1.5	1.3	1.8	1.1	1.3	-	-
Females	-	-	-	-	-	-	-	-	-	-	-	-

^a SEER 9 areas (San Francisco, Connecticut, Detroit, Hawaii, Iowa, New Mexico, Seattle, Utah, and Atlanta). Rates are per 100,000 and are age-adjusted to the 2000 US Std Population (19 age groups - Census P25-1130).

- Statistic not shown. Rate based on less than 16 cases for the time interval.

Table XVII-2

MESOTHELIOMAAGE ADJUSTED SEER INCIDENCE^a RATES BY YEAR, RACE AND SEX

	<u>All Races</u>			<u>Whites</u>			<u>Blacks</u>		
	<u>Total</u>	<u>Males</u>	<u>Females</u>	<u>Total</u>	<u>Males</u>	<u>Females</u>	<u>Total</u>	<u>Males</u>	<u>Females</u>
<u>AGE-ADJUSTED RATES</u>									
<u>YEAR OF DIAGNOSIS:</u>									
1975	0.6	1.0	0.3	0.6	1.0	0.3	-	-	-
1976	0.7	1.1	0.3	0.7	1.2	0.4	-	-	-
1977	0.6	1.0	0.3	0.6	1.1	0.3	-	-	-
1978	0.7	1.4	0.2	0.8	1.5	0.2	-	-	-
1979	0.8	1.5	0.3	0.8	1.6	0.3	-	-	-
1980	1.0	1.8	0.4	1.1	2.0	0.4	-	-	-
1981	0.8	1.4	0.3	0.8	1.5	0.3	-	-	-
1982	0.8	1.4	0.4	0.9	1.5	0.4	-	-	-
1983	1.0	1.9	0.5	1.1	2.0	0.5	-	-	-
1984	1.1	2.0	0.4	1.1	2.2	0.4	-	-	-
1985	0.9	1.7	0.4	1.0	1.7	0.4	-	-	-
1986	0.9	1.7	0.4	1.0	1.8	0.5	-	-	-
1987	1.0	1.7	0.4	1.0	1.8	0.5	-	-	-
1988	1.0	1.8	0.4	1.1	2.0	0.4	-	-	-
1989	1.1	2.2	0.4	1.2	2.4	0.4	-	-	-
1990	1.1	2.2	0.5	1.2	2.3	0.5	-	-	-
1991	1.1	2.1	0.4	1.2	2.2	0.5	-	-	-
1992	1.2	2.5	0.4	1.3	2.7	0.4	-	-	-
1993	1.1	2.0	0.4	1.1	2.2	0.4	-	-	-
1994	1.2	2.2	0.4	1.2	2.3	0.5	1.1	-	-
1995	1.2	2.2	0.5	1.2	2.3	0.5	-	-	-
1996	1.1	2.1	0.5	1.3	2.4	0.5	-	-	-
1997	1.0	1.9	0.4	1.1	2.1	0.4	0.9	-	-
1998	1.1	2.1	0.4	1.2	2.2	0.5	-	-	-
1999	1.1	2.2	0.4	1.2	2.3	0.4	-	-	-
2000	1.1	2.1	0.3	1.2	2.4	0.4	-	-	-
2001	1.1	2.0	0.4	1.2	2.2	0.4	-	-	-
2002	1.0	1.9	0.4	1.1	2.2	0.4	-	-	-
2003	0.9	1.6	0.4	1.0	1.8	0.4	-	-	-
1975-2003	1.0	1.9	0.4	1.1	2.0	0.4	0.6	1.1	0.3

^a SEER 9 areas (San Francisco, Connecticut, Detroit, Hawaii, Iowa, New Mexico, Seattle, Utah, and Atlanta). Rates are per 100,000 and are age-adjusted to the 2000 US Std Population (19 age groups - Census P25-1130).

- Statistic not shown. Rate based on less than 16 cases for the time interval.

Table XVII-3
MESOTHELIOMASEER INCIDENCE^a RATES, AGE-ADJUSTED AND AGE-SPECIFIC RATES, BY RACE AND SEX

	<u>All Races</u>			<u>Whites</u>			<u>Blacks</u>		
	<u>Total</u>	<u>Males</u>	<u>Females</u>	<u>Total</u>	<u>Males</u>	<u>Females</u>	<u>Total</u>	<u>Males</u>	<u>Females</u>
<u>SEER INCIDENCE</u>									
<u>AGE AT DIAGNOSIS</u>									
<u>AGE-ADJUSTED RATES, 2000-2003</u>									
All ages	1.1	2.0	0.4	1.2	2.3	0.5	0.5	1.0	0.2
Under 65	0.3	0.4	0.2	0.3	0.5	0.2	0.2	0.3	0.1
65 and over	6.6	13.1	2.1	7.3	14.6	2.3	2.8	5.8	1.0
All ages(IARC world std) ^b	0.6	1.1	0.3	0.7	1.3	0.3	0.3	0.5	0.2
<u>AGE-SPECIFIC RATES, 2000-2003</u>									
<1	-	-	-	-	-	-	-	-	-
1-4	-	-	-	-	-	-	-	-	-
5-9	-	-	-	-	-	-	-	-	-
10-14	-	-	-	-	-	-	-	-	-
15-19	-	-	-	-	-	-	-	-	-
20-24	-	-	-	-	-	-	-	-	-
25-29	-	-	-	-	-	-	-	-	-
30-34	-	-	-	-	-	-	-	-	-
35-39	0.1	-	-	0.1	-	-	-	-	-
40-44	0.2	0.2	0.1	0.2	0.2	-	-	-	-
45-49	0.4	0.4	0.3	0.4	0.4	0.4	-	-	-
50-54	0.7	0.9	0.5	0.8	1.0	0.6	-	-	-
55-59	1.4	2.3	0.6	1.6	2.5	0.7	-	-	-
60-64	2.4	3.8	1.0	2.7	4.4	1.1	-	-	-
65-69	3.7	6.6	1.3	4.3	7.4	1.5	-	-	-
70-74	6.2	11.9	1.6	6.9	13.4	1.6	3.4	-	-
75-79	9.2	18.0	3.0	10.2	19.9	3.4	3.4	-	-
80-84	9.4	19.3	3.3	10.3	21.0	3.6	-	-	-
85+	6.1	14.7	2.2	6.6	16.0	2.4	-	-	-

^a SEER 17 areas. Rates are per 100,000 and are age-adjusted to the 2000 US Std Population (19 age groups - Census P25-1130), unless noted.

^b Rates are per 100,000 and are age-adjusted to the IARC world standard population.

- Statistic not shown. Rate based on less than 16 cases for the time interval.

Table XVII-4
MESOTHELIOMA (Invasive)

SURVIVAL RATES, BY RACE, SEX, DIAGNOSIS YEAR, STAGE AND AGE

	All Races			Whites			Blacks		
	Total	Males	Females	Total	Males	Females	Total	Males	Females
<u>5-YR RELATIVE SURVIVAL RATES</u>									
YEAR OF DIAGNOSIS:									
1960-1963 ^a	-	-	-	-	-	-	-	-	-
1970-1973 ^a	-	-	-	-	-	-	-	-	-
1975-1977 ^b	10.4	3.2	27.9 ^f	11.1	3.5	28.5 ^f	-	-	-
1978-1980 ^b	6.0	5.4	8.3	6.1	5.4	8.9	6.9 ^f	-	-
1981-1983 ^b	8.2	5.7	15.4	8.6	5.8	16.5	5.9 ^f	7.6 ^f	-
1984-1986 ^b	7.1	5.0	13.8	6.6	4.3	13.9	11.8 ^f	14.9 ^f	-
1987-1989 ^b	6.6	4.8	12.9	6.7	4.9	13.0	4.5	0.0	-
1990-1992 ^b	8.5	4.7	21.9	8.1	4.4	21.3	12.9 ^f	12.0 ^f	-
1993-1995 ^b	7.0	3.5	18.9	6.9	3.3	19.8	9.6 ^f	8.5 ^f	-
1996-2002 ^b	9.6	7.4	16.9	9.6	7.3	17.4	19.6 ^f	16.7 ^f	24.4 ^g
<u>5-YR PERIOD SURVIVAL RATES^{cd}</u>									
YEAR OF DIAGNOSIS:									
1996-2002	10.0	7.9	16.5	9.4	7.3	16.1	23.9	21.2	28.4
<u>STAGE DISTRIBUTION (%) 1996-2002^c</u>									
All Stages									
Number of cases	2,959	2,301	658	2,720	2,132	588	131	90	41
Percent	100%	100%	100%	100%	100%	100%	100%	100%	100%
Localized	12	12	11	12	12	11	16	17	15
Regional	20	20	19	20	20	19	15	12	20
Distant	58	57	60	58	57	61	62	64	56
Unstaged	10	11	10	11	11	10	8	7	10
<u>5-YR RELATIVE SURVIVAL RATES, 1996-2002^c</u>									
AGE AT DIAGNOSIS:									
<45	36.7 ^f	28.3 ^f	46.7 ^f	37.3 ^f	28.6 ^f	48.0 ^f	-	-	-
45-54	19.7	15.2	26.6 ^f	19.3	14.2	28.1 ^f	40.0 ^g	-	-
55-64	10.0	8.4	16.6 ^f	9.4	8.1	15.5 ^f	16.6 ^f	8.3 ^f	-
65-74	5.6	5.2	6.5	5.5	5.0	7.3	3.4	4.8 ^f	-
75+	5.1	5.2	4.7	5.0	4.8	5.0	6.4 ^f	10.4 ^g	-
Under 65	16.3	11.9	27.8	15.9	11.3	29.0	26.5 ^f	15.8 ^f	41.9 ^g
65 and over	5.4	5.3	5.5	5.4	5.1	5.9	4.8	7.2 ^f	-
STAGE:									
All Stages	9.2	7.6	14.5	9.0	7.2	14.7	16.3	12.1	22.1 ^f
Localized	15.3	11.9	28.1 ^f	15.0	11.8	28.3 ^f	16.2 ^g	-	-
Regional	10.2	9.2	13.1	9.5	8.4	13.1	15.0 ^g	-	-
Distant	7.0	5.5	11.3	6.9	5.2	11.7	14.1	13.1 ^f	14.5 ^f
Unstaged	10.9	8.5	20.0 ^f	9.6	7.7	17.5 ^f	-	-	-

^a Rates are based on End Results data from a series of hospital registries and one population-based registry.
^b Rates are from the SEER 9 areas (San Francisco, Connecticut, Detroit, Hawaii, Iowa, New Mexico, Seattle, Utah, Atlanta).
Rates are based on follow-up of patients into 2003.
^c Rates are from the SEER 17 areas (San Francisco, Connecticut, Detroit, Hawaii, Iowa, New Mexico, Seattle, Utah, Atlanta, San Jose-Monterey, Los Angeles, Alaska Native Registry, Rural Georgia, California excluding SF/SJM/LA, Kentucky, Louisiana and New Jersey). California excluding SF/SJM/LA, Kentucky, Louisiana, and New Jersey contribute cases for diagnosis years 2000-2002. The remaining 13 SEER Areas contribute cases for the entire period 1996-2002. Rates are based on follow-up of patients into 2003.
^d Period survival provides a more up-to-date estimate of survival by piecing together the most recent conditional survival estimates from several cohorts. It is computed here using three calendar year blocks (2000-2002: 0-1 year survival), (1999-2001: 1-2 year survival), (1998-2000: 2-3 year survival), (1997-1999: 3-4 year survival), (1996-1998: 4-5 years survival).
^e The difference in rates between 1975-1977 and 1996-2002 is statistically significant (p<.05).
^f The standard error of the survival rate is between 5 and 10 percentage points.
^g The standard error of the survival rate is greater than 10 percentage points.
- Statistic could not be calculated due to fewer than 16 cases during the time period.

Table XVII-5
MESOTHELIOMA (Invasive)

SURVIVAL RATES^a

By Year of Diagnosis

All Races, Males and Females

Year of Diagnosis

	1975- 1979	1980- 1984	1985	1986	1987	1988	1989	1990	1991	1992	1993	1994	1995	1996	1997	1998	1999	2000	2001	2002
Relative Survival Rates (SEER ^b)																				
1-year	37.6	38.9	41.9	40.0	39.1	38.3	31.4	40.8	35.6	40.9	33.7	38.7	37.1	43.1	37.0	39.9	34.2	41.5	43.0	33.0
2-year	16.7	19.6	21.0	18.6	14.6	16.9	15.8	16.1	14.0	20.5	14.1	17.5	14.1	26.3	17.2	23.3	19.5	15.3	24.9	
3-year	11.2	12.3	14.3	11.9	8.6	12.2	9.6	10.9	11.9	13.3	9.1	12.3	12.3	17.7	10.8	16.0	13.7	10.6		
4-year	9.8	8.9	9.9	9.6	6.2	10.2	6.6	6.2	9.0	11.2	6.5	9.7	9.4	12.0	8.4	13.4	11.6			
5-year	8.2	7.6	7.4	8.0	5.0	9.8	5.1	6.2	8.9	10.0	4.4	8.5	7.7	10.3	6.8	13.4				
6-year	7.0	6.4	6.2	6.1	4.6	6.6	4.3	4.4	8.1	7.6	4.4	8.3	6.6	10.3	5.2					
7-year	6.7	5.9	4.8	5.4	4.0	5.4	4.3	3.2	7.8	7.2	4.4	7.8	5.7	9.0						
8-year	6.2	5.7	4.2	5.0	4.0	4.9	4.0	2.8	7.2	7.2	3.8	7.2	5.7							
9-year	6.0	5.5	3.5	5.0	3.5	4.9	4.0	2.8	5.4	7.2	3.8	7.2								
10-year	5.9	5.3	2.8	4.6	3.5	4.9	3.8	2.8	5.4	6.5	3.4									
11-year	5.9	5.3	2.8	4.6	3.5	4.9	3.8	2.8	5.1	6.1										
12-year	5.8	5.3	2.1	4.6	3.5	4.9	3.8	2.8	5.1											
13-year	5.8	5.3	2.1	4.6	3.5	4.9	3.8	2.8												
14-year	5.8	5.3	2.1	4.6	3.5	4.7	3.8													
15-year	5.8	5.3	2.1	4.6	3.5	4.7														
16-year	5.7	5.3	2.1	4.6	3.5															
17-year	5.7	5.3	2.1	4.6																
18-year	5.7	5.3	2.1																	
19-year	5.7	5.3																		
20-year	5.7																			

^a Survival rates are relative rates expressed as percents.

^b Rates are from the SEER 9 areas (San Francisco, Connecticut, Detroit, Hawaii, Iowa, New Mexico, Seattle, Utah, and Atlanta).

Table XVII-6
MESOTHELIOMA (Invasive)

SURVIVAL RATES^a

By Year of Diagnosis

All Races, Males

Year of Diagnosis

	1975- 1979	1980- 1984	1985	1986	1987	1988	1989	1990	1991	1992	1993	1994	1995	1996	1997	1998	1999	2000	2001	2002
Relative Survival Rates (SEER ^b)																				
1-year	36.0	37.5	41.6	35.3	40.4	35.4	29.8	37.2	31.4	36.5	35.9	34.5	36.4	46.6	33.8	35.5	32.6	41.8	39.5	31.6
2-year	12.0	16.6	21.1	11.4	13.5	13.7	14.9	12.8	8.6	15.6	13.9	11.5	11.3	25.8	14.8	18.8	15.4	14.4	21.7	
3-year	6.7	9.8	14.0	6.4	7.9	8.3	7.8	7.8	8.0	8.2	8.0	7.0	9.3	16.1	9.2	13.0	8.5	9.0		
4-year	5.7	7.0	10.0	3.8	4.6	7.0	6.1	4.5	4.4	6.5	5.3	4.0	6.2	11.0	6.8	10.8	6.2			
5-year	3.9	5.6	6.6	3.8	3.7	6.4	4.2	4.5	4.4	4.9	2.4	3.5	4.5	10.1	4.7	10.8				
6-year	3.2	4.7	5.0	3.1	3.0	2.9	3.0	3.3	4.4	3.0	2.4	3.5	3.8	10.1	2.2					
7-year	2.8	4.0	3.1	3.1	2.1	2.0	3.0	1.7	4.4	2.4	2.4	3.0	2.4	9.5						
8-year	2.2	3.8	3.1	3.1	2.1	2.0	3.0	0.9	4.4	2.4	1.0	2.5	2.4							
9-year	2.0	3.8	2.3	3.1	1.2	2.0	3.0	0.9	3.0	2.4	1.0	2.5								
10-year	2.0	3.8	2.3	2.7	1.2	2.0	2.9	0.9	3.0	2.0	1.0									
11-year	2.0	3.8	2.3	2.7	1.2	2.0	2.9	0.9	2.3	2.0										
12-year	1.9	3.8	2.3	2.7	1.2	2.0	2.9	0.9	2.3											
13-year	1.6	3.8	2.3	2.7	1.2	1.5	2.9	0.9												
14-year	1.6	3.8	2.3	2.7	1.2	0.0	2.9													
15-year	1.3	3.8	2.3	2.7	0.0	0.0														
16-year	1.3	3.8	2.3	2.7	0.0															
17-year	1.3	3.8	2.3	2.7																
18-year	1.3	3.8	2.3																	
19-year	1.3	3.8																		
20-year	1.3																			

^a Survival rates are relative rates expressed as percents.

^b Rates are from the SEER 9 areas (San Francisco, Connecticut, Detroit, Hawaii, Iowa, New Mexico, Seattle, Utah, and Atlanta).

Table XVII-7
MESOTHELIOMA (Invasive)

SURVIVAL RATES^a

By Year of Diagnosis

All Races, Females

Year of Diagnosis

	1975- 1979	1980- 1984	1985	1986	1987	1988	1989	1990	1991	1992	1993	1994	1995	1996	1997	1998	1999	2000	2001	2002
Relative Survival Rates (SEER ^b)																				
1-year	42.5	43.7	43.0	52.5	35.1	48.4	38.8	53.1	50.7	60.3	25.9	56.2	39.2	32.6	50.0	55.9	41.1	39.7	53.6	37.6
2-year	31.5	29.8	20.6	37.5	18.2	27.6	19.9	27.2	33.1	41.8	14.5	42.9	23.6	27.3	27.2	39.2	36.9	19.2	34.2	
3-year	24.8	20.4	15.2	26.2	10.8	25.1	17.3	20.9	24.6	34.1	12.3	33.7	21.7	22.2	17.0	26.3	35.2	17.1		
4-year	22.2	14.9	9.5	24.3	10.8	20.3	8.9	11.9	24.6	30.3	10.3	32.1	20.1	14.9	14.3	22.1	33.5			
5-year	20.9	13.9	9.5	17.8	8.6	20.3	8.9	11.9	23.6	30.3	10.3	27.7	18.6	11.0	14.3	22.1				
6-year	18.0	11.2	9.5	13.1	8.6	18.3	8.9	7.5	19.0	26.2	10.3	25.9	16.2	9.2	14.3					
7-year	17.4	11.2	9.5	10.6	8.6	15.8	8.9	7.5	16.7	26.2	10.3	25.9	16.2	7.1						
8-year	17.1	11.2	7.4	8.3	8.6	13.0	6.8	7.5	14.4	26.2	10.3	24.3	16.2							
9-year	17.1	10.4	7.4	8.3	8.6	13.0	6.8	7.5	12.6	25.4	10.3	24.3								
11-year	16.2	8.5	4.1	8.3	8.6	13.0	6.8	7.5	12.6	22.8	10.3									
10-year	15.7	8.5	4.1	8.3	8.6	13.0	6.8	7.5	12.6	19.8										
12-year	15.7	8.5	0.0	8.3	8.6	13.0	6.8	7.5	12.6											
13-year	15.7	8.5	0.0	8.3	8.6	13.0	6.8	7.5												
14-year	15.7	8.5	0.0	8.3	8.6	13.0	6.8													
15-year	15.7	8.5	0.0	8.3	8.6	13.0														
16-year	15.7	8.5	0.0	8.3	8.6															
17-year	15.4	8.5	0.0	8.2																
18-year	15.4	8.5	0.0																	
19-year	15.4	8.5																		
20-year	15.4																			

^a Survival rates are relative rates expressed as percents.

^b Rates are from the SEER 9 areas (San Francisco, Connecticut, Detroit, Hawaii, Iowa, New Mexico, Seattle, Utah, and Atlanta).

Table XVII-8
MESOTHELIOMA

Percent Diagnosed With Cancer In 10, 20 and 30 Years and In Remaining Lifetime,
Given Cancer Free At Current Age By Race and Sex

Lifetime Risk (Percent) of Being Diagnosed (17 SEER Areas) With Cancer

2001-2003

Race/ Ethnicity	Current Age	Males				Females			
		+10 yrs	+20 yrs	+30 yrs	Eventually	+10 yrs	+20 yrs	+30 yrs	Eventually
All Races	0	0.00	0.00	0.00	0.20	0.00	0.00	0.00	0.05
	10	0.00	0.00	0.00	0.21	0.00	0.00	0.00	0.05
	20	0.00	0.00	0.00	0.21	0.00	0.00	0.00	0.05
	30	0.00	0.00	0.02	0.21	0.00	0.00	0.01	0.05
	40	0.00	0.02	0.06	0.21	0.00	0.01	0.02	0.05
	50	0.02	0.06	0.15	0.22	0.01	0.02	0.03	0.05
	60	0.05	0.14	0.21	0.22	0.01	0.03	0.04	0.05
White	0	0.00	0.00	0.00	0.23	0.00	0.00	0.00	0.06
	10	0.00	0.00	0.00	0.23	0.00	0.00	0.00	0.06
	20	0.00	0.00	0.00	0.23	0.00	0.00	0.00	0.06
	30	0.00	0.00	0.02	0.23	0.00	0.00	0.01	0.06
	40	0.00	0.02	0.07	0.23	0.00	0.01	0.02	0.06
	50	0.02	0.07	0.17	0.24	0.01	0.02	0.04	0.05
	60	0.06	0.16	0.23	0.24	0.01	0.03	0.05	0.05
Black	0	0.00	0.00	0.00	0.08	0.00	0.00	0.00	0.02
	10	0.00	0.00	0.00	0.08	0.00	0.00	0.00	0.02
	20	0.00	0.00	0.00	0.08	0.00	0.00	0.00	0.02
	30	0.00	0.00	0.02	0.08	0.00	0.00	0.00	0.02
	40	0.00	0.02	0.03	0.08	0.00	0.00	0.01	0.02
	50	0.01	0.03	0.06	0.08	0.00	0.01	0.02	0.02
	60	0.01	0.05	0.08	0.08	0.01	0.01	0.02	0.02
Asian/ Pacific Islander	0	0.00	0.00	0.00	0.09	0.00	0.00	0.00	0.02
	10	0.00	0.00	0.00	0.09	0.00	0.00	0.00	0.02
	20	0.00	0.00	0.00	0.09	0.00	0.00	0.00	0.02
	30	0.00	0.00	0.00	0.09	0.00	0.00	0.00	0.02
	40	0.00	0.00	0.02	0.09	0.00	0.00	0.01	0.02
	50	0.00	0.02	0.06	0.09	0.00	0.01	0.01	0.02
	60	0.02	0.06	0.08	0.09	0.01	0.01	0.02	0.02
Hispanic ^a	0	0.00	0.00	0.00	0.20	0.00	0.00	0.00	0.07
	10	0.00	0.00	0.00	0.20	0.00	0.00	0.00	0.07
	20	0.00	0.00	0.01	0.21	0.00	0.00	0.00	0.07
	30	0.00	0.01	0.02	0.21	0.00	0.00	0.01	0.07
	40	0.00	0.02	0.07	0.21	0.00	0.01	0.02	0.07
	50	0.02	0.06	0.15	0.21	0.00	0.02	0.04	0.07
	60	0.05	0.14	0.20	0.21	0.01	0.04	0.06	0.06

Race/Ethnicity	Lifetime Risk of Developing	
	Males	Females
All Races	0.20%	0.16%
White	0.23%	0.18%
Black	0.08%	0.05%
Asian/Pacific Islander	0.09%	0.07%
Hispanic ^a	0.20%	0.11%

Devcan Version 6.1.0, April 2006, National Cancer Institute (<http://srab.cancer.gov/devcan/>).

Source: Incidence data are from the SEER 17 areas (San Francisco, Connecticut, Detroit, Hawaii, Iowa, New Mexico, Seattle, Utah, Atlanta, San Jose-Monterey, Los Angeles, Alaska Native Registry, Rural Georgia, California excluding SF/SJM/LA, Kentucky, Louisiana and New Jersey).

^a Hispanic is not mutually exclusive from Whites, Blacks, Asian/Pacific Islanders, and American Indians/Alaska Natives. Underlying incidence data for Hispanics are based on NHIA and exclude cases from Hawaii, Seattle, Alaska Native Registry and Kentucky.

Table XVII-9
MESOTHELIOMA

SEER INCIDENCE
AGE-ADJUSTED RATES AND TRENDS^a
By Race/Ethnicity and Sex

RACE/ETHNICITY	Rate 2000-2003 ^b Rate per 100,000 persons			Trend 1994-2003 ^c APC (%)		
	Total	Males	Females	Total	Males	Females
All Races	1.1	2.0	0.4	-1.6*	-1.7*	-1.3*
White	1.2	2.3	0.5	-1.0	-1.3	-0.5
White Hispanic ^d	1.1	1.9	0.5	-1.1	-2.4	-
White Non-Hispanic ^d	1.2	2.3	0.5	-0.6	-1.0	0.7
Black	0.5	1.0	0.2	-7.7*	-	-
Asian/Pacific Islander	0.4	0.6	0.2	-	-	-
Amer Ind/Alaska Nat ^e	-	-	-	-	-	-
Hispanic ^d	1.1	1.9	0.5	-1.0	-2.4	-

- The APC is the Annual Percent Change over the time interval.
 - Statistic not shown. Rate based on less than 16 cases for the time interval. Trend based on less than 10 cases for at least one year within the time interval.
- ^a Rates are age-adjusted to the 2000 US Std Population (19 age groups - Census P25-1130). Trends are based on rates age-adjusted to the 2000 US Std Population (19 age groups - Census P25-1130).
- ^b Incidence data used in calculating the rates are from the 17 SEER areas (San Francisco, Connecticut, Detroit, Hawaii, Iowa, New Mexico, Seattle, Utah, Atlanta, San Jose-Monterey, Los Angeles, Alaska Native Registry, Rural Georgia, California excluding SF/SJM/LA, Kentucky, Louisiana and New Jersey).
- ^c Incidence data used in calculating the trends are from the 13 SEER areas (San Francisco, Connecticut, Detroit, Hawaii, Iowa, New Mexico, Seattle, Utah, Atlanta, San Jose-Monterey, Los Angeles, Alaska Native Registry and Rural Georgia).
- ^d Hispanic and Non-Hispanic are not mutually exclusive from Whites, Blacks, Asian/Pacific Islanders, and American Indians/Alaska Natives. Incidence data for Hispanics and Non-Hispanics are based on NHIA and exclude cases from Hawaii, Seattle, Alaska Native Registry and Kentucky.
- ^e Incidence data for American Indians/Alaska Natives include cases from Connecticut, Detroit, Iowa, New Mexico, Seattle, Utah, Atlanta, and the Alaska Native Registry. Incidence rates are for diagnosis years 1999-2002. Incidence trends are for diagnosis years 1994-2002.
- * The APC is significantly different from zero (p<.05).

Table XVII-10
MESOTHELIOMA (Invasive)

AGE-ADJUSTED SEER INCIDENCE RATES^a
By Registry, Race/Ethnicity and Sex

	All Races			Whites		Blacks		Asian/Pacific Islanders		Hispanics ^b	
	Total	Males	Females	Males	Females	Males	Females	Males	Females	Males	Females
<u>SEER INCIDENCE RATES^a, 2000-2003</u>											
REGISTRY											
17 SEER Areas ^c	1.1	2.0	0.4	2.3	0.5	1.0	0.2	0.6	0.2	1.9	0.5
13 SEER Areas ^c	1.0	1.8	0.4	2.1	0.4	0.8	-	0.7	-	1.8	0.5
11 SEER Areas ^c	1.0	1.8	0.4	2.1	0.4	0.9	-	0.7	-	1.8	0.5
9 SEER Areas ^c	1.0	1.9	0.4	2.1	0.4	0.7	-	0.8	-	1.9	-
San Francisco-Oakland	1.1	2.0	0.4	2.5	0.4	-	-	-	-	-	-
Connecticut	1.2	2.3	0.4	2.4	0.4	-	-	-	-	-	-
Metropolitan Detroit	1.0	1.8	0.5	2.1	0.6	-	-	-	-	-	-
Hawaii	0.8	1.7	-	3.0	-	-	-	1.2	-	-	-
Iowa	0.7	1.2	0.4	1.2	0.4	-	-	-	-	-	-
New Mexico	0.8	1.6	-	1.7	-	-	-	-	-	2.1	-
Seattle-Puget Sound	1.4	2.8	0.4	3.0	0.4	-	-	-	-	-	-
Utah	1.0	1.8	-	1.8	-	-	-	-	-	-	-
Metropolitan Atlanta	0.5	0.9	-	1.1	-	-	-	-	-	-	-
San Jose-Monterey	0.8	1.3	0.5	1.5	0.6	-	-	-	-	-	-
Los Angeles	1.0	1.7	0.4	2.1	0.5	-	-	-	-	1.8	0.6
Rural Georgia	-	-	-	-	-	-	-	-	-	-	-
California exclud. SF/SJM/LA	1.1	2.0	0.4	2.1	0.4	-	-	-	-	2.1	0.3
Kentucky	0.8	1.5	0.4	1.6	0.4	-	-	-	-	-	-
Louisiana	1.2	2.4	0.4	2.8	0.5	1.1	-	-	-	-	-
New Jersey	1.6	3.1	0.6	3.4	0.6	1.4	-	-	-	-	-

^a Rates are per 100,000 and are age-adjusted to the 2000 US Std Population (19 age groups - Census P25-1130)

^b Hispanic is not mutually exclusive from Whites, Blacks, Asian/Pacific Islanders, and American Indians/Alaska Natives. Incidence data for Hispanics are based on NHIA and exclude cases from Hawaii, Seattle, Alaska Native Registry and Kentucky.

^c The SEER 9 areas are San Francisco, Connecticut, Detroit, Hawaii, Iowa, New Mexico, Seattle, Utah and Atlanta.

The SEER 11 areas comprise the SEER 9 areas plus San Jose-Monterey and Los Angeles.

The SEER 13 areas comprise the SEER 11 areas plus the Alaska Native Registry and Rural Georgia.

The SEER 17 areas comprise the SEER 13 areas plus California excluding SF/SJM/LA, Kentucky, Louisiana and New Jersey

- Statistic not shown. Rate based on less than 16 cases for the time interval.

Table XVII-11
MESOTHELIOMA (Invasive)

Estimated United States Cancer Prevalence Counts^a on January 1, 2003
By Race/Ethnicity, Sex and Years Since Diagnosis

Years Since Diagnosis	0 to <5	5 to <10	10 to <15	15 to <20	20 to <25	0 to <13 ^e	0 to <28 ^e	>=28 ^g	Complete ^h
<u>Race/Sex</u>									
All Races ^b	2,802	598	315	192	151	3,619	4,182	+	+
Males	1,903	269	87	96	72	2,232	2,438	+	+
Females	899	329	228	96	79	1,387	1,744	+	+
White ^b	2,609	523	279	167	138	3,319	3,828	+	+
Males	1,770	233	70	71	59	2,051	2,214	+	+
Females	839	290	209	96	79	1,268	1,614	+	+
Black ^b	116	61	26	22	13	202	249	+	+
Males	81	36	13	22	13	130	165	+	+
Females	35	25	13	0	0	72	84	+	+
Asian/Pacific Islander ^c	19	9	+	+	+	32	+	+	+
Males	14	7	+	+	+	21	+	+	+
Females	5	2	+	+	+	11	+	+	+
Hispanic ^d	213	20	+	+	+	243	+	+	+
Males	167	10	+	+	+	177	+	+	+
Females	46	10	+	+	+	66	+	+	+

Estimated prevalence percent^a on January 1, 2003, of the SEER 11 population diagnosed in the previous 10 years
By Age at Prevalence, Race/Ethnicity and Sex

Age at Prevalence	Age Specific (Crude)										Age-Adjusted ^f
	All Ages	0-9	10-19	20-29	30-39	40-49	50-59	60-69	70-79	80+	All Ages
<u>Race/Sex</u>											
All Races ^c	0.0010%	-	-	-	0.0001%	0.0006%	0.0017%	0.0036%	0.0050%	0.0063%	0.0011%
Males	0.0014%	-	-	-	-	0.0007%	0.0018%	0.0050%	0.0098%	0.0127%	0.0017%
Females	0.0007%	-	-	-	0.0002%	0.0006%	0.0015%	0.0023%	0.0014%	0.0028%	0.0007%
White ^c	0.0012%	-	-	-	0.0002%	0.0007%	0.0018%	0.0041%	0.0059%	0.0068%	0.0012%
Males	0.0016%	-	-	-	-	0.0007%	0.0020%	0.0058%	0.0113%	0.0136%	0.0019%
Females	0.0008%	-	-	-	0.0003%	0.0007%	0.0017%	0.0026%	0.0017%	0.0031%	0.0008%
Black ^c	0.0005%	-	-	-	-	-	0.0011%	0.0021%	-	-	0.0006%
Males	0.0007%	-	-	-	-	-	-	-	-	-	0.0012%
Females	0.0003%	-	-	-	-	-	-	-	-	-	0.0003%
Asian/Pacific Islander ^c	0.0003%	-	-	-	-	-	-	-	-	-	0.0003%
Males	0.0004%	-	-	-	-	-	-	-	-	-	0.0005%
Females	-	-	-	-	-	-	-	-	-	-	-
Hispanic ^d	0.0006%	-	-	-	-	0.0008%	0.0016%	0.0034%	0.0067%	0.0077%	0.0012%
Males	0.0009%	-	-	-	-	-	0.0025%	0.0060%	0.0135%	-	0.0022%
Females	0.0003%	-	-	-	-	-	-	-	-	-	0.0005%

^a US 2003 cancer prevalence counts are based on 2003 cancer prevalence proportions from the SEER registries and 1/1/2003 US population estimates based on the average of 2002 and 2003 population estimates from the US Bureau of the Census. Prevalence was calculated using the First Malignant Primary Only for a person.

^{b c d} Statistics based on (b) SEER 9 Areas (c) SEER 11 Areas and Rural Georgia (d) NHIA for Hispanic for SEER 11 Areas and Rural Georgia excluding Hawaii and Seattle.

^e Maximum limited-duration prevalence: 28 years for 1975-2003 SEER 9 data; 13 years for 1990-2003 SEER 11 data (used to calculate prevalence for Hispanics and Asian Pacific Islanders).

^f Percentages are age-adjusted to the 2000 US standard population by 5-year age groups.

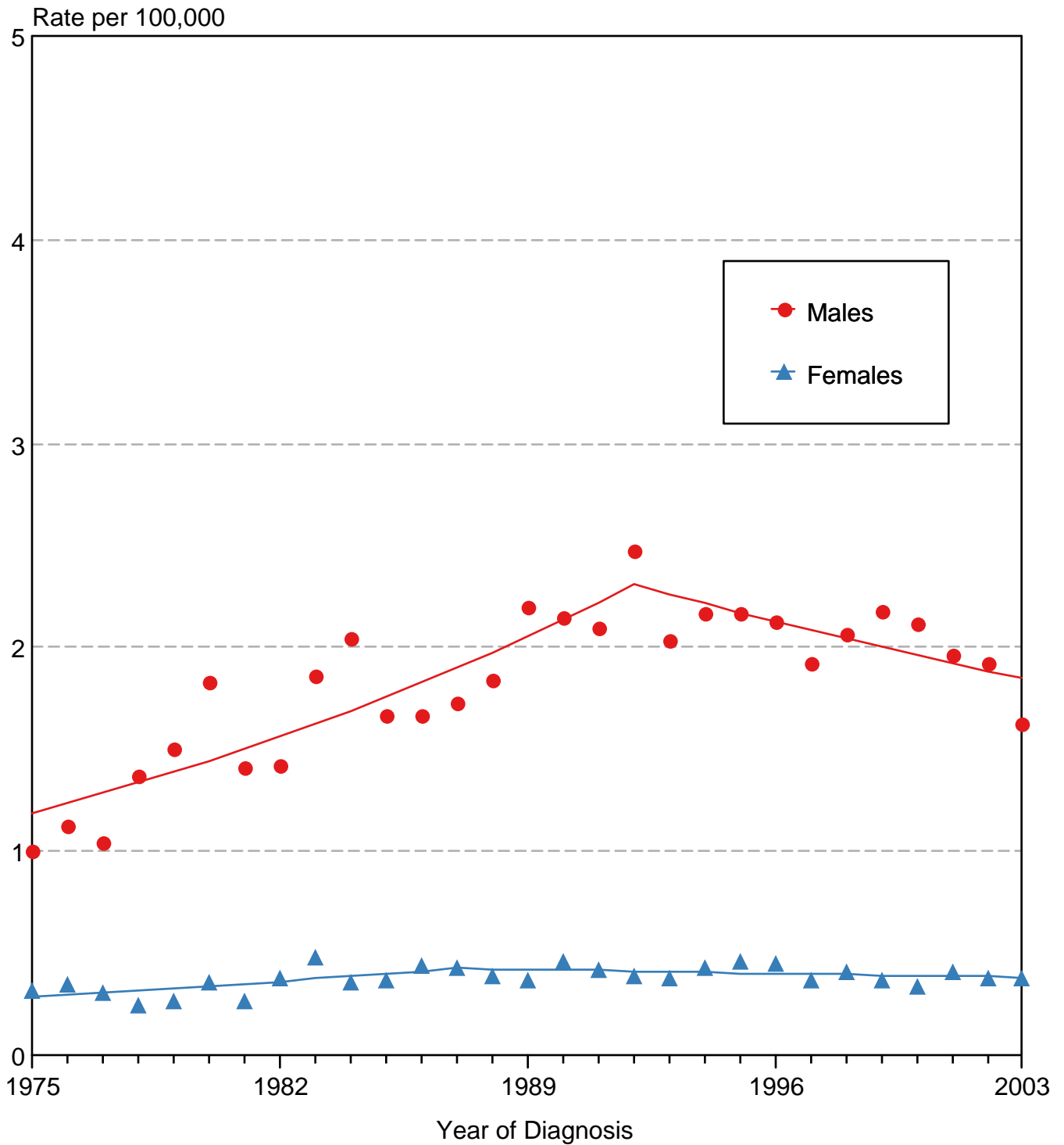
^{g h i} (g) Cases diagnosed more than 28 years ago were estimated using the completeness index method (Capocaccia et. al. 1997, Merrill et. al. 2000). (h) Complete prevalence is obtained by summing 0 to <28 and >=28. (i) Age-specific completeness index was approximated using empirical data from historical Connecticut tumor registry.

- Statistic not shown. Statistic based on fewer than 5 cases estimated alive in SEER for the time interval.

+ Not available.

Figure XVII-1

Mesothelioma SEER Incidence, 1975-2003 All Races, By Sex



Source: SEER 9 areas. Rates are age-adjusted to the 2000 US Std Population (19 age groups - Census P25-1103). Regression lines are calculated using the Joinpoint Regression Program Version 3.1, April 2006, National Cancer Institute.