

Table XXIV-1  
STOMACH CANCER (Invasive)

TRENDS IN SEER INCIDENCE<sup>a</sup> AND U.S. MORTALITY<sup>b</sup> USING THE JOINPOINT REGRESSION PROGRAM, 1975-2003  
WITH UP TO THREE JOINPOINTS BY RACE AND SEX

		<u>Joinpoint Segment 1</u>		<u>Joinpoint Segment 2</u>		<u>Joinpoint Segment 3</u>		<u>Joinpoint Segment 4</u>	
		Year	APC	Year	APC	Year	APC	Year	APC
<u>SEER Cancer Incidence<sup>a</sup></u>									
All Races	Male and Female	1975-2003	-1.6*						
All Races	Male	1975-1988	-1.2*	1988-2003	-2.1*				
All Races	Female	1975-2003	-1.7*						
White	Male and Female	1975-2003	-1.9*						
White	Male	1975-2003	-1.9*						
White	Female	1975-2003	-2.1*						
Black	Male and Female	1975-2003	-1.2*						
Black	Male	1975-1982	2.3	1982-2003	-2.1*				
Black	Female	1975-2003	-0.7*						
<u>SEER Delay-Adjusted Incidence<sup>a</sup></u>									
All Races	Male and Female	1975-2003	-1.6*						
All Races	Male	1975-1988	-1.2*	1988-2003	-2.1*				
All Races	Female	1975-2003	-1.6*						
White	Male and Female	1975-2003	-1.9*						
White	Male	1975-2003	-1.9*						
White	Female	1975-2003	-2.1*						
Black	Male and Female	1975-2003	-1.2*						
Black	Male	1975-1982	2.3	1982-2003	-2.1*				
Black	Female	1975-2003	-0.6*						
<u>U.S. Cancer Mortality<sup>b</sup></u>									
All Races	Male and Female	1975-1987	-2.5*	1987-1990	-0.3	1990-2003	-3.0*		
All Races	Male	1975-1987	-2.3*	1987-1991	-0.9	1991-2003	-3.5*		
All Races	Female	1975-1987	-2.8*	1987-1990	-0.5	1990-2003	-2.6*		
White	Male and Female	1975-1987	-2.8*	1987-1990	-0.8	1990-2003	-3.2*		
White	Male	1975-1994	-2.4*	1994-2003	-3.9*				
White	Female	1975-1987	-3.1*	1987-1990	-1.0	1990-2003	-2.9*		
Black	Male and Female	1975-1987	-1.6*	1987-1991	0.4	1991-2003	-2.9*		
Black	Male	1975-1993	-1.1*	1993-2003	-3.3*				
Black	Female	1975-1995	-1.0*	1995-2003	-2.6*				

Joinpoint Regression Program Version 3.1, April 2006, National Cancer Institute. (<http://srab.cancer.gov/joinpoint/>).

The APC is the Annual Percent Change based on rates age-adjusted to the 2000 US Std Population (19 age groups - Census P25-1130).

<sup>a</sup> Trends are from the SEER 9 areas (San Francisco, Connecticut, Detroit, Hawaii, Iowa, New Mexico, Seattle, Utah, and Atlanta).

<sup>b</sup> Trends are from the NCHS public use data file for the total US.

\* The APC is significantly different from zero (p<.05).

Table XXIV-2  
STOMACH CANCER (Invasive)

AGE ADJUSTED SEER INCIDENCE<sup>a</sup> RATES BY YEAR, RACE AND SEX

	<u>All Races</u>			<u>Whites</u>			<u>Blacks</u>		
	<u>Total</u>	<u>Males</u>	<u>Females</u>	<u>Total</u>	<u>Males</u>	<u>Females</u>	<u>Total</u>	<u>Males</u>	<u>Females</u>
<u>AGE-ADJUSTED RATES</u>									
<u>YEAR OF DIAGNOSIS:</u>									
1975	11.7	17.1	7.8	10.6	16.0	7.0	17.0	24.8	11.5
1976	12.2	17.5	8.3	11.2	16.0	7.7	15.8	23.5	10.1
1977	11.5	16.6	7.9	10.3	15.0	7.0	17.3	24.7	11.6
1978	11.5	16.5	7.9	10.3	15.0	7.0	17.6	22.9	13.5
1979	12.0	17.4	8.2	10.8	15.6	7.5	18.5	28.2	11.7
1980	11.3	17.1	7.2	10.3	15.7	6.6	15.1	26.3	7.3
1981	11.1	16.6	7.4	10.1	15.1	6.7	17.6	27.9	10.3
1982	10.9	16.3	7.1	9.7	14.6	6.3	19.0	31.2	10.3
1983	10.9	15.8	7.4	9.5	13.7	6.6	18.0	27.8	11.2
1984	10.6	15.3	7.3	9.4	13.9	6.4	16.4	21.7	12.3
1985	10.2	15.1	6.9	8.9	13.3	6.0	16.4	23.5	11.4
1986	10.2	15.0	6.8	9.0	13.5	5.9	16.5	23.2	11.9
1987	10.2	15.0	6.8	9.0	13.2	6.0	17.0	26.7	10.7
1988	10.2	15.5	6.5	8.8	13.6	5.5	16.2	24.8	10.1
1989	10.0	15.2	6.3	8.7	13.5	5.4	15.8	23.2	10.7
1990	9.3	13.7	6.2	7.9	11.9	5.2	14.4	21.8	9.4
1991	9.7	14.2	6.6	8.3	12.3	5.5	16.5	25.6	10.5
1992	9.2	13.3	6.1	7.9	11.6	5.2	14.0	19.9	9.8
1993	9.0	13.6	5.8	7.7	11.6	4.9	14.4	23.7	8.4
1994	9.0	13.6	5.7	7.7	11.7	4.8	15.0	24.7	8.8
1995	8.3	12.6	5.2	7.3	11.3	4.4	13.3	18.8	9.5
1996	8.5	12.6	5.5	7.3	11.0	4.7	14.5	22.6	8.9
1997	8.6	12.7	5.6	7.2	10.8	4.5	15.6	22.1	10.9
1998	8.5	12.2	5.9	7.2	10.5	4.7	14.9	20.1	11.4
1999	8.6	12.1	6.0	7.4	10.5	5.0	13.0	18.1	9.8
2000	8.1	11.6	5.4	6.8	9.8	4.5	12.8	19.7	8.1
2001	7.7	11.2	5.1	6.4	9.6	4.0	12.8	18.0	9.0
2002	7.9	11.2	5.4	6.6	9.8	4.3	12.8	15.5	10.6
2003	7.5	10.6	5.2	6.4	9.2	4.2	12.8	17.6	9.6
1975-2003	9.6	14.0	6.4	8.4	12.4	5.5	15.3	22.5	10.2

<sup>a</sup> SEER 9 areas (San Francisco, Connecticut, Detroit, Hawaii, Iowa, New Mexico, Seattle, Utah, and Atlanta). Rates are per 100,000 and are age-adjusted to the 2000 US Std Population (19 age groups - Census P25-1130).  
 - Statistic not shown. Rate based on less than 16 cases for the time interval.

Table XXIV-3  
STOMACH CANCER (Invasive)

AGE-ADJUSTED U.S. DEATH<sup>a</sup> RATES BY YEAR, RACE AND SEX

	<u>All Races</u>			<u>Whites</u>			<u>Blacks</u>		
	<u>Total</u>	<u>Males</u>	<u>Females</u>	<u>Total</u>	<u>Males</u>	<u>Females</u>	<u>Total</u>	<u>Males</u>	<u>Females</u>
<u>AGE-ADJUSTED RATES</u>									
<u>YEAR OF DEATH:</u>									
1975	8.5	12.3	5.9	7.9	11.4	5.6	13.9	21.0	8.6
1976	8.3	12.0	5.7	7.7	11.2	5.4	13.5	20.2	8.6
1977	7.9	11.5	5.4	7.3	10.7	5.0	13.4	19.5	9.0
1978	7.7	11.0	5.5	7.2	10.2	5.1	12.6	18.7	8.3
1979	7.6	11.0	5.2	7.0	10.2	4.8	12.9	18.7	8.7
1980	7.4	10.6	5.1	6.8	9.8	4.8	12.2	18.3	8.0
1981	7.3	10.6	5.0	6.7	9.8	4.6	12.5	18.1	8.6
1982	7.0	10.3	4.9	6.5	9.4	4.5	12.2	19.2	7.4
1983	6.8	9.9	4.8	6.2	9.0	4.4	12.3	18.4	8.1
1984	6.8	9.9	4.7	6.2	9.1	4.3	11.9	17.9	7.9
1985	6.5	9.5	4.4	6.0	8.8	4.1	11.5	17.0	7.8
1986	6.4	9.4	4.2	5.8	8.6	3.8	11.4	17.4	7.4
1987	6.2	9.1	4.2	5.6	8.3	3.8	11.3	17.0	7.5
1988	6.1	8.8	4.2	5.5	7.9	3.8	11.0	17.0	7.1
1989	6.2	9.2	4.2	5.6	8.3	3.8	11.5	17.7	7.3
1990	6.1	8.9	4.2	5.4	8.0	3.7	11.5	17.2	7.7
1991	6.0	8.9	4.0	5.4	8.0	3.6	11.5	17.6	7.5
1992	5.6	8.1	3.9	5.0	7.3	3.4	10.7	15.6	7.5
1993	5.6	8.2	3.8	5.0	7.3	3.4	10.7	16.3	7.1
1994	5.4	7.9	3.7	4.8	7.0	3.3	10.3	15.4	7.0
1995	5.3	7.7	3.7	4.7	6.9	3.2	10.4	14.9	7.4
1996	5.1	7.4	3.5	4.5	6.6	3.1	10.0	15.1	6.8
1997	4.9	7.2	3.4	4.3	6.3	2.9	9.7	14.6	6.5
1998	4.8	6.8	3.4	4.3	6.1	3.0	9.3	13.7	6.4
1999	4.6	6.6	3.3	4.0	5.8	2.8	9.2	13.7	6.5
2000	4.5	6.4	3.2	4.0	5.6	2.8	8.9	12.8	6.5
2001	4.4	6.1	3.1	3.8	5.4	2.7	8.3	12.0	5.8
2002	4.2	5.9	3.0	3.7	5.3	2.5	8.4	12.0	6.1
2003	4.1	5.7	3.0	3.6	5.0	2.6	7.8	11.4	5.4
1975-2003	5.9	8.5	4.1	5.4	7.7	3.7	10.8	16.2	7.3

<sup>a</sup> NCHS public use data file for the total US. Rates are per 100,000 and are age-adjusted to the 2000 US Std Population (19 age groups - Census P25-1130).

- Statistic not shown. Rate based on less than 16 cases for the time interval.

Table XXIV-4  
STOMACH CANCER (Invasive)

SEER INCIDENCE<sup>a</sup> AND U.S. DEATH<sup>b</sup> RATES, AGE-ADJUSTED AND AGE-SPECIFIC RATES, BY RACE AND SEX

	All Races			Whites			Blacks		
	Total	Males	Females	Total	Males	Females	Total	Males	Females
<u>SEER INCIDENCE</u>									
<u>AGE AT DIAGNOSIS</u>									
AGE-ADJUSTED RATES, 2000-2003									
All ages	8.1	11.5	5.6	7.1	10.2	4.7	12.8	17.7	9.3
Under 65	3.0	4.0	2.0	2.6	3.6	1.7	4.4	6.1	2.9
65 and over	43.6	63.2	30.1	37.9	56.0	25.3	71.0	98.0	53.8
All ages(IARC world std) <sup>c</sup>	5.0	7.0	3.3	4.4	6.2	2.8	7.6	10.7	5.3
AGE-SPECIFIC RATES, 2000-2003									
<1	-	-	-	-	-	-	-	-	-
1-4	-	-	-	-	-	-	-	-	-
5-9	-	-	-	-	-	-	-	-	-
10-14	-	-	-	-	-	-	-	-	-
15-19	-	-	-	-	-	-	-	-	-
20-24	0.2	0.1	0.2	0.2	-	-	-	-	-
25-29	0.5	0.7	0.3	0.5	0.6	0.3	-	-	-
30-34	1.0	1.1	0.8	0.9	0.9	0.8	1.1	1.3	-
35-39	1.7	1.9	1.5	1.5	1.7	1.3	1.7	1.9	1.6
40-44	2.7	3.2	2.3	2.3	2.7	1.9	4.4	5.7	3.2
45-49	4.7	6.1	3.3	4.2	5.5	2.9	6.4	8.6	4.4
50-54	7.4	9.6	5.3	6.5	8.6	4.3	12.1	17.1	7.8
55-59	11.9	16.7	7.4	10.5	14.8	6.3	17.0	24.5	10.9
60-64	18.9	27.8	10.8	16.9	25.3	9.2	29.0	42.9	17.8
65-69	27.9	40.6	17.1	24.7	36.6	14.4	41.1	60.6	26.2
70-74	39.1	55.4	26.1	34.1	49.2	21.9	61.2	86.7	43.5
75-79	48.0	70.5	32.2	41.0	61.8	26.4	78.2	115.8	54.8
80-84	58.1	85.8	40.9	51.2	76.7	35.3	92.6	133.3	70.6
85+	62.9	90.2	50.7	53.7	78.7	42.8	119.6	132.7	114.5
<u>U.S. MORTALITY</u>									
<u>AGE AT DEATH</u>									
AGE-ADJUSTED RATES, 2000-2003									
All ages	4.3	6.0	3.1	3.8	5.3	2.7	8.4	12.1	6.0
Under 65	1.4	1.9	1.0	1.2	1.6	0.8	2.6	3.8	1.7
65 and over	24.5	34.8	17.6	21.7	31.0	15.4	48.0	69.4	35.5
All ages(IARC world std) <sup>c</sup>	2.5	3.5	1.7	2.2	3.0	1.5	4.8	7.0	3.2
AGE-SPECIFIC RATES, 2000-2003									
<1	-	-	-	-	-	-	-	-	-
1-4	-	-	-	-	-	-	-	-	-
5-9	-	-	-	-	-	-	-	-	-
10-14	-	-	-	-	-	-	-	-	-
15-19	0.0	-	-	-	-	-	-	-	-
20-24	0.1	0.1	0.1	0.1	-	0.1	-	-	-
25-29	0.2	0.2	0.2	0.2	0.2	0.1	0.3	0.4	-
30-34	0.4	0.5	0.4	0.4	0.4	0.3	0.7	0.8	0.7
35-39	0.8	0.8	0.7	0.7	0.7	0.6	1.3	1.4	1.1
40-44	1.3	1.5	1.1	1.0	1.2	0.9	2.5	3.1	1.9
45-49	2.2	2.8	1.6	1.8	2.4	1.3	4.1	5.7	2.6
50-54	3.6	4.8	2.4	3.0	4.1	2.0	7.3	10.7	4.4
55-59	5.4	7.6	3.4	4.8	6.7	2.9	10.1	15.1	6.0
60-64	9.0	13.0	5.4	7.8	11.3	4.7	17.0	25.9	10.0
65-69	13.1	18.8	8.2	11.3	16.2	7.0	25.2	38.8	15.1
70-74	19.1	27.5	12.4	16.9	24.3	10.8	36.2	56.2	22.7
75-79	25.9	37.2	18.0	22.9	33.2	15.5	52.1	76.4	37.6
80-84	34.1	48.0	25.7	30.3	43.0	22.6	67.5	97.0	52.3
85+	47.2	66.1	39.1	42.2	59.9	34.6	93.5	119.9	83.5

<sup>a</sup> SEER 17 areas. Rates are per 100,000 and are age-adjusted to the 2000 US Std Population (19 age groups - Census P25-1130), unless noted.

<sup>b</sup> NCHS public use data file for the total US. Rates are per 100,000 and are age-adjusted to the 2000 US Std Population (19 age groups - Census P25-1130), unless noted.

<sup>c</sup> Rates are per 100,000 and are age-adjusted to the IARC world standard population.

- Statistic not shown. Rate based on less than 16 cases for the time interval.

Table XXIV-5  
STOMACH CANCER (Invasive)

SURVIVAL RATES, BY RACE, SEX, DIAGNOSIS YEAR, STAGE AND AGE

	All Races			Whites			Blacks		
	Total	Males	Females	Total	Males	Females	Total	Males	Females
<u>5-YR RELATIVE SURVIVAL RATES</u>									
YEAR OF DIAGNOSIS:									
1960-1963 <sup>a</sup>	-	-	-	11	10	13	8	5	14
1970-1973 <sup>a</sup>	-	-	-	13	12	14	13	15	10
1975-1977 <sup>b</sup>	15.8	15.0	16.9	14.7	13.7	16.3	16.3	16.4	16.0
1978-1980 <sup>b</sup>	16.7	15.0	19.5	16.1	14.4	18.7	16.9	16.0	18.5
1981-1983 <sup>b</sup>	18.0	17.1	19.4	16.9	16.0	18.2	17.2	17.1	17.2
1984-1986 <sup>b</sup>	18.3	16.2	21.6	17.6	15.2	21.5	20.0	17.5	23.4
1987-1989 <sup>b</sup>	20.6	17.5	25.8	19.1	16.0	24.3	19.9	17.2	24.4
1990-1992 <sup>b</sup>	21.7	18.6	26.6	19.4	16.4	24.2	24.5	23.7	25.4
1993-1995 <sup>b</sup>	21.9	20.8	23.7	20.9	19.7	23.0	20.0	18.0	22.8
1996-2002 <sup>b</sup>	23.9 <sup>e</sup>	22.8 <sup>e</sup>	25.5 <sup>e</sup>	21.9 <sup>e</sup>	20.5 <sup>e</sup>	24.3 <sup>e</sup>	23.3 <sup>e</sup>	21.2	25.4 <sup>e</sup>
<u>5-YR PERIOD SURVIVAL RATES<sup>cd</sup></u>									
YEAR OF DIAGNOSIS:									
1996-2002	24.3	23.0	26.2	22.7	21.5	24.7	22.3	19.6	25.7
<u>STAGE DISTRIBUTION (%) 1996-2002<sup>c</sup></u>									
All Stages									
Number of cases	24,188	14,688	9,500	17,002	10,580	6,422	3,074	1,711	1,363
Percent	100%	100%	100%	100%	100%	100%	100%	100%	100%
Localized	23	23	24	23	22	24	24	22	26
Regional	31	33	29	30	32	28	30	31	28
Distant	33	35	32	34	35	32	33	36	30
Unstaged	12	10	15	12	11	15	13	10	16
<u>5-YR RELATIVE SURVIVAL RATES, 1996-2002<sup>c</sup></u>									
AGE AT DIAGNOSIS:									
<45	28.2	26.4	30.5	27.7	25.5	30.4	31.4	26.7	37.6
45-54	26.7	24.8	30.3	23.6	21.8	27.4	30.8	24.5	40.0
55-64	23.9	23.3	25.4	22.0	21.2	24.0	21.2	18.5	26.4
65-74	24.8	22.8	28.3	22.3	20.1	26.5	24.4	22.7	26.3
75+	20.4	19.7	21.0	19.5	19.4	19.7	13.2	10.4	15.5
Under 65	25.7	24.3	28.4	23.7	22.1	26.9	27.1	22.4	34.9
65 and over	22.6	21.5	24.1	20.9	19.8	22.4	19.3	17.7	20.4
STAGE:									
All Stages	23.9	22.7	25.6	22.0	20.9	23.9	23.1	20.5	26.4
Localized	61.9	59.4	65.5	58.6	55.6	63.2	58.8	56.0	61.8
Regional	22.2	22.0	22.7	20.3	20.3	20.2	23.2	21.4	26.0
Distant	3.4	3.3	3.6	3.1	2.9	3.6	2.5	2.3	3.2
Unstaged	13.0	12.4	13.6	12.7	12.2	13.1	10.5	7.9	12.9

<sup>a</sup> Rates are based on End Results data from a series of hospital registries and one population-based registry.  
<sup>b</sup> Rates are from the SEER 9 areas (San Francisco, Connecticut, Detroit, Hawaii, Iowa, New Mexico, Seattle, Utah, Atlanta).  
Rates are based on follow-up of patients into 2003.  
<sup>c</sup> Rates are from the SEER 17 areas (San Francisco, Connecticut, Detroit, Hawaii, Iowa, New Mexico, Seattle, Utah, Atlanta, San Jose-Monterey, Los Angeles, Alaska Native Registry, Rural Georgia, California excluding SF/SJM/LA, Kentucky, Louisiana and New Jersey). California excluding SF/SJM/LA, Kentucky, Louisiana, and New Jersey contribute cases for diagnosis years 2000-2002. The remaining 13 SEER Areas contribute cases for the entire period 1996-2002. Rates are based on follow-up of patients into 2003.  
<sup>d</sup> Period survival provides a more up-to-date estimate of survival by piecing together the most recent conditional survival estimates from several cohorts. It is computed here using three calendar year blocks (2000-2002: 0-1 year survival), (1999-2001: 1-2 year survival), (1998-2000: 2-3 year survival), (1997-1999: 3-4 year survival), (1996-1998: 4-5 years survival).  
<sup>e</sup> The difference in rates between 1975-1977 and 1996-2002 is statistically significant (p<.05).  
<sup>f</sup> The standard error of the survival rate is between 5 and 10 percentage points.  
<sup>g</sup> The standard error of the survival rate is greater than 10 percentage points.  
- Statistic could not be calculated due to fewer than 16 cases during the time period.

Table XXIV-6  
STOMACH CANCER (Invasive)

SURVIVAL RATES<sup>a</sup>

By Year of Diagnosis

All Races, Males and Females

Year of Diagnosis

	1975- 1979	1980- 1984	1985	1986	1987	1988	1989	1990	1991	1992	1993	1994	1995	1996	1997	1998	1999	2000	2001	2002
Relative Survival Rates (SEER <sup>b</sup> )																				
1-year	39.7	42.9	43.6	45.1	43.7	46.9	46.4	46.5	44.6	47.2	45.2	46.2	47.2	46.9	46.1	49.3	47.8	48.5	49.8	50.7
2-year	25.5	27.5	28.6	29.1	27.4	32.6	31.7	32.7	30.6	32.5	30.8	33.6	32.2	32.7	33.5	34.4	34.7	33.3	34.3	
3-year	20.2	21.8	22.3	23.5	21.9	26.4	25.4	25.5	25.3	26.3	24.4	27.0	27.2	27.8	26.8	29.0	28.6	27.7		
4-year	17.8	19.0	19.6	21.4	19.5	22.7	22.4	22.9	22.8	24.0	21.4	24.5	24.0	24.5	24.2	26.2	25.9			
5-year	16.2	17.5	17.9	20.2	18.7	21.9	21.2	20.8	21.4	22.7	20.1	22.8	22.8	23.0	22.9	24.0				
6-year	15.3	16.7	17.0	19.3	17.9	20.7	20.2	19.1	20.0	21.8	19.3	21.0	21.7	21.3	21.8					
7-year	14.8	16.0	16.8	19.3	16.5	20.1	19.0	18.5	19.6	20.5	18.4	20.1	20.7	20.7						
8-year	14.2	15.4	16.0	18.8	15.9	19.7	18.7	18.2	19.1	19.4	17.5	19.2	20.7							
9-year	13.9	15.1	15.7	18.4	15.3	19.7	18.2	17.2	18.4	18.6	16.8	19.2								
10-year	13.6	15.0	15.1	17.8	14.5	19.1	17.5	16.7	18.0	18.2	16.1									
11-year	13.2	14.6	14.9	17.2	14.0	19.1	17.3	16.5	18.0	17.5										
12-year	13.1	14.2	14.9	17.2	13.7	18.8	16.8	16.0	18.0											
13-year	12.9	14.2	14.9	16.6	13.4	18.7	16.8	16.0												
14-year	12.5	14.2	14.9	16.3	13.1	18.6	16.8													
15-year	12.1	13.9	14.9	16.0	12.9	18.6														
16-year	11.9	13.6	14.9	15.6	12.6															
17-year	11.8	13.5	14.9	15.3																
18-year	11.5	13.3	14.9																	
19-year	11.4	13.3																		
20-year	11.2																			

<sup>a</sup> Survival rates are relative rates expressed as percents.

<sup>b</sup> Rates are from the SEER 9 areas (San Francisco, Connecticut, Detroit, Hawaii, Iowa, New Mexico, Seattle, Utah, and Atlanta).

Table XXIV-7  
STOMACH CANCER (Invasive)

SURVIVAL RATES<sup>a</sup>

By Year of Diagnosis

All Races, Males

Year of Diagnosis

	1975- 1979	1980- 1984	1985	1986	1987	1988	1989	1990	1991	1992	1993	1994	1995	1996	1997	1998	1999	2000	2001	2002
Relative Survival Rates (SEER <sup>b</sup> )																				
1-year	39.2	42.4	42.8	42.4	42.4	46.1	46.9	46.3	42.6	45.4	43.9	46.3	48.2	44.9	46.6	50.8	47.6	47.8	51.0	49.4
2-year	24.5	26.6	27.6	26.7	24.9	30.5	30.7	31.6	27.1	30.2	28.4	33.0	32.4	29.2	32.2	36.3	34.3	33.6	34.2	
3-year	19.1	20.9	21.0	21.0	19.5	24.1	23.3	24.2	21.5	24.3	23.0	26.2	26.5	24.7	25.3	30.1	28.1	27.8		
4-year	16.6	17.9	18.3	18.6	16.9	19.8	19.3	20.9	18.6	22.0	20.3	24.0	23.1	22.0	22.4	26.6	25.2			
5-year	15.1	16.2	16.0	17.3	15.7	18.6	18.0	18.4	16.5	20.7	18.7	22.1	21.6	20.9	20.7	24.4				
6-year	14.1	15.4	15.0	16.5	15.2	17.8	17.1	17.3	14.8	19.4	17.7	20.1	20.6	19.6	19.5					
7-year	13.6	14.6	14.4	16.4	13.9	17.2	15.7	16.7	13.9	18.2	16.3	19.1	19.7	19.4						
8-year	13.2	14.1	13.7	16.0	13.1	16.9	15.3	15.9	13.2	17.2	15.2	18.3	19.7							
9-year	13.1	13.9	13.3	15.6	12.8	16.6	14.5	15.5	12.8	16.3	14.6	18.2								
10-year	12.7	13.8	12.5	15.4	12.1	16.3	13.8	14.7	12.4	15.7	13.3									
11-year	12.4	13.5	12.0	15.2	11.6	16.1	13.6	14.1	12.4	15.5										
12-year	12.3	12.9	12.0	15.1	11.3	16.1	13.0	13.7	12.4											
13-year	12.3	12.9	12.0	15.1	11.3	16.0	12.9	13.7												
14-year	11.6	12.9	11.9	15.0	10.6	16.0	12.7													
15-year	11.2	12.7	11.9	15.0	10.0	16.0														
16-year	11.1	12.3	11.9	14.7	9.5															
17-year	10.8	12.1	11.8	14.7																
18-year	10.3	11.9	11.5																	
19-year	10.3	11.9																		
20-year	10.3																			

<sup>a</sup> Survival rates are relative rates expressed as percents.

<sup>b</sup> Rates are from the SEER 9 areas (San Francisco, Connecticut, Detroit, Hawaii, Iowa, New Mexico, Seattle, Utah, and Atlanta).

Table XXIV-8  
STOMACH CANCER (Invasive)

SURVIVAL RATES<sup>a</sup>

By Year of Diagnosis

All Races, Females

Year of Diagnosis

	1975- 1979	1980- 1984	1985	1986	1987	1988	1989	1990	1991	1992	1993	1994	1995	1996	1997	1998	1999	2000	2001	2002
Relative Survival Rates (SEER <sup>b</sup> )																				
1-year	40.5	43.7	44.8	49.7	45.7	48.2	45.5	46.9	47.8	50.1	47.5	46.0	45.6	50.3	45.5	46.9	48.0	49.6	47.8	52.7
2-year	26.9	29.0	30.1	33.0	31.6	36.2	33.5	34.4	36.1	36.4	34.9	34.8	31.9	38.3	35.6	31.4	35.2	32.8	34.6	
3-year	21.9	23.3	24.4	27.5	25.7	30.4	29.2	27.6	31.2	29.6	26.7	28.2	28.3	32.7	29.2	27.2	29.3	27.4		
4-year	19.6	20.9	21.6	25.8	23.5	27.8	27.8	26.0	29.2	27.2	23.2	25.4	25.5	28.5	27.1	25.4	27.0			
5-year	17.8	19.5	20.9	24.9	23.3	27.5	26.6	24.5	29.0	25.8	22.3	24.0	24.8	26.5	26.2	23.3				
6-year	17.1	18.9	20.2	23.7	22.1	25.8	25.7	21.8	27.9	25.7	21.8	22.4	23.6	23.9	25.3					
7-year	16.7	18.3	20.2	23.7	20.6	25.3	24.7	21.3	27.7	24.0	21.3	21.8	22.4	22.6						
8-year	15.7	17.4	19.7	23.0	20.2	24.3	24.4	21.3	27.7	22.8	20.8	20.7	22.2							
9-year	15.2	17.1	19.3	22.5	19.2	24.3	24.4	19.5	27.0	22.3	20.3	20.7								
10-year	15.1	16.9	19.2	21.4	17.9	23.9	23.8	19.5	26.5	22.0	20.3									
11-year	14.5	16.4	19.2	20.4	17.5	23.8	23.6	19.5	26.5	20.6										
12-year	14.2	16.3	19.2	20.1	17.1	23.1	23.4	19.5	26.5											
13-year	13.7	16.2	19.2	18.5	16.5	22.8	23.4	19.5												
14-year	13.6	16.1	19.2	18.2	16.5	22.2	23.4													
15-year	13.5	15.7	19.2	17.3	16.5	22.2														
16-year	13.1	15.5	19.2	16.7	16.5															
17-year	13.1	15.4	19.2	16.2																
18-year	13.1	15.3	19.2																	
19-year	12.8	15.1																		
20-year	12.2																			

<sup>a</sup> Survival rates are relative rates expressed as percents.

<sup>b</sup> Rates are from the SEER 9 areas (San Francisco, Connecticut, Detroit, Hawaii, Iowa, New Mexico, Seattle, Utah, and Atlanta).



Table XXIV-9  
STOMACH CANCER (Invasive)

Percent Diagnosed With Cancer In 10, 20 and 30 Years and In Remaining Lifetime,  
Given Cancer Free At Current Age By Race and Sex

Lifetime Risk (Percent) of Being Diagnosed (17 SEER Areas) With Cancer and  
Lifetime Risk (Percent) of Dying (Total U.S.) From Cancer

2001-2003

Race/ Ethnicity	Current Age	Males				Females			
		+10 yrs	+20 yrs	+30 yrs	Eventually	+10 yrs	+20 yrs	+30 yrs	Eventually
All Races	0	0.00	0.00	0.00	1.12	0.00	0.00	0.00	0.68
	10	0.00	0.00	0.02	1.14	0.00	0.00	0.02	0.68
	20	0.00	0.02	0.06	1.14	0.00	0.01	0.04	0.68
	30	0.01	0.06	0.18	1.15	0.01	0.04	0.10	0.69
	40	0.05	0.17	0.45	1.16	0.03	0.09	0.21	0.68
	50	0.13	0.41	0.81	1.15	0.06	0.19	0.40	0.66
White	0	0.00	0.00	0.00	1.01	0.00	0.00	0.00	0.57
	10	0.00	0.00	0.02	1.02	0.00	0.00	0.01	0.58
	20	0.00	0.02	0.06	1.02	0.00	0.01	0.04	0.58
	30	0.01	0.05	0.16	1.03	0.01	0.04	0.09	0.58
	40	0.04	0.15	0.40	1.04	0.02	0.08	0.18	0.57
	50	0.12	0.37	0.73	1.03	0.05	0.16	0.33	0.56
Black	0	0.00	0.00	0.01	1.31	0.00	0.00	0.00	0.99
	10	0.00	0.01	0.02	1.34	0.00	0.00	0.02	1.01
	20	0.01	0.02	0.09	1.35	0.00	0.02	0.05	1.01
	30	0.02	0.09	0.27	1.38	0.01	0.05	0.14	1.02
	40	0.07	0.26	0.63	1.41	0.04	0.13	0.30	1.02
	50	0.20	0.59	1.07	1.43	0.09	0.27	0.59	1.02
Asian/ Pacific Islander	0	0.00	0.00	0.01	2.44	0.00	0.00	0.00	1.72
	10	0.00	0.01	0.03	2.46	0.00	0.00	0.03	1.74
	20	0.01	0.03	0.10	2.47	0.00	0.02	0.08	1.74
	30	0.02	0.09	0.27	2.48	0.02	0.07	0.19	1.74
	40	0.07	0.25	0.66	2.48	0.05	0.17	0.39	1.73
	50	0.18	0.60	1.38	2.46	0.11	0.34	0.83	1.69
Hispanic <sup>a</sup>	0	0.00	0.00	0.01	1.80	0.00	0.00	0.00	1.36
	10	0.00	0.01	0.03	1.82	0.00	0.00	0.03	1.38
	20	0.01	0.03	0.09	1.83	0.00	0.02	0.08	1.38
	30	0.02	0.09	0.26	1.84	0.02	0.07	0.20	1.38
	40	0.06	0.24	0.62	1.85	0.05	0.18	0.40	1.37
	50	0.18	0.57	1.21	1.84	0.13	0.35	0.73	1.34
60	0.41	1.09	1.57	1.77	0.23	0.62	1.07	1.25	

Race/Ethnicity	Lifetime Risk of Developing		Lifetime Risk of Dying	
	Males	Females	Males	Females
All Races	1.12%	0.68%	0.57%	0.38%
White	1.01%	0.57%	0.52%	0.34%
Black	1.31%	0.99%	0.87%	0.64%
Asian/Pacific Islander	2.44%	1.72%	1.56%	1.20%
Hispanic <sup>a</sup>	1.80%	1.36%	1.06%	0.76%

Devcan Version 6.1.0, April 2006, National Cancer Institute (<http://srab.cancer.gov/devcan/>).

Source: Incidence data are from the SEER 17 areas (San Francisco, Connecticut, Detroit, Hawaii, Iowa, New Mexico, Seattle, Utah, Atlanta, San Jose-Monterey, Los Angeles, Alaska Native Registry, Rural Georgia, California excluding SF/SJM/LA, Kentucky, Louisiana and New Jersey). Mortality data are from the NCHS public use data file for the total US.

<sup>a</sup> Hispanic is not mutually exclusive from Whites, Blacks, Asian/Pacific Islanders, and American Indians/Alaska Natives. Underlying incidence data for Hispanics are based on NHIA and exclude cases from Hawaii, Seattle, Alaska Native Registry and Kentucky. Underlying mortality data for Hispanics exclude deaths from Minnesota, New Hampshire and North Dakota.

Table XXIV-10  
STOMACH CANCER (Invasive)

SEER INCIDENCE AND U.S. MORTALITY  
AGE-ADJUSTED RATES AND TRENDS<sup>a</sup>  
By Race/Ethnicity and Sex

SEER Incidence

RACE/ETHNICITY	Rate 2000-2003 <sup>b</sup>			Trend 1994-2003 <sup>c</sup>		
	Rate per 100,000 persons			APC (%)		
	Total	Males	Females	Total	Males	Females
All Races	8.1	11.5	5.6	-1.5*	-2.3*	-0.7
White	7.1	10.2	4.7	-1.5*	-2.3*	-0.6
White Hispanic <sup>d</sup>	12.6	16.2	9.8	-2.0*	-3.5*	-0.3
White Non-Hispanic <sup>d</sup>	6.4	9.5	4.1	-2.0*	-2.5*	-1.4
Black	12.8	17.7	9.3	-2.3*	-3.3*	-1.1
Asian/Pacific Islander	14.4	18.9	11.0	-3.2*	-3.2*	-3.0*
Amer Ind/Alaska Nat <sup>e</sup>	16.2	21.6	12.3	4.7	-	-
Hispanic <sup>d</sup>	12.3	15.9	9.6	-1.9*	-3.4*	-0.2

U.S. Mortality<sup>f</sup>

RACE/ETHNICITY	Rate 2000-2003			Trend 1994-2003		
	Rate per 100,000 persons			APC (%)		
	Total	Males	Females	Total	Males	Females
All Races	4.3	6.0	3.1	-3.1*	-3.6*	-2.6*
White	3.8	5.3	2.7	-3.2*	-3.8*	-2.8*
White Hispanic <sup>d</sup>	7.1	9.5	5.3	-1.8*	-2.3*	-1.3
White Non-Hispanic <sup>d</sup>	3.5	5.0	2.4	-3.6*	-4.1*	-3.2*
Black	8.4	12.1	6.0	-3.0*	-3.4*	-2.6*
Asian/Pacific Islander	8.3	10.8	6.5	-4.2*	-4.1*	-4.1*
Amer Ind/Alaska Nat	5.1	6.8	3.9	-1.6	-2.0	-0.8
Hispanic <sup>d</sup>	6.8	9.1	5.1	-1.8*	-2.3*	-1.4

- The APC is the Annual Percent Change over the time interval.
- Statistic not shown. Rate based on less than 16 cases for the time interval. Trend based on less than 10 cases for at least one year within the time interval.
- <sup>a</sup> Rates are age-adjusted to the 2000 US Std Population (19 age groups - Census P25-1130). Trends are based on rates age-adjusted to the 2000 US Std Population (19 age groups - Census P25-1130).
- <sup>b</sup> Incidence data used in calculating the rates are from the 17 SEER areas (San Francisco, Connecticut, Detroit, Hawaii, Iowa, New Mexico, Seattle, Utah, Atlanta, San Jose-Monterey, Los Angeles, Alaska Native Registry, Rural Georgia, California excluding SF/SJM/LA, Kentucky, Louisiana and New Jersey).
- <sup>c</sup> Incidence data used in calculating the trends are from the 13 SEER areas (San Francisco, Connecticut, Detroit, Hawaii, Iowa, New Mexico, Seattle, Utah, Atlanta, San Jose-Monterey, Los Angeles, Alaska Native Registry and Rural Georgia).
- <sup>d</sup> Hispanic and Non-Hispanic are not mutually exclusive from Whites, Blacks, Asian/Pacific Islanders, and American Indians/Alaska Natives. Incidence data for Hispanics and Non-Hispanics are based on NHIA and exclude cases from Hawaii, Seattle, Alaska Native Registry and Kentucky. The 2000-2003 Hispanic and Non-Hispanic death rates exclude deaths from Minnesota, New Hampshire and North Dakota. The 1994-2003 Hispanic and Non-Hispanic mortality trends exclude deaths from Maine, Minnesota, New Hampshire, North Dakota, and Oklahoma.
- <sup>e</sup> Incidence data for American Indians/Alaska Natives include cases from Connecticut, Detroit, Iowa, New Mexico, Seattle, Utah, Atlanta, and the Alaska Native Registry. Incidence rates are for diagnosis years 1999-2002. Incidence trends are for diagnosis years 1994-2002.
- <sup>f</sup> Mortality data are analyzed from a public use file provided by the National Center for Health Statistics (NCHS).
- \* The APC is significantly different from zero (p<.05).

Table XXIV-11  
STOMACH CANCER (Invasive)

AGE-ADJUSTED SEER INCIDENCE RATES<sup>a</sup>  
By Registry, Race/Ethnicity and Sex

	All Races			Whites		Blacks		Asian/Pacific Islanders		Hispanics <sup>b</sup>	
	Total	Males	Females	Males	Females	Males	Females	Males	Females	Males	Females
<u>SEER INCIDENCE RATES<sup>a</sup>, 2000-2003</u>											
REGISTRY											
17 SEER Areas <sup>c</sup>	8.1	11.5	5.6	10.2	4.7	17.7	9.3	18.9	11.0	15.9	9.6
13 SEER Areas <sup>c</sup>	8.5	11.9	5.9	10.3	4.8	17.3	9.0	19.8	11.5	15.8	10.1
11 SEER Areas <sup>c</sup>	8.5	11.9	5.9	10.3	4.8	17.4	9.1	19.8	11.5	15.8	10.1
9 SEER Areas <sup>c</sup>	7.8	11.2	5.3	9.6	4.2	17.7	9.4	19.4	10.9	14.1	9.3
San Francisco-Oakland	8.7	12.4	5.8	10.3	4.3	16.8	8.9	17.9	9.5	16.6	9.0
Connecticut	8.6	13.0	5.4	12.3	5.2	24.6	7.9	-	-	15.6	11.9
Metropolitan Detroit	8.8	12.5	6.0	11.3	4.9	17.2	10.5	17.3	-	-	-
Hawaii	13.6	17.9	10.3	10.6	4.6	-	-	20.5	12.0	-	-
Iowa	5.3	7.9	3.3	7.6	3.2	-	-	-	-	-	-
New Mexico	7.1	10.0	4.8	9.5	4.5	-	-	-	-	13.4	8.8
Seattle-Puget Sound	6.9	10.0	4.6	9.4	3.9	14.4	-	18.4	11.8	-	-
Utah	5.4	7.4	3.7	7.2	3.6	-	-	-	-	11.2	-
Metropolitan Atlanta	7.0	9.3	5.3	5.8	3.6	18.5	8.9	24.1	12.3	-	-
San Jose-Monterey	8.5	11.8	6.0	10.5	5.1	-	-	17.0	10.4	14.9	10.6
Los Angeles	10.5	14.2	7.8	12.5	6.9	16.6	8.6	21.4	12.9	17.1	10.6
Rural Georgia	5.8	8.7	-	-	-	-	-	-	-	-	-
California exclud. SF/SJM/LA	7.3	10.3	4.9	9.7	4.5	15.0	8.0	16.2	9.1	15.2	9.1
Kentucky	5.9	8.8	3.6	8.6	3.4	13.2	7.5	-	-	-	-
Louisiana	8.3	11.5	5.9	8.9	4.0	20.3	11.4	-	-	12.1	-
New Jersey	9.0	13.2	6.0	12.2	5.5	18.8	9.0	17.0	10.3	19.2	9.3

<sup>a</sup> Rates are per 100,000 and are age-adjusted to the 2000 US Std Population (19 age groups - Census P25-1130)

<sup>b</sup> Hispanic is not mutually exclusive from Whites, Blacks, Asian/Pacific Islanders, and American Indians/Alaska Natives. Incidence data for Hispanics are based on NHIA and exclude cases from Hawaii, Seattle, Alaska Native Registry and Kentucky.

<sup>c</sup> The SEER 9 areas are San Francisco, Connecticut, Detroit, Hawaii, Iowa, New Mexico, Seattle, Utah and Atlanta.

The SEER 11 areas comprise the SEER 9 areas plus San Jose-Monterey and Los Angeles.

The SEER 13 areas comprise the SEER 11 areas plus the Alaska Native Registry and Rural Georgia.

The SEER 17 areas comprise the SEER 13 areas plus California excluding SF/SJM/LA, Kentucky, Louisiana and New Jersey

- Statistic not shown. Rate based on less than 16 cases for the time interval.

Table XXIV-12  
STOMACH CANCER (Invasive)

AGE-ADJUSTED SEER DEATH RATES<sup>a</sup>  
By Registry, Race/Ethnicity and Sex

	All Races			Whites		Blacks		Asian/Pacific Islanders		Hispanics <sup>b</sup>	
	Total	Males	Females	Males	Females	Males	Females	Males	Females	Males	Females
<u>SEER DEATH RATES<sup>a</sup>, 2000-2003</u>											
REGISTRY											
17 SEER Areas <sup>c</sup>	4.8	6.7	3.5	5.8	3.0	12.5	6.2	11.4	6.6	9.9	5.5
13 SEER Areas <sup>c</sup>	5.0	6.9	3.7	5.8	3.0	11.3	6.0	12.2	7.0	10.5	6.2
11 SEER Areas <sup>c</sup>	5.0	6.9	3.7	5.8	3.0	11.3	6.0	12.2	7.0	10.6	6.2
9 SEER Areas <sup>c</sup>	4.6	6.3	3.3	5.2	2.6	11.4	6.0	11.1	6.9	10.2	5.8
San Francisco-Oakland	5.3	7.2	3.9	5.8	2.9	13.1	5.8	10.1	6.9	10.2	6.0
Connecticut	4.9	6.9	3.5	6.6	3.3	13.9	5.9	-	-	8.6	4.1
Metropolitan Detroit	4.9	6.5	3.7	5.6	3.0	9.9	6.4	-	-	-	-
Hawaii	7.9	10.6	5.8	5.7	2.5	-	-	12.3	6.8	-	-
Iowa	3.1	4.5	2.1	4.4	2.0	-	-	-	-	-	-
New Mexico	4.7	6.7	3.2	6.3	2.9	-	-	-	-	11.2	5.9
Seattle-Puget Sound	3.9	5.5	2.7	4.8	2.3	14.4	-	12.3	8.4	-	-
Utah	3.3	4.1	2.6	3.9	2.5	-	-	-	-	-	-
Metropolitan Atlanta	4.1	5.6	3.1	3.4	1.9	11.9	6.1	-	-	-	-
San Jose-Monterey	4.9	6.9	3.6	5.9	3.1	-	-	11.4	5.9	9.6	6.9
Los Angeles	6.6	8.9	4.9	7.6	4.4	11.4	6.2	14.5	7.3	11.0	6.4
Rural Georgia	4.6	-	-	-	-	-	-	-	-	-	-
California exclud. SF/SJM/LA	4.5	6.2	3.2	5.8	2.9	11.4	5.5	10.0	5.9	9.8	5.3
Kentucky	3.7	5.1	2.6	4.9	2.5	10.3	4.3	-	-	-	-
Louisiana	5.2	7.5	3.6	4.8	2.1	16.4	7.9	-	-	-	-
New Jersey	5.1	7.4	3.5	6.8	3.2	13.0	5.5	6.9	5.0	7.7	2.9
Total U.S.	4.3	6.0	3.1	5.3	2.7	12.1	6.0	10.8	6.5	9.1	5.1

<sup>a</sup> NCHS public use data file for the total US. Rates are per 100,000 and are age-adjusted to the 2000 US Std Population (19 age groups - Census P25-1130).

<sup>b</sup> Hispanic is not mutually exclusive from Whites, Blacks, Asian/Pacific Islanders, and American Indians/Alaska Natives. The 2000-2003 Hispanic death rates do not include deaths from Minnesota, New Hampshire and North Dakota.

<sup>c</sup> The SEER 9 areas are San Francisco, Connecticut, Detroit, Hawaii, Iowa, New Mexico, Seattle, Utah and Atlanta.

The SEER 11 areas comprise the SEER 9 areas plus San Jose-Monterey and Los Angeles.

The SEER 13 areas comprise the SEER 11 areas plus the Alaska Native Registry and Rural Georgia.

The SEER 17 areas comprise the SEER 13 areas plus California excluding SF/SJM/LA, Kentucky, Louisiana and New Jersey

- Statistic not shown. Rate based on less than 16 cases for the time interval.

Table XXIV-13  
STOMACH CANCER (Invasive)AVERAGE ANNUAL AGE-ADJUSTED CANCER DEATH<sup>a</sup> RATES BY STATE, ALL RACES, 2000-2003

## Males and Females

State	Rate	SE	Rank	PD	State	Rate	SE	Rank	PD
TOTAL U.S.	4.3	0.02							
High Five States									
Hawaii	7.9 <sup>bc</sup>	0.39	(01)	83.7					
District of Columbia	6.8 <sup>bc</sup>	0.55	(02)	58.1					
Alaska	5.7 <sup>b</sup>	0.70	(03)	32.6					
Rhode Island	5.4 <sup>b</sup>	0.33	(04)	25.6					
Louisiana	5.2 <sup>bc</sup>	0.18	(05)	20.9					
Low Five States									
Utah	3.3 <sup>bc</sup>	0.23	(47)	-23.3					
Wyoming	3.2 <sup>b</sup>	0.41	(48)	-25.6					
Iowa	3.1 <sup>bc</sup>	0.15	(49)	-27.9					
Nebraska	2.8 <sup>bc</sup>	0.19	(50)	-34.9					
Idaho	2.6 <sup>bc</sup>	0.23	(51)	-39.5					
Alabama	4.3	0.15	(19)	0.0	Montana	3.6 <sup>b</sup>	0.30	(36)	-16.3
Alaska	5.7 <sup>b</sup>	0.70	(03)	32.6	Nebraska	2.8 <sup>bc</sup>	0.19	(50)	-34.9
Arizona	3.5 <sup>bc</sup>	0.13	(38)	-18.6	Nevada	3.9	0.23	(28)	-9.3
Arkansas	3.9	0.18	(30)	-9.3	New Hampshire	3.6 <sup>b</sup>	0.27	(35)	-16.3
California	5.2 <sup>bc</sup>	0.07	(06)	20.9	New Jersey	5.1 <sup>bc</sup>	0.12	(08)	18.6
Colorado	3.3 <sup>bc</sup>	0.15	(43)	-23.3	New Mexico	4.7	0.26	(14)	9.3
Connecticut	4.9	0.18	(09)	14.0	New York	5.1 <sup>bc</sup>	0.08	(07)	18.6
Delaware	4.3	0.36	(18)	0.0	North Carolina	4.0	0.11	(25)	-7.0
District of Columbia	6.8 <sup>bc</sup>	0.55	(02)	58.1	North Dakota	4.0	0.37	(23)	-7.0
Florida	4.0 <sup>c</sup>	0.07	(26)	-7.0	Ohio	3.7 <sup>c</sup>	0.09	(32)	-14.0
Georgia	4.2	0.12	(20)	-2.3	Oklahoma	3.4 <sup>bc</sup>	0.15	(41)	-20.9
Hawaii	7.9 <sup>bc</sup>	0.39	(01)	83.7	Oregon	3.3 <sup>bc</sup>	0.15	(46)	-23.3
Idaho	2.6 <sup>bc</sup>	0.23	(51)	-39.5	Pennsylvania	4.2	0.08	(21)	-2.3
Illinois	4.6	0.10	(15)	7.0	Rhode Island	5.4 <sup>b</sup>	0.33	(04)	25.6
Indiana	3.3 <sup>bc</sup>	0.12	(45)	-23.3	South Carolina	4.9	0.18	(10)	14.0
Iowa	3.1 <sup>bc</sup>	0.15	(49)	-27.9	South Dakota	3.3 <sup>b</sup>	0.32	(44)	-23.3
Kansas	3.4 <sup>bc</sup>	0.17	(42)	-20.9	Tennessee	3.9	0.13	(27)	-9.3
Kentucky	3.7 <sup>c</sup>	0.15	(34)	-14.0	Texas	4.8 <sup>c</sup>	0.08	(12)	11.6
Louisiana	5.2 <sup>bc</sup>	0.18	(05)	20.9	Utah	3.3 <sup>bc</sup>	0.23	(47)	-23.3
Maine	4.3	0.27	(17)	0.0	Vermont	3.7	0.38	(33)	-14.0
Maryland	4.2	0.14	(22)	-2.3	Virginia	4.5	0.13	(16)	4.7
Massachusetts	4.9 <sup>c</sup>	0.13	(11)	14.0	Washington	3.9	0.13	(29)	-9.3
Michigan	4.0	0.10	(24)	-7.0	West Virginia	3.7	0.21	(31)	-14.0
Minnesota	3.4 <sup>bc</sup>	0.13	(40)	-20.9	Wisconsin	3.6 <sup>bc</sup>	0.13	(37)	-16.3
Mississippi	4.7	0.21	(13)	9.3	Wyoming	3.2 <sup>b</sup>	0.41	(48)	-25.6
Missouri	3.4 <sup>bc</sup>	0.12	(39)	-20.9					

<sup>a</sup> NCHS public use data file. Rates are per 100,000 and are age-adjusted to the 2000 US Std Population (19 age groups - Census P25-1130).

<sup>b</sup> Absolute percent difference between state rate and total U.S. rate is 15% or more.

<sup>c</sup> Difference between state rate and total U.S. rate is statistically significant ( $p \leq .0002$ ).

SE Standard error of the rate.

PD Percent difference between state rate and total U.S. rate.

Table XXIV-14  
STOMACH CANCER (Invasive)AVERAGE ANNUAL AGE-ADJUSTED CANCER DEATH<sup>a</sup> RATES BY STATE, ALL RACES, 2000-2003

## Males

State	Rate	SE	Rank	PD	State	Rate	SE	Rank	PD
TOTAL U.S.	6.0	0.04							
High Five States									
Hawaii	10.6 <sup>bc</sup>	0.68	(01)	76.7					
District of Columbia	9.1 <sup>b</sup>	1.02	(02)	51.7					
Alaska	8.6 <sup>b</sup>	1.39	(03)	43.3					
Louisiana	7.5 <sup>bc</sup>	0.34	(04)	25.0					
Rhode Island	7.4 <sup>b</sup>	0.62	(05)	23.3					
Low Five States									
Iowa	4.5 <sup>bc</sup>	0.28	(47)	-25.0					
Oregon	4.5 <sup>bc</sup>	0.27	(48)	-25.0					
Utah	4.1 <sup>bc</sup>	0.39	(49)	-31.7					
Nebraska	3.7 <sup>bc</sup>	0.35	(50)	-38.3					
Idaho	3.6 <sup>bc</sup>	0.41	(51)	-40.0					
Alabama	5.8	0.28	(22)	-3.3	Montana	5.0 <sup>d</sup>	0.55	(39)	-16.7
Alaska	8.6 <sup>b</sup>	1.39	(03)	43.3	Nebraska	3.7 <sup>bc</sup>	0.35	(50)	-38.3
Arizona	5.1 <sup>bc</sup>	0.23	(36)	-15.0	Nevada	5.3	0.41	(32)	-11.7
Arkansas	5.4	0.34	(30)	-10.0	New Hampshire	5.1 <sup>b</sup>	0.49	(34)	-15.0
California	7.0 <sup>bc</sup>	0.12	(08)	16.7	New Jersey	7.4 <sup>bc</sup>	0.23	(06)	23.3
Colorado	4.6 <sup>bc</sup>	0.28	(45)	-23.3	New Mexico	6.7	0.48	(13)	11.7
Connecticut	6.9 <sup>b</sup>	0.33	(12)	15.0	New York	7.1 <sup>bc</sup>	0.15	(07)	18.3
Delaware	6.2	0.68	(17)	3.3	North Carolina	5.4	0.21	(28)	-10.0
District of Columbia	9.1 <sup>b</sup>	1.02	(02)	51.7	North Dakota	6.0	0.69	(19)	0.0
Florida	5.6	0.12	(23)	-6.7	Ohio	5.4	0.17	(29)	-10.0
Georgia	5.8	0.24	(21)	-3.3	Oklahoma	4.8 <sup>bc</sup>	0.28	(43)	-20.0
Hawaii	10.6 <sup>bc</sup>	0.68	(01)	76.7	Oregon	4.5 <sup>bc</sup>	0.27	(48)	-25.0
Idaho	3.6 <sup>bc</sup>	0.41	(51)	-40.0	Pennsylvania	6.0	0.16	(20)	0.0
Illinois	6.6	0.18	(14)	10.0	Rhode Island	7.4 <sup>b</sup>	0.62	(05)	23.3
Indiana	4.5 <sup>bc</sup>	0.21	(46)	-25.0	South Carolina	7.0 <sup>b</sup>	0.34	(09)	16.7
Iowa	4.5 <sup>bc</sup>	0.28	(47)	-25.0	South Dakota	4.9 <sup>b</sup>	0.58	(42)	-18.3
Kansas	5.0 <sup>b</sup>	0.32	(38)	-16.7	Tennessee	5.5	0.25	(27)	-8.3
Kentucky	5.1 <sup>b</sup>	0.28	(33)	-15.0	Texas	6.6	0.15	(15)	10.0
Louisiana	7.5 <sup>bc</sup>	0.34	(04)	25.0	Utah	4.1 <sup>bc</sup>	0.39	(49)	-31.7
Maine	6.1	0.51	(18)	1.7	Vermont	5.0 <sup>b</sup>	0.68	(37)	-16.7
Maryland	5.5	0.26	(26)	-8.3	Virginia	6.4	0.25	(16)	6.7
Massachusetts	7.0 <sup>bc</sup>	0.25	(10)	16.7	Washington	5.3	0.24	(31)	-11.7
Michigan	5.5	0.19	(24)	-8.3	West Virginia	5.5	0.40	(25)	-8.3
Minnesota	4.9 <sup>bc</sup>	0.24	(41)	-18.3	Wisconsin	5.1 <sup>bc</sup>	0.23	(35)	-15.0
Mississippi	7.0 <sup>b</sup>	0.41	(11)	16.7	Wyoming	4.7 <sup>b</sup>	0.76	(44)	-21.7
Missouri	4.9 <sup>bc</sup>	0.22	(40)	-18.3					

<sup>a</sup> NCHS public use data file. Rates are per 100,000 and are age-adjusted to the 2000 US Std Population (19 age groups - Census P25-1130).

<sup>b</sup> Absolute percent difference between state rate and total U.S. rate is 15% or more.

<sup>c</sup> Difference between state rate and total U.S. rate is statistically significant ( $p \leq .0002$ ).

SE Standard error of the rate.

PD Percent difference between state rate and total U.S. rate.

Table XXIV-15  
STOMACH CANCER (Invasive)

AVERAGE ANNUAL AGE-ADJUSTED CANCER DEATH<sup>a</sup> RATES BY STATE, ALL RACES, 2000-2003

Females

State	Rate	SE	Rank	PD
TOTAL U.S.	3.1	0.02		
High Five States				
Hawaii	5.8 <sup>bc</sup>	0.44	(01)	87.1
District of Columbia	5.2 <sup>b</sup>	0.61	(02)	67.7
Rhode Island	4.2 <sup>b</sup>	0.38	(03)	35.5
New York	3.8 <sup>bc</sup>	0.09	(04)	22.6
California	3.8 <sup>bc</sup>	0.07	(05)	22.6
Low Five States				
Kansas	2.1 <sup>bc</sup>	0.18	(47)	-32.3
Nebraska	2.1 <sup>bc</sup>	0.22	(48)	-32.3
Iowa	2.1 <sup>bc</sup>	0.16	(49)	-32.3
Wyoming	2.0 <sup>b</sup>	0.43	(50)	-35.5
Idaho	1.8 <sup>bc</sup>	0.26	(51)	-41.9

State	Rate	SE	Rank	PD	State	Rate	SE	Rank	PD
Alabama	3.2	0.17	(17)	3.2	Montana	2.6 <sup>d</sup>	0.34	(30)	-16.1
Alaska	3.5	0.71	(10)	12.9	Nebraska	2.1 <sup>bc</sup>	0.22	(48)	-32.3
Arizona	2.3 <sup>bc</sup>	0.14	(42)	-25.8	Nevada	2.7	0.26	(29)	-12.9
Arkansas	2.7	0.20	(28)	-12.9	New Hampshire	2.3 <sup>b</sup>	0.28	(44)	-25.8
California	3.8 <sup>bc</sup>	0.07	(05)	22.6	New Jersey	3.5	0.13	(09)	12.9
Colorado	2.4 <sup>bc</sup>	0.17	(39)	-22.6	New Mexico	3.2	0.28	(16)	3.2
Connecticut	3.5	0.20	(08)	12.9	New York	3.8 <sup>bc</sup>	0.09	(04)	22.6
Delaware	2.8	0.38	(25)	-9.7	North Carolina	3.0	0.13	(21)	-3.2
District of Columbia	5.2 <sup>b</sup>	0.61	(02)	67.7	North Dakota	2.6 <sup>b</sup>	0.40	(33)	-16.1
Florida	2.7 <sup>c</sup>	0.08	(27)	-12.9	Ohio	2.5 <sup>bc</sup>	0.09	(35)	-19.4
Georgia	3.0	0.14	(20)	-3.2	Oklahoma	2.3 <sup>bc</sup>	0.17	(45)	-25.8
Hawaii	5.8 <sup>bc</sup>	0.44	(01)	87.1	Oregon	2.4 <sup>bc</sup>	0.17	(41)	-22.6
Idaho	1.8 <sup>bc</sup>	0.26	(51)	-41.9	Pennsylvania	2.9	0.09	(23)	-6.5
Illinois	3.2	0.11	(14)	3.2	Rhode Island	4.2 <sup>b</sup>	0.38	(03)	35.5
Indiana	2.3 <sup>bc</sup>	0.13	(43)	-25.8	South Carolina	3.3	0.19	(12)	6.5
Iowa	2.1 <sup>bc</sup>	0.16	(49)	-32.3	South Dakota	2.1 <sup>b</sup>	0.34	(46)	-32.3
Kansas	2.1 <sup>bc</sup>	0.18	(47)	-32.3	Tennessee	2.9	0.15	(24)	-6.5
Kentucky	2.6 <sup>b</sup>	0.17	(32)	-16.1	Texas	3.5 <sup>c</sup>	0.09	(07)	12.9
Louisiana	3.6 <sup>b</sup>	0.19	(06)	16.1	Utah	2.6 <sup>b</sup>	0.27	(34)	-16.1
Maine	3.1	0.30	(19)	0.0	Vermont	2.6 <sup>d</sup>	0.42	(31)	-16.1
Maryland	3.2	0.16	(15)	3.2	Virginia	3.1	0.14	(18)	0.0
Massachusetts	3.4	0.14	(11)	9.7	Washington	2.8	0.15	(26)	-9.7
Michigan	2.9	0.11	(22)	-6.5	West Virginia	2.5 <sup>b</sup>	0.22	(37)	-19.4
Minnesota	2.4 <sup>bc</sup>	0.15	(38)	-22.6	Wisconsin	2.5 <sup>bc</sup>	0.14	(36)	-19.4
Mississippi	3.2	0.22	(13)	3.2	Wyoming	2.0 <sup>d</sup>	0.43	(50)	-35.5
Missouri	2.4 <sup>bc</sup>	0.13	(40)	-22.6					

<sup>a</sup> NCHS public use data file. Rates are per 100,000 and are age-adjusted to the 2000 US Std Population (19 age groups - Census P25-1130).

<sup>b</sup> Absolute percent difference between state rate and total U.S. rate is 15% or more.

<sup>c</sup> Difference between state rate and total U.S. rate is statistically significant (p<=.0002).

SE Standard error of the rate.

PD Percent difference between state rate and total U.S. rate.

Table XXIV-16  
STOMACH CANCER (Invasive)

Estimated United States Cancer Prevalence Counts<sup>a</sup> on January 1, 2003  
By Race/Ethnicity, Sex and Years Since Diagnosis

Years Since Diagnosis	0 to <5	5 to <10	10 to <15	15 to <20	20 to <25	0 to <13 <sup>e</sup>	0 to <28 <sup>e</sup>	>=28 <sup>g</sup>	Complete <sup>h</sup>
<b>Race/Sex</b>									
All Races <sup>b</sup>	29,257	11,679	7,740	4,734	2,887	45,791	57,098	2,755	59,853
Males	17,694	6,632	3,862	2,471	1,570	26,701	32,717	1,582	34,299
Females	11,563	5,047	3,878	2,263	1,317	19,090	24,381	1,173	25,554
White <sup>b</sup>	22,152	8,813	5,772	3,642	2,409	34,543	43,412	2,233	45,645
Males	13,704	5,054	2,835	1,932	1,326	20,462	25,243	1,222	26,465
Females	8,448	3,759	2,937	1,710	1,083	14,081	18,169	1,011	19,180
Black <sup>b</sup>	4,295	1,722	1,120	713	265	6,721	8,203	357	8,560
Males	2,291	918	624	349	162	3,606	4,391	206	4,597
Females	2,004	804	496	364	103	3,115	3,812	151	3,963
Asian/Pacific Islander <sup>c</sup>	2,403	1,080	+	+	+	3,937	+	+	+
Males	1,381	624	+	+	+	2,255	+	+	+
Females	1,022	456	+	+	+	1,682	+	+	+
Hispanic <sup>d</sup>	3,396	1,150	+	+	+	5,030	+	+	+
Males	1,918	561	+	+	+	2,709	+	+	+
Females	1,478	589	+	+	+	2,321	+	+	+

Estimated prevalence percent<sup>a</sup> on January 1, 2003, of the SEER 11 population diagnosed in the previous 10 years  
By Age at Prevalence, Race/Ethnicity and Sex

Age at Prevalence	Age Specific (Crude)										Age-Adjusted <sup>f</sup>
	All Ages	0-9	10-19	20-29	30-39	40-49	50-59	60-69	70-79	80+	All Ages
<b>Race/Sex</b>											
All Races <sup>c</sup>	0.0159%	-	0.0001%	0.0005%	0.0026%	0.0086%	0.0214%	0.0498%	0.0949%	0.1118%	0.0172%
Males	0.0187%	-	-	0.0006%	0.0026%	0.0097%	0.0273%	0.0698%	0.1304%	0.1543%	0.0230%
Females	0.0131%	-	0.0002%	0.0003%	0.0025%	0.0075%	0.0158%	0.0320%	0.0682%	0.0887%	0.0127%
White <sup>c</sup>	0.0133%	-	0.0001%	0.0004%	0.0021%	0.0070%	0.0172%	0.0425%	0.0714%	0.0877%	0.0136%
Males	0.0159%	-	-	0.0005%	0.0022%	0.0078%	0.0221%	0.0610%	0.0997%	0.1236%	0.0185%
Females	0.0108%	-	0.0002%	0.0003%	0.0021%	0.0061%	0.0124%	0.0257%	0.0497%	0.0685%	0.0098%
Black <sup>c</sup>	0.0152%	-	-	0.0011%	0.0022%	0.0141%	0.0329%	0.0565%	0.1225%	0.1211%	0.0218%
Males	0.0166%	-	-	0.0016%	0.0024%	0.0171%	0.0375%	0.0786%	0.1659%	0.1195%	0.0271%
Females	0.0139%	-	-	-	0.0021%	0.0114%	0.0290%	0.0392%	0.0939%	0.1218%	0.0179%
Asian/Pacific Islander <sup>c</sup>	0.0333%	-	-	-	0.0052%	0.0139%	0.0397%	0.0924%	0.2408%	0.3188%	0.0391%
Males	0.0394%	-	-	-	0.0051%	0.0154%	0.0549%	0.1232%	0.3283%	0.4112%	0.0519%
Females	0.0277%	-	-	-	0.0052%	0.0125%	0.0264%	0.0667%	0.1773%	0.2566%	0.0296%
Hispanic <sup>d</sup>	0.0115%	-	0.0004%	0.0005%	0.0037%	0.0120%	0.0300%	0.0629%	0.1248%	0.1756%	0.0239%
Males	0.0121%	-	-	0.0008%	0.0034%	0.0120%	0.0336%	0.0825%	0.1688%	0.2306%	0.0302%
Females	0.0109%	-	0.0007%	-	0.0041%	0.0121%	0.0267%	0.0468%	0.0935%	0.1448%	0.0194%

<sup>a</sup> US 2003 cancer prevalence counts are based on 2003 cancer prevalence proportions from the SEER registries and 1/1/2003 US population estimates based on the average of 2002 and 2003 population estimates from the US Bureau of the Census. Prevalence was calculated using the First Malignant Primary Only for a person.  
<sup>b c d</sup> Statistics based on (b) SEER 9 Areas (c) SEER 11 Areas and Rural Georgia (d) NHIA for Hispanic for SEER 11 Areas and Rural Georgia excluding Hawaii and Seattle.  
<sup>e</sup> Maximum limited-duration prevalence: 28 years for 1975-2003 SEER 9 data; 13 years for 1990-2003 SEER 11 data (used to calculate prevalence for Hispanics and Asian Pacific Islanders).  
<sup>f</sup> Percentages are age-adjusted to the 2000 US standard population by 5-year age groups.  
<sup>g h</sup> (g) Cases diagnosed more than 28 years ago were estimated using the completeness index method (Capocaccia et. al. 1997, Merrill et. al. 2000). (h) Complete prevalence is obtained by summing 0 to <28 and >=28.  
 - Statistic not shown. Statistic based on fewer than 5 cases estimated alive in SEER for the time interval.  
 + Not available.



# SEER Incidence, Delay Adjusted Incidence and US Death Rates+ Stomach Cancer, by Race and Sex

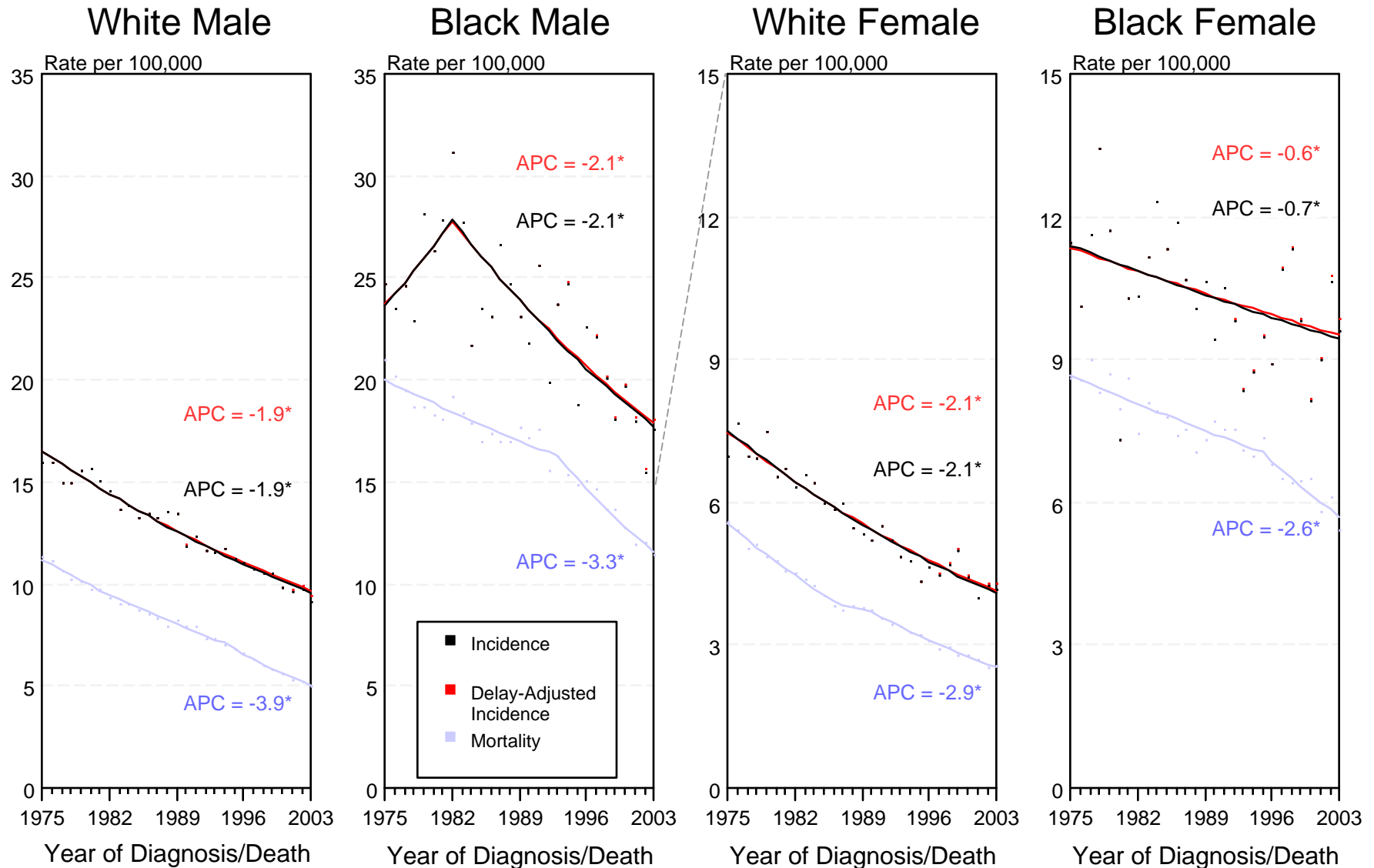


Figure XXIV-1

+ Source: SEER 9 areas and NCHS public use data file for the total US. Rates are age-adjusted to the 2000 US Std Population (19 age groups - Census P25-1103). Regression lines and APCs are calculated using the Joinpoint Regression Program Version 3.1, April 2006, National Cancer Institute.

The APC is the Annual Percent Change for the regression line segments. The APC shown on the graph is for the most recent trend.

\* The APC is significantly different from zero ( $p < 0.05$ ).

# SEER Incidence and US Death Rates\* Stomach Cancer, Both Sexes

Joinpoint Analyses for Whites and Blacks from 1975-2003  
and for Asian/Pacific Islanders, American Indians/Alaska Natives and Hispanics from 1992-2003

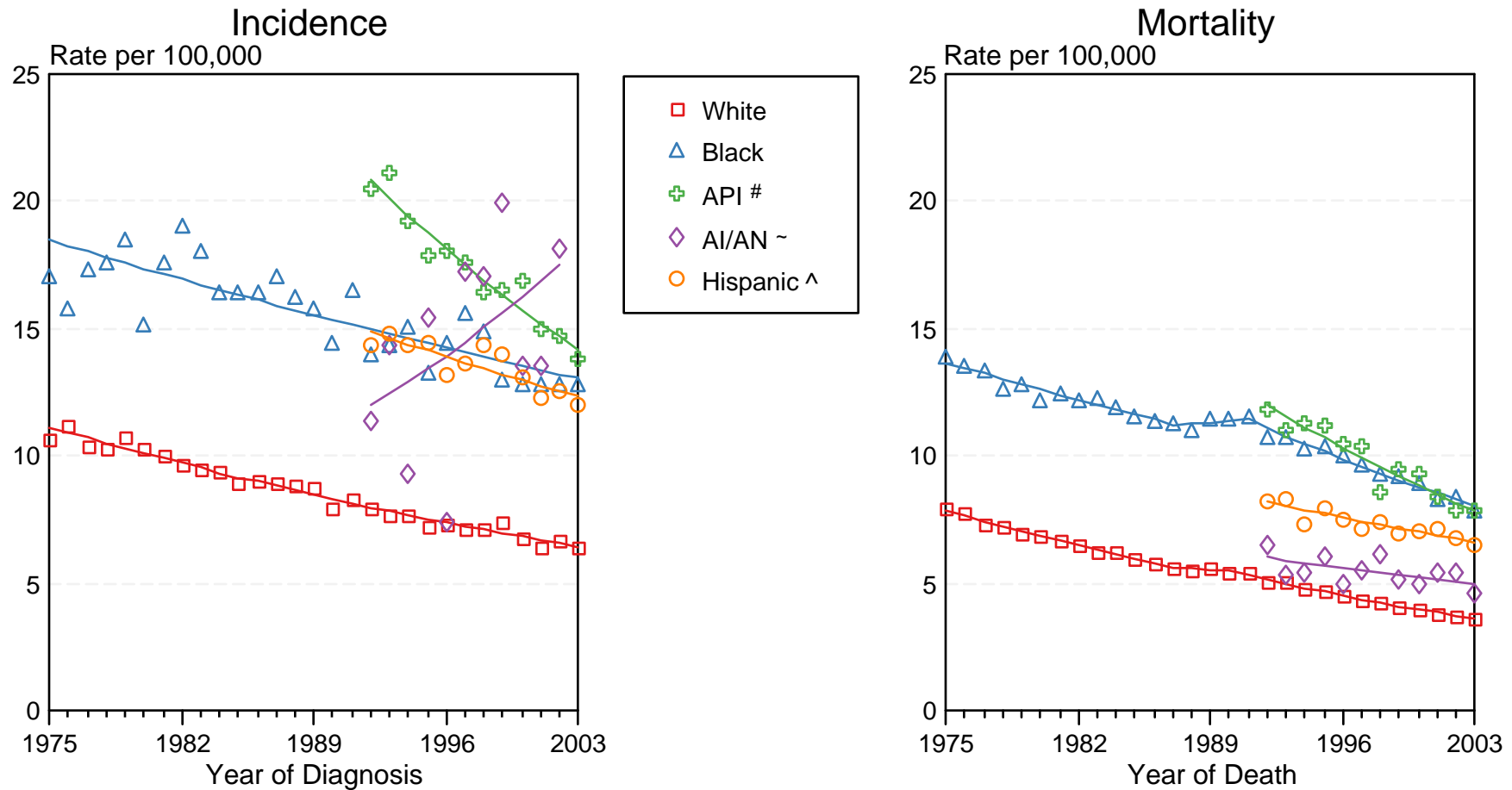


Figure XXIV-2

Source: Incidence data for Whites and Blacks are from the SEER 9 areas (San Francisco, Connecticut, Detroit, Hawaii, Iowa, New Mexico, Seattle, Utah, Atlanta). Incidence data for Asian/Pacific Islanders and Hispanics are from the SEER 13 Areas (SEER 9 Areas, San Jose-Monterey, Los Angeles, Alaska Native Registry and Rural Georgia). Mortality data are from NCHS public use data file for the total US.

\* Rates are age-adjusted to the 2000 US Std Population (19 age groups - Census P25-1103).

Regression lines are calculated using the Joinpoint Regression Program Version 3.1, April 2006, National Cancer Institute.

# API = Asian/Pacific Islander.

~ AI/AN = American Indian/Alaska Native. Incidence data for AI/AN include cases from Connecticut, Detroit, Iowa, New Mexico, Seattle, Utah, Atlanta and the Alaska Native Registry for the time period 1992-2002. Mortality data are from the entire US for the time period 1992-2003.

^ Hispanic is not mutually exclusive from Whites, Blacks, Asian/Pacific Islanders, and American Indians/Alaska Natives. Incidence data for Hispanics are based on NHIA and exclude cases from Hawaii, Seattle, and the Alaska Native Registry. Mortality data for Hispanics exclude cases from Connecticut, Maine, Maryland, Minnesota, New Hampshire, New York, North Dakota, Oklahoma, and Vermont.