

Table XXIX-1

AGE-ADJUSTED AND AGE-SPECIFIC SEER CANCER INCIDENCE RATES, 2000-2003^aBy International Classification of Childhood Cancer (ICCC)^b Group and Subgroup^c and Age (excludes MDS)

All Races, Males and Females

ICCC Group and Subgroup	0-14	0-19	<1	1-4	5-9	10-14	15-19
All ICCG Groups Combined	147.8	163.2	230.8	205.1	111.9	124.2	209.1
I Leukemia	47.8	43.2	45.2	86.3	38.4	28.3	29.6
I(a) Lymphoid leukemia	37.9	32.7	19.6	74.4	31.9	19.7	17.1
I(b) Acute myeloid leukemia	7.5	8.0	18.5	9.0	4.7	7.2	9.2
I(c) Chronic myeloproliferative diseases	0.7	1.0	-	-	-	1.1	2.0
I(d) Myelodysplastic syndrome and other myeloproliferative	0.5	0.3	-	-	-	-	-
I(e) Unspecified and other specified leukemias	1.2	1.2	3.7	1.4	1.2	-	1.3
II Lymphomas and reticuloendothelial neo.	15.1	23.4	8.5	8.4	13.7	22.8	48.1
II(a) Hodgkin lymphoma	5.3	11.4	-	1.1	4.1	10.7	29.5
II(b) Non-Hodgkin lymphoma (except Burkitt lymphoma)	6.2	8.4	-	3.7	6.3	8.9	15.1
II(c) Burkitt lymphoma	2.4	2.5	-	2.0	3.0	2.6	2.5
II(d) Miscellaneous lymphoreticular neo.	0.9	0.8	6.9	1.5	-	-	-
II(e) Unspecified lymphomas	-	0.4	-	-	-	-	0.8
III CNS and misc intracranial and intraspinal neo.	31.9	28.9	32.3	40.7	31.9	25.0	19.9
III(a) Ependymomas and choroid plexus tumor	3.0	2.6	4.4	5.2	2.2	1.7	1.4
III(b) Astrocytoma	15.6	14.3	12.5	19.1	15.5	13.6	10.4
III(c) Intracranial and intraspinal embryonal tumors	7.5	6.6	11.3	10.4	7.5	4.6	3.8
III(d) Other gliomas	5.1	4.7	-	4.7	6.3	4.5	3.7
III(e) Other specified intracranial/intraspinal neo.	0.5	0.4	-	-	-	-	-
III(f) Unspecified intracranial and intraspinal neo.	0.3	0.3	-	-	-	-	-
IV Neuroblastoma and other peripheral nervous cell tumor	9.9	7.6	50.5	19.2	3.4	1.7	-
IV(a) Neuroblastoma and ganglioneuroblastoma	9.8	7.4	50.3	19.1	3.4	1.6	-
IV(b) Other peripheral nervous cell tumors	-	-	-	-	-	-	-
V Retinoblastoma	3.9	3.0	23.8	8.7	-	-	-
VI Renal tumors	7.8	6.2	17.1	18.7	4.7	1.1	1.3
VI(a) Nephroblastoma and other nonepithelial renal tumor	7.5	5.7	17.1	18.5	4.3	-	-
VI(b) Renal carcinoma	0.3	0.5	-	-	-	-	1.1
VI(c) Unspecified malignant renal tumors	-	-	-	-	-	-	-

^a SEER 17 areas (San Francisco, Connecticut, Detroit, Hawaii, Iowa, New Mexico, Seattle, Utah, Atlanta, San Jose-Monterey, Los Angeles, Alaska Native Registry, Rural Georgia, California excluding SF/SJM/LA, Kentucky, Louisiana and New Jersey).

^b International Classification of Childhood Cancer is based on ICD-0-3. Steliarova-Foucher E, Stiller C, Lacour B, Kaatsch P. International Classification of Childhood Cancer, Third Edition. Cancer. April 1, 2005; Vol 103, No. 7, pg 1457-1467.

^c Classifications are shown for invasive cases only. Groups and subgroups that include *in situ* behavior reflect only invasive cases.

- Rates are per 1,000,000 and are age-adjusted to the 2000 US Std Population (19 age groups - Census P25-1130).

- Statistic could not be calculated. Rate based on less than 16 cases for the time interval.

- Neoplasms are abbreviated as neo.

Table XXIX-1 - continued

AGE-ADJUSTED AND AGE-SPECIFIC SEER CANCER INCIDENCE RATES, 2000-2003^aBy International Classification of Childhood Cancer (ICCC)^b Group and Subgroup^c and Age(excludes MDS)

All Races, Males and Females

ICCC Group and Subgroup	0-14	0-19	<1	1-4	5-9	10-14	15-19
VII Hepatic tumors	2.5	2.1	12.5	4.4	0.9	0.7	0.9
VII(a) Hepatoblastoma	2.1	1.6	11.8	4.3	-	-	-
VII(b) Hepatic carcinoma	0.3	0.5	-	-	-	-	0.8
VII(c) Unspecified malignant hepatic tumors	-	-	-	-	-	-	-
VIII Malignant bone tumors	6.3	8.5	-	1.4	5.0	12.4	15.1
VIII(a) Osteosarcoma	3.9	5.2	-	-	3.1	8.0	9.0
VIII(b) Chondrosarcoma	-	0.3	-	-	-	-	1.0
VIII(c) Ewing tumor and related sarcomas of bone	2.0	2.5	-	1.0	1.5	3.6	4.0
VIII(d) Other specified malignant bone tumors	0.3	0.4	-	-	-	-	0.7
VIII(e) Unspecified malignant bone tumors	-	-	-	-	-	-	-
IX Soft tissue and other extraosseous sarcomas	10.7	12.1	17.5	10.7	7.9	12.2	16.3
IX(a) Rhabdomyosarcoma	5.3	4.9	5.1	8.3	4.4	3.8	3.8
IX(b) Fibrosarcoma, peripheral nerve & other fibrous	1.2	1.4	6.0	-	-	1.5	1.9
IX(c) Kaposi sarcoma	-	-	-	-	-	-	-
IX(d) Other specified soft tissue sarcomas	3.5	4.9	4.8	1.8	2.3	5.7	9.0
IX(e) Unspecified soft-tissue sarcomas	0.8	0.9	-	-	-	1.3	1.4
X Germ cell & trophoblastic tumors & neo. of gonads	5.5	11.5	20.8	3.9	2.1	7.4	29.1
X(a) Intracranial and intraspinal germ-cell tumors	1.6	1.9	-	-	0.8	3.3	2.9
X(b) Extracranial & extragonadal germ cell tumors	1.6	1.8	14.8	2.0	-	-	2.4
X(c) Malignant gonadal germ cell tumors	2.2	7.2	-	1.6	1.1	3.4	22.3
X(d) Gonadal carcinomas	-	0.3	-	-	-	-	1.0
X(e) Other and unspecified malignant gonadal tumors	-	0.2	-	-	-	-	-
XI Other malignant epithelial neo. and melanomas	5.7	16.2	-	1.8	3.1	12.1	47.5
XI(a) Adrenocortical carcinoma	0.3	0.3	-	-	-	-	-
XI(b) Thyroid carcinoma	2.0	6.0	-	-	-	5.0	17.8
XI(c) Nasopharyngeal carcinoma	-	0.4	-	-	-	-	1.4
XI(d) Malignant melanoma	2.1	6.0	-	1.1	1.5	3.7	17.6
XI(e) Skin carcinoma	-	-	-	-	-	-	-
XI(f) Other and unspecified carcinomas	1.2	3.5	-	-	-	2.8	10.3
XII Other and unspecified malignant neo.	0.6	0.6	-	-	-	-	0.8
XII(a) Other specified malignant tumors	0.4	0.4	-	-	-	-	-
XII(b) Other unspecified malignant tumors	-	0.3	-	-	-	-	-
Not classified by ICCC	0.3	0.5	-	-	-	-	1.0

^a SEER 17 areas (San Francisco, Connecticut, Detroit, Hawaii, Iowa, New Mexico, Seattle, Utah, Atlanta, San Jose-Monterey, Los Angeles, Alaska Native Registry, Rural Georgia, California excluding SF/SJM/LA, Kentucky, Louisiana and New Jersey).

^b International Classification of Childhood Cancer is based on ICD-0-3. Steliarova-Foucher E, Stiller C, Lacour B, Kaatsch P. International Classification of Childhood Cancer, Third Edition. Cancer. April 1, 2005: Vol 103, No. 7, pg 1457-1467.

^c Classifications are shown for invasive cases only. Groups and subgroups that include *in situ* behavior reflect only invasive cases.

Rates are per 1,000,000 and are age-adjusted to the 2000 US Std Population (19 age groups - Census P25-1130).

- Statistic could not be calculated. Rate based on less than 16 cases for the time interval.

Neoplasms are abbreviated as neo.

Table XXIX-2

AGE-ADJUSTED SEER CANCER INCIDENCE RATES, 1975-1981, 1982-1988, 1989-1995, 1996-2003^aBy International Classification of Childhood Cancer (ICCC)^b Selected Group and Subgroup^c and Year of Diagnosis (excludes MDS)

All Races, Males and Females, Ages 0-19

<u>ICCC Group and Subgroup</u>	<u>1975-1981</u>	<u>1982-1988</u>	<u>1989-1995</u>	<u>1996-2003</u>
All ICCC Groups Combined	141.3	152.5	159.3	161.9
I Leukemia	34.4	37.0	38.3	40.1
I(a) Lymphoid leukemia	24.9	27.8	28.7	30.3
I(b) Acute myeloid leukemia	6.0	6.1	7.0	7.8
II Lymphomas and reticuloendothelial neo.	24.2	25.1	24.1	23.7
II(a) Hodgkin lymphoma	14.2	14.2	13.1	12.1
II(b,c,e) Non-Hodgkin lymphoma	9.2	10.2	10.5	11.2
III CNS & misc intracranial & intraspinal neo.	23.4	26.2	29.8	29.1
III(a) Ependymomas and choroid plexus tumor	1.9	2.2	2.5	2.5
III(b) Astrocytoma	11.4	13.6	15.6	14.2
III(c) Intracranial and intraspinal embryonal tumors	4.4	4.9	5.8	6.5
III(d) Other gliomas	4.7	4.5	5.2	5.3
IV Neuroblastoma and other peripheral nervous cell tumors	7.9	8.4	8.4	8.3
IV(a) Neuroblastoma and ganglioneuroblastoma	7.8	8.1	8.1	8.1
V Retinoblastoma	2.7	3.0	3.3	3.1
VI Renal tumors	6.3	6.7	6.9	6.9
VI(a) Nephroblastoma and other nonepithelial renal tumor	6.0	6.3	6.4	6.4
VII Hepatic tumors	1.1	1.7	1.6	2.3
VII(a) Hepatoblastoma	0.6	1.2	1.2	1.6
VIII Malignant bone tumors	8.1	8.9	9.0	8.3
VIII(a) Osteosarcoma	4.0	4.8	5.0	4.9
VIII(c) Ewing tumor and related sarcomas of bone	3.0	3.2	2.9	2.6
IX Soft tissue and other extrasosseous sarcomas	9.8	11.2	11.1	12.0
IX(a) Rhabdomyosarcoma	4.0	4.5	4.8	4.6
X Germ cell & trophoblastic tumors & neo. of gonads	8.9	10.0	11.1	10.6
X(a) Intracranial and intraspinal germ-cell tumor	0.9	1.1	1.6	1.8
X(c) Malignant gonadal germ cell tumor	1.6	1.6	1.8	1.6
XI Other malignant epithelial neo. and melanomas	13.6	13.7	15.1	16.8
XI(b) Thyroid carcinoma	4.7	5.3	5.2	6.2
XI(d) Malignant melanoma	4.3	4.1	5.3	5.8

^a SEER 9 areas (San Francisco, Connecticut, Detroit, Hawaii, Iowa, New Mexico, Seattle, Utah, and Atlanta). Rates are per 1,000,000 and are age-adjusted to the 2000 US Std Population (19 age groups - Census P25-1130).

^b International Classification of Childhood Cancer is based on ICD-0-3. Steliarova-Foucher E, Stiller C, Lacour B, Kaatsch P. International Classification of Childhood Cancer, Third Edition. Cancer. April 1, 2005: Vol 103, No. 7, pg 1457-1467.

^c Classifications are shown for invasive cases only. Groups and subgroups that include *in situ* behavior reflect only invasive cases.

- Statistic could not be calculated. Rate based on less than 16 cases for the time interval. Neoplasms are abbreviated as neo.

Table XXIX-3

AGE-ADJUSTED SEER CANCER INCIDENCE TRENDS, 1975-2003, 1975-1988, 1989-2003^aBy International Classification of Childhood Cancer (ICCC)^b Selected Group and Subgroup^c (excludes MDS)

All Races, Males and Females

ICCC Group and Subgroup	Ages 0-14				Ages 0-19			
	% Change	APC	APC	APC	% Change	APC	APC	APC
	1975-2003	1975-2003	1975-1988	1989-2003	1975-2003	1975-2003	1975-1988	1989-2003
All ICCG Groups Combined	11.4	0.6*	1.1*	0.1 [#]	19.0	0.6*	1.0*	0.2 [#]
I Leukemia	20.2	0.6*	1.3*	0.1 [@]	22.0	0.7*	1.0*	0.3
I(a) Lymphoid leukemia	35.3	0.8*	1.6*	0.2 [@]	40.4	0.8*	1.5*	0.3
I(b) Acute myeloid leukemia	15.5	1.1*	1.1	0.2	7.8	1.2*	0.5	1.0
II Lymphomas and reticuloendothelial neo.	-19.7	-0.4	-0.5	0.3	-8.1	-0.2	0.2	-0.5
II(a) Hodgkin lymphoma	-38.8	-1.3*	-1.5	-2.0	-29.7	-0.9*	-0.5	-2.0 [@]
II(b,c,e) Non-Hodgkin lymphoma	-4.5	0.5	0.3	1.9*	27.5	1.0*	1.2*	1.6*
III CNS & misc intracranial & intraspinal neo.	30.7	1.2*	2.4*	0.1 [#]	29.0	1.1*	2.2*	0.0 [#]
III(a) Ependymomas and choroid plexus tumors	-	-	-	-0.9	-	-	-	-0.5
III(b) Astrocytoma	67.8	1.5*	3.6*	-0.3 [#]	51.8	1.0*	3.1*	-0.8 [#]
III(c) Intracranial and intraspinal embryonal tum.	93.2	1.6*	1.4	1.3	106.4	1.8*	1.7	1.8
III(d) Other gliomas	-34.4	0.4	-0.5	0.5	-24.9	0.7	-0.6	0.7
IV Neuroblastoma and other peripheral nervous cell tumors	-26.0	0.2	0.2	0.1	-23.8	0.2	0.5	0.1
IV(a) Neuroblastoma and ganglioneuroblastoma	-26.0	0.2	0.1	0.2	-25.5	0.2	0.2	0.2
V Retinoblastoma	-1.1	0.6	1.0	-0.7	-1.1	0.6	1.0	-0.8
VI Renal tumors	14.1	0.3	0.5	-0.8	16.1	0.3	0.5	-0.8
VI(a) Nephroblastoma and other nonepithelial renal tumors	18.4	0.2	0.6	-0.9	18.4	0.1	0.6	-1.0
VII Hepatic tumors	-	-	-	-	-	-	-	-
VII(a) Hepatoblastoma	-	-	-	-	-	-	-	-
VIII Malignant bone tumors	19.3	-0.1	2.2	-1.2 [#]	10.5	0.2	2.0*	-0.7 [@]
VIII(a) Osteosarcoma	-	-	-	-1.2	61.4	0.9*	3.3*	0.0 [#]
VIII(c) Ewing tum. and related sarcomas of bone	-	-	-	-	-20.5	-0.7	2.1	-1.5
IX Soft tissue and other extraosseous sarcomas	25.1	0.6	0.3	-0.4	47.9	0.6*	1.0	0.5
IX(a) Rhabdomyosarcoma	32.7	0.4	0.8	-1.5	58.9	0.5	1.6	-0.7
X Germ cell & trophoblastic tum. & neo. of gonads	-9.5	1.0	1.7	-0.5	1.0	0.8*	1.4	-0.2
X(a) Intracranial and intraspinal germ-cell tum.	-	-	-	-	-	-	-	-
X(c) Malignant gonadal germ cell tumors	-	-	-	-	-9.5	-	-	-
XI Other malignant epithelial neo. and melanomas	-8.1	0.8*	-0.6	2.0	66.8	1.1*	0.2	1.9 ^{*@}
XI(b) Thyroid carcinoma	9.8	-	-	-	81.3	1.2*	0.8	2.5*
XI(d) Malignant melanoma	-	-	-	-	123.1	1.6*	0.6	1.4

The APC is the Annual Percent Change over the time interval.

^a SEER 9 areas (San Francisco, Connecticut, Detroit, Hawaii, Iowa, New Mexico, Seattle, Utah, and Atlanta).

^b International Classification of Childhood Cancer is based on ICD-0-3. Steliarova-Foucher E, Stiller C, Lacour B, Kaatsch P. International Classification of Childhood Cancer, Third Edition. Cancer. April 1, 2005; Vol 103, No. 7, pg 1457-1467.

^c Classifications are shown for invasive cases only. Groups and subgroups that include *in situ* behavior reflect only invasive cases.

* The APC is significantly different from zero (p<.05)

The APC for 1989-2003 is significantly different from the APC for 1975-1988 (p<.05).

@ The APC for 1989-2003 is significantly different from the APC for 1975-1988 (p<.10).

- Statistic could not be calculated. Trend based on less than 10 cases for at least one year within the time interval.

Neoplasms are abbreviated as neo. Tumors are abbreviated as tum.

Table XXIX-4

AGE-ADJUSTED SEER CANCER INCIDENCE TRENDS, 1975-2003, 1975-1988, 1989-2003^aBy International Classification of Childhood Cancer (ICCC)^b Selected Group and Subgroup^c (excludes MDS)

All Races, Males

ICCC Group and Subgroup	Ages 0-14				Ages 0-19			
	% Change 1975-2003	APC 1975-2003	APC 1975-1988	APC 1989-2003	% Change 1975-2003	APC 1975-2003	APC 1975-1988	APC 1989-2003
All ICCG Groups Combined	8.0	0.6*	1.2*	-0.2 [#]	22.0	0.7*	1.3*	0.2 [#]
I Leukemia	7.3	0.6*	1.3*	0.2	11.8	0.6*	1.1*	0.5
I(a) Lymphoid leukemia	22.7	0.8*	1.7*	0.0 [@]	33.1	0.8*	1.8*	0.1 [@]
I(b) Acute myeloid leukemia	17.7	-	-	1.7	5.1	1.5*	-0.3	2.8* [@]
II Lymphomas and reticuloendothelial neo.	-13.8	-0.5	-0.2	-0.1	6.3	-0.2	0.4	-0.1
II(a) Hodgkin lymphoma	-21.1	-	-	-	-18.3	-1.1*	-0.4	-1.7
II(b,c,e) Non-Hodgkin lymphoma	-7.8	0.1	0.1	0.9	39.6	0.8*	1.1	1.4
III CNS & misc intracranial & intraspinal neo.	38.7	1.3*	2.5*	-0.5 [#]	32.4	1.2*	2.4*	-0.3 [#]
III(a) Ependymomas and choroid plexus tumors	-	-	-	-	-	-	-	-
III(b) Astrocytoma	51.8	1.2*	3.2*	-1.7 [#]	39.7	0.9*	2.8*	-1.5 [#]
III(c) Intracranial and intraspinal embryonal tum.	-	-	-	1.1	-	-	-	1.8
III(d) Other gliomas	-20.9	-	-	-	-23.2	-	-	0.8
IV Neuroblastoma and other peripheral nervous cell tumors	-7.2	0.4	0.8	-0.1	-3.2	0.4	1.2	-0.2
IV(a) Neuroblastoma and ganglioneuroblastoma	-7.2	0.4	0.6	0.0	-6.8	0.4	0.9	0.0
V Retinoblastoma	5.1	-	-	-	5.1	-	-	-
VI Renal tumors	4.2	0.4	1.2	-1.7	4.3	0.5	0.6	-1.3
VI(a) Nephroblastoma and other nonepithelial renal tumors	17.5	0.3	1.4	-1.7	17.5	0.3	1.3	-1.8
VII Hepatic tumors	-	-	-	-	-	-	-	-
VII(a) Hepatoblastoma	-	-	-	-	-	-	-	-
VIII Malignant bone tumors	8.6	0.4	3.3*	-0.1	13.4	0.7	2.9*	-0.4 [@]
VIII(a) Osteosarcoma	-	-	-	-	-	-	-	0.3
VIII(c) Ewing tum. and related sarcomas of bone	-	-	-	-	-	-	-	-
IX Soft tissue and other extraosseous sarcomas	28.3	0.7	0.4	0.1	52.6	0.9*	1.2	0.9
IX(a) Rhabdomyosarcoma	13.3	-	-	-	42.6	-	-	-0.4
X Germ cell & trophoblastic tum. & neo. of gonads	-	-	-	-	40.1	1.2*	1.4	0.0
X(a) Intracranial and intraspinal germ-cell tum.	-	-	-	-	-	-	-	-
X(c) Malignant gonadal germ cell tum. (testis)	-	-	-	-	-	-	-	-
XI Other malignant epithelial neo. and melanomas	-12.1	-	-	-	87.3	1.3*	0.4	2.4*
XI(b) Thyroid carcinoma	-	-	-	-	-	-	-	-
XI(d) Malignant melanoma	-	-	-	-	113.0	-	-	-

^a The APC is the Annual Percent Change over the time interval.

^b SEER 9 areas (San Francisco, Connecticut, Detroit, Hawaii, Iowa, New Mexico, Seattle, Utah, and Atlanta).

^c International Classification of Childhood Cancer is based on ICD-0-3. Steliarova-Foucher E, Stiller C, Lacour B, Kaatsch P. International Classification of Childhood Cancer, Third Edition. Cancer. April 1, 2005; Vol 103, No. 7, pg 1457-1467.

^d Classifications are shown for invasive cases only. Groups and subgroups that include *in situ* behavior reflect only invasive cases.

* The APC is significantly different from zero (p<.05)

[#] The APC for 1989-2003 is significantly different from the APC for 1975-1988 (p<.05).

[@] The APC for 1989-2003 is significantly different from the APC for 1975-1988 (p<.10).

- Statistic could not be calculated. Trend based on less than 10 cases for at least one year within the time interval. Neoplasms are abbreviated as neo. Tumors are abbreviated as tum.

Table XXIX-5

AGE-ADJUSTED SEER CANCER INCIDENCE TRENDS, 1975-2003, 1975-1988, 1989-2003^aBy International Classification of Childhood Cancer (ICCC)^b Selected Group and Subgroup^c (excludes MDS)

All Races, Females

ICCC Group and Subgroup	Ages 0-14				Ages 0-19			
	% Change 1975-2003	APC 1975-2003	APC 1975-1988	APC 1989-2003	% Change 1975-2003	APC 1975-2003	APC 1975-1988	APC 1989-2003
All ICCG Groups Combined	15.7	0.6*	0.9*	0.3	15.5	0.5*	0.8	0.2
I Leukemia	40.8	0.5	1.3	-0.2	37.6	0.7*	1.0	0.1
I(a) Lymphoid leukemia	54.0	0.7*	1.5	0.3	50.9	0.8*	1.2	0.5
I(b) Acute myeloid leukemia	12.5	0.4	1.3	-1.9	11.0	0.9*	1.7	-1.1 [®]
II Lymphomas and reticuloendothelial neo.	-31.7	-0.2	-1.3	1.1	-30.0	-0.2	0.0	-0.8
II(a) Hodgkin lymphoma	-	-	-	-	-44.2	-0.7	-0.6	-2.3
II(b,c,e) Non-Hodgkin lymphoma	4.6	-	-	-	1.8	1.3*	1.6	2.3
III CNS & misc intracranial & intraspinal neo.	23.4	1.2*	2.3	0.9	25.2	1.0*	2.1	0.4
III(a) Ependymomas and choroid plexus tumors	-	-	-	-	-	-	-	-
III(b) Astrocytoma	83.2	1.7*	4.1*	1.1 [®]	65.1	1.1*	3.4*	-0.1 [#]
III(c) Intracranial and intraspinal embryonal tum.	-	-	-	1.4	-	-	-	1.8
III(d) Other gliomas	-46.7	-	-	-	-26.8	-	-	-
IV Neuroblastoma and other peripheral nervous cell tumors	-42.0	0.1	-0.5	0.6	-42.0	0.0	-0.4	0.7
IV(a) Neuroblastoma and ganglioneuroblastoma	-42.0	0.1	-0.5	0.8	-42.0	0.0	-0.5	0.7
V Retinoblastoma	-	-	-	-	-	-	-	-
VI Renal tumors	25.3	0.1	-0.3	-0.1	30.2	0.2	0.2	-0.4
VI(a) Nephroblastoma and other nonepithelial renal tumors	19.3	0.0	-0.2	-0.2	19.3	0.0	-0.1	-0.5
VII Hepatic tumors	-	-	-	-	-	-	-	-
VII(a) Hepatoblastoma	-	-	-	-	-	-	-	-
VIII Malignant bone tumors	34.5	-	1.0	-	6.6	-0.6	0.8	-1.3
VIII(a) Osteosarcoma	-	-	-	-	19.4	0.0	0.7	-0.9
VIII(c) Ewing tum. and related sarcomas of bone	-	-	-	-	-	-	-	-
IX Soft tissue and other extraosseous sarcomas	21.5	0.4	0.2	-0.9	42.4	0.4	1.0	0.2
IX(a) Rhabdomyosarcoma	-	-	-	-	77.9	-	-	-
X Germ cell & trophoblastic tum. & neo. of gonads	4.7	-	-	-0.4	-31.8	0.2	1.2	-0.8
X(a) Intracranial and intraspinal germ-cell tum.	-	-	-	-	-	-	-	-
X(c) Malignant gonadal germ cell tum. (ovary)	-	-	-	-	-	-	-	-
XI Other malignant epithelial neo. and melanomas	-4.7	-	0.8	-	56.2	1.1*	0.2	1.8*
XI(b) Thyroid carcinoma	-	-	-	-	93.6	1.4*	1.2	2.2*
XI(d) Malignant melanoma	-	-	-	-	135.0	-	-	0.8

The APC is the Annual Percent Change over the time interval.

^a SEER 9 areas (San Francisco, Connecticut, Detroit, Hawaii, Iowa, New Mexico, Seattle, Utah, and Atlanta).

^b International Classification of Childhood Cancer is based on ICD-0-3. Steliarova-Foucher E, Stiller C, Lacour B, Kaatsch P. International Classification of Childhood Cancer, Third Edition. Cancer. April 1, 2005; Vol 103, No. 7, pg 1457-1467.

^c Classifications are shown for invasive cases only. Groups and subgroups that include *in situ* behavior reflect only invasive cases.

* The APC is significantly different from zero ($p < .05$)

The APC for 1989-2003 is significantly different from the APC for 1975-1988 ($p < .05$).

® The APC for 1989-2003 is significantly different from the APC for 1975-1988 ($p < .10$).

- Statistic could not be calculated. Trend based on less than 10 cases for at least one year within the time interval. Neoplasms are abbreviated as neo. Tumors are abbreviated as tum.

Table XXIX-6

5-YEAR RELATIVE SURVIVAL RATES, 1996-2002^aBy International Classification of Childhood Cancer (ICCC)^b Selected Group and Subgroup^c and Sex and Age (excludes MDS)

ICCC Group & Subgroup	Ages 0-19 by Sex			Both Sexes by Age					
	Total	Male	Female	<1	1-4	5-9	10-14	15-19	0-14
All ICCC Groups Combined	77.9	76.3	79.7	73.1	80.0	76.3	77.8	78.2	77.7
I Leukemia	75.2	73.8	76.9	51.6	86.3	80.2	70.8	50.5	79.5
I(a) Lymphoid leukemia	81.4	79.7	83.6	50.8 ^d	90.2	84.5	76.1	55.4	84.7
I(b) Acute myeloid leukemia	50.5	50.4	50.5	47.6 ^d	59.0	54.2	53.7	39.1	54.4
II Lymphomas and reticuloendothelial neo.	86.9	86.0	88.3	49.7 ^d	82.9	88.7	88.0	87.6	86.3
II(a) Hodgkin lymphoma	94.6	94.7	94.4	-	100.0	96.0	93.9	94.5	94.7
II(b,c,e) Non-Hodgkin lymphoma	79.4	79.3	79.5	-	79.5	85.1	82.2	74.5	82.3
III CNS & misc intracranial & intraspinal neo.	71.7	70.5	73.2	51.0	71.6	68.4	78.7	74.1	71.2
III(a) Ependymomas and choroid plexus tumor	73.5	75.2	72.1 ^d	72.0 ^e	69.9 ^d	68.3 ^d	73.5 ^d	89.5 ^d	70.7
III(b) Astrocytoma	82.6	79.2	86.5	67.7 ^d	90.8	81.3	83.0	75.5	84.2
III(c) Intracranial and intraspinal embryonal tumors	67.3	68.3	66.1	32.3 ^d	56.9	77.2	84.0	69.9 ^d	66.9
III(d) Other gliomas	52.0	53.7	50.0	-	46.0 ^d	35.9	62.8	73.5	46.8
IV Neuroblastoma and other peripheral nervous cell tumors	68.9	68.3	69.5	90.6	59.3	53.1 ^d	68.7 ^d	71.4 ^e	68.8
IV(a) Neuroblastoma and ganglioneuroblastoma	68.9	68.2	69.5	90.6	59.4	51.5 ^d	71.3 ^d	-	68.8
V Retinoblastoma	97.0	97.3	96.8	99.4	94.2	-	-	-	97.0
VI Renal tumors	87.1	87.8	86.3	89.2	90.1	86.7	48.9 ^e	76.9 ^d	87.5
VI(a) Nephroblastoma and other nonepithelial renal tumor	88.3	89.5	87.0	89.2	90.1	86.1	59.9 ^e	-	88.3
VII Hepatic tumors	47.1	46.5	47.4 ^d	68.6 ^d	61.6 ^d	12.3 ^e	18.2 ^d	18.3 ^d	52.8
VII(a) Hepatoblastoma	59.2	57.0 ^d	61.5 ^d	70.6 ^d	61.8 ^d	-	-	-	59.5
VIII Malignant bone tumors	65.1	64.6	66.2	-	49.2 ^e	73.4	65.3	62.8	66.9
VIII(a) Osteosarcoma	65.8	64.6	68.1	-	-	69.7 ^d	66.6	63.7	67.3
VIII(c) Ewing tumor and related sarcomas of bone	59.0	59.8	57.9 ^d	-	0.0	82.2 ^d	58.7 ^d	52.5 ^d	63.8
IX Soft tissue and other extrasosseous sarcomas	69.2	68.5	70.1	54.3 ^d	71.3	71.1	71.9	68.0	69.7
IX(a) Rhabdomyosarcoma	61.0	63.6	57.3	45.0 ^e	67.0	66.1	58.5 ^d	52.7 ^d	63.0
X Germ cell & trophoblastic tumors & neo. of gonads	89.7	89.1	90.7	81.8	87.3 ^d	88.7 ^d	93.5	90.3	88.7
X(a) Intracranial and intraspinal germ-cell tumor	84.8	86.8	79.5 ^d	-	-	93.2 ^d	89.5	80.9 ^d	86.4
X(c) Malignant gonadal germ cell tumor	76.7	67.2 ^d	86.3	80.6 ^d	87.4 ^d	-	-	67.4 ^d	80.9
XI Other malignant epithelial neo. and melanomas	89.2	83.8	91.8	-	92.9	82.2	89.9	89.4	88.6
XI(b) Thyroid carcinoma	97.8	94.1	98.6	-	-	100.0	96.8	97.9	97.5
XI(d) Malignant melanoma	94.7	95.0	94.4	-	88.2 ^d	89.3 ^d	90.8 ^d	95.8	90.3

^a SEER 17 areas (San Francisco, Connecticut, Detroit, Hawaii, Iowa, New Mexico, Seattle, Utah, Atlanta, San Jose-Monterey, Los Angeles, Alaska Native Registry, Rural Georgia, California excluding SF/SJM/LA, Kentucky, Louisiana and New Jersey). California excluding SF/SJM/LA, Kentucky, Louisiana, and New Jersey contribute cases for diagnosis years 2000-2002. The remaining 13 SEER Areas contribute cases for the entire period 1996-2002. Rates are based on follow-up of patients into 2003.

^b International Classification of Childhood Cancer is based on ICD-0-3. Steliarova-Foucher E, Stiller C, Lacour B, Kaatsch P. International Classification of Childhood Cancer, Third Edition. Cancer. April 1, 2005: Vol 103, No. 7, pg 1457-1467.

^c Classifications are shown for invasive cases only. Groups and subgroups that include *in situ* behavior reflect only invasive cases.

^d The standard error of the survival rate is between 5 and 10 percentage points.

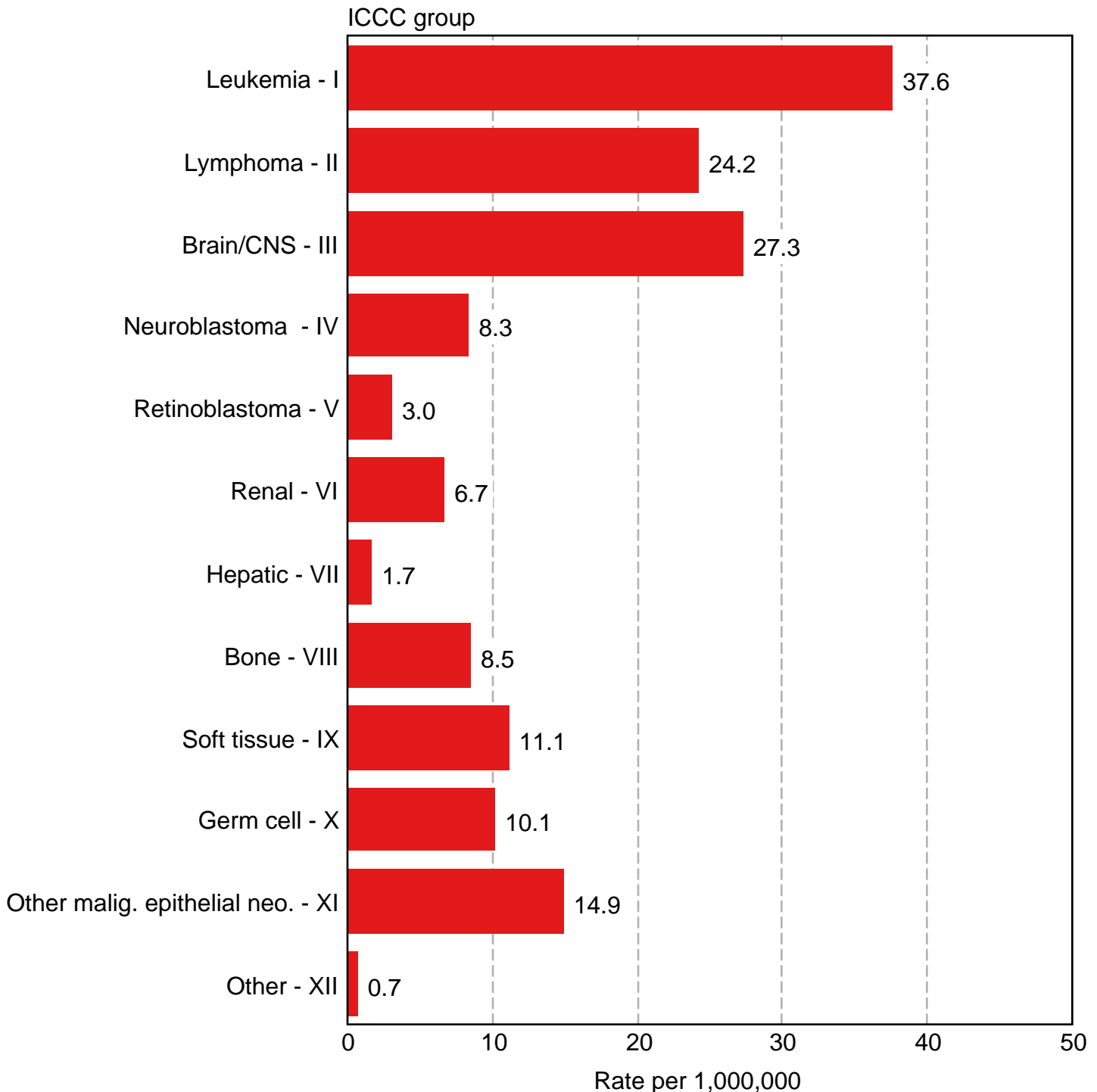
^e The standard error of the survival rate is greater than 10 percentage points.

- Statistic could not be calculated due to fewer than 16 cases during the time period.

Neoplasms are abbreviated as neo.

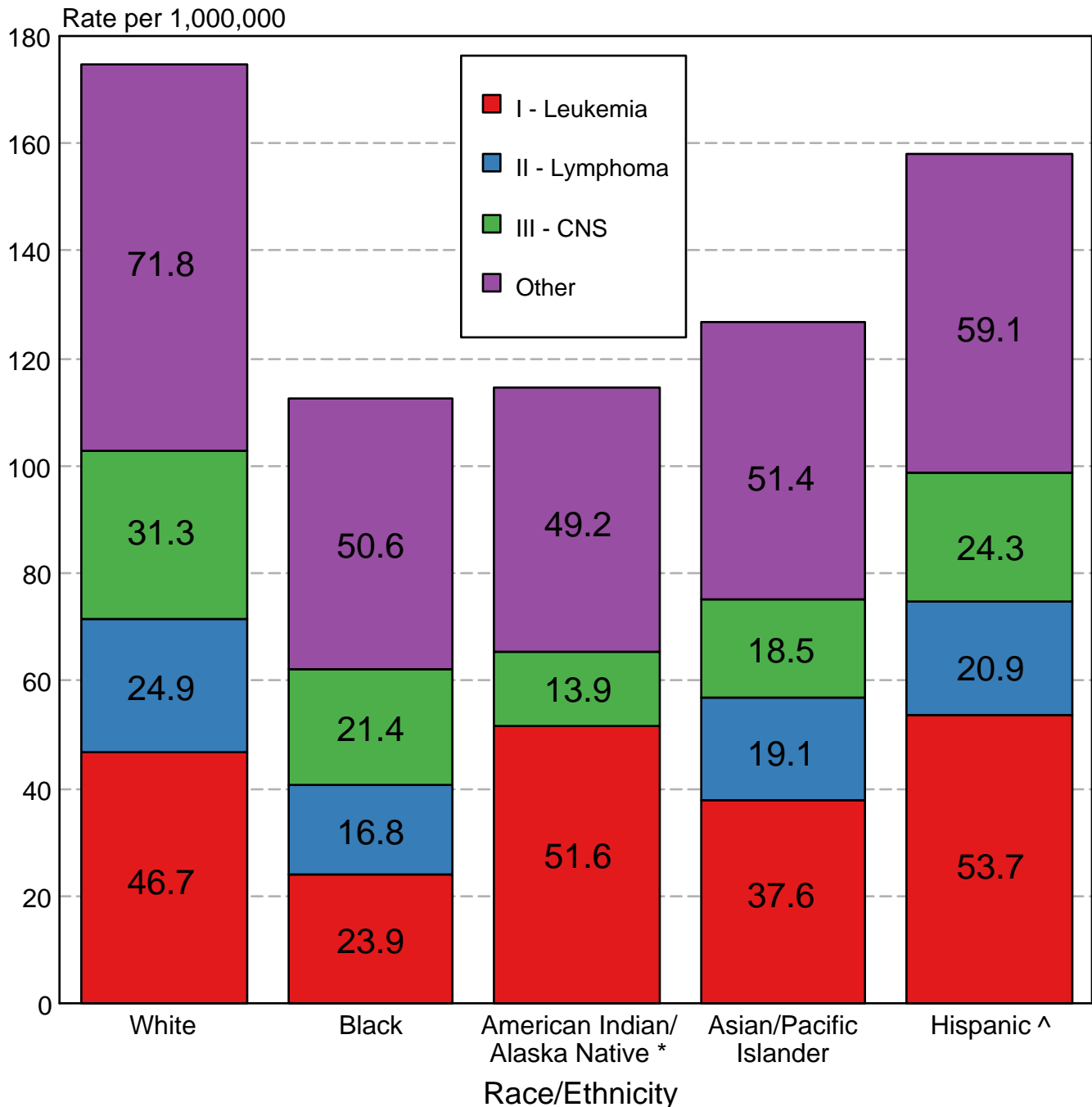
Survival rates are relative rates expressed as percents.

Childhood Cancer SEER Incidence Rates by ICCC Group, 1975-2003 Under 20 Years of Age, Both Sexes, All Races



Source: SEER 9 areas (San Francisco, Connecticut, Detroit, Hawaii, Iowa, New Mexico, Seattle, Utah, Atlanta). Rates are age-adjusted to the 2000 US Std Population (19 age groups - Census P25-1130). International Classification of Childhood Cancer is based on ICD-0-3. Steliarova-Foucher E, Stiller C, Lacour B, Kaatsch P. International Classification of Childhood Cancer, Third Edition. Cancer. April 1, 2005; Vol 103, No. 7, pg 1457-1467.

Childhood Cancer SEER Incidence Rates 2000-2003 by ICCC Group and Race/Ethnicity Both Sexes, Under 20 Years of Age



Source: SEER 17 areas (San Francisco, Connecticut, Detroit, Hawaii, Iowa, New Mexico, Seattle, Utah, Atlanta, San Jose-Monterey, Los Angeles, Alaska Native Registry, Rural Georgia, California excluding SF/SJM/LA, Kentucky, Louisiana, and New Jersey). Incidence rates are age-adjusted to the 2000 US Std Population (19 age groups - Census P25-1130) and are not shown for fewer than 10 cases for the time period.

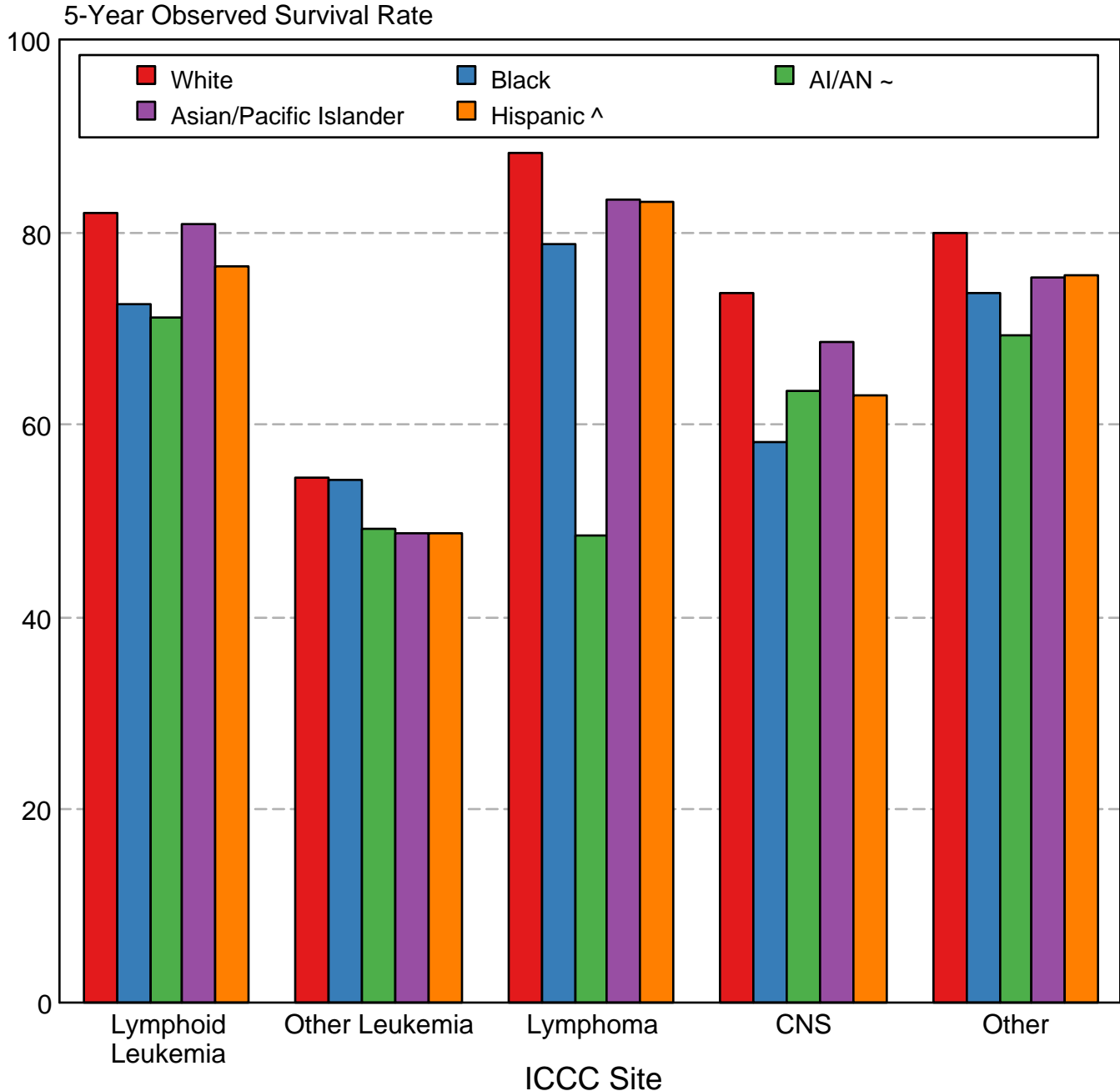
International Classification of Childhood Cancer is based on ICD-0-3. Steliarova-Foucher E, Stiller C, Lacour B, Kaatsch P. International Classification of Childhood Cancer, Third Edition. Cancer. April 1, 2005; Vol 103, No. 7, pg 1457-1467.

* Incidence data for American Indians/Alaska Natives include cases from Connecticut, Detroit, Iowa, New Mexico, Seattle, Utah, Atlanta, and the Alaska Native Registry for the time period 1999-2002.

^ Hispanic is not mutually exclusive from Whites, Blacks, Asian/Pacific Islanders, and American Indians/Alaska Natives.

Incidence data for Hispanics are based on NHIA and exclude cases from Hawaii, Seattle, Alaska Native Registry and Kentucky.

SEER Childhood Cancer 1996-2002 5-Year Observed Survival Rates by ICCC Group and Race/Ethnicity Both Sexes, Under 20 Years of Age



Source: SEER 17 areas (San Francisco, Connecticut, Detroit, Hawaii, Iowa, New Mexico, Seattle, Utah, Atlanta, San Jose-Monterey, Los Angeles, Alaska Native Registry, Rural Georgia, California excluding SF/SJM/LA, Kentucky, Louisiana, and New Jersey). California excluding SF/SJM/LA, Kentucky, Louisiana, and New Jersey contribute cases for diagnosis years 2000-2002. The remaining 13 SEER Areas contribute cases for the entire period 1996-2002.

International Classification of Childhood Cancer is based on ICD-0-3. Steliarova-Foucher E, Stiller C, Lacour B, Kaatsch P. International Classification of Childhood Cancer, Third Edition. Cancer. April 1, 2005; Vol 103, No. 7, pg 1457-1467.

~ American Indian/Alaska Native. Survival data for AI/AN include cases from Connecticut, Detroit, Iowa, New Mexico, Seattle, Utah, Atlanta and the Alaska Native Registry.

^ Hispanic is not mutually exclusive from Whites, Blacks, Asian/Pacific Islanders, and American Indians/Alaska Natives.

Survival data for Hispanics are based on NHIA and excludes cases from Hawaii, Seattle, Alaska Native Registry and Kentucky.