

Table XI-1
KIDNEY AND RENAL PELVIS CANCER (Invasive)

TRENDS IN SEER INCIDENCE^a AND U.S. MORTALITY^b USING THE JOINTPOINT REGRESSION PROGRAM, 1975-2004
WITH UP TO THREE JOINTPOINTS BY RACE AND SEX

		<u>Jointpoint Segment 1</u>		<u>Jointpoint Segment 2</u>		<u>Jointpoint Segment 3</u>		<u>Jointpoint Segment 4</u>	
		Year	APC	Year	APC	Year	APC	Year	APC
<u>SEER Cancer Incidence^a</u>									
All Races	Male and Female	1975-2004	1.9*						
All Races	Male	1975-2004	1.7*						
All Races	Female	1975-2004	2.2*						
White	Male and Female	1975-2004	1.9*						
White	Male	1975-2004	1.6*						
White	Female	1975-2004	2.2*						
Black	Male and Female	1975-2004	2.7*						
Black	Male	1975-2004	2.8*						
Black	Female	1975-2004	2.8*						
<u>SEER Delay-Adjusted Incidence^a</u>									
All Races	Male and Female	1975-2004	2.0*						
All Races	Male	1975-2004	1.8*						
All Races	Female	1975-2004	2.3*						
White	Male and Female	1975-1991	2.4*	1991-1997	0.7	1997-2004	3.0*		
White	Male	1975-2004	1.7*						
White	Female	1975-1992	2.8*	1992-1999	0.7	1999-2004	4.4*		
Black	Male and Female	1975-2004	2.9*						
Black	Male	1975-2004	2.9*						
Black	Female	1975-2004	2.9*						
<u>U.S. Cancer Mortality^b</u>									
All Races	Male and Female	1975-1992	1.1*	1992-2004	-0.2				
All Races	Male	1975-1992	1.1*	1992-2004	-0.3*				
All Races	Female	1975-1992	1.3*	1992-2004	-0.5*				
White	Male and Female	1975-1992	1.0*	1992-2004	-0.2				
White	Male	1975-1992	1.0*	1992-2004	-0.2				
White	Female	1975-1992	1.2*	1992-2004	-0.5*				
Black	Male and Female	1975-1991	2.7*	1991-2004	-0.2				
Black	Male	1975-1991	2.9*	1991-2004	-0.3				
Black	Female	1975-1994	2.4*	1994-2004	-0.8				

Jointpoint Regression Program Version 3.0, April 2005, National Cancer Institute. (<http://srab.cancer.gov/jointpoint/>).

The APC is the Annual Percent Change based on rates age-adjusted to the 2000 US Std Population (19 age groups - Census P25-1130).

^a Trends are from the SEER 9 areas (San Francisco, Connecticut, Detroit, Hawaii, Iowa, New Mexico, Seattle, Utah, and Atlanta).

^b Trends are from the NCHS public use data file for the total US.

* The APC is significantly different from zero (p<.05).

Table XI-2
 KIDNEY AND RENAL PELVIS CANCER (Invasive)

AGE ADJUSTED SEER INCIDENCE^a RATES BY YEAR, RACE AND SEX

	All Races			Whites			Blacks		
	Total	Males	Females	Total	Males	Females	Total	Males	Females
<u>AGE-ADJUSTED RATES</u>									
YEAR OF DIAGNOSIS:									
1975	7.1	10.3	4.5	7.3	10.8	4.6	6.2	8.2	4.3
1976	8.0	11.2	5.5	8.1	11.5	5.6	7.7	11.6	4.7
1977	8.0	11.4	5.5	8.1	11.7	5.5	8.5	11.1	6.4
1978	7.8	11.8	4.8	8.0	12.1	4.9	8.0	11.0	5.7
1979	7.6	11.1	5.0	7.8	11.6	5.1	7.3	8.2	6.3
1980	8.1	11.7	5.4	8.4	12.2	5.6	6.0	8.0	4.4
1981	8.5	12.8	5.3	8.6	13.0	5.3	10.0	15.8	5.8
1982	8.3	11.8	5.7	8.5	12.0	5.8	7.6	11.2	4.9
1983	8.9	13.2	5.7	9.2	13.8	5.8	8.8	13.5	5.5
1984	9.2	13.1	6.2	9.5	13.6	6.3	9.0	12.0	6.9
1985	8.9	13.1	5.8	9.2	13.6	5.9	8.6	11.6	6.2
1986	9.7	13.8	6.6	9.8	14.1	6.7	10.1	15.0	6.6
1987	9.9	14.1	6.7	10.1	14.4	6.9	11.1	15.6	7.5
1988	9.9	14.0	7.0	10.1	14.3	7.0	11.6	15.4	8.8
1989	10.3	14.5	7.1	10.6	15.0	7.2	10.8	15.1	7.8
1990	10.4	14.7	7.1	10.7	15.0	7.4	10.5	15.9	6.6
1991	10.6	15.1	7.2	10.8	15.2	7.3	12.2	18.3	7.7
1992	10.8	15.3	7.4	11.1	15.6	7.7	11.0	16.4	7.2
1993	10.7	14.7	7.6	10.8	14.7	7.7	12.8	17.3	9.4
1994	11.3	15.6	7.9	11.5	16.0	8.0	12.7	18.0	8.7
1995	11.1	15.5	7.6	11.1	15.4	7.7	14.2	21.5	9.2
1996	11.3	15.8	7.9	11.5	16.2	7.8	13.7	17.2	11.1
1997	10.9	15.1	7.6	11.0	15.0	7.7	13.5	19.4	9.2
1998	11.8	16.4	8.2	12.1	16.7	8.4	12.6	17.2	9.1
1999	11.4	15.9	7.8	11.6	16.2	7.9	13.7	18.7	10.0
2000	12.4	17.3	8.5	12.7	17.9	8.5	14.7	19.1	11.8
2001	12.5	17.4	8.5	12.7	17.6	8.7	15.5	22.9	10.2
2002	12.7	17.6	8.7	13.0	17.8	8.9	15.1	22.0	10.2
2003	13.2	17.8	9.5	13.5	18.0	9.8	14.2	21.2	9.1
2004	13.1	17.8	9.2	13.4	18.2	9.4	15.1	21.6	10.3
1975-2004	10.4	14.6	7.1	10.5	14.9	7.2	11.7	16.5	8.1

^a SEER 9 areas (San Francisco, Connecticut, Detroit, Hawaii, Iowa, New Mexico, Seattle, Utah, and Atlanta). Rates are per 100,000 and are age-adjusted to the 2000 US Std Population (19 age groups - Census P25-1130).
 - Statistic not shown. Rate based on less than 16 cases for the time interval.

Table XI-3
 KIDNEY AND RENAL PELVIS CANCER (Invasive)

AGE-ADJUSTED U.S. DEATH^a RATES BY YEAR, RACE AND SEX

	All Races			Whites			Blacks		
	Total	Males	Females	Total	Males	Females	Total	Males	Females
<u>AGE-ADJUSTED RATES</u>									
YEAR OF DEATH:									
1975	3.6	5.2	2.4	3.7	5.3	2.5	2.8	4.1	1.8
1976	3.6	5.2	2.4	3.7	5.4	2.5	2.9	4.2	1.9
1977	3.7	5.4	2.4	3.8	5.5	2.5	2.9	4.0	2.0
1978	3.7	5.4	2.4	3.8	5.5	2.5	3.2	4.8	1.9
1979	3.6	5.3	2.4	3.7	5.5	2.4	2.9	4.2	2.0
1980	3.7	5.5	2.4	3.8	5.6	2.4	3.0	4.2	2.0
1981	3.7	5.4	2.5	3.8	5.5	2.6	3.2	4.6	2.1
1982	3.9	5.7	2.5	3.9	5.8	2.6	3.4	4.8	2.4
1983	3.8	5.6	2.6	3.9	5.7	2.7	3.3	4.9	2.1
1984	3.9	5.8	2.6	4.0	5.9	2.6	3.5	4.9	2.4
1985	4.0	5.8	2.7	4.0	5.8	2.7	3.8	6.0	2.4
1986	4.0	5.8	2.8	4.1	5.9	2.8	3.7	5.3	2.5
1987	4.1	6.0	2.8	4.2	6.1	2.8	3.7	5.5	2.4
1988	4.0	5.9	2.7	4.1	5.9	2.8	3.8	5.8	2.4
1989	4.2	6.1	2.8	4.2	6.2	2.8	4.0	6.1	2.6
1990	4.2	6.2	2.8	4.2	6.2	2.8	4.2	6.4	2.8
1991	4.3	6.2	2.9	4.3	6.2	3.0	4.3	6.4	3.0
1992	4.3	6.2	2.9	4.4	6.3	2.9	4.0	5.9	2.6
1993	4.2	6.1	2.8	4.2	6.2	2.8	4.1	6.1	2.7
1994	4.3	6.2	2.9	4.3	6.3	2.9	4.2	6.4	2.8
1995	4.3	6.2	3.0	4.4	6.3	3.0	4.4	6.3	3.1
1996	4.3	6.2	2.8	4.3	6.3	2.9	4.1	5.9	2.9
1997	4.3	6.2	2.9	4.3	6.2	2.9	4.3	6.5	2.8
1998	4.3	6.2	2.8	4.3	6.3	2.9	4.0	6.3	2.5
1999	4.1	5.9	2.7	4.1	6.0	2.7	4.2	6.1	2.8
2000	4.2	6.1	2.8	4.3	6.2	2.8	4.1	6.3	2.7
2001	4.3	6.2	2.8	4.3	6.3	2.8	4.3	6.4	2.8
2002	4.2	6.1	2.8	4.3	6.3	2.8	4.1	5.8	2.8
2003	4.2	6.1	2.7	4.3	6.2	2.8	4.1	6.1	2.7
2004	4.1	5.9	2.7	4.2	6.1	2.8	4.0	5.8	2.7
1975-2004	4.1	5.9	2.7	4.1	6.0	2.8	3.8	5.6	2.6

^a NCHS public use data file for the total US. Rates are per 100,000 and are age-adjusted to the 2000 US Std Population (19 age groups - Census P25-1130).

- Statistic not shown. Rate based on less than 16 cases for the time interval.

Table XI-4
KIDNEY AND RENAL PELVIS CANCER (Invasive)

SEER INCIDENCE^a AND U.S. DEATH^b RATES, AGE-ADJUSTED AND AGE-SPECIFIC RATES, BY RACE AND SEX

	All Races			Whites			Blacks		
	Total	Males	Females	Total	Males	Females	Total	Males	Females
<u>SEER INCIDENCE</u>									
<u>AGE AT DIAGNOSIS</u>									
AGE-ADJUSTED RATES, 2000-2004									
All ages	12.8	17.8	8.8	13.3	18.3	9.1	14.3	20.4	9.7
Under 65	6.8	9.0	4.6	7.0	9.2	4.8	8.1	11.4	5.3
65 and over	54.6	78.0	37.9	56.6	80.8	39.1	57.1	83.3	40.6
All ages(IARC world std) ^c	9.0	12.3	6.2	9.3	12.6	6.4	10.2	14.5	7.0
AGE-SPECIFIC RATES, 2000-2004									
<1	1.7	1.8	1.6	1.7	1.9	1.5	-	-	-
1-4	1.8	1.8	1.8	1.8	1.9	1.8	2.0	2.0	2.0
5-9	0.4	0.4	0.5	0.4	0.4	0.4	0.6	-	0.9
10-14	0.1	0.1	0.1	0.1	-	-	-	-	-
15-19	0.2	0.1	0.2	0.2	-	0.2	-	-	-
20-24	0.3	0.2	0.3	0.3	0.2	0.3	0.5	-	-
25-29	0.7	0.7	0.7	0.7	0.8	0.6	1.1	-	1.3
30-34	1.6	1.7	1.4	1.6	1.8	1.4	2.0	2.0	2.1
35-39	3.3	4.1	2.5	3.4	4.1	2.6	4.0	5.5	2.7
40-44	6.4	7.9	4.9	6.6	8.2	5.0	7.4	9.4	5.7
45-49	11.2	15.0	7.4	11.5	15.2	7.7	13.5	19.5	8.3
50-54	18.1	24.1	12.3	18.6	24.4	12.9	22.3	32.2	13.8
55-59	27.4	37.6	17.8	28.0	37.9	18.6	33.1	49.7	19.3
60-64	39.1	55.5	24.2	40.9	57.5	25.4	43.1	63.8	26.4
65-69	49.3	68.1	33.2	51.2	70.5	34.3	55.5	79.6	37.2
70-74	56.4	79.4	38.0	58.6	82.5	39.2	58.8	83.4	41.8
75-79	61.7	88.1	43.1	63.9	91.5	44.4	63.8	88.6	48.6
80-84	59.1	85.3	42.8	61.1	87.6	44.6	57.3	94.7	37.1
85+	45.2	71.1	33.5	46.5	73.8	34.3	45.1	69.0	35.5
<u>U.S. MORTALITY</u>									
<u>AGE AT DEATH</u>									
AGE-ADJUSTED RATES, 2000-2004									
All ages	4.2	6.1	2.8	4.3	6.2	2.8	4.1	6.1	2.8
Under 65	1.6	2.3	0.9	1.6	2.3	0.9	1.7	2.5	1.0
65 and over	22.4	32.6	15.6	22.9	33.3	15.9	20.8	31.0	14.8
All ages(IARC world std) ^c	2.6	3.8	1.7	2.7	3.8	1.7	2.6	3.9	1.7
AGE-SPECIFIC RATES, 2000-2004									
<1	-	-	-	-	-	-	-	-	-
1-4	0.1	0.1	0.1	0.1	0.1	0.1	-	-	-
5-9	0.1	0.1	0.1	0.1	0.1	0.1	0.2	-	-
10-14	0.0	0.0	0.0	0.0	-	-	-	-	-
15-19	0.0	0.0	0.0	0.0	-	-	-	-	-
20-24	0.1	0.1	0.0	0.0	0.1	-	0.1	-	-
25-29	0.1	0.1	0.1	0.1	0.1	0.1	0.3	0.4	-
30-34	0.2	0.2	0.1	0.1	0.2	0.1	0.4	0.5	-
35-39	0.4	0.5	0.2	0.3	0.5	0.2	0.6	0.8	0.5
40-44	1.0	1.4	0.6	1.0	1.4	0.6	1.3	1.7	0.9
45-49	2.2	3.2	1.3	2.3	3.3	1.3	2.5	3.4	1.8
50-54	4.2	6.2	2.3	4.3	6.3	2.4	4.4	6.7	2.4
55-59	7.1	10.5	4.0	7.3	10.8	4.0	7.3	10.9	4.3
60-64	11.3	16.6	6.4	11.6	16.9	6.6	11.0	17.1	6.1
65-69	14.9	21.3	9.5	15.5	21.8	9.8	13.4	20.1	8.5
70-74	19.7	28.1	13.0	20.2	28.6	13.3	18.0	27.3	11.7
75-79	24.5	35.0	17.1	24.9	35.5	17.3	24.2	35.7	17.4
80-84	29.4	43.0	21.2	30.0	43.8	21.5	27.0	40.8	19.9
85+	32.9	50.5	25.3	33.6	52.1	25.6	29.8	43.2	24.7

^a SEER 17 areas. Rates are per 100,000 and are age-adjusted to the 2000 US Std Population (19 age groups - Census P25-1130), unless noted.

^b NCHS public use data file for the total US. Rates are per 100,000 and are age-adjusted to the 2000 US Std Population (19 age groups - Census P25-1130), unless noted.

^c Rates are per 100,000 and are age-adjusted to the IARC world standard population.

- Statistic not shown. Rate based on less than 16 cases for the time interval.

Table XI-5
KIDNEY AND RENAL PELVIS CANCER (Invasive)

SURVIVAL RATES, BY RACE, SEX, DIAGNOSIS YEAR, STAGE AND AGE

	All Races			Whites			Blacks		
	Total	Males	Females	Total	Males	Females	Total	Males	Females
<u>5-YR RELATIVE SURVIVAL RATES</u>									
YEAR OF DIAGNOSIS:									
1960-1963 ^a	-	-	-	37	36	39	38	38	37
1970-1973 ^a	-	-	-	46	44	50	44	40	49
1975-1977 ^b	50.9	51.0	50.8	50.7	50.9	50.3	50.1	48.9	52.0 ^f
1978-1980 ^b	54.0	53.8	54.3	53.8	54.0	53.2	57.1	52.0	63.4 ^f
1981-1983 ^b	51.4	52.2	50.0	51.3	52.4	49.5	51.9	51.8	52.0
1984-1986 ^b	55.8	56.2	55.1	56.0	56.6	55.0	54.0	50.5	59.1
1987-1989 ^b	57.9	58.2	57.4	58.5	59.2	57.4	55.8	53.2	58.6
1990-1992 ^b	61.5	61.7	61.2	62.1	62.5	61.5	57.6	55.8	59.4
1993-1995 ^b	62.6	62.4	62.9	63.1	63.5	62.4	58.6	55.2	63.5
1996-2003 ^b	65.7 ^e	64.6 ^e	67.3 ^e	65.5 ^e	64.8 ^e	66.7 ^e	65.5 ^e	63.0 ^e	67.5 ^e
<u>5-YR PERIOD SURVIVAL RATES^{cd}</u>									
YEAR OF DIAGNOSIS:									
1996-2003	67.0	66.4	68.0	67.0	66.7	67.6	63.9	60.6	67.8
<u>STAGE DISTRIBUTION (%) 1996-2003^c</u>									
All Stages									
Number of cases	40,169	24,669	15,500	33,646	20,747	12,899	4,001	2,347	1,654
Percent	100%	100%	100%	100%	100%	100%	100%	100%	100%
Localized	55	54	57	55	54	57	59	59	60
Regional	19	20	18	20	21	19	16	16	15
Distant	20	21	19	20	21	19	20	20	19
Unstaged	5	4	6	5	4	6	6	5	6
<u>5-YR RELATIVE SURVIVAL RATES, 1996-2003^c</u>									
AGE AT DIAGNOSIS:									
<45	79.7	77.2	83.0	80.9	78.8	84.0	72.1	66.6	77.9
45-54	70.9	68.7	75.6	71.0	68.7	76.2	67.4	65.0	71.2
55-64	66.4	65.7	67.9	66.8	66.1	68.2	63.2	60.5	66.5
65-74	62.5	61.9	63.5	62.4	61.7	63.4	61.4	61.0	60.9
75+	51.8	53.6	50.0	52.0	54.4	49.6	48.0	47.0 ^f	48.1
Under 65	70.9	69.0	74.4	71.2	69.4	74.7	67.4	63.9	72.1
65 and over	58.3	58.9	57.5	58.2	59.1	57.2	57.0	57.4	55.6
STAGE:									
All Stages	65.5	65.1	66.3	65.5	65.3	66.0	64.2	62.0	66.3
Localized	89.6	89.3	90.0	90.0	89.8	90.3	85.4	83.7	86.8
Regional	60.8	62.4	57.9	60.7	62.5	57.5	57.0	55.8	57.4
Distant	9.5	9.5	9.6	9.4	9.7	8.9	10.3	7.6	14.2
Unstaged	35.2	37.3	32.1	33.1	36.3	28.5	38.5	34.2 ^f	41.2 ^f

^a Rates are based on End Results data from a series of hospital registries and one population-based registry.

^b Rates are from the SEER 9 areas (San Francisco, Connecticut, Detroit, Hawaii, Iowa, New Mexico, Seattle, Utah, Atlanta).

Rates are based on follow-up of patients into 2004.

^c Rates are from the SEER 17 areas (San Francisco, Connecticut, Detroit, Hawaii, Iowa, New Mexico, Seattle, Utah, Atlanta, San Jose-Monterey, Los Angeles, Alaska Native Registry, Rural Georgia, California excluding SF/SJM/LA, Kentucky, Louisiana and New Jersey). California excluding SF/SJM/LA, Kentucky, Louisiana, and New Jersey contribute cases for diagnosis years 2000-2003. The remaining 13 SEER Areas contribute cases for the entire period 1996-2003. Rates are based on follow-up of patients into 2004.

^d Period survival provides a more up-to-date estimate of survival by piecing together the most recent conditional survival estimates from several cohorts. It is computed here using three calendar year blocks (2001-2003: 0-1 year survival), (2000-2002: 1-2 year survival), (1999-2001: 2-3 year survival), (1998-2000: 3-4 year survival), (1997-1999: 4-5 years survival).

^e The difference in rates between 1975-1977 and 1996-2003 is statistically significant ($p < .05$).

^f The standard error of the survival rate is between 5 and 10 percentage points.

^g The standard error of the survival rate is greater than 10 percentage points.

- Statistic could not be calculated due to fewer than 16 cases during the time period.

Table XI-6
KIDNEY AND RENAL PELVIS CANCER (Invasive)

SURVIVAL RATES^a

By Year of Diagnosis

All Races, Males and Females

Year of Diagnosis

	1975- 1979	1980- 1984	1985	1986	1987	1988	1989	1990	1991	1992	1993	1994	1995	1996	1997	1998	1999	2000	2001	2002	2003
Relative Survival Rates (SEER ^b)																					
1-year	69.7	71.4	74.2	72.2	74.2	74.3	73.1	76.4	77.3	77.6	76.8	77.2	77.5	77.7	76.9	78.4	78.4	80.2	81.7	79.9	82.2
2-year	60.9	62.5	66.2	64.8	66.2	65.8	65.3	68.8	69.4	69.5	71.3	70.2	70.1	71.0	70.4	71.7	72.3	74.4	74.4	75.3	
3-year	56.9	57.9	60.7	60.3	61.2	62.6	62.1	66.2	65.2	66.8	67.4	67.6	66.0	68.1	66.6	68.5	68.3	69.9	71.6		
4-year	53.7	55.0	58.4	56.9	59.2	59.9	59.1	63.9	63.1	63.9	64.1	65.7	64.2	65.2	64.3	65.7	65.5	68.3			
5-year	51.8	53.4	56.3	54.7	58.0	58.0	57.5	61.2	61.6	61.7	62.3	63.0	62.4	63.8	62.9	64.7	63.6				
6-year	50.5	51.3	53.9	54.2	55.8	56.0	56.6	59.4	59.6	60.4	60.7	62.0	60.8	62.3	61.2	63.1					
7-year	48.8	50.4	52.4	53.1	54.2	55.1	55.5	57.1	58.8	58.1	60.3	60.6	59.6	60.8	59.9						
8-year	47.8	49.4	51.7	51.7	53.4	54.2	54.3	56.4	57.8	57.3	58.9	59.1	58.7	60.5							
9-year	46.9	48.4	50.5	50.7	52.0	53.8	52.7	55.4	56.5	56.2	58.1	58.8	57.6								
10-year	46.1	47.5	48.2	49.5	51.0	52.8	50.8	54.7	54.7	55.6	55.8	57.0									
11-year	45.5	46.5	46.1	48.8	49.8	52.1	49.2	53.8	53.6	53.5	54.7										
12-year	44.8	46.0	45.7	48.5	48.8	50.5	48.2	52.2	52.8	52.7											
13-year	44.5	45.6	44.3	47.3	47.8	49.7	48.1	51.4	52.5												
14-year	43.6	45.2	43.6	45.3	46.6	48.6	48.0	50.2													
15-year	42.9	45.1	43.1	43.6	46.3	47.9	47.4														
16-year	42.8	44.8	42.8	43.3	45.7	46.0															
17-year	42.7	44.7	42.1	42.6	43.8																
18-year	41.9	44.3	41.0	42.6																	
19-year	41.1	43.5	39.4																		
20-year	40.7	43.0																			

^a Survival rates are relative rates expressed as percents.

^b Rates are from the SEER 9 areas (San Francisco, Connecticut, Detroit, Hawaii, Iowa, New Mexico, Seattle, Utah, and Atlanta).

Table XI-7
KIDNEY AND RENAL PELVIS CANCER (Invasive)

SURVIVAL RATES^a

By Year of Diagnosis

All Races, Males

Year of Diagnosis

	1975- 1979	1980- 1984	1985	1986	1987	1988	1989	1990	1991	1992	1993	1994	1995	1996	1997	1998	1999	2000	2001	2002	2003
Relative Survival Rates (SEER ^b)																					
1-year	70.4	71.5	75.7	73.2	75.8	74.2	71.9	78.0	78.9	78.8	78.1	77.1	79.8	78.6	78.5	78.8	77.9	79.4	81.0	80.4	81.1
2-year	61.2	62.6	67.2	66.2	67.5	65.8	63.8	69.9	69.9	69.8	71.9	69.5	71.5	72.3	71.2	72.3	71.4	73.3	73.9	75.5	
3-year	57.0	58.3	61.8	61.4	63.6	62.1	61.5	67.3	66.4	67.2	68.0	66.5	67.3	68.7	67.1	68.6	67.4	68.2	70.9		
4-year	53.6	55.4	59.2	56.8	61.1	59.9	58.3	64.5	64.8	63.5	64.3	64.7	64.6	65.6	64.5	65.7	64.3	66.4			
5-year	51.9	53.7	57.5	54.7	59.1	58.0	57.3	61.5	63.0	60.6	62.2	62.2	62.8	64.0	62.5	64.7	62.5				
6-year	50.6	51.6	54.8	54.0	56.5	55.0	56.1	58.9	60.1	59.7	60.2	61.5	60.3	63.1	60.2	62.6					
7-year	48.6	50.6	52.5	53.1	54.8	54.7	54.1	56.6	59.0	57.2	59.9	60.2	59.4	61.5	58.8						
8-year	47.2	49.6	51.9	51.2	53.3	53.7	52.7	55.6	57.5	56.4	58.7	58.7	58.2	60.6							
9-year	46.5	48.5	49.8	49.9	51.4	53.4	50.6	54.6	56.4	55.5	57.8	58.5	57.4								
10-year	45.3	47.6	47.8	49.0	50.0	52.3	49.0	53.6	54.5	54.7	55.4	57.1									
11-year	44.5	46.7	45.9	47.7	48.1	51.3	46.7	52.1	52.8	52.8	54.5										
12-year	43.6	46.2	45.0	47.3	46.3	49.1	45.6	50.4	52.2	52.1											
13-year	43.1	45.8	43.4	45.6	44.8	48.7	45.5	49.7	51.8												
14-year	42.3	44.9	42.7	43.5	43.6	47.6	45.1	49.0													
15-year	41.3	44.9	42.7	42.3	42.8	46.9	44.1														
16-year	41.1	44.3	42.5	41.9	41.9	44.8															
17-year	41.0	44.2	41.9	41.7	40.0																
18-year	40.3	44.0	40.0	41.7																	
19-year	39.6	43.3	39.3																		
20-year	38.9	42.5																			

^a Survival rates are relative rates expressed as percents.

^b Rates are from the SEER 9 areas (San Francisco, Connecticut, Detroit, Hawaii, Iowa, New Mexico, Seattle, Utah, and Atlanta).

Table XI-8
KIDNEY AND RENAL PELVIS CANCER (Invasive)

SURVIVAL RATES^a

By Year of Diagnosis

All Races, Females

Year of Diagnosis

	1975- 1979	1980- 1984	1985	1986	1987	1988	1989	1990	1991	1992	1993	1994	1995	1996	1997	1998	1999	2000	2001	2002	2003
Relative Survival Rates (SEER ^b)																					
1-year	68.6	71.2	71.5	70.8	71.5	74.4	75.0	73.9	74.6	75.8	75.0	77.4	73.9	76.3	74.5	77.7	79.3	81.4	82.7	79.1	83.8
2-year	60.3	62.2	64.4	62.5	64.0	65.7	67.6	67.1	68.5	68.9	70.5	71.2	67.9	69.0	69.1	70.6	73.8	76.3	75.3	74.8	
3-year	56.8	57.3	58.9	58.5	57.4	63.4	63.1	64.4	63.2	66.3	66.6	69.1	63.8	67.1	65.9	68.2	69.8	72.7	72.8		
4-year	53.8	54.4	56.7	57.2	56.2	59.7	60.4	63.0	60.3	64.5	63.7	67.2	63.4	64.7	63.9	65.8	67.2	71.4			
5-year	51.6	52.8	54.1	54.6	56.1	58.0	57.8	60.9	59.3	63.4	62.5	64.2	61.7	63.4	63.0	64.8	65.3				
6-year	50.3	50.9	52.3	54.4	54.7	57.6	57.4	60.1	58.6	61.6	61.1	62.7	61.3	61.1	62.6	63.8					
7-year	49.2	50.1	52.1	53.0	53.2	55.6	57.4	57.9	58.4	59.2	60.9	61.2	59.9	59.8	61.5						
8-year	48.7	49.1	51.3	52.5	53.2	54.4	56.3	57.6	58.2	58.4	59.1	59.8	59.4	59.7							
9-year	47.5	48.2	51.3	51.6	53.1	54.2	56.0	56.7	56.6	57.0	58.6	58.8	57.6								
10-year	47.4	47.4	49.0	49.8	52.5	52.9	53.5	55.9	55.0	56.8	56.2	56.8									
11-year	47.1	46.2	46.3	49.8	52.3	52.9	53.1	55.9	54.6	54.7	54.7										
12-year	46.8	45.6	46.3	49.7	52.0	52.2	51.8	54.9	53.8	53.5											
13-year	46.5	45.1	45.6	49.7	52.0	51.1	51.8	54.0	53.3												
14-year	45.8	44.9	45.0	47.8	51.2	49.6	51.8	51.5													
15-year	45.5	44.9	43.3	45.6	51.0	48.6	51.8														
16-year	45.4	44.9	42.5	45.2	51.0	47.6															
17-year	45.2	44.9	42.1	43.8	49.1																
18-year	44.3	44.7	41.9	43.8																	
19-year	43.4	43.8	39.7																		
20-year	43.4	43.7																			

^a Survival rates are relative rates expressed as percents.

^b Rates are from the SEER 9 areas (San Francisco, Connecticut, Detroit, Hawaii, Iowa, New Mexico, Seattle, Utah, and Atlanta).

Table XI-9
 KIDNEY AND RENAL PELVIS CANCER (Invasive)

Risk of Being Diagnosed With Cancer in 10, 20 and 30 Years, Lifetime Risk of Being Diagnosed with Cancer, and
 Lifetime Risk of Dying from Cancer Given Cancer Free At Current Age
 Both Sexes, 2002-2004 By Race/Ethnicity

Race/ Ethnicity	Current Age	Risk of Being Diagnosed with Cancer				Risk of Dying from Cancer	
		+10 yrs Percent (95% C.I.)	+20 yrs Percent (95% C.I.)	+30 yrs Percent (95% C.I.)	Eventually Percent (95% C.I.)	Eventually Percent (95% C.I.)	
All Races	0	0.01 (0.01, 0.01)	0.01 (0.01, 0.01)	0.02 (0.02, 0.02)	1.34 (1.33, 1.36)	0.46 (0.46, 0.47)	
	10	0.00 (0.00, 0.00)	0.01 (0.01, 0.01)	0.03 (0.03, 0.03)	1.35 (1.33, 1.37)	0.47 (0.46, 0.47)	
	20	0.01 (0.00, 0.01)	0.03 (0.03, 0.03)	0.12 (0.12, 0.12)	1.35 (1.34, 1.37)	0.47 (0.46, 0.47)	
	30	0.03 (0.02, 0.03)	0.12 (0.11, 0.12)	0.33 (0.33, 0.34)	1.36 (1.34, 1.38)	0.47 (0.47, 0.48)	
	40	0.09 (0.09, 0.09)	0.31 (0.30, 0.31)	0.69 (0.68, 0.70)	1.35 (1.33, 1.37)	0.48 (0.47, 0.48)	
	50	0.22 (0.22, 0.23)	0.61 (0.60, 0.62)	1.03 (1.02, 1.04)	1.30 (1.28, 1.31)	0.47 (0.47, 0.48)	
	60	0.41 (0.41, 0.42)	0.86 (0.84, 0.87)	1.10 (1.08, 1.11)	1.14 (1.13, 1.16)	0.45 (0.44, 0.45)	
	70	0.51 (0.50, 0.52)	0.79 (0.77, 0.80)	- (- , -)	0.84 (0.83, 0.86)	0.38 (0.37, 0.38)	
80	0.39 (0.38, 0.41)	- (- , -)	- (- , -)	0.47 (0.46, 0.48)	0.28 (0.27, 0.28)		
White	0	0.01 (0.01, 0.01)	0.01 (0.01, 0.01)	0.02 (0.02, 0.02)	1.40 (1.38, 1.42)	0.48 (0.47, 0.49)	
	10	0.00 (0.00, 0.00)	0.01 (0.01, 0.01)	0.03 (0.03, 0.04)	1.40 (1.39, 1.42)	0.48 (0.48, 0.49)	
	20	0.01 (0.00, 0.01)	0.03 (0.03, 0.03)	0.12 (0.12, 0.13)	1.41 (1.39, 1.43)	0.49 (0.48, 0.49)	
	30	0.03 (0.03, 0.03)	0.12 (0.11, 0.12)	0.34 (0.33, 0.35)	1.41 (1.40, 1.43)	0.49 (0.48, 0.50)	
	40	0.09 (0.09, 0.10)	0.32 (0.31, 0.33)	0.71 (0.70, 0.73)	1.40 (1.39, 1.42)	0.49 (0.49, 0.50)	
	50	0.23 (0.23, 0.24)	0.64 (0.63, 0.65)	1.07 (1.06, 1.09)	1.35 (1.33, 1.37)	0.49 (0.48, 0.50)	
	60	0.43 (0.42, 0.44)	0.89 (0.88, 0.91)	1.14 (1.12, 1.16)	1.19 (1.17, 1.20)	0.46 (0.46, 0.47)	
	70	0.53 (0.52, 0.55)	0.82 (0.80, 0.83)	- (- , -)	0.87 (0.85, 0.89)	0.39 (0.38, 0.39)	
80	0.41 (0.39, 0.42)	- (- , -)	- (- , -)	0.48 (0.47, 0.50)	0.28 (0.27, 0.29)		
Black	0	0.01 (0.01, 0.01)	0.01 (0.01, 0.02)	0.02 (0.01, 0.02)	1.20 (1.15, 1.25)	0.36 (0.35, 0.38)	
	10	0.00 (0.00, 0.00)	0.01 (0.01, 0.01)	0.04 (0.03, 0.05)	1.22 (1.17, 1.27)	0.37 (0.36, 0.39)	
	20	0.01 (0.01, 0.01)	0.04 (0.03, 0.04)	0.14 (0.13, 0.15)	1.22 (1.18, 1.28)	0.37 (0.36, 0.39)	
	30	0.03 (0.03, 0.04)	0.14 (0.12, 0.15)	0.37 (0.35, 0.39)	1.24 (1.19, 1.29)	0.38 (0.37, 0.39)	
	40	0.11 (0.10, 0.12)	0.35 (0.33, 0.37)	0.72 (0.69, 0.76)	1.24 (1.19, 1.29)	0.38 (0.37, 0.40)	
	50	0.26 (0.24, 0.27)	0.65 (0.62, 0.68)	1.00 (0.95, 1.04)	1.19 (1.14, 1.25)	0.38 (0.37, 0.40)	
	60	0.44 (0.41, 0.47)	0.83 (0.79, 0.88)	1.01 (0.96, 1.06)	1.05 (1.00, 1.11)	0.37 (0.35, 0.38)	
	70	0.49 (0.45, 0.53)	0.71 (0.67, 0.77)	- (- , -)	0.76 (0.71, 0.82)	0.32 (0.31, 0.34)	
80	0.36 (0.32, 0.41)	- (- , -)	- (- , -)	0.44 (0.39, 0.50)	0.25 (0.23, 0.27)		

Devcan Version 6.2.0, April 2006, National Cancer Institute (<http://srab.cancer.gov/devcan/>).

Source: Incidence data are from the SEER 17 areas (San Francisco, Connecticut, Detroit, Hawaii, Iowa, New Mexico, Seattle, Utah, Atlanta, San Jose-Monterey, Los Angeles, Alaska Native Registry, Rural Georgia, California excluding SF/SJM/LA, Kentucky, Louisiana and New Jersey). Mortality data are from the NCHS public use data file for the total US.

- Statistic could not be calculated.

A percent or confidence interval value of 0.00 represents a value that is below 0.005.

Table XI-9 - continued
 KIDNEY AND RENAL PELVIS CANCER (Invasive)

Risk of Being Diagnosed With Cancer in 10, 20 and 30 Years, Lifetime Risk of Being Diagnosed with Cancer, and
 Lifetime Risk of Dying from Cancer Given Cancer Free At Current Age
 Both Sexes, 2002-2004 By Race/Ethnicity

Race/ Ethnicity	Current Age	Risk of Being Diagnosed with Cancer				Risk of Dying from Cancer	
		+10 yrs Percent (95% C.I.)	+20 yrs Percent (95% C.I.)	+30 yrs Percent (95% C.I.)	Eventually Percent (95% C.I.)	Eventually Percent (95% C.I.)	
Asian/ Pacific Islander	0	0.01 (0.00, 0.01)	0.01 (0.00, 0.01)	0.01 (0.00, 0.01)	0.83 (0.77, 0.90)	0.26 (0.22, 0.30)	
	10	0.00 (0.00, 0.00)	0.00 (0.00, 0.00)	0.02 (0.01, 0.02)	0.83 (0.77, 0.90)	0.26 (0.22, 0.31)	
	20	0.00 (0.00, 0.00)	0.01 (0.01, 0.02)	0.06 (0.05, 0.06)	0.83 (0.77, 0.90)	0.26 (0.22, 0.31)	
	30	0.01 (0.01, 0.02)	0.05 (0.05, 0.06)	0.16 (0.15, 0.18)	0.83 (0.78, 0.90)	0.26 (0.23, 0.31)	
	40	0.04 (0.04, 0.05)	0.15 (0.14, 0.17)	0.34 (0.32, 0.37)	0.83 (0.77, 0.90)	0.26 (0.22, 0.31)	
	50	0.11 (0.10, 0.12)	0.31 (0.28, 0.33)	0.55 (0.52, 0.59)	0.80 (0.74, 0.87)	0.26 (0.22, 0.31)	
	60	0.20 (0.18, 0.22)	0.46 (0.42, 0.50)	0.64 (0.60, 0.70)	0.71 (0.65, 0.78)	0.25 (0.21, 0.30)	
	70	0.28 (0.25, 0.31)	0.48 (0.44, 0.53)	- (- , -)	0.55 (0.49, 0.62)	0.22 (0.18, 0.27)	
80	0.25 (0.21, 0.29)	- (- , -)	- (- , -)	0.34 (0.28, 0.42)	0.17 (0.12, 0.23)		
American Indian/ Alaska Native ^a	0	0.02 (0.01, 0.05)	0.02 (0.01, 0.05)	0.02 (0.01, 0.06)	1.53 (1.28, 1.92)	0.68 (0.58, 0.82)	
	10	0.00 (0.00, 0.01)	0.00 (0.00, 0.02)	0.04 (0.02, 0.07)	1.53 (1.28, 1.93)	0.69 (0.59, 0.84)	
	20	0.00 (0.00, 0.02)	0.04 (0.02, 0.07)	0.15 (0.11, 0.20)	1.55 (1.29, 1.94)	0.70 (0.59, 0.84)	
	30	0.04 (0.02, 0.07)	0.15 (0.11, 0.20)	0.41 (0.33, 0.50)	1.57 (1.31, 1.97)	0.71 (0.60, 0.86)	
	40	0.11 (0.08, 0.16)	0.38 (0.30, 0.47)	0.75 (0.62, 0.91)	1.57 (1.31, 1.99)	0.73 (0.62, 0.88)	
	50	0.28 (0.21, 0.36)	0.67 (0.54, 0.82)	1.20 (0.99, 1.45)	1.52 (1.25, 1.95)	0.74 (0.62, 0.89)	
	60	0.42 (0.31, 0.55)	1.00 (0.79, 1.24)	1.30 (1.04, 1.62)	1.34 (1.06, 1.79)	0.70 (0.58, 0.87)	
	70	0.68 (0.50, 0.91)	1.03 (0.77, 1.36)	- (- , -)	1.08 (0.80, 1.58)	0.60 (0.47, 0.80)	
80	0.49 (0.29, 0.81)	- (- , -)	- (- , -)	0.56 (0.32, 1.17)	0.39 (0.25, 0.63)		
Hispanic ^b	0	0.01 (0.01, 0.01)	0.01 (0.01, 0.01)	0.01 (0.01, 0.02)	1.42 (1.36, 1.49)	0.48 (0.45, 0.51)	
	10	0.00 (0.00, 0.00)	0.01 (0.00, 0.01)	0.03 (0.02, 0.03)	1.43 (1.37, 1.50)	0.48 (0.46, 0.51)	
	20	0.00 (0.00, 0.01)	0.03 (0.02, 0.03)	0.11 (0.10, 0.12)	1.44 (1.37, 1.51)	0.48 (0.46, 0.51)	
	30	0.02 (0.02, 0.02)	0.11 (0.10, 0.11)	0.32 (0.31, 0.34)	1.44 (1.38, 1.51)	0.49 (0.46, 0.52)	
	40	0.09 (0.08, 0.09)	0.30 (0.29, 0.32)	0.68 (0.65, 0.71)	1.44 (1.37, 1.51)	0.49 (0.46, 0.52)	
	50	0.22 (0.21, 0.24)	0.61 (0.58, 0.64)	1.06 (1.01, 1.10)	1.38 (1.32, 1.45)	0.49 (0.46, 0.52)	
	60	0.40 (0.38, 0.43)	0.88 (0.83, 0.92)	1.16 (1.10, 1.22)	1.22 (1.15, 1.29)	0.46 (0.43, 0.49)	
	70	0.53 (0.49, 0.57)	0.85 (0.79, 0.91)	- (- , -)	0.91 (0.85, 0.99)	0.39 (0.36, 0.42)	
80	0.42 (0.37, 0.47)	- (- , -)	- (- , -)	0.51 (0.44, 0.59)	0.29 (0.26, 0.33)		

Devcan Version 6.2.0, April 2006, National Cancer Institute (<http://srab.cancer.gov/devcan/>).

Source: Incidence data are from the SEER 17 areas (San Francisco, Connecticut, Detroit, Hawaii, Iowa, New Mexico, Seattle, Utah, Atlanta, San Jose-Monterey, Los Angeles, Alaska Native Registry, Rural Georgia, California excluding SF/SJM/LA, Kentucky, Louisiana and New Jersey). Mortality data are from the NCHS public use data file for the total US.

^a Underlying incidence and mortality data for American Indian/Alaska Native are based on the CHSDA (Contract Health Service Delivery Area) counties.

^b Hispanic is not mutually exclusive from whites, blacks, Asian/Pacific Islanders, and American Indians/Alaska Natives. Underlying incidence data for Hispanics are based on NHIA and exclude cases from the Alaska Native Registry and Kentucky. Underlying mortality data for Hispanics exclude deaths from Minnesota, New Hampshire and North Dakota.

- Statistic could not be calculated.

A percent or confidence interval value of 0.00 represents a value that is below 0.005.

Table XI-9 - continued
 KIDNEY AND RENAL PELVIS CANCER (Invasive)

Risk of Being Diagnosed With Cancer in 10, 20 and 30 Years, Lifetime Risk of Being Diagnosed with Cancer, and
 Lifetime Risk of Dying from Cancer Given Cancer Free At Current Age
 Males, 2002-2004 By Race/Ethnicity

Race/ Ethnicity	Current Age	Risk of Being Diagnosed with Cancer			Risk of Dying from Cancer	
		+10 yrs Percent (95% C.I.)	+20 yrs Percent (95% C.I.)	+30 yrs Percent (95% C.I.)	Eventually Percent (95% C.I.)	Eventually Percent (95% C.I.)
All Races	0	0.01 (0.01, 0.01)	0.01 (0.01, 0.01)	0.02 (0.02, 0.02)	1.71 (1.68, 1.73)	0.59 (0.58, 0.60)
	10	0.00 (0.00, 0.00)	0.01 (0.01, 0.01)	0.04 (0.03, 0.04)	1.72 (1.69, 1.75)	0.60 (0.59, 0.61)
	20	0.01 (0.00, 0.01)	0.04 (0.03, 0.04)	0.15 (0.14, 0.16)	1.73 (1.70, 1.75)	0.60 (0.60, 0.61)
	30	0.03 (0.03, 0.03)	0.15 (0.14, 0.15)	0.43 (0.42, 0.44)	1.74 (1.72, 1.77)	0.61 (0.60, 0.62)
	40	0.12 (0.11, 0.12)	0.41 (0.40, 0.42)	0.91 (0.89, 0.93)	1.74 (1.71, 1.77)	0.62 (0.61, 0.63)
	50	0.30 (0.29, 0.31)	0.82 (0.81, 0.84)	1.36 (1.34, 1.39)	1.69 (1.66, 1.71)	0.62 (0.61, 0.63)
	60	0.57 (0.55, 0.58)	1.15 (1.13, 1.17)	1.45 (1.42, 1.47)	1.50 (1.47, 1.53)	0.58 (0.57, 0.59)
	70	0.70 (0.68, 0.72)	1.05 (1.03, 1.08)	- (- , -)	1.12 (1.09, 1.14)	0.49 (0.48, 0.50)
80	0.55 (0.52, 0.57)	- (- , -)	- (- , -)	0.65 (0.62, 0.67)	0.37 (0.36, 0.38)	
White	0	0.01 (0.01, 0.01)	0.01 (0.01, 0.02)	0.02 (0.02, 0.02)	1.78 (1.75, 1.81)	0.62 (0.61, 0.63)
	10	0.00 (0.00, 0.00)	0.01 (0.01, 0.01)	0.04 (0.04, 0.04)	1.78 (1.75, 1.82)	0.62 (0.62, 0.63)
	20	0.01 (0.00, 0.01)	0.04 (0.03, 0.04)	0.15 (0.15, 0.16)	1.79 (1.76, 1.82)	0.63 (0.62, 0.64)
	30	0.03 (0.03, 0.04)	0.15 (0.14, 0.16)	0.44 (0.43, 0.45)	1.81 (1.78, 1.84)	0.63 (0.63, 0.64)
	40	0.12 (0.11, 0.12)	0.41 (0.40, 0.42)	0.94 (0.92, 0.96)	1.81 (1.77, 1.84)	0.64 (0.63, 0.65)
	50	0.30 (0.29, 0.31)	0.85 (0.83, 0.87)	1.42 (1.39, 1.44)	1.75 (1.72, 1.78)	0.64 (0.63, 0.65)
	60	0.59 (0.57, 0.60)	1.20 (1.17, 1.23)	1.50 (1.47, 1.53)	1.56 (1.52, 1.59)	0.60 (0.59, 0.61)
	70	0.73 (0.71, 0.75)	1.09 (1.06, 1.12)	- (- , -)	1.15 (1.12, 1.18)	0.51 (0.50, 0.52)
80	0.56 (0.54, 0.58)	- (- , -)	- (- , -)	0.66 (0.63, 0.69)	0.38 (0.36, 0.39)	
Black	0	0.01 (0.01, 0.01)	0.01 (0.01, 0.02)	0.02 (0.01, 0.03)	1.49 (1.42, 1.58)	0.45 (0.43, 0.47)
	10	0.00 (0.00, 0.00)	0.01 (0.01, 0.01)	0.04 (0.04, 0.05)	1.52 (1.45, 1.61)	0.46 (0.44, 0.48)
	20	0.01 (0.00, 0.01)	0.04 (0.04, 0.05)	0.18 (0.16, 0.20)	1.54 (1.46, 1.62)	0.46 (0.44, 0.48)
	30	0.04 (0.03, 0.04)	0.18 (0.16, 0.19)	0.51 (0.48, 0.55)	1.57 (1.49, 1.65)	0.47 (0.45, 0.49)
	40	0.14 (0.13, 0.16)	0.49 (0.46, 0.53)	0.99 (0.94, 1.05)	1.58 (1.50, 1.67)	0.48 (0.45, 0.50)
	50	0.37 (0.34, 0.40)	0.90 (0.85, 0.96)	1.31 (1.24, 1.39)	1.53 (1.45, 1.63)	0.48 (0.46, 0.51)
	60	0.62 (0.57, 0.67)	1.09 (1.02, 1.17)	1.31 (1.22, 1.40)	1.35 (1.26, 1.45)	0.46 (0.44, 0.49)
	70	0.64 (0.57, 0.71)	0.92 (0.83, 1.01)	- (- , -)	0.98 (0.88, 1.08)	0.41 (0.38, 0.44)
80	0.52 (0.43, 0.61)	- (- , -)	- (- , -)	0.62 (0.52, 0.75)	0.31 (0.27, 0.35)	

Devcan Version 6.2.0, April 2006, National Cancer Institute (<http://srab.cancer.gov/devcan/>).

Source: Incidence data are from the SEER 17 areas (San Francisco, Connecticut, Detroit, Hawaii, Iowa, New Mexico, Seattle, Utah, Atlanta, San Jose-Monterey, Los Angeles, Alaska Native Registry, Rural Georgia, California excluding SF/SJM/LA, Kentucky, Louisiana and New Jersey). Mortality data are from the NCHS public use data file for the total US.

- Statistic could not be calculated.

A percent or confidence interval value of 0.00 represents a value that is below 0.005.

Table XI-9 - continued
 KIDNEY AND RENAL PELVIS CANCER (Invasive)

Risk of Being Diagnosed With Cancer in 10, 20 and 30 Years, Lifetime Risk of Being Diagnosed with Cancer, and
 Lifetime Risk of Dying from Cancer Given Cancer Free At Current Age
 Males, 2002-2004 By Race/Ethnicity

Race/ Ethnicity	Current Age	Risk of Being Diagnosed with Cancer				Risk of Dying from Cancer	
		+10 yrs Percent (95% C.I.)	+20 yrs Percent (95% C.I.)	+30 yrs Percent (95% C.I.)	Eventually Percent (95% C.I.)	Eventually Percent (95% C.I.)	
Asian/ Pacific Islander	0	0.01 (0.00, 0.01)	0.01 (0.00, 0.01)	0.01 (0.00, 0.01)	1.11 (1.01, 1.22)	0.34 (0.28, 0.43)	
	10	0.00 (0.00, 0.00)	0.00 (0.00, 0.00)	0.02 (0.01, 0.02)	1.11 (1.02, 1.23)	0.35 (0.29, 0.43)	
	20	0.00 (0.00, 0.00)	0.02 (0.01, 0.02)	0.07 (0.06, 0.08)	1.12 (1.02, 1.23)	0.35 (0.29, 0.43)	
	30	0.02 (0.01, 0.02)	0.07 (0.06, 0.08)	0.22 (0.20, 0.25)	1.12 (1.03, 1.24)	0.35 (0.29, 0.43)	
	40	0.05 (0.04, 0.06)	0.21 (0.19, 0.24)	0.49 (0.44, 0.53)	1.12 (1.02, 1.24)	0.35 (0.29, 0.43)	
	50	0.16 (0.14, 0.18)	0.44 (0.40, 0.49)	0.77 (0.70, 0.83)	1.08 (0.98, 1.20)	0.35 (0.28, 0.43)	
	60	0.29 (0.26, 0.33)	0.63 (0.57, 0.70)	0.88 (0.80, 0.98)	0.97 (0.87, 1.09)	0.34 (0.27, 0.43)	
	70	0.38 (0.33, 0.43)	0.66 (0.58, 0.75)	- (- , -)	0.75 (0.65, 0.88)	0.29 (0.22, 0.39)	
	80	0.37 (0.30, 0.45)	- (- , -)	- (- , -)	0.49 (0.38, 0.63)	0.23 (0.15, 0.35)	
American Indian/ Alaska Native ^a	0	0.01 (0.00, 0.06)	0.01 (0.00, 0.06)	0.02 (0.00, 0.07)	1.78 (1.41, 2.54)	0.84 (0.69, 1.08)	
	10	0.00 (0.00, 0.02)	0.01 (0.00, 0.04)	0.06 (0.03, 0.11)	1.81 (1.43, 2.58)	0.86 (0.70, 1.11)	
	20	0.01 (0.00, 0.04)	0.06 (0.03, 0.11)	0.18 (0.12, 0.27)	1.83 (1.45, 2.61)	0.87 (0.71, 1.12)	
	30	0.05 (0.02, 0.10)	0.18 (0.12, 0.26)	0.49 (0.37, 0.65)	1.87 (1.48, 2.66)	0.89 (0.73, 1.15)	
	40	0.13 (0.08, 0.20)	0.46 (0.34, 0.61)	0.92 (0.71, 1.17)	1.88 (1.48, 2.70)	0.92 (0.75, 1.19)	
	50	0.34 (0.24, 0.48)	0.83 (0.62, 1.09)	1.49 (1.16, 1.90)	1.84 (1.43, 2.71)	0.96 (0.78, 1.25)	
	60	0.53 (0.36, 0.76)	1.26 (0.93, 1.68)	1.63 (1.21, 2.20)	1.64 (1.21, 2.58)	0.93 (0.74, 1.25)	
	70	0.87 (0.57, 1.28)	1.32 (0.89, 1.93)	- (- , -)	1.33 (0.89, 2.42)	0.78 (0.58, 1.15)	
	80	0.68 (0.32, 1.34)	- (- , -)	- (- , -)	0.69 (0.32, 2.25)	0.42 (0.23, 0.93)	
Hispanic ^b	0	0.01 (0.01, 0.01)	0.01 (0.01, 0.01)	0.02 (0.01, 0.02)	1.77 (1.67, 1.89)	0.63 (0.59, 0.69)	
	10	0.00 (0.00, 0.00)	0.01 (0.00, 0.01)	0.03 (0.03, 0.04)	1.78 (1.68, 1.90)	0.64 (0.60, 0.70)	
	20	0.01 (0.00, 0.01)	0.03 (0.03, 0.04)	0.14 (0.12, 0.15)	1.79 (1.69, 1.91)	0.64 (0.60, 0.70)	
	30	0.03 (0.02, 0.03)	0.13 (0.12, 0.14)	0.40 (0.37, 0.43)	1.80 (1.70, 1.93)	0.65 (0.60, 0.71)	
	40	0.11 (0.10, 0.12)	0.38 (0.35, 0.40)	0.87 (0.82, 0.92)	1.80 (1.70, 1.93)	0.66 (0.61, 0.71)	
	50	0.28 (0.26, 0.30)	0.79 (0.74, 0.84)	1.37 (1.29, 1.45)	1.75 (1.64, 1.88)	0.66 (0.61, 0.71)	
	60	0.54 (0.50, 0.59)	1.16 (1.09, 1.24)	1.49 (1.39, 1.60)	1.57 (1.46, 1.70)	0.63 (0.58, 0.69)	
	70	0.72 (0.65, 0.79)	1.09 (1.00, 1.20)	- (- , -)	1.19 (1.07, 1.33)	0.54 (0.48, 0.61)	
	80	0.54 (0.45, 0.63)	- (- , -)	- (- , -)	0.67 (0.55, 0.83)	0.41 (0.35, 0.50)	

Devcan Version 6.2.0, April 2006, National Cancer Institute (<http://srab.cancer.gov/devcan/>).

Source: Incidence data are from the SEER 17 areas (San Francisco, Connecticut, Detroit, Hawaii, Iowa, New Mexico, Seattle, Utah, Atlanta, San Jose-Monterey, Los Angeles, Alaska Native Registry, Rural Georgia, California excluding SF/SJM/LA, Kentucky, Louisiana and New Jersey). Mortality data are from the NCHS public use data file for the total US.

^a Underlying incidence and mortality data for American Indian/Alaska Native are based on the CHSDA (Contract Health Service Delivery Area) counties.

^b Hispanic is not mutually exclusive from whites, blacks, Asian/Pacific Islanders, and American Indians/Alaska Natives. Underlying incidence data for Hispanics are based on NHIA and exclude cases from the Alaska Native Registry and Kentucky. Underlying mortality data for Hispanics exclude deaths from Minnesota, New Hampshire and North Dakota.

- Statistic could not be calculated.

A percent or confidence interval value of 0.00 represents a value that is below 0.005.

Table XI-9 - continued
 KIDNEY AND RENAL PELVIS CANCER (Invasive)

Risk of Being Diagnosed With Cancer in 10, 20 and 30 Years, Lifetime Risk of Being Diagnosed with Cancer, and
 Lifetime Risk of Dying from Cancer Given Cancer Free At Current Age
 Females, 2002-2004 By Race/Ethnicity

Race/ Ethnicity	Current Age	Risk of Being Diagnosed with Cancer			Risk of Dying from Cancer	
		+10 yrs Percent (95% C.I.)	+20 yrs Percent (95% C.I.)	+30 yrs Percent (95% C.I.)	Eventually Percent (95% C.I.)	Eventually Percent (95% C.I.)
All Races	0	0.01 (0.01, 0.01)	0.01 (0.01, 0.01)	0.02 (0.02, 0.02)	1.01 (0.99, 1.03)	0.35 (0.34, 0.35)
	10	0.00 (0.00, 0.00)	0.01 (0.01, 0.01)	0.03 (0.03, 0.03)	1.01 (0.99, 1.03)	0.35 (0.34, 0.35)
	20	0.01 (0.00, 0.01)	0.03 (0.02, 0.03)	0.09 (0.09, 0.09)	1.01 (0.99, 1.03)	0.35 (0.34, 0.35)
	30	0.02 (0.02, 0.02)	0.08 (0.08, 0.09)	0.23 (0.23, 0.24)	1.01 (0.99, 1.03)	0.35 (0.34, 0.36)
	40	0.06 (0.06, 0.07)	0.21 (0.21, 0.22)	0.47 (0.46, 0.48)	1.00 (0.98, 1.02)	0.35 (0.35, 0.36)
	50	0.15 (0.15, 0.16)	0.42 (0.40, 0.43)	0.73 (0.71, 0.74)	0.95 (0.93, 0.97)	0.35 (0.34, 0.36)
	60	0.28 (0.27, 0.29)	0.60 (0.59, 0.62)	0.80 (0.78, 0.82)	0.84 (0.82, 0.86)	0.34 (0.33, 0.34)
	70	0.37 (0.35, 0.38)	0.59 (0.57, 0.60)	- (- , -)	0.63 (0.62, 0.65)	0.29 (0.29, 0.30)
80	0.30 (0.28, 0.31)	- (- , -)	- (- , -)	0.36 (0.35, 0.38)	0.22 (0.21, 0.23)	
White	0	0.01 (0.01, 0.01)	0.01 (0.01, 0.02)	0.02 (0.02, 0.02)	1.05 (1.03, 1.08)	0.36 (0.35, 0.36)
	10	0.00 (0.00, 0.00)	0.01 (0.01, 0.01)	0.03 (0.03, 0.03)	1.05 (1.03, 1.08)	0.36 (0.35, 0.37)
	20	0.01 (0.00, 0.01)	0.03 (0.02, 0.03)	0.09 (0.09, 0.10)	1.05 (1.03, 1.08)	0.36 (0.35, 0.37)
	30	0.02 (0.02, 0.02)	0.09 (0.08, 0.09)	0.24 (0.24, 0.25)	1.05 (1.03, 1.08)	0.36 (0.35, 0.37)
	40	0.07 (0.06, 0.07)	0.22 (0.22, 0.23)	0.49 (0.48, 0.51)	1.04 (1.02, 1.06)	0.36 (0.36, 0.37)
	50	0.16 (0.15, 0.17)	0.44 (0.42, 0.45)	0.76 (0.74, 0.78)	0.99 (0.97, 1.02)	0.36 (0.35, 0.37)
	60	0.29 (0.28, 0.30)	0.62 (0.61, 0.64)	0.83 (0.81, 0.85)	0.87 (0.85, 0.89)	0.34 (0.34, 0.35)
	70	0.38 (0.36, 0.39)	0.60 (0.59, 0.62)	- (- , -)	0.65 (0.63, 0.67)	0.30 (0.29, 0.31)
80	0.31 (0.29, 0.32)	- (- , -)	- (- , -)	0.37 (0.35, 0.39)	0.22 (0.22, 0.23)	
Black	0	0.01 (0.01, 0.02)	0.01 (0.01, 0.02)	0.02 (0.01, 0.03)	0.93 (0.88, 1.00)	0.29 (0.28, 0.31)
	10	0.00 (0.00, 0.00)	0.01 (0.01, 0.01)	0.03 (0.03, 0.04)	0.94 (0.88, 1.01)	0.30 (0.28, 0.32)
	20	0.01 (0.00, 0.01)	0.03 (0.03, 0.04)	0.10 (0.09, 0.12)	0.95 (0.89, 1.01)	0.30 (0.28, 0.32)
	30	0.03 (0.02, 0.03)	0.10 (0.09, 0.11)	0.24 (0.22, 0.27)	0.95 (0.89, 1.01)	0.30 (0.28, 0.32)
	40	0.07 (0.06, 0.08)	0.22 (0.20, 0.25)	0.49 (0.45, 0.52)	0.94 (0.88, 1.00)	0.30 (0.29, 0.32)
	50	0.16 (0.14, 0.18)	0.43 (0.39, 0.47)	0.72 (0.67, 0.78)	0.90 (0.84, 0.97)	0.30 (0.29, 0.32)
	60	0.30 (0.27, 0.33)	0.62 (0.57, 0.67)	0.77 (0.71, 0.84)	0.81 (0.75, 0.88)	0.30 (0.28, 0.31)
	70	0.38 (0.34, 0.43)	0.57 (0.51, 0.63)	- (- , -)	0.61 (0.55, 0.68)	0.27 (0.25, 0.29)
80	0.27 (0.23, 0.32)	- (- , -)	- (- , -)	0.34 (0.28, 0.41)	0.22 (0.19, 0.24)	

Devcan Version 6.2.0, April 2006, National Cancer Institute (<http://srab.cancer.gov/devcan/>).

Source: Incidence data are from the SEER 17 areas (San Francisco, Connecticut, Detroit, Hawaii, Iowa, New Mexico, Seattle, Utah, Atlanta, San Jose-Monterey, Los Angeles, Alaska Native Registry, Rural Georgia, California excluding SF/SJM/LA, Kentucky, Louisiana and New Jersey). Mortality data are from the NCHS public use data file for the total US.

- Statistic could not be calculated.

A percent or confidence interval value of 0.00 represents a value that is below 0.005.

Table XI-9 - continued
 KIDNEY AND RENAL PELVIS CANCER (Invasive)

Risk of Being Diagnosed With Cancer in 10, 20 and 30 Years, Lifetime Risk of Being Diagnosed with Cancer, and
 Lifetime Risk of Dying from Cancer Given Cancer Free At Current Age
 Females, 2002-2004 By Race/Ethnicity

Race/ Ethnicity	Current Age	Risk of Being Diagnosed with Cancer				Risk of Dying from Cancer	
		+10 yrs Percent (95% C.I.)	+20 yrs Percent (95% C.I.)	+30 yrs Percent (95% C.I.)	Eventually Percent (95% C.I.)	Eventually Percent (95% C.I.)	
Asian/ Pacific Islander	0	0.01 (0.00, 0.01)	0.01 (0.00, 0.01)	0.01 (0.00, 0.02)	0.58 (0.52, 0.67)	0.18 (0.15, 0.24)	
	10	0.00 (0.00, 0.00)	0.00 (0.00, 0.01)	0.02 (0.01, 0.02)	0.58 (0.52, 0.67)	0.18 (0.15, 0.24)	
	20	0.00 (0.00, 0.01)	0.01 (0.01, 0.02)	0.04 (0.04, 0.06)	0.58 (0.52, 0.67)	0.19 (0.15, 0.25)	
	30	0.01 (0.01, 0.02)	0.04 (0.03, 0.05)	0.11 (0.10, 0.13)	0.58 (0.51, 0.67)	0.19 (0.15, 0.25)	
	40	0.03 (0.02, 0.04)	0.10 (0.09, 0.12)	0.22 (0.19, 0.25)	0.57 (0.51, 0.66)	0.19 (0.15, 0.25)	
	50	0.07 (0.06, 0.08)	0.19 (0.16, 0.22)	0.38 (0.34, 0.42)	0.55 (0.48, 0.64)	0.18 (0.14, 0.24)	
	60	0.12 (0.10, 0.15)	0.32 (0.28, 0.36)	0.44 (0.39, 0.50)	0.49 (0.42, 0.58)	0.17 (0.13, 0.24)	
	70	0.21 (0.17, 0.24)	0.34 (0.29, 0.40)	- (- , -)	0.39 (0.33, 0.48)	0.16 (0.12, 0.22)	
	80	0.16 (0.13, 0.21)	- (- , -)	- (- , -)	0.22 (0.16, 0.32)	0.12 (0.08, 0.20)	
American Indian/ Alaska Native ^a	0	0.03 (0.01, 0.09)	0.03 (0.01, 0.09)	0.03 (0.01, 0.09)	1.28 (0.97, 1.88)	0.52 (0.39, 0.73)	
	10	0.00 (0.00, 0.02)	0.00 (0.00, 0.03)	0.03 (0.01, 0.07)	1.27 (0.95, 1.88)	0.53 (0.40, 0.74)	
	20	0.00 (0.00, 0.03)	0.03 (0.01, 0.07)	0.12 (0.07, 0.19)	1.27 (0.96, 1.88)	0.53 (0.40, 0.75)	
	30	0.02 (0.01, 0.06)	0.12 (0.07, 0.19)	0.32 (0.23, 0.45)	1.28 (0.96, 1.90)	0.54 (0.40, 0.75)	
	40	0.09 (0.05, 0.16)	0.30 (0.21, 0.43)	0.60 (0.44, 0.80)	1.28 (0.96, 1.91)	0.55 (0.41, 0.77)	
	50	0.22 (0.14, 0.33)	0.52 (0.36, 0.72)	0.94 (0.69, 1.27)	1.22 (0.89, 1.87)	0.53 (0.39, 0.76)	
	60	0.32 (0.19, 0.50)	0.77 (0.53, 1.09)	1.00 (0.70, 1.42)	1.07 (0.74, 1.74)	0.50 (0.35, 0.74)	
	70	0.52 (0.31, 0.82)	0.79 (0.50, 1.22)	- (- , -)	0.86 (0.54, 1.61)	0.46 (0.30, 0.73)	
	80	0.36 (0.14, 0.76)	- (- , -)	- (- , -)	0.45 (0.18, 1.38)	0.36 (0.18, 0.72)	
Hispanic ^b	0	0.01 (0.01, 0.01)	0.01 (0.01, 0.01)	0.01 (0.01, 0.02)	1.12 (1.05, 1.21)	0.35 (0.32, 0.38)	
	10	0.00 (0.00, 0.00)	0.00 (0.00, 0.01)	0.02 (0.02, 0.03)	1.13 (1.05, 1.22)	0.35 (0.32, 0.39)	
	20	0.00 (0.00, 0.01)	0.02 (0.02, 0.03)	0.08 (0.07, 0.09)	1.13 (1.05, 1.22)	0.35 (0.32, 0.39)	
	30	0.02 (0.01, 0.02)	0.08 (0.07, 0.09)	0.25 (0.23, 0.27)	1.13 (1.05, 1.22)	0.35 (0.32, 0.39)	
	40	0.06 (0.06, 0.07)	0.23 (0.21, 0.25)	0.50 (0.47, 0.54)	1.12 (1.04, 1.21)	0.35 (0.32, 0.39)	
	50	0.17 (0.15, 0.19)	0.44 (0.41, 0.48)	0.79 (0.73, 0.84)	1.07 (0.99, 1.16)	0.35 (0.32, 0.38)	
	60	0.29 (0.26, 0.32)	0.64 (0.59, 0.69)	0.89 (0.82, 0.96)	0.93 (0.86, 1.03)	0.33 (0.30, 0.36)	
	70	0.39 (0.34, 0.43)	0.66 (0.59, 0.73)	- (- , -)	0.71 (0.63, 0.80)	0.28 (0.25, 0.32)	
	80	0.34 (0.29, 0.41)	- (- , -)	- (- , -)	0.41 (0.34, 0.50)	0.22 (0.18, 0.26)	

Devcan Version 6.2.0, April 2006, National Cancer Institute (<http://srab.cancer.gov/devcan/>).

Source: Incidence data are from the SEER 17 areas (San Francisco, Connecticut, Detroit, Hawaii, Iowa, New Mexico, Seattle, Utah, Atlanta, San Jose-Monterey, Los Angeles, Alaska Native Registry, Rural Georgia, California excluding SF/SJM/LA, Kentucky, Louisiana and New Jersey). Mortality data are from the NCHS public use data file for the total US.

^a Underlying incidence and mortality data for American Indian/Alaska Native are based on the CHSDA (Contract Health Service Delivery Area) counties.

^b Hispanic is not mutually exclusive from whites, blacks, Asian/Pacific Islanders, and American Indians/Alaska Natives. Underlying incidence data for Hispanics are based on NHIA and exclude cases from the Alaska Native Registry and Kentucky. Underlying mortality data for Hispanics exclude deaths from Minnesota, New Hampshire and North Dakota.

- Statistic could not be calculated.

A percent or confidence interval value of 0.00 represents a value that is below 0.005.

Table XI-10
KIDNEY AND RENAL PELVIS CANCER (Invasive)

SEER INCIDENCE AND U.S. MORTALITY
AGE-ADJUSTED RATES AND TRENDS^a
 By Race/Ethnicity and Sex

SEER Incidence

RACE/ETHNICITY	Rate 2000-2004 ^b			Trend 1995-2004 ^c		
	Rate per 100,000 persons			APC (%)		
	Total	Males	Females	Total	Males	Females
All Races	12.8	17.8	8.8	2.1*	1.9*	2.2*
White	13.3	18.3	9.1	2.3*	2.1*	2.5*
White Hispanic ^d	12.7	16.9	9.4	1.9*	2.4*	0.8
White Non-Hispanic ^d	13.2	18.3	9.0	2.4*	2.0*	2.7*
Black	14.3	20.4	9.7	1.4	1.6	0.8
Asian/Pacific Islander	6.3	8.9	4.3	1.1	0.9	1.7
Amer Ind/Alaska Nat ^e	14.7	18.5	11.5	1.4	0.0	-
Hispanic ^d	12.4	16.5	9.1	2.0*	2.7*	0.9

U.S. Mortality^f

RACE/ETHNICITY	Rate 2000-2004			Trend 1995-2004		
	Rate per 100,000 persons			APC (%)		
	Total	Males	Females	Total	Males	Females
All Races	4.2	6.1	2.8	-0.4	-0.3	-0.8*
White	4.3	6.2	2.8	-0.3	-0.2	-0.7*
White Hispanic ^d	3.8	5.6	2.4	0.5	0.8	-0.3
White Non-Hispanic ^d	4.3	6.2	2.8	-0.2	-0.2	-0.6*
Black	4.1	6.1	2.8	-0.7*	-0.6	-0.9
Asian/Pacific Islander	1.7	2.4	1.1	-3.0*	-3.8*	-1.5
Amer Ind/Alaska Nat						
Total U.S.	4.8	6.6	3.2	0.0	1.0	-2.2
CHSDA Counties	6.5	9.3	4.3	0.6	1.9	-1.7
Non-CHSDA Counties	2.4	3.0	1.8	-	-	-
Hispanic ^d	3.6	5.4	2.3	0.5	0.7	-0.3

- The APC is the Annual Percent Change over the time interval.
- Statistic not shown. Rate based on less than 16 cases for the time interval. Trend based on less than 10 cases for at least one year within the time interval.
- a Rates are age-adjusted to the 2000 US Std Population (19 age groups - Census P25-1130). Trends are based on rates age-adjusted to the 2000 US Std Population (19 age groups - Census P25-1130).
- b Incidence data used in calculating the rates are from the 17 SEER areas (San Francisco, Connecticut, Detroit, Hawaii, Iowa, New Mexico, Seattle, Utah, Atlanta, San Jose-Monterey, Los Angeles, Alaska Native Registry, Rural Georgia, California excluding SF/SJM/LA, Kentucky, Louisiana and New Jersey).
- c Incidence data used in calculating the trends are from the 13 SEER areas (San Francisco, Connecticut, Detroit, Hawaii, Iowa, New Mexico, Seattle, Utah, Atlanta, San Jose-Monterey, Los Angeles, Alaska Native Registry and Rural Georgia).
- d Hispanic and Non-Hispanic are not mutually exclusive from whites, blacks, Asian/Pacific Islanders, and American Indians/Alaska Natives. Incidence data for Hispanics and Non-Hispanics are based on NHIA and exclude cases from the Alaska Native Registry and Kentucky. The 2000-2004 Hispanic and Non-Hispanic death rates exclude deaths from Minnesota, New Hampshire and North Dakota. The 1995-2004 Hispanic and Non-Hispanic mortality trends exclude deaths from Maine, Minnesota, New Hampshire, North Dakota, and Oklahoma.
- e Incidence data for American Indian/Alaska Native are based on the CHSDA(Contract Health Service Delivery Area) counties.
- f Mortality data are analyzed from a public use file provided by the National Center for Health Statistics (NCHS).
- * The APC is significantly different from zero (p<.05).

Table XI-11
 KIDNEY AND RENAL PELVIS CANCER (Invasive)

AGE-ADJUSTED SEER INCIDENCE RATES^a
 By Registry, Race and Sex

	All Races			Whites			Blacks		
	Total	Males	Females	Total	Males	Females	Total	Males	Females
<u>SEER INCIDENCE RATES^a, 2000-2004</u>									
REGISTRY									
Atlanta & Rural Georgia	11.8	16.9	7.8	11.9	17.0	7.6	12.4	18.4	8.4
Atlanta	11.8	17.0	7.8	11.8	17.0	7.6	12.8	19.1	8.5
Rural Georgia	11.8	17.3	7.1	12.6	19.0	6.8	9.7	-	-
California	11.4	16.0	7.7	12.1	16.9	8.2	13.2	18.9	8.9
Greater Bay Area	10.5	14.4	7.3	11.4	15.7	7.9	13.1	18.2	9.2
San Francisco-Oakland	10.5	14.5	7.3	11.4	15.8	7.7	13.5	18.2	9.9
San Jose-Monterey	10.4	14.2	7.3	11.5	15.4	8.3	10.8	18.7	-
Los Angeles	11.0	15.5	7.5	12.0	16.8	8.1	12.8	18.6	8.7
Greater California	11.9	16.7	8.0	12.4	17.4	8.3	13.9	19.7	8.9
Connecticut	13.9	19.3	9.7	13.9	19.2	9.7	14.1	19.6	9.7
Detroit	15.0	20.7	10.7	14.5	19.9	10.4	17.6	25.0	12.5
Hawaii	10.0	14.3	6.3	11.8	16.5	7.1	-	-	-
Iowa	14.5	19.3	10.5	14.4	19.2	10.4	12.8	18.9	-
Kentucky	15.3	20.9	10.9	15.2	20.7	10.9	17.5	23.1	13.1
Louisiana	16.1	22.0	11.5	16.5	22.2	12.0	15.3	22.3	10.5
New Jersey	14.1	19.7	9.7	14.6	20.3	10.0	12.6	18.2	8.6
New Mexico	11.8	16.0	8.2	11.6	16.0	7.9	-	-	-
Seattle-Puget Sound	13.6	19.0	9.1	13.8	19.2	9.3	17.2	24.5	9.9
Utah	10.2	13.2	7.6	10.3	13.4	7.7	-	-	-
9 SEER Areas ^b	12.8	17.6	8.9	13.1	17.9	9.1	14.9	21.3	10.3
11 SEER Areas ^b	12.2	16.9	8.5	12.7	17.5	8.8	14.3	20.5	9.8
13 SEER Areas ^b	12.3	16.9	8.5	12.7	17.5	8.8	14.2	20.4	9.8
17 SEER Areas ^b	12.8	17.8	8.8	13.3	18.3	9.1	14.3	20.4	9.7

^a Rates are per 100,000 and are age-adjusted to the 2000 US Std Population (19 age groups - Census P25-1130)

^b The SEER 9 areas are San Francisco, Connecticut, Detroit, Hawaii, Iowa, New Mexico, Seattle, Utah and Atlanta.

The SEER 11 areas comprise the SEER 9 areas plus San Jose-Monterey and Los Angeles.

The SEER 13 areas comprise the SEER 11 areas plus the Alaska Native Registry and Rural Georgia.

The SEER 17 areas comprise the SEER 13 areas plus California excluding SF/SJM/LA, Kentucky, Louisiana and New Jersey

- Statistic not shown. Rate based on less than 16 cases for the time interval.

Table XI-12
 KIDNEY AND RENAL PELVIS CANCER (Invasive)

AGE-ADJUSTED SEER DEATH RATES^a
 By Registry, Race and Sex

	All Races			Whites			Blacks		
	Total	Males	Females	Total	Males	Females	Total	Males	Females
<u>SEER DEATH RATES^a, 2000-2004</u>									
REGISTRY									
Atlanta & Rural Georgia	3.7	5.6	2.3	3.9	5.9	2.3	3.6	5.9	2.3
Atlanta	3.7	5.6	2.3	3.9	5.8	2.4	3.6	6.2	2.2
Rural Georgia	3.5	-	-	3.9	-	-	-	-	-
California	3.7	5.3	2.4	3.9	5.7	2.6	4.1	6.1	2.7
Greater Bay Area	3.2	4.4	2.2	3.5	5.0	2.4	4.0	5.2	3.2
San Francisco-Oakland	3.2	4.6	2.1	3.6	5.3	2.3	4.0	5.3	3.2
San Jose-Monterey	3.1	4.0	2.3	3.4	4.4	2.6	-	-	-
Los Angeles	3.7	5.4	2.4	4.0	5.8	2.6	4.3	6.7	2.8
Greater California	3.9	5.7	2.5	4.1	5.9	2.6	3.9	6.1	2.3
Connecticut	3.8	5.8	2.3	3.8	5.9	2.2	4.0	5.0	3.2
Detroit	4.4	6.7	2.8	4.5	6.7	2.9	4.3	6.6	2.7
Hawaii	2.7	3.8	1.8	3.4	5.3	-	-	-	-
Iowa	5.0	7.4	3.0	5.0	7.5	3.1	-	-	-
Kentucky	4.8	7.0	3.2	4.9	7.1	3.3	4.0	5.5	3.0
Louisiana	5.3	7.4	3.6	5.5	7.5	3.8	5.0	7.4	3.3
New Jersey	4.0	5.9	2.7	4.2	6.1	2.8	3.4	5.3	2.2
New Mexico	4.4	6.4	2.8	4.3	6.2	2.8	-	-	-
Seattle-Puget Sound	4.1	6.0	2.5	4.2	6.2	2.7	5.1	6.4	-
Utah	3.1	4.4	2.0	3.1	4.5	2.0	-	-	-
9 SEER Areas ^b	3.9	5.8	2.5	4.1	6.1	2.6	4.0	5.9	2.7
11 SEER Areas ^b	3.8	5.6	2.5	4.1	6.0	2.6	4.1	6.1	2.7
13 SEER Areas ^b	3.8	5.6	2.5	4.0	6.0	2.6	4.1	6.1	2.7
17 SEER Areas ^b	4.0	5.9	2.6	4.2	6.1	2.7	4.1	6.2	2.7
Total U.S.	4.2	6.1	2.8	4.3	6.2	2.8	4.1	6.1	2.8

^a NCHS public use data file for the total US. Rates are per 100,000 and are age-adjusted to the 2000 US Std Population (19 age groups - Census P25-1130).

^b The SEER 9 areas are San Francisco, Connecticut, Detroit, Hawaii, Iowa, New Mexico, Seattle, Utah and Atlanta.

The SEER 11 areas comprise the SEER 9 areas plus San Jose-Monterey and Los Angeles.

The SEER 13 areas comprise the SEER 11 areas plus the Alaska Native Registry and Rural Georgia.

The SEER 17 areas comprise the SEER 13 areas plus California excluding SF/SJM/LA, Kentucky, Louisiana and New Jersey

- Statistic not shown. Rate based on less than 16 cases for the time interval.

Table XI-13
KIDNEY AND RENAL PELVIS CANCER (Invasive)

AVERAGE ANNUAL AGE-ADJUSTED CANCER DEATH^a RATES BY STATE, ALL RACES, 2000-2004

Males and Females

State	Rate	SE	Rank	PD	State	Rate	SE	Rank	PD
TOTAL U.S.	4.2	0.02							
High Five States									
Louisiana	5.3 ^b	0.16	(01)	26.2 ^c					
Oklahoma	5.2 ^b	0.17	(02)	23.8 ^c					
Indiana	5.2 ^b	0.13	(03)	23.8 ^c					
North Dakota	5.1	0.37	(04)	21.4 ^c					
Iowa	5.0 ^b	0.17	(05)	19.0 ^c					
Low Five States									
Florida	3.6 ^b	0.06	(47)	-14.3					
New York	3.5 ^b	0.06	(48)	-16.7 ^c					
District of Columbia	3.4	0.35	(49)	-19.0 ^c					
Utah	3.1 ^b	0.19	(50)	-26.2 ^c					
Hawaii	2.7 ^b	0.20	(51)	-35.7 ^c					
Alabama	3.8	0.13	(43)	-9.5	Montana	4.5	0.30	(16)	7.1
Alaska	4.1	0.50	(31)	-2.4	Nebraska	4.7	0.23	(10)	11.9
Arizona	4.0	0.12	(39)	-4.8	Nevada	4.1	0.21	(33)	-2.4
Arkansas	4.4	0.17	(23)	4.8	New Hampshire	4.1	0.25	(32)	-2.4
California	3.7 ^b	0.05	(45)	-11.9	New Jersey	4.0	0.09	(37)	-4.8
Colorado	3.6 ^b	0.14	(46)	-14.3	New Mexico	4.4	0.22	(24)	4.8
Connecticut	3.8	0.14	(44)	-9.5	New York	3.5 ^b	0.06	(48)	-16.7 ^c
Delaware	4.0	0.31	(40)	-4.8	North Carolina	4.3	0.10	(26)	2.4
District of Columbia	3.4	0.35	(49)	-19.0 ^c	North Dakota	5.1	0.37	(04)	21.4 ^c
Florida	3.6 ^b	0.06	(47)	-14.3	Ohio	4.6 ^b	0.09	(13)	9.5
Georgia	4.0	0.11	(36)	-4.8	Oklahoma	5.2 ^b	0.17	(02)	23.8 ^c
Hawaii	2.7 ^b	0.20	(51)	-35.7 ^c	Oregon	4.1	0.15	(34)	-2.4
Idaho	4.4	0.27	(21)	4.8	Pennsylvania	4.2	0.08	(30)	0.0
Illinois	4.5 ^b	0.09	(17)	7.1	Rhode Island	4.9	0.29	(07)	16.7 ^c
Indiana	5.2 ^b	0.13	(03)	23.8 ^c	South Carolina	4.3	0.14	(28)	2.4
Iowa	5.0 ^b	0.17	(05)	19.0 ^c	South Dakota	4.6	0.33	(12)	9.5
Kansas	4.5	0.18	(15)	7.1	Tennessee	4.4	0.12	(18)	4.8
Kentucky	4.8 ^b	0.15	(08)	14.3	Texas	4.9 ^b	0.07	(06)	16.7 ^c
Louisiana	5.3 ^b	0.16	(01)	26.2 ^c	Utah	3.1 ^b	0.19	(50)	-26.2 ^c
Maine	4.4	0.24	(20)	4.8	Vermont	4.0	0.35	(35)	-4.8
Maryland	3.9	0.12	(41)	-7.1	Virginia	4.0	0.11	(38)	-4.8
Massachusetts	3.9	0.11	(42)	-7.1	Washington	4.3	0.12	(27)	2.4
Michigan	4.4	0.09	(22)	4.8	West Virginia	4.3	0.20	(25)	2.4
Minnesota	4.4	0.13	(19)	4.8	Wisconsin	4.6	0.13	(14)	9.5
Mississippi	4.7	0.18	(11)	11.9	Wyoming	4.2	0.42	(29)	0.0
Missouri	4.8 ^b	0.13	(09)	14.3					

^a NCHS public use data file. Rates are per 100,000 and are age-adjusted to the 2000 US Std Population (19 age groups - Census P25-1130).

^b Difference between state rate and total U.S. rate is statistically significant ($p < .0002$).

^c Absolute percent difference between state rate and total U.S. rate is 15% or more.

SE Standard error of the rate.

PD Percent difference between state rate and total U.S. rate.

Table XI-14
KIDNEY AND RENAL PELVIS CANCER (Invasive)

AVERAGE ANNUAL AGE-ADJUSTED CANCER DEATH^a RATES BY STATE, ALL RACES, 2000-2004

Males

State	Rate	SE	Rank	PD	State	Rate	SE	Rank	PD
TOTAL U.S.	6.1	0.03							
High Five States									
North Dakota	7.5	0.69	(01)	23.0 ^c					
Iowa	7.4 ^b	0.32	(02)	21.3 ^c					
Oklahoma	7.4 ^b	0.31	(03)	21.3 ^c					
Louisiana	7.4 ^b	0.29	(04)	21.3 ^c					
Indiana	7.4 ^b	0.24	(05)	21.3 ^c					
Low Five States									
New Hampshire	5.3	0.45	(47)	-13.1					
Florida	5.3 ^b	0.11	(48)	-13.1					
New York	5.1 ^b	0.11	(49)	-16.4 ^c					
Utah	4.4 ^b	0.35	(50)	-27.9 ^c					
Hawaii	3.8 ^b	0.36	(51)	-37.7 ^c					
Alabama	5.7	0.25	(43)	-6.6	Montana	6.6	0.55	(13)	8.2
Alaska	6.1	0.93	(28)	0.0	Nebraska	6.5	0.41	(17)	6.6
Arizona	5.7	0.22	(42)	-6.6	Nevada	5.8	0.37	(38)	-4.9
Arkansas	6.1	0.31	(27)	0.0	New Hampshire	5.3	0.45	(47)	-13.1
California	5.3 ^b	0.09	(46)	-13.1	New Jersey	5.9	0.18	(36)	-3.3
Colorado	5.6	0.27	(44)	-8.2	New Mexico	6.4	0.41	(20)	4.9
Connecticut	5.8	0.27	(40)	-4.9	New York	5.1 ^b	0.11	(49)	-16.4 ^c
Delaware	5.8	0.59	(39)	-4.9	North Carolina	6.6	0.20	(14)	8.2
District of Columbia	5.4	0.70	(45)	-11.5	North Dakota	7.5	0.69	(01)	23.0 ^c
Florida	5.3 ^b	0.11	(48)	-13.1	Ohio	6.6	0.16	(12)	8.2
Georgia	6.0	0.21	(32)	-1.6	Oklahoma	7.4 ^b	0.31	(03)	21.3 ^c
Hawaii	3.8 ^b	0.36	(51)	-37.7 ^c	Oregon	5.9	0.27	(37)	-3.3
Idaho	6.0	0.46	(31)	-1.6	Pennsylvania	5.9	0.14	(34)	-3.3
Illinois	6.5	0.16	(15)	6.6	Rhode Island	7.0	0.53	(08)	14.8
Indiana	7.4 ^b	0.24	(05)	21.3 ^c	South Carolina	6.3	0.28	(22)	3.3
Iowa	7.4 ^b	0.32	(02)	21.3 ^c	South Dakota	6.9	0.62	(09)	13.1
Kansas	6.5	0.33	(18)	6.6	Tennessee	6.5	0.23	(19)	6.6
Kentucky	7.0	0.29	(07)	14.8	Texas	7.1 ^b	0.14	(06)	16.4 ^c
Louisiana	7.4 ^b	0.29	(04)	21.3 ^c	Utah	4.4 ^b	0.35	(50)	-27.9 ^c
Maine	6.2	0.44	(25)	1.6	Vermont	5.9	0.65	(35)	-3.3
Maryland	5.7	0.23	(41)	-6.6	Virginia	6.2	0.21	(26)	1.6
Massachusetts	6.0	0.21	(33)	-1.6	Washington	6.3	0.22	(24)	3.3
Michigan	6.4	0.17	(21)	4.9	West Virginia	6.1	0.37	(29)	0.0
Minnesota	6.3	0.24	(23)	3.3	Wisconsin	6.5	0.23	(16)	6.6
Mississippi	6.7	0.34	(11)	9.8	Wyoming	6.1	0.75	(30)	0.0
Missouri	6.9 ^b	0.23	(10)	13.1					

^a NCHS public use data file. Rates are per 100,000 and are age-adjusted to the 2000 US Std Population (19 age groups - Census P25-1130).

^b Difference between state rate and total U.S. rate is statistically significant ($p < .0002$).

^c Absolute percent difference between state rate and total U.S. rate is 15% or more.

SE Standard error of the rate.

PD Percent difference between state rate and total U.S. rate.

Table XI-15
KIDNEY AND RENAL PELVIS CANCER (Invasive)

AVERAGE ANNUAL AGE-ADJUSTED CANCER DEATH^a RATES BY STATE, ALL RACES, 2000-2004

Females

State	Rate	SE	Rank	PD	State	Rate	SE	Rank	PD
TOTAL U.S.	2.8	0.02							
High Five States									
Louisiana	3.6 ^b	0.17	(01)	28.6 ^c					
Indiana	3.6 ^b	0.14	(02)	28.6 ^c					
North Dakota	3.5	0.42	(03)	25.0 ^c					
Oklahoma	3.4 ^b	0.18	(04)	21.4 ^c					
Rhode Island	3.4	0.32	(05)	21.4 ^c					
Low Five States									
Florida	2.2 ^b	0.06	(47)	-21.4 ^c					
Colorado	2.1 ^b	0.14	(48)	-25.0 ^c					
District of Columbia	2.1	0.35	(49)	-25.0 ^c					
Utah	2.0	0.21	(50)	-28.6 ^c					
Hawaii	1.8 ^b	0.22	(51)	-35.7 ^c					
Alabama	2.5	0.13	(40)	-10.7	Montana	2.8	0.32	(27)	0.0
Alaska	2.3	0.51	(45)	-17.9 ^c	Nebraska	3.3	0.25	(06)	17.9 ^c
Arizona	2.6	0.13	(37)	-7.1	Nevada	2.6	0.23	(35)	-7.1
Arkansas	3.0	0.19	(20)	7.1	New Hampshire	3.2	0.30	(10)	14.3
California	2.4 ^b	0.05	(42)	-14.3	New Jersey	2.7	0.10	(33)	-3.6
Colorado	2.1 ^b	0.14	(48)	-25.0 ^c	New Mexico	2.8	0.24	(26)	0.0
Connecticut	2.3	0.15	(46)	-17.9 ^c	New York	2.4 ^b	0.06	(44)	-14.3
Delaware	2.7	0.34	(32)	-3.6	North Carolina	2.7	0.11	(30)	-3.6
District of Columbia	2.1	0.35	(49)	-25.0 ^c	North Dakota	3.5	0.42	(03)	25.0 ^c
Florida	2.2 ^b	0.06	(47)	-21.4 ^c	Ohio	3.1 ^b	0.09	(13)	10.7
Georgia	2.7	0.12	(29)	-3.6	Oklahoma	3.4 ^b	0.18	(04)	21.4 ^c
Hawaii	1.8 ^b	0.22	(51)	-35.7 ^c	Oregon	2.7	0.16	(34)	-3.6
Idaho	3.0	0.30	(19)	7.1	Pennsylvania	2.9	0.08	(23)	3.6
Illinois	3.0	0.09	(17)	7.1	Rhode Island	3.4	0.32	(05)	21.4 ^c
Indiana	3.6 ^b	0.14	(02)	28.6 ^c	South Carolina	2.7	0.15	(28)	-3.6
Iowa	3.0	0.18	(16)	7.1	South Dakota	2.9	0.35	(25)	3.6
Kansas	3.1	0.20	(14)	10.7	Tennessee	2.9	0.13	(22)	3.6
Kentucky	3.2	0.16	(08)	14.3	Texas	3.3 ^b	0.08	(07)	17.9 ^c
Louisiana	3.6 ^b	0.17	(01)	28.6 ^c	Utah	2.0	0.21	(50)	-28.6 ^c
Maine	3.1	0.27	(12)	10.7	Vermont	2.6	0.38	(38)	-7.1
Maryland	2.6	0.13	(36)	-7.1	Virginia	2.4	0.11	(41)	-14.3
Massachusetts	2.4	0.11	(43)	-14.3	Washington	2.7	0.13	(31)	-3.6
Michigan	2.9	0.10	(24)	3.6	West Virginia	3.0	0.22	(18)	7.1
Minnesota	3.0	0.15	(21)	7.1	Wisconsin	3.1	0.14	(15)	10.7
Mississippi	3.2	0.20	(11)	14.3	Wyoming	2.5	0.43	(39)	-10.7
Missouri	3.2	0.14	(09)	14.3					

^a NCHS public use data file. Rates are per 100,000 and are age-adjusted to the 2000 US Std Population (19 age groups - Census P25-1130).

^b Difference between state rate and total U.S. rate is statistically significant ($p < .0002$).

^c Absolute percent difference between state rate and total U.S. rate is 15% or more.

SE Standard error of the rate.

PD Percent difference between state rate and total U.S. rate.

Table XI-16
KIDNEY AND RENAL PELVIS CANCER (Invasive)

Estimated United States Cancer Prevalence Counts^a on January 1, 2004
By Race/Ethnicity, Sex and Years Since Diagnosis

Years Since Diagnosis	0 to <5	5 to <10	10 to <15	15 to <20	20 to <25	0 to <14 ^e	0 to <29 ^e	>=29 ^g	Complete ^h
Race/Sex									
All Races ^b	98,835	57,255	35,468	20,124	11,497	185,832	228,714	11,552	240,266
Males	59,318	34,237	20,735	11,573	6,711	111,099	135,506	6,393	141,899
Females	39,517	23,018	14,733	8,551	4,786	74,733	93,208	5,159	98,367
White ^b	84,557	49,158	31,637	18,003	10,132	160,099	198,486	13,137	211,623
Males	51,165	29,695	18,718	10,551	6,081	96,614	118,884	6,222	125,106
Females	33,392	19,463	12,919	7,452	4,051	63,485	79,602	6,915	86,517
Black ^b	10,517	6,218	3,033	1,727	1,110	19,361	23,041	1,983	25,024
Males	5,832	3,406	1,534	791	504	10,588	12,257	697	12,954
Females	4,685	2,812	1,499	936	606	8,773	10,784	1,286	12,070
Asian/Pacific Islander ^c	1,983	969	+	+	+	3,314	+	+	+
Males	1,213	614	+	+	+	2,059	+	+	+
Females	770	355	+	+	+	1,255	+	+	+
Hispanic ^d	7,378	3,517	+	+	+	12,673	+	+	+
Males	4,355	1,943	+	+	+	7,304	+	+	+
Females	3,023	1,574	+	+	+	5,369	+	+	+

Estimated prevalence percent^a on January 1, 2004, of the SEER 11 population diagnosed in the previous 10 years
By Age at Prevalence, Race/Ethnicity and Sex

Age at Prevalence	Age Specific (Crude)										Age-Adjusted ^f
	All Ages	0-9	10-19	20-29	30-39	40-49	50-59	60-69	70-79	80+	All Ages
Race/Sex											
All Races ^c	0.0470%	0.0069%	0.0042%	0.0015%	0.0082%	0.0325%	0.0860%	0.1703%	0.2227%	0.1836%	0.0493%
Males	0.0573%	0.0065%	0.0035%	0.0016%	0.0090%	0.0399%	0.1156%	0.2313%	0.3084%	0.2594%	0.0657%
Females	0.0368%	0.0074%	0.0050%	0.0015%	0.0074%	0.0251%	0.0580%	0.1157%	0.1581%	0.1421%	0.0360%
White ^c	0.0510%	0.0072%	0.0045%	0.0014%	0.0084%	0.0338%	0.0897%	0.1786%	0.2334%	0.1902%	0.0515%
Males	0.0622%	0.0072%	0.0039%	0.0014%	0.0093%	0.0413%	0.1196%	0.2401%	0.3221%	0.2739%	0.0685%
Females	0.0399%	0.0073%	0.0051%	0.0015%	0.0074%	0.0261%	0.0604%	0.1221%	0.1650%	0.1450%	0.0374%
Black ^c	0.0412%	0.0076%	0.0048%	0.0027%	0.0106%	0.0368%	0.0997%	0.1835%	0.2294%	0.1901%	0.0538%
Males	0.0488%	0.0055%	0.0032%	0.0028%	0.0109%	0.0445%	0.1417%	0.2453%	0.3317%	0.2341%	0.0711%
Females	0.0343%	0.0098%	0.0064%	0.0026%	0.0104%	0.0300%	0.0649%	0.1350%	0.1623%	0.1689%	0.0412%
Asian/Pacific Islander ^c	0.0255%	0.0031%	0.0015%	-	0.0046%	0.0172%	0.0474%	0.0931%	0.1322%	0.1138%	0.0278%
Males	0.0325%	0.0022%	-	-	0.0053%	0.0234%	0.0652%	0.1388%	0.1820%	0.1530%	0.0384%
Females	0.0191%	0.0040%	0.0020%	-	0.0045%	0.0115%	0.0318%	0.0549%	0.0964%	0.0878%	0.0194%
Hispanic ^d	0.0265%	0.0059%	0.0027%	0.0010%	0.0073%	0.0291%	0.0821%	0.1611%	0.2531%	0.1696%	0.0487%
Males	0.0295%	0.0050%	0.0016%	0.0010%	0.0081%	0.0327%	0.1088%	0.2082%	0.3445%	0.2143%	0.0624%
Females	0.0233%	0.0069%	0.0038%	0.0010%	0.0064%	0.0254%	0.0572%	0.1219%	0.1877%	0.1441%	0.0379%

^a US 2004 cancer prevalence counts are based on 2004 cancer prevalence proportions from the SEER registries and 1/1/2004 US population estimates based on the average of 2003 and 2004 population estimates from the US Bureau of the Census. Prevalence was calculated using the First Malignant Primary Only for a person.

^{b c d} Statistics based on (b) SEER 9 Areas (c) SEER 11 Areas and Rural Georgia (d) NHIA for Hispanic for SEER 11 Areas and Rural Georgia.

^e Maximum limited-duration prevalence: 29 years for 1975-2004 SEER 9 data; 14 years for 1990-2004 SEER 11 data (used to calculate prevalence for Hispanics and Asian Pacific Islanders).

^f Percentages are age-adjusted to the 2000 US Standard Population (19 age groups - Census P25-1130) by 5-year age groups.

^{g h} (g) Cases diagnosed more than 29 years ago were estimated using the completeness index method (Capocaccia et. al. 1997, Merrill et. al. 2000). (h) Complete prevalence is obtained by summing 0 to <29 and >=29.

- Statistic not shown. Statistic based on fewer than 5 cases estimated alive in SEER for the time interval.

+ Not available.

SEER Incidence, Delay Adjusted Incidence and US Death Rates^a Kidney and Renal Pelvis Cancer, by Race and Sex

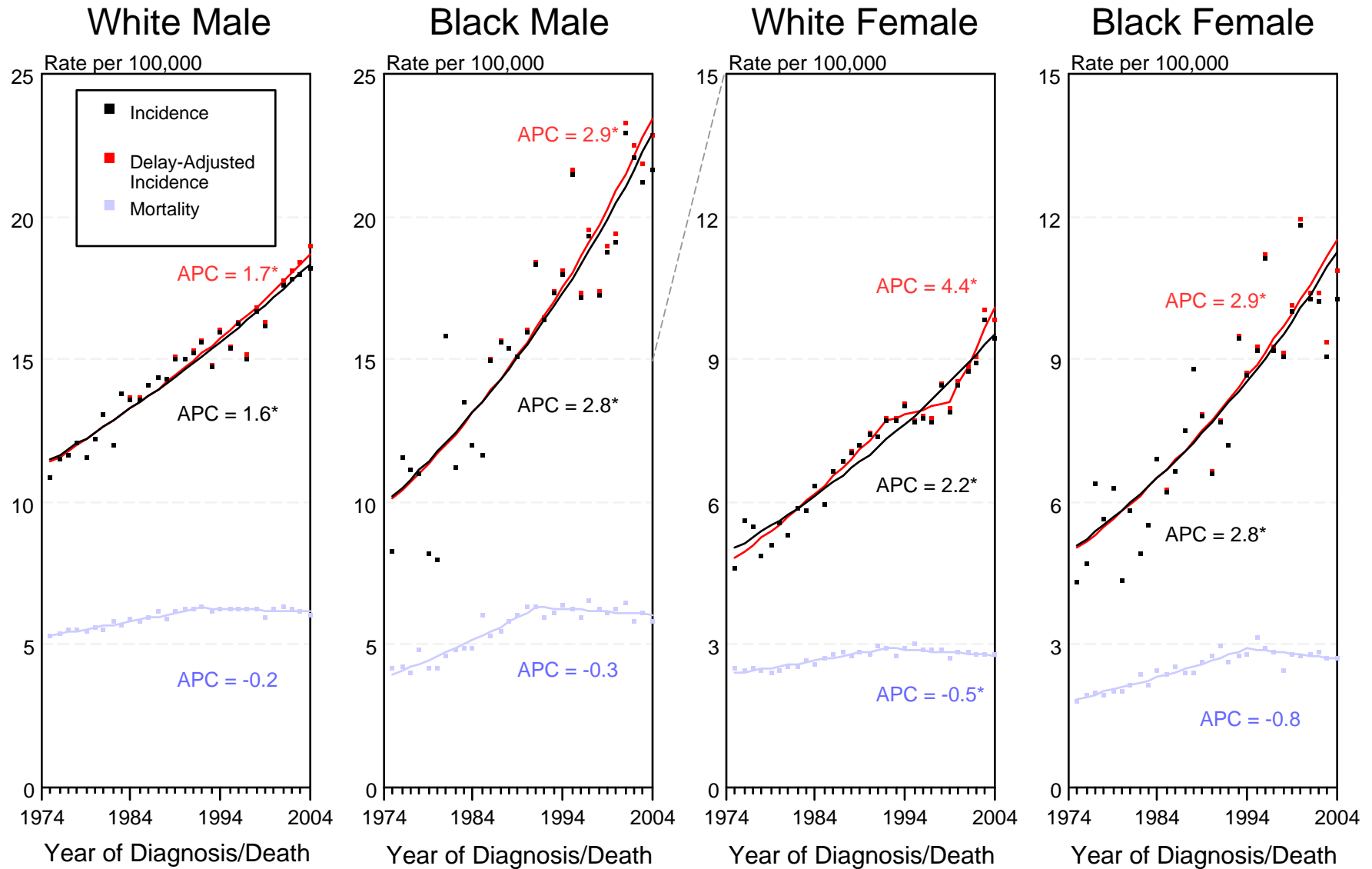


Figure XI-1

^a Source: SEER 9 areas and NCHS public use data file for the total US. Rates are age-adjusted to the 2000 US Std Population (19 age groups - Census P25-1103). Regression lines and APCs are calculated using the Joinpoint Regression Program Version 3.0, April 2005, National Cancer Institute. The APC is the Annual Percent Change for the regression line segments. The APC shown on the graph is for the most recent trend.

* The APC is significantly different from zero ($p < 0.05$).

SEER Incidence and US Death Rates^a Kidney and Renal Pelvis Cancer, Both Sexes

Joinpoint Analyses for Whites and Blacks from 1975-2004 and for Asian/Pacific Islanders, American Indians/Alaska Natives and Hispanics from 1992-2004

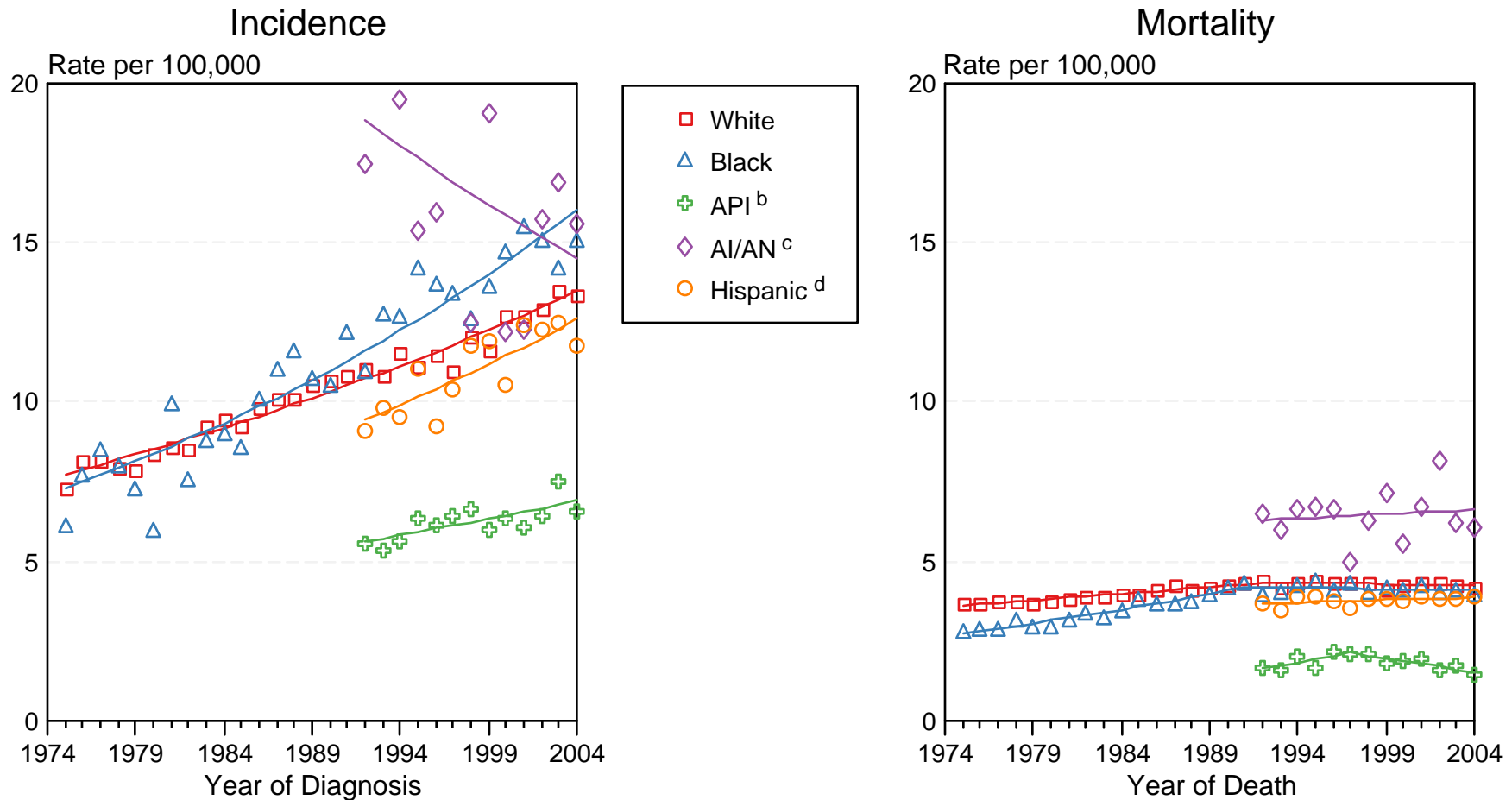


Figure XI-2

Source: Incidence data for whites and blacks are from the SEER 9 areas (San Francisco, Connecticut, Detroit, Hawaii, Iowa, New Mexico, Seattle, Utah, Atlanta). Incidence data for Asian/Pacific Islanders, American Indians/Alaska Natives and Hispanics are from the SEER 13 Areas (SEER 9 Areas, San Jose-Monterey, Los Angeles, Alaska Native Registry and Rural Georgia). Mortality data are from NCHS public use data file for the total US.

^a Rates are age-adjusted to the 2000 US Std Population (19 age groups - Census P25-1103).

Regression lines are calculated using the Joinpoint Regression Program Version 3.0, April 2005, National Cancer Institute.

^b API = Asian/Pacific Islander.

^c AI/AN = American Indian/Alaska Native. Rates for American Indian/Alaska Native are based on the CHSDA(Contract Health Service Delivery Area) counties.

^d Hispanic is not mutually exclusive from whites, blacks, Asian/Pacific Islanders, and American Indians/Alaska Natives. Incidence data for Hispanics are based on NHIA and exclude cases from the Alaska Native Registry. Mortality data for Hispanics exclude cases from Connecticut, Maine, Maryland, Minnesota, New Hampshire, New York, North Dakota, Oklahoma, and Vermont.