

Table XXII-1  
PANCREAS CANCER (Invasive)

TRENDS IN SEER INCIDENCE<sup>a</sup> AND U.S. MORTALITY<sup>b</sup> USING THE JOINPOINT REGRESSION PROGRAM, 1975-2004  
WITH UP TO THREE JOINPOINTS BY RACE AND SEX

		<u>Joinpoint Segment 1</u>		<u>Joinpoint Segment 2</u>		<u>Joinpoint Segment 3</u>		<u>Joinpoint Segment 4</u>	
		Year	APC	Year	APC	Year	APC	Year	APC
<u>SEER Cancer Incidence<sup>a</sup></u>									
All Races	Male and Female	1975-1978	-2.2	1978-1984	1.2*	1984-1990	-1.3*	1990-2004	0.1
All Races	Male	1975-1993	-0.8*	1993-2004	0.1				
All Races	Female	1975-1983	1.4*	1983-2004	-0.2				
White	Male and Female	1975-1978	-2.5	1978-1984	1.0	1984-1993	-1.0*	1993-2004	0.5*
White	Male	1975-1981	-2.3*	1981-1984	1.6	1984-1993	-1.4*	1993-2004	0.6*
White	Female	1975-1984	1.6*	1984-1987	-2.4	1987-2004	0.1		
Black	Male and Female	1975-2004	-0.4*						
Black	Male	1975-2004	-0.7*						
Black	Female	1975-2004	-0.1						
<u>SEER Delay-Adjusted Incidence<sup>a</sup></u>									
All Races	Male and Female	1975-1978	-2.1	1978-1984	1.1	1984-1993	-0.9*	1993-2004	0.5*
All Races	Male	1975-1993	-0.9*	1993-2004	0.3				
All Races	Female	1975-1983	1.3*	1983-2004	-0.1				
White	Male and Female	1975-1978	-2.5	1978-1984	1.1	1984-1993	-1.0*	1993-2004	0.7*
White	Male	1975-1994	-1.0*	1994-2004	0.8*				
White	Female	1975-1984	1.2*	1984-2000	-0.3	2000-2004	2.3		
Black	Male and Female	1975-2004	-0.3						
Black	Male	1975-2004	-0.7*						
Black	Female	1975-2004	0.0						
<u>U.S. Cancer Mortality<sup>b</sup></u>									
All Races	Male and Female	1975-2004	-0.1*						
All Races	Male	1975-1986	-0.9*	1986-2004	-0.2*				
All Races	Female	1975-1984	0.8*	1984-2004	0.1				
White	Male and Female	1975-1996	-0.2*	1996-2004	0.2*				
White	Male	1975-1987	-1.0*	1987-2004	-0.1				
White	Female	1975-1983	0.7*	1983-2004	0.1*				
Black	Male and Female	1975-1990	1.1*	1990-2004	-0.8*				
Black	Male	1975-1990	0.6*	1990-2004	-1.1*				
Black	Female	1975-1984	2.5*	1984-1993	0.6	1993-2004	-0.7*		

Joinpoint Regression Program Version 3.0, April 2005, National Cancer Institute. (<http://srab.cancer.gov/joinpoint/>).

The APC is the Annual Percent Change based on rates age-adjusted to the 2000 US Std Population (19 age groups - Census P25-1130).

<sup>a</sup> Trends are from the SEER 9 areas (San Francisco, Connecticut, Detroit, Hawaii, Iowa, New Mexico, Seattle, Utah, and Atlanta).

<sup>b</sup> Trends are from the NCHS public use data file for the total US.

\* The APC is significantly different from zero (p<.05).

Table XXII-2  
PANCREAS CANCER (Invasive)

AGE ADJUSTED SEER INCIDENCE<sup>a</sup> RATES BY YEAR, RACE AND SEX

	<u>All Races</u>			<u>Whites</u>			<u>Blacks</u>		
	<u>Total</u>	<u>Males</u>	<u>Females</u>	<u>Total</u>	<u>Males</u>	<u>Females</u>	<u>Total</u>	<u>Males</u>	<u>Females</u>
<u>AGE-ADJUSTED RATES</u>									
<u>YEAR OF DIAGNOSIS:</u>									
1975	11.8	15.6	9.1	11.7	15.6	8.9	15.9	18.1	13.9
1976	12.0	14.8	9.9	11.8	14.5	9.8	17.6	22.7	14.0
1977	11.9	14.8	9.8	11.6	14.6	9.5	17.1	19.4	15.2
1978	11.1	14.1	8.9	10.8	13.9	8.6	15.1	20.0	11.5
1979	11.5	14.2	9.7	11.2	13.8	9.4	16.1	19.1	13.7
1980	11.5	14.2	9.6	11.1	13.7	9.2	17.9	21.8	15.5
1981	11.7	13.5	10.2	11.4	13.3	9.9	17.2	20.9	14.1
1982	11.7	13.8	10.2	11.4	13.5	9.9	16.9	21.0	14.0
1983	12.2	14.7	10.4	11.7	14.1	10.1	18.1	23.1	14.9
1984	12.2	13.9	10.9	12.0	13.9	10.6	17.2	18.4	16.3
1985	12.1	14.3	10.5	11.7	13.6	10.3	18.7	25.0	14.6
1986	11.7	13.8	10.2	11.4	13.5	9.8	17.3	20.2	15.6
1987	11.6	13.8	10.1	11.1	13.4	9.5	18.4	19.0	17.9
1988	11.7	13.7	10.2	11.1	13.4	9.6	18.5	19.4	17.4
1989	11.3	12.9	10.1	11.0	12.7	9.6	15.0	16.0	14.0
1990	11.3	12.8	10.1	11.0	12.5	9.8	15.2	18.8	12.6
1991	11.4	12.9	10.2	11.0	12.6	9.8	17.0	18.2	16.2
1992	11.6	13.2	10.3	11.3	12.9	10.0	17.3	19.8	15.8
1993	11.0	12.5	9.7	10.5	12.0	9.3	16.8	18.7	15.1
1994	11.4	13.3	9.9	10.9	12.3	9.7	17.4	21.5	14.5
1995	11.1	12.7	10.0	10.7	12.3	9.6	18.1	20.3	16.3
1996	11.3	12.9	9.9	10.9	12.5	9.6	17.1	19.8	14.9
1997	11.5	13.0	10.2	11.0	12.5	9.7	17.9	19.4	16.6
1998	11.5	13.1	10.2	11.2	13.0	9.8	14.7	16.2	13.9
1999	11.1	12.6	9.8	10.7	12.2	9.3	16.7	19.5	14.7
2000	11.4	13.3	9.8	11.1	12.9	9.6	15.7	18.3	13.2
2001	11.3	13.1	9.9	11.0	13.0	9.5	14.1	15.2	13.2
2002	11.6	13.0	10.4	11.5	13.2	10.0	15.8	14.9	15.8
2003	11.4	12.6	10.4	11.2	12.4	10.1	15.8	16.6	15.2
2004	11.4	13.3	9.8	11.3	13.0	9.8	15.1	18.3	12.5
1975-2004	11.5	13.4	10.0	11.2	13.1	9.7	16.6	19.0	14.8

<sup>a</sup> SEER 9 areas (San Francisco, Connecticut, Detroit, Hawaii, Iowa, New Mexico, Seattle, Utah, and Atlanta). Rates are per 100,000 and are age-adjusted to the 2000 US Std Population (19 age groups - Census P25-1130).

- Statistic not shown. Rate based on less than 16 cases for the time interval.

Table XXII-3  
PANCREAS CANCER (Invasive)

AGE-ADJUSTED U.S. DEATH<sup>a</sup> RATES BY YEAR, RACE AND SEX

	<u>All Races</u>			<u>Whites</u>			<u>Blacks</u>		
	<u>Total</u>	<u>Males</u>	<u>Females</u>	<u>Total</u>	<u>Males</u>	<u>Females</u>	<u>Total</u>	<u>Males</u>	<u>Females</u>
<u>AGE-ADJUSTED RATES</u>									
<u>YEAR OF DEATH:</u>									
1975	10.7	13.8	8.4	10.5	13.6	8.3	12.8	16.3	10.1
1976	10.7	13.6	8.6	10.5	13.4	8.4	12.9	16.0	10.5
1977	10.9	13.9	8.8	10.7	13.6	8.6	13.2	17.1	10.3
1978	10.8	13.6	8.8	10.6	13.5	8.6	12.9	15.9	10.7
1979	10.7	13.4	8.8	10.5	13.3	8.6	13.4	15.9	11.6
1980	10.6	13.1	8.8	10.4	12.8	8.6	13.8	16.5	11.8
1981	10.7	13.2	8.9	10.5	12.9	8.8	13.4	17.0	10.8
1982	10.6	13.1	8.8	10.3	12.8	8.6	14.1	17.1	11.9
1983	10.7	12.8	9.1	10.4	12.4	8.9	14.8	18.1	12.5
1984	10.8	13.0	9.2	10.5	12.6	8.9	15.0	17.5	13.1
1985	10.6	12.9	9.0	10.3	12.5	8.8	14.4	17.3	12.4
1986	10.6	12.5	9.2	10.3	12.2	8.9	14.6	16.7	13.0
1987	10.6	12.5	9.2	10.3	12.2	8.9	14.6	17.4	12.6
1988	10.5	12.5	9.0	10.1	12.2	8.6	14.5	17.1	12.7
1989	10.6	12.6	9.2	10.3	12.2	8.8	15.0	17.7	13.2
1990	10.7	12.6	9.3	10.3	12.2	8.9	15.2	18.1	13.2
1991	10.7	12.6	9.3	10.4	12.3	9.0	14.5	16.9	12.8
1992	10.7	12.6	9.3	10.3	12.2	8.9	15.4	18.2	13.4
1993	10.7	12.4	9.4	10.3	12.1	9.0	15.0	17.6	13.3
1994	10.6	12.4	9.3	10.3	12.0	9.0	15.2	17.7	13.4
1995	10.4	12.1	9.2	10.2	11.9	8.9	13.9	15.8	12.5
1996	10.5	12.1	9.2	10.2	11.8	8.9	14.4	16.4	13.0
1997	10.5	12.2	9.1	10.2	12.0	8.8	14.6	16.4	13.1
1998	10.5	12.3	9.2	10.2	12.0	8.8	14.5	16.5	13.1
1999	10.6	12.3	9.3	10.4	12.1	9.0	14.2	16.6	12.4
2000	10.5	12.1	9.3	10.3	12.0	9.0	14.0	15.8	12.7
2001	10.5	12.1	9.3	10.4	12.0	9.0	13.7	15.1	12.5
2002	10.5	12.2	9.2	10.3	12.0	8.9	13.7	15.4	12.3
2003	10.5	12.0	9.2	10.3	11.9	9.0	13.8	15.5	12.4
2004	10.6	12.3	9.2	10.4	12.2	9.0	13.6	15.6	12.1
1975-2004	10.6	12.6	9.1	10.4	12.4	8.9	14.3	16.7	12.5

<sup>a</sup> NCHS public use data file for the total US. Rates are per 100,000 and are age-adjusted to the 2000 US Std Population (19 age groups - Census P25-1130).

- Statistic not shown. Rate based on less than 16 cases for the time interval.

Table XXII-4  
PANCREAS CANCER (Invasive)

SEER INCIDENCE<sup>a</sup> AND U.S. DEATH<sup>b</sup> RATES, AGE-ADJUSTED AND AGE-SPECIFIC RATES, BY RACE AND SEX

	All Races			Whites			Blacks		
	Total	Males	Females	Total	Males	Females	Total	Males	Females
<u>SEER INCIDENCE</u>									
<u>AGE AT DIAGNOSIS</u>									
AGE-ADJUSTED RATES, 2000-2004									
All ages	11.4	12.9	10.1	11.2	12.8	9.9	15.0	16.2	13.9
Under 65	3.7	4.4	3.0	3.6	4.4	2.9	5.3	6.3	4.4
65 and over	64.2	71.4	58.9	63.6	71.4	57.9	82.3	84.8	79.2
All ages(IARC world std) <sup>c</sup>	6.9	7.9	6.0	6.8	7.9	5.9	9.3	10.6	8.3
AGE-SPECIFIC RATES, 2000-2004									
<1	-	-	-	-	-	-	-	-	-
1-4	-	-	-	-	-	-	-	-	-
5-9	-	-	-	-	-	-	-	-	-
10-14	-	-	-	-	-	-	-	-	-
15-19	-	-	-	-	-	-	-	-	-
20-24	0.1	-	-	-	-	-	-	-	-
25-29	0.2	0.2	0.2	0.2	0.2	0.3	-	-	-
30-34	0.4	0.4	0.4	0.4	0.4	0.4	-	-	-
35-39	1.0	1.2	0.9	1.0	1.0	0.9	1.3	1.9	-
40-44	2.3	2.8	1.9	2.3	2.7	1.8	3.0	3.5	2.5
45-49	5.1	6.0	4.2	4.9	5.9	3.9	8.0	8.6	7.4
50-54	10.1	12.4	7.9	10.0	12.4	7.6	14.9	18.4	11.9
55-59	17.0	20.6	13.7	16.7	20.1	13.4	23.9	31.8	17.4
60-64	28.1	33.2	23.4	27.6	33.0	22.6	39.8	44.0	36.5
65-69	42.3	48.5	37.0	41.7	47.8	36.4	58.4	71.7	48.2
70-74	57.9	65.5	51.7	57.3	64.9	51.1	78.3	93.6	67.6
75-79	72.4	81.5	66.0	72.4	83.1	64.8	88.1	82.7	91.5
80-84	83.8	93.0	78.1	83.0	93.0	76.8	103.7	104.3	103.4
85+	88.8	91.2	87.7	87.5	91.9	85.6	109.0	76.9	121.8
<u>U.S. MORTALITY</u>									
<u>AGE AT DEATH</u>									
AGE-ADJUSTED RATES, 2000-2004									
All ages	10.6	12.2	9.2	10.4	12.0	9.0	13.8	15.5	12.4
Under 65	3.2	3.9	2.5	3.0	3.8	2.4	4.5	5.7	3.6
65 and over	61.7	69.4	56.1	60.9	69.0	54.9	77.6	83.2	73.5
All ages(IARC world std) <sup>c</sup>	6.2	7.3	5.3	6.1	7.2	5.1	8.3	9.7	7.2
AGE-SPECIFIC RATES, 2000-2004									
<1	-	-	-	-	-	-	-	-	-
1-4	-	-	-	-	-	-	-	-	-
5-9	-	-	-	-	-	-	-	-	-
10-14	-	-	-	-	-	-	-	-	-
15-19	-	-	-	-	-	-	-	-	-
20-24	0.0	0.0	-	0.0	-	-	-	-	-
25-29	0.1	0.1	0.1	0.1	0.1	0.1	-	-	-
30-34	0.2	0.2	0.1	0.2	0.2	0.1	0.3	0.4	-
35-39	0.7	0.8	0.5	0.7	0.8	0.5	0.8	1.1	0.6
40-44	1.8	2.1	1.4	1.7	2.0	1.4	2.5	3.0	2.1
45-49	4.1	5.2	3.0	4.0	5.0	2.9	6.0	7.8	4.5
50-54	8.6	10.8	6.4	8.2	10.3	6.1	13.1	16.7	10.0
55-59	15.1	18.6	11.8	14.6	18.1	11.3	21.9	27.9	17.0
60-64	24.9	30.2	20.0	24.3	29.7	19.3	34.5	41.5	28.9
65-69	37.0	43.9	31.1	36.3	43.4	30.1	48.8	56.5	43.1
70-74	52.5	59.7	46.7	51.5	58.7	45.6	70.4	82.0	62.7
75-79	68.7	77.8	62.2	67.9	77.7	60.8	86.6	92.5	83.1
80-84	84.5	95.0	78.1	83.8	95.0	76.9	100.2	106.5	97.0
85+	96.7	101.2	94.7	95.8	101.9	93.2	114.3	102.2	119.0

<sup>a</sup> SEER 17 areas. Rates are per 100,000 and are age-adjusted to the 2000 US Std Population (19 age groups - Census P25-1130), unless noted.

<sup>b</sup> NCHS public use data file for the total US. Rates are per 100,000 and are age-adjusted to the 2000 US Std Population (19 age groups - Census P25-1130), unless noted.

<sup>c</sup> Rates are per 100,000 and are age-adjusted to the IARC world standard population.

- Statistic not shown. Rate based on less than 16 cases for the time interval.

Table XXII-5  
PANCREAS CANCER (Invasive)

SURVIVAL RATES, BY RACE, SEX, DIAGNOSIS YEAR, STAGE AND AGE

	All Races			Whites			Blacks		
	Total	Males	Females	Total	Males	Females	Total	Males	Females
<u>5-YR RELATIVE SURVIVAL RATES</u>									
YEAR OF DIAGNOSIS:									
1960-1963 <sup>a</sup>	-	-	-	1	1	2	1	0	3
1970-1973 <sup>a</sup>	-	-	-	2	2	2	2	0	3
1975-1977 <sup>b</sup>	2.4	2.6	2.2	2.5	2.7	2.3	2.3	2.7	2.0
1978-1980 <sup>b</sup>	3.0	2.8	3.2	2.7	2.6	2.7	5.9	4.3	7.4
1981-1983 <sup>b</sup>	3.0	2.6	3.4	2.8	2.3	3.3	3.7	4.0	3.3
1984-1986 <sup>b</sup>	3.0	2.4	3.5	2.7	2.2	3.1	4.9	4.2	5.4
1987-1989 <sup>b</sup>	3.8	3.5	4.1	3.4	3.2	3.5	5.7	5.1	6.1
1990-1992 <sup>b</sup>	4.5	4.2	4.7	4.6	4.3	4.9	3.7	3.2	4.0
1993-1995 <sup>b</sup>	4.2	3.9	4.6	4.2	3.8	4.6	3.7	3.5	3.9
1996-2003 <sup>b</sup>	5.0 <sup>e</sup>	5.0 <sup>e</sup>	5.0 <sup>e</sup>	4.9 <sup>e</sup>	5.3 <sup>e</sup>	4.4 <sup>e</sup>	4.6 <sup>e</sup>	3.2	5.8 <sup>e</sup>
<u>5-YR PERIOD SURVIVAL RATES<sup>cd</sup></u>									
YEAR OF DIAGNOSIS:									
1996-2003	5.4	5.5	5.3	5.2	5.5	5.0	5.6	4.2	6.5
<u>STAGE DISTRIBUTION (%) 1996-2003<sup>c</sup></u>									
All Stages									
Number of cases	37,749	18,311	19,438	30,639	14,982	15,657	4,234	1,918	2,316
Percent	100%	100%	100%	100%	100%	100%	100%	100%	100%
Localized	7	6	8	7	6	8	8	6	9
Regional	26	25	26	26	25	26	24	23	25
Distant	52	55	49	52	55	48	54	59	50
Unstaged	15	13	17	15	13	17	14	12	15
<u>5-YR RELATIVE SURVIVAL RATES, 1996-2003<sup>c</sup></u>									
AGE AT DIAGNOSIS:									
<45	19.5	14.9	25.4	19.1	15.2	24.0	18.6	13.9	24.7 <sup>f</sup>
45-54	7.6	6.9	8.8	7.7	7.7	7.9	6.0	3.0	11.1
55-64	5.4	4.7	6.4	5.4	4.7	6.4	4.3	3.2	5.3
65-74	3.9	3.8	4.0	4.0	4.1	3.7	3.3	2.2	4.0
75+	2.5	2.8	2.3	2.4	2.7	2.2	1.9	-	2.6
Under 65	7.8	6.6	9.4	7.7	6.9	8.9	6.5	4.4	9.2
65 and over	3.2	3.4	3.0	3.2	3.6	2.9	2.7	1.6	3.3
STAGE:									
All Stages	5.0	4.9	5.1	4.9	5.1	4.7	4.5	3.2	5.6
Localized	20.3	18.9	21.2	20.7	19.8	21.2	14.7	9.8	16.8
Regional	8.0	8.2	7.9	8.1	9.0	7.3	6.9	4.4	8.5
Distant	1.7	2.0	1.5	1.6	1.8	1.3	1.9	2.3	1.4
Unstaged	4.1	4.6	3.7	3.6	4.5	2.9	4.4	2.0	6.7

<sup>a</sup> Rates are based on End Results data from a series of hospital registries and one population-based registry.  
<sup>b</sup> Rates are from the SEER 9 areas (San Francisco, Connecticut, Detroit, Hawaii, Iowa, New Mexico, Seattle, Utah, Atlanta).  
Rates are based on follow-up of patients into 2004.  
<sup>c</sup> Rates are from the SEER 17 areas (San Francisco, Connecticut, Detroit, Hawaii, Iowa, New Mexico, Seattle, Utah, Atlanta, San Jose-Monterey, Los Angeles, Alaska Native Registry, Rural Georgia, California excluding SF/SJM/LA, Kentucky, Louisiana and New Jersey). California excluding SF/SJM/LA, Kentucky, Louisiana, and New Jersey contribute cases for diagnosis years 2000-2003. The remaining 13 SEER Areas contribute cases for the entire period 1996-2003. Rates are based on follow-up of patients into 2004.  
<sup>d</sup> Period survival provides a more up-to-date estimate of survival by piecing together the most recent conditional survival estimates from several cohorts. It is computed here using three calendar year blocks (2001-2003: 0-1 year survival), (2000-2002: 1-2 year survival), (1999-2001: 2-3 year survival), (1998-2000: 3-4 year survival), (1997-1999: 4-5 years survival).  
<sup>e</sup> The difference in rates between 1975-1977 and 1996-2003 is statistically significant (p<.05).  
<sup>f</sup> The standard error of the survival rate is between 5 and 10 percentage points.  
<sup>g</sup> The standard error of the survival rate is greater than 10 percentage points.  
- Statistic could not be calculated due to fewer than 16 cases during the time period.

Table XXII-6  
PANCREAS CANCER (Invasive)

SURVIVAL RATES<sup>a</sup>

By Year of Diagnosis

All Races, Males and Females

Year of Diagnosis

	1975- 1979	1980- 1984	1985	1986	1987	1988	1989	1990	1991	1992	1993	1994	1995	1996	1997	1998	1999	2000	2001	2002	2003
Relative Survival Rates (SEER <sup>b</sup> )																					
1-year	15.2	17.2	16.4	18.2	18.8	18.3	19.9	19.5	20.1	20.4	18.3	19.8	18.8	20.1	21.4	20.9	23.7	23.5	24.9	26.2	23.6
2-year	6.1	6.6	6.5	6.5	8.0	6.9	8.0	8.4	9.2	9.0	8.5	9.3	8.6	9.9	10.0	8.9	10.8	11.1	11.7	12.0	
3-year	3.7	4.3	5.1	4.5	5.7	4.6	5.0	5.5	6.4	5.9	5.3	6.8	5.6	6.7	7.1	5.9	7.0	7.5	7.4		
4-year	3.0	3.5	4.0	3.4	4.8	3.6	4.1	4.3	5.3	5.2	4.4	5.5	4.3	5.1	5.6	4.6	6.0	6.2			
5-year	2.5	3.1	3.3	2.9	4.2	3.5	3.6	4.0	4.7	4.7	3.6	5.2	3.9	4.5	5.1	3.9	5.4				
6-year	2.4	2.8	2.8	2.6	3.8	3.3	3.3	3.9	4.3	4.7	3.4	4.5	3.6	4.2	4.7	3.8					
7-year	2.2	2.6	2.7	2.4	3.4	3.2	3.1	3.5	4.1	4.1	3.2	4.2	3.5	3.9	4.5						
8-year	2.0	2.4	2.5	2.3	3.4	2.8	2.6	3.5	3.8	3.9	3.2	3.7	3.2	3.8							
9-year	1.9	2.2	2.1	2.3	3.2	2.5	2.4	3.2	3.8	3.7	3.0	3.6	3.2								
10-year	1.8	2.1	2.0	2.3	3.2	2.3	2.3	2.9	3.6	3.6	2.8	3.5									
11-year	1.8	2.1	2.0	2.3	3.1	2.3	2.3	2.8	3.2	3.4	2.6										
12-year	1.8	2.0	1.9	2.3	3.1	2.3	2.3	2.8	3.2	3.2											
13-year	1.8	2.0	1.8	2.2	2.7	2.3	2.3	2.8	3.2												
14-year	1.7	2.0	1.8	2.2	2.7	2.3	2.3	2.8													
15-year	1.7	1.9	1.7	1.9	2.7	2.3	2.2														
16-year	1.7	1.9	1.7	1.8	2.7	2.3															
17-year	1.7	1.9	1.7	1.8	2.7																
18-year	1.6	1.9	1.6	1.8																	
19-year	1.6	1.9	1.5																		
20-year	1.5	1.9																			

<sup>a</sup> Survival rates are relative rates expressed as percents.

<sup>b</sup> Rates are from the SEER 9 areas (San Francisco, Connecticut, Detroit, Hawaii, Iowa, New Mexico, Seattle, Utah, and Atlanta).

Table XXII-7  
PANCREAS CANCER (Invasive)

SURVIVAL RATES<sup>a</sup>

By Year of Diagnosis

All Races, Males

Year of Diagnosis

	1975- 1979	1980- 1984	1985	1986	1987	1988	1989	1990	1991	1992	1993	1994	1995	1996	1997	1998	1999	2000	2001	2002	2003
Relative Survival Rates (SEER <sup>b</sup> )																					
1-year	15.2	16.1	15.9	18.1	18.1	18.8	18.7	19.3	19.7	17.8	17.1	20.2	17.9	21.5	22.7	20.3	24.6	23.6	24.0	26.1	24.8
2-year	6.0	6.2	6.1	5.9	7.6	7.3	5.9	8.6	9.0	8.6	7.7	9.7	7.6	11.3	9.7	9.2	10.0	11.5	12.4	11.3	
3-year	3.5	3.9	4.8	3.9	5.4	4.9	3.7	5.2	6.6	5.4	4.7	7.6	4.4	7.6	6.6	5.8	6.4	7.1	7.8		
4-year	2.9	3.2	3.6	3.0	4.1	3.7	2.8	3.8	5.6	4.7	3.5	6.0	3.7	6.1	5.3	4.7	5.7	6.0			
5-year	2.6	2.7	2.6	2.3	4.1	3.6	2.6	3.4	5.0	4.1	2.7	5.6	3.2	5.4	4.4	4.1	5.2				
6-year	2.4	2.4	2.0	2.1	3.6	3.2	2.1	3.4	4.6	4.0	2.4	5.0	2.9	5.1	3.8	3.9					
7-year	2.3	2.1	2.0	1.8	3.1	3.1	2.1	3.1	4.1	3.3	2.1	4.7	2.9	4.7	3.4						
8-year	2.0	1.9	1.8	1.6	3.1	2.6	2.0	3.1	3.9	3.0	2.0	4.0	2.8	4.7							
9-year	2.0	1.8	1.5	1.6	3.0	2.3	1.5	2.9	3.9	2.9	1.9	3.9	2.6								
10-year	1.9	1.7	1.3	1.6	3.0	1.9	1.5	2.5	3.7	2.9	1.5	3.4									
11-year	1.8	1.7	1.3	1.6	3.0	1.8	1.5	2.4	3.6	2.9	1.2										
12-year	1.8	1.7	1.3	1.6	3.0	1.8	1.5	2.4	3.6	2.9											
13-year	1.7	1.7	1.3	1.6	2.4	1.8	1.5	2.4	3.6												
14-year	1.7	1.7	1.3	1.5	2.4	1.8	1.5	2.4													
15-year	1.7	1.6	1.3	0.9	2.4	1.8	1.5														
16-year	1.7	1.6	1.3	0.7	2.4	1.8															
17-year	1.7	1.6	1.3	0.7	2.4																
18-year	1.7	1.6	1.3	0.7																	
19-year	1.6	1.6	1.3																		
20-year	1.6	1.6																			

<sup>a</sup> Survival rates are relative rates expressed as percents.

<sup>b</sup> Rates are from the SEER 9 areas (San Francisco, Connecticut, Detroit, Hawaii, Iowa, New Mexico, Seattle, Utah, and Atlanta).

Table XXII-8  
PANCREAS CANCER (Invasive)

SURVIVAL RATES<sup>a</sup>

By Year of Diagnosis

All Races, Females

Year of Diagnosis

	1975- 1979	1980- 1984	1985	1986	1987	1988	1989	1990	1991	1992	1993	1994	1995	1996	1997	1998	1999	2000	2001	2002	2003
Relative Survival Rates (SEER <sup>b</sup> )																					
1-year	15.2	18.3	16.8	18.3	19.4	17.7	21.1	19.6	20.5	22.7	19.3	19.4	19.5	18.7	20.2	21.4	22.9	23.5	25.8	26.3	22.4
2-year	6.3	7.1	6.8	7.1	8.4	6.5	9.8	8.2	9.5	9.4	9.3	9.0	9.6	8.5	10.3	8.6	11.6	10.6	11.0	12.7	
3-year	3.9	4.6	5.4	5.1	6.1	4.3	6.1	5.8	6.2	6.4	5.8	5.8	6.7	5.8	7.5	5.9	7.5	7.9	6.9		
4-year	3.1	3.8	4.4	3.8	5.3	3.5	5.2	4.7	5.1	5.6	5.2	5.0	4.8	4.2	5.9	4.4	6.2	6.4			
5-year	2.5	3.4	4.0	3.4	4.2	3.4	4.5	4.5	4.4	5.2	4.4	4.8	4.6	3.6	5.6	3.7	5.7				
6-year	2.3	3.1	3.4	3.2	3.9	3.4	4.3	4.2	4.1	5.2	4.3	4.0	4.2	3.3	5.4	3.7					
7-year	2.1	3.0	3.3	3.0	3.6	3.2	3.9	3.8	4.0	4.8	4.2	3.6	4.0	3.1	5.4						
8-year	1.9	2.8	3.0	2.9	3.6	2.9	3.1	3.7	3.6	4.8	4.2	3.4	3.5	3.0							
9-year	1.8	2.7	2.7	2.9	3.4	2.6	3.1	3.5	3.6	4.4	4.0	3.2	3.5								
11-year	1.8	2.5	2.7	2.9	3.4	2.6	3.1	3.3	3.5	4.1	4.0	3.2									
10-year	1.8	2.4	2.7	2.9	3.1	2.6	3.0	3.3	2.8	3.6	3.9										
12-year	1.8	2.3	2.3	2.9	3.1	2.6	3.0	3.3	2.8	3.3											
13-year	1.7	2.3	2.1	2.8	3.0	2.6	2.8	3.0	2.8												
14-year	1.6	2.2	2.1	2.8	2.9	2.6	2.8	2.9													
15-year	1.4	2.2	2.0	2.8	2.9	2.6	2.7														
16-year	1.4	2.0	1.9	2.7	2.8	2.6															
17-year	1.4	2.0	1.9	2.7	2.8																
18-year	1.4	2.0	1.9	2.7																	
19-year	1.4	2.0	1.5																		
20-year	1.4	2.0																			

<sup>a</sup> Survival rates are relative rates expressed as percents.

<sup>b</sup> Rates are from the SEER 9 areas (San Francisco, Connecticut, Detroit, Hawaii, Iowa, New Mexico, Seattle, Utah, and Atlanta).



Table XXII-9  
PANCREAS CANCER (Invasive)

Risk of Being Diagnosed With Cancer in 10, 20 and 30 Years, Lifetime Risk of Being Diagnosed with Cancer, and  
 Lifetime Risk of Dying from Cancer Given Cancer Free At Current Age  
 Both Sexes, 2002-2004 By Race/Ethnicity

Race/ Ethnicity	Current Age	Risk of Being Diagnosed with Cancer			Risk of Dying from Cancer	
		+10 yrs Percent ( 95% C.I. )	+20 yrs Percent ( 95% C.I. )	+30 yrs Percent ( 95% C.I. )	Eventually Percent ( 95% C.I. )	Eventually Percent ( 95% C.I. )
All Races	0	0.00 ( 0.00, 0.00 )	0.00 ( 0.00, 0.00 )	0.00 ( 0.00, 0.00 )	1.31 ( 1.29, 1.33 )	1.20 ( 1.19, 1.21 )
	10	0.00 ( 0.00, 0.00 )	0.00 ( 0.00, 0.00 )	0.01 ( 0.01, 0.01 )	1.32 ( 1.31, 1.34 )	1.22 ( 1.21, 1.22 )
	20	0.00 ( 0.00, 0.00 )	0.01 ( 0.01, 0.01 )	0.05 ( 0.05, 0.05 )	1.33 ( 1.31, 1.35 )	1.22 ( 1.21, 1.23 )
	30	0.01 ( 0.01, 0.01 )	0.05 ( 0.04, 0.05 )	0.18 ( 0.17, 0.18 )	1.34 ( 1.32, 1.36 )	1.23 ( 1.22, 1.24 )
	40	0.04 ( 0.04, 0.04 )	0.17 ( 0.17, 0.18 )	0.47 ( 0.46, 0.48 )	1.35 ( 1.33, 1.37 )	1.24 ( 1.24, 1.25 )
	50	0.14 ( 0.13, 0.14 )	0.45 ( 0.44, 0.46 )	0.90 ( 0.89, 0.92 )	1.35 ( 1.33, 1.37 )	1.25 ( 1.24, 1.26 )
	60	0.33 ( 0.32, 0.34 )	0.82 ( 0.80, 0.83 )	1.18 ( 1.16, 1.20 )	1.29 ( 1.27, 1.31 )	1.21 ( 1.20, 1.22 )
	70	0.56 ( 0.55, 0.57 )	0.98 ( 0.96, 1.00 )	- ( - , - )	1.10 ( 1.09, 1.12 )	1.07 ( 1.06, 1.08 )
80	0.60 ( 0.58, 0.61 )	- ( - , - )	- ( - , - )	0.77 ( 0.76, 0.79 )	0.79 ( 0.79, 0.80 )	
White	0	0.00 ( 0.00, 0.00 )	0.00 ( 0.00, 0.00 )	0.00 ( 0.00, 0.00 )	1.30 ( 1.28, 1.32 )	1.20 ( 1.19, 1.20 )
	10	0.00 ( 0.00, 0.00 )	0.00 ( 0.00, 0.00 )	0.01 ( 0.01, 0.01 )	1.31 ( 1.29, 1.33 )	1.21 ( 1.20, 1.22 )
	20	0.00 ( 0.00, 0.00 )	0.01 ( 0.01, 0.01 )	0.05 ( 0.04, 0.05 )	1.32 ( 1.30, 1.34 )	1.22 ( 1.21, 1.22 )
	30	0.01 ( 0.01, 0.01 )	0.05 ( 0.04, 0.05 )	0.17 ( 0.17, 0.18 )	1.33 ( 1.31, 1.35 )	1.23 ( 1.22, 1.23 )
	40	0.04 ( 0.04, 0.04 )	0.17 ( 0.16, 0.17 )	0.47 ( 0.46, 0.48 )	1.34 ( 1.32, 1.35 )	1.24 ( 1.23, 1.24 )
	50	0.13 ( 0.13, 0.14 )	0.44 ( 0.43, 0.45 )	0.90 ( 0.88, 0.91 )	1.33 ( 1.31, 1.35 )	1.24 ( 1.23, 1.25 )
	60	0.33 ( 0.32, 0.33 )	0.81 ( 0.80, 0.83 )	1.17 ( 1.15, 1.19 )	1.27 ( 1.25, 1.29 )	1.20 ( 1.19, 1.21 )
	70	0.56 ( 0.55, 0.57 )	0.97 ( 0.95, 0.99 )	- ( - , - )	1.09 ( 1.07, 1.11 )	1.06 ( 1.05, 1.06 )
80	0.59 ( 0.57, 0.60 )	- ( - , - )	- ( - , - )	0.75 ( 0.73, 0.77 )	0.78 ( 0.77, 0.79 )	
Black	0	0.00 ( 0.00, 0.00 )	0.00 ( 0.00, 0.00 )	0.00 ( 0.00, 0.00 )	1.40 ( 1.34, 1.46 )	1.26 ( 1.24, 1.29 )
	10	0.00 ( 0.00, 0.00 )	0.00 ( 0.00, 0.00 )	0.01 ( 0.01, 0.01 )	1.43 ( 1.38, 1.49 )	1.29 ( 1.27, 1.32 )
	20	0.00 ( 0.00, 0.00 )	0.01 ( 0.01, 0.01 )	0.06 ( 0.06, 0.07 )	1.44 ( 1.38, 1.50 )	1.30 ( 1.28, 1.33 )
	30	0.01 ( 0.01, 0.01 )	0.06 ( 0.06, 0.07 )	0.24 ( 0.22, 0.25 )	1.46 ( 1.41, 1.53 )	1.32 ( 1.29, 1.35 )
	40	0.06 ( 0.05, 0.06 )	0.23 ( 0.22, 0.25 )	0.61 ( 0.58, 0.64 )	1.49 ( 1.43, 1.55 )	1.35 ( 1.32, 1.37 )
	50	0.19 ( 0.17, 0.20 )	0.58 ( 0.55, 0.62 )	1.08 ( 1.03, 1.13 )	1.51 ( 1.45, 1.58 )	1.37 ( 1.34, 1.40 )
	60	0.44 ( 0.41, 0.47 )	0.99 ( 0.95, 1.05 )	1.35 ( 1.29, 1.41 )	1.48 ( 1.42, 1.55 )	1.34 ( 1.31, 1.37 )
	70	0.69 ( 0.65, 0.74 )	1.14 ( 1.07, 1.20 )	- ( - , - )	1.30 ( 1.23, 1.38 )	1.21 ( 1.17, 1.24 )
80	0.71 ( 0.65, 0.78 )	- ( - , - )	- ( - , - )	0.98 ( 0.90, 1.07 )	0.92 ( 0.88, 0.96 )	

Devcan Version 6.2.0, April 2006, National Cancer Institute (<http://srab.cancer.gov/devcan/>).

Source: Incidence data are from the SEER 17 areas (San Francisco, Connecticut, Detroit, Hawaii, Iowa, New Mexico, Seattle, Utah, Atlanta, San Jose-Monterey, Los Angeles, Alaska Native Registry, Rural Georgia, California excluding SF/SJM/LA, Kentucky, Louisiana and New Jersey). Mortality data are from the NCHS public use data file for the total US.

- Statistic could not be calculated.

A percent or confidence interval value of 0.00 represents a value that is below 0.005.

Table XXII-9 - continued  
PANCREAS CANCER (Invasive)

Risk of Being Diagnosed With Cancer in 10, 20 and 30 Years, Lifetime Risk of Being Diagnosed with Cancer, and  
 Lifetime Risk of Dying from Cancer Given Cancer Free At Current Age  
 Both Sexes, 2002-2004 By Race/Ethnicity

Race/ Ethnicity	Current Age	Risk of Being Diagnosed with Cancer				Risk of Dying from Cancer	
		+10 yrs Percent ( 95% C.I. )	+20 yrs Percent ( 95% C.I. )	+30 yrs Percent ( 95% C.I. )	Eventually Percent ( 95% C.I. )	Eventually Percent ( 95% C.I. )	
Asian/ Pacific Islander	0	0.00 ( 0.00, 0.00 )	0.00 ( 0.00, 0.00 )	0.00 ( 0.00, 0.00 )	1.34 ( 1.26, 1.44 )	1.21 ( 1.14, 1.29 )	
	10	0.00 ( 0.00, 0.00 )	0.00 ( 0.00, 0.00 )	0.01 ( 0.01, 0.01 )	1.35 ( 1.27, 1.45 )	1.22 ( 1.15, 1.30 )	
	20	0.00 ( 0.00, 0.00 )	0.01 ( 0.01, 0.01 )	0.04 ( 0.03, 0.04 )	1.36 ( 1.27, 1.45 )	1.23 ( 1.15, 1.31 )	
	30	0.01 ( 0.01, 0.01 )	0.04 ( 0.03, 0.04 )	0.13 ( 0.12, 0.15 )	1.36 ( 1.28, 1.46 )	1.23 ( 1.16, 1.31 )	
	40	0.03 ( 0.02, 0.03 )	0.13 ( 0.11, 0.14 )	0.36 ( 0.34, 0.39 )	1.36 ( 1.28, 1.46 )	1.23 ( 1.16, 1.31 )	
	50	0.10 ( 0.09, 0.11 )	0.34 ( 0.31, 0.37 )	0.74 ( 0.69, 0.78 )	1.35 ( 1.27, 1.45 )	1.23 ( 1.15, 1.31 )	
	60	0.25 ( 0.23, 0.27 )	0.66 ( 0.62, 0.70 )	1.10 ( 1.03, 1.17 )	1.30 ( 1.21, 1.40 )	1.19 ( 1.11, 1.27 )	
	70	0.45 ( 0.41, 0.48 )	0.92 ( 0.86, 0.99 )	- ( - , - )	1.14 ( 1.05, 1.24 )	1.07 ( 1.00, 1.16 )	
80	0.59 ( 0.53, 0.66 )	- ( - , - )	- ( - , - )	0.86 ( 0.76, 0.98 )	0.84 ( 0.76, 0.95 )		
American Indian/ Alaska Native <sup>a</sup>	0	0.00 ( 0.00, 0.02 )	0.00 ( 0.00, 0.02 )	0.00 ( 0.00, 0.03 )	0.96 ( 0.75, 1.32 )	0.80 ( 0.68, 0.96 )	
	10	0.00 ( 0.00, 0.01 )	0.00 ( 0.00, 0.02 )	0.02 ( 0.01, 0.04 )	0.98 ( 0.76, 1.34 )	0.81 ( 0.69, 0.98 )	
	20	0.00 ( 0.00, 0.01 )	0.02 ( 0.01, 0.04 )	0.06 ( 0.03, 0.09 )	0.98 ( 0.76, 1.35 )	0.82 ( 0.70, 0.99 )	
	30	0.01 ( 0.00, 0.04 )	0.06 ( 0.03, 0.09 )	0.13 ( 0.09, 0.18 )	1.00 ( 0.78, 1.37 )	0.84 ( 0.71, 1.00 )	
	40	0.04 ( 0.02, 0.07 )	0.12 ( 0.08, 0.17 )	0.38 ( 0.28, 0.50 )	1.01 ( 0.78, 1.40 )	0.86 ( 0.72, 1.03 )	
	50	0.08 ( 0.04, 0.12 )	0.35 ( 0.25, 0.47 )	0.71 ( 0.54, 0.91 )	1.00 ( 0.77, 1.41 )	0.87 ( 0.74, 1.05 )	
	60	0.29 ( 0.20, 0.41 )	0.68 ( 0.51, 0.89 )	0.95 ( 0.72, 1.24 )	1.00 ( 0.75, 1.43 )	0.85 ( 0.70, 1.05 )	
	70	0.45 ( 0.31, 0.65 )	0.77 ( 0.54, 1.07 )	- ( - , - )	0.83 ( 0.58, 1.31 )	0.74 ( 0.57, 0.96 )	
80	0.44 ( 0.24, 0.77 )	- ( - , - )	- ( - , - )	0.52 ( 0.28, 1.14 )	0.58 ( 0.38, 0.87 )		
Hispanic <sup>b</sup>	0	0.00 ( 0.00, 0.00 )	0.00 ( 0.00, 0.00 )	0.00 ( 0.00, 0.00 )	1.46 ( 1.38, 1.55 )	1.13 ( 1.09, 1.18 )	
	10	0.00 ( 0.00, 0.00 )	0.00 ( 0.00, 0.00 )	0.01 ( 0.01, 0.01 )	1.48 ( 1.40, 1.57 )	1.15 ( 1.11, 1.19 )	
	20	0.00 ( 0.00, 0.00 )	0.01 ( 0.01, 0.01 )	0.04 ( 0.03, 0.04 )	1.48 ( 1.40, 1.57 )	1.15 ( 1.11, 1.20 )	
	30	0.01 ( 0.01, 0.01 )	0.04 ( 0.03, 0.04 )	0.15 ( 0.14, 0.16 )	1.49 ( 1.41, 1.58 )	1.16 ( 1.12, 1.21 )	
	40	0.03 ( 0.02, 0.03 )	0.14 ( 0.13, 0.15 )	0.43 ( 0.40, 0.45 )	1.50 ( 1.42, 1.59 )	1.17 ( 1.13, 1.22 )	
	50	0.12 ( 0.11, 0.13 )	0.41 ( 0.38, 0.43 )	0.89 ( 0.84, 0.93 )	1.51 ( 1.42, 1.60 )	1.18 ( 1.13, 1.22 )	
	60	0.31 ( 0.28, 0.33 )	0.81 ( 0.76, 0.85 )	1.22 ( 1.16, 1.29 )	1.46 ( 1.37, 1.56 )	1.15 ( 1.10, 1.19 )	
	70	0.56 ( 0.52, 0.60 )	1.02 ( 0.96, 1.09 )	- ( - , - )	1.29 ( 1.20, 1.40 )	1.03 ( 0.98, 1.08 )	
80	0.61 ( 0.55, 0.68 )	- ( - , - )	- ( - , - )	0.97 ( 0.86, 1.09 )	0.79 ( 0.74, 0.85 )		

Devcan Version 6.2.0, April 2006, National Cancer Institute (<http://srab.cancer.gov/devcan/>).

Source: Incidence data are from the SEER 17 areas (San Francisco, Connecticut, Detroit, Hawaii, Iowa, New Mexico, Seattle, Utah, Atlanta, San Jose-Monterey, Los Angeles, Alaska Native Registry, Rural Georgia, California excluding SF/SJM/LA, Kentucky, Louisiana and New Jersey). Mortality data are from the NCHS public use data file for the total US.

<sup>a</sup> Underlying incidence and mortality data for American Indian/Alaska Native are based on the CHSDA (Contract Health Service Delivery Area) counties.

<sup>b</sup> Hispanic is not mutually exclusive from whites, blacks, Asian/Pacific Islanders, and American Indians/Alaska Natives. Underlying incidence data for Hispanics are based on NHIA and exclude cases from the Alaska Native Registry and Kentucky. Underlying mortality data for Hispanics exclude deaths from Minnesota, New Hampshire and North Dakota.

- Statistic could not be calculated.

A percent or confidence interval value of 0.00 represents a value that is below 0.005.

Table XXII-9 - continued  
PANCREAS CANCER (Invasive)

Risk of Being Diagnosed With Cancer in 10, 20 and 30 Years, Lifetime Risk of Being Diagnosed with Cancer, and  
 Lifetime Risk of Dying from Cancer Given Cancer Free At Current Age  
 Males, 2002-2004 By Race/Ethnicity

Race/ Ethnicity	Current Age	Risk of Being Diagnosed with Cancer				Risk of Dying from Cancer	
		+10 yrs Percent ( 95% C.I. )	+20 yrs Percent ( 95% C.I. )	+30 yrs Percent ( 95% C.I. )	Eventually Percent ( 95% C.I. )	Eventually Percent ( 95% C.I. )	
All Races	0	0.00 ( 0.00, 0.00 )	0.00 ( 0.00, 0.00 )	0.00 ( 0.00, 0.00 )	1.30 ( 1.27, 1.32 )	1.20 ( 1.19, 1.21 )	
	10	0.00 ( 0.00, 0.00 )	0.00 ( 0.00, 0.00 )	0.01 ( 0.01, 0.01 )	1.31 ( 1.29, 1.34 )	1.22 ( 1.21, 1.23 )	
	20	0.00 ( 0.00, 0.00 )	0.01 ( 0.01, 0.01 )	0.05 ( 0.05, 0.06 )	1.32 ( 1.30, 1.35 )	1.23 ( 1.22, 1.24 )	
	30	0.01 ( 0.01, 0.01 )	0.05 ( 0.05, 0.06 )	0.21 ( 0.20, 0.22 )	1.34 ( 1.31, 1.36 )	1.24 ( 1.23, 1.25 )	
	40	0.05 ( 0.04, 0.05 )	0.20 ( 0.20, 0.21 )	0.54 ( 0.52, 0.55 )	1.35 ( 1.33, 1.38 )	1.26 ( 1.25, 1.27 )	
	50	0.16 ( 0.16, 0.17 )	0.51 ( 0.50, 0.52 )	0.99 ( 0.97, 1.01 )	1.35 ( 1.33, 1.38 )	1.27 ( 1.26, 1.28 )	
	60	0.37 ( 0.36, 0.39 )	0.89 ( 0.87, 0.91 )	1.21 ( 1.18, 1.24 )	1.28 ( 1.26, 1.31 )	1.22 ( 1.21, 1.23 )	
	70	0.61 ( 0.60, 0.63 )	1.00 ( 0.97, 1.02 )	- ( - , - )	1.08 ( 1.06, 1.11 )	1.06 ( 1.05, 1.07 )	
80	0.59 ( 0.57, 0.61 )	- ( - , - )	- ( - , - )	0.73 ( 0.70, 0.76 )	0.77 ( 0.76, 0.79 )		
White	0	0.00 ( 0.00, 0.00 )	0.00 ( 0.00, 0.00 )	0.00 ( 0.00, 0.00 )	1.30 ( 1.28, 1.33 )	1.21 ( 1.20, 1.22 )	
	10	0.00 ( 0.00, 0.00 )	0.00 ( 0.00, 0.00 )	0.01 ( 0.01, 0.01 )	1.32 ( 1.29, 1.35 )	1.23 ( 1.21, 1.24 )	
	20	0.00 ( 0.00, 0.00 )	0.01 ( 0.01, 0.01 )	0.05 ( 0.05, 0.06 )	1.32 ( 1.30, 1.35 )	1.23 ( 1.22, 1.25 )	
	30	0.01 ( 0.01, 0.01 )	0.05 ( 0.05, 0.06 )	0.21 ( 0.20, 0.22 )	1.34 ( 1.31, 1.37 )	1.25 ( 1.24, 1.26 )	
	40	0.05 ( 0.04, 0.05 )	0.20 ( 0.19, 0.21 )	0.53 ( 0.52, 0.55 )	1.35 ( 1.32, 1.38 )	1.26 ( 1.25, 1.28 )	
	50	0.16 ( 0.16, 0.17 )	0.51 ( 0.49, 0.52 )	0.99 ( 0.97, 1.01 )	1.35 ( 1.32, 1.38 )	1.27 ( 1.26, 1.28 )	
	60	0.37 ( 0.36, 0.38 )	0.89 ( 0.87, 0.91 )	1.21 ( 1.18, 1.24 )	1.28 ( 1.25, 1.31 )	1.22 ( 1.21, 1.23 )	
	70	0.62 ( 0.60, 0.64 )	1.00 ( 0.97, 1.02 )	- ( - , - )	1.08 ( 1.05, 1.11 )	1.06 ( 1.04, 1.07 )	
80	0.59 ( 0.57, 0.61 )	- ( - , - )	- ( - , - )	0.72 ( 0.69, 0.75 )	0.77 ( 0.75, 0.79 )		
Black	0	0.00 ( 0.00, 0.00 )	0.00 ( 0.00, 0.00 )	0.00 ( 0.00, 0.00 )	1.25 ( 1.17, 1.33 )	1.18 ( 1.15, 1.21 )	
	10	0.00 ( 0.00, 0.00 )	0.00 ( 0.00, 0.00 )	0.01 ( 0.01, 0.02 )	1.28 ( 1.20, 1.36 )	1.21 ( 1.18, 1.25 )	
	20	0.00 ( 0.00, 0.00 )	0.01 ( 0.01, 0.02 )	0.07 ( 0.06, 0.08 )	1.29 ( 1.21, 1.37 )	1.22 ( 1.19, 1.26 )	
	30	0.01 ( 0.01, 0.02 )	0.07 ( 0.06, 0.08 )	0.28 ( 0.26, 0.31 )	1.32 ( 1.24, 1.41 )	1.25 ( 1.21, 1.29 )	
	40	0.06 ( 0.05, 0.07 )	0.28 ( 0.25, 0.31 )	0.68 ( 0.63, 0.73 )	1.35 ( 1.27, 1.44 )	1.28 ( 1.24, 1.32 )	
	50	0.23 ( 0.21, 0.26 )	0.66 ( 0.61, 0.71 )	1.12 ( 1.05, 1.20 )	1.38 ( 1.30, 1.47 )	1.31 ( 1.27, 1.35 )	
	60	0.50 ( 0.45, 0.55 )	1.03 ( 0.95, 1.11 )	1.27 ( 1.18, 1.36 )	1.33 ( 1.23, 1.43 )	1.26 ( 1.22, 1.31 )	
	70	0.71 ( 0.64, 0.78 )	1.02 ( 0.93, 1.12 )	- ( - , - )	1.11 ( 1.01, 1.22 )	1.11 ( 1.06, 1.16 )	
80	0.58 ( 0.49, 0.68 )	- ( - , - )	- ( - , - )	0.73 ( 0.61, 0.87 )	0.81 ( 0.75, 0.87 )		

Devcan Version 6.2.0, April 2006, National Cancer Institute (<http://srab.cancer.gov/devcan/>).

Source: Incidence data are from the SEER 17 areas (San Francisco, Connecticut, Detroit, Hawaii, Iowa, New Mexico, Seattle, Utah, Atlanta, San Jose-Monterey, Los Angeles, Alaska Native Registry, Rural Georgia, California excluding SF/SJM/LA, Kentucky, Louisiana and New Jersey). Mortality data are from the NCHS public use data file for the total US.

- Statistic could not be calculated.

A percent or confidence interval value of 0.00 represents a value that is below 0.005.

Table XXII-9 - continued  
 PANCREAS CANCER (Invasive)

Risk of Being Diagnosed With Cancer in 10, 20 and 30 Years, Lifetime Risk of Being Diagnosed with Cancer, and  
 Lifetime Risk of Dying from Cancer Given Cancer Free At Current Age  
 Males, 2002-2004 By Race/Ethnicity

Race/ Ethnicity	Current Age	Risk of Being Diagnosed with Cancer				Risk of Dying from Cancer	
		+10 yrs Percent ( 95% C.I. )	+20 yrs Percent ( 95% C.I. )	+30 yrs Percent ( 95% C.I. )	Eventually Percent ( 95% C.I. )	Eventually Percent ( 95% C.I. )	
Asian/ Pacific Islander	0	0.00 ( 0.00, 0.00 )	0.00 ( 0.00, 0.00 )	0.00 ( 0.00, 0.01 )	1.33 ( 1.21, 1.46 )	1.14 ( 1.05, 1.25 )	
	10	0.00 ( 0.00, 0.00 )	0.00 ( 0.00, 0.00 )	0.01 ( 0.01, 0.02 )	1.34 ( 1.22, 1.48 )	1.15 ( 1.06, 1.27 )	
	20	0.00 ( 0.00, 0.00 )	0.01 ( 0.01, 0.02 )	0.04 ( 0.03, 0.05 )	1.34 ( 1.23, 1.48 )	1.16 ( 1.07, 1.27 )	
	30	0.01 ( 0.01, 0.01 )	0.04 ( 0.03, 0.05 )	0.14 ( 0.12, 0.16 )	1.35 ( 1.24, 1.49 )	1.16 ( 1.07, 1.28 )	
	40	0.03 ( 0.02, 0.04 )	0.13 ( 0.12, 0.16 )	0.40 ( 0.36, 0.44 )	1.35 ( 1.24, 1.49 )	1.17 ( 1.07, 1.28 )	
	50	0.11 ( 0.09, 0.12 )	0.37 ( 0.33, 0.42 )	0.81 ( 0.74, 0.88 )	1.35 ( 1.23, 1.49 )	1.16 ( 1.07, 1.28 )	
	60	0.28 ( 0.24, 0.32 )	0.73 ( 0.66, 0.80 )	1.13 ( 1.04, 1.24 )	1.29 ( 1.17, 1.44 )	1.12 ( 1.02, 1.24 )	
	70	0.50 ( 0.44, 0.56 )	0.95 ( 0.85, 1.06 )	- ( - , - )	1.13 ( 1.00, 1.28 )	1.00 ( 0.90, 1.13 )	
	80	0.59 ( 0.50, 0.70 )	- ( - , - )	- ( - , - )	0.83 ( 0.69, 1.01 )	0.77 ( 0.65, 0.92 )	
American Indian/ Alaska Native <sup>a</sup>	0	0.00 ( 0.00, 0.04 )	0.00 ( 0.00, 0.04 )	0.00 ( 0.00, 0.04 )	0.93 ( 0.66, 1.64 )	0.79 ( 0.60, 1.07 )	
	10	0.00 ( 0.00, 0.02 )	0.00 ( 0.00, 0.02 )	0.02 ( 0.01, 0.06 )	0.95 ( 0.67, 1.67 )	0.80 ( 0.61, 1.09 )	
	20	0.00 ( 0.00, 0.02 )	0.02 ( 0.01, 0.06 )	0.08 ( 0.04, 0.14 )	0.96 ( 0.68, 1.69 )	0.81 ( 0.62, 1.11 )	
	30	0.02 ( 0.01, 0.06 )	0.08 ( 0.04, 0.14 )	0.16 ( 0.09, 0.25 )	0.99 ( 0.70, 1.73 )	0.83 ( 0.63, 1.14 )	
	40	0.06 ( 0.03, 0.11 )	0.14 ( 0.08, 0.23 )	0.45 ( 0.31, 0.66 )	1.00 ( 0.70, 1.77 )	0.86 ( 0.66, 1.18 )	
	50	0.09 ( 0.04, 0.17 )	0.42 ( 0.27, 0.62 )	0.81 ( 0.56, 1.14 )	0.99 ( 0.68, 1.81 )	0.88 ( 0.66, 1.22 )	
	60	0.36 ( 0.22, 0.57 )	0.79 ( 0.53, 1.15 )	0.98 ( 0.65, 1.45 )	0.99 ( 0.66, 1.87 )	0.86 ( 0.63, 1.23 )	
	70	0.51 ( 0.29, 0.85 )	0.74 ( 0.42, 1.24 )	- ( - , - )	0.75 ( 0.43, 1.79 )	0.76 ( 0.49, 1.21 )	
	80	0.34 ( 0.09, 0.92 )	- ( - , - )	- ( - , - )	0.36 ( 0.09, 1.91 )	0.69 ( 0.34, 1.37 )	
Hispanic <sup>b</sup>	0	0.00 ( 0.00, 0.00 )	0.00 ( 0.00, 0.00 )	0.00 ( 0.00, 0.00 )	1.26 ( 1.16, 1.38 )	1.06 ( 1.00, 1.12 )	
	10	0.00 ( 0.00, 0.00 )	0.00 ( 0.00, 0.00 )	0.01 ( 0.01, 0.01 )	1.27 ( 1.18, 1.39 )	1.07 ( 1.01, 1.13 )	
	20	0.00 ( 0.00, 0.00 )	0.01 ( 0.01, 0.01 )	0.04 ( 0.03, 0.05 )	1.28 ( 1.18, 1.40 )	1.08 ( 1.02, 1.14 )	
	30	0.01 ( 0.01, 0.01 )	0.04 ( 0.03, 0.05 )	0.16 ( 0.14, 0.18 )	1.29 ( 1.19, 1.42 )	1.09 ( 1.03, 1.15 )	
	40	0.03 ( 0.03, 0.04 )	0.16 ( 0.14, 0.17 )	0.45 ( 0.41, 0.49 )	1.30 ( 1.20, 1.43 )	1.10 ( 1.04, 1.16 )	
	50	0.13 ( 0.11, 0.14 )	0.43 ( 0.39, 0.47 )	0.91 ( 0.84, 0.97 )	1.31 ( 1.21, 1.44 )	1.11 ( 1.05, 1.17 )	
	60	0.32 ( 0.29, 0.36 )	0.83 ( 0.76, 0.90 )	1.15 ( 1.06, 1.25 )	1.26 ( 1.15, 1.39 )	1.07 ( 1.01, 1.14 )	
	70	0.58 ( 0.53, 0.65 )	0.96 ( 0.87, 1.06 )	- ( - , - )	1.08 ( 0.97, 1.23 )	0.93 ( 0.86, 1.00 )	
	80	0.53 ( 0.44, 0.62 )	- ( - , - )	- ( - , - )	0.70 ( 0.58, 0.88 )	0.66 ( 0.58, 0.75 )	

Devcan Version 6.2.0, April 2006, National Cancer Institute (<http://srab.cancer.gov/devcan/>).

Source: Incidence data are from the SEER 17 areas (San Francisco, Connecticut, Detroit, Hawaii, Iowa, New Mexico, Seattle, Utah, Atlanta, San Jose-Monterey, Los Angeles, Alaska Native Registry, Rural Georgia, California excluding SF/SJM/LA, Kentucky, Louisiana and New Jersey). Mortality data are from the NCHS public use data file for the total US.

<sup>a</sup> Underlying incidence and mortality data for American Indian/Alaska Native are based on the CHSDA (Contract Health Service Delivery Area) counties.

<sup>b</sup> Hispanic is not mutually exclusive from whites, blacks, Asian/Pacific Islanders, and American Indians/Alaska Natives. Underlying incidence data for Hispanics are based on NHIA and exclude cases from the Alaska Native Registry and Kentucky. Underlying mortality data for Hispanics exclude deaths from Minnesota, New Hampshire and North Dakota.

- Statistic could not be calculated.

A percent or confidence interval value of 0.00 represents a value that is below 0.005.

Table XXII-9 - continued  
PANCREAS CANCER (Invasive)

Risk of Being Diagnosed With Cancer in 10, 20 and 30 Years, Lifetime Risk of Being Diagnosed with Cancer, and  
 Lifetime Risk of Dying from Cancer Given Cancer Free At Current Age  
 Females, 2002-2004 By Race/Ethnicity

Race/ Ethnicity	Current Age	Risk of Being Diagnosed with Cancer				Risk of Dying from Cancer	
		+10 yrs Percent ( 95% C.I. )	+20 yrs Percent ( 95% C.I. )	+30 yrs Percent ( 95% C.I. )	Eventually Percent ( 95% C.I. )	Eventually Percent ( 95% C.I. )	
All Races	0	0.00 ( 0.00, 0.00 )	0.00 ( 0.00, 0.00 )	0.00 ( 0.00, 0.00 )	1.32 ( 1.29, 1.34 )	1.19 ( 1.18, 1.20 )	
	10	0.00 ( 0.00, 0.00 )	0.00 ( 0.00, 0.00 )	0.01 ( 0.01, 0.01 )	1.33 ( 1.31, 1.35 )	1.21 ( 1.20, 1.22 )	
	20	0.00 ( 0.00, 0.00 )	0.01 ( 0.01, 0.01 )	0.04 ( 0.04, 0.04 )	1.33 ( 1.31, 1.36 )	1.21 ( 1.20, 1.22 )	
	30	0.01 ( 0.01, 0.01 )	0.04 ( 0.04, 0.04 )	0.15 ( 0.14, 0.15 )	1.34 ( 1.31, 1.36 )	1.22 ( 1.21, 1.23 )	
	40	0.03 ( 0.03, 0.03 )	0.14 ( 0.13, 0.15 )	0.41 ( 0.40, 0.42 )	1.34 ( 1.32, 1.37 )	1.23 ( 1.21, 1.24 )	
	50	0.11 ( 0.10, 0.11 )	0.39 ( 0.38, 0.40 )	0.83 ( 0.81, 0.85 )	1.34 ( 1.31, 1.36 )	1.23 ( 1.22, 1.24 )	
	60	0.29 ( 0.28, 0.30 )	0.75 ( 0.74, 0.77 )	1.15 ( 1.13, 1.18 )	1.29 ( 1.26, 1.31 )	1.19 ( 1.18, 1.21 )	
	70	0.52 ( 0.50, 0.53 )	0.97 ( 0.95, 0.99 )	- ( - , - )	1.12 ( 1.09, 1.14 )	1.07 ( 1.06, 1.08 )	
80	0.60 ( 0.58, 0.62 )	- ( - , - )	- ( - , - )	0.80 ( 0.78, 0.83 )	0.81 ( 0.79, 0.82 )		
White	0	0.00 ( 0.00, 0.00 )	0.00 ( 0.00, 0.00 )	0.00 ( 0.00, 0.00 )	1.29 ( 1.27, 1.32 )	1.18 ( 1.17, 1.19 )	
	10	0.00 ( 0.00, 0.00 )	0.00 ( 0.00, 0.00 )	0.01 ( 0.01, 0.01 )	1.31 ( 1.28, 1.33 )	1.19 ( 1.18, 1.20 )	
	20	0.00 ( 0.00, 0.00 )	0.01 ( 0.01, 0.01 )	0.04 ( 0.04, 0.04 )	1.31 ( 1.28, 1.33 )	1.20 ( 1.18, 1.21 )	
	30	0.01 ( 0.01, 0.01 )	0.04 ( 0.03, 0.04 )	0.14 ( 0.14, 0.15 )	1.31 ( 1.29, 1.34 )	1.20 ( 1.19, 1.21 )	
	40	0.03 ( 0.03, 0.03 )	0.13 ( 0.13, 0.14 )	0.40 ( 0.39, 0.42 )	1.32 ( 1.29, 1.34 )	1.21 ( 1.20, 1.22 )	
	50	0.11 ( 0.10, 0.11 )	0.38 ( 0.37, 0.39 )	0.82 ( 0.80, 0.84 )	1.31 ( 1.28, 1.34 )	1.21 ( 1.20, 1.22 )	
	60	0.29 ( 0.27, 0.30 )	0.74 ( 0.72, 0.76 )	1.13 ( 1.11, 1.16 )	1.26 ( 1.23, 1.28 )	1.17 ( 1.16, 1.19 )	
	70	0.51 ( 0.50, 0.53 )	0.95 ( 0.93, 0.97 )	- ( - , - )	1.09 ( 1.06, 1.11 )	1.05 ( 1.04, 1.06 )	
80	0.59 ( 0.57, 0.61 )	- ( - , - )	- ( - , - )	0.77 ( 0.75, 0.80 )	0.79 ( 0.78, 0.80 )		
Black	0	0.00 ( 0.00, 0.00 )	0.00 ( 0.00, 0.00 )	0.00 ( 0.00, 0.00 )	1.53 ( 1.45, 1.62 )	1.33 ( 1.30, 1.37 )	
	10	0.00 ( 0.00, 0.00 )	0.00 ( 0.00, 0.00 )	0.01 ( 0.00, 0.01 )	1.57 ( 1.48, 1.65 )	1.37 ( 1.33, 1.40 )	
	20	0.00 ( 0.00, 0.00 )	0.01 ( 0.00, 0.01 )	0.06 ( 0.05, 0.07 )	1.57 ( 1.49, 1.66 )	1.37 ( 1.33, 1.41 )	
	30	0.01 ( 0.00, 0.01 )	0.06 ( 0.05, 0.07 )	0.20 ( 0.18, 0.22 )	1.58 ( 1.50, 1.67 )	1.38 ( 1.34, 1.42 )	
	40	0.05 ( 0.04, 0.06 )	0.20 ( 0.18, 0.22 )	0.55 ( 0.51, 0.59 )	1.60 ( 1.52, 1.69 )	1.40 ( 1.36, 1.44 )	
	50	0.15 ( 0.13, 0.17 )	0.52 ( 0.48, 0.56 )	1.04 ( 0.97, 1.10 )	1.62 ( 1.53, 1.71 )	1.42 ( 1.39, 1.46 )	
	60	0.40 ( 0.36, 0.44 )	0.97 ( 0.90, 1.04 )	1.42 ( 1.33, 1.50 )	1.60 ( 1.50, 1.70 )	1.40 ( 1.36, 1.45 )	
	70	0.68 ( 0.62, 0.74 )	1.21 ( 1.13, 1.30 )	- ( - , - )	1.43 ( 1.33, 1.54 )	1.27 ( 1.23, 1.31 )	
80	0.79 ( 0.71, 0.88 )	- ( - , - )	- ( - , - )	1.11 ( 1.00, 1.23 )	0.98 ( 0.93, 1.03 )		

Devcan Version 6.2.0, April 2006, National Cancer Institute (<http://srab.cancer.gov/devcan/>).

Source: Incidence data are from the SEER 17 areas (San Francisco, Connecticut, Detroit, Hawaii, Iowa, New Mexico, Seattle, Utah, Atlanta, San Jose-Monterey, Los Angeles, Alaska Native Registry, Rural Georgia, California excluding SF/SJM/LA, Kentucky, Louisiana and New Jersey). Mortality data are from the NCHS public use data file for the total US.

- Statistic could not be calculated.

A percent or confidence interval value of 0.00 represents a value that is below 0.005.

Table XXII-9 - continued  
PANCREAS CANCER (Invasive)

Risk of Being Diagnosed With Cancer in 10, 20 and 30 Years, Lifetime Risk of Being Diagnosed with Cancer, and  
 Lifetime Risk of Dying from Cancer Given Cancer Free At Current Age  
 Females, 2002-2004 By Race/Ethnicity

Race/ Ethnicity	Current Age	Risk of Being Diagnosed with Cancer				Risk of Dying from Cancer	
		+10 yrs Percent ( 95% C.I. )	+20 yrs Percent ( 95% C.I. )	+30 yrs Percent ( 95% C.I. )	Eventually Percent ( 95% C.I. )	Eventually Percent ( 95% C.I. )	
Asian/ Pacific Islander	0	0.00 ( 0.00, 0.00 )	0.00 ( 0.00, 0.00 )	0.00 ( 0.00, 0.01 )	1.35 ( 1.23, 1.50 )	1.27 ( 1.16, 1.40 )	
	10	0.00 ( 0.00, 0.00 )	0.00 ( 0.00, 0.00 )	0.01 ( 0.00, 0.01 )	1.37 ( 1.24, 1.51 )	1.28 ( 1.17, 1.41 )	
	20	0.00 ( 0.00, 0.00 )	0.01 ( 0.00, 0.01 )	0.03 ( 0.03, 0.04 )	1.37 ( 1.25, 1.51 )	1.29 ( 1.18, 1.41 )	
	30	0.01 ( 0.00, 0.01 )	0.03 ( 0.02, 0.04 )	0.12 ( 0.11, 0.14 )	1.37 ( 1.25, 1.52 )	1.29 ( 1.18, 1.42 )	
	40	0.03 ( 0.02, 0.03 )	0.12 ( 0.10, 0.14 )	0.33 ( 0.30, 0.37 )	1.37 ( 1.25, 1.52 )	1.29 ( 1.18, 1.42 )	
	50	0.09 ( 0.08, 0.11 )	0.31 ( 0.28, 0.34 )	0.68 ( 0.62, 0.74 )	1.36 ( 1.23, 1.51 )	1.29 ( 1.18, 1.42 )	
	60	0.22 ( 0.19, 0.25 )	0.60 ( 0.55, 0.66 )	1.07 ( 0.98, 1.16 )	1.30 ( 1.17, 1.45 )	1.25 ( 1.14, 1.38 )	
	70	0.40 ( 0.36, 0.45 )	0.90 ( 0.82, 0.99 )	- ( - , - )	1.15 ( 1.02, 1.31 )	1.13 ( 1.02, 1.27 )	
80	0.59 ( 0.51, 0.68 )	- ( - , - )	- ( - , - )	0.89 ( 0.75, 1.06 )	0.90 ( 0.78, 1.06 )		
American Indian/ Alaska Native <sup>a</sup>	0	0.00 ( 0.00, 0.04 )	0.00 ( 0.00, 0.05 )	0.01 ( 0.00, 0.05 )	0.97 ( 0.67, 1.57 )	0.83 ( 0.66, 1.06 )	
	10	0.00 ( 0.00, 0.03 )	0.01 ( 0.00, 0.03 )	0.01 ( 0.00, 0.05 )	0.99 ( 0.68, 1.59 )	0.84 ( 0.67, 1.08 )	
	20	0.00 ( 0.00, 0.03 )	0.01 ( 0.00, 0.04 )	0.04 ( 0.01, 0.08 )	0.99 ( 0.68, 1.59 )	0.84 ( 0.68, 1.08 )	
	30	0.01 ( 0.00, 0.04 )	0.04 ( 0.01, 0.08 )	0.10 ( 0.05, 0.18 )	0.99 ( 0.69, 1.61 )	0.85 ( 0.68, 1.09 )	
	40	0.03 ( 0.01, 0.07 )	0.09 ( 0.05, 0.17 )	0.30 ( 0.19, 0.46 )	1.00 ( 0.69, 1.63 )	0.86 ( 0.69, 1.11 )	
	50	0.06 ( 0.03, 0.13 )	0.28 ( 0.17, 0.44 )	0.62 ( 0.41, 0.89 )	1.00 ( 0.68, 1.65 )	0.88 ( 0.70, 1.13 )	
	60	0.23 ( 0.13, 0.38 )	0.58 ( 0.38, 0.87 )	0.92 ( 0.62, 1.33 )	0.99 ( 0.66, 1.67 )	0.85 ( 0.67, 1.12 )	
	70	0.40 ( 0.23, 0.67 )	0.79 ( 0.49, 1.23 )	- ( - , - )	0.87 ( 0.54, 1.63 )	0.73 ( 0.53, 1.03 )	
80	0.51 ( 0.24, 0.99 )	- ( - , - )	- ( - , - )	0.63 ( 0.29, 1.59 )	0.52 ( 0.31, 0.89 )		
Hispanic <sup>b</sup>	0	0.00 ( 0.00, 0.00 )	0.00 ( 0.00, 0.00 )	0.00 ( 0.00, 0.00 )	1.63 ( 1.51, 1.76 )	1.19 ( 1.13, 1.26 )	
	10	0.00 ( 0.00, 0.00 )	0.00 ( 0.00, 0.00 )	0.01 ( 0.01, 0.01 )	1.65 ( 1.52, 1.78 )	1.21 ( 1.15, 1.27 )	
	20	0.00 ( 0.00, 0.00 )	0.01 ( 0.01, 0.01 )	0.03 ( 0.03, 0.04 )	1.65 ( 1.53, 1.79 )	1.21 ( 1.15, 1.28 )	
	30	0.01 ( 0.00, 0.01 )	0.03 ( 0.03, 0.04 )	0.14 ( 0.12, 0.15 )	1.65 ( 1.53, 1.79 )	1.21 ( 1.15, 1.28 )	
	40	0.03 ( 0.02, 0.03 )	0.13 ( 0.11, 0.15 )	0.41 ( 0.37, 0.44 )	1.66 ( 1.53, 1.80 )	1.22 ( 1.16, 1.29 )	
	50	0.11 ( 0.09, 0.12 )	0.39 ( 0.35, 0.42 )	0.87 ( 0.81, 0.93 )	1.66 ( 1.53, 1.80 )	1.22 ( 1.16, 1.29 )	
	60	0.29 ( 0.26, 0.32 )	0.79 ( 0.73, 0.85 )	1.27 ( 1.19, 1.37 )	1.60 ( 1.48, 1.75 )	1.19 ( 1.13, 1.26 )	
	70	0.54 ( 0.49, 0.60 )	1.07 ( 0.99, 1.17 )	- ( - , - )	1.43 ( 1.30, 1.58 )	1.08 ( 1.02, 1.16 )	
80	0.67 ( 0.59, 0.75 )	- ( - , - )	- ( - , - )	1.12 ( 0.97, 1.30 )	0.87 ( 0.79, 0.95 )		

Devcan Version 6.2.0, April 2006, National Cancer Institute (<http://srab.cancer.gov/devcan/>).

Source: Incidence data are from the SEER 17 areas (San Francisco, Connecticut, Detroit, Hawaii, Iowa, New Mexico, Seattle, Utah, Atlanta, San Jose-Monterey, Los Angeles, Alaska Native Registry, Rural Georgia, California excluding SF/SJM/LA, Kentucky, Louisiana and New Jersey). Mortality data are from the NCHS public use data file for the total US.

<sup>a</sup> Underlying incidence and mortality data for American Indian/Alaska Native are based on the CHSDA (Contract Health Service Delivery Area) counties.

<sup>b</sup> Hispanic is not mutually exclusive from whites, blacks, Asian/Pacific Islanders, and American Indians/Alaska Natives. Underlying incidence data for Hispanics are based on NHIA and exclude cases from the Alaska Native Registry and Kentucky. Underlying mortality data for Hispanics exclude deaths from Minnesota, New Hampshire and North Dakota.

- Statistic could not be calculated.

A percent or confidence interval value of 0.00 represents a value that is below 0.005.

Table XXII-10  
PANCREAS CANCER (Invasive)

SEER INCIDENCE AND U.S. MORTALITY  
AGE-ADJUSTED RATES AND TRENDS<sup>a</sup>  
 By Race/Ethnicity and Sex

SEER Incidence

RACE/ETHNICITY	Rate 2000-2004 <sup>b</sup>			Trend 1995-2004 <sup>c</sup>		
	Rate per 100,000 persons			APC (%)		
	Total	Males	Females	Total	Males	Females
All Races	11.4	12.9	10.1	0.0	-0.1	0.0
White	11.2	12.8	9.9	0.3	0.2	0.2
White Hispanic <sup>d</sup>	10.7	11.3	10.2	-1.3	-1.7	-1.2
White Non-Hispanic <sup>d</sup>	11.4	13.1	9.9	0.5*	0.4	0.4
Black	15.0	16.2	13.9	-1.6*	-2.1*	-1.3
Asian/Pacific Islander	9.0	10.0	8.3	0.0	-0.4	0.5
Amer Ind/Alaska Nat <sup>e</sup>	9.2	9.5	8.9	-1.1	-	-
Hispanic <sup>d</sup>	10.5	11.0	10.0	-1.1	-1.6	-1.0

U.S. Mortality<sup>f</sup>

RACE/ETHNICITY	Rate 2000-2004			Trend 1995-2004		
	Rate per 100,000 persons			APC (%)		
	Total	Males	Females	Total	Males	Females
All Races	10.6	12.2	9.2	0.1*	0.0	0.1
White	10.4	12.0	9.0	0.3*	0.2	0.2
White Hispanic <sup>d</sup>	8.6	9.4	7.8	0.2	-0.4	0.6
White Non-Hispanic <sup>d</sup>	10.5	12.2	9.1	0.3*	0.3*	0.3*
Black	13.8	15.5	12.4	-0.6*	-0.7*	-0.6*
Asian/Pacific Islander	7.4	7.9	6.9	-0.2	-1.0	0.6
Amer Ind/Alaska Nat						
Total U.S.	6.3	6.6	6.0	0.1	0.1	0.2
CHSDA Counties	7.5	7.6	7.3	1.0	1.2	0.7
Non-CHSDA Counties	4.7	5.3	4.3	-0.8	-	-
Hispanic <sup>d</sup>	8.3	9.1	7.5	0.2	-0.4	0.6

- The APC is the Annual Percent Change over the time interval.
- Statistic not shown. Rate based on less than 16 cases for the time interval. Trend based on less than 10 cases for at least one year within the time interval.
- a Rates are age-adjusted to the 2000 US Std Population (19 age groups - Census P25-1130). Trends are based on rates age-adjusted to the 2000 US Std Population (19 age groups - Census P25-1130).
- b Incidence data used in calculating the rates are from the 17 SEER areas (San Francisco, Connecticut, Detroit, Hawaii, Iowa, New Mexico, Seattle, Utah, Atlanta, San Jose-Monterey, Los Angeles, Alaska Native Registry, Rural Georgia, California excluding SF/SJM/LA, Kentucky, Louisiana and New Jersey).
- c Incidence data used in calculating the trends are from the 13 SEER areas (San Francisco, Connecticut, Detroit, Hawaii, Iowa, New Mexico, Seattle, Utah, Atlanta, San Jose-Monterey, Los Angeles, Alaska Native Registry and Rural Georgia).
- d Hispanic and Non-Hispanic are not mutually exclusive from whites, blacks, Asian/Pacific Islanders, and American Indians/Alaska Natives. Incidence data for Hispanics and Non-Hispanics are based on NHIA and exclude cases from the Alaska Native Registry and Kentucky. The 2000-2004 Hispanic and Non-Hispanic death rates exclude deaths from Minnesota, New Hampshire and North Dakota. The 1995-2004 Hispanic and Non-Hispanic mortality trends exclude deaths from Maine, Minnesota, New Hampshire, North Dakota, and Oklahoma.
- e Incidence data for American Indian/Alaska Native are based on the CHSDA(Contract Health Service Delivery Area) counties.
- f Mortality data are analyzed from a public use file provided by the National Center for Health Statistics (NCHS).
- \* The APC is significantly different from zero (p<.05).

Table XXII-11  
PANCREAS CANCER (Invasive)

AGE-ADJUSTED SEER INCIDENCE RATES<sup>a</sup>  
 By Registry, Race and Sex

	<u>All Races</u>			<u>Whites</u>			<u>Blacks</u>		
	<u>Total</u>	<u>Males</u>	<u>Females</u>	<u>Total</u>	<u>Males</u>	<u>Females</u>	<u>Total</u>	<u>Males</u>	<u>Females</u>
<u>SEER INCIDENCE RATES<sup>a</sup>, 2000-2004</u>									
<u>REGISTRY</u>									
Atlanta & Rural Georgia	10.5	12.1	9.2	9.6	11.2	8.3	13.0	14.3	11.7
Atlanta	10.4	12.2	9.0	9.5	11.2	8.3	13.0	14.9	11.4
Rural Georgia	11.3	10.5	11.1	10.3	10.5	8.9	13.7	-	15.4
California	10.8	12.1	9.8	10.9	12.3	9.8	14.9	15.5	14.1
Greater Bay Area	10.6	11.5	9.9	10.8	11.8	10.0	15.3	14.9	15.0
San Francisco-Oakland	10.7	11.7	9.9	10.9	12.0	9.8	15.5	14.6	15.6
San Jose-Monterey	10.5	11.0	9.8	10.8	11.3	10.2	13.9	18.0	-
Los Angeles	10.6	11.7	9.7	10.6	11.9	9.6	14.4	15.2	13.6
Greater California	11.0	12.5	9.7	11.1	12.7	9.8	15.3	16.5	14.0
Connecticut	12.1	14.0	10.6	12.0	13.9	10.4	15.4	17.9	13.5
Detroit	13.5	15.7	11.6	12.8	15.0	10.8	16.5	18.6	14.7
Hawaii	11.8	13.0	10.9	10.7	11.7	10.3	-	-	-
Iowa	11.2	13.0	9.7	11.0	12.8	9.6	24.9	21.7	26.8
Kentucky	10.6	12.4	9.3	10.4	12.1	9.1	14.3	17.5	12.0
Louisiana	12.8	14.9	11.2	11.9	14.1	10.1	16.1	18.1	14.4
New Jersey	12.2	13.7	11.0	12.2	13.9	10.8	14.0	14.1	13.8
New Mexico	10.1	11.5	8.8	10.3	11.8	8.9	-	-	-
Seattle-Puget Sound	11.7	13.1	10.4	11.6	13.1	10.3	18.2	20.1	17.1
Utah	9.4	11.3	7.7	9.4	11.5	7.8	-	-	-
9 SEER Areas <sup>b</sup>	11.4	13.1	10.1	11.2	12.9	9.8	15.3	16.7	14.0
11 SEER Areas <sup>b</sup>	11.2	12.6	10.0	11.1	12.6	9.8	15.1	16.3	13.8
13 SEER Areas <sup>b</sup>	11.2	12.6	10.0	11.1	12.6	9.8	15.0	16.2	13.9
17 SEER Areas <sup>b</sup>	11.4	12.9	10.1	11.2	12.8	9.9	15.0	16.2	13.9

<sup>a</sup> Rates are per 100,000 and are age-adjusted to the 2000 US Std Population (19 age groups - Census P25-1130)

<sup>b</sup> The SEER 9 areas are San Francisco, Connecticut, Detroit, Hawaii, Iowa, New Mexico, Seattle, Utah and Atlanta.

The SEER 11 areas comprise the SEER 9 areas plus San Jose-Monterey and Los Angeles.

The SEER 13 areas comprise the SEER 11 areas plus the Alaska Native Registry and Rural Georgia.

The SEER 17 areas comprise the SEER 13 areas plus California excluding SF/SJM/LA, Kentucky, Louisiana and New Jersey

- Statistic not shown. Rate based on less than 16 cases for the time interval.



Table XXII-12  
PANCREAS CANCER (Invasive)

AGE-ADJUSTED SEER DEATH RATES<sup>a</sup>  
 By Registry, Race and Sex

	<u>All Races</u>			<u>Whites</u>			<u>Blacks</u>		
	<u>Total</u>	<u>Males</u>	<u>Females</u>	<u>Total</u>	<u>Males</u>	<u>Females</u>	<u>Total</u>	<u>Males</u>	<u>Females</u>
<u>SEER DEATH RATES<sup>a</sup>, 2000-2004</u>									
REGISTRY									
Atlanta & Rural Georgia	10.2	11.7	8.9	9.2	10.9	7.9	13.2	14.1	12.1
Atlanta	10.2	12.0	8.8	9.1	11.1	7.7	13.4	14.6	12.0
Rural Georgia	10.1	8.0	11.0	9.3	7.5	10.0	11.7	-	13.1
California	10.1	11.4	9.1	10.3	11.7	9.1	14.1	14.5	13.4
Greater Bay Area	9.9	10.6	9.3	10.3	11.1	9.5	15.2	14.8	15.0
San Francisco-Oakland	9.9	10.6	9.3	10.3	11.2	9.4	15.3	14.2	15.7
San Jose-Monterey	9.9	10.6	9.2	10.4	11.1	9.7	14.4	20.1	-
Los Angeles	10.0	11.0	9.1	10.1	11.3	9.1	13.3	14.3	12.4
Greater California	10.2	11.8	8.9	10.3	12.0	9.0	14.2	14.3	13.8
Connecticut	11.0	12.7	9.6	10.8	12.6	9.5	14.6	16.7	13.0
Detroit	11.5	13.3	10.0	10.9	12.9	9.3	14.1	15.2	13.0
Hawaii	10.6	11.9	9.5	10.2	12.5	8.4	-	-	-
Iowa	10.5	11.9	9.4	10.4	11.7	9.2	21.8	24.7	19.5
Kentucky	10.2	11.8	9.0	10.1	11.6	8.8	13.9	17.1	11.8
Louisiana	12.2	14.2	10.6	11.2	13.4	9.6	15.3	17.2	13.8
New Jersey	11.2	12.6	10.1	11.2	12.6	10.0	13.5	14.4	12.7
New Mexico	9.7	11.0	8.6	10.0	11.3	8.8	-	-	-
Seattle-Puget Sound	10.7	12.0	9.7	10.9	12.2	9.7	14.4	15.9	13.2
Utah	9.0	11.1	7.2	9.0	11.2	7.2	-	-	-
9 SEER Areas <sup>b</sup>	10.5	11.9	9.3	10.4	11.9	9.1	14.1	15.0	13.2
11 SEER Areas <sup>b</sup>	10.3	11.6	9.2	10.3	11.7	9.1	13.9	14.9	12.9
13 SEER Areas <sup>b</sup>	10.3	11.6	9.3	10.3	11.7	9.1	13.9	14.8	12.9
17 SEER Areas <sup>b</sup>	10.5	11.9	9.4	10.5	12.0	9.2	14.1	15.2	13.0
Total U.S.	10.6	12.2	9.2	10.4	12.0	9.0	13.8	15.5	12.4

<sup>a</sup> NCHS public use data file for the total US. Rates are per 100,000 and are age-adjusted to the 2000 US Std Population (19 age groups - Census P25-1130).

<sup>b</sup> The SEER 9 areas are San Francisco, Connecticut, Detroit, Hawaii, Iowa, New Mexico, Seattle, Utah and Atlanta.

The SEER 11 areas comprise the SEER 9 areas plus San Jose-Monterey and Los Angeles.

The SEER 13 areas comprise the SEER 11 areas plus the Alaska Native Registry and Rural Georgia.

The SEER 17 areas comprise the SEER 13 areas plus California excluding SF/SJM/LA, Kentucky, Louisiana and New Jersey

- Statistic not shown. Rate based on less than 16 cases for the time interval.

Table XXII-13  
PANCREAS CANCER (Invasive)AVERAGE ANNUAL AGE-ADJUSTED CANCER DEATH<sup>a</sup> RATES BY STATE, ALL RACES, 2000-2004

## Males and Females

State	Rate	SE	Rank	PD	State	Rate	SE	Rank	PD
TOTAL U.S.	10.6	0.03							
High Five States									
District of Columbia	12.6	0.67	(01)	18.9 <sup>c</sup>					
Louisiana	12.2 <sup>b</sup>	0.24	(02)	15.1 <sup>c</sup>					
Mississippi	11.5	0.29	(03)	8.5					
Massachusetts	11.4 <sup>b</sup>	0.18	(04)	7.5					
Maine	11.2	0.39	(05)	5.7					
Low Five States									
Nebraska	9.6	0.32	(47)	-9.4					
West Virginia	9.5	0.30	(48)	-10.4					
Arizona	9.3 <sup>b</sup>	0.19	(49)	-12.3					
Vermont	9.2	0.53	(50)	-13.2					
Utah	9.0 <sup>b</sup>	0.33	(51)	-15.1 <sup>c</sup>					
Alabama	10.7	0.21	(22)	0.9	Montana	9.8	0.44	(44)	-7.5
Alaska	10.1	0.78	(38)	-4.7	Nebraska	9.6	0.32	(47)	-9.4
Arizona	9.3 <sup>b</sup>	0.19	(49)	-12.3	Nevada	10.6	0.34	(25)	0.0
Arkansas	10.3	0.26	(32)	-2.8	New Hampshire	10.9	0.42	(17)	2.8
California	10.1 <sup>b</sup>	0.08	(39)	-4.7	New Jersey	11.2 <sup>b</sup>	0.16	(07)	5.7
Colorado	9.8	0.23	(45)	-7.5	New Mexico	9.7	0.33	(46)	-8.5
Connecticut	11.0	0.24	(12)	3.8	New York	11.0 <sup>b</sup>	0.10	(13)	3.8
Delaware	10.5	0.50	(28)	-0.9	North Carolina	10.8	0.16	(18)	1.9
District of Columbia	12.6	0.67	(01)	18.9 <sup>c</sup>	North Dakota	10.1	0.53	(40)	-4.7
Florida	10.0 <sup>b</sup>	0.10	(41)	-5.7	Ohio	10.5	0.13	(31)	-0.9
Georgia	10.6	0.18	(24)	0.0	Oklahoma	9.8	0.23	(42)	-7.5
Hawaii	10.6	0.40	(27)	0.0	Oregon	10.7	0.24	(23)	0.9
Idaho	10.1	0.40	(37)	-4.7	Pennsylvania	10.8	0.12	(19)	1.9
Illinois	11.2 <sup>b</sup>	0.14	(06)	5.7	Rhode Island	11.1	0.43	(08)	4.7
Indiana	10.9	0.19	(15)	2.8	South Carolina	11.0	0.23	(10)	3.8
Iowa	10.5	0.25	(30)	-0.9	South Dakota	10.8	0.51	(20)	1.9
Kansas	10.2	0.27	(36)	-3.8	Tennessee	10.9	0.19	(16)	2.8
Kentucky	10.2	0.22	(33)	-3.8	Texas	10.2 <sup>b</sup>	0.11	(35)	-3.8
Louisiana	12.2 <sup>b</sup>	0.24	(02)	15.1 <sup>c</sup>	Utah	9.0 <sup>b</sup>	0.33	(51)	-15.1 <sup>c</sup>
Maine	11.2	0.39	(05)	5.7	Vermont	9.2	0.53	(50)	-13.2
Maryland	11.0	0.21	(11)	3.8	Virginia	10.5	0.18	(29)	-0.9
Massachusetts	11.4 <sup>b</sup>	0.18	(04)	7.5	Washington	11.1	0.20	(09)	4.7
Michigan	10.8	0.15	(21)	1.9	West Virginia	9.5	0.30	(48)	-10.4
Minnesota	10.2	0.20	(34)	-3.8	Wisconsin	11.0	0.20	(14)	3.8
Mississippi	11.5	0.29	(03)	8.5	Wyoming	9.8	0.64	(43)	-7.5
Missouri	10.6	0.19	(26)	0.0					

<sup>a</sup> NCHS public use data file. Rates are per 100,000 and are age-adjusted to the 2000 US Std Population (19 age groups - Census P25-1130).

<sup>b</sup> Difference between state rate and total U.S. rate is statistically significant ( $p < .0002$ ).

<sup>c</sup> Absolute percent difference between state rate and total U.S. rate is 15% or more.

SE Standard error of the rate.

PD Percent difference between state rate and total U.S. rate.

Table XXII-14  
PANCREAS CANCER (Invasive)AVERAGE ANNUAL AGE-ADJUSTED CANCER DEATH<sup>a</sup> RATES BY STATE, ALL RACES, 2000-2004

## Males

State	Rate	SE	Rank	PD	State	Rate	SE	Rank	PD
TOTAL U.S.	12.2	0.05							
High Five States									
District of Columbia	14.5	1.16	(01)	18.9 <sup>c</sup>					
Louisiana	14.2 <sup>b</sup>	0.41	(02)	16.4 <sup>c</sup>					
Mississippi	13.5	0.50	(03)	10.7 <sup>c</sup>					
Maine	13.4	0.65	(04)	9.8					
Illinois	13.1 <sup>b</sup>	0.23	(05)	7.4					
Low Five States									
Utah	11.1	0.56	(47)	-9.0					
New Mexico	11.0	0.53	(48)	-9.8					
Vermont	10.9	0.89	(49)	-10.7 <sup>c</sup>					
Idaho	10.9	0.63	(50)	-10.7 <sup>c</sup>					
Arizona	10.8 <sup>b</sup>	0.30	(51)	-11.5 <sup>c</sup>					
Alabama	12.6	0.37	(12)	3.3	Montana	11.2	0.72	(45)	-8.2
Alaska	11.6	1.31	(37)	-4.9	Nebraska	11.4	0.55	(39)	-6.6
Arizona	10.8 <sup>b</sup>	0.30	(51)	-11.5 <sup>c</sup>	Nevada	11.8	0.53	(34)	-3.3
Arkansas	11.9	0.44	(29)	-2.5	New Hampshire	11.5	0.66	(38)	-5.7
California	11.4 <sup>b</sup>	0.13	(43)	-6.6	New Jersey	12.6	0.26	(14)	3.3
Colorado	11.2	0.38	(46)	-8.2	New Mexico	11.0	0.53	(48)	-9.8
Connecticut	12.7	0.40	(11)	4.1	New York	12.4	0.18	(21)	1.6
Delaware	11.8	0.82	(33)	-3.3	North Carolina	12.8	0.28	(08)	4.9
District of Columbia	14.5	1.16	(01)	18.9 <sup>c</sup>	North Dakota	11.4	0.85	(42)	-6.6
Florida	11.6	0.16	(36)	-4.9	Ohio	12.1	0.22	(25)	-0.8
Georgia	12.5	0.31	(19)	2.5	Oklahoma	12.0	0.40	(26)	-1.6
Hawaii	11.9	0.64	(30)	-2.5	Oregon	12.3	0.39	(23)	0.8
Idaho	10.9	0.63	(50)	-10.7 <sup>c</sup>	Pennsylvania	12.8	0.20	(10)	4.9
Illinois	13.1 <sup>b</sup>	0.23	(05)	7.4	Rhode Island	11.9	0.70	(28)	-2.5
Indiana	12.8	0.32	(09)	4.9	South Carolina	12.8	0.40	(07)	4.9
Iowa	11.9	0.41	(31)	-2.5	South Dakota	11.4	0.79	(40)	-6.6
Kansas	12.1	0.45	(24)	-0.8	Tennessee	12.5	0.33	(15)	2.5
Kentucky	11.8	0.38	(32)	-3.3	Texas	11.9	0.18	(27)	-2.5
Louisiana	14.2 <sup>b</sup>	0.41	(02)	16.4 <sup>c</sup>	Utah	11.1	0.56	(47)	-9.0
Maine	13.4	0.65	(04)	9.8	Vermont	10.9	0.89	(49)	-10.7 <sup>c</sup>
Maryland	12.6	0.35	(13)	3.3	Virginia	12.3	0.30	(22)	0.8
Massachusetts	13.0	0.30	(06)	6.6	Washington	12.5	0.32	(16)	2.5
Michigan	12.5	0.24	(17)	2.5	West Virginia	11.3	0.51	(44)	-7.4
Minnesota	11.8	0.34	(35)	-3.3	Wisconsin	12.4	0.32	(20)	1.6
Mississippi	13.5	0.50	(03)	10.7 <sup>c</sup>	Wyoming	11.4	1.04	(41)	-6.6
Missouri	12.5	0.32	(18)	2.5					

<sup>a</sup> NCHS public use data file. Rates are per 100,000 and are age-adjusted to the 2000 US Std Population (19 age groups - Census P25-1130).

<sup>b</sup> Difference between state rate and total U.S. rate is statistically significant ( $p < .0002$ ).

<sup>c</sup> Absolute percent difference between state rate and total U.S. rate is 10% or more.

SE Standard error of the rate.

PD Percent difference between state rate and total U.S. rate.

Table XXII-15  
PANCREAS CANCER (Invasive)AVERAGE ANNUAL AGE-ADJUSTED CANCER DEATH<sup>a</sup> RATES BY STATE, ALL RACES, 2000-2004

## Females

State	Rate	SE	Rank	PD	State	Rate	SE	Rank	PD
TOTAL U.S.	9.2	0.03							
High Five States									
District of Columbia	11.2	0.81	(01)	21.7 <sup>c</sup>					
Louisiana	10.6 <sup>b</sup>	0.29	(02)	15.2 <sup>c</sup>					
New Hampshire	10.5	0.54	(03)	14.1					
Rhode Island	10.3	0.54	(04)	12.0					
South Dakota	10.2	0.66	(05)	10.9					
Low Five States									
West Virginia	8.2	0.36	(47)	-10.9					
Oklahoma	8.1 <sup>b</sup>	0.28	(48)	-12.0					
Arizona	8.1 <sup>b</sup>	0.23	(49)	-12.0					
Vermont	8.0	0.66	(50)	-13.0					
Utah	7.2 <sup>b</sup>	0.40	(51)	-21.7 <sup>c</sup>					
Alabama	9.3	0.26	(27)	1.1	Montana	8.6	0.55	(43)	-6.5
Alaska	9.1	1.00	(33)	-1.1	Nebraska	8.4	0.40	(46)	-8.7
Arizona	8.1 <sup>b</sup>	0.23	(49)	-12.0	Nevada	9.6	0.43	(17)	4.3
Arkansas	9.0	0.33	(34)	-2.2	New Hampshire	10.5	0.54	(03)	14.1
California	9.1	0.10	(32)	-1.1	New Jersey	10.1 <sup>b</sup>	0.20	(06)	9.8
Colorado	8.6	0.29	(44)	-6.5	New Mexico	8.6	0.42	(42)	-6.5
Connecticut	9.6	0.30	(15)	4.3	New York	9.9 <sup>b</sup>	0.13	(10)	7.6
Delaware	9.5	0.63	(20)	3.3	North Carolina	9.2	0.20	(28)	0.0
District of Columbia	11.2	0.81	(01)	21.7 <sup>c</sup>	North Dakota	9.0	0.67	(35)	-2.2
Florida	8.6 <sup>b</sup>	0.12	(41)	-6.5	Ohio	9.1	0.16	(30)	-1.1
Georgia	9.2	0.21	(29)	0.0	Oklahoma	8.1 <sup>b</sup>	0.28	(48)	-12.0
Hawaii	9.5	0.50	(18)	3.3	Oregon	9.3	0.30	(23)	1.1
Idaho	9.3	0.52	(25)	1.1	Pennsylvania	9.3	0.15	(24)	1.1
Illinois	9.7	0.17	(11)	5.4	Rhode Island	10.3	0.54	(04)	12.0
Indiana	9.5	0.23	(19)	3.3	South Carolina	9.6	0.29	(14)	4.3
Iowa	9.4	0.31	(22)	2.2	South Dakota	10.2	0.66	(05)	10.9
Kansas	8.5	0.32	(45)	-7.6	Tennessee	9.6	0.24	(16)	4.3
Kentucky	9.0	0.27	(36)	-2.2	Texas	8.7 <sup>b</sup>	0.13	(39)	-5.4
Louisiana	10.6 <sup>b</sup>	0.29	(02)	15.2 <sup>c</sup>	Utah	7.2 <sup>b</sup>	0.40	(51)	-21.7 <sup>c</sup>
Maine	9.4	0.47	(21)	2.2	Vermont	8.0	0.66	(50)	-13.0
Maryland	9.7	0.26	(12)	5.4	Virginia	9.1	0.22	(31)	-1.1
Massachusetts	10.1 <sup>b</sup>	0.22	(07)	9.8	Washington	9.9	0.25	(09)	7.6
Michigan	9.3	0.18	(26)	1.1	West Virginia	8.2	0.36	(47)	-10.9
Minnesota	8.9	0.25	(38)	-3.3	Wisconsin	9.7	0.24	(13)	5.4
Mississippi	10.0	0.35	(08)	8.7	Wyoming	8.6	0.81	(40)	-6.5
Missouri	8.9	0.23	(37)	-3.3					

<sup>a</sup> NCHS public use data file. Rates are per 100,000 and are age-adjusted to the 2000 US Std Population (19 age groups - Census P25-1130).

<sup>b</sup> Difference between state rate and total U.S. rate is statistically significant ( $p < .0002$ ).

<sup>c</sup> Absolute percent difference between state rate and total U.S. rate is 15% or more.

SE Standard error of the rate.

PD Percent difference between state rate and total U.S. rate.

Table XXII-16  
PANCREAS CANCER (Invasive)

Estimated United States Cancer Prevalence Counts<sup>a</sup> on January 1, 2004  
 By Race/Ethnicity, Sex and Years Since Diagnosis

Years Since Diagnosis	0 to <5	5 to <10	10 to <15	15 to <20	20 to <25	0 to <14 <sup>e</sup>	0 to <29 <sup>e</sup>	>=29 <sup>g</sup>	Complete <sup>h</sup>
<u>Race/Sex</u>									
All Races <sup>b</sup>	21,231	3,252	1,826	865	653	26,083	27,987	460	28,447
Males	10,156	1,570	792	353	253	12,431	13,235	188	13,423
Females	11,075	1,682	1,034	512	400	13,652	14,752	272	15,024
White <sup>b</sup>	17,925	2,607	1,485	588	555	21,870	23,289	373	23,662
Males	8,905	1,334	653	271	224	10,843	11,468	168	11,636
Females	9,020	1,273	832	317	331	11,027	11,821	205	12,026
Black <sup>b</sup>	2,456	380	227	225	67	2,990	3,381	216	3,597
Males	858	120	86	79	13	1,027	1,182	77	1,259
Females	1,598	260	141	146	54	1,963	2,199	139	2,338
Asian/Pacific Islander <sup>c</sup>	624	131	+	+	+	790	+	+	+
Males	285	51	+	+	+	347	+	+	+
Females	339	80	+	+	+	443	+	+	+
Hispanic <sup>d</sup>	988	231	+	+	+	1,354	+	+	+
Males	470	75	+	+	+	610	+	+	+
Females	518	156	+	+	+	744	+	+	+

Estimated prevalence percent<sup>a</sup> on January 1, 2004, of the SEER 11 population diagnosed in the previous 10 years  
 By Age at Prevalence, Race/Ethnicity and Sex

Age at Prevalence	Age Specific (Crude)										Age-Adjusted <sup>f</sup>
	All Ages	0-9	10-19	20-29	30-39	40-49	50-59	60-69	70-79	80+	All Ages
<u>Race/Sex</u>											
All Races <sup>c</sup>	0.0075%	-	0.0002%	0.0004%	0.0012%	0.0046%	0.0120%	0.0275%	0.0411%	0.0366%	0.0080%
Males	0.0074%	-	-	0.0002%	0.0010%	0.0048%	0.0136%	0.0302%	0.0459%	0.0389%	0.0086%
Females	0.0076%	-	0.0003%	0.0006%	0.0014%	0.0044%	0.0106%	0.0251%	0.0375%	0.0353%	0.0074%
White <sup>c</sup>	0.0078%	-	0.0002%	0.0005%	0.0012%	0.0042%	0.0128%	0.0272%	0.0401%	0.0344%	0.0078%
Males	0.0079%	-	-	0.0003%	0.0010%	0.0050%	0.0148%	0.0308%	0.0455%	0.0363%	0.0088%
Females	0.0076%	-	-	0.0007%	0.0015%	0.0034%	0.0108%	0.0239%	0.0360%	0.0334%	0.0071%
Black <sup>c</sup>	0.0068%	-	-	-	0.0015%	0.0061%	0.0113%	0.0336%	0.0503%	0.0474%	0.0096%
Males	0.0054%	-	-	-	0.0021%	0.0040%	0.0113%	0.0298%	0.0549%	0.0213%	0.0083%
Females	0.0081%	-	-	-	-	0.0080%	0.0113%	0.0366%	0.0474%	0.0600%	0.0103%
Asian/Pacific Islander <sup>c</sup>	0.0068%	-	-	-	0.0009%	0.0046%	0.0077%	0.0251%	0.0400%	0.0499%	0.0076%
Males	0.0063%	-	-	-	-	0.0028%	0.0066%	0.0272%	0.0417%	0.0718%	0.0080%
Females	0.0072%	-	-	-	0.0012%	0.0061%	0.0086%	0.0233%	0.0388%	0.0354%	0.0074%
Hispanic <sup>d</sup>	0.0030%	-	0.0003%	-	0.0008%	0.0020%	0.0093%	0.0202%	0.0303%	0.0296%	0.0058%
Males	0.0025%	-	-	-	-	0.0016%	0.0100%	0.0197%	0.0325%	0.0317%	0.0059%
Females	0.0034%	-	-	-	0.0012%	0.0024%	0.0087%	0.0207%	0.0287%	0.0283%	0.0058%

<sup>a</sup> US 2004 cancer prevalence counts are based on 2004 cancer prevalence proportions from the SEER registries and 1/1/2004 US population estimates based on the average of 2003 and 2004 population estimates from the US Bureau of the Census. Prevalence was calculated using the First Malignant Primary Only for a person.

<sup>b c d</sup> Statistics based on (b) SEER 9 Areas (c) SEER 11 Areas and Rural Georgia (d) NHIA for Hispanic for SEER 11 Areas and Rural Georgia.

<sup>e</sup> Maximum limited-duration prevalence: 29 years for 1975-2004 SEER 9 data; 14 years for 1990-2004 SEER 11 data (used to calculate prevalence for Hispanics and Asian Pacific Islanders).

<sup>f</sup> Percentages are age-adjusted to the 2000 US Standard Population (19 age groups - Census P25-1130) by 5-year age groups.

<sup>g h</sup> (g) Cases diagnosed more than 29 years ago were estimated using the completeness index method (Capocaccia et. al. 1997, Merrill et. al. 2000). (h) Complete prevalence is obtained by summing 0 to <29 and >=29.

- Statistic not shown. Statistic based on fewer than 5 cases estimated alive in SEER for the time interval.

+ Not available.

# SEER Incidence, Delay Adjusted Incidence and US Death Rates<sup>a</sup> Pancreas Cancer, by Race and Sex

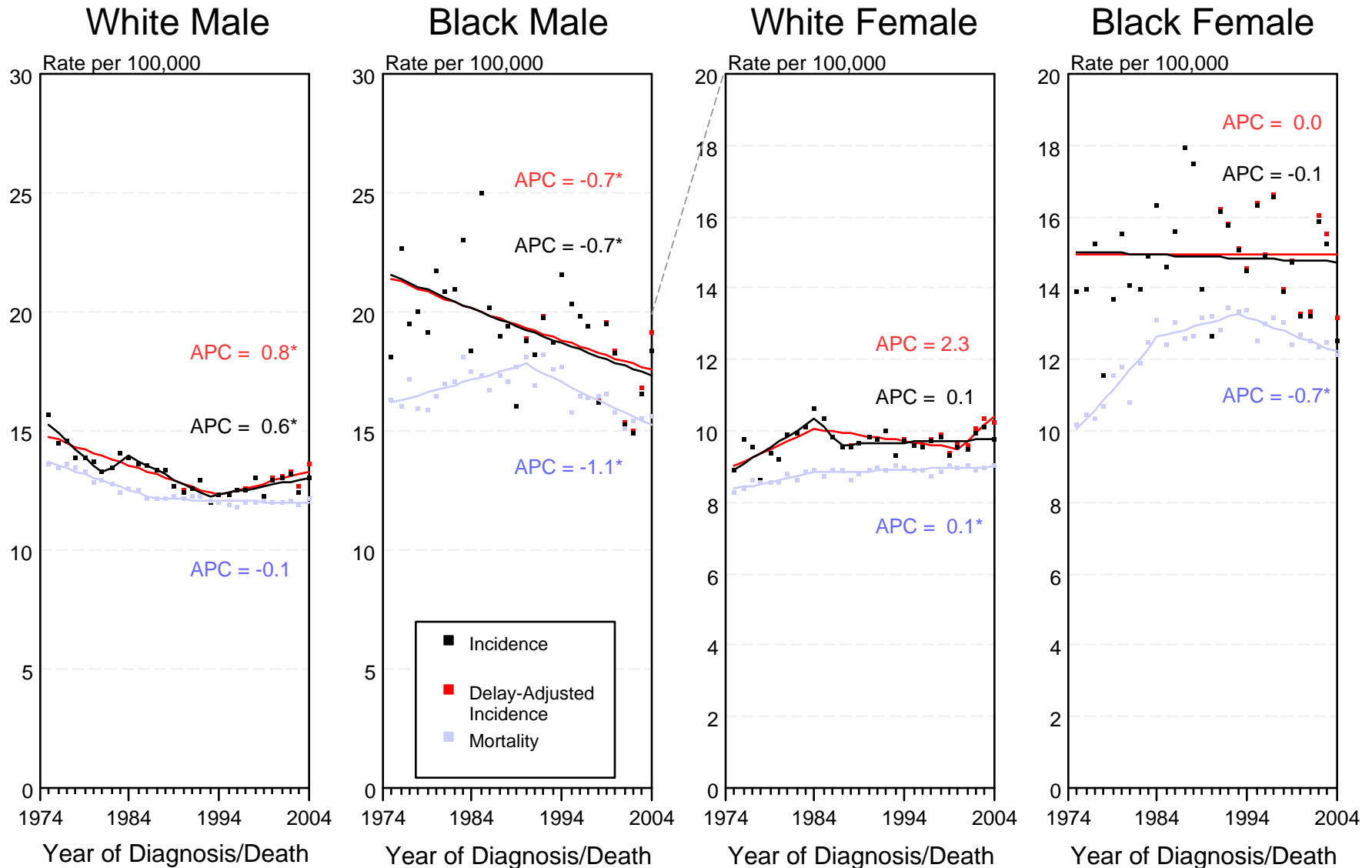


Figure XXII-1

<sup>a</sup> Source: SEER 9 areas and NCHS public use data file for the total US. Rates are age-adjusted to the 2000 US Std Population (19 age groups - Census P25-1103). Regression lines and APCs are calculated using the Joinpoint Regression Program Version 3.0, April 2005, National Cancer Institute.

The APC is the Annual Percent Change for the regression line segments. The APC shown on the graph is for the most recent trend.

\* The APC is significantly different from zero ( $p < 0.05$ ).

# SEER Incidence and US Death Rates<sup>a</sup> Pancreas Cancer, Both Sexes

Joinpoint Analyses for Whites and Blacks from 1975-2004  
and for Asian/Pacific Islanders, American Indians/Alaska Natives and Hispanics from 1992-2004

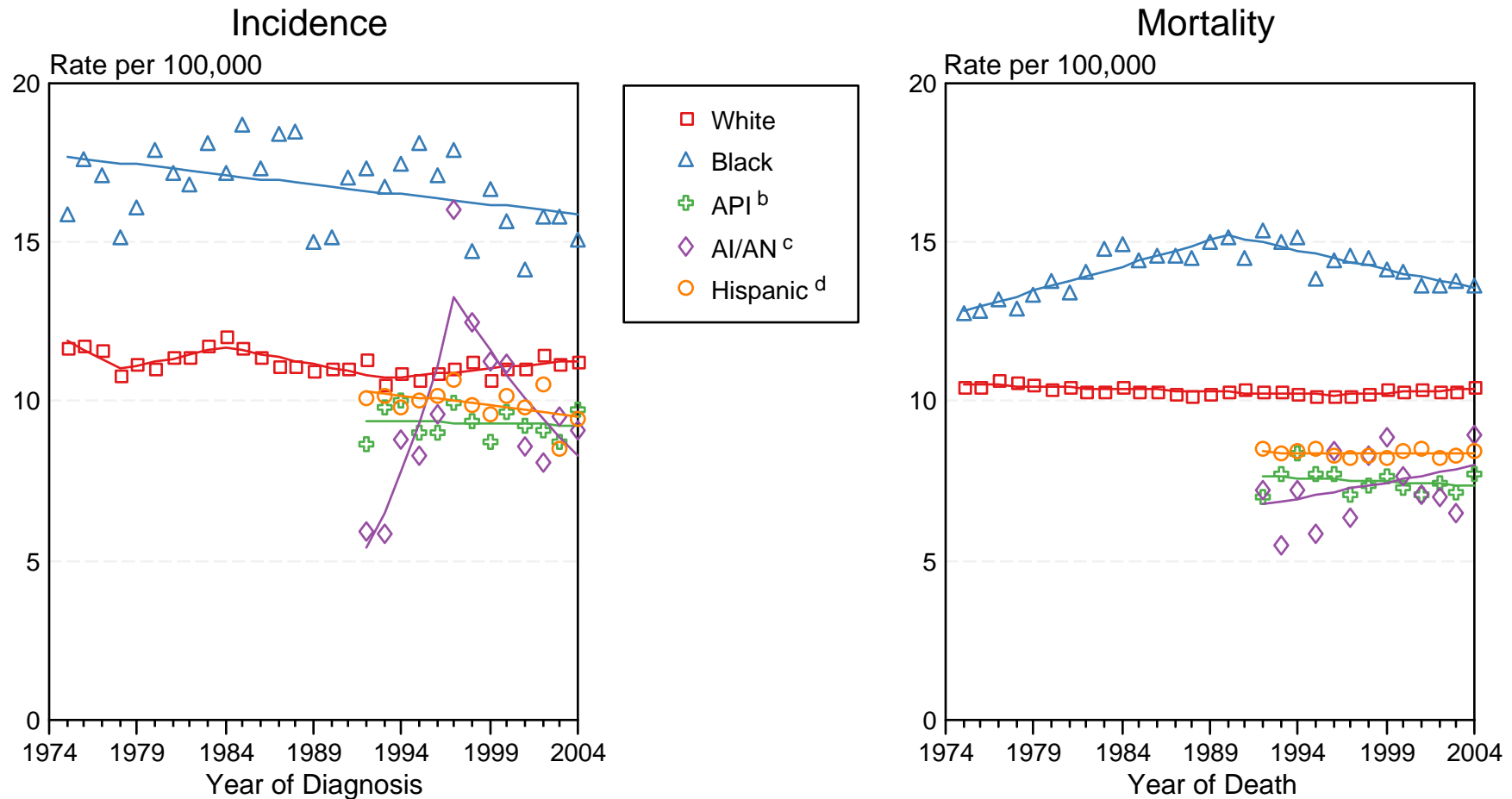


Figure XXII-2

Source: Incidence data for whites and blacks are from the SEER 9 areas (San Francisco, Connecticut, Detroit, Hawaii, Iowa, New Mexico, Seattle, Utah, Atlanta). Incidence data for Asian/Pacific Islanders, American Indians/Alaska Natives and Hispanics are from the SEER 13 Areas (SEER 9 Areas, San Jose-Monterey, Los Angeles, Alaska Native Registry and Rural Georgia). Mortality data are from NCHS public use data file for the total US.

<sup>a</sup> Rates are age-adjusted to the 2000 US Std Population (19 age groups - Census P25-1103).

Regression lines are calculated using the Joinpoint Regression Program Version 3.0, April 2005, National Cancer Institute.

<sup>b</sup> API = Asian/Pacific Islander.

<sup>c</sup> AI/AN = American Indian/Alaska Native. Rates for American Indian/Alaska Native are based on the CHSDA (Contract Health Service Delivery Area) counties.

<sup>d</sup> Hispanic is not mutually exclusive from whites, blacks, Asian/Pacific Islanders, and American Indians/Alaska Natives. Incidence data for Hispanics are based on NHIA and exclude cases from the Alaska Native Registry. Mortality data for Hispanics exclude cases from Connecticut, Maine, Maryland, Minnesota, New Hampshire, New York, North Dakota, Oklahoma, and Vermont.