

Table XXV-1
TESTIS CANCER (Invasive)

TRENDS IN SEER INCIDENCE^a AND U.S. MORTALITY^b USING THE JOINPOINT REGRESSION PROGRAM, 1975-2004
WITH UP TO THREE JOINPOINTS BY RACE AND AGE

		<u>Joinpoint Segment 1</u>		<u>Joinpoint Segment 2</u>		<u>Joinpoint Segment 3</u>		<u>Joinpoint Segment 4</u>	
		<u>Year</u>	<u>APC</u>	<u>Year</u>	<u>APC</u>	<u>Year</u>	<u>APC</u>	<u>Year</u>	<u>APC</u>
<u>SEER Cancer Incidence^a</u>									
All Races	All Ages	1975-1989	2.3*	1989-2004	0.7*				
All Races	Under 50	1975-1989	2.7*	1989-2004	0.7*				
All Races	50 and Over	1975-2004	-0.1						
White	All Ages	1975-2004	1.6*						
White	Under 50	1975-1987	3.3*	1987-2004	1.1*				
White	50 and Over	1975-2004	0.0						
Black	All Ages	1975-2004	2.3*						
Black	Under 50	1975-2004	2.1*						
<u>SEER Delay-Adjusted Incidence^a</u>									
All Races	All Ages	1975-2004	1.4*						
All Races	Under 50	1975-1989	2.7*	1989-2004	0.8*				
All Races	50 and Over	1975-2004	-0.1						
White	All Ages	1975-2004	1.7*						
White	Under 50	1975-1987	3.3*	1987-2004	1.3*				
White	50 and Over	1975-2004	0.0						
Black	All Ages	1975-2004	2.5*						
Black	Under 50	1975-2004	2.3*						
<u>U.S. Cancer Mortality^b</u>									
All Races	All Ages	1975-1981	-10.5*	1981-1995	-3.1*	1995-2004	0.0		
All Races	Under 50	1975-1982	-10.8*	1982-2004	-1.9*				
All Races	50 and Over	1975-1990	-5.9*	1990-2004	-0.2				
White	All Ages	1975-1981	-10.8*	1981-1995	-2.9*	1995-2004	0.0		
White	Under 50	1975-1982	-10.9*	1982-2004	-1.8*				
White	50 and Over	1975-1990	-5.9*	1990-2004	-0.2				
Black	All Ages	1975-2004	-2.0*						
Black	Under 50	1975-2004	-1.3*						
Black	50 and Over	1975-2004	-2.7*						

Joinpoint Regression Program Version 3.0, April 2005, National Cancer Institute. (<http://srab.cancer.gov/joinpoint/>).

The APC is the Annual Percent Change based on rates age-adjusted to the 2000 US Std Population (19 age groups - Census P25-1130).

^a Trends are from the SEER 9 areas (San Francisco, Connecticut, Detroit, Hawaii, Iowa, New Mexico, Seattle, Utah, and Atlanta).

^b Trends are from the NCHS public use data file for the total US.

* The APC is significantly different from zero (p<.05).

Table XXV-2
TESTIS CANCER (Invasive)

AGE-ADJUSTED SEER INCIDENCE^a RATES BY YEAR, RACE AND AGE

	<u>All Races, Males</u>			<u>White Males</u>			<u>Black Males</u>		
	All	<50	50+	All	<50	50+	All	<50	50+
<u>SEER INCIDENCE RATES</u>									
YEAR OF DIAGNOSIS:									
1975	3.7	4.2	2.4	4.2	4.7	2.6	-	-	-
1976	3.4	4.2	1.5	3.8	4.5	1.7	-	-	-
1977	4.3	5.1	2.2	4.9	5.8	2.4	-	-	-
1978	3.6	4.2	1.8	4.0	4.7	2.1	-	-	-
1979	3.9	4.5	2.2	4.3	5.1	2.3	-	-	-
1980	4.3	5.3	1.9	4.9	6.0	2.1	-	-	-
1981	4.2	5.1	1.8	4.8	5.8	2.1	-	-	-
1982	4.4	5.2	2.3	5.0	6.0	2.4	-	-	-
1983	4.6	5.5	2.2	5.2	6.3	2.4	-	-	-
1984	4.4	5.4	1.9	5.0	6.1	2.1	-	-	-
1985	4.5	5.5	1.8	5.1	6.3	2.1	-	-	-
1986	4.8	5.8	2.2	5.6	6.8	2.4	-	-	-
1987	5.0	6.3	1.9	5.7	7.1	1.9	-	-	-
1988	4.6	5.8	1.5	5.5	6.9	1.7	-	-	-
1989	5.5	6.7	2.2	6.3	7.8	2.5	-	-	-
1990	5.1	6.3	2.1	6.0	7.4	2.3	-	-	-
1991	5.1	6.2	2.1	5.7	7.0	2.3	-	-	-
1992	5.1	6.4	1.8	6.1	7.6	2.0	-	-	-
1993	5.1	6.4	1.6	6.0	7.5	1.9	-	-	-
1994	5.5	6.7	2.1	6.3	7.8	2.3	1.2	1.5	-
1995	4.5	5.6	1.8	5.2	6.4	2.1	1.5	1.9	-
1996	5.2	6.6	1.7	6.2	7.8	1.9	-	-	-
1997	5.4	6.5	2.4	6.3	7.7	2.7	1.3	-	-
1998	5.6	7.1	1.6	6.6	8.4	1.8	1.5	2.0	-
1999	5.4	6.8	1.8	6.3	7.9	2.0	1.6	2.0	-
2000	5.7	7.2	2.0	6.7	8.4	2.3	1.5	1.9	-
2001	5.5	6.8	2.0	6.5	8.1	2.2	1.7	1.8	-
2002	5.7	7.1	1.9	6.9	8.6	2.3	1.3	1.6	-
2003	5.2	6.5	1.8	6.3	8.0	2.0	1.1	-	-
2004	5.7	7.1	2.2	7.0	8.7	2.5	1.0	-	-
1975-2004	4.9	6.1	2.0	5.7	7.0	2.2	1.1	1.3	0.6

^a SEER 9 areas (San Francisco, Connecticut, Detroit, Hawaii, Iowa, New Mexico, Seattle, Utah, and Atlanta). Rates are per 100,000 and are age-adjusted to the 2000 US Std Population (19 age groups - Census P25-1130).
 - Statistic not shown. Rate based on less than 16 cases for the time interval.

Table XXV-3
TESTIS CANCER (Invasive)

AGE-ADJUSTED U.S. DEATH^a RATES BY YEAR, RACE AND AGE

	<u>All Races, Males</u>			<u>White Males</u>			<u>Black Males</u>		
	<u>All</u>	<u><50</u>	<u>50+</u>	<u>All</u>	<u><50</u>	<u>50+</u>	<u>All</u>	<u><50</u>	<u>50+</u>
<u>U.S. DEATH RATES</u>									
<u>YEAR OF DEATH:</u>									
1975	0.7	0.7	0.7	0.8	0.8	0.8	0.2	-	-
1976	0.7	0.7	0.7	0.8	0.8	0.7	0.4	0.2	-
1977	0.6	0.7	0.6	0.7	0.7	0.6	0.2	-	-
1978	0.6	0.6	0.5	0.6	0.6	0.6	0.2	0.2	-
1979	0.5	0.5	0.6	0.5	0.5	0.6	0.4	0.3	-
1980	0.5	0.4	0.5	0.5	0.5	0.5	0.2	-	-
1981	0.4	0.4	0.4	0.4	0.4	0.4	0.2	-	-
1982	0.4	0.4	0.4	0.4	0.4	0.4	0.2	-	-
1983	0.4	0.4	0.4	0.4	0.4	0.4	0.2	0.2	-
1984	0.3	0.3	0.4	0.4	0.4	0.4	0.2	-	-
1985	0.4	0.3	0.4	0.4	0.4	0.4	0.2	-	-
1986	0.3	0.3	0.3	0.3	0.3	0.4	0.2	-	-
1987	0.3	0.4	0.3	0.4	0.4	0.3	0.2	0.2	-
1988	0.3	0.3	0.4	0.3	0.3	0.4	0.2	-	-
1989	0.3	0.3	0.3	0.3	0.3	0.3	0.2	0.2	-
1990	0.3	0.3	0.2	0.3	0.3	0.2	-	-	-
1991	0.3	0.3	0.3	0.3	0.3	0.3	0.1	-	-
1992	0.3	0.3	0.3	0.3	0.3	0.3	0.1	0.1	-
1993	0.3	0.3	0.3	0.3	0.3	0.3	0.2	0.1	-
1994	0.3	0.3	0.2	0.3	0.3	0.2	0.1	0.1	-
1995	0.2	0.2	0.2	0.3	0.3	0.2	-	-	-
1996	0.3	0.3	0.3	0.3	0.3	0.3	0.1	-	-
1997	0.2	0.2	0.2	0.3	0.3	0.3	0.2	0.2	-
1998	0.3	0.3	0.3	0.3	0.3	0.3	0.2	0.1	-
1999	0.3	0.3	0.3	0.3	0.3	0.3	0.1	0.1	-
2000	0.2	0.3	0.2	0.3	0.3	0.2	0.2	0.2	-
2001	0.2	0.2	0.3	0.3	0.3	0.2	0.2	-	-
2002	0.3	0.3	0.3	0.3	0.3	0.3	0.2	0.2	-
2003	0.2	0.2	0.3	0.3	0.3	0.3	0.2	0.1	-
2004	0.2	0.2	0.3	0.3	0.3	0.3	0.1	0.1	-
1975-2004	0.3	0.3	0.3	0.4	0.4	0.4	0.2	0.1	0.3

^a NCHS public use data file for the total US. Rates are per 100,000 and are age-adjusted to the 2000 US Std Population (19 age groups - Census P25-1130).

- Statistic not shown. Rate based on less than 16 cases for the time interval.

Table XXV-4
TESTIS CANCER (Invasive)

SEER INCIDENCE^a AND U.S. DEATH^b RATES, AGE-ADJUSTED AND AGE-SPECIFIC RATES, BY RACE

	Incidence ^a			US Death ^b		
	All Races, Males	White Males	Black Males	All Races, Males	White Males	Black Males
<u>AGE-ADJUSTED RATES, 2000-2004</u>						
AGE AT DIAGNOSIS/DEATH:						
All ages	5.3	6.3	1.4	0.3	0.3	0.2
Under 65	6.0	7.0	1.6	0.2	0.3	0.1
65 and over	1.1	1.2	-	0.3	0.3	0.4
All ages(IARC world std) ^c	5.0	5.8	1.3	0.2	0.2	0.1
<u>AGE-SPECIFIC RATES, 2000-2004</u>						
AGE AT DIAGNOSIS/DEATH:						
<1	0.8	0.8	-	-	-	-
1-4	0.3	0.3	-	-	-	-
5-9	-	-	-	-	-	-
10-14	0.2	0.2	-	-	-	-
15-19	3.4	4.1	0.9	0.1	0.1	-
20-24	9.4	11.2	2.1	0.3	0.3	-
25-29	12.2	14.5	3.3	0.4	0.5	-
30-34	13.0	15.5	3.4	0.4	0.5	-
35-39	11.4	13.4	3.1	0.4	0.5	0.3
40-44	9.5	11.2	2.1	0.4	0.5	-
45-49	6.3	7.3	1.6	0.4	0.4	0.3
50-54	4.2	4.8	-	0.3	0.3	-
55-59	2.3	2.6	-	0.2	0.2	-
60-64	1.5	1.7	-	0.2	0.2	-
65-69	1.4	1.5	-	0.2	0.2	-
70-74	0.9	0.9	-	0.3	0.3	-
75-79	1.1	1.2	-	0.3	0.2	-
80-84	1.0	1.0	-	0.4	0.4	-
85+	0.9	1.1	-	0.6	0.6	-

^a SEER 17 areas. Rates are per 100,000 and are age-adjusted to the 2000 US Std Population (19 age groups - Census P25-1130), unless noted.

^b NCHS public use data file for the total US. Rates are per 100,000 and are age-adjusted to the 2000 US Std Population (19 age groups - Census P25-1130), unless noted.

^c Rates are per 100,000 and are age-adjusted to the IARC world standard population.

- Statistic not shown. Rate based on less than 16 cases for the time interval.

Table XXV-5
TESTIS CANCER (Invasive)

SURVIVAL RATES, BY RACE, DIAGNOSIS YEAR, STAGE AND AGE

	All Races, Males			White Males			Black Males		
	All	<50	50+	All	<50	50+	All	<50	50+
<u>5-YR RELATIVE SURVIVAL RATES</u>									
YEAR OF DIAGNOSIS:									
1960-1963 ^a	-	-	-	63	-	-	-	-	-
1970-1973 ^a	-	-	-	72	-	-	-	-	-
1975-1977 ^b	82.8	83.4	78.4	82.7	83.3	78.1	82.0 ^f	85.0 ^f	-
1978-1980 ^b	89.0	89.4	84.2	89.3	89.7	85.1	72.7 ^f	77.1 ^f	-
1981-1983 ^b	92.3	92.7	87.0	92.5	92.9	87.2	87.5 ^f	84.7 ^f	-
1984-1986 ^b	92.8	93.6	81.9	93.1	94.0	82.2	87.0 ^f	89.4 ^f	-
1987-1989 ^b	95.1	95.0	95.5	95.4	95.4	95.2	88.4 ^f	87.8 ^f	-
1990-1992 ^b	95.8	95.8	94.4	96.2	96.1	95.4	83.6 ^f	88.6 ^f	-
1993-1995 ^b	95.7	96.2	86.5	95.9	96.5	87.5	88.2	89.4	-
1996-2003 ^b	96.0 ^e	96.4 ^e	89.7 ^e	96.3 ^e	96.7 ^e	90.4 ^e	87.5	89.0	-
<u>5-YR PERIOD SURVIVAL RATES^{cd}</u>									
YEAR OF DIAGNOSIS:									
1996-2003	95.9	96.2	92.4	96.1	96.4	92.5	90.8	93.1	-
<u>STAGE DISTRIBUTION (%) 1996-2003^c</u>									
All Stages									
Number of cases	11,757	10,756	1,001	10,802	9,885	917	343	312	31
Percent	100%	100%	100%	100%	100%	100%	100%	100%	100%
Localized	70	70	67	71	71	68	59	61	48
Regional	17	17	18	17	17	17	22	22	23
Distant	11	11	12	11	10	12	16	16	19
Unstaged	1	1	3	1	1	3	2	2	10
<u>5-YR RELATIVE SURVIVAL RATES, 1996-2003^c</u>									
AGE AT DIAGNOSIS:									
<45	95.7	-	-	96.0	-	-	91.2	-	-
45-54	95.7	-	-	96.4	-	-	82.7 ^f	-	-
55-64	90.5	-	-	91.0	-	-	-	-	-
65-74	75.0 ^f	-	-	75.6 ^f	-	-	-	-	-
75+	64.4 ^g	-	-	68.5 ^g	-	-	-	-	-
Under 65	95.6	-	-	96.0	-	-	89.0	-	-
65 and over	74.0 ^f	-	-	75.7 ^f	-	-	-	-	-
STAGE:									
All Stages	95.4	95.7	91.4	95.7	96.0	92.2	88.2	90.8	49.6 ^g
Localized	99.3	99.4	98.2	99.4	99.5	98.4	98.1	99.9	-
Regional	95.8	96.0	92.0	96.0	96.1	93.5	90.8	94.2	-
Distant	70.0	71.3	55.8 ^f	71.3	72.7	56.2 ^f	51.6 ^f	52.0 ^f	-
Unstaged	87.4	91.8	66.8 ^g	88.8	92.3	70.9 ^g	-	-	-

^a Rates are based on End Results data from a series of hospital registries and one population-based registry.
^b Rates are from the SEER 9 areas (San Francisco, Connecticut, Detroit, Hawaii, Iowa, New Mexico, Seattle, Utah, Atlanta).
^c Rates are based on follow-up of patients into 2004.
^c Rates are from the SEER 17 areas (San Francisco, Connecticut, Detroit, Hawaii, Iowa, New Mexico, Seattle, Utah, Atlanta, San Jose-Monterey, Los Angeles, Alaska Native Registry, Rural Georgia, California excluding SF/SJM/LA, Kentucky, Louisiana and New Jersey). California excluding SF/SJM/LA, Kentucky, Louisiana, and New Jersey contribute cases for diagnosis years 2000-2003. The remaining 13 SEER Areas contribute cases for the entire period 1996-2003. Rates are based on follow-up of patients into 2004.
^d Period survival provides a more up-to-date estimate of survival by piecing together the most recent conditional survival estimates from several cohorts. It is computed here using three calendar year blocks (2001-2003: 0-1 year survival), (2000-2002: 1-2 year survival), (1999-2001: 2-3 year survival), (1998-2000: 3-4 year survival), (1997-1999: 4-5 years survival).
^e The difference in rates between 1975-1977 and 1996-2003 is statistically significant (p<.05).
^f The standard error of the survival rate is between 5 and 10 percentage points.
^g The standard error of the survival rate is greater than 10 percentage points.
- Statistic could not be calculated due to fewer than 16 cases during the time period.

Table XXV-6
TESTIS CANCER (Invasive)

SURVIVAL RATES^a

By Year of Diagnosis

All Races, Males

Year of Diagnosis

	1975- 1979	1980- 1984	1985	1986	1987	1988	1989	1990	1991	1992	1993	1994	1995	1996	1997	1998	1999	2000	2001	2002	2003
Relative Survival Rates (SEER ^b)																					
1-year	93.4	96.1	97.1	98.1	98.2	98.7	98.2	98.2	98.6	98.0	96.6	97.8	98.3	97.9	97.4	98.2	96.9	97.9	98.7	98.0	98.6
2-year	88.7	92.8	94.0	96.6	97.4	96.6	95.9	96.7	97.1	96.7	95.7	96.5	97.4	96.4	95.6	96.6	96.3	96.7	97.6	97.0	
3-year	86.7	92.1	93.4	96.5	96.5	95.8	95.2	96.2	96.0	95.6	95.1	96.0	96.4	95.8	95.1	96.2	95.7	95.9	97.2		
4-year	85.8	91.6	92.8	95.9	95.8	95.4	94.9	96.2	95.6	95.5	95.0	96.0	96.3	95.8	94.8	96.1	95.6	95.9			
5-year	85.3	91.2	92.5	95.4	95.4	95.0	94.9	96.2	95.6	95.4	94.8	95.7	96.3	95.8	94.8	95.9	95.6				
6-year	85.0	91.0	92.3	95.4	94.9	94.8	94.8	96.0	95.4	95.0	94.8	95.7	96.3	95.8	94.7	95.5					
7-year	84.8	90.8	92.3	95.4	94.6	94.6	94.4	95.9	95.3	94.7	94.8	95.5	96.3	95.8	94.7						
8-year	84.8	90.6	91.5	95.4	94.6	93.8	94.2	95.8	95.1	94.2	94.8	94.8	96.2	95.8							
9-year	84.8	90.2	91.5	95.2	94.6	93.6	93.9	95.7	95.0	94.2	94.5	94.8	96.1								
10-year	84.1	90.1	91.3	94.9	94.6	93.5	93.9	95.7	94.7	94.1	94.5	94.8									
11-year	83.6	89.9	90.6	94.7	94.6	93.4	93.9	95.7	94.6	94.0	94.5										
12-year	83.4	89.9	90.5	94.3	94.3	93.4	93.9	95.3	94.5	94.0											
13-year	83.1	89.6	89.9	94.2	93.9	93.4	93.7	95.3	94.4												
14-year	82.6	89.1	88.9	94.1	93.7	93.4	93.7	95.3													
15-year	82.4	88.8	88.6	94.0	93.7	93.4	93.7														
16-year	82.1	88.3	88.6	93.9	93.7	93.4															
17-year	81.5	88.0	88.3	93.8	93.7																
18-year	81.0	87.8	87.4	93.8																	
19-year	80.5	87.7	86.5																		
20-year	80.4	87.4																			

^a Survival rates are relative rates expressed as percents.

^b Rates are from the SEER 9 areas (San Francisco, Connecticut, Detroit, Hawaii, Iowa, New Mexico, Seattle, Utah, and Atlanta).

Table XXV-7
TESTIS CANCER (Invasive)

Risk of Being Diagnosed With Cancer in 10, 20 and 30 Years, Lifetime Risk of Being Diagnosed with Cancer, and
 Lifetime Risk of Dying from Cancer Given Cancer Free At Current Age
 2002-2004 By Race/Ethnicity

Race/ Ethnicity	Current Age	Risk of Being Diagnosed with Cancer				Risk of Dying from Cancer	
		+10 yrs Percent (95% C.I.)	+20 yrs Percent (95% C.I.)	+30 yrs Percent (95% C.I.)	Eventually Percent (95% C.I.)	Eventually Percent (95% C.I.)	
All Races	0	0.00 (0.00, 0.00)	0.02 (0.02, 0.03)	0.12 (0.12, 0.13)	0.36 (0.35, 0.37)	0.02 (0.02, 0.02)	
	10	0.02 (0.02, 0.02)	0.12 (0.12, 0.13)	0.24 (0.23, 0.25)	0.36 (0.35, 0.37)	0.02 (0.02, 0.02)	
	20	0.10 (0.10, 0.11)	0.22 (0.21, 0.23)	0.29 (0.28, 0.30)	0.34 (0.33, 0.35)	0.02 (0.02, 0.02)	
	30	0.12 (0.11, 0.12)	0.19 (0.19, 0.20)	0.22 (0.22, 0.23)	0.24 (0.24, 0.25)	0.02 (0.01, 0.02)	
	40	0.08 (0.07, 0.08)	0.11 (0.10, 0.11)	0.12 (0.11, 0.12)	0.13 (0.12, 0.13)	0.01 (0.01, 0.01)	
	50	0.03 (0.03, 0.04)	0.04 (0.04, 0.05)	0.05 (0.05, 0.06)	0.06 (0.05, 0.06)	0.01 (0.01, 0.01)	
	60	0.01 (0.01, 0.02)	0.02 (0.02, 0.02)	0.02 (0.02, 0.03)	0.03 (0.02, 0.03)	0.01 (0.01, 0.01)	
	70	0.01 (0.01, 0.01)	0.01 (0.01, 0.02)	- (- , -)	0.01 (0.01, 0.02)	0.01 (0.00, 0.01)	
80	0.01 (0.00, 0.01)	- (- , -)	- (- , -)	0.01 (0.01, 0.01)	0.00 (0.00, 0.01)		
White	0	0.00 (0.00, 0.00)	0.03 (0.03, 0.03)	0.15 (0.14, 0.16)	0.43 (0.42, 0.44)	0.02 (0.02, 0.02)	
	10	0.03 (0.02, 0.03)	0.15 (0.14, 0.16)	0.29 (0.28, 0.30)	0.43 (0.42, 0.44)	0.02 (0.02, 0.02)	
	20	0.12 (0.12, 0.13)	0.26 (0.25, 0.27)	0.35 (0.34, 0.36)	0.41 (0.40, 0.42)	0.02 (0.02, 0.02)	
	30	0.14 (0.14, 0.15)	0.23 (0.22, 0.24)	0.26 (0.25, 0.27)	0.29 (0.28, 0.30)	0.02 (0.02, 0.02)	
	40	0.09 (0.08, 0.09)	0.12 (0.12, 0.13)	0.14 (0.13, 0.14)	0.15 (0.14, 0.16)	0.01 (0.01, 0.01)	
	50	0.04 (0.03, 0.04)	0.05 (0.05, 0.06)	0.06 (0.05, 0.06)	0.06 (0.06, 0.07)	0.01 (0.01, 0.01)	
	60	0.01 (0.01, 0.02)	0.02 (0.02, 0.03)	0.03 (0.02, 0.03)	0.03 (0.02, 0.03)	0.01 (0.01, 0.01)	
	70	0.01 (0.01, 0.01)	0.01 (0.01, 0.02)	- (- , -)	0.02 (0.01, 0.02)	0.01 (0.00, 0.01)	
80	0.01 (0.01, 0.01)	- (- , -)	- (- , -)	0.01 (0.01, 0.01)	0.00 (0.00, 0.01)		
Black	0	0.00 (0.00, 0.01)	0.01 (0.00, 0.01)	0.03 (0.02, 0.03)	0.09 (0.07, 0.11)	0.01 (0.01, 0.02)	
	10	0.01 (0.00, 0.01)	0.03 (0.02, 0.03)	0.05 (0.04, 0.06)	0.09 (0.07, 0.11)	0.01 (0.01, 0.02)	
	20	0.02 (0.01, 0.03)	0.05 (0.04, 0.06)	0.07 (0.06, 0.08)	0.08 (0.07, 0.10)	0.01 (0.01, 0.02)	
	30	0.03 (0.02, 0.04)	0.05 (0.04, 0.06)	0.06 (0.05, 0.07)	0.06 (0.05, 0.08)	0.01 (0.01, 0.01)	
	40	0.02 (0.01, 0.03)	0.03 (0.02, 0.04)	0.03 (0.02, 0.04)	0.04 (0.03, 0.05)	0.01 (0.00, 0.01)	
	50	0.01 (0.01, 0.02)	0.01 (0.01, 0.02)	0.02 (0.01, 0.03)	0.02 (0.01, 0.04)	0.01 (0.00, 0.01)	
	60	0.00 (0.00, 0.01)	0.01 (0.00, 0.02)	0.01 (0.00, 0.02)	0.01 (0.00, 0.03)	0.00 (0.00, 0.01)	
	70	0.00 (0.00, 0.01)	0.00 (0.00, 0.02)	- (- , -)	0.00 (0.00, 0.03)	0.01 (0.00, 0.01)	
80	0.00 (0.00, 0.02)	- (- , -)	- (- , -)	0.00 (0.00, 0.05)	0.00 (0.00, 0.01)		

Devcan Version 6.2.0, April 2006, National Cancer Institute (<http://srab.cancer.gov/devcan/>).

Source: Incidence data are from the SEER 17 areas (San Francisco, Connecticut, Detroit, Hawaii, Iowa, New Mexico, Seattle, Utah, Atlanta, San Jose-Monterey, Los Angeles, Alaska Native Registry, Rural Georgia, California excluding SF/SJM/LA, Kentucky, Louisiana and New Jersey). Mortality data are from the NCHS public use data file for the total US.

- Statistic could not be calculated.

A percent or confidence interval value of 0.00 represents a value that is below 0.005.

Table XXV-7 - continued
TESTIS CANCER (Invasive)

Risk of Being Diagnosed With Cancer in 10, 20 and 30 Years, Lifetime Risk of Being Diagnosed with Cancer, and
 Lifetime Risk of Dying from Cancer Given Cancer Free At Current Age
 2002-2004 By Race/Ethnicity

Race/ Ethnicity	Current Age	Risk of Being Diagnosed with Cancer				Risk of Dying from Cancer	
		+10 yrs Percent (95% C.I.)	+20 yrs Percent (95% C.I.)	+30 yrs Percent (95% C.I.)	Eventually Percent (95% C.I.)	Eventually Percent (95% C.I.)	
Asian/ Pacific Islander	0	0.00 (0.00, 0.01)	0.01 (0.01, 0.02)	0.04 (0.03, 0.05)	0.11 (0.09, 0.15)	0.01 (0.00, 0.05)	
	10	0.01 (0.01, 0.02)	0.04 (0.03, 0.05)	0.07 (0.06, 0.08)	0.11 (0.09, 0.15)	0.01 (0.00, 0.05)	
	20	0.03 (0.02, 0.03)	0.06 (0.05, 0.07)	0.08 (0.07, 0.09)	0.10 (0.08, 0.14)	0.01 (0.00, 0.05)	
	30	0.03 (0.03, 0.04)	0.05 (0.04, 0.06)	0.06 (0.05, 0.07)	0.07 (0.06, 0.11)	0.01 (0.00, 0.05)	
	40	0.02 (0.01, 0.03)	0.03 (0.02, 0.04)	0.03 (0.02, 0.04)	0.04 (0.03, 0.08)	0.00 (0.00, 0.05)	
	50	0.01 (0.00, 0.01)	0.01 (0.01, 0.02)	0.02 (0.01, 0.03)	0.02 (0.01, 0.07)	0.00 (0.00, 0.05)	
	60	0.00 (0.00, 0.01)	0.01 (0.00, 0.02)	0.01 (0.00, 0.03)	0.01 (0.00, 0.06)	0.00 (0.00, 0.05)	
	70	0.01 (0.00, 0.02)	0.01 (0.00, 0.03)	- (- , -)	0.01 (0.00, 0.06)	0.00 (0.00, 0.05)	
	80	0.00 (0.00, 0.02)	- (- , -)	- (- , -)	0.00 (0.00, 0.08)	0.00 (0.00, 0.07)	
American Indian/ Alaska Native ^a	0	0.00 (0.00, 0.04)	0.02 (0.01, 0.07)	0.11 (0.07, 0.19)	0.28 (0.18, 0.91)	0.01 (0.00, 0.19)	
	10	0.02 (0.01, 0.05)	0.12 (0.07, 0.18)	0.23 (0.16, 0.32)	0.28 (0.19, 0.93)	0.01 (0.00, 0.20)	
	20	0.10 (0.06, 0.15)	0.21 (0.14, 0.30)	0.22 (0.15, 0.31)	0.26 (0.17, 0.92)	0.01 (0.00, 0.20)	
	30	0.12 (0.07, 0.18)	0.12 (0.07, 0.20)	0.13 (0.08, 0.21)	0.17 (0.09, 0.86)	0.01 (0.00, 0.20)	
	40	0.01 (0.00, 0.03)	0.01 (0.00, 0.05)	0.03 (0.00, 0.11)	0.06 (0.01, 0.80)	0.00 (0.00, 0.21)	
	50	0.00 (0.00, 0.05)	0.02 (0.00, 0.11)	0.05 (0.01, 0.19)	0.05 (0.01, 0.83)	0.00 (0.00, 0.22)	
	60	0.02 (0.00, 0.11)	0.05 (0.01, 0.21)	0.05 (0.01, 0.29)	0.05 (0.01, 0.91)	0.00 (0.00, 0.24)	
	70	0.04 (0.00, 0.22)	0.04 (0.00, 0.33)	- (- , -)	0.04 (0.00, 1.07)	0.00 (0.00, 0.30)	
	80	0.01 (0.00, 0.41)	- (- , -)	- (- , -)	0.01 (0.00, 1.57)	0.00 (0.00, 0.47)	
Hispanic ^b	0	0.00 (0.00, 0.01)	0.03 (0.02, 0.03)	0.12 (0.11, 0.13)	0.27 (0.25, 0.31)	0.02 (0.02, 0.04)	
	10	0.02 (0.02, 0.03)	0.12 (0.11, 0.13)	0.20 (0.19, 0.21)	0.27 (0.25, 0.31)	0.02 (0.02, 0.04)	
	20	0.09 (0.09, 0.10)	0.18 (0.16, 0.19)	0.22 (0.20, 0.23)	0.25 (0.23, 0.29)	0.02 (0.02, 0.04)	
	30	0.08 (0.08, 0.09)	0.12 (0.11, 0.14)	0.14 (0.13, 0.16)	0.16 (0.14, 0.20)	0.02 (0.01, 0.03)	
	40	0.04 (0.03, 0.05)	0.06 (0.05, 0.07)	0.07 (0.06, 0.08)	0.07 (0.06, 0.12)	0.01 (0.01, 0.03)	
	50	0.02 (0.01, 0.03)	0.03 (0.02, 0.04)	0.03 (0.02, 0.05)	0.03 (0.02, 0.08)	0.01 (0.01, 0.03)	
	60	0.01 (0.01, 0.02)	0.02 (0.01, 0.03)	0.02 (0.01, 0.03)	0.02 (0.01, 0.07)	0.01 (0.00, 0.03)	
	70	0.00 (0.00, 0.01)	0.00 (0.00, 0.02)	- (- , -)	0.00 (0.00, 0.07)	0.01 (0.00, 0.03)	
	80	0.00 (0.00, 0.02)	- (- , -)	- (- , -)	0.00 (0.00, 0.09)	0.01 (0.00, 0.04)	

Devcan Version 6.2.0, April 2006, National Cancer Institute (<http://srab.cancer.gov/devcan/>).

Source: Incidence data are from the SEER 17 areas (San Francisco, Connecticut, Detroit, Hawaii, Iowa, New Mexico, Seattle, Utah, Atlanta, San Jose-Monterey, Los Angeles, Alaska Native Registry, Rural Georgia, California excluding SF/SJM/LA, Kentucky, Louisiana and New Jersey). Mortality data are from the NCHS public use data file for the total US.

^a Underlying incidence and mortality data for American Indian/Alaska Native are based on the CHSDA (Contract Health Service Delivery Area) counties.

^b Hispanic is not mutually exclusive from whites, blacks, Asian/Pacific Islanders, and American Indians/Alaska Natives. Underlying incidence data for Hispanics are based on NHIA and exclude cases from the Alaska Native Registry and Kentucky. Underlying mortality data for Hispanics exclude deaths from Minnesota, New Hampshire and North Dakota.

- Statistic could not be calculated.

A percent or confidence interval value of 0.00 represents a value that is below 0.005.

Table XXV-8
TESTIS CANCER (Invasive)

SEER INCIDENCE AND U.S. MORTALITY
AGE-ADJUSTED RATES AND TRENDS^a
 By Race/Ethnicity

SEER Incidence

RACE/ETHNICITY	Rate 2000-2004 ^b	Trend 1995-2004 ^c
	Rate per 100,000 persons	APC (%)
	Males	Males
All Races	5.3	1.1*
White	6.3	1.5*
White Hispanic ^d	4.0	1.3
White Non-Hispanic ^d	7.3	2.0*
Black	1.4	-1.7
Asian/Pacific Islander	1.7	-0.3
Amer Ind/Alaska Nat ^e	3.8	-
Hispanic ^d	3.8	1.5

U.S. Mortality^f

RACE/ETHNICITY	Rate 2000-2004	Trend 1995-2004
	Rate per 100,000 persons	APC (%)
	Males	Males
All Races	0.3	0.1
White	0.3	0.1
White Hispanic ^d	0.3	3.0
White Non-Hispanic ^d	0.3	-0.1
Black	0.2	3.9
Asian/Pacific Islander	0.1	-
Amer Ind/Alaska Nat	-	-
Total U.S.	-	-
CHSDA Counties	-	-
Non-CHSDA Counties	-	-
Hispanic ^d	0.2	3.2

- The APC is the Annual Percent Change over the time interval.
- Statistic not shown. Rate based on less than 16 cases for the time interval. Trend based on less than 10 cases for at least one year within the time interval.
- ^a Rates are age-adjusted to the 2000 US Std Population (19 age groups - Census P25-1130). Trends are based on rates age-adjusted to the 2000 US Std Population (19 age groups - Census P25-1130).
- ^b Incidence data used in calculating the rates are from the 17 SEER areas (San Francisco, Connecticut, Detroit, Hawaii, Iowa, New Mexico, Seattle, Utah, Atlanta, San Jose-Monterey, Los Angeles, Alaska Native Registry, Rural Georgia, California excluding SF/SJM/LA, Kentucky, Louisiana and New Jersey).
- ^c Incidence data used in calculating the trends are from the 13 SEER areas (San Francisco, Connecticut, Detroit, Hawaii, Iowa, New Mexico, Seattle, Utah, Atlanta, San Jose-Monterey, Los Angeles, Alaska Native Registry and Rural Georgia).
- ^d Hispanic and Non-Hispanic are not mutually exclusive from whites, blacks, Asian/Pacific Islanders, and American Indians/Alaska Natives. Incidence data for Hispanics and Non-Hispanics are based on NHIA and exclude cases from the Alaska Native Registry and Kentucky. The 2000-2004 Hispanic and Non-Hispanic death rates exclude deaths from Minnesota, New Hampshire and North Dakota. The 1995-2004 Hispanic and Non-Hispanic mortality trends exclude deaths from Maine, Minnesota, New Hampshire, North Dakota, and Oklahoma.
- ^e Incidence data for American Indian/Alaska Native are based on the CHSDA(Contract Health Service Delivery Area) counties.
- ^f Mortality data are analyzed from a public use file provided by the National Center for Health Statistics (NCHS).
- * The APC is significantly different from zero (p<.05).

Table XXV-9
TESTIS CANCER (Invasive)

AGE-ADJUSTED SEER INCIDENCE RATES^a
 By Registry, Race/Ethnicity and Age

	<u>All Races</u>			<u>Whites</u>			<u>Blacks</u>		
	<u>All Ages</u>	<u>Ages <50</u>	<u>Ages 50+</u>	<u>All Ages</u>	<u>Ages <50</u>	<u>Ages 50+</u>	<u>All Ages</u>	<u>Ages <50</u>	<u>Ages 50+</u>
<u>SEER INCIDENCE RATES^a, 2000-2004</u>									
<u>REGISTRY</u>									
Atlanta & Rural Georgia	4.0	4.9	1.4	5.7	7.3	1.8	1.1	1.4	-
Atlanta	4.0	4.9	1.5	5.8	7.3	1.9	1.1	1.3	-
Rural Georgia	-	-	-	-	-	-	-	-	-
California	5.2	6.3	2.1	6.0	7.4	2.4	1.5	1.7	-
Greater Bay Area	5.1	6.3	2.1	6.5	8.0	2.5	2.0	2.3	-
San Francisco-Oakland	5.1	6.3	2.0	6.6	8.1	2.5	2.0	2.3	-
San Jose-Monterey	5.2	6.2	2.3	6.3	7.7	2.6	-	-	-
Los Angeles	4.6	5.7	1.5	5.5	6.9	1.9	1.2	1.4	-
Greater California	5.5	6.6	2.4	6.2	7.5	2.6	1.5	1.7	-
Connecticut	5.9	7.4	1.8	6.5	8.2	1.9	1.9	-	-
Detroit	5.3	6.4	2.5	6.8	8.3	3.0	1.3	1.5	-
Hawaii	4.2	5.5	-	6.4	8.3	-	-	-	-
Iowa	6.6	8.4	2.1	6.8	8.6	2.1	-	-	-
Kentucky	5.0	6.3	1.5	5.3	6.7	1.6	-	-	-
Louisiana	4.6	5.5	2.1	6.1	7.4	2.6	1.5	1.7	-
New Jersey	5.9	7.3	2.2	7.1	8.8	2.5	1.8	2.2	-
New Mexico	5.6	7.1	1.9	6.1	7.7	1.9	-	-	-
Seattle-Puget Sound	6.3	8.0	2.0	7.2	9.2	2.1	-	-	-
Utah	6.9	8.6	2.6	7.3	9.0	2.7	-	-	-
9 SEER Areas ^b	5.6	6.9	2.0	6.7	8.4	2.3	1.3	1.5	-
11 SEER Areas ^b	5.3	6.6	1.9	6.4	7.9	2.2	1.3	1.5	0.7
13 SEER Areas ^b	5.3	6.6	1.9	6.4	7.9	2.2	1.3	1.5	0.7
17 SEER Areas ^b	5.3	6.6	2.1	6.3	7.8	2.3	1.4	1.7	0.7

^a Rates are per 100,000 and are age-adjusted to the 2000 US Std Population (19 age groups - Census P25-1130)

^b The SEER 9 areas are San Francisco, Connecticut, Detroit, Hawaii, Iowa, New Mexico, Seattle, Utah and Atlanta.

The SEER 11 areas comprise the SEER 9 areas plus San Jose-Monterey and Los Angeles.

The SEER 13 areas comprise the SEER 11 areas plus the Alaska Native Registry and Rural Georgia.

The SEER 17 areas comprise the SEER 13 areas plus California excluding SF/SJM/LA, Kentucky, Louisiana and New Jersey

- Statistic not shown. Rate based on less than 16 cases for the time interval.

Table XXV-10
TESTIS CANCER (Invasive)

AGE-ADJUSTED SEER DEATH RATES^a
 By Registry, Race/Ethnicity and Age

	<u>All Races</u>			<u>Whites</u>			<u>Blacks</u>		
	<u>All Ages</u>	<u>Ages <50</u>	<u>Ages 50+</u>	<u>All Ages</u>	<u>Ages <50</u>	<u>Ages 50+</u>	<u>All Ages</u>	<u>Ages <50</u>	<u>Ages 50+</u>
<u>SEER DEATH RATES^a, 2000-2004</u>									
REGISTRY									
Atlanta & Rural Georgia	-	-	-	-	-	-	-	-	-
Atlanta	-	-	-	-	-	-	-	-	-
Rural Georgia	-	-	-	-	-	-	-	-	-
California	0.3	0.3	0.3	0.3	0.3	0.3	-	-	-
Greater Bay Area	0.2	0.3	-	0.3	0.3	-	-	-	-
San Francisco-Oakland	0.2	0.2	-	0.3	-	-	-	-	-
San Jose-Monterey	-	-	-	-	-	-	-	-	-
Los Angeles	0.3	0.3	0.3	0.3	0.3	-	-	-	-
Greater California	0.3	0.3	0.4	0.3	0.3	0.4	-	-	-
Connecticut	0.3	0.3	-	0.3	-	-	-	-	-
Detroit	0.2	-	-	-	-	-	-	-	-
Hawaii	-	-	-	-	-	-	-	-	-
Iowa	0.3	-	-	0.3	-	-	-	-	-
Kentucky	-	-	-	-	-	-	-	-	-
Louisiana	0.3	0.3	-	0.3	0.4	-	-	-	-
New Jersey	0.2	0.2	-	0.3	0.3	-	-	-	-
New Mexico	-	-	-	-	-	-	-	-	-
Seattle-Puget Sound	0.2	-	-	0.2	-	-	-	-	-
Utah	-	-	-	-	-	-	-	-	-
9 SEER Areas ^b	0.2	0.2	0.3	0.2	0.2	0.3	-	-	-
11 SEER Areas ^b	0.2	0.2	0.3	0.3	0.3	0.3	-	-	-
13 SEER Areas ^b	0.2	0.2	0.3	0.3	0.3	0.3	-	-	-
17 SEER Areas ^b	0.2	0.2	0.3	0.3	0.3	0.3	0.1	-	-
Total U.S.	0.3	0.2	0.3	0.3	0.3	0.3	0.2	0.1	0.2

^a NCHS public use data file for the total US. Rates are per 100,000 and are age-adjusted to the 2000 US Std Population (19 age groups - Census P25-1130).

^b The SEER 9 areas are San Francisco, Connecticut, Detroit, Hawaii, Iowa, New Mexico, Seattle, Utah and Atlanta.

The SEER 11 areas comprise the SEER 9 areas plus San Jose-Monterey and Los Angeles.

The SEER 13 areas comprise the SEER 11 areas plus the Alaska Native Registry and Rural Georgia.

The SEER 17 areas comprise the SEER 13 areas plus California excluding SF/SJM/LA, Kentucky, Louisiana and New Jersey

- Statistic not shown. Rate based on less than 16 cases for the time interval.

Table XXV-11
TESTIS CANCER (Invasive)AVERAGE ANNUAL AGE-ADJUSTED CANCER DEATH^a RATES BY STATE, ALL RACES, 2000-2004

Males

State	Rate	SE	Rank	PD	State	Rate	SE	Rank	PD
TOTAL U.S.	0.3	0.01							
High Five States									
Oregon	0.4	0.07	(01)	33.3 ^c					
New Hampshire	0.4	0.11	(02)	33.3 ^c					
Montana	0.4	0.13	(03)	33.3 ^c					
Mississippi	0.4	0.08	(04)	33.3 ^c					
Iowa	0.3	0.07	(05)	0.0					
Low Five States									
Arkansas	0.1	0.05	(47)	-66.7 ^c					
Kentucky	0.1 ^b	0.03	(48)	-66.7 ^c					
South Dakota	0.1	0.07	(49)	-66.7 ^c					
Alaska	0.1	0.07	(50)	-66.7 ^c					
Delaware	0.1	0.07	(51)	-66.7 ^c					
Alabama	0.2	0.04	(41)	-33.3 ^c	Montana	0.4	0.13	(03)	33.3 ^c
Alaska	0.1	0.07	(50)	-66.7 ^c	Nebraska	0.2	0.07	(37)	-33.3 ^c
Arizona	0.3	0.05	(09)	0.0	Nevada	0.3	0.08	(11)	0.0
Arkansas	0.1	0.05	(47)	-66.7 ^c	New Hampshire	0.4	0.11	(02)	33.3 ^c
California	0.3	0.02	(12)	0.0	New Jersey	0.2	0.03	(30)	-33.3 ^c
Colorado	0.2	0.04	(43)	-33.3 ^c	New Mexico	0.3	0.08	(16)	0.0
Connecticut	0.3	0.05	(20)	0.0	New York	0.2	0.02	(26)	-33.3 ^c
Delaware	0.1	0.07	(51)	-66.7 ^c	North Carolina	0.2	0.04	(24)	-33.3 ^c
District of Columbia	0.2	0.13	(32)	-33.3 ^c	North Dakota	0.3	0.14	(08)	0.0
Florida	0.3	0.03	(15)	0.0	Ohio	0.3	0.03	(07)	0.0
Georgia	0.2	0.03	(45)	-33.3 ^c	Oklahoma	0.2	0.05	(31)	-33.3 ^c
Hawaii	0.2	0.08	(39)	-33.3 ^c	Oregon	0.4	0.07	(01)	33.3 ^c
Idaho	0.3	0.10	(06)	0.0	Pennsylvania	0.3	0.03	(19)	0.0
Illinois	0.2	0.03	(33)	-33.3 ^c	Rhode Island	0.2	0.10	(28)	-33.3 ^c
Indiana	0.2	0.04	(40)	-33.3 ^c	South Carolina	0.2	0.05	(35)	-33.3 ^c
Iowa	0.3	0.07	(05)	0.0	South Dakota	0.1	0.07	(49)	-66.7 ^c
Kansas	0.2	0.06	(22)	-33.3 ^c	Tennessee	0.2	0.04	(34)	-33.3 ^c
Kentucky	0.1 ^b	0.03	(48)	-66.7 ^c	Texas	0.3	0.02	(13)	0.0
Louisiana	0.3	0.05	(18)	0.0	Utah	0.2	0.07	(25)	-33.3 ^c
Maine	0.3	0.10	(14)	0.0	Vermont	0.2	0.10	(42)	-33.3 ^c
Maryland	0.2	0.04	(21)	-33.3 ^c	Virginia	0.2	0.03	(44)	-33.3 ^c
Massachusetts	0.3	0.04	(17)	0.0	Washington	0.3	0.05	(10)	0.0
Michigan	0.2	0.03	(29)	-33.3 ^c	West Virginia	0.2	0.07	(36)	-33.3 ^c
Minnesota	0.2	0.04	(23)	-33.3 ^c	Wisconsin	0.2	0.04	(38)	-33.3 ^c
Mississippi	0.4	0.08	(04)	33.3 ^c	Wyoming	0.1	0.11	(46)	-66.7 ^c
Missouri	0.2	0.04	(27)	-33.3 ^c					

^a NCHS public use data file. Rates are per 100,000 and are age-adjusted to the 2000 US Std Population (19 age groups - Census P25-1130).

^b Difference between state rate and total U.S. rate is statistically significant ($p < .0002$).

^c Absolute percent difference between state rate and total U.S. rate is 15% or more.

SE Standard error of the rate.

PD Percent difference between state rate and total U.S. rate.

Table XXV-12
TESTIS CANCER (Invasive)

Estimated United States Cancer Prevalence Counts^a on January 1, 2004
 By Race/Ethnicity and Years Since Diagnosis

Years Since Diagnosis	0 to <5	5 to <10	10 to <15	15 to <20	20 to <25	0 to <14 ^e	0 to <29 ^e	>=29 ^g	Complete ^h
<u>Race</u>									
All Races ^b	38,541	34,082	31,208	25,262	19,329	97,489	158,516	19,002	177,518
White ^b	36,147	32,157	29,918	24,402	18,691	92,143	150,982	18,259	169,241
Black ^b	1,061	845	425	373	310	2,220	3,213	179	3,392
Asian/Pacific Islander ^c	617	481	+	+	+	1,443	+	+	+
Hispanic ^d	3,881	2,780	+	+	+	8,541	+	+	+

Estimated prevalence percent^a on January 1, 2004, of the SEER 11 population diagnosed in the previous 10 years
 By Age at Prevalence and Race/Ethnicity

Age at Prevalence	Age Specific (Crude)										Age-Adjusted ^f
	All Ages	0-9	10-19	20-29	30-39	40-49	50-59	60-69	70-79	80+	All Ages
<u>Race</u>											
All Races ^c	0.0476%	0.0018%	0.0044%	0.0532%	0.1092%	0.0947%	0.0453%	0.0179%	0.0086%	0.0054%	0.0462%
White ^c	0.0573%	0.0019%	0.0048%	0.0652%	0.1342%	0.1129%	0.0529%	0.0210%	0.0102%	0.0062%	0.0556%
Black ^c	0.0108%	-	0.0030%	0.0082%	0.0232%	0.0252%	0.0150%	-	-	-	0.0109%
Asian/Pacific Islander ^c	0.0164%	0.0025%	0.0035%	0.0182%	0.0306%	0.0329%	0.0168%	0.0060%	-	-	0.0155%
Hispanic ^d	0.0319%	0.0023%	0.0041%	0.0468%	0.0751%	0.0516%	0.0211%	0.0096%	-	-	0.0297%

^a US 2004 cancer prevalence counts are based on 2004 cancer prevalence proportions from the SEER registries and 1/1/2004 US population estimates based on the average of 2003 and 2004 population estimates from the US Bureau of the Census. Prevalence was calculated using the First Malignant Primary Only for a person.

^{b c d} Statistics based on (b) SEER 9 Areas (c) SEER 11 Areas and Rural Georgia (d) NHIA for Hispanic for SEER 11 Areas and Rural Georgia.

^e Maximum limited-duration prevalence: 29 years for 1975-2004 SEER 9 data; 14 years for 1990-2004 SEER 11 data (used to calculate prevalence for Hispanics and Asian Pacific Islanders).

^f Percentages are age-adjusted to the 2000 US Standard Population (19 age groups - Census P25-1130) by 5-year age groups.

^{g h} (g) Cases diagnosed more than 29 years ago were estimated using the completeness index method (Capocaccia et. al. 1997, Merrill et. al. 2000). (h) Complete prevalence is obtained by summing 0 to <29 and >=29.

- Statistic not shown. Statistic based on fewer than 5 cases estimated alive in SEER for the time interval.

+ Not available.

SEER Incidence, Delay Adjusted Incidence and US Death Rates^a Testis Cancer, by Race

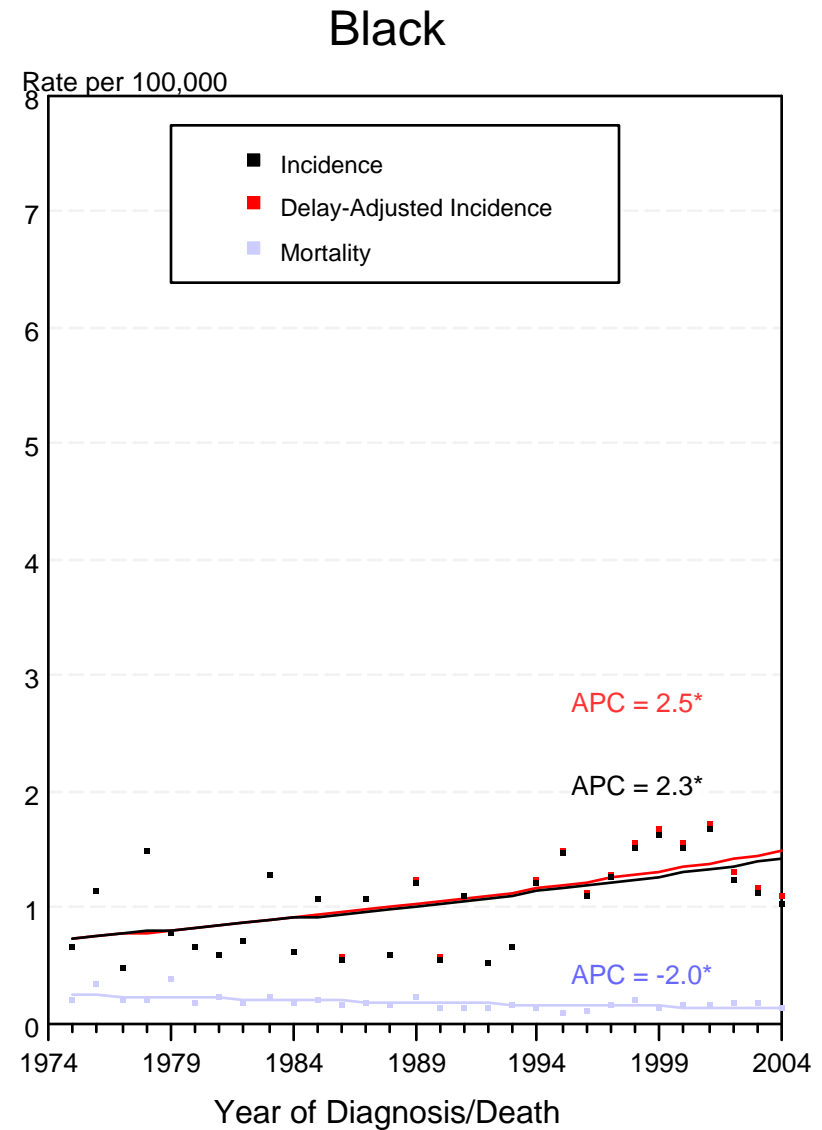
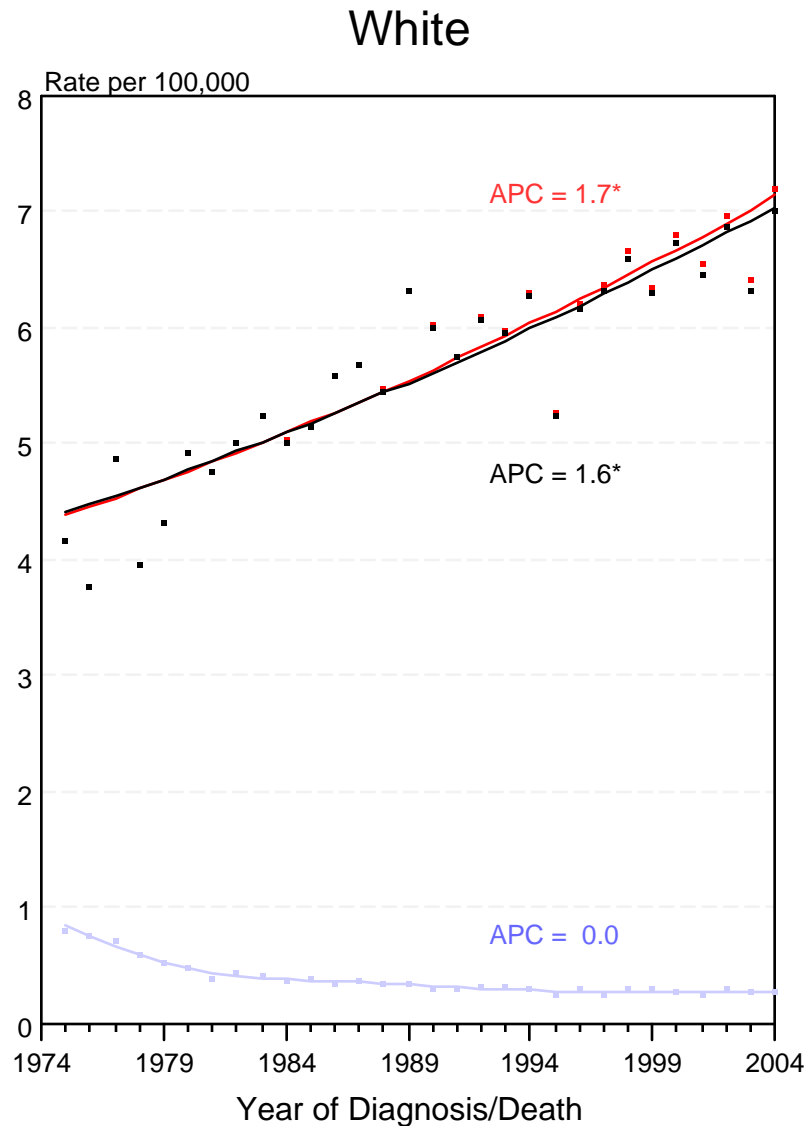


Figure XXV-1

^a Source: SEER 9 areas and NCHS public use data file for the total US. Rates are age-adjusted to the 2000 US Std Population (19 age groups - Census P25-1103). Regression lines and APCs are calculated using the Joinpoint Regression Program Version 3.0, April 2005, National Cancer Institute.

The APC is the Annual Percent Change for the regression line segments. The APC shown on the graph is for the most recent trend.

* The APC is significantly different from zero ($p < 0.05$).

SEER Incidence, Delay Adjusted Incidence and US Death Rates^a Testis Cancer, by Age and Race

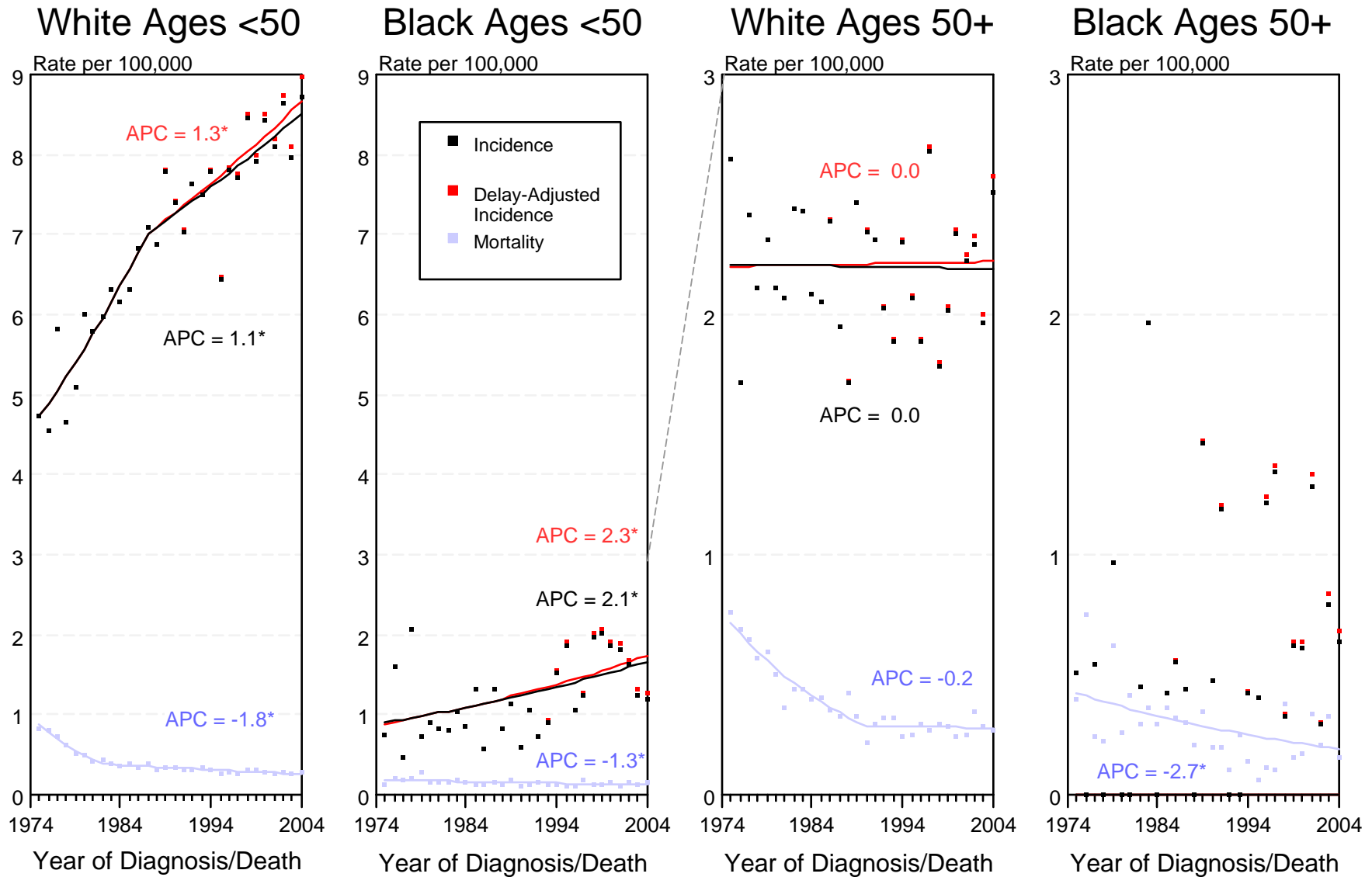


Figure XXV-2

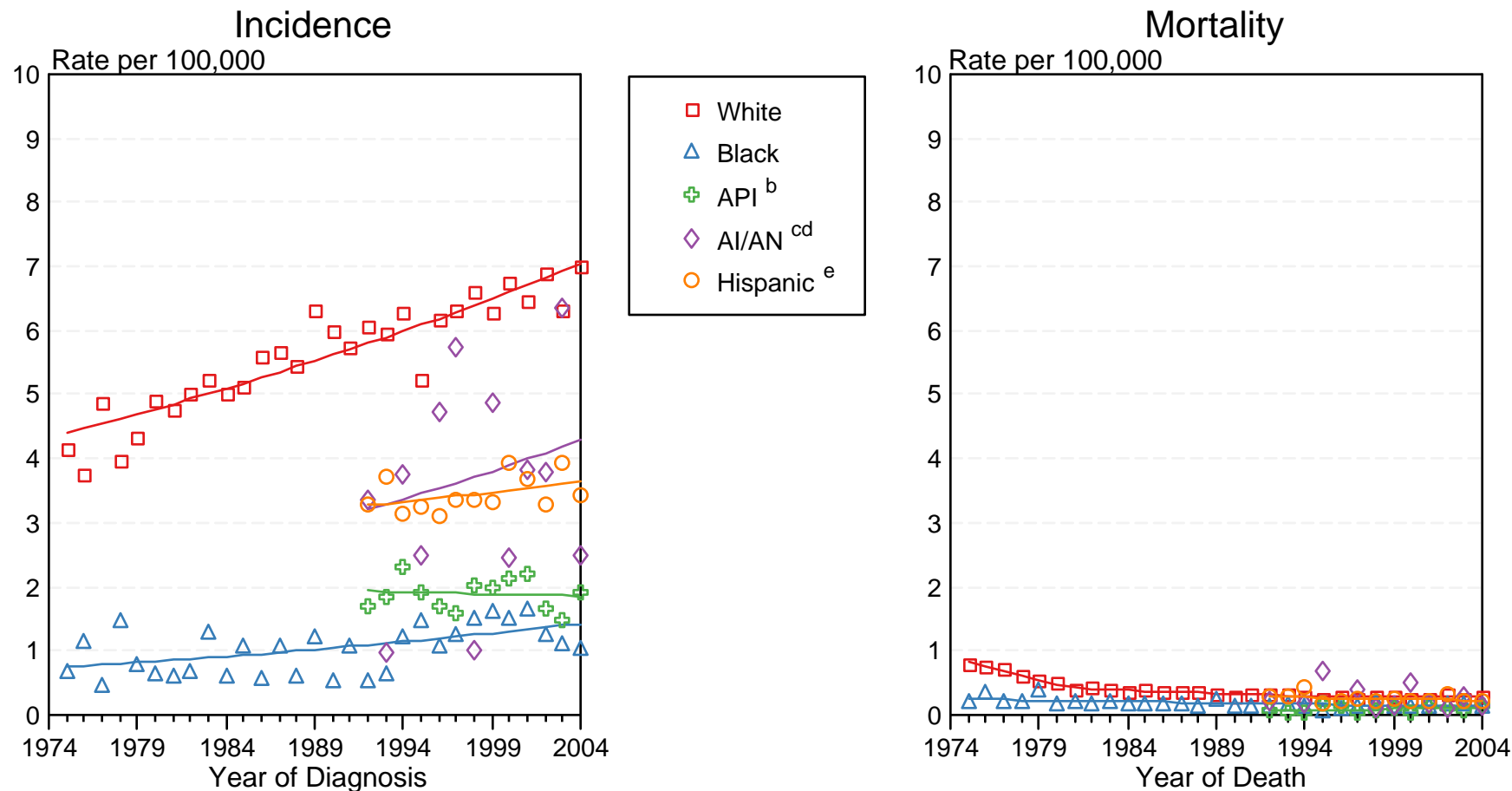
^a Source: SEER 9 areas and NCHS public use data file for the total US. Rates are age-adjusted to the 2000 US Std Population (19 age groups - Census P25-1103). Regression lines and APCs are calculated using the Joinpoint Regression Program Version 3.0, April 2005, National Cancer Institute.

The APC is the Annual Percent Change for the regression line segments. The APC shown on the graph is for the most recent trend.

* The APC is significantly different from zero ($p < 0.05$).

SEER Incidence and US Death Rates^a Testis Cancer

Joinpoint Analyses for Whites and Blacks from 1975-2004
and for Asian/Pacific Islanders, American Indians/Alaska Natives and Hispanics from 1992-2004



Source: Incidence data for whites and blacks are from the SEER 9 areas (San Francisco, Connecticut, Detroit, Hawaii, Iowa, New Mexico, Seattle, Utah, Atlanta). Incidence data for Asian/Pacific Islanders, American Indians/Alaska Natives and Hispanics are from the SEER 13 Areas (SEER 9 Areas, San Jose-Monterey, Los Angeles, Alaska Native Registry and Rural Georgia). Mortality data are from NCHS public use data file for the total US.

^a Rates are age-adjusted to the 2000 US Std Population (19 age groups - Census P25-1103).

Regression lines are calculated using the Joinpoint Regression Program Version 3.0, April 2005, National Cancer Institute.

^b API = Asian/Pacific Islander.

^c AI/AN = American Indian/Alaska Native. Rates for American Indian/Alaska Native are based on the CHSDA (Contract Health Service Delivery Area) counties.

^d Joinpoint could not fit a regression line for American Indian/Alaska Native Mortality due to insufficient data.

^e Hispanic is not mutually exclusive from whites, blacks, Asian/Pacific Islanders, and American Indians/Alaska Natives. Incidence data for Hispanics are based on NHIA and exclude cases from the Alaska Native Registry. Mortality data for Hispanics exclude cases from Connecticut, Maine, Maryland, Minnesota, New Hampshire, New York, North Dakota, Oklahoma, and Vermont.