

Table XXIX-1

AGE-ADJUSTED AND AGE-SPECIFIC SEER CANCER INCIDENCE RATES, 2001-2004^a

By International Classification of Childhood Cancer (ICCC)^b Group and Subgroup^c and Age
Including Group III benign brain tumors (2004) and myelodysplastic syndromes (2001-2004)
All Races, Males and Females

ICCC Group and Subgroup	0-14	0-19	<1	1-4	5-9	10-14	15-19
All ICCC Groups Combined							
Excluding benign brain (2001-2004)	150.6	166.4	236.9	209.4	111.3	128.6	213.7
Including Group III benign brain tumors (2004)	157.8	174.3	241.2	216.6	115.0	139.9	223.6
I Leukemia (includes myelodysplastic syndromes)	50.5	45.9	48.3	91.6	40.2	30.0	32.4
I(a) Lymphoid leukemia	38.7	33.4	17.8	75.8	32.8	20.5	17.7
I(b) Acute myeloid leukemia	7.9	8.2	17.3	10.4	4.7	7.2	9.3
I(c) Chronic myeloproliferative diseases	1.1	1.6	-	0.9	-	1.1	3.2
I(d) Myelodysplastic syndrome and other myeloproliferative	1.7	1.5	6.8	3.0	0.8	0.7	1.0
I(e) Unspecified and other specified leukemias	1.2	1.2	-	1.5	1.2	-	1.1
II Lymphomas and reticuloendothelial neo.	15.0	23.2	8.6	8.4	13.1	23.2	47.5
II(a) Hodgkin lymphoma	5.3	11.3	-	1.1	3.9	10.9	29.2
II(b) Non-Hodgkin lymphoma (except Burkitt lymphoma)	6.2	8.4	-	3.7	5.8	9.5	14.8
II(c) Burkitt lymphoma	2.3	2.4	-	1.8	3.0	2.4	2.6
II(d) Miscellaneous lymphoreticular neo.	1.1	0.8	7.1	1.8	-	-	-
II(e) Unspecified lymphomas	-	0.3	-	-	-	-	-
III CNS and misc intracranial and intraspinal neo. (2004 only)	37.3	37.2	42.3	44.9	34.4	33.3	37.1
III(a) Ependymomas and choroid plexus tumor	4.4	3.8	-	6.9	3.4	-	-
III(b) Astrocytoma	13.4	13.4	-	15.7	12.5	12.7	13.2
III(c) Intracranial and intraspinal embryonal tumors	6.7	5.7	-	10.8	5.6	4.0	-
III(d) Other gliomas	5.1	4.9	-	3.7	7.7	4.5	4.4
III(e) Other specified intracranial/intraspinal neo.	6.6	8.5	-	6.9	4.7	8.5	14.1
III(f) Unspecified intracranial and intraspinal neo.	1.0	0.9	-	-	-	-	-
IV Neuroblastoma and other peripheral nervous cell tumor	9.9	7.6	50.5	19.8	2.9	1.7	-
IV(a) Neuroblastoma and ganglioneuroblastoma	9.8	7.4	50.3	19.7	2.9	1.4	-
IV(b) Other peripheral nervous cell tumors	-	0.2	-	-	-	-	-
V Retinoblastoma	4.0	3.0	24.8	8.7	-	-	-
VI Renal tumors	7.5	6.0	17.3	17.8	4.0	1.1	1.5
VI(a) Nephroblastoma and other nonepithelial renal tumor	7.1	5.4	17.3	17.7	3.8	-	-
VI(b) Renal carcinoma	0.3	0.5	-	-	-	-	1.3
VI(c) Unspecified malignant renal tumors	-	-	-	-	-	-	-

^a SEER 17 areas (San Francisco, Connecticut, Detroit, Hawaii, Iowa, New Mexico, Seattle, Utah, Atlanta, San Jose-Monterey, Los Angeles, Alaska Native Registry, Rural Georgia, California excluding SF/SJM/LA, Kentucky, Louisiana and New Jersey).

^b International Classification of Childhood Cancer is based on ICD-O-3. Steliarova-Foucher E, Stiller C, Lacour B, Kaatsch P. International Classification of Childhood Cancer, Third Edition. Cancer. April 1, 2005; Vol 103, No. 7, pg 1457-1467.

^c Classifications are shown for invasive cases only except as noted. For ICCC groups and subgroups that include *in situ* behavior, only invasive cases are shown.

Rates are per 1,000,000 and are age-adjusted to the 2000 US Std Population (19 age groups - Census P25-1130).

- Statistic could not be calculated. Rate based on less than 16 cases for the time interval.

Neoplasms are abbreviated as neo.

Table XXIX-1 - continued

AGE-ADJUSTED AND AGE-SPECIFIC SEER CANCER INCIDENCE RATES, 2001-2004^a

By International Classification of Childhood Cancer (ICCC)^b Group and Subgroup^c and Age
Including Group III benign brain tumors (2004) and myelodysplastic syndromes (2001-2004)
All Races, Males and Females

ICCC Group and Subgroup	0-14	0-19	<1	1-4	5-9	10-14	15-19
VII Hepatic tumors	2.4	2.1	12.3	4.5	0.9	-	1.2
VII(a) Hepatoblastoma	2.1	1.6	12.1	4.4	-	-	-
VII(b) Hepatic carcinoma	0.3	0.5	-	-	-	-	1.2
VII(c) Unspecified malignant hepatic tumors	-	-	-	-	-	-	-
VIII Malignant bone tumors	6.6	8.9	-	1.6	5.0	13.2	15.5
VIII(a) Osteosarcoma	4.0	5.2	-	-	2.9	8.6	8.8
VIII(b) Chondrosarcoma	-	0.4	-	-	-	-	1.1
VIII(c) Ewing tumor and related sarcomas of bone	2.1	2.6	-	1.1	1.6	3.5	4.2
VIII(d) Other specified malignant bone tumors	0.3	0.5	-	-	-	-	1.0
VIII(e) Unspecified malignant bone tumors	-	-	-	-	-	-	-
IX Soft tissue and other extraosseous sarcomas	10.7	12.0	18.4	10.7	7.2	12.7	16.0
IX(a) Rhabdomyosarcoma	5.2	4.8	4.8	8.3	4.1	3.9	3.8
IX(b) Fibrosarcoma, peripheral nerve & other fibrous	1.3	1.5	6.1	-	0.8	1.6	1.9
IX(c) Kaposi sarcoma	-	-	-	-	-	-	-
IX(d) Other specified soft tissue sarcomas	3.4	4.7	5.5	1.8	1.8	5.7	8.9
IX(e) Unspecified soft-tissue sarcomas	0.9	1.0	-	-	-	1.4	1.3
X Germ cell & trophoblastic tumors & neo. of gonads	5.8	11.8	20.0	3.8	2.2	8.1	29.6
X(a) Intracranial and intraspinal germ-cell tumors	1.6	2.0	-	-	-	3.5	3.2
X(b) Extracranial & extragonadal germ cell tumors	1.6	1.7	13.7	1.9	-	-	1.9
X(c) Malignant gonadal germ cell tumors	2.4	7.5	3.9	1.6	1.3	3.7	22.7
X(d) Gonadal carcinomas	-	0.4	-	-	-	-	1.2
X(e) Other and unspecified malignant gonadal tumors	-	0.2	-	-	-	-	-
XI Other malignant epithelial neo. and melanomas	6.0	16.5	-	1.9	3.7	12.5	47.6
XI(a) Adrenocortical carcinoma	-	0.2	-	-	-	-	-
XI(b) Thyroid carcinoma	2.1	6.1	-	-	1.1	4.9	17.8
XI(c) Nasopharyngeal carcinoma	-	0.5	-	-	-	-	1.4
XI(d) Malignant melanoma	2.2	6.4	-	1.1	1.8	3.9	18.7
XI(e) Skin carcinoma	-	-	-	-	-	-	-
XI(f) Other and unspecified carcinomas	1.2	3.3	-	-	-	2.9	9.5
XII Other and unspecified malignant neo.	0.5	0.6	-	-	-	-	0.9
XII(a) Other specified malignant tumors	0.4	0.4	-	-	-	-	-
XII(b) Other unspecified malignant tumors	-	0.2	-	-	-	-	-
Not classified by ICC	0.4	0.5	-	-	-	-	1.0

^a SEER 17 areas (San Francisco, Connecticut, Detroit, Hawaii, Iowa, New Mexico, Seattle, Utah, Atlanta, San Jose-Monterey, Los Angeles, Alaska Native Registry, Rural Georgia, California excluding SF/SJM/LA, Kentucky, Louisiana and New Jersey).

^b International Classification of Childhood Cancer is based on ICD-O-3. Steliarova-Foucher E, Stiller C, Lacour B, Kaatsch P. International Classification of Childhood Cancer, Third Edition. Cancer. April 1, 2005: Vol 103, No. 7, pg 1457-1467.

^c Classifications are shown for invasive cases only except as noted. For ICC groups and subgroups that include *in situ* behavior, only invasive cases are shown.

Rates are per 1,000,000 and are age-adjusted to the 2000 US Std Population (19 age groups - Census P25-1130).

- Statistic could not be calculated. Rate based on less than 16 cases for the time interval.

Neoplasms are abbreviated as neo.

Table XXIX-2

AGE-ADJUSTED SEER CANCER INCIDENCE RATES, 1975-2004, 1975-1981, 1982-1988, 1989-1996, 1997-2004^a

By International Classification of Childhood Cancer (ICCC)^b Selected Group and Subgroup^c and Year of Diagnosis
 Excluding benign brain and myelodysplastic syndromes
 All Races, Males and Females, Ages 0-19

<u>ICCC Group and Subgroup</u>	<u>1975-2004</u>	<u>1975-1981</u>	<u>1982-1988</u>	<u>1989-1996</u>	<u>1997-2004</u>
All ICCC Groups Combined	154.5	141.2	152.6	159.6	161.8
I Leukemia	37.8	34.4	36.9	38.5	40.6
I(a) Lymphoid leukemia	28.2	24.9	27.8	28.8	30.6
I(b) Acute myeloid leukemia	6.9	6.0	6.1	7.2	7.8
II Lymphomas and reticuloendothelial neo.	24.1	24.1	25.1	24.1	23.5
II(a) Hodgkin lymphoma	13.3	14.2	14.2	13.2	11.8
II(b,c,e) Non-Hodgkin lymphoma	10.3	9.2	10.2	10.3	11.4
III CNS & misc intracranial & intraspinal neo.	27.3	23.4	26.2	29.8	28.9
III(a) Ependymomas and choroid plexus tumor	2.3	1.9	2.2	2.5	2.4
III(b) Astrocytoma	13.8	11.4	13.7	15.5	14.0
III(c) Intracranial and intraspinal embryonal tumors	5.5	4.4	4.9	5.8	6.5
III(d) Other gliomas	5.0	4.7	4.5	5.2	5.3
IV Neuroblastoma and other peripheral nervous cell tumors	8.3	7.9	8.4	8.5	8.3
IV(a) Neuroblastoma and ganglioneuroblastoma	8.1	7.8	8.2	8.2	8.1
V Retinoblastoma	3.0	2.7	3.0	3.3	3.0
VI Renal tumors	6.7	6.3	6.7	6.9	6.8
VI(a) Nephroblastoma and other nonepithelial renal tumor	6.2	6.0	6.3	6.5	6.1
VII Hepatic tumors	1.7	1.1	1.7	1.6	2.3
VII(a) Hepatoblastoma	1.2	0.6	1.2	1.2	1.7
VIII Malignant bone tumors	8.5	8.1	8.9	8.7	8.4
VIII(a) Osteosarcoma	4.6	4.0	4.8	4.9	4.8
VIII(c) Ewing tumor and related sarcomas of bone	2.9	3.0	3.2	2.8	2.7
IX Soft tissue and other extrasosseous sarcomas	11.1	9.8	11.2	11.2	11.9
IX(a) Rhabdomyosarcoma	4.5	4.0	4.5	4.8	4.6
X Germ cell & trophoblastic tumors & neo. of gonads	10.2	8.9	10.0	11.1	10.8
X(a) Intracranial and intraspinal germ-cell tumor	1.4	0.9	1.1	1.7	1.8
X(c) Malignant gonadal germ cell tumor	1.6	1.6	1.6	1.7	1.5
XI Other malignant epithelial neo. and melanomas	14.9	13.6	13.7	15.2	16.7
XI(b) Thyroid carcinoma	5.4	4.7	5.3	5.2	6.2
XI(d) Malignant melanoma	4.9	4.3	4.1	5.5	5.7

^a SEER 9 areas (San Francisco, Connecticut, Detroit, Hawaii, Iowa, New Mexico, Seattle, Utah, and Atlanta). Rates are per 1,000,000 and are age-adjusted to the 2000 US Std Population (19 age groups - Census P25-1130).

^b International Classification of Childhood Cancer is based on ICD-O-3. Steliarova-Foucher E, Stiller C, Lacour B, Kaatsch P. International Classification of Childhood Cancer, Third Edition. Cancer. April 1, 2005; Vol 103, No. 7, pg 1457-1467.

^c Classifications are shown for invasive cases only except as noted. For ICCC groups and subgroups that include *in situ* behavior, only invasive cases are shown.

- Statistic could not be calculated. Rate based on less than 16 cases for the time interval. Neoplasms are abbreviated as neo.

Table XXIX-3

AGE-ADJUSTED SEER CANCER INCIDENCE TRENDS, 1975-2004, 1975-1989, 1990-2004^a

By International Classification of Childhood Cancer (ICCC)^b Selected Group and Subgroup^c
 Excluding benign brain and myelodysplastic syndromes
 All Races, Males and Females

ICCC Group and Subgroup	Ages 0-14				Ages 0-19			
	% Change 1975-2004	APC 1975-2004	APC 1975-1989	APC 1990-2004	% Change 1975-2004	APC 1975-2004	APC 1975-1989	APC 1990-2004
All ICCG Groups Combined	28.2	0.6*	1.2*	0.2 [#]	23.2	0.6*	1.2*	0.2 [#]
I Leukemia	49.6	0.7*	1.5*	0.6	41.9	0.7*	1.3*	0.8
I(a) Lymphoid leukemia	58.0	0.8*	2.0*	0.7 [@]	58.5	0.8*	2.0*	0.9
I(b) Acute myeloid leukemia	65.7	1.2*	0.7	0.4	39.9	1.3*	0.1	0.7
II Lymphomas and reticuloendothelial neo.	-22.1	-0.4*	-0.5	0.2	-12.0	-0.2	0.4	-0.3
II(a) Hodgkin lymphoma	-23.0	-1.2*	-0.8	-1.1	-26.9	-0.9*	0.1	-1.4* [@]
II(b,c,e) Non-Hodgkin lymphoma	-27.0	0.3	-0.1	1.1	6.7	0.9*	1.0*	1.2
III CNS & misc intracranial & intraspinal neo.	42.2	1.1*	2.4*	-0.1 [#]	35.8	1.0*	2.2*	-0.2 [#]
III(a) Ependymomas and choroid plexus tumors	95.9	1.0	3.5	-0.7 [@]	86.1	0.9	3.4	-0.4 [@]
III(b) Astrocytoma	42.8	1.3*	3.8*	-0.6 [#]	40.1	0.9*	3.3*	-0.8 [#]
III(c) Intracranial and intraspinal embryonal tum.	159.0	1.5*	1.0	0.5	168.1	1.7*	1.1	0.8
III(d) Other gliomas	-9.8	0.4	-0.7	0.3	-13.5	0.7	-0.7	0.3
IV Neuroblastoma and other peripheral nervous cell tumors	20.2	0.3	0.2	0.3	19.9	0.3	0.4	0.3
IV(a) Neuroblastoma and ganglioneuroblastoma	18.5	0.3	0.0	0.4	16.6	0.2	0.2	0.4
V Retinoblastoma	-10.1	0.4	0.7	-1.5	-10.1	0.4	0.8	-1.6
VI Renal tumors	7.8	0.1	1.3	-0.7	15.5	0.2	1.2	-0.7
VI(a) Nephroblastoma and other nonepithelial renal tumors	5.8	0.0	1.4	-0.7	8.8	-0.1	1.4	-1.0
VII Hepatic tumors	243.2	2.4*	2.3	2.9	264.2	2.2*	2.1	2.3
VII(a) Hepatoblastoma	504.5	3.1*	4.2	3.3	504.5	3.0*	4.4	3.3
VIII Malignant bone tumors	43.2	0.0	1.5	-1.2 [@]	5.9	0.1	1.7*	-1.0 [#]
VIII(a) Osteosarcoma	110.1	0.6	2.9*	-1.4 [#]	20.1	0.7	3.0*	-0.7 [#]
VIII(c) Ewing tum. and related sarcomas of bone	2.3	-1.1	0.8	-2.0	-6.3	-0.7	1.3	-1.6
IX Soft tissue and other extraosseous sarcomas	16.8	0.5	1.1	-0.1	39.4	0.6*	1.2	0.6
IX(a) Rhabdomyosarcoma	23.9	0.4	2.2	-0.7 [@]	42.3	0.5	2.2	-0.2
X Germ cell & trophoblastic tum. & neo. of gonads	54.7	1.1*	2.3	0.6	34.9	0.9*	1.5*	0.1
X(a) Intracranial and intraspinal germ-cell tum.	127.7	-	-	0.1	96.4	3.0*	2.1	0.2
X(c) Malignant gonadal germ cell tumors	455.4	1.4	6.5*	-0.7 [#]	-20.0	0.0	2.6	-0.7
XI Other malignant epithelial neo. and melanomas	25.4	0.9*	-0.6	1.9 [@]	20.5	1.0*	0.2	1.3
XI(b) Thyroid carcinoma	11.0	0.5	0.1	1.1	41.6	1.1*	0.8	2.1
XI(d) Malignant melanoma	127.5	2.2*	0.4	3.9*	82.4	1.7*	1.3	1.5

^a The APC is the Annual Percent Change over the time interval.

^b SEER 9 areas (San Francisco, Connecticut, Detroit, Hawaii, Iowa, New Mexico, Seattle, Utah, and Atlanta).

^c International Classification of Childhood Cancer is based on ICD-O-3. Steliarova-Foucher E, Stiller C, Lacour B, Kaatsch P.

International Classification of Childhood Cancer, Third Edition. Cancer. April 1, 2005: Vol 103, No. 7, pg 1457-1467.

^d Classifications are shown for invasive cases only except as noted. For ICCG groups and subgroups that include *in situ* behavior, only invasive cases are shown.

* The APC is significantly different from zero (p<.05)

[#] The APC for 1990-2004 is significantly different from the APC for 1975-1989 (p<.05).

[@] The APC for 1990-2004 is significantly different from the APC for 1975-1989 (p<.10).

- Statistic could not be calculated. Trend based on less than 10 cases for at least one year within the time interval.

Neoplasms are abbreviated as neo. Tumors are abbreviated as tum.

Table XXIX-4

AGE-ADJUSTED SEER CANCER INCIDENCE TRENDS, 1975-2004, 1975-1989, 1990-2004^a

By International Classification of Childhood Cancer (ICCC)^b Selected Group and Subgroup^c
 Excluding benign brain and myelodysplastic syndromes
 All Races, Males

ICCC Group and Subgroup	Ages 0-14				Ages 0-19			
	% Change 1975-2004	APC 1975-2004	APC 1975-1989	APC 1990-2004	% Change 1975-2004	APC 1975-2004	APC 1975-1989	APC 1990-2004
All ICCG Groups Combined	25.5	0.6*	1.3*	0.0 [#]	24.3	0.6*	1.3*	0.2 [#]
I Leukemia	33.8	0.7*	1.5*	0.7	33.8	0.7*	1.2*	1.0
I(a) Lymphoid leukemia	42.1	0.7*	2.0*	0.4 [@]	54.4	0.8*	2.0*	0.7
I(b) Acute myeloid leukemia	85.4	1.9*	0.2	1.8	43.8	1.6*	-1.1	2.3* [#]
II Lymphomas and reticuloendothelial neo.	-33.6	-0.6*	-0.3	-0.4	-22.8	-0.3	0.5	-0.3
II(a) Hodgkin lymphoma	-25.6	-1.4*	-0.1	-1.1	-37.7	-1.1*	0.1	-1.2
II(b,c,e) Non-Hodgkin lymphoma	-42.7	-0.1	-0.3	-0.2	-8.4	0.7*	0.8	0.6
III CNS & misc intracranial & intraspinal neo.	80.9	1.2*	2.6*	-0.4 [#]	57.0	1.1*	2.4*	-0.4 [#]
III(a) Ependymomas and choroid plexus tumors	46.0	0.3	2.3	-4.0* [#]	67.8	0.3	2.0	-3.5* [#]
III(b) Astrocytoma	74.1	1.1*	3.7*	-1.4 [#]	57.2	0.8*	3.1*	-1.2 [#]
III(c) Intracranial and intraspinal embryonal tum.	370.4	1.6*	0.9	0.3	316.5	1.8*	1.1	0.6
III(d) Other gliomas	34.9	1.0	1.4	1.8	11.0	1.1	0.5	1.0
IV Neuroblastoma and other peripheral nervous cell tumors	20.4	0.3	0.6	-0.5	19.8	0.4	1.0	-0.5
IV(a) Neuroblastoma and ganglioneuroblastoma	20.4	0.4	0.3	-0.4	16.2	0.3	0.7	-0.4
V Retinoblastoma	-10.7	1.0	1.5	-0.8	-10.7	1.0	1.7	-0.9
VI Renal tumors	2.7	0.2	1.9	-1.8 [#]	-2.1	0.3	1.5	-1.3
VI(a) Nephroblastoma and other nonepithelial renal tumors	15.8	0.2	2.0	-1.7 [@]	15.8	0.1	1.9	-1.8 [#]
VII Hepatic tumors	224.9	2.5*	2.4	1.1	252.9	2.4*	1.5	0.5
VII(a) Hepatoblastoma	302.5	3.0*	4.0	2.1	302.5	3.0*	4.4	2.1
VIII Malignant bone tumors	-5.6	0.2	2.3	-1.6	-18.3	0.5	2.5*	-1.5 [#]
VIII(a) Osteosarcoma	69.6	0.6	3.9	-2.7 [#]	22.3	1.1	4.4*	-1.0 [#]
VIII(c) Ewing tum. and related sarcomas of bone	-52.8	-0.3	1.0	-1.0	-60.2	-0.4	0.6	-2.1
IX Soft tissue and other extraosseous sarcomas	24.5	0.7	1.3	0.6	46.1	0.8*	1.7	1.3
IX(a) Rhabdomyosarcoma	22.3	0.4	3.4*	-0.5 [#]	27.1	0.4	3.2	-0.3 [@]
X Germ cell & trophoblastic tum. & neo. of gonads	87.7	1.3	1.3	1.0	122.1	1.4*	1.7	1.1
X(a) Intracranial and intraspinal germ-cell tum.	131.6	-	-	0.6	93.3	3.4*	1.5	0.8
X(c) Malignant gonadal germ cell tum. (testis)	137.8	0.7	2.9	0.0	-6.5	-0.9	3.4	-0.2
XI Other malignant epithelial neo. and melanomas	11.8	0.7	-1.0	0.8	6.7	1.1*	0.3	1.6
XI(b) Thyroid carcinoma	0.0	-	-	-	-41.8	0.1	-0.5	2.3
XI(d) Malignant melanoma	86.8	1.7	-2.6	3.3	46.0	2.0*	1.0	2.2

^a The APC is the Annual Percent Change over the time interval.

^b SEER 9 areas (San Francisco, Connecticut, Detroit, Hawaii, Iowa, New Mexico, Seattle, Utah, and Atlanta).

^c International Classification of Childhood Cancer is based on ICD-O-3. Steliarova-Foucher E, Stiller C, Lacour B, Kaatsch P.

International Classification of Childhood Cancer, Third Edition. Cancer. April 1, 2005: Vol 103, No. 7, pg 1457-1467.

^d Classifications are shown for invasive cases only except as noted. For ICCG groups and subgroups that include *in situ* behavior, only invasive cases are shown.

* The APC is significantly different from zero (p<.05)

The APC for 1990-2004 is significantly different from the APC for 1975-1989 (p<.05).

@ The APC for 1990-2004 is significantly different from the APC for 1975-1989 (p<.10).

- Statistic could not be calculated. Trend based on less than 10 cases for at least one year within the time interval.

Neoplasms are abbreviated as neo. Tumors are abbreviated as tum.

Table XXIX-5

AGE-ADJUSTED SEER CANCER INCIDENCE TRENDS, 1975-2004, 1975-1989, 1990-2004^a

By International Classification of Childhood Cancer (ICCC)^b Selected Group and Subgroup^c
 Excluding benign brain and myelodysplastic syndromes
 All Races, Females

ICCC Group and Subgroup	Ages 0-14				Ages 0-19			
	% Change 1975-2004	APC 1975-2004	APC 1975-1989	APC 1990-2004	% Change 1975-2004	APC 1975-2004	APC 1975-1989	APC 1990-2004
All ICCG Groups Combined	31.5	0.5*	1.1*	0.4	21.8	0.5*	1.0*	0.2
I Leukemia	74.7	0.6*	1.6	0.5	54.2	0.7*	1.5	0.6
I(a) Lymphoid leukemia	81.5	0.8*	1.9	0.9	64.3	0.8*	1.9	1.1
I(b) Acute myeloid leukemia	40.6	0.4	1.6	-1.7	34.3	0.9*	1.5	-1.2 [@]
II Lymphomas and reticuloendothelial neo.	0.6	-0.1	-1.2	1.3	4.0	-0.1	0.4	-0.1
II(a) Hodgkin lymphoma	-19.5	-1.2*	-2.2	-1.7	-13.4	-0.7*	0.0	-1.7
II(b,c,e) Non-Hodgkin lymphoma	17.5	1.4*	0.6	4.5*	37.9	1.4*	1.6	2.8*
III CNS & misc intracranial & intraspinal neo.	6.2	1.0*	2.1	0.2	13.1	0.8*	2.0	0.1 [@]
III(a) Ependymomas and choroid plexus tumors	164.7	1.3	3.5	3.5	106.4	1.1	3.3	3.8
III(b) Astrocytoma	12.9	1.4*	3.9*	0.3 [#]	20.8	0.9*	3.5*	-0.4 [#]
III(c) Intracranial and intraspinal embryonal tum.	42.9	1.1*	0.9	0.5	72.4	1.4*	1.1	0.9
III(d) Other gliomas	-50.7	-0.3	-3.0*	-1.1	-39.4	0.1	-2.1	-0.5
IV Neuroblastoma and other peripheral nervous cell tumors	20.0	0.3	-0.4	1.4	20.0	0.2	-0.5	1.4
IV(a) Neuroblastoma and ganglioneuroblastoma	16.9	0.3	-0.4	1.6	16.9	0.2	-0.5	1.5
V Retinoblastoma	-9.3	-0.2	-0.6	-2.3	-9.3	-0.1	-0.6	-2.2
VI Renal tumors	13.6	-0.1	0.7	0.2	36.5	0.0	0.9	-0.2
VI(a) Nephroblastoma and other nonepithelial renal tumors	-4.4	-0.3	0.8	0.1	1.7	-0.3	0.9	-0.3
VII Hepatic tumors	294.4	2.4*	1.9	6.3*	294.4	2.1*	2.8	5.6
VII(a) Hepatoblastoma	-	-	-	4.9	-	-	-	4.9
VIII Malignant bone tumors	113.2	-0.2	0.8	-1.6	36.1	-0.4	0.5	-0.4
VIII(a) Osteosarcoma	144.1	0.6	1.8	-0.9	19.1	0.0	1.0	-0.4
VIII(c) Ewing tum. and related sarcomas of bone	81.6	-1.7	1.2	-2.5	143.5	-1.0	2.6	-0.5
IX Soft tissue and other extraosseous sarcomas	7.9	0.3	1.0	-1.0	31.6	0.3	0.8	-0.1
IX(a) Rhabdomyosarcoma	25.6	0.3	0.5	-0.7	60.2	0.6	0.5	0.1
X Germ cell & trophoblastic tum. & neo. of gonads	21.3	0.8	3.3	-0.3 [@]	-38.2	0.1	1.1	-1.5
X(a) Intracranial and intraspinal germ-cell tum.	107.3	-	-	-1.1	107.3	-	-	-0.6
X(c) Malignant gonadal germ cell tum. (ovary)	-	-	-	-0.7	-27.8	0.6	2.0	-1.5
XI Other malignant epithelial neo. and melanomas	35.8	1.0*	-0.1	2.6	28.9	1.0*	0.2	1.2
XI(b) Thyroid carcinoma	14.1	0.7	1.4	2.6	68.9	1.4*	1.3	2.0*
XI(d) Malignant melanoma	181.5	-	-	3.4	123.1	1.5*	1.4	1.0

The APC is the Annual Percent Change over the time interval.

^a SEER 9 areas (San Francisco, Connecticut, Detroit, Hawaii, Iowa, New Mexico, Seattle, Utah, and Atlanta).

^b International Classification of Childhood Cancer is based on ICD-O-3. Steliarova-Foucher E, Stiller C, Lacour B, Kaatsch P. International Classification of Childhood Cancer, Third Edition. Cancer. April 1, 2005; Vol 103, No. 7, pg 1457-1467.

^c Classifications are shown for invasive cases only. Groups and subgroups that include *in situ* behavior reflect only invasive cases.

* The APC is significantly different from zero ($p < .05$)

The APC for 1990-2004 is significantly different from the APC for 1975-1989 ($p < .05$).

@ The APC for 1990-2004 is significantly different from the APC for 1975-1989 ($p < .10$).

- Statistic could not be calculated. Trend based on less than 10 cases for at least one year within the time interval. Neoplasms are abbreviated as neo. Tumors are abbreviated as tum.

Table XXIX-6

5-YEAR RELATIVE SURVIVAL RATES, 1996-2003^a

By International Classification of Childhood Cancer (ICCC)^b Selected Group and Subgroup^c and Sex and Age
Excluding benign brain and myelodysplastic syndromes

ICCC Group & Subgroup	Ages 0-19 by Sex			Both Sexes by Age					
	Total	Male	Female	<1	1-4	5-9	10-14	15-19	0-14
All ICCC Groups Combined	78.2	76.5	80.1	72.6	80.5	76.9	77.5	78.8	77.9
I Leukemia	76.1	74.8	77.8	50.6	86.8	81.1	70.5	54.5	79.9
I(a) Lymphoid leukemia	82.1	80.2	84.4	48.3	90.7	85.0	75.9	59.1	85.0
I(b) Acute myeloid leukemia	53.0	53.9	52.0	48.3 ^d	62.3	56.2	55.0	43.9	56.3
II Lymphomas and reticuloendothelial neo.	87.4	86.5	88.7	55.8 ^d	84.8	88.6	88.9	87.6	87.1
II(a) Hodgkin lymphoma	94.6	94.9	94.2	-	100.0	94.0	94.7	94.4	94.9
II(b,c,e) Non-Hodgkin lymphoma	80.1	79.7	81.0	-	81.7	86.0	83.2	74.9	83.4
III CNS & misc intracranial & intraspinal neo.	71.3	69.9	73.1	48.1	71.0	69.1	77.8	74.4	70.7
III(a) Ependymomas and choroid plexus tumor	71.1	68.9	75.5 ^d	46.5 ^e	64.5 ^d	73.7 ^d	77.0 ^d	89.3 ^d	67.9
III(b) Astrocytoma	82.6	80.5	85.0	67.9 ^d	90.4	81.9	83.3	75.2	84.3
III(c) Intracranial and intraspinal embryonal tumors	65.5	66.1	64.7	32.0 ^d	57.2	75.9	75.7	70.9 ^d	64.8
III(d) Other gliomas	52.1	53.1	51.1	48.5 ^e	44.5 ^d	34.8	64.1	75.1	46.5
IV Neuroblastoma and other peripheral nervous cell tumors	68.6	68.1	69.2	90.5	61.5	46.2 ^d	60.0 ^e	64.4 ^e	68.7
IV(a) Neuroblastoma and ganglioneuroblastoma	68.5	67.9	69.0	90.4	61.6	44.6 ^d	59.8 ^e	-	68.7
V Retinoblastoma	97.1	96.8	97.5	99.3	95.1	100.0	-	-	97.1
VI Renal tumors	87.5	89.1	85.9	88.5	89.9	88.5	56.7 ^e	74.5 ^d	88.0
VI(a) Nephroblastoma and other nonepithelial renal tumor	88.7	91.0	86.6	88.5	90.2	87.9	65.9 ^e	-	88.8
VII Hepatic tumors	48.5	45.4	52.5 ^d	65.8 ^d	62.6	24.8 ^e	12.2 ^d	21.9 ^d	53.3
VII(a) Hepatoblastoma	60.5	55.4 ^d	67.0 ^d	67.3 ^d	62.8	-	-	-	60.8
VIII Malignant bone tumors	65.6	63.9	68.5	-	59.6 ^d	76.4	63.8	63.9	66.9
VIII(a) Osteosarcoma	66.2	64.0	69.8	-	-	72.9 ^d	64.9	65.3	66.9
VIII(c) Ewing tumor and related sarcomas of bone	59.8	58.8	61.5 ^d	-	57.0 ^e	83.9 ^d	56.9 ^d	52.8 ^d	64.6
IX Soft tissue and other extraosseous sarcomas	68.5	67.7	69.6	59.7 ^d	70.3	71.4	71.7	65.7	70.0
IX(a) Rhabdomyosarcoma	59.2	62.0	55.1	50.8 ^e	67.0	65.1	53.8 ^d	46.8 ^d	62.1
X Germ cell & trophoblastic tumors & neo. of gonads	90.1	89.4	91.4	83.6	88.3	91.2	93.0	90.5	89.6
X(a) Intracranial and intraspinal germ-cell tumor	85.6	86.1	84.4 ^d	-	-	95.2	89.8	81.3 ^d	87.6
X(c) Malignant gonadal germ cell tumor	95.5	94.5	97.6	100.0	91.3 ^d	97.1	100.0	94.8	97.9
XI Other malignant epithelial neo. and melanomas	89.6	84.4	92.2	-	94.2	83.7	89.9	89.8	89.0
XI(b) Thyroid carcinoma	97.9	93.9	98.8	-	-	100.0	96.0	98.2	96.8
XI(d) Malignant melanoma	94.3	94.8	93.9	-	90.3 ^d	90.8 ^d	90.8	95.3	90.7

^a SEER 17 areas (San Francisco, Connecticut, Detroit, Hawaii, Iowa, New Mexico, Seattle, Utah, Atlanta, San Jose-Monterey, Los Angeles, Alaska Native Registry, Rural Georgia, California excluding SF/SJM/LA, Kentucky, Louisiana and New Jersey). California excluding SF/SJM/LA, Kentucky, Louisiana, and New Jersey contribute cases for diagnosis years 2000-2003. The remaining 13 SEER Areas contribute cases for the entire period 1996-2003. Rates are based on follow-up of patients into 2004.

^b International Classification of Childhood Cancer is based on ICD-O-3. Steliarova-Foucher E, Stiller C, Lacour B, Kaatsch P. International Classification of Childhood Cancer, Third Edition. Cancer. April 1, 2005: Vol 103, No. 7, pg 1457-1467.

^c Classifications are shown for invasive cases only except as noted. For ICCC groups and subgroups that include *in situ* behavior, only invasive cases are shown.

^d The standard error of the survival rate is between 5 and 10 percentage points.

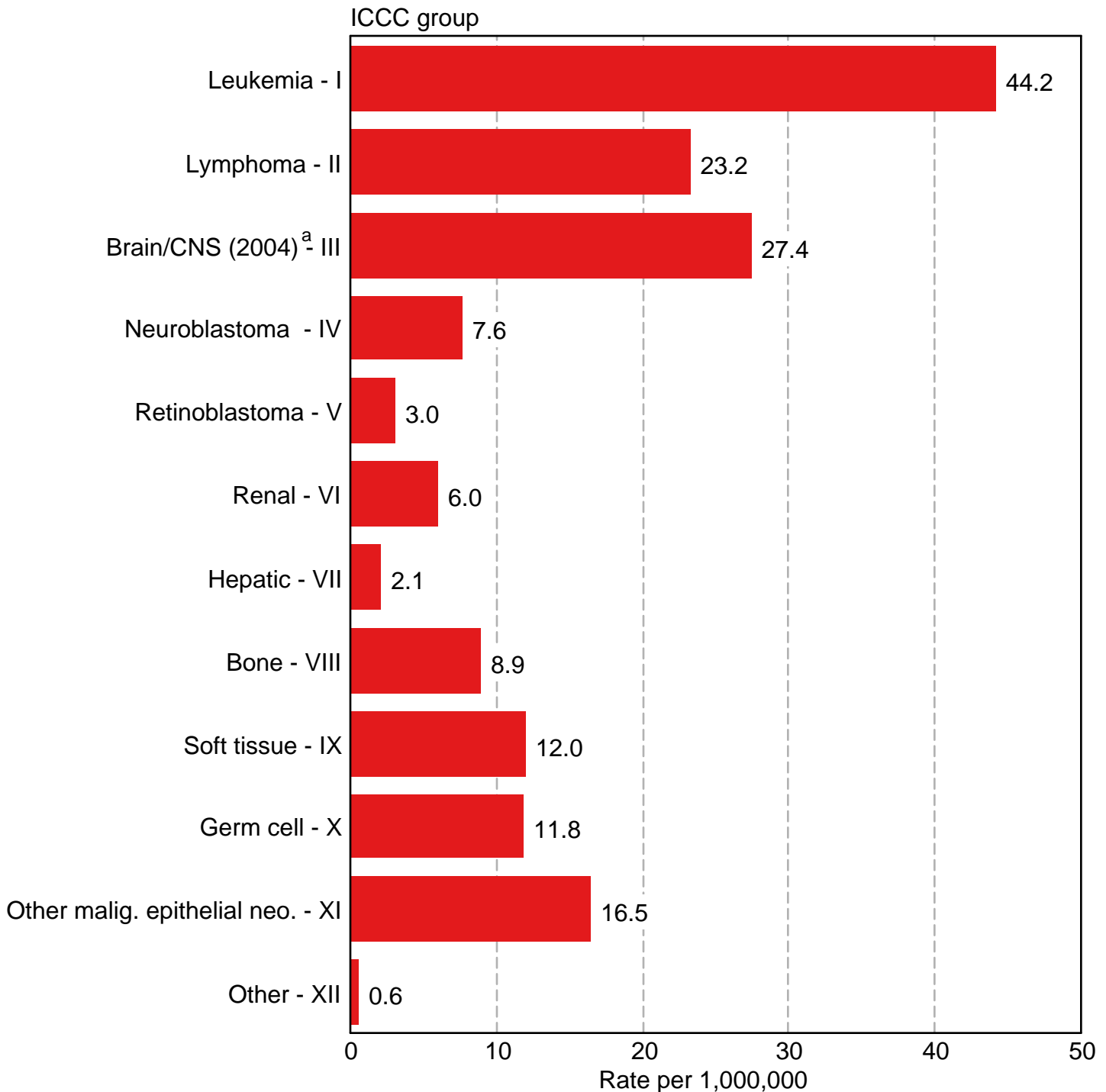
^e The standard error of the survival rate is greater than 10 percentage points.

- Statistic could not be calculated due to fewer than 16 cases during the time period.

Neoplasms are abbreviated as neo.

Survival rates are relative rates expressed as percents.

Childhood Cancer SEER Incidence Rates by ICCC Group, 2001-2004 Under 20 Years of Age, Both Sexes, All Races

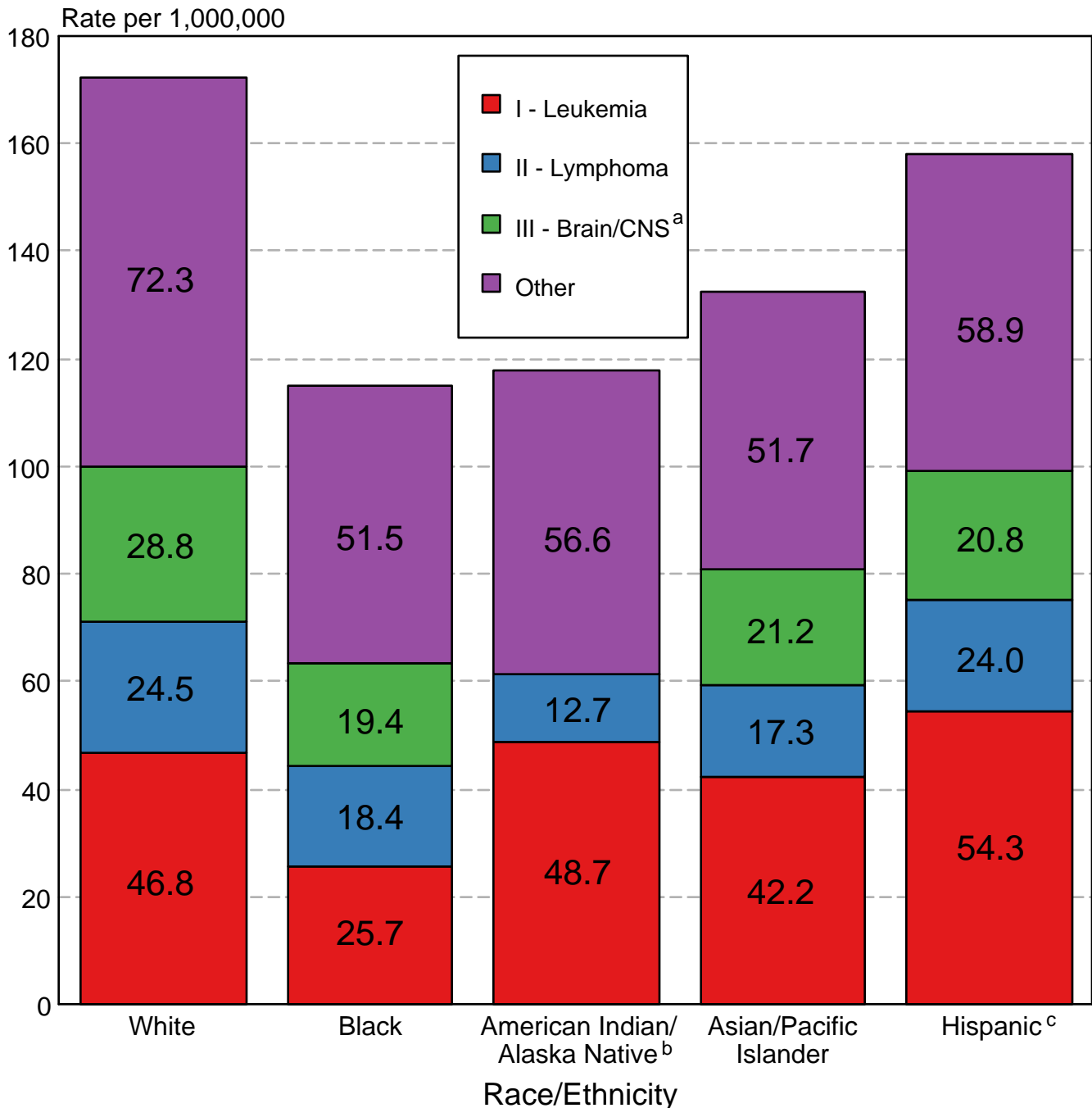


Source: SEER 9 areas (San Francisco, Connecticut, Detroit, Hawaii, Iowa, New Mexico, Seattle, Utah, Atlanta). Rates are age-adjusted to the 2000 US Std Population (19 age groups - Census P25-1130).

International Classification of Childhood Cancer is based on ICD-0-3. Steliarova-Foucher E, Stiller C, Lacour B, Kaatsch P. International Classification of Childhood Cancer, Third Edition. Cancer. April 1, 2005; Vol 103, No. 7, pg 1457-1467.

^a Rate for Group III (Brain/CNS) includes benign brain tumors and is based only on cases diagnosed in 2004.

Childhood Cancer SEER Incidence Rates 2001-2004 by ICCG Group and Race/Ethnicity Both Sexes, Under 20 Years of Age



Source: SEER 17 areas (San Francisco, Connecticut, Detroit, Hawaii, Iowa, New Mexico, Seattle, Utah, Atlanta, San Jose-Monterey, Los Angeles, Alaska Native Registry, Rural Georgia, California excluding SF/SJM/LA, Kentucky, Louisiana, and New Jersey). Incidence rates are age-adjusted to the 2000 US Std Population (19 age groups - Census P25-1130) and are not shown for fewer than 10 cases for the time period.

International Classification of Childhood Cancer is based on ICD-0-3. Steliarova-Foucher E, Stiller C, Lacour B, Kaatsch P. International Classification of Childhood Cancer, Third Edition. Cancer. April 1, 2005; Vol 103, No. 7, pg 1457-1467.

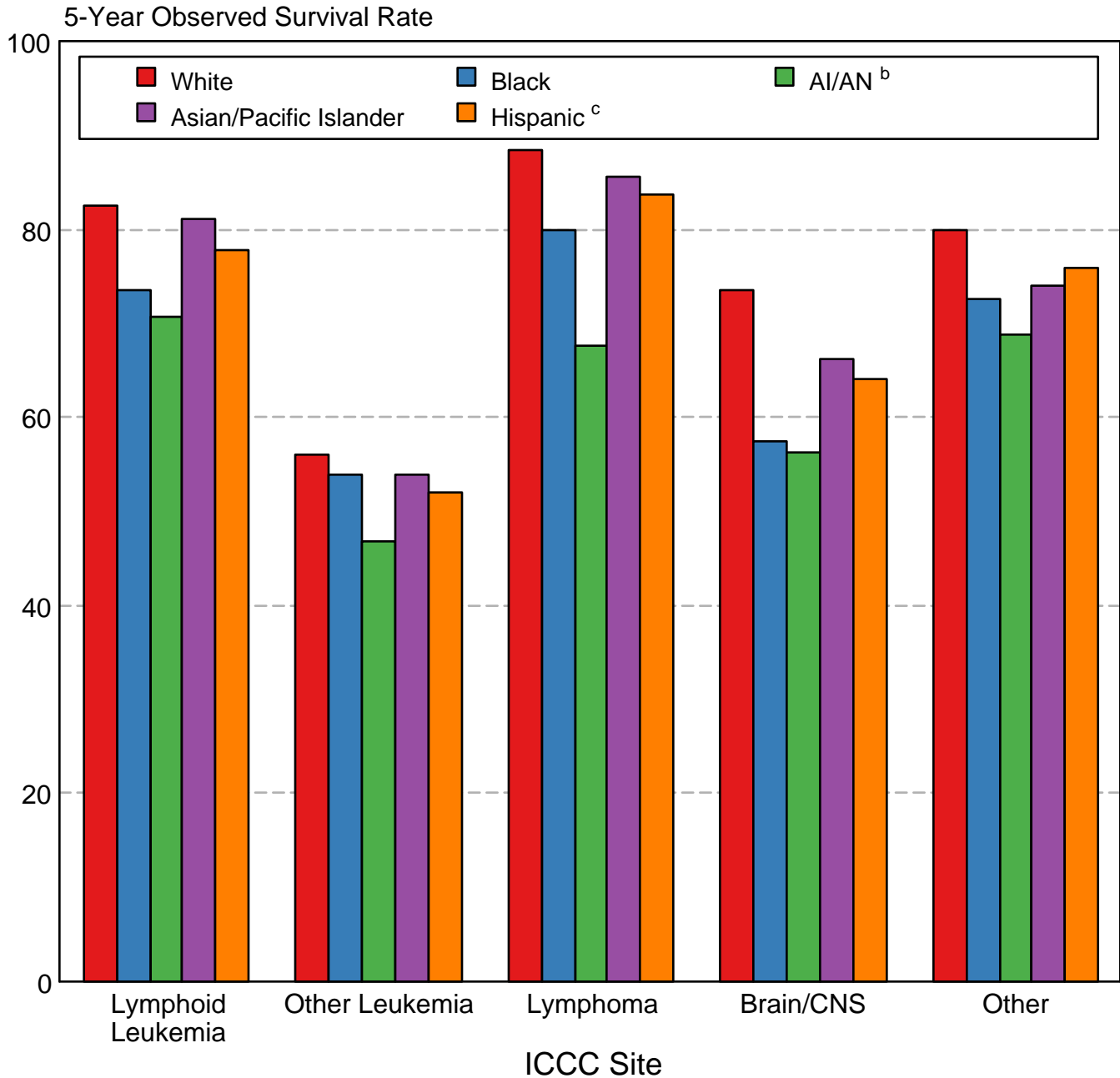
^a Rate for Group III (Brain/CNS) includes benign brain tumors and is based only on cases diagnosed in 2004.

^b Incidence rates for American Indian/Alaska Native are based on the CHSDA(Contract Health Service Delivery Area) counties.

^c Hispanic is not mutually exclusive from Whites, Blacks, Asian/Pacific Islanders, and American Indians/Alaska Natives.

Incidence data for Hispanics are based on NHIA and exclude cases from the Alaska Native Registry and Kentucky.

SEER Childhood Cancer 1996-2003 5-Year Observed Survival Rates by ICCC Group^a and Race/Ethnicity Both Sexes, Under 20 Years of Age



Source: SEER 17 areas (San Francisco, Connecticut, Detroit, Hawaii, Iowa, New Mexico, Seattle, Utah, Atlanta, San Jose-Monterey, Los Angeles, Alaska Native Registry, Rural Georgia, California excluding SF/SJM/LA, Kentucky, Louisiana, and New Jersey). California excluding SF/SJM/LA, Kentucky, Louisiana, and New Jersey contribute cases for diagnosis years 2000-2003. The remaining 13 SEER Areas contribute cases for the entire period 1996-2003.

International Classification of Childhood Cancer is based on ICD-0-3. Steliarova-Foucher E, Stiller C, Lacour B, Kaatsch P. International Classification of Childhood Cancer, Third Edition. Cancer. April 1, 2005; Vol 103, No. 7, pg 1457-1467.

^a Excludes Myelodysplastic syndrome (MDS) cases.

^b American Indian/Alaska Native. Survival data for American Indian/Alaska Native are based on the CHSDA (Contract Health Service Delivery Area) counties.

^c Hispanic is not mutually exclusive from Whites, Blacks, Asian/Pacific Islanders, and American Indians/Alaska Natives. Survival data for Hispanics are based on NHIA and excludes cases from the Alaska Native Registry and Kentucky.