

Table X-1

KAPOSI SARCOMANUMBER OF CASES

By SEER Location and Year of Diagnosis, 1975-2005

All Races, Males, All Ages

SEER Location	Year of Diagnosis													
	1975- 1979	1980- 1981	1982- 1983	1984- 1985	1986- 1987	1988- 1989	1990- 1991	1992- 1993	1994- 1995	1996- 1997	1998- 1999	2000- 2001	2002- 2003	2004- 2005
SEER 9 ^b	134	79	326	887	1574	2132	2234	2056	1800	836	391	396	326	356
SEER 9 except SF-Oakland	102	44	85	259	427	775	843	975	874	462	244	262	222	234
San Francisco- Oakland SMSA ^c	32	35	241	628	1147	1357	1391	1081	926	374	147	134	104	122
San Francisco City/County	15	21	201	540	955	1078	1088	792	689	251	86	79	67	80

AGE-ADJUSTED CANCER INCIDENCE RATES^a

By SEER Location and Year of Diagnosis, 1975-2005

All Races, Males, All Ages

SEER Location	Year of Diagnosis													
	1975- 1979	1980- 1981	1982- 1983	1984- 1985	1986- 1987	1988- 1989	1990- 1991	1992- 1993	1994- 1995	1996- 1997	1998- 1999	2000- 2001	2002- 2003	2004- 2005
SEER 9 ^b	0.4	0.5	1.7	4.2	7.1	9.2	9.3	8.2	7.0	3.2	1.5	1.5	1.2	1.3
SEER 9 except SF-Oakland	0.4	0.4	0.6	1.5	2.3	4.0	4.2	4.6	4.0	2.1	1.1	1.2	1.0	1.0
San Francisco- Oakland SMSA ^c	0.7	1.3	7.0	17.2	30.1	34.0	34.0	25.6	21.9	8.9	3.5	3.0	2.5	2.8
San Francisco City/County	1.1	3.1	25.1	65.3	111.3	124.7	125.5	89.1	77.4	28.0	9.4	8.5	7.4	8.5

^a Rates are per 100,000 males and are age-adjusted to the 2000 US Std Population (19 age groups - Census P25-1130).^b The SEER 9 areas are San Francisco-Oakland SMSA, Connecticut, Detroit, Hawaii, Iowa, New Mexico, Seattle, Utah and Atlanta.^c The San Francisco-Oakland SMSA represents 15% of all persons in the SEER areas. For this age group, all SEER areas may not be generalizable to the United States for Kaposi Sarcoma.

- Statistic not shown. Rate based on less than 4 cases for the time interval.

Table X-2

KAPOSI SARCOMANUMBER OF CASES

By SEER Location and Year of Diagnosis, 1975-2005

All Races, Males, Ages 20-54

SEER Location	Year of Diagnosis													
	1975- 1979	1980- 1981	1982- 1983	1984- 1985	1986- 1987	1988- 1989	1990- 1991	1992- 1993	1994- 1995	1996- 1997	1998- 1999	2000- 2001	2002- 2003	2004- 2005
SEER 9 ^b	13	26	254	806	1481	1994	2105	1921	1675	751	318	342	256	297
SEER 9 except SF-Oakland	11	5	35	207	378	694	774	909	809	409	197	223	183	192
San Francisco- Oakland SMSA ^c	<4	21	219	599	1103	1300	1331	1012	866	342	121	119	73	105
San Francisco City/County	<4	18	193	520	924	1042	1050	748	648	234	76	73	50	72

AGE-ADJUSTED CANCER INCIDENCE RATES^a

By SEER Location and Year of Diagnosis, 1975-2005

All Races, Males, Ages 20-54

SEER Location	Year of Diagnosis													
	1975- 1979	1980- 1981	1982- 1983	1984- 1985	1986- 1987	1988- 1989	1990- 1991	1992- 1993	1994- 1995	1996- 1997	1998- 1999	2000- 2001	2002- 2003	2004- 2005
SEER 9 ^b	0.1	0.3	2.4	7.4	13.1	16.9	17.1	14.9	12.6	5.5	2.3	2.5	1.8	2.2
SEER 9 except SF-Oakland	0.1	0.1	0.4	2.2	3.9	6.9	7.4	8.4	7.2	3.6	1.7	1.9	1.6	1.7
San Francisco- Oakland SMSA ^c	-	1.3	12.1	32.3	57.4	64.4	63.9	46.8	40.2	15.8	5.4	5.2	3.2	4.7
San Francisco City/County	-	5.3	47.8	125.1	214.0	239.2	240.1	165.3	142.5	51.1	16.1	15.5	10.4	15.1

^a Rates are per 100,000 males aged 20-54 and are age-adjusted to the 2000 US Std Population (19 age groups - Census P25-1130).^b The SEER 9 areas are San Francisco-Oakland SMSA, Connecticut, Detroit, Hawaii, Iowa, New Mexico, Seattle, Utah and Atlanta.^c The San Francisco-Oakland SMSA represents 15% of all persons in the SEER areas. For this age group, all SEER areas may not be generalizable to the United States for Kaposi Sarcoma.

- Statistic not shown. Rate based on less than 4 cases for the time interval.

Table X-3

KAPOSI SARCOMANUMBER OF CASES

By SEER Location and Year of Diagnosis, 1975-2005

All Races, Males, Ages 55+

SEER Location	Year of Diagnosis													
	1975- 1979	1980- 1981	1982- 1983	1984- 1985	1986- 1987	1988- 1989	1990- 1991	1992- 1993	1994- 1995	1996- 1997	1998- 1999	2000- 2001	2002- 2003	2004- 2005
SEER 9 ^b	121	53	71	80	92	135	129	134	125	85	73	53	70	58
SEER 9 except SF-Oakland	91	39	49	52	49	81	69	65	65	53	47	38	39	41
San Francisco- Oakland SMSA ^c	30	14	22	28	43	54	60	69	60	32	26	15	31	17
San Francisco City/County	14	<4	8	20	31	35	38	44	41	17	10	6	17	8

AGE-ADJUSTED CANCER INCIDENCE RATES^a

By SEER Location and Year of Diagnosis, 1975-2005

All Races, Males, Ages 55+

SEER Location	Year of Diagnosis													
	1975- 1979	1980- 1981	1982- 1983	1984- 1985	1986- 1987	1988- 1989	1990- 1991	1992- 1993	1994- 1995	1996- 1997	1998- 1999	2000- 2001	2002- 2003	2004- 2005
SEER 9 ^b	1.9	1.9	2.4	2.4	2.5	3.6	3.6	3.3	3.0	2.1	1.7	1.3	1.5	1.2
SEER 9 except SF-Oakland	1.7	1.7	2.0	2.0	1.8	2.7	2.4	2.0	1.9	1.6	1.3	1.1	1.0	1.0
San Francisco- Oakland SMSA ^c	2.9	3.1	4.6	4.7	6.4	8.1	9.6	10.4	8.8	4.8	3.7	2.1	4.0	2.1
San Francisco City/County	4.7	-	5.6	12.9	20.5	23.5	26.4	30.5	29.0	11.5	6.7	3.8	10.4	4.6

^a Rates are per 100,000 males aged 55+ and are age-adjusted to the 2000 US Std Population (19 age groups - Census P25-1130).^b The SEER 9 areas are San Francisco-Oakland SMSA, Connecticut, Detroit, Hawaii, Iowa, New Mexico, Seattle, Utah and Atlanta.^c The San Francisco-Oakland SMSA represents 15% of all persons in the SEER areas. For this age group, all SEER areas may not be generalizable to the United States for Kaposi Sarcoma.

- Statistic not shown. Rate based on less than 4 cases for the time interval.

Table X-4
KAPOSI SARCOMAAGE ADJUSTED SEER INCIDENCE^a RATES BY YEAR, RACE AND SEX

	All Races			Whites			Blacks		
	Total	Males	Females	Total	Males	Females	Total	Males	Females
<u>AGE-ADJUSTED RATES</u>									
YEAR OF DIAGNOSIS:									
1975	0.2	0.6	-	0.2	0.6	-	-	-	-
1976	0.2	0.5	-	0.2	0.5	-	-	-	-
1977	0.3	0.5	-	0.3	0.6	-	-	-	-
1978	0.2	0.3	0.2	0.2	0.3	-	-	-	-
1979	0.2	0.3	-	0.2	0.3	-	-	-	-
1980	0.3	0.6	-	0.3	0.6	-	-	-	-
1981	0.3	0.5	-	0.3	0.6	-	-	-	-
1982	0.7	1.2	0.2	0.7	1.3	0.2	-	-	-
1983	1.1	2.2	-	1.2	2.4	-	-	-	-
1984	1.8	3.6	-	2.0	3.9	-	1.3	2.9	-
1985	2.5	4.9	0.2	2.8	5.5	0.2	1.1	2.2	-
1986	3.3	6.5	-	3.7	7.3	-	1.6	3.6	-
1987	3.8	7.6	-	4.3	8.5	-	2.1	4.3	-
1988	4.4	8.9	0.1	4.8	9.5	0.1	3.3	7.2	-
1989	4.8	9.5	0.1	5.1	10.2	-	4.6	9.7	-
1990	4.6	9.2	0.2	5.0	10.0	0.2	3.6	7.5	-
1991	4.7	9.4	0.2	5.0	10.0	0.2	4.6	9.5	-
1992	4.4	8.7	0.2	4.6	9.0	0.2	5.0	10.5	-
1993	3.9	7.6	0.2	4.0	8.0	0.1	4.3	8.6	-
1994	3.8	7.5	0.2	3.9	7.6	0.1	4.1	8.4	-
1995	3.3	6.5	0.2	3.3	6.4	0.2	4.9	10.2	-
1996	2.2	4.4	0.2	2.0	4.0	-	4.6	9.1	-
1997	1.1	2.1	0.1	0.9	1.8	-	2.7	5.3	-
1998	0.8	1.6	-	0.7	1.3	-	1.8	3.8	-
1999	0.8	1.5	0.1	0.7	1.2	-	1.9	3.7	-
2000	0.8	1.5	-	0.7	1.3	-	2.0	4.0	-
2001	0.8	1.5	0.2	0.7	1.2	0.2	1.9	3.7	-
2002	0.7	1.3	0.1	0.5	1.0	-	1.5	3.1	-
2003	0.6	1.2	-	0.6	1.0	-	1.5	3.1	-
2004	0.7	1.3	-	0.6	1.1	-	1.6	3.3	-
2005	0.7	1.4	0.1	0.6	1.1	-	1.9	3.7	-
1975-2005	1.9	3.8	0.1	2.0	3.9	0.1	2.3	4.7	0.3

^a SEER 9 areas (San Francisco, Connecticut, Detroit, Hawaii, Iowa, New Mexico, Seattle, Utah, and Atlanta). Rates are per 100,000 and are age-adjusted to the 2000 US Std Population (19 age groups - Census P25-1130).

- Statistic not shown. Rate based on less than 16 cases for the time interval.

Table X-5
KAPOSI SARCOMASEER INCIDENCE^a RATES, AGE-ADJUSTED AND AGE-SPECIFIC RATES, BY RACE AND SEX

	All Races			Whites			Blacks		
	Total	Males	Females	Total	Males	Females	Total	Males	Females
<u>SEER INCIDENCE</u>									
<u>AGE AT DIAGNOSIS</u>									
AGE-ADJUSTED RATES, 2001-2005									
All ages	0.7	1.3	0.1	0.6	1.1	0.1	1.3	2.6	0.2
Under 65	0.6	1.1	0.0	0.5	1.0	0.0	1.4	2.8	0.2
65 and over	1.2	2.1	0.6	1.2	2.1	0.7	0.8	1.5	-
All ages(IARC world std) ^b	0.5	0.9	0.1	0.4	0.8	0.0	1.1	2.1	0.1
AGE-SPECIFIC RATES, 2001-2005									
<1	-	-	-	-	-	-	-	-	-
1-4	-	-	-	-	-	-	-	-	-
5-9	-	-	-	-	-	-	-	-	-
10-14	-	-	-	-	-	-	-	-	-
15-19	-	-	-	-	-	-	-	-	-
20-24	0.1	0.2	-	-	-	-	0.6	1.1	-
25-29	0.5	1.0	-	0.4	0.7	-	1.8	3.4	-
30-34	1.0	2.0	-	0.8	1.5	-	2.7	5.6	-
35-39	1.6	3.1	-	1.3	2.5	-	4.0	8.1	-
40-44	1.4	2.8	-	1.3	2.5	-	3.1	6.0	-
45-49	1.0	1.9	-	0.9	1.7	-	1.8	3.6	-
50-54	0.7	1.3	-	0.6	1.1	-	1.5	3.1	-
55-59	0.5	1.0	-	0.5	0.9	-	-	-	-
60-64	0.4	0.8	-	0.4	0.7	-	-	-	-
65-69	0.6	1.1	-	0.6	1.0	-	-	-	-
70-74	0.9	1.5	0.4	1.0	1.7	0.4	-	-	-
75-79	1.2	2.0	0.6	1.2	1.9	0.6	-	-	-
80-84	2.0	3.0	1.3	2.1	3.3	1.3	-	-	-
85+	2.5	4.6	1.5	2.4	4.3	1.5	-	-	-

^a SEER 17 areas. Rates are per 100,000 and are age-adjusted to the 2000 US Std Population (19 age groups - Census P25-1130), unless noted.

^b Rates are per 100,000 and are age-adjusted to the IARC world standard population.

- Statistic not shown. Rate based on less than 16 cases for the time interval.

Table X-6
KAPOSI SARCOMA

SURVIVAL RATES, BY RACE, SEX, DIAGNOSIS YEAR, STAGE AND AGE

	All Races			Whites			Blacks		
	Total	Males	Females	Total	Males	Females	Total	Males	Females
<u>5-YR RELATIVE SURVIVAL RATES</u>									
YEAR OF DIAGNOSIS:									
1960-1963 ^a	-	-	-	-	-	-	-	-	-
1970-1973 ^a	-	-	-	-	-	-	-	-	-
1975-1977 ^b	83.2 ^f	82.0 ^f	82.8 ^g	82.0 ^f	80.0 ^f	80.9 ^g	-	-	-
1978-1980 ^b	78.9 ^f	80.6 ^f	72.6 ^g	78.2 ^f	79.2 ^f	72.4 ^g	-	-	-
1981-1983 ^b	33.8	31.1	74.4 ^g	32.1	29.5	72.5 ^g	44.4 ^g	41.5 ^g	-
1984-1986 ^b	12.2	11.1	71.4 ^g	11.9	10.7	70.2 ^g	16.3	15.2	-
1987-1989 ^b	9.8	9.2	65.8 ^g	9.3	8.8	71.4 ^g	11.9	10.8	-
1990-1992 ^b	9.0	8.4	50.6 ^f	8.5	8.0	50.1 ^f	11.5	10.5	-
1993-1995 ^b	21.1	20.6	48.6 ^f	21.6	21.1	58.5 ^g	15.8	15.1	32.5 ^g
1996-2004 ^b	54.6 ^e	54.1 ^e	63.6 ^f	60.0 ^e	58.9 ^e	80.3 ^f	40.7	40.9	38.3 ^f
<u>5-YR PERIOD SURVIVAL RATES^{cd}</u>									
YEAR OF DIAGNOSIS:									
1996-2004	61.9	62.0	60.9	64.8	64.5	69.8	47.3	48.1	-
<u>5-YR RELATIVE SURVIVAL RATES, 1996-2004^c</u>									
AGE AT DIAGNOSIS:									
<45	52.8	53.0	42.9 ^f	55.5	55.4	69.7 ^g	41.2	42.4	16.8 ^f
45-54	54.3	55.2	21.1 ^g	55.0	55.5	-	48.5	50.5	-
55-64	72.8	72.7	-	72.3	71.9	-	60.5 ^g	59.7 ^g	-
65-74	80.8	81.9 ^f	72.8 ^g	81.7	81.6 ^f	78.5 ^g	-	-	-
75+	88.7 ^f	89.8 ^f	78.1 ^f	90.5 ^f	91.2 ^f	81.3 ^f	90.0 ^g	-	-
Under 65	54.2	54.5	43.2 ^f	56.6	56.5	62.9 ^f	43.1	44.2	19.7 ^f
65 and over	85.9	87.0	78.5 ^f	87.7	87.5	81.2 ^f	75.3 ^g	64.4 ^g	-

- ^a Rates are based on End Results data from a series of hospital registries and one population-based registry.
- ^b Rates are from the SEER 9 areas (San Francisco, Connecticut, Detroit, Hawaii, Iowa, New Mexico, Seattle, Utah, Atlanta).
- ^c Rates are based on follow-up of patients into 2005.
- ^d Rates are from the SEER 17 areas (San Francisco, Connecticut, Detroit, Hawaii, Iowa, New Mexico, Seattle, Utah, Atlanta, San Jose-Monterey, Los Angeles, Alaska Native Registry, Rural Georgia, California excluding SF/SJM/LA, Kentucky, Louisiana and New Jersey). California excluding SF/SJM/LA, Kentucky, Louisiana, and New Jersey contribute cases for diagnosis years 2000-2004. The remaining 13 SEER Areas contribute cases for the entire period 1996-2004. Rates are based on follow-up of patients into 2005.
- ^e Period survival provides a more up-to-date estimate of survival by piecing together the most recent conditional survival estimates from several cohorts. It is computed here using three calendar year blocks (2002-2004: 0-1 year survival), (2001-2003: 1-2 year survival), (2000-2002: 2-3 year survival), (1999-2001: 3-4 year survival), (1998-2000: 4-5 years survival).
- ^f The difference in rates between 1975-1977 and 1996-2004 is statistically significant (p<.05).
- ^g The standard error of the survival rate is between 5 and 10 percentage points.
- The standard error of the survival rate is greater than 10 percentage points.
- Statistic could not be calculated due to fewer than 16 cases during the time period.

Table X-7
KAPOSI SARCOMA
SURVIVAL RATES^a

By Year of Diagnosis

All Races, Males and Females

Year of Diagnosis

	1975- 1979	1980- 1984	1985	1986	1987	1988	1989	1990	1991	1992	1993	1994	1995	1996	1997	1998	1999	2000	2001	2002	2003	2004
Relative Survival Rates (SEER ^b)																						
1-year	95.4	66.8	51.5	55.7	64.2	62.7	62.2	61.9	62.8	63.2	59.1	55.7	62.3	69.5	72.9	73.9	76.8	73.8	80.0	77.8	74.0	81.9
2-year	89.8	44.4	27.1	31.6	39.0	34.2	34.7	33.4	30.3	28.4	30.1	27.5	46.8	60.1	63.4	64.8	65.1	66.7	72.6	71.0	71.6	
3-year	88.9	35.0	21.0	19.2	22.6	19.0	19.4	19.8	15.4	16.3	19.4	20.7	42.5	54.0	59.8	60.0	61.2	59.8	66.8	65.9		
4-year	85.0	30.2	15.7	13.4	15.3	12.8	12.9	14.4	10.8	10.8	15.1	18.2	38.2	50.8	55.8	57.3	56.3	55.4	63.7			
5-year	85.0	26.1	12.7	10.4	11.1	9.5	9.1	9.8	8.4	8.8	13.5	17.0	35.0	47.5	53.3	56.4	55.3	52.1				
6-year	80.3	22.0	11.1	8.7	9.6	8.2	6.7	7.7	7.4	8.1	13.0	15.8	34.3	44.7	50.7	53.0	52.4					
7-year	78.7	20.7	9.8	6.5	8.1	6.9	6.0	7.1	7.0	7.3	12.2	14.6	32.6	43.7	46.4	50.0						
8-year	78.7	17.6	8.0	5.7	6.7	6.1	5.4	6.4	6.5	7.1	11.6	14.2	31.2	43.5	43.2							
9-year	78.7	15.9	7.5	4.5	5.4	5.8	4.9	6.1	6.0	7.0	11.2	13.4	30.0	41.6								
10-year	78.7	13.8	6.9	4.2	4.6	5.5	4.9	5.9	5.8	6.7	10.9	13.2	28.9									
11-year	78.4	12.3	6.1	3.6	4.2	5.3	4.6	5.7	5.6	6.7	10.3	12.8										
12-year	78.4	11.8	5.3	3.3	4.1	5.2	4.4	5.7	5.4	6.5	10.1											
13-year	78.4	10.9	4.7	3.2	3.7	4.5	4.2	5.5	5.2	6.5												
14-year	78.4	10.7	4.3	2.9	3.6	4.3	3.9	4.9	5.1													
15-year	78.4	10.1	4.1	2.9	3.6	4.1	3.7	4.3														
16-year	78.4	9.5	4.1	2.8	3.1	3.7	3.7															
17-year	78.4	9.0	4.0	2.8	3.0	3.6																
18-year	78.4	7.7	4.0	2.8	2.7																	
19-year	78.4	7.7	3.8	2.6																		
20-year	78.4	7.2	3.6																			

^a Survival rates are relative rates expressed as percents.

^b Rates are from the SEER 9 areas (San Francisco, Connecticut, Detroit, Hawaii, Iowa, New Mexico, Seattle, Utah, and Atlanta).

Table X-8
KAPOSI SARCOMA
SURVIVAL RATES^a

By Year of Diagnosis

All Races, Males

Year of Diagnosis

	1975- 1979	1980- 1984	1985	1986	1987	1988	1989	1990	1991	1992	1993	1994	1995	1996	1997	1998	1999	2000	2001	2002	2003	2004
Relative Survival Rates (SEER ^b)																						
1-year	95.7	65.1	50.4	55.1	63.9	62.5	62.1	61.5	62.4	63.0	58.9	55.1	61.4	69.3	72.9	73.0	76.8	73.2	79.2	76.6	74.1	80.7
2-year	89.8	41.8	25.3	31.2	38.2	33.6	34.4	32.9	29.6	28.0	29.2	26.9	45.6	59.5	63.0	63.1	64.6	65.2	72.9	70.0	71.3	
3-year	88.0	32.6	19.1	18.7	21.6	18.3	19.1	19.1	14.6	15.9	18.7	20.2	41.6	53.7	59.1	58.4	60.7	58.9	68.1	65.3		
4-year	85.4	27.8	13.9	12.9	14.3	12.1	12.6	13.8	9.9	10.5	14.4	17.7	37.4	50.4	54.9	55.3	55.3	55.2	64.4			
5-year	85.4	23.9	10.7	9.8	10.2	8.9	8.8	9.2	7.6	8.4	12.8	16.5	34.7	47.4	53.3	54.1	54.0	52.2				
6-year	77.7	19.9	9.1	8.2	8.7	7.5	6.5	7.1	6.6	7.8	12.3	15.3	33.9	44.7	50.4	51.6	50.8					
7-year	76.8	18.4	7.9	6.2	7.2	6.3	5.8	6.5	6.2	7.0	11.7	14.3	32.1	43.7	46.7	49.6						
8-year	76.8	15.8	6.3	5.5	6.2	5.6	5.1	5.9	5.7	6.9	11.1	13.9	30.8	43.4	43.2							
9-year	76.8	14.3	5.9	4.3	5.0	5.3	4.7	5.6	5.1	6.8	10.8	13.2	29.8	41.4								
10-year	76.8	12.4	5.5	4.0	4.5	5.1	4.6	5.5	5.0	6.5	10.5	12.9	28.7									
11-year	72.7	11.0	4.9	3.5	4.2	4.9	4.4	5.3	4.8	6.5	9.8	12.5										
12-year	72.7	10.6	4.5	3.2	4.1	4.9	4.3	5.3	4.6	6.3	9.7											
13-year	72.7	9.8	4.1	3.1	3.7	4.2	4.1	5.2	4.3	6.3												
14-year	72.7	9.6	4.1	2.7	3.6	4.1	3.8	4.5	4.3													
15-year	72.7	8.9	4.0	2.7	3.6	4.0	3.6	4.2														
16-year	72.7	8.6	4.0	2.6	3.1	3.7	3.6															
17-year	72.7	8.4	4.0	2.6	3.0	3.6																
18-year	72.7	7.5	4.0	2.6	2.7																	
19-year	72.7	7.5	3.8	2.5																		
20-year	72.7	6.9	3.6																			

^a

Survival rates are relative rates expressed as percents.

^b

Rates are from the SEER 9 areas (San Francisco, Connecticut, Detroit, Hawaii, Iowa, New Mexico, Seattle, Utah, and Atlanta).

Table X-9
KAPOSI SARCOMA
SURVIVAL RATES^a

By Year of Diagnosis

All Races, Females

Year of Diagnosis

	1975- 1979	1980- 1984	1985	1986	1987	1988	1989	1990	1991	1992	1993	1994	1995	1996	1997	1998	1999	2000	2001	2002	2003	2004
Relative Survival Rates (SEER ^b)																						
1-year	93.5	91.8	85.1	93.9	84.4	80.8	66.9	79.8	89.5	74.7	70.9	82.3	87.4	77.7	72.4	86.9	75.5	81.1	87.0	88.4	69.2	100.0
2-year	89.7	86.4	85.1	62.2	84.4	80.8	54.2	55.6	78.5	53.5	70.9	56.5	85.4	77.7	67.2	86.9	69.5	81.1	68.1	80.0	69.2	
3-year	89.7	76.4	85.1	54.9	84.4	78.6	40.7	55.6	73.9	43.2	50.7	48.3	72.5	62.5	67.2	86.9	65.4	72.0	52.7	69.8		
4-year	83.8	73.1	84.9	54.9	84.4	75.5	40.7	49.9	73.9	31.9	50.7	43.7	66.7	62.5	67.2	86.9	65.4	60.3	52.7			
5-year	81.7	67.0	84.9	54.9	84.4	69.0	37.4	47.6	72.7	31.9	50.7	43.7	46.5	51.2	53.9	86.9	65.4	51.9				
6-year	81.7	65.3	84.9	54.4	84.4	69.0	29.5	42.9	68.9	26.9	50.7	40.6	46.5	44.1	53.9	80.1	65.4					
7-year	81.7	65.3	84.9	30.4	84.4	65.0	29.5	42.9	68.9	26.9	44.5	35.2	46.5	44.1	41.6	57.0						
8-year	81.7	59.0	84.9	30.4	73.8	57.3	29.5	42.9	68.9	22.1	44.5	35.2	46.5	44.1	41.6							
9-year	81.7	56.4	84.9	30.4	59.6	57.3	29.5	42.9	68.9	22.1	40.5	30.7	38.8	44.1								
11-year	81.7	50.9	84.9	30.4	21.4	52.4	29.5	38.9	68.9	22.1	40.5	30.7	33.9									
10-year	81.7	48.5	82.1	21.1	0.0	52.4	25.7	33.9	68.9	22.1	40.5	30.7										
12-year	81.7	48.5	61.9	21.1	0.0	44.2	25.7	33.9	68.9	22.1	33.5											
13-year	81.7	48.5	50.2	21.1	0.0	44.2	14.4	33.9	68.9	22.1												
14-year	81.7	48.5	19.2	21.1	0.0	34.1	14.4	33.9	68.9													
15-year	81.7	48.5	19.2	21.1	0.0	17.5	14.4	0.0														
16-year	81.7	48.5	19.2	21.1	0.0	17.5	14.4															
17-year	81.7	37.6	0.0	21.1	0.0	17.5																
18-year	81.7	21.2	0.0	21.1	0.0																	
19-year	81.7	21.2	0.0	21.1																		
20-year	81.7	21.2	0.0																			

^a Survival rates are relative rates expressed as percents.

^b Rates are from the SEER 9 areas (San Francisco, Connecticut, Detroit, Hawaii, Iowa, New Mexico, Seattle, Utah, and Atlanta).

Table X-10
KAPOSI SARCOMA

Risk of Being Diagnosed With Cancer in 10, 20 and 30 Years, Lifetime Risk of Being Diagnosed with Cancer, and
 Lifetime Risk of Dying from Cancer Given Cancer Free At Current Age
 Both Sexes, 2003-2005 By Race/Ethnicity

Race/ Ethnicity	Current Age	Risk of Being Diagnosed with Cancer			Risk of Dying from Cancer	
		+10 yrs Percent (95% C.I.)	+20 yrs Percent (95% C.I.)	+30 yrs Percent (95% C.I.)	Eventually Percent (95% C.I.)	Eventually Percent (95% C.I.)
All Races	0	0.00 (0.00, 0.00)	0.00 (0.00, 0.00)	0.00 (0.00, 0.00)	0.05 (0.05, 0.06)	0.00 (0.00, 0.00)
	10	0.00 (0.00, 0.00)	0.00 (0.00, 0.00)	0.01 (0.01, 0.02)	0.05 (0.05, 0.06)	0.00 (0.00, 0.00)
	20	0.00 (0.00, 0.00)	0.01 (0.01, 0.02)	0.03 (0.02, 0.03)	0.05 (0.05, 0.06)	0.00 (0.00, 0.00)
	30	0.01 (0.01, 0.01)	0.02 (0.02, 0.03)	0.03 (0.03, 0.03)	0.05 (0.05, 0.05)	0.00 (0.00, 0.00)
	40	0.01 (0.01, 0.01)	0.02 (0.02, 0.02)	0.02 (0.02, 0.02)	0.04 (0.04, 0.04)	0.00 (0.00, 0.00)
	50	0.01 (0.00, 0.01)	0.01 (0.01, 0.01)	0.02 (0.02, 0.02)	0.03 (0.03, 0.03)	0.00 (0.00, 0.00)
	60	0.01 (0.00, 0.01)	0.01 (0.01, 0.01)	0.02 (0.02, 0.02)	0.02 (0.02, 0.03)	0.00 (0.00, 0.00)
	70	0.01 (0.01, 0.01)	0.02 (0.02, 0.02)	- (- , -)	0.02 (0.02, 0.03)	0.00 (0.00, 0.00)
80	0.01 (0.01, 0.02)	- (- , -)	- (- , -)	0.02 (0.02, 0.02)	0.00 (0.00, 0.00)	
White	0	0.00 (0.00, 0.00)	0.00 (0.00, 0.00)	0.00 (0.00, 0.00)	0.05 (0.05, 0.05)	0.00 (0.00, 0.00)
	10	0.00 (0.00, 0.00)	0.00 (0.00, 0.00)	0.01 (0.01, 0.01)	0.05 (0.05, 0.05)	0.00 (0.00, 0.00)
	20	0.00 (0.00, 0.00)	0.01 (0.01, 0.01)	0.02 (0.02, 0.02)	0.05 (0.05, 0.05)	0.00 (0.00, 0.00)
	30	0.01 (0.01, 0.01)	0.02 (0.02, 0.02)	0.03 (0.02, 0.03)	0.05 (0.04, 0.05)	0.00 (0.00, 0.00)
	40	0.01 (0.01, 0.01)	0.02 (0.01, 0.02)	0.02 (0.02, 0.02)	0.04 (0.04, 0.04)	0.00 (0.00, 0.00)
	50	0.01 (0.00, 0.01)	0.01 (0.01, 0.01)	0.02 (0.02, 0.02)	0.03 (0.03, 0.03)	0.00 (0.00, 0.00)
	60	0.01 (0.00, 0.01)	0.01 (0.01, 0.02)	0.02 (0.02, 0.02)	0.02 (0.02, 0.03)	0.00 (0.00, 0.00)
	70	0.01 (0.01, 0.01)	0.02 (0.02, 0.02)	- (- , -)	0.02 (0.02, 0.03)	0.00 (0.00, 0.00)
80	0.01 (0.01, 0.02)	- (- , -)	- (- , -)	0.02 (0.01, 0.02)	0.00 (0.00, 0.00)	
Black	0	0.00 (0.00, 0.00)	0.00 (0.00, 0.00)	0.01 (0.01, 0.01)	0.09 (0.08, 0.10)	0.00 (0.00, 0.00)
	10	0.00 (0.00, 0.00)	0.01 (0.01, 0.01)	0.04 (0.04, 0.05)	0.09 (0.08, 0.10)	0.00 (0.00, 0.00)
	20	0.01 (0.01, 0.01)	0.04 (0.04, 0.05)	0.07 (0.06, 0.07)	0.09 (0.08, 0.10)	0.00 (0.00, 0.00)
	30	0.03 (0.03, 0.04)	0.06 (0.05, 0.06)	0.07 (0.06, 0.07)	0.08 (0.07, 0.09)	0.00 (0.00, 0.00)
	40	0.02 (0.02, 0.03)	0.03 (0.03, 0.04)	0.04 (0.03, 0.05)	0.05 (0.04, 0.06)	0.00 (0.00, 0.00)
	50	0.01 (0.01, 0.01)	0.01 (0.01, 0.02)	0.02 (0.01, 0.03)	0.02 (0.02, 0.03)	0.00 (0.00, 0.00)
	60	0.01 (0.00, 0.01)	0.01 (0.01, 0.02)	0.01 (0.01, 0.02)	0.02 (0.01, 0.03)	0.00 (0.00, 0.00)
	70	0.01 (0.00, 0.01)	0.01 (0.01, 0.02)	- (- , -)	0.01 (0.01, 0.03)	0.00 (0.00, 0.00)
80	0.01 (0.00, 0.02)	- (- , -)	- (- , -)	0.01 (0.00, 0.03)	0.00 (0.00, 0.00)	

Devcan Version 7.0.0, April 2008, National Cancer Institute (<http://srab.cancer.gov/devcan/>).

Source: Incidence data are from the SEER 17 areas (San Francisco, Connecticut, Detroit, Hawaii, Iowa, New Mexico, Seattle, Utah, Atlanta, San Jose-Monterey, Los Angeles, Alaska Native Registry, Rural Georgia, California excluding SF/SJM/LA, Kentucky, Louisiana and New Jersey). Mortality data are from the NCHS public use data file for the total US.

- Statistic could not be calculated.

A percent or confidence interval value of 0.00 represents a value that is below 0.005.

Table X-10 - continued

KAPOSI SARCOMA

Risk of Being Diagnosed With Cancer in 10, 20 and 30 Years, Lifetime Risk of Being Diagnosed with Cancer, and
Lifetime Risk of Dying from Cancer Given Cancer Free At Current Age
Both Sexes, 2003-2005 By Race/Ethnicity

Race/ Ethnicity	Current Age	Risk of Being Diagnosed with Cancer				Risk of Dying from Cancer	
		+10 yrs Percent (95% C.I.)	+20 yrs Percent (95% C.I.)	+30 yrs Percent (95% C.I.)	Eventually Percent (95% C.I.)	Eventually Percent (95% C.I.)	
Asian/ Pacific Islander	0	0.00 (0.00, 0.00)	0.00 (0.00, 0.00)	0.00 (0.00, 0.00)	0.02 (0.01, 0.04)	0.00 (0.00, 0.02)	
	10	0.00 (0.00, 0.00)	0.00 (0.00, 0.00)	0.00 (0.00, 0.00)	0.02 (0.01, 0.04)	0.00 (0.00, 0.02)	
	20	0.00 (0.00, 0.00)	0.00 (0.00, 0.00)	0.00 (0.00, 0.01)	0.02 (0.01, 0.04)	0.00 (0.00, 0.02)	
	30	0.00 (0.00, 0.00)	0.00 (0.00, 0.01)	0.01 (0.00, 0.01)	0.02 (0.01, 0.04)	0.00 (0.00, 0.02)	
	40	0.00 (0.00, 0.00)	0.00 (0.00, 0.01)	0.01 (0.00, 0.01)	0.02 (0.01, 0.04)	0.00 (0.00, 0.02)	
	50	0.00 (0.00, 0.00)	0.01 (0.00, 0.01)	0.01 (0.01, 0.02)	0.01 (0.01, 0.04)	0.00 (0.00, 0.02)	
	60	0.00 (0.00, 0.01)	0.01 (0.00, 0.01)	0.01 (0.01, 0.02)	0.01 (0.01, 0.04)	0.00 (0.00, 0.02)	
	70	0.00 (0.00, 0.01)	0.01 (0.00, 0.02)	- (- , -)	0.01 (0.00, 0.04)	0.00 (0.00, 0.02)	
	80	0.01 (0.00, 0.02)	- (- , -)	- (- , -)	0.01 (0.00, 0.04)	0.00 (0.00, 0.03)	
American Indian/ Alaska Native ^a	0	0.00 (0.00, 0.02)	0.00 (0.00, 0.02)	0.00 (0.00, 0.03)	0.02 (0.01, 0.31)	0.00 (0.00, 0.08)	
	10	0.00 (0.00, 0.01)	0.00 (0.00, 0.02)	0.01 (0.00, 0.04)	0.02 (0.01, 0.31)	0.00 (0.00, 0.08)	
	20	0.00 (0.00, 0.02)	0.01 (0.00, 0.04)	0.02 (0.01, 0.04)	0.02 (0.01, 0.31)	0.00 (0.00, 0.08)	
	30	0.01 (0.00, 0.03)	0.02 (0.00, 0.04)	0.02 (0.01, 0.05)	0.02 (0.01, 0.32)	0.00 (0.00, 0.08)	
	40	0.00 (0.00, 0.02)	0.01 (0.00, 0.03)	0.01 (0.00, 0.04)	0.01 (0.00, 0.32)	0.00 (0.00, 0.09)	
	50	0.00 (0.00, 0.03)	0.00 (0.00, 0.04)	0.00 (0.00, 0.05)	0.00 (0.00, 0.33)	0.00 (0.00, 0.09)	
	60	0.00 (0.00, 0.04)	0.00 (0.00, 0.05)	0.00 (0.00, 0.09)	0.00 (0.00, 0.35)	0.00 (0.00, 0.10)	
	70	0.00 (0.00, 0.06)	0.00 (0.00, 0.10)	- (- , -)	0.00 (0.00, 0.41)	0.00 (0.00, 0.12)	
	80	0.00 (0.00, 0.14)	- (- , -)	- (- , -)	0.00 (0.00, 0.57)	0.00 (0.00, 0.18)	
Hispanic ^b	0	0.00 (0.00, 0.00)	0.00 (0.00, 0.00)	0.00 (0.00, 0.00)	0.10 (0.09, 0.13)	0.01 (0.00, 0.02)	
	10	0.00 (0.00, 0.00)	0.00 (0.00, 0.00)	0.02 (0.01, 0.02)	0.10 (0.09, 0.13)	0.01 (0.00, 0.02)	
	20	0.00 (0.00, 0.00)	0.02 (0.01, 0.02)	0.03 (0.03, 0.03)	0.11 (0.09, 0.13)	0.01 (0.00, 0.02)	
	30	0.01 (0.01, 0.02)	0.03 (0.02, 0.03)	0.04 (0.03, 0.04)	0.10 (0.09, 0.13)	0.01 (0.00, 0.02)	
	40	0.01 (0.01, 0.02)	0.02 (0.02, 0.03)	0.03 (0.03, 0.04)	0.09 (0.07, 0.12)	0.01 (0.00, 0.02)	
	50	0.01 (0.01, 0.01)	0.02 (0.01, 0.02)	0.04 (0.03, 0.05)	0.08 (0.06, 0.10)	0.01 (0.00, 0.02)	
	60	0.01 (0.01, 0.01)	0.03 (0.03, 0.04)	0.06 (0.05, 0.08)	0.07 (0.06, 0.10)	0.01 (0.00, 0.02)	
	70	0.03 (0.02, 0.04)	0.06 (0.04, 0.08)	- (- , -)	0.07 (0.05, 0.10)	0.01 (0.00, 0.02)	
	80	0.04 (0.03, 0.06)	- (- , -)	- (- , -)	0.06 (0.04, 0.10)	0.01 (0.00, 0.02)	

Devcan Version 7.0.0, April 2008, National Cancer Institute (<http://srab.cancer.gov/devcan/>).

Source: Incidence data are from the SEER 17 areas (San Francisco, Connecticut, Detroit, Hawaii, Iowa, New Mexico, Seattle, Utah, Atlanta, San Jose-Monterey, Los Angeles, Alaska Native Registry, Rural Georgia, California excluding SF/SJM/LA, Kentucky, Louisiana and New Jersey). Mortality data are from the NCHS public use data file for the total US.

^a Underlying incidence and mortality data for American Indian/Alaska Native are based on the CHSDA (Contract Health Service Delivery Area) counties.

^b Hispanic is not mutually exclusive from whites, blacks, Asian/Pacific Islanders, and American Indians/Alaska Natives. Underlying incidence data for Hispanics are based on NHIA and exclude cases from the Alaska Native Registry and Kentucky. Underlying mortality data for Hispanics exclude deaths from Minnesota, New Hampshire and North Dakota.

- Statistic could not be calculated.

A percent or confidence interval value of 0.00 represents a value that is below 0.005.

Table X-10 - continued

KAPOSI SARCOMA

Risk of Being Diagnosed With Cancer in 10, 20 and 30 Years, Lifetime Risk of Being Diagnosed with Cancer, and
Lifetime Risk of Dying from Cancer Given Cancer Free At Current Age
Males, 2003-2005 By Race/Ethnicity

Race/ Ethnicity	Current Age	Risk of Being Diagnosed with Cancer				Risk of Dying from Cancer	
		+10 yrs Percent (95% C.I.)	+20 yrs Percent (95% C.I.)	+30 yrs Percent (95% C.I.)	Eventually Percent (95% C.I.)	Eventually Percent (95% C.I.)	
All Races	0	0.00 (0.00, 0.00)	0.00 (0.00, 0.00)	0.01 (0.00, 0.01)	0.09 (0.09, 0.10)	0.00 (0.00, 0.00)	
	10	0.00 (0.00, 0.00)	0.01 (0.00, 0.01)	0.03 (0.03, 0.03)	0.09 (0.09, 0.10)	0.00 (0.00, 0.00)	
	20	0.01 (0.00, 0.01)	0.03 (0.03, 0.03)	0.05 (0.05, 0.05)	0.09 (0.09, 0.10)	0.00 (0.00, 0.00)	
	30	0.02 (0.02, 0.03)	0.05 (0.04, 0.05)	0.06 (0.05, 0.06)	0.09 (0.08, 0.10)	0.00 (0.00, 0.00)	
	40	0.02 (0.02, 0.02)	0.03 (0.03, 0.04)	0.04 (0.04, 0.05)	0.07 (0.06, 0.07)	0.00 (0.00, 0.00)	
	50	0.01 (0.01, 0.01)	0.02 (0.02, 0.02)	0.03 (0.03, 0.03)	0.05 (0.04, 0.05)	0.00 (0.00, 0.00)	
	60	0.01 (0.01, 0.01)	0.02 (0.02, 0.02)	0.03 (0.03, 0.04)	0.04 (0.03, 0.04)	0.00 (0.00, 0.00)	
	70	0.01 (0.01, 0.02)	0.03 (0.03, 0.03)	- (- , -)	0.03 (0.03, 0.04)	0.00 (0.00, 0.00)	
80	0.02 (0.02, 0.03)	- (- , -)	- (- , -)	0.03 (0.02, 0.04)	0.00 (0.00, 0.00)		
White	0	0.00 (0.00, 0.00)	0.00 (0.00, 0.00)	0.00 (0.00, 0.01)	0.08 (0.08, 0.09)	0.00 (0.00, 0.00)	
	10	0.00 (0.00, 0.00)	0.00 (0.00, 0.01)	0.02 (0.02, 0.03)	0.09 (0.08, 0.09)	0.00 (0.00, 0.00)	
	20	0.00 (0.00, 0.01)	0.02 (0.02, 0.03)	0.04 (0.04, 0.05)	0.09 (0.08, 0.09)	0.00 (0.00, 0.00)	
	30	0.02 (0.02, 0.02)	0.04 (0.04, 0.04)	0.05 (0.05, 0.05)	0.08 (0.08, 0.09)	0.00 (0.00, 0.00)	
	40	0.02 (0.02, 0.02)	0.03 (0.03, 0.03)	0.04 (0.04, 0.04)	0.06 (0.06, 0.07)	0.00 (0.00, 0.00)	
	50	0.01 (0.01, 0.01)	0.02 (0.02, 0.02)	0.03 (0.03, 0.03)	0.05 (0.04, 0.05)	0.00 (0.00, 0.00)	
	60	0.01 (0.01, 0.01)	0.02 (0.02, 0.03)	0.03 (0.03, 0.04)	0.04 (0.03, 0.04)	0.00 (0.00, 0.00)	
	70	0.01 (0.01, 0.02)	0.03 (0.03, 0.03)	- (- , -)	0.03 (0.03, 0.04)	0.00 (0.00, 0.00)	
80	0.02 (0.02, 0.03)	- (- , -)	- (- , -)	0.03 (0.02, 0.04)	0.00 (0.00, 0.01)		
Black	0	0.00 (0.00, 0.00)	0.00 (0.00, 0.00)	0.02 (0.01, 0.03)	0.16 (0.14, 0.19)	0.00 (0.00, 0.01)	
	10	0.00 (0.00, 0.00)	0.02 (0.02, 0.03)	0.08 (0.07, 0.10)	0.17 (0.15, 0.19)	0.00 (0.00, 0.01)	
	20	0.02 (0.01, 0.03)	0.08 (0.07, 0.10)	0.13 (0.11, 0.15)	0.17 (0.15, 0.19)	0.00 (0.00, 0.01)	
	30	0.07 (0.06, 0.08)	0.11 (0.10, 0.13)	0.13 (0.12, 0.15)	0.15 (0.13, 0.18)	0.00 (0.00, 0.01)	
	40	0.05 (0.04, 0.06)	0.07 (0.06, 0.08)	0.08 (0.06, 0.09)	0.09 (0.07, 0.11)	0.00 (0.00, 0.01)	
	50	0.02 (0.01, 0.03)	0.03 (0.02, 0.04)	0.03 (0.02, 0.05)	0.04 (0.03, 0.06)	0.00 (0.00, 0.00)	
	60	0.01 (0.00, 0.02)	0.02 (0.01, 0.03)	0.02 (0.01, 0.04)	0.02 (0.01, 0.05)	0.00 (0.00, 0.01)	
	70	0.01 (0.00, 0.02)	0.02 (0.01, 0.03)	- (- , -)	0.02 (0.01, 0.05)	0.00 (0.00, 0.01)	
80	0.01 (0.00, 0.04)	- (- , -)	- (- , -)	0.02 (0.00, 0.07)	0.00 (0.00, 0.01)		

Devcan Version 7.0.0, April 2008, National Cancer Institute (<http://srab.cancer.gov/devcan/>).

Source: Incidence data are from the SEER 17 areas (San Francisco, Connecticut, Detroit, Hawaii, Iowa, New Mexico, Seattle, Utah, Atlanta, San Jose-Monterey, Los Angeles, Alaska Native Registry, Rural Georgia, California excluding SF/SJM/LA, Kentucky, Louisiana and New Jersey). Mortality data are from the NCHS public use data file for the total US.

- Statistic could not be calculated.

A percent or confidence interval value of 0.00 represents a value that is below 0.005.

Table X-10 - continued

KAPOSI SARCOMA

Risk of Being Diagnosed With Cancer in 10, 20 and 30 Years, Lifetime Risk of Being Diagnosed with Cancer, and
Lifetime Risk of Dying from Cancer Given Cancer Free At Current Age
Males, 2003-2005 By Race/Ethnicity

Race/ Ethnicity	Current Age	Risk of Being Diagnosed with Cancer				Risk of Dying from Cancer	
		+10 yrs Percent (95% C.I.)	+20 yrs Percent (95% C.I.)	+30 yrs Percent (95% C.I.)	Eventually Percent (95% C.I.)	Eventually Percent (95% C.I.)	
Asian/ Pacific Islander	0	0.00 (0.00, 0.00)	0.00 (0.00, 0.00)	0.00 (0.00, 0.00)	0.03 (0.02, 0.08)	0.00 (0.00, 0.04)	
	10	0.00 (0.00, 0.00)	0.00 (0.00, 0.00)	0.01 (0.00, 0.01)	0.03 (0.02, 0.08)	0.00 (0.00, 0.04)	
	20	0.00 (0.00, 0.00)	0.01 (0.00, 0.01)	0.01 (0.00, 0.01)	0.03 (0.02, 0.08)	0.00 (0.00, 0.04)	
	30	0.00 (0.00, 0.01)	0.01 (0.00, 0.01)	0.01 (0.01, 0.02)	0.03 (0.02, 0.08)	0.00 (0.00, 0.04)	
	40	0.00 (0.00, 0.01)	0.01 (0.00, 0.01)	0.01 (0.01, 0.02)	0.03 (0.02, 0.07)	0.00 (0.00, 0.04)	
	50	0.00 (0.00, 0.01)	0.01 (0.00, 0.02)	0.02 (0.01, 0.03)	0.02 (0.01, 0.07)	0.00 (0.00, 0.04)	
	60	0.01 (0.00, 0.02)	0.02 (0.01, 0.03)	0.02 (0.01, 0.04)	0.02 (0.01, 0.07)	0.00 (0.00, 0.05)	
	70	0.01 (0.00, 0.02)	0.01 (0.01, 0.04)	- (- , -)	0.02 (0.01, 0.07)	0.00 (0.00, 0.05)	
	80	0.01 (0.00, 0.03)	- (- , -)	- (- , -)	0.01 (0.00, 0.08)	0.00 (0.00, 0.06)	
American Indian/ Alaska Native ^a	0	0.00 (0.00, 0.05)	0.00 (0.00, 0.05)	0.01 (0.00, 0.05)	0.05 (0.02, 0.71)	0.00 (0.00, 0.20)	
	10	0.00 (0.00, 0.02)	0.01 (0.00, 0.04)	0.03 (0.01, 0.07)	0.05 (0.02, 0.72)	0.00 (0.00, 0.20)	
	20	0.01 (0.00, 0.04)	0.03 (0.01, 0.07)	0.04 (0.01, 0.09)	0.05 (0.02, 0.73)	0.00 (0.00, 0.20)	
	30	0.02 (0.00, 0.06)	0.03 (0.01, 0.08)	0.04 (0.01, 0.10)	0.04 (0.01, 0.74)	0.00 (0.00, 0.21)	
	40	0.01 (0.00, 0.04)	0.02 (0.00, 0.07)	0.02 (0.00, 0.09)	0.02 (0.00, 0.75)	0.00 (0.00, 0.22)	
	50	0.01 (0.00, 0.06)	0.01 (0.00, 0.08)	0.01 (0.00, 0.12)	0.01 (0.00, 0.79)	0.00 (0.00, 0.23)	
	60	0.00 (0.00, 0.08)	0.00 (0.00, 0.12)	0.00 (0.00, 0.22)	0.00 (0.00, 0.86)	0.00 (0.00, 0.26)	
	70	0.00 (0.00, 0.14)	0.00 (0.00, 0.26)	- (- , -)	0.00 (0.00, 1.03)	0.00 (0.00, 0.33)	
	80	0.00 (0.00, 0.38)	- (- , -)	- (- , -)	0.00 (0.00, 1.52)	0.00 (0.00, 0.51)	
Hispanic ^b	0	0.00 (0.00, 0.00)	0.00 (0.00, 0.00)	0.01 (0.00, 0.01)	0.18 (0.15, 0.24)	0.01 (0.00, 0.03)	
	10	0.00 (0.00, 0.00)	0.01 (0.00, 0.01)	0.03 (0.03, 0.04)	0.19 (0.15, 0.24)	0.01 (0.00, 0.03)	
	20	0.01 (0.00, 0.01)	0.03 (0.03, 0.04)	0.06 (0.05, 0.07)	0.19 (0.15, 0.25)	0.01 (0.00, 0.03)	
	30	0.03 (0.02, 0.03)	0.05 (0.04, 0.06)	0.07 (0.06, 0.08)	0.18 (0.15, 0.24)	0.01 (0.00, 0.03)	
	40	0.03 (0.02, 0.03)	0.04 (0.04, 0.05)	0.06 (0.05, 0.07)	0.16 (0.13, 0.22)	0.01 (0.00, 0.03)	
	50	0.02 (0.01, 0.02)	0.03 (0.02, 0.04)	0.07 (0.06, 0.09)	0.14 (0.10, 0.20)	0.01 (0.00, 0.03)	
	60	0.02 (0.01, 0.03)	0.06 (0.04, 0.08)	0.11 (0.08, 0.14)	0.13 (0.09, 0.19)	0.01 (0.00, 0.03)	
	70	0.05 (0.03, 0.07)	0.10 (0.07, 0.14)	- (- , -)	0.13 (0.09, 0.20)	0.01 (0.01, 0.04)	
	80	0.08 (0.05, 0.12)	- (- , -)	- (- , -)	0.11 (0.07, 0.21)	0.01 (0.00, 0.04)	

Devcan Version 7.0.0, April 2008, National Cancer Institute (<http://srab.cancer.gov/devcan/>).

Source: Incidence data are from the SEER 17 areas (San Francisco, Connecticut, Detroit, Hawaii, Iowa, New Mexico, Seattle, Utah, Atlanta, San Jose-Monterey, Los Angeles, Alaska Native Registry, Rural Georgia, California excluding SF/SJM/LA, Kentucky, Louisiana and New Jersey). Mortality data are from the NCHS public use data file for the total US.

^a Underlying incidence and mortality data for American Indian/Alaska Native are based on the CHSDA (Contract Health Service Delivery Area) counties.

^b Hispanic is not mutually exclusive from whites, blacks, Asian/Pacific Islanders, and American Indians/Alaska Natives. Underlying incidence data for Hispanics are based on NHIA and exclude cases from the Alaska Native Registry and Kentucky. Underlying mortality data for Hispanics exclude deaths from Minnesota, New Hampshire and North Dakota.

- Statistic could not be calculated.

A percent or confidence interval value of 0.00 represents a value that is below 0.005.

Table X-10 - continued

KAPOSI SARCOMA

Risk of Being Diagnosed With Cancer in 10, 20 and 30 Years, Lifetime Risk of Being Diagnosed with Cancer, and
Lifetime Risk of Dying from Cancer Given Cancer Free At Current Age
Females, 2003-2005 By Race/Ethnicity

Race/ Ethnicity	Current Age	Risk of Being Diagnosed with Cancer				Risk of Dying from Cancer	
		+10 yrs Percent (95% C.I.)	+20 yrs Percent (95% C.I.)	+30 yrs Percent (95% C.I.)	Eventually Percent (95% C.I.)	Eventually Percent (95% C.I.)	
All Races	0	0.00 (0.00, 0.00)	0.00 (0.00, 0.00)	0.00 (0.00, 0.00)	0.01 (0.01, 0.02)	0.00 (0.00, 0.00)	
	10	0.00 (0.00, 0.00)	0.00 (0.00, 0.00)	0.00 (0.00, 0.00)	0.01 (0.01, 0.02)	0.00 (0.00, 0.00)	
	20	0.00 (0.00, 0.00)	0.00 (0.00, 0.00)	0.00 (0.00, 0.00)	0.01 (0.01, 0.02)	0.00 (0.00, 0.00)	
	30	0.00 (0.00, 0.00)	0.00 (0.00, 0.00)	0.00 (0.00, 0.00)	0.01 (0.01, 0.02)	0.00 (0.00, 0.00)	
	40	0.00 (0.00, 0.00)	0.00 (0.00, 0.00)	0.00 (0.00, 0.00)	0.01 (0.01, 0.02)	0.00 (0.00, 0.00)	
	50	0.00 (0.00, 0.00)	0.00 (0.00, 0.00)	0.01 (0.00, 0.01)	0.01 (0.01, 0.02)	0.00 (0.00, 0.00)	
	60	0.00 (0.00, 0.00)	0.01 (0.00, 0.01)	0.01 (0.01, 0.01)	0.01 (0.01, 0.02)	0.00 (0.00, 0.00)	
	70	0.00 (0.00, 0.01)	0.01 (0.01, 0.01)	- (- , -)	0.01 (0.01, 0.02)	0.00 (0.00, 0.00)	
80	0.01 (0.01, 0.01)	- (- , -)	- (- , -)	0.01 (0.01, 0.01)	0.00 (0.00, 0.00)		
White	0	0.00 (0.00, 0.00)	0.00 (0.00, 0.00)	0.00 (0.00, 0.00)	0.01 (0.01, 0.02)	0.00 (0.00, 0.00)	
	10	0.00 (0.00, 0.00)	0.00 (0.00, 0.00)	0.00 (0.00, 0.00)	0.01 (0.01, 0.02)	0.00 (0.00, 0.00)	
	20	0.00 (0.00, 0.00)	0.00 (0.00, 0.00)	0.00 (0.00, 0.00)	0.01 (0.01, 0.02)	0.00 (0.00, 0.00)	
	30	0.00 (0.00, 0.00)	0.00 (0.00, 0.00)	0.00 (0.00, 0.00)	0.01 (0.01, 0.02)	0.00 (0.00, 0.00)	
	40	0.00 (0.00, 0.00)	0.00 (0.00, 0.00)	0.00 (0.00, 0.00)	0.01 (0.01, 0.02)	0.00 (0.00, 0.00)	
	50	0.00 (0.00, 0.00)	0.00 (0.00, 0.00)	0.01 (0.00, 0.01)	0.01 (0.01, 0.02)	0.00 (0.00, 0.00)	
	60	0.00 (0.00, 0.00)	0.01 (0.00, 0.01)	0.01 (0.01, 0.01)	0.01 (0.01, 0.02)	0.00 (0.00, 0.00)	
	70	0.00 (0.00, 0.01)	0.01 (0.01, 0.01)	- (- , -)	0.01 (0.01, 0.02)	0.00 (0.00, 0.00)	
80	0.01 (0.01, 0.01)	- (- , -)	- (- , -)	0.01 (0.01, 0.01)	0.00 (0.00, 0.00)		
Black	0	0.00 (0.00, 0.00)	0.00 (0.00, 0.00)	0.00 (0.00, 0.00)	0.02 (0.01, 0.03)	0.00 (0.00, 0.00)	
	10	0.00 (0.00, 0.00)	0.00 (0.00, 0.00)	0.00 (0.00, 0.01)	0.02 (0.01, 0.03)	0.00 (0.00, 0.00)	
	20	0.00 (0.00, 0.00)	0.00 (0.00, 0.01)	0.01 (0.00, 0.01)	0.02 (0.01, 0.03)	0.00 (0.00, 0.00)	
	30	0.00 (0.00, 0.00)	0.00 (0.00, 0.01)	0.01 (0.00, 0.01)	0.01 (0.01, 0.03)	0.00 (0.00, 0.00)	
	40	0.00 (0.00, 0.01)	0.00 (0.00, 0.01)	0.01 (0.00, 0.01)	0.01 (0.01, 0.03)	0.00 (0.00, 0.00)	
	50	0.00 (0.00, 0.00)	0.00 (0.00, 0.01)	0.01 (0.00, 0.01)	0.01 (0.00, 0.02)	0.00 (0.00, 0.00)	
	60	0.00 (0.00, 0.01)	0.01 (0.00, 0.01)	0.01 (0.00, 0.02)	0.01 (0.00, 0.02)	0.00 (0.00, 0.00)	
	70	0.01 (0.00, 0.01)	0.01 (0.00, 0.02)	- (- , -)	0.01 (0.00, 0.03)	0.00 (0.00, 0.00)	
80	0.01 (0.00, 0.02)	- (- , -)	- (- , -)	0.01 (0.00, 0.03)	0.00 (0.00, 0.01)		

Devcan Version 7.0.0, April 2008, National Cancer Institute (<http://srab.cancer.gov/devcan/>).

Source: Incidence data are from the SEER 17 areas (San Francisco, Connecticut, Detroit, Hawaii, Iowa, New Mexico, Seattle, Utah, Atlanta, San Jose-Monterey, Los Angeles, Alaska Native Registry, Rural Georgia, California excluding SF/SJM/LA, Kentucky, Louisiana and New Jersey). Mortality data are from the NCHS public use data file for the total US.

- Statistic could not be calculated.

A percent or confidence interval value of 0.00 represents a value that is below 0.005.

Table X-10 - continued

KAPOSI SARCOMA

Risk of Being Diagnosed With Cancer in 10, 20 and 30 Years, Lifetime Risk of Being Diagnosed with Cancer, and
Lifetime Risk of Dying from Cancer Given Cancer Free At Current Age
Females, 2003-2005 By Race/Ethnicity

Race/ Ethnicity	Current Age	Risk of Being Diagnosed with Cancer				Risk of Dying from Cancer	
		+10 yrs Percent (95% C.I.)	+20 yrs Percent (95% C.I.)	+30 yrs Percent (95% C.I.)	Eventually Percent (95% C.I.)	Eventually Percent (95% C.I.)	
Asian/ Pacific Islander	0	0.00 (0.00, 0.00)	0.00 (0.00, 0.00)	0.00 (0.00, 0.00)	0.01 (0.00, 0.05)	0.00 (0.00, 0.04)	
	10	0.00 (0.00, 0.00)	0.00 (0.00, 0.00)	0.00 (0.00, 0.00)	0.01 (0.00, 0.06)	0.00 (0.00, 0.04)	
	20	0.00 (0.00, 0.00)	0.00 (0.00, 0.00)	0.00 (0.00, 0.00)	0.01 (0.00, 0.06)	0.00 (0.00, 0.04)	
	30	0.00 (0.00, 0.00)	0.00 (0.00, 0.00)	0.00 (0.00, 0.00)	0.01 (0.00, 0.06)	0.00 (0.00, 0.04)	
	40	0.00 (0.00, 0.00)	0.00 (0.00, 0.00)	0.00 (0.00, 0.01)	0.01 (0.00, 0.06)	0.00 (0.00, 0.04)	
	50	0.00 (0.00, 0.00)	0.00 (0.00, 0.01)	0.00 (0.00, 0.01)	0.01 (0.00, 0.06)	0.00 (0.00, 0.04)	
	60	0.00 (0.00, 0.00)	0.00 (0.00, 0.01)	0.00 (0.00, 0.02)	0.00 (0.00, 0.06)	0.00 (0.00, 0.04)	
	70	0.00 (0.00, 0.01)	0.00 (0.00, 0.02)	- (- , -)	0.00 (0.00, 0.06)	0.00 (0.00, 0.04)	
	80	0.00 (0.00, 0.02)	- (- , -)	- (- , -)	0.00 (0.00, 0.07)	0.00 (0.00, 0.05)	
American Indian/ Alaska Native ^a	0	0.00 (0.00, 0.05)	0.00 (0.00, 0.05)	0.00 (0.00, 0.05)	0.00 (0.00, 0.53)	0.00 (0.00, 0.14)	
	10	0.00 (0.00, 0.02)	0.00 (0.00, 0.02)	0.00 (0.00, 0.03)	0.00 (0.00, 0.54)	0.00 (0.00, 0.14)	
	20	0.00 (0.00, 0.02)	0.00 (0.00, 0.03)	0.00 (0.00, 0.03)	0.00 (0.00, 0.54)	0.00 (0.00, 0.15)	
	30	0.00 (0.00, 0.03)	0.00 (0.00, 0.03)	0.00 (0.00, 0.04)	0.00 (0.00, 0.54)	0.00 (0.00, 0.15)	
	40	0.00 (0.00, 0.02)	0.00 (0.00, 0.04)	0.00 (0.00, 0.06)	0.00 (0.00, 0.55)	0.00 (0.00, 0.15)	
	50	0.00 (0.00, 0.04)	0.00 (0.00, 0.07)	0.00 (0.00, 0.09)	0.00 (0.00, 0.57)	0.00 (0.00, 0.16)	
	60	0.00 (0.00, 0.07)	0.00 (0.00, 0.10)	0.00 (0.00, 0.15)	0.00 (0.00, 0.60)	0.00 (0.00, 0.17)	
	70	0.00 (0.00, 0.11)	0.00 (0.00, 0.17)	- (- , -)	0.00 (0.00, 0.69)	0.00 (0.00, 0.20)	
	80	0.00 (0.00, 0.23)	- (- , -)	- (- , -)	0.00 (0.00, 0.92)	0.00 (0.00, 0.27)	
Hispanic ^b	0	0.00 (0.00, 0.00)	0.00 (0.00, 0.00)	0.00 (0.00, 0.00)	0.03 (0.02, 0.06)	0.00 (0.00, 0.02)	
	10	0.00 (0.00, 0.00)	0.00 (0.00, 0.00)	0.00 (0.00, 0.00)	0.03 (0.02, 0.06)	0.00 (0.00, 0.02)	
	20	0.00 (0.00, 0.00)	0.00 (0.00, 0.00)	0.00 (0.00, 0.00)	0.03 (0.02, 0.06)	0.00 (0.00, 0.02)	
	30	0.00 (0.00, 0.00)	0.00 (0.00, 0.00)	0.00 (0.00, 0.00)	0.03 (0.02, 0.06)	0.01 (0.00, 0.02)	
	40	0.00 (0.00, 0.00)	0.00 (0.00, 0.00)	0.00 (0.00, 0.01)	0.03 (0.02, 0.06)	0.01 (0.00, 0.02)	
	50	0.00 (0.00, 0.00)	0.00 (0.00, 0.01)	0.01 (0.01, 0.02)	0.03 (0.02, 0.07)	0.01 (0.00, 0.02)	
	60	0.00 (0.00, 0.01)	0.01 (0.01, 0.02)	0.03 (0.02, 0.05)	0.03 (0.02, 0.07)	0.01 (0.00, 0.02)	
	70	0.01 (0.00, 0.02)	0.03 (0.01, 0.05)	- (- , -)	0.03 (0.02, 0.07)	0.01 (0.00, 0.02)	
	80	0.02 (0.01, 0.04)	- (- , -)	- (- , -)	0.03 (0.01, 0.07)	0.01 (0.00, 0.03)	

Devcan Version 7.0.0, April 2008, National Cancer Institute (<http://srab.cancer.gov/devcan/>).

Source: Incidence data are from the SEER 17 areas (San Francisco, Connecticut, Detroit, Hawaii, Iowa, New Mexico, Seattle, Utah, Atlanta, San Jose-Monterey, Los Angeles, Alaska Native Registry, Rural Georgia, California excluding SF/SJM/LA, Kentucky, Louisiana and New Jersey). Mortality data are from the NCHS public use data file for the total US.

^a Underlying incidence and mortality data for American Indian/Alaska Native are based on the CHSDA (Contract Health Service Delivery Area) counties.

^b Hispanic is not mutually exclusive from whites, blacks, Asian/Pacific Islanders, and American Indians/Alaska Natives. Underlying incidence data for Hispanics are based on NHIA and exclude cases from the Alaska Native Registry and Kentucky. Underlying mortality data for Hispanics exclude deaths from Minnesota, New Hampshire and North Dakota.

- Statistic could not be calculated.

A percent or confidence interval value of 0.00 represents a value that is below 0.005.

Table X-11
KAPOSI SARCOMA

SEER INCIDENCE
AGE-ADJUSTED RATES AND TRENDS^a
 By Race/Ethnicity and Sex

RACE/ETHNICITY	Rate 2001-2005 ^b			Seer 13 Areas ^c			SEER 9 Areas ^d		
	Rate per 100,000 persons			Trend 1996-2005			Trend 1996-2005		
	Total	Males	Females	Total	Males	Females	Total	Males	Females
All Races	0.7	1.3	0.1	-11.5*	-11.7*	-6.1*	-11.9*	-12.3*	-4.8*
White	0.6	1.1	0.1	-12.2*	-12.4*	-6.7*	-13.2*	-13.6*	-5.3*
White Hispanic ^e	1.0	1.9	0.2	-10.6*	-9.7	-	-	-	-
White Non-Hispanic ^e	0.5	1.0	0.1	-12.8*	-13.1*	-6.6*	-	-	-
Black	1.3	2.6	0.2	-9.4*	-9.5*	-	-8.6*	-8.8*	-
Asian/Pacific Islander	0.2	0.4	-	-	-	-	-	-	-
Amer Ind/Alaska Nat ^f	-	-	-	-	-	-	-	-	-
Hispanic ^e	1.0	1.9	0.2	-9.4*	-9.4*	-	-	-	-

The AAPC is the Average Annual Percent Change over the time interval. The AAPCs are calculated by the Joinpoint Regression Program Version 3.3, April 2008, National Cancer Institute.

- Statistic not shown. Rate based on less than 16 cases for the time interval. Trend based on less than 10 cases for at least one year within the time interval.

^a Rates are age-adjusted to the 2000 US Std Population (19 age groups - Census P25-1130). Trends are based on rates age-adjusted to the 2000 US Std Population (19 age groups - Census P25-1130).

^b Incidence data used in calculating the 2001-2005 rates are from the SEER 17 areas (San Francisco, Connecticut, Detroit, Hawaii, Iowa, New Mexico, Seattle, Utah, Atlanta, San Jose-Monterey, Los Angeles, Alaska Native Registry, Rural Georgia, California excluding SF/SJM/LA, Kentucky, Louisiana and New Jersey).

^c The SEER 13 areas are San Francisco, Connecticut, Detroit, Hawaii, Iowa, New Mexico, Seattle, Utah, Atlanta, San Jose-Monterey, Los Angeles, Alaska Native Registry and Rural Georgia. The 1996-2005 AAPC trends are based on a Joinpoint analysis using diagnosis years 1992-2005.

^d The SEER 9 areas are San Francisco, Connecticut, Detroit, Hawaii, Iowa, New Mexico, Seattle, Utah, and Atlanta. The 1996-2005 AAPC trends are based on a Joinpoint analysis using diagnosis years 1975-2005.

^e Hispanic and Non-Hispanic are not mutually exclusive from whites, blacks, Asian/Pacific Islanders, and American Indians/Alaska Natives. Incidence data for Hispanics and Non-Hispanics are based on NHIA and exclude cases from the Alaska Native Registry and Kentucky.

^f Incidence data for American Indian/Alaska Native are based on the CHSDA(Contract Health Service Delivery Area) counties.

* The APC is significantly different from zero (p<.05).

Table X-12
KAPOSI SARCOMA

AGE-ADJUSTED SEER INCIDENCE RATES^a
 By Registry, Race and Sex

	<u>All Races</u>			<u>Whites</u>			<u>Blacks</u>		
	<u>Total</u>	<u>Males</u>	<u>Females</u>	<u>Total</u>	<u>Males</u>	<u>Females</u>	<u>Total</u>	<u>Males</u>	<u>Females</u>
<u>SEER INCIDENCE RATES^a, 2001-2005</u>									
<u>REGISTRY</u>									
Atlanta & Rural Georgia	1.4	2.8	-	1.0	1.9	-	2.2	4.7	-
Atlanta	1.4	2.8	-	1.0	1.9	-	2.3	4.8	-
Rural Georgia	-	-	-	-	-	-	-	-	-
California	0.8	1.6	0.1	0.8	1.5	0.1	1.5	2.9	-
Greater Bay Area	1.0	2.0	0.1	1.1	2.1	-	2.5	4.6	-
San Francisco-Oakland	1.4	2.7	0.2	1.5	2.9	-	2.7	5.0	-
San Jose-Monterey	0.4	0.7	-	0.4	0.7	-	-	-	-
Los Angeles	1.2	2.4	0.1	1.3	2.5	0.1	1.5	3.2	-
Greater California	0.5	1.0	0.1	0.5	0.9	0.1	1.1	1.9	-
Connecticut	0.4	0.7	0.2	0.4	0.6	0.2	1.1	-	-
Detroit	0.5	0.9	0.1	0.3	0.6	-	0.8	1.8	-
Hawaii	0.5	0.9	-	1.4	2.1	-	-	-	-
Iowa	0.2	0.3	-	0.1	0.3	-	-	-	-
Kentucky	0.2	0.4	-	0.2	0.4	-	-	-	-
Louisiana	0.5	1.0	0.2	0.5	0.8	0.2	0.6	1.3	-
New Jersey	0.6	1.1	0.1	0.5	0.9	0.1	1.3	2.5	-
New Mexico	0.5	0.9	-	0.5	0.9	-	-	-	-
Seattle-Puget Sound	0.5	0.9	-	0.5	0.9	-	-	-	-
Utah	0.2	0.4	-	0.2	-	-	-	-	-
9 SEER Areas ^b	0.7	1.3	0.1	0.6	1.1	0.1	1.7	3.4	0.2
11 SEER Areas ^b	0.8	1.5	0.1	0.7	1.4	0.1	1.7	3.3	0.2
13 SEER Areas ^b	0.8	1.5	0.1	0.7	1.4	0.1	1.6	3.3	0.2
17 SEER Areas ^b	0.7	1.3	0.1	0.6	1.1	0.1	1.3	2.6	0.2

^a Rates are per 100,000 and are age-adjusted to the 2000 US Std Population (19 age groups - Census P25-1130)

^b The SEER 9 areas are San Francisco, Connecticut, Detroit, Hawaii, Iowa, New Mexico, Seattle, Utah and Atlanta.

The SEER 11 areas comprise the SEER 9 areas plus San Jose-Monterey and Los Angeles.

The SEER 13 areas comprise the SEER 11 areas plus the Alaska Native Registry and Rural Georgia.

The SEER 17 areas comprise the SEER 13 areas plus California excluding SF/SJM/LA, Kentucky, Louisiana and New Jersey.

- Statistic not shown. Rate based on less than 16 cases for the time interval.

Table X-13
KAPOSI SARCOMAEstimated United States Cancer Prevalence Counts^a on January 1, 2005
By Race/Ethnicity, Sex and Years Since Diagnosis

Years Since Diagnosis	0 to <5	5 to <10	10 to <15	15 to <20	20 to <25	25 to <30	0 to <15 ^e	0 to <30 ^e	>=30 ^g	Complete ^h
<u>Race/Sex</u>										
All Races ^b	6,456	8,047	4,059	1,425	410	271	18,563	20,669	+	+
Males	5,958	7,622	3,772	1,387	387	132	17,353	19,259	+	+
Females	498	425	287	38	23	139	1,210	1,410	+	+
White ^b	4,544	6,310	3,404	1,197	323	224	14,258	16,002	+	+
Males	4,132	6,027	3,175	1,159	311	108	13,334	14,912	+	+
Females	412	283	229	38	12	116	924	1,090	+	+
Black ^b	1,586	1,276	403	103	40	12	3,266	3,421	+	+
Males	1,505	1,179	368	103	40	12	3,052	3,207	+	+
Females	81	97	35	0	0	0	214	214	+	+
Asian/Pacific Islander ^c	84	102	23	+	+	+	208	+	+	+
Males	79	99	23	+	+	+	201	+	+	+
Females	5	3	0	+	+	+	7	+	+	+
Hispanic ^d	1,109	1,364	590	+	+	+	3,063	+	+	+
Males	1,039	1,321	556	+	+	+	2,916	+	+	+
Females	70	43	34	+	+	+	147	+	+	+

Estimated prevalence percent^a on January 1, 2005, of the SEER 11 population diagnosed in the previous 15 years
By Age at Prevalence, Race/Ethnicity and Sex

Age at Prevalence	Age Specific (Crude)										Age-Adjusted ^f
	All Ages	0-9	10-19	20-29	30-39	40-49	50-59	60-69	70-79	80+	All Ages
<u>Race/Sex</u>											
All Races ^c	0.0073%	-	-	0.0009%	0.0084%	0.0196%	0.0126%	0.0071%	0.0070%	0.0150%	0.0073%
Males	0.0140%	-	-	0.0015%	0.0163%	0.0388%	0.0254%	0.0137%	0.0133%	0.0281%	0.0143%
Females	0.0007%	-	-	-	0.0003%	0.0005%	0.0005%	0.0013%	0.0021%	0.0078%	0.0007%
White ^c	0.0074%	-	-	0.0006%	0.0077%	0.0199%	0.0127%	0.0073%	0.0077%	0.0155%	0.0073%
Males	0.0140%	-	-	0.0011%	0.0144%	0.0389%	0.0252%	0.0138%	0.0144%	0.0293%	0.0140%
Females	0.0008%	-	-	-	0.0004%	0.0004%	0.0004%	0.0014%	0.0024%	0.0080%	0.0007%
Black ^c	0.0094%	-	-	0.0025%	0.0178%	0.0247%	0.0154%	0.0093%	0.0046%	0.0115%	0.0099%
Males	0.0188%	-	-	0.0046%	0.0377%	0.0520%	0.0325%	0.0195%	0.0082%	-	0.0203%
Females	0.0008%	-	-	-	-	-	-	-	-	0.0119%	0.0010%
Asian/Pacific Islander ^c	0.0016%	-	-	-	0.0012%	0.0033%	0.0041%	0.0021%	0.0022%	0.0039%	0.0016%
Males	0.0032%	-	-	-	0.0025%	0.0065%	0.0088%	0.0039%	0.0052%	-	0.0033%
Females	-	-	-	-	-	-	-	-	-	-	-
Hispanic ^d	0.0073%	-	-	0.0008%	0.0113%	0.0229%	0.0142%	0.0127%	0.0115%	0.0413%	0.0100%
Males	0.0135%	-	-	0.0014%	0.0208%	0.0443%	0.0287%	0.0239%	0.0239%	0.0755%	0.0192%
Females	0.0007%	-	-	-	-	-	-	0.0033%	-	0.0217%	0.0013%

^a US 2005 cancer prevalence counts are based on 2005 cancer prevalence proportions from the SEER registries and 1/1/2005 US population estimates based on the average of 2004 and 2005 population estimates from the US Bureau of the Census. Prevalence was calculated using the First Malignant Primary Only for a person.

^{b c d} Statistics based on (b) SEER 9 Areas (c) SEER 11 Areas and Rural Georgia (d) NHIA for Hispanic for SEER 11 Areas and Rural Georgia.

^e Maximum limited-duration prevalence: 30 years for 1975-2005 SEER 9 data; 15 years for 1990-2005 SEER 11 data (used to calculate prevalence for Hispanics and Asian Pacific Islanders).

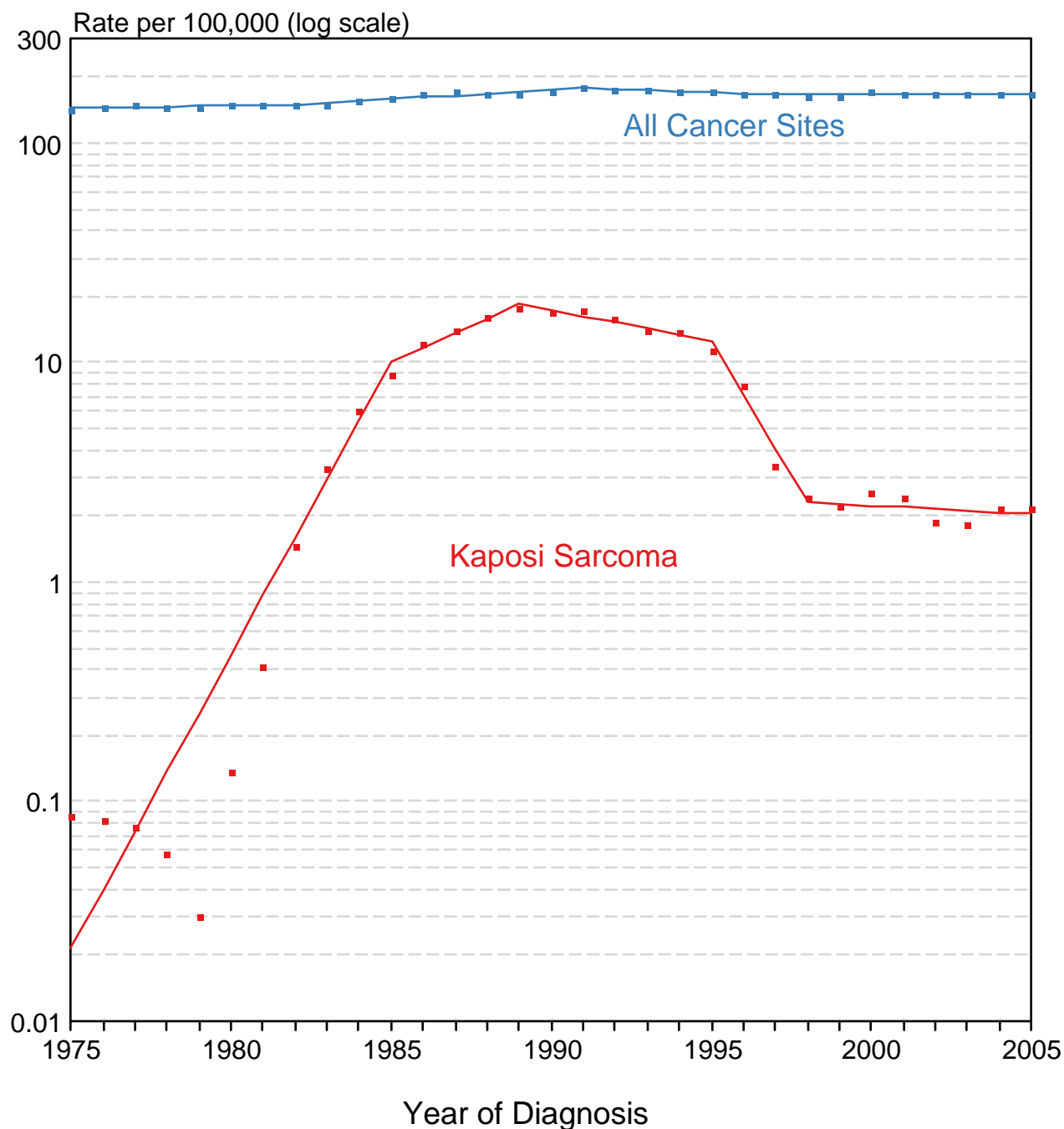
^f Percentages are age-adjusted to the 2000 US Standard Population (19 age groups - Census P25-1130) by 5-year age groups.

^{g h i} (g) Cases diagnosed more than 30 years ago were estimated using the completeness index method (Capocaccia et. al. 1997, Merrill et. al. 2000). (h) Complete prevalence is obtained by summing 0 to <30 and >=30. (i) Age-specific completeness index was approximated using empirical data from historical Connecticut tumor registry.

- Statistic not shown. Statistic based on fewer than 5 cases estimated alive in SEER for the time interval.

+ Not available.

All Cancer Sites vs Kaposi Sarcoma SEER Incidence Rates, 1975-2005 Males, Ages 20-54



Source: SEER 9 areas. Rates are age-adjusted to the 2000 US Std Population (19 age groups - Census P25-1103). Regression lines are calculated using the Joinpoint Regression Program Version 3.3.1, April 2008, National Cancer Institute.

All SEER excluding San Francisco/Oakland Males, Ages 20-54 1975-2005

San Francisco/Oakland Males, Ages 20-54 1975-2005

San Francisco County/City Males, Ages 20-54 1975-2005

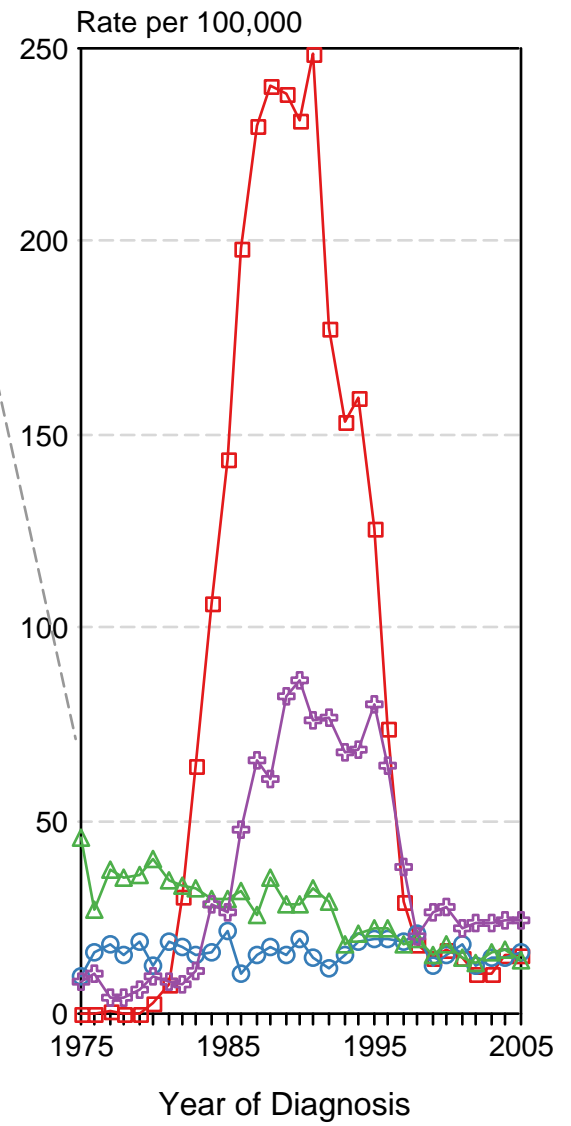
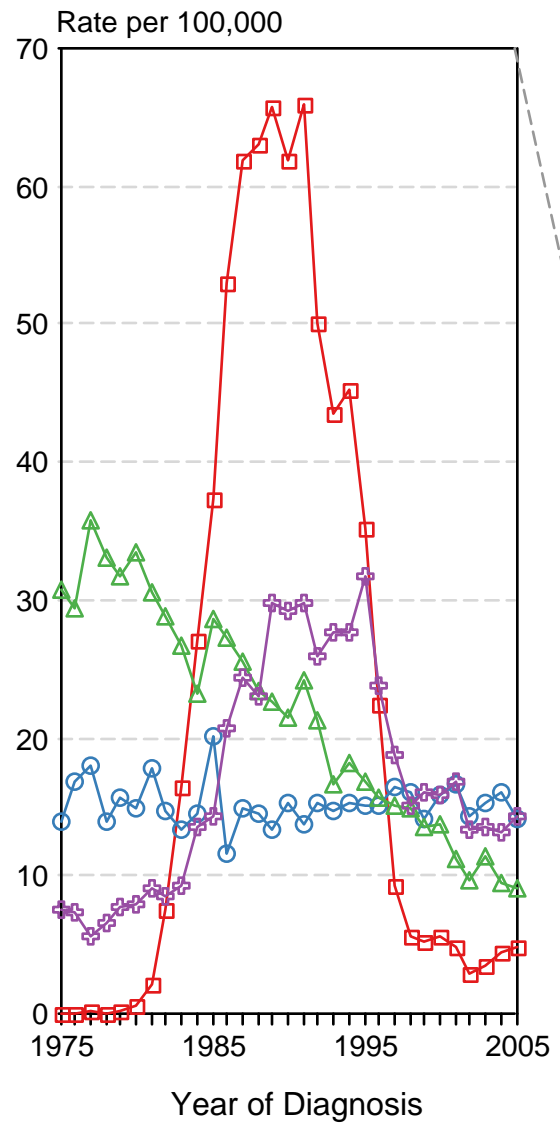
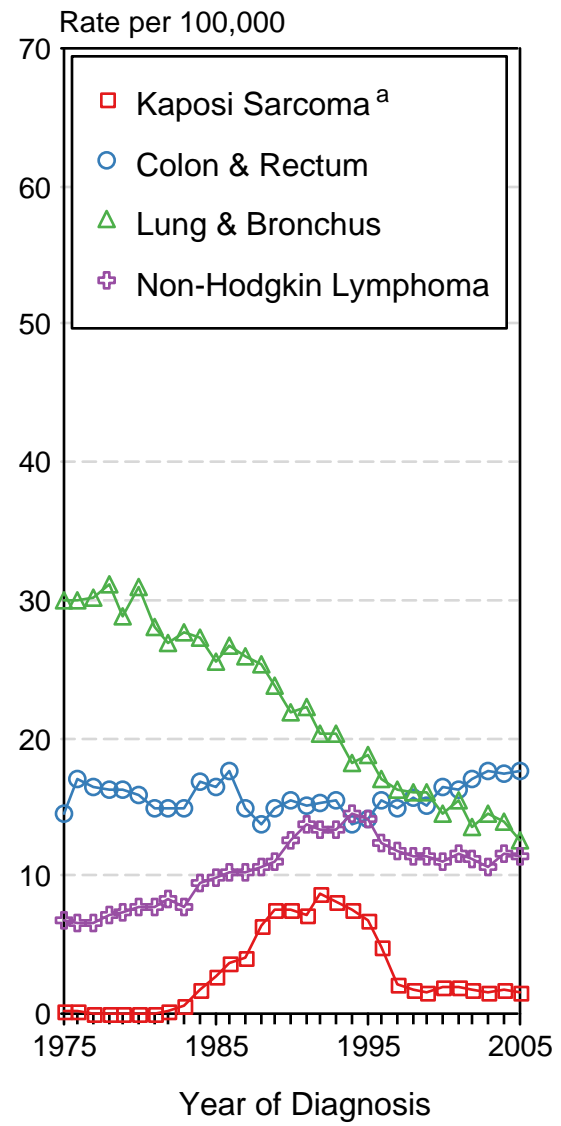


Figure X-2

Source: SEER 9 areas. Rates are age-adjusted to the 2000 US Std Population (19 age groups - Census P25-1103).
 a Kaposi Sarcoma excluded from Colon & Rectum, Lung & Bronchus, and Non-Hodgkin Lymphoma.