

Table 7.1
Cancer of the Corpus and Uterus, NOS (Invasive)

Trends in SEER Incidence^{ab} and U.S. Mortality^c Using the Joinpoint Regression Program,
1975-2006 With up to Four Joinpoints, 1992-2006 With up to Two Joinpoints,
All Ages by Race/Ethnicity

	Joinpoint Trend 1		Joinpoint Trend 2		Joinpoint Trend 3		Joinpoint Trend 4		Joinpoint Trend 5		AAPC ^d	
	Years	APC	Years	APC	Years	APC	Years	APC	Years	APC	1997-2006	2002-2006
<u>SEER 9 Delay-Adjusted Incidence^a, 1975-2006</u>												
All Races	1975-1979	-6.0*	1979-1988	-1.7*	1988-1997	0.7*	1997-2006	-0.5*			-0.5*	-0.5*
White	1975-1979	-6.1*	1979-1988	-1.6*	1988-1997	0.7*	1997-2006	-0.7*			-0.7*	-0.7*
Black	1975-1987	-1.1	1987-2006	1.3*							1.3*	1.3*
<u>SEER 13 Delay-Adjusted Incidence^b, 1992-2006</u>												
All Races	1992-2006	-0.3*									-0.3*	-0.3*
White	1992-2006	-0.4*									-0.4*	-0.4*
Black	1992-2006	1.4*									1.4*	1.4*
<u>SEER 9 Observed Incidence^a, 1975-2006</u>												
All Races	1975-1979	-6.0*	1979-1988	-1.7*	1988-1997	0.7*	1997-2006	-0.6*			-0.6*	-0.6*
White	1975-1979	-6.1*	1979-1988	-1.6*	1988-1998	0.6*	1998-2006	-0.9*			-0.8*	-0.9*
Black	1975-1987	-1.1	1987-2006	1.2*							1.2*	1.2*
<u>SEER 13 Observed Incidence^b, 1992-2006</u>												
All Races	1992-1997	0.7	1997-2006	-0.7*							-0.7*	-0.7*
White	1992-1997	0.6	1997-2006	-0.9*							-0.9*	-0.9*
White NH ^{ef}	1992-1997	0.8	1997-2006	-1.0*							-1.0*	-1.0*
Black	1992-2006	1.3*									1.3*	1.3*
Black NH ^{ef}	1992-2006	1.3*									1.3*	1.3*
API ^e	1992-2006	1.1*									1.1*	1.1*
AI/AN ^{eg}	1992-2006	2.1									2.1	2.1
Hispanic ^f	1992-2006	0.9*									0.9*	0.9*
<u>U.S. Cancer Mortality^c, 1975-2006</u>												
All Races	1975-1992	-1.5*	1992-2006	0.0							0.0	0.0
White	1975-1991	-1.7*	1991-2006	-0.1							-0.1	-0.1
Black	1975-1997	-0.8*	1997-2006	0.7							0.7	0.7
<u>U.S. Cancer Mortality^c, 1992-2006</u>												
All Races	1992-1997	-0.7*	1997-2006	0.3*							0.3*	0.3*
White	1992-2006	-0.1									-0.1	-0.1
White NH ^{ef}	1992-2006	-0.1									-0.1	-0.1
Black	1992-2006	0.3									0.3	0.3
Black NH ^{ef}	1992-2006	0.1									0.1	0.1
API ^e	1992-2006	1.3									1.3*	1.3*
AI/AN ^{eg}	1992-2006	-0.8									-0.8	-0.8
Hispanic ^f	1992-2006	-0.2									-0.2	-0.2

Joinpoint Regression Program Version 3.3.1, April 2008, National Cancer Institute. (<http://srab.cancer.gov/joinpoint/>).

The APC is the Annual Percent Change based on rates age-adjusted to the 2000 US Std Population (19 age groups - Census P25-1130).

^a Trends are from the SEER 9 areas (San Francisco, Connecticut, Detroit, Hawaii, Iowa, New Mexico, Seattle, Utah, and Atlanta).

^b Trends are from the SEER 13 areas (SEER 9 Areas, Los Angeles, San Jose-Monterey, Rural Georgia, and the Alaska Native Registry).

^c Trends are from US Mortality Files, National Center for Health Statistics, Centers for Disease Control and Prevention.

^d The AAPC is the Average Annual Percent Change and is based on the APCs calculated by Joinpoint.

^e API - Asian/Pacific Islander, AI/AN - American Indian/Alaska Native, NH - Non-Hispanic

^f Hispanic and Non-Hispanic are not mutually exclusive from whites, blacks, Asian/Pacific Islanders, and American Indians/Alaska

Natives. Incidence data for Hispanics and Non-Hispanics are based on NHIA and exclude cases from the Alaska Native Registry.

The Hispanic and Non-Hispanic mortality trends exclude deaths from CT, DC, ME, MD, MN, NH, NY, ND, OK and VT.

^g Data for American Indian/Alaska Native are based on the CHSDA (Contract Health Service Delivery Area) counties.

* The APC/AAPC is significantly different from zero ($p < .05$).

- Joinpoint regression line analysis could not be performed on data series.

Table 7.2
Cancer of the Corpus and Uterus, NOS (Invasive)

Trends in SEER Incidence^{ab} and U.S. Mortality^c Using the Joinpoint Regression Program,
1975-2006 With up to Four Joinpoints, 1992-2006 With up to Two Joinpoints,
Ages <50 by Race/Ethnicity

	Joinpoint Trend 1		Joinpoint Trend 2		Joinpoint Trend 3		Joinpoint Trend 4		Joinpoint Trend 5		AAPC ^d	
	Years	APC	Years	APC	Years	APC	Years	APC	Years	APC	1997-2006	2002-2006
<u>SEER 9 Delay-Adjusted Incidence^a, 1975-2006</u>												
All Races	1975-1985	-3.3*	1985-2006	0.7*							0.7*	0.7*
White	1975-1984	-3.6*	1984-2006	0.3							0.3	0.3
Black	1975-1985	-5.5*	1985-2006	2.8*							2.8*	2.8*
<u>SEER 13 Delay-Adjusted Incidence^b, 1992-2006</u>												
All Races	1992-2006	1.1*									1.1*	1.1*
White	1992-2006	0.9*									0.9*	0.9*
Black	1992-1999	-1.4	1999-2002	17.4	2002-2006	-7.4					1.6	-7.4*
<u>SEER 9 Observed Incidence^a, 1975-2006</u>												
All Races	1975-1985	-3.3*	1985-2006	0.7*							0.7*	0.7*
White	1975-1983	-4.0*	1983-2006	0.2							0.2	0.2
Black	1975-1985	-5.4*	1985-2006	2.7*							2.7*	2.7*
<u>SEER 13 Observed Incidence^b, 1992-2006</u>												
All Races	1992-2006	1.0*									1.0*	1.0*
White	1992-2006	0.8*									0.8*	0.8*
White NH ^{ef}	1992-2006	0.4									0.4	0.4
Black	1992-1999	-1.5	1999-2002	17.3	2002-2006	-7.9					1.4	-7.9*
Black NH ^{ef}	1992-1999	-1.9	1999-2002	18.3	2002-2006	-7.7					1.6	-7.7*
API ^e	1992-2006	1.3*									1.3*	1.3*
AI/AN ^{eg}	1992-2006	0.5									0.5	0.5
Hispanic ^f	1992-2006	2.3*									2.3*	2.3*
<u>U.S. Cancer Mortality^c, 1975-2006</u>												
All Races	1975-1988	-4.1*	1988-2006	0.8*							0.8*	0.8*
White	1975-1988	-3.8*	1988-2006	0.8*							0.8*	0.8*
Black	1975-1995	-4.5*	1995-2006	2.9*							2.9*	2.9*
<u>U.S. Cancer Mortality^c, 1992-2006</u>												
All Races	1992-2006	1.4*									1.4*	1.4*
White	1992-2006	1.3*									1.3*	1.3*
White NH ^{ef}	1992-2006	1.4*									1.4*	1.4*
Black	1992-2006	1.7*									1.7*	1.7*
Black NH ^{ef}	1992-1996	-6.7	1996-2006	4.4*							4.4*	4.4*
API ^e	1992-2006	1.7									1.7	1.7
AI/AN ^{eg}	-	-									-	-
Hispanic ^f	1992-1998	-7.3*	1998-2006	4.6*							3.2*	4.6*

Joinpoint Regression Program Version 3.3.1, April 2008, National Cancer Institute. (<http://srab.cancer.gov/joinpoint/>).

The APC is the Annual Percent Change based on rates age-adjusted to the 2000 US Std Population (19 age groups - Census P25-1130).

^a Trends are from the SEER 9 areas (San Francisco, Connecticut, Detroit, Hawaii, Iowa, New Mexico, Seattle, Utah, and Atlanta).

^b Trends are from the SEER 13 areas (SEER 9 Areas, Los Angeles, San Jose-Monterey, Rural Georgia, and the Alaska Native Registry).

^c Trends are from US Mortality Files, National Center for Health Statistics, Centers for Disease Control and Prevention.

^d The AAPC is the Average Annual Percent Change and is based on the APCs calculated by Joinpoint.

^e API - Asian/Pacific Islander, AI/AN - American Indian/Alaska Native, NH - Non-Hispanic

^f Hispanic and Non-Hispanic are not mutually exclusive from whites, blacks, Asian/Pacific Islanders, and American Indians/Alaska

Natives. Incidence data for Hispanics and Non-Hispanics are based on NHIA and exclude cases from the Alaska Native Registry.

The Hispanic and Non-Hispanic mortality trends exclude deaths from CT, DC, ME, MD, MN, NH, NY, ND, OK and VT.

^g Data for American Indian/Alaska Native are based on the CHSDA (Contract Health Service Delivery Area) counties.

* The APC/AAPC is significantly different from zero ($p < .05$).

- Joinpoint regression line analysis could not be performed on data series.

Table 7.3
Cancer of the Corpus and Uterus, NOS (Invasive)

Trends in SEER Incidence^{ab} and U.S. Mortality^c Using the Joinpoint Regression Program,
1975-2006 With up to Four Joinpoints, 1992-2006 With up to Two Joinpoints,
Ages 50+ by Race/Ethnicity

	Joinpoint Trend 1		Joinpoint Trend 2		Joinpoint Trend 3		Joinpoint Trend 4		Joinpoint Trend 5		AAPC ^d	
	Years	APC	Years	APC	Years	APC	Years	APC	Years	APC	1997-2006	2002-2006
<u>SEER 9 Delay-Adjusted Incidence^a, 1975-2006</u>												
All Races	1975-1979	-6.2*	1979-1988	-1.7*	1988-1997	0.7*	1997-2006	-0.8*			-0.8*	-0.8*
White	1975-1979	-6.2*	1979-1988	-1.7*	1988-1997	0.8*	1997-2006	-0.9*			-0.9*	-0.9*
Black	1975-2006	0.5*									0.5*	0.5*
<u>SEER 13 Delay-Adjusted Incidence^b, 1992-2006</u>												
All Races	1992-1997	0.7	1997-2006	-1.0*							-1.0*	-1.0*
White	1992-1997	0.7	1997-2006	-1.1*							-1.1*	-1.1*
Black	1992-2006	1.3*									1.3*	1.3*
<u>SEER 9 Observed Incidence^a, 1975-2006</u>												
All Races	1975-1979	-6.2*	1979-1988	-1.7*	1988-1997	0.7*	1997-2006	-0.9*			-0.9*	-0.9*
White	1975-1979	-6.2*	1979-1988	-1.7*	1988-1997	0.8*	1997-2006	-1.0*			-1.0*	-1.0*
Black	1975-2006	0.5*									0.5*	0.5*
<u>SEER 13 Observed Incidence^b, 1992-2006</u>												
All Races	1992-1997	0.7	1997-2006	-1.1*							-1.1*	-1.1*
White	1992-1997	0.7	1997-2006	-1.2*							-1.2*	-1.2*
White NH ^{ef}	1992-1997	0.9	1997-2006	-1.2*							-1.2*	-1.2*
Black	1992-2006	1.1*									1.1*	1.1*
Black NH ^{ef}	1992-2006	1.1*									1.1*	1.1*
API ^e	1992-2006	1.0*									1.0*	1.0*
AI/AN ^{eg}	1992-2006	2.8									2.8*	2.8*
Hispanic ^f	1992-2006	0.6									0.6	0.6
<u>U.S. Cancer Mortality^c, 1975-2006</u>												
All Races	1975-1992	-1.4*	1992-2006	-0.1							-0.1	-0.1
White	1975-1991	-1.6*	1991-2006	-0.2*							-0.2*	-0.2*
Black	1975-1997	-0.6*	1997-2006	0.5							0.5	0.5
<u>U.S. Cancer Mortality^c, 1992-2006</u>												
All Races	1992-1997	-0.8*	1997-2006	0.2							0.2	0.2
White	1992-2006	-0.2*									-0.2*	-0.2*
White NH ^{ef}	1992-2006	-0.2*									-0.2*	-0.2*
Black	1992-2006	0.2									0.2	0.2
Black NH ^{ef}	1992-2006	0.0									0.0	0.0
API ^e	1992-2006	1.3									1.3	1.3
AI/AN ^{eg}	1992-2006	-0.6									-0.6	-0.6
Hispanic ^f	1992-2006	-0.2									-0.2	-0.2

Joinpoint Regression Program Version 3.3.1, April 2008, National Cancer Institute. (<http://srab.cancer.gov/joinpoint/>).

The APC is the Annual Percent Change based on rates age-adjusted to the 2000 US Std Population (19 age groups - Census P25-1130).

^a Trends are from the SEER 9 areas (San Francisco, Connecticut, Detroit, Hawaii, Iowa, New Mexico, Seattle, Utah, and Atlanta).

^b Trends are from the SEER 13 areas (SEER 9 Areas, Los Angeles, San Jose-Monterey, Rural Georgia, and the Alaska Native Registry).

^c Trends are from US Mortality Files, National Center for Health Statistics, Centers for Disease Control and Prevention.

^d The AAPC is the Average Annual Percent Change and is based on the APCs calculated by Joinpoint.

^e API - Asian/Pacific Islander, AI/AN - American Indian/Alaska Native, NH - Non-Hispanic

^f Hispanic and Non-Hispanic are not mutually exclusive from whites, blacks, Asian/Pacific Islanders, and American Indians/Alaska

Natives. Incidence data for Hispanics and Non-Hispanics are based on NHIA and exclude cases from the Alaska Native Registry.

The Hispanic and Non-Hispanic mortality trends exclude deaths from CT, DC, ME, MD, MN, NH, NY, ND, OK and VT.

^g Data for American Indian/Alaska Native are based on the CHSDA (Contract Health Service Delivery Area) counties.

* The APC/AAPC is significantly different from zero ($p < .05$).

- Joinpoint regression line analysis could not be performed on data series.

Table 7.4
Cancer of the Corpus and Uterus, NOS (Invasive)

Age-adjusted SEER Incidence^a Rates by Year, Race and Age

	All Races, Females			White Females			Black Females		
	All	<50	50+	All	<50	50+	All	<50	50+
Year of Diagnosis:									
1975	35.47	6.48	111.37	37.34	6.83	117.22	19.91	3.64	62.51
1976	34.37	6.22	108.08	36.25	6.28	114.71	17.61	3.29	55.11
1977	31.66	5.73	99.58	33.13	5.91	104.41	20.06	3.52	63.37
1978	30.05	6.10	92.76	31.67	6.32	98.05	18.59	3.74	57.49
1979	27.89	5.30	87.07	29.23	5.33	91.83	16.96	3.94	51.06
1980	27.31	4.97	85.82	28.54	4.97	90.26	16.22	-	52.13
1981	27.26	5.58	84.02	28.35	5.45	88.33	17.42	2.86	55.52
1982	26.79	5.04	83.75	28.21	5.20	88.47	17.06	2.49	55.22
1983	26.53	4.86	83.27	27.77	4.89	87.69	18.81	3.37	59.25
1984	25.66	4.58	80.88	27.11	4.84	85.42	17.38	-	58.35
1985	25.22	4.60	79.21	26.53	4.80	83.42	17.51	2.23	57.52
1986	24.40	4.84	75.63	25.64	5.02	79.64	16.78	2.54	54.09
1987	24.72	4.99	76.38	26.15	5.28	80.80	15.77	-	51.79
1988	23.55	4.52	73.38	24.59	4.46	77.30	16.88	2.97	53.32
1989	24.42	4.49	76.61	25.49	4.78	79.72	19.36	1.78	65.40
1990	25.05	4.60	78.59	26.52	4.80	83.40	16.92	2.28	55.27
1991	24.63	4.39	77.64	26.00	4.49	82.31	17.48	3.12	55.09
1992	24.82	4.87	77.08	26.19	4.88	82.00	16.94	2.88	53.74
1993	24.28	5.18	74.27	25.67	5.14	79.42	17.06	3.48	52.63
1994	25.13	5.02	77.78	26.32	5.03	82.07	17.62	2.51	57.20
1995	25.31	4.69	79.31	26.46	4.62	83.65	18.86	2.65	61.29
1996	24.92	4.52	78.35	25.96	4.36	82.52	19.30	3.17	61.55
1997	25.87	5.04	80.40	27.35	5.04	85.75	16.47	2.46	53.15
1998	25.70	4.80	80.40	27.04	4.77	85.35	19.37	2.98	62.29
1999	25.31	5.18	78.02	26.76	5.06	83.56	17.47	2.79	55.91
2000	24.79	5.21	76.08	26.17	5.35	80.69	17.90	3.00	56.92
2001	25.20	5.10	77.86	26.65	4.96	83.42	18.94	3.96	58.16
2002	24.75	4.99	76.49	25.17	4.53	79.23	22.93	4.66	70.79
2003	24.13	5.21	73.65	25.29	5.22	77.87	19.96	3.68	62.57
2004	24.71	5.40	75.29	25.64	5.10	79.42	20.10	3.68	63.09
2005	24.50	5.41	74.47	25.28	5.25	77.75	22.70	4.00	71.67
2006	24.08	5.01	74.03	25.30	4.91	78.70	18.90	3.57	59.05
1975-2006	26.12	5.04	81.30	27.48	5.06	86.21	18.41	3.10	58.49

^a SEER 9 areas (San Francisco, Connecticut, Detroit, Hawaii, Iowa, New Mexico, Seattle, Utah, and Atlanta). Rates are per 100,000 and are age-adjusted to the 2000 US Std Population (19 age groups - Census P25-1130).
- Statistic not shown. Rate based on less than 16 cases for the time interval.

Table 7.5
Cancer of the Corpus and Uterus, NOS (Invasive)
Age-adjusted U.S. Death^a Rates by Year, Race and Age

Year of Death:	All Races, Females			White Females			Black Females		
	All	<50	50+	All	<50	50+	All	<50	50+
1975	5.28	0.52	17.74	5.05	0.47	17.06	7.80	0.93	25.81
1976	5.33	0.53	17.90	5.11	0.49	17.19	8.07	0.86	26.96
1977	5.22	0.52	17.54	4.96	0.48	16.67	8.35	0.83	28.04
1978	5.10	0.52	17.08	4.84	0.48	16.23	8.16	0.85	27.30
1979	4.99	0.40	17.01	4.74	0.36	16.19	7.90	0.73	26.66
1980	5.12	0.44	17.38	4.84	0.39	16.50	8.39	0.85	28.12
1981	4.88	0.41	16.60	4.68	0.38	15.91	7.34	0.56	25.11
1982	4.85	0.41	16.49	4.61	0.40	15.65	7.61	0.43	26.40
1983	4.80	0.36	16.43	4.59	0.32	15.78	7.29	0.60	24.82
1984	4.68	0.36	15.99	4.42	0.31	15.17	7.70	0.69	26.07
1985	4.61	0.36	15.74	4.39	0.34	14.99	7.37	0.51	25.33
1986	4.44	0.35	15.17	4.20	0.33	14.36	7.27	0.56	24.85
1987	4.42	0.34	15.10	4.18	0.32	14.28	7.32	0.52	25.12
1988	4.35	0.31	14.90	4.09	0.30	14.01	7.40	0.46	25.57
1989	4.26	0.35	14.52	4.01	0.33	13.63	7.25	0.48	24.99
1990	4.34	0.33	14.85	4.08	0.32	13.94	7.36	0.42	25.56
1991	4.18	0.33	14.24	3.90	0.31	13.30	7.29	0.49	25.08
1992	4.21	0.32	14.40	3.97	0.29	13.59	6.98	0.44	24.11
1993	4.17	0.32	14.26	3.91	0.30	13.35	7.28	0.44	25.17
1994	4.15	0.28	14.29	3.91	0.28	13.41	7.06	0.34	24.67
1995	4.15	0.34	14.12	3.97	0.34	13.47	6.46	0.35	22.47
1996	4.13	0.31	14.14	3.86	0.30	13.18	7.18	0.37	25.03
1997	4.00	0.31	13.67	3.78	0.31	12.85	6.74	0.30	23.62
1998	4.10	0.32	14.00	3.86	0.29	13.19	6.85	0.45	23.60
1999	4.08	0.35	13.87	3.86	0.34	13.10	6.84	0.39	23.71
2000	4.11	0.35	13.94	3.84	0.34	12.99	7.23	0.40	25.11
2001	4.17	0.36	14.16	3.93	0.34	13.35	6.97	0.48	23.96
2002	4.16	0.34	14.15	3.87	0.33	13.13	7.32	0.40	25.43
2003	4.13	0.34	14.05	3.87	0.30	13.21	7.05	0.49	24.22
2004	4.12	0.38	13.93	3.87	0.37	13.03	6.97	0.45	24.06
2005	4.10	0.36	13.91	3.83	0.34	12.97	7.15	0.49	24.60
2006	4.21	0.37	14.27	3.92	0.36	13.27	7.37	0.46	25.48
1975-2006	4.42	0.36	15.06	4.18	0.34	14.24	7.29	0.50	25.09

^a US Mortality Files, National Center for Health Statistics, Centers for Disease Control and Prevention.
Rates are per 100,000 and are age-adjusted to the 2000 US Std Population (19 age groups - Census P25-1130).
- Statistic not shown. Rate based on less than 16 cases for the time interval.

Table 7.6
Cancer of the Corpus and Uterus, NOS (Invasive)

SEER Incidence^a and U.S. Death^b Rates, Age-Adjusted and Age-Specific Rates, by Race

	Incidence ^a			US Death ^b		
	All Races, Females	White Females	Black Females	All Races, Females	White Females	Black Females
<u>Age-Adjusted Rates, 2002-2006</u>						
Age at Diagnosis/Death:						
All ages	23.3	24.2	20.3	4.1	3.9	7.2
Under 65	14.9	15.5	11.1	1.5	1.4	2.4
65 and over	81.0	84.4	83.6	22.7	21.2	40.3
All ages (IARC world std) ^c	17.1	17.8	14.8	2.6	2.4	4.6
<u>Age-Specific Rates, 2002-2006</u>						
Age at Diagnosis/Death:						
<1	-	-	-	-	-	-
1-4	-	-	-	-	-	-
5-9	-	-	-	-	-	-
10-14	-	-	-	-	-	-
15-19	-	-	-	-	-	-
20-24	0.4	0.3	-	-	-	-
25-29	1.4	1.4	1.3	0.1	0.1	-
30-34	3.7	3.7	3.0	0.2	0.2	0.3
35-39	7.2	7.0	5.8	0.4	0.4	0.5
40-44	13.0	13.3	9.1	0.9	0.9	1.2
45-49	23.2	23.6	13.5	1.8	1.7	2.3
50-54	43.7	46.5	24.7	3.7	3.5	4.8
55-59	68.8	72.6	49.8	7.0	6.6	11.1
60-64	83.5	86.9	83.1	11.6	10.4	23.5
65-69	89.3	92.6	99.1	16.4	14.5	34.5
70-74	84.7	88.5	87.0	20.6	18.8	41.1
75-79	80.8	84.5	85.0	23.7	22.2	43.1
80-84	77.3	80.8	69.2	28.1	27.2	44.0
85+	59.9	61.9	56.4	32.9	32.7	42.5

^a SEER 17 areas. Rates are per 100,000 and are age-adjusted to the 2000 US Std Population (19 age groups - Census P25-1130), unless noted.

^b US Mortality Files, National Center for Health Statistics, Centers for Disease Control and Prevention.

^c Rates are per 100,000 and are age-adjusted to the 2000 US Std Population (19 age groups - Census P25-1130), unless noted.

- Rates are per 100,000 and are age-adjusted to the IARC world standard population.

- Statistic not shown. Rate based on less than 16 cases for the time interval.

Table 7.7
Cancer of the Corpus and Uterus, NOS (Invasive)

Survival Rates, by Race, Diagnosis Year, Stage and Age

	All Races, Females			White Females			Black Females		
	All	<50	50+	All	<50	50+	All	<50	50+
5-Year Relative Survival Rates									
Year of Diagnosis:									
1960-1963 ^a	-	-	-	73	-	-	31	-	-
1970-1973 ^a	-	-	-	81	-	-	44	-	-
1975-1977 ^b	87.6	92.7	87.0	88.7	93.3	88.2	61.0	84.4 ^f	56.1
1978-1980 ^b	83.6	91.7	82.5	84.9	93.1	83.8	55.9	82.0 ^f	50.5
1981-1983 ^b	81.9	91.3	80.6	83.3	92.3	82.2	52.5	82.8 ^f	47.2
1984-1986 ^b	83.5	93.6	82.1	85.0	93.9	83.8	57.8	83.6 ^f	54.0
1987-1989 ^b	83.4	90.2	82.3	85.0	91.0	84.1	58.3	84.6 ^f	54.1
1990-1992 ^b	84.6	90.0	83.7	86.7	92.2	85.8	54.9	72.5 ^f	50.9
1993-1995 ^b	84.0	90.1	82.9	85.7	91.6	84.7	60.1	81.8	55.3
1996-1998 ^b	84.5	90.1	83.5	86.2	91.1	85.3	62.4	82.4	57.7
1999-2005 ^b	84.4 ^e	89.2 ^e	83.4 ^e	86.5 ^e	90.8	85.7 ^e	61.5	74.5	57.9
5-Year Period Survival Rates^{cd}									
Year of Diagnosis:									
1999-2005	82.9	89.0	81.5	84.6	89.8	83.7	61.5	79.3	57.5
Stage Distribution (%) 1999-2005^c									
All Stages									
Number of cases	51,071	8,270	42,801	43,156	6,409	36,747	3,948	658	3,290
Percent	100%	100%	100%	100%	100%	100%	100%	100%	100%
Localized	69	73	68	70	74	70	53	64	51
Regional	19	17	19	18	17	19	24	16	26
Distant	8	6	8	7	6	8	16	13	16
Unstaged	4	4	4	4	4	4	7	7	7
5-Year Relative Survival Rates, 1999-2005^c									
Age at Diagnosis:									
Ages <45	89.5	-	-	90.3	-	-	81.6	-	-
Ages 45-54	88.2	-	-	89.2	-	-	70.8	-	-
Ages 55-64	85.5	-	-	87.7	-	-	62.2	-	-
Ages 65-74	79.9	-	-	83.0	-	-	51.5	-	-
Ages 75+	72.2	-	-	74.1	-	-	48.2	-	-
Ages <65	87.1	-	-	88.6	-	-	68.7	-	-
Ages 65+	76.7	-	-	79.3	-	-	50.5	-	-
Stage:									
All Stages	82.9	89.1	81.6	84.7	89.7	83.7	61.3	78.7	57.4
Localized	95.7	96.4	95.6	96.4	96.5	96.5	84.9	92.3	82.7
Regional	67.4	80.8	64.8	69.6	81.9	67.3	46.1	67.5 ^f	42.9
Distant	17.4	29.8	15.3	18.8	31.8	16.7	10.5	21.5 ^f	8.4
Unstaged	56.1	84.9	49.3	56.2	83.4	50.5	38.2	81.2 ^f	26.9

^a Rates are based on End Results data from a series of hospital registries and one population-based registry.

^b Rates are from the SEER 9 areas (San Francisco, Connecticut, Detroit, Hawaii, Iowa, New Mexico, Seattle, Utah, Atlanta).

Rates are based on follow-up of patients into 2006.

^c Rates are from the SEER 17 areas (San Francisco, Connecticut, Detroit, Hawaii, Iowa, New Mexico, Seattle, Utah, Atlanta, San Jose-Monterey, Los Angeles, Alaska Native Registry, Rural Georgia, California excluding SF/SJM/LA, Kentucky, Louisiana and New Jersey). California excluding SF/SJM/LA, Kentucky, Louisiana, and New Jersey contribute cases for diagnosis years 2000-2005.

The remaining 13 SEER Areas contribute cases for the entire period 1999-2005. Rates are based on follow-up of patients into 2006.

^d Period survival provides a more up-to-date estimate of survival by piecing together the most recent conditional survival estimates from several cohorts. It is computed here using three year calendar blocks (2003-2005: 0-1 year survival),

(2002-2004: 1-2 year survival), (2001-2003: 2-3 year survival), (2000-2002: 3-4 year survival), (1999-2001: 4-5 years survival).

^e The difference in rates between 1975-1977 and 1999-2005 is statistically significant ($p < .05$).

^f The standard error of the survival rate is between 5 and 10 percentage points.

^g The standard error of the survival rate is greater than 10 percentage points.

- Statistic could not be calculated due to fewer than 25 cases during the time period.

Table 7.8
Cancer of the Corpus And Uterus, NOS (Invasive)

Survival Rates^a
By Year of Diagnosis

All Races, Females

Year of Diagnosis

	1975- 1979	1980- 1984	1985- 1989	1990	1991	1992	1993	1994	1995	1996	1997	1998	1999	2000	2001	2002	2003	2004	2005
Relative Survival Rates (SEER ^b)																			
1-year	94.0	91.8	92.6	92.8	92.1	93.2	92.6	92.0	93.3	91.9	93.3	93.7	94.2	94.0	92.5	92.4	93.2	93.0	93.0
2-year	90.4	86.8	87.9	88.3	88.3	89.8	88.8	87.5	88.8	88.5	89.5	89.9	89.9	89.8	88.6	88.5	88.9	88.5	
3-year	88.2	84.2	85.4	85.6	86.1	87.6	86.1	85.2	86.6	86.4	86.6	87.0	87.9	87.9	86.4	86.3	86.6		
4-year	86.9	83.0	84.2	84.2	84.4	86.2	84.9	83.7	85.3	85.5	85.8	85.2	86.4	86.8	85.0	84.5			
5-year	86.6	82.1	83.4	83.6	84.0	86.1	84.0	83.1	84.9	84.3	85.0	84.2	85.2	86.2	84.3				
6-year	86.2	81.7	82.9	82.5	83.0	85.3	83.4	82.2	84.4	83.7	84.2	83.7	84.9	85.8					
7-year	86.1	81.5	82.8	82.5	82.9	85.3	83.3	81.4	84.0	83.0	83.8	83.6	84.1						
8-year	86.1	81.1	82.6	82.4	82.3	85.0	82.4	81.0	83.8	82.4	83.1	83.5							
9-year	86.1	81.0	82.5	82.3	82.2	85.0	82.3	81.0	83.2	82.3	82.8								
10-year	86.1	80.9	82.5	81.8	82.1	84.9	81.8	81.0	83.1	82.1									
11-year	86.1	80.8	82.4	81.8	82.1	84.9	81.3	81.0	83.1										
12-year	86.1	80.8	82.3	81.7	81.9	84.9	80.8	81.0											
13-year	86.1	80.8	82.2	81.1	81.5	84.9	80.8												
14-year	86.1	80.6	82.0	81.1	80.9	84.9													
15-year	86.1	80.6	81.9	81.1	80.1														
16-year	86.1	80.1	81.5	81.1															
17-year	86.1	80.1	81.5																
18-year	86.1	79.9																	
19-year	86.1	79.4																	
20-year	86.1	79.4																	

^a
^b

Survival rates are relative rates expressed as percents.
Rates are from the SEER 9 areas (San Francisco, Connecticut, Detroit, Hawaii, Iowa, New Mexico, Seattle, Utah, and Atlanta).

Table 7.9
Cancer of the Corpus and Uterus, NOS (Invasive)

Risk of Being Diagnosed With Cancer in 10, 20 and 30 Years,
Lifetime Risk of Being Diagnosed with Cancer Given Alive and Cancer-Free at Current Age, and
Lifetime Risk of Dying from Cancer Given Alive at Current Age
Females, 2004-2006 By Race/Ethnicity

Race/ Ethnicity	Current Age	Risk of Being Diagnosed with Cancer						Risk of Dying from Cancer	
		+10 yrs Percent (95% C.I.)	+20 yrs Percent (95% C.I.)	+30 yrs Percent (95% C.I.)	Eventually Percent (95% C.I.)	Eventually Percent (95% C.I.)			
All Races	0	0.00 (0.00, 0.00)	0.00 (0.00, 0.00)	0.01 (0.01, 0.01)	2.53 (2.50, 2.56)	0.52 (0.52, 0.53)			
	10	0.00 (0.00, 0.00)	0.01 (0.01, 0.01)	0.07 (0.07, 0.07)	2.55 (2.52, 2.58)	0.53 (0.52, 0.54)			
	20	0.01 (0.01, 0.01)	0.07 (0.07, 0.07)	0.26 (0.25, 0.26)	2.56 (2.53, 2.59)	0.53 (0.52, 0.54)			
	30	0.06 (0.06, 0.06)	0.25 (0.24, 0.26)	0.79 (0.77, 0.80)	2.56 (2.53, 2.59)	0.53 (0.53, 0.54)			
	40	0.19 (0.19, 0.20)	0.73 (0.72, 0.75)	1.50 (1.48, 1.53)	2.53 (2.49, 2.56)	0.54 (0.53, 0.54)			
	50	0.55 (0.54, 0.57)	1.34 (1.32, 1.36)	1.97 (1.94, 2.00)	2.39 (2.36, 2.42)	0.53 (0.53, 0.54)			
	60	0.83 (0.81, 0.85)	1.49 (1.46, 1.51)	1.85 (1.82, 1.88)	1.93 (1.90, 1.96)	0.50 (0.50, 0.51)			
	70	0.74 (0.72, 0.76)	1.14 (1.12, 1.17)	- (- , -)	1.23 (1.21, 1.26)	0.42 (0.41, 0.42)			
	80	0.53 (0.52, 0.55)	- (- , -)	- (- , -)	0.65 (0.63, 0.68)	0.29 (0.29, 0.30)			
White	0	0.00 (0.00, 0.00)	0.00 (0.00, 0.00)	0.01 (0.01, 0.01)	2.65 (2.62, 2.69)	0.50 (0.49, 0.51)			
	10	0.00 (0.00, 0.00)	0.01 (0.01, 0.01)	0.07 (0.06, 0.07)	2.68 (2.64, 2.71)	0.50 (0.50, 0.51)			
	20	0.01 (0.01, 0.01)	0.07 (0.06, 0.07)	0.26 (0.25, 0.27)	2.68 (2.65, 2.72)	0.50 (0.50, 0.51)			
	30	0.06 (0.05, 0.06)	0.25 (0.25, 0.26)	0.82 (0.81, 0.84)	2.68 (2.65, 2.72)	0.51 (0.50, 0.51)			
	40	0.20 (0.19, 0.20)	0.77 (0.76, 0.79)	1.58 (1.55, 1.60)	2.65 (2.61, 2.68)	0.51 (0.50, 0.52)			
	50	0.59 (0.57, 0.60)	1.41 (1.39, 1.43)	2.07 (2.04, 2.10)	2.50 (2.47, 2.54)	0.50 (0.50, 0.51)			
	60	0.86 (0.85, 0.88)	1.56 (1.53, 1.59)	1.93 (1.90, 1.96)	2.01 (1.98, 2.04)	0.47 (0.47, 0.48)			
	70	0.78 (0.76, 0.80)	1.20 (1.17, 1.22)	- (- , -)	1.29 (1.26, 1.31)	0.40 (0.39, 0.40)			
	80	0.55 (0.53, 0.57)	- (- , -)	- (- , -)	0.67 (0.65, 0.70)	0.29 (0.28, 0.30)			
Black	0	0.00 (0.00, 0.00)	0.00 (0.00, 0.00)	0.01 (0.01, 0.01)	1.97 (1.88, 2.06)	0.77 (0.75, 0.80)			
	10	0.00 (0.00, 0.00)	0.01 (0.01, 0.01)	0.05 (0.04, 0.06)	2.01 (1.92, 2.10)	0.79 (0.76, 0.82)			
	20	0.01 (0.01, 0.01)	0.05 (0.04, 0.06)	0.17 (0.15, 0.18)	2.01 (1.93, 2.11)	0.79 (0.77, 0.82)			
	30	0.04 (0.04, 0.05)	0.16 (0.14, 0.18)	0.51 (0.48, 0.54)	2.02 (1.93, 2.12)	0.80 (0.77, 0.83)			
	40	0.12 (0.10, 0.13)	0.47 (0.44, 0.50)	1.19 (1.13, 1.25)	2.01 (1.92, 2.10)	0.81 (0.78, 0.84)			
	50	0.37 (0.34, 0.40)	1.12 (1.06, 1.18)	1.66 (1.58, 1.75)	1.97 (1.88, 2.07)	0.82 (0.79, 0.85)			
	60	0.82 (0.77, 0.87)	1.41 (1.33, 1.49)	1.70 (1.61, 1.79)	1.75 (1.66, 1.85)	0.80 (0.77, 0.83)			
	70	0.71 (0.65, 0.77)	1.05 (0.97, 1.13)	- (- , -)	1.11 (1.02, 1.20)	0.63 (0.60, 0.66)			
	80	0.50 (0.43, 0.57)	- (- , -)	- (- , -)	0.58 (0.51, 0.67)	0.39 (0.36, 0.42)			

Devcan Version 6.4.0, April 2009, National Cancer Institute (<http://srab.cancer.gov/devcan/>).

Source: Incidence data are from the SEER 17 areas (San Francisco, Connecticut, Detroit, Hawaii, Iowa, New Mexico, Seattle, Utah, Atlanta, San Jose-Monterey, Los Angeles, Alaska Native Registry, Rural Georgia, California excluding SF/SJM/LA, Kentucky, Louisiana and New Jersey). Mortality data are from the NCHS public use data file for the total US.

- Statistic could not be calculated.

A percent or confidence interval value of 0.00 represents a value that is below 0.005.

Table 7.9 - continued
Cancer of the Corpus and Uterus, NOS (Invasive)

Risk of Being Diagnosed With Cancer in 10, 20 and 30 Years,
Lifetime Risk of Being Diagnosed with Cancer Given Alive and Cancer-Free at Current Age, and
Lifetime Risk of Dying from Cancer Given Alive at Current Age
Females, 2004-2006 By Race/Ethnicity

Race/ Ethnicity	Current Age	Risk of Being Diagnosed with Cancer					Risk of Dying from Cancer	
		+10 yrs Percent (95% C.I.)	+20 yrs Percent (95% C.I.)	+30 yrs Percent (95% C.I.)	Eventually Percent (95% C.I.)	Eventually Percent (95% C.I.)		
Asian/ Pacific Islander	0	0.00 (0.00, 0.00)	0.00 (0.00, 0.01)	0.02 (0.01, 0.02)	1.87 (1.76, 1.98)	0.34 (0.30, 0.40)		
	10	0.00 (0.00, 0.00)	0.02 (0.01, 0.02)	0.09 (0.08, 0.10)	1.88 (1.78, 2.00)	0.34 (0.30, 0.40)		
	20	0.01 (0.01, 0.02)	0.09 (0.08, 0.10)	0.31 (0.29, 0.34)	1.88 (1.78, 2.00)	0.34 (0.30, 0.40)		
	30	0.07 (0.06, 0.09)	0.30 (0.28, 0.32)	0.76 (0.72, 0.81)	1.87 (1.77, 1.99)	0.34 (0.30, 0.40)		
	40	0.23 (0.21, 0.25)	0.69 (0.65, 0.73)	1.16 (1.10, 1.22)	1.81 (1.71, 1.93)	0.34 (0.30, 0.40)		
	50	0.47 (0.44, 0.50)	0.95 (0.89, 1.00)	1.31 (1.24, 1.39)	1.60 (1.50, 1.72)	0.33 (0.29, 0.39)		
	60	0.49 (0.45, 0.53)	0.87 (0.80, 0.93)	1.09 (1.01, 1.17)	1.16 (1.07, 1.28)	0.29 (0.25, 0.35)		
	70	0.40 (0.36, 0.45)	0.64 (0.57, 0.71)	- (- , -)	0.72 (0.63, 0.83)	0.22 (0.18, 0.28)		
80	0.28 (0.23, 0.33)	- (- , -)	- (- , -)	0.38 (0.29, 0.49)	0.14 (0.10, 0.20)			
American Indian/ Alaska Native ^a	0	0.00 (0.00, 0.04)	0.00 (0.00, 0.04)	0.00 (0.00, 0.05)	1.77 (1.33, 2.53)	0.38 (0.25, 0.60)		
	10	0.00 (0.00, 0.02)	0.00 (0.00, 0.02)	0.04 (0.01, 0.09)	1.80 (1.35, 2.57)	0.38 (0.25, 0.61)		
	20	0.00 (0.00, 0.02)	0.04 (0.01, 0.09)	0.20 (0.14, 0.29)	1.81 (1.36, 2.59)	0.39 (0.25, 0.61)		
	30	0.04 (0.01, 0.08)	0.20 (0.14, 0.29)	0.55 (0.42, 0.70)	1.82 (1.37, 2.61)	0.39 (0.25, 0.62)		
	40	0.17 (0.11, 0.24)	0.52 (0.40, 0.66)	1.01 (0.80, 1.26)	1.81 (1.36, 2.62)	0.40 (0.26, 0.63)		
	50	0.36 (0.26, 0.49)	0.87 (0.67, 1.12)	1.26 (0.99, 1.59)	1.70 (1.24, 2.52)	0.40 (0.26, 0.64)		
	60	0.54 (0.38, 0.75)	0.95 (0.70, 1.27)	1.18 (0.87, 1.58)	1.42 (0.96, 2.28)	0.38 (0.23, 0.64)		
	70	0.47 (0.29, 0.74)	0.73 (0.46, 1.12)	- (- , -)	1.00 (0.54, 1.97)	0.34 (0.18, 0.64)		
80	0.34 (0.14, 0.72)	- (- , -)	- (- , -)	0.70 (0.22, 1.98)	0.28 (0.09, 0.69)			
Hispanic ^b	0	0.00 (0.00, 0.00)	0.00 (0.00, 0.00)	0.01 (0.01, 0.02)	2.03 (1.94, 2.14)	0.44 (0.41, 0.48)		
	10	0.00 (0.00, 0.00)	0.01 (0.01, 0.02)	0.08 (0.07, 0.09)	2.05 (1.96, 2.16)	0.45 (0.41, 0.49)		
	20	0.01 (0.01, 0.02)	0.08 (0.07, 0.09)	0.25 (0.24, 0.27)	2.05 (1.96, 2.16)	0.45 (0.42, 0.49)		
	30	0.07 (0.06, 0.07)	0.24 (0.23, 0.26)	0.67 (0.63, 0.70)	2.05 (1.95, 2.16)	0.45 (0.42, 0.49)		
	40	0.18 (0.16, 0.19)	0.60 (0.57, 0.63)	1.19 (1.13, 1.24)	1.99 (1.90, 2.10)	0.45 (0.42, 0.49)		
	50	0.43 (0.41, 0.46)	1.03 (0.97, 1.08)	1.51 (1.44, 1.58)	1.85 (1.75, 1.96)	0.44 (0.41, 0.48)		
	60	0.62 (0.57, 0.66)	1.12 (1.05, 1.18)	1.38 (1.30, 1.47)	1.47 (1.38, 1.58)	0.41 (0.38, 0.45)		
	70	0.55 (0.50, 0.60)	0.84 (0.77, 0.91)	- (- , -)	0.93 (0.85, 1.04)	0.34 (0.30, 0.38)		
80	0.36 (0.31, 0.42)	- (- , -)	- (- , -)	0.48 (0.40, 0.59)	0.23 (0.20, 0.28)			

Devcan Version 6.4.0, April 2009, National Cancer Institute (<http://srab.cancer.gov/devcan/>).

Source: Incidence data are from the SEER 17 areas (San Francisco, Connecticut, Detroit, Hawaii, Iowa, New Mexico, Seattle, Utah, Atlanta, San Jose-Monterey, Los Angeles, Alaska Native Registry, Rural Georgia, California excluding SF/SJM/LA, Kentucky, Louisiana and New Jersey). Mortality data are from the NCHS public use data file for the total US.

^a Underlying incidence and mortality data for American Indian/Alaska Native are based on the CHSDA (Contract Health Service Delivery Area) counties.

^b Hispanic is not mutually exclusive from whites, blacks, Asian/Pacific Islanders, and American Indians/Alaska Natives.

Underlying incidence data for Hispanics are based on NHIA and exclude cases from the Alaska Native Registry.

Underlying mortality data for Hispanics exclude deaths from the District of Columbia, Minnesota, New Hampshire and North Dakota.

- Statistic could not be calculated.

A percent or confidence interval value of 0.00 represents a value that is below 0.005.

Table 7.10
Cancer of the Corpus And Uterus, NOS (Invasive)

SEER Incidence and U.S. Mortality
Age-Adjusted Rates and Trends^a
By Race/Ethnicity

SEER Incidence	SEER 17 Areas ^b	SEER 13 Areas ^b	SEER 9 Areas ^b
	Rate 2002-2006	Trend 1997-2006 ^c	Trend 1997-2006 ^d
	Rate per 100,000 persons	AAPC (%)	AAPC (%)
RACE/ETHNICITY	Females	Females	Females
All Races	23.3	-0.7*	-0.6*
White	24.2	-0.9*	-0.8*
White Hispanic ^e	18.3	0.8*	-
White Non-Hispanic ^e	25.0	-1.0*	-
Black	20.3	1.3*	1.2*
Asian/Pacific Islander	16.8	1.1*	-
Amer Ind/Alaska Nat ^f	16.3	-	-
Hispanic ^e	17.8	0.9*	-
<u>U.S. Mortality^g</u>			
	Rate 2002-2006	Trend 1997-2006 ^h	
	Rate per 100,000 persons	AAPC (%)	
RACE/ETHNICITY	Females	Females	
All Races	4.1	0.3*	
White	3.9	-0.1	
White Hispanic ^e	3.2	-0.3	
White Non-Hispanic ^e	3.9	-0.1	
Black	7.2	0.3	
Asian/Pacific Islander	2.5	1.3*	
Amer Ind/Alaska Nat			
Total U.S.	2.2	-1.2	
CHSDA Counties	3.0	-	
Non-CHSDA Counties	1.3	-	
Hispanic ^e	3.1	-0.2	

The AAPC is the Average Annual Percent Change over the time interval. The AAPCs are calculated by the Joinpoint Regression Program Version 3.3, April 2008, National Cancer Institute.

- Statistic not shown. Rate based on less than 16 cases for the time interval.

Trend based on less than 10 cases for at least one year within the time interval.

a Rates are age-adjusted to the 2000 US Std Population (19 age groups - Census P25-1130). Trends

are based on rates age-adjusted to the 2000 US Std Population (19 age groups - Census P25-1130).

b The SEER 9 areas are San Francisco, Connecticut, Detroit, Hawaii, Iowa, New Mexico, Seattle, Utah and Atlanta.

The SEER 13 areas comprise the SEER 9 areas plus San Jose-Monterey, Los Angeles, the Alaska Native Registry and Rural Georgia.

The SEER 17 areas comprise the SEER 13 areas plus California excluding SF/SJM/LA, Kentucky, Louisiana and New Jersey.

c The 1997-2006 AAPC estimates are based on a Joinpoint analysis with up to 2 Joinpoints over diagnosis years 1992-2006.

d The 1997-2006 AAPC estimates are based on a Joinpoint analysis with up to 4 Joinpoints over diagnosis years 1975-2006.

e Hispanic and Non-Hispanic are not mutually exclusive from whites, blacks, Asian/Pacific Islanders, and American Indians/Alaska Natives. Incidence data for Hispanics and Non-Hispanics are based on NHIA and exclude cases from the Alaska Native Registry. The 2002-2006 Hispanic and Non-Hispanic death rates exclude deaths from the District of Columbia, Minnesota, New Hampshire and North Dakota. The 1997-2006 Hispanic and Non-Hispanic mortality trends exclude deaths from Connecticut, the District of Columbia, Maine, Maryland, Minnesota, New Hampshire, New York, North Dakota, Oklahoma and Vermont.

f Incidence data for American Indian/Alaska Native are based on the CHSDA(Contract Health Service Delivery Area) counties.

g US Mortality Files, National Center for Health Statistics, CDC.

h The 1997-2006 mortality AAPCs are based on a Joinpoint analysis using years of death 1992-2006.

* The APC is significantly different from zero (p<.05).

Table 7.11
Cancer of the Corpus and Uterus, NOS (Invasive)

Age-Adjusted SEER Incidence Rates^a
By Registry, Race and Age

	All Races			Whites			Blacks		
	All Ages	Ages <50	Ages 50+	All Ages	Ages <50	Ages 50+	All Ages	Ages <50	Ages 50+
<u>SEER Incidence Rates^a, 2002-2006</u>									
Atlanta & Rural Georgia	17.81	3.83	54.44	18.82	4.08	57.42	17.00	3.44	52.51
Atlanta	18.07	3.86	55.27	19.06	4.13	58.16	17.36	3.46	53.77
Rural Georgia	13.61	-	42.10	14.42	-	45.88	12.41	-	-
California	21.54	4.84	65.27	22.51	4.76	69.00	19.27	3.03	61.79
Greater Bay Area	22.19	4.46	68.63	23.71	3.89	75.63	20.55	3.80	64.40
San Francisco-Oakland	23.10	4.56	71.64	24.39	3.56	78.95	20.87	3.79	65.60
San Jose-Monterey	20.36	4.28	62.47	22.43	4.45	69.51	18.27	-	55.91
Los Angeles	22.03	5.36	65.71	23.52	5.50	70.68	19.16	2.82	61.95
Greater California	21.04	4.70	63.81	21.72	4.67	66.37	18.72	2.87	60.23
Connecticut	28.52	5.72	88.22	29.05	6.02	89.33	24.15	3.38	78.53
Detroit	26.58	5.41	82.00	27.75	5.56	85.84	23.81	5.17	72.62
Hawaii	27.05	10.25	71.01	26.70	5.66	81.81	-	-	-
Iowa	27.51	5.51	85.13	27.61	5.50	85.52	-	-	-
Kentucky	23.15	6.77	66.05	23.22	6.85	66.10	21.42	4.74	65.09
Louisiana	17.57	4.34	52.23	17.72	5.18	50.55	18.49	2.78	59.61
New Jersey	28.49	5.30	89.20	29.89	5.60	93.51	22.54	3.61	72.09
New Mexico	19.19	5.25	55.70	19.68	5.20	57.60	-	-	-
Seattle-Puget Sound	24.59	4.79	76.44	25.65	4.83	80.16	20.00	-	66.24
Utah	22.13	5.11	66.71	22.44	4.98	68.18	-	-	-
9 SEER Areas ^b	24.43	5.20	74.78	25.34	5.00	78.59	20.90	3.91	65.38
11 SEER Areas ^b	23.66	5.19	72.05	24.81	5.09	76.44	20.42	3.68	64.25
13 SEER Areas ^b	23.61	5.17	71.91	24.78	5.09	76.35	20.30	3.67	63.84
17 SEER Areas ^b	23.26	5.12	70.76	24.20	5.16	74.08	20.27	3.48	64.22

^a Rates are per 100,000 and are age-adjusted to the 2000 US Std Population (19 age groups - Census P25-1130)

^b The SEER 9 areas are San Francisco, Connecticut, Detroit, Hawaii, Iowa, New Mexico, Seattle, Utah and Atlanta.

The SEER 11 areas comprise the SEER 9 areas plus San Jose-Monterey and Los Angeles.

The SEER 13 areas comprise the SEER 11 areas plus the Alaska Native Registry and Rural Georgia.

The SEER 17 areas comprise the SEER 13 areas plus California excluding SF/SJM/LA, Kentucky, Louisiana and New Jersey.

- Statistic not shown. Rate based on less than 16 cases for the time interval.

Table 7.12
Cancer of the Corpus and Uterus, NOS (Invasive)

Age-Adjusted SEER Death Rates^a
By Registry, Race and Age

	All Races			Whites			Blacks		
	All Ages	Ages <50	Ages 50+	All Ages	Ages <50	Ages 50+	All Ages	Ages <50	Ages 50+
<u>SEER Death Rates^a, 2002-2006</u>									
Atlanta & Rural Georgia	3.88	0.29	13.28	2.87	-	10.02	6.27	-	21.63
Atlanta	3.91	0.30	13.34	2.84	-	9.90	6.43	-	22.16
Rural Georgia	-	-	-	-	-	-	-	-	-
California	3.93	0.37	13.25	3.90	0.36	13.16	7.30	0.36	25.46
Greater Bay Area	4.02	0.33	13.68	3.99	-	13.97	8.07	-	28.04
San Francisco-Oakland	4.16	0.37	14.06	3.92	-	13.69	8.32	-	29.09
San Jose-Monterey	3.76	-	12.97	4.13	-	14.51	-	-	-
Los Angeles	4.40	0.40	14.85	4.35	0.46	14.52	7.45	-	26.15
Greater California	3.67	0.37	12.30	3.69	0.37	12.36	6.54	-	22.66
Connecticut	4.36	0.35	14.86	4.14	0.35	14.06	7.86	-	27.26
Detroit	5.28	0.44	17.95	4.76	-	16.64	7.20	1.05	23.32
Hawaii	3.57	-	11.30	3.13	-	10.46	-	-	-
Iowa	4.66	0.49	15.60	4.63	0.49	15.47	-	-	-
Kentucky	3.50	0.49	11.40	3.39	0.48	10.99	5.90	-	19.55
Louisiana	3.65	0.48	11.93	2.56	0.41	8.21	7.08	0.67	23.87
New Jersey	5.17	0.34	17.79	4.94	0.34	17.01	7.85	-	27.11
New Mexico	3.82	0.57	12.34	3.83	-	12.50	-	-	-
Seattle-Puget Sound	4.07	0.33	13.86	4.04	0.28	13.88	7.62	-	25.99
Utah	3.42	-	11.92	3.42	-	12.08	-	-	-
9 SEER Areas ^b	4.28	0.38	14.47	4.06	0.29	13.94	7.13	0.61	24.22
11 SEER Areas ^b	4.28	0.38	14.48	4.13	0.32	14.10	7.20	0.54	24.64
13 SEER Areas ^b	4.25	0.38	14.41	4.11	0.32	14.04	7.15	0.53	24.48
17 SEER Areas ^b	4.15	0.38	14.02	3.98	0.35	13.50	7.15	0.54	24.46
Total U.S.	4.14	0.36	14.06	3.87	0.34	13.12	7.17	0.46	24.76

^a US Mortality Files, National Center for Health Statistics, Centers for Disease Control and Prevention.
Rates are per 100,000 and are age-adjusted to the 2000 US Std Population (19 age groups - Census P25-1130).

^b The SEER 9 areas are San Francisco, Connecticut, Detroit, Hawaii, Iowa, New Mexico, Seattle, Utah and Atlanta.
The SEER 11 areas comprise the SEER 9 areas plus San Jose-Monterey and Los Angeles.
The SEER 13 areas comprise the SEER 11 areas plus the Alaska Native Registry and Rural Georgia.
The SEER 17 areas comprise the SEER 13 areas plus California excluding SF/SJM/LA, Kentucky, Louisiana and New Jersey.
- Statistic not shown. Rate based on less than 16 cases for the time interval.

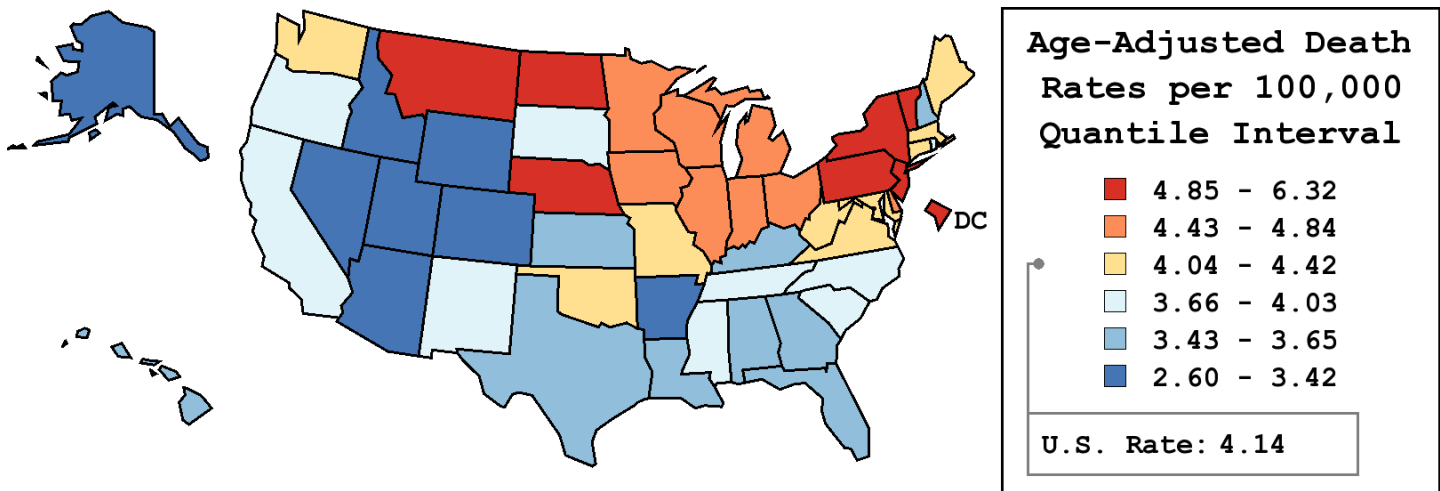
Table 7.13
Cancer of the Corpus and Uterus, NOS (Invasive)

Age-Adjusted Cancer Death^a Rates By State, All Races, 2002-2006

Females

State	Rate	SE	Rank	PD
TOTAL U.S.	4.14	0.02		
High Five States				
D.C.	6.32	0.62	(01)	52.51 ^c
Vermont	5.21	0.53	(02)	25.85 ^c
North Dakota	5.17	0.51	(03)	24.77 ^c
New Jersey	5.17	0.14	(04)	24.67 ^c
New York	5.01	0.09	(05)	20.91 ^c
Low Five States				
Arkansas	3.28	0.20	(47)	-20.90 ^c
Wyoming	3.18	0.49	(48)	-23.37 ^c
Nevada	2.99	0.23	(49)	-27.72 ^c
Arizona	2.89	0.13	(50)	-30.19 ^c
Alaska	2.60	0.53	(51)	-37.20 ^c

State	Rate	SE	Rank	PD	State	Rate	SE	Rank	PD
Alabama	3.46	0.16	(43)	-16.56 ^c	Montana	4.93	0.42	(06)	19.04 ^c
Alaska	2.60	0.53	(51)	-37.20 ^c	Nebraska	4.93	0.31	(07)	19.02 ^c
Arizona	2.89	0.13	(50)	-30.19 ^c	Nevada	2.99	0.23	(49)	-27.72 ^c
Arkansas	3.28	0.20	(47)	-20.90 ^c	New Hampshire	3.62	0.31	(37)	-12.54
California	3.93	0.07	(29)	-5.14	New Jersey	5.17	0.14	(04)	24.67 ^c
Colorado	3.31	0.17	(46)	-20.09 ^c	New Mexico	3.82	0.27	(32)	-7.77
Connecticut	4.36	0.20	(20)	5.16	New York	5.01	0.09	(05)	20.91 ^c
Delaware	4.84	0.44	(09)	16.88 ^c	North Carolina	4.00	0.13	(27)	-3.54
D.C.	6.32	0.62	(01)	52.51 ^c	North Dakota	5.17	0.51	(03)	24.77 ^c
Florida	3.59	0.08	(39)	-13.30	Ohio	4.45	0.11	(16)	7.47
Georgia	3.58	0.13	(40)	-13.66	Oklahoma	4.08	0.20	(23)	-1.43
Hawaii	3.57	0.31	(41)	-13.79	Oregon	3.83	0.19	(31)	-7.51
Idaho	3.35	0.30	(45)	-19.14 ^c	Pennsylvania	4.91	0.11	(08)	18.50 ^c
Illinois	4.49	0.11	(13)	8.29	Rhode Island	3.67	0.33	(34)	-11.47
Indiana	4.71	0.16	(10)	13.63	South Carolina	4.03	0.18	(26)	-2.64
Iowa	4.66	0.22	(12)	12.57	South Dakota	3.83	0.40	(30)	-7.47
Kansas	3.62	0.21	(36)	-12.54	Tennessee	3.74	0.15	(33)	-9.79
Kentucky	3.50	0.17	(42)	-15.42 ^c	Texas	3.62	0.08	(38)	-12.56
Louisiana	3.65	0.17	(35)	-11.99	Utah	3.42	0.27	(44)	-17.54 ^c
Maine	4.40	0.32	(18)	6.15	Vermont	5.21	0.53	(02)	25.85 ^c
Maryland	4.42	0.17	(17)	6.62	Virginia	4.04	0.14	(25)	-2.40
Massachusetts	4.37	0.15	(19)	5.42	Washington	4.06	0.16	(24)	-2.07
Michigan	4.70	0.13	(11)	13.50	West Virginia	4.22	0.26	(22)	1.83
Minnesota	4.45	0.18	(15)	7.48	Wisconsin	4.45	0.17	(14)	7.51
Mississippi	3.97	0.22	(28)	-4.26	Wyoming	3.18	0.49	(48)	-23.37 ^c
Missouri	4.30	0.16	(21)	3.67					



^a US Mortality Files, National Center for Health Statistics, Centers for Disease Control and Prevention. Rates are per 100,000 and are age-adjusted to the 2000 US Std Population (19 age groups - Census P25-1130).

^b Difference between state rate and total U.S. rate is statistically significant ($p \leq .0002$).

^c Absolute percent difference between state rate and total U.S. rate is 15% or more.

SE Standard error of the rate.

PD Percent difference between state rate and total U.S. rate.

Table 7.14
Cancer of the Corpus and Uterus, NOS (Invasive)

Estimated United States Cancer Prevalence Counts^a on January 1, 2006
By Race/Ethnicity and Years Since Diagnosis

Years Since Diagnosis	0 to <5	5 to <10	10 to <15	15 to <20	20 to <25	25 to <30	0 to <16 ^e	0 to <31 ^e	>=31 ^g	Complete ^h
<u>Race</u>										
All Races ^b	146,768	115,083	87,371	64,913	49,514	44,765	363,887	518,293	54,310	572,603
White ^b	129,587	104,717	81,008	60,777	46,939	42,510	329,098	475,036	47,688	522,724
Black ^b	10,229	5,402	3,518	2,365	1,326	1,061	19,600	24,112	1,222	25,334
Asian/Pacific Islander ^c	4,567	2,923	1,827	+	+	+	9,575	+	+	+
Hispanic ^d	8,788	5,171	3,534	+	+	+	18,162	+	+	+

Estimated prevalence percent^a on January 1, 2006, of the SEER 11 population diagnosed in the previous 16 years
By Age at Prevalence and Race/Ethnicity

Age at Prevalence	Age Specific (Crude)										Age-Adjusted ^f All Ages	
	All Ages	0-9	10-19	20-29	30-39	40-49	50-59	60-69	70-79	80+		
<u>Race</u>												
All Races ^c	0.2066%	-	0.0002%	0.0029%	0.0249%	0.0992%	0.3384%	0.7640%	0.9301%	0.8471%	0.1956%	
White ^c	0.2358%	-	-	0.0027%	0.0248%	0.0992%	0.3606%	0.8414%	1.0452%	0.9392%	0.2135%	
Black ^c	0.0918%	-	-	0.0029%	0.0208%	0.0622%	0.1588%	0.4604%	0.5839%	0.3942%	0.1123%	
Asian/Pacific Islander ^c	0.1436%	-	-	0.0036%	0.0269%	0.1246%	0.3501%	0.4895%	0.4485%	0.3630%	0.1363%	
Hispanic ^d	0.0842%	-	-	0.0037%	0.0325%	0.0994%	0.2531%	0.5176%	0.5162%	0.4307%	0.1319%	

^a US 2006 cancer prevalence counts are based on 2006 cancer prevalence proportions from the SEER registries and 1/1/2006 US population estimates based on the average of 2005 and 2006 population estimates from the US Bureau of the Census. Prevalence was calculated using the First Malignant Primary Only for a person.

^{b c d} Statistics based on (b) SEER 9 Areas (c) SEER 11 Areas and Rural Georgia (d) NHIA for Hispanic for SEER 11 Areas and Rural Georgia.

^e Maximum limited-duration prevalence: 31 years for 1975-2006 SEER 9 data; 16 years for 1990-2006 SEER 11 data (used to calculate prevalence for Hispanics and Asian Pacific Islanders).

^f Percentages are age-adjusted to the 2000 US Standard Population (19 age groups - Census P25-1130) by 5-year age groups.

^{g h i} (g) Cases diagnosed more than 31 years ago were estimated using the completeness index method (Capocaccia et. al. 1997, Merrill et. al. 2000). (h) Complete prevalence is obtained by summing 0 to <31 and >=31. (i) Age-specific completeness index was approximated using empirical data from historical Connecticut tumor registry.

- Statistic not shown. Statistic based on fewer than 5 cases estimated alive in SEER for the time interval.

+ Not available.

SEER Observed Incidence, SEER Delay Adjusted Incidence and US Death Rates^a Cancer of the Corpus and Uterus, NOS, by Race

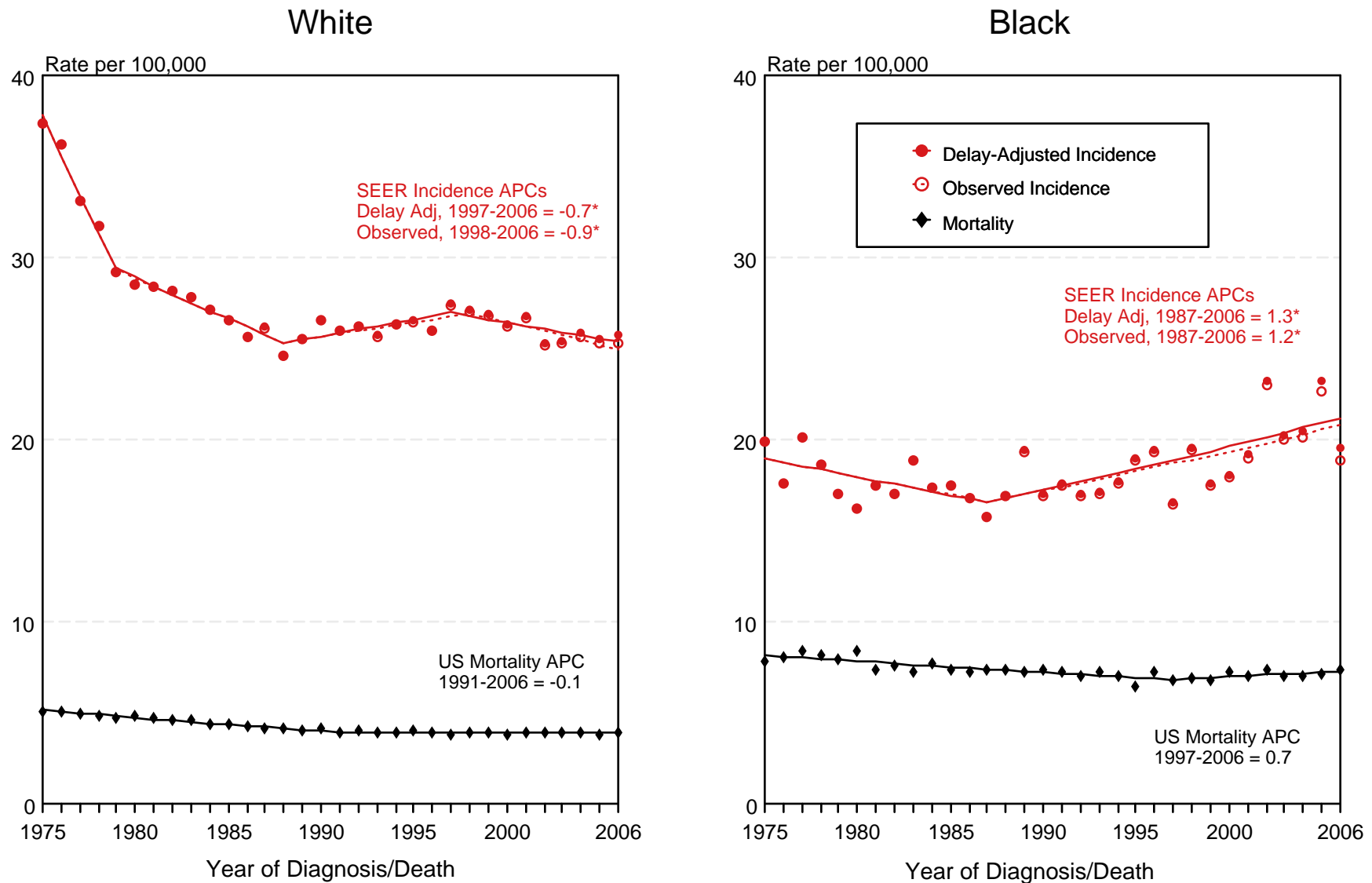


Figure 7.1

- ^a Source: SEER 9 areas and US Mortality Files (National Center for Health Statistics, CDC). Rates are age-adjusted to the 2000 US Std Population (19 age groups - Census P25-1103). Regression lines and APCs are calculated using the Joinpoint Regression Program Version 3.3.1, April 2008, National Cancer Institute. The APC is the Annual Percent Change for the regression line segments. The APC shown on the graph is for the most recent trend.
- * The APC is significantly different from zero ($p < 0.05$).

SEER Observed Incidence, SEER Delay Adjusted Incidence and US Death Rates^a Cancer of the Corpus and Uterus, NOS, by Age and Race

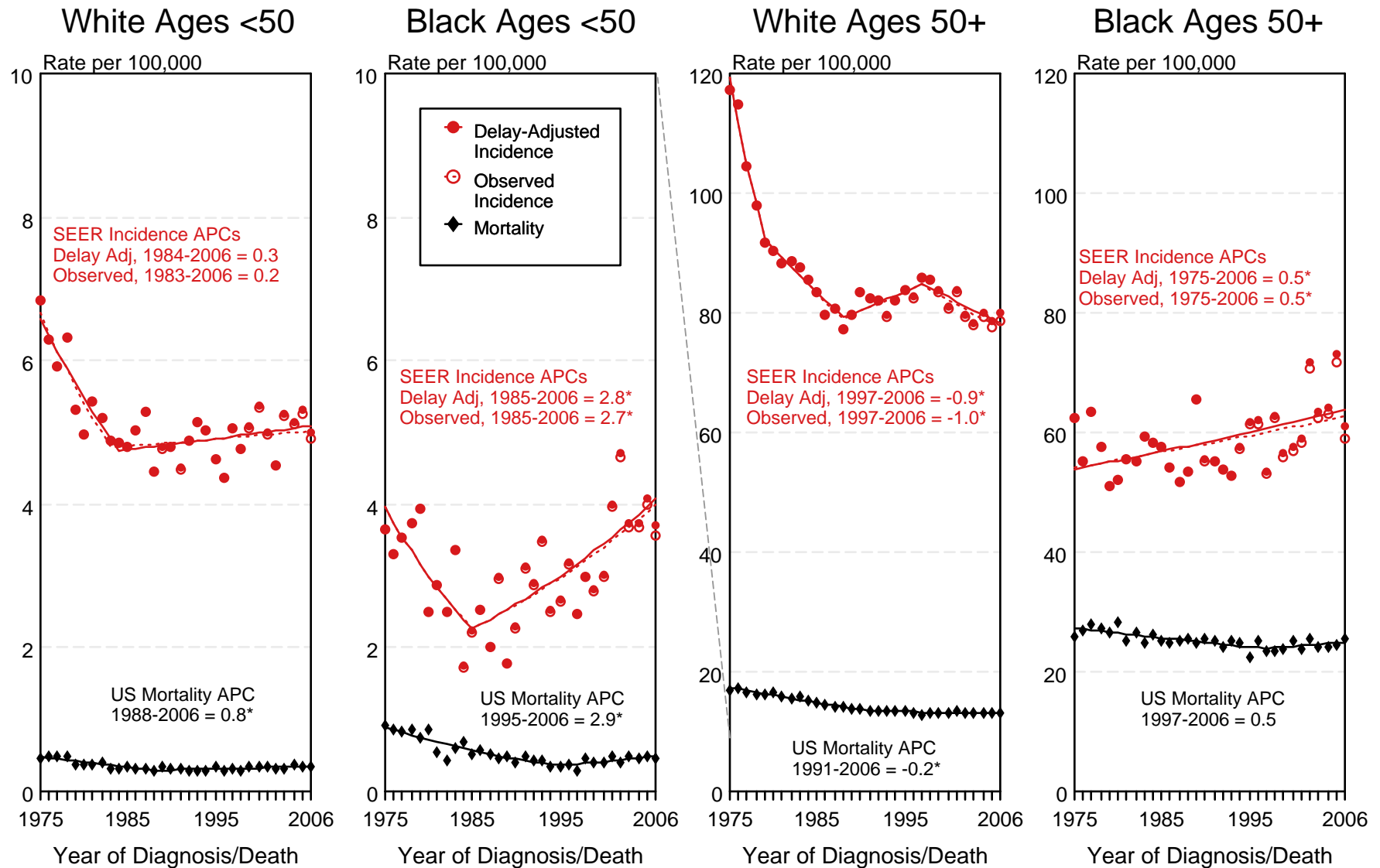


Figure 7.2

^a Source: SEER 9 areas and US Mortality Files (National Center for Health Statistics, CDC). Rates are age-adjusted to the 2000 US Std Population (19 age groups - Census P25-1103). Regression lines and APCs are calculated using the Joinpoint Regression Program Version 3.3.1, April 2008, National Cancer Institute. The APC is the Annual Percent Change for the regression line segments. The APC shown on the graph is for the most recent trend.

* The APC is significantly different from zero ($p < 0.05$).

SEER Incidence and US Death Rates^a Cancer of the Corpus and Uterus, NOS

Joinpoint Analyses for Whites and Blacks from 1975-2006
and for Asian/Pacific Islanders, American Indians/Alaska Natives and Hispanics from 1992-2006

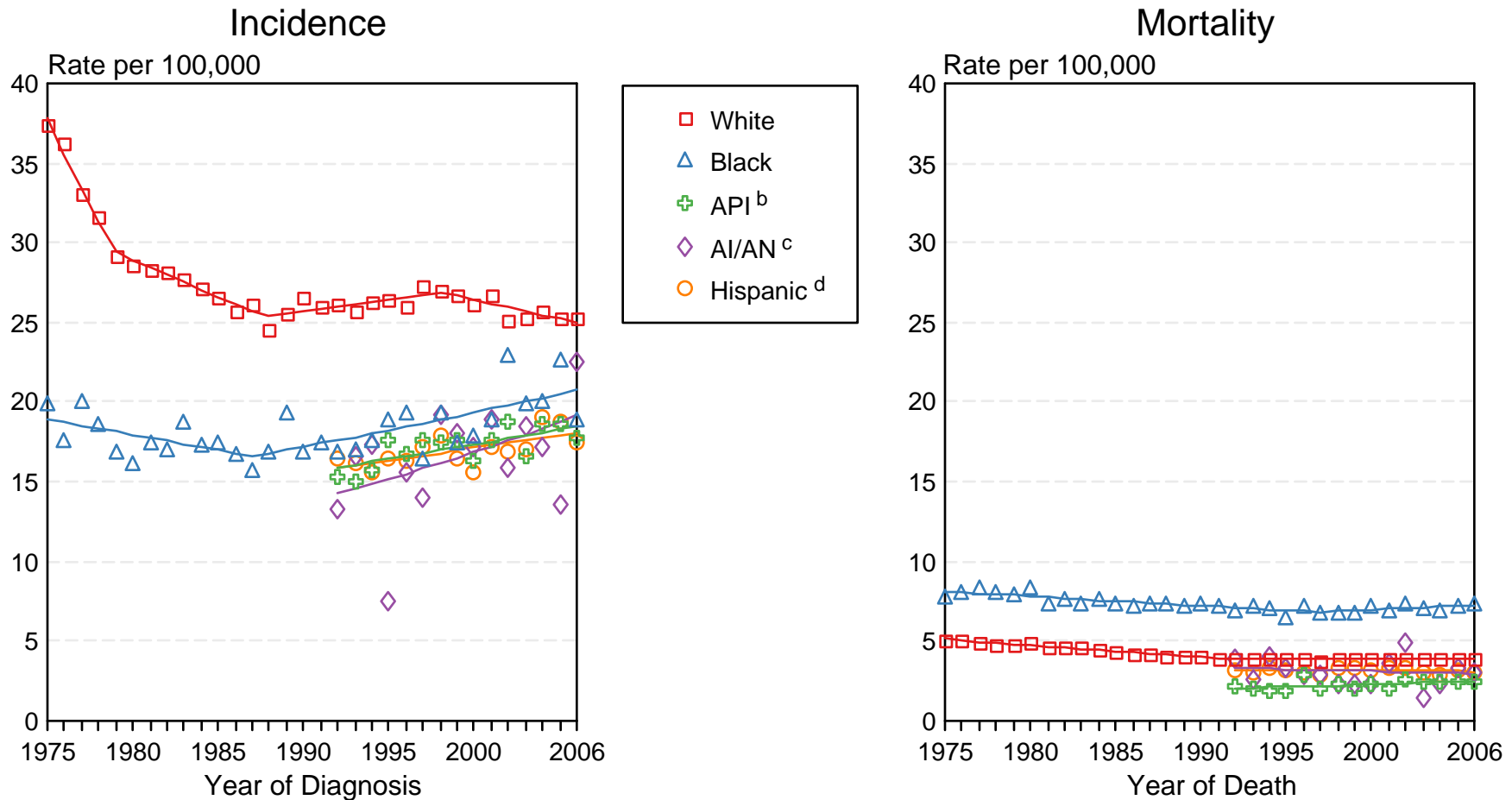


Figure 7.3

Source: Incidence data for whites and blacks are from the SEER 9 areas (San Francisco, Connecticut, Detroit, Hawaii, Iowa, New Mexico, Seattle, Utah, Atlanta).

Incidence data for Asian/Pacific Islanders, American Indians/Alaska Natives and Hispanics are from the SEER 13 Areas (SEER 9 Areas, San Jose-Monterey, Los Angeles, Alaska Native Registry and Rural Georgia). Mortality data are from US Mortality Files, National Center for Health Statistics, CDC.

^a Rates are age-adjusted to the 2000 US Std Population (19 age groups - Census P25-1103).

Regression lines are calculated using the Joinpoint Regression Program Version 3.3.1, April 2008, National Cancer Institute. Joinpoint analyses for Whites and Blacks during the 1975-2006 period allow a maximum of 4 joinpoints. Analyses for other ethnic groups during the period 1992-2006 allow a maximum of 2 joinpoints.

^b API = Asian/Pacific Islander.

^c AI/AN = American Indian/Alaska Native. Rates for American Indian/Alaska Native are based on the CHSDA(Contract Health Service Delivery Area) counties.

^d Hispanic is not mutually exclusive from whites, blacks, Asian/Pacific Islanders, and American Indians/Alaska Natives. Incidence data for Hispanics are based on NHIA and exclude cases from the Alaska Native Registry. Mortality data for Hispanics exclude cases from Connecticut, the District of Columbia, Maine, Maryland, Minnesota, New Hampshire, New York, North Dakota, Oklahoma, and Vermont.

SEER Observed Incidence and SEER Delay Adjusted Incidence Rates^a SEER 9 Areas Compared to SEER 13 Areas Cancer of the Corpus and Uterus, NOS, by Race

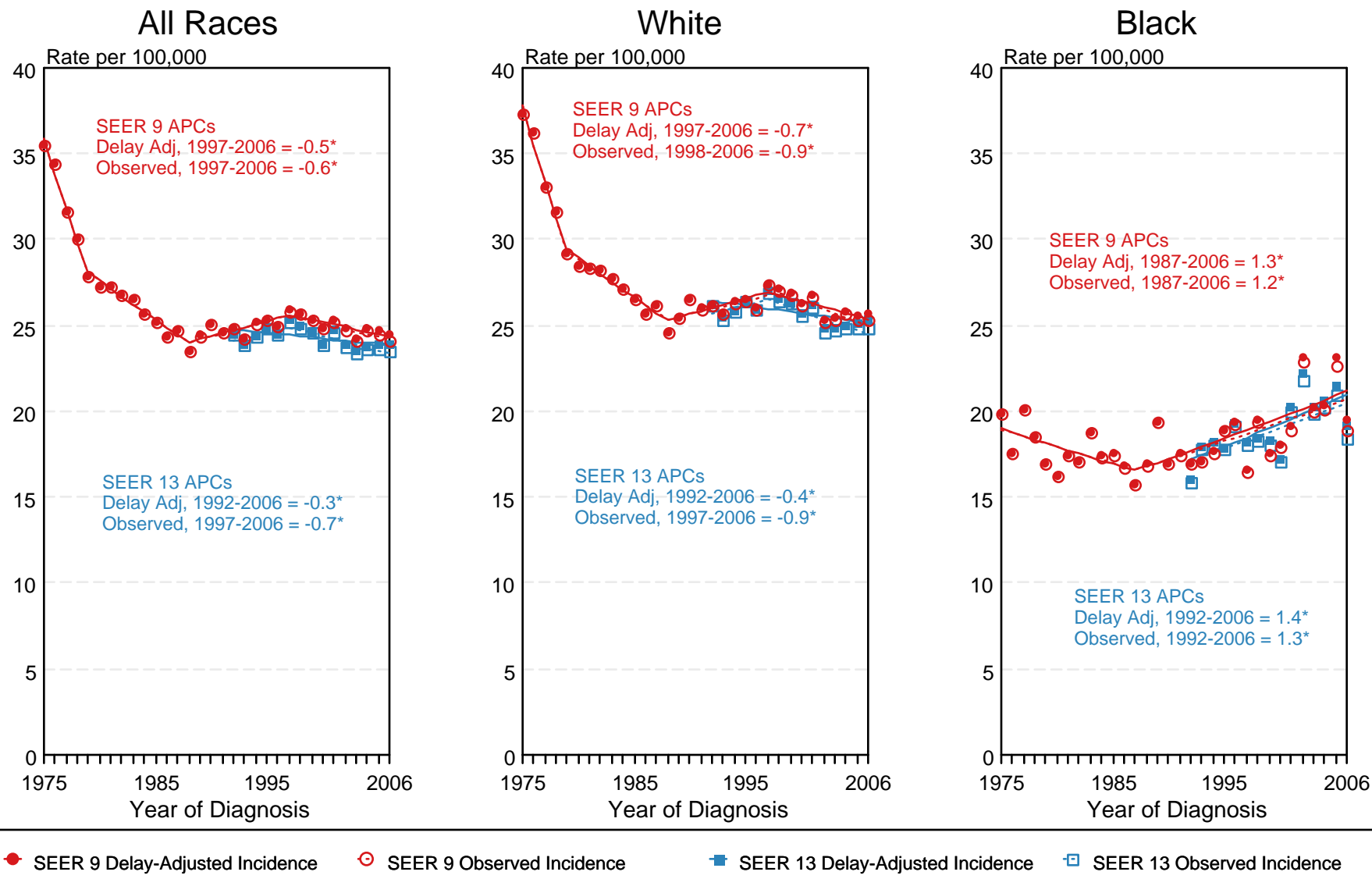


Figure 7.4

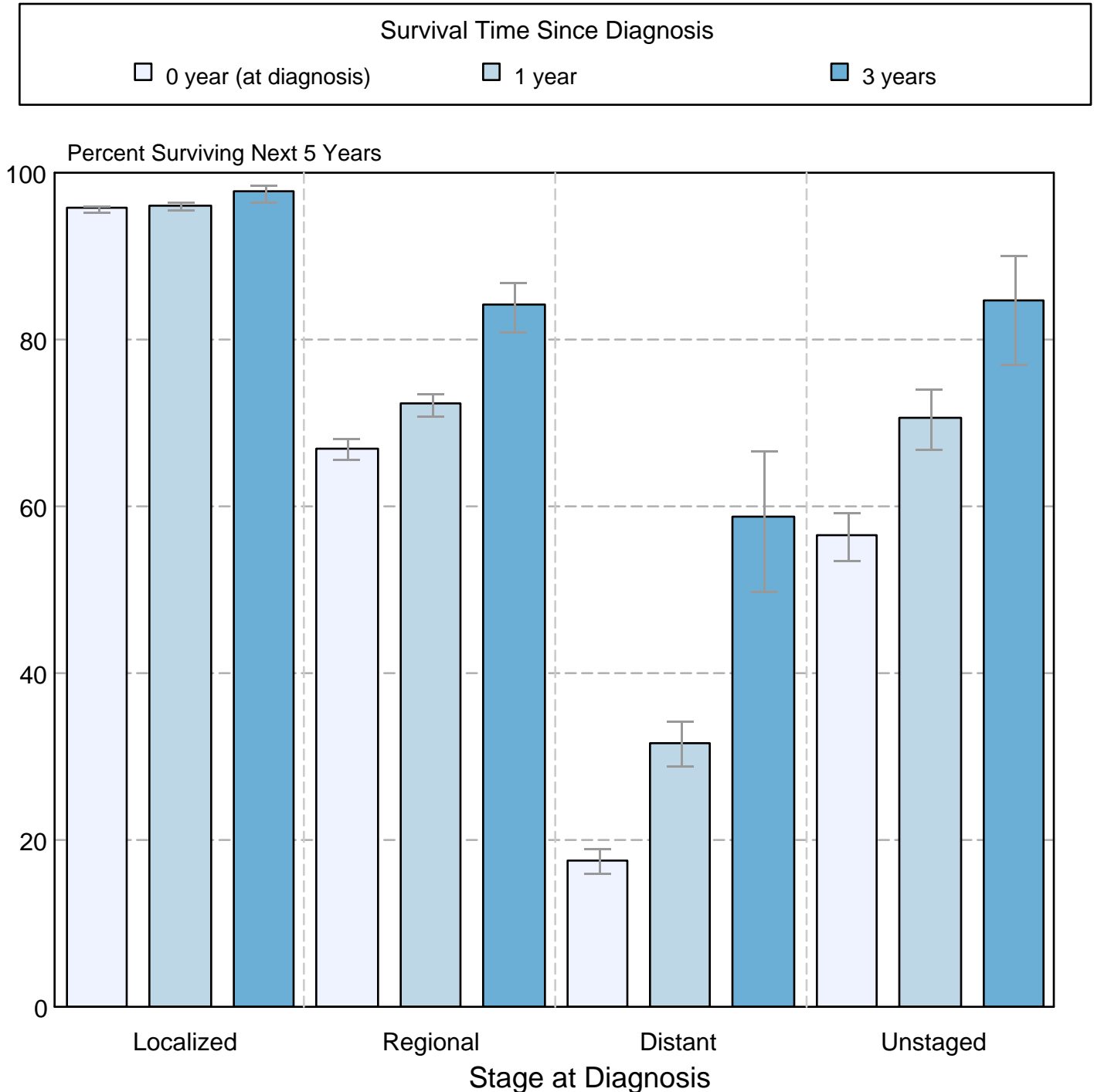
^a Source: SEER 9 areas and SEER 13 areas.
Rates are age-adjusted to the 2000 US Std Population (19 age groups - Census P25-1103).
Regression lines and APCs are calculated using the Joinpoint Regression Program Version 3.3.1, April 2008, National Cancer Institute.
The APC is the Annual Percent Change for the regression line segments. The APC shown on the graph is for the most recent trend.
* The APC is significantly different from zero ($p < 0.05$).

Figure 7.5

Cancer of the Corpus and Uterus, NOS

5-Year SEER Conditional Relative Survival Rates and 95% Confidence Intervals

Probability of surviving the next 5 years given the cohort
has already survived 0, 1, or 3 years
1998-2005 by stage at diagnosis



Source: SEER 17 areas (San Francisco, Connecticut, Detroit, Hawaii, Iowa, New Mexico, Seattle, Utah, Atlanta, San Jose-Monterey, Los Angeles, Alaska Native Registry, Rural Georgia, California excluding SF/SJM/LA, Kentucky, Louisiana, and New Jersey). California excluding SF/SJM/LA, Kentucky, Louisiana, and New Jersey contribute cases for diagnosis years 2000-2006. The remaining 13 SEER Areas contribute cases for the entire period 1998-2005. Percent surviving is not shown if based on less than 25 cases. Confidence intervals are not shown if length of the confidence interval is greater than 5 times the standard error.