

Table 18.1
MyelomaTrends in SEER Incidence^{ab} and U.S. Mortality^c Using the Joinpoint Regression Program,
1975-2006 With up to Four Joinpoints, 1992-2006 With up to Two Joinpoints,
Both Sexes by Race/Ethnicity

	Joinpoint Trend 1		Joinpoint Trend 2		Joinpoint Trend 3		Joinpoint Trend 4		Joinpoint Trend 5		AAPC ^d	
	Years	APC	Years	APC	Years	APC	Years	APC	Years	APC	1997-2006	2002-2006
<u>SEER 9 Delay-Adjusted Incidence^a, 1975-2006</u>												
All Races	1975-1991	1.2*	1991-2006	0.2							0.2	0.2
White	1975-2006	0.7*									0.7*	0.7*
Black	1975-2006	0.7*									0.7*	0.7*
<u>SEER 13 Delay-Adjusted Incidence^b, 1992-2006</u>												
All Races	1992-2006	0.2									0.2	0.2
White	1992-2006	0.2									0.2	0.2
Black	1992-2006	0.2									0.2	0.2
<u>SEER 9 Observed Incidence^a, 1975-2006</u>												
All Races	1975-1997	1.0*	1997-2006	-0.8							-0.8*	-0.8*
White	1975-1997	1.0*	1997-2006	-0.7							-0.7	-0.7
Black	1975-1994	1.3*	1994-2006	-0.8							-0.8	-0.8
<u>SEER 13 Observed Incidence^b, 1992-2006</u>												
All Races	1992-2006	-0.3									-0.3	-0.3
White	1992-2006	-0.2									-0.2	-0.2
White NH ^{ef}	1992-2006	-0.2									-0.2	-0.2
Black	1992-2006	-0.3									-0.3	-0.3
Black NH ^{ef}	1992-2006	-0.3									-0.3	-0.3
API ^e	1992-2006	-0.7									-0.7	-0.7
AI/AN ^{eg}	1992-2006	1.2									1.2	1.2
Hispanic ^f	1992-2006	-0.4									-0.4	-0.4
<u>U.S. Cancer Mortality^c, 1975-2006</u>												
All Races	1975-1994	1.4*	1994-2002	-0.7*	2002-2006	-2.0*					-1.3*	-2.0*
White	1975-1994	1.4*	1994-2002	-0.6*	2002-2006	-1.9*					-1.2*	-1.9*
Black	1975-1982	3.4*	1982-1996	1.2*	1996-2006	-1.9*					-1.9*	-1.9*
<u>U.S. Cancer Mortality^c, 1992-2006</u>												
All Races	1992-1994	2.0	1994-2002	-0.7*	2002-2006	-2.0*					-1.3*	-2.0*
White	1992-1994	2.0	1994-2002	-0.6*	2002-2006	-1.9*					-1.2*	-1.9*
White NH ^{ef}	1992-1994	1.8	1994-2002	-0.5	2002-2006	-1.9*					-1.1*	-1.9*
Black	1992-1998	0.1	1998-2006	-2.1*							-1.9*	-2.1*
Black NH ^{ef}	1992-1996	1.7	1996-2006	-1.8*							-1.8*	-1.8*
API ^e	1992-2006	-1.3*									-1.3*	-1.3*
AI/AN ^{eg}	1992-2006	-0.5									-0.5	-0.5
Hispanic ^f	1992-2006	-0.4									-0.4	-0.4

Joinpoint Regression Program Version 3.3.1, April 2008, National Cancer Institute. (<http://srab.cancer.gov/joinpoint/>).

The APC is the Annual Percent Change based on rates age-adjusted to the 2000 US Std Population (19 age groups - Census P25-1130).

^a Trends are from the SEER 9 areas (San Francisco, Connecticut, Detroit, Hawaii, Iowa, New Mexico, Seattle, Utah, and Atlanta).^b Trends are from the SEER 13 areas (SEER 9 Areas, Los Angeles, San Jose-Monterey, Rural Georgia, and the Alaska Native Registry).^c Trends are from US Mortality Files, National Center for Health Statistics, Centers for Disease Control and Prevention.^d The AAPC is the Average Annual Percent Change and is based on the APCs calculated by Joinpoint.^e API - Asian/Pacific Islander, AI/AN - American Indian/Alaska Native, NH - Non-Hispanic^f Hispanic and Non-Hispanic are not mutually exclusive from whites, blacks, Asian/Pacific Islanders, and American Indians/Alaska

Natives. Incidence data for Hispanics and Non-Hispanics are based on NHIA and exclude cases from the Alaska Native Registry.

The Hispanic and Non-Hispanic mortality trends exclude deaths from CT, DC, ME, MD, MN, NH, NY, ND, OK and VT.

^g Data for American Indian/Alaska Native are based on the CHSDA (Contract Health Service Delivery Area) counties.

* The APC/AAPC is significantly different from zero (p<.05).

- Joinpoint regression line analysis could not be performed on data series.

Table 18.2
MyelomaTrends in SEER Incidence^{ab} and U.S. Mortality^c Using the Joinpoint Regression Program,
1975-2006 With up to Four Joinpoints, 1992-2006 With up to Two Joinpoints,
Males by Race/Ethnicity

	<u>Joinpoint Trend 1</u>		<u>Joinpoint Trend 2</u>		<u>Joinpoint Trend 3</u>		<u>Joinpoint Trend 4</u>		<u>Joinpoint Trend 5</u>		<u>AAPC^d</u>	
	Years	APC	Years	APC	Years	APC	Years	APC	Years	APC	1997-2006	2002-2006
<u>SEER 9 Delay-Adjusted Incidence^a, 1975-2006</u>												
All Races	1975-2006	0.7*									0.7*	0.7*
White	1975-2006	0.8*									0.8*	0.8*
Black	1975-2006	0.5*									0.5*	0.5*
<u>SEER 13 Delay-Adjusted Incidence^b, 1992-2006</u>												
All Races	1992-2006	0.1									0.1	0.1
White	1992-2006	0.2									0.2	0.2
Black	1992-2006	0.5									0.5	0.5
<u>SEER 9 Observed Incidence^a, 1975-2006</u>												
All Races	1975-2002	0.8*	2002-2006	-3.0							-0.9	-3.0
White	1975-2002	0.9*	2002-2006	-3.2							-0.9	-3.2
Black	1975-2006	0.3									0.3	0.3
<u>SEER 13 Observed Incidence^b, 1992-2006</u>												
All Races	1992-2006	-0.3									-0.3	-0.3
White	1992-2006	-0.3									-0.3	-0.3
White NH ^{ef}	1992-2006	-0.2									-0.2	-0.2
Black	1992-2006	0.0									0.0	0.0
Black NH ^{ef}	1992-2006	0.0									0.0	0.0
API ^e	1992-2006	-1.4									-1.4*	-1.4*
AI/AN ^{eg}	1992-2006	-1.3									-1.3	-1.3
Hispanic ^f	1992-2006	-0.7									-0.7	-0.7
<u>U.S. Cancer Mortality^c, 1975-2006</u>												
All Races	1975-1994	1.5*	1994-2006	-1.1*							-1.1*	-1.1*
White	1975-1994	1.5*	1994-2006	-0.9*							-0.9*	-0.9*
Black	1975-1982	3.7*	1982-1994	1.2*	1994-2006	-1.6*					-1.6*	-1.6*
<u>U.S. Cancer Mortality^c, 1992-2006</u>												
All Races	1992-1994	3.2	1994-2006	-1.1*							-1.1*	-1.1*
White	1992-1994	3.5	1994-2006	-1.0*							-1.0*	-1.0*
White NH ^{ef}	1992-1994	4.4	1994-2006	-1.0*							-1.0*	-1.0*
Black	1992-2006	-1.3*									-1.3*	-1.3*
Black NH ^{ef}	1992-1994	4.2	1994-2006	-1.5*							-1.5*	-1.5*
API ^e	1992-2006	-2.1*									-2.1*	-2.1*
AI/AN ^{eg}	1992-2006	-0.4									-0.4	-0.4
Hispanic ^f	1992-2006	-1.0									-1.0	-1.0

Joinpoint Regression Program Version 3.3.1, April 2008, National Cancer Institute. (<http://srab.cancer.gov/joinpoint/>).

The APC is the Annual Percent Change based on rates age-adjusted to the 2000 US Std Population (19 age groups - Census P25-1130).

^a Trends are from the SEER 9 areas (San Francisco, Connecticut, Detroit, Hawaii, Iowa, New Mexico, Seattle, Utah, and Atlanta).^b Trends are from the SEER 13 areas (SEER 9 Areas, Los Angeles, San Jose-Monterey, Rural Georgia, and the Alaska Native Registry).^c Trends are from US Mortality Files, National Center for Health Statistics, Centers for Disease Control and Prevention.^d The AAPC is the Average Annual Percent Change and is based on the APCs calculated by Joinpoint.^e API - Asian/Pacific Islander, AI/AN - American Indian/Alaska Native, NH - Non-Hispanic^f Hispanic and Non-Hispanic are not mutually exclusive from whites, blacks, Asian/Pacific Islanders, and American Indians/Alaska

Natives. Incidence data for Hispanics and Non-Hispanics are based on NHIA and exclude cases from the Alaska Native Registry.

The Hispanic and Non-Hispanic mortality trends exclude deaths from CT, DC, ME, MD, MN, NH, NY, ND, OK and VT.

^g Data for American Indian/Alaska Native are based on the CHSDA (Contract Health Service Delivery Area) counties.

* The APC/AAPC is significantly different from zero (p<.05).

- Joinpoint regression line analysis could not be performed on data series.

Table 18.3
MyelomaTrends in SEER Incidence^{ab} and U.S. Mortality^c Using the Joinpoint Regression Program,
1975-2006 With up to Four Joinpoints, 1992-2006 With up to Two Joinpoints,
Females by Race/Ethnicity

	Joinpoint Trend 1		Joinpoint Trend 2		Joinpoint Trend 3		Joinpoint Trend 4		Joinpoint Trend 5		AAPC ^d	
	Years	APC	Years	APC	Years	APC	Years	APC	Years	APC	1997-2006	2002-2006
<u>SEER 9 Delay-Adjusted Incidence^a, 1975-2006</u>												
All Races	1975-2006	0.6*									0.6*	0.6*
White	1975-2006	0.5*									0.5*	0.5*
Black	1975-2006	0.9*									0.9*	0.9*
<u>SEER 13 Delay-Adjusted Incidence^b, 1992-2006</u>												
All Races	1992-2006	0.1									0.1	0.1
White	1992-2006	0.0									0.0	0.0
Black	1992-2006	-0.1									-0.1	-0.1
<u>SEER 9 Observed Incidence^a, 1975-2006</u>												
All Races	1975-1997	0.9*	1997-2006	-1.1							-1.1*	-1.1*
White	1975-1997	0.8*	1997-2006	-1.1							-1.1	-1.1
Black	1975-1996	1.6*	1996-2006	-1.4							-1.4	-1.4
<u>SEER 13 Observed Incidence^b, 1992-2006</u>												
All Races	1992-2006	-0.3									-0.3	-0.3
White	1992-2006	-0.4									-0.4	-0.4
White NH ^{ef}	1992-2006	-0.5									-0.5	-0.5
Black	1992-2006	-0.7									-0.7	-0.7
Black NH ^{ef}	1992-2006	-0.7									-0.7	-0.7
API ^e	1992-2006	0.3									0.3	0.3
AI/AN ^{eg}	1992-2006	3.6									3.6	3.6
Hispanic ^f	1992-2006	-0.1									-0.1	-0.1
<u>U.S. Cancer Mortality^c, 1975-2006</u>												
All Races	1975-1993	1.5*	1993-2001	-0.4	2001-2006	-2.4*					-1.5*	-2.4*
White	1975-1993	1.4*	1993-2001	-0.5	2001-2006	-2.1*					-1.4*	-2.1*
Black	1975-1993	2.1*	1993-2000	-0.1	2000-2006	-3.2*					-2.1*	-3.2*
<u>U.S. Cancer Mortality^c, 1992-2006</u>												
All Races	1992-2000	-0.1	2000-2006	-2.2*							-1.5*	-2.2*
White	1992-2001	-0.3	2001-2006	-2.2*							-1.4*	-2.2*
White NH ^{ef}	1992-2001	-0.3	2001-2006	-2.2*							-1.3*	-2.2*
Black	1992-2000	0.2	2000-2006	-3.3*							-2.1*	-3.3*
Black NH ^{ef}	1992-1999	0.7	1999-2006	-2.9*							-2.1*	-2.9*
API ^e	1992-2006	-0.4									-0.4	-0.4
AI/AN ^{eg}	1992-2006	-0.9									-0.9	-0.9
Hispanic ^f	1992-1996	7.2	1996-2006	-1.5*							-1.5*	-1.5*

Joinpoint Regression Program Version 3.3.1, April 2008, National Cancer Institute. (<http://srab.cancer.gov/joinpoint/>).

The APC is the Annual Percent Change based on rates age-adjusted to the 2000 US Std Population (19 age groups - Census P25-1130).

^a Trends are from the SEER 9 areas (San Francisco, Connecticut, Detroit, Hawaii, Iowa, New Mexico, Seattle, Utah, and Atlanta).^b Trends are from the SEER 13 areas (SEER 9 Areas, Los Angeles, San Jose-Monterey, Rural Georgia, and the Alaska Native Registry).^c Trends are from US Mortality Files, National Center for Health Statistics, Centers for Disease Control and Prevention.^d The AAPC is the Average Annual Percent Change and is based on the APCs calculated by Joinpoint.^e API - Asian/Pacific Islander, AI/AN - American Indian/Alaska Native, NH - Non-Hispanic^f Hispanic and Non-Hispanic are not mutually exclusive from whites, blacks, Asian/Pacific Islanders, and American Indians/Alaska

Natives. Incidence data for Hispanics and Non-Hispanics are based on NHIA and exclude cases from the Alaska Native Registry.

The Hispanic and Non-Hispanic mortality trends exclude deaths from CT, DC, ME, MD, MN, NH, NY, ND, OK and VT.

^g Data for American Indian/Alaska Native are based on the CHSDA (Contract Health Service Delivery Area) counties.

* The APC/AAPC is significantly different from zero (p<.05).

- Joinpoint regression line analysis could not be performed on data series.

Table 18.4
MyelomaAge-adjusted SEER Incidence^a Rates by Year, Race and Sex

Year of Diagnosis:	All Races			Whites			Blacks		
	Total	Males	Females	Total	Males	Females	Total	Males	Females
1975	4.91	6.43	3.86	4.61	6.17	3.57	9.72	10.86	8.61
1976	5.02	6.08	4.37	4.76	5.77	4.14	9.20	11.22	7.90
1977	5.06	6.38	4.16	4.85	6.19	3.95	9.09	11.00	7.75
1978	4.74	5.93	3.94	4.43	5.60	3.65	9.61	10.97	8.66
1979	4.88	6.00	4.09	4.50	5.41	3.83	10.99	15.26	8.23
1980	4.79	5.77	4.12	4.43	5.44	3.75	9.89	10.83	9.05
1981	5.02	6.00	4.33	4.62	5.46	4.00	11.01	15.23	8.19
1982	5.29	6.28	4.67	4.89	5.87	4.32	11.57	13.93	9.72
1983	5.31	6.93	4.22	4.74	6.30	3.73	13.72	16.22	11.92
1984	5.41	6.98	4.33	5.05	6.44	4.11	10.84	15.35	7.71
1985	5.20	6.32	4.35	4.94	5.95	4.19	9.38	12.58	7.13
1986	5.33	6.31	4.65	4.89	6.02	4.13	11.01	11.57	10.42
1987	5.93	7.37	5.02	5.66	7.18	4.71	11.13	13.48	9.69
1988	5.33	6.57	4.51	5.03	6.37	4.18	10.81	12.17	9.72
1989	5.44	6.73	4.49	5.10	6.35	4.17	10.74	13.46	8.96
1990	5.65	7.25	4.56	5.25	6.93	4.10	11.96	14.74	10.18
1991	6.03	7.67	4.85	5.57	7.18	4.41	12.78	15.92	10.64
1992	5.96	7.28	5.07	5.63	6.99	4.76	11.51	13.04	10.40
1993	5.60	7.33	4.34	5.15	6.82	3.97	12.74	15.72	10.50
1994	5.72	6.80	5.03	5.20	6.34	4.44	12.76	15.16	11.82
1995	5.73	7.23	4.69	5.32	6.79	4.32	12.18	15.13	10.30
1996	5.81	7.18	4.77	5.42	6.87	4.29	12.54	13.39	11.87
1997	6.11	7.36	5.24	5.68	7.02	4.74	12.71	14.42	11.94
1998	5.90	7.29	4.87	5.56	7.08	4.41	11.73	13.20	10.82
1999	5.58	7.06	4.49	5.12	6.56	4.06	12.10	15.35	10.06
2000	6.02	7.49	4.92	5.72	7.49	4.40	10.81	10.47	10.81
2001	5.85	7.22	4.82	5.44	6.81	4.38	12.05	14.58	10.53
2002	5.91	7.67	4.59	5.58	7.42	4.20	10.78	13.87	8.77
2003	5.70	7.18	4.58	5.44	6.95	4.27	10.49	13.68	8.36
2004	5.66	7.10	4.59	5.15	6.61	4.08	12.17	14.96	10.20
2005	5.79	7.32	4.65	5.36	6.96	4.14	11.90	13.89	10.60
2006	5.37	6.48	4.54	5.04	6.25	4.09	11.42	12.98	10.43
1975-2006	5.55	6.90	4.59	5.17	6.54	4.19	11.40	13.68	9.88

^a SEER 9 areas (San Francisco, Connecticut, Detroit, Hawaii, Iowa, New Mexico, Seattle, Utah, and Atlanta). Rates are per 100,000 and are age-adjusted to the 2000 US Std Population (19 age groups - Census P25-1130).
- Statistic not shown. Rate based on less than 16 cases for the time interval.

Table 18.5

Myeloma

Age-adjusted U.S. Death^a Rates by Year, Race and Sex

Year of Death:	All Races			Whites			Blacks		
	Total	Males	Females	Total	Males	Females	Total	Males	Females
1975	2.94	3.70	2.42	2.73	3.47	2.23	5.26	6.44	4.41
1976	3.10	3.89	2.57	2.89	3.64	2.38	5.56	6.92	4.58
1977	3.13	3.92	2.60	2.91	3.64	2.43	5.55	7.24	4.42
1978	3.17	3.94	2.66	2.95	3.69	2.45	5.74	6.97	4.93
1979	3.26	4.12	2.68	3.03	3.85	2.48	5.91	7.42	4.89
1980	3.27	4.12	2.72	3.02	3.83	2.49	6.10	7.37	5.23
1981	3.29	4.05	2.79	3.01	3.70	2.54	6.57	8.16	5.50
1982	3.38	4.17	2.85	3.10	3.81	2.62	6.68	8.56	5.45
1983	3.44	4.34	2.87	3.15	3.97	2.63	6.82	8.73	5.58
1984	3.47	4.26	2.95	3.20	3.92	2.73	6.64	8.38	5.47
1985	3.58	4.46	3.02	3.29	4.11	2.78	6.90	8.57	5.82
1986	3.61	4.51	3.03	3.29	4.12	2.76	7.16	9.10	5.95
1987	3.61	4.57	2.97	3.32	4.21	2.72	7.06	9.18	5.71
1988	3.63	4.61	3.02	3.36	4.35	2.73	6.89	8.14	6.12
1989	3.70	4.64	3.10	3.42	4.30	2.85	7.08	8.91	5.92
1990	3.80	4.83	3.13	3.49	4.45	2.87	7.32	9.64	5.92
1991	3.87	4.83	3.26	3.54	4.46	2.95	7.77	9.59	6.64
1992	3.80	4.72	3.19	3.48	4.36	2.90	7.45	9.33	6.32
1993	3.96	4.89	3.35	3.64	4.56	3.04	7.82	9.32	6.88
1994	3.97	5.03	3.26	3.67	4.69	2.99	7.68	9.68	6.46
1995	3.98	4.94	3.36	3.66	4.61	3.02	7.79	9.41	6.90
1996	3.91	4.94	3.25	3.59	4.60	2.94	7.70	9.63	6.54
1997	3.90	4.93	3.22	3.60	4.61	2.93	7.49	9.24	6.45
1998	3.83	4.76	3.21	3.50	4.41	2.88	7.75	9.49	6.77
1999	3.84	4.72	3.24	3.52	4.41	2.91	7.45	8.84	6.64
2000	3.83	4.66	3.27	3.53	4.38	2.96	7.51	8.75	6.73
2001	3.80	4.68	3.18	3.52	4.40	2.89	7.22	8.71	6.28
2002	3.80	4.76	3.14	3.56	4.54	2.86	6.88	8.27	6.02
2003	3.70	4.58	3.08	3.43	4.33	2.78	7.11	8.36	6.29
2004	3.56	4.40	2.97	3.30	4.14	2.69	6.85	8.22	6.02
2005	3.56	4.49	2.89	3.32	4.24	2.65	6.47	8.01	5.48
2006	3.48	4.36	2.85	3.24	4.09	2.61	6.53	8.23	5.44
1975-2006	3.64	4.54	3.03	3.36	4.23	2.77	6.97	8.57	5.96

^a US Mortality Files, National Center for Health Statistics, Centers for Disease Control and Prevention.
 Rates are per 100,000 and are age-adjusted to the 2000 US Std Population (19 age groups - Census P25-1130).
 - Statistic not shown. Rate based on less than 16 cases for the time interval.

Table 18.6
MyelomaSEER Incidence^a and U.S. Death^b Rates, Age-Adjusted and Age-Specific Rates, by Race and Sex

	All Races			Whites			Blacks		
	Total	Males	Females	Total	Males	Females	Total	Males	Females
<u>SEER Incidence</u>									
<u>Age at Diagnosis</u>									
Age-Adjusted Rates, 2002-2006									
All ages	5.6	7.1	4.6	5.2	6.6	4.1	11.7	14.3	10.0
Under 65	2.1	2.5	1.8	1.9	2.3	1.5	4.7	5.4	4.1
65 and over	29.9	38.5	23.8	28.0	36.8	21.9	60.2	75.5	50.7
All ages (IARC world std) ^c	3.5	4.4	2.9	3.2	4.1	2.5	7.5	9.0	6.4
Age-Specific Rates, 2002-2006									
<1	-	-	-	-	-	-	-	-	-
1-4	-	-	-	-	-	-	-	-	-
5-9	-	-	-	-	-	-	-	-	-
10-14	-	-	-	-	-	-	-	-	-
15-19	-	-	-	-	-	-	-	-	-
20-24	-	-	-	-	-	-	-	-	-
25-29	0.1	-	-	-	-	-	-	-	-
30-34	0.3	0.4	0.2	0.3	0.4	-	0.6	-	-
35-39	0.7	0.8	0.6	0.6	0.7	0.4	2.0	2.0	1.9
40-44	1.6	1.8	1.4	1.4	1.8	1.1	3.4	3.0	3.8
45-49	3.3	3.9	2.7	2.8	3.4	2.1	7.4	8.7	6.3
50-54	6.0	6.7	5.2	5.2	5.9	4.5	14.5	16.5	12.8
55-59	9.5	11.3	7.8	8.8	10.5	7.1	19.3	24.3	15.1
60-64	14.7	17.7	11.9	13.2	16.4	10.3	32.1	36.3	28.7
65-69	21.4	26.3	17.1	19.7	24.5	15.4	44.6	54.6	37.0
70-74	28.2	35.9	22.0	25.9	33.8	19.5	60.5	75.7	49.8
75-79	34.9	44.6	27.9	33.1	42.9	25.9	68.9	85.0	59.0
80-84	38.5	49.9	31.4	36.8	48.6	29.5	73.1	93.6	61.8
85+	33.3	47.3	26.8	31.8	46.2	25.2	63.9	84.1	55.6
<u>U.S. Mortality</u>									
<u>Age at Death</u>									
Age-Adjusted Rates, 2002-2006									
All ages	3.6	4.5	3.0	3.4	4.3	2.7	6.8	8.2	5.8
Under 65	0.9	1.1	0.7	0.8	1.0	0.6	2.0	2.4	1.6
65 and over	22.4	28.3	18.5	21.2	27.1	17.2	39.9	48.7	34.9
All ages (IARC world std) ^c	2.0	2.5	1.7	1.9	2.3	1.5	4.0	4.8	3.4
Age-Specific Rates, 2002-2006									
<1	-	-	-	-	-	-	-	-	-
1-4	-	-	-	-	-	-	-	-	-
5-9	-	-	-	-	-	-	-	-	-
10-14	-	-	-	-	-	-	-	-	-
15-19	-	-	-	-	-	-	-	-	-
20-24	-	-	-	-	-	-	-	-	-
25-29	-	-	-	-	-	-	-	-	-
30-34	0.0	0.1	-	0.0	0.1	-	-	-	-
35-39	0.1	0.2	0.1	0.1	0.1	0.1	0.4	0.4	0.3
40-44	0.5	0.6	0.4	0.4	0.5	0.3	1.0	1.1	0.9
45-49	1.1	1.2	0.9	0.9	1.0	0.7	2.4	2.9	2.1
50-54	2.3	2.8	1.8	1.9	2.4	1.5	5.3	6.3	4.4
55-59	4.4	5.2	3.6	3.8	4.5	3.1	9.8	11.9	8.1
60-64	7.7	9.3	6.3	7.0	8.5	5.6	15.8	19.2	13.2
65-69	12.5	15.2	10.1	11.4	14.2	8.9	24.6	29.1	21.3
70-74	19.1	23.1	15.9	17.7	21.8	14.4	36.1	43.2	31.3
75-79	26.2	32.5	21.6	24.9	31.4	20.2	46.2	55.0	40.9
80-84	32.8	42.0	27.1	31.6	40.8	25.9	54.9	69.9	47.0
85+	32.7	44.4	27.4	31.5	43.5	26.1	53.6	68.4	47.8

^a SEER 17 areas. Rates are per 100,000 and are age-adjusted to the 2000 US Std Population (19 age groups - Census P25-1130), unless noted.

^b US Mortality Files, National Center for Health Statistics, Centers for Disease Control and Prevention.

^c Rates are per 100,000 and are age-adjusted to the 2000 US Std Population (19 age groups - Census P25-1130), unless noted.

^d Rates are per 100,000 and are age-adjusted to the IARC world standard population.

- Statistic not shown. Rate based on less than 16 cases for the time interval.

Table 18.7
Myeloma

	All Races			Whites			Blacks		
	Total	Males	Females	Total	Males	Females	Total	Males	Females
5-Year Relative Survival Rates									
Year of Diagnosis:									
1960-1963 ^a	-	-	-	12	13	10	-	-	-
1970-1973 ^a	-	-	-	19	20	17	-	-	-
1975-1977 ^b	25.9	25.5	26.2	25.4	25.1	25.7	30.7	31.6	29.7
1978-1980 ^b	27.0	25.5	28.5	26.0	25.5	26.5	32.5	26.9	37.9
1981-1983 ^b	28.7	26.8	30.7	28.5	26.7	30.3	29.6	30.3	28.8
1984-1986 ^b	28.5	29.1	27.9	27.4	27.3	27.4	32.4	34.0	30.6
1987-1989 ^b	28.5	30.2	26.8	28.2	30.5	25.8	31.0	30.7	31.3
1990-1992 ^b	30.6	31.8	29.2	29.7	30.9	28.5	35.6	40.1	31.5
1993-1995 ^b	33.0	33.7	32.2	32.1	33.1	30.9	35.9	35.0	36.3
1996-1998 ^b	33.4	35.7	30.9	33.3	35.7	30.5	31.7	33.1	30.6
1999-2005 ^b	37.1 ^e	39.3 ^e	34.6 ^e	37.5 ^e	40.1 ^e	34.3 ^e	35.5 ^e	37.2	33.8
5-Year Period Survival Rates ^{cd}									
Year of Diagnosis:									
1999-2005	38.4	39.2	37.5	38.1	39.4	36.4	37.5	36.6	38.3
Stage Distribution (%) 1999-2005 ^c									
All Stages									
Number of cases	21,769	11,619	10,150	16,552	9,062	7,490	3,743	1,824	1,919
Percent	100%	100%	100%	100%	100%	100%	100%	100%	100%
Localized	5	5	4	5	6	4	3	3	3
Regional	0	0	0	0	0	0	0	0	0
Distant	95	94	96	95	94	96	97	97	97
Unstaged	0	0	0	0	0	0	0	0	0
5-Year Relative Survival Rates, 1999-2005 ^c									
Age at Diagnosis:									
Ages <45	60.3	61.3	58.6	61.5	63.6	57.3	57.2	55.2 ^f	58.9 ^f
Ages 45-54	52.7	52.2	53.3	55.0	54.9	55.2	46.4	41.2	52.2
Ages 55-64	44.4	45.1	43.5	45.7	46.2	44.9	38.0	38.7	37.7
Ages 65-74	33.7	32.6	35.0	33.7	32.8	34.8	31.9	31.0	32.7
Ages 75+	20.3	20.3	20.3	19.7	19.8	19.5	22.0	21.5	22.0
Ages <65	49.3	49.8	48.7	50.7	51.4	49.6	44.0	42.0	46.4
Ages 65+	27.3	27.4	27.1	26.8	27.1	26.3	27.7	27.6	27.6
Stage:									
All Stages	37.1	38.3	35.7	36.9	38.6	34.9	36.6	36.0	37.2
Localized	71.0	78.0	57.8	71.0	77.9	57.0	65.0 ^f	77.4 ^f	49.2 ^g
Regional	-	-	-	-	-	-	-	-	-
Distant	35.3	35.7	34.9	34.9	35.8	34.0	35.7	34.5	36.8
Unstaged	-	-	-	-	-	-	-	-	-

^a Rates are based on End Results data from a series of hospital registries and one population-based registry.

^b Rates are from the SEER 9 areas (San Francisco, Connecticut, Detroit, Hawaii, Iowa, New Mexico, Seattle, Utah, Atlanta).

Rates are based on follow-up of patients into 2006.

^c Rates are from the SEER 17 areas (San Francisco, Connecticut, Detroit, Hawaii, Iowa, New Mexico, Seattle, Utah, Atlanta, San Jose-Monterey, Los Angeles, Alaska Native Registry, Rural Georgia, California excluding SF/SJM/LA, Kentucky, Louisiana and New Jersey). California excluding SF/SJM/LA, Kentucky, Louisiana, and New Jersey contribute cases for diagnosis years 2000-2005.

^d The remaining 13 SEER Areas contribute cases for the entire period 1999-2005. Rates are based on follow-up of patients into 2006. Period survival provides a more up-to-date estimate of survival by piecing together the most recent conditional survival estimates from several cohorts. It is computed here using three year calendar blocks (2003-2005: 0-1 year survival),

(2002-2004: 1-2 year survival), (2001-2003: 2-3 year survival), (2000-2002: 3-4 year survival), (1999-2001: 4-5 years survival).

^e The difference in rates between 1975-1977 and 1999-2005 is statistically significant ($p < .05$).

^f The standard error of the survival rate is between 5 and 10 percentage points.

^g The standard error of the survival rate is greater than 10 percentage points.

- Statistic could not be calculated due to fewer than 25 cases during the time period.

Table 18.8
MyelomaSurvival Rates^a
By Year of Diagnosis

All Races, Males and Females

	Year of Diagnosis																		
	1975- 1979	1980- 1984	1985- 1989	1990	1991	1992	1993	1994	1995	1996	1997	1998	1999	2000	2001	2002	2003	2004	2005
Relative Survival Rates (SEER ^b)																			
1-year	69.0	70.9	73.2	71.6	75.8	69.7	73.2	73.7	75.0	71.1	74.8	75.2	74.4	73.2	73.1	74.6	77.3	74.1	75.3
2-year	53.0	55.6	58.8	57.0	60.6	57.1	59.5	59.6	59.6	58.6	61.4	62.7	60.8	60.8	60.1	63.0	65.1	66.0	
3-year	40.9	44.0	46.5	44.8	48.8	46.5	47.6	49.0	48.7	46.3	49.5	52.0	49.0	50.6	49.9	53.4	55.8		
4-year	32.5	35.4	37.1	38.8	39.2	35.9	38.8	38.3	41.3	38.9	39.6	40.4	39.7	42.2	44.5	46.8			
5-year	26.3	28.1	28.7	31.4	32.1	28.3	32.2	32.2	34.5	32.6	32.7	34.8	32.3	35.5	37.8				
6-year	21.1	22.3	23.4	25.4	25.9	22.2	28.1	27.3	29.3	28.1	27.2	30.5	28.2	30.4					
7-year	17.3	17.9	18.9	20.0	22.3	19.8	23.6	22.1	24.7	25.1	23.5	25.0	24.6						
8-year	14.6	14.4	16.3	18.1	18.7	16.9	19.3	19.4	21.5	22.9	20.9	23.0							
9-year	12.4	12.4	13.2	16.5	17.4	15.1	17.5	16.7	19.5	21.6	18.4								
10-year	11.0	10.7	11.8	14.9	15.9	13.2	16.1	15.0	18.6	19.1									
11-year	9.7	9.8	10.6	13.5	14.3	12.1	15.3	14.6	17.5										
12-year	8.9	8.8	9.8	12.8	12.8	10.3	13.9	13.1											
13-year	7.6	7.9	9.1	12.1	12.4	9.6	12.6												
14-year	7.0	7.2	8.6	11.0	11.8	9.3													
15-year	6.2	6.9	7.9	10.4	11.5														
16-year	5.8	6.4	7.3	10.0															
17-year	5.5	6.0	7.2																
18-year	4.9	5.7																	
19-year	4.7	5.0																	
20-year	4.1	4.8																	

^a Survival rates are relative rates expressed as percents.
^b Rates are from the SEER 9 areas (San Francisco, Connecticut, Detroit, Hawaii, Iowa, New Mexico, Seattle, Utah, and Atlanta).

Table 18.9

Myeloma

Survival Rates^a
By Year of Diagnosis

All Races, Males

Year of Diagnosis

	1975- 1979	1980- 1984	1985- 1989	1990	1991	1992	1993	1994	1995	1996	1997	1998	1999	2000	2001	2002	2003	2004	2005
Relative Survival Rates (SEER ^b)																			
1-year	68.9	71.1	74.0	71.2	76.9	73.5	71.0	74.9	75.6	71.9	74.5	76.2	76.1	74.6	74.4	75.3	77.4	76.2	75.6
2-year	53.4	56.1	60.4	57.4	62.5	60.7	58.6	60.6	60.4	59.9	61.6	63.8	62.2	62.7	61.9	61.8	66.2	67.9	
3-year	40.4	44.0	47.3	45.7	49.9	49.7	46.1	48.4	50.2	46.4	51.3	54.4	52.2	53.1	51.0	52.1	57.2		
4-year	32.1	35.0	38.1	38.2	40.5	37.4	37.3	38.5	42.6	40.5	41.8	44.2	44.1	44.4	46.5	46.9			
5-year	25.7	27.0	29.7	31.5	34.0	29.8	31.3	32.1	37.5	34.6	33.6	38.9	36.1	37.2	40.0				
6-year	20.4	22.0	24.9	23.8	28.2	23.1	28.4	29.6	32.8	30.6	27.7	34.5	31.4	31.2					
7-year	16.7	18.0	20.7	19.4	23.9	20.4	23.8	25.0	27.3	27.1	23.6	28.4	27.6						
8-year	14.2	14.8	17.7	18.6	21.1	18.5	19.2	22.0	23.5	25.6	21.9	26.1							
9-year	12.2	12.8	14.3	16.9	19.6	17.0	17.9	18.6	21.6	23.2	20.2								
10-year	10.6	10.8	12.8	15.5	17.8	14.6	16.9	16.5	20.9	20.4									
11-year	8.7	10.0	11.4	13.1	16.1	14.2	15.6	15.9	20.0										
12-year	8.1	8.7	11.0	13.1	14.4	13.0	13.7	13.1											
13-year	6.9	7.9	10.2	12.5	14.2	12.3	12.3												
14-year	6.3	7.0	9.7	11.4	14.1	12.2													
15-year	5.7	6.6	9.0	11.4	13.6														
16-year	5.4	6.1	8.6	11.1															
17-year	5.0	5.8	8.5																
18-year	4.4	5.4																	
19-year	4.2	5.1																	
20-year	3.3	4.8																	

^a Survival rates are relative rates expressed as percents.^b Rates are from the SEER 9 areas (San Francisco, Connecticut, Detroit, Hawaii, Iowa, New Mexico, Seattle, Utah, and Atlanta).

Table 18.10
MyelomaSurvival Rates^a
By Year of Diagnosis

All Races, Females

Year of Diagnosis

	1975- 1979	1980- 1984	1985- 1989	1990	1991	1992	1993	1994	1995	1996	1997	1998	1999	2000	2001	2002	2003	2004	2005
Relative Survival Rates (SEER ^b)																			
1-year	69.1	70.8	72.4	72.0	74.5	65.8	76.0	72.5	74.2	70.3	75.1	74.1	72.4	71.5	71.7	73.7	77.3	71.5	75.0
2-year	52.7	55.2	57.3	56.5	58.3	53.5	60.7	58.8	58.8	57.2	61.1	61.6	59.1	58.5	58.1	64.5	63.9	63.7	
3-year	41.5	44.1	45.7	43.8	47.6	43.2	49.4	49.5	46.9	46.1	47.5	49.2	45.3	47.8	48.7	54.9	54.2		
4-year	32.8	35.9	36.0	39.6	37.7	34.4	40.7	38.2	39.9	37.3	37.3	36.1	34.7	39.7	42.3	46.7			
5-year	27.0	29.3	27.7	31.3	29.9	26.8	33.2	32.3	31.2	30.5	31.7	30.3	28.0	33.5	35.4				
6-year	21.7	22.5	22.0	27.2	23.3	21.3	27.6	25.1	25.4	25.4	26.8	25.9	24.3	29.4					
7-year	17.9	17.8	17.1	20.6	20.4	19.2	23.4	19.4	21.8	22.8	23.2	21.2	21.1						
8-year	14.9	14.1	14.9	17.7	15.9	15.3	19.5	16.8	19.3	20.0	19.9	19.5							
9-year	12.7	12.0	12.1	16.0	14.9	13.0	17.0	14.8	17.2	19.8	16.3								
10-year	11.5	10.5	10.9	14.1	13.7	11.7	15.0	13.6	16.2	17.7									
11-year	10.7	9.7	9.8	13.9	12.3	9.9	14.8	13.3	14.8										
12-year	9.6	8.9	8.6	12.4	10.7	7.6	14.1	12.8											
13-year	8.2	7.9	8.0	11.6	10.0	7.0	12.7												
14-year	7.7	7.3	7.5	10.6	9.1	6.3													
15-year	6.8	7.2	6.7	9.2	9.0														
16-year	6.1	6.6	6.0	8.9															
17-year	6.0	6.2	5.9																
18-year	5.3	5.9																	
19-year	5.1	4.9																	
20-year	4.8	4.6																	

^a
^b

Survival rates are relative rates expressed as percents.

Rates are from the SEER 9 areas (San Francisco, Connecticut, Detroit, Hawaii, Iowa, New Mexico, Seattle, Utah, and Atlanta).

Table 18.11
Myeloma

Risk of Being Diagnosed With Cancer in 10, 20 and 30 Years,
Lifetime Risk of Being Diagnosed with Cancer Given Alive and Cancer-Free at Current Age, and
Lifetime Risk of Dying from Cancer Given Alive at Current Age
Both Sexes, 2004-2006 By Race/Ethnicity

Race/ Ethnicity	Current Age	Risk of Being Diagnosed with Cancer						Risk of Dying from Cancer	
		+10 yrs Percent (95% C.I.)	+20 yrs Percent (95% C.I.)	+30 yrs Percent (95% C.I.)	Eventually Percent (95% C.I.)	Eventually Percent (95% C.I.)			
All Races	0	0.00 (0.00, 0.00)	0.00 (0.00, 0.00)	0.00 (0.00, 0.00)	0.63 (0.62, 0.65)	0.42 (0.41, 0.42)			
	10	0.00 (0.00, 0.00)	0.00 (0.00, 0.00)	0.01 (0.01, 0.01)	0.64 (0.63, 0.65)	0.42 (0.42, 0.43)			
	20	0.00 (0.00, 0.00)	0.01 (0.01, 0.01)	0.03 (0.03, 0.03)	0.64 (0.63, 0.66)	0.42 (0.42, 0.43)			
	30	0.01 (0.00, 0.01)	0.03 (0.03, 0.03)	0.10 (0.10, 0.11)	0.65 (0.64, 0.66)	0.43 (0.42, 0.43)			
	40	0.03 (0.02, 0.03)	0.10 (0.10, 0.10)	0.26 (0.25, 0.26)	0.65 (0.64, 0.67)	0.43 (0.43, 0.44)			
	50	0.08 (0.07, 0.08)	0.24 (0.23, 0.24)	0.45 (0.44, 0.46)	0.65 (0.63, 0.66)	0.44 (0.43, 0.44)			
	60	0.17 (0.16, 0.18)	0.40 (0.39, 0.41)	0.57 (0.56, 0.58)	0.60 (0.59, 0.62)	0.43 (0.43, 0.44)			
	70	0.26 (0.26, 0.27)	0.46 (0.45, 0.47)	- (- , -)	0.50 (0.49, 0.51)	0.39 (0.38, 0.40)			
White	0	0.00 (0.00, 0.00)	0.00 (0.00, 0.00)	0.00 (0.00, 0.00)	0.59 (0.58, 0.60)	0.39 (0.39, 0.40)			
	10	0.00 (0.00, 0.00)	0.00 (0.00, 0.00)	0.01 (0.00, 0.01)	0.60 (0.58, 0.61)	0.40 (0.39, 0.40)			
	20	0.00 (0.00, 0.00)	0.00 (0.00, 0.01)	0.03 (0.02, 0.03)	0.60 (0.59, 0.61)	0.40 (0.40, 0.41)			
	30	0.00 (0.00, 0.01)	0.03 (0.02, 0.03)	0.09 (0.09, 0.10)	0.60 (0.59, 0.62)	0.40 (0.40, 0.41)			
	40	0.02 (0.02, 0.02)	0.09 (0.09, 0.09)	0.23 (0.23, 0.24)	0.61 (0.59, 0.62)	0.41 (0.40, 0.41)			
	50	0.07 (0.07, 0.07)	0.22 (0.21, 0.22)	0.42 (0.41, 0.43)	0.60 (0.59, 0.61)	0.41 (0.41, 0.42)			
	60	0.16 (0.15, 0.16)	0.37 (0.36, 0.38)	0.53 (0.52, 0.54)	0.56 (0.55, 0.57)	0.41 (0.40, 0.41)			
	70	0.25 (0.24, 0.26)	0.43 (0.42, 0.44)	- (- , -)	0.46 (0.45, 0.48)	0.37 (0.37, 0.38)			
Black	0	0.00 (0.00, 0.00)	0.00 (0.00, 0.00)	0.00 (0.00, 0.00)	1.08 (1.03, 1.13)	0.63 (0.62, 0.65)			
	10	0.00 (0.00, 0.00)	0.00 (0.00, 0.00)	0.02 (0.01, 0.02)	1.11 (1.06, 1.16)	0.65 (0.63, 0.67)			
	20	0.00 (0.00, 0.00)	0.02 (0.01, 0.02)	0.07 (0.06, 0.08)	1.11 (1.06, 1.16)	0.65 (0.63, 0.67)			
	30	0.01 (0.01, 0.02)	0.07 (0.06, 0.08)	0.22 (0.20, 0.24)	1.13 (1.08, 1.18)	0.66 (0.64, 0.68)			
	40	0.06 (0.05, 0.07)	0.21 (0.20, 0.23)	0.50 (0.48, 0.53)	1.14 (1.09, 1.20)	0.68 (0.66, 0.69)			
	50	0.16 (0.15, 0.17)	0.47 (0.44, 0.50)	0.85 (0.81, 0.89)	1.14 (1.08, 1.20)	0.69 (0.67, 0.71)			
	60	0.35 (0.32, 0.37)	0.77 (0.73, 0.82)	1.03 (0.97, 1.08)	1.09 (1.04, 1.15)	0.69 (0.67, 0.71)			
	70	0.53 (0.49, 0.57)	0.85 (0.79, 0.91)	- (- , -)	0.93 (0.87, 1.00)	0.63 (0.61, 0.66)			
80	0.50 (0.45, 0.55)	- (- , -)	- (- , -)	0.63 (0.56, 0.70)	0.47 (0.45, 0.50)				

Devcan Version 6.4.0, April 2009, National Cancer Institute (<http://srab.cancer.gov/devcan/>).

Source: Incidence data are from the SEER 17 areas (San Francisco, Connecticut, Detroit, Hawaii, Iowa, New Mexico, Seattle, Utah, Atlanta, San Jose-Monterey, Los Angeles, Alaska Native Registry, Rural Georgia, California excluding SF/SJM/LA, Kentucky, Louisiana and New Jersey). Mortality data are from the NCHS public use data file for the total US.

- Statistic could not be calculated.

A percent or confidence interval value of 0.00 represents a value that is below 0.005.

Table 18.11 - continued
Myeloma

Risk of Being Diagnosed With Cancer in 10, 20 and 30 Years,
Lifetime Risk of Being Diagnosed with Cancer Given Alive and Cancer-Free at Current Age, and
Lifetime Risk of Dying from Cancer Given Alive at Current Age
Both Sexes, 2004-2006 By Race/Ethnicity

Race/ Ethnicity	Current Age	Risk of Being Diagnosed with Cancer					Risk of Dying from Cancer	
		+10 yrs Percent (95% C.I.)	+20 yrs Percent (95% C.I.)	+30 yrs Percent (95% C.I.)	Eventually Percent (95% C.I.)	Eventually Percent (95% C.I.)		
Asian/ Pacific Islander	0	0.00 (0.00, 0.00)	0.00 (0.00, 0.00)	0.00 (0.00, 0.00)	0.47 (0.42, 0.52)	0.26 (0.23, 0.29)		
	10	0.00 (0.00, 0.00)	0.00 (0.00, 0.00)	0.00 (0.00, 0.00)	0.47 (0.43, 0.53)	0.26 (0.23, 0.30)		
	20	0.00 (0.00, 0.00)	0.00 (0.00, 0.00)	0.02 (0.01, 0.02)	0.47 (0.43, 0.53)	0.26 (0.23, 0.30)		
	30	0.00 (0.00, 0.00)	0.02 (0.01, 0.02)	0.05 (0.05, 0.06)	0.47 (0.43, 0.53)	0.26 (0.23, 0.30)		
	40	0.01 (0.01, 0.02)	0.05 (0.04, 0.06)	0.15 (0.13, 0.17)	0.47 (0.43, 0.53)	0.26 (0.24, 0.30)		
	50	0.04 (0.03, 0.05)	0.14 (0.12, 0.15)	0.28 (0.25, 0.31)	0.47 (0.42, 0.52)	0.26 (0.23, 0.30)		
	60	0.10 (0.09, 0.12)	0.25 (0.22, 0.28)	0.40 (0.36, 0.44)	0.44 (0.40, 0.50)	0.25 (0.22, 0.29)		
	70	0.16 (0.14, 0.18)	0.32 (0.29, 0.36)	- (- , -)	0.37 (0.32, 0.43)	0.22 (0.20, 0.26)		
	80	0.20 (0.17, 0.24)	- (- , -)	- (- , -)	0.26 (0.21, 0.32)	0.16 (0.13, 0.21)		
American Indian/ Alaska Native ^a	0	0.00 (0.00, 0.02)	0.00 (0.00, 0.02)	0.00 (0.00, 0.02)	0.47 (0.34, 0.82)	0.33 (0.27, 0.44)		
	10	0.00 (0.00, 0.01)	0.00 (0.00, 0.01)	0.01 (0.00, 0.03)	0.48 (0.35, 0.83)	0.34 (0.27, 0.45)		
	20	0.00 (0.00, 0.01)	0.01 (0.00, 0.03)	0.03 (0.01, 0.06)	0.48 (0.35, 0.84)	0.34 (0.28, 0.46)		
	30	0.01 (0.00, 0.03)	0.03 (0.01, 0.06)	0.10 (0.06, 0.15)	0.49 (0.36, 0.85)	0.35 (0.28, 0.46)		
	40	0.02 (0.01, 0.04)	0.09 (0.06, 0.14)	0.23 (0.16, 0.32)	0.49 (0.35, 0.87)	0.36 (0.29, 0.48)		
	50	0.07 (0.04, 0.12)	0.22 (0.15, 0.31)	0.41 (0.30, 0.57)	0.49 (0.35, 0.88)	0.37 (0.29, 0.49)		
	60	0.16 (0.10, 0.25)	0.36 (0.25, 0.52)	0.44 (0.30, 0.64)	0.45 (0.30, 0.87)	0.34 (0.26, 0.47)		
	70	0.24 (0.14, 0.39)	0.33 (0.20, 0.54)	- (- , -)	0.34 (0.20, 0.82)	0.27 (0.19, 0.42)		
	80	0.13 (0.04, 0.33)	- (- , -)	- (- , -)	0.13 (0.04, 0.79)	0.12 (0.06, 0.32)		
Hispanic ^b	0	0.00 (0.00, 0.00)	0.00 (0.00, 0.00)	0.00 (0.00, 0.00)	0.66 (0.62, 0.71)	0.39 (0.37, 0.41)		
	10	0.00 (0.00, 0.00)	0.00 (0.00, 0.00)	0.01 (0.00, 0.01)	0.67 (0.62, 0.72)	0.39 (0.37, 0.42)		
	20	0.00 (0.00, 0.00)	0.01 (0.00, 0.01)	0.03 (0.03, 0.04)	0.67 (0.63, 0.72)	0.39 (0.37, 0.42)		
	30	0.00 (0.00, 0.01)	0.03 (0.03, 0.03)	0.10 (0.09, 0.11)	0.67 (0.63, 0.73)	0.40 (0.37, 0.42)		
	40	0.03 (0.02, 0.03)	0.10 (0.09, 0.11)	0.26 (0.24, 0.28)	0.68 (0.63, 0.73)	0.40 (0.38, 0.43)		
	50	0.07 (0.07, 0.08)	0.24 (0.22, 0.26)	0.46 (0.43, 0.49)	0.67 (0.62, 0.72)	0.40 (0.38, 0.43)		
	60	0.17 (0.16, 0.19)	0.41 (0.38, 0.44)	0.58 (0.54, 0.62)	0.62 (0.58, 0.68)	0.39 (0.37, 0.42)		
	70	0.26 (0.24, 0.29)	0.45 (0.41, 0.49)	- (- , -)	0.50 (0.45, 0.56)	0.34 (0.32, 0.37)		
	80	0.24 (0.21, 0.28)	- (- , -)	- (- , -)	0.31 (0.26, 0.37)	0.24 (0.21, 0.27)		

Devcan Version 6.4.0, April 2009, National Cancer Institute (<http://srab.cancer.gov/devcan/>).

Source: Incidence data are from the SEER 17 areas (San Francisco, Connecticut, Detroit, Hawaii, Iowa, New Mexico, Seattle, Utah, Atlanta, San Jose-Monterey, Los Angeles, Alaska Native Registry, Rural Georgia, California excluding SF/SJM/LA, Kentucky, Louisiana and New Jersey). Mortality data are from the NCHS public use data file for the total US.

^a Underlying incidence and mortality data for American Indian/Alaska Native are based on the CHSDA (Contract Health Service Delivery Area) counties.

^b Hispanic is not mutually exclusive from whites, blacks, Asian/Pacific Islanders, and American Indians/Alaska Natives. Underlying incidence data for Hispanics are based on NHIA and exclude cases from the Alaska Native Registry.

- Underlying mortality data for Hispanics exclude deaths from the District of Columbia, Minnesota, New Hampshire and North Dakota. Statistic could not be calculated.

A percent or confidence interval value of 0.00 represents a value that is below 0.005.

Table 18.11 - continued

Myeloma

Risk of Being Diagnosed With Cancer in 10, 20 and 30 Years,
 Lifetime Risk of Being Diagnosed with Cancer Given Alive and Cancer-Free at Current Age, and
 Lifetime Risk of Dying from Cancer Given Alive at Current Age
 Males, 2004-2006 By Race/Ethnicity

Race/ Ethnicity	Current Age	Risk of Being Diagnosed with Cancer						Risk of Dying from Cancer	
		+10 yrs Percent (95% C.I.)	+20 yrs Percent (95% C.I.)	+30 yrs Percent (95% C.I.)	Eventually Percent (95% C.I.)	Eventually Percent (95% C.I.)			
All Races	0	0.00 (0.00, 0.00)	0.00 (0.00, 0.00)	0.00 (0.00, 0.00)	0.72 (0.70, 0.74)	0.46 (0.45, 0.46)			
	10	0.00 (0.00, 0.00)	0.00 (0.00, 0.00)	0.01 (0.01, 0.01)	0.73 (0.71, 0.75)	0.46 (0.46, 0.47)			
	20	0.00 (0.00, 0.00)	0.01 (0.01, 0.01)	0.04 (0.03, 0.04)	0.73 (0.71, 0.75)	0.47 (0.46, 0.47)			
	30	0.01 (0.01, 0.01)	0.04 (0.03, 0.04)	0.12 (0.11, 0.12)	0.74 (0.72, 0.76)	0.47 (0.46, 0.48)			
	40	0.03 (0.03, 0.03)	0.11 (0.11, 0.12)	0.30 (0.29, 0.31)	0.75 (0.73, 0.77)	0.48 (0.47, 0.49)			
	50	0.09 (0.08, 0.09)	0.28 (0.27, 0.29)	0.54 (0.52, 0.55)	0.74 (0.72, 0.76)	0.49 (0.48, 0.50)			
	60	0.21 (0.20, 0.22)	0.48 (0.47, 0.50)	0.67 (0.65, 0.69)	0.71 (0.69, 0.73)	0.49 (0.48, 0.50)			
	70	0.33 (0.32, 0.34)	0.55 (0.53, 0.57)	- (- , -)	0.59 (0.57, 0.61)	0.45 (0.44, 0.46)			
	80	0.33 (0.31, 0.35)	- (- , -)	- (- , -)	0.39 (0.37, 0.42)	0.34 (0.33, 0.35)			
White	0	0.00 (0.00, 0.00)	0.00 (0.00, 0.00)	0.00 (0.00, 0.00)	0.68 (0.66, 0.70)	0.44 (0.43, 0.45)			
	10	0.00 (0.00, 0.00)	0.00 (0.00, 0.00)	0.01 (0.01, 0.01)	0.69 (0.67, 0.71)	0.44 (0.44, 0.45)			
	20	0.00 (0.00, 0.00)	0.01 (0.01, 0.01)	0.03 (0.03, 0.04)	0.70 (0.68, 0.72)	0.45 (0.44, 0.45)			
	30	0.01 (0.00, 0.01)	0.03 (0.03, 0.03)	0.11 (0.10, 0.11)	0.70 (0.68, 0.72)	0.45 (0.44, 0.46)			
	40	0.03 (0.02, 0.03)	0.10 (0.10, 0.11)	0.28 (0.27, 0.29)	0.71 (0.69, 0.73)	0.46 (0.45, 0.47)			
	50	0.08 (0.08, 0.08)	0.26 (0.25, 0.27)	0.51 (0.49, 0.52)	0.71 (0.68, 0.73)	0.47 (0.46, 0.48)			
	60	0.19 (0.18, 0.20)	0.46 (0.44, 0.48)	0.64 (0.62, 0.66)	0.67 (0.65, 0.69)	0.47 (0.46, 0.48)			
	70	0.31 (0.30, 0.33)	0.52 (0.50, 0.54)	- (- , -)	0.56 (0.54, 0.59)	0.43 (0.42, 0.44)			
	80	0.32 (0.30, 0.34)	- (- , -)	- (- , -)	0.38 (0.36, 0.40)	0.33 (0.32, 0.34)			
Black	0	0.00 (0.00, 0.00)	0.00 (0.00, 0.00)	0.00 (0.00, 0.01)	1.09 (1.02, 1.17)	0.64 (0.62, 0.67)			
	10	0.00 (0.00, 0.00)	0.00 (0.00, 0.01)	0.01 (0.01, 0.02)	1.12 (1.04, 1.20)	0.66 (0.63, 0.69)			
	20	0.00 (0.00, 0.01)	0.01 (0.01, 0.02)	0.07 (0.06, 0.08)	1.13 (1.05, 1.21)	0.67 (0.64, 0.70)			
	30	0.01 (0.01, 0.02)	0.07 (0.06, 0.08)	0.24 (0.22, 0.27)	1.15 (1.08, 1.23)	0.68 (0.65, 0.71)			
	40	0.06 (0.05, 0.07)	0.24 (0.22, 0.26)	0.56 (0.52, 0.61)	1.18 (1.10, 1.26)	0.70 (0.67, 0.73)			
	50	0.19 (0.17, 0.21)	0.53 (0.49, 0.58)	0.93 (0.87, 1.00)	1.18 (1.10, 1.27)	0.72 (0.69, 0.76)			
	60	0.40 (0.36, 0.44)	0.86 (0.79, 0.93)	1.10 (1.02, 1.19)	1.15 (1.06, 1.25)	0.74 (0.71, 0.77)			
	70	0.61 (0.55, 0.68)	0.92 (0.84, 1.02)	- (- , -)	1.00 (0.90, 1.11)	0.70 (0.66, 0.74)			
	80	0.55 (0.46, 0.65)	- (- , -)	- (- , -)	0.68 (0.56, 0.82)	0.55 (0.50, 0.60)			

Devcan Version 6.4.0, April 2009, National Cancer Institute (<http://srab.cancer.gov/devcan/>).

Source: Incidence data are from the SEER 17 areas (San Francisco, Connecticut, Detroit, Hawaii, Iowa, New Mexico, Seattle, Utah, Atlanta, San Jose-Monterey, Los Angeles, Alaska Native Registry, Rural Georgia, California excluding SF/SJM/LA, Kentucky, Louisiana and New Jersey). Mortality data are from the NCHS public use data file for the total US.

- Statistic could not be calculated.

A percent or confidence interval value of 0.00 represents a value that is below 0.005.

Table 18.11 - continued

Myeloma

Risk of Being Diagnosed With Cancer in 10, 20 and 30 Years,
Lifetime Risk of Being Diagnosed with Cancer Given Alive and Cancer-Free at Current Age, and
Lifetime Risk of Dying from Cancer Given Alive at Current Age
Males, 2004-2006 By Race/Ethnicity

Race/ Ethnicity	Current Age	Risk of Being Diagnosed with Cancer					Risk of Dying from Cancer	
		+10 yrs Percent (95% C.I.)	+20 yrs Percent (95% C.I.)	+30 yrs Percent (95% C.I.)	Eventually Percent (95% C.I.)	Eventually Percent (95% C.I.)		
Asian/ Pacific Islander	0	0.00 (0.00, 0.00)	0.00 (0.00, 0.00)	0.00 (0.00, 0.01)	0.53 (0.47, 0.62)	0.29 (0.25, 0.35)		
	10	0.00 (0.00, 0.00)	0.00 (0.00, 0.00)	0.00 (0.00, 0.01)	0.54 (0.47, 0.63)	0.29 (0.25, 0.36)		
	20	0.00 (0.00, 0.00)	0.00 (0.00, 0.01)	0.02 (0.01, 0.02)	0.54 (0.47, 0.63)	0.30 (0.25, 0.36)		
	30	0.00 (0.00, 0.01)	0.02 (0.01, 0.02)	0.06 (0.05, 0.07)	0.54 (0.47, 0.64)	0.30 (0.25, 0.36)		
	40	0.01 (0.01, 0.02)	0.06 (0.05, 0.07)	0.17 (0.15, 0.20)	0.55 (0.47, 0.64)	0.30 (0.26, 0.36)		
	50	0.05 (0.04, 0.06)	0.16 (0.14, 0.19)	0.33 (0.29, 0.37)	0.54 (0.47, 0.63)	0.30 (0.26, 0.36)		
	60	0.12 (0.10, 0.15)	0.30 (0.25, 0.34)	0.47 (0.41, 0.53)	0.52 (0.44, 0.61)	0.29 (0.25, 0.36)		
	70	0.19 (0.16, 0.23)	0.38 (0.33, 0.45)	- (- , -)	0.44 (0.36, 0.54)	0.27 (0.22, 0.34)		
	80	0.25 (0.19, 0.31)	- (- , -)	- (- , -)	0.32 (0.24, 0.44)	0.21 (0.16, 0.30)		
American Indian/ Alaska Native ^a	0	0.00 (0.00, 0.04)	0.00 (0.00, 0.04)	0.00 (0.00, 0.04)	0.50 (0.31, 1.40)	0.35 (0.26, 0.60)		
	10	0.00 (0.00, 0.02)	0.00 (0.00, 0.02)	0.02 (0.00, 0.05)	0.51 (0.31, 1.43)	0.36 (0.27, 0.62)		
	20	0.00 (0.00, 0.02)	0.02 (0.00, 0.05)	0.04 (0.02, 0.09)	0.52 (0.32, 1.44)	0.37 (0.27, 0.62)		
	30	0.02 (0.00, 0.05)	0.04 (0.02, 0.09)	0.12 (0.07, 0.20)	0.53 (0.32, 1.48)	0.38 (0.28, 0.64)		
	40	0.03 (0.01, 0.07)	0.11 (0.06, 0.19)	0.24 (0.14, 0.38)	0.53 (0.32, 1.51)	0.39 (0.29, 0.67)		
	50	0.08 (0.04, 0.16)	0.22 (0.12, 0.37)	0.40 (0.24, 0.64)	0.53 (0.31, 1.57)	0.40 (0.29, 0.70)		
	60	0.15 (0.07, 0.29)	0.35 (0.19, 0.60)	0.48 (0.26, 0.84)	0.49 (0.26, 1.63)	0.38 (0.26, 0.71)		
	70	0.24 (0.10, 0.49)	0.39 (0.17, 0.80)	- (- , -)	0.41 (0.18, 1.79)	0.33 (0.21, 0.74)		
	80	0.22 (0.03, 0.74)	- (- , -)	- (- , -)	0.24 (0.04, 2.28)	0.20 (0.08, 0.80)		
Hispanic ^b	0	0.00 (0.00, 0.00)	0.00 (0.00, 0.00)	0.00 (0.00, 0.00)	0.71 (0.64, 0.80)	0.41 (0.38, 0.45)		
	10	0.00 (0.00, 0.00)	0.00 (0.00, 0.00)	0.01 (0.00, 0.01)	0.72 (0.65, 0.81)	0.42 (0.38, 0.46)		
	20	0.00 (0.00, 0.00)	0.00 (0.00, 0.01)	0.04 (0.03, 0.04)	0.72 (0.66, 0.82)	0.42 (0.38, 0.46)		
	30	0.00 (0.00, 0.01)	0.03 (0.03, 0.04)	0.11 (0.09, 0.12)	0.73 (0.66, 0.83)	0.42 (0.39, 0.47)		
	40	0.03 (0.03, 0.04)	0.10 (0.09, 0.12)	0.29 (0.26, 0.32)	0.74 (0.67, 0.83)	0.43 (0.39, 0.47)		
	50	0.08 (0.06, 0.09)	0.26 (0.23, 0.29)	0.51 (0.47, 0.56)	0.73 (0.66, 0.83)	0.43 (0.40, 0.48)		
	60	0.20 (0.17, 0.23)	0.47 (0.42, 0.52)	0.64 (0.58, 0.71)	0.70 (0.62, 0.80)	0.43 (0.39, 0.48)		
	70	0.31 (0.27, 0.35)	0.51 (0.45, 0.58)	- (- , -)	0.57 (0.49, 0.68)	0.39 (0.34, 0.44)		
	80	0.28 (0.22, 0.34)	- (- , -)	- (- , -)	0.36 (0.28, 0.50)	0.28 (0.23, 0.35)		

Devcan Version 6.4.0, April 2009, National Cancer Institute (<http://srab.cancer.gov/devcan/>).

Source: Incidence data are from the SEER 17 areas (San Francisco, Connecticut, Detroit, Hawaii, Iowa, New Mexico, Seattle, Utah, Atlanta, San Jose-Monterey, Los Angeles, Alaska Native Registry, Rural Georgia, California excluding SF/SJM/LA, Kentucky, Louisiana and New Jersey). Mortality data are from the NCHS public use data file for the total US.

^a Underlying incidence and mortality data for American Indian/Alaska Native are based on the CHSDA (Contract Health Service Delivery Area) counties.

^b Hispanic is not mutually exclusive from whites, blacks, Asian/Pacific Islanders, and American Indians/Alaska Natives.

Underlying incidence data for Hispanics are based on NHIA and exclude cases from the Alaska Native Registry.

Underlying mortality data for Hispanics exclude deaths from the District of Columbia, Minnesota, New Hampshire and North Dakota.

- Statistic could not be calculated.

A percent or confidence interval value of 0.00 represents a value that is below 0.005.

Table 18.11 - continued

Myeloma

Risk of Being Diagnosed With Cancer in 10, 20 and 30 Years,
 Lifetime Risk of Being Diagnosed with Cancer Given Alive and Cancer-Free at Current Age, and
 Lifetime Risk of Dying from Cancer Given Alive at Current Age
 Females, 2004-2006 By Race/Ethnicity

Race/ Ethnicity	Current Age	Risk of Being Diagnosed with Cancer						Risk of Dying from Cancer	
		+10 yrs Percent (95% C.I.)	+20 yrs Percent (95% C.I.)	+30 yrs Percent (95% C.I.)	Eventually Percent (95% C.I.)	Eventually Percent (95% C.I.)			
All Races	0	0.00 (0.00, 0.00)	0.00 (0.00, 0.00)	0.00 (0.00, 0.00)	0.56 (0.55, 0.58)	0.38 (0.38, 0.39)			
	10	0.00 (0.00, 0.00)	0.00 (0.00, 0.00)	0.01 (0.00, 0.01)	0.57 (0.55, 0.58)	0.39 (0.38, 0.39)			
	20	0.00 (0.00, 0.00)	0.01 (0.00, 0.01)	0.03 (0.02, 0.03)	0.57 (0.55, 0.59)	0.39 (0.38, 0.39)			
	30	0.00 (0.00, 0.01)	0.03 (0.02, 0.03)	0.09 (0.09, 0.10)	0.57 (0.56, 0.59)	0.39 (0.38, 0.40)			
	40	0.02 (0.02, 0.02)	0.09 (0.08, 0.09)	0.21 (0.21, 0.22)	0.57 (0.56, 0.59)	0.39 (0.39, 0.40)			
	50	0.07 (0.06, 0.07)	0.20 (0.19, 0.20)	0.38 (0.37, 0.39)	0.56 (0.55, 0.58)	0.40 (0.39, 0.40)			
	60	0.14 (0.13, 0.14)	0.33 (0.32, 0.34)	0.48 (0.47, 0.50)	0.52 (0.50, 0.54)	0.39 (0.38, 0.39)			
	70	0.21 (0.20, 0.22)	0.39 (0.37, 0.40)	- (- , -)	0.43 (0.41, 0.44)	0.35 (0.34, 0.35)			
80	0.23 (0.22, 0.24)	- (- , -)	- (- , -)	0.28 (0.27, 0.30)	0.25 (0.24, 0.26)				
White	0	0.00 (0.00, 0.00)	0.00 (0.00, 0.00)	0.00 (0.00, 0.00)	0.51 (0.49, 0.52)	0.36 (0.35, 0.36)			
	10	0.00 (0.00, 0.00)	0.00 (0.00, 0.00)	0.00 (0.00, 0.00)	0.51 (0.50, 0.53)	0.36 (0.35, 0.37)			
	20	0.00 (0.00, 0.00)	0.00 (0.00, 0.00)	0.02 (0.02, 0.02)	0.51 (0.50, 0.53)	0.36 (0.35, 0.37)			
	30	0.00 (0.00, 0.00)	0.02 (0.02, 0.02)	0.08 (0.07, 0.08)	0.52 (0.50, 0.53)	0.36 (0.36, 0.37)			
	40	0.02 (0.01, 0.02)	0.08 (0.07, 0.08)	0.19 (0.18, 0.20)	0.52 (0.50, 0.53)	0.37 (0.36, 0.37)			
	50	0.06 (0.06, 0.06)	0.18 (0.17, 0.18)	0.34 (0.33, 0.35)	0.51 (0.49, 0.53)	0.37 (0.36, 0.37)			
	60	0.12 (0.11, 0.13)	0.29 (0.28, 0.31)	0.44 (0.42, 0.45)	0.47 (0.45, 0.49)	0.36 (0.35, 0.37)			
	70	0.19 (0.18, 0.20)	0.35 (0.34, 0.37)	- (- , -)	0.39 (0.37, 0.40)	0.33 (0.32, 0.33)			
80	0.21 (0.20, 0.22)	- (- , -)	- (- , -)	0.26 (0.24, 0.27)	0.24 (0.23, 0.24)				
Black	0	0.00 (0.00, 0.00)	0.00 (0.00, 0.00)	0.00 (0.00, 0.00)	1.08 (1.01, 1.15)	0.63 (0.60, 0.65)			
	10	0.00 (0.00, 0.00)	0.00 (0.00, 0.00)	0.02 (0.01, 0.02)	1.10 (1.03, 1.17)	0.64 (0.62, 0.67)			
	20	0.00 (0.00, 0.00)	0.02 (0.01, 0.02)	0.07 (0.06, 0.08)	1.10 (1.03, 1.18)	0.64 (0.62, 0.67)			
	30	0.02 (0.01, 0.02)	0.07 (0.06, 0.08)	0.20 (0.18, 0.22)	1.11 (1.04, 1.19)	0.65 (0.62, 0.67)			
	40	0.05 (0.05, 0.06)	0.19 (0.17, 0.21)	0.45 (0.42, 0.49)	1.11 (1.04, 1.19)	0.66 (0.63, 0.68)			
	50	0.14 (0.12, 0.16)	0.41 (0.38, 0.45)	0.78 (0.73, 0.84)	1.10 (1.03, 1.18)	0.67 (0.64, 0.70)			
	60	0.30 (0.27, 0.34)	0.70 (0.64, 0.76)	0.97 (0.90, 1.04)	1.05 (0.97, 1.13)	0.66 (0.63, 0.69)			
	70	0.47 (0.42, 0.52)	0.79 (0.72, 0.87)	- (- , -)	0.89 (0.81, 0.97)	0.59 (0.56, 0.62)			
80	0.47 (0.40, 0.53)	- (- , -)	- (- , -)	0.60 (0.52, 0.69)	0.43 (0.40, 0.47)				

Devcan Version 6.4.0, April 2009, National Cancer Institute (<http://srab.cancer.gov/devcan/>).

Source: Incidence data are from the SEER 17 areas (San Francisco, Connecticut, Detroit, Hawaii, Iowa, New Mexico, Seattle, Utah, Atlanta, San Jose-Monterey, Los Angeles, Alaska Native Registry, Rural Georgia, California excluding SF/SJM/LA, Kentucky, Louisiana and New Jersey). Mortality data are from the NCHS public use data file for the total US.

- Statistic could not be calculated.

A percent or confidence interval value of 0.00 represents a value that is below 0.005.

Table 18.11 - continued
Myeloma

Risk of Being Diagnosed With Cancer in 10, 20 and 30 Years,
Lifetime Risk of Being Diagnosed with Cancer Given Alive and Cancer-Free at Current Age, and
Lifetime Risk of Dying from Cancer Given Alive at Current Age
Females, 2004-2006 By Race/Ethnicity

Race/ Ethnicity	Current Age	Risk of Being Diagnosed with Cancer						Risk of Dying from Cancer	
		+10 yrs Percent (95% C.I.)	+20 yrs Percent (95% C.I.)	+30 yrs Percent (95% C.I.)	Eventually Percent (95% C.I.)	Eventually Percent (95% C.I.)			
Asian/ Pacific Islander	0	0.00 (0.00, 0.00)	0.00 (0.00, 0.00)	0.00 (0.00, 0.00)	0.41 (0.35, 0.49)	0.23 (0.20, 0.28)			
	10	0.00 (0.00, 0.00)	0.00 (0.00, 0.00)	0.00 (0.00, 0.01)	0.41 (0.36, 0.49)	0.23 (0.20, 0.28)			
	20	0.00 (0.00, 0.00)	0.00 (0.00, 0.01)	0.01 (0.01, 0.02)	0.41 (0.36, 0.49)	0.23 (0.20, 0.28)			
	30	0.00 (0.00, 0.01)	0.01 (0.01, 0.02)	0.05 (0.04, 0.06)	0.41 (0.36, 0.49)	0.23 (0.20, 0.29)			
	40	0.01 (0.01, 0.02)	0.05 (0.04, 0.06)	0.13 (0.11, 0.15)	0.41 (0.36, 0.49)	0.23 (0.20, 0.29)			
	50	0.03 (0.03, 0.04)	0.12 (0.10, 0.14)	0.24 (0.21, 0.27)	0.40 (0.35, 0.49)	0.23 (0.20, 0.28)			
	60	0.08 (0.07, 0.10)	0.21 (0.18, 0.25)	0.34 (0.30, 0.39)	0.38 (0.32, 0.46)	0.22 (0.19, 0.27)			
	70	0.13 (0.11, 0.16)	0.27 (0.23, 0.32)	- (- , -)	0.31 (0.26, 0.40)	0.19 (0.16, 0.25)			
	80	0.16 (0.13, 0.21)	- (- , -)	- (- , -)	0.21 (0.16, 0.31)	0.13 (0.10, 0.19)			
American Indian/ Alaska Native ^a	0	0.00 (0.00, 0.04)	0.00 (0.00, 0.04)	0.00 (0.00, 0.04)	0.45 (0.28, 1.03)	0.31 (0.23, 0.49)			
	10	0.00 (0.00, 0.02)	0.00 (0.00, 0.02)	0.01 (0.00, 0.04)	0.46 (0.29, 1.04)	0.32 (0.24, 0.50)			
	20	0.00 (0.00, 0.02)	0.01 (0.00, 0.04)	0.02 (0.00, 0.06)	0.46 (0.29, 1.05)	0.32 (0.24, 0.50)			
	30	0.01 (0.00, 0.04)	0.02 (0.00, 0.06)	0.08 (0.04, 0.15)	0.46 (0.29, 1.06)	0.33 (0.24, 0.50)			
	40	0.01 (0.00, 0.04)	0.07 (0.03, 0.14)	0.22 (0.13, 0.37)	0.46 (0.29, 1.07)	0.33 (0.24, 0.51)			
	50	0.06 (0.03, 0.13)	0.22 (0.12, 0.37)	0.42 (0.26, 0.65)	0.47 (0.29, 1.09)	0.34 (0.25, 0.53)			
	60	0.17 (0.08, 0.30)	0.38 (0.22, 0.61)	0.43 (0.25, 0.71)	0.43 (0.25, 1.09)	0.31 (0.21, 0.50)			
	70	0.24 (0.11, 0.46)	0.30 (0.14, 0.58)	- (- , -)	0.30 (0.14, 1.05)	0.22 (0.14, 0.44)			
	80	0.07 (0.01, 0.32)	- (- , -)	- (- , -)	0.07 (0.01, 1.08)	0.07 (0.02, 0.37)			
Hispanic ^b	0	0.00 (0.00, 0.00)	0.00 (0.00, 0.00)	0.00 (0.00, 0.00)	0.62 (0.56, 0.69)	0.37 (0.34, 0.41)			
	10	0.00 (0.00, 0.00)	0.00 (0.00, 0.00)	0.01 (0.00, 0.01)	0.63 (0.57, 0.70)	0.38 (0.35, 0.41)			
	20	0.00 (0.00, 0.00)	0.01 (0.00, 0.01)	0.03 (0.02, 0.03)	0.63 (0.57, 0.70)	0.38 (0.35, 0.41)			
	30	0.01 (0.00, 0.01)	0.03 (0.02, 0.03)	0.10 (0.08, 0.11)	0.63 (0.57, 0.70)	0.38 (0.35, 0.41)			
	40	0.02 (0.02, 0.03)	0.09 (0.08, 0.10)	0.23 (0.21, 0.26)	0.63 (0.57, 0.70)	0.38 (0.35, 0.41)			
	50	0.07 (0.06, 0.08)	0.21 (0.19, 0.24)	0.42 (0.38, 0.46)	0.62 (0.56, 0.69)	0.38 (0.35, 0.41)			
	60	0.15 (0.13, 0.17)	0.36 (0.32, 0.40)	0.52 (0.47, 0.58)	0.56 (0.51, 0.64)	0.36 (0.33, 0.40)			
	70	0.23 (0.20, 0.26)	0.41 (0.36, 0.46)	- (- , -)	0.45 (0.40, 0.53)	0.31 (0.28, 0.35)			
	80	0.22 (0.18, 0.27)	- (- , -)	- (- , -)	0.28 (0.22, 0.36)	0.21 (0.18, 0.25)			

Devcan Version 6.4.0, April 2009, National Cancer Institute (<http://srab.cancer.gov/devcan/>).

Source: Incidence data are from the SEER 17 areas (San Francisco, Connecticut, Detroit, Hawaii, Iowa, New Mexico, Seattle, Utah, Atlanta, San Jose-Monterey, Los Angeles, Alaska Native Registry, Rural Georgia, California excluding SF/SJM/LA, Kentucky, Louisiana and New Jersey). Mortality data are from the NCHS public use data file for the total US.

^a Underlying incidence and mortality data for American Indian/Alaska Native are based on the CHSDA (Contract Health Service Delivery Area) counties.

^b Hispanic is not mutually exclusive from whites, blacks, Asian/Pacific Islanders, and American Indians/Alaska Natives.

Underlying incidence data for Hispanics are based on NHIA and exclude cases from the Alaska Native Registry.

Underlying mortality data for Hispanics exclude deaths from the District of Columbia, Minnesota, New Hampshire and North Dakota.

- Statistic could not be calculated.

A percent or confidence interval value of 0.00 represents a value that is below 0.005.

Table 18.12
Myeloma

SEER Incidence and U.S. Mortality
Age-Adjusted Rates and Trends^a
By Race/Ethnicity and Sex

SEER Incidence	SEER 17 Areas ^b			SEER 13 Areas ^b			SEER 9 Areas ^b		
	Rate 2002-2006			Trend 1997-2006 ^c			Trend 1997-2006 ^d		
	Rate per 100,000 persons			AAPC (%)			AAPC (%)		
RACE/ETHNICITY	Total	Males	Females	Total	Males	Females	Total	Males	Females
All Races	5.6	7.1	4.6	-0.3	-0.3	-0.3	-0.8*	-0.9	-1.1*
White	5.2	6.6	4.1	-0.2	-0.3	-0.4	-0.7	-0.9	-1.1
White Hispanic ^e	5.5	6.6	4.7	-0.5	-0.8	-0.1	-	-	-
White Non-Hispanic ^e	5.1	6.6	4.0	-0.2	-0.2	-0.5	-	-	-
Black	11.7	14.3	10.0	-0.3	0.0	-0.7	-0.8	0.3	-1.4
Asian/Pacific Islander	3.3	3.9	2.8	-0.7	-1.4*	0.3	-	-	-
Amer Ind/Alaska Nat ^f	4.8	4.6	5.1	-	-	-	-	-	-
Hispanic ^e	5.4	6.4	4.7	-0.4	-0.7	-0.1	-	-	-
<u>U.S. Mortality^g</u>									
U.S. Mortality ^g	Rate 2002-2006			Trend 1997-2006 ^h					
	Rate per 100,000 persons			AAPC (%)					
	Total	Males	Females	Total	Males	Females			
RACE/ETHNICITY	Total	Males	Females	Total	Males	Females			
All Races	3.6	4.5	3.0	-1.3*	-1.1*	-1.5*			
White	3.4	4.3	2.7	-1.2*	-1.0*	-1.4*			
White Hispanic ^e	3.0	3.5	2.6	-0.5	-1.1	-1.6*			
White Non-Hispanic ^e	3.4	4.3	2.7	-1.1*	-1.0*	-1.3*			
Black	6.8	8.2	5.8	-1.9*	-1.3*	-2.1*			
Asian/Pacific Islander	1.6	1.9	1.5	-1.3*	-2.1*	-0.4			
Amer Ind/Alaska Nat									
Total U.S.	2.8	3.3	2.5	-0.7	-	-			
CHSDA Counties	3.6	4.3	3.3	-0.5	-	-			
Non-CHSDA Counties	1.7	2.0	1.5	-	-	-			
Hispanic ^e	2.9	3.4	2.6	-0.4	-1.0	-1.5*			

The AAPC is the Average Annual Percent Change over the time interval. The AAPCs are calculated by the Joinpoint Regression Program Version 3.3, April 2008, National Cancer Institute.

- Statistic not shown. Rate based on less than 16 cases for the time interval.

Trend based on less than 10 cases for at least one year within the time interval.

a Rates are age-adjusted to the 2000 US Std Population (19 age groups - Census P25-1130). Trends

are based on rates age-adjusted to the 2000 US Std Population (19 age groups - Census P25-1130).

b The SEER 9 areas are San Francisco, Connecticut, Detroit, Hawaii, Iowa, New Mexico, Seattle, Utah and Atlanta.

The SEER 13 areas comprise the SEER 9 areas plus San Jose-Monterey, Los Angeles, the Alaska Native Registry and Rural Georgia.

The SEER 17 areas comprise the SEER 13 areas plus California excluding SF/SJM/LA, Kentucky, Louisiana and New Jersey.

c The 1997-2006 AAPC estimates are based on a Joinpoint analysis with up to 2 Joinpoints over diagnosis years 1992-2006.

d The 1997-2006 AAPC estimates are based on a Joinpoint analysis with up to 4 Joinpoints over diagnosis years 1975-2006.

e Hispanic and Non-Hispanic are not mutually exclusive from whites, blacks, Asian/Pacific Islanders, and American Indians/Alaska Natives. Incidence data for Hispanics and Non-Hispanics are based on NHIA and exclude cases from the Alaska Native Registry. The 2002-2006 Hispanic and Non-Hispanic death rates exclude deaths from the District of Columbia, Minnesota, New Hampshire and North Dakota. The 1997-2006 Hispanic and Non-Hispanic mortality trends exclude deaths from Connecticut, the District of Columbia, Maine, Maryland, Minnesota, New Hampshire, New York, North Dakota, Oklahoma and Vermont.

f Incidence data for American Indian/Alaska Native are based on the CHSDA(Contract Health Service Delivery Area) counties.

g US Mortality Files, National Center for Health Statistics, CDC.

h The 1997-2006 mortality AAPCs are based on a Joinpoint analysis using years of death 1992-2006.

* The APC is significantly different from zero (p<.05).

Table 18.13
MyelomaAge-Adjusted SEER Incidence Rates^a
By Registry, Race and Sex

	All Races			Whites			Blacks		
	Total	Males	Females	Total	Males	Females	Total	Males	Females
<u>SEER Incidence Rates^a, 2002-2006</u>									
Atlanta & Rural Georgia	6.24	7.76	5.11	4.83	6.07	3.91	10.32	13.41	8.23
Atlanta	6.23	7.68	5.18	4.95	6.20	4.04	10.11	12.81	8.25
Rural Georgia	6.75	9.80	4.27	-	-	-	14.16	22.36	-
California	5.24	6.52	4.24	5.02	6.34	3.97	11.37	13.43	9.90
Greater Bay Area	5.48	6.68	4.51	5.46	6.80	4.37	11.35	12.39	10.58
San Francisco-Oakland	5.37	6.47	4.50	5.16	6.45	4.10	11.25	12.02	10.64
San Jose-Monterey	5.70	7.15	4.54	6.03	7.45	4.88	12.31	16.30	-
Los Angeles	5.43	6.58	4.59	4.94	6.15	4.05	12.01	13.99	10.66
Greater California	5.07	6.45	3.97	4.92	6.29	3.82	10.46	13.51	8.19
Connecticut	5.63	7.11	4.58	5.20	6.56	4.24	10.69	14.58	8.02
Detroit	6.88	8.55	5.76	5.53	7.15	4.36	12.43	14.87	10.95
Hawaii	4.14	5.22	3.28	5.53	7.98	3.63	-	-	-
Iowa	5.31	6.92	4.15	5.18	6.79	4.00	16.21	-	16.19
Kentucky	5.85	7.49	4.72	5.43	7.07	4.28	12.72	15.58	11.02
Louisiana	6.72	8.51	5.43	4.80	6.17	3.78	12.72	16.38	10.32
New Jersey	6.13	7.61	5.05	5.49	7.09	4.28	11.86	13.10	11.05
New Mexico	5.29	6.57	4.26	5.32	6.72	4.19	-	-	-
Seattle-Puget Sound	5.99	7.95	4.47	5.92	7.86	4.40	11.72	16.14	7.87
Utah	4.60	5.71	3.66	4.66	5.74	3.72	-	-	-
9 SEER Areas ^b	5.68	7.14	4.59	5.31	6.83	4.16	11.36	13.87	9.69
11 SEER Areas ^b	5.63	7.02	4.59	5.28	6.73	4.18	11.53	13.93	9.93
13 SEER Areas ^b	5.63	7.02	4.59	5.27	6.72	4.17	11.56	14.03	9.90
17 SEER Areas ^b	5.63	7.06	4.56	5.19	6.65	4.08	11.73	14.26	10.03

^a Rates are per 100,000 and are age-adjusted to the 2000 US Std Population (19 age groups - Census P25-1130)^b The SEER 9 areas are San Francisco, Connecticut, Detroit, Hawaii, Iowa, New Mexico, Seattle, Utah and Atlanta.

The SEER 11 areas comprise the SEER 9 areas plus San Jose-Monterey and Los Angeles.

The SEER 13 areas comprise the SEER 11 areas plus the Alaska Native Registry and Rural Georgia.

The SEER 17 areas comprise the SEER 13 areas plus California excluding SF/SJM/LA, Kentucky, Louisiana and New Jersey.

- Statistic not shown. Rate based on less than 16 cases for the time interval.

Table 18.14

Myeloma

Age-Adjusted SEER Death Rates^a
By Registry, Race and Sex

	All Races			Whites			Blacks		
	Total	Males	Females	Total	Males	Females	Total	Males	Females
<u>SEER Death Rates^a, 2002-2006</u>									
Atlanta & Rural Georgia	3.96	4.78	3.36	3.22	3.99	2.66	6.06	7.35	5.17
Atlanta	4.00	4.78	3.42	3.30	4.05	2.75	6.04	7.15	5.24
Rural Georgia	3.69	-	-	-	-	-	6.92	-	-
California	3.33	4.13	2.74	3.28	4.20	2.60	7.33	7.98	6.89
Greater Bay Area	3.32	4.12	2.71	3.37	4.33	2.63	7.43	7.58	7.27
San Francisco-Oakland	3.41	4.19	2.83	3.33	4.31	2.60	7.46	7.39	7.40
San Jose-Monterey	3.14	3.97	2.47	3.46	4.35	2.72	-	-	-
Los Angeles	3.28	3.94	2.82	3.07	3.85	2.53	7.28	8.24	6.73
Greater California	3.36	4.23	2.71	3.34	4.30	2.62	7.27	7.80	6.83
Connecticut	3.59	4.21	3.17	3.39	4.02	2.97	6.66	6.95	6.41
Detroit	4.04	5.21	3.23	3.40	4.57	2.58	6.72	8.18	5.77
Hawaii	2.25	2.85	1.78	3.33	4.22	2.52	-	-	-
Iowa	3.54	4.48	2.92	3.48	4.35	2.90	11.57	-	-
Kentucky	3.84	4.98	3.06	3.65	4.73	2.91	7.65	10.00	5.89
Louisiana	4.21	5.49	3.33	3.24	4.18	2.58	7.48	10.30	5.71
New Jersey	3.58	4.39	3.04	3.29	4.18	2.69	6.85	7.36	6.46
New Mexico	3.35	4.39	2.55	3.33	4.39	2.50	-	-	-
Seattle-Puget Sound	3.71	4.91	2.86	3.74	4.96	2.86	7.40	8.91	6.24
Utah	3.31	4.14	2.69	3.29	4.15	2.65	-	-	-
9 SEER Areas ^b	3.58	4.48	2.94	3.44	4.40	2.76	6.73	7.89	5.95
11 SEER Areas ^b	3.49	4.33	2.89	3.37	4.28	2.71	6.89	8.02	6.15
13 SEER Areas ^b	3.49	4.33	2.89	3.37	4.27	2.72	6.87	8.03	6.12
17 SEER Areas ^b	3.53	4.41	2.91	3.36	4.29	2.69	7.04	8.39	6.15
Total U.S.	3.62	4.51	2.98	3.37	4.27	2.72	6.76	8.22	5.84

^a US Mortality Files, National Center for Health Statistics, Centers for Disease Control and Prevention.
Rates are per 100,000 and are age-adjusted to the 2000 US Std Population (19 age groups - Census P25-1130).

^b The SEER 9 areas are San Francisco, Connecticut, Detroit, Hawaii, Iowa, New Mexico, Seattle, Utah and Atlanta.
The SEER 11 areas comprise the SEER 9 areas plus San Jose-Monterey and Los Angeles.
The SEER 13 areas comprise the SEER 11 areas plus the Alaska Native Registry and Rural Georgia.
The SEER 17 areas comprise the SEER 13 areas plus California excluding SF/SJM/LA, Kentucky, Louisiana and New Jersey.
- Statistic not shown. Rate based on less than 16 cases for the time interval.

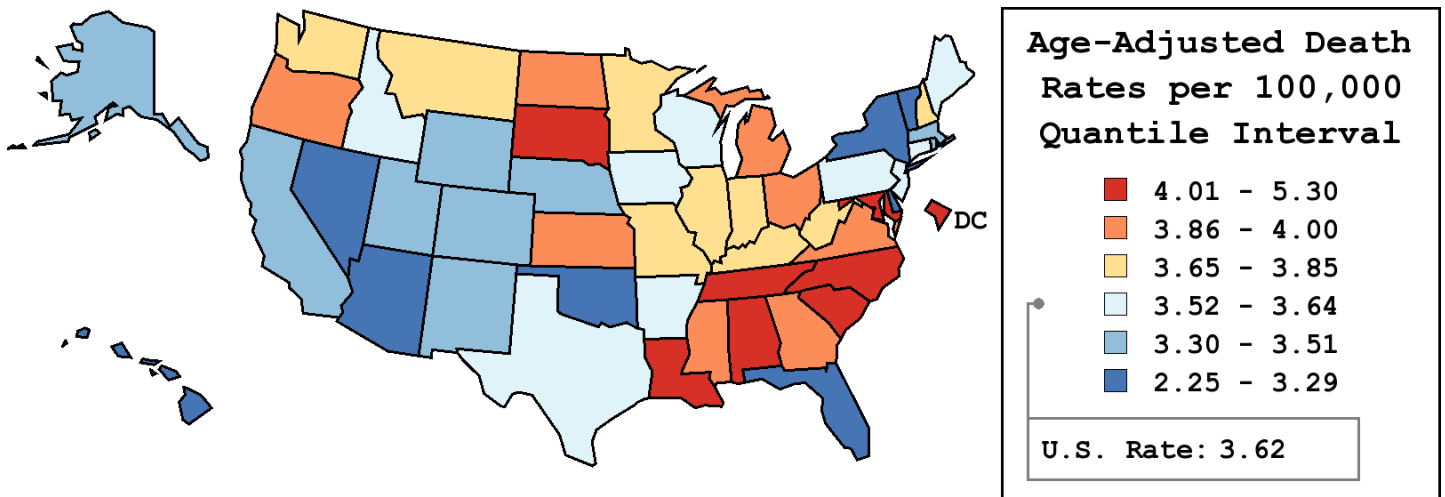
Table 18.15
Myeloma

Age-Adjusted Cancer Death^a Rates By State, All Races, 2002-2006

Males and Females

State	Rate	SE	Rank	PD
TOTAL U.S.	3.62	0.02		
High Five States				
D.C.	5.30	0.43	(01)	46.52 ^c
Alabama	4.40	0.14	(02)	21.46 ^c
South Carolina	4.26	0.14	(03)	17.75 ^c
South Dakota	4.22	0.31	(04)	16.54 ^c
Louisiana	4.21	0.14	(05)	16.30 ^c
Low Five States				
Vermont	3.20	0.31	(47)	-11.69
Arizona	3.17	0.10	(48)	-12.31
Nevada	3.10	0.17	(49)	-14.46
Florida	3.09	0.05	(50)	-14.65
Hawaii	2.25	0.18	(51)	-37.71 ^c

State	Rate	SE	Rank	PD	State	Rate	SE	Rank	PD
Alabama	4.40	0.14	(02)	21.46 ^c	Montana	3.77	0.27	(21)	4.21
Alaska	3.30	0.43	(43)	-8.78	Nebraska	3.34	0.19	(40)	-7.75
Arizona	3.17	0.10	(48)	-12.31	Nevada	3.10	0.17	(49)	-14.46
Arkansas	3.64	0.16	(26)	0.49	New Hampshire	3.83	0.24	(19)	5.70
California	3.33	0.05	(41)	-8.01	New Jersey	3.58	0.09	(30)	-0.96
Colorado	3.51	0.14	(35)	-3.10	New Mexico	3.35	0.19	(38)	-7.39
Connecticut	3.59	0.14	(29)	-0.67	New York	3.20	0.06	(46)	-11.53
Delaware	3.29	0.27	(44)	-8.95	North Carolina	4.16	0.10	(06)	15.01 ^c
D.C.	5.30	0.43	(01)	46.52 ^c	North Dakota	3.89	0.32	(15)	7.49
Florida	3.09	0.05	(50)	-14.65	Ohio	3.92	0.08	(14)	8.44
Georgia	3.87	0.10	(16)	6.98	Oklahoma	3.26	0.13	(45)	-9.80
Hawaii	2.25	0.18	(51)	-37.71 ^c	Oregon	3.94	0.14	(13)	8.85
Idaho	3.55	0.23	(33)	-1.91	Pennsylvania	3.57	0.07	(32)	-1.24
Illinois	3.75	0.08	(22)	3.59	Rhode Island	3.35	0.24	(39)	-7.44
Indiana	3.74	0.11	(23)	3.21	South Carolina	4.26	0.14	(03)	17.75 ^c
Iowa	3.54	0.14	(34)	-2.17	South Dakota	4.22	0.31	(04)	16.54 ^c
Kansas	3.98	0.17	(12)	10.01	Tennessee	4.15	0.12	(07)	14.61
Kentucky	3.84	0.14	(18)	6.24	Texas	3.62	0.06	(28)	-0.08
Louisiana	4.21	0.14	(05)	16.30 ^c	Utah	3.31	0.20	(42)	-8.55
Maine	3.63	0.22	(27)	0.18	Vermont	3.20	0.31	(47)	-11.69
Maryland	4.05	0.12	(08)	11.98	Virginia	4.00	0.11	(10)	10.53
Massachusetts	3.49	0.10	(36)	-3.64	Washington	3.73	0.11	(24)	2.93
Michigan	4.00	0.09	(09)	10.66	West Virginia	3.72	0.18	(25)	2.85
Minnesota	3.85	0.12	(17)	6.28	Wisconsin	3.58	0.11	(31)	-1.01
Mississippi	3.99	0.17	(11)	10.27	Wyoming	3.47	0.37	(37)	-4.01
Missouri	3.78	0.11	(20)	4.41					



^a US Mortality Files, National Center for Health Statistics, Centers for Disease Control and Prevention. Rates are per 100,000 and are age-adjusted to the 2000 US Std Population (19 age groups - Census P25-1130).

^b Difference between state rate and total U.S. rate is statistically significant ($p \leq .0002$).

^c Absolute percent difference between state rate and total U.S. rate is 15% or more.

SE Standard error of the rate.

PD Percent difference between state rate and total U.S. rate.

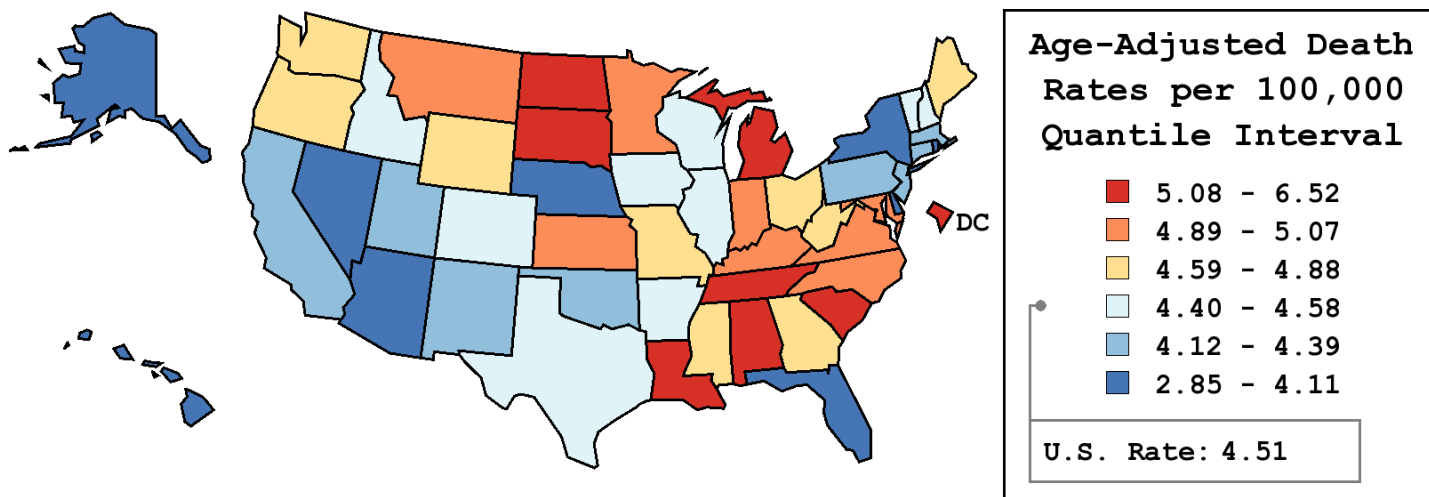
Table 18.16
Myeloma

Age-Adjusted Cancer Death^a Rates By State, All Races, 2002-2006

Males

State	Rate	SE	Rank	PD
TOTAL U.S.	4.51	0.03		
High Five States				
D.C.	6.52	0.78	(01)	44.39 ^c
Louisiana	5.49	0.25	(02)	21.64 ^c
South Dakota	5.34	0.53	(03)	18.36 ^c
Alabama	5.29	0.24	(04)	17.19 ^c
Michigan	5.22	0.16	(05)	15.73 ^c
Low Five States				
Arizona	4.06	0.18	(47)	-9.98
Florida	3.96	0.09	(48)	-12.23
Nevada	3.74	0.28	(49)	-17.19 ^c
Alaska	2.99	0.59	(50)	-33.75 ^c
Hawaii	2.85	0.30	(51)	-36.84 ^c

State	Rate	SE	Rank	PD	State	Rate	SE	Rank	PD
Alabama	5.29	0.24	(04)	17.19 ^c	Montana	5.07	0.47	(09)	12.29
Alaska	2.99	0.59	(50)	-33.75 ^c	Nebraska	4.11	0.32	(44)	-8.90
Arizona	4.06	0.18	(47)	-9.98	Nevada	3.74	0.28	(49)	-17.19 ^c
Arkansas	4.57	0.27	(28)	1.36	New Hampshire	4.44	0.40	(33)	-1.55
California	4.13	0.08	(42)	-8.37	New Jersey	4.39	0.15	(36)	-2.74
Colorado	4.51	0.24	(31)	-0.08	New Mexico	4.39	0.33	(35)	-2.74
Connecticut	4.21	0.23	(40)	-6.73	New York	4.07	0.10	(46)	-9.84
Delaware	4.11	0.48	(43)	-8.89	North Carolina	5.02	0.17	(11)	11.25
D.C.	6.52	0.78	(01)	44.39 ^c	North Dakota	5.09	0.56	(08)	12.76
Florida	3.96	0.09	(48)	-12.23	Ohio	4.76	0.14	(22)	5.59
Georgia	4.69	0.18	(23)	3.86	Oklahoma	4.28	0.24	(39)	-5.25
Hawaii	2.85	0.30	(51)	-36.84 ^c	Oregon	4.85	0.24	(19)	7.37
Idaho	4.52	0.40	(30)	0.10	Pennsylvania	4.32	0.12	(38)	-4.19
Illinois	4.53	0.13	(29)	0.31	Rhode Island	4.09	0.41	(45)	-9.37
Indiana	4.95	0.20	(14)	9.77	South Carolina	5.17	0.25	(07)	14.65
Iowa	4.48	0.25	(32)	-0.77	South Dakota	5.34	0.53	(03)	18.36 ^c
Kansas	4.93	0.29	(15)	9.14	Tennessee	5.20	0.21	(06)	15.28 ^c
Kentucky	4.98	0.24	(12)	10.33	Texas	4.43	0.11	(34)	-1.90
Louisiana	5.49	0.25	(02)	21.64 ^c	Utah	4.14	0.33	(41)	-8.26
Maine	4.88	0.40	(17)	8.19	Vermont	4.58	0.59	(27)	1.43
Maryland	4.91	0.22	(16)	8.90	Virginia	5.04	0.19	(10)	11.59
Massachusetts	4.36	0.18	(37)	-3.29	Washington	4.87	0.20	(18)	7.82
Michigan	5.22	0.16	(05)	15.73 ^c	West Virginia	4.78	0.33	(20)	5.97
Minnesota	4.98	0.22	(13)	10.31	Wisconsin	4.58	0.19	(26)	1.51
Mississippi	4.61	0.28	(25)	2.14	Wyoming	4.65	0.65	(24)	3.12
Missouri	4.77	0.19	(21)	5.78					



^a US Mortality Files, National Center for Health Statistics, Centers for Disease Control and Prevention. Rates are per 100,000 and are age-adjusted to the 2000 US Std Population (19 age groups - Census P25-1130).
^b Difference between state rate and total U.S. rate is statistically significant ($p \leq .0002$).
^c Absolute percent difference between state rate and total U.S. rate is 15% or more.
SE Standard error of the rate.
PD Percent difference between state rate and total U.S. rate.

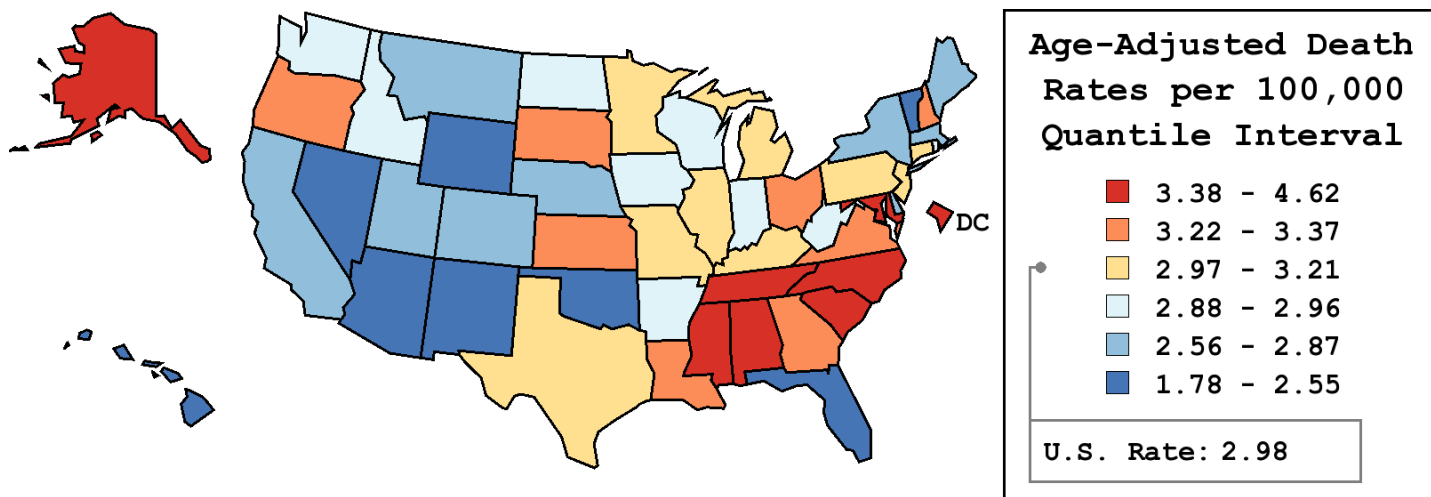
Table 18.17
Myeloma

Age-Adjusted Cancer Death^a Rates By State, All Races, 2002-2006

Females

State	Rate	SE	Rank	PD
TOTAL U.S.	2.98	0.02		
High Five States				
D.C.	4.62	0.52	(01)	54.73 ^c
Alabama	3.77	0.16	(02)	26.52 ^c
South Carolina	3.66	0.17	(03)	22.84 ^c
North Carolina	3.56	0.12	(04)	19.31 ^c
Mississippi	3.50	0.20	(05)	17.47 ^c
Low Five States				
Wyoming	2.48	0.43	(47)	-16.83 ^c
Arizona	2.47	0.12	(48)	-17.23 ^c
Florida	2.41	0.06	(49)	-19.24 ^c
Vermont	2.32	0.35	(50)	-22.39 ^c
Hawaii	1.78	0.22	(51)	-40.39 ^c

State	Rate	SE	Rank	PD	State	Rate	SE	Rank	PD
Alabama	3.77	0.16	(02)	26.52 ^c	Montana	2.77	0.31	(38)	-7.14
Alaska	3.46	0.60	(07)	16.14 ^c	Nebraska	2.79	0.23	(37)	-6.40
Arizona	2.47	0.12	(48)	-17.23 ^c	Nevada	2.54	0.21	(46)	-14.86
Arkansas	2.94	0.18	(28)	-1.57	New Hampshire	3.27	0.30	(14)	9.61
California	2.74	0.06	(39)	-8.17	New Jersey	3.04	0.11	(24)	1.77
Colorado	2.80	0.16	(36)	-6.15	New Mexico	2.55	0.22	(44)	-14.51
Connecticut	3.17	0.17	(18)	6.22	New York	2.62	0.07	(43)	-12.12
Delaware	2.72	0.33	(40)	-8.94	North Carolina	3.56	0.12	(04)	19.31 ^c
D.C.	4.62	0.52	(01)	54.73 ^c	North Dakota	2.94	0.38	(27)	-1.48
Florida	2.41	0.06	(49)	-19.24 ^c	Ohio	3.37	0.10	(09)	12.88
Georgia	3.32	0.13	(12)	11.19	Oklahoma	2.55	0.16	(45)	-14.58
Hawaii	1.78	0.22	(51)	-40.39 ^c	Oregon	3.25	0.18	(15)	9.07
Idaho	2.88	0.29	(34)	-3.60	Pennsylvania	3.06	0.08	(21)	2.60
Illinois	3.21	0.09	(17)	7.74	Rhode Island	2.90	0.29	(32)	-2.94
Indiana	2.92	0.13	(30)	-2.19	South Carolina	3.66	0.17	(03)	22.84 ^c
Iowa	2.92	0.17	(29)	-2.09	South Dakota	3.23	0.36	(16)	8.18
Kansas	3.32	0.20	(11)	11.22	Tennessee	3.42	0.14	(08)	14.52
Kentucky	3.06	0.16	(22)	2.47	Texas	3.02	0.08	(25)	1.14
Louisiana	3.33	0.16	(10)	11.67	Utah	2.69	0.24	(42)	-9.68
Maine	2.72	0.25	(41)	-8.96	Vermont	2.32	0.35	(50)	-22.39 ^c
Maryland	3.47	0.15	(06)	16.44 ^c	Virginia	3.29	0.13	(13)	10.36
Massachusetts	2.87	0.12	(35)	-3.83	Washington	2.91	0.13	(31)	-2.53
Michigan	3.13	0.10	(19)	4.94	West Virginia	2.96	0.22	(26)	-0.81
Minnesota	3.04	0.15	(23)	1.85	Wisconsin	2.89	0.13	(33)	-3.19
Mississippi	3.50	0.20	(05)	17.47 ^c	Wyoming	2.48	0.43	(47)	-16.83 ^c
Missouri	3.09	0.13	(20)	3.65					



^a US Mortality Files, National Center for Health Statistics, Centers for Disease Control and Prevention. Rates are per 100,000 and are age-adjusted to the 2000 US Std Population (19 age groups - Census P25-1130).
^b Difference between state rate and total U.S. rate is statistically significant ($p \leq .0002$).
^c Absolute percent difference between state rate and total U.S. rate is 15% or more.
SE Standard error of the rate.
PD Percent difference between state rate and total U.S. rate.

Table 18.18
Myeloma (Invasive)Estimated United States Cancer Prevalence Counts^a on January 1, 2006
By Race/Ethnicity, Sex and Years Since Diagnosis

Years Since Diagnosis		0 to <5	5 to <10	10 to <15	15 to <20	20 to <25	25 to <30	0 to <16 ^e	0 to <31 ^e	>=31 ^g	Complete ^h	
Race	Sex											
All Races ^b	Both Sexes	39,615	12,048	4,647	1,740	622	195	56,829	58,905	298	59,203	
	Males	21,534	6,777	2,616	1,054	301	88	31,232	32,370	113	32,483	
	Females	18,081	5,271	2,031	686	321	107	25,597	26,535	185	26,720	
White ^b	Both Sexes	30,902	9,472	3,556	1,265	363	182	44,323	45,751	87	45,838	
	Males	17,260	5,545	2,024	783	163	84	25,068	25,859	0 ⁱ	25,859	
	Females	13,642	3,927	1,532	482	200	98	19,255	19,892	87 ⁱ	19,979	
Black ^b	Both Sexes	7,133	2,118	911	403	229	0	10,275	10,819	+	+	
	Males	3,467	995	510	241	126	0	5,034	5,338	+	+	
	Females	3,666	1,123	401	162	103	0	5,241	5,481	+	+	
Asian/ Pacific Islander ^c	Both Sexes	862	291	110	+	+	+	1,270	+	+	+	
	Males	433	156	56	+	+	+	647	+	+	+	
	Females	429	135	54	+	+	+	623	+	+	+	
Hispanic ^d	Both Sexes	2,700	823	275	+	+	+	3,833	+	+	+	
	Males	1,399	470	161	+	+	+	2,054	+	+	+	
	Females	1,301	353	114	+	+	+	1,779	+	+	+	

Estimated prevalence percent^a on January 1, 2006, of the SEER 11 population diagnosed in the previous 16 years
By Age at Prevalence, Race/Ethnicity and Sex

Age at Prevalence	All Ages	Age Specific (Crude)									Age-Adjusted ^f	
		0-9	10-19	20-29	30-39	40-49	50-59	60-69	70-79	80+	All Ages	
Race	Sex											
All Races ^c	Both Sexes	0.0173%	-	-	0.0002%	0.0020%	0.0082%	0.0288%	0.0655%	0.0926%	0.0852%	0.0178%
	Males	0.0190%	-	-	0.0003%	0.0027%	0.0092%	0.0338%	0.0802%	0.1140%	0.1044%	0.0216%
	Females	0.0156%	-	-	-	0.0013%	0.0071%	0.0240%	0.0523%	0.0760%	0.0745%	0.0147%
White ^c	Both Sexes	0.0168%	-	-	-	0.0019%	0.0077%	0.0260%	0.0616%	0.0880%	0.0780%	0.0166%
	Males	0.0188%	-	-	-	0.0028%	0.0087%	0.0308%	0.0769%	0.1113%	0.0971%	0.0206%
	Females	0.0148%	-	-	-	0.0010%	0.0067%	0.0213%	0.0474%	0.0696%	0.0675%	0.0134%
Black ^c	Both Sexes	0.0259%	-	-	0.0007%	0.0039%	0.0155%	0.0611%	0.1252%	0.1703%	0.1732%	0.0348%
	Males	0.0270%	-	-	-	0.0040%	0.0175%	0.0698%	0.1557%	0.1944%	0.2041%	0.0407%
	Females	0.0249%	-	-	-	0.0037%	0.0138%	0.0540%	0.1014%	0.1542%	0.1583%	0.0305%
Asian/ Pacific Islander ^c	Both Sexes	0.0106%	-	-	-	0.0007%	0.0037%	0.0176%	0.0407%	0.0565%	0.0713%	0.0113%
	Males	0.0112%	-	-	-	-	0.0043%	0.0217%	0.0417%	0.0652%	0.0926%	0.0131%
	Females	0.0101%	-	-	-	-	0.0033%	0.0140%	0.0399%	0.0501%	0.0572%	0.0099%
Hispanic ^d	Both Sexes	0.0088%	-	-	-	0.0025%	0.0080%	0.0224%	0.0599%	0.0931%	0.0755%	0.0166%
	Males	0.0090%	-	-	-	0.0035%	0.0080%	0.0272%	0.0676%	0.1061%	0.0955%	0.0193%
	Females	0.0085%	-	-	-	0.0013%	0.0080%	0.0178%	0.0533%	0.0836%	0.0638%	0.0144%

^a US 2006 cancer prevalence counts are based on 2006 cancer prevalence proportions from the SEER registries and 1/1/2006 US population estimates based on the average of 2005 and 2006 population estimates from the US Bureau of the Census. Prevalence was calculated using the First Malignant Primary Only for a person.

^{b c d} Statistics based on (b) SEER 9 Areas (c) SEER 11 Areas and Rural Georgia (d) NHIA for Hispanic for SEER 11 Areas and Rural Georgia.

^e Maximum limited-duration prevalence: 31 years for 1975-2006 SEER 9 data; 16 years for 1990-2006 SEER 11 data (used to calculate prevalence for Hispanics and Asian Pacific Islanders).

^f Percentages are age-adjusted to the 2000 US Standard Population (19 age groups - Census P25-1130) by 5-year age groups.

^{g h i} (g) Cases diagnosed more than 31 years ago were estimated using the completeness index method (Capocaccia et. al. 1997, Merrill et. al. 2000). (h) Complete prevalence is obtained by summing 0 to <31 and >=31. (i) Age-specific completeness index was approximated using empirical data from historical Connecticut tumor registry.

- Statistic not shown. Statistic based on fewer than 5 cases estimated alive in SEER for the time interval.

+ Not available.

SEER Observed Incidence, SEER Delay Adjusted Incidence and US Death Rates^a Myeloma, by Race and Sex

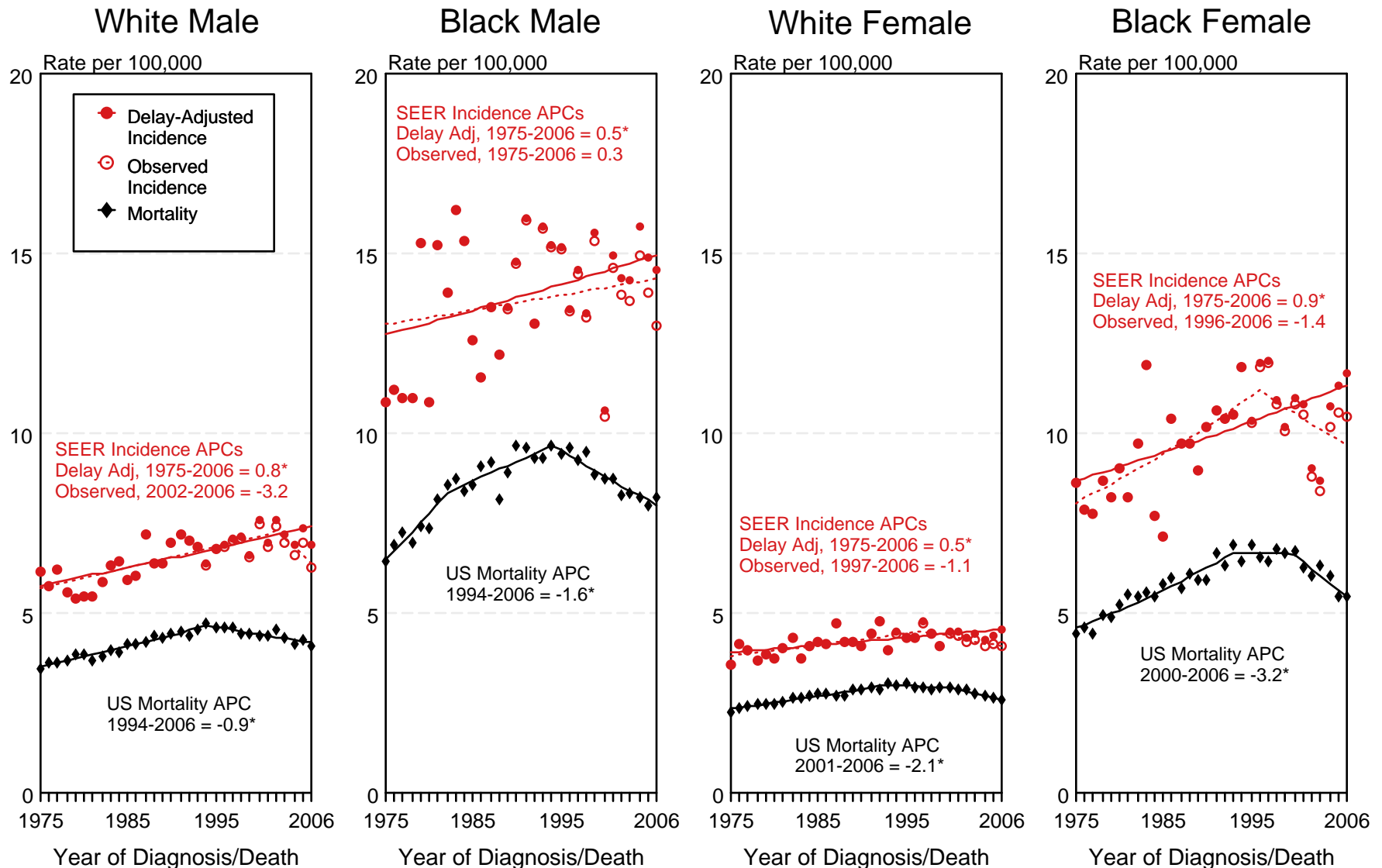


Figure 18.1

Source: SEER 9 areas and US Mortality Files (National Center for Health Statistics, CDC).

^a Rates are age-adjusted to the 2000 US Std Population (19 age groups - Census P25-1103).

Regression lines and APCs are calculated using the Joinpoint Regression Program Version 3.3.1, April 2008, National Cancer Institute.

The APC is the Annual Percent Change for the regression line segments. The APC shown on the graph is for the most recent trend.

The APC is significantly different from zero ($p < 0.05$).

*

SEER Incidence and US Death Rates^a Myeloma, Both Sexes

Joinpoint Analyses for Whites and Blacks from 1975-2006
and for Asian/Pacific Islanders, American Indians/Alaska Natives and Hispanics from 1992-2006

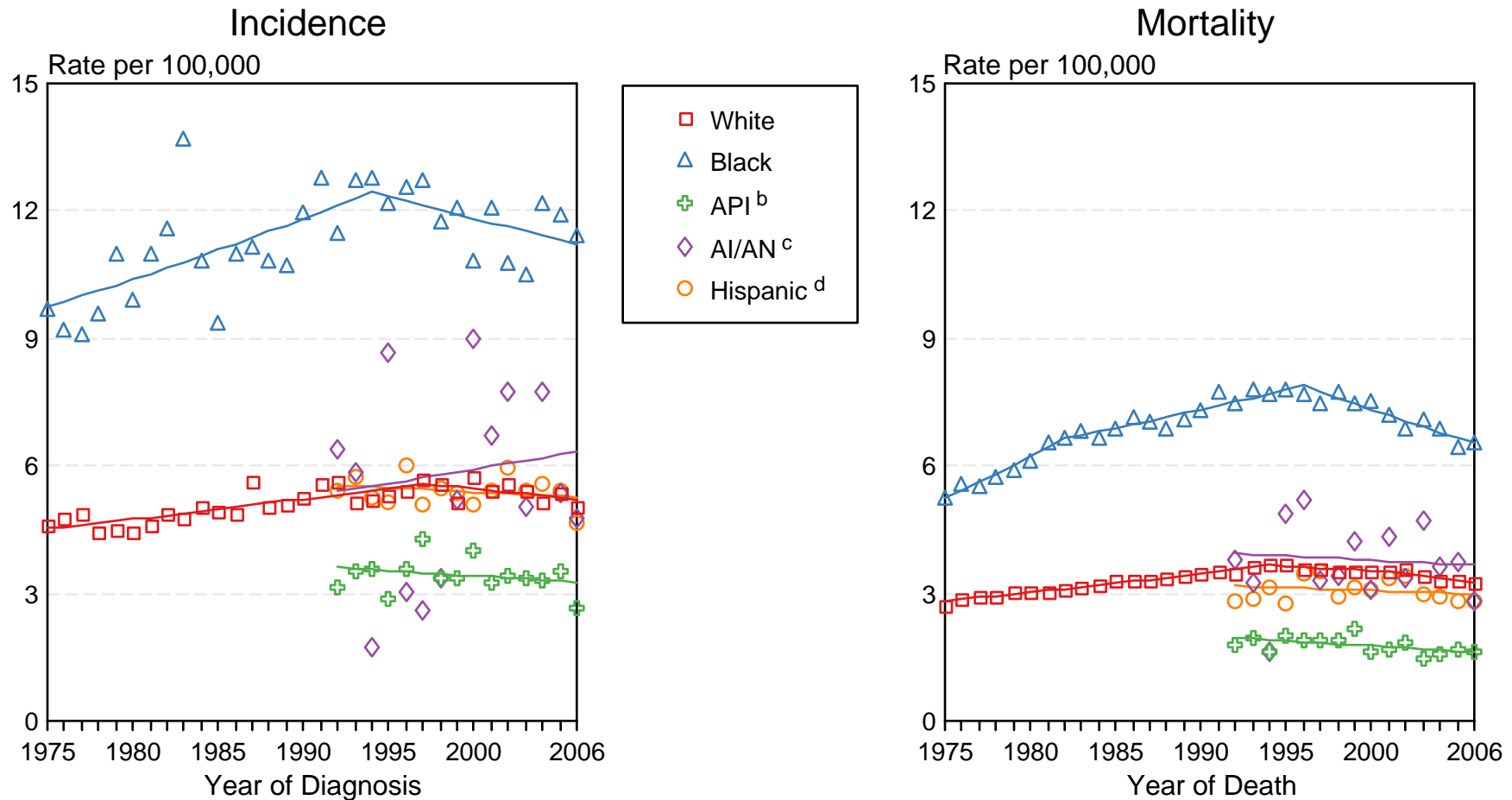


Figure 18.2

Source: Incidence data for whites and blacks are from the SEER 9 areas (San Francisco, Connecticut, Detroit, Hawaii, Iowa, New Mexico, Seattle, Utah, Atlanta). Incidence data for Asian/Pacific Islanders, American Indians/Alaska Natives and Hispanics are from the SEER 13 Areas (SEER 9 Areas, San Jose-Monterey, Los Angeles, Alaska Native Registry and Rural Georgia). Mortality data are from US Mortality Files, National Center for Health Statistics, CDC.

^a Rates are age-adjusted to the 2000 US Std Population (19 age groups - Census P25-1103).

Regression lines are calculated using the Joinpoint Regression Program Version 3.3.1, April 2008, National Cancer Institute. Joinpoint analyses for Whites and Blacks during the 1975-2006 period allow a maximum of 4 joinpoints. Analyses for other ethnic groups during the period 1992-2006 allow a maximum of 2 joinpoints.

^b API = Asian/Pacific Islander.

^c AI/AN = American Indian/Alaska Native. Rates for American Indian/Alaska Native are based on the CHSDA (Contract Health Service Delivery Area) counties.

^d Hispanic is not mutually exclusive from whites, blacks, Asian/Pacific Islanders, and American Indians/Alaska Natives. Incidence data for Hispanics are based on NHIA and exclude cases from the Alaska Native Registry. Mortality data for Hispanics exclude cases from Connecticut, the District of Columbia, Maine, Maryland, Minnesota, New Hampshire, New York, North Dakota, Oklahoma, and Vermont.

SEER Observed Incidence and SEER Delay Adjusted Incidence Rates^a SEER 9 Areas Compared to SEER 13 Areas Myeloma, Male, by Race

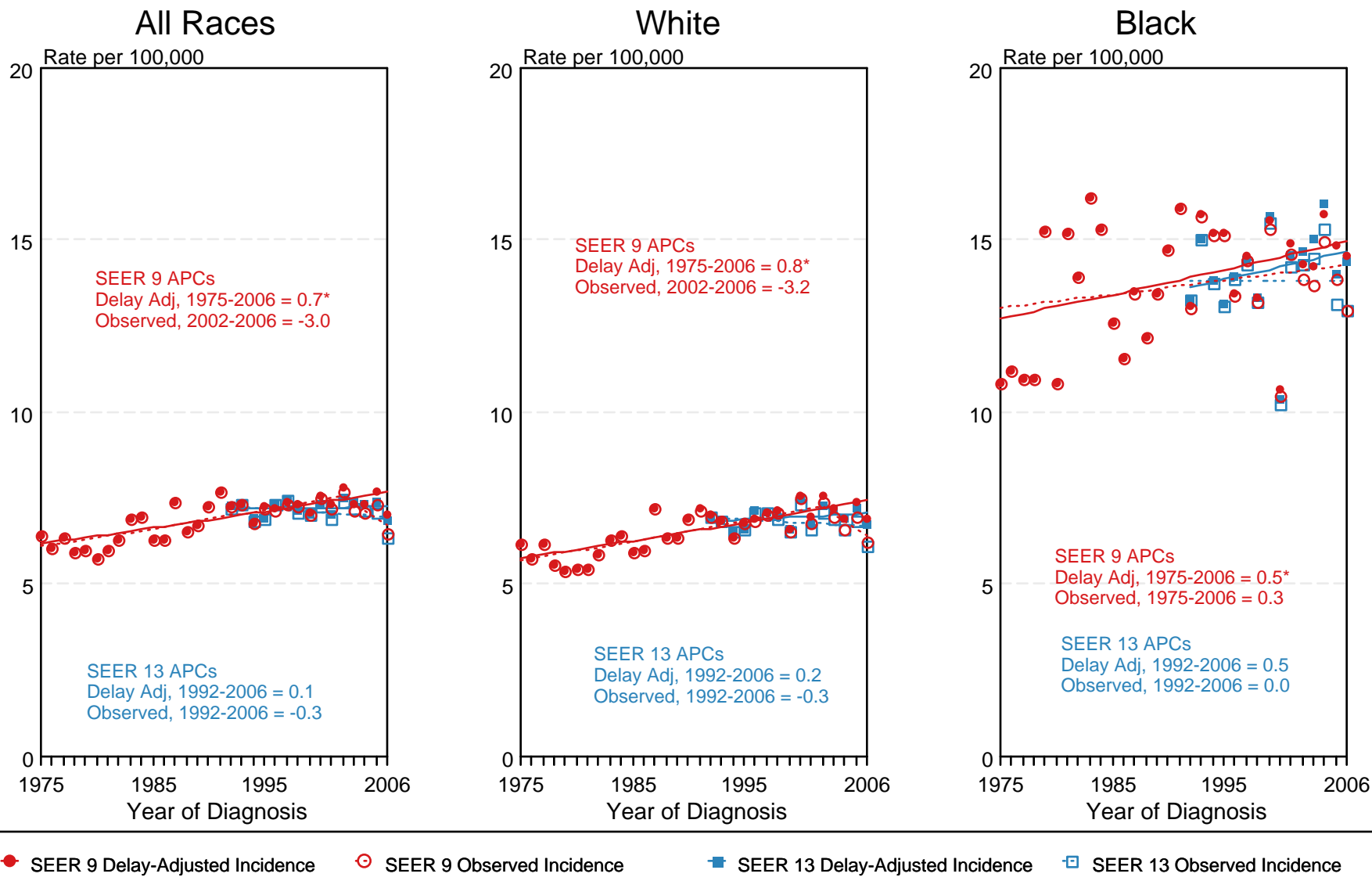
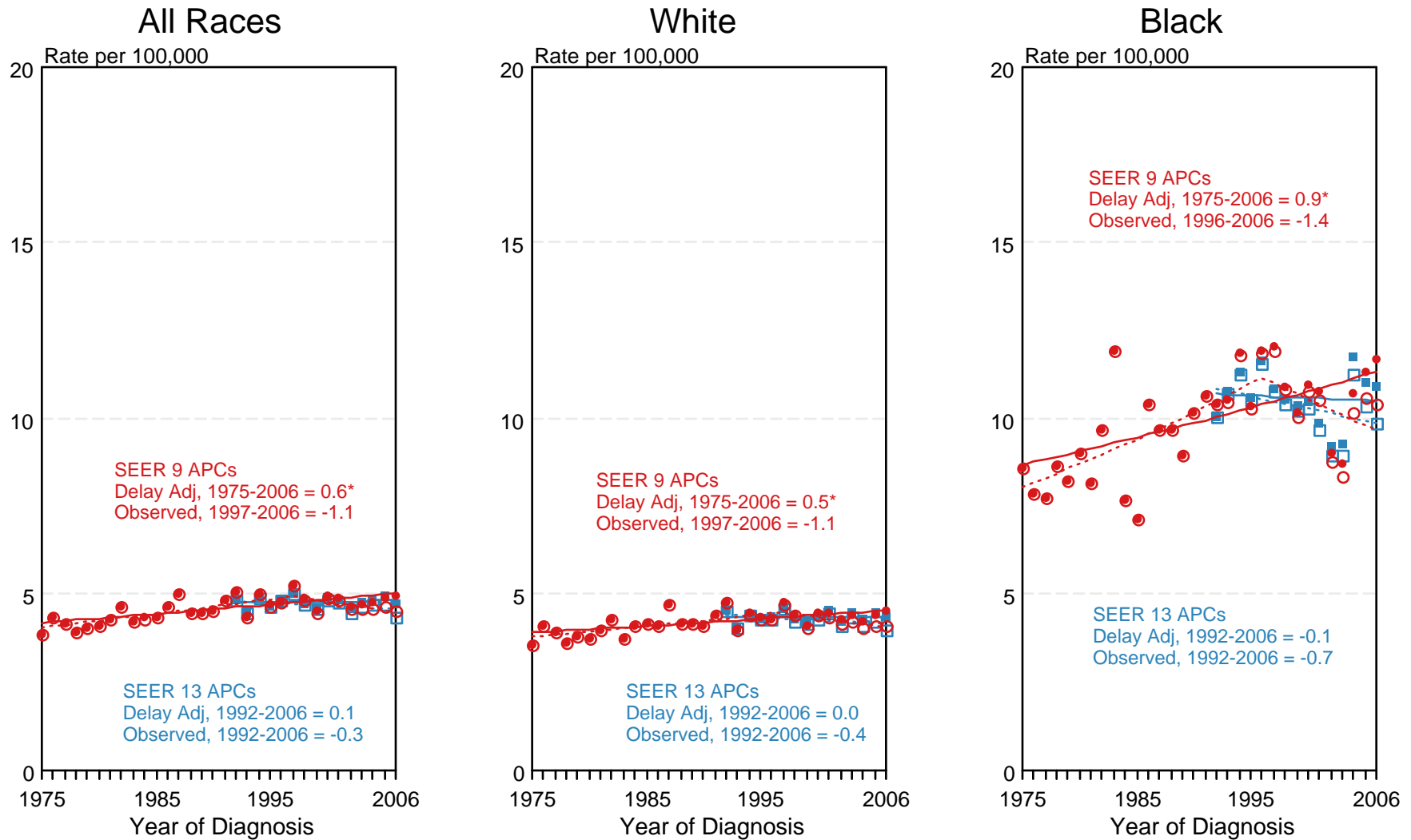


Figure 18.3

^a Source: SEER 9 areas and SEER 13 areas. Rates are age-adjusted to the 2000 US Std Population (19 age groups - Census P25-1103). Regression lines and APCs are calculated using the Joinpoint Regression Program Version 3.3.1, April 2008, National Cancer Institute. The APC is the Annual Percent Change for the regression line segments. The APC shown on the graph is for the most recent trend.
* The APC is significantly different from zero ($p < 0.05$).

SEER Observed Incidence and SEER Delay Adjusted Incidence Rates^a SEER 9 Areas Compared to SEER 13 Areas Myeloma, Female, by Race



● SEER 9 Delay-Adjusted Incidence
 ○ SEER 9 Observed Incidence
 ■ SEER 13 Delay-Adjusted Incidence
 □ SEER 13 Observed Incidence

^a Source: SEER 9 areas and SEER 13 areas. Rates are age-adjusted to the 2000 US Std Population (19 age groups - Census P25-1103). Regression lines and APCs are calculated using the Joinpoint Regression Program Version 3.3.1, April 2008, National Cancer Institute. The APC is the Annual Percent Change for the regression line segments. The APC shown on the graph is for the most recent trend.
* The APC is significantly different from zero ($p < 0.05$).

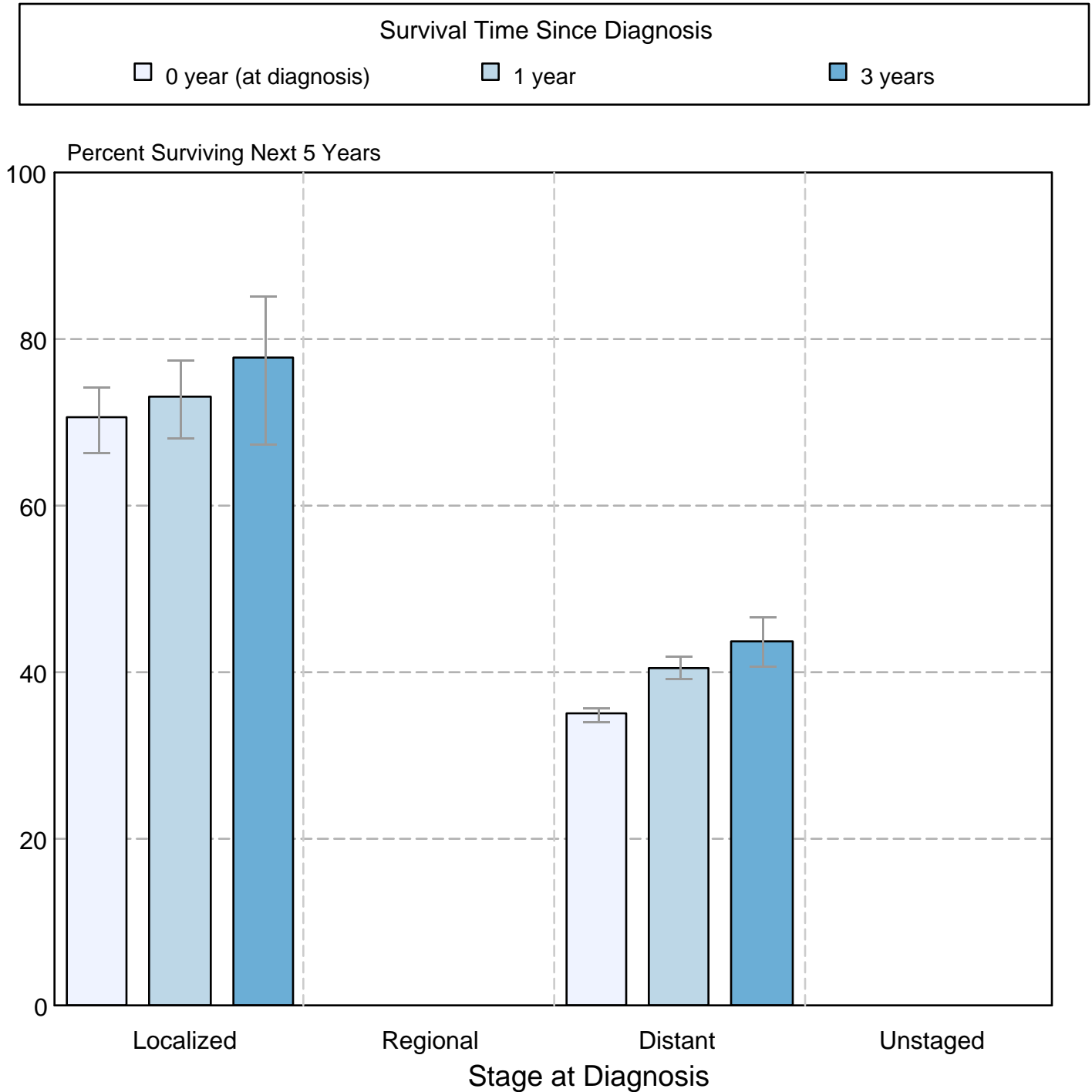
Figure 18.4

Figure 18.5

Myeloma

5-Year SEER Conditional Relative Survival Rates and 95% Confidence Intervals

Probability of surviving the next 5 years given the cohort has already survived 0, 1, or 3 years
1998-2005 by stage at diagnosis



Source: SEER 17 areas (San Francisco, Connecticut, Detroit, Hawaii, Iowa, New Mexico, Seattle, Utah, Atlanta, San Jose-Monterey, Los Angeles, Alaska Native Registry, Rural Georgia, California excluding SF/SJM/LA, Kentucky, Louisiana, and New Jersey). California excluding SF/SJM/LA, Kentucky, Louisiana, and New Jersey contribute cases for diagnosis years 2000-2006. The remaining 13 SEER Areas contribute cases for the entire period 1998-2005. Percent surviving is not shown if based on less than 25 cases. Confidence intervals are not shown if length of the confidence interval is greater than 5 times the standard error.