

Table 22.1  
Cancer of the Pancreas (Invasive)

Trends in SEER Incidence<sup>ab</sup> and U.S. Mortality<sup>c</sup> Using the Joinpoint Regression Program,  
1975-2006 With up to Four Joinpoints, 1992-2006 With up to Two Joinpoints,  
Both Sexes by Race/Ethnicity

	Joinpoint Trend 1		Joinpoint Trend 2		Joinpoint Trend 3		Joinpoint Trend 4		Joinpoint Trend 5		AAPC <sup>d</sup>	
	Years	APC	Years	APC	Years	APC	Years	APC	Years	APC	1997-2006	2002-2006
<u>SEER 9 Delay-Adjusted Incidence<sup>a</sup>, 1975-2006</u>												
All Races	1975-1978	-2.2	1978-1984	1.3*	1984-1989	-1.4	1989-2001	0.0	2001-2006	1.7*	0.9*	1.7*
White	1975-1979	-1.9	1979-1984	1.7	1984-1987	-2.5	1987-1999	-0.1	1999-2006	1.5*	1.1*	1.5*
Black	1975-2006	-0.2									-0.2	-0.2
<u>SEER 13 Delay-Adjusted Incidence<sup>b</sup>, 1992-2006</u>												
All Races	1992-2001	0.0	2001-2006	1.5*							0.8*	1.5*
White	1992-2001	0.2	2001-2006	1.7*							1.0*	1.7*
Black	1992-2001	-1.8*	2001-2006	2.0							0.3	2.0
<u>SEER 9 Observed Incidence<sup>a</sup>, 1975-2006</u>												
All Races	1975-1978	-2.1	1978-1984	1.1	1984-1993	-0.9*	1993-2006	0.5*			0.5*	0.5*
White	1975-1978	-2.5	1978-1984	1.0	1984-1994	-0.9*	1994-2006	0.7*			0.7*	0.7*
Black	1975-2006	-0.3*									-0.3*	-0.3*
<u>SEER 13 Observed Incidence<sup>b</sup>, 1992-2006</u>												
All Races	1992-2006	0.3*									0.3*	0.3*
White	1992-2006	0.5*									0.5*	0.5*
White NH <sup>ef</sup>	1992-2006	0.5*									0.5*	0.5*
Black	1992-2006	-0.8*									-0.8*	-0.8*
Black NH <sup>ef</sup>	1992-2006	-0.8*									-0.8*	-0.8*
API <sup>e</sup>	1992-2006	0.0									0.0	0.0
AI/AN <sup>eg</sup>	1992-2006	3.4									3.4*	3.4*
Hispanic <sup>f</sup>	1992-2006	0.0									0.0	0.0
<u>U.S. Cancer Mortality<sup>c</sup>, 1975-2006</u>												
All Races	1975-2003	-0.1*	2003-2006	1.0*							0.3	0.8*
White	1975-1997	-0.2*	1997-2006	0.4*							0.4*	0.4*
Black	1975-1989	1.2*	1989-2006	-0.7*							-0.7*	-0.7*
<u>U.S. Cancer Mortality<sup>c</sup>, 1992-2006</u>												
All Races	1992-1995	-0.8	1995-2003	0.1	2003-2006	0.9*					0.3*	0.7*
White	1992-1996	-0.4	1996-2003	0.3	2003-2006	1.0*					0.5*	0.8*
White NH <sup>ef</sup>	1992-1997	-0.3	1997-2006	0.6*							0.6*	0.6*
Black	1992-2006	-0.8*									-0.8*	-0.8*
Black NH <sup>ef</sup>	1992-2006	-0.8*									-0.8*	-0.8*
API <sup>e</sup>	1992-2006	-0.3									-0.3	-0.3
AI/AN <sup>eg</sup>	1992-2006	2.3*									2.3*	2.3*
Hispanic <sup>f</sup>	1992-2006	0.0									0.0	0.0

Joinpoint Regression Program Version 3.3.1, April 2008, National Cancer Institute. (<http://srab.cancer.gov/joinpoint/>).

The APC is the Annual Percent Change based on rates age-adjusted to the 2000 US Std Population (19 age groups - Census P25-1130).

<sup>a</sup> Trends are from the SEER 9 areas (San Francisco, Connecticut, Detroit, Hawaii, Iowa, New Mexico, Seattle, Utah, and Atlanta).

<sup>b</sup> Trends are from the SEER 13 areas (SEER 9 Areas, Los Angeles, San Jose-Monterey, Rural Georgia, and the Alaska Native Registry).

<sup>c</sup> Trends are from US Mortality Files, National Center for Health Statistics, Centers for Disease Control and Prevention.

<sup>d</sup> The AAPC is the Average Annual Percent Change and is based on the APCs calculated by Joinpoint.

<sup>e</sup> API - Asian/Pacific Islander, AI/AN - American Indian/Alaska Native, NH - Non-Hispanic

<sup>f</sup> Hispanic and Non-Hispanic are not mutually exclusive from whites, blacks, Asian/Pacific Islanders, and American Indians/Alaska

Natives. Incidence data for Hispanics and Non-Hispanics are based on NHIA and exclude cases from the Alaska Native Registry.

The Hispanic and Non-Hispanic mortality trends exclude deaths from CT, DC, ME, MD, MN, NH, NY, ND, OK and VT.

<sup>g</sup> Data for American Indian/Alaska Native are based on the CHSDA (Contract Health Service Delivery Area) counties.

\* The APC/AAPC is significantly different from zero ( $p < .05$ ).

- Joinpoint regression line analysis could not be performed on data series.

Table 22.2  
Cancer of the Pancreas (Invasive)

Trends in SEER Incidence<sup>ab</sup> and U.S. Mortality<sup>c</sup> Using the Joinpoint Regression Program,  
1975-2006 With up to Four Joinpoints, 1992-2006 With up to Two Joinpoints,  
Males by Race/Ethnicity

	Joinpoint Trend 1		Joinpoint Trend 2		Joinpoint Trend 3		Joinpoint Trend 4		Joinpoint Trend 5		AAPC <sup>d</sup>	
	Years	APC	Years	APC	Years	APC	Years	APC	Years	APC	1997-2006	2002-2006
<u>SEER 9 Delay-Adjusted Incidence<sup>a</sup>, 1975-2006</u>												
All Races	1975-1981	-1.8*	1981-1985	1.1	1985-1990	-2.1	1990-2003	0.1	2003-2006	2.5	0.9	1.9
White	1975-1994	-1.0*	1994-2006	0.9*							0.9*	0.9*
Black	1975-2006	-0.6*									-0.6*	-0.6*
<u>SEER 13 Delay-Adjusted Incidence<sup>b</sup>, 1992-2006</u>												
All Races	1992-2003	-0.1	2003-2006	2.4*							0.8*	1.8*
White	1992-2006	0.6*									0.6*	0.6*
Black	1992-2006	-1.0*									-1.0*	-1.0*
<u>SEER 9 Observed Incidence<sup>a</sup>, 1975-2006</u>												
All Races	1975-1993	-0.9*	1993-2006	0.3							0.3	0.3
White	1975-1994	-1.0*	1994-2006	0.7*							0.7*	0.7*
Black	1975-2006	-0.7*									-0.7*	-0.7*
<u>SEER 13 Observed Incidence<sup>b</sup>, 1992-2006</u>												
All Races	1992-2006	0.1									0.1	0.1
White	1992-2006	0.4*									0.4*	0.4*
White NH <sup>ef</sup>	1992-2006	0.5*									0.5*	0.5*
Black	1992-2006	-1.2*									-1.2*	-1.2*
Black NH <sup>ef</sup>	1992-2006	-1.1*									-1.1*	-1.1*
API <sup>e</sup>	1992-2006	-0.9									-0.9	-0.9
AI/AN <sup>eg</sup>	1992-2006	2.9									2.9	2.9
Hispanic <sup>f</sup>	1992-2006	0.0									0.0	0.0
<u>U.S. Cancer Mortality<sup>c</sup>, 1975-2006</u>												
All Races	1975-1986	-0.9*	1986-2003	-0.2*	2003-2006	1.0					0.2	0.7
White	1975-1986	-1.0*	1986-2003	-0.1*	2003-2006	1.3*					0.3	0.9*
Black	1975-1990	0.6*	1990-2006	-1.1*							-1.1*	-1.1*
<u>U.S. Cancer Mortality<sup>c</sup>, 1992-2006</u>												
All Races	1992-1995	-1.3	1995-2006	0.1							0.1	0.1
White	1992-1996	-0.7	1996-2006	0.3*							0.3*	0.3*
White NH <sup>ef</sup>	1992-1996	-0.9	1996-2006	0.6*							0.6*	0.6*
Black	1992-2006	-1.2*									-1.2*	-1.2*
Black NH <sup>ef</sup>	1992-2006	-1.2*									-1.2*	-1.2*
API <sup>e</sup>	1992-2006	-1.0*									-1.0*	-1.0*
AI/AN <sup>eg</sup>	1992-2006	3.2*									3.2*	3.2*
Hispanic <sup>f</sup>	1992-2006	-0.3									-0.3	-0.3

Joinpoint Regression Program Version 3.3.1, April 2008, National Cancer Institute. (<http://srab.cancer.gov/joinpoint/>).

The APC is the Annual Percent Change based on rates age-adjusted to the 2000 US Std Population (19 age groups - Census P25-1130).

<sup>a</sup> Trends are from the SEER 9 areas (San Francisco, Connecticut, Detroit, Hawaii, Iowa, New Mexico, Seattle, Utah, and Atlanta).

<sup>b</sup> Trends are from the SEER 13 areas (SEER 9 Areas, Los Angeles, San Jose-Monterey, Rural Georgia, and the Alaska Native Registry).

<sup>c</sup> Trends are from US Mortality Files, National Center for Health Statistics, Centers for Disease Control and Prevention.

<sup>d</sup> The AAPC is the Average Annual Percent Change and is based on the APCs calculated by Joinpoint.

<sup>e</sup> API - Asian/Pacific Islander, AI/AN - American Indian/Alaska Native, NH - Non-Hispanic

<sup>f</sup> Hispanic and Non-Hispanic are not mutually exclusive from whites, blacks, Asian/Pacific Islanders, and American Indians/Alaska

Natives. Incidence data for Hispanics and Non-Hispanics are based on NHIA and exclude cases from the Alaska Native Registry.

The Hispanic and Non-Hispanic mortality trends exclude deaths from CT, DC, ME, MD, MN, NH, NY, ND, OK and VT.

<sup>g</sup> Data for American Indian/Alaska Native are based on the CHSDA (Contract Health Service Delivery Area) counties.

\* The APC/AAPC is significantly different from zero ( $p < .05$ ).

- Joinpoint regression line analysis could not be performed on data series.

Table 22.3  
Cancer of the Pancreas (Invasive)

Trends in SEER Incidence<sup>ab</sup> and U.S. Mortality<sup>c</sup> Using the Joinpoint Regression Program,  
1975-2006 With up to Four Joinpoints, 1992-2006 With up to Two Joinpoints,  
Females by Race/Ethnicity

	Joinpoint Trend 1		Joinpoint Trend 2		Joinpoint Trend 3		Joinpoint Trend 4		Joinpoint Trend 5		AAPC <sup>d</sup>	
	Years	APC	Years	APC	Years	APC	Years	APC	Years	APC	1997-2006	2002-2006
<u>SEER 9 Delay-Adjusted Incidence<sup>a</sup>, 1975-2006</u>												
All Races	1975-1984	1.3*	1984-2000	-0.3	2000-2006	1.7*					1.0*	1.7*
White	1975-1984	1.2*	1984-1999	-0.4*	1999-2006	1.7*					1.2*	1.7*
Black	1975-2006	0.1									0.1	0.1
<u>SEER 13 Delay-Adjusted Incidence<sup>b</sup>, 1992-2006</u>												
All Races	1992-2000	-0.2	2000-2006	1.5*							1.0*	1.5*
White	1992-2000	-0.1	2000-2006	1.7*							1.1*	1.7*
Black	1992-2006	-0.3									-0.3	-0.3
<u>SEER 9 Observed Incidence<sup>a</sup>, 1975-2006</u>												
All Races	1975-1984	1.5*	1984-1995	-0.6	1995-2006	0.6*					0.6*	0.6*
White	1975-1984	1.2*	1984-1999	-0.4	1999-2006	1.3*					0.9*	1.3*
Black	1975-2006	0.0									0.0	0.0
<u>SEER 13 Observed Incidence<sup>b</sup>, 1992-2006</u>												
All Races	1992-2006	0.4*									0.4*	0.4*
White	1992-2006	0.4*									0.4*	0.4*
White NH <sup>ef</sup>	1992-2006	0.5*									0.5*	0.5*
Black	1992-2006	-0.6									-0.6	-0.6
Black NH <sup>ef</sup>	1992-2006	-0.5									-0.5	-0.5
API <sup>e</sup>	1992-2006	0.9*									0.9*	0.9*
AI/AN <sup>eg</sup>	1992-2006	4.0									4.0	4.0
Hispanic <sup>f</sup>	1992-2006	-0.1									-0.1	-0.1
<u>U.S. Cancer Mortality<sup>c</sup>, 1975-2006</u>												
All Races	1975-1984	0.8*	1984-2006	0.1*							0.1*	0.1*
White	1975-1983	0.6*	1983-2006	0.1*							0.1*	0.1*
Black	1975-1986	2.5*	1986-2006	-0.3*							-0.3*	-0.3*
<u>U.S. Cancer Mortality<sup>c</sup>, 1992-2006</u>												
All Races	1992-1997	-0.5	1997-2006	0.3*							0.3*	0.3*
White	1992-1997	-0.4	1997-2006	0.4*							0.4*	0.4*
White NH <sup>ef</sup>	1992-2006	0.3*									0.3*	0.3*
Black	1992-2006	-0.6*									-0.6*	-0.6*
Black NH <sup>ef</sup>	1992-2006	-0.6*									-0.6*	-0.6*
API <sup>e</sup>	1992-2006	0.5									0.5	0.5
AI/AN <sup>eg</sup>	1992-2006	2.1									2.1	2.1
Hispanic <sup>f</sup>	1992-2006	0.3									0.3	0.3

Joinpoint Regression Program Version 3.3.1, April 2008, National Cancer Institute. (<http://srab.cancer.gov/joinpoint/>).

The APC is the Annual Percent Change based on rates age-adjusted to the 2000 US Std Population (19 age groups - Census P25-1130).

<sup>a</sup> Trends are from the SEER 9 areas (San Francisco, Connecticut, Detroit, Hawaii, Iowa, New Mexico, Seattle, Utah, and Atlanta).

<sup>b</sup> Trends are from the SEER 13 areas (SEER 9 Areas, Los Angeles, San Jose-Monterey, Rural Georgia, and the Alaska Native Registry).

<sup>c</sup> Trends are from US Mortality Files, National Center for Health Statistics, Centers for Disease Control and Prevention.

<sup>d</sup> The AAPC is the Average Annual Percent Change and is based on the APCs calculated by Joinpoint.

<sup>e</sup> API - Asian/Pacific Islander, AI/AN - American Indian/Alaska Native, NH - Non-Hispanic

<sup>f</sup> Hispanic and Non-Hispanic are not mutually exclusive from whites, blacks, Asian/Pacific Islanders, and American Indians/Alaska

Natives. Incidence data for Hispanics and Non-Hispanics are based on NHIA and exclude cases from the Alaska Native Registry.

The Hispanic and Non-Hispanic mortality trends exclude deaths from CT, DC, ME, MD, MN, NH, NY, ND, OK and VT.

<sup>g</sup> Data for American Indian/Alaska Native are based on the CHSDA (Contract Health Service Delivery Area) counties.

\* The APC/AAPC is significantly different from zero ( $p < .05$ ).

- Joinpoint regression line analysis could not be performed on data series.

Table 22.4  
Cancer of the Pancreas (Invasive)

Age-adjusted SEER Incidence<sup>a</sup> Rates by Year, Race and Sex

Year of Diagnosis:	All Races			Whites			Blacks		
	Total	Males	Females	Total	Males	Females	Total	Males	Females
1975	11.84	15.61	9.12	11.69	15.65	8.89	15.90	18.08	13.91
1976	11.99	14.82	9.91	11.76	14.50	9.75	17.61	22.68	13.97
1977	11.90	14.82	9.83	11.62	14.59	9.54	17.12	19.44	15.25
1978	11.07	14.06	8.85	10.83	13.90	8.60	15.14	20.02	11.53
1979	11.52	14.15	9.65	11.21	13.84	9.39	16.08	19.14	13.68
1980	11.52	14.20	9.61	11.07	13.70	9.19	17.94	21.76	15.53
1981	11.69	13.55	10.17	11.39	13.26	9.91	17.18	20.86	14.10
1982	11.71	13.81	10.17	11.41	13.47	9.94	16.86	20.99	13.96
1983	12.19	14.66	10.44	11.75	14.07	10.12	18.13	23.05	14.90
1984	12.22	13.94	10.93	12.03	13.87	10.64	17.19	18.36	16.34
1985	12.10	14.34	10.50	11.70	13.60	10.34	18.70	24.98	14.57
1986	11.68	13.78	10.21	11.37	13.54	9.82	17.32	20.16	15.59
1987	11.61	13.81	10.10	11.09	13.38	9.54	18.43	18.98	17.93
1988	11.65	13.70	10.20	11.11	13.35	9.57	18.48	19.55	17.32
1989	11.34	12.88	10.08	10.98	12.66	9.64	14.99	16.05	13.97
1990	11.28	12.81	10.06	11.02	12.46	9.84	15.20	18.82	12.63
1991	11.40	12.90	10.23	11.04	12.61	9.79	17.06	18.20	16.24
1992	11.62	13.22	10.34	11.33	12.90	10.02	17.34	19.77	15.75
1993	10.96	12.53	9.69	10.51	11.98	9.30	16.82	18.71	15.18
1994	11.37	13.25	9.90	10.89	12.34	9.73	17.45	21.53	14.49
1995	11.13	12.72	9.96	10.71	12.31	9.58	18.11	20.31	16.31
1996	11.29	12.92	9.92	10.90	12.48	9.56	17.06	19.68	14.88
1997	11.49	13.06	10.19	11.04	12.57	9.74	17.83	19.35	16.48
1998	11.47	13.11	10.22	11.25	13.00	9.85	14.75	16.22	13.89
1999	11.09	12.59	9.81	10.69	12.22	9.33	16.67	19.46	14.69
2000	11.41	13.31	9.83	11.07	12.92	9.58	15.67	18.16	13.24
2001	11.29	13.08	9.97	11.03	13.00	9.53	14.19	15.37	13.27
2002	11.68	12.97	10.50	11.53	13.22	10.01	15.97	14.89	16.07
2003	11.52	12.75	10.49	11.32	12.55	10.25	15.90	16.86	15.16
2004	11.82	13.73	10.22	11.61	13.43	10.08	15.65	18.92	13.09
2005	11.76	13.42	10.40	11.47	13.13	10.08	16.54	17.77	15.85
2006	12.01	13.56	10.71	11.86	13.65	10.36	15.96	17.26	14.76
1975-2006	11.57	13.47	10.10	11.25	13.17	9.76	16.62	18.92	14.87

<sup>a</sup> SEER 9 areas (San Francisco, Connecticut, Detroit, Hawaii, Iowa, New Mexico, Seattle, Utah, and Atlanta). Rates are per 100,000 and are age-adjusted to the 2000 US Std Population (19 age groups - Census P25-1130).  
- Statistic not shown. Rate based on less than 16 cases for the time interval.

Table 22.5  
Cancer of the Pancreas (Invasive)

Age-adjusted U.S. Death<sup>a</sup> Rates by Year, Race and Sex

Year of Death:	All Races			Whites			Blacks		
	Total	Males	Females	Total	Males	Females	Total	Males	Females
1975	10.66	13.80	8.42	10.48	13.61	8.27	12.81	16.32	10.15
1976	10.68	13.62	8.57	10.50	13.43	8.41	12.86	16.05	10.47
1977	10.87	13.86	8.76	10.68	13.61	8.62	13.20	17.14	10.35
1978	10.79	13.63	8.76	10.62	13.47	8.59	12.90	15.93	10.69
1979	10.73	13.39	8.81	10.53	13.25	8.57	13.39	15.85	11.55
1980	10.62	13.10	8.83	10.36	12.85	8.58	13.78	16.47	11.80
1981	10.70	13.16	8.92	10.50	12.91	8.77	13.40	16.96	10.83
1982	10.59	13.06	8.85	10.32	12.76	8.60	14.09	17.07	11.91
1983	10.69	12.82	9.13	10.36	12.40	8.87	14.78	18.10	12.45
1984	10.80	12.96	9.22	10.45	12.61	8.89	14.96	17.52	13.08
1985	10.63	12.86	9.03	10.33	12.53	8.76	14.43	17.29	12.40
1986	10.60	12.46	9.23	10.30	12.16	8.93	14.60	16.72	13.04
1987	10.59	12.52	9.18	10.28	12.16	8.90	14.58	17.36	12.61
1988	10.49	12.51	8.98	10.15	12.16	8.65	14.52	17.05	12.66
1989	10.62	12.61	9.17	10.25	12.22	8.82	15.02	17.71	13.15
1990	10.69	12.59	9.25	10.34	12.19	8.92	15.18	18.08	13.21
1991	10.69	12.58	9.28	10.40	12.27	8.99	14.55	16.93	12.79
1992	10.70	12.61	9.27	10.35	12.23	8.92	15.40	18.22	13.44
1993	10.66	12.41	9.37	10.33	12.06	9.05	15.05	17.59	13.31
1994	10.64	12.37	9.31	10.28	11.98	8.95	15.16	17.69	13.38
1995	10.45	12.13	9.18	10.21	11.91	8.92	13.90	15.78	12.54
1996	10.47	12.08	9.23	10.17	11.79	8.91	14.43	16.45	12.97
1997	10.45	12.22	9.07	10.16	11.97	8.76	14.57	16.39	13.14
1998	10.52	12.29	9.15	10.23	12.02	8.83	14.52	16.49	13.07
1999	10.62	12.32	9.27	10.38	12.07	9.03	14.18	16.58	12.40
2000	10.54	12.14	9.26	10.32	11.97	8.99	14.04	15.79	12.70
2001	10.55	12.12	9.28	10.37	12.02	9.05	13.67	15.05	12.53
2002	10.53	12.18	9.20	10.32	12.04	8.93	13.68	15.44	12.34
2003	10.50	12.05	9.23	10.30	11.89	8.99	13.79	15.49	12.45
2004	10.65	12.36	9.25	10.46	12.19	9.02	13.67	15.58	12.13
2005	10.77	12.37	9.46	10.61	12.25	9.25	13.73	15.47	12.39
2006	10.80	12.40	9.47	10.66	12.36	9.24	13.67	14.96	12.54
1975-2006	10.65	12.61	9.16	10.39	12.36	8.89	14.21	16.54	12.48

<sup>a</sup> US Mortality Files, National Center for Health Statistics, Centers for Disease Control and Prevention.  
Rates are per 100,000 and are age-adjusted to the 2000 US Std Population (19 age groups - Census P25-1130).  
- Statistic not shown. Rate based on less than 16 cases for the time interval.

Table 22.6  
Cancer of the Pancreas (Invasive)SEER Incidence<sup>a</sup> and U.S. Death<sup>b</sup> Rates, Age-Adjusted and Age-Specific Rates, by Race and Sex

	All Races			Whites			Blacks		
	Total	Males	Females	Total	Males	Females	Total	Males	Females
<u>SEER Incidence</u>									
<u>Age at Diagnosis</u>									
Age-Adjusted Rates, 2002-2006									
All ages	11.7	13.1	10.4	11.5	13.1	10.2	15.6	16.6	14.6
Under 65	3.8	4.5	3.2	3.7	4.4	3.1	5.4	6.4	4.6
65 and over	65.9	72.8	60.7	65.5	73.0	59.7	86.2	87.1	84.1
All ages (IARC world std) <sup>c</sup>	7.0	8.0	6.2	6.9	8.0	6.0	9.6	10.6	8.7
Age-Specific Rates, 2002-2006									
<1	-	-	-	-	-	-	-	-	-
1-4	-	-	-	-	-	-	-	-	-
5-9	-	-	-	-	-	-	-	-	-
10-14	-	-	-	-	-	-	-	-	-
15-19	-	-	-	-	-	-	-	-	-
20-24	0.1	-	-	-	-	-	-	-	-
25-29	0.2	0.1	0.2	0.2	-	0.2	-	-	-
30-34	0.4	0.4	0.5	0.4	0.4	0.5	0.5	-	-
35-39	1.1	1.2	1.0	1.1	1.1	1.0	1.1	1.3	-
40-44	2.3	2.8	1.9	2.2	2.7	1.8	2.8	3.2	2.4
45-49	5.3	6.1	4.4	5.0	6.0	4.1	8.0	8.4	7.7
50-54	10.3	12.3	8.3	10.0	12.1	8.0	15.5	19.1	12.5
55-59	17.7	21.3	14.3	17.6	21.0	14.4	24.2	32.3	17.5
60-64	28.8	33.5	24.5	28.3	33.4	23.5	41.4	45.3	38.3
65-69	42.0	48.6	36.3	41.6	48.4	35.6	58.2	67.4	51.2
70-74	59.0	67.1	52.5	58.5	67.0	51.5	77.9	90.0	69.5
75-79	73.8	81.9	67.9	74.1	82.8	67.9	94.4	92.6	95.5
80-84	88.9	97.3	83.6	88.0	98.0	81.8	112.5	111.7	112.9
85+	92.8	93.8	92.3	91.3	93.9	90.1	120.2	86.9	133.9
<u>U.S. Mortality</u>									
<u>Age at Death</u>									
Age-Adjusted Rates, 2002-2006									
All ages	10.7	12.3	9.3	10.5	12.2	9.1	13.7	15.4	12.4
Under 65	3.2	3.9	2.5	3.1	3.8	2.4	4.6	5.8	3.6
65 and over	62.2	70.0	56.5	61.6	69.9	55.4	76.7	81.8	72.8
All ages (IARC world std) <sup>c</sup>	6.3	7.4	5.3	6.1	7.2	5.2	8.3	9.7	7.2
Age-Specific Rates, 2002-2006									
<1	-	-	-	-	-	-	-	-	-
1-4	-	-	-	-	-	-	-	-	-
5-9	-	-	-	-	-	-	-	-	-
10-14	-	-	-	-	-	-	-	-	-
15-19	-	-	-	-	-	-	-	-	-
20-24	0.0	0.0	-	0.0	-	-	-	-	-
25-29	0.1	0.1	0.1	0.1	0.1	0.1	0.1	-	-
30-34	0.2	0.2	0.2	0.2	0.2	0.2	0.2	0.4	-
35-39	0.6	0.8	0.5	0.6	0.8	0.5	0.8	1.1	0.5
40-44	1.8	2.2	1.4	1.7	2.1	1.4	2.5	3.0	2.0
45-49	4.3	5.3	3.3	4.1	5.1	3.1	6.1	7.5	4.9
50-54	8.6	10.7	6.5	8.1	10.2	6.1	13.3	17.1	10.1
55-59	15.3	19.0	11.8	14.8	18.4	11.4	22.0	28.9	16.3
60-64	25.2	30.7	20.3	24.6	30.2	19.4	35.6	42.9	30.0
65-69	37.3	44.1	31.4	36.7	43.7	30.5	48.8	57.0	42.6
70-74	52.9	61.1	46.2	52.0	60.5	45.0	69.1	79.9	61.8
75-79	69.2	77.6	63.1	68.6	77.6	62.0	85.5	90.0	82.8
80-84	86.4	96.4	80.2	85.8	96.8	79.0	99.7	105.0	97.0
85+	96.8	101.6	94.6	96.2	102.3	93.4	112.0	99.6	116.9

<sup>a</sup> SEER 17 areas. Rates are per 100,000 and are age-adjusted to the 2000 US Std Population (19 age groups - Census P25-1130), unless noted.<sup>b</sup> US Mortality Files, National Center for Health Statistics, Centers for Disease Control and Prevention.<sup>c</sup> Rates are per 100,000 and are age-adjusted to the 2000 US Std Population (19 age groups - Census P25-1130), unless noted.

- Rates are per 100,000 and are age-adjusted to the IARC world standard population.

- Statistic not shown. Rate based on less than 16 cases for the time interval.

Table 22.7  
Cancer of the Pancreas (Invasive)

## Survival Rates, by Race, Sex, Diagnosis Year, Stage and Age

	All Races			Whites			Blacks		
	Total	Males	Females	Total	Males	Females	Total	Males	Females
<b>5-Year Relative Survival Rates</b>									
Year of Diagnosis:									
1960-1963 <sup>a</sup>	-	-	-	1	1	2	1	0	3
1970-1973 <sup>a</sup>	-	-	-	2	2	2	2	0	3
1975-1977 <sup>b</sup>	2.5	2.7	2.3	2.6	2.7	2.3	2.3	2.7	2.0
1978-1980 <sup>b</sup>	3.0	2.8	3.2	2.7	2.6	2.7	5.9	4.3	7.4
1981-1983 <sup>b</sup>	3.0	2.6	3.3	2.8	2.3	3.2	3.7	4.0	3.3
1984-1986 <sup>b</sup>	3.0	2.4	3.5	2.7	2.2	3.1	4.9	4.2	5.4
1987-1989 <sup>b</sup>	3.8	3.5	4.0	3.4	3.2	3.5	5.9	5.5	6.1
1990-1992 <sup>b</sup>	4.6	4.2	4.8	4.7	4.4	4.9	3.8	3.2	4.3
1993-1995 <sup>b</sup>	4.2	3.9	4.6	4.2	3.8	4.6	3.7	3.5	3.9
1996-1998 <sup>b</sup>	4.6	4.8	4.4	4.4	5.0	3.8	3.6	3.3	3.7
1999-2005 <sup>b</sup>	5.6 <sup>e</sup>	5.6 <sup>e</sup>	5.6 <sup>e</sup>	5.7 <sup>e</sup>	6.0 <sup>e</sup>	5.3 <sup>e</sup>	5.3 <sup>e</sup>	3.6	6.6 <sup>e</sup>
<b>5-Year Period Survival Rates<sup>cd</sup></b>									
Year of Diagnosis:									
1999-2005	5.7	5.4	6.1	5.7	5.5	5.9	5.4	4.0	6.6
<b>Stage Distribution (%) 1999-2005<sup>c</sup></b>									
All Stages									
Number of cases	42,228	20,607	21,621	34,441	16,946	17,495	4,667	2,116	2,551
Percent	100%	100%	100%	100%	100%	100%	100%	100%	100%
Localized	7	7	8	7	7	8	9	7	10
Regional	26	26	26	26	26	26	24	24	25
Distant	53	56	50	52	55	49	55	60	51
Unstaged	14	12	16	14	12	16	12	10	14
<b>5-Year Relative Survival Rates, 1999-2005<sup>c</sup></b>									
Age at Diagnosis:									
Ages <45	20.7	14.9	28.6	20.3	15.6	26.5	18.9	11.3	32.1 <sup>f</sup>
Ages 45-54	8.8	7.5	10.6	8.4	8.0	9.0	9.0	5.7	13.0
Ages 55-64	5.8	5.2	6.6	5.8	5.2	6.6	5.5	4.2	7.1
Ages 65-74	4.4	4.3	4.5	4.6	4.6	4.6	2.9	3.0	2.9
Ages 75+	2.7	3.1	2.5	2.9	3.1	2.7	2.0	2.0	1.9
Ages <65	8.4	7.0	10.4	8.2	7.2	9.6	8.4	5.7	11.7
Ages 65+	3.6	3.8	3.4	3.7	3.9	3.5	2.5	2.8	2.4
Stage:									
All Stages	5.5	5.4	5.7	5.5	5.5	5.5	5.4	4.5	6.2
Localized	22.2	20.2	23.7	22.7	21.5	23.7	17.4	14.6	18.7
Regional	8.7	8.7	8.8	8.8	9.1	8.6	7.5	5.7	8.9
Distant	1.8	2.0	1.7	1.6	1.8	1.5	2.5	2.4	2.4
Unstaged	4.9	6.0	3.8	4.5	5.6	3.5	6.2	6.3	5.9

<sup>a</sup> Rates are based on End Results data from a series of hospital registries and one population-based registry.<sup>b</sup> Rates are from the SEER 9 areas (San Francisco, Connecticut, Detroit, Hawaii, Iowa, New Mexico, Seattle, Utah, Atlanta).

Rates are based on follow-up of patients into 2006.

<sup>c</sup> Rates are from the SEER 17 areas (San Francisco, Connecticut, Detroit, Hawaii, Iowa, New Mexico, Seattle, Utah, Atlanta, San Jose-Monterey, Los Angeles, Alaska Native Registry, Rural Georgia, California excluding SF/SJM/LA, Kentucky, Louisiana and New Jersey). California excluding SF/SJM/LA, Kentucky, Louisiana, and New Jersey contribute cases for diagnosis years 2000-2005.<sup>d</sup> The remaining 13 SEER Areas contribute cases for the entire period 1999-2005. Rates are based on follow-up of patients into 2006. Period survival provides a more up-to-date estimate of survival by piecing together the most recent conditional survival estimates from several cohorts. It is computed here using three year calendar blocks (2003-2005: 0-1 year survival),

(2002-2004: 1-2 year survival), (2001-2003: 2-3 year survival), (2000-2002: 3-4 year survival), (1999-2001: 4-5 years survival).

<sup>e</sup> The difference in rates between 1975-1977 and 1999-2005 is statistically significant (p<.05).<sup>f</sup> The standard error of the survival rate is between 5 and 10 percentage points.<sup>g</sup> The standard error of the survival rate is greater than 10 percentage points.

- Statistic could not be calculated due to fewer than 25 cases during the time period.

Table 22.8  
Cancer of the Pancreas (Invasive)

Survival Rates<sup>a</sup>  
By Year of Diagnosis

All Races, Males and Females

Year of Diagnosis

	1975- 1979	1980- 1984	1985- 1989	1990	1991	1992	1993	1994	1995	1996	1997	1998	1999	2000	2001	2002	2003	2004	2005
Relative Survival Rates (SEER <sup>b</sup> )																			
1-year	15.2	17.2	18.3	19.5	20.2	20.4	18.3	19.8	18.8	20.0	21.6	20.9	23.7	23.6	25.0	26.3	24.0	24.2	28.0
2-year	6.2	6.6	7.1	8.5	9.3	9.1	8.5	9.3	8.6	9.9	10.2	8.9	10.9	11.2	11.8	12.2	11.5	12.1	
3-year	3.7	4.3	5.0	5.6	6.5	6.0	5.2	6.8	5.6	6.6	7.3	5.9	7.0	7.6	7.5	8.6	7.6		
4-year	3.0	3.5	4.0	4.4	5.4	5.3	4.4	5.5	4.3	5.1	5.9	4.6	6.0	6.4	6.3	7.1			
5-year	2.6	3.0	3.5	4.0	4.8	4.8	3.6	5.2	3.9	4.5	5.3	3.9	5.5	5.4	5.2				
6-year	2.4	2.8	3.2	3.9	4.5	4.8	3.4	4.5	3.6	4.1	4.9	3.8	5.1	5.0					
7-year	2.2	2.5	3.0	3.5	4.2	4.2	3.2	4.2	3.5	3.8	4.7	3.6	4.9						
8-year	2.0	2.4	2.7	3.5	3.9	4.1	3.2	3.7	3.2	3.8	4.6	3.3							
9-year	1.9	2.2	2.5	3.3	3.9	3.8	3.0	3.6	3.2	3.7	4.6								
10-year	1.9	2.1	2.5	3.0	3.7	3.7	2.8	3.5	3.1	3.7									
11-year	1.9	2.1	2.5	2.9	3.4	3.5	2.6	3.4	3.0										
12-year	1.8	2.0	2.5	2.9	3.4	3.4	2.5	3.3											
13-year	1.8	2.0	2.4	2.9	3.4	3.3	2.5												
14-year	1.8	2.0	2.4	2.8	3.4	3.3													
15-year	1.7	1.9	2.3	2.7	3.0														
16-year	1.7	1.9	2.2	2.7															
17-year	1.7	1.9	2.2																
18-year	1.6	1.9																	
19-year	1.6	1.9																	
20-year	1.6	1.9																	

<sup>a</sup>  
<sup>b</sup>

Survival rates are relative rates expressed as percents.  
Rates are from the SEER 9 areas (San Francisco, Connecticut, Detroit, Hawaii, Iowa, New Mexico, Seattle, Utah, and Atlanta).



Table 22.9  
Cancer of the Pancreas (Invasive)

Survival Rates<sup>a</sup>  
By Year of Diagnosis

All Races, Males

Year of Diagnosis

	1975- 1979	1980- 1984	1985- 1989	1990	1991	1992	1993	1994	1995	1996	1997	1998	1999	2000	2001	2002	2003	2004	2005
Relative Survival Rates (SEER <sup>b</sup> )																			
1-year	15.1	16.1	18.0	19.3	19.7	17.9	17.1	20.2	17.9	21.4	23.1	20.3	24.6	23.6	24.0	26.2	25.4	26.1	26.6
2-year	6.0	6.2	6.6	8.7	9.0	8.7	7.7	9.7	7.6	11.2	10.1	9.2	10.1	11.6	12.4	11.6	11.5	12.5	
3-year	3.5	3.9	4.5	5.4	6.6	5.5	4.7	7.6	4.4	7.5	7.1	5.8	6.5	7.1	7.8	8.4	7.2		
4-year	3.0	3.2	3.4	3.9	5.6	4.8	3.5	6.0	3.7	6.0	5.9	4.7	5.8	6.1	6.4	7.1			
5-year	2.6	2.7	3.1	3.5	5.0	4.2	2.7	5.6	3.2	5.3	5.0	4.1	5.3	5.3	5.5				
6-year	2.4	2.4	2.6	3.5	4.6	4.1	2.4	5.0	2.9	5.0	4.3	3.9	4.4	5.1					
7-year	2.3	2.1	2.5	3.3	4.1	3.5	2.1	4.7	2.9	4.5	3.9	3.7	4.3						
8-year	2.1	1.9	2.3	3.3	3.9	3.1	2.0	4.0	2.8	4.5	3.9	3.6							
9-year	2.0	1.8	2.0	3.0	3.9	3.1	1.9	3.9	2.6	4.4	3.9								
10-year	1.9	1.7	1.9	2.6	3.7	3.1	1.5	3.4	2.5	4.2									
11-year	1.9	1.7	1.9	2.5	3.6	3.1	1.3	3.4	2.5										
12-year	1.8	1.7	1.9	2.5	3.6	3.1	1.1	3.2											
13-year	1.8	1.7	1.9	2.5	3.6	2.9	1.1												
14-year	1.8	1.7	1.9	2.5	3.6	2.9													
15-year	1.8	1.6	1.7	2.5	3.6														
16-year	1.8	1.6	1.7	2.5															
17-year	1.8	1.6	1.7																
18-year	1.7	1.6																	
19-year	1.6	1.6																	
20-year	1.6	1.6																	

<sup>a</sup>  
<sup>b</sup>

Survival rates are relative rates expressed as percents.  
Rates are from the SEER 9 areas (San Francisco, Connecticut, Detroit, Hawaii, Iowa, New Mexico, Seattle, Utah, and Atlanta).

Table 22.10  
Cancer of the Pancreas (Invasive)

Survival Rates<sup>a</sup>  
By Year of Diagnosis

All Races, Females

Year of Diagnosis

	1975- 1979	1980- 1984	1985- 1989	1990	1991	1992	1993	1994	1995	1996	1997	1998	1999	2000	2001	2002	2003	2004	2005
Relative Survival Rates (SEER <sup>b</sup> )																			
1-year	15.2	18.3	18.6	19.6	20.6	22.8	19.4	19.4	19.5	18.7	20.3	21.4	22.9	23.5	25.9	26.5	22.6	22.2	29.4
2-year	6.3	7.0	7.7	8.2	9.7	9.5	9.2	9.0	9.6	8.5	10.3	8.7	11.6	10.7	11.2	12.9	11.5	11.7	
3-year	3.9	4.6	5.4	5.7	6.4	6.5	5.8	5.8	6.7	5.8	7.5	5.9	7.5	8.0	7.1	8.8	7.9		
4-year	3.1	3.8	4.5	4.7	5.3	5.7	5.2	5.0	4.8	4.2	5.9	4.4	6.2	6.7	6.1	6.9			
5-year	2.5	3.4	3.9	4.5	4.6	5.3	4.3	4.8	4.6	3.6	5.6	3.7	5.7	5.5	4.9				
6-year	2.4	3.1	3.7	4.2	4.3	5.3	4.3	4.0	4.2	3.3	5.4	3.7	5.7	4.9					
7-year	2.1	3.0	3.4	3.8	4.2	4.9	4.1	3.6	4.0	3.1	5.4	3.4	5.3						
8-year	1.9	2.8	3.1	3.7	3.9	4.9	4.1	3.4	3.5	3.0	5.3	2.9							
9-year	1.9	2.7	3.0	3.5	3.9	4.6	4.0	3.2	3.5	2.9	5.1								
11-year	1.8	2.5	3.0	3.3	3.8	4.2	4.0	3.2	3.5	2.9									
10-year	1.8	2.4	2.9	3.3	3.1	3.8	3.9	3.2	3.5										
12-year	1.8	2.3	2.9	3.3	3.1	3.5	3.8	3.2											
13-year	1.7	2.3	2.8	3.0	3.1	3.5	3.8												
14-year	1.6	2.2	2.8	2.9	3.1	3.5													
15-year	1.5	2.2	2.8	2.8	2.2														
16-year	1.5	2.1	2.6	2.8															
17-year	1.5	2.1	2.6																
18-year	1.5	2.1																	
19-year	1.5	2.1																	
20-year	1.5	2.1																	

<sup>a</sup>  
<sup>b</sup>

Survival rates are relative rates expressed as percents.  
Rates are from the SEER 9 areas (San Francisco, Connecticut, Detroit, Hawaii, Iowa, New Mexico, Seattle, Utah, and Atlanta).

Table 22.11  
Cancer of the Pancreas (Invasive)

Risk of Being Diagnosed With Cancer in 10, 20 and 30 Years,  
Lifetime Risk of Being Diagnosed with Cancer Given Alive and Cancer-Free at Current Age, and  
Lifetime Risk of Dying from Cancer Given Alive at Current Age  
Both Sexes, 2004-2006 By Race/Ethnicity

Race/ Ethnicity	Current Age	Risk of Being Diagnosed with Cancer				Risk of Dying from Cancer	
		+10 yrs Percent ( 95% C.I. )	+20 yrs Percent ( 95% C.I. )	+30 yrs Percent ( 95% C.I. )	Eventually Percent ( 95% C.I. )	Eventually Percent ( 95% C.I. )	
All Races	0	0.00 ( 0.00, 0.00 )	0.00 ( 0.00, 0.00 )	0.00 ( 0.00, 0.00 )	1.38 ( 1.37, 1.40 )	1.25 ( 1.25, 1.26 )	
	10	0.00 ( 0.00, 0.00 )	0.00 ( 0.00, 0.00 )	0.01 ( 0.01, 0.01 )	1.40 ( 1.38, 1.42 )	1.27 ( 1.26, 1.28 )	
	20	0.00 ( 0.00, 0.00 )	0.01 ( 0.01, 0.01 )	0.05 ( 0.05, 0.05 )	1.41 ( 1.39, 1.43 )	1.28 ( 1.27, 1.29 )	
	30	0.01 ( 0.01, 0.01 )	0.05 ( 0.05, 0.05 )	0.18 ( 0.18, 0.19 )	1.42 ( 1.40, 1.44 )	1.29 ( 1.28, 1.30 )	
	40	0.04 ( 0.04, 0.04 )	0.18 ( 0.17, 0.18 )	0.48 ( 0.48, 0.49 )	1.43 ( 1.41, 1.45 )	1.30 ( 1.29, 1.31 )	
	50	0.14 ( 0.14, 0.15 )	0.46 ( 0.45, 0.47 )	0.93 ( 0.91, 0.94 )	1.43 ( 1.41, 1.45 )	1.31 ( 1.30, 1.32 )	
	60	0.34 ( 0.33, 0.34 )	0.83 ( 0.82, 0.85 )	1.24 ( 1.23, 1.26 )	1.37 ( 1.35, 1.39 )	1.27 ( 1.26, 1.28 )	
	70	0.57 ( 0.56, 0.58 )	1.04 ( 1.02, 1.06 )	- ( - , - )	1.18 ( 1.16, 1.20 )	1.12 ( 1.11, 1.13 )	
	80	0.65 ( 0.64, 0.67 )	- ( - , - )	- ( - , - )	0.85 ( 0.83, 0.87 )	0.84 ( 0.83, 0.85 )	
White	0	0.00 ( 0.00, 0.00 )	0.00 ( 0.00, 0.00 )	0.00 ( 0.00, 0.00 )	1.37 ( 1.35, 1.39 )	1.25 ( 1.24, 1.26 )	
	10	0.00 ( 0.00, 0.00 )	0.00 ( 0.00, 0.00 )	0.01 ( 0.01, 0.01 )	1.39 ( 1.37, 1.41 )	1.27 ( 1.26, 1.28 )	
	20	0.00 ( 0.00, 0.00 )	0.01 ( 0.01, 0.01 )	0.05 ( 0.04, 0.05 )	1.39 ( 1.37, 1.41 )	1.27 ( 1.26, 1.28 )	
	30	0.01 ( 0.01, 0.01 )	0.05 ( 0.04, 0.05 )	0.18 ( 0.18, 0.19 )	1.40 ( 1.38, 1.42 )	1.28 ( 1.28, 1.29 )	
	40	0.04 ( 0.04, 0.04 )	0.17 ( 0.17, 0.18 )	0.48 ( 0.47, 0.49 )	1.41 ( 1.39, 1.43 )	1.30 ( 1.29, 1.30 )	
	50	0.14 ( 0.14, 0.14 )	0.45 ( 0.44, 0.46 )	0.92 ( 0.91, 0.94 )	1.41 ( 1.39, 1.43 )	1.30 ( 1.29, 1.31 )	
	60	0.33 ( 0.32, 0.34 )	0.83 ( 0.82, 0.85 )	1.23 ( 1.21, 1.25 )	1.35 ( 1.33, 1.37 )	1.26 ( 1.25, 1.27 )	
	70	0.57 ( 0.56, 0.58 )	1.03 ( 1.01, 1.05 )	- ( - , - )	1.16 ( 1.14, 1.18 )	1.11 ( 1.10, 1.12 )	
	80	0.64 ( 0.63, 0.66 )	- ( - , - )	- ( - , - )	0.82 ( 0.80, 0.84 )	0.83 ( 0.82, 0.84 )	
Black	0	0.00 ( 0.00, 0.00 )	0.00 ( 0.00, 0.00 )	0.00 ( 0.00, 0.00 )	1.49 ( 1.43, 1.55 )	1.31 ( 1.28, 1.34 )	
	10	0.00 ( 0.00, 0.00 )	0.00 ( 0.00, 0.00 )	0.01 ( 0.01, 0.01 )	1.52 ( 1.46, 1.59 )	1.34 ( 1.32, 1.37 )	
	20	0.00 ( 0.00, 0.00 )	0.01 ( 0.01, 0.01 )	0.06 ( 0.05, 0.07 )	1.53 ( 1.47, 1.60 )	1.35 ( 1.32, 1.38 )	
	30	0.01 ( 0.01, 0.01 )	0.06 ( 0.05, 0.07 )	0.25 ( 0.23, 0.26 )	1.56 ( 1.49, 1.62 )	1.37 ( 1.34, 1.40 )	
	40	0.05 ( 0.05, 0.06 )	0.24 ( 0.23, 0.26 )	0.62 ( 0.59, 0.66 )	1.58 ( 1.52, 1.65 )	1.40 ( 1.37, 1.42 )	
	50	0.20 ( 0.18, 0.21 )	0.60 ( 0.57, 0.63 )	1.10 ( 1.05, 1.15 )	1.61 ( 1.54, 1.68 )	1.42 ( 1.39, 1.45 )	
	60	0.45 ( 0.42, 0.48 )	1.01 ( 0.96, 1.06 )	1.42 ( 1.36, 1.48 )	1.57 ( 1.50, 1.65 )	1.39 ( 1.36, 1.43 )	
	70	0.70 ( 0.65, 0.75 )	1.21 ( 1.14, 1.28 )	- ( - , - )	1.40 ( 1.33, 1.48 )	1.25 ( 1.22, 1.29 )	
	80	0.80 ( 0.73, 0.87 )	- ( - , - )	- ( - , - )	1.10 ( 1.01, 1.19 )	0.97 ( 0.94, 1.01 )	

Devcan Version 6.4.0, April 2009, National Cancer Institute (<http://srab.cancer.gov/devcan/>).

Source: Incidence data are from the SEER 17 areas (San Francisco, Connecticut, Detroit, Hawaii, Iowa, New Mexico, Seattle, Utah, Atlanta, San Jose-Monterey, Los Angeles, Alaska Native Registry, Rural Georgia, California excluding SF/SJM/LA, Kentucky, Louisiana and New Jersey). Mortality data are from the NCHS public use data file for the total US.

- Statistic could not be calculated.

A percent or confidence interval value of 0.00 represents a value that is below 0.005.

Table 22.11 - continued  
Cancer of the Pancreas (Invasive)

Risk of Being Diagnosed With Cancer in 10, 20 and 30 Years,  
Lifetime Risk of Being Diagnosed with Cancer Given Alive and Cancer-Free at Current Age, and  
Lifetime Risk of Dying from Cancer Given Alive at Current Age  
Both Sexes, 2004-2006 By Race/Ethnicity

Race/ Ethnicity	Current Age	Risk of Being Diagnosed with Cancer				Risk of Dying from Cancer	
		+10 yrs Percent ( 95% C.I. )	+20 yrs Percent ( 95% C.I. )	+30 yrs Percent ( 95% C.I. )	Eventually Percent ( 95% C.I. )	Eventually Percent ( 95% C.I. )	
Asian/ Pacific Islander	0	0.00 ( 0.00, 0.00 )	0.00 ( 0.00, 0.00 )	0.00 ( 0.00, 0.00 )	1.48 ( 1.39, 1.58 )	1.30 ( 1.22, 1.38 )	
	10	0.00 ( 0.00, 0.00 )	0.00 ( 0.00, 0.00 )	0.01 ( 0.01, 0.01 )	1.50 ( 1.40, 1.60 )	1.31 ( 1.23, 1.40 )	
	20	0.00 ( 0.00, 0.00 )	0.01 ( 0.01, 0.01 )	0.04 ( 0.04, 0.05 )	1.50 ( 1.41, 1.60 )	1.31 ( 1.24, 1.40 )	
	30	0.01 ( 0.01, 0.01 )	0.04 ( 0.04, 0.05 )	0.14 ( 0.12, 0.15 )	1.51 ( 1.41, 1.61 )	1.32 ( 1.24, 1.40 )	
	40	0.03 ( 0.03, 0.04 )	0.13 ( 0.12, 0.14 )	0.36 ( 0.34, 0.39 )	1.51 ( 1.41, 1.61 )	1.32 ( 1.24, 1.41 )	
	50	0.10 ( 0.09, 0.11 )	0.33 ( 0.31, 0.36 )	0.74 ( 0.70, 0.78 )	1.49 ( 1.40, 1.60 )	1.32 ( 1.24, 1.40 )	
	60	0.24 ( 0.22, 0.27 )	0.66 ( 0.62, 0.71 )	1.16 ( 1.10, 1.23 )	1.44 ( 1.35, 1.55 )	1.28 ( 1.20, 1.37 )	
	70	0.45 ( 0.42, 0.49 )	1.00 ( 0.93, 1.06 )	- ( - , - )	1.30 ( 1.20, 1.41 )	1.18 ( 1.09, 1.27 )	
	80	0.67 ( 0.61, 0.73 )	- ( - , - )	- ( - , - )	1.04 ( 0.93, 1.17 )	0.97 ( 0.87, 1.08 )	
American Indian/ Alaska Native <sup>a</sup>	0	0.00 ( 0.00, 0.02 )	0.00 ( 0.00, 0.02 )	0.00 ( 0.00, 0.02 )	1.13 ( 0.91, 1.55 )	1.01 ( 0.87, 1.20 )	
	10	0.00 ( 0.00, 0.01 )	0.00 ( 0.00, 0.01 )	0.01 ( 0.00, 0.03 )	1.15 ( 0.92, 1.58 )	1.03 ( 0.89, 1.22 )	
	20	0.00 ( 0.00, 0.01 )	0.01 ( 0.00, 0.03 )	0.04 ( 0.02, 0.07 )	1.16 ( 0.93, 1.59 )	1.04 ( 0.90, 1.23 )	
	30	0.01 ( 0.00, 0.03 )	0.04 ( 0.02, 0.07 )	0.13 ( 0.09, 0.18 )	1.18 ( 0.94, 1.62 )	1.06 ( 0.92, 1.25 )	
	40	0.03 ( 0.02, 0.06 )	0.12 ( 0.08, 0.17 )	0.36 ( 0.27, 0.47 )	1.20 ( 0.96, 1.65 )	1.09 ( 0.94, 1.29 )	
	50	0.09 ( 0.06, 0.14 )	0.34 ( 0.25, 0.46 )	0.81 ( 0.64, 1.01 )	1.22 ( 0.97, 1.68 )	1.12 ( 0.97, 1.33 )	
	60	0.27 ( 0.19, 0.37 )	0.77 ( 0.59, 0.98 )	1.14 ( 0.89, 1.44 )	1.21 ( 0.94, 1.71 )	1.12 ( 0.95, 1.34 )	
	70	0.58 ( 0.42, 0.79 )	1.01 ( 0.75, 1.33 )	- ( - , - )	1.09 ( 0.81, 1.66 )	1.03 ( 0.84, 1.29 )	
	80	0.59 ( 0.36, 0.92 )	- ( - , - )	- ( - , - )	0.70 ( 0.43, 1.42 )	0.82 ( 0.59, 1.16 )	
Hispanic <sup>b</sup>	0	0.00 ( 0.00, 0.00 )	0.00 ( 0.00, 0.00 )	0.00 ( 0.00, 0.00 )	1.48 ( 1.40, 1.56 )	1.21 ( 1.17, 1.26 )	
	10	0.00 ( 0.00, 0.00 )	0.00 ( 0.00, 0.00 )	0.01 ( 0.01, 0.01 )	1.49 ( 1.41, 1.58 )	1.23 ( 1.18, 1.28 )	
	20	0.00 ( 0.00, 0.00 )	0.01 ( 0.01, 0.01 )	0.04 ( 0.04, 0.05 )	1.50 ( 1.42, 1.59 )	1.23 ( 1.19, 1.28 )	
	30	0.01 ( 0.01, 0.01 )	0.04 ( 0.04, 0.05 )	0.15 ( 0.14, 0.17 )	1.51 ( 1.43, 1.60 )	1.24 ( 1.20, 1.29 )	
	40	0.03 ( 0.03, 0.04 )	0.15 ( 0.14, 0.16 )	0.45 ( 0.42, 0.47 )	1.52 ( 1.44, 1.61 )	1.25 ( 1.21, 1.30 )	
	50	0.12 ( 0.11, 0.13 )	0.42 ( 0.40, 0.45 )	0.88 ( 0.84, 0.93 )	1.52 ( 1.43, 1.61 )	1.26 ( 1.21, 1.31 )	
	60	0.32 ( 0.30, 0.35 )	0.80 ( 0.76, 0.85 )	1.23 ( 1.17, 1.29 )	1.47 ( 1.38, 1.56 )	1.23 ( 1.18, 1.28 )	
	70	0.54 ( 0.50, 0.57 )	1.01 ( 0.95, 1.07 )	- ( - , - )	1.28 ( 1.19, 1.38 )	1.10 ( 1.05, 1.16 )	
	80	0.61 ( 0.56, 0.67 )	- ( - , - )	- ( - , - )	0.97 ( 0.86, 1.08 )	0.87 ( 0.81, 0.94 )	

Devcan Version 6.4.0, April 2009, National Cancer Institute (<http://srab.cancer.gov/devcan/>).

Source: Incidence data are from the SEER 17 areas (San Francisco, Connecticut, Detroit, Hawaii, Iowa, New Mexico, Seattle, Utah, Atlanta, San Jose-Monterey, Los Angeles, Alaska Native Registry, Rural Georgia, California excluding SF/SJM/LA, Kentucky, Louisiana and New Jersey). Mortality data are from the NCHS public use data file for the total US.

<sup>a</sup> Underlying incidence and mortality data for American Indian/Alaska Native are based on the CHSDA (Contract Health Service Delivery Area) counties.

<sup>b</sup> Hispanic is not mutually exclusive from whites, blacks, Asian/Pacific Islanders, and American Indians/Alaska Natives.

Underlying incidence data for Hispanics are based on NHIA and exclude cases from the Alaska Native Registry.

Underlying mortality data for Hispanics exclude deaths from the District of Columbia, Minnesota, New Hampshire and North Dakota.

- Statistic could not be calculated.

A percent or confidence interval value of 0.00 represents a value that is below 0.005.

Table 22.11 - continued  
Cancer of the Pancreas (Invasive)

Risk of Being Diagnosed With Cancer in 10, 20 and 30 Years,  
Lifetime Risk of Being Diagnosed with Cancer Given Alive and Cancer-Free at Current Age, and  
Lifetime Risk of Dying from Cancer Given Alive at Current Age  
Males, 2004-2006 By Race/Ethnicity

Race/ Ethnicity	Current Age	Risk of Being Diagnosed with Cancer					Risk of Dying from Cancer	
		+10 yrs Percent ( 95% C.I. )	+20 yrs Percent ( 95% C.I. )	+30 yrs Percent ( 95% C.I. )	Eventually Percent ( 95% C.I. )	Eventually Percent ( 95% C.I. )		
All Races	0	0.00 ( 0.00, 0.00 )	0.00 ( 0.00, 0.00 )	0.00 ( 0.00, 0.00 )	1.38 ( 1.35, 1.40 )	1.26 ( 1.25, 1.27 )		
	10	0.00 ( 0.00, 0.00 )	0.00 ( 0.00, 0.00 )	0.01 ( 0.01, 0.01 )	1.39 ( 1.37, 1.42 )	1.28 ( 1.27, 1.29 )		
	20	0.00 ( 0.00, 0.00 )	0.01 ( 0.01, 0.01 )	0.05 ( 0.05, 0.06 )	1.40 ( 1.38, 1.43 )	1.29 ( 1.27, 1.30 )		
	30	0.01 ( 0.01, 0.01 )	0.05 ( 0.05, 0.06 )	0.21 ( 0.20, 0.22 )	1.42 ( 1.39, 1.45 )	1.30 ( 1.29, 1.31 )		
	40	0.05 ( 0.04, 0.05 )	0.21 ( 0.20, 0.21 )	0.55 ( 0.54, 0.57 )	1.43 ( 1.41, 1.46 )	1.32 ( 1.31, 1.33 )		
	50	0.17 ( 0.16, 0.17 )	0.52 ( 0.51, 0.54 )	1.01 ( 0.99, 1.03 )	1.44 ( 1.41, 1.46 )	1.33 ( 1.32, 1.34 )		
	60	0.39 ( 0.37, 0.40 )	0.91 ( 0.89, 0.93 )	1.28 ( 1.25, 1.31 )	1.37 ( 1.34, 1.40 )	1.28 ( 1.27, 1.29 )		
	70	0.62 ( 0.60, 0.64 )	1.06 ( 1.03, 1.08 )	- ( - , - )	1.16 ( 1.13, 1.19 )	1.11 ( 1.10, 1.12 )		
	80	0.66 ( 0.63, 0.68 )	- ( - , - )	- ( - , - )	0.82 ( 0.79, 0.85 )	0.82 ( 0.80, 0.83 )		
White	0	0.00 ( 0.00, 0.00 )	0.00 ( 0.00, 0.00 )	0.00 ( 0.00, 0.00 )	1.38 ( 1.35, 1.41 )	1.27 ( 1.26, 1.28 )		
	10	0.00 ( 0.00, 0.00 )	0.00 ( 0.00, 0.00 )	0.01 ( 0.01, 0.01 )	1.40 ( 1.37, 1.42 )	1.29 ( 1.27, 1.30 )		
	20	0.00 ( 0.00, 0.00 )	0.01 ( 0.01, 0.01 )	0.05 ( 0.05, 0.06 )	1.40 ( 1.37, 1.43 )	1.29 ( 1.28, 1.31 )		
	30	0.01 ( 0.01, 0.01 )	0.05 ( 0.05, 0.06 )	0.21 ( 0.20, 0.21 )	1.42 ( 1.39, 1.45 )	1.31 ( 1.30, 1.32 )		
	40	0.05 ( 0.04, 0.05 )	0.20 ( 0.19, 0.21 )	0.55 ( 0.54, 0.57 )	1.43 ( 1.40, 1.46 )	1.33 ( 1.31, 1.34 )		
	50	0.16 ( 0.16, 0.17 )	0.52 ( 0.51, 0.54 )	1.01 ( 0.99, 1.04 )	1.43 ( 1.41, 1.47 )	1.33 ( 1.32, 1.35 )		
	60	0.39 ( 0.37, 0.40 )	0.92 ( 0.89, 0.94 )	1.29 ( 1.26, 1.32 )	1.37 ( 1.34, 1.40 )	1.29 ( 1.27, 1.30 )		
	70	0.62 ( 0.60, 0.64 )	1.06 ( 1.03, 1.09 )	- ( - , - )	1.15 ( 1.12, 1.19 )	1.11 ( 1.10, 1.13 )		
	80	0.66 ( 0.63, 0.68 )	- ( - , - )	- ( - , - )	0.80 ( 0.77, 0.83 )	0.82 ( 0.80, 0.83 )		
Black	0	0.00 ( 0.00, 0.00 )	0.00 ( 0.00, 0.00 )	0.00 ( 0.00, 0.01 )	1.33 ( 1.25, 1.41 )	1.21 ( 1.18, 1.25 )		
	10	0.00 ( 0.00, 0.00 )	0.00 ( 0.00, 0.01 )	0.01 ( 0.01, 0.02 )	1.36 ( 1.28, 1.45 )	1.24 ( 1.21, 1.28 )		
	20	0.00 ( 0.00, 0.00 )	0.01 ( 0.01, 0.02 )	0.07 ( 0.06, 0.08 )	1.37 ( 1.29, 1.46 )	1.25 ( 1.22, 1.29 )		
	30	0.01 ( 0.01, 0.01 )	0.07 ( 0.06, 0.08 )	0.29 ( 0.27, 0.32 )	1.41 ( 1.32, 1.50 )	1.28 ( 1.25, 1.32 )		
	40	0.06 ( 0.05, 0.07 )	0.30 ( 0.27, 0.32 )	0.71 ( 0.66, 0.76 )	1.44 ( 1.35, 1.54 )	1.31 ( 1.28, 1.35 )		
	50	0.25 ( 0.23, 0.28 )	0.69 ( 0.64, 0.74 )	1.14 ( 1.07, 1.21 )	1.47 ( 1.38, 1.57 )	1.34 ( 1.30, 1.38 )		
	60	0.51 ( 0.46, 0.55 )	1.03 ( 0.95, 1.10 )	1.31 ( 1.22, 1.40 )	1.41 ( 1.31, 1.52 )	1.30 ( 1.26, 1.34 )		
	70	0.69 ( 0.62, 0.76 )	1.06 ( 0.97, 1.16 )	- ( - , - )	1.19 ( 1.08, 1.32 )	1.12 ( 1.08, 1.17 )		
	80	0.65 ( 0.56, 0.76 )	- ( - , - )	- ( - , - )	0.88 ( 0.74, 1.05 )	0.82 ( 0.76, 0.88 )		

Devcan Version 6.4.0, April 2009, National Cancer Institute (<http://srab.cancer.gov/devcan/>).

Source: Incidence data are from the SEER 17 areas (San Francisco, Connecticut, Detroit, Hawaii, Iowa, New Mexico, Seattle, Utah, Atlanta, San Jose-Monterey, Los Angeles, Alaska Native Registry, Rural Georgia, California excluding SF/SJM/LA, Kentucky, Louisiana and New Jersey). Mortality data are from the NCHS public use data file for the total US.

- Statistic could not be calculated.

A percent or confidence interval value of 0.00 represents a value that is below 0.005.

Table 22.11 - continued  
Cancer of the Pancreas (Invasive)

Risk of Being Diagnosed With Cancer in 10, 20 and 30 Years,  
Lifetime Risk of Being Diagnosed with Cancer Given Alive and Cancer-Free at Current Age, and  
Lifetime Risk of Dying from Cancer Given Alive at Current Age  
Males, 2004-2006 By Race/Ethnicity

Race/ Ethnicity	Current Age	Risk of Being Diagnosed with Cancer				Risk of Dying from Cancer	
		+10 yrs Percent ( 95% C.I. )	+20 yrs Percent ( 95% C.I. )	+30 yrs Percent ( 95% C.I. )	Eventually Percent ( 95% C.I. )	Eventually Percent ( 95% C.I. )	
Asian/ Pacific Islander	0	0.00 ( 0.00, 0.00 )	0.00 ( 0.00, 0.00 )	0.00 ( 0.00, 0.00 )	1.49 ( 1.36, 1.63 )	1.25 ( 1.15, 1.37 )	
	10	0.00 ( 0.00, 0.00 )	0.00 ( 0.00, 0.00 )	0.01 ( 0.01, 0.01 )	1.50 ( 1.37, 1.65 )	1.26 ( 1.16, 1.38 )	
	20	0.00 ( 0.00, 0.00 )	0.01 ( 0.01, 0.01 )	0.05 ( 0.04, 0.06 )	1.50 ( 1.38, 1.65 )	1.27 ( 1.17, 1.39 )	
	30	0.01 ( 0.00, 0.01 )	0.05 ( 0.04, 0.06 )	0.17 ( 0.15, 0.19 )	1.51 ( 1.38, 1.66 )	1.28 ( 1.17, 1.39 )	
	40	0.04 ( 0.04, 0.05 )	0.16 ( 0.14, 0.18 )	0.40 ( 0.37, 0.45 )	1.52 ( 1.39, 1.67 )	1.28 ( 1.18, 1.40 )	
	50	0.12 ( 0.10, 0.13 )	0.37 ( 0.33, 0.41 )	0.80 ( 0.73, 0.87 )	1.50 ( 1.37, 1.65 )	1.27 ( 1.17, 1.39 )	
	60	0.26 ( 0.23, 0.30 )	0.71 ( 0.65, 0.78 )	1.18 ( 1.09, 1.29 )	1.44 ( 1.31, 1.60 )	1.23 ( 1.13, 1.36 )	
	70	0.50 ( 0.44, 0.56 )	1.02 ( 0.92, 1.13 )	- ( - , - )	1.31 ( 1.16, 1.48 )	1.14 ( 1.02, 1.27 )	
	80	0.68 ( 0.59, 0.78 )	- ( - , - )	- ( - , - )	1.05 ( 0.89, 1.25 )	0.92 ( 0.79, 1.08 )	
American Indian/ Alaska Native <sup>a</sup>	0	0.00 ( 0.00, 0.04 )	0.00 ( 0.00, 0.04 )	0.00 ( 0.00, 0.04 )	1.01 ( 0.70, 1.95 )	1.01 ( 0.80, 1.35 )	
	10	0.00 ( 0.00, 0.02 )	0.00 ( 0.00, 0.02 )	0.01 ( 0.00, 0.05 )	1.04 ( 0.72, 1.99 )	1.04 ( 0.82, 1.38 )	
	20	0.00 ( 0.00, 0.02 )	0.01 ( 0.00, 0.05 )	0.04 ( 0.02, 0.09 )	1.05 ( 0.73, 2.01 )	1.05 ( 0.83, 1.40 )	
	30	0.01 ( 0.00, 0.05 )	0.04 ( 0.02, 0.09 )	0.14 ( 0.08, 0.22 )	1.07 ( 0.75, 2.06 )	1.07 ( 0.85, 1.43 )	
	40	0.03 ( 0.01, 0.07 )	0.13 ( 0.07, 0.21 )	0.38 ( 0.25, 0.55 )	1.10 ( 0.76, 2.12 )	1.11 ( 0.88, 1.49 )	
	50	0.11 ( 0.06, 0.18 )	0.37 ( 0.23, 0.55 )	0.74 ( 0.51, 1.04 )	1.12 ( 0.77, 2.20 )	1.15 ( 0.91, 1.55 )	
	60	0.29 ( 0.16, 0.46 )	0.70 ( 0.46, 1.01 )	1.03 ( 0.69, 1.50 )	1.12 ( 0.74, 2.30 )	1.15 ( 0.89, 1.60 )	
	70	0.49 ( 0.28, 0.81 )	0.89 ( 0.53, 1.42 )	- ( - , - )	0.99 ( 0.59, 2.41 )	1.08 ( 0.77, 1.62 )	
	80	0.57 ( 0.24, 1.19 )	- ( - , - )	- ( - , - )	0.72 ( 0.30, 2.76 )	0.97 ( 0.57, 1.76 )	
Hispanic <sup>b</sup>	0	0.00 ( 0.00, 0.00 )	0.00 ( 0.00, 0.00 )	0.00 ( 0.00, 0.00 )	1.34 ( 1.25, 1.46 )	1.15 ( 1.09, 1.22 )	
	10	0.00 ( 0.00, 0.00 )	0.00 ( 0.00, 0.00 )	0.01 ( 0.01, 0.01 )	1.36 ( 1.26, 1.48 )	1.16 ( 1.10, 1.23 )	
	20	0.00 ( 0.00, 0.00 )	0.01 ( 0.01, 0.01 )	0.04 ( 0.04, 0.05 )	1.37 ( 1.27, 1.49 )	1.17 ( 1.11, 1.24 )	
	30	0.01 ( 0.01, 0.01 )	0.04 ( 0.04, 0.05 )	0.16 ( 0.14, 0.18 )	1.38 ( 1.28, 1.51 )	1.18 ( 1.12, 1.25 )	
	40	0.04 ( 0.03, 0.04 )	0.15 ( 0.14, 0.17 )	0.48 ( 0.45, 0.52 )	1.39 ( 1.29, 1.52 )	1.20 ( 1.13, 1.27 )	
	50	0.12 ( 0.11, 0.13 )	0.46 ( 0.42, 0.50 )	0.93 ( 0.86, 0.99 )	1.40 ( 1.29, 1.52 )	1.20 ( 1.14, 1.28 )	
	60	0.36 ( 0.33, 0.40 )	0.86 ( 0.79, 0.93 )	1.24 ( 1.15, 1.33 )	1.36 ( 1.25, 1.49 )	1.18 ( 1.11, 1.25 )	
	70	0.57 ( 0.51, 0.63 )	1.00 ( 0.91, 1.10 )	- ( - , - )	1.14 ( 1.03, 1.29 )	1.02 ( 0.95, 1.11 )	
	80	0.60 ( 0.51, 0.70 )	- ( - , - )	- ( - , - )	0.79 ( 0.66, 0.97 )	0.77 ( 0.68, 0.87 )	

Devcan Version 6.4.0, April 2009, National Cancer Institute (<http://srab.cancer.gov/devcan/>).

Source: Incidence data are from the SEER 17 areas (San Francisco, Connecticut, Detroit, Hawaii, Iowa, New Mexico, Seattle, Utah, Atlanta, San Jose-Monterey, Los Angeles, Alaska Native Registry, Rural Georgia, California excluding SF/SJM/LA, Kentucky, Louisiana and New Jersey). Mortality data are from the NCHS public use data file for the total US.

<sup>a</sup> Underlying incidence and mortality data for American Indian/Alaska Native are based on the CHSDA (Contract Health Service Delivery Area) counties.

<sup>b</sup> Hispanic is not mutually exclusive from whites, blacks, Asian/Pacific Islanders, and American Indians/Alaska Natives.

Underlying incidence data for Hispanics are based on NHIA and exclude cases from the Alaska Native Registry.

Underlying mortality data for Hispanics exclude deaths from the District of Columbia, Minnesota, New Hampshire and North Dakota.

- Statistic could not be calculated.

A percent or confidence interval value of 0.00 represents a value that is below 0.005.

Table 22.11 - continued  
Cancer of the Pancreas (Invasive)

Risk of Being Diagnosed With Cancer in 10, 20 and 30 Years,  
Lifetime Risk of Being Diagnosed with Cancer Given Alive and Cancer-Free at Current Age, and  
Lifetime Risk of Dying from Cancer Given Alive at Current Age  
Females, 2004-2006 By Race/Ethnicity

Race/ Ethnicity	Current Age	Risk of Being Diagnosed with Cancer						Risk of Dying from Cancer	
		+10 yrs Percent ( 95% C.I. )	+20 yrs Percent ( 95% C.I. )	+30 yrs Percent ( 95% C.I. )	Eventually Percent ( 95% C.I. )	Eventually Percent ( 95% C.I. )			
All Races	0	0.00 ( 0.00, 0.00 )	0.00 ( 0.00, 0.00 )	0.00 ( 0.00, 0.00 )	1.39 ( 1.37, 1.42 )	1.25 ( 1.24, 1.26 )			
	10	0.00 ( 0.00, 0.00 )	0.00 ( 0.00, 0.00 )	0.01 ( 0.01, 0.01 )	1.41 ( 1.38, 1.43 )	1.26 ( 1.25, 1.28 )			
	20	0.00 ( 0.00, 0.00 )	0.01 ( 0.01, 0.01 )	0.04 ( 0.04, 0.04 )	1.41 ( 1.38, 1.44 )	1.27 ( 1.26, 1.28 )			
	30	0.01 ( 0.01, 0.01 )	0.04 ( 0.04, 0.04 )	0.15 ( 0.15, 0.16 )	1.42 ( 1.39, 1.44 )	1.27 ( 1.26, 1.28 )			
	40	0.03 ( 0.03, 0.04 )	0.15 ( 0.14, 0.15 )	0.42 ( 0.41, 0.43 )	1.42 ( 1.40, 1.45 )	1.28 ( 1.27, 1.29 )			
	50	0.12 ( 0.11, 0.12 )	0.39 ( 0.38, 0.40 )	0.85 ( 0.83, 0.87 )	1.42 ( 1.39, 1.44 )	1.28 ( 1.27, 1.30 )			
	60	0.29 ( 0.28, 0.30 )	0.77 ( 0.75, 0.79 )	1.21 ( 1.19, 1.23 )	1.36 ( 1.33, 1.38 )	1.25 ( 1.24, 1.26 )			
	70	0.53 ( 0.52, 0.55 )	1.03 ( 1.00, 1.05 )	- ( - , - )	1.19 ( 1.17, 1.22 )	1.12 ( 1.11, 1.14 )			
	80	0.65 ( 0.63, 0.67 )	- ( - , - )	- ( - , - )	0.87 ( 0.85, 0.90 )	0.86 ( 0.85, 0.87 )			
White	0	0.00 ( 0.00, 0.00 )	0.00 ( 0.00, 0.00 )	0.00 ( 0.00, 0.00 )	1.36 ( 1.34, 1.39 )	1.23 ( 1.22, 1.25 )			
	10	0.00 ( 0.00, 0.00 )	0.00 ( 0.00, 0.00 )	0.01 ( 0.01, 0.01 )	1.38 ( 1.35, 1.40 )	1.25 ( 1.24, 1.26 )			
	20	0.00 ( 0.00, 0.00 )	0.01 ( 0.01, 0.01 )	0.04 ( 0.04, 0.04 )	1.38 ( 1.35, 1.41 )	1.25 ( 1.24, 1.26 )			
	30	0.01 ( 0.01, 0.01 )	0.04 ( 0.04, 0.04 )	0.15 ( 0.15, 0.16 )	1.38 ( 1.36, 1.41 )	1.26 ( 1.24, 1.27 )			
	40	0.03 ( 0.03, 0.04 )	0.15 ( 0.14, 0.15 )	0.41 ( 0.40, 0.43 )	1.39 ( 1.36, 1.42 )	1.26 ( 1.25, 1.28 )			
	50	0.12 ( 0.11, 0.12 )	0.39 ( 0.38, 0.40 )	0.84 ( 0.82, 0.86 )	1.38 ( 1.36, 1.41 )	1.27 ( 1.25, 1.28 )			
	60	0.28 ( 0.27, 0.29 )	0.75 ( 0.74, 0.77 )	1.18 ( 1.16, 1.21 )	1.32 ( 1.29, 1.35 )	1.23 ( 1.22, 1.24 )			
	70	0.53 ( 0.51, 0.54 )	1.00 ( 0.98, 1.03 )	- ( - , - )	1.16 ( 1.13, 1.19 )	1.10 ( 1.09, 1.12 )			
	80	0.63 ( 0.61, 0.65 )	- ( - , - )	- ( - , - )	0.84 ( 0.81, 0.86 )	0.84 ( 0.83, 0.85 )			
Black	0	0.00 ( 0.00, 0.00 )	0.00 ( 0.00, 0.00 )	0.00 ( 0.00, 0.01 )	1.63 ( 1.55, 1.72 )	1.39 ( 1.36, 1.43 )			
	10	0.00 ( 0.00, 0.00 )	0.00 ( 0.00, 0.00 )	0.01 ( 0.01, 0.01 )	1.67 ( 1.58, 1.76 )	1.43 ( 1.39, 1.46 )			
	20	0.00 ( 0.00, 0.00 )	0.01 ( 0.00, 0.01 )	0.06 ( 0.05, 0.07 )	1.67 ( 1.58, 1.77 )	1.43 ( 1.39, 1.47 )			
	30	0.01 ( 0.00, 0.01 )	0.06 ( 0.05, 0.07 )	0.20 ( 0.18, 0.22 )	1.69 ( 1.60, 1.78 )	1.44 ( 1.40, 1.48 )			
	40	0.05 ( 0.04, 0.06 )	0.20 ( 0.18, 0.22 )	0.55 ( 0.51, 0.59 )	1.70 ( 1.61, 1.80 )	1.46 ( 1.42, 1.50 )			
	50	0.15 ( 0.14, 0.17 )	0.52 ( 0.48, 0.56 )	1.07 ( 1.00, 1.13 )	1.72 ( 1.63, 1.82 )	1.48 ( 1.44, 1.52 )			
	60	0.40 ( 0.36, 0.44 )	0.99 ( 0.93, 1.06 )	1.50 ( 1.42, 1.60 )	1.71 ( 1.61, 1.81 )	1.46 ( 1.42, 1.50 )			
	70	0.71 ( 0.65, 0.77 )	1.31 ( 1.22, 1.41 )	- ( - , - )	1.55 ( 1.44, 1.66 )	1.34 ( 1.30, 1.38 )			
	80	0.88 ( 0.79, 0.97 )	- ( - , - )	- ( - , - )	1.22 ( 1.11, 1.35 )	1.05 ( 1.01, 1.11 )			

Devcan Version 6.4.0, April 2009, National Cancer Institute (<http://srab.cancer.gov/devcan/>).

Source: Incidence data are from the SEER 17 areas (San Francisco, Connecticut, Detroit, Hawaii, Iowa, New Mexico, Seattle, Utah, Atlanta, San Jose-Monterey, Los Angeles, Alaska Native Registry, Rural Georgia, California excluding SF/SJM/LA, Kentucky, Louisiana and New Jersey). Mortality data are from the NCHS public use data file for the total US.

- Statistic could not be calculated.

A percent or confidence interval value of 0.00 represents a value that is below 0.005.

Table 22.11 - continued  
Cancer of the Pancreas (Invasive)

Risk of Being Diagnosed With Cancer in 10, 20 and 30 Years,  
Lifetime Risk of Being Diagnosed with Cancer Given Alive and Cancer-Free at Current Age, and  
Lifetime Risk of Dying from Cancer Given Alive at Current Age  
Females, 2004-2006 By Race/Ethnicity

Race/ Ethnicity	Current Age	Risk of Being Diagnosed with Cancer						Risk of Dying from Cancer	
		+10 yrs Percent ( 95% C.I. )	+20 yrs Percent ( 95% C.I. )	+30 yrs Percent ( 95% C.I. )	Eventually Percent ( 95% C.I. )	Eventually Percent ( 95% C.I. )			
Asian/ Pacific Islander	0	0.00 ( 0.00, 0.00 )	0.00 ( 0.00, 0.00 )	0.00 ( 0.00, 0.01 )	1.48 ( 1.35, 1.63 )	1.34 ( 1.23, 1.47 )			
	10	0.00 ( 0.00, 0.00 )	0.00 ( 0.00, 0.01 )	0.01 ( 0.01, 0.01 )	1.49 ( 1.36, 1.64 )	1.35 ( 1.24, 1.48 )			
	20	0.00 ( 0.00, 0.00 )	0.01 ( 0.01, 0.01 )	0.03 ( 0.03, 0.04 )	1.49 ( 1.36, 1.64 )	1.35 ( 1.24, 1.49 )			
	30	0.01 ( 0.00, 0.01 )	0.03 ( 0.02, 0.04 )	0.11 ( 0.10, 0.13 )	1.49 ( 1.37, 1.65 )	1.36 ( 1.24, 1.49 )			
	40	0.02 ( 0.02, 0.03 )	0.10 ( 0.09, 0.12 )	0.33 ( 0.29, 0.36 )	1.49 ( 1.36, 1.64 )	1.36 ( 1.25, 1.49 )			
	50	0.08 ( 0.07, 0.10 )	0.31 ( 0.27, 0.34 )	0.69 ( 0.64, 0.75 )	1.48 ( 1.35, 1.64 )	1.36 ( 1.24, 1.49 )			
	60	0.23 ( 0.20, 0.26 )	0.62 ( 0.57, 0.68 )	1.15 ( 1.06, 1.24 )	1.44 ( 1.31, 1.60 )	1.32 ( 1.20, 1.45 )			
	70	0.42 ( 0.38, 0.47 )	0.98 ( 0.89, 1.07 )	- ( - , - )	1.29 ( 1.15, 1.45 )	1.21 ( 1.09, 1.36 )			
	80	0.66 ( 0.58, 0.74 )	- ( - , - )	- ( - , - )	1.02 ( 0.88, 1.20 )	1.01 ( 0.87, 1.17 )			
American Indian/ Alaska Native <sup>a</sup>	0	0.00 ( 0.00, 0.04 )	0.00 ( 0.00, 0.04 )	0.00 ( 0.00, 0.04 )	1.26 ( 0.93, 1.93 )	1.04 ( 0.85, 1.31 )			
	10	0.00 ( 0.00, 0.02 )	0.00 ( 0.00, 0.02 )	0.01 ( 0.00, 0.04 )	1.28 ( 0.95, 1.96 )	1.06 ( 0.86, 1.33 )			
	20	0.00 ( 0.00, 0.02 )	0.01 ( 0.00, 0.04 )	0.04 ( 0.02, 0.09 )	1.28 ( 0.95, 1.97 )	1.06 ( 0.87, 1.34 )			
	30	0.01 ( 0.00, 0.04 )	0.04 ( 0.02, 0.09 )	0.12 ( 0.07, 0.20 )	1.29 ( 0.96, 1.98 )	1.07 ( 0.87, 1.35 )			
	40	0.04 ( 0.01, 0.08 )	0.12 ( 0.07, 0.19 )	0.35 ( 0.24, 0.51 )	1.31 ( 0.97, 2.01 )	1.10 ( 0.89, 1.38 )			
	50	0.08 ( 0.04, 0.15 )	0.32 ( 0.21, 0.48 )	0.87 ( 0.63, 1.18 )	1.31 ( 0.96, 2.03 )	1.12 ( 0.91, 1.41 )			
	60	0.26 ( 0.16, 0.40 )	0.83 ( 0.59, 1.15 )	1.24 ( 0.90, 1.68 )	1.30 ( 0.94, 2.06 )	1.11 ( 0.89, 1.42 )			
	70	0.66 ( 0.43, 0.96 )	1.12 ( 0.77, 1.59 )	- ( - , - )	1.19 ( 0.81, 2.03 )	1.01 ( 0.78, 1.37 )			
	80	0.61 ( 0.32, 1.07 )	- ( - , - )	- ( - , - )	0.70 ( 0.37, 1.75 )	0.74 ( 0.48, 1.18 )			
Hispanic <sup>b</sup>	0	0.00 ( 0.00, 0.00 )	0.00 ( 0.00, 0.00 )	0.00 ( 0.00, 0.00 )	1.58 ( 1.47, 1.71 )	1.27 ( 1.20, 1.33 )			
	10	0.00 ( 0.00, 0.00 )	0.00 ( 0.00, 0.00 )	0.01 ( 0.01, 0.01 )	1.60 ( 1.48, 1.73 )	1.28 ( 1.22, 1.35 )			
	20	0.00 ( 0.00, 0.00 )	0.01 ( 0.00, 0.01 )	0.04 ( 0.03, 0.04 )	1.60 ( 1.48, 1.73 )	1.28 ( 1.22, 1.35 )			
	30	0.01 ( 0.00, 0.01 )	0.04 ( 0.03, 0.04 )	0.15 ( 0.13, 0.17 )	1.60 ( 1.49, 1.74 )	1.29 ( 1.22, 1.36 )			
	40	0.03 ( 0.03, 0.04 )	0.14 ( 0.13, 0.16 )	0.42 ( 0.39, 0.45 )	1.61 ( 1.49, 1.74 )	1.29 ( 1.23, 1.36 )			
	50	0.11 ( 0.10, 0.13 )	0.39 ( 0.36, 0.43 )	0.85 ( 0.79, 0.90 )	1.60 ( 1.48, 1.73 )	1.29 ( 1.23, 1.36 )			
	60	0.29 ( 0.26, 0.32 )	0.76 ( 0.70, 0.81 )	1.22 ( 1.14, 1.30 )	1.54 ( 1.42, 1.68 )	1.26 ( 1.20, 1.34 )			
	70	0.51 ( 0.47, 0.56 )	1.01 ( 0.93, 1.10 )	- ( - , - )	1.36 ( 1.24, 1.51 )	1.15 ( 1.08, 1.23 )			
	80	0.62 ( 0.55, 0.70 )	- ( - , - )	- ( - , - )	1.06 ( 0.92, 1.22 )	0.93 ( 0.85, 1.02 )			

Devcan Version 6.4.0, April 2009, National Cancer Institute (<http://srab.cancer.gov/devcan/>).

Source: Incidence data are from the SEER 17 areas (San Francisco, Connecticut, Detroit, Hawaii, Iowa, New Mexico, Seattle, Utah, Atlanta, San Jose-Monterey, Los Angeles, Alaska Native Registry, Rural Georgia, California excluding SF/SJM/LA, Kentucky, Louisiana and New Jersey). Mortality data are from the NCHS public use data file for the total US.

<sup>a</sup> Underlying incidence and mortality data for American Indian/Alaska Native are based on the CHSDA (Contract Health Service Delivery Area) counties.

<sup>b</sup> Hispanic is not mutually exclusive from whites, blacks, Asian/Pacific Islanders, and American Indians/Alaska Natives.

Underlying incidence data for Hispanics are based on NHIA and exclude cases from the Alaska Native Registry.

Underlying mortality data for Hispanics exclude deaths from the District of Columbia, Minnesota, New Hampshire and North Dakota.

- Statistic could not be calculated.

A percent or confidence interval value of 0.00 represents a value that is below 0.005.



Table 22.12  
Cancer of the Pancreas (Invasive)

SEER Incidence and U.S. Mortality  
Age-Adjusted Rates and Trends<sup>a</sup>  
By Race/Ethnicity and Sex

SEER Incidence	SEER 17 Areas <sup>b</sup>			SEER 13 Areas <sup>b</sup>			SEER 9 Areas <sup>b</sup>		
	Rate 2002-2006			Trend 1997-2006 <sup>c</sup>			Trend 1997-2006 <sup>d</sup>		
	Rate per 100,000 persons			AAPC (%)			AAPC (%)		
RACE/ETHNICITY	Total	Males	Females	Total	Males	Females	Total	Males	Females
All Races	11.7	13.1	10.4	0.3*	0.1	0.4*	0.5*	0.3	0.6*
White	11.5	13.1	10.2	0.5*	0.4*	0.4*	0.7*	0.7*	0.9*
White Hispanic <sup>e</sup>	10.9	11.4	10.4	-0.1	-0.1	-0.3	-	-	-
White Non-Hispanic <sup>e</sup>	11.7	13.3	10.2	0.5*	0.5*	0.5*	-	-	-
Black	15.6	16.6	14.6	-0.8*	-1.2*	-0.6	-0.3*	-0.7*	0.0
Asian/Pacific Islander	9.0	10.1	8.2	0.0	-0.9	0.9*	-	-	-
Amer Ind/Alaska Nat <sup>f</sup>	9.7	10.2	9.3	-	-	-	-	-	-
Hispanic <sup>e</sup>	10.6	11.1	10.2	0.0	0.0	-0.1	-	-	-
<u>U.S. Mortality<sup>g</sup></u>									
RACE/ETHNICITY	Rate 2002-2006			Trend 1997-2006 <sup>h</sup>					
	Rate per 100,000 persons			AAPC (%)					
	Total	Males	Females	Total	Males	Females			
All Races	10.7	12.3	9.3	0.3*	0.1	0.3*			
White	10.5	12.2	9.1	0.5*	0.3*	0.4*			
White Hispanic <sup>e</sup>	8.6	9.5	7.8	0.1	-0.4	0.3			
White Non-Hispanic <sup>e</sup>	10.6	12.4	9.2	0.6*	0.6*	0.3*			
Black	13.7	15.4	12.4	-0.8*	-1.2*	-0.6*			
Asian/Pacific Islander	7.4	8.1	7.0	-0.3	-1.0*	0.5			
Amer Ind/Alaska Nat									
Total U.S.	6.8	7.1	6.6	1.1	1.8	0.9			
CHSDA Counties	8.4	9.1	7.8	2.3*	3.2*	2.1			
Non-CHSDA Counties	4.9	4.5	5.1	-0.9	-	-			
Hispanic <sup>e</sup>	8.3	9.1	7.5	0.0	-0.3	0.3			

The AAPC is the Average Annual Percent Change over the time interval. The AAPCs are calculated by the Joinpoint Regression Program Version 3.3, April 2008, National Cancer Institute.

Statistic not shown. Rate based on less than 16 cases for the time interval.

Trend based on less than 10 cases for at least one year within the time interval.

Rates are age-adjusted to the 2000 US Std Population (19 age groups - Census P25-1130). Trends

are based on rates age-adjusted to the 2000 US Std Population (19 age groups - Census P25-1130).

The SEER 9 areas are San Francisco, Connecticut, Detroit, Hawaii, Iowa, New Mexico, Seattle, Utah and Atlanta.

The SEER 13 areas comprise the SEER 9 areas plus San Jose-Monterey, Los Angeles, the Alaska Native Registry and Rural Georgia.

The SEER 17 areas comprise the SEER 13 areas plus California excluding SF/SJM/LA, Kentucky, Louisiana and New Jersey.

The 1997-2006 AAPC estimates are based on a Joinpoint analysis with up to 2 Joinpoints over diagnosis years 1992-2006.

The 1997-2006 AAPC estimates are based on a Joinpoint analysis with up to 4 Joinpoints over diagnosis years 1975-2006.

Hispanic and Non-Hispanic are not mutually exclusive from whites, blacks, Asian/Pacific Islanders, and American Indians/Alaska Natives. Incidence data for Hispanics and Non-Hispanics are based on NHIA and exclude cases from the Alaska Native Registry. The 2002-2006 Hispanic and Non-Hispanic death rates exclude deaths from the District of Columbia, Minnesota, New Hampshire and North Dakota. The 1997-2006 Hispanic and Non-Hispanic mortality trends exclude deaths from Connecticut, the District of Columbia, Maine, Maryland, Minnesota, New Hampshire, New York, North Dakota, Oklahoma and Vermont.

Incidence data for American Indian/Alaska Native are based on the CHSDA(Contract Health Service Delivery Area) counties.

US Mortality Files, National Center for Health Statistics, CDC.

The 1997-2006 mortality AAPCs are based on a Joinpoint analysis using years of death 1992-2006.

The APC is significantly different from zero (p<.05).

Table 22.13  
Cancer of the Pancreas (Invasive)

Age-Adjusted SEER Incidence Rates<sup>a</sup>  
By Registry, Race and Sex

	All Races			Whites			Blacks		
	Total	Males	Females	Total	Males	Females	Total	Males	Females
<u>SEER Incidence Rates<sup>a</sup>, 2002-2006</u>									
Atlanta & Rural Georgia	10.65	12.18	9.40	9.84	11.59	8.45	13.29	13.99	12.40
Atlanta	10.52	12.28	9.15	9.77	11.71	8.30	13.05	14.12	11.99
Rural Georgia	13.02	11.25	13.59	11.18	9.65	11.50	17.44	-	17.99
California	11.16	12.37	10.15	11.30	12.62	10.19	15.34	14.97	15.14
Greater Bay Area	11.25	12.26	10.30	11.70	12.92	10.57	15.54	14.13	15.98
San Francisco-Oakland	11.18	12.14	10.28	11.66	12.89	10.51	15.39	13.71	16.09
San Jose-Monterey	11.41	12.50	10.36	11.79	12.97	10.68	16.95	16.74	15.50
Los Angeles	10.81	11.73	10.03	10.73	11.73	9.88	14.66	14.40	14.44
Greater California	11.31	12.70	10.16	11.42	12.88	10.21	16.14	16.30	15.54
Connecticut	13.23	15.61	11.27	12.95	15.31	10.99	18.56	22.99	15.51
Detroit	13.96	16.21	12.08	13.08	15.49	11.00	17.89	20.15	16.23
Hawaii	11.85	13.11	10.78	10.75	12.63	9.70	-	-	-
Iowa	11.11	12.47	9.95	11.02	12.42	9.82	21.50	-	25.86
Kentucky	11.29	13.03	9.90	11.08	12.83	9.69	15.24	17.22	13.53
Louisiana	13.21	14.90	11.78	12.13	13.88	10.68	16.82	18.81	15.13
New Jersey	12.33	14.01	10.96	12.33	14.10	10.88	13.98	15.10	13.11
New Mexico	10.49	11.44	9.69	10.68	11.76	9.76	-	-	-
Seattle-Puget Sound	11.62	12.94	10.56	11.52	12.87	10.39	17.56	18.07	18.11
Utah	9.70	11.05	8.52	9.79	11.19	8.58	-	-	-
9 SEER Areas <sup>b</sup>	11.76	13.29	10.46	11.56	13.20	10.15	15.99	17.16	14.96
11 SEER Areas <sup>b</sup>	11.52	12.90	10.35	11.39	12.88	10.12	15.64	16.41	14.83
13 SEER Areas <sup>b</sup>	11.53	12.91	10.37	11.39	12.88	10.12	15.66	16.38	14.87
17 SEER Areas <sup>b</sup>	11.66	13.11	10.44	11.54	13.08	10.24	15.59	16.56	14.61

<sup>a</sup> Rates are per 100,000 and are age-adjusted to the 2000 US Std Population (19 age groups - Census P25-1130)

<sup>b</sup> The SEER 9 areas are San Francisco, Connecticut, Detroit, Hawaii, Iowa, New Mexico, Seattle, Utah and Atlanta.

The SEER 11 areas comprise the SEER 9 areas plus San Jose-Monterey and Los Angeles.

The SEER 13 areas comprise the SEER 11 areas plus the Alaska Native Registry and Rural Georgia.

The SEER 17 areas comprise the SEER 13 areas plus California excluding SF/SJM/LA, Kentucky, Louisiana and New Jersey.

- Statistic not shown. Rate based on less than 16 cases for the time interval.

Table 22.14  
Cancer of the Pancreas (Invasive)

Age-Adjusted SEER Death Rates<sup>a</sup>  
By Registry, Race and Sex

	All Races			Whites			Blacks		
	Total	Males	Females	Total	Males	Females	Total	Males	Females
<u>SEER Death Rates<sup>a</sup>, 2002-2006</u>									
Atlanta & Rural Georgia	10.09	11.71	8.84	9.14	11.07	7.75	12.73	13.30	11.90
Atlanta	10.01	11.91	8.63	9.12	11.34	7.57	12.63	13.36	11.74
Rural Georgia	11.76	10.11	12.18	10.09	7.73	11.08	15.62	16.01	14.52
California	10.28	11.54	9.22	10.46	11.88	9.25	14.28	14.21	13.99
Greater Bay Area	10.24	11.17	9.41	10.74	12.03	9.59	14.79	13.07	15.47
San Francisco-Oakland	10.20	11.04	9.45	10.65	11.97	9.46	14.95	12.87	15.96
San Jose-Monterey	10.34	11.46	9.34	10.91	12.14	9.82	13.91	14.32	-
Los Angeles	10.17	11.08	9.39	10.16	11.09	9.33	13.94	14.42	13.41
Greater California	10.35	11.89	9.07	10.50	12.16	9.12	14.27	14.63	13.69
Connecticut	11.73	13.87	10.09	11.53	13.70	9.85	16.19	19.39	14.13
Detroit	11.70	13.72	10.05	11.06	13.04	9.43	14.44	16.98	12.52
Hawaii	10.62	11.77	9.63	10.19	12.81	8.08	-	-	-
Iowa	10.38	11.70	9.28	10.28	11.62	9.17	21.24	19.53	22.39
Kentucky	10.70	12.41	9.29	10.47	12.21	9.04	15.15	17.16	13.60
Louisiana	12.19	13.80	10.84	11.27	13.05	9.80	15.44	16.74	14.28
New Jersey	11.15	12.66	9.97	11.27	12.86	9.99	12.39	13.85	11.38
New Mexico	10.19	11.32	9.20	10.49	11.62	9.49	-	-	-
Seattle-Puget Sound	10.44	11.74	9.33	10.44	11.79	9.28	15.59	14.83	16.30
Utah	9.26	10.84	7.90	9.33	11.04	7.88	-	-	-
9 SEER Areas <sup>b</sup>	10.63	12.11	9.41	10.51	12.14	9.16	14.18	15.22	13.20
11 SEER Areas <sup>b</sup>	10.51	11.84	9.39	10.46	11.92	9.23	14.12	15.03	13.23
13 SEER Areas <sup>b</sup>	10.51	11.84	9.40	10.45	11.89	9.23	14.11	15.00	13.22
17 SEER Areas <sup>b</sup>	10.66	12.11	9.48	10.62	12.18	9.33	14.12	15.15	13.16
Total U.S.	10.65	12.28	9.33	10.47	12.15	9.09	13.71	15.38	12.37

<sup>a</sup> US Mortality Files, National Center for Health Statistics, Centers for Disease Control and Prevention.  
Rates are per 100,000 and are age-adjusted to the 2000 US Std Population (19 age groups - Census P25-1130).

<sup>b</sup> The SEER 9 areas are San Francisco, Connecticut, Detroit, Hawaii, Iowa, New Mexico, Seattle, Utah and Atlanta.  
The SEER 11 areas comprise the SEER 9 areas plus San Jose-Monterey and Los Angeles.  
The SEER 13 areas comprise the SEER 11 areas plus the Alaska Native Registry and Rural Georgia.  
The SEER 17 areas comprise the SEER 13 areas plus California excluding SF/SJM/LA, Kentucky, Louisiana and New Jersey.  
- Statistic not shown. Rate based on less than 16 cases for the time interval.

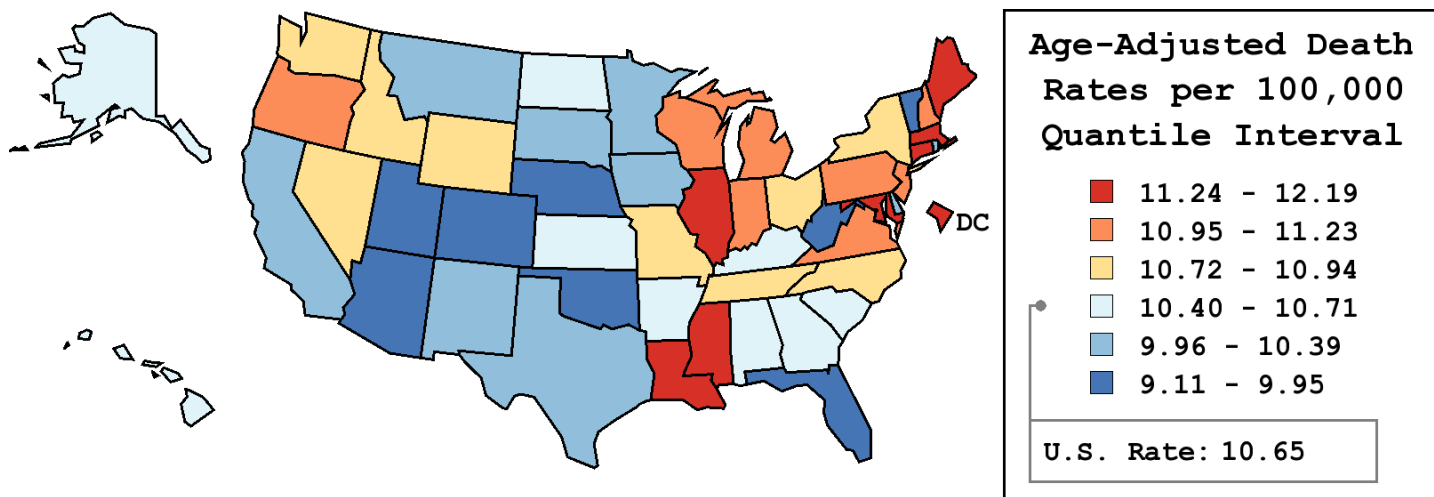
Table 22.15  
Cancer of the Pancreas (Invasive)

Age-Adjusted Cancer Death<sup>a</sup> Rates By State, All Races, 2002-2006

Males and Females

State	Rate	SE	Rank	PD
TOTAL U.S.	10.65	0.03		
High Five States				
Louisiana	12.19	0.24	(01)	14.44
D.C.	12.18	0.65	(02)	14.32
Connecticut	11.73	0.25	(03)	10.10
Mississippi	11.51	0.28	(04)	8.00
Massachusetts	11.46	0.18	(05)	7.60
Low Five States				
Nebraska	9.71	0.32	(47)	-8.87
Vermont	9.37	0.53	(48)	-12.04
West Virginia	9.29	0.29	(49)	-12.77
Utah	9.26	0.33	(50)	-13.14
Arizona	9.11	0.18	(51)	-14.51

State	Rate	SE	Rank	PD	State	Rate	SE	Rank	PD
Alabama	10.54	0.21	(31)	-1.11	Montana	10.26	0.44	(40)	-3.75
Alaska	10.46	0.78	(32)	-1.87	Nebraska	9.71	0.32	(47)	-8.87
Arizona	9.11	0.18	(51)	-14.51	Nevada	10.77	0.32	(24)	1.09
Arkansas	10.69	0.27	(28)	0.37	New Hampshire	11.12	0.41	(11)	4.40
California	10.28	0.08	(39)	-3.55	New Jersey	11.15	0.16	(10)	4.64
Colorado	9.86	0.23	(46)	-7.48	New Mexico	10.19	0.33	(41)	-4.39
Connecticut	11.73	0.25	(03)	10.10	New York	10.93	0.10	(18)	2.54
Delaware	10.11	0.48	(42)	-5.08	North Carolina	10.94	0.16	(17)	2.68
D.C.	12.18	0.65	(02)	14.32	North Dakota	10.41	0.54	(34)	-2.31
Florida	9.91	0.09	(45)	-7.03	Ohio	10.79	0.13	(23)	1.30
Georgia	10.44	0.17	(33)	-2.06	Oklahoma	9.95	0.23	(44)	-6.57
Hawaii	10.62	0.39	(30)	-0.35	Oregon	11.00	0.24	(15)	3.27
Idaho	10.82	0.40	(21)	1.59	Pennsylvania	11.23	0.12	(09)	5.37
Illinois	11.32	0.13	(08)	6.29	Rhode Island	10.29	0.41	(38)	-3.45
Indiana	11.10	0.19	(13)	4.22	South Carolina	10.71	0.22	(26)	0.54
Iowa	10.38	0.25	(36)	-2.63	South Dakota	10.35	0.49	(37)	-2.87
Kansas	10.69	0.27	(29)	0.33	Tennessee	10.88	0.19	(20)	2.08
Kentucky	10.70	0.22	(27)	0.39	Texas	10.04	0.10	(43)	-5.80
Louisiana	12.19	0.24	(01)	14.44	Utah	9.26	0.33	(50)	-13.14
Maine	11.41	0.38	(07)	7.08	Vermont	9.37	0.53	(48)	-12.04
Maryland	11.45	0.21	(06)	7.46	Virginia	10.97	0.18	(16)	2.98
Massachusetts	11.46	0.18	(05)	7.60	Washington	10.74	0.19	(25)	0.83
Michigan	11.06	0.15	(14)	3.78	West Virginia	9.29	0.29	(49)	-12.77
Minnesota	10.39	0.20	(35)	-2.52	Wisconsin	11.11	0.20	(12)	4.28
Mississippi	11.51	0.28	(04)	8.00	Wyoming	10.89	0.66	(19)	2.23
Missouri	10.82	0.19	(22)	1.51					



<sup>a</sup> US Mortality Files, National Center for Health Statistics, Centers for Disease Control and Prevention. Rates are per 100,000 and are age-adjusted to the 2000 US Std Population (19 age groups - Census P25-1130).  
<sup>b</sup> Difference between state rate and total U.S. rate is statistically significant ( $p \leq .0002$ ).  
<sup>c</sup> Absolute percent difference between state rate and total U.S. rate is 15% or more.  
 SE Standard error of the rate.  
 PD Percent difference between state rate and total U.S. rate.

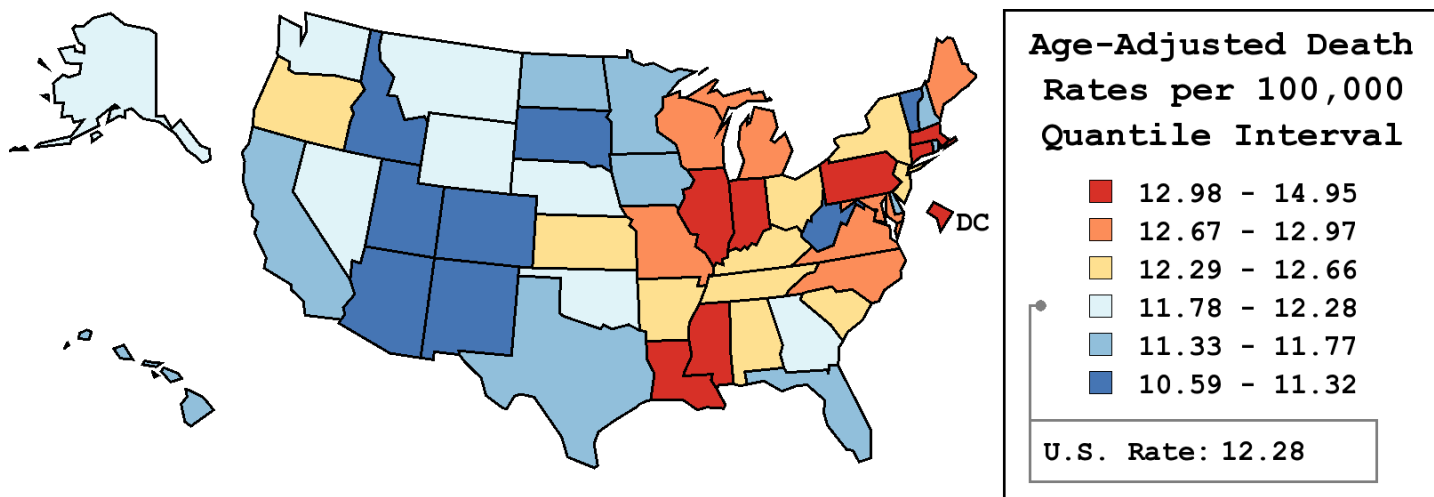
Table 22.16  
Cancer of the Pancreas (Invasive)

Age-Adjusted Cancer Death<sup>a</sup> Rates By State, All Races, 2002-2006

Males

State	Rate	SE	Rank	PD
TOTAL U.S.	12.28	0.04		
High Five States				
D.C.	14.95	1.16	(01)	21.75 <sup>c</sup>
Connecticut	13.87	0.42	(02)	13.02 <sup>c</sup>
Louisiana	13.80	0.40	(03)	12.44 <sup>c</sup>
Massachusetts	13.50	0.31	(04)	10.01 <sup>c</sup>
Mississippi	13.24	0.48	(05)	7.87
Low Five States				
Colorado	11.06	0.37	(47)	-9.89
West Virginia	10.88	0.49	(48)	-11.37 <sup>c</sup>
Utah	10.84	0.53	(49)	-11.66 <sup>c</sup>
Vermont	10.69	0.86	(50)	-12.92 <sup>c</sup>
Arizona	10.59	0.28	(51)	-13.75 <sup>c</sup>

State	Rate	SE	Rank	PD	State	Rate	SE	Rank	PD
Alabama	12.66	0.36	(17)	3.11	Montana	11.87	0.72	(32)	-3.33
Alaska	12.21	1.30	(28)	-0.55	Nebraska	11.92	0.55	(31)	-2.91
Arizona	10.59	0.28	(51)	-13.75 <sup>c</sup>	Nevada	12.28	0.51	(26)	0.04
Arkansas	12.64	0.44	(19)	2.99	New Hampshire	11.58	0.65	(41)	-5.69
California	11.54	0.13	(42)	-5.97	New Jersey	12.66	0.26	(16)	3.12
Colorado	11.06	0.37	(47)	-9.89	New Mexico	11.32	0.52	(44)	-7.80
Connecticut	13.87	0.42	(02)	13.02 <sup>c</sup>	New York	12.45	0.17	(22)	1.40
Delaware	11.52	0.78	(43)	-6.17	North Carolina	12.97	0.27	(09)	5.62
D.C.	14.95	1.16	(01)	21.75 <sup>c</sup>	North Dakota	11.68	0.85	(39)	-4.87
Florida	11.60	0.15	(40)	-5.53	Ohio	12.50	0.22	(20)	1.82
Georgia	12.28	0.30	(27)	0.02	Oklahoma	11.80	0.39	(33)	-3.91
Hawaii	11.77	0.61	(34)	-4.13	Oregon	12.36	0.39	(24)	0.67
Idaho	11.29	0.62	(45)	-8.03	Pennsylvania	13.17	0.21	(07)	7.24
Illinois	13.19	0.23	(06)	7.48	Rhode Island	11.77	0.69	(35)	-4.15
Indiana	13.06	0.32	(08)	6.36	South Carolina	12.33	0.38	(25)	0.48
Iowa	11.70	0.40	(38)	-4.73	South Dakota	11.27	0.77	(46)	-8.21
Kansas	12.49	0.45	(21)	1.70	Tennessee	12.65	0.32	(18)	3.08
Kentucky	12.41	0.38	(23)	1.12	Texas	11.70	0.17	(37)	-4.67
Louisiana	13.80	0.40	(03)	12.44 <sup>c</sup>	Utah	10.84	0.53	(49)	-11.66 <sup>c</sup>
Maine	12.94	0.63	(10)	5.37	Vermont	10.69	0.86	(50)	-12.92 <sup>c</sup>
Maryland	12.90	0.35	(11)	5.07	Virginia	12.71	0.30	(15)	3.51
Massachusetts	13.50	0.31	(04)	10.01 <sup>c</sup>	Washington	12.05	0.31	(30)	-1.86
Michigan	12.88	0.24	(12)	4.88	West Virginia	10.88	0.49	(48)	-11.37 <sup>c</sup>
Minnesota	11.72	0.33	(36)	-4.53	Wisconsin	12.73	0.32	(14)	3.66
Mississippi	13.24	0.48	(05)	7.87	Wyoming	12.11	1.05	(29)	-1.39
Missouri	12.73	0.31	(13)	3.66					



<sup>a</sup> US Mortality Files, National Center for Health Statistics, Centers for Disease Control and Prevention. Rates are per 100,000 and are age-adjusted to the 2000 US Std Population (19 age groups - Census P25-1130).  
<sup>b</sup> Difference between state rate and total U.S. rate is statistically significant ( $p \leq .0002$ ).  
<sup>c</sup> Absolute percent difference between state rate and total U.S. rate is 10% or more.  
SE Standard error of the rate.  
PD Percent difference between state rate and total U.S. rate.

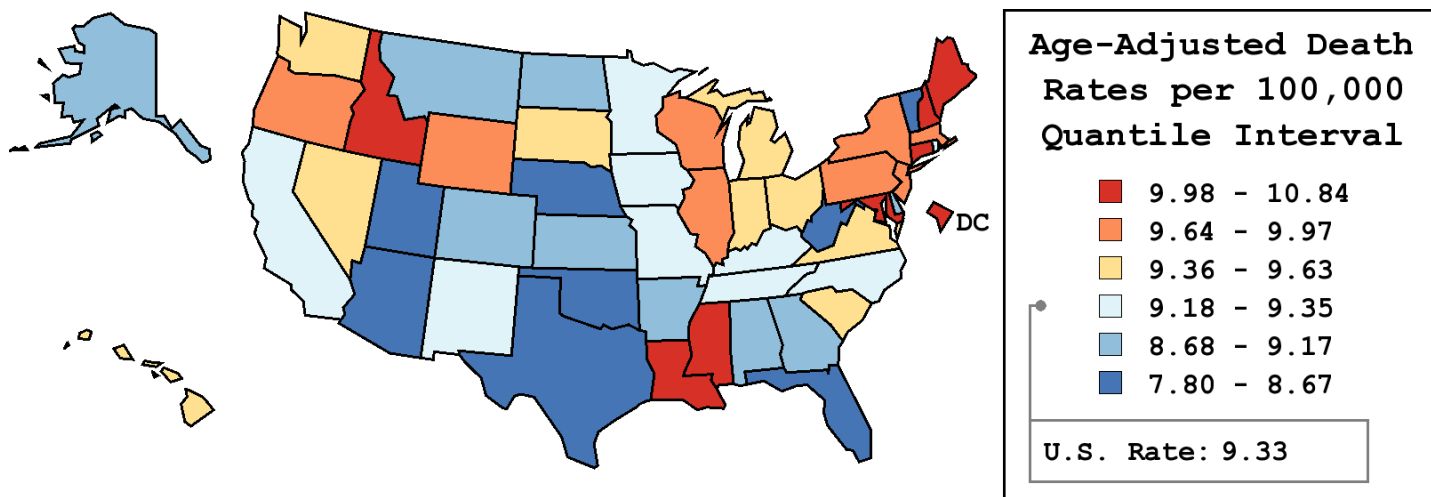
Table 22.17  
Cancer of the Pancreas (Invasive)

Age-Adjusted Cancer Death<sup>a</sup> Rates By State, All Races, 2002-2006

Females

State	Rate	SE	Rank	PD
TOTAL U.S.	9.33	0.03		
High Five States				
Louisiana	10.84	0.30	(01)	16.24 <sup>c</sup>
New Hampshire	10.79	0.54	(02)	15.65 <sup>c</sup>
Maryland	10.31	0.26	(03)	10.60
Idaho	10.26	0.53	(04)	10.02
Mississippi	10.18	0.35	(05)	9.21
Low Five States				
Vermont	8.23	0.66	(47)	-11.74
Nebraska	8.14	0.40	(48)	-12.73
West Virginia	8.01	0.36	(49)	-14.07
Utah	7.90	0.41	(50)	-15.31 <sup>c</sup>
Arizona	7.80	0.22	(51)	-16.35 <sup>c</sup>

State	Rate	SE	Rank	PD	State	Rate	SE	Rank	PD
Alabama	8.93	0.25	(40)	-4.20	Montana	8.74	0.55	(43)	-6.25
Alaska	9.09	0.99	(37)	-2.54	Nebraska	8.14	0.40	(48)	-12.73
Arizona	7.80	0.22	(51)	-16.35 <sup>c</sup>	Nevada	9.38	0.41	(25)	0.63
Arkansas	9.13	0.33	(36)	-2.08	New Hampshire	10.79	0.54	(02)	15.65 <sup>c</sup>
California	9.22	0.10	(32)	-1.15	New Jersey	9.97	0.19	(09)	6.89
Colorado	8.81	0.29	(41)	-5.58	New Mexico	9.20	0.42	(34)	-1.31
Connecticut	10.09	0.30	(08)	8.16	New York	9.72	0.13	(14)	4.28
Delaware	8.80	0.59	(42)	-5.67	North Carolina	9.30	0.19	(28)	-0.26
D.C.	10.16	0.77	(06)	8.96	North Dakota	9.08	0.67	(38)	-2.67
Florida	8.46	0.12	(46)	-9.33	Ohio	9.40	0.16	(24)	0.84
Georgia	9.06	0.21	(39)	-2.85	Oklahoma	8.48	0.28	(45)	-9.09
Hawaii	9.63	0.50	(17)	3.26	Oregon	9.84	0.31	(13)	5.49
Idaho	10.26	0.53	(04)	10.02	Pennsylvania	9.69	0.15	(16)	3.88
Illinois	9.86	0.17	(12)	5.75	Rhode Island	9.33	0.52	(27)	0.04
Indiana	9.55	0.23	(21)	2.44	South Carolina	9.46	0.28	(23)	1.44
Iowa	9.28	0.31	(30)	-0.51	South Dakota	9.58	0.63	(19)	2.75
Kansas	9.17	0.33	(35)	-1.63	Tennessee	9.35	0.23	(26)	0.31
Kentucky	9.29	0.28	(29)	-0.37	Texas	8.67	0.13	(44)	-7.01
Louisiana	10.84	0.30	(01)	16.24 <sup>c</sup>	Utah	7.90	0.41	(50)	-15.31 <sup>c</sup>
Maine	10.10	0.48	(07)	8.26	Vermont	8.23	0.66	(47)	-11.74
Maryland	10.31	0.26	(03)	10.60	Virginia	9.58	0.22	(20)	2.72
Massachusetts	9.95	0.22	(10)	6.68	Washington	9.62	0.24	(18)	3.15
Michigan	9.53	0.18	(22)	2.22	West Virginia	8.01	0.36	(49)	-14.07
Minnesota	9.23	0.25	(31)	-1.00	Wisconsin	9.71	0.24	(15)	4.13
Mississippi	10.18	0.35	(05)	9.21	Wyoming	9.91	0.85	(11)	6.27
Missouri	9.22	0.23	(33)	-1.16					



<sup>a</sup> US Mortality Files, National Center for Health Statistics, Centers for Disease Control and Prevention. Rates are per 100,000 and are age-adjusted to the 2000 US Std Population (19 age groups - Census P25-1130).  
<sup>b</sup> Difference between state rate and total U.S. rate is statistically significant ( $p \leq .0002$ ).  
<sup>c</sup> Absolute percent difference between state rate and total U.S. rate is 15% or more.  
SE Standard error of the rate.  
PD Percent difference between state rate and total U.S. rate.

Table 22.18  
Cancer of the Pancreas (Invasive)

Estimated United States Cancer Prevalence Counts<sup>a</sup> on January 1, 2006  
By Race/Ethnicity, Sex and Years Since Diagnosis

Years Since Diagnosis		0 to <5	5 to <10	10 to <15	15 to <20	20 to <25	25 to <30	0 to <16 <sup>e</sup>	0 to <31 <sup>e</sup>	>=31 <sup>g</sup>	Complete <sup>h</sup>
<u>Race</u>	<u>Sex</u>										
All Races <sup>b</sup>	Both Sexes	23,089	3,805	1,959	1,044	483	372	29,138	30,784	396	31,180
	Males	11,266	1,847	846	434	192	201	14,094	14,813	166	14,979
	Females	11,823	1,958	1,113	610	291	171	15,044	15,971	230	16,201
White <sup>b</sup>	Both Sexes	19,466	3,007	1,550	785	382	312	24,264	25,531	321	25,852
	Males	9,931	1,588	684	355	155	173	12,325	12,910	150	13,060
	Females	9,535	1,419	866	430	227	139	11,939	12,621	171	12,792
Black <sup>b</sup>	Both Sexes	2,665	502	249	217	62	55	3,452	3,753	180	3,933
	Males	883	146	74	76	26	23	1,116	1,231	54	1,285
	Females	1,782	356	175	141	36	32	2,336	2,522	126	2,648
Asian/ Pacific Islander <sup>c</sup>	Both Sexes	698	152	56	+	+	+	913	+	+	+
	Males	340	65	27	+	+	+	433	+	+	+
	Females	358	87	29	+	+	+	480	+	+	+
Hispanic <sup>d</sup>	Both Sexes	1,438	229	181	+	+	+	1,859	+	+	+
	Males	603	83	65	+	+	+	762	+	+	+
	Females	835	146	116	+	+	+	1,097	+	+	+

Estimated prevalence percent<sup>a</sup> on January 1, 2006, of the SEER 11 population diagnosed in the previous 16 years  
By Age at Prevalence, Race/Ethnicity and Sex

Age at Prevalence		Age Specific (Crude)										Age-Adjusted <sup>f</sup>
		All Ages	0-9	10-19	20-29	30-39	40-49	50-59	60-69	70-79	80+	All Ages
<u>Race</u>	<u>Sex</u>											
All Races <sup>c</sup>	Both Sexes	0.0089%	-	0.0002%	0.0005%	0.0016%	0.0050%	0.0149%	0.0315%	0.0447%	0.0448%	0.0092%
	Males	0.0087%	-	-	0.0003%	0.0012%	0.0047%	0.0161%	0.0351%	0.0498%	0.0480%	0.0098%
	Females	0.0091%	-	0.0002%	0.0006%	0.0019%	0.0053%	0.0137%	0.0282%	0.0407%	0.0431%	0.0086%
White <sup>c</sup>	Both Sexes	0.0092%	-	0.0002%	0.0004%	0.0017%	0.0046%	0.0149%	0.0311%	0.0449%	0.0436%	0.0091%
	Males	0.0092%	-	-	0.0003%	0.0012%	0.0045%	0.0168%	0.0355%	0.0513%	0.0477%	0.0100%
	Females	0.0092%	-	0.0003%	0.0005%	0.0021%	0.0047%	0.0131%	0.0270%	0.0399%	0.0414%	0.0083%
Black <sup>c</sup>	Both Sexes	0.0084%	-	-	-	0.0018%	0.0059%	0.0183%	0.0415%	0.0521%	0.0553%	0.0113%
	Males	0.0064%	-	-	-	0.0021%	0.0051%	0.0170%	0.0369%	0.0422%	0.0239%	0.0090%
	Females	0.0103%	-	-	-	0.0016%	0.0066%	0.0194%	0.0450%	0.0586%	0.0705%	0.0127%
Asian/ Pacific Islander <sup>c</sup>	Both Sexes	0.0075%	-	-	-	0.0010%	0.0055%	0.0117%	0.0261%	0.0349%	0.0472%	0.0079%
	Males	0.0075%	-	-	-	-	0.0043%	0.0103%	0.0332%	0.0401%	0.0621%	0.0088%
	Females	0.0075%	-	-	-	0.0012%	0.0065%	0.0129%	0.0200%	0.0310%	0.0373%	0.0074%
Hispanic <sup>d</sup>	Both Sexes	0.0043%	-	-	0.0005%	0.0014%	0.0035%	0.0114%	0.0261%	0.0419%	0.0428%	0.0080%
	Males	0.0033%	-	-	-	0.0011%	0.0027%	0.0087%	0.0277%	0.0400%	0.0354%	0.0073%
	Females	0.0053%	-	-	-	0.0017%	0.0045%	0.0139%	0.0248%	0.0432%	0.0471%	0.0086%

<sup>a</sup> US 2006 cancer prevalence counts are based on 2006 cancer prevalence proportions from the SEER registries and 1/1/2006 US population estimates based on the average of 2005 and 2006 population estimates from the US Bureau of the Census. Prevalence was calculated using the First Malignant Primary Only for a person.

<sup>b c d</sup> Statistics based on (b) SEER 9 Areas (c) SEER 11 Areas and Rural Georgia (d) NHIA for Hispanic for SEER 11 Areas and Rural Georgia.

<sup>e</sup> Maximum limited-duration prevalence: 31 years for 1975-2006 SEER 9 data; 16 years for 1990-2006 SEER 11 data (used to calculate prevalence for Hispanics and Asian Pacific Islanders).

<sup>f</sup> Percentages are age-adjusted to the 2000 US Standard Population (19 age groups - Census P25-1130) by 5-year age groups.

<sup>g h i</sup> (g) Cases diagnosed more than 31 years ago were estimated using the completeness index method (Capocaccia et. al. 1997, Merrill et. al. 2000). (h) Complete prevalence is obtained by summing 0 to <31 and >=31. (i) Age-specific completeness index was approximated using empirical data from historical Connecticut tumor registry.

- Statistic not shown. Statistic based on fewer than 5 cases estimated alive in SEER for the time interval.

+ Not available.

Table 22.19

## Cancer of the Pancreas (Invasive)

Percent Distribution and Counts by Histology among Histologically Confirmed Cases, 2002-2006  
Both Sexes by Race

Histology <sup>a</sup>	All Races		White		Black		Asian/Pacific Islander		American Indian/ Alaska Native <sup>b</sup>		Hispanic <sup>c</sup>	
	Count	Percent	Count	Percent	Count	Percent	Count	Percent	Count	Percent	Count	Percent
Carcinoma	31,670	97.9%	25,895	97.8%	3,450	98.3%	2,064	98.3%	131	98.5%	2,985	97.7%
Epidermoid carcinoma <sup>d</sup> (8051-8131)	63	0.2%	46	0.2%	-	-	-	-	-	-	-	-
Adenocarcinoma <sup>e</sup>	27,580	85.3%	22,597	85.4%	2,978	84.8%	1,779	84.7%	116	87.2%	2,575	84.3%
Adenocarcinoma, NOS (8140)	22,206	68.7%	18,196	68.8%	2,454	69.9%	1,374	65.4%	100	75.2%	2,078	68.0%
Papillary adenocarcinoma, NOS (8260)	80	0.2%	65	0.2%	-	-	-	-	-	-	-	-
Mucinous adenocarcinoma (8480,8482)	964	3.0%	799	3.0%	83	2.4%	73	3.5%	-	-	79	2.6%
Mucin-producing adenocarcinoma (8481)	714	2.2%	579	2.2%	101	2.9%	31	1.5%	-	-	62	2.0%
Infiltrating duct carcinoma (8500-8503,8507,8514)	2,705	8.4%	2,201	8.3%	249	7.1%	232	11.0%	-	-	231	7.6%
Other adenocarcinoma (8050,8141-8147,8160-8162, 8180-8221,8250-8259, 8261-8479,8483-8499, 8504-8506,8520-8551, 8560,8570-8574,8576, 8940-8941)	911	2.8%	757	2.9%	84	2.4%	63	3.0%	-	-	113	3.7%
Other specific carcinomas <sup>f</sup>	1,812	5.6%	1,501	5.7%	185	5.3%	107	5.1%	-	-	178	5.8%
Islet cell carcinoma (8150-8155)	369	1.1%	312	1.2%	33	0.9%	19	0.9%	-	-	31	1.0%
Other carcinomas (8013-8015,8030-8046, 8179-8175,8230-8249, 8345,8510-8512, 8561-8562,8580-8671)	1,443	4.5%	1,189	4.5%	152	4.3%	88	4.2%	-	-	147	4.8%
Unspecified, "Carcinoma, NOS" (8010-8012, 8015-8022,8575)	2,215	6.8%	1,751	6.6%	277	7.9%	171	8.1%	-	-	230	7.5%

Source: SEER 17 areas (San Francisco, Connecticut, Detroit, Hawaii, Iowa, New Mexico, Seattle, Utah, Atlanta, San Jose-Monterey, Los Angeles, Alaska Native Registry, Rural Georgia, California excluding SF/SJM/LA, Kentucky, Louisiana and New Jersey). Percents may not sum to 100 due to rounding.

<sup>a</sup> Excludes Kaposi Sarcoma, mesothelioma, lymphomas, leukemias, myelomas, lymphoreticular, and immunoproliferative diseases.

<sup>b</sup> Estimates for American Indian/Alaska Native are based on the CHSDA(Contract Health Service Delivery Area) counties.

<sup>c</sup> Hispanic is not mutually exclusive from whites, blacks, Asian/Pacific Islanders, and American Indians/Alaska Natives.

<sup>d</sup> Underlying incidence data for Hispanics are based on NHIA and exclude cases from the Alaska Native Registry.

<sup>e</sup> Epidermoid carcinoma includes squamous, basal, and transitional cell carcinomas.

- Statistic not shown due to fewer than 16 cases during the time period.



Table 22-19 - continued

Cancer of the Pancreas (Invasive)Percent Distribution and Counts by Histology among Histologically Confirmed Cases, 2001-2005  
Both Sexes by Race

Histology <sup>a</sup>	<u>All Races</u>		<u>White</u>		<u>Black</u>		<u>Asian/Pacific Islander</u>		<u>American Indian/ Alaska Native<sup>b</sup></u>		<u>Hispanic<sup>c</sup></u>	
	Count	Percent	Count	Percent	Count	Percent	Count	Percent	Count	Percent	Count	Percent
Sarcoma and other soft tissue tumors (8680-8713,8800-8921, 8990-8991,9040-9055, 9120-9134,9141-9340, 9540-9581)	30	0.1%	26	0.1%	-	-	-	-	-	-	-	-
Other specific types <sup>d</sup> (8720-8790,8930-8933, 8950-8982,9000-9030, 9060-9110,9350-9364, 9380-9513,9530-9539)	24	0.1%	22	0.1%	-	-	-	-	-	-	-	-
Unspecified (8000-8005)	616	1.9%	521	2.0%	55	1.6%	35	1.7%	-	-	63	2.1%
Total	32,340	100.0%	26,464	100.0%	3,510	100.0%	2,100	100.0%	133	100.0%	3,054	100.0%

Source: SEER 17 areas (San Francisco, Connecticut, Detroit, Hawaii, Iowa, New Mexico, Seattle, Utah, Atlanta, San Jose-Monterey, Los Angeles, Alaska Native Registry, Rural Georgia, California excluding SF/SJM/LA, Kentucky, Louisiana and New Jersey). Percents may not sum to 100 due to rounding.

<sup>a</sup> Excludes Kaposi Sarcoma, mesothelioma, lymphomas, leukemias, myelomas, lymphoreticular, and immunoproliferative diseases.

<sup>b</sup> Estimates for American Indian/Alaska Native are based on the CHSDA(Contract Health Service Delivery Area) counties.

<sup>c</sup> Hispanic is not mutually exclusive from whites, blacks, Asian/Pacific Islanders, and American Indians/Alaska Natives.

<sup>d</sup> Underlying incidence data for Hispanics are based on NHIA and exclude cases from the Alaska Native Registry.

<sup>e</sup> Epidermoid carcinoma includes squamous, basal, and transitional cell carcinomas.

- Statistic not shown due to fewer than 16 cases during the time period.

# SEER Observed Incidence, SEER Delay Adjusted Incidence and US Death Rates<sup>a</sup> Cancer of the Pancreas, by Race and Sex

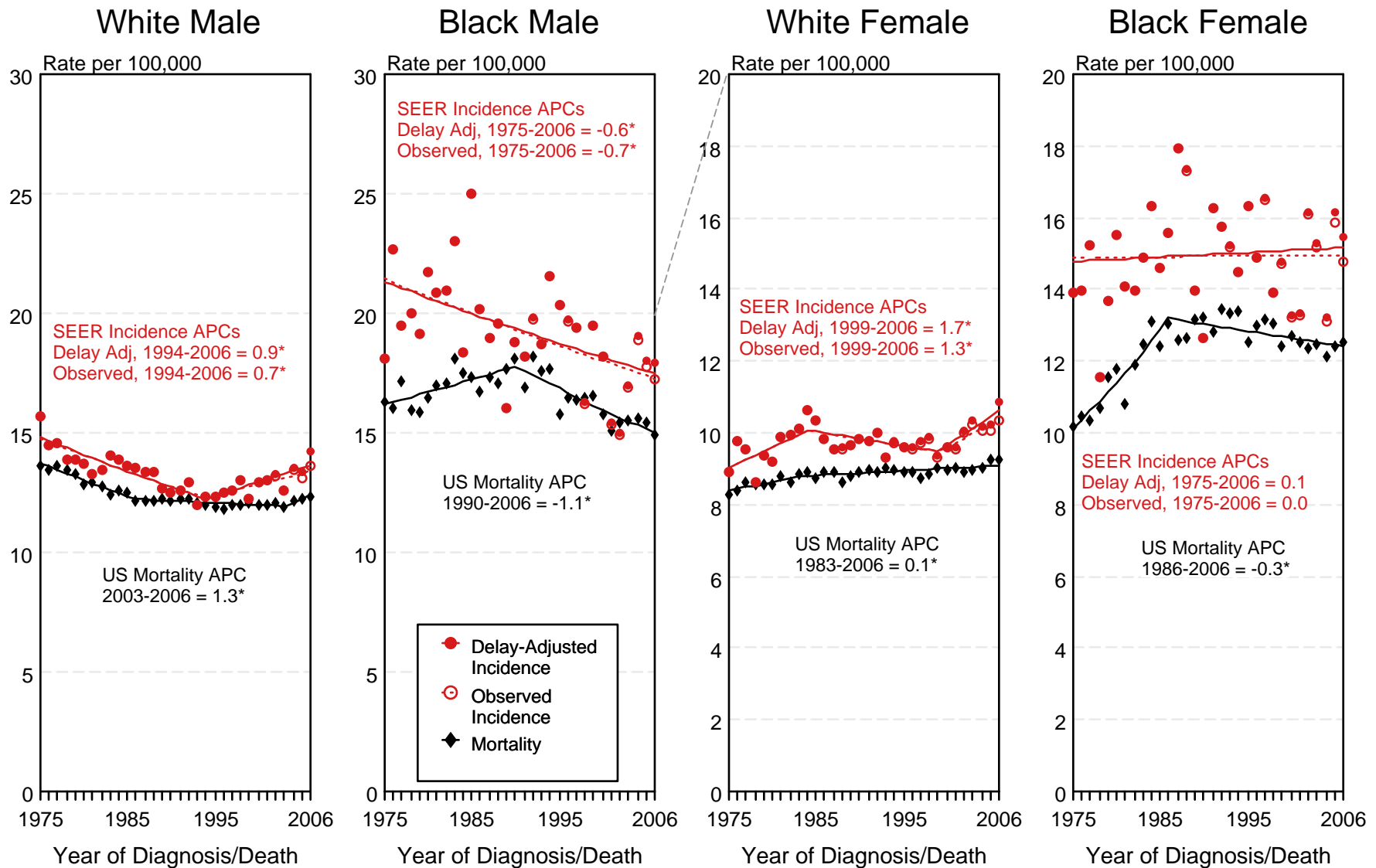


Figure 22.1

<sup>a</sup> Source: SEER 9 areas and US Mortality Files (National Center for Health Statistics, CDC). Rates are age-adjusted to the 2000 US Std Population (19 age groups - Census P25-1103). Regression lines and APCs are calculated using the Joinpoint Regression Program Version 3.3.1, April 2008, National Cancer Institute. The APC is the Annual Percent Change for the regression line segments. The APC shown on the graph is for the most recent trend.

\* The APC is significantly different from zero ( $p < 0.05$ ).

# SEER Incidence and US Death Rates<sup>a</sup> Cancer of the Pancreas, Both Sexes

Joinpoint Analyses for Whites and Blacks from 1975-2006

and for Asian/Pacific Islanders, American Indians/Alaska Natives and Hispanics from 1992-2006

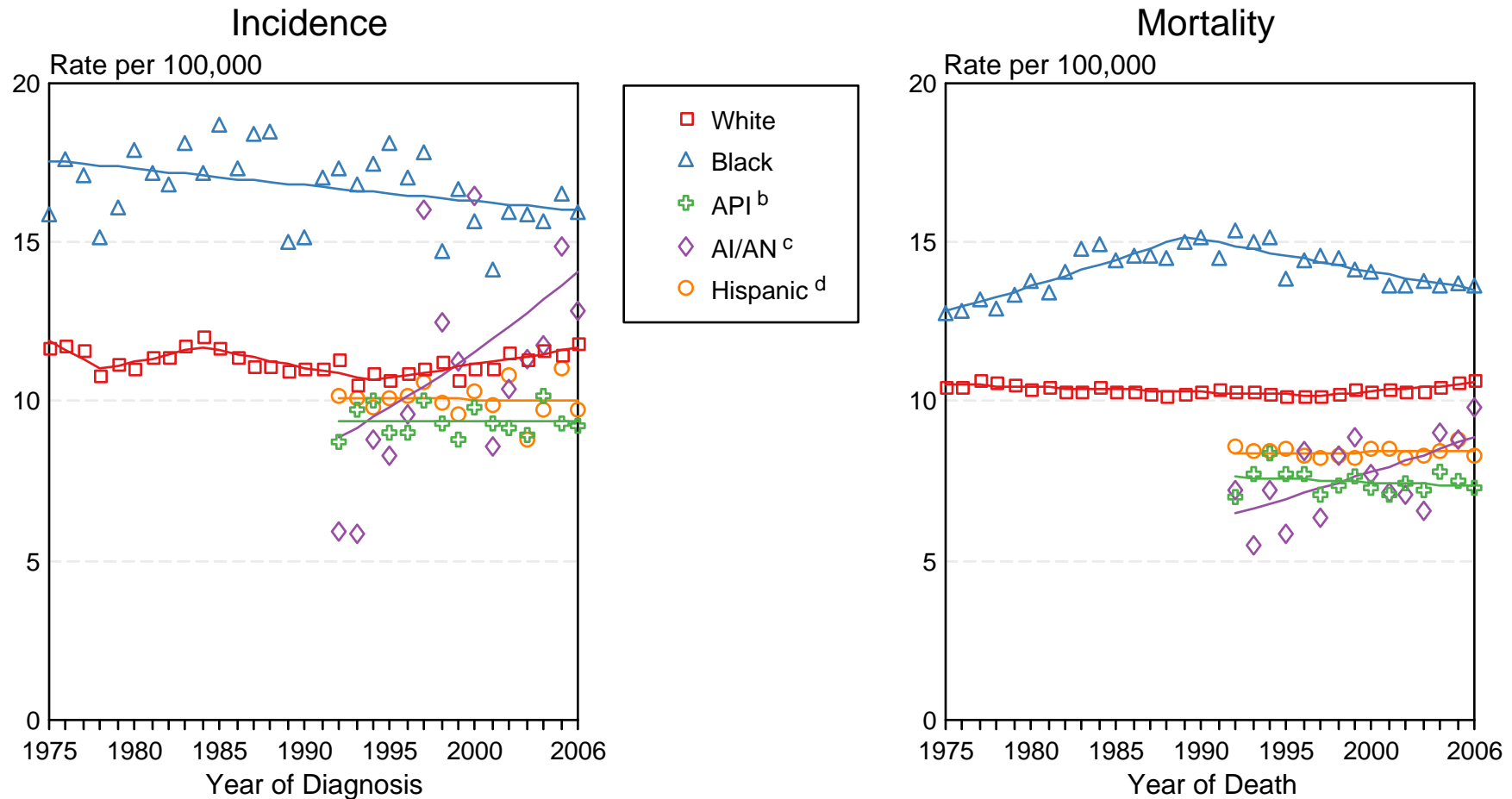


Figure 22.2

Source: Incidence data for whites and blacks are from the SEER 9 areas (San Francisco, Connecticut, Detroit, Hawaii, Iowa, New Mexico, Seattle, Utah, Atlanta).

Incidence data for Asian/Pacific Islanders, American Indians/Alaska Natives and Hispanics are from the SEER 13 Areas (SEER 9 Areas, San Jose-Monterey, Los Angeles, Alaska Native Registry and Rural Georgia). Mortality data are from US Mortality Files, National Center for Health Statistics, CDC.

<sup>a</sup> Rates are age-adjusted to the 2000 US Std Population (19 age groups - Census P25-1103).

Regression lines are calculated using the Joinpoint Regression Program Version 3.3.1, April 2008, National Cancer Institute. Joinpoint analyses for Whites and Blacks during the 1975-2006 period allow a maximum of 4 joinpoints. Analyses for other ethnic groups during the period 1992-2006 allow a maximum of 2 joinpoints.

<sup>b</sup> API = Asian/Pacific Islander.

<sup>c</sup> AI/AN = American Indian/Alaska Native. Rates for American Indian/Alaska Native are based on the CHSDA(Contract Health Service Delivery Area) counties.

<sup>d</sup> Hispanic is not mutually exclusive from whites, blacks, Asian/Pacific Islanders, and American Indians/Alaska Natives. Incidence data for Hispanics are based on NHIA and exclude cases from the Alaska Native Registry. Mortality data for Hispanics exclude cases from Connecticut, the District of Columbia, Maine, Maryland, Minnesota, New Hampshire, New York, North Dakota, Oklahoma, and Vermont.

# SEER Observed Incidence and SEER Delay Adjusted Incidence Rates<sup>a</sup> SEER 9 Areas Compared to SEER 13 Areas Cancer of the Pancreas, Male, by Race

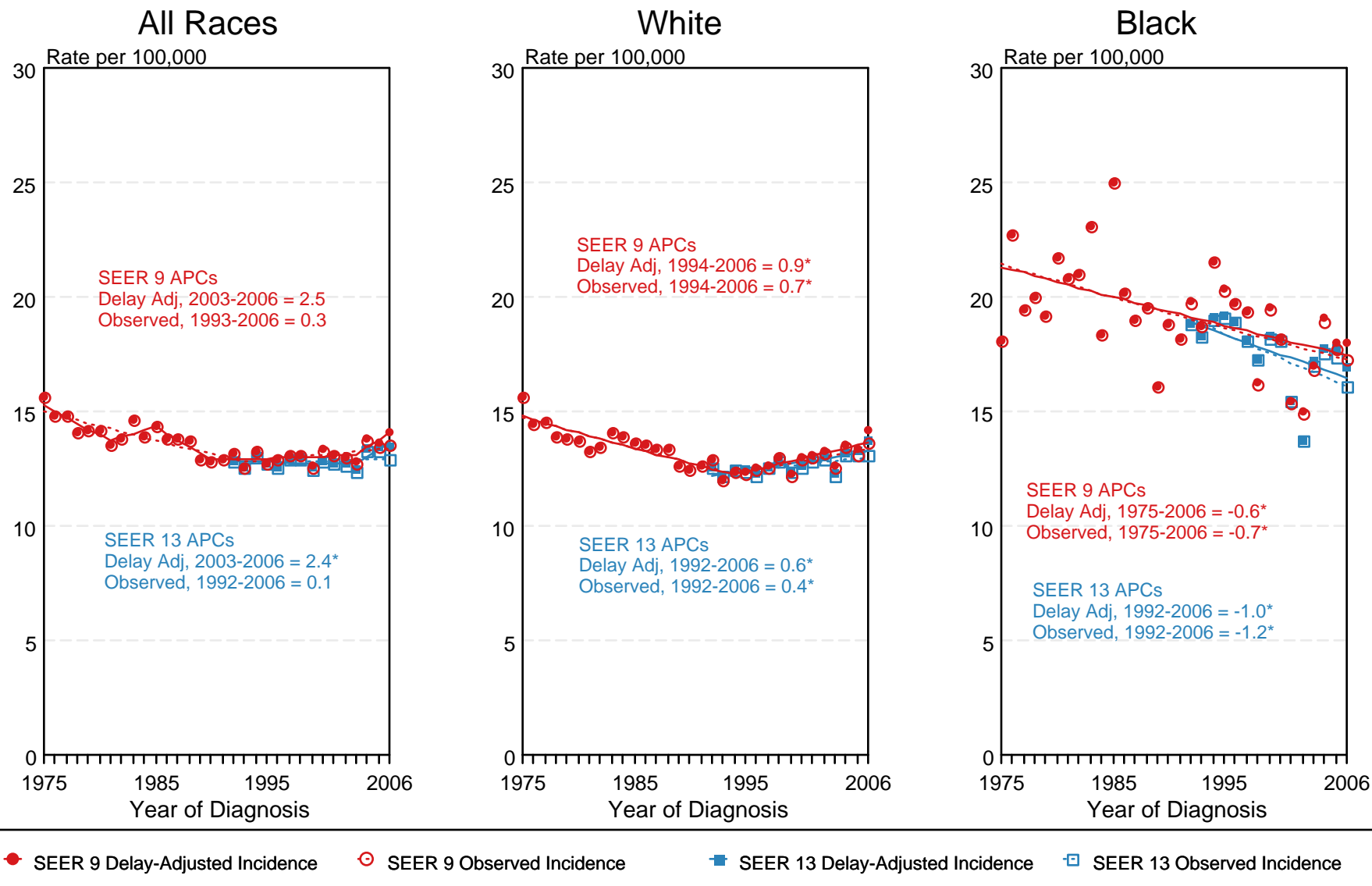


Figure 22.3

<sup>a</sup> Source: SEER 9 areas and SEER 13 areas. Rates are age-adjusted to the 2000 US Std Population (19 age groups - Census P25-1103). Regression lines and APCs are calculated using the Joinpoint Regression Program Version 3.3.1, April 2008, National Cancer Institute. The APC is the Annual Percent Change for the regression line segments. The APC shown on the graph is for the most recent trend.  
\* The APC is significantly different from zero ( $p < 0.05$ ).

# SEER Observed Incidence and SEER Delay Adjusted Incidence Rates<sup>a</sup> SEER 9 Areas Compared to SEER 13 Areas Cancer of the Pancreas, Female, by Race

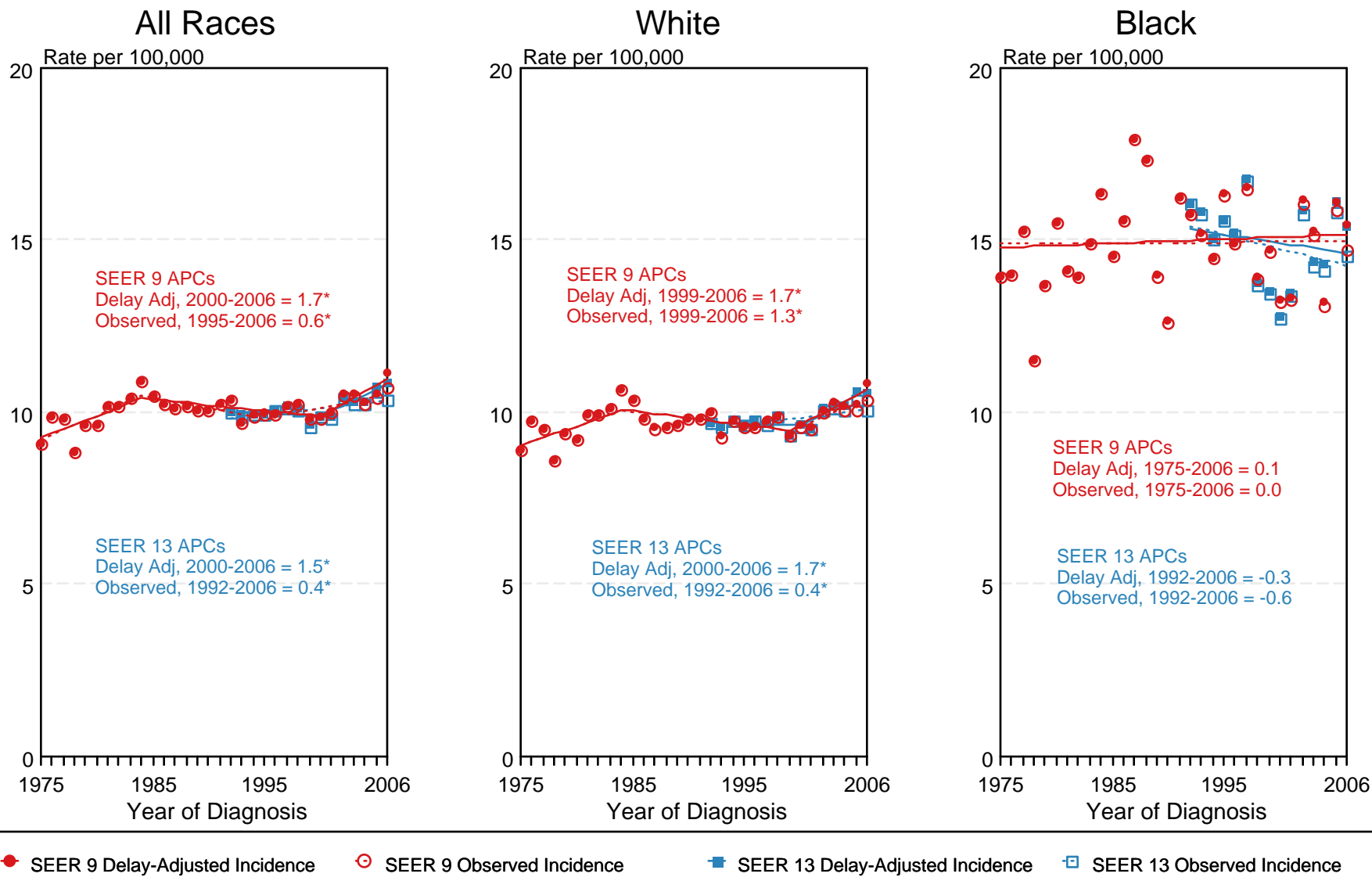


Figure 22.4

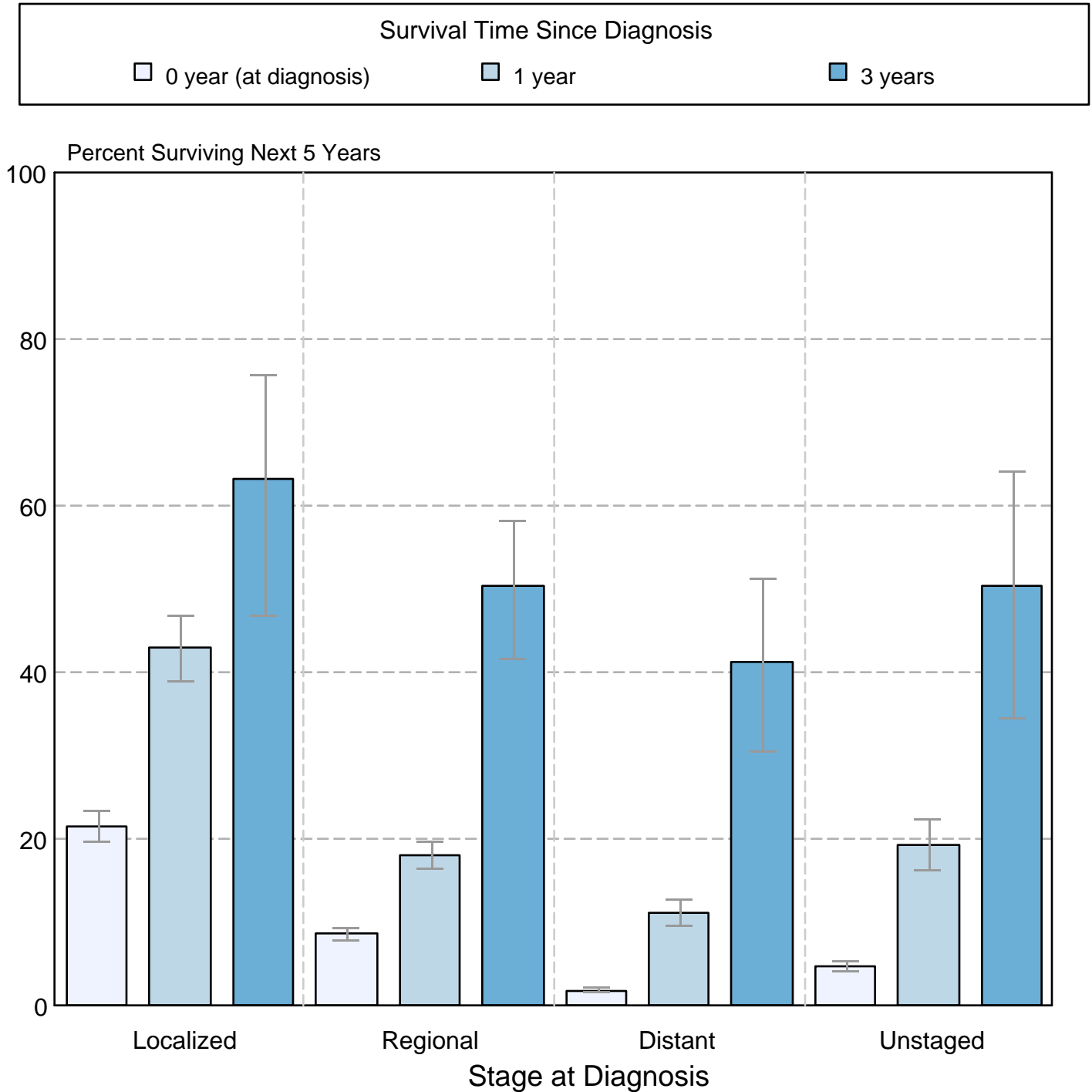
<sup>a</sup> Source: SEER 9 areas and SEER 13 areas.  
Rates are age-adjusted to the 2000 US Std Population (19 age groups - Census P25-1103).  
Regression lines and APCs are calculated using the Joinpoint Regression Program Version 3.3.1, April 2008, National Cancer Institute.  
The APC is the Annual Percent Change for the regression line segments. The APC shown on the graph is for the most recent trend.  
\* The APC is significantly different from zero ( $p < 0.05$ ).

Figure 22.5

## Cancer of the Pancreas

### 5-Year SEER Conditional Relative Survival Rates and 95% Confidence Intervals

Probability of surviving the next 5 years given the cohort  
has already survived 0, 1, or 3 years  
1998-2005 by stage at diagnosis



Source: SEER 17 areas (San Francisco, Connecticut, Detroit, Hawaii, Iowa, New Mexico, Seattle, Utah, Atlanta, San Jose-Monterey, Los Angeles, Alaska Native Registry, Rural Georgia, California excluding SF/SJM/LA, Kentucky, Louisiana, and New Jersey). California excluding SF/SJM/LA, Kentucky, Louisiana, and New Jersey contribute cases for diagnosis years 2000-2006. The remaining 13 SEER Areas contribute cases for the entire period 1998-2005. Percent surviving is not shown if based on less than 25 cases. Confidence intervals are not shown if length of the confidence interval is greater than 5 times the standard error.