

Table 1.4  
Age-Adjusted SEER Incidence and U.S. Death Rates and 5-Year Relative Survival Rates  
By Primary Cancer Site, Sex and Time Period

All Races

Site	Incidence <sup>a</sup> (2002-2006)			US Mortality <sup>b</sup> (2002-2006)			Survival <sup>c</sup> (1999-2005)		
	Total	Males	Females	Total	Males	Females	Total	Males	Females
All Sites	462.9	541.8	408.5	186.9	229.9	157.8	66.1	66.2	66.0
Oral Cavity & Pharynx:	10.4	15.4	6.1	2.6	3.9	1.5	61.0	59.9	63.3
Lip	0.8	1.3	0.4	0.0	0.0	0.0	91.1	90.8	91.4
Tongue	2.8	4.2	1.7	0.6	0.9	0.4	59.5	59.4	59.9
Salivary gland	1.2	1.6	1.0	0.2	0.4	0.1	73.9	68.3	81.1
Floor of mouth	0.6	0.9	0.4	0.0	0.1	0.0	53.0	51.3	56.9
Gum & other oral cavity	1.5	1.8	1.2	0.4	0.5	0.3	59.5	56.5	63.1
Nasopharynx	0.7	1.0	0.4	0.2	0.3	0.1	57.6	56.9	59.2
Tonsil	1.5	2.6	0.6	0.2	0.3	0.1	66.6	67.6	62.2
Oropharynx	0.3	0.5	0.2	0.2	0.3	0.1	39.2	39.0	39.6
Hypopharynx	0.7	1.2	0.3	0.1	0.2	0.0	29.2	28.9	30.4
Other oral cavity & pharynx	0.2	0.3	0.1	0.5	0.9	0.2	34.3	36.2	29.8
Digestive System:	87.9	107.0	72.6	44.6	57.2	34.8	45.4	43.5	47.5
Esophagus	4.5	7.7	2.0	4.4	7.8	1.7	16.8	16.6	17.3
Stomach	7.9	11.0	5.5	4.0	5.5	2.8	25.7	24.0	28.3
Small intestine	1.9	2.3	1.6	0.4	0.4	0.3	61.7	61.2	62.1
Colon & Rectum:	49.1	57.3	42.8	18.2	21.9	15.4	65.2	65.3	65.0
Colon	35.5	40.0	32.0	-	-	-	64.6	65.0	64.1
Rectum	13.6	17.2	10.7	-	-	-	66.6	65.9	67.5
Anus, anal canal & anorectum	1.6	1.4	1.7	0.2	0.2	0.2	66.3	61.4	69.6
Liver & intrahep. bile duct:	6.6	10.2	3.6	5.1	7.5	3.2	13.1	12.7	13.9
Liver	6.1	9.5	3.1	4.0	6.2	2.2	13.8	13.3	15.2
Intrahepatic bile duct	0.6	0.7	0.5	1.1	1.3	1.0	6.0	5.5	6.5
Gallbladder	1.2	0.9	1.4	0.7	0.5	0.8	15.3	13.1	16.0
Other biliary	1.8	2.1	1.5	0.5	0.6	0.4	17.2	18.5	15.7
Pancreas	11.7	13.1	10.4	10.7	12.3	9.3	5.5	5.4	5.7
Retroperitoneum	0.4	0.4	0.4	0.1	0.1	0.1	52.3	49.7	55.0
Peritoneum, omentum & mesentery	0.7	0.1	1.1	0.2	0.1	0.4	29.5	46.0	28.2
Other digestive system	0.5	0.6	0.5	0.3	0.3	0.2	10.4	9.8	10.9
Respiratory System:	67.5	85.1	54.4	54.9	73.2	41.6	18.9	18.3	19.7
Nose, nasal cavity & middle ear	0.7	0.9	0.5	0.2	0.2	0.1	55.5	53.2	58.4
Larynx	3.5	6.2	1.3	1.3	2.3	0.5	61.6	62.5	58.1
Lung & bronchus	63.1	77.7	52.5	53.4	70.5	40.9	15.6	13.4	18.1
Pleura <sup>d</sup>	0.0	0.1	0.0	0.1	0.2	0.0	33.5	28.0	42.6
Trachea & other respiratory organs	0.2	0.3	0.1	0.1	0.1	0.1	48.0	48.4	47.1
Bones & joints	0.9	1.0	0.8	0.4	0.5	0.4	68.4	65.0	72.5
Soft tissue (including heart)	3.1	3.8	2.7	1.3	1.4	1.1	67.2	66.9	67.5
Skin (excl. basal & squamous):	21.4	27.4	17.2	3.5	5.4	2.1	91.1	88.9	93.9
Melanoma of the skin	19.6	25.0	15.8	2.7	3.9	1.7	91.4	89.3	94.0
Other non-epithelial skin	1.8	2.4	1.4	0.8	1.4	0.4	87.9	84.5	91.6
Breast	67.1	1.2	123.8	13.8	0.3	24.5	89.1	87.0	89.1
Breast ( <i>in situ</i> )	15.8	0.1	29.6	-	-	-	100.0	100.0	100.0

Note: Incidence and death rates are per 100,000 and are age-adjusted to the 2000 US Std Population (19 age groups - Census P25-1130).

<sup>a</sup> SEER 17 areas (San Francisco, Connecticut, Detroit, Hawaii, Iowa, New Mexico, Seattle, Utah, Atlanta, San Jose-Monterey, Los Angeles, Alaska Native Registry, Rural Georgia, California excluding SF/SJM/LA, Kentucky, Louisiana and New Jersey).

<sup>b</sup> US Mortality Files, National Center for Health Statistics, Centers for Disease Control and Prevention.

<sup>c</sup> SEER 17 areas. California excluding SF/SJM/LA, Kentucky, Louisiana, and New Jersey contribute cases for diagnosis years 2000-2005. The remaining 13 SEER Areas contribute cases for the entire period 1999-2005.

<sup>d</sup> Mesotheliomas of the Pleura are included in the separate group Mesothelioma for incidence but are included in the Pleura grouping for mortality.

- Statistic could not be calculated due to less than 16 cases in the time interval.

Table 1.4 - continued  
Age-Adjusted SEER Incidence and U.S. Death Rates and 5-Year Relative Survival Rates  
By Primary Cancer Site, Sex and Time Period

All Races

Site	Incidence <sup>a</sup> (2002-2006)			US Mortality <sup>b</sup> (2002-2006)			Survival <sup>c</sup> (1999-2005)		
	Total	Males	Females	Total	Males	Females	Total	Males	Females
Female Genital System:	25.9	-	48.2	9.1	-	16.2	69.7	-	69.7
Cervix uteri	4.3	-	8.2	1.3	-	2.5	70.6	-	70.6
Corpus uteri	12.2	-	22.7	1.1	-	1.9	84.0	-	84.0
Uterus, NOS	0.3	-	0.6	1.3	-	2.2	29.7	-	29.7
Ovary <sup>d</sup>	7.1	-	13.1	4.9	-	8.8	45.9	-	45.9
Vagina	0.4	-	0.7	0.1	-	0.2	52.6	-	52.6
Vulva	1.2	-	2.2	0.3	-	0.5	76.1	-	76.1
Other female genital system	0.4	-	0.7	0.1	-	0.2	65.7	-	65.7
Male Genital System:	73.8	165.7	-	10.0	26.1	-	99.4	99.4	-
Prostate	70.6	159.3	-	9.8	25.6	-	99.7	99.7	-
Testis	2.7	5.4	-	0.1	0.3	-	95.3	95.3	-
Penis	0.3	0.8	-	0.1	0.2	-	67.5	67.5	-
Other male genital system	0.1	0.2	-	0.0	0.0	-	84.5	84.5	-
Urinary System:	35.5	57.0	19.3	8.7	13.8	5.1	74.8	76.2	71.7
Urinary bladder	21.0	37.1	9.3	4.3	7.5	2.2	80.0	81.5	75.7
Kidney & renal pelvis	13.6	18.6	9.5	4.1	6.0	2.7	68.4	67.9	69.0
Ureter	0.6	0.8	0.4	0.1	0.1	0.1	54.9	57.4	51.2
Other urinary system	0.3	0.4	0.2	0.1	0.2	0.1	56.9	59.6	52.6
Eye & Orbit	0.8	1.0	0.7	0.1	0.1	0.1	83.8	82.1	85.9
Brain & Nervous System: <sup>e</sup>	6.4	7.6	5.4	4.3	5.3	3.5	34.8	32.9	37.1
Brain	6.0	7.2	5.0	-	-	-	31.5	30.2	33.1
Cranial nerves & other nervous system	0.4	0.4	0.4	-	-	-	79.5	76.0	82.7
Endocrine System:	10.3	5.7	14.8	0.8	0.8	0.8	94.8	89.6	96.5
Thyroid	9.6	4.9	14.2	0.5	0.5	0.5	97.3	94.7	98.0
Other endocrine & thymus	0.7	0.8	0.6	0.3	0.3	0.3	62.4	62.7	62.1
Lymphoma:	22.3	26.6	18.9	7.5	9.5	6.1	69.9	68.0	72.1
Hodgkin lymphoma	2.8	3.1	2.5	0.4	0.5	0.4	84.7	83.0	86.7
Non-Hodgkin lymphoma	19.5	23.5	16.4	7.1	9.0	5.7	67.2	65.2	69.4
Myeloma	5.6	7.1	4.6	3.6	4.5	3.0	37.1	38.3	35.7
Leukemia:	12.2	15.8	9.5	7.3	9.8	5.5	53.1	53.5	52.6
Lymphocytic:	6.1	8.1	4.5	2.1	3.0	1.5	73.7	73.3	74.1
Acute lymphocytic	1.6	1.9	1.4	0.5	0.6	0.4	65.3	64.7	66.0
Chronic lymphocytic	4.1	5.6	2.9	1.5	2.2	1.0	77.5	76.3	79.3
Other lymphocytic	0.4	0.6	0.2	0.1	0.2	0.1	83.5	87.0	72.9
Myeloid & Monocytic:	5.4	6.8	4.4	3.4	4.5	2.7	32.7	31.9	33.6
Acute myeloid	3.5	4.3	2.9	2.8	3.6	2.2	22.8	21.5	24.3
Chronic myeloid	1.5	1.9	1.1	0.4	0.5	0.3	56.1	55.1	57.4
Acute monocytic	0.3	0.3	0.3	0.0	0.1	0.0	24.0	23.1	24.6
Other myeloid & monocytic	0.2	0.2	0.1	0.2	0.3	0.1	30.2	28.8	30.9
Other leukemia:	0.7	0.9	0.6	1.8	2.4	1.4	23.3	23.5	23.1
Other acute leukemia	0.3	0.4	0.2	0.8	1.0	0.6	14.3	14.4	13.9
Aleukemic, subleukemic & NOS	0.4	0.5	0.4	1.0	1.4	0.8	31.5	31.1	31.6
Kaposi Sarcoma <sup>f</sup>	0.6	1.2	0.1	-	-	-	61.4	61.2	65.2
Mesothelioma <sup>f</sup>	1.1	2.0	0.4	-	-	-	7.9	6.0	13.9
Ill-defined & unspecified	10.0	11.4	9.0	14.3	18.0	11.6	16.6	20.0	13.4

Note: Incidence and death rates are per 100,000 and are age-adjusted to the 2000 US Std Population (19 age groups - Census P25-1130).

<sup>a</sup> SEER 17 areas (San Francisco, Connecticut, Detroit, Hawaii, Iowa, New Mexico, Seattle, Utah, Atlanta, San Jose-Monterey, Los Angeles, Alaska Native Registry, Rural Georgia, California excluding SF/SJM/LA, Kentucky, Louisiana and New Jersey).

<sup>b</sup> US Mortality Files, National Center for Health Statistics, Centers for Disease Control and Prevention.

<sup>c</sup> SEER 17 areas. California excluding SF/SJM/LA, Kentucky, Louisiana, and New Jersey contribute cases for diagnosis years 2000-2005. The remaining 13 SEER Areas contribute cases for the entire period 1999-2005.

<sup>d</sup> Ovary excludes borderline cases or histologies 8442, 8451, 8462, 8472, and 8473.

<sup>e</sup> Due to coding changes, Brain & Nervous System mortality are no longer shown separately.

<sup>f</sup> Rate not shown for mortality. Category did not exist in mortality coding until 1999.

- Statistic could not be calculated due to less than 16 cases in the time interval.

Table 1.5  
Age-Adjusted SEER Incidence and U.S. Death Rates and 5-Year Relative Survival Rates  
By Primary Cancer Site, Sex and Time Period

Site	Whites								
	Incidence <sup>a</sup> (2002-2006)			US Mortality <sup>b</sup> (2002-2006)			Survival <sup>c</sup> (1999-2005)		
	Total	Males	Females	Total	Males	Females	Total	Males	Females
All Sites	470.6	544.3	420.5	185.4	226.7	157.3	66.9	67.0	66.9
Oral Cavity & Pharynx:	10.5	15.6	6.1	2.5	3.7	1.4	62.8	62.4	63.8
Lip	0.9	1.5	0.4	0.0	0.0	0.0	91.2	90.8	92.0
Tongue	3.0	4.4	1.7	0.6	0.9	0.4	62.0	62.0	62.2
Salivary gland	1.2	1.7	0.9	0.2	0.4	0.1	72.9	67.9	79.9
Floor of mouth	0.7	1.0	0.4	0.0	0.1	0.0	54.1	53.0	56.7
Gum & other oral cavity	1.5	1.8	1.2	0.4	0.5	0.3	60.1	57.8	62.9
Nasopharynx	0.4	0.6	0.2	0.2	0.2	0.1	53.5	55.0	49.5
Tonsil	1.6	2.7	0.6	0.2	0.3	0.1	69.2	70.7	63.0
Oropharynx	0.3	0.5	0.2	0.2	0.3	0.1	43.1	43.2	42.9
Hypopharynx	0.7	1.1	0.3	0.1	0.2	0.0	30.5	30.6	30.3
Other oral cavity & pharynx	0.2	0.3	0.1	0.5	0.8	0.2	37.3	39.7	31.8
Digestive System:	85.3	103.9	70.4	43.0	55.1	33.4	46.5	44.8	48.5
Esophagus	4.6	7.9	1.9	4.4	7.9	1.6	17.6	17.6	17.6
Stomach	6.9	9.8	4.7	3.5	4.8	2.4	24.1	22.5	26.7
Small intestine	1.9	2.2	1.6	0.3	0.4	0.3	63.9	63.7	63.9
Colon & Rectum:	48.6	56.9	42.1	17.7	21.4	14.9	66.1	66.3	65.9
Colon	35.1	39.7	31.5	-	-	-	65.6	66.0	65.1
Rectum	13.5	17.1	10.6	-	-	-	67.2	66.7	67.8
Anus, anal canal & anorectum	1.7	1.4	1.9	0.2	0.2	0.2	67.0	61.8	70.3
Liver & Intrahep. bile duct:	5.6	8.6	3.0	4.7	6.8	2.9	12.8	12.4	13.6
Liver	5.1	8.0	2.5	3.6	5.5	1.9	13.6	13.0	15.2
Intrahepatic bile duct	0.6	0.6	0.5	1.1	1.3	1.0	5.7	5.3	6.0
Gallbladder	1.1	0.8	1.4	0.6	0.5	0.8	15.0	12.6	15.8
Other biliary	1.7	2.1	1.5	0.5	0.6	0.4	17.5	19.3	15.5
Pancreas	11.5	13.1	10.2	10.5	12.2	9.1	5.5	5.5	5.5
Retroperitoneum	0.4	0.5	0.4	0.1	0.1	0.1	53.4	50.3	56.8
Peritoneum, omentum & mesentery	0.7	0.1	1.3	0.3	0.1	0.4	29.5	43.6	28.5
Other digestive system	0.5	0.6	0.4	0.3	0.3	0.2	10.1	9.4	10.8
Respiratory System:	68.8	85.0	56.8	55.3	72.5	42.6	19.2	18.6	19.9
Nose, nasal cavity & middle ear	0.7	0.8	0.5	0.2	0.2	0.1	55.6	53.0	59.1
Larynx	3.5	6.2	1.3	1.2	2.1	0.5	63.1	64.0	59.6
Lung & bronchus	64.4	77.6	54.8	53.8	69.9	41.9	15.9	13.7	18.3
Pleura <sup>d</sup>	0.0	0.1	0.0	0.1	0.2	0.0	33.0	26.9	43.9
Trachea & other respiratory organs	0.2	0.3	0.1	0.1	0.1	0.1	48.5	50.4	44.2
Bones & joints	0.9	1.1	0.8	0.4	0.5	0.4	68.2	64.4	72.9
Soft tissue (including heart)	3.2	3.8	2.7	1.3	1.4	1.1	67.8	67.5	68.2
Skin (excl. basal & squamous):	24.8	31.5	20.1	3.9	5.9	2.4	90.9	88.6	93.7
Melanoma of the skin	22.9	28.9	18.7	3.0	4.4	2.0	91.2	89.0	93.9
Other non-epithelial skin	1.9	2.6	1.4	0.9	1.5	0.4	86.5	83.2	90.1
Breast	68.7	1.2	127.8	13.4	0.3	23.9	90.3	88.3	90.3
Breast ( <i>in situ</i> )	16.0	0.1	30.3	-	-	-	100.0	100.0	100.0

Note: Incidence and death rates are per 100,000 and are age-adjusted to the 2000 US Std Population (19 age groups - Census P25-1130).

<sup>a</sup> SEER 17 areas (San Francisco, Connecticut, Detroit, Hawaii, Iowa, New Mexico, Seattle, Utah, Atlanta, San Jose-Monterey, Los Angeles, Alaska Native Registry, Rural Georgia, California excluding SF/SJM/LA, Kentucky, Louisiana and New Jersey).

<sup>b</sup> US Mortality Files, National Center for Health Statistics, Centers for Disease Control and Prevention.

<sup>c</sup> SEER 17 areas. California excluding SF/SJM/LA, Kentucky, Louisiana, and New Jersey contribute cases for diagnosis years 2000-2005. The remaining 13 SEER Areas contribute cases for the entire period 1999-2005.

<sup>d</sup> Mesotheliomas of the Pleura are included in the separate group Mesothelioma for incidence but are included in the Pleura grouping for mortality.

- Statistic could not be calculated due to less than 16 cases in the time interval.

Table 1.5 - continued  
 Age-Adjusted SEER Incidence and U.S. Death Rates and 5-Year Relative Survival Rates  
 By Primary Cancer Site, Sex and Time Period

Site	Whites								
	Incidence <sup>a</sup> (2002-2006)			US Mortality <sup>b</sup> (2002-2006)			Survival <sup>c</sup> (1999-2005)		
	Total	Males	Females	Total	Males	Females	Total	Males	Females
Female Genital System:	26.5	-	49.8	9.0	-	16.1	70.8	-	70.8
Cervix uteri	4.1	-	8.1	1.2	-	2.2	72.0	-	72.0
Corpus uteri	12.6	-	23.7	1.0	-	1.8	85.7	-	85.7
Uterus, NOS	0.3	-	0.5	1.2	-	2.0	29.7	-	29.7
Ovary <sup>d</sup>	7.4	-	13.8	5.1	-	9.1	45.8	-	45.8
Vagina	0.4	-	0.7	0.1	-	0.2	54.8	-	54.8
Vulva	1.3	-	2.3	0.3	-	0.5	76.5	-	76.5
Other female genital system	0.4	-	0.7	0.1	-	0.2	64.3	-	64.3
Male Genital System:	72.1	160.4	-	9.3	24.1	-	99.7	99.7	-
Prostate	68.5	153.0	-	9.0	23.6	-	99.9	99.9	-
Testis	3.2	6.3	-	0.1	0.3	-	95.6	95.6	-
Penis	0.4	0.8	-	0.1	0.2	-	67.2	67.2	-
Other male genital system	0.1	0.2	-	0.0	0.0	-	86.3	86.3	-
Urinary System:	37.7	60.7	20.3	8.9	14.3	5.2	75.4	76.6	72.6
Urinary bladder	22.8	40.3	9.9	4.5	7.9	2.2	80.5	81.7	77.0
Kidney & renal pelvis	14.1	19.2	9.9	4.2	6.1	2.8	68.5	68.1	69.1
Ureter	0.6	0.9	0.4	0.1	0.2	0.1	54.9	57.6	50.4
Other urinary system	0.3	0.4	0.1	0.1	0.2	0.1	57.5	58.4	55.5
Eye & Orbit	0.9	1.1	0.8	0.1	0.1	0.1	83.4	81.6	85.5
Brain & Nervous System: <sup>e</sup>	7.1	8.4	5.9	4.7	5.7	3.8	34.0	32.4	36.1
Brain	6.7	8.0	5.5	-	-	-	30.9	29.8	32.3
Cranial nerves & other nervous system	0.4	0.4	0.4	-	-	-	79.9	77.4	82.2
Endocrine System:	10.8	6.0	15.6	0.8	0.8	0.7	95.1	90.1	96.8
Thyroid	10.1	5.2	15.0	0.5	0.5	0.5	97.5	94.8	98.2
Other endocrine & thymus	0.7	0.8	0.6	0.3	0.3	0.3	61.4	62.4	60.0
Lymphoma:	23.4	27.7	19.8	7.9	9.9	6.3	70.7	69.0	72.6
Hodgkin lymphoma	3.0	3.3	2.7	0.5	0.6	0.4	85.1	83.6	86.7
Non-Hodgkin lymphoma	20.4	24.4	17.2	7.4	9.3	5.9	68.0	66.3	70.0
Myeloma	5.2	6.6	4.1	3.4	4.3	2.7	36.9	38.6	34.9
Leukemia:	12.8	16.5	9.9	7.5	10.1	5.7	53.4	53.8	53.0
Lymphocytic:	6.5	8.7	4.8	2.2	3.1	1.5	74.0	73.8	74.4
Acute lymphocytic	1.7	2.0	1.5	0.5	0.6	0.4	65.6	65.2	66.0
Chronic lymphocytic	4.3	6.0	3.1	1.5	2.2	1.0	77.8	76.5	79.6
Other lymphocytic	0.4	0.7	0.2	0.1	0.2	0.1	83.8	87.6	72.6
Myeloid & Monocytic:	5.6	7.0	4.5	3.5	4.6	2.7	31.7	30.7	33.0
Acute myeloid	3.6	4.5	3.0	2.9	3.7	2.3	22.2	20.9	23.9
Chronic myeloid	1.5	1.9	1.2	0.4	0.5	0.3	54.5	53.2	56.3
Acute monocytic	0.3	0.4	0.3	0.0	0.1	0.0	24.1	21.6	26.7
Other myeloid & monocytic	0.2	0.2	0.1	0.2	0.3	0.2	29.5	28.5	29.6
Other leukemia:	0.7	0.9	0.6	1.8	2.4	1.4	22.7	23.4	21.8
Other acute leukemia	0.3	0.4	0.2	0.8	1.0	0.6	13.1	13.2	12.3
Aleukemic, subleukemic & NOS	0.4	0.5	0.3	1.0	1.4	0.8	32.1	32.7	30.8
Kaposi Sarcoma <sup>f</sup>	0.6	1.1	0.1	-	-	-	65.0	64.2	76.0
Mesothelioma <sup>f</sup>	1.2	2.2	0.5	-	-	-	7.4	5.6	13.3
Ill-defined & unspecified	10.1	11.5	9.1	14.2	17.9	11.5	17.4	21.5	13.6

Note: Incidence and death rates are per 100,000 and are age-adjusted to the 2000 US Std Population (19 age groups - Census P25-1130).

<sup>a</sup> SEER 17 areas (San Francisco, Connecticut, Detroit, Hawaii, Iowa, New Mexico, Seattle, Utah, Atlanta, San Jose-Monterey, Los Angeles, Alaska Native Registry, Rural Georgia, California excluding SF/SJM/LA, Kentucky, Louisiana and New Jersey).

<sup>b</sup> US Mortality Files, National Center for Health Statistics, Centers for Disease Control and Prevention.

<sup>c</sup> SEER 17 areas. California excluding SF/SJM/LA, Kentucky, Louisiana, and New Jersey contribute cases for diagnosis years 2000-2005. The remaining 13 SEER Areas contribute cases for the entire period 1999-2005.

<sup>d</sup> Ovary excludes borderline cases or histologies 8442, 8451, 8462, 8472, and 8473.

<sup>e</sup> Due to coding changes, Brain & Nervous System mortality are no longer shown separately.

<sup>f</sup> Rate not shown for mortality. Category did not exist in mortality coding until 1999.

- Statistic could not be calculated due to less than 16 cases in the time interval.

Table 1.6  
Age-Adjusted SEER Incidence and U.S. Death Rates and 5-Year Relative Survival Rates  
By Primary Cancer Site, Sex and Time Period

Site	Blacks								
	Incidence <sup>a</sup> (2002-2006)			US Mortality <sup>b</sup> (2002-2006)			Survival <sup>c</sup> (1999-2005)		
	Total	Males	Females	Total	Males	Females	Total	Males	Females
All Sites	493.6	633.7	398.9	229.0	304.2	183.7	58.0	60.6	55.2
Oral Cavity & Pharynx:	10.5	16.7	5.8	3.6	6.5	1.6	42.6	38.2	53.2
Lip	0.1	0.2	-	-	-	-	86.1	85.9	81.4
Tongue	2.3	3.8	1.2	0.7	1.2	0.3	33.1	32.4	34.3
Salivary gland	1.0	1.2	1.0	0.2	0.2	0.1	74.5	65.7	81.6
Floor of mouth	0.7	1.2	0.4	0.1	0.1	0.0	41.9	37.3	56.2
Gum & other oral cavity	1.7	2.3	1.3	0.4	0.7	0.3	54.0	46.7	64.5
Nasopharynx	0.7	1.2	0.4	0.3	0.5	0.2	51.2	48.9	54.4
Tonsil	1.6	2.9	0.6	0.3	0.6	0.1	43.2	41.4	50.3
Oropharynx	0.6	1.1	0.3	0.4	0.7	0.2	20.8	21.0	21.1
Hypopharynx	1.2	2.2	0.4	0.2	0.4	0.0	22.3	20.9	27.7
Other oral cavity & pharynx	0.4	0.6	0.2	1.0	2.0	0.4	19.5	19.9	18.1
Digestive System:	110.5	134.6	93.2	61.5	80.3	48.4	38.5	35.3	41.7
Esophagus	5.6	9.3	3.0	5.4	9.2	2.7	10.8	9.8	13.4
Stomach	12.1	16.8	9.0	7.6	11.0	5.3	25.3	22.6	28.4
Small intestine	3.1	3.6	2.7	0.6	0.7	0.5	53.0	50.3	55.3
Colon & Rectum:	59.9	69.3	53.5	25.4	31.4	21.6	56.1	55.5	56.7
Colon	46.0	52.3	41.8	-	-	-	55.5	55.5	55.6
Rectum	13.9	17.0	11.7	-	-	-	57.9	55.5	60.4
Anus, anal canal & anorectum	1.7	1.6	1.6	0.2	0.2	0.2	59.8	53.7	65.7
Liver & Intrahep. bile duct:	8.2	13.4	4.2	6.8	10.8	3.9	8.8	8.3	10.0
Liver	7.7	12.9	3.7	5.8	9.5	3.0	9.0	8.5	10.0
Intrahepatic bile duct	0.5	0.4	0.5	1.0	1.2	0.9	5.5	3.1	7.8
Gallbladder	1.4	1.1	1.7	0.8	0.6	1.0	14.4	21.5	13.0
Other biliary	1.6	1.8	1.4	0.4	0.5	0.4	12.6	14.3	11.2
Pancreas	15.6	16.6	14.6	13.7	15.4	12.4	5.4	4.5	6.2
Retroperitoneum	0.4	0.3	0.4	0.1	0.1	0.1	42.3	42.8	42.0
Peritoneum, omentum & mesentery	0.4	0.1	0.6	0.2	0.1	0.2	29.3	46.7	24.8
Other digestive system	0.6	0.7	0.6	0.4	0.5	0.3	13.2	12.5	13.5
Respiratory System:	81.1	115.9	57.3	62.5	95.2	40.9	16.0	15.7	16.3
Nose, nasal cavity & middle ear	0.6	0.9	0.4	0.2	0.3	0.1	51.5	48.0	56.2
Larynx	5.6	10.5	2.0	2.3	4.7	0.7	50.5	51.6	46.1
Lung & bronchus	74.7	104.3	54.7	59.9	90.1	40.0	12.4	10.8	14.5
Pleura <sup>d</sup>	-	-	-	0.0	0.1	0.0	-	-	-
Trachea & other respiratory organs	0.2	0.2	0.2	0.1	0.1	0.1	37.6	32.7	48.4
Bones & joints	0.8	0.8	0.7	0.5	0.6	0.4	66.4	65.2	67.3
Soft tissue (including heart)	3.3	3.7	3.0	1.4	1.4	1.4	60.9	61.4	60.5
Skin (excl. basal & squamous):	2.1	2.1	2.1	0.9	1.4	0.6	88.9	86.2	91.1
Melanoma of the skin	1.0	1.1	1.0	0.4	0.5	0.4	77.3	73.3	80.4
Other non-epithelial skin	1.1	1.0	1.1	0.5	0.9	0.2	96.4	94.1	97.5
Breast	67.4	1.6	117.7	19.5	0.5	33.0	77.9	77.0	77.9
Breast ( <i>in situ</i> )	15.1	0.2	26.6	-	-	-	100.0	99.1	100.0

Note: Incidence and death rates are per 100,000 and are age-adjusted to the 2000 US Std Population (19 age groups - Census P25-1130).

<sup>a</sup> SEER 17 areas (San Francisco, Connecticut, Detroit, Hawaii, Iowa, New Mexico, Seattle, Utah, Atlanta, San Jose-Monterey, Los Angeles, Alaska Native Registry, Rural Georgia, California excluding SF/SJM/LA, Kentucky, Louisiana and New Jersey).

<sup>b</sup> US Mortality Files, National Center for Health Statistics, Centers for Disease Control and Prevention.

<sup>c</sup> SEER 17 areas. California excluding SF/SJM/LA, Kentucky, Louisiana, and New Jersey contribute cases for diagnosis years 2000-2005. The remaining 13 SEER Areas contribute cases for the entire period 1999-2005.

<sup>d</sup> Mesotheliomas of the Pleura are included in the separate group Mesothelioma for incidence but are included in the Pleura grouping for mortality.

- Statistic could not be calculated due to less than 16 cases in the time interval.

Table 1.6 - continued  
Age-Adjusted SEER Incidence and U.S. Death Rates and 5-Year Relative Survival Rates  
By Primary Cancer Site, Sex and Time Period

Site	Blacks								
	Incidence <sup>a</sup> (2002-2006)			US Mortality <sup>b</sup> (2002-2006)			Survival <sup>c</sup> (1999-2005)		
	Total	Males	Females	Total	Males	Females	Total	Males	Females
Female Genital System:	25.3	-	44.3	11.8	-	19.9	56.3	-	56.3
Cervix uteri	5.8	-	10.4	2.6	-	4.6	61.4	-	61.4
Corpus uteri	11.0	-	19.2	1.9	-	3.1	63.1	-	63.1
Uterus, NOS	0.6	-	1.1	2.4	-	4.0	26.2	-	26.2
Ovary <sup>d</sup>	5.8	-	10.1	4.4	-	7.3	37.4	-	37.4
Vagina	0.6	-	1.1	0.2	-	0.3	42.8	-	42.8
Vulva	1.0	-	1.8	0.2	-	0.3	70.1	-	70.1
Other female genital system	0.4	-	0.7	0.1	-	0.2	67.4	-	67.4
Male Genital System:	100.7	242.2	-	20.2	56.8	-	96.3	96.3	-
Prostate	99.6	239.8	-	20.0	56.3	-	96.5	96.5	-
Testis	0.6	1.3	-	0.1	0.2	-	88.4	88.4	-
Penis	0.4	1.0	-	0.1	0.3	-	67.9	67.9	-
Other male genital system	0.1	0.2	-	0.0	0.0	-	79.4	79.4	-
Urinary System:	28.4	42.2	18.8	8.0	11.6	5.6	65.5	67.0	63.1
Urinary bladder	12.8	20.0	7.9	3.7	5.5	2.8	66.5	71.5	57.3
Kidney & renal pelvis	15.0	21.3	10.3	4.0	6.0	2.7	65.9	64.7	67.4
Ureter	0.3	0.4	0.3	0.0	0.1	0.1	51.4	43.6	58.7
Other urinary system	0.4	0.5	0.3	0.1	0.1	0.2	36.4	39.8	33.5
Eye & Orbit	0.2	0.3	0.2	0.0	0.0	0.0	83.5	83.3	84.1
Brain & Nervous System: <sup>e</sup>	4.0	4.7	3.4	2.5	3.2	2.1	38.6	33.9	43.7
Brain	3.6	4.3	3.0	-	-	-	33.9	30.3	37.9
Cranial nerves & other nervous system	0.4	0.3	0.4	-	-	-	76.5	69.5	80.3
Endocrine System:	6.6	3.6	9.1	0.8	0.7	0.8	91.3	84.0	93.4
Thyroid	5.8	2.7	8.4	0.5	0.3	0.5	95.0	91.4	95.5
Other endocrine & thymus	0.8	0.9	0.7	0.3	0.3	0.3	64.8	62.4	67.1
Lymphoma:	17.4	21.2	14.5	5.4	6.8	4.4	63.1	58.4	68.6
Hodgkin lymphoma	2.6	2.9	2.3	0.4	0.5	0.3	82.1	77.3	87.4
Non-Hodgkin lymphoma	14.8	18.3	12.2	5.0	6.3	4.1	58.4	54.0	63.8
Myeloma	11.7	14.3	10.0	6.8	8.2	5.8	36.6	36.0	37.2
Leukemia:	9.8	12.7	7.8	6.4	8.5	5.1	45.8	45.5	46.1
Lymphocytic:	4.2	5.9	3.0	1.9	2.7	1.3	63.1	59.1	68.1
Acute lymphocytic	0.9	1.1	0.8	0.3	0.4	0.3	60.7	55.1	66.7
Chronic lymphocytic	3.0	4.4	2.1	1.4	2.1	1.0	64.5	60.5	69.7
Other lymphocytic	0.3	0.5	0.1	0.1	0.2	0.1	66.1	68.3	58.4
Myeloid & Monocytic:	4.7	5.8	4.0	2.8	3.6	2.4	34.6	36.5	31.8
Acute myeloid	3.0	3.6	2.6	2.2	2.7	1.9	24.5	26.4	21.5
Chronic myeloid	1.4	1.8	1.1	0.5	0.7	0.4	56.2	55.2	56.7
Acute monocytic	0.2	0.2	0.2	0.0	-	-	19.3	26.7	10.9
Other myeloid & monocytic	0.2	0.2	0.1	0.2	0.2	0.1	29.0	20.2	33.1
Other leukemia:	0.9	1.0	0.8	1.7	2.2	1.4	20.7	16.7	24.5
Other acute leukemia	0.3	0.3	0.2	0.6	0.8	0.5	20.6	18.3	20.1
Aleukemic, subleukemic & NOS	0.6	0.7	0.5	1.1	1.5	0.9	19.5	15.6	23.8
Kaposi Sarcoma <sup>f</sup>	1.3	2.5	0.2	-	-	-	45.6	46.6	24.1
Mesothelioma <sup>f</sup>	0.6	1.2	0.3	-	-	-	12.2	8.6	17.9
Ill-defined & unspecified	11.7	13.4	10.4	17.3	22.6	13.7	10.8	11.2	10.4

Note: Incidence and death rates are per 100,000 and are age-adjusted to the 2000 US Std Population (19 age groups - Census P25-1130).

<sup>a</sup> SEER 17 areas (San Francisco, Connecticut, Detroit, Hawaii, Iowa, New Mexico, Seattle, Utah, Atlanta, San Jose-Monterey, Los Angeles, Alaska Native Registry, Rural Georgia, California excluding SF/SJM/LA, Kentucky, Louisiana and New Jersey).

<sup>b</sup> US Mortality Files, National Center for Health Statistics, Centers for Disease Control and Prevention.

<sup>c</sup> SEER 17 areas. California excluding SF/SJM/LA, Kentucky, Louisiana, and New Jersey contribute cases for diagnosis years 2000-2005. The remaining 13 SEER Areas contribute cases for the entire period 1999-2005.

<sup>d</sup> Ovary excludes borderline cases or histologies 8442, 8451, 8462, 8472, and 8473.

<sup>e</sup> Due to coding changes, Brain & Nervous System mortality are no longer shown separately.

<sup>f</sup> Rate not shown for mortality. Category did not exist in mortality coding until 1999.

- Statistic could not be calculated due to less than 16 cases in the time interval.

# SEER Incidence<sup>a</sup> and US Death Rates<sup>b</sup>, 2002-2006 5-Year Relative Survival Rates<sup>c</sup>, 1999-2005 All Cancer Combined, by Race and Sex

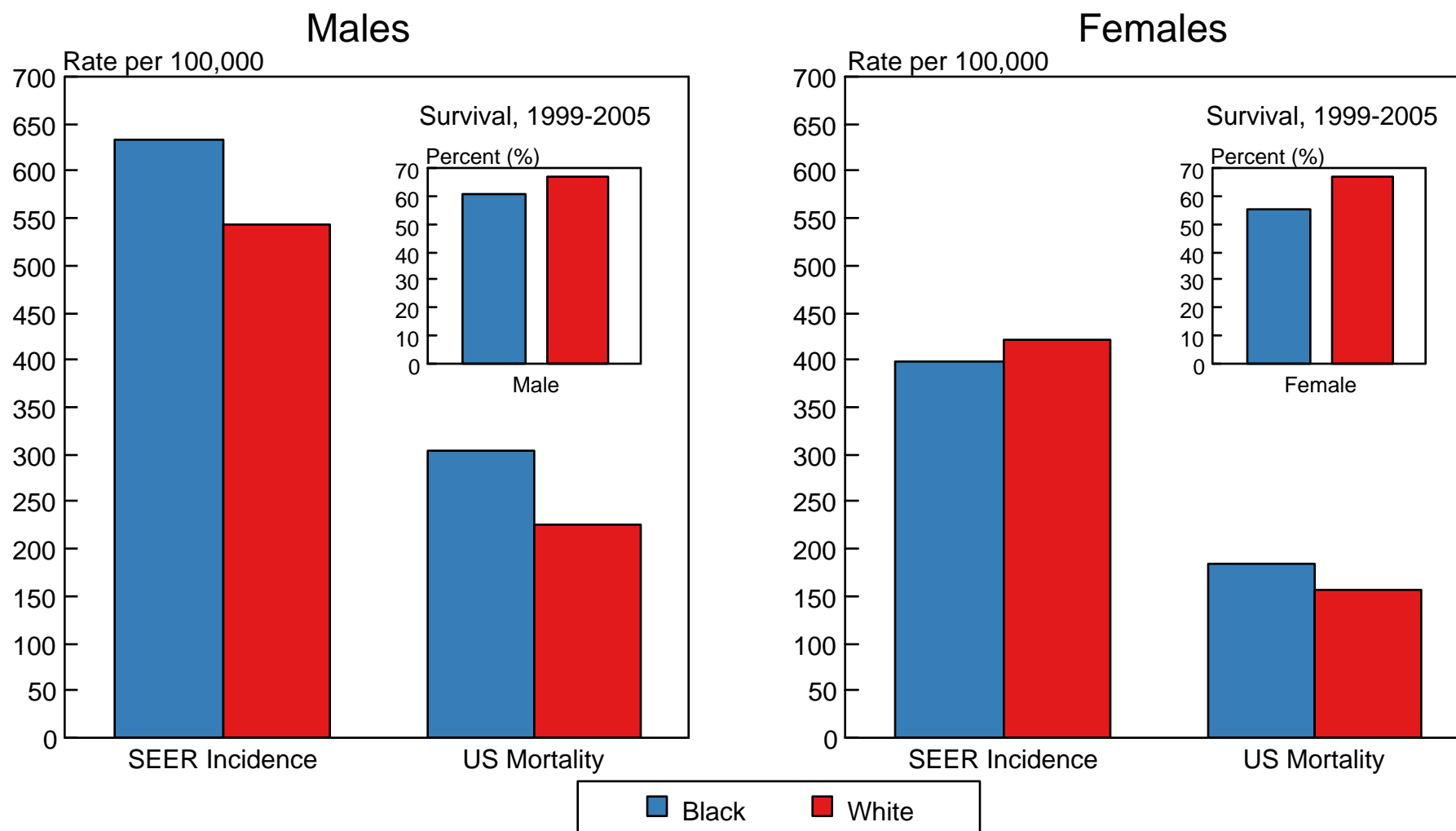


Figure 19

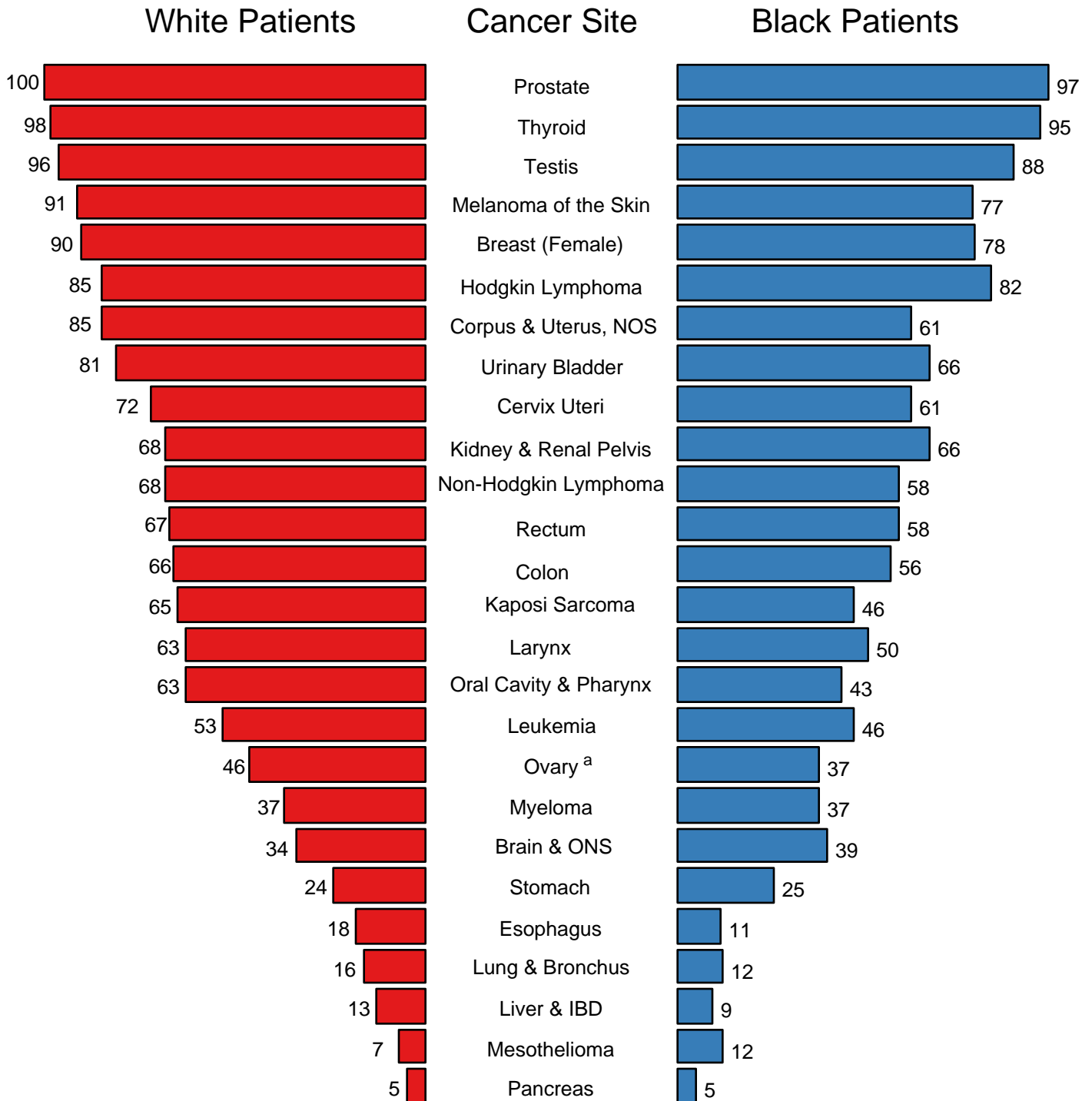
a Incidence rates are from the SEER 17 areas (San Francisco, Connecticut, Detroit, Hawaii, Iowa, New Mexico, Seattle, Utah, Atlanta, San Jose-Monterey, Los Angeles, Alaska Native Registry, Rural Georgia, California excluding SF/SJM/LA, Kentucky, Louisiana, and New Jersey) and are age-adjusted to the 2000 US Std Population (19 age groups - Census P25-1103).

b Death rates are from the US Mortality Files, National Center for Health Statistics, Centers for Disease Control and Prevention and are age-adjusted to the 2000 US Std Population (19 age groups - Census P25-1103).

c Survival rates are from the SEER 17 areas (San Francisco, Connecticut, Detroit, Hawaii, Iowa, New Mexico, Seattle, Utah, Atlanta, San Jose-Monterey, Los Angeles, Alaska Native Registry, Rural Georgia, California excluding SF/SJM/LA, Kentucky, Louisiana, and New Jersey). California excluding SF/SJM/LA, Kentucky, Louisiana, and New Jersey contribute cases for diagnosis years 2000-2006. The remaining 13 SEER Areas contribute cases for the entire period 1999-2005. Relative survival rates are expressed as percents.

Figure 1.11

## 5-Year Relative Survival Rates SEER Program, 1999-2006 Both Sexes, by Race



Source: SEER 17 areas (San Francisco, Connecticut, Detroit, Hawaii, Iowa, New Mexico, Seattle, Utah, Atlanta, San Jose-Monterey, Los Angeles, Alaska Native Registry, Rural Georgia, California excluding SF/SJM/LA, Kentucky, Louisiana, and New Jersey). California excluding SF/SJM/LA, Kentucky, Louisiana, and New Jersey contribute cases for diagnosis years 2000-2006. The remaining 13 SEER Areas contribute cases for the entire period 1999-2006.

<sup>a</sup> Ovary excludes borderline cases or histologies 8442, 8451, 8462, 8472, and 8473.



Table 2.7  
All Cancer Sites (Invasive)

Survival Rates, by Race, Sex, Diagnosis Year and Age

	All Races			Whites			Blacks		
	Total	Males	Females	Total	Males	Females	Total	Males	Females
<b>5-Year Relative Survival Rates</b>									
Year of Diagnosis:									
1960-1963 <sup>a</sup>	-	-	-	39	-	-	27	-	-
1970-1973 <sup>a</sup>	-	-	-	43	-	-	31	-	-
1975-1977 <sup>b</sup>	50.1	42.3	57.1	51.0	43.3	57.8	39.7	32.7	47.1
1978-1980 <sup>b</sup>	50.4	44.0	56.4	51.4	45.3	57.1	39.6	33.3	46.6
1981-1983 <sup>b</sup>	51.6	46.1	56.7	52.8	47.6	57.6	39.6	34.3	45.6
1984-1986 <sup>b</sup>	53.5	47.7	58.9	54.7	49.1	59.9	40.8	35.5	46.4
1987-1989 <sup>b</sup>	56.4	51.6	61.1	57.8	53.3	62.1	43.7	38.8	48.9
1990-1992 <sup>b</sup>	60.9	59.6	62.4	62.4	61.3	63.5	48.2	47.3	49.3
1993-1995 <sup>b</sup>	62.2	61.2	63.4	63.4	62.4	64.5	53.0	53.7	52.0
1996-1998 <sup>b</sup>	64.4	63.6	65.3	65.6	64.7	66.4	55.5	57.2	53.5
1999-2005 <sup>b</sup>	67.8 <sup>e</sup>	68.0 <sup>e</sup>	67.7 <sup>e</sup>	69.1 <sup>e</sup>	69.3 <sup>e</sup>	68.9 <sup>e</sup>	59.4 <sup>e</sup>	62.2 <sup>e</sup>	56.2 <sup>e</sup>
<b>5-Year Period Survival Rates<sup>cd</sup></b>									
Year of Diagnosis:									
1999-2005	66.6	66.9	66.3	67.4	67.6	67.2	58.7	61.2	55.8
<b>5-Year Relative Survival Rates, 1999-2005<sup>c</sup></b>									
Age at Diagnosis:									
Ages <45	78.6	73.4	82.0	80.4	75.8	83.5	65.1	56.8	70.2
Ages 45-54	71.2	64.9	76.3	72.9	66.5	78.0	59.0	56.3	61.6
Ages 55-64	68.4	68.3	68.5	69.4	69.1	69.8	60.7	64.6	54.7
Ages 65-74	64.2	67.9	59.3	64.9	68.2	60.4	58.1	65.1	47.9
Ages 75+	53.8	58.5	49.5	54.4	58.7	50.6	44.8	51.7	38.7
Ages <65	71.7	68.3	74.9	73.1	69.7	76.3	61.1	60.6	61.6
Ages 65+	59.7	64.2	54.5	60.3	64.5	55.6	53.1	60.8	43.9

<sup>a</sup> Rates are based on End Results data from a series of hospital registries and one population-based registry.  
<sup>b</sup> Rates are from the SEER 9 areas (San Francisco, Connecticut, Detroit, Hawaii, Iowa, New Mexico, Seattle, Utah, Atlanta).  
Rates are based on follow-up of patients into 2006.  
<sup>c</sup> Rates are from the SEER 17 areas (San Francisco, Connecticut, Detroit, Hawaii, Iowa, New Mexico, Seattle, Utah, Atlanta, San Jose-Monterey, Los Angeles, Alaska Native Registry, Rural Georgia, California excluding SF/SJM/LA, Kentucky, Louisiana and New Jersey). California excluding SF/SJM/LA, Kentucky, Louisiana, and New Jersey contribute cases for diagnosis years 2000-2005. The remaining 13 SEER Areas contribute cases for the entire period 1999-2005. Rates are based on follow-up of patients into 2006.  
<sup>d</sup> Period survival provides a more up-to-date estimate of survival by piecing together the most recent conditional survival estimates from several cohorts. It is computed here using three year calendar blocks (2003-2005: 0-1 year survival), (2002-2004: 1-2 year survival), (2001-2003: 2-3 year survival), (2000-2002: 3-4 year survival), (1999-2001: 4-5 years survival).  
<sup>e</sup> The difference in rates between 1975-1977 and 1999-2005 is statistically significant (p<.05).  
<sup>f</sup> The standard error of the survival rate is between 5 and 10 percentage points.  
<sup>g</sup> The standard error of the survival rate is greater than 10 percentage points.  
- Statistic could not be calculated due to fewer than 25 cases during the time period.

Table 3.7  
Cancer of the Brain and Other Nervous System (Invasive)  
Survival Rates, by Race, Sex, Diagnosis Year, Stage and Age

	All Races			Whites			Blacks		
	Total	Males	Females	Total	Males	Females	Total	Males	Females
<b>5-Year Relative Survival Rates</b>									
Year of Diagnosis:									
1960-1963 <sup>a</sup>	-	-	-	18	16	21	19	17	21
1970-1973 <sup>a</sup>	-	-	-	20	18	22	19	19	19
1975-1977 <sup>b</sup>	23.7	22.1	25.7	23.1	21.6	25.0	26.6	20.6	35.9 <sup>f</sup>
1978-1980 <sup>b</sup>	25.1	23.9	26.5	24.6	23.6	25.9	29.1	29.5	28.4 <sup>f</sup>
1981-1983 <sup>b</sup>	25.5	24.5	26.7	24.7	23.9	25.6	32.5	33.4	30.6 <sup>f</sup>
1984-1986 <sup>b</sup>	28.7	27.6	30.1	28.0	26.8	29.4	32.2	34.3	29.4
1987-1989 <sup>b</sup>	30.8	29.2	32.7	30.1	28.2	32.5	32.9	34.9	30.4
1990-1992 <sup>b</sup>	32.2	32.8	31.5	31.3	31.8	30.6	41.2	43.1	38.7
1993-1995 <sup>b</sup>	34.2	34.9	33.2	33.0	33.4	32.4	42.5	47.1	37.5
1996-1998 <sup>b</sup>	32.9	32.4	33.5	32.2	31.9	32.6	36.3	35.0	37.7
1999-2005 <sup>b</sup>	35.9 <sup>e</sup>	34.0 <sup>e</sup>	38.2 <sup>e</sup>	35.1 <sup>e</sup>	33.6 <sup>e</sup>	36.9 <sup>e</sup>	41.1 <sup>e</sup>	35.4 <sup>e</sup>	47.7
<b>5-Year Period Survival Rates<sup>cd</sup></b>									
Year of Diagnosis:									
1999-2005	35.5	33.6	37.8	34.8	33.2	36.8	38.9	32.8	45.6
<b>Stage Distribution (%) 1999-2005<sup>c</sup></b>									
All Stages									
Number of cases	27,103	15,039	12,064	23,809	13,285	10,524	1,702	899	803
Percent	100%	100%	100%	100%	100%	100%	100%	100%	100%
Localized	73	74	72	74	75	72	72	70	74
Regional	16	16	16	16	16	16	14	16	13
Distant	2	2	2	2	2	2	3	4	3
Unstaged	8	7	9	8	7	9	10	10	10
<b>5-Year Relative Survival Rates, 1999-2005<sup>c</sup></b>									
Age at Diagnosis:									
Ages <45	64.0	61.4	67.1	64.9	62.6	67.8	57.6	51.2	64.8
Ages 45-54	29.7	26.4	34.6	29.4	26.0	34.5	31.3	26.6	37.0
Ages 55-64	14.2	11.8	17.5	13.6	11.6	16.5	17.8	12.0	24.2
Ages 65-74	7.9	5.7	10.4	7.6	5.3	10.3	9.1	7.9	10.4
Ages 75+	3.9	3.2	4.3	3.8	3.2	4.2	5.9	-	6.3
Ages <65	44.7	41.4	49.0	44.3	41.2	48.5	45.0	39.0	52.1
Ages 65+	6.1	4.7	7.5	5.9	4.5	7.3	7.9	6.9	8.6
Stage:									
All Stages	34.8	32.9	37.1	34.0	32.4	36.1	38.6	33.9	43.7
Localized	37.2	35.1	39.9	36.5	34.6	39.0	41.5	36.9	45.9
Regional	23.5	22.1	25.2	22.7	21.7	23.9	25.9	21.4	31.6 <sup>f</sup>
Distant	38.8	36.3	41.6	40.1	37.1	43.2	33.4 <sup>f</sup>	32.3 <sup>f</sup>	-
Unstaged	33.7	33.1	34.1	32.5	32.4	32.4	35.4	29.2 <sup>f</sup>	42.6 <sup>f</sup>

<sup>a</sup> Rates are based on End Results data from a series of hospital registries and one population-based registry.

<sup>b</sup> Rates are from the SEER 9 areas (San Francisco, Connecticut, Detroit, Hawaii, Iowa, New Mexico, Seattle, Utah, Atlanta).

Rates are based on follow-up of patients into 2006.

<sup>c</sup> Rates are from the SEER 17 areas (San Francisco, Connecticut, Detroit, Hawaii, Iowa, New Mexico, Seattle, Utah, Atlanta, San Jose-Monterey, Los Angeles, Alaska Native Registry, Rural Georgia, California excluding SF/SJM/LA, Kentucky, Louisiana and New Jersey). California excluding SF/SJM/LA, Kentucky, Louisiana, and New Jersey contribute cases for diagnosis years 2000-2005.

The remaining 13 SEER Areas contribute cases for the entire period 1999-2005. Rates are based on follow-up of patients into 2006.

<sup>d</sup> Period survival provides a more up-to-date estimate of survival by piecing together the most recent conditional survival estimates from several cohorts. It is computed here using three year calendar blocks (2003-2005: 0-1 year survival),

(2002-2004: 1-2 year survival), (2001-2003: 2-3 year survival), (2000-2002: 3-4 year survival), (1999-2001: 4-5 years survival).

<sup>e</sup> The difference in rates between 1975-1977 and 1999-2005 is statistically significant ( $p < .05$ ).

<sup>f</sup> The standard error of the survival rate is between 5 and 10 percentage points.

<sup>g</sup> The standard error of the survival rate is greater than 10 percentage points.

- Statistic could not be calculated due to fewer than 25 cases during the time period.

Table 4.12  
Cancer of the Female Breast (Invasive)

## Survival Rates, by Race, Diagnosis Year, Stage and Age

	All Races, Females			White Females			Black Females		
	All	<50	50+	All	<50	50+	All	<50	50+
<b>5-Year Relative Survival Rates</b>									
Year of Diagnosis:									
1960-1963 <sup>a</sup>	-	-	-	63	-	-	46	-	-
1970-1973 <sup>a</sup>	-	-	-	68	-	-	51	-	-
1975-1977 <sup>b</sup>	75.1	76.7	74.5	75.9	77.9	75.2	62.2	62.3	62.1
1978-1980 <sup>b</sup>	74.9	75.6	74.7	75.6	76.3	75.4	63.9	67.1	62.1
1981-1983 <sup>b</sup>	76.7	77.5	76.5	77.7	78.7	77.4	64.0	65.3	63.4
1984-1986 <sup>b</sup>	79.3	78.0	79.8	80.4	79.7	80.7	65.3	64.0	66.0
1987-1989 <sup>b</sup>	84.3	81.5	85.2	85.4	82.9	86.2	71.3	69.6	72.2
1990-1992 <sup>b</sup>	85.5	83.4	86.3	86.7	85.2	87.3	71.8	70.3	72.8
1993-1995 <sup>b</sup>	86.6	84.3	87.5	88.0	86.3	88.6	72.9	70.1	74.6
1996-1998 <sup>b</sup>	88.5	86.6	89.2	89.6	88.3	90.1	76.5	74.0	78.1
1999-2005 <sup>b</sup>	90.1 <sup>e</sup>	88.4 <sup>e</sup>	90.8 <sup>e</sup>	91.3 <sup>e</sup>	90.2 <sup>e</sup>	91.8 <sup>e</sup>	78.9 <sup>e</sup>	76.7 <sup>e</sup>	80.2 <sup>e</sup>
<b>5-Year Period Survival Rates<sup>cd</sup></b>									
Year of Diagnosis:									
1999-2005	89.3	87.8	89.9	90.6	89.4	91.0	77.4	75.7	78.3
<b>Stage Distribution (%) 1999-2005<sup>c</sup></b>									
All Stages									
Number of cases	272,566	68,325	204,241	227,140	53,060	174,080	24,363	8,063	16,300
Percent	100%	100%	100%	100%	100%	100%	100%	100%	100%
Localized	60	53	63	61	54	64	51	46	53
Regional	33	41	30	32	41	29	39	46	35
Distant	5	4	5	4	3	5	8	7	9
Unstaged	2	2	2	2	2	2	3	2	3
<b>5-Year Relative Survival Rates, 1999-2005<sup>c</sup></b>									
Age at Diagnosis:									
Ages <45	85.9	-	-	87.5	-	-	74.5	-	-
Ages 45-54	89.3	-	-	90.7	-	-	78.2	-	-
Ages 55-64	90.2	-	-	91.2	-	-	78.7	-	-
Ages 65-74	90.9	-	-	91.7	-	-	81.8	-	-
Ages 75+	88.8	-	-	89.8	-	-	76.4	-	-
Ages <65	88.9	-	-	90.2	-	-	77.3	-	-
Ages 65+	90.0	-	-	90.9	-	-	79.8	-	-
Stage:									
All Stages	89.1	87.6	89.8	90.3	89.1	90.8	77.9	76.2	78.9
Localized	98.3	96.0	99.1	98.8	96.5	99.6	93.8	91.6	94.9
Regional	83.5	82.9	83.8	84.8	84.6	85.0	72.1	71.3	72.6
Distant	23.3	28.8	21.7	24.7	33.2	22.5	16.0	15.0	16.4
Unstaged	57.7	72.3	52.9	58.7	76.7	53.5	44.8	49.7	42.2
<i>In Situ</i> <sup>h</sup>	100.0	100.0	100.0	100.0	100.0	100.0	100.0	99.6	100.0

<sup>a</sup> Rates are based on End Results data from a series of hospital registries and one population-based registry.

<sup>b</sup> Rates are from the SEER 9 areas (San Francisco, Connecticut, Detroit, Hawaii, Iowa, New Mexico, Seattle, Utah, Atlanta).

Rates are based on follow-up of patients into 2006.

<sup>c</sup> Rates are from the SEER 17 areas (San Francisco, Connecticut, Detroit, Hawaii, Iowa, New Mexico, Seattle, Utah, Atlanta, San Jose-Monterey, Los Angeles, Alaska Native Registry, Rural Georgia, California excluding SF/SJM/LA, Kentucky, Louisiana and New Jersey). California excluding SF/SJM/LA, Kentucky, Louisiana, and New Jersey contribute cases for diagnosis years 2000-2005. The remaining 13 SEER Areas contribute cases for the entire period 1999-2005. Rates are based on follow-up of patients into 2006.

<sup>d</sup> Period survival provides a more up-to-date estimate of survival by piecing together the most recent conditional survival estimates from several cohorts. It is computed here using three year calendar blocks (2003-2005: 0-1 year survival), (2002-2004: 1-2 year survival), (2001-2003: 2-3 year survival), (2000-2002: 3-4 year survival), (1999-2001: 4-5 years survival).

<sup>e</sup> The difference in rates between 1975-1977 and 1999-2005 is statistically significant ( $p < .05$ ).

<sup>f</sup> The standard error of the survival rate is between 5 and 10 percentage points.

<sup>g</sup> The standard error of the survival rate is greater than 10 percentage points.

<sup>h</sup> *In situ* cases are not included in the All Stages group.

- Statistic could not be calculated due to fewer than 25 cases during the time period.

Table 5.7  
Cancer of the Cervix Uteri (Invasive)

## Survival Rates, by Race, Diagnosis Year, Stage and Age

	All Races, Females			White Females			Black Females		
	All	<50	50+	All	<50	50+	All	<50	50+
<b>5-Year Relative Survival Rates</b>									
Year of Diagnosis:									
1960-1963 <sup>a</sup>	-	-	-	58	-	-	47	-	-
1970-1973 <sup>a</sup>	-	-	-	64	-	-	61	-	-
1975-1977 <sup>b</sup>	69.9	82.4	58.5	70.7	83.8	58.9	65.0	75.5	55.0
1978-1980 <sup>b</sup>	68.6	78.5	58.9	69.4	79.9	59.5	61.7	70.5	52.7
1981-1983 <sup>b</sup>	68.3	79.5	56.5	69.0	80.7	56.3	61.6	73.7	49.4
1984-1986 <sup>b</sup>	68.1	78.0	56.2	70.0	79.7	57.5	58.3	67.9	48.3
1987-1989 <sup>b</sup>	71.2	79.7	59.5	73.7	82.7	59.9	58.1	63.4	53.2
1990-1992 <sup>b</sup>	70.6	79.0	58.3	71.9	81.2	57.9	58.8	63.3	52.4
1993-1995 <sup>b</sup>	73.3	81.8	60.5	74.7	83.4	60.6	64.2	71.0	54.5
1996-1998 <sup>b</sup>	73.5	81.0	61.5	74.6	82.7	60.5	65.3	67.7	61.7
1999-2005 <sup>b</sup>	71.8	81.2	57.8	73.1	83.3	57.0	64.8	71.3	56.0
<b>5-Year Period Survival Rates<sup>cd</sup></b>									
Year of Diagnosis:									
1999-2005	69.9	78.2	58.2	71.3	79.7	58.8	60.7	67.9	51.3
<b>Stage Distribution (%) 1999-2005<sup>e</sup></b>									
All Stages									
Number of cases	19,972	11,246	8,726	15,313	8,844	6,469	2,593	1,370	1,223
Percent	100%	100%	100%	100%	100%	100%	100%	100%	100%
Localized	50	61	36	51	62	35	43	52	33
Regional	35	28	43	34	27	43	38	34	43
Distant	11	8	15	11	8	16	12	8	17
Unstaged	5	4	6	4	3	6	6	5	7
<b>5-Year Relative Survival Rates, 1999-2005<sup>e</sup></b>									
Age at Diagnosis:									
Ages <45	80.9	-	-	82.5	-	-	70.8	-	-
Ages 45-54	69.8	-	-	70.9	-	-	60.8	-	-
Ages 55-64	61.5	-	-	61.0	-	-	55.8	-	-
Ages 65-74	56.2	-	-	56.5	-	-	47.9	-	-
Ages 75+	39.8	-	-	39.0	-	-	39.8	-	-
Ages <65	74.4	-	-	75.7	-	-	65.1	-	-
Ages 65+	49.9	-	-	50.0	-	-	44.8	-	-
Stage:									
All Stages	70.6	78.8	58.6	72.0	80.4	58.9	61.4	68.9	51.7
Localized	91.5	93.6	86.4	92.7	94.6	87.9	84.2	87.6	77.6
Regional	57.7	62.8	52.8	58.6	64.2	52.9	51.3	54.5	48.0
Distant	17.2	21.3	14.3	18.4	24.4	14.3	11.2	7.3	14.1
Unstaged	56.7	74.6	38.1	55.0	72.6	37.6	54.8 <sup>f</sup>	74.3 <sup>f</sup>	35.6 <sup>f</sup>

<sup>a</sup> Rates are based on End Results data from a series of hospital registries and one population-based registry.

<sup>b</sup> Rates are from the SEER 9 areas (San Francisco, Connecticut, Detroit, Hawaii, Iowa, New Mexico, Seattle, Utah, Atlanta).

Rates are based on follow-up of patients into 2006.

<sup>c</sup> Rates are from the SEER 17 areas (San Francisco, Connecticut, Detroit, Hawaii, Iowa, New Mexico, Seattle, Utah, Atlanta, San Jose-Monterey, Los Angeles, Alaska Native Registry, Rural Georgia, California excluding SF/SJM/LA, Kentucky, Louisiana and New Jersey). California excluding SF/SJM/LA, Kentucky, Louisiana, and New Jersey contribute cases for diagnosis years 2000-2005.

The remaining 13 SEER Areas contribute cases for the entire period 1999-2005. Rates are based on follow-up of patients into 2006.

<sup>d</sup> Period survival provides a more up-to-date estimate of survival by piecing together the most recent conditional survival estimates from several cohorts. It is computed here using three year calendar blocks (2003-2005: 0-1 year survival),

(2002-2004: 1-2 year survival), (2001-2003: 2-3 year survival), (2000-2002: 3-4 year survival), (1999-2001: 4-5 years survival).

The difference in rates between 1975-1977 and 1999-2005 is statistically significant ( $p < .05$ ).

<sup>e</sup> The standard error of the survival rate is between 5 and 10 percentage points.

<sup>f</sup> The standard error of the survival rate is greater than 10 percentage points.

- Statistic could not be calculated due to fewer than 25 cases during the time period.

Table 6.11  
Cancer of the Colon and Rectum (Invasive)

## Survival Rates, by Race, Sex, Diagnosis Year, Stage and Age

	All Races			Whites			Blacks		
	Total	Males	Females	Total	Males	Females	Total	Males	Females
<b>5-Year Relative Survival Rates</b>									
Year of Diagnosis:									
1960-1963 <sup>a</sup>	-	-	-	-	-	-	-	-	-
1970-1973 <sup>a</sup>	-	-	-	-	-	-	-	-	-
1975-1977 <sup>b</sup>	50.8	49.8	51.6	50.9	50.1	51.7	46.1	44.5	47.1
1978-1980 <sup>b</sup>	52.5	51.6	53.4	52.9	51.9	53.8	46.2	44.3	47.5
1981-1983 <sup>b</sup>	55.4	55.1	55.7	55.8	55.8	55.8	47.5	43.9	50.3
1984-1986 <sup>b</sup>	58.5	58.4	58.6	59.2	59.2	59.3	49.1	48.2	49.8
1987-1989 <sup>b</sup>	60.6	60.9	60.4	61.1	61.6	60.6	53.4	51.2	55.3
1990-1992 <sup>b</sup>	62.4	62.4	62.4	63.2	63.1	63.2	53.8	55.5	52.3
1993-1995 <sup>b</sup>	60.9	60.4	61.4	61.5	61.0	62.1	53.0	51.8	54.0
1996-1998 <sup>b</sup>	63.5	63.1	63.9	64.1	63.6	64.5	55.2	55.3	55.1
1999-2005 <sup>b</sup>	66.8 <sup>e</sup>	67.1 <sup>e</sup>	66.4 <sup>e</sup>	68.0 <sup>e</sup>	68.4 <sup>e</sup>	67.5 <sup>e</sup>	57.0 <sup>e</sup>	56.5 <sup>e</sup>	57.2 <sup>e</sup>
<b>5-Year Period Survival Rates<sup>cd</sup></b>									
Year of Diagnosis:									
1999-2005	66.2	66.3	66.1	67.0	67.3	66.7	57.9	56.9	58.9
<b>Stage Distribution (%) 1999-2005<sup>c</sup></b>									
All Stages									
Number of cases	188,224	95,166	93,058	153,553	78,231	75,322	18,972	8,748	10,224
Percent	100%	100%	100%	100%	100%	100%	100%	100%	100%
Localized	39	39	38	39	40	38	34	34	34
Regional	37	37	38	37	37	38	35	36	35
Distant	19	19	19	19	19	19	24	25	24
Unstaged	5	4	5	5	4	5	6	5	6
<b>5-Year Relative Survival Rates, 1999-2005<sup>c</sup></b>									
Age at Diagnosis:									
Ages <45	67.4	66.4	68.4	69.1	67.9	70.4	59.1	57.9	60.2
Ages 45-54	68.7	67.7	69.8	69.8	68.8	71.1	58.5	56.8	60.2
Ages 55-64	67.4	66.9	68.0	67.4	67.9	69.2	58.5	57.8	59.3
Ages 65-74	66.6	66.5	66.7	67.3	67.1	67.4	58.1	57.0	58.8
Ages 75+	60.4	60.8	60.1	61.4	62.0	61.0	47.4	45.6	48.4
Ages <65	67.8	67.1	68.7	69.0	68.2	70.0	58.6	57.4	59.8
Ages 65+	63.4	64.0	63.0	64.3	64.9	63.7	53.2	52.6	53.6
Stage:									
All Stages	65.2	65.3	65.0	66.1	66.3	65.9	56.1	55.5	56.7
Localized	90.8	90.8	90.8	91.3	91.5	91.2	86.3	85.1	87.3
Regional	69.5	69.6	69.4	70.1	70.2	70.0	63.1	63.4	62.7
Distant	11.3	10.5	12.1	11.6	10.8	12.5	8.0	6.9	8.9
Unstaged	38.4	40.8	36.0	37.3	39.8	34.7	36.0	37.1	35.1

<sup>a</sup> Rates are based on End Results data from a series of hospital registries and one population-based registry.

<sup>b</sup> Rates are from the SEER 9 areas (San Francisco, Connecticut, Detroit, Hawaii, Iowa, New Mexico, Seattle, Utah, Atlanta).

Rates are based on follow-up of patients into 2006.

<sup>c</sup> Rates are from the SEER 17 areas (San Francisco, Connecticut, Detroit, Hawaii, Iowa, New Mexico, Seattle, Utah, Atlanta, San Jose-Monterey, Los Angeles, Alaska Native Registry, Rural Georgia, California excluding SF/SJM/LA, Kentucky, Louisiana and New Jersey). California excluding SF/SJM/LA, Kentucky, Louisiana, and New Jersey contribute cases for diagnosis years 2000-2005.

The remaining 13 SEER Areas contribute cases for the entire period 1999-2005. Rates are based on follow-up of patients into 2006.

<sup>d</sup> Period survival provides a more up-to-date estimate of survival by piecing together the most recent conditional survival estimates from several cohorts. It is computed here using three year calendar blocks (2003-2005: 0-1 year survival),

(2002-2004: 1-2 year survival), (2001-2003: 2-3 year survival), (2000-2002: 3-4 year survival), (1999-2001: 4-5 years survival).

<sup>e</sup> The difference in rates between 1975-1977 and 1999-2005 is statistically significant ( $p < .05$ ).

<sup>f</sup> The standard error of the survival rate is between 5 and 10 percentage points.

<sup>g</sup> The standard error of the survival rate is greater than 10 percentage points.

- Statistic could not be calculated due to fewer than 25 cases during the time period.

Table 6.12  
Cancer of the Colon (Invasive)

Survival Rates, by Race, Sex, Diagnosis Year, Stage and Age

	All Races			Whites			Blacks		
	Total	Males	Females	Total	Males	Females	Total	Males	Females
<b>5-Year Relative Survival Rates</b>									
Year of Diagnosis:									
1960-1963 <sup>a</sup>	-	-	-	43	42	44	34	32	35
1970-1973 <sup>a</sup>	-	-	-	49	47	50	37	36	38
1975-1977 <sup>b</sup>	51.5	50.8	52.0	51.7	51.0	52.2	46.4	45.5	46.8
1978-1980 <sup>b</sup>	53.5	52.5	54.3	53.7	52.6	54.5	49.6	48.0	50.6
1981-1983 <sup>b</sup>	56.5	57.0	56.0	56.7	57.5	56.1	49.7	45.9	52.4
1984-1986 <sup>b</sup>	59.1	59.4	58.7	59.7	60.1	59.4	49.9	49.6	50.1
1987-1989 <sup>b</sup>	61.3	61.9	60.7	61.8	62.6	61.0	53.3	51.6	54.5
1990-1992 <sup>b</sup>	63.2	63.7	62.7	64.0	64.4	63.5	54.3	55.9	52.9
1993-1995 <sup>b</sup>	60.8	60.7	61.0	61.4	61.2	61.6	52.4	51.5	53.0
1996-1998 <sup>b</sup>	63.1	63.0	63.1	63.8	63.7	63.9	54.7	55.6	54.0
1999-2005 <sup>b</sup>	66.1 <sup>e</sup>	66.5 <sup>e</sup>	65.7 <sup>e</sup>	67.4 <sup>e</sup>	67.9 <sup>e</sup>	66.9 <sup>e</sup>	55.6 <sup>e</sup>	55.0 <sup>e</sup>	55.9 <sup>e</sup>
<b>5-Year Period Survival Rates<sup>cd</sup></b>									
Year of Diagnosis:									
1999-2005	65.5	66.0	65.2	66.4	66.9	65.9	57.4	56.8	57.9
<b>Stage Distribution (%) 1999-2005<sup>c</sup></b>									
All Stages									
Number of cases	133,516	64,273	69,243	108,927	52,861	56,066	14,337	6,383	7,954
Percent	100%	100%	100%	100%	100%	100%	100%	100%	100%
Localized	36	37	36	37	38	36	32	32	32
Regional	39	38	39	39	38	39	37	38	37
Distant	20	20	20	20	20	20	26	26	26
Unstaged	4	4	5	4	4	5	5	4	5
<b>5-Year Relative Survival Rates, 1999-2005<sup>c</sup></b>									
Age at Diagnosis:									
Ages <45	66.4	66.9	65.8	68.3	67.7	68.9	58.9	61.6	56.4
Ages 45-54	66.2	65.6	66.8	67.4	66.9	68.1	56.7	54.9	58.1
Ages 55-64	65.9	65.6	66.3	67.1	66.7	67.7	57.1	57.0	57.0
Ages 65-74	66.4	66.7	66.0	67.2	67.5	66.7	57.9	57.0	58.5
Ages 75+	61.6	62.4	61.1	62.7	63.6	62.1	49.1	47.9	49.7
Ages <65	66.0	65.8	66.3	67.3	66.8	68.0	57.2	57.0	57.4
Ages 65+	63.9	64.8	63.1	64.8	65.7	64.0	53.8	53.4	54.0
Stage:									
All Stages	64.6	65.0	64.1	65.6	66.0	65.1	55.5	55.5	55.6
Localized	91.8	92.2	91.4	92.4	92.9	91.9	87.2	86.5	87.8
Regional	70.5	70.7	70.2	71.0	71.4	70.7	64.8	65.5	64.3
Distant	11.1	10.4	11.7	11.5	10.8	12.2	7.7	6.4	8.8
Unstaged	33.2	36.3	30.3	32.6	35.4	29.7	28.3	32.9	25.1

<sup>a</sup> Rates are based on End Results data from a series of hospital registries and one population-based registry.  
<sup>b</sup> Rates are from the SEER 9 areas (San Francisco, Connecticut, Detroit, Hawaii, Iowa, New Mexico, Seattle, Utah, Atlanta).  
Rates are based on follow-up of patients into 2006.  
<sup>c</sup> Rates are from the SEER 17 areas (San Francisco, Connecticut, Detroit, Hawaii, Iowa, New Mexico, Seattle, Utah, Atlanta, San Jose-Monterey, Los Angeles, Alaska Native Registry, Rural Georgia, California excluding SF/SJM/LA, Kentucky, Louisiana and New Jersey). California excluding SF/SJM/LA, Kentucky, Louisiana, and New Jersey contribute cases for diagnosis years 2000-2005. The remaining 13 SEER Areas contribute cases for the entire period 1999-2005. Rates are based on follow-up of patients into 2006.  
<sup>d</sup> Period survival provides a more up-to-date estimate of survival by piecing together the most recent conditional survival estimates from several cohorts. It is computed here using three year calendar blocks (2003-2005: 0-1 year survival), (2002-2004: 1-2 year survival), (2001-2003: 2-3 year survival), (2000-2002: 3-4 year survival), (1999-2001: 4-5 years survival).  
<sup>e</sup> The difference in rates between 1975-1977 and 1999-2005 is statistically significant (p<.05).  
<sup>f</sup> The standard error of the survival rate is between 5 and 10 percentage points.  
<sup>g</sup> The standard error of the survival rate is greater than 10 percentage points.  
- Statistic could not be calculated due to fewer than 25 cases during the time period.

Table 6.13  
Cancer of the Rectum (Invasive)

## Survival Rates, by Race, Sex, Diagnosis Year, Stage and Age

	All Races			Whites			Blacks		
	Total	Males	Females	Total	Males	Females	Total	Males	Females
<b>5-Year Relative Survival Rates</b>									
Year of Diagnosis:									
1960-1963 <sup>a</sup>	-	-	-	38	36	41	27	28	27
1970-1973 <sup>a</sup>	-	-	-	45	43	48	30	20	40
1975-1977 <sup>b</sup>	49.2	48.1	50.6	49.4	48.4	50.5	45.0	41.9	47.5
1978-1980 <sup>b</sup>	50.4	49.8	51.1	51.3	50.7	51.9	35.6	35.1	35.9
1981-1983 <sup>b</sup>	53.0	51.5	54.7	53.7	52.3	55.3	40.6	38.3	42.9
1984-1986 <sup>b</sup>	57.3	56.4	58.4	58.0	57.3	58.9	46.4	43.9	48.8
1987-1989 <sup>b</sup>	59.1	58.9	59.5	59.6	59.8	59.5	53.7	49.5	57.8
1990-1992 <sup>b</sup>	60.5	59.7	61.6	61.2	60.4	62.4	52.2	54.1	49.8
1993-1995 <sup>b</sup>	61.2	59.9	62.9	61.7	60.4	63.3	54.8	52.1	57.9
1996-1998 <sup>b</sup>	64.5	63.2	66.1	64.7	63.5	66.3	56.5	54.7	58.2
1999-2005 <sup>b</sup>	68.5 <sup>e</sup>	68.3 <sup>e</sup>	68.7 <sup>e</sup>	69.4 <sup>e</sup>	69.5 <sup>e</sup>	69.3 <sup>e</sup>	61.0 <sup>e</sup>	60.2 <sup>e</sup>	61.6 <sup>e</sup>
<b>5-Year Period Survival Rates<sup>cd</sup></b>									
Year of Diagnosis:									
1999-2005	67.6	67.0	68.5	68.2	67.9	68.7	59.3	56.8	61.9
<b>Stage Distribution (%) 1999-2005<sup>c</sup></b>									
All Stages									
Number of cases	54,708	30,893	23,815	44,626	25,370	19,256	4,635	2,365	2,270
Percent	100%	100%	100%	100%	100%	100%	100%	100%	100%
Localized	44	44	45	44	44	45	42	40	44
Regional	33	34	32	34	34	33	30	30	29
Distant	17	17	16	16	17	16	20	22	18
Unstaged	6	5	7	6	5	6	8	7	9
<b>5-Year Relative Survival Rates, 1999-2005<sup>c</sup></b>									
Age at Diagnosis:									
Ages <45	69.0	65.9	72.9	70.3	68.3	72.9	59.4	51.5	69.3
Ages 45-54	72.6	70.7	75.3	73.4	71.5	76.2	62.7	59.9	65.5
Ages 55-64	70.2	69.2	71.8	71.0	70.1	72.7	62.4	59.3	65.8
Ages 65-74	67.2	66.0	69.0	67.6	66.3	69.3	58.6	56.7	60.2
Ages 75+	56.2	56.0	56.4	57.2	57.3	57.2	39.3	35.2	40.9
Ages <65	70.9	69.3	73.3	71.8	70.3	74.0	62.0	58.4	66.3
Ages 65+	62.2	62.0	62.4	62.8	62.8	62.8	50.7	49.4	51.8
Stage:									
All Stages	66.6	65.9	67.5	67.2	66.7	67.8	57.9	55.5	60.4
Localized	88.9	88.5	89.5	89.3	89.1	89.6	84.0	81.9	85.9
Regional	67.0	67.1	66.8	67.8	67.8	67.8	56.4	56.8	55.5
Distant	11.9	10.6	13.9	12.1	10.9	13.8	9.2	8.5	9.7
Unstaged	46.9	47.1	46.6	45.3	45.9	44.2	48.6	43.4 <sup>f</sup>	52.1

<sup>a</sup> Rates are based on End Results data from a series of hospital registries and one population-based registry.

<sup>b</sup> Rates are from the SEER 9 areas (San Francisco, Connecticut, Detroit, Hawaii, Iowa, New Mexico, Seattle, Utah, Atlanta).

Rates are based on follow-up of patients into 2006.

<sup>c</sup> Rates are from the SEER 17 areas (San Francisco, Connecticut, Detroit, Hawaii, Iowa, New Mexico, Seattle, Utah, Atlanta, San Jose-Monterey, Los Angeles, Alaska Native Registry, Rural Georgia, California excluding SF/SJM/LA, Kentucky, Louisiana and New Jersey). California excluding SF/SJM/LA, Kentucky, Louisiana, and New Jersey contribute cases for diagnosis years 2000-2005.

The remaining 13 SEER Areas contribute cases for the entire period 1999-2005. Rates are based on follow-up of patients into 2006.

<sup>d</sup> Period survival provides a more up-to-date estimate of survival by piecing together the most recent conditional survival estimates from several cohorts. It is computed here using three year calendar blocks (2003-2005: 0-1 year survival),

(2002-2004: 1-2 year survival), (2001-2003: 2-3 year survival), (2000-2002: 3-4 year survival), (1999-2001: 4-5 years survival).

The difference in rates between 1975-1977 and 1999-2005 is statistically significant ( $p < .05$ ).

<sup>e</sup> The standard error of the survival rate is between 5 and 10 percentage points.

<sup>f</sup> The standard error of the survival rate is greater than 10 percentage points.

<sup>g</sup> - Statistic could not be calculated due to fewer than 25 cases during the time period.

Table 7.7  
Cancer of the Corpus and Uterus, NOS (Invasive)

Survival Rates, by Race, Diagnosis Year, Stage and Age

	All Races, Females			White Females			Black Females		
	All	<50	50+	All	<50	50+	All	<50	50+
<b>5-Year Relative Survival Rates</b>									
Year of Diagnosis:									
1960-1963 <sup>a</sup>	-	-	-	73	-	-	31	-	-
1970-1973 <sup>a</sup>	-	-	-	81	-	-	44	-	-
1975-1977 <sup>b</sup>	87.6	92.7	87.0	88.7	93.3	88.2	61.0	84.4 <sup>f</sup>	56.1
1978-1980 <sup>b</sup>	83.6	91.7	82.5	84.9	93.1	83.8	55.9	82.0 <sup>f</sup>	50.5
1981-1983 <sup>b</sup>	81.9	91.3	80.6	83.3	92.3	82.2	52.5	82.8 <sup>f</sup>	47.2
1984-1986 <sup>b</sup>	83.5	93.6	82.1	85.0	93.9	83.8	57.8	83.6 <sup>f</sup>	54.0
1987-1989 <sup>b</sup>	83.4	90.2	82.3	85.0	91.0	84.1	58.3	84.6 <sup>f</sup>	54.1
1990-1992 <sup>b</sup>	84.6	90.0	83.7	86.7	92.2	85.8	54.9	72.5 <sup>f</sup>	50.9
1993-1995 <sup>b</sup>	84.0	90.1	82.9	85.7	91.6	84.7	60.1	81.8	55.3
1996-1998 <sup>b</sup>	84.5	90.1	83.5	86.2	91.1	85.3	62.4	82.4	57.7
1999-2005 <sup>b</sup>	84.4 <sup>e</sup>	89.2 <sup>e</sup>	83.4 <sup>e</sup>	86.5 <sup>e</sup>	90.8	85.7 <sup>e</sup>	61.5	74.5	57.9
<b>5-Year Period Survival Rates<sup>cd</sup></b>									
Year of Diagnosis:									
1999-2005	82.9	89.0	81.5	84.6	89.8	83.7	61.5	79.3	57.5
<b>Stage Distribution (%) 1999-2005<sup>c</sup></b>									
All Stages									
Number of cases	51,071	8,270	42,801	43,156	6,409	36,747	3,948	658	3,290
Percent	100%	100%	100%	100%	100%	100%	100%	100%	100%
Localized	69	73	68	70	74	70	53	64	51
Regional	19	17	19	18	17	19	24	16	26
Distant	8	6	8	7	6	8	16	13	16
Unstaged	4	4	4	4	4	4	7	7	7
<b>5-Year Relative Survival Rates, 1999-2005<sup>c</sup></b>									
Age at Diagnosis:									
Ages <45	89.5	-	-	90.3	-	-	81.6	-	-
Ages 45-54	88.2	-	-	89.2	-	-	70.8	-	-
Ages 55-64	85.5	-	-	87.7	-	-	62.2	-	-
Ages 65-74	79.9	-	-	83.0	-	-	51.5	-	-
Ages 75+	72.2	-	-	74.1	-	-	48.2	-	-
Ages <65	87.1	-	-	88.6	-	-	68.7	-	-
Ages 65+	76.7	-	-	79.3	-	-	50.5	-	-
Stage:									
All Stages	82.9	89.1	81.6	84.7	89.7	83.7	61.3	78.7	57.4
Localized	95.7	96.4	95.6	96.4	96.5	96.5	84.9	92.3	82.7
Regional	67.4	80.8	64.8	69.6	81.9	67.3	46.1	67.5 <sup>f</sup>	42.9
Distant	17.4	29.8	15.3	18.8	31.8	16.7	10.5	21.5 <sup>f</sup>	8.4
Unstaged	56.1	84.9	49.3	56.2	83.4	50.5	38.2	81.2 <sup>f</sup>	26.9

<sup>a</sup> Rates are based on End Results data from a series of hospital registries and one population-based registry.

<sup>b</sup> Rates are from the SEER 9 areas (San Francisco, Connecticut, Detroit, Hawaii, Iowa, New Mexico, Seattle, Utah, Atlanta).

Rates are based on follow-up of patients into 2006.

<sup>c</sup> Rates are from the SEER 17 areas (San Francisco, Connecticut, Detroit, Hawaii, Iowa, New Mexico, Seattle, Utah, Atlanta, San Jose-Monterey, Los Angeles, Alaska Native Registry, Rural Georgia, California excluding SF/SJM/LA, Kentucky, Louisiana and New Jersey). California excluding SF/SJM/LA, Kentucky, Louisiana, and New Jersey contribute cases for diagnosis years 2000-2005.

The remaining 13 SEER Areas contribute cases for the entire period 1999-2005. Rates are based on follow-up of patients into 2006.

<sup>d</sup> Period survival provides a more up-to-date estimate of survival by piecing together the most recent conditional survival estimates from several cohorts. It is computed here using three year calendar blocks (2003-2005: 0-1 year survival),

(2002-2004: 1-2 year survival), (2001-2003: 2-3 year survival), (2000-2002: 3-4 year survival), (1999-2001: 4-5 years survival).

The difference in rates between 1975-1977 and 1999-2005 is statistically significant ( $p < .05$ ).

<sup>e</sup> The standard error of the survival rate is between 5 and 10 percentage points.

<sup>f</sup> The standard error of the survival rate is greater than 10 percentage points.

<sup>g</sup> - Statistic could not be calculated due to fewer than 25 cases during the time period.



Table 8.7  
Cancer of the Esophagus (Invasive)

## Survival Rates, by Race, Sex, Diagnosis Year, Stage and Age

	All Races			Whites			Blacks		
	Total	Males	Females	Total	Males	Females	Total	Males	Females
<b>5-Year Relative Survival Rates</b>									
Year of Diagnosis:									
1960-1963 <sup>a</sup>	-	-	-	4	4	6	1	0	2
1970-1973 <sup>a</sup>	-	-	-	4	4	4	4	4	3
1975-1977 <sup>b</sup>	5.1	4.0	7.5	5.6	4.9	7.1	3.1	1.6	7.1
1978-1980 <sup>b</sup>	5.1	4.8	5.7	5.5	5.5	5.3	4.3	3.3	7.0
1981-1983 <sup>b</sup>	6.8	6.2	8.4	7.6	6.8	9.3	4.3	3.6	6.5
1984-1986 <sup>b</sup>	9.6	8.5	12.4	10.6	9.3	13.4	8.2	7.6	9.9
1987-1989 <sup>b</sup>	9.8	9.6	10.1	11.1	11.4	10.1	6.4	5.0	10.3
1990-1992 <sup>b</sup>	12.7	12.3	13.8	13.6	12.9	15.4	9.4	9.7	8.4
1993-1995 <sup>b</sup>	12.7	12.8	12.4	14.3	14.4	13.7	7.5	7.6	7.2
1996-1998 <sup>b</sup>	13.8	13.4	15.3	14.9	14.4	16.4	10.1	8.5	13.2
1999-2005 <sup>b</sup>	18.8 <sup>e</sup>	18.3 <sup>e</sup>	20.3 <sup>e</sup>	19.8 <sup>e</sup>	19.6 <sup>e</sup>	20.5 <sup>e</sup>	12.5 <sup>e</sup>	10.2 <sup>e</sup>	17.4 <sup>e</sup>
<b>5-Year Period Survival Rates<sup>cd</sup></b>									
Year of Diagnosis:									
1999-2005	17.2	17.0	17.7	18.2	18.3	17.7	10.3	8.8	14.5
<b>Stage Distribution (%) 1999-2005<sup>c</sup></b>									
All Stages									
Number of cases	16,822	12,864	3,958	13,964	10,801	3,163	1,928	1,357	571
Percent	100%	100%	100%	100%	100%	100%	100%	100%	100%
Localized	23	23	25	24	23	26	20	19	21
Regional	30	31	28	30	31	28	31	32	30
Distant	32	33	26	31	33	25	32	34	29
Unstaged	15	13	21	15	13	21	17	15	19
<b>5-Year Relative Survival Rates, 1999-2005<sup>c</sup></b>									
Age at Diagnosis:									
Ages <45	20.2	19.6	22.1	21.5	20.4	26.8 <sup>f</sup>	13.8	16.1 <sup>f</sup>	-
Ages 45-54	17.3	17.4	16.9	18.8	19.0	17.2	10.8	8.5	17.4
Ages 55-64	19.4	18.9	22.1	20.5	19.9	23.5	12.4	11.9	14.1
Ages 65-74	17.0	16.4	18.7	17.8	17.6	18.3	9.4	7.2	14.8
Ages 75+	12.1	11.9	12.6	12.4	12.0	13.1	8.9	10.0	6.8
Ages <65	18.8	18.4	20.4	20.0	19.7	22.0	11.9	10.9	14.8
Ages 65+	14.9	14.6	15.5	15.4	15.4	15.5	9.3	8.1	11.7
Stage:									
All Stages	16.8	16.6	17.3	17.6	17.6	17.6	10.8	9.8	13.4
Localized	37.1	38.8	32.2	39.0	41.0	32.6	20.8	19.3	23.7
Regional	18.5	17.7	21.2	19.5	19.0	21.2	10.9	9.1	18.8
Distant	3.1	2.9	3.6	3.1	3.0	3.6	2.0	1.3	3.8
Unstaged	11.7	11.5	12.0	11.1	10.8	11.6	13.8	15.7	9.5

<sup>a</sup> Rates are based on End Results data from a series of hospital registries and one population-based registry.

<sup>b</sup> Rates are from the SEER 9 areas (San Francisco, Connecticut, Detroit, Hawaii, Iowa, New Mexico, Seattle, Utah, Atlanta).

Rates are based on follow-up of patients into 2006.

<sup>c</sup> Rates are from the SEER 17 areas (San Francisco, Connecticut, Detroit, Hawaii, Iowa, New Mexico, Seattle, Utah, Atlanta, San Jose-Monterey, Los Angeles, Alaska Native Registry, Rural Georgia, California excluding SF/SJM/LA, Kentucky, Louisiana and New Jersey). California excluding SF/SJM/LA, Kentucky, Louisiana, and New Jersey contribute cases for diagnosis years 2000-2005.

<sup>d</sup> The remaining 13 SEER Areas contribute cases for the entire period 1999-2005. Rates are based on follow-up of patients into 2006. Period survival provides a more up-to-date estimate of survival by piecing together the most recent conditional survival estimates from several cohorts. It is computed here using three year calendar blocks (2003-2005: 0-1 year survival),

(2002-2004: 1-2 year survival), (2001-2003: 2-3 year survival), (2000-2002: 3-4 year survival), (1999-2001: 4-5 years survival).

<sup>e</sup> The difference in rates between 1975-1977 and 1999-2005 is statistically significant ( $p < .05$ ).

<sup>f</sup> The standard error of the survival rate is between 5 and 10 percentage points.

<sup>g</sup> The standard error of the survival rate is greater than 10 percentage points.

- Statistic could not be calculated due to fewer than 25 cases during the time period.

Table 9.7  
Hodgkin Lymphoma

## Survival Rates, by Race, Sex, Diagnosis Year and Age

	All Races			Whites			Blacks		
	Total	Males	Females	Total	Males	Females	Total	Males	Females
<b>5-Year Relative Survival Rates</b>									
Year of Diagnosis:									
1960-1963 <sup>a</sup>	-	-	-	40	34	48	-	-	-
1970-1973 <sup>a</sup>	-	-	-	67	66	69	-	-	-
1975-1977 <sup>b</sup>	73.5	71.8	75.7	73.9	72.1	76.0	71.3	69.3 <sup>f</sup>	75.3 <sup>f</sup>
1978-1980 <sup>b</sup>	73.4	72.2	75.1	73.6	71.8	75.9	71.7	75.8 <sup>f</sup>	64.0 <sup>f</sup>
1981-1983 <sup>b</sup>	75.7	74.4	77.3	76.0	75.2	77.1	73.4	71.1 <sup>f</sup>	77.5 <sup>f</sup>
1984-1986 <sup>b</sup>	79.4	77.5	81.7	79.9	78.0	82.3	74.8	75.5 <sup>f</sup>	72.3 <sup>f</sup>
1987-1989 <sup>b</sup>	80.4	77.8	83.6	81.0	78.1	84.5	72.8	72.2 <sup>f</sup>	73.5 <sup>f</sup>
1990-1992 <sup>b</sup>	82.9	80.5	85.7	84.0	82.4	86.0	74.2	64.6	84.5
1993-1995 <sup>b</sup>	82.8	80.1	86.0	83.4	81.0	86.2	78.5	74.2	82.9
1996-1998 <sup>b</sup>	85.9	85.1	86.8	86.7	85.2	88.3	81.2	83.7	78.5
1999-2005 <sup>b</sup>	86.4 <sup>e</sup>	85.0 <sup>e</sup>	88.2 <sup>e</sup>	87.4 <sup>e</sup>	86.2 <sup>e</sup>	88.7 <sup>e</sup>	81.4 <sup>e</sup>	77.4	85.4
<b>5-Year Period Survival Rates<sup>cd</sup></b>									
Year of Diagnosis:									
1999-2005	84.6	83.2	86.2	85.1	83.9	86.5	81.3	78.8	83.6
<b>Stage Distribution (%) 1999-2005<sup>c</sup></b>									
All Stages									
Number of cases	12,374	6,697	5,677	10,425	5,628	4,797	1,271	672	599
Percent	100%	100%	100%	100%	100%	100%	100%	100%	100%
Localized	19	20	19	19	20	19	22	22	22
Regional	40	35	46	41	36	46	33	28	37
Distant	35	39	30	34	38	30	41	45	37
Unstaged	5	5	5	5	5	5	5	5	4
<b>5-Year Relative Survival Rates, 1999-2005<sup>c</sup></b>									
Age at Diagnosis:									
Ages <45	91.8	90.5	93.2	92.6	91.7	93.7	85.0	80.5	89.7
Ages 45-54	82.9	80.0	87.3	83.0	80.1	87.4	80.4	76.0	84.6 <sup>f</sup>
Ages 55-64	73.6	69.2	80.1	72.8	69.4	78.1	77.8 <sup>f</sup>	65.5 <sup>f</sup>	87.1 <sup>f</sup>
Ages 65-74	56.7	53.8	60.3	56.7	54.1	60.1	62.1 <sup>g</sup>	55.2 <sup>g</sup>	61.2 <sup>g</sup>
Ages 75+	39.3	35.7	41.2	41.6	38.5	43.1	28.3 <sup>g</sup>	-	-
Ages <65	89.0	86.9	91.5	89.6	87.7	91.8	83.8	78.8	89.4
Ages 65+	49.8	48.0	51.5	50.8	49.2	52.2	50.8 <sup>f</sup>	46.7 <sup>g</sup>	52.7 <sup>g</sup>
Stage:									
All Stages	84.7	83.0	86.7	85.1	83.6	86.7	82.1	77.3	87.4
Localized	89.9	90.1	89.7	89.7	90.2	88.8	92.6	89.0	95.5
Regional	91.1	89.9	92.1	91.6	90.4	92.6	84.3	80.0	87.7
Distant	74.5	72.6	77.3	74.6	73.5	76.1	74.7	68.0	83.4
Unstaged	81.7	82.3	80.6	82.1	81.3	82.0	80.2 <sup>f</sup>	82.5 <sup>f</sup>	74.9 <sup>g</sup>

<sup>a</sup> Rates are based on End Results data from a series of hospital registries and one population-based registry.

<sup>b</sup> Rates are from the SEER 9 areas (San Francisco, Connecticut, Detroit, Hawaii, Iowa, New Mexico, Seattle, Utah, Atlanta).

Rates are based on follow-up of patients into 2006.

<sup>c</sup> Rates are from the SEER 17 areas (San Francisco, Connecticut, Detroit, Hawaii, Iowa, New Mexico, Seattle, Utah, Atlanta, San Jose-Monterey, Los Angeles, Alaska Native Registry, Rural Georgia, California excluding SF/SJM/LA, Kentucky, Louisiana and New Jersey). California excluding SF/SJM/LA, Kentucky, Louisiana, and New Jersey contribute cases for diagnosis years 2000-2005.

<sup>d</sup> The remaining 13 SEER Areas contribute cases for the entire period 1999-2005. Rates are based on follow-up of patients into 2006.

Period survival provides a more up-to-date estimate of survival by piecing together the most recent conditional survival estimates from several cohorts. It is computed here using three year calendar blocks (2003-2005: 0-1 year survival),

(2002-2004: 1-2 year survival), (2001-2003: 2-3 year survival), (2000-2002: 3-4 year survival), (1999-2001: 4-5 years survival).

<sup>e</sup> The difference in rates between 1975-1977 and 1999-2005 is statistically significant ( $p < .05$ ).

<sup>f</sup> The standard error of the survival rate is between 5 and 10 percentage points.

<sup>g</sup> The standard error of the survival rate is greater than 10 percentage points.

- Statistic could not be calculated due to fewer than 25 cases during the time period.

Table 10.6  
Kaposi Sarcoma

Survival Rates, by Race, Sex, Diagnosis Year, Stage and Age

	All Races			Whites			Blacks		
	Total	Males	Females	Total	Males	Females	Total	Males	Females
<b>5-Year Relative Survival Rates</b>									
Year of Diagnosis:									
1960-1963 <sup>a</sup>	-	-	-	-	-	-	-	-	-
1970-1973 <sup>a</sup>	-	-	-	-	-	-	-	-	-
1975-1977 <sup>b</sup>	83.2 <sup>f</sup>	82.0 <sup>f</sup>	-	82.0 <sup>f</sup>	80.0 <sup>f</sup>	-	-	-	-
1978-1980 <sup>b</sup>	78.9 <sup>f</sup>	80.6 <sup>f</sup>	72.6 <sup>g</sup>	78.2 <sup>f</sup>	79.2 <sup>f</sup>	72.4 <sup>g</sup>	-	-	-
1981-1983 <sup>b</sup>	33.6	31.0	74.4 <sup>g</sup>	31.9	29.3	72.5 <sup>g</sup>	-	-	-
1984-1986 <sup>b</sup>	12.3	11.1	71.4 <sup>g</sup>	11.9	10.8	70.2 <sup>g</sup>	16.3	15.2	-
1987-1989 <sup>b</sup>	9.6	9.0	65.8 <sup>g</sup>	9.2	8.7	71.4 <sup>g</sup>	11.7	10.6	-
1990-1992 <sup>b</sup>	9.0	8.4	50.6 <sup>f</sup>	8.5	8.0	50.1 <sup>f</sup>	11.5	10.5	-
1993-1995 <sup>b</sup>	21.2	20.7	48.6 <sup>f</sup>	21.7	21.2	58.5 <sup>g</sup>	16.1	15.3	-
1996-1998 <sup>b</sup>	50.9	50.4	64.6 <sup>f</sup>	55.2	54.4	81.1 <sup>g</sup>	37.8	37.4	-
1999-2005 <sup>b</sup>	59.8 <sup>e</sup>	59.6 <sup>e</sup>	62.0 <sup>f</sup>	67.2 <sup>e</sup>	66.5 <sup>e</sup>	78.4 <sup>f</sup>	43.5	44.2	-
<b>5-Year Period Survival Rates<sup>cd</sup></b>									
Year of Diagnosis:									
1999-2005	63.2	63.6	59.0	67.2	66.8	68.6	46.4	48.1	-
<b>5-Year Relative Survival Rates, 1999-2005<sup>c</sup></b>									
Age at Diagnosis:									
Ages <45	56.4	56.8	38.3 <sup>f</sup>	60.2	60.2	-	43.4	44.7	-
Ages 45-54	57.4	58.9	-	58.0	59.3	-	47.6 <sup>f</sup>	49.7 <sup>f</sup>	-
Ages 55-64	71.8	72.7	-	73.0	73.4 <sup>f</sup>	-	56.1 <sup>g</sup>	58.2 <sup>g</sup>	-
Ages 65-74	81.4	82.9 <sup>f</sup>	71.0 <sup>g</sup>	80.0 <sup>f</sup>	81.1 <sup>f</sup>	71.9 <sup>g</sup>	-	-	-
Ages 75+	87.6 <sup>f</sup>	89.2 <sup>f</sup>	76.5 <sup>f</sup>	89.4 <sup>f</sup>	89.8 <sup>f</sup>	79.7 <sup>f</sup>	-	-	-
Ages <65	57.8	58.4	36.5 <sup>f</sup>	60.9	61.1	47.9 <sup>g</sup>	44.5	45.8	14.5 <sup>f</sup>
Ages 65+	85.4	87.3	76.0 <sup>f</sup>	86.0	86.7 <sup>f</sup>	79.6 <sup>f</sup>	-	-	-

<sup>a</sup> Rates are based on End Results data from a series of hospital registries and one population-based registry.  
<sup>b</sup> Rates are from the SEER 9 areas (San Francisco, Connecticut, Detroit, Hawaii, Iowa, New Mexico, Seattle, Utah, Atlanta).  
Rates are based on follow-up of patients into 2006.  
<sup>c</sup> Rates are from the SEER 17 areas (San Francisco, Connecticut, Detroit, Hawaii, Iowa, New Mexico, Seattle, Utah, Atlanta, San Jose-Monterey, Los Angeles, Alaska Native Registry, Rural Georgia, California excluding SF/SJM/LA, Kentucky, Louisiana and New Jersey). California excluding SF/SJM/LA, Kentucky, Louisiana, and New Jersey contribute cases for diagnosis years 2000-2005. The remaining 13 SEER Areas contribute cases for the entire period 1999-2005. Rates are based on follow-up of patients into 2006.  
<sup>d</sup> Period survival provides a more up-to-date estimate of survival by piecing together the most recent conditional survival estimates from several cohorts. It is computed here using three year calendar blocks (2003-2005: 0-1 year survival), (2002-2004: 1-2 year survival), (2001-2003: 2-3 year survival), (2000-2002: 3-4 year survival), (1999-2001: 4-5 years survival).  
<sup>e</sup> The difference in rates between 1975-1977 and 1999-2005 is statistically significant (p<.05).  
<sup>f</sup> The standard error of the survival rate is between 5 and 10 percentage points.  
<sup>g</sup> The standard error of the survival rate is greater than 10 percentage points.  
- Statistic could not be calculated due to fewer than 25 cases during the time period.

Table 11.7  
Cancer of the Kidney and Renal Pelvis (Invasive)

## Survival Rates, by Race, Sex, Diagnosis Year, Stage and Age

	All Races			Whites			Blacks		
	Total	Males	Females	Total	Males	Females	Total	Males	Females
<b>5-Year Relative Survival Rates</b>									
Year of Diagnosis:									
1960-1963 <sup>a</sup>	-	-	-	37	36	39	38	38	37
1970-1973 <sup>a</sup>	-	-	-	46	44	50	44	40	49
1975-1977 <sup>b</sup>	50.9	51.0	50.8	50.7	50.9	50.3	49.7	48.2	52.0 <sup>f</sup>
1978-1980 <sup>b</sup>	54.1	53.8	54.6	53.8	54.1	53.3	57.6	52.0	64.5 <sup>f</sup>
1981-1983 <sup>b</sup>	51.4	52.3	50.0	51.4	52.5	49.5	51.9	51.8	52.0
1984-1986 <sup>b</sup>	55.8	56.3	55.0	56.0	56.6	55.0	54.0	50.5	59.1
1987-1989 <sup>b</sup>	57.9	58.2	57.4	58.5	59.2	57.4	56.0	53.5	58.6
1990-1992 <sup>b</sup>	61.5	61.6	61.3	62.1	62.4	61.6	57.8	55.9	59.8
1993-1995 <sup>b</sup>	62.7	62.5	63.0	63.1	63.6	62.5	58.7	55.4	63.4
1996-1998 <sup>b</sup>	63.9	63.8	63.9	63.4	63.6	63.2	67.3	67.9	65.6
1999-2005 <sup>b</sup>	69.1 <sup>e</sup>	68.0 <sup>e</sup>	70.8 <sup>e</sup>	69.4 <sup>e</sup>	68.6 <sup>e</sup>	70.7 <sup>e</sup>	65.9 <sup>e</sup>	62.9 <sup>e</sup>	69.5 <sup>e</sup>
<b>5-Year Period Survival Rates<sup>cd</sup></b>									
Year of Diagnosis:									
1999-2005	70.3	69.9	70.9	70.4	69.9	71.2	67.3	67.2	67.1
<b>Stage Distribution (%) 1999-2005<sup>c</sup></b>									
All Stages									
Number of cases	47,144	28,900	18,244	39,716	24,412	15,304	4,619	2,752	1,867
Percent	100%	100%	100%	100%	100%	100%	100%	100%	100%
Localized	58	57	60	58	57	60	63	63	63
Regional	18	19	17	19	19	17	14	14	13
Distant	19	20	18	19	20	18	19	20	18
Unstaged	4	4	5	4	4	5	5	4	5
<b>5-Year Relative Survival Rates, 1999-2005<sup>c</sup></b>									
Age at Diagnosis:									
Ages <45	81.1	79.3	83.6	82.5	80.5	85.4	73.0	70.2	76.4
Ages 45-54	74.3	72.3	78.2	74.5	72.3	79.2	69.9	68.8	71.8
Ages 55-64	69.5	68.7	71.2	70.1	69.3	71.7	64.6	62.4	69.0
Ages 65-74	65.1	64.1	66.5	64.8	63.9	66.3	64.8	64.3	63.8
Ages 75+	54.6	55.9	53.3	55.1	56.8	53.5	48.1	46.0 <sup>f</sup>	49.0
Ages <65	73.6	72.0	76.6	74.1	72.4	77.4	68.8	66.6	72.5
Ages 65+	60.8	61.2	60.4	60.8	61.3	60.2	59.0	59.5	58.1
Stage:									
All Stages	68.4	67.9	69.0	68.5	68.1	69.1	65.9	64.7	67.4
Localized	90.4	90.3	90.5	91.0	90.9	91.2	85.6	85.0	86.1
Regional	62.3	63.7	60.0	62.4	63.7	60.0	56.7	56.2	55.8
Distant	10.4	10.8	9.5	9.9	10.6	8.6	11.9	10.1	14.7
Unstaged	37.5	38.0	35.9	36.3	37.9	33.5	37.4	32.7 <sup>f</sup>	41.8 <sup>f</sup>

<sup>a</sup> Rates are based on End Results data from a series of hospital registries and one population-based registry.

<sup>b</sup> Rates are from the SEER 9 areas (San Francisco, Connecticut, Detroit, Hawaii, Iowa, New Mexico, Seattle, Utah, Atlanta).

Rates are based on follow-up of patients into 2006.

<sup>c</sup> Rates are from the SEER 17 areas (San Francisco, Connecticut, Detroit, Hawaii, Iowa, New Mexico, Seattle, Utah, Atlanta, San Jose-Monterey, Los Angeles, Alaska Native Registry, Rural Georgia, California excluding SF/SJM/LA, Kentucky, Louisiana and New Jersey). California excluding SF/SJM/LA, Kentucky, Louisiana, and New Jersey contribute cases for diagnosis years 2000-2005.

<sup>d</sup> The remaining 13 SEER Areas contribute cases for the entire period 1999-2005. Rates are based on follow-up of patients into 2006. Period survival provides a more up-to-date estimate of survival by piecing together the most recent conditional survival estimates from several cohorts. It is computed here using three year calendar blocks (2003-2005: 0-1 year survival),

(2002-2004: 1-2 year survival), (2001-2003: 2-3 year survival), (2000-2002: 3-4 year survival), (1999-2001: 4-5 years survival).

<sup>e</sup> The difference in rates between 1975-1977 and 1999-2005 is statistically significant ( $p < .05$ ).

<sup>f</sup> The standard error of the survival rate is between 5 and 10 percentage points.

<sup>g</sup> The standard error of the survival rate is greater than 10 percentage points.

- Statistic could not be calculated due to fewer than 25 cases during the time period.

Table 12.7  
Cancer of the Larynx (Invasive)

## Survival Rates, by Race, Sex, Diagnosis Year, Stage and Age

	All Races			Whites			Blacks		
	Total	Males	Females	Total	Males	Females	Total	Males	Females
<b>5-Year Relative Survival Rates</b>									
Year of Diagnosis:									
1960-1963 <sup>a</sup>	-	-	-	53	54	46	-	-	-
1970-1973 <sup>a</sup>	-	-	-	62	63	56	-	-	-
1975-1977 <sup>b</sup>	66.6	67.3	62.8	67.3	68.1	62.5	59.2	58.3	63.5 <sup>f</sup>
1978-1980 <sup>b</sup>	66.0	66.3	64.6	67.0	67.3	65.3	57.1	57.3	56.0 <sup>f</sup>
1981-1983 <sup>b</sup>	68.8	69.0	67.8	70.2	70.4	69.3	56.5	57.3	53.1 <sup>f</sup>
1984-1986 <sup>b</sup>	65.7	66.4	62.3	67.6	68.2	64.2	52.8	53.4	50.8 <sup>f</sup>
1987-1989 <sup>b</sup>	66.4	67.5	62.4	67.8	69.3	61.9	57.2	55.2	63.2 <sup>f</sup>
1990-1992 <sup>b</sup>	66.6	67.4	63.4	68.4	69.2	65.5	53.3	53.9	51.1 <sup>f</sup>
1993-1995 <sup>b</sup>	63.9	65.5	57.3	65.5	67.3	58.2	53.0	54.2	48.0 <sup>f</sup>
1996-1998 <sup>b</sup>	65.1	66.8	59.2	67.0	68.5	61.7	53.6	56.7	44.6 <sup>f</sup>
1999-2005 <sup>b</sup>	63.2 <sup>e</sup>	63.9 <sup>e</sup>	60.6	65.5	66.1	62.9	50.1 <sup>e</sup>	51.3	46.5
<b>5-Year Period Survival Rates<sup>cd</sup></b>									
Year of Diagnosis:									
1999-2005	61.3	62.5	56.4	62.6	63.8	57.9	50.2	51.7	44.4
<b>Stage Distribution (%) 1999-2005<sup>c</sup></b>									
All Stages									
Number of cases	13,972	11,203	2,769	11,355	9,072	2,283	2,023	1,618	405
Percent	100%	100%	100%	100%	100%	100%	100%	100%	100%
Localized	59	60	53	61	62	54	47	47	46
Regional	19	18	26	19	17	25	24	22	30
Distant	17	17	15	16	16	14	25	26	20
Unstaged	5	5	6	5	5	6	4	4	4
<b>5-Year Relative Survival Rates, 1999-2005<sup>c</sup></b>									
Age at Diagnosis:									
Ages <45	71.5	69.6	75.7	74.8	73.0	78.7	56.3	52.6 <sup>f</sup>	65.4 <sup>f</sup>
Ages 45-54	62.0	62.2	61.1	65.6	65.8	65.0	47.6	48.1	45.2 <sup>f</sup>
Ages 55-64	62.0	63.0	57.7	63.6	64.6	59.3	51.0	52.6	44.3 <sup>f</sup>
Ages 65-74	60.5	61.9	55.5	60.6	61.8	55.6	54.4	57.2	42.8 <sup>f</sup>
Ages 75+	57.4	59.8	49.2	58.7	60.8	51.4	40.9 <sup>f</sup>	43.3 <sup>f</sup>	32.2 <sup>g</sup>
Ages <65	63.0	63.4	61.6	65.4	65.8	63.9	50.4	50.9	48.5
Ages 65+	59.7	61.4	53.6	60.1	61.7	54.4	50.8	53.5	39.9 <sup>f</sup>
Stage:									
All Stages	61.6	62.5	58.1	63.1	64.0	59.6	50.5	51.6	46.1
Localized	77.9	78.9	73.7	78.3	79.1	74.5	72.3	74.3	64.7
Regional	42.1	41.2	44.4	43.3	42.1	46.2	35.5	36.0	34.3 <sup>f</sup>
Distant	32.4	32.2	33.3	33.6	33.4	34.3	26.5	27.1	21.7 <sup>f</sup>
Unstaged	45.6	47.8	37.5 <sup>f</sup>	45.3	48.2	35.1 <sup>f</sup>	29.2 <sup>f</sup>	30.8 <sup>f</sup>	-

<sup>a</sup> Rates are based on End Results data from a series of hospital registries and one population-based registry.

<sup>b</sup> Rates are from the SEER 9 areas (San Francisco, Connecticut, Detroit, Hawaii, Iowa, New Mexico, Seattle, Utah, Atlanta).

Rates are based on follow-up of patients into 2006.

<sup>c</sup> Rates are from the SEER 17 areas (San Francisco, Connecticut, Detroit, Hawaii, Iowa, New Mexico, Seattle, Utah, Atlanta, San Jose-Monterey, Los Angeles, Alaska Native Registry, Rural Georgia, California excluding SF/SJM/LA, Kentucky, Louisiana and New Jersey). California excluding SF/SJM/LA, Kentucky, Louisiana, and New Jersey contribute cases for diagnosis years 2000-2005.

<sup>d</sup> The remaining 13 SEER Areas contribute cases for the entire period 1999-2005. Rates are based on follow-up of patients into 2006.

Period survival provides a more up-to-date estimate of survival by piecing together the most recent conditional survival estimates from several cohorts. It is computed here using three year calendar blocks (2003-2005: 0-1 year survival),

(2002-2004: 1-2 year survival), (2001-2003: 2-3 year survival), (2000-2002: 3-4 year survival), (1999-2001: 4-5 years survival).

<sup>e</sup> The difference in rates between 1975-1977 and 1999-2005 is statistically significant ( $p < .05$ ).

<sup>f</sup> The standard error of the survival rate is between 5 and 10 percentage points.

<sup>g</sup> The standard error of the survival rate is greater than 10 percentage points.

- Statistic could not be calculated due to fewer than 25 cases during the time period.

Table 13.13  
Leukemia

## Survival Rates, by Race, Sex, Diagnosis Year and Age

	All Races			Whites			Blacks		
	Total	Males	Females	Total	Males	Females	Total	Males	Females
5-Year Relative Survival Rates									
Year of Diagnosis:									
1960-1963 <sup>a</sup>	-	-	-	14	-	-	-	-	-
1970-1973 <sup>a</sup>	-	-	-	22	-	-	-	-	-
1975-1977 <sup>b</sup>	35.4	34.4	36.7	36.0	35.1	37.1	33.5	30.4	36.7
1978-1980 <sup>b</sup>	37.8	36.8	39.1	38.5	37.6	39.7	29.4	28.5	30.5
1981-1983 <sup>b</sup>	39.2	38.9	39.6	40.2	40.0	40.5	34.2	33.4	35.0
1984-1986 <sup>b</sup>	42.0	41.4	42.6	43.2	42.8	43.8	33.8	32.7	35.0
1987-1989 <sup>b</sup>	44.5	46.0	42.5	45.6	47.6	43.0	36.7	35.0	38.7
1990-1992 <sup>b</sup>	46.8	46.5	47.3	48.2	48.3	48.0	37.2	31.6	43.1
1993-1995 <sup>b</sup>	48.7	49.3	47.8	49.7	50.3	48.8	42.3	41.6	43.1
1996-1998 <sup>b</sup>	49.4	49.6	49.2	50.8	50.6	51.1	39.1	39.5	38.4
1999-2005 <sup>b</sup>	54.0 <sup>e</sup>	54.7 <sup>e</sup>	53.1 <sup>e</sup>	54.8 <sup>e</sup>	55.6 <sup>e</sup>	53.8 <sup>e</sup>	46.3 <sup>e</sup>	46.8 <sup>e</sup>	45.5
5-Year Period Survival Rates <sup>cd</sup>									
Year of Diagnosis:									
1999-2005	55.0	55.4	54.3	55.1	55.7	54.3	48.2	47.5	49.2
5-Year Relative Survival Rates, 1999-2005 <sup>c</sup>									
Age at Diagnosis:									
Ages <45	68.3	67.6	69.4	69.6	69.2	70.2	56.8	53.2	61.6
Ages 45-54	60.1	61.7	57.8	61.5	62.9	59.3	48.7	51.0	44.6
Ages 55-64	56.2	56.4	55.9	57.2	57.2	57.3	42.1	42.5	41.8
Ages 65-74	46.5	44.8	49.1	47.1	45.1	50.1	40.8	37.9	43.7
Ages 75+	32.7	32.6	32.9	33.3	33.1	33.4	25.3	23.7	25.1
Ages <65	63.1	62.9	63.3	64.1	64.0	64.3	51.4	50.2	53.0
Ages 65+	39.3	39.1	39.7	39.7	39.4	40.2	34.2	33.4	34.5

<sup>a</sup> Rates are based on End Results data from a series of hospital registries and one population-based registry.

<sup>b</sup> Rates are from the SEER 9 areas (San Francisco, Connecticut, Detroit, Hawaii, Iowa, New Mexico, Seattle, Utah, Atlanta).

Rates are based on follow-up of patients into 2006.

<sup>c</sup> Rates are from the SEER 17 areas (San Francisco, Connecticut, Detroit, Hawaii, Iowa, New Mexico, Seattle, Utah, Atlanta, San Jose-Monterey, Los Angeles, Alaska Native Registry, Rural Georgia, California excluding SF/SJM/LA, Kentucky, Louisiana and New Jersey). California excluding SF/SJM/LA, Kentucky, Louisiana, and New Jersey contribute cases for diagnosis years 2000-2005.

The remaining 13 SEER Areas contribute cases for the entire period 1999-2005. Rates are based on follow-up of patients into 2006.

<sup>d</sup> Period survival provides a more up-to-date estimate of survival by piecing together the most recent conditional survival estimates from several cohorts. It is computed here using three year calendar blocks (2003-2005: 0-1 year survival),

(2002-2004: 1-2 year survival), (2001-2003: 2-3 year survival), (2000-2002: 3-4 year survival), (1999-2001: 4-5 years survival).

<sup>e</sup> The difference in rates between 1975-1977 and 1999-2005 is statistically significant (p<.05).

<sup>f</sup> The standard error of the survival rate is between 5 and 10 percentage points.

<sup>g</sup> The standard error of the survival rate is greater than 10 percentage points.

- Statistic could not be calculated due to fewer than 25 cases during the time period.

Table 13.14  
Lymphocytic Leukemia

Survival Rates, by Race, Sex, Diagnosis Year and Age

	All Races			Whites			Blacks		
	Total	Males	Females	Total	Males	Females	Total	Males	Females
<u>Acute Lymphocytic Leukemia</u>									
5-Year Relative Survival Rates									
Year of Diagnosis:									
1975-1977 <sup>a</sup>	42.4	38.6	47.4	42.8	39.2	47.9	34.5 <sup>e</sup>	-	-
1978-1980 <sup>a</sup>	50.4	46.8	55.6	50.8	47.4	55.7	31.7 <sup>e</sup>	31.4 <sup>e</sup>	-
1981-1983 <sup>a</sup>	51.9	48.6	56.4	52.8	49.5	57.3	43.4 <sup>e</sup>	37.6 <sup>e</sup>	49.1 <sup>e</sup>
1984-1986 <sup>a</sup>	53.7	50.5	58.0	54.6	50.8	60.1	36.4 <sup>e</sup>	44.2 <sup>e</sup>	27.4 <sup>e</sup>
1987-1989 <sup>a</sup>	56.1	55.7	56.7	56.9	57.0	56.6	46.1 <sup>e</sup>	43.1 <sup>e</sup>	48.0 <sup>e</sup>
1990-1992 <sup>a</sup>	59.9	56.5	64.8	59.8	57.1	63.7	57.8 <sup>e</sup>	51.0 <sup>e</sup>	63.8 <sup>e</sup>
1993-1995 <sup>a</sup>	61.6	58.7	65.4	61.1	58.7	64.3	53.9 <sup>e</sup>	45.7 <sup>e</sup>	65.0 <sup>e</sup>
1996-1998 <sup>b</sup>	66.6	65.4	68.1	67.4	65.1	70.3	56.4 <sup>e</sup>	60.4 <sup>e</sup>	50.6 <sup>e</sup>
1999-2005 <sup>a</sup>	66.3 <sup>d</sup>	65.0 <sup>d</sup>	67.9 <sup>d</sup>	66.9 <sup>d</sup>	65.9 <sup>d</sup>	68.4 <sup>d</sup>	59.7 <sup>d</sup>	55.1 <sup>e</sup>	63.8 <sup>e</sup>
5-Year Period Survival Rates <sup>bc</sup>									
Year of Diagnosis:									
1999-2005	65.4	64.8	66.2	65.3	65.0	65.7	63.4	55.7	71.5
5-Year Relative Survival Rates, 1999-2005 <sup>b</sup>									
Age at Diagnosis:									
Ages <45	75.1	73.3	77.5	75.6	74.0	77.8	68.6	61.8	76.7
Ages 45-54	25.5	24.1	27.0	25.8	23.7	28.6	14.5 <sup>e</sup>	-	-
Ages 55-64	17.9	16.3	20.0	17.3	15.9	19.3	-	-	-
Ages 65-74	11.0	9.4	13.3	11.6	10.6	12.9	-	-	-
Ages 75+	4.7	-	5.3	2.8	-	2.9	-	-	-
Ages <65	69.1	67.7	71.1	69.6	68.2	71.4	63.1	57.1	70.0
Ages 65+	8.7	7.7	9.1	8.5	8.3	8.2	13.4 <sup>e</sup>	-	-
<u>Chronic Lymphocytic Leukemia</u>									
5-Year Relative Survival Rates									
Year of Diagnosis:									
1975-1977 <sup>a</sup>	69.0	66.8	71.8	69.8	67.5	72.8	57.2 <sup>e</sup>	56.3 <sup>e</sup>	57.9 <sup>e</sup>
1978-1980 <sup>a</sup>	70.7	67.9	74.3	71.4	68.4	75.3	59.2 <sup>e</sup>	59.6 <sup>e</sup>	58.4 <sup>e</sup>
1981-1983 <sup>a</sup>	68.4	67.8	69.2	69.1	68.9	69.5	57.6 <sup>e</sup>	54.3 <sup>e</sup>	62.9 <sup>e</sup>
1984-1986 <sup>a</sup>	74.0	72.6	75.9	74.3	72.9	76.2	70.1 <sup>e</sup>	67.3 <sup>e</sup>	70.5 <sup>e</sup>
1987-1989 <sup>a</sup>	74.6	74.6	74.6	75.7	75.8	75.4	60.4	59.0 <sup>e</sup>	62.5 <sup>e</sup>
1990-1992 <sup>a</sup>	75.7	74.4	77.6	76.9	75.7	78.5	54.0 <sup>e</sup>	45.3 <sup>e</sup>	62.7 <sup>e</sup>
1993-1995 <sup>a</sup>	77.8	77.3	78.5	78.7	78.1	79.4	64.4	63.0 <sup>e</sup>	66.4 <sup>e</sup>
1996-1998 <sup>b</sup>	75.8	73.8	78.6	76.7	74.8	79.4	57.7 <sup>e</sup>	50.3 <sup>e</sup>	66.9 <sup>e</sup>
1999-2005 <sup>a</sup>	78.8 <sup>d</sup>	78.6 <sup>d</sup>	79.2 <sup>d</sup>	79.3 <sup>d</sup>	79.1 <sup>d</sup>	79.6 <sup>d</sup>	65.9	63.3 <sup>e</sup>	68.5 <sup>e</sup>
5-Year Period Survival Rates <sup>bc</sup>									
Year of Diagnosis:									
1999-2005	77.7	76.3	79.8	77.8	76.6	79.7	65.5	61.7	70.6
5-Year Relative Survival Rates, 1999-2005 <sup>b</sup>									
Age at Diagnosis:									
Ages <45	90.2	88.6	93.2	92.1	90.2	95.8	67.5 <sup>e</sup>	-	-
Ages 45-54	88.3	86.8	91.2	89.3	87.5	92.9	73.5 <sup>e</sup>	73.8 <sup>e</sup>	71.7 <sup>f</sup>
Ages 55-64	84.2	81.5	89.8	84.9	82.5	89.9	65.1	58.0 <sup>e</sup>	78.2 <sup>e</sup>
Ages 65-74	79.9	76.5	85.3	80.3	76.8	85.9	69.3	64.2 <sup>e</sup>	74.0 <sup>e</sup>
Ages 75+	63.9	62.5	65.3	64.0	62.4	65.6	47.5 <sup>e</sup>	38.4 <sup>e</sup>	53.8 <sup>e</sup>
Ages <65	86.0	83.8	90.5	86.9	84.7	91.3	68.0	64.4	75.3 <sup>e</sup>
Ages 65+	71.8	70.2	73.8	71.9	70.1	74.1	60.6	56.3	65.0

<sup>a</sup> Rates are from the SEER 9 areas (San Francisco, Connecticut, Detroit, Hawaii, Iowa, New Mexico, Seattle, Utah, Atlanta). Rates are based on follow-up of patients into 2006.

<sup>b</sup> Rates are from the SEER 17 areas (San Francisco, Connecticut, Detroit, Hawaii, Iowa, New Mexico, Seattle, Utah, Atlanta, San Jose-Monterey, Los Angeles, Alaska Native Registry, Rural Georgia, California excluding SF/SJM/LA, Kentucky, Louisiana and New Jersey). California excluding SF/SJM/LA, Kentucky, Louisiana, and New Jersey contribute cases for diagnosis years 2000-2005. The remaining 13 SEER Areas contribute cases for the entire period 1999-2005. Rates are based on follow-up of patients into 2006.

<sup>c</sup> Period survival provides a more up-to-date estimate of survival by piecing together the most recent conditional survival estimates from several cohorts. It is computed here using three year calendar blocks (2003-2005: 0-1 year survival), (2002-2004: 1-2 year survival), (2001-2003: 2-3 year survival), (2000-2002: 3-4 year survival), (1999-2001: 4-5 years survival).

<sup>d</sup> The difference in rates between 1975-1977 and 1999-2005 is statistically significant (p<.05).

<sup>e</sup> The standard error of the survival rate is between 5 and 10 percentage points.

<sup>f</sup> The standard error of the survival rate is greater than 10 percentage points.

- Statistic could not be calculated due to fewer than 25 cases during the time period.

Table 13.15  
Myeloid Leukemia

Survival Rates, by Race, Sex, Diagnosis Year and Age

	All Races			Whites			Blacks		
	Total	Males	Females	Total	Males	Females	Total	Males	Females
<u>Acute Myeloid Leukemia</u>									
5-Year Relative Survival Rates									
Year of Diagnosis:									
1975-1977 <sup>a</sup>	6.6	6.1	7.1	6.3	6.1	6.5	10.6	8.5 <sup>e</sup>	12.1 <sup>e</sup>
1978-1980 <sup>a</sup>	8.4	7.9	9.0	7.8	6.9	8.8	10.2	7.2	13.2
1981-1983 <sup>a</sup>	9.5	8.3	10.8	8.7	7.3	10.4	12.5	16.4 <sup>e</sup>	8.8
1984-1986 <sup>a</sup>	11.9	10.5	13.5	11.7	10.4	13.1	10.2	6.8	13.3
1987-1989 <sup>a</sup>	12.8	10.4	15.4	12.7	11.1	14.5	10.1	4.7	16.9 <sup>e</sup>
1990-1992 <sup>a</sup>	15.3	13.8	17.0	15.1	13.5	16.8	14.6	14.3	14.7
1993-1995 <sup>a</sup>	18.0	16.6	19.6	17.3	15.9	19.0	23.6	22.7 <sup>e</sup>	23.5 <sup>e</sup>
1996-1998 <sup>b</sup>	19.0	17.9	20.2	17.7	16.6	18.9	24.6	26.7 <sup>e</sup>	21.4 <sup>e</sup>
1999-2005 <sup>a</sup>	23.4 <sup>d</sup>	21.8 <sup>d</sup>	25.1 <sup>d</sup>	23.0 <sup>d</sup>	21.0 <sup>d</sup>	25.4 <sup>d</sup>	24.0 <sup>d</sup>	27.6 <sup>d</sup>	18.7
5-Year Period Survival Rates <sup>bc</sup>									
Year of Diagnosis:									
1999-2005	23.8	22.9	24.9	22.9	22.2	23.8	27.1	27.7	25.0
5-Year Relative Survival Rates, 1999-2005 <sup>b</sup>									
Age at Diagnosis:									
Ages <45	51.3	49.2	53.7	52.6	50.8	54.6	41.7	41.9	40.3 <sup>e</sup>
Ages 45-54	31.0	30.5	31.5	31.6	31.0	32.3	27.6	27.0 <sup>e</sup>	28.3 <sup>e</sup>
Ages 55-64	18.4	16.0	21.5	18.1	15.6	21.5	16.9	18.9	13.9 <sup>e</sup>
Ages 65-74	8.0	6.5	10.0	7.9	6.4	10.0	8.2	5.0	9.9
Ages 75+	1.7	1.4	1.9	1.7	1.4	1.9	1.1	0.0	1.5
Ages <65	36.9	34.7	39.6	37.1	34.8	40.0	32.7	33.4	30.9
Ages 65+	4.7	4.1	5.3	4.6	4.1	5.2	5.1	3.4	5.6
<u>Chronic Myeloid Leukemia</u>									
5-Year Relative Survival Rates									
Year of Diagnosis:									
1975-1977 <sup>a</sup>	23.9	21.5	27.1	22.6	20.5	25.5	28.7 <sup>e</sup>	22.6 <sup>e</sup>	36.0 <sup>e</sup>
1978-1980 <sup>a</sup>	25.1	24.1	26.2	25.2	24.7	25.7	22.0 <sup>e</sup>	20.9 <sup>e</sup>	23.6 <sup>e</sup>
1981-1983 <sup>a</sup>	30.5	26.5	35.2	31.1	27.5	35.0	30.2	20.6 <sup>e</sup>	41.3 <sup>e</sup>
1984-1986 <sup>a</sup>	23.9	21.5	27.2	24.5	21.5	28.7	22.2	21.4 <sup>e</sup>	22.6 <sup>e</sup>
1987-1989 <sup>a</sup>	32.2	32.9	31.1	32.1	33.4	30.4	35.7 <sup>e</sup>	30.3 <sup>e</sup>	43.8 <sup>e</sup>
1990-1992 <sup>a</sup>	32.5	31.2	34.2	32.2	32.0	32.5	35.3 <sup>e</sup>	24.3 <sup>e</sup>	47.0 <sup>e</sup>
1993-1995 <sup>a</sup>	37.3	36.9	37.9	37.2	37.2	37.2	35.7 <sup>e</sup>	32.8 <sup>e</sup>	40.5 <sup>e</sup>
1996-1998 <sup>b</sup>	38.8	39.0	38.4	40.0	39.0	40.9	29.7 <sup>e</sup>	29.0 <sup>e</sup>	30.1 <sup>e</sup>
1999-2005 <sup>a</sup>	53.3 <sup>d</sup>	51.3 <sup>d</sup>	55.7 <sup>d</sup>	51.9 <sup>d</sup>	50.1 <sup>d</sup>	53.9 <sup>d</sup>	55.2 <sup>d</sup>	54.0 <sup>de</sup>	56.6 <sup>e</sup>
5-Year Period Survival Rates <sup>bc</sup>									
Year of Diagnosis:									
1999-2005	60.8	60.4	61.3	59.3	58.7	60.0	61.8	60.1	63.1
5-Year Relative Survival Rates, 1999-2005 <sup>b</sup>									
Age at Diagnosis:									
Ages <45	77.2	75.8	79.4	77.4	75.7	80.2	71.3	69.2	74.6 <sup>e</sup>
Ages 45-54	76.5	73.7	79.9	76.7	75.2	78.4	68.3 <sup>e</sup>	58.4 <sup>e</sup>	80.1 <sup>e</sup>
Ages 55-64	62.3	60.2	65.6	62.3	59.0	67.4	55.6 <sup>e</sup>	61.1 <sup>e</sup>	48.2 <sup>f</sup>
Ages 65-74	38.7	34.8	44.5	37.5	32.6	45.1	34.7 <sup>e</sup>	33.3 <sup>e</sup>	35.6 <sup>f</sup>
Ages 75+	23.9	22.2	25.6	24.1	22.2	25.9	12.7 <sup>e</sup>	8.6 <sup>e</sup>	13.0 <sup>f</sup>
Ages <65	73.1	71.1	76.0	73.0	70.8	76.2	67.2	65.3	70.0
Ages 65+	30.9	29.0	33.2	30.2	27.7	33.1	26.9	24.6 <sup>e</sup>	27.1 <sup>e</sup>

<sup>a</sup> Rates are from the SEER 9 areas (San Francisco, Connecticut, Detroit, Hawaii, Iowa, New Mexico, Seattle, Utah, Atlanta). Rates are based on follow-up of patients into 2006.

<sup>b</sup> Rates are from the SEER 17 areas (San Francisco, Connecticut, Detroit, Hawaii, Iowa, New Mexico, Seattle, Utah, Atlanta, San Jose-Monterey, Los Angeles, Alaska Native Registry, Rural Georgia, California excluding SF/SJM/LA, Kentucky, Louisiana and New Jersey). California excluding SF/SJM/LA, Kentucky, Louisiana, and New Jersey contribute cases for diagnosis years 2000-2005. The remaining 13 SEER Areas contribute cases for the entire period 1999-2005. Rates are based on follow-up of patients into 2006.

<sup>c</sup> Period survival provides a more up-to-date estimate of survival by piecing together the most recent conditional survival estimates from several cohorts. It is computed here using three year calendar blocks (2003-2005: 0-1 year survival), (2002-2004: 1-2 year survival), (2001-2003: 2-3 year survival), (2000-2002: 3-4 year survival), (1999-2001: 4-5 years survival).

<sup>d</sup> The difference in rates between 1975-1977 and 1999-2005 is statistically significant (p<.05).

<sup>e</sup> The standard error of the survival rate is between 5 and 10 percentage points.

<sup>f</sup> The standard error of the survival rate is greater than 10 percentage points.

- Statistic could not be calculated due to fewer than 25 cases during the time period.



Table 14.7  
Cancer of the Liver and Intrahepatic Bile Duct (Invasive)  
Survival Rates, by Race, Sex, Diagnosis Year, Stage and Age

	All Races			Whites			Blacks		
	Total	Males	Females	Total	Males	Females	Total	Males	Females
<b>5-Year Relative Survival Rates</b>									
Year of Diagnosis:									
1960-1963 <sup>a</sup>	-	-	-	-	-	-	-	-	-
1970-1973 <sup>a</sup>	-	-	-	-	-	-	-	-	-
1975-1977 <sup>b</sup>	3.7	2.0	6.7	3.7	2.1	6.1	1.9	0.0	5.9
1978-1980 <sup>b</sup>	3.5	2.3	5.5	3.4	2.3	4.8	3.8	3.2	5.1
1981-1983 <sup>b</sup>	4.1	3.5	5.3	4.4	3.8	5.6	3.0	2.1	4.9
1984-1986 <sup>b</sup>	6.0	3.7	10.2	6.0	3.7	10.0	4.5	2.2	9.5
1987-1989 <sup>b</sup>	5.2	3.3	8.7	6.1	3.6	10.2	2.9	1.6	5.1
1990-1992 <sup>b</sup>	5.9	5.2	7.5	6.8	5.6	8.9	2.7	2.0	3.7
1993-1995 <sup>b</sup>	5.9	5.5	6.7	5.6	5.2	6.3	4.2	2.8	7.8
1996-1998 <sup>b</sup>	8.8	8.3	9.8	8.8	7.6	11.1	4.6	5.8	2.2
1999-2005 <sup>b</sup>	13.7 <sup>e</sup>	13.2 <sup>e</sup>	14.7 <sup>e</sup>	13.0 <sup>e</sup>	12.5 <sup>e</sup>	14.1 <sup>e</sup>	9.7 <sup>e</sup>	8.7	12.7 <sup>e</sup>
<b>5-Year Period Survival Rates<sup>cd</sup></b>									
Year of Diagnosis:									
1999-2005	14.7	14.6	15.0	14.5	14.3	14.8	10.9	10.2	12.2
<b>Stage Distribution (%) 1999-2005<sup>c</sup></b>									
All Stages									
Number of cases	25,053	17,561	7,492	16,909	11,808	5,101	2,762	1,995	767
Percent	100%	100%	100%	100%	100%	100%	100%	100%	100%
Localized	37	37	37	36	37	36	34	34	37
Regional	26	27	24	25	25	23	28	28	26
Distant	19	19	19	19	19	19	22	23	20
Unstaged	18	17	21	20	19	23	16	16	17
<b>5-Year Relative Survival Rates, 1999-2005<sup>c</sup></b>									
Age at Diagnosis:									
Ages <45	26.7	23.1	35.5	30.0	25.2	39.9	16.2	15.7	17.6 <sup>f</sup>
Ages 45-54	17.1	16.2	21.5	18.3	17.4	22.5	9.9	8.7	15.6 <sup>f</sup>
Ages 55-64	14.2	13.1	17.8	14.1	12.6	18.9	7.4	6.6	10.0
Ages 65-74	9.8	9.4	10.6	8.1	7.8	8.5	8.5	7.3	8.5
Ages 75+	5.2	4.9	5.4	4.6	4.2	4.8	2.4	2.5	2.8
Ages <65	17.2	15.8	22.4	18.0	16.2	24.4	9.6	8.7	13.0
Ages 65+	7.8	7.7	8.0	6.6	6.5	6.7	6.7	6.7	6.1
Stage:									
All Stages	13.1	12.7	13.9	12.8	12.4	13.6	8.8	8.3	10.0
Localized	25.7	25.3	26.5	25.6	25.2	26.5	18.6	18.7	17.6
Regional	8.5	8.3	9.2	8.4	8.1	9.2	4.4	4.1	5.3
Distant	2.4	2.0	3.4	2.3	1.7	3.9	2.2	2.3	3.4
Unstaged	5.8	5.5	6.3	5.1	4.7	5.6	4.9	3.4	8.7

<sup>a</sup> Rates are based on End Results data from a series of hospital registries and one population-based registry.

<sup>b</sup> Rates are from the SEER 9 areas (San Francisco, Connecticut, Detroit, Hawaii, Iowa, New Mexico, Seattle, Utah, Atlanta).

Rates are based on follow-up of patients into 2006.

<sup>c</sup> Rates are from the SEER 17 areas (San Francisco, Connecticut, Detroit, Hawaii, Iowa, New Mexico, Seattle, Utah, Atlanta, San Jose-Monterey, Los Angeles, Alaska Native Registry, Rural Georgia, California excluding SF/SJM/LA, Kentucky, Louisiana and New Jersey). California excluding SF/SJM/LA, Kentucky, Louisiana, and New Jersey contribute cases for diagnosis years 2000-2005.

The remaining 13 SEER Areas contribute cases for the entire period 1999-2005. Rates are based on follow-up of patients into 2006.

<sup>d</sup> Period survival provides a more up-to-date estimate of survival by piecing together the most recent conditional survival estimates from several cohorts. It is computed here using three year calendar blocks (2003-2005: 0-1 year survival),

(2002-2004: 1-2 year survival), (2001-2003: 2-3 year survival), (2000-2002: 3-4 year survival), (1999-2001: 4-5 years survival).

The difference in rates between 1975-1977 and 1999-2005 is statistically significant ( $p < .05$ ).

<sup>e</sup> The standard error of the survival rate is between 5 and 10 percentage points.

<sup>f</sup> The standard error of the survival rate is greater than 10 percentage points.

<sup>g</sup> - Statistic could not be calculated due to fewer than 25 cases during the time period.

Table 15.11  
Cancer of the Lung and Bronchus (Invasive)

## Survival Rates, by Race, Sex, Diagnosis Year, Stage and Age

	All Races			Whites			Blacks		
	Total	Males	Females	Total	Males	Females	Total	Males	Females
<b>5-Year Relative Survival Rates</b>									
Year of Diagnosis:									
1960-1963 <sup>a</sup>	-	-	-	8	7	11	5	5	6
1970-1973 <sup>a</sup>	-	-	-	10	9	14	7	6	10
1975-1977 <sup>b</sup>	12.7	11.5	15.8	12.8	11.5	15.9	11.5	10.8	14.0
1978-1980 <sup>b</sup>	13.3	11.8	16.7	13.4	12.0	16.6	12.1	10.0	18.1
1981-1983 <sup>b</sup>	13.7	12.1	16.9	13.9	12.3	17.1	11.7	10.5	15.1
1984-1986 <sup>b</sup>	13.3	11.6	16.4	13.5	11.7	16.7	11.4	10.7	13.0
1987-1989 <sup>b</sup>	13.5	12.4	15.4	13.8	12.5	15.8	11.2	11.1	11.5
1990-1992 <sup>b</sup>	14.1	12.6	16.3	14.5	13.0	16.6	10.8	9.6	12.8
1993-1995 <sup>b</sup>	14.9	12.9	17.4	15.1	13.1	17.7	13.1	11.6	15.8
1996-1998 <sup>b</sup>	15.2	13.4	17.4	15.4	13.5	17.7	12.7	11.0	15.2
1999-2005 <sup>b</sup>	16.3 <sup>e</sup>	14.0 <sup>e</sup>	18.8 <sup>e</sup>	16.6 <sup>e</sup>	14.4 <sup>e</sup>	19.1 <sup>e</sup>	12.9 <sup>e</sup>	11.1	15.2
<b>5-Year Period Survival Rates<sup>cd</sup></b>									
Year of Diagnosis:									
1999-2005	15.9	13.8	18.4	16.2	14.1	18.5	12.4	10.6	14.8
<b>Stage Distribution (%) 1999-2005<sup>c</sup></b>									
All Stages									
Number of cases	227,919	123,777	104,142	190,480	101,713	88,767	23,512	13,702	9,810
Percent	100%	100%	100%	100%	100%	100%	100%	100%	100%
Localized	15	13	16	15	14	17	12	11	14
Regional	22	22	22	22	22	22	22	23	22
Distant	55	57	54	55	56	53	59	60	58
Unstaged	8	7	8	8	8	9	6	6	6
<b>5-Year Relative Survival Rates, 1999-2005<sup>c</sup></b>									
Age at Diagnosis:									
Ages <45	24.0	22.6	25.5	26.0	24.7	27.2	16.1	14.4	18.0
Ages 45-54	18.5	14.8	23.2	19.4	15.3	24.3	13.6	11.3	17.1
Ages 55-64	17.7	15.1	21.2	18.2	15.5	21.6	13.7	11.9	16.6
Ages 65-74	15.6	13.4	18.3	15.8	13.5	18.4	12.0	10.6	13.8
Ages 75+	11.1	9.7	12.4	11.4	10.0	12.6	8.2	6.8	9.2
Ages <65	18.4	15.5	22.2	19.1	16.1	22.8	13.9	11.9	17.0
Ages 65+	13.7	11.9	15.6	13.9	12.1	15.7	10.6	9.4	12.0
Stage:									
All Stages	15.6	13.4	18.1	15.9	13.7	18.3	12.4	10.8	14.5
Localized	52.6	47.7	57.1	53.1	48.3	57.5	44.8	41.3	48.5
Regional	23.7	21.5	26.2	23.8	21.8	26.1	19.9	18.0	22.6
Distant	3.5	2.9	4.2	3.4	2.9	4.1	3.0	2.8	3.4
Unstaged	8.5	7.6	9.4	8.2	7.3	9.0	10.3	8.8	12.3

<sup>a</sup> Rates are based on End Results data from a series of hospital registries and one population-based registry.

<sup>b</sup> Rates are from the SEER 9 areas (San Francisco, Connecticut, Detroit, Hawaii, Iowa, New Mexico, Seattle, Utah, Atlanta).

Rates are based on follow-up of patients into 2006.

<sup>c</sup> Rates are from the SEER 17 areas (San Francisco, Connecticut, Detroit, Hawaii, Iowa, New Mexico, Seattle, Utah, Atlanta, San Jose-Monterey, Los Angeles, Alaska Native Registry, Rural Georgia, California excluding SF/SJM/LA, Kentucky, Louisiana and New Jersey). California excluding SF/SJM/LA, Kentucky, Louisiana, and New Jersey contribute cases for diagnosis years 2000-2005.

The remaining 13 SEER Areas contribute cases for the entire period 1999-2005. Rates are based on follow-up of patients into 2006.

<sup>d</sup> Period survival provides a more up-to-date estimate of survival by piecing together the most recent conditional survival estimates from several cohorts. It is computed here using three year calendar blocks (2003-2005: 0-1 year survival),

(2002-2004: 1-2 year survival), (2001-2003: 2-3 year survival), (2000-2002: 3-4 year survival), (1999-2001: 4-5 years survival).

<sup>e</sup> The difference in rates between 1975-1977 and 1999-2005 is statistically significant ( $p < .05$ ).

<sup>f</sup> The standard error of the survival rate is between 5 and 10 percentage points.

<sup>g</sup> The standard error of the survival rate is greater than 10 percentage points.

- Statistic could not be calculated due to fewer than 25 cases during the time period.

Table 15.12  
Small Cell Cancer of the Lung and Bronchus (Invasive)

Survival Rates, by Race, Sex, Diagnosis Year, Stage and Age

	All Races			Whites			Blacks		
	Total	Males	Females	Total	Males	Females	Total	Males	Females
<b>5-Year Relative Survival Rates</b>									
Year of Diagnosis:									
1975-1977 <sup>a</sup>	3.7	3.1	4.8	3.7	3.1	4.9	3.8	3.9	3.6
1978-1980 <sup>a</sup>	4.4	3.3	6.6	4.5	3.5	6.6	3.2	2.4	5.0
1981-1983 <sup>a</sup>	4.8	3.8	6.4	4.8	3.9	6.2	5.6	4.3	8.5
1984-1986 <sup>a</sup>	4.7	3.6	6.5	4.9	3.7	6.7	3.6	2.3	5.6
1987-1989 <sup>a</sup>	5.2	4.0	6.7	5.3	4.0	6.9	4.0	3.4	4.7
1990-1992 <sup>a</sup>	5.6	4.8	6.6	5.7	4.8	6.8	4.0	4.0	3.9
1993-1995 <sup>a</sup>	6.7	5.4	8.1	6.6	5.3	7.9	6.9	4.6	9.9
1996-1998 <sup>b</sup>	6.2	5.4	7.0	6.4	5.6	7.2	4.2	3.2	5.2
1999-2005 <sup>a</sup>	6.3 <sup>d</sup>	5.0 <sup>d</sup>	7.5 <sup>d</sup>	6.3 <sup>d</sup>	4.8 <sup>d</sup>	7.7 <sup>d</sup>	5.5 <sup>d</sup>	5.2 <sup>d</sup>	5.8
<b>5-Year Period Survival Rates<sup>bc</sup></b>									
Year of Diagnosis:									
1999-2005	6.3	5.3	7.2	6.3	5.3	7.2	5.0	4.3	5.8
<b>Stage Distribution (%) 1999-2005<sup>b</sup></b>									
All Stages									
Number of cases	31,163	15,924	15,239	27,417	13,783	13,634	2,461	1,304	1,157
Percent	100%	100%	100%	100%	100%	100%	100%	100%	100%
Localized	5	5	5	5	5	5	5	4	6
Regional	21	19	23	21	19	23	22	22	22
Distant	69	71	66	69	71	66	68	68	67
Unstaged	5	5	6	5	5	6	5	5	5
<b>5-Year Relative Survival Rates, 1999-2005<sup>b</sup></b>									
Age at Diagnosis:									
Ages <45	10.7	10.8	10.7	11.5	11.2	11.9	3.2	5.3	0.0
Ages 45-54	8.7	6.5	11.4	8.9	6.6	11.6	6.9	4.6	10.5
Ages 55-64	7.3	5.7	9.0	7.3	5.5	9.2	6.7	6.9	6.0
Ages 65-74	5.4	4.8	5.9	5.3	4.5	5.9	3.8	4.6	3.0
Ages 75+	3.1	2.6	3.5	3.4	3.0	3.6	0.0	0.0	0.0
Ages <65	7.9	6.2	9.7	7.9	6.1	10.0	6.6	6.1	7.1
Ages 65+	4.6	4.1	5.0	4.6	4.0	5.0	2.8	3.1	2.5
Stage:									
All Stages	6.0	5.1	7.0	6.1	5.0	7.1	4.8	4.7	4.8
Localized	20.3	19.2	21.0	20.2	18.6	21.2	15.1	19.6 <sup>e</sup>	11.4 <sup>e</sup>
Regional	13.3	12.1	14.3	13.5	12.4	14.3	9.8	9.4	10.6
Distant	2.6	2.1	3.1	2.6	1.9	3.3	2.0	2.1	1.8
Unstaged	8.2	6.7	9.4	8.0	6.5	9.0	8.9	7.0	10.8

<sup>a</sup> Rates are from the SEER 9 areas (San Francisco, Connecticut, Detroit, Hawaii, Iowa, New Mexico, Seattle, Utah, Atlanta). Rates are based on follow-up of patients into 2006.

<sup>b</sup> Rates are from the SEER 17 areas (San Francisco, Connecticut, Detroit, Hawaii, Iowa, New Mexico, Seattle, Utah, Atlanta, San Jose-Monterey, Los Angeles, Alaska Native Registry, Rural Georgia, California excluding SF/SJM/LA, Kentucky, Louisiana and New Jersey). California excluding SF/SJM/LA, Kentucky, Louisiana, and New Jersey contribute cases for diagnosis years 2000-2005. The remaining 13 SEER Areas contribute cases for the entire period 1999-2005. Rates are based on follow-up of patients into 2006.

<sup>c</sup> Period survival provides a more up-to-date estimate of survival by piecing together the most recent conditional survival estimates from several cohorts. It is computed here using three year calendar blocks (2003-2005: 0-1 year survival), (2002-2004: 1-2 year survival), (2001-2003: 2-3 year survival), (2000-2002: 3-4 year survival), (1999-2001: 4-5 years survival).

<sup>d</sup> The difference in rates between 1975-1977 and 1999-2005 is statistically significant ( $p < .05$ ).

<sup>e</sup> The standard error of the survival rate is between 5 and 10 percentage points.

<sup>f</sup> The standard error of the survival rate is greater than 10 percentage points.

- Statistic could not be calculated due to fewer than 25 cases during the time period.

Table 15.13  
Non-Small Cell Cancer of the Lung and Bronchus (Invasive)

Survival Rates, by Race, Sex, Diagnosis Year, Stage and Age

	All Races			Whites			Blacks		
	Total	Males	Females	Total	Males	Females	Total	Males	Females
<b>5-Year Relative Survival Rates</b>									
Year of Diagnosis:									
1975-1977 <sup>a</sup>	14.2	12.7	18.0	14.3	12.8	18.1	12.5	11.5	16.2
1978-1980 <sup>a</sup>	15.0	13.4	18.9	15.3	13.6	18.9	13.2	10.9	20.1
1981-1983 <sup>a</sup>	15.6	13.7	19.5	16.0	14.0	19.9	12.6	11.4	16.1
1984-1986 <sup>a</sup>	15.1	13.2	18.8	15.5	13.4	19.3	12.6	11.8	14.5
1987-1989 <sup>a</sup>	15.4	14.0	17.6	15.7	14.3	18.1	12.3	12.1	12.7
1990-1992 <sup>a</sup>	15.8	14.0	18.6	16.4	14.6	19.1	11.7	10.2	14.3
1993-1995 <sup>a</sup>	16.4	14.2	19.5	16.8	14.5	20.0	13.9	12.4	16.7
1996-1998 <sup>b</sup>	16.8	14.7	19.5	17.2	14.9	19.9	13.7	11.8	16.8
1999-2005 <sup>a</sup>	18.0 <sup>d</sup>	15.4 <sup>d</sup>	20.9 <sup>d</sup>	18.5 <sup>d</sup>	16.0 <sup>d</sup>	21.3 <sup>d</sup>	13.8 <sup>d</sup>	11.8	16.5
<b>5-Year Period Survival Rates<sup>bc</sup></b>									
Year of Diagnosis:									
1999-2005	17.5	15.1	20.4	18.0	15.5	20.7	13.3	11.3	16.0
<b>Stage Distribution (%) 1999-2005<sup>b</sup></b>									
All Stages									
Number of cases	196,756	107,853	88,903	163,063	87,930	75,133	21,051	12,398	8,653
Percent	100%	100%	100%	100%	100%	100%	100%	100%	100%
Localized	16	15	18	17	15	19	13	12	15
Regional	22	23	22	22	23	22	22	23	22
Distant	53	55	52	52	54	50	58	59	57
Unstaged	8	8	9	9	8	9	6	6	7
<b>5-Year Relative Survival Rates, 1999-2005<sup>b</sup></b>									
Age at Diagnosis:									
Ages <45	25.7	24.0	27.3	28.0	26.5	29.3	17.0	15.0	19.2
Ages 45-54	20.2	16.2	25.4	21.5	17.0	27.0	14.3	12.0	17.8
Ages 55-64	19.8	16.8	23.9	20.6	17.5	24.6	14.6	12.5	18.3
Ages 65-74	17.4	14.7	20.7	17.7	14.9	21.0	13.0	11.3	15.5
Ages 75+	12.1	10.5	13.6	12.4	10.9	13.8	8.9	7.5	10.0
Ages <65	20.4	17.1	24.7	21.4	18.0	25.7	14.7	12.5	18.3
Ages 65+	15.1	13.0	17.3	15.3	13.3	17.6	11.5	10.1	13.2
Stage:									
All Stages	17.2	14.7	20.1	17.7	15.2	20.5	13.3	11.5	15.8
Localized	54.2	49.1	59.1	54.8	49.7	59.4	46.1	42.2	50.4
Regional	25.2	22.7	28.4	25.5	23.0	28.4	21.1	18.9	24.2
Distant	3.7	3.1	4.4	3.6	3.1	4.3	3.2	2.8	3.7
Unstaged	8.5	7.7	9.4	8.2	7.4	9.0	10.4	8.9	12.3

<sup>a</sup> Rates are from the SEER 9 areas (San Francisco, Connecticut, Detroit, Hawaii, Iowa, New Mexico, Seattle, Utah, Atlanta). Rates are based on follow-up of patients into 2006.

<sup>b</sup> Rates are from the SEER 17 areas (San Francisco, Connecticut, Detroit, Hawaii, Iowa, New Mexico, Seattle, Utah, Atlanta, San Jose-Monterey, Los Angeles, Alaska Native Registry, Rural Georgia, California excluding SF/SJM/LA, Kentucky, Louisiana and New Jersey). California excluding SF/SJM/LA, Kentucky, Louisiana, and New Jersey contribute cases for diagnosis years 2000-2005. The remaining 13 SEER Areas contribute cases for the entire period 1999-2005. Rates are based on follow-up of patients into 2006.

<sup>c</sup> Period survival provides a more up-to-date estimate of survival by piecing together the most recent conditional survival estimates from several cohorts. It is computed here using three year calendar blocks (2003-2005: 0-1 year survival), (2002-2004: 1-2 year survival), (2001-2003: 2-3 year survival), (2000-2002: 3-4 year survival), (1999-2001: 4-5 years survival).

<sup>d</sup> The difference in rates between 1975-1977 and 1999-2005 is statistically significant ( $p < .05$ ).

<sup>e</sup> The standard error of the survival rate is between 5 and 10 percentage points.

<sup>f</sup> The standard error of the survival rate is greater than 10 percentage points.

- Statistic could not be calculated due to fewer than 25 cases during the time period.

Table 16.7  
Melanoma of the Skin (Invasive)

## Survival Rates, by Race, Sex, Diagnosis Year, Stage and Age

	All Races			Whites			Blacks		
	Total	Males	Females	Total	Males	Females	Total	Males	Females
<b>5-Year Relative Survival Rates</b>									
Year of Diagnosis:									
1960-1963 <sup>a</sup>	-	-	-	60	51	68	-	-	-
1970-1973 <sup>a</sup>	-	-	-	68	62	75	-	-	-
1975-1977 <sup>b</sup>	82.4	78.0	86.8	82.4	78.0	86.7	59.7 <sup>f</sup>	-	-
1978-1980 <sup>b</sup>	83.3	78.2	88.2	83.3	78.3	88.3	59.7 <sup>g</sup>	-	-
1981-1983 <sup>b</sup>	83.4	78.9	87.8	83.3	78.9	87.7	60.8 <sup>g</sup>	-	-
1984-1986 <sup>b</sup>	86.8	82.6	91.3	86.6	82.2	91.2	69.7 <sup>g</sup>	-	-
1987-1989 <sup>b</sup>	88.5	85.4	91.8	88.3	85.3	91.5	79.9 <sup>f</sup>	-	90.4 <sup>f</sup>
1990-1992 <sup>b</sup>	89.6	87.3	92.1	89.6	87.3	92.1	60.3 <sup>f</sup>	-	-
1993-1995 <sup>b</sup>	89.8	87.3	92.9	89.7	87.0	92.9	66.8 <sup>f</sup>	65.4 <sup>g</sup>	-
1996-1998 <sup>b</sup>	91.3	89.7	93.2	91.1	89.3	93.2	74.9 <sup>f</sup>	69.6 <sup>g</sup>	78.6 <sup>f</sup>
1999-2005 <sup>b</sup>	93.0 <sup>e</sup>	91.0 <sup>e</sup>	95.2 <sup>e</sup>	92.9 <sup>e</sup>	90.9 <sup>e</sup>	95.3 <sup>e</sup>	77.7 <sup>f</sup>	76.4 <sup>f</sup>	77.6 <sup>f</sup>
<b>5-Year Period Survival Rates<sup>cd</sup></b>									
Year of Diagnosis:									
1999-2005	91.4	89.3	93.8	91.1	89.0	93.6	79.1	70.6	85.3
<b>Stage Distribution (%) 1999-2005<sup>c</sup></b>									
All Stages									
Number of cases	71,842	39,640	32,202	67,898	37,643	30,255	336	148	188
Percent	100%	100%	100%	100%	100%	100%	100%	100%	100%
Localized	84	82	86	84	82	86	60	52	65
Regional	8	9	7	8	9	7	21	23	19
Distant	4	4	2	4	4	2	13	18	9
Unstaged	4	4	4	4	4	4	7	7	7
<b>5-Year Relative Survival Rates, 1999-2005<sup>c</sup></b>									
Age at Diagnosis:									
Ages <45	93.9	90.8	96.3	93.8	90.5	96.3	73.9 <sup>f</sup>	67.4 <sup>f</sup>	77.4 <sup>f</sup>
Ages 45-54	91.8	89.3	94.8	91.4	88.8	94.6	85.3 <sup>f</sup>	-	-
Ages 55-64	91.8	90.2	94.5	91.6	89.9	94.3	82.4 <sup>f</sup>	74.6 <sup>f</sup>	89.8 <sup>f</sup>
Ages 65-74	90.6	89.6	92.4	90.4	89.4	92.1	79.2 <sup>f</sup>	69.7 <sup>g</sup>	83.9 <sup>g</sup>
Ages 75+	84.4	83.1	85.9	84.3	83.0	85.8	59.0 <sup>g</sup>	52.2 <sup>g</sup>	60.0 <sup>g</sup>
Ages <65	92.7	90.1	95.5	92.4	89.8	95.4	78.5	75.0 <sup>f</sup>	81.1
Ages 65+	88.2	87.2	89.6	88.1	87.2	89.3	70.8 <sup>f</sup>	63.7 <sup>g</sup>	73.5 <sup>f</sup>
Stage:									
All Stages	91.4	89.3	94.0	91.2	89.0	93.9	77.3	73.3 <sup>f</sup>	80.4
Localized	98.1	97.5	98.8	98.0	97.3	98.7	94.5	91.7 <sup>f</sup>	95.8
Regional	61.9	57.8	68.0	62.1	57.9	68.3	47.7 <sup>f</sup>	56.7 <sup>g</sup>	37.2 <sup>g</sup>
Distant	15.3	14.0	18.2	14.7	13.6	17.2	29.1 <sup>f</sup>	20.9 <sup>g</sup>	-
Unstaged	75.4	72.5	79.4	74.0	71.1	78.0	67.0 <sup>g</sup>	-	-

<sup>a</sup> Rates are based on End Results data from a series of hospital registries and one population-based registry.

<sup>b</sup> Rates are from the SEER 9 areas (San Francisco, Connecticut, Detroit, Hawaii, Iowa, New Mexico, Seattle, Utah, Atlanta).

Rates are based on follow-up of patients into 2006.

<sup>c</sup> Rates are from the SEER 17 areas (San Francisco, Connecticut, Detroit, Hawaii, Iowa, New Mexico, Seattle, Utah, Atlanta, San Jose-Monterey, Los Angeles, Alaska Native Registry, Rural Georgia, California excluding SF/SJM/LA, Kentucky, Louisiana and New Jersey). California excluding SF/SJM/LA, Kentucky, Louisiana, and New Jersey contribute cases for diagnosis years 2000-2005.

<sup>d</sup> The remaining 13 SEER Areas contribute cases for the entire period 1999-2005. Rates are based on follow-up of patients into 2006. Period survival provides a more up-to-date estimate of survival by piecing together the most recent conditional survival estimates from several cohorts. It is computed here using three year calendar blocks (2003-2005: 0-1 year survival),

(2002-2004: 1-2 year survival), (2001-2003: 2-3 year survival), (2000-2002: 3-4 year survival), (1999-2001: 4-5 years survival).

<sup>e</sup> The difference in rates between 1975-1977 and 1999-2005 is statistically significant ( $p < .05$ ).

<sup>f</sup> The standard error of the survival rate is between 5 and 10 percentage points.

<sup>g</sup> The standard error of the survival rate is greater than 10 percentage points.

- Statistic could not be calculated due to fewer than 25 cases during the time period.

Table 17.4  
Mesothelioma

Survival Rates, by Race, Sex, Diagnosis Year, Stage and Age

	All Races			Whites			Blacks		
	Total	Males	Females	Total	Males	Females	Total	Males	Females
<b>5-Year Relative Survival Rates</b>									
Year of Diagnosis:									
1960-1963 <sup>a</sup>	-	-	-	-	-	-	-	-	-
1970-1973 <sup>a</sup>	-	-	-	-	-	-	-	-	-
1975-1977 <sup>b</sup>	10.4	3.1	27.9 <sup>f</sup>	11.1	3.6	28.5 <sup>f</sup>	-	-	-
1978-1980 <sup>b</sup>	6.3	5.8	8.3	6.1	5.4	8.9	-	-	-
1981-1983 <sup>b</sup>	8.3	5.7	15.6	8.7	5.8	16.7	-	-	-
1984-1986 <sup>b</sup>	7.1	4.7	14.7	6.6	4.0	14.9	-	-	-
1987-1989 <sup>b</sup>	6.6	4.8	13.0	6.7	4.9	13.1	4.5	-	-
1990-1992 <sup>b</sup>	8.5	4.7	21.9	8.1	4.3	21.3	12.9 <sup>f</sup>	12.0 <sup>f</sup>	-
1993-1995 <sup>b</sup>	7.0	3.5	19.6	6.3	3.0	18.9	9.5 <sup>f</sup>	8.4 <sup>f</sup>	-
1996-1998 <sup>b</sup>	10.5	8.7	16.3	10.7	8.8	17.3	11.6 <sup>f</sup>	-	-
1999-2005 <sup>b</sup>	7.7	5.6	14.3 <sup>e</sup>	7.0	5.0	13.6	16.5 <sup>f</sup>	14.0 <sup>f</sup>	-
<b>5-Year Period Survival Rates<sup>cd</sup></b>									
Year of Diagnosis:									
1999-2005	7.3	5.7	11.9	6.8	5.3	11.4	9.2	7.0	-
<b>5-Year Relative Survival Rates, 1999-2005<sup>c</sup></b>									
Age at Diagnosis:									
Ages <45	40.2	36.8 <sup>f</sup>	43.7 <sup>f</sup>	35.0 <sup>f</sup>	34.7 <sup>f</sup>	35.2 <sup>f</sup>	-	-	-
Ages 45-54	16.5	10.7	24.9	15.8	10.1	24.3	27.2 <sup>f</sup>	-	-
Ages 55-64	9.2	7.0	17.5	8.6	5.6	20.1	0.0	-	-
Ages 65-74	5.7	5.9	4.5	5.8	5.8	5.3	-	-	-
Ages 75+	2.8	2.4	4.2	2.8	2.4	4.4	0.0	0.0	-
Ages <65	14.8	10.4	25.2	13.5	9.2	24.3	20.4 <sup>f</sup>	16.4 <sup>f</sup>	-
Ages 65+	4.0	3.9	4.4	4.1	3.9	4.8	0.0	0.0	-

<sup>a</sup> Rates are based on End Results data from a series of hospital registries and one population-based registry.  
<sup>b</sup> Rates are from the SEER 9 areas (San Francisco, Connecticut, Detroit, Hawaii, Iowa, New Mexico, Seattle, Utah, Atlanta).  
Rates are based on follow-up of patients into 2006.  
<sup>c</sup> Rates are from the SEER 17 areas (San Francisco, Connecticut, Detroit, Hawaii, Iowa, New Mexico, Seattle, Utah, Atlanta, San Jose-Monterey, Los Angeles, Alaska Native Registry, Rural Georgia, California excluding SF/SJM/LA, Kentucky, Louisiana and New Jersey). California excluding SF/SJM/LA, Kentucky, Louisiana, and New Jersey contribute cases for diagnosis years 2000-2005. The remaining 13 SEER Areas contribute cases for the entire period 1999-2005. Rates are based on follow-up of patients into 2006.  
<sup>d</sup> Period survival provides a more up-to-date estimate of survival by piecing together the most recent conditional survival estimates from several cohorts. It is computed here using three year calendar blocks (2003-2005: 0-1 year survival), (2002-2004: 1-2 year survival), (2001-2003: 2-3 year survival), (2000-2002: 3-4 year survival), (1999-2001: 4-5 years survival).  
<sup>e</sup> The difference in rates between 1975-1977 and 1999-2005 is statistically significant (p<.05).  
<sup>f</sup> The standard error of the survival rate is between 5 and 10 percentage points.  
<sup>g</sup> The standard error of the survival rate is greater than 10 percentage points.  
- Statistic could not be calculated due to fewer than 25 cases during the time period.

Table 18.7  
Myeloma

	All Races			Whites			Blacks		
	Total	Males	Females	Total	Males	Females	Total	Males	Females
5-Year Relative Survival Rates									
Year of Diagnosis:									
1960-1963 <sup>a</sup>	-	-	-	12	13	10	-	-	-
1970-1973 <sup>a</sup>	-	-	-	19	20	17	-	-	-
1975-1977 <sup>b</sup>	25.9	25.5	26.2	25.4	25.1	25.7	30.7	31.6	29.7
1978-1980 <sup>b</sup>	27.0	25.5	28.5	26.0	25.5	26.5	32.5	26.9	37.9
1981-1983 <sup>b</sup>	28.7	26.8	30.7	28.5	26.7	30.3	29.6	30.3	28.8
1984-1986 <sup>b</sup>	28.5	29.1	27.9	27.4	27.3	27.4	32.4	34.0	30.6
1987-1989 <sup>b</sup>	28.5	30.2	26.8	28.2	30.5	25.8	31.0	30.7	31.3
1990-1992 <sup>b</sup>	30.6	31.8	29.2	29.7	30.9	28.5	35.6	40.1	31.5
1993-1995 <sup>b</sup>	33.0	33.7	32.2	32.1	33.1	30.9	35.9	35.0	36.3
1996-1998 <sup>b</sup>	33.4	35.7	30.9	33.3	35.7	30.5	31.7	33.1	30.6
1999-2005 <sup>b</sup>	37.1 <sup>e</sup>	39.3 <sup>e</sup>	34.6 <sup>e</sup>	37.5 <sup>e</sup>	40.1 <sup>e</sup>	34.3 <sup>e</sup>	35.5 <sup>e</sup>	37.2	33.8
5-Year Period Survival Rates <sup>cd</sup>									
Year of Diagnosis:									
1999-2005	38.4	39.2	37.5	38.1	39.4	36.4	37.5	36.6	38.3
Stage Distribution (%) 1999-2005 <sup>c</sup>									
All Stages									
Number of cases	21,769	11,619	10,150	16,552	9,062	7,490	3,743	1,824	1,919
Percent	100%	100%	100%	100%	100%	100%	100%	100%	100%
Localized	5	5	4	5	6	4	3	3	3
Regional	0	0	0	0	0	0	0	0	0
Distant	95	94	96	95	94	96	97	97	97
Unstaged	0	0	0	0	0	0	0	0	0
5-Year Relative Survival Rates, 1999-2005 <sup>c</sup>									
Age at Diagnosis:									
Ages <45	60.3	61.3	58.6	61.5	63.6	57.3	57.2	55.2 <sup>f</sup>	58.9 <sup>f</sup>
Ages 45-54	52.7	52.2	53.3	55.0	54.9	55.2	46.4	41.2	52.2
Ages 55-64	44.4	45.1	43.5	45.7	46.2	44.9	38.0	38.7	37.7
Ages 65-74	33.7	32.6	35.0	33.7	32.8	34.8	31.9	31.0	32.7
Ages 75+	20.3	20.3	20.3	19.7	19.8	19.5	22.0	21.5	22.0
Ages <65	49.3	49.8	48.7	50.7	51.4	49.6	44.0	42.0	46.4
Ages 65+	27.3	27.4	27.1	26.8	27.1	26.3	27.7	27.6	27.6
Stage:									
All Stages	37.1	38.3	35.7	36.9	38.6	34.9	36.6	36.0	37.2
Localized	71.0	78.0	57.8	71.0	77.9	57.0	65.0 <sup>f</sup>	77.4 <sup>f</sup>	49.2 <sup>g</sup>
Regional	-	-	-	-	-	-	-	-	-
Distant	35.3	35.7	34.9	34.9	35.8	34.0	35.7	34.5	36.8
Unstaged	-	-	-	-	-	-	-	-	-

<sup>a</sup> Rates are based on End Results data from a series of hospital registries and one population-based registry.

<sup>b</sup> Rates are from the SEER 9 areas (San Francisco, Connecticut, Detroit, Hawaii, Iowa, New Mexico, Seattle, Utah, Atlanta).

Rates are based on follow-up of patients into 2006.

<sup>c</sup> Rates are from the SEER 17 areas (San Francisco, Connecticut, Detroit, Hawaii, Iowa, New Mexico, Seattle, Utah, Atlanta, San Jose-Monterey, Los Angeles, Alaska Native Registry, Rural Georgia, California excluding SF/SJM/LA, Kentucky, Louisiana and New Jersey). California excluding SF/SJM/LA, Kentucky, Louisiana, and New Jersey contribute cases for diagnosis years 2000-2005.

<sup>d</sup> The remaining 13 SEER Areas contribute cases for the entire period 1999-2005. Rates are based on follow-up of patients into 2006. Period survival provides a more up-to-date estimate of survival by piecing together the most recent conditional survival estimates from several cohorts. It is computed here using three year calendar blocks (2003-2005: 0-1 year survival),

(2002-2004: 1-2 year survival), (2001-2003: 2-3 year survival), (2000-2002: 3-4 year survival), (1999-2001: 4-5 years survival).

<sup>e</sup> The difference in rates between 1975-1977 and 1999-2005 is statistically significant ( $p < .05$ ).

<sup>f</sup> The standard error of the survival rate is between 5 and 10 percentage points.

<sup>g</sup> The standard error of the survival rate is greater than 10 percentage points.

- Statistic could not be calculated due to fewer than 25 cases during the time period.

Table 19.7  
Non-Hodgkin Lymphoma

Survival Rates, by Race, Sex, Diagnosis Year and Age

	All Races			Whites			Blacks		
	Total	Males	Females	Total	Males	Females	Total	Males	Females
<b>5-Year Relative Survival Rates</b>									
Year of Diagnosis:									
1960-1963 <sup>a</sup>	-	-	-	31	31	31	-	-	-
1970-1973 <sup>a</sup>	-	-	-	41	39	43	-	-	-
1975-1977 <sup>b</sup>	48.0	46.9	49.1	48.4	47.8	48.9	49.0	42.6	56.1 <sup>f</sup>
1978-1980 <sup>b</sup>	49.9	47.9	52.0	50.0	48.2	51.8	52.3	48.0	58.1 <sup>f</sup>
1981-1983 <sup>b</sup>	52.6	52.2	52.9	52.8	52.6	53.1	50.4	49.5	51.5
1984-1986 <sup>b</sup>	53.3	51.4	55.3	53.7	52.0	55.6	47.7	44.9	51.3
1987-1989 <sup>b</sup>	52.4	48.7	56.9	52.8	49.2	57.2	47.4	42.2	53.7
1990-1992 <sup>b</sup>	51.9	47.4	57.8	53.0	48.3	58.7	42.1	38.0	47.8
1993-1995 <sup>b</sup>	53.7	49.3	59.4	54.5	50.4	59.8	42.0	35.3	55.0
1996-1998 <sup>b</sup>	60.2	58.0	63.0	61.0	58.7	63.7	54.4	52.3	57.7
1999-2005 <sup>b</sup>	68.7 <sup>e</sup>	66.7 <sup>e</sup>	71.1 <sup>e</sup>	70.1 <sup>e</sup>	68.4 <sup>e</sup>	72.1 <sup>e</sup>	59.9 <sup>e</sup>	55.0	65.6
<b>5-Year Period Survival Rates<sup>cd</sup></b>									
Year of Diagnosis:									
1999-2005	68.6	66.9	70.5	69.4	68.0	71.0	60.8	56.5	65.8
<b>Stage Distribution (%) 1999-2005<sup>c</sup></b>									
All Stages									
Number of cases	75,219	40,248	34,971	63,822	34,094	29,728	5,545	3,037	2,508
Percent	100%	100%	100%	100%	100%	100%	100%	100%	100%
Localized	30	28	31	29	28	31	28	25	30
Regional	15	15	15	15	15	15	14	14	15
Distant	47	49	44	47	49	45	50	53	46
Unstaged	9	8	9	8	8	9	8	8	9
<b>5-Year Relative Survival Rates, 1999-2005<sup>c</sup></b>									
Age at Diagnosis:									
Ages <45	74.5	71.0	80.4	76.7	73.1	82.8	60.5	56.1	67.2
Ages 45-54	75.2	71.4	80.9	77.1	73.3	83.0	59.4	53.5	67.7
Ages 55-64	71.8	68.2	76.4	72.7	69.4	76.9	62.5	55.7	70.4
Ages 65-74	64.5	61.1	67.9	65.0	61.7	68.4	54.8	47.2	61.5
Ages 75+	51.9	51.1	52.4	52.8	51.8	53.5	45.6	47.9 <sup>f</sup>	42.9
Ages <65	73.8	70.2	79.0	75.3	71.9	80.4	60.7	55.3	68.4
Ages 65+	58.4	56.8	59.9	59.1	57.4	60.6	51.3	47.6	53.2
Stage:									
All Stages	67.2	65.2	69.4	68.0	66.3	70.0	58.4	54.0	63.8
Localized	81.0	79.8	82.3	81.5	80.7	82.3	77.1	71.0	82.2
Regional	70.9	69.3	72.5	71.8	70.0	73.6	63.4	61.5	65.2
Distant	57.4	55.8	59.5	59.0	57.4	60.9	45.6	43.2	48.9
Unstaged	65.1	63.0	67.2	64.4	62.2	66.6	60.7	55.4	65.6

<sup>a</sup> Rates are based on End Results data from a series of hospital registries and one population-based registry.  
<sup>b</sup> Rates are from the SEER 9 areas (San Francisco, Connecticut, Detroit, Hawaii, Iowa, New Mexico, Seattle, Utah, Atlanta).  
Rates are based on follow-up of patients into 2006.  
<sup>c</sup> Rates are from the SEER 17 areas (San Francisco, Connecticut, Detroit, Hawaii, Iowa, New Mexico, Seattle, Utah, Atlanta, San Jose-Monterey, Los Angeles, Alaska Native Registry, Rural Georgia, California excluding SF/SJM/LA, Kentucky, Louisiana and New Jersey). California excluding SF/SJM/LA, Kentucky, Louisiana, and New Jersey contribute cases for diagnosis years 2000-2005. The remaining 13 SEER Areas contribute cases for the entire period 1999-2005. Rates are based on follow-up of patients into 2006.  
<sup>d</sup> Period survival provides a more up-to-date estimate of survival by piecing together the most recent conditional survival estimates from several cohorts. It is computed here using three year calendar blocks (2003-2005: 0-1 year survival), (2002-2004: 1-2 year survival), (2001-2003: 2-3 year survival), (2000-2002: 3-4 year survival), (1999-2001: 4-5 years survival).  
<sup>e</sup> The difference in rates between 1975-1977 and 1999-2005 is statistically significant (p<.05).  
<sup>f</sup> The standard error of the survival rate is between 5 and 10 percentage points.  
<sup>g</sup> The standard error of the survival rate is greater than 10 percentage points.  
- Statistic could not be calculated due to fewer than 25 cases during the time period.



Table 20.7a  
Cancer of the Oral Cavity and Pharynx (Invasive)

Survival Rates, by Race, Sex, Diagnosis Year, Stage and Age

	All Races			Whites			Blacks		
	Total	Males	Females	Total	Males	Females	Total	Males	Females
<b>5-Year Relative Survival Rates</b>									
Year of Diagnosis:									
1960-1963 <sup>a</sup>	-	-	-	45	-	-	-	-	-
1970-1973 <sup>a</sup>	-	-	-	43	-	-	-	-	-
1975-1977 <sup>b</sup>	53.1	51.9	55.8	54.6	54.1	55.9	36.2	29.7	48.9
1978-1980 <sup>b</sup>	54.0	52.4	57.5	56.2	55.2	58.3	35.1	29.9	46.2
1981-1983 <sup>b</sup>	52.6	51.0	56.0	55.0	53.8	57.5	31.8	26.4	45.7
1984-1986 <sup>b</sup>	54.6	52.0	59.8	56.8	55.2	60.1	35.8	29.9	50.3
1987-1989 <sup>b</sup>	54.2	51.4	59.9	56.6	54.4	61.0	34.4	30.1	44.8
1990-1992 <sup>b</sup>	56.2	53.7	61.3	58.7	56.9	62.4	33.3	28.3	46.8
1993-1995 <sup>b</sup>	58.4	56.7	61.9	60.9	60.0	62.6	38.1	32.7	51.5
1996-1998 <sup>b</sup>	58.8	57.0	62.7	61.1	60.0	63.4	36.3	31.4	48.7
1999-2005 <sup>b</sup>	62.5 <sup>e</sup>	61.5 <sup>e</sup>	64.7 <sup>e</sup>	64.4 <sup>e</sup>	64.1 <sup>e</sup>	65.0 <sup>e</sup>	46.1 <sup>e</sup>	41.0 <sup>e</sup>	57.1
<b>5-Year Period Survival Rates<sup>cd</sup></b>									
Year of Diagnosis:									
1999-2005	61.6	60.6	63.8	63.5	63.2	64.3	42.8	37.9	54.1
<b>Stage Distribution (%) 1999-2005<sup>c</sup></b>									
All Stages									
Number of cases	39,621	27,290	12,331	32,210	22,337	9,873	3,888	2,731	1,157
Percent	100%	100%	100%	100%	100%	100%	100%	100%	100%
Localized	34	30	42	36	32	44	22	18	31
Regional	46	49	38	45	49	37	51	54	45
Distant	14	14	12	12	13	11	20	21	18
Unstaged	7	7	7	7	7	7	6	6	6
<b>5-Year Relative Survival Rates, 1999-2005<sup>c</sup></b>									
Age at Diagnosis:									
Ages <45	77.4	74.2	83.2	80.0	77.3	85.1	62.0	54.0	73.4
Ages 45-54	64.9	63.3	69.9	68.6	67.4	72.9	40.2	37.8	46.4
Ages 55-64	60.2	58.8	64.5	62.6	61.4	66.1	38.8	36.7	46.8
Ages 65-74	55.1	54.5	56.2	56.6	56.8	56.3	35.4	31.0	45.7
Ages 75+	48.5	47.7	49.3	49.4	48.8	50.0	38.1	28.4	48.8 <sup>f</sup>
Ages <65	65.5	63.3	71.4	68.1	66.4	73.1	44.4	40.2	55.0
Ages 65+	52.5	52.3	53.0	53.8	54.1	53.3	36.5	30.4	47.3
Stage:									
All Stages	61.0	59.9	63.3	62.8	62.4	63.8	42.6	38.2	53.2
Localized	82.7	82.0	83.7	83.1	82.9	83.4	74.2	65.7	85.1
Regional	54.3	55.4	51.2	56.4	58.2	50.9	36.3	34.8	40.6
Distant	31.8	31.0	34.0	32.1	31.3	34.1	24.5	23.5	27.5
Unstaged	53.4	52.8	54.4	53.6	53.3	53.8	39.8	35.9	47.4 <sup>f</sup>

<sup>a</sup> Rates are based on End Results data from a series of hospital registries and one population-based registry.

<sup>b</sup> Rates are from the SEER 9 areas (San Francisco, Connecticut, Detroit, Hawaii, Iowa, New Mexico, Seattle, Utah, Atlanta).

Rates are based on follow-up of patients into 2006.

<sup>c</sup> Rates are from the SEER 17 areas (San Francisco, Connecticut, Detroit, Hawaii, Iowa, New Mexico, Seattle, Utah, Atlanta, San Jose-Monterey, Los Angeles, Alaska Native Registry, Rural Georgia, California excluding SF/SJM/LA, Kentucky, Louisiana and New Jersey). California excluding SF/SJM/LA, Kentucky, Louisiana, and New Jersey contribute cases for diagnosis years 2000-2005.

The remaining 13 SEER Areas contribute cases for the entire period 1999-2005. Rates are based on follow-up of patients into 2006.

<sup>d</sup> Period survival provides a more up-to-date estimate of survival by piecing together the most recent conditional survival estimates from several cohorts. It is computed here using three year calendar blocks (2003-2005: 0-1 year survival),

(2002-2004: 1-2 year survival), (2001-2003: 2-3 year survival), (2000-2002: 3-4 year survival), (1999-2001: 4-5 years survival).

<sup>e</sup> The difference in rates between 1975-1977 and 1999-2005 is statistically significant ( $p < .05$ ).

<sup>f</sup> The standard error of the survival rate is between 5 and 10 percentage points.

<sup>g</sup> The standard error of the survival rate is greater than 10 percentage points.

- Statistic could not be calculated due to fewer than 25 cases during the time period.

Table 21.7  
Cancer of the Ovary(Invasive)

## Survival Rates, by Race, Diagnosis Year, Stage and Age

	All Races, Females			White Females			Black Females		
	All	<65	65+	All	<65	65+	All	<65	65+
<b>5-Year Relative Survival Rates</b>									
Year of Diagnosis:									
1960-1963 <sup>a</sup>	-	-	-	32	-	-	32	-	-
1970-1973 <sup>a</sup>	-	-	-	36	-	-	32	-	-
1975-1977 <sup>b</sup>	37.2	44.4	21.9	36.5	43.7	21.6	43.1	49.2	25.5 <sup>f</sup>
1978-1980 <sup>b</sup>	38.9	47.5	22.6	38.1	46.6	22.8	40.3	49.7	13.0
1981-1983 <sup>b</sup>	40.7	50.6	24.4	40.3	50.6	24.5	38.9	45.7	23.4 <sup>f</sup>
1984-1986 <sup>b</sup>	39.9	49.6	25.0	39.0	48.7	24.7	41.0	53.1	21.3
1987-1989 <sup>b</sup>	39.9	51.3	24.7	39.9	51.5	25.1	35.2	47.3	17.9
1990-1992 <sup>b</sup>	42.6	55.7	25.6	42.5	56.3	25.5	38.1	50.2	17.7
1993-1995 <sup>b</sup>	43.6	55.9	28.1	42.7	55.6	27.6	43.3	55.3	27.5
1996-1998 <sup>b</sup>	45.7	57.2	29.7	45.1	56.8	29.7	41.3	53.0	22.5
1999-2005 <sup>b</sup>	45.6 <sup>e</sup>	55.9 <sup>e</sup>	30.0 <sup>e</sup>	45.5 <sup>e</sup>	56.2 <sup>e</sup>	30.3 <sup>e</sup>	37.2	45.1	21.6
<b>5-Year Period Survival Rates<sup>cd</sup></b>									
Year of Diagnosis:									
1999-2005	46.2	56.5	30.1	46.1	56.7	30.6	38.3	46.6	21.9
<b>Stage Distribution (%) 1999-2005<sup>c</sup></b>									
All Stages									
Number of cases	29,168	16,000	13,168	24,849	13,201	11,648	2,074	1,238	836
Percent	100%	100%	100%	100%	100%	100%	100%	100%	100%
Localized	15	21	7	14	20	7	15	20	7
Regional	17	20	13	17	20	13	15	15	15
Distant	62	55	69	63	56	70	62	58	67
Unstaged	7	4	10	7	4	10	8	7	11
<b>5-Year Relative Survival Rates, 1999-2005<sup>c</sup></b>									
Age at Diagnosis:									
Ages <45	72.8	-	-	73.3	-	-	66.7	-	-
Ages 45-54	57.0	-	-	58.1	-	-	42.3	-	-
Ages 55-64	45.4	-	-	45.9	-	-	31.6	-	-
Ages 65-74	35.7	-	-	36.1	-	-	24.2	-	-
Ages 75+	23.2	-	-	23.8	-	-	16.4	-	-
Ages <65	56.5	-	-	56.8	-	-	46.2	-	-
Ages 65+	29.8	-	-	30.1	-	-	20.9	-	-
Stage:									
All Stages	45.9	56.5	29.8	45.8	56.8	30.1	37.4	46.2	20.9
Localized	93.8	93.9	93.5	93.7	93.7	93.3	92.1	96.1	75.1 <sup>g</sup>
Regional	72.8	79.7	56.7	73.3	80.4	57.2	57.4	65.0	43.9 <sup>f</sup>
Distant	28.2	34.9	20.0	28.8	35.9	20.7	19.6	24.9	11.0
Unstaged	27.3	48.9	13.0	26.8	50.0	13.4	27.4	42.4 <sup>f</sup>	9.0

Ovary excludes borderline cases or histologies 8442, 8451, 8462, 8472, and 8473.

<sup>a</sup> Rates are based on END Results data from a series of hospital registries and one population-based registry.

<sup>b</sup> Rates are from the SEER 9 areas (San Francisco, Connecticut, Detroit, Hawaii, Iowa, New Mexico, Seattle, Utah, Atlanta).

Rates are based on follow-up of patients into 2006.

<sup>c</sup> Rates are from the SEER 17 areas (San Francisco, Connecticut, Detroit, Hawaii, Iowa, New Mexico, Seattle, Utah, Atlanta, San Jose-Monterey, Los Angeles, Alaska Native Registry, Rural Georgia, California excluding SF/SJM/LA, Kentucky, Louisiana and New Jersey). California excluding SF/SJM/LA, Kentucky, Louisiana, and New Jersey contribute cases for diagnosis years 2000-2005.

<sup>d</sup> The remaining 13 SEER Areas contribute cases for the entire period 1999-2005. Rates are based on follow-up of patients into 2006.

Period survival provides a more up-to-date estimate of survival by piecing together the most recent conditional survival estimates from several cohorts. It is computed here using three year calendar blocks (2003-2005: 0-1 year survival),

(2002-2004: 1-2 year survival), (2001-2003: 2-3 year survival), (2000-2002: 3-4 year survival), (1999-2001: 4-5 years survival).

<sup>e</sup> The difference in rates between 1975-1977 and 1999-2005 is statistically significant ( $p < .05$ ).

<sup>f</sup> The standard error of the survival rate is between 5 and 10 percentage points.

<sup>g</sup> The standard error of the survival rate is greater than 10 percentage points.

- Statistic could not be calculated due to fewer than 25 cases during the time period.

Table 22.7  
Cancer of the Pancreas (Invasive)

## Survival Rates, by Race, Sex, Diagnosis Year, Stage and Age

	All Races			Whites			Blacks		
	Total	Males	Females	Total	Males	Females	Total	Males	Females
<b>5-Year Relative Survival Rates</b>									
Year of Diagnosis:									
1960-1963 <sup>a</sup>	-	-	-	1	1	2	1	0	3
1970-1973 <sup>a</sup>	-	-	-	2	2	2	2	0	3
1975-1977 <sup>b</sup>	2.5	2.7	2.3	2.6	2.7	2.3	2.3	2.7	2.0
1978-1980 <sup>b</sup>	3.0	2.8	3.2	2.7	2.6	2.7	5.9	4.3	7.4
1981-1983 <sup>b</sup>	3.0	2.6	3.3	2.8	2.3	3.2	3.7	4.0	3.3
1984-1986 <sup>b</sup>	3.0	2.4	3.5	2.7	2.2	3.1	4.9	4.2	5.4
1987-1989 <sup>b</sup>	3.8	3.5	4.0	3.4	3.2	3.5	5.9	5.5	6.1
1990-1992 <sup>b</sup>	4.6	4.2	4.8	4.7	4.4	4.9	3.8	3.2	4.3
1993-1995 <sup>b</sup>	4.2	3.9	4.6	4.2	3.8	4.6	3.7	3.5	3.9
1996-1998 <sup>b</sup>	4.6	4.8	4.4	4.4	5.0	3.8	3.6	3.3	3.7
1999-2005 <sup>b</sup>	5.6 <sup>e</sup>	5.6 <sup>e</sup>	5.6 <sup>e</sup>	5.7 <sup>e</sup>	6.0 <sup>e</sup>	5.3 <sup>e</sup>	5.3 <sup>e</sup>	3.6	6.6 <sup>e</sup>
<b>5-Year Period Survival Rates<sup>cd</sup></b>									
Year of Diagnosis:									
1999-2005	5.7	5.4	6.1	5.7	5.5	5.9	5.4	4.0	6.6
<b>Stage Distribution (%) 1999-2005<sup>c</sup></b>									
All Stages									
Number of cases	42,228	20,607	21,621	34,441	16,946	17,495	4,667	2,116	2,551
Percent	100%	100%	100%	100%	100%	100%	100%	100%	100%
Localized	7	7	8	7	7	8	9	7	10
Regional	26	26	26	26	26	26	24	24	25
Distant	53	56	50	52	55	49	55	60	51
Unstaged	14	12	16	14	12	16	12	10	14
<b>5-Year Relative Survival Rates, 1999-2005<sup>c</sup></b>									
Age at Diagnosis:									
Ages <45	20.7	14.9	28.6	20.3	15.6	26.5	18.9	11.3	32.1 <sup>f</sup>
Ages 45-54	8.8	7.5	10.6	8.4	8.0	9.0	9.0	5.7	13.0
Ages 55-64	5.8	5.2	6.6	5.8	5.2	6.6	5.5	4.2	7.1
Ages 65-74	4.4	4.3	4.5	4.6	4.6	4.6	2.9	3.0	2.9
Ages 75+	2.7	3.1	2.5	2.9	3.1	2.7	2.0	2.0	1.9
Ages <65	8.4	7.0	10.4	8.2	7.2	9.6	8.4	5.7	11.7
Ages 65+	3.6	3.8	3.4	3.7	3.9	3.5	2.5	2.8	2.4
Stage:									
All Stages	5.5	5.4	5.7	5.5	5.5	5.5	5.4	4.5	6.2
Localized	22.2	20.2	23.7	22.7	21.5	23.7	17.4	14.6	18.7
Regional	8.7	8.7	8.8	8.8	9.1	8.6	7.5	5.7	8.9
Distant	1.8	2.0	1.7	1.6	1.8	1.5	2.5	2.4	2.4
Unstaged	4.9	6.0	3.8	4.5	5.6	3.5	6.2	6.3	5.9

<sup>a</sup> Rates are based on End Results data from a series of hospital registries and one population-based registry.

<sup>b</sup> Rates are from the SEER 9 areas (San Francisco, Connecticut, Detroit, Hawaii, Iowa, New Mexico, Seattle, Utah, Atlanta).

Rates are based on follow-up of patients into 2006.

<sup>c</sup> Rates are from the SEER 17 areas (San Francisco, Connecticut, Detroit, Hawaii, Iowa, New Mexico, Seattle, Utah, Atlanta, San Jose-Monterey, Los Angeles, Alaska Native Registry, Rural Georgia, California excluding SF/SJM/LA, Kentucky, Louisiana and New Jersey). California excluding SF/SJM/LA, Kentucky, Louisiana, and New Jersey contribute cases for diagnosis years 2000-2005.

<sup>d</sup> The remaining 13 SEER Areas contribute cases for the entire period 1999-2005. Rates are based on follow-up of patients into 2006. Period survival provides a more up-to-date estimate of survival by piecing together the most recent conditional survival estimates from several cohorts. It is computed here using three year calendar blocks (2003-2005: 0-1 year survival),

(2002-2004: 1-2 year survival), (2001-2003: 2-3 year survival), (2000-2002: 3-4 year survival), (1999-2001: 4-5 years survival).

<sup>e</sup> The difference in rates between 1975-1977 and 1999-2005 is statistically significant ( $p < .05$ ).

<sup>f</sup> The standard error of the survival rate is between 5 and 10 percentage points.

<sup>g</sup> The standard error of the survival rate is greater than 10 percentage points.

- Statistic could not be calculated due to fewer than 25 cases during the time period.

Table 23.7  
Cancer of the Prostate (Invasive)

## Survival Rates, by Race, Diagnosis Year, Stage and Age

	All Races, Males			White Males			Black Males		
	All	<65	65+	All	<65	65+	All	<65	65+
<b>5-Year Relative Survival Rates</b>									
Year of Diagnosis:									
1960-1963 <sup>a</sup>	-	-	-	50	-	-	35	-	-
1970-1973 <sup>a</sup>	-	-	-	63	-	-	55	-	-
1975-1977 <sup>b</sup>	68.9	73.4	67.3	69.8	75.2	67.8	61.3	61.9	61.0
1978-1980 <sup>b</sup>	72.0	75.7	70.6	73.3	77.2	71.8	62.7	65.2	61.5
1981-1983 <sup>b</sup>	73.8	76.4	72.8	74.9	78.0	73.9	63.7	65.5	62.9
1984-1986 <sup>b</sup>	76.1	77.5	75.6	77.3	79.1	76.7	66.4	67.4	65.9
1987-1989 <sup>b</sup>	83.9	83.4	84.0	85.4	84.9	85.6	72.2	72.9	72.0
1990-1992 <sup>b</sup>	94.2	93.4	94.5	95.3	94.4	95.6	85.5	87.0	84.8
1993-1995 <sup>b</sup>	95.4	95.8	95.2	96.2	96.5	96.0	91.5	93.0	90.5
1996-1998 <sup>b</sup>	97.5	98.5	96.9	98.0	98.9	97.5	94.2	96.7	92.1
1999-2005 <sup>b</sup>	99.9 <sup>e</sup>	99.7 <sup>e</sup>	99.8 <sup>e</sup>	99.9 <sup>e</sup>	99.9 <sup>e</sup>	99.9 <sup>e</sup>	97.9 <sup>e</sup>	99.2 <sup>e</sup>	96.6 <sup>e</sup>
<b>5-Year Period Survival Rates<sup>cd</sup></b>									
Year of Diagnosis:									
1999-2005	99.9	99.5	99.7	99.9	99.7	99.8	96.9	98.9	94.7
<b>Stage Distribution (%) 1999-2005<sup>c</sup></b>									
All Stages									
Number of cases	301,531	114,406	187,125	240,385	89,361	151,024	37,704	18,216	19,488
Percent	100%	100%	100%	100%	100%	100%	100%	100%	100%
Localized	80	77	82	80	77	82	78	77	80
Regional	12	18	8	12	19	9	12	17	7
Distant	4	3	5	4	3	5	6	4	8
Unstaged	3	2	5	3	1	4	4	2	5
<b>5-Year Relative Survival Rates, 1999-2005<sup>c</sup></b>									
Age at Diagnosis:									
Ages <45	94.7	-	-	94.6	-	-	94.4	-	-
Ages 45-54	97.9	-	-	97.9	-	-	97.4	-	-
Ages 55-64	99.8	-	-	100.0	-	-	98.9	-	-
Ages 65-74	100.0	-	-	100.0	-	-	98.0	-	-
Ages 75+	97.8	-	-	98.3	-	-	86.9	-	-
Ages <65	99.3	-	-	99.5	-	-	98.4	-	-
Ages 65+	99.7	-	-	99.7	-	-	94.8	-	-
Stage:									
All Stages	99.7	99.3	99.7	99.9	99.5	99.7	96.5	98.4	94.8
Localized	100.0	100.0	100.0	100.0	100.0	100.0	100.0	100.0	100.0
Regional	100.0	100.0	100.0	100.0	100.0	100.0	100.0	100.0	99.4
Distant	30.6	31.4	30.2	30.0	31.3	29.5	28.5	28.5	28.3
Unstaged	75.5	84.8	72.8	75.6	84.8	73.1	65.9	80.5	59.1

<sup>a</sup> Rates are based on End Results data from a series of hospital registries and one population-based registry.

<sup>b</sup> Rates are from the SEER 9 areas (San Francisco, Connecticut, Detroit, Hawaii, Iowa, New Mexico, Seattle, Utah, Atlanta).

Rates are based on follow-up of patients into 2006.

<sup>c</sup> Rates are from the SEER 17 areas (San Francisco, Connecticut, Detroit, Hawaii, Iowa, New Mexico, Seattle, Utah, Atlanta, San Jose-Monterey, Los Angeles, Alaska Native Registry, Rural Georgia, California excluding SF/SJM/LA, Kentucky, Louisiana and New Jersey). California excluding SF/SJM/LA, Kentucky, Louisiana, and New Jersey contribute cases for diagnosis years 2000-2005.

The remaining 13 SEER Areas contribute cases for the entire period 1999-2005. Rates are based on follow-up of patients into 2006.

<sup>d</sup> Period survival provides a more up-to-date estimate of survival by piecing together the most recent conditional survival estimates from several cohorts. It is computed here using three year calendar blocks (2003-2005: 0-1 year survival),

(2002-2004: 1-2 year survival), (2001-2003: 2-3 year survival), (2000-2002: 3-4 year survival), (1999-2001: 4-5 years survival).

<sup>e</sup> The difference in rates between 1975-1977 and 1999-2005 is statistically significant ( $p < .05$ ).

<sup>f</sup> The standard error of the survival rate is between 5 and 10 percentage points.

<sup>g</sup> The standard error of the survival rate is greater than 10 percentage points.

- Statistic could not be calculated due to fewer than 25 cases during the time period.

Table 24.7  
Cancer of the Stomach (Invasive)

## Survival Rates, by Race, Sex, Diagnosis Year, Stage and Age

	All Races			Whites			Blacks		
	Total	Males	Females	Total	Males	Females	Total	Males	Females
<b>5-Year Relative Survival Rates</b>									
Year of Diagnosis:									
1960-1963 <sup>a</sup>	-	-	-	11	10	13	8	5	14
1970-1973 <sup>a</sup>	-	-	-	13	12	14	13	15	10
1975-1977 <sup>b</sup>	15.9	15.0	17.2	14.8	13.7	16.4	16.3	16.4	16.1
1978-1980 <sup>b</sup>	16.8	14.9	19.9	16.2	14.3	19.1	16.9	16.0	18.6
1981-1983 <sup>b</sup>	18.0	17.1	19.6	16.9	16.1	18.3	17.2	16.8	17.7
1984-1986 <sup>b</sup>	18.4	16.2	21.8	17.6	15.1	21.6	20.0	17.5	23.4
1987-1989 <sup>b</sup>	20.7	17.5	26.0	19.1	16.1	24.5	20.0	17.2	24.5
1990-1992 <sup>b</sup>	21.7	18.6	26.6	19.3	16.4	24.0	23.8	22.9	24.9
1993-1995 <sup>b</sup>	21.7	20.5	23.9	20.6	19.3	23.1	19.9	17.9	23.0
1996-1998 <sup>b</sup>	23.1	21.7	25.3	21.0	19.1	24.4	23.8	21.0	27.0
1999-2005 <sup>b</sup>	26.5 <sup>e</sup>	24.9 <sup>e</sup>	28.9 <sup>e</sup>	25.3 <sup>e</sup>	23.4 <sup>e</sup>	28.5 <sup>e</sup>	26.1 <sup>e</sup>	25.1 <sup>e</sup>	27.2 <sup>e</sup>
<b>5-Year Period Survival Rates<sup>cd</sup></b>									
Year of Diagnosis:									
1999-2005	27.2	25.5	29.8	25.4	23.7	28.2	27.0	23.7	31.0
<b>Stage Distribution (%) 1999-2005<sup>c</sup></b>									
All Stages									
Number of cases	30,671	18,517	12,154	21,925	13,542	8,383	3,782	2,100	1,682
Percent	100%	100%	100%	100%	100%	100%	100%	100%	100%
Localized	23	22	24	23	22	24	23	21	25
Regional	32	34	30	32	33	29	31	32	29
Distant	33	34	32	34	35	33	33	35	30
Unstaged	11	10	14	12	10	14	13	11	16
<b>5-Year Relative Survival Rates, 1999-2005<sup>c</sup></b>									
Age at Diagnosis:									
Ages <45	30.0	28.7	31.6	28.1	26.6	30.1	38.0	34.0	43.2
Ages 45-54	28.5	26.2	32.6	26.3	24.0	30.8	30.2	27.2	35.0
Ages 55-64	26.4	24.3	30.9	24.2	22.7	28.0	27.3	22.8	35.1
Ages 65-74	26.4	24.5	29.6	25.0	23.0	28.7	22.1	19.9	24.9
Ages 75+	21.9	20.2	23.6	20.9	19.6	22.3	16.1	12.3	18.4
Ages <65	27.8	25.7	31.6	25.6	23.7	29.4	30.9	26.9	37.4
Ages 65+	24.1	22.5	26.1	22.9	21.4	25.0	19.3	17.2	21.3
Stage:									
All Stages	25.7	24.0	28.3	24.1	22.5	26.7	25.2	22.6	28.4
Localized	62.5	59.4	66.5	60.3	56.9	65.1	57.8	56.9	58.3
Regional	26.6	25.8	27.8	24.8	24.6	25.3	28.3	25.4	32.2
Distant	3.4	3.3	3.6	3.2	3.1	3.2	3.2	2.3	4.3
Unstaged	16.8	12.7	21.2	15.5	11.0	20.6	16.0	11.5	19.8

<sup>a</sup> Rates are based on End Results data from a series of hospital registries and one population-based registry.

<sup>b</sup> Rates are from the SEER 9 areas (San Francisco, Connecticut, Detroit, Hawaii, Iowa, New Mexico, Seattle, Utah, Atlanta).

Rates are based on follow-up of patients into 2006.

<sup>c</sup> Rates are from the SEER 17 areas (San Francisco, Connecticut, Detroit, Hawaii, Iowa, New Mexico, Seattle, Utah, Atlanta, San Jose-Monterey, Los Angeles, Alaska Native Registry, Rural Georgia, California excluding SF/SJM/LA, Kentucky, Louisiana and New Jersey). California excluding SF/SJM/LA, Kentucky, Louisiana, and New Jersey contribute cases for diagnosis years 2000-2005.

The remaining 13 SEER Areas contribute cases for the entire period 1999-2005. Rates are based on follow-up of patients into 2006.

<sup>d</sup> Period survival provides a more up-to-date estimate of survival by piecing together the most recent conditional survival estimates from several cohorts. It is computed here using three year calendar blocks (2003-2005: 0-1 year survival),

(2002-2004: 1-2 year survival), (2001-2003: 2-3 year survival), (2000-2002: 3-4 year survival), (1999-2001: 4-5 years survival).

<sup>e</sup> The difference in rates between 1975-1977 and 1999-2005 is statistically significant ( $p < .05$ ).

<sup>f</sup> The standard error of the survival rate is between 5 and 10 percentage points.

<sup>g</sup> The standard error of the survival rate is greater than 10 percentage points.

- Statistic could not be calculated due to fewer than 25 cases during the time period.

Table 25.7  
Cancer of the Testis (Invasive)

## Survival Rates, by Race, Diagnosis Year, Stage and Age

	All Races, Males			White Males			Black Males		
	All	<50	50+	All	<50	50+	All	<50	50+
<b>5-Year Relative Survival Rates</b>									
Year of Diagnosis:									
1960-1963 <sup>a</sup>	-	-	-	63	-	-	-	-	-
1970-1973 <sup>a</sup>	-	-	-	72	-	-	-	-	-
1975-1977 <sup>b</sup>	82.7	83.3	78.4	82.6	83.2	78.1	-	-	-
1978-1980 <sup>b</sup>	89.1	89.5	84.2	89.4	89.8	85.1	72.7 <sup>f</sup>	77.1 <sup>f</sup>	-
1981-1983 <sup>b</sup>	92.3	92.7	87.0	92.5	92.9	87.2	87.5 <sup>f</sup>	84.7 <sup>f</sup>	-
1984-1986 <sup>b</sup>	92.8	93.6	81.9	93.1	94.0	82.2	87.0 <sup>f</sup>	89.4 <sup>f</sup>	-
1987-1989 <sup>b</sup>	95.1	95.0	95.5	95.4	95.3	95.2	88.4 <sup>f</sup>	87.8 <sup>f</sup>	-
1990-1992 <sup>b</sup>	95.9	95.9	94.4	96.2	96.2	95.4	83.6 <sup>f</sup>	-	-
1993-1995 <sup>b</sup>	95.7	96.2	86.6	96.0	96.5	87.6	88.2	89.4	-
1996-1998 <sup>b</sup>	95.7	96.3	86.5	95.8	96.4	86.6	88.6	90.1	-
1999-2005 <sup>b</sup>	96.2 <sup>e</sup>	96.5 <sup>e</sup>	91.7 <sup>e</sup>	96.5 <sup>e</sup>	96.8 <sup>e</sup>	92.5 <sup>e</sup>	87.0	87.7	-
<b>5-Year Period Survival Rates<sup>cd</sup></b>									
Year of Diagnosis:									
1999-2005	95.3	95.5	92.7	95.7	95.8	93.4	88.7	90.3	-
<b>Stage Distribution (%) 1999-2005<sup>c</sup></b>									
All Stages									
Number of cases	12,893	11,723	1,170	11,863	10,785	1,078	361	331	30
Percent	100%	100%	100%	100%	100%	100%	100%	100%	100%
Localized	70	70	70	71	71	71	59	60	50
Regional	17	17	16	17	17	15	21	22	17
Distant	11	11	11	11	11	11	17	17	20
Unstaged	2	2	3	2	1	3	2	1	13
<b>5-Year Relative Survival Rates, 1999-2005<sup>c</sup></b>									
Age at Diagnosis:									
Ages <45	95.6	-	-	95.8	-	-	90.5	-	-
Ages 45-54	95.4	-	-	95.9	-	-	81.9 <sup>f</sup>	-	-
Ages 55-64	90.4	-	-	91.1	-	-	-	-	-
Ages 65-74	82.8 <sup>f</sup>	-	-	82.5 <sup>f</sup>	-	-	-	-	-
Ages 75+	73.8 <sup>g</sup>	-	-	75.4 <sup>g</sup>	-	-	-	-	-
Ages <65	95.5	-	-	95.8	-	-	88.8	-	-
Ages 65+	80.7 <sup>f</sup>	-	-	81.7 <sup>f</sup>	-	-	-	-	-
Stage:									
All Stages	95.3	95.5	92.5	95.6	95.8	93.2	88.4	90.1	66.8 <sup>g</sup>
Localized	99.2	99.3	97.8	99.2	99.3	98.1	99.2	99.9	-
Regional	95.9	95.7	95.2	96.4	96.1	96.3	84.8	87.5	-
Distant	71.0	72.0	58.4	71.7	72.7	59.8 <sup>f</sup>	56.3 <sup>f</sup>	56.7 <sup>f</sup>	-
Unstaged	87.4	90.2	71.8 <sup>f</sup>	88.6	91.1	73.1 <sup>g</sup>	-	-	-

<sup>a</sup> Rates are based on End Results data from a series of hospital registries and one population-based registry.

<sup>b</sup> Rates are from the SEER 9 areas (San Francisco, Connecticut, Detroit, Hawaii, Iowa, New Mexico, Seattle, Utah, Atlanta).

Rates are based on follow-up of patients into 2006.

<sup>c</sup> Rates are from the SEER 17 areas (San Francisco, Connecticut, Detroit, Hawaii, Iowa, New Mexico, Seattle, Utah, Atlanta, San Jose-Monterey, Los Angeles, Alaska Native Registry, Rural Georgia, California excluding SF/SJM/LA, Kentucky, Louisiana and New Jersey). California excluding SF/SJM/LA, Kentucky, Louisiana, and New Jersey contribute cases for diagnosis years 2000-2005.

The remaining 13 SEER Areas contribute cases for the entire period 1999-2005. Rates are based on follow-up of patients into 2006.

<sup>d</sup> Period survival provides a more up-to-date estimate of survival by piecing together the most recent conditional survival estimates from several cohorts. It is computed here using three year calendar blocks (2003-2005: 0-1 year survival),

(2002-2004: 1-2 year survival), (2001-2003: 2-3 year survival), (2000-2002: 3-4 year survival), (1999-2001: 4-5 years survival).

<sup>e</sup> The difference in rates between 1975-1977 and 1999-2005 is statistically significant ( $p < .05$ ).

<sup>f</sup> The standard error of the survival rate is between 5 and 10 percentage points.

<sup>g</sup> The standard error of the survival rate is greater than 10 percentage points.

- Statistic could not be calculated due to fewer than 25 cases during the time period.

Table 26.7  
Cancer of the Thyroid (Invasive)

## Survival Rates, by Race, Sex, Diagnosis Year, Stage and Age

	All Races			Whites			Blacks		
	Total	Males	Females	Total	Males	Females	Total	Males	Females
<b>5-Year Relative Survival Rates</b>									
Year of Diagnosis:									
1960-1963 <sup>a</sup>	-	-	-	83	75	87	-	-	-
1970-1973 <sup>a</sup>	-	-	-	86	82	87	-	-	-
1975-1977 <sup>b</sup>	93.2	92.6	93.4	93.0	92.3	93.2	90.7	-	91.7
1978-1980 <sup>b</sup>	93.2	88.5	94.6	92.7	88.9	93.8	90.5	68.8 <sup>g</sup>	95.7
1981-1983 <sup>b</sup>	94.4	93.0	94.7	93.8	91.9	94.5	96.7	100.0	93.7
1984-1986 <sup>b</sup>	93.9	90.9	94.8	93.9	90.6	94.8	90.0	86.1 <sup>f</sup>	90.8
1987-1989 <sup>b</sup>	95.1	92.4	95.9	94.9	92.4	95.5	92.5	90.7 <sup>f</sup>	92.7
1990-1992 <sup>b</sup>	95.1	91.3	96.2	95.7	92.5	96.6	87.4	84.8 <sup>f</sup>	88.3
1993-1995 <sup>b</sup>	96.0	92.5	97.0	96.0	92.3	97.2	93.4	88.3 <sup>f</sup>	94.5
1996-1998 <sup>b</sup>	96.1	91.7	97.4	96.5	92.2	97.8	95.3	86.0 <sup>f</sup>	96.7
1999-2005 <sup>b</sup>	97.3 <sup>e</sup>	94.9 <sup>e</sup>	98.0 <sup>e</sup>	97.5 <sup>e</sup>	95.3 <sup>e</sup>	98.2 <sup>e</sup>	95.5	94.1	95.5
<b>5-Year Period Survival Rates<sup>cd</sup></b>									
Year of Diagnosis:									
1999-2005	97.7	94.8	98.4	97.8	94.8	98.5	96.9	93.5	97.2
<b>Stage Distribution (%) 1999-2005<sup>c</sup></b>									
All Stages									
Number of cases	37,453	8,609	28,844	30,963	7,355	23,608	2,227	416	1,811
Percent	100%	100%	100%	100%	100%	100%	100%	100%	100%
Localized	68	58	70	68	59	71	76	67	77
Regional	24	30	23	24	30	23	14	16	14
Distant	6	9	5	5	9	4	8	13	7
Unstaged	3	3	2	3	3	2	2	3	2
<b>5-Year Relative Survival Rates, 1999-2005<sup>c</sup></b>									
Age at Diagnosis:									
Ages <45	99.3	98.0	99.5	99.3	98.3	99.6	98.1	91.5	99.0
Ages 45-54	98.6	95.6	99.4	98.7	95.6	99.5	94.9	86.6	96.9
Ages 55-64	96.2	93.7	97.1	96.5	93.7	97.4	92.5	90.1	91.6
Ages 65-74	92.3	90.3	93.2	92.9	90.5	94.1	88.1	91.9 <sup>f</sup>	85.7 <sup>f</sup>
Ages 75+	81.0	75.7	82.2	82.5	75.9	83.4	67.2 <sup>f</sup>	-	64.1 <sup>g</sup>
Ages <65	98.6	96.4	99.2	98.7	96.6	99.3	96.5	91.0	97.5
Ages 65+	88.7	86.4	89.4	89.4	86.2	90.0	83.0	90.9 <sup>f</sup>	79.6
Stage:									
All Stages	97.3	94.7	98.0	97.5	94.8	98.2	95.0	91.4	95.5
Localized	99.8	99.6	99.8	99.8	99.6	99.8	99.3	98.2	99.3
Regional	97.0	95.4	97.7	97.2	95.2	98.0	92.4	86.3 <sup>f</sup>	93.8
Distant	59.0	52.8	62.2	57.9	50.5	62.1	52.7	59.7 <sup>f</sup>	49.2 <sup>f</sup>
Unstaged	89.4	81.1	92.0	89.3	81.0	92.1	76.3 <sup>f</sup>	-	76.1 <sup>g</sup>

<sup>a</sup> Rates are based on End Results data from a series of hospital registries and one population-based registry.

<sup>b</sup> Rates are from the SEER 9 areas (San Francisco, Connecticut, Detroit, Hawaii, Iowa, New Mexico, Seattle, Utah, Atlanta).

Rates are based on follow-up of patients into 2006.

<sup>c</sup> Rates are from the SEER 17 areas (San Francisco, Connecticut, Detroit, Hawaii, Iowa, New Mexico, Seattle, Utah, Atlanta, San Jose-Monterey, Los Angeles, Alaska Native Registry, Rural Georgia, California excluding SF/SJM/LA, Kentucky, Louisiana and New Jersey). California excluding SF/SJM/LA, Kentucky, Louisiana, and New Jersey contribute cases for diagnosis years 2000-2005.

<sup>d</sup> The remaining 13 SEER Areas contribute cases for the entire period 1999-2005. Rates are based on follow-up of patients into 2006. Period survival provides a more up-to-date estimate of survival by piecing together the most recent conditional survival estimates from several cohorts. It is computed here using three year calendar blocks (2003-2005: 0-1 year survival),

(2002-2004: 1-2 year survival), (2001-2003: 2-3 year survival), (2000-2002: 3-4 year survival), (1999-2001: 4-5 years survival).

<sup>e</sup> The difference in rates between 1975-1977 and 1999-2005 is statistically significant ( $p < .05$ ).

<sup>f</sup> The standard error of the survival rate is between 5 and 10 percentage points.

<sup>g</sup> The standard error of the survival rate is greater than 10 percentage points.

- Statistic could not be calculated due to fewer than 25 cases during the time period.

Table 27.7  
Cancer of the Urinary Bladder (Invasive and *In Situ*)

## Survival Rates, by Race, Sex, Diagnosis Year, Stage and Age

	All Races			Whites			Blacks		
	Total	Males	Females	Total	Males	Females	Total	Males	Females
<b>5-Year Relative Survival Rates</b>									
Year of Diagnosis:									
1960-1963 <sup>a</sup>	-	-	-	53	53	53	24	24	24
1970-1973 <sup>a</sup>	-	-	-	61	61	60	36	38	27
1975-1977 <sup>b</sup>	73.5	74.9	69.7	74.5	75.5	71.5	50.6	56.8	38.8 <sup>f</sup>
1978-1980 <sup>b</sup>	76.0	77.2	72.7	76.9	77.6	74.8	55.6	64.3	40.8 <sup>f</sup>
1981-1983 <sup>b</sup>	78.5	79.9	74.9	79.3	80.4	76.3	60.1	65.4	48.4 <sup>f</sup>
1984-1986 <sup>b</sup>	78.2	79.5	74.6	78.7	79.9	75.5	61.0	64.0	54.2 <sup>f</sup>
1987-1989 <sup>b</sup>	80.6	82.8	74.1	81.5	83.5	75.4	63.3	68.1	54.0 <sup>f</sup>
1990-1992 <sup>b</sup>	80.9	83.3	74.0	81.9	84.2	75.2	64.8	67.6	60.2
1993-1995 <sup>b</sup>	81.5	83.1	76.9	82.2	83.4	78.8	61.9	69.1	46.8
1996-1998 <sup>b</sup>	80.1	81.1	77.2	80.7	81.7	77.8	62.3	65.1	55.3
1999-2005 <sup>b</sup>	81.7 <sup>e</sup>	83.0 <sup>e</sup>	78.2 <sup>e</sup>	82.6 <sup>e</sup>	83.5 <sup>e</sup>	80.0 <sup>e</sup>	67.8 <sup>e</sup>	71.5 <sup>e</sup>	61.0 <sup>e</sup>
<b>5-Year Period Survival Rates<sup>cd</sup></b>									
Year of Diagnosis:									
1999-2005	80.3	81.8	75.8	80.6	81.9	76.7	68.4	71.8	61.8
<b>Stage Distribution (%) 1999-2005<sup>c</sup></b>									
All Stages									
Number of cases	72,583	54,093	18,490	65,545	49,207	16,338	3,454	2,184	1,270
Percent	100%	100%	100%	100%	100%	100%	100%	100%	100%
In Situ	50	51	48	51	51	49	36	39	30
Localized	36	36	35	35	36	35	40	39	41
Regional	8	7	8	7	7	8	12	11	14
Distant	4	3	5	4	3	5	7	5	10
Unstaged	3	3	3	3	3	3	5	5	5
<b>5-Year Relative Survival Rates, 1999-2005<sup>c</sup></b>									
Age at Diagnosis:									
Ages <45	90.4	91.3	88.2	91.4	92.0	89.8	78.2	79.1	74.8 <sup>f</sup>
Ages 45-54	85.3	85.4	84.9	85.9	85.8	86.3	73.0	77.4	60.5 <sup>f</sup>
Ages 55-64	84.7	84.8	84.3	85.1	85.0	85.5	73.0	75.4	67.3
Ages 65-74	80.1	81.1	76.8	80.6	81.3	78.5	65.3	71.3	54.5
Ages 75+	72.7	75.9	65.3	73.4	76.4	66.5	52.0	53.8	48.2
Ages <65	85.6	85.7	85.1	86.0	86.0	86.3	74.1	76.9	67.3
Ages 65+	76.5	78.7	70.6	77.2	79.0	72.0	58.9	63.8	51.5
Stage:									
All Stages	80.0	81.5	75.7	80.5	81.7	77.0	66.5	71.5	57.3
In Situ	97.2	97.3	97.0	97.3	97.2	97.4	96.5	98.1	91.6
Localized	74.3	76.3	68.3	74.7	76.6	68.9	63.1	65.8	58.0
Regional	36.2	37.1	33.9	36.7	37.1	35.4	30.0	36.1	21.8
Distant	5.8	5.9	5.5	5.7	6.3	4.4	7.8	0.0	11.4
Unstaged	56.0	60.6	44.4	55.1	59.1	44.7	44.1 <sup>f</sup>	49.2 <sup>f</sup>	33.7 <sup>f</sup>

<sup>a</sup> Rates are based on End Results data from a series of hospital registries and one population-based registry.

<sup>b</sup> Rates are from the SEER 9 areas (San Francisco, Connecticut, Detroit, Hawaii, Iowa, New Mexico, Seattle, Utah, Atlanta).

Rates are based on follow-up of patients into 2006.

<sup>c</sup> Rates are from the SEER 17 areas (San Francisco, Connecticut, Detroit, Hawaii, Iowa, New Mexico, Seattle, Utah, Atlanta, San Jose-Monterey, Los Angeles, Alaska Native Registry, Rural Georgia, California excluding SF/SJM/LA, Kentucky, Louisiana and New Jersey). California excluding SF/SJM/LA, Kentucky, Louisiana, and New Jersey contribute cases for diagnosis years 2000-2005.

The remaining 13 SEER Areas contribute cases for the entire period 1999-2005. Rates are based on follow-up of patients into 2006.

<sup>d</sup> Period survival provides a more up-to-date estimate of survival by piecing together the most recent conditional survival estimates from several cohorts. It is computed here using three year calendar blocks (2003-2005: 0-1 year survival), (2002-2004: 1-2 year survival), (2001-2003: 2-3 year survival), (2000-2002: 3-4 year survival), (1999-2001: 4-5 years survival).

<sup>e</sup> The difference in rates between 1975-1977 and 1999-2005 is statistically significant ( $p < .05$ ).

<sup>f</sup> The standard error of the survival rate is between 5 and 10 percentage points.

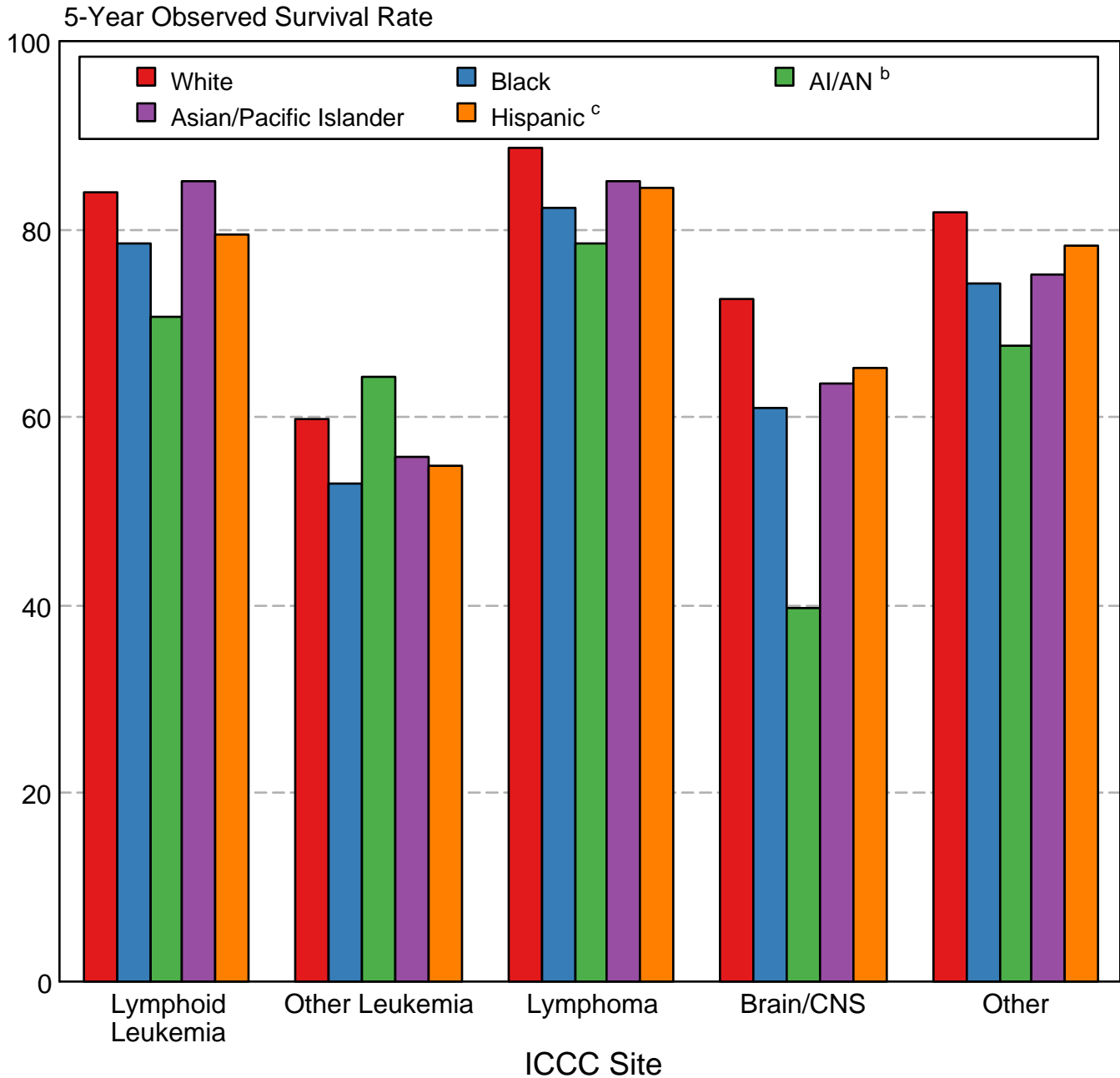
<sup>g</sup> The standard error of the survival rate is greater than 10 percentage points.

- Statistic could not be calculated due to fewer than 25 cases during the time period.



## Childhood Cancer: SEER Survival Rates 1999-2005

### 5-Year Observed Survival Rates by ICCC Group<sup>a</sup> and Race/Ethnicity Both Sexes, Under 20 Years of Age



Source: SEER 17 areas (San Francisco, Connecticut, Detroit, Hawaii, Iowa, New Mexico, Seattle, Utah, Atlanta, San Jose-Monterey, Los Angeles, Alaska Native Registry, Rural Georgia, California excluding SF/SJM/LA, Kentucky, Louisiana, and New Jersey). California excluding SF/SJM/LA, Kentucky, Louisiana, and New Jersey contribute cases for diagnosis years 2000-2006. The remaining 13 SEER Areas contribute cases for the entire period 1999-2005.

International Classification of Childhood Cancer is based on ICD-O-3. Steliarova-Foucher E, Stiller C, Lacour B, Kaatsch P. International Classification of Childhood Cancer, Third Edition. Cancer. April 1, 2005; Vol 103, No. 7, pg 1457-1467.

<sup>a</sup> Excludes myelodysplastic syndromes (MDS) and benign brain tumors.

<sup>b</sup> American Indian/Alaska Native. Survival data for American Indian/Alaska Native are based on the CHSDA (Contract Health Service Delivery Area) counties.

<sup>c</sup> Hispanic is not mutually exclusive from whites, blacks, Asian/Pacific Islanders, and American Indians/Alaska Natives. Survival data for Hispanics are based on NHIA and excludes cases from the Alaska Native Registry and Kentucky.