

Table 15.1  
Cancer of the Lung and Bronchus (Invasive)

Trends in SEER Incidence<sup>ab</sup> and U.S. Mortality<sup>c</sup> Using the Joinpoint Regression Program,  
1975-2007 With up to Four Joinpoints, 1992-2007 With up to Two Joinpoints,  
Both Sexes by Race/Ethnicity

	Joinpoint Trend 1		Joinpoint Trend 2		Joinpoint Trend 3		Joinpoint Trend 4		Joinpoint Trend 5		AAPC <sup>d</sup>	
	Years	APC	Years	APC	Years	APC	Years	APC	Years	APC	1998-2007	2003-2007
<u>SEER 9 Delay-Adjusted Incidence<sup>a</sup>, 1975-2007</u>												
All Races	1975-1982	2.5*	1982-1991	1.0*	1991-2007	-0.8*					-0.8*	-0.8*
White	1975-1982	2.5*	1982-1991	1.1*	1991-2007	-0.6*					-0.6*	-0.6*
Black	1975-1985	3.3*	1985-2007	-1.0*							-1.0*	-1.0*
<u>SEER 13 Delay-Adjusted Incidence<sup>b</sup>, 1992-2007</u>												
All Races	1992-2007	-1.1*									-1.1*	-1.1*
White	1992-2007	-1.0*									-1.0*	-1.0*
Black	1992-2007	-1.4*									-1.4*	-1.4*
<u>SEER 9 Observed Incidence<sup>a</sup>, 1975-2007</u>												
All Races	1975-1982	2.5*	1982-1991	1.0*	1991-2007	-0.8*					-0.8*	-0.8*
White	1975-1987	2.0*	1987-1998	-0.1	1998-2007	-1.1*					-1.1*	-1.1*
Black	1975-1984	3.3*	1984-1998	-0.5	1998-2007	-2.0*					-2.0*	-2.0*
<u>SEER 13 Observed Incidence<sup>b</sup>, 1992-2007</u>												
All Races	1992-2007	-1.2*									-1.2*	-1.2*
White	1992-1998	-0.5*	1998-2007	-1.4*							-1.4*	-1.4*
White NH <sup>ef</sup>	1992-1998	-0.4	1998-2007	-1.2*							-1.2*	-1.2*
Black	1992-2007	-1.5*									-1.5*	-1.5*
Black NH <sup>ef</sup>	1992-2007	-1.5*									-1.5*	-1.5*
API <sup>e</sup>	1992-1994	-4.3	1994-2005	-0.2	2005-2007	-4.5					-1.2	-2.4
AI/AN <sup>eg</sup>	1992-2007	-0.5									-0.5	-0.5
Hispanic <sup>f</sup>	1992-2007	-1.7*									-1.7*	-1.7*
<u>U.S. Cancer Mortality<sup>c</sup>, 1975-2007</u>												
All Races	1975-1980	3.0*	1980-1990	1.8*	1990-1994	-0.1	1994-2003	-0.9*	2003-2007	-1.6*	-1.2*	-1.6*
White	1975-1982	2.6*	1982-1991	1.7*	1991-2002	-0.6*	2002-2007	-1.4*			-1.1*	-1.4*
Black	1975-1981	3.5*	1981-1990	1.9*	1990-1997	-0.9*	1997-2007	-1.9*			-1.9*	-1.9*
<u>U.S. Cancer Mortality<sup>c</sup>, 1992-2007</u>												
All Races	1992-2002	-0.8*	2002-2007	-1.5*							-1.2*	-1.5*
White	1992-2002	-0.6*	2002-2007	-1.4*							-1.1*	-1.4*
White NH <sup>ef</sup>	1992-2003	-0.5*	2003-2007	-1.4*							-0.9*	-1.4*
Black	1992-1997	-1.1*	1997-2005	-1.7*	2005-2007	-2.6*					-1.9*	-2.2*
Black NH <sup>ef</sup>	1992-2004	-1.4*	2004-2007	-2.2*							-1.7*	-2.0*
API <sup>e</sup>	1992-2007	-1.3*									-1.3*	-1.3*
AI/AN <sup>eg</sup>	1992-2007	-0.2									-0.2	-0.2
Hispanic <sup>f</sup>	1992-1997	0.4	1997-2007	-2.2*							-2.2*	-2.2*

Joinpoint Regression Program Version 3.4.3, April 2010, National Cancer Institute. (<http://srab.cancer.gov/joinpoint/>).

The APC is the Annual Percent Change based on rates age-adjusted to the 2000 US Std Population (19 age groups - Census P25-1130).

<sup>a</sup> Trends are from the SEER 9 areas (San Francisco, Connecticut, Detroit, Hawaii, Iowa, New Mexico, Seattle, Utah, and Atlanta).

<sup>b</sup> Trends are from the SEER 13 areas (SEER 9 Areas, Los Angeles, San Jose-Monterey, Rural Georgia, and the Alaska Native Registry).

<sup>c</sup> Trends are from US Mortality Files, National Center for Health Statistics, Centers for Disease Control and Prevention.

<sup>d</sup> The AAPC is the Average Annual Percent Change and is based on the APCs calculated by Joinpoint.

<sup>e</sup> API - Asian/Pacific Islander, AI/AN - American Indian/Alaska Native, NH - Non-Hispanic

<sup>f</sup> Hispanic and Non-Hispanic are not mutually exclusive from whites, blacks, Asian/Pacific Islanders, and American Indians/Alaska

Natives. Incidence data for Hispanics and Non-Hispanics are based on NHIA and exclude cases from the Alaska Native Registry.

The Hispanic and Non-Hispanic mortality trends exclude deaths from CT, DC, ME, MD, MN, NH, NY, ND, OK and VT.

<sup>g</sup> Data for American Indian/Alaska Native are based on the CHSDA (Contract Health Service Delivery Area) counties.

\* The APC/AAPC is significantly different from zero ( $p < .05$ ).

- Joinpoint regression line analysis could not be performed on data series.

Table 15.2  
Cancer of the Lung and Bronchus (Invasive)

Trends in SEER Incidence<sup>ab</sup> and U.S. Mortality<sup>c</sup> Using the Joinpoint Regression Program,  
1975-2007 With up to Four Joinpoints, 1992-2007 With up to Two Joinpoints,  
Males by Race/Ethnicity

	Joinpoint Trend 1		Joinpoint Trend 2		Joinpoint Trend 3		Joinpoint Trend 4		Joinpoint Trend 5		AAPC <sup>d</sup>	
	Years	APC	Years	APC	Years	APC	Years	APC	Years	APC	1998-2007	2003-2007
<u>SEER 9 Delay-Adjusted Incidence<sup>a</sup>, 1975-2007</u>												
All Races	1975-1982	1.4*	1982-1991	-0.4	1991-2007	-1.8*					-1.8*	-1.8*
White	1975-1981	1.5*	1981-1990	-0.2	1990-2007	-1.8*					-1.8*	-1.8*
Black	1975-1984	2.9*	1984-1998	-1.4*	1998-2007	-3.2*					-3.2*	-3.2*
<u>SEER 13 Delay-Adjusted Incidence<sup>b</sup>, 1992-2007</u>												
All Races	1992-2007	-2.0*									-2.0*	-2.0*
White	1992-2007	-2.0*									-2.0*	-2.0*
Black	1992-2007	-2.7*									-2.7*	-2.7*
<u>SEER 9 Observed Incidence<sup>a</sup>, 1975-2007</u>												
All Races	1975-1982	1.5*	1982-1992	-0.5*	1992-2007	-2.0*					-2.0*	-2.0*
White	1975-1981	1.4*	1981-1989	-0.1	1989-2003	-1.6*	2003-2007	-2.9*			-2.2*	-2.9*
Black	1975-1984	2.9*	1984-1998	-1.4*	1998-2007	-3.4*					-3.4*	-3.4*
<u>SEER 13 Observed Incidence<sup>b</sup>, 1992-2007</u>												
All Races	1992-2007	-2.1*									-2.1*	-2.1*
White	1992-2007	-2.1*									-2.1*	-2.1*
White NH <sup>ef</sup>	1992-2007	-1.9*									-1.9*	-1.9*
Black	1992-2007	-2.8*									-2.8*	-2.8*
Black NH <sup>ef</sup>	1992-2007	-2.8*									-2.8*	-2.8*
API <sup>e</sup>	1992-2007	-1.2*									-1.2*	-1.2*
AI/AN <sup>eg</sup>	1992-2007	-2.1*									-2.1*	-2.1*
Hispanic <sup>f</sup>	1992-2007	-2.3*									-2.3*	-2.3*
<u>U.S. Cancer Mortality<sup>c</sup>, 1975-2007</u>												
All Races	1975-1978	2.4*	1978-1984	1.2*	1984-1991	0.3*	1991-2005	-1.9*	2005-2007	-3.0*	-2.1*	-2.5*
White	1975-1980	1.9*	1980-1987	0.7*	1987-1991	0.1	1991-2005	-1.7*	2005-2007	-3.0*	-2.0*	-2.4*
Black	1975-1977	4.9*	1977-1984	2.3*	1984-1990	1.2*	1990-1995	-1.4*	1995-2007	-2.8*	-2.8*	-2.8*
<u>U.S. Cancer Mortality<sup>c</sup>, 1992-2007</u>												
All Races	1992-2007	-2.0*									-2.0*	-2.0*
White	1992-2005	-1.8*	2005-2007	-2.9*							-2.0*	-2.3*
White NH <sup>ef</sup>	1992-2007	-1.7*									-1.7*	-1.7*
Black	1992-1994	-0.8	1994-2007	-2.8*							-2.8*	-2.8*
Black NH <sup>ef</sup>	1992-1994	-1.1	1994-2007	-2.6*							-2.6*	-2.6*
API <sup>e</sup>	1992-2007	-1.6*									-1.6*	-1.6*
AI/AN <sup>eg</sup>	1992-2007	-1.5*									-1.5*	-1.5*
Hispanic <sup>f</sup>	1992-1998	-0.4	1998-2007	-3.4*							-3.4*	-3.4*

Joinpoint Regression Program Version 3.4.3, April 2010, National Cancer Institute. (<http://srab.cancer.gov/joinpoint/>).

The APC is the Annual Percent Change based on rates age-adjusted to the 2000 US Std Population (19 age groups - Census P25-1130).

<sup>a</sup> Trends are from the SEER 9 areas (San Francisco, Connecticut, Detroit, Hawaii, Iowa, New Mexico, Seattle, Utah, and Atlanta).

<sup>b</sup> Trends are from the SEER 13 areas (SEER 9 Areas, Los Angeles, San Jose-Monterey, Rural Georgia, and the Alaska Native Registry).

<sup>c</sup> Trends are from US Mortality Files, National Center for Health Statistics, Centers for Disease Control and Prevention.

<sup>d</sup> The AAPC is the Average Annual Percent Change and is based on the APCs calculated by Joinpoint.

<sup>e</sup> API - Asian/Pacific Islander, AI/AN - American Indian/Alaska Native, NH - Non-Hispanic

<sup>f</sup> Hispanic and Non-Hispanic are not mutually exclusive from whites, blacks, Asian/Pacific Islanders, and American Indians/Alaska

Natives. Incidence data for Hispanics and Non-Hispanics are based on NHIA and exclude cases from the Alaska Native Registry.

The Hispanic and Non-Hispanic mortality trends exclude deaths from CT, DC, ME, MD, MN, NH, NY, ND, OK and VT.

<sup>g</sup> Data for American Indian/Alaska Native are based on the CHSDA (Contract Health Service Delivery Area) counties.

\* The APC/AAPC is significantly different from zero ( $p < .05$ ).

- Joinpoint regression line analysis could not be performed on data series.

Table 15.3  
Cancer of the Lung and Bronchus (Invasive)

Trends in SEER Incidence<sup>ab</sup> and U.S. Mortality<sup>c</sup> Using the Joinpoint Regression Program,  
1975-2007 With up to Four Joinpoints, 1992-2007 With up to Two Joinpoints,  
Females by Race/Ethnicity

	Joinpoint Trend 1		Joinpoint Trend 2		Joinpoint Trend 3		Joinpoint Trend 4		Joinpoint Trend 5		AAPC <sup>d</sup>	
	Years	APC	Years	APC	Years	APC	Years	APC	Years	APC	1998-2007	2003-2007
<u>SEER 9 Delay-Adjusted Incidence<sup>a</sup>, 1975-2007</u>												
All Races	1975-1982	5.5*	1982-1991	3.5*	1991-2007	0.4*					0.4*	0.4*
White	1975-1982	5.6*	1982-1988	4.1*	1988-1997	1.5*	1997-2007	0.2			0.2	0.2
Black	1975-1990	4.3*	1990-2007	0.4							0.4	0.4
<u>SEER 13 Delay-Adjusted Incidence<sup>b</sup>, 1992-2007</u>												
All Races	1992-1997	0.7	1997-2007	-0.3*							-0.3*	-0.3*
White	1992-1997	0.9	1997-2007	-0.3*							-0.3*	-0.3*
Black	1992-2007	0.5									0.5*	0.5*
<u>SEER 9 Observed Incidence<sup>a</sup>, 1975-2007</u>												
All Races	1975-1982	5.5*	1982-1990	3.5*	1990-1998	1.0*	1998-2007	-0.1			-0.1	-0.1
White	1975-1982	5.6*	1982-1988	4.1*	1988-1997	1.6*	1997-2007	0.0			0.0	0.0
Black	1975-1990	4.3*	1990-2007	0.3							0.3	0.3
<u>SEER 13 Observed Incidence<sup>b</sup>, 1992-2007</u>												
All Races	1992-1998	0.6	1998-2007	-0.6*							-0.6*	-0.6*
White	1992-1997	1.0*	1997-2007	-0.5*							-0.5*	-0.5*
White NH <sup>ef</sup>	1992-1997	1.2*	1997-2007	-0.3							-0.3	-0.3
Black	1992-2007	0.3									0.3	0.3
Black NH <sup>ef</sup>	1992-2007	0.4									0.4	0.4
API <sup>e</sup>	1992-2007	0.2									0.2	0.2
AI/AN <sup>eg</sup>	1992-2007	1.7									1.7	1.7
Hispanic <sup>f</sup>	1992-2007	-1.0*									-1.0*	-1.0*
<u>U.S. Cancer Mortality<sup>c</sup>, 1975-2007</u>												
All Races	1975-1982	6.0*	1982-1990	4.2*	1990-1995	1.7*	1995-2003	0.3*	2003-2007	-0.9*	-0.2	-0.9*
White	1975-1983	5.8*	1983-1990	4.1*	1990-1994	2.1*	1994-2002	0.5*	2002-2007	-0.6*	-0.1	-0.6*
Black	1975-1981	6.7*	1981-1991	3.9*	1991-1998	1.0*	1998-2007	-0.3			-0.3	-0.3
<u>U.S. Cancer Mortality<sup>c</sup>, 1992-2007</u>												
All Races	1992-2002	0.6*	2002-2007	-0.8*							-0.2	-0.8*
White	1992-2002	0.7*	2002-2007	-0.7*							-0.1	-0.7*
White NH <sup>ef</sup>	1992-2002	0.9*	2002-2007	-0.5							0.1	-0.5
Black	1992-1998	1.1*	1998-2007	-0.3							-0.3	-0.3
Black NH <sup>ef</sup>	1992-2005	0.6*	2005-2007	-2.6							-0.1	-1.0
API <sup>e</sup>	1992-2007	-0.4									-0.4	-0.4
AI/AN <sup>eg</sup>	1992-2007	1.5*									1.5*	1.5*
Hispanic <sup>f</sup>	1992-2007	-0.3									-0.3	-0.3

Joinpoint Regression Program Version 3.4.3, April 2010, National Cancer Institute. (<http://srab.cancer.gov/joinpoint/>).

The APC is the Annual Percent Change based on rates age-adjusted to the 2000 US Std Population (19 age groups - Census P25-1130).

<sup>a</sup> Trends are from the SEER 9 areas (San Francisco, Connecticut, Detroit, Hawaii, Iowa, New Mexico, Seattle, Utah, and Atlanta).

<sup>b</sup> Trends are from the SEER 13 areas (SEER 9 Areas, Los Angeles, San Jose-Monterey, Rural Georgia, and the Alaska Native Registry).

<sup>c</sup> Trends are from US Mortality Files, National Center for Health Statistics, Centers for Disease Control and Prevention.

<sup>d</sup> The AAPC is the Average Annual Percent Change and is based on the APCs calculated by Joinpoint.

<sup>e</sup> API - Asian/Pacific Islander, AI/AN - American Indian/Alaska Native, NH - Non-Hispanic

<sup>f</sup> Hispanic and Non-Hispanic are not mutually exclusive from whites, blacks, Asian/Pacific Islanders, and American Indians/Alaska Natives. Incidence data for Hispanics and Non-Hispanics are based on NHIA and exclude cases from the Alaska Native Registry.

The Hispanic and Non-Hispanic mortality trends exclude deaths from CT, DC, ME, MD, MN, NH, NY, ND, OK and VT.

<sup>g</sup> Data for American Indian/Alaska Native are based on the CHSDA (Contract Health Service Delivery Area) counties.

\* The APC/AAPC is significantly different from zero ( $p < .05$ ).

- Joinpoint regression line analysis could not be performed on data series.

Table 15.4  
Small Cell Cancer of the Lung and Bronchus (Invasive) and Non-Small Cell Cancer of the Lung and Bronchus (Invasive)

Trends in SEER 9 Observed Incidence<sup>a</sup> Using the Joinpoint Regression Program,  
1975-2007 With up to Four Joinpoints,  
By Race and Sex

		<u>Joinpoint Trend 1</u>		<u>Joinpoint Trend 2</u>		<u>Joinpoint Trend 3</u>		<u>Joinpoint Trend 4</u>		<u>Joinpoint Trend 5</u>		<u>AAPC<sup>b</sup></u>
		Years	APC	Years	APC	Years	APC	Years	APC	Years	APC	2003-2007
<u>SEER 9 Observed Incidence<sup>a</sup> for Small Cell Cancer of the Lung and Bronchus, 1975-2007</u>												
All Races	Both Sexes	1975-1982	6.2*	1982-1989	1.2*	1989-2007	-2.3*					-2.3*
All Races	Male	1975-1981	5.5*	1981-1988	0.1	1988-2007	-3.2*					-3.2*
All Races	Female	1975-1982	9.6*	1982-1991	2.9*	1991-2007	-1.7*					-1.7*
White	Both Sexes	1975-1982	6.3*	1982-1989	1.4*	1989-2007	-2.2*					-2.2*
White	Male	1975-1980	6.3*	1980-1988	0.5	1988-2007	-3.2*					-3.2*
White	Female	1975-1982	10.0*	1982-1990	3.5*	1990-2007	-1.3*					-1.3*
Black	Both Sexes	1975-1986	4.8*	1986-2007	-2.4*							-2.4*
Black	Male	1975-1985	4.9*	1985-2007	-3.4*							-3.4*
Black	Female	1975-1991	4.6*	1991-2007	-2.0*							-2.0*
<u>SEER 9 Observed Incidence<sup>a</sup> for Non-Small Cell Cancer of the Lung and Bronchus, 1975-2007</u>												
All Races	Both Sexes	1975-1988	1.5*	1988-1998	0.0	1998-2007	-1.0*					-1.0*
All Races	Male	1975-1987	0.5*	1987-2003	-1.3*	2003-2007	-3.2*					-3.2*
All Races	Female	1975-1988	4.3*	1988-1997	1.7*	1997-2007	0.3					0.3
White	Both Sexes	1975-1988	1.6*	1988-1998	0.1	1998-2007	-0.9*					-0.9*
White	Male	1975-1987	0.4*	1987-2003	-1.3*	2003-2007	-3.1*					-3.1*
White	Female	1975-1988	4.4*	1988-1997	1.9*	1997-2007	0.3					0.3
Black	Both Sexes	1975-1984	3.0*	1984-1998	-0.3	1998-2007	-1.8*					-1.8*
Black	Male	1975-1984	2.6*	1984-1998	-1.2*	1998-2007	-3.3*					-3.3*
Black	Female	1975-1990	4.2*	1990-2007	0.6*							0.6*

Joinpoint Regression Program Version 3.4.3, April 2010, National Cancer Institute. (<http://srab.cancer.gov/joinpoint/>).

The APC is the Annual Percent Change based on rates age-adjusted to the 2000 US Std Population (19 age groups - Census P25-1130).

Trends are from the SEER 9 areas (San Francisco, Connecticut, Detroit, Hawaii, Iowa, New Mexico, Seattle, Utah, and Atlanta).

The AAPC is the Average Annual Percent Change and is based on the APCs calculated by Joinpoint.

\* The APC/AAPC is significantly different from zero (p<.05).

- Joinpoint regression line analysis could not be performed on data series.

a  
b  
\*  
-

Table 15.5  
Cancer of the Lung and Bronchus (Invasive)

Delay-adjusted SEER Incidence<sup>a</sup> Rates by Year, Race and Sex

Year of Diagnosis:	All Races			Whites			Blacks		
	Total	Males	Females	Total	Males	Females	Total	Males	Females
1975	52.26	89.54	24.53	51.96	89.16	24.86	64.56	114.92	24.66
1976	55.42	93.81	27.31	54.64	92.77	27.28	72.34	131.00	28.63
1977	56.70	95.52	28.32	55.88	94.77	28.05	73.57	124.84	33.88
1978	57.84	96.67	29.65	57.27	95.86	29.90	74.47	130.51	31.58
1979	58.61	95.81	31.58	58.03	95.18	31.64	74.52	127.59	34.11
1980	60.66	99.96	32.22	59.43	97.71	32.38	86.57	151.30	38.25
1981	62.04	99.42	35.12	61.55	98.46	35.52	82.31	142.96	37.45
1982	63.30	100.71	36.73	63.06	99.70	37.68	80.37	141.06	35.68
1983	63.45	99.45	37.89	63.04	97.64	39.10	86.63	151.34	39.50
1984	65.50	102.09	39.46	64.36	99.94	39.63	93.06	159.22	44.82
1985	64.62	98.64	40.23	64.00	96.90	40.89	89.56	149.69	46.05
1986	65.78	99.08	42.28	65.17	97.40	42.93	92.93	156.24	48.67
1987	67.90	101.52	44.16	68.08	100.64	45.51	84.79	143.72	43.22
1988	68.03	98.70	46.29	68.25	97.94	47.71	88.13	144.95	48.06
1989	67.55	97.96	46.10	67.58	97.07	47.25	89.06	142.80	51.38
1990	68.07	96.95	47.76	68.23	96.17	48.94	86.76	137.20	52.07
1991	69.22	97.25	49.59	68.99	95.92	50.64	93.19	144.94	56.98
1992	69.45	97.17	49.86	68.92	94.86	51.08	93.91	148.79	55.89
1993	67.79	93.97	49.21	67.85	92.52	50.72	86.35	135.42	52.46
1994	67.17	90.97	50.51	67.28	90.16	51.60	87.21	131.67	56.39
1995	66.86	89.84	50.45	67.14	88.01	52.47	85.77	138.84	50.04
1996	66.46	88.02	51.19	66.85	86.78	52.99	84.29	128.44	55.21
1997	66.62	86.30	52.60	67.27	84.90	54.99	82.19	129.45	50.46
1998	67.56	88.07	52.97	68.13	86.74	55.14	87.10	130.60	57.76
1999	65.88	84.64	52.53	66.42	83.43	54.52	84.47	121.94	59.07
2000	64.18	82.14	51.26	64.79	80.93	53.33	79.94	114.20	57.05
2001	64.12	81.20	51.69	65.09	80.93	53.63	80.18	114.03	57.28
2002	63.90	80.13	52.38	64.72	79.65	54.21	81.01	112.08	60.39
2003	64.50	80.63	52.88	65.41	79.42	55.53	80.29	118.06	54.88
2004	61.96	75.87	51.83	62.71	75.14	53.73	75.10	103.82	56.05
2005	62.50	75.12	53.40	63.63	75.12	55.43	73.70	96.17	58.79
2006	61.54	73.15	52.97	62.22	72.16	55.03	75.64	99.34	59.16
2007	60.95	71.82	53.02	62.24	71.30	55.75	71.78	96.56	55.12

Additional information on the model used to delay-adjust SEER Incidence rates can be found at (<http://srab.cancer.gov/delay/>).

<sup>a</sup> SEER 9 areas (San Francisco, Connecticut, Detroit, Hawaii, Iowa, New Mexico, Seattle, Utah, and Atlanta).  
Rates are per 100,000 and are age-adjusted to the 2000 US Std Population (19 age groups - Census P25-1130).

- Delay-adjusted rate is not shown for observed rates based on less than 16 cases for the time interval.

Table 15.6  
Cancer of the Lung and Bronchus (Invasive)

Age-adjusted SEER Incidence<sup>a</sup> Rates by Year, Race and Sex

Year of Diagnosis:	All Races			Whites			Blacks		
	Total	Males	Females	Total	Males	Females	Total	Males	Females
1975	52.26	89.54	24.53	51.96	89.16	24.86	64.56	114.92	24.66
1976	55.42	93.81	27.31	54.64	92.77	27.28	72.34	131.00	28.63
1977	56.70	95.52	28.32	55.88	94.77	28.05	73.57	124.84	33.88
1978	57.84	96.67	29.65	57.27	95.86	29.90	74.47	130.51	31.58
1979	58.61	95.81	31.58	58.03	95.18	31.64	74.52	127.59	34.11
1980	60.66	99.96	32.22	59.43	97.71	32.38	86.57	151.30	38.25
1981	62.04	99.42	35.12	61.55	98.46	35.52	82.31	142.96	37.45
1982	63.30	100.71	36.73	63.06	99.70	37.68	80.37	141.06	35.68
1983	63.45	99.45	37.89	63.04	97.64	39.10	86.62	151.34	39.49
1984	65.50	102.08	39.46	64.35	99.94	39.63	93.06	159.21	44.82
1985	64.62	98.64	40.23	64.00	96.90	40.89	89.56	149.68	46.04
1986	65.78	99.08	42.28	65.16	97.39	42.93	92.92	156.23	48.67
1987	67.90	101.51	44.16	68.07	100.63	45.50	84.78	143.70	43.22
1988	68.02	98.69	46.29	68.24	97.92	47.70	88.12	144.93	48.06
1989	67.54	97.95	46.10	67.57	97.06	47.24	89.04	142.77	51.37
1990	68.06	96.94	47.75	68.22	96.15	48.92	86.74	137.17	52.06
1991	69.21	97.24	49.58	68.97	95.89	50.63	93.15	144.90	56.96
1992	69.43	97.15	49.85	68.90	94.83	51.06	93.87	148.73	55.86
1993	67.77	93.94	49.19	67.82	92.48	50.69	86.30	135.35	52.43
1994	67.14	90.93	50.49	67.24	90.11	51.57	87.15	131.58	56.36
1995	66.83	89.79	50.42	67.09	87.94	52.43	85.70	138.72	50.00
1996	66.42	87.97	51.16	66.79	86.70	52.94	84.20	128.30	55.15
1997	66.57	86.23	52.56	67.19	84.80	54.92	82.08	129.27	50.39
1998	67.50	87.99	52.93	68.03	86.62	55.07	86.96	130.39	57.67
1999	65.78	84.52	52.45	66.27	83.25	54.40	84.27	121.64	58.92
2000	64.06	81.98	51.17	64.62	80.70	53.19	79.70	113.85	56.88
2001	63.96	81.00	51.57	64.86	80.65	53.44	79.87	113.59	57.06
2002	63.69	79.87	52.21	64.42	79.29	53.97	80.60	111.52	60.09
2003	64.22	80.28	52.65	65.02	78.95	55.20	79.78	117.30	54.53
2004	61.60	75.43	51.54	62.23	74.57	53.32	74.48	102.97	55.59
2005	62.02	74.54	52.99	63.01	74.38	54.89	72.92	95.15	58.17
2006	60.91	72.40	52.43	61.43	71.24	54.33	74.61	97.98	58.35
2007	59.34	69.93	51.62	60.35	69.13	54.06	69.47	93.45	53.35
1975-2007	63.99	89.57	45.39	64.05	88.67	46.39	81.77	127.33	49.80

<sup>a</sup> SEER 9 areas (San Francisco, Connecticut, Detroit, Hawaii, Iowa, New Mexico, Seattle, Utah, and Atlanta). Rates are per 100,000 and are age-adjusted to the 2000 US Std Population (19 age groups - Census P25-1130).  
- Statistic not shown. Rate based on less than 16 cases for the time interval.

Table 15.7  
 Small Cell Cancer of the Lung and Bronchus (Invasive)  
 Age-adjusted SEER Incidence<sup>a</sup> Rates by Year, Race and Sex

Year of Diagnosis:	All Races			Whites			Blacks		
	Total	Males	Females	Total	Males	Females	Total	Males	Females
1975	6.65	10.34	3.79	6.89	10.70	3.97	5.87	8.94	3.48
1976	7.06	11.36	3.84	7.12	11.52	3.89	8.23	12.82	4.76
1977	7.70	12.38	4.22	7.84	12.79	4.21	8.13	11.19	5.78
1978	8.64	13.39	5.03	8.87	13.69	5.28	7.81	13.89	3.13
1979	8.68	13.09	5.36	9.03	13.63	5.61	7.63	11.83	4.47
1980	9.10	14.20	5.23	9.33	14.40	5.54	9.99	17.53	4.38
1981	9.71	14.55	6.12	10.01	14.84	6.48	9.21	15.87	4.21
1982	10.37	14.92	7.12	10.73	15.28	7.55	9.63	15.94	4.92
1983	10.36	14.86	7.08	10.74	15.04	7.64	9.12	15.08	4.85
1984	10.69	15.18	7.41	11.05	15.64	7.77	10.41	14.99	6.86
1985	10.44	14.96	7.08	10.78	15.25	7.49	11.07	17.77	6.27
1986	11.20	15.52	7.98	11.54	15.99	8.27	12.26	17.70	8.35
1987	10.65	14.13	8.19	11.17	14.56	8.84	9.53	14.49	6.03
1988	11.37	15.27	8.51	11.90	15.61	9.21	10.49	17.86	5.30
1989	11.24	14.84	8.68	11.68	15.22	9.21	12.07	17.67	8.35
1990	10.65	13.84	8.38	11.26	14.46	9.05	9.35	13.70	6.21
1991	11.29	13.99	9.36	11.68	14.32	9.84	12.34	15.92	10.00
1992	10.49	13.39	8.44	10.96	13.84	8.96	10.16	13.32	7.95
1993	10.02	12.33	8.34	10.48	12.64	8.94	9.38	13.25	6.74
1994	9.77	11.69	8.42	10.24	11.98	9.05	9.95	13.62	7.43
1995	9.85	12.25	8.13	10.35	12.60	8.74	9.50	13.89	6.61
1996	9.70	12.07	7.96	10.27	12.46	8.63	8.80	12.02	6.84
1997	9.53	10.85	8.64	10.11	11.11	9.49	7.86	10.82	6.05
1998	9.28	10.84	8.14	9.86	11.27	8.83	9.37	12.10	7.45
1999	8.80	10.03	7.97	9.34	10.25	8.78	8.14	10.95	6.05
2000	8.78	10.42	7.58	9.27	10.84	8.13	9.44	11.54	7.93
2001	8.34	9.78	7.33	8.87	10.26	7.93	8.50	10.78	6.86
2002	8.25	9.35	7.50	8.93	9.81	8.34	7.20	9.74	5.70
2003	8.17	9.06	7.56	8.68	9.32	8.29	7.88	9.53	6.72
2004	8.02	8.90	7.40	8.41	9.13	7.90	8.54	9.90	7.68
2005	7.50	8.57	6.75	8.12	9.12	7.42	6.47	7.51	5.80
2006	7.56	8.33	7.01	8.11	8.63	7.77	6.79	8.33	5.75
2007	7.40	8.22	6.82	8.04	8.55	7.73	6.64	8.97	4.98
1975-2007	9.26	11.94	7.27	9.73	12.35	7.78	8.89	12.58	6.29

Note: Small Cell Cancer of the Lung and Bronchus includes histologies 8041-8045.  
<sup>a</sup> SEER 9 areas (San Francisco, Connecticut, Detroit, Hawaii, Iowa, New Mexico, Seattle, Utah, and Atlanta).  
 Rates are per 100,000 and are age-adjusted to the 2000 US Std Population (19 age groups - Census P25-1130).  
 - Statistic not shown. Rate based on less than 16 cases for the time interval.

Table 15.8  
 Non-Small Cell Cancer of the Lung and Bronchus (Invasive)  
 Age-adjusted SEER Incidence<sup>a</sup> Rates by Year, Race and Sex

Year of Diagnosis:	All Races			Whites			Blacks		
	Total	Males	Females	Total	Males	Females	Total	Males	Females
1975	45.61	79.20	20.74	45.07	78.46	20.89	58.68	105.98	21.18
1976	48.36	82.45	23.47	47.52	81.25	23.39	64.11	118.18	23.87
1977	49.00	83.14	24.10	48.04	81.98	23.84	65.44	113.65	28.10
1978	49.20	83.28	24.62	48.40	82.17	24.62	66.65	116.63	28.45
1979	49.93	82.72	26.22	49.00	81.55	26.03	66.89	115.76	29.64
1980	51.56	85.76	26.99	50.10	83.31	26.84	76.58	133.78	33.87
1981	52.32	84.87	29.00	51.54	83.62	29.05	73.10	127.09	33.24
1982	52.93	85.79	29.61	52.33	84.42	30.13	70.74	125.12	30.76
1983	53.09	84.59	30.81	52.30	82.60	31.46	77.50	136.26	34.64
1984	54.81	86.90	32.05	53.31	84.29	31.85	82.64	144.23	37.96
1985	54.18	83.68	33.15	53.22	81.64	33.40	78.49	131.91	39.78
1986	54.58	83.56	34.30	53.62	81.40	34.66	80.66	138.53	40.31
1987	57.25	87.38	35.97	56.91	86.07	36.66	75.25	129.21	37.19
1988	56.65	83.42	37.77	56.35	82.32	38.49	77.63	127.07	42.76
1989	56.31	83.11	37.42	55.88	81.83	38.03	76.97	125.10	43.02
1990	57.41	83.10	39.37	56.96	81.69	39.87	77.38	123.46	45.84
1991	57.92	83.25	40.22	57.29	81.57	40.78	80.81	128.98	46.96
1992	58.94	83.75	41.41	57.93	80.99	42.10	83.71	135.41	47.91
1993	57.74	81.60	40.86	57.34	79.84	41.75	76.92	122.10	45.69
1994	57.37	79.24	42.07	57.00	78.13	42.51	77.20	117.96	48.93
1995	56.97	77.54	42.29	56.73	75.34	43.68	76.20	124.83	43.39
1996	56.71	75.90	43.20	56.52	74.24	44.31	75.40	116.28	48.31
1997	57.04	75.38	43.92	57.08	73.69	45.43	74.22	118.45	44.34
1998	58.22	77.15	44.79	58.18	75.34	46.23	77.59	118.29	50.22
1999	56.98	74.48	44.49	56.94	73.00	45.62	76.13	110.70	52.88
2000	55.28	71.56	43.58	55.34	69.87	45.05	70.26	102.31	48.95
2001	55.61	71.21	44.24	55.99	70.39	45.52	71.37	102.81	50.20
2002	55.44	70.52	44.72	55.49	69.48	45.62	73.40	101.78	54.39
2003	56.05	71.22	45.09	56.34	69.64	46.91	71.90	107.77	47.81
2004	53.58	66.54	44.14	53.82	65.44	45.42	65.94	93.07	47.91
2005	54.52	65.97	46.24	54.89	65.26	47.47	66.45	87.64	52.37
2006	53.35	64.07	45.42	53.32	62.62	46.56	67.81	89.65	52.60
2007	51.95	61.71	44.80	52.31	60.58	46.33	62.83	84.48	48.37
1975-2007	54.72	77.63	38.12	54.33	76.32	38.61	72.88	114.75	43.51

Note: Non-Small Cell Cancer of the Lung and Bronchus includes histologies 8000-8040, 8046-9049, 9056-9139, 9141-9589.  
<sup>a</sup> SEER 9 areas (San Francisco, Connecticut, Detroit, Hawaii, Iowa, New Mexico, Seattle, Utah, and Atlanta).  
 Rates are per 100,000 and are age-adjusted to the 2000 US Std Population (19 age groups - Census P25-1130).  
 - Statistic not shown. Rate based on less than 16 cases for the time interval.



Table 15.9  
Cancer of the Lung and Bronchus (Invasive)  
Age-adjusted U.S. Death<sup>a</sup> Rates by Year, Race and Sex

Year of Death:	All Races			Whites			Blacks		
	Total	Males	Females	Total	Males	Females	Total	Males	Females
1975	42.56	76.39	17.56	42.08	75.47	17.67	49.33	91.01	17.34
1976	44.20	78.52	18.97	43.72	77.55	19.10	51.07	93.96	18.51
1977	45.49	80.45	20.01	44.82	79.09	20.09	54.56	100.80	19.91
1978	46.88	82.06	21.40	46.29	80.76	21.58	55.26	101.65	20.66
1979	47.69	82.94	22.32	47.08	81.64	22.42	56.43	102.89	22.24
1980	49.41	84.71	24.13	48.75	83.27	24.22	59.16	106.67	24.57
1981	49.99	85.16	24.95	49.28	83.52	25.10	60.57	109.71	25.10
1982	51.43	86.79	26.47	50.78	85.18	26.72	62.27	112.55	26.30
1983	52.40	87.04	28.10	51.70	85.40	28.28	63.68	112.76	28.73
1984	53.36	88.22	28.94	52.64	86.24	29.27	65.07	117.98	27.98
1985	54.32	88.54	30.41	53.68	86.69	30.81	65.76	117.50	29.64
1986	55.04	88.95	31.41	54.36	87.03	31.76	66.95	119.18	31.00
1987	56.24	90.05	32.72	55.56	88.09	33.04	68.65	121.77	32.48
1988	56.97	89.87	34.14	56.35	87.86	34.57	69.18	122.15	33.54
1989	57.90	89.77	35.77	57.21	87.57	36.27	71.04	124.72	34.87
1990	58.85	90.56	36.85	58.18	88.40	37.31	72.06	125.17	36.48
1991	58.99	89.88	37.61	58.38	87.76	38.12	71.64	123.58	37.16
1992	58.90	88.01	38.70	58.34	85.98	39.21	71.35	121.06	38.55
1993	59.13	87.60	39.28	58.66	85.52	39.97	71.12	121.98	37.72
1994	58.54	85.69	39.62	58.15	83.78	40.30	70.15	118.63	38.61
1995	58.38	84.37	40.26	58.08	82.62	40.97	69.28	116.08	38.84
1996	57.91	82.82	40.41	57.69	81.15	41.22	68.30	113.18	39.08
1997	57.51	81.33	40.82	57.31	79.83	41.52	67.89	110.21	40.53
1998	57.08	79.89	40.98	56.93	78.47	41.69	66.86	107.40	40.67
1999	55.42	76.97	40.15	55.31	75.67	40.86	65.00	103.61	40.00
2000	55.84	76.45	41.12	55.99	75.39	42.08	63.81	100.91	39.66
2001	55.30	75.21	40.99	55.53	74.25	42.02	62.65	99.34	38.84
2002	54.97	73.54	41.56	55.28	72.77	42.59	62.24	95.69	40.26
2003	54.16	71.92	41.24	54.48	71.22	42.23	61.15	93.06	40.30
2004	53.34	70.36	40.89	53.66	69.67	41.89	60.08	90.66	40.01
2005	52.83	69.46	40.62	53.27	69.07	41.59	58.87	87.30	40.21
2006	51.72	67.44	40.16	52.24	67.10	41.23	57.20	84.55	39.18
2007	50.69	65.23	39.98	51.23	64.83	41.14	55.86	82.75	38.27
1975-2007	54.16	81.07	34.84	53.90	79.79	35.33	63.44	106.11	34.37

<sup>a</sup> US Mortality Files, National Center for Health Statistics, Centers for Disease Control and Prevention.  
Rates are per 100,000 and are age-adjusted to the 2000 US Std Population (19 age groups - Census P25-1130).  
- Statistic not shown. Rate based on less than 16 cases for the time interval.

Table 15.10  
Cancer of the Lung and Bronchus (Invasive)SEER Incidence<sup>a</sup> and U.S. Death<sup>b</sup> Rates, Age-Adjusted and Age-Specific Rates, by Race and Sex

	All Races			Whites			Blacks		
	Total	Males	Females	Total	Males	Females	Total	Males	Females
<u>SEER Incidence</u>									
<u>Age at Diagnosis</u>									
Age-Adjusted Rates, 2003-2007									
All ages	62.5	76.2	52.4	63.8	76.3	54.7	73.5	101.2	54.8
Under 65	19.9	22.2	17.7	19.7	21.4	18.1	29.5	37.7	22.8
65 and over	356.6	449.6	292.0	368.3	455.5	307.6	378.1	540.2	276.6
All ages (IARC world std) <sup>c</sup>	39.2	46.6	33.4	40.0	46.3	34.9	48.5	65.4	36.2
Age-Specific Rates, 2003-2007									
<1	-	-	-	-	-	-	-	-	-
1-4	-	-	-	-	-	-	-	-	-
5-9	-	-	-	-	-	-	-	-	-
10-14	-	-	-	-	-	-	-	-	-
15-19	0.1	-	-	0.1	-	-	-	-	-
20-24	0.3	0.3	0.3	0.3	0.3	0.4	-	-	-
25-29	0.6	0.6	0.6	0.6	0.5	0.6	0.7	-	-
30-34	1.2	1.1	1.4	1.1	1.0	1.3	1.6	1.7	1.5
35-39	3.2	3.1	3.3	3.1	2.9	3.3	3.5	3.6	3.5
40-44	9.9	9.6	10.2	9.5	9.2	9.9	15.1	14.8	15.3
45-49	25.3	25.3	25.2	24.3	23.7	25.0	42.3	47.0	38.2
50-54	49.9	56.0	44.0	47.8	52.3	43.4	83.8	104.6	66.1
55-59	93.4	107.4	80.2	92.5	102.4	82.9	140.6	193.9	96.5
60-64	172.4	198.5	148.6	175.7	197.1	155.6	230.4	305.9	170.5
65-69	275.5	323.3	233.8	286.1	326.8	249.9	321.7	441.5	231.0
70-74	371.4	446.4	310.8	385.4	451.8	330.6	396.8	550.0	289.0
75-79	436.0	552.2	352.2	452.2	561.8	371.9	441.7	623.5	328.9
80-84	415.6	552.4	329.5	426.5	560.9	341.9	418.3	620.2	307.2
85+	299.6	438.2	233.7	301.9	441.0	236.6	307.6	501.2	226.0
<u>U.S. Mortality</u>									
<u>Age at Death</u>									
Age-Adjusted Rates, 2003-2007									
All ages	52.5	68.8	40.6	52.9	68.3	41.6	58.6	87.5	39.6
Under 65	15.9	19.1	12.9	15.6	18.3	13.0	21.9	30.5	14.9
65 and over	305.7	412.3	232.1	311.0	413.7	239.3	311.9	481.6	210.0
All ages (IARC world std) <sup>c</sup>	32.2	41.1	25.2	32.4	40.6	25.8	37.7	55.2	25.3
Age-Specific Rates, 2003-2007									
<1	-	-	-	-	-	-	-	-	-
1-4	-	-	-	-	-	-	-	-	-
5-9	-	-	-	-	-	-	-	-	-
10-14	-	-	-	-	-	-	-	-	-
15-19	0.0	0.0	-	0.0	-	-	-	-	-
20-24	0.1	0.1	0.1	0.1	0.1	0.1	-	-	-
25-29	0.2	0.2	0.2	0.2	0.2	0.2	0.2	0.3	-
30-34	0.5	0.6	0.5	0.5	0.6	0.5	0.6	0.8	0.5
35-39	2.1	2.1	2.1	2.1	2.1	2.1	2.4	2.6	2.3
40-44	7.9	8.2	7.5	7.7	7.9	7.4	10.8	12.3	9.4
45-49	20.2	22.6	18.0	19.3	21.0	17.6	31.4	39.1	24.6
50-54	39.8	48.2	31.8	38.2	45.2	31.3	61.0	82.4	42.8
55-59	74.7	92.0	58.4	73.4	88.0	59.3	105.3	152.1	66.7
60-64	139.8	172.2	110.2	140.1	168.5	113.7	175.4	257.2	111.6
65-69	220.9	277.8	171.2	224.1	276.8	177.3	250.3	366.1	164.5
70-74	304.3	390.8	234.1	310.7	392.4	243.3	311.6	464.1	207.5
75-79	369.5	495.2	278.3	376.5	497.7	287.1	367.7	565.5	249.5
80-84	379.4	536.8	281.7	384.9	539.4	288.0	374.4	603.1	253.9
85+	300.4	465.9	224.7	304.5	469.3	228.9	279.6	487.0	196.2

<sup>a</sup> SEER 17 areas. Rates are per 100,000 and are age-adjusted to the 2000 US Std Population (19 age groups - Census P25-1130), unless noted.<sup>b</sup> US Mortality Files, National Center for Health Statistics, Centers for Disease Control and Prevention.<sup>c</sup> Rates are per 100,000 and are age-adjusted to the 2000 US Std Population (19 age groups - Census P25-1130), unless noted.

- Rates are per 100,000 and are age-adjusted to the IARC world standard population.

- Statistic not shown. Rate based on less than 16 cases for the time interval.

Table 15.11  
Small Cell Cancer of the Lung and Bronchus<sup>a</sup>(Invasive) and Non-Small Cell Cancer of the Lung and Bronchus<sup>b</sup>(Invasive)

SEER Incidence<sup>c</sup> Rates, Age-Adjusted and Age-Specific Rates, by Race and Sex

	All Races			Whites			Blacks		
	Total	Males	Females	Total	Males	Females	Total	Males	Females
<u>Small Cell Cancer of the Lung and Bronchus<sup>a</sup></u>									
<u>Age at Diagnosis</u>									
Age-Adjusted Rates, 2003-2007									
All ages	7.7	8.7	7.0	8.3	9.2	7.8	7.1	8.8	5.9
Under 65	2.9	3.1	2.7	3.1	3.3	3.0	3.0	3.6	2.5
65 and over	41.1	47.6	36.7	44.2	49.9	40.5	35.2	44.9	29.1
All ages (IARC world std) <sup>d</sup>	5.2	5.7	4.8	5.6	6.0	5.3	4.8	5.9	4.0
Age-Specific Rates, 2003-2007									
<1	-	-	-	-	-	-	-	-	-
1-4	-	-	-	-	-	-	-	-	-
5-9	-	-	-	-	-	-	-	-	-
10-14	-	-	-	-	-	-	-	-	-
15-19	-	-	-	-	-	-	-	-	-
20-24	-	-	-	-	-	-	-	-	-
25-29	-	-	-	-	-	-	-	-	-
30-34	-	-	-	-	-	-	-	-	-
35-39	0.3	0.3	0.2	0.3	0.3	0.3	-	-	-
40-44	1.1	1.1	1.1	1.2	1.2	1.2	1.2	1.2	1.3
45-49	3.4	3.4	3.4	3.7	3.6	3.7	3.9	4.3	3.6
50-54	7.5	8.2	6.8	8.0	8.5	7.4	8.5	10.0	7.2
55-59	14.4	15.5	13.4	15.6	16.3	14.8	14.3	17.0	12.2
60-64	26.1	27.8	24.5	28.1	29.2	27.1	25.5	31.8	20.6
65-69	38.8	41.0	37.0	42.5	43.6	41.6	34.0	41.4	28.4
70-74	47.3	51.2	44.2	51.5	54.1	49.3	38.4	45.7	33.2
75-79	51.0	60.4	44.2	54.5	63.0	48.3	42.7	55.0	35.1
80-84	39.6	51.4	32.2	41.4	52.7	34.3	38.5	57.8	27.8
85+	18.1	28.1	13.3	18.8	29.2	13.9	14.8	18.7	13.1
<u>Non-Small Cell Cancer Lung and Bronchus<sup>b</sup></u>									
<u>Age at Diagnosis</u>									
Age-Adjusted Rates, 2003-2007									
All ages	54.7	67.5	45.4	55.5	67.1	47.0	66.5	92.4	48.9
Under 65	17.0	19.1	15.0	16.6	18.2	15.1	26.5	34.1	20.2
65 and over	315.5	402.0	255.2	324.1	405.6	267.1	342.9	495.3	247.5
All ages (IARC world std) <sup>b</sup>	34.0	40.9	28.6	34.3	40.4	29.6	43.7	59.5	32.2
Age-Specific Rates, 2003-2007									
<1	-	-	-	-	-	-	-	-	-
1-4	-	-	-	-	-	-	-	-	-
5-9	-	-	-	-	-	-	-	-	-
10-14	-	-	-	-	-	-	-	-	-
15-19	0.1	-	-	0.1	-	-	-	-	-
20-24	0.3	0.3	0.3	0.3	0.3	0.4	-	-	-
25-29	0.6	0.5	0.6	0.6	0.5	0.6	0.7	-	-
30-34	1.2	1.1	1.3	1.1	0.9	1.2	1.5	1.6	1.5
35-39	2.9	2.8	3.0	2.8	2.6	3.1	3.3	3.3	3.2
40-44	8.8	8.5	9.1	8.3	8.0	8.7	13.8	13.5	14.1
45-49	21.9	21.9	21.8	20.6	20.0	21.2	38.4	42.7	34.6
50-54	42.4	47.9	37.2	39.9	43.8	36.0	75.3	94.6	58.9
55-59	79.0	91.9	66.7	76.9	86.1	68.0	126.3	176.9	84.3
60-64	146.4	170.7	124.0	147.5	167.9	128.5	204.9	274.1	149.9
65-69	236.7	282.3	196.9	243.5	283.2	208.3	287.7	400.1	202.6
70-74	324.1	395.2	266.7	333.9	397.7	281.3	358.4	504.3	255.7
75-79	385.0	491.8	308.0	397.7	498.8	323.7	399.0	568.6	293.8
80-84	376.0	501.1	297.3	385.1	508.2	307.7	379.8	562.3	279.4
85+	281.5	410.1	220.3	283.2	411.8	222.8	292.8	482.5	212.9

<sup>a</sup> Small Cell Cancer of the Lung and Bronchus includes histologies 8041-8045.  
<sup>b</sup> Non-Small Cell Cancer of the Lung and Bronchus includes histologies 8000-8040, 8046-9049, 9056-9139, 9141-9589.  
<sup>c</sup> SEER 17 areas. Rates are per 100,000 and are age-adjusted to the 2000 US Std Population (19 age groups - Census P25-1130), unless noted.  
<sup>d</sup> Rates are per 100,000 and are age-adjusted to the IARC world standard population.  
- Statistic not shown. Rate based on less than 16 cases for the time interval.

Table 15.12  
Cancer of the Lung and Bronchus (Invasive)

5-Year Relative and Period Survival (Percent) by Race, Sex, Diagnosis Year, Stage and Age

	All Races			Whites			Blacks		
	Total	Males	Females	Total	Males	Females	Total	Males	Females
5-Year Relative Survival (Percent)									
Year of Diagnosis:									
1960-1963 <sup>a</sup>	-	-	-	8	7	11	5	5	6
1970-1973 <sup>a</sup>	-	-	-	10	9	14	7	6	10
1975-1977 <sup>b</sup>	12.7	11.5	15.9	12.8	11.5	16.0	11.6	10.8	14.1
1978-1980 <sup>b</sup>	13.3	11.8	16.7	13.4	11.9	16.6	12.0	9.9	18.1
1981-1983 <sup>b</sup>	13.7	12.0	16.9	13.9	12.2	17.0	11.7	10.5	15.1
1984-1986 <sup>b</sup>	13.3	11.6	16.4	13.6	11.7	16.8	11.4	10.7	13.0
1987-1989 <sup>b</sup>	13.5	12.4	15.4	13.8	12.5	15.8	11.2	11.0	11.5
1990-1992 <sup>b</sup>	14.0	12.5	16.3	14.4	12.9	16.6	10.7	9.5	12.9
1993-1995 <sup>b</sup>	14.9	13.0	17.4	15.1	13.1	17.7	13.2	11.6	15.8
1996-1998 <sup>b</sup>	15.2	13.4	17.4	15.5	13.6	17.7	12.7	11.1	15.2
1999-2006 <sup>b</sup>	16.4 <sup>e</sup>	14.2 <sup>e</sup>	19.0 <sup>e</sup>	16.8 <sup>e</sup>	14.5 <sup>e</sup>	19.4 <sup>e</sup>	13.2 <sup>e</sup>	11.8 <sup>e</sup>	15.0
5-Year Period Survival (Percent) <sup>cd</sup>									
Year of Diagnosis:									
1999-2006	16.4	14.0	19.0	16.7	14.2	19.4	12.9	11.7	14.4
Stage Distribution (%) 1999-2006 <sup>c</sup>									
All Stages									
Number of cases	263,175	142,448	120,727	219,592	116,915	102,677	27,263	15,802	11,461
Percent	100%	100%	100%	100%	100%	100%	100%	100%	100%
Localized	15	13	16	15	14	17	12	11	14
Regional	22	22	22	22	22	22	22	23	22
Distant	56	57	54	55	56	53	60	60	58
Unstaged	8	7	8	8	7	8	6	6	6
5-Year Relative Survival (Percent), 1999-2006 <sup>c</sup>									
Age at Diagnosis:									
Ages <45	24.5	22.8	26.2	26.4	24.8	27.9	17.2	15.4	19.1
Ages 45-54	18.8	15.1	23.5	19.7	15.6	24.7	14.0	12.1	16.8
Ages 55-64	17.8	15.1	21.3	18.3	15.5	21.9	13.9	12.3	16.5
Ages 65-74	15.7	13.4	18.4	15.9	13.5	18.7	11.9	10.8	13.5
Ages 75+	11.3	9.8	12.7	11.6	10.1	12.9	8.6	7.9	9.3
Ages <65	18.6	15.6	22.4	19.3	16.1	23.1	14.2	12.4	16.9
Ages 65+	13.8	12.0	15.8	14.0	12.1	16.0	10.7	9.8	11.8
Stage:									
All Stages	15.8	13.5	18.3	16.1	13.8	18.6	12.6	11.3	14.4
Localized	52.9	48.1	57.4	53.5	48.8	57.8	45.1	41.6	49.0
Regional	24.0	21.8	26.6	24.1	21.8	26.7	20.9	19.9	22.3
Distant	3.5	3.0	4.2	3.5	2.9	4.2	3.1	2.8	3.4
Unstaged	8.7	7.6	9.9	8.4	7.2	9.5	10.6	9.8	11.7

<sup>a</sup> Based on End Results data from a series of hospital registries and one population-based registry.

<sup>b</sup> Based on the SEER 9 areas (San Francisco, Connecticut, Detroit, Hawaii, Iowa, New Mexico, Seattle, Utah, Atlanta).

Based on follow-up of patients into 2007.

<sup>c</sup> Based on the SEER 17 areas (San Francisco, Connecticut, Detroit, Hawaii, Iowa, New Mexico, Seattle, Utah, Atlanta, San Jose-Monterey, Los Angeles, Alaska Native Registry, Rural Georgia, California excluding SF/SJM/LA, Kentucky, Louisiana and New Jersey). California excluding SF/SJM/LA, Kentucky, Louisiana, and New Jersey contribute cases for diagnosis years 2000-2006. The remaining 13 SEER Areas contribute cases for the entire period 1999-2006. Based on follow-up of patients into 2007.

<sup>d</sup> Period survival provides a more up-to-date estimate of survival by piecing together the most recent conditional survival estimates from several cohorts. It is computed here using three year calendar blocks (2004-2006: 0-1 year survival),

(2003-2005: 1-2 year survival), (2002-2004: 2-3 year survival), (2001-2003: 3-4 year survival), (2000-2002: 4-5 years survival).

<sup>e</sup> The difference between 1975-1977 and 1999-2006 is statistically significant ( $p < .05$ ).

<sup>f</sup> The standard error is between 5 and 10 percentage points.

<sup>g</sup> The standard error is greater than 10 percentage points.

- Statistic could not be calculated due to fewer than 25 cases during the time period.

Table 15.13  
Small Cell Cancer of the Lung and Bronchus (Invasive)

5-Year Relative and Period Survival (Percent) by Race, Sex, Diagnosis Year, Stage and Age

	All Races			Whites			Blacks		
	Total	Males	Females	Total	Males	Females	Total	Males	Females
5-Year Relative Survival (Percent)									
Year of Diagnosis:									
1975-1977 <sup>a</sup>	3.7	3.2	4.8	3.7	3.1	4.9	3.8	3.9	3.6
1978-1980 <sup>a</sup>	4.4	3.3	6.6	4.5	3.4	6.6	3.2	2.4	5.0
1981-1983 <sup>a</sup>	4.8	3.7	6.4	4.8	3.8	6.2	5.6	4.3	8.5
1984-1986 <sup>a</sup>	4.7	3.6	6.5	4.9	3.7	6.7	3.6	2.3	5.6
1987-1989 <sup>a</sup>	5.2	4.0	6.7	5.3	4.0	6.9	3.9	3.4	4.7
1990-1992 <sup>a</sup>	5.6	4.7	6.6	5.7	4.7	6.8	4.0	3.9	3.9
1993-1995 <sup>a</sup>	6.6	5.4	8.0	6.5	5.3	7.8	6.9	4.6	9.9
1996-1998 <sup>b</sup>	6.2	5.4	7.0	6.4	5.6	7.2	3.9	2.7	5.2
1999-2006 <sup>a</sup>	6.3 <sup>d</sup>	5.1 <sup>d</sup>	7.5 <sup>d</sup>	6.3 <sup>d</sup>	4.7 <sup>d</sup>	7.8 <sup>d</sup>	5.3	5.7 <sup>d</sup>	4.7
5-Year Period Survival (Percent) <sup>bc</sup>									
Year of Diagnosis:									
1999-2006	6.4	5.2	7.6	6.4	5.1	7.7	5.4	5.3	5.6
Stage Distribution (%) 1999-2006 <sup>b</sup>									
All Stages									
Number of cases	35,769	18,256	17,513	31,466	15,795	15,671	2,827	1,505	1,322
Percent	100%	100%	100%	100%	100%	100%	100%	100%	100%
Localized	5	5	5	5	5	5	5	4	6
Regional	21	19	22	21	19	22	22	21	23
Distant	69	71	67	69	72	67	69	70	67
Unstaged	5	5	5	5	5	5	4	4	4
5-Year Relative Survival (Percent), 1999-2006 <sup>b</sup>									
Age at Diagnosis:									
Ages <45	10.3	9.6	11.0	10.6	9.7	11.6	7.4	9.2 <sup>e</sup>	-
Ages 45-54	9.0	6.7	11.6	9.3	7.0	11.8	6.4	3.6	9.7
Ages 55-64	7.3	5.7	9.2	7.4	5.4	9.4	6.4	7.1	5.4
Ages 65-74	5.4	4.9	5.9	5.3	4.5	6.0	3.5	4.6	2.5
Ages 75+	3.3	2.8	3.6	3.4	3.1	3.6	-	0.0	-
Ages <65	7.9	6.2	9.9	8.0	6.1	10.2	6.5	6.2	6.8
Ages 65+	4.6	4.1	5.0	4.6	4.0	5.1	2.8	3.3	2.4
Stage:									
All Stages	6.1	5.1	7.1	6.1	5.0	7.2	4.8	5.0	4.7
Localized	21.0	19.4	22.0	21.0	19.1	22.3	14.6	17.0 <sup>e</sup>	12.6
Regional	13.3	12.0	14.4	13.4	12.0	14.6	11.2	11.5	10.8
Distant	2.7	2.2	3.1	2.7	2.1	3.3	1.9	2.1	1.6
Unstaged	8.2	6.0	10.2	8.2	5.8	10.1	7.9	5.8	9.0

<sup>a</sup> Based on the SEER 9 areas (San Francisco, Connecticut, Detroit, Hawaii, Iowa, New Mexico, Seattle, Utah, Atlanta).

Based on follow-up of patients into 2007.

<sup>b</sup> Based on the SEER 17 areas (San Francisco, Connecticut, Detroit, Hawaii, Iowa, New Mexico, Seattle, Utah, Atlanta, San Jose-Monterey, Los Angeles, Alaska Native Registry, Rural Georgia, California excluding SF/SJM/LA, Kentucky, Louisiana and New Jersey). California excluding SF/SJM/LA, Kentucky, Louisiana, and New Jersey contribute cases for diagnosis years 2000-2006. The remaining 13 SEER Areas contribute cases for the entire period 1999-2006. Based on follow-up of patients into 2007.

<sup>c</sup> Period survival provides a more up-to-date estimate of survival by piecing together the most recent conditional survival estimates from several cohorts. It is computed here using three year calendar blocks (2004-2006: 0-1 year survival), (2003-2005: 1-2 year survival), (2002-2004: 2-3 year survival), (2001-2003: 3-4 year survival), (2000-2002: 4-5 years survival).

<sup>d</sup> The difference between 1975-1977 and 1999-2006 is statistically significant ( $p < .05$ ).

<sup>e</sup> The standard error is between 5 and 10 percentage points.

<sup>f</sup> The standard error is greater than 10 percentage points.

- Statistic could not be calculated due to fewer than 25 cases during the time period.

Table 15.14  
Non-Small Cell Cancer of the Lung and Bronchus (Invasive)

5-Year Relative and Period Survival (Percent) by Race, Sex, Diagnosis Year, Stage and Age

	All Races			Whites			Blacks		
	Total	Males	Females	Total	Males	Females	Total	Males	Females
5-Year Relative Survival (Percent)									
Year of Diagnosis:									
1975-1977 <sup>a</sup>	14.2	12.8	18.0	14.4	12.9	18.1	12.6	11.5	16.3
1978-1980 <sup>a</sup>	15.0	13.4	18.8	15.2	13.6	18.9	13.2	10.9	20.0
1981-1983 <sup>a</sup>	15.5	13.6	19.5	15.9	13.9	19.9	12.6	11.3	16.1
1984-1986 <sup>a</sup>	15.2	13.2	18.8	15.5	13.4	19.3	12.6	11.8	14.6
1987-1989 <sup>a</sup>	15.3	14.0	17.6	15.7	14.2	18.2	12.3	12.0	12.7
1990-1992 <sup>a</sup>	15.8	13.9	18.6	16.3	14.5	19.0	11.6	10.1	14.4
1993-1995 <sup>a</sup>	16.5	14.3	19.5	16.9	14.6	20.0	14.0	12.4	16.8
1996-1998 <sup>b</sup>	16.9	14.8	19.5	17.2	15.0	19.9	13.8	11.9	16.8
1999-2006 <sup>a</sup>	18.2 <sup>d</sup>	15.6 <sup>d</sup>	21.2 <sup>d</sup>	18.8 <sup>d</sup>	16.1 <sup>d</sup>	21.7 <sup>d</sup>	14.1 <sup>d</sup>	12.4	16.4
5-Year Period Survival (Percent) <sup>bc</sup>									
Year of Diagnosis:									
1999-2006	18.1	15.4	21.1	18.5	15.7	21.6	13.8	12.4	15.6
Stage Distribution (%) 1999-2006 <sup>b</sup>									
All Stages									
Number of cases	227,406	124,192	103,214	188,126	101,120	87,006	24,436	14,297	10,139
Percent	100%	100%	100%	100%	100%	100%	100%	100%	100%
Localized	16	15	18	17	15	19	13	12	15
Regional	22	23	22	22	23	22	22	23	22
Distant	54	55	52	52	54	51	59	60	57
Unstaged	8	8	8	8	8	9	6	6	6
5-Year Relative Survival (Percent), 1999-2006 <sup>b</sup>									
Age at Diagnosis:									
Ages <45	26.2	24.3	28.1	28.6	26.9	30.2	17.8	15.8	20.0
Ages 45-54	20.5	16.5	25.6	21.8	17.2	27.3	14.9	12.9	17.7
Ages 55-64	19.9	16.9	24.1	20.7	17.5	24.9	14.9	12.9	18.2
Ages 65-74	17.5	14.7	21.0	17.9	15.0	21.3	13.0	11.4	15.1
Ages 75+	12.3	10.7	13.8	12.7	11.0	14.2	9.3	8.5	10.1
Ages <65	20.6	17.3	24.9	21.6	18.0	26.0	15.1	13.1	18.2
Ages 65+	15.2	13.1	17.6	15.5	13.3	17.9	11.6	10.4	13.0
Stage:									
All Stages	17.4	14.8	20.3	17.8	15.2	20.8	13.5	12.0	15.7
Localized	54.5	49.5	59.2	55.2	50.2	59.7	46.6	42.5	50.9
Regional	25.7	23.1	28.9	25.9	23.2	29.1	22.0	20.7	23.9
Distant	3.7	3.1	4.5	3.6	3.0	4.4	3.3	2.9	3.7
Unstaged	8.8	7.8	9.8	8.4	7.3	9.5	10.8	10.1	11.8

<sup>a</sup> Based on the SEER 9 areas (San Francisco, Connecticut, Detroit, Hawaii, Iowa, New Mexico, Seattle, Utah, Atlanta).  
Based on follow-up of patients into 2007.

<sup>b</sup> Based on the SEER 17 areas (San Francisco, Connecticut, Detroit, Hawaii, Iowa, New Mexico, Seattle, Utah, Atlanta, San Jose-Monterey, Los Angeles, Alaska Native Registry, Rural Georgia, California excluding SF/SJM/LA, Kentucky, Louisiana and New Jersey). California excluding SF/SJM/LA, Kentucky, Louisiana, and New Jersey contribute cases for diagnosis years 2000-2006. The remaining 13 SEER Areas contribute cases for the entire period 1999-2006. Based on follow-up of patients into 2007.

<sup>c</sup> Period survival provides a more up-to-date estimate of survival by piecing together the most recent conditional survival estimates from several cohorts. It is computed here using three year calendar blocks (2004-2006: 0-1 year survival), (2003-2005: 1-2 year survival), (2002-2004: 2-3 year survival), (2001-2003: 3-4 year survival), (2000-2002: 4-5 years survival).

<sup>d</sup> The difference between 1975-1977 and 1999-2006 is statistically significant ( $p < .05$ ).

<sup>e</sup> The standard error is between 5 and 10 percentage points.

<sup>f</sup> The standard error is greater than 10 percentage points.

- Statistic could not be calculated due to fewer than 25 cases during the time period.

Table 15.15  
Cancer of the Lung and Bronchus (Invasive)

SEER<sup>a</sup> Relative Survival (Percent)  
By Year of Diagnosis

All Races, Males and Females

Survival Time	Year of Diagnosis																			
	1975- 1979	1980- 1984	1985- 1989	1990	1991	1992	1993	1994	1995	1996	1997	1998	1999	2000	2001	2002	2003	2004	2005	2006
1-year	36.7	38.7	40.0	40.3	41.2	41.0	40.8	40.9	41.5	41.1	41.7	41.3	42.7	42.4	41.6	42.0	43.1	43.5	44.5	44.9
2-year	21.7	22.5	23.1	23.6	23.9	24.7	24.5	24.5	25.4	25.3	25.4	25.9	26.4	26.6	26.3	27.1	27.1	28.1	28.6	
3-year	16.7	17.4	17.5	18.0	18.7	18.9	18.9	19.1	19.6	19.8	19.8	20.3	20.3	20.9	20.4	21.4	21.2	22.7		
4-year	14.4	14.9	15.0	15.3	15.9	16.2	16.2	16.4	17.0	16.8	17.0	17.5	17.4	18.1	17.4	18.1	18.3			
5-year	13.0	13.4	13.5	13.7	14.1	14.3	14.7	14.8	15.1	15.2	15.3	15.2	15.7	16.3	15.6	16.2				
6-year	12.0	12.3	12.4	12.7	13.1	13.2	13.6	13.6	13.8	13.9	13.9	13.9	14.4	14.8	14.1					
7-year	11.4	11.5	11.5	11.7	12.0	12.2	12.6	12.7	13.1	12.9	12.9	12.9	13.3	13.6						
8-year	10.8	10.7	10.7	11.0	11.2	11.3	11.8	12.0	12.3	12.0	12.0	11.9	12.6							
9-year	10.2	10.0	10.1	10.1	10.6	10.6	11.1	11.3	11.6	11.3	11.1	11.3								
10-year	9.6	9.4	9.6	9.4	10.1	10.0	10.4	10.7	11.0	10.4	10.6									
11-year	9.2	9.1	9.1	8.9	9.5	9.4	9.8	10.1	10.5	9.9										
12-year	8.9	8.6	8.6	8.3	9.0	9.1	9.2	9.4	10.0											
13-year	8.5	8.2	8.2	8.1	8.4	8.6	8.8	9.0												
14-year	8.2	7.9	7.8	7.9	7.8	8.4	8.5													
15-year	7.8	7.5	7.5	7.6	7.4	7.9														
16-year	7.6	7.2	7.2	7.2	6.9															
17-year	7.3	6.9	6.9	6.9																
18-year	7.0	6.6	6.6																	
19-year	6.8	6.2																		
20-year	6.6	5.9																		

<sup>a</sup> Based on the SEER 9 areas (San Francisco, Connecticut, Detroit, Hawaii, Iowa, New Mexico, Seattle, Utah, and Atlanta).

Table 15.16  
Cancer of the Lung and Bronchus (Invasive)

SEER<sup>a</sup> Relative Survival (Percent)  
By Year of Diagnosis

All Races, Males

Year of Diagnosis

	1975- 1979	1980- 1984	1985- 1989	1990	1991	1992	1993	1994	1995	1996	1997	1998	1999	2000	2001	2002	2003	2004	2005	2006
Survival Time																				
1-year	34.8	36.8	37.9	38.1	39.0	39.0	38.2	38.6	39.3	39.2	39.4	38.4	39.6	40.0	38.4	38.4	40.6	40.5	40.9	42.1
2-year	20.1	20.8	21.5	21.4	22.0	23.1	22.3	22.0	23.6	23.6	23.6	23.3	23.3	24.3	22.8	23.6	24.2	25.2	24.9	
3-year	15.2	15.7	16.0	16.1	17.1	17.5	16.6	16.7	17.7	18.3	18.1	17.8	17.1	18.7	17.8	18.4	18.7	19.8		
4-year	12.9	13.3	13.5	13.4	14.1	14.7	14.0	14.0	15.3	15.1	15.3	15.1	14.4	16.1	14.8	15.5	16.0			
5-year	11.6	11.9	12.1	11.9	12.5	13.0	12.6	12.7	13.6	13.6	13.8	12.9	13.0	14.6	13.2	14.0				
6-year	10.6	10.9	11.1	10.9	11.7	11.8	11.6	11.5	12.3	12.3	12.3	11.5	11.7	13.1	12.1					
7-year	10.0	10.1	10.2	10.2	10.5	10.9	10.8	10.6	11.8	11.3	11.3	10.7	10.8	11.8						
8-year	9.4	9.3	9.6	9.3	9.7	9.9	10.0	10.0	10.9	10.6	10.6	9.7	10.1							
9-year	8.9	8.7	9.0	8.4	9.2	9.2	9.4	9.5	10.2	10.0	9.8	9.2								
10-year	8.4	8.1	8.5	7.7	8.9	8.6	8.9	9.0	9.5	9.1	9.3									
11-year	8.0	7.8	8.0	7.2	8.3	7.9	8.2	8.7	9.1	8.4										
12-year	7.6	7.4	7.6	6.7	7.9	7.7	7.8	7.9	8.7											
13-year	7.2	7.1	7.1	6.5	7.3	7.2	7.1	7.7												
14-year	7.0	6.7	6.8	6.3	6.6	7.0	6.9													
15-year	6.6	6.4	6.6	5.9	6.2	6.8														
16-year	6.4	6.1	6.3	5.5	5.8															
17-year	6.2	5.7	5.9	5.3																
18-year	5.9	5.5	5.5																	
19-year	5.7	5.2																		
20-year	5.5	4.9																		

<sup>a</sup> Based on the SEER 9 areas (San Francisco, Connecticut, Detroit, Hawaii, Iowa, New Mexico, Seattle, Utah, and Atlanta).



Table 15.17  
Cancer of the Lung and Bronchus (Invasive)

SEER<sup>a</sup> Relative Survival (Percent)  
By Year of Diagnosis

All Races, Females

Year of Diagnosis

	1975- 1979	1980- 1984	1985- 1989	1990	1991	1992	1993	1994	1995	1996	1997	1998	1999	2000	2001	2002	2003	2004	2005	2006
Survival Time																				
1-year	41.8	42.7	43.7	43.7	44.5	44.1	44.5	44.1	44.6	43.5	44.6	44.9	46.5	45.3	45.7	46.3	46.0	46.9	48.5	48.0
2-year	25.8	26.2	26.0	27.0	26.8	27.0	27.8	27.9	27.9	27.6	27.6	29.1	30.2	29.4	30.5	31.1	30.4	31.5	32.6	
3-year	20.6	20.9	20.1	20.9	21.1	21.1	22.2	22.2	22.1	21.8	21.8	23.3	24.1	23.6	23.6	24.8	24.1	25.9		
4-year	18.2	18.1	17.6	18.0	18.6	18.3	19.2	19.4	19.4	18.9	19.1	20.4	21.0	20.5	20.5	21.1	21.1			
5-year	16.6	16.4	15.8	16.4	16.4	16.1	17.6	17.5	17.1	17.2	17.1	18.0	18.9	18.3	18.5	18.8				
6-year	15.4	15.1	14.6	15.2	15.2	15.1	16.3	16.4	15.7	15.8	15.7	16.7	17.4	16.8	16.6					
7-year	14.5	14.2	13.5	14.0	14.1	14.0	15.1	15.2	14.8	14.9	14.7	15.6	16.2	15.7						
8-year	13.8	13.4	12.6	13.3	13.2	13.3	14.2	14.5	14.1	13.8	13.6	14.7	15.4							
9-year	13.1	12.5	11.8	12.5	12.6	12.5	13.4	13.4	13.4	12.8	12.7	13.9								
10-year	12.3	11.8	11.2	11.7	11.8	11.9	12.3	12.7	12.8	12.0	12.1									
11-year	11.9	11.3	10.6	11.2	11.2	11.3	11.8	11.9	12.3	11.8										
12-year	11.5	10.7	10.1	10.5	10.5	10.9	11.1	11.1	11.6											
13-year	11.1	10.2	9.7	10.3	9.8	10.4	10.9	10.6												
14-year	10.6	9.8	9.3	9.9	9.2	10.0	10.5													
15-year	10.1	9.4	8.9	9.8	8.8	9.4														
16-year	9.9	9.0	8.5	9.4	8.2															
17-year	9.4	8.7	8.3	9.0																
18-year	9.1	8.3	8.0																	
19-year	8.7	7.7																		
20-year	8.5	7.4																		

<sup>a</sup> Based on the SEER 9 areas (San Francisco, Connecticut, Detroit, Hawaii, Iowa, New Mexico, Seattle, Utah, and Atlanta).

Table 15.18  
Cancer of the Lung and Bronchus (Invasive)

Risk of Being Diagnosed With Cancer in 10, 20 and 30 Years,  
Lifetime Risk of Being Diagnosed with Cancer Given Alive and Cancer-Free at Current Age, and  
Lifetime Risk of Dying from Cancer Given Alive at Current Age  
Both Sexes, 2005-2007 By Race/Ethnicity

Race/ Ethnicity	Current Age	Risk of Being Diagnosed with Cancer				Risk of Dying from Cancer	Race/ Ethnicity	Current Age	Risk of Being Diagnosed with Cancer				Risk of Dying from Cancer
		+10 yrs	+20 yrs	+30 yrs	Ever				+10 yrs	+20 yrs	+30 yrs	Ever	
All Races	0	0.00	0.00	0.01	6.95	5.93	Asian/ Pacific Islander	0	0.00	0.00	0.01	5.55	4.27
	10	0.00	0.01	0.03	7.03	6.01		10	0.00	0.01	0.03	5.60	4.31
	20	0.00	0.03	0.20	7.06	6.04		20	0.00	0.03	0.14	5.61	4.32
	30	0.02	0.20	0.86	7.12	6.10		30	0.03	0.14	0.56	5.64	4.33
	40	0.18	0.85	2.67	7.19	6.16		40	0.11	0.54	1.58	5.64	4.34
	50	0.69	2.57	5.30	7.21	6.20		50	0.43	1.49	3.42	5.61	4.33
	60	2.00	4.90	6.61	6.94	6.01		60	1.10	3.10	4.70	5.36	4.20
	70	3.33	5.30	-	5.68	5.02		70	2.17	3.90	-	4.63	3.80
80	2.75	-	-	3.27	3.08	80	2.14	-	-	3.03	2.84		
White	0	0.00	0.00	0.01	7.15	6.08	American Indian/ Alaska Native <sup>a</sup>	0	0.00	0.01	0.01	4.74	4.02
	10	0.00	0.01	0.03	7.23	6.15		10	0.01	0.01	0.03	4.81	4.09
	20	0.00	0.03	0.19	7.25	6.18		20	0.00	0.02	0.10	4.84	4.12
	30	0.02	0.19	0.85	7.31	6.23		30	0.02	0.10	0.51	4.92	4.20
	40	0.17	0.83	2.72	7.38	6.29		40	0.08	0.51	1.60	5.04	4.32
	50	0.68	2.62	5.46	7.40	6.33		50	0.44	1.58	3.76	5.17	4.45
	60	2.06	5.07	6.82	7.13	6.13		60	1.22	3.58	4.67	5.10	4.45
	70	3.45	5.46	-	5.81	5.11		70	2.75	4.02	-	4.52	3.72
80	2.80	-	-	3.30	3.11	80	1.78	-	-	2.47	2.13		
Black	0	0.00	0.00	0.00	6.53	5.41	Hispanic <sup>b</sup>	0	0.00	0.00	0.00	4.12	3.05
	10	0.00	0.00	0.03	6.68	5.55		10	0.00	0.00	0.02	4.17	3.08
	20	0.00	0.03	0.30	6.72	5.58		20	0.00	0.01	0.08	4.18	3.09
	30	0.03	0.30	1.26	6.83	5.66		30	0.01	0.08	0.35	4.22	3.12
	40	0.28	1.26	3.29	6.96	5.77		40	0.07	0.35	1.23	4.25	3.14
	50	1.03	3.16	5.52	7.01	5.84		50	0.28	1.18	2.72	4.27	3.17
	60	2.39	5.02	6.39	6.69	5.64		60	0.94	2.56	3.77	4.19	3.13
	70	3.28	4.98	-	5.35	4.64		70	1.81	3.15	-	3.62	2.77
80	2.63	-	-	3.21	2.94	80	1.74	-	-	2.36	1.97		

Devcan Version 6.5.0, June 2010, National Cancer Institute (<http://srab.cancer.gov/devcan/>).

Source: Incidence data are from the SEER 17 areas (San Francisco, Connecticut, Detroit, Hawaii, Iowa, New Mexico, Seattle, Utah, Atlanta, San Jose-Monterey, Los Angeles, Alaska Native Registry, Rural Georgia, California excluding SF/SJM/LA, Kentucky, Louisiana and New Jersey). Mortality data are from the NCHS public use data file for the total US.

<sup>a</sup> Underlying incidence and mortality data for American Indian/Alaska Native are based on the CHSDA (Contract Health Service Delivery Area) counties.

<sup>b</sup> Hispanic is not mutually exclusive from whites, blacks, Asian/Pacific Islanders, and American Indians/Alaska Natives.

Underlying incidence data for Hispanics are based on NHIA and exclude cases from the Alaska Native Registry.

Underlying mortality data for Hispanics exclude deaths from the District of Columbia, Minnesota, New Hampshire and North Dakota.

- Statistic could not be calculated.

A percent of 0.00 represents a value that is below 0.005.

Table 15.19  
Cancer of the Lung and Bronchus (Invasive)

Risk of Being Diagnosed With Cancer in 10, 20 and 30 Years,  
Lifetime Risk of Being Diagnosed with Cancer Given Alive and Cancer-Free at Current Age, and  
Lifetime Risk of Dying from Cancer Given Alive at Current Age  
Males, 2005-2007 By Race/Ethnicity

Race/ Ethnicity	Current Age	Risk of Being Diagnosed with Cancer				Risk of Dying from Cancer	Race/ Ethnicity	Current Age	Risk of Being Diagnosed with Cancer				Risk of Dying from Cancer
		+10 yrs	+20 yrs	+30 yrs	Ever				+10 yrs	+20 yrs	+30 yrs	Ever	
All Races	0	0.00	0.00	0.01	7.67	6.95	Asian/ Pacific Islander	0	0.00	0.00	0.01	6.92	5.50
	10	0.00	0.01	0.03	7.77	7.06		10	0.00	0.01	0.03	6.99	5.55
	20	0.00	0.03	0.20	7.82	7.10		20	0.01	0.03	0.16	7.01	5.56
	30	0.02	0.19	0.93	7.92	7.20		30	0.03	0.15	0.67	7.05	5.60
	40	0.17	0.93	2.97	8.03	7.31		40	0.13	0.65	1.99	7.08	5.62
	50	0.78	2.89	5.99	8.13	7.42		50	0.53	1.89	4.48	7.07	5.62
	60	2.29	5.64	7.60	7.95	7.31		60	1.42	4.12	6.20	6.84	5.51
	70	3.96	6.28	-	6.70	6.29		70	2.99	5.29	-	6.01	5.06
80	3.48	-	-	4.10	4.13	80	2.99	-	-	3.91	3.86		
White	0	0.00	0.00	0.01	7.76	7.04	American Indian/ Alaska Native <sup>a</sup>	0	0.00	0.01	0.01	5.01	4.32
	10	0.00	0.01	0.03	7.85	7.14		10	0.01	0.01	0.03	5.10	4.40
	20	0.00	0.02	0.18	7.89	7.17		20	0.01	0.03	0.09	5.14	4.45
	30	0.02	0.18	0.89	7.98	7.27		30	0.02	0.09	0.55	5.27	4.57
	40	0.16	0.88	2.95	8.09	7.37		40	0.07	0.55	1.66	5.44	4.75
	50	0.74	2.88	6.04	8.19	7.48		50	0.50	1.67	4.14	5.67	4.99
	60	2.30	5.71	7.69	8.02	7.36		60	1.29	4.00	5.25	5.69	5.09
	70	4.02	6.36	-	6.75	6.33		70	3.25	4.76	-	5.28	4.45
80	3.51	-	-	4.10	4.12	80	2.21	-	-	2.98	2.72		
Black	0	0.00	0.00	0.01	7.65	6.83	Hispanic <sup>b</sup>	0	0.00	0.00	0.00	4.95	4.07
	10	0.00	0.01	0.04	7.85	7.02		10	0.00	0.00	0.01	5.01	4.12
	20	0.00	0.04	0.32	7.92	7.07		20	0.00	0.01	0.08	5.04	4.14
	30	0.03	0.32	1.52	8.11	7.23		30	0.01	0.08	0.38	5.10	4.19
	40	0.30	1.54	4.10	8.33	7.43		40	0.07	0.37	1.41	5.16	4.24
	50	1.32	4.04	6.87	8.53	7.63		50	0.32	1.39	3.29	5.24	4.31
	60	3.14	6.41	7.98	8.32	7.55		60	1.14	3.17	4.69	5.25	4.32
	70	4.33	6.40	-	6.86	6.44		70	2.33	4.07	-	4.71	3.93
80	3.59	-	-	4.39	4.43	80	2.39	-	-	3.28	2.93		

Devcan Version 6.5.0, June 2010, National Cancer Institute (<http://srab.cancer.gov/devcan/>).

Source: Incidence data are from the SEER 17 areas (San Francisco, Connecticut, Detroit, Hawaii, Iowa, New Mexico, Seattle, Utah, Atlanta, San Jose-Monterey, Los Angeles, Alaska Native Registry, Rural Georgia, California excluding SF/SJM/LA, Kentucky, Louisiana and New Jersey). Mortality data are from the NCHS public use data file for the total US.

<sup>a</sup> Underlying incidence and mortality data for American Indian/Alaska Native are based on the CHSDA (Contract Health Service Delivery Area) counties.

<sup>b</sup> Hispanic is not mutually exclusive from whites, blacks, Asian/Pacific Islanders, and American Indians/Alaska Natives.

Underlying incidence data for Hispanics are based on NHIA and exclude cases from the Alaska Native Registry.

Underlying mortality data for Hispanics exclude deaths from the District of Columbia, Minnesota, New Hampshire and North Dakota.

- Statistic could not be calculated.

A percent of 0.00 represents a value that is below 0.005.

Table 15.20  
Cancer of the Lung and Bronchus (Invasive)

Risk of Being Diagnosed With Cancer in 10, 20 and 30 Years,  
Lifetime Risk of Being Diagnosed with Cancer Given Alive and Cancer-Free at Current Age, and  
Lifetime Risk of Dying from Cancer Given Alive at Current Age  
Females, 2005-2007 By Race/Ethnicity

Race/ Ethnicity	Current Age	Risk of Being Diagnosed with Cancer				Risk of Dying from Cancer	Race/ Ethnicity	Current Age	Risk of Being Diagnosed with Cancer				Risk of Dying from Cancer
		+10 yrs	+20 yrs	+30 yrs	Ever				+10 yrs	+20 yrs	+30 yrs	Ever	
All Races	0	0.00	0.00	0.01	6.35	5.05	Asian/ Pacific Islander	0	0.00	0.00	0.00	4.40	3.25
	10	0.00	0.01	0.03	6.42	5.11		10	0.00	0.00	0.03	4.43	3.28
	20	0.01	0.03	0.21	6.43	5.12		20	0.00	0.03	0.13	4.44	3.28
	30	0.03	0.20	0.79	6.46	5.15		30	0.02	0.13	0.46	4.45	3.29
	40	0.18	0.77	2.40	6.49	5.18		40	0.10	0.43	1.23	4.44	3.29
	50	0.61	2.27	4.68	6.44	5.17		50	0.33	1.14	2.55	4.39	3.26
	60	1.74	4.27	5.80	6.12	4.94		60	0.83	2.27	3.49	4.16	3.14
	70	2.83	4.54	-	4.90	4.06		70	1.54	2.84	-	3.55	2.82
80	2.27	-	-	2.74	2.44	80	1.53	-	-	2.38	2.10		
White	0	0.00	0.00	0.01	6.66	5.24	American Indian/ Alaska Native <sup>a</sup>	0	0.00	0.00	0.01	4.54	3.78
	10	0.00	0.01	0.03	6.72	5.30		10	0.00	0.01	0.02	4.59	3.83
	20	0.01	0.03	0.20	6.73	5.31		20	0.00	0.02	0.11	4.61	3.85
	30	0.03	0.20	0.80	6.76	5.34		30	0.02	0.11	0.48	4.65	3.89
	40	0.18	0.78	2.51	6.79	5.37		40	0.09	0.47	1.54	4.72	3.96
	50	0.62	2.38	4.94	6.74	5.34		50	0.39	1.49	3.42	4.77	4.01
	60	1.84	4.52	6.10	6.41	5.11		60	1.17	3.21	4.19	4.63	3.94
	70	2.99	4.76	-	5.10	4.18		70	2.33	3.44	-	3.95	3.18
80	2.34	-	-	2.80	2.48	80	1.49	-	-	2.17	1.76		
Black	0	0.00	0.00	0.00	5.55	4.20	Hispanic <sup>b</sup>	0	0.00	0.00	0.00	3.47	2.21
	10	0.00	0.00	0.03	5.67	4.30		10	0.00	0.00	0.02	3.50	2.23
	20	0.00	0.03	0.29	5.69	4.31		20	0.00	0.02	0.09	3.51	2.24
	30	0.03	0.29	1.02	5.73	4.34		30	0.01	0.09	0.33	3.52	2.24
	40	0.26	1.01	2.58	5.79	4.39		40	0.07	0.32	1.05	3.53	2.25
	50	0.78	2.41	4.36	5.75	4.39		50	0.25	1.00	2.24	3.51	2.25
	60	1.78	3.91	5.12	5.41	4.18		60	0.77	2.06	3.02	3.38	2.19
	70	2.52	3.97	-	4.31	3.44		70	1.40	2.45	-	2.84	1.94
80	2.08	-	-	2.57	2.15	80	1.30	-	-	1.79	1.38		

Devcan Version 6.5.0, June 2010, National Cancer Institute (<http://srab.cancer.gov/devcan/>).

Source: Incidence data are from the SEER 17 areas (San Francisco, Connecticut, Detroit, Hawaii, Iowa, New Mexico, Seattle, Utah, Atlanta, San Jose-Monterey, Los Angeles, Alaska Native Registry, Rural Georgia, California excluding SF/SJM/LA, Kentucky, Louisiana and New Jersey). Mortality data are from the NCHS public use data file for the total US.

<sup>a</sup> Underlying incidence and mortality data for American Indian/Alaska Native are based on the CHSDA (Contract Health Service Delivery Area) counties.

<sup>b</sup> Hispanic is not mutually exclusive from whites, blacks, Asian/Pacific Islanders, and American Indians/Alaska Natives.

Underlying incidence data for Hispanics are based on NHIA and exclude cases from the Alaska Native Registry.

Underlying mortality data for Hispanics exclude deaths from the District of Columbia, Minnesota, New Hampshire and North Dakota.

- Statistic could not be calculated.

A percent of 0.00 represents a value that is below 0.005.

Table 15.21  
Lung and Bronchus (Invasive)

SEER Incidence and U.S. Mortality  
Age-Adjusted Rates and Trends<sup>a</sup>  
By Race/Ethnicity and Sex

SEER Incidence	SEER 17 Areas <sup>b</sup>			SEER 13 Areas <sup>b</sup>			SEER 9 Areas <sup>b</sup>		
	Rate 2003-2007			Trend 1998-2007 <sup>c</sup>			Trend 1998-2007 <sup>d</sup>		
	Rate per 100,000 persons			AAPC (%)			AAPC (%)		
RACE/ETHNICITY	Total	Males	Females	Total	Males	Females	Total	Males	Females
All Races	62.5	76.2	52.4	-1.2*	-2.1*	-0.6*	-0.8*	-2.0*	-0.1
White	63.8	76.3	54.7	-1.4*	-2.1*	-0.5*	-1.1*	-2.2*	0.0
White Hispanic <sup>e</sup>	32.7	42.1	25.8	-1.8*	-2.5*	-1.1*	-	-	-
White Non-Hispanic <sup>e</sup>	68.3	81.1	59.0	-1.2*	-1.9*	-0.3	-	-	-
Black	73.5	101.2	54.8	-1.5*	-2.8*	0.3	-2.0*	-3.4*	0.3
Asian/Pacific Islander	38.7	52.9	28.1	-1.2	-1.2*	0.2	-	-	-
Amer Ind/Alaska Nat <sup>f</sup>	45.3	52.7	39.7	-0.5	-2.1*	1.7	-	-	-
Hispanic <sup>e</sup>	32.1	41.4	25.4	-1.7*	-2.3*	-1.0*	-	-	-
<u>U.S. Mortality<sup>g</sup></u>									
RACE/ETHNICITY	Rate 2003-2007			Trend 1998-2007 <sup>h</sup>					
	Rate per 100,000 persons			AAPC (%)					
	Total	Males	Females	Total	Males	Females			
All Races	52.5	68.8	40.6	-1.2*	-2.0*	-0.2			
White	52.9	68.3	41.6	-1.1*	-2.0*	-0.1			
White Hispanic <sup>e</sup>	22.8	33.4	14.9	-2.2*	-3.5*	-0.3			
White Non-Hispanic <sup>e</sup>	55.4	71.1	43.8	-0.9*	-1.7*	0.1			
Black	58.6	87.5	39.6	-1.9*	-2.8*	-0.3			
Asian/Pacific Islander	26.2	36.7	18.5	-1.3*	-1.6*	-0.4			
Amer Ind/Alaska Nat									
Total U.S.	33.7	41.1	28.1	-0.9*	-3.8	0.8*			
CHSDA Counties	39.7	48.1	33.3	-0.2	-1.5*	1.5*			
Non-CHSDA Counties	26.4	32.5	21.6	-1.8*	-3.4*	0.0			
Hispanic <sup>e</sup>	22.1	32.5	14.4	-2.2*	-3.4*	-0.3			

The AAPC is the Average Annual Percent Change over the time interval. The AAPCs are calculated by the Joinpoint Regression Program Version 3.4.3, April 2010, National Cancer Institute.

- Statistic not shown. Rate based on less than 16 cases for the time interval.

Trend based on less than 10 cases for at least one year within the time interval.

a Rates are age-adjusted to the 2000 US Std Population (19 age groups - Census P25-1130). Trends

are based on rates age-adjusted to the 2000 US Std Population (19 age groups - Census P25-1130).

b The SEER 9 areas are San Francisco, Connecticut, Detroit, Hawaii, Iowa, New Mexico, Seattle, Utah and Atlanta.

The SEER 13 areas comprise the SEER 9 areas plus San Jose-Monterey, Los Angeles, the Alaska Native Registry and Rural Georgia.

The SEER 17 areas comprise the SEER 13 areas plus California excluding SF/SJM/LA, Kentucky, Louisiana and New Jersey.

c The 1998-2007 AAPC estimates are based on a Joinpoint analysis with up to 2 Joinpoints over diagnosis years 1992-2007.

d The 1998-2007 AAPC estimates are based on a Joinpoint analysis with up to 4 Joinpoints over diagnosis years 1975-2007.

e Hispanic and Non-Hispanic are not mutually exclusive from whites, blacks, Asian/Pacific Islanders, and American Indians/Alaska Natives. Incidence data for Hispanics and Non-Hispanics are based on NHIA and exclude cases from the Alaska Native Registry. The 2003-2007 Hispanic and Non-Hispanic death rates exclude deaths from the District of Columbia, New Hampshire, and North Dakota. The 1998-2007 Hispanic and Non-Hispanic mortality trends exclude deaths from Connecticut, the District of Columbia, Maine, Maryland, Minnesota, New Hampshire, New York, North Dakota, Oklahoma and Vermont.

f Incidence data for American Indian/Alaska Native are based on the CHSDA(Contract Health Service Delivery Area) counties.

g US Mortality Files, National Center for Health Statistics, CDC.

h The 1998-2007 mortality AAPCs are based on a Joinpoint analysis using years of death 1992-2007.

\* The APC is significantly different from zero (p<.05).

Table 15.22  
Cancer of the Lung And Bronchus (Invasive)

Age-Adjusted SEER Incidence Rates<sup>a</sup>  
By Registry, Race and Sex

	All Races			Whites			Blacks		
	Total	Males	Females	Total	Males	Females	Total	Males	Females
<u>SEER Incidence Rates<sup>a</sup>, 2003-2007</u>									
Atlanta & Rural Georgia	58.39	75.52	46.62	58.75	71.90	49.66	60.47	90.62	42.14
Atlanta	57.68	73.83	46.68	57.55	69.56	49.42	61.08	91.08	42.93
Rural Georgia	73.77	107.22	48.43	82.56	114.12	56.53	56.78	91.39	34.57
California	53.74	63.92	46.28	55.21	64.12	48.74	69.09	88.38	55.50
Greater Bay Area	50.71	59.04	44.75	51.84	57.32	48.19	72.87	89.46	61.31
San Francisco-Oakland	52.33	60.81	46.30	52.69	57.63	49.47	75.19	91.73	63.68
San Jose-Monterey	47.55	55.62	41.72	50.40	56.85	45.97	59.18	81.76	42.08
Los Angeles	46.32	57.35	38.30	45.47	54.59	38.87	68.21	89.50	53.83
Greater California	58.41	68.73	50.75	60.17	69.93	52.99	67.87	86.67	53.79
Connecticut	68.42	80.50	60.25	69.34	80.53	61.90	60.36	85.95	43.30
Detroit	80.47	98.39	68.11	79.19	94.27	69.03	89.40	120.86	68.43
Hawaii	53.33	69.23	40.51	63.72	74.88	54.60	31.83	33.45	-
Iowa	68.97	89.33	54.17	68.68	88.80	54.08	106.25	152.93	68.16
Kentucky	100.56	131.35	78.18	100.68	131.31	78.31	106.47	143.92	81.40
Louisiana	79.58	107.83	58.90	79.33	102.99	61.79	81.71	125.88	52.05
New Jersey	65.20	78.30	56.26	66.61	78.69	58.46	66.62	89.50	51.86
New Mexico	46.30	55.73	38.69	48.67	58.02	41.07	42.71	55.26	31.30
Seattle-Puget Sound	67.66	77.15	60.71	68.94	77.36	62.89	71.91	91.12	56.23
Utah	29.08	36.20	23.17	28.96	35.93	23.19	56.33	80.71	-
9 SEER Areas <sup>b</sup>	61.56	74.41	52.21	62.36	73.57	54.32	74.07	100.95	55.97
11 SEER Areas <sup>b</sup>	57.37	69.58	48.48	58.20	68.77	50.62	72.30	97.49	55.26
13 SEER Areas <sup>b</sup>	57.49	69.79	48.53	58.27	68.91	50.63	72.05	97.39	54.94
17 SEER Areas <sup>b</sup>	62.47	76.25	52.40	63.78	76.28	54.71	73.55	101.18	54.84

<sup>a</sup> Rates are per 100,000 and are age-adjusted to the 2000 US Std Population (19 age groups - Census P25-1130)

<sup>b</sup> The SEER 9 areas are San Francisco, Connecticut, Detroit, Hawaii, Iowa, New Mexico, Seattle, Utah and Atlanta.

The SEER 11 areas comprise the SEER 9 areas plus San Jose-Monterey and Los Angeles.

The SEER 13 areas comprise the SEER 11 areas plus the Alaska Native Registry and Rural Georgia.

The SEER 17 areas comprise the SEER 13 areas plus California excluding SF/SJM/LA, Kentucky, Louisiana and New Jersey.

- Statistic not shown. Rate based on less than 16 cases for the time interval.

Table 15.23  
Cancer of the Lung And Bronchus (Invasive)

Age-Adjusted SEER Death Rates<sup>a</sup>  
By Registry, Race and Sex

	All Races			Whites			Blacks		
	Total	Males	Females	Total	Males	Females	Total	Males	Females
<u>SEER Death Rates<sup>a</sup>, 2003-2007</u>									
Atlanta & Rural Georgia	44.95	61.24	33.99	44.47	58.18	35.06	48.18	73.89	32.92
Atlanta	44.35	59.83	34.05	43.56	56.40	34.92	48.47	73.78	33.56
Rural Georgia	57.37	87.66	34.55	62.35	91.52	38.70	48.02	80.84	27.79
California	41.67	51.38	34.51	42.96	51.66	36.57	56.33	76.75	41.93
Greater Bay Area	38.31	45.77	33.05	39.60	44.83	36.13	60.40	78.72	47.82
San Francisco-Oakland	39.66	47.13	34.40	40.41	45.03	37.39	62.26	80.07	50.08
San Jose-Monterey	35.68	43.18	30.36	38.23	44.63	33.94	49.89	77.62	29.13
Los Angeles	36.67	47.39	28.84	35.84	44.76	29.33	55.73	77.55	40.84
Greater California	45.28	55.25	37.83	46.84	56.42	39.68	54.35	74.74	39.20
Connecticut	48.03	59.65	40.10	48.79	59.89	41.24	43.56	64.87	30.09
Detroit	55.98	71.87	44.97	54.74	68.84	45.05	63.44	88.33	46.94
Hawaii	38.15	51.19	27.70	48.87	58.74	40.51	21.81	-	-
Iowa	52.49	70.82	39.15	52.42	70.61	39.20	78.74	116.24	49.03
Kentucky	76.54	105.22	56.03	76.66	105.28	56.13	81.79	115.22	59.48
Louisiana	64.05	89.71	45.58	62.75	83.93	47.32	69.25	111.19	41.44
New Jersey	48.53	61.48	39.70	49.61	62.12	41.02	52.36	73.16	39.51
New Mexico	37.09	46.15	29.92	38.87	47.83	31.75	38.21	53.57	24.61
Seattle-Puget Sound	50.79	59.94	44.07	52.20	60.91	45.83	55.07	67.82	43.32
Utah	23.85	31.41	17.61	23.63	31.19	17.38	52.45	71.75	-
9 SEER Areas <sup>b</sup>	45.54	57.39	36.94	46.34	57.21	38.47	55.94	78.36	41.01
11 SEER Areas <sup>b</sup>	43.00	54.37	34.74	43.72	53.97	36.30	55.80	78.06	40.84
13 SEER Areas <sup>b</sup>	43.16	54.61	34.83	43.86	54.19	36.36	55.65	78.02	40.62
17 SEER Areas <sup>b</sup>	47.56	60.57	38.07	48.59	60.70	39.76	58.30	83.96	41.14
Total U.S.	52.51	68.81	40.56	52.94	68.32	41.60	58.56	87.52	39.56

<sup>a</sup> US Mortality Files, National Center for Health Statistics, Centers for Disease Control and Prevention.  
Rates are per 100,000 and are age-adjusted to the 2000 US Std Population (19 age groups - Census P25-1130).

<sup>b</sup> The SEER 9 areas are San Francisco, Connecticut, Detroit, Hawaii, Iowa, New Mexico, Seattle, Utah and Atlanta.  
The SEER 11 areas comprise the SEER 9 areas plus San Jose-Monterey and Los Angeles.  
The SEER 13 areas comprise the SEER 11 areas plus the Alaska Native Registry and Rural Georgia.  
The SEER 17 areas comprise the SEER 13 areas plus California excluding SF/SJM/LA, Kentucky, Louisiana and New Jersey.  
- Statistic not shown. Rate based on less than 16 cases for the time interval.

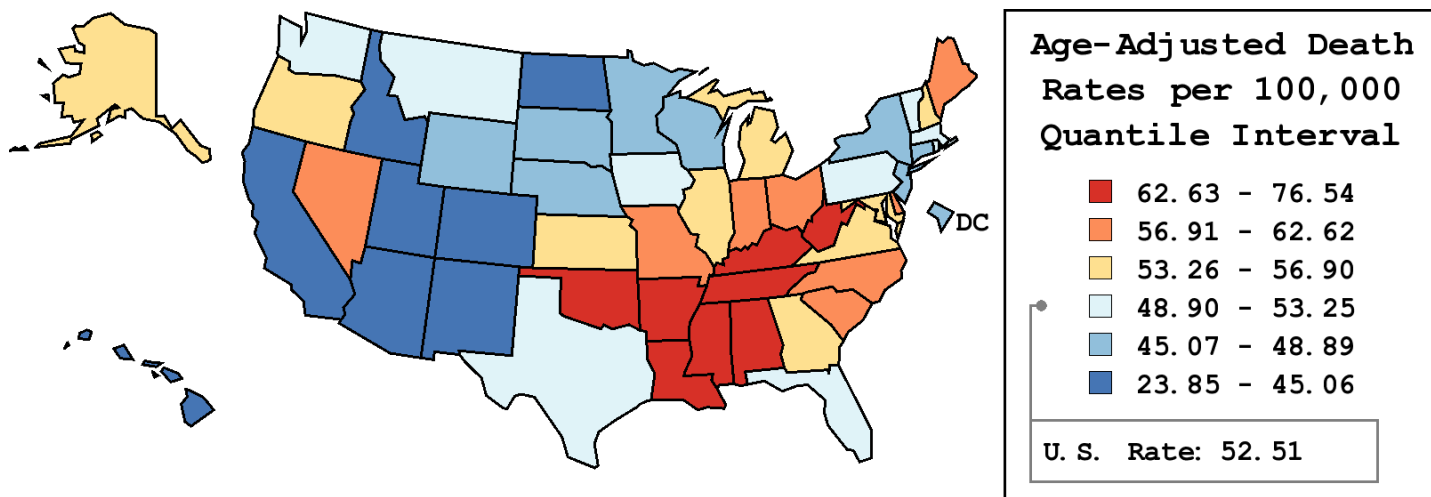
Table 15.24  
Cancer of the Lung and Bronchus (Invasive)

Age-Adjusted Cancer Death<sup>a</sup> Rates By State, All Races, 2003-2007

Males and Females

State	Rate	SE	Rank	PD
TOTAL U.S.	52.51	0.06		
High Five States				
Kentucky	76.54 <sup>b</sup>	0.59	(01)	45.76 <sup>c</sup>
Tennessee	67.66 <sup>b</sup>	0.47	(02)	28.84 <sup>c</sup>
West Virginia	67.56 <sup>b</sup>	0.78	(03)	28.66 <sup>c</sup>
Arkansas	67.06 <sup>b</sup>	0.66	(04)	27.70 <sup>c</sup>
Mississippi	66.49 <sup>b</sup>	0.68	(05)	26.62 <sup>c</sup>
Low Five States				
California	41.67 <sup>b</sup>	0.16	(47)	-20.64 <sup>c</sup>
Colorado	39.05 <sup>b</sup>	0.45	(48)	-25.64 <sup>c</sup>
Hawaii	38.15 <sup>b</sup>	0.74	(49)	-27.36 <sup>c</sup>
New Mexico	37.09 <sup>b</sup>	0.62	(50)	-29.37 <sup>c</sup>
Utah	23.85 <sup>b</sup>	0.51	(51)	-54.58 <sup>c</sup>

State	Rate	SE	Rank	PD	State	Rate	SE	Rank	PD
Alabama	62.75 <sup>b</sup>	0.51	(08)	19.49 <sup>c</sup>	Montana	50.84	0.99	(32)	-3.19
Alaska	53.81	1.72	(22)	2.46	Nebraska	48.32 <sup>b</sup>	0.72	(39)	-7.98 <sup>c</sup>
Arizona	43.55 <sup>b</sup>	0.38	(45)	-17.07 <sup>c</sup>	Nevada	57.44 <sup>b</sup>	0.73	(16)	9.38 <sup>c</sup>
Arkansas	67.06 <sup>b</sup>	0.66	(04)	27.70 <sup>c</sup>	New Hampshire	53.45	0.90	(25)	1.79
California	41.67 <sup>b</sup>	0.16	(47)	-20.64 <sup>c</sup>	New Jersey	48.53 <sup>b</sup>	0.33	(37)	-7.59 <sup>c</sup>
Colorado	39.05 <sup>b</sup>	0.45	(48)	-25.64 <sup>c</sup>	New Mexico	37.09 <sup>b</sup>	0.62	(50)	-29.37 <sup>c</sup>
Connecticut	48.03 <sup>b</sup>	0.50	(40)	-8.53 <sup>c</sup>	New York	45.25 <sup>b</sup>	0.21	(43)	-13.83 <sup>c</sup>
Delaware	61.41 <sup>b</sup>	1.16	(11)	16.95 <sup>c</sup>	North Carolina	58.85 <sup>b</sup>	0.37	(15)	12.07 <sup>c</sup>
D.C.	48.60	1.31	(36)	-7.45 <sup>c</sup>	North Dakota	45.06 <sup>b</sup>	1.13	(44)	-14.20 <sup>c</sup>
Florida	52.08	0.21	(30)	-0.83	Ohio	59.82 <sup>b</sup>	0.31	(13)	13.92 <sup>c</sup>
Georgia	56.90 <sup>b</sup>	0.39	(17)	8.35 <sup>c</sup>	Oklahoma	63.24 <sup>b</sup>	0.58	(07)	20.42 <sup>c</sup>
Hawaii	38.15 <sup>b</sup>	0.74	(49)	-27.36 <sup>c</sup>	Oregon	53.52	0.53	(24)	1.92
Idaho	43.31 <sup>b</sup>	0.81	(46)	-17.52 <sup>c</sup>	Pennsylvania	53.25	0.27	(26)	1.41
Illinois	54.09 <sup>b</sup>	0.30	(21)	3.01	Rhode Island	53.03	0.95	(27)	0.98
Indiana	62.62 <sup>b</sup>	0.45	(09)	19.24 <sup>c</sup>	South Carolina	58.96 <sup>b</sup>	0.52	(14)	12.28 <sup>c</sup>
Iowa	52.49	0.56	(28)	-0.04	South Dakota	48.89	1.06	(35)	-6.89 <sup>c</sup>
Kansas	54.29	0.62	(20)	3.38	Tennessee	67.66 <sup>b</sup>	0.47	(02)	28.84 <sup>c</sup>
Kentucky	76.54 <sup>b</sup>	0.59	(01)	45.76 <sup>c</sup>	Texas	50.59 <sup>b</sup>	0.23	(33)	-3.67
Louisiana	64.05 <sup>b</sup>	0.55	(06)	21.98 <sup>c</sup>	Utah	23.85 <sup>b</sup>	0.51	(51)	-54.58 <sup>c</sup>
Maine	60.45 <sup>b</sup>	0.88	(12)	15.11 <sup>c</sup>	Vermont	50.55	1.22	(34)	-3.73
Maryland	53.76	0.45	(23)	2.37	Virginia	55.65 <sup>b</sup>	0.39	(19)	5.97 <sup>c</sup>
Massachusetts	52.47	0.39	(29)	-0.08	Washington	51.62	0.42	(31)	-1.69
Michigan	55.98 <sup>b</sup>	0.33	(18)	6.60 <sup>c</sup>	West Virginia	67.56 <sup>b</sup>	0.78	(03)	28.66 <sup>c</sup>
Minnesota	45.78 <sup>b</sup>	0.43	(42)	-12.81 <sup>c</sup>	Wisconsin	48.50 <sup>b</sup>	0.41	(38)	-7.63 <sup>c</sup>
Mississippi	66.49 <sup>b</sup>	0.68	(05)	26.62 <sup>c</sup>	Wyoming	45.90 <sup>b</sup>	1.34	(41)	-12.60 <sup>c</sup>
Missouri	62.51 <sup>b</sup>	0.45	(10)	19.04 <sup>c</sup>					



<sup>a</sup> US Mortality Files, National Center for Health Statistics, Centers for Disease Control and Prevention. Rates are per 100,000 and are age-adjusted to the 2000 US Std Population (19 age groups - Census P25-1130).  
<sup>b</sup> Difference between state rate and total U.S. rate is statistically significant ( $p \leq .0002$ ).  
<sup>c</sup> Absolute percent difference between state rate and total U.S. rate is 5% or more.  
SE Standard error of the rate.  
PD Percent difference between state rate and total U.S. rate.



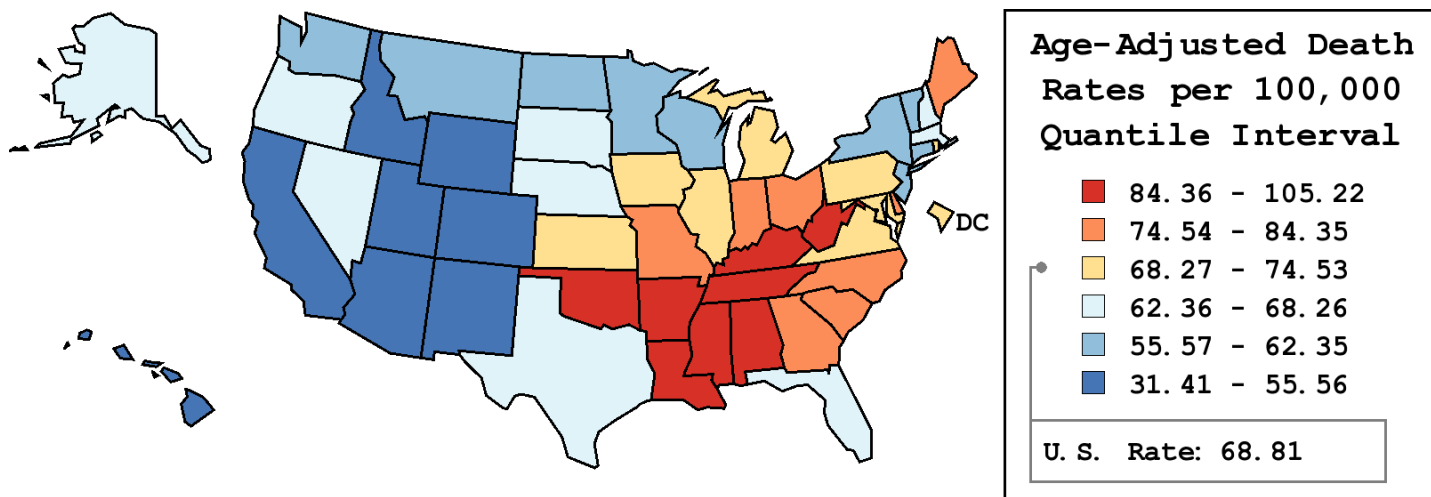
Table 15.25  
Cancer of the Lung and Bronchus (Invasive)

Age-Adjusted Cancer Death<sup>a</sup> Rates By State, All Races, 2003-2007

Males

State	Rate	SE	Rank	PD
TOTAL U.S.	68.81	0.10		
High Five States				
Kentucky	105.22 <sup>b</sup>	1.08	(01)	52.91 <sup>c</sup>
Mississippi	99.40 <sup>b</sup>	1.30	(02)	44.44 <sup>c</sup>
Tennessee	95.72 <sup>b</sup>	0.87	(03)	39.11 <sup>c</sup>
Arkansas	93.17 <sup>b</sup>	1.19	(04)	35.39 <sup>c</sup>
Alabama	92.19 <sup>b</sup>	0.96	(05)	33.98 <sup>c</sup>
Low Five States				
California	51.38 <sup>b</sup>	0.28	(47)	-25.34 <sup>c</sup>
Hawaii	51.19 <sup>b</sup>	1.28	(48)	-25.61 <sup>c</sup>
Colorado	47.82 <sup>b</sup>	0.77	(49)	-30.50 <sup>c</sup>
New Mexico	46.15 <sup>b</sup>	1.05	(50)	-32.94 <sup>c</sup>
Utah	31.41 <sup>b</sup>	0.88	(51)	-54.35 <sup>c</sup>

State	Rate	SE	Rank	PD	State	Rate	SE	Rank	PD
Alabama	92.19 <sup>b</sup>	0.96	(05)	33.98 <sup>c</sup>	Montana	60.70 <sup>b</sup>	1.61	(39)	-11.79 <sup>c</sup>
Alaska	64.83	2.83	(33)	-5.79 <sup>c</sup>	Nebraska	65.63	1.28	(28)	-4.63
Arizona	54.11 <sup>b</sup>	0.63	(45)	-21.36 <sup>c</sup>	Nevada	64.96	1.14	(32)	-5.60 <sup>c</sup>
Arkansas	93.17 <sup>b</sup>	1.19	(04)	35.39 <sup>c</sup>	New Hampshire	65.49	1.52	(30)	-4.83
California	51.38 <sup>b</sup>	0.28	(47)	-25.34 <sup>c</sup>	New Jersey	61.48 <sup>b</sup>	0.57	(38)	-10.66 <sup>c</sup>
Colorado	47.82 <sup>b</sup>	0.77	(49)	-30.50 <sup>c</sup>	New Mexico	46.15 <sup>b</sup>	1.05	(50)	-32.94 <sup>c</sup>
Connecticut	59.65 <sup>b</sup>	0.87	(40)	-13.32 <sup>c</sup>	New York	57.67 <sup>b</sup>	0.37	(43)	-16.20 <sup>c</sup>
Delaware	76.39 <sup>b</sup>	1.99	(16)	11.02 <sup>c</sup>	North Carolina	82.49 <sup>b</sup>	0.68	(12)	19.87 <sup>c</sup>
D.C.	69.13	2.48	(24)	0.46	North Dakota	58.57 <sup>b</sup>	1.92	(41)	-14.89 <sup>c</sup>
Florida	66.22 <sup>b</sup>	0.36	(27)	-3.76	Ohio	80.32 <sup>b</sup>	0.56	(14)	16.73 <sup>c</sup>
Georgia	81.58 <sup>b</sup>	0.74	(13)	18.55 <sup>c</sup>	Oklahoma	84.98 <sup>b</sup>	1.03	(08)	23.50 <sup>c</sup>
Hawaii	51.19 <sup>b</sup>	1.28	(48)	-25.61 <sup>c</sup>	Oregon	64.16 <sup>b</sup>	0.87	(34)	-6.76 <sup>c</sup>
Idaho	53.38 <sup>b</sup>	1.34	(46)	-22.43 <sup>c</sup>	Pennsylvania	71.45 <sup>b</sup>	0.48	(20)	3.83
Illinois	71.07 <sup>b</sup>	0.53	(21)	3.28	Rhode Island	69.75	1.69	(23)	1.37
Indiana	83.85 <sup>b</sup>	0.80	(11)	21.86 <sup>c</sup>	South Carolina	83.92 <sup>b</sup>	0.95	(10)	21.95 <sup>c</sup>
Iowa	70.82	0.98	(22)	2.91	South Dakota	65.55	1.84	(29)	-4.75
Kansas	72.29	1.09	(19)	5.06 <sup>c</sup>	Tennessee	95.72 <sup>b</sup>	0.87	(03)	39.11 <sup>c</sup>
Kentucky	105.22 <sup>b</sup>	1.08	(01)	52.91 <sup>c</sup>	Texas	68.26	0.42	(26)	-0.80
Louisiana	89.71 <sup>b</sup>	1.00	(07)	30.37 <sup>c</sup>	Utah	31.41 <sup>b</sup>	0.88	(51)	-54.35 <sup>c</sup>
Maine	76.88 <sup>b</sup>	1.53	(15)	11.73 <sup>c</sup>	Vermont	61.84	2.07	(36)	-10.14 <sup>c</sup>
Maryland	69.09	0.80	(25)	0.41	Virginia	74.53 <sup>b</sup>	0.71	(17)	8.31 <sup>c</sup>
Massachusetts	65.46 <sup>b</sup>	0.68	(31)	-4.88	Washington	61.51 <sup>b</sup>	0.69	(37)	-10.61 <sup>c</sup>
Michigan	72.50 <sup>b</sup>	0.58	(18)	5.36 <sup>c</sup>	West Virginia	91.03 <sup>b</sup>	1.39	(06)	32.28 <sup>c</sup>
Minnesota	58.28 <sup>b</sup>	0.73	(42)	-15.31 <sup>c</sup>	Wisconsin	62.35 <sup>b</sup>	0.71	(35)	-9.39 <sup>c</sup>
Mississippi	99.40 <sup>b</sup>	1.30	(02)	44.44 <sup>c</sup>	Wyoming	55.56 <sup>b</sup>	2.22	(44)	-19.25 <sup>c</sup>
Missouri	84.35 <sup>b</sup>	0.80	(09)	22.57 <sup>c</sup>					



<sup>a</sup> US Mortality Files, National Center for Health Statistics, Centers for Disease Control and Prevention. Rates are per 100,000 and are age-adjusted to the 2000 US Std Population (19 age groups - Census P25-1130).  
<sup>b</sup> Difference between state rate and total U.S. rate is statistically significant ( $p \leq .0002$ ).  
<sup>c</sup> Absolute percent difference between state rate and total U.S. rate is 5% or more.  
SE Standard error of the rate.  
PD Percent difference between state rate and total U.S. rate.

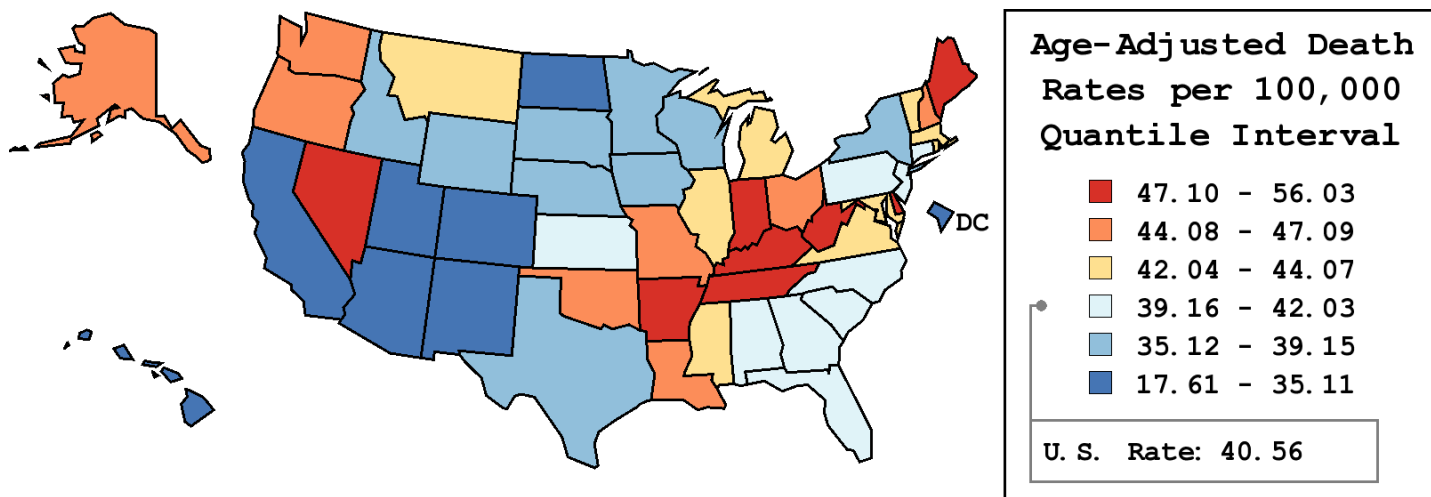
Table 15.26  
Cancer of the Lung And Bronchus (Invasive)

Age-Adjusted Cancer Death<sup>a</sup> Rates By State, All Races, 2003-2007

Females

State	Rate	SE	Rank	PD
TOTAL U.S.	40.56	0.07		
High Five States				
Kentucky	56.03 <sup>b</sup>	0.68	(01)	38.16 <sup>c</sup>
Nevada	50.87 <sup>b</sup>	0.93	(02)	25.43 <sup>c</sup>
West Virginia	50.47 <sup>b</sup>	0.91	(03)	24.45 <sup>c</sup>
Delaware	50.37 <sup>b</sup>	1.41	(04)	24.19 <sup>c</sup>
Maine	48.71 <sup>b</sup>	1.06	(05)	20.09 <sup>c</sup>
Low Five States				
California	34.51 <sup>b</sup>	0.20	(47)	-14.90 <sup>c</sup>
Colorado	32.85 <sup>b</sup>	0.55	(48)	-19.00 <sup>c</sup>
New Mexico	29.92 <sup>b</sup>	0.75	(49)	-26.24 <sup>c</sup>
Hawaii	27.70 <sup>b</sup>	0.85	(50)	-31.70 <sup>c</sup>
Utah	17.61 <sup>b</sup>	0.60	(51)	-56.57 <sup>c</sup>

State	Rate	SE	Rank	PD	State	Rate	SE	Rank	PD
Alabama	41.69	0.55	(27)	2.79	Montana	43.28	1.24	(19)	6.71 <sup>c</sup>
Alaska	44.41	2.13	(15)	9.51 <sup>c</sup>	Nebraska	35.61 <sup>b</sup>	0.84	(42)	-12.19 <sup>c</sup>
Arizona	34.92 <sup>b</sup>	0.46	(45)	-13.89 <sup>c</sup>	Nevada	50.87 <sup>b</sup>	0.93	(02)	25.43 <sup>c</sup>
Arkansas	47.46 <sup>b</sup>	0.75	(08)	17.02 <sup>c</sup>	New Hampshire	44.69 <sup>b</sup>	1.10	(14)	10.18 <sup>c</sup>
California	34.51 <sup>b</sup>	0.20	(47)	-14.90 <sup>c</sup>	New Jersey	39.70	0.39	(34)	-2.13
Colorado	32.85 <sup>b</sup>	0.55	(48)	-19.00 <sup>c</sup>	New Mexico	29.92 <sup>b</sup>	0.75	(49)	-26.24 <sup>c</sup>
Connecticut	40.10	0.61	(32)	-1.13	New York	36.68 <sup>b</sup>	0.25	(40)	-9.57 <sup>c</sup>
Delaware	50.37 <sup>b</sup>	1.41	(04)	24.19 <sup>c</sup>	North Carolina	42.03 <sup>b</sup>	0.41	(26)	3.64
D.C.	34.91 <sup>b</sup>	1.45	(46)	-13.93 <sup>c</sup>	North Dakota	35.11 <sup>b</sup>	1.36	(44)	-13.44 <sup>c</sup>
Florida	40.60	0.26	(30)	0.11	Ohio	45.34 <sup>b</sup>	0.36	(13)	11.78 <sup>c</sup>
Georgia	39.74	0.43	(33)	-2.01	Oklahoma	47.09 <sup>b</sup>	0.67	(09)	16.10 <sup>c</sup>
Hawaii	27.70 <sup>b</sup>	0.85	(50)	-31.70 <sup>c</sup>	Oregon	45.49 <sup>b</sup>	0.66	(12)	12.16 <sup>c</sup>
Idaho	35.44 <sup>b</sup>	0.99	(43)	-12.61 <sup>c</sup>	Pennsylvania	40.43	0.31	(31)	-0.30
Illinois	42.21 <sup>b</sup>	0.35	(23)	4.08	Rhode Island	42.04	1.12	(25)	3.65
Indiana	47.61 <sup>b</sup>	0.52	(06)	17.39 <sup>c</sup>	South Carolina	40.64	0.57	(29)	0.21
Iowa	39.15	0.65	(35)	-3.47	South Dakota	36.48	1.25	(41)	-10.04 <sup>c</sup>
Kansas	41.25	0.73	(28)	1.70	Tennessee	47.54 <sup>b</sup>	0.52	(07)	17.22 <sup>c</sup>
Kentucky	56.03 <sup>b</sup>	0.68	(01)	38.16 <sup>c</sup>	Texas	37.53 <sup>b</sup>	0.27	(38)	-7.47 <sup>c</sup>
Louisiana	45.58 <sup>b</sup>	0.61	(11)	12.37 <sup>c</sup>	Utah	17.61 <sup>b</sup>	0.60	(51)	-56.57 <sup>c</sup>
Maine	48.71 <sup>b</sup>	1.06	(05)	20.09 <sup>c</sup>	Vermont	42.45	1.51	(22)	4.68
Maryland	42.94 <sup>b</sup>	0.53	(21)	5.87 <sup>c</sup>	Virginia	42.11	0.45	(24)	3.83
Massachusetts	43.77 <sup>b</sup>	0.47	(18)	7.92 <sup>c</sup>	Washington	44.30 <sup>b</sup>	0.52	(16)	9.23 <sup>c</sup>
Michigan	44.07 <sup>b</sup>	0.39	(17)	8.67 <sup>c</sup>	West Virginia	50.47 <sup>b</sup>	0.91	(03)	24.45 <sup>c</sup>
Minnesota	36.96 <sup>b</sup>	0.52	(39)	-8.88 <sup>c</sup>	Wisconsin	38.55 <sup>b</sup>	0.49	(36)	-4.96
Mississippi	43.04	0.72	(20)	6.12 <sup>c</sup>	Wyoming	38.43	1.68	(37)	-5.25 <sup>c</sup>
Missouri	46.61 <sup>b</sup>	0.52	(10)	14.93 <sup>c</sup>					



<sup>a</sup> US Mortality Files, National Center for Health Statistics, Centers for Disease Control and Prevention. Rates are per 100,000 and are age-adjusted to the 2000 US Std Population (19 age groups - Census P25-1130).  
<sup>b</sup> Difference between state rate and total U.S. rate is statistically significant ( $p \leq .0002$ ).  
<sup>c</sup> Absolute percent difference between state rate and total U.S. rate is 5% or more.  
SE Standard error of the rate.  
PD Percent difference between state rate and total U.S. rate.

Table 15.27  
Cancer of the Lung And Bronchus (Invasive)

Estimated United States Cancer Prevalence Counts<sup>a</sup> on January 1, 2007  
By Race/Ethnicity, Sex and Years Since Diagnosis

Years Since Diagnosis		0 to <5	5 to <10	10 to <15	15 to <20	20 to <25	25 to <30	0 to <17 <sup>e</sup>	0 to <32 <sup>e</sup>	>=32 <sup>g</sup>	Complete <sup>h</sup>
<u>Race</u>	<u>Sex</u>										
All Races <sup>b</sup>	Both Sexes	213,542	69,437	38,895	20,533	10,999	5,743	331,521	360,606	10,011	370,617
	Males	100,425	30,787	17,826	9,540	4,966	2,750	153,231	167,066	5,673	172,739
	Females	113,117	38,650	21,069	10,993	6,033	2,993	178,290	193,540	4,338	197,878
White <sup>b</sup>	Both Sexes	183,440	61,075	34,181	18,319	9,701	5,177	287,364	313,121	4,676	317,797
	Males	85,221	26,665	15,348	8,367	4,347	2,440	130,986	143,006	2,240	145,246
	Females	98,219	34,410	18,833	9,952	5,354	2,737	156,378	170,115	2,436	172,551
Black <sup>b</sup>	Both Sexes	22,255	6,098	3,559	1,711	1,022	436	32,646	35,256	429	35,685
	Males	11,033	2,890	1,817	927	466	230	16,061	17,500	228	17,728
	Females	11,222	3,208	1,742	784	556	206	16,585	17,756	201	17,957
Asian/ Pacific Islander <sup>c</sup>	Both Sexes	5,962	1,642	760	+	+	+	8,553	+	+	+
	Males	3,109	854	428	+	+	+	4,504	+	+	+
	Females	2,853	788	332	+	+	+	4,049	+	+	+
Hispanic <sup>d</sup>	Both Sexes	6,506	1,898	1,016	+	+	+	9,674	+	+	+
	Males	3,341	929	508	+	+	+	4,879	+	+	+
	Females	3,165	969	508	+	+	+	4,795	+	+	+

Estimated prevalence percent<sup>a</sup> on January 1, 2007, of the SEER 11 population diagnosed in the previous 17 years  
By Age at Prevalence, Race/Ethnicity and Sex

Age at Prevalence		Age Specific (Crude)									Age-Adjusted <sup>f</sup>	
		All Ages	0-9	10-19	20-29	30-39	40-49	50-59	60-69	70-79	80+	All Ages
<u>Race</u>	<u>Sex</u>											
All Races <sup>c</sup>	Both Sexes	0.0917%	0.0001%	0.0003%	0.0015%	0.0051%	0.0256%	0.1080%	0.3420%	0.6224%	0.5033%	0.0958%
	Males	0.0867%	-	0.0003%	0.0014%	0.0049%	0.0225%	0.1067%	0.3527%	0.6718%	0.5928%	0.1017%
	Females	0.0967%	-	0.0002%	0.0015%	0.0053%	0.0287%	0.1093%	0.3323%	0.5839%	0.4534%	0.0918%
White <sup>c</sup>	Both Sexes	0.0983%	0.0001%	0.0003%	0.0017%	0.0053%	0.0252%	0.1053%	0.3507%	0.6452%	0.5172%	0.0980%
	Males	0.0901%	-	0.0003%	0.0016%	0.0049%	0.0212%	0.1017%	0.3476%	0.6773%	0.5955%	0.1010%
	Females	0.1064%	-	-	0.0017%	0.0058%	0.0293%	0.1089%	0.3536%	0.6196%	0.4738%	0.0964%
Black <sup>c</sup>	Both Sexes	0.0781%	-	-	0.0009%	0.0055%	0.0349%	0.1631%	0.3971%	0.6395%	0.4228%	0.1054%
	Males	0.0808%	-	-	-	0.0059%	0.0339%	0.1773%	0.4842%	0.7644%	0.5531%	0.1244%
	Females	0.0757%	-	-	-	0.0051%	0.0358%	0.1513%	0.3296%	0.5558%	0.3595%	0.0924%
Asian/ Pacific Islander <sup>c</sup>	Both Sexes	0.0695%	-	-	-	0.0039%	0.0204%	0.0804%	0.2483%	0.4793%	0.4449%	0.0741%
	Males	0.0750%	-	-	-	0.0042%	0.0213%	0.0836%	0.3000%	0.5872%	0.5900%	0.0897%
	Females	0.0642%	-	-	-	0.0037%	0.0196%	0.0776%	0.2043%	0.4000%	0.3510%	0.0625%
Hispanic <sup>d</sup>	Both Sexes	0.0211%	-	-	0.0009%	0.0031%	0.0109%	0.0430%	0.1323%	0.2727%	0.2656%	0.0419%
	Males	0.0205%	-	-	0.0008%	0.0033%	0.0108%	0.0452%	0.1357%	0.3320%	0.3529%	0.0488%
	Females	0.0217%	-	-	0.0010%	0.0027%	0.0110%	0.0409%	0.1293%	0.2293%	0.2148%	0.0372%

<sup>a</sup> US 2007 cancer prevalence counts are based on 2007 cancer prevalence proportions from the SEER registries and 1/1/2007 US population estimates based on the average of 2006 and 2007 population estimates from the US Bureau of the Census. Prevalence was calculated using the First Malignant Primary Only for a person.

<sup>b c d</sup> Statistics based on (b) SEER 9 Areas (c) SEER 11 Areas and Rural Georgia (d) NHIA for Hispanic for SEER 11 Areas and Rural Georgia.

<sup>e</sup> Maximum limited-duration prevalence: 32 years for 1975-2007 SEER 9 data; 17 years for 1990-2007 SEER 11 data (used to calculate prevalence for Hispanics and Asian Pacific Islanders).

<sup>f</sup> Percentages are age-adjusted to the 2000 US Standard Population (19 age groups - Census P25-1130) by 5-year age groups.

<sup>g h i</sup> (g) Cases diagnosed more than 32 years ago were estimated using the completeness index method (Capocaccia et. al. 1997, Merrill et. al. 2000). (h) Complete prevalence is obtained by summing 0 to <32 and >=32. (i) Age-specific completeness index was approximated using empirical data from historical Connecticut tumor registry.

- Statistic not shown. Statistic based on fewer than 5 cases estimated alive in SEER for the time interval.

+ Not available.

Table 15.28

## Cancer of the Lung and Bronchus (Invasive)

Percent Distribution and Counts by Histology among Histologically Confirmed Cases, 2003-2007  
Both Sexes by Race

Histology <sup>a</sup>	All Races		White		Black		Asian/Pacific Islander		American Indian/ Alaska Native <sup>b</sup>		Hispanic <sup>c</sup>	
	Count	Percent	Count	Percent	Count	Percent	Count	Percent	Count	Percent	Count	Percent
Carcinoma	198,736	98.9%	166,400	98.9%	20,038	99.0%	10,881	99.1%	690	98.0%	10,526	98.7%
Small cell (8041-8045)	27,826	13.9%	24,554	14.6%	2,167	10.7%	889	8.1%	135	19.2%	1,275	12.0%
Non-small cell <sup>d</sup>	170,910	85.1%	141,846	84.3%	17,871	88.3%	9,992	91.0%	555	78.8%	9,251	86.7%
Squamous and transitional cell (8051-8052,8070-8084, 8120-8131)	39,682	19.8%	33,213	19.7%	4,485	22.2%	1,668	15.2%	180	25.6%	1,837	17.2%
Adenocarcinoma (8050,8140-8149, 8160-8162,8190-8221, 8250-8263,8270-8280, 8290-8337,8350-8390, 8400-8560,8570-8576, 8940-8941)	75,367	37.5%	62,305	37.0%	7,249	35.8%	5,374	48.9%	161	22.9%	4,276	40.1%
Large cell (8011-8015)	6,544	3.3%	5,356	3.2%	807	4.0%	335	3.0%	22	3.1%	363	3.4%
Other non-small cell <sup>e</sup>	49,317	24.5%	40,972	24.4%	5,330	26.3%	2,615	23.8%	192	27.3%	2,775	26.0%
Sarcoma (8680-8713,8800-8921, 8990-8991,9040-9044, 9120-9136,9150-9252, 9370-9373,9540-9582)	355	0.2%	302	0.2%	27	0.1%	17	0.2%	-	-	29	0.3%
Other specified types <sup>f</sup> (8720-8790,8930-8936, 8950-8983,9000-9030, 9060-9110,9260-9365, 9380-9539)	144	0.1%	129	0.1%	-	-	-	-	-	-	-	-
Unspecified (8000-8005)	1,674	0.8%	1,414	0.8%	163	0.8%	83	0.8%	-	-	101	0.9%
Total	200,909	100.0%	168,245	100.0%	20,239	100.0%	10,985	100.0%	704	100.0%	10,666	100.0%

Source: SEER 17 areas (San Francisco, Connecticut, Detroit, Hawaii, Iowa, New Mexico, Seattle, Utah, Atlanta, San Jose-Monterey, Los Angeles, Alaska Native Registry, Rural Georgia, California excluding SF/SJM/LA, Kentucky, Louisiana and New Jersey). Percents may not sum to 100 due to rounding.

<sup>a</sup> Excludes Kaposi Sarcoma, mesothelioma, lymphomas, leukemias, myelomas, lymphoreticular, and immunoproliferative diseases.

<sup>b</sup> Estimates for American Indian/Alaska Native are based on the CHSDA (Contract Health Service Delivery Area) counties.

<sup>c</sup> Hispanic is not mutually exclusive from whites, blacks, Asian/Pacific Islanders, and American Indians/Alaska Natives.

<sup>d</sup> Underlying incidence data for Hispanics are based on NHIA and exclude cases from the Alaska Native Registry.

<sup>e</sup> Non-small cell includes histologies 8010-8015, 8020-8022, 8030-8040, 8046, 8050-8052, 8070-8084, 8090-8110, 8120-8131, 8140-8156, 8160-8162, 8170-8175, 8180, 8190-8221, 8230-8231, 8240-8263, 8270-8280, 8290-8337, 8340-8347, 8350-8390, 8400-8562, 8570-8576, 8580-8671, 8940-8941.

<sup>f</sup> Includes large cell carcinoma, NOS, other specified carcinomas, and unspecified carcinomas (8010, 8020-8022, 8030-8040, 8046, 8090-8110, 8150-8156, 8170-8175, 8180, 8230-8231, 8240-8249, 8340-8347, 8561-8562, 8580-8671).

<sup>g</sup> Other specific types includes melanomas.

- Statistic not shown due to fewer than 16 cases during the time period.

Table 15.29

## Cancer of the Lung and Bronchus (Invasive)

Percent Distribution and Counts by Histology among Histologically Confirmed Cases, 2003-2007  
Males by Race

Histology <sup>a</sup>	All Races		White		Black		Asian/Pacific Islander		American Indian/ Alaska Native <sup>b</sup>		Hispanic <sup>c</sup>	
	Count	Percent	Count	Percent	Count	Percent	Count	Percent	Count	Percent	Count	Percent
Carcinoma	106,152	98.9%	87,652	98.9%	11,338	99.1%	6,421	99.0%	355	97.5%	5,810	98.8%
Small cell (8041-8045)	13,947	13.0%	12,119	13.7%	1,122	9.8%	608	9.4%	61	16.8%	706	12.0%
Non-small cell <sup>d</sup>	92,205	85.9%	75,533	85.2%	10,216	89.3%	5,813	89.6%	294	80.8%	5,104	86.8%
Squamous and transitional cell (8051-8052,8070-8084, 8120-8131)	25,050	23.3%	20,702	23.4%	2,893	25.3%	1,250	19.3%	106	29.1%	1,221	20.8%
Adenocarcinoma (8050,8140-8149, 8160-8162,8190-8221, 8250-8263,8270-8280, 8290-8337,8350-8390, 8400-8560,8570-8576, 8940-8941)	36,582	34.1%	29,899	33.7%	3,756	32.8%	2,728	42.1%	73	20.1%	2,106	35.8%
Large cell (8011-8015)	3,782	3.5%	3,064	3.5%	473	4.1%	222	3.4%	-	-	228	3.9%
Other non-small cell <sup>e</sup>	26,791	25.0%	21,868	24.7%	3,094	27.0%	1,613	24.9%	105	28.8%	1,549	26.3%
Sarcoma (8680-8713,8800-8921, 8990-8991,9040-9044, 9120-9136,9150-9252, 9370-9373,9540-9582)	200	0.2%	168	0.2%	16	0.1%	-	-	-	-	-	-
Other specified types <sup>f</sup> (8720-8790,8930-8936, 8950-8983,9000-9030, 9060-9110,9260-9365, 9380-9539)	74	0.1%	69	0.1%	-	-	-	-	-	-	-	-
Unspecified (8000-8005)	881	0.8%	730	0.8%	89	0.8%	52	0.8%	-	-	51	0.9%
Total	107,307	100.0%	88,619	100.0%	11,445	100.0%	6,486	100.0%	364	100.0%	5,879	100.0%

Source: SEER 17 areas (San Francisco, Connecticut, Detroit, Hawaii, Iowa, New Mexico, Seattle, Utah, Atlanta, San Jose-Monterey, Los Angeles, Alaska Native Registry, Rural Georgia, California excluding SF/SJM/LA, Kentucky, Louisiana and New Jersey). Percents may not sum to 100 due to rounding.

<sup>a</sup> Excludes Kaposi Sarcoma, mesothelioma, lymphomas, leukemias, myelomas, lymphoreticular, and immunoproliferative diseases.

<sup>b</sup> Estimates for American Indian/Alaska Native are based on the CHSDA (Contract Health Service Delivery Area) counties.

<sup>c</sup> Hispanic is not mutually exclusive from whites, blacks, Asian/Pacific Islanders, and American Indians/Alaska Natives.

<sup>d</sup> Underlying incidence data for Hispanics are based on NHIA and exclude cases from the Alaska Native Registry.

<sup>e</sup> Non-small cell includes histologies 8010-8015, 8020-8022, 8030-8040, 8046, 8050-8052, 8070-8084, 8090-8110, 8120-8131, 8140-8156, 8160-8162, 8170-8175, 8180, 8190-8221, 8230-8231, 8240-8263, 8270-8280, 8290-8337, 8340-8347, 8350-8390, 8400-8562, 8570-8576, 8580-8671, 8940-8941.

<sup>f</sup> Includes large cell carcinoma, NOS, other specified carcinomas, and unspecified carcinomas (8010, 8020-8022, 8030-8040, 8046, 8090-8110, 8150-8156, 8170-8175, 8180, 8230-8231, 8240-8249, 8340-8347, 8561-8562, 8580-8671).

<sup>g</sup> Other specific types includes melanomas.

- Statistic not shown due to fewer than 16 cases during the time period.

Table 15.30

## Cancer of the Lung and Bronchus (Invasive)

Percent Distribution and Counts by Histology among Histologically Confirmed Cases, 2003-2007  
Females by Race

Histology <sup>a</sup>	All Races		White		Black		Asian/Pacific Islander		American Indian/ Alaska Native <sup>b</sup>		Hispanic <sup>c</sup>	
	Count	Percent	Count	Percent	Count	Percent	Count	Percent	Count	Percent	Count	Percent
Carcinoma	92,584	98.9%	78,748	98.9%	8,700	98.9%	4,460	99.1%	335	98.5%	4,716	98.5%
Small cell (8041-8045)	13,879	14.8%	12,435	15.6%	1,045	11.9%	281	6.2%	74	21.8%	569	11.9%
Non-small cell <sup>d</sup>	78,705	84.1%	66,313	83.3%	7,655	87.0%	4,179	92.9%	261	76.8%	4,147	86.6%
Squamous and transitional cell (8051-8052,8070-8084, 8120-8131)	14,632	15.6%	12,511	15.7%	1,592	18.1%	418	9.3%	74	21.8%	616	12.9%
Adenocarcinoma (8050,8140-8149, 8160-8162,8190-8221, 8250-8263,8270-8280, 8290-8337,8350-8390, 8400-8560,8570-8576, 8940-8941)	38,785	41.4%	32,406	40.7%	3,493	39.7%	2,646	58.8%	88	25.9%	2,170	45.3%
Large cell (8011-8015)	2,762	3.0%	2,292	2.9%	334	3.8%	113	2.5%	-	-	135	2.8%
Other non-small cell <sup>e</sup>	22,526	24.1%	19,104	24.0%	2,236	25.4%	1,002	22.3%	87	25.6%	1,226	25.6%
Sarcoma (8680-8713,8800-8921, 8990-8991,9040-9044, 9120-9136,9150-9252, 9370-9373,9540-9582)	155	0.2%	134	0.2%	-	-	-	-	-	-	-	-
Other specified types <sup>f</sup> (8720-8790,8930-8936, 8950-8983,9000-9030, 9060-9110,9260-9365, 9380-9539)	70	0.1%	60	0.1%	-	-	-	-	-	-	-	-
Unspecified (8000-8005)	793	0.8%	684	0.9%	74	0.8%	31	0.7%	-	-	50	1.0%
Total	93,602	100.0%	79,626	100.0%	8,794	100.0%	4,499	100.0%	340	100.0%	4,787	100.0%

Source: SEER 17 areas (San Francisco, Connecticut, Detroit, Hawaii, Iowa, New Mexico, Seattle, Utah, Atlanta, San Jose-Monterey, Los Angeles, Alaska Native Registry, Rural Georgia, California excluding SF/SJM/LA, Kentucky, Louisiana and New Jersey). Percents may not sum to 100 due to rounding.

<sup>a</sup> Excludes Kaposi Sarcoma, mesothelioma, lymphomas, leukemias, myelomas, lymphoreticular, and immunoproliferative diseases.

<sup>b</sup> Estimates for American Indian/Alaska Native are based on the CHSDA (Contract Health Service Delivery Area) counties.

<sup>c</sup> Hispanic is not mutually exclusive from whites, blacks, Asian/Pacific Islanders, and American Indians/Alaska Natives.

<sup>d</sup> Underlying incidence data for Hispanics are based on NHIA and exclude cases from the Alaska Native Registry.

<sup>e</sup> Non-small cell includes histologies 8010-8015, 8020-8022, 8030-8040, 8046, 8050-8052, 8070-8084, 8090-8110, 8120-8131, 8140-8156, 8160-8162, 8170-8175, 8180, 8190-8221, 8230-8231, 8240-8263, 8270-8280, 8290-8337, 8340-8347, 8350-8390, 8400-8562, 8570-8576, 8580-8671, 8940-8941.

<sup>f</sup> Includes large cell carcinoma, NOS, other specified carcinomas, and unspecified carcinomas (8010, 8020-8022, 8030-8040, 8046, 8090-8110, 8150-8156, 8170-8175, 8180, 8230-8231, 8240-8249, 8340-8347, 8561-8562, 8580-8671).

<sup>g</sup> Other specific types includes melanomas.

- Statistic not shown due to fewer than 16 cases during the time period.

# SEER Observed Incidence, SEER Delay Adjusted Incidence and US Death Rates<sup>a</sup> Cancer of the Lung and Bronchus, by Race and Sex

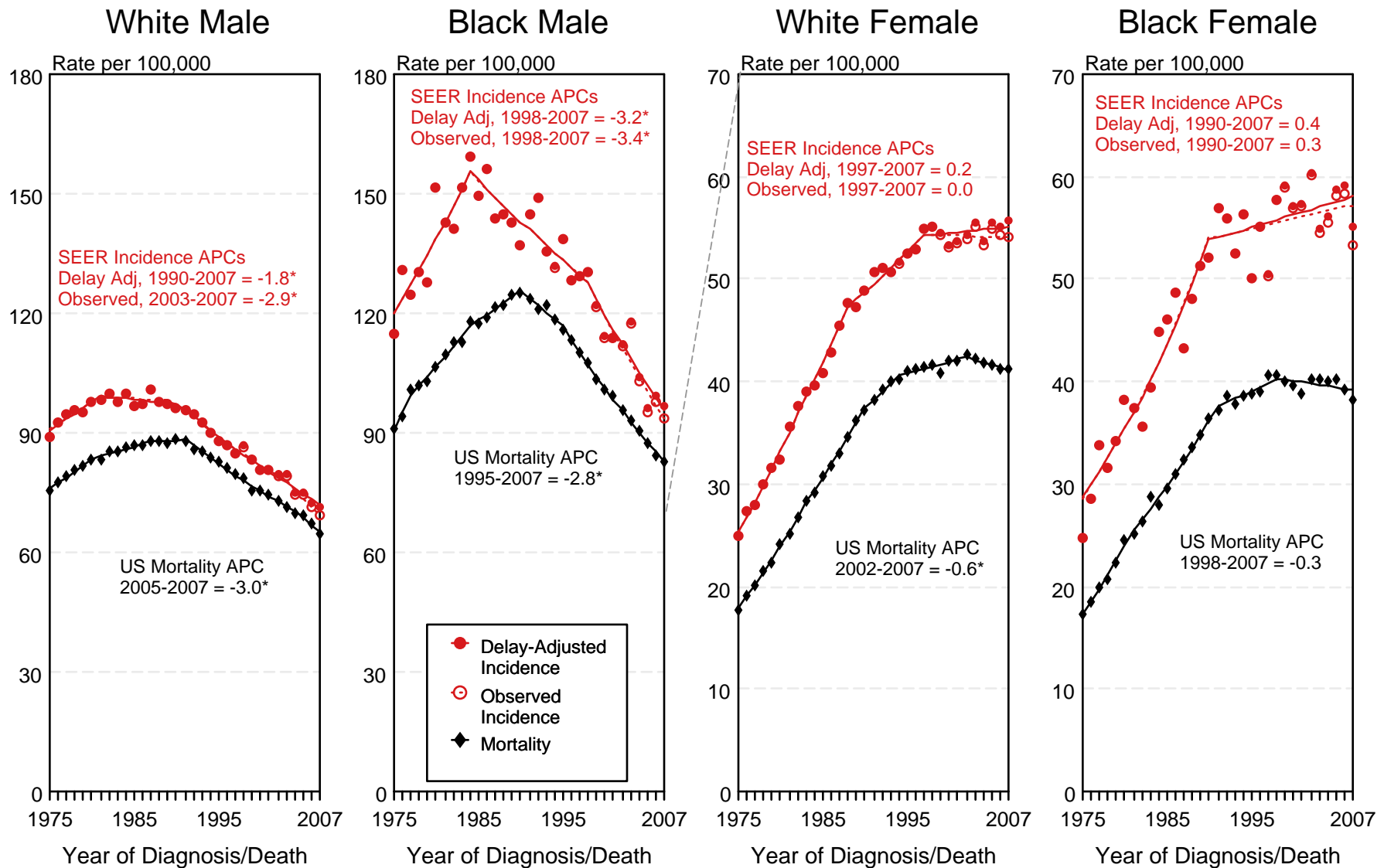


Figure 15.1

<sup>a</sup> Source: SEER 9 areas and US Mortality Files (National Center for Health Statistics, CDC). Rates are age-adjusted to the 2000 US Std Population (19 age groups - Census P25-1103). Regression lines and APCs are calculated using the Joinpoint Regression Program Version 3.4.3, April 2010, National Cancer Institute. The APC is the Annual Percent Change for the regression line segments. The APC shown on the graph is for the most recent trend.  
 \* The APC is significantly different from zero ( $p < 0.05$ ).

# SEER Observed Incidence, SEER Delay Adjusted Incidence and US Death Rates<sup>a</sup> Cancer of the Lung and Bronchus, Under 65 Years of Age, by Race and Sex

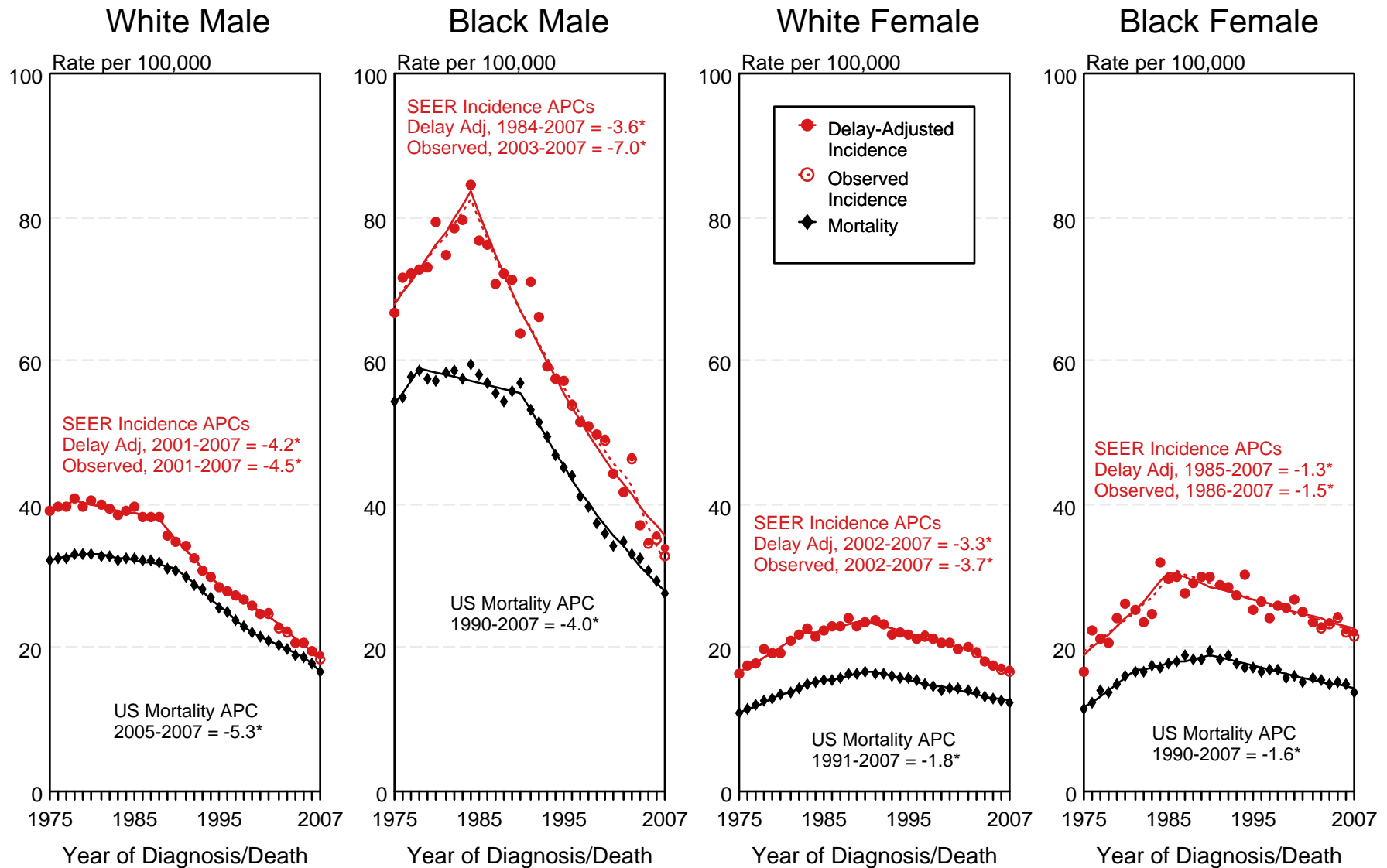


Figure 15.2

<sup>a</sup> Source: SEER 9 areas and US Mortality Files (National Center for Health Statistics, CDC). Rates are age-adjusted to the 2000 US Std Population (19 age groups - Census P25-1103). Regression lines and APCs are calculated using the Joinpoint Regression Program Version 3.4.3, April 2010, National Cancer Institute. The APC is the Annual Percent Change for the regression line segments. The APC shown on the graph is for the most recent trend.  
\* The APC is significantly different from zero ( $p < 0.05$ ).



# SEER Observed Incidence, SEER Delay Adjusted Incidence and US Death Rates<sup>a</sup> Cancer of the Lung and Bronchus, Ages 65 and Over, by Race and Sex

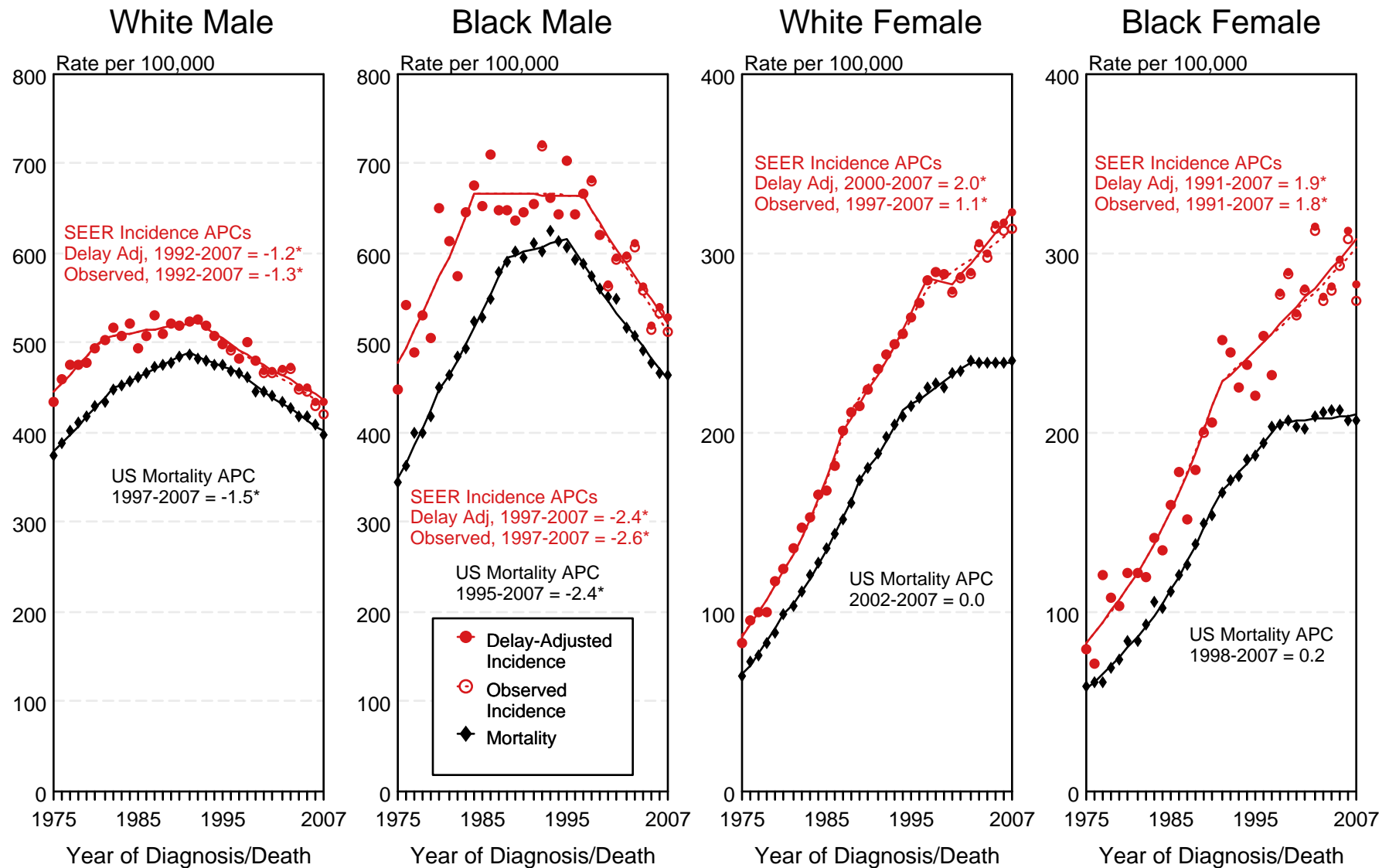


Figure 15.3

<sup>a</sup> Source: SEER 9 areas and US Mortality Files (National Center for Health Statistics, CDC). Rates are age-adjusted to the 2000 US Std Population (19 age groups - Census P25-1103). Regression lines and APCs are calculated using the Joinpoint Regression Program Version 3.4.3, April 2010, National Cancer Institute. The APC is the Annual Percent Change for the regression line segments. The APC shown on the graph is for the most recent trend.  
 \* The APC is significantly different from zero ( $p < 0.05$ ).

# SEER Incidence and US Death Rates<sup>a</sup> Cancer of the Lung and Bronchus, Both Sexes

and for Asian/Pacific Islanders, American Indians/Alaska Natives and Hispanics from 1992-2007

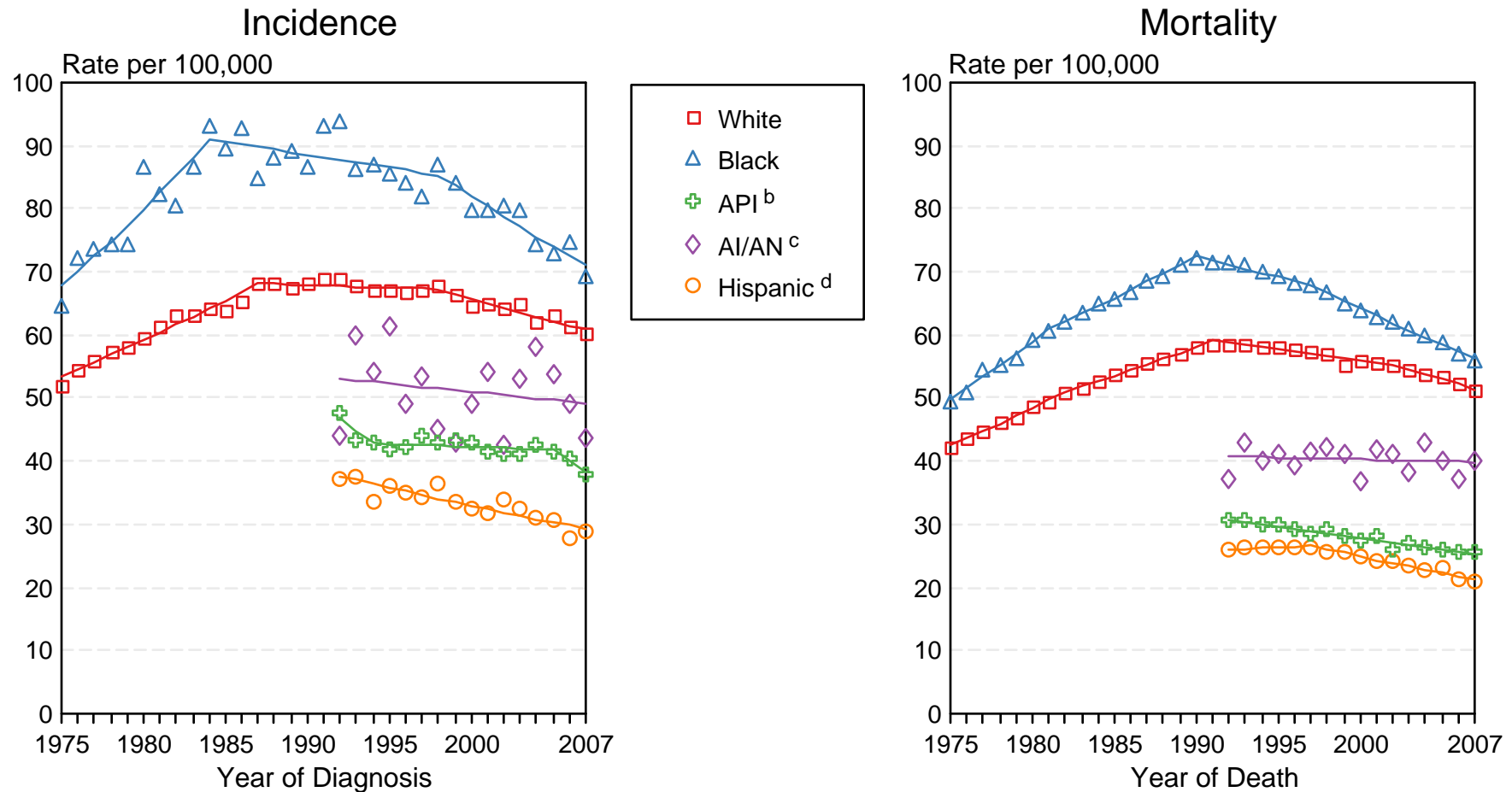


Figure 15.4

Source: Incidence data for whites and blacks are from the SEER 9 areas (San Francisco, Connecticut, Detroit, Hawaii, Iowa, New Mexico, Seattle, Utah, Atlanta).

Incidence data for Asian/Pacific Islanders, American Indians/Alaska Natives and Hispanics are from the SEER 13 Areas (SEER 9 Areas, San Jose-Monterey, Los Angeles, Alaska Native Registry and Rural Georgia). Mortality data are from US Mortality Files, National Center for Health Statistics, CDC.

<sup>a</sup> Rates are age-adjusted to the 2000 US Std Population (19 age groups - Census P25-1103).

Regression lines are calculated using the Joinpoint Regression Program Version 3.4.3, April 2010, National Cancer Institute. Joinpoint analyses for Whites and Blacks during the 1975-2007 period allow a maximum of 4 joinpoints. Analyses for other ethnic groups during the period 1992-2007 allow a maximum of 2 joinpoints.

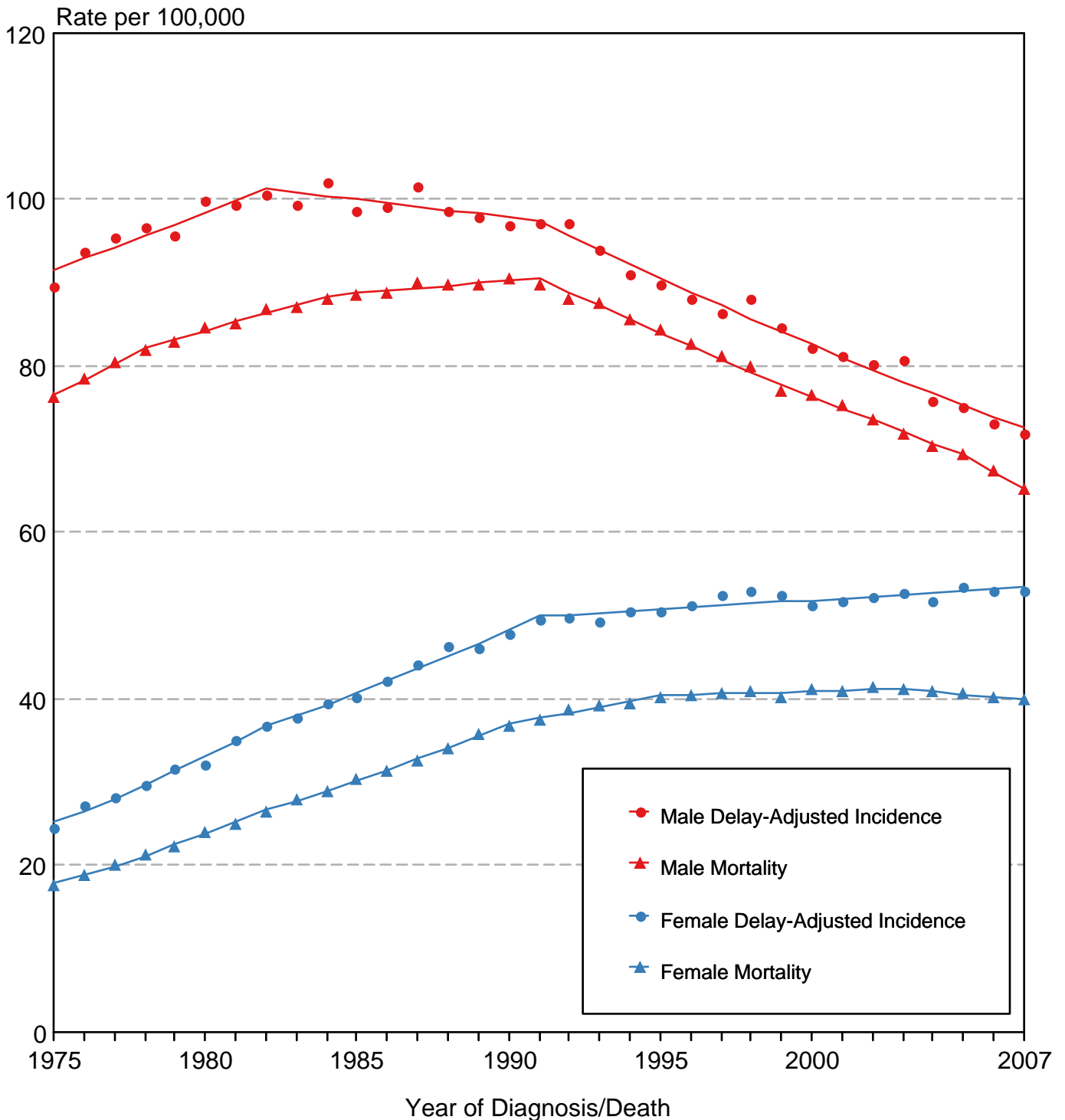
<sup>b</sup> API = Asian/Pacific Islander.

<sup>c</sup> AI/AN = American Indian/Alaska Native. Rates for American Indian/Alaska Native are based on the CHSDA (Contract Health Service Delivery Area) counties.

<sup>d</sup> Hispanic is not mutually exclusive from whites, blacks, Asian/Pacific Islanders, and American Indians/Alaska Natives. Incidence data for Hispanics are based on NHIA and exclude cases from the Alaska Native Registry. Mortality data for Hispanics exclude cases from Connecticut, the District of Columbia, Maine, Maryland, Minnesota, New Hampshire, New York, North Dakota, Oklahoma, and Vermont.

Figure 15.5

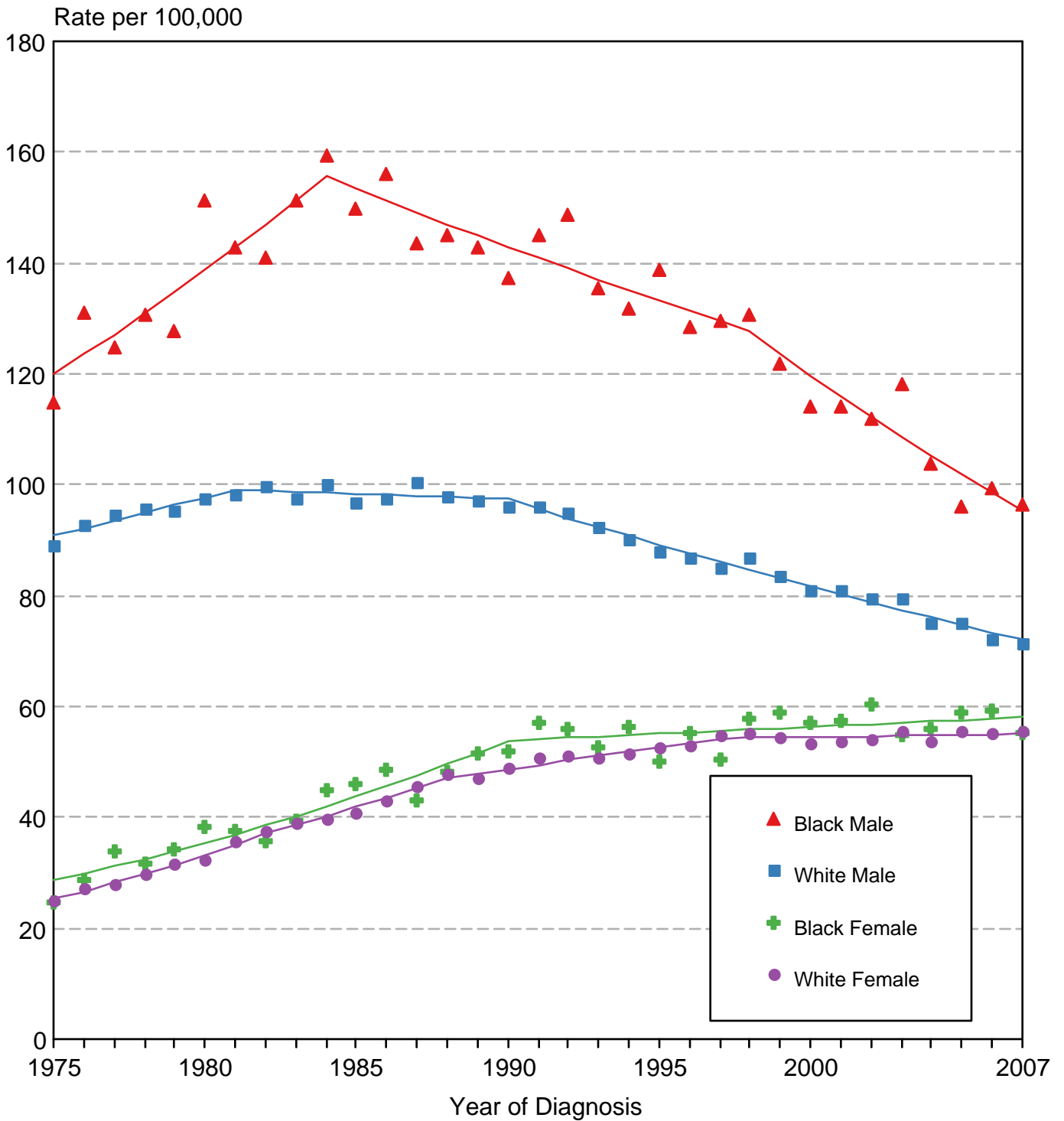
# Cancer of the Lung & Bronchus SEER Delay-Adjusted Incidence & US Death Rates, 1975-2007, All Races, By Sex



Source: SEER 9 areas and US Mortality Files (National Center for Health Statistics, CDC). Rates are age-adjusted to the 2000 US Std Population (19 age groups - Census P25-1103). Regression lines are calculated using the Joinpoint Regression Program Version 3.4.3, April 2010, National Cancer Institute.

Figure 15.6

# Cancer of the Lung & Bronchus SEER Delay-Adjusted Incidence, 1975-2007 By Sex and Race



Source: SEER 9 areas. Rates are age-adjusted to the 2000 US Std Population (19 age groups - Census P25-1103). Regression lines are calculated using the Joinpoint Regression Program Version 3.4.3, April 2010, National Cancer Institute.

# SEER Observed Incidence and SEER Delay Adjusted Incidence Rates<sup>a</sup> SEER 9 Areas Compared to SEER 13 Areas Cancer of the Lung and Bronchus, Male, by Race

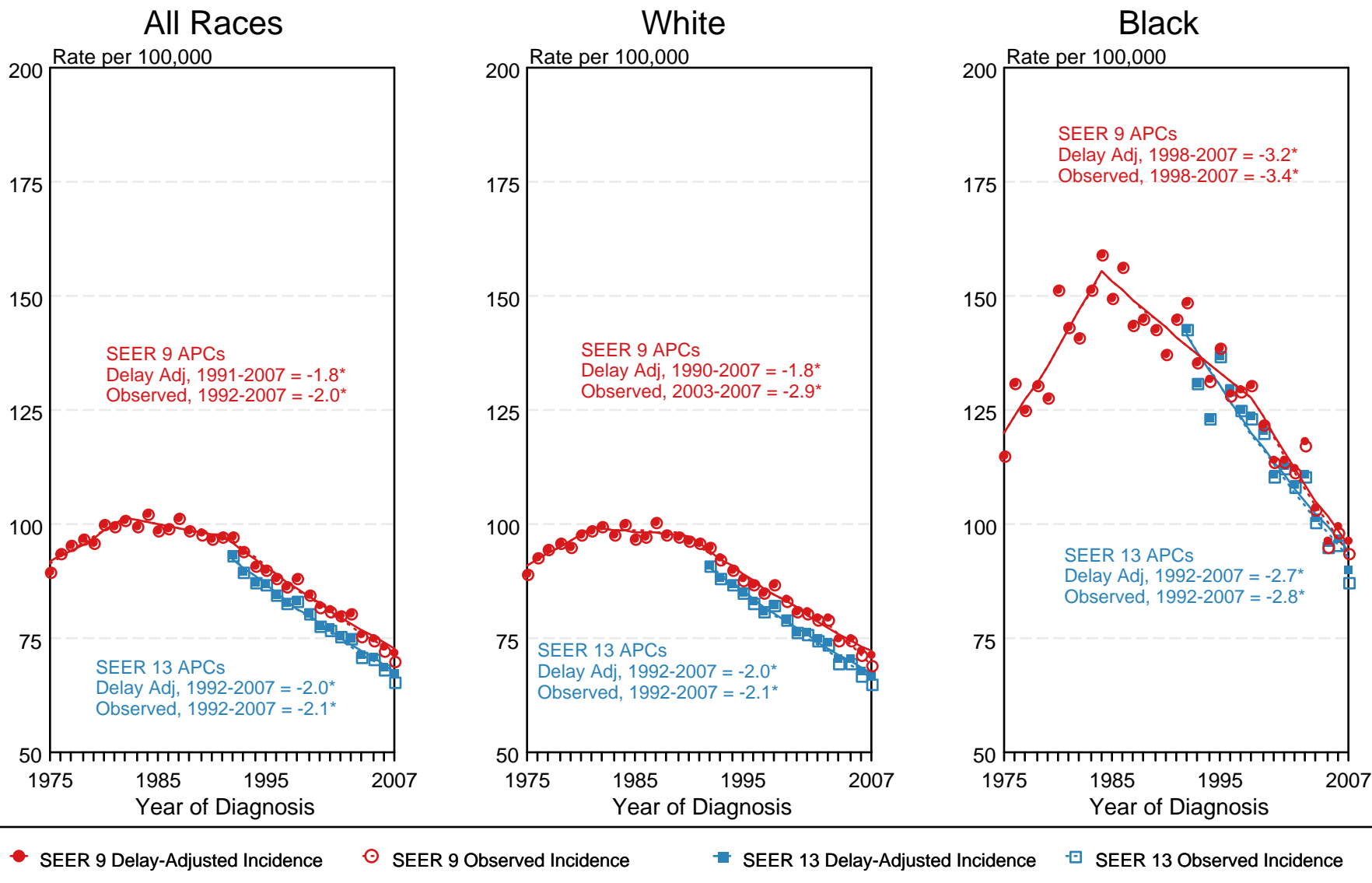


Figure 15.7

<sup>a</sup> Source: SEER 9 areas and SEER 13 areas.  
Rates are age-adjusted to the 2000 US Std Population (19 age groups - Census P25-1103).  
Regression lines and APCs are calculated using the Joinpoint Regression Program Version 3.4.3, April 2010, National Cancer Institute.  
The APC is the Annual Percent Change for the regression line segments. The APC shown on the graph is for the most recent trend.  
\* The APC is significantly different from zero ( $p < 0.05$ ).

# SEER Observed Incidence and SEER Delay Adjusted Incidence Rates<sup>a</sup> SEER 9 Areas Compared to SEER 13 Areas Cancer of the Lung and Bronchus, Female, by Race

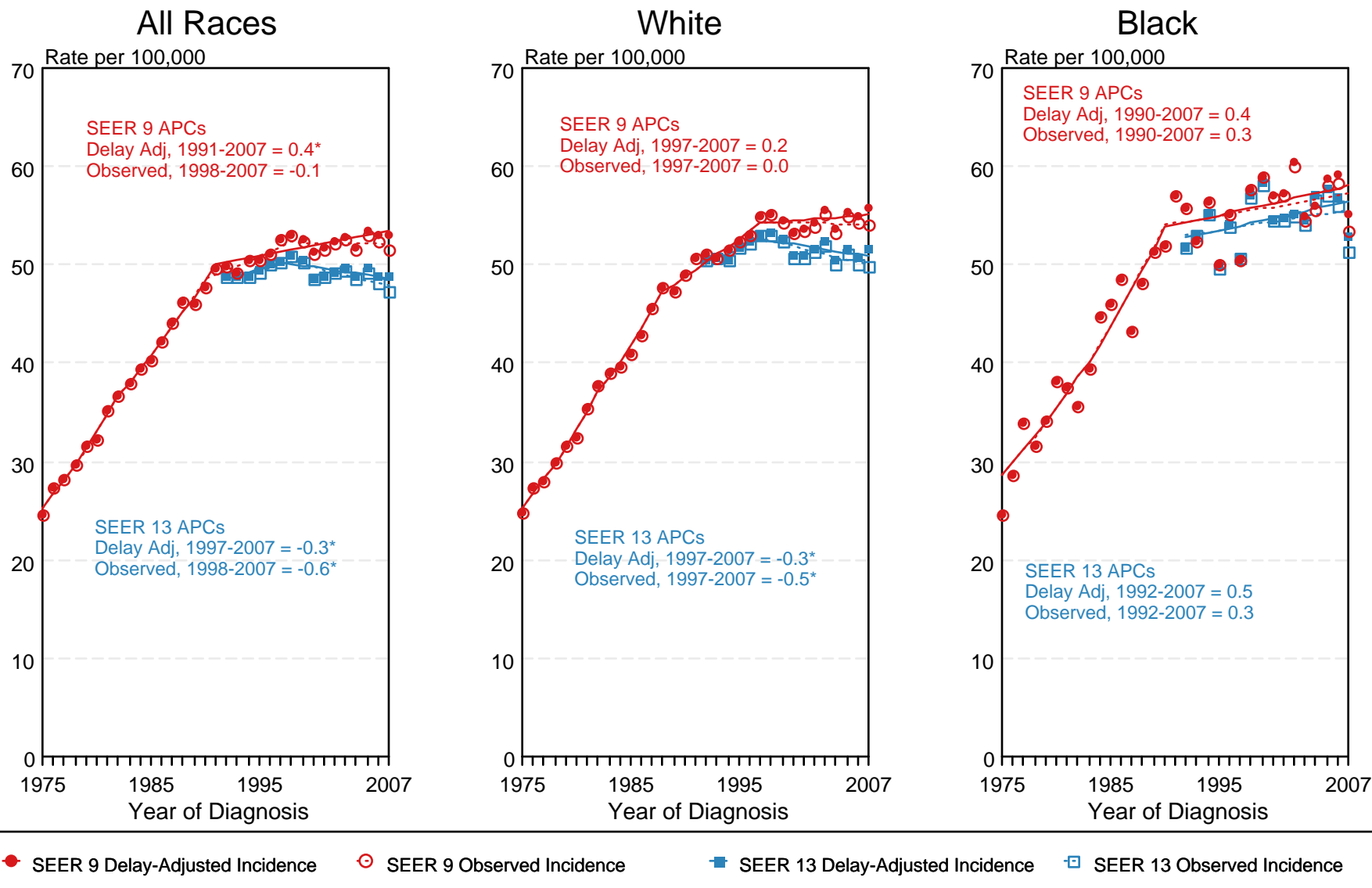


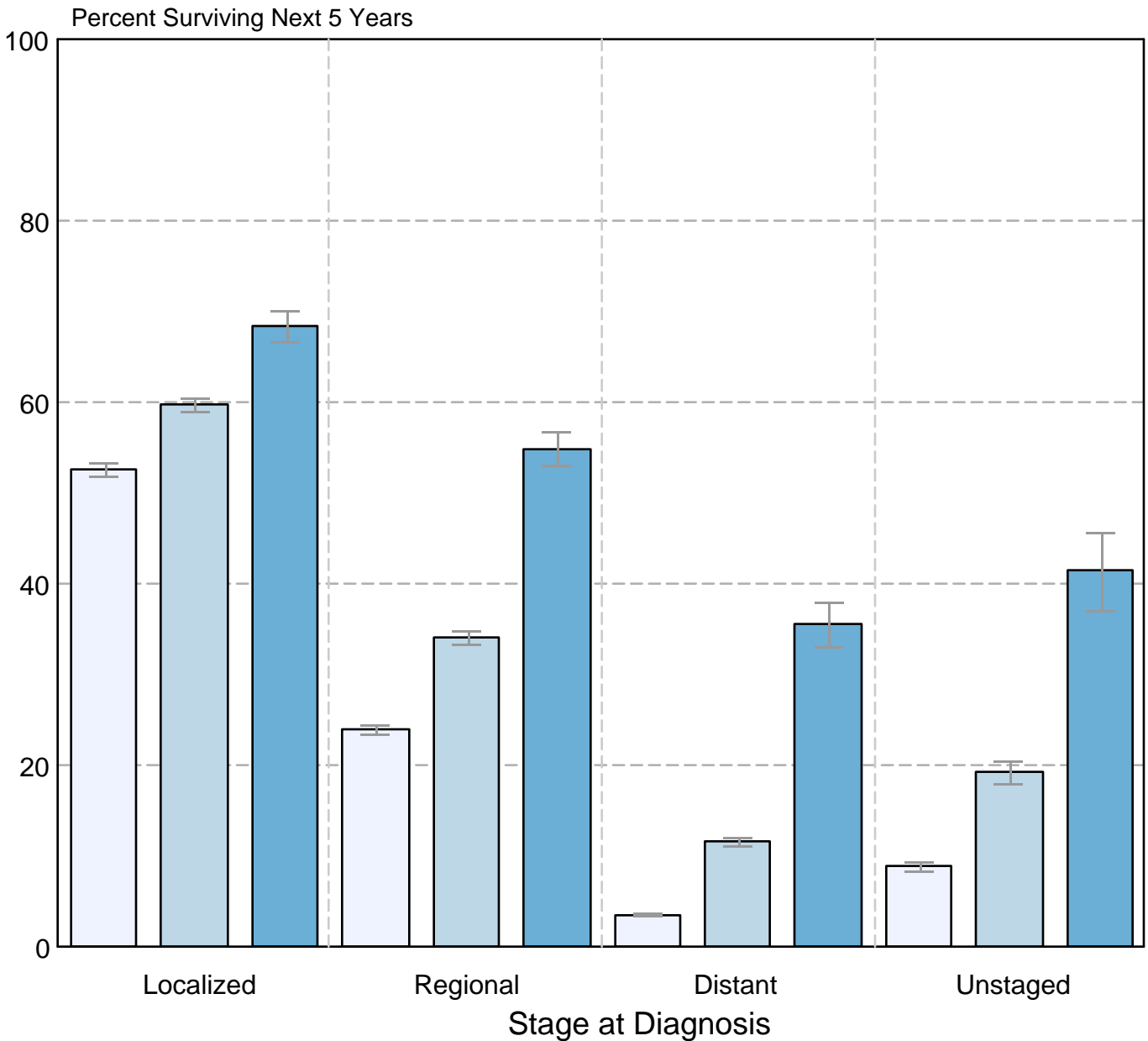
Figure 15.8

<sup>a</sup> Source: SEER 9 areas and SEER 13 areas.  
Rates are age-adjusted to the 2000 US Std Population (19 age groups - Census P25-1103).  
Regression lines and APCs are calculated using the Joinpoint Regression Program Version 3.4.3, April 2010, National Cancer Institute.  
The APC is the Annual Percent Change for the regression line segments. The APC shown on the graph is for the most recent trend.  
\* The APC is significantly different from zero ( $p < 0.05$ ).

Figure 15.9

## Cancer of the Lung and Bronchus 5-Year SEER Conditional Relative Survival and 95% Confidence Intervals

Probability of surviving the next 5 years given the cohort  
has already survived 0, 1, or 3 years  
1998-2006 by stage at diagnosis



Source: SEER 17 areas (San Francisco, Connecticut, Detroit, Hawaii, Iowa, New Mexico, Seattle, Utah, Atlanta, San Jose-Monterey, Los Angeles, Alaska Native Registry, Rural Georgia, California excluding SF/SJM/LA, Kentucky, Louisiana, and New Jersey). California excluding SF/SJM/LA, Kentucky, Louisiana, and New Jersey contribute cases for diagnosis years 2000-2006. The remaining 13 SEER Areas contribute cases for the entire period 1998-2006. Percent surviving is not shown if based on less than 25 cases. Confidence intervals are not shown if length of the confidence interval is greater than 5 times the standard error.