

Table 22.1
Cancer of the Pancreas (Invasive)

Trends in SEER Incidence^{ab} and U.S. Mortality^c Using the Joinpoint Regression Program,
1975-2007 With up to Four Joinpoints, 1992-2007 With up to Two Joinpoints,
Both Sexes by Race/Ethnicity

	Joinpoint Trend 1		Joinpoint Trend 2		Joinpoint Trend 3		Joinpoint Trend 4		Joinpoint Trend 5		AAPC ^d	
	Years	APC	Years	APC	Years	APC	Years	APC	Years	APC	1998-2007	2003-2007
<u>SEER 9 Delay-Adjusted Incidence^a, 1975-2007</u>												
All Races	1975-1978	-2.2	1978-1984	1.3*	1984-1989	-1.5	1989-2001	0.0	2001-2007	1.5*	1.0*	1.5*
White	1975-1979	-1.9	1979-1984	1.7	1984-1987	-2.6	1987-1999	-0.1	1999-2007	1.5*	1.3*	1.5*
Black	1975-2007	-0.3*									-0.3*	-0.3*
<u>SEER 13 Delay-Adjusted Incidence^b, 1992-2007</u>												
All Races	1992-2001	0.0	2001-2007	1.4*							0.9*	1.4*
White	1992-2000	0.1	2000-2007	1.4*							1.1*	1.4*
Black	1992-2007	-0.6*									-0.6*	-0.6*
<u>SEER 9 Observed Incidence^a, 1975-2007</u>												
All Races	1975-1978	-2.2	1978-1983	1.3	1983-1995	-0.7*	1995-2007	0.7*			0.7*	0.7*
White	1975-1978	-2.5	1978-1984	1.0	1984-1994	-0.9*	1994-2007	0.8*			0.8*	0.8*
Black	1975-2007	-0.3*									-0.3*	-0.3*
<u>SEER 13 Observed Incidence^b, 1992-2007</u>												
All Races	1992-2007	0.4*									0.4*	0.4*
White	1992-2007	0.5*									0.5*	0.5*
White NH ^{ef}	1992-2007	0.6*									0.6*	0.6*
Black	1992-2007	-0.8*									-0.8*	-0.8*
Black NH ^{ef}	1992-2007	-0.8*									-0.8*	-0.8*
API ^e	1992-2007	0.2									0.2	0.2
AI/AN ^{eg}	1992-2007	3.2*									3.2*	3.2*
Hispanic ^f	1992-2007	0.1									0.1	0.1
<u>U.S. Cancer Mortality^c, 1975-2007</u>												
All Races	1975-2002	-0.1*	2002-2007	0.6*							0.3*	0.6*
White	1975-1997	-0.2*	1997-2007	0.4*							0.4*	0.4*
Black	1975-1989	1.2*	1989-2007	-0.6*							-0.6*	-0.6*
<u>U.S. Cancer Mortality^c, 1992-2007</u>												
All Races	1992-1996	-0.7	1996-2007	0.3*							0.3*	0.3*
White	1992-1996	-0.5	1996-2007	0.4*							0.4*	0.4*
White NH ^{ef}	1992-1997	-0.3	1997-2007	0.6*							0.6*	0.6*
Black	1992-2007	-0.7*									-0.7*	-0.7*
Black NH ^{ef}	1992-2007	-0.7*									-0.7*	-0.7*
API ^e	1992-2007	-0.2									-0.2	-0.2
AI/AN ^{eg}	1992-2007	2.3*									2.3*	2.3*
Hispanic ^f	1992-2002	-0.2	2002-2005	1.8	2005-2007	-4.3*					-0.5	-1.3

Joinpoint Regression Program Version 3.4.3, April 2010, National Cancer Institute. (<http://srab.cancer.gov/joinpoint/>).

The APC is the Annual Percent Change based on rates age-adjusted to the 2000 US Std Population (19 age groups - Census P25-1130).

^a Trends are from the SEER 9 areas (San Francisco, Connecticut, Detroit, Hawaii, Iowa, New Mexico, Seattle, Utah, and Atlanta).

^b Trends are from the SEER 13 areas (SEER 9 Areas, Los Angeles, San Jose-Monterey, Rural Georgia, and the Alaska Native Registry).

^c Trends are from US Mortality Files, National Center for Health Statistics, Centers for Disease Control and Prevention.

^d The AAPC is the Average Annual Percent Change and is based on the APCs calculated by Joinpoint.

^e API - Asian/Pacific Islander, AI/AN - American Indian/Alaska Native, NH - Non-Hispanic

^f Hispanic and Non-Hispanic are not mutually exclusive from whites, blacks, Asian/Pacific Islanders, and American Indians/Alaska

Natives. Incidence data for Hispanics and Non-Hispanics are based on NHIA and exclude cases from the Alaska Native Registry.

The Hispanic and Non-Hispanic mortality trends exclude deaths from CT, DC, ME, MD, MN, NH, NY, ND, OK and VT.

^g Data for American Indian/Alaska Native are based on the CHSDA (Contract Health Service Delivery Area) counties.

* The APC/AAPC is significantly different from zero ($p < .05$).

- Joinpoint regression line analysis could not be performed on data series.

Table 22.2
Cancer of the Pancreas (Invasive)

Trends in SEER Incidence^{ab} and U.S. Mortality^c Using the Joinpoint Regression Program,
1975-2007 With up to Four Joinpoints, 1992-2007 With up to Two Joinpoints,
Males by Race/Ethnicity

	Joinpoint Trend 1		Joinpoint Trend 2		Joinpoint Trend 3		Joinpoint Trend 4		Joinpoint Trend 5		AAPC ^d	
	Years	APC	Years	APC	Years	APC	Years	APC	Years	APC	1998-2007	2003-2007
<u>SEER 9 Delay-Adjusted Incidence^a, 1975-2007</u>												
All Races	1975-1981	-1.8*	1981-1985	1.1	1985-1990	-2.2*	1990-2003	0.2	2003-2007	2.0*	1.0*	2.0*
White	1975-1995	-0.9*	1995-2007	1.1*							1.1*	1.1*
Black	1975-2007	-0.7*									-0.7*	-0.7*
<u>SEER 13 Delay-Adjusted Incidence^b, 1992-2007</u>												
All Races	1992-2003	0.0	2003-2007	1.9*							0.8*	1.9*
White	1992-2007	0.7*									0.7*	0.7*
Black	1992-2007	-1.0*									-1.0*	-1.0*
<u>SEER 9 Observed Incidence^a, 1975-2007</u>												
All Races	1975-1995	-0.8*	1995-2007	0.6*							0.6*	0.6*
White	1975-1994	-1.0*	1994-2007	0.8*							0.8*	0.8*
Black	1975-2007	-0.7*									-0.7*	-0.7*
<u>SEER 13 Observed Incidence^b, 1992-2007</u>												
All Races	1992-2007	0.2									0.2*	0.2*
White	1992-2007	0.5*									0.5*	0.5*
White NH ^{ef}	1992-2007	0.6*									0.6*	0.6*
Black	1992-2007	-1.2*									-1.2*	-1.2*
Black NH ^{ef}	1992-2007	-1.1*									-1.1*	-1.1*
API ^e	1992-2007	-0.5									-0.5	-0.5
AI/AN ^{eg}	1992-2007	3.0									3.0	3.0
Hispanic ^f	1992-2007	0.0									0.0	0.0
<u>U.S. Cancer Mortality^c, 1975-2007</u>												
All Races	1975-1986	-0.8*	1986-2002	-0.3*	2002-2007	0.7*					0.3	0.7*
White	1975-1987	-1.0*	1987-2003	-0.1	2003-2007	1.1*					0.4*	1.1*
Black	1975-1990	0.6*	1990-2007	-1.0*							-1.0*	-1.0*
<u>U.S. Cancer Mortality^c, 1992-2007</u>												
All Races	1992-1995	-1.1	1995-2003	0.0	2003-2007	0.7*					0.3*	0.7*
White	1992-1995	-0.8	1995-2003	0.1	2003-2007	0.8*					0.4*	0.8*
White NH ^{ef}	1992-1996	-1.0	1996-2007	0.6*							0.6*	0.6*
Black	1992-2007	-1.0*									-1.0*	-1.0*
Black NH ^{ef}	1992-2007	-1.0*									-1.0*	-1.0*
API ^e	1992-2007	-0.9*									-0.9*	-0.9*
AI/AN ^{eg}	1992-2007	3.4*									3.4*	3.4*
Hispanic ^f	1992-2007	-0.5*									-0.5*	-0.5*

Joinpoint Regression Program Version 3.4.3, April 2010, National Cancer Institute. (<http://srab.cancer.gov/joinpoint/>).

The APC is the Annual Percent Change based on rates age-adjusted to the 2000 US Std Population (19 age groups - Census P25-1130).

^a Trends are from the SEER 9 areas (San Francisco, Connecticut, Detroit, Hawaii, Iowa, New Mexico, Seattle, Utah, and Atlanta).

^b Trends are from the SEER 13 areas (SEER 9 Areas, Los Angeles, San Jose-Monterey, Rural Georgia, and the Alaska Native Registry).

^c Trends are from US Mortality Files, National Center for Health Statistics, Centers for Disease Control and Prevention.

^d The AAPC is the Average Annual Percent Change and is based on the APCs calculated by Joinpoint.

^e API - Asian/Pacific Islander, AI/AN - American Indian/Alaska Native, NH - Non-Hispanic

^f Hispanic and Non-Hispanic are not mutually exclusive from whites, blacks, Asian/Pacific Islanders, and American Indians/Alaska

Natives. Incidence data for Hispanics and Non-Hispanics are based on NHIA and exclude cases from the Alaska Native Registry.

The Hispanic and Non-Hispanic mortality trends exclude deaths from CT, DC, ME, MD, MN, NH, NY, ND, OK and VT.

^g Data for American Indian/Alaska Native are based on the CHSDA (Contract Health Service Delivery Area) counties.

* The APC/AAPC is significantly different from zero ($p < .05$).

- Joinpoint regression line analysis could not be performed on data series.

Table 22.3
Cancer of the Pancreas (Invasive)

Trends in SEER Incidence^{ab} and U.S. Mortality^c Using the Joinpoint Regression Program,
1975-2007 With up to Four Joinpoints, 1992-2007 With up to Two Joinpoints,
Females by Race/Ethnicity

	Joinpoint Trend 1		Joinpoint Trend 2		Joinpoint Trend 3		Joinpoint Trend 4		Joinpoint Trend 5		AAPC ^d	
	Years	APC	Years	APC	Years	APC	Years	APC	Years	APC	1998-2007	2003-2007
<u>SEER 9 Delay-Adjusted Incidence^a, 1975-2007</u>												
All Races	1975-1984	1.3*	1984-1999	-0.4*	1999-2007	1.4*					1.2*	1.4*
White	1975-1984	1.2*	1984-1999	-0.4*	1999-2007	1.6*					1.4*	1.6*
Black	1975-2007	0.1									0.1	0.1
<u>SEER 13 Delay-Adjusted Incidence^b, 1992-2007</u>												
All Races	1992-2000	-0.1	2000-2007	1.3*							1.0*	1.3*
White	1992-2000	-0.1	2000-2007	1.5*							1.2*	1.5*
Black	1992-2007	-0.4									-0.4	-0.4
<u>SEER 9 Observed Incidence^a, 1975-2007</u>												
All Races	1975-1984	1.3*	1984-1999	-0.4	1999-2007	1.1*					0.9*	1.1*
White	1975-1984	1.2*	1984-1999	-0.4	1999-2007	1.3*					1.1*	1.3*
Black	1975-2007	0.0									0.0	0.0
<u>SEER 13 Observed Incidence^b, 1992-2007</u>												
All Races	1992-2007	0.4*									0.4*	0.4*
White	1992-2007	0.5*									0.5*	0.5*
White NH ^{ef}	1992-2007	0.5*									0.5*	0.5*
Black	1992-2007	-0.6									-0.6	-0.6
Black NH ^{ef}	1992-2007	-0.5									-0.5	-0.5
API ^e	1992-2007	0.9*									0.9*	0.9*
AI/AN ^{eg}	1992-2007	3.4									3.4	3.4
Hispanic ^f	1992-2007	0.2									0.2	0.2
<u>U.S. Cancer Mortality^c, 1975-2007</u>												
All Races	1975-1984	0.8*	1984-2007	0.1*							0.1*	0.1*
White	1975-1983	0.6*	1983-2007	0.2*							0.2*	0.2*
Black	1975-1986	2.4*	1986-2007	-0.3*							-0.3*	-0.3*
<u>U.S. Cancer Mortality^c, 1992-2007</u>												
All Races	1992-1997	-0.4	1997-2007	0.3*							0.3*	0.3*
White	1992-2007	0.2*									0.2*	0.2*
White NH ^{ef}	1992-2007	0.3*									0.3*	0.3*
Black	1992-2004	-0.8*	2004-2007	1.3							-0.1	0.8
Black NH ^{ef}	1992-2007	-0.4*									-0.4*	-0.4*
API ^e	1992-2007	0.4									0.4	0.4
AI/AN ^{eg}	1992-2007	1.9									1.9*	1.9*
Hispanic ^f	1992-2007	0.2									0.2	0.2

Joinpoint Regression Program Version 3.4.3, April 2010, National Cancer Institute. (<http://srab.cancer.gov/joinpoint/>).

The APC is the Annual Percent Change based on rates age-adjusted to the 2000 US Std Population (19 age groups - Census P25-1130).

^a Trends are from the SEER 9 areas (San Francisco, Connecticut, Detroit, Hawaii, Iowa, New Mexico, Seattle, Utah, and Atlanta).

^b Trends are from the SEER 13 areas (SEER 9 Areas, Los Angeles, San Jose-Monterey, Rural Georgia, and the Alaska Native Registry).

^c Trends are from US Mortality Files, National Center for Health Statistics, Centers for Disease Control and Prevention.

^d The AAPC is the Average Annual Percent Change and is based on the APCs calculated by Joinpoint.

^e API - Asian/Pacific Islander, AI/AN - American Indian/Alaska Native, NH - Non-Hispanic

^f Hispanic and Non-Hispanic are not mutually exclusive from whites, blacks, Asian/Pacific Islanders, and American Indians/Alaska

Natives. Incidence data for Hispanics and Non-Hispanics are based on NHIA and exclude cases from the Alaska Native Registry.

The Hispanic and Non-Hispanic mortality trends exclude deaths from CT, DC, ME, MD, MN, NH, NY, ND, OK and VT.

^g Data for American Indian/Alaska Native are based on the CHSDA (Contract Health Service Delivery Area) counties.

* The APC/AAPC is significantly different from zero ($p < .05$).

- Joinpoint regression line analysis could not be performed on data series.

Table 22.4
Cancer of the Pancreas (Invasive)

Delay-adjusted SEER Incidence^a Rates by Year, Race and Sex

Year of Diagnosis:	All Races			Whites			Blacks		
	Total	Males	Females	Total	Males	Females	Total	Males	Females
1975	11.84	15.61	9.12	11.69	15.65	8.89	15.90	18.08	13.91
1976	11.99	14.82	9.91	11.76	14.50	9.75	17.61	22.68	13.97
1977	11.90	14.82	9.83	11.62	14.59	9.54	17.12	19.44	15.25
1978	11.07	14.06	8.85	10.83	13.90	8.60	15.14	20.02	11.53
1979	11.52	14.15	9.65	11.21	13.84	9.39	16.08	19.14	13.68
1980	11.52	14.20	9.61	11.07	13.70	9.19	17.94	21.76	15.53
1981	11.69	13.55	10.17	11.39	13.26	9.91	17.18	20.86	14.10
1982	11.71	13.81	10.17	11.41	13.47	9.94	16.86	20.99	13.96
1983	12.19	14.66	10.44	11.75	14.07	10.12	18.13	23.05	14.90
1984	12.22	13.94	10.93	12.03	13.87	10.64	17.19	18.36	16.34
1985	12.10	14.34	10.50	11.70	13.60	10.34	18.70	24.98	14.57
1986	11.69	13.78	10.21	11.37	13.54	9.82	17.32	20.16	15.59
1987	11.61	13.81	10.10	11.09	13.38	9.55	18.43	18.98	17.93
1988	11.65	13.71	10.20	11.11	13.35	9.57	18.48	19.55	17.32
1989	11.34	12.88	10.08	10.99	12.66	9.64	14.99	16.05	13.97
1990	11.28	12.81	10.06	11.03	12.46	9.85	15.20	18.83	12.64
1991	11.40	12.90	10.23	11.04	12.61	9.79	17.06	18.21	16.25
1992	11.63	13.22	10.34	11.33	12.91	10.02	17.35	19.78	15.76
1993	10.96	12.54	9.69	10.51	11.99	9.30	16.83	18.72	15.19
1994	11.37	13.26	9.91	10.89	12.35	9.74	17.46	21.54	14.50
1995	11.14	12.73	9.97	10.72	12.32	9.59	18.13	20.33	16.32
1996	11.29	12.92	9.93	10.91	12.49	9.57	17.08	19.70	14.90
1997	11.50	13.07	10.20	11.05	12.59	9.75	17.86	19.38	16.51
1998	11.49	13.12	10.23	11.27	13.03	9.88	14.78	16.24	13.92
1999	11.11	12.60	9.83	10.72	12.25	9.36	16.74	19.57	14.74
2000	11.43	13.34	9.86	11.11	12.96	9.61	15.72	18.21	13.28
2001	11.32	13.13	9.99	11.07	13.06	9.56	14.24	15.42	13.32
2002	11.73	13.01	10.55	11.59	13.27	10.08	16.05	14.96	16.16
2003	11.60	12.83	10.57	11.41	12.65	10.35	16.01	16.97	15.27
2004	11.92	13.83	10.32	11.74	13.55	10.20	15.84	19.07	13.30
2005	11.93	13.60	10.57	11.68	13.35	10.29	16.73	17.96	16.06
2006	12.43	14.00	11.12	12.35	14.20	10.80	16.48	17.76	15.26
2007	12.36	14.08	10.93	12.29	14.16	10.72	15.45	16.27	14.70

Additional information on the model used to delay-adjust SEER Incidence rates can be found at (<http://srab.cancer.gov/delay/>).

^a SEER 9 areas (San Francisco, Connecticut, Detroit, Hawaii, Iowa, New Mexico, Seattle, Utah, and Atlanta).
Rates are per 100,000 and are age-adjusted to the 2000 US Std Population (19 age groups - Census P25-1130).

- Delay-adjusted rate is not shown for observed rates based on less than 16 cases for the time interval.

Table 22.5
Cancer of the Pancreas (Invasive)

Age-adjusted SEER Incidence^a Rates by Year, Race and Sex

Year of Diagnosis:	All Races			Whites			Blacks		
	Total	Males	Females	Total	Males	Females	Total	Males	Females
1975	11.84	15.61	9.12	11.69	15.65	8.89	15.90	18.08	13.91
1976	11.99	14.82	9.91	11.76	14.50	9.75	17.61	22.68	13.97
1977	11.90	14.82	9.83	11.62	14.59	9.54	17.12	19.44	15.25
1978	11.07	14.06	8.85	10.83	13.90	8.60	15.14	20.02	11.53
1979	11.52	14.15	9.65	11.21	13.84	9.39	16.08	19.14	13.68
1980	11.52	14.20	9.61	11.07	13.70	9.19	17.94	21.76	15.53
1981	11.69	13.55	10.17	11.39	13.26	9.91	17.18	20.86	14.10
1982	11.71	13.81	10.17	11.41	13.47	9.94	16.86	20.99	13.96
1983	12.19	14.66	10.44	11.75	14.07	10.12	18.13	23.05	14.90
1984	12.22	13.94	10.93	12.03	13.87	10.64	17.19	18.36	16.34
1985	12.10	14.34	10.50	11.70	13.60	10.34	18.70	24.98	14.57
1986	11.68	13.78	10.21	11.37	13.54	9.82	17.32	20.16	15.59
1987	11.61	13.81	10.10	11.09	13.38	9.54	18.43	18.98	17.93
1988	11.65	13.70	10.20	11.11	13.35	9.57	18.48	19.55	17.32
1989	11.34	12.88	10.08	10.98	12.66	9.64	14.99	16.05	13.97
1990	11.28	12.81	10.06	11.02	12.46	9.84	15.20	18.82	12.63
1991	11.40	12.90	10.23	11.04	12.61	9.79	17.06	18.20	16.24
1992	11.62	13.22	10.34	11.33	12.90	10.02	17.34	19.77	15.75
1993	10.96	12.53	9.69	10.51	11.98	9.30	16.82	18.71	15.18
1994	11.37	13.25	9.90	10.89	12.34	9.73	17.45	21.53	14.49
1995	11.13	12.72	9.96	10.71	12.31	9.58	18.11	20.31	16.31
1996	11.29	12.92	9.92	10.90	12.48	9.56	17.06	19.68	14.88
1997	11.49	13.06	10.19	11.04	12.57	9.74	17.83	19.35	16.48
1998	11.47	13.11	10.22	11.25	13.00	9.85	14.75	16.22	13.89
1999	11.09	12.58	9.82	10.70	12.22	9.33	16.70	19.53	14.69
2000	11.41	13.31	9.83	11.07	12.92	9.57	15.66	18.15	13.23
2001	11.29	13.09	9.96	11.03	13.01	9.52	14.18	15.36	13.26
2002	11.69	12.96	10.51	11.52	13.20	10.02	15.96	14.88	16.07
2003	11.54	12.77	10.51	11.33	12.56	10.27	15.89	16.85	15.15
2004	11.84	13.74	10.24	11.63	13.43	10.10	15.69	18.91	13.17
2005	11.82	13.48	10.46	11.54	13.20	10.15	16.52	17.76	15.85
2006	12.28	13.84	10.97	12.15	13.99	10.61	16.21	17.50	15.00
2007	11.92	13.61	10.53	11.78	13.61	10.25	14.80	15.63	14.05
1975-2007	11.60	13.49	10.13	11.28	13.21	9.79	16.56	18.78	14.86

^a SEER 9 areas (San Francisco, Connecticut, Detroit, Hawaii, Iowa, New Mexico, Seattle, Utah, and Atlanta).
Rates are per 100,000 and are age-adjusted to the 2000 US Std Population (19 age groups - Census P25-1130).
- Statistic not shown. Rate based on less than 16 cases for the time interval.

Table 22.6
Cancer of the Pancreas (Invasive)

Age-adjusted U.S. Death^a Rates by Year, Race and Sex

Year of Death:	All Races			Whites			Blacks		
	Total	Males	Females	Total	Males	Females	Total	Males	Females
1975	10.66	13.80	8.42	10.48	13.61	8.27	12.81	16.32	10.15
1976	10.68	13.62	8.57	10.50	13.43	8.41	12.86	16.05	10.47
1977	10.87	13.86	8.76	10.68	13.61	8.62	13.20	17.14	10.35
1978	10.79	13.63	8.76	10.62	13.47	8.59	12.90	15.93	10.69
1979	10.73	13.39	8.81	10.53	13.25	8.57	13.39	15.85	11.55
1980	10.62	13.10	8.83	10.36	12.85	8.58	13.78	16.47	11.80
1981	10.70	13.16	8.92	10.50	12.91	8.77	13.40	16.96	10.83
1982	10.59	13.06	8.85	10.32	12.76	8.60	14.09	17.07	11.91
1983	10.69	12.82	9.13	10.36	12.40	8.87	14.78	18.10	12.45
1984	10.80	12.96	9.22	10.45	12.61	8.89	14.96	17.52	13.08
1985	10.63	12.86	9.03	10.33	12.53	8.76	14.43	17.29	12.40
1986	10.60	12.46	9.23	10.30	12.16	8.93	14.60	16.72	13.04
1987	10.59	12.52	9.18	10.28	12.16	8.90	14.58	17.36	12.61
1988	10.49	12.51	8.98	10.15	12.16	8.65	14.52	17.05	12.66
1989	10.62	12.61	9.17	10.25	12.22	8.82	15.02	17.71	13.15
1990	10.69	12.59	9.25	10.34	12.19	8.92	15.18	18.08	13.21
1991	10.69	12.58	9.28	10.40	12.27	8.99	14.55	16.93	12.79
1992	10.70	12.61	9.27	10.35	12.23	8.92	15.40	18.22	13.44
1993	10.66	12.41	9.37	10.33	12.06	9.05	15.05	17.59	13.31
1994	10.64	12.37	9.31	10.28	11.98	8.95	15.16	17.69	13.38
1995	10.45	12.13	9.18	10.21	11.91	8.92	13.90	15.78	12.54
1996	10.47	12.08	9.23	10.17	11.79	8.91	14.43	16.45	12.97
1997	10.45	12.22	9.07	10.16	11.97	8.76	14.57	16.39	13.14
1998	10.52	12.29	9.15	10.23	12.02	8.83	14.52	16.49	13.07
1999	10.62	12.32	9.27	10.38	12.07	9.03	14.18	16.58	12.40
2000	10.54	12.14	9.26	10.32	11.97	8.99	14.04	15.79	12.70
2001	10.55	12.12	9.28	10.37	12.02	9.05	13.67	15.05	12.53
2002	10.53	12.17	9.20	10.32	12.04	8.93	13.68	15.44	12.34
2003	10.50	12.05	9.23	10.30	11.89	8.99	13.79	15.49	12.44
2004	10.65	12.35	9.25	10.45	12.19	9.02	13.66	15.58	12.13
2005	10.77	12.37	9.46	10.61	12.25	9.25	13.73	15.47	12.39
2006	10.80	12.40	9.47	10.66	12.35	9.24	13.67	14.95	12.54
2007	10.78	12.52	9.37	10.61	12.41	9.13	14.02	15.65	12.70
1975-2007	10.65	12.60	9.16	10.40	12.36	8.89	14.20	16.51	12.49

^a US Mortality Files, National Center for Health Statistics, Centers for Disease Control and Prevention.
Rates are per 100,000 and are age-adjusted to the 2000 US Std Population (19 age groups - Census P25-1130).
- Statistic not shown. Rate based on less than 16 cases for the time interval.

Table 22.7
Cancer of the Pancreas (Invasive)SEER Incidence^a and U.S. Death^b Rates, Age-Adjusted and Age-Specific Rates, by Race and Sex

	All Races			Whites			Blacks		
	Total	Males	Females	Total	Males	Females	Total	Males	Females
<u>SEER Incidence</u>									
<u>Age at Diagnosis</u>									
Age-Adjusted Rates, 2003-2007									
All ages	11.7	13.3	10.5	11.6	13.2	10.3	15.5	16.7	14.4
Under 65	3.8	4.5	3.2	3.8	4.4	3.1	5.5	6.5	4.7
65 and over	66.4	73.9	60.9	66.2	74.3	60.0	84.5	87.4	81.6
All ages (IARC world std) ^c	7.1	8.1	6.2	7.0	8.1	6.1	9.5	10.6	8.6
Age-Specific Rates, 2003-2007									
<1	-	-	-	-	-	-	-	-	-
1-4	-	-	-	-	-	-	-	-	-
5-9	-	-	-	-	-	-	-	-	-
10-14	-	-	-	-	-	-	-	-	-
15-19	-	-	-	-	-	-	-	-	-
20-24	0.1	-	-	0.1	-	-	-	-	-
25-29	0.2	0.1	0.2	0.2	-	0.2	-	-	-
30-34	0.4	0.4	0.5	0.4	0.3	0.4	0.6	-	-
35-39	1.0	1.1	0.9	1.0	1.1	0.9	1.0	1.0	1.0
40-44	2.3	2.7	1.9	2.2	2.7	1.8	2.6	2.9	2.3
45-49	5.3	6.1	4.5	5.1	6.0	4.3	7.8	7.7	7.9
50-54	10.4	12.4	8.5	10.1	12.0	8.3	16.7	20.9	13.1
55-59	17.9	21.1	14.9	17.6	20.6	14.8	25.5	32.9	19.4
60-64	29.0	34.0	24.4	28.5	33.9	23.5	41.4	46.4	37.5
65-69	42.0	49.0	35.9	41.9	49.3	35.2	54.5	63.0	48.1
70-74	58.9	67.1	52.3	58.5	67.3	51.2	76.2	86.8	68.7
75-79	75.0	83.2	69.0	75.5	84.1	69.3	93.7	99.8	89.9
80-84	91.1	100.1	85.4	90.2	100.7	83.6	114.5	113.7	114.9
85+	92.8	96.2	91.2	91.5	96.5	89.1	117.6	90.8	129.0
<u>U.S. Mortality</u>									
<u>Age at Death</u>									
Age-Adjusted Rates, 2003-2007									
All ages	10.7	12.3	9.4	10.5	12.2	9.1	13.8	15.4	12.4
Under 65	3.2	3.9	2.5	3.1	3.8	2.4	4.6	5.8	3.6
65 and over	62.5	70.4	56.6	61.9	70.4	55.5	77.1	81.8	73.5
All ages (IARC world std) ^c	6.3	7.4	5.3	6.2	7.3	5.2	8.3	9.7	7.2
Age-Specific Rates, 2003-2007									
<1	-	-	-	-	-	-	-	-	-
1-4	-	-	-	-	-	-	-	-	-
5-9	-	-	-	-	-	-	-	-	-
10-14	-	-	-	-	-	-	-	-	-
15-19	-	-	-	-	-	-	-	-	-
20-24	0.0	0.0	-	0.0	-	-	-	-	-
25-29	0.1	0.1	0.1	0.1	0.1	0.1	0.1	-	-
30-34	0.2	0.2	0.2	0.2	0.2	0.2	0.3	0.4	-
35-39	0.6	0.8	0.5	0.6	0.8	0.4	0.8	1.0	0.5
40-44	1.8	2.1	1.4	1.7	2.0	1.4	2.4	2.9	2.0
45-49	4.2	5.2	3.3	4.1	5.0	3.2	6.0	7.4	4.8
50-54	8.7	10.8	6.7	8.3	10.3	6.3	13.7	17.3	10.7
55-59	15.3	19.0	11.9	14.8	18.4	11.5	22.2	29.4	16.4
60-64	25.4	31.0	20.3	24.9	30.5	19.7	35.1	43.3	28.7
65-69	37.4	44.6	31.2	36.9	44.3	30.4	48.8	57.0	42.7
70-74	52.9	61.2	46.2	52.1	60.6	45.0	68.2	78.6	61.1
75-79	69.2	77.7	63.1	68.7	77.7	62.1	85.5	91.2	82.1
80-84	88.0	98.0	81.7	87.3	98.4	80.4	103.3	104.5	102.7
85+	96.6	102.2	94.0	95.8	102.9	92.5	113.3	101.0	118.3

^a SEER 17 areas. Rates are per 100,000 and are age-adjusted to the 2000 US Std Population (19 age groups - Census P25-1130), unless noted.

^b US Mortality Files, National Center for Health Statistics, Centers for Disease Control and Prevention.

^c Rates are per 100,000 and are age-adjusted to the 2000 US Std Population (19 age groups - Census P25-1130), unless noted.

- Rates are per 100,000 and are age-adjusted to the IARC world standard population.

- Statistic not shown. Rate based on less than 16 cases for the time interval.

Table 22.8
Cancer of the Pancreas (Invasive)

5-Year Relative and Period Survival (Percent) by Race, Sex, Diagnosis Year, Stage and Age

	All Races			Whites			Blacks		
	Total	Males	Females	Total	Males	Females	Total	Males	Females
5-Year Relative Survival (Percent)									
Year of Diagnosis:									
1960-1963 ^a	-	-	-	1	1	2	1	0	3
1970-1973 ^a	-	-	-	2	2	2	2	0	3
1975-1977 ^b	2.5	2.7	2.3	2.6	2.7	2.3	2.3	2.7	2.0
1978-1980 ^b	3.0	2.8	3.2	2.7	2.6	2.7	5.9	4.3	7.4
1981-1983 ^b	3.0	2.6	3.3	2.8	2.3	3.2	3.7	4.0	3.3
1984-1986 ^b	3.0	2.4	3.5	2.7	2.1	3.1	4.7	4.2	5.0
1987-1989 ^b	3.8	3.5	4.0	3.4	3.2	3.5	5.9	5.5	6.1
1990-1992 ^b	4.6	4.2	4.8	4.7	4.4	4.9	3.8	3.2	4.3
1993-1995 ^b	4.2	3.9	4.6	4.2	3.8	4.6	3.7	3.5	3.8
1996-1998 ^b	4.6	4.8	4.3	4.4	5.0	3.8	3.6	3.3	3.7
1999-2006 ^b	5.7 ^e	5.5 ^e	6.0 ^e	5.8 ^e	5.8 ^e	5.8 ^e	4.9 ^e	3.5	6.0 ^e
5-Year Period Survival (Percent) ^{cd}									
Year of Diagnosis:									
1999-2006	6.0	5.4	6.5	6.0	5.6	6.4	5.1	4.1	6.0
Stage Distribution (%) 1999-2006 ^c									
All Stages									
Number of cases	49,410	24,075	25,335	40,232	19,797	20,435	5,477	2,475	3,002
Percent	100%	100%	100%	100%	100%	100%	100%	100%	100%
Localized	8	7	9	8	7	9	9	7	10
Regional	26	26	26	26	26	26	24	24	25
Distant	53	56	50	52	55	49	55	60	52
Unstaged	14	12	15	14	12	16	12	10	14
5-Year Relative Survival (Percent), 1999-2006 ^c									
Age at Diagnosis:									
Ages <45	21.0	14.9	29.0	20.3	15.4	26.8	19.3	11.3	31.4 ^f
Ages 45-54	8.9	7.5	11.1	8.6	7.9	9.7	8.8	5.7	12.6
Ages 55-64	5.9	5.1	7.1	6.0	5.1	7.2	5.1	3.2	7.6
Ages 65-74	4.5	4.5	4.5	4.8	4.9	4.6	2.7	2.9	2.5
Ages 75+	2.8	3.1	2.6	2.9	2.9	2.9	2.0	2.5	1.8
Ages <65	8.5	6.8	10.8	8.3	7.0	10.1	8.0	5.0	11.7
Ages 65+	3.6	3.9	3.4	3.8	4.0	3.6	2.4	2.9	2.2
Stage:									
All Stages	5.6	5.3	5.9	5.6	5.4	5.7	5.2	4.2	6.0
Localized	22.5	20.4	24.1	22.9	21.7	23.8	16.4	11.1	19.6
Regional	8.8	8.5	9.0	8.8	8.8	8.8	7.6	5.7	9.1
Distant	1.9	2.0	1.7	1.7	1.9	1.5	2.1	2.3	1.9
Unstaged	5.0	5.8	4.3	4.8	5.7	4.0	6.3	6.5	6.0

^a Based on End Results data from a series of hospital registries and one population-based registry.

^b Based on the SEER 9 areas (San Francisco, Connecticut, Detroit, Hawaii, Iowa, New Mexico, Seattle, Utah, Atlanta).

Based on follow-up of patients into 2007.

^c Based on the SEER 17 areas (San Francisco, Connecticut, Detroit, Hawaii, Iowa, New Mexico, Seattle, Utah, Atlanta, San Jose-Monterey, Los Angeles, Alaska Native Registry, Rural Georgia, California excluding SF/SJM/LA, Kentucky, Louisiana and New Jersey). California excluding SF/SJM/LA, Kentucky, Louisiana, and New Jersey contribute cases for diagnosis years 2000-2006. The remaining 13 SEER Areas contribute cases for the entire period 1999-2006. Based on follow-up of patients into 2007.

^d Period survival provides a more up-to-date estimate of survival by piecing together the most recent conditional survival estimates from several cohorts. It is computed here using three year calendar blocks (2004-2006: 0-1 year survival),

(2003-2005: 1-2 year survival), (2002-2004: 2-3 year survival), (2001-2003: 3-4 year survival), (2000-2002: 4-5 years survival).

^e The difference between 1975-1977 and 1999-2006 is statistically significant ($p < .05$).

^f The standard error is between 5 and 10 percentage points.

^g The standard error is greater than 10 percentage points.

- Statistic could not be calculated due to fewer than 25 cases during the time period.

Table 22.9
Cancer of the Pancreas (Invasive)
SEER^a Relative Survival (Percent)
By Year of Diagnosis

All Races, Males and Females

Survival Time	Year of Diagnosis																			
	1975- 1979	1980- 1984	1985- 1989	1990	1991	1992	1993	1994	1995	1996	1997	1998	1999	2000	2001	2002	2003	2004	2005	2006
1-year	15.2	17.2	18.3	19.4	20.2	20.4	18.3	19.7	18.7	20.0	21.6	20.8	23.8	23.5	25.0	26.4	24.1	24.3	28.1	26.9
2-year	6.2	6.6	7.1	8.4	9.3	9.1	8.5	9.3	8.6	9.9	10.2	8.9	10.9	11.2	11.8	12.3	11.6	12.2	12.9	
3-year	3.7	4.3	5.0	5.6	6.5	6.0	5.2	6.8	5.6	6.6	7.3	5.8	7.0	7.6	7.5	8.7	7.7	8.6		
4-year	3.0	3.5	3.9	4.3	5.4	5.3	4.4	5.5	4.3	5.1	5.9	4.6	6.0	6.4	6.2	7.1	5.9			
5-year	2.6	3.0	3.5	4.0	4.8	4.8	3.6	5.2	3.9	4.5	5.3	3.9	5.5	5.4	5.2	6.4				
6-year	2.4	2.8	3.1	3.9	4.5	4.8	3.4	4.5	3.6	4.1	4.9	3.8	5.1	4.9	4.8					
7-year	2.2	2.6	2.9	3.5	4.2	4.2	3.2	4.2	3.5	3.8	4.7	3.6	4.8	4.5						
8-year	2.0	2.4	2.7	3.5	3.9	4.1	3.2	3.7	3.2	3.8	4.6	3.2	4.6							
9-year	1.9	2.2	2.5	3.3	3.9	3.9	3.0	3.6	3.2	3.7	4.5	2.9								
10-year	1.9	2.1	2.5	3.0	3.7	3.7	2.8	3.5	3.1	3.7	4.5									
11-year	1.9	2.1	2.4	3.0	3.4	3.5	2.6	3.4	3.0	3.5										
12-year	1.8	2.1	2.4	3.0	3.4	3.4	2.5	3.3	3.0											
13-year	1.8	2.0	2.4	3.0	3.4	3.3	2.5	3.1												
14-year	1.8	2.0	2.4	2.9	3.4	3.3	2.4													
15-year	1.7	1.9	2.3	2.8	3.0	3.3														
16-year	1.7	1.9	2.1	2.8	2.9															
17-year	1.7	1.9	2.1	2.8																
18-year	1.6	1.9	2.1																	
19-year	1.6	1.9																		
20-year	1.6	1.9																		

^a Based on the SEER 9 areas (San Francisco, Connecticut, Detroit, Hawaii, Iowa, New Mexico, Seattle, Utah, and Atlanta).

Table 22.10
Cancer of the Pancreas (Invasive)

SEER^a Relative Survival (Percent)
By Year of Diagnosis

All Races, Males

Year of Diagnosis

	1975- 1979	1980- 1984	1985- 1989	1990	1991	1992	1993	1994	1995	1996	1997	1998	1999	2000	2001	2002	2003	2004	2005	2006
Survival Time																				
1-year	15.1	16.1	17.9	19.2	19.7	17.9	17.1	20.1	17.9	21.4	23.1	20.3	24.7	23.6	24.1	26.2	25.5	26.2	26.5	28.1
2-year	6.0	6.2	6.6	8.6	8.9	8.6	7.7	9.7	7.6	11.3	10.1	9.2	10.1	11.6	12.5	11.5	11.6	12.6	11.7	
3-year	3.6	3.9	4.5	5.3	6.6	5.4	4.7	7.6	4.4	7.5	7.1	5.8	6.5	7.1	7.9	8.3	7.4	8.4		
4-year	3.0	3.2	3.4	3.9	5.6	4.8	3.5	6.0	3.7	6.0	5.9	4.7	5.8	6.1	6.5	7.0	5.5			
5-year	2.6	2.7	3.1	3.5	5.0	4.2	2.7	5.6	3.2	5.4	5.0	4.1	5.3	5.3	5.6	6.2				
6-year	2.4	2.4	2.6	3.5	4.6	4.1	2.4	5.1	2.9	5.0	4.3	3.9	4.4	5.0	5.1					
7-year	2.3	2.1	2.4	3.3	4.1	3.5	2.1	4.8	2.9	4.6	3.9	3.7	4.3	4.7						
8-year	2.1	1.9	2.2	3.3	3.9	3.1	2.0	4.0	2.8	4.6	3.9	3.6	4.3							
9-year	2.0	1.8	2.0	3.1	3.9	3.1	1.9	3.9	2.6	4.4	3.9	3.2								
10-year	1.9	1.7	1.9	2.7	3.7	3.1	1.5	3.4	2.5	4.2	3.8									
11-year	1.9	1.7	1.9	2.6	3.6	3.1	1.3	3.4	2.5	3.6										
12-year	1.8	1.7	1.9	2.6	3.6	3.1	1.1	3.2	2.3											
13-year	1.8	1.7	1.8	2.6	3.6	2.9	1.1	2.9												
14-year	1.8	1.7	1.8	2.6	3.6	2.9	0.8													
15-year	1.8	1.6	1.7	2.6	3.6	2.9														
16-year	1.8	1.6	1.7	2.6	3.6															
17-year	1.8	1.6	1.7	2.6																
18-year	1.7	1.6	1.6																	
19-year	1.6	1.6																		
20-year	1.6	1.6																		

^a Based on the SEER 9 areas (San Francisco, Connecticut, Detroit, Hawaii, Iowa, New Mexico, Seattle, Utah, and Atlanta).

Table 22.11
Cancer of the Pancreas (Invasive)

SEER^a Relative Survival (Percent)
By Year of Diagnosis

All Races, Females

Year of Diagnosis

	1975- 1979	1980- 1984	1985- 1989	1990	1991	1992	1993	1994	1995	1996	1997	1998	1999	2000	2001	2002	2003	2004	2005	2006
Survival Time																				
1-year	15.2	18.2	18.6	19.6	20.6	22.8	19.4	19.3	19.4	18.7	20.2	21.3	22.9	23.5	25.8	26.5	22.7	22.3	29.8	25.7
2-year	6.4	7.0	7.7	8.2	9.7	9.5	9.2	8.9	9.6	8.5	10.2	8.6	11.6	10.7	11.2	13.0	11.5	11.6	14.1	
3-year	3.9	4.6	5.4	5.7	6.4	6.5	5.8	5.8	6.6	5.8	7.5	5.9	7.5	8.0	7.0	9.1	7.9	8.7		
4-year	3.1	3.8	4.4	4.7	5.3	5.7	5.2	5.0	4.7	4.2	5.9	4.4	6.2	6.7	6.0	7.2	6.3			
5-year	2.5	3.4	3.9	4.5	4.6	5.3	4.3	4.7	4.5	3.6	5.6	3.7	5.7	5.4	4.8	6.6				
6-year	2.4	3.1	3.6	4.2	4.3	5.3	4.3	4.0	4.2	3.3	5.4	3.7	5.7	4.8	4.5					
7-year	2.1	3.0	3.4	3.8	4.2	4.9	4.1	3.5	4.0	3.1	5.4	3.4	5.3	4.3						
8-year	1.9	2.8	3.1	3.7	3.9	4.9	4.1	3.4	3.5	3.0	5.3	2.8	4.8							
9-year	1.9	2.7	2.9	3.5	3.9	4.6	4.0	3.2	3.5	2.9	5.0	2.5								
10-year	1.8	2.5	2.9	3.3	3.8	4.2	4.0	3.2	3.5	2.9	5.0									
11-year	1.8	2.4	2.9	3.3	3.2	3.8	3.9	3.2	3.4	2.9										
12-year	1.8	2.3	2.9	3.3	3.1	3.5	3.8	3.2	3.4											
13-year	1.7	2.3	2.8	3.0	3.1	3.5	3.8	3.2												
14-year	1.6	2.3	2.8	2.9	3.1	3.5	3.8													
15-year	1.5	2.2	2.8	2.8	2.2	3.5														
16-year	1.5	2.1	2.6	2.8	2.2															
17-year	1.5	2.1	2.6	2.8																
18-year	1.5	2.1	2.6																	
19-year	1.5	2.1																		
20-year	1.5	2.1																		

^a Based on the SEER 9 areas (San Francisco, Connecticut, Detroit, Hawaii, Iowa, New Mexico, Seattle, Utah, and Atlanta).

Table 22.12
Cancer of the Pancreas (Invasive)

Risk of Being Diagnosed With Cancer in 10, 20 and 30 Years,
Lifetime Risk of Being Diagnosed with Cancer Given Alive and Cancer-Free at Current Age, and
Lifetime Risk of Dying from Cancer Given Alive at Current Age
Both Sexes, 2005-2007 By Race/Ethnicity

Race/ Ethnicity	Current Age	Risk of Being Diagnosed with Cancer				Risk of Dying from Cancer	Race/ Ethnicity	Current Age	Risk of Being Diagnosed with Cancer				Risk of Dying from Cancer
		+10 yrs	+20 yrs	+30 yrs	Ever				+10 yrs	+20 yrs	+30 yrs	Ever	
All Races	0	0.00	0.00	0.00	1.41	1.27	Asian/ Pacific Islander	0	0.00	0.00	0.00	1.48	1.32
	10	0.00	0.00	0.01	1.43	1.29		10	0.00	0.00	0.01	1.49	1.33
	20	0.00	0.01	0.05	1.43	1.30		20	0.00	0.01	0.04	1.50	1.34
	30	0.01	0.05	0.18	1.45	1.31		30	0.01	0.04	0.13	1.50	1.34
	40	0.04	0.18	0.49	1.46	1.32		40	0.03	0.13	0.36	1.50	1.34
	50	0.14	0.46	0.94	1.46	1.33		50	0.09	0.34	0.75	1.49	1.34
	60	0.34	0.85	1.27	1.40	1.29		60	0.25	0.68	1.15	1.44	1.31
	70	0.58	1.06	-	1.21	1.14		70	0.46	0.98	-	1.29	1.21
80	0.66	-	-	0.87	0.85	80	0.63	-	-	1.01	1.01		
White	0	0.00	0.00	0.00	1.40	1.27	American Indian/ Alaska Native ^a	0	0.00	0.00	0.00	1.19	1.00
	10	0.00	0.00	0.01	1.42	1.29		10	0.00	0.00	0.00	1.21	1.02
	20	0.00	0.01	0.05	1.42	1.29		20	0.00	0.00	0.03	1.22	1.03
	30	0.01	0.05	0.18	1.43	1.30		30	0.00	0.03	0.15	1.24	1.05
	40	0.04	0.18	0.48	1.44	1.31		40	0.03	0.15	0.41	1.27	1.08
	50	0.14	0.46	0.94	1.44	1.32		50	0.13	0.39	0.81	1.29	1.10
	60	0.33	0.85	1.26	1.38	1.28		60	0.29	0.73	1.10	1.26	1.10
	70	0.58	1.05	-	1.19	1.12		70	0.52	0.95	-	1.13	1.05
80	0.65	-	-	0.84	0.84	80	0.60	-	-	0.85	0.82		
Black	0	0.00	0.00	0.00	1.50	1.35	Hispanic ^b	0	0.00	0.00	0.00	1.51	1.21
	10	0.00	0.00	0.01	1.53	1.38		10	0.00	0.00	0.01	1.52	1.23
	20	0.00	0.01	0.06	1.54	1.39		20	0.00	0.01	0.04	1.53	1.23
	30	0.01	0.06	0.26	1.56	1.41		30	0.01	0.04	0.15	1.54	1.24
	40	0.05	0.25	0.63	1.59	1.43		40	0.03	0.14	0.43	1.55	1.25
	50	0.21	0.60	1.11	1.61	1.46		50	0.11	0.40	0.87	1.55	1.26
	60	0.44	1.01	1.42	1.57	1.43		60	0.31	0.80	1.23	1.51	1.23
	70	0.70	1.21	-	1.40	1.30		70	0.55	1.03	-	1.34	1.11
80	0.79	-	-	1.07	1.02	80	0.62	-	-	1.02	0.88		

Devcan Version 6.5.0, June 2010, National Cancer Institute (<http://srab.cancer.gov/devcan/>).

Source: Incidence data are from the SEER 17 areas (San Francisco, Connecticut, Detroit, Hawaii, Iowa, New Mexico, Seattle, Utah, Atlanta, San Jose-Monterey, Los Angeles, Alaska Native Registry, Rural Georgia, California excluding SF/SJM/LA, Kentucky, Louisiana and New Jersey). Mortality data are from the NCHS public use data file for the total US.

^a Underlying incidence and mortality data for American Indian/Alaska Native are based on the CHSDA (Contract Health Service Delivery Area) counties.

^b Hispanic is not mutually exclusive from whites, blacks, Asian/Pacific Islanders, and American Indians/Alaska Natives.

Underlying incidence data for Hispanics are based on NHIA and exclude cases from the Alaska Native Registry.

Underlying mortality data for Hispanics exclude deaths from the District of Columbia, Minnesota, New Hampshire and North Dakota.

- Statistic could not be calculated.

A percent of 0.00 represents a value that is below 0.005.

Table 22.13
Cancer of the Pancreas (Invasive)

Risk of Being Diagnosed With Cancer in 10, 20 and 30 Years,
Lifetime Risk of Being Diagnosed with Cancer Given Alive and Cancer-Free at Current Age, and
Lifetime Risk of Dying from Cancer Given Alive at Current Age
Males, 2005-2007 By Race/Ethnicity

Race/ Ethnicity	Current Age	Risk of Being Diagnosed with Cancer				Risk of Dying from Cancer	Race/ Ethnicity	Current Age	Risk of Being Diagnosed with Cancer				Risk of Dying from Cancer
		+10 yrs	+20 yrs	+30 yrs	Ever				+10 yrs	+20 yrs	+30 yrs	Ever	
All Races	0	0.00	0.00	0.00	1.41	1.28	Asian/ Pacific Islander	0	0.00	0.00	0.00	1.49	1.30
	10	0.00	0.00	0.01	1.43	1.30		10	0.00	0.00	0.01	1.50	1.31
	20	0.00	0.01	0.05	1.43	1.31		20	0.00	0.01	0.05	1.51	1.32
	30	0.01	0.05	0.21	1.45	1.32		30	0.01	0.05	0.16	1.52	1.32
	40	0.05	0.21	0.56	1.47	1.34		40	0.04	0.15	0.41	1.52	1.33
	50	0.17	0.53	1.03	1.47	1.35		50	0.11	0.38	0.80	1.50	1.32
	60	0.39	0.93	1.31	1.41	1.31		60	0.28	0.72	1.18	1.45	1.29
	70	0.63	1.09	-	1.20	1.13		70	0.49	1.00	-	1.30	1.20
80	0.68	-	-	0.84	0.84	80	0.65	-	-	1.04	1.02		
White	0	0.00	0.00	0.00	1.42	1.29	American Indian/ Alaska Native ^a	0	0.00	0.00	0.00	1.10	1.00
	10	0.00	0.00	0.01	1.43	1.31		10	0.00	0.00	0.00	1.12	1.02
	20	0.00	0.01	0.05	1.44	1.32		20	0.00	0.00	0.03	1.13	1.03
	30	0.01	0.05	0.21	1.46	1.33		30	0.00	0.03	0.14	1.16	1.06
	40	0.05	0.20	0.56	1.47	1.35		40	0.03	0.15	0.38	1.20	1.10
	50	0.16	0.53	1.04	1.48	1.36		50	0.13	0.37	0.71	1.24	1.13
	60	0.40	0.94	1.33	1.41	1.31		60	0.26	0.64	0.99	1.22	1.13
	70	0.64	1.09	-	1.19	1.14		70	0.45	0.87	-	1.15	1.09
80	0.68	-	-	0.82	0.84	80	0.60	-	-	1.00	0.93		
Black	0	0.00	0.00	0.00	1.33	1.23	Hispanic ^b	0	0.00	0.00	0.00	1.34	1.14
	10	0.00	0.00	0.01	1.37	1.26		10	0.00	0.00	0.01	1.35	1.16
	20	0.00	0.01	0.06	1.38	1.28		20	0.00	0.01	0.04	1.36	1.16
	30	0.01	0.06	0.30	1.41	1.30		30	0.01	0.04	0.16	1.37	1.18
	40	0.06	0.30	0.69	1.44	1.34		40	0.04	0.15	0.47	1.39	1.19
	50	0.25	0.67	1.15	1.47	1.36		50	0.12	0.44	0.89	1.39	1.19
	60	0.48	1.03	1.33	1.40	1.32		60	0.35	0.82	1.22	1.35	1.16
	70	0.73	1.12	-	1.21	1.15		70	0.54	1.00	-	1.15	1.02
80	0.68	-	-	0.84	0.85	80	0.62	-	-	0.84	0.79		

Devcan Version 6.5.0, June 2010, National Cancer Institute (<http://srab.cancer.gov/devcan/>).

Source: Incidence data are from the SEER 17 areas (San Francisco, Connecticut, Detroit, Hawaii, Iowa, New Mexico, Seattle, Utah, Atlanta, San Jose-Monterey, Los Angeles, Alaska Native Registry, Rural Georgia, California excluding SF/SJM/LA, Kentucky, Louisiana and New Jersey). Mortality data are from the NCHS public use data file for the total US.

^a Underlying incidence and mortality data for American Indian/Alaska Native are based on the CHSDA (Contract Health Service Delivery Area) counties.

^b Hispanic is not mutually exclusive from whites, blacks, Asian/Pacific Islanders, and American Indians/Alaska Natives.

Underlying incidence data for Hispanics are based on NHIA and exclude cases from the Alaska Native Registry.

Underlying mortality data for Hispanics exclude deaths from the District of Columbia, Minnesota, New Hampshire and North Dakota.

- Statistic could not be calculated.

A percent of 0.00 represents a value that is below 0.005.

Table 22.14
Cancer of the Pancreas (Invasive)

Risk of Being Diagnosed With Cancer in 10, 20 and 30 Years,
Lifetime Risk of Being Diagnosed with Cancer Given Alive and Cancer-Free at Current Age, and
Lifetime Risk of Dying from Cancer Given Alive at Current Age
Females, 2005-2007 By Race/Ethnicity

Race/ Ethnicity	Current Age	Risk of Being Diagnosed with Cancer				Risk of Dying from Cancer	Race/ Ethnicity	Current Age	Risk of Being Diagnosed with Cancer				Risk of Dying from Cancer
		+10 yrs	+20 yrs	+30 yrs	Ever				+10 yrs	+20 yrs	+30 yrs	Ever	
All Races	0	0.00	0.00	0.00	1.41	1.26	Asian/ Pacific Islander	0	0.00	0.00	0.00	1.47	1.34
	10	0.00	0.00	0.01	1.43	1.28		10	0.00	0.00	0.01	1.48	1.35
	20	0.00	0.01	0.04	1.43	1.28		20	0.00	0.01	0.03	1.49	1.35
	30	0.01	0.04	0.16	1.44	1.29		30	0.01	0.03	0.11	1.49	1.36
	40	0.03	0.15	0.42	1.44	1.30		40	0.02	0.10	0.32	1.49	1.36
	50	0.12	0.39	0.86	1.44	1.30		50	0.08	0.30	0.71	1.48	1.35
	60	0.29	0.78	1.22	1.38	1.26		60	0.23	0.64	1.13	1.44	1.32
	70	0.54	1.04	-	1.22	1.14		70	0.44	0.96	-	1.29	1.21
80	0.65	-	-	0.88	0.86	80	0.61	-	-	0.99	1.00		
White	0	0.00	0.00	0.00	1.39	1.25	American Indian/ Alaska Native ^a	0	0.00	0.00	0.00	1.30	1.02
	10	0.00	0.00	0.01	1.40	1.26		10	0.00	0.00	0.00	1.32	1.04
	20	0.00	0.01	0.04	1.40	1.26		20	0.00	0.00	0.03	1.33	1.04
	30	0.01	0.04	0.15	1.41	1.27		30	0.00	0.03	0.15	1.34	1.05
	40	0.03	0.15	0.41	1.41	1.28		40	0.03	0.16	0.44	1.36	1.08
	50	0.12	0.38	0.85	1.41	1.28		50	0.13	0.42	0.89	1.37	1.09
	60	0.28	0.76	1.20	1.35	1.24		60	0.31	0.81	1.21	1.31	1.09
	70	0.54	1.02	-	1.18	1.11		70	0.57	1.03	-	1.15	1.05
80	0.63	-	-	0.85	0.84	80	0.61	-	-	0.77	0.77		
Black	0	0.00	0.00	0.00	1.64	1.44	Hispanic ^b	0	0.00	0.00	0.00	1.64	1.27
	10	0.00	0.00	0.01	1.68	1.48		10	0.00	0.00	0.01	1.66	1.29
	20	0.00	0.01	0.06	1.68	1.48		20	0.00	0.01	0.04	1.66	1.29
	30	0.01	0.06	0.22	1.69	1.49		30	0.01	0.04	0.14	1.66	1.29
	40	0.05	0.21	0.57	1.71	1.51		40	0.03	0.13	0.39	1.67	1.30
	50	0.17	0.54	1.08	1.72	1.53		50	0.10	0.37	0.86	1.66	1.30
	60	0.40	0.98	1.49	1.69	1.52		60	0.28	0.78	1.25	1.61	1.27
	70	0.68	1.28	-	1.52	1.39		70	0.55	1.06	-	1.45	1.17
80	0.85	-	-	1.20	1.10	80	0.63	-	-	1.12	0.93		

Devcan Version 6.5.0, June 2010, National Cancer Institute (<http://srab.cancer.gov/devcan/>).

Source: Incidence data are from the SEER 17 areas (San Francisco, Connecticut, Detroit, Hawaii, Iowa, New Mexico, Seattle, Utah, Atlanta, San Jose-Monterey, Los Angeles, Alaska Native Registry, Rural Georgia, California excluding SF/SJM/LA, Kentucky, Louisiana and New Jersey). Mortality data are from the NCHS public use data file for the total US.

^a Underlying incidence and mortality data for American Indian/Alaska Native are based on the CHSDA (Contract Health Service Delivery Area) counties.

^b Hispanic is not mutually exclusive from whites, blacks, Asian/Pacific Islanders, and American Indians/Alaska Natives.

Underlying incidence data for Hispanics are based on NHIA and exclude cases from the Alaska Native Registry.

Underlying mortality data for Hispanics exclude deaths from the District of Columbia, Minnesota, New Hampshire and North Dakota.

- Statistic could not be calculated.

A percent of 0.00 represents a value that is below 0.005.

Table 22.15
Cancer of the Pancreas (Invasive)

SEER Incidence and U.S. Mortality
Age-Adjusted Rates and Trends^a
By Race/Ethnicity and Sex

SEER Incidence	SEER 17 Areas ^b			SEER 13 Areas ^b			SEER 9 Areas ^b		
	Rate 2003-2007			Trend 1998-2007 ^c			Trend 1998-2007 ^d		
	Rate per 100,000 persons			AAPC (%)			AAPC (%)		
RACE/ETHNICITY	Total	Males	Females	Total	Males	Females	Total	Males	Females
All Races	11.7	13.3	10.5	0.4*	0.2*	0.4*	0.7*	0.6*	0.9*
White	11.6	13.2	10.3	0.5*	0.5*	0.5*	0.8*	0.8*	1.1*
White Hispanic ^e	10.7	11.3	10.2	0.0	-0.1	0.1	-	-	-
White Non-Hispanic ^e	11.8	13.5	10.3	0.6*	0.6*	0.5*	-	-	-
Black	15.5	16.7	14.4	-0.8*	-1.2*	-0.6	-0.3*	-0.7*	0.0
Asian/Pacific Islander	9.1	10.2	8.3	0.2	-0.5	0.9*	-	-	-
Amer Ind/Alaska Nat ^f	10.3	10.6	10.1	-	-	-	-	-	-
Hispanic ^e	10.5	10.9	10.1	0.1	0.0	0.2	-	-	-
<u>U.S. Mortality^g</u>									
RACE/ETHNICITY	Rate 2003-2007			Trend 1998-2007 ^h					
	Rate per 100,000 persons			AAPC (%)					
	Total	Males	Females	Total	Males	Females			
All Races	10.7	12.3	9.4	0.3*	0.3*	0.3*			
White	10.5	12.2	9.1	0.4*	0.4*	0.2*			
White Hispanic ^e	8.5	9.4	7.8	-0.4	-0.5*	0.2			
White Non-Hispanic ^e	10.7	12.4	9.2	0.6*	0.6*	0.3*			
Black	13.8	15.4	12.4	-0.7*	-1.0*	-0.1			
Asian/Pacific Islander	7.4	8.2	6.9	-0.2	-0.9*	0.4			
Amer Ind/Alaska Nat									
Total U.S.	6.8	7.4	6.4	1.0	2.0*	0.6			
CHSDA Counties	8.8	9.9	8.0	2.3*	3.4*	1.9*			
Non-CHSDA Counties	4.4	4.3	4.4	-1.3	-	-			
Hispanic ^e	8.3	9.1	7.5	-0.5	-0.5*	0.2			

The AAPC is the Average Annual Percent Change over the time interval. The AAPCs are calculated by the Joinpoint Regression Program Version 3.4.3, April 2010, National Cancer Institute.

- Statistic not shown. Rate based on less than 16 cases for the time interval.

Trend based on less than 10 cases for at least one year within the time interval.

a Rates are age-adjusted to the 2000 US Std Population (19 age groups - Census P25-1130). Trends

b are based on rates age-adjusted to the 2000 US Std Population (19 age groups - Census P25-1130).

The SEER 9 areas are San Francisco, Connecticut, Detroit, Hawaii, Iowa, New Mexico, Seattle, Utah and Atlanta.

The SEER 13 areas comprise the SEER 9 areas plus San Jose-Monterey, Los Angeles, the Alaska Native Registry and Rural Georgia.

The SEER 17 areas comprise the SEER 13 areas plus California excluding SF/SJM/LA, Kentucky, Louisiana and New Jersey.

c The 1998-2007 AAPC estimates are based on a Joinpoint analysis with up to 2 Joinpoints over diagnosis years 1992-2007.

d The 1998-2007 AAPC estimates are based on a Joinpoint analysis with up to 4 Joinpoints over diagnosis years 1975-2007.

e Hispanic and Non-Hispanic are not mutually exclusive from whites, blacks, Asian/Pacific Islanders, and American Indians/Alaska Natives. Incidence data for Hispanics and Non-Hispanics are based on NHIA and exclude cases from the Alaska Native Registry. The 2003-2007 Hispanic and Non-Hispanic death rates exclude deaths from the District of Columbia, New Hampshire, and North Dakota. The 1998-2007 Hispanic and Non-Hispanic mortality trends exclude deaths from Connecticut, the District of Columbia, Maine, Maryland, Minnesota, New Hampshire, New York, North Dakota, Oklahoma and Vermont.

f Incidence data for American Indian/Alaska Native are based on the CHSDA(Contract Health Service Delivery Area) counties.

g US Mortality Files, National Center for Health Statistics, CDC.

h The 1998-2007 mortality AAPCs are based on a Joinpoint analysis using years of death 1992-2007.

* The APC is significantly different from zero (p<.05).

Table 22.16
Cancer of the Pancreas (Invasive)
Age-Adjusted SEER Incidence Rates^a
By Registry, Race and Sex

	All Races			Whites			Blacks		
	Total	Males	Females	Total	Males	Females	Total	Males	Females
<u>SEER Incidence Rates^a, 2003-2007</u>									
Atlanta & Rural Georgia	10.56	11.96	9.41	9.73	11.21	8.51	13.14	14.35	12.11
Atlanta	10.47	12.09	9.18	9.75	11.47	8.35	12.83	14.14	11.75
Rural Georgia	12.53	10.90	13.43	10.02	7.70	11.56	18.32	19.10	17.35
California	11.22	12.49	10.16	11.36	12.74	10.20	15.46	15.72	14.94
Greater Bay Area	11.42	12.83	10.19	11.91	13.51	10.53	15.66	15.40	15.34
San Francisco-Oakland	11.32	12.64	10.17	11.89	13.45	10.52	15.27	14.60	15.32
San Jose-Monterey	11.62	13.24	10.25	11.95	13.64	10.57	17.99	19.83	15.03
Los Angeles	10.84	11.74	10.05	10.74	11.66	9.91	14.86	15.31	14.32
Greater California	11.34	12.71	10.21	11.46	12.95	10.23	16.21	16.56	15.62
Connecticut	13.52	15.77	11.68	13.26	15.46	11.45	17.63	22.18	14.59
Detroit	14.04	16.25	12.24	13.11	15.50	11.08	18.27	20.65	16.57
Hawaii	12.35	14.14	10.79	11.11	13.05	9.78	-	-	-
Iowa	11.23	12.72	9.95	11.15	12.62	9.90	21.18	21.06	20.52
Kentucky	11.53	13.21	10.13	11.33	13.10	9.87	15.13	16.10	14.07
Louisiana	12.92	14.35	11.71	11.99	13.62	10.64	16.16	17.35	15.01
New Jersey	12.56	14.51	11.03	12.59	14.60	11.01	14.22	15.99	12.87
New Mexico	10.31	11.42	9.41	10.46	11.58	9.51	-	-	-
Seattle-Puget Sound	11.85	13.35	10.64	11.81	13.41	10.50	15.95	15.01	17.50
Utah	9.69	10.74	8.82	9.75	10.87	8.80	-	-	-
9 SEER Areas ^b	11.88	13.49	10.54	11.68	13.36	10.27	15.82	17.30	14.64
11 SEER Areas ^b	11.63	13.09	10.41	11.50	13.02	10.20	15.60	16.82	14.57
13 SEER Areas ^b	11.64	13.09	10.43	11.49	13.01	10.21	15.63	16.83	14.60
17 SEER Areas ^b	11.75	13.25	10.50	11.64	13.23	10.32	15.50	16.69	14.44

^a Rates are per 100,000 and are age-adjusted to the 2000 US Std Population (19 age groups - Census P25-1130)

^b The SEER 9 areas are San Francisco, Connecticut, Detroit, Hawaii, Iowa, New Mexico, Seattle, Utah and Atlanta.

The SEER 11 areas comprise the SEER 9 areas plus San Jose-Monterey and Los Angeles.

The SEER 13 areas comprise the SEER 11 areas plus the Alaska Native Registry and Rural Georgia.

The SEER 17 areas comprise the SEER 13 areas plus California excluding SF/SJM/LA, Kentucky, Louisiana and New Jersey.

- Statistic not shown. Rate based on less than 16 cases for the time interval.

Table 22.17
Cancer of the Pancreas (Invasive)

Age-Adjusted SEER Death Rates^a
By Registry, Race and Sex

	All Races			Whites			Blacks		
	Total	Males	Females	Total	Males	Females	Total	Males	Females
<u>SEER Death Rates^a, 2003-2007</u>									
Atlanta & Rural Georgia	10.02	11.52	8.88	9.13	11.02	7.76	12.66	12.90	12.07
Atlanta	9.85	11.59	8.57	9.08	11.28	7.53	12.24	12.42	11.69
Rural Georgia	13.35	12.07	13.71	10.63	8.23	11.84	19.56	21.70	17.47
California	10.32	11.58	9.25	10.50	11.90	9.30	14.37	14.51	13.91
Greater Bay Area	10.39	11.46	9.47	10.86	12.29	9.64	15.14	13.86	15.58
San Francisco-Oakland	10.37	11.32	9.54	10.78	12.18	9.55	15.34	13.71	16.04
San Jose-Monterey	10.43	11.76	9.33	10.99	12.50	9.78	13.22	14.47	-
Los Angeles	10.18	11.18	9.33	10.19	11.13	9.33	13.76	14.69	12.91
Greater California	10.37	11.82	9.15	10.53	12.11	9.20	14.63	14.66	14.19
Connecticut	11.83	14.15	10.01	11.68	13.99	9.86	14.95	19.06	12.26
Detroit	11.87	13.74	10.35	11.11	13.02	9.49	15.21	17.45	13.58
Hawaii	10.64	12.24	9.25	10.01	12.38	7.95	-	-	-
Iowa	10.13	11.67	8.89	10.04	11.60	8.79	20.90	18.99	21.82
Kentucky	10.77	12.49	9.36	10.57	12.40	9.08	14.45	14.97	13.83
Louisiana	12.03	13.60	10.74	11.12	12.77	9.77	15.40	16.98	14.10
New Jersey	11.21	13.06	9.79	11.31	13.26	9.80	12.76	14.44	11.46
New Mexico	10.05	11.16	9.15	10.31	11.39	9.41	-	-	-
Seattle-Puget Sound	10.45	11.84	9.30	10.54	12.06	9.27	14.76	13.25	16.48
Utah	8.88	9.81	8.08	8.92	9.96	8.04	-	-	-
9 SEER Areas ^b	10.61	12.11	9.38	10.48	12.13	9.13	14.16	15.08	13.33
11 SEER Areas ^b	10.50	11.88	9.36	10.44	11.94	9.19	14.05	14.99	13.19
13 SEER Areas ^b	10.51	11.88	9.37	10.43	11.91	9.20	14.10	15.06	13.22
17 SEER Areas ^b	10.67	12.15	9.45	10.62	12.21	9.30	14.16	15.24	13.18
Total U.S.	10.70	12.35	9.36	10.53	12.22	9.13	13.77	15.43	12.44

^a US Mortality Files, National Center for Health Statistics, Centers for Disease Control and Prevention.
Rates are per 100,000 and are age-adjusted to the 2000 US Std Population (19 age groups - Census P25-1130).

^b The SEER 9 areas are San Francisco, Connecticut, Detroit, Hawaii, Iowa, New Mexico, Seattle, Utah and Atlanta.
The SEER 11 areas comprise the SEER 9 areas plus San Jose-Monterey and Los Angeles.
The SEER 13 areas comprise the SEER 11 areas plus the Alaska Native Registry and Rural Georgia.
The SEER 17 areas comprise the SEER 13 areas plus California excluding SF/SJM/LA, Kentucky, Louisiana and New Jersey.
- Statistic not shown. Rate based on less than 16 cases for the time interval.

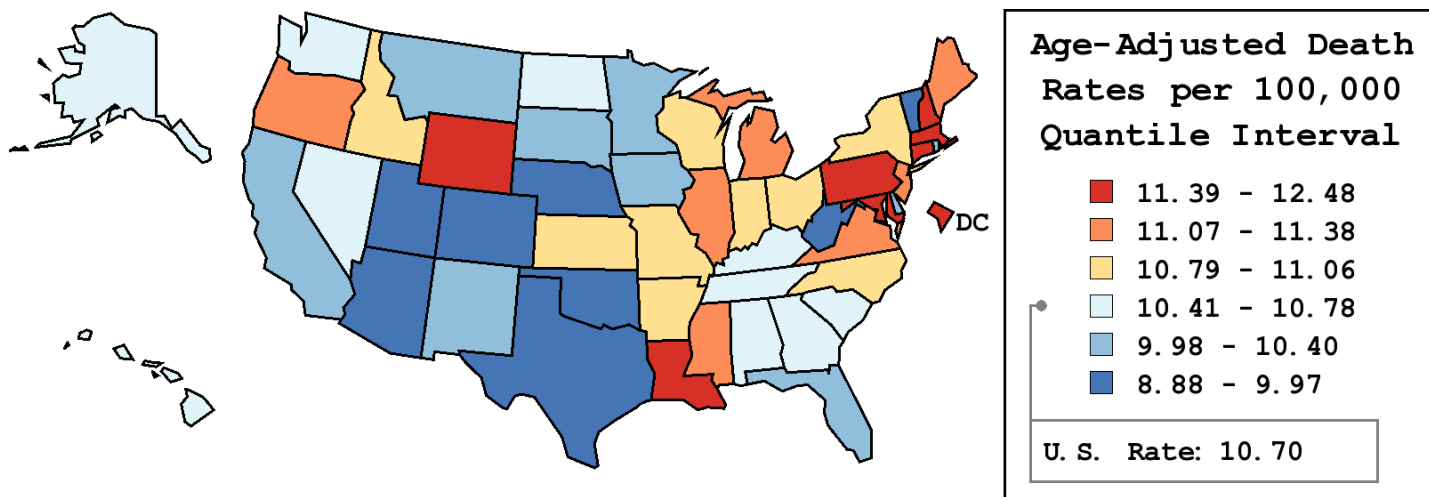
Table 22.18
Cancer of the Pancreas (Invasive)

Age-Adjusted Cancer Death^a Rates By State, All Races, 2003-2007

Males and Females

State	Rate	SE	Rank	PD
TOTAL U.S.	10.70	0.03		
High Five States				
D.C.	12.48	0.66	(01)	16.56 ^c
Louisiana	12.03 ^b	0.24	(02)	12.40
Connecticut	11.83 ^b	0.25	(03)	10.52
New Hampshire	11.69	0.42	(04)	9.23
Massachusetts	11.58 ^b	0.18	(05)	8.22
Low Five States				
Colorado	9.78 ^b	0.22	(47)	-8.61
Vermont	9.77	0.54	(48)	-8.70
West Virginia	9.24 ^b	0.29	(49)	-13.69
Arizona	9.23 ^b	0.17	(50)	-13.73
Utah	8.88 ^b	0.31	(51)	-17.07 ^c

State	Rate	SE	Rank	PD	State	Rate	SE	Rank	PD
Alabama	10.75	0.21	(28)	0.47	Montana	10.40	0.44	(35)	-2.82
Alaska	10.44	0.76	(34)	-2.47	Nebraska	9.96	0.33	(46)	-6.96
Arizona	9.23 ^b	0.17	(50)	-13.73	Nevada	10.69	0.31	(29)	-0.10
Arkansas	10.82	0.27	(23)	1.13	New Hampshire	11.69	0.42	(04)	9.23
California	10.32 ^b	0.08	(37)	-3.56	New Jersey	11.21	0.16	(14)	4.71
Colorado	9.78 ^b	0.22	(47)	-8.61	New Mexico	10.05	0.32	(42)	-6.11
Connecticut	11.83 ^b	0.25	(03)	10.52	New York	10.83	0.10	(22)	1.23
Delaware	10.33	0.48	(36)	-3.48	North Carolina	11.05	0.16	(18)	3.25
D.C.	12.48	0.66	(01)	16.56 ^c	North Dakota	10.61	0.54	(32)	-0.84
Florida	10.00 ^b	0.09	(43)	-6.53	Ohio	11.06	0.13	(16)	3.35
Georgia	10.52	0.17	(33)	-1.68	Oklahoma	9.97	0.23	(45)	-6.88
Hawaii	10.64	0.39	(31)	-0.57	Oregon	11.10	0.24	(15)	3.74
Idaho	10.92	0.40	(20)	1.99	Pennsylvania	11.43 ^b	0.12	(07)	6.76
Illinois	11.25 ^b	0.13	(11)	5.07	Rhode Island	10.25	0.41	(40)	-4.23
Indiana	11.06	0.19	(17)	3.34	South Carolina	10.67	0.22	(30)	-0.32
Iowa	10.13	0.24	(41)	-5.34	South Dakota	10.28	0.48	(39)	-3.99
Kansas	10.82	0.27	(24)	1.10	Tennessee	10.78	0.19	(25)	0.73
Kentucky	10.77	0.22	(27)	0.65	Texas	9.97 ^b	0.10	(44)	-6.87
Louisiana	12.03 ^b	0.24	(02)	12.40	Utah	8.88 ^b	0.31	(51)	-17.07 ^c
Maine	11.24	0.38	(12)	4.99	Vermont	9.77	0.54	(48)	-8.70
Maryland	11.54 ^b	0.21	(06)	7.80	Virginia	11.23	0.18	(13)	4.92
Massachusetts	11.58 ^b	0.18	(05)	8.22	Washington	10.78	0.19	(26)	0.71
Michigan	11.33 ^b	0.15	(10)	5.89	West Virginia	9.24 ^b	0.29	(49)	-13.69
Minnesota	10.31	0.20	(38)	-3.68	Wisconsin	10.88	0.19	(21)	1.66
Mississippi	11.38	0.28	(09)	6.31	Wyoming	11.41	0.67	(08)	6.63
Missouri	11.02	0.19	(19)	3.00					



^a US Mortality Files, National Center for Health Statistics, Centers for Disease Control and Prevention. Rates are per 100,000 and are age-adjusted to the 2000 US Std Population (19 age groups - Census P25-1130).
^b Difference between state rate and total U.S. rate is statistically significant ($p \leq .0002$).
^c Absolute percent difference between state rate and total U.S. rate is 15% or more.
SE Standard error of the rate.
PD Percent difference between state rate and total U.S. rate.

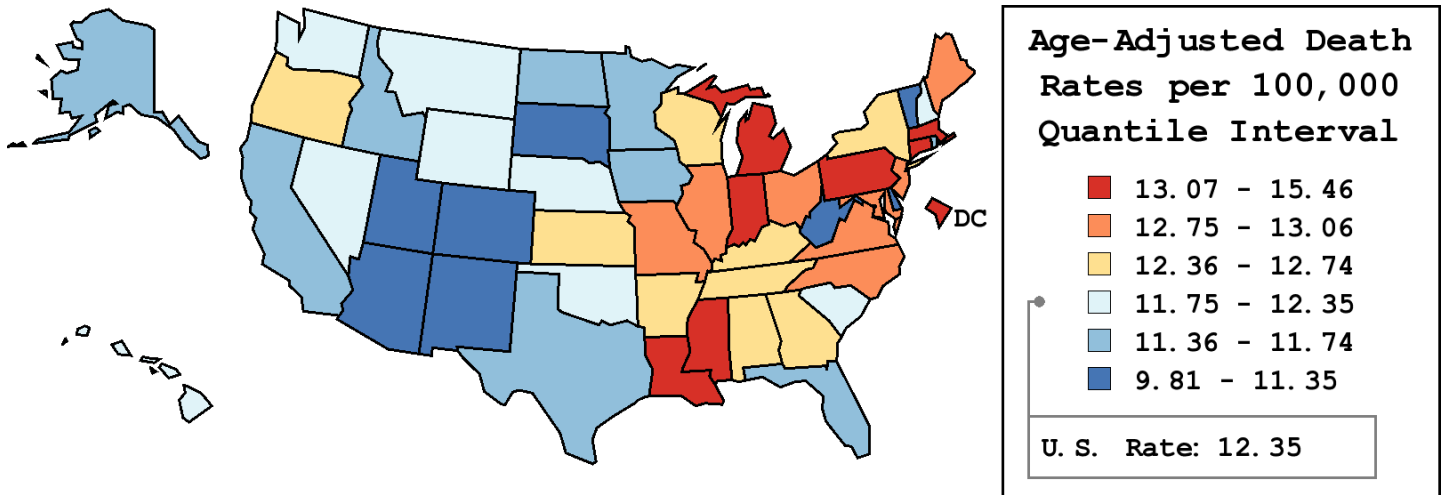
Table 22.19
Cancer of the Pancreas (Invasive)

Age-Adjusted Cancer Death^a Rates By State, All Races, 2003-2007

Males

State	Rate	SE	Rank	PD
TOTAL U.S.	12.35	0.04		
High Five States				
D.C.	15.46	1.18	(01)	25.21 ^c
Connecticut	14.15 ^b	0.42	(02)	14.63 ^c
Louisiana	13.60	0.39	(03)	10.16 ^c
Mississippi	13.50	0.48	(04)	9.37
Massachusetts	13.41	0.30	(05)	8.62
Low Five States				
New Mexico	11.16	0.51	(47)	-9.64
Arizona	11.02 ^b	0.28	(48)	-10.77 ^c
Colorado	10.93 ^b	0.36	(49)	-11.51 ^c
Vermont	10.83	0.86	(50)	-12.27 ^c
Utah	9.81 ^b	0.49	(51)	-20.52 ^c

State	Rate	SE	Rank	PD	State	Rate	SE	Rank	PD
Alabama	12.74	0.36	(17)	3.23	Montana	12.13	0.71	(31)	-1.71
Alaska	11.74	1.22	(35)	-4.95	Nebraska	12.12	0.55	(32)	-1.86
Arizona	11.02 ^b	0.28	(48)	-10.77 ^c	Nevada	11.95	0.49	(33)	-3.24
Arkansas	12.58	0.44	(19)	1.86	New Hampshire	12.35	0.66	(26)	0.07
California	11.58 ^b	0.13	(40)	-6.19	New Jersey	13.06	0.26	(09)	5.77
Colorado	10.93 ^b	0.36	(49)	-11.51 ^c	New Mexico	11.16	0.51	(47)	-9.64
Connecticut	14.15 ^b	0.42	(02)	14.63 ^c	New York	12.39	0.17	(25)	0.40
Delaware	11.16	0.76	(46)	-9.60	North Carolina	12.84	0.27	(15)	4.00
D.C.	15.46	1.18	(01)	25.21 ^c	North Dakota	11.57	0.85	(41)	-6.27
Florida	11.69 ^b	0.15	(37)	-5.32	Ohio	12.90	0.22	(13)	4.49
Georgia	12.51	0.29	(22)	1.31	Oklahoma	11.77	0.38	(34)	-4.64
Hawaii	12.24	0.62	(29)	-0.86	Oregon	12.40	0.38	(24)	0.47
Idaho	11.48	0.61	(43)	-7.05	Pennsylvania	13.37 ^b	0.21	(07)	8.28
Illinois	13.00	0.22	(10)	5.32	Rhode Island	11.52	0.68	(42)	-6.72
Indiana	13.11	0.32	(08)	6.22	South Carolina	12.35	0.37	(27)	0.07
Iowa	11.67	0.40	(38)	-5.45	South Dakota	11.22	0.76	(45)	-9.10
Kansas	12.55	0.45	(21)	1.62	Tennessee	12.66	0.32	(18)	2.54
Kentucky	12.49	0.37	(23)	1.13	Texas	11.64 ^b	0.17	(39)	-5.74
Louisiana	13.60	0.39	(03)	10.16 ^c	Utah	9.81 ^b	0.49	(51)	-20.52 ^c
Maine	12.93	0.62	(12)	4.72	Vermont	10.83	0.86	(50)	-12.27 ^c
Maryland	12.79	0.34	(16)	3.62	Virginia	12.96	0.30	(11)	4.94
Massachusetts	13.41	0.30	(05)	8.62	Washington	12.19	0.30	(30)	-1.27
Michigan	13.40 ^b	0.25	(06)	8.51	West Virginia	11.35	0.49	(44)	-8.06
Minnesota	11.70	0.33	(36)	-5.24	Wisconsin	12.56	0.32	(20)	1.76
Mississippi	13.50	0.48	(04)	9.37	Wyoming	12.29	1.04	(28)	-0.49
Missouri	12.89	0.31	(14)	4.38					



^a US Mortality Files, National Center for Health Statistics, Centers for Disease Control and Prevention. Rates are per 100,000 and are age-adjusted to the 2000 US Std Population (19 age groups - Census P25-1130).
^b Difference between state rate and total U.S. rate is statistically significant ($p \leq .0002$).
^c Absolute percent difference between state rate and total U.S. rate is 10% or more.
SE Standard error of the rate.
PD Percent difference between state rate and total U.S. rate.

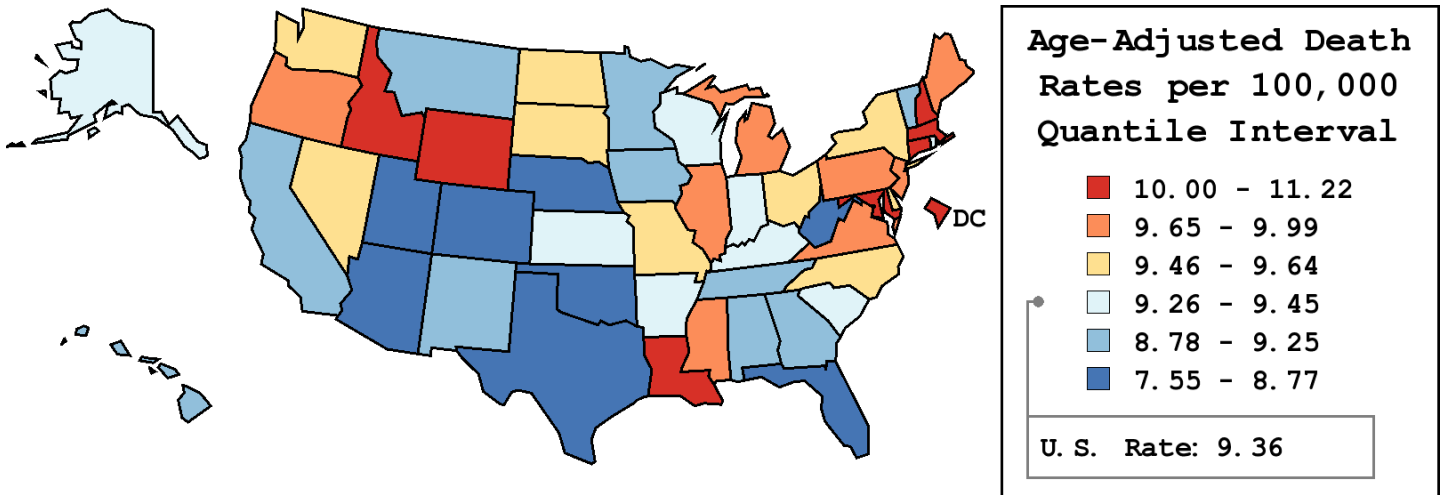
Table 22.20
Cancer of the Pancreas (Invasive)

Age-Adjusted Cancer Death^a Rates By State, All Races, 2003-2007

Females

State	Rate	SE	Rank	PD
TOTAL U.S.	9.36	0.03		
High Five States				
New Hampshire	11.22	0.54	(01)	19.91 ^c
Louisiana	10.74 ^b	0.29	(02)	14.79
Wyoming	10.72	0.88	(03)	14.58
Maryland	10.52 ^b	0.26	(04)	12.43
D.C.	10.44	0.78	(05)	11.64
Low Five States				
Oklahoma	8.52	0.28	(47)	-8.94
Nebraska	8.38	0.40	(48)	-10.48
Utah	8.08	0.40	(49)	-13.69
Arizona	7.68 ^b	0.21	(50)	-17.86 ^c
West Virginia	7.55 ^b	0.35	(51)	-19.33 ^c

State	Rate	SE	Rank	PD	State	Rate	SE	Rank	PD
Alabama	9.20	0.25	(36)	-1.64	Montana	8.84	0.55	(43)	-5.56
Alaska	9.35	0.99	(31)	-0.10	Nebraska	8.38	0.40	(48)	-10.48
Arizona	7.68 ^b	0.21	(50)	-17.86 ^c	Nevada	9.53	0.41	(22)	-1.92
Arkansas	9.39	0.33	(28)	0.33	New Hampshire	11.22	0.54	(01)	19.91 ^c
California	9.25	0.10	(34)	-1.09	New Jersey	9.79	0.19	(14)	4.59
Colorado	8.77	0.28	(44)	-6.28	New Mexico	9.15	0.41	(38)	-2.25
Connecticut	10.01	0.30	(08)	6.99	New York	9.64	0.13	(17)	3.06
Delaware	9.52	0.61	(24)	1.71	North Carolina	9.58	0.20	(18)	2.44
D.C.	10.44	0.78	(05)	11.64	North Dakota	9.52	0.68	(23)	1.80
Florida	8.55 ^b	0.12	(46)	-8.61	Ohio	9.58	0.16	(19)	2.39
Georgia	9.06	0.20	(40)	-3.21	Oklahoma	8.52	0.28	(47)	-8.94
Hawaii	9.25	0.48	(35)	-1.09	Oregon	9.99	0.31	(09)	6.79
Idaho	10.27	0.52	(06)	9.82	Pennsylvania	9.85	0.15	(12)	5.32
Illinois	9.85	0.16	(11)	5.33	Rhode Island	9.31	0.52	(32)	-0.48
Indiana	9.42	0.23	(27)	0.71	South Carolina	9.30	0.27	(33)	-0.61
Iowa	8.89	0.30	(41)	-4.97	South Dakota	9.55	0.63	(21)	2.05
Kansas	9.38	0.34	(29)	0.22	Tennessee	9.19	0.23	(37)	-1.80
Kentucky	9.36	0.27	(30)	0.01	Texas	8.62 ^b	0.13	(45)	-7.86
Louisiana	10.74 ^b	0.29	(02)	14.79	Utah	8.08	0.40	(49)	-13.69
Maine	9.85	0.47	(10)	5.33	Vermont	8.88	0.69	(42)	-5.08
Maryland	10.52 ^b	0.26	(04)	12.43	Virginia	9.82	0.22	(13)	4.94
Massachusetts	10.18 ^b	0.22	(07)	8.80	Washington	9.57	0.24	(20)	2.30
Michigan	9.66	0.18	(16)	3.23	West Virginia	7.55 ^b	0.35	(51)	-19.33 ^c
Minnesota	9.14	0.25	(39)	-2.36	Wisconsin	9.45	0.24	(26)	0.99
Mississippi	9.76	0.34	(15)	4.34	Wyoming	10.72	0.88	(03)	14.58
Missouri	9.47	0.23	(25)	1.25					



^a US Mortality Files, National Center for Health Statistics, Centers for Disease Control and Prevention. Rates are per 100,000 and are age-adjusted to the 2000 US Std Population (19 age groups - Census P25-1130).
^b Difference between state rate and total U.S. rate is statistically significant ($p \leq .0002$).
^c Absolute percent difference between state rate and total U.S. rate is 15% or more.
SE Standard error of the rate.
PD Percent difference between state rate and total U.S. rate.

Table 22.21
Cancer of the Pancreas (Invasive)

Estimated United States Cancer Prevalence Counts^a on January 1, 2007
By Race/Ethnicity, Sex and Years Since Diagnosis

Years Since Diagnosis		0 to <5	5 to <10	10 to <15	15 to <20	20 to <25	25 to <30	0 to <17 ^e	0 to <32 ^e	>=32 ^g	Complete ^h	
Race	Sex											
All Races ^b	Both Sexes	24,579	3,945	1,995	1,118	532	344	31,057	32,616	377	32,993	
	Males	12,128	1,973	851	536	177	159	15,239	15,897	160	16,057	
	Females	12,451	1,972	1,144	582	355	185	15,818	16,719	217	16,936	
White ^b	Both Sexes	21,067	3,218	1,570	866	400	293	26,324	27,499	312	27,811	
	Males	10,738	1,760	660	461	132	140	13,424	13,947	146	14,093	
	Females	10,329	1,458	910	405	268	153	12,900	13,552	166	13,718	
Black ^b	Both Sexes	2,376	477	260	205	95	42	3,160	3,473	148	3,621	
	Males	883	134	94	64	38	10	1,124	1,240	51	1,291	
	Females	1,493	343	166	141	57	32	2,036	2,233	97	2,330	
Asian/ Pacific Islander ^c	Both Sexes	815	152	57	+	+	+	1,040	+	+	+	
	Males	363	54	26	+	+	+	451	+	+	+	
	Females	452	98	31	+	+	+	589	+	+	+	
Hispanic ^d	Both Sexes	1,446	245	203	+	+	+	1,922	+	+	+	
	Males	672	94	55	+	+	+	840	+	+	+	
	Females	774	151	148	+	+	+	1,082	+	+	+	

Estimated prevalence percent^a on January 1, 2007, of the SEER 11 population diagnosed in the previous 17 years
By Age at Prevalence, Race/Ethnicity and Sex

Age at Prevalence	Race	Sex	Age Specific (Crude)								Age-Adjusted ^f	
			All Ages	0-9	10-19	20-29	30-39	40-49	50-59	60-69	70-79	80+
All Races ^c	Both Sexes	0.0094%	-	0.0001%	0.0006%	0.0016%	0.0051%	0.0155%	0.0307%	0.0470%	0.0488%	0.0095%
	Males	0.0091%	-	-	0.0004%	0.0010%	0.0052%	0.0166%	0.0348%	0.0507%	0.0530%	0.0102%
	Females	0.0096%	-	0.0002%	0.0007%	0.0021%	0.0051%	0.0144%	0.0270%	0.0441%	0.0464%	0.0089%
White ^c	Both Sexes	0.0097%	-	0.0001%	0.0006%	0.0015%	0.0048%	0.0161%	0.0305%	0.0471%	0.0479%	0.0095%
	Males	0.0098%	-	-	0.0005%	0.0010%	0.0052%	0.0176%	0.0350%	0.0528%	0.0535%	0.0105%
	Females	0.0097%	-	0.0002%	0.0006%	0.0021%	0.0044%	0.0147%	0.0263%	0.0425%	0.0448%	0.0086%
Black ^c	Both Sexes	0.0077%	-	-	-	0.0017%	0.0054%	0.0165%	0.0370%	0.0478%	0.0436%	0.0101%
	Males	0.0063%	-	-	-	-	0.0052%	0.0162%	0.0369%	0.0383%	0.0331%	0.0090%
	Females	0.0089%	-	-	-	0.0022%	0.0055%	0.0167%	0.0370%	0.0541%	0.0487%	0.0107%
Asian/ Pacific Islander ^c	Both Sexes	0.0083%	-	-	-	0.0015%	0.0061%	0.0105%	0.0257%	0.0412%	0.0578%	0.0087%
	Males	0.0074%	-	-	-	-	0.0047%	0.0095%	0.0325%	0.0384%	0.0570%	0.0085%
	Females	0.0092%	-	-	-	0.0020%	0.0074%	0.0115%	0.0199%	0.0433%	0.0584%	0.0088%
Hispanic ^d	Both Sexes	0.0043%	-	-	0.0005%	0.0012%	0.0043%	0.0113%	0.0236%	0.0387%	0.0437%	0.0076%
	Males	0.0036%	-	-	-	0.0008%	0.0036%	0.0100%	0.0260%	0.0405%	0.0375%	0.0075%
	Females	0.0050%	-	-	0.0007%	0.0018%	0.0051%	0.0125%	0.0215%	0.0374%	0.0472%	0.0079%

^a US 2007 cancer prevalence counts are based on 2007 cancer prevalence proportions from the SEER registries and 1/1/2007 US population estimates based on the average of 2006 and 2007 population estimates from the US Bureau of the Census. Prevalence was calculated using the First Malignant Primary Only for a person.

^{b c d} Statistics based on (b) SEER 9 Areas (c) SEER 11 Areas and Rural Georgia (d) NHIA for Hispanic for SEER 11 Areas and Rural Georgia.

^e Maximum limited-duration prevalence: 32 years for 1975-2007 SEER 9 data; 17 years for 1990-2007 SEER 11 data (used to calculate prevalence for Hispanics and Asian Pacific Islanders).

^f Percentages are age-adjusted to the 2000 US Standard Population (19 age groups - Census P25-1130) by 5-year age groups.

^{g h i} (g) Cases diagnosed more than 32 years ago were estimated using the completeness index method (Capocaccia et. al. 1997, Merrill et. al. 2000). (h) Complete prevalence is obtained by summing 0 to <32 and >=32. (i) Age-specific completeness index was approximated using empirical data from historical Connecticut tumor registry.

- Statistic not shown. Statistic based on fewer than 5 cases estimated alive in SEER for the time interval.

+ Not available.

Table 22.22

Cancer of the Pancreas (Invasive)

Percent Distribution and Counts by Histology among Histologically Confirmed Cases, 2003-2007
Both Sexes by Race

Histology ^a	All Races		White		Black		Asian/Pacific Islander		American Indian/ Alaska Native ^b		Hispanic ^c	
	Count	Percent	Count	Percent	Count	Percent	Count	Percent	Count	Percent	Count	Percent
Carcinoma	32,680	97.9%	26,728	97.9%	3,522	98.3%	2,148	98.1%	137	96.5%	3,110	97.7%
Epidermoid carcinoma ^d (8051-8131)	68	0.2%	49	0.2%	-	-	-	-	-	-	-	-
Adenocarcinoma ^e	28,540	85.5%	23,406	85.7%	3,055	85.2%	1,835	83.8%	123	86.6%	2,691	84.6%
Adenocarcinoma, NOS (8140)	23,034	69.0%	18,895	69.2%	2,507	69.9%	1,433	65.4%	103	72.5%	2,170	68.2%
Papillary adenocarcinoma, NOS (8260)	70	0.2%	59	0.2%	-	-	-	-	-	-	-	-
Mucinous adenocarcinoma (8480,8482)	940	2.8%	782	2.9%	82	2.3%	68	3.1%	-	-	82	2.6%
Mucin-producing adenocarcinoma (8481)	626	1.9%	506	1.9%	92	2.6%	25	1.1%	-	-	58	1.8%
Infiltrating duct carcinoma (8500-8503,8507,8514)	2,967	8.9%	2,416	8.8%	286	8.0%	241	11.0%	-	-	248	7.8%
Other adenocarcinoma ^f	903	2.7%	748	2.7%	84	2.3%	63	2.9%	-	-	120	3.8%
Other specific carcinomas ^g	1,924	5.8%	1,568	5.7%	200	5.6%	129	5.9%	-	-	191	6.0%
Islet cell carcinoma (8150-8155)	360	1.1%	298	1.1%	31	0.9%	27	1.2%	-	-	28	0.9%
Other carcinomas ^h	1,564	4.7%	1,270	4.7%	169	4.7%	102	4.7%	-	-	163	5.1%
Unspecified, "Carcinoma, NOS" (8010,8020-8022)	2,148	6.4%	1,705	6.2%	257	7.2%	176	8.0%	-	-	224	7.0%
Sarcoma and other soft tissue tumors ⁱ	31	0.1%	26	0.1%	-	-	-	-	-	-	-	-
Other specific types ^j	23	0.1%	19	0.1%	-	-	-	-	-	-	-	-
Unspecified (8000-8005)	640	1.9%	536	2.0%	54	1.5%	41	1.9%	-	-	66	2.1%
Total	33,374	100.0%	27,309	100.0%	3,584	100.0%	2,190	100.0%	142	100.0%	3,182	100.0%

Source: SEER 17 areas (San Francisco, Connecticut, Detroit, Hawaii, Iowa, New Mexico, Seattle, Utah, Atlanta, San Jose-Monterey, Los Angeles, Alaska Native Registry, Rural Georgia, California excluding SF/SJM/LA, Kentucky, Louisiana and New Jersey). Percents may not sum to 100 due to rounding.

^a Excludes Kaposi Sarcoma, mesothelioma, lymphomas, leukemias, myelomas, lymphoreticular, and immunoproliferative diseases.

^b Estimates for American Indian/Alaska Native are based on the CHSDA (Contract Health Service Delivery Area) counties.

^c Hispanic is not mutually exclusive from whites, blacks, Asian/Pacific Islanders, and American Indians/Alaska Natives.

^d Underlying incidence data for Hispanics are based on NHIA and exclude cases from the Alaska Native Registry.

^e Epidermoid carcinoma includes squamous, basal, and transitional cell carcinomas.

^f Adenocarcinoma includes histologies 8050,8140-8147,8160-8162,8180-8221,8250-8507,8514,8520-8551,8560,8570-8574,8576,8940-8941.

^g Other adenocarcinoma include histologies 8050,8141-8147,8160-8162,8180-8221,8250-8259,8261-8479,8483-8499,8504-8506,8520-8551,8560,8570-8574,8576,8940-8941.

^h Other specific carcinomas include histologies 8012-8015,8030-8046,8150-8155,8170-8180,8230-8249,8508,8510-8513,8561-8562,8575,8580-8671.

ⁱ Other carcinomas include histologies 8012-8015,8030-8046,8170-8180,8230-8249,8508,8510-8513,8561-8562,8575,8580-8671.

^j Sarcoma and other soft tissue tumors include histologies 8680-8713,8800-8921,8990-8991,9040-9044,9120-9136,9150-9252,9370-9373,9540-9582.

^k Other specific types include histologies 8720-8790,8930-8936,8950-9030,9060-9110,9260-9365,9380-9539.

- Statistic not shown due to fewer than 16 cases during the time period.

SEER Observed Incidence, SEER Delay Adjusted Incidence and US Death Rates^a Cancer of the Pancreas, by Race and Sex

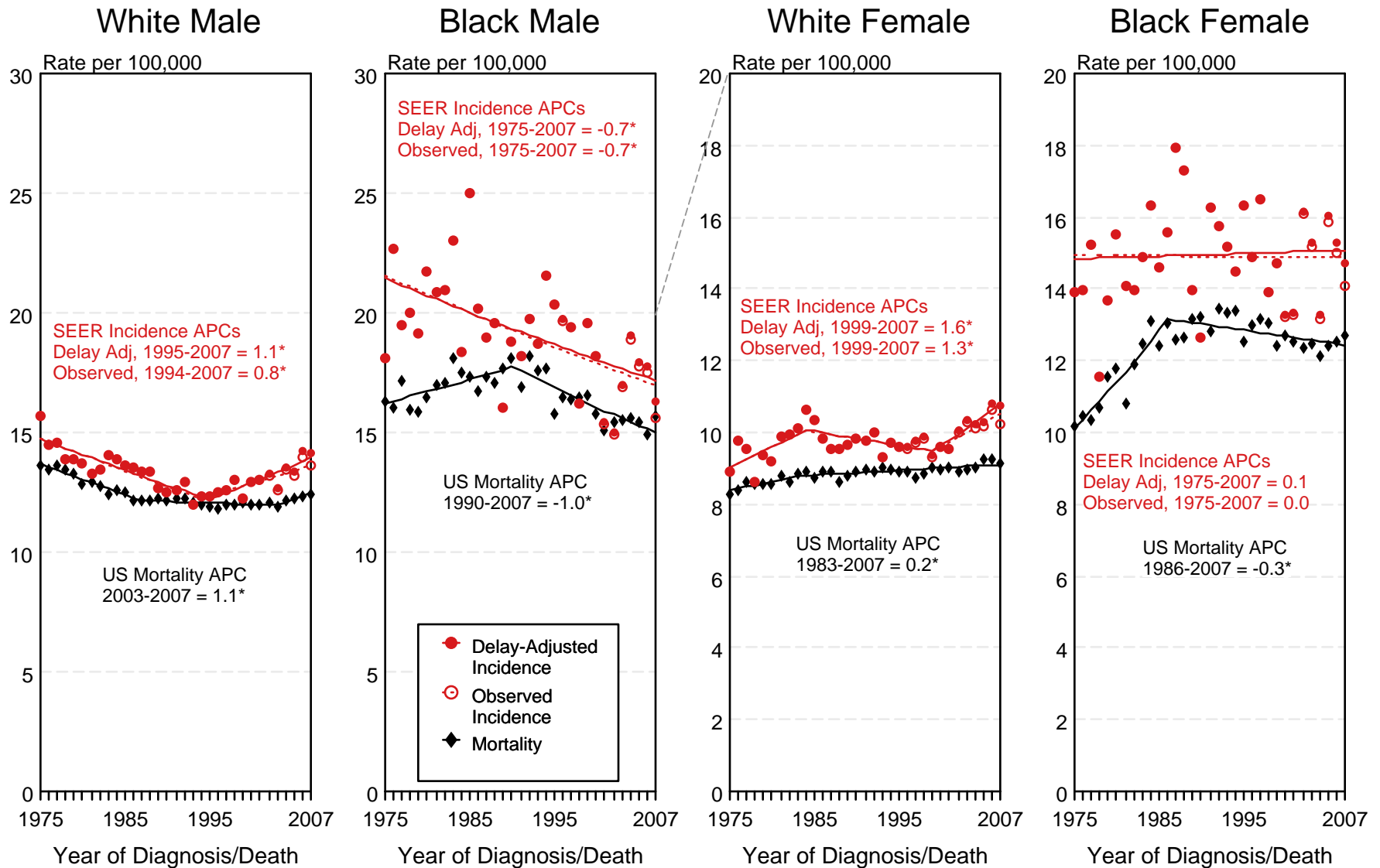


Figure 22.1

^a Source: SEER 9 areas and US Mortality Files (National Center for Health Statistics, CDC). Rates are age-adjusted to the 2000 US Std Population (19 age groups - Census P25-1103). Regression lines and APCs are calculated using the Joinpoint Regression Program Version 3.4.3, April 2010, National Cancer Institute. The APC is the Annual Percent Change for the regression line segments. The APC shown on the graph is for the most recent trend.
* The APC is significantly different from zero ($p < 0.05$).

SEER Incidence and US Death Rates^a Cancer of the Pancreas, Both Sexes

Joinpoint Analyses for Whites and Blacks from 1975-2007

and for Asian/Pacific Islanders, American Indians/Alaska Natives and Hispanics from 1992-2007

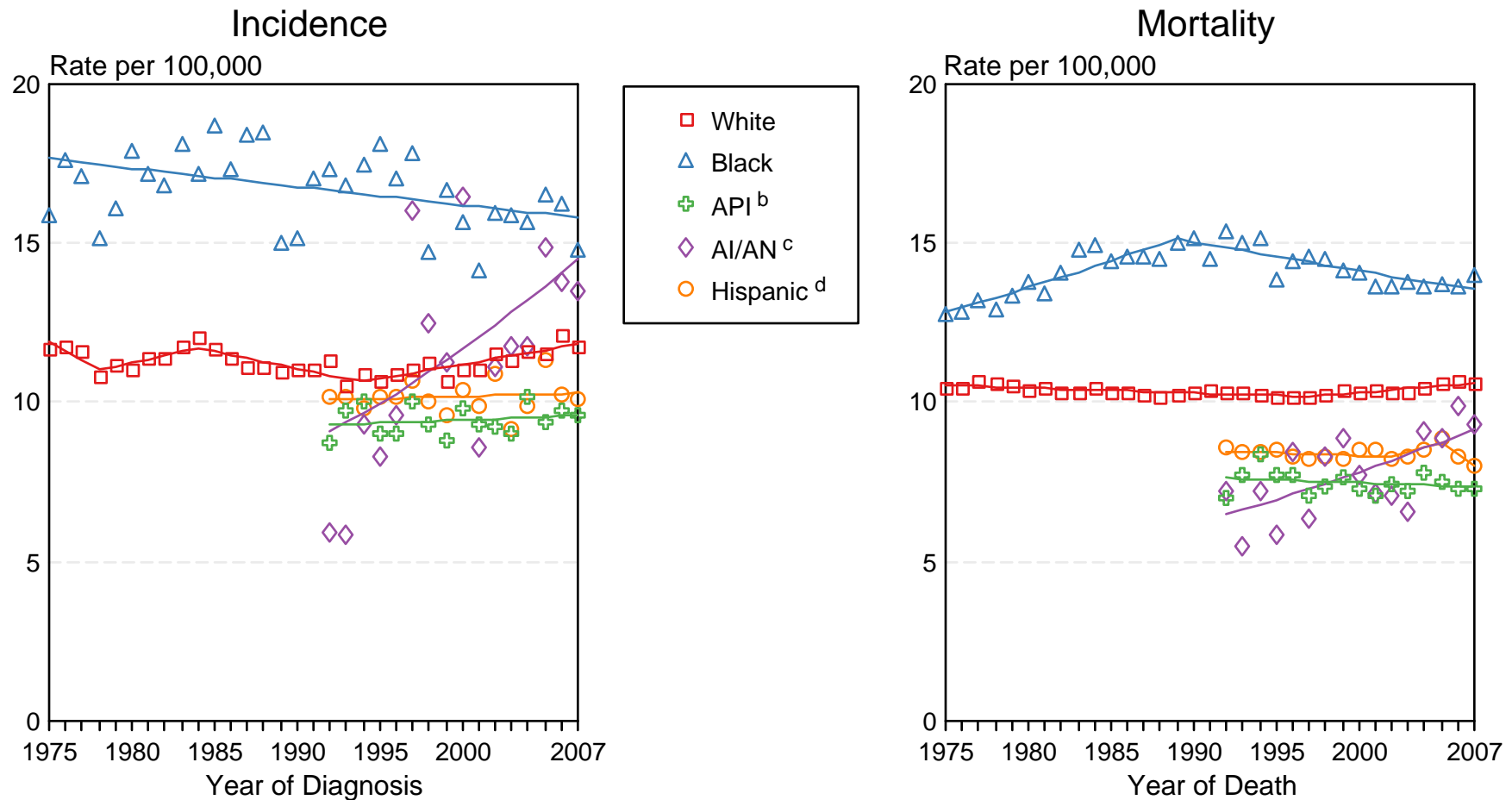


Figure 22.2

Source: Incidence data for whites and blacks are from the SEER 9 areas (San Francisco, Connecticut, Detroit, Hawaii, Iowa, New Mexico, Seattle, Utah, Atlanta).

Incidence data for Asian/Pacific Islanders, American Indians/Alaska Natives and Hispanics are from the SEER 13 Areas (SEER 9 Areas, San Jose-Monterey, Los Angeles, Alaska Native Registry and Rural Georgia). Mortality data are from US Mortality Files, National Center for Health Statistics, CDC.

^a Rates are age-adjusted to the 2000 US Std Population (19 age groups - Census P25-1103).

Regression lines are calculated using the Joinpoint Regression Program Version 3.4.3, April 2010, National Cancer Institute. Joinpoint analyses for Whites and Blacks during the 1975-2007 period allow a maximum of 4 joinpoints. Analyses for other ethnic groups during the period 1992-2007 allow a maximum of 2 joinpoints.

^b API = Asian/Pacific Islander.

^c AI/AN = American Indian/Alaska Native. Rates for American Indian/Alaska Native are based on the CHSDA(Contract Health Service Delivery Area) counties.

^d Hispanic is not mutually exclusive from whites, blacks, Asian/Pacific Islanders, and American Indians/Alaska Natives. Incidence data for Hispanics are based on NHIA and exclude cases from the Alaska Native Registry. Mortality data for Hispanics exclude cases from Connecticut, the District of Columbia, Maine, Maryland, Minnesota, New Hampshire, New York, North Dakota, Oklahoma, and Vermont.

SEER Observed Incidence and SEER Delay Adjusted Incidence Rates^a SEER 9 Areas Compared to SEER 13 Areas Cancer of the Pancreas, Male, by Race

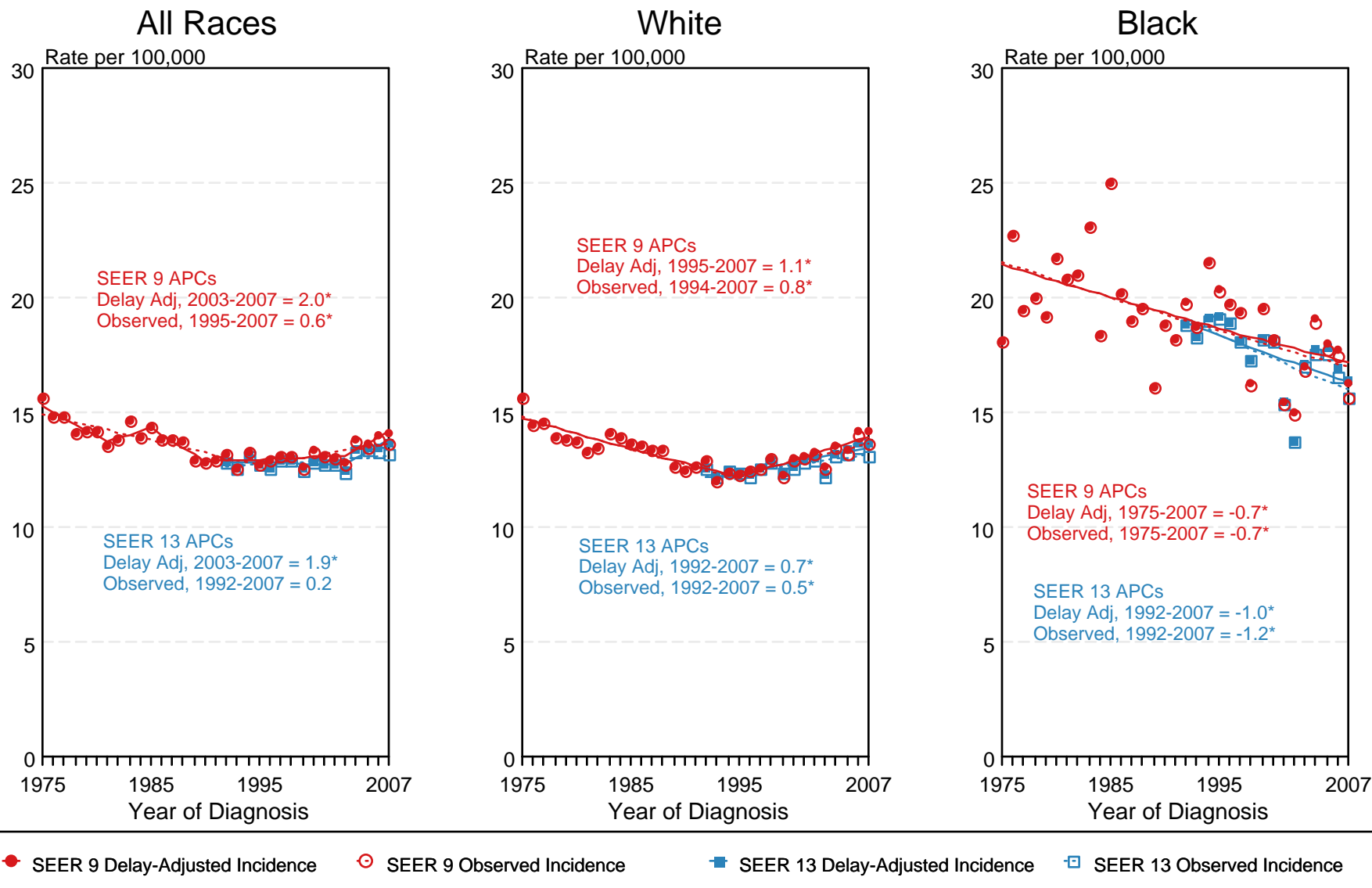


Figure 22.3

^a Source: SEER 9 areas and SEER 13 areas. Rates are age-adjusted to the 2000 US Std Population (19 age groups - Census P25-1103). Regression lines and APCs are calculated using the Joinpoint Regression Program Version 3.4.3, April 2010, National Cancer Institute. The APC is the Annual Percent Change for the regression line segments. The APC shown on the graph is for the most recent trend.
* The APC is significantly different from zero ($p < 0.05$).

SEER Observed Incidence and SEER Delay Adjusted Incidence Rates^a SEER 9 Areas Compared to SEER 13 Areas Cancer of the Pancreas, Female, by Race

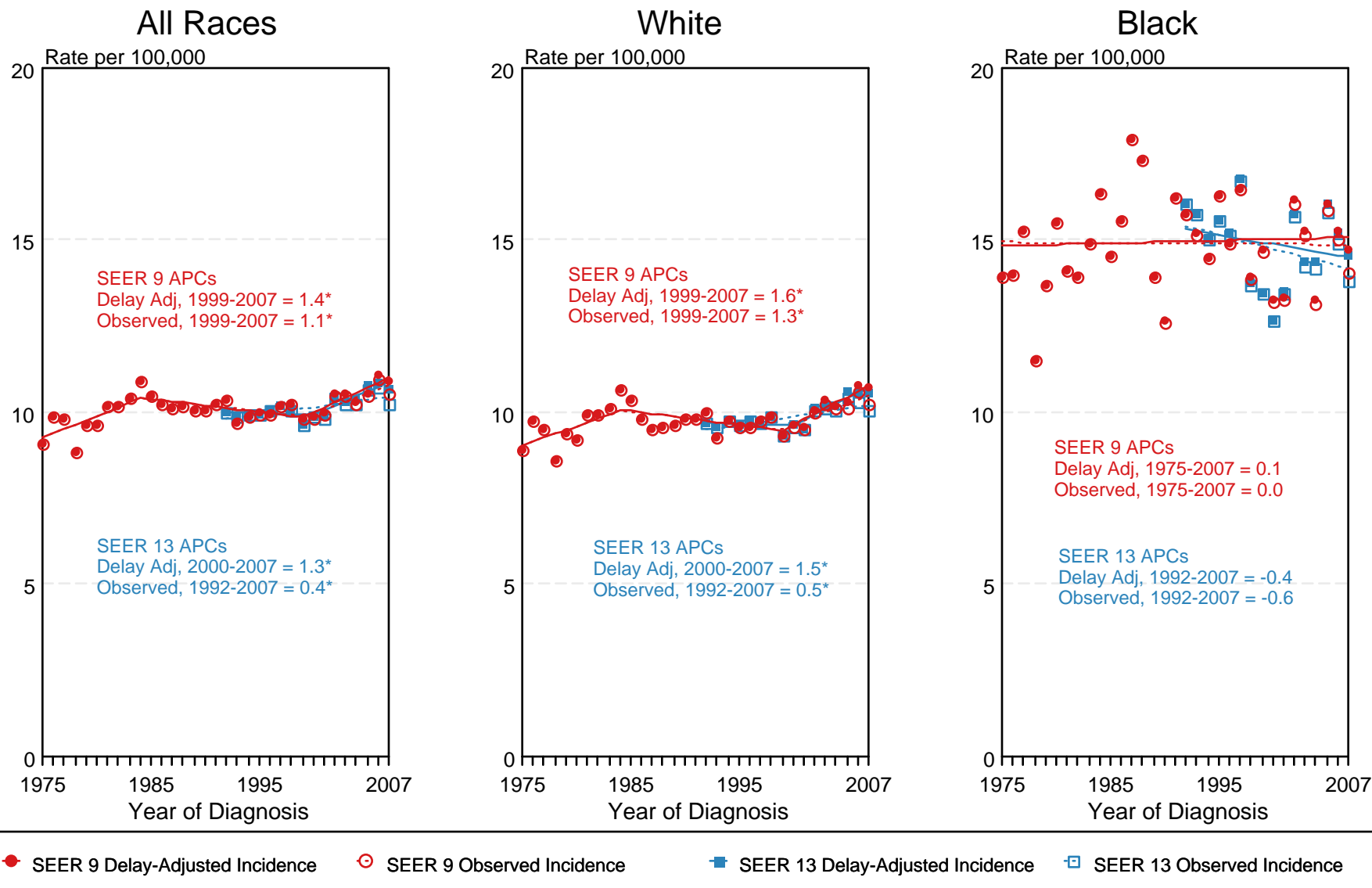


Figure 22.4

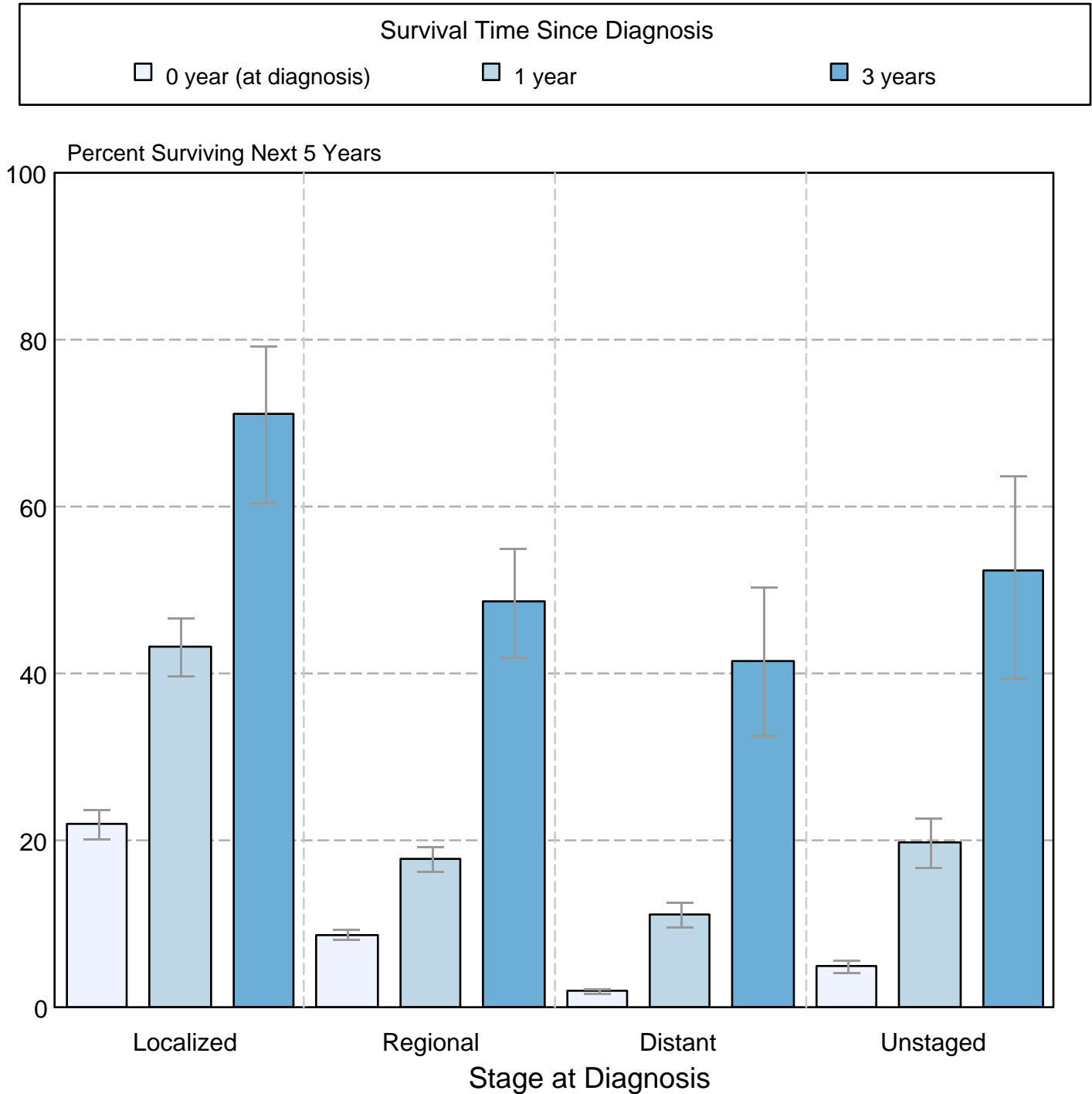
^a Source: SEER 9 areas and SEER 13 areas. Rates are age-adjusted to the 2000 US Std Population (19 age groups - Census P25-1103). Regression lines and APCs are calculated using the Joinpoint Regression Program Version 3.4.3, April 2010, National Cancer Institute. The APC is the Annual Percent Change for the regression line segments. The APC shown on the graph is for the most recent trend.
* The APC is significantly different from zero ($p < 0.05$).

Figure 22.5

Cancer of the Pancreas

5-Year SEER Conditional Relative Survival and 95% Confidence Intervals

Probability of surviving the next 5 years given the cohort
has already survived 0, 1, or 3 years
1998-2006 by stage at diagnosis



Source: SEER 17 areas (San Francisco, Connecticut, Detroit, Hawaii, Iowa, New Mexico, Seattle, Utah, Atlanta, San Jose-Monterey, Los Angeles, Alaska Native Registry, Rural Georgia, California excluding SF/SJM/LA, Kentucky, Louisiana, and New Jersey). California excluding SF/SJM/LA, Kentucky, Louisiana, and New Jersey contribute cases for diagnosis years 2000-2006. The remaining 13 SEER Areas contribute cases for the entire period 1998-2006. Percent surviving is not shown if based on less than 25 cases. Confidence intervals are not shown if length of the confidence interval is greater than 5 times the standard error.