

Table 14.1  
Cancer of the Liver and Intrahepatic Bile Duct (Invasive)

Trends in SEER Incidence<sup>ab</sup> and U.S. Mortality<sup>c</sup> Using the Joinpoint Regression Program,  
1975-2008 With up to Five Joinpoints, 1992-2008 With up to Three Joinpoints,  
Both Sexes by Race/Ethnicity

	JP Trend 1		JP Trend 2		JP Trend 3		JP Trend 4		JP Trend 5		JP Trend 6		AAPC <sup>d</sup>	
	Years	APC	Years	APC	Years	APC	Years	APC	Years	APC	Years	APC	1999-08	2004-08
<u>SEER 9 Delay-Adjusted Incidence<sup>a</sup>, 1975-2008</u>														
All Races	1975-84	1.3	1984-98	4.8*	1998-01	0.2	2001-08	4.6*					3.6*	4.6*
White	1975-87	1.6*	1987-98	5.4*	1998-01	-1.4	2001-08	5.2*					3.7*	5.2*
Black	1975-82	-1.0	1982-08	3.8*									3.8*	3.8*
<u>SEER 13 Delay-Adjusted Incidence<sup>b</sup>, 1992-2008</u>														
All Races	1992-99	5.1*	1999-02	0.5	2002-08	4.4*							3.1*	4.4*
White	1992-99	5.6*	1999-02	-0.9	2002-08	5.6*							3.4*	5.6*
Black	1992-08	4.1*											4.1*	4.1*
<u>SEER 9 Observed Incidence<sup>a</sup>, 1975-2008</u>														
All Races	1975-84	1.3	1984-96	4.7*	1996-08	3.1*							3.1*	3.1*
White	1975-87	1.6*	1987-98	5.4*	1998-01	-1.1	2001-08	4.6*					3.3*	4.6*
Black	1975-08	3.3*											3.3*	3.3*
<u>SEER 13 Observed Incidence<sup>b</sup>, 1992-2008</u>														
All Races	1992-08	3.4*											3.4*	3.4*
White	1992-99	5.6*	1999-02	-0.6	2002-08	4.8*							3.0*	4.8*
White NH <sup>ef</sup>	1992-99	5.4*	1999-02	-2.0	2002-08	5.1*							2.7	5.1*
Black	1992-08	3.9*											3.9*	3.9*
Black NH <sup>ef</sup>	1992-08	3.9*											3.9*	3.9*
API <sup>e</sup>	1992-08	0.8*											0.8*	0.8*
AI/AN <sup>eg</sup>	1992-08	2.3											2.3	2.3
Hispanic <sup>f</sup>	1992-08	2.9*											2.9*	2.9*
<u>U.S. Cancer Mortality<sup>c</sup>, 1975-2008</u>														
All Races	1975-80	0.2	1980-87	2.0*	1987-96	3.8*	1996-99	0.5	1999-08	2.2*			2.2*	2.2*
White	1975-78	-1.2	1978-87	1.6*	1987-96	3.9*	1996-99	0.4	1999-08	2.4*			2.4*	2.4*
Black	1975-85	0.7	1985-08	2.0*									2.0*	2.0*
<u>U.S. Cancer Mortality<sup>c</sup>, 1992-2008</u>														
All Races	1992-96	3.5*	1996-99	0.6	1999-08	2.2*							2.2*	2.2*
White	1992-96	3.5*	1996-99	0.6	1999-08	2.3*							2.3*	2.3*
White NH <sup>ef</sup>	1992-96	3.6*	1996-99	0.1	1999-08	2.2*							2.2*	2.2*
Black	1992-08	1.8*											1.8*	1.8*
Black NH <sup>ef</sup>	1992-08	2.0*											2.0*	2.0*
API <sup>e</sup>	1992-08	-0.8*											-0.8*	-0.8*
AI/AN <sup>eg</sup>	1992-08	1.9*											1.9*	1.9*
Hispanic <sup>f</sup>	1992-08	1.6*											1.6*	1.6*

Joinpoint Regression Program Version 3.5, April 2011, National Cancer Institute. (<http://surveillance.cancer.gov/joinpoint/>).

The APC is the Annual Percent Change based on rates age-adjusted to the 2000 US Std Population (19 age groups - Census P25-1130).

Trends are from the SEER 9 areas (San Francisco, Connecticut, Detroit, Hawaii, Iowa, New Mexico, Seattle, Utah, and Atlanta).

Trends are from the SEER 13 areas (SEER 9 Areas, Los Angeles, San Jose-Monterey, Rural Georgia, and the Alaska Native Registry).

Trends are from US Mortality Files, National Center for Health Statistics, Centers for Disease Control and Prevention.

The AAPC is the Average Annual Percent Change and is based on the APCs calculated by Joinpoint.

API - Asian/Pacific Islander, AI/AN - American Indian/Alaska Native, NH - Non-Hispanic

Hispanic and Non-Hispanic are not mutually exclusive from whites, blacks, Asian/Pacific Islanders, and American Indians/Alaska

Natives. Incidence data for Hispanics and Non-Hispanics are based on NHIA and exclude cases from the Alaska Native Registry.

The Hispanic and Non-Hispanic mortality trends exclude deaths from CT, DC, ME, MD, MN, NH, NY, ND, OK and VT.

Data for American Indian/Alaska Native are based on the CHSDA (Contract Health Service Delivery Area) counties.

\* The APC/AAPC is significantly different from zero ( $p < .05$ ).

- Joinpoint regression line analysis could not be performed on data series.

Table 14.2  
Cancer of the Liver and Intrahepatic Bile Duct (Invasive)

Trends in SEER Incidence<sup>ab</sup> and U.S. Mortality<sup>c</sup> Using the Joinpoint Regression Program,  
1975-2008 With up to Five Joinpoints, 1992-2008 With up to Three Joinpoints,  
Males by Race/Ethnicity

	JP Trend 1		JP Trend 2		JP Trend 3		JP Trend 4		JP Trend 5		JP Trend 6		AAPC <sup>d</sup>	
	Years	APC	Years	APC	Years	APC	Years	APC	Years	APC	Years	APC	1999-08	2004-08
<u>SEER 9 Delay-Adjusted Incidence<sup>a</sup>, 1975-2008</u>														
All Races	1975-08	3.7*											3.7*	3.7*
White	1975-87	1.8*	1987-98	5.5*	1998-01	-1.4	2001-08	5.5*					3.9*	5.5*
Black	1975-08	3.7*											3.7*	3.7*
<u>SEER 13 Delay-Adjusted Incidence<sup>b</sup>, 1992-2008</u>														
All Races	1992-08	3.6*											3.6*	3.6*
White	1992-08	3.8*											3.8*	3.8*
Black	1992-08	4.7*											4.7*	4.7*
<u>SEER 9 Observed Incidence<sup>a</sup>, 1975-2008</u>														
All Races	1975-08	3.6*											3.6*	3.6*
White	1975-84	1.9	1984-08	3.9*									3.9*	3.9*
Black	1975-08	3.6*											3.6*	3.6*
<u>SEER 13 Observed Incidence<sup>b</sup>, 1992-2008</u>														
All Races	1992-08	3.4*											3.4*	3.4*
White	1992-08	3.6*											3.6*	3.6*
White NH <sup>ef</sup>	1992-08	3.3*											3.3*	3.3*
Black	1992-08	4.5*											4.5*	4.5*
Black NH <sup>ef</sup>	1992-08	4.5*											4.5*	4.5*
API <sup>e</sup>	1992-08	0.9*											0.9*	0.9*
AI/AN <sup>eg</sup>	1992-08	2.7											2.7	2.7
Hispanic <sup>f</sup>	1992-08	2.7*											2.7*	2.7*
<u>U.S. Cancer Mortality<sup>c</sup>, 1975-2008</u>														
All Races	1975-85	1.5*	1985-96	3.8*	1996-99	0.6	1999-08	2.5*					2.5*	2.5*
White	1975-85	1.4*	1985-96	3.9*	1996-99	0.6	1999-08	2.5*					2.5*	2.5*
Black	1975-01	1.6*	2001-08	3.5*									3.1*	3.5*
<u>U.S. Cancer Mortality<sup>c</sup>, 1992-2008</u>														
All Races	1992-08	2.2*											2.2*	2.2*
White	1992-08	2.3*											2.3*	2.3*
White NH <sup>ef</sup>	1992-08	2.2*											2.2*	2.2*
Black	1992-08	2.3*											2.3*	2.3*
Black NH <sup>ef</sup>	1992-08	2.6*											2.6*	2.6*
API <sup>e</sup>	1992-08	-0.9*											-0.9*	-0.9*
AI/AN <sup>eg</sup>	1992-08	1.9*											1.9*	1.9*
Hispanic <sup>f</sup>	1992-08	1.4*											1.4*	1.4*

Joinpoint Regression Program Version 3.5, April 2011, National Cancer Institute. (<http://surveillance.cancer.gov/joinpoint/>).

The APC is the Annual Percent Change based on rates age-adjusted to the 2000 US Std Population (19 age groups - Census P25-1130).

<sup>a</sup> Trends are from the SEER 9 areas (San Francisco, Connecticut, Detroit, Hawaii, Iowa, New Mexico, Seattle, Utah, and Atlanta).

<sup>b</sup> Trends are from the SEER 13 areas (SEER 9 Areas, Los Angeles, San Jose-Monterey, Rural Georgia, and the Alaska Native Registry).

<sup>c</sup> Trends are from US Mortality Files, National Center for Health Statistics, Centers for Disease Control and Prevention.

<sup>d</sup> The AAPC is the Average Annual Percent Change and is based on the APCs calculated by Joinpoint.

<sup>e</sup> API - Asian/Pacific Islander, AI/AN - American Indian/Alaska Native, NH - Non-Hispanic

<sup>f</sup> Hispanic and Non-Hispanic are not mutually exclusive from whites, blacks, Asian/Pacific Islanders, and American Indians/Alaska

Natives. Incidence data for Hispanics and Non-Hispanics are based on NHIA and exclude cases from the Alaska Native Registry.

The Hispanic and Non-Hispanic mortality trends exclude deaths from CT, DC, ME, MD, MN, NH, NY, ND, OK and VT.

<sup>g</sup> Data for American Indian/Alaska Native are based on the CHSDA (Contract Health Service Delivery Area) counties.

\* The APC/AAPC is significantly different from zero ( $p < .05$ ).

- Joinpoint regression line analysis could not be performed on data series.

Table 14.3  
Cancer of the Liver and Intrahepatic Bile Duct (Invasive)

Trends in SEER Incidence<sup>ab</sup> and U.S. Mortality<sup>c</sup> Using the Joinpoint Regression Program,  
1975-2008 With up to Five Joinpoints, 1992-2008 With up to Three Joinpoints,  
Females by Race/Ethnicity

	JP Trend 1		JP Trend 2		JP Trend 3		JP Trend 4		JP Trend 5		JP Trend 6		AAPC <sup>d</sup>	
	Years	APC	Years	APC	Years	APC	Years	APC	Years	APC	Years	APC	1999-08	2004-08
<u>SEER 9 Delay-Adjusted Incidence<sup>a</sup>, 1975-2008</u>														
All Races	1975-83	0.6	1983-97	4.2*	1997-08	2.3*							2.3*	2.3*
White	1975-85	0.8	1985-99	4.0*	1999-04	-0.9	2004-08	6.8*					2.5	6.8*
Black	1975-08	2.7*											2.7*	2.7*
<u>SEER 13 Delay-Adjusted Incidence<sup>b</sup>, 1992-2008</u>														
All Races	1992-08	3.0*											3.0*	3.0*
White	1992-99	6.2*	1999-03	-2.1	2003-08	5.5*							2.0*	5.5*
Black	1992-08	2.8*											2.8*	2.8*
<u>SEER 9 Observed Incidence<sup>a</sup>, 1975-2008</u>														
All Races	1975-83	0.5	1983-97	4.2*	1997-08	2.1*							2.1*	2.1*
White	1975-85	0.8	1985-99	4.1*	1999-02	-2.9	2002-08	4.1*					1.7	4.1*
Black	1975-08	2.6*											2.6*	2.6*
<u>SEER 13 Observed Incidence<sup>b</sup>, 1992-2008</u>														
All Races	1992-96	7.2*	1996-08	2.0*									2.0*	2.0*
White	1992-99	6.1*	1999-03	-2.0	2003-08	4.5*							1.6	4.5*
White NH <sup>ef</sup>	1992-98	6.4*	1998-04	-1.3	2004-08	5.7*							1.7*	5.7*
Black	1992-08	2.6*											2.6*	2.6*
Black NH <sup>ef</sup>	1992-08	2.6*											2.6*	2.6*
API <sup>e</sup>	1992-08	0.6											0.6	0.6
AI/AN <sup>eg</sup>	1992-08	1.4											1.4	1.4
Hispanic <sup>f</sup>	1992-08	2.6*											2.6*	2.6*
<u>U.S. Cancer Mortality<sup>c</sup>, 1975-2008</u>														
All Races	1975-78	-1.5	1978-88	1.4*	1988-95	3.9*	1995-01	0.3	2001-04	2.7	2004-08	0.4	1.1	0.4
White	1975-78	-1.9	1978-88	1.2*	1988-96	3.6*	1996-00	-0.4	2000-08	1.7*			1.4*	1.7*
Black	1975-96	2.0*	1996-08	0.4									0.4	0.4
<u>U.S. Cancer Mortality<sup>c</sup>, 1992-2008</u>														
All Races	1992-95	3.8*	1995-01	0.3	2001-04	2.7	2004-08	0.4					1.1	0.4
White	1992-96	3.2*	1996-00	-0.5	2000-06	2.1*	2006-08	-0.5					1.2*	0.8
White NH <sup>ef</sup>	1992-96	3.3*	1996-00	-1.1	2000-06	1.9*	2006-08	-1.0					0.9	0.4
Black	1992-08	0.6*											0.6*	0.6*
Black NH <sup>ef</sup>	1992-08	0.7*											0.7*	0.7*
API <sup>e</sup>	1992-08	-0.6											-0.6	-0.6
AI/AN <sup>eg</sup>	1992-08	1.4											1.4	1.4
Hispanic <sup>f</sup>	1992-08	1.3*											1.3*	1.3*

Joinpoint Regression Program Version 3.5, April 2011, National Cancer Institute. (<http://surveillance.cancer.gov/joinpoint/>).

The APC is the Annual Percent Change based on rates age-adjusted to the 2000 US Std Population (19 age groups - Census P25-1130).

Trends are from the SEER 9 areas (San Francisco, Connecticut, Detroit, Hawaii, Iowa, New Mexico, Seattle, Utah, and Atlanta).

Trends are from the SEER 13 areas (SEER 9 Areas, Los Angeles, San Jose-Monterey, Rural Georgia, and the Alaska Native Registry).

Trends are from US Mortality Files, National Center for Health Statistics, Centers for Disease Control and Prevention.

The AAPC is the Average Annual Percent Change and is based on the APCs calculated by Joinpoint.

API - Asian/Pacific Islander, AI/AN - American Indian/Alaska Native, NH - Non-Hispanic

Hispanic and Non-Hispanic are not mutually exclusive from whites, blacks, Asian/Pacific Islanders, and American Indians/Alaska

Natives. Incidence data for Hispanics and Non-Hispanics are based on NHIA and exclude cases from the Alaska Native Registry.

The Hispanic and Non-Hispanic mortality trends exclude deaths from CT, DC, ME, MD, MN, NH, NY, ND, OK and VT.

Data for American Indian/Alaska Native are based on the CHSDA (Contract Health Service Delivery Area) counties.

\* The APC/AAPC is significantly different from zero ( $p < .05$ ).

- Joinpoint regression line analysis could not be performed on data series.

Table 14.4  
Cancer of the Liver and Intrahepatic Bile Duct (Invasive)  
Delay-adjusted SEER Incidence<sup>a</sup> Rates by Year, Race and Sex

Year of Diagnosis:	All Races			Whites			Blacks		
	Total	Males	Females	Total	Males	Females	Total	Males	Females
1975	2.64	3.93	1.64	2.19	3.23	1.43	4.74	6.46	3.19
1976	2.66	3.83	1.76	2.29	3.16	1.62	4.03	6.23	-
1977	2.68	4.25	1.56	2.24	3.57	1.33	3.47	5.02	-
1978	2.67	4.15	1.56	2.17	3.27	1.39	4.23	6.82	2.13
1979	2.68	4.06	1.67	2.23	3.30	1.50	4.07	7.10	-
1980	2.63	3.94	1.67	2.26	3.28	1.56	3.62	5.01	2.47
1981	2.93	4.65	1.66	2.49	3.88	1.51	4.59	7.09	2.53
1982	2.94	4.37	1.88	2.40	3.48	1.64	3.85	5.40	2.63
1983	2.91	4.68	1.58	2.38	3.75	1.41	4.11	6.30	2.33
1984	2.86	4.27	1.87	2.32	3.41	1.60	3.34	5.26	1.91
1985	3.17	5.10	1.73	2.61	4.15	1.51	3.96	7.64	-
1986	3.20	4.78	2.02	2.61	3.89	1.70	5.04	7.56	3.20
1987	3.38	4.85	2.21	2.66	3.64	1.87	5.35	7.70	3.58
1988	3.38	5.44	1.81	2.70	4.24	1.60	4.85	8.87	-
1989	3.61	5.58	2.17	2.86	4.29	1.89	5.28	9.08	2.61
1990	3.93	6.04	2.30	3.06	4.66	1.87	6.51	10.63	3.47
1991	4.33	6.68	2.57	3.54	5.56	2.12	5.96	9.25	3.49
1992	3.99	6.07	2.40	3.19	4.82	1.94	5.64	8.43	3.44
1993	4.50	7.14	2.48	3.69	5.89	2.07	6.20	10.14	3.10
1994	4.45	6.98	2.49	3.59	5.60	2.09	5.06	9.54	1.87
1995	4.56	6.82	2.80	3.58	5.38	2.25	6.06	8.60	3.95
1996	5.42	8.28	3.14	4.42	6.76	2.63	6.73	10.99	3.56
1997	5.37	8.06	3.16	4.40	6.57	2.61	7.44	11.40	4.44
1998	5.47	8.32	3.15	4.56	6.97	2.59	6.53	9.67	4.07
1999	5.83	8.86	3.34	4.76	7.22	2.75	7.75	12.25	4.40
2000	5.63	8.52	3.23	4.71	7.07	2.75	6.92	11.62	3.45
2001	5.61	8.65	3.17	4.35	6.59	2.56	7.98	13.83	3.50
2002	5.75	8.75	3.25	4.62	7.02	2.57	7.38	12.03	3.82
2003	6.16	9.46	3.33	5.00	7.73	2.66	7.73	12.61	3.89
2004	6.40	10.01	3.31	5.11	7.92	2.68	9.42	15.95	4.45
2005	6.80	10.34	3.73	5.46	8.51	2.84	9.47	15.03	4.99
2006	7.15	11.01	3.80	5.84	9.14	2.95	9.80	15.46	5.25
2007	7.37	11.51	3.77	5.93	9.29	2.99	10.35	18.00	4.63
2008	7.63	11.68	4.13	6.44	9.75	3.53	11.00	19.07	4.99

Additional information on the model used to delay-adjust SEER Incidence rates can be found at <http://surveillance.cancer.gov/delay/>.

<sup>a</sup> SEER 9 areas (San Francisco, Connecticut, Detroit, Hawaii, Iowa, New Mexico, Seattle, Utah, and Atlanta). Rates are per 100,000 and are age-adjusted to the 2000 US Std Population (19 age groups - Census P25-1130).

- Delay-adjusted rate is not shown for observed rates based on less than 16 cases for the time interval.

Table 14.5  
Cancer of the Liver and Intrahepatic Bile Duct (Invasive)  
Age-adjusted SEER Incidence<sup>a</sup> Rates by Year, Race and Sex

Year of Diagnosis:	All Races			Whites			Blacks		
	Total	Males	Females	Total	Males	Females	Total	Males	Females
1975	2.64	3.93	1.64	2.19	3.23	1.43	4.74	6.46	3.19
1976	2.66	3.83	1.76	2.29	3.16	1.62	4.03	6.23	-
1977	2.68	4.25	1.56	2.24	3.57	1.33	3.47	5.02	-
1978	2.67	4.15	1.56	2.17	3.27	1.39	4.23	6.82	2.13
1979	2.68	4.06	1.67	2.23	3.30	1.50	4.07	7.10	-
1980	2.63	3.94	1.67	2.26	3.28	1.56	3.62	5.01	2.47
1981	2.93	4.65	1.66	2.49	3.88	1.51	4.59	7.09	2.53
1982	2.94	4.37	1.88	2.40	3.48	1.64	3.85	5.40	2.63
1983	2.91	4.68	1.58	2.38	3.74	1.41	4.11	6.30	2.33
1984	2.86	4.27	1.87	2.32	3.41	1.60	3.34	5.26	1.91
1985	3.16	5.10	1.73	2.61	4.15	1.51	3.96	7.64	-
1986	3.20	4.78	2.02	2.61	3.89	1.70	5.03	7.56	3.20
1987	3.38	4.84	2.20	2.66	3.64	1.87	5.35	7.69	3.57
1988	3.38	5.44	1.81	2.70	4.24	1.59	4.84	8.86	-
1989	3.60	5.58	2.17	2.86	4.28	1.89	5.28	9.07	2.60
1990	3.93	6.03	2.30	3.05	4.65	1.86	6.50	10.61	3.47
1991	4.32	6.68	2.57	3.53	5.55	2.12	5.95	9.24	3.48
1992	3.99	6.06	2.39	3.18	4.81	1.94	5.63	8.42	3.43
1993	4.50	7.13	2.48	3.68	5.87	2.07	6.19	10.12	3.09
1994	4.45	6.98	2.48	3.59	5.59	2.08	5.05	9.52	1.86
1995	4.55	6.81	2.80	3.57	5.37	2.24	6.05	8.58	3.94
1996	5.41	8.27	3.14	4.41	6.75	2.63	6.72	10.96	3.55
1997	5.36	8.05	3.16	4.38	6.56	2.60	7.42	11.37	4.43
1998	5.47	8.31	3.15	4.55	6.95	2.58	6.51	9.64	4.06
1999	5.82	8.85	3.33	4.74	7.20	2.74	7.73	12.21	4.39
2000	5.62	8.51	3.23	4.69	7.04	2.74	6.89	11.58	3.44
2001	5.61	8.64	3.16	4.34	6.57	2.55	7.95	13.79	3.49
2002	5.74	8.73	3.24	4.60	6.99	2.56	7.35	11.98	3.80
2003	6.15	9.44	3.32	4.98	7.70	2.65	7.70	12.56	3.87
2004	6.37	9.97	3.30	5.08	7.87	2.66	9.37	15.87	4.42
2005	6.76	10.28	3.71	5.41	8.43	2.81	9.40	14.91	4.95
2006	7.08	10.90	3.76	5.76	9.01	2.91	9.68	15.27	5.19
2007	7.25	11.32	3.71	5.81	9.09	2.92	10.16	17.66	4.54
2008	7.33	11.23	3.97	6.11	9.25	3.35	10.50	18.20	4.77
1975-2008	4.69	7.24	2.64	3.77	5.81	2.17	6.69	10.86	3.48

<sup>a</sup> SEER 9 areas (San Francisco, Connecticut, Detroit, Hawaii, Iowa, New Mexico, Seattle, Utah, and Atlanta). Rates are per 100,000 and are age-adjusted to the 2000 US Std Population (19 age groups - Census P25-1130).  
- Statistic not shown. Rate based on less than 16 cases for the time interval.

Table 14.6  
Cancer of the Liver and Intrahepatic Bile Duct (Invasive)

Age-adjusted U.S. Death<sup>a</sup> Rates by Year, Race and Sex

Year of Death:	All Races			Whites			Blacks		
	Total	Males	Females	Total	Males	Females	Total	Males	Females
1975	2.81	3.85	2.05	2.62	3.52	1.99	4.30	6.34	2.69
1976	2.75	3.82	1.96	2.55	3.48	1.88	4.46	6.81	2.67
1977	2.78	3.84	1.99	2.56	3.44	1.92	4.52	7.19	2.49
1978	2.74	3.86	1.92	2.50	3.48	1.81	4.60	6.99	2.84
1979	2.82	3.88	2.04	2.62	3.54	1.95	4.36	6.64	2.70
1980	2.78	3.88	2.00	2.56	3.51	1.91	4.49	6.78	2.78
1981	2.87	4.11	1.99	2.67	3.76	1.91	4.40	6.67	2.73
1982	2.94	4.20	2.05	2.69	3.79	1.93	4.69	7.16	2.93
1983	2.92	4.20	2.00	2.63	3.72	1.87	4.80	7.27	3.00
1984	3.02	4.35	2.07	2.74	3.85	1.98	4.82	7.93	2.65
1985	3.11	4.40	2.19	2.85	3.94	2.08	4.57	7.18	2.74
1986	3.15	4.53	2.15	2.88	4.08	2.03	4.72	7.26	2.90
1987	3.20	4.56	2.20	2.92	4.14	2.04	4.76	6.90	3.23
1988	3.30	4.82	2.21	3.02	4.38	2.08	4.76	7.24	3.03
1989	3.44	5.02	2.29	3.13	4.51	2.15	5.10	8.00	3.09
1990	3.61	5.27	2.43	3.27	4.74	2.25	5.29	7.81	3.59
1991	3.69	5.32	2.51	3.35	4.80	2.32	5.29	7.97	3.48
1992	3.91	5.71	2.59	3.56	5.17	2.40	5.45	8.50	3.32
1993	4.04	5.82	2.74	3.71	5.32	2.56	5.49	8.10	3.59
1994	4.13	6.02	2.73	3.77	5.42	2.55	5.72	8.90	3.53
1995	4.36	6.31	2.91	3.97	5.71	2.69	6.21	9.30	4.11
1996	4.44	6.46	2.91	4.08	5.87	2.73	5.90	9.07	3.68
1997	4.50	6.53	2.97	4.11	5.91	2.75	6.02	8.89	3.92
1998	4.59	6.74	2.92	4.19	6.08	2.73	6.38	10.13	3.70
1999	4.52	6.50	2.95	4.15	5.95	2.73	5.95	8.76	3.82
2000	4.64	6.80	2.94	4.22	6.15	2.71	6.08	9.55	3.58
2001	4.72	6.94	2.98	4.33	6.36	2.73	6.26	9.16	4.08
2002	4.88	7.18	3.02	4.48	6.53	2.83	6.35	10.03	3.65
2003	5.01	7.40	3.11	4.57	6.73	2.84	6.69	10.43	4.03
2004	5.12	7.44	3.22	4.67	6.73	2.96	6.97	10.84	4.11
2005	5.27	7.80	3.20	4.83	7.10	2.97	7.04	11.39	3.79
2006	5.30	7.75	3.27	4.87	7.05	3.07	7.05	11.19	3.91
2007	5.37	7.95	3.24	4.97	7.24	3.07	7.12	11.63	3.81
2008	5.58	8.39	3.24	5.14	7.65	3.02	7.48	12.30	3.95
1975-2008	4.06	5.94	2.63	3.71	5.37	2.46	5.78	8.95	3.47

<sup>a</sup> US Mortality Files, National Center for Health Statistics, Centers for Disease Control and Prevention.  
Rates are per 100,000 and are age-adjusted to the 2000 US Std Population (19 age groups - Census P25-1130).  
- Statistic not shown. Rate based on less than 16 cases for the time interval.

Table 14.7  
Cancer of the Liver and Intrahepatic Bile Duct (Invasive)  
SEER Incidence<sup>a</sup> and U.S. Death<sup>b</sup> Rates, Age-Adjusted and Age-Specific Rates, by Race and Sex

	All Races			Whites			Blacks		
	Total	Males	Females	Total	Males	Females	Total	Males	Females
<u>SEER Incidence</u>									
<u>Age at Diagnosis</u>									
Age-Adjusted Rates, 2004-2008									
All ages	7.3	11.2	3.9	6.2	9.6	3.3	9.2	15.1	4.6
Under 65	4.0	6.5	1.6	3.4	5.4	1.3	6.0	10.3	2.5
65 and over	30.0	43.9	19.6	25.7	38.0	16.5	30.8	48.0	19.4
All ages (IARC world std) <sup>c</sup>	5.1	7.9	2.5	4.3	6.7	2.1	6.8	11.3	3.2
Age-Specific Rates, 2004-2008									
<1	1.2	1.4	1.0	1.3	1.6	1.1	-	-	-
1-4	0.6	0.7	0.4	0.6	0.7	0.4	-	-	-
5-9	0.1	-	-	0.1	-	-	-	-	-
10-14	0.1	-	-	0.1	-	-	-	-	-
15-19	0.2	0.2	0.1	0.2	0.2	-	-	-	-
20-24	0.2	0.2	0.1	0.2	0.2	-	-	-	-
25-29	0.3	0.4	0.2	0.2	0.3	-	-	-	-
30-34	0.5	0.7	0.3	0.3	0.4	0.3	0.9	1.4	-
35-39	0.9	1.2	0.6	0.6	0.8	0.5	1.2	1.5	-
40-44	2.2	3.3	1.0	1.7	2.5	0.8	2.4	3.7	1.3
45-49	6.1	10.0	2.3	5.2	8.5	1.8	7.5	12.1	3.4
50-54	13.8	23.5	4.6	11.9	20.0	3.8	20.5	35.3	7.8
55-59	20.3	33.9	7.5	17.3	28.7	6.3	35.3	63.0	12.3
60-64	20.7	33.4	9.1	17.3	27.7	7.5	33.6	58.2	14.2
65-69	24.9	37.4	13.9	20.5	30.5	11.6	31.1	51.9	15.4
70-74	31.4	45.9	19.5	26.0	38.9	15.4	32.2	46.2	22.3
75-79	34.5	49.9	23.1	30.2	44.3	19.7	29.3	48.5	17.2
80-84	33.1	48.1	23.6	29.7	43.5	20.9	34.0	55.1	22.6
85+	27.1	39.3	21.5	24.0	35.9	18.6	25.9	34.2	22.8
<u>U.S. Mortality</u>									
<u>Age at Death</u>									
Age-Adjusted Rates, 2004-2008									
All ages	5.3	7.9	3.2	4.9	7.2	3.0	7.1	11.5	3.9
Under 65	2.3	3.7	1.0	2.0	3.1	0.9	3.9	6.8	1.5
65 and over	26.2	37.0	18.3	24.8	35.1	17.4	29.3	43.7	20.3
All ages (IARC world std) <sup>c</sup>	3.4	5.1	1.9	3.1	4.6	1.8	4.9	8.1	2.4
Age-Specific Rates, 2004-2008									
<1	0.1	-	-	0.1	-	-	-	-	-
1-4	0.1	0.1	0.1	0.1	0.2	0.1	-	-	-
5-9	0.0	0.1	0.0	0.0	0.1	-	-	-	-
10-14	0.0	0.0	0.0	0.0	0.0	0.0	-	-	-
15-19	0.1	0.1	0.1	0.1	0.1	0.0	-	-	-
20-24	0.1	0.1	0.1	0.1	0.1	0.1	0.1	0.2	-
25-29	0.2	0.2	0.1	0.1	0.2	0.1	0.3	0.4	0.3
30-34	0.3	0.3	0.2	0.2	0.2	0.2	0.5	0.8	0.2
35-39	0.5	0.7	0.3	0.4	0.5	0.3	0.9	1.4	0.4
40-44	1.2	1.6	0.7	1.0	1.3	0.6	1.8	2.7	0.9
45-49	3.5	5.4	1.6	3.0	4.6	1.3	5.4	8.7	2.6
50-54	8.2	13.6	3.0	7.2	11.8	2.7	13.6	24.0	4.7
55-59	11.5	18.8	4.6	9.9	15.9	4.1	22.0	40.3	7.1
60-64	13.3	20.4	6.8	11.8	17.9	6.2	21.6	37.2	9.4
65-69	17.1	25.1	10.1	15.7	22.8	9.4	22.6	37.1	11.9
70-74	23.8	34.0	15.4	22.3	31.7	14.5	27.2	41.8	17.1
75-79	30.1	41.8	21.4	28.8	40.3	20.2	31.1	44.7	22.8
80-84	34.7	48.6	25.9	33.5	47.3	24.8	34.9	49.1	27.5
85+	34.4	47.6	28.5	33.1	46.2	27.3	38.5	54.5	32.8

<sup>a</sup> SEER 17 areas. Rates are per 100,000 and are age-adjusted to the 2000 US Std Population (19 age groups - Census P25-1130), unless noted.

<sup>b</sup> US Mortality Files, National Center for Health Statistics, Centers for Disease Control and Prevention.

<sup>c</sup> Rates are per 100,000 and are age-adjusted to the 2000 US Std Population (19 age groups - Census P25-1130), unless noted.

- Rates are per 100,000 and are age-adjusted to the IARC world standard population.

- Statistic not shown. Rate based on less than 16 cases for the time interval.

Table 14.8  
Cancer of the Liver and Intrahepatic Bile Duct (Invasive)

5-Year Relative and Period Survival (Percent) by Race, Sex, Diagnosis Year, Stage and Age

	All Races			Whites			Blacks		
	Total	Males	Females	Total	Males	Females	Total	Males	Females
5-Year Relative Survival (Percent)									
Year of Diagnosis:									
1960-1963 <sup>a</sup>	-	-	-	-	-	-	-	-	-
1970-1973 <sup>a</sup>	-	-	-	-	-	-	-	-	-
1975-1977 <sup>b</sup>	3.4	1.9	6.4	3.4	2.0	5.8	1.8	0.0	5.6
1978-1980 <sup>b</sup>	3.3	2.2	5.4	3.3	2.2	4.8	3.6	3.0	5.0
1981-1983 <sup>b</sup>	3.7	3.1	5.0	4.0	3.2	5.2	2.8	2.1	4.7
1984-1986 <sup>b</sup>	5.7	3.7	9.5	5.7	3.7	9.1	4.3	2.1	9.2
1987-1989 <sup>b</sup>	4.8	3.2	7.9	5.6	3.4	9.2	2.7	1.6	4.9
1990-1992 <sup>b</sup>	5.6	4.9	7.0	6.3	5.2	8.3	2.6	2.0	3.6
1993-1995 <sup>b</sup>	5.6	5.3	6.2	5.3	5.0	5.8	4.0	2.7	7.4
1996-2000 <sup>b</sup>	9.4	9.1	10.0	8.7	8.0	10.2	5.9	6.3	4.8
2001-2007 <sup>b</sup>	15.0 <sup>e</sup>	15.3 <sup>e</sup>	14.4 <sup>e</sup>	14.6 <sup>e</sup>	15.1 <sup>e</sup>	13.3 <sup>e</sup>	9.9 <sup>e</sup>	8.5	14.0 <sup>e</sup>
5-Year Period Survival (Percent) <sup>cd</sup>									
2007	16.0	16.1	15.7	15.3	15.7	14.4	10.9	8.8	16.5
Stage Distribution (%) 2001-2007 <sup>c</sup>									
All Stages									
Number of cases	29,672	21,113	8,559	20,080	14,294	5,786	3,376	2,461	915
Percent	100%	100%	100%	100%	100%	100%	100%	100%	100%
Localized	39	39	40	39	39	38	37	37	39
Regional	26	27	24	25	26	23	28	28	27
Distant	19	19	18	18	18	18	22	23	20
Unstaged	16	15	18	17	16	20	13	12	14
5-Year Relative Survival (Percent), 2001-2007 <sup>c</sup>									
Age at Diagnosis:									
Ages <45	30.6	27.6	38.1	33.7	30.4	40.9	18.0	15.3	25.7 <sup>f</sup>
Ages 45-54	18.8	18.2	22.4	19.4	19.0	21.9	12.3	10.1	22.6
Ages 55-64	16.1	15.0	20.1	16.4	15.2	20.9	8.2	6.4	13.3
Ages 65-74	11.8	11.1	13.1	10.0	9.7	10.6	7.9	5.0	13.7
Ages 75+	5.2	6.0	4.3	4.6	5.4	3.7	4.2	3.7	3.8
Ages <65	19.0	17.7	23.9	19.6	18.3	24.7	11.3	9.3	18.5
Ages 65+	8.6	8.9	8.2	7.4	7.8	6.6	6.5	4.9	8.9
Stage:									
All Stages	14.4	14.4	14.4	13.9	14.1	13.5	9.9	8.3	14.2
Localized	27.0	27.2	26.4	26.4	27.0	25.0	18.7	15.8	26.3
Regional	9.2	9.0	9.7	9.0	8.9	9.2	6.1	5.3	8.3
Distant	2.6	2.2	3.6	2.8	2.2	4.2	2.3	1.9	2.7
Unstaged	5.8	6.0	5.6	5.2	5.1	5.3	5.6	4.7	7.3

<sup>a</sup> Based on End Results data from a series of hospital registries and one population-based registry.

<sup>b</sup> SEER 9 areas (San Francisco, Connecticut, Detroit, Hawaii, Iowa, New Mexico, Seattle, Utah, Atlanta).

Based on follow-up of patients into 2008.

<sup>c</sup> SEER 17 areas (San Francisco, Connecticut, Detroit, Hawaii, Iowa, New Mexico, Seattle, Utah, Atlanta, San Jose-Monterey, Los Angeles, Alaska Native Registry, Rural Georgia, California excluding SF/SJM/LA, Kentucky, Louisiana and New Jersey).

Based on follow-up of patients into 2008.

<sup>d</sup> Period survival provides a 2007 estimate of survival by piecing together the most recent conditional survival estimates from several cohorts. It is computed here using three year calendar blocks (2005-2007: 0-1 year survival), (2004-2006: 1-2 year survival), (2003-2005: 2-3 year survival), (2002-2004: 3-4 year survival), (2001-2003: 4-5 years survival).

<sup>e</sup> The difference between 1975-1977 and 2001-2007 is statistically significant ( $p < .05$ ).

<sup>f</sup> The standard error is between 5 and 10 percentage points.

<sup>g</sup> The standard error is greater than 10 percentage points.

- Statistic could not be calculated due to fewer than 25 cases during the time period.



Table 14.9  
Cancer of the Liver and Intrahepatic Bile Duct (Invasive)

SEER<sup>a</sup> Relative Survival (Percent)  
By Year of Diagnosis

All Races, Males and Females

Survival Time	Year of Diagnosis																				
	1975- 1979	1980- 1984	1985- 1989	1990	1991	1992	1993	1994	1995	1996	1997	1998	1999	2000	2001	2002	2003	2004	2005	2006	2007
1-year	14.3	15.5	18.6	20.6	22.7	20.5	21.0	25.4	24.2	25.4	28.3	27.5	28.6	29.4	31.8	33.6	36.7	38.5	39.6	40.4	41.8
2-year	6.9	8.5	9.8	11.2	13.0	12.6	11.1	14.8	14.1	15.0	17.5	17.1	17.8	20.1	21.7	22.4	24.7	26.2	27.0	29.1	
3-year	4.8	6.0	7.4	9.0	9.5	8.4	7.9	9.2	9.5	10.6	12.4	13.0	14.1	15.2	16.0	17.4	20.2	20.6	20.9		
4-year	4.1	4.6	6.4	6.4	7.5	6.8	6.1	7.7	6.9	9.0	10.0	10.7	11.9	12.2	13.5	15.4	16.8	17.4			
5-year	3.4	3.8	5.3	5.1	5.9	5.6	4.5	6.5	5.7	7.9	7.9	9.3	10.0	11.4	11.7	14.0	15.2				
6-year	3.0	3.5	5.0	4.6	5.6	5.1	3.8	5.7	4.9	6.8	7.3	8.4	8.8	10.7	10.8	11.6					
7-year	2.8	3.1	4.8	4.3	4.9	4.6	3.4	5.2	4.4	6.3	6.6	7.0	8.2	9.9	9.6						
8-year	2.7	2.9	4.3	4.3	4.5	4.4	3.3	5.0	4.2	6.2	5.6	6.4	7.6	9.5							
9-year	2.6	2.8	4.2	4.3	4.4	4.4	3.2	4.7	4.1	5.6	5.3	5.4	7.3								
10-year	2.6	2.8	4.0	3.7	4.3	4.4	3.2	4.6	3.6	5.3	5.1	5.4									
11-year	2.6	2.6	3.9	3.4	3.9	4.4	3.1	4.5	3.1	5.2	5.1										
12-year	2.5	2.6	3.8	3.3	3.9	4.1	3.0	4.5	3.0	4.9											
13-year	2.3	2.4	3.8	3.3	3.9	4.0	3.0	3.9	3.0												
14-year	2.3	2.4	3.7	3.2	3.8	3.9	3.0	3.9													
15-year	2.2	2.4	3.7	3.2	3.7	3.6	3.0														
16-year	2.2	2.3	3.7	3.0	3.5	3.6															
17-year	2.1	2.3	3.7	3.0	3.5																
18-year	2.0	2.2	3.7	2.8																	
19-year	2.0	2.1	3.7																		
20-year	2.0	2.1																			

<sup>a</sup> Based on the SEER 9 areas (San Francisco, Connecticut, Detroit, Hawaii, Iowa, New Mexico, Seattle, Utah, and Atlanta).

Table 14.10  
Cancer of the Liver and Intrahepatic Bile Duct (Invasive)

SEER<sup>a</sup> Relative Survival (Percent)  
By Year of Diagnosis

All Races, Males

Year of Diagnosis

	1975- 1979	1980- 1984	1985- 1989	1990	1991	1992	1993	1994	1995	1996	1997	1998	1999	2000	2001	2002	2003	2004	2005	2006	2007
Survival Time																					
1-year	11.9	13.4	15.6	18.1	21.4	20.3	19.0	24.6	22.5	25.3	27.3	26.4	29.7	28.9	31.2	33.0	36.0	37.8	40.3	40.5	40.7
2-year	5.1	6.6	7.4	9.0	13.0	12.6	9.8	13.6	12.9	15.8	16.4	16.2	17.8	19.3	20.5	21.4	25.0	25.7	27.8	30.0	
3-year	3.2	4.9	5.4	7.6	9.6	8.0	6.8	8.4	9.0	11.0	11.8	11.9	13.5	15.2	15.2	17.8	20.1	20.0	21.2		
4-year	2.7	3.5	4.5	5.3	7.3	6.1	5.4	7.6	6.2	9.0	9.5	10.5	11.3	12.2	12.4	15.6	16.8	17.3			
5-year	2.0	2.9	3.6	4.0	5.2	5.3	4.3	6.5	5.0	7.6	7.6	8.8	9.8	11.1	10.7	14.3	15.6				
6-year	1.7	2.6	3.3	3.3	4.8	4.9	4.0	6.0	4.3	6.6	7.2	7.7	8.7	10.4	9.9	11.6					
7-year	1.4	2.2	3.3	3.3	4.1	4.3	3.6	5.5	3.6	6.2	6.4	6.3	8.2	9.8	8.9						
8-year	1.4	1.9	3.0	3.3	3.7	4.2	3.5	5.1	3.5	6.2	5.2	6.0	7.5	9.7							
9-year	1.3	1.9	3.0	3.3	3.5	4.2	3.3	4.6	3.3	5.6	5.0	5.1	7.3								
10-year	1.3	1.9	2.9	3.0	3.3	4.2	3.1	4.4	2.7	5.1	5.0	5.1									
11-year	1.3	1.8	2.9	2.7	3.1	4.2	3.1	4.2	2.2	4.8	5.0										
12-year	1.3	1.7	2.7	2.5	3.1	4.2	3.1	4.2	1.9	4.5											
13-year	1.1	1.4	2.7	2.5	3.1	4.0	3.1	3.7	1.9												
14-year	1.1	1.4	2.6	2.5	3.1	4.0	3.1	3.7													
15-year	1.0	1.4	2.6	2.3	3.1	4.0	3.1														
16-year	1.0	1.4	2.6	1.9	3.1	4.0															
17-year	1.0	1.4	2.6	1.9	3.1																
18-year	1.0	1.4	2.6	1.9																	
19-year	1.0	1.4	2.6																		
20-year	1.0	1.4																			

<sup>a</sup> Based on the SEER 9 areas (San Francisco, Connecticut, Detroit, Hawaii, Iowa, New Mexico, Seattle, Utah, and Atlanta).

Table 14.11  
Cancer of the Liver and Intrahepatic Bile Duct (Invasive)

SEER<sup>a</sup> Relative Survival (Percent)  
By Year of Diagnosis

All Races, Females

Year of Diagnosis

	1975- 1979	1980- 1984	1985- 1989	1990	1991	1992	1993	1994	1995	1996	1997	1998	1999	2000	2001	2002	2003	2004	2005	2006	2007
Survival Time																					
1-year	19.0	19.5	24.5	25.8	25.3	20.9	25.2	27.1	27.6	25.5	30.4	30.0	26.1	30.5	33.1	34.9	38.6	40.3	37.9	40.1	44.9
2-year	10.3	12.2	14.6	15.7	13.2	12.6	13.8	17.3	16.5	13.2	19.7	19.0	17.9	21.8	24.4	24.6	23.8	27.8	25.1	26.9	
3-year	7.8	8.2	11.3	11.8	9.4	9.2	10.3	10.8	10.4	9.8	13.7	15.2	15.3	15.0	17.7	16.6	20.4	22.3	20.1		
4-year	6.6	6.7	9.8	8.7	8.0	8.2	7.6	8.0	8.3	8.9	11.1	11.1	13.4	12.3	15.9	14.8	16.5	17.6			
5-year	6.1	5.6	8.8	7.4	7.3	6.2	4.9	6.4	7.0	8.4	8.5	10.3	10.3	12.0	14.0	13.3	13.8				
6-year	5.4	5.2	8.3	7.0	7.1	5.4	3.4	5.2	6.0	7.1	7.4	9.9	9.2	11.3	12.7	11.6					
7-year	5.4	4.7	7.6	6.1	6.3	5.1	3.0	4.8	5.7	6.5	7.0	8.7	8.1	10.0	11.3						
8-year	5.2	4.7	6.9	6.1	5.9	4.8	3.0	4.8	5.4	6.3	6.3	7.4	7.8	9.1							
9-year	4.9	4.5	6.5	6.1	5.9	4.8	3.0	4.8	5.4	5.7	5.9	6.1	7.2								
10-year	4.9	4.4	6.1	5.2	5.9	4.8	3.0	4.8	5.1	5.7	4.9	6.1									
11-year	4.9	4.3	5.9	4.7	5.3	4.3	3.0	4.8	4.8	5.7	4.9										
12-year	4.8	4.3	5.9	4.7	5.3	3.9	3.0	4.8	4.8	5.5											
13-year	4.4	4.2	5.7	4.7	5.3	3.9	3.0	4.5	4.8												
14-year	4.4	4.2	5.7	4.6	4.9	3.6	3.0	4.5													
15-year	4.4	4.2	5.7	4.6	4.5	2.7	3.0														
16-year	4.3	4.1	5.7	4.6	4.5	2.7															
17-year	4.2	3.9	5.7	4.6	4.5																
18-year	3.8	3.7	5.6	4.2																	
19-year	3.8	3.3	5.6																		
20-year	3.8	3.3																			

<sup>a</sup> Based on the SEER 9 areas (San Francisco, Connecticut, Detroit, Hawaii, Iowa, New Mexico, Seattle, Utah, and Atlanta).

Table 14.12

## Cancer of the Liver and Intrahepatic Bile Duct (Invasive)

Risk of Being Diagnosed With Cancer in 10, 20 and 30 Years,  
Lifetime Risk of Being Diagnosed with Cancer Given Alive and Cancer-Free at Current Age, and  
Lifetime Risk of Dying from Cancer Given Alive at Current Age  
Both Sexes, 2006-2008 By Race/Ethnicity

Race/ Ethnicity	Current Age	Risk of Being Diagnosed with Cancer				Risk of Dying from Cancer	Race/ Ethnicity	Current Age	Risk of Being Diagnosed with Cancer				Risk of Dying from Cancer
		+10 yrs	+20 yrs	+30 yrs	Ever				+10 yrs	+20 yrs	+30 yrs	Ever	
All Races	0	0.00	0.01	0.01	0.80	0.60	Asian/ Pacific Islander	0	0.01	0.01	0.01	1.88	1.46
	10	0.00	0.00	0.01	0.80	0.61		10	0.00	0.00	0.02	1.89	1.47
	20	0.00	0.01	0.05	0.81	0.61		20	0.00	0.02	0.10	1.89	1.47
	30	0.01	0.05	0.21	0.81	0.62		30	0.02	0.10	0.34	1.90	1.48
	40	0.04	0.21	0.42	0.81	0.62		40	0.08	0.33	0.75	1.89	1.47
	50	0.17	0.38	0.62	0.79	0.61		50	0.25	0.68	1.30	1.83	1.44
	60	0.22	0.48	0.62	0.66	0.55		60	0.44	1.08	1.50	1.64	1.34
	70	0.29	0.45	-	0.49	0.46		70	0.69	1.15	-	1.30	1.14
80	0.23	-	-	0.28	0.32	80	0.55	-	-	0.74	0.80		
White	0	0.00	0.01	0.01	0.69	0.57	American Indian/ Alaska Native <sup>a</sup>	0	0.00	0.01	0.01	1.23	0.90
	10	0.00	0.00	0.01	0.69	0.57		10	0.00	0.00	0.01	1.25	0.91
	20	0.00	0.01	0.04	0.69	0.57		20	0.00	0.01	0.09	1.26	0.92
	30	0.01	0.04	0.18	0.70	0.58		30	0.01	0.09	0.38	1.28	0.94
	40	0.04	0.18	0.35	0.70	0.58		40	0.08	0.38	0.67	1.31	0.96
	50	0.15	0.33	0.53	0.68	0.58		50	0.32	0.61	0.99	1.28	0.97
	60	0.19	0.41	0.54	0.57	0.52		60	0.32	0.72	1.00	1.04	0.91
	70	0.25	0.39	-	0.43	0.44		70	0.47	0.78	-	0.83	0.79
80	0.20	-	-	0.25	0.30	80	0.44	-	-	0.50	0.60		
Black	0	0.00	0.00	0.01	0.84	0.67	Hispanic <sup>b</sup>	0	0.01	0.01	0.01	1.38	1.09
	10	0.00	0.01	0.01	0.85	0.69		10	0.00	0.00	0.01	1.39	1.10
	20	0.00	0.01	0.06	0.86	0.69		20	0.00	0.01	0.07	1.39	1.10
	30	0.01	0.06	0.31	0.87	0.70		30	0.01	0.07	0.30	1.40	1.11
	40	0.05	0.31	0.58	0.88	0.71		40	0.06	0.29	0.63	1.41	1.12
	50	0.27	0.55	0.75	0.86	0.70		50	0.23	0.58	1.00	1.37	1.11
	60	0.31	0.53	0.63	0.66	0.59		60	0.36	0.80	1.07	1.20	1.03
	70	0.27	0.39	-	0.43	0.46		70	0.49	0.78	-	0.92	0.87
80	0.18	-	-	0.24	0.33	80	0.38	-	-	0.56	0.62		

Devcan Version 6.6.0, October 2011, National Cancer Institute (<http://surveillance.cancer.gov/devcan/>).

Source: Incidence data are from the SEER 17 areas (San Francisco, Connecticut, Detroit, Hawaii, Iowa, New Mexico, Seattle, Utah, Atlanta, San Jose-Monterey, Los Angeles, Alaska Native Registry, Rural Georgia, California excluding SF/SJM/LA, Kentucky, Louisiana and New Jersey). Mortality data are from the NCHS public use data file for the total US.

<sup>a</sup> Underlying incidence and mortality data for American Indian/Alaska Native are based on the CHSDA (Contract Health Service Delivery Area) counties.

<sup>b</sup> Hispanic is not mutually exclusive from whites, blacks, Asian/Pacific Islanders, and American Indians/Alaska Natives.

Underlying incidence data for Hispanics are based on NHIA and exclude cases from the Alaska Native Registry.

Underlying mortality data for Hispanics exclude deaths from the District of Columbia, Minnesota, New Hampshire and North Dakota.

- Statistic could not be calculated.

A percent of 0.00 represents a value that is below 0.005.

Table 14.13

## Cancer of the Liver and Intrahepatic Bile Duct (Invasive)

Risk of Being Diagnosed With Cancer in 10, 20 and 30 Years,  
Lifetime Risk of Being Diagnosed with Cancer Given Alive and Cancer-Free at Current Age, and  
Lifetime Risk of Dying from Cancer Given Alive at Current Age  
Males, 2006-2008 By Race/Ethnicity

Race/ Ethnicity	Current Age	Risk of Being Diagnosed with Cancer				Risk of Dying from Cancer	Race/ Ethnicity	Current Age	Risk of Being Diagnosed with Cancer				Risk of Dying from Cancer
		+10 yrs	+20 yrs	+30 yrs	Ever				+10 yrs	+20 yrs	+30 yrs	Ever	
All Races	0	0.01	0.01	0.01	1.13	0.79	Asian/ Pacific Islander	0	0.01	0.01	0.02	2.54	1.87
	10	0.00	0.00	0.01	1.14	0.81		10	0.00	0.01	0.04	2.56	1.88
	20	0.00	0.01	0.08	1.14	0.81		20	0.00	0.03	0.17	2.56	1.89
	30	0.01	0.08	0.35	1.15	0.82		30	0.03	0.17	0.58	2.57	1.89
	40	0.07	0.34	0.65	1.16	0.83		40	0.14	0.55	1.21	2.56	1.89
	50	0.28	0.61	0.93	1.13	0.82		50	0.42	1.09	1.92	2.47	1.84
	60	0.35	0.70	0.88	0.91	0.72		60	0.70	1.57	2.04	2.14	1.66
	70	0.41	0.63	-	0.66	0.59		70	0.96	1.48	-	1.59	1.34
80	0.31	-	-	0.36	0.40	80	0.68	-	-	0.81	0.86		
White	0	0.01	0.01	0.01	0.97	0.74	American Indian/ Alaska Native <sup>a</sup>	0	0.00	0.01	0.01	1.64	1.11
	10	0.00	0.00	0.01	0.98	0.75		10	0.00	0.00	0.01	1.66	1.13
	20	0.00	0.01	0.07	0.98	0.75		20	0.00	0.01	0.11	1.67	1.15
	30	0.01	0.06	0.30	0.99	0.76		30	0.01	0.12	0.60	1.72	1.18
	40	0.06	0.30	0.55	1.00	0.77		40	0.11	0.61	1.01	1.77	1.22
	50	0.24	0.51	0.80	0.97	0.76		50	0.52	0.95	1.47	1.75	1.24
	60	0.29	0.59	0.76	0.79	0.68		60	0.47	1.04	1.27	1.35	1.12
	70	0.36	0.55	-	0.58	0.56		70	0.68	0.96	-	1.06	0.95
80	0.28	-	-	0.33	0.38	80	0.40	-	-	0.55	0.74		
Black	0	0.00	0.01	0.01	1.24	0.94	Hispanic <sup>b</sup>	0	0.01	0.01	0.01	1.77	1.36
	10	0.00	0.01	0.02	1.27	0.96		10	0.00	0.00	0.01	1.78	1.37
	20	0.00	0.02	0.09	1.28	0.97		20	0.00	0.01	0.11	1.79	1.38
	30	0.01	0.09	0.52	1.30	0.99		30	0.01	0.11	0.48	1.81	1.40
	40	0.08	0.52	0.95	1.33	1.01		40	0.10	0.47	0.97	1.82	1.41
	50	0.47	0.93	1.20	1.32	1.00		50	0.39	0.90	1.45	1.77	1.40
	60	0.52	0.83	0.95	0.98	0.80		60	0.54	1.14	1.43	1.48	1.26
	70	0.41	0.56	-	0.60	0.59		70	0.68	1.01	-	1.07	1.04
80	0.26	-	-	0.32	0.41	80	0.45	-	-	0.53	0.71		

Devcan Version 6.6.0, October 2011, National Cancer Institute (<http://surveillance.cancer.gov/devcan/>).

Source: Incidence data are from the SEER 17 areas (San Francisco, Connecticut, Detroit, Hawaii, Iowa, New Mexico, Seattle, Utah, Atlanta, San Jose-Monterey, Los Angeles, Alaska Native Registry, Rural Georgia, California excluding SF/SJM/LA, Kentucky, Louisiana and New Jersey). Mortality data are from the NCHS public use data file for the total US.

<sup>a</sup> Underlying incidence and mortality data for American Indian/Alaska Native are based on the CHSDA (Contract Health Service Delivery Area) counties.

<sup>b</sup> Hispanic is not mutually exclusive from whites, blacks, Asian/Pacific Islanders, and American Indians/Alaska Natives.

Underlying incidence data for Hispanics are based on NHIA and exclude cases from the Alaska Native Registry.

Underlying mortality data for Hispanics exclude deaths from the District of Columbia, Minnesota, New Hampshire and North Dakota.

- Statistic could not be calculated.

A percent of 0.00 represents a value that is below 0.005.

Table 14.14

## Cancer of the Liver and Intrahepatic Bile Duct (Invasive)

Risk of Being Diagnosed With Cancer in 10, 20 and 30 Years,  
Lifetime Risk of Being Diagnosed with Cancer Given Alive and Cancer-Free at Current Age, and  
Lifetime Risk of Dying from Cancer Given Alive at Current Age  
Females, 2006-2008 By Race/Ethnicity

Race/ Ethnicity	Current Age	Risk of Being Diagnosed with Cancer				Risk of Dying from Cancer	Race/ Ethnicity	Current Age	Risk of Being Diagnosed with Cancer				Risk of Dying from Cancer
		+10 yrs	+20 yrs	+30 yrs	Ever				+10 yrs	+20 yrs	+30 yrs	Ever	
All Races	0	0.00	0.00	0.01	0.49	0.42	Asian/ Pacific Islander	0	0.00	0.01	0.01	1.31	1.11
	10	0.00	0.00	0.01	0.49	0.43		10	0.00	0.00	0.01	1.31	1.11
	20	0.00	0.01	0.02	0.49	0.43		20	0.00	0.01	0.04	1.31	1.12
	30	0.01	0.02	0.08	0.49	0.43		30	0.01	0.04	0.13	1.32	1.12
	40	0.02	0.08	0.18	0.49	0.43		40	0.03	0.12	0.34	1.31	1.12
	50	0.06	0.17	0.33	0.48	0.43		50	0.09	0.31	0.76	1.30	1.11
	60	0.11	0.28	0.40	0.44	0.41		60	0.22	0.68	1.05	1.23	1.08
	70	0.19	0.32	-	0.36	0.36		70	0.49	0.88	-	1.07	0.99
80	0.17	-	-	0.22	0.27	80	0.47	-	-	0.69	0.76		
White	0	0.00	0.00	0.01	0.42	0.40	American Indian/ Alaska Native <sup>a</sup>	0	0.00	0.00	0.00	0.85	0.69
	10	0.00	0.00	0.01	0.42	0.41		10	0.00	0.00	0.01	0.86	0.70
	20	0.00	0.01	0.02	0.41	0.41		20	0.00	0.01	0.06	0.86	0.70
	30	0.00	0.02	0.07	0.42	0.41		30	0.01	0.06	0.18	0.87	0.71
	40	0.01	0.07	0.16	0.41	0.41		40	0.06	0.17	0.35	0.88	0.72
	50	0.05	0.14	0.28	0.41	0.41		50	0.12	0.30	0.55	0.85	0.73
	60	0.10	0.24	0.34	0.37	0.39		60	0.19	0.45	0.76	0.77	0.72
	70	0.16	0.27	-	0.31	0.35		70	0.29	0.64	-	0.65	0.67
80	0.15	-	-	0.19	0.25	80	0.46	-	-	0.48	0.52		
Black	0	0.00	0.00	0.00	0.47	0.43	Hispanic <sup>b</sup>	0	0.00	0.01	0.01	0.99	0.84
	10	0.00	0.00	0.01	0.48	0.44		10	0.00	0.00	0.01	1.00	0.85
	20	0.00	0.01	0.03	0.48	0.44		20	0.00	0.01	0.03	1.00	0.85
	30	0.01	0.03	0.13	0.48	0.44		30	0.00	0.03	0.11	1.00	0.85
	40	0.03	0.12	0.25	0.48	0.45		40	0.02	0.11	0.30	1.00	0.85
	50	0.10	0.23	0.36	0.47	0.45		50	0.09	0.28	0.58	0.99	0.85
	60	0.14	0.28	0.37	0.40	0.42		60	0.21	0.52	0.76	0.94	0.82
	70	0.16	0.26	-	0.31	0.37		70	0.34	0.60	-	0.79	0.75
80	0.14	-	-	0.20	0.29	80	0.33	-	-	0.56	0.56		

Devcan Version 6.6.0, October 2011, National Cancer Institute (<http://surveillance.cancer.gov/devcan/>).

Source: Incidence data are from the SEER 17 areas (San Francisco, Connecticut, Detroit, Hawaii, Iowa, New Mexico, Seattle, Utah, Atlanta, San Jose-Monterey, Los Angeles, Alaska Native Registry, Rural Georgia, California excluding SF/SJM/LA, Kentucky, Louisiana and New Jersey). Mortality data are from the NCHS public use data file for the total US.

<sup>a</sup> Underlying incidence and mortality data for American Indian/Alaska Native are based on the CHSDA (Contract Health Service Delivery Area) counties.

<sup>b</sup> Hispanic is not mutually exclusive from whites, blacks, Asian/Pacific Islanders, and American Indians/Alaska Natives.

Underlying incidence data for Hispanics are based on NHIA and exclude cases from the Alaska Native Registry.

Underlying mortality data for Hispanics exclude deaths from the District of Columbia, Minnesota, New Hampshire and North Dakota.

- Statistic could not be calculated.

A percent of 0.00 represents a value that is below 0.005.

Table 14.15  
Cancer of the Liver and Intrahepatic Bile Duct (Invasive)

SEER Incidence and U.S. Mortality  
Age-Adjusted Rates and Trends<sup>a</sup>  
By Race/Ethnicity and Sex

SEER Incidence	SEER 17 Areas <sup>b</sup>			SEER 13 Areas <sup>b</sup>			SEER 9 Areas <sup>b</sup>		
	Rate 2004-2008			Trend 1999-2008 <sup>c</sup>			Trend 1999-2008 <sup>d</sup>		
	Rate per 100,000 persons			AAPC (%)			AAPC (%)		
RACE/ETHNICITY	Total	Males	Females	Total	Males	Females	Total	Males	Females
All Races	7.3	11.2	3.9	3.4*	3.4*	2.0*	3.1*	3.6*	2.1*
White	6.2	9.6	3.3	3.0*	3.6*	1.6	3.3*	3.9*	1.7
White Hispanic <sup>e</sup>	11.4	16.9	6.6	2.7*	2.5*	2.4*	-	-	-
White Non-Hispanic <sup>e</sup>	5.4	8.4	2.8	2.7	3.3*	1.7*	-	-	-
Black	9.2	15.1	4.6	3.9*	4.5*	2.6*	3.3*	3.6*	2.6*
Asian/Pacific Islander	14.6	22.1	8.4	0.8*	0.9*	0.6	-	-	-
Amer Ind/Alaska Nat <sup>f</sup>	12.2	17.4	7.8	2.3	-	-	-	-	-
Hispanic <sup>e</sup>	11.1	16.5	6.4	2.9*	2.7*	2.6*	-	-	-
<u>U.S. Mortality<sup>g</sup></u>									
	Rate 2004-2008			Trend 1999-2008 <sup>h</sup>					
	Rate per 100,000 persons			AAPC (%)					
RACE/ETHNICITY	Total	Males	Females	Total	Males	Females			
All Races	5.3	7.9	3.2	2.2*	2.2*	1.1			
White	4.9	7.2	3.0	2.3*	2.3*	1.2*			
White Hispanic <sup>e</sup>	8.5	12.0	5.5	1.6*	1.4*	1.4*			
White Non-Hispanic <sup>e</sup>	4.6	6.7	2.8	2.2*	2.2*	0.9			
Black	7.1	11.5	3.9	1.8*	2.3*	0.6*			
Asian/Pacific Islander	10.0	14.7	6.3	-0.8*	-0.9*	-0.6			
Amer Ind/Alaska Nat									
Total U.S.	6.6	8.6	4.9	1.7*	1.5*	1.4			
CHSDA Counties	9.1	11.9	6.7	1.9*	1.9*	1.4			
Non-CHSDA Counties	3.7	4.8	2.5	-	-	-			
Hispanic <sup>e</sup>	8.1	11.6	5.2	1.6*	1.4*	1.3*			

The AAPC is the Average Annual Percent Change over the time interval. The AAPCs are calculated by the Joinpoint Regression Program Version 3.5, April 2011, National Cancer Institute.

- Statistic not shown. Rate based on less than 16 cases for the time interval.

Trend based on less than 10 cases for at least one year within the time interval.

a Rates are age-adjusted to the 2000 US Std Population (19 age groups - Census P25-1130). Trends

are based on rates age-adjusted to the 2000 US Std Population (19 age groups - Census P25-1130).

b The SEER 9 areas are San Francisco, Connecticut, Detroit, Hawaii, Iowa, New Mexico, Seattle, Utah and Atlanta.

The SEER 13 areas comprise the SEER 9 areas plus San Jose-Monterey, Los Angeles, the Alaska Native Registry and Rural Georgia.

The SEER 17 areas comprise the SEER 13 areas plus California excluding SF/SJM/LA, Kentucky, Louisiana and New Jersey.

c The 1999-2008 AAPC estimates are based on a Joinpoint analysis with up to 3 Joinpoints over diagnosis years 1992-2008.

d The 1999-2008 AAPC estimates are based on a Joinpoint analysis with up to 5 Joinpoints over diagnosis years 1975-2008.

e Hispanic and Non-Hispanic are not mutually exclusive from whites, blacks, Asian/Pacific Islanders, and American Indians/Alaska Natives. Incidence data for Hispanics and Non-Hispanics are based on NHIA and exclude cases from the Alaska Native Registry. The 2004-2008 Hispanic and Non-Hispanic death rates exclude deaths from the District of Columbia and North Dakota.

The 1999-2008 Hispanic and Non-Hispanic mortality trends exclude deaths from Connecticut, the District of Columbia, Maine, Maryland, Minnesota, New Hampshire, New York, North Dakota, Oklahoma and Vermont.

f Incidence data for American Indian/Alaska Native are based on the CHSDA(Contract Health Service Delivery Area) counties.

g US Mortality Files, National Center for Health Statistics, CDC.

h The 1999-2008 mortality AAPCs are based on a Joinpoint analysis using years of death 1992-2008.

\* The APC is significantly different from zero (p<.05).

Table 14.16  
Cancer of the Liver and Intrahepatic Bile Duct (Invasive)

Age-Adjusted SEER Incidence Rates<sup>a</sup>  
By Registry, Race and Sex

	All Races			Whites			Blacks		
	Total	Males	Females	Total	Males	Females	Total	Males	Females
<u>SEER Incidence Rates<sup>a</sup>, 2004-2008</u>									
Atlanta & Rural Georgia	5.68	9.07	2.87	4.62	7.05	2.57	6.77	11.69	3.09
Atlanta	5.77	9.20	2.95	4.60	7.02	2.59	7.06	12.11	3.27
Rural Georgia	4.04	6.98	-	4.78	7.61	-	-	-	-
California	8.40	12.83	4.52	7.02	10.70	3.72	10.04	16.14	5.14
Greater Bay Area	9.62	14.87	4.94	7.10	10.98	3.55	12.93	21.15	6.17
San Francisco-Oakland	9.54	14.84	4.86	6.88	10.54	3.53	13.20	22.05	6.15
San Jose-Monterey	9.77	14.92	5.10	7.49	11.76	3.57	11.07	16.25	-
Los Angeles	9.07	13.58	5.27	7.70	11.33	4.52	8.73	14.13	4.78
Greater California	7.66	11.76	4.02	6.73	10.38	3.45	9.92	15.28	5.12
Connecticut	6.29	10.44	2.90	5.76	9.66	2.59	9.60	15.84	4.91
Detroit	6.83	10.65	3.72	5.69	8.85	3.11	10.25	17.03	5.23
Hawaii	10.18	15.06	5.74	8.21	12.82	3.49	-	-	-
Iowa	4.53	6.83	2.55	4.28	6.41	2.44	11.81	19.06	-
Kentucky	5.15	7.80	2.93	4.98	7.58	2.81	7.16	10.82	4.00
Louisiana	7.13	11.91	3.31	6.08	10.05	2.86	9.43	16.38	4.35
New Jersey	6.34	9.97	3.31	5.86	9.22	3.05	7.81	12.47	4.25
New Mexico	8.04	12.14	4.37	7.59	11.93	3.71	-	-	-
Seattle-Puget Sound	7.78	11.53	4.39	6.16	9.28	3.33	16.03	24.88	8.12
Utah	3.50	5.27	1.91	3.24	4.81	1.84	-	-	-
9 SEER Areas <sup>b</sup>	6.97	10.77	3.69	5.65	8.76	2.94	9.85	16.44	4.78
11 SEER Areas <sup>b</sup>	7.59	11.62	4.12	6.17	9.45	3.30	9.64	15.98	4.80
13 SEER Areas <sup>b</sup>	7.58	11.60	4.12	6.17	9.44	3.30	9.54	15.83	4.74
17 SEER Areas <sup>b</sup>	7.28	11.23	3.88	6.19	9.56	3.25	9.17	15.11	4.60

<sup>a</sup> Rates are per 100,000 and are age-adjusted to the 2000 US Std Population (19 age groups - Census P25-1130)

<sup>b</sup> The SEER 9 areas are San Francisco, Connecticut, Detroit, Hawaii, Iowa, New Mexico, Seattle, Utah and Atlanta.

The SEER 11 areas comprise the SEER 9 areas plus San Jose-Monterey and Los Angeles.

The SEER 13 areas comprise the SEER 11 areas plus the Alaska Native Registry and Rural Georgia.

The SEER 17 areas comprise the SEER 13 areas plus California excluding SF/SJM/LA, Kentucky, Louisiana and New Jersey.

- Statistic not shown. Rate based on less than 16 cases for the time interval.



Table 14.17  
Cancer of the Liver And Intrahepatic Bile Duct (Invasive)

Age-Adjusted SEER Death Rates<sup>a</sup>  
By Registry, Race and Sex

	All Races			Whites			Blacks		
	Total	Males	Females	Total	Males	Females	Total	Males	Females
<u>SEER Death Rates<sup>a</sup>, 2004-2008</u>									
Atlanta & Rural Georgia	4.37	6.39	2.77	3.76	5.37	2.48	4.96	7.97	2.78
Atlanta	4.46	6.47	2.85	3.80	5.36	2.55	5.14	8.25	2.86
Rural Georgia	3.08	5.25	-	3.32	-	-	-	-	-
California	6.59	9.52	4.11	5.72	8.17	3.62	8.03	12.43	4.58
Greater Bay Area	6.84	10.02	4.09	5.44	7.83	3.29	9.07	13.61	5.42
San Francisco-Oakland	7.01	10.20	4.26	5.46	7.68	3.48	9.19	13.88	5.54
San Jose-Monterey	6.49	9.64	3.72	5.38	8.11	2.95	8.12	12.15	-
Los Angeles	7.42	10.48	4.93	6.46	8.75	4.54	7.74	12.64	4.32
Greater California	6.12	8.90	3.73	5.52	8.04	3.35	7.75	11.17	4.52
Connecticut	4.90	7.55	2.81	4.67	7.22	2.65	6.14	8.78	4.10
Detroit	5.70	8.09	3.76	4.94	6.82	3.44	8.07	12.85	4.49
Hawaii	7.49	10.61	4.65	6.67	9.26	3.99	-	-	-
Iowa	4.11	5.83	2.67	3.94	5.52	2.64	-	-	-
Kentucky	4.85	7.00	3.17	4.69	6.76	3.08	6.81	10.15	4.05
Louisiana	7.11	10.79	4.22	6.19	9.17	3.82	9.44	15.45	5.11
New Jersey	5.07	7.49	3.14	4.81	7.01	3.04	6.63	10.53	3.84
New Mexico	6.46	9.37	3.95	6.27	9.54	3.44	-	-	-
Seattle-Puget Sound	5.90	8.62	3.54	5.00	7.35	2.98	8.37	14.73	-
Utah	3.44	4.69	2.36	3.25	4.45	2.23	-	-	-
9 SEER Areas <sup>b</sup>	5.51	7.99	3.43	4.75	6.85	2.98	7.07	11.16	3.97
11 SEER Areas <sup>b</sup>	5.99	8.63	3.78	5.13	7.30	3.30	7.29	11.65	4.05
13 SEER Areas <sup>b</sup>	5.97	8.61	3.77	5.12	7.28	3.29	7.25	11.64	4.00
17 SEER Areas <sup>b</sup>	5.90	8.57	3.67	5.21	7.50	3.29	7.55	11.98	4.23
Total U.S.	5.33	7.88	3.23	4.90	7.17	3.02	7.14	11.50	3.92

<sup>a</sup> US Mortality Files, National Center for Health Statistics, Centers for Disease Control and Prevention.  
Rates are per 100,000 and are age-adjusted to the 2000 US Std Population (19 age groups - Census P25-1130).

<sup>b</sup> The SEER 9 areas are San Francisco, Connecticut, Detroit, Hawaii, Iowa, New Mexico, Seattle, Utah and Atlanta.  
The SEER 11 areas comprise the SEER 9 areas plus San Jose-Monterey and Los Angeles.  
The SEER 13 areas comprise the SEER 11 areas plus the Alaska Native Registry and Rural Georgia.  
The SEER 17 areas comprise the SEER 13 areas plus California excluding SF/SJM/LA, Kentucky, Louisiana and New Jersey.  
- Statistic not shown. Rate based on less than 16 cases for the time interval.

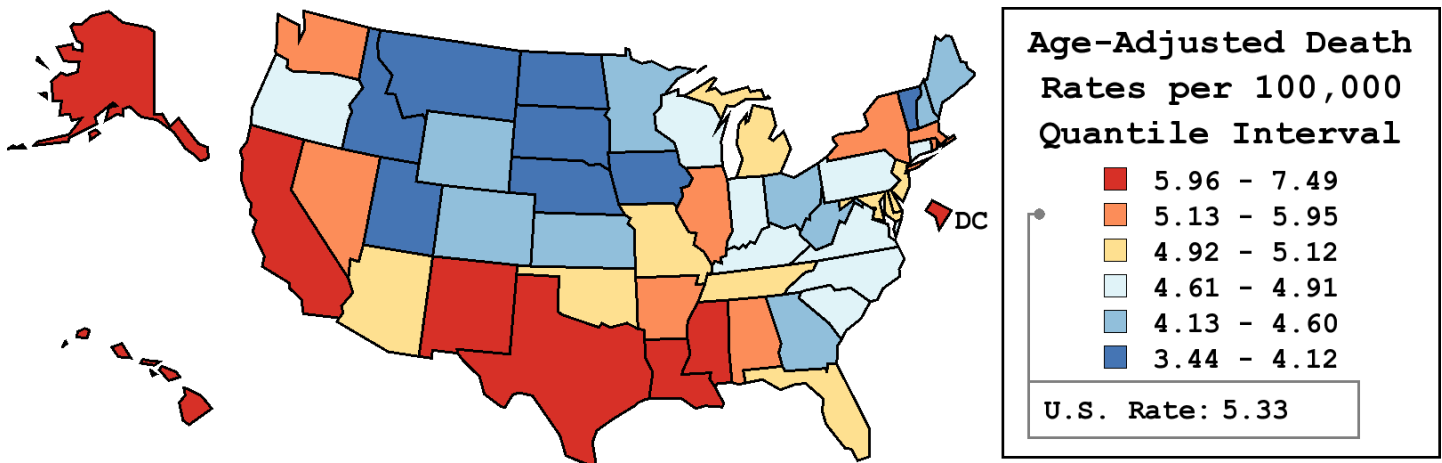
Table 14.18  
Cancer of the Liver and Intrahepatic Bile Duct (Invasive)

Age-Adjusted Cancer Death<sup>a</sup> Rates By State, All Races, 2004-2008

Males and Females

State	Rate	SE	Rank	PD
TOTAL U.S.	5.33	0.02		
High Five States				
Hawaii	7.49 <sup>b</sup>	0.33	(01)	40.41 <sup>c</sup>
Louisiana	7.11 <sup>b</sup>	0.18	(02)	33.37 <sup>c</sup>
Texas	7.11 <sup>b</sup>	0.08	(03)	33.25 <sup>c</sup>
D.C.	6.95	0.49	(04)	30.38 <sup>c</sup>
California	6.59 <sup>b</sup>	0.06	(05)	23.64 <sup>c</sup>
Low Five States				
Idaho	3.96 <sup>b</sup>	0.24	(47)	-25.70 <sup>c</sup>
Vermont	3.78 <sup>b</sup>	0.33	(48)	-29.05 <sup>c</sup>
Nebraska	3.78 <sup>b</sup>	0.20	(49)	-29.07 <sup>c</sup>
Montana	3.77 <sup>b</sup>	0.26	(50)	-29.35 <sup>c</sup>
Utah	3.44 <sup>b</sup>	0.19	(51)	-35.48 <sup>c</sup>

State	Rate	SE	Rank	PD	State	Rate	SE	Rank	PD
Alabama	5.40	0.15	(14)	1.21	Montana	3.77 <sup>b</sup>	0.26	(50)	-29.35 <sup>c</sup>
Alaska	6.02	0.54	(08)	12.94	Nebraska	3.78 <sup>b</sup>	0.20	(49)	-29.07 <sup>c</sup>
Arizona	5.05	0.13	(21)	-5.40	Nevada	5.95	0.23	(09)	11.66
Arkansas	5.75	0.19	(10)	7.77	New Hampshire	4.44	0.26	(40)	-16.68 <sup>c</sup>
California	6.59 <sup>b</sup>	0.06	(05)	23.64 <sup>c</sup>	New Jersey	5.07	0.10	(20)	-4.88
Colorado	4.59 <sup>b</sup>	0.15	(37)	-13.95	New Mexico	6.46 <sup>b</sup>	0.25	(06)	21.06 <sup>c</sup>
Connecticut	4.90	0.16	(27)	-8.15	New York	5.45	0.07	(13)	2.14
Delaware	5.04	0.33	(22)	-5.42	North Carolina	4.76 <sup>b</sup>	0.10	(31)	-10.81
D.C.	6.95	0.49	(04)	30.38 <sup>c</sup>	North Dakota	4.12 <sup>b</sup>	0.33	(44)	-22.82 <sup>c</sup>
Florida	5.12	0.07	(18)	-3.98	Ohio	4.59 <sup>b</sup>	0.08	(38)	-13.99
Georgia	4.60 <sup>b</sup>	0.11	(35)	-13.68	Oklahoma	5.03	0.16	(23)	-5.65
Hawaii	7.49 <sup>b</sup>	0.33	(01)	40.41 <sup>c</sup>	Oregon	4.76 <sup>b</sup>	0.15	(32)	-10.83
Idaho	3.96 <sup>b</sup>	0.24	(47)	-25.70 <sup>c</sup>	Pennsylvania	4.91 <sup>b</sup>	0.08	(26)	-7.90
Illinois	5.15	0.09	(16)	-3.38	Rhode Island	5.28	0.30	(15)	-1.00
Indiana	4.72 <sup>b</sup>	0.12	(33)	-11.52	South Carolina	4.87	0.15	(28)	-8.61
Iowa	4.11 <sup>b</sup>	0.15	(45)	-22.90 <sup>c</sup>	South Dakota	4.04 <sup>b</sup>	0.30	(46)	-24.18 <sup>c</sup>
Kansas	4.18 <sup>b</sup>	0.17	(43)	-21.67 <sup>c</sup>	Tennessee	4.96	0.12	(25)	-7.08
Kentucky	4.85	0.15	(29)	-9.08	Texas	7.11 <sup>b</sup>	0.08	(03)	33.25 <sup>c</sup>
Louisiana	7.11 <sup>b</sup>	0.18	(02)	33.37 <sup>c</sup>	Utah	3.44 <sup>b</sup>	0.19	(51)	-35.48 <sup>c</sup>
Maine	4.39 <sup>b</sup>	0.23	(41)	-17.61 <sup>c</sup>	Vermont	3.78 <sup>b</sup>	0.33	(48)	-29.05 <sup>c</sup>
Maryland	5.12	0.14	(17)	-3.98	Virginia	4.71 <sup>b</sup>	0.11	(34)	-11.69
Massachusetts	5.49	0.12	(12)	2.90	Washington	5.61	0.13	(11)	5.27
Michigan	5.09	0.10	(19)	-4.56	West Virginia	4.54 <sup>b</sup>	0.20	(39)	-14.92
Minnesota	4.60 <sup>b</sup>	0.13	(36)	-13.84	Wisconsin	4.76 <sup>b</sup>	0.13	(30)	-10.73
Mississippi	6.43 <sup>b</sup>	0.21	(07)	20.54 <sup>c</sup>	Wyoming	4.39	0.41	(42)	-17.64 <sup>c</sup>
Missouri	5.01	0.13	(24)	-6.12					



<sup>a</sup> US Mortality Files, National Center for Health Statistics, Centers for Disease Control and Prevention. Rates are per 100,000 and are age-adjusted to the 2000 US Std Population (19 age groups - Census P25-1130).

<sup>b</sup> Difference between state rate and total U.S. rate is statistically significant ( $p \leq .0002$ ).

<sup>c</sup> Absolute percent difference between state rate and total U.S. rate is 15% or more.

SE Standard error of the rate.

PD Percent difference between state rate and total U.S. rate.

- Statistic not shown. Rate based on less than 16 cases for the time interval.

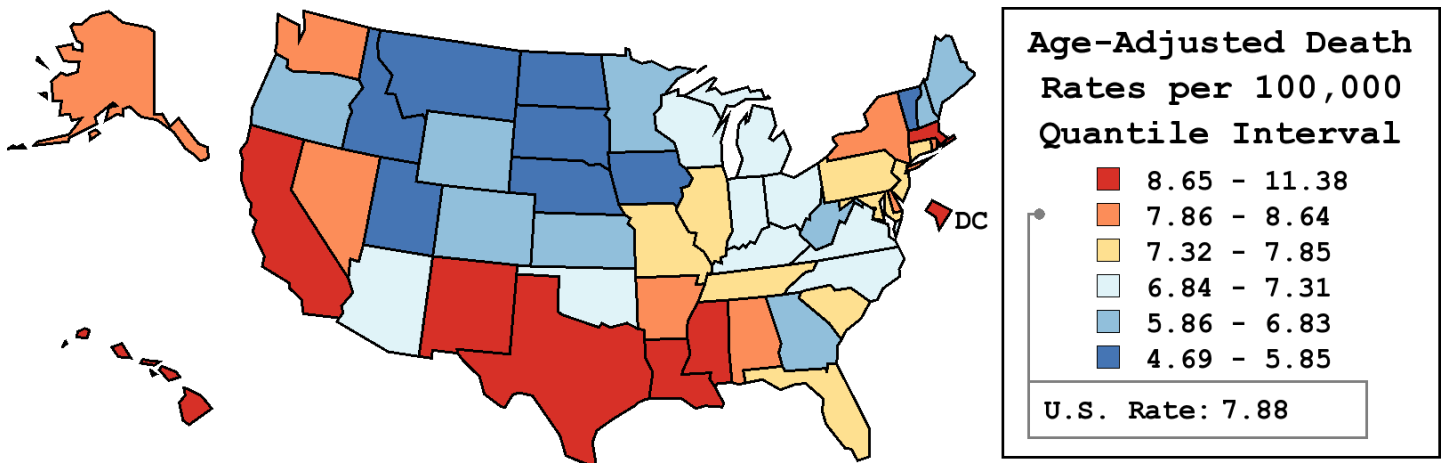
Table 14.19  
Cancer of the Liver and Intrahepatic Bile Duct (Invasive)

Age-Adjusted Cancer Death<sup>a</sup> Rates By State, All Races, 2004-2008

Males

State	Rate	SE	Rank	PD
TOTAL U.S.	7.88	0.03		
High Five States				
D.C.	11.38 <sup>b</sup>	0.96	(01)	44.47 <sup>c</sup>
Louisiana	10.79 <sup>b</sup>	0.34	(02)	37.01 <sup>c</sup>
Hawaii	10.61 <sup>b</sup>	0.57	(03)	34.63 <sup>c</sup>
Texas	10.56 <sup>b</sup>	0.16	(04)	34.03 <sup>c</sup>
Mississippi	9.90 <sup>b</sup>	0.41	(05)	25.70 <sup>c</sup>
Low Five States				
South Dakota	5.35 <sup>b</sup>	0.52	(47)	-32.14 <sup>c</sup>
North Dakota	5.25 <sup>b</sup>	0.57	(48)	-33.32 <sup>c</sup>
Vermont	5.07 <sup>b</sup>	0.57	(49)	-35.68 <sup>c</sup>
Montana	4.75 <sup>b</sup>	0.44	(50)	-39.72 <sup>c</sup>
Utah	4.69 <sup>b</sup>	0.33	(51)	-40.47 <sup>c</sup>

State	Rate	SE	Rank	PD	State	Rate	SE	Rank	PD
Alabama	8.05	0.28	(16)	2.20	Montana	4.75 <sup>b</sup>	0.44	(50)	-39.72 <sup>c</sup>
Alaska	8.64	0.98	(09)	9.70	Nebraska	5.65 <sup>b</sup>	0.37	(46)	-28.30 <sup>c</sup>
Arizona	7.19	0.22	(29)	-8.79	Nevada	8.22	0.39	(14)	4.41
Arkansas	8.29	0.35	(12)	5.29	New Hampshire	6.39	0.46	(38)	-18.88 <sup>c</sup>
California	9.52 <sup>b</sup>	0.11	(06)	20.79 <sup>c</sup>	New Jersey	7.49	0.19	(20)	-4.94
Colorado	6.29 <sup>b</sup>	0.26	(40)	-20.09 <sup>c</sup>	New Mexico	9.37	0.45	(07)	18.96 <sup>c</sup>
Connecticut	7.55	0.30	(19)	-4.11	New York	8.25	0.14	(13)	4.73
Delaware	8.35	0.63	(11)	6.06	North Carolina	7.12 <sup>b</sup>	0.19	(30)	-9.67
D.C.	11.38 <sup>b</sup>	0.96	(01)	44.47 <sup>c</sup>	North Dakota	5.25 <sup>b</sup>	0.57	(48)	-33.32 <sup>c</sup>
Florida	7.85	0.12	(17)	-0.35	Ohio	6.85 <sup>b</sup>	0.16	(34)	-13.06
Georgia	6.83 <sup>b</sup>	0.20	(35)	-13.31	Oklahoma	7.31	0.29	(26)	-7.14
Hawaii	10.61 <sup>b</sup>	0.57	(03)	34.63 <sup>c</sup>	Oregon	6.70 <sup>b</sup>	0.27	(36)	-14.95
Idaho	5.85 <sup>b</sup>	0.42	(44)	-25.78 <sup>c</sup>	Pennsylvania	7.41	0.15	(24)	-5.98
Illinois	7.44	0.17	(22)	-5.50	Rhode Island	8.45	0.58	(10)	7.24
Indiana	7.01 <sup>b</sup>	0.23	(31)	-11.06	South Carolina	7.43	0.27	(23)	-5.68
Iowa	5.83 <sup>b</sup>	0.28	(45)	-26.00 <sup>c</sup>	South Dakota	5.35 <sup>b</sup>	0.52	(47)	-32.14 <sup>c</sup>
Kansas	6.15 <sup>b</sup>	0.31	(42)	-21.92 <sup>c</sup>	Tennessee	7.46	0.23	(21)	-5.33
Kentucky	7.00	0.28	(32)	-11.17	Texas	10.56 <sup>b</sup>	0.16	(04)	34.03 <sup>c</sup>
Louisiana	10.79 <sup>b</sup>	0.34	(02)	37.01 <sup>c</sup>	Utah	4.69 <sup>b</sup>	0.33	(51)	-40.47 <sup>c</sup>
Maine	6.39	0.43	(39)	-18.93 <sup>c</sup>	Vermont	5.07 <sup>b</sup>	0.57	(49)	-35.68 <sup>c</sup>
Maryland	7.81	0.26	(18)	-0.91	Virginia	7.29	0.22	(27)	-7.41
Massachusetts	8.87 <sup>b</sup>	0.24	(08)	12.57	Washington	8.14	0.24	(15)	3.36
Michigan	7.26 <sup>b</sup>	0.18	(28)	-7.88	West Virginia	6.18 <sup>b</sup>	0.36	(41)	-21.53 <sup>c</sup>
Minnesota	6.56 <sup>b</sup>	0.24	(37)	-16.67 <sup>c</sup>	Wisconsin	6.93 <sup>b</sup>	0.23	(33)	-12.02
Mississippi	9.90 <sup>b</sup>	0.41	(05)	25.70 <sup>c</sup>	Wyoming	5.99	0.72	(43)	-24.01 <sup>c</sup>
Missouri	7.34	0.23	(25)	-6.77					



<sup>a</sup> US Mortality Files, National Center for Health Statistics, Centers for Disease Control and Prevention. Rates are per 100,000 and are age-adjusted to the 2000 US Std Population (19 age groups - Census P25-1130).  
<sup>b</sup> Difference between state rate and total U.S. rate is statistically significant (p<=.0002).  
<sup>c</sup> Absolute percent difference between state rate and total U.S. rate is 15% or more.  
SE Standard error of the rate.  
PD Percent difference between state rate and total U.S. rate.  
- Statistic not shown. Rate based on less than 16 cases for the time interval.

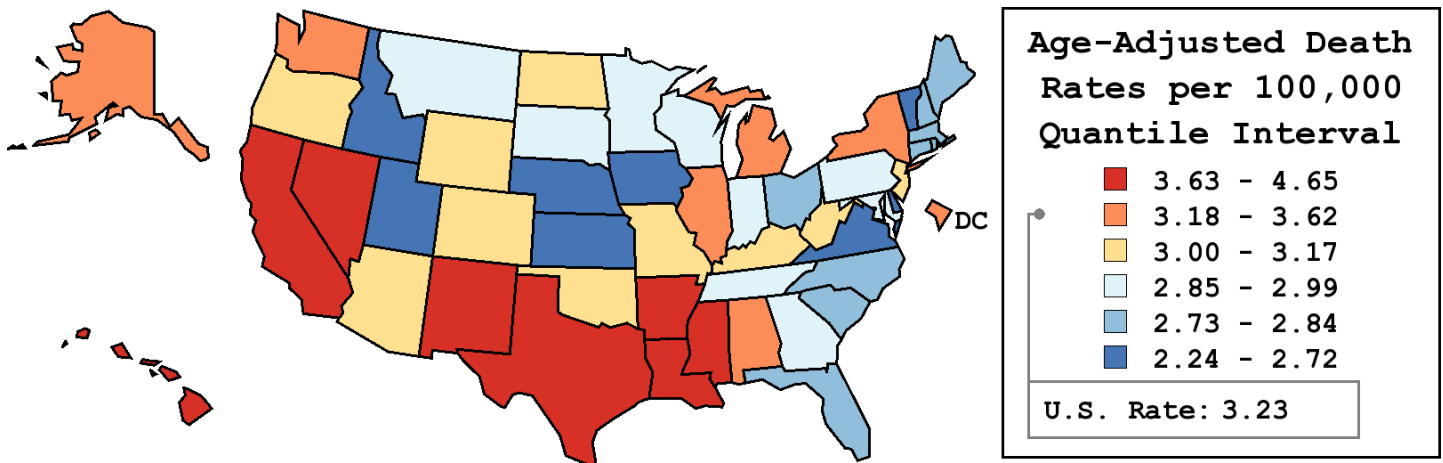
Table 14.20  
Cancer of the Liver and Intrahepatic Bile Duct (Invasive)

Age-Adjusted Cancer Death<sup>a</sup> Rates By State, All Races, 2004-2008

Females

State	Rate	SE	Rank	PD
TOTAL U.S.	3.23	0.02		
High Five States				
Hawaii	4.65 <sup>b</sup>	0.34	(01)	43.78 <sup>c</sup>
Texas	4.26 <sup>b</sup>	0.09	(02)	31.74 <sup>c</sup>
Louisiana	4.22 <sup>b</sup>	0.18	(03)	30.39 <sup>c</sup>
California	4.11 <sup>b</sup>	0.07	(04)	27.19 <sup>c</sup>
New Mexico	3.95	0.27	(05)	22.06 <sup>c</sup>
Low Five States				
Kansas	2.49 <sup>b</sup>	0.17	(47)	-23.02 <sup>c</sup>
Utah	2.36 <sup>b</sup>	0.21	(48)	-26.85 <sup>c</sup>
Idaho	2.30 <sup>b</sup>	0.25	(49)	-28.94 <sup>c</sup>
Delaware	2.27	0.30	(50)	-29.91 <sup>c</sup>
Nebraska	2.24 <sup>b</sup>	0.21	(51)	-30.66 <sup>c</sup>

State	Rate	SE	Rank	PD	State	Rate	SE	Rank	PD
Alabama	3.32	0.15	(12)	2.57	Montana	2.86	0.32	(33)	-11.39
Alaska	3.62	0.58	(09)	12.08	Nebraska	2.24 <sup>b</sup>	0.21	(51)	-30.66 <sup>c</sup>
Arizona	3.17	0.14	(16)	-2.01	Nevada	3.83	0.25	(06)	18.35 <sup>c</sup>
Arkansas	3.65	0.20	(08)	12.76	New Hampshire	2.76	0.27	(43)	-14.77
California	4.11 <sup>b</sup>	0.07	(04)	27.19 <sup>c</sup>	New Jersey	3.14	0.11	(18)	-2.90
Colorado	3.13	0.17	(19)	-3.21	New Mexico	3.95	0.27	(05)	22.06 <sup>c</sup>
Connecticut	2.81	0.16	(39)	-13.11	New York	3.22	0.07	(15)	-0.38
Delaware	2.27	0.30	(50)	-29.91 <sup>c</sup>	North Carolina	2.84 <sup>b</sup>	0.11	(36)	-12.07
D.C.	3.53	0.46	(10)	9.16	North Dakota	3.12	0.39	(20)	-3.56
Florida	2.77 <sup>b</sup>	0.07	(42)	-14.46	Ohio	2.79 <sup>b</sup>	0.09	(40)	-13.76
Georgia	2.86	0.11	(34)	-11.45	Oklahoma	3.10	0.17	(22)	-4.22
Hawaii	4.65 <sup>b</sup>	0.34	(01)	43.78 <sup>c</sup>	Oregon	3.04	0.17	(24)	-5.91
Idaho	2.30 <sup>b</sup>	0.25	(49)	-28.94 <sup>c</sup>	Pennsylvania	2.95 <sup>b</sup>	0.08	(28)	-8.88
Illinois	3.31	0.10	(13)	2.36	Rhode Island	2.84	0.28	(35)	-12.02
Indiana	2.90	0.13	(31)	-10.20	South Carolina	2.78	0.15	(41)	-14.04
Iowa	2.67	0.16	(46)	-17.29 <sup>c</sup>	South Dakota	2.87	0.34	(32)	-11.21
Kansas	2.49 <sup>b</sup>	0.17	(47)	-23.02 <sup>c</sup>	Tennessee	2.93	0.13	(30)	-9.41
Kentucky	3.17	0.16	(17)	-2.10	Texas	4.26 <sup>b</sup>	0.09	(02)	31.74 <sup>c</sup>
Louisiana	4.22 <sup>b</sup>	0.18	(03)	30.39 <sup>c</sup>	Utah	2.36 <sup>b</sup>	0.21	(48)	-26.85 <sup>c</sup>
Maine	2.81	0.25	(38)	-13.09	Vermont	2.72	0.39	(44)	-15.95 <sup>c</sup>
Maryland	2.99	0.14	(26)	-7.56	Virginia	2.70 <sup>b</sup>	0.11	(45)	-16.47 <sup>c</sup>
Massachusetts	2.84	0.12	(37)	-12.20	Washington	3.40	0.14	(11)	5.08
Michigan	3.30	0.11	(14)	2.04	West Virginia	3.09	0.22	(23)	-4.58
Minnesota	2.97	0.14	(27)	-8.26	Wisconsin	2.93	0.13	(29)	-9.37
Mississippi	3.82	0.21	(07)	18.02 <sup>c</sup>	Wyoming	3.04	0.46	(25)	-5.98
Missouri	3.10	0.13	(21)	-4.10					



<sup>a</sup> US Mortality Files, National Center for Health Statistics, Centers for Disease Control and Prevention. Rates are per 100,000 and are age-adjusted to the 2000 US Std Population (19 age groups - Census P25-1130).  
<sup>b</sup> Difference between state rate and total U.S. rate is statistically significant ( $p \leq .0002$ ).  
<sup>c</sup> Absolute percent difference between state rate and total U.S. rate is 15% or more.  
SE Standard error of the rate.  
PD Percent difference between state rate and total U.S. rate.  
- Statistic not shown. Rate based on less than 16 cases for the time interval.

Table 14.21  
Cancer of the Liver and Intrahepatic Bile Duct (Invasive)

Estimated United States Cancer Prevalence Counts<sup>a</sup> on January 1, 2008  
By Race/Ethnicity, Sex and Years Since Diagnosis

Years Since Diagnosis		0 to <5	5 to <10	10 to <15	15 to <20	20 to <25	25 to <30	0 to <18 <sup>e</sup>	0 to <33 <sup>e</sup>	>=33 <sup>g</sup>	Complete <sup>h</sup>
<u>Race</u>	<u>Sex</u>										
All Races <sup>b</sup>	Both Sexes	20,771	3,797	1,318	790	558	199	29,617	30,771	404	31,175
	Males	14,807	2,413	767	351	246	65	21,032	21,496	71	21,567
	Females	5,964	1,384	551	439	312	134	8,585	9,275	333	9,608
White <sup>b</sup>	Both Sexes	14,962	2,779	984	624	444	131	21,383	22,289	343	22,632
	Males	10,897	1,728	558	252	189	35	15,285	15,619	169 <sup>i</sup>	15,788
	Females	4,065	1,051	426	372	255	96	6,098	6,670	174 <sup>i</sup>	6,844
Black <sup>b</sup>	Both Sexes	2,834	286	90	93	62	45	3,739	3,887	+	+
	Males	1,860	172	43	47	27	22	2,557	2,627	+	+
	Females	974	114	47	46	35	23	1,182	1,260	+	+
Asian/ Pacific Islander <sup>c</sup>	Both Sexes	2,900	754	200	+	+	+	3,910	+	+	+
	Males	2,081	506	146	+	+	+	2,772	+	+	+
	Females	819	248	54	+	+	+	1,138	+	+	+
Hispanic <sup>d</sup>	Both Sexes	3,383	613	228	+	+	+	4,305	+	+	+
	Males	2,494	376	160	+	+	+	3,090	+	+	+
	Females	889	237	68	+	+	+	1,215	+	+	+

Estimated prevalence percent<sup>a</sup> on January 1, 2008, of the SEER 11 population diagnosed in the previous 18 years  
By Age at Prevalence, Race/Ethnicity and Sex

Age at Prevalence		Age Specific (Crude)									Age-Adjusted <sup>f</sup>	
		All Ages	0-9	10-19	20-29	30-39	40-49	50-59	60-69	70-79	80+	All Ages
<u>Race</u>	<u>Sex</u>											
All Races <sup>c</sup>	Both Sexes	0.0117%	0.0024%	0.0016%	0.0007%	0.0014%	0.0062%	0.0273%	0.0408%	0.0480%	0.0273%	0.0116%
	Males	0.0167%	0.0024%	0.0018%	0.0007%	0.0018%	0.0093%	0.0453%	0.0621%	0.0688%	0.0414%	0.0173%
	Females	0.0068%	0.0023%	0.0013%	0.0007%	0.0009%	0.0032%	0.0101%	0.0216%	0.0317%	0.0195%	0.0065%
White <sup>c</sup>	Both Sexes	0.0091%	0.0025%	0.0015%	0.0007%	0.0011%	0.0047%	0.0221%	0.0292%	0.0317%	0.0196%	0.0086%
	Males	0.0130%	0.0026%	0.0018%	0.0008%	0.0013%	0.0067%	0.0365%	0.0447%	0.0455%	0.0296%	0.0129%
	Females	0.0052%	0.0025%	0.0013%	0.0006%	0.0009%	0.0025%	0.0077%	0.0148%	0.0206%	0.0141%	0.0048%
Black <sup>c</sup>	Both Sexes	0.0093%	-	0.0009%	0.0014%	0.0012%	0.0039%	0.0334%	0.0431%	0.0400%	0.0156%	0.0108%
	Males	0.0135%	-	0.0013%	-	0.0016%	0.0049%	0.0549%	0.0734%	0.0583%	0.0283%	0.0170%
	Females	0.0054%	-	-	0.0019%	-	0.0031%	0.0155%	0.0197%	0.0274%	0.0096%	0.0061%
Asian/ Pacific Islander <sup>c</sup>	Both Sexes	0.0292%	0.0031%	0.0021%	-	0.0026%	0.0179%	0.0532%	0.1136%	0.1562%	0.0888%	0.0304%
	Males	0.0423%	0.0029%	0.0022%	-	0.0046%	0.0297%	0.0927%	0.1731%	0.2297%	0.1280%	0.0468%
	Females	0.0169%	0.0034%	0.0020%	-	-	0.0070%	0.0188%	0.0630%	0.1013%	0.0641%	0.0168%
Hispanic <sup>d</sup>	Both Sexes	-	-	-	-	-	-	-	-	-	-	-
	Males	-	-	-	-	-	-	-	-	-	-	-
	Females	-	-	-	-	-	-	-	-	-	-	-

<sup>a</sup> US 2008 cancer prevalence counts are based on 2008 cancer prevalence proportions from the SEER registries and 1/1/2008 US population estimates based on the average of 2007 and 2008 population estimates from the US Bureau of the Census. Prevalence was calculated using the First Malignant Primary Only for a person.

<sup>b c d</sup> Statistics based on (b) SEER 9 Areas (c) SEER 11 Areas and Rural Georgia (d) NHIA for Hispanic for SEER 11 Areas and Rural Georgia.

<sup>e</sup> Maximum limited-duration prevalence: 33 years for 1975-2008 SEER 9 data; 18 years for 1990-2008 SEER 11 data (used to calculate prevalence for Hispanics and Asian Pacific Islanders).

<sup>f</sup> Percentages are age-adjusted to the 2000 US Standard Population (19 age groups - Census P25-1130) by 5-year age groups.

<sup>g h i</sup> (g) Cases diagnosed more than 33 years ago were estimated using the completeness index method (Capocaccia et. al. 1997, Merrill et. al. 2000). (h) Complete prevalence is obtained by summing 0 to <33 and >=33. (i) Age-specific completeness index was approximated using empirical data from historical Connecticut tumor registry.

- Statistic not shown. Statistic based on fewer than 5 cases estimated alive in SEER for the time interval.

+ Not available.

Table 14.22

## Cancer of the Liver and Intrahepatic Bile Duct (Invasive)

Percent Distribution and Counts by Histology among Histologically Confirmed Cases, 2004-2008  
Both Sexes by Race

Histology <sup>a</sup>	All Races		White		Black		Asian/Pacific Islander		American Indian/ Alaska Native <sup>b</sup>		Hispanic <sup>c</sup>	
	Count	Percent	Count	Percent	Count	Percent	Count	Percent	Count	Percent	Count	Percent
Carcinoma (8010-8576)	18,335	97.3%	12,687	97.0%	2,219	98.4%	3,153	98.0%	158	94.0%	3,047	96.0%
Hepatocellular carcinoma <sup>d</sup> (8170-8175)	14,407	76.5%	9,679	74.0%	1,877	83.2%	2,634	81.9%	125	74.4%	2,481	78.2%
Cholangiocarcinoma (8050,8140-8141, 8160-8161,8260,8440, 8480-8500,8570-8572)	2,913	15.5%	2,282	17.4%	245	10.9%	346	10.8%	24	14.3%	396	12.5%
Intrahepatic cholangio- carcinoma (8160)	2,011	10.7%	1,565	12.0%	156	6.9%	259	8.1%	20	11.9%	275	8.7%
Other cholangiocarcinoma (8050,8140-8141,8161, 8260,8440,8480-8500, 8570-8572)	902	4.8%	717	5.5%	89	3.9%	87	2.7%	-	-	121	3.8%
Other specific carcinomas <sup>e</sup>	398	2.1%	306	2.3%	34	1.5%	52	1.6%	-	-	55	1.7%
Unspecified, Carcinoma, NOS (8010-8011,8020-8022)	356	1.9%	245	1.9%	39	1.7%	61	1.9%	-	-	60	1.9%
Hepatoblastoma (8970)	180	1.0%	145	1.1%	-	-	19	0.6%	-	-	69	2.2%
Sarcoma <sup>f</sup>	165	0.9%	134	1.0%	-	-	16	0.5%	-	-	21	0.7%
Hemangiosarcoma (9120-9133,9161)	99	0.5%	82	0.6%	-	-	-	-	-	-	-	-
Other sarcomas <sup>g</sup>	66	0.4%	52	0.4%	-	-	-	-	-	-	-	-
Other specific types (8720-8790,8930-8936, 8950-8969,8971-9030, 9060-9110,9260-9365,9380-9539)	41	0.2%	25	0.2%	-	-	-	-	-	-	-	-
Unspecified (8000-8005)	120	0.6%	89	0.7%	-	-	18	0.6%	-	-	23	0.7%
Total <sup>d</sup>	18,841	100.0%	13,080	100.0%	2,255	100.0%	3,216	100.0%	168	100.0%	3,173	100.0%

Source: SEER 17 areas (San Francisco, Connecticut, Detroit, Hawaii, Iowa, New Mexico, Seattle, Utah, Atlanta, San Jose-Monterey, Los Angeles, Alaska Native Registry, Rural Georgia, California excluding SF/SJM/LA, Kentucky, Louisiana and New Jersey). Percents may not sum to 100 due to rounding.

<sup>a</sup> Excludes Kaposi Sarcoma, mesothelioma, lymphomas, leukemias, myelomas, lymphoreticular, and immunoproliferative diseases.

<sup>b</sup> Estimates for American Indian/Alaska Native are based on the CHSDA (Contract Health Service Delivery Area) counties.

<sup>c</sup> Hispanic is not mutually exclusive from whites, blacks, Asian/Pacific Islanders, and American Indians/Alaska Natives.

<sup>d</sup> Underlying incidence data for Hispanics are based on NHIA and exclude cases from the Alaska Native Registry.

<sup>e</sup> Epidermoid carcinomas arising from liver parenchyma are referred to as hepatocellular carcinomas.

<sup>f</sup> Other specific carcinomas include histologies 8012-8015, 8030-8046, 8150-8155, 8177-8180, 8230-8249, 8508, 8510-8513, 8561-8562, 8575, 8580-8671.

<sup>g</sup> Sarcoma includes histologies 8680-8713, 8800-8921, 9040-9044, 9120-9136, 9150-9252, 9370-9373, 9540-9582.

<sup>h</sup> Other sarcomas include histologies 8680-8713, 8800-8921, 9040-9044, 9135-9136, 9150-9160, 9170-9252, 9370-9373, 9540-9582.

- Statistic not shown due to fewer than 16 cases during the time period.

# SEER Observed Incidence and Delay Adjusted Incidence Rates<sup>a</sup> Cancer of the Liver and Intrahepatic Bile Duct, by Race and Sex

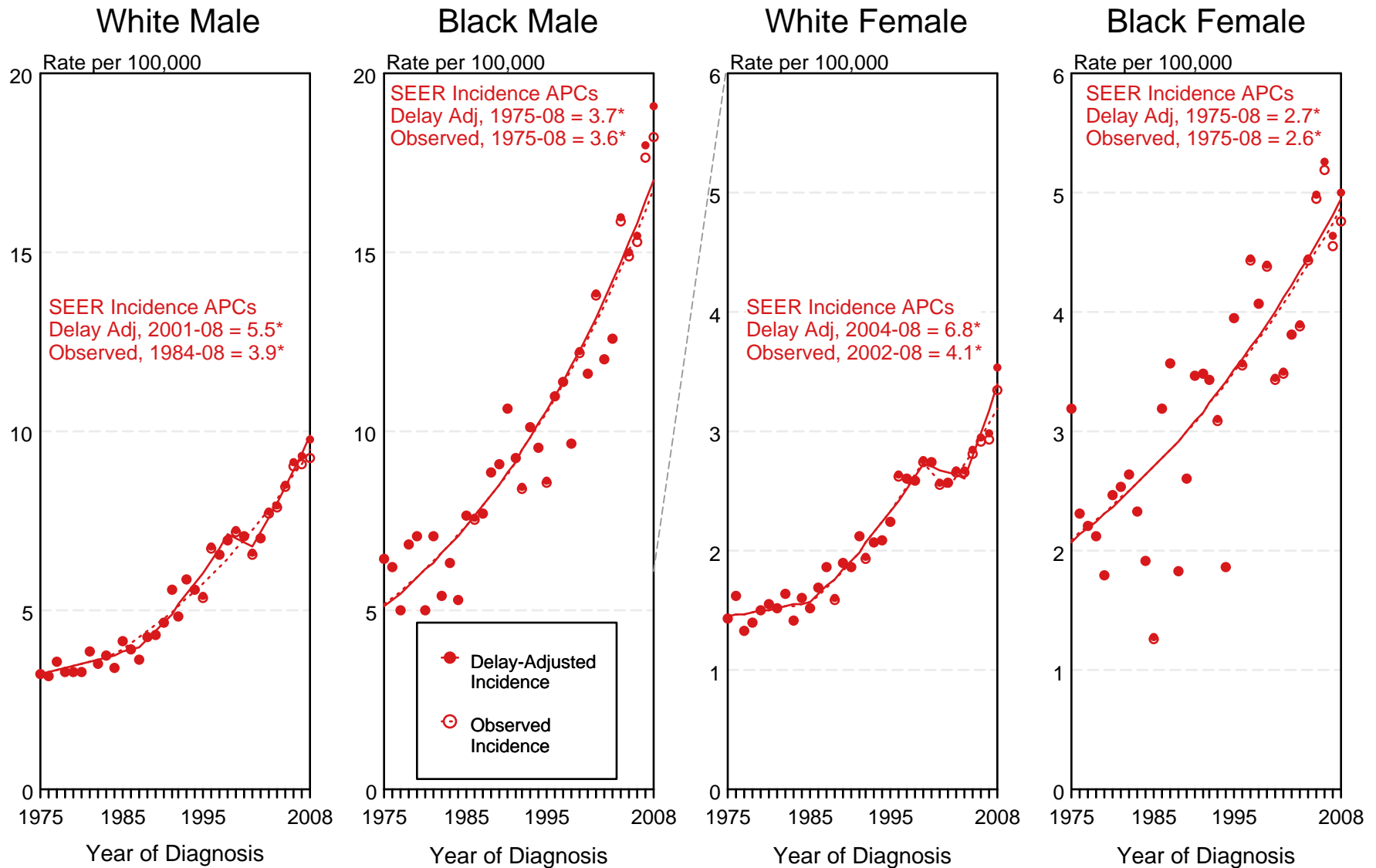


Figure 14.1

<sup>a</sup> Source: SEER 9 areas. Rates are age-adjusted to the 2000 US Std Population (19 age groups - Census P25-1103). Regression lines and APCs are calculated using the Joinpoint Regression Program Version 3.5, April 2011, National Cancer Institute. The APC is the Annual Percent Change for the regression line segments. The APC shown on the graph is for the most recent trend.  
\* The APC is significantly different from zero ( $p < 0.05$ ).

# SEER Incidence and US Death Rates<sup>a</sup>

## Cancer of the Liver and Intrahepatic Bile Duct, Both Sexes

### Joinpoint Analyses for Whites and Blacks from 1975-2008

### and for Asian/Pacific Islanders, American Indians/Alaska Natives and Hispanics from 1992-2008

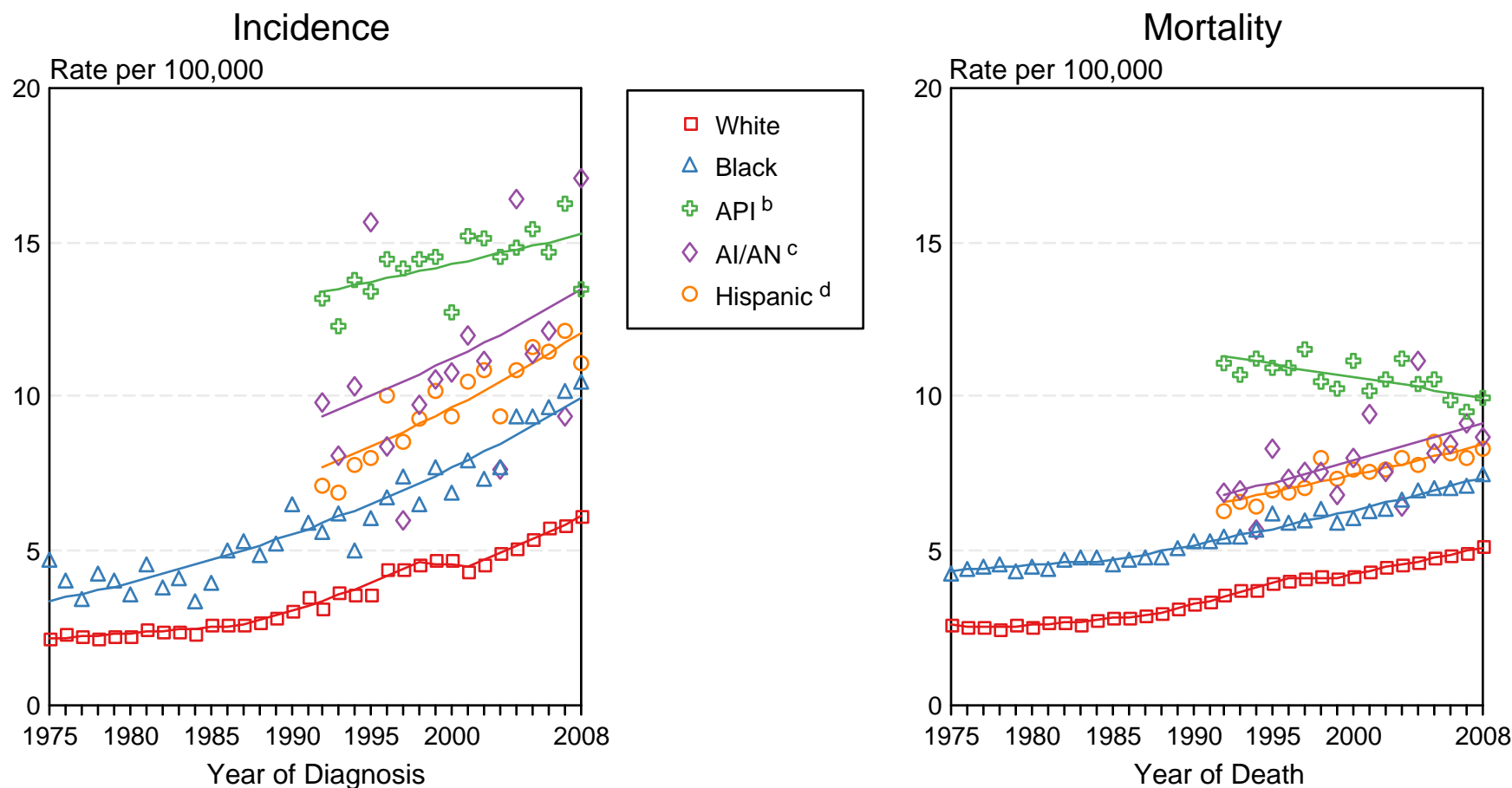


Figure 14.2

Source: Incidence data for whites and blacks are from the SEER 9 areas (San Francisco, Connecticut, Detroit, Hawaii, Iowa, New Mexico, Seattle, Utah, Atlanta). Incidence data for Asian/Pacific Islanders, American Indians/Alaska Natives and Hispanics are from the SEER 13 Areas (SEER 9 Areas, San Jose-Monterey, Los Angeles, Alaska Native Registry and Rural Georgia). Mortality data are from US Mortality Files, National Center for Health Statistics, CDC.

<sup>a</sup> Rates are age-adjusted to the 2000 US Std Population (19 age groups - Census P25-1103).

Regression lines are calculated using the Joinpoint Regression Program Version 3.5, April 2011, National Cancer Institute. Joinpoint analyses for Whites and Blacks during the 1975-2008 period allow a maximum of 5 joinpoints. Analyses for other ethnic groups during the period 1992-2008 allow a maximum of 3 joinpoints.

<sup>b</sup> API = Asian/Pacific Islander.

<sup>c</sup> AI/AN = American Indian/Alaska Native. Rates for American Indian/Alaska Native are based on the CHSDA(Contract Health Service Delivery Area) counties.

<sup>d</sup> Hispanic is not mutually exclusive from whites, blacks, Asian/Pacific Islanders, and American Indians/Alaska Natives. Incidence data for Hispanics are based on NHIA and exclude cases from the Alaska Native Registry. Mortality data for Hispanics exclude cases from Connecticut, the District of Columbia, Maine, Maryland, Minnesota, New Hampshire, New York, North Dakota, Oklahoma, and Vermont.



# SEER Observed Incidence and SEER Delay Adjusted Incidence Rates<sup>a</sup> SEER 9 Areas Compared to SEER 13 Areas Cancer of the Liver and Intrahepatic Bile Duct, Male, by Race

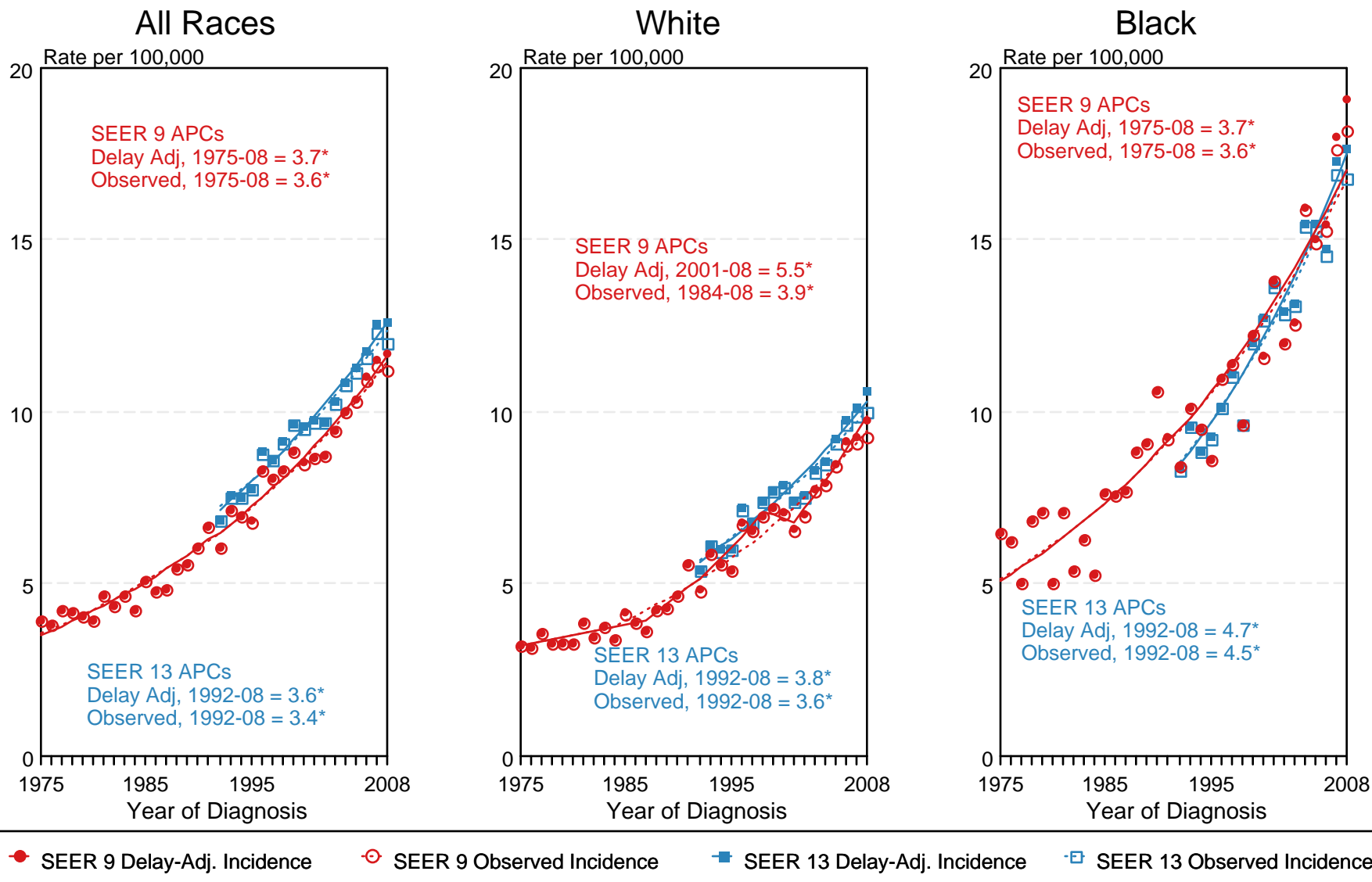


Figure 14.3

<sup>a</sup> Source: SEER 9 areas and SEER 13 areas.  
Rates are age-adjusted to the 2000 US Std Population (19 age groups - Census P25-1103).  
Regression lines and APCs are calculated using the Joinpoint Regression Program Version 3.5, April 2011, National Cancer Institute.  
The APC is the Annual Percent Change for the regression line segments. The APC shown on the graph is for the most recent trend.  
\* The APC is significantly different from zero ( $p < 0.05$ ).

# SEER Observed Incidence and SEER Delay Adjusted Incidence Rates<sup>a</sup> SEER 9 Areas Compared to SEER 13 Areas Cancer of the Liver and Intrahepatic Bile Duct, Female, by Race

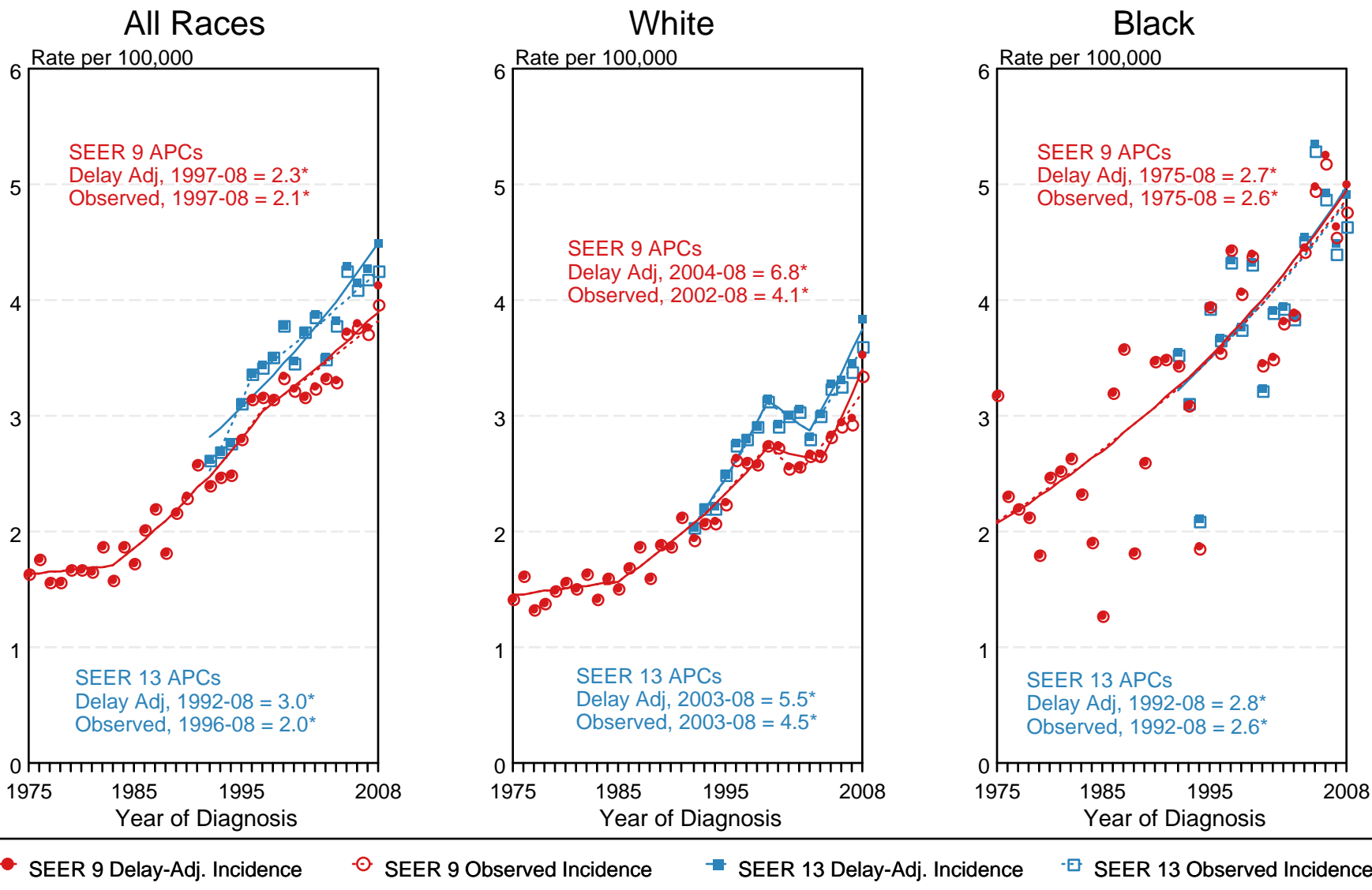


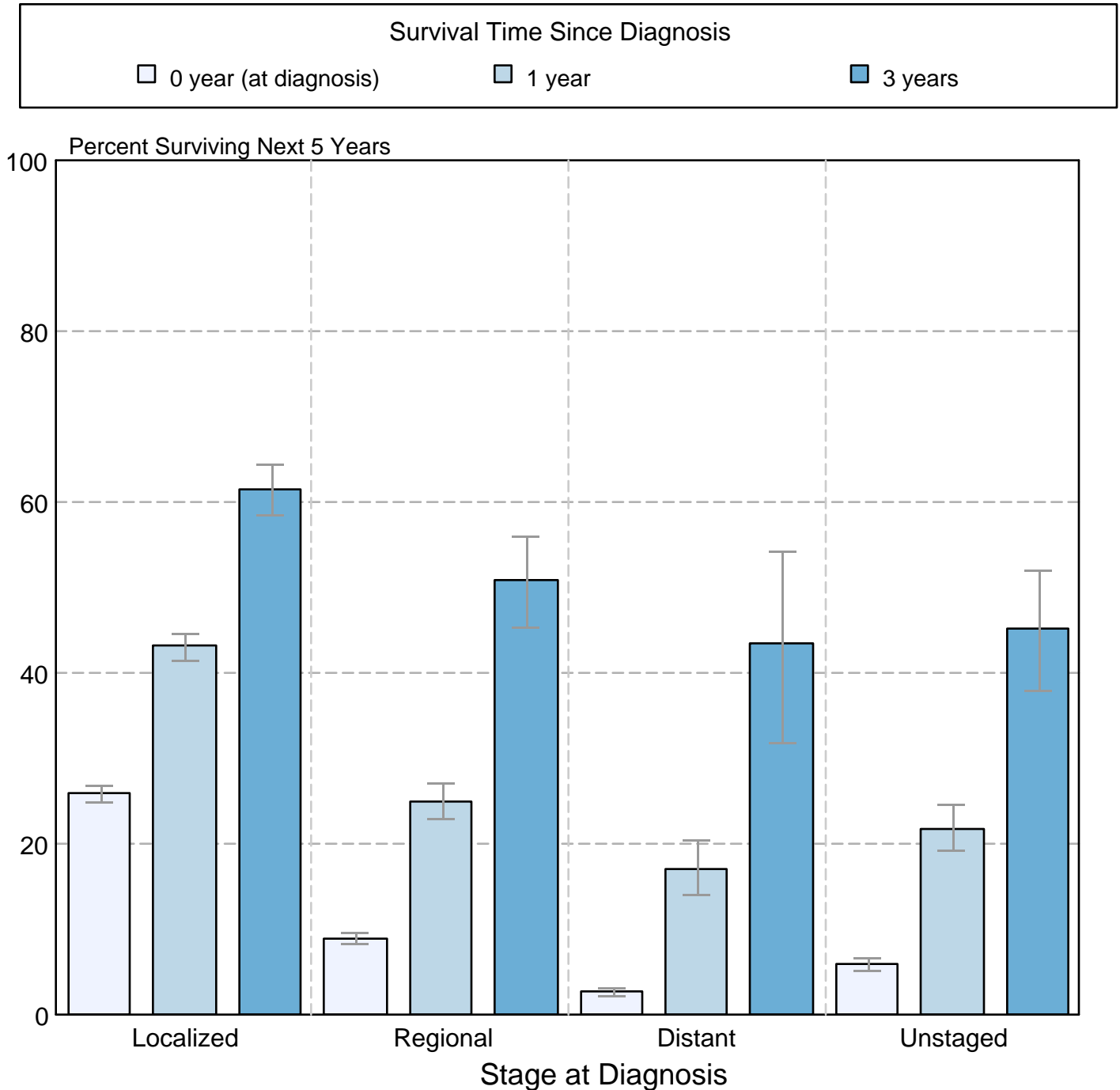
Figure 14.4

<sup>a</sup> Source: SEER 9 areas and SEER 13 areas.  
Rates are age-adjusted to the 2000 US Std Population (19 age groups - Census P25-1103).  
Regression lines and APCs are calculated using the Joinpoint Regression Program Version 3.5, April 2011, National Cancer Institute.  
The APC is the Annual Percent Change for the regression line segments. The APC shown on the graph is for the most recent trend.  
\* The APC is significantly different from zero ( $p < 0.05$ ).

Figure 14.5

## Cancer of the Liver and Intrahepatic Bile Duct 5-Year SEER Conditional Relative Survival and 95% Confidence Intervals

Probability of surviving the next 5 years given the cohort  
has already survived 0, 1, or 3 years  
1998-2007 by stage at diagnosis



Source: SEER 17 areas (San Francisco, Connecticut, Detroit, Hawaii, Iowa, New Mexico, Seattle, Utah, Atlanta, San Jose-Monterey, Los Angeles, Alaska Native Registry, Rural Georgia, California excluding SF/SJM/LA, Kentucky, Louisiana, and New Jersey). California excluding SF/SJM/LA, Kentucky, Louisiana, and New Jersey contribute cases for diagnosis years 2000-2007. The remaining 13 SEER Areas contribute cases for the entire period 1998-2007.

Percent surviving is not shown if based on less than 25 cases.

Confidence intervals are not shown if length of the confidence interval is greater than 5 times the standard error.