

Table 15.1
Cancer of the Lung and Bronchus (Invasive)

Trends in SEER Incidence^{ab} and U.S. Mortality^c Using the Joinpoint Regression Program,
1975-2009 With up to Five Joinpoints, 1992-2009 With up to Three Joinpoints,
Both Sexes by Race/Ethnicity

	JP Trend 1		JP Trend 2		JP Trend 3		JP Trend 4		JP Trend 5		JP Trend 6		AAPC ^d	
	Years	APC	Years	APC	Years	APC	Years	APC	Years	APC	Years	APC	2000-09	2005-09
<u>SEER 9 Delay-Adjusted Incidence^a, 1975-2009</u>														
All Races	1975-82	2.5*	1982-91	1.0*	1991-09	-0.8*							-0.8*	-0.8*
White	1975-82	2.5*	1982-91	1.1*	1991-09	-0.7*							-0.7*	-0.7*
Black	1975-85	3.2*	1985-09	-0.9*									-0.9*	-0.9*
<u>SEER 13 Delay-Adjusted Incidence^b, 1992-2009</u>														
All Races	1992-09	-1.0*											-1.0*	-1.0*
White	1992-09	-1.0*											-1.0*	-1.0*
Black	1992-09	-1.3*											-1.3*	-1.3*
<u>SEER 9 Observed Incidence^a, 1975-2009</u>														
All Races	1975-82	2.5*	1982-91	1.0*	1991-09	-0.8*							-0.8*	-0.8*
White	1975-87	2.0*	1987-98	-0.1	1998-09	-1.0*							-1.0*	-1.0*
Black	1975-85	3.3*	1985-09	-1.0*									-1.0*	-1.0*
<u>SEER 13 Observed Incidence^b, 1992-2009</u>														
All Races	1992-09	-1.1*											-1.1*	-1.1*
White	1992-09	-1.0*											-1.0*	-1.0*
White NH ^{ef}	1992-09	-0.9*											-0.9*	-0.9*
Black	1992-09	-1.4*											-1.4*	-1.4*
Black NH ^{ef}	1992-09	-1.3*											-1.3*	-1.3*
API ^e	1992-09	-0.6*											-0.6*	-0.6*
AI/AN ^{eg}	1992-09	-0.4											-0.4	-0.4
Hispanic ^f	1992-09	-1.3*											-1.3*	-1.3*
<u>U.S. Cancer Mortality^c, 1975-2009</u>														
All Races	1975-80	3.0*	1980-90	1.8*	1990-95	-0.2	1995-05	-1.0*	2005-09	-2.2*			-1.5*	-2.2*
White	1975-80	2.9*	1980-90	1.8*	1990-95	-0.1	1995-05	-0.9*	2005-09	-2.0*			-1.4*	-2.0*
Black	1975-77	4.7*	1977-82	3.0*	1982-90	1.8*	1990-95	-0.7*	1995-05	-1.7*	2005-09	-3.0*	-2.3*	-3.0*
<u>U.S. Cancer Mortality^c, 1992-2009</u>														
All Races	1992-04	-0.8*	2004-09	-2.0*									-1.5*	-2.0*
White	1992-03	-0.7*	2003-09	-1.7*									-1.4*	-1.7*
White NH ^{ef}	1992-04	-0.6*	2004-09	-1.7*									-1.2*	-1.7*
Black	1992-97	-1.2*	1997-05	-1.7*	2005-09	-3.0*							-2.3*	-3.0*
Black NH ^{ef}	1992-05	-1.4*	2005-09	-3.0*									-2.1*	-3.0*
API ^e	1992-09	-1.1*											-1.1*	-1.1*
AI/AN ^{eg}	1992-09	-0.1											-0.1	-0.1
Hispanic ^f	1992-97	0.6	1997-09	-2.2*									-2.2*	-2.2*

Joinpoint Regression Program Version 3.5, April 2011, National Cancer Institute. (<http://surveillance.cancer.gov/joinpoint/>).

The APC is the Annual Percent Change based on rates age-adjusted to the 2000 US Std Population (19 age groups - Census P25-1130).

Trends are from the SEER 9 areas (San Francisco, Connecticut, Detroit, Hawaii, Iowa, New Mexico, Seattle, Utah, and Atlanta).

Trends are from the SEER 13 areas (SEER 9 Areas, Los Angeles, San Jose-Monterey, Rural Georgia, and the Alaska Native Registry).

Trends are from US Mortality Files, National Center for Health Statistics, Centers for Disease Control and Prevention.

The AAPC is the Average Annual Percent Change and is based on the APCs calculated by Joinpoint.

API - Asian/Pacific Islander, AI/AN - American Indian/Alaska Native, NH - Non-Hispanic

Hispanic and Non-Hispanic are not mutually exclusive from whites, blacks, Asian/Pacific Islanders, and American Indians/Alaska

Natives. Incidence data for Hispanics and Non-Hispanics are based on NHIA and exclude cases from the Alaska Native Registry.

The Hispanic and Non-Hispanic mortality trends exclude deaths from CT, DC, ME, MD, MN, NH, NY, ND, SC, OK and VT.

Data for American Indian/Alaska Native are based on the CHSDA (Contract Health Service Delivery Area) counties.

* The APC/AAPC is significantly different from zero ($p < .05$).

- Joinpoint regression line analysis could not be performed on data series.

Table 15.2
Cancer of the Lung and Bronchus (Invasive)

Trends in SEER Incidence^{ab} and U.S. Mortality^c Using the Joinpoint Regression Program,
1975-2009 With up to Five Joinpoints, 1992-2009 With up to Three Joinpoints,
Males by Race/Ethnicity

	JP Trend 1		JP Trend 2		JP Trend 3		JP Trend 4		JP Trend 5		JP Trend 6		AAPC ^d	
	Years	APC	Years	APC	Years	APC	Years	APC	Years	APC	Years	APC	2000-09	2005-09
<u>SEER 9 Delay-Adjusted Incidence^a, 1975-2009</u>														
All Races	1975-82	1.5*	1982-91	-0.5*	1991-09	-1.8*							-1.8*	-1.8*
White	1975-81	1.5*	1981-90	-0.2	1990-09	-1.7*							-1.7*	-1.7*
Black	1975-84	3.4*	1984-09	-1.9*									-1.9*	-1.9*
<u>SEER 13 Delay-Adjusted Incidence^b, 1992-2009</u>														
All Races	1992-09	-1.9*											-1.9*	-1.9*
White	1992-09	-1.9*											-1.9*	-1.9*
Black	1992-09	-2.4*											-2.4*	-2.4*
<u>SEER 9 Observed Incidence^a, 1975-2009</u>														
All Races	1975-82	1.4*	1982-91	-0.4	1991-09	-1.8*							-1.8*	-1.8*
White	1975-81	1.5*	1981-90	-0.2	1990-09	-1.8*							-1.8*	-1.8*
Black	1975-85	2.8*	1985-09	-2.0*									-2.0*	-2.0*
<u>SEER 13 Observed Incidence^b, 1992-2009</u>														
All Races	1992-09	-2.0*											-2.0*	-2.0*
White	1992-09	-2.0*											-2.0*	-2.0*
White NH ^{ef}	1992-09	-1.8*											-1.8*	-1.8*
Black	1992-09	-2.5*											-2.5*	-2.5*
Black NH ^{ef}	1992-09	-2.4*											-2.4*	-2.4*
API ^e	1992-09	-1.1*											-1.1*	-1.1*
AI/AN ^{eg}	1992-09	-1.4											-1.4	-1.4
Hispanic ^f	1992-09	-2.1*											-2.1*	-2.1*
<u>U.S. Cancer Mortality^c, 1975-2009</u>														
All Races	1975-78	2.5*	1978-84	1.2*	1984-90	0.4*	1990-93	-1.1	1993-05	-1.9*	2005-09	-2.8*	-2.3*	-2.8*
White	1975-82	1.7*	1982-91	0.4*	1991-05	-1.8*	2005-09	-2.7*					-2.2*	-2.7*
Black	1975-77	4.9*	1977-84	2.3*	1984-90	1.2*	1990-94	-1.3*	1994-04	-2.6*	2004-09	-3.2*	-3.0*	-3.2*
<u>U.S. Cancer Mortality^c, 1992-2009</u>														
All Races	1992-05	-1.9*	2005-09	-2.8*									-2.3*	-2.8*
White	1992-05	-1.7*	2005-09	-2.7*									-2.2*	-2.7*
White NH ^{ef}	1992-05	-1.6*	2005-09	-2.5*									-2.0*	-2.5*
Black	1992-94	-1.0	1994-04	-2.7*	2004-09	-3.2*							-3.0*	-3.2*
Black NH ^{ef}	1992-94	-1.1	1994-09	-2.6*									-2.6*	-2.6*
API ^e	1992-09	-1.5*											-1.5*	-1.5*
AI/AN ^{eg}	1992-09	-1.2*											-1.2*	-1.2*
Hispanic ^f	1992-98	-0.4	1998-09	-3.3*									-3.3*	-3.3*

Joinpoint Regression Program Version 3.5, April 2011, National Cancer Institute. (<http://surveillance.cancer.gov/joinpoint/>).

The APC is the Annual Percent Change based on rates age-adjusted to the 2000 US Std Population (19 age groups - Census P25-1130).

Trends are from the SEER 9 areas (San Francisco, Connecticut, Detroit, Hawaii, Iowa, New Mexico, Seattle, Utah, and Atlanta).

Trends are from the SEER 13 areas (SEER 9 Areas, Los Angeles, San Jose-Monterey, Rural Georgia, and the Alaska Native Registry).

Trends are from US Mortality Files, National Center for Health Statistics, Centers for Disease Control and Prevention.

The AAPC is the Average Annual Percent Change and is based on the APCs calculated by Joinpoint.

API - Asian/Pacific Islander, AI/AN - American Indian/Alaska Native, NH - Non-Hispanic

Hispanic and Non-Hispanic are not mutually exclusive from whites, blacks, Asian/Pacific Islanders, and American Indians/Alaska

Natives. Incidence data for Hispanics and Non-Hispanics are based on NHIA and exclude cases from the Alaska Native Registry.

The Hispanic and Non-Hispanic mortality trends exclude deaths from CT, DC, ME, MD, MN, NH, NY, ND, SC, OK and VT.

Data for American Indian/Alaska Native are based on the CHSDA (Contract Health Service Delivery Area) counties.

* The APC/AAPC is significantly different from zero ($p < .05$).

- Joinpoint regression line analysis could not be performed on data series.

Table 15.3
Cancer of the Lung and Bronchus (Invasive)

Trends in SEER Incidence^{ab} and U.S. Mortality^c Using the Joinpoint Regression Program,
1975-2009 With up to Five Joinpoints, 1992-2009 With up to Three Joinpoints,
Females by Race/Ethnicity

	JP Trend 1		JP Trend 2		JP Trend 3		JP Trend 4		JP Trend 5		JP Trend 6		AAPC ^d	
	Years	APC	Years	APC	Years	APC	Years	APC	Years	APC	Years	APC	2000-09	2005-09
<u>SEER 9 Delay-Adjusted Incidence^a, 1975-2009</u>														
All Races	1975-88	4.6*	1988-97	1.3*	1997-09	0.1							0.1	0.1
White	1975-88	4.8*	1988-97	1.4*	1997-09	0.1							0.1	0.1
Black	1975-90	4.3*	1990-09	0.5*									0.5*	0.5*
<u>SEER 13 Delay-Adjusted Incidence^b, 1992-2009</u>														
All Races	1992-97	0.7	1997-09	-0.3*									-0.3*	-0.3*
White	1992-97	0.9	1997-09	-0.3*									-0.3*	-0.3*
Black	1992-09	0.4											0.4	0.4
<u>SEER 9 Observed Incidence^a, 1975-2009</u>														
All Races	1975-82	5.6*	1982-91	3.4*	1991-06	0.5*	2006-09	-1.5					-0.2	-1.0
White	1975-82	5.6*	1982-88	4.1*	1988-97	1.5*	1997-07	0.1	2007-09	-2.0			-0.4	-1.0
Black	1975-90	4.3*	1990-09	0.4									0.4	0.4
<u>SEER 13 Observed Incidence^b, 1992-2009</u>														
All Races	1992-98	0.8*	1998-01	-1.3	2001-05	0.5	2005-09	-1.2*					-0.5	-1.2*
White	1992-97	1.0	1997-09	-0.5*									-0.5*	-0.5*
White NH ^{ef}	1992-97	1.3*	1997-09	-0.3									-0.3	-0.3
Black	1992-09	0.2											0.2	0.2
Black NH ^{ef}	1992-09	0.3											0.3	0.3
API ^e	1992-09	0.4											0.4	0.4
AI/AN ^{eg}	1992-09	1.1											1.1	1.1
Hispanic ^f	1992-09	-0.4											-0.4	-0.4
<u>U.S. Cancer Mortality^c, 1975-2009</u>														
All Races	1975-82	6.0*	1982-90	4.2*	1990-95	1.7*	1995-03	0.3*	2003-09	-1.1*			-0.6*	-1.1*
White	1975-83	5.8*	1983-90	4.1*	1990-94	2.1*	1994-03	0.5*	2003-09	-1.0*			-0.5*	-1.0*
Black	1975-81	6.8*	1981-92	3.8*	1992-05	0.3*	2005-09	-2.8*					-1.1*	-2.8*
<u>U.S. Cancer Mortality^c, 1992-2009</u>														
All Races	1992-02	0.6*	2002-09	-1.0*									-0.6*	-1.0*
White	1992-02	0.7*	2002-09	-0.9*									-0.5*	-0.9*
White NH ^{ef}	1992-02	0.9*	2002-09	-0.7*									-0.4*	-0.7*
Black	1992-05	0.3*	2005-09	-2.9*									-1.1*	-2.9*
Black NH ^{ef}	1992-05	0.5*	2005-09	-2.8*									-1.0*	-2.8*
API ^e	1992-09	-0.3											-0.3	-0.3
AI/AN ^{eg}	1992-09	1.2*											1.2*	1.2*
Hispanic ^f	1992-03	0.2	2003-09	-1.8*									-1.1*	-1.8*

Joinpoint Regression Program Version 3.5, April 2011, National Cancer Institute. (<http://surveillance.cancer.gov/joinpoint/>).

The APC is the Annual Percent Change based on rates age-adjusted to the 2000 US Std Population (19 age groups - Census P25-1130).

Trends are from the SEER 9 areas (San Francisco, Connecticut, Detroit, Hawaii, Iowa, New Mexico, Seattle, Utah, and Atlanta).

Trends are from the SEER 13 areas (SEER 9 Areas, Los Angeles, San Jose-Monterey, Rural Georgia, and the Alaska Native Registry).

Trends are from US Mortality Files, National Center for Health Statistics, Centers for Disease Control and Prevention.

The AAPC is the Average Annual Percent Change and is based on the APCs calculated by Joinpoint.

API - Asian/Pacific Islander, AI/AN - American Indian/Alaska Native, NH - Non-Hispanic

Hispanic and Non-Hispanic are not mutually exclusive from whites, blacks, Asian/Pacific Islanders, and American Indians/Alaska

Natives. Incidence data for Hispanics and Non-Hispanics are based on NHIA and exclude cases from the Alaska Native Registry.

The Hispanic and Non-Hispanic mortality trends exclude deaths from CT, DC, ME, MD, MN, NH, NY, ND, SC, OK and VT.

Data for American Indian/Alaska Native are based on the CHSDA (Contract Health Service Delivery Area) counties.

* The APC/AAPC is significantly different from zero ($p < .05$).

- Joinpoint regression line analysis could not be performed on data series.

Table 15.4
Small Cell Cancer of the Lung and Bronchus (Invasive) and Non-Small Cell Cancer of the Lung and Bronchus (Invasive)

Trends in SEER 9 Observed Incidence^a Using the Joinpoint Regression Program,
1975-2009 With up to Five Joinpoints,
By Race and Sex

		JP Trend 1		JP Trend 2		JP Trend 3		JP Trend 4		JP Trend 5		JP Trend 6		AAPC ^d
		Years	APC	Years	APC	Years	APC	Years	APC	Years	APC	Years	APC	2005-09
<u>SEER 9 Observed Incidence^a for Small Cell Cancer of the Lung and Bronchus, 1975-2009</u>														
All Races	Both Sexes	1975-82	6.2*	1982-89	1.2*	1989-09	-2.3*							-2.3*
All Races	Male	1975-81	5.5*	1981-88	0.0	1988-09	-3.1*							-3.1*
All Races	Female	1975-82	9.6*	1982-91	3.0*	1991-09	-1.7*							-1.7*
White	Both Sexes	1975-82	6.3*	1982-89	1.4*	1989-09	-2.2*							-2.2*
White	Male	1975-78	8.8*	1978-86	2.0*	1986-09	-3.0*							-3.0*
White	Female	1975-82	10.2*	1982-91	3.0*	1991-09	-1.5*							-1.5*
Black	Both Sexes	1975-86	4.7*	1986-09	-2.3*									-2.3*
Black	Male	1975-85	4.8*	1985-09	-3.3*									-3.3*
Black	Female	1975-91	4.4*	1991-09	-1.7*									-1.7*
<u>SEER 9 Observed Incidence^a for Non-Small Cell Cancer of the Lung and Bronchus, 1975-2009</u>														
All Races	Both Sexes	1975-81	2.0*	1981-92	1.0*	1992-09	-0.6*							-0.6*
All Races	Male	1975-82	0.9*	1982-92	-0.4	1992-09	-1.6*							-1.6*
All Races	Female	1975-88	4.2*	1988-97	1.8*	1997-09	0.3*							0.3*
White	Both Sexes	1975-88	1.6*	1988-98	0.1	1998-09	-0.8*							-0.8*
White	Male	1975-90	0.1	1990-09	-1.6*									-1.6*
White	Female	1975-88	4.4*	1988-97	1.9*	1997-09	0.3							0.3
Black	Both Sexes	1975-85	3.0*	1985-09	-0.8*									-0.8*
Black	Male	1975-84	3.1*	1984-09	-1.8*									-1.8*
Black	Female	1975-90	4.2*	1990-09	0.6*									0.6*

Joinpoint Regression Program Version 3.5, April 2011, National Cancer Institute. (<http://surveillance.cancer.gov/joinpoint/>).
The APC is the Annual Percent Change based on rates age-adjusted to the 2000 US Std Population (19 age groups - Census P25-1130).
Trends are from the SEER 9 areas (San Francisco, Connecticut, Detroit, Hawaii, Iowa, New Mexico, Seattle, Utah, and Atlanta).
The AAPC is the Average Annual Percent Change and is based on the APCs calculated by Joinpoint.
* The APC/AAPC is significantly different from zero (p<.05).
- Joinpoint regression line analysis could not be performed on data series.

Table 15.5
Cancer of the Lung and Bronchus (Invasive)

Delay-adjusted SEER Incidence^a Rates by Year, Race and Sex

Year of Diagnosis:	All Races			Whites			Blacks		
	Total	Males	Females	Total	Males	Females	Total	Males	Females
1975	52.26	89.56	24.53	51.96	89.17	24.86	64.55	114.90	24.66
1976	55.42	93.80	27.31	54.64	92.75	27.28	72.34	131.00	28.63
1977	56.70	95.50	28.32	55.88	94.75	28.05	73.58	124.86	33.88
1978	57.85	96.67	29.65	57.27	95.86	29.90	74.53	130.51	31.69
1979	58.62	95.81	31.59	58.03	95.18	31.65	74.54	127.72	34.11
1980	60.66	99.97	32.22	59.43	97.72	32.37	86.57	151.30	38.25
1981	62.03	99.41	35.12	61.54	98.44	35.52	82.31	142.96	37.45
1982	63.30	100.71	36.73	63.06	99.69	37.68	80.37	141.06	35.68
1983	63.45	99.46	37.89	63.04	97.63	39.10	86.63	151.34	39.50
1984	65.51	102.08	39.47	64.36	99.93	39.64	93.06	159.22	44.82
1985	64.62	98.64	40.23	64.00	96.90	40.89	89.56	149.69	46.05
1986	65.78	99.06	42.29	65.16	97.36	42.94	92.94	156.28	48.67
1987	67.90	101.52	44.16	68.08	100.65	45.50	84.82	143.72	43.28
1988	68.03	98.69	46.30	68.26	97.92	47.72	88.14	144.94	48.08
1989	67.55	97.95	46.10	67.57	97.05	47.25	89.05	142.79	51.38
1990	68.08	96.95	47.78	68.24	96.17	48.95	86.80	137.19	52.15
1991	69.21	97.23	49.59	68.99	95.92	50.64	93.16	144.78	57.07
1992	69.46	97.18	49.87	68.93	94.87	51.09	93.90	148.76	55.89
1993	67.78	93.97	49.19	67.84	92.53	50.69	86.33	135.39	52.46
1994	67.16	90.95	50.51	67.27	90.14	51.59	87.18	131.62	56.38
1995	66.86	89.83	50.45	67.12	87.97	52.48	85.74	138.78	50.03
1996	66.47	88.02	51.22	66.84	86.75	52.99	84.40	128.48	55.38
1997	66.65	86.34	52.62	67.29	84.92	55.00	82.18	129.26	50.53
1998	67.56	88.05	52.98	68.11	86.69	55.13	87.04	130.49	57.73
1999	65.87	84.63	52.52	66.37	83.38	54.48	84.44	121.94	59.02
2000	64.17	82.12	51.27	64.74	80.86	53.30	80.08	114.29	57.29
2001	64.17	81.36	51.72	65.09	81.02	53.60	80.21	114.00	57.44
2002	64.05	80.35	52.55	64.80	79.75	54.34	81.12	112.72	60.43
2003	64.69	80.91	53.08	65.51	79.56	55.68	80.52	118.87	55.17
2004	62.15	76.18	52.02	62.76	75.28	53.78	75.62	105.02	56.45
2005	62.88	75.72	53.70	63.89	75.54	55.66	74.38	98.18	59.00
2006	62.17	74.17	53.38	62.68	72.96	55.30	76.43	101.32	59.42
2007	61.83	73.46	53.41	62.90	72.69	55.89	74.02	100.36	56.67
2008	60.16	71.87	51.74	60.87	70.56	54.07	75.19	103.67	56.37
2009	60.11	70.73	52.54	60.78	69.93	54.32	74.52	97.65	59.23

Additional information on the model used to delay-adjust SEER Incidence rates can be found at <http://surveillance.cancer.gov/delay/>.

^a SEER 9 areas (San Francisco, Connecticut, Detroit, Hawaii, Iowa, New Mexico, Seattle, Utah, and Atlanta). Rates are per 100,000 and are age-adjusted to the 2000 US Std Population (19 age groups - Census P25-1130).

- Delay-adjusted rate is not shown for observed rates based on less than 16 cases for the time interval.

Table 15.6
Cancer of the Lung and Bronchus (Invasive)

Age-adjusted SEER Incidence^a Rates by Year, Race and Sex

Year of Diagnosis:	All Races			Whites			Blacks		
	Total	Males	Females	Total	Males	Females	Total	Males	Females
1975-2009	63.81	88.42	45.91	63.90	87.52	46.93	81.38	125.55	50.57
1975	52.26	89.56	24.53	51.96	89.17	24.86	64.55	114.90	24.66
1976	55.42	93.80	27.31	54.64	92.75	27.28	72.34	131.00	28.63
1977	56.70	95.50	28.32	55.88	94.75	28.05	73.58	124.86	33.88
1978	57.85	96.67	29.65	57.27	95.86	29.90	74.53	130.51	31.69
1979	58.62	95.81	31.59	58.03	95.18	31.65	74.54	127.72	34.11
1980	60.66	99.97	32.22	59.43	97.72	32.37	86.57	151.30	38.25
1981	62.03	99.41	35.12	61.54	98.44	35.52	82.31	142.96	37.45
1982	63.30	100.71	36.73	63.06	99.69	37.68	80.37	141.06	35.68
1983	63.45	99.46	37.89	63.04	97.63	39.10	86.62	151.34	39.49
1984	65.51	102.08	39.47	64.36	99.93	39.64	93.06	159.21	44.82
1985	64.62	98.64	40.23	64.00	96.90	40.88	89.56	149.68	46.04
1986	65.78	99.06	42.29	65.16	97.36	42.94	92.94	156.27	48.67
1987	67.90	101.52	44.15	68.08	100.65	45.50	84.81	143.71	43.28
1988	68.03	98.68	46.30	68.25	97.91	47.71	88.13	144.93	48.07
1989	67.54	97.95	46.10	67.56	97.05	47.24	89.04	142.77	51.37
1990	68.08	96.94	47.77	68.23	96.16	48.94	86.79	137.17	52.14
1991	69.20	97.22	49.58	68.98	95.90	50.63	93.14	144.76	57.05
1992	69.45	97.17	49.86	68.92	94.85	51.07	93.88	148.73	55.88
1993	67.76	93.95	49.18	67.82	92.50	50.67	86.30	135.35	52.43
1994	67.15	90.93	50.50	67.25	90.12	51.57	87.15	131.58	56.36
1995	66.84	89.80	50.43	67.10	87.94	52.45	85.70	138.72	50.00
1996	66.44	87.99	51.19	66.80	86.71	52.96	84.35	128.41	55.34
1997	66.62	86.30	52.59	67.24	84.88	54.96	82.12	129.18	50.49
1998	67.52	88.01	52.95	68.05	86.63	55.08	86.96	130.39	57.67
1999	65.81	84.57	52.47	66.29	83.30	54.40	84.33	121.80	58.92
2000	64.11	82.04	51.21	64.65	80.76	53.21	79.95	114.13	57.18
2001	64.09	81.26	51.64	64.97	80.90	53.49	80.04	113.80	57.30
2002	63.94	80.23	52.44	64.65	79.59	54.20	80.91	112.46	60.24
2003	64.54	80.75	52.95	65.31	79.35	55.50	80.26	118.51	54.96
2004	61.96	75.98	51.84	62.52	75.03	53.55	75.29	104.62	56.18
2005	62.63	75.47	53.47	63.58	75.21	55.36	73.97	97.70	58.64
2006	61.86	73.84	53.08	62.28	72.55	54.91	75.90	100.68	58.96
2007	61.42	73.03	53.01	62.39	72.17	55.39	73.36	99.55	56.10
2008	59.64	71.31	51.24	60.23	69.89	53.45	74.33	102.59	55.65
2009	58.75	69.27	51.25	59.21	68.26	52.80	72.45	95.13	57.45

^a SEER 9 areas (San Francisco, Connecticut, Detroit, Hawaii, Iowa, New Mexico, Seattle, Utah, and Atlanta). Rates are per 100,000 and are age-adjusted to the 2000 US Std Population (19 age groups - Census P25-1130).
- Statistic not shown. Rate based on less than 16 cases for the time interval.

Table 15.7
 Small Cell Cancer of the Lung and Bronchus (Invasive)
 Age-adjusted SEER Incidence^a Rates by Year, Race and Sex

Year of Diagnosis:	All Races			Whites			Blacks		
	Total	Males	Females	Total	Males	Females	Total	Males	Females
1975-2009	9.12	11.66	7.23	9.59	12.07	7.75	8.75	12.26	6.28
1975	6.65	10.34	3.79	6.89	10.70	3.97	5.87	8.94	3.48
1976	7.06	11.36	3.84	7.12	11.51	3.89	8.23	12.82	4.76
1977	7.70	12.38	4.22	7.84	12.79	4.21	8.13	11.19	5.78
1978	8.64	13.39	5.03	8.87	13.69	5.28	7.81	13.89	3.13
1979	8.68	13.09	5.36	9.03	13.63	5.61	7.63	11.83	4.47
1980	9.10	14.20	5.23	9.33	14.40	5.54	9.99	17.53	4.38
1981	9.71	14.55	6.12	10.00	14.82	6.48	9.21	15.87	4.21
1982	10.37	14.92	7.12	10.73	15.28	7.55	9.63	15.94	4.92
1983	10.36	14.87	7.08	10.75	15.05	7.64	9.12	15.08	4.85
1984	10.69	15.18	7.41	11.05	15.64	7.77	10.41	14.99	6.86
1985	10.44	14.96	7.08	10.78	15.25	7.49	11.07	17.77	6.27
1986	11.20	15.51	7.98	11.53	15.98	8.27	12.26	17.70	8.35
1987	10.65	14.13	8.20	11.17	14.56	8.84	9.56	14.49	6.09
1988	11.38	15.28	8.51	11.90	15.62	9.21	10.49	17.86	5.30
1989	11.24	14.84	8.68	11.68	15.22	9.21	12.07	17.67	8.35
1990	10.65	13.84	8.38	11.26	14.46	9.05	9.35	13.70	6.21
1991	11.29	13.99	9.36	11.68	14.32	9.84	12.34	15.92	10.00
1992	10.49	13.39	8.44	10.96	13.84	8.96	10.16	13.32	7.95
1993	10.02	12.33	8.34	10.48	12.64	8.94	9.38	13.25	6.74
1994	9.77	11.69	8.42	10.24	11.98	9.05	9.95	13.62	7.43
1995	9.85	12.25	8.13	10.36	12.60	8.76	9.50	13.89	6.61
1996	9.71	12.08	7.96	10.27	12.47	8.63	8.80	12.02	6.84
1997	9.53	10.85	8.64	10.11	11.11	9.49	7.86	10.82	6.05
1998	9.28	10.84	8.14	9.86	11.27	8.83	9.37	12.10	7.45
1999	8.80	10.02	7.97	9.33	10.24	8.78	8.14	10.95	6.05
2000	8.79	10.43	7.58	9.27	10.84	8.13	9.44	11.54	7.93
2001	8.37	9.84	7.34	8.90	10.33	7.93	8.51	10.79	6.88
2002	8.28	9.38	7.54	8.97	9.84	8.39	7.20	9.79	5.70
2003	8.21	9.09	7.60	8.71	9.34	8.33	7.92	9.49	6.80
2004	8.08	8.97	7.45	8.47	9.21	7.95	8.55	9.95	7.70
2005	7.57	8.66	6.80	8.18	9.21	7.47	6.55	7.65	5.84
2006	7.65	8.48	7.07	8.19	8.76	7.83	6.79	8.32	5.76
2007	7.63	8.54	6.98	8.27	8.89	7.87	7.08	9.38	5.41
2008	7.04	7.88	6.42	7.49	8.02	7.12	6.29	8.67	4.84
2009	7.06	7.69	6.64	7.49	7.99	7.18	7.46	8.16	7.00

Note:

Small Cell Cancer of the Lung and Bronchus includes histologies 8041-8045.

^a SEER 9 areas (San Francisco, Connecticut, Detroit, Hawaii, Iowa, New Mexico, Seattle, Utah, and Atlanta).
 Rates are per 100,000 and are age-adjusted to the 2000 US Std Population (19 age groups - Census P25-1130).

- Statistic not shown. Rate based on less than 16 cases for the time interval.

Table 15.8
 Non-Small Cell Cancer of the Lung and Bronchus (Invasive)
 Age-adjusted SEER Incidence^a Rates by Year, Race and Sex

Year of Diagnosis:	All Races			Whites			Blacks		
	Total	Males	Females	Total	Males	Females	Total	Males	Females
1975-2009	54.69	76.76	38.68	54.31	75.45	39.18	72.63	113.29	44.29
1975	45.61	79.21	20.74	45.07	78.47	20.89	58.67	105.96	21.18
1976	48.36	82.44	23.47	47.52	81.24	23.39	64.11	118.18	23.87
1977	48.99	83.12	24.10	48.03	81.96	23.84	65.45	113.67	28.10
1978	49.21	83.28	24.62	48.40	82.17	24.61	66.71	116.63	28.56
1979	49.94	82.72	26.23	49.01	81.55	26.05	66.91	115.89	29.64
1980	51.56	85.76	26.99	50.10	83.31	26.83	76.58	133.78	33.87
1981	52.32	84.86	29.00	51.54	83.62	29.05	73.10	127.09	33.24
1982	52.93	85.79	29.61	52.32	84.41	30.13	70.74	125.12	30.76
1983	53.09	84.59	30.81	52.29	82.58	31.46	77.50	136.26	34.64
1984	54.82	86.89	32.06	53.31	84.29	31.87	82.64	144.23	37.96
1985	54.18	83.68	33.15	53.22	81.65	33.39	78.49	131.91	39.78
1986	54.58	83.55	34.31	53.62	81.38	34.67	80.68	138.57	40.31
1987	57.25	87.39	35.96	56.91	86.08	36.65	75.25	129.22	37.19
1988	56.65	83.40	37.78	56.35	82.30	38.50	77.64	127.07	42.77
1989	56.31	83.11	37.42	55.88	81.82	38.04	76.97	125.10	43.02
1990	57.42	83.11	39.39	56.97	81.70	39.88	77.43	123.46	45.93
1991	57.91	83.24	40.22	57.29	81.58	40.78	80.80	128.84	47.05
1992	58.95	83.78	41.41	57.95	81.02	42.11	83.72	135.41	47.93
1993	57.74	81.62	40.84	57.34	79.86	41.73	76.92	122.10	45.69
1994	57.37	79.24	42.08	57.00	78.14	42.51	77.20	117.96	48.93
1995	56.99	77.55	42.30	56.74	75.33	43.69	76.20	124.83	43.39
1996	56.74	75.92	43.23	56.53	74.24	44.32	75.55	116.40	48.50
1997	57.10	75.45	43.96	57.14	73.77	45.47	74.26	118.35	44.44
1998	58.24	77.17	44.81	58.20	75.36	46.25	77.59	118.29	50.22
1999	57.01	74.55	44.50	56.96	73.06	45.62	76.19	110.85	52.88
2000	55.32	71.62	43.63	55.38	69.92	45.08	70.51	102.59	49.24
2001	55.72	71.42	44.30	56.07	70.57	45.56	71.54	103.01	50.43
2002	55.65	70.85	44.91	55.68	69.75	45.81	73.71	102.67	54.55
2003	56.34	71.67	45.34	56.60	70.00	47.16	72.34	109.03	48.16
2004	53.88	67.01	44.39	54.05	65.82	45.60	66.74	94.67	48.48
2005	55.07	66.81	46.67	55.40	66.01	47.89	67.42	90.05	52.80
2006	54.20	65.36	46.01	54.09	63.79	47.08	69.11	92.37	53.20
2007	53.80	64.49	46.03	54.12	63.27	47.52	66.28	90.18	50.69
2008	52.60	63.43	44.81	52.74	61.87	46.33	68.04	93.92	50.81
2009	51.69	61.58	44.61	51.72	60.27	45.63	64.99	86.97	50.45

Note: Non-Small Cell Cancer of the Lung and Bronchus includes histologies 8000-8040, 8046-9049, 9056-9139, 9141-9589.
^a SEER 9 areas (San Francisco, Connecticut, Detroit, Hawaii, Iowa, New Mexico, Seattle, Utah, and Atlanta).
 Rates are per 100,000 and are age-adjusted to the 2000 US Std Population (19 age groups - Census P25-1130).
 - Statistic not shown. Rate based on less than 16 cases for the time interval.

Table 15.9
Cancer of the Lung and Bronchus (Invasive)
Age-adjusted U.S. Death^a Rates by Year, Race and Sex

Year of Death:	All Races			Whites			Blacks		
	Total	Males	Females	Total	Males	Females	Total	Males	Females
1975-2009	53.78	79.76	35.11	53.60	78.58	35.64	62.54	103.91	34.51
1975	42.56	76.39	17.56	42.08	75.47	17.67	49.33	91.01	17.34
1976	44.20	78.52	18.97	43.72	77.55	19.10	51.07	93.96	18.51
1977	45.49	80.45	20.01	44.82	79.09	20.09	54.56	100.80	19.91
1978	46.88	82.06	21.40	46.29	80.76	21.58	55.26	101.65	20.66
1979	47.69	82.94	22.32	47.08	81.64	22.42	56.43	102.89	22.24
1980	49.41	84.71	24.13	48.75	83.27	24.22	59.16	106.67	24.57
1981	49.99	85.16	24.95	49.28	83.52	25.10	60.57	109.71	25.10
1982	51.43	86.79	26.47	50.78	85.18	26.72	62.27	112.55	26.30
1983	52.40	87.04	28.10	51.70	85.40	28.28	63.68	112.76	28.73
1984	53.36	88.22	28.94	52.64	86.24	29.27	65.07	117.98	27.98
1985	54.32	88.54	30.41	53.68	86.69	30.81	65.76	117.50	29.64
1986	55.04	88.95	31.41	54.36	87.03	31.76	66.95	119.18	31.00
1987	56.24	90.05	32.72	55.56	88.09	33.04	68.65	121.77	32.48
1988	56.97	89.87	34.14	56.35	87.86	34.57	69.18	122.15	33.54
1989	57.90	89.77	35.77	57.21	87.57	36.27	71.04	124.72	34.87
1990	58.85	90.56	36.85	58.18	88.40	37.31	72.06	125.17	36.48
1991	58.99	89.88	37.61	58.38	87.76	38.12	71.64	123.58	37.16
1992	58.90	88.01	38.70	58.34	85.98	39.21	71.35	121.06	38.55
1993	59.13	87.60	39.28	58.66	85.52	39.97	71.12	121.98	37.72
1994	58.54	85.69	39.62	58.15	83.78	40.30	70.15	118.63	38.61
1995	58.38	84.37	40.26	58.08	82.62	40.97	69.28	116.08	38.84
1996	57.91	82.82	40.41	57.69	81.15	41.22	68.30	113.18	39.08
1997	57.51	81.33	40.82	57.31	79.83	41.52	67.89	110.21	40.53
1998	57.08	79.89	40.98	56.93	78.47	41.69	66.86	107.40	40.67
1999	55.42	76.97	40.15	55.31	75.67	40.86	65.00	103.61	40.00
2000	55.85	76.48	41.12	55.99	75.41	42.08	63.80	100.96	39.66
2001	55.31	75.31	41.00	55.53	74.33	42.02	62.62	99.58	38.81
2002	54.98	73.68	41.56	55.28	72.88	42.59	62.20	96.04	40.22
2003	54.17	72.09	41.24	54.48	71.34	42.22	61.12	93.59	40.25
2004	53.36	70.54	40.90	53.66	69.81	41.89	60.05	91.25	39.95
2005	52.85	69.66	40.63	53.27	69.22	41.59	58.86	88.04	40.15
2006	51.75	67.63	40.18	52.24	67.23	41.24	57.13	85.09	39.09
2007	50.72	65.43	40.00	51.24	64.97	41.15	55.82	83.58	38.16
2008	49.60	64.03	39.01	50.23	63.75	40.23	53.61	79.64	36.93
2009	48.49	61.96	38.56	49.19	61.77	39.84	52.16	77.22	35.99

^a US Mortality Files, National Center for Health Statistics, Centers for Disease Control and Prevention.
Rates are per 100,000 and are age-adjusted to the 2000 US Std Population (19 age groups - Census P25-1130).
- Statistic not shown. Rate based on less than 16 cases for the time interval.

Table 15.10
Cancer of the Lung and Bronchus (Invasive)SEER Incidence^a and U.S. Death^b Rates, Age-Adjusted and Age-Specific Rates, by Race and Sex

	All Races			Whites			Blacks		
	Total	Males	Females	Total	Males	Females	Total	Males	Females
<u>SEER Incidence</u>									
<u>Age at Diagnosis</u>									
Age-Adjusted Rates, 2005-2009									
All ages	62.6	76.4	52.7	64.1	76.4	55.1	71.3	99.9	52.6
Under 65	19.6	21.9	17.5	19.5	21.1	17.9	28.0	36.2	21.4
65 and over	359.9	453.1	295.5	372.3	458.9	312.4	370.6	540.1	268.1
All ages (IARC world std) ^c	39.1	46.4	33.4	39.8	46.1	34.9	47.0	64.5	34.6
Age-Specific Rates, 2005-2009									
<1	-	-	-	-	-	-	-	-	-
1-4	-	-	-	-	-	-	-	-	-
5-9	-	-	-	-	-	-	-	-	-
10-14	-	-	-	-	-	-	-	-	-
15-19	0.1	0.1	0.1	0.2	-	0.2	-	-	-
20-24	0.3	0.3	0.3	0.3	0.3	0.3	-	-	-
25-29	0.6	0.5	0.6	0.6	0.5	0.6	0.6	-	-
30-34	1.3	1.2	1.4	1.2	1.1	1.4	1.5	1.5	1.5
35-39	3.0	2.9	3.2	2.9	2.8	3.1	3.3	3.5	3.1
40-44	9.3	9.0	9.5	9.1	8.8	9.4	12.9	12.9	12.8
45-49	24.9	24.2	25.5	24.3	23.1	25.6	37.2	39.5	35.1
50-54	51.1	56.1	46.3	49.2	52.2	46.2	81.3	101.4	63.9
55-59	92.1	107.2	77.9	91.3	102.6	80.3	134.7	186.1	92.4
60-64	168.1	194.8	143.6	170.1	191.8	149.8	224.6	305.8	160.8
65-69	277.4	324.6	236.1	286.2	324.7	251.8	330.1	460.5	232.3
70-74	367.3	438.9	309.0	382.3	445.5	329.6	375.3	526.2	269.3
75-79	433.2	539.9	354.2	451.5	551.8	375.9	413.1	578.4	309.2
80-84	427.7	567.3	339.2	442.2	578.0	355.5	402.7	602.1	297.0
85+	321.2	483.7	246.4	323.9	483.8	250.7	339.6	606.1	240.0
<u>U.S. Mortality</u>									
<u>Age at Death</u>									
Age-Adjusted Rates, 2005-2009									
All ages	50.6	65.7	39.6	51.2	65.3	40.8	55.4	82.6	38.0
Under 65	14.8	17.7	12.1	14.6	17.0	12.3	20.2	27.7	14.0
65 and over	298.1	397.0	229.8	304.1	399.0	237.8	299.2	461.8	203.9
All ages (IARC world std) ^c	30.8	38.8	24.3	31.0	38.4	25.0	35.4	51.5	24.2
Age-Specific Rates, 2005-2009									
<1	-	-	-	-	-	-	-	-	-
1-4	-	-	-	-	-	-	-	-	-
5-9	-	-	-	-	-	-	-	-	-
10-14	-	-	-	-	-	-	-	-	-
15-19	0.0	0.0	-	0.0	0.0	-	-	-	-
20-24	0.1	0.1	0.1	0.1	0.1	0.1	0.1	-	-
25-29	0.2	0.2	0.2	0.2	0.2	0.2	0.2	0.4	-
30-34	0.5	0.6	0.5	0.5	0.6	0.5	0.5	0.7	0.4
35-39	1.8	1.9	1.8	1.8	1.9	1.8	2.0	2.1	1.9
40-44	6.8	6.9	6.7	6.7	6.7	6.7	8.6	9.6	7.7
45-49	19.2	20.8	17.7	18.6	19.6	17.5	28.1	33.9	23.2
50-54	39.1	46.2	32.2	37.8	43.7	32.0	57.3	75.8	41.6
55-59	69.5	85.9	54.0	68.2	81.9	54.9	97.4	141.0	61.7
60-64	128.6	158.0	101.7	128.7	154.5	104.5	163.1	234.8	107.0
65-69	210.7	262.5	165.3	213.9	261.3	171.6	240.2	351.9	157.9
70-74	290.7	366.6	228.4	298.2	369.5	238.4	290.3	426.6	195.9
75-79	356.0	464.6	275.2	365.0	469.4	285.8	335.0	501.1	232.7
80-84	376.9	523.7	283.5	384.3	528.8	291.0	354.8	555.6	249.5
85+	314.9	493.1	234.5	317.2	491.7	238.0	321.6	600.7	218.9

^a SEER 18 areas. Rates are per 100,000 and are age-adjusted to the 2000 US Std Population (19 age groups - Census P25-1130), unless noted.^b US Mortality Files, National Center for Health Statistics, Centers for Disease Control and Prevention.^c Rates are per 100,000 and are age-adjusted to the 2000 US Std Population (19 age groups - Census P25-1130), unless noted.

- Rates are per 100,000 and are age-adjusted to the IARC world standard population.

- Statistic not shown. Rate based on less than 16 cases for the time interval.

Table 15.11
Small Cell Cancer of the Lung and Bronchus^a(Invasive) and Non-Small Cell Cancer of the Lung and Bronchus^b(Invasive)

SEER Incidence^c Rates, Age-Adjusted and Age-Specific Rates, by Race and Sex

	All Races			Whites			Blacks		
	Total	Males	Females	Total	Males	Females	Total	Males	Females
<u>Small Cell Cancer of the Lung and Bronchus^a</u>									
<u>Age at Diagnosis</u>									
Age-Adjusted Rates, 2005-2009									
All ages	7.6	8.6	6.9	8.2	9.0	7.7	6.8	8.5	5.7
Under 65	2.9	3.0	2.7	3.1	3.2	3.0	2.8	3.3	2.4
65 and over	40.6	47.1	36.2	43.6	49.3	39.9	34.7	44.2	28.9
All ages (IARC world std) ^d	5.1	5.6	4.7	5.5	5.9	5.3	4.6	5.7	3.9
Age-Specific Rates, 2005-2009									
<1	-	-	-	-	-	-	-	-	-
1-4	-	-	-	-	-	-	-	-	-
5-9	-	-	-	-	-	-	-	-	-
10-14	-	-	-	-	-	-	-	-	-
15-19	-	-	-	-	-	-	-	-	-
20-24	-	-	-	-	-	-	-	-	-
25-29	-	-	-	-	-	-	-	-	-
30-34	0.1	-	-	-	-	-	-	-	-
35-39	0.3	0.3	0.3	0.3	0.3	0.3	-	-	-
40-44	1.0	1.0	1.0	1.1	1.1	1.1	1.0	1.0	1.1
45-49	3.5	3.3	3.6	3.8	3.6	4.0	3.5	3.4	3.5
50-54	7.7	8.3	7.2	8.3	8.7	7.9	8.3	9.6	7.2
55-59	13.9	15.0	13.0	15.2	15.9	14.5	12.8	15.1	11.0
60-64	25.3	27.1	23.7	27.3	28.3	26.3	24.5	31.8	18.8
65-69	38.7	40.9	36.9	42.7	43.7	41.8	30.8	37.8	25.5
70-74	46.1	50.7	42.3	49.7	53.2	46.8	41.1	49.3	35.4
75-79	49.1	56.8	43.5	52.5	59.4	47.3	41.7	53.2	34.5
80-84	40.0	52.0	32.5	42.3	53.9	34.9	35.1	47.9	28.3
85+	19.1	30.7	13.8	19.5	30.8	14.3	17.7	28.1	13.8
<u>Non-Small Cell Cancer Lung and Bronchus^b</u>									
<u>Age at Diagnosis</u>									
Age-Adjusted Rates, 2005-2009									
All ages	55.0	67.8	45.7	55.8	67.4	47.5	64.5	91.4	46.9
Under 65	16.8	18.9	14.8	16.4	17.9	14.9	25.2	32.8	19.0
65 and over	319.3	406.1	259.3	328.7	409.6	272.5	335.9	495.9	239.3
All ages (IARC world std) ^b	34.0	40.8	28.6	34.3	40.2	29.7	42.4	58.8	30.8
Age-Specific Rates, 2005-2009									
<1	-	-	-	-	-	-	-	-	-
1-4	-	-	-	-	-	-	-	-	-
5-9	-	-	-	-	-	-	-	-	-
10-14	-	-	-	-	-	-	-	-	-
15-19	0.1	0.1	0.1	0.2	-	0.2	-	-	-
20-24	0.3	0.3	0.3	0.3	0.3	0.3	-	-	-
25-29	0.6	0.5	0.6	0.5	0.5	0.6	0.6	-	-
30-34	1.2	1.1	1.4	1.2	1.0	1.4	1.4	1.2	1.5
35-39	2.8	2.6	2.9	2.7	2.5	2.9	3.1	3.4	2.8
40-44	8.3	8.0	8.6	8.0	7.7	8.3	11.8	11.9	11.8
45-49	21.4	20.9	21.9	20.5	19.4	21.6	33.7	36.1	31.6
50-54	43.4	47.8	39.2	40.9	43.5	38.3	73.0	91.8	56.8
55-59	78.2	92.2	64.9	76.1	86.7	65.8	121.9	171.1	81.4
60-64	142.7	167.6	119.9	142.8	163.4	123.4	200.1	274.0	142.0
65-69	238.7	283.7	199.3	243.5	281.0	210.0	299.3	422.7	206.8
70-74	321.3	388.3	266.6	332.6	392.3	282.8	334.2	476.9	233.9
75-79	384.0	483.2	310.7	399.0	492.4	328.6	371.4	525.2	274.7
80-84	387.6	515.4	306.7	399.9	524.0	320.6	367.7	554.3	268.7
85+	302.1	453.0	232.5	304.4	453.0	236.4	321.9	578.0	226.2

^a Small Cell Cancer of the Lung and Bronchus includes histologies 8041-8045.

^b Non-Small Cell Cancer of the Lung and Bronchus includes histologies 8000-8040, 8046-9049, 9056-9139, 9141-9589.

^c SEER 18 areas. Rates are per 100,000 and are age-adjusted to the 2000 US Std Population (19 age groups - Census P25-1130), unless noted.

^d Rates are per 100,000 and are age-adjusted to the IARC world standard population.

- Statistic not shown. Rate based on less than 16 cases for the time interval.

Table 15.12
Cancer of the Lung and Bronchus (Invasive)

5-Year Relative and Period Survival (Percent) by Race, Sex, Diagnosis Year, Stage and Age

	All Races			Whites			Blacks		
	Total	Males	Females	Total	Males	Females	Total	Males	Females
5-Year Relative Survival (Percent)									
Year of Diagnosis:									
1960-1963 ^a	-	-	-	8	7	11	5	5	6
1970-1973 ^a	-	-	-	10	9	14	7	6	10
1975-1977 ^b	12.3	11.1	15.5	12.3	11.1	15.6	11.4	10.7	13.8
1978-1980 ^b	12.8	11.4	16.3	12.9	11.5	16.3	11.8	9.8	17.9
1981-1983 ^b	13.2	11.6	16.5	13.4	11.8	16.7	11.4	10.2	14.9
1984-1986 ^b	12.9	11.3	16.0	13.1	11.4	16.3	11.2	10.5	12.8
1987-1989 ^b	13.1	12.0	15.0	13.4	12.1	15.4	11.0	10.8	11.2
1990-1992 ^b	13.6	12.1	16.0	14.0	12.5	16.2	10.5	9.3	12.6
1993-1995 ^b	14.4	12.6	16.9	14.6	12.7	17.2	12.8	11.3	15.5
1996-1998 ^b	14.7	13.0	16.9	14.9	13.1	17.1	12.4	10.9	14.9
1999-2001 ^b	15.3	13.2	18.0	15.5	13.3	18.1	12.6	10.8	15.2
2002-2008 ^b	16.9 ^f	14.8 ^f	19.2 ^f	17.3 ^f	15.2 ^f	19.7 ^f	13.5 ^f	12.6 ^f	14.6
5-Year Period Survival (Percent) ^{cd}									
2008	16.8	14.5	19.4	17.1	14.7	19.7	13.8	12.6	15.4
Stage Distribution (%) 2002-2008 ^{ce}									
All Stages									
Number of cases	269,136	144,880	124,256	223,520	118,537	104,983	29,511	16,937	12,574
Percent	100%	100%	100%	100%	100%	100%	100%	100%	100%
Localized	15	14	17	16	14	17	12	11	14
Regional	22	22	22	22	22	22	22	22	22
Distant	56	58	55	55	57	54	60	61	59
Unstaged	6	6	7	7	6	7	5	5	5
5-Year Relative Survival (Percent), 2002-2008 ^c									
Age at Diagnosis:									
Ages <45	26.1	23.1	29.2	27.7	24.3	31.1	20.8	19.9	21.9
Ages 45-54	18.9	15.5	23.2	20.0	16.3	24.5	13.9	12.0	16.5
Ages 55-64	18.4	15.8	21.9	18.9	16.2	22.3	14.6	12.9	17.3
Ages 65-74	16.6	14.3	19.4	16.9	14.5	19.7	13.3	12.7	14.2
Ages 75+	11.6	10.1	13.1	12.0	10.4	13.4	8.5	6.9	9.9
Ages <65	19.0	16.1	22.8	19.7	16.7	23.5	14.8	13.0	17.5
Ages 65+	14.1	12.3	16.1	14.4	12.5	16.3	11.3	10.5	12.1
Stage ^e :									
All Stages	15.9	13.8	18.4	16.3	14.1	18.7	13.0	11.8	14.6
Localized	52.2	47.4	56.8	52.9	47.9	57.5	44.0	40.9	47.4
Regional	25.1	22.9	27.7	25.1	23.0	27.6	22.7	21.3	24.5
Distant	3.7	3.1	4.3	3.6	3.0	4.2	3.5	3.2	3.9
Unstaged	7.9	7.0	8.9	7.5	6.3	8.8	10.1	10.4	9.9

^a Based on End Results data from a series of hospital registries and one population-based registry.

^b SEER 9 areas (San Francisco, Connecticut, Detroit, Hawaii, Iowa, New Mexico, Seattle, Utah, Atlanta).

Based on follow-up of patients into 2009.

^c SEER 18 areas (San Francisco, Connecticut, Detroit, Hawaii, Iowa, New Mexico, Seattle, Utah, Atlanta, San Jose-Monterey, Los Angeles, Alaska Native Registry, Rural Georgia, California excluding SF/SJM/LA, Kentucky, Louisiana, New Jersey and Georgia excluding ATL/RG).

Based on follow-up of patients into 2009.

^d Period survival provides a 2008 estimate of survival by piecing together the most recent conditional survival estimates from several cohorts. It is computed here using three year calendar blocks (2006-2008: 0-1 year survival), (2005-2007: 1-2 year survival), (2004-2006: 2-3 year survival), (2003-2005: 3-4 year survival), (2002-2004: 4-5 years survival).

^e Stage at diagnosis is classified using SEER Summary Stage 2000.

^f The difference between 1975-1977 and 2002-2008 is statistically significant (p<.05).

^g The standard error is between 5 and 10 percentage points.

^h The standard error is greater than 10 percentage points.

- Statistic could not be calculated due to fewer than 25 cases during the time period.

Table 15.13
Small Cell Cancer of the Lung and Bronchus (Invasive)

5-Year Relative and Period Survival (Percent) by Race, Sex, Diagnosis Year, Stage and Age

	All Races			Whites			Blacks		
	Total	Males	Females	Total	Males	Females	Total	Males	Females
5-Year Relative Survival (Percent)									
Year of Diagnosis:									
1975-1977 ^a	3.6	3.1	4.8	3.7	3.1	4.9	3.7	3.8	3.6
1978-1980 ^a	4.2	3.1	6.5	4.3	3.3	6.5	3.1	2.4	5.0
1981-1983 ^a	4.6	3.6	6.3	4.6	3.7	6.1	5.4	4.2	8.4
1984-1986 ^a	4.6	3.5	6.3	4.7	3.6	6.5	3.6	2.2	5.6
1987-1989 ^a	5.1	3.9	6.6	5.1	3.9	6.8	4.0	3.3	5.1
1990-1992 ^a	5.4	4.6	6.4	5.5	4.6	6.6	3.9	3.9	3.9
1993-1995 ^a	6.4	5.2	7.8	6.3	5.1	7.7	6.8	4.5	9.9
1996-1998 ^b	5.9	5.2	6.8	6.1	5.3	6.9	3.8	2.7	5.1
1999-2001 ^a	5.8	4.9	6.8	5.6	4.4	6.9	5.3	6.1	4.3
2002-2008 ^a	6.6 ^e	4.7 ^e	8.4 ^e	6.6 ^e	4.4 ^e	8.7 ^e	5.8 ^e	5.7 ^e	5.9
5-Year Period Survival (Percent) ^{bc}									
2008	6.4	5.1	7.6	6.3	4.8	7.7	7.0	7.0	6.7
Stage Distribution (%) 2002-2008 ^{bd}									
All Stages									
Number of cases	36,397	18,503	17,894	31,993	16,030	15,963	2,984	1,556	1,428
Percent	100%	100%	100%	100%	100%	100%	100%	100%	100%
Localized	5	5	5	5	5	5	5	5	6
Regional	21	19	22	21	19	23	21	19	23
Distant	71	73	69	71	73	68	71	73	68
Unstaged	4	4	4	4	4	4	3	4	3
5-Year Relative Survival (Percent), 2002-2008 ^b									
Age at Diagnosis:									
Ages <45	10.3	9.4	11.2	9.5	8.6	10.2	16.9	18.1 ^f	16.1 ^f
Ages 45-54	9.2	6.8	11.9	9.4	6.8	12.4	6.0	4.4	7.9
Ages 55-64	7.9	5.7	10.3	7.8	5.5	10.4	8.1	7.6	8.3
Ages 65-74	5.8	4.9	6.6	5.8	4.7	6.9	4.0	5.4	3.1
Ages 75+	3.6	3.0	4.2	3.6	3.0	4.0	4.5	2.8	5.9
Ages <65	8.4	6.2	10.8	8.3	6.0	11.0	7.8	7.0	8.6
Ages 65+	4.8	4.1	5.6	4.9	4.0	5.7	4.3	4.5	4.1
Stage ^d :									
All Stages	6.3	5.0	7.7	6.3	4.8	7.7	6.1	5.9	6.3
Localized	22.9	20.6	24.9	23.3	20.6	25.6	17.6	19.0 ^f	16.7 ^f
Regional	14.0	11.9	15.9	13.9	11.6	16.0	14.6	15.0	14.1
Distant	2.8	2.3	3.4	2.8	2.1	3.4	2.7	2.4	2.9
Unstaged	8.5	5.0	11.6	8.7	4.8	12.0	6.4	8.6	3.3

Note: Small Cell Cancer of the Lung and Bronchus includes histologies 8041-8045.

^a SEER 9 areas (San Francisco, Connecticut, Detroit, Hawaii, Iowa, New Mexico, Seattle, Utah, Atlanta).

Based on follow-up of patients into 2009.

^b SEER 18 areas (San Francisco, Connecticut, Detroit, Hawaii, Iowa, New Mexico, Seattle, Utah, Atlanta, San Jose-Monterey, Los Angeles, Alaska Native Registry, Rural Georgia, California excluding SF/SJM/LA, Kentucky, Louisiana, New Jersey and Georgia excluding ATL/RG).

Based on follow-up of patients into 2009.

^c Period survival provides a 2008 estimate of survival by piecing together the most recent conditional survival estimates from several cohorts. It is computed here using three year calendar blocks (2006-2008: 0-1 year survival), (2005-2007: 1-2 year survival), (2004-2006: 2-3 year survival), (2003-2005: 3-4 year survival), (2002-2004: 4-5 years survival).

^d Stage at diagnosis is classified using SEER Summary Stage 2000.

^e The difference between 1975-1977 and 2002-2008 is statistically significant (p<.05).

^f The standard error is between 5 and 10 percentage points.

^g The standard error is greater than 10 percentage points.

- Statistic could not be calculated due to fewer than 25 cases during the time period.

Table 15.14
Non-Small Cell Cancer of the Lung and Bronchus (Invasive)

5-Year Relative and Period Survival (Percent) by Race, Sex, Diagnosis Year, Stage and Age

	All Races			Whites			Blacks		
	Total	Males	Females	Total	Males	Females	Total	Males	Females
5-Year Relative Survival (Percent)									
Year of Diagnosis:									
1975-1977 ^a	13.7	12.4	17.5	13.8	12.4	17.6	12.4	11.5	15.9
1978-1980 ^a	14.5	12.9	18.4	14.6	13.1	18.5	12.9	10.7	19.8
1981-1983 ^a	15.0	13.1	19.0	15.3	13.4	19.4	12.2	11.0	15.9
1984-1986 ^a	14.7	12.8	18.4	15.0	13.0	18.8	12.3	11.6	14.3
1987-1989 ^a	14.8	13.6	17.1	15.2	13.7	17.6	12.0	11.9	12.3
1990-1992 ^a	15.3	13.5	18.2	15.8	14.0	18.6	11.3	9.9	14.1
1993-1995 ^a	15.9	13.8	18.9	16.3	14.0	19.3	13.6	12.1	16.4
1996-1998 ^b	16.3	14.3	18.9	16.6	14.5	19.3	13.5	11.7	16.5
1999-2001 ^a	16.9	14.5	20.0	17.3	14.8	20.2	13.6	11.3	16.8
2002-2008 ^a	18.5 ^e	16.3 ^e	21.1 ^e	19.2 ^e	16.9 ^e	21.7 ^e	14.4 ^e	13.3 ^e	15.7
5-Year Period Survival (Percent) ^{bc}									
2008	18.4	15.9	21.3	18.9	16.3	21.9	14.6	13.1	16.5
Stage Distribution (%) 2002-2008 ^{bd}									
All Stages									
Number of cases	232,739	126,377	106,362	191,527	102,507	89,020	26,527	15,381	11,146
Percent	100%	100%	100%	100%	100%	100%	100%	100%	100%
Localized	17	15	19	17	16	19	13	12	15
Regional	22	23	22	22	23	22	22	22	22
Distant	54	56	52	53	55	51	59	60	58
Unstaged	7	6	7	7	7	8	5	6	5
5-Year Relative Survival (Percent), 2002-2008 ^b									
Age at Diagnosis:									
Ages <45	28.0	24.6	31.3	30.3	26.5	34.0	21.1	20.1	22.5
Ages 45-54	20.7	17.0	25.4	22.3	18.2	27.2	14.8	12.8	17.6
Ages 55-64	20.5	17.6	24.5	21.2	18.3	25.2	15.4	13.5	18.7
Ages 65-74	18.5	15.7	21.9	18.9	16.0	22.4	14.4	13.4	15.9
Ages 75+	12.6	11.0	14.2	13.0	11.3	14.6	8.8	7.3	10.3
Ages <65	21.1	17.9	25.3	22.1	18.8	26.4	15.6	13.7	18.7
Ages 65+	15.5	13.4	17.7	15.8	13.7	18.1	12.0	11.1	13.2
Stage ^d :									
All Stages	17.5	15.1	20.3	18.0	15.5	20.7	13.8	12.4	15.7
Localized	53.6	48.6	58.4	54.3	49.2	59.0	45.2	41.7	49.0
Regional	26.7	24.2	29.8	26.9	24.5	29.7	23.6	21.9	26.0
Distant	3.8	3.3	4.5	3.8	3.2	4.4	3.6	3.3	4.0
Unstaged	7.9	7.1	8.7	7.4	6.4	8.5	10.4	10.5	10.4

Note: Non-Small Cell Cancer of the Lung and Bronchus includes histologies 8000-8040, 8046-9049, 9056-9139, 9141-9589.

^a SEER 9 areas (San Francisco, Connecticut, Detroit, Hawaii, Iowa, New Mexico, Seattle, Utah, Atlanta).

Based on follow-up of patients into 2009.

^b SEER 18 areas (San Francisco, Connecticut, Detroit, Hawaii, Iowa, New Mexico, Seattle, Utah, Atlanta, San Jose-Monterey, Los Angeles, Alaska Native Registry, Rural Georgia, California excluding SF/SJM/LA, Kentucky, Louisiana, New Jersey and Georgia excluding ATL/RG).

Based on follow-up of patients into 2009.

^c Period survival provides a 2008 estimate of survival by piecing together the most recent conditional survival estimates from several cohorts. It is computed here using three year calendar blocks (2006-2008: 0-1 year survival), (2005-2007: 1-2 year survival), (2004-2006: 2-3 year survival), (2003-2005: 3-4 year survival), (2002-2004: 4-5 years survival).

^d Stage at diagnosis is classified using SEER Summary Stage 2000.

^e The difference between 1975-1977 and 2002-2008 is statistically significant (p<.05).

^f The standard error is between 5 and 10 percentage points.

^g The standard error is greater than 10 percentage points.

- Statistic could not be calculated due to fewer than 25 cases during the time period.

Table 15.15
Cancer of the Lung and Bronchus (Invasive)

SEER^a Relative Survival (Percent)
By Year of Diagnosis

All Races, Males and Females

Survival Time	Year of Diagnosis																					
	1975- 1979	1980- 1984	1985- 1989	1990	1991	1992	1993	1994	1995	1996	1997	1998	1999	2000	2001	2002	2003	2004	2005	2006	2007	2008
1-year	36.6	38.5	39.8	40.2	41.0	40.9	40.6	40.8	41.4	40.9	41.5	41.1	42.6	42.2	41.4	41.8	42.9	43.4	44.5	45.1	45.2	46.0
2-year	21.5	22.3	22.9	23.4	23.7	24.5	24.3	24.3	25.2	25.1	25.2	25.6	26.2	26.3	25.9	26.8	26.8	28.0	28.5	29.7	30.0	
3-year	16.4	17.1	17.3	17.7	18.4	18.7	18.6	18.8	19.3	19.5	19.5	19.9	19.9	20.5	20.0	20.9	20.8	22.4	22.6	23.5		
4-year	14.0	14.5	14.7	14.9	15.6	15.8	15.8	15.9	16.6	16.3	16.7	17.1	17.0	17.7	16.9	17.6	17.9	18.9	19.4			
5-year	12.6	13.0	13.1	13.3	13.7	13.9	14.2	14.3	14.6	14.6	14.9	14.7	15.2	15.7	15.0	15.6	16.0	16.8				
6-year	11.5	11.8	11.9	12.2	12.6	12.7	13.0	13.0	13.2	13.2	13.4	13.3	13.8	14.2	13.5	14.2	14.5					
7-year	10.8	10.9	10.9	11.2	11.5	11.6	12.0	11.9	12.4	12.1	12.3	12.2	12.7	12.9	12.3	12.9						
8-year	10.1	10.0	10.1	10.3	10.6	10.7	11.0	11.1	11.5	11.2	11.3	11.2	11.9	11.9	11.4							
9-year	9.4	9.3	9.4	9.4	10.0	9.9	10.3	10.3	10.7	10.4	10.4	10.5	11.1	11.2								
10-year	8.8	8.6	8.8	8.7	9.4	9.3	9.5	9.7	10.0	9.5	9.8	10.0	10.5									
11-year	8.3	8.2	8.2	8.1	8.7	8.6	8.8	9.1	9.5	8.9	9.2	9.4										
12-year	7.9	7.7	7.7	7.5	8.2	8.2	8.2	8.3	8.9	8.3	8.4											
13-year	7.5	7.2	7.2	7.2	7.5	7.7	7.6	7.9	8.2	8.0												
14-year	7.1	6.8	6.8	6.8	6.8	7.4	7.3	7.4	7.7													
15-year	6.6	6.5	6.4	6.5	6.4	6.9	6.7	7.0														
16-year	6.4	6.0	6.1	6.1	5.9	6.5	6.4															
17-year	6.1	5.7	5.7	5.7	5.5	6.2																
18-year	5.7	5.4	5.3	5.5	5.2																	
19-year	5.4	5.0	4.9	5.2																		
20-year	5.2	4.6	4.7																			

^a Based on the SEER 9 areas (San Francisco, Connecticut, Detroit, Hawaii, Iowa, New Mexico, Seattle, Utah, and Atlanta).

Table 15.16
Cancer of the Lung and Bronchus (Invasive)

SEER^a Relative Survival (Percent)
By Year of Diagnosis

All Races, Males

Year of Diagnosis

	1975- 1979	1980- 1984	1985- 1989	1990	1991	1992	1993	1994	1995	1996	1997	1998	1999	2000	2001	2002	2003	2004	2005	2006	2007	2008
Survival Time																						
1-year	34.7	36.6	37.8	38.0	38.9	38.9	38.1	38.5	39.3	39.1	39.2	38.3	39.5	39.9	38.2	38.2	40.5	40.5	41.0	42.2	41.9	42.9
2-year	19.9	20.6	21.3	21.2	21.8	22.9	22.1	21.8	23.4	23.4	23.4	23.1	23.2	24.1	22.6	23.3	24.0	25.1	25.0	27.2	26.3	
3-year	14.9	15.4	15.8	15.8	16.8	17.3	16.3	16.4	17.5	18.0	17.9	17.5	16.8	18.4	17.4	18.1	18.4	19.7	19.5	20.9		
4-year	12.6	13.0	13.2	13.1	13.8	14.4	13.7	13.7	15.0	14.8	15.0	14.8	14.1	15.8	14.4	15.1	15.6	16.7	16.5			
5-year	11.2	11.5	11.7	11.5	12.1	12.7	12.2	12.3	13.2	13.2	13.4	12.5	12.6	14.1	12.8	13.5	14.1	14.9				
6-year	10.2	10.4	10.7	10.5	11.2	11.4	11.1	11.0	11.9	11.8	11.9	11.0	11.3	12.6	11.6	12.1	12.6					
7-year	9.5	9.5	9.8	9.7	10.0	10.5	10.2	10.0	11.3	10.7	10.8	10.1	10.4	11.3	10.4	11.1						
8-year	8.9	8.7	9.0	8.8	9.1	9.4	9.3	9.3	10.3	9.9	10.0	9.1	9.6	10.7	9.6							
9-year	8.3	8.0	8.5	7.9	8.6	8.7	8.7	8.7	9.6	9.2	9.2	8.5	8.8	9.9								
10-year	7.7	7.4	7.9	7.2	8.2	8.0	8.1	8.2	8.8	8.3	8.6	8.1	8.4									
11-year	7.2	7.1	7.4	6.6	7.5	7.4	7.3	7.7	8.4	7.5	8.0	7.5										
12-year	6.8	6.6	6.8	6.1	7.1	7.0	6.7	6.9	8.0	6.9	7.2											
13-year	6.4	6.2	6.4	5.8	6.4	6.5	6.1	6.7	7.2	6.7												
14-year	6.1	5.8	6.0	5.5	5.8	6.3	5.7	6.1	6.9													
15-year	5.6	5.5	5.7	5.1	5.3	6.0	5.3	5.8														
16-year	5.4	5.1	5.3	4.7	4.9	5.5	5.1															
17-year	5.1	4.7	4.9	4.5	4.7	5.3																
18-year	4.8	4.5	4.5	4.3	4.4																	
19-year	4.5	4.2	4.2	4.2																		
20-year	4.3	3.8	3.9																			

^a Based on the SEER 9 areas (San Francisco, Connecticut, Detroit, Hawaii, Iowa, New Mexico, Seattle, Utah, and Atlanta).

Table 15.17
Cancer of the Lung and Bronchus (Invasive)

SEER^a Relative Survival (Percent)
By Year of Diagnosis

All Races, Females

Year of Diagnosis

	1975- 1979	1980- 1984	1985- 1989	1990	1991	1992	1993	1994	1995	1996	1997	1998	1999	2000	2001	2002	2003	2004	2005	2006	2007	2008
Survival Time																						
1-year	41.7	42.6	43.6	43.6	44.4	44.0	44.4	44.0	44.5	43.3	44.5	44.8	46.3	45.1	45.4	46.1	45.9	46.7	48.4	48.3	48.8	49.4
2-year	25.7	26.0	25.8	26.8	26.6	26.8	27.6	27.7	27.7	27.3	27.4	28.9	29.9	29.0	30.2	30.8	30.1	31.3	32.4	32.7	34.0	
3-year	20.4	20.7	19.8	20.7	20.9	20.8	21.9	21.9	21.8	21.4	21.5	23.0	23.7	23.1	23.1	24.4	23.8	25.6	25.9	26.5		
4-year	17.9	17.8	17.3	17.7	18.3	18.0	18.8	19.0	18.9	18.4	18.7	20.0	20.6	20.0	19.9	20.6	20.6	21.5	22.5			
5-year	16.2	16.0	15.4	16.1	16.1	15.7	17.2	17.0	16.5	16.6	16.6	17.5	18.4	17.7	17.8	18.1	18.2	18.8				
6-year	15.0	14.7	14.2	14.7	14.8	14.6	15.8	15.8	15.0	15.1	15.2	16.1	16.9	16.1	15.8	16.5	16.7					
7-year	14.0	13.7	12.9	13.4	13.7	13.4	14.5	14.5	13.9	14.1	14.1	14.9	15.6	14.9	14.6	15.1						
8-year	13.2	12.8	12.0	12.7	12.8	12.6	13.6	13.7	13.1	13.0	13.0	13.9	14.7	13.5	13.7							
9-year	12.4	11.9	11.1	11.8	12.0	11.8	12.7	12.6	12.3	11.9	12.0	13.0	13.9	12.7								
10-year	11.6	11.1	10.5	11.0	11.3	11.1	11.5	11.7	11.6	11.0	11.3	12.3	13.1									
11-year	11.1	10.6	9.8	10.3	10.6	10.4	11.0	10.9	11.0	10.6	10.6	11.7										
12-year	10.7	9.9	9.2	9.5	9.9	9.9	10.2	10.1	10.2	9.9	9.9											
13-year	10.3	9.3	8.8	9.2	9.1	9.3	9.9	9.5	9.5	9.5												
14-year	9.7	8.9	8.2	8.7	8.4	8.9	9.5	9.1	8.7													
15-year	9.2	8.4	7.8	8.5	7.9	8.2	8.7	8.6														
16-year	8.9	8.0	7.4	8.1	7.3	8.0	8.3															
17-year	8.4	7.7	7.0	7.5	6.8	7.5																
18-year	8.1	7.2	6.7	7.1	6.3																	
19-year	7.7	6.6	6.2	6.6																		
20-year	7.4	6.3	6.1																			

^a Based on the SEER 9 areas (San Francisco, Connecticut, Detroit, Hawaii, Iowa, New Mexico, Seattle, Utah, and Atlanta).

Table 15.18
Cancer of the Lung and Bronchus (Invasive)

Risk of Being Diagnosed With Cancer in 10, 20 and 30 Years,
Lifetime Risk of Being Diagnosed with Cancer Given Alive and Cancer-Free at Current Age, and
Lifetime Risk of Dying from Cancer Given Alive at Current Age
Both Sexes, 2007-2009 By Race/Ethnicity

Race/ Ethnicity	Current Age	Risk of Being Diagnosed with Cancer				Risk of Dying from Cancer	Race/ Ethnicity	Current Age	Risk of Being Diagnosed with Cancer				Risk of Dying from Cancer
		+10 yrs	+20 yrs	+30 yrs	Ever				+10 yrs	+20 yrs	+30 yrs	Ever	
All Races	0	0.00	0.00	0.01	6.99	5.82	Asian/ Pacific Islander	0	0.00	0.00	0.01	5.69	4.33
	10	0.00	0.01	0.03	7.08	5.89		10	0.00	0.01	0.03	5.73	4.37
	20	0.00	0.03	0.20	7.10	5.91		20	0.01	0.03	0.14	5.75	4.38
	30	0.02	0.19	0.85	7.16	5.97		30	0.02	0.14	0.53	5.77	4.39
	40	0.17	0.84	2.65	7.22	6.03		40	0.11	0.51	1.58	5.78	4.41
	50	0.69	2.55	5.24	7.25	6.07		50	0.41	1.49	3.36	5.74	4.39
	60	1.98	4.85	6.64	6.98	5.90		60	1.12	3.06	4.79	5.52	4.27
	70	3.29	5.35	-	5.74	4.99		70	2.09	3.97	-	4.76	3.89
80	2.84	-	-	3.38	3.14	80	2.29	-	-	3.26	2.91		
White	0	0.00	0.00	0.01	7.19	5.96	American Indian/ Alaska Native ^a	0	0.00	0.00	0.00	4.44	4.23
	10	0.00	0.01	0.03	7.26	6.03		10	0.00	0.00	0.02	4.50	4.30
	20	0.00	0.03	0.19	7.28	6.05		20	0.00	0.02	0.14	4.53	4.33
	30	0.02	0.19	0.84	7.34	6.10		30	0.02	0.14	0.53	4.61	4.41
	40	0.17	0.83	2.69	7.41	6.16		40	0.12	0.53	1.67	4.73	4.55
	50	0.68	2.59	5.40	7.43	6.20		50	0.42	1.62	3.49	4.82	4.72
	60	2.03	5.02	6.84	7.17	6.02		60	1.29	3.32	4.41	4.75	4.74
	70	3.42	5.51	-	5.89	5.09		70	2.36	3.62	-	4.03	4.08
80	2.90	-	-	3.41	3.17	80	1.75	-	-	2.31	2.61		
Black	0	0.00	0.00	0.00	6.57	5.29	Hispanic ^b	0	0.00	0.00	0.00	4.34	3.00
	10	0.00	0.01	0.03	6.72	5.41		10	0.00	0.00	0.02	4.38	3.03
	20	0.00	0.03	0.27	6.75	5.44		20	0.00	0.02	0.08	4.39	3.04
	30	0.03	0.26	1.20	6.84	5.51		30	0.01	0.08	0.36	4.43	3.06
	40	0.24	1.20	3.25	6.96	5.61		40	0.07	0.35	1.23	4.45	3.09
	50	1.00	3.14	5.45	7.03	5.68		50	0.29	1.19	2.76	4.48	3.11
	60	2.38	4.95	6.41	6.70	5.49		60	0.95	2.59	3.92	4.40	3.07
	70	3.18	4.98	-	5.35	4.57		70	1.83	3.30	-	3.83	2.74
80	2.69	-	-	3.23	2.99	80	1.88	-	-	2.55	1.94		

Devcan Version 6.6.1, April 2012, National Cancer Institute (<http://surveillance.cancer.gov/devcan/>).

Source: Incidence data are from the SEER 18 areas (San Francisco, Connecticut, Detroit, Hawaii, Iowa, New Mexico, Seattle, Utah, Atlanta, San Jose-Monterey, Los Angeles, Alaska Native Registry, Rural Georgia, California excluding SF/SJM/LA, Kentucky, Louisiana, New Jersey, and Georgia excluding ATL/RG). Mortality data are from the NCHS public use data file for the total US.

^a Underlying incidence and mortality data for American Indian/Alaska Native are based on the CHSDA (Contract Health Service Delivery Area) counties.

^b Hispanic is not mutually exclusive from whites, blacks, Asian/Pacific Islanders, and American Indians/Alaska Natives. Underlying incidence data for Hispanics are based on NHIA and exclude cases from the Alaska Native Registry. Underlying mortality data for Hispanics exclude deaths from the District of Columbia, Minnesota, New Hampshire, North Dakota and South Carolina.

- Statistic could not be calculated.

A percent of 0.00 represents a value that is below 0.005.

Table 15.19
Cancer of the Lung and Bronchus (Invasive)

Risk of Being Diagnosed With Cancer in 10, 20 and 30 Years,
Lifetime Risk of Being Diagnosed with Cancer Given Alive and Cancer-Free at Current Age, and
Lifetime Risk of Dying from Cancer Given Alive at Current Age
Males, 2007-2009 By Race/Ethnicity

Race/ Ethnicity	Current Age	Risk of Being Diagnosed with Cancer				Risk of Dying from Cancer	Race/ Ethnicity	Current Age	Risk of Being Diagnosed with Cancer				Risk of Dying from Cancer
		+10 yrs	+20 yrs	+30 yrs	Ever				+10 yrs	+20 yrs	+30 yrs	Ever	
All Races	0	0.00	0.00	0.01	7.77	6.74	Asian/ Pacific Islander	0	0.00	0.00	0.01	7.13	5.57
	10	0.00	0.01	0.03	7.87	6.83		10	0.00	0.01	0.03	7.19	5.62
	20	0.00	0.03	0.19	7.91	6.87		20	0.01	0.03	0.15	7.21	5.63
	30	0.02	0.19	0.93	8.00	6.96		30	0.02	0.14	0.61	7.25	5.66
	40	0.17	0.92	2.95	8.11	7.06		40	0.12	0.60	1.97	7.29	5.69
	50	0.78	2.88	5.93	8.21	7.17		50	0.48	1.88	4.30	7.29	5.70
	60	2.27	5.57	7.66	8.04	7.07		60	1.46	3.98	6.29	7.10	5.60
	70	3.90	6.38	-	6.82	6.15		70	2.80	5.34	-	6.25	5.18
80	3.65	-	-	4.30	4.13	80	3.27	-	-	4.44	4.00		
White	0	0.00	0.00	0.01	7.82	6.81	American Indian/ Alaska Native ^a	0	0.00	0.00	0.00	4.83	4.64
	10	0.00	0.01	0.03	7.91	6.90		10	0.00	0.00	0.02	4.90	4.72
	20	0.00	0.03	0.18	7.95	6.93		20	0.00	0.02	0.12	4.95	4.77
	30	0.02	0.18	0.89	8.04	7.01		30	0.02	0.13	0.51	5.08	4.90
	40	0.16	0.88	2.91	8.14	7.11		40	0.11	0.51	1.79	5.25	5.10
	50	0.74	2.84	5.96	8.24	7.22		50	0.42	1.78	3.91	5.43	5.37
	60	2.26	5.63	7.73	8.08	7.12		60	1.49	3.83	5.15	5.51	5.52
	70	3.96	6.44	-	6.85	6.19		70	2.81	4.39	-	4.82	4.89
80	3.66	-	-	4.27	4.12	80	2.31	-	-	2.94	3.26		
Black	0	0.00	0.00	0.01	7.95	6.70	Hispanic ^b	0	0.00	0.00	0.00	5.02	3.95
	10	0.00	0.01	0.03	8.15	6.87		10	0.00	0.00	0.02	5.08	3.99
	20	0.00	0.03	0.28	8.21	6.92		20	0.00	0.02	0.08	5.10	4.01
	30	0.03	0.28	1.50	8.37	7.06		30	0.01	0.08	0.37	5.16	4.06
	40	0.26	1.51	4.11	8.57	7.24		40	0.06	0.36	1.35	5.21	4.10
	50	1.32	4.07	6.91	8.78	7.42		50	0.30	1.32	3.22	5.29	4.17
	60	3.15	6.42	8.24	8.55	7.34		60	1.09	3.11	4.78	5.30	4.18
	70	4.31	6.72	-	7.14	6.36		70	2.30	4.20	-	4.80	3.82
80	4.00	-	-	4.69	4.51	80	2.55	-	-	3.35	2.82		

Devcan Version 6.6.1, April 2012, National Cancer Institute (<http://surveillance.cancer.gov/devcan/>).

Source: Incidence data are from the SEER 18 areas (San Francisco, Connecticut, Detroit, Hawaii, Iowa, New Mexico, Seattle, Utah, Atlanta, San Jose-Monterey, Los Angeles, Alaska Native Registry, Rural Georgia, California excluding SF/SJM/LA, Kentucky, Louisiana, New Jersey, and Georgia excluding ATL/RG). Mortality data are from the NCHS public use data file for the total US.

^a Underlying incidence and mortality data for American Indian/Alaska Native are based on the CHSDA (Contract Health Service Delivery Area) counties.

^b Hispanic is not mutually exclusive from whites, blacks, Asian/Pacific Islanders, and American Indians/Alaska Natives. Underlying incidence data for Hispanics are based on NHIA and exclude cases from the Alaska Native Registry. Underlying mortality data for Hispanics exclude deaths from the District of Columbia, Minnesota, New Hampshire, North Dakota and South Carolina.

- Statistic could not be calculated.

A percent of 0.00 represents a value that is below 0.005.

Table 15.20
Cancer of the Lung and Bronchus (Invasive)

Risk of Being Diagnosed With Cancer in 10, 20 and 30 Years,
Lifetime Risk of Being Diagnosed with Cancer Given Alive and Cancer-Free at Current Age, and
Lifetime Risk of Dying from Cancer Given Alive at Current Age
Females, 2007-2009 By Race/Ethnicity

Race/ Ethnicity	Current Age	Risk of Being Diagnosed with Cancer				Risk of Dying from Cancer	Race/ Ethnicity	Current Age	Risk of Being Diagnosed with Cancer				Risk of Dying from Cancer
		+10 yrs	+20 yrs	+30 yrs	Ever				+10 yrs	+20 yrs	+30 yrs	Ever	
All Races	0	0.00	0.00	0.01	6.35	5.02	Asian/ Pacific Islander	0	0.00	0.00	0.01	4.49	3.34
	10	0.00	0.01	0.03	6.41	5.08		10	0.00	0.01	0.03	4.52	3.36
	20	0.00	0.03	0.20	6.43	5.09		20	0.01	0.03	0.13	4.53	3.37
	30	0.02	0.20	0.78	6.46	5.12		30	0.03	0.13	0.46	4.54	3.37
	40	0.17	0.76	2.37	6.49	5.15		40	0.10	0.44	1.24	4.53	3.38
	50	0.60	2.24	4.63	6.45	5.14		50	0.34	1.15	2.58	4.47	3.35
	60	1.72	4.22	5.80	6.13	4.94		60	0.83	2.30	3.58	4.24	3.24
	70	2.80	4.56	-	4.93	4.12		70	1.56	2.92	-	3.62	2.92
80	2.31	-	-	2.79	2.53	80	1.61	-	-	2.43	2.16		
White	0	0.00	0.00	0.01	6.67	5.23	American Indian/ Alaska Native ^a	0	0.00	0.00	0.00	4.11	3.87
	10	0.00	0.01	0.03	6.73	5.28		10	0.00	0.00	0.02	4.16	3.93
	20	0.00	0.03	0.20	6.74	5.29		20	0.00	0.02	0.15	4.18	3.95
	30	0.02	0.20	0.80	6.77	5.31		30	0.02	0.15	0.55	4.23	3.99
	40	0.17	0.78	2.47	6.80	5.35		40	0.14	0.55	1.56	4.29	4.07
	50	0.62	2.34	4.89	6.76	5.33		50	0.43	1.47	3.13	4.31	4.16
	60	1.81	4.48	6.11	6.43	5.11		60	1.11	2.87	3.79	4.14	4.11
	70	2.98	4.80	-	5.15	4.25		70	1.99	3.03	-	3.42	3.47
80	2.40	-	-	2.86	2.57	80	1.37	-	-	1.89	2.21		
Black	0	0.00	0.00	0.00	5.40	4.11	Hispanic ^b	0	0.00	0.00	0.00	3.80	2.22
	10	0.00	0.00	0.03	5.51	4.20		10	0.00	0.00	0.02	3.83	2.24
	20	0.00	0.03	0.25	5.53	4.21		20	0.00	0.02	0.09	3.84	2.24
	30	0.03	0.25	0.95	5.57	4.24		30	0.01	0.09	0.35	3.85	2.25
	40	0.23	0.93	2.50	5.62	4.29		40	0.08	0.34	1.13	3.86	2.26
	50	0.73	2.36	4.22	5.59	4.29		50	0.27	1.07	2.36	3.84	2.26
	60	1.76	3.78	4.99	5.27	4.10		60	0.83	2.17	3.24	3.69	2.19
	70	2.38	3.80	-	4.14	3.39		70	1.45	2.62	-	3.11	1.94
80	1.98	-	-	2.46	2.19	80	1.43	-	-	2.04	1.39		

Devcan Version 6.6.1, April 2012, National Cancer Institute (<http://surveillance.cancer.gov/devcan/>).

Source: Incidence data are from the SEER 18 areas (San Francisco, Connecticut, Detroit, Hawaii, Iowa, New Mexico, Seattle, Utah, Atlanta, San Jose-Monterey, Los Angeles, Alaska Native Registry, Rural Georgia, California excluding SF/SJM/LA, Kentucky, Louisiana, New Jersey, and Georgia excluding ATL/RG). Mortality data are from the NCHS public use data file for the total US.

^a Underlying incidence and mortality data for American Indian/Alaska Native are based on the CHSDA (Contract Health Service Delivery Area) counties.

^b Hispanic is not mutually exclusive from whites, blacks, Asian/Pacific Islanders, and American Indians/Alaska Natives. Underlying incidence data for Hispanics are based on NHIA and exclude cases from the Alaska Native Registry. Underlying mortality data for Hispanics exclude deaths from the District of Columbia, Minnesota, New Hampshire, North Dakota and South Carolina.

- Statistic could not be calculated.

A percent of 0.00 represents a value that is below 0.005.

Table 15.21
Lung and Bronchus (Invasive)

SEER Incidence and U.S. Mortality
Age-Adjusted Rates and Trends^a
By Race/Ethnicity and Sex

SEER Incidence	SEER 18 Areas ^b			SEER 13 Areas ^b			SEER 9 Areas ^b		
	Rate 2005-2009			Trend 2000-2009 ^c			Trend 2000-2009 ^d		
	Rate per 100,000 persons			AAPC (%)			AAPC (%)		
RACE/ETHNICITY	Total	Males	Females	Total	Males	Females	Total	Males	Females
All Races	62.6	76.4	52.7	-1.1*	-2.0*	-0.5	-0.8*	-1.8*	-0.2
White	64.1	76.4	55.1	-1.0*	-2.0*	-0.5*	-1.0*	-1.8*	-0.4
White Hispanic ^e	32.5	41.2	26.2	-1.4*	-2.2*	-0.5*	-	-	-
White Non-Hispanic ^e	68.6	81.4	59.3	-0.9*	-1.8*	-0.3	-	-	-
Black	71.3	99.9	52.6	-1.4*	-2.5*	0.2	-1.0*	-2.0*	0.4
Asian/Pacific Islander	38.7	52.2	28.8	-0.6*	-1.1*	0.4	-	-	-
Amer Ind/Alaska Nat ^f	43.6	51.9	37.4	-0.4	-1.4	1.1	-	-	-
Hispanic ^e	31.9	40.5	25.8	-1.3*	-2.1*	-0.4	-	-	-
<u>U.S. Mortality^g</u>									
U.S. Mortality ^g	Rate 2005-2009			Trend 2000-2009 ^h					
	Rate per 100,000 persons			AAPC (%)					
	Total	Males	Females	Total	Males	Females			
All Races	50.6	65.7	39.6	-1.5*	-2.3*	-0.6*			
White	51.2	65.3	40.8	-1.4*	-2.2*	-0.5*			
White Hispanic ^e	21.8	31.6	14.5	-2.2*	-3.1*	-0.5*			
White Non-Hispanic ^e	53.7	68.0	43.1	-1.2*	-2.0*	-0.4*			
Black	55.4	82.6	38.0	-2.3*	-3.0*	-1.1*			
Asian/Pacific Islander	25.8	35.9	18.5	-1.1*	-1.5*	-0.3			
Amer Ind/Alaska Nat									
Total U.S.	32.7	40.1	27.1	-1.0*	-2.3*	-1.0			
CHSDA Counties	39.6	48.3	33.2	-0.1	-1.2*	1.2*			
Non-CHSDA Counties	24.3	30.4	19.5	-3.3	-3.7*	-2.0*			
Hispanic ^e	21.2	30.8	14.0	-2.2*	-3.3*	-1.1*			

The AAPC is the Average Annual Percent Change over the time interval. The AAPCs are calculated by the Joinpoint Regression Program Version 3.5, April 2011, National Cancer Institute.

- Statistic not shown. Rate based on less than 16 cases for the time interval.

Trend based on less than 10 cases for at least one year within the time interval.

a Rates are age-adjusted to the 2000 US Std Population (19 age groups - Census P25-1130). Trends

are based on rates age-adjusted to the 2000 US Std Population (19 age groups - Census P25-1130).

b The SEER 9 areas are San Francisco, Connecticut, Detroit, Hawaii, Iowa, New Mexico, Seattle, Utah, and Atlanta.

The SEER 13 areas comprise the SEER 9 areas plus San Jose-Monterey, Los Angeles, the Alaska Native Registry, and Rural Georgia.

The SEER 18 areas comprise the SEER 13 areas plus California excluding SF/SJM/LA, Kentucky, Louisiana, New Jersey, and Georgia excluding ATL/RG.

c The 2000-2009 AAPC estimates are based on a Joinpoint analysis with up to 3 Joinpoints over diagnosis years 1992-2009.

d The 2000-2009 AAPC estimates are based on a Joinpoint analysis with up to 5 Joinpoints over diagnosis years 1975-2009.

e Hispanic and Non-Hispanic are not mutually exclusive from whites, blacks, Asian/Pacific Islanders, and American Indians/Alaska Natives. Incidence data for Hispanics and Non-Hispanics are based on NHIA and exclude cases from the Alaska Native Registry. The 2005-2009 Hispanic and Non-Hispanic death rates exclude deaths from the District of Columbia, North Dakota, and South Carolina. The 2000-2009 Hispanic and Non-Hispanic mortality trends exclude deaths from Connecticut, the District of Columbia, Maine, Maryland, Minnesota, New Hampshire, New York, North Dakota, Oklahoma, South Carolina and Vermont.

f Incidence data for American Indian/Alaska Native are based on the CHSDA(Contract Health Service Delivery Area) counties.

g US Mortality Files, National Center for Health Statistics, CDC.

h The 2000-2009 mortality AAPCs are based on a Joinpoint analysis using years of death 1992-2009.

* The APC is significantly different from zero (p<.05).

Table 15.22
Cancer of the Lung And Bronchus (Invasive)

Age-Adjusted SEER Incidence Rates^a
By Registry, Race and Sex

	All Races			Whites			Blacks		
	Total	Males	Females	Total	Males	Females	Total	Males	Females
<u>SEER Incidence Rates^a, 2005-2009</u>									
California	52.44	62.41	45.24	53.79	62.51	47.54	66.72	87.53	52.66
Greater Bay Area	49.14	56.64	43.86	49.86	54.69	46.65	71.53	88.18	60.30
San Francisco-Oakland	51.13	59.25	45.49	51.35	56.30	48.13	73.52	90.80	62.10
San Jose-Monterey	45.17	51.48	40.61	47.24	51.86	44.08	57.26	71.15	46.05
Los Angeles	45.62	56.90	37.53	45.06	54.25	38.46	64.46	87.65	49.58
Greater California	56.76	66.93	49.36	58.34	67.95	51.39	67.37	88.40	52.30
Connecticut	67.97	78.54	61.02	68.86	78.60	62.61	61.10	81.14	47.52
Detroit	80.35	97.12	68.85	79.29	93.43	69.77	88.76	117.66	69.84
Georgia	71.65	95.60	54.75	74.99	96.45	59.50	63.30	97.01	42.44
Atlanta	56.70	70.43	47.11	55.71	65.18	49.15	61.97	90.12	45.10
Rural Georgia	74.55	108.13	49.21	83.46	114.37	58.13	56.13	90.79	33.74
Greater Georgia	78.44	106.46	58.64	82.15	107.90	63.57	65.35	102.83	41.79
Hawaii	52.92	68.71	40.36	60.98	70.52	53.53	42.53	55.99	-
Iowa	69.48	87.61	56.34	69.10	87.02	56.12	111.41	158.47	77.81
Kentucky	100.41	128.23	80.12	100.51	127.81	80.51	108.37	149.03	81.92
Louisiana	76.88	101.95	58.20	76.35	96.80	60.82	80.67	122.61	52.57
New Jersey	64.47	76.06	56.76	66.20	76.76	59.34	64.64	86.73	50.78
New Mexico	46.59	55.66	39.29	48.68	57.64	41.42	52.73	72.22	34.86
Seattle-Puget Sound	65.94	74.87	59.58	67.18	74.99	61.76	72.14	92.44	56.31
Utah	27.72	33.78	22.75	27.69	33.70	22.76	43.28	-	-
9 SEER Areas ^b	60.81	72.51	52.37	61.48	71.54	54.34	73.93	99.00	57.33
11 SEER Areas ^b	56.59	67.92	48.42	57.36	66.99	50.51	71.26	95.61	55.18
13 SEER Areas ^b	56.73	68.16	48.47	57.45	67.14	50.53	71.01	95.50	54.84
18 SEER Areas ^b	62.64	76.41	52.65	64.06	76.43	55.13	71.34	99.87	52.58

^a Rates are per 100,000 and are age-adjusted to the 2000 US Std Population (19 age groups - Census P25-1130)

^b The SEER 9 areas are San Francisco, Connecticut, Detroit, Hawaii, Iowa, New Mexico, Seattle, Utah and Atlanta.

The SEER 11 areas comprise the SEER 9 areas plus San Jose-Monterey and Los Angeles.

The SEER 13 areas comprise the SEER 11 areas plus the Alaska Native Registry and Rural Georgia.

The SEER 18 areas comprise the SEER 13 areas plus California excluding SF/SJM/LA, Kentucky, Louisiana, New Jersey and Georgia excluding ATL/RG.

- Statistic not shown. Rate based on less than 16 cases for the time interval.

Table 15.23
Cancer of the Lung And Bronchus (Invasive)

Age-Adjusted SEER Death Rates^a
By Registry, Race and Sex

	All Races			Whites			Blacks		
	Total	Males	Females	Total	Males	Females	Total	Males	Females
<u>SEER Death Rates^a, 2005-2009</u>									
California	39.86	49.18	33.07	41.04	49.36	34.98	53.43	72.81	40.36
Greater Bay Area	36.17	43.40	31.00	37.00	41.92	33.58	57.26	76.50	44.44
San Francisco-Oakland	37.46	45.08	32.05	37.66	42.36	34.40	59.05	78.90	45.95
San Jose-Monterey	33.62	40.14	28.90	35.89	41.25	32.16	44.98	63.95	31.81
Los Angeles	35.40	45.84	27.93	34.67	43.12	28.58	52.93	73.28	39.79
Greater California	43.22	52.73	36.21	44.68	53.91	37.90	51.78	70.43	38.42
Connecticut	45.66	55.88	38.82	46.25	55.99	39.78	42.55	61.34	30.97
Detroit	55.55	70.45	45.30	54.66	67.70	45.72	62.10	86.12	46.57
Georgia	53.90	75.81	38.74	55.89	75.96	41.59	49.58	79.61	31.53
Atlanta	41.38	54.14	32.63	39.87	49.69	32.96	47.84	71.97	33.93
Rural Georgia	53.55	81.48	33.05	56.11	80.28	37.16	48.69	84.22	26.62
Greater Georgia	59.56	85.17	41.78	61.96	85.80	44.99	51.41	85.15	30.75
Hawaii	37.66	51.17	27.02	48.26	58.81	39.86	27.11	-	-
Iowa	51.20	67.46	39.41	51.17	67.27	39.51	73.77	113.20	43.84
Kentucky	74.03	99.67	55.51	74.12	99.52	55.67	80.28	114.27	58.12
Louisiana	60.99	84.36	44.12	59.86	79.18	45.72	65.70	104.04	40.59
New Jersey	46.17	57.88	38.28	47.48	58.71	39.93	48.76	68.97	36.49
New Mexico	35.88	44.42	29.12	37.68	46.35	30.80	37.12	52.68	22.11
Seattle-Puget Sound	48.22	56.19	42.45	49.44	56.91	44.07	54.87	65.44	45.90
Utah	21.45	28.06	16.10	21.26	27.75	16.00	44.87	66.72	-
9 SEER Areas ^b	43.67	54.46	35.88	44.28	53.95	37.31	54.39	76.19	40.25
11 SEER Areas ^b	41.29	51.77	33.72	41.87	51.08	35.23	53.93	75.29	40.05
13 SEER Areas ^b	41.47	52.01	33.84	42.02	51.28	35.32	53.81	75.32	39.82
18 SEER Areas ^b	46.55	59.39	37.24	47.60	59.45	39.00	55.08	80.69	38.54
Total U.S.	50.63	65.65	39.65	51.19	65.31	40.78	55.42	82.55	38.01

^a US Mortality Files, National Center for Health Statistics, Centers for Disease Control and Prevention. Rates are per 100,000 and are age-adjusted to the 2000 US Std Population (19 age groups - Census P25-1130).

^b The SEER 9 areas are San Francisco, Connecticut, Detroit, Hawaii, Iowa, New Mexico, Seattle, Utah and Atlanta. The SEER 11 areas comprise the SEER 9 areas plus San Jose-Monterey and Los Angeles.

The SEER 13 areas comprise the SEER 11 areas plus the Alaska Native Registry and Rural Georgia.

The SEER 18 areas comprise the SEER 13 areas plus California excluding SF/SJM/LA, Kentucky, Louisiana, New Jersey and Georgia excluding ATL/RG.

- Statistic not shown. Rate based on less than 16 cases for the time interval.

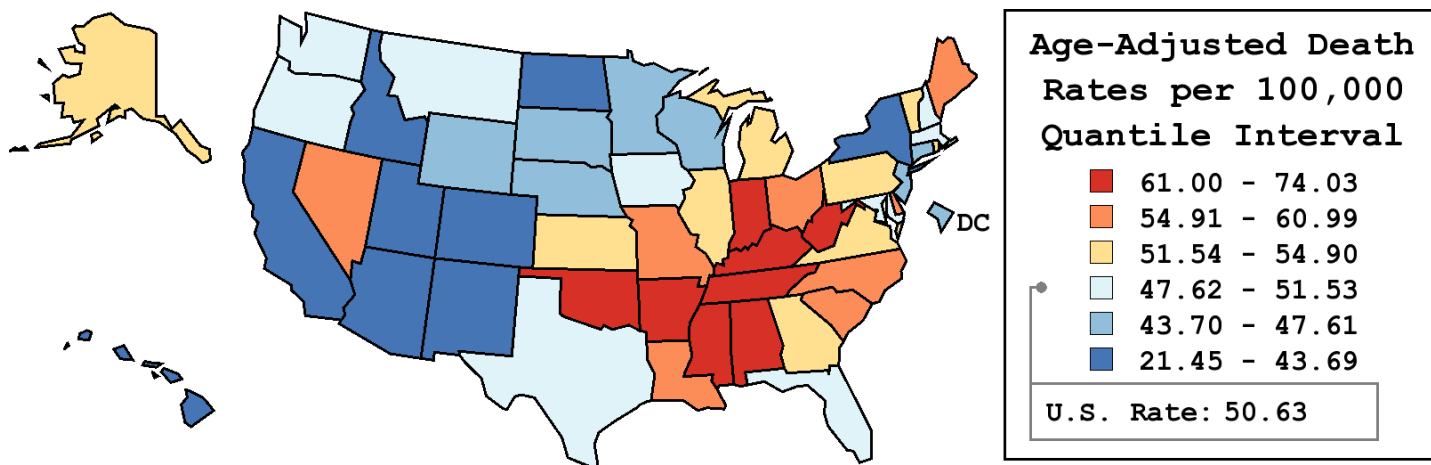
Table 15.24
Cancer of the Lung and Bronchus (Invasive)

Age-Adjusted Cancer Death^a Rates By State, All Races, 2005-2009

Males and Females

State	Rate	SE	Rank	PD
TOTAL U.S.	50.63	0.06		
High Five States				
Kentucky	74.03 ^b	0.57	(01)	46.20 ^c
West Virginia	66.99 ^b	0.77	(02)	32.30 ^c
Arkansas	66.24 ^b	0.65	(03)	30.83 ^c
Tennessee	65.74 ^b	0.45	(04)	29.83 ^c
Mississippi	65.11 ^b	0.66	(05)	28.59 ^c
Low Five States				
California	39.86 ^b	0.16	(47)	-21.28 ^c
Hawaii	37.66 ^b	0.72	(48)	-25.63 ^c
Colorado	37.36 ^b	0.43	(49)	-26.20 ^c
New Mexico	35.88 ^b	0.60	(50)	-29.14 ^c
Utah	21.45 ^b	0.47	(51)	-57.63 ^c

State	Rate	SE	Rank	PD	State	Rate	SE	Rank	PD
Alabama	61.28 ^b	0.49	(08)	21.04 ^c	Montana	48.15	0.94	(33)	-4.91
Alaska	53.27	1.65	(20)	5.20 ^c	Nebraska	47.27 ^b	0.71	(36)	-6.63 ^c
Arizona	40.85 ^b	0.35	(46)	-19.33 ^c	Nevada	55.06 ^b	0.69	(16)	8.75 ^c
Arkansas	66.24 ^b	0.65	(03)	30.83 ^c	New Hampshire	50.77	0.85	(29)	0.27
California	39.86 ^b	0.16	(47)	-21.28 ^c	New Jersey	46.17 ^b	0.32	(39)	-8.82 ^c
Colorado	37.36 ^b	0.43	(49)	-26.20 ^c	New Mexico	35.88 ^b	0.60	(50)	-29.14 ^c
Connecticut	45.66 ^b	0.49	(40)	-9.83 ^c	New York	43.69 ^b	0.20	(44)	-13.71 ^c
Delaware	57.32 ^b	1.09	(13)	13.21 ^c	North Carolina	57.27 ^b	0.35	(14)	13.10 ^c
D.C.	46.73	1.28	(38)	-7.71 ^c	North Dakota	43.69 ^b	1.10	(43)	-13.71 ^c
Florida	50.16	0.21	(31)	-0.93	Ohio	58.14 ^b	0.30	(11)	14.82 ^c
Georgia	53.90 ^b	0.37	(18)	6.45 ^c	Oklahoma	62.13 ^b	0.57	(06)	22.71 ^c
Hawaii	37.66 ^b	0.72	(48)	-25.63 ^c	Oregon	51.14	0.51	(28)	1.01
Idaho	42.53 ^b	0.77	(45)	-16.00 ^c	Pennsylvania	51.71 ^b	0.26	(24)	2.13
Illinois	52.43 ^b	0.29	(22)	3.55	Rhode Island	52.03	0.93	(23)	2.77
Indiana	61.63 ^b	0.44	(07)	21.72 ^c	South Carolina	56.81 ^b	0.49	(15)	12.20 ^c
Iowa	51.20	0.55	(27)	1.13	South Dakota	46.93 ^b	1.02	(37)	-7.32 ^c
Kansas	53.50 ^b	0.61	(19)	5.66 ^c	Tennessee	65.74 ^b	0.45	(04)	29.83 ^c
Kentucky	74.03 ^b	0.57	(01)	46.20 ^c	Texas	47.66 ^b	0.22	(34)	-5.88 ^c
Louisiana	60.99 ^b	0.53	(09)	20.45 ^c	Utah	21.45 ^b	0.47	(51)	-57.63 ^c
Maine	57.55 ^b	0.85	(12)	13.65 ^c	Vermont	51.55	1.21	(25)	1.82
Maryland	51.53	0.43	(26)	1.77	Virginia	53.10 ^b	0.38	(21)	4.88
Massachusetts	50.47	0.38	(30)	-0.32	Washington	49.25	0.40	(32)	-2.73
Michigan	54.90 ^b	0.32	(17)	8.43 ^c	West Virginia	66.99 ^b	0.77	(02)	32.30 ^c
Minnesota	44.68 ^b	0.41	(42)	-11.77 ^c	Wisconsin	47.61 ^b	0.40	(35)	-5.96 ^c
Mississippi	65.11 ^b	0.66	(05)	28.59 ^c	Wyoming	44.79 ^b	1.31	(41)	-11.55 ^c
Missouri	60.16 ^b	0.43	(10)	18.82 ^c					



^a US Mortality Files, National Center for Health Statistics, Centers for Disease Control and Prevention. Rates are per 100,000 and are age-adjusted to the 2000 US Std Population (19 age groups - Census P25-1130).
^b Difference between state rate and total U.S. rate is statistically significant (p<=.0002).
^c Absolute percent difference between state rate and total U.S. rate is 5% or more.
SE Standard error of the rate.
PD Percent difference between state rate and total U.S. rate.
- Statistic not shown. Rate based on less than 16 cases for the time interval.

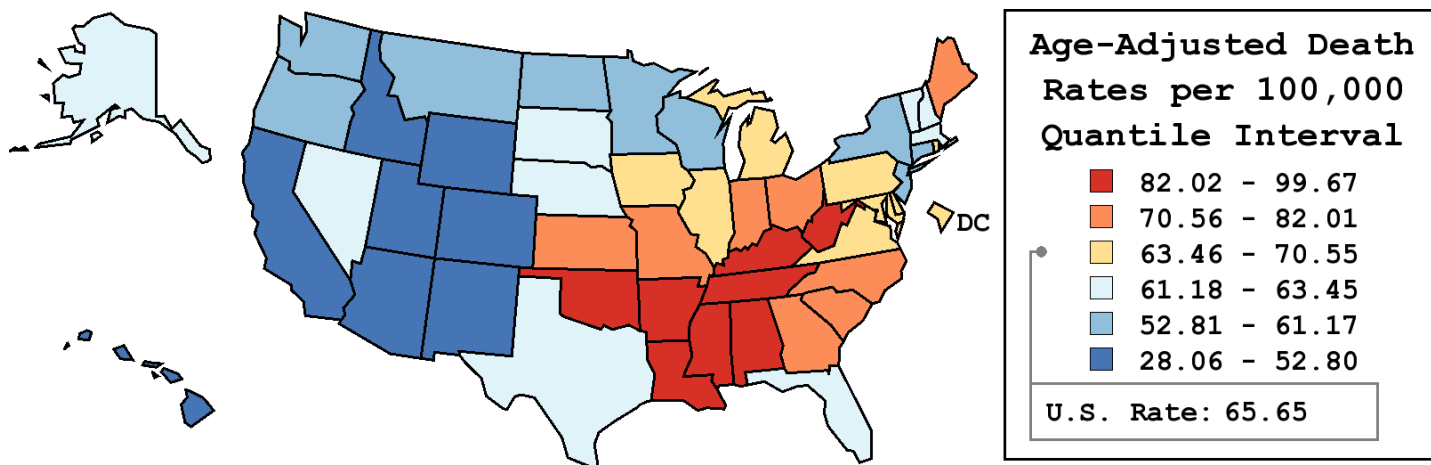
Table 15.25
Cancer of the Lung and Bronchus (Invasive)

Age-Adjusted Cancer Death^a Rates By State, All Races, 2005-2009

Males

State	Rate	SE	Rank	PD
TOTAL U.S.	65.65	0.10		
High Five States				
Kentucky	99.67 ^b	1.03	(01)	51.81 ^c
Mississippi	97.29 ^b	1.27	(02)	48.19 ^c
Arkansas	92.54 ^b	1.16	(03)	40.96 ^c
Tennessee	91.49 ^b	0.82	(04)	39.35 ^c
Alabama	89.39 ^b	0.92	(05)	36.16 ^c
Low Five States				
Arizona	50.25 ^b	0.58	(47)	-23.46 ^c
California	49.18 ^b	0.27	(48)	-25.09 ^c
Colorado	45.11 ^b	0.72	(49)	-31.29 ^c
New Mexico	44.42 ^b	1.00	(50)	-32.34 ^c
Utah	28.06 ^b	0.81	(51)	-57.26 ^c

State	Rate	SE	Rank	PD	State	Rate	SE	Rank	PD
Alabama	89.39 ^b	0.92	(05)	36.16 ^c	Montana	57.09 ^b	1.53	(39)	-13.04 ^c
Alaska	62.89	2.72	(28)	-4.21	Nebraska	62.42	1.24	(31)	-4.92
Arizona	50.25 ^b	0.58	(47)	-23.46 ^c	Nevada	62.53	1.09	(30)	-4.75
Arkansas	92.54 ^b	1.16	(03)	40.96 ^c	New Hampshire	61.97	1.44	(33)	-5.60 ^c
California	49.18 ^b	0.27	(48)	-25.09 ^c	New Jersey	57.88 ^b	0.55	(38)	-11.84 ^c
Colorado	45.11 ^b	0.72	(49)	-31.29 ^c	New Mexico	44.42 ^b	1.00	(50)	-32.34 ^c
Connecticut	55.88 ^b	0.84	(41)	-14.88 ^c	New York	55.25 ^b	0.36	(42)	-15.85 ^c
Delaware	69.24	1.83	(19)	5.47 ^c	North Carolina	79.28 ^b	0.65	(12)	20.76 ^c
D.C.	64.74	2.41	(25)	-1.39	North Dakota	56.55 ^b	1.87	(40)	-13.86 ^c
Florida	63.45 ^b	0.35	(26)	-3.35	Ohio	77.38 ^b	0.54	(13)	17.86 ^c
Georgia	75.81 ^b	0.70	(14)	15.47 ^c	Oklahoma	82.67 ^b	1.00	(08)	25.92 ^c
Hawaii	51.17 ^b	1.26	(46)	-22.06 ^c	Oregon	61.17 ^b	0.84	(35)	-6.83 ^c
Idaho	51.32 ^b	1.27	(45)	-21.83 ^c	Pennsylvania	68.47 ^b	0.46	(20)	4.29
Illinois	67.78 ^b	0.51	(21)	3.25	Rhode Island	66.32	1.64	(23)	1.02
Indiana	82.01 ^b	0.78	(09)	24.92 ^c	South Carolina	79.62 ^b	0.90	(11)	21.28 ^c
Iowa	67.46	0.95	(22)	2.75	South Dakota	62.19	1.76	(32)	-5.28 ^c
Kansas	70.61 ^b	1.06	(16)	7.56 ^c	Tennessee	91.49 ^b	0.82	(04)	39.35 ^c
Kentucky	99.67 ^b	1.03	(01)	51.81 ^c	Texas	63.43 ^b	0.39	(27)	-3.38
Louisiana	84.36 ^b	0.96	(07)	28.50 ^c	Utah	28.06 ^b	0.81	(51)	-57.26 ^c
Maine	73.11 ^b	1.46	(15)	11.36 ^c	Vermont	61.60	2.03	(34)	-6.18 ^c
Maryland	65.58	0.77	(24)	-0.11	Virginia	70.55 ^b	0.68	(17)	7.46 ^c
Massachusetts	62.60 ^b	0.66	(29)	-4.65	Washington	58.07 ^b	0.66	(37)	-11.54 ^c
Michigan	70.34 ^b	0.56	(18)	7.15 ^c	West Virginia	87.53 ^b	1.35	(06)	33.32 ^c
Minnesota	55.20 ^b	0.70	(43)	-15.91 ^c	Wisconsin	59.94 ^b	0.68	(36)	-8.69 ^c
Mississippi	97.29 ^b	1.27	(02)	48.19 ^c	Wyoming	52.80 ^b	2.13	(44)	-19.57 ^c
Missouri	79.80 ^b	0.77	(10)	21.56 ^c					



^a US Mortality Files, National Center for Health Statistics, Centers for Disease Control and Prevention. Rates are per 100,000 and are age-adjusted to the 2000 US Std Population (19 age groups - Census P25-1130).
^b Difference between state rate and total U.S. rate is statistically significant (p<=.0002).
^c Absolute percent difference between state rate and total U.S. rate is 5% or more.
SE Standard error of the rate.
PD Percent difference between state rate and total U.S. rate.
- Statistic not shown. Rate based on less than 16 cases for the time interval.

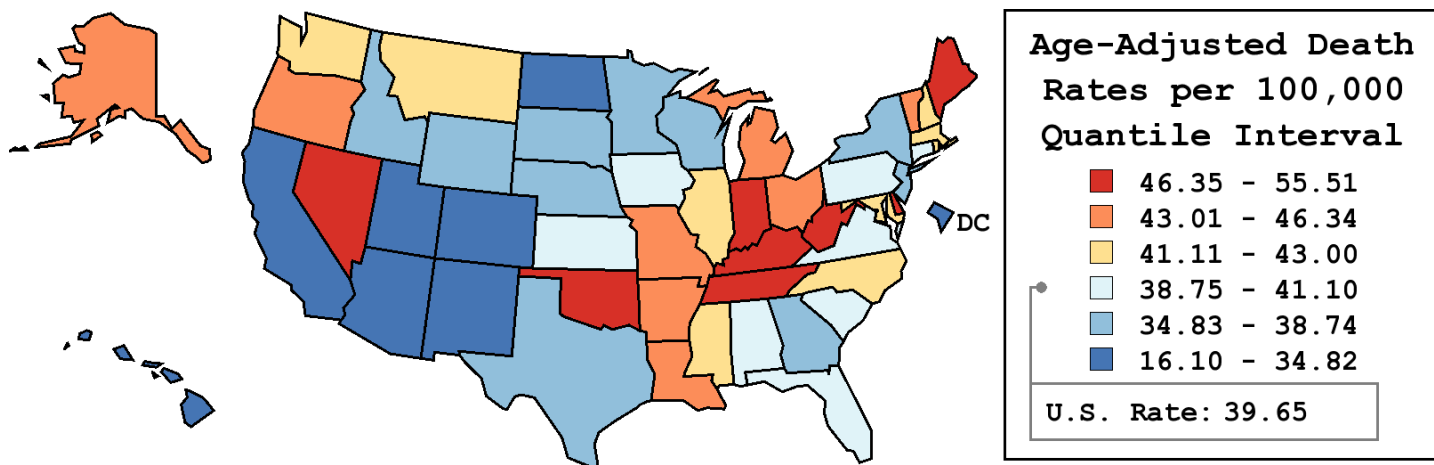
Table 15.26
Cancer of the Lung And Bronchus (Invasive)

Age-Adjusted Cancer Death^a Rates By State, All Races, 2005-2009

Females

State	Rate	SE	Rank	PD
TOTAL U.S.	39.65	0.07		
High Five States				
Kentucky	55.51 ^b	0.66	(01)	40.01 ^c
West Virginia	51.87 ^b	0.92	(02)	30.83 ^c
Nevada	48.81 ^b	0.89	(03)	23.11 ^c
Delaware	48.48 ^b	1.35	(04)	22.29 ^c
Indiana	47.21 ^b	0.51	(05)	19.09 ^c
Low Five States				
California	33.07 ^b	0.19	(47)	-16.60 ^c
Colorado	31.93 ^b	0.53	(48)	-19.47 ^c
New Mexico	29.12 ^b	0.73	(49)	-26.54 ^c
Hawaii	27.02 ^b	0.83	(50)	-31.84 ^c
Utah	16.10 ^b	0.55	(51)	-59.40 ^c

State	Rate	SE	Rank	PD	State	Rate	SE	Rank	PD
Alabama	41.10	0.54	(26)	3.65	Montana	41.33	1.19	(25)	4.23
Alaska	45.53	2.08	(11)	14.83 ^c	Nebraska	36.04 ^b	0.83	(39)	-9.10 ^c
Arizona	33.20 ^b	0.43	(46)	-16.26 ^c	Nevada	48.81 ^b	0.89	(03)	23.11 ^c
Arkansas	46.34 ^b	0.73	(09)	16.89 ^c	New Hampshire	42.97	1.06	(18)	8.38 ^c
California	33.07 ^b	0.19	(47)	-16.60 ^c	New Jersey	38.28 ^b	0.38	(37)	-3.45
Colorado	31.93 ^b	0.53	(48)	-19.47 ^c	New Mexico	29.12 ^b	0.73	(49)	-26.54 ^c
Connecticut	38.82	0.60	(33)	-2.09	New York	35.82 ^b	0.25	(41)	-9.65 ^c
Delaware	48.48 ^b	1.35	(04)	22.29 ^c	North Carolina	41.62 ^b	0.40	(24)	4.97
D.C.	34.82	1.44	(44)	-12.19 ^c	North Dakota	34.33 ^b	1.34	(45)	-13.41 ^c
Florida	39.33	0.25	(32)	-0.79	Ohio	44.51 ^b	0.35	(12)	12.27 ^c
Georgia	38.74	0.41	(35)	-2.29	Oklahoma	46.87 ^b	0.66	(07)	18.21 ^c
Hawaii	27.02 ^b	0.83	(50)	-31.84 ^c	Oregon	43.59 ^b	0.63	(16)	9.94 ^c
Idaho	35.59 ^b	0.97	(42)	-10.24 ^c	Pennsylvania	40.01	0.31	(29)	0.92
Illinois	41.89 ^b	0.34	(22)	5.65 ^c	Rhode Island	43.00	1.13	(17)	8.45 ^c
Indiana	47.21 ^b	0.51	(05)	19.09 ^c	South Carolina	39.99	0.55	(30)	0.86
Iowa	39.41	0.65	(31)	-0.59	South Dakota	35.48	1.21	(43)	-10.50 ^c
Kansas	41.00	0.72	(27)	3.41	Tennessee	47.18 ^b	0.51	(06)	18.99 ^c
Kentucky	55.51 ^b	0.66	(01)	40.01 ^c	Texas	35.94 ^b	0.25	(40)	-9.34 ^c
Louisiana	44.12 ^b	0.60	(14)	11.28 ^c	Utah	16.10 ^b	0.55	(51)	-59.40 ^c
Maine	46.36 ^b	1.02	(08)	16.94 ^c	Vermont	44.32	1.51	(13)	11.78 ^c
Maryland	41.78 ^b	0.52	(23)	5.39 ^c	Virginia	40.72	0.44	(28)	2.70
Massachusetts	42.45 ^b	0.46	(20)	7.08 ^c	Washington	42.83 ^b	0.50	(19)	8.03 ^c
Michigan	43.87 ^b	0.39	(15)	10.64 ^c	West Virginia	51.87 ^b	0.92	(02)	30.83 ^c
Minnesota	37.23 ^b	0.51	(38)	-6.10 ^c	Wisconsin	38.74	0.49	(34)	-2.29
Mississippi	42.33 ^b	0.71	(21)	6.77 ^c	Wyoming	38.48	1.65	(36)	-2.95
Missouri	45.95 ^b	0.51	(10)	15.90 ^c					



^a US Mortality Files, National Center for Health Statistics, Centers for Disease Control and Prevention. Rates are per 100,000 and are age-adjusted to the 2000 US Std Population (19 age groups - Census P25-1130).
^b Difference between state rate and total U.S. rate is statistically significant (p<=.0002).
^c Absolute percent difference between state rate and total U.S. rate is 5% or more.
SE Standard error of the rate.
PD Percent difference between state rate and total U.S. rate.
- Statistic not shown. Rate based on less than 16 cases for the time interval.

Table 15.27
Cancer of the Lung And Bronchus (Invasive)

Estimated United States Cancer Prevalence Counts^a on January 1, 2009
By Race/Ethnicity, Sex and Years Since Diagnosis

Years Since Diagnosis		0 to <5	5 to <10	10 to <15	15 to <20	20 to <25	25 to <30	0 to <19 ^e	0 to <34 ^e	>=34 ^g	Complete ^h
<u>Race</u>	<u>Sex</u>										
All Races ^b	Both Sexes	224,508	73,096	40,029	21,696	11,093	5,706	355,972	379,223	8,539	387,762
	Males	104,519	32,530	17,506	10,024	4,915	2,722	162,893	173,619	4,871	178,490
	Females	119,989	40,566	22,523	11,672	6,178	2,984	193,079	205,604	3,668	209,272
White ^b	Both Sexes	191,522	64,113	35,002	19,420	9,843	5,042	307,035	327,592	3,735	331,327
	Males	88,141	28,202	14,846	8,931	4,264	2,410	138,623	147,973	1,789	149,762
	Females	103,381	35,911	20,156	10,489	5,579	2,632	168,412	179,619	1,946	181,565
Black ^b	Both Sexes	23,966	6,652	3,723	1,787	967	503	35,864	37,934	351	38,285
	Males	11,723	3,226	1,905	853	496	240	17,555	18,621	186	18,807
	Females	12,243	3,426	1,818	934	471	263	18,309	19,313	165	19,478
Asian/ Pacific Islander ^c	Both Sexes	6,612	1,700	916	+	+	+	9,545	+	+	+
	Males	3,473	809	521	+	+	+	4,980	+	+	+
	Females	3,139	891	395	+	+	+	4,565	+	+	+
Hispanic ^d	Both Sexes	7,956	2,206	1,171	+	+	+	11,845	+	+	+
	Males	3,986	1,069	578	+	+	+	5,883	+	+	+
	Females	3,970	1,137	593	+	+	+	5,962	+	+	+

Estimated prevalence percent^a on January 1, 2009, of the SEER 11 population diagnosed in the previous 19 years
By Age at Prevalence, Race/Ethnicity and Sex

Age at Prevalence		Age Specific (Crude)									Age-Adjusted ^f	
		All Ages	0-9	10-19	20-29	30-39	40-49	50-59	60-69	70-79	80+	All Ages
<u>Race</u>	<u>Sex</u>											
All Races ^c	Both Sexes	0.0935%	0.0002%	0.0002%	0.0017%	0.0051%	0.0244%	0.1067%	0.3345%	0.6208%	0.5351%	0.0961%
	Males	0.0874%	-	0.0003%	0.0016%	0.0047%	0.0213%	0.1042%	0.3414%	0.6513%	0.6330%	0.1007%
	Females	0.0995%	-	-	0.0017%	0.0056%	0.0276%	0.1090%	0.3283%	0.5966%	0.4805%	0.0933%
White ^c	Both Sexes	0.1001%	0.0002%	0.0003%	0.0018%	0.0051%	0.0247%	0.1039%	0.3399%	0.6450%	0.5473%	0.0982%
	Males	0.0905%	-	0.0003%	0.0017%	0.0048%	0.0211%	0.0973%	0.3340%	0.6572%	0.6278%	0.0996%
	Females	0.1096%	-	-	0.0019%	0.0055%	0.0283%	0.1104%	0.3455%	0.6351%	0.5025%	0.0980%
Black ^c	Both Sexes	0.0803%	-	-	0.0014%	0.0054%	0.0305%	0.1567%	0.4186%	0.6023%	0.4870%	0.1058%
	Males	0.0832%	-	-	0.0014%	0.0056%	0.0274%	0.1818%	0.4882%	0.7220%	0.6712%	0.1262%
	Females	0.0777%	-	-	0.0013%	0.0053%	0.0333%	0.1358%	0.3653%	0.5200%	0.4008%	0.0924%
Asian/ Pacific Islander ^c	Both Sexes	0.0711%	-	-	0.0011%	0.0048%	0.0179%	0.0828%	0.2402%	0.4912%	0.4691%	0.0754%
	Males	0.0761%	-	-	-	0.0037%	0.0178%	0.0885%	0.2903%	0.5797%	0.6339%	0.0902%
	Females	0.0663%	-	-	0.0014%	0.0059%	0.0179%	0.0777%	0.1976%	0.4241%	0.3668%	0.0645%
Hispanic ^d	Both Sexes	0.0238%	-	-	0.0011%	0.0031%	0.0122%	0.0435%	0.1517%	0.3030%	0.2768%	0.0460%
	Males	0.0227%	-	-	0.0007%	0.0035%	0.0119%	0.0417%	0.1614%	0.3657%	0.3306%	0.0521%
	Females	0.0250%	-	-	0.0016%	0.0027%	0.0126%	0.0453%	0.1432%	0.2561%	0.2454%	0.0418%

^a US 2009 cancer prevalence counts are based on 2009 cancer prevalence proportions from the SEER registries and 1/1/2009 US population estimates based on the average of 2008 and 2009 population estimates from the US Bureau of the Census. Prevalence was calculated using the First Malignant Primary Only for a person.

^{b c d} Statistics based on (b) SEER 9 Areas (c) SEER 11 Areas and Rural Georgia (d) NHIA for Hispanic for SEER 11 Areas and Rural Georgia.

^e Maximum limited-duration prevalence: 34 years for 1975-2009 SEER 9 data; 19 years for 1990-2009 SEER 11 data (used to calculate prevalence for Hispanics and Asian Pacific Islanders).

^f Percentages are age-adjusted to the 2000 US Standard Population (19 age groups - Census P25-1130) by 5-year age groups.

^{g h i} (g) Cases diagnosed more than 34 years ago were estimated using the completeness index method (Capocaccia et. al. 1997, Merrill et. al. 2000). (h) Complete prevalence is obtained by summing 0 to <34 and >=34. (i) Age-specific completeness index was approximated using empirical data from historical Connecticut tumor registry.

- Statistic not shown. Statistic based on fewer than 5 cases estimated alive in SEER for the time interval.

+ Not available.

Table 15.28

Cancer of the Lung and Bronchus (Invasive)

Percent Distribution and Counts by Histology among Histologically Confirmed Cases, 2005-2009
Both Sexes by Race

Histology ^a	All Races		White		Black		Asian/Pacific Islander		American Indian/ Alaska Native ^b		Hispanic ^c	
	Count	Percent	Count	Percent	Count	Percent	Count	Percent	Count	Percent	Count	Percent
Carcinoma	221,882	98.9%	184,680	98.9%	23,929	98.9%	11,720	99.0%	726	97.2%	11,624	98.3%
Small cell (8041-8045)	30,639	13.7%	26,906	14.4%	2,561	10.6%	955	8.1%	134	17.9%	1,370	11.6%
Non-small cell ^d	191,243	85.2%	157,774	84.5%	21,368	88.3%	10,765	90.9%	592	79.3%	10,254	86.7%
Squamous and transitional cell ^e	46,659	20.8%	38,984	20.9%	5,549	22.9%	1,793	15.1%	179	24.0%	2,049	17.3%
Adenocarcinoma ^f	87,872	39.2%	72,009	38.6%	9,133	37.8%	6,175	52.1%	200	26.8%	5,036	42.6%
Large cell (8011-8015)	6,501	2.9%	5,316	2.8%	882	3.6%	265	2.2%	22	2.9%	324	2.7%
Other non-small cell ^g	50,211	22.4%	41,465	22.2%	5,804	24.0%	2,532	21.4%	191	25.6%	2,845	24.1%
Sarcoma ^h	402	0.2%	329	0.2%	42	0.2%	19	0.2%	-	-	41	0.3%
Other specified types ⁱ	181	0.1%	153	0.1%	20	0.1%	-	-	-	-	21	0.2%
Unspecified (8000-8005)	1,882	0.8%	1,561	0.8%	201	0.8%	97	0.8%	-	-	140	1.2%
Total	224,347	100.0%	186,723	100.0%	24,192	100.0%	11,844	100.0%	747	100.0%	11,826	100.0%

Source: SEER 18 areas (San Francisco, Connecticut, Detroit, Hawaii, Iowa, New Mexico, Seattle, Utah, Atlanta, San Jose-Monterey, Los Angeles, Alaska Native Registry, Rural Georgia, California excluding SF/SJM/LA, Kentucky, Louisiana, New Jersey and Georgia excluding ATL/RG).

Percents may not sum to 100 due to rounding.

^a Excludes Kaposi Sarcoma, mesothelioma, lymphomas, leukemias, myelomas, lymphoreticular, and immunoproliferative diseases.

^b Estimates for American Indian/Alaska Native are based on the CHSDA (Contract Health Service Delivery Area) counties.

^c Hispanic is not mutually exclusive from whites, blacks, Asian/Pacific Islanders, and American Indians/Alaska Natives.

^d Underlying incidence data for Hispanics are based on NHIA and exclude cases from the Alaska Native Registry.

^e Non-small cell includes histologies 8010-8015, 8020-8022, 8030-8040, 8046, 8050-8052, 8070-8084, 8090-8110, 8120-8131, 8140-8156, 8160-8162, 8170-8175, 8180, 8190-8221, 8230-8231, 8240-8263, 8270-8280, 8290-8337, 8340-8347, 8350-8390, 8400-8562, 8570-8576, 8580-8671, 8940-8941.

^f Squamous and transitional cell includes histologies 8051-8052, 8070-8084, 8120-8131.

^g Adenocarcinoma includes histologies 8050, 8140-8149, 8160-8162, 8190-8221, 8250-8263, 8270-8280, 8290-8337, 8350-8390, 8400-8560, 8570-8576, 8940-8941.

^h Other non-small cell includes large cell carcinoma, NOS, other specified carcinomas, and unspecified carcinomas.

ⁱ Other non-small cell is defined as histologies 8010, 8020-8022, 8030-8040, 8046, 8090-8110, 8150-8156, 8170-8175, 8180, 8230-8231, 8240-8249, 8340-8347, 8561-8562, 8580-8671.

^h Sarcoma includes histologies 8680-8713, 8800-8921, 8990-8991, 9040-9044, 9120-9136, 9150-9252, 9370-9373, 9540-9582.

ⁱ Other specific types includes melanomas and is defined as histologies 8720-8790, 8930-8936, 8950-8983, 9000-9030, 9060-9110, 9260-9365, 9380-9539.

- Statistic not shown due to fewer than 16 cases during the time period.

Table 15.29

Cancer of the Lung and Bronchus (Invasive)

Percent Distribution and Counts by Histology among Histologically Confirmed Cases, 2005-2009
Males by Race

Histology ^a	All Races		White		Black		Asian/Pacific Islander		American Indian/ Alaska Native ^b		Hispanic ^c	
	Count	Percent	Count	Percent	Count	Percent	Count	Percent	Count	Percent	Count	Percent
Carcinoma	118,537	98.9%	97,344	98.9%	13,613	99.0%	6,769	98.8%	376	97.4%	6,294	98.5%
Small cell (8041-8045)	15,380	12.8%	13,326	13.5%	1,313	9.5%	638	9.3%	62	16.1%	743	11.6%
Non-small cell ^d	103,157	86.0%	84,018	85.3%	12,300	89.4%	6,131	89.5%	314	81.3%	5,551	86.8%
Squamous and transitional cell ^e	29,478	24.6%	24,329	24.7%	3,590	26.1%	1,334	19.5%	111	28.8%	1,348	21.1%
Adenocarcinoma ^f	42,753	35.7%	34,617	35.2%	4,824	35.1%	3,058	44.6%	88	22.8%	2,439	38.2%
Large cell (8011-8015)	3,736	3.1%	3,031	3.1%	514	3.7%	172	2.5%	-	-	203	3.2%
Other non-small cell ^g	27,190	22.7%	22,041	22.4%	3,372	24.5%	1,567	22.9%	104	26.9%	1,561	24.4%
Sarcoma ^h	223	0.2%	183	0.2%	20	0.1%	-	-	-	-	18	0.3%
Other specified types ⁱ	102	0.1%	86	0.1%	-	-	-	-	-	-	-	-
Unspecified (8000-8005)	1,029	0.9%	837	0.9%	113	0.8%	65	0.9%	-	-	71	1.1%
Total	119,891	100.0%	98,450	100.0%	13,755	100.0%	6,854	100.0%	386	100.0%	6,393	100.0%

Source: SEER 18 areas (San Francisco, Connecticut, Detroit, Hawaii, Iowa, New Mexico, Seattle, Utah, Atlanta, San Jose-Monterey, Los Angeles, Alaska Native Registry, Rural Georgia, California excluding SF/SJM/LA, Kentucky, Louisiana, New Jersey and Georgia excluding ATL/RG).

Percents may not sum to 100 due to rounding.

^a Excludes Kaposi Sarcoma, mesothelioma, lymphomas, leukemias, myelomas, lymphoreticular, and immunoproliferative diseases.

^b Estimates for American Indian/Alaska Native are based on the CHSDA (Contract Health Service Delivery Area) counties.

^c Hispanic is not mutually exclusive from whites, blacks, Asian/Pacific Islanders, and American Indians/Alaska Natives.

^d Underlying incidence data for Hispanics are based on NHIA and exclude cases from the Alaska Native Registry.

^e Non-small cell includes histologies 8010-8015, 8020-8022, 8030-8040, 8046, 8050-8052, 8070-8084, 8090-8110, 8120-8131, 8140-8156, 8160-8162, 8170-8175, 8180, 8190-8221, 8230-8231, 8240-8263, 8270-8280, 8290-8337, 8340-8347, 8350-8390, 8400-8562, 8570-8576, 8580-8671, 8940-8941.

^f Squamous and transitional cell includes histologies 8051-8052, 8070-8084, 8120-8131.

^g Adenocarcinoma includes histologies 8050, 8140-8149, 8160-8162, 8190-8221, 8250-8263, 8270-8280, 8290-8337, 8350-8390, 8400-8560, 8570-8576, 8940-8941.

^h Other non-small cell includes large cell carcinoma, NOS, other specified carcinomas, and unspecified carcinomas.

ⁱ Other non-small cell is defined as histologies 8010, 8020-8022, 8030-8040, 8046, 8090-8110, 8150-8156, 8170-8175, 8180, 8230-8231, 8240-8249, 8340-8347, 8561-8562, 8580-8671.

^h Sarcoma includes histologies 8680-8713, 8800-8921, 8990-8991, 9040-9044, 9120-9136, 9150-9252, 9370-9373, 9540-9582.

ⁱ Other specific types includes melanomas and is defined as histologies 8720-8790, 8930-8936, 8950-8983, 9000-9030, 9060-9110, 9260-9365, 9380-9539.

- Statistic not shown due to fewer than 16 cases during the time period.

Table 15.30

Cancer of the Lung and Bronchus (Invasive)

Percent Distribution and Counts by Histology among Histologically Confirmed Cases, 2005-2009
Females by Race

Histology ^a	All Races		White		Black		Asian/Pacific Islander		American Indian/ Alaska Native ^b		Hispanic ^c	
	Count	Percent	Count	Percent	Count	Percent	Count	Percent	Count	Percent	Count	Percent
Carcinoma	103,345	98.9%	87,336	98.9%	10,316	98.8%	4,951	99.2%	350	97.0%	5,330	98.1%
Small cell (8041-8045)	15,259	14.6%	13,580	15.4%	1,248	12.0%	317	6.4%	72	19.9%	627	11.5%
Non-small cell ^d	88,086	84.3%	73,756	83.6%	9,068	86.9%	4,634	92.9%	278	77.0%	4,703	86.6%
Squamous and transitional cell ^e	17,181	16.4%	14,655	16.6%	1,959	18.8%	459	9.2%	68	18.8%	701	12.9%
Adenocarcinoma ^f	45,119	43.2%	37,392	42.4%	4,309	41.3%	3,117	62.5%	112	31.0%	2,597	47.8%
Large cell (8011-8015)	2,765	2.6%	2,285	2.6%	368	3.5%	93	1.9%	-	-	121	2.2%
Other non-small cell ^g	23,021	22.0%	19,424	22.0%	2,432	23.3%	965	19.3%	87	24.1%	1,284	23.6%
Sarcoma ^h	179	0.2%	146	0.2%	22	0.2%	-	-	-	-	23	0.4%
Other specified types ⁱ	79	0.1%	67	0.1%	-	-	-	-	-	-	-	-
Unspecified (8000-8005)	853	0.8%	724	0.8%	88	0.8%	32	0.6%	-	-	69	1.3%
Total	104,456	100.0%	88,273	100.0%	10,437	100.0%	4,990	100.0%	361	100.0%	5,433	100.0%

Source: SEER 18 areas (San Francisco, Connecticut, Detroit, Hawaii, Iowa, New Mexico, Seattle, Utah, Atlanta, San Jose-Monterey, Los Angeles, Alaska Native Registry, Rural Georgia, California excluding SF/SJM/LA, Kentucky, Louisiana, New Jersey and Georgia excluding ATL/RG).

Percents may not sum to 100 due to rounding.

^a Excludes Kaposi Sarcoma, mesothelioma, lymphomas, leukemias, myelomas, lymphoreticular, and immunoproliferative diseases.

^b Estimates for American Indian/Alaska Native are based on the CHSDA (Contract Health Service Delivery Area) counties.

^c Hispanic is not mutually exclusive from whites, blacks, Asian/Pacific Islanders, and American Indians/Alaska Natives.

^d Underlying incidence data for Hispanics are based on NHIA and exclude cases from the Alaska Native Registry.

^e Non-small cell includes histologies 8010-8015, 8020-8022, 8030-8040, 8046, 8050-8052, 8070-8084, 8090-8110, 8120-8131, 8140-8156, 8160-8162, 8170-8175, 8180, 8190-8221, 8230-8231, 8240-8263, 8270-8280, 8290-8337, 8340-8347, 8350-8390, 8400-8562, 8570-8576, 8580-8671, 8940-8941.

^f Squamous and transitional cell includes histologies 8051-8052, 8070-8084, 8120-8131.

^g Adenocarcinoma includes histologies 8050, 8140-8149, 8160-8162, 8190-8221, 8250-8263, 8270-8280, 8290-8337, 8350-8390, 8400-8560, 8570-8576, 8940-8941.

^h Other non-small cell includes large cell carcinoma, NOS, other specified carcinomas, and unspecified carcinomas.

ⁱ Other non-small cell is defined as histologies 8010, 8020-8022, 8030-8040, 8046, 8090-8110, 8150-8156, 8170-8175, 8180, 8230-8231, 8240-8249, 8340-8347, 8561-8562, 8580-8671.

^h Sarcoma includes histologies 8680-8713, 8800-8921, 8990-8991, 9040-9044, 9120-9136, 9150-9252, 9370-9373, 9540-9582.

ⁱ Other specific types includes melanomas and is defined as histologies 8720-8790, 8930-8936, 8950-8983, 9000-9030, 9060-9110, 9260-9365, 9380-9539.

- Statistic not shown due to fewer than 16 cases during the time period.

SEER Observed Incidence, SEER Delay Adjusted Incidence and US Death Rates^a Cancer of the Lung and Bronchus, by Race and Sex

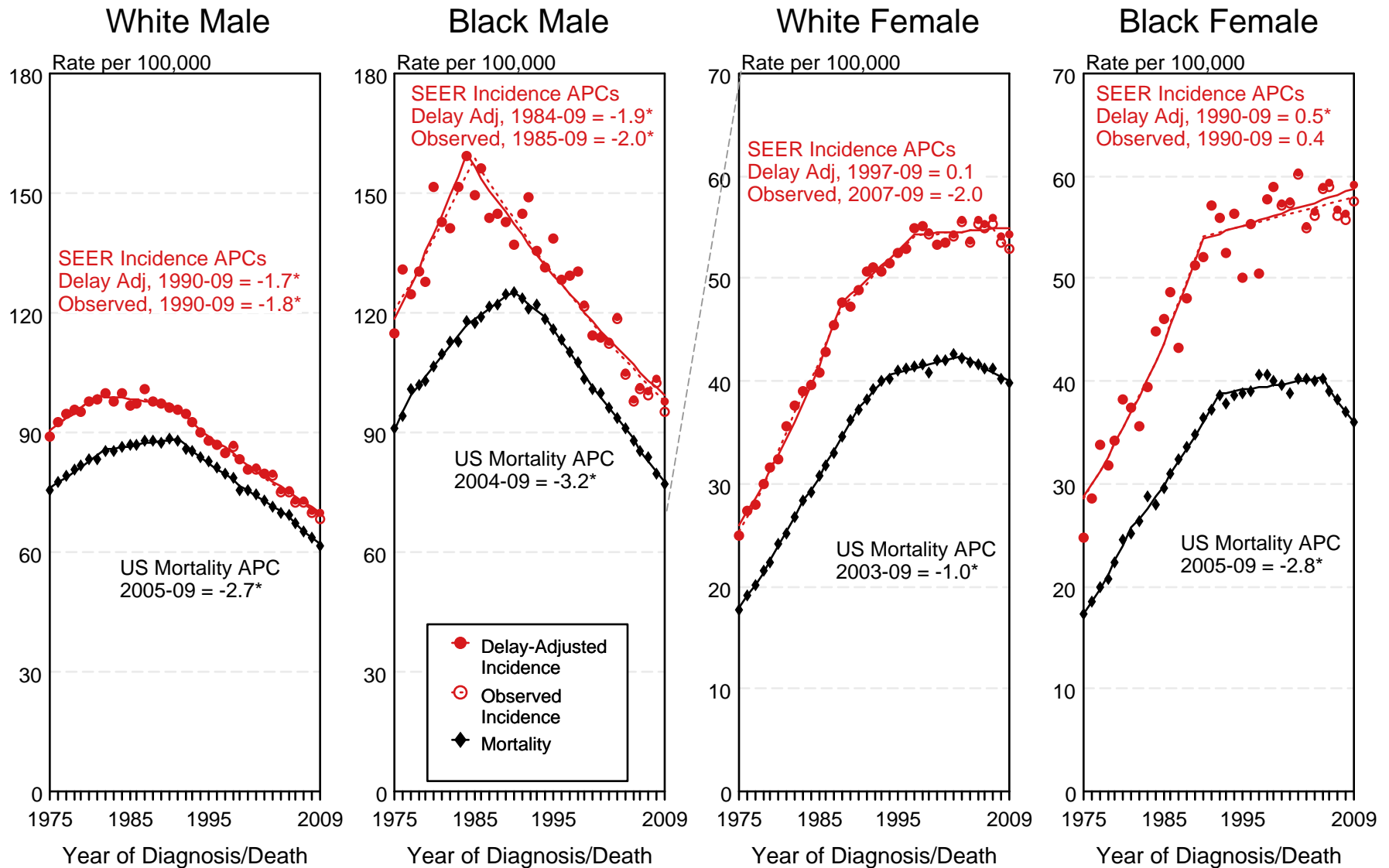


Figure 15.1

^a Source: SEER 9 areas and US Mortality Files (National Center for Health Statistics, CDC). Rates are age-adjusted to the 2000 US Std Population (19 age groups - Census P25-1103). Regression lines and APCs are calculated using the Joinpoint Regression Program Version 3.5, April 2011, National Cancer Institute. The APC is the Annual Percent Change for the regression line segments. The APC shown on the graph is for the most recent trend.

* The APC is significantly different from zero ($p < 0.05$).

SEER Observed Incidence, SEER Delay Adjusted Incidence and US Death Rates^a Cancer of the Lung and Bronchus, Under 65 Years of Age, by Race and Sex

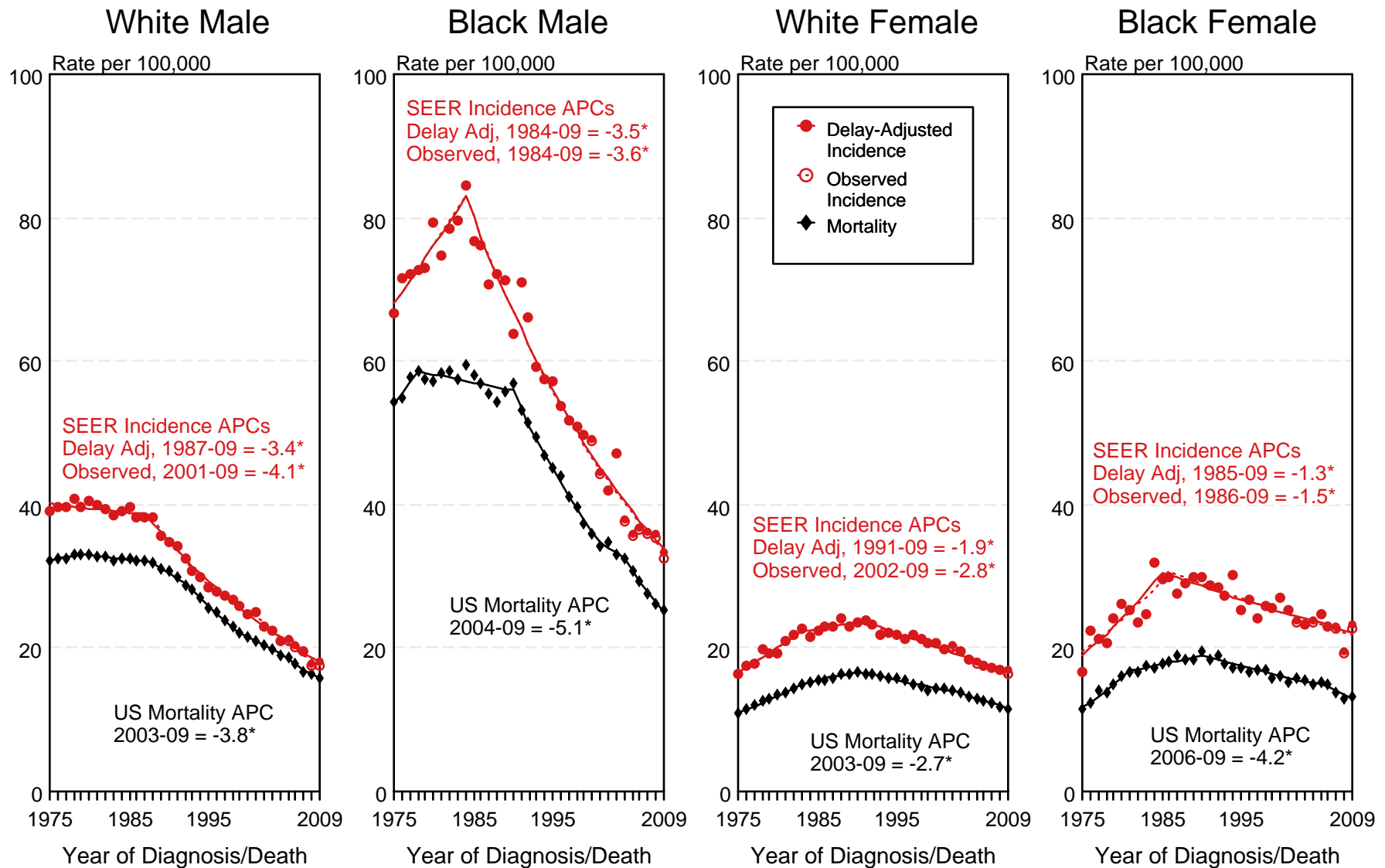


Figure 15.2

^a Source: SEER 9 areas and US Mortality Files (National Center for Health Statistics, CDC). Rates are age-adjusted to the 2000 US Std Population (19 age groups - Census P25-1103). Regression lines and APCs are calculated using the Joinpoint Regression Program Version 3.5, April 2011, National Cancer Institute. The APC is the Annual Percent Change for the regression line segments. The APC shown on the graph is for the most recent trend.

* The APC is significantly different from zero ($p < 0.05$).

SEER Observed Incidence, SEER Delay Adjusted Incidence and US Death Rates^a Cancer of the Lung and Bronchus, Ages 65 and Over, by Race and Sex

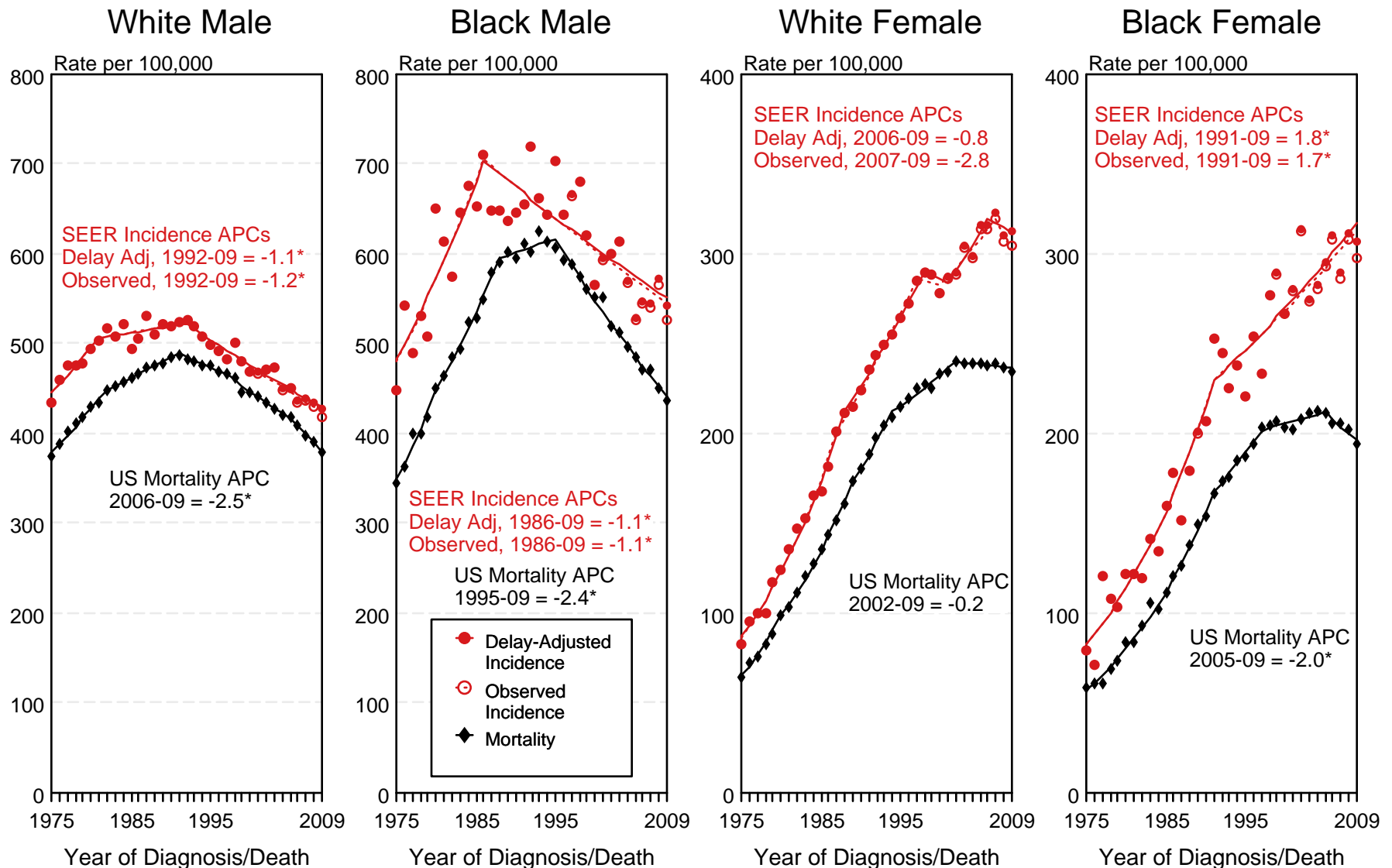


Figure 15.3

^a Source: SEER 9 areas and US Mortality Files (National Center for Health Statistics, CDC). Rates are age-adjusted to the 2000 US Std Population (19 age groups - Census P25-1103). Regression lines and APCs are calculated using the Joinpoint Regression Program Version 3.5, April 2011, National Cancer Institute. The APC is the Annual Percent Change for the regression line segments. The APC shown on the graph is for the most recent trend.
* The APC is significantly different from zero ($p < 0.05$).

SEER Incidence and US Death Rates^a Cancer of the Lung and Bronchus, Both Sexes

and for Asian/Pacific Islanders, American Indians/Alaska Natives and Hispanics from 1992-2009

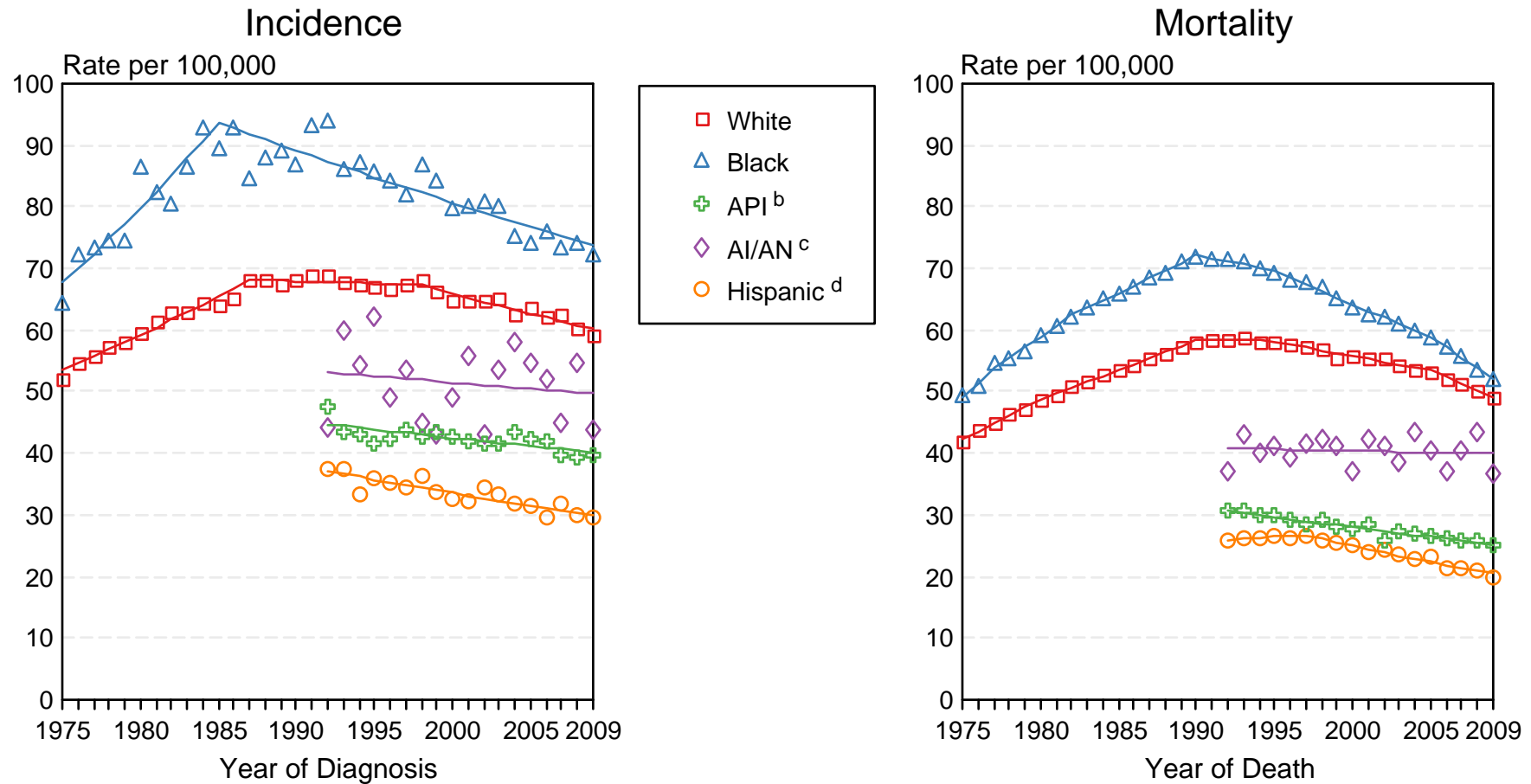


Figure 15.4

Source: Incidence data for whites and blacks are from the SEER 9 areas (San Francisco, Connecticut, Detroit, Hawaii, Iowa, New Mexico, Seattle, Utah, Atlanta). Incidence data for Asian/Pacific Islanders, American Indians/Alaska Natives and Hispanics are from the SEER 13 Areas (SEER 9 Areas, San Jose-Monterey, Los Angeles, Alaska Native Registry and Rural Georgia). Mortality data are from US Mortality Files, National Center for Health Statistics, CDC.

^a Rates are age-adjusted to the 2000 US Std Population (19 age groups - Census P25-1103).

Regression lines are calculated using the Joinpoint Regression Program Version 3.5, April 2011, National Cancer Institute. Joinpoint analyses for Whites and Blacks during the 1975-2009 period allow a maximum of 5 joinpoints. Analyses for other ethnic groups during the period 1992-2009 allow a maximum of 3 joinpoints.

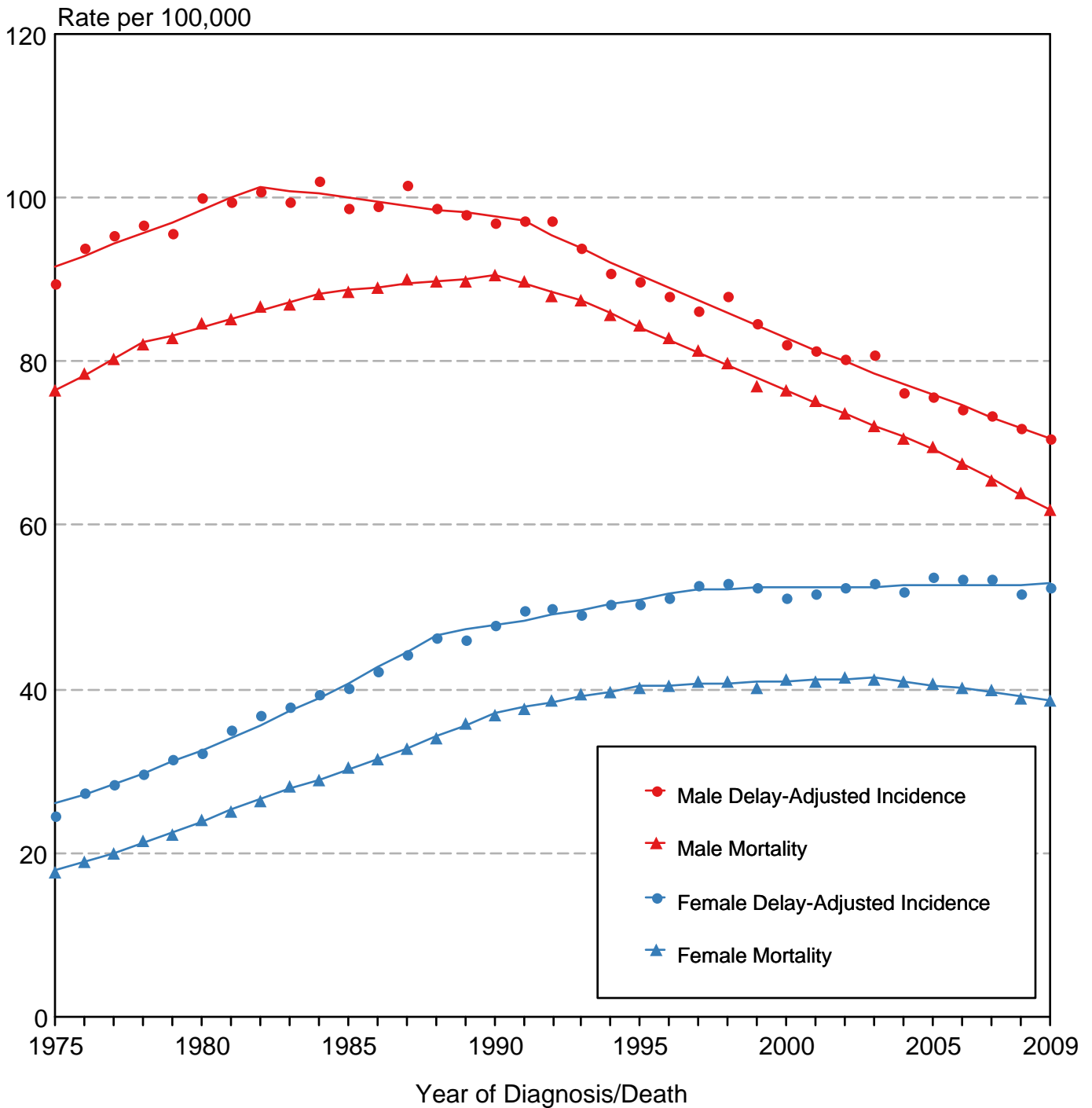
^b API = Asian/Pacific Islander.

^c AI/AN = American Indian/Alaska Native. Rates for American Indian/Alaska Native are based on the CHSDA (Contract Health Service Delivery Area) counties.

^d Hispanic is not mutually exclusive from whites, blacks, Asian/Pacific Islanders, and American Indians/Alaska Natives. Incidence data for Hispanics are based on NHIA and exclude cases from the Alaska Native Registry. Mortality data for Hispanics exclude cases from Connecticut, the District of Columbia, Maine, Maryland, Minnesota, New Hampshire, New York, North Dakota, South Carolina, Oklahoma, and Vermont.

Figure 15.5

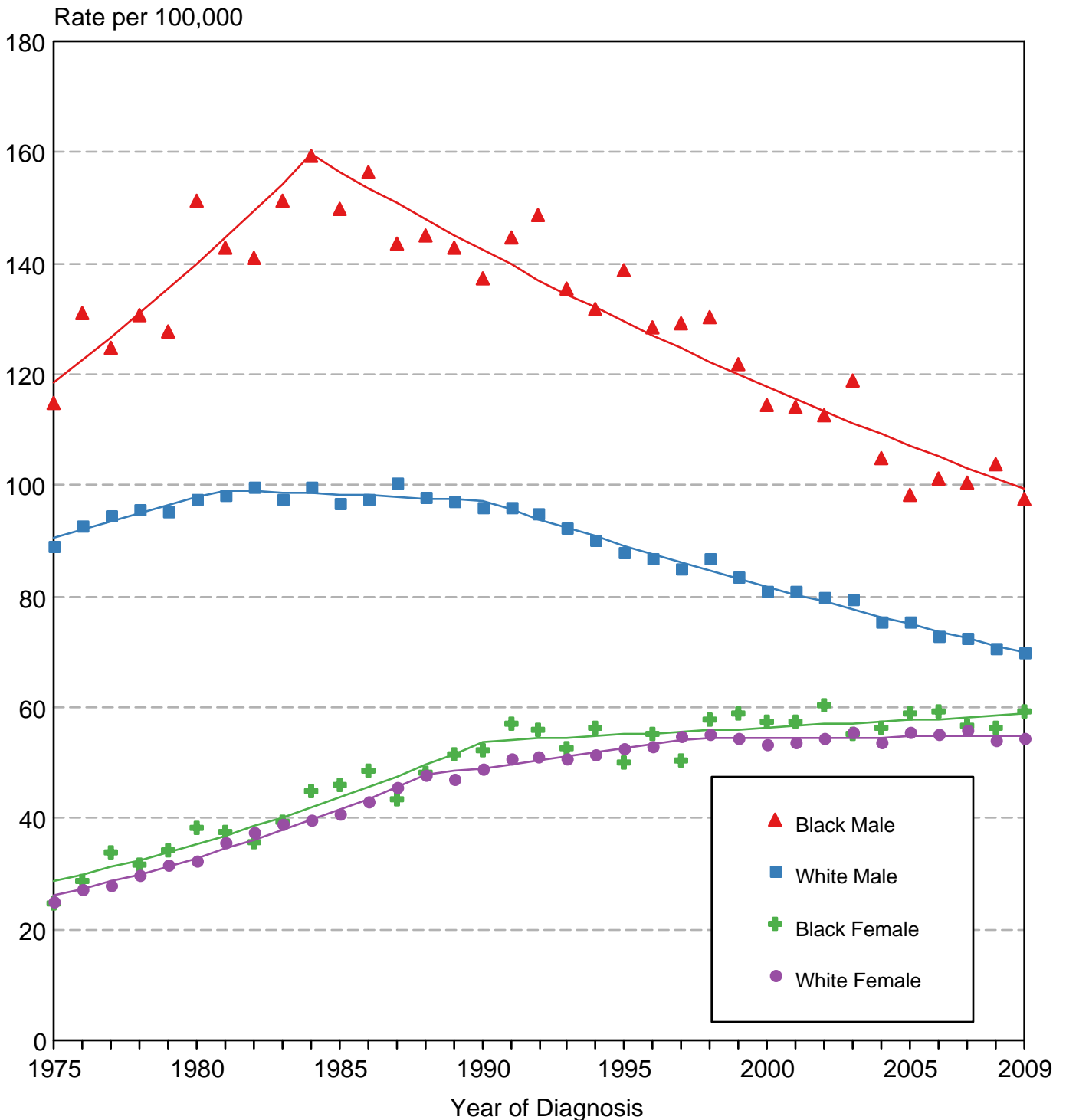
Cancer of the Lung & Bronchus SEER Delay-Adjusted Incidence & US Death Rates, 1975-2009, All Races, By Sex



Source: SEER 9 areas and US Mortality Files (National Center for Health Statistics, CDC). Rates are age-adjusted to the 2000 US Std Population (19 age groups - Census P25-1103). Regression lines are calculated using the Joinpoint Regression Program Version 3.5, April 2011, National Cancer Institute.

Figure 15.6

Cancer of the Lung & Bronchus SEER Delay-Adjusted Incidence, 1975-2009 By Sex and Race



Source: SEER 9 areas. Rates are age-adjusted to the 2000 US Std Population (19 age groups - Census P25-1103). Regression lines are calculated using the Joinpoint Regression Program Version 3.5, April 2011, National Cancer Institute.

SEER Observed Incidence and SEER Delay Adjusted Incidence Rates^a SEER 9 Areas Compared to SEER 13 Areas Cancer of the Lung and Bronchus, Male, by Race

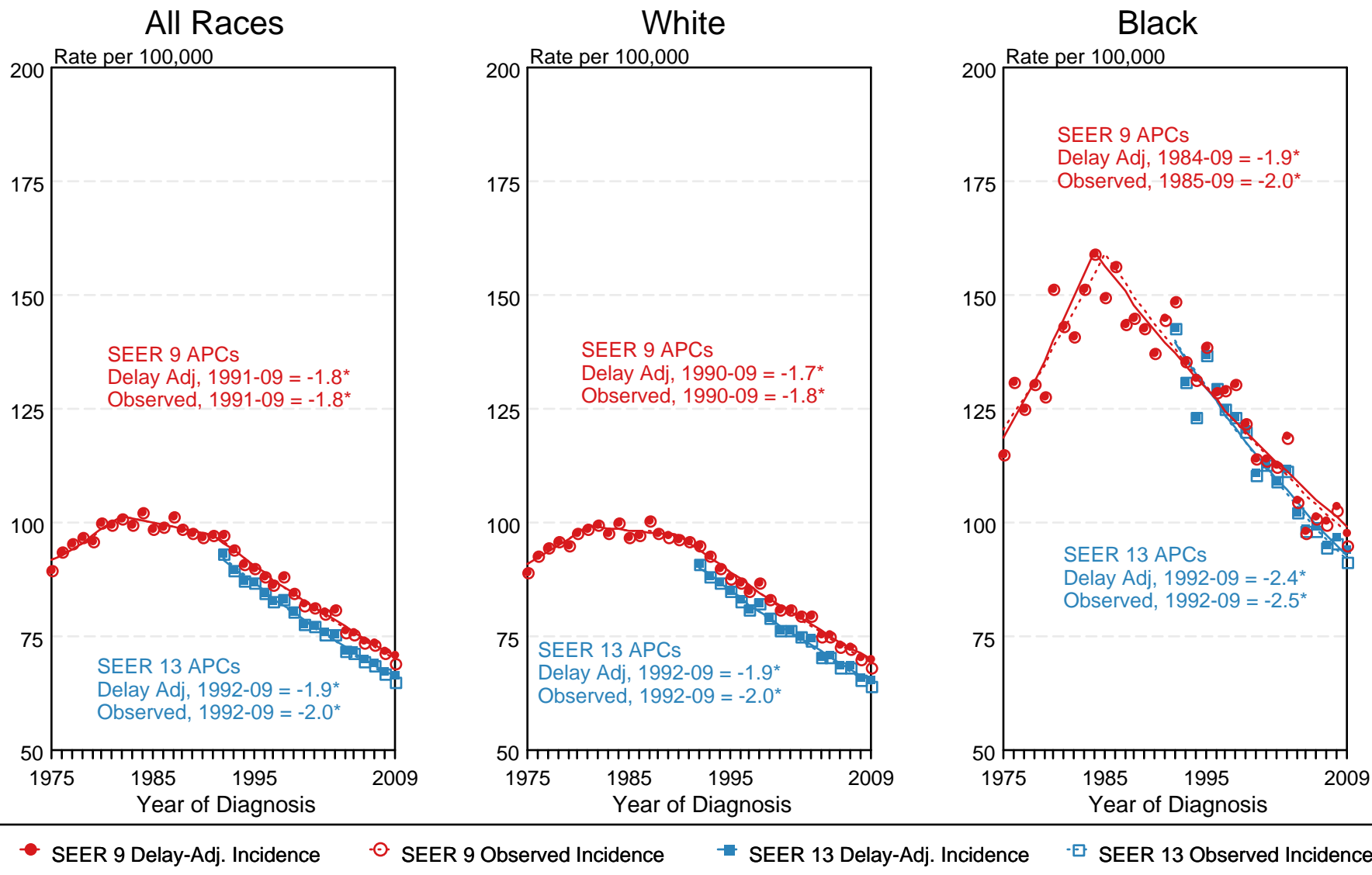


Figure 15.7

^a Source: SEER 9 areas and SEER 13 areas.
Rates are age-adjusted to the 2000 US Std Population (19 age groups - Census P25-1103).
Regression lines and APCs are calculated using the Joinpoint Regression Program Version 3.5, April 2011, National Cancer Institute.
The APC is the Annual Percent Change for the regression line segments. The APC shown on the graph is for the most recent trend.
* The APC is significantly different from zero ($p < 0.05$).

SEER Observed Incidence and SEER Delay Adjusted Incidence Rates^a SEER 9 Areas Compared to SEER 13 Areas Cancer of the Lung and Bronchus, Female, by Race

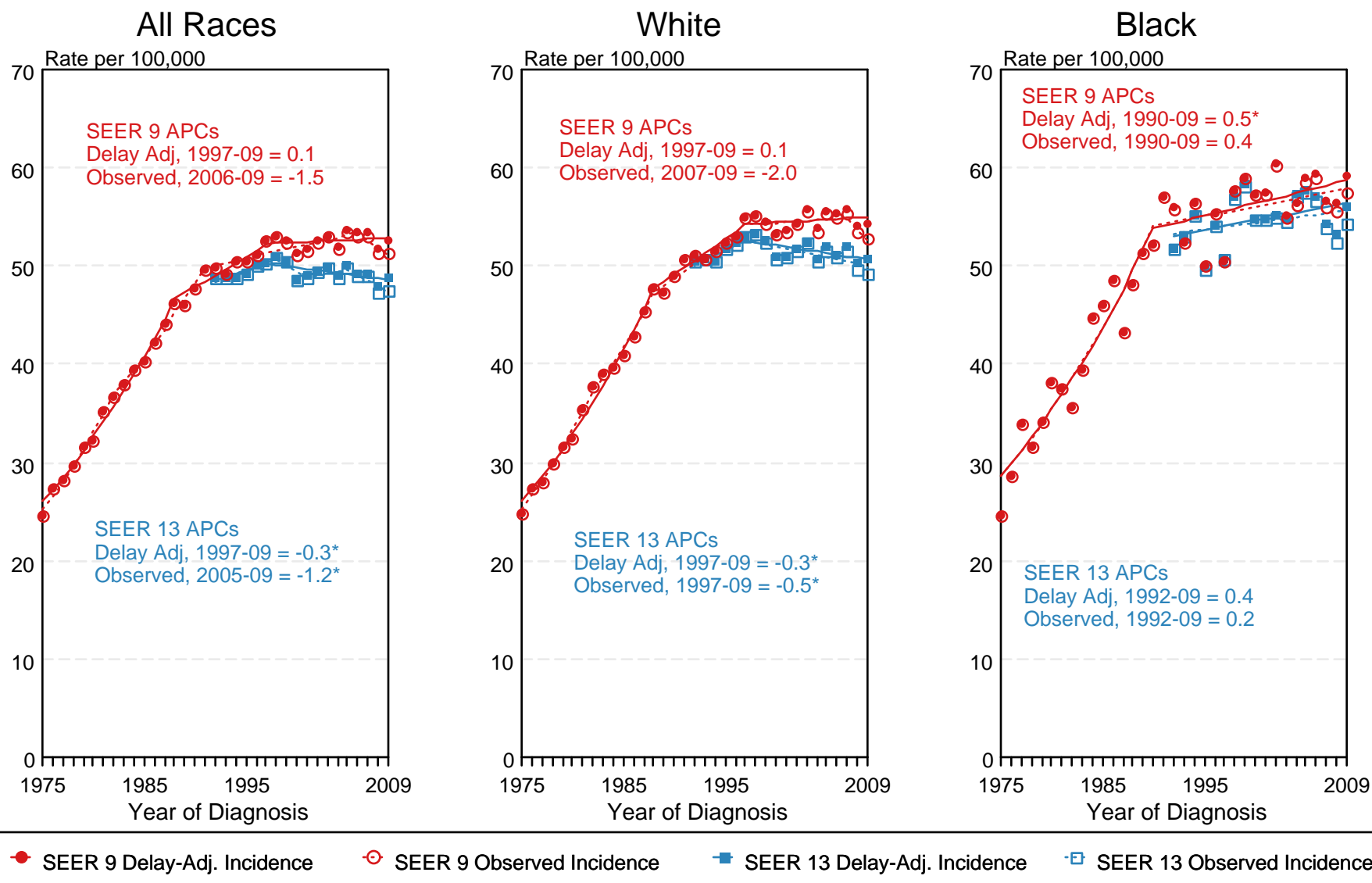
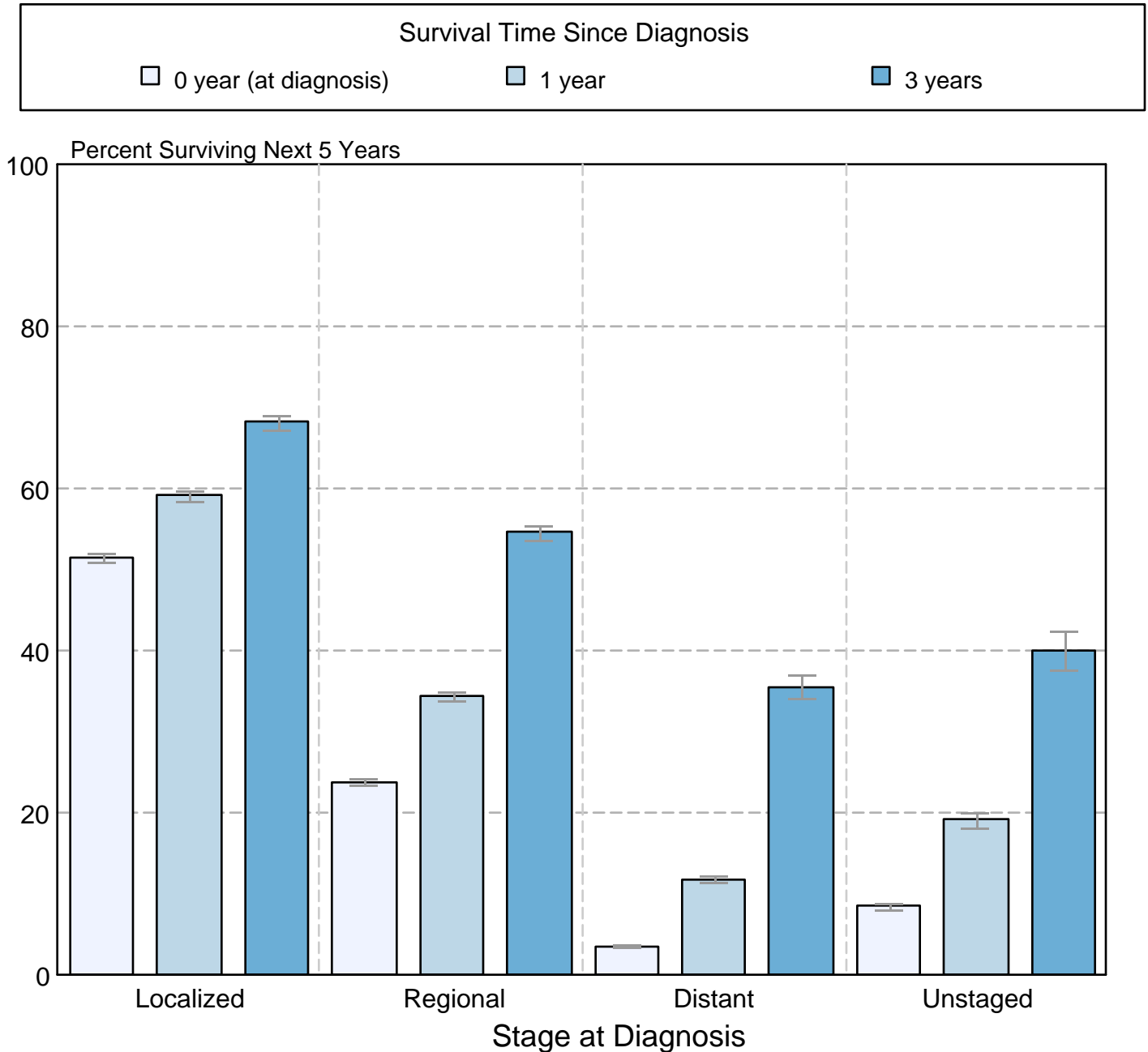


Figure 15.8

^a Source: SEER 9 areas and SEER 13 areas.
Rates are age-adjusted to the 2000 US Std Population (19 age groups - Census P25-1103).
Regression lines and APCs are calculated using the Joinpoint Regression Program Version 3.5, April 2011, National Cancer Institute.
The APC is the Annual Percent Change for the regression line segments. The APC shown on the graph is for the most recent trend.
* The APC is significantly different from zero ($p < 0.05$).

Figure 15.9

Cancer of the Lung and Bronchus 5-Year SEER Conditional Relative Survival and 95% Confidence Intervals Probability of surviving the next 5 years given the cohort has already survived 0, 1, or 3 years 1998-2008 by stage at diagnosis



Source: SEER 18 areas (San Francisco, Connecticut, Detroit, Hawaii, Iowa, New Mexico, Seattle, Utah, Atlanta, San Jose-Monterey, Los Angeles, Alaska Native Registry, Rural Georgia, California excluding SF/SJM/LA, Kentucky, Louisiana, New Jersey and Georgia excluding ATL/RG). California excluding SF/SJM/LA, Kentucky, Louisiana, New Jersey and Georgia excluding ATL/RG contribute cases for diagnosis years 2000-2008. The remaining 13 SEER Areas contribute cases for the entire period 1998-2008.

Stage at diagnosis is classified using SEER Summary Stage 2000.

Percent surviving is not shown if based on less than 25 cases.

Confidence intervals are not shown if length of the confidence interval is greater than 5 times the standard error.