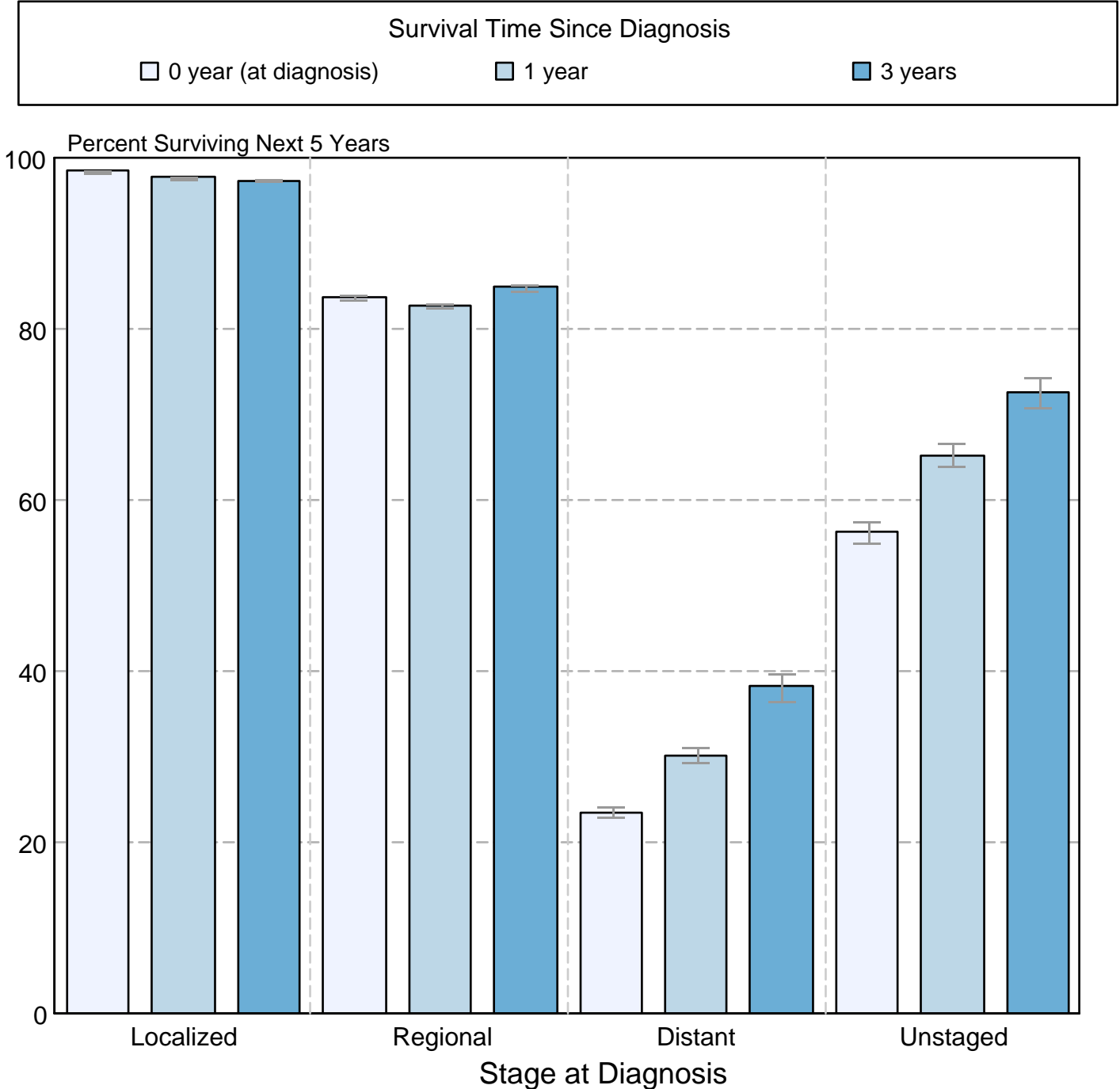


Figure 4.11

Cancer of the Female Breast
5-Year SEER Conditional Relative Survival and
95% Confidence Intervals
 Probability of surviving the next 5 years given the cohort
 has already survived 0, 1, or 3 years
 1998-2009 by stage at diagnosis



Source: SEER 18 areas (San Francisco, Connecticut, Detroit, Hawaii, Iowa, New Mexico, Seattle, Utah, Atlanta, San Jose-Monterey, Los Angeles, Alaska Native Registry, Rural Georgia, California excluding SF/SJM/LA, Kentucky, Louisiana, New Jersey and Georgia excluding ATL/RG). California excluding SF/SJM/LA, Kentucky, Louisiana, New Jersey and Georgia excluding ATL/RG contribute cases for diagnosis years 2000-2009. The remaining 13 SEER Areas contribute cases for the entire period 1998-2009. Percent surviving is not shown if based on less than 25 cases. Confidence intervals are not shown if length of the confidence interval is greater than 5 times the standard error.