

Table 4.1
Cancer of the Female Breast (Invasive)

Trends in SEER Incidence^{ab} and U.S. Mortality^c Using the Joinpoint Regression Program,
1975-2010 With up to Five Joinpoints, 1992-2010 With up to Three Joinpoints,
All Ages by Race/Ethnicity

	JP Trend 1		JP Trend 2		JP Trend 3		JP Trend 4		JP Trend 5		JP Trend 6		AAPC ^d	
	Years	APC	Years	APC	Years	APC	Years	APC	Years	APC	Years	APC	2001-10	2006-10
<u>SEER 9 Delay-Adjusted Incidence^a, 1975-2010</u>														
All Races	1975-80	-0.6	1980-87	4.0*	1987-94	-0.2	1994-99	1.8*	1999-04	-2.2*	2004-10	0.2	-0.6	0.2
White	1975-80	-0.5	1980-87	4.1*	1987-94	-0.2	1994-99	2.0*	1999-04	-2.3*	2004-10	0.1	-0.7*	0.1
Black	1975-92	2.2*	1992-10	0.1									0.1	0.1
<u>SEER 13 Delay-Adjusted Incidence^b, 1992-2010</u>														
All Races	1992-99	1.3*	1999-04	-2.2*	2004-10	0.2							-0.6	0.2
White	1992-99	1.5*	1999-04	-2.3*	2004-10	0.1							-0.7	0.1
Black	1992-10	0.2*											0.2*	0.2*
<u>SEER 9 Observed Incidence^a, 1975-2010</u>														
All Races	1975-80	-0.5	1980-87	4.0*	1987-94	-0.2	1994-99	1.8*	1999-04	-2.3*	2004-10	0.1	-0.7	0.1
White	1975-80	-0.5	1980-87	4.1*	1987-94	-0.2	1994-99	2.0*	1999-04	-2.4*	2004-10	-0.1	-0.8*	-0.1
Black	1975-92	2.2*	1992-10	0.1									0.1	0.1
<u>SEER 13 Observed Incidence^b, 1992-2010</u>														
All Races	1992-99	1.3*	1999-04	-2.2*	2004-10	0.1							-0.7	0.1
White	1992-99	1.5*	1999-04	-2.4*	2004-10	-0.1							-0.8*	-0.1
White NH ^{ef}	1992-99	1.7*	1999-04	-2.3*	2004-10	0.1							-0.7	0.1
Black	1992-10	0.1											0.1	0.1
Black NH ^{ef}	1992-10	0.2											0.2	0.2
API ^e	1992-94	-4.3	1994-97	5.8	1997-10	0.0							0.0	0.0
AI/AN ^{eg}	1992-10	-0.3											-0.3	-0.3
Hispanic ^f	1992-99	1.3	1999-10	-0.6*									-0.6*	-0.6*
<u>U.S. Cancer Mortality^c, 1975-2010</u>														
All Races	1975-90	0.4*	1990-95	-1.8*	1995-98	-3.2*	1998-10	-1.9*					-1.9*	-1.9*
White	1975-90	0.3*	1990-95	-2.0*	1995-98	-3.5*	1998-10	-1.9*					-1.9*	-1.9*
Black	1975-93	1.4*	1993-10	-1.5*									-1.5*	-1.5*
<u>U.S. Cancer Mortality^c, 1992-2010</u>														
All Races	1992-95	-1.3*	1995-98	-3.4*	1998-10	-1.9*							-1.9*	-1.9*
White	1992-95	-1.5*	1995-98	-3.6*	1998-10	-1.9*							-1.9*	-1.9*
White NH ^{ef}	1992-95	-1.6*	1995-98	-3.5*	1998-10	-1.8*							-1.8*	-1.8*
Black	1992-95	0.4	1995-10	-1.6*									-1.6*	-1.6*
Black NH ^{ef}	1992-10	-1.2*											-1.2*	-1.2*
API ^e	1992-10	-1.0*											-1.0*	-1.0*
AI/AN ^{eg}	1992-10	-0.4											-0.4	-0.4
Hispanic ^f	1992-10	-1.7*											-1.7*	-1.7*

Joinpoint Regression Program Version 4.0.3, April 2013, National Cancer Institute. (<http://surveillance.cancer.gov/joinpoint/>).

The APC is the Annual Percent Change based on rates age-adjusted to the 2000 US Std Population (19 age groups - Census P25-1130).

Trends are from the SEER 9 areas (San Francisco, Connecticut, Detroit, Hawaii, Iowa, New Mexico, Seattle, Utah, and Atlanta).

Trends are from the SEER 13 areas (SEER 9 Areas, Los Angeles, San Jose-Monterey, Rural Georgia, and the Alaska Native Registry).

Trends are from US Mortality Files, National Center for Health Statistics, Centers for Disease Control and Prevention.

The AAPC is the Average Annual Percent Change and is based on the APCs calculated by Joinpoint.

API - Asian/Pacific Islander, AI/AN - American Indian/Alaska Native, NH - Non-Hispanic

Hispanic and Non-Hispanic are not mutually exclusive from whites, blacks, Asian/Pacific Islanders, and American Indians/Alaska

Natives. Incidence data for Hispanics and Non-Hispanics are based on NHIA and exclude cases from the Alaska Native Registry.

The Hispanic and Non-Hispanic mortality trends exclude deaths from CT, DC, ME, MD, MN, NH, NY, ND, SC, OK and VT.

Data for American Indian/Alaska Native are based on the CHSDA (Contract Health Service Delivery Area) counties.

* The APC/AAPC is significantly different from zero ($p < .05$).

- Joinpoint regression line analysis could not be performed on data series.

Table 4.2
Cancer of the Female Breast (Invasive)

Trends in SEER Incidence^{ab} and U.S. Mortality^c Using the Joinpoint Regression Program,
1975-2010 With up to Five Joinpoints, 1992-2010 With up to Three Joinpoints,
Ages <50 by Race/Ethnicity

	JP Trend 1		JP Trend 2		JP Trend 3		JP Trend 4		JP Trend 5		JP Trend 6		AAPC ^d	
	Years	APC	Years	APC	Years	APC	Years	APC	Years	APC	Years	APC	2001-10	2006-10
<u>SEER 9 Delay-Adjusted Incidence^a, 1975-2010</u>														
All Races	1975-80	-1.5	1980-85	3.2*	1985-10	0.0							0.0	0.0
White	1975-80	-1.1	1980-87	2.7*	1987-94	-0.8	1994-10	0.3*					0.3*	0.3*
Black	1975-77	-6.1	1977-90	1.8*	1990-10	-0.3							-0.3	-0.3
<u>SEER 13 Delay-Adjusted Incidence^b, 1992-2010</u>														
All Races	1992-10	0.1											0.1	0.1
White	1992-10	0.1*											0.1*	0.1*
Black	1992-01	-1.1	2001-10	0.9									0.9	0.9
<u>SEER 9 Observed Incidence^a, 1975-2010</u>														
All Races	1975-80	-1.5	1980-85	3.2*	1985-10	0.0							0.0	0.0
White	1975-80	-1.1	1980-87	2.6*	1987-94	-0.8	1994-10	0.2*					0.2*	0.2*
Black	1975-91	1.3*	1991-10	-0.3									-0.3	-0.3
<u>SEER 13 Observed Incidence^b, 1992-2010</u>														
All Races	1992-10	0.1											0.1	0.1
White	1992-10	0.1											0.1	0.1
White NH ^{ef}	1992-10	0.4*											0.4*	0.4*
Black	1992-02	-1.4*	2002-05	4.1	2005-10	-1.3							0.4	-1.3
Black NH ^{ef}	1992-02	-1.4*	2002-05	4.6	2005-10	-1.1							0.7	-1.1
API ^e	1992-10	0.8*											0.8*	0.8*
AI/AN ^{eg}	1992-10	0.0											0.0	0.0
Hispanic ^f	1992-10	-0.1											-0.1	-0.1
<u>U.S. Cancer Mortality^c, 1975-2010</u>														
All Races	1975-90	-0.4*	1990-10	-3.1*									-3.1*	-3.1*
White	1975-91	-0.7*	1991-99	-4.3*	1999-10	-2.6*							-2.6*	-2.6*
Black	1975-87	1.8*	1987-96	-1.2*	1996-10	-2.5*							-2.5*	-2.5*
<u>U.S. Cancer Mortality^c, 1992-2010</u>														
All Races	1992-10	-3.0*											-3.0*	-3.0*
White	1992-10	-3.2*											-3.2*	-3.2*
White NH ^{ef}	1992-10	-3.1*											-3.1*	-3.1*
Black	1992-10	-2.4*											-2.4*	-2.4*
Black NH ^{ef}	1992-10	-2.3*											-2.3*	-2.3*
API ^e	1992-10	-2.8*											-2.8*	-2.8*
AI/AN ^{eg}	1992-10	-2.7*											-2.7*	-2.7*
Hispanic ^f	1992-10	-3.0*											-3.0*	-3.0*

Joinpoint Regression Program Version 4.0.3, April 2013, National Cancer Institute. (<http://surveillance.cancer.gov/joinpoint/>).
^a The APC is the Annual Percent Change based on rates age-adjusted to the 2000 US Std Population (19 age groups - Census P25-1130).
^b Trends are from the SEER 9 areas (San Francisco, Connecticut, Detroit, Hawaii, Iowa, New Mexico, Seattle, Utah, and Atlanta).
^c Trends are from the SEER 13 areas (SEER 9 Areas, Los Angeles, San Jose-Monterey, Rural Georgia, and the Alaska Native Registry).
^d Trends are from US Mortality Files, National Center for Health Statistics, Centers for Disease Control and Prevention.
^e The AAPC is the Average Annual Percent Change and is based on the APCs calculated by Joinpoint.
^f API - Asian/Pacific Islander, AI/AN - American Indian/Alaska Native, NH - Non-Hispanic
Hispanic and Non-Hispanic are not mutually exclusive from whites, blacks, Asian/Pacific Islanders, and American Indians/Alaska Natives. Incidence data for Hispanics and Non-Hispanics are based on NHIA and exclude cases from the Alaska Native Registry.
The Hispanic and Non-Hispanic mortality trends exclude deaths from CT, DC, ME, MD, MN, NH, NY, ND, SC, OK and VT.
^g Data for American Indian/Alaska Native are based on the CHSDA (Contract Health Service Delivery Area) counties.
* The APC/AAPC is significantly different from zero (p<.05).
- Joinpoint regression line analysis could not be performed on data series.

Table 4.3
Cancer of the Female Breast (Invasive)

Trends in SEER Incidence^{ab} and U.S. Mortality^c Using the Joinpoint Regression Program,
1975-2010 With up to Five Joinpoints, 1992-2010 With up to Three Joinpoints,
Ages 50+ by Race/Ethnicity

	JP Trend 1		JP Trend 2		JP Trend 3		JP Trend 4		JP Trend 5		JP Trend 6		AAPC ^d	
	Years	APC	Years	APC	Years	APC	Years	APC	Years	APC	Years	APC	2001-10	2006-10
<u>SEER 9 Delay-Adjusted Incidence^a, 1975-2010</u>														
All Races	1975-82	0.8	1982-87	5.4*	1987-93	-0.3	1993-99	1.9*	1999-05	-2.5*	2005-10	0.5	-0.8	0.5
White	1975-82	0.9	1982-87	5.6*	1987-93	-0.4	1993-99	2.1*	1999-05	-2.6*	2005-10	0.3	-1.0*	0.3
Black	1975-92	2.6*	1992-10	0.3									0.3	0.3
<u>SEER 13 Delay-Adjusted Incidence^b, 1992-2010</u>														
All Races	1992-99	1.7*	1999-04	-2.8*	2004-10	0.1							-0.9	0.1
White	1992-00	1.5*	2000-04	-3.7*	2004-10	0.1							-1.2*	0.1
Black	1992-10	0.3*											0.3*	0.3*
<u>SEER 9 Observed Incidence^a, 1975-2010</u>														
All Races	1975-82	0.9	1982-87	5.3*	1987-93	-0.3	1993-99	1.9*	1999-05	-2.6*	2005-10	0.4	-0.9*	0.4
White	1975-82	0.9*	1982-87	5.5*	1987-93	-0.3	1993-00	1.7*	2000-04	-3.8*	2004-10	-0.1	-1.3*	-0.1
Black	1975-92	2.6*	1992-10	0.2									0.2	0.2
<u>SEER 13 Observed Incidence^b, 1992-2010</u>														
All Races	1992-99	1.7*	1999-04	-2.9*	2004-10	0.0							-1.0*	0.0
White	1992-00	1.4*	2000-04	-3.7*	2004-10	0.0							-1.3*	0.0
White NH ^{ef}	1992-01	1.3*	2001-04	-5.2	2004-10	0.3							-1.6	0.3
Black	1992-10	0.2											0.2	0.2
Black NH ^{ef}	1992-10	0.2											0.2	0.2
API ^e	1992-94	-5.6	1994-97	8.3	1997-04	-1.5	2004-10	1.3					0.3	1.3
AI/AN ^{eg}	1992-10	-0.3											-0.3	-0.3
Hispanic ^f	1992-99	1.5	1999-10	-0.7*									-0.7*	-0.7*
<u>U.S. Cancer Mortality^c, 1975-2010</u>														
All Races	1975-90	0.6*	1990-10	-1.9*									-1.9*	-1.9*
White	1975-90	0.5*	1990-10	-2.0*									-2.0*	-2.0*
Black	1975-93	1.6*	1993-10	-1.2*									-1.2*	-1.2*
<u>U.S. Cancer Mortality^c, 1992-2010</u>														
All Races	1992-94	-0.4	1994-97	-3.1*	1997-10	-1.8*							-1.8*	-1.8*
White	1992-94	-0.6	1994-97	-3.3*	1997-10	-1.9*							-1.9*	-1.9*
White NH ^{ef}	1992-94	-0.5	1994-97	-3.3*	1997-10	-1.7*							-1.7*	-1.7*
Black	1992-94	1.9	1994-10	-1.3*									-1.3*	-1.3*
Black NH ^{ef}	1992-10	-0.9*											-0.9*	-0.9*
API ^e	1992-10	-0.5*											-0.5*	-0.5*
AI/AN ^{eg}	1992-10	0.1											0.1	0.1
Hispanic ^f	1992-10	-1.5*											-1.5*	-1.5*

Joinpoint Regression Program Version 4.0.3, April 2013, National Cancer Institute. (<http://surveillance.cancer.gov/joinpoint/>).

The APC is the Annual Percent Change based on rates age-adjusted to the 2000 US Std Population (19 age groups - Census P25-1130).

Trends are from the SEER 9 areas (San Francisco, Connecticut, Detroit, Hawaii, Iowa, New Mexico, Seattle, Utah, and Atlanta).

Trends are from the SEER 13 areas (SEER 9 Areas, Los Angeles, San Jose-Monterey, Rural Georgia, and the Alaska Native Registry).

Trends are from US Mortality Files, National Center for Health Statistics, Centers for Disease Control and Prevention.

The AAPC is the Average Annual Percent Change and is based on the APCs calculated by Joinpoint.

API - Asian/Pacific Islander, AI/AN - American Indian/Alaska Native, NH - Non-Hispanic

Hispanic and Non-Hispanic are not mutually exclusive from whites, blacks, Asian/Pacific Islanders, and American Indians/Alaska

Natives. Incidence data for Hispanics and Non-Hispanics are based on NHIA and exclude cases from the Alaska Native Registry.

The Hispanic and Non-Hispanic mortality trends exclude deaths from CT, DC, ME, MD, MN, NH, NY, ND, SC, OK and VT.

Data for American Indian/Alaska Native are based on the CHSDA (Contract Health Service Delivery Area) counties.

* The APC/AAPC is significantly different from zero ($p < .05$).

- Joinpoint regression line analysis could not be performed on data series.

Table 4.4
Cancer of the Female Breast (*In Situ*)

Trends in SEER Incidence^{ab} Using the Joinpoint Regression Program,
1975-2010 With up to Five Joinpoints, 1992-2010 With up to Three Joinpoints,
All Ages by Race/Ethnicity

	JP Trend 1		JP Trend 2		JP Trend 3		JP Trend 4		JP Trend 5		JP Trend 6		AAPC ^d	
	Years	APC	Years	APC	Years	APC	Years	APC	Years	APC	Years	APC	2001-10	2006-10
<u>SEER 9 Delay-Adjusted Incidence^a, 1975-2010</u>														
All Races	1975-81	-3.2	1981-87	25.1*	1987-94	3.8*	1994-98	9.9*	1998-10	1.0*			1.0*	1.0*
White	1975-81	-2.7	1981-87	25.0*	1987-95	4.0*	1995-98	11.3*	1998-10	0.8*			0.8*	0.8*
Black	1975-98	9.4*	1998-10	1.6*									1.6*	1.6*
<u>SEER 13 Delay-Adjusted Incidence^b, 1992-2010</u>														
All Races	1992-99	7.1*	1999-10	0.7									0.7	0.7
White	1992-99	7.0*	1999-10	0.5									0.5	0.5
Black	1992-98	8.9*	1998-10	1.8*									1.8*	1.8*
<u>SEER 9 Observed Incidence^a, 1975-2010</u>														
All Races	1975-81	-3.1	1981-87	25.2*	1987-94	3.8*	1994-98	9.9*	1998-10	0.9*			0.9*	0.9*
White	1975-81	-2.9	1981-87	25.4*	1987-95	3.9*	1995-98	11.4	1998-10	0.7*			0.7*	0.7*
Black	1975-81	3.1	1981-88	18.4*	1988-98	7.9*	1998-10	1.8*					1.8*	1.8*
<u>SEER 13 Observed Incidence^b, 1992-2010</u>														
All Races	1992-99	7.1*	1999-10	0.6									0.6	0.6
White	1992-99	7.0*	1999-10	0.4									0.4	0.4
White NH ^{ef}	1992-99	7.3*	1999-10	0.6									0.6	0.6
Black	1992-98	8.9*	1998-10	1.8*									1.8*	1.8*
Black NH ^{ef}	1992-98	8.7*	1998-10	1.9*									1.9*	1.9*
API ^e	1992-02	7.8*	2002-05	-5.4	2005-08	8.6	2008-10	-3.8					0.9	2.2
AI/AN ^{eg}	1992-10	0.8											0.8	0.8
Hispanic ^f	1992-98	8.3*	1998-10	1.6*									1.6*	1.6*

Joinpoint Regression Program Version 4.0.3, April 2013, National Cancer Institute. (<http://surveillance.cancer.gov/joinpoint/>).
^a The APC is the Annual Percent Change based on rates age-adjusted to the 2000 US Std Population (19 age groups - Census P25-1130).
^b Trends are from the SEER 9 areas (San Francisco, Connecticut, Detroit, Hawaii, Iowa, New Mexico, Seattle, Utah, and Atlanta).
^c Trends are from the SEER 13 areas (SEER 9 Areas, Los Angeles, San Jose-Monterey, Rural Georgia, and the Alaska Native Registry).
^d Trends are from US Mortality Files, National Center for Health Statistics, Centers for Disease Control and Prevention.
^e The AAPC is the Average Annual Percent Change and is based on the APCs calculated by Joinpoint.
^f API - Asian/Pacific Islander, AI/AN - American Indian/Alaska Native, NH - Non-Hispanic
Hispanic and Non-Hispanic are not mutually exclusive from whites, blacks, Asian/Pacific Islanders, and American Indians/Alaska Natives. Incidence data for Hispanics and Non-Hispanics are based on NHIA and exclude cases from the Alaska Native Registry.
^g The Hispanic and Non-Hispanic mortality trends exclude deaths from CT, DC, ME, MD, MN, NH, NY, ND, SC, OK and VT.
* Data for American Indian/Alaska Native are based on the CHSDA (Contract Health Service Delivery Area) counties.
- The APC/AAPC is significantly different from zero (p<.05).
- Joinpoint regression line analysis could not be performed on data series.

Table 4.5
Cancer of the Breast (Invasive)

Age-adjusted SEER Incidence^a Rates by Year, Race and Sex

Year of Diagnosis:	All Races			Whites			Blacks		
	Total	Males	Females	Total	Males	Females	Total	Males	Females
1975-2010	68.85	1.09	125.48	70.64	1.09	129.39	66.36	1.63	115.44
1975	58.06	0.85	105.07	59.45	0.88	107.33	52.11	-	93.58
1976	56.44	1.10	101.92	58.12	1.12	104.80	48.04	-	85.36
1977	55.99	0.96	100.83	57.47	0.88	103.44	49.67	-	87.03
1978	55.85	0.90	100.64	57.57	0.89	103.67	48.18	-	85.92
1979	56.85	0.99	102.13	58.31	0.94	104.75	49.88	-	86.90
1980	56.91	0.90	102.25	58.55	0.93	105.15	50.55	-	89.40
1981	59.32	1.00	106.35	61.26	0.93	109.95	54.34	-	94.20
1982	59.23	0.98	106.48	61.10	0.94	110.01	53.88	-	93.47
1983	61.91	1.04	111.16	63.73	1.13	114.50	58.95	-	103.58
1984	64.49	0.93	116.01	66.60	0.94	119.94	58.42	-	102.47
1985	69.13	0.95	124.28	71.02	0.97	127.88	64.13	-	111.71
1986	70.49	0.95	126.88	72.32	0.96	130.44	66.22	-	114.97
1987	74.80	0.96	134.51	77.84	0.98	140.31	63.08	-	109.46
1988	73.08	1.22	131.31	75.63	1.16	136.33	68.99	2.76	118.65
1989	70.75	1.13	127.21	73.39	1.08	132.40	60.52	-	104.92
1990	73.17	1.13	131.84	75.35	1.15	136.26	68.55	-	118.63
1991	74.10	1.12	133.86	76.64	1.17	138.92	67.37	-	117.33
1992	73.03	1.04	132.05	74.76	1.02	135.78	71.59	-	124.02
1993	71.33	1.08	129.20	73.18	1.04	133.16	68.79	-	119.39
1994	72.10	1.14	130.98	74.29	1.09	135.69	70.64	-	122.53
1995	72.85	0.97	132.63	75.16	0.93	137.68	71.61	-	123.72
1996	73.34	1.31	133.68	75.34	1.32	138.14	71.68	-	124.35
1997	75.57	1.10	137.96	77.65	1.07	142.75	72.33	-	125.04
1998	77.31	1.07	141.35	79.72	1.12	146.73	71.14	-	123.96
1999	77.17	0.98	141.47	79.60	0.97	147.11	72.50	-	125.47
2000	74.34	1.16	136.42	77.24	1.14	142.97	68.01	2.86	117.20
2001	75.56	1.22	138.69	78.21	1.22	144.88	66.55	1.66	115.26
2002	73.62	1.15	135.64	75.93	1.13	141.24	70.87	1.95	122.95
2003	68.85	1.32	126.85	70.82	1.34	131.76	71.09	1.74	123.44
2004	69.34	1.21	128.00	70.83	1.25	132.07	71.27	1.61	123.90
2005	68.32	1.09	126.42	70.22	1.19	131.31	67.83	-	118.22
2006	68.07	1.22	125.98	69.51	1.26	130.11	71.32	1.54	124.29
2007	68.95	1.11	127.89	70.35	1.13	132.11	71.50	1.82	123.97
2008	68.88	1.18	127.99	69.75	1.21	131.16	72.95	1.37	127.17
2009	70.11	1.22	130.27	71.04	1.27	133.62	73.47	-	128.07
2010	67.71	1.25	126.02	68.78	1.12	129.77	69.56	3.04	120.55

^a SEER 9 areas (San Francisco, Connecticut, Detroit, Hawaii, Iowa, New Mexico, Seattle, Utah, and Atlanta). Rates are per 100,000 and are age-adjusted to the 2000 US Std Population (19 age groups - Census P25-1130).
- Statistic not shown. Rate based on less than 16 cases for the time interval.

Table 4.6
Cancer of the Breast (Invasive)

Age-adjusted U.S. Death^a Rates by Year, Race and Sex

Year of Death:	All Races			Whites			Blacks		
	Total	Males	Females	Total	Males	Females	Total	Males	Females
1975-2010	16.28	0.32	28.67	16.12	0.31	28.50	20.10	0.55	34.13
1975	17.83	0.37	31.45	18.03	0.38	31.79	16.82	0.41	29.49
1976	18.06	0.38	31.80	18.25	0.36	32.17	17.61	0.60	30.47
1977	18.47	0.36	32.48	18.56	0.35	32.67	18.90	0.51	32.80
1978	18.05	0.36	31.73	18.12	0.35	31.90	18.63	0.60	32.14
1979	17.74	0.28	31.21	17.87	0.26	31.48	17.87	0.54	30.82
1980	18.04	0.30	31.68	18.15	0.30	31.93	18.37	0.42	31.68
1981	18.20	0.32	31.92	18.28	0.31	32.12	18.95	0.46	32.55
1982	18.39	0.33	32.19	18.42	0.32	32.31	19.68	0.56	33.75
1983	18.33	0.31	32.07	18.36	0.29	32.20	19.57	0.50	33.53
1984	18.79	0.29	32.90	18.76	0.28	32.90	20.97	0.47	35.94
1985	18.84	0.34	32.98	18.88	0.34	33.11	20.35	0.43	34.85
1986	18.76	0.28	32.87	18.76	0.27	32.93	20.69	0.42	35.44
1987	18.66	0.34	32.66	18.57	0.34	32.57	21.53	0.47	36.73
1988	18.98	0.33	33.20	18.85	0.28	33.09	22.35	0.88	37.78
1989	19.00	0.33	33.23	18.95	0.33	33.23	21.56	0.45	36.61
1990	18.93	0.28	33.14	18.79	0.26	33.02	22.49	0.52	38.00
1991	18.66	0.28	32.69	18.46	0.27	32.45	22.62	0.44	38.28
1992	18.07	0.31	31.64	17.89	0.30	31.43	21.88	0.45	37.09
1993	17.98	0.36	31.39	17.74	0.34	31.09	22.62	0.66	38.04
1994	17.67	0.35	30.92	17.40	0.34	30.56	22.44	0.60	37.74
1995	17.44	0.35	30.55	17.11	0.32	30.09	22.70	0.77	38.18
1996	16.83	0.34	29.49	16.52	0.31	29.05	22.09	0.72	37.13
1997	16.07	0.32	28.21	15.67	0.30	27.62	22.25	0.63	37.43
1998	15.67	0.32	27.54	15.32	0.31	27.01	21.08	0.56	35.53
1999	15.18	0.34	26.61	14.77	0.32	25.98	20.93	0.69	35.21
2000	15.19	0.37	26.64	14.86	0.35	26.17	20.48	0.63	34.36
2001	14.77	0.35	26.01	14.37	0.33	25.43	20.52	0.65	34.52
2002	14.54	0.31	25.62	14.13	0.29	25.02	20.32	0.61	34.14
2003	14.31	0.31	25.27	13.89	0.30	24.66	20.24	0.47	34.10
2004	13.82	0.29	24.49	13.44	0.28	23.94	19.11	0.56	32.29
2005	13.61	0.29	24.14	13.18	0.28	23.49	19.37	0.49	32.81
2006	13.25	0.29	23.56	12.87	0.29	23.02	18.73	0.47	31.62
2007	12.90	0.28	22.96	12.51	0.27	22.40	18.51	0.45	31.36
2008	12.66	0.31	22.55	12.26	0.29	21.99	18.37	0.60	30.96
2009	12.43	0.28	22.24	12.09	0.28	21.76	17.78	0.41	30.19
2010	12.26	0.30	21.92	11.85	0.28	21.33	17.78	0.59	30.17

^a US Mortality Files, National Center for Health Statistics, Centers for Disease Control and Prevention. Rates are per 100,000 and are age-adjusted to the 2000 US Std Population (19 age groups - Census P25-1130).
- Statistic not shown. Rate based on less than 16 cases for the time interval.

Table 4.7
Cancer of the Female Breast (Invasive)

Delay-adjusted SEER Incidence^a Rates by Year, Race and Age

Year of Diagnosis:	All Races, Females			White Females			Black Females		
	All	<50	50+	All	<50	50+	All	<50	50+
1975	105.07	40.62	273.82	107.33	40.68	281.86	93.58	42.98	226.09
1976	101.92	40.03	263.98	104.80	40.83	272.31	85.36	37.85	209.77
1977	100.83	39.11	262.44	103.44	39.40	271.12	87.03	37.62	216.41
1978	100.64	38.85	262.45	103.67	39.34	272.15	85.92	40.01	206.14
1979	102.13	38.04	269.96	104.75	38.63	277.88	86.90	37.85	215.34
1980	102.25	37.82	270.96	105.15	38.31	280.15	89.40	37.69	224.82
1981	106.35	39.22	282.13	109.95	40.16	292.70	94.20	38.66	239.64
1982	106.49	40.57	279.09	110.02	41.31	289.93	93.49	38.02	238.73
1983	111.18	40.27	296.85	114.52	40.91	307.28	103.62	41.39	266.58
1984	116.03	42.38	308.90	119.98	43.15	321.15	102.53	44.69	253.99
1985	124.30	44.38	333.59	127.93	44.50	346.40	111.80	45.56	285.25
1986	126.92	44.53	342.66	130.50	45.29	353.64	115.08	45.69	296.80
1987	134.56	45.55	367.63	140.39	46.56	386.11	109.59	43.19	283.47
1988	131.36	44.01	360.08	136.42	45.08	375.61	118.80	42.84	317.70
1989	127.28	43.41	346.89	132.52	44.55	362.87	105.11	42.24	269.75
1990	131.92	45.61	357.91	136.40	45.42	374.62	118.88	49.00	301.86
1991	133.94	47.28	360.87	139.08	47.32	379.36	117.59	50.97	292.05
1992	132.15	43.49	364.30	135.95	43.69	377.54	124.33	47.17	326.40
1993	129.31	42.88	355.61	133.35	43.37	368.97	119.73	45.23	314.81
1994	131.10	42.45	363.24	135.90	42.83	379.60	122.91	47.67	319.93
1995	132.76	43.24	367.17	137.91	43.85	384.22	124.15	45.62	329.77
1996	133.83	43.59	370.14	138.40	44.07	385.40	124.82	44.44	335.29
1997	138.13	43.58	385.73	143.03	44.23	401.76	125.56	44.48	337.85
1998	141.54	45.49	393.06	147.05	45.78	412.22	124.50	46.79	327.99
1999	141.71	43.89	397.86	147.49	45.23	415.27	126.12	44.00	341.17
2000	136.69	43.54	380.59	143.38	44.09	403.39	117.87	44.88	308.99
2001	138.99	44.03	387.67	145.34	44.96	408.18	115.98	40.02	314.90
2002	135.97	42.92	379.63	141.74	43.69	398.50	123.79	41.43	339.47
2003	127.20	43.42	346.59	132.28	44.46	362.26	124.37	43.49	336.15
2004	128.41	45.04	346.74	132.65	45.05	362.03	124.93	47.89	326.64
2005	126.88	44.18	343.45	131.95	44.70	360.43	119.30	45.94	311.38
2006	126.52	44.26	341.91	130.82	45.27	354.86	125.55	45.55	335.03
2007	128.51	45.34	346.30	132.92	45.95	360.66	125.35	45.38	334.76
2008	128.71	45.58	346.40	132.17	45.91	358.04	128.90	45.18	348.13
2009	131.13	45.59	355.13	134.99	46.15	367.60	130.31	46.24	350.43
2010	127.40	44.28	345.04	131.87	45.47	358.13	123.73	44.61	330.91

Additional information on the model used to delay-adjust SEER Incidence rates can be found at [\(http://surveillance.cancer.gov/delay/\)](http://surveillance.cancer.gov/delay/).

^a SEER 9 areas (San Francisco, Connecticut, Detroit, Hawaii, Iowa, New Mexico, Seattle, Utah, and Atlanta).
Rates are per 100,000 and are age-adjusted to the 2000 US Std Population (19 age groups - Census P25-1130).
- Delay-adjusted rate is not shown for observed rates based on less than 16 cases for the time interval.

Table 4.8
Cancer of the Female Breast (*In Situ*)

Delay-adjusted SEER Incidence^a Rates by Year, Race and Age

	All Races, Females			White Females			Black Females		
	All	<50	50+	All	<50	50+	All	<50	50+
Year of Diagnosis:									
1975	5.83	3.80	11.15	5.90	3.84	11.28	3.94	-	8.31
1976	5.28	2.72	11.98	5.36	2.89	11.83	3.28	-	9.40
1977	4.25	2.56	8.67	4.32	2.59	8.85	3.03	-	-
1978	4.40	2.36	9.74	4.55	2.50	9.91	3.29	-	-
1979	4.58	2.81	9.21	4.65	2.85	9.37	4.78	-	9.55
1980	4.83	2.98	9.67	5.06	3.11	10.17	3.56	-	-
1981	4.96	2.64	11.05	4.93	2.52	11.26	4.08	-	8.72
1982	5.30	2.73	12.03	5.34	2.71	12.24	5.55	2.73	12.94
1983	6.09	3.03	14.09	6.22	3.03	14.57	5.41	-	13.20
1984	8.63	4.79	18.66	9.19	5.19	19.64	6.35	2.37	16.77
1985	11.53	5.93	26.20	12.11	6.27	27.39	8.21	3.49	20.58
1986	13.63	6.79	31.56	14.27	7.23	32.70	9.32	5.12	20.33
1987	17.38	7.82	42.40	18.22	8.24	44.35	12.30	5.64	29.74
1988	17.58	8.20	42.14	18.11	8.50	43.28	15.99	7.38	38.55
1989	16.55	7.04	41.46	17.11	7.27	42.86	14.54	5.52	38.16
1990	19.15	8.39	47.32	19.93	8.73	49.27	14.99	5.54	39.72
1991	19.80	8.78	48.65	20.51	8.90	50.90	15.42	7.30	36.69
1992	21.44	9.01	53.99	22.19	9.27	56.01	19.09	6.83	51.20
1993	20.72	8.37	53.05	21.36	8.81	54.25	16.74	6.06	44.70
1994	22.32	8.73	57.89	22.91	9.02	59.27	20.16	7.48	53.37
1995	24.72	9.64	64.21	25.11	10.03	64.61	22.83	6.51	65.56
1996	25.38	9.84	66.08	25.94	9.84	68.09	22.76	7.72	62.15
1997	28.33	11.05	73.58	28.97	11.23	75.43	28.31	11.41	72.58
1998	32.81	12.00	87.32	33.78	12.34	89.93	30.46	10.69	82.22
1999	32.78	11.99	87.20	33.22	12.24	88.17	29.68	10.40	80.16
2000	32.86	11.81	87.99	33.94	12.56	89.92	29.80	8.06	86.74
2001	33.72	11.58	91.70	34.29	12.04	92.56	31.91	9.03	91.83
2002	34.08	11.92	92.11	34.64	12.35	93.01	28.67	8.70	80.96
2003	32.52	12.05	86.12	33.54	12.58	88.44	29.97	9.44	83.72
2004	33.23	12.79	86.76	34.05	13.04	89.08	30.68	10.13	84.50
2005	32.74	12.52	85.66	33.74	13.08	87.85	31.86	10.21	88.53
2006	33.35	13.88	84.35	33.72	14.46	84.18	35.90	11.69	99.30
2007	35.50	14.45	90.62	35.97	14.90	91.14	33.63	11.04	92.79
2008	37.00	14.22	96.66	37.35	14.85	96.28	36.58	11.62	101.95
2009	37.19	14.54	96.51	37.98	15.18	97.70	35.87	11.45	99.82
2010	34.21	13.25	89.10	34.55	13.30	90.19	33.39	12.32	88.56

Additional information on the model used to delay-adjust SEER Incidence rates can be found at <http://surveillance.cancer.gov/delay/>.

^a SEER 9 areas (San Francisco, Connecticut, Detroit, Hawaii, Iowa, New Mexico, Seattle, Utah, and Atlanta). Rates are per 100,000 and are age-adjusted to the 2000 US Std Population (19 age groups - Census P25-1130).

- Delay-adjusted rate is not shown for observed rates based on less than 16 cases for the time interval.

Table 4.9
Cancer of the Female Breast (Invasive)

Age-adjusted SEER Incidence^a Rates by Year, Race and Age

	All Races, Females			White Females			Black Females		
	All	<50	50+	All	<50	50+	All	<50	50+
Year of Diagnosis:									
1975-2010	125.48	43.34	340.57	129.39	43.85	353.37	115.44	44.05	302.38
1975	105.07	40.62	273.82	107.33	40.68	281.86	93.58	42.98	226.09
1976	101.92	40.03	263.98	104.80	40.83	272.31	85.36	37.85	209.77
1977	100.83	39.11	262.44	103.44	39.40	271.12	87.03	37.62	216.41
1978	100.64	38.85	262.45	103.67	39.34	272.15	85.92	40.01	206.14
1979	102.13	38.04	269.96	104.75	38.63	277.88	86.90	37.85	215.34
1980	102.25	37.82	270.96	105.15	38.31	280.15	89.40	37.69	224.82
1981	106.35	39.22	282.13	109.95	40.16	292.70	94.20	38.66	239.64
1982	106.48	40.57	279.08	110.01	41.31	289.91	93.47	38.02	238.68
1983	111.16	40.27	296.81	114.50	40.90	307.22	103.58	41.37	266.47
1984	116.01	42.37	308.85	119.94	43.14	321.05	102.47	44.66	253.83
1985	124.28	44.37	333.51	127.88	44.48	346.26	111.71	45.52	285.02
1986	126.88	44.51	342.57	130.44	45.27	353.48	114.97	45.64	296.50
1987	134.51	45.53	367.50	140.31	46.53	385.90	109.46	43.13	283.13
1988	131.31	43.99	359.95	136.33	45.05	375.38	118.65	42.79	317.29
1989	127.21	43.39	346.71	132.40	44.51	362.56	104.92	42.16	269.26
1990	131.84	45.59	357.71	136.26	45.38	374.25	118.63	48.90	301.23
1991	133.86	47.25	360.64	138.92	47.27	378.94	117.33	50.86	291.38
1992	132.05	43.46	364.04	135.78	43.63	377.07	124.02	47.05	325.56
1993	129.20	42.85	355.32	133.16	43.31	368.46	119.39	45.10	313.92
1994	130.98	42.41	362.91	135.69	42.77	379.03	122.53	47.52	318.93
1995	132.63	43.20	366.79	137.68	43.77	383.57	123.72	45.46	328.63
1996	133.68	43.54	369.72	138.14	43.99	384.69	124.35	44.27	334.04
1997	137.96	43.53	385.24	142.75	44.14	400.95	125.04	44.30	336.47
1998	141.35	45.43	392.53	146.73	45.68	411.34	123.96	46.59	326.58
1999	141.47	43.81	397.18	147.11	45.11	414.18	125.47	43.77	339.40
2000	136.42	43.46	379.86	142.97	43.96	402.23	117.20	44.62	307.24
2001	138.69	43.93	386.83	144.88	44.82	406.88	115.26	39.77	312.95
2002	135.64	42.81	378.70	141.24	43.54	397.09	122.95	41.14	337.16
2003	126.85	43.30	345.62	131.76	44.28	360.84	123.44	43.16	333.63
2004	128.00	44.89	345.64	132.07	44.85	360.45	123.90	47.50	323.95
2005	126.42	44.02	342.20	131.31	44.48	358.67	118.22	45.53	308.56
2006	125.98	44.07	340.47	130.11	45.02	352.92	124.29	45.09	331.68
2007	127.89	45.12	344.61	132.11	45.66	358.46	123.97	44.88	331.06
2008	127.99	45.33	344.44	131.16	45.56	355.30	127.17	44.58	343.44
2009	130.27	45.29	352.79	133.62	45.69	363.89	128.07	45.45	344.41
2010	126.02	43.80	341.31	129.77	44.74	352.42	120.55	43.47	322.39

^a SEER 9 areas (San Francisco, Connecticut, Detroit, Hawaii, Iowa, New Mexico, Seattle, Utah, and Atlanta). Rates are per 100,000 and are age-adjusted to the 2000 US Std Population (19 age groups - Census P25-1130).
- Statistic not shown. Rate based on less than 16 cases for the time interval.

Table 4.10
Cancer of the Female Breast (Invasive)
Age-adjusted U.S. Death^a Rates by Year, Race and Age

Year of Death:	All Races, Females			White Females			Black Females		
	All	<50	50+	All	<50	50+	All	<50	50+
1975-2010	28.67	6.86	85.78	28.50	6.50	86.12	34.13	10.54	95.91
1975	31.45	9.11	89.94	31.79	9.01	91.42	29.49	10.68	78.75
1976	31.80	8.74	92.21	32.17	8.64	93.80	30.47	10.22	83.50
1977	32.48	8.86	94.34	32.67	8.75	95.32	32.80	10.52	91.13
1978	31.73	8.69	92.08	31.90	8.46	93.29	32.14	11.37	86.53
1979	31.21	8.58	90.47	31.48	8.34	92.07	30.82	11.36	81.78
1980	31.68	8.57	92.22	31.93	8.39	93.56	31.68	10.82	86.31
1981	31.92	8.46	93.33	32.12	8.20	94.77	32.55	11.48	87.74
1982	32.19	8.42	94.43	32.31	8.19	95.46	33.75	11.19	92.83
1983	32.07	8.16	94.70	32.20	7.89	95.85	33.53	11.17	92.10
1984	32.90	8.58	96.57	32.90	8.22	97.55	35.94	12.55	97.21
1985	32.98	8.56	96.90	33.11	8.30	98.09	34.85	12.04	94.58
1986	32.87	8.64	96.32	32.93	8.26	97.53	35.44	12.86	94.58
1987	32.66	8.44	96.08	32.57	7.99	96.93	36.73	12.94	99.04
1988	33.20	8.39	98.18	33.09	8.01	98.78	37.78	12.71	103.42
1989	33.23	8.42	98.22	33.23	8.06	99.16	36.61	12.41	99.96
1990	33.14	8.32	98.14	33.02	7.99	98.55	38.00	11.99	106.13
1991	32.69	8.16	96.91	32.45	7.73	97.15	38.28	12.31	106.29
1992	31.64	7.77	94.15	31.43	7.37	94.45	37.09	12.03	102.73
1993	31.39	7.41	94.18	31.09	6.99	94.20	38.04	11.65	107.14
1994	30.92	7.37	92.58	30.56	6.92	92.47	37.74	11.70	105.91
1995	30.55	7.29	91.46	30.09	6.80	91.07	38.18	11.71	107.49
1996	29.49	6.95	88.53	29.05	6.40	88.35	37.13	11.74	103.61
1997	28.21	6.71	84.53	27.62	6.22	83.64	37.43	11.03	106.56
1998	27.54	6.34	83.05	27.01	5.82	82.50	35.53	10.65	100.68
1999	26.61	5.75	81.22	25.98	5.20	80.40	35.21	10.27	100.52
2000	26.64	5.89	80.99	26.17	5.37	80.64	34.36	9.94	98.31
2001	26.01	5.86	78.77	25.43	5.36	77.98	34.52	9.85	99.12
2002	25.62	5.63	77.97	25.02	5.07	77.28	34.14	10.02	97.31
2003	25.27	5.58	76.85	24.66	5.08	75.90	34.10	9.62	98.19
2004	24.49	5.21	74.99	23.94	4.67	74.38	32.29	9.26	92.60
2005	24.14	5.20	73.74	23.49	4.65	72.83	32.81	9.46	93.95
2006	23.56	5.05	72.01	23.02	4.58	71.32	31.62	8.88	91.17
2007	22.96	4.77	70.60	22.40	4.28	69.85	31.36	8.55	91.10
2008	22.55	4.74	69.20	21.99	4.32	68.23	30.96	8.23	90.47
2009	22.24	4.81	67.88	21.76	4.48	67.01	30.19	7.96	88.39
2010	21.92	4.53	67.47	21.33	4.08	66.53	30.17	8.02	88.17

^a US Mortality Files, National Center for Health Statistics, Centers for Disease Control and Prevention.
Rates are per 100,000 and are age-adjusted to the 2000 US Std Population (19 age groups - Census P25-1130).
- Statistic not shown. Rate based on less than 16 cases for the time interval.

Table 4.11
Cancer of the Female Breast (*In Situ*)

Age-adjusted SEER Incidence^a Rates by Year, Race and Age

	All Races, Females			White Females			Black Females		
	All	<50	50+	All	<50	50+	All	<50	50+
Year of Diagnosis:									
1975-2010	22.86	9.45	57.98	22.91	9.60	57.78	22.05	7.88	59.15
1975	5.83	3.80	11.15	5.90	3.84	11.28	3.94	-	8.31
1976	5.28	2.72	11.98	5.36	2.89	11.83	3.28	-	9.40
1977	4.25	2.56	8.67	4.32	2.59	8.85	3.03	-	-
1978	4.40	2.36	9.74	4.55	2.50	9.91	3.29	-	-
1979	4.58	2.81	9.21	4.65	2.85	9.37	4.78	-	9.55
1980	4.83	2.98	9.67	5.06	3.11	10.17	3.56	-	-
1981	4.96	2.64	11.05	4.93	2.52	11.26	4.08	-	8.72
1982	5.30	2.73	12.03	5.34	2.71	12.24	5.55	2.73	12.94
1983	6.09	3.03	14.09	6.22	3.03	14.57	5.41	-	13.20
1984	8.62	4.79	18.66	9.18	5.19	19.64	6.35	2.37	16.77
1985	11.53	5.93	26.19	12.10	6.27	27.38	8.21	3.49	20.57
1986	13.63	6.79	31.56	14.27	7.23	32.69	9.32	5.12	20.32
1987	17.38	7.82	42.39	18.21	8.23	44.33	12.30	5.64	29.73
1988	17.57	8.20	42.12	18.10	8.50	43.26	15.99	7.38	38.53
1989	16.54	7.03	41.44	17.10	7.27	42.84	14.53	5.52	38.14
1990	19.14	8.38	47.31	19.92	8.72	49.24	14.98	5.54	39.69
1991	19.80	8.78	48.64	20.49	8.90	50.86	15.41	7.29	36.66
1992	21.43	9.01	53.98	22.17	9.26	55.97	19.08	6.83	51.16
1993	20.71	8.37	53.04	21.35	8.80	54.21	16.73	6.06	44.66
1994	22.31	8.73	57.87	22.89	9.01	59.22	20.14	7.47	53.32
1995	24.72	9.64	64.19	25.09	10.02	64.54	22.80	6.50	65.50
1996	25.37	9.84	66.05	25.91	9.83	68.02	22.74	7.71	62.09
1997	28.31	11.04	73.54	28.95	11.22	75.36	28.28	11.40	72.50
1998	32.79	11.99	87.27	33.75	12.33	89.84	30.43	10.68	82.14
1999	32.75	11.98	87.14	33.18	12.22	88.05	29.64	10.38	80.05
2000	32.84	11.80	87.92	33.89	12.54	89.79	29.76	8.04	86.62
2001	33.69	11.57	91.62	34.24	12.02	92.42	31.86	9.02	91.69
2002	34.04	11.90	91.99	34.58	12.33	92.86	28.62	8.69	80.83
2003	32.47	12.03	85.99	33.48	12.56	88.28	29.92	9.43	83.57
2004	33.17	12.77	86.60	33.98	13.01	88.90	30.62	10.11	84.33
2005	32.66	12.50	85.48	33.68	13.06	87.67	31.79	10.19	88.35
2006	33.27	13.85	84.13	33.65	14.42	84.00	35.82	11.66	99.08
2007	35.39	14.40	90.35	35.89	14.87	90.92	33.55	11.01	92.57
2008	36.87	14.17	96.31	37.23	14.80	95.95	36.46	11.58	101.60
2009	37.03	14.48	96.10	37.76	15.09	97.13	35.66	11.38	99.24
2010	33.83	13.10	88.09	34.14	13.14	89.13	33.00	12.18	87.52

^a SEER 9 areas (San Francisco, Connecticut, Detroit, Hawaii, Iowa, New Mexico, Seattle, Utah, and Atlanta). Rates are per 100,000 and are age-adjusted to the 2000 US Std Population (19 age groups - Census P25-1130).
- Statistic not shown. Rate based on less than 16 cases for the time interval.

Table 4.12
Cancer of the Breast (Invasive)SEER Incidence^a and U.S. Death^b Rates, Age-Adjusted and Age-Specific Rates, by Race and Sex

	All Races			Whites			Blacks		
	Total	Males	Females	Total	Males	Females	Total	Males	Females
<u>SEER Incidence</u>									
<u>Age at Diagnosis</u>									
Age-Adjusted Rates, 2006-2010									
All ages	66.8	1.2	123.8	68.0	1.2	127.4	69.3	1.9	121.4
Under 65	41.8	0.4	81.6	42.0	0.4	83.0	44.2	0.7	82.3
65 and over	239.9	6.7	415.8	248.2	6.7	433.9	242.5	9.7	391.5
All ages (IARC world std) ^c	47.3	0.8	89.4	48.1	0.7	91.9	49.1	1.2	88.0
Age-Specific Rates, 2006-2010									
<1	-	-	-	-	-	-	-	-	-
1-4	-	-	-	-	-	-	-	-	-
5-9	-	-	-	-	-	-	-	-	-
10-14	-	-	-	-	-	-	-	-	-
15-19	0.1	-	0.2	0.1	-	0.2	-	-	-
20-24	0.8	-	1.6	0.7	-	1.5	0.9	-	1.9
25-29	4.3	-	8.6	3.9	-	8.1	6.5	-	12.4
30-34	13.0	-	26.2	12.5	-	25.6	17.7	-	33.4
35-39	29.7	0.1	59.1	29.1	-	59.1	35.3	-	66.6
40-44	61.5	0.4	122.2	60.8	0.4	122.6	66.6	-	126.0
45-49	95.1	0.6	187.7	95.8	0.5	191.6	94.6	0.9	179.1
50-54	114.0	1.2	222.8	114.9	1.1	227.3	118.0	2.2	221.2
55-59	139.3	1.9	268.3	140.3	2.0	273.8	149.9	2.1	275.2
60-64	181.9	3.2	346.2	186.4	3.0	359.2	183.5	5.6	328.5
65-69	221.9	4.6	413.2	229.1	4.8	430.7	218.1	5.6	382.4
70-74	235.3	5.6	424.6	244.3	5.6	445.4	234.6	8.8	396.7
75-79	254.4	7.9	439.6	264.7	7.8	462.3	253.1	12.2	405.4
80-84	258.0	8.1	419.8	266.6	8.1	436.3	262.6	11.7	395.8
85+	243.4	9.7	357.0	248.8	9.8	365.0	270.7	14.0	371.9
<u>U.S. Mortality</u>									
<u>Age at Death</u>									
Age-Adjusted Rates, 2006-2010									
All ages	12.7	0.3	22.6	12.3	0.3	22.1	18.2	0.5	30.8
Under 65	5.8	0.1	11.2	5.4	0.1	10.5	9.5	0.2	17.5
65 and over	60.6	1.7	101.8	60.3	1.6	102.0	78.4	2.7	122.8
All ages (IARC world std) ^c	7.9	0.2	14.6	7.6	0.2	14.2	11.8	0.3	20.7
Age-Specific Rates, 2006-2010									
<1	-	-	-	-	-	-	-	-	-
1-4	-	-	-	-	-	-	-	-	-
5-9	-	-	-	-	-	-	-	-	-
10-14	-	-	-	-	-	-	-	-	-
15-19	-	-	-	-	-	-	-	-	-
20-24	0.1	-	0.1	0.0	-	0.1	0.1	-	0.2
25-29	0.3	-	0.7	0.3	-	0.6	0.7	-	1.4
30-34	1.4	-	2.8	1.2	-	2.4	2.9	-	5.5
35-39	3.5	0.0	6.9	3.1	-	6.2	6.8	-	12.8
40-44	6.8	0.1	13.5	6.1	0.1	12.3	12.4	-	23.3
45-49	10.9	0.1	21.4	10.0	0.1	19.8	19.1	-	35.9
50-54	16.3	0.2	31.7	15.2	0.2	29.9	26.4	0.5	49.1
55-59	22.6	0.4	43.4	21.2	0.4	41.2	36.7	0.8	67.0
60-64	30.1	0.7	57.1	29.3	0.7	56.2	42.8	1.2	76.6
65-69	37.3	0.9	69.5	36.7	0.8	69.2	50.9	2.2	88.1
70-74	45.1	1.2	81.8	44.6	1.2	81.6	60.5	2.2	101.8
75-79	58.5	1.7	101.6	58.5	1.6	102.5	73.7	2.2	117.9
80-84	79.6	2.4	129.6	79.4	2.4	130.2	102.4	3.3	154.2
85+	125.3	3.6	182.6	125.4	3.5	183.1	156.5	5.1	214.4

^a SEER 18 areas. Rates are per 100,000 and are age-adjusted to the 2000 US Std Population (19 age groups - Census P25-1130), unless noted.^b US Mortality Files, National Center for Health Statistics, Centers for Disease Control and Prevention.^c Rates are per 100,000 and are age-adjusted to the 2000 US Std Population (19 age groups - Census P25-1130), unless noted.

- Rates are per 100,000 and are age-adjusted to the IARC world standard population.

- Statistic not shown. Rate based on less than 16 cases for the time interval.

Table 4.13
Cancer of the Female Breast (*In Situ*)

SEER Incidence^a Rates, Age-Adjusted and Age-Specific Rates, by Race

	All Races, Females	White Females	Black Females
<u>Age-Adjusted Rates, 2006-2010</u>			
Age at Diagnosis:			
All ages	31.4	31.9	29.5
Under 65	23.5	23.9	20.6
65 and over	86.4	87.0	90.7
All ages (IARC world std) ^b	23.7	24.0	22.0
<u>Age-Specific Rates, 2006-2010</u>			
Age at Diagnosis:			
<1	-	-	-
1-4	-	-	-
5-9	-	-	-
10-14	-	-	-
15-19	-	-	-
20-24	0.1	-	-
25-29	0.8	0.7	0.9
30-34	2.8	2.7	3.4
35-39	10.9	10.8	11.3
40-44	39.8	40.6	32.4
45-49	61.2	63.1	45.7
50-54	73.3	75.5	59.6
55-59	75.0	76.0	72.2
60-64	89.3	89.7	93.4
65-69	102.1	102.7	103.0
70-74	98.5	99.7	105.6
75-79	92.0	92.8	93.0
80-84	70.6	71.6	76.7
85+	35.1	34.3	45.4

^a SEER 18 areas. Rates are per 100,000 and are age-adjusted to the 2000 US Std Population (19 age groups - Census P25-1130), unless noted.

^b Rates are per 100,000 and are age-adjusted to the IARC world standard population.

- Statistic not shown. Rate based on less than 16 cases for the time interval.

Table 4.14
Cancer of the Female Breast (Invasive)

5-Year Relative and Period Survival (Percent) by Race, Diagnosis Year, Stage and Age

	All Races, Females			White Females			Black Females		
	All	<50	50+	All	<50	50+	All	<50	50+
5-Year Relative Survival (Percent)									
Year of Diagnosis:									
1960-1963 ^a	-	-	-	63	-	-	46	-	-
1970-1973 ^a	-	-	-	68	-	-	51	-	-
1975-1977 ^b	74.8	76.5	74.3	75.6	77.8	74.9	62.1	62.3	62.0
1978-1980 ^b	74.4	75.5	74.1	75.1	76.1	74.8	63.2	67.1	61.2
1981-1983 ^b	76.1	77.4	75.7	77.1	78.6	76.7	63.3	64.9	62.6
1984-1986 ^b	78.9	77.8	79.3	80.0	79.5	80.1	65.1	64.0	65.8
1987-1989 ^b	84.0	81.4	85.0	85.1	82.7	85.9	71.2	69.5	72.1
1990-1992 ^b	85.2	83.4	85.9	86.4	85.1	86.9	71.4	70.1	72.3
1993-1995 ^b	86.3	84.2	87.1	87.6	86.2	88.1	72.7	70.2	74.1
1996-1998 ^b	88.2	86.5	88.9	89.3	88.2	89.7	76.1	73.9	77.5
1999-2002 ^b	89.9	88.2	90.5	91.1	89.9	91.5	78.2	76.7	79.1
2003-2009 ^b	90.3 ^f	90.3 ^f	90.4 ^f	91.7 ^f	91.9 ^f	91.7 ^f	79.1 ^f	79.5 ^f	78.9 ^f
5-Year Period Survival (Percent) ^{cd}									
2009	89.5	89.5	89.5	90.6	90.7	90.6	79.7	80.1	79.5
Stage Distribution (%) 2003-2009 ^{ee}									
All Stages									
Number of cases	317,340	79,804	237,536	257,938	60,629	197,309	33,134	10,408	22,726
Percent	100%	100%	100%	100%	100%	100%	100%	100%	100%
Localized	61	54	63	62	55	64	52	47	54
Regional	32	40	30	32	40	29	38	44	35
Distant	5	4	6	5	4	5	8	7	9
Unstaged	2	1	2	2	1	2	2	1	2
5-Year Relative Survival (Percent), 2003-2009 ^c									
Age at Diagnosis:									
Ages <45	87.7	-	-	89.1	-	-	77.7	-	-
Ages 45-54	90.1	-	-	91.4	-	-	79.8	-	-
Ages 55-64	89.9	-	-	90.9	-	-	80.2	-	-
Ages 65-74	90.5	-	-	91.6	-	-	81.2	-	-
Ages 75+	87.1	-	-	88.6	-	-	71.6	-	-
Ages <65	89.5	-	-	90.7	-	-	79.3	-	-
Ages 65+	88.9	-	-	90.1	-	-	77.1	-	-
Stage ^g :									
All Stages	89.2	89.1	89.3	90.4	90.5	90.5	78.7	79.0	78.6
Localized	98.6	96.4	99.3	99.2	96.8	99.9	93.7	92.6	94.2
Regional	84.4	85.8	83.7	85.8	87.7	84.9	73.8	74.2	73.5
Distant	24.3	32.9	21.9	25.4	35.3	23.0	16.1	22.1	13.7
Unstaged	50.0	71.6	45.3	48.4	72.1	44.0	47.8	57.1	45.0
<i>In Situ</i> ^j	100.0	100.0	100.0	100.0	100.0	100.0	100.0	99.8	100.0

^a Based on End Results data from a series of hospital registries and one population-based registry.

^b SEER 9 areas (San Francisco, Connecticut, Detroit, Hawaii, Iowa, New Mexico, Seattle, Utah, Atlanta).
Based on follow-up of patients into 2010.

^c SEER 18 areas (San Francisco, Connecticut, Detroit, Hawaii, Iowa, New Mexico, Seattle, Utah, Atlanta, San Jose-Monterey, Los Angeles, Alaska Native Registry, Rural Georgia, California excluding SF/SJM/LA, Kentucky, Louisiana, New Jersey and Georgia excluding ATL/RG).

Based on follow-up of patients into 2010.

^d Period survival provides a 2009 estimate of survival by piecing together the most recent conditional survival estimates from several cohorts. It is computed here using three year calendar blocks (2007-2009: 0-1 year survival),

(2006-2008: 1-2 year survival), (2005-2007: 2-3 year survival), (2004-2006: 3-4 year survival), (2003-2005: 4-5 years survival).

^e Stage at diagnosis is classified using SEER Summary Stage 2000.

^f The difference between 1975-1977 and 2003-2009 is statistically significant ($p < .05$).

^g The standard error is between 5 and 10 percentage points.

^h The standard error is greater than 10 percentage points.

^j *In situ* cases are not included in the All Stages group.

- Statistic could not be calculated due to fewer than 25 cases during the time period.

Table 4.15
Cancer of the Female Breast (Invasive)

SEER^a Relative Survival (Percent)
By Year of Diagnosis

All Races, Females

Year of Diagnosis

	1975- 1979	1980- 1984	1985- 1989	1990	1991	1992	1993	1994	1995	1996	1997	1998	1999	2000	2001	2002	2003	2004	2005	2006	2007	2008	2009
Survival Time																							
1-year	94.4	95.1	96.3	96.8	97.1	97.2	97.0	97.3	97.1	96.9	97.4	97.5	97.5	97.5	97.3	97.6	97.8	97.7	97.8	97.8	97.7	97.7	97.8
2-year	88.7	89.9	92.3	93.2	93.5	94.1	93.8	94.1	93.9	93.6	94.3	94.9	95.1	95.3	95.1	95.5	95.5	95.6	95.7	95.7	96.1	95.7	
3-year	83.1	84.6	88.3	89.6	90.0	90.9	90.8	90.9	91.3	90.9	92.0	92.8	93.1	93.5	92.9	93.6	93.3	93.2	93.8	93.8	94.0		
4-year	78.4	80.1	85.0	86.8	87.4	88.1	88.0	88.5	88.8	88.8	89.9	91.0	91.3	91.7	91.0	91.8	91.6	91.3	91.9	92.2			
5-year	74.6	76.3	82.2	84.6	85.2	85.8	85.7	86.5	86.8	86.7	88.4	89.5	89.6	90.2	89.5	90.2	89.8	89.9	90.5				
6-year	71.4	73.3	79.9	82.5	83.3	84.0	83.9	85.0	85.4	85.0	87.0	88.3	88.1	89.1	88.3	88.8	88.6	88.6					
7-year	68.6	70.6	77.8	80.7	81.6	82.4	82.1	83.5	83.8	83.9	86.0	87.1	87.0	87.7	86.9	87.6	87.4						
8-year	66.4	68.3	76.3	79.4	80.0	81.6	80.5	82.8	82.6	82.5	85.0	85.8	85.9	86.4	85.9	86.4							
9-year	64.2	66.4	74.6	78.1	78.7	80.6	79.5	81.7	81.4	81.4	83.8	84.6	85.0	85.3	85.3								
10-year	62.4	64.4	73.3	77.0	77.6	79.6	78.6	80.5	80.6	80.4	82.7	83.4	84.2	84.5									
11-year	60.8	62.6	72.0	75.9	76.9	78.7	77.3	79.1	79.5	79.5	81.9	82.6	83.0										
12-year	59.2	61.4	70.8	75.1	75.8	77.7	76.7	78.0	78.5	78.6	81.1	82.0											
13-year	58.0	60.3	69.8	74.1	75.0	76.7	75.8	77.3	77.4	77.5	80.1												
14-year	57.1	59.1	68.9	73.0	74.2	76.1	74.9	76.3	76.8	76.7													
15-year	56.0	58.2	68.1	71.8	73.6	75.1	74.0	75.8	75.9														
16-year	55.1	57.1	67.2	70.7	72.7	74.2	72.9	75.2															
17-year	54.1	56.2	66.5	69.8	71.8	73.4	71.9																
18-year	53.3	55.5	65.7	69.0	70.9	73.1																	
19-year	52.5	54.8	65.1	68.4	69.9																		
20-year	51.7	54.1	64.4	67.5																			
21-year	51.0	53.3	63.7																				
22-year	50.4	52.7																					
23-year	49.8	52.0																					
24-year	49.2	51.3																					
25-year	48.4	50.8																					
26-year	48.1	50.4																					
27-year	47.7																						
28-year	47.2																						
29-year	46.7																						
30-year	46.2																						

^a Based on the SEER 9 areas (San Francisco, Connecticut, Detroit, Hawaii, Iowa, New Mexico, Seattle, Utah, and Atlanta).

Table 4.16
Cancer of the Female Breast (Ages <50, Invasive)

SEER^a Relative Survival (Percent)
By Year of Diagnosis

All Races, Females

Year of Diagnosis

	1975- 1979	1980- 1984	1985- 1989	1990	1991	1992	1993	1994	1995	1996	1997	1998	1999	2000	2001	2002	2003	2004	2005	2006	2007	2008	2009
Survival Time																							
1-year	96.6	97.4	97.9	97.4	98.4	98.2	97.8	98.3	97.9	97.7	98.0	98.3	98.6	98.4	98.2	98.5	98.8	98.5	98.8	98.8	99.0	98.7	98.8
2-year	90.7	91.2	92.5	92.9	93.9	94.4	94.2	93.5	93.6	93.7	94.7	95.1	95.0	95.5	94.6	95.7	96.0	95.9	96.0	96.7	97.0	96.3	
3-year	84.5	85.5	87.3	88.3	90.0	90.7	90.2	89.3	90.0	90.7	91.6	92.1	92.2	92.9	91.6	93.2	93.6	93.2	93.7	94.7	94.9		
4-year	79.9	80.9	83.3	85.0	86.8	86.4	87.1	86.1	86.6	88.1	88.7	89.4	90.0	90.5	89.2	90.5	91.8	91.1	92.0	92.9			
5-year	76.0	77.0	80.1	82.4	83.9	83.8	84.6	84.0	84.1	85.5	86.7	87.3	88.1	88.9	87.3	88.6	89.7	89.2	90.6				
6-year	73.2	74.1	77.9	80.1	81.8	81.7	83.0	82.0	82.2	83.3	84.7	85.3	86.1	87.3	85.2	86.6	88.0	87.6					
7-year	70.8	71.5	75.7	78.6	79.5	80.2	81.2	80.3	80.2	81.7	83.2	83.6	84.8	85.6	83.4	85.1	86.6						
8-year	68.9	69.5	74.1	76.6	78.2	78.7	79.6	79.1	78.7	80.0	81.4	82.2	83.5	83.7	82.0	83.9							
9-year	67.0	67.7	72.6	75.5	77.2	77.6	78.5	77.6	77.5	78.9	80.4	80.7	82.4	82.4	80.9								
10-year	65.5	66.3	71.4	74.3	76.3	76.8	77.4	76.5	76.3	77.6	79.1	79.6	81.4	81.5									
11-year	64.2	65.0	70.3	73.2	75.3	75.7	76.6	75.7	75.4	76.6	78.0	78.7	80.2										
12-year	62.8	64.0	69.2	72.4	74.0	75.1	76.0	74.2	74.5	75.9	77.1	78.0											
13-year	61.6	62.9	68.3	71.3	73.2	73.9	75.1	73.5	73.6	74.5	76.2												
14-year	60.9	61.8	67.5	70.7	72.5	73.3	74.2	72.7	72.9	73.8													
15-year	60.1	61.0	66.8	70.0	71.8	72.6	73.4	72.2	72.0														
16-year	59.4	60.3	66.1	69.6	70.8	72.1	72.1	71.7															
17-year	58.9	59.7	65.5	68.9	70.2	71.6	71.6																
18-year	58.3	59.1	64.8	68.5	69.4	70.8																	
19-year	57.6	58.6	64.3	67.8	68.8																		
20-year	57.0	58.0	63.8	67.1																			
21-year	56.3	57.3	63.2																				
22-year	55.7	56.5																					
23-year	55.1	55.9																					
24-year	54.5	55.3																					
25-year	53.9	54.9																					
26-year	53.5	54.3																					
27-year	52.9																						
28-year	52.6																						
29-year	52.2																						
30-year	51.8																						

^a Based on the SEER 9 areas (San Francisco, Connecticut, Detroit, Hawaii, Iowa, New Mexico, Seattle, Utah, and Atlanta).

Table 4.17
Cancer of the Female Breast (Ages 50+, Invasive)

SEER^a Relative Survival (Percent)
By Year of Diagnosis

All Races, Females

Year of Diagnosis

	1975- 1979	1980- 1984	1985- 1989	1990	1991	1992	1993	1994	1995	1996	1997	1998	1999	2000	2001	2002	2003	2004	2005	2006	2007	2008	2009
Survival Time																							
1-year	93.7	94.4	95.8	96.6	96.6	96.8	96.7	97.0	96.8	96.7	97.1	97.2	97.2	97.2	97.0	97.2	97.5	97.5	97.4	97.4	97.3	97.4	97.6
2-year	88.0	89.6	92.3	93.3	93.4	94.0	93.6	94.3	94.1	93.6	94.2	94.8	95.2	95.3	95.3	95.4	95.3	95.5	95.6	95.3	95.7	95.5	
3-year	82.6	84.3	88.6	90.1	90.0	91.0	91.0	91.4	91.8	91.0	92.1	93.1	93.4	93.7	93.3	93.7	93.2	93.3	93.8	93.5	93.7		
4-year	77.9	79.9	85.6	87.5	87.7	88.7	88.3	89.4	89.6	89.1	90.3	91.6	91.7	92.1	91.7	92.2	91.5	91.4	91.8	92.0			
5-year	74.1	76.1	83.0	85.4	85.7	86.5	86.1	87.4	87.8	87.1	89.0	90.3	90.1	90.7	90.3	90.8	89.8	90.1	90.5				
6-year	70.8	73.1	80.5	83.4	83.9	84.9	84.2	86.0	86.5	85.7	87.8	89.5	88.8	89.7	89.4	89.6	88.9	88.9					
7-year	67.9	70.3	78.5	81.4	82.4	83.3	82.4	84.6	85.1	84.7	87.0	88.4	87.8	88.6	88.1	88.5	87.7						
8-year	65.6	67.9	77.0	80.5	80.7	82.8	80.9	84.2	84.1	83.4	86.4	87.2	86.8	87.4	87.4	87.3							
9-year	63.3	65.9	75.3	79.1	79.3	81.7	79.9	83.2	82.9	82.4	85.1	86.2	86.0	86.4	86.9								
10-year	61.3	63.8	73.9	78.0	78.1	80.7	79.1	81.9	82.3	81.5	84.1	84.8	85.2	85.7									
11-year	59.5	61.8	72.6	77.0	77.6	79.9	77.6	80.3	81.1	80.7	83.3	84.1	84.0										
12-year	57.9	60.5	71.3	76.2	76.6	78.6	77.0	79.3	80.1	79.7	82.6	83.6											
13-year	56.7	59.3	70.3	75.2	75.8	77.7	76.0	78.6	78.9	78.7	81.6												
14-year	55.6	58.0	69.4	73.8	74.9	77.1	75.1	77.6	78.4	77.9													
15-year	54.4	57.1	68.4	72.4	74.4	76.0	74.2	77.1	77.3														
16-year	53.3	55.8	67.5	70.9	73.5	74.9	73.1	76.5															
17-year	52.1	54.7	66.7	69.7	72.4	74.0	71.9																
18-year	51.2	54.0	65.8	68.7	71.4	73.9																	
19-year	50.3	53.2	65.2	68.2	70.2																		
20-year	49.4	52.3	64.4	67.1																			
21-year	48.6	51.6	63.5																				
22-year	48.1	51.0																					
23-year	47.4	50.3																					
24-year	46.8	49.5																					
25-year	45.8	48.9																					
26-year	45.5	48.7																					
27-year	45.1																						
28-year	44.7																						
29-year	44.0																						
30-year	43.3																						

^a Based on the SEER 9 areas (San Francisco, Connecticut, Detroit, Hawaii, Iowa, New Mexico, Seattle, Utah, and Atlanta).

Table 4.18
Cancer of the Female Breast (Invasive)

Risk of Being Diagnosed With Cancer in 10, 20 and 30 Years,
Lifetime Risk of Being Diagnosed with Cancer Given Alive and Cancer-Free at Current Age, and
Lifetime Risk of Dying from Cancer Given Alive at Current Age
Females, 2008-2010 By Race/Ethnicity

Race/ Ethnicity	Current Age	Risk of Being Diagnosed with Cancer				Risk of Dying from Cancer	Race/ Ethnicity	Current Age	Risk of Being Diagnosed with Cancer				Risk of Dying from Cancer
		+10 yrs	+20 yrs	+30 yrs	Ever				+10 yrs	+20 yrs	+30 yrs	Ever	
All Races	0	0.00	0.00	0.06	12.29	2.74	Asian/ Pacific Islander	0	0.00	0.00	0.05	9.87	1.73
	10	0.00	0.06	0.50	12.42	2.77		10	0.00	0.05	0.44	9.94	1.74
	20	0.06	0.49	1.92	12.45	2.78		20	0.05	0.44	1.77	9.95	1.74
	30	0.44	1.87	4.08	12.45	2.79		30	0.39	1.73	3.61	9.93	1.74
	40	1.45	3.69	6.85	12.16	2.76		40	1.34	3.24	5.65	9.61	1.72
	50	2.31	5.59	8.74	11.07	2.64		50	1.94	4.40	6.57	8.44	1.63
	60	3.49	6.86	8.86	9.34	2.39		60	2.56	4.82	6.24	6.76	1.44
	70	3.84	6.12	-	6.67	2.00		70	2.44	3.97	-	4.53	1.16
80	3.06	-	-	3.80	1.55	80	1.83	-	-	2.50	0.89		
White	0	0.00	0.00	0.06	12.68	2.71	American Indian/ Alaska Native ^a	0	0.00	0.00	0.05	7.38	1.73
	10	0.00	0.06	0.49	12.80	2.74		10	0.00	0.05	0.26	7.46	1.75
	20	0.06	0.49	1.93	12.82	2.74		20	0.05	0.26	1.05	7.49	1.76
	30	0.44	1.89	4.15	12.83	2.75		30	0.21	1.02	2.54	7.52	1.78
	40	1.47	3.75	7.05	12.55	2.73		40	0.82	2.37	4.51	7.44	1.78
	50	2.36	5.76	9.07	11.44	2.62		50	1.61	3.83	5.94	6.89	1.75
	60	3.62	7.15	9.20	9.67	2.39		60	2.38	4.64	5.40	5.66	1.58
	70	4.02	6.36	-	6.90	1.99		70	2.58	3.45	-	3.74	1.30
80	3.16	-	-	3.89	1.55	80	1.16	-	-	1.55	1.06		
Black	0	0.00	0.00	0.07	10.82	3.25	Hispanic ^b	0	0.00	0.00	0.04	9.73	2.05
	10	0.00	0.07	0.57	11.04	3.31		10	0.00	0.05	0.37	9.82	2.07
	20	0.07	0.57	1.93	11.06	3.32		20	0.04	0.37	1.45	9.84	2.08
	30	0.50	1.87	4.01	11.08	3.34		30	0.33	1.41	3.16	9.83	2.08
	40	1.40	3.57	6.35	10.77	3.29		40	1.09	2.86	5.25	9.58	2.06
	50	2.27	5.18	7.84	9.81	3.11		50	1.81	4.26	6.61	8.69	1.96
	60	3.19	6.12	7.80	8.27	2.75		60	2.57	5.04	6.59	7.21	1.76
	70	3.49	5.50	-	6.06	2.31		70	2.72	4.43	-	5.11	1.48
80	2.87	-	-	3.68	1.85	80	2.14	-	-	2.98	1.17		

Devcan 6.7.0, June 2013, National Cancer Institute (<http://surveillance.cancer.gov/devcan/>).

Source: Incidence data are from the SEER 18 areas (San Francisco, Connecticut, Detroit, Hawaii, Iowa, New Mexico, Seattle, Utah, Atlanta, San Jose-Monterey, Los Angeles, Alaska Native Registry, Rural Georgia, California excluding SF/SJM/LA, Kentucky, Louisiana, New Jersey, and Georgia excluding ATL/RG). Mortality data are from the NCHS public use data file for the total US.

^a Underlying incidence and mortality data for American Indian/Alaska Native are based on the CHSDA (Contract Health Service Delivery Area) counties.

^b Hispanic is not mutually exclusive from whites, blacks, Asian/Pacific Islanders, and American Indians/Alaska Natives. Underlying incidence data for Hispanics are based on NHIA and exclude cases from the Alaska Native Registry. Underlying mortality data for Hispanics exclude deaths from the District of Columbia, Minnesota, New Hampshire, North Dakota and South Carolina.

- Statistic could not be calculated.

A percent of 0.00 represents a value that is below 0.005.

Table 4.19
Cancer of the Female Breast (Invasive)

SEER Incidence and U.S. Mortality
Age-Adjusted Rates and Trends^a
By Race/Ethnicity

SEER Incidence	SEER 18 Areas ^b	SEER 13 Areas ^b	SEER 9 Areas ^b
	Rate 2006-2010	Trend 2001-2010 ^c	Trend 2001-2010 ^d
	Rate per 100,000 persons	AAPC (%)	AAPC (%)
	Females	Females	Females
RACE/ETHNICITY			
All Races	123.8	-0.7	-0.7
White	127.4	-0.8*	-0.8*
White Hispanic ^e	94.2	0.0	-
White Non-Hispanic ^e	133.4	-0.7	-
Black	121.4	0.1	0.1
Asian/Pacific Islander	91.8	0.0	-
Amer Ind/Alaska Nat ^f	77.1	-0.3	-
Hispanic ^e	90.8	-0.6*	-
<u>U.S. Mortality^g</u>			
	Rate 2006-2010	Trend 2001-2010 ^h	
	Rate per 100,000 persons	AAPC (%)	
	Females	Females	
RACE/ETHNICITY			
All Races	22.6	-1.9*	
White	22.1	-1.9*	
White Hispanic ^e	15.6	-1.6*	
White Non-Hispanic ^e	22.7	-1.8*	
Black	30.8	-1.6*	
Asian/Pacific Islander	11.5	-1.0*	
Amer Ind/Alaska Nat			
Total U.S.	12.5	-1.2*	
CHSDA Counties	15.5	-0.4	
Non-CHSDA Counties	8.9	-2.6*	
Hispanic ^e	14.8	-1.7*	

The AAPC is the Average Annual Percent Change over the time interval. The AAPCs are calculated by the Joinpoint Regression Program Version 4.0.3, April 2013, National Cancer Institute.

- Statistic not shown. Rate based on less than 16 cases for the time interval.

Trend based on less than 10 cases for at least one year within the time interval.

a Rates are age-adjusted to the 2000 US Std Population (19 age groups - Census P25-1130). Trends

are based on rates age-adjusted to the 2000 US Std Population (19 age groups - Census P25-1130).

b The SEER 9 areas are San Francisco, Connecticut, Detroit, Hawaii, Iowa, New Mexico, Seattle, Utah, and Atlanta.

The SEER 13 areas comprise the SEER 9 areas plus San Jose-Monterey, Los Angeles, the Alaska Native Registry, and Rural Georgia.

The SEER 18 areas comprise the SEER 13 areas plus California excluding SF/SJM/LA, Kentucky, Louisiana, New Jersey, and Georgia excluding ATL/RG.

c The 2001-2010 AAPC estimates are based on a Joinpoint analysis with up to 3 Joinpoints over diagnosis years 1992-2010.

d The 2001-2010 AAPC estimates are based on a Joinpoint analysis with up to 5 Joinpoints over diagnosis years 1975-2010.

e Hispanic and Non-Hispanic are not mutually exclusive from whites, blacks, Asian/Pacific Islanders, and American Indians/Alaska Natives. Incidence data for Hispanics and Non-Hispanics are based on NHIA and exclude cases from the Alaska Native Registry. The 2006-2010 Hispanic and Non-Hispanic death rates exclude deaths from the District of Columbia, North Dakota, and South Carolina. The 2001-2010 Hispanic and Non-Hispanic mortality trends exclude deaths from Connecticut, the District of Columbia, Maine, Maryland, Minnesota, New Hampshire, New York, North Dakota, Oklahoma, South Carolina and Vermont.

f Incidence data for American Indian/Alaska Native are based on the CHSDA(Contract Health Service Delivery Area) counties.

g US Mortality Files, National Center for Health Statistics, CDC.

h The 2001-2010 mortality AAPCs are based on a Joinpoint analysis using years of death 1992-2010.

* The APC is significantly different from zero (p<.05).

Table 4.20
Cancer of the Female Breast (*In Situ*)

SEER Incidence
Age-Adjusted Rates and Trends^a
By Race/Ethnicity

SEER Incidence	SEER 18 Areas ^b	SEER 13 Areas ^b	SEER 9 Areas ^b
	Rate 2006-2010 Rate per 100,000 persons	Trend 2001-2010 ^c AAPC (%)	Trend 2001-2010 ^d AAPC (%)
RACE/ETHNICITY	Females	Females	Females
All Races	31.4	0.6	0.9*
White	31.9	0.4	0.7*
White Hispanic ^e	21.1	1.7*	-
White Non-Hispanic ^e	34.1	0.6	-
Black	29.5	1.8*	1.8*
Asian/Pacific Islander	29.1	0.9	-
Amer Ind/Alaska Nat ^f	13.7	0.8	-
Hispanic ^e	20.6	1.6*	-

The AAPC is the Average Annual Percent Change over the time interval. The AAPCs are calculated by the Joinpoint Regression Program Version 4.0.3, April 2013, National Cancer Institute.

- Statistic not shown. Rate based on less than 16 cases for the time interval.

Trend based on less than 10 cases for at least one year within the time interval.

^a Rates are age-adjusted to the 2000 US Std Population (19 age groups - Census P25-1130). Trends are based on rates age-adjusted to the 2000 US Std Population (19 age groups - Census P25-1130).

^b The SEER 9 areas are San Francisco, Connecticut, Detroit, Hawaii, Iowa, New Mexico, Seattle, Utah, and Atlanta.

The SEER 13 areas comprise the SEER 9 areas plus San Jose-Monterey, Los Angeles, the Alaska Native Registry, and Rural Georgia.

The SEER 18 areas comprise the SEER 13 areas plus California excluding SF/SJM/LA, Kentucky, Louisiana, New Jersey, and Georgia excluding ATL/RG.

^c The 2001-2010 AAPC estimates are based on a Joinpoint analysis with up to 3 Joinpoints over diagnosis years 1992-2010.

^d The 2001-2010 AAPC estimates are based on a Joinpoint analysis with up to 5 Joinpoints over diagnosis years 1975-2010.

^e Hispanic and Non-Hispanic are not mutually exclusive from whites, blacks, Asian/Pacific Islanders, and American Indians/Alaska Natives. Incidence data for Hispanics and Non-Hispanics are based on NHIA and exclude cases from the Alaska Native Registry.

^f Incidence data for American Indian/Alaska Native are based on the CHSDA (Contract Health Service Delivery Area) counties.

* The APC is significantly different from zero ($p < .05$).

Table 4.21
Cancer of the Female Breast (Invasive)

Age-Adjusted SEER Incidence Rates^a
By Registry, Race and Age

	All Races			Whites			Blacks		
	All Ages	Ages <50	Ages 50+	All Ages	Ages <50	Ages 50+	All Ages	Ages <50	Ages 50+
<u>SEER Incidence Rates^a, 2006-2010</u>									
California	122.04	40.62	335.22	127.78	41.14	354.67	120.71	40.84	329.87
Greater Bay Area	127.57	44.37	345.44	139.75	46.26	384.56	120.08	40.00	329.78
San Francisco-Oakland	129.86	45.28	351.35	142.18	47.07	391.25	123.01	40.73	338.46
San Jose-Monterey	123.19	42.73	333.87	135.56	44.92	372.91	98.90	35.47	264.99
Los Angeles	115.95	39.82	315.29	119.98	39.00	332.03	124.28	43.71	335.26
Greater California	122.92	39.67	340.93	127.49	40.63	354.95	117.51	38.49	324.43
Connecticut	136.26	50.26	361.45	138.90	51.79	367.00	110.91	39.77	297.20
Detroit	126.95	44.82	342.02	128.18	45.83	343.83	126.37	43.43	343.53
Georgia	121.52	43.25	326.47	122.59	42.02	333.57	120.90	47.03	314.32
Atlanta	130.56	47.60	347.79	135.23	48.39	362.61	130.06	48.96	342.42
Rural Georgia	129.39	49.91	337.54	138.22	54.27	358.06	111.39	45.22	284.66
Greater Georgia	116.82	40.57	316.47	117.52	39.14	322.74	114.85	45.31	296.95
Hawaii	123.07	47.25	321.62	132.87	47.92	355.30	128.47	46.56	342.96
Iowa	123.36	43.52	332.44	123.86	43.75	333.63	114.02	38.83	310.91
Kentucky	121.29	41.60	329.96	120.88	41.12	329.73	129.35	46.29	346.85
Louisiana	119.69	41.21	325.19	118.91	39.46	326.95	124.59	46.46	329.19
New Jersey	129.27	47.67	342.95	133.59	49.29	354.34	117.15	43.57	309.82
New Mexico	108.81	37.74	294.91	113.04	39.71	305.07	83.39	37.38	203.89
Seattle-Puget Sound	137.20	44.28	380.49	142.08	44.69	397.09	122.82	42.95	331.97
Utah	110.84	36.10	306.56	112.06	36.99	308.62	96.74	-	284.24
9 SEER Areas ^b	127.63	44.72	344.74	131.34	45.33	356.56	124.75	44.69	334.42
11 SEER Areas ^b	124.72	43.42	337.62	129.11	43.81	352.46	124.32	44.37	333.65
13 SEER Areas ^b	124.74	43.44	337.62	129.14	43.83	352.51	124.11	44.37	332.89
18 SEER Areas ^b	123.79	42.62	336.34	127.38	42.96	348.44	121.35	44.11	323.61

^a Rates are per 100,000 and are age-adjusted to the 2000 US Std Population (19 age groups - Census P25-1130)

^b The SEER 9 areas are San Francisco, Connecticut, Detroit, Hawaii, Iowa, New Mexico, Seattle, Utah and Atlanta.

The SEER 11 areas comprise the SEER 9 areas plus San Jose-Monterey and Los Angeles.

The SEER 13 areas comprise the SEER 11 areas plus the Alaska Native Registry and Rural Georgia.

The SEER 18 areas comprise the SEER 13 areas plus California excluding SF/SJM/LA, Kentucky, Louisiana, New Jersey and Georgia excluding ATL/RG.

- Statistic not shown. Rate based on less than 16 cases for the time interval.

Table 4.22
Cancer of the Female Breast (Invasive)

Age-Adjusted SEER Death Rates^a
By Registry, Race and Age

	All Races			Whites			Blacks		
	All Ages	Ages <50	Ages 50+	All Ages	Ages <50	Ages 50+	All Ages	Ages <50	Ages 50+
<u>SEER Death Rates^a, 2006-2010</u>									
California	21.85	4.43	67.48	22.76	4.36	70.94	31.80	8.51	92.80
Greater Bay Area	20.73	3.92	64.74	22.55	3.77	71.75	29.59	8.94	83.67
San Francisco-Oakland	20.98	4.03	65.35	22.52	3.49	72.36	30.56	9.32	86.20
San Jose-Monterey	20.21	3.71	63.41	22.57	4.24	70.57	21.42	-	59.84
Los Angeles	22.01	4.77	67.14	22.38	4.60	68.95	34.83	8.96	102.56
Greater California	22.17	4.43	68.60	22.94	4.42	71.45	29.39	7.91	85.65
Connecticut	21.57	4.40	66.54	21.32	4.24	66.05	26.99	6.41	80.90
Detroit	26.56	5.82	80.87	24.52	4.70	76.40	34.52	9.50	100.03
Georgia	23.44	5.26	71.05	21.45	4.01	67.12	29.65	8.05	86.21
Atlanta	25.27	5.76	76.36	22.46	3.95	70.91	32.03	8.47	93.72
Rural Georgia	28.58	8.73	80.54	23.64	-	64.61	37.92	-	111.12
Greater Georgia	22.57	4.89	68.85	21.15	3.97	66.13	27.83	7.62	80.74
Hawaii	16.41	4.88	46.61	19.57	6.47	53.85	-	-	-
Iowa	21.34	4.62	65.14	21.38	4.65	65.18	28.33	-	88.54
Kentucky	23.12	4.81	71.05	22.63	4.63	69.75	32.86	7.43	99.44
Louisiana	25.44	5.65	77.26	22.38	4.14	70.14	33.83	8.99	98.88
New Jersey	25.16	4.92	78.16	25.07	4.67	78.52	30.86	7.81	91.20
New Mexico	20.91	4.55	63.75	21.66	4.88	65.61	20.77	-	63.94
Seattle-Puget Sound	21.57	3.79	68.12	22.46	3.85	71.22	25.49	4.49	80.50
Utah	21.82	4.08	68.27	22.31	4.30	69.49	-	-	-
9 SEER Areas ^b	22.22	4.64	68.24	22.25	4.24	69.40	31.30	8.24	91.67
11 SEER Areas ^b	22.07	4.62	67.75	22.31	4.33	69.39	32.01	8.36	93.93
13 SEER Areas ^b	22.10	4.61	67.91	22.32	4.31	69.48	32.06	8.33	94.20
18 SEER Areas ^b	22.74	4.68	70.03	22.75	4.37	70.89	31.31	8.16	91.93
Total U.S.	22.64	4.78	69.39	22.09	4.35	68.55	30.84	8.32	89.79

^a US Mortality Files, National Center for Health Statistics, Centers for Disease Control and Prevention. Rates are per 100,000 and are age-adjusted to the 2000 US Std Population (19 age groups - Census P25-1130).

^b The SEER 9 areas are San Francisco, Connecticut, Detroit, Hawaii, Iowa, New Mexico, Seattle, Utah and Atlanta. The SEER 11 areas comprise the SEER 9 areas plus San Jose-Monterey and Los Angeles.

The SEER 13 areas comprise the SEER 11 areas plus the Alaska Native Registry and Rural Georgia.

The SEER 18 areas comprise the SEER 13 areas plus California excluding SF/SJM/LA, Kentucky, Louisiana, New Jersey and Georgia excluding ATL/RG.

- Statistic not shown. Rate based on less than 16 cases for the time interval.

Table 4.23
Cancer of the Female Breast (*In Situ*)

Age-Adjusted SEER Incidence Rates^a
By Registry, Race and Age

	All Races			Whites			Blacks		
	All Ages	Ages <50	Ages 50+	All Ages	Ages <50	Ages 50+	All Ages	Ages <50	Ages 50+
<u>SEER Incidence Rates^a, 2006-2010</u>									
California	28.97	10.59	77.08	29.17	10.46	78.16	26.99	8.10	76.44
Greater Bay Area	34.46	13.39	89.61	35.33	13.53	92.41	28.28	7.42	82.89
San Francisco-Oakland	35.99	13.96	93.69	37.52	14.63	97.44	28.77	7.10	85.53
San Jose-Monterey	31.52	12.36	81.68	31.58	11.68	83.70	24.04	-	62.57
Los Angeles	25.60	9.50	67.75	25.39	9.17	67.87	26.88	8.42	75.21
Greater California	28.63	10.14	77.05	28.95	10.16	78.17	26.30	8.10	73.95
Connecticut	46.72	19.97	116.77	47.65	20.66	118.30	39.23	14.50	103.98
Detroit	37.31	15.06	95.56	37.08	16.08	92.06	39.07	12.59	108.41
Georgia	29.90	11.12	79.08	30.69	11.51	80.90	29.39	10.75	78.20
Atlanta	35.77	13.33	94.55	40.04	15.50	104.27	32.46	11.64	87.00
Rural Georgia	19.56	-	59.21	21.20	-	64.21	17.37	-	52.23
Greater Georgia	27.27	9.94	72.66	27.35	9.90	73.03	27.67	10.14	73.59
Hawaii	35.95	14.51	92.11	31.09	13.13	78.12	-	-	-
Iowa	29.44	11.40	76.66	29.30	11.43	76.10	31.68	-	86.03
Kentucky	24.99	9.31	66.03	24.64	9.11	65.33	29.81	11.44	77.92
Louisiana	24.24	7.73	67.48	24.86	8.06	68.83	23.76	7.32	66.78
New Jersey	40.29	18.36	97.70	42.42	19.84	101.54	29.14	10.17	78.79
New Mexico	19.37	7.10	51.49	20.44	7.64	53.97	-	-	-
Seattle-Puget Sound	38.98	15.24	101.14	39.67	15.37	103.30	36.31	10.92	102.79
Utah	23.91	8.70	63.74	24.12	8.82	64.21	-	-	-
9 SEER Areas ^b	35.30	14.00	91.09	35.76	14.47	91.54	34.84	11.56	95.81
11 SEER Areas ^b	32.87	12.82	85.37	33.30	13.07	86.26	32.81	10.86	90.32
13 SEER Areas ^b	32.82	12.81	85.22	33.26	13.06	86.18	32.61	10.78	89.75
18 SEER Areas ^b	31.42	12.18	81.82	31.89	12.43	82.87	29.49	9.91	80.76

^a Rates are per 100,000 and are age-adjusted to the 2000 US Std Population (19 age groups - Census P25-1130)

^b The SEER 9 areas are San Francisco, Connecticut, Detroit, Hawaii, Iowa, New Mexico, Seattle, Utah and Atlanta.

The SEER 11 areas comprise the SEER 9 areas plus San Jose-Monterey and Los Angeles.

The SEER 13 areas comprise the SEER 11 areas plus the Alaska Native Registry and Rural Georgia.

The SEER 18 areas comprise the SEER 13 areas plus California excluding SF/SJM/LA, Kentucky, Louisiana, New Jersey and Georgia excluding ATL/RG.

- Statistic not shown. Rate based on less than 16 cases for the time interval.

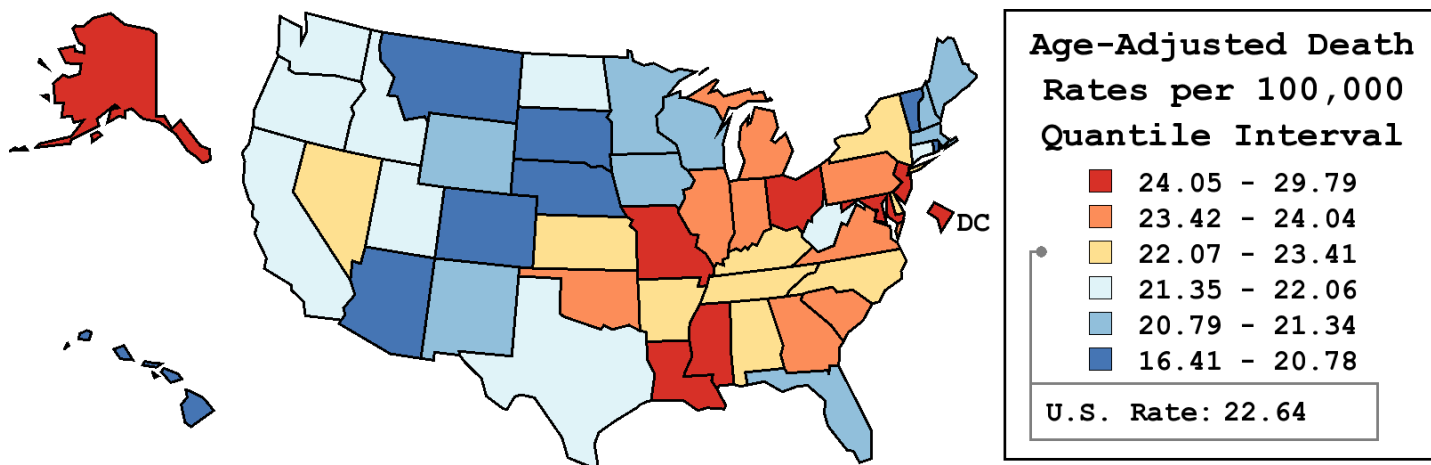
Table 4.24
Cancer of the Female Breast (Invasive)

Age-Adjusted Cancer Death^a Rates By State, All Races, 2006-2010

Females

State	Rate	SE	Rank	PD
TOTAL U.S.	22.64	0.05		
High Five States				
D.C.	29.79	1.37	(01)	31.63 ^c
Louisiana	25.44	0.45	(02)	12.39 ^c
New Jersey	25.16	0.31	(03)	11.15 ^c
Ohio	24.81	0.26	(04)	9.59
Mississippi	24.72	0.54	(05)	9.18
Low Five States				
South Dakota	20.29	0.91	(47)	-10.35 ^c
Nebraska	20.14	0.62	(48)	-11.02 ^c
Montana	19.83	0.82	(49)	-12.38 ^c
Colorado	19.57	0.40	(50)	-13.56 ^c
Hawaii	16.41	0.65	(51)	-27.50 ^c

State	Rate	SE	Rank	PD	State	Rate	SE	Rank	PD
Alabama	23.33	0.41	(19)	3.05	Montana	19.83	0.82	(49)	-12.38 ^c
Alaska	24.23	1.44	(07)	7.05	Nebraska	20.14	0.62	(48)	-11.02 ^c
Arizona	20.62	0.34	(45)	-8.90	Nevada	22.99	0.60	(22)	1.59
Arkansas	23.41	0.52	(17)	3.44	New Hampshire	21.33	0.74	(36)	-5.76
California	21.85	0.15	(27)	-3.46	New Jersey	25.16	0.31	(03)	11.15 ^c
Colorado	19.57	0.40	(50)	-13.56 ^c	New Mexico	20.91	0.61	(41)	-7.64
Connecticut	21.57	0.44	(33)	-4.72	New York	22.30	0.19	(24)	-1.48
Delaware	22.79	0.93	(23)	0.69	North Carolina	23.09	0.29	(21)	2.01
D.C.	29.79	1.37	(01)	31.63 ^c	North Dakota	21.61	1.04	(32)	-4.52
Florida	21.26	0.19	(39)	-6.07	Ohio	24.81	0.26	(04)	9.59
Georgia	23.44	0.31	(16)	3.55	Oklahoma	23.85	0.47	(12)	5.37
Hawaii	16.41	0.65	(51)	-27.50 ^c	Oregon	21.62	0.44	(31)	-4.48
Idaho	21.63	0.74	(30)	-4.44	Pennsylvania	23.84	0.24	(13)	5.31
Illinois	23.59	0.25	(14)	4.21	Rhode Island	20.78	0.79	(44)	-8.20
Indiana	23.85	0.36	(11)	5.38	South Carolina	23.46	0.42	(15)	3.65
Iowa	21.34	0.48	(35)	-5.72	South Dakota	20.29	0.91	(47)	-10.35 ^c
Kansas	22.18	0.52	(25)	-2.01	Tennessee	23.35	0.36	(18)	3.15
Kentucky	23.12	0.43	(20)	2.12	Texas	21.82	0.19	(29)	-3.60
Louisiana	25.44	0.45	(02)	12.39 ^c	Utah	21.82	0.64	(28)	-3.60
Maine	20.87	0.69	(43)	-7.81	Vermont	20.39	1.02	(46)	-9.91
Maryland	24.47	0.39	(06)	8.10	Virginia	24.04	0.33	(09)	6.22
Massachusetts	21.25	0.33	(40)	-6.10	Washington	21.52	0.35	(34)	-4.95
Michigan	23.97	0.28	(10)	5.89	West Virginia	22.06	0.60	(26)	-2.53
Minnesota	20.87	0.37	(42)	-7.79	Wisconsin	21.28	0.36	(38)	-5.98
Mississippi	24.72	0.54	(05)	9.18	Wyoming	21.32	1.20	(37)	-5.82
Missouri	24.17	0.37	(08)	6.79					



^a US Mortality Files, National Center for Health Statistics, Centers for Disease Control and Prevention. Rates are per 100,000 and are age-adjusted to the 2000 US Std Population (19 age groups - Census P25-1130).
^b Difference between state rate and total U.S. rate is statistically significant ($p \leq .0002$).
^c Absolute percent difference between state rate and total U.S. rate is 10% or more.
SE Standard error of the rate.
PD Percent difference between state rate and total U.S. rate.
- Statistic not shown. Rate based on less than 16 cases for the time interval.

Table 4.25
Cancer of the Breast (Invasive)

Estimated United States Cancer Prevalence Counts^a on January 1, 2010
By Race/Ethnicity, Sex and Years Since Diagnosis

Years Since Diagnosis		0 to <5	5 to <10	10 to <15	15 to <20	20 to <25	25 to <30	0 to <18 ^e	0 to <35 ^e	>=35 ^g	Complete ^h
<u>Race</u>	<u>Sex</u>										
All Races ^b	Both Sexes	847,990	682,322	520,032	338,523	215,193	111,063	2,388,868	2,784,496	59,133	2,843,629
	Males	5,797	3,879	2,093	1,249	771	417	13,018	14,436	152	14,588
	Females	842,193	678,443	517,939	337,274	214,422	110,646	2,375,850	2,770,060	58,981	2,829,041
White ^b	Both Sexes	719,295	597,566	460,928	303,258	195,605	100,654	2,081,047	2,440,716	52,282	2,492,998
	Males	5,005	3,241	1,846	1,091	678	401	11,183	12,478	+ ⁱ	12,471
	Females	714,290	594,325	459,082	302,167	194,927	100,253	2,069,864	2,428,238	52,289	2,480,527
Black ^b	Both Sexes	85,890	56,331	39,352	24,087	13,669	7,561	205,661	230,970	+	+
	Males	610	506	160	97	85	12	1,374	1,483	+	+
	Females	85,280	55,825	39,192	23,990	13,584	7,549	204,287	229,487	4,397	233,884
Asian/ Pacific Islander ^c	Both Sexes	31,091	21,837	14,564	+	+	+	72,975	+	+	+
	Males	137	66	43	+	+	+	280	+	+	+
	Females	30,954	21,771	14,521	+	+	+	72,695	+	+	+
Hispanic ^d	Both Sexes	57,058	38,748	25,302	+	+	+	121,107	+	+	+
	Males	259	140	52	+	+	+	451	+	+	+
	Females	56,799	38,608	25,250	+	+	+	120,656	+	+	+

Estimated prevalence percent^a on January 1, 2010, of the SEER 11 population diagnosed in the previous 18 years
By Age at Prevalence, Race/Ethnicity and Sex

Age at Prevalence		Age Specific (Crude)									Age-Adjusted ^f	
		All Ages	0-9	10-19	20-29	30-39	40-49	50-59	60-69	70-79	80+	All Ages
<u>Race</u>	<u>Sex</u>											
All Races ^c	Both Sexes	0.6089%	-	0.0001%	0.0061%	0.0863%	0.4609%	1.1010%	1.9094%	2.5026%	2.8320%	0.5873%
	Males	0.0068%	-	-	-	0.0004%	0.0027%	0.0083%	0.0239%	0.0408%	0.0588%	0.0075%
	Females	1.1951%	-	0.0002%	0.0124%	0.1723%	0.9149%	2.1431%	3.6146%	4.4677%	4.4383%	1.0793%
White ^c	Both Sexes	0.6688%	-	-	0.0057%	0.0855%	0.4655%	1.1356%	2.0230%	2.6788%	3.0054%	0.6158%
	Males	0.0075%	-	-	-	0.0004%	0.0025%	0.0080%	0.0250%	0.0436%	0.0624%	0.0078%
	Females	1.3265%	-	-	0.0117%	0.1748%	0.9420%	2.2471%	3.8849%	4.8349%	4.7217%	1.1455%
Black ^c	Both Sexes	0.4382%	-	-	0.0082%	0.0983%	0.4615%	1.0042%	1.6418%	2.1296%	2.4425%	0.5256%
	Males	0.0063%	-	-	-	-	0.0039%	0.0150%	0.0298%	0.0413%	0.0580%	0.0089%
	Females	0.8304%	-	-	0.0158%	0.1833%	0.8665%	1.8577%	2.9161%	3.5651%	3.5705%	0.9111%
Asian/ Pacific Islander ^c	Both Sexes	0.4567%	-	-	0.0061%	0.0818%	0.4423%	0.9828%	1.4105%	1.7091%	1.7846%	0.4530%
	Males	0.0036%	-	-	-	-	0.0021%	0.0049%	0.0112%	0.0239%	0.0292%	0.0042%
	Females	0.8717%	-	-	0.0119%	0.1548%	0.8333%	1.8207%	2.5765%	2.9922%	2.8696%	0.8140%
Hispanic ^d	Both Sexes	0.2501%	-	-	0.0040%	0.0620%	0.3194%	0.8044%	1.3380%	1.7204%	1.8922%	0.4133%
	Males	0.0018%	-	-	-	-	0.0013%	0.0040%	0.0138%	0.0220%	0.0239%	0.0038%
	Females	0.5045%	-	-	0.0085%	0.1276%	0.6499%	1.5621%	2.4598%	2.9676%	2.9970%	0.7515%

^a US 2010 cancer prevalence counts are based on 2010 cancer prevalence proportions from the SEER registries and 1/1/2010 US population estimates based on the average of 2009 and 2010 population estimates from the US Bureau of the Census. Prevalence was calculated using the First Malignant Primary Only for a person.

^{b c d} Statistics based on (b) SEER 9 Areas (c) SEER 11 Areas and Rural Georgia (d) NHIA for Hispanic for SEER 11 Areas and Rural Georgia.

^e Maximum limited-duration prevalence: 35 years for 1975-2010 SEER 9 data; 18 years for 1992-2010 SEER 11 data (used to calculate prevalence for Hispanics and Asian Pacific Islanders).

^f Percentages are age-adjusted to the 2000 US Standard Population (19 age groups - Census P25-1130) by 5-year age groups.

^{g h i} (g) Cases diagnosed more than 35 years ago were estimated using the completeness index method (Capocaccia et. al. 1997, Merrill et. al. 2000). (h) Complete prevalence is obtained by summing 0 to <35 and >=35. (i) Age-specific completeness index was approximated using empirical data from historical Connecticut tumor registry.

- Statistic not shown. Statistic based on fewer than 5 cases estimated alive in SEER for the time interval.

+ Not available.

Table 4.26

Cancer of the Female Breast (Invasive)

Percent Distribution and Counts by Histology among Histologically Confirmed Cases, 2006-2010
Females by Race

Histology ^a	All Races		White		Black		Asian/Pacific Islander		American Indian/ Alaska Native ^b		Hispanic ^c	
	Count	Percent	Count	Percent	Count	Percent	Count	Percent	Count	Percent	Count	Percent
Carcinoma	280,343	99.4%	227,311	99.4%	29,434	99.3%	20,070	99.3%	1,070	99.0%	27,008	99.2%
Epidermoid carcinoma ^d (8051-8131)	148	0.1%	121	0.1%	19	0.1%	-	-	-	-	18	0.1%
Adenocarcinoma ^e	274,394	97.3%	222,769	97.5%	28,468	96.0%	19,726	97.6%	1,041	96.3%	26,369	96.8%
Adenocarcinoma, NOS (8140)	2,324	0.8%	1,854	0.8%	284	1.0%	136	0.7%	-	-	239	0.9%
Infiltrating duct carcinoma (8500)	203,964	72.3%	163,512	71.5%	22,253	75.1%	15,655	77.4%	807	74.7%	19,880	73.0%
Lobular carcinoma, NOS (8520)	24,403	8.7%	21,118	9.2%	1,967	6.6%	1,038	5.1%	68	6.3%	1,940	7.1%
Inflammatory adenocarcinoma (8530)	1,233	0.4%	957	0.4%	213	0.7%	52	0.3%	-	-	164	0.6%
Infiltrating duct mixed and infiltrating lobular mixed (8522-8524)	27,590	9.8%	23,405	10.2%	2,211	7.5%	1,637	8.1%	97	9.0%	2,747	10.1%
Mucinous adenocarcinoma (8480,8482)	5,969	2.1%	4,750	2.1%	582	2.0%	551	2.7%	22	2.0%	510	1.9%
Mucin-producing adenocarcinoma (8481)	88	0.0%	68	0.0%	-	-	-	-	-	-	-	-
Tubular adenocarcinoma (8211)	2,315	0.8%	2,080	0.9%	123	0.4%	94	0.5%	-	-	165	0.6%
Papillary adenocarcinoma (8050,8260,8503,8504)	1,621	0.6%	1,149	0.5%	272	0.9%	177	0.9%	-	-	177	0.7%
Paget disease (8540-8543)	1,430	0.5%	1,149	0.5%	141	0.5%	117	0.6%	-	-	173	0.6%
Other adenocarcinomas ^f	3,457	1.2%	2,727	1.2%	409	1.4%	264	1.3%	-	-	364	1.3%
Other specific carcinomas ^g	2,485	0.9%	1,842	0.8%	479	1.6%	137	0.7%	-	-	299	1.1%
Medullary adenocarcinoma (8510-8513)	1,022	0.4%	702	0.3%	251	0.8%	59	0.3%	-	-	154	0.6%
Other ^h	1,463	0.5%	1,140	0.5%	228	0.8%	78	0.4%	-	-	145	0.5%
Unspecified, Carcinoma, NOS (8010-8011,8020-8022)	3,316	1.2%	2,579	1.1%	468	1.6%	201	1.0%	17	1.6%	322	1.2%

Source: SEER 18 areas (San Francisco, Connecticut, Detroit, Hawaii, Iowa, New Mexico, Seattle, Utah, Atlanta, San Jose-Monterey, Los Angeles, Alaska Native Registry, Rural Georgia, California excluding SF/SJM/LA, Kentucky, Louisiana, New Jersey and Georgia excluding ATL/RG).

Percents may not sum to 100 due to rounding.

^a Excludes Kaposi Sarcoma, mesothelioma, lymphomas, leukemias, myelomas, lymphoreticular, and immunoproliferative diseases.

^b Estimates for American Indian/Alaska Native are based on the CHSDA (Contract Health Service Delivery Area) counties.

^c Hispanic is not mutually exclusive from whites, blacks, Asian/Pacific Islanders, and American Indians/Alaska Natives.

^d Underlying incidence data for Hispanics are based on NHIA and exclude cases from the Alaska Native Registry.

^e Epidermoid carcinoma includes squamous, basal, and transitional cell carcinomas.

^e Adenocarcinoma includes histologies 8050, 8140-8147, 8160-8162, 8180-8221, 8250-8507, 8514, 8520-8551, 8560, 8570-8574, 8576, 8940-8941.

^f Other adenocarcinomas include histologies 8141-8147, 8160-8162, 8180-8210, 8212-8221, 8250-8259, 8261-8479, 8483-8499, 8501-8502, 8505-8507, 8514, 8521, 8525-8529, 8531-8539, 8544-8551, 8560, 8570-8574, 8576, 8940-8941.

^g Other specific carcinomas include histologies 8012-8015, 8030-8046, 8150-8155, 8170-8175, 8230-8249, 8508, 8510-8513, 8561-8562, 8575, 8580-8671.

^h Other includes histologies 8012-8015, 8030-8046, 8150-8155, 8170-8175, 8230-8249, 8508, 8561-8562, 8575, 8580-8671.

- Statistic not shown due to fewer than 16 cases during the time period.

Table 4.26 - continued

Cancer of the Female Breast (Invasive)

Percent Distribution and Counts by Histology among Histologically Confirmed Cases, 2006-2010
Females by Race

Histology ^a	All Races		White		Black		Asian/Pacific Islander		American Indian/ Alaska Native ^b		Hispanic ^c	
	Count	Percent	Count	Percent	Count	Percent	Count	Percent	Count	Percent	Count	Percent
Sarcoma and other soft tissue tumors (8680-8713,8800-8921, 9040-9044,9120-9136, 9150-9252,9370-9373, 9540-9582)	310	0.1%	246	0.1%	34	0.1%	26	0.1%	-	-	28	0.1%
Hemangiosarcomas (9120-9126,9170)	154	0.1%	135	0.1%	-	-	-	-	-	-	17	0.1%
Other sarcomas ^d	156	0.1%	111	0.0%	27	0.1%	-	-	-	-	-	-
Other specific types (8720-8790,8930-8936, 8950-9030,9060-9110, 9260-9365,9380-9539)	747	0.3%	558	0.2%	93	0.3%	85	0.4%	-	-	136	0.5%
Phyllodes tumor, malignant (9020)	617	0.2%	464	0.2%	65	0.2%	80	0.4%	-	-	115	0.4%
Other ^e	130	0.0%	94	0.0%	28	0.1%	-	-	-	-	21	0.1%
Unspecified (8000-8005)	604	0.2%	456	0.2%	78	0.3%	33	0.2%	-	-	60	0.2%
Total ^f	282,004	100.0%	228,571	100.0%	29,639	100.0%	20,214	100.0%	1,081	100.0%	27,232	100.0%

Source: SEER 18 areas (San Francisco, Connecticut, Detroit, Hawaii, Iowa, New Mexico, Seattle, Utah, Atlanta, San Jose-Monterey, Los Angeles, Alaska Native Registry, Rural Georgia, California excluding SF/SJM/LA, Kentucky, Louisiana, New Jersey and Georgia excluding ATL/RG).

Percents may not sum to 100 due to rounding.

^a Excludes Kaposi Sarcoma, mesothelioma, lymphomas, leukemias, myelomas, lymphoreticular, and immunoproliferative diseases.

^b Estimates for American Indian/Alaska Native are based on the CHSDA (Contract Health Service Delivery Area) counties.

^c Hispanic is not mutually exclusive from whites, blacks, Asian/Pacific Islanders, and American Indians/Alaska Natives.

Underlying incidence data for Hispanics are based on NHIA and exclude cases from the Alaska Native Registry.

^d Other sarcomas include histologies 8680-8713, 8800-8921, 9040-9044, 9127-9136, 9150-9169, 9171-9252, 9370-9373, 9540-9582.

^e Other includes histologies 8720-8790, 8930-8936, 8950-9019, 9021-9030, 9060-9110, 9260-9365, 9380-9539.

^f Total includes carcinoma cases from the previous page.

- Statistic not shown due to fewer than 16 cases during the time period.

Table 4.27

Cancer of the Female Breast(In Situ)

Percent Distribution and Counts by Histology among Histologically Confirmed Cases, 2006-2010
Females by Race

Histology ^a	All Races		White		Black		Asian/Pacific Islander		American Indian/ Alaska Native ^b		Hispanic ^c	
	Count	Percent	Count	Percent	Count	Percent	Count	Percent	Count	Percent	Count	Percent
Adenocarcinoma ^d	71,958	99.7%	57,078	99.7%	7,346	99.6%	6,471	99.9%	205	100.0%	6,352	99.8%
Adenocarcinoma <i>in situ</i> , NOS (8140/2)	-	-	-	-	-	-	-	-	-	-	-	-
Ductal carcinoma <i>in situ</i> ^e	60,766	84.2%	47,669	83.3%	6,423	87.1%	5,861	90.5%	171	83.4%	5,405	84.9%
Cribriform carcinoma <i>in situ</i> (8201/2)	5,963	8.3%	4,606	8.0%	629	8.5%	619	9.6%	25	12.2%	562	8.8%
Ductal carcinoma <i>in situ</i> , solid type(8230/2)	4,485	6.2%	3,651	6.4%	371	5.0%	410	6.3%	-	-	366	5.8%
Ductal carcinoma <i>in situ</i> , NOS (8500/2)	23,138	32.1%	18,424	32.2%	2,486	33.7%	1,920	29.6%	65	31.7%	1,962	30.8%
Comedocarcinoma <i>in situ</i> (8501/2)	5,406	7.5%	4,268	7.5%	570	7.7%	493	7.6%	19	9.3%	488	7.7%
Ductal carcinoma <i>in situ</i> papillary(8503/2)	1,206	1.7%	832	1.5%	211	2.9%	134	2.1%	-	-	121	1.9%
Noninfiltrating intracystic carcinoma(8504/2)	312	0.4%	208	0.4%	44	0.6%	55	0.8%	-	-	31	0.5%
Ductal carcinoma <i>in situ</i> micropapillary(8507/2)	1,529	2.1%	1,227	2.1%	177	2.4%	108	1.7%	-	-	128	2.0%
Intraductal with other types of carcinoma <i>in situ</i> (8523/2)	18,543	25.7%	14,306	25.0%	1,921	26.0%	2,101	32.4%	36	17.6%	1,728	27.2%
Lobular carcinoma <i>in situ</i> (8520/2-8521/2, 8524/2)	8,296	11.5%	7,062	12.3%	650	8.8%	378	5.8%	23	11.2%	687	10.8%
Lobular carcinoma <i>in situ</i> , NOS (8520/2)	8,269	11.5%	7,039	12.3%	646	8.8%	378	5.8%	23	11.2%	687	10.8%
Lobular CIS ^f with other CIS ^f (8524/2)	26	0.0%	23	0.0%	-	-	-	-	-	-	-	-
Intraductal and lobular <i>in situ</i> carcinoma (8522/2)	2,430	3.4%	1,987	3.5%	229	3.1%	178	2.7%	-	-	218	3.4%
Other adenocarcinomas ^g	458	0.6%	352	0.6%	44	0.6%	54	0.8%	-	-	42	0.7%
Other <i>in situ</i> histologies ^h	188	0.3%	149	0.3%	29	0.4%	-	-	-	-	-	-
Total	72,146	100.0%	57,227	100.0%	7,375	100.0%	6,476	100.0%	205	100.0%	6,363	100.0%

Source: SEER 18 areas (San Francisco, Connecticut, Detroit, Hawaii, Iowa, New Mexico, Seattle, Utah, Atlanta, San Jose-Monterey, Los Angeles, Alaska Native Registry, Rural Georgia, California excluding SF/SJM/LA, Kentucky, Louisiana, New Jersey and Georgia excluding ATL/RG).

Percents may not sum to 100 due to rounding.

^a Excludes Kaposi Sarcoma, mesothelioma, lymphomas, leukemias, myelomas, lymphoreticular, and immunoproliferative diseases.

^b Estimates for American Indian/Alaska Native are based on the CHSDA(Contract Health Service Delivery Area) counties.

^c Hispanic is not mutually exclusive from whites, blacks, Asian/Pacific Islanders, and American Indians/Alaska Natives.

^d Underlying incidence data for Hispanics are based on NHIA and exclude cases from the Alaska Native Registry.

^e Adenocarcinoma includes histologies 8050,8140-8147,8160-8162,8180-8221,8230,8250-8507,8514,8520-8551,8560,8570-8574,8576,8940-8941.

^f Ductal carcinoma includes histologies 8201, 8230, 8401, 8500-8507, 8523.

^f CIS = Carcinoma *in situ*.

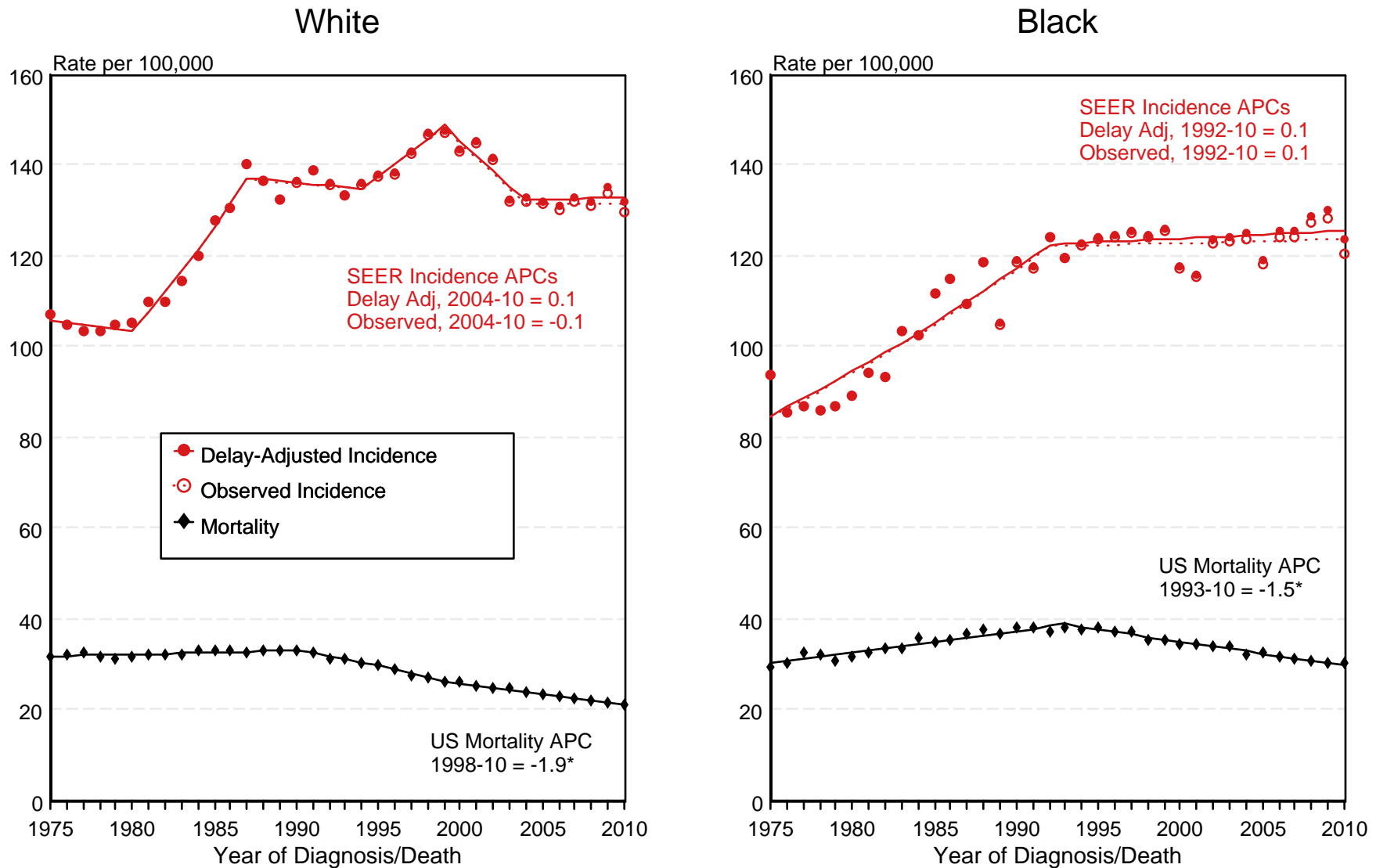
^g Other adenocarcinomas include 8050, 8141-8147, 8160-8162, 8180-8200, 8202-8221, 8250-8400, 8402-8499, 8514, 8525-8551, 8560, 8570-8574, 8576, 8940-8941.

^h Other histologies include 8000-8049, 8051-8139, 8148-8159, 8163-8179, 8222-8229, 8231-8249, 8508-8513, 8515-8519, 8552-8559, 8561-8569, 8575, 8577-8939, 8942-9989.

- Statistic not shown due to fewer than 16 cases during the time period.

Figure 4.1

SEER Observed Incidence, SEER Delay Adjusted Incidence and US Death Rates^a Cancer of the Female Breast, by Race

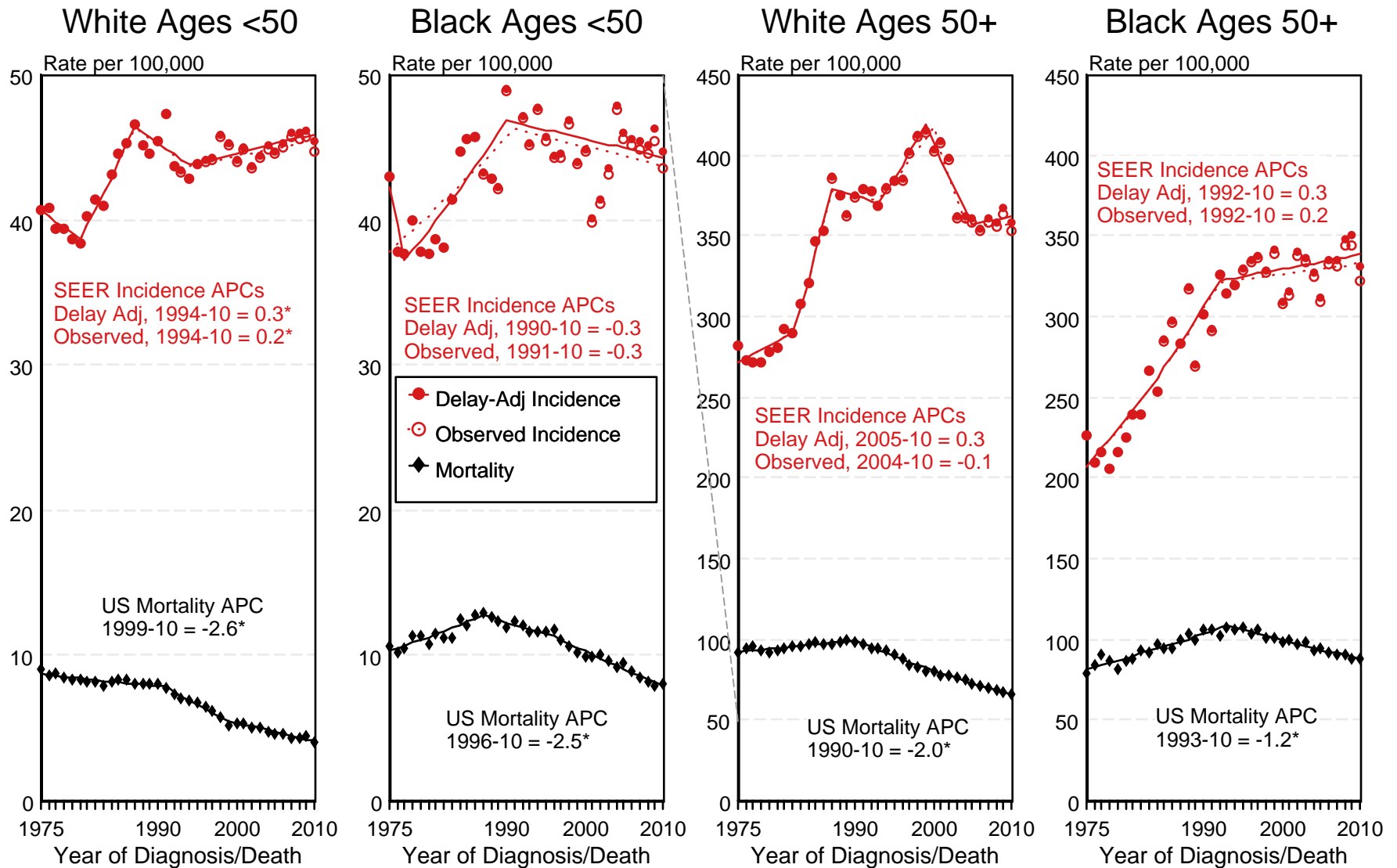


^a Source: SEER 9 areas and US Mortality Files (National Center for Health Statistics, CDC). Rates are age-adjusted to the 2000 US Std Population (19 age groups - Census P25-1103). Regression lines and APCs are calculated using the Joinpoint Regression Program Version 4.0.3, April 2013, National Cancer Institute. The APC is the Annual Percent Change for the regression line segments. The APC shown on the graph is for the most recent trend.

* The APC is significantly different from zero ($p < 0.05$).

Figure 4.2

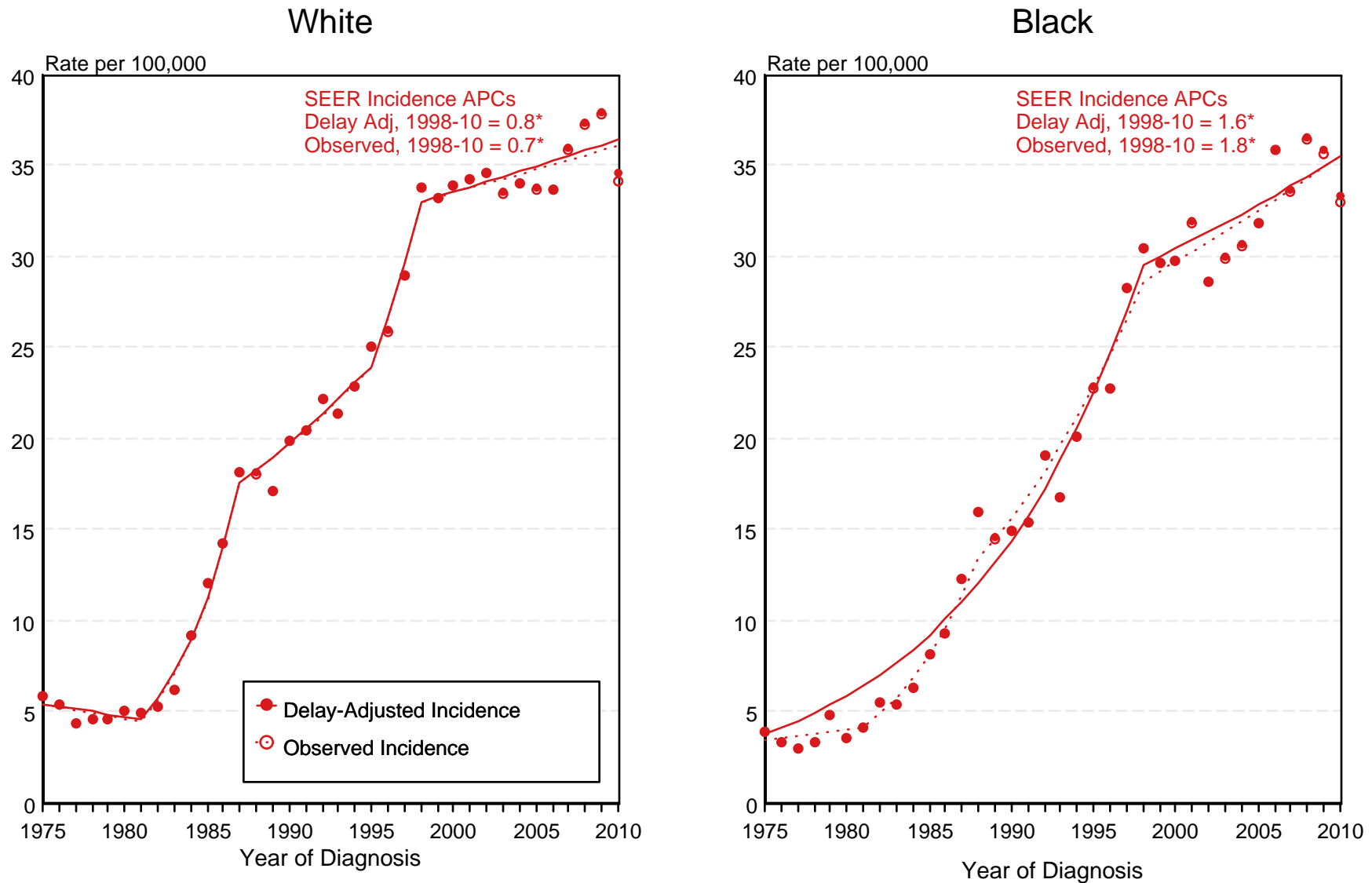
SEER Observed Incidence, SEER Delay Adjusted Incidence and US Death Rates^a Cancer of the Female Breast, by Age and Race



^a Source: SEER 9 areas and US Mortality Files (National Center for Health Statistics, CDC). Rates are age-adjusted to the 2000 US Std Population (19 age groups - Census P25-1103). Regression lines and APCs are calculated using the Joinpoint Regression Program Version 4.0.3, April 2013, National Cancer Institute. The APC is the Annual Percent Change for the regression line segments. The APC shown on the graph is for the most recent trend.
* The APC is significantly different from zero ($p < 0.05$).

Figure 4.3

SEER Observed Incidence and Delay Adjusted Incidence Rates^a Cancer of the Female Breast (*In Situ*), by Race



^a Source: SEER 9 areas. Rates are age-adjusted to the 2000 US Std Population (19 age groups - Census P25-1103). Regression lines and APCs are calculated using the Joinpoint Regression Program Version 4.0.3, April 2013, National Cancer Institute. The APC is the Annual Percent Change for the regression line segments. The APC shown on the graph is for the most recent trend.

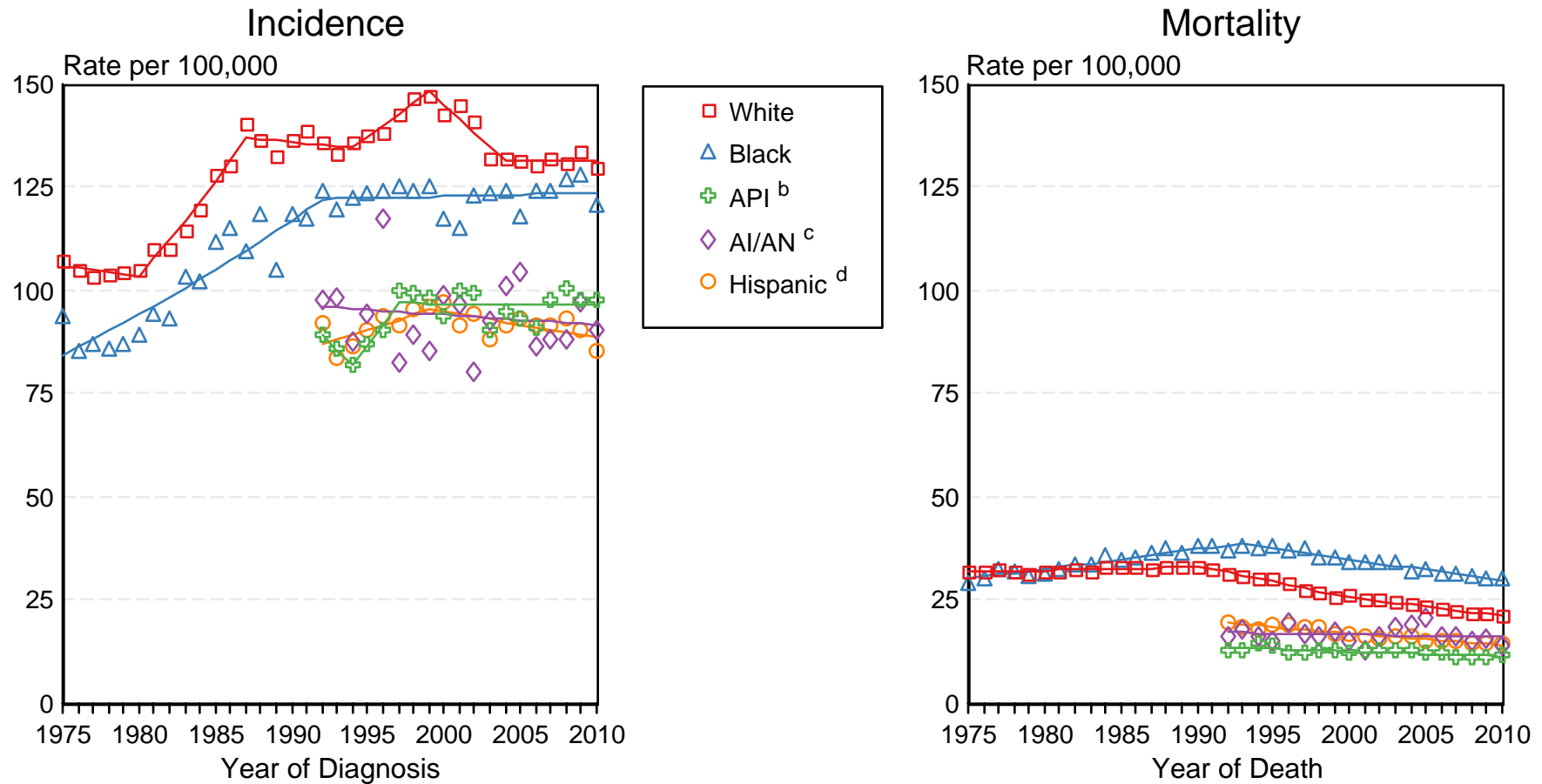
* The APC is significantly different from zero ($p < 0.05$).

Figure 4.4

SEER Incidence and US Death Rates^a Cancer of the Female Breast

Joinpoint Analyses for Whites and Blacks from 1975-2010

and for Asian/Pacific Islanders, American Indians/Alaska Natives and Hispanics from 1992-2010



Source: Incidence data for whites and blacks are from the SEER 9 areas (San Francisco, Connecticut, Detroit, Hawaii, Iowa, New Mexico, Seattle, Utah, Atlanta). Incidence data for Asian/Pacific Islanders, American Indians/Alaska Natives and Hispanics are from the SEER 13 Areas (SEER 9 Areas, San Jose-Monterey, Los Angeles, Alaska Native Registry and Rural Georgia). Mortality data are from US Mortality Files, National Center for Health Statistics, CDC.

^a Rates are age-adjusted to the 2000 US Std Population (19 age groups - Census P25-1103).

Regression lines are calculated using the Joinpoint Regression Program Version 4.0.3, April 2013, National Cancer Institute. Joinpoint analyses for Whites and Blacks during the 1975-2010 period allow a maximum of 5 joinpoints. Analyses for other ethnic groups during the period 1992-2010 allow a maximum of 3 joinpoints.

^b API = Asian/Pacific Islander.

^c AI/AN = American Indian/Alaska Native. Rates for American Indian/Alaska Native are based on the CHSDA(Contract Health Service Delivery Area) counties.

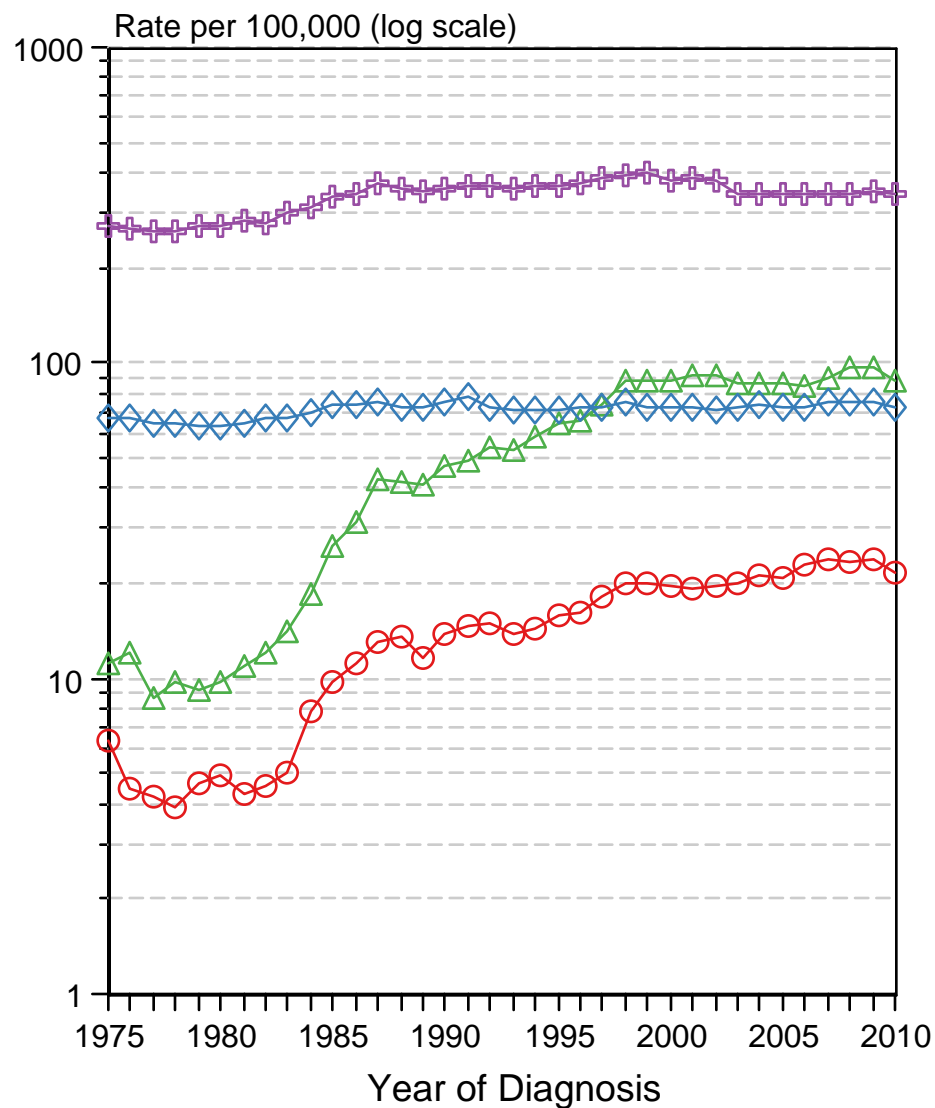
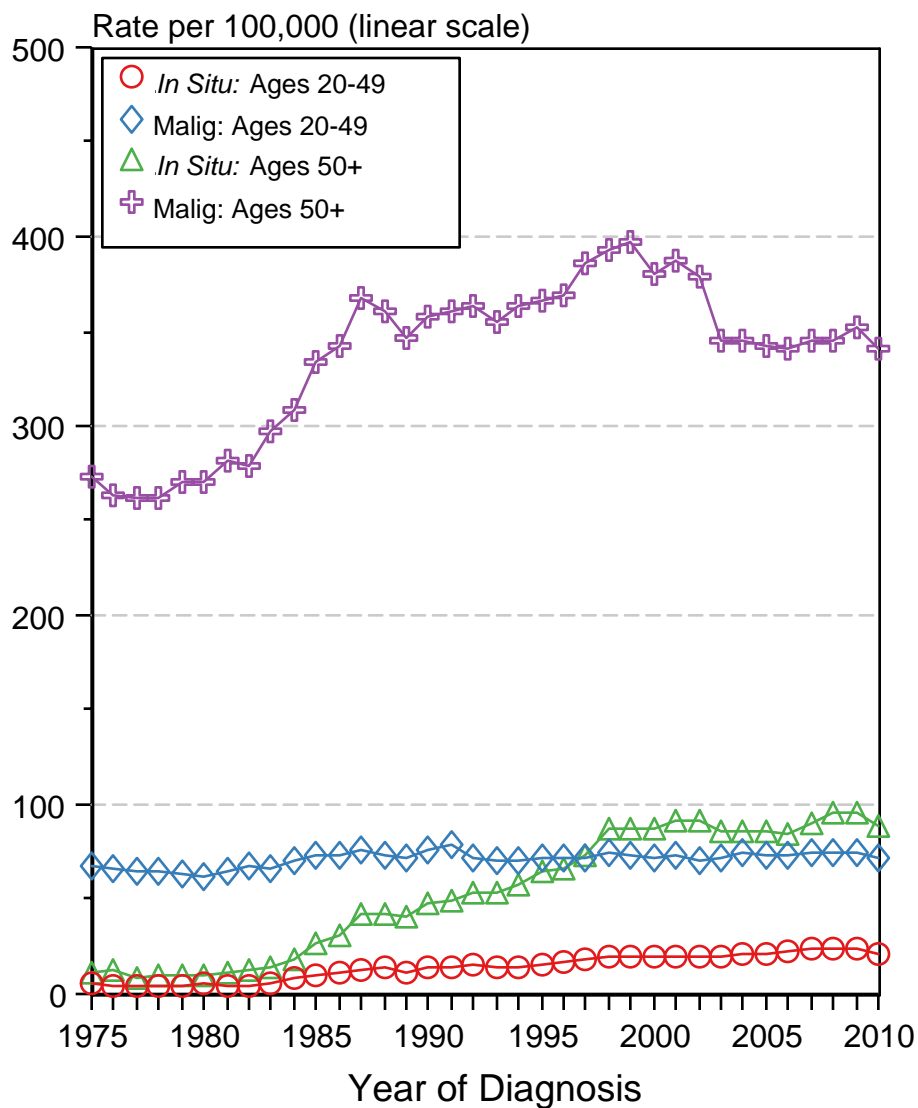
^d Hispanic is not mutually exclusive from whites, blacks, Asian/Pacific Islanders, and American Indians/Alaska Natives. Incidence data for Hispanics are based on NHIA and exclude cases from the Alaska Native Registry. Mortality data for Hispanics exclude cases from Connecticut, the District of Columbia, Maine, Maryland, Minnesota, New Hampshire, New York, North Dakota, South Carolina, Oklahoma, and Vermont.

Figure 4.5

Cancer of Female Breast, Incidence Rates, 1975-2010

In Situ vs Malignant, by Age

All Races, Females



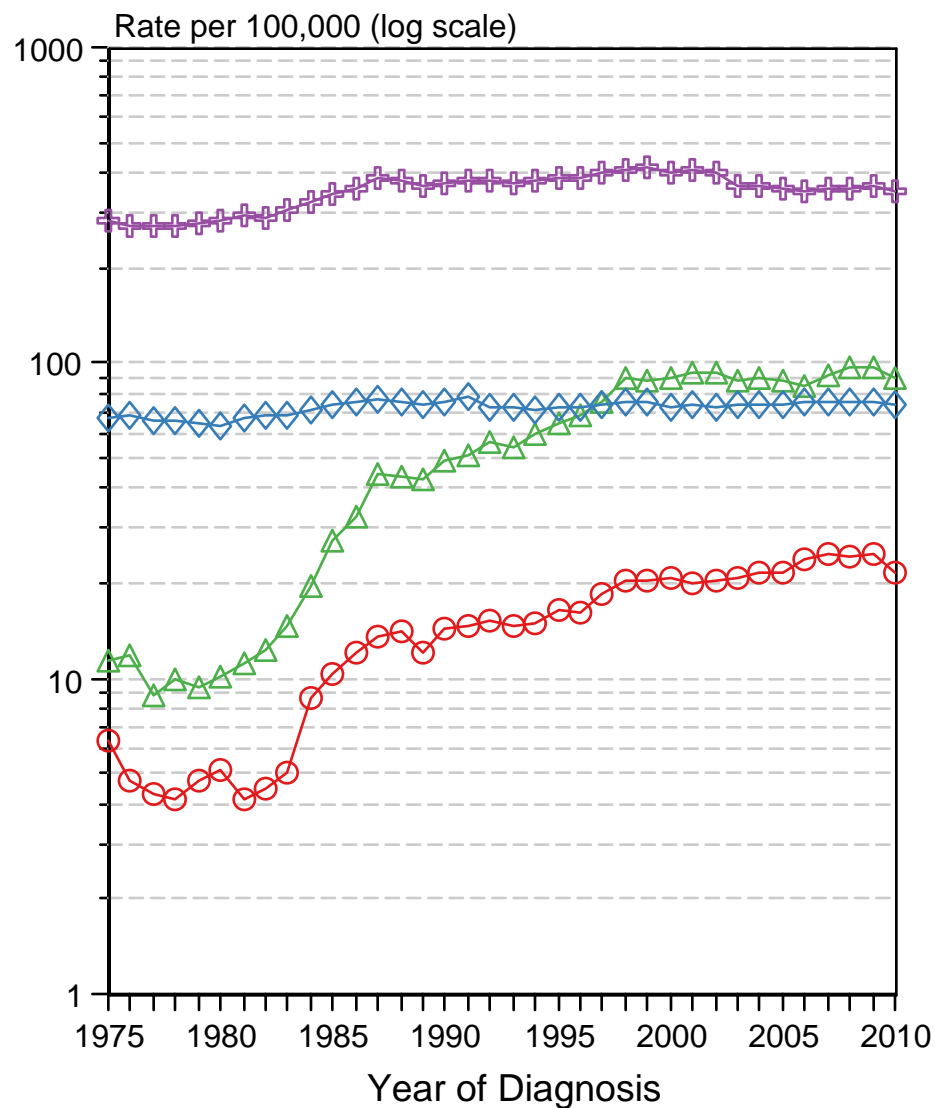
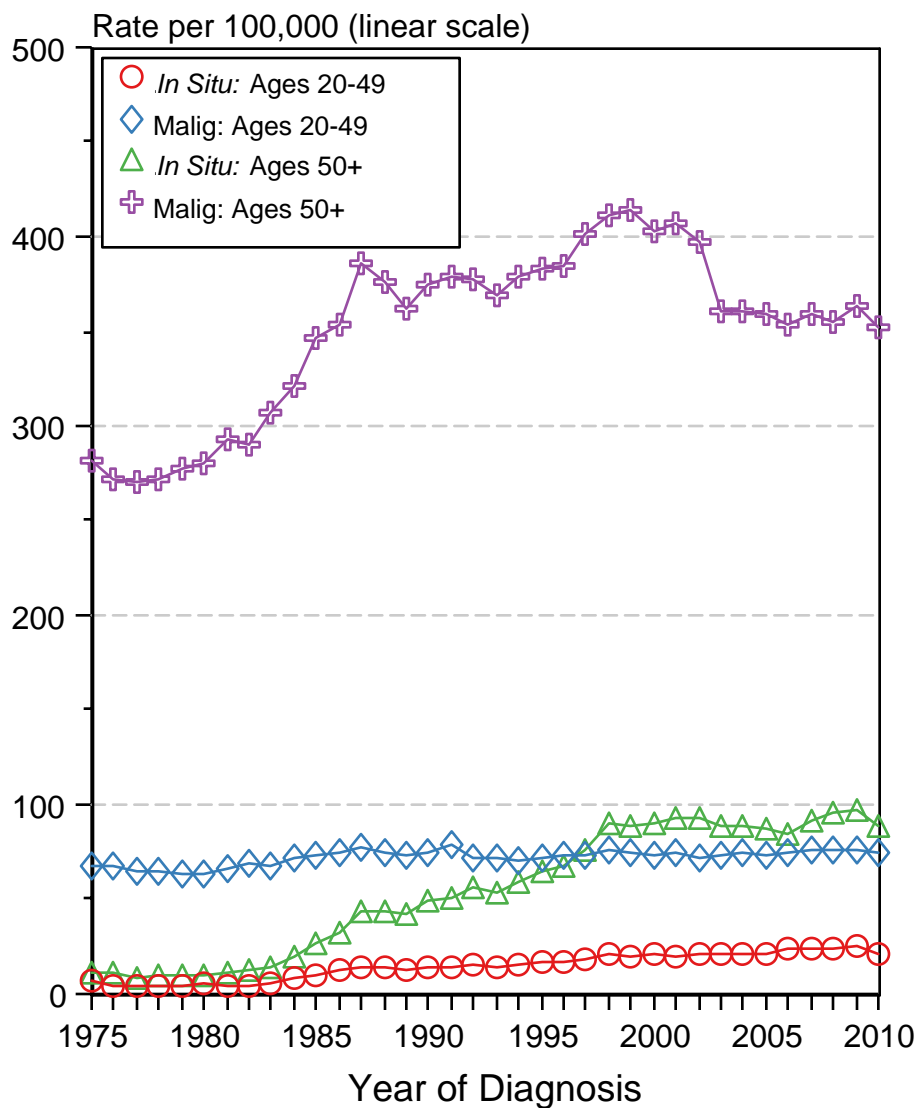
Source: SEER 9 areas. Rates are per 100,000 and age-adjusted to the 2000 US Std Population (19 age groups - Census P25-1103).

Figure 4.6

Cancer of Female Breast, Incidence Rates, 1975-2010

In Situ vs Malignant, by Age

White, Females



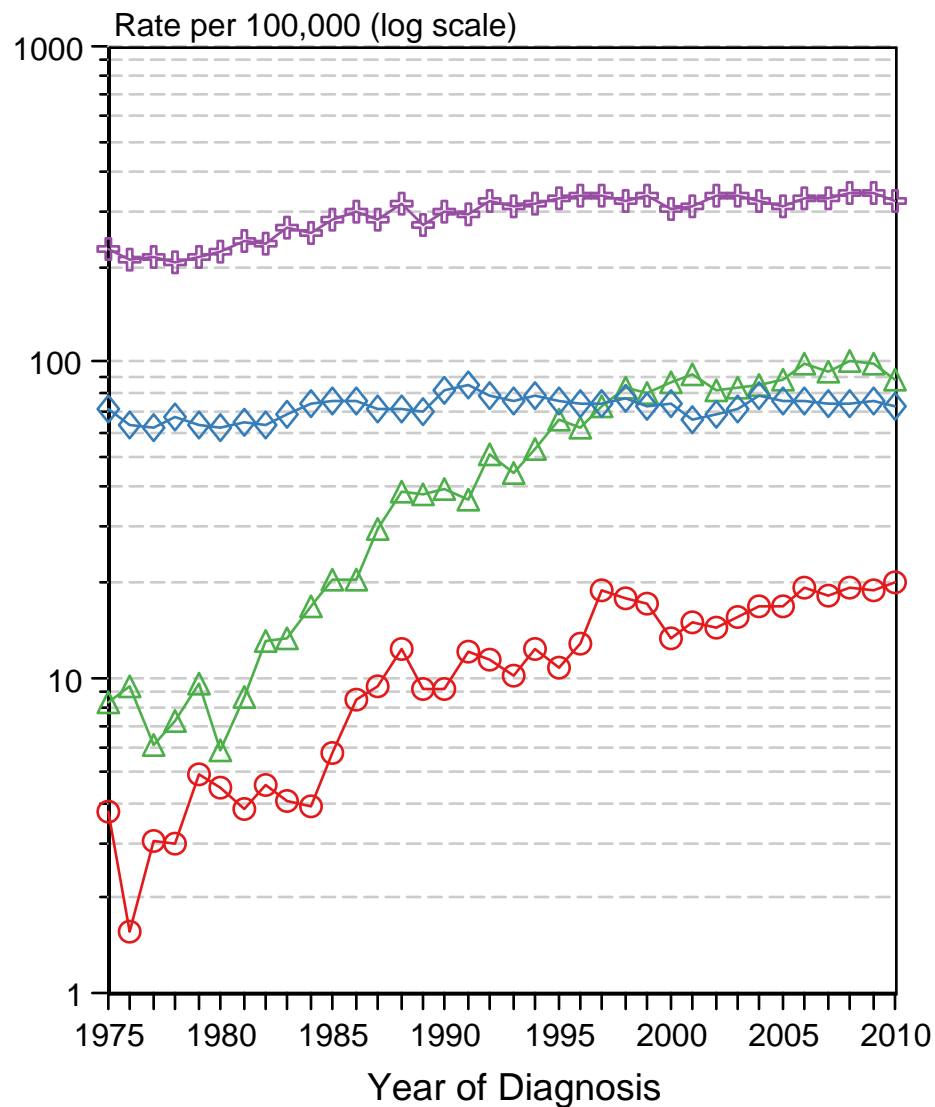
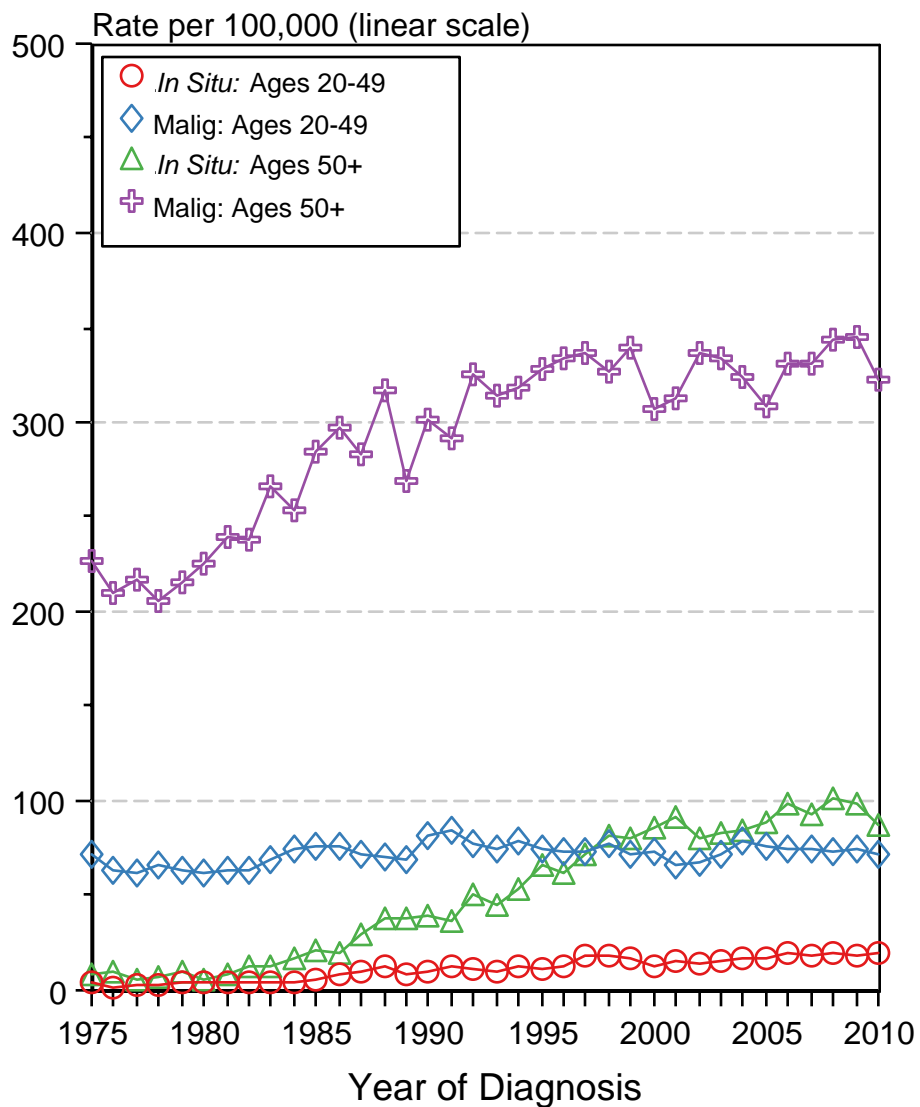
Source: SEER 9 areas. Rates are per 100,000 and age-adjusted to the 2000 US Std Population (19 age groups - Census P25-1103).

Figure 4.7

Cancer of Female Breast, Incidence Rates, 1975-2010

In Situ vs Malignant, by Age

Black, Females



Source: SEER 9 areas. Rates are per 100,000 and age-adjusted to the 2000 US Std Population (19 age groups - Census P25-1103).

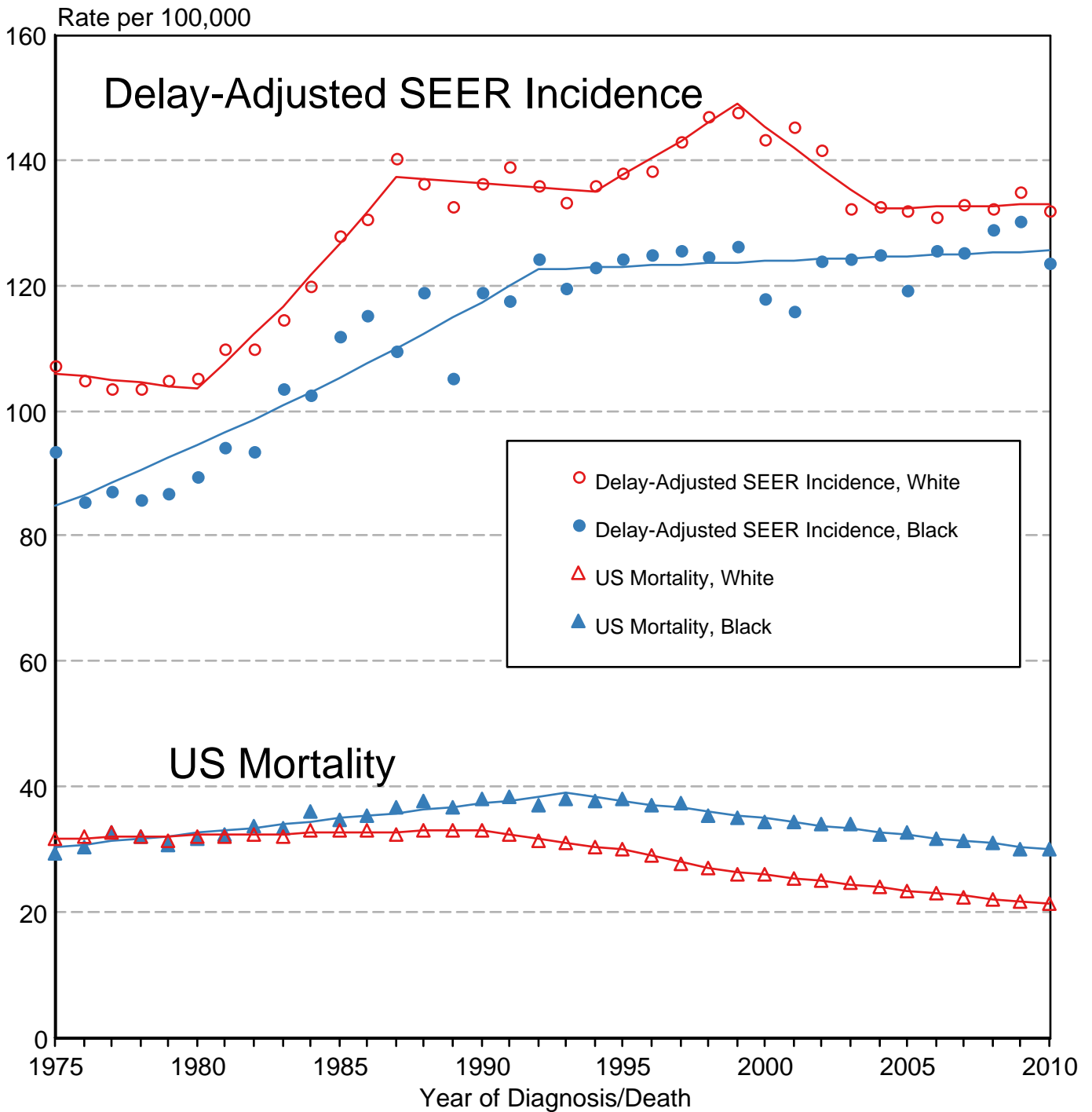
Figure 4.8

Cancer of the Breast

Delay-Adjusted SEER Incidence & US Mortality

White Females vs Black Females

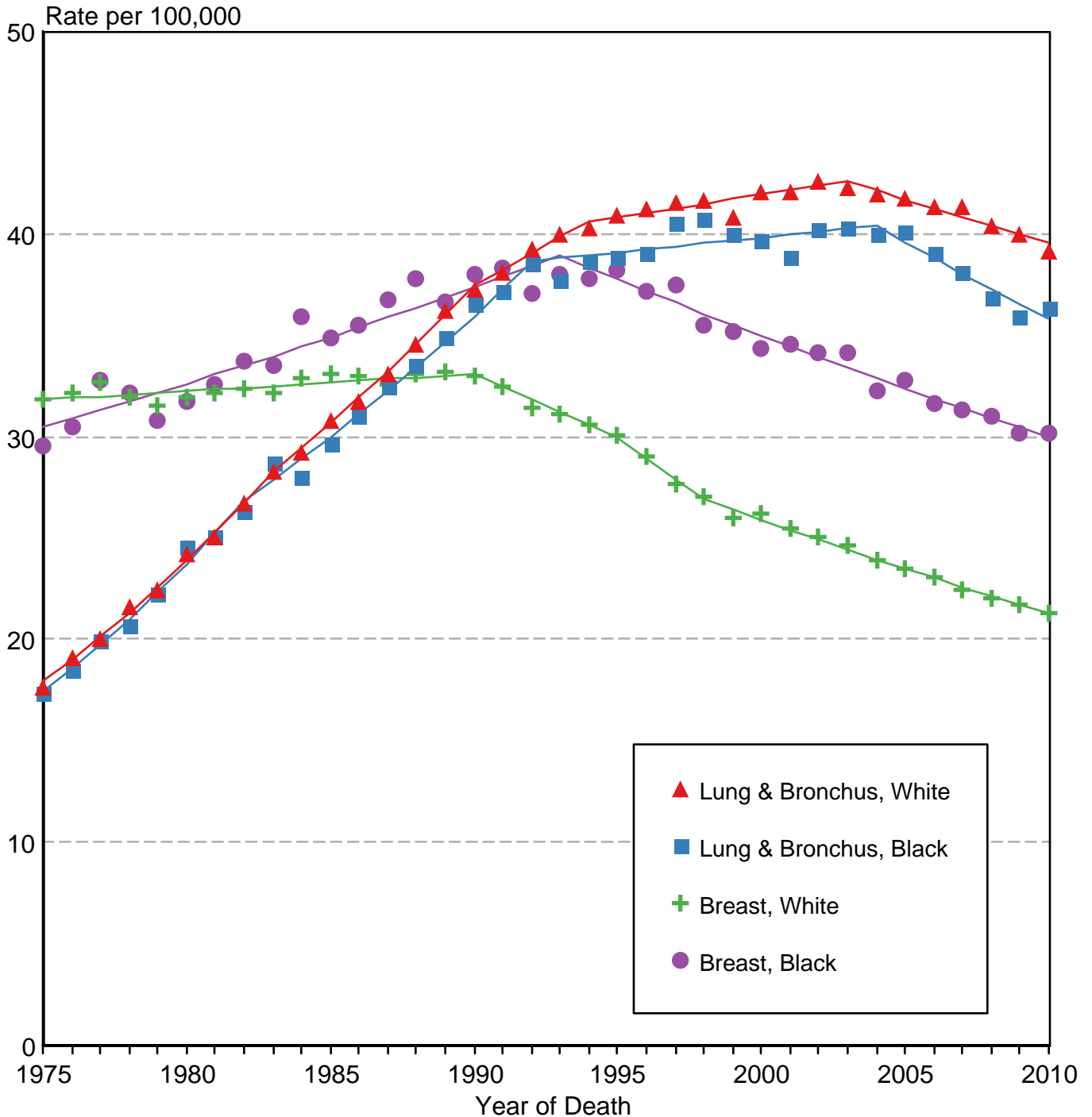
1975-2010



Source: SEER 9 areas and US Mortality Files (National Center for Health Statistics, CDC). Rates are age-adjusted to the 2000 US Std Population (19 age groups - Census P25-1103). Regression lines are calculated using the Joinpoint Regression Program Version 4.0.3, April 2013, National Cancer Institute.

Figure 4.9

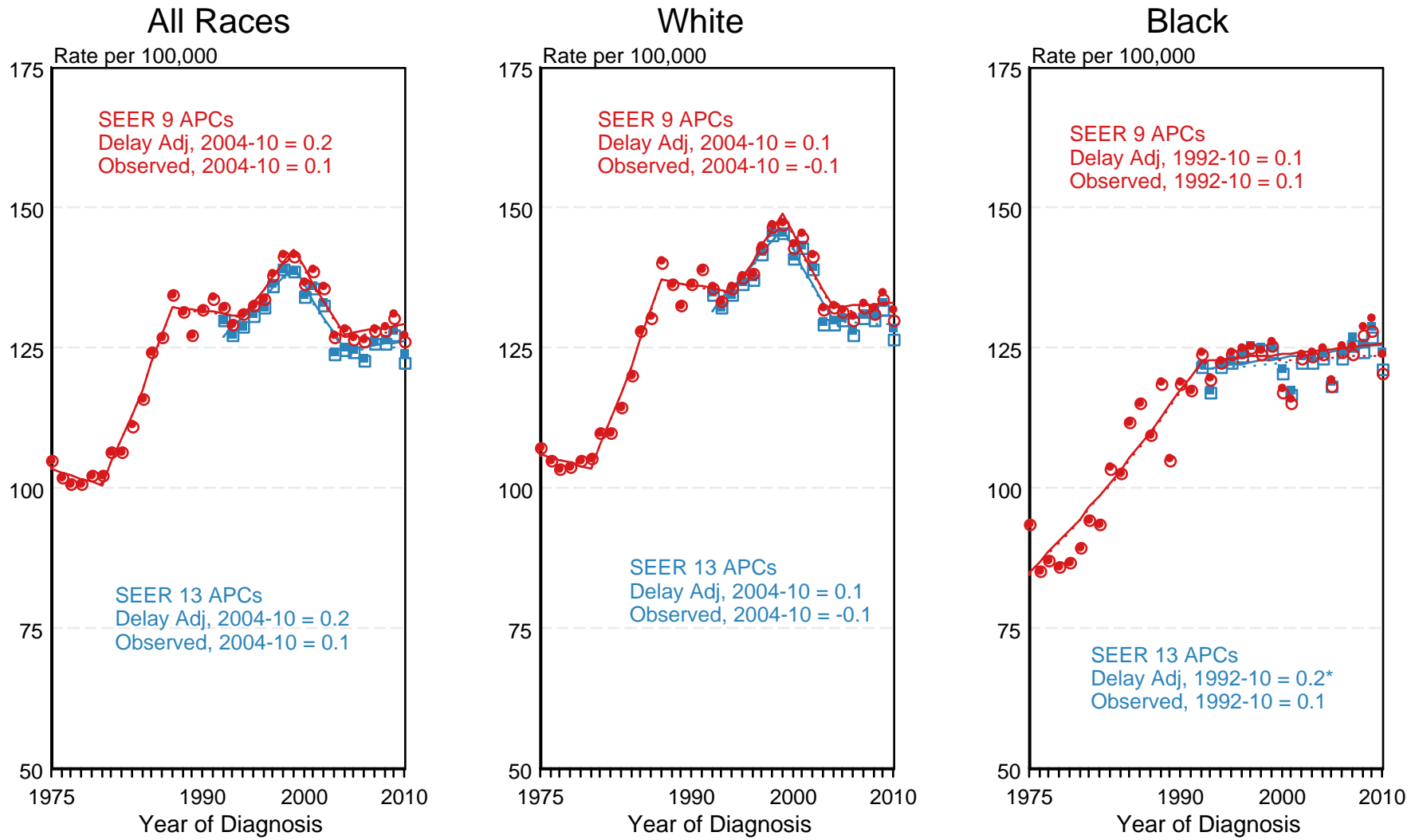
US Death Rates for Cancer of the Breast and Cancer of the Lung and Bronchus White Females vs Black Females 1975-2010



Source: US Mortality Files, National Center for Health Statistics, CDC.
Rates are age-adjusted to the 2000 US Std Population (19 age groups - Census P25-1103).
Regression lines are calculated using the Joinpoint Regression Program Version 4.0.3, April 2013,
National Cancer Institute.

Figure 4.10

SEER Observed Incidence and SEER Delay Adjusted Incidence Rates^a SEER 9 Areas Compared to SEER 13 Areas Cancer of the Female Breast, by Race

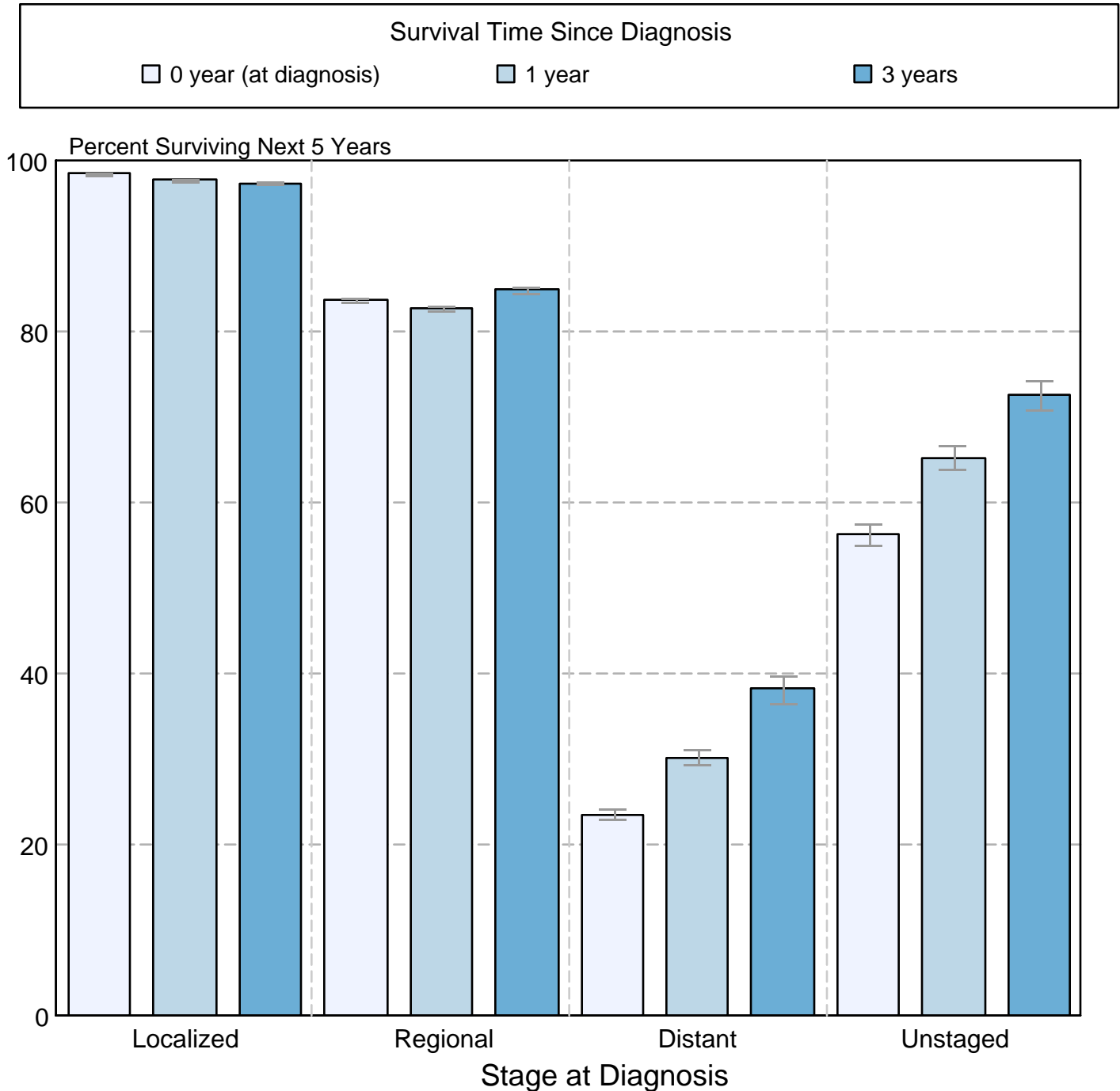


● SEER 9 Delay-Adj. Incidence ○ SEER 9 Observed Incidence ■ SEER 13 Delay-Adj. Incidence □ SEER 13 Observed Incidence

^a Source: SEER 9 areas and SEER 13 areas.
Rates are age-adjusted to the 2000 US Std Population (19 age groups - Census P25-1103).
Regression lines and APCs are calculated using the Joinpoint Regression Program Version 4.0.3, April 2013, National Cancer Institute.
The APC is the Annual Percent Change for the regression line segments. The APC shown on the graph is for the most recent trend.
* The APC is significantly different from zero ($p < 0.05$).

Figure 4.11

Cancer of the Female Breast 5-Year SEER Conditional Relative Survival and 95% Confidence Intervals Probability of surviving the next 5 years given the cohort has already survived 0, 1, or 3 years 1998-2009 by stage at diagnosis



Source: SEER 18 areas (San Francisco, Connecticut, Detroit, Hawaii, Iowa, New Mexico, Seattle, Utah, Atlanta, San Jose-Monterey, Los Angeles, Alaska Native Registry, Rural Georgia, California excluding SF/SJM/LA, Kentucky, Louisiana, New Jersey and Georgia excluding ATL/RG). California excluding SF/SJM/LA, Kentucky, Louisiana, New Jersey and Georgia excluding ATL/RG contribute cases for diagnosis years 2000-2009. The remaining 13 SEER Areas contribute cases for the entire period 1998-2009. Percent surviving is not shown if based on less than 25 cases. Confidence intervals are not shown if length of the confidence interval is greater than 5 times the standard error.