

Table 9.1
Hodgkin Lymphoma

Trends in SEER Incidence^{ab} and U.S. Mortality^c Using the Joinpoint Regression Program,
1975-2010 With up to Five Joinpoints, 1992-2010 With up to Three Joinpoints,
Both Sexes by Race/Ethnicity

	JP Trend 1		JP Trend 2		JP Trend 3		JP Trend 4		JP Trend 5		JP Trend 6		AAPC ^d	
	Years	APC	Years	APC	Years	APC	Years	APC	Years	APC	Years	APC	2001-10	2006-10
<u>SEER 9 Delay-Adjusted Incidence^a, 1975-2010</u>														
All Races	1975-03	-0.2	2003-07	2.9	2007-10	-3.6							0.0	-2.1
White	1975-10	0.0											0.0	0.0
Black	1975-10	1.0*											1.0*	1.0*
<u>SEER 13 Delay-Adjusted Incidence^b, 1992-2010</u>														
All Races	1992-01	-0.2	2001-07	1.6*	2007-10	-2.5							0.2	-1.5
White	1992-10	0.3											0.3	0.3
Black	1992-10	1.0*											1.0*	1.0*
<u>SEER 9 Observed Incidence^a, 1975-2010</u>														
All Races	1975-89	0.3	1989-01	-0.9*	2001-07	2.4*	2007-10	-3.9					0.2	-2.4
White	1975-10	0.0											0.0	0.0
Black	1975-10	1.1*											1.1*	1.1*
<u>SEER 13 Observed Incidence^b, 1992-2010</u>														
All Races	1992-01	-0.2	2001-07	1.5*	2007-10	-2.9							0.0	-1.8
White	1992-02	-0.1	2002-07	1.7	2007-10	-3.1							-0.1	-1.9
White NH ^{ef}	1992-04	0.2	2004-07	3.3	2007-10	-4.9*							-0.5	-2.9*
Black	1992-10	1.0*											1.0*	1.0*
Black NH ^{ef}	1992-10	1.1*											1.1*	1.1*
API ^e	1992-10	2.2*											2.2*	2.2*
AI/AN ^{eg}	-	-											-	-
Hispanic ^f	1992-10	0.4											0.4	0.4
<u>U.S. Cancer Mortality^c, 1975-2010</u>														
All Races	1975-79	-6.5*	1979-98	-3.5*	1998-10	-2.2*							-2.2*	-2.2*
White	1975-79	-6.3*	1979-98	-3.6*	1998-10	-2.1*							-2.1*	-2.1*
Black	1975-10	-2.9*											-2.9*	-2.9*
<u>U.S. Cancer Mortality^c, 1992-2010</u>														
All Races	1992-94	-7.7	1994-10	-2.4*									-2.4*	-2.4*
White	1992-94	-8.3	1994-10	-2.2*									-2.2*	-2.2*
White NH ^{ef}	1992-10	-2.4*											-2.4*	-2.4*
Black	1992-10	-3.0*											-3.0*	-3.0*
Black NH ^{ef}	1992-10	-2.5*											-2.5*	-2.5*
API ^e	1992-10	-1.3											-1.3	-1.3
AI/AN ^{eg}	1992-10	0.9											0.9	0.9
Hispanic ^f	1992-10	-2.8*											-2.8*	-2.8*

Joinpoint Regression Program Version 4.0.3, April 2013, National Cancer Institute. (<http://surveillance.cancer.gov/joinpoint/>).

The APC is the Annual Percent Change based on rates age-adjusted to the 2000 US Std Population (19 age groups - Census P25-1130).

Trends are from the SEER 9 areas (San Francisco, Connecticut, Detroit, Hawaii, Iowa, New Mexico, Seattle, Utah, and Atlanta).

Trends are from the SEER 13 areas (SEER 9 Areas, Los Angeles, San Jose-Monterey, Rural Georgia, and the Alaska Native Registry).

Trends are from US Mortality Files, National Center for Health Statistics, Centers for Disease Control and Prevention.

The AAPC is the Average Annual Percent Change and is based on the APCs calculated by Joinpoint.

API - Asian/Pacific Islander, AI/AN - American Indian/Alaska Native, NH - Non-Hispanic

Hispanic and Non-Hispanic are not mutually exclusive from whites, blacks, Asian/Pacific Islanders, and American Indians/Alaska

Natives. Incidence data for Hispanics and Non-Hispanics are based on NHIA and exclude cases from the Alaska Native Registry.

The Hispanic and Non-Hispanic mortality trends exclude deaths from CT, DC, ME, MD, MN, NH, NY, ND, SC, OK and VT.

Data for American Indian/Alaska Native are based on the CHSDA (Contract Health Service Delivery Area) counties.

* The APC/AAPC is significantly different from zero ($p < .05$).

- Joinpoint regression line analysis could not be performed on data series.

Table 9.2
Hodgkin Lymphoma

Trends in SEER Incidence^{ab} and U.S. Mortality^c Using the Joinpoint Regression Program,
1975-2010 With up to Five Joinpoints, 1992-2010 With up to Three Joinpoints,
Males by Race/Ethnicity

	JP Trend 1		JP Trend 2		JP Trend 3		JP Trend 4		JP Trend 5		JP Trend 6		AAPC ^d	
	Years	APC	Years	APC	Years	APC	Years	APC	Years	APC	Years	APC	2001-10	2006-10
<u>SEER 9 Delay-Adjusted Incidence^a, 1975-2010</u>														
All Races	1975-01	-0.6*	2001-10	1.1									1.1	1.1
White	1975-10	-0.3*											-0.3*	-0.3*
Black	1975-10	-0.1											-0.1	-0.1
<u>SEER 13 Delay-Adjusted Incidence^b, 1992-2010</u>														
All Races	1992-10	0.4*											0.4*	0.4*
White	1992-10	0.3											0.3	0.3
Black	1992-10	1.2*											1.2*	1.2*
<u>SEER 9 Observed Incidence^a, 1975-2010</u>														
All Races	1975-01	-0.7*	2001-10	1.0									1.0	1.0
White	1975-10	-0.4*											-0.4*	-0.4*
Black	1975-10	0.5											0.5	0.5
<u>SEER 13 Observed Incidence^b, 1992-2010</u>														
All Races	1992-10	0.3											0.3	0.3
White	1992-10	0.3											0.3	0.3
White NH ^{ef}	1992-10	0.5											0.5	0.5
Black	1992-10	1.2*											1.2*	1.2*
Black NH ^{ef}	1992-10	1.3*											1.3*	1.3*
API ^e	1992-10	1.6											1.6	1.6
AI/AN ^{eg}	-	-											-	-
Hispanic ^f	1992-10	0.1											0.1	0.1
<u>U.S. Cancer Mortality^c, 1975-2010</u>														
All Races	1975-97	-4.0*	1997-10	-2.2*									-2.2*	-2.2*
White	1975-97	-4.1*	1997-10	-2.0*									-2.0*	-2.0*
Black	1975-10	-3.3*											-3.3*	-3.3*
<u>U.S. Cancer Mortality^c, 1992-2010</u>														
All Races	1992-94	-11.0	1994-10	-2.2*									-2.2*	-2.2*
White	1992-94	-11.4	1994-10	-2.0*									-2.0*	-2.0*
White NH ^{ef}	1992-10	-2.4*											-2.4*	-2.4*
Black	1992-10	-3.6*											-3.6*	-3.6*
Black NH ^{ef}	1992-10	-3.1*											-3.1*	-3.1*
API ^e	1992-10	-2.8											-2.8	-2.8
AI/AN ^{eg}	-	-											-	-
Hispanic ^f	1992-10	-2.9*											-2.9*	-2.9*

Joinpoint Regression Program Version 4.0.3, April 2013, National Cancer Institute. (<http://surveillance.cancer.gov/joinpoint/>).

The APC is the Annual Percent Change based on rates age-adjusted to the 2000 US Std Population (19 age groups - Census P25-1130).

Trends are from the SEER 9 areas (San Francisco, Connecticut, Detroit, Hawaii, Iowa, New Mexico, Seattle, Utah, and Atlanta).

Trends are from the SEER 13 areas (SEER 9 Areas, Los Angeles, San Jose-Monterey, Rural Georgia, and the Alaska Native Registry).

Trends are from US Mortality Files, National Center for Health Statistics, Centers for Disease Control and Prevention.

The AAPC is the Average Annual Percent Change and is based on the APCs calculated by Joinpoint.

API - Asian/Pacific Islander, AI/AN - American Indian/Alaska Native, NH - Non-Hispanic

Hispanic and Non-Hispanic are not mutually exclusive from whites, blacks, Asian/Pacific Islanders, and American Indians/Alaska

Natives. Incidence data for Hispanics and Non-Hispanics are based on NHIA and exclude cases from the Alaska Native Registry.

The Hispanic and Non-Hispanic mortality trends exclude deaths from CT, DC, ME, MD, MN, NH, NY, ND, SC, OK and VT.

Data for American Indian/Alaska Native are based on the CHSDA (Contract Health Service Delivery Area) counties.

* The APC/AAPC is significantly different from zero (p<.05).

- Joinpoint regression line analysis could not be performed on data series.

Table 9.3
Hodgkin Lymphoma

Trends in SEER Incidence^{ab} and U.S. Mortality^c Using the Joinpoint Regression Program,
1975-2010 With up to Five Joinpoints, 1992-2010 With up to Three Joinpoints,
Females by Race/Ethnicity

	JP Trend 1		JP Trend 2		JP Trend 3		JP Trend 4		JP Trend 5		JP Trend 6		AAPC ^d	
	Years	APC	Years	APC	Years	APC	Years	APC	Years	APC	Years	APC	2001-10	2006-10
<u>SEER 9 Delay-Adjusted Incidence^a, 1975-2010</u>														
All Races	1975-10	0.4*											0.4*	0.4*
White	1975-10	0.3*											0.3*	0.3*
Black	1975-10	1.9*											1.9*	1.9*
<u>SEER 13 Delay-Adjusted Incidence^b, 1992-2010</u>														
All Races	1992-10	0.2											0.2	0.2
White	1992-10	0.2											0.2	0.2
Black	1992-10	0.6											0.6	0.6
<u>SEER 9 Observed Incidence^a, 1975-2010</u>														
All Races	1975-10	0.3*											0.3*	0.3*
White	1975-10	0.3*											0.3*	0.3*
Black	1975-10	2.0*											2.0*	2.0*
<u>SEER 13 Observed Incidence^b, 1992-2010</u>														
All Races	1992-10	0.1											0.1	0.1
White	1992-10	0.1											0.1	0.1
White NH ^{ef}	1992-10	0.2											0.2	0.2
Black	1992-10	0.7											0.7	0.7
Black NH ^{ef}	1992-10	0.8											0.8	0.8
API ^e	1992-10	3.1*											3.1*	3.1*
AI/AN ^{eg}	-	-											-	-
Hispanic ^f	1992-10	0.7											0.7	0.7
<u>U.S. Cancer Mortality^c, 1975-2010</u>														
All Races	1975-85	-4.9*	1985-10	-2.6*									-2.6*	-2.6*
White	1975-85	-5.0*	1985-10	-2.5*									-2.5*	-2.5*
Black	1975-10	-2.5*											-2.5*	-2.5*
<u>U.S. Cancer Mortality^c, 1992-2010</u>														
All Races	1992-10	-2.6*											-2.6*	-2.6*
White	1992-10	-2.5*											-2.5*	-2.5*
White NH ^{ef}	1992-10	-2.4*											-2.4*	-2.4*
Black	1992-10	-2.4*											-2.4*	-2.4*
Black NH ^{ef}	1992-10	-1.9*											-1.9*	-1.9*
API ^e	-	-											-	-
AI/AN ^{eg}	-	-											-	-
Hispanic ^f	1992-10	-2.7*											-2.7*	-2.7*

Joinpoint Regression Program Version 4.0.3, April 2013, National Cancer Institute. (<http://surveillance.cancer.gov/joinpoint/>).

The APC is the Annual Percent Change based on rates age-adjusted to the 2000 US Std Population (19 age groups - Census P25-1130).

^a Trends are from the SEER 9 areas (San Francisco, Connecticut, Detroit, Hawaii, Iowa, New Mexico, Seattle, Utah, and Atlanta).

^b Trends are from the SEER 13 areas (SEER 9 Areas, Los Angeles, San Jose-Monterey, Rural Georgia, and the Alaska Native Registry).

^c Trends are from US Mortality Files, National Center for Health Statistics, Centers for Disease Control and Prevention.

^d The AAPC is the Average Annual Percent Change and is based on the APCs calculated by Joinpoint.

^e API - Asian/Pacific Islander, AI/AN - American Indian/Alaska Native, NH - Non-Hispanic

^f Hispanic and Non-Hispanic are not mutually exclusive from whites, blacks, Asian/Pacific Islanders, and American Indians/Alaska

Natives. Incidence data for Hispanics and Non-Hispanics are based on NHIA and exclude cases from the Alaska Native Registry.

The Hispanic and Non-Hispanic mortality trends exclude deaths from CT, DC, ME, MD, MN, NH, NY, ND, SC, OK and VT.

^g Data for American Indian/Alaska Native are based on the CHSDA (Contract Health Service Delivery Area) counties.

* The APC/AAPC is significantly different from zero (p<.05).

- Joinpoint regression line analysis could not be performed on data series.

Table 9.4
Hodgkin Lymphoma

Delay-adjusted SEER Incidence^a Rates by Year, Race and Sex

Year of Diagnosis:	All Races			Whites			Blacks		
	Total	Males	Females	Total	Males	Females	Total	Males	Females
1975	3.08	3.86	2.39	3.23	3.91	2.63	2.58	4.41	-
1976	2.76	3.37	2.24	2.88	3.44	2.41	2.57	3.91	-
1977	2.98	3.61	2.46	3.27	3.93	2.71	1.68	1.91	-
1978	2.80	3.41	2.32	3.07	3.70	2.58	1.47	2.01	-
1979	2.93	3.91	2.08	3.09	4.05	2.27	2.86	4.68	-
1980	2.77	3.31	2.27	2.98	3.53	2.48	1.82	2.07	1.54
1981	2.92	3.59	2.33	3.23	3.92	2.61	1.39	1.86	-
1982	2.93	3.50	2.46	3.13	3.68	2.70	2.58	3.15	2.04
1983	3.02	3.72	2.39	3.33	4.00	2.70	2.11	3.85	-
1984	3.07	3.72	2.47	3.39	4.02	2.79	2.07	3.31	-
1985	2.98	3.50	2.50	3.31	3.84	2.83	1.74	2.26	-
1986	2.73	3.34	2.21	2.91	3.50	2.40	2.27	2.81	1.90
1987	3.05	3.72	2.50	3.35	4.02	2.80	2.08	2.78	1.47
1988	3.10	3.59	2.67	3.44	4.00	2.96	1.90	1.93	1.86
1989	3.06	3.68	2.56	3.36	3.98	2.85	2.17	3.16	1.38
1990	3.08	3.53	2.64	3.32	3.85	2.81	2.97	3.18	2.75
1991	3.03	3.50	2.61	3.35	3.84	2.91	2.41	2.71	2.09
1992	2.88	3.11	2.70	3.05	3.23	2.92	2.68	2.73	2.62
1993	2.86	3.27	2.51	3.09	3.49	2.75	2.97	3.66	2.47
1994	2.87	3.16	2.60	3.16	3.51	2.83	2.10	2.37	1.93
1995	2.78	3.24	2.37	3.06	3.53	2.66	2.30	2.86	1.79
1996	2.86	3.33	2.43	3.14	3.62	2.68	2.48	3.21	1.84
1997	2.83	2.96	2.71	3.08	3.25	2.92	2.58	2.40	2.73
1998	2.81	3.11	2.57	3.14	3.45	2.89	2.16	2.37	1.99
1999	2.88	3.12	2.70	3.11	3.25	3.04	2.54	3.16	2.02
2000	2.83	3.32	2.38	3.07	3.54	2.64	2.44	3.05	1.89
2001	2.59	2.96	2.26	2.76	3.14	2.40	2.44	3.15	1.94
2002	2.98	3.30	2.72	3.16	3.45	2.92	2.93	3.26	2.71
2003	2.75	3.15	2.40	3.02	3.46	2.63	2.42	2.79	2.26
2004	2.98	3.08	2.92	3.14	3.20	3.12	3.10	3.29	2.97
2005	3.07	3.56	2.66	3.28	3.78	2.87	3.16	3.40	2.94
2006	3.05	3.37	2.73	3.24	3.53	2.93	3.16	3.89	2.54
2007	3.22	3.72	2.77	3.46	3.92	3.04	3.29	4.04	2.66
2008	3.01	3.46	2.60	3.23	3.66	2.84	3.14	3.73	2.64
2009	2.99	3.27	2.75	3.25	3.51	3.02	2.65	3.27	2.11
2010	2.86	3.33	2.42	3.03	3.55	2.53	2.61	3.11	2.19

Additional information on the model used to delay-adjust SEER Incidence rates can be found at [\(http://surveillance.cancer.gov/delay/\)](http://surveillance.cancer.gov/delay/).

^a SEER 9 areas (San Francisco, Connecticut, Detroit, Hawaii, Iowa, New Mexico, Seattle, Utah, and Atlanta). Rates are per 100,000 and are age-adjusted to the 2000 US Std Population (19 age groups - Census P25-1130).

- Delay-adjusted rate is not shown for observed rates based on less than 16 cases for the time interval.

Table 9.5
Hodgkin Lymphoma

Age-adjusted SEER Incidence^a Rates by Year, Race and Sex

Year of Diagnosis:	All Races			Whites			Blacks		
	Total	Males	Females	Total	Males	Females	Total	Males	Females
1975-2010	2.91	3.37	2.51	3.16	3.62	2.76	2.49	3.05	2.02
1975	3.08	3.86	2.39	3.23	3.91	2.63	2.58	4.41	-
1976	2.76	3.37	2.24	2.88	3.44	2.41	2.57	3.91	-
1977	2.98	3.61	2.46	3.27	3.93	2.71	1.68	1.91	-
1978	2.80	3.41	2.32	3.07	3.70	2.58	1.47	2.01	-
1979	2.93	3.91	2.08	3.09	4.05	2.27	2.86	4.68	-
1980	2.77	3.31	2.27	2.98	3.53	2.48	1.82	2.07	1.54
1981	2.92	3.59	2.33	3.23	3.92	2.61	1.39	1.86	-
1982	2.93	3.50	2.46	3.13	3.67	2.70	2.58	3.15	2.04
1983	3.02	3.72	2.39	3.33	3.99	2.70	2.11	3.85	-
1984	3.07	3.72	2.47	3.38	4.02	2.79	2.07	3.31	-
1985	2.97	3.50	2.50	3.31	3.84	2.83	1.74	2.26	-
1986	2.73	3.33	2.21	2.91	3.50	2.40	2.27	2.80	1.90
1987	3.05	3.72	2.50	3.35	4.01	2.79	2.08	2.78	1.46
1988	3.10	3.59	2.67	3.44	4.00	2.95	1.90	1.93	1.86
1989	3.06	3.67	2.55	3.36	3.97	2.85	2.16	3.15	1.37
1990	3.07	3.52	2.64	3.32	3.84	2.81	2.96	3.18	2.75
1991	3.02	3.49	2.60	3.34	3.83	2.90	2.40	2.70	2.08
1992	2.87	3.10	2.69	3.05	3.22	2.92	2.66	2.71	2.61
1993	2.85	3.26	2.50	3.08	3.49	2.74	2.96	3.64	2.46
1994	2.85	3.15	2.59	3.15	3.50	2.82	2.09	2.36	1.91
1995	2.76	3.22	2.36	3.05	3.52	2.65	2.29	2.84	1.78
1996	2.85	3.32	2.41	3.13	3.61	2.68	2.46	3.19	1.83
1997	2.82	2.95	2.70	3.07	3.23	2.91	2.57	2.38	2.72
1998	2.79	3.09	2.55	3.13	3.44	2.88	2.15	2.35	1.98
1999	2.86	3.09	2.68	3.10	3.24	3.02	2.52	3.14	2.01
2000	2.81	3.29	2.36	3.06	3.52	2.63	2.42	3.03	1.87
2001	2.57	2.93	2.23	2.74	3.12	2.39	2.42	3.12	1.92
2002	2.95	3.27	2.69	3.14	3.43	2.91	2.90	3.23	2.68
2003	2.71	3.11	2.37	3.01	3.44	2.62	2.40	2.76	2.23
2004	2.94	3.04	2.88	3.12	3.18	3.11	3.07	3.25	2.93
2005	3.03	3.51	2.62	3.26	3.75	2.85	3.12	3.36	2.90
2006	3.00	3.32	2.69	3.22	3.51	2.91	3.12	3.83	2.51
2007	3.16	3.66	2.72	3.43	3.89	3.01	3.25	3.98	2.62
2008	2.95	3.39	2.55	3.20	3.63	2.82	3.09	3.67	2.60
2009	2.93	3.20	2.69	3.21	3.47	2.99	2.61	3.21	2.07
2010	2.76	3.22	2.34	2.97	3.49	2.49	2.53	3.02	2.13

^a SEER 9 areas (San Francisco, Connecticut, Detroit, Hawaii, Iowa, New Mexico, Seattle, Utah, and Atlanta). Rates are per 100,000 and are age-adjusted to the 2000 US Std Population (19 age groups - Census P25-1130).
- Statistic not shown. Rate based on less than 16 cases for the time interval.

Table 9.6
Hodgkin Lymphoma

Age-adjusted U.S. Death^a Rates by Year, Race and Sex

Year of Death:	All Races			Whites			Blacks		
	Total	Males	Females	Total	Males	Females	Total	Males	Females
1975-2010	0.64	0.80	0.50	0.67	0.83	0.53	0.54	0.72	0.40
1975	1.31	1.69	1.00	1.35	1.73	1.04	1.07	1.50	0.72
1976	1.17	1.50	0.90	1.20	1.52	0.94	0.97	1.44	0.60
1977	1.14	1.45	0.87	1.18	1.49	0.90	0.92	1.20	0.69
1978	1.06	1.35	0.82	1.10	1.38	0.87	0.76	1.17	0.44
1979	0.97	1.27	0.71	1.00	1.31	0.74	0.76	1.06	0.51
1980	0.98	1.23	0.76	1.01	1.27	0.80	0.75	1.09	0.48
1981	0.93	1.15	0.74	0.96	1.19	0.76	0.74	0.88	0.62
1982	0.88	1.09	0.70	0.92	1.15	0.72	0.70	0.78	0.62
1983	0.85	1.09	0.65	0.88	1.13	0.68	0.64	0.90	0.45
1984	0.86	1.18	0.60	0.88	1.19	0.63	0.79	1.18	0.47
1985	0.77	0.98	0.58	0.78	1.00	0.60	0.71	0.96	0.51
1986	0.78	1.00	0.58	0.80	1.04	0.60	0.65	0.85	0.49
1987	0.74	0.96	0.56	0.77	0.98	0.58	0.67	0.94	0.46
1988	0.67	0.88	0.50	0.69	0.91	0.51	0.59	0.75	0.48
1989	0.71	0.92	0.54	0.73	0.94	0.56	0.66	0.92	0.47
1990	0.66	0.85	0.50	0.69	0.88	0.52	0.56	0.81	0.36
1991	0.65	0.83	0.51	0.66	0.83	0.51	0.67	0.89	0.49
1992	0.65	0.83	0.50	0.67	0.86	0.52	0.58	0.77	0.45
1993	0.61	0.79	0.47	0.63	0.80	0.50	0.57	0.83	0.39
1994	0.56	0.66	0.47	0.56	0.66	0.48	0.55	0.73	0.41
1995	0.55	0.67	0.44	0.56	0.68	0.46	0.53	0.73	0.36
1996	0.53	0.64	0.44	0.55	0.65	0.46	0.47	0.63	0.36
1997	0.53	0.62	0.46	0.54	0.63	0.47	0.54	0.67	0.43
1998	0.48	0.61	0.36	0.49	0.62	0.37	0.48	0.66	0.33
1999	0.51	0.63	0.41	0.53	0.66	0.43	0.41	0.55	0.30
2000	0.46	0.55	0.39	0.48	0.57	0.41	0.35	0.42	0.30
2001	0.47	0.56	0.38	0.48	0.59	0.39	0.42	0.52	0.35
2002	0.47	0.58	0.38	0.49	0.60	0.41	0.40	0.57	0.27
2003	0.46	0.55	0.39	0.48	0.57	0.41	0.36	0.47	0.27
2004	0.43	0.55	0.34	0.44	0.57	0.35	0.40	0.47	0.34
2005	0.42	0.51	0.36	0.43	0.51	0.37	0.42	0.55	0.32
2006	0.44	0.56	0.33	0.45	0.57	0.35	0.41	0.56	0.30
2007	0.41	0.51	0.33	0.43	0.53	0.35	0.36	0.45	0.29
2008	0.37	0.45	0.31	0.39	0.47	0.33	0.33	0.39	0.28
2009	0.40	0.48	0.32	0.41	0.49	0.34	0.39	0.48	0.30
2010	0.38	0.49	0.29	0.40	0.51	0.31	0.30	0.36	0.26

^a US Mortality Files, National Center for Health Statistics, Centers for Disease Control and Prevention. Rates are per 100,000 and are age-adjusted to the 2000 US Std Population (19 age groups - Census P25-1130).
- Statistic not shown. Rate based on less than 16 cases for the time interval.

Table 9.7
Hodgkin LymphomaSEER Incidence^a and U.S. Death^b Rates, Age-Adjusted and Age-Specific Rates, by Race and Sex

	All Races			Whites			Blacks		
	Total	Males	Females	Total	Males	Females	Total	Males	Females
<u>SEER Incidence</u>									
<u>Age at Diagnosis</u>									
Age-Adjusted Rates, 2006-2010									
All ages	2.8	3.2	2.4	3.0	3.4	2.6	2.7	3.2	2.3
Under 65	2.6	2.8	2.3	2.7	3.0	2.5	2.7	3.2	2.3
65 and over	4.2	5.3	3.4	4.6	5.8	3.8	2.6	3.1	2.3
All ages (IARC world std) ^c	2.5	2.8	2.2	2.7	3.0	2.4	2.5	2.9	2.1
Age-Specific Rates, 2006-2010									
<1	-	-	-	-	-	-	-	-	-
1-4	0.1	0.1	-	-	-	-	-	-	-
5-9	0.5	0.8	0.3	0.6	0.8	0.3	0.5	-	-
10-14	1.2	1.3	1.1	1.3	1.4	1.2	1.3	1.3	1.3
15-19	3.2	3.1	3.2	3.5	3.5	3.5	2.3	2.2	2.3
20-24	4.5	4.4	4.6	4.9	4.7	5.1	3.5	3.8	3.3
25-29	4.2	4.2	4.2	4.5	4.3	4.6	4.9	5.1	4.7
30-34	3.8	4.0	3.6	4.2	4.4	4.0	4.1	4.5	3.7
35-39	3.0	3.3	2.6	3.2	3.5	2.9	3.2	3.9	2.6
40-44	2.8	3.4	2.2	3.0	3.5	2.4	3.1	4.2	2.1
45-49	2.5	3.0	1.9	2.6	3.1	2.0	3.3	4.5	2.2
50-54	2.4	3.1	1.8	2.5	3.0	1.9	3.4	4.5	2.3
55-59	2.6	3.3	1.9	2.7	3.5	2.0	2.6	3.2	2.1
60-64	3.0	3.5	2.5	3.1	3.7	2.6	3.4	3.1	3.6
65-69	3.8	4.7	2.9	4.1	4.9	3.3	3.4	4.5	2.5
70-74	4.3	5.4	3.4	4.8	6.0	3.7	2.7	-	2.8
75-79	4.6	5.5	4.0	5.2	6.2	4.4	-	-	-
80-84	4.9	6.6	3.8	5.2	6.9	4.0	4.0	-	-
85+	3.8	4.8	3.4	4.1	5.2	3.6	-	-	-
<u>U.S. Mortality</u>									
<u>Age at Death</u>									
Age-Adjusted Rates, 2006-2010									
All ages	0.4	0.5	0.3	0.4	0.5	0.3	0.4	0.4	0.3
Under 65	0.2	0.3	0.2	0.2	0.3	0.2	0.3	0.4	0.2
65 and over	1.6	2.0	1.3	1.7	2.1	1.4	1.0	1.1	0.9
All ages (IARC world std) ^c	0.3	0.3	0.2	0.3	0.3	0.2	0.3	0.3	0.2
Age-Specific Rates, 2006-2010									
<1	-	-	-	-	-	-	-	-	-
1-4	-	-	-	-	-	-	-	-	-
5-9	-	-	-	-	-	-	-	-	-
10-14	-	-	-	-	-	-	-	-	-
15-19	0.1	0.1	0.1	0.1	0.1	0.1	-	-	-
20-24	0.2	0.2	0.2	0.2	0.3	0.2	0.2	-	0.3
25-29	0.3	0.3	0.2	0.3	0.3	0.2	0.3	0.4	0.2
30-34	0.3	0.3	0.3	0.3	0.4	0.3	0.4	0.4	0.3
35-39	0.3	0.4	0.3	0.3	0.4	0.3	0.4	0.6	0.3
40-44	0.3	0.4	0.2	0.3	0.4	0.2	0.3	0.5	-
45-49	0.3	0.4	0.2	0.3	0.4	0.2	0.4	0.5	0.2
50-54	0.3	0.5	0.2	0.4	0.5	0.2	0.4	0.6	0.2
55-59	0.5	0.6	0.4	0.5	0.6	0.4	0.6	0.7	0.5
60-64	0.6	0.8	0.5	0.6	0.8	0.5	0.6	0.9	0.4
65-69	0.9	1.1	0.7	0.9	1.1	0.7	0.8	1.0	0.6
70-74	1.2	1.4	1.0	1.3	1.5	1.1	0.7	-	-
75-79	1.8	2.2	1.5	2.0	2.4	1.6	1.0	-	0.9
80-84	2.4	2.9	2.0	2.5	3.1	2.2	1.2	-	1.2
85+	2.5	3.4	2.1	2.6	3.5	2.2	1.8	-	1.7

^a SEER 18 areas. Rates are per 100,000 and are age-adjusted to the 2000 US Std Population (19 age groups - Census P25-1130), unless noted.

^b US Mortality Files, National Center for Health Statistics, Centers for Disease Control and Prevention.

^c Rates are per 100,000 and are age-adjusted to the 2000 US Std Population (19 age groups - Census P25-1130), unless noted.

- Rates are per 100,000 and are age-adjusted to the IARC world standard population.

- Statistic not shown. Rate based on less than 16 cases for the time interval.

Table 9.8
Hodgkin Lymphoma

5-Year Relative and Period Survival (Percent) by Race, Sex, Diagnosis Year and Age

	All Races			Whites			Blacks		
	Total	Males	Females	Total	Males	Females	Total	Males	Females
5-Year Relative Survival (Percent)									
Year of Diagnosis:									
1960-1963 ^a	-	-	-	40	34	48	-	-	-
1970-1973 ^a	-	-	-	67	66	69	-	-	-
1975-1977 ^b	71.8	69.9	74.3	72.1	70.2	74.5	70.1	68.5 ^g	73.3 ^g
1978-1980 ^b	71.7	70.3	73.5	71.8	69.8	74.3	70.6	74.7 ^g	63.1 ^g
1981-1983 ^b	74.2	72.9	75.8	74.6	73.7	75.6	71.5	69.2 ^g	75.9 ^g
1984-1986 ^b	78.2	76.4	80.5	78.7	76.8	81.1	74.7	75.7 ^g	72.1 ^g
1987-1989 ^b	79.2	76.6	82.5	79.7	76.8	83.4	72.4	71.8 ^g	73.1 ^g
1990-1992 ^b	81.7	79.2	84.7	82.8	81.0	85.0	73.9	64.5	84.1
1993-1995 ^b	81.6	79.1	84.6	82.1	79.9	84.7	78.4	74.4	82.8
1996-1998 ^b	85.1	84.4	85.9	85.7	84.4	87.3	81.1	84.1	78.0
1999-2002 ^b	85.1	83.0	87.6	86.0	84.5	87.8	80.6	74.2	88.2
2003-2009 ^b	87.6 ^f	86.9 ^f	88.5 ^f	88.7 ^f	88.2 ^f	89.1 ^f	82.7 ^f	79.1 ^f	86.3
5-Year Period Survival (Percent) ^{cd}									
2009	85.7	85.0	86.6	86.4	85.8	87.0	80.1	78.2	82.2
Stage Distribution (%) 2003-2009 ^{ee}									
All Stages									
Number of cases	14,838	8,053	6,785	12,234	6,656	5,578	1,742	919	823
Percent	100%	100%	100%	100%	100%	100%	100%	100%	100%
Localized	17	18	16	17	18	16	20	20	19
Regional	40	36	46	41	37	47	33	28	39
Distant	38	42	33	37	41	32	44	50	39
Unstaged	5	4	5	5	5	5	3	3	4
5-Year Relative Survival (Percent), 2003-2009 ^c									
Age at Diagnosis:									
Ages <45	93.5	92.5	94.6	94.3	93.7	95.0	86.9	83.4	90.5
Ages 45-54	84.3	82.2	87.7	86.3	84.5	89.0	72.5	66.9	81.3
Ages 55-64	76.0	76.0	75.8	78.5	78.8	77.6	59.8 ^g	53.7 ^g	65.5 ^g
Ages 65-74	62.2	59.5	65.4	61.8	58.1	66.2	64.6 ^g	72.6 ^g	55.2 ^g
Ages 75+	41.6	42.6	40.4	42.4	42.3	42.1	32.2 ^h	-	24.2 ^h
Ages <65	90.3	88.9	92.0	91.4	90.4	92.6	82.3	77.8	87.2
Ages 65+	52.4	52.7	52.1	52.5	51.5	53.1	55.8 ^g	68.5 ^g	44.6 ^g
Stage ^e :									
All Stages	85.1	84.3	86.0	85.6	85.1	86.2	80.5	77.5	83.7
Localized	90.2	90.7	89.4	90.1	90.5	89.6	90.4	92.5	87.2
Regional	91.4	90.5	92.2	91.9	91.3	92.5	86.0	81.5	89.6
Distant	76.0	75.9	76.1	76.3	76.6	75.8	72.5	69.6	76.4
Unstaged	83.4	84.6	82.0	83.9	85.8	81.6	72.1 ^g	61.1 ^h	79.3 ^g

^a Based on End Results data from a series of hospital registries and one population-based registry.

^b SEER 9 areas (San Francisco, Connecticut, Detroit, Hawaii, Iowa, New Mexico, Seattle, Utah, Atlanta).

Based on follow-up of patients into 2010.

^c SEER 18 areas (San Francisco, Connecticut, Detroit, Hawaii, Iowa, New Mexico, Seattle, Utah, Atlanta, San Jose-Monterey, Los Angeles, Alaska Native Registry, Rural Georgia, California excluding SF/SJM/LA, Kentucky, Louisiana, New Jersey and Georgia excluding ATL/RG).

Based on follow-up of patients into 2010.

^d Period survival provides a 2009 estimate of survival by piecing together the most recent conditional survival estimates from several cohorts. It is computed here using three year calendar blocks (2007-2009: 0-1 year survival), (2006-2008: 1-2 year survival), (2005-2007: 2-3 year survival), (2004-2006: 3-4 year survival), (2003-2005: 4-5 years survival).

^e Stage at diagnosis is classified using SEER Summary Stage 2000.

^f The difference between 1975-1977 and 2003-2009 is statistically significant (p<.05).

^g The standard error is between 5 and 10 percentage points.

^h The standard error is greater than 10 percentage points.

- Statistic could not be calculated due to fewer than 25 cases during the time period.

Table 9.9
Hodgkin Lymphoma

SEER^a Relative Survival (Percent)
By Year of Diagnosis

All Races, Males and Females

Year of Diagnosis

	1975- 1979	1980- 1984	1985- 1989	1990	1991	1992	1993	1994	1995	1996	1997	1998	1999	2000	2001	2002	2003	2004	2005	2006	2007	2008	2009
Survival Time																							
1-year	86.9	89.4	90.7	90.5	92.9	92.5	91.3	93.1	92.8	91.5	93.6	94.5	91.0	92.4	94.0	92.8	93.2	91.5	93.4	92.5	93.2	94.6	92.0
2-year	80.8	83.6	86.3	86.6	87.0	88.9	86.3	89.7	88.6	88.1	90.8	90.4	87.7	90.6	90.7	89.8	92.2	89.6	90.9	90.2	92.5	92.6	
3-year	76.5	80.0	83.0	84.2	84.5	87.3	83.5	86.1	86.5	86.7	89.3	88.3	85.4	88.7	88.4	88.4	89.9	87.4	90.3	89.0	90.6		
4-year	73.7	77.3	80.5	82.1	82.3	85.4	81.5	84.2	83.4	84.6	88.4	86.5	84.2	87.8	86.6	86.1	88.1	86.1	89.5	88.6			
5-year	71.4	74.8	79.0	81.0	80.1	84.0	79.6	83.0	82.2	83.2	87.2	84.9	83.4	86.4	85.2	85.1	87.4	85.8	88.3				
6-year	69.0	72.2	77.4	79.1	78.9	82.3	77.8	81.7	80.1	81.7	85.9	83.7	82.2	85.5	84.3	84.7	87.0	84.8					
7-year	67.1	70.5	75.1	76.8	77.5	81.4	76.0	81.3	78.9	80.0	85.2	83.0	80.9	84.6	84.2	83.3	86.3						
8-year	65.0	69.2	74.0	75.7	76.2	80.9	75.1	80.7	78.4	79.3	84.7	82.4	80.0	83.5	83.8	82.3							
9-year	62.9	67.8	73.1	74.5	75.7	79.9	74.2	79.5	77.2	78.2	84.4	81.4	79.0	82.6	82.7								
10-year	61.7	66.7	72.5	73.4	74.6	78.6	74.0	79.1	76.6	76.6	83.8	80.2	78.1	82.6									
11-year	60.3	65.7	71.5	73.1	73.9	77.6	73.4	78.9	75.6	75.6	83.2	79.5	78.0										
12-year	59.4	64.5	70.7	71.9	73.7	77.2	72.4	77.9	75.5	74.8	82.7	79.2											
13-year	58.6	63.7	69.5	71.7	72.9	76.4	71.5	77.0	75.4	74.2	81.6												
14-year	57.4	62.5	68.4	71.5	72.1	75.9	71.4	76.5	75.4	73.4													
15-year	56.4	61.7	67.3	71.0	71.6	75.2	71.2	75.2	75.3														
16-year	55.6	60.6	66.6	70.9	70.5	75.2	70.5	74.8															
17-year	54.6	59.3	66.0	69.9	70.2	74.5	70.3																
18-year	53.7	58.4	65.4	69.1	69.0	73.6																	
19-year	53.0	57.8	64.7	67.7	66.8																		
20-year	52.0	56.7	63.9	66.9																			

^a Based on the SEER 9 areas (San Francisco, Connecticut, Detroit, Hawaii, Iowa, New Mexico, Seattle, Utah, and Atlanta).

Table 9.10
Hodgkin Lymphoma

SEER^a Relative Survival (Percent)
By Year of Diagnosis

All Races, Males

Year of Diagnosis

	1975- 1979	1980- 1984	1985- 1989	1990	1991	1992	1993	1994	1995	1996	1997	1998	1999	2000	2001	2002	2003	2004	2005	2006	2007	2008	2009
Survival Time																							
1-year	85.9	89.4	89.8	90.2	92.7	90.9	88.7	93.5	92.2	92.7	92.1	94.2	89.3	90.8	92.8	90.8	93.0	89.7	93.3	91.7	92.4	93.3	92.8
2-year	80.2	83.5	84.8	84.7	86.2	86.3	83.2	88.8	88.0	88.6	89.5	90.9	86.1	88.4	89.0	88.2	92.1	88.4	90.9	89.3	91.5	91.2	
3-year	75.3	80.2	81.3	82.5	82.6	84.4	80.1	85.3	85.1	87.0	87.4	88.7	83.6	85.3	86.4	86.7	89.9	86.4	90.2	88.8	89.3		
4-year	71.7	77.2	78.3	80.7	79.7	82.3	77.6	83.0	81.0	85.0	86.9	86.3	82.8	83.7	85.0	84.8	86.7	85.8	88.9	87.7			
5-year	69.2	74.1	76.5	80.0	76.8	80.8	75.2	81.8	80.2	82.9	85.8	84.3	82.6	81.8	83.5	83.7	86.0	85.8	87.8				
6-year	66.5	71.4	74.6	78.0	75.7	78.7	72.6	80.4	78.8	81.8	83.5	83.4	80.5	80.5	82.0	83.0	86.0	83.8					
7-year	64.4	69.6	71.8	75.5	73.5	78.6	71.7	80.4	77.6	79.6	82.9	82.1	78.7	79.9	81.7	81.1	85.0						
8-year	62.4	68.1	70.4	74.8	71.3	77.5	70.2	80.1	76.5	78.5	82.2	81.6	77.6	78.7	81.2	79.9							
9-year	60.0	66.9	69.2	73.6	71.0	76.8	69.1	78.5	75.4	77.5	82.2	80.2	76.1	78.4	79.4								
10-year	58.9	65.6	68.5	72.3	70.5	75.5	69.1	78.3	75.4	75.2	81.0	78.1	75.2	78.4									
11-year	57.5	64.6	67.1	72.2	70.0	73.9	68.5	78.2	74.3	74.0	80.4	77.5	75.2										
12-year	56.4	63.2	65.9	70.9	69.5	73.5	67.5	77.6	74.2	72.4	80.3	77.0											
13-year	55.7	62.6	64.3	70.5	68.1	72.6	66.0	77.1	74.2	71.8	78.5												
14-year	54.3	61.2	63.2	70.5	67.8	72.5	65.6	76.3	74.2	70.4													
15-year	53.1	60.5	62.0	69.7	67.3	72.1	64.9	74.6	74.2														
16-year	52.4	59.4	61.1	69.5	66.3	72.1	64.5	74.1															
17-year	51.1	58.0	60.6	68.0	66.3	71.3	64.2																
18-year	50.1	57.0	59.9	66.9	65.7	69.8																	
19-year	49.5	56.5	59.3	65.9	63.1																		
20-year	48.5	55.2	58.3	64.7																			

^a Based on the SEER 9 areas (San Francisco, Connecticut, Detroit, Hawaii, Iowa, New Mexico, Seattle, Utah, and Atlanta).

Table 9.11
Hodgkin Lymphoma

SEER^a Relative Survival (Percent)
By Year of Diagnosis

All Races, Females

Year of Diagnosis

	1975- 1979	1980- 1984	1985- 1989	1990	1991	1992	1993	1994	1995	1996	1997	1998	1999	2000	2001	2002	2003	2004	2005	2006	2007	2008	2009
Survival Time																							
1-year	88.2	89.5	91.8	90.9	93.0	94.2	94.4	92.5	93.7	90.0	95.1	94.9	92.9	94.5	95.3	95.1	93.4	93.4	93.4	93.4	94.4	96.0	91.2
2-year	81.6	83.7	88.3	88.9	87.9	91.7	90.0	90.7	89.3	87.4	92.3	89.9	89.4	93.5	92.8	91.6	92.2	90.9	90.8	91.3	93.3	94.0	
3-year	78.1	79.7	85.0	86.3	86.8	90.5	87.4	87.0	88.1	86.2	91.2	87.7	87.4	93.1	90.9	90.2	89.9	88.3	90.3	89.4	92.3		
4-year	76.2	77.6	83.2	83.8	85.6	88.6	86.0	85.6	86.5	83.9	89.7	86.6	85.6	93.1	88.6	87.5	89.6	86.2	90.1	89.4			
5-year	74.3	75.7	82.1	82.1	84.4	87.5	84.8	84.3	84.6	83.5	88.5	85.4	84.3	92.6	87.1	86.7	89.0	85.8	88.9				
6-year	72.3	73.4	80.9	80.4	83.1	86.2	83.8	83.2	81.7	81.4	88.5	84.1	83.9	92.2	86.9	86.5	88.0	85.5					
7-year	70.8	71.8	79.2	78.3	82.6	84.4	81.3	81.9	80.6	80.4	87.7	83.8	83.1	90.9	86.9	85.7	87.7						
8-year	68.4	70.6	78.4	76.8	82.3	84.4	80.8	81.3	80.6	80.1	87.2	83.3	82.6	90.2	86.9	84.8							
9-year	66.9	68.9	78.0	75.5	81.6	83.2	80.1	80.7	79.4	78.9	86.6	82.8	82.1	88.3	86.8								
10-year	65.4	68.1	77.5	74.6	79.7	82.0	79.8	79.9	78.1	78.4	86.5	82.4	81.2	88.3									
11-year	64.2	67.1	77.1	74.2	78.9	81.7	79.2	79.7	77.3	77.5	86.0	81.8	80.7										
12-year	63.4	66.3	76.6	73.2	78.9	81.0	78.2	77.9	76.8	77.4	85.0	81.4											
13-year	62.5	65.2	75.9	73.0	78.9	80.4	77.9	76.8	76.0	77.1	84.8												
14-year	61.5	64.2	75.0	72.5	77.7	79.2	77.9	76.7	76.0	76.8													
15-year	60.7	63.3	73.9	72.5	76.8	78.4	77.9	75.8	75.7														
16-year	59.8	62.2	73.4	72.5	75.5	78.1	77.7	75.4															
17-year	59.3	60.9	72.7	72.1	74.4	77.9	77.4																
18-year	58.4	60.2	72.3	71.8	73.3	77.6																	
19-year	57.8	59.4	71.3	69.8	71.4																		
20-year	56.8	58.7	70.9	69.6																			

^a Based on the SEER 9 areas (San Francisco, Connecticut, Detroit, Hawaii, Iowa, New Mexico, Seattle, Utah, and Atlanta).

Table 9.12
Hodgkin Lymphoma

Risk of Being Diagnosed With Cancer in 10, 20 and 30 Years,
Lifetime Risk of Being Diagnosed with Cancer Given Alive and Cancer-Free at Current Age, and
Lifetime Risk of Dying from Cancer Given Alive at Current Age
Both Sexes, 2008-2010 By Race/Ethnicity

Race/ Ethnicity	Current Age	Risk of Being Diagnosed with Cancer				Risk of Dying from Cancer	Race/ Ethnicity	Current Age	Risk of Being Diagnosed with Cancer				Risk of Dying from Cancer
		+10 yrs	+20 yrs	+30 yrs	Ever				+10 yrs	+20 yrs	+30 yrs	Ever	
All Races	0	0.00	0.03	0.07	0.22	0.04	Asian/ Pacific Islander	0	0.00	0.02	0.04	0.11	0.03
	10	0.02	0.06	0.10	0.22	0.04		10	0.01	0.04	0.05	0.11	0.03
	20	0.04	0.07	0.10	0.20	0.04		20	0.02	0.04	0.05	0.10	0.03
	30	0.03	0.06	0.08	0.16	0.04		30	0.01	0.02	0.03	0.08	0.02
	40	0.03	0.05	0.08	0.13	0.04		40	0.01	0.02	0.03	0.06	0.02
	50	0.02	0.05	0.09	0.11	0.03		50	0.01	0.02	0.04	0.05	0.02
	60	0.03	0.06	0.09	0.09	0.03		60	0.01	0.03	0.04	0.04	0.02
	70	0.04	0.06	-	0.07	0.03		70	0.02	0.03	-	0.04	0.02
80	0.03	-	-	0.04	0.02	80	0.02	-	-	0.02	0.02		
White	0	0.00	0.03	0.07	0.24	0.04	American Indian/ Alaska Native ^a	0	0.00	0.01	0.03	0.11	0.02
	10	0.02	0.07	0.10	0.24	0.04		10	0.01	0.03	0.04	0.12	0.02
	20	0.04	0.08	0.11	0.22	0.04		20	0.02	0.02	0.03	0.10	0.02
	30	0.04	0.06	0.09	0.17	0.04		30	0.01	0.01	0.02	0.09	0.02
	40	0.03	0.05	0.08	0.14	0.04		40	0.00	0.02	0.02	0.08	0.02
	50	0.03	0.06	0.09	0.12	0.04		50	0.02	0.02	0.04	0.09	0.02
	60	0.03	0.07	0.09	0.10	0.03		60	0.01	0.02	0.04	0.07	0.02
	70	0.04	0.07	-	0.07	0.03		70	0.01	0.04	-	0.08	0.01
80	0.03	-	-	0.04	0.02	80	0.03	-	-	0.08	0.01		
Black	0	0.00	0.02	0.06	0.20	0.03	Hispanic ^b	0	0.00	0.02	0.05	0.22	0.05
	10	0.02	0.06	0.09	0.20	0.03		10	0.02	0.04	0.06	0.22	0.05
	20	0.04	0.08	0.11	0.18	0.03		20	0.03	0.05	0.07	0.20	0.05
	30	0.04	0.07	0.10	0.14	0.03		30	0.02	0.04	0.07	0.18	0.05
	40	0.03	0.06	0.09	0.11	0.02		40	0.02	0.05	0.08	0.16	0.05
	50	0.03	0.06	0.07	0.08	0.02		50	0.02	0.06	0.11	0.14	0.05
	60	0.03	0.04	0.05	0.05	0.02		60	0.03	0.08	0.11	0.12	0.04
	70	0.02	0.03	-	0.03	0.02		70	0.06	0.09	-	0.09	0.04
80	0.02	-	-	0.02	0.01	80	0.04	-	-	0.05	0.03		

Devcan 6.7.0, June 2013, National Cancer Institute (<http://surveillance.cancer.gov/devcan/>).

Source: Incidence data are from the SEER 18 areas (San Francisco, Connecticut, Detroit, Hawaii, Iowa, New Mexico, Seattle, Utah, Atlanta, San Jose-Monterey, Los Angeles, Alaska Native Registry, Rural Georgia, California excluding SF/SJM/LA, Kentucky, Louisiana, New Jersey, and Georgia excluding ATL/RG). Mortality data are from the NCHS public use data file for the total US.

^a Underlying incidence and mortality data for American Indian/Alaska Native are based on the CHSDA (Contract Health Service Delivery Area) counties.

^b Hispanic is not mutually exclusive from whites, blacks, Asian/Pacific Islanders, and American Indians/Alaska Natives. Underlying incidence data for Hispanics are based on NHIA and exclude cases from the Alaska Native Registry. Underlying mortality data for Hispanics exclude deaths from the District of Columbia, Minnesota, New Hampshire, North Dakota and South Carolina.

- Statistic could not be calculated.

A percent of 0.00 represents a value that is below 0.005.

Table 9.13
Hodgkin Lymphoma

Risk of Being Diagnosed With Cancer in 10, 20 and 30 Years,
Lifetime Risk of Being Diagnosed with Cancer Given Alive and Cancer-Free at Current Age, and
Lifetime Risk of Dying from Cancer Given Alive at Current Age
Males, 2008-2010 By Race/Ethnicity

Race/ Ethnicity	Current Age	Risk of Being Diagnosed with Cancer				Risk of Dying from Cancer	Race/ Ethnicity	Current Age	Risk of Being Diagnosed with Cancer				Risk of Dying from Cancer
		+10 yrs	+20 yrs	+30 yrs	Ever				+10 yrs	+20 yrs	+30 yrs	Ever	
All Races	0	0.00	0.03	0.07	0.25	0.04	Asian/ Pacific Islander	0	0.00	0.02	0.04	0.12	0.04
	10	0.02	0.06	0.10	0.24	0.05		10	0.01	0.04	0.05	0.12	0.04
	20	0.04	0.08	0.11	0.22	0.05		20	0.02	0.04	0.05	0.11	0.04
	30	0.03	0.07	0.09	0.19	0.04		30	0.01	0.03	0.04	0.09	0.03
	40	0.03	0.06	0.09	0.15	0.04		40	0.01	0.02	0.04	0.07	0.03
	50	0.03	0.06	0.10	0.13	0.04		50	0.01	0.03	0.04	0.06	0.03
	60	0.04	0.08	0.10	0.10	0.04		60	0.02	0.03	0.05	0.05	0.03
	70	0.05	0.07	-	0.08	0.03		70	0.02	0.04	-	0.04	0.03
80	0.04	-	-	0.05	0.03	80	0.02	-	-	0.02	0.02		
White	0	0.00	0.03	0.07	0.26	0.05	American Indian/ Alaska Native ^a	0	0.00	0.01	0.03	0.06	0.03
	10	0.02	0.07	0.10	0.26	0.05		10	0.01	0.03	0.03	0.06	0.03
	20	0.04	0.08	0.11	0.24	0.05		20	0.02	0.02	0.02	0.05	0.03
	30	0.04	0.07	0.10	0.20	0.05		30	0.00	0.00	0.02	0.03	0.03
	40	0.03	0.06	0.10	0.16	0.04		40	0.00	0.02	0.03	0.03	0.03
	50	0.03	0.07	0.11	0.14	0.04		50	0.02	0.03	0.03	0.03	0.03
	60	0.04	0.08	0.11	0.11	0.04		60	0.00	0.00	0.00	0.00	0.03
	70	0.05	0.08	-	0.09	0.03		70	0.00	0.00	-	0.00	0.02
80	0.04	-	-	0.05	0.03	80	0.00	-	-	0.00	0.02		
Black	0	0.00	0.02	0.06	0.21	0.03	Hispanic ^b	0	0.01	0.02	0.05	0.25	0.06
	10	0.02	0.06	0.10	0.21	0.03		10	0.02	0.04	0.06	0.25	0.06
	20	0.04	0.08	0.12	0.20	0.03		20	0.03	0.05	0.07	0.23	0.06
	30	0.04	0.08	0.12	0.16	0.03		30	0.02	0.05	0.08	0.21	0.06
	40	0.04	0.08	0.10	0.12	0.02		40	0.03	0.06	0.09	0.19	0.06
	50	0.04	0.06	0.07	0.08	0.02		50	0.03	0.06	0.12	0.17	0.06
	60	0.03	0.04	0.05	0.05	0.02		60	0.03	0.10	0.14	0.14	0.05
	70	0.02	0.03	-	0.03	0.01		70	0.07	0.12	-	0.13	0.05
80	0.01	-	-	0.01	0.01	80	0.06	-	-	0.07	0.03		

Devcan 6.7.0, June 2013, National Cancer Institute (<http://surveillance.cancer.gov/devcan/>).

Source: Incidence data are from the SEER 18 areas (San Francisco, Connecticut, Detroit, Hawaii, Iowa, New Mexico, Seattle, Utah, Atlanta, San Jose-Monterey, Los Angeles, Alaska Native Registry, Rural Georgia, California excluding SF/SJM/LA, Kentucky, Louisiana, New Jersey, and Georgia excluding ATL/RG). Mortality data are from the NCHS public use data file for the total US.

^a Underlying incidence and mortality data for American Indian/Alaska Native are based on the CHSDA (Contract Health Service Delivery Area) counties.

^b Hispanic is not mutually exclusive from whites, blacks, Asian/Pacific Islanders, and American Indians/Alaska Natives. Underlying incidence data for Hispanics are based on NHIA and exclude cases from the Alaska Native Registry. Underlying mortality data for Hispanics exclude deaths from the District of Columbia, Minnesota, New Hampshire, North Dakota and South Carolina.

- Statistic could not be calculated.
A percent of 0.00 represents a value that is below 0.005.

Table 9.14
Hodgkin Lymphoma

Risk of Being Diagnosed With Cancer in 10, 20 and 30 Years,
Lifetime Risk of Being Diagnosed with Cancer Given Alive and Cancer-Free at Current Age, and
Lifetime Risk of Dying from Cancer Given Alive at Current Age
Females, 2008-2010 By Race/Ethnicity

Race/ Ethnicity	Current Age	Risk of Being Diagnosed with Cancer					Risk of Dying from Cancer	Race/ Ethnicity	Current Age	Risk of Being Diagnosed with Cancer					Risk of Dying from Cancer
		+10 yrs	+20 yrs	+30 yrs	Ever	+10 yrs				+20 yrs	+30 yrs	Ever			
All Races	0	0.00	0.02	0.07	0.20	0.03	Asian/ Pacific Islander	0	0.00	0.01	0.04	0.10	0.02		
	10	0.02	0.06	0.10	0.20	0.04		10	0.01	0.04	0.05	0.10	0.02		
	20	0.04	0.07	0.09	0.18	0.04		20	0.02	0.03	0.04	0.09	0.02		
	30	0.03	0.05	0.07	0.14	0.03		30	0.01	0.02	0.03	0.07	0.02		
	40	0.02	0.04	0.06	0.11	0.03		40	0.01	0.02	0.02	0.05	0.02		
	50	0.02	0.04	0.07	0.09	0.03		50	0.01	0.01	0.03	0.05	0.02		
	60	0.03	0.05	0.07	0.08	0.03		60	0.01	0.02	0.03	0.04	0.02		
	70	0.03	0.05	-	0.06	0.02		70	0.02	0.03	-	0.03	0.01		
80	0.03	-	-	0.03	0.02	80	0.02	-	-	0.02	0.01				
White	0	0.00	0.03	0.07	0.22	0.04	American Indian/ Alaska Native ^a	0	0.00	0.01	0.03	0.16	0.01		
	10	0.02	0.07	0.10	0.22	0.04		10	0.01	0.03	0.04	0.16	0.01		
	20	0.05	0.08	0.10	0.20	0.04		20	0.02	0.03	0.03	0.15	0.01		
	30	0.03	0.06	0.08	0.15	0.04		30	0.01	0.01	0.02	0.14	0.01		
	40	0.02	0.04	0.07	0.12	0.03		40	0.00	0.01	0.02	0.13	0.01		
	50	0.02	0.05	0.08	0.10	0.03		50	0.01	0.02	0.04	0.13	0.01		
	60	0.03	0.06	0.08	0.08	0.03		60	0.01	0.04	0.08	0.13	0.01		
	70	0.04	0.06	-	0.06	0.03		70	0.03	0.07	-	0.13	0.01		
80	0.03	-	-	0.03	0.02	80	0.06	-	-	0.14	0.00				
Black	0	0.00	0.02	0.06	0.18	0.03	Hispanic ^b	0	0.00	0.02	0.05	0.19	0.04		
	10	0.02	0.06	0.09	0.18	0.03		10	0.02	0.04	0.06	0.19	0.04		
	20	0.04	0.07	0.09	0.17	0.03		20	0.03	0.05	0.07	0.18	0.04		
	30	0.03	0.06	0.08	0.13	0.02		30	0.02	0.04	0.06	0.15	0.04		
	40	0.02	0.04	0.07	0.10	0.02		40	0.02	0.04	0.07	0.13	0.04		
	50	0.02	0.05	0.06	0.08	0.02		50	0.02	0.05	0.09	0.11	0.04		
	60	0.03	0.04	0.06	0.06	0.02		60	0.03	0.07	0.09	0.10	0.04		
	70	0.02	0.03	-	0.03	0.02		70	0.04	0.06	-	0.07	0.03		
80	0.02	-	-	0.02	0.01	80	0.02	-	-	0.03	0.03				

Devcan 6.7.0, June 2013, National Cancer Institute (<http://surveillance.cancer.gov/devcan/>).

Source: Incidence data are from the SEER 18 areas (San Francisco, Connecticut, Detroit, Hawaii, Iowa, New Mexico, Seattle, Utah, Atlanta, San Jose-Monterey, Los Angeles, Alaska Native Registry, Rural Georgia, California excluding SF/SJM/LA, Kentucky, Louisiana, New Jersey, and Georgia excluding ATL/RG). Mortality data are from the NCHS public use data file for the total US.

^a Underlying incidence and mortality data for American Indian/Alaska Native are based on the CHSDA (Contract Health Service Delivery Area) counties.

^b Hispanic is not mutually exclusive from whites, blacks, Asian/Pacific Islanders, and American Indians/Alaska Natives. Underlying incidence data for Hispanics are based on NHIA and exclude cases from the Alaska Native Registry. Underlying mortality data for Hispanics exclude deaths from the District of Columbia, Minnesota, New Hampshire, North Dakota and South Carolina.

- Statistic could not be calculated.

A percent of 0.00 represents a value that is below 0.005.

Table 9.15
Hodgkin Lymphoma

SEER Incidence and U.S. Mortality
Age-Adjusted Rates and Trends^a
By Race/Ethnicity and Sex

SEER Incidence	SEER 18 Areas ^b			SEER 13 Areas ^b			SEER 9 Areas ^b		
	Rate 2006-2010			Trend 2001-2010 ^c			Trend 2001-2010 ^d		
	Rate per 100,000 persons			AAPC (%)			AAPC (%)		
RACE/ETHNICITY	Total	Males	Females	Total	Males	Females	Total	Males	Females
All Races	2.8	3.2	2.4	0.0	0.3	0.1	0.2	1.0	0.3*
White	3.0	3.4	2.6	-0.1	0.3	0.1	0.0	-0.4*	0.3*
White Hispanic ^e	2.5	2.9	2.2	0.4	0.0	0.8	-	-	-
White Non-Hispanic ^e	3.2	3.6	2.9	-0.5	0.5	0.2	-	-	-
Black	2.7	3.2	2.3	1.0*	1.2*	0.7	1.1*	0.5	2.0*
Asian/Pacific Islander	1.3	1.5	1.1	2.2*	1.6	3.1*	-	-	-
Amer Ind/Alaska Nat ^f	0.9	-	1.1	-	-	-	-	-	-
Hispanic ^e	2.4	2.8	2.1	0.4	0.1	0.7	-	-	-
<u>U.S. Mortality^g</u>									
RACE/ETHNICITY	Rate 2006-2010			Trend 2001-2010 ^h					
	Rate per 100,000 persons			AAPC (%)					
	Total	Males	Females	Total	Males	Females			
All Races	0.4	0.5	0.3	-2.4*	-2.2*	-2.6*			
White	0.4	0.5	0.3	-2.2*	-2.0*	-2.5*			
White Hispanic ^e	0.4	0.6	0.3	-2.7*	-2.8*	-2.5*			
White Non-Hispanic ^e	0.4	0.5	0.3	-2.4*	-2.4*	-2.4*			
Black	0.4	0.4	0.3	-3.0*	-3.6*	-2.4*			
Asian/Pacific Islander	0.2	0.2	0.1	-	-	-			
Amer Ind/Alaska Nat									
Total U.S.	0.1	0.3	-	-	-	-			
CHSDA Counties	-	-	-	-	-	-			
Non-CHSDA Counties	-	-	-	-	-	-			
Hispanic ^e	0.4	0.5	0.3	-2.8*	-2.9*	-2.7*			

The AAPC is the Average Annual Percent Change over the time interval. The AAPCs are calculated by the Joinpoint Regression Program Version 4.0.3, April 2013, National Cancer Institute.

- Statistic not shown. Rate based on less than 16 cases for the time interval.

Trend based on less than 10 cases for at least one year within the time interval.

a Rates are age-adjusted to the 2000 US Std Population (19 age groups - Census P25-1130). Trends

are based on rates age-adjusted to the 2000 US Std Population (19 age groups - Census P25-1130).

b The SEER 9 areas are San Francisco, Connecticut, Detroit, Hawaii, Iowa, New Mexico, Seattle, Utah, and Atlanta.

The SEER 13 areas comprise the SEER 9 areas plus San Jose-Monterey, Los Angeles, the Alaska Native Registry, and Rural Georgia.

The SEER 18 areas comprise the SEER 13 areas plus California excluding SF/SJM/LA, Kentucky, Louisiana, New Jersey, and Georgia excluding ATL/RG.

c The 2001-2010 AAPC estimates are based on a Joinpoint analysis with up to 3 Joinpoints over diagnosis years 1992-2010.

d The 2001-2010 AAPC estimates are based on a Joinpoint analysis with up to 5 Joinpoints over diagnosis years 1975-2010.

e Hispanic and Non-Hispanic are not mutually exclusive from whites, blacks, Asian/Pacific Islanders, and American Indians/Alaska Natives. Incidence data for Hispanics and Non-Hispanics are based on NHIA and exclude cases from the Alaska Native Registry. The 2006-2010 Hispanic and Non-Hispanic death rates exclude deaths from the District of Columbia, North Dakota, and South Carolina. The 2001-2010 Hispanic and Non-Hispanic mortality trends exclude deaths from Connecticut, the District of Columbia, Maine, Maryland, Minnesota, New Hampshire, New York, North Dakota, Oklahoma, South Carolina and Vermont.

f Incidence data for American Indian/Alaska Native are based on the CHSDA(Contract Health Service Delivery Area) counties.

g US Mortality Files, National Center for Health Statistics, CDC.

h The 2001-2010 mortality AAPCs are based on a Joinpoint analysis using years of death 1992-2010.

* The APC is significantly different from zero (p<.05).

Table 9.16
Hodgkin Lymphoma

Age-Adjusted SEER Incidence Rates^a
By Registry, Race and Sex

	All Races			Whites			Blacks		
	Total	Males	Females	Total	Males	Females	Total	Males	Females
<u>SEER Incidence Rates^a, 2006-2010</u>									
California	2.55	2.94	2.20	2.79	3.20	2.42	2.67	3.04	2.34
Greater Bay Area	2.70	2.96	2.49	3.11	3.35	2.92	3.62	4.22	3.11
San Francisco-Oakland	2.82	3.17	2.52	3.26	3.60	2.95	3.84	4.34	3.47
San Jose-Monterey	2.51	2.62	2.46	2.87	2.93	2.90	-	-	-
Los Angeles	2.46	2.92	2.06	2.75	3.27	2.27	2.54	2.72	2.38
Greater California	2.54	2.94	2.17	2.72	3.13	2.35	2.39	2.81	1.96
Connecticut	3.49	3.89	3.09	3.68	4.12	3.23	2.58	2.74	2.40
Detroit	3.41	4.02	2.87	3.62	4.14	3.17	2.93	3.75	2.28
Georgia	2.65	3.00	2.32	2.75	3.07	2.46	2.65	3.03	2.29
Atlanta	2.83	3.41	2.35	3.07	3.54	2.69	2.78	3.50	2.18
Rural Georgia	-	-	-	-	-	-	-	-	-
Greater Georgia	2.55	2.84	2.28	2.63	2.92	2.36	2.50	2.67	2.30
Hawaii	1.99	1.79	2.23	2.94	2.95	3.00	-	-	-
Iowa	3.06	3.42	2.69	3.12	3.47	2.77	-	-	-
Kentucky	2.68	3.02	2.36	2.73	3.06	2.44	2.28	2.70	1.91
Louisiana	3.05	3.38	2.76	3.14	3.49	2.81	2.77	3.07	2.52
New Jersey	3.26	3.63	2.94	3.54	3.78	3.36	2.68	3.57	1.95
New Mexico	2.23	2.41	2.08	2.36	2.47	2.27	-	-	-
Seattle-Puget Sound	3.02	3.49	2.58	3.27	3.74	2.82	3.18	3.19	3.20
Utah	2.68	3.14	2.23	2.76	3.20	2.34	-	-	-
9 SEER Areas ^b	2.96	3.35	2.60	3.21	3.59	2.84	2.91	3.53	2.39
11 SEER Areas ^b	2.81	3.20	2.46	3.07	3.46	2.70	2.82	3.35	2.36
13 SEER Areas ^b	2.80	3.19	2.45	3.07	3.46	2.70	2.82	3.33	2.38
18 SEER Areas ^b	2.78	3.15	2.44	2.98	3.35	2.65	2.69	3.15	2.28

^a Rates are per 100,000 and are age-adjusted to the 2000 US Std Population (19 age groups - Census P25-1130)

^b The SEER 9 areas are San Francisco, Connecticut, Detroit, Hawaii, Iowa, New Mexico, Seattle, Utah and Atlanta.

The SEER 11 areas comprise the SEER 9 areas plus San Jose-Monterey and Los Angeles.

The SEER 13 areas comprise the SEER 11 areas plus the Alaska Native Registry and Rural Georgia.

The SEER 18 areas comprise the SEER 13 areas plus California excluding SF/SJM/LA, Kentucky, Louisiana, New Jersey and Georgia excluding ATL/RG.

- Statistic not shown. Rate based on less than 16 cases for the time interval.

Table 9.17
Hodgkin Lymphoma

Age-Adjusted SEER Death Rates^a
By Registry, Race and Sex

	All Races			Whites			Blacks		
	Total	Males	Females	Total	Males	Females	Total	Males	Females
<u>SEER Death Rates^a, 2006-2010</u>									
California	0.40	0.49	0.33	0.45	0.54	0.38	0.34	0.41	0.30
Greater Bay Area	0.36	0.42	0.33	0.43	0.45	0.43	-	-	-
San Francisco-Oakland	0.33	0.39	0.29	0.38	0.39	0.38	-	-	-
San Jose-Monterey	0.43	0.51	0.40	0.51	0.56	0.51	-	-	-
Los Angeles	0.39	0.49	0.32	0.46	0.57	0.38	-	-	-
Greater California	0.42	0.51	0.34	0.45	0.56	0.37	0.37	-	-
Connecticut	0.43	0.52	0.35	0.45	0.52	0.38	-	-	-
Detroit	0.40	0.56	0.29	0.44	0.59	0.32	-	-	-
Georgia	0.37	0.48	0.28	0.38	0.48	0.31	0.35	0.41	0.26
Atlanta	0.43	0.68	0.25	0.51	0.74	0.38	-	-	-
Rural Georgia	-	-	-	-	-	-	-	-	-
Greater Georgia	0.35	0.41	0.30	0.34	0.40	0.29	0.38	-	-
Hawaii	-	-	-	-	-	-	-	-	-
Iowa	0.41	0.40	0.42	0.42	0.40	0.43	-	-	-
Kentucky	0.37	0.50	0.25	0.36	0.47	0.27	-	-	-
Louisiana	0.53	0.63	0.44	0.56	0.68	0.45	0.40	-	-
New Jersey	0.42	0.55	0.32	0.46	0.61	0.32	0.36	-	-
New Mexico	0.40	0.52	0.28	0.40	0.49	0.30	-	-	-
Seattle-Puget Sound	0.32	0.47	0.20	0.35	0.51	0.22	-	-	-
Utah	0.31	0.35	-	0.31	0.35	-	-	-	-
9 SEER Areas ^b	0.37	0.47	0.28	0.40	0.48	0.33	0.34	0.58	-
11 SEER Areas ^b	0.37	0.47	0.30	0.42	0.50	0.35	0.32	0.52	0.18
13 SEER Areas ^b	0.37	0.47	0.30	0.42	0.50	0.35	0.33	0.51	0.20
18 SEER Areas ^b	0.39	0.49	0.31	0.43	0.53	0.35	0.36	0.47	0.27
Total U.S.	0.40	0.50	0.32	0.42	0.52	0.34	0.36	0.45	0.28

^a US Mortality Files, National Center for Health Statistics, Centers for Disease Control and Prevention. Rates are per 100,000 and are age-adjusted to the 2000 US Std Population (19 age groups - Census P25-1130).

^b The SEER 9 areas are San Francisco, Connecticut, Detroit, Hawaii, Iowa, New Mexico, Seattle, Utah and Atlanta. The SEER 11 areas comprise the SEER 9 areas plus San Jose-Monterey and Los Angeles.

The SEER 13 areas comprise the SEER 11 areas plus the Alaska Native Registry and Rural Georgia.

The SEER 18 areas comprise the SEER 13 areas plus California excluding SF/SJM/LA, Kentucky, Louisiana, New Jersey and Georgia excluding ATL/RG.

- Statistic not shown. Rate based on less than 16 cases for the time interval.

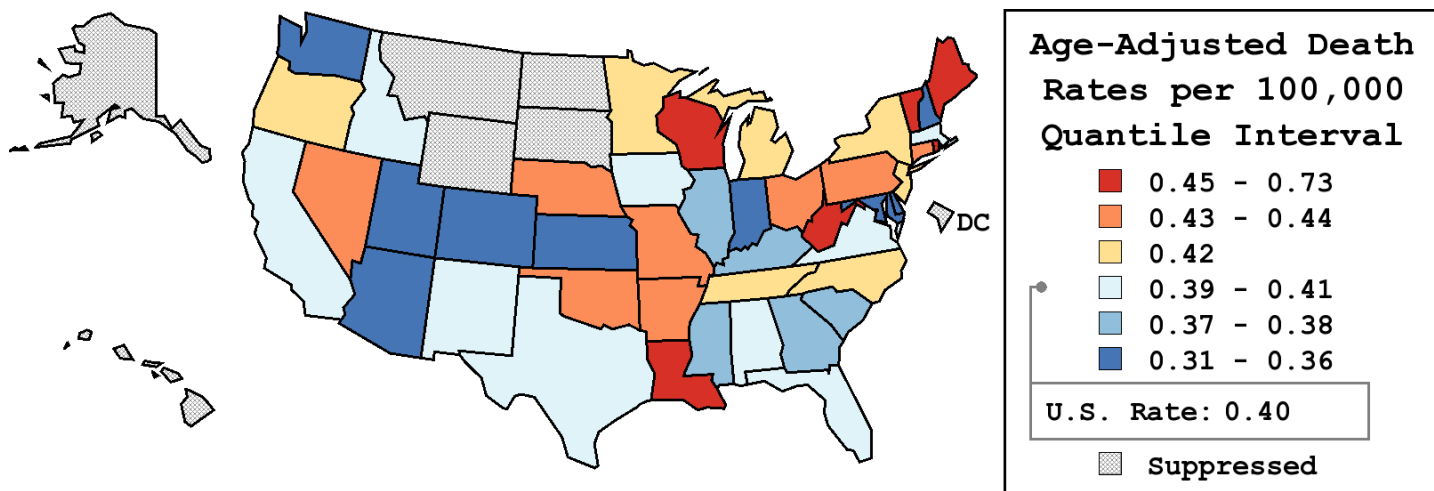
Table 9.18
Hodgkin Lymphoma

Age-Adjusted Cancer Death^a Rates By State, All Races, 2006-2010

Males and Females

State	Rate	SE	Rank	PD
TOTAL U.S.	0.40	0.01		
High Five States				
Vermont	0.73	0.15	(01)	81.41 ^c
Louisiana	0.53	0.05	(02)	31.36 ^c
Maine	0.52	0.09	(03)	31.14 ^c
West Virginia	0.46	0.07	(04)	15.20 ^c
Wisconsin	0.46	0.04	(05)	14.93
Low Five States				
Maryland	0.35	0.04	(40)	-12.92
Indiana	0.34	0.03	(41)	-14.67
Kansas	0.34	0.05	(42)	-15.56 ^c
Arizona	0.33	0.03	(43)	-17.27 ^c
Utah	0.31	0.06	(44)	-22.83 ^c

State	Rate	SE	Rank	PD	State	Rate	SE	Rank	PD
Alabama	0.41	0.04	(23)	1.56	Montana	-	-	(-)	-
Alaska	-	-	(-)	-	Nebraska	0.43	0.07	(12)	8.10
Arizona	0.33	0.03	(43)	-17.27 ^c	Nevada	0.44	0.06	(09)	9.01
Arkansas	0.43	0.05	(14)	7.34	New Hampshire	0.36	0.07	(36)	-8.93
California	0.40	0.02	(24)	0.19	New Jersey	0.42	0.03	(18)	5.88
Colorado	0.36	0.04	(38)	-10.20	New Mexico	0.40	0.06	(26)	-0.23
Connecticut	0.43	0.05	(13)	8.09	New York	0.42	0.02	(15)	6.22
Delaware	0.36	0.09	(39)	-11.11	North Carolina	0.42	0.03	(21)	4.13
D.C.	-	-	(-)	-	North Dakota	-	-	(-)	-
Florida	0.40	0.02	(27)	-0.26	Ohio	0.44	0.03	(07)	9.91
Georgia	0.37	0.03	(33)	-7.41	Oklahoma	0.43	0.05	(11)	8.15
Hawaii	-	-	(-)	-	Oregon	0.42	0.05	(17)	5.89
Idaho	0.40	0.07	(28)	-0.76	Pennsylvania	0.44	0.03	(10)	8.83
Illinois	0.37	0.02	(32)	-6.71	Rhode Island	0.45	0.09	(06)	13.40
Indiana	0.34	0.03	(41)	-14.67	South Carolina	0.38	0.04	(31)	-4.43
Iowa	0.41	0.05	(22)	3.72	South Dakota	-	-	(-)	-
Kansas	0.34	0.05	(42)	-15.56 ^c	Tennessee	0.42	0.04	(16)	6.15
Kentucky	0.37	0.04	(35)	-8.16	Texas	0.40	0.02	(29)	-1.04
Louisiana	0.53	0.05	(02)	31.36 ^c	Utah	0.31	0.06	(44)	-22.83 ^c
Maine	0.52	0.09	(03)	31.14 ^c	Vermont	0.73	0.15	(01)	81.41 ^c
Maryland	0.35	0.04	(40)	-12.92	Virginia	0.39	0.03	(30)	-2.47
Massachusetts	0.40	0.03	(25)	-0.19	Washington	0.36	0.03	(37)	-9.54
Michigan	0.42	0.03	(20)	4.35	West Virginia	0.46	0.07	(04)	15.20 ^c
Minnesota	0.42	0.04	(19)	5.39	Wisconsin	0.46	0.04	(05)	14.93
Mississippi	0.37	0.05	(34)	-7.87	Wyoming	-	-	(-)	-
Missouri	0.44	0.04	(08)	9.02					



^a US Mortality Files, National Center for Health Statistics, Centers for Disease Control and Prevention. Rates are per 100,000 and are age-adjusted to the 2000 US Std Population (19 age groups - Census P25-1130).

^b Difference between state rate and total U.S. rate is statistically significant ($p \leq .0002$).

^c Absolute percent difference between state rate and total U.S. rate is 15% or more.

SE Standard error of the rate.

PD Percent difference between state rate and total U.S. rate.

- Statistic not shown. Rate based on less than 16 cases for the time interval.

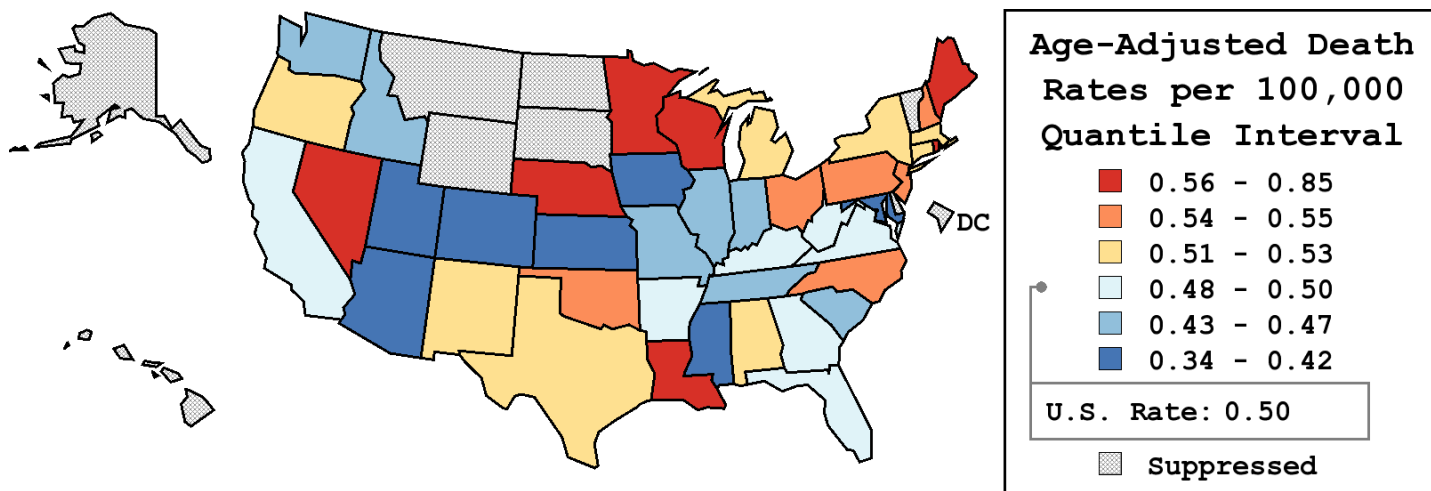
Table 9.19
Hodgkin Lymphoma

Age-Adjusted Cancer Death^a Rates By State, All Races, 2006-2010

Males

State	Rate	SE	Rank	PD
TOTAL U.S.	0.50	0.01		
High Five States				
Rhode Island	0.85	0.18	(01)	70.64 ^c
Nebraska	0.66	0.12	(02)	32.77 ^c
Maine	0.66	0.14	(03)	32.01 ^c
Nevada	0.64	0.11	(04)	29.32 ^c
Louisiana	0.63	0.08	(05)	27.42 ^c
Low Five States				
Iowa	0.40	0.07	(38)	-18.58 ^c
Maryland	0.39	0.06	(39)	-20.95 ^c
Mississippi	0.39	0.08	(40)	-21.09 ^c
Utah	0.35	0.08	(41)	-29.43 ^c
Kansas	0.34	0.07	(42)	-32.34 ^c

State	Rate	SE	Rank	PD	State	Rate	SE	Rank	PD
Alabama	0.51	0.07	(21)	1.68	Montana	-	-	(-)	-
Alaska	-	-	(-)	-	Nebraska	0.66	0.12	(02)	32.77 ^c
Arizona	0.42	0.05	(37)	-14.63	Nevada	0.64	0.11	(04)	29.32 ^c
Arkansas	0.49	0.09	(25)	-2.05	New Hampshire	0.54	0.14	(13)	7.84
California	0.49	0.03	(24)	-1.83	New Jersey	0.55	0.05	(09)	9.93
Colorado	0.42	0.07	(36)	-14.59	New Mexico	0.52	0.11	(17)	4.41
Connecticut	0.52	0.08	(18)	4.12	New York	0.52	0.03	(19)	3.87
Delaware	-	-	(-)	-	North Carolina	0.54	0.05	(12)	8.18
D.C.	-	-	(-)	-	North Dakota	-	-	(-)	-
Florida	0.50	0.03	(22)	0.77	Ohio	0.55	0.05	(10)	9.72
Georgia	0.48	0.05	(26)	-2.53	Oklahoma	0.54	0.08	(11)	8.18
Hawaii	-	-	(-)	-	Oregon	0.51	0.07	(20)	2.86
Idaho	0.44	0.11	(34)	-11.87	Pennsylvania	0.55	0.04	(08)	10.53
Illinois	0.45	0.04	(33)	-9.47	Rhode Island	0.85	0.18	(01)	70.64 ^c
Indiana	0.47	0.06	(29)	-4.57	South Carolina	0.43	0.07	(35)	-12.84
Iowa	0.40	0.07	(38)	-18.58 ^c	South Dakota	-	-	(-)	-
Kansas	0.34	0.07	(42)	-32.34 ^c	Tennessee	0.47	0.06	(31)	-6.07
Kentucky	0.50	0.07	(23)	0.27	Texas	0.52	0.03	(16)	4.70
Louisiana	0.63	0.08	(05)	27.42 ^c	Utah	0.35	0.08	(41)	-29.43 ^c
Maine	0.66	0.14	(03)	32.01 ^c	Vermont	-	-	(-)	-
Maryland	0.39	0.06	(39)	-20.95 ^c	Virginia	0.48	0.05	(28)	-2.66
Massachusetts	0.53	0.06	(14)	7.54	Washington	0.46	0.06	(32)	-7.60
Michigan	0.53	0.05	(15)	7.31	West Virginia	0.48	0.10	(27)	-2.54
Minnesota	0.56	0.07	(07)	12.92	Wisconsin	0.56	0.07	(06)	13.13
Mississippi	0.39	0.08	(40)	-21.09 ^c	Wyoming	-	-	(-)	-
Missouri	0.47	0.06	(30)	-4.68					



^a US Mortality Files, National Center for Health Statistics, Centers for Disease Control and Prevention. Rates are per 100,000 and are age-adjusted to the 2000 US Std Population (19 age groups - Census P25-1130).
^b Difference between state rate and total U.S. rate is statistically significant (p<=.0002).
^c Absolute percent difference between state rate and total U.S. rate is 15% or more.
SE Standard error of the rate.
PD Percent difference between state rate and total U.S. rate.
- Statistic not shown. Rate based on less than 16 cases for the time interval.

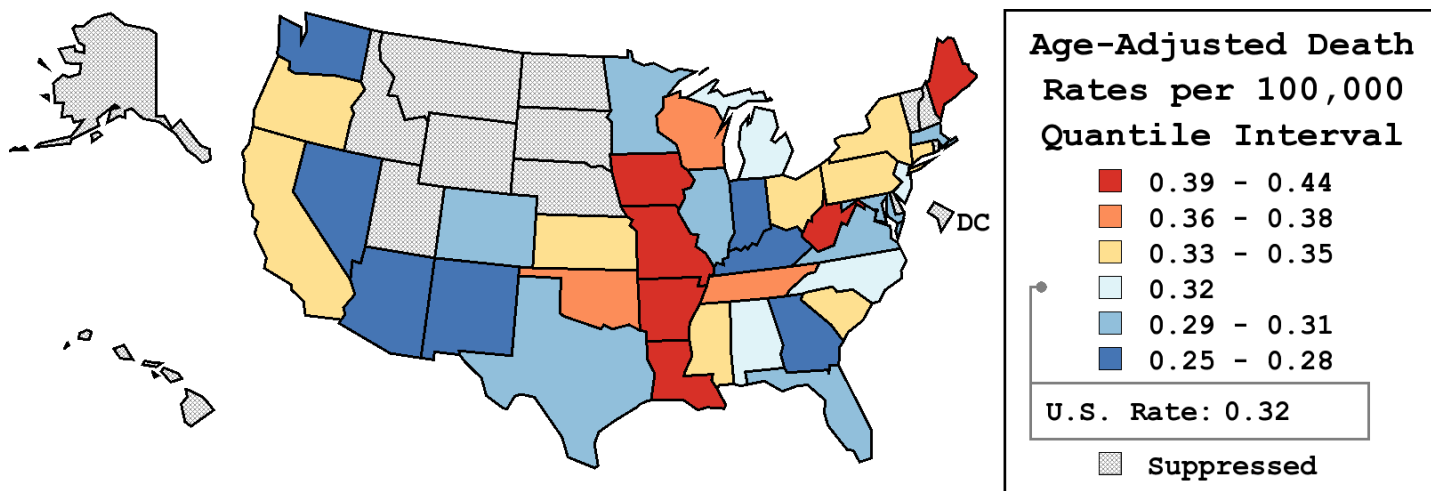
Table 9.20
Hodgkin Lymphoma

Age-Adjusted Cancer Death^a Rates By State, All Races, 2006-2010

Females

State	Rate	SE	Rank	PD
TOTAL U.S.	0.32	0.01		
High Five States				
Louisiana	0.44	0.06	(01)	36.98 ^c
West Virginia	0.43	0.09	(02)	33.73 ^c
Iowa	0.42	0.07	(03)	32.31 ^c
Maine	0.41	0.10	(04)	28.36 ^c
Missouri	0.40	0.05	(05)	25.18 ^c
Low Five States				
New Mexico	0.28	0.07	(33)	-13.77
Nevada	0.26	0.06	(34)	-17.46 ^c
Kentucky	0.25	0.05	(35)	-20.22 ^c
Indiana	0.25	0.04	(36)	-22.17 ^c
Arizona	0.25	0.04	(37)	-22.69 ^c

State	Rate	SE	Rank	PD	State	Rate	SE	Rank	PD
Alabama	0.32	0.05	(20)	-0.14	Montana	-	-	(-)	-
Alaska	-	-	(-)	-	Nebraska	-	-	(-)	-
Arizona	0.25	0.04	(37)	-22.69 ^c	Nevada	0.26	0.06	(34)	-17.46 ^c
Arkansas	0.39	0.07	(06)	22.67 ^c	New Hampshire	-	-	(-)	-
California	0.33	0.02	(18)	4.11	New Jersey	0.32	0.04	(19)	0.49
Colorado	0.29	0.05	(30)	-10.50	New Mexico	0.28	0.07	(33)	-13.77
Connecticut	0.35	0.06	(10)	10.62	New York	0.35	0.03	(13)	9.92
Delaware	-	-	(-)	-	North Carolina	0.32	0.04	(22)	-0.87
D.C.	-	-	(-)	-	North Dakota	-	-	(-)	-
Florida	0.31	0.02	(25)	-2.82	Ohio	0.35	0.03	(11)	10.57
Georgia	0.28	0.04	(31)	-11.32	Oklahoma	0.36	0.06	(09)	13.76
Hawaii	-	-	(-)	-	Oregon	0.35	0.06	(14)	9.32
Idaho	-	-	(-)	-	Pennsylvania	0.34	0.03	(16)	7.38
Illinois	0.31	0.03	(24)	-2.81	Rhode Island	-	-	(-)	-
Indiana	0.25	0.04	(36)	-22.17 ^c	South Carolina	0.34	0.05	(17)	5.60
Iowa	0.42	0.07	(03)	32.31 ^c	South Dakota	-	-	(-)	-
Kansas	0.34	0.07	(15)	8.06	Tennessee	0.38	0.05	(07)	20.48 ^c
Kentucky	0.25	0.05	(35)	-20.22 ^c	Texas	0.29	0.02	(29)	-8.40
Louisiana	0.44	0.06	(01)	36.98 ^c	Utah	-	-	(-)	-
Maine	0.41	0.10	(04)	28.36 ^c	Vermont	-	-	(-)	-
Maryland	0.30	0.04	(27)	-5.79	Virginia	0.31	0.04	(26)	-4.08
Massachusetts	0.30	0.04	(28)	-7.44	Washington	0.28	0.04	(32)	-12.27
Michigan	0.32	0.03	(21)	-0.27	West Virginia	0.43	0.09	(02)	33.73 ^c
Minnesota	0.31	0.05	(23)	-2.26	Wisconsin	0.37	0.05	(08)	16.18 ^c
Mississippi	0.35	0.07	(12)	10.15	Wyoming	-	-	(-)	-
Missouri	0.40	0.05	(05)	25.18 ^c					



^a US Mortality Files, National Center for Health Statistics, Centers for Disease Control and Prevention. Rates are per 100,000 and are age-adjusted to the 2000 US Std Population (19 age groups - Census P25-1130).
^b Difference between state rate and total U.S. rate is statistically significant (p<=.0002).
^c Absolute percent difference between state rate and total U.S. rate is 15% or more.
SE Standard error of the rate.
PD Percent difference between state rate and total U.S. rate.
- Statistic not shown. Rate based on less than 16 cases for the time interval.

Table 9.21
Hodgkin LymphomaEstimated United States Cancer Prevalence Counts^a on January 1, 2010
By Race/Ethnicity, Sex and Years Since Diagnosis

Years Since Diagnosis		0 to <5	5 to <10	10 to <15	15 to <20	20 to <25	25 to <30	0 to <18 ^e	0 to <35 ^e	>=35 ^g	Complete ^h
<u>Race</u>	<u>Sex</u>										
All Races ^b	Both Sexes	39,048	31,542	27,862	24,612	20,519	14,967	123,063	168,309	13,619	181,928
	Males	21,122	16,396	14,182	12,479	10,024	8,020	64,179	87,084	6,806	93,890
	Females	17,926	15,146	13,680	12,133	10,495	6,947	58,884	81,225	6,813	88,038
White ^b	Both Sexes	32,588	27,082	24,516	22,107	19,002	13,946	106,294	148,513	15,113	163,626
	Males	17,710	14,158	12,461	11,292	9,244	7,318	55,622	76,721	7,802	84,523
	Females	14,878	12,924	12,055	10,815	9,758	6,628	50,672	71,792	7,311	79,103
Black ^b	Both Sexes	4,937	3,304	2,702	2,117	1,171	821	13,061	15,416	1,054	16,470
	Males	2,605	1,579	1,371	1,027	609	602	6,582	8,038	723	8,761
	Females	2,332	1,725	1,331	1,090	562	219	6,479	7,378	331	7,709
Asian/ Pacific Islander ^c	Both Sexes	891	724	366	+	+	+	2,147	+	+	+
	Males	451	373	198	+	+	+	1,081	+	+	+
	Females	440	351	168	+	+	+	1,066	+	+	+
Hispanic ^d	Both Sexes	3,923	2,821	2,211	+	+	+	8,955	+	+	+
	Males	2,125	1,667	1,191	+	+	+	4,983	+	+	+
	Females	1,798	1,154	1,020	+	+	+	3,972	+	+	+

Estimated prevalence percent^a on January 1, 2010, of the SEER 11 population diagnosed in the previous 18 years
By Age at Prevalence, Race/Ethnicity and Sex

Age at Prevalence		Age Specific (Crude)									Age-Adjusted ^f	
		All Ages	0-9	10-19	20-29	30-39	40-49	50-59	60-69	70-79	80+	All Ages
<u>Race</u>	<u>Sex</u>											
All Races ^c	Both Sexes	0.0292%	0.0007%	0.0100%	0.0384%	0.0528%	0.0449%	0.0311%	0.0270%	0.0264%	0.0202%	0.0292%
	Males	0.0313%	0.0009%	0.0111%	0.0372%	0.0519%	0.0492%	0.0380%	0.0322%	0.0303%	0.0240%	0.0312%
	Females	0.0272%	0.0006%	0.0088%	0.0396%	0.0537%	0.0406%	0.0245%	0.0223%	0.0234%	0.0181%	0.0273%
White ^c	Both Sexes	0.0330%	0.0007%	0.0111%	0.0435%	0.0611%	0.0507%	0.0347%	0.0298%	0.0300%	0.0230%	0.0331%
	Males	0.0352%	0.0008%	0.0124%	0.0407%	0.0598%	0.0547%	0.0421%	0.0356%	0.0342%	0.0273%	0.0350%
	Females	0.0309%	0.0007%	0.0097%	0.0465%	0.0624%	0.0466%	0.0273%	0.0245%	0.0266%	0.0205%	0.0313%
Black ^c	Both Sexes	0.0261%	-	0.0087%	0.0309%	0.0493%	0.0429%	0.0323%	0.0278%	0.0220%	0.0122%	0.0268%
	Males	0.0278%	-	0.0082%	0.0338%	0.0473%	0.0485%	0.0404%	0.0298%	0.0251%	0.0165%	0.0292%
	Females	0.0246%	-	0.0093%	0.0282%	0.0511%	0.0380%	0.0253%	0.0262%	0.0198%	0.0102%	0.0249%
Asian/ Pacific Islander ^c	Both Sexes	0.0116%	0.0009%	0.0045%	0.0199%	0.0193%	0.0158%	0.0093%	0.0085%	0.0087%	0.0052%	0.0110%
	Males	0.0124%	-	0.0059%	0.0231%	0.0177%	0.0174%	0.0092%	0.0115%	0.0087%	-	0.0120%
	Females	0.0107%	-	0.0029%	0.0168%	0.0209%	0.0143%	0.0094%	0.0060%	0.0087%	0.0054%	0.0101%
Hispanic ^d	Both Sexes	0.0182%	0.0008%	0.0094%	0.0240%	0.0276%	0.0268%	0.0228%	0.0282%	0.0305%	0.0202%	0.0200%
	Males	0.0199%	0.0007%	0.0117%	0.0248%	0.0266%	0.0305%	0.0302%	0.0293%	0.0367%	0.0380%	0.0226%
	Females	0.0164%	0.0009%	0.0070%	0.0231%	0.0287%	0.0229%	0.0157%	0.0272%	0.0260%	0.0097%	0.0177%

^a US 2010 cancer prevalence counts are based on 2010 cancer prevalence proportions from the SEER registries and 1/1/2010 US population estimates based on the average of 2009 and 2010 population estimates from the US Bureau of the Census. Prevalence was calculated using the First Malignant Primary Only for a person.

^{b c d} Statistics based on (b) SEER 9 Areas (c) SEER 11 Areas and Rural Georgia (d) NHIA for Hispanic for SEER 11 Areas and Rural Georgia.

^e Maximum limited-duration prevalence: 35 years for 1975-2010 SEER 9 data; 18 years for 1992-2010 SEER 11 data (used to calculate prevalence for Hispanics and Asian Pacific Islanders).

^f Percentages are age-adjusted to the 2000 US Standard Population (19 age groups - Census P25-1130) by 5-year age groups.

^{g h i} (g) Cases diagnosed more than 35 years ago were estimated using the completeness index method (Capocaccia et. al. 1997, Merrill et. al. 2000). (h) Complete prevalence is obtained by summing 0 to <35 and >=35. (i) Age-specific completeness index was approximated using empirical data from historical Connecticut tumor registry.

- Statistic not shown. Statistic based on fewer than 5 cases estimated alive in SEER for the time interval.

+ Not available.

Table 9.22
All Lymphoid Neoplasms With Detailed Hodgkin Lymphoma Subtypes^a

SEER^b Incidence Rates and Annual Percent Change by Age at Diagnosis

All Races, Both Sexes, 2001-2010

Site	All Ages			Ages 0-19			Ages 20-64			Ages 65+		
	Rate	Count	APC	Rate	Count	APC	Rate	Count	APC	Rate	Count	APC
Lymphoid Neoplasm	35.3	284,909	0.0	5.8	13,698	0.9	23.5	121,575	-0.5*	157.2	149,636	0.2
1 Hodgkin Lymphoma	2.8	22,863	0.0	1.2	2,866	1.4*	3.2	16,031	-0.4	4.2	3,966	0.9
1(a) Classical Hodgkin lymphoma	2.6	21,848	-0.2	1.1	2,709	1.0	3.1	15,334	-0.7	4.0	3,805	0.5
1(a)1. Lymphocyte-rich/mixed cellularity/ lymphocyte-depleted	0.5	3,830	-1.4*	0.1	302	4.3	0.5	2,451	-1.9*	1.1	1,077	-2.0
1(a)1.1 Lymphocyte-rich	0.1	722	1.5	0.0	65	-	0.1	496	0.7	0.2	161	1.6
1(a)1.2 Mixed cellularity	0.3	2,812	-2.5*	0.1	222	2.3	0.4	1,789	-2.7*	0.8	801	-3.5*
1(a)1.3 Lymphocyte-depleted	0.0	296	1.9	-	-	-	0.0	166	-1.9	0.1	115	-
1(a)2. Nodular sclerosis	1.6	13,299	-1.5*	0.9	2,074	-0.2	2.0	9,831	-1.9*	1.5	1,394	-0.6
1(a)3. Classical Hodgkin lymphoma, NOS ^c	0.6	4,719	4.4*	0.1	333	6.0*	0.6	3,052	4.5*	1.4	1,334	3.8*
1(b) Nodular lymphocyte predominant Hodgkin Lymphoma	0.1	1,015	5.9*	0.1	157	8.5*	0.1	697	4.4*	0.2	161	-
2 Non-Hodgkin lymphoma	31.4	252,975	0.1	4.6	10,741	0.7	19.7	102,416	-0.4*	146.9	139,818	0.4
3 Composite Hodgkin lymphoma and Non-Hodgkin lymphoma	0.0	145	4.0	-	-	-	0.0	77	-	0.1	66	-
4 Lymphoid neoplasm, NOS ^c	1.1	8,926	-4.7*	0.0	89	-	0.6	3,051	-5.6*	6.0	5,786	-4.4*

The APC is the Annual Percent Change over the time interval.

^a Morton LM, Turner JJ, Cerhan JR, Linet MS, Treseler PA, Clarke CA, Jack A, Cozen W, Maynadié M, Spinelli JJ, Costantini AS, Rüdiger T, Scarpa A, Zheng T, Weisenburger DD. Proposed classification of lymphoid neoplasms for epidemiologic research from the Pathology Working Group of the International Lymphoma Epidemiology Consortium (InterLymph). *Blood*. 2007;110:695-708.

^b SEER 18 areas (San Francisco, Connecticut, Detroit, Hawaii, Iowa, New Mexico, Seattle, Utah, Atlanta, San Jose-Monterey, Los Angeles, Alaska Native Registry, Rural Georgia, California excluding SF/SJM/LA, Kentucky, Louisiana, New Jersey and Georgia excluding ATL/RG).

^c NOS = Not otherwise specified.

* The APC is significantly different from zero (p<.05).

- Statistic not shown. Rate based on less than 16 cases for the time interval.

Trend based on less than 10 cases for at least one year within the time interval.

Table 9.23
All Lymphoid Neoplasms With Detailed Hodgkin Lymphoma Subtypes^a

SEER^b Incidence Rates and Annual Percent Change by Age at Diagnosis

All Races, Males, 2001-2010

Site	All Ages			Ages 0-19			Ages 20-64			Ages 65+		
	Rate	Count	APC	Rate	Count	APC	Rate	Count	APC	Rate	Count	APC
Lymphoid Neoplasm	43.6	157,485	0.0	6.6	8,015	1.0*	28.1	71,203	-0.6*	199.7	78,267	0.3
1 Hodgkin Lymphoma	3.1	12,519	0.1	1.3	1,543	1.4	3.6	8,892	-0.5	5.2	2,084	1.4
1(a) Classical Hodgkin lymphoma	3.0	11,815	-0.2	1.2	1,418	0.8	3.4	8,408	-0.8	5.0	1,989	1.0
1(a)1. Lymphocyte-rich/mixed cellularity/ lymphocyte-depleted	0.6	2,395	-2.3*	0.2	216	4.4	0.7	1,637	-2.7*	1.3	542	-3.6
1(a)1.1 Lymphocyte-rich	0.1	443	-0.3	0.0	51	-	0.1	319	-0.3	0.2	73	-
1(a)1.2 Mixed cellularity	0.5	1,771	-2.9*	0.1	156	3.9	0.5	1,205	-3.1*	1.0	410	-4.2*
1(a)1.3 Lymphocyte-depleted	0.0	181	-0.5	-	-	-	0.0	113	-	0.1	59	-
1(a)2. Nodular sclerosis	1.6	6,682	-1.3*	0.8	1,009	-0.4	2.0	4,941	-1.8*	1.8	732	0.5
1(a)3. Classical Hodgkin lymphoma, NOS ^c	0.7	2,738	4.3*	0.2	193	3.7	0.7	1,830	3.9*	1.8	715	5.1
1(b) Nodular lymphocyte predominant Hodgkin Lymphoma	0.2	704	5.8*	0.1	125	-	0.2	484	4.4*	0.2	95	-
2 Non-Hodgkin lymphoma	39.1	140,228	0.1	5.3	6,417	0.9	23.8	60,435	-0.5*	187.1	73,376	0.5
3 Composite Hodgkin lymphoma and Non-Hodgkin lymphoma	0.0	72	-	-	-	-	0.0	43	-	0.1	28	-
4 Lymphoid neoplasm, NOS ^c	1.4	4,666	-4.5*	0.0	54	-	0.7	1,833	-5.7*	7.3	2,779	-4.0*

The APC is the Annual Percent Change over the time interval.

^a Morton LM, Turner JJ, Cerhan JR, Linet MS, Treseler PA, Clarke CA, Jack A, Cozen W, Maynadié M, Spinelli JJ, Costantini AS, Rüdiger T, Scarpa A, Zheng T, Weisenburger DD. Proposed classification of lymphoid neoplasms for epidemiologic research from the Pathology Working Group of the International Lymphoma Epidemiology Consortium (InterLymph). *Blood*. 2007;110:695-708.

^b SEER 18 areas (San Francisco, Connecticut, Detroit, Hawaii, Iowa, New Mexico, Seattle, Utah, Atlanta, San Jose-Monterey, Los Angeles, Alaska Native Registry, Rural Georgia, California excluding SF/SJM/LA, Kentucky, Louisiana, New Jersey and Georgia excluding ATL/RG).

^c NOS = Not otherwise specified.

* The APC is significantly different from zero (p<.05).

- Statistic not shown. Rate based on less than 16 cases for the time interval.

Trend based on less than 10 cases for at least one year within the time interval.

Table 9.24
All Lymphoid Neoplasms With Detailed Hodgkin Lymphoma Subtypes^a

SEER^b Incidence Rates and Annual Percent Change by Age at Diagnosis

All Races, Females, 2001-2010

Site	All Ages			Ages 0-19			Ages 20-64			Ages 65+		
	Rate	Count	APC	Rate	Count	APC	Rate	Count	APC	Rate	Count	APC
Lymphoid Neoplasm	28.8	127,424	-0.2	4.9	5,683	0.7	19.1	50,372	-0.4*	127.7	71,369	-0.1
1 Hodgkin Lymphoma	2.5	10,344	-0.1	1.1	1,323	1.4	2.9	7,139	-0.4	3.4	1,882	0.1
1(a) Classical Hodgkin lymphoma	2.4	10,033	-0.3	1.1	1,291	1.2	2.8	6,926	-0.6	3.3	1,816	-0.2
1(a)1. Lymphocyte-rich/mixed cellularity/ lymphocyte-depleted	0.3	1,435	-0.1	0.1	86	-	0.3	814	-0.5	1.0	535	-0.4
1(a)1.1 Lymphocyte-rich	0.1	279	4.6	-	-	-	0.1	177	3.1	0.2	88	-
1(a)1.2 Mixed cellularity	0.2	1,041	-1.9	0.1	66	-	0.2	584	-1.7	0.7	391	-2.8
1(a)1.3 Lymphocyte-depleted	0.0	115	-	-	-	-	0.0	53	-	0.1	56	-
1(a)2. Nodular sclerosis	1.6	6,617	-1.7*	0.9	1,065	-0.1	2.0	4,890	-2.0*	1.2	662	-1.9
1(a)3. Classical Hodgkin lymphoma, NOS ^c	0.5	1,981	4.6*	0.1	140	-	0.5	1,222	5.5*	1.1	619	1.8
1(b) Nodular lymphocyte predominant Hodgkin Lymphoma	0.1	311	5.8*	0.0	32	-	0.1	213	4.4	0.1	66	-
2 Non-Hodgkin lymphoma	25.4	112,747	0.0	3.8	4,324	0.4	15.8	41,981	-0.2	119.1	66,442	0.1
3 Composite Hodgkin lymphoma and Non-Hodgkin lymphoma	0.0	73	-	-	-	-	0.0	34	-	0.1	38	-
4 Lymphoid neoplasm, NOS ^c	0.9	4,260	-4.9*	0.0	35	-	0.5	1,218	-5.4*	5.1	3,007	-4.9*

^a The APC is the Annual Percent Change over the time interval.

Morton LM, Turner JJ, Cerhan JR, Linet MS, Treseler PA, Clarke CA, Jack A, Cozen W, Maynadié M, Spinelli JJ, Costantini AS, Rüdiger T, Scarpa A, Zheng T, Weisenburger DD. Proposed classification of lymphoid neoplasms for epidemiologic research from the Pathology Working Group of the International Lymphoma Epidemiology Consortium (InterLymph). *Blood*. 2007;110:695-708.

^b SEER 18 areas (San Francisco, Connecticut, Detroit, Hawaii, Iowa, New Mexico, Seattle, Utah, Atlanta, San Jose-Monterey, Los Angeles, Alaska Native Registry, Rural Georgia, California excluding SF/SJM/LA, Kentucky, Louisiana, New Jersey and Georgia excluding ATL/RG).

^c NOS = Not otherwise specified.

* The APC is significantly different from zero (p<.05).

- Statistic not shown. Rate based on less than 16 cases for the time interval.

Trend based on less than 10 cases for at least one year within the time interval.

Table 9.25
All Lymphoid Neoplasms With Detailed Hodgkin Lymphoma Subtypes^a

SEER^b 5-Year Relative Survival (Percent) by Age at Diagnosis

All Races, Both Sexes, 2003-2009

Site	All Ages		Ages 0-19		Ages 20-64		Ages 65+	
	Count	Percent (95% C.I.)	Percent (95% C.I.)	Percent (95% C.I.)	Percent (95% C.I.)	Percent (95% C.I.)	Percent (95% C.I.)	
Lymphoid Neoplasm	166,706	67.5 (67.2 , 67.8)	88.5 (87.7 , 89.2)	75.2 (74.8 , 75.6)	56.7 (56.2 , 57.2)			
1 Hodgkin Lymphoma	14,838	85.1 (84.4 , 85.8)	96.6 (95.5 , 97.5)	89.1 (88.4 , 89.8)	52.4 (49.3 , 55.4)			
1(a) Classical Hodgkin lymphoma	14,174	84.6 (83.8 , 85.3)	96.4 (95.2 , 97.3)	88.7 (88.0 , 89.4)	51.5 (48.4 , 54.6)			
1(a)1. Lymphocyte-rich/mixed cellularity/ lymphocyte-depleted	2,363	79.5 (77.4 , 81.5)	96.1 (91.8 , 98.2)	85.4 (83.3 , 87.4)	57.2 (51.1 , 62.7)			
1(a)1.1 Lymphocyte-rich	468	87.7 (82.8 , 91.3)	100.0 (- , -)	90.7 (86.0 , 93.9)	71.3 (54.1 , 83.0)			
1(a)1.2 Mixed cellularity	1,716	79.6 (77.0 , 81.9)	94.4 (88.5 , 97.4)	85.2 (82.6 , 87.5)	57.8 (50.6 , 64.4)			
1(a)1.3 Lymphocyte-depleted	179	58.0 (49.2 , 65.8)	- (- , -)	71.3 (60.4 , 79.6)	31.4 (18.3 , 45.5)			
1(a)2. Nodular sclerosis	8,887	89.2 (88.3 , 89.9)	96.1 (94.7 , 97.2)	91.5 (90.6 , 92.2)	54.2 (48.9 , 59.2)			
1(a)3. Classical Hodgkin lymphoma, NOS ^c	2,924	74.5 (72.5 , 76.4)	98.2 (95.2 , 99.4)	82.0 (79.9 , 84.0)	43.5 (38.4 , 48.4)			
1(b) Nodular lymphocyte predominant Hodgkin Lymphoma	664	95.6 (92.4 , 97.5)	100.0 (- , -)	97.6 (94.9 , 98.9)	72.7 (51.5 , 85.8)			
2 Non-Hodgkin lymphoma	147,198	66.2 (65.9 , 66.5)	86.3 (85.4 , 87.2)	73.3 (72.9 , 73.7)	57.4 (56.9 , 58.0)			
3 Composite Hodgkin lymphoma and Non-Hodgkin lymphoma	71	59.4 (44.6 , 71.4)	- (- , -)	64.8 (46.9 , 78.1)	49.7 (25.0 , 70.3)			
4 Lymphoid neoplasm, NOS ^c	4,599	49.0 (47.2 , 50.9)	88.1 (75.3 , 94.5)	61.5 (58.8 , 64.1)	40.3 (37.7 , 42.8)			

^a Morton LM, Turner JJ, Cerhan JR, Linet MS, Treseler PA, Clarke CA, Jack A, Cozen W, Maynadié M, Spinelli JJ, Costantini AS, Rüdiger T, Scarpa A, Zheng T, Weisenburger DD. Proposed classification of lymphoid neoplasms for epidemiologic research from the Pathology Working Group of the International Lymphoma Epidemiology Consortium (InterLymph). *Blood*. 2007;110:695-708.

^b SEER 18 areas (San Francisco, Connecticut, Detroit, Hawaii, Iowa, New Mexico, Seattle, Utah, Atlanta, San Jose-Monterey, Los Angeles, Alaska Native Registry, Rural Georgia, California excluding SF/SJM/LA, Kentucky, Louisiana, New Jersey and Georgia excluding ATL/RG).

^c NOS = Not otherwise specified.

- Statistic not displayed due to less than 25 cases.

Table 9.26
All Lymphoid Neoplasms With Detailed Hodgkin Lymphoma Subtypes^a

SEER^b 5-Year Relative Survival (Percent) by Age at Diagnosis

All Races, Males, 2003-2009

Site	All Ages		Ages 0-19	Ages 20-64	Ages 65+
	Count	Percent (95% C.I.)	Percent (95% C.I.)	Percent (95% C.I.)	Percent (95% C.I.)
Lymphoid Neoplasm	91,488	67.0 (66.6 , 67.4)	87.5 (86.5 , 88.5)	73.2 (72.7 , 73.6)	56.2 (55.5 , 57.0)
1 Hodgkin Lymphoma	8,053	84.3 (83.3 , 85.2)	97.2 (95.7 , 98.2)	87.3 (86.3 , 88.3)	52.7 (48.1 , 57.0)
1(a) Classical Hodgkin lymphoma	7,585	83.6 (82.5 , 84.6)	97.0 (95.3 , 98.0)	86.7 (85.6 , 87.7)	51.6 (47.0 , 56.1)
1(a)1. Lymphocyte-rich/mixed cellularity/ lymphocyte-depleted	1,483	80.6 (77.9 , 83.0)	96.8 (91.4 , 98.9)	85.4 (82.7 , 87.8)	52.5 (43.6 , 60.7)
1(a)1.1 Lymphocyte-rich	287	88.1 (81.7 , 92.3)	100.0 (- , -)	90.9 (85.2 , 94.5)	61.2 (35.0 , 79.5)
1(a)1.2 Mixed cellularity	1,087	80.8 (77.6 , 83.5)	95.2 (87.5 , 98.2)	85.2 (81.9 , 87.9)	54.9 (44.2 , 64.5)
1(a)1.3 Lymphocyte-depleted	109	57.9 (46.7 , 67.6)	- (- , -)	69.5 (55.8 , 79.7)	31.0 (13.4 , 50.5)
1(a)2. Nodular sclerosis	4,422	88.1 (86.9 , 89.3)	96.6 (94.5 , 97.9)	89.8 (88.4 , 91.0)	55.4 (47.8 , 62.4)
1(a)3. Classical Hodgkin lymphoma, NOS ^c	1,680	73.8 (71.1 , 76.3)	98.5 (93.6 , 99.7)	78.9 (75.9 , 81.5)	44.9 (37.8 , 51.7)
1(b) Nodular lymphocyte predominant Hodgkin Lymphoma	468	96.2 (92.1 , 98.2)	100.0 (- , -)	97.8 (95.0 , 99.0)	72.3 (47.1 , 86.9)
2 Non-Hodgkin lymphoma	81,025	65.7 (65.3 , 66.2)	85.2 (83.9 , 86.3)	71.4 (70.8 , 72.0)	56.8 (56.0 , 57.6)
3 Composite Hodgkin lymphoma and Non-Hodgkin lymphoma	43	63.7 (42.9 , 78.6)	- (- , -)	61.0 (38.2 , 77.7)	- (- , -)
4 Lymphoid neoplasm, NOS ^c	2,367	49.6 (47.0 , 52.2)	86.7 (68.3 , 94.8)	58.1 (54.6 , 61.5)	41.3 (37.3 , 45.1)

^a Morton LM, Turner JJ, Cerhan JR, Linet MS, Treseler PA, Clarke CA, Jack A, Cozen W, Maynadié M, Spinelli JJ, Costantini AS, Rüdiger T, Scarpa A, Zheng T, Weisenburger DD. Proposed classification of lymphoid neoplasms for epidemiologic research from the Pathology Working Group of the International Lymphoma Epidemiology Consortium (InterLymph). *Blood*. 2007;110:695-708.

^b SEER 18 areas (San Francisco, Connecticut, Detroit, Hawaii, Iowa, New Mexico, Seattle, Utah, Atlanta, San Jose-Monterey, Los Angeles, Alaska Native Registry, Rural Georgia, California excluding SF/SJM/LA, Kentucky, Louisiana, New Jersey and Georgia excluding ATL/RG).

^c NOS = Not otherwise specified.

- Statistic not displayed due to less than 25 cases.

Table 9.27
All Lymphoid Neoplasms With Detailed Hodgkin Lymphoma Subtypes^a

SEER^b 5-Year Relative Survival (Percent) by Age at Diagnosis

All Races, Females, 2003-2009

Site	All Ages		Ages 0-19		Ages 20-64		Ages 65+	
	Count	Percent (95% C.I.)	Percent (95% C.I.)	Percent (95% C.I.)	Percent (95% C.I.)	Percent (95% C.I.)	Percent (95% C.I.)	
Lymphoid Neoplasm	75,218	68.1 (67.6 , 68.5)	89.9 (88.7 , 90.9)	78.2 (77.6 , 78.7)	57.1 (56.4 , 57.8)			
1 Hodgkin Lymphoma	6,785	86.0 (85.0 , 87.0)	95.9 (94.0 , 97.2)	91.3 (90.3 , 92.2)	52.1 (47.9 , 56.1)			
1(a) Classical Hodgkin lymphoma	6,589	85.8 (84.7 , 86.8)	95.8 (93.9 , 97.1)	91.1 (90.1 , 92.0)	51.4 (47.2 , 55.4)			
1(a)1. Lymphocyte-rich/mixed cellularity/ lymphocyte-depleted	880	77.7 (73.9 , 80.9)	94.5 (83.6 , 98.2)	85.1 (81.1 , 88.3)	60.2 (52.0 , 67.5)			
1(a)1.1 Lymphocyte-rich	181	86.4 (77.5 , 92.0)	- (- , -)	89.6 (79.7 , 94.8)	74.8 (53.1 , 87.5)			
1(a)1.2 Mixed cellularity	629	77.3 (72.8 , 81.1)	92.8 (79.0 , 97.6)	84.8 (79.9 , 88.5)	59.7 (49.9 , 68.2)			
1(a)1.3 Lymphocyte-depleted	70	57.8 (43.1 , 70.0)	- (- , -)	73.1 (52.0 , 86.1)	30.8 (12.7 , 51.0)			
1(a)2. Nodular sclerosis	4,465	90.1 (89.0 , 91.1)	95.7 (93.4 , 97.1)	93.1 (92.0 , 94.1)	52.5 (45.3 , 59.2)			
1(a)3. Classical Hodgkin lymphoma, NOS ^c	1,244	75.5 (72.4 , 78.3)	97.9 (91.4 , 99.5)	86.6 (83.5 , 89.2)	41.0 (34.1 , 47.9)			
1(b) Nodular lymphocyte predominant Hodgkin Lymphoma	196	94.2 (86.9 , 97.5)	- (- , -)	95.5 (88.3 , 98.3)	75.2 (27.5 , 93.9)			
2 Non-Hodgkin lymphoma	66,173	66.8 (66.3 , 67.3)	88.0 (86.6 , 89.3)	76.1 (75.4 , 76.7)	58.0 (57.2 , 58.8)			
3 Composite Hodgkin lymphoma and Non-Hodgkin lymphoma	28	53.7 (32.2 , 71.1)	- (- , -)	- (- , -)	- (- , -)			
4 Lymphoid neoplasm, NOS ^c	2,232	48.4 (45.7 , 51.1)	- (- , -)	66.9 (62.6 , 70.8)	39.5 (36.1 , 42.8)			

^a Morton LM, Turner JJ, Cerhan JR, Linet MS, Treseler PA, Clarke CA, Jack A, Cozen W, Maynadié M, Spinelli JJ, Costantini AS, Rüdiger T, Scarpa A, Zheng T, Weisenburger DD. Proposed classification of lymphoid neoplasms for epidemiologic research from the Pathology Working Group of the International Lymphoma Epidemiology Consortium (InterLymph). *Blood*. 2007;110:695-708.

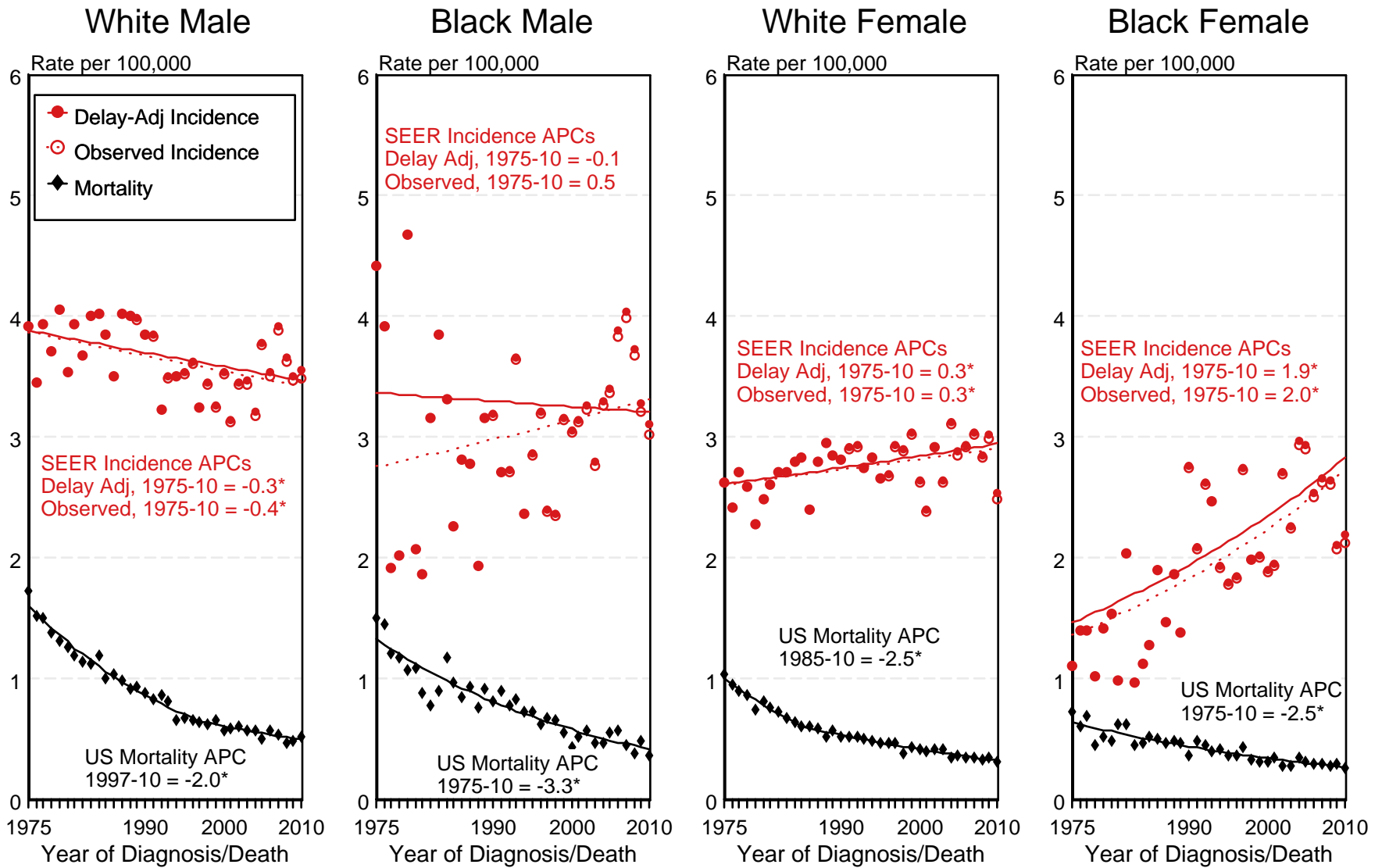
^b SEER 18 areas (San Francisco, Connecticut, Detroit, Hawaii, Iowa, New Mexico, Seattle, Utah, Atlanta, San Jose-Monterey, Los Angeles, Alaska Native Registry, Rural Georgia, California excluding SF/SJM/LA, Kentucky, Louisiana, New Jersey and Georgia excluding ATL/RG).

^c NOS = Not otherwise specified.

- Statistic not displayed due to less than 25 cases.

Figure 9.1

SEER Observed Incidence, SEER Delay Adjusted Incidence and US Death Rates^a Hodgkin Lymphoma, by Race and Sex



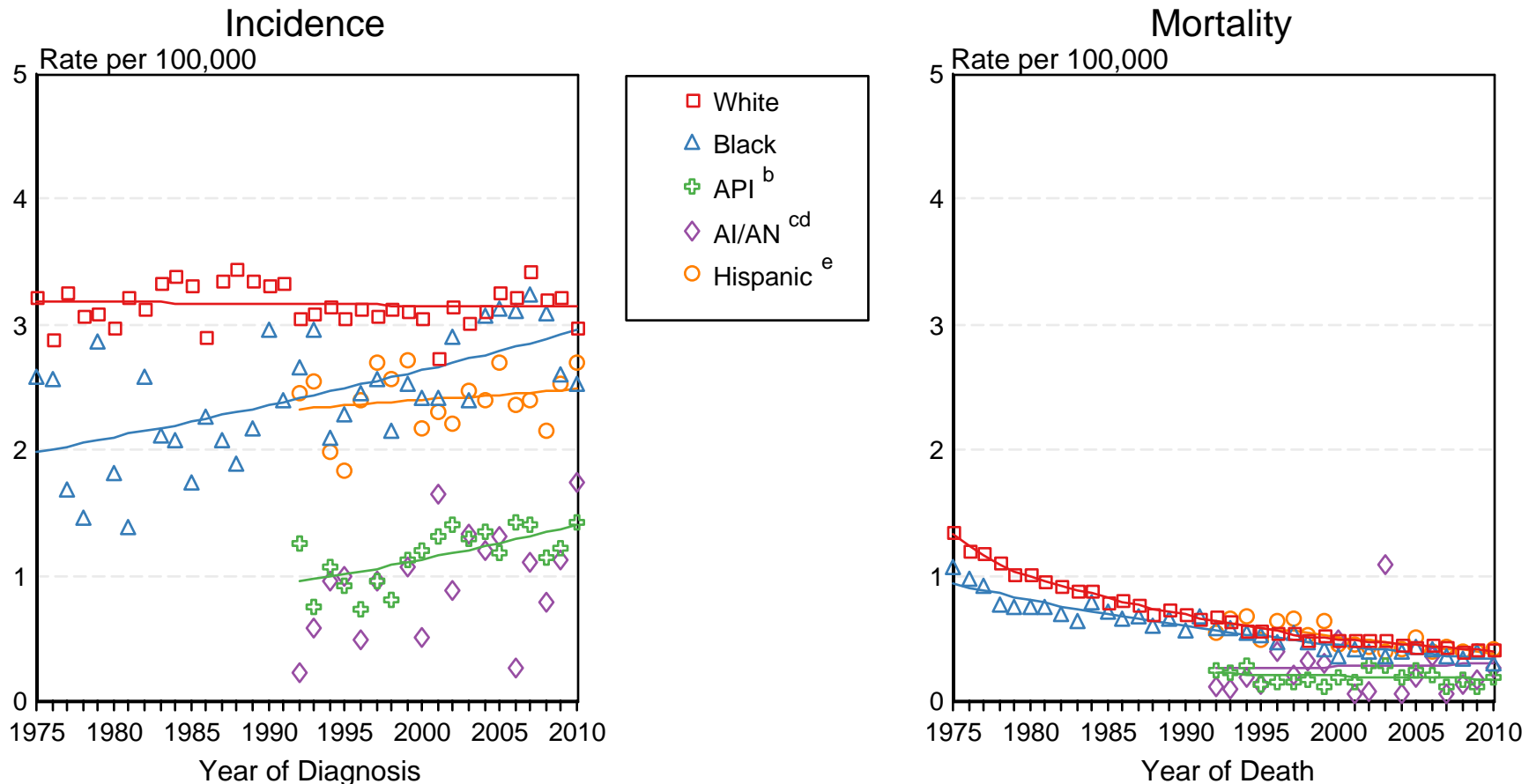
^a Source: SEER 9 areas and US Mortality Files (National Center for Health Statistics, CDC). Rates are age-adjusted to the 2000 US Std Population (19 age groups - Census P25-1103). Regression lines and APCs are calculated using the Joinpoint Regression Program Version 4.0.3, April 2013, National Cancer Institute. The APC is the Annual Percent Change for the regression line segments. The APC shown on the graph is for the most recent trend.
* The APC is significantly different from zero ($p < 0.05$).

Figure 9.2

SEER Incidence and US Death Rates^a Hodgkin Lymphoma, Both Sexes

Joinpoint Analyses for Whites and Blacks from 1975-2010

and for Asian/Pacific Islanders, American Indians/Alaska Natives and Hispanics from 1992-2010



Source: Incidence data for whites and blacks are from the SEER 9 areas (San Francisco, Connecticut, Detroit, Hawaii, Iowa, New Mexico, Seattle, Utah, Atlanta). Incidence data for Asian/Pacific Islanders, American Indians/Alaska Natives and Hispanics are from the SEER 13 Areas (SEER 9 Areas, San Jose-Monterey, Los Angeles, Alaska Native Registry and Rural Georgia). Mortality data are from US Mortality Files, National Center for Health Statistics, CDC.

^a Rates are age-adjusted to the 2000 US Std Population (19 age groups - Census P25-1103).

Regression lines are calculated using the Joinpoint Regression Program Version 4.0.3, April 2013, National Cancer Institute. Joinpoint analyses for Whites and Blacks during the 1975-2010 period allow a maximum of 5 joinpoints. Analyses for other ethnic groups during the period 1992-2010 allow a maximum of 3 joinpoints.

^b API = Asian/Pacific Islander.

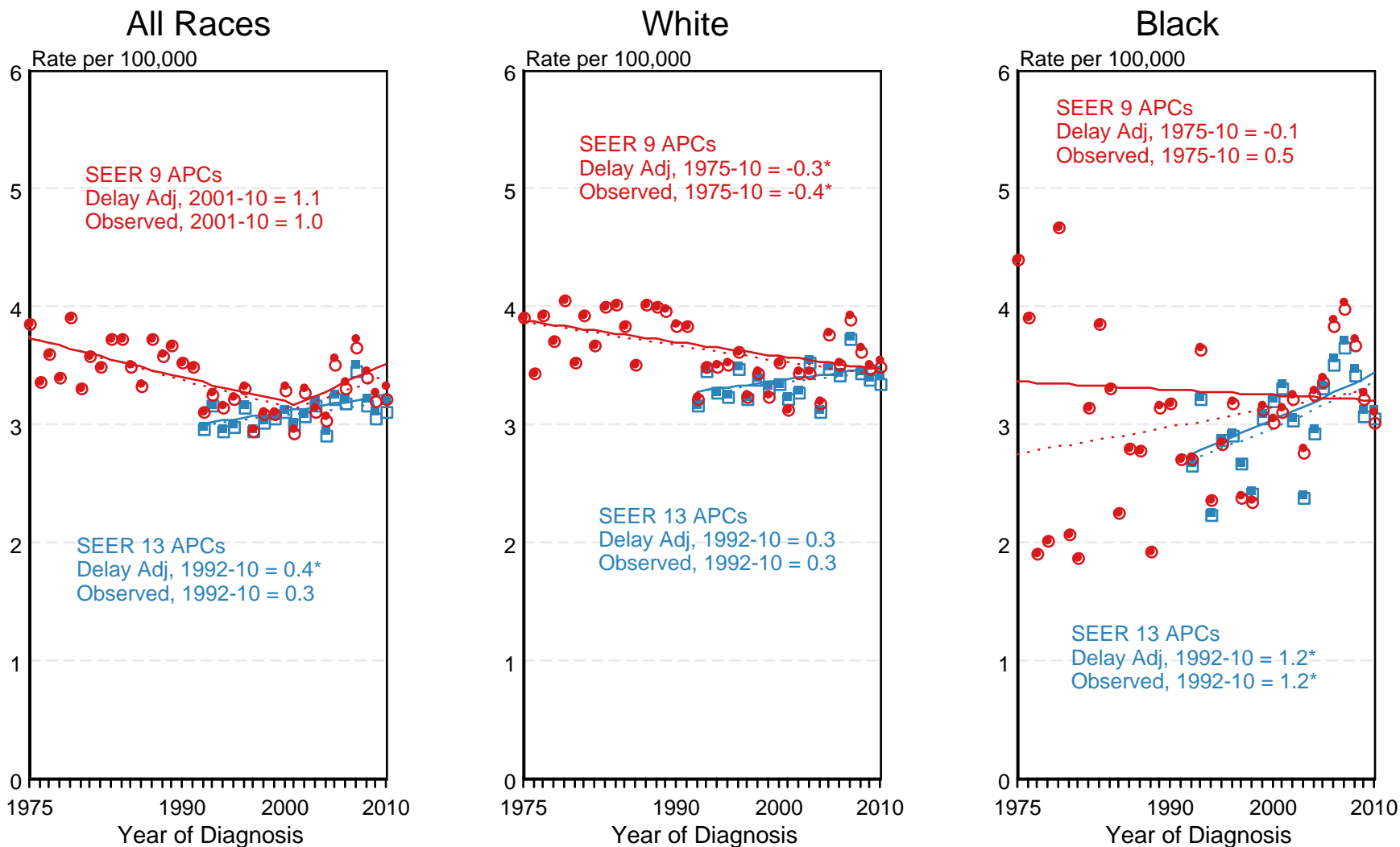
^c AI/AN = American Indian/Alaska Native. Rates for American Indian/Alaska Native are based on the CHSDA(Contract Health Service Delivery Area) counties.

^d Joinpoint could not fit a regression line for American Indian/Alaska Native Incidence due to insufficient data.

^e Hispanic is not mutually exclusive from whites, blacks, Asian/Pacific Islanders, and American Indians/Alaska Natives. Incidence data for Hispanics are based on NHIA and exclude cases from the Alaska Native Registry. Mortality data for Hispanics exclude cases from Connecticut, the District of Columbia, Maine, Maryland, Minnesota, New Hampshire, New York, North Dakota, South Carolina, Oklahoma, and Vermont.

Figure 9.3

SEER Observed Incidence and SEER Delay Adjusted Incidence Rates^a SEER 9 Areas Compared to SEER 13 Areas Hodgkin Lymphoma, Male, by Race

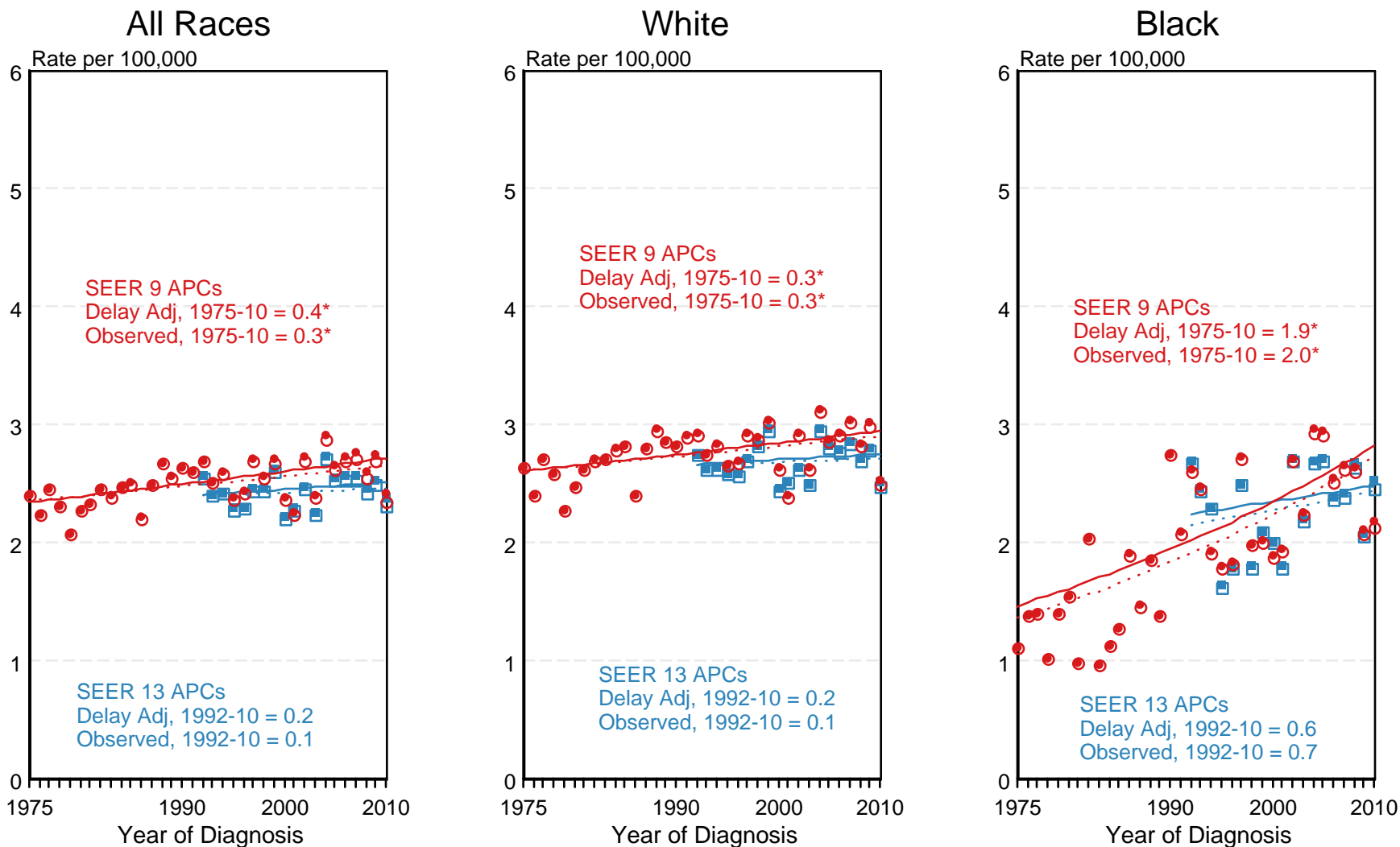


● SEER 9 Delay-Adj. Incidence
 ○ SEER 9 Observed Incidence
 ■ SEER 13 Delay-Adj. Incidence
 □ SEER 13 Observed Incidence

^a Source: SEER 9 areas and SEER 13 areas.
 Rates are age-adjusted to the 2000 US Std Population (19 age groups - Census P25-1103).
 Regression lines and APCs are calculated using the Joinpoint Regression Program Version 4.0.3, April 2013, National Cancer Institute.
 The APC is the Annual Percent Change for the regression line segments. The APC shown on the graph is for the most recent trend.
 * The APC is significantly different from zero (p < 0.05).

Figure 9.4

SEER Observed Incidence and SEER Delay Adjusted Incidence Rates^a SEER 9 Areas Compared to SEER 13 Areas Hodgkin Lymphoma, Female, by Race



● SEER 9 Delay-Adj. Incidence
 ○ SEER 9 Observed Incidence
 ■ SEER 13 Delay-Adj. Incidence
 □ SEER 13 Observed Incidence

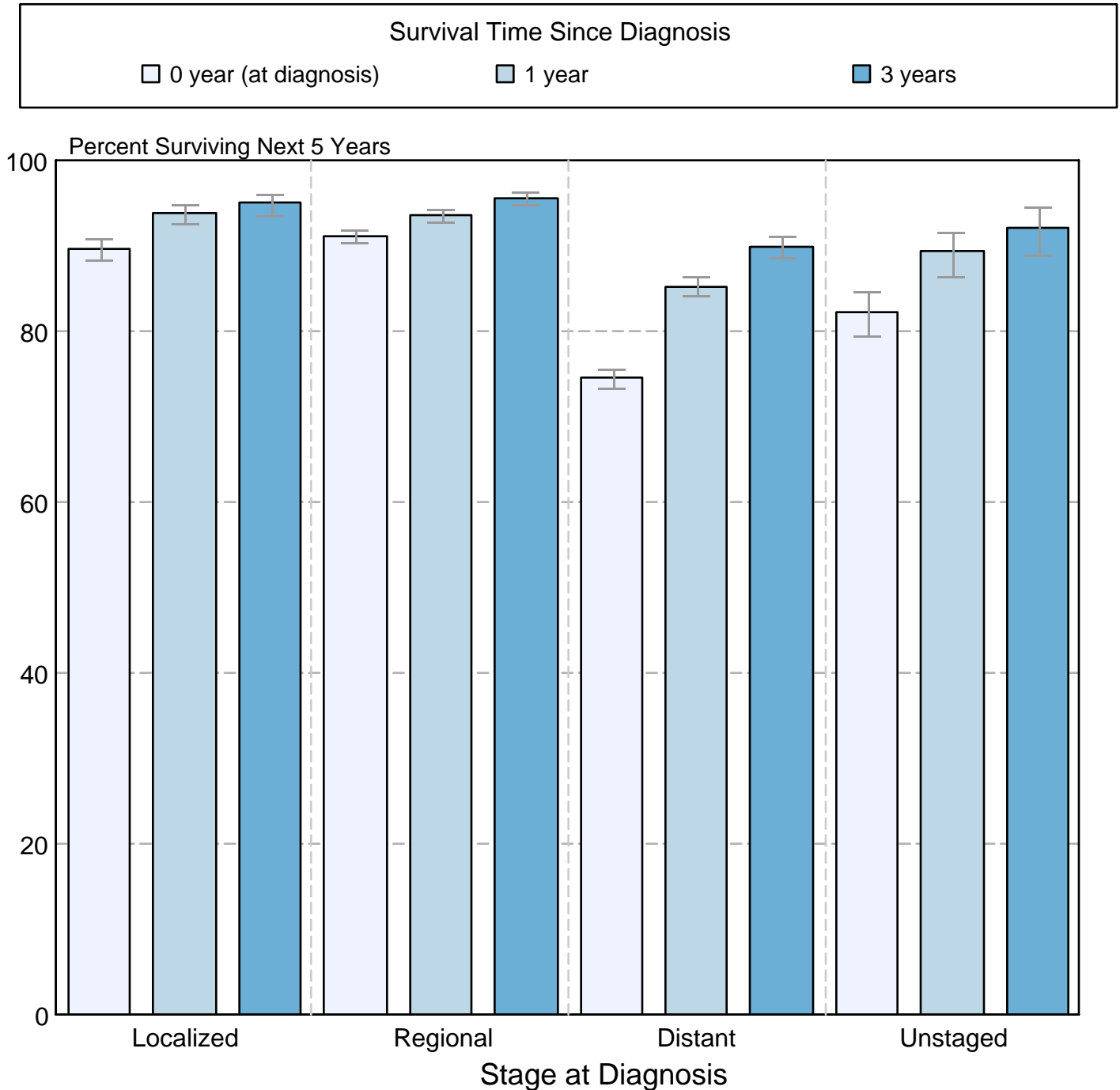
^a Source: SEER 9 areas and SEER 13 areas.
 Rates are age-adjusted to the 2000 US Std Population (19 age groups - Census P25-1103).
 Regression lines and APCs are calculated using the Joinpoint Regression Program Version 4.0.3, April 2013, National Cancer Institute.
 The APC is the Annual Percent Change for the regression line segments. The APC shown on the graph is for the most recent trend.
 * The APC is significantly different from zero ($p < 0.05$).

Figure 9.5

Hodgkin Lymphoma

5-Year SEER Conditional Relative Survival and 95% Confidence Intervals

Probability of surviving the next 5 years given the cohort
has already survived 0, 1, or 3 years
1998-2009 by stage at diagnosis



Source: SEER 18 areas (San Francisco, Connecticut, Detroit, Hawaii, Iowa, New Mexico, Seattle, Utah, Atlanta, San Jose-Monterey, Los Angeles, Alaska Native Registry, Rural Georgia, California excluding SF/SJM/LA, Kentucky, Louisiana, New Jersey and Georgia excluding ATL/RG). California excluding SF/SJM/LA, Kentucky, Louisiana, New Jersey and Georgia excluding ATL/RG contribute cases for diagnosis years 2000-2009. The remaining 13 SEER Areas contribute cases for the entire period 1998-2009. Percent surviving is not shown if based on less than 25 cases. Confidence intervals are not shown if length of the confidence interval is greater than 5 times the standard error.