

Table 15.1
Cancer of the Lung and Bronchus (Invasive)

Trends in SEER Incidence^{ab} and U.S. Mortality^c Using the Joinpoint Regression Program,
1975-2010 With up to Five Joinpoints, 1992-2010 With up to Three Joinpoints,
Both Sexes by Race/Ethnicity

	JP Trend 1		JP Trend 2		JP Trend 3		JP Trend 4		JP Trend 5		JP Trend 6		AAPC ^d	
	Years	APC	Years	APC	Years	APC	Years	APC	Years	APC	Years	APC	2001-10	2006-10
<u>SEER 9 Delay-Adjusted Incidence^a, 1975-2010</u>														
All Races	1975-82	2.5*	1982-91	0.9*	1991-07	-0.7*	2007-10	-2.1*					-1.2*	-1.7*
White	1975-82	2.5*	1982-90	1.2*	1990-07	-0.5*	2007-10	-2.1*					-1.1*	-1.7*
Black	1975-85	3.2*	1985-10	-1.0*									-1.0*	-1.0*
<u>SEER 13 Delay-Adjusted Incidence^b, 1992-2010</u>														
All Races	1992-10	-1.1*											-1.1*	-1.1*
White	1992-10	-1.0*											-1.0*	-1.0*
Black	1992-10	-1.3*											-1.3*	-1.3*
<u>SEER 9 Observed Incidence^a, 1975-2010</u>														
All Races	1975-82	2.5*	1982-91	1.0*	1991-07	-0.7*	2007-10	-2.6*					-1.3*	-2.1*
White	1975-82	2.6*	1982-91	1.1*	1991-07	-0.6*	2007-10	-2.6*					-1.3*	-2.1*
Black	1975-86	2.9*	1986-10	-1.1*									-1.1*	-1.1*
<u>SEER 13 Observed Incidence^b, 1992-2010</u>														
All Races	1992-07	-1.0*	2007-10	-2.7*									-1.6*	-2.3*
White	1992-07	-0.9*	2007-10	-2.7*									-1.5*	-2.2*
White NH ^{ef}	1992-07	-0.7*	2007-10	-2.5*									-1.3*	-2.1*
Black	1992-10	-1.5*											-1.5*	-1.5*
Black NH ^{ef}	1992-10	-1.4*											-1.4*	-1.4*
API ^e	1992-05	-0.5*	2005-10	-2.0*									-1.3*	-2.0*
AI/AN ^{eg}	1992-10	-0.4											-0.4	-0.4
Hispanic ^f	1992-10	-1.1*											-1.1*	-1.1*
<u>U.S. Cancer Mortality^c, 1975-2010</u>														
All Races	1975-80	3.0*	1980-90	1.8*	1990-95	-0.2	1995-05	-1.0*	2005-10	-2.2*			-1.7*	-2.2*
White	1975-80	2.9*	1980-90	1.8*	1990-95	-0.1	1995-05	-0.8*	2005-10	-2.1*			-1.5*	-2.1*
Black	1975-81	3.5*	1981-90	1.9*	1990-95	-0.7*	1995-04	-1.7*	2004-10	-2.7*			-2.4*	-2.7*
<u>U.S. Cancer Mortality^c, 1992-2010</u>														
All Races	1992-04	-0.8*	2004-10	-2.1*									-1.7*	-2.1*
White	1992-04	-0.7*	2004-10	-1.9*									-1.5*	-1.9*
White NH ^{ef}	1992-04	-0.6*	2004-10	-1.8*									-1.4*	-1.8*
Black	1992-97	-1.1*	1997-05	-1.8*	2005-10	-2.9*							-2.4*	-2.9*
Black NH ^{ef}	1992-04	-1.4*	2004-10	-2.7*									-2.3*	-2.7*
API ^e	1992-10	-1.1*											-1.1*	-1.1*
AI/AN ^{eg}	1992-10	0.0											0.0	0.0
Hispanic ^f	1992-03	-0.8*	2003-10	-2.6*									-2.2*	-2.6*

Joinpoint Regression Program Version 4.0.3, April 2013, National Cancer Institute. (<http://surveillance.cancer.gov/joinpoint/>).
^a The APC is the Annual Percent Change based on rates age-adjusted to the 2000 US Std Population (19 age groups - Census P25-1130).
^b Trends are from the SEER 9 areas (San Francisco, Connecticut, Detroit, Hawaii, Iowa, New Mexico, Seattle, Utah, and Atlanta).
^c Trends are from the SEER 13 areas (SEER 9 Areas, Los Angeles, San Jose-Monterey, Rural Georgia, and the Alaska Native Registry).
^d Trends are from US Mortality Files, National Center for Health Statistics, Centers for Disease Control and Prevention.
^e The AAPC is the Average Annual Percent Change and is based on the APCs calculated by Joinpoint.
^f API - Asian/Pacific Islander, AI/AN - American Indian/Alaska Native, NH - Non-Hispanic
Hispanic and Non-Hispanic are not mutually exclusive from whites, blacks, Asian/Pacific Islanders, and American Indians/Alaska Natives. Incidence data for Hispanics and Non-Hispanics are based on NHIA and exclude cases from the Alaska Native Registry.
The Hispanic and Non-Hispanic mortality trends exclude deaths from CT, DC, ME, MD, MN, NH, NY, ND, SC, OK and VT.
^g Data for American Indian/Alaska Native are based on the CHSDA (Contract Health Service Delivery Area) counties.
* The APC/AAPC is significantly different from zero (p<.05).
- Joinpoint regression line analysis could not be performed on data series.

Table 15.2
Cancer of the Lung and Bronchus (Invasive)

Trends in SEER Incidence^{ab} and U.S. Mortality^c Using the Joinpoint Regression Program,
1975-2010 With up to Five Joinpoints, 1992-2010 With up to Three Joinpoints,
Males by Race/Ethnicity

	JP Trend 1		JP Trend 2		JP Trend 3		JP Trend 4		JP Trend 5		JP Trend 6		AAPC ^d	
	Years	APC	Years	APC	Years	APC	Years	APC	Years	APC	Years	APC	2001-10	2006-10
<u>SEER 9 Delay-Adjusted Incidence^a, 1975-2010</u>														
All Races	1975-82	1.4*	1982-91	-0.4*	1991-10	-1.8*							-1.8*	-1.8*
White	1975-81	1.5*	1981-90	-0.2	1990-10	-1.7*							-1.7*	-1.7*
Black	1975-84	3.3*	1984-10	-1.9*									-1.9*	-1.9*
<u>SEER 13 Delay-Adjusted Incidence^b, 1992-2010</u>														
All Races	1992-10	-1.9*											-1.9*	-1.9*
White	1992-10	-1.9*											-1.9*	-1.9*
Black	1992-10	-2.5*											-2.5*	-2.5*
<u>SEER 9 Observed Incidence^a, 1975-2010</u>														
All Races	1975-82	1.4*	1982-91	-0.4	1991-10	-1.8*							-1.8*	-1.8*
White	1975-81	1.5*	1981-90	-0.2	1990-10	-1.8*							-1.8*	-1.8*
Black	1975-85	2.9*	1985-10	-2.1*									-2.1*	-2.1*
<u>SEER 13 Observed Incidence^b, 1992-2010</u>														
All Races	1992-10	-2.0*											-2.0*	-2.0*
White	1992-10	-1.9*											-1.9*	-1.9*
White NH ^{ef}	1992-10	-1.8*											-1.8*	-1.8*
Black	1992-10	-2.6*											-2.6*	-2.6*
Black NH ^{ef}	1992-10	-2.5*											-2.5*	-2.5*
API ^e	1992-08	-1.0*	2008-10	-5.7									-2.1*	-3.4
AI/AN ^{eg}	1992-10	-1.2											-1.2	-1.2
Hispanic ^f	1992-10	-1.9*											-1.9*	-1.9*
<u>U.S. Cancer Mortality^c, 1975-2010</u>														
All Races	1975-78	2.5*	1978-84	1.2*	1984-90	0.4*	1990-93	-1.1	1993-05	-1.9*	2005-10	-2.9*	-2.5*	-2.9*
White	1975-82	1.7*	1982-91	0.4*	1991-05	-1.8*	2005-10	-2.8*					-2.3*	-2.8*
Black	1975-77	4.9*	1977-84	2.3*	1984-90	1.2*	1990-94	-1.2*	1994-03	-2.7*	2003-10	-3.4*	-3.2*	-3.4*
<u>U.S. Cancer Mortality^c, 1992-2010</u>														
All Races	1992-05	-1.9*	2005-10	-2.9*									-2.5*	-2.9*
White	1992-05	-1.8*	2005-10	-2.8*									-2.3*	-2.8*
White NH ^{ef}	1992-05	-1.6*	2005-10	-2.7*									-2.2*	-2.7*
Black	1992-94	-1.0	1994-03	-2.7*	2003-10	-3.4*							-3.2*	-3.4*
Black NH ^{ef}	1992-01	-2.4*	2001-10	-3.1*									-3.1*	-3.1*
API ^e	1992-10	-1.5*											-1.5*	-1.5*
AI/AN ^{eg}	1992-10	-1.0*											-1.0*	-1.0*
Hispanic ^f	1992-98	-0.4	1998-10	-2.7*									-2.7*	-2.7*

Joinpoint Regression Program Version 4.0.3, April 2013, National Cancer Institute. (<http://surveillance.cancer.gov/joinpoint/>).

The APC is the Annual Percent Change based on rates age-adjusted to the 2000 US Std Population (19 age groups - Census P25-1130).

Trends are from the SEER 9 areas (San Francisco, Connecticut, Detroit, Hawaii, Iowa, New Mexico, Seattle, Utah, and Atlanta).

Trends are from the SEER 13 areas (SEER 9 Areas, Los Angeles, San Jose-Monterey, Rural Georgia, and the Alaska Native Registry).

Trends are from US Mortality Files, National Center for Health Statistics, Centers for Disease Control and Prevention.

The AAPC is the Average Annual Percent Change and is based on the APCs calculated by Joinpoint.

API - Asian/Pacific Islander, AI/AN - American Indian/Alaska Native, NH - Non-Hispanic

Hispanic and Non-Hispanic are not mutually exclusive from whites, blacks, Asian/Pacific Islanders, and American Indians/Alaska

Natives. Incidence data for Hispanics and Non-Hispanics are based on NHIA and exclude cases from the Alaska Native Registry.

The Hispanic and Non-Hispanic mortality trends exclude deaths from CT, DC, ME, MD, MN, NH, NY, ND, SC, OK and VT.

Data for American Indian/Alaska Native are based on the CHSDA (Contract Health Service Delivery Area) counties.

* The APC/AAPC is significantly different from zero ($p < .05$).

- Joinpoint regression line analysis could not be performed on data series.

Table 15.3
Cancer of the Lung and Bronchus (Invasive)

Trends in SEER Incidence^{ab} and U.S. Mortality^c Using the Joinpoint Regression Program,
1975-2010 With up to Five Joinpoints, 1992-2010 With up to Three Joinpoints,
Females by Race/Ethnicity

	JP Trend 1		JP Trend 2		JP Trend 3		JP Trend 4		JP Trend 5		JP Trend 6		AAPC ^d	
	Years	APC	Years	APC	Years	APC	Years	APC	Years	APC	Years	APC	2001-10	2006-10
<u>SEER 9 Delay-Adjusted Incidence^a, 1975-2010</u>														
All Races	1975-82	5.6*	1982-91	3.4*	1991-07	0.5*	2007-10	-2.1*					-0.4	-1.5
White	1975-82	5.6*	1982-88	4.2*	1988-98	1.5*	1998-01	-0.9	2001-07	0.8	2007-10	-2.2*	-0.2	-1.4*
Black	1975-91	4.0*	1991-10	0.3									0.3	0.3
<u>SEER 13 Delay-Adjusted Incidence^b, 1992-2010</u>														
All Races	1992-98	0.8*	1998-01	-1.3	2001-05	0.7	2005-10	-1.2*					-0.4	-1.2*
White	1992-98	1.0*	1998-01	-1.3	2001-07	0.3	2007-10	-2.1*					-0.5	-1.5*
Black	1992-10	0.3											0.3	0.3
<u>SEER 9 Observed Incidence^a, 1975-2010</u>														
All Races	1975-82	5.6*	1982-91	3.4*	1991-07	0.5*	2007-10	-2.6*					-0.6	-1.9*
White	1975-82	5.6*	1982-88	4.2*	1988-97	1.5*	1997-07	0.2	2007-10	-2.3*			-0.6	-1.7*
Black	1975-91	4.1*	1991-10	0.2									0.2	0.2
<u>SEER 13 Observed Incidence^b, 1992-2010</u>														
All Races	1992-07	0.0	2007-10	-2.6*									-0.9*	-1.9*
White	1992-97	0.9	2008-10	-0.3	2008-10	-3.3	1997-08						-1.0*	-1.8
White NH ^{ef}	1992-97	1.1*	1997-08	-0.1	2008-10	-3.5							-0.9	-1.8
Black	1992-05	0.7*	2005-10	-1.9									-0.7	-1.9
Black NH ^{ef}	1992-05	0.8*	2005-10	-1.7									-0.6	-1.7
API ^e	1992-10	0.2											0.2	0.2
AI/AN ^{eg}	1992-10	0.9											0.9	0.9
Hispanic ^f	1992-10	-0.2											-0.2	-0.2
<u>U.S. Cancer Mortality^c, 1975-2010</u>														
All Races	1975-82	6.0*	1982-90	4.2*	1990-95	1.7*	1995-04	0.3*	2004-10	-1.4*			-0.8*	-1.4*
White	1975-83	5.8*	1983-90	4.1*	1990-94	2.1*	1994-03	0.5*	2003-10	-1.1*			-0.7*	-1.1*
Black	1975-82	6.4*	1982-92	3.7*	1992-04	0.4*	2004-10	-2.0*					-1.2*	-2.0*
<u>U.S. Cancer Mortality^c, 1992-2010</u>														
All Races	1992-96	1.1*	1996-04	0.2	2004-10	-1.4*							-0.8*	-1.4*
White	1992-03	0.6*	2003-10	-1.1*									-0.7*	-1.1*
White NH ^{ef}	1992-03	0.8*	2003-10	-1.0*									-0.6*	-1.0*
Black	1992-04	0.4*	2004-10	-2.0*									-1.2*	-2.0*
Black NH ^{ef}	1992-05	0.5*	2005-10	-2.4*									-1.1*	-2.4*
API ^e	1992-10	-0.4*											-0.4*	-0.4*
AI/AN ^{eg}	1992-08	1.7*	2008-10	-7.9									-0.5	-3.2
Hispanic ^f	1992-03	0.4	2003-10	-1.6*									-1.2*	-1.6*

Joinpoint Regression Program Version 4.0.3, April 2013, National Cancer Institute. (<http://surveillance.cancer.gov/joinpoint/>).

The APC is the Annual Percent Change based on rates age-adjusted to the 2000 US Std Population (19 age groups - Census P25-1130).

Trends are from the SEER 9 areas (San Francisco, Connecticut, Detroit, Hawaii, Iowa, New Mexico, Seattle, Utah, and Atlanta).

Trends are from the SEER 13 areas (SEER 9 Areas, Los Angeles, San Jose-Monterey, Rural Georgia, and the Alaska Native Registry).

Trends are from US Mortality Files, National Center for Health Statistics, Centers for Disease Control and Prevention.

The AAPC is the Average Annual Percent Change and is based on the APCs calculated by Joinpoint.

API - Asian/Pacific Islander, AI/AN - American Indian/Alaska Native, NH - Non-Hispanic

Hispanic and Non-Hispanic are not mutually exclusive from whites, blacks, Asian/Pacific Islanders, and American Indians/Alaska

Natives. Incidence data for Hispanics and Non-Hispanics are based on NHIA and exclude cases from the Alaska Native Registry.

The Hispanic and Non-Hispanic mortality trends exclude deaths from CT, DC, ME, MD, MN, NH, NY, ND, SC, OK and VT.

Data for American Indian/Alaska Native are based on the CHSDA (Contract Health Service Delivery Area) counties.

* The APC/AAPC is significantly different from zero ($p < .05$).

- Joinpoint regression line analysis could not be performed on data series.

Table 15.4
Small Cell Cancer of the Lung and Bronchus (Invasive) and Non-Small Cell Cancer of the Lung and Bronchus (Invasive)

Trends in SEER 9 Observed Incidence^a Using the Joinpoint Regression Program,
1975-2010 With up to Five Joinpoints,
By Race and Sex

		JP Trend 1		JP Trend 2		JP Trend 3		JP Trend 4		JP Trend 5		JP Trend 6		AAPC ^d
		Years	APC	Years	APC	Years	APC	Years	APC	Years	APC	Years	APC	2006-10
<u>SEER 9 Observed Incidence^a for Small Cell Cancer of the Lung and Bronchus, 1975-2010</u>														
All Races	Both Sexes	1975-82	6.2*	1982-89	1.2*	1989-10	-2.3*							-2.3*
All Races	Male	1975-81	5.6*	1981-88	0.0	1988-10	-3.1*							-3.1*
All Races	Female	1975-82	9.6*	1982-91	3.0*	1991-10	-1.7*							-1.7*
White	Both Sexes	1975-82	6.3*	1982-89	1.4*	1989-10	-2.1*							-2.1*
White	Male	1975-78	8.8*	1978-86	2.0*	1986-10	-2.9*							-2.9*
White	Female	1975-82	10.2*	1982-91	3.0*	1991-10	-1.5*							-1.5*
Black	Both Sexes	1975-86	4.8*	1986-10	-2.4*									-2.4*
Black	Male	1975-85	4.9*	1985-10	-3.3*									-3.3*
Black	Female	1975-91	4.5*	1991-10	-1.8*									-1.8*
<u>SEER 9 Observed Incidence^a for Non-Small Cell Cancer of the Lung and Bronchus, 1975-2010</u>														
All Races	Both Sexes	1975-90	1.4*	1990-07	-0.4*	2007-10	-2.7*							-2.1*
All Races	Male	1975-82	0.9*	1982-92	-0.4	1992-10	-1.6*							-1.6*
All Races	Female	1975-90	4.1*	1990-07	0.9*	2007-10	-2.7*							-1.8*
White	Both Sexes	1975-90	1.5*	1990-07	-0.3*	2007-10	-2.7*							-2.1*
White	Male	1975-90	0.1	1990-10	-1.6*									-1.6*
White	Female	1975-88	4.4*	1988-97	1.8*	1997-07	0.6*	2007-10	-2.3*					-1.6*
Black	Both Sexes	1975-84	3.0*	1984-98	-0.3	1998-10	-1.5*							-1.5*
Black	Male	1975-84	2.6*	1984-97	-1.2*	1997-10	-2.7*							-2.7*
Black	Female	1975-90	4.3*	1990-10	0.6*									0.6*

Joinpoint Regression Program Version 4.0.3, April 2013, National Cancer Institute. (<http://surveillance.cancer.gov/joinpoint/>).
The APC is the Annual Percent Change based on rates age-adjusted to the 2000 US Std Population (19 age groups - Census P25-1130).
Trends are from the SEER 9 areas (San Francisco, Connecticut, Detroit, Hawaii, Iowa, New Mexico, Seattle, Utah, and Atlanta).
The AAPC is the Average Annual Percent Change and is based on the APCs calculated by Joinpoint.
* The APC/AAPC is significantly different from zero (p<.05).
- Joinpoint regression line analysis could not be performed on data series.

Table 15.5
Cancer of the Lung and Bronchus (Invasive)

Delay-adjusted SEER Incidence^a Rates by Year, Race and Sex

Year of Diagnosis:	All Races			Whites			Blacks		
	Total	Males	Females	Total	Males	Females	Total	Males	Females
1975	52.26	89.56	24.53	51.96	89.16	24.85	64.55	114.90	24.66
1976	55.42	93.80	27.31	54.64	92.75	27.28	72.34	131.00	28.63
1977	56.70	95.51	28.31	55.88	94.76	28.04	73.58	124.86	33.88
1978	57.85	96.67	29.65	57.26	95.87	29.88	74.53	130.51	31.69
1979	58.62	95.81	31.59	58.04	95.19	31.65	74.54	127.72	34.11
1980	60.66	99.97	32.22	59.43	97.72	32.37	86.57	151.30	38.25
1981	62.03	99.41	35.12	61.54	98.44	35.52	82.31	142.96	37.45
1982	63.29	100.70	36.73	63.06	99.69	37.68	80.37	141.06	35.68
1983	63.45	99.46	37.89	63.04	97.63	39.10	86.62	151.34	39.49
1984	65.50	102.06	39.47	64.36	99.93	39.64	92.93	158.84	44.82
1985	64.63	98.64	40.24	64.00	96.90	40.89	89.56	149.69	46.05
1986	65.78	99.06	42.29	65.16	97.36	42.94	92.94	156.28	48.67
1987	67.90	101.52	44.16	68.08	100.65	45.50	84.81	143.72	43.28
1988	68.03	98.69	46.30	68.25	97.92	47.72	88.14	144.94	48.08
1989	67.54	97.95	46.09	67.56	97.05	47.24	89.05	142.78	51.37
1990	68.08	96.92	47.79	68.24	96.14	48.96	86.79	137.18	52.14
1991	69.21	97.23	49.59	68.99	95.92	50.64	93.16	144.78	57.06
1992	69.46	97.19	49.86	68.92	94.87	51.07	93.90	148.76	55.89
1993	67.77	93.97	49.18	67.84	92.53	50.67	86.33	135.38	52.45
1994	67.18	90.96	50.53	67.29	90.15	51.62	87.23	131.61	56.48
1995	66.86	89.83	50.45	67.12	87.99	52.46	85.73	138.76	50.02
1996	66.47	88.01	51.23	66.84	86.75	53.00	84.39	128.47	55.37
1997	66.64	86.30	52.62	67.27	84.88	55.00	82.17	129.25	50.52
1998	67.56	88.05	52.99	68.10	86.68	55.13	87.10	130.47	57.87
1999	65.87	84.62	52.53	66.37	83.36	54.49	84.46	122.01	59.00
2000	64.18	82.16	51.26	64.74	80.89	53.29	80.12	114.37	57.30
2001	64.21	81.44	51.73	65.12	81.11	53.59	80.35	114.07	57.61
2002	64.11	80.49	52.55	64.87	79.88	54.36	81.33	112.90	60.58
2003	64.82	81.10	53.15	65.66	79.74	55.77	80.70	118.62	55.49
2004	62.33	76.38	52.16	62.97	75.49	53.95	76.13	105.03	57.17
2005	63.14	75.97	53.92	64.21	75.79	55.95	74.66	97.88	59.52
2006	62.43	74.41	53.60	63.05	73.26	55.62	76.58	100.91	59.83
2007	62.17	73.78	53.70	63.34	73.03	56.31	74.14	100.23	56.87
2008	60.55	72.38	51.97	61.43	71.12	54.50	75.24	103.52	56.48
2009	60.03	70.78	52.27	60.83	69.98	54.22	73.72	97.20	58.25
2010	57.93	68.12	50.35	59.24	68.11	52.59	67.22	86.16	54.75

Additional information on the model used to delay-adjust SEER Incidence rates can be found at <http://surveillance.cancer.gov/delay/>.

^a SEER 9 areas (San Francisco, Connecticut, Detroit, Hawaii, Iowa, New Mexico, Seattle, Utah, and Atlanta). Rates are per 100,000 and are age-adjusted to the 2000 US Std Population (19 age groups - Census P25-1130).

- Delay-adjusted rate is not shown for observed rates based on less than 16 cases for the time interval.

Table 15.6
Cancer of the Lung and Bronchus (Invasive)

Age-adjusted SEER Incidence^a Rates by Year, Race and Sex

Year of Diagnosis:	All Races			Whites			Blacks		
	Total	Males	Females	Total	Males	Females	Total	Males	Females
1975-2010	63.61	87.70	46.05	63.79	86.89	47.13	80.73	123.68	50.76
1975	52.26	89.56	24.53	51.96	89.16	24.85	64.55	114.90	24.66
1976	55.42	93.80	27.31	54.64	92.75	27.28	72.34	131.00	28.63
1977	56.70	95.51	28.31	55.88	94.76	28.04	73.58	124.86	33.88
1978	57.85	96.67	29.65	57.26	95.87	29.88	74.53	130.51	31.69
1979	58.62	95.81	31.59	58.04	95.19	31.65	74.54	127.72	34.11
1980	60.66	99.97	32.22	59.43	97.72	32.37	86.57	151.30	38.25
1981	62.03	99.41	35.12	61.54	98.44	35.52	82.31	142.96	37.45
1982	63.29	100.70	36.73	63.06	99.69	37.68	80.37	141.06	35.68
1983	63.45	99.46	37.89	63.04	97.63	39.10	86.62	151.34	39.49
1984	65.50	102.06	39.47	64.36	99.93	39.64	92.92	158.84	44.82
1985	64.62	98.64	40.23	64.00	96.90	40.88	89.56	149.68	46.04
1986	65.78	99.05	42.29	65.15	97.36	42.94	92.94	156.27	48.67
1987	67.90	101.52	44.15	68.08	100.65	45.50	84.81	143.71	43.28
1988	68.03	98.68	46.30	68.25	97.91	47.71	88.13	144.93	48.07
1989	67.54	97.95	46.09	67.56	97.05	47.23	89.04	142.77	51.37
1990	68.08	96.92	47.78	68.23	96.13	48.96	86.78	137.17	52.13
1991	69.20	97.22	49.58	68.98	95.90	50.63	93.14	144.76	57.05
1992	69.45	97.18	49.85	68.91	94.85	51.06	93.88	148.73	55.88
1993	67.76	93.96	49.17	67.82	92.52	50.66	86.30	135.35	52.43
1994	67.17	90.94	50.52	67.27	90.13	51.60	87.20	131.58	56.46
1995	66.84	89.82	50.44	67.10	87.96	52.44	85.70	138.72	50.00
1996	66.45	87.99	51.21	66.81	86.71	52.98	84.35	128.41	55.34
1997	66.61	86.28	52.60	67.23	84.84	54.97	82.12	129.18	50.49
1998	67.53	88.02	52.96	68.06	86.64	55.09	87.04	130.39	57.82
1999	65.83	84.57	52.49	66.31	83.30	54.43	84.38	121.91	58.92
2000	64.13	82.10	51.21	64.67	80.81	53.22	80.02	114.25	57.21
2001	64.14	81.37	51.67	65.03	81.01	53.51	80.22	113.91	57.50
2002	64.03	80.40	52.47	64.76	79.76	54.25	81.17	112.70	60.43
2003	64.71	80.98	53.05	65.51	79.58	55.63	80.49	118.35	55.33
2004	62.20	76.24	52.02	62.79	75.30	53.77	75.88	104.73	56.96
2005	62.96	75.78	53.75	63.98	75.55	55.72	74.36	97.53	59.25
2006	62.20	74.17	53.38	62.76	72.96	55.33	76.18	100.44	59.48
2007	61.87	73.47	53.40	62.97	72.64	55.94	73.65	99.63	56.45
2008	60.17	71.97	51.61	60.96	70.63	54.03	74.61	102.72	55.94
2009	59.53	70.25	51.78	60.22	69.35	53.63	72.92	96.23	57.54
2010	56.68	66.77	49.16	57.78	66.56	51.19	65.42	84.03	53.17

^a SEER 9 areas (San Francisco, Connecticut, Detroit, Hawaii, Iowa, New Mexico, Seattle, Utah, and Atlanta). Rates are per 100,000 and are age-adjusted to the 2000 US Std Population (19 age groups - Census P25-1130).
- Statistic not shown. Rate based on less than 16 cases for the time interval.

Table 15.7
 Small Cell Cancer of the Lung and Bronchus (Invasive)
 Age-adjusted SEER Incidence^a Rates by Year, Race and Sex

Year of Diagnosis:	All Races			Whites			Blacks		
	Total	Males	Females	Total	Males	Females	Total	Males	Females
1975-2010	9.03	11.51	7.19	9.52	11.93	7.73	8.62	12.03	6.24
1975	6.65	10.34	3.79	6.89	10.70	3.97	5.87	8.94	3.48
1976	7.06	11.36	3.84	7.12	11.51	3.89	8.23	12.82	4.76
1977	7.70	12.38	4.22	7.84	12.79	4.21	8.13	11.19	5.78
1978	8.64	13.39	5.03	8.87	13.69	5.28	7.81	13.89	3.13
1979	8.68	13.09	5.36	9.03	13.63	5.61	7.63	11.83	4.47
1980	9.10	14.20	5.23	9.33	14.40	5.54	9.99	17.53	4.38
1981	9.71	14.55	6.12	10.00	14.82	6.48	9.21	15.87	4.21
1982	10.37	14.92	7.12	10.73	15.28	7.55	9.63	15.94	4.92
1983	10.36	14.87	7.08	10.75	15.05	7.64	9.12	15.08	4.85
1984	10.69	15.18	7.41	11.05	15.64	7.77	10.41	14.99	6.86
1985	10.44	14.96	7.08	10.78	15.25	7.49	11.07	17.77	6.27
1986	11.20	15.51	7.98	11.53	15.98	8.27	12.26	17.70	8.35
1987	10.65	14.13	8.20	11.17	14.56	8.84	9.56	14.49	6.09
1988	11.38	15.28	8.51	11.90	15.62	9.21	10.49	17.86	5.30
1989	11.23	14.84	8.67	11.68	15.22	9.20	12.07	17.67	8.35
1990	10.65	13.82	8.39	11.26	14.45	9.06	9.35	13.70	6.21
1991	11.29	13.99	9.36	11.68	14.32	9.84	12.34	15.92	10.00
1992	10.49	13.39	8.44	10.96	13.84	8.96	10.16	13.32	7.95
1993	10.02	12.33	8.34	10.48	12.64	8.94	9.38	13.25	6.74
1994	9.77	11.69	8.42	10.24	11.98	9.05	9.95	13.62	7.43
1995	9.85	12.25	8.13	10.36	12.60	8.76	9.50	13.89	6.61
1996	9.71	12.08	7.96	10.27	12.47	8.63	8.80	12.02	6.84
1997	9.52	10.85	8.63	10.10	11.11	9.48	7.86	10.82	6.05
1998	9.29	10.85	8.14	9.86	11.29	8.83	9.37	12.10	7.45
1999	8.80	10.02	7.97	9.33	10.23	8.78	8.19	11.05	6.05
2000	8.80	10.44	7.59	9.28	10.85	8.13	9.45	11.54	7.94
2001	8.37	9.85	7.34	8.91	10.34	7.93	8.52	10.80	6.89
2002	8.29	9.39	7.54	8.98	9.86	8.39	7.21	9.80	5.71
2003	8.23	9.12	7.61	8.73	9.37	8.34	7.93	9.50	6.83
2004	8.11	9.00	7.48	8.51	9.24	8.00	8.60	9.98	7.75
2005	7.59	8.70	6.81	8.21	9.24	7.49	6.63	7.78	5.88
2006	7.67	8.50	7.08	8.23	8.81	7.85	6.83	8.19	5.89
2007	7.66	8.59	7.01	8.33	8.96	7.92	7.10	9.40	5.44
2008	7.09	7.94	6.46	7.57	8.10	7.20	6.36	8.79	4.87
2009	7.11	7.76	6.66	7.58	8.09	7.25	7.51	8.36	6.94
2010	6.74	7.42	6.27	7.39	7.91	7.05	5.82	6.87	5.03

Note: Small Cell Cancer of the Lung and Bronchus includes histologies 8041-8045.
^a SEER 9 areas (San Francisco, Connecticut, Detroit, Hawaii, Iowa, New Mexico, Seattle, Utah, and Atlanta).
 Rates are per 100,000 and are age-adjusted to the 2000 US Std Population (19 age groups - Census P25-1130).
 - Statistic not shown. Rate based on less than 16 cases for the time interval.

Table 15.8
 Non-Small Cell Cancer of the Lung and Bronchus (Invasive)
 Age-adjusted SEER Incidence^a Rates by Year, Race and Sex

Year of Diagnosis:	All Races			Whites			Blacks		
	Total	Males	Females	Total	Males	Females	Total	Males	Females
1975-2010	54.58	76.20	38.86	54.27	74.96	39.40	72.10	111.65	44.53
1975	45.61	79.21	20.74	45.07	78.46	20.89	58.67	105.96	21.18
1976	48.36	82.44	23.47	47.52	81.24	23.39	64.11	118.18	23.87
1977	48.99	83.13	24.09	48.03	81.97	23.83	65.45	113.67	28.10
1978	49.21	83.28	24.62	48.39	82.17	24.60	66.71	116.63	28.56
1979	49.94	82.72	26.23	49.01	81.56	26.05	66.91	115.89	29.64
1980	51.56	85.76	26.99	50.10	83.31	26.83	76.58	133.78	33.87
1981	52.32	84.86	29.00	51.54	83.62	29.05	73.10	127.09	33.24
1982	52.93	85.78	29.61	52.32	84.41	30.13	70.74	125.12	30.76
1983	53.09	84.59	30.81	52.29	82.58	31.46	77.50	136.26	34.63
1984	54.81	86.87	32.06	53.31	84.29	31.87	82.51	143.85	37.96
1985	54.18	83.68	33.16	53.22	81.65	33.39	78.49	131.91	39.78
1986	54.58	83.54	34.31	53.62	81.37	34.67	80.68	138.57	40.31
1987	57.25	87.39	35.96	56.91	86.08	36.65	75.25	129.22	37.19
1988	56.65	83.40	37.78	56.35	82.30	38.50	77.64	127.07	42.77
1989	56.31	83.11	37.42	55.88	81.82	38.04	76.97	125.10	43.02
1990	57.42	83.09	39.39	56.97	81.68	39.89	77.43	123.46	45.92
1991	57.92	83.24	40.22	57.29	81.58	40.78	80.80	128.84	47.05
1992	58.95	83.78	41.41	57.95	81.02	42.10	83.72	135.41	47.93
1993	57.74	81.63	40.83	57.34	79.88	41.72	76.92	122.10	45.69
1994	57.39	79.25	42.11	57.02	78.15	42.54	77.25	117.96	49.02
1995	56.99	77.57	42.30	56.74	75.36	43.69	76.20	124.83	43.39
1996	56.74	75.92	43.25	56.54	74.24	44.34	75.55	116.40	48.50
1997	57.09	75.43	43.97	57.13	73.74	45.49	74.26	118.35	44.44
1998	58.25	77.17	44.82	58.20	75.35	46.25	77.68	118.29	50.37
1999	57.03	74.55	44.52	56.98	73.07	45.65	76.19	110.85	52.88
2000	55.33	71.67	43.62	55.39	69.96	45.09	70.58	102.71	49.27
2001	55.77	71.52	44.33	56.12	70.67	45.58	71.70	103.11	50.61
2002	55.74	71.00	44.94	55.78	69.90	45.86	73.96	102.91	54.72
2003	56.48	71.86	45.44	56.78	70.21	47.29	72.56	108.85	48.50
2004	54.09	67.25	44.55	54.28	66.06	45.78	67.29	94.75	49.21
2005	55.37	67.08	46.94	55.77	66.31	48.23	67.73	89.75	53.37
2006	54.53	65.67	46.29	54.52	64.15	47.48	69.35	92.24	53.59
2007	54.21	64.88	46.40	54.64	63.69	48.01	66.55	90.23	51.01
2008	53.08	64.03	45.14	53.38	62.54	46.84	68.25	93.93	51.07
2009	52.42	62.49	45.12	52.65	61.26	46.38	65.41	87.87	50.60
2010	49.93	59.35	42.89	50.39	58.65	44.14	59.60	77.16	48.13

Note: Non-Small Cell Cancer of the Lung and Bronchus includes histologies 8000-8040, 8046-9049, 9056-9139, 9141-9589.
^a SEER 9 areas (San Francisco, Connecticut, Detroit, Hawaii, Iowa, New Mexico, Seattle, Utah, and Atlanta).
 Rates are per 100,000 and are age-adjusted to the 2000 US Std Population (19 age groups - Census P25-1130).
 - Statistic not shown. Rate based on less than 16 cases for the time interval.

Table 15.9
Cancer of the Lung and Bronchus (Invasive)
Age-adjusted U.S. Death^a Rates by Year, Race and Sex

Year of Death:	All Races			Whites			Blacks		
	Total	Males	Females	Total	Males	Females	Total	Males	Females
1975-2010	53.52	78.92	35.20	53.40	77.84	35.77	61.85	102.08	34.52
1975	42.56	76.39	17.56	42.08	75.47	17.67	49.33	91.01	17.34
1976	44.20	78.52	18.97	43.72	77.55	19.10	51.07	93.96	18.51
1977	45.49	80.45	20.01	44.82	79.09	20.09	54.56	100.80	19.91
1978	46.88	82.06	21.40	46.29	80.76	21.58	55.26	101.65	20.66
1979	47.69	82.94	22.32	47.08	81.64	22.42	56.43	102.89	22.24
1980	49.41	84.71	24.13	48.75	83.27	24.22	59.16	106.67	24.57
1981	49.99	85.16	24.95	49.28	83.52	25.10	60.57	109.71	25.10
1982	51.43	86.79	26.47	50.78	85.18	26.72	62.27	112.55	26.30
1983	52.40	87.04	28.10	51.70	85.40	28.28	63.68	112.76	28.73
1984	53.36	88.22	28.94	52.64	86.24	29.27	65.07	117.98	27.98
1985	54.32	88.54	30.41	53.68	86.69	30.81	65.76	117.50	29.64
1986	55.04	88.95	31.41	54.36	87.03	31.76	66.95	119.18	31.00
1987	56.24	90.05	32.72	55.56	88.09	33.04	68.65	121.77	32.48
1988	56.97	89.87	34.14	56.35	87.86	34.57	69.18	122.15	33.54
1989	57.90	89.77	35.77	57.21	87.57	36.27	71.04	124.72	34.87
1990	58.85	90.56	36.85	58.18	88.40	37.31	72.06	125.17	36.48
1991	58.99	89.88	37.61	58.38	87.76	38.12	71.64	123.58	37.16
1992	58.90	88.01	38.70	58.34	85.98	39.21	71.35	121.06	38.55
1993	59.13	87.60	39.28	58.66	85.52	39.97	71.12	121.98	37.72
1994	58.54	85.69	39.62	58.15	83.78	40.30	70.15	118.63	38.61
1995	58.38	84.37	40.26	58.08	82.62	40.97	69.28	116.08	38.84
1996	57.91	82.82	40.41	57.69	81.15	41.22	68.30	113.18	39.08
1997	57.51	81.33	40.82	57.31	79.83	41.52	67.89	110.21	40.53
1998	57.08	79.89	40.98	56.93	78.47	41.69	66.86	107.40	40.67
1999	55.42	76.97	40.15	55.31	75.67	40.86	65.00	103.61	40.00
2000	55.85	76.48	41.12	55.99	75.41	42.08	63.77	100.87	39.64
2001	55.32	75.32	41.01	55.55	74.34	42.05	62.54	99.32	38.80
2002	55.00	73.67	41.60	55.31	72.89	42.64	62.05	95.59	40.21
2003	54.19	72.03	41.29	54.52	71.32	42.30	60.92	92.96	40.25
2004	53.37	70.43	40.96	53.71	69.74	41.99	59.79	90.41	39.95
2005	52.85	69.49	40.71	53.32	69.09	41.70	58.52	86.96	40.12
2006	51.73	67.39	40.26	52.27	67.05	41.36	56.73	83.89	39.06
2007	50.71	65.17	40.10	51.28	64.76	41.30	55.38	82.19	38.13
2008	49.59	63.73	39.13	50.28	63.51	40.40	53.13	78.20	36.88
2009	48.41	61.54	38.63	49.18	61.41	39.97	51.56	75.49	35.90
2010	47.42	60.06	37.95	48.11	59.92	39.18	51.16	73.55	36.28

^a US Mortality Files, National Center for Health Statistics, Centers for Disease Control and Prevention. Rates are per 100,000 and are age-adjusted to the 2000 US Std Population (19 age groups - Census P25-1130).
- Statistic not shown. Rate based on less than 16 cases for the time interval.

Table 15.10
Cancer of the Lung and Bronchus (Invasive)

SEER Incidence^a and U.S. Death^b Rates, Age-Adjusted and Age-Specific Rates, by Race and Sex

	All Races			Whites			Blacks		
	Total	Males	Females	Total	Males	Females	Total	Males	Females
<u>SEER Incidence</u>									
<u>Age at Diagnosis</u>									
Age-Adjusted Rates, 2006-2010									
All ages	61.4	74.3	51.9	63.1	74.5	54.6	69.7	95.8	52.2
Under 65	18.8	21.0	16.8	18.8	20.4	17.3	26.3	33.2	20.5
65 and over	356.2	443.3	294.6	369.0	449.0	312.0	369.4	528.3	271.2
All ages (IARC world std) ^c	38.0	44.8	32.6	38.9	44.8	34.2	45.2	60.8	33.9
Age-Specific Rates, 2006-2010									
<1	-	-	-	-	-	-	-	-	-
1-4	-	-	-	-	-	-	-	-	-
5-9	-	-	-	-	-	-	-	-	-
10-14	-	-	-	-	-	-	-	-	-
15-19	0.1	0.1	0.1	0.1	-	-	-	-	-
20-24	0.3	0.3	0.3	0.3	0.3	0.3	-	-	-
25-29	0.6	0.6	0.6	0.6	0.6	0.7	0.5	-	-
30-34	1.3	1.3	1.4	1.2	1.1	1.4	1.6	1.7	1.4
35-39	2.9	2.9	3.0	2.9	2.8	3.0	3.2	3.6	2.8
40-44	8.7	8.4	8.9	8.7	8.4	9.0	11.5	11.7	11.4
45-49	24.1	23.5	24.7	24.0	22.8	25.1	34.5	35.7	33.5
50-54	50.4	55.0	46.0	49.2	52.0	46.5	78.0	95.3	62.6
55-59	88.4	103.1	74.7	87.8	98.9	77.1	129.0	173.9	90.9
60-64	158.0	182.6	135.4	160.8	181.0	141.9	205.8	272.7	151.2
65-69	267.4	311.5	228.6	277.7	314.2	244.9	310.7	422.5	224.2
70-74	359.1	426.2	303.7	375.6	434.7	325.9	372.3	513.9	270.5
75-79	431.9	532.5	356.3	449.2	542.5	377.4	431.0	597.0	326.1
80-84	429.5	562.1	343.7	442.7	568.5	360.1	417.0	627.7	305.2
85+	330.0	477.6	258.2	332.7	475.8	263.1	331.1	557.1	241.9
<u>U.S. Mortality</u>									
<u>Age at Death</u>									
Age-Adjusted Rates, 2006-2010									
All ages	49.5	63.5	39.2	50.2	63.2	40.4	53.5	78.5	37.2
Under 65	14.1	16.8	11.6	14.0	16.3	11.9	18.6	25.0	13.1
65 and over	294.3	386.4	229.7	300.2	388.1	237.8	295.1	447.9	203.7
All ages (IARC world std) ^c	29.7	37.2	23.7	30.0	36.9	24.5	33.6	48.1	23.3
Age-Specific Rates, 2006-2010									
<1	-	-	-	-	-	-	-	-	-
1-4	-	-	-	-	-	-	-	-	-
5-9	-	-	-	-	-	-	-	-	-
10-14	-	-	-	-	-	-	-	-	-
15-19	0.0	0.0	0.0	0.0	0.0	-	-	-	-
20-24	0.1	0.1	0.1	0.1	0.1	0.1	0.1	-	-
25-29	0.2	0.2	0.2	0.2	0.2	0.2	0.2	0.4	-
30-34	0.5	0.6	0.5	0.6	0.6	0.5	0.6	0.8	0.4
35-39	1.7	1.8	1.7	1.8	1.8	1.7	1.8	1.8	1.7
40-44	6.1	6.2	6.0	6.2	6.1	6.2	7.2	8.1	6.4
45-49	18.4	19.7	17.2	18.1	18.9	17.2	25.5	29.9	21.6
50-54	38.3	44.7	32.0	37.4	42.6	32.3	53.8	70.2	39.5
55-59	66.8	82.6	51.9	65.9	79.4	52.9	90.5	128.2	58.6
60-64	120.2	147.0	95.4	120.7	144.4	98.4	149.7	211.1	99.8
65-69	200.9	248.0	159.3	204.8	247.8	165.9	224.5	321.2	150.8
70-74	280.1	348.2	223.1	287.6	351.0	233.5	281.2	408.9	191.0
75-79	351.3	451.8	275.2	359.3	454.8	285.5	341.1	507.7	238.1
80-84	382.3	522.8	291.2	388.6	525.8	298.1	369.8	575.3	262.2
85+	329.0	499.5	248.8	332.4	499.4	253.2	313.0	557.2	219.6

^a SEER 18 areas. Rates are per 100,000 and are age-adjusted to the 2000 US Std Population (19 age groups - Census P25-1130), unless noted.

^b US Mortality Files, National Center for Health Statistics, Centers for Disease Control and Prevention.

^c Rates are per 100,000 and are age-adjusted to the 2000 US Std Population (19 age groups - Census P25-1130), unless noted.

- Rates are per 100,000 and are age-adjusted to the IARC world standard population.

- Statistic not shown. Rate based on less than 16 cases for the time interval.

Table 15.11
Small Cell Cancer of the Lung and Bronchus^a(Invasive) and Non-Small Cell Cancer of the Lung and Bronchus^b(Invasive)

SEER Incidence^c Rates, Age-Adjusted and Age-Specific Rates, by Race and Sex

	All Races			Whites			Blacks		
	Total	Males	Females	Total	Males	Females	Total	Males	Females
<u>Small Cell Cancer of the Lung and Bronchus^a</u>									
<u>Age at Diagnosis</u>									
Age-Adjusted Rates, 2006-2010									
All ages	7.4	8.4	6.8	8.1	8.8	7.5	6.7	8.1	5.7
Under 65	2.7	2.9	2.6	3.0	3.1	2.9	2.6	3.0	2.2
65 and over	40.1	46.3	35.7	43.2	48.6	39.4	34.9	43.4	29.5
All ages (IARC world std) ^d	4.9	5.4	4.6	5.4	5.7	5.1	4.4	5.3	3.8
Age-Specific Rates, 2006-2010									
<1	-	-	-	-	-	-	-	-	-
1-4	-	-	-	-	-	-	-	-	-
5-9	-	-	-	-	-	-	-	-	-
10-14	-	-	-	-	-	-	-	-	-
15-19	-	-	-	-	-	-	-	-	-
20-24	-	-	-	-	-	-	-	-	-
25-29	-	-	-	-	-	-	-	-	-
30-34	0.1	-	-	-	-	-	-	-	-
35-39	0.3	0.3	0.2	0.3	0.3	0.3	-	-	-
40-44	1.0	0.9	1.0	1.1	1.0	1.1	0.9	0.9	0.9
45-49	3.3	3.2	3.5	3.7	3.5	4.0	3.2	3.4	3.1
50-54	7.6	8.1	7.1	8.3	8.6	8.0	8.3	9.7	7.0
55-59	13.1	14.0	12.4	14.4	15.0	13.9	11.8	13.9	10.0
60-64	23.7	25.3	22.3	25.9	27.0	25.0	21.5	26.0	17.8
65-69	37.5	40.3	35.0	41.4	43.2	39.7	29.6	36.7	24.2
70-74	45.2	49.5	41.6	49.1	52.2	46.4	40.9	48.1	35.7
75-79	48.9	55.7	43.8	52.3	58.2	47.8	42.6	52.4	36.3
80-84	40.0	51.6	32.5	42.0	53.5	34.5	37.0	47.3	31.6
85+	20.0	30.9	14.7	20.3	30.9	15.2	18.5	28.8	14.4
<u>Non-Small Cell Cancer Lung and Bronchus^b</u>									
<u>Age at Diagnosis</u>									
Age-Adjusted Rates, 2006-2010									
All ages	54.0	66.0	45.1	55.0	65.7	47.0	63.0	87.7	46.5
Under 65	16.1	18.1	14.2	15.8	17.3	14.4	23.7	30.2	18.3
65 and over	316.1	396.9	259.0	325.8	400.4	272.7	334.5	484.8	241.7
All ages (IARC world std) ^b	33.1	39.4	28.0	33.5	39.0	29.1	40.8	55.4	30.2
Age-Specific Rates, 2006-2010									
<1	-	-	-	-	-	-	-	-	-
1-4	-	-	-	-	-	-	-	-	-
5-9	-	-	-	-	-	-	-	-	-
10-14	-	-	-	-	-	-	-	-	-
15-19	0.1	0.1	0.1	0.1	-	-	-	-	-
20-24	0.3	0.3	0.2	0.3	0.3	0.3	-	-	-
25-29	0.6	0.6	0.6	0.6	0.6	0.6	0.5	-	-
30-34	1.3	1.2	1.3	1.2	1.1	1.3	1.5	1.6	1.4
35-39	2.7	2.6	2.7	2.6	2.5	2.7	3.0	3.4	2.5
40-44	7.7	7.5	8.0	7.6	7.3	7.8	10.6	10.8	10.5
45-49	20.7	20.3	21.1	20.2	19.4	21.1	31.3	32.2	30.4
50-54	42.8	46.9	38.9	40.9	43.4	38.5	69.7	85.6	55.6
55-59	75.3	89.1	62.4	73.3	83.9	63.2	117.2	160.1	80.8
60-64	134.3	157.4	113.1	134.9	154.0	116.9	184.3	246.7	133.4
65-69	229.9	271.2	193.6	236.3	271.1	205.1	281.1	385.8	200.0
70-74	313.9	376.7	262.1	326.6	382.5	279.5	331.4	465.8	234.9
75-79	383.0	476.7	312.6	396.8	484.3	329.6	388.4	544.6	289.8
80-84	389.5	510.4	311.2	400.7	515.1	325.5	380.0	580.4	273.7
85+	310.0	446.7	243.5	312.4	445.0	247.9	312.6	528.4	227.5

^a Small Cell Cancer of the Lung and Bronchus includes histologies 8041-8045.
^b Non-Small Cell Cancer of the Lung and Bronchus includes histologies 8000-8040, 8046-9049, 9056-9139, 9141-9589.
^c SEER 18 areas. Rates are per 100,000 and are age-adjusted to the 2000 US Std Population (19 age groups - Census P25-1130), unless noted.
^d Rates are per 100,000 and are age-adjusted to the IARC world standard population.
- Statistic not shown. Rate based on less than 16 cases for the time interval.

Table 15.12
Cancer of the Lung and Bronchus (Invasive)

5-Year Relative and Period Survival (Percent) by Race, Sex, Diagnosis Year, Stage and Age

	All Races			Whites			Blacks		
	Total	Males	Females	Total	Males	Females	Total	Males	Females
5-Year Relative Survival (Percent)									
Year of Diagnosis:									
1960-1963 ^a	-	-	-	8	7	11	5	5	6
1970-1973 ^a	-	-	-	10	9	14	7	6	10
1975-1977 ^b	12.2	11.1	15.3	12.2	11.1	15.4	11.3	10.6	13.7
1978-1980 ^b	12.8	11.4	16.3	12.9	11.5	16.2	11.7	9.7	17.7
1981-1983 ^b	13.1	11.5	16.4	13.3	11.7	16.5	11.4	10.2	14.9
1984-1986 ^b	12.8	11.2	16.0	13.0	11.3	16.3	11.1	10.3	12.8
1987-1989 ^b	13.0	11.9	14.9	13.3	12.0	15.3	10.9	10.8	11.1
1990-1992 ^b	13.6	12.1	15.9	13.9	12.4	16.2	10.4	9.3	12.5
1993-1995 ^b	14.3	12.5	16.8	14.5	12.6	17.1	12.8	11.3	15.6
1996-1998 ^b	14.6	12.9	16.8	14.8	13.0	17.0	12.3	10.7	14.8
1999-2002 ^b	15.3	13.2	17.9	15.6	13.5	18.2	12.4	10.8	14.7
2003-2009 ^b	17.5 ^f	15.4 ^f	20.0 ^f	18.0 ^f	15.7 ^f	20.4 ^f	14.2 ^f	13.0 ^f	15.6
5-Year Period Survival (Percent) ^{cd}									
2009	17.3	15.0	19.9	17.6	15.3	20.1	14.3	12.2	16.9
Stage Distribution (%) 2003-2009 ^{ee}									
All Stages									
Number of cases	269,536	144,187	125,349	222,942	117,573	105,369	29,806	16,925	12,881
Percent	100%	100%	100%	100%	100%	100%	100%	100%	100%
Localized	15	14	17	16	14	17	12	11	14
Regional	22	22	22	22	22	22	22	22	22
Distant	57	58	55	56	58	54	61	62	59
Unstaged	6	6	6	6	6	7	5	5	5
5-Year Relative Survival (Percent), 2003-2009 ^c									
Age at Diagnosis:									
Ages <45	27.4	23.7	31.2	29.1	24.7	33.4	22.4	20.8	24.1
Ages 45-54	19.4	15.6	23.8	20.3	16.3	25.0	14.7	12.5	17.5
Ages 55-64	18.8	16.0	22.6	19.3	16.4	23.1	14.9	13.0	18.0
Ages 65-74	17.6	15.0	20.6	17.8	15.3	20.9	14.0	12.6	15.8
Ages 75+	12.2	10.7	13.6	12.5	11.0	13.9	8.4	7.1	9.6
Ages <65	19.5	16.3	23.6	20.2	16.8	24.3	15.3	13.3	18.3
Ages 65+	14.9	13.0	16.9	15.1	13.2	17.2	11.6	10.5	12.9
Stage ^e :									
All Stages	16.6	14.3	19.2	16.9	14.5	19.5	13.5	12.0	15.4
Localized	53.5	48.2	58.5	54.2	48.8	59.2	44.9	41.2	48.8
Regional	26.1	23.7	28.8	26.1	23.9	28.7	23.5	21.7	25.9
Distant	3.9	3.3	4.6	3.8	3.1	4.5	3.7	3.3	4.2
Unstaged	7.8	7.2	8.4	7.3	6.5	8.0	10.9	10.8	11.1

^a Based on End Results data from a series of hospital registries and one population-based registry.

^b SEER 9 areas (San Francisco, Connecticut, Detroit, Hawaii, Iowa, New Mexico, Seattle, Utah, Atlanta).
Based on follow-up of patients into 2010.

^c SEER 18 areas (San Francisco, Connecticut, Detroit, Hawaii, Iowa, New Mexico, Seattle, Utah, Atlanta, San Jose-Monterey, Los Angeles, Alaska Native Registry, Rural Georgia, California excluding SF/SJM/LA, Kentucky, Louisiana, New Jersey and Georgia excluding ATL/RG).
Based on follow-up of patients into 2010.

^d Period survival provides a 2009 estimate of survival by piecing together the most recent conditional survival estimates from several cohorts. It is computed here using three year calendar blocks (2007-2009: 0-1 year survival), (2006-2008: 1-2 year survival), (2005-2007: 2-3 year survival), (2004-2006: 3-4 year survival), (2003-2005: 4-5 years survival).

^e Stage at diagnosis is classified using SEER Summary Stage 2000.

^f The difference between 1975-1977 and 2003-2009 is statistically significant (p<.05).

^g The standard error is between 5 and 10 percentage points.

^h The standard error is greater than 10 percentage points.

- Statistic could not be calculated due to fewer than 25 cases during the time period.

Table 15.13
Small Cell Cancer of the Lung and Bronchus (Invasive)

5-Year Relative and Period Survival (Percent) by Race, Sex, Diagnosis Year, Stage and Age

	All Races			Whites			Blacks		
	Total	Males	Females	Total	Males	Females	Total	Males	Females
5-Year Relative Survival (Percent)									
Year of Diagnosis:									
1975-1977 ^a	3.6	3.1	4.8	3.7	3.1	4.9	3.7	3.8	3.6
1978-1980 ^a	4.2	3.1	6.5	4.3	3.3	6.5	3.1	2.4	5.0
1981-1983 ^a	4.5	3.6	6.2	4.6	3.6	6.1	5.4	4.1	8.4
1984-1986 ^a	4.5	3.5	6.2	4.7	3.6	6.4	3.6	2.2	5.6
1987-1989 ^a	5.0	3.9	6.6	5.1	3.9	6.8	4.0	3.3	5.1
1990-1992 ^a	5.4	4.5	6.4	5.5	4.5	6.6	3.9	3.9	3.9
1993-1995 ^a	6.4	5.2	7.8	6.3	5.1	7.7	6.8	4.5	9.9
1996-1998 ^b	5.9	5.2	6.5	6.1	5.4	6.7	3.6	2.7	4.5
1999-2002 ^a	6.1	4.9	7.4	6.0	4.5	7.6	4.9	5.2	4.6
2003-2009 ^a	6.5 ^e	4.8 ^e	8.2 ^e	6.5 ^e	4.7 ^e	8.2 ^e	6.2 ^e	5.2 ^e	7.4
5-Year Period Survival (Percent) ^{bc}									
2009	6.5	5.1	7.8	6.4	5.0	7.7	6.8	5.6	8.1
Stage Distribution (%) 2003-2009 ^{bd}									
All Stages									
Number of cases	36,162	18,299	17,863	31,621	15,789	15,832	3,089	1,582	1,507
Percent	100%	100%	100%	100%	100%	100%	100%	100%	100%
Localized	5	5	5	5	5	5	5	5	5
Regional	21	19	22	21	19	22	21	18	23
Distant	72	73	70	71	73	70	72	74	69
Unstaged	3	3	3	3	3	3	3	3	2
5-Year Relative Survival (Percent), 2003-2009 ^b									
Age at Diagnosis:									
Ages <45	10.3	9.7	10.8	9.2	9.0	9.5	16.1	16.0 ^f	16.1 ^f
Ages 45-54	9.2	7.3	11.2	8.9	6.8	11.2	8.0	6.8	9.3
Ages 55-64	7.8	5.5	10.5	7.8	5.4	10.5	8.1	6.4	10.2
Ages 65-74	5.9	5.1	6.7	6.0	4.9	6.9	5.0	5.1	4.7
Ages 75+	3.5	2.9	4.1	3.4	2.9	3.9	5.0	3.8	5.6
Ages <65	8.3	6.2	10.7	8.2	5.9	10.7	8.5	7.0	10.4
Ages 65+	4.9	4.2	5.6	4.9	4.1	5.6	5.0	4.6	5.2
Stage ^d :									
All Stages	6.3	5.0	7.7	6.2	4.9	7.6	6.8	6.0	7.6
Localized	23.3	20.5	26.1	23.7	20.6	26.6	20.5	21.2 ^f	18.8 ^f
Regional	14.4	11.9	16.5	14.2	11.5	16.4	16.2	15.1	16.9
Distant	2.8	2.3	3.4	2.7	2.2	3.3	3.1	2.5	3.8
Unstaged	8.3	6.2	10.2	8.1	5.5	10.4	8.7	15.3 ^f	0.0

Note: Small Cell Cancer of the Lung and Bronchus includes histologies 8041-8045.

^a SEER 9 areas (San Francisco, Connecticut, Detroit, Hawaii, Iowa, New Mexico, Seattle, Utah, Atlanta).

Based on follow-up of patients into 2010.

^b SEER 18 areas (San Francisco, Connecticut, Detroit, Hawaii, Iowa, New Mexico, Seattle, Utah, Atlanta, San Jose-Monterey, Los Angeles, Alaska Native Registry, Rural Georgia, California excluding SF/SJM/LA, Kentucky, Louisiana, New Jersey and Georgia excluding ATL/RG).

Based on follow-up of patients into 2010.

^c Period survival provides a 2009 estimate of survival by piecing together the most recent conditional survival estimates from several cohorts. It is computed here using three year calendar blocks (2007-2009: 0-1 year survival), (2006-2008: 1-2 year survival), (2005-2007: 2-3 year survival), (2004-2006: 3-4 year survival), (2003-2005: 4-5 years survival).

^d Stage at diagnosis is classified using SEER Summary Stage 2000.

^e The difference between 1975-1977 and 2003-2009 is statistically significant (p<.05).

^f The standard error is between 5 and 10 percentage points.

^g The standard error is greater than 10 percentage points.

- Statistic could not be calculated due to fewer than 25 cases during the time period.

Table 15.14
Non-Small Cell Cancer of the Lung and Bronchus (Invasive)

5-Year Relative and Period Survival (Percent) by Race, Sex, Diagnosis Year, Stage and Age

	All Races			Whites			Blacks		
	Total	Males	Females	Total	Males	Females	Total	Males	Females
5-Year Relative Survival (Percent)									
Year of Diagnosis:									
1975-1977 ^a	13.6	12.3	17.3	13.7	12.3	17.4	12.3	11.3	15.9
1978-1980 ^a	14.4	12.8	18.4	14.6	13.0	18.4	12.8	10.6	19.6
1981-1983 ^a	14.9	13.0	18.9	15.2	13.3	19.2	12.2	10.9	15.9
1984-1986 ^a	14.6	12.7	18.3	14.9	12.9	18.7	12.2	11.4	14.3
1987-1989 ^a	14.7	13.4	17.0	15.1	13.6	17.5	11.9	11.8	12.2
1990-1992 ^a	15.2	13.4	18.1	15.8	14.0	18.5	11.3	9.9	14.0
1993-1995 ^a	15.8	13.8	18.8	16.2	14.0	19.2	13.6	12.1	16.4
1996-1998 ^b	16.2	14.2	18.8	16.5	14.4	19.2	13.4	11.5	16.4
1999-2002 ^a	16.9	14.5	19.9	17.3	15.0	20.2	13.4	11.4	16.1
2003-2009 ^a	19.3 ^e	16.9 ^e	21.9 ^e	19.9 ^e	17.5 ^e	22.6 ^e	15.1 ^e	13.8 ^e	16.6
5-Year Period Survival (Percent) ^{bc}									
2009	19.0	16.4	21.9	19.5	17.0	22.3	15.1	12.9	18.0
Stage Distribution (%) 2003-2009 ^{bd}									
All Stages									
Number of cases	233,374	125,888	107,486	191,321	101,784	89,537	26,717	15,343	11,374
Percent	100%	100%	100%	100%	100%	100%	100%	100%	100%
Localized	17	15	19	18	16	20	13	12	15
Regional	22	23	22	22	23	22	22	22	22
Distant	54	56	52	53	55	51	59	60	58
Unstaged	6	6	7	7	6	7	5	5	5
5-Year Relative Survival (Percent), 2003-2009 ^b									
Age at Diagnosis:									
Ages <45	29.4	25.3	33.4	31.7	26.9	36.4	23.0	21.2	24.8
Ages 45-54	21.3	17.1	26.3	22.7	18.2	28.1	15.4	13.1	18.5
Ages 55-64	21.0	17.9	25.3	21.8	18.6	26.0	15.7	13.7	19.1
Ages 65-74	19.5	16.5	23.2	20.0	16.9	23.7	15.1	13.4	17.4
Ages 75+	13.2	11.6	14.7	13.6	11.9	15.2	8.7	7.4	10.0
Ages <65	21.6	18.1	26.2	22.7	18.9	27.4	16.1	14.0	19.4
Ages 65+	16.3	14.1	18.6	16.7	14.5	19.0	12.4	11.1	13.9
Stage ^d :									
All Stages	18.2	15.6	21.2	18.7	16.1	21.7	14.3	12.6	16.4
Localized	54.9	49.5	59.9	55.6	50.1	60.6	45.9	41.9	50.2
Regional	27.8	25.2	31.0	28.0	25.5	31.0	24.3	22.2	27.1
Distant	4.1	3.5	4.9	4.0	3.3	4.8	3.8	3.5	4.2
Unstaged	7.8	7.3	8.3	7.2	6.6	7.8	11.0	10.6	11.8

Note: Non-Small Cell Cancer of the Lung and Bronchus includes histologies 8000-8040, 8046-9049, 9056-9139, 9141-9589.

^a SEER 9 areas (San Francisco, Connecticut, Detroit, Hawaii, Iowa, New Mexico, Seattle, Utah, Atlanta).

Based on follow-up of patients into 2010.

^b SEER 18 areas (San Francisco, Connecticut, Detroit, Hawaii, Iowa, New Mexico, Seattle, Utah, Atlanta, San Jose-Monterey, Los Angeles, Alaska Native Registry, Rural Georgia, California excluding SF/SJM/LA, Kentucky, Louisiana, New Jersey and Georgia excluding ATL/RG).

Based on follow-up of patients into 2010.

^c Period survival provides a 2009 estimate of survival by piecing together the most recent conditional survival estimates from several cohorts. It is computed here using three year calendar blocks (2007-2009: 0-1 year survival), (2006-2008: 1-2 year survival), (2005-2007: 2-3 year survival), (2004-2006: 3-4 year survival), (2003-2005: 4-5 years survival).

^d Stage at diagnosis is classified using SEER Summary Stage 2000.

^e The difference between 1975-1977 and 2003-2009 is statistically significant ($p < .05$).

^f The standard error is between 5 and 10 percentage points.

^g The standard error is greater than 10 percentage points.

- Statistic could not be calculated due to fewer than 25 cases during the time period.

Table 15.15
Cancer of the Lung and Bronchus (Invasive)

SEER^a Relative Survival (Percent)
By Year of Diagnosis

All Races, Males and Females

Year of Diagnosis

	1975- 1979	1980- 1984	1985- 1989	1990	1991	1992	1993	1994	1995	1996	1997	1998	1999	2000	2001	2002	2003	2004	2005	2006	2007	2008	2009
Survival Time																							
1-year	35.4	37.2	38.5	38.8	40.0	39.6	39.2	39.6	40.3	39.9	40.4	39.9	41.4	40.8	40.2	40.7	41.9	42.1	43.4	44.0	44.3	45.0	45.5
2-year	21.1	22.0	22.6	23.0	23.3	24.0	24.0	23.9	24.9	24.7	24.7	25.1	25.8	25.8	25.5	26.5	26.5	27.7	28.4	29.4	29.9	30.6	
3-year	16.3	16.9	17.1	17.5	18.3	18.5	18.4	18.6	19.1	19.3	19.3	19.8	19.8	20.3	19.8	20.7	20.7	22.2	22.5	23.5	23.7		
4-year	13.9	14.5	14.6	14.8	15.5	15.7	15.7	15.8	16.5	16.2	16.6	17.0	17.0	17.5	16.7	17.5	17.8	18.8	19.4	19.9			
5-year	12.5	12.9	13.0	13.3	13.6	13.8	14.2	14.2	14.5	14.5	14.7	14.6	15.2	15.7	14.9	15.6	16.0	16.7	17.3				
6-year	11.4	11.7	11.9	12.1	12.6	12.6	12.9	13.0	13.1	13.2	13.3	13.3	13.7	14.2	13.4	14.1	14.4	15.4					
7-year	10.7	10.8	10.8	11.1	11.4	11.6	11.9	11.9	12.3	12.1	12.3	12.2	12.7	12.9	12.3	12.9	13.2						
8-year	10.0	10.0	10.1	10.3	10.5	10.6	11.0	11.1	11.4	11.2	11.3	11.2	11.9	11.9	11.4	11.9							
9-year	9.4	9.2	9.4	9.3	9.9	9.9	10.3	10.3	10.7	10.3	10.4	10.5	11.0	11.2	10.6								
10-year	8.8	8.6	8.8	8.6	9.3	9.2	9.4	9.6	10.0	9.4	9.8	9.9	10.5	10.4									
11-year	8.3	8.1	8.2	8.0	8.7	8.5	8.7	9.0	9.4	8.8	9.1	9.4	9.7										
12-year	7.8	7.7	7.7	7.5	8.1	8.1	8.1	8.3	8.9	8.3	8.4	8.8											
13-year	7.4	7.2	7.2	7.2	7.5	7.6	7.6	7.8	8.2	8.0	7.9												
14-year	7.1	6.8	6.8	6.8	6.8	7.4	7.2	7.3	7.6	7.6													
15-year	6.6	6.4	6.4	6.5	6.4	6.9	6.7	7.0	7.3														
16-year	6.3	6.0	6.1	6.0	5.8	6.5	6.4	6.4															
17-year	6.0	5.6	5.7	5.7	5.6	6.2	5.9																
18-year	5.7	5.3	5.3	5.4	5.2	5.7																	
19-year	5.4	5.0	4.9	5.1	4.9																		
20-year	5.1	4.6	4.7	4.8																			
21-year	4.9	4.3	4.5																				
22-year	4.6	4.1																					
23-year	4.4	3.8																					
24-year	4.2	3.6																					
25-year	4.0	3.4																					
26-year	3.8	3.3																					
27-year	3.6																						
28-year	3.5																						
29-year	3.3																						
30-year	3.2																						

^a Based on the SEER 9 areas (San Francisco, Connecticut, Detroit, Hawaii, Iowa, New Mexico, Seattle, Utah, and Atlanta).

Table 15.16
Cancer of the Lung and Bronchus (Invasive)

SEER^a Relative Survival (Percent)
By Year of Diagnosis

All Races, Males

Year of Diagnosis

	1975- 1979	1980- 1984	1985- 1989	1990	1991	1992	1993	1994	1995	1996	1997	1998	1999	2000	2001	2002	2003	2004	2005	2006	2007	2008	2009
Survival Time																							
1-year	33.4	35.4	36.5	36.5	37.8	37.7	36.7	37.2	38.0	38.0	38.0	37.0	38.2	38.6	36.9	37.1	39.4	39.0	39.9	41.3	40.8	41.8	42.5
2-year	19.5	20.2	21.0	20.9	21.4	22.5	21.7	21.5	23.1	23.0	23.0	22.6	22.7	23.7	22.1	23.1	23.7	24.7	24.8	26.8	26.1	27.5	
3-year	14.8	15.3	15.6	15.6	16.7	17.2	16.1	16.2	17.4	17.8	17.7	17.4	16.7	18.2	17.2	17.9	18.1	19.5	19.4	20.8	20.7		
4-year	12.5	12.9	13.1	13.1	13.7	14.3	13.6	13.6	14.8	14.6	15.0	14.7	14.1	15.6	14.2	15.0	15.5	16.6	16.5	17.3			
5-year	11.1	11.4	11.6	11.5	12.0	12.7	12.2	12.2	13.1	13.1	13.3	12.4	12.6	14.1	12.7	13.5	14.1	14.8	14.8				
6-year	10.1	10.4	10.6	10.5	11.2	11.4	11.1	10.9	11.8	11.7	11.9	11.0	11.2	12.6	11.5	12.1	12.6	13.5					
7-year	9.4	9.5	9.7	9.6	10.0	10.4	10.2	10.0	11.2	10.6	10.8	10.1	10.3	11.3	10.4	11.1	11.6						
8-year	8.8	8.7	9.0	8.8	9.1	9.4	9.2	9.2	10.2	9.8	10.0	9.1	9.5	10.7	9.5	10.0							
9-year	8.2	8.0	8.4	7.7	8.6	8.7	8.7	8.7	9.6	9.1	9.2	8.5	8.7	9.9	8.9								
10-year	7.7	7.4	7.9	7.2	8.1	8.0	8.0	8.1	8.8	8.2	8.6	8.0	8.4	9.1									
11-year	7.2	7.0	7.3	6.6	7.5	7.3	7.2	7.7	8.3	7.5	7.9	7.5	7.7										
12-year	6.7	6.6	6.8	6.1	7.0	7.0	6.7	6.9	8.0	6.9	7.2	7.0											
13-year	6.3	6.2	6.3	5.8	6.4	6.5	6.0	6.6	7.2	6.7	6.8												
14-year	6.0	5.8	6.0	5.5	5.8	6.3	5.7	6.0	6.9	6.4													
15-year	5.6	5.5	5.6	5.1	5.3	6.0	5.3	5.8	6.4														
16-year	5.3	5.1	5.3	4.7	4.9	5.5	5.1	5.3															
17-year	5.1	4.7	4.9	4.4	4.7	5.3	4.8																
18-year	4.7	4.4	4.5	4.3	4.4	4.8																	
19-year	4.5	4.2	4.1	4.2	4.2																		
20-year	4.2	3.8	3.9	3.7																			
21-year	4.1	3.6	3.6																				
22-year	3.9	3.4																					
23-year	3.7	3.1																					
24-year	3.4	2.9																					
25-year	3.3	2.8																					
26-year	3.1	2.6																					
27-year	2.8																						
28-year	2.8																						
29-year	2.7																						
30-year	2.6																						

^a Based on the SEER 9 areas (San Francisco, Connecticut, Detroit, Hawaii, Iowa, New Mexico, Seattle, Utah, and Atlanta).

Table 15.17
Cancer of the Lung and Bronchus (Invasive)

SEER^a Relative Survival (Percent)
By Year of Diagnosis

All Races, Females

Year of Diagnosis

	1975- 1979	1980- 1984	1985- 1989	1990	1991	1992	1993	1994	1995	1996	1997	1998	1999	2000	2001	2002	2003	2004	2005	2006	2007	2008	2009
Survival Time																							
1-year	40.4	41.3	42.2	42.4	43.2	42.6	42.9	42.9	43.5	42.4	43.3	43.6	45.4	43.6	44.2	45.0	44.8	45.7	47.3	47.1	48.0	48.5	48.8
2-year	25.3	25.7	25.5	26.4	26.2	26.3	27.2	27.3	27.3	26.9	26.9	28.3	29.5	28.5	29.7	30.6	29.8	31.1	32.3	32.4	34.1	34.1	
3-year	20.2	20.5	19.6	20.5	20.8	20.5	21.8	21.8	21.6	21.4	21.3	22.9	23.6	22.8	22.9	24.1	23.7	25.4	25.9	26.5	27.0		
4-year	17.7	17.8	17.2	17.6	18.2	17.8	18.7	18.9	18.8	18.3	18.5	19.9	20.5	19.9	19.9	20.5	20.6	21.3	22.6	22.8			
5-year	16.1	16.0	15.3	16.0	16.0	15.6	17.2	17.0	16.4	16.5	16.5	17.4	18.3	17.6	17.7	18.0	18.2	18.8	20.0				
6-year	14.9	14.6	14.1	14.6	14.8	14.4	15.6	15.8	15.0	15.1	15.1	16.1	16.8	16.1	15.8	16.5	16.6	17.4					
7-year	14.0	13.6	12.9	13.4	13.6	13.4	14.4	14.5	13.9	14.0	14.1	14.9	15.6	14.9	14.6	15.1	15.1						
8-year	13.1	12.8	11.9	12.7	12.7	12.5	13.5	13.6	13.1	13.0	12.8	13.8	14.8	13.5	13.7	14.0							
9-year	12.4	11.8	11.1	11.8	12.0	11.7	12.6	12.5	12.3	11.9	11.9	13.0	13.8	12.7	12.7								
10-year	11.6	11.1	10.4	10.9	11.1	11.0	11.5	11.7	11.6	11.0	11.2	12.3	13.1	11.8									
11-year	11.1	10.5	9.8	10.3	10.5	10.3	10.9	10.9	11.0	10.6	10.6	11.7	12.1										
12-year	10.6	9.9	9.2	9.5	9.8	9.7	10.2	10.1	10.1	10.0	9.9	11.1											
13-year	10.2	9.3	8.7	9.2	9.1	9.3	9.9	9.5	9.4	9.6	9.3												
14-year	9.6	8.9	8.2	8.7	8.4	8.9	9.4	9.1	8.7	9.1													
15-year	9.1	8.4	7.8	8.5	7.9	8.3	8.7	8.5	8.4														
16-year	8.9	8.0	7.4	8.1	7.3	8.0	8.3	7.8															
17-year	8.4	7.7	7.0	7.4	6.9	7.5	7.5																
18-year	8.0	7.2	6.7	7.1	6.3	7.1																	
19-year	7.7	6.6	6.2	6.5	6.0																		
20-year	7.4	6.2	6.0	6.4																			
21-year	6.9	5.8	5.8																				
22-year	6.5	5.5																					
23-year	6.2	5.2																					
24-year	6.0	5.1																					
25-year	5.7	4.8																					
26-year	5.5	4.5																					
27-year	5.4																						
28-year	5.1																						
29-year	4.9																						
30-year	4.5																						

^a Based on the SEER 9 areas (San Francisco, Connecticut, Detroit, Hawaii, Iowa, New Mexico, Seattle, Utah, and Atlanta).

Table 15.18
Cancer of the Lung and Bronchus (Invasive)

Risk of Being Diagnosed With Cancer in 10, 20 and 30 Years,
Lifetime Risk of Being Diagnosed with Cancer Given Alive and Cancer-Free at Current Age, and
Lifetime Risk of Dying from Cancer Given Alive at Current Age
Both Sexes, 2008-2010 By Race/Ethnicity

Race/ Ethnicity	Current Age	Risk of Being Diagnosed with Cancer				Risk of Dying from Cancer	Race/ Ethnicity	Current Age	Risk of Being Diagnosed with Cancer				Risk of Dying from Cancer
		+10 yrs	+20 yrs	+30 yrs	Ever				+10 yrs	+20 yrs	+30 yrs	Ever	
All Races	0	0.00	0.00	0.01	6.88	5.75	Asian/ Pacific Islander	0	0.00	0.00	0.01	5.62	4.30
	10	0.00	0.01	0.03	6.96	5.82		10	0.00	0.00	0.03	5.67	4.33
	20	0.00	0.03	0.19	6.99	5.84		20	0.00	0.03	0.12	5.68	4.34
	30	0.02	0.19	0.82	7.04	5.89		30	0.02	0.12	0.50	5.69	4.35
	40	0.16	0.81	2.52	7.10	5.96		40	0.09	0.48	1.50	5.70	4.36
	50	0.66	2.42	5.07	7.13	6.00		50	0.39	1.42	3.25	5.68	4.36
	60	1.87	4.69	6.53	6.87	5.83		60	1.06	2.95	4.75	5.45	4.24
	70	3.22	5.32	-	5.71	4.98		70	2.03	3.98	-	4.73	3.88
80	2.87	-	-	3.41	3.20	80	2.36	-	-	3.27	2.94		
White	0	0.00	0.00	0.01	7.06	5.88	American Indian/ Alaska Native ^a	0	0.00	0.00	0.00	4.57	4.34
	10	0.00	0.01	0.03	7.13	5.95		10	0.00	0.00	0.01	4.63	4.41
	20	0.01	0.03	0.19	7.15	5.97		20	0.00	0.01	0.12	4.66	4.44
	30	0.02	0.19	0.82	7.21	6.02		30	0.01	0.12	0.52	4.73	4.52
	40	0.16	0.80	2.56	7.27	6.08		40	0.11	0.52	1.66	4.83	4.64
	50	0.66	2.46	5.23	7.30	6.12		50	0.43	1.62	3.46	4.91	4.79
	60	1.92	4.85	6.72	7.05	5.95		60	1.28	3.26	4.45	4.81	4.78
	70	3.35	5.47	-	5.85	5.08		70	2.28	3.65	-	4.07	4.21
80	2.93	-	-	3.44	3.23	80	1.88	-	-	2.46	2.83		
Black	0	0.00	0.00	0.01	6.56	5.25	Hispanic ^b	0	0.00	0.00	0.00	4.41	3.05
	10	0.00	0.00	0.03	6.71	5.37		10	0.00	0.00	0.02	4.45	3.08
	20	0.00	0.03	0.25	6.74	5.40		20	0.00	0.02	0.08	4.47	3.09
	30	0.03	0.25	1.15	6.83	5.47		30	0.01	0.08	0.34	4.49	3.11
	40	0.22	1.15	3.05	6.94	5.57		40	0.06	0.33	1.17	4.52	3.13
	50	0.96	2.95	5.36	7.00	5.64		50	0.27	1.13	2.68	4.54	3.16
	60	2.20	4.86	6.38	6.68	5.45		60	0.90	2.52	3.99	4.47	3.12
	70	3.25	5.11	-	5.46	4.60		70	1.79	3.42	-	3.95	2.83
80	2.78	-	-	3.31	3.05	80	2.07	-	-	2.75	2.08		

Devcan 6.7.0, June 2013, National Cancer Institute (<http://surveillance.cancer.gov/devcan/>).

Source: Incidence data are from the SEER 18 areas (San Francisco, Connecticut, Detroit, Hawaii, Iowa, New Mexico, Seattle, Utah, Atlanta, San Jose-Monterey, Los Angeles, Alaska Native Registry, Rural Georgia, California excluding SF/SJM/LA, Kentucky, Louisiana, New Jersey, and Georgia excluding ATL/RG). Mortality data are from the NCHS public use data file for the total US.

^a Underlying incidence and mortality data for American Indian/Alaska Native are based on the CHSDA (Contract Health Service Delivery Area) counties.

^b Hispanic is not mutually exclusive from whites, blacks, Asian/Pacific Islanders, and American Indians/Alaska Natives. Underlying incidence data for Hispanics are based on NHIA and exclude cases from the Alaska Native Registry. Underlying mortality data for Hispanics exclude deaths from the District of Columbia, Minnesota, New Hampshire, North Dakota and South Carolina.

- Statistic could not be calculated.
A percent of 0.00 represents a value that is below 0.005.

Table 15.19
Cancer of the Lung and Bronchus (Invasive)

Risk of Being Diagnosed With Cancer in 10, 20 and 30 Years,
Lifetime Risk of Being Diagnosed with Cancer Given Alive and Cancer-Free at Current Age, and
Lifetime Risk of Dying from Cancer Given Alive at Current Age
Males, 2008-2010 By Race/Ethnicity

Race/ Ethnicity	Current Age	Risk of Being Diagnosed with Cancer				Risk of Dying from Cancer	Race/ Ethnicity	Current Age	Risk of Being Diagnosed with Cancer				Risk of Dying from Cancer
		+10 yrs	+20 yrs	+30 yrs	Ever				+10 yrs	+20 yrs	+30 yrs	Ever	
All Races	0	0.00	0.00	0.01	7.62	6.61	Asian/ Pacific Islander	0	0.00	0.00	0.00	7.08	5.53
	10	0.00	0.01	0.03	7.72	6.70		10	0.00	0.00	0.03	7.14	5.57
	20	0.00	0.03	0.18	7.75	6.73		20	0.00	0.03	0.12	7.16	5.58
	30	0.02	0.18	0.89	7.84	6.82		30	0.02	0.12	0.58	7.19	5.61
	40	0.16	0.88	2.80	7.94	6.92		40	0.10	0.56	1.85	7.23	5.63
	50	0.74	2.73	5.73	8.04	7.03		50	0.47	1.78	4.12	7.24	5.65
	60	2.15	5.38	7.50	7.88	6.93		60	1.37	3.80	6.20	7.05	5.54
	70	3.81	6.29	-	6.74	6.07		70	2.67	5.31	-	6.24	5.13
80	3.63	-	-	4.28	4.14	80	3.36	-	-	4.55	4.03		
White	0	0.00	0.00	0.01	7.66	6.67	American Indian/ Alaska Native ^a	0	0.00	0.00	0.00	5.02	4.76
	10	0.00	0.01	0.03	7.74	6.76		10	0.00	0.00	0.00	5.09	4.84
	20	0.00	0.03	0.18	7.78	6.79		20	0.00	0.00	0.09	5.13	4.89
	30	0.02	0.18	0.86	7.86	6.87		30	0.00	0.09	0.48	5.24	5.01
	40	0.16	0.85	2.78	7.96	6.97		40	0.09	0.49	1.71	5.40	5.19
	50	0.71	2.70	5.77	8.06	7.07		50	0.42	1.70	3.88	5.57	5.42
	60	2.15	5.44	7.56	7.91	6.98		60	1.39	3.75	5.17	5.60	5.52
	70	3.87	6.34	-	6.76	6.11		70	2.80	4.48	-	4.98	4.95
80	3.63	-	-	4.24	4.13	80	2.43	-	-	3.17	3.18		
Black	0	0.00	0.00	0.01	7.87	6.59	Hispanic ^b	0	0.00	0.00	0.00	5.05	4.03
	10	0.00	0.01	0.03	8.06	6.75		10	0.00	0.00	0.02	5.11	4.08
	20	0.00	0.03	0.26	8.12	6.80		20	0.00	0.02	0.08	5.13	4.10
	30	0.03	0.26	1.39	8.28	6.93		30	0.01	0.07	0.35	5.18	4.14
	40	0.23	1.39	3.81	8.47	7.10		40	0.06	0.34	1.28	5.23	4.18
	50	1.22	3.76	6.73	8.66	7.27		50	0.29	1.25	3.15	5.30	4.25
	60	2.88	6.25	8.12	8.43	7.17		60	1.03	3.03	4.79	5.32	4.26
	70	4.35	6.76	-	7.16	6.27		70	2.27	4.27	-	4.87	3.96
80	4.00	-	-	4.66	4.43	80	2.70	-	-	3.50	2.99		

Devcan 6.7.0, June 2013, National Cancer Institute (<http://surveillance.cancer.gov/devcan/>).

Source: Incidence data are from the SEER 18 areas (San Francisco, Connecticut, Detroit, Hawaii, Iowa, New Mexico, Seattle, Utah, Atlanta, San Jose-Monterey, Los Angeles, Alaska Native Registry, Rural Georgia, California excluding SF/SJM/LA, Kentucky, Louisiana, New Jersey, and Georgia excluding ATL/RG). Mortality data are from the NCHS public use data file for the total US.

^a Underlying incidence and mortality data for American Indian/Alaska Native are based on the CHSDA (Contract Health Service Delivery Area) counties.

^b Hispanic is not mutually exclusive from whites, blacks, Asian/Pacific Islanders, and American Indians/Alaska Natives. Underlying incidence data for Hispanics are based on NHIA and exclude cases from the Alaska Native Registry. Underlying mortality data for Hispanics exclude deaths from the District of Columbia, Minnesota, New Hampshire, North Dakota and South Carolina.

- Statistic could not be calculated.

A percent of 0.00 represents a value that is below 0.005.

Table 15.20
Cancer of the Lung and Bronchus (Invasive)

Risk of Being Diagnosed With Cancer in 10, 20 and 30 Years,
Lifetime Risk of Being Diagnosed with Cancer Given Alive and Cancer-Free at Current Age, and
Lifetime Risk of Dying from Cancer Given Alive at Current Age
Females, 2008-2010 By Race/Ethnicity

Race/ Ethnicity	Current Age	Risk of Being Diagnosed with Cancer				Risk of Dying from Cancer	Race/ Ethnicity	Current Age	Risk of Being Diagnosed with Cancer				Risk of Dying from Cancer
		+10 yrs	+20 yrs	+30 yrs	Ever				+10 yrs	+20 yrs	+30 yrs	Ever	
All Races	0	0.00	0.00	0.01	6.26	4.99	Asian/ Pacific Islander	0	0.00	0.00	0.01	4.42	3.31
	10	0.00	0.01	0.03	6.32	5.05		10	0.00	0.01	0.03	4.45	3.33
	20	0.00	0.03	0.19	6.34	5.06		20	0.00	0.03	0.12	4.45	3.34
	30	0.02	0.19	0.76	6.36	5.09		30	0.02	0.11	0.44	4.46	3.34
	40	0.17	0.74	2.25	6.39	5.12		40	0.09	0.42	1.19	4.45	3.34
	50	0.59	2.12	4.48	6.36	5.11		50	0.33	1.11	2.54	4.40	3.32
	60	1.61	4.08	5.71	6.04	4.92		60	0.80	2.26	3.60	4.17	3.22
	70	2.74	4.56	-	4.93	4.15		70	1.55	2.97	-	3.57	2.94
80	2.37	-	-	2.86	2.60	80	1.67	-	-	2.37	2.18		
White	0	0.00	0.00	0.01	6.56	5.19	American Indian/ Alaska Native ^a	0	0.00	0.00	0.01	4.21	3.96
	10	0.00	0.01	0.03	6.62	5.24		10	0.00	0.01	0.02	4.26	4.01
	20	0.01	0.03	0.20	6.63	5.25		20	0.01	0.02	0.15	4.28	4.03
	30	0.02	0.19	0.77	6.66	5.28		30	0.01	0.15	0.55	4.31	4.08
	40	0.17	0.76	2.35	6.69	5.31		40	0.14	0.55	1.62	4.37	4.15
	50	0.60	2.23	4.73	6.65	5.30		50	0.43	1.54	3.11	4.38	4.23
	60	1.70	4.32	6.01	6.33	5.09		60	1.18	2.84	3.86	4.18	4.15
	70	2.91	4.78	-	5.14	4.28		70	1.87	3.02	-	3.38	3.63
80	2.46	-	-	2.93	2.64	80	1.51	-	-	1.99	2.60		
Black	0	0.00	0.00	0.00	5.46	4.14	Hispanic ^b	0	0.00	0.00	0.01	3.90	2.24
	10	0.00	0.00	0.03	5.57	4.23		10	0.00	0.00	0.02	3.94	2.27
	20	0.00	0.03	0.24	5.58	4.24		20	0.00	0.02	0.09	3.95	2.27
	30	0.02	0.24	0.93	5.62	4.27		30	0.01	0.08	0.34	3.95	2.28
	40	0.22	0.92	2.39	5.68	4.32		40	0.07	0.33	1.08	3.96	2.28
	50	0.73	2.25	4.20	5.65	4.33		50	0.26	1.02	2.29	3.94	2.28
	60	1.64	3.75	5.03	5.32	4.15		60	0.79	2.10	3.34	3.81	2.22
	70	2.46	3.96	-	4.30	3.49		70	1.42	2.77	-	3.27	2.00
80	2.10	-	-	2.57	2.33	80	1.65	-	-	2.26	1.50		

Devcan 6.7.0, June 2013, National Cancer Institute (<http://surveillance.cancer.gov/devcan/>).

Source: Incidence data are from the SEER 18 areas (San Francisco, Connecticut, Detroit, Hawaii, Iowa, New Mexico, Seattle, Utah, Atlanta, San Jose-Monterey, Los Angeles, Alaska Native Registry, Rural Georgia, California excluding SF/SJM/LA, Kentucky, Louisiana, New Jersey, and Georgia excluding ATL/RG). Mortality data are from the NCHS public use data file for the total US.

^a Underlying incidence and mortality data for American Indian/Alaska Native are based on the CHSDA (Contract Health Service Delivery Area) counties.

^b Hispanic is not mutually exclusive from whites, blacks, Asian/Pacific Islanders, and American Indians/Alaska Natives. Underlying incidence data for Hispanics are based on NHIA and exclude cases from the Alaska Native Registry. Underlying mortality data for Hispanics exclude deaths from the District of Columbia, Minnesota, New Hampshire, North Dakota and South Carolina.

- Statistic could not be calculated.

A percent of 0.00 represents a value that is below 0.005.

Table 15.21
Lung and Bronchus (Invasive)

SEER Incidence and U.S. Mortality
Age-Adjusted Rates and Trends^a
By Race/Ethnicity and Sex

SEER Incidence	SEER 18 Areas ^b			SEER 13 Areas ^b			SEER 9 Areas ^b		
	Rate 2006-2010			Trend 2001-2010 ^c			Trend 2001-2010 ^d		
	Rate per 100,000 persons			AAPC (%)			AAPC (%)		
RACE/ETHNICITY	Total	Males	Females	Total	Males	Females	Total	Males	Females
All Races	61.4	74.3	51.9	-1.6*	-2.0*	-0.9*	-1.3*	-1.8*	-0.6
White	63.1	74.5	54.6	-1.5*	-1.9*	-1.0*	-1.3*	-1.8*	-0.6
White Hispanic ^e	33.2	41.9	27.0	-1.2*	-1.9*	-0.2	-	-	-
White Non-Hispanic ^e	67.4	79.1	58.7	-1.3*	-1.8*	-0.9	-	-	-
Black	69.7	95.8	52.2	-1.5*	-2.6*	-0.7	-1.1*	-2.1*	0.2
Asian/Pacific Islander	37.6	50.7	28.1	-1.3*	-2.1*	0.2	-	-	-
Amer Ind/Alaska Nat ^f	42.1	51.2	35.7	-0.4	-1.2	0.9	-	-	-
Hispanic ^e	32.2	40.6	26.3	-1.1*	-1.9*	-0.2	-	-	-
<u>U.S. Mortality^g</u>									
	Rate 2006-2010			Trend 2001-2010 ^h					
	Rate per 100,000 persons			AAPC (%)					
RACE/ETHNICITY	Total	Males	Females	Total	Males	Females			
All Races	49.5	63.5	39.2	-1.7*	-2.5*	-0.8*			
White	50.2	63.2	40.4	-1.5*	-2.3*	-0.7*			
White Hispanic ^e	22.2	32.6	14.8	-2.1*	-2.4*	-1.2*			
White Non-Hispanic ^e	52.6	65.7	42.7	-1.4*	-2.2*	-0.6*			
Black	53.5	78.5	37.2	-2.4*	-3.2*	-1.2*			
Asian/Pacific Islander	25.5	35.5	18.4	-1.1*	-1.5*	-0.4*			
Amer Ind/Alaska Nat									
Total U.S.	33.0	41.2	26.8	-0.8*	-1.9*	-1.1			
CHSDA Counties	40.2	49.6	33.1	0.0	-1.0*	-0.5			
Non-CHSDA Counties	24.3	31.1	19.0	-1.9*	-3.1*	-1.7*			
Hispanic ^e	21.3	31.3	14.1	-2.2*	-2.7*	-1.2*			

The AAPC is the Average Annual Percent Change over the time interval. The AAPCs are calculated by the Joinpoint Regression Program Version 4.0.3, April 2013, National Cancer Institute.

- Statistic not shown. Rate based on less than 16 cases for the time interval.

Trend based on less than 10 cases for at least one year within the time interval.

a Rates are age-adjusted to the 2000 US Std Population (19 age groups - Census P25-1130). Trends

are based on rates age-adjusted to the 2000 US Std Population (19 age groups - Census P25-1130).

b The SEER 9 areas are San Francisco, Connecticut, Detroit, Hawaii, Iowa, New Mexico, Seattle, Utah, and Atlanta.

The SEER 13 areas comprise the SEER 9 areas plus San Jose-Monterey, Los Angeles, the Alaska Native Registry, and Rural Georgia.

The SEER 18 areas comprise the SEER 13 areas plus California excluding SF/SJM/LA, Kentucky, Louisiana, New Jersey, and Georgia excluding ATL/RG.

c The 2001-2010 AAPC estimates are based on a Joinpoint analysis with up to 3 Joinpoints over diagnosis years 1992-2010.

d The 2001-2010 AAPC estimates are based on a Joinpoint analysis with up to 5 Joinpoints over diagnosis years 1975-2010.

e Hispanic and Non-Hispanic are not mutually exclusive from whites, blacks, Asian/Pacific Islanders, and American Indians/Alaska Natives. Incidence data for Hispanics and Non-Hispanics are based on NHIA and exclude cases from the Alaska Native Registry. The 2006-2010 Hispanic and Non-Hispanic death rates exclude deaths from the District of Columbia, North Dakota, and South Carolina. The 2001-2010 Hispanic and Non-Hispanic mortality trends exclude deaths from Connecticut, the District of Columbia, Maine, Maryland, Minnesota, New Hampshire, New York, North Dakota, Oklahoma, South Carolina and Vermont.

f Incidence data for American Indian/Alaska Native are based on the CHSDA(Contract Health Service Delivery Area) counties.

g US Mortality Files, National Center for Health Statistics, CDC.

h The 2001-2010 mortality AAPCs are based on a Joinpoint analysis using years of death 1992-2010.

* The APC is significantly different from zero (p<.05).

Table 15.22
Cancer of the Lung And Bronchus (Invasive)

Age-Adjusted SEER Incidence Rates^a
By Registry, Race and Sex

	All Races			Whites			Blacks		
	Total	Males	Females	Total	Males	Females	Total	Males	Females
<u>SEER Incidence Rates^a, 2006-2010</u>									
California	51.19	60.36	44.37	52.89	60.82	46.98	63.78	81.09	51.67
Greater Bay Area	48.19	55.59	42.82	49.45	54.17	46.10	70.52	85.01	60.51
San Francisco-Oakland	50.52	58.50	44.71	51.30	55.86	48.06	72.73	88.38	62.20
San Jose-Monterey	43.61	49.91	39.06	46.20	51.21	42.67	54.14	61.41	47.32
Los Angeles	44.51	54.86	36.89	44.49	53.00	38.14	62.18	82.33	48.96
Greater California	55.30	64.46	48.43	57.09	65.63	50.68	62.19	77.87	50.19
Connecticut	66.07	75.48	59.53	66.92	75.16	61.34	60.34	80.49	46.26
Detroit	80.09	96.34	68.85	79.50	93.03	70.31	86.79	115.31	67.96
Georgia	71.01	93.27	55.03	74.54	94.15	60.05	62.45	94.50	42.58
Atlanta	58.95	73.19	49.07	60.00	69.92	52.94	59.74	86.52	44.03
Rural Georgia	74.21	110.76	46.49	81.61	113.39	55.85	58.72	103.31	29.82
Greater Georgia	76.12	101.00	58.07	79.42	101.93	62.73	64.75	99.48	42.45
Hawaii	49.97	64.30	38.65	55.12	62.62	48.51	46.31	55.48	-
Iowa	67.60	84.73	54.90	67.35	84.42	54.71	101.33	128.45	82.08
Kentucky	99.59	125.93	80.31	99.75	125.59	80.69	106.85	144.17	82.88
Louisiana	75.67	99.57	57.68	74.94	94.49	59.97	79.54	118.43	53.02
New Jersey	62.36	72.78	55.32	64.32	73.78	58.05	62.36	81.84	50.03
New Mexico	44.67	52.93	38.07	46.49	54.44	40.12	61.50	89.57	35.65
Seattle-Puget Sound	65.58	74.61	59.02	66.70	74.61	61.02	71.89	88.45	58.63
Utah	28.13	34.07	23.24	27.99	33.98	23.07	55.49	-	60.35
9 SEER Areas ^b	60.01	71.22	51.80	60.86	70.34	53.96	72.36	96.24	56.44
11 SEER Areas ^b	55.66	66.43	47.76	56.74	65.83	50.09	69.49	92.06	54.41
13 SEER Areas ^b	55.80	66.69	47.80	56.82	65.99	50.11	69.31	92.21	54.03
18 SEER Areas ^b	61.44	74.34	51.92	63.05	74.54	54.56	69.68	95.78	52.19

^a Rates are per 100,000 and are age-adjusted to the 2000 US Std Population (19 age groups - Census P25-1130)

^b The SEER 9 areas are San Francisco, Connecticut, Detroit, Hawaii, Iowa, New Mexico, Seattle, Utah and Atlanta.

The SEER 11 areas comprise the SEER 9 areas plus San Jose-Monterey and Los Angeles.

The SEER 13 areas comprise the SEER 11 areas plus the Alaska Native Registry and Rural Georgia.

The SEER 18 areas comprise the SEER 13 areas plus California excluding SF/SJM/LA, Kentucky, Louisiana, New Jersey and Georgia excluding ATL/RG.

- Statistic not shown. Rate based on less than 16 cases for the time interval.

Table 15.23
Cancer of the Lung And Bronchus (Invasive)

Age-Adjusted SEER Death Rates^a
By Registry, Race and Sex

	All Races			Whites			Blacks		
	Total	Males	Females	Total	Males	Females	Total	Males	Females
<u>SEER Death Rates^a, 2006-2010</u>									
California	38.69	47.22	32.32	40.05	47.64	34.35	50.89	67.19	39.35
Greater Bay Area	35.12	41.63	30.40	36.11	40.55	32.91	55.31	70.81	44.45
San Francisco-Oakland	36.46	43.37	31.48	37.01	41.24	33.98	57.10	74.03	45.50
San Jose-Monterey	32.48	38.25	28.25	34.55	39.36	31.04	42.52	49.00	36.97
Los Angeles	34.51	44.46	27.20	34.18	42.36	28.09	51.20	69.80	39.10
Greater California	41.85	50.39	35.40	43.41	51.63	37.20	47.83	61.94	36.65
Connecticut	44.17	52.72	38.23	44.78	52.71	39.32	41.96	58.59	31.02
Detroit	55.37	69.81	45.32	54.51	67.21	45.73	61.79	84.61	46.83
Georgia	52.92	73.12	38.72	55.15	73.70	41.66	48.10	74.98	31.80
Atlanta	42.87	55.71	34.17	42.82	52.79	35.80	45.95	68.11	33.35
Rural Georgia	54.00	84.90	31.61	56.80	84.03	35.87	48.36	87.16	24.33
Greater Georgia	57.15	79.81	41.01	59.33	80.50	43.85	49.90	79.15	31.44
Hawaii	35.96	48.76	25.90	42.79	50.04	36.45	39.84	52.35	-
Iowa	49.33	64.06	38.34	49.29	63.94	38.37	71.93	97.23	52.04
Kentucky	73.17	97.05	55.80	73.19	96.70	55.97	80.75	114.09	59.08
Louisiana	59.40	80.90	43.63	58.45	76.12	45.32	63.66	98.45	40.32
New Jersey	44.79	55.78	37.25	46.27	56.72	39.09	46.30	65.48	34.47
New Mexico	35.11	43.36	28.57	36.62	44.78	30.14	48.24	73.98	25.54
Seattle-Puget Sound	47.41	55.62	41.37	48.62	56.19	43.03	54.12	65.29	44.77
Utah	21.60	27.54	16.76	21.43	27.27	16.67	53.38	68.38	-
9 SEER Areas ^b	42.89	52.99	35.49	43.56	52.49	37.00	53.44	73.54	40.20
11 SEER Areas ^b	40.45	50.29	33.23	41.17	49.75	34.84	52.74	72.23	39.87
13 SEER Areas ^b	40.64	50.54	33.36	41.33	49.95	34.95	52.63	72.36	39.63
18 SEER Areas ^b	45.40	57.27	36.64	46.57	57.45	38.49	53.41	76.45	38.15
Total U.S.	49.52	63.48	39.18	50.18	63.25	40.41	53.51	78.48	37.21

^a US Mortality Files, National Center for Health Statistics, Centers for Disease Control and Prevention. Rates are per 100,000 and are age-adjusted to the 2000 US Std Population (19 age groups - Census P25-1130).

^b The SEER 9 areas are San Francisco, Connecticut, Detroit, Hawaii, Iowa, New Mexico, Seattle, Utah and Atlanta. The SEER 11 areas comprise the SEER 9 areas plus San Jose-Monterey and Los Angeles.

The SEER 13 areas comprise the SEER 11 areas plus the Alaska Native Registry and Rural Georgia.

The SEER 18 areas comprise the SEER 13 areas plus California excluding SF/SJM/LA, Kentucky, Louisiana, New Jersey and Georgia excluding ATL/RG.

- Statistic not shown. Rate based on less than 16 cases for the time interval.

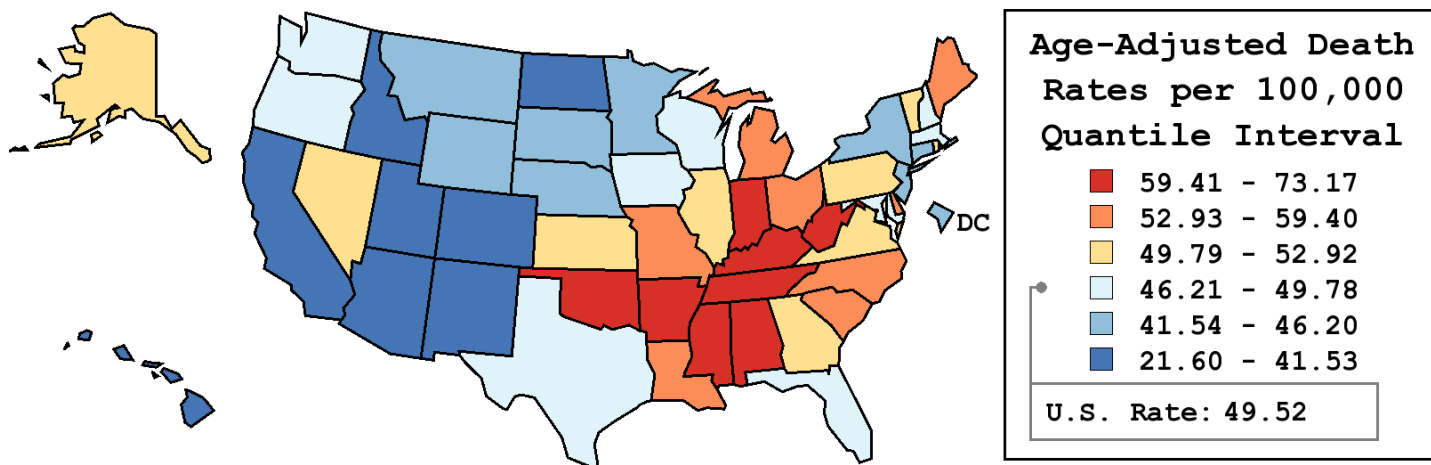
Table 15.24
Cancer of the Lung and Bronchus (Invasive)

Age-Adjusted Cancer Death^a Rates By State, All Races, 2006-2010

Males and Females

State	Rate	SE	Rank	PD
TOTAL U.S.	49.52	0.06		
High Five States				
Kentucky	73.17	0.57	(01)	47.76 ^c
West Virginia	65.22	0.75	(02)	31.71 ^c
Arkansas	64.60	0.63	(03)	30.47 ^c
Tennessee	64.50	0.44	(04)	30.26 ^c
Mississippi	64.29	0.65	(05)	29.84 ^c
Low Five States				
California	38.69	0.15	(47)	-21.87 ^c
Colorado	36.73	0.42	(48)	-25.82 ^c
Hawaii	35.96	0.69	(49)	-27.38 ^c
New Mexico	35.11	0.58	(50)	-29.09 ^c
Utah	21.60	0.47	(51)	-56.39 ^c

State	Rate	SE	Rank	PD	State	Rate	SE	Rank	PD
Alabama	60.35	0.48	(08)	21.87 ^c	Montana	45.07	0.90	(38)	-8.99 ^c
Alaska	52.76	1.63	(18)	6.55 ^c	Nebraska	46.20	0.69	(35)	-6.70 ^c
Arizona	40.57	0.35	(46)	-18.06 ^c	Nevada	52.39	0.67	(20)	5.80 ^c
Arkansas	64.60	0.63	(03)	30.47 ^c	New Hampshire	49.78	0.84	(26)	0.54
California	38.69	0.15	(47)	-21.87 ^c	New Jersey	44.79	0.31	(39)	-9.55 ^c
Colorado	36.73	0.42	(48)	-25.82 ^c	New Mexico	35.11	0.58	(50)	-29.09 ^c
Connecticut	44.17	0.47	(40)	-10.79 ^c	New York	43.52	0.20	(42)	-12.12 ^c
Delaware	56.42	1.07	(12)	13.95 ^c	North Carolina	55.68	0.34	(14)	12.45 ^c
D.C.	46.14	1.30	(36)	-6.83 ^c	North Dakota	41.53	1.05	(44)	-16.12 ^c
Florida	48.84	0.20	(31)	-1.38	Ohio	57.08	0.30	(11)	15.28 ^c
Georgia	52.92	0.36	(17)	6.88 ^c	Oklahoma	60.76	0.55	(06)	22.70 ^c
Hawaii	35.96	0.69	(49)	-27.38 ^c	Oregon	49.53	0.49	(29)	0.03
Idaho	41.01	0.75	(45)	-17.17 ^c	Pennsylvania	50.53	0.26	(25)	2.04
Illinois	51.79	0.28	(21)	4.59	Rhode Island	51.39	0.93	(22)	3.79
Indiana	60.46	0.43	(07)	22.10 ^c	South Carolina	55.56	0.48	(15)	12.20 ^c
Iowa	49.33	0.53	(30)	-0.39	South Dakota	45.98	1.01	(37)	-7.14 ^c
Kansas	51.23	0.59	(24)	3.45	Tennessee	64.50	0.44	(04)	30.26 ^c
Kentucky	73.17	0.57	(01)	47.76 ^c	Texas	46.22	0.21	(34)	-6.65 ^c
Louisiana	59.40	0.52	(09)	19.96 ^c	Utah	21.60	0.47	(51)	-56.39 ^c
Maine	56.11	0.83	(13)	13.32 ^c	Vermont	52.50	1.22	(19)	6.03 ^c
Maryland	49.56	0.42	(28)	0.08	Virginia	51.39	0.37	(23)	3.79
Massachusetts	49.66	0.37	(27)	0.29	Washington	48.46	0.39	(32)	-2.13
Michigan	54.12	0.32	(16)	9.29 ^c	West Virginia	65.22	0.75	(02)	31.71 ^c
Minnesota	43.86	0.41	(41)	-11.43 ^c	Wisconsin	46.89	0.39	(33)	-5.30 ^c
Mississippi	64.29	0.65	(05)	29.84 ^c	Wyoming	42.38	1.25	(43)	-14.41 ^c
Missouri	59.01	0.43	(10)	19.17 ^c					



^a US Mortality Files, National Center for Health Statistics, Centers for Disease Control and Prevention. Rates are per 100,000 and are age-adjusted to the 2000 US Std Population (19 age groups - Census P25-1130).
^b Difference between state rate and total U.S. rate is statistically significant ($p \leq .0002$).
^c Absolute percent difference between state rate and total U.S. rate is 5% or more.
SE Standard error of the rate.
PD Percent difference between state rate and total U.S. rate.
- Statistic not shown. Rate based on less than 16 cases for the time interval.

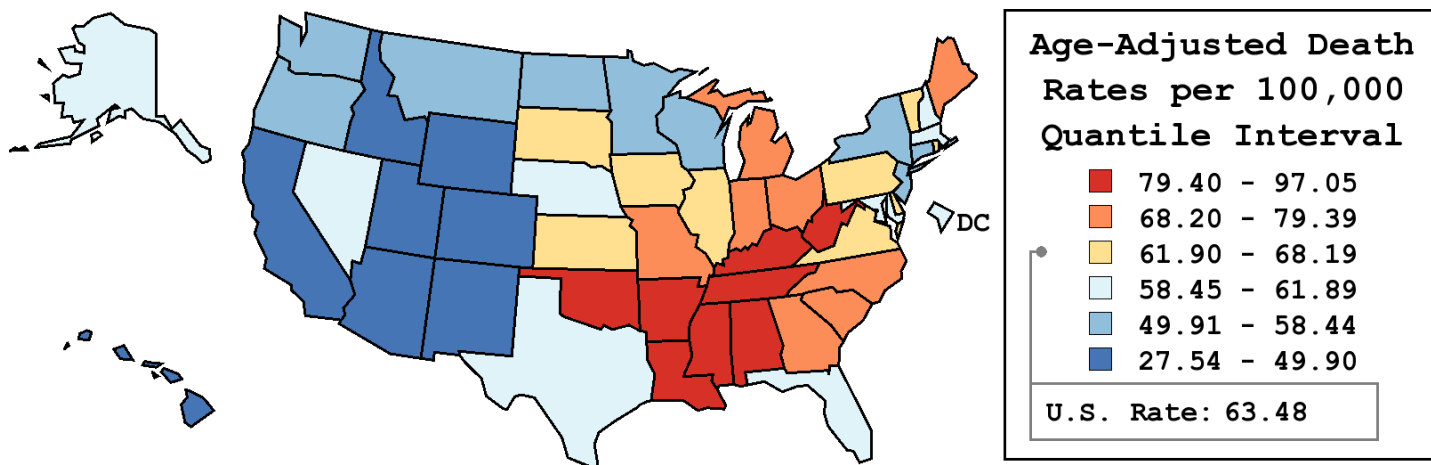
Table 15.25
Cancer of the Lung and Bronchus (Invasive)

Age-Adjusted Cancer Death^a Rates By State, All Races, 2006-2010

Males

State	Rate	SE	Rank	PD
TOTAL U.S.	63.48	0.10		
High Five States				
Kentucky	97.05	1.01	(01)	52.88 ^c
Mississippi	95.38	1.25	(02)	50.24 ^c
Arkansas	90.13	1.14	(03)	41.98 ^c
Tennessee	89.45	0.81	(04)	40.90 ^c
Alabama	87.37	0.91	(05)	37.63 ^c
Low Five States				
Hawaii	48.76	1.21	(47)	-23.20 ^c
California	47.22	0.26	(48)	-25.62 ^c
Colorado	44.20	0.70	(49)	-30.37 ^c
New Mexico	43.36	0.98	(50)	-31.70 ^c
Utah	27.54	0.80	(51)	-56.62 ^c

State	Rate	SE	Rank	PD	State	Rate	SE	Rank	PD
Alabama	87.37	0.91	(05)	37.63 ^c	Montana	52.07	1.43	(43)	-17.98 ^c
Alaska	61.78	2.70	(27)	-2.68	Nebraska	60.33	1.20	(32)	-4.97
Arizona	49.82	0.58	(45)	-21.52 ^c	Nevada	59.66	1.06	(33)	-6.02 ^c
Arkansas	90.13	1.14	(03)	41.98 ^c	New Hampshire	59.00	1.40	(34)	-7.06 ^c
California	47.22	0.26	(48)	-25.62 ^c	New Jersey	55.78	0.53	(38)	-12.13 ^c
Colorado	44.20	0.70	(49)	-30.37 ^c	New Mexico	43.36	0.98	(50)	-31.70 ^c
Connecticut	52.72	0.79	(42)	-16.96 ^c	New York	54.31	0.35	(39)	-14.46 ^c
Delaware	68.19	1.80	(17)	7.42 ^c	North Carolina	76.61	0.63	(11)	20.68 ^c
D.C.	61.89	2.37	(26)	-2.51	North Dakota	54.14	1.80	(40)	-14.72 ^c
Florida	61.38	0.34	(29)	-3.32	Ohio	74.81	0.52	(13)	17.84 ^c
Georgia	73.12	0.68	(14)	15.18 ^c	Oklahoma	79.55	0.97	(08)	25.31 ^c
Hawaii	48.76	1.21	(47)	-23.20 ^c	Oregon	58.44	0.81	(35)	-7.94 ^c
Idaho	49.16	1.22	(46)	-22.56 ^c	Pennsylvania	65.83	0.45	(21)	3.70
Illinois	65.83	0.50	(20)	3.70	Rhode Island	64.92	1.61	(22)	2.26
Indiana	79.39	0.75	(09)	25.06 ^c	South Carolina	77.08	0.88	(10)	21.41 ^c
Iowa	64.06	0.91	(23)	0.90	South Dakota	61.91	1.76	(25)	-2.48
Kansas	66.77	1.02	(19)	5.18 ^c	Tennessee	89.45	0.81	(04)	40.90 ^c
Kentucky	97.05	1.01	(01)	52.88 ^c	Texas	60.71	0.38	(30)	-4.36
Louisiana	80.90	0.94	(07)	27.43 ^c	Utah	27.54	0.80	(51)	-56.62 ^c
Maine	69.94	1.41	(15)	10.16 ^c	Vermont	62.33	2.02	(24)	-1.81
Maryland	61.74	0.73	(28)	-2.75	Virginia	67.06	0.65	(18)	5.63 ^c
Massachusetts	60.61	0.64	(31)	-4.52	Washington	56.95	0.64	(37)	-10.29 ^c
Michigan	68.21	0.55	(16)	7.44 ^c	West Virginia	84.35	1.30	(06)	32.87 ^c
Minnesota	53.28	0.68	(41)	-16.07 ^c	Wisconsin	58.39	0.66	(36)	-8.03 ^c
Mississippi	95.38	1.25	(02)	50.24 ^c	Wyoming	49.90	2.03	(44)	-21.40 ^c
Missouri	76.49	0.74	(12)	20.48 ^c					



^a US Mortality Files, National Center for Health Statistics, Centers for Disease Control and Prevention. Rates are per 100,000 and are age-adjusted to the 2000 US Std Population (19 age groups - Census P25-1130).
^b Difference between state rate and total U.S. rate is statistically significant (p<=.0002).
^c Absolute percent difference between state rate and total U.S. rate is 5% or more.
SE Standard error of the rate.
PD Percent difference between state rate and total U.S. rate.
- Statistic not shown. Rate based on less than 16 cases for the time interval.

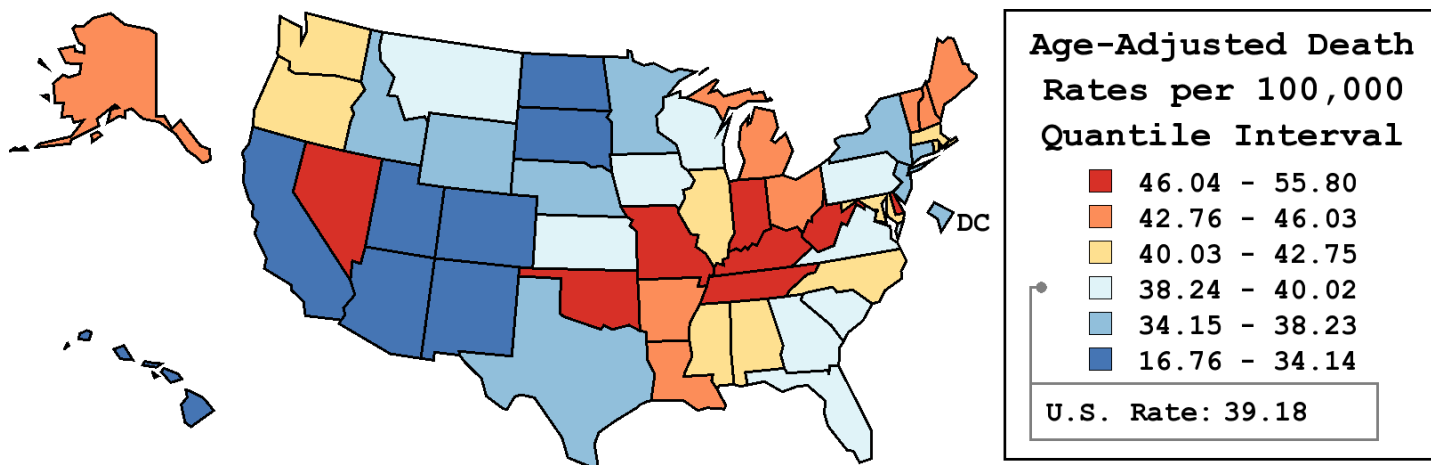
Table 15.26
Cancer of the Lung And Bronchus (Invasive)

Age-Adjusted Cancer Death^a Rates By State, All Races, 2006-2010

Females

State	Rate	SE	Rank	PD
TOTAL U.S.	39.18	0.07		
High Five States				
Kentucky	55.80	0.66	(01)	42.43 ^c
West Virginia	50.89	0.90	(02)	29.90 ^c
Delaware	47.66	1.32	(03)	21.66 ^c
Indiana	46.72	0.50	(04)	19.26 ^c
Oklahoma	46.57	0.65	(05)	18.88 ^c
Low Five States				
North Dakota	32.24	1.26	(47)	-17.72 ^c
Colorado	31.31	0.52	(48)	-20.07 ^c
New Mexico	28.57	0.71	(49)	-27.08 ^c
Hawaii	25.90	0.79	(50)	-33.89 ^c
Utah	16.76	0.56	(51)	-57.23 ^c

State	Rate	SE	Rank	PD	State	Rate	SE	Rank	PD
Alabama	40.76	0.53	(24)	4.03	Montana	39.57	1.15	(29)	1.01
Alaska	45.84	2.07	(10)	17.01 ^c	Nebraska	35.47	0.82	(40)	-9.47 ^c
Arizona	33.19	0.43	(45)	-15.28 ^c	Nevada	46.48	0.86	(07)	18.63 ^c
Arkansas	45.36	0.71	(11)	15.79 ^c	New Hampshire	43.27	1.06	(16)	10.44 ^c
California	32.32	0.19	(46)	-17.50 ^c	New Jersey	37.25	0.37	(36)	-4.92
Colorado	31.31	0.52	(48)	-20.07 ^c	New Mexico	28.57	0.71	(49)	-27.08 ^c
Connecticut	38.23	0.59	(35)	-2.42	New York	36.06	0.25	(39)	-7.95 ^c
Delaware	47.66	1.32	(03)	21.66 ^c	North Carolina	40.67	0.39	(25)	3.82
D.C.	35.00	1.48	(42)	-10.66 ^c	North Dakota	32.24	1.26	(47)	-17.72 ^c
Florida	38.77	0.24	(31)	-1.04	Ohio	44.20	0.35	(13)	12.83 ^c
Georgia	38.72	0.41	(32)	-1.16	Oklahoma	46.57	0.65	(05)	18.88 ^c
Hawaii	25.90	0.79	(50)	-33.89 ^c	Oregon	42.75	0.62	(17)	9.12 ^c
Idaho	34.45	0.94	(43)	-12.06 ^c	Pennsylvania	39.59	0.30	(28)	1.05
Illinois	41.92	0.34	(22)	7.00 ^c	Rhode Island	42.56	1.13	(18)	8.62 ^c
Indiana	46.72	0.50	(04)	19.26 ^c	South Carolina	39.88	0.54	(27)	1.78
Iowa	38.34	0.63	(34)	-2.13	South Dakota	34.14	1.19	(44)	-12.87 ^c
Kansas	39.42	0.70	(30)	0.63	Tennessee	46.57	0.50	(06)	18.88 ^c
Kentucky	55.80	0.66	(01)	42.43 ^c	Texas	35.38	0.25	(41)	-9.68 ^c
Louisiana	43.63	0.59	(15)	11.37 ^c	Utah	16.76	0.56	(51)	-57.23 ^c
Maine	46.03	1.01	(09)	17.48 ^c	Vermont	45.09	1.52	(12)	15.08 ^c
Maryland	40.79	0.51	(23)	4.13	Virginia	40.02	0.43	(26)	2.15
Massachusetts	42.14	0.46	(20)	7.55 ^c	Washington	42.14	0.49	(19)	7.56 ^c
Michigan	43.87	0.38	(14)	11.98 ^c	West Virginia	50.89	0.90	(02)	29.90 ^c
Minnesota	37.01	0.50	(37)	-5.53 ^c	Wisconsin	38.40	0.48	(33)	-2.00
Mississippi	42.00	0.70	(21)	7.19 ^c	Wyoming	36.38	1.58	(38)	-7.13 ^c
Missouri	46.17	0.51	(08)	17.86 ^c					



^a US Mortality Files, National Center for Health Statistics, Centers for Disease Control and Prevention. Rates are per 100,000 and are age-adjusted to the 2000 US Std Population (19 age groups - Census P25-1130).
^b Difference between state rate and total U.S. rate is statistically significant (p<=.0002).
^c Absolute percent difference between state rate and total U.S. rate is 5% or more.
SE Standard error of the rate.
PD Percent difference between state rate and total U.S. rate.
- Statistic not shown. Rate based on less than 16 cases for the time interval.

Table 15.27
Cancer of the Lung And Bronchus (Invasive)

Estimated United States Cancer Prevalence Counts^a on January 1, 2010
By Race/Ethnicity, Sex and Years Since Diagnosis

Years Since Diagnosis		0 to <5	5 to <10	10 to <15	15 to <20	20 to <25	25 to <30	0 to <18 ^e	0 to <35 ^e	>=35 ^g	Complete ^h
<u>Race</u>	<u>Sex</u>										
All Races ^b	Both Sexes	231,996	75,108	41,458	22,038	11,527	5,962	370,600	391,564	7,867	399,431
	Males	108,211	33,462	17,795	9,916	5,160	2,716	169,384	178,912	4,498	183,410
	Females	123,785	41,646	23,663	12,122	6,367	3,246	201,216	212,652	3,369	216,021
White ^b	Both Sexes	197,163	65,648	36,169	19,441	10,233	5,274	318,423	336,910	3,296	340,206
	Males	91,187	28,787	15,084	8,691	4,482	2,396	143,750	152,043	1,552	153,595
	Females	105,976	36,861	21,085	10,750	5,751	2,878	174,673	184,867	1,744	186,611
Black ^b	Both Sexes	25,150	6,834	3,960	2,047	971	535	37,990	39,861	310	40,171
	Males	12,105	3,399	1,952	942	518	247	18,397	19,346	162	19,508
	Females	13,045	3,435	2,008	1,105	453	288	19,593	20,515	148	20,663
Asian/ Pacific Islander ^c	Both Sexes	7,002	1,951	979	+	+	+	10,187	+	+	+
	Males	3,589	942	536	+	+	+	5,196	+	+	+
	Females	3,413	1,009	443	+	+	+	4,991	+	+	+
Hispanic ^d	Both Sexes	8,530	2,434	1,169	+	+	+	12,133	+	+	+
	Males	4,159	1,083	578	+	+	+	5,819	+	+	+
	Females	4,371	1,351	591	+	+	+	6,314	+	+	+

Estimated prevalence percent^a on January 1, 2010, of the SEER 11 population diagnosed in the previous 18 years
By Age at Prevalence, Race/Ethnicity and Sex

Age at Prevalence		Age Specific (Crude)									Age-Adjusted ^f	
		All Ages	0-9	10-19	20-29	30-39	40-49	50-59	60-69	70-79	80+	All Ages
<u>Race</u>	<u>Sex</u>											
All Races ^c	Both Sexes	0.0960%	0.0001%	0.0003%	0.0017%	0.0056%	0.0243%	0.1067%	0.3218%	0.6243%	0.5644%	0.0965%
	Males	0.0898%	-	0.0003%	0.0016%	0.0050%	0.0210%	0.1030%	0.3304%	0.6495%	0.6464%	0.1002%
	Females	0.1021%	-	0.0003%	0.0018%	0.0062%	0.0275%	0.1103%	0.3141%	0.6042%	0.5169%	0.0943%
White ^c	Both Sexes	0.1038%	0.0002%	0.0003%	0.0019%	0.0057%	0.0245%	0.1052%	0.3289%	0.6485%	0.5773%	0.0989%
	Males	0.0940%	-	0.0003%	0.0018%	0.0051%	0.0212%	0.0983%	0.3253%	0.6528%	0.6405%	0.0994%
	Females	0.1135%	-	0.0004%	0.0020%	0.0062%	0.0279%	0.1119%	0.3323%	0.6450%	0.5404%	0.0992%
Black ^c	Both Sexes	0.0830%	-	-	0.0015%	0.0060%	0.0299%	0.1536%	0.3979%	0.6314%	0.4834%	0.1060%
	Males	0.0851%	-	-	0.0017%	0.0066%	0.0236%	0.1717%	0.4555%	0.7500%	0.6533%	0.1238%
	Females	0.0811%	-	-	0.0013%	0.0055%	0.0354%	0.1380%	0.3524%	0.5498%	0.4031%	0.0942%
Asian/ Pacific Islander ^c	Both Sexes	0.0713%	-	-	0.0009%	0.0052%	0.0197%	0.0792%	0.2294%	0.4858%	0.5170%	0.0758%
	Males	0.0758%	-	-	-	0.0036%	0.0194%	0.0798%	0.2816%	0.5681%	0.6767%	0.0896%
	Females	0.0672%	-	-	-	0.0067%	0.0200%	0.0788%	0.1860%	0.4232%	0.4183%	0.0658%
Hispanic ^d	Both Sexes	0.0248%	-	-	0.0011%	0.0037%	0.0121%	0.0448%	0.1413%	0.3111%	0.3464%	0.0482%
	Males	0.0232%	-	-	0.0007%	0.0042%	0.0111%	0.0432%	0.1412%	0.3767%	0.4093%	0.0539%
	Females	0.0263%	-	-	0.0017%	0.0032%	0.0132%	0.0463%	0.1414%	0.2628%	0.3092%	0.0444%

^a US 2010 cancer prevalence counts are based on 2010 cancer prevalence proportions from the SEER registries and 1/1/2010 US population estimates based on the average of 2009 and 2010 population estimates from the US Bureau of the Census. Prevalence was calculated using the First Malignant Primary Only for a person.

^{b c d} Statistics based on (b) SEER 9 Areas (c) SEER 11 Areas and Rural Georgia (d) NHIA for Hispanic for SEER 11 Areas and Rural Georgia.

^e Maximum limited-duration prevalence: 35 years for 1975-2010 SEER 9 data; 18 years for 1992-2010 SEER 11 data (used to calculate prevalence for Hispanics and Asian Pacific Islanders).

^f Percentages are age-adjusted to the 2000 US Standard Population (19 age groups - Census P25-1130) by 5-year age groups.

^{g h i} (g) Cases diagnosed more than 35 years ago were estimated using the completeness index method (Capocaccia et. al. 1997, Merrill et. al. 2000). (h) Complete prevalence is obtained by summing 0 to <35 and >=35. (i) Age-specific completeness index was approximated using empirical data from historical Connecticut tumor registry.

- Statistic not shown. Statistic based on fewer than 5 cases estimated alive in SEER for the time interval.

+ Not available.

Table 15.28

Cancer of the Lung and Bronchus (Invasive)

Percent Distribution and Counts by Histology among Histologically Confirmed Cases, 2006-2010
Both Sexes by Race

Histology ^a	All Races		White		Black		Asian/Pacific Islander		American Indian/ Alaska Native ^b		Hispanic ^c	
	Count	Percent	Count	Percent	Count	Percent	Count	Percent	Count	Percent	Count	Percent
Carcinoma	224,350	98.9%	186,083	98.9%	24,620	98.9%	12,109	98.8%	729	97.9%	11,972	98.1%
Small cell (8041-8045)	30,845	13.6%	27,025	14.4%	2,626	10.5%	968	7.9%	140	18.8%	1,436	11.8%
Non-small cell ^d	193,505	85.3%	159,058	84.5%	21,994	88.3%	11,141	90.9%	589	79.1%	10,536	86.3%
Squamous and transitional cell ^e	48,561	21.4%	40,634	21.6%	5,732	23.0%	1,851	15.1%	178	23.9%	2,201	18.0%
Adenocarcinoma ^f	92,669	40.8%	75,509	40.1%	9,903	39.8%	6,698	54.7%	216	29.0%	5,366	44.0%
Large cell (8011-8015)	5,890	2.6%	4,817	2.6%	811	3.3%	223	1.8%	20	2.7%	280	2.3%
Other non-small cell ^g	46,385	20.4%	38,098	20.2%	5,548	22.3%	2,369	19.3%	175	23.5%	2,689	22.0%
Sarcoma ^h	422	0.2%	344	0.2%	43	0.2%	23	0.2%	-	-	47	0.4%
Other specified types ⁱ	187	0.1%	154	0.1%	24	0.1%	-	-	-	-	23	0.2%
Unspecified (8000-8005)	1,932	0.9%	1,581	0.8%	218	0.9%	112	0.9%	-	-	163	1.3%
Total	226,891	100.0%	188,162	100.0%	24,905	100.0%	12,253	100.0%	745	100.0%	12,205	100.0%

Source: SEER 18 areas (San Francisco, Connecticut, Detroit, Hawaii, Iowa, New Mexico, Seattle, Utah, Atlanta, San Jose-Monterey, Los Angeles, Alaska Native Registry, Rural Georgia, California excluding SF/SJM/LA, Kentucky, Louisiana, New Jersey and Georgia excluding ATL/RG).

Percents may not sum to 100 due to rounding.

^a Excludes Kaposi Sarcoma, mesothelioma, lymphomas, leukemias, myelomas, lymphoreticular, and immunoproliferative diseases.

^b Estimates for American Indian/Alaska Native are based on the CHSDA (Contract Health Service Delivery Area) counties.

^c Hispanic is not mutually exclusive from whites, blacks, Asian/Pacific Islanders, and American Indians/Alaska Natives.

Underlying incidence data for Hispanics are based on NHIA and exclude cases from the Alaska Native Registry.

^d Non-small cell includes histologies 8010-8015, 8020-8022, 8030-8040, 8046, 8050-8052, 8070-8084, 8090-8110, 8120-8131, 8140-8156, 8160-8162, 8170-8175, 8180, 8190-8221, 8230-8231, 8240-8263, 8270-8280, 8290-8337, 8340-8347, 8350-8390, 8400-8562, 8570-8576, 8580-8671, 8940-8941.

^e Squamous and transitional cell includes histologies 8051-8052, 8070-8084, 8120-8131.

^f Adenocarcinoma includes histologies 8050, 8140-8149, 8160-8162, 8190-8221, 8250-8263, 8270-8280, 8290-8337, 8350-8390, 8400-8560, 8570-8576, 8940-8941.

^g Other non-small cell includes large cell carcinoma, NOS, other specified carcinomas, and unspecified carcinomas.

Other non-small cell is defined as histologies 8010, 8020-8022, 8030-8040, 8046, 8090-8110, 8150-8156, 8170-8175, 8180, 8230-8231, 8240-8249, 8340-8347, 8561-8562, 8580-8671.

^h Sarcoma includes histologies 8680-8713, 8800-8921, 8990-8991, 9040-9044, 9120-9136, 9150-9252, 9370-9373, 9540-9582.

ⁱ Other specific types includes melanomas and is defined as histologies 8720-8790, 8930-8936, 8950-8983, 9000-9030, 9060-9110, 9260-9365, 9380-9539.

- Statistic not shown due to fewer than 16 cases during the time period.

Table 15.29

Cancer of the Lung and Bronchus (Invasive)

Percent Distribution and Counts by Histology among Histologically Confirmed Cases, 2006-2010
Males by Race

Histology ^a	All Races		White		Black		Asian/Pacific Islander		American Indian/ Alaska Native ^b		Hispanic ^c	
	Count	Percent	Count	Percent	Count	Percent	Count	Percent	Count	Percent	Count	Percent
Carcinoma	119,723	98.8%	97,995	98.8%	13,938	98.9%	6,959	98.7%	379	97.9%	6,382	98.2%
Small cell (8041-8045)	15,507	12.8%	13,407	13.5%	1,346	9.6%	651	9.2%	63	16.3%	777	12.0%
Non-small cell ^d	104,216	86.0%	84,588	85.3%	12,592	89.3%	6,308	89.5%	316	81.7%	5,605	86.2%
Squamous and transitional cell ^e	30,691	25.3%	25,394	25.6%	3,703	26.3%	1,362	19.3%	106	27.4%	1,420	21.8%
Adenocarcinoma ^f	45,076	37.2%	36,263	36.6%	5,200	36.9%	3,341	47.4%	100	25.8%	2,545	39.1%
Large cell (8011-8015)	3,357	2.8%	2,719	2.7%	473	3.4%	144	2.0%	-	-	168	2.6%
Other non-small cell ^g	25,092	20.7%	20,212	20.4%	3,216	22.8%	1,461	20.7%	99	25.6%	1,472	22.6%
Sarcoma ^h	229	0.2%	189	0.2%	21	0.1%	-	-	-	-	23	0.4%
Other specified types ⁱ	111	0.1%	94	0.1%	-	-	-	-	-	-	-	-
Unspecified (8000-8005)	1,065	0.9%	858	0.9%	124	0.9%	71	1.0%	-	-	82	1.3%
Total	121,128	100.0%	99,136	100.0%	14,093	100.0%	7,049	100.0%	387	100.0%	6,501	100.0%

Source: SEER 18 areas (San Francisco, Connecticut, Detroit, Hawaii, Iowa, New Mexico, Seattle, Utah, Atlanta, San Jose-Monterey, Los Angeles, Alaska Native Registry, Rural Georgia, California excluding SF/SJM/LA, Kentucky, Louisiana, New Jersey and Georgia excluding ATL/RG).

Percents may not sum to 100 due to rounding.

^a Excludes Kaposi Sarcoma, mesothelioma, lymphomas, leukemias, myelomas, lymphoreticular, and immunoproliferative diseases.

^b Estimates for American Indian/Alaska Native are based on the CHSDA (Contract Health Service Delivery Area) counties.

^c Hispanic is not mutually exclusive from whites, blacks, Asian/Pacific Islanders, and American Indians/Alaska Natives.

^d Underlying incidence data for Hispanics are based on NHIA and exclude cases from the Alaska Native Registry.

^e Non-small cell includes histologies 8010-8015, 8020-8022, 8030-8040, 8046, 8050-8052, 8070-8084, 8090-8110, 8120-8131, 8140-8156, 8160-8162, 8170-8175, 8180, 8190-8221, 8230-8231, 8240-8263, 8270-8280, 8290-8337, 8340-8347, 8350-8390, 8400-8562, 8570-8576, 8580-8671, 8940-8941.

^f Squamous and transitional cell includes histologies 8051-8052, 8070-8084, 8120-8131.

^g Adenocarcinoma includes histologies 8050, 8140-8149, 8160-8162, 8190-8221, 8250-8263, 8270-8280, 8290-8337, 8350-8390, 8400-8560, 8570-8576, 8940-8941.

^h Other non-small cell includes large cell carcinoma, NOS, other specified carcinomas, and unspecified carcinomas.

ⁱ Other non-small cell is defined as histologies 8010, 8020-8022, 8030-8040, 8046, 8090-8110, 8150-8156, 8170-8175, 8180, 8230-8231, 8240-8249, 8340-8347, 8561-8562, 8580-8671.

^h Sarcoma includes histologies 8680-8713, 8800-8921, 8990-8991, 9040-9044, 9120-9136, 9150-9252, 9370-9373, 9540-9582.

ⁱ Other specific types includes melanomas and is defined as histologies 8720-8790, 8930-8936, 8950-8983, 9000-9030, 9060-9110, 9260-9365, 9380-9539.

- Statistic not shown due to fewer than 16 cases during the time period.

Table 15.30

Cancer of the Lung and Bronchus (Invasive)

Percent Distribution and Counts by Histology among Histologically Confirmed Cases, 2006-2010
Females by Race

Histology ^a	All Races		White		Black		Asian/Pacific Islander		American Indian/ Alaska Native ^b		Hispanic ^c	
	Count	Percent	Count	Percent	Count	Percent	Count	Percent	Count	Percent	Count	Percent
Carcinoma	104,627	98.9%	88,088	98.9%	10,682	98.8%	5,150	99.0%	350	97.8%	5,590	98.0%
Small cell (8041-8045)	15,338	14.5%	13,618	15.3%	1,280	11.8%	317	6.1%	77	21.5%	659	11.6%
Non-small cell ^d	89,289	84.4%	74,470	83.6%	9,402	87.0%	4,833	92.9%	273	76.3%	4,931	86.4%
Squamous and transitional cell ^e	17,870	16.9%	15,240	17.1%	2,029	18.8%	489	9.4%	72	20.1%	781	13.7%
Adenocarcinoma ^f	47,593	45.0%	39,246	44.1%	4,703	43.5%	3,357	64.5%	116	32.4%	2,821	49.5%
Large cell (8011-8015)	2,533	2.4%	2,098	2.4%	338	3.1%	79	1.5%	-	-	112	2.0%
Other non-small cell ^g	21,293	20.1%	17,886	20.1%	2,332	21.6%	908	17.4%	76	21.2%	1,217	21.3%
Sarcoma ^h	193	0.2%	155	0.2%	22	0.2%	-	-	-	-	24	0.4%
Other specified types ⁱ	76	0.1%	60	0.1%	-	-	-	-	-	-	-	-
Unspecified (8000-8005)	867	0.8%	723	0.8%	94	0.9%	41	0.8%	-	-	81	1.4%
Total	105,763	100.0%	89,026	100.0%	10,812	100.0%	5,204	100.0%	358	100.0%	5,704	100.0%

Source: SEER 18 areas (San Francisco, Connecticut, Detroit, Hawaii, Iowa, New Mexico, Seattle, Utah, Atlanta, San Jose-Monterey, Los Angeles, Alaska Native Registry, Rural Georgia, California excluding SF/SJM/LA, Kentucky, Louisiana, New Jersey and Georgia excluding ATL/RG).

Percents may not sum to 100 due to rounding.

^a Excludes Kaposi Sarcoma, mesothelioma, lymphomas, leukemias, myelomas, lymphoreticular, and immunoproliferative diseases.

^b Estimates for American Indian/Alaska Native are based on the CHSDA (Contract Health Service Delivery Area) counties.

^c Hispanic is not mutually exclusive from whites, blacks, Asian/Pacific Islanders, and American Indians/Alaska Natives.

^d Underlying incidence data for Hispanics are based on NHIA and exclude cases from the Alaska Native Registry.

^e Non-small cell includes histologies 8010-8015, 8020-8022, 8030-8040, 8046, 8050-8052, 8070-8084, 8090-8110, 8120-8131, 8140-8156, 8160-8162, 8170-8175, 8180, 8190-8221, 8230-8231, 8240-8263, 8270-8280, 8290-8337, 8340-8347, 8350-8390, 8400-8562, 8570-8576, 8580-8671, 8940-8941.

^f Squamous and transitional cell includes histologies 8051-8052, 8070-8084, 8120-8131.

^g Adenocarcinoma includes histologies 8050, 8140-8149, 8160-8162, 8190-8221, 8250-8263, 8270-8280, 8290-8337, 8350-8390, 8400-8560, 8570-8576, 8940-8941.

^h Other non-small cell includes large cell carcinoma, NOS, other specified carcinomas, and unspecified carcinomas.

ⁱ Other non-small cell is defined as histologies 8010, 8020-8022, 8030-8040, 8046, 8090-8110, 8150-8156, 8170-8175, 8180, 8230-8231, 8240-8249, 8340-8347, 8561-8562, 8580-8671.

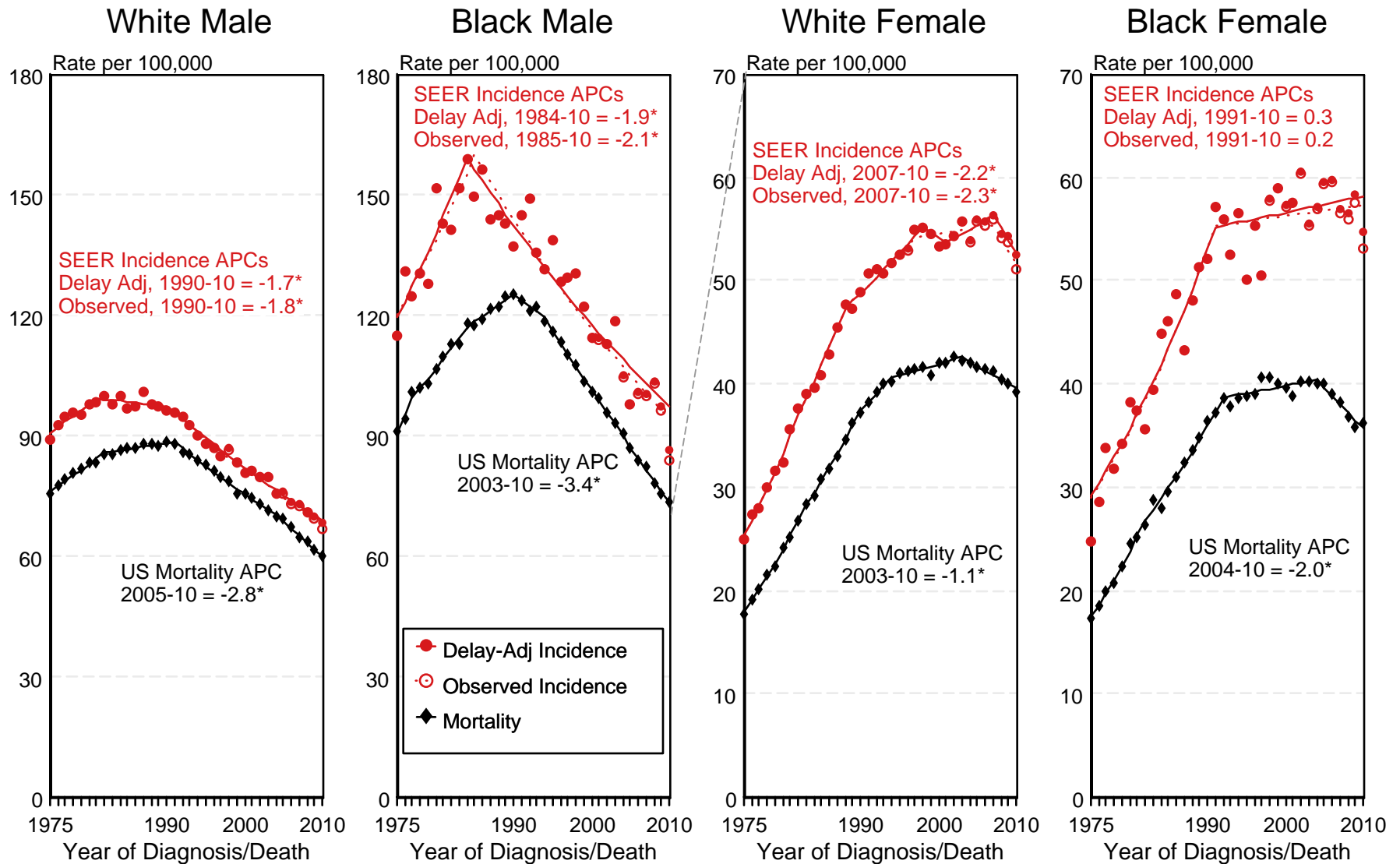
^h Sarcoma includes histologies 8680-8713, 8800-8921, 8990-8991, 9040-9044, 9120-9136, 9150-9252, 9370-9373, 9540-9582.

ⁱ Other specific types includes melanomas and is defined as histologies 8720-8790, 8930-8936, 8950-8983, 9000-9030, 9060-9110, 9260-9365, 9380-9539.

- Statistic not shown due to fewer than 16 cases during the time period.

Figure 15.1

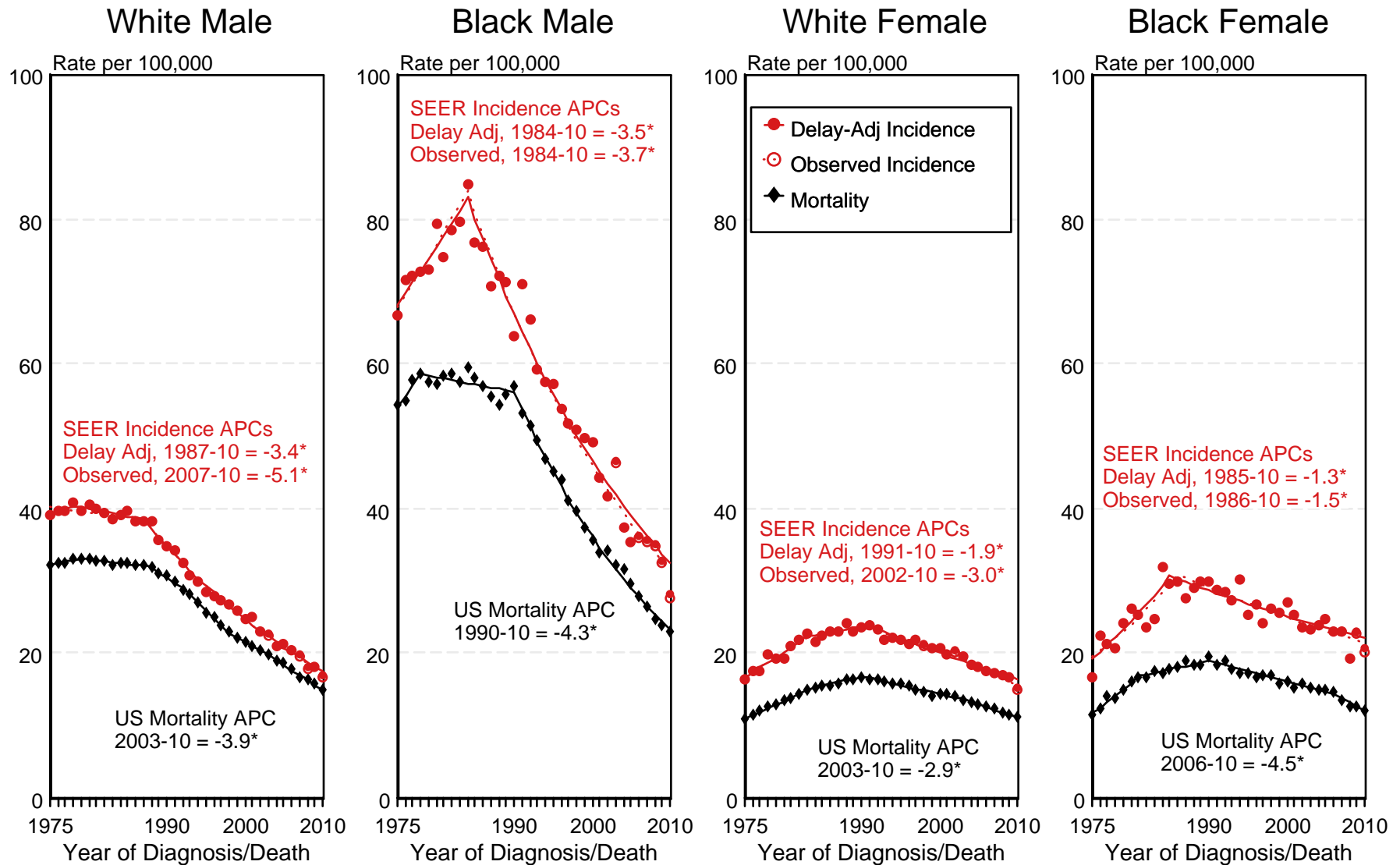
SEER Observed Incidence, SEER Delay Adjusted Incidence and US Death Rates^a Cancer of the Lung and Bronchus, by Race and Sex



^a Source: SEER 9 areas and US Mortality Files (National Center for Health Statistics, CDC). Rates are age-adjusted to the 2000 US Std Population (19 age groups - Census P25-1103). Regression lines and APCs are calculated using the Joinpoint Regression Program Version 4.0.3, April 2013, National Cancer Institute. The APC is the Annual Percent Change for the regression line segments. The APC shown on the graph is for the most recent trend.
* The APC is significantly different from zero ($p < 0.05$).

Figure 15.2

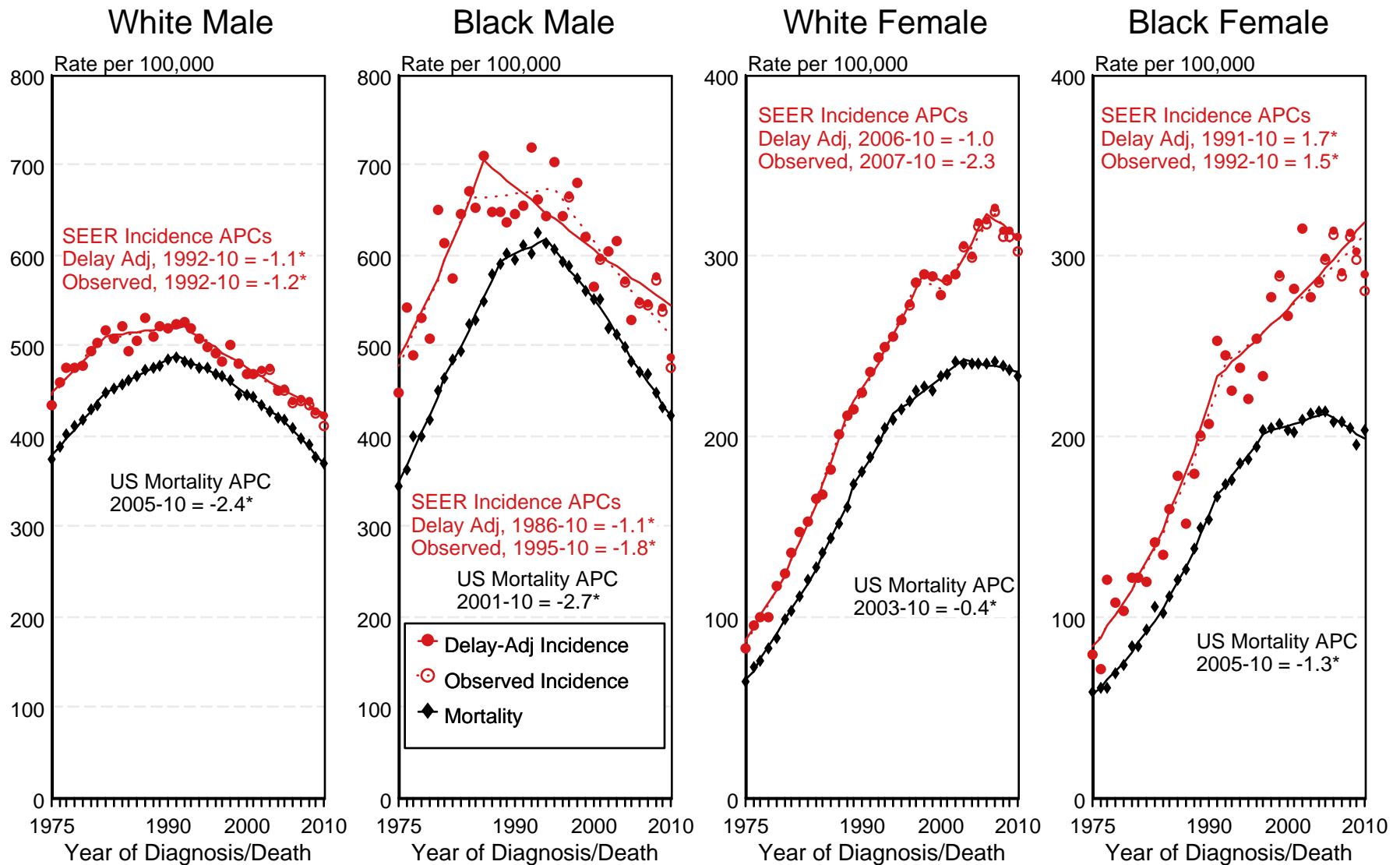
SEER Observed Incidence, SEER Delay Adjusted Incidence and US Death Rates^a Cancer of the Lung and Bronchus, Under 65 Years of Age, by Race and Sex



^a Source: SEER 9 areas and US Mortality Files (National Center for Health Statistics, CDC). Rates are age-adjusted to the 2000 US Std Population (19 age groups - Census P25-1103). Regression lines and APCs are calculated using the Joinpoint Regression Program Version 4.0.3, April 2013, National Cancer Institute. The APC is the Annual Percent Change for the regression line segments. The APC shown on the graph is for the most recent trend.
* The APC is significantly different from zero ($p < 0.05$).

Figure 15.3

SEER Observed Incidence, SEER Delay Adjusted Incidence and US Death Rates^a Cancer of the Lung and Bronchus, Ages 65 and Over, by Race and Sex

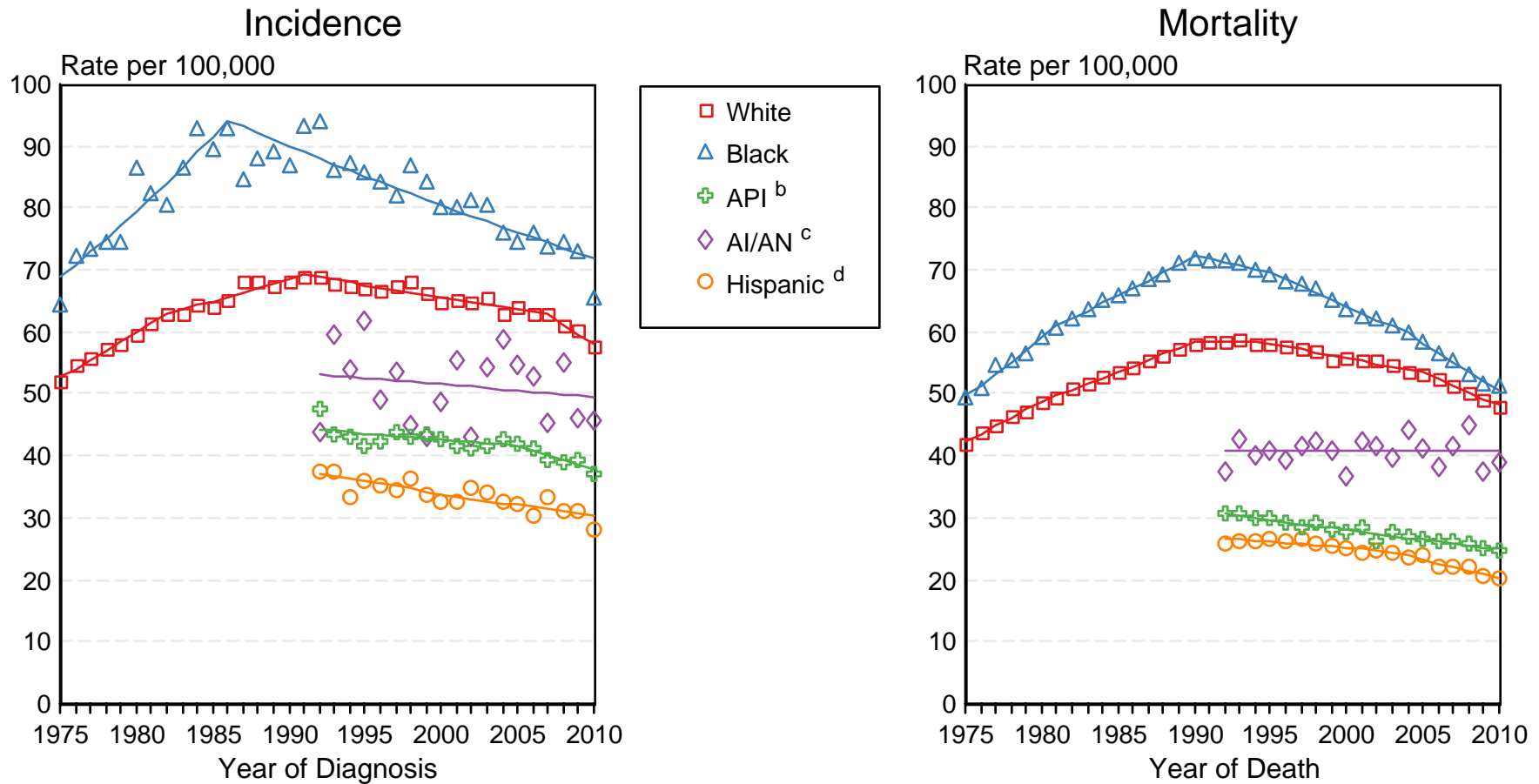


^a Source: SEER 9 areas and US Mortality Files (National Center for Health Statistics, CDC). Rates are age-adjusted to the 2000 US Std Population (19 age groups - Census P25-1103). Regression lines and APCs are calculated using the Joinpoint Regression Program Version 4.0.3, April 2013, National Cancer Institute. The APC is the Annual Percent Change for the regression line segments. The APC shown on the graph is for the most recent trend.
* The APC is significantly different from zero ($p < 0.05$).

Figure 15.4

SEER Incidence and US Death Rates^a Cancer of the Lung and Bronchus, Both Sexes

Joinpoint Analyses for Whites and Blacks from 1975-2010
and for Asian/Pacific Islanders, American Indians/Alaska Natives and Hispanics from 1992-2010



Source: Incidence data for whites and blacks are from the SEER 9 areas (San Francisco, Connecticut, Detroit, Hawaii, Iowa, New Mexico, Seattle, Utah, Atlanta). Incidence data for Asian/Pacific Islanders, American Indians/Alaska Natives and Hispanics are from the SEER 13 Areas (SEER 9 Areas, San Jose-Monterey, Los Angeles, Alaska Native Registry and Rural Georgia). Mortality data are from US Mortality Files, National Center for Health Statistics, CDC.

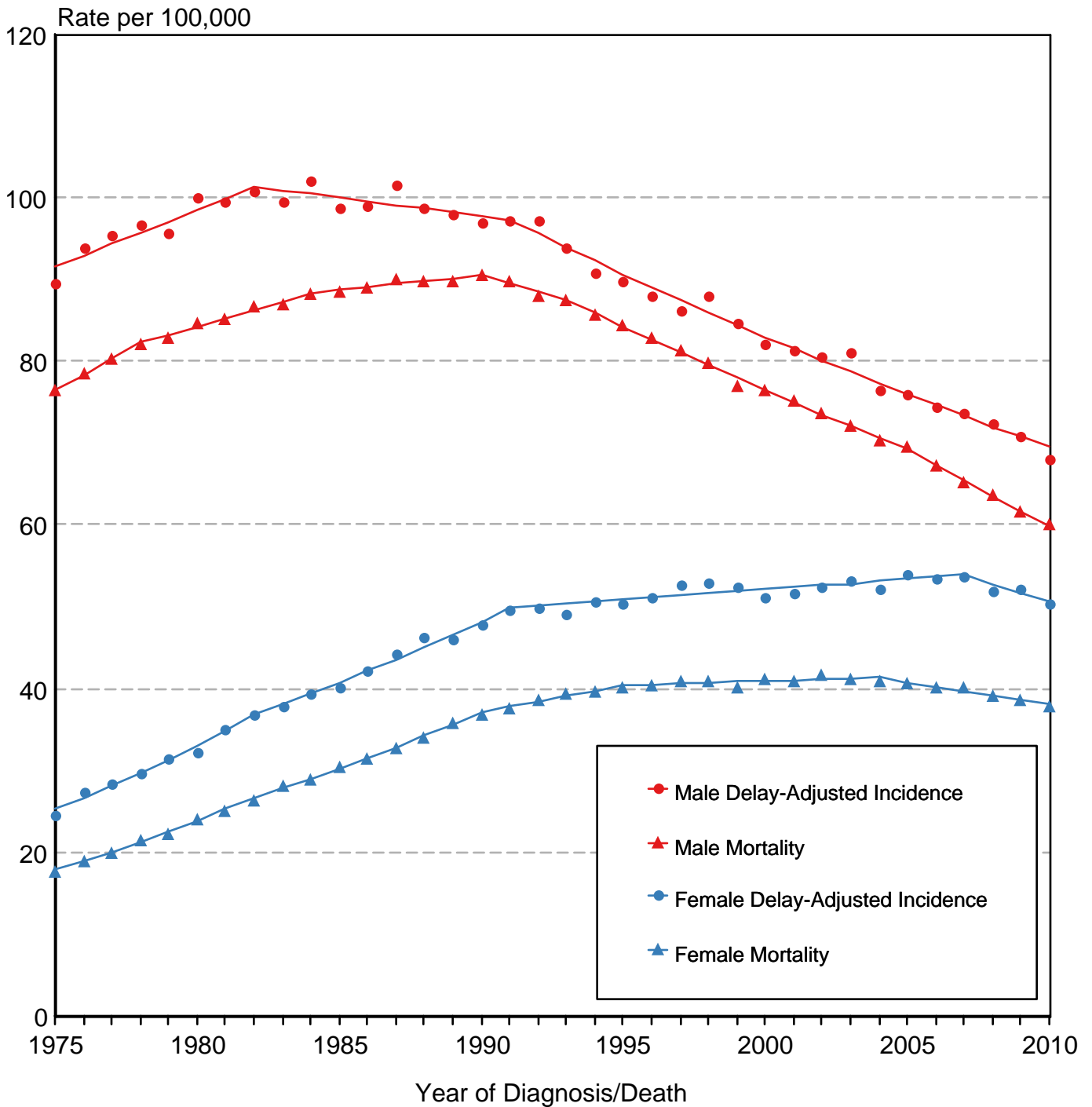
^a Rates are age-adjusted to the 2000 US Std Population (19 age groups - Census P25-1103). Regression lines are calculated using the Joinpoint Regression Program Version 4.0.3, April 2013, National Cancer Institute. Joinpoint analyses for Whites and Blacks during the 1975-2010 period allow a maximum of 5 joinpoints. Analyses for other ethnic groups during the period 1992-2010 allow a maximum of 3 joinpoints.

^b API = Asian/Pacific Islander.

^c AI/AN = American Indian/Alaska Native. Rates for American Indian/Alaska Native are based on the CHSDA(Contract Health Service Delivery Area) counties.

^d Hispanic is not mutually exclusive from whites, blacks, Asian/Pacific Islanders, and American Indians/Alaska Natives. Incidence data for Hispanics are based on NHIA and exclude cases from the Alaska Native Registry. Mortality data for Hispanics exclude cases from Connecticut, the District of Columbia, Maine, Maryland, Minnesota, New Hampshire, New York, North Dakota, South Carolina, Oklahoma, and Vermont.

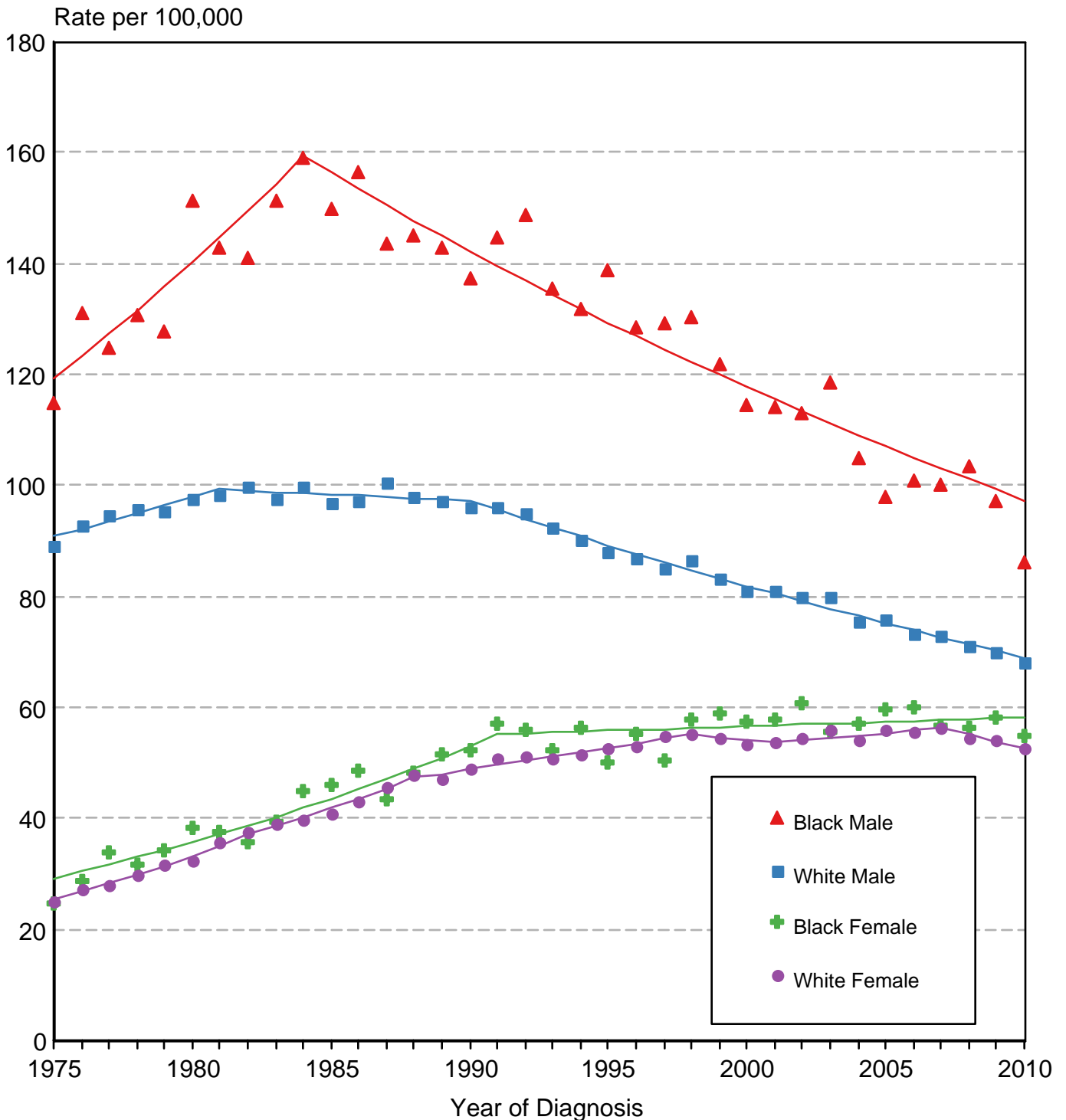
Cancer of the Lung & Bronchus SEER Delay-Adjusted Incidence & US Death Rates, 1975-2010, All Races, By Sex



Source: SEER 9 areas and US Mortality Files (National Center for Health Statistics, CDC). Rates are age-adjusted to the 2000 US Std Population (19 age groups - Census P25-1103). Regression lines are calculated using the Joinpoint Regression Program Version 4.0.3, April 2013, National Cancer Institute.

Figure 15.6

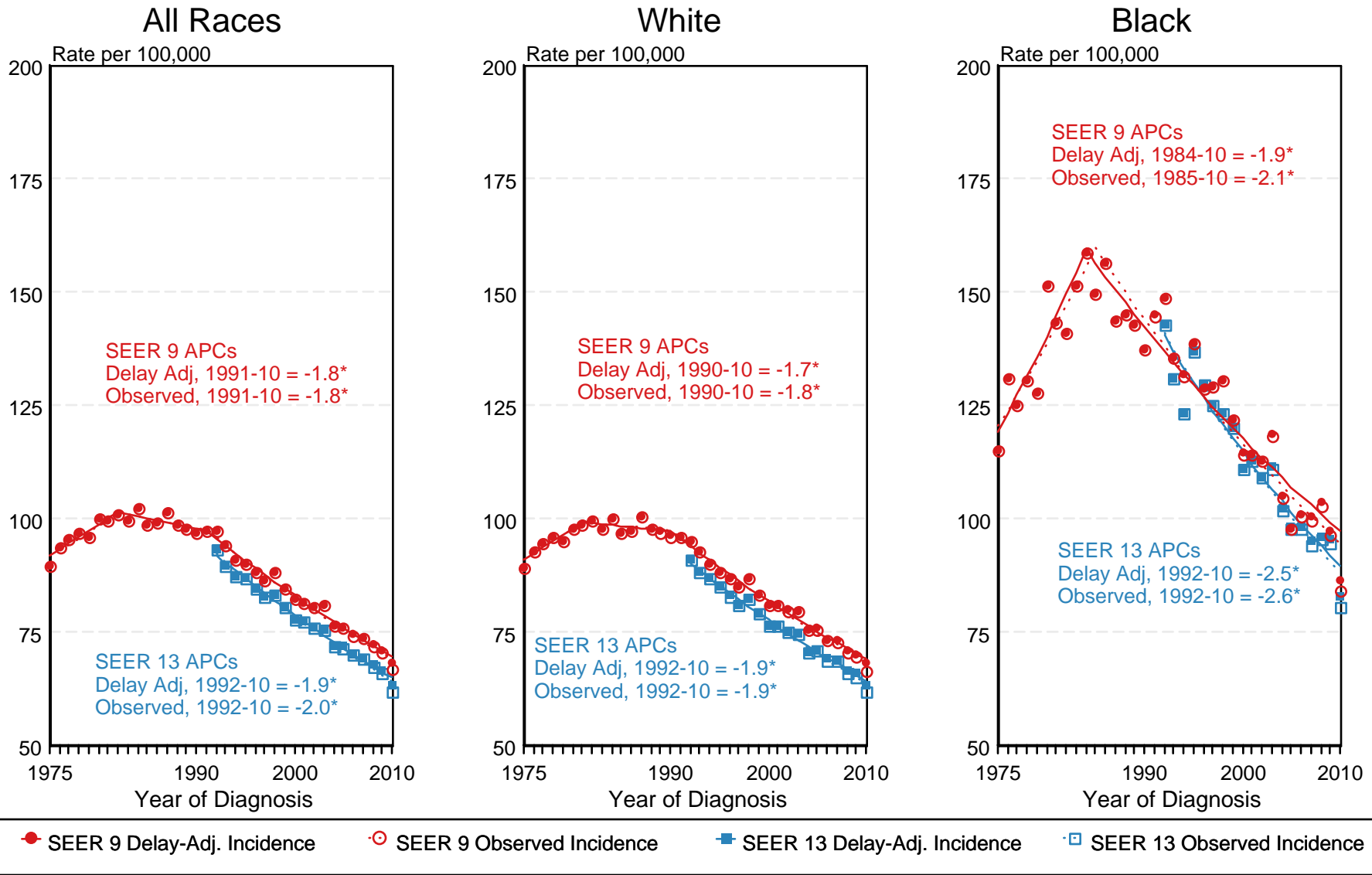
Cancer of the Lung & Bronchus SEER Delay-Adjusted Incidence, 1975-2010 By Sex and Race



Source: SEER 9 areas. Rates are age-adjusted to the 2000 US Std Population (19 age groups - Census P25-1103). Regression lines are calculated using the Joinpoint Regression Program Version 4.0.3, April 2013, National Cancer Institute.

Figure 15.7

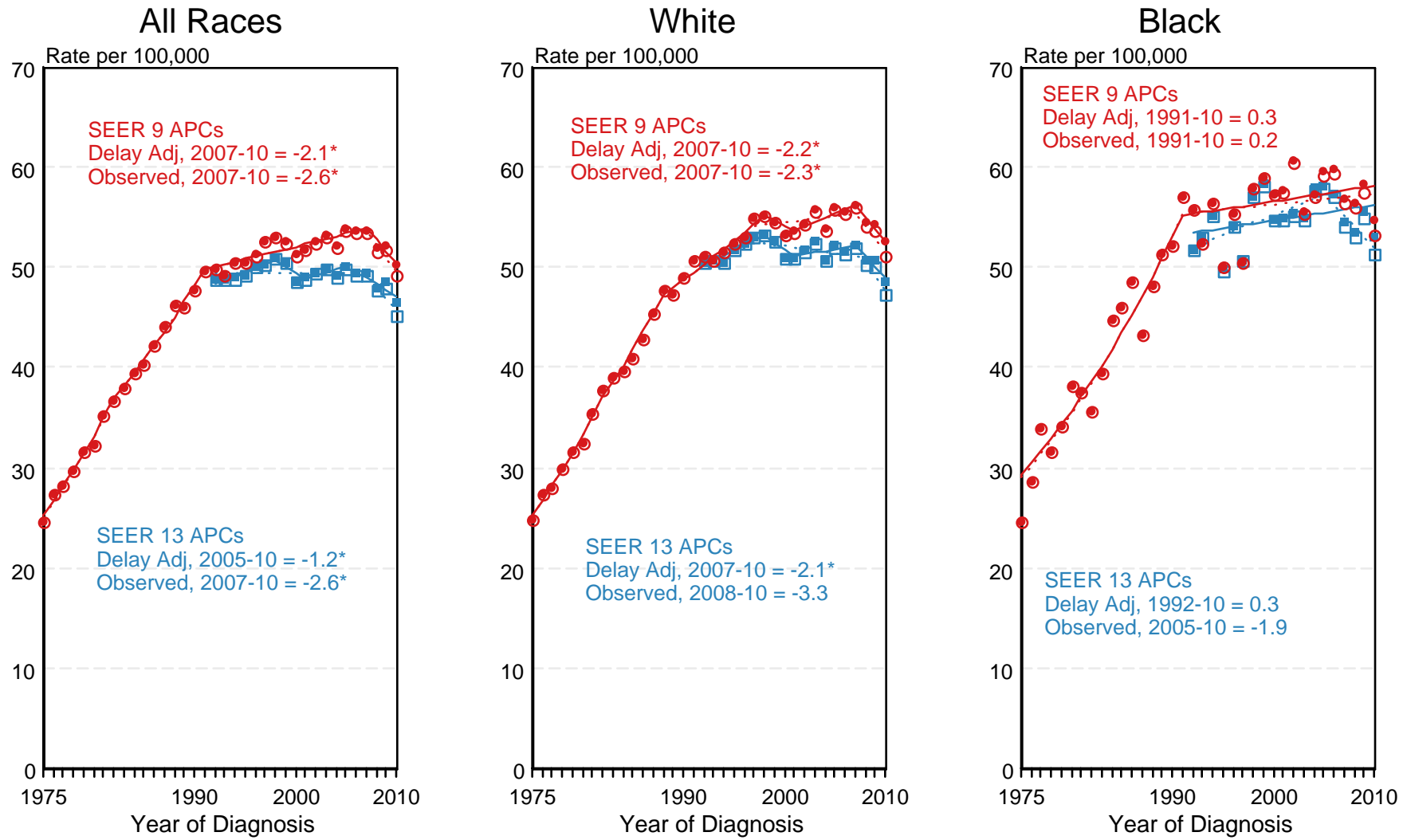
SEER Observed Incidence and SEER Delay Adjusted Incidence Rates^a SEER 9 Areas Compared to SEER 13 Areas Cancer of the Lung and Bronchus, Male, by Race



^a Source: SEER 9 areas and SEER 13 areas.
Rates are age-adjusted to the 2000 US Std Population (19 age groups - Census P25-1103).
Regression lines and APCs are calculated using the Joinpoint Regression Program Version 4.0.3, April 2013, National Cancer Institute.
The APC is the Annual Percent Change for the regression line segments. The APC shown on the graph is for the most recent trend.
* The APC is significantly different from zero ($p < 0.05$).

Figure 15.8

SEER Observed Incidence and SEER Delay Adjusted Incidence Rates^a SEER 9 Areas Compared to SEER 13 Areas Cancer of the Lung and Bronchus, Female, by Race

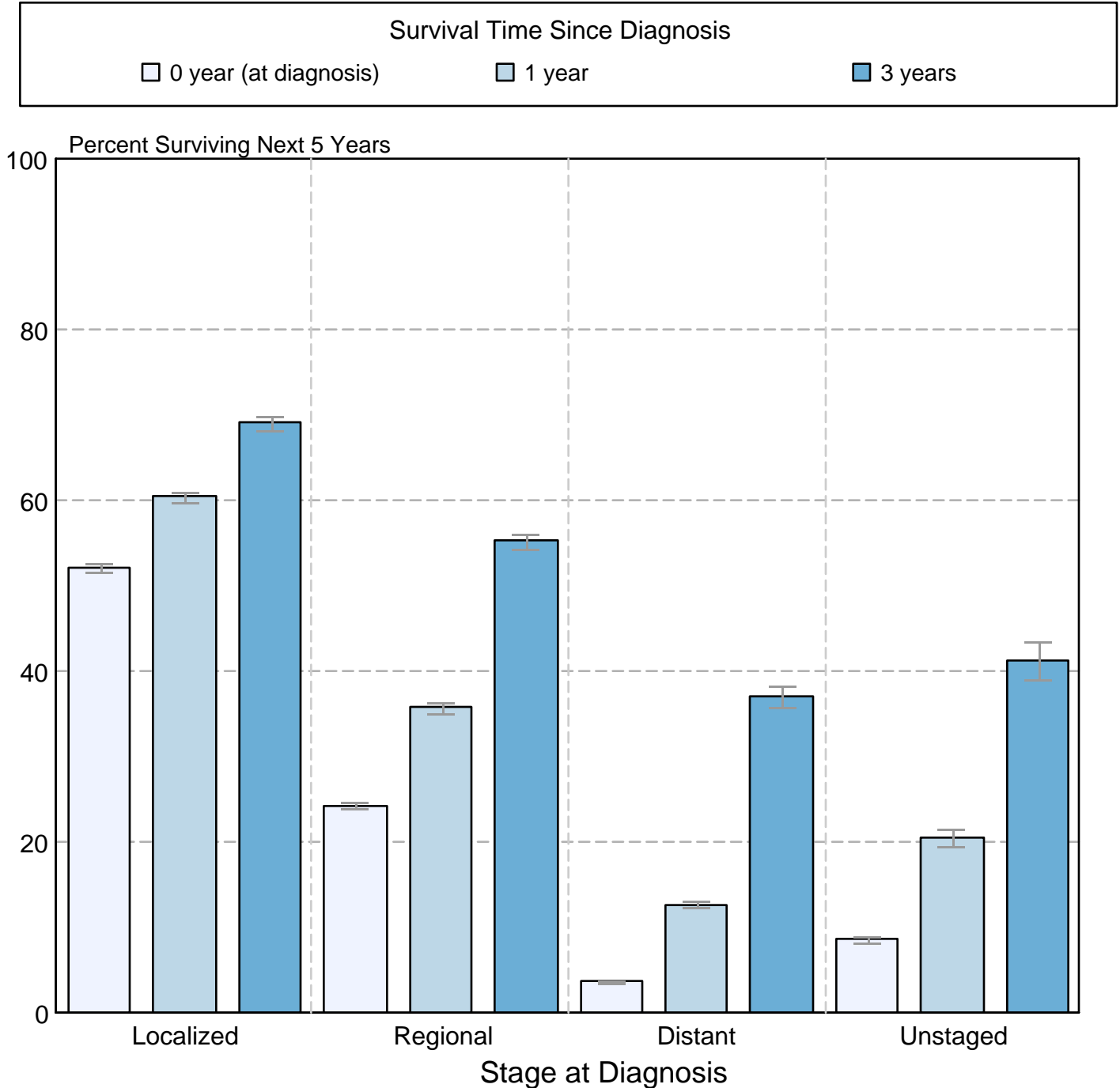


● SEER 9 Delay-Adj. Incidence
 ○ SEER 9 Observed Incidence
 ■ SEER 13 Delay-Adj. Incidence
 □ SEER 13 Observed Incidence

^a Source: SEER 9 areas and SEER 13 areas. Rates are age-adjusted to the 2000 US Std Population (19 age groups - Census P25-1103). Regression lines and APCs are calculated using the Joinpoint Regression Program Version 4.0.3, April 2013, National Cancer Institute. The APC is the Annual Percent Change for the regression line segments. The APC shown on the graph is for the most recent trend. * The APC is significantly different from zero (p < 0.05).

Figure 15.9

Cancer of the Lung and Bronchus
5-Year SEER Conditional Relative Survival and
95% Confidence Intervals
 Probability of surviving the next 5 years given the cohort
 has already survived 0, 1, or 3 years
 1998-2009 by stage at diagnosis



Source: SEER 18 areas (San Francisco, Connecticut, Detroit, Hawaii, Iowa, New Mexico, Seattle, Utah, Atlanta, San Jose-Monterey, Los Angeles, Alaska Native Registry, Rural Georgia, California excluding SF/SJM/LA, Kentucky, Louisiana, New Jersey and Georgia excluding ATL/RG). California excluding SF/SJM/LA, Kentucky, Louisiana, New Jersey and Georgia excluding ATL/RG contribute cases for diagnosis years 2000-2009. The remaining 13 SEER Areas contribute cases for the entire period 1998-2009. Percent surviving is not shown if based on less than 25 cases. Confidence intervals are not shown if length of the confidence interval is greater than 5 times the standard error.