

Table 26.1  
Cancer of the Thyroid (Invasive)

Trends in SEER Incidence<sup>ab</sup> and U.S. Mortality<sup>c</sup> Using the Joinpoint Regression Program,  
1975-2010 With up to Five Joinpoints, 1992-2010 With up to Three Joinpoints,  
Both Sexes by Race/Ethnicity

	JP Trend 1		JP Trend 2		JP Trend 3		JP Trend 4		JP Trend 5		JP Trend 6		AAPC <sup>d</sup>	
	Years	APC	Years	APC	Years	APC	Years	APC	Years	APC	Years	APC	2001-10	2006-10
<u>SEER 9 Delay-Adjusted Incidence<sup>a</sup>, 1975-2010</u>														
All Races	1975-81	-2.1	1981-96	2.2*	1996-10	6.3*							6.3*	6.3*
White	1975-81	-2.0	1981-97	2.7*	1997-08	7.2*	2008-10	2.6					6.2*	4.9*
Black	1975-95	0.7	1995-10	6.3*									6.3*	6.3*
<u>SEER 13 Delay-Adjusted Incidence<sup>b</sup>, 1992-2010</u>														
All Races	1992-98	3.3*	1998-10	6.3*									6.3*	6.3*
White	1992-98	4.0*	1998-10	6.5*									6.5*	6.5*
Black	1992-95	-4.5	1995-10	6.8*									6.8*	6.8*
<u>SEER 9 Observed Incidence<sup>a</sup>, 1975-2010</u>														
All Races	1975-77	6.2	1977-80	-6.7	1980-97	2.5*	1997-10	6.4*					6.4*	6.4*
White	1975-77	7.3	1977-80	-6.6	1980-97	2.7*	1997-08	7.1*	2008-10	2.1			6.0*	4.6*
Black	1975-95	0.8	1995-10	6.2*									6.2*	6.2*
<u>SEER 13 Observed Incidence<sup>b</sup>, 1992-2010</u>														
All Races	1992-98	3.2*	1998-10	6.2*									6.2*	6.2*
White	1992-98	3.9*	1998-10	6.4*									6.4*	6.4*
White NH <sup>ef</sup>	1992-98	4.6*	1998-10	6.6*									6.6*	6.6*
Black	1992-95	-4.3	1995-10	6.7*									6.7*	6.7*
Black NH <sup>ef</sup>	1992-95	-4.7	1995-10	6.8*									6.8*	6.8*
API <sup>e</sup>	1992-00	0.6	2000-10	5.2*									5.2*	5.2*
AI/AN <sup>eg</sup>	1992-10	3.6*											3.6*	3.6*
Hispanic <sup>f</sup>	1992-95	-4.8	1995-10	5.1*									5.1*	5.1*
<u>U.S. Cancer Mortality<sup>c</sup>, 1975-2010</u>														
All Races	1975-89	-2.0*	1989-10	0.9*									0.9*	0.9*
White	1975-89	-2.1*	1989-10	0.9*									0.9*	0.9*
Black	1975-10	0.0											0.0	0.0
<u>U.S. Cancer Mortality<sup>c</sup>, 1992-2010</u>														
All Races	1992-10	0.9*											0.9*	0.9*
White	1992-10	0.8*											0.8*	0.8*
White NH <sup>ef</sup>	1992-10	1.0*											1.0*	1.0*
Black	1992-10	1.2*											1.2*	1.2*
Black NH <sup>ef</sup>	1992-10	1.4*											1.4*	1.4*
API <sup>e</sup>	1992-10	0.0											0.0	0.0
AI/AN <sup>eg</sup>	1992-10	1.2											1.2	1.2
Hispanic <sup>f</sup>	1992-10	-0.2											-0.2	-0.2

Joinpoint Regression Program Version 4.0.3, April 2013, National Cancer Institute. (<http://surveillance.cancer.gov/joinpoint/>).

The APC is the Annual Percent Change based on rates age-adjusted to the 2000 US Std Population (19 age groups - Census P25-1130).

Trends are from the SEER 9 areas (San Francisco, Connecticut, Detroit, Hawaii, Iowa, New Mexico, Seattle, Utah, and Atlanta).

Trends are from the SEER 13 areas (SEER 9 Areas, Los Angeles, San Jose-Monterey, Rural Georgia, and the Alaska Native Registry).

Trends are from US Mortality Files, National Center for Health Statistics, Centers for Disease Control and Prevention.

The AAPC is the Average Annual Percent Change and is based on the APCs calculated by Joinpoint.

API - Asian/Pacific Islander, AI/AN - American Indian/Alaska Native, NH - Non-Hispanic

Hispanic and Non-Hispanic are not mutually exclusive from whites, blacks, Asian/Pacific Islanders, and American Indians/Alaska

Natives. Incidence data for Hispanics and Non-Hispanics are based on NHIA and exclude cases from the Alaska Native Registry.

The Hispanic and Non-Hispanic mortality trends exclude deaths from CT, DC, ME, MD, MN, NH, NY, ND, SC, OK and VT.

Data for American Indian/Alaska Native are based on the CHSDA (Contract Health Service Delivery Area) counties.

\* The APC/AAPC is significantly different from zero ( $p < .05$ ).

- Joinpoint regression line analysis could not be performed on data series.

Table 26.2  
Cancer of the Thyroid (Invasive)

Trends in SEER Incidence<sup>ab</sup> and U.S. Mortality<sup>c</sup> Using the Joinpoint Regression Program,  
1975-2010 With up to Five Joinpoints, 1992-2010 With up to Three Joinpoints,  
Males by Race/Ethnicity

	JP Trend 1		JP Trend 2		JP Trend 3		JP Trend 4		JP Trend 5		JP Trend 6		AAPC <sup>d</sup>	
	Years	APC	Years	APC	Years	APC	Years	APC	Years	APC	Years	APC	2001-10	2006-10
<u>SEER 9 Delay-Adjusted Incidence<sup>a</sup>, 1975-2010</u>														
All Races	1975-80	-4.5	1980-97	1.8*	1997-10	5.5*							5.5*	5.5*
White	1975-77	10.5	1977-80	-9.0	1980-97	2.5*	1997-10	5.8*					5.8*	5.8*
Black	1975-10	2.8*											2.8*	2.8*
<u>SEER 13 Delay-Adjusted Incidence<sup>b</sup>, 1992-2010</u>														
All Races	1992-96	-0.9	1996-10	5.4*									5.4*	5.4*
White	1992-95	-1.9	1995-10	5.6*									5.6*	5.6*
Black	1992-95	-11.3	1995-10	5.4*									5.4*	5.4*
<u>SEER 9 Observed Incidence<sup>a</sup>, 1975-2010</u>														
All Races	1975-80	-4.6	1980-97	1.8*	1997-10	5.5*							5.5*	5.5*
White	1975-77	10.1	1977-80	-9.0	1980-97	2.5*	1997-10	5.7*					5.7*	5.7*
Black	1975-10	2.9*											2.9*	2.9*
<u>SEER 13 Observed Incidence<sup>b</sup>, 1992-2010</u>														
All Races	1992-96	-1.0	1996-10	5.4*									5.4*	5.4*
White	1992-95	-1.9	1995-10	5.5*									5.5*	5.5*
White NH <sup>ef</sup>	1992-96	0.5	1996-10	6.0*									6.0*	6.0*
Black	1992-95	-11.6	1995-10	5.4*									5.4*	5.4*
Black NH <sup>ef</sup>	1992-95	-11.2	1995-10	5.4*									5.4*	5.4*
API <sup>e</sup>	1992-10	2.7*											2.7*	2.7*
AI/AN <sup>eg</sup>	1992-10	2.8											2.8	2.8
Hispanic <sup>f</sup>	1992-10	3.8*											3.8*	3.8*
<u>U.S. Cancer Mortality<sup>c</sup>, 1975-2010</u>														
All Races	1975-83	-3.1*	1983-10	1.2*									1.2*	1.2*
White	1975-84	-2.6*	1984-10	1.3*									1.3*	1.3*
Black	1975-10	0.4											0.4	0.4
<u>U.S. Cancer Mortality<sup>c</sup>, 1992-2010</u>														
All Races	1992-10	1.6*											1.6*	1.6*
White	1992-10	1.6*											1.6*	1.6*
White NH <sup>ef</sup>	1992-10	1.6*											1.6*	1.6*
Black	1992-10	2.0*											2.0*	2.0*
Black NH <sup>ef</sup>	1992-10	1.7*											1.7*	1.7*
API <sup>e</sup>	1992-10	-0.3											-0.3	-0.3
AI/AN <sup>eg</sup>	-	-											-	-
Hispanic <sup>f</sup>	1992-10	1.8											1.8	1.8

Joinpoint Regression Program Version 4.0.3, April 2013, National Cancer Institute. (<http://surveillance.cancer.gov/joinpoint/>).

The APC is the Annual Percent Change based on rates age-adjusted to the 2000 US Std Population (19 age groups - Census P25-1130).

Trends are from the SEER 9 areas (San Francisco, Connecticut, Detroit, Hawaii, Iowa, New Mexico, Seattle, Utah, and Atlanta).

Trends are from the SEER 13 areas (SEER 9 Areas, Los Angeles, San Jose-Monterey, Rural Georgia, and the Alaska Native Registry).

Trends are from US Mortality Files, National Center for Health Statistics, Centers for Disease Control and Prevention.

The AAPC is the Average Annual Percent Change and is based on the APCs calculated by Joinpoint.

API - Asian/Pacific Islander, AI/AN - American Indian/Alaska Native, NH - Non-Hispanic

Hispanic and Non-Hispanic are not mutually exclusive from whites, blacks, Asian/Pacific Islanders, and American Indians/Alaska

Natives. Incidence data for Hispanics and Non-Hispanics are based on NHIA and exclude cases from the Alaska Native Registry.

The Hispanic and Non-Hispanic mortality trends exclude deaths from CT, DC, ME, MD, MN, NH, NY, ND, SC, OK and VT.

Data for American Indian/Alaska Native are based on the CHSDA (Contract Health Service Delivery Area) counties.

\* The APC/AAPC is significantly different from zero ( $p < .05$ ).

- Joinpoint regression line analysis could not be performed on data series.

Table 26.3  
Cancer of the Thyroid (Invasive)

Trends in SEER Incidence<sup>ab</sup> and U.S. Mortality<sup>c</sup> Using the Joinpoint Regression Program,  
1975-2010 With up to Five Joinpoints, 1992-2010 With up to Three Joinpoints,  
Females by Race/Ethnicity

	JP Trend 1		JP Trend 2		JP Trend 3		JP Trend 4		JP Trend 5		JP Trend 6		AAPC <sup>d</sup>	
	Years	APC	Years	APC	Years	APC	Years	APC	Years	APC	Years	APC	2001-10	2006-10
<u>SEER 9 Delay-Adjusted Incidence<sup>a</sup>, 1975-2010</u>														
All Races	1975-81	-1.6	1981-96	2.5*	1996-10	6.6*							6.6*	6.6*
White	1975-82	-1.0	1982-97	3.0*	1997-08	7.6*	2008-10	2.8					6.5*	5.2*
Black	1975-93	0.0	1993-10	6.5*									6.5*	6.5*
<u>SEER 13 Delay-Adjusted Incidence<sup>b</sup>, 1992-2010</u>														
All Races	1992-98	3.9*	1998-10	6.5*									6.5*	6.5*
White	1992-10	6.4*											6.4*	6.4*
Black	1992-10	6.8*											6.8*	6.8*
<u>SEER 9 Observed Incidence<sup>a</sup>, 1975-2010</u>														
All Races	1975-81	-1.6	1981-96	2.5*	1996-10	6.6*							6.6*	6.6*
White	1975-82	-1.0	1982-97	3.0*	1997-08	7.5*	2008-10	2.3					6.3*	4.9*
Black	1975-91	-0.4	1991-10	5.9*									5.9*	5.9*
<u>SEER 13 Observed Incidence<sup>b</sup>, 1992-2010</u>														
All Races	1992-98	3.9*	1998-10	6.5*									6.5*	6.5*
White	1992-98	4.7*	1998-10	6.6*									6.6*	6.6*
White NH <sup>ef</sup>	1992-10	6.5*											6.5*	6.5*
Black	1992-98	2.8	1998-10	7.5*									7.5*	7.5*
Black NH <sup>ef</sup>	1992-98	2.5	1998-10	7.7*									7.7*	7.7*
API <sup>e</sup>	1992-00	0.9	2000-10	5.4*									5.4*	5.4*
AI/AN <sup>eg</sup>	1992-10	3.8*											3.8*	3.8*
Hispanic <sup>f</sup>	1992-98	1.0	1998-10	5.6*									5.6*	5.6*
<u>U.S. Cancer Mortality<sup>c</sup>, 1975-2010</u>														
All Races	1975-88	-2.7*	1988-10	0.5*									0.5*	0.5*
White	1975-88	-2.9*	1988-10	0.4*									0.4*	0.4*
Black	1975-10	-0.2											-0.2	-0.2
<u>U.S. Cancer Mortality<sup>c</sup>, 1992-2010</u>														
All Races	1992-94	-6.4	1994-10	0.9*									0.9*	0.9*
White	1992-95	-3.3	1995-10	0.8*									0.8*	0.8*
White NH <sup>ef</sup>	1992-94	-5.6	1994-10	0.9*									0.9*	0.9*
Black	1992-10	1.0											1.0	1.0
Black NH <sup>ef</sup>	1992-10	1.5*											1.5*	1.5*
API <sup>e</sup>	1992-03	-3.7*	2003-10	5.2*									3.2	5.2*
AI/AN <sup>eg</sup>	1992-10	-0.6											-0.6	-0.6
Hispanic <sup>f</sup>	1992-10	-1.2*											-1.2*	-1.2*

Joinpoint Regression Program Version 4.0.3, April 2013, National Cancer Institute. (<http://surveillance.cancer.gov/joinpoint/>).

The APC is the Annual Percent Change based on rates age-adjusted to the 2000 US Std Population (19 age groups - Census P25-1130).

Trends are from the SEER 9 areas (San Francisco, Connecticut, Detroit, Hawaii, Iowa, New Mexico, Seattle, Utah, and Atlanta).

Trends are from the SEER 13 areas (SEER 9 Areas, Los Angeles, San Jose-Monterey, Rural Georgia, and the Alaska Native Registry).

Trends are from US Mortality Files, National Center for Health Statistics, Centers for Disease Control and Prevention.

The AAPC is the Average Annual Percent Change and is based on the APCs calculated by Joinpoint.

API - Asian/Pacific Islander, AI/AN - American Indian/Alaska Native, NH - Non-Hispanic

Hispanic and Non-Hispanic are not mutually exclusive from whites, blacks, Asian/Pacific Islanders, and American Indians/Alaska

Natives. Incidence data for Hispanics and Non-Hispanics are based on NHIA and exclude cases from the Alaska Native Registry.

The Hispanic and Non-Hispanic mortality trends exclude deaths from CT, DC, ME, MD, MN, NH, NY, ND, SC, OK and VT.

Data for American Indian/Alaska Native are based on the CHSDA (Contract Health Service Delivery Area) counties.

\* The APC/AAPC is significantly different from zero ( $p < .05$ ).

- Joinpoint regression line analysis could not be performed on data series.

Table 26.4  
Cancer of the Thyroid (Invasive)

Delay-adjusted SEER Incidence<sup>a</sup> Rates by Year, Race and Sex

Year of Diagnosis:	All Races			Whites			Blacks		
	Total	Males	Females	Total	Males	Females	Total	Males	Females
1975	4.85	3.14	6.45	4.66	2.79	6.37	2.97	-	4.21
1976	4.79	2.94	6.57	4.68	2.88	6.41	3.37	-	5.00
1977	5.44	3.50	7.32	5.35	3.44	7.21	3.74	-	5.40
1978	5.09	3.14	6.94	4.95	2.97	6.83	2.92	-	4.00
1979	4.48	2.67	6.17	4.45	2.58	6.21	3.24	-	4.30
1980	4.33	2.39	6.15	4.30	2.28	6.21	2.37	-	3.43
1981	4.42	2.52	6.23	4.38	2.48	6.26	2.38	-	3.41
1982	4.63	3.00	6.15	4.55	2.87	6.13	3.29	-	4.35
1983	4.71	2.80	6.50	4.74	2.61	6.73	3.02	2.15	3.77
1984	4.85	2.66	6.92	4.73	2.58	6.81	3.02	-	4.08
1985	5.13	3.09	7.09	5.08	3.09	7.05	2.87	-	3.66
1986	5.33	3.07	7.50	5.25	3.11	7.35	3.35	-	5.10
1987	5.05	2.81	7.14	5.04	2.86	7.08	2.82	-	4.30
1988	4.94	2.94	6.89	4.90	3.00	6.80	2.53	-	3.21
1989	5.37	2.98	7.65	5.47	3.21	7.72	2.51	-	3.93
1990	5.51	2.94	7.97	5.58	2.99	8.12	3.77	2.28	4.92
1991	5.50	3.19	7.70	5.69	3.31	8.01	3.23	2.08	4.21
1992	5.88	3.53	8.12	5.90	3.54	8.19	4.22	3.10	5.14
1993	5.65	3.59	7.65	5.76	3.69	7.81	3.39	2.08	4.57
1994	6.09	3.39	8.75	6.24	3.44	9.03	3.77	1.79	5.37
1995	6.24	3.37	9.01	6.43	3.61	9.25	3.10	-	4.57
1996	6.53	3.48	9.51	6.73	3.63	9.84	3.85	-	5.78
1997	6.79	3.67	9.80	7.07	3.79	10.34	4.00	2.46	5.27
1998	7.00	3.71	10.14	7.23	3.96	10.45	3.87	1.51	5.82
1999	7.35	3.88	10.69	7.59	4.10	11.02	4.64	1.61	7.11
2000	7.62	4.04	11.12	8.08	4.39	11.81	4.60	2.20	6.59
2001	8.32	4.34	12.19	8.71	4.64	12.82	4.94	2.55	6.87
2002	9.25	4.94	13.46	9.79	5.27	14.34	5.51	2.81	7.70
2003	9.67	4.73	14.48	10.41	5.10	15.73	5.36	2.85	7.59
2004	10.17	5.26	14.96	10.89	5.61	16.22	6.45	3.43	8.95
2005	11.02	5.84	16.04	12.01	6.52	17.51	5.91	2.80	8.62
2006	11.37	5.89	16.68	12.28	6.47	18.12	6.62	3.06	9.49
2007	12.46	6.14	18.61	13.36	6.61	20.17	7.41	3.23	10.84
2008	13.32	6.67	19.78	14.36	7.17	21.60	7.09	4.47	9.55
2009	14.50	7.08	21.64	15.60	7.76	23.42	8.72	3.34	13.37
2010	14.05	6.73	21.15	14.89	7.35	22.49	8.71	3.69	12.91

Additional information on the model used to delay-adjust SEER Incidence rates can be found at <http://surveillance.cancer.gov/delay/>.

<sup>a</sup> SEER 9 areas (San Francisco, Connecticut, Detroit, Hawaii, Iowa, New Mexico, Seattle, Utah, and Atlanta). Rates are per 100,000 and are age-adjusted to the 2000 US Std Population (19 age groups - Census P25-1130).

- Delay-adjusted rate is not shown for observed rates based on less than 16 cases for the time interval.

Table 26.5  
Cancer of the Thyroid (Invasive)

Age-adjusted SEER Incidence<sup>a</sup> Rates by Year, Race and Sex

Year of Diagnosis:	All Races			Whites			Blacks		
	Total	Males	Females	Total	Males	Females	Total	Males	Females
1975-2010	7.54	4.07	10.87	7.70	4.21	11.14	4.62	2.28	6.58
1975	4.85	3.14	6.45	4.66	2.79	6.37	2.97	-	4.21
1976	4.79	2.94	6.57	4.68	2.88	6.41	3.37	-	5.00
1977	5.44	3.50	7.32	5.35	3.44	7.21	3.74	-	5.40
1978	5.09	3.14	6.94	4.95	2.97	6.83	2.92	-	4.00
1979	4.48	2.67	6.17	4.45	2.58	6.21	3.24	-	4.30
1980	4.33	2.39	6.15	4.30	2.28	6.21	2.37	-	3.43
1981	4.42	2.52	6.23	4.38	2.48	6.26	2.38	-	3.41
1982	4.63	3.00	6.15	4.55	2.87	6.13	3.29	-	4.34
1983	4.71	2.80	6.50	4.74	2.61	6.72	3.02	2.15	3.77
1984	4.85	2.65	6.92	4.73	2.58	6.80	3.02	-	4.08
1985	5.13	3.09	7.09	5.08	3.09	7.04	2.86	-	3.66
1986	5.32	3.07	7.49	5.24	3.10	7.34	3.35	-	5.09
1987	5.05	2.81	7.13	5.03	2.86	7.07	2.82	-	4.30
1988	4.94	2.94	6.89	4.90	3.00	6.79	2.53	-	3.21
1989	5.36	2.98	7.65	5.47	3.21	7.71	2.51	-	3.92
1990	5.50	2.93	7.96	5.57	2.99	8.11	3.76	2.28	4.91
1991	5.49	3.19	7.69	5.68	3.31	8.00	3.22	2.07	4.20
1992	5.88	3.52	8.11	5.89	3.53	8.18	4.20	3.09	5.13
1993	5.64	3.58	7.64	5.75	3.68	7.79	3.38	2.07	4.56
1994	6.08	3.38	8.74	6.22	3.43	9.01	3.75	1.78	5.35
1995	6.22	3.37	9.00	6.42	3.60	9.22	3.09	-	4.55
1996	6.51	3.47	9.48	6.71	3.62	9.81	3.83	-	5.75
1997	6.77	3.66	9.78	7.04	3.77	10.31	3.98	2.44	5.24
1998	6.98	3.71	10.12	7.20	3.94	10.42	3.85	1.50	5.79
1999	7.33	3.86	10.66	7.55	4.08	10.98	4.61	1.60	7.06
2000	7.60	4.03	11.08	8.04	4.37	11.76	4.57	2.18	6.55
2001	8.28	4.32	12.15	8.66	4.61	12.75	4.89	2.52	6.82
2002	9.21	4.92	13.40	9.72	5.23	14.25	5.46	2.78	7.63
2003	9.63	4.71	14.41	10.33	5.05	15.62	5.30	2.82	7.51
2004	10.11	5.23	14.88	10.80	5.55	16.09	6.37	3.39	8.85
2005	10.95	5.80	15.94	11.90	6.45	17.36	5.83	2.76	8.51
2006	11.29	5.85	16.56	12.15	6.40	17.94	6.52	3.01	9.36
2007	12.37	6.09	18.46	13.21	6.52	19.95	7.29	3.17	10.67
2008	13.21	6.62	19.61	14.17	7.06	21.33	6.96	4.37	9.38
2009	14.35	7.01	21.43	15.37	7.62	23.09	8.55	3.26	13.11
2010	13.83	6.62	20.81	14.55	7.16	21.99	8.44	3.56	12.53

<sup>a</sup> SEER 9 areas (San Francisco, Connecticut, Detroit, Hawaii, Iowa, New Mexico, Seattle, Utah, and Atlanta). Rates are per 100,000 and are age-adjusted to the 2000 US Std Population (19 age groups - Census P25-1130).  
- Statistic not shown. Rate based on less than 16 cases for the time interval.

Table 26.6  
Cancer of the Thyroid (Invasive)

Age-adjusted U.S. Death<sup>a</sup> Rates by Year, Race and Sex

Year of Death:	All Races			Whites			Blacks		
	Total	Males	Females	Total	Males	Females	Total	Males	Females
1975-2010	0.48	0.43	0.50	0.47	0.44	0.49	0.47	0.34	0.55
1975	0.55	0.39	0.65	0.55	0.40	0.65	0.47	0.35	0.56
1976	0.56	0.49	0.61	0.56	0.49	0.60	0.52	0.42	0.60
1977	0.57	0.46	0.63	0.56	0.46	0.62	0.67	0.53	0.74
1978	0.55	0.44	0.61	0.55	0.45	0.61	0.48	0.33	0.60
1979	0.53	0.43	0.58	0.53	0.45	0.58	0.47	0.28	0.60
1980	0.48	0.38	0.53	0.49	0.40	0.54	0.42	0.29	0.51
1981	0.50	0.42	0.55	0.50	0.43	0.54	0.48	0.26	0.62
1982	0.48	0.37	0.53	0.47	0.37	0.53	0.48	0.38	0.54
1983	0.44	0.34	0.50	0.45	0.35	0.50	0.41	0.28	0.49
1984	0.47	0.38	0.52	0.47	0.39	0.51	0.47	-	0.64
1985	0.45	0.39	0.48	0.44	0.39	0.46	0.49	0.34	0.58
1986	0.46	0.39	0.49	0.45	0.39	0.49	0.48	0.34	0.57
1987	0.45	0.40	0.48	0.45	0.41	0.47	0.48	0.33	0.58
1988	0.44	0.41	0.45	0.44	0.42	0.44	0.44	0.33	0.50
1989	0.44	0.41	0.44	0.43	0.41	0.43	0.51	0.40	0.56
1990	0.44	0.37	0.48	0.44	0.38	0.47	0.45	0.30	0.54
1991	0.43	0.38	0.46	0.42	0.39	0.43	0.50	0.37	0.58
1992	0.46	0.38	0.50	0.46	0.39	0.48	0.41	0.30	0.48
1993	0.46	0.39	0.50	0.46	0.40	0.48	0.46	0.26	0.58
1994	0.42	0.38	0.44	0.42	0.38	0.44	0.37	0.30	0.40
1995	0.44	0.41	0.44	0.44	0.43	0.44	0.40	0.27	0.46
1996	0.45	0.42	0.47	0.45	0.43	0.46	0.44	0.33	0.49
1997	0.46	0.45	0.46	0.45	0.45	0.44	0.49	0.37	0.55
1998	0.44	0.38	0.47	0.43	0.39	0.45	0.43	0.27	0.53
1999	0.45	0.44	0.45	0.45	0.45	0.44	0.44	0.39	0.47
2000	0.48	0.47	0.48	0.47	0.48	0.45	0.51	0.34	0.59
2001	0.48	0.47	0.48	0.47	0.48	0.46	0.51	0.41	0.58
2002	0.48	0.45	0.48	0.48	0.46	0.48	0.48	0.39	0.52
2003	0.45	0.43	0.46	0.46	0.45	0.46	0.38	0.29	0.44
2004	0.48	0.47	0.47	0.48	0.48	0.47	0.45	0.40	0.48
2005	0.48	0.48	0.49	0.48	0.50	0.46	0.51	0.30	0.64
2006	0.49	0.46	0.51	0.50	0.48	0.50	0.47	0.28	0.60
2007	0.50	0.51	0.48	0.48	0.51	0.46	0.50	0.40	0.56
2008	0.52	0.50	0.52	0.52	0.52	0.51	0.46	0.40	0.51
2009	0.52	0.51	0.52	0.51	0.52	0.50	0.57	0.41	0.66
2010	0.51	0.50	0.51	0.50	0.51	0.48	0.49	0.45	0.53

<sup>a</sup> US Mortality Files, National Center for Health Statistics, Centers for Disease Control and Prevention.  
Rates are per 100,000 and are age-adjusted to the 2000 US Std Population (19 age groups - Census P25-1130).  
- Statistic not shown. Rate based on less than 16 cases for the time interval.

Table 26.7  
Cancer of the Thyroid (Invasive)SEER Incidence<sup>a</sup> and U.S. Death<sup>b</sup> Rates, Age-Adjusted and Age-Specific Rates, by Race and Sex

	All Races			Whites			Blacks		
	Total	Males	Females	Total	Males	Females	Total	Males	Females
<u>SEER Incidence</u>									
<u>Age at Diagnosis</u>									
Age-Adjusted Rates, 2006-2010									
All ages	12.2	6.1	18.2	13.0	6.6	19.4	7.1	3.2	10.5
Under 65	11.1	4.8	17.2	11.9	5.3	18.6	6.1	2.3	9.4
65 and over	20.3	14.8	24.7	20.6	15.5	24.9	14.5	9.7	17.8
All ages (IARC world std) <sup>c</sup>	9.9	4.7	14.9	10.6	5.1	16.0	5.6	2.4	8.4
Age-Specific Rates, 2006-2010									
<1	-	-	-	-	-	-	-	-	-
1-4	-	-	-	-	-	-	-	-	-
5-9	0.1	-	0.2	0.1	-	0.2	-	-	-
10-14	0.6	0.3	1.0	0.8	0.4	1.2	-	-	-
15-19	2.3	0.8	3.8	2.6	1.0	4.3	0.7	-	1.2
20-24	5.1	1.4	9.0	5.8	1.7	10.4	1.8	-	3.1
25-29	9.1	2.9	15.5	10.1	3.2	17.4	3.6	1.2	5.8
30-34	13.3	4.4	22.4	14.8	4.7	25.4	6.1	1.6	10.1
35-39	16.3	5.9	26.8	17.5	6.4	29.1	7.6	2.1	12.6
40-44	18.3	7.5	29.1	19.6	8.1	31.4	10.2	4.5	15.3
45-49	19.9	8.6	31.0	21.5	9.6	33.5	10.7	3.7	17.0
50-54	21.9	10.4	32.9	23.0	11.3	34.6	13.0	4.1	20.9
55-59	22.0	12.7	30.8	22.8	13.4	31.9	14.8	7.0	21.4
60-64	22.5	14.7	29.7	23.1	15.6	30.1	17.5	8.0	25.3
65-69	24.3	16.0	31.7	25.0	16.9	32.3	17.3	9.8	23.0
70-74	23.6	17.0	28.9	24.1	18.1	29.1	17.0	11.5	20.9
75-79	20.0	15.0	23.7	20.3	15.8	23.8	12.7	8.5	15.4
80-84	15.5	12.8	17.3	15.4	13.1	17.0	10.8	-	13.0
85+	10.8	9.9	11.3	10.5	9.4	11.0	10.3	-	9.8
<u>U.S. Mortality</u>									
<u>Age at Death</u>									
Age-Adjusted Rates, 2006-2010									
All ages	0.5	0.5	0.5	0.5	0.5	0.5	0.5	0.4	0.6
Under 65	0.1	0.2	0.1	0.1	0.2	0.1	0.2	0.1	0.2
65 and over	3.0	2.9	3.0	3.0	2.9	2.9	2.9	2.2	3.3
All ages (IARC world std) <sup>c</sup>	0.3	0.3	0.3	0.3	0.3	0.3	0.3	0.2	0.3
Age-Specific Rates, 2006-2010									
<1	-	-	-	-	-	-	-	-	-
1-4	-	-	-	-	-	-	-	-	-
5-9	-	-	-	-	-	-	-	-	-
10-14	-	-	-	-	-	-	-	-	-
15-19	-	-	-	-	-	-	-	-	-
20-24	-	-	-	-	-	-	-	-	-
25-29	0.0	-	-	0.0	-	-	-	-	-
30-34	0.0	-	0.0	0.0	-	0.0	-	-	-
35-39	0.1	0.1	0.1	0.1	0.1	0.1	-	-	-
40-44	0.1	0.1	0.1	0.1	0.1	0.1	0.1	-	0.2
45-49	0.2	0.2	0.2	0.2	0.2	0.2	0.1	-	-
50-54	0.4	0.4	0.3	0.4	0.4	0.3	0.4	0.4	0.5
55-59	0.6	0.6	0.6	0.6	0.7	0.6	0.7	0.6	0.8
60-64	1.0	1.0	1.0	1.0	1.0	0.9	1.0	0.8	1.2
65-69	1.7	1.8	1.5	1.7	1.9	1.5	1.6	1.5	1.7
70-74	2.3	2.4	2.3	2.3	2.4	2.1	2.5	1.3	3.5
75-79	3.3	3.2	3.3	3.3	3.3	3.3	2.6	2.6	2.6
80-84	4.2	4.0	4.3	4.1	4.0	4.2	4.1	2.6	4.9
85+	5.5	4.6	5.9	5.4	4.7	5.8	5.5	4.5	5.9

<sup>a</sup> SEER 18 areas. Rates are per 100,000 and are age-adjusted to the 2000 US Std Population (19 age groups - Census P25-1130), unless noted.

<sup>b</sup> US Mortality Files, National Center for Health Statistics, Centers for Disease Control and Prevention.

<sup>c</sup> Rates are per 100,000 and are age-adjusted to the 2000 US Std Population (19 age groups - Census P25-1130), unless noted.

- Rates are per 100,000 and are age-adjusted to the IARC world standard population.

- Statistic not shown. Rate based on less than 16 cases for the time interval.

Table 26.8  
Cancer of the Thyroid (Invasive)

5-Year Relative and Period Survival (Percent) by Race, Sex, Diagnosis Year, Stage and Age

	All Races			Whites			Blacks		
	Total	Males	Females	Total	Males	Females	Total	Males	Females
5-Year Relative Survival (Percent)									
Year of Diagnosis:									
1960-1963 <sup>a</sup>	-	-	-	83	75	87	-	-	-
1970-1973 <sup>a</sup>	-	-	-	86	82	87	-	-	-
1975-1977 <sup>b</sup>	92.1	91.1	92.4	91.8	90.7	92.2	89.8	-	91.0
1978-1980 <sup>b</sup>	92.1	92.1	93.6	91.5	87.5	92.7	90.1	68.0 <sup>h</sup>	95.4
1981-1983 <sup>b</sup>	93.6	92.2	93.9	93.1	90.9	93.7	96.3	100.0	93.2
1984-1986 <sup>b</sup>	93.1	89.8	94.2	93.2	89.4	94.3	89.3	85.5 <sup>g</sup>	90.3
1987-1989 <sup>b</sup>	94.4	91.6	95.2	94.1	91.5	95.0	92.2	91.2 <sup>g</sup>	92.2
1990-1992 <sup>b</sup>	94.3	90.5	95.5	94.9	91.6	96.0	85.8	84.5 <sup>g</sup>	86.2
1993-1995 <sup>b</sup>	95.4	91.6	96.6	95.5	91.6	96.8	93.2	88.1 <sup>g</sup>	94.3
1996-1998 <sup>b</sup>	95.6	90.9	96.9	95.9	91.3	97.3	95.0	86.1 <sup>g</sup>	96.4
1999-2002 <sup>b</sup>	96.6	94.4	97.3	97.0	94.9	97.6	93.1	91.6	93.2
2003-2009 <sup>b</sup>	97.9 <sup>f</sup>	95.8 <sup>f</sup>	98.5 <sup>f</sup>	98.2 <sup>f</sup>	96.2 <sup>f</sup>	98.8 <sup>f</sup>	96.6 <sup>f</sup>	89.7	97.8
5-Year Period Survival (Percent) <sup>cd</sup>									
2009	98.0	95.9	98.6	98.2	96.2	98.7	97.0	89.7	98.0
Stage Distribution (%) 2003-2009 <sup>ce</sup>									
All Stages									
Number of cases	55,834	12,715	43,119	45,860	10,786	35,074	3,607	658	2,949
Percent	100%	100%	100%	100%	100%	100%	100%	100%	100%
Localized	68	59	71	69	59	72	77	68	79
Regional	25	32	23	25	32	23	15	19	14
Distant	4	8	4	4	7	3	6	11	5
Unstaged	2	2	2	2	2	2	2	2	2
5-Year Relative Survival (Percent), 2003-2009 <sup>c</sup>									
Age at Diagnosis:									
Ages <45	99.6	98.6	99.8	99.7	98.7	99.8	98.8	94.8	99.3
Ages 45-54	98.9	97.0	99.4	99.1	97.2	99.6	96.9	94.6	97.3
Ages 55-64	97.0	94.5	97.9	97.2	94.6	98.2	96.6	92.6	97.0
Ages 65-74	94.6	90.2	96.1	95.2	91.0	96.7	92.0	86.6 <sup>g</sup>	92.6
Ages 75+	84.9	80.8	85.7	85.9	81.1	86.5	76.2 <sup>g</sup>	63.9 <sup>h</sup>	78.6
Ages <65	98.9	97.0	99.4	99.0	97.2	99.5	97.9	94.4	98.5
Ages 65+	91.1	87.4	92.4	91.9	88.1	93.1	87.2	79.3 <sup>g</sup>	88.7
Stage <sup>e</sup> :									
All Stages	97.7	95.2	98.5	97.9	95.4	98.7	96.6	91.9	97.4
Localized	99.9	99.8	99.9	99.9	99.8	99.9	99.6	98.1	99.6
Regional	97.4	95.8	98.1	97.5	95.6	98.2	94.5	92.6	94.9
Distant	55.0	49.1	58.7	54.8	47.4	60.1	48.2	52.6 <sup>g</sup>	46.0 <sup>g</sup>
Unstaged	87.5	77.8	90.4	86.8	77.2	89.8	88.4 <sup>g</sup>	-	88.7 <sup>g</sup>

<sup>a</sup> Based on End Results data from a series of hospital registries and one population-based registry.<sup>b</sup> SEER 9 areas (San Francisco, Connecticut, Detroit, Hawaii, Iowa, New Mexico, Seattle, Utah, Atlanta).

Based on follow-up of patients into 2010.

<sup>c</sup> SEER 18 areas (San Francisco, Connecticut, Detroit, Hawaii, Iowa, New Mexico, Seattle, Utah, Atlanta, San Jose-Monterey, Los Angeles, Alaska Native Registry, Rural Georgia, California excluding SF/SJM/LA, Kentucky, Louisiana, New Jersey and Georgia excluding ATL/RG).

Based on follow-up of patients into 2010.

<sup>d</sup> Period survival provides a 2009 estimate of survival by piecing together the most recent conditional survival estimates from several cohorts. It is computed here using three year calendar blocks (2007-2009: 0-1 year survival), (2006-2008: 1-2 year survival), (2005-2007: 2-3 year survival), (2004-2006: 3-4 year survival), (2003-2005: 4-5 years survival).<sup>e</sup> Stage at diagnosis is classified using SEER Summary Stage 2000.<sup>f</sup> The difference between 1975-1977 and 2003-2009 is statistically significant (p<.05).<sup>g</sup> The standard error is between 5 and 10 percentage points.<sup>h</sup> The standard error is greater than 10 percentage points.

- Statistic could not be calculated due to fewer than 25 cases during the time period.



Table 26.9  
Cancer of the Thyroid (Invasive)  
SEER<sup>a</sup> Relative Survival (Percent)  
By Year of Diagnosis

All Races, Males and Females

Year of Diagnosis

	1975- 1979	1980- 1984	1985- 1989	1990	1991	1992	1993	1994	1995	1996	1997	1998	1999	2000	2001	2002	2003	2004	2005	2006	2007	2008	2009
Survival Time																							
1-year	94.9	95.1	95.9	96.5	96.4	95.4	95.2	97.5	96.7	96.8	96.4	97.7	97.1	97.7	97.6	97.1	97.9	98.3	97.7	98.5	98.6	98.3	98.8
2-year	93.5	94.5	95.2	96.1	95.8	94.7	94.7	96.9	96.1	96.5	96.1	97.1	97.0	97.1	97.4	97.1	97.8	97.9	97.3	98.4	98.1	98.2	
3-year	92.9	93.7	94.7	95.5	95.5	94.2	94.6	96.3	96.0	95.9	96.1	96.9	97.0	97.0	96.9	97.1	97.6	97.9	97.3	98.3	98.1		
4-year	92.4	93.4	94.3	95.5	95.0	93.8	94.2	96.0	95.9	95.3	95.6	96.3	97.0	96.9	96.9	97.1	97.4	97.7	97.3	98.3			
5-year	92.0	93.3	94.0	95.5	94.3	93.0	94.2	95.7	95.8	94.9	95.3	96.2	96.8	96.3	96.2	97.1	97.3	97.3	97.3				
6-year	91.6	93.1	93.8	94.8	93.9	92.8	94.2	95.2	95.8	94.7	95.2	95.8	96.3	96.3	96.1	96.7	96.9	97.2					
7-year	91.4	92.6	93.4	94.7	93.7	92.7	93.9	95.1	95.6	94.4	95.2	95.8	96.1	96.2	96.1	96.5	96.8						
8-year	91.0	92.6	93.3	94.7	93.7	92.7	93.9	94.5	95.5	94.1	95.2	95.8	96.0	95.9	95.9	96.4							
9-year	90.7	92.3	93.1	94.7	93.6	92.7	93.6	94.2	95.5	93.7	95.0	95.8	95.6	95.9	95.4								
10-year	90.5	92.0	92.8	93.9	93.2	92.7	93.2	94.0	95.2	93.6	95.0	95.8	95.3	95.9									
11-year	90.2	91.7	92.6	93.4	93.0	92.4	92.8	94.0	95.1	93.2	95.0	95.8	95.0										
12-year	90.2	91.4	92.5	93.4	92.6	92.0	92.8	93.6	95.1	92.9	95.0	95.8											
13-year	90.0	91.2	92.4	92.9	92.6	92.0	92.6	93.5	95.1	92.7	95.0												
14-year	89.9	91.1	92.3	92.5	92.3	92.0	92.1	93.5	95.1	92.4													
15-year	89.6	90.6	92.2	92.3	91.5	91.7	92.0	93.1	94.3														
16-year	89.6	90.5	92.2	92.1	91.0	91.7	91.8	93.0															
17-year	89.5	90.5	92.2	92.1	91.0	91.5	91.5																
18-year	89.2	90.4	92.1	92.1	91.0	90.7																	
19-year	89.1	90.4	91.8	92.1	90.8																		
20-year	89.1	90.4	91.8	92.1																			

<sup>a</sup> Based on the SEER 9 areas (San Francisco, Connecticut, Detroit, Hawaii, Iowa, New Mexico, Seattle, Utah, and Atlanta).

Table 26.10  
Cancer of the Thyroid (Invasive)  
SEER<sup>a</sup> Relative Survival (Percent)  
By Year of Diagnosis

All Races, Males

Year of Diagnosis

	1975- 1979	1980- 1984	1985- 1989	1990	1991	1992	1993	1994	1995	1996	1997	1998	1999	2000	2001	2002	2003	2004	2005	2006	2007	2008	2009
Survival Time																							
1-year	94.6	92.5	94.8	93.8	94.6	93.6	93.2	96.6	93.4	93.7	91.8	97.2	96.5	96.4	96.1	95.0	95.6	96.7	96.9	96.4	97.4	96.8	98.3
2-year	92.5	92.0	93.7	92.2	92.4	92.8	92.5	95.4	91.9	93.4	90.9	95.4	96.2	95.1	95.4	94.8	95.3	95.1	95.4	96.1	96.7	96.2	
3-year	91.5	90.8	93.5	91.5	91.3	91.9	91.7	94.8	91.7	92.1	90.9	94.7	96.2	95.1	94.2	94.8	94.2	94.8	95.4	96.1	96.7		
4-year	90.5	90.4	92.1	91.5	91.0	91.3	90.2	94.2	91.4	91.7	89.5	93.6	96.2	95.1	93.6	94.5	93.5	94.3	95.4	96.1			
5-year	89.9	90.2	91.6	91.1	89.4	90.7	89.9	93.4	91.2	89.8	88.2	93.6	96.2	94.0	92.3	94.3	93.2	94.1	95.4				
6-year	89.6	89.8	91.1	90.3	88.2	90.6	89.7	92.8	90.3	89.8	88.0	93.5	95.8	94.0	91.9	93.8	91.7	94.0					
7-year	89.4	89.3	90.0	90.3	87.4	90.6	89.5	92.2	88.8	89.5	88.0	93.3	95.4	93.6	91.8	92.3	91.7						
8-year	89.3	89.3	89.6	90.3	87.0	90.6	88.9	91.2	88.7	88.5	87.9	93.3	95.3	93.5	91.0	91.4							
9-year	88.8	88.6	88.5	90.3	87.0	90.6	88.7	90.7	88.7	86.7	86.9	93.3	93.0	93.5	89.9								
10-year	88.3	87.8	88.4	90.3	87.0	90.6	87.2	90.7	87.5	86.4	86.9	93.2	92.6	93.5									
11-year	87.5	87.2	88.4	90.1	86.8	90.5	87.2	90.7	86.3	84.8	86.6	93.2	92.6										
12-year	87.5	86.3	88.3	88.9	86.7	89.0	87.2	89.8	86.1	84.1	86.6	93.1											
13-year	87.3	86.1	87.7	86.9	86.7	89.0	87.2	89.4	86.1	83.1	86.6												
14-year	87.3	86.1	87.7	86.6	86.0	88.9	86.3	89.4	85.9	82.8													
15-year	86.6	85.3	87.7	83.8	85.0	88.8	85.7	89.4	85.9														
16-year	86.5	85.2	87.7	83.3	85.0	88.4	85.4	89.4															
17-year	86.5	84.8	87.7	83.3	85.0	87.4	85.4																
18-year	86.5	84.4	87.7	83.3	83.9	85.4																	
19-year	86.5	84.4	87.7	83.3	82.1																		
20-year	86.5	84.4	87.7	83.3																			

<sup>a</sup> Based on the SEER 9 areas (San Francisco, Connecticut, Detroit, Hawaii, Iowa, New Mexico, Seattle, Utah, and Atlanta).

Table 26.11  
Cancer of the Thyroid (Invasive)  
SEER<sup>a</sup> Relative Survival (Percent)  
By Year of Diagnosis

All Races, Females

Year of Diagnosis

	1975- 1979	1980- 1984	1985- 1989	1990	1991	1992	1993	1994	1995	1996	1997	1998	1999	2000	2001	2002	2003	2004	2005	2006	2007	2008	2009
Survival Time																							
1-year	95.0	95.9	96.3	97.2	97.0	96.1	95.8	97.8	97.8	97.7	97.7	97.9	97.4	98.0	98.0	97.7	98.5	98.8	97.9	99.0	98.9	98.7	98.9
2-year	93.8	95.3	95.7	97.2	96.9	95.3	95.6	97.4	97.4	97.4	97.7	97.6	97.3	97.7	97.9	97.7	98.4	98.6	97.9	99.0	98.5	98.7	
3-year	93.2	94.7	95.1	96.8	96.8	95.0	95.6	96.8	97.3	97.0	97.7	97.5	97.3	97.5	97.7	97.7	98.4	98.6	97.9	99.0	98.5		
4-year	93.1	94.4	95.0	96.8	96.3	94.7	95.6	96.6	97.3	96.4	97.5	97.1	97.1	97.5	97.7	97.7	98.4	98.6	97.9	99.0			
5-year	92.7	94.3	94.9	96.8	95.9	93.8	95.6	96.4	97.2	96.3	97.5	96.9	96.8	96.9	97.3	97.7	98.4	98.2	97.9				
6-year	92.3	94.2	94.7	96.0	95.8	93.5	95.6	95.9	97.2	96.0	97.3	96.5	96.5	96.9	97.3	97.6	98.3	98.0					
7-year	92.1	93.8	94.5	95.7	95.6	93.4	95.5	95.9	97.2	95.8	97.3	96.5	96.2	96.9	97.2	97.6	98.0						
8-year	91.6	93.6	94.5	95.7	95.6	93.3	95.5	95.4	97.2	95.8	97.3	96.5	96.1	96.6	97.2	97.6							
9-year	91.3	93.5	94.5	95.7	95.6	93.3	95.5	95.1	97.2	95.8	97.3	96.5	96.1	96.6	97.0								
10-year	91.1	93.3	94.2	95.0	95.0	93.3	95.4	94.8	97.2	95.6	97.3	96.5	95.9	96.4									
11-year	91.1	93.1	94.0	94.5	94.9	93.0	94.9	94.8	97.2	95.6	97.3	96.5	95.6										
12-year	91.1	93.1	93.9	94.5	94.4	93.0	94.8	94.7	97.2	95.5	97.3	96.4											
13-year	90.8	92.8	93.9	94.5	94.3	93.0	94.7	94.7	97.2	95.5	97.3												
14-year	90.7	92.8	93.8	94.2	94.2	93.0	94.4	94.7	97.2	95.3													
15-year	90.6	92.4	93.7	94.2	93.5	92.7	94.3	94.0	96.6														
16-year	90.6	92.2	93.6	94.2	92.9	92.7	94.1	93.9															
17-year	90.3	92.2	93.5	94.2	92.9	92.7	93.6																
18-year	89.8	92.2	93.4	94.2	92.9	92.5																	
19-year	89.6	92.2	93.1	94.2	92.9																		
20-year	89.6	92.2	93.1	94.2																			

<sup>a</sup> Based on the SEER 9 areas (San Francisco, Connecticut, Detroit, Hawaii, Iowa, New Mexico, Seattle, Utah, and Atlanta).

Table 26.12  
Cancer of the Thyroid (Invasive)

Risk of Being Diagnosed With Cancer in 10, 20 and 30 Years,  
Lifetime Risk of Being Diagnosed with Cancer Given Alive and Cancer-Free at Current Age, and  
Lifetime Risk of Dying from Cancer Given Alive at Current Age  
Both Sexes, 2008-2010 By Race/Ethnicity

Race/ Ethnicity	Current Age	Risk of Being Diagnosed with Cancer				Risk of Dying from Cancer	Race/ Ethnicity	Current Age	Risk of Being Diagnosed with Cancer				Risk of Dying from Cancer
		+10 yrs	+20 yrs	+30 yrs	Ever				+10 yrs	+20 yrs	+30 yrs	Ever	
All Races	0	0.00	0.02	0.09	1.08	0.06	Asian/ Pacific Islander	0	0.00	0.02	0.08	1.19	0.13
	10	0.02	0.09	0.24	1.09	0.06		10	0.01	0.08	0.22	1.20	0.13
	20	0.08	0.23	0.42	1.08	0.06		20	0.06	0.21	0.40	1.19	0.13
	30	0.15	0.35	0.57	1.01	0.06		30	0.15	0.34	0.56	1.14	0.13
	40	0.20	0.42	0.63	0.87	0.06		40	0.19	0.41	0.64	1.00	0.13
	50	0.23	0.45	0.61	0.69	0.06		50	0.22	0.46	0.67	0.82	0.13
	60	0.23	0.41	0.48	0.49	0.06		60	0.24	0.46	0.57	0.61	0.13
	70	0.20	0.28	-	0.30	0.06		70	0.23	0.35	-	0.40	0.12
80	0.11	-	-	0.13	0.05	80	0.15	-	-	0.20	0.10		
White	0	0.00	0.02	0.10	1.14	0.06	American Indian/ Alaska Native <sup>a</sup>	0	0.00	0.02	0.06	0.73	0.06
	10	0.02	0.10	0.27	1.15	0.06		10	0.02	0.06	0.14	0.74	0.06
	20	0.09	0.25	0.46	1.14	0.06		20	0.04	0.13	0.24	0.72	0.06
	30	0.17	0.38	0.61	1.06	0.06		30	0.09	0.20	0.31	0.69	0.06
	40	0.21	0.44	0.66	0.90	0.06		40	0.12	0.23	0.37	0.62	0.06
	50	0.24	0.46	0.63	0.71	0.06		50	0.11	0.26	0.40	0.52	0.06
	60	0.24	0.42	0.49	0.50	0.06		60	0.15	0.31	0.37	0.44	0.06
	70	0.21	0.29	-	0.30	0.06		70	0.18	0.24	-	0.33	0.07
80	0.11	-	-	0.12	0.05	80	0.09	-	-	0.20	0.07		
Black	0	0.00	0.01	0.03	0.60	0.05	Hispanic <sup>b</sup>	0	0.00	0.02	0.08	1.01	0.09
	10	0.01	0.03	0.10	0.61	0.05		10	0.02	0.08	0.20	1.02	0.09
	20	0.03	0.10	0.21	0.61	0.06		20	0.06	0.18	0.34	1.01	0.09
	30	0.07	0.18	0.32	0.59	0.06		30	0.12	0.28	0.47	0.96	0.09
	40	0.11	0.25	0.40	0.53	0.06		40	0.16	0.35	0.55	0.85	0.09
	50	0.14	0.30	0.40	0.44	0.06		50	0.19	0.40	0.58	0.70	0.09
	60	0.17	0.28	0.31	0.32	0.06		60	0.21	0.41	0.50	0.53	0.08
	70	0.13	0.18	-	0.19	0.05		70	0.21	0.32	-	0.35	0.08
80	0.06	-	-	0.08	0.05	80	0.13	-	-	0.17	0.06		

Devcan 6.7.0, June 2013, National Cancer Institute (<http://surveillance.cancer.gov/devcan/>).

Source: Incidence data are from the SEER 18 areas (San Francisco, Connecticut, Detroit, Hawaii, Iowa, New Mexico, Seattle, Utah, Atlanta, San Jose-Monterey, Los Angeles, Alaska Native Registry, Rural Georgia, California excluding SF/SJM/LA, Kentucky, Louisiana, New Jersey, and Georgia excluding ATL/RG). Mortality data are from the NCHS public use data file for the total US.

<sup>a</sup> Underlying incidence and mortality data for American Indian/Alaska Native are based on the CHSDA (Contract Health Service Delivery Area) counties.

<sup>b</sup> Hispanic is not mutually exclusive from whites, blacks, Asian/Pacific Islanders, and American Indians/Alaska Natives. Underlying incidence data for Hispanics are based on NHIA and exclude cases from the Alaska Native Registry. Underlying mortality data for Hispanics exclude deaths from the District of Columbia, Minnesota, New Hampshire, North Dakota and South Carolina.

- Statistic could not be calculated.  
A percent of 0.00 represents a value that is below 0.005.

Table 26.13  
Cancer of the Thyroid (Invasive)

Risk of Being Diagnosed With Cancer in 10, 20 and 30 Years,  
Lifetime Risk of Being Diagnosed with Cancer Given Alive and Cancer-Free at Current Age, and  
Lifetime Risk of Dying from Cancer Given Alive at Current Age  
Males, 2008-2010 By Race/Ethnicity

Race/ Ethnicity	Current Age	Risk of Being Diagnosed with Cancer				Risk of Dying from Cancer	Race/ Ethnicity	Current Age	Risk of Being Diagnosed with Cancer				Risk of Dying from Cancer
		+10 yrs	+20 yrs	+30 yrs	Ever				+10 yrs	+20 yrs	+30 yrs	Ever	
All Races	0	0.00	0.01	0.03	0.55	0.05	Asian/ Pacific Islander	0	0.00	0.01	0.02	0.55	0.06
	10	0.01	0.03	0.08	0.56	0.05		10	0.01	0.02	0.08	0.56	0.06
	20	0.02	0.08	0.16	0.55	0.05		20	0.02	0.07	0.14	0.55	0.06
	30	0.05	0.14	0.25	0.54	0.05		30	0.06	0.13	0.23	0.54	0.06
	40	0.08	0.20	0.33	0.49	0.06		40	0.07	0.18	0.30	0.48	0.06
	50	0.12	0.25	0.37	0.42	0.06		50	0.11	0.23	0.34	0.42	0.06
	60	0.15	0.27	0.32	0.33	0.05		60	0.13	0.24	0.31	0.32	0.06
	70	0.14	0.20	-	0.21	0.05		70	0.12	0.20	-	0.22	0.05
80	0.08	-	-	0.10	0.04	80	0.10	-	-	0.12	0.03		
White	0	0.00	0.01	0.03	0.59	0.06	American Indian/ Alaska Native <sup>a</sup>	0	0.00	0.00	0.02	0.28	0.03
	10	0.01	0.03	0.09	0.60	0.06		10	0.01	0.02	0.05	0.28	0.03
	20	0.03	0.08	0.17	0.59	0.06		20	0.02	0.04	0.07	0.28	0.03
	30	0.06	0.15	0.27	0.57	0.06		30	0.03	0.05	0.13	0.27	0.03
	40	0.09	0.21	0.35	0.52	0.06		40	0.03	0.11	0.22	0.25	0.04
	50	0.12	0.27	0.39	0.44	0.06		50	0.09	0.20	0.23	0.23	0.04
	60	0.16	0.29	0.34	0.34	0.06		60	0.13	0.16	0.16	0.16	0.04
	70	0.15	0.21	-	0.22	0.05		70	0.03	0.03	-	0.03	0.04
80	0.08	-	-	0.09	0.04	80	0.00	-	-	0.00	0.02		
Black	0	0.00	0.00	0.01	0.26	0.04	Hispanic <sup>b</sup>	0	0.00	0.01	0.02	0.44	0.06
	10	0.00	0.01	0.03	0.27	0.04		10	0.01	0.02	0.05	0.44	0.06
	20	0.01	0.03	0.07	0.27	0.04		20	0.01	0.04	0.10	0.44	0.06
	30	0.02	0.06	0.11	0.26	0.04		30	0.03	0.09	0.18	0.43	0.06
	40	0.04	0.09	0.16	0.25	0.04		40	0.06	0.15	0.25	0.41	0.06
	50	0.05	0.12	0.19	0.22	0.04		50	0.09	0.19	0.29	0.36	0.06
	60	0.08	0.15	0.18	0.19	0.04		60	0.11	0.21	0.26	0.28	0.05
	70	0.09	0.12	-	0.13	0.04		70	0.12	0.18	-	0.20	0.05
80	0.05	-	-	0.07	0.03	80	0.08	-	-	0.11	0.02		

Devcan 6.7.0, June 2013, National Cancer Institute (<http://surveillance.cancer.gov/devcan/>).

Source: Incidence data are from the SEER 18 areas (San Francisco, Connecticut, Detroit, Hawaii, Iowa, New Mexico, Seattle, Utah, Atlanta, San Jose-Monterey, Los Angeles, Alaska Native Registry, Rural Georgia, California excluding SF/SJM/LA, Kentucky, Louisiana, New Jersey, and Georgia excluding ATL/RG). Mortality data are from the NCHS public use data file for the total US.

<sup>a</sup> Underlying incidence and mortality data for American Indian/Alaska Native are based on the CHSDA (Contract Health Service Delivery Area) counties.

<sup>b</sup> Hispanic is not mutually exclusive from whites, blacks, Asian/Pacific Islanders, and American Indians/Alaska Natives. Underlying incidence data for Hispanics are based on NHIA and exclude cases from the Alaska Native Registry. Underlying mortality data for Hispanics exclude deaths from the District of Columbia, Minnesota, New Hampshire, North Dakota and South Carolina.

- Statistic could not be calculated.  
A percent of 0.00 represents a value that is below 0.005.

Table 26.14  
Cancer of the Thyroid (Invasive)

Risk of Being Diagnosed With Cancer in 10, 20 and 30 Years,  
Lifetime Risk of Being Diagnosed with Cancer Given Alive and Cancer-Free at Current Age, and  
Lifetime Risk of Dying from Cancer Given Alive at Current Age  
Females, 2008-2010 By Race/Ethnicity

Race/ Ethnicity	Current Age	Risk of Being Diagnosed with Cancer				Risk of Dying from Cancer	Race/ Ethnicity	Current Age	Risk of Being Diagnosed with Cancer				Risk of Dying from Cancer
		+10 yrs	+20 yrs	+30 yrs	Ever				+10 yrs	+20 yrs	+30 yrs	Ever	
All Races	0	0.00	0.03	0.16	1.61	0.07	Asian/ Pacific Islander	0	0.00	0.03	0.13	1.76	0.18
	10	0.03	0.16	0.41	1.63	0.07		10	0.02	0.13	0.35	1.77	0.18
	20	0.13	0.38	0.69	1.60	0.07		20	0.10	0.33	0.63	1.75	0.18
	30	0.26	0.57	0.89	1.48	0.07		30	0.23	0.53	0.84	1.66	0.18
	40	0.31	0.64	0.93	1.24	0.07		40	0.30	0.62	0.95	1.44	0.18
	50	0.33	0.63	0.85	0.94	0.07		50	0.32	0.65	0.95	1.15	0.18
	60	0.31	0.54	0.63	0.64	0.07		60	0.34	0.64	0.79	0.85	0.18
	70	0.25	0.35	-	0.37	0.07		70	0.32	0.48	-	0.54	0.17
80	0.12	-	-	0.15	0.05	80	0.19	-	-	0.26	0.14		
White	0	0.00	0.03	0.18	1.71	0.07	American Indian/ Alaska Native <sup>a</sup>	0	0.00	0.03	0.10	1.15	0.07
	10	0.03	0.18	0.46	1.72	0.07		10	0.03	0.10	0.25	1.16	0.08
	20	0.15	0.43	0.77	1.69	0.07		20	0.07	0.22	0.41	1.14	0.08
	30	0.28	0.62	0.96	1.55	0.07		30	0.15	0.35	0.48	1.08	0.08
	40	0.34	0.68	0.97	1.28	0.07		40	0.20	0.34	0.50	0.95	0.08
	50	0.35	0.65	0.87	0.96	0.07		50	0.14	0.31	0.56	0.77	0.07
	60	0.32	0.55	0.63	0.64	0.07		60	0.18	0.44	0.54	0.67	0.08
	70	0.25	0.35	-	0.36	0.06		70	0.29	0.41	-	0.55	0.08
80	0.12	-	-	0.14	0.05	80	0.15	-	-	0.33	0.09		
Black	0	0.00	0.01	0.05	0.92	0.07	Hispanic <sup>b</sup>	0	0.00	0.03	0.14	1.58	0.11
	10	0.01	0.05	0.17	0.93	0.07		10	0.03	0.14	0.36	1.60	0.11
	20	0.04	0.16	0.33	0.93	0.07		20	0.12	0.33	0.60	1.57	0.11
	30	0.12	0.29	0.50	0.89	0.07		30	0.21	0.48	0.77	1.46	0.11
	40	0.17	0.39	0.60	0.78	0.07		40	0.27	0.56	0.84	1.26	0.11
	50	0.23	0.45	0.58	0.63	0.07		50	0.29	0.58	0.85	1.00	0.11
	60	0.24	0.38	0.43	0.44	0.07		60	0.30	0.57	0.70	0.74	0.11
	70	0.17	0.22	-	0.23	0.06		70	0.29	0.42	-	0.47	0.10
80	0.07	-	-	0.09	0.05	80	0.16	-	-	0.22	0.08		

Devcan 6.7.0, June 2013, National Cancer Institute (<http://surveillance.cancer.gov/devcan/>).

Source: Incidence data are from the SEER 18 areas (San Francisco, Connecticut, Detroit, Hawaii, Iowa, New Mexico, Seattle, Utah, Atlanta, San Jose-Monterey, Los Angeles, Alaska Native Registry, Rural Georgia, California excluding SF/SJM/LA, Kentucky, Louisiana, New Jersey, and Georgia excluding ATL/RG). Mortality data are from the NCHS public use data file for the total US.

<sup>a</sup> Underlying incidence and mortality data for American Indian/Alaska Native are based on the CHSDA (Contract Health Service Delivery Area) counties.

<sup>b</sup> Hispanic is not mutually exclusive from whites, blacks, Asian/Pacific Islanders, and American Indians/Alaska Natives. Underlying incidence data for Hispanics are based on NHIA and exclude cases from the Alaska Native Registry. Underlying mortality data for Hispanics exclude deaths from the District of Columbia, Minnesota, New Hampshire, North Dakota and South Carolina.

- Statistic could not be calculated.  
A percent of 0.00 represents a value that is below 0.005.

Table 26.15  
Cancer of the Thyroid (Invasive)

SEER Incidence and U.S. Mortality  
Age-Adjusted Rates and Trends<sup>a</sup>  
By Race/Ethnicity and Sex

SEER Incidence	SEER 18 Areas <sup>b</sup>			SEER 13 Areas <sup>b</sup>			SEER 9 Areas <sup>b</sup>		
	Rate 2006-2010			Trend 2001-2010 <sup>c</sup>			Trend 2001-2010 <sup>d</sup>		
	Rate per 100,000 persons			AAPC (%)			AAPC (%)		
RACE/ETHNICITY	Total	Males	Females	Total	Males	Females	Total	Males	Females
All Races	12.2	6.1	18.2	6.2*	5.4*	6.5*	6.4*	5.5*	6.6*
White	13.0	6.6	19.4	6.4*	5.5*	6.6*	6.0*	5.7*	6.3*
White Hispanic <sup>e</sup>	11.0	4.6	17.2	5.2*	3.7*	5.9*	-	-	-
White Non-Hispanic <sup>e</sup>	13.7	7.1	20.3	6.6*	6.0*	6.5*	-	-	-
Black	7.1	3.2	10.5	6.7*	5.4*	7.5*	6.2*	2.9*	5.9*
Asian/Pacific Islander	12.1	5.3	17.9	5.2*	2.7*	5.4*	-	-	-
Amer Ind/Alaska Nat <sup>f</sup>	7.3	3.3	11.0	3.6*	-	-	-	-	-
Hispanic <sup>e</sup>	10.5	4.4	16.4	5.1*	3.8*	5.6*	-	-	-
<u>U.S. Mortality<sup>g</sup></u>									
RACE/ETHNICITY	Rate 2006-2010			Trend 2001-2010 <sup>h</sup>					
	Rate per 100,000 persons			AAPC (%)					
	Total	Males	Females	Total	Males	Females			
All Races	0.5	0.5	0.5	0.9*	1.6*	0.9*			
White	0.5	0.5	0.5	0.8*	1.6*	0.8*			
White Hispanic <sup>e</sup>	0.6	0.6	0.7	0.0	1.9	-1.0*			
White Non-Hispanic <sup>e</sup>	0.5	0.5	0.5	1.0*	1.6*	0.9*			
Black	0.5	0.4	0.6	1.2*	2.0*	1.0			
Asian/Pacific Islander	0.7	0.5	0.9	0.0	-	3.2			
Amer Ind/Alaska Nat									
Total U.S.	0.3	0.3	0.3	-	-	-			
CHSDA Counties	0.5	-	-	-	-	-			
Non-CHSDA Counties	-	-	-	-	-	-			
Hispanic <sup>e</sup>	0.6	0.5	0.7	-0.2	1.8	-1.2*			

The AAPC is the Average Annual Percent Change over the time interval. The AAPCs are calculated by the Joinpoint Regression Program Version 4.0.3, April 2013, National Cancer Institute.

- Statistic not shown. Rate based on less than 16 cases for the time interval.

Trend based on less than 10 cases for at least one year within the time interval.

a Rates are age-adjusted to the 2000 US Std Population (19 age groups - Census P25-1130). Trends

are based on rates age-adjusted to the 2000 US Std Population (19 age groups - Census P25-1130).

b The SEER 9 areas are San Francisco, Connecticut, Detroit, Hawaii, Iowa, New Mexico, Seattle, Utah, and Atlanta.

The SEER 13 areas comprise the SEER 9 areas plus San Jose-Monterey, Los Angeles, the Alaska Native Registry, and Rural Georgia.

The SEER 18 areas comprise the SEER 13 areas plus California excluding SF/SJM/LA, Kentucky, Louisiana, New Jersey, and Georgia excluding ATL/RG.

c The 2001-2010 AAPC estimates are based on a Joinpoint analysis with up to 3 Joinpoints over diagnosis years 1992-2010.

d The 2001-2010 AAPC estimates are based on a Joinpoint analysis with up to 5 Joinpoints over diagnosis years 1975-2010.

e Hispanic and Non-Hispanic are not mutually exclusive from whites, blacks, Asian/Pacific Islanders, and American Indians/Alaska Natives. Incidence data for Hispanics and Non-Hispanics are based on NHIA and exclude cases from the Alaska Native Registry. The 2006-2010 Hispanic and Non-Hispanic death rates exclude deaths from the District of Columbia, North Dakota, and South Carolina. The 2001-2010 Hispanic and Non-Hispanic mortality trends exclude deaths from Connecticut, the District of Columbia, Maine, Maryland, Minnesota, New Hampshire, New York, North Dakota, Oklahoma, South Carolina and Vermont.

f Incidence data for American Indian/Alaska Native are based on the CHSDA(Contract Health Service Delivery Area) counties.

g US Mortality Files, National Center for Health Statistics, CDC.

h The 2001-2010 mortality AAPCs are based on a Joinpoint analysis using years of death 1992-2010.

\* The APC is significantly different from zero (p<.05).

Table 26.16  
Cancer of the Thyroid (Invasive)

Age-Adjusted SEER Incidence Rates<sup>a</sup>  
By Registry, Race and Sex

	All Races			Whites			Blacks		
	Total	Males	Females	Total	Males	Females	Total	Males	Females
<u>SEER Incidence Rates<sup>a</sup>, 2006-2010</u>									
California	10.84	5.45	16.13	11.13	5.70	16.66	6.42	3.00	9.52
Greater Bay Area	10.04	5.05	14.99	10.44	5.50	15.63	4.38	1.84	6.67
San Francisco-Oakland	9.35	4.77	13.86	9.71	5.18	14.52	4.21	-	6.31
San Jose-Monterey	11.32	5.53	17.12	11.68	6.04	17.55	5.53	-	-
Los Angeles	11.46	5.61	17.03	11.83	5.88	17.76	7.59	3.27	11.14
Greater California	10.83	5.51	16.13	11.07	5.68	16.52	6.13	3.27	9.02
Connecticut	17.36	8.52	25.70	18.12	8.95	26.90	9.54	5.44	13.17
Detroit	13.08	6.66	18.99	14.40	7.37	21.28	8.43	3.76	12.03
Georgia	10.05	5.05	14.76	11.56	5.92	17.22	6.45	2.72	9.52
Atlanta	11.31	5.89	16.30	14.24	7.60	21.00	6.82	3.04	9.92
Rural Georgia	9.69	5.17	13.81	9.14	-	13.37	9.88	-	13.00
Greater Georgia	9.43	4.66	13.98	10.55	5.32	15.76	6.01	2.37	9.04
Hawaii	14.23	6.26	22.29	12.70	6.31	20.55	14.08	-	-
Iowa	12.36	6.66	18.12	12.49	6.67	18.35	8.91	-	11.73
Kentucky	12.84	6.66	18.83	13.24	6.85	19.44	8.34	4.57	11.79
Louisiana	9.84	5.08	14.37	11.49	6.06	16.91	6.33	2.50	9.53
New Jersey	16.67	8.24	24.63	18.20	9.01	27.11	8.02	3.69	11.68
New Mexico	12.84	5.68	19.76	13.29	5.71	20.69	8.03	-	-
Seattle-Puget Sound	12.99	6.38	19.57	13.09	6.66	19.62	7.61	-	13.23
Utah	16.12	7.49	24.73	16.48	7.61	25.33	-	-	-
9 SEER Areas <sup>b</sup>	13.02	6.44	19.39	13.89	6.95	20.86	7.57	3.47	11.04
11 SEER Areas <sup>b</sup>	12.53	6.19	18.66	13.25	6.65	19.90	7.56	3.37	11.09
13 SEER Areas <sup>b</sup>	12.51	6.19	18.63	13.25	6.64	19.89	7.59	3.42	11.11
18 SEER Areas <sup>b</sup>	12.23	6.11	18.17	12.98	6.55	19.40	7.12	3.21	10.49

<sup>a</sup> Rates are per 100,000 and are age-adjusted to the 2000 US Std Population (19 age groups - Census P25-1130)

<sup>b</sup> The SEER 9 areas are San Francisco, Connecticut, Detroit, Hawaii, Iowa, New Mexico, Seattle, Utah and Atlanta.

The SEER 11 areas comprise the SEER 9 areas plus San Jose-Monterey and Los Angeles.

The SEER 13 areas comprise the SEER 11 areas plus the Alaska Native Registry and Rural Georgia.

The SEER 18 areas comprise the SEER 13 areas plus California excluding SF/SJM/LA, Kentucky, Louisiana, New Jersey and Georgia excluding ATL/RG.

- Statistic not shown. Rate based on less than 16 cases for the time interval.



Table 26.17  
Cancer of the Thyroid (Invasive)

Age-Adjusted SEER Death Rates<sup>a</sup>  
By Registry, Race and Sex

	All Races			Whites			Blacks		
	Total	Males	Females	Total	Males	Females	Total	Males	Females
<u>SEER Death Rates<sup>a</sup>, 2006-2010</u>									
California	0.61	0.55	0.66	0.58	0.56	0.60	0.53	-	0.67
Greater Bay Area	0.64	0.56	0.70	0.61	0.64	0.59	-	-	-
San Francisco-Oakland	0.57	0.45	0.66	0.52	0.51	0.53	-	-	-
San Jose-Monterey	0.77	0.77	0.78	0.78	0.87	0.72	-	-	-
Los Angeles	0.68	0.64	0.71	0.67	0.64	0.69	0.49	-	-
Greater California	0.57	0.51	0.62	0.54	0.51	0.56	0.52	-	-
Connecticut	0.45	0.45	0.46	0.46	0.46	0.46	-	-	-
Detroit	0.47	0.43	0.50	0.47	0.44	0.48	0.48	-	0.59
Georgia	0.40	0.43	0.37	0.41	0.46	0.35	0.38	-	0.40
Atlanta	0.41	0.56	0.32	0.43	0.55	0.34	-	-	-
Rural Georgia	-	-	-	-	-	-	-	-	-
Greater Georgia	0.39	0.39	0.37	0.39	0.43	0.34	0.41	-	0.52
Hawaii	0.66	-	0.89	-	-	-	-	-	-
Iowa	0.50	0.59	0.42	0.50	0.59	0.42	-	-	-
Kentucky	0.51	0.45	0.54	0.52	0.47	0.55	-	-	-
Louisiana	0.48	0.45	0.50	0.49	0.50	0.49	0.43	-	0.54
New Jersey	0.53	0.54	0.51	0.55	0.58	0.53	0.33	-	-
New Mexico	0.54	0.53	0.53	0.54	0.54	0.51	-	-	-
Seattle-Puget Sound	0.53	0.51	0.53	0.52	0.50	0.52	-	-	-
Utah	0.54	0.67	0.42	0.54	0.69	0.42	-	-	-
9 SEER Areas <sup>b</sup>	0.51	0.50	0.52	0.50	0.51	0.47	0.44	0.47	0.44
11 SEER Areas <sup>b</sup>	0.56	0.54	0.57	0.55	0.56	0.53	0.46	0.40	0.51
13 SEER Areas <sup>b</sup>	0.56	0.54	0.58	0.55	0.56	0.53	0.46	0.39	0.51
18 SEER Areas <sup>b</sup>	0.54	0.52	0.56	0.53	0.53	0.52	0.43	0.33	0.50
Total U.S.	0.51	0.50	0.51	0.50	0.51	0.49	0.50	0.39	0.57

<sup>a</sup> US Mortality Files, National Center for Health Statistics, Centers for Disease Control and Prevention. Rates are per 100,000 and are age-adjusted to the 2000 US Std Population (19 age groups - Census P25-1130).

<sup>b</sup> The SEER 9 areas are San Francisco, Connecticut, Detroit, Hawaii, Iowa, New Mexico, Seattle, Utah and Atlanta. The SEER 11 areas comprise the SEER 9 areas plus San Jose-Monterey and Los Angeles.

The SEER 13 areas comprise the SEER 11 areas plus the Alaska Native Registry and Rural Georgia.

The SEER 18 areas comprise the SEER 13 areas plus California excluding SF/SJM/LA, Kentucky, Louisiana, New Jersey and Georgia excluding ATL/RG.

- Statistic not shown. Rate based on less than 16 cases for the time interval.

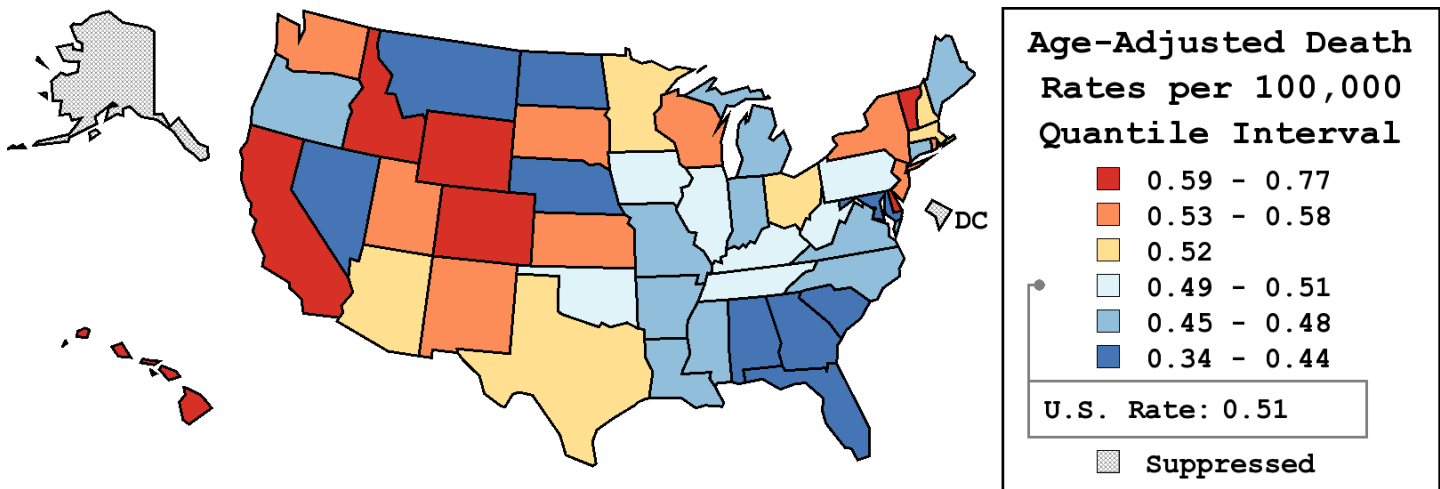
Table 26.18  
Cancer of the Thyroid (Invasive)

Age-Adjusted Cancer Death<sup>a</sup> Rates By State, All Races, 2006-2010

Males and Females

State	Rate	SE	Rank	PD
TOTAL U.S.	0.51	0.01		
High Five States				
Vermont	0.77	0.15	(01)	51.22 <sup>c</sup>
Idaho	0.70	0.10	(02)	38.00 <sup>c</sup>
Hawaii	0.66	0.09	(03)	29.80 <sup>c</sup>
Delaware	0.63	0.11	(04)	24.92 <sup>c</sup>
California	0.61	0.02	(05)	20.19 <sup>c</sup>
Low Five States				
Nebraska	0.44	0.07	(45)	-13.74
Maryland	0.42	0.04	(46)	-16.52 <sup>c</sup>
Georgia	0.40	0.03	(47)	-21.13 <sup>c</sup>
South Carolina	0.40	0.04	(48)	-21.15 <sup>c</sup>
Montana	0.34	0.08	(49)	-33.38 <sup>c</sup>

State	Rate	SE	Rank	PD	State	Rate	SE	Rank	PD
Alabama	0.44	0.04	(41)	-12.80	Montana	0.34	0.08	(49)	-33.38 <sup>c</sup>
Alaska	-	-	(-)	-	Nebraska	0.44	0.07	(45)	-13.74
Arizona	0.52	0.04	(20)	1.69	Nevada	0.44	0.06	(42)	-12.86
Arkansas	0.48	0.05	(32)	-5.84	New Hampshire	0.52	0.08	(22)	1.55
California	0.61	0.02	(05)	20.19 <sup>c</sup>	New Jersey	0.53	0.03	(16)	3.52
Colorado	0.60	0.05	(07)	18.76 <sup>c</sup>	New Mexico	0.54	0.07	(13)	6.40
Connecticut	0.45	0.05	(38)	-10.55	New York	0.53	0.02	(15)	4.30
Delaware	0.63	0.11	(04)	24.92 <sup>c</sup>	North Carolina	0.46	0.03	(37)	-8.99
D.C.	-	-	(-)	-	North Dakota	0.44	0.11	(44)	-13.65
Florida	0.44	0.02	(43)	-13.30	Ohio	0.52	0.03	(19)	2.48
Georgia	0.40	0.03	(47)	-21.13 <sup>c</sup>	Oklahoma	0.49	0.05	(27)	-2.94
Hawaii	0.66	0.09	(03)	29.80 <sup>c</sup>	Oregon	0.48	0.05	(31)	-5.34
Idaho	0.70	0.10	(02)	38.00 <sup>c</sup>	Pennsylvania	0.51	0.03	(23)	1.11
Illinois	0.49	0.03	(28)	-2.98	Rhode Island	0.55	0.09	(11)	9.00
Indiana	0.48	0.04	(35)	-6.28	South Carolina	0.40	0.04	(48)	-21.15 <sup>c</sup>
Iowa	0.50	0.05	(26)	-1.89	South Dakota	0.58	0.11	(09)	13.64
Kansas	0.58	0.06	(08)	13.88	Tennessee	0.51	0.04	(24)	0.54
Kentucky	0.51	0.05	(25)	-0.53	Texas	0.52	0.02	(18)	3.02
Louisiana	0.48	0.05	(30)	-5.21	Utah	0.54	0.08	(14)	5.65
Maine	0.48	0.07	(33)	-5.97	Vermont	0.77	0.15	(01)	51.22 <sup>c</sup>
Maryland	0.42	0.04	(46)	-16.52 <sup>c</sup>	Virginia	0.45	0.03	(39)	-10.69
Massachusetts	0.52	0.04	(21)	1.61	Washington	0.56	0.04	(10)	9.34
Michigan	0.48	0.03	(34)	-6.11	West Virginia	0.49	0.07	(29)	-3.03
Minnesota	0.52	0.04	(17)	3.13	Wisconsin	0.55	0.04	(12)	7.67
Mississippi	0.45	0.05	(40)	-11.75	Wyoming	0.61	0.15	(06)	19.40 <sup>c</sup>
Missouri	0.47	0.04	(36)	-6.72					



<sup>a</sup> US Mortality Files, National Center for Health Statistics, Centers for Disease Control and Prevention. Rates are per 100,000 and are age-adjusted to the 2000 US Std Population (19 age groups - Census P25-1130).

<sup>b</sup> Difference between state rate and total U.S. rate is statistically significant ( $p \leq .0002$ ).

<sup>c</sup> Absolute percent difference between state rate and total U.S. rate is 15% or more.

SE Standard error of the rate.

PD Percent difference between state rate and total U.S. rate.

- Statistic not shown. Rate based on less than 16 cases for the time interval.

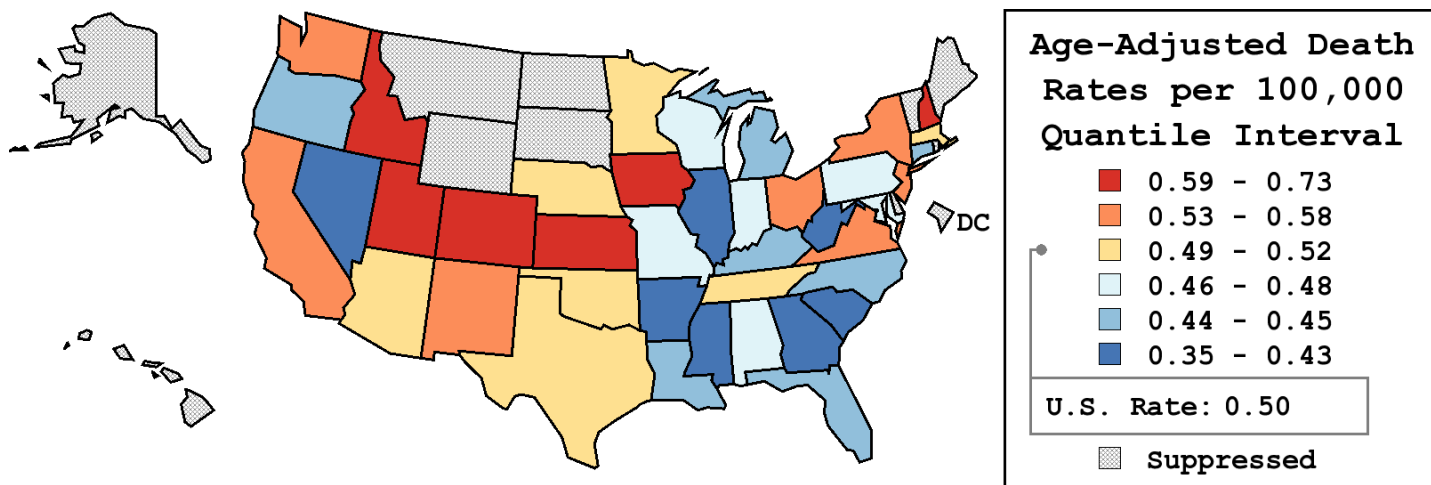
Table 26.19  
Cancer of the Thyroid (Invasive)

Age-Adjusted Cancer Death<sup>a</sup> Rates By State, All Races, 2006-2010

Males

State	Rate	SE	Rank	PD
TOTAL U.S.	0.50	0.01		
High Five States				
Kansas	0.73	0.11	(01)	46.62 <sup>c</sup>
Colorado	0.67	0.09	(02)	34.78 <sup>c</sup>
Utah	0.67	0.13	(03)	34.28 <sup>c</sup>
Idaho	0.66	0.14	(04)	32.71 <sup>c</sup>
New Hampshire	0.66	0.15	(05)	32.47 <sup>c</sup>
Low Five States				
Nevada	0.40	0.08	(36)	-20.48 <sup>c</sup>
Arkansas	0.39	0.08	(37)	-20.68 <sup>c</sup>
West Virginia	0.39	0.09	(38)	-21.17 <sup>c</sup>
Illinois	0.38	0.04	(39)	-23.37 <sup>c</sup>
Mississippi	0.35	0.07	(40)	-29.59 <sup>c</sup>

State	Rate	SE	Rank	PD	State	Rate	SE	Rank	PD
Alabama	0.48	0.07	(23)	-4.15	Montana	-	-	(-)	-
Alaska	-	-	(-)	-	Nebraska	0.49	0.11	(19)	-0.56
Arizona	0.50	0.06	(17)	0.11	Nevada	0.40	0.08	(36)	-20.48 <sup>c</sup>
Arkansas	0.39	0.08	(37)	-20.68 <sup>c</sup>	New Hampshire	0.66	0.15	(05)	32.47 <sup>c</sup>
California	0.55	0.03	(09)	10.61	New Jersey	0.54	0.05	(11)	9.39
Colorado	0.67	0.09	(02)	34.78 <sup>c</sup>	New Mexico	0.53	0.11	(13)	5.64
Connecticut	0.45	0.07	(27)	-8.73	New York	0.53	0.04	(12)	7.13
Delaware	-	-	(-)	-	North Carolina	0.45	0.05	(30)	-10.48
D.C.	-	-	(-)	-	North Dakota	-	-	(-)	-
Florida	0.44	0.03	(32)	-11.40	Ohio	0.58	0.05	(07)	17.08 <sup>c</sup>
Georgia	0.43	0.05	(34)	-12.97	Oklahoma	0.50	0.08	(18)	-0.15
Hawaii	-	-	(-)	-	Oregon	0.45	0.07	(29)	-10.39
Idaho	0.66	0.14	(04)	32.71 <sup>c</sup>	Pennsylvania	0.48	0.04	(22)	-4.04
Illinois	0.38	0.04	(39)	-23.37 <sup>c</sup>	Rhode Island	-	-	(-)	-
Indiana	0.48	0.06	(21)	-3.92	South Carolina	0.43	0.07	(35)	-13.10
Iowa	0.59	0.09	(06)	19.39 <sup>c</sup>	South Dakota	-	-	(-)	-
Kansas	0.73	0.11	(01)	46.62 <sup>c</sup>	Tennessee	0.49	0.06	(20)	-0.73
Kentucky	0.45	0.07	(31)	-10.51	Texas	0.52	0.03	(15)	4.49
Louisiana	0.45	0.07	(28)	-10.36	Utah	0.67	0.13	(03)	34.28 <sup>c</sup>
Maine	-	-	(-)	-	Vermont	-	-	(-)	-
Maryland	0.46	0.06	(26)	-6.81	Virginia	0.54	0.06	(10)	9.48
Massachusetts	0.51	0.06	(16)	2.64	Washington	0.57	0.06	(08)	14.77
Michigan	0.44	0.04	(33)	-12.36	West Virginia	0.39	0.09	(38)	-21.17 <sup>c</sup>
Minnesota	0.52	0.06	(14)	5.30	Wisconsin	0.47	0.06	(24)	-4.99
Mississippi	0.35	0.07	(40)	-29.59 <sup>c</sup>	Wyoming	-	-	(-)	-
Missouri	0.47	0.06	(25)	-6.39					



<sup>a</sup> US Mortality Files, National Center for Health Statistics, Centers for Disease Control and Prevention. Rates are per 100,000 and are age-adjusted to the 2000 US Std Population (19 age groups - Census P25-1130).  
<sup>b</sup> Difference between state rate and total U.S. rate is statistically significant (p<=.0002).  
<sup>c</sup> Absolute percent difference between state rate and total U.S. rate is 15% or more.  
SE Standard error of the rate.  
PD Percent difference between state rate and total U.S. rate.  
- Statistic not shown. Rate based on less than 16 cases for the time interval.

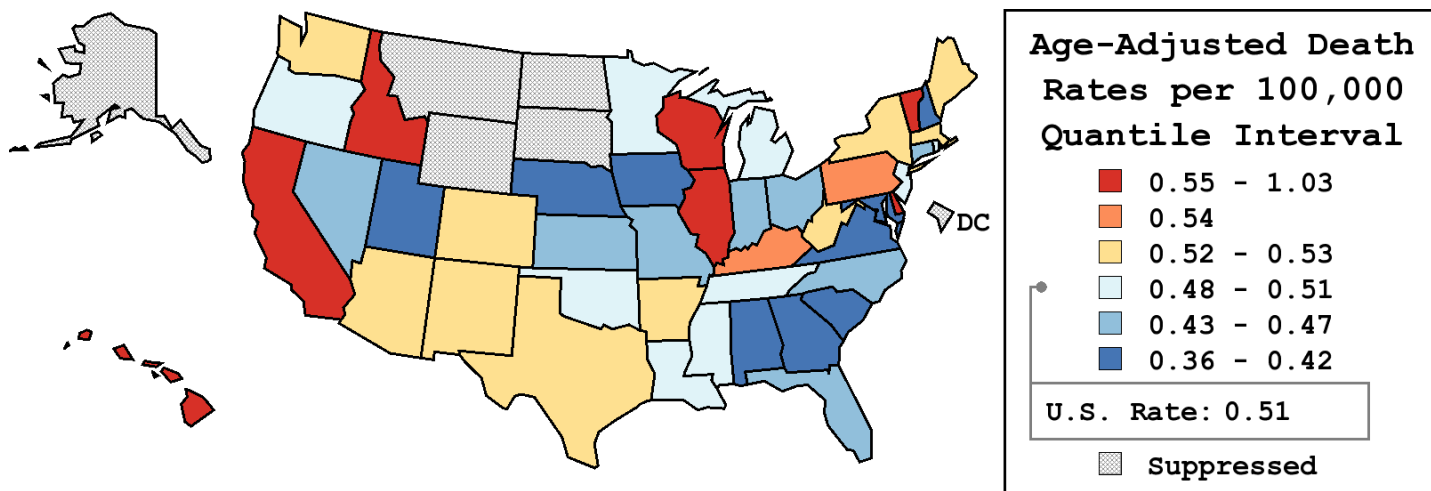
Table 26.20  
Cancer of the Thyroid (Invasive)

Age-Adjusted Cancer Death<sup>a</sup> Rates By State, All Races, 2006-2010

Females

State	Rate	SE	Rank	PD
TOTAL U.S.	0.51	0.01		
High Five States				
Vermont	1.03	0.24	(01)	102.34 <sup>c</sup>
Hawaii	0.89	0.15	(02)	74.17 <sup>c</sup>
Idaho	0.73	0.14	(03)	43.98 <sup>c</sup>
California	0.66	0.03	(04)	28.57 <sup>c</sup>
Delaware	0.62	0.15	(05)	22.08 <sup>c</sup>
Low Five States				
Maryland	0.39	0.05	(41)	-23.08 <sup>c</sup>
Virginia	0.39	0.04	(42)	-23.93 <sup>c</sup>
Georgia	0.37	0.04	(43)	-27.77 <sup>c</sup>
South Carolina	0.37	0.05	(44)	-28.20 <sup>c</sup>
Nebraska	0.36	0.08	(45)	-29.78 <sup>c</sup>

State	Rate	SE	Rank	PD	State	Rate	SE	Rank	PD
Alabama	0.40	0.05	(40)	-20.88 <sup>c</sup>	Montana	-	-	(-)	-
Alaska	-	-	(-)	-	Nebraska	0.36	0.08	(45)	-29.78 <sup>c</sup>
Arizona	0.53	0.05	(16)	2.96	Nevada	0.47	0.09	(30)	-7.12
Arkansas	0.53	0.08	(11)	3.98	New Hampshire	0.42	0.10	(39)	-18.44 <sup>c</sup>
California	0.66	0.03	(04)	28.57 <sup>c</sup>	New Jersey	0.51	0.04	(20)	0.76
Colorado	0.53	0.07	(12)	3.79	New Mexico	0.53	0.10	(10)	4.14
Connecticut	0.46	0.06	(34)	-10.55	New York	0.53	0.03	(14)	3.54
Delaware	0.62	0.15	(05)	22.08 <sup>c</sup>	North Carolina	0.47	0.04	(31)	-7.20
D.C.	-	-	(-)	-	North Dakota	-	-	(-)	-
Florida	0.44	0.03	(36)	-14.52	Ohio	0.47	0.04	(32)	-8.44
Georgia	0.37	0.04	(43)	-27.77 <sup>c</sup>	Oklahoma	0.50	0.07	(27)	-2.75
Hawaii	0.89	0.15	(02)	74.17 <sup>c</sup>	Oregon	0.51	0.07	(22)	0.46
Idaho	0.73	0.14	(03)	43.98 <sup>c</sup>	Pennsylvania	0.54	0.04	(09)	5.49
Illinois	0.57	0.04	(07)	11.83	Rhode Island	0.50	0.11	(26)	-1.34
Indiana	0.45	0.05	(35)	-11.53	South Carolina	0.37	0.05	(44)	-28.20 <sup>c</sup>
Iowa	0.42	0.07	(38)	-17.23 <sup>c</sup>	South Dakota	-	-	(-)	-
Kansas	0.47	0.07	(29)	-7.07	Tennessee	0.51	0.05	(21)	0.72
Kentucky	0.54	0.07	(08)	6.07	Texas	0.52	0.03	(19)	1.21
Louisiana	0.50	0.06	(25)	-1.09	Utah	0.42	0.09	(37)	-16.98 <sup>c</sup>
Maine	0.53	0.10	(17)	2.90	Vermont	1.03	0.24	(01)	102.34 <sup>c</sup>
Maryland	0.39	0.05	(41)	-23.08 <sup>c</sup>	Virginia	0.39	0.04	(42)	-23.93 <sup>c</sup>
Massachusetts	0.52	0.05	(18)	1.92	Washington	0.53	0.05	(15)	3.53
Michigan	0.49	0.04	(28)	-3.81	West Virginia	0.53	0.09	(13)	3.68
Minnesota	0.51	0.06	(24)	-0.46	Wisconsin	0.61	0.06	(06)	19.19 <sup>c</sup>
Mississippi	0.51	0.08	(23)	-0.07	Wyoming	-	-	(-)	-
Missouri	0.46	0.05	(33)	-9.63					



<sup>a</sup> US Mortality Files, National Center for Health Statistics, Centers for Disease Control and Prevention. Rates are per 100,000 and are age-adjusted to the 2000 US Std Population (19 age groups - Census P25-1130).  
<sup>b</sup> Difference between state rate and total U.S. rate is statistically significant (p<=.0002).  
<sup>c</sup> Absolute percent difference between state rate and total U.S. rate is 15% or more.  
SE Standard error of the rate.  
PD Percent difference between state rate and total U.S. rate.  
- Statistic not shown. Rate based on less than 16 cases for the time interval.

Table 26.21  
Cancer of the Thyroid (Invasive)

Estimated United States Cancer Prevalence Counts<sup>a</sup> on January 1, 2010  
By Race/Ethnicity, Sex and Years Since Diagnosis

Years Since Diagnosis		0 to <5	5 to <10	10 to <15	15 to <20	20 to <25	25 to <30	0 to <18 <sup>e</sup>	0 to <35 <sup>e</sup>	>=35 <sup>g</sup>	Complete <sup>h</sup>
<u>Race</u>	<u>Sex</u>										
All Races <sup>b</sup>	Both Sexes	165,253	108,492	72,789	52,405	39,963	29,662	398,939	494,969	40,004	534,973
	Males	37,076	23,208	15,370	11,746	8,524	6,003	87,400	107,747	9,115	116,862
	Females	128,177	85,284	57,419	40,659	31,439	23,659	311,539	387,222	30,889	418,111
White <sup>b</sup>	Both Sexes	143,323	95,066	63,951	46,856	35,950	26,905	349,196	435,879	36,272	472,151
	Males	33,136	20,812	13,946	10,718	7,869	5,356	78,612	97,244	7,682	104,926
	Females	110,187	74,254	50,005	36,138	28,081	21,549	270,584	338,635	28,590	367,225
Black <sup>b</sup>	Both Sexes	10,318	6,600	4,050	2,688	1,754	1,345	23,655	28,019	1,674	29,693
	Males	1,687	1,227	596	551	307	308	4,060	4,796	185	4,981
	Females	8,631	5,373	3,454	2,137	1,447	1,037	19,595	23,223	1,489	24,712
Asian/ Pacific Islander <sup>c</sup>	Both Sexes	7,791	4,908	3,245	+	+	+	17,378	+	+	+
	Males	1,462	877	533	+	+	+	3,120	+	+	+
	Females	6,329	4,031	2,712	+	+	+	14,258	+	+	+
Hispanic <sup>d</sup>	Both Sexes	16,337	10,194	6,279	+	+	+	32,811	+	+	+
	Males	2,747	1,743	1,014	+	+	+	5,505	+	+	+
	Females	13,590	8,451	5,265	+	+	+	27,306	+	+	+

Estimated prevalence percent<sup>a</sup> on January 1, 2010, of the SEER 11 population diagnosed in the previous 18 years  
By Age at Prevalence, Race/Ethnicity and Sex

Age at Prevalence		Age Specific (Crude)									Age-Adjusted <sup>f</sup>	
		All Ages	0-9	10-19	20-29	30-39	40-49	50-59	60-69	70-79	80+	All Ages
<u>Race</u>	<u>Sex</u>											
All Races <sup>c</sup>	Both Sexes	0.1065%	0.0001%	0.0049%	0.0377%	0.1163%	0.1798%	0.2041%	0.2107%	0.1830%	0.1185%	0.1038%
	Males	0.0463%	-	0.0018%	0.0112%	0.0367%	0.0700%	0.0926%	0.1174%	0.1145%	0.0795%	0.0463%
	Females	0.1651%	-	0.0081%	0.0652%	0.1961%	0.2886%	0.3105%	0.2951%	0.2377%	0.1412%	0.1587%
White <sup>c</sup>	Both Sexes	0.1164%	0.0002%	0.0056%	0.0427%	0.1302%	0.1983%	0.2182%	0.2188%	0.1864%	0.1165%	0.1118%
	Males	0.0521%	-	0.0021%	0.0129%	0.0406%	0.0781%	0.1022%	0.1271%	0.1228%	0.0767%	0.0506%
	Females	0.1803%	-	0.0092%	0.0746%	0.2242%	0.3219%	0.3325%	0.3043%	0.2384%	0.1397%	0.1727%
Black <sup>c</sup>	Both Sexes	0.0503%	-	0.0010%	0.0125%	0.0492%	0.0902%	0.1057%	0.1384%	0.1226%	0.0923%	0.0552%
	Males	0.0174%	-	-	0.0032%	0.0114%	0.0336%	0.0348%	0.0562%	0.0581%	0.0805%	0.0213%
	Females	0.0803%	-	0.0015%	0.0212%	0.0820%	0.1403%	0.1669%	0.2034%	0.1669%	0.0979%	0.0835%
Asian/ Pacific Islander <sup>c</sup>	Both Sexes	0.1004%	-	0.0045%	0.0309%	0.1018%	0.1529%	0.1972%	0.2069%	0.1978%	0.1412%	0.0970%
	Males	0.0383%	-	0.0014%	0.0080%	0.0361%	0.0538%	0.0761%	0.0953%	0.0980%	0.0891%	0.0393%
	Females	0.1572%	-	0.0077%	0.0533%	0.1608%	0.2409%	0.3010%	0.2999%	0.2738%	0.1733%	0.1466%
Hispanic <sup>d</sup>	Both Sexes	0.0673%	-	0.0049%	0.0302%	0.0841%	0.1343%	0.1776%	0.1897%	0.1720%	0.1374%	0.0865%
	Males	0.0221%	-	0.0016%	0.0065%	0.0221%	0.0391%	0.0665%	0.0892%	0.0942%	0.0756%	0.0324%
	Females	0.1136%	-	0.0083%	0.0568%	0.1500%	0.2331%	0.2827%	0.2749%	0.2292%	0.1739%	0.1382%

<sup>a</sup> US 2010 cancer prevalence counts are based on 2010 cancer prevalence proportions from the SEER registries and 1/1/2010 US population estimates based on the average of 2009 and 2010 population estimates from the US Bureau of the Census. Prevalence was calculated using the First Malignant Primary Only for a person.

<sup>b c d</sup> Statistics based on (b) SEER 9 Areas (c) SEER 11 Areas and Rural Georgia (d) NHIA for Hispanic for SEER 11 Areas and Rural Georgia.

<sup>e</sup> Maximum limited-duration prevalence: 35 years for 1975-2010 SEER 9 data; 18 years for 1992-2010 SEER 11 data (used to calculate prevalence for Hispanics and Asian Pacific Islanders).

<sup>f</sup> Percentages are age-adjusted to the 2000 US Standard Population (19 age groups - Census P25-1130) by 5-year age groups.

<sup>g h i</sup> (g) Cases diagnosed more than 35 years ago were estimated using the completeness index method (Capocaccia et. al. 1997, Merrill et. al. 2000). (h) Complete prevalence is obtained by summing 0 to <35 and >=35. (i) Age-specific completeness index was approximated using empirical data from historical Connecticut tumor registry.

- Statistic not shown. Statistic based on fewer than 5 cases estimated alive in SEER for the time interval.

+ Not available.

Table 26.22

## Cancer of the Thyroid (Invasive)

Percent Distribution and Counts by Histology among Histologically Confirmed Cases, 2006-2010  
Both Sexes by Race

Histology <sup>a</sup>	All Races		White		Black		Asian/Pacific Islander		American Indian/ Alaska Native <sup>b</sup>		Hispanic <sup>c</sup>	
	Count	Percent	Count	Percent	Count	Percent	Count	Percent	Count	Percent	Count	Percent
Carcinoma	51,927	99.7%	42,591	99.7%	3,343	99.3%	5,032	99.8%	212	99.5%	7,439	99.7%
Epidermoid carcinoma <sup>d</sup> (8051-8131)	54	0.1%	44	0.1%	-	-	-	-	-	-	-	-
Adenocarcinoma <sup>e</sup>	50,173	96.3%	41,167	96.4%	3,191	94.8%	4,893	97.0%	204	95.8%	7,203	96.6%
Papillary adenocarcinoma (8050,8260,8340-8344, 8350,8450)	45,473	87.3%	37,428	87.6%	2,693	80.0%	4,528	89.8%	184	86.4%	6,685	89.6%
Follicular carcinoma (8330-8332,8335)	3,049	5.9%	2,342	5.5%	362	10.8%	273	5.4%	18	8.5%	346	4.6%
Oxyphilic (8290)	1,313	2.5%	1,131	2.6%	101	3.0%	66	1.3%	-	-	134	1.8%
Other specific carcinomas <sup>f</sup>	937	1.8%	778	1.8%	88	2.6%	45	0.9%	-	-	141	1.9%
Medullary carcinoma (8510)	905	1.7%	752	1.8%	84	2.5%	44	0.9%	-	-	137	1.8%
Carcinoma, NOS (8004,8010-8012, 8020-8022,8030-8032)	763	1.5%	602	1.4%	59	1.8%	90	1.8%	-	-	86	1.2%
Anaplastic carcinoma (8004,8012,8020-8021, 8030-8032)	475	0.9%	381	0.9%	31	0.9%	58	1.1%	-	-	53	0.7%
Sarcoma and other soft tissue tumors <sup>g</sup>	-	-	-	-	-	-	-	-	-	-	-	-
Other specific types <sup>h</sup>	-	-	-	-	-	-	-	-	-	-	-	-
Unspecified (8000-8003,8005)	151	0.3%	115	0.3%	17	0.5%	-	-	-	-	20	0.3%
Total	52,095	100.0%	42,718	100.0%	3,365	100.0%	5,044	100.0%	213	100.0%	7,459	100.0%

Source: SEER 18 areas (San Francisco, Connecticut, Detroit, Hawaii, Iowa, New Mexico, Seattle, Utah, Atlanta, San Jose-Monterey, Los Angeles, Alaska Native Registry, Rural Georgia, California excluding SF/SJM/LA, Kentucky, Louisiana, New Jersey and Georgia excluding ATL/RG).

Percents may not sum to 100 due to rounding.

<sup>a</sup> Excludes Kaposi Sarcoma, mesothelioma, lymphomas, leukemias, myelomas, lymphoreticular, and immunoproliferative diseases.

<sup>b</sup> Estimates for American Indian/Alaska Native are based on the CHSDA (Contract Health Service Delivery Area) counties.

<sup>c</sup> Hispanic is not mutually exclusive from whites, blacks, Asian/Pacific Islanders, and American Indians/Alaska Natives.

<sup>d</sup> Underlying incidence data for Hispanics are based on NHIA and exclude cases from the Alaska Native Registry.

<sup>e</sup> Epidermoid carcinoma includes squamous, basal, and transitional cell carcinomas.

<sup>f</sup> Adenocarcinoma includes histologies 8050, 8140-8147, 8160-8162, 8180-8221, 8250-8507, 8514, 8520-8551, 8560, 8570-8574, 8576, 8940-8941.

<sup>g</sup> Other specific carcinomas include histologies 8013-8015, 8033-8046, 8150-8155, 8170-8171, 8230-8249, 8510, 8512, 8561-8562, 8575, 8580-8671.

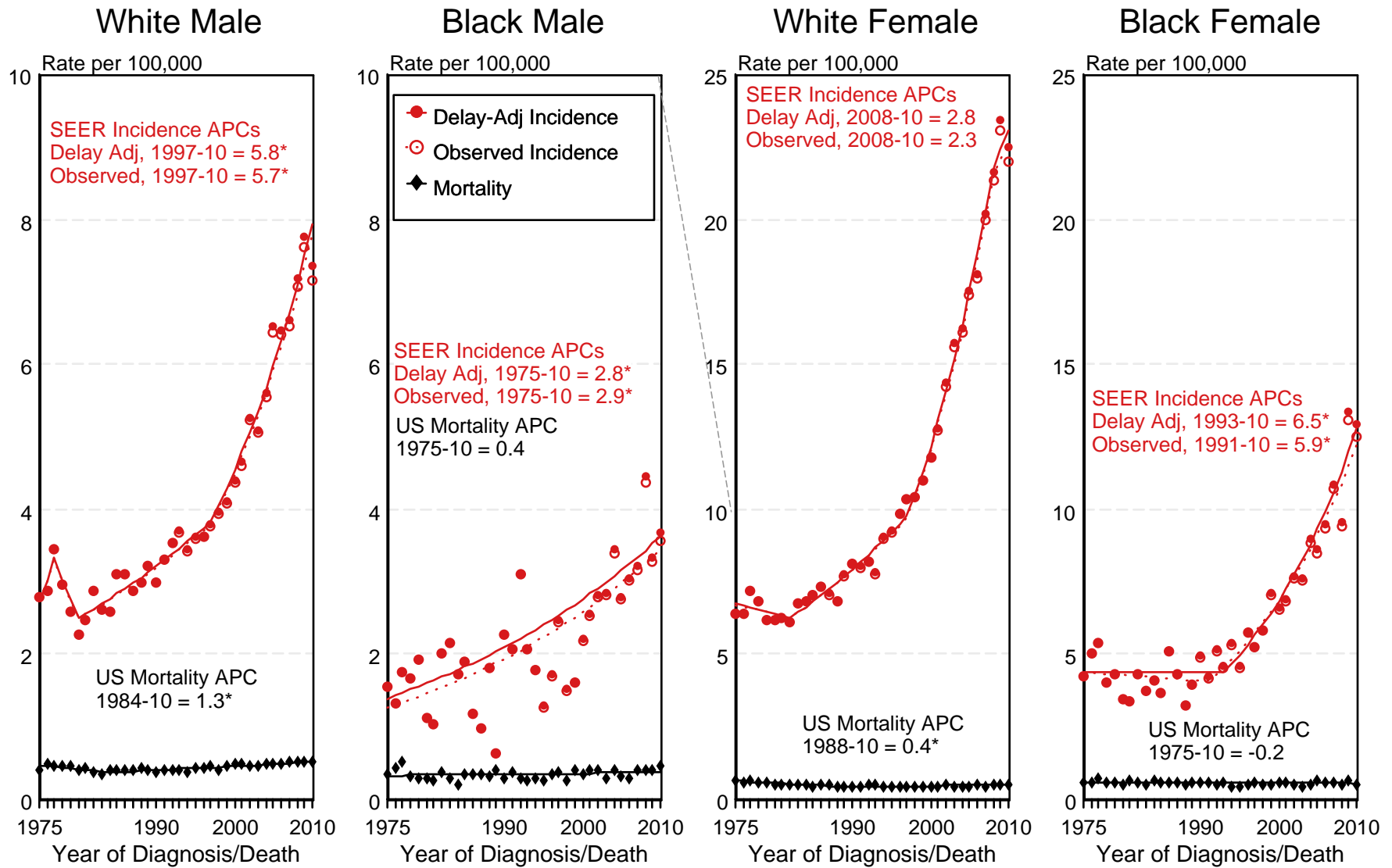
<sup>h</sup> Sarcoma and other soft tissue tumors include histologies 8680-8713, 8800-8921, 8990-8991, 9040-9044, 9120-9136, 9150-9252, 9370-9373, 9540-9582.

<sup>i</sup> Other specific types include histologies 8720-8790, 8930-8936, 8950-8983, 9000-9030, 9060-9110, 9260-9365, 9380-9539.

- Statistic not shown due to fewer than 16 cases during the time period.

Figure 26.1

# SEER Observed Incidence, SEER Delay Adjusted Incidence and US Death Rates<sup>a</sup> Cancer of the Thyroid, by Race and Sex



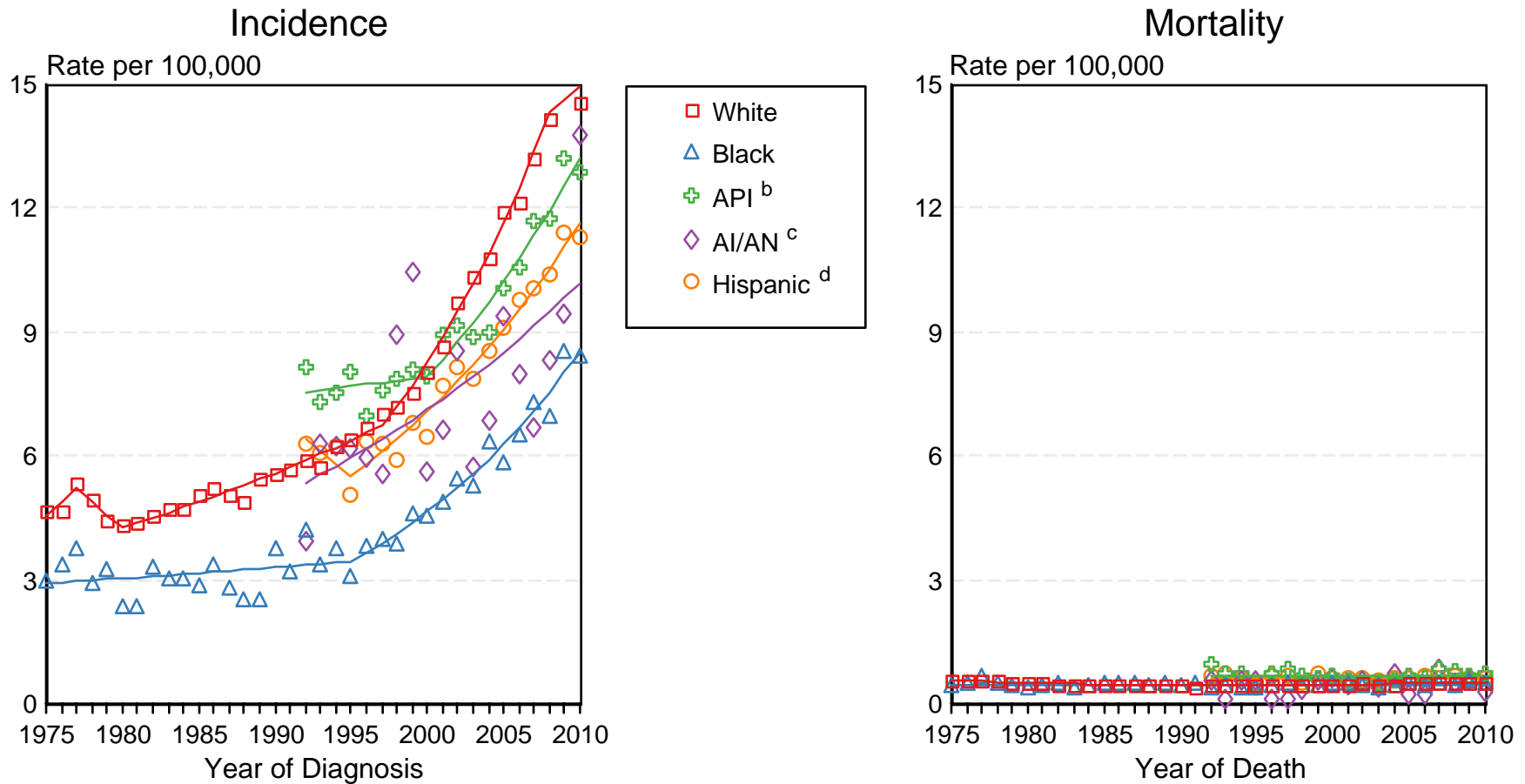
<sup>a</sup> Source: SEER 9 areas and US Mortality Files (National Center for Health Statistics, CDC). Rates are age-adjusted to the 2000 US Std Population (19 age groups - Census P25-1103). Regression lines and APCs are calculated using the Joinpoint Regression Program Version 4.0.3, April 2013, National Cancer Institute. The APC is the Annual Percent Change for the regression line segments. The APC shown on the graph is for the most recent trend.  
\* The APC is significantly different from zero ( $p < 0.05$ ).

Figure 26.2

# SEER Incidence and US Death Rates<sup>a</sup> Cancer of the Thyroid, Both Sexes

Joinpoint Analyses for Whites and Blacks from 1975-2010

and for Asian/Pacific Islanders, American Indians/Alaska Natives and Hispanics from 1992-2010



Source: Incidence data for whites and blacks are from the SEER 9 areas (San Francisco, Connecticut, Detroit, Hawaii, Iowa, New Mexico, Seattle, Utah, Atlanta). Incidence data for Asian/Pacific Islanders, American Indians/Alaska Natives and Hispanics are from the SEER 13 Areas (SEER 9 Areas, San Jose-Monterey, Los Angeles, Alaska Native Registry and Rural Georgia). Mortality data are from US Mortality Files, National Center for Health Statistics, CDC.

<sup>a</sup> Rates are age-adjusted to the 2000 US Std Population (19 age groups - Census P25-1103). Regression lines are calculated using the Joinpoint Regression Program Version 4.0.3, April 2013, National Cancer Institute. Joinpoint analyses for Whites and Blacks during the 1975-2010 period allow a maximum of 5 joinpoints. Analyses for other ethnic groups during the period 1992-2010 allow a maximum of 3 joinpoints.

<sup>b</sup> API = Asian/Pacific Islander.

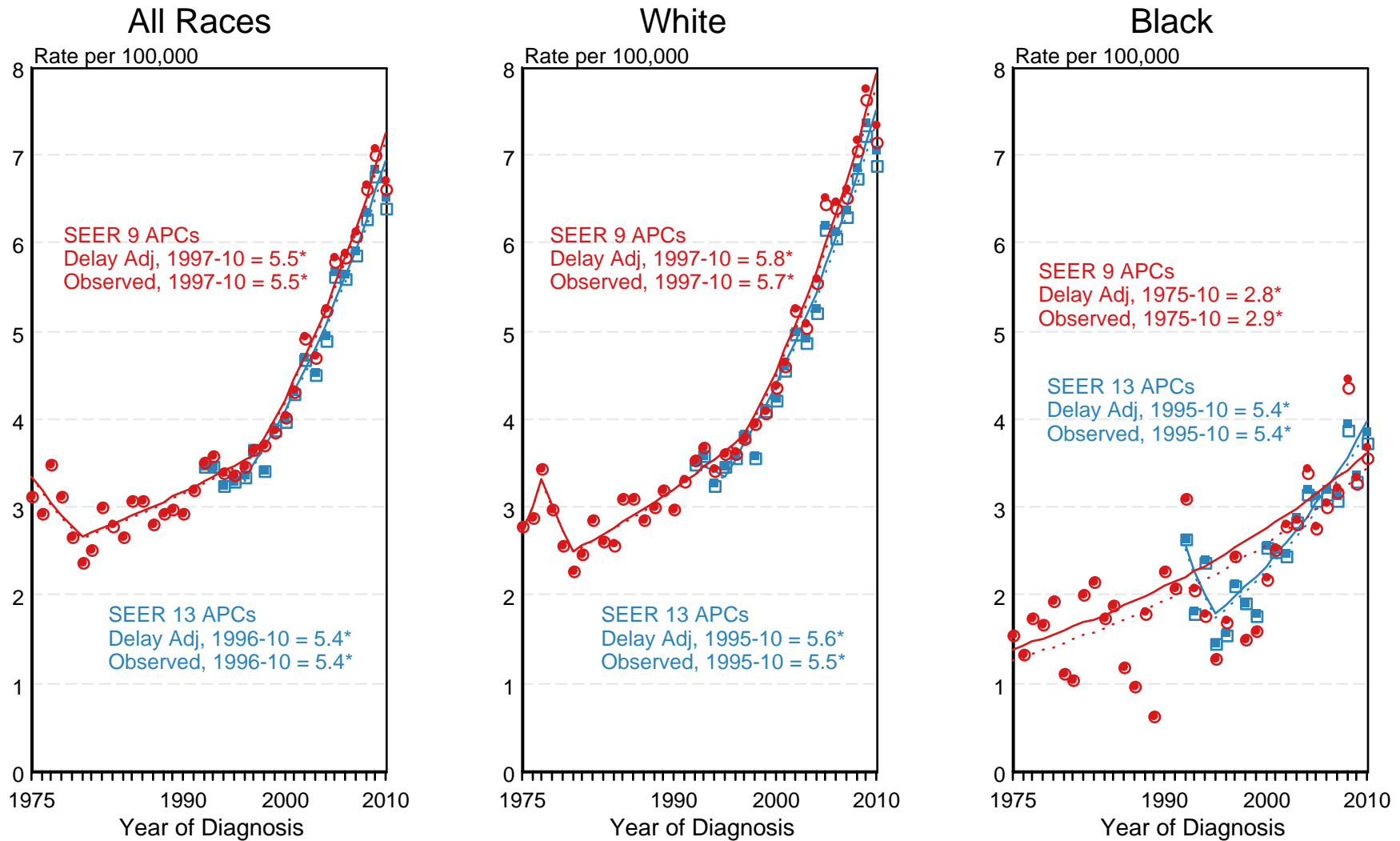
<sup>c</sup> AI/AN = American Indian/Alaska Native. Rates for American Indian/Alaska Native are based on the CHSDA(Contract Health Service Delivery Area) counties.

<sup>d</sup> Hispanic is not mutually exclusive from whites, blacks, Asian/Pacific Islanders, and American Indians/Alaska Natives. Incidence data for Hispanics are based on NHIA and exclude cases from the Alaska Native Registry. Mortality data for Hispanics exclude cases from Connecticut, the District of Columbia, Maine, Maryland, Minnesota, New Hampshire, New York, North Dakota, South Carolina, Oklahoma, and Vermont.



Figure 26.3

# SEER Observed Incidence and SEER Delay Adjusted Incidence Rates<sup>a</sup> SEER 9 Areas Compared to SEER 13 Areas Cancer of the Thyroid, Male, by Race

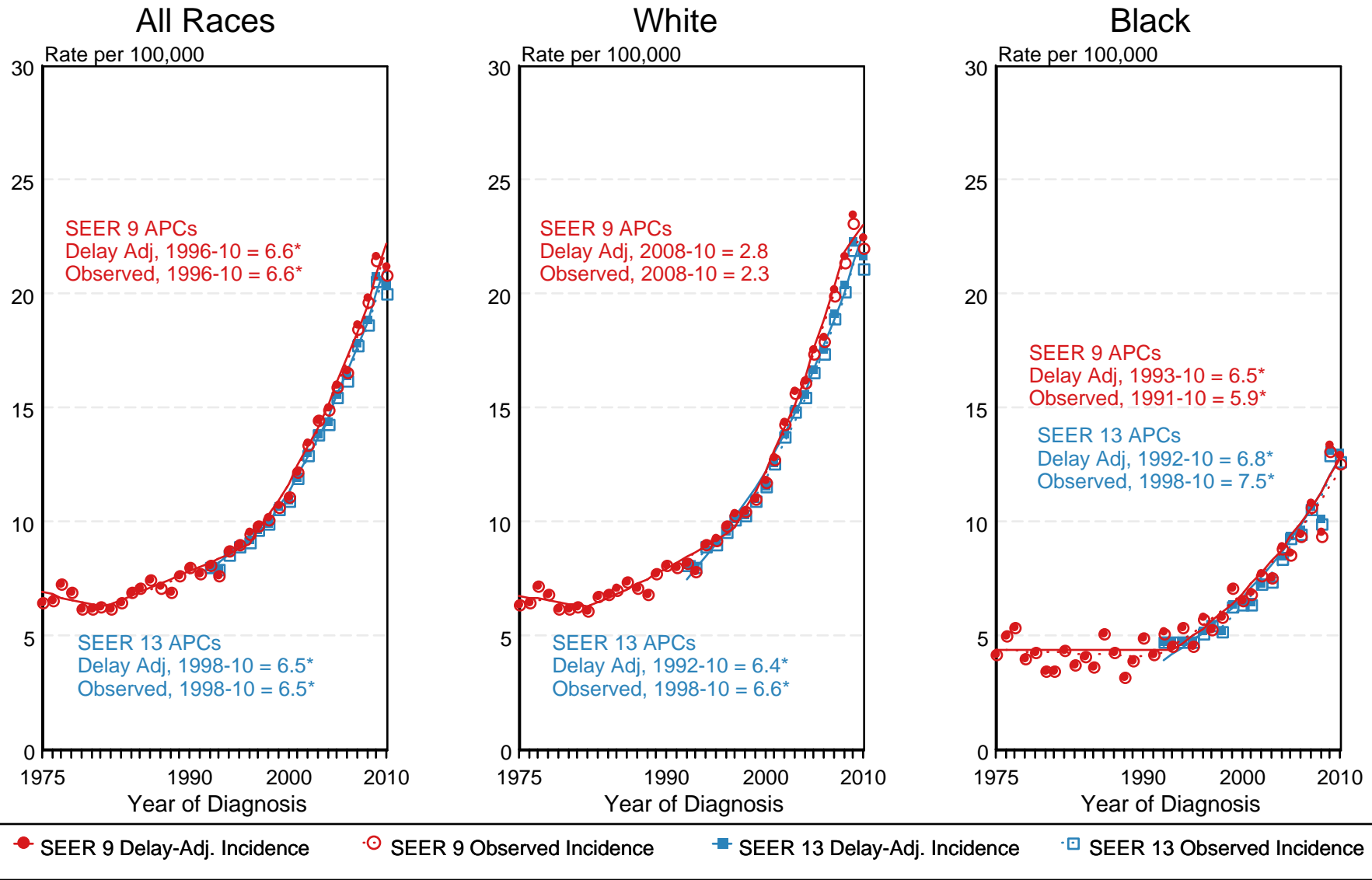


● SEER 9 Delay-Adj. Incidence    ○ SEER 9 Observed Incidence    ■ SEER 13 Delay-Adj. Incidence    □ SEER 13 Observed Incidence

<sup>a</sup> Source: SEER 9 areas and SEER 13 areas.  
Rates are age-adjusted to the 2000 US Std Population (19 age groups - Census P25-1103).  
Regression lines and APCs are calculated using the Joinpoint Regression Program Version 4.0.3, April 2013, National Cancer Institute.  
The APC is the Annual Percent Change for the regression line segments. The APC shown on the graph is for the most recent trend.  
\* The APC is significantly different from zero ( $p < 0.05$ ).

Figure 26.4

# SEER Observed Incidence and SEER Delay Adjusted Incidence Rates<sup>a</sup> SEER 9 Areas Compared to SEER 13 Areas Cancer of the Thyroid, Female, by Race



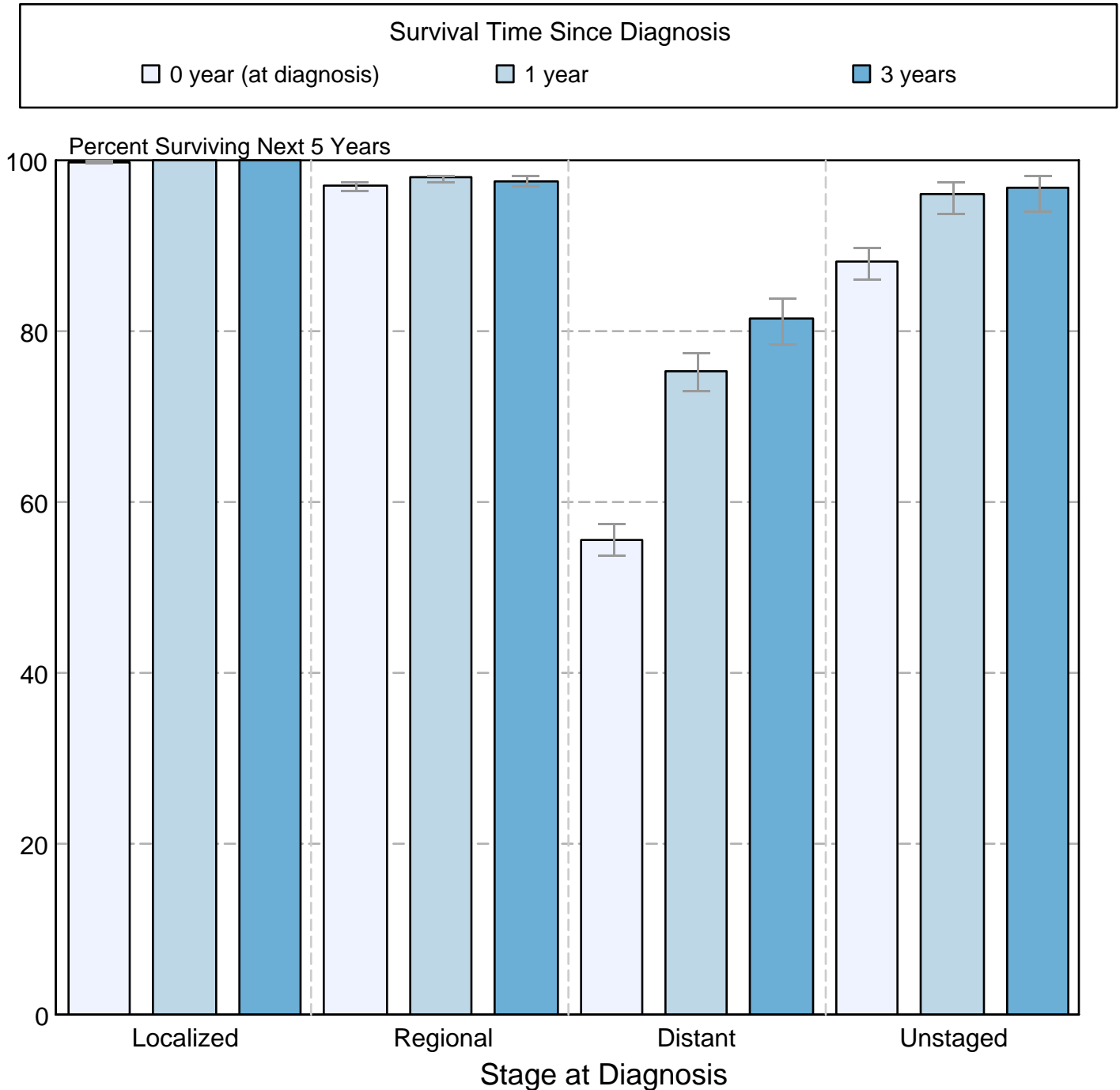
<sup>a</sup> Source: SEER 9 areas and SEER 13 areas.  
Rates are age-adjusted to the 2000 US Std Population (19 age groups - Census P25-1103).  
Regression lines and APCs are calculated using the Joinpoint Regression Program Version 4.0.3, April 2013, National Cancer Institute.  
The APC is the Annual Percent Change for the regression line segments. The APC shown on the graph is for the most recent trend.  
\* The APC is significantly different from zero ( $p < 0.05$ ).

Figure 26.5

## Cancer of the Thyroid

### 5-Year SEER Conditional Relative Survival and 95% Confidence Intervals

Probability of surviving the next 5 years given the cohort  
has already survived 0, 1, or 3 years  
1998-2009 by stage at diagnosis



Source: SEER 18 areas (San Francisco, Connecticut, Detroit, Hawaii, Iowa, New Mexico, Seattle, Utah, Atlanta, San Jose-Monterey, Los Angeles, Alaska Native Registry, Rural Georgia, California excluding SF/SJM/LA, Kentucky, Louisiana, New Jersey and Georgia excluding ATL/RG). California excluding SF/SJM/LA, Kentucky, Louisiana, New Jersey and Georgia excluding ATL/RG contribute cases for diagnosis years 2000-2009. The remaining 13 SEER Areas contribute cases for the entire period 1998-2009. Percent surviving is not shown if based on less than 25 cases. Confidence intervals are not shown if length of the confidence interval is greater than 5 times the standard error.