

Table 2.1  
All Cancer Sites (Invasive)

Trends in SEER Incidence<sup>ab</sup> and U.S. Mortality<sup>c</sup> Using the Joinpoint Regression Program,  
1975-2011 With up to Five Joinpoints, 1992-2011 With up to Three Joinpoints,  
Both Sexes by Race/Ethnicity

	JP Trend 1		JP Trend 2		JP Trend 3		JP Trend 4		JP Trend 5		JP Trend 6		AAPC <sup>d</sup>	
	Years	APC	Years	APC	Years	APC	Years	APC	Years	APC	Years	APC	2002-11	2007-11
<u>SEER 9 Delay-Adjusted Incidence<sup>a</sup>, 1975-2011</u>														
All Races	1975-89	1.2*	1989-92	2.8	1992-95	-2.4	1995-98	1.2	1998-11	-0.4*			-0.4*	-0.4*
White	1975-82	0.9*	1982-92	1.8*	1992-95	-2.0	1995-99	1.1	1999-11	-0.4*			-0.4*	-0.4*
Black	1975-84	1.6*	1984-89	0.4	1989-92	4.7*	1992-95	-1.7	1995-09	-0.5*	2009-11	-2.1	-0.8*	-1.3
<u>SEER 13 Delay-Adjusted Incidence<sup>b</sup>, 1992-2011</u>														
All Races	1992-94	-3.1	1994-99	0.3	1999-11	-0.5*							-0.5*	-0.5*
White	1992-94	-3.3*	1994-99	0.6	1999-11	-0.4*							-0.4*	-0.4*
Black	1992-11	-0.7*											-0.7*	-0.7*
<u>SEER 9 Observed Incidence<sup>a</sup>, 1975-2011</u>														
All Races	1975-89	1.2*	1989-92	2.8	1992-95	-2.4	1995-98	1.1	1998-09	-0.3*	2009-11	-2.0	-0.7*	-1.2
White	1975-82	0.9*	1982-92	1.8*	1992-95	-2.1	1995-98	1.4	1998-09	-0.3*	2009-11	-2.2	-0.7*	-1.3
Black	1975-84	1.6*	1984-89	0.4	1989-92	4.7*	1992-95	-1.7	1995-09	-0.5*	2009-11	-3.1*	-1.1*	-1.8*
<u>SEER 13 Observed Incidence<sup>b</sup>, 1992-2011</u>														
All Races	1992-94	-3.2*	1994-98	0.4	1998-09	-0.4*	2009-11	-2.2					-0.8*	-1.3*
White	1992-94	-3.2*	1994-99	0.5	1999-09	-0.4*	2009-11	-2.3					-0.8*	-1.4*
White NH <sup>ef</sup>	1992-94	-3.1*	1994-99	0.6	1999-09	-0.3*	2009-11	-2.3					-0.8*	-1.3
Black	1992-09	-0.7*	2009-11	-2.8*									-1.2*	-1.8*
Black NH <sup>ef</sup>	1992-09	-0.6*	2009-11	-2.6									-1.1*	-1.6*
API <sup>e</sup>	1992-11	-0.5*											-0.5*	-0.5*
AI/AN <sup>eg</sup>	1992-11	0.2											0.2	0.2
Hispanic <sup>f</sup>	1992-11	-0.3*											-0.3*	-0.3*
<u>U.S. Cancer Mortality<sup>c</sup>, 1975-2011</u>														
All Races	1975-84	0.5*	1984-91	0.3*	1991-94	-0.5	1994-98	-1.3*	1998-01	-0.8	2001-11	-1.5*	-1.5*	-1.5*
White	1975-90	0.4*	1990-94	-0.3	1994-98	-1.2*	1998-01	-0.6	2001-11	-1.4*			-1.4*	-1.4*
Black	1975-83	1.3*	1983-91	0.7*	1991-95	-0.8	1995-01	-1.6*	2001-11	-2.1*			-2.1*	-2.1*
<u>U.S. Cancer Mortality<sup>c</sup>, 1992-2011</u>														
All Races	1992-01	-1.0*	2001-11	-1.5*									-1.5*	-1.5*
White	1992-94	-0.3	1994-98	-1.2*	1998-01	-0.6	2001-11	-1.4*					-1.4*	-1.4*
White NH <sup>ef</sup>	1992-94	0.2	1994-98	-1.2*	1998-01	-0.5	2001-11	-1.4*					-1.4*	-1.4*
Black	1992-94	-0.4	1994-01	-1.6*	2001-11	-2.1*							-2.1*	-2.1*
Black NH <sup>ef</sup>	1992-94	0.0	1994-02	-1.6*	2002-09	-2.1*	2009-11	-1.4*					-2.0*	-1.7*
API <sup>e</sup>	1992-11	-1.4*											-1.4*	-1.4*
AI/AN <sup>eg</sup>	1992-11	-0.1											-0.1	-0.1
Hispanic <sup>f</sup>	1992-99	0.0	1999-11	-1.3*									-1.3*	-1.3*

Joinpoint Regression Program Version 4.1.0, April 2014, National Cancer Institute. (<http://surveillance.cancer.gov/joinpoint/>).

The APC is the Annual Percent Change based on rates age-adjusted to the 2000 US Std Population (19 age groups - Census P25-1130).

Trends are from the SEER 9 areas (San Francisco, Connecticut, Detroit, Hawaii, Iowa, New Mexico, Seattle, Utah, and Atlanta).

Trends are from the SEER 13 areas (SEER 9 Areas, Los Angeles, San Jose-Monterey, Rural Georgia, and the Alaska Native Registry).

Trends are from US Mortality Files, National Center for Health Statistics, Centers for Disease Control and Prevention.

The AAPC is the Average Annual Percent Change and is based on the APCs calculated by Joinpoint.

API - Asian/Pacific Islander, AI/AN - American Indian/Alaska Native, NH - Non-Hispanic

Hispanic and Non-Hispanic are not mutually exclusive from whites, blacks, Asian/Pacific Islanders, and American Indians/Alaska

Natives. Incidence data for Hispanics and Non-Hispanics are based on NHIA and exclude cases from the Alaska Native Registry.

The Hispanic and Non-Hispanic mortality trends exclude deaths from New Hampshire and Oklahoma.

Data for American Indian/Alaska Native are based on the CHSDA (Contract Health Service Delivery Area) counties.

\* The APC/AAPC is significantly different from zero ( $p < .05$ ).

- Joinpoint regression line analysis could not be performed on data series.

Table 2.2  
All Cancer Sites (Invasive)

Trends in SEER Incidence<sup>ab</sup> and U.S. Mortality<sup>c</sup> Using the Joinpoint Regression Program,  
1975-2011 With up to Five Joinpoints, 1992-2011 With up to Three Joinpoints,  
Males by Race/Ethnicity

	JP Trend 1		JP Trend 2		JP Trend 3		JP Trend 4		JP Trend 5		JP Trend 6		AAPC <sup>d</sup>	
	Years	APC	Years	APC	Years	APC	Years	APC	Years	APC	Years	APC	2002-11	2007-11
<u>SEER 9 Delay-Adjusted Incidence<sup>a</sup>, 1975-2011</u>														
All Races	1975-89	1.3*	1989-92	5.2*	1992-95	-4.9*	1995-00	0.6	2000-11	-0.9*			-0.9*	-0.9*
White	1975-89	1.4*	1989-92	5.0*	1992-95	-5.0*	1995-01	0.6	2001-11	-0.9*			-0.9*	-0.9*
Black	1975-81	2.8*	1981-89	0.7	1989-92	6.7*	1992-05	-1.6*	2005-08	0.4	2008-11	-3.6*	-1.6*	-2.6*
<u>SEER 13 Delay-Adjusted Incidence<sup>b</sup>, 1992-2011</u>														
All Races	1992-94	-5.9*	1994-07	-0.5*	2007-11	-1.8*							-1.1*	-1.8*
White	1992-94	-6.2*	1994-07	-0.3*	2007-11	-1.8*							-1.0*	-1.8*
Black	1992-11	-1.4*											-1.4*	-1.4*
<u>SEER 9 Observed Incidence<sup>a</sup>, 1975-2011</u>														
All Races	1975-89	1.3*	1989-92	5.2*	1992-95	-4.9*	1995-99	0.6	1999-08	-0.6*	2008-11	-2.4*	-1.2*	-2.0*
White	1975-89	1.4*	1989-92	5.0*	1992-95	-5.1*	1995-00	0.7	2000-08	-0.7*	2008-11	-2.5*	-1.3*	-2.0*
Black	1975-81	2.8*	1981-89	0.6	1989-92	7.5*	1992-96	-2.6*	1996-09	-1.2*	2009-11	-4.7*	-2.0*	-2.9*
<u>SEER 13 Observed Incidence<sup>b</sup>, 1992-2011</u>														
All Races	1992-94	-5.9*	1994-07	-0.5*	2007-11	-2.2*							-1.2*	-2.2*
White	1992-94	-6.2*	1994-07	-0.3*	2007-11	-2.3*							-1.2*	-2.3*
White NH <sup>ef</sup>	1992-94	-6.3*	1994-07	-0.2	2007-11	-2.2*							-1.1*	-2.2*
Black	1992-09	-1.4*	2009-11	-4.7									-2.1*	-3.1*
Black NH <sup>ef</sup>	1992-09	-1.4*	2009-11	-4.4									-2.0*	-2.9*
API <sup>e</sup>	1992-96	-2.7*	1996-00	0.4	2000-07	-1.0*	2007-11	-2.4*					-1.6*	-2.4*
AI/AN <sup>eg</sup>	1992-11	-0.2											-0.2	-0.2
Hispanic <sup>f</sup>	1992-07	-0.5*	2007-11	-2.2*									-1.3*	-2.2*
<u>U.S. Cancer Mortality<sup>c</sup>, 1975-2011</u>														
All Races	1975-79	1.0*	1979-90	0.3*	1990-93	-0.5	1993-01	-1.5*	2001-11	-1.8*			-1.8*	-1.8*
White	1975-79	0.9*	1979-91	0.2*	1991-94	-0.8	1994-97	-1.7*	1997-01	-1.2*	2001-11	-1.7*	-1.7*	-1.7*
Black	1975-82	1.8*	1982-90	1.0*	1990-93	-0.3	1993-00	-2.0*	2000-11	-2.6*			-2.6*	-2.6*
<u>U.S. Cancer Mortality<sup>c</sup>, 1992-2011</u>														
All Races	1992-01	-1.4*	2001-11	-1.8*									-1.8*	-1.8*
White	1992-01	-1.3*	2001-11	-1.7*									-1.7*	-1.7*
White NH <sup>ef</sup>	1992-94	-0.2	1994-97	-1.8*	1997-00	-0.9	2000-11	-1.6*					-1.6*	-1.6*
Black	1992-94	-0.5	1994-01	-2.1*	2001-11	-2.6*							-2.6*	-2.6*
Black NH <sup>ef</sup>	1992-94	-0.2	1994-01	-2.1*	2001-11	-2.5*							-2.5*	-2.5*
API <sup>e</sup>	1992-11	-1.6*											-1.6*	-1.6*
AI/AN <sup>eg</sup>	1992-11	-0.2											-0.2	-0.2
Hispanic <sup>f</sup>	1992-95	1.7	1995-11	-1.4*									-1.4*	-1.4*

Joinpoint Regression Program Version 4.1.0, April 2014, National Cancer Institute. (<http://surveillance.cancer.gov/joinpoint/>).

The APC is the Annual Percent Change based on rates age-adjusted to the 2000 US Std Population (19 age groups - Census P25-1130).

Trends are from the SEER 9 areas (San Francisco, Connecticut, Detroit, Hawaii, Iowa, New Mexico, Seattle, Utah, and Atlanta).

Trends are from the SEER 13 areas (SEER 9 Areas, Los Angeles, San Jose-Monterey, Rural Georgia, and the Alaska Native Registry).

Trends are from US Mortality Files, National Center for Health Statistics, Centers for Disease Control and Prevention.

The AAPC is the Average Annual Percent Change and is based on the APCs calculated by Joinpoint.

API - Asian/Pacific Islander, AI/AN - American Indian/Alaska Native, NH - Non-Hispanic

Hispanic and Non-Hispanic are not mutually exclusive from whites, blacks, Asian/Pacific Islanders, and American Indians/Alaska

Natives. Incidence data for Hispanics and Non-Hispanics are based on NHIA and exclude cases from the Alaska Native Registry.

The Hispanic and Non-Hispanic mortality trends exclude deaths from New Hampshire and Oklahoma.

Data for American Indian/Alaska Native are based on the CHSDA (Contract Health Service Delivery Area) counties.

\* The APC/AAPC is significantly different from zero ( $p < .05$ ).

- Joinpoint regression line analysis could not be performed on data series.

Table 2.3  
All Cancer Sites (Invasive)

Trends in SEER Incidence<sup>ab</sup> and U.S. Mortality<sup>c</sup> Using the Joinpoint Regression Program,  
1975-2011 With up to Five Joinpoints, 1992-2011 With up to Three Joinpoints,  
Females by Race/Ethnicity

	JP Trend 1		JP Trend 2		JP Trend 3		JP Trend 4		JP Trend 5		JP Trend 6		AAPC <sup>d</sup>	
	Years	APC	Years	APC	Years	APC	Years	APC	Years	APC	Years	APC	2002-11	2007-11
<u>SEER 9 Delay-Adjusted Incidence<sup>a</sup>, 1975-2011</u>														
All Races	1975-79	-0.3	1979-87	1.6*	1987-95	0.1	1995-98	1.5	1998-03	-0.6	2003-11	0.1	0.0	0.1
White	1975-79	-0.2	1979-87	1.7*	1987-95	0.1	1995-98	1.7	1998-04	-0.4	2004-11	0.2	0.0	0.2
Black	1975-91	1.1*	1991-11	0.1									0.1	0.1
<u>SEER 13 Delay-Adjusted Incidence<sup>b</sup>, 1992-2011</u>														
All Races	1992-98	0.8*	1998-03	-0.7	2003-11	0.0							-0.1	0.0
White	1992-94	-0.3	1994-98	1.5*	1998-03	-0.7	2003-11	0.1					0.0	0.1
Black	1992-11	0.1											0.1	0.1
<u>SEER 9 Observed Incidence<sup>a</sup>, 1975-2011</u>														
All Races	1975-79	-0.3	1979-87	1.6*	1987-95	0.1	1995-98	1.2	1998-11	-0.2*			-0.2*	-0.2*
White	1975-79	-0.2	1979-87	1.7*	1987-95	0.1	1995-98	1.5	1998-11	-0.2*			-0.2*	-0.2*
Black	1975-91	1.1*	1991-11	0.0									0.0	0.0
<u>SEER 13 Observed Incidence<sup>b</sup>, 1992-2011</u>														
All Races	1992-98	0.7*	1998-11	-0.3*									-0.3*	-0.3*
White	1992-98	0.9*	1998-11	-0.3*									-0.3*	-0.3*
White NH <sup>ef</sup>	1992-98	1.2*	1998-04	-0.5	2004-09	0.3	2009-11	-1.7					-0.3	-0.7
Black	1992-11	0.0											0.0	0.0
Black NH <sup>ef</sup>	1992-11	0.1											0.1	0.1
API <sup>e</sup>	1992-11	0.1											0.1	0.1
AI/AN <sup>eg</sup>	1992-11	0.6*											0.6*	0.6*
Hispanic <sup>f</sup>	1992-11	0.1											0.1	0.1
<u>U.S. Cancer Mortality<sup>c</sup>, 1975-2011</u>														
All Races	1975-90	0.6*	1990-94	-0.2	1994-02	-0.8*	2002-11	-1.4*					-1.4*	-1.4*
White	1975-90	0.6*	1990-95	-0.2	1995-98	-1.2*	1998-01	-0.2	2001-11	-1.4*			-1.4*	-1.4*
Black	1975-91	1.0*	1991-97	-0.5*	1997-03	-1.1*	2003-09	-1.9*	2009-11	-0.5			-1.5*	-1.2*
<u>U.S. Cancer Mortality<sup>c</sup>, 1992-2011</u>														
All Races	1992-95	-0.2	1995-98	-1.2*	1998-01	-0.4	2001-11	-1.4*					-1.4*	-1.4*
White	1992-95	-0.2	1995-98	-1.2*	1998-01	-0.2	2001-11	-1.4*					-1.4*	-1.4*
White NH <sup>ef</sup>	1992-94	0.6	1994-98	-1.0*	1998-01	-0.2	2001-11	-1.3*					-1.3*	-1.3*
Black	1992-97	-0.5*	1997-03	-1.1*	2003-09	-1.9*	2009-11	-0.5					-1.5*	-1.2*
Black NH <sup>ef</sup>	1992-95	0.1	1995-03	-1.0*	2003-09	-1.9*	2009-11	-0.3					-1.4*	-1.1*
API <sup>e</sup>	1992-11	-1.0*											-1.0*	-1.0*
AI/AN <sup>eg</sup>	1992-04	0.7	2004-11	-1.7*									-1.2*	-1.7*
Hispanic <sup>f</sup>	1992-01	-0.1	2001-11	-1.2*									-1.2*	-1.2*

Joinpoint Regression Program Version 4.1.0, April 2014, National Cancer Institute. (<http://surveillance.cancer.gov/joinpoint/>).

The APC is the Annual Percent Change based on rates age-adjusted to the 2000 US Std Population (19 age groups - Census P25-1130).

Trends are from the SEER 9 areas (San Francisco, Connecticut, Detroit, Hawaii, Iowa, New Mexico, Seattle, Utah, and Atlanta).

Trends are from the SEER 13 areas (SEER 9 Areas, Los Angeles, San Jose-Monterey, Rural Georgia, and the Alaska Native Registry).

Trends are from US Mortality Files, National Center for Health Statistics, Centers for Disease Control and Prevention.

The AAPC is the Average Annual Percent Change and is based on the APCs calculated by Joinpoint.

API - Asian/Pacific Islander, AI/AN - American Indian/Alaska Native, NH - Non-Hispanic

Hispanic and Non-Hispanic are not mutually exclusive from whites, blacks, Asian/Pacific Islanders, and American Indians/Alaska

Natives. Incidence data for Hispanics and Non-Hispanics are based on NHIA and exclude cases from the Alaska Native Registry.

The Hispanic and Non-Hispanic mortality trends exclude deaths from New Hampshire and Oklahoma.

Data for American Indian/Alaska Native are based on the CHSDA (Contract Health Service Delivery Area) counties.

\* The APC/AAPC is significantly different from zero ( $p < .05$ ).

- Joinpoint regression line analysis could not be performed on data series.

Table 2.4  
All Cancer Sites (Invasive)

Delay-adjusted SEER Incidence<sup>a</sup> Rates by Year, Race and Sex

Year of Diagnosis:	All Races			Whites			Blacks		
	Total	Males	Females	Total	Males	Females	Total	Males	Females
1975	400.41	466.79	365.87	402.11	468.53	369.59	426.52	525.51	356.63
1976	407.38	481.11	367.41	409.71	481.86	373.14	427.45	552.95	340.63
1977	407.74	486.51	363.70	409.33	487.18	367.89	442.60	577.58	352.02
1978	407.29	488.35	362.20	409.81	489.71	368.02	436.25	570.67	343.64
1979	412.52	496.45	365.55	414.16	497.62	369.74	451.53	589.70	359.09
1980	418.08	505.84	368.13	419.50	505.22	373.38	467.48	615.10	366.55
1981	425.32	510.91	377.17	427.73	510.89	383.94	472.73	633.91	362.94
1982	424.54	511.11	376.27	427.85	512.55	383.53	465.18	621.92	359.41
1983	431.20	520.01	380.81	434.48	521.08	388.07	487.09	646.07	382.06
1984	440.09	525.55	392.54	443.80	527.86	399.72	488.25	643.94	386.08
1985	449.01	531.38	403.31	453.67	533.80	411.66	489.19	643.65	388.43
1986	451.54	538.43	402.45	456.26	543.20	409.37	493.98	644.19	396.60
1987	468.20	563.42	413.42	475.14	569.18	423.49	501.24	666.32	394.36
1988	464.06	558.64	409.43	470.59	565.46	418.12	504.12	657.88	404.49
1989	468.04	567.33	408.57	475.53	574.00	418.89	493.00	661.75	384.86
1990	482.30	593.07	415.84	489.37	599.91	425.21	522.27	700.07	409.49
1991	503.38	637.86	419.20	511.05	645.21	428.96	549.39	765.32	412.79
1992	510.98	658.65	415.15	517.44	664.19	423.97	569.12	809.33	413.59
1993	493.82	622.65	408.64	497.60	621.06	417.61	568.79	819.04	404.34
1994	483.93	590.23	413.93	488.09	588.37	423.67	558.52	784.25	409.47
1995	477.44	572.28	415.24	482.92	571.08	426.78	543.52	750.28	405.00
1996	479.77	573.26	418.60	485.77	575.07	428.88	541.24	727.97	417.57
1997	487.01	576.31	428.91	494.52	577.65	441.95	541.16	741.14	410.61
1998	488.93	573.64	434.42	497.87	577.73	447.84	536.79	723.99	416.22
1999	491.26	581.57	431.20	499.84	584.25	444.70	541.35	724.63	421.10
2000	487.07	581.17	422.84	497.87	585.67	438.94	528.43	713.55	404.66
2001	490.83	582.36	427.85	502.52	589.34	443.65	521.44	699.37	401.59
2002	488.66	575.86	428.98	499.38	583.23	442.40	535.71	699.65	426.35
2003	476.44	561.26	418.20	487.85	567.20	433.95	520.13	681.39	412.84
2004	477.66	559.54	421.01	488.67	566.26	435.17	525.56	685.98	419.94
2005	473.81	550.57	420.58	486.68	560.43	435.90	509.88	644.31	421.02
2006	477.47	557.57	420.36	490.30	566.35	436.21	509.57	645.41	416.66
2007	483.56	568.67	422.11	495.56	575.99	437.67	519.10	668.88	416.31
2008	477.22	550.03	425.44	488.75	556.68	440.71	518.74	665.06	419.48
2009	475.89	540.78	429.95	487.35	548.17	444.41	511.46	640.47	424.14
2010	466.64	530.53	420.82	478.57	537.79	436.39	494.32	617.66	409.31
2011	463.44	520.77	423.17	476.22	529.27	439.39	490.50	596.02	418.33

Additional information on the model used to delay-adjust SEER Incidence rates can be found at [\(http://surveillance.cancer.gov/delay/\)](http://surveillance.cancer.gov/delay/).

<sup>a</sup> SEER 9 areas (San Francisco, Connecticut, Detroit, Hawaii, Iowa, New Mexico, Seattle, Utah, and Atlanta).  
Rates are per 100,000 and are age-adjusted to the 2000 US Std Population (19 age groups - Census P25-1130).  
- Delay-adjusted rate is not shown for observed rates based on less than 16 cases for the time interval.

Table 2.5  
All Cancer Sites (Invasive)

Age-adjusted SEER Incidence<sup>a</sup> Rates by Year, Race and Sex

Year of Diagnosis:	All Races			Whites			Blacks		
	Total	Males	Females	Total	Males	Females	Total	Males	Females
1975-2011	464.52	552.00	408.11	470.52	554.86	417.72	507.59	669.35	400.02
1975	400.41	466.79	365.87	402.11	468.53	369.59	426.52	525.51	356.63
1976	407.38	481.11	367.41	409.71	481.86	373.14	427.45	552.95	340.63
1977	407.74	486.51	363.70	409.33	487.18	367.89	442.60	577.58	352.02
1978	407.29	488.35	362.20	409.81	489.71	368.02	436.25	570.67	343.64
1979	412.52	496.45	365.55	414.16	497.62	369.74	451.53	589.70	359.09
1980	418.08	505.84	368.13	419.50	505.22	373.38	467.48	615.10	366.55
1981	425.32	510.91	377.17	427.73	510.89	383.94	472.73	633.91	362.94
1982	424.51	511.08	376.25	427.82	512.50	383.50	465.14	621.86	359.38
1983	431.15	519.95	380.76	434.40	520.98	388.00	487.00	645.95	382.00
1984	440.01	525.45	392.47	443.68	527.70	399.62	488.12	643.75	385.99
1985	448.91	531.26	403.22	453.51	533.59	411.52	489.01	643.40	388.30
1986	451.41	538.26	402.33	456.05	542.93	409.19	493.75	643.87	396.43
1987	468.04	563.22	413.27	474.88	568.83	423.27	500.95	665.91	394.16
1988	463.86	558.40	409.27	470.28	565.05	417.86	503.78	657.40	404.24
1989	467.81	567.05	408.38	475.16	573.52	418.58	492.61	661.19	384.58
1990	482.04	592.74	415.62	488.92	599.32	424.85	521.79	699.38	409.14
1991	503.06	637.45	418.95	510.54	644.52	428.56	548.83	764.50	412.40
1992	510.62	658.18	414.87	516.85	663.39	423.52	568.47	808.35	413.15
1993	493.43	622.15	408.33	496.97	620.22	417.12	568.06	817.93	403.86
1994	483.52	589.71	413.58	487.40	587.48	423.11	557.72	783.06	408.93
1995	476.99	571.73	414.86	482.16	570.13	426.16	542.66	749.02	404.41
1996	479.27	572.65	418.17	484.93	574.01	428.19	540.30	726.62	416.90
1997	486.47	575.65	428.44	493.59	576.48	441.17	540.13	739.64	409.89
1998	488.35	572.95	433.92	496.88	576.50	447.01	535.72	722.45	415.45
1999	490.54	580.70	430.58	498.57	582.67	443.65	539.97	722.68	420.11
2000	486.29	580.21	422.17	496.48	583.92	437.80	526.95	711.43	403.60
2001	489.96	581.30	427.11	500.96	587.39	442.36	519.82	697.06	400.43
2002	487.70	574.71	428.16	497.66	581.10	440.98	533.86	697.10	424.98
2003	475.41	560.02	417.31	485.99	564.90	432.40	518.14	678.63	411.37
2004	476.46	558.11	419.98	486.51	563.61	433.37	523.23	682.76	418.20
2005	472.39	548.89	419.35	484.13	557.32	433.76	507.21	640.74	418.95
2006	475.75	555.52	418.88	487.23	562.60	433.64	506.38	641.14	414.21
2007	481.41	566.10	420.27	491.80	571.40	434.55	515.17	663.54	413.34
2008	474.52	546.86	423.08	484.10	551.11	436.74	513.80	658.40	415.71
2009	472.35	536.68	426.82	481.40	541.14	439.26	505.21	632.26	419.23
2010	461.57	524.67	416.33	470.44	528.22	429.33	485.91	606.67	402.69
2011	453.95	509.94	414.63	462.19	513.05	426.99	476.05	577.75	406.52

<sup>a</sup> SEER 9 areas (San Francisco, Connecticut, Detroit, Hawaii, Iowa, New Mexico, Seattle, Utah, and Atlanta). Rates are per 100,000 and are age-adjusted to the 2000 US Std Population (19 age groups - Census P25-1130).  
- Statistic not shown. Rate based on less than 16 cases for the time interval.

Table 2.6  
All Cancer Sites (Invasive)

Age-adjusted U.S. Death<sup>a</sup> Rates by Year, Race and Sex

Year of Death:	All Races			Whites			Blacks		
	Total	Males	Females	Total	Males	Females	Total	Males	Females
1975-2011	198.68	252.02	163.81	196.20	247.17	162.97	245.87	337.41	188.94
1975	199.14	258.43	160.03	196.33	254.00	158.99	235.50	320.45	174.17
1976	202.30	262.23	162.70	199.38	257.50	161.69	241.76	328.45	179.10
1977	203.02	264.23	162.94	199.67	258.78	161.61	246.38	337.95	181.60
1978	204.42	267.07	163.76	201.14	261.65	162.54	247.24	340.91	181.53
1979	204.53	268.65	163.06	201.20	263.24	161.70	248.98	344.67	182.73
1980	206.96	271.08	165.75	203.27	265.03	164.17	256.18	353.91	189.25
1981	206.40	269.78	165.90	202.64	263.27	164.55	256.77	358.65	187.47
1982	208.32	272.89	167.45	204.54	266.28	166.11	260.36	364.86	190.17
1983	209.21	274.09	168.27	205.17	267.22	166.69	263.75	369.32	193.24
1984	210.91	275.08	170.55	206.66	267.55	169.02	268.15	377.93	195.67
1985	211.35	275.68	170.96	207.25	268.25	169.58	268.06	377.82	196.31
1986	211.79	276.04	171.59	207.73	268.83	170.01	269.45	378.92	199.05
1987	211.91	276.34	171.54	207.78	268.96	169.87	271.12	383.24	199.91
1988	212.62	276.89	172.53	208.48	269.46	170.94	271.59	384.17	200.36
1989	214.30	278.50	174.25	209.96	270.25	172.88	275.87	395.28	200.87
1990	214.95	279.82	174.65	210.41	271.48	172.89	279.30	399.14	205.39
1991	215.06	279.15	175.30	210.62	271.19	173.41	278.97	395.85	207.39
1992	213.46	276.51	174.39	209.24	268.91	172.58	274.93	389.20	205.80
1993	213.45	275.89	174.55	209.16	267.89	172.82	277.09	394.76	206.29
1994	211.74	272.12	174.11	207.83	264.73	172.62	271.96	385.20	204.06
1995	209.89	268.50	173.35	206.09	261.46	171.73	269.51	379.02	204.53
1996	207.00	263.75	171.21	203.40	256.83	169.85	265.28	373.70	200.94
1997	203.55	258.13	169.00	199.94	251.58	167.35	262.14	363.18	202.53
1998	200.82	253.63	166.93	197.56	247.62	165.38	255.66	353.13	198.38
1999	200.72	252.75	167.24	197.75	247.14	165.92	253.80	349.23	197.54
2000	198.79	248.46	166.70	196.37	243.37	165.98	248.07	341.20	193.21
2001	196.29	245.05	164.61	193.98	240.31	163.75	244.34	334.14	192.12
2002	194.36	241.63	163.38	192.38	237.62	162.56	240.81	325.80	191.45
2003	190.89	235.81	161.16	189.10	232.16	160.40	235.16	314.60	188.76
2004	186.84	230.27	157.92	185.21	226.60	157.41	228.98	307.30	183.51
2005	185.23	228.09	156.46	183.87	224.94	156.04	224.83	300.33	180.94
2006	182.03	222.56	154.63	181.10	220.02	154.52	218.93	290.16	177.31
2007	179.26	219.33	152.00	178.30	216.64	151.91	216.23	286.57	175.47
2008	176.32	215.34	149.27	175.69	213.21	149.37	209.37	275.26	170.41
2009	173.40	211.17	147.12	173.03	209.33	147.48	205.39	268.91	167.41
2010	171.76	208.81	145.75	171.37	207.16	145.86	202.89	264.20	166.22
2011	168.70	204.25	143.47	168.45	203.21	143.39	199.22	253.95	166.16

<sup>a</sup> US Mortality Files, National Center for Health Statistics, Centers for Disease Control and Prevention. Rates are per 100,000 and are age-adjusted to the 2000 US Std Population (19 age groups - Census P25-1130).  
- Statistic not shown. Rate based on less than 16 cases for the time interval.

Table 2.7  
All Cancer Sites (Invasive)

SEER Incidence<sup>a</sup> and U.S. Death<sup>b</sup> Rates, Age-Adjusted and Age-Specific Rates, by Race and Sex

	All Races			Whites			Blacks		
	Total	Males	Females	Total	Males	Females	Total	Males	Females
<u>SEER Incidence</u>									
<u>Age at Diagnosis</u>									
Age-Adjusted Rates, 2007-2011									
All ages	460.4	529.4	411.3	468.9	532.1	424.4	480.8	600.9	398.8
Under 65	223.8	218.7	229.9	227.4	218.9	237.1	243.6	271.3	221.2
65 and over	2,095.8	2,677.4	1,665.6	2,138.1	2,696.9	1,719.0	2,120.3	2,878.9	1,626.8
All ages (IARC world std) <sup>c</sup>	312.9	349.2	285.6	318.7	350.6	295.0	333.1	410.0	277.0
Age-Specific Rates, 2007-2011									
<1	23.7	24.5	22.8	24.4	24.7	24.1	19.7	21.9	17.5
1-4	21.9	23.1	20.6	23.6	24.6	22.5	16.0	16.8	15.1
5-9	12.7	13.9	11.5	13.5	14.8	12.1	10.3	10.5	10.1
10-14	13.5	14.0	13.0	14.4	14.9	13.9	11.1	11.7	10.4
15-19	21.6	22.6	20.6	23.8	24.9	22.5	14.0	14.5	13.4
20-24	35.8	34.6	37.1	39.6	38.8	40.6	22.4	21.1	23.7
25-29	57.2	48.7	66.0	62.0	53.4	71.1	41.9	33.2	49.9
30-34	87.9	65.1	111.1	93.2	69.6	118.0	73.1	48.6	95.3
35-39	132.9	88.9	176.8	138.6	93.9	184.9	116.3	75.6	152.7
40-44	216.9	148.3	285.0	221.3	151.2	293.1	212.1	157.8	261.1
45-49	355.3	278.9	430.1	361.1	280.0	442.8	368.9	334.1	400.3
50-54	566.8	545.9	587.0	568.4	538.0	598.5	648.3	718.7	585.3
55-59	842.6	936.8	754.1	845.2	921.8	771.2	1,012.7	1,287.0	779.2
60-64	1,229.9	1,459.7	1,018.6	1,239.6	1,444.5	1,046.2	1,458.7	1,947.6	1,059.5
65-69	1,732.7	2,156.3	1,358.9	1,758.2	2,150.5	1,404.3	1,938.1	2,657.9	1,381.0
70-74	2,064.2	2,620.5	1,603.0	2,112.9	2,642.7	1,664.6	2,135.8	2,916.0	1,572.9
75-79	2,318.5	2,957.4	1,834.5	2,377.5	2,989.9	1,902.3	2,261.4	3,035.9	1,768.6
80-84	2,389.5	3,064.1	1,947.0	2,438.8	3,092.9	2,002.3	2,240.4	3,031.1	1,817.9
85+	2,236.7	3,012.8	1,853.7	2,266.6	3,049.2	1,880.4	2,107.1	2,842.5	1,813.4
<u>U.S. Mortality</u>									
<u>Age at Death</u>									
Age-Adjusted Rates, 2007-2011									
All ages	173.8	211.6	147.4	173.3	209.8	147.5	206.4	269.3	169.0
Under 65	55.1	59.3	51.2	53.9	57.8	50.3	74.3	82.8	67.3
65 and over	994.3	1,264.7	812.5	998.5	1,260.4	820.0	1,119.5	1,558.0	872.2
All ages (IARC world std) <sup>c</sup>	102.3	120.4	88.6	101.7	118.9	88.3	126.1	157.7	105.3
Age-Specific Rates, 2007-2011									
<1	1.7	1.9	1.5	1.7	1.9	1.5	1.7	2.0	1.4
1-4	2.2	2.3	2.1	2.3	2.4	2.3	2.0	2.2	1.9
5-9	2.3	2.4	2.2	2.3	2.5	2.2	2.2	2.1	2.3
10-14	2.1	2.2	2.1	2.2	2.3	2.1	2.0	2.0	2.1
15-19	2.9	3.4	2.5	3.0	3.5	2.5	2.9	3.3	2.5
20-24	4.6	5.5	3.6	4.6	5.7	3.6	4.9	5.6	4.3
25-29	6.6	7.1	6.1	6.5	7.1	6.0	7.8	7.9	7.7
30-34	11.0	10.2	11.8	10.9	10.2	11.6	13.6	11.6	15.3
35-39	20.2	17.3	23.0	19.7	17.3	22.2	26.5	20.2	32.0
40-44	39.1	34.1	44.0	38.1	33.6	42.7	51.9	42.6	60.2
45-49	79.2	76.2	82.3	77.1	74.5	79.7	106.9	100.7	112.4
50-54	146.3	155.3	137.7	142.2	150.4	134.1	201.6	219.8	185.6
55-59	240.0	272.6	209.4	233.5	262.7	205.4	335.2	403.5	277.5
60-64	376.0	434.6	321.8	370.7	424.4	320.2	502.0	625.2	401.7
65-69	571.9	671.8	483.2	570.3	664.1	485.5	713.5	901.8	569.5
70-74	805.4	966.4	670.3	808.9	961.6	678.2	939.3	1,229.0	733.6
75-79	1,085.3	1,348.4	884.2	1,092.9	1,346.1	895.1	1,201.5	1,635.0	930.9
80-84	1,380.7	1,798.9	1,105.4	1,388.1	1,796.6	1,114.1	1,503.0	2,151.4	1,161.4
85+	1,711.3	2,425.1	1,370.0	1,720.0	2,423.7	1,380.4	1,801.9	2,864.7	1,389.8

<sup>a</sup> SEER 18 areas. Rates are per 100,000 and are age-adjusted to the 2000 US Std Population (19 age groups - Census P25-1130), unless noted.

<sup>b</sup> US Mortality Files, National Center for Health Statistics, Centers for Disease Control and Prevention.

<sup>c</sup> Rates are per 100,000 and are age-adjusted to the 2000 US Std Population (19 age groups - Census P25-1130), unless noted.

<sup>d</sup> Rates are per 100,000 and are age-adjusted to the IARC world standard population.

- Statistic not shown. Rate based on less than 16 cases for the time interval.

Table 2.8  
All Cancer Sites (Invasive)

5-Year Relative and Period Survival (Percent) by Race, Sex, Diagnosis Year and Age

	All Races			Whites			Blacks		
	Total	Males	Females	Total	Males	Females	Total	Males	Females
5-Year Relative Survival (Percent)									
Year of Diagnosis:									
1960-1963 <sup>a</sup>	-	-	-	39	-	-	27	-	-
1970-1973 <sup>a</sup>	-	-	-	43	-	-	31	-	-
1975-1977 <sup>b</sup>	48.9	41.7	55.9	49.8	42.7	56.5	39.0	32.7	46.2
1978-1980 <sup>b</sup>	49.0	43.1	54.9	50.0	44.3	55.6	38.9	33.3	45.6
1981-1983 <sup>b</sup>	50.2	45.2	55.1	51.3	46.6	56.0	38.7	34.1	44.4
1984-1986 <sup>b</sup>	52.4	47.1	57.6	53.6	48.6	58.5	40.1	35.4	45.5
1987-1989 <sup>b</sup>	55.3	51.1	59.6	56.7	52.8	60.6	42.9	38.8	47.7
1990-1992 <sup>b</sup>	59.9	59.1	60.9	61.4	60.8	62.0	47.7	47.5	48.1
1993-1995 <sup>b</sup>	61.3	60.8	61.8	62.4	62.0	62.8	52.7	54.4	50.5
1996-1998 <sup>b</sup>	63.3	63.0	63.6	64.4	64.1	64.7	55.1	57.8	51.9
1999-2003 <sup>b</sup>	66.4	66.8	66.0	67.7	68.1	67.2	58.4	61.9	54.3
2004-2010 <sup>b</sup>	68.3 <sup>e</sup>	69.0 <sup>e</sup>	67.6 <sup>e</sup>	69.4 <sup>e</sup>	70.0 <sup>e</sup>	68.7 <sup>e</sup>	61.5 <sup>e</sup>	64.9 <sup>e</sup>	57.7 <sup>e</sup>
5-Year Period Survival (Percent) <sup>cd</sup>									
2010	66.6	66.9	66.3	67.1	67.2	67.0	60.6	63.6	57.3
5-Year Relative Survival (Percent), 2004-2010 <sup>c</sup>									
Age at Diagnosis:									
Ages <45	81.1	76.4	84.1	82.7	78.3	85.6	69.7	63.3	73.5
Ages 45-54	73.0	67.6	77.5	74.5	68.8	79.1	62.6	61.1	64.2
Ages 55-64	69.8	69.7	69.9	70.7	70.3	71.1	62.8	65.6	58.5
Ages 65-74	65.6	68.8	61.0	66.1	68.9	62.0	60.4	66.6	51.4
Ages 75+	51.3	55.7	47.1	51.9	55.8	48.2	43.1	50.7	36.7
Ages <65	73.1	70.2	76.0	74.3	71.2	77.4	64.1	63.9	64.3
Ages 65+	58.6	62.9	53.4	59.0	62.9	54.3	53.4	61.1	44.2

<sup>a</sup> Based on End Results data from a series of hospital registries and one population-based registry.  
<sup>b</sup> SEER 9 areas (San Francisco, Connecticut, Detroit, Hawaii, Iowa, New Mexico, Seattle, Utah, Atlanta).  
Based on follow-up of patients into 2011.  
<sup>c</sup> SEER 18 areas (San Francisco, Connecticut, Detroit, Hawaii, Iowa, New Mexico, Seattle, Utah, Atlanta, San Jose-Monterey, Los Angeles, Alaska Native Registry, Rural Georgia, California excluding SF/SJM/LA, Kentucky, Louisiana, New Jersey and Georgia excluding ATL/RG).  
Based on follow-up of patients into 2011.  
<sup>d</sup> Period survival provides a 2010 estimate of survival by piecing together the most recent conditional survival estimates from several cohorts. It is computed here using three year calendar blocks (2007-2009: 0-1 year survival), (2006-2008: 1-2 year survival), (2005-2007: 2-3 year survival), (2004-2006: 3-4 year survival), (2003-2005: 4-5 years survival).  
<sup>e</sup> The difference between 1975-1977 and 2004-2010 is statistically significant (p<.05).  
<sup>f</sup> The standard error is between 5 and 10 percentage points.  
<sup>g</sup> The standard error is greater than 10 percentage points.  
- Statistic could not be calculated due to fewer than 25 cases during the time period.



Table 2.9  
All Cancer Sites (Invasive)  
SEER<sup>a</sup> Relative Survival (Percent)  
By Year of Diagnosis

All Races, Males and Females

Year of Diagnosis

	1975- 1979	1980- 1984	1985- 1989	1990- 1994	1995	1996	1997	1998	1999	2000	2001	2002	2003	2004	2005	2006	2007	2008	2009	2010
Survival Time																				
1-year	69.2	70.7	73.2	76.4	76.5	77.0	77.7	78.0	78.7	79.0	79.5	79.8	79.5	80.0	80.3	80.9	81.3	81.5	81.7	81.5
2-year	59.8	61.3	64.4	68.8	69.3	70.2	70.9	71.4	72.2	72.7	73.4	73.9	73.4	74.0	74.3	75.3	75.6	75.6	75.6	75.6
3-year	54.7	56.2	59.8	64.9	65.7	66.7	67.4	68.0	68.9	69.6	70.3	70.8	70.3	70.9	71.2	72.2	72.5	72.3		
4-year	51.4	52.8	56.7	62.3	63.3	64.3	65.1	65.7	66.8	67.5	68.3	68.8	68.3	68.8	69.2	70.0	70.4			
5-year	48.9	50.2	54.4	60.4	61.6	62.5	63.3	64.0	65.2	66.0	66.8	67.3	66.7	67.3	67.6	68.5				
6-year	47.0	48.2	52.6	58.9	60.2	61.2	62.0	62.7	64.0	64.8	65.7	66.2	65.5	66.0	66.3					
7-year	45.4	46.5	51.0	57.5	59.0	60.1	61.0	61.7	62.9	63.8	64.7	65.2	64.4	64.9						
8-year	44.1	45.1	49.8	56.4	58.1	59.2	60.1	60.9	62.0	62.7	63.8	64.3	63.5							
9-year	42.9	43.9	48.6	55.4	57.2	58.3	59.2	59.9	61.3	62.0	63.0	63.5								
10-year	41.8	42.8	47.6	54.5	56.4	57.5	58.5	59.1	60.5	61.3	62.3									
11-year	40.8	41.9	46.7	53.7	55.6	56.9	57.8	58.4	59.7	60.4										
12-year	40.0	41.0	45.9	53.0	54.9	56.2	57.2	57.7	59.0											
13-year	39.3	40.3	45.1	52.3	54.0	55.5	56.5	57.0												
14-year	38.7	39.6	44.4	51.7	53.3	54.8	55.8													
15-year	38.0	38.9	43.7	51.0	52.6	54.1														
16-year	37.4	38.2	43.1	50.4	52.0															
17-year	36.8	37.6	42.6	49.8																
18-year	36.3	37.1	42.1																	
19-year	35.9	36.5	41.7																	
20-year	35.5	36.0	41.2																	
21-year	35.0	35.5	40.8																	
22-year	34.5	35.1	40.3																	
23-year	34.1	34.6																		
24-year	33.6	34.2																		
25-year	33.1	33.8																		
26-year	32.7	33.4																		
27-year	32.4	32.9																		
28-year	32.0																			
29-year	31.7																			
30-year	31.3																			

<sup>a</sup> Based on the SEER 9 areas (San Francisco, Connecticut, Detroit, Hawaii, Iowa, New Mexico, Seattle, Utah, and Atlanta).

Table 2.10  
All Cancer Sites (Invasive)

SEER<sup>a</sup> Relative Survival (Percent)  
By Year of Diagnosis

All Races, Males

Year of Diagnosis

	1975- 1979	1980- 1984	1985- 1989	1990- 1994	1995	1996	1997	1998	1999	2000	2001	2002	2003	2004	2005	2006	2007	2008	2009	2010
Survival Time																				
1-year	63.7	66.6	69.9	75.5	75.3	76.2	76.9	76.8	78.0	78.6	79.1	79.2	79.0	79.7	79.9	80.9	81.4	81.2	81.4	81.0
2-year	53.4	56.4	60.4	67.7	68.0	69.4	70.2	70.3	71.5	72.5	73.1	73.5	73.0	73.8	74.1	75.4	75.8	75.4	75.2	
3-year	48.2	51.2	55.5	64.0	64.6	66.1	67.0	67.1	68.5	69.5	70.4	70.8	70.1	71.0	71.2	72.5	73.0	72.4		
4-year	44.7	47.7	52.2	61.6	62.4	63.8	64.9	65.0	66.6	67.6	68.5	69.1	68.4	69.2	69.4	70.6	71.2			
5-year	42.2	45.0	49.9	59.8	60.8	62.3	63.1	63.5	65.2	66.3	67.4	68.0	67.2	68.0	68.1	69.3				
6-year	40.2	43.0	48.1	58.3	59.5	61.1	61.9	62.3	64.1	65.2	66.5	67.0	66.0	66.9	66.9					
7-year	38.5	41.3	46.4	57.0	58.5	60.1	61.1	61.3	63.3	64.3	65.6	66.3	65.1	65.9						
8-year	37.1	39.8	45.0	55.8	57.6	59.3	60.3	60.6	62.4	63.3	64.9	65.5	64.4							
9-year	35.8	38.6	43.8	54.8	56.9	58.5	59.5	59.7	61.7	62.7	64.4	64.9								
10-year	34.6	37.5	42.8	53.9	56.0	57.6	58.9	59.0	61.1	62.0	63.6									
11-year	33.5	36.5	41.8	53.1	55.3	57.0	58.2	58.3	60.5	61.0										
12-year	32.6	35.6	40.9	52.4	54.4	56.3	57.6	57.5	59.8											
13-year	31.8	34.9	40.0	51.7	53.6	55.7	56.9	56.9												
14-year	31.1	34.1	39.3	51.0	52.7	55.1	56.1													
15-year	30.3	33.4	38.5	50.3	51.9	54.5														
16-year	29.7	32.6	37.8	49.7	51.3															
17-year	29.0	32.0	37.3	49.0																
18-year	28.4	31.4	36.7																	
19-year	28.0	30.8	36.2																	
20-year	27.5	30.3	35.8																	
21-year	27.0	29.7	35.3																	
22-year	26.5	29.2	34.9																	
23-year	26.1	28.8																		
24-year	25.5	28.4																		
25-year	25.0	28.0																		
26-year	24.5	27.5																		
27-year	24.2	27.2																		
28-year	23.8																			
29-year	23.4																			
30-year	23.0																			

<sup>a</sup> Based on the SEER 9 areas (San Francisco, Connecticut, Detroit, Hawaii, Iowa, New Mexico, Seattle, Utah, and Atlanta).

Table 2.11  
All Cancer Sites (Invasive)

SEER<sup>a</sup> Relative Survival (Percent)  
By Year of Diagnosis

All Races, Females

Year of Diagnosis

	1975- 1979	1980- 1984	1985- 1989	1990- 1994	1995	1996	1997	1998	1999	2000	2001	2002	2003	2004	2005	2006	2007	2008	2009	2010
Survival Time																				
1-year	74.6	74.9	76.7	77.5	77.9	77.9	78.6	79.3	79.4	79.4	80.0	80.4	80.0	80.4	80.7	80.9	81.3	81.8	82.1	81.9
2-year	66.0	66.2	68.7	70.0	70.7	71.0	71.6	72.5	73.0	73.0	73.9	74.4	73.9	74.2	74.6	75.1	75.4	75.9	76.1	
3-year	61.2	61.2	64.2	65.9	66.9	67.3	67.9	69.0	69.4	69.6	70.2	70.9	70.4	70.8	71.2	71.8	71.8	72.2		
4-year	57.9	57.9	61.3	63.1	64.3	64.7	65.3	66.5	67.1	67.3	68.0	68.5	68.1	68.3	68.9	69.4	69.6			
5-year	55.6	55.3	59.0	61.1	62.4	62.8	63.5	64.6	65.3	65.7	66.2	66.7	66.2	66.5	67.1	67.5				
6-year	53.6	53.4	57.3	59.5	60.9	61.3	62.1	63.2	63.8	64.4	64.9	65.3	64.9	65.1	65.7					
7-year	52.1	51.7	55.7	58.1	59.6	60.3	60.9	62.1	62.6	63.2	63.7	64.0	63.6	63.9						
8-year	50.8	50.3	54.5	57.1	58.6	59.2	60.0	61.2	61.6	62.1	62.6	63.0	62.5							
9-year	49.7	49.2	53.4	56.1	57.7	58.2	59.0	60.2	60.8	61.3	61.6	62.0								
10-year	48.7	48.1	52.5	55.2	57.0	57.4	58.1	59.3	60.0	60.5	60.9									
11-year	47.8	47.1	51.6	54.4	56.1	56.8	57.4	58.6	59.0	59.7										
12-year	47.0	46.3	50.8	53.7	55.4	56.1	56.8	58.0	58.3											
13-year	46.3	45.6	50.1	53.0	54.5	55.3	56.1	57.1												
14-year	45.7	44.9	49.4	52.4	53.9	54.5	55.5													
15-year	45.1	44.3	48.8	51.8	53.3	53.8														
16-year	44.5	43.6	48.3	51.3	52.6															
17-year	44.0	43.0	47.7	50.6																
18-year	43.6	42.5	47.3																	
19-year	43.1	41.9	46.9																	
20-year	42.6	41.5	46.4																	
21-year	42.1	40.9	45.9																	
22-year	41.7	40.5	45.4																	
23-year	41.2	40.1																		
24-year	40.8	39.6																		
25-year	40.3	39.1																		
26-year	39.9	38.7																		
27-year	39.6	38.2																		
28-year	39.2																			
29-year	38.8																			
30-year	38.4																			

<sup>a</sup> Based on the SEER 9 areas (San Francisco, Connecticut, Detroit, Hawaii, Iowa, New Mexico, Seattle, Utah, and Atlanta).

Table 2.12  
All Cancer Sites (Invasive)

Risk of Being Diagnosed With Cancer in 10, 20 and 30 Years,  
Lifetime Risk of Being Diagnosed with Cancer Given Alive and Cancer-Free at Current Age, and  
Lifetime Risk of Dying from Cancer Given Alive at Current Age  
Both Sexes, 2009-2011 By Race/Ethnicity

Race/ Ethnicity	Current Age	Risk of Being Diagnosed with Cancer				Risk of Dying from Cancer	Race/ Ethnicity	Current Age	Risk of Being Diagnosed with Cancer				Risk of Dying from Cancer
		+10 yrs	+20 yrs	+30 yrs	Ever				+10 yrs	+20 yrs	+30 yrs	Ever	
All Races	0	0.18	0.35	0.80	40.37	20.84	Asian/ Pacific Islander	0	0.14	0.27	0.56	34.75	18.69
	10	0.18	0.63	1.69	40.71	21.08		10	0.13	0.42	1.22	34.92	18.81
	20	0.46	1.52	4.13	40.73	21.13		20	0.29	1.09	3.10	34.89	18.82
	30	1.08	3.72	9.64	40.77	21.26		30	0.81	2.83	6.93	34.82	18.85
	40	2.70	8.75	19.44	40.55	21.38		40	2.04	6.20	13.53	34.43	18.82
	50	6.35	17.56	29.97	39.69	21.35		50	4.27	11.82	21.59	33.33	18.63
	60	12.47	26.28	34.85	37.10	20.69		60	8.02	18.40	27.05	30.88	17.99
	70	17.16	27.81	-	30.61	18.53		70	11.76	21.56	-	25.90	16.48
80	16.15	-	-	20.40	14.27	80	12.63	-	-	18.23	13.53		
White	0	0.19	0.38	0.87	40.55	20.95	American Indian/ Alaska Native <sup>a</sup>	0	0.11	0.23	0.51	29.15	16.99
	10	0.19	0.69	1.79	40.84	21.16		10	0.12	0.40	1.12	29.42	17.23
	20	0.50	1.61	4.25	40.84	21.20		20	0.28	1.00	2.74	29.50	17.33
	30	1.12	3.80	9.71	40.85	21.33		30	0.73	2.50	6.38	29.73	17.58
	40	2.73	8.77	19.51	40.59	21.43		40	1.82	5.80	13.10	29.83	17.90
	50	6.33	17.60	30.13	39.71	21.40		50	4.20	11.89	21.08	29.52	18.26
	60	12.51	26.44	34.96	37.09	20.74		60	8.47	18.59	25.24	27.89	17.96
	70	17.29	27.87	-	30.51	18.56		70	12.24	20.27	-	23.48	16.46
80	16.11	-	-	20.13	14.22	80	11.73	-	-	16.41	13.05		
Black	0	0.13	0.25	0.56	37.63	21.17	Hispanic <sup>b</sup>	0	0.17	0.34	0.71	37.15	17.71
	10	0.12	0.44	1.35	38.31	21.62		10	0.17	0.54	1.34	37.39	17.87
	20	0.32	1.24	3.89	38.40	21.70		20	0.37	1.17	3.11	37.37	17.90
	30	0.93	3.63	10.37	38.68	21.92		30	0.80	2.76	7.25	37.36	17.96
	40	2.77	9.69	21.03	38.76	22.13		40	1.99	6.55	15.25	37.13	18.00
	50	7.35	19.40	30.43	38.22	22.20		50	4.72	13.72	24.83	36.37	17.92
	60	13.94	26.71	33.70	35.72	21.55		60	9.75	21.78	30.78	34.29	17.42
	70	17.04	26.37	-	29.07	19.35		70	14.25	24.90	-	29.05	15.93
80	15.22	-	-	19.63	15.30	80	14.85	-	-	20.65	12.92		

Devcan 6.8.0, August 2014, National Cancer Institute (<http://surveillance.cancer.gov/devcan/>).

Source: Incidence data are from the SEER 18 areas (San Francisco, Connecticut, Detroit, Hawaii, Iowa, New Mexico, Seattle, Utah, Atlanta, San Jose-Monterey, Los Angeles, Alaska Native Registry, Rural Georgia, California excluding SF/SJM/LA, Kentucky, Louisiana, New Jersey, and Georgia excluding ATL/RG). Mortality data are from the NCHS public use data file for the total US.

<sup>a</sup> Underlying incidence and mortality data for American Indian/Alaska Native are based on the CHSDA (Contract Health Service Delivery Area) counties.

<sup>b</sup> Hispanic is not mutually exclusive from whites, blacks, Asian/Pacific Islanders, and American Indians/Alaska Natives. Underlying incidence data for Hispanics are based on NHIA and exclude cases from the Alaska Native Registry.

- Statistic could not be calculated.

A percent of 0.00 represents a value that is below 0.005.

Table 2.13  
All Cancer Sites (Invasive)

Risk of Being Diagnosed With Cancer in 10, 20 and 30 Years,  
Lifetime Risk of Being Diagnosed with Cancer Given Alive and Cancer-Free at Current Age, and  
Lifetime Risk of Dying from Cancer Given Alive at Current Age  
Males, 2009-2011 By Race/Ethnicity

Race/ Ethnicity	Current Age	Risk of Being Diagnosed with Cancer				Risk of Dying from Cancer	Race/ Ethnicity	Current Age	Risk of Being Diagnosed with Cancer				Risk of Dying from Cancer
		+10 yrs	+20 yrs	+30 yrs	Ever				+10 yrs	+20 yrs	+30 yrs	Ever	
All Races	0	0.18	0.37	0.76	43.31	22.83	Asian/ Pacific Islander	0	0.16	0.28	0.51	36.92	21.04
	10	0.18	0.58	1.32	43.73	23.12		10	0.13	0.35	0.84	37.12	21.19
	20	0.40	1.14	3.14	43.81	23.20		20	0.23	0.71	1.91	37.12	21.20
	30	0.75	2.79	9.04	44.08	23.44		30	0.49	1.70	5.38	37.16	21.27
	40	2.08	8.47	21.17	44.28	23.69		40	1.22	4.94	13.42	37.06	21.29
	50	6.70	20.03	34.40	44.26	23.92		50	3.81	12.50	24.29	36.72	21.22
	60	15.09	31.37	40.43	42.53	23.59		60	9.26	21.83	31.46	35.08	20.71
	70	21.39	33.29	-	36.05	21.71		70	14.65	25.89	-	30.11	19.25
80	20.03	-	-	24.68	17.61	80	15.51	-	-	21.34	16.21		
White	0	0.20	0.39	0.83	42.90	22.87	American Indian/ Alaska Native <sup>a</sup>	0	0.12	0.23	0.47	29.98	18.46
	10	0.20	0.64	1.42	43.25	23.12		10	0.11	0.35	0.83	30.31	18.75
	20	0.44	1.22	3.23	43.30	23.19		20	0.25	0.73	1.94	30.46	18.90
	30	0.80	2.83	8.96	43.52	23.42		30	0.49	1.73	5.34	30.90	19.29
	40	2.08	8.34	20.87	43.67	23.65		40	1.28	5.01	13.22	31.40	19.82
	50	6.56	19.70	33.98	43.61	23.86		50	3.94	12.62	23.13	31.84	20.52
	60	14.84	30.97	39.87	41.84	23.53		60	9.67	21.39	28.84	31.10	20.66
	70	21.08	32.70	-	35.28	21.63		70	14.71	24.07	-	26.91	19.58
80	19.51	-	-	23.85	17.46	80	14.67	-	-	19.11	16.24		
Black	0	0.14	0.26	0.51	41.63	23.66	Hispanic <sup>b</sup>	0	0.18	0.36	0.70	40.34	20.28
	10	0.13	0.38	0.99	42.48	24.22		10	0.18	0.52	1.05	40.64	20.48
	20	0.26	0.87	3.19	42.69	24.35		20	0.34	0.87	2.23	40.68	20.53
	30	0.62	2.99	11.05	43.34	24.76		30	0.53	1.92	6.38	40.84	20.68
	40	2.45	10.75	25.25	44.01	25.22		40	1.40	5.94	16.32	40.95	20.81
	50	8.86	24.35	37.16	44.38	25.71		50	4.70	15.44	28.98	40.94	20.94
	60	18.60	33.99	40.94	42.67	25.64		60	11.79	26.63	36.53	39.75	20.73
	70	22.73	33.00	-	35.56	24.02		70	18.40	30.66	-	34.66	19.45
80	19.52	-	-	24.38	20.48	80	18.82	-	-	24.95	16.46		

Devcan 6.8.0, August 2014, National Cancer Institute (<http://surveillance.cancer.gov/devcan/>).

Source: Incidence data are from the SEER 18 areas (San Francisco, Connecticut, Detroit, Hawaii, Iowa, New Mexico, Seattle, Utah, Atlanta, San Jose-Monterey, Los Angeles, Alaska Native Registry, Rural Georgia, California excluding SF/SJM/LA, Kentucky, Louisiana, New Jersey, and Georgia excluding ATL/RG). Mortality data are from the NCHS public use data file for the total US.

<sup>a</sup> Underlying incidence and mortality data for American Indian/Alaska Native are based on the CHSDA (Contract Health Service Delivery Area) counties.

<sup>b</sup> Hispanic is not mutually exclusive from whites, blacks, Asian/Pacific Islanders, and American Indians/Alaska Natives. Underlying incidence data for Hispanics are based on NHIA and exclude cases from the Alaska Native Registry.

- Statistic could not be calculated.

A percent of 0.00 represents a value that is below 0.005.

Table 2.14  
All Cancer Sites (Invasive)

Risk of Being Diagnosed With Cancer in 10, 20 and 30 Years,  
Lifetime Risk of Being Diagnosed with Cancer Given Alive and Cancer-Free at Current Age, and  
Lifetime Risk of Dying from Cancer Given Alive at Current Age  
Females, 2009-2011 By Race/Ethnicity

Race/ Ethnicity	Current Age	Risk of Being Diagnosed with Cancer				Risk of Dying from Cancer	Race/ Ethnicity	Current Age	Risk of Being Diagnosed with Cancer				Risk of Dying from Cancer
		+10 yrs	+20 yrs	+30 yrs	Ever				+10 yrs	+20 yrs	+30 yrs	Ever	
All Races	0	0.17	0.34	0.85	37.81	19.26	Asian/ Pacific Islander	0	0.12	0.25	0.60	33.08	16.84
	10	0.17	0.69	2.07	38.09	19.46		10	0.13	0.49	1.57	33.23	16.94
	20	0.52	1.90	5.12	38.05	19.48		20	0.36	1.44	4.17	33.17	16.94
	30	1.40	4.65	10.26	37.88	19.53		30	1.09	3.84	8.32	33.00	16.94
	40	3.32	9.05	17.81	37.25	19.52		40	2.79	7.33	13.66	32.34	16.88
	50	6.01	15.19	25.82	35.58	19.29		50	4.69	11.24	19.33	30.54	16.60
	60	10.05	21.67	29.93	32.35	18.40		60	6.94	15.52	23.42	27.41	15.88
	70	13.75	23.52	-	26.39	16.19		70	9.48	18.22	-	22.64	14.41
80	13.69	-	-	17.71	12.19	80	10.72	-	-	16.14	11.68		
White	0	0.18	0.37	0.91	38.53	19.41	American Indian/ Alaska Native <sup>a</sup>	0	0.09	0.23	0.54	28.63	15.93
	10	0.19	0.74	2.19	38.76	19.58		10	0.14	0.46	1.42	28.84	16.14
	20	0.56	2.01	5.31	38.71	19.60		20	0.32	1.29	3.56	28.84	16.19
	30	1.47	4.80	10.50	38.53	19.65		30	0.98	3.28	7.41	28.87	16.32
	40	3.40	9.23	18.21	37.86	19.64		40	2.35	6.58	13.02	28.58	16.46
	50	6.11	15.54	26.46	36.15	19.41		50	4.45	11.22	19.26	27.57	16.55
	60	10.31	22.25	30.55	32.85	18.52		60	7.38	16.14	22.19	25.19	15.97
	70	14.15	23.99	-	26.72	16.27		70	10.25	17.33	-	20.84	14.31
80	13.88	-	-	17.74	12.18	80	9.79	-	-	14.65	11.21		
Black	0	0.13	0.25	0.61	34.18	19.37	Hispanic <sup>b</sup>	0	0.16	0.32	0.72	34.72	15.81
	10	0.12	0.49	1.70	34.72	19.74		10	0.16	0.57	1.65	34.91	15.93
	20	0.37	1.58	4.54	34.72	19.76		20	0.41	1.49	4.04	34.86	15.94
	30	1.22	4.21	9.76	34.69	19.84		30	1.09	3.66	8.18	34.68	15.95
	40	3.06	8.75	17.31	34.27	19.86		40	2.61	7.20	14.41	34.10	15.89
	50	6.01	15.05	24.61	32.98	19.63		50	4.75	12.22	21.31	32.60	15.65
	60	10.13	20.84	27.93	30.22	18.68		60	7.99	17.72	26.02	29.81	14.97
	70	13.22	21.97	-	24.80	16.42		70	11.09	20.56	-	24.87	13.47
80	12.97	-	-	17.16	12.70	80	12.33	-	-	17.95	10.76		

Devcan 6.8.0, August 2014, National Cancer Institute (<http://surveillance.cancer.gov/devcan/>).

Source: Incidence data are from the SEER 18 areas (San Francisco, Connecticut, Detroit, Hawaii, Iowa, New Mexico, Seattle, Utah, Atlanta, San Jose-Monterey, Los Angeles, Alaska Native Registry, Rural Georgia, California excluding SF/SJM/LA, Kentucky, Louisiana, New Jersey, and Georgia excluding ATL/RG). Mortality data are from the NCHS public use data file for the total US.

<sup>a</sup> Underlying incidence and mortality data for American Indian/Alaska Native are based on the CHSDA (Contract Health Service Delivery Area) counties.

<sup>b</sup> Hispanic is not mutually exclusive from whites, blacks, Asian/Pacific Islanders, and American Indians/Alaska Natives. Underlying incidence data for Hispanics are based on NHIA and exclude cases from the Alaska Native Registry.

- Statistic could not be calculated.

A percent of 0.00 represents a value that is below 0.005.

Table 2.15  
All Cancer Sites (Invasive)

SEER Incidence and U.S. Mortality  
Age-Adjusted Rates and Trends<sup>a</sup>  
By Race/Ethnicity and Sex

SEER Incidence	SEER 18 Areas <sup>b</sup>			SEER 13 Areas <sup>b</sup>			SEER 9 Areas <sup>b</sup>		
	Rate 2007-2011			Trend 2002-2011 <sup>c</sup>			Trend 2002-2011 <sup>d</sup>		
	Rate per 100,000 persons			AAPC (%)			AAPC (%)		
	Total	Males	Females	Total	Males	Females	Total	Males	Females
RACE/ETHNICITY									
All Races	460.4	529.4	411.3	-0.8*	-1.2*	-0.3*	-0.7*	-1.2*	-0.2*
White	468.9	532.1	424.4	-0.8*	-1.2*	-0.3*	-0.7*	-1.3*	-0.2*
White Hispanic <sup>e</sup>	364.3	414.7	332.9	-0.3*	-1.2*	0.1*	-	-	-
White Non-Hispanic <sup>e</sup>	487.9	552.1	441.9	-0.8*	-1.1*	-0.3	-	-	-
Black	480.8	600.9	398.8	-1.2*	-2.1*	0.0	-1.1*	-2.0*	0.0
Asian/Pacific Islander	306.7	331.0	293.0	-0.5*	-1.6*	0.1	-	-	-
Amer Ind/Alaska Nat <sup>f</sup>	319.3	348.1	301.9	0.2	-0.2	0.6*	-	-	-
Hispanic <sup>e</sup>	353.2	405.0	320.4	-0.3*	-1.3*	0.1	-	-	-
U.S. Mortality <sup>g</sup>									
	Rate 2007-2011			Trend 2002-2011 <sup>h</sup>					
	Rate per 100,000 persons			AAPC (%)					
	Total	Males	Females	Total	Males	Females			
RACE/ETHNICITY									
All Races	173.8	211.6	147.4	-1.5*	-1.8*	-1.4*			
White	173.3	209.8	147.5	-1.4*	-1.7*	-1.4*			
White Hispanic <sup>e</sup>	126.6	157.6	105.3	-1.1*	-1.3*	-1.0*			
White Non-Hispanic <sup>e</sup>	177.3	214.0	151.2	-1.4*	-1.6*	-1.3*			
Black	206.4	269.3	169.0	-2.1*	-2.6*	-1.5*			
Asian/Pacific Islander	107.8	131.0	91.5	-1.4*	-1.6*	-1.0*			
Amer Ind/Alaska Nat									
Total U.S.	120.0	145.2	102.1	-1.4*	-1.2*	-1.9*			
CHSDA Counties	158.0	190.0	135.2	-0.1	-0.2	-1.2*			
Non-CHSDA Counties	75.5	93.1	63.1	-2.7*	-3.2*	-2.5*			
Hispanic <sup>e</sup>	120.3	150.1	99.9	-1.3*	-1.4*	-1.2*			

The AAPC is the Average Annual Percent Change over the time interval. The AAPCs are calculated by the Joinpoint Regression Program Version 4.1.0, April 2014, National Cancer Institute.

- Statistic not shown. Rate based on less than 16 cases for the time interval.

Trend based on less than 10 cases for at least one year within the time interval.

a Rates are age-adjusted to the 2000 US Std Population (19 age groups - Census P25-1130). Trends are based on rates age-adjusted to the 2000 US Std Population (19 age groups - Census P25-1130).

b The SEER 9 areas are San Francisco, Connecticut, Detroit, Hawaii, Iowa, New Mexico, Seattle, Utah, and Atlanta.

The SEER 13 areas comprise the SEER 9 areas plus San Jose-Monterey, Los Angeles, the Alaska Native Registry, and Rural Georgia.

The SEER 18 areas comprise the SEER 13 areas plus California excluding SF/SJM/LA, Kentucky, Louisiana, New Jersey, and Georgia excluding ATL/RG.

c The 2002-2011 AAPC estimates are based on a Joinpoint analysis with up to 3 Joinpoints over diagnosis years 1992-2011.

d The 2002-2011 AAPC estimates are based on a Joinpoint analysis with up to 5 Joinpoints over diagnosis years 1975-2011.

e Hispanic and Non-Hispanic are not mutually exclusive from whites, blacks, Asian/Pacific Islanders, and American Indians/Alaska Natives. Incidence data for Hispanics and Non-Hispanics are based on NHIA and exclude cases from the Alaska Native Registry. The 2002-2011 Hispanic and Non-Hispanic mortality trends exclude deaths from New Hampshire and Oklahoma.

f Incidence data for American Indian/Alaska Native are based on the CHSDA (Contract Health Service Delivery Area) counties.

g US Mortality Files, National Center for Health Statistics, CDC.

h The 2002-2011 mortality AAPCs are based on a Joinpoint analysis using years of death 1992-2011.

\* The APC is significantly different from zero (p<.05).

Table 2.16  
All Cancer Sites (Invasive)

Age-Adjusted SEER Incidence Rates<sup>a</sup>  
By Registry, Race and Sex

	All Races			Whites			Blacks		
	Total	Males	Females	Total	Males	Females	Total	Males	Females
<u>SEER Incidence Rates<sup>a</sup>, 2007-2011</u>									
California	431.95	490.46	390.48	445.95	500.51	407.54	455.45	545.79	389.21
Greater Bay Area	438.87	499.07	396.47	474.35	536.38	430.25	473.10	568.39	402.15
San Francisco-Oakland	444.21	503.45	402.80	478.61	538.52	436.44	482.76	584.11	409.18
San Jose-Monterey	428.52	490.74	383.95	466.62	532.31	419.28	406.35	468.31	347.51
Los Angeles	414.28	471.63	375.62	424.30	475.48	390.57	464.24	560.26	399.09
Greater California	437.61	495.83	395.37	446.30	499.81	407.88	437.85	519.25	372.06
Connecticut	493.74	557.96	449.68	494.86	552.37	456.38	458.69	580.28	378.21
Detroit	520.08	618.34	451.64	515.94	599.27	459.57	545.25	697.17	443.46
Georgia	465.10	555.18	401.68	467.91	543.41	414.62	471.34	614.38	380.96
Atlanta	469.04	558.94	407.59	477.28	549.01	429.20	481.53	619.26	396.34
Rural Georgia	454.03	546.24	387.53	471.51	539.06	422.69	421.61	567.87	328.70
Greater Georgia	463.85	553.94	399.84	464.73	542.15	409.28	466.70	611.91	373.66
Hawaii	422.04	467.86	391.91	500.31	560.09	446.56	398.37	453.25	310.17
Iowa	475.63	540.02	431.15	472.75	534.09	430.83	498.10	597.11	425.96
Kentucky	512.48	592.98	456.62	509.67	585.43	457.58	518.27	630.89	442.86
Louisiana	487.29	591.33	410.03	484.12	578.10	413.07	511.29	652.06	415.44
New Jersey	492.51	565.48	443.25	502.22	567.67	459.10	463.86	574.19	393.03
New Mexico	393.00	440.13	356.97	396.77	442.35	361.62	321.49	360.34	277.71
Seattle-Puget Sound	493.49	554.31	449.62	503.83	560.56	463.08	495.58	585.49	411.45
Utah	413.26	484.33	356.56	415.81	487.18	358.66	389.26	456.70	320.52
9 SEER Areas <sup>b</sup>	468.42	536.14	420.13	477.67	540.33	433.27	498.47	626.00	411.33
11 SEER Areas <sup>b</sup>	453.97	519.29	407.89	465.81	526.60	423.20	488.62	606.61	407.58
13 SEER Areas <sup>b</sup>	454.05	519.35	407.98	465.82	526.63	423.18	487.65	606.09	406.42
18 SEER Areas <sup>b</sup>	460.39	529.42	411.34	468.91	532.07	424.36	480.76	600.86	398.83

<sup>a</sup> Rates are per 100,000 and are age-adjusted to the 2000 US Std Population (19 age groups - Census P25-1130)

<sup>b</sup> The SEER 9 areas are San Francisco, Connecticut, Detroit, Hawaii, Iowa, New Mexico, Seattle, Utah and Atlanta.

The SEER 11 areas comprise the SEER 9 areas plus San Jose-Monterey and Los Angeles.

The SEER 13 areas comprise the SEER 11 areas plus the Alaska Native Registry and Rural Georgia.

The SEER 18 areas comprise the SEER 13 areas plus California excluding SF/SJM/LA, Kentucky, Louisiana, New Jersey and Georgia excluding ATL/RG.

- Statistic not shown. Rate based on less than 16 cases for the time interval.



Table 2.17  
All Cancer Sites (Invasive)

Age-Adjusted SEER Death Rates<sup>a</sup>  
By Registry, Race and Sex

	All Races			Whites			Blacks		
	Total	Males	Females	Total	Males	Females	Total	Males	Females
<u>SEER Death Rates<sup>a</sup>, 2007-2011</u>									
California	157.70	186.79	137.30	162.88	191.90	142.40	203.33	247.06	176.40
Greater Bay Area	148.81	174.40	131.29	156.42	181.64	139.07	208.92	253.32	182.71
San Francisco-Oakland	151.94	178.83	133.65	157.93	184.03	139.96	214.37	261.61	186.70
San Jose-Monterey	142.58	165.67	126.54	153.64	177.31	137.35	170.11	198.24	151.27
Los Angeles	153.67	182.81	133.84	155.78	183.20	137.01	209.52	256.74	182.17
Greater California	162.63	192.87	141.00	167.39	198.07	145.35	193.42	232.64	166.21
Connecticut	162.88	195.69	141.26	163.50	195.21	142.64	171.47	223.75	139.79
Detroit	187.28	225.08	163.00	180.66	215.62	157.99	221.30	277.97	187.07
Georgia	176.39	222.94	146.26	172.69	214.09	144.53	196.36	271.96	156.34
Atlanta	161.63	197.75	140.05	153.22	183.14	134.43	189.52	253.24	158.09
Rural Georgia	193.49	259.12	150.06	182.32	231.32	146.58	218.28	329.81	158.14
Greater Georgia	182.57	232.48	149.45	179.43	224.33	148.41	200.78	281.58	156.27
Hawaii	141.63	175.77	115.58	162.51	190.25	138.82	165.48	189.09	128.73
Iowa	173.06	211.07	147.08	172.77	210.49	146.99	235.20	299.93	194.96
Kentucky	207.09	257.53	172.23	206.47	256.21	171.84	236.39	306.95	193.32
Louisiana	198.64	250.75	162.16	188.60	234.35	155.86	232.57	311.54	182.50
New Jersey	171.48	203.67	151.01	173.55	204.71	153.61	197.71	254.48	165.45
New Mexico	153.00	183.76	129.84	156.02	187.55	132.06	156.67	180.66	135.22
Seattle-Puget Sound	170.24	202.44	147.58	173.55	204.78	151.48	200.40	243.60	167.50
Utah	128.51	154.64	109.06	129.03	155.16	109.61	137.99	152.77	121.19
9 SEER Areas <sup>b</sup>	162.58	195.13	140.34	163.81	195.31	142.13	201.92	255.93	170.06
11 SEER Areas <sup>b</sup>	159.49	190.75	138.13	161.69	191.94	140.88	203.36	255.27	172.74
13 SEER Areas <sup>b</sup>	159.84	191.25	138.32	161.85	192.20	140.93	203.45	256.27	172.33
18 SEER Areas <sup>b</sup>	168.16	202.63	144.40	170.01	203.38	146.80	206.49	266.55	170.52
Total U.S.	173.79	211.61	147.45	173.28	209.77	147.54	206.39	269.26	169.01

<sup>a</sup> US Mortality Files, National Center for Health Statistics, Centers for Disease Control and Prevention. Rates are per 100,000 and are age-adjusted to the 2000 US Std Population (19 age groups - Census P25-1130).

<sup>b</sup> The SEER 9 areas are San Francisco, Connecticut, Detroit, Hawaii, Iowa, New Mexico, Seattle, Utah and Atlanta. The SEER 11 areas comprise the SEER 9 areas plus San Jose-Monterey and Los Angeles.

The SEER 13 areas comprise the SEER 11 areas plus the Alaska Native Registry and Rural Georgia.

The SEER 18 areas comprise the SEER 13 areas plus California excluding SF/SJM/LA, Kentucky, Louisiana, New Jersey and Georgia excluding ATL/RG.

- Statistic not shown. Rate based on less than 16 cases for the time interval.

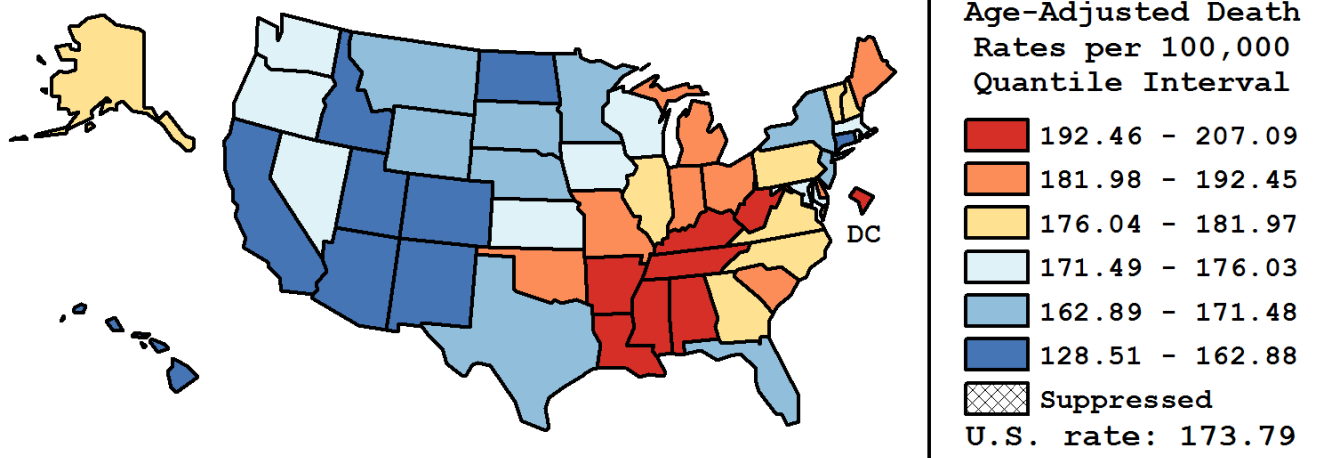
Table 2.18  
All Cancer Sites (Invasive)

Age-Adjusted Cancer Death<sup>a</sup> Rates by State, All Races, 2007-2011

Males and Females

State	Rate	SE	Rank	PD
TOTAL U.S.	173.79	0.10		
High Five States				
Kentucky	207.09 <sup>b</sup>	0.95	(01)	19.16 <sup>c</sup>
Mississippi	200.31 <sup>b</sup>	1.15	(02)	15.26 <sup>c</sup>
West Virginia	200.29 <sup>b</sup>	1.32	(03)	15.25 <sup>c</sup>
Louisiana	198.64 <sup>b</sup>	0.94	(04)	14.30 <sup>c</sup>
Arkansas	196.92 <sup>b</sup>	1.10	(05)	13.31 <sup>c</sup>
Low Five States				
New Mexico	153.00 <sup>b</sup>	1.21	(47)	-11.96 <sup>c</sup>
Arizona	152.89 <sup>b</sup>	0.68	(48)	-12.02 <sup>c</sup>
Colorado	149.94 <sup>b</sup>	0.82	(49)	-13.72 <sup>c</sup>
Hawaii	141.63 <sup>b</sup>	1.36	(50)	-18.50 <sup>c</sup>
Utah	128.51 <sup>b</sup>	1.13	(51)	-26.05 <sup>c</sup>

State	Rate	SE	Rank	PD	State	Rate	SE	Rank	PD
Alabama	193.97 <sup>b</sup>	0.87	(07)	11.61 <sup>c</sup>	Montana	163.76 <sup>b</sup>	1.69	(42)	-5.77 <sup>c</sup>
Alaska	181.58	2.98	(18)	4.49	Nebraska	168.23 <sup>b</sup>	1.30	(35)	-3.19
Arizona	152.89 <sup>b</sup>	0.68	(48)	-12.02 <sup>c</sup>	Nevada	176.03	1.21	(25)	1.29
Arkansas	196.92 <sup>b</sup>	1.10	(05)	13.31 <sup>c</sup>	New Hampshire	176.21	1.57	(24)	1.39
California	157.70 <sup>b</sup>	0.30	(46)	-9.26 <sup>c</sup>	New Jersey	171.48 <sup>b</sup>	0.60	(34)	-1.32
Colorado	149.94 <sup>b</sup>	0.82	(49)	-13.72 <sup>c</sup>	New Mexico	153.00 <sup>b</sup>	1.21	(47)	-11.96 <sup>c</sup>
Connecticut	162.88 <sup>b</sup>	0.90	(43)	-6.27 <sup>c</sup>	New York	164.30 <sup>b</sup>	0.39	(40)	-5.46 <sup>c</sup>
Delaware	185.45 <sup>b</sup>	1.93	(14)	6.71 <sup>c</sup>	North Carolina	179.48 <sup>b</sup>	0.61	(20)	3.27
D.C.	192.87 <sup>b</sup>	2.63	(08)	10.98 <sup>c</sup>	North Dakota	161.01 <sup>b</sup>	2.04	(45)	-7.35 <sup>c</sup>
Florida	165.51 <sup>b</sup>	0.37	(39)	-4.76	Ohio	189.73 <sup>b</sup>	0.54	(11)	9.18 <sup>c</sup>
Georgia	176.39 <sup>b</sup>	0.65	(22)	1.50	Oklahoma	192.45 <sup>b</sup>	0.98	(09)	10.74 <sup>c</sup>
Hawaii	141.63 <sup>b</sup>	1.36	(50)	-18.50 <sup>c</sup>	Oregon	174.51	0.91	(29)	0.42
Idaho	161.61 <sup>b</sup>	1.46	(44)	-7.00 <sup>c</sup>	Pennsylvania	181.97 <sup>b</sup>	0.48	(17)	4.71
Illinois	181.11 <sup>b</sup>	0.53	(19)	4.21	Rhode Island	174.68	1.69	(27)	0.51
Indiana	190.08 <sup>b</sup>	0.75	(10)	9.37 <sup>c</sup>	South Carolina	185.11 <sup>b</sup>	0.88	(15)	6.52 <sup>c</sup>
Iowa	173.06	0.98	(32)	-0.42	South Dakota	167.62	1.90	(36)	-3.55
Kansas	172.67	1.07	(33)	-0.64	Tennessee	195.93 <sup>b</sup>	0.77	(06)	12.74 <sup>c</sup>
Kentucky	207.09 <sup>b</sup>	0.95	(01)	19.16 <sup>c</sup>	Texas	166.91 <sup>b</sup>	0.40	(37)	-3.96
Louisiana	198.64 <sup>b</sup>	0.94	(04)	14.30 <sup>c</sup>	Utah	128.51 <sup>b</sup>	1.13	(51)	-26.05 <sup>c</sup>
Maine	185.55 <sup>b</sup>	1.50	(13)	6.77 <sup>c</sup>	Vermont	178.31	2.23	(21)	2.60
Maryland	174.69	0.78	(26)	0.52	Virginia	176.32 <sup>b</sup>	0.67	(23)	1.46
Massachusetts	173.44	0.69	(30)	-0.20	Washington	173.10	0.73	(31)	-0.39
Michigan	182.41 <sup>b</sup>	0.58	(16)	4.97	West Virginia	200.29 <sup>b</sup>	1.32	(03)	15.25 <sup>c</sup>
Minnesota	166.72 <sup>b</sup>	0.78	(38)	-4.07	Wisconsin	174.62	0.75	(28)	0.48
Mississippi	200.31 <sup>b</sup>	1.15	(02)	15.26 <sup>c</sup>	Wyoming	164.12 <sup>b</sup>	2.43	(41)	-5.56 <sup>c</sup>
Missouri	185.91 <sup>b</sup>	0.75	(12)	6.98 <sup>c</sup>					



<sup>a</sup> US Mortality Files, National Center for Health Statistics, Centers for Disease Control and Prevention. Rates are per 100,000 and are age-adjusted to the 2000 US Std Population (19 age groups - Census P25-1130).  
<sup>b</sup> Difference between state rate and total U.S. rate is statistically significant ( $p \leq .0002$ ).  
<sup>c</sup> Absolute percent difference between state rate and total U.S. rate is 5% or more.  
SE Standard error of the rate.  
PD Percent difference between state rate and total U.S. rate.  
- Statistic not shown. Rate based on less than 16 cases for the time interval.

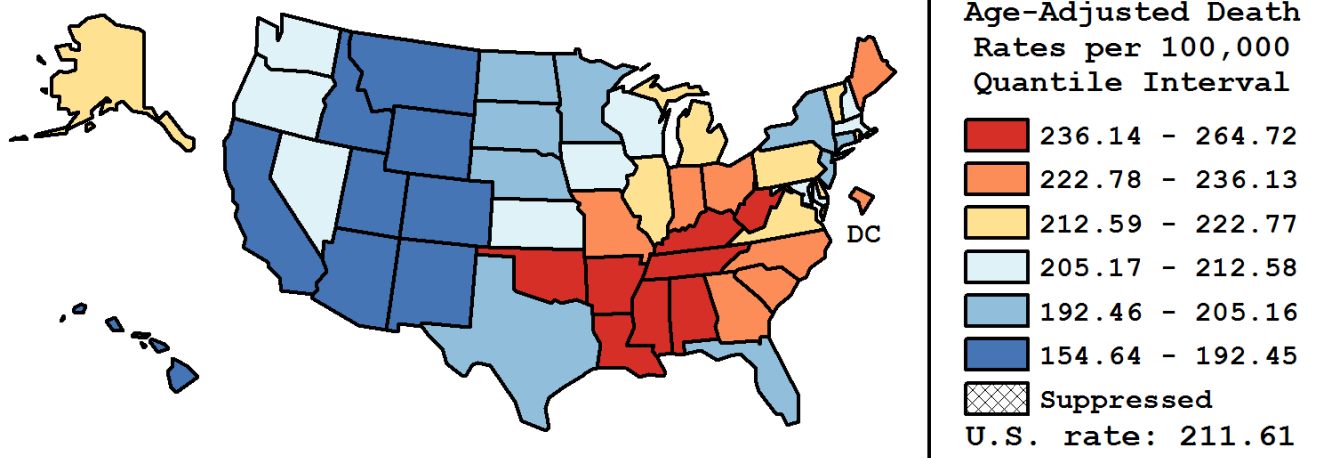
Table 2.19  
All Cancer Sites (Invasive)

Age-Adjusted Cancer Death<sup>a</sup> Rates by State, All Races, 2007-2011

Males

State	Rate	SE	Rank	PD
TOTAL U.S.	211.61	0.18		
High Five States				
Mississippi	264.72 <sup>b</sup>	2.10	(01)	25.10 <sup>c</sup>
Kentucky	257.53 <sup>b</sup>	1.66	(02)	21.70 <sup>c</sup>
Alabama	251.64 <sup>b</sup>	1.55	(03)	18.92 <sup>c</sup>
Tennessee	251.15 <sup>b</sup>	1.36	(04)	18.68 <sup>c</sup>
Louisiana	250.75 <sup>b</sup>	1.65	(05)	18.50 <sup>c</sup>
Low Five States				
New Mexico	183.76 <sup>b</sup>	2.00	(47)	-13.16 <sup>c</sup>
Arizona	182.62 <sup>b</sup>	1.11	(48)	-13.70 <sup>c</sup>
Colorado	177.70 <sup>b</sup>	1.39	(49)	-16.02 <sup>c</sup>
Hawaii	175.77 <sup>b</sup>	2.27	(50)	-16.94 <sup>c</sup>
Utah	154.64 <sup>b</sup>	1.88	(51)	-26.92 <sup>c</sup>

State	Rate	SE	Rank	PD	State	Rate	SE	Rank	PD
Alabama	251.64 <sup>b</sup>	1.55	(03)	18.92 <sup>c</sup>	Montana	192.45 <sup>b</sup>	2.74	(43)	-9.05 <sup>c</sup>
Alaska	215.43	4.99	(23)	1.81	Nebraska	204.18	2.19	(35)	-3.51
Arizona	182.62 <sup>b</sup>	1.11	(48)	-13.70 <sup>c</sup>	Nevada	206.94	1.98	(31)	-2.20
Arkansas	248.67 <sup>b</sup>	1.91	(06)	17.52 <sup>c</sup>	New Hampshire	211.07	2.64	(29)	-0.26
California	186.79 <sup>b</sup>	0.50	(46)	-11.73 <sup>c</sup>	New Jersey	203.67 <sup>b</sup>	1.02	(36)	-3.75
Colorado	177.70 <sup>b</sup>	1.39	(49)	-16.02 <sup>c</sup>	New Mexico	183.76 <sup>b</sup>	2.00	(47)	-13.16 <sup>c</sup>
Connecticut	195.69 <sup>b</sup>	1.51	(42)	-7.52 <sup>c</sup>	New York	196.58 <sup>b</sup>	0.67	(41)	-7.10 <sup>c</sup>
Delaware	222.77	3.25	(17)	5.28 <sup>c</sup>	North Carolina	227.72 <sup>b</sup>	1.08	(14)	7.61 <sup>c</sup>
D.C.	234.84 <sup>b</sup>	4.60	(11)	10.98 <sup>c</sup>	North Dakota	200.04	3.43	(40)	-5.47 <sup>c</sup>
Florida	200.30 <sup>b</sup>	0.61	(39)	-5.35 <sup>c</sup>	Ohio	232.75 <sup>b</sup>	0.93	(12)	9.99 <sup>c</sup>
Georgia	222.94 <sup>b</sup>	1.18	(16)	5.36 <sup>c</sup>	Oklahoma	238.19 <sup>b</sup>	1.68	(08)	12.56 <sup>c</sup>
Hawaii	175.77 <sup>b</sup>	2.27	(50)	-16.94 <sup>c</sup>	Oregon	206.57	1.50	(32)	-2.38
Idaho	192.21 <sup>b</sup>	2.40	(45)	-9.17 <sup>c</sup>	Pennsylvania	222.21 <sup>b</sup>	0.82	(18)	5.01 <sup>c</sup>
Illinois	218.90 <sup>b</sup>	0.90	(20)	3.44	Rhode Island	217.48	2.93	(21)	2.77
Indiana	235.76 <sup>b</sup>	1.30	(10)	11.41 <sup>c</sup>	South Carolina	236.13 <sup>b</sup>	1.55	(09)	11.59 <sup>c</sup>
Iowa	211.07	1.65	(28)	-0.26	South Dakota	201.40	3.15	(37)	-4.82
Kansas	211.27	1.80	(27)	-0.16	Tennessee	251.15 <sup>b</sup>	1.36	(04)	18.68 <sup>c</sup>
Kentucky	257.53 <sup>b</sup>	1.66	(02)	21.70 <sup>c</sup>	Texas	205.16 <sup>b</sup>	0.69	(34)	-3.05
Louisiana	250.75 <sup>b</sup>	1.65	(05)	18.50 <sup>c</sup>	Utah	154.64 <sup>b</sup>	1.88	(51)	-26.92 <sup>c</sup>
Maine	227.73 <sup>b</sup>	2.54	(13)	7.62 <sup>c</sup>	Vermont	213.57	3.74	(24)	0.93
Maryland	211.78	1.35	(26)	0.08	Virginia	216.71 <sup>b</sup>	1.17	(22)	2.41
Massachusetts	210.79	1.18	(30)	-0.39	Washington	205.71 <sup>b</sup>	1.20	(33)	-2.79
Michigan	219.43 <sup>b</sup>	0.98	(19)	3.69	West Virginia	246.11 <sup>b</sup>	2.25	(07)	16.30 <sup>c</sup>
Minnesota	201.15 <sup>b</sup>	1.30	(38)	-4.94	Wisconsin	212.58	1.26	(25)	0.46
Mississippi	264.72 <sup>b</sup>	2.10	(01)	25.10 <sup>c</sup>	Wyoming	192.34 <sup>b</sup>	3.97	(44)	-9.10 <sup>c</sup>
Missouri	225.94 <sup>b</sup>	1.27	(15)	6.77 <sup>c</sup>					



<sup>a</sup> US Mortality Files, National Center for Health Statistics, Centers for Disease Control and Prevention. Rates are per 100,000 and are age-adjusted to the 2000 US Std Population (19 age groups - Census P25-1130).  
<sup>b</sup> Difference between state rate and total U.S. rate is statistically significant (p<=.0002).  
<sup>c</sup> Absolute percent difference between state rate and total U.S. rate is 5% or more.  
SE Standard error of the rate.  
PD Percent difference between state rate and total U.S. rate.  
- Statistic not shown. Rate based on less than 16 cases for the time interval.

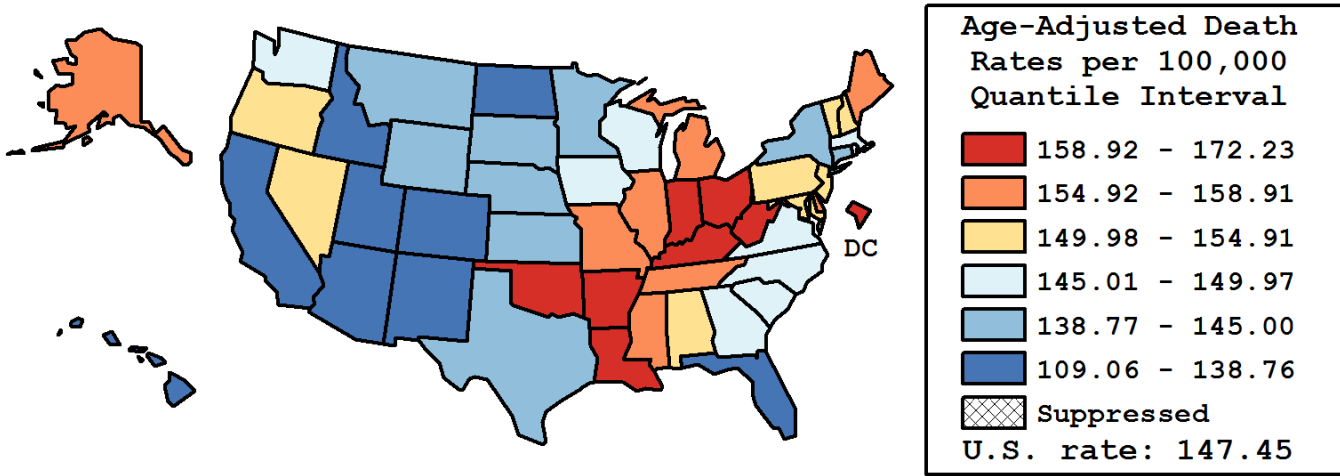
Table 2.20  
All Cancer Sites (Invasive)

Age-Adjusted Cancer Death<sup>a</sup> Rates by State, All Races, 2007-2011

Females

State	Rate	SE	Rank	PD
TOTAL U.S.	147.45	0.13		
High Five States				
Kentucky	172.23 <sup>b</sup>	1.16	(01)	16.81 <sup>c</sup>
West Virginia	167.80 <sup>b</sup>	1.63	(02)	13.81 <sup>c</sup>
D.C.	166.83 <sup>b</sup>	3.22	(03)	13.14 <sup>c</sup>
Louisiana	162.16 <sup>b</sup>	1.13	(04)	9.98 <sup>c</sup>
Ohio	160.38 <sup>b</sup>	0.66	(05)	8.77 <sup>c</sup>
Low Five States				
Colorado	130.53 <sup>b</sup>	1.03	(47)	-11.47 <sup>c</sup>
Arizona	129.96 <sup>b</sup>	0.85	(48)	-11.86 <sup>c</sup>
New Mexico	129.84 <sup>b</sup>	1.50	(49)	-11.94 <sup>c</sup>
Hawaii	115.58 <sup>b</sup>	1.67	(50)	-21.61 <sup>c</sup>
Utah	109.06 <sup>b</sup>	1.41	(51)	-26.03 <sup>c</sup>

State	Rate	SE	Rank	PD	State	Rate	SE	Rank	PD
Alabama	154.28 <sup>b</sup>	1.03	(18)	4.63	Montana	142.17	2.16	(40)	-3.58
Alaska	155.03	3.71	(16)	5.14 <sup>c</sup>	Nebraska	142.53	1.62	(39)	-3.34
Arizona	129.96 <sup>b</sup>	0.85	(48)	-11.86 <sup>c</sup>	Nevada	151.73	1.52	(21)	2.90
Arkansas	159.81 <sup>b</sup>	1.34	(06)	8.39 <sup>c</sup>	New Hampshire	152.07	1.96	(20)	3.14
California	137.30 <sup>b</sup>	0.38	(45)	-6.88 <sup>c</sup>	New Jersey	151.01 <sup>b</sup>	0.74	(23)	2.42
Colorado	130.53 <sup>b</sup>	1.03	(47)	-11.47 <sup>c</sup>	New Mexico	129.84 <sup>b</sup>	1.50	(49)	-11.94 <sup>c</sup>
Connecticut	141.26 <sup>b</sup>	1.11	(41)	-4.20	New York	143.44 <sup>b</sup>	0.49	(36)	-2.72
Delaware	158.91 <sup>b</sup>	2.40	(09)	7.78 <sup>c</sup>	North Carolina	147.18	0.73	(31)	-0.18
D.C.	166.83 <sup>b</sup>	3.22	(03)	13.14 <sup>c</sup>	North Dakota	133.07 <sup>b</sup>	2.53	(46)	-9.75 <sup>c</sup>
Florida	138.76 <sup>b</sup>	0.46	(43)	-5.89 <sup>c</sup>	Ohio	160.38 <sup>b</sup>	0.66	(05)	8.77 <sup>c</sup>
Georgia	146.26	0.78	(33)	-0.81	Oklahoma	159.70 <sup>b</sup>	1.21	(07)	8.31 <sup>c</sup>
Hawaii	115.58 <sup>b</sup>	1.67	(50)	-21.61 <sup>c</sup>	Oregon	151.44	1.15	(22)	2.71
Idaho	138.58 <sup>b</sup>	1.85	(44)	-6.01 <sup>c</sup>	Pennsylvania	154.91 <sup>b</sup>	0.60	(17)	5.06 <sup>c</sup>
Illinois	156.44 <sup>b</sup>	0.65	(15)	6.10 <sup>c</sup>	Rhode Island	147.45	2.07	(30)	0.01
Indiana	159.05 <sup>b</sup>	0.92	(08)	7.87 <sup>c</sup>	South Carolina	149.97	1.05	(25)	1.71
Iowa	147.08	1.23	(32)	-0.25	South Dakota	143.90	2.40	(35)	-2.41
Kansas	145.00	1.32	(34)	-1.66	Tennessee	158.15 <sup>b</sup>	0.92	(10)	7.26 <sup>c</sup>
Kentucky	172.23 <sup>b</sup>	1.16	(01)	16.81 <sup>c</sup>	Texas	139.66 <sup>b</sup>	0.49	(42)	-5.28 <sup>c</sup>
Louisiana	162.16 <sup>b</sup>	1.13	(04)	9.98 <sup>c</sup>	Utah	109.06 <sup>b</sup>	1.41	(51)	-26.03 <sup>c</sup>
Maine	156.47 <sup>b</sup>	1.85	(14)	6.12 <sup>c</sup>	Vermont	153.15	2.78	(19)	3.87
Maryland	150.15	0.96	(24)	1.84	Virginia	149.10	0.82	(28)	1.12
Massachusetts	149.16	0.85	(27)	1.16	Washington	149.70	0.91	(26)	1.53
Michigan	157.09 <sup>b</sup>	0.72	(12)	6.54 <sup>c</sup>	West Virginia	167.80 <sup>b</sup>	1.63	(02)	13.81 <sup>c</sup>
Minnesota	142.98 <sup>b</sup>	0.97	(38)	-3.03	Wisconsin	148.45	0.93	(29)	0.68
Mississippi	156.96 <sup>b</sup>	1.35	(13)	6.45 <sup>c</sup>	Wyoming	143.42	3.11	(37)	-2.73
Missouri	157.80 <sup>b</sup>	0.93	(11)	7.02 <sup>c</sup>					



<sup>a</sup> US Mortality Files, National Center for Health Statistics, Centers for Disease Control and Prevention. Rates are per 100,000 and are age-adjusted to the 2000 US Std Population (19 age groups - Census P25-1130).  
<sup>b</sup> Difference between state rate and total U.S. rate is statistically significant (p<=.0002).  
<sup>c</sup> Absolute percent difference between state rate and total U.S. rate is 5% or more.  
SE Standard error of the rate.  
PD Percent difference between state rate and total U.S. rate.  
- Statistic not shown. Rate based on less than 16 cases for the time interval.

Table 2.21  
All Cancer Sites (Invasive)

Estimated United States Cancer Prevalence Counts<sup>a</sup> on January 1, 2011  
By Race/Ethnicity, Sex and Years Since Diagnosis

Years Since Diagnosis		0 to <5	5 to <10	10 to <15	15 to <20	20 to <25	25 to <30	0 to <19 <sup>e</sup>	0 to <36 <sup>e</sup>	>=36 <sup>g</sup>	Complete <sup>h</sup>
<u>Race</u>	<u>Sex</u>										
All Races <sup>b</sup>	Both Sexes	4,594,732	3,153,349	2,206,528	1,398,664	813,745	479,491	11,551,569	12,998,655	398,504	13,397,159
	Males	2,373,342	1,598,257	1,052,027	624,794	286,933	153,864	5,723,802	6,188,275	82,761	6,271,036
	Females	2,221,390	1,555,092	1,154,501	773,870	526,812	325,627	5,827,767	6,810,380	315,743	7,126,123
White <sup>b</sup>	Both Sexes	3,873,922	2,735,983	1,936,873	1,246,445	737,398	436,723	9,972,290	11,288,173	349,111	11,637,284
	Males	1,992,129	1,379,781	918,148	557,144	262,877	141,937	4,916,050	5,343,834	77,440	5,421,274
	Females	1,881,793	1,356,202	1,018,725	689,301	474,521	294,786	5,056,240	5,944,339	271,671	6,216,010
Black <sup>b</sup>	Both Sexes	470,162	283,128	181,576	101,652	48,754	27,655	1,049,074	1,132,495	23,724	1,156,219
	Males	254,286	156,022	95,636	47,986	15,328	7,370	558,243	580,643	2,081	582,724
	Females	215,876	127,106	85,940	53,666	33,426	20,285	490,831	551,852	21,643	573,495
Asian/ Pacific Islander <sup>c</sup>	Both Sexes	138,281	85,330	53,166	+	+	+	302,774	+	+	+
	Males	59,359	34,925	20,074	+	+	+	123,408	+	+	+
	Females	78,922	50,405	33,092	+	+	+	179,366	+	+	+
Hispanic <sup>d</sup>	Both Sexes	310,615	194,217	121,869	+	+	+	688,386	+	+	+
	Males	148,698	91,411	54,197	+	+	+	319,300	+	+	+
	Females	161,917	102,806	67,672	+	+	+	369,086	+	+	+

Estimated prevalence percent<sup>a</sup> on January 1, 2011, of the SEER<sup>c</sup> population diagnosed in the previous 19 years  
By Age at Prevalence, Race/Ethnicity and Sex

Age at Prevalence		Age Specific (Crude)										Age-Adjusted <sup>f</sup>
		All Ages	0-9	10-19	20-29	30-39	40-49	50-59	60-69	70-79	80+	All Ages
<u>Race</u>	<u>Sex</u>											
All Races <sup>c</sup>	Both Sexes	3.2217%	0.0862%	0.1837%	0.3198%	0.7689%	1.8721%	4.2666%	9.2546%	15.5822%	17.3733%	3.1412%
	Males	3.2166%	0.0913%	0.1931%	0.3099%	0.6094%	1.2979%	3.4940%	9.9466%	20.1479%	24.9665%	3.5286%
	Females	3.2266%	0.0809%	0.1738%	0.3301%	0.9289%	2.4413%	5.0049%	8.6287%	11.9106%	12.9282%	2.9139%
White <sup>c</sup>	Both Sexes	3.5585%	0.0939%	0.2039%	0.3630%	0.8634%	2.0102%	4.4752%	9.7013%	16.4512%	17.9921%	3.3133%
	Males	3.5192%	0.0986%	0.2161%	0.3513%	0.6930%	1.4141%	3.6333%	10.2198%	20.8721%	25.3324%	3.6571%
	Females	3.5976%	0.0889%	0.1911%	0.3755%	1.0425%	2.6247%	5.3066%	9.2172%	12.8078%	13.6557%	3.1218%
Black <sup>c</sup>	Both Sexes	2.3888%	0.0629%	0.1262%	0.2021%	0.5298%	1.5203%	4.0049%	9.5579%	15.4970%	15.4242%	2.9575%
	Males	2.6684%	0.0685%	0.1238%	0.2028%	0.3818%	1.0725%	3.9383%	12.6281%	23.6878%	26.9148%	3.9709%
	Females	2.1343%	0.0572%	0.1286%	0.2014%	0.6589%	1.9168%	4.0627%	7.1323%	9.8116%	9.9271%	2.3336%
Asian/ Pacific Islander <sup>c</sup>	Both Sexes	2.0299%	0.0675%	0.1285%	0.1901%	0.4691%	1.3207%	3.0094%	5.6545%	9.4723%	12.3994%	2.0502%
	Males	1.7744%	0.0727%	0.1351%	0.1768%	0.3183%	0.6954%	1.8658%	5.0668%	11.3639%	17.6094%	2.0567%
	Females	2.2638%	0.0621%	0.1215%	0.2031%	0.6043%	1.8758%	3.9907%	6.1417%	8.0194%	9.1981%	2.1021%
Hispanic <sup>d</sup>	Both Sexes	1.3751%	0.0808%	0.1742%	0.2457%	0.5507%	1.3078%	2.9931%	6.4163%	11.1656%	13.2202%	2.2708%
	Males	1.2494%	0.0868%	0.1837%	0.2461%	0.4265%	0.8128%	2.1598%	6.5842%	15.0580%	19.8157%	2.5617%
	Females	1.5037%	0.0745%	0.1641%	0.2452%	0.6830%	1.8232%	3.7866%	6.2732%	8.2937%	9.2981%	2.1372%

<sup>a</sup> US 2011 cancer prevalence counts are based on 2011 cancer prevalence proportions from the SEER registries and 1/1/2011 US population estimates based on the average of 2010 and 2011 population estimates from the US Bureau of the Census. Prevalence was calculated using the First Malignant Primary Only for a person.

<sup>b c d</sup> Statistics based on (b) SEER 9 Areas (c) SEER 11 Areas and Rural Georgia (d) NHIA for Hispanic for SEER 11 Areas and Rural Georgia.

<sup>e</sup> Maximum limited-duration prevalence: 36 years for 1975-2011 SEER 9 data; 19 years for 1992-2011 SEER 11 data (used to calculate prevalence for Hispanics and Asian Pacific Islanders).

<sup>f</sup> Percentages are age-adjusted to the 2000 US Standard Population (19 age groups - Census P25-1130) by 5-year age groups.

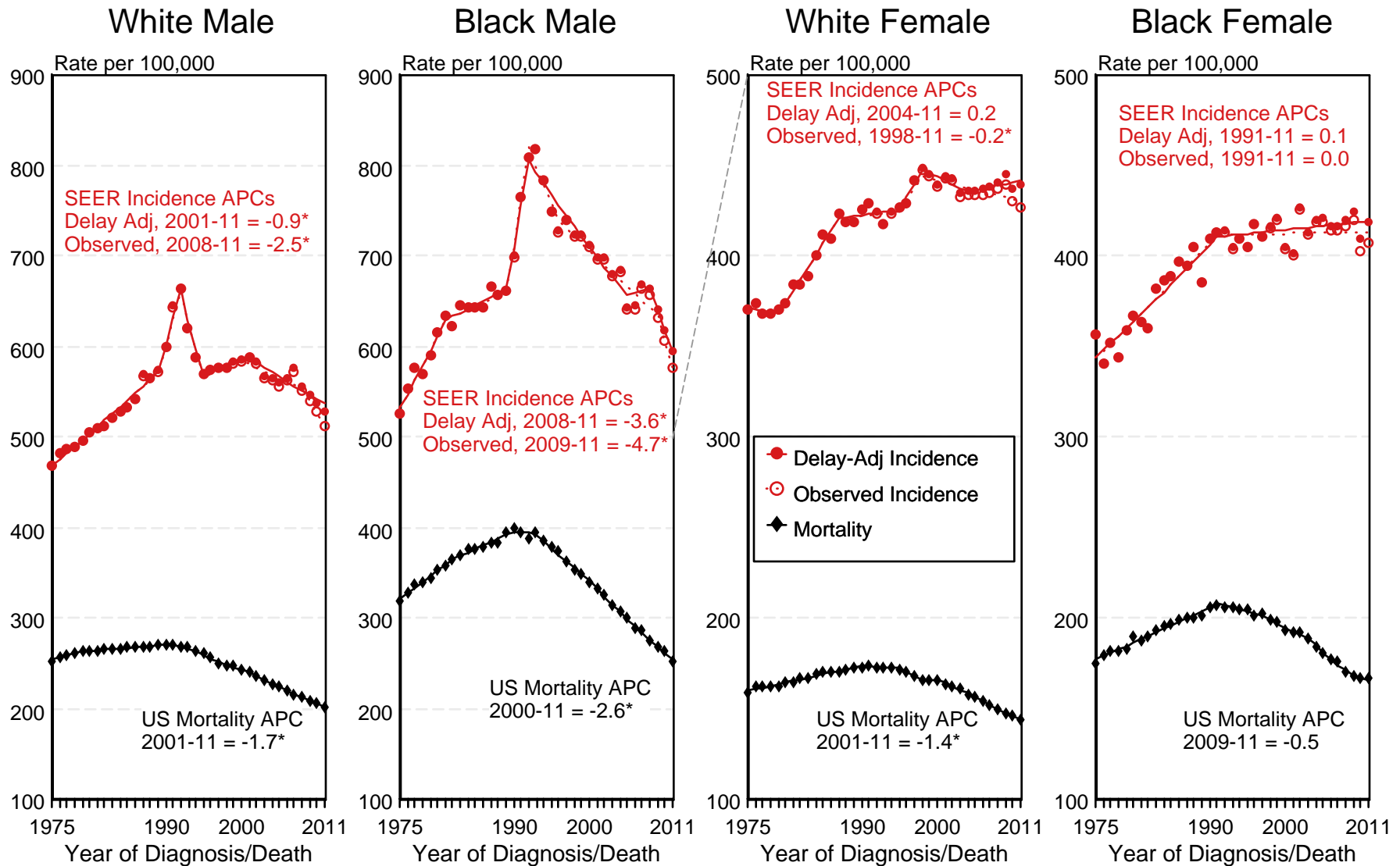
<sup>g h i</sup> (g) Cases diagnosed more than 36 years ago were estimated using the completeness index method (Capocaccia et. al. 1997, Merrill et. al. 2000). (h) Complete prevalence is obtained by summing 0 to <36 and >=36. (i) Age-specific completeness index was approximated using empirical data from historical Connecticut tumor registry.

- Statistic not shown. Statistic based on fewer than 5 cases estimated alive in SEER for the time interval.

+ Not available.

Figure 2.1

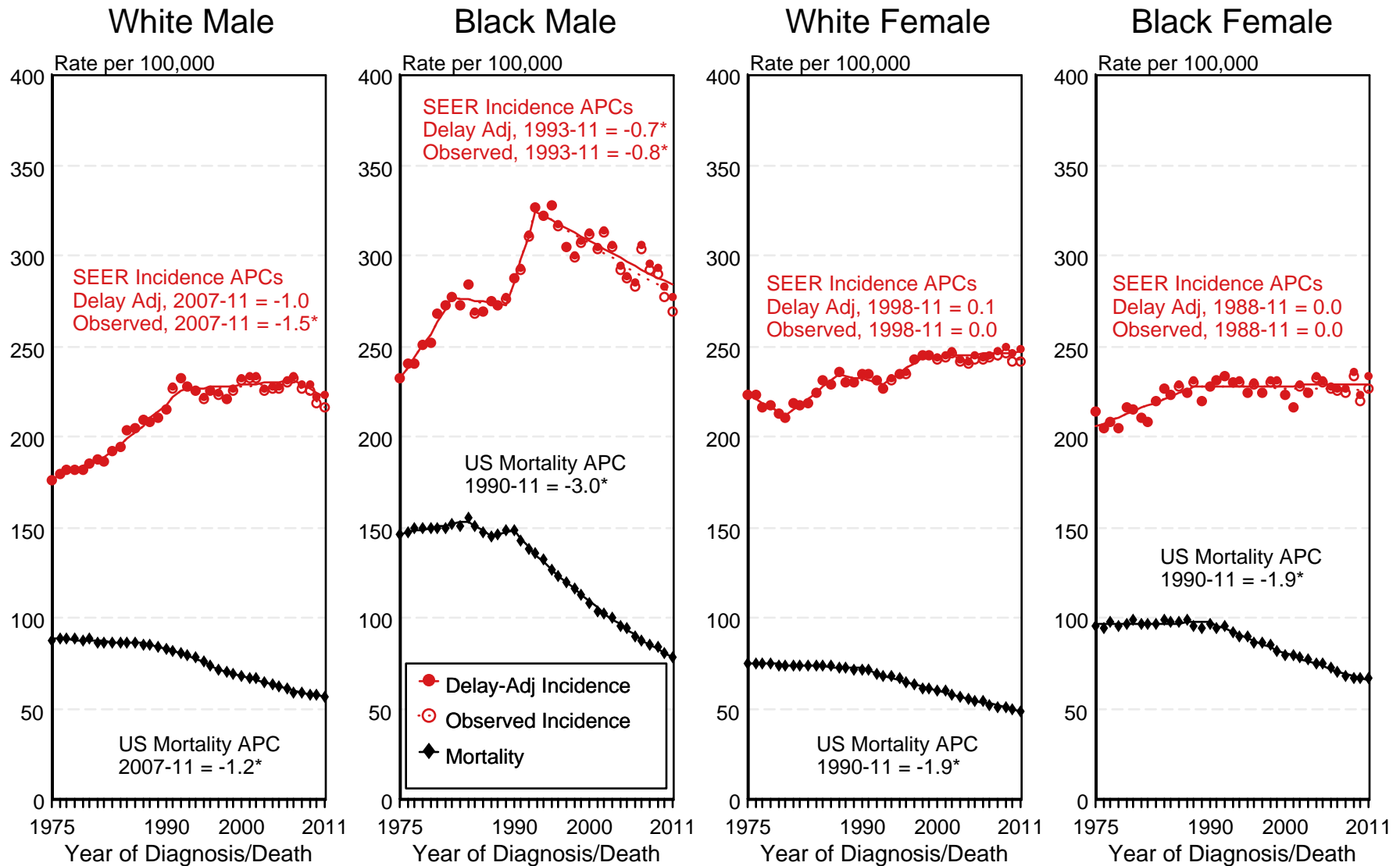
# SEER Observed Incidence, SEER Delay Adjusted Incidence and US Death Rates<sup>a</sup> All Cancer Sites, by Race and Sex



<sup>a</sup> Source: SEER 9 areas and US Mortality Files (National Center for Health Statistics, CDC). Rates are age-adjusted to the 2000 US Std Population (19 age groups - Census P25-1103). Regression lines and APCs are calculated using the Joinpoint Regression Program Version 4.1.0, April 2014, National Cancer Institute. The APC is the Annual Percent Change for the regression line segments. The APC shown on the graph is for the most recent trend.  
\* The APC is significantly different from zero ( $p < 0.05$ ).

Figure 2.2

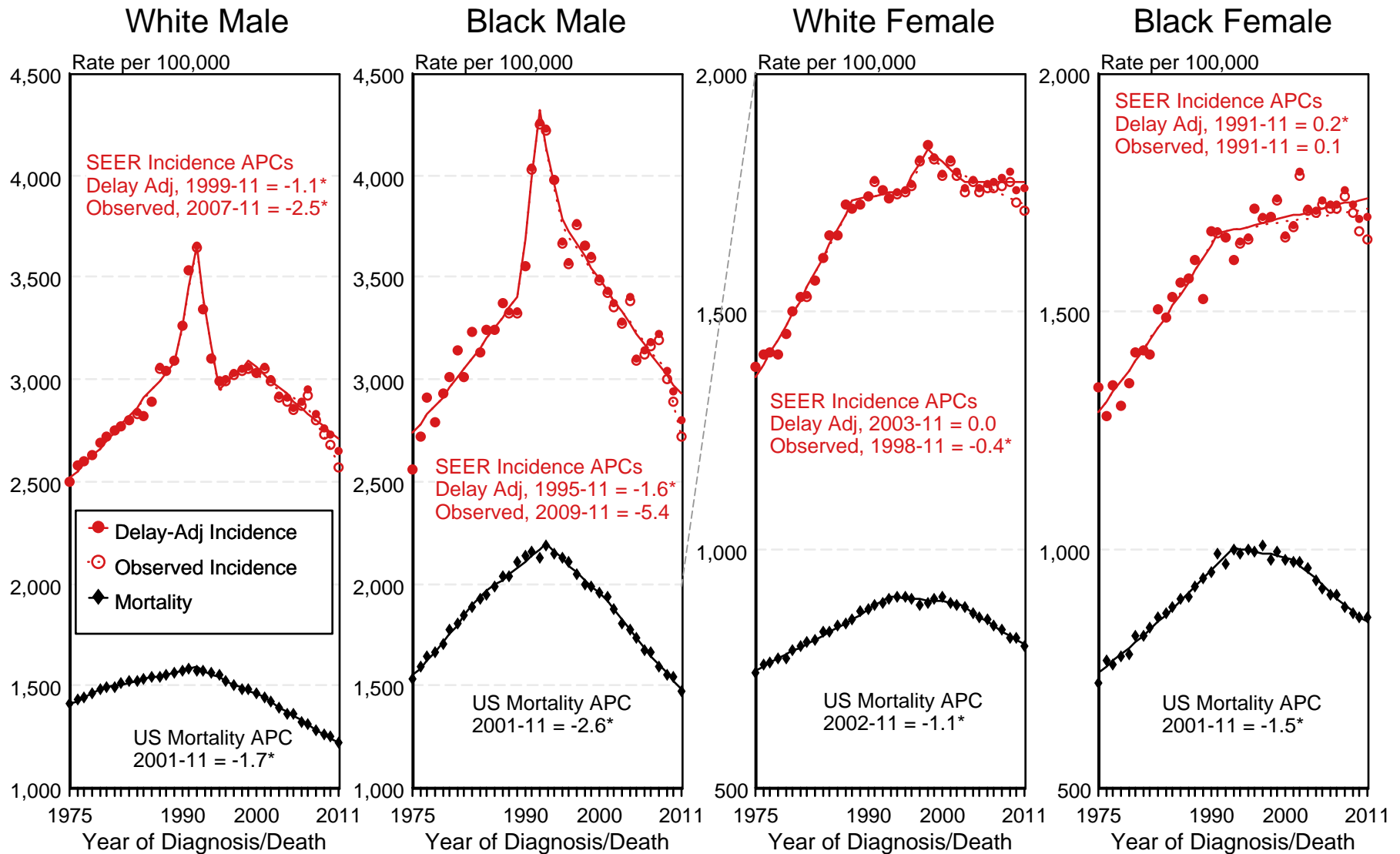
# SEER Observed Incidence, SEER Delay Adjusted Incidence and US Death Rates<sup>a</sup> All Cancer Sites, Under 65 Years of Age, by Race and Sex



<sup>a</sup> Source: SEER 9 areas and US Mortality Files (National Center for Health Statistics, CDC). Rates are age-adjusted to the 2000 US Std Population (19 age groups - Census P25-1103). Regression lines and APCs are calculated using the Joinpoint Regression Program Version 4.1.0, April 2014, National Cancer Institute. The APC is the Annual Percent Change for the regression line segments. The APC shown on the graph is for the most recent trend.  
\* The APC is significantly different from zero ( $p < 0.05$ ).

Figure 2.3

# SEER Observed Incidence, SEER Delay Adjusted Incidence and US Death Rates<sup>a</sup> All Cancer Sites, Ages 65 and Over, by Race and Sex



<sup>a</sup> Source: SEER 9 areas and US Mortality Files (National Center for Health Statistics, CDC). Rates are age-adjusted to the 2000 US Std Population (19 age groups - Census P25-1103). Regression lines and APCs are calculated using the Joinpoint Regression Program Version 4.1.0, April 2014, National Cancer Institute. The APC is the Annual Percent Change for the regression line segments. The APC shown on the graph is for the most recent trend.  
\* The APC is significantly different from zero ( $p < 0.05$ ).

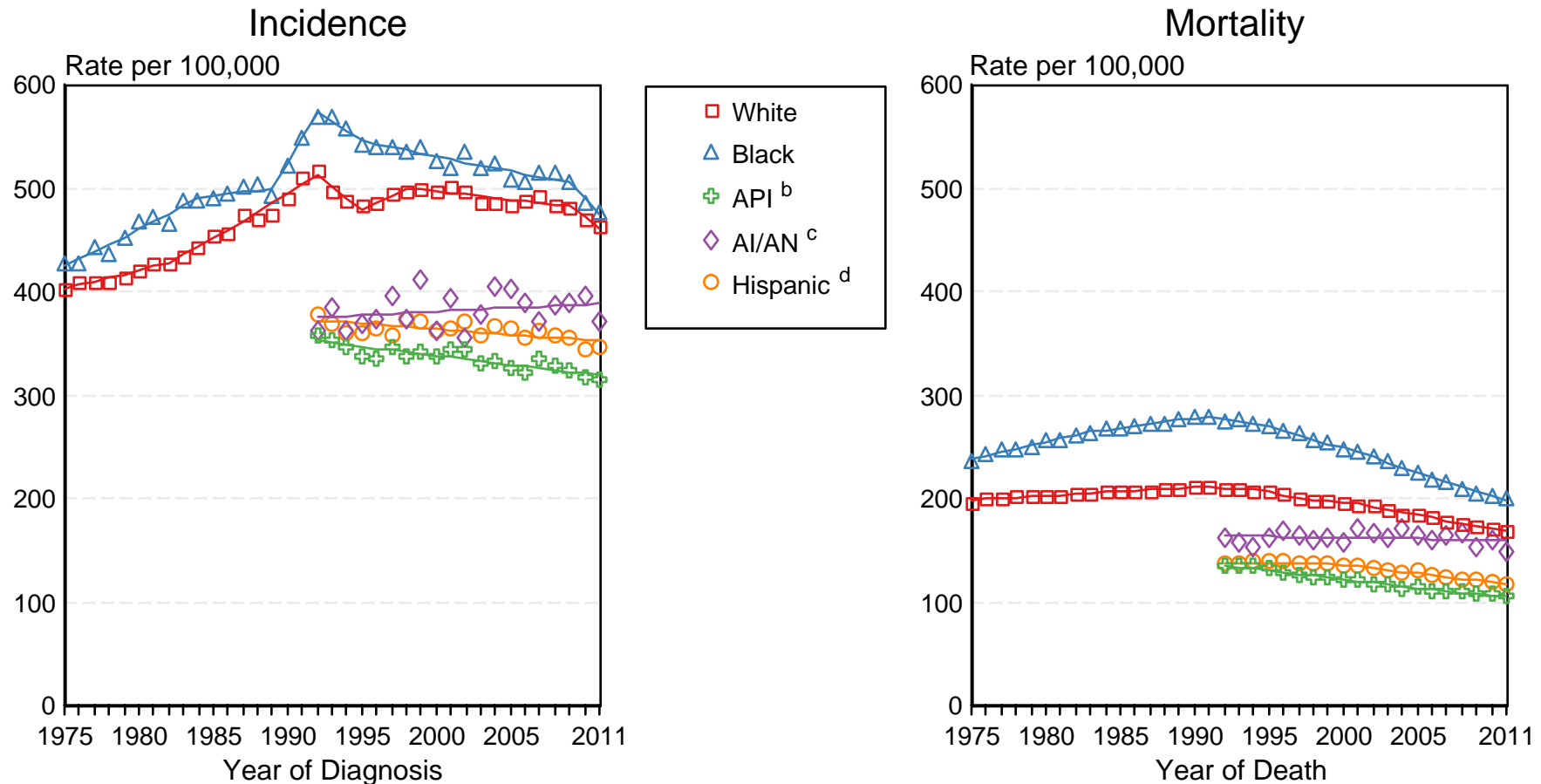


Figure 2.4

# SEER Incidence and US Death Rates<sup>a</sup> All Cancer Sites, Both Sexes

Joinpoint Analyses for Whites and Blacks from 1975-2011

and for Asian/Pacific Islanders, American Indians/Alaska Natives and Hispanics from 1992-2011



Source: Incidence data for whites and blacks are from the SEER 9 areas (San Francisco, Connecticut, Detroit, Hawaii, Iowa, New Mexico, Seattle, Utah, Atlanta).

Incidence data for Asian/Pacific Islanders, American Indians/Alaska Natives and Hispanics are from the SEER 13 Areas (SEER 9 Areas, San Jose-Monterey,

<sup>a</sup> Los Angeles, Alaska Native Registry and Rural Georgia). Mortality data are from US Mortality Files, National Center for Health Statistics, CDC.

Rates are age-adjusted to the 2000 US Std Population (19 age groups - Census P25-1103).

Regression lines are calculated using the Joinpoint Regression Program Version 4.1.0, April 2014, National Cancer Institute. Joinpoint analyses for Whites and Blacks during the 1975-2011 period allow a maximum of 5 joinpoints. Analyses for other ethnic groups during the period 1992-2011 allow a maximum of 3 joinpoints.

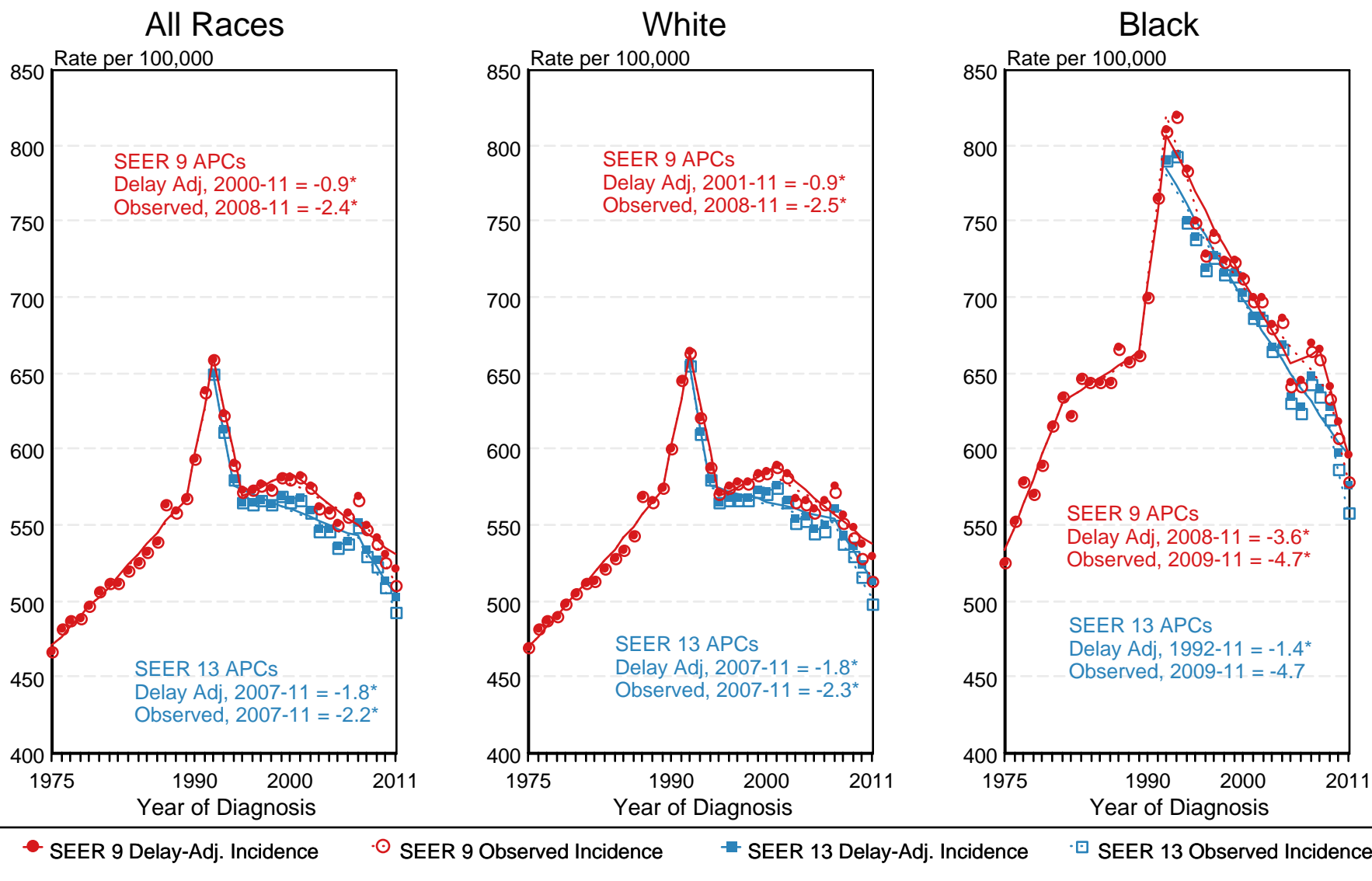
<sup>b</sup> API = Asian/Pacific Islander.

<sup>c</sup> AI/AN = American Indian/Alaska Native. Rates for American Indian/Alaska Native are based on the CHSDA(Contract Health Service Delivery Area) counties.

<sup>d</sup> Hispanic is not mutually exclusive from whites, blacks, Asian/Pacific Islanders, and American Indians/Alaska Natives. Incidence data for Hispanics are based on NHIA and exclude cases from the Alaska Native Registry. Mortality data for Hispanics exclude cases from New Hampshire and Oklahoma.

Figure 2.5

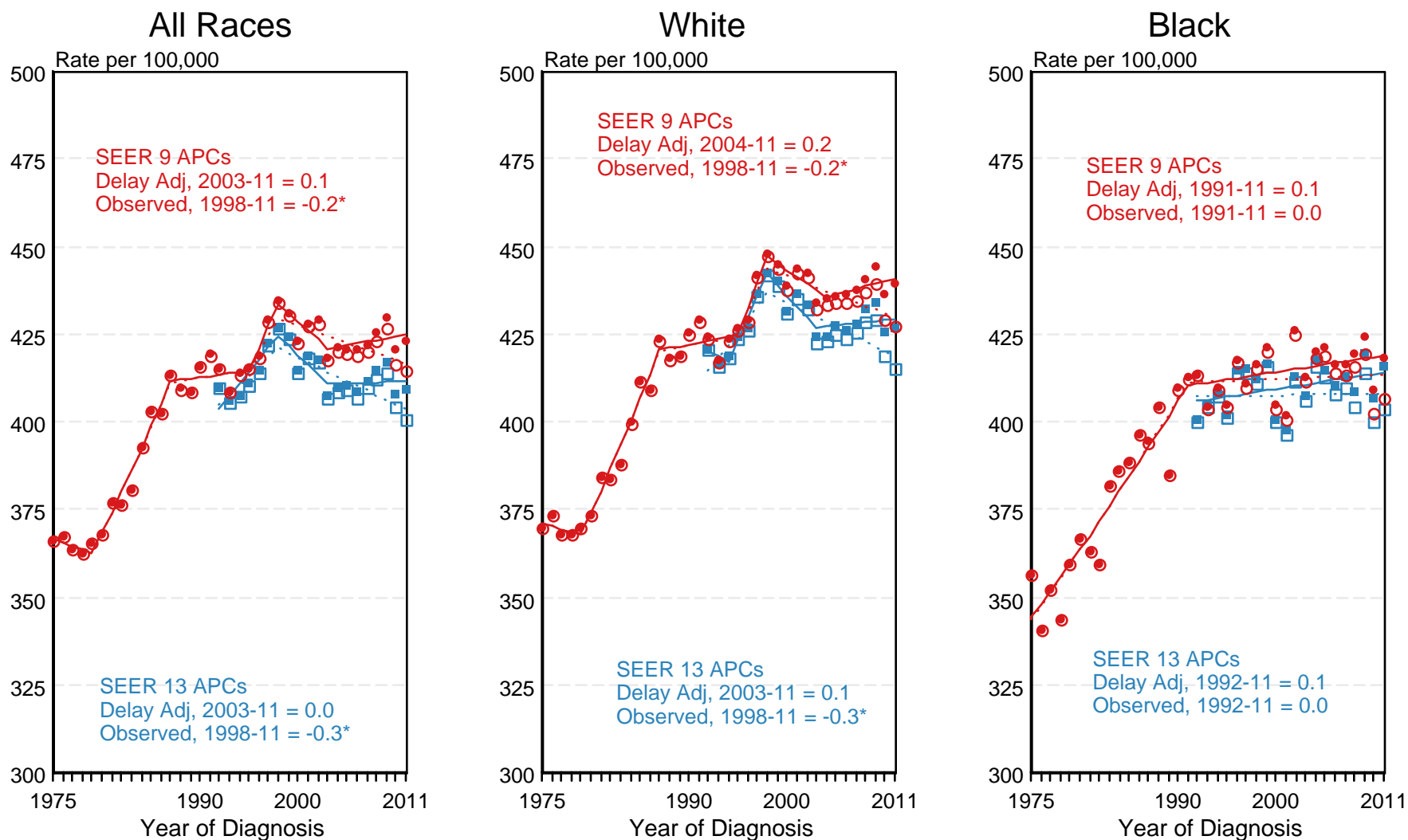
# SEER Observed Incidence and SEER Delay Adjusted Incidence Rates<sup>a</sup> SEER 9 Areas Compared to SEER 13 Areas All Cancer Sites, Males, by Race



<sup>a</sup> Source: SEER 9 areas and SEER 13 areas.  
Rates are age-adjusted to the 2000 US Std Population (19 age groups - Census P25-1103).  
Regression lines and APCs are calculated using the Joinpoint Regression Program Version 4.1.0, April 2014, National Cancer Institute.  
The APC is the Annual Percent Change for the regression line segments. The APC shown on the graph is for the most recent trend.  
\* The APC is significantly different from zero ( $p < 0.05$ ).

Figure 2.6

# SEER Observed Incidence and SEER Delay Adjusted Incidence Rates<sup>a</sup> SEER 9 Areas Compared to SEER 13 Areas All Cancer Sites, Female, by Race



● SEER 9 Delay-Adj. Incidence    
 ○ SEER 9 Observed Incidence    
 ■ SEER 13 Delay-Adj. Incidence    
 □ SEER 13 Observed Incidence

<sup>a</sup> Source: SEER 9 areas and SEER 13 areas. Rates are age-adjusted to the 2000 US Std Population (19 age groups - Census P25-1103). Regression lines and APCs are calculated using the Joinpoint Regression Program Version 4.1.0, April 2014, National Cancer Institute. The APC is the Annual Percent Change for the regression line segments. The APC shown on the graph is for the most recent trend. \* The APC is significantly different from zero ( $p < 0.05$ ).