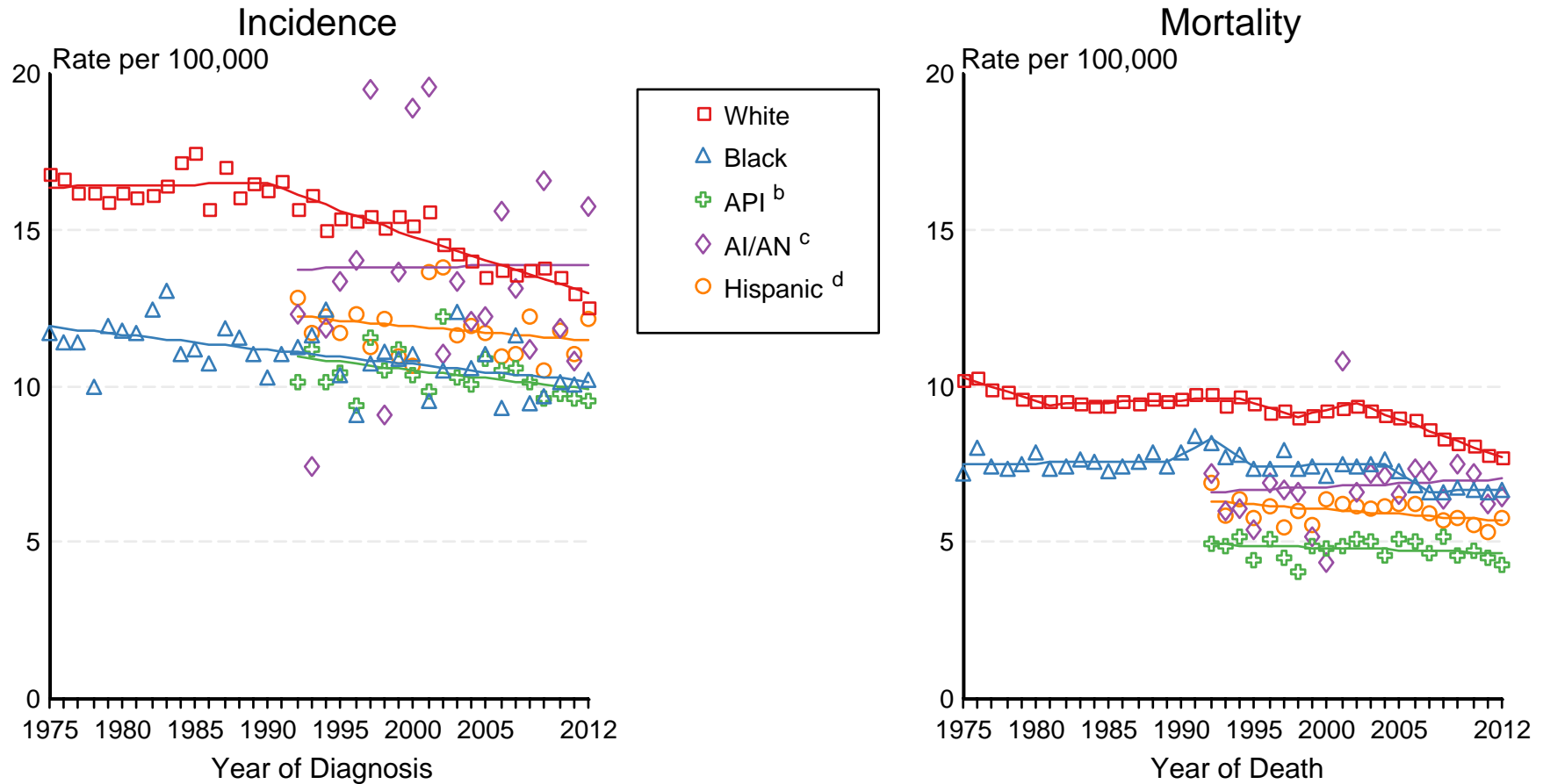


Figure 21.3

SEER Incidence and US Death Rates^a Cancer of the Ovary

Joinpoint Analyses for Whites and Blacks from 1975-2012
and for Asian/Pacific Islanders, American Indians/Alaska Natives and Hispanics from 1992-2012



Source: Incidence data for whites and blacks are from the SEER 9 areas (San Francisco, Connecticut, Detroit, Hawaii, Iowa, New Mexico, Seattle, Utah, Atlanta). Incidence data for Asian/Pacific Islanders, American Indians/Alaska Natives and Hispanics are from the SEER 13 Areas (SEER 9 Areas, San Jose-Monterey, Los Angeles, Alaska Native Registry and Rural Georgia). Ovary excludes borderline cases or histologies 8442, 8451, 8462, 8472, and 8473.

Mortality data are from US Mortality Files, National Center for Health Statistics, CDC.
^a Rates are age-adjusted to the 2000 US Std Population (19 age groups - Census P25-1103).

Regression lines are calculated using the Joinpoint Regression Program Version 4.2.0, April 2015, National Cancer Institute. Joinpoint analyses for Whites and Blacks during the 1975-2012 period allow a maximum of 5 joinpoints. Analyses for other ethnic groups during the period 1992-2012 allow a maximum of 3 joinpoints.

^b API = Asian/Pacific Islander.

^c AI/AN = American Indian/Alaska Native. Rates for American Indian/Alaska Native are based on the CHSDA(Contract Health Service Delivery Area) counties.

^d Hispanic is not mutually exclusive from whites, blacks, Asian/Pacific Islanders, and American Indians/Alaska Natives. Incidence data for Hispanics are based on NHIA and exclude cases from the Alaska Native Registry. Mortality data for Hispanics exclude cases from New Hampshire and Oklahoma.