

Table 7.1
Cancer of the Corpus and Uterus, NOS (Invasive)

Trends in SEER Incidence^{ab} and U.S. Mortality^c Using the Joinpoint Regression Program,
1975-2012 With up to Five Joinpoints, 1992-2012 With up to Three Joinpoints,
All Ages by Race/Ethnicity

	JP Trend 1		JP Trend 2		JP Trend 3		JP Trend 4		JP Trend 5		JP Trend 6		AAPC ^d	
	Years	APC	Years	APC	Years	APC	Years	APC	Years	APC	Years	APC	2003-12	2008-12
<u>SEER 9 Delay-Adjusted Incidence^a, 1975-2012</u>														
All Races	1975-79	-6.0*	1979-88	-1.7*	1988-97	0.7*	1997-06	-0.4*	2006-09	3.5	2009-12	0.5	1.2	1.2
White	1975-79	-6.1*	1979-88	-1.7*	1988-98	0.7*	1998-03	-1.2	2003-12	1.3*			1.3*	1.3*
Black	1975-97	-0.1	1997-12	2.9*									2.9*	2.9*
<u>SEER 13 Delay-Adjusted Incidence^b, 1992-2012</u>														
All Races	1992-06	-0.1	2006-12	2.3*									1.5*	2.3*
White	1992-97	0.7	1997-04	-0.9*	2004-12	1.6*							1.3*	1.6*
Black	1992-12	2.4*											2.4*	2.4*
<u>SEER 9 Observed Incidence^a, 1975-2012</u>														
All Races	1975-79	-6.0*	1979-88	-1.7*	1988-97	0.7*	1997-06	-0.4*	2006-09	3.5	2009-12	0.2	1.1	1.0
White	1975-79	-6.1*	1979-88	-1.7*	1988-98	0.7*	1998-03	-1.2	2003-12	1.1*			1.1*	1.1*
Black	1975-97	-0.1	1997-12	2.8*									2.8*	2.8*
<u>SEER 13 Observed Incidence^b, 1992-2012</u>														
All Races	1992-97	0.8	1997-04	-0.8	2004-12	1.8*							1.5*	1.8*
White	1992-98	0.6	1998-03	-1.4	2003-12	1.3*							1.3*	1.3*
White NH ^{ef}	1992-97	0.9	1997-04	-1.0*	2004-12	1.3*							1.0*	1.3*
Black	1992-12	2.3*											2.3*	2.3*
Black NH ^{ef}	1992-12	2.3*											2.3*	2.3*
API ^e	1992-12	1.8*											1.8*	1.8*
AI/AN ^{eg}	1992-12	2.5*											2.5*	2.5*
Hispanic ^f	1992-08	1.2*	2008-12	5.1*									2.9*	5.1*
<u>U.S. Cancer Mortality^c, 1975-2012</u>														
All Races	1975-89	-1.6*	1989-97	-0.7*	1997-09	0.3*	2009-12	2.5*					1.1*	2.0*
White	1975-91	-1.7*	1991-05	-0.1	2005-12	1.1*							0.8*	1.1*
Black	1975-98	-0.8*	1998-12	1.0*									1.0*	1.0*
<u>U.S. Cancer Mortality^c, 1992-2012</u>														
All Races	1992-97	-0.7*	1997-09	0.3*	2009-12	2.5*							1.1*	2.0*
White	1992-07	0.0	2007-12	1.5*									0.8*	1.5*
White NH ^{ef}	1992-08	0.1	2008-12	1.7*									0.8*	1.7*
Black	1992-08	0.3	2008-12	3.1*									1.5*	3.1*
Black NH ^{ef}	1992-09	0.4*	2009-12	4.1*									1.6*	3.2*
API ^e	1992-12	2.0*											2.0*	2.0*
AI/AN ^{eg}	1992-12	1.1											1.1	1.1
Hispanic ^f	1992-12	0.7*											0.7*	0.7*

Joinpoint Regression Program Version 4.2.0, April 2015, National Cancer Institute. (<http://surveillance.cancer.gov/joinpoint/>).

The APC is the Annual Percent Change based on rates age-adjusted to the 2000 US Std Population (19 age groups - Census P25-1130).

Trends are from the SEER 9 areas (San Francisco, Connecticut, Detroit, Hawaii, Iowa, New Mexico, Seattle, Utah, and Atlanta).

Trends are from the SEER 13 areas (SEER 9 Areas, Los Angeles, San Jose-Monterey, Rural Georgia, and the Alaska Native Registry).

Trends are from US Mortality Files, National Center for Health Statistics, Centers for Disease Control and Prevention.

The AAPC is the Average Annual Percent Change and is based on the APCs calculated by Joinpoint.

API - Asian/Pacific Islander, AI/AN - American Indian/Alaska Native, NH - Non-Hispanic

Hispanic and Non-Hispanic are not mutually exclusive from whites, blacks, Asian/Pacific Islanders, and American Indians/Alaska

Natives. Incidence data for Hispanics and Non-Hispanics are based on NHIA and exclude cases from the Alaska Native Registry.

The Hispanic and Non-Hispanic mortality trends exclude deaths from New Hampshire and Oklahoma.

Data for American Indian/Alaska Native are based on the CHSDA (Contract Health Service Delivery Area) counties.

* The APC/AAPC is significantly different from zero ($p < .05$).

- Joinpoint regression line analysis could not be performed on data series.

Table 7.2
Cancer of the Corpus and Uterus, NOS (Invasive)

Trends in SEER Incidence^{ab} and U.S. Mortality^c Using the Joinpoint Regression Program,
1975-2012 With up to Five Joinpoints, 1992-2012 With up to Three Joinpoints,
Ages <50 by Race/Ethnicity

	JP Trend 1		JP Trend 2		JP Trend 3		JP Trend 4		JP Trend 5		JP Trend 6		AAPC ^d	
	Years	APC	Years	APC	Years	APC	Years	APC	Years	APC	Years	APC	2003-12	2008-12
<u>SEER 9 Delay-Adjusted Incidence^a, 1975-2012</u>														
All Races	1975-88	-2.6*	1988-12	1.3*									1.3*	1.3*
White	1975-89	-2.4*	1989-12	1.2*									1.2*	1.2*
Black	1975-85	-4.9*	1985-12	2.3*									2.3*	2.3*
<u>SEER 13 Delay-Adjusted Incidence^b, 1992-2012</u>														
All Races	1992-12	1.6*											1.6*	1.6*
White	1992-12	1.5*											1.5*	1.5*
Black	1992-12	1.9*											1.9*	1.9*
<u>SEER 9 Observed Incidence^a, 1975-2012</u>														
All Races	1975-88	-2.6*	1988-12	1.3*									1.3*	1.3*
White	1975-88	-2.6*	1988-12	1.0*									1.0*	1.0*
Black	1975-85	-4.8*	1985-12	2.3*									2.3*	2.3*
<u>SEER 13 Observed Incidence^b, 1992-2012</u>														
All Races	1992-12	1.5*											1.5*	1.5*
White	1992-12	1.5*											1.5*	1.5*
White NH ^{ef}	1992-12	1.0*											1.0*	1.0*
Black	1992-12	1.8*											1.8*	1.8*
Black NH ^{ef}	1992-12	2.0*											2.0*	2.0*
API ^e	1992-12	1.3*											1.3*	1.3*
AI/AN ^{eg}	1992-12	1.4											1.4	1.4
Hispanic ^f	1992-94	-8.6	1994-12	2.9*									2.9*	2.9*
<u>U.S. Cancer Mortality^c, 1975-2012</u>														
All Races	1975-84	-4.6*	1984-94	-1.5*	1994-12	1.6*							1.6*	1.6*
White	1975-88	-4.0*	1988-12	1.2*									1.2*	1.2*
Black	1975-95	-4.4*	1995-12	2.3*									2.3*	2.3*
<u>U.S. Cancer Mortality^c, 1992-2012</u>														
All Races	1992-12	1.6*											1.6*	1.6*
White	1992-12	1.5*											1.5*	1.5*
White NH ^{ef}	1992-12	1.5*											1.5*	1.5*
Black	1992-12	1.8*											1.8*	1.8*
Black NH ^{ef}	1992-12	1.9*											1.9*	1.9*
API ^e	1992-12	1.4											1.4	1.4
AI/AN ^{eg}	-	-											-	-
Hispanic ^f	1992-96	-8.7	1996-12	2.2*									2.2*	2.2*

Joinpoint Regression Program Version 4.2.0, April 2015, National Cancer Institute. (<http://surveillance.cancer.gov/joinpoint/>).

The APC is the Annual Percent Change based on rates age-adjusted to the 2000 US Std Population (19 age groups - Census P25-1130).

^a Trends are from the SEER 9 areas (San Francisco, Connecticut, Detroit, Hawaii, Iowa, New Mexico, Seattle, Utah, and Atlanta).

^b Trends are from the SEER 13 areas (SEER 9 Areas, Los Angeles, San Jose-Monterey, Rural Georgia, and the Alaska Native Registry).

^c Trends are from US Mortality Files, National Center for Health Statistics, Centers for Disease Control and Prevention.

^d The AAPC is the Average Annual Percent Change and is based on the APCs calculated by Joinpoint.

^e API - Asian/Pacific Islander, AI/AN - American Indian/Alaska Native, NH - Non-Hispanic

^f Hispanic and Non-Hispanic are not mutually exclusive from whites, blacks, Asian/Pacific Islanders, and American Indians/Alaska

Natives. Incidence data for Hispanics and Non-Hispanics are based on NHIA and exclude cases from the Alaska Native Registry.

The Hispanic and Non-Hispanic mortality trends exclude deaths from New Hampshire and Oklahoma.

^g Data for American Indian/Alaska Native are based on the CHSDA (Contract Health Service Delivery Area) counties.

* The APC/AAPC is significantly different from zero (p<.05).

- Joinpoint regression line analysis could not be performed on data series.

Table 7.3
Cancer of the Corpus and Uterus, NOS (Invasive)

Trends in SEER Incidence^{ab} and U.S. Mortality^c Using the Joinpoint Regression Program, 1975-2012 With up to Five Joinpoints, 1992-2012 With up to Three Joinpoints, Ages 50+ by Race/Ethnicity

	JP Trend 1		JP Trend 2		JP Trend 3		JP Trend 4		JP Trend 5		JP Trend 6		AAPC ^d	
	Years	APC	Years	APC	Years	APC	Years	APC	Years	APC	Years	APC	2003-12	2008-12
<u>SEER 9 Delay-Adjusted Incidence^a, 1975-2012</u>														
All Races	1975-79	-6.2*	1979-88	-1.7*	1988-97	0.7*	1997-05	-0.8*	2005-12	1.9*			1.3*	1.9*
White	1975-79	-6.2*	1979-88	-1.7*	1988-97	0.8*	1997-05	-0.9*	2005-12	1.6*			1.0*	1.6*
Black	1975-99	0.1	1999-12	3.3*									3.3*	3.3*
<u>SEER 13 Delay-Adjusted Incidence^b, 1992-2012</u>														
All Races	1992-97	0.9	1997-04	-1.2*	2004-12	1.8*							1.5*	1.8*
White	1992-97	0.8	1997-04	-1.3*	2004-12	1.5*							1.2*	1.5*
Black	1992-12	2.4*											2.4*	2.4*
<u>SEER 9 Observed Incidence^a, 1975-2012</u>														
All Races	1975-79	-6.2*	1979-88	-1.7*	1988-97	0.6*	1997-05	-0.8*	2005-12	1.8*			1.2*	1.8*
White	1975-79	-6.2*	1979-88	-1.7*	1988-98	0.7*	1998-03	-1.6	2003-12	1.1*			1.1*	1.1*
Black	1975-99	0.1	1999-12	3.2*									3.2*	3.2*
<u>SEER 13 Observed Incidence^b, 1992-2012</u>														
All Races	1992-97	0.9	1997-04	-1.2*	2004-12	1.7*							1.4*	1.7*
White	1992-97	0.8	1997-04	-1.3*	2004-12	1.4*							1.1*	1.4*
White NH ^{ef}	1992-97	1.0	1997-04	-1.3*	2004-12	1.2*							1.0*	1.2*
Black	1992-12	2.4*											2.4*	2.4*
Black NH ^{ef}	1992-12	2.4*											2.4*	2.4*
API ^e	1992-95	6.5	1995-06	0.4	2006-09	7.3	2009-12	-0.3					2.4	1.5
AI/AN ^{eg}	1992-12	2.8*											2.8*	2.8*
Hispanic ^f	1992-08	1.0*	2008-12	4.9*									2.7*	4.9*
<u>U.S. Cancer Mortality^c, 1975-2012</u>														
All Races	1975-89	-1.5*	1989-97	-0.7*	1997-09	0.3*	2009-12	2.6*					1.0*	2.0*
White	1975-92	-1.5*	1992-07	-0.1	2007-12	1.5*							0.8*	1.5*
Black	1975-99	-0.6*	1999-12	1.0*									1.0*	1.0*
<u>U.S. Cancer Mortality^c, 1992-2012</u>														
All Races	1992-97	-0.8*	1997-09	0.3*	2009-12	2.6*							1.0*	2.0*
White	1992-07	-0.1	2007-12	1.5*									0.8*	1.5*
White NH ^{ef}	1992-08	0.0	2008-12	1.7*									0.7*	1.7*
Black	1992-08	0.2	2008-12	3.1*									1.5*	3.1*
Black NH ^{ef}	1992-08	0.3	2008-12	3.2*									1.6*	3.2*
API ^e	1992-12	2.1*											2.1*	2.1*
AI/AN ^{eg}	1992-12	1.5											1.5	1.5
Hispanic ^f	1992-12	0.7*											0.7*	0.7*

Joinpoint Regression Program Version 4.2.0, April 2015, National Cancer Institute. (<http://surveillance.cancer.gov/joinpoint/>).

The APC is the Annual Percent Change based on rates age-adjusted to the 2000 US Std Population (19 age groups - Census P25-1130).

Trends are from the SEER 9 areas (San Francisco, Connecticut, Detroit, Hawaii, Iowa, New Mexico, Seattle, Utah, and Atlanta).

Trends are from the SEER 13 areas (SEER 9 Areas, Los Angeles, San Jose-Monterey, Rural Georgia, and the Alaska Native Registry).

Trends are from US Mortality Files, National Center for Health Statistics, Centers for Disease Control and Prevention.

The AAPC is the Average Annual Percent Change and is based on the APCs calculated by Joinpoint.

API - Asian/Pacific Islander, AI/AN - American Indian/Alaska Native, NH - Non-Hispanic

Hispanic and Non-Hispanic are not mutually exclusive from whites, blacks, Asian/Pacific Islanders, and American Indians/Alaska

Natives. Incidence data for Hispanics and Non-Hispanics are based on NHIA and exclude cases from the Alaska Native Registry.

The Hispanic and Non-Hispanic mortality trends exclude deaths from New Hampshire and Oklahoma.

Data for American Indian/Alaska Native are based on the CHSDA (Contract Health Service Delivery Area) counties.

* The APC/AAPC is significantly different from zero ($p < .05$).

- Joinpoint regression line analysis could not be performed on data series.

Table 7.4
Cancer of the Corpus and Uterus, NOS (Invasive)

Delay-adjusted SEER Incidence^a Rates by Year, Race and Age

Year of Diagnosis:	All Races, Females			White Females			Black Females		
	All	<50	50+	All	<50	50+	All	<50	50+
1975	35.47	6.48	111.37	37.32	6.81	117.22	19.91	3.64	62.51
1976	34.37	6.20	108.12	36.25	6.28	114.71	17.61	3.29	55.11
1977	31.68	5.75	99.58	33.17	5.91	104.56	20.06	3.52	63.37
1978	30.05	6.10	92.76	31.66	6.31	98.05	18.74	3.94	57.49
1979	27.90	5.33	87.02	29.25	5.35	91.85	16.96	3.94	51.06
1980	27.31	4.97	85.81	28.52	4.95	90.25	16.22	2.51	52.13
1981	27.27	5.60	83.99	28.35	5.45	88.32	17.42	2.86	55.52
1982	26.80	5.08	83.70	28.23	5.24	88.44	17.09	2.49	55.33
1983	26.51	4.86	83.21	27.78	4.91	87.66	18.83	3.39	59.25
1984	25.71	4.62	80.92	27.16	4.89	85.47	17.38	1.74	58.35
1985	25.23	4.63	79.19	26.56	4.83	83.45	17.41	2.23	57.17
1986	24.39	4.82	75.64	25.62	4.99	79.66	16.78	2.54	54.09
1987	24.71	5.00	76.32	26.12	5.28	80.68	15.76	2.02	51.73
1988	23.58	4.56	73.38	24.60	4.49	77.27	16.97	2.97	53.65
1989	24.43	4.48	76.68	25.50	4.77	79.80	19.36	1.78	65.40
1990	25.05	4.60	78.60	26.54	4.81	83.44	17.03	2.28	55.65
1991	24.64	4.37	77.70	25.99	4.48	82.34	17.48	3.12	55.09
1992	24.80	4.86	77.01	26.16	4.85	81.97	17.03	3.01	53.74
1993	24.29	5.19	74.31	25.67	5.14	79.42	16.97	3.48	52.27
1994	25.15	5.03	77.81	26.34	5.06	82.07	17.71	2.51	57.53
1995	25.33	4.72	79.30	26.50	4.64	83.75	18.82	2.75	60.90
1996	24.93	4.52	78.38	25.98	4.39	82.50	19.43	3.08	62.24
1997	25.88	5.04	80.43	27.31	5.02	85.70	16.63	2.54	53.51
1998	25.73	4.83	80.46	27.03	4.77	85.31	19.51	3.15	62.37
1999	25.33	5.19	78.07	26.78	5.07	83.64	17.80	2.97	56.63
2000	24.83	5.23	76.16	26.23	5.37	80.83	18.12	3.01	57.69
2001	25.30	5.12	78.14	26.74	4.97	83.77	19.36	4.07	59.40
2002	24.93	5.06	76.98	25.35	4.58	79.72	23.38	4.87	71.83
2003	24.37	5.31	74.28	25.59	5.29	78.73	20.23	3.69	63.56
2004	25.12	5.57	76.30	26.12	5.29	80.66	20.54	3.86	64.23
2005	25.00	5.55	75.94	25.92	5.41	79.61	23.26	4.13	73.36
2006	24.64	5.14	75.71	26.10	5.07	81.19	19.38	3.72	60.41
2007	25.33	5.87	76.28	26.20	5.93	79.30	22.72	3.52	73.01
2008	26.15	6.03	78.84	26.81	5.79	81.84	24.29	4.33	76.57
2009	27.44	6.01	83.56	28.15	5.95	86.31	25.37	3.74	82.02
2010	27.53	6.30	83.12	28.28	6.13	86.28	24.99	3.92	80.16
2011	27.24	5.59	83.94	27.58	5.41	85.64	28.63	4.12	92.80
2012	27.83	6.29	84.22	28.69	6.11	87.82	25.92	4.44	82.15

Additional information on the model used to delay-adjust SEER Incidence rates can be found at [\(http://surveillance.cancer.gov/delay/\)](http://surveillance.cancer.gov/delay/).

^a SEER 9 areas (San Francisco, Connecticut, Detroit, Hawaii, Iowa, New Mexico, Seattle, Utah, and Atlanta).
Rates are per 100,000 and are age-adjusted to the 2000 US Std Population (19 age groups - Census P25-1130).
- Delay-adjusted rate is not shown for observed rates based on less than 16 cases for the time interval.

Table 7.5
Cancer of the Corpus and Uterus, NOS (Invasive)

Age-adjusted SEER Incidence^a Rates by Year, Race and Age

	All Races, Females			White Females			Black Females		
	All	<50	50+	All	<50	50+	All	<50	50+
Year of Diagnosis:									
1975-2012	26.33	5.24	81.56	27.54	5.20	86.02	20.11	3.33	64.06
1975	35.47	6.48	111.37	37.32	6.81	117.22	19.91	3.64	62.51
1976	34.37	6.20	108.12	36.25	6.28	114.71	17.61	3.29	55.11
1977	31.68	5.75	99.58	33.17	5.91	104.56	20.06	3.52	63.37
1978	30.05	6.10	92.76	31.66	6.31	98.05	18.74	3.94	57.49
1979	27.90	5.33	87.02	29.25	5.35	91.85	16.96	3.94	51.06
1980	27.31	4.97	85.81	28.52	4.95	90.25	16.22	-	52.13
1981	27.27	5.60	83.99	28.35	5.45	88.32	17.42	2.86	55.52
1982	26.80	5.08	83.70	28.23	5.24	88.44	17.09	2.49	55.33
1983	26.51	4.86	83.21	27.78	4.91	87.66	18.83	3.39	59.25
1984	25.71	4.62	80.92	27.16	4.89	85.47	17.38	-	58.35
1985	25.23	4.63	79.19	26.56	4.83	83.45	17.41	2.23	57.17
1986	24.39	4.82	75.64	25.62	4.99	79.66	16.78	2.54	54.09
1987	24.71	5.00	76.32	26.12	5.28	80.68	15.76	-	51.73
1988	23.58	4.56	73.38	24.60	4.49	77.27	16.97	2.97	53.65
1989	24.43	4.48	76.68	25.50	4.77	79.80	19.36	1.78	65.40
1990	25.05	4.60	78.60	26.54	4.81	83.44	17.03	2.28	55.65
1991	24.64	4.37	77.70	25.99	4.48	82.34	17.48	3.12	55.09
1992	24.80	4.86	77.01	26.16	4.85	81.97	17.03	3.01	53.74
1993	24.29	5.19	74.31	25.67	5.14	79.42	16.97	3.48	52.27
1994	25.15	5.03	77.81	26.34	5.06	82.07	17.71	2.51	57.53
1995	25.33	4.72	79.30	26.50	4.64	83.75	18.82	2.75	60.90
1996	24.93	4.52	78.38	25.98	4.39	82.50	19.43	3.08	62.24
1997	25.88	5.04	80.43	27.31	5.02	85.70	16.63	2.54	53.51
1998	25.73	4.83	80.45	27.02	4.77	85.29	19.51	3.15	62.36
1999	25.32	5.19	78.05	26.77	5.06	83.60	17.79	2.97	56.60
2000	24.82	5.23	76.13	26.20	5.37	80.76	18.11	3.00	57.65
2001	25.29	5.12	78.10	26.71	4.96	83.66	19.34	4.07	59.34
2002	24.92	5.06	76.92	25.30	4.57	79.59	23.35	4.87	71.74
2003	24.35	5.31	74.22	25.54	5.28	78.56	20.20	3.68	63.46
2004	25.09	5.57	76.22	26.05	5.28	80.46	20.50	3.85	64.10
2005	24.97	5.55	75.85	25.84	5.40	79.36	23.20	4.12	73.17
2006	24.60	5.13	75.59	26.01	5.05	80.88	19.32	3.70	60.21
2007	25.28	5.86	76.12	26.09	5.90	78.94	22.63	3.51	72.71
2008	26.09	6.02	78.66	26.67	5.76	81.41	24.18	4.30	76.21
2009	27.36	5.99	83.31	27.97	5.91	85.75	25.21	3.72	81.50
2010	27.44	6.28	82.83	28.07	6.08	85.63	24.78	3.88	79.49
2011	27.11	5.57	83.53	27.30	5.36	84.78	28.30	4.07	91.74
2012	27.50	6.23	83.19	28.17	6.00	86.22	25.44	4.35	80.68

^a SEER 9 areas (San Francisco, Connecticut, Detroit, Hawaii, Iowa, New Mexico, Seattle, Utah, and Atlanta). Rates are per 100,000 and are age-adjusted to the 2000 US Std Population (19 age groups - Census P25-1130).
- Statistic not shown. Rate based on less than 16 cases for the time interval.

Table 7.6
Cancer of the Corpus and Uterus, NOS (Invasive)
Age-adjusted U.S. Death^a Rates by Year, Race and Age

Year of Death:	All Races, Females			White Females			Black Females		
	All	<50	50+	All	<50	50+	All	<50	50+
1975-2012	4.41	0.37	15.01	4.16	0.35	14.14	7.37	0.50	25.34
1975	5.28	0.52	17.74	5.05	0.47	17.06	7.80	0.93	25.81
1976	5.33	0.53	17.90	5.11	0.49	17.19	8.07	0.86	26.96
1977	5.22	0.52	17.54	4.96	0.48	16.67	8.35	0.83	28.04
1978	5.10	0.52	17.08	4.84	0.48	16.23	8.16	0.85	27.30
1979	4.99	0.40	17.01	4.74	0.36	16.19	7.90	0.73	26.66
1980	5.12	0.44	17.38	4.84	0.39	16.50	8.39	0.85	28.12
1981	4.88	0.41	16.60	4.68	0.38	15.91	7.34	0.56	25.11
1982	4.85	0.41	16.49	4.61	0.40	15.65	7.61	0.43	26.40
1983	4.80	0.36	16.43	4.59	0.32	15.78	7.29	0.60	24.82
1984	4.68	0.36	15.99	4.42	0.31	15.17	7.70	0.69	26.07
1985	4.61	0.36	15.74	4.39	0.34	14.99	7.37	0.51	25.33
1986	4.44	0.35	15.17	4.20	0.33	14.36	7.27	0.56	24.85
1987	4.42	0.34	15.10	4.18	0.32	14.28	7.32	0.52	25.12
1988	4.35	0.31	14.90	4.09	0.30	14.01	7.40	0.46	25.57
1989	4.26	0.35	14.52	4.01	0.33	13.63	7.25	0.48	24.99
1990	4.34	0.33	14.85	4.08	0.32	13.94	7.36	0.42	25.56
1991	4.18	0.33	14.24	3.90	0.31	13.30	7.29	0.49	25.08
1992	4.21	0.32	14.40	3.97	0.29	13.59	6.98	0.44	24.11
1993	4.17	0.32	14.26	3.91	0.30	13.35	7.28	0.44	25.17
1994	4.15	0.28	14.29	3.91	0.28	13.41	7.06	0.34	24.67
1995	4.15	0.34	14.12	3.97	0.34	13.47	6.46	0.35	22.47
1996	4.13	0.31	14.14	3.86	0.30	13.18	7.18	0.37	25.03
1997	4.00	0.31	13.67	3.78	0.31	12.85	6.74	0.30	23.62
1998	4.10	0.32	14.00	3.86	0.29	13.19	6.85	0.45	23.60
1999	4.08	0.35	13.87	3.86	0.34	13.10	6.84	0.39	23.71
2000	4.11	0.35	13.95	3.84	0.34	12.99	7.23	0.40	25.11
2001	4.18	0.36	14.18	3.94	0.34	13.38	6.97	0.48	23.97
2002	4.17	0.34	14.19	3.88	0.33	13.17	7.32	0.40	25.46
2003	4.14	0.34	14.10	3.89	0.31	13.27	7.05	0.49	24.23
2004	4.14	0.38	13.99	3.89	0.37	13.09	6.96	0.45	24.01
2005	4.12	0.36	13.98	3.85	0.34	13.05	7.15	0.49	24.58
2006	4.23	0.37	14.34	3.95	0.36	13.35	7.34	0.45	25.39
2007	4.20	0.39	14.17	3.90	0.37	13.15	7.50	0.51	25.82
2008	4.21	0.38	14.25	3.96	0.37	13.35	7.09	0.51	24.33
2009	4.17	0.38	14.11	3.89	0.39	13.04	7.42	0.42	25.74
2010	4.45	0.40	15.06	4.16	0.38	14.06	7.53	0.50	25.93
2011	4.48	0.43	15.09	4.15	0.41	13.93	8.00	0.55	27.52
2012	4.52	0.40	15.30	4.14	0.38	14.01	8.16	0.53	28.14

^a US Mortality Files, National Center for Health Statistics, Centers for Disease Control and Prevention.
Rates are per 100,000 and are age-adjusted to the 2000 US Std Population (19 age groups - Census P25-1130).
- Statistic not shown. Rate based on less than 16 cases for the time interval.

Table 7.7
Cancer of the Corpus and Uterus, NOS (Invasive)

SEER Incidence^a and U.S. Death^b Rates, Age-Adjusted and Age-Specific Rates, by Race

	SEER Incidence ^a			U.S. Mortality ^b		
	All Races Females	White Females	Black Females	All Races Females	White Females	Black Females
<u>Age-Adjusted Rates, 2008-2012</u>						
Age at Diagnosis/Death:						
All ages	25.1	25.8	24.0	4.4	4.1	7.7
Under 65	16.3	16.8	13.0	1.6	1.5	2.6
65 and over	85.9	88.0	99.3	23.5	21.9	42.8
All ages (IARC world std) ^c	18.7	19.3	17.6	2.8	2.5	4.9
<u>Age-Specific Rates, 2008-2012</u>						
Age at Diagnosis/Death:						
<1	-	-	-	-	-	-
1-4	-	-	-	-	-	-
5-9	-	-	-	-	-	-
10-14	-	-	-	-	-	-
15-19	-	-	-	-	-	-
20-24	0.4	0.3	0.7	-	-	-
25-29	2.0	2.0	1.7	0.1	0.1	-
30-34	4.5	4.5	3.8	0.2	0.2	0.2
35-39	9.0	9.1	6.7	0.5	0.5	0.6
40-44	14.2	14.4	9.3	1.0	1.0	1.2
45-49	24.5	25.1	15.6	1.9	1.8	2.6
50-54	46.2	47.9	30.0	3.9	3.7	5.0
55-59	74.6	78.4	56.8	7.5	6.9	12.0
60-64	93.1	95.3	100.3	12.9	11.5	25.2
65-69	101.6	104.1	115.2	17.6	15.7	37.7
70-74	94.8	96.5	119.1	21.9	19.9	43.2
75-79	82.4	84.3	99.3	24.5	22.5	46.8
80-84	70.6	73.9	71.8	27.6	26.5	43.9
85+	56.3	58.1	55.7	33.7	33.2	45.3

^a SEER 18 areas. Rates are per 100,000 and are age-adjusted to the 2000 US Std Population (19 age groups - Census P25-1130), unless noted.

^b US Mortality Files, National Center for Health Statistics, Centers for Disease Control and Prevention.

^c Rates are per 100,000 and are age-adjusted to the 2000 US Std Population (19 age groups - Census P25-1130), unless noted.

- Rates are per 100,000 and are age-adjusted to the IARC world standard population.

- Statistic not shown. Rate based on less than 16 cases for the time interval.

Table 7.8
Cancer of the Corpus and Uterus, NOS (Invasive)

5-Year Relative and Period Survival (Percent) by Race, Diagnosis Year, Stage and Age

	All Races, Females			White Females			Black Females		
	All	<50	50+	All	<50	50+	All	<50	50+
5-Year Relative Survival (Percent)									
Year of Diagnosis:									
1960-1963 ^a	-	-	-	73	-	-	31	-	-
1970-1973 ^a	-	-	-	81	-	-	44	-	-
1975-1977 ^b	86.9	92.7	86.2	88.0	93.3	87.4	60.2	84.4 ^g	55.6
1978-1980 ^b	82.5	91.7	81.3	83.7	93.1	82.6	54.9	82.3 ^g	49.5
1981-1983 ^b	80.7	91.3	79.4	82.2	92.3	81.0	50.7	82.8 ^g	45.6
1984-1986 ^b	82.4	93.6	81.0	84.0	93.9	82.8	56.2	83.5 ^g	52.7
1987-1989 ^b	82.2	89.8	81.1	83.9	90.9	82.9	56.7	82.8 ^g	52.9
1990-1992 ^b	83.7	90.1	82.7	85.8	92.2	84.9	54.0	72.9 ^g	50.2
1993-1995 ^b	83.2	90.0	82.0	84.9	91.5	83.8	58.6	81.9	53.9
1996-1998 ^b	83.5	90.1	82.3	85.1	91.3	84.2	61.4	81.9	57.0
1999-2001 ^b	84.1	88.7	83.2	85.9	89.9	85.2	60.9	70.9	58.3
2002-2004 ^b	82.9	90.0	81.5	85.2	92.4	84.0	59.9	77.8	55.2
2005-2011 ^b	83.3 ^f	88.5 ^f	82.3 ^f	85.3 ^f	90.1 ^f	84.6 ^f	65.6 ^f	77.3	63.4 ^f
5-Year Period Survival (Percent) ^{cd}									
2011	81.6	88.9	80.3	84.0	90.1	83.0	61.6	79.8	58.7
Stage Distribution (%) 2005-2011 ^{ce}									
All Stages									
Number of cases	68,599	10,290	58,309	55,772	7,805	47,967	6,661	941	5,720
Percent	100%	100%	100%	100%	100%	100%	100%	100%	100%
Localized	67	71	67	69	72	69	53	64	51
Regional	21	18	21	20	17	20	26	19	27
Distant	8	7	9	8	7	8	16	12	16
Unstaged	4	4	3	3	3	3	5	5	5
5-Year Relative Survival (Percent), 2005-2011 ^c									
Age at Diagnosis:									
Ages <45	89.5	-	-	90.6	-	-	79.5	-	-
Ages 45-54	88.3	-	-	90.0	-	-	71.0	-	-
Ages 55-64	84.6	-	-	87.0	-	-	63.9	-	-
Ages 65-74	77.8	-	-	80.9	-	-	56.9	-	-
Ages 75+	67.4	-	-	70.4	-	-	40.1	-	-
Ages <65	86.4	-	-	88.4	-	-	68.2	-	-
Ages 65+	73.7	-	-	76.6	-	-	51.4	-	-
Stage ^e :									
All Stages	81.7	88.8	80.4	83.9	90.1	82.9	61.5	77.8	58.6
Localized	95.3	96.7	95.1	96.3	97.2	96.1	85.3	91.8	83.9
Regional	68.2	81.9	66.1	70.8	83.8	68.9	48.8	65.7	46.8
Distant	16.9	29.0	15.0	18.5	30.4	16.7	8.9	20.1	7.4
Unstaged	48.5	88.3	41.2	48.3	88.2	41.8	35.8	86.0 ^g	26.8

^a Based on End Results data from a series of hospital registries and one population-based registry.

^b SEER 9 areas (San Francisco, Connecticut, Detroit, Hawaii, Iowa, New Mexico, Seattle, Utah, Atlanta).
Based on follow-up of patients into 2012.

^c SEER 18 areas (San Francisco, Connecticut, Detroit, Hawaii, Iowa, New Mexico, Seattle, Utah, Atlanta, San Jose-Monterey, Los Angeles, Alaska Native Registry, Rural Georgia, California excluding SF/SJM/LA, Kentucky, Louisiana, New Jersey and Georgia excluding ATL/RG).
Based on follow-up of patients into 2012.

^d Period survival provides a 2011 estimate of survival by piecing together the most recent conditional survival estimates from several cohorts. It is computed here using three year calendar blocks (2009-2011: 0-1 year survival), (2008-2010: 1-2 year survival), (2007-2009: 2-3 year survival), (2006-2008: 3-4 year survival), (2005-2007: 4-5 years survival).

^e Stage at diagnosis is classified using SEER Summary Stage 2000. Stage distribution percentages may not sum to 100 due to rounding.

^f The difference between 1975-1977 and 2005-2011 is statistically significant (p<.05).

^g The standard error is between 5 and 10 percentage points.

^h The standard error is greater than 10 percentage points.

- Statistic could not be calculated due to fewer than 25 cases during the time period.

Table 7.9
Cancer of the Corpus And Uterus, NOS (Invasive)

SEER^a Relative Survival (Percent)
By Year of Diagnosis

All Races, Females

Year of Diagnosis

	1975- 1979	1980- 1984	1985- 1989	1990- 1994	1995	1996	1997	1998	1999	2000	2001	2002	2003	2004	2005	2006	2007	2008	2009	2010	2011
Survival Time																					
1-year	93.7	91.3	92.2	92.1	92.8	91.5	93.1	93.4	93.8	93.6	92.0	91.9	92.7	92.7	92.7	92.7	93.2	93.3	92.7	93.3	92.1
2-year	90.1	86.3	87.5	88.1	88.5	88.0	88.9	89.6	89.5	89.4	88.1	88.1	88.5	88.2	89.0	89.5	89.5	88.6	88.2	88.8	
3-year	87.8	83.4	84.8	85.6	85.9	85.7	86.2	86.5	87.3	87.3	85.7	85.7	86.0	85.4	85.7	87.2	87.3	85.9	85.6		
4-year	86.3	82.0	83.4	84.0	84.7	84.6	85.2	84.5	85.5	85.9	84.1	83.6	84.6	83.7	84.1	85.4	85.6	84.2			
5-year	85.8	80.9	82.3	83.3	84.1	83.3	84.0	83.2	84.2	85.1	83.1	82.8	83.3	82.6	82.9	84.7	83.8				
6-year	85.1	80.3	81.7	82.2	83.4	82.1	83.3	82.5	83.7	84.3	82.2	82.3	82.4	81.6	81.7	84.1					
7-year	84.7	79.8	81.3	81.9	82.9	81.2	82.5	82.2	82.6	83.9	81.4	81.2	81.8	80.5	81.1						
8-year	84.5	79.1	80.7	81.2	82.4	80.4	81.5	81.9	82.0	83.2	80.7	80.9	81.7	80.0							
9-year	84.5	78.7	80.4	81.0	81.5	79.7	81.0	81.2	81.9	83.2	79.9	80.1	81.0								
10-year	84.3	78.4	80.2	80.5	81.1	79.4	81.0	81.0	81.2	82.6	79.7	79.8									
11-year	84.0	78.0	79.9	80.4	81.0	79.4	81.0	80.9	81.2	81.6	78.7										
12-year	83.9	77.8	79.5	79.9	80.8	79.4	81.0	80.6	80.8	81.6											
13-year	83.9	77.4	79.1	79.6	80.6	79.0	81.0	80.3	80.1												
14-year	83.7	77.0	78.8	79.1	80.0	78.8	81.0	79.4													
15-year	83.6	76.8	78.5	79.0	79.5	78.2	80.6														
16-year	83.4	76.1	78.0	78.6	79.2	77.0															
17-year	83.4	75.9	77.8	78.1	78.6																
18-year	83.4	75.4	77.7	77.4																	
19-year	83.4	74.7	77.5																		
20-year	83.4	74.7	76.8																		

^a Based on the SEER 9 areas (San Francisco, Connecticut, Detroit, Hawaii, Iowa, New Mexico, Seattle, Utah, and Atlanta).

Table 7.10
Cancer of the Corpus and Uterus, NOS (Invasive)

Risk of Being Diagnosed With Cancer in 10, 20 and 30 Years,
Lifetime Risk of Being Diagnosed with Cancer Given Alive and Cancer-Free at Current Age, and
Lifetime Risk of Dying from Cancer Given Alive at Current Age
Females, 2010-2012 By Race/Ethnicity

Race/ Ethnicity	Current Age	Risk of Being Diagnosed with Cancer				Risk of Dying from Cancer	Race/ Ethnicity	Current Age	Risk of Being Diagnosed with Cancer				Risk of Dying from Cancer
		+10 yrs	+20 yrs	+30 yrs	Ever				+10 yrs	+20 yrs	+30 yrs	Ever	
All Races	0	0.00	0.00	0.01	2.78	0.58	Asian/ Pacific Islander	0	0.00	0.00	0.01	2.25	0.46
	10	0.00	0.01	0.09	2.80	0.59		10	0.00	0.01	0.09	2.26	0.46
	20	0.01	0.08	0.28	2.81	0.59		20	0.01	0.09	0.33	2.26	0.46
	30	0.07	0.27	0.84	2.81	0.59		30	0.07	0.32	0.87	2.26	0.46
	40	0.20	0.78	1.65	2.76	0.60		40	0.25	0.80	1.40	2.19	0.46
	50	0.59	1.48	2.20	2.61	0.59		50	0.56	1.17	1.63	1.97	0.45
	60	0.94	1.69	2.05	2.13	0.56		60	0.62	1.09	1.34	1.44	0.40
	70	0.83	1.23	-	1.32	0.45		70	0.50	0.75	-	0.87	0.32
80	0.51	-	-	0.63	0.31	80	0.30	-	-	0.43	0.22		
White	0	0.00	0.00	0.01	2.86	0.55	American Indian/ Alaska Native ^a	0	0.00	0.00	0.01	1.93	0.48
	10	0.00	0.01	0.09	2.88	0.55		10	0.00	0.01	0.11	1.95	0.49
	20	0.01	0.09	0.29	2.89	0.55		20	0.01	0.12	0.33	1.95	0.49
	30	0.07	0.28	0.87	2.89	0.55		30	0.10	0.32	0.74	1.96	0.49
	40	0.21	0.80	1.71	2.84	0.55		40	0.22	0.65	1.25	1.89	0.50
	50	0.61	1.53	2.26	2.69	0.55		50	0.44	1.07	1.50	1.73	0.50
	60	0.97	1.73	2.10	2.18	0.52		60	0.66	1.12	1.30	1.35	0.48
	70	0.85	1.26	-	1.35	0.42		70	0.51	0.72	-	0.77	0.39
80	0.53	-	-	0.64	0.30	80	0.27	-	-	0.34	0.25		
Black	0	0.00	0.00	0.01	2.53	0.93	Hispanic ^b	0	0.00	0.00	0.02	2.42	0.52
	10	0.00	0.01	0.06	2.58	0.95		10	0.00	0.02	0.10	2.44	0.53
	20	0.01	0.06	0.20	2.58	0.95		20	0.02	0.10	0.30	2.44	0.53
	30	0.05	0.19	0.61	2.58	0.95		30	0.08	0.28	0.76	2.43	0.53
	40	0.14	0.56	1.46	2.57	0.96		40	0.20	0.69	1.39	2.36	0.53
	50	0.44	1.37	2.14	2.51	0.97		50	0.49	1.21	1.82	2.20	0.52
	60	1.00	1.84	2.16	2.23	0.95		60	0.74	1.37	1.67	1.76	0.48
	70	0.97	1.35	-	1.44	0.75		70	0.68	1.01	-	1.10	0.38
80	0.52	-	-	0.64	0.47	80	0.40	-	-	0.51	0.27		

Devcan 6.8.0, August 2014, National Cancer Institute (<http://surveillance.cancer.gov/devcan/>).

Source: Incidence data are from the SEER 18 areas (San Francisco, Connecticut, Detroit, Hawaii, Iowa, New Mexico, Seattle, Utah, Atlanta, San Jose-Monterey, Los Angeles, Alaska Native Registry, Rural Georgia, California excluding SF/SJM/LA, Kentucky, Louisiana, New Jersey, and Georgia excluding ATL/RG). Mortality data are from the NCHS public use data file for the total US.

^a Underlying incidence and mortality data for American Indian/Alaska Native are based on the CHSDA (Contract Health Service Delivery Area) counties.

^b Hispanic is not mutually exclusive from whites, blacks, Asian/Pacific Islanders, and American Indians/Alaska Natives. Underlying incidence data for Hispanics are based on NHIA and exclude cases from the Alaska Native Registry.

- Statistic could not be calculated.

A percent of 0.00 represents a value that is below 0.005.

Table 7.11
Cancer of the Corpus And Uterus, NOS (Invasive)

SEER Incidence and U.S. Mortality
Age-Adjusted Rates and Trends^a
By Race/Ethnicity

SEER Incidence	SEER 18 Areas ^b	SEER 13 Areas ^b	SEER 9 Areas ^b
	Rate 2008-2012	Trend 2003-2012 ^c	Trend 2003-2012 ^d
	Rate per 100,000 persons	AAPC (%)	AAPC (%)
RACE/ETHNICITY	Females	Females	Females
All Races	25.1	1.5*	1.1
White	25.8	1.3*	1.1*
White Hispanic ^e	21.5	3.0*	-
White Non-Hispanic ^e	26.4	1.0*	-
Black	24.0	2.3*	2.8*
Asian/Pacific Islander	19.9	1.8*	-
Amer Ind/Alaska Nat ^f	19.8	2.5*	-
Hispanic ^e	20.7	2.9*	-
<u>U.S. Mortality^g</u>			
	Rate 2008-2012	Trend 2003-2012 ^h	
	Rate per 100,000 persons	AAPC (%)	
RACE/ETHNICITY	Females	Females	
All Races	4.4	1.1*	
White	4.1	0.8*	
White Hispanic ^e	3.7	2.0*	
White Non-Hispanic ^e	4.1	0.8*	
Black	7.7	1.5*	
Asian/Pacific Islander	2.8	2.0*	
Amer Ind/Alaska Nat			
Total U.S.	2.6	0.3	
CHSDA Counties	3.5	1.1	
Non-CHSDA Counties	1.5	-1.1	
Hispanic ^e	3.5	0.7*	

The AAPC is the Average Annual Percent Change over the time interval. The AAPCs are calculated by the Joinpoint Regression Program Version 4.2.0, April 2015, National Cancer Institute.

- Statistic not shown. Rate based on less than 16 cases for the time interval.
- Trend based on less than 10 cases for at least one year within the time interval.
- ^a Rates are age-adjusted to the 2000 US Std Population (19 age groups - Census P25-1130). Trends are based on rates age-adjusted to the 2000 US Std Population (19 age groups - Census P25-1130).
- ^b The SEER 9 areas are San Francisco, Connecticut, Detroit, Hawaii, Iowa, New Mexico, Seattle, Utah, and Atlanta.
- The SEER 13 areas comprise the SEER 9 areas plus San Jose-Monterey, Los Angeles, the Alaska Native Registry, and Rural Georgia.
- The SEER 18 areas comprise the SEER 13 areas plus California excluding SF/SJM/LA, Kentucky, Louisiana, New Jersey, and Georgia excluding ATL/RG.
- ^c The 2003-2012 AAPC estimates are based on a Joinpoint analysis with up to 3 Joinpoints over diagnosis years 1992-2012.
- ^d The 2003-2012 AAPC estimates are based on a Joinpoint analysis with up to 5 Joinpoints over diagnosis years 1975-2012.
- ^e Hispanic and Non-Hispanic are not mutually exclusive from whites, blacks, Asian/Pacific Islanders, and American Indians/Alaska Natives. Incidence data for Hispanics and Non-Hispanics are based on NHIA and exclude cases from the Alaska Native Registry. The 2003-2012 Hispanic and Non-Hispanic mortality trends exclude deaths from New Hampshire and Oklahoma.
- ^f Incidence data for American Indian/Alaska Native are based on the CHSDA (Contract Health Service Delivery Area) counties.
- ^g US Mortality Files, National Center for Health Statistics, CDC.
- ^h The 2003-2012 mortality AAPCs are based on a Joinpoint analysis using years of death 1992-2012.
- * The APC is significantly different from zero (p<.05).

Table 7.12
Cancer of the Corpus and Uterus, NOS (Invasive)

Age-Adjusted SEER Incidence Rates^a
By Registry, Race and Age

	All Races			Whites			Blacks		
	All Ages	Ages <50	Ages 50+	All Ages	Ages <50	Ages 50+	All Ages	Ages <50	Ages 50+
<u>SEER Incidence Rates^a, 2008-2012</u>									
California	24.08	5.59	72.50	24.96	5.67	75.49	24.33	3.43	79.05
Greater Bay Area	25.17	4.89	78.26	26.86	4.52	85.33	24.63	3.11	80.97
San Francisco-Oakland	26.11	5.18	80.89	27.68	4.63	88.05	25.33	3.24	83.20
San Jose-Monterey	23.37	4.37	73.14	25.43	4.35	80.63	19.30	-	63.64
Los Angeles	25.10	6.49	73.81	26.38	6.79	77.67	25.49	3.79	82.29
Greater California	23.20	5.38	69.86	23.81	5.46	71.87	23.03	3.24	74.86
Connecticut	29.73	4.96	94.59	29.86	4.93	95.12	28.46	4.12	92.21
Detroit	30.20	7.10	90.67	31.75	7.91	94.19	26.71	5.21	83.00
Georgia	20.63	4.50	62.87	20.37	5.03	60.54	23.03	3.69	73.67
Atlanta	21.72	3.79	68.64	20.81	4.18	64.36	24.73	3.54	80.21
Rural Georgia	19.68	-	58.95	21.46	-	60.41	18.32	-	60.23
Greater Georgia	20.32	4.93	60.63	20.33	5.38	59.48	21.99	3.87	69.41
Hawaii	29.26	11.78	75.04	23.75	6.57	68.74	-	-	-
Iowa	31.23	7.13	94.35	31.47	7.20	95.03	20.52	-	64.65
Kentucky	24.18	6.97	69.24	24.53	7.25	69.79	21.09	4.15	65.45
Louisiana	18.21	4.82	53.27	17.63	4.71	51.47	20.44	4.89	61.15
New Jersey	30.20	5.24	95.56	31.82	5.55	100.60	26.39	3.72	85.74
New Mexico	23.29	7.16	65.55	22.57	6.41	64.90	23.81	-	82.10
Seattle-Puget Sound	26.26	5.55	80.48	26.89	5.29	83.45	23.89	4.38	74.98
Utah	25.20	6.55	74.02	24.88	6.06	74.16	-	-	-
9 SEER Areas ^b	27.12	6.02	82.38	27.66	5.82	84.85	25.62	4.06	82.06
11 SEER Areas ^b	26.46	6.03	79.97	27.32	5.99	83.16	25.51	3.99	81.86
13 SEER Areas ^b	26.42	6.03	79.82	27.29	5.99	83.07	25.41	3.97	81.56
18 SEER Areas ^b	25.10	5.70	75.90	25.82	5.79	78.27	23.95	3.97	76.29

^a Rates are per 100,000 and are age-adjusted to the 2000 US Std Population (19 age groups - Census P25-1130)

^b The SEER 9 areas are San Francisco, Connecticut, Detroit, Hawaii, Iowa, New Mexico, Seattle, Utah and Atlanta.

The SEER 11 areas comprise the SEER 9 areas plus San Jose-Monterey and Los Angeles.

The SEER 13 areas comprise the SEER 11 areas plus the Alaska Native Registry and Rural Georgia.

The SEER 18 areas comprise the SEER 13 areas plus California excluding SF/SJM/LA, Kentucky, Louisiana, New Jersey and Georgia excluding ATL/RG.

- Statistic not shown. Rate based on less than 16 cases for the time interval.

Table 7.13
Cancer of the Corpus and Uterus, NOS (Invasive)

Age-Adjusted SEER Death Rates^a
By Registry, Race and Age

	All Races			Whites			Blacks		
	All Ages	Ages <50	Ages 50+	All Ages	Ages <50	Ages 50+	All Ages	Ages <50	Ages 50+
<u>SEER Death Rates^a, 2008-2012</u>									
California	4.33	0.40	14.63	4.33	0.40	14.64	7.79	0.47	26.95
Greater Bay Area	4.18	0.30	14.36	4.45	0.26	15.41	6.12	-	21.85
San Francisco-Oakland	4.07	0.31	13.91	4.20	-	14.48	6.04	-	21.49
San Jose-Monterey	4.41	-	15.23	4.88	-	17.02	-	-	-
Los Angeles	4.81	0.52	16.05	4.68	0.52	15.57	8.74	-	30.23
Greater California	4.16	0.38	14.06	4.16	0.38	14.06	7.76	-	26.56
Connecticut	4.35	0.30	14.96	4.06	-	13.94	8.12	-	28.34
Detroit	5.54	0.55	18.59	4.97	0.58	16.45	7.78	-	26.84
Georgia	4.03	0.40	13.54	3.08	0.39	10.13	7.29	0.45	25.21
Atlanta	4.46	0.35	15.22	3.37	-	11.15	7.12	-	24.91
Rural Georgia	4.78	-	16.14	-	-	-	-	-	-
Greater Georgia	3.83	0.43	12.75	2.94	0.39	9.63	7.51	0.55	25.71
Hawaii	4.42	0.91	13.62	3.32	-	11.41	-	-	-
Iowa	4.96	0.46	16.76	4.98	0.48	16.76	-	-	-
Kentucky	3.60	0.38	12.05	3.47	0.38	11.56	6.10	-	20.82
Louisiana	3.67	0.51	11.95	3.03	0.49	9.69	5.73	-	19.15
New Jersey	5.33	0.38	18.29	4.96	0.34	17.05	8.64	-	30.17
New Mexico	3.26	0.50	10.48	3.27	-	10.46	-	-	-
Seattle-Puget Sound	4.11	0.45	13.71	4.05	0.41	13.59	8.02	-	27.57
Utah	3.87	-	13.15	3.74	-	12.93	-	-	-
9 SEER Areas ^b	4.41	0.42	14.86	4.19	0.39	14.14	7.27	0.37	25.32
11 SEER Areas ^b	4.50	0.44	15.15	4.33	0.41	14.59	7.61	0.40	26.48
13 SEER Areas ^b	4.48	0.43	15.09	4.31	0.41	14.54	7.58	0.40	26.36
18 SEER Areas ^b	4.37	0.41	14.73	4.14	0.39	13.96	7.41	0.47	25.57
Total U.S.	4.37	0.40	14.78	4.06	0.39	13.69	7.66	0.50	26.39

^a US Mortality Files, National Center for Health Statistics, Centers for Disease Control and Prevention. Rates are per 100,000 and are age-adjusted to the 2000 US Std Population (19 age groups - Census P25-1130).

^b The SEER 9 areas are San Francisco, Connecticut, Detroit, Hawaii, Iowa, New Mexico, Seattle, Utah and Atlanta. The SEER 11 areas comprise the SEER 9 areas plus San Jose-Monterey and Los Angeles.

The SEER 13 areas comprise the SEER 11 areas plus the Alaska Native Registry and Rural Georgia.

The SEER 18 areas comprise the SEER 13 areas plus California excluding SF/SJM/LA, Kentucky, Louisiana, New Jersey and Georgia excluding ATL/RG.

- Statistic not shown. Rate based on less than 16 cases for the time interval.

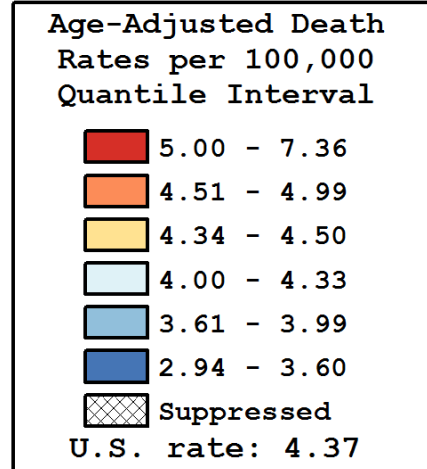
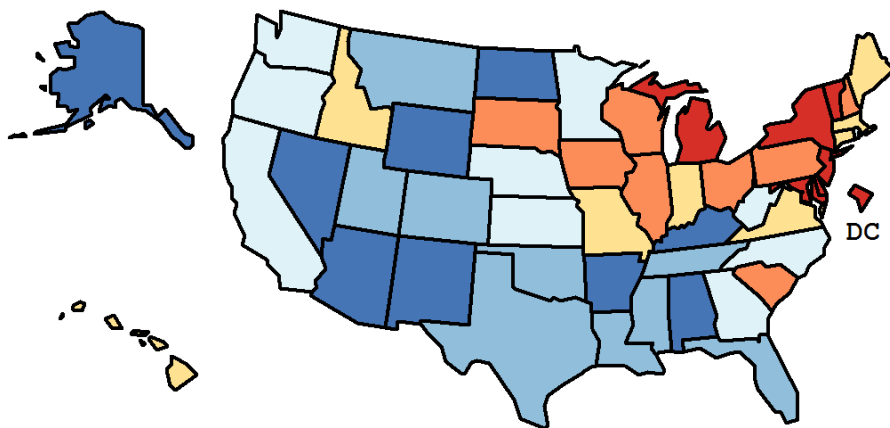
Table 7.14
Cancer of the Corpus and Uterus, NOS (Invasive)

Age-Adjusted Cancer Death^a Rates By State, All Races, 2008-2012

Females

State	Rate	SE	Rank(CI) ^d	PD
TOTAL U.S.	4.37	0.02		
High Five States				
D.C.	7.36 ^b	0.67	01(01,04)	68.33 ^c
Vermont	5.46	0.52	02(01,36)	24.99 ^c
New York	5.35 ^b	0.09	03(02,09)	22.45 ^c
New Jersey	5.33 ^b	0.14	04(02,11)	21.83 ^c
Maryland	5.29 ^b	0.18	05(02,13)	21.06 ^c
Low Five States				
New Mexico	3.26 ^b	0.23	47(34,51)	-25.45 ^c
Wyoming	3.26	0.46	48(13,51)	-25.45 ^c
Arkansas	3.22 ^b	0.19	49(37,51)	-26.44 ^c
Nevada	3.21 ^b	0.21	50(36,51)	-26.67 ^c
Alaska	2.94	0.50	51(16,51)	-32.80 ^c

State	Rate	SE	Rank(CI) ^d	PD	State	Rate	SE	Rank(CI) ^d	PD
Alabama	3.46 ^b	0.15	44(35,51)	-20.78 ^c	Montana	3.81	0.35	37(10,51)	-12.95
Alaska	2.94	0.50	51(16,51)	-32.80 ^c	Nebraska	4.32	0.28	26(06,45)	-1.19
Arizona	3.42 ^b	0.13	45(36,51)	-21.73 ^c	Nevada	3.21 ^b	0.21	50(36,51)	-26.67 ^c
Arkansas	3.22 ^b	0.19	49(37,51)	-26.44 ^c	New Hampshire	4.84	0.34	12(02,38)	10.79
California	4.33	0.07	24(15,31)	-0.93	New Jersey	5.33 ^b	0.14	04(02,11)	21.83 ^c
Colorado	3.68 ^b	0.17	40(27,49)	-15.79 ^c	New Mexico	3.26 ^b	0.23	47(34,51)	-25.45 ^c
Connecticut	4.35	0.20	23(09,39)	-0.52	New York	5.35 ^b	0.09	03(02,09)	22.45 ^c
Delaware	5.21	0.43	06(01,35)	19.06 ^c	North Carolina	4.15	0.12	31(17,39)	-5.12
D.C.	7.36 ^b	0.67	01(01,04)	68.33 ^c	North Dakota	3.42	0.41	46(14,51)	-21.75 ^c
Florida	3.99 ^b	0.08	34(25,40)	-8.73	Ohio	4.90 ^b	0.12	11(04,18)	12.12
Georgia	4.03	0.13	33(19,42)	-7.83	Oklahoma	3.79	0.18	38(22,48)	-13.37
Hawaii	4.42	0.33	18(03,46)	1.16	Oregon	4.08	0.19	32(14,44)	-6.60
Idaho	4.37	0.32	21(03,45)	0.03	Pennsylvania	4.97 ^b	0.11	09(04,16)	13.65
Illinois	4.99 ^b	0.12	08(03,16)	14.18	Rhode Island	4.33	0.35	25(03,47)	-1.04
Indiana	4.50	0.15	16(09,32)	2.92	South Carolina	4.59	0.18	14(06,33)	5.02
Iowa	4.96	0.23	10(02,24)	13.53	South Dakota	4.82	0.45	13(02,44)	10.19
Kansas	4.16	0.22	30(11,45)	-4.75	Tennessee	3.74 ^b	0.14	39(27,48)	-14.46
Kentucky	3.60 ^b	0.17	43(30,50)	-17.58 ^c	Texas	3.66 ^b	0.08	42(34,47)	-16.27 ^c
Louisiana	3.67 ^b	0.17	41(26,50)	-16.07 ^c	Utah	3.87	0.26	36(13,50)	-11.52
Maine	4.36	0.30	22(04,45)	-0.29	Vermont	5.46	0.52	02(01,36)	24.99 ^c
Maryland	5.29 ^b	0.18	05(02,13)	21.06 ^c	Virginia	4.42	0.14	19(11,33)	1.05
Massachusetts	4.39	0.15	20(11,35)	0.43	Washington	4.18	0.15	29(14,40)	-4.30
Michigan	5.06 ^b	0.13	07(02,16)	15.82 ^c	West Virginia	4.27	0.26	27(07,44)	-2.29
Minnesota	4.22	0.17	28(13,40)	-3.38	Wisconsin	4.52	0.16	15(08,32)	3.42
Mississippi	3.90	0.21	35(16,48)	-10.89	Wyoming	3.26	0.46	48(13,51)	-25.45 ^c
Missouri	4.43	0.15	17(10,34)	1.44					



^a US Mortality Files, National Center for Health Statistics, Centers for Disease Control and Prevention. Rates are per 100,000 and are age-adjusted to the 2000 US Std Population (19 age groups - Census P25-1130).

^b Difference between state rate and total U.S. rate is statistically significant ($p < .0002$).

^c Absolute percent difference between state rate and total U.S. rate is 15% or more.

^d Rank of state level death rate and the 95% confidence intervals (low, high) for the rank.

SE Standard error of the rate.

PD Percent difference between state rate and total U.S. rate.

- Statistic not shown. Rate based on less than 16 cases for the time interval.

Table 7.15
Cancer of the Corpus and Uterus, NOS (Invasive)

Estimated United States Cancer Prevalence Counts^a on January 1, 2012
By Race/Ethnicity and Years Since Diagnosis

Years Since Diagnosis	0 to <5	5 to <10	10 to <15	15 to <20	20 to <25	25 to <30	0 to <20 ^e	0 to <37 ^e	>=37 ^g	Complete ^h
<u>Race</u>										
All Races ^b	183,434	127,357	101,371	70,925	47,636	32,609	504,608	598,766	22,846	621,612
White ^b	156,395	112,816	92,247	65,091	44,433	30,759	446,663	535,109	19,170	554,279
Black ^b	16,207	7,915	4,477	2,990	1,678	957	32,295	35,198	730	35,928
Asian/Pacific Islander ^c	7,132	4,407	2,976	+	+	+	16,394	+	+	+
Hispanic ^d	13,533	8,381	5,340	+	+	+	30,687	+	+	+

Estimated prevalence percent^a on January 1, 2012, of the SEER^c population diagnosed in the previous 20 years
By Age at Prevalence and Race/Ethnicity

Age at Prevalence	Age Specific (Crude)										Age-Adjusted ^f All Ages
	All Ages	0-9	10-19	20-29	30-39	40-49	50-59	60-69	70-79	80+	
<u>Race</u>											
All Races ^c	0.2740%	-	-	0.0033%	0.0305%	0.1177%	0.3935%	0.9253%	1.2039%	1.0375%	0.2397%
White ^c	0.3120%	-	-	0.0029%	0.0300%	0.1186%	0.4121%	1.0052%	1.3507%	1.1596%	0.2602%
Black ^c	0.1417%	-	-	0.0040%	0.0240%	0.0808%	0.2209%	0.6058%	0.8518%	0.5672%	0.1552%
Asian/Pacific Islander ^c	0.1984%	-	-	0.0040%	0.0326%	0.1348%	0.4207%	0.7006%	0.6230%	0.4936%	0.1766%
Hispanic ^d	0.1228%	-	-	0.0041%	0.0387%	0.1270%	0.3167%	0.6654%	0.7679%	0.5984%	0.1754%

^a US 2012 cancer prevalence counts are based on 2012 cancer prevalence proportions from the SEER registries and 1/1/2012 US population estimates based on the average of 2011 and 2012 population estimates from the US Bureau of the Census. Prevalence was calculated using the First Malignant Primary Only for a person.

^{b c d} Statistics based on (b) SEER 9 Areas (c) SEER 11 Areas and Rural Georgia (d) NHIA for Hispanic for SEER 11 Areas and Rural Georgia.

^e Maximum limited-duration prevalence: 37 years for 1975-2012 SEER 9 data; 20 years for 1992-2012 SEER 11 data (used to calculate prevalence for Hispanics and Asian Pacific Islanders).

^f Percentages are age-adjusted to the 2000 US Standard Population (19 age groups - Census P25-1130) by 5-year age groups.

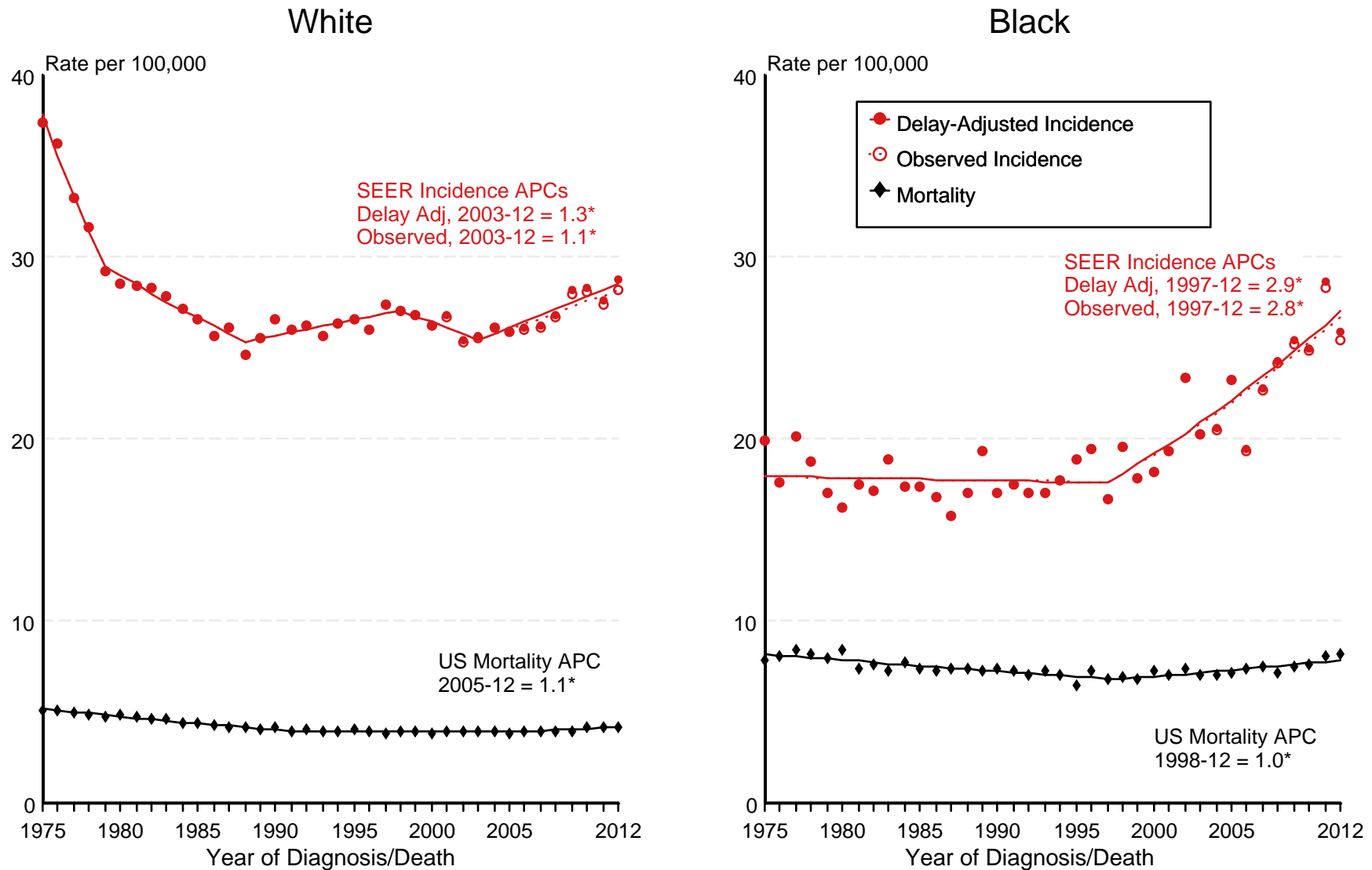
^{g h i} (g) Cases diagnosed more than 37 years ago were estimated using the completeness index method (Capocaccia et. al. 1997, Merrill et. al. 2000). (h) Complete prevalence is obtained by summing 0 to <37 and >=37. (i) Age-specific completeness index was approximated using empirical data from historical Connecticut tumor registry.

- Statistic not shown. Statistic based on fewer than 5 cases estimated alive in SEER for the time interval.

+ Not available.

Figure 7.1

SEER Observed Incidence, SEER Delay Adjusted Incidence and US Death Rates^a Cancer of the Corpus and Uterus, NOS, by Race



Source: SEER 9 areas and US Mortality Files (National Center for Health Statistics, CDC).

^a Rates are age-adjusted to the 2000 US Std Population (19 age groups - Census P25-1103).

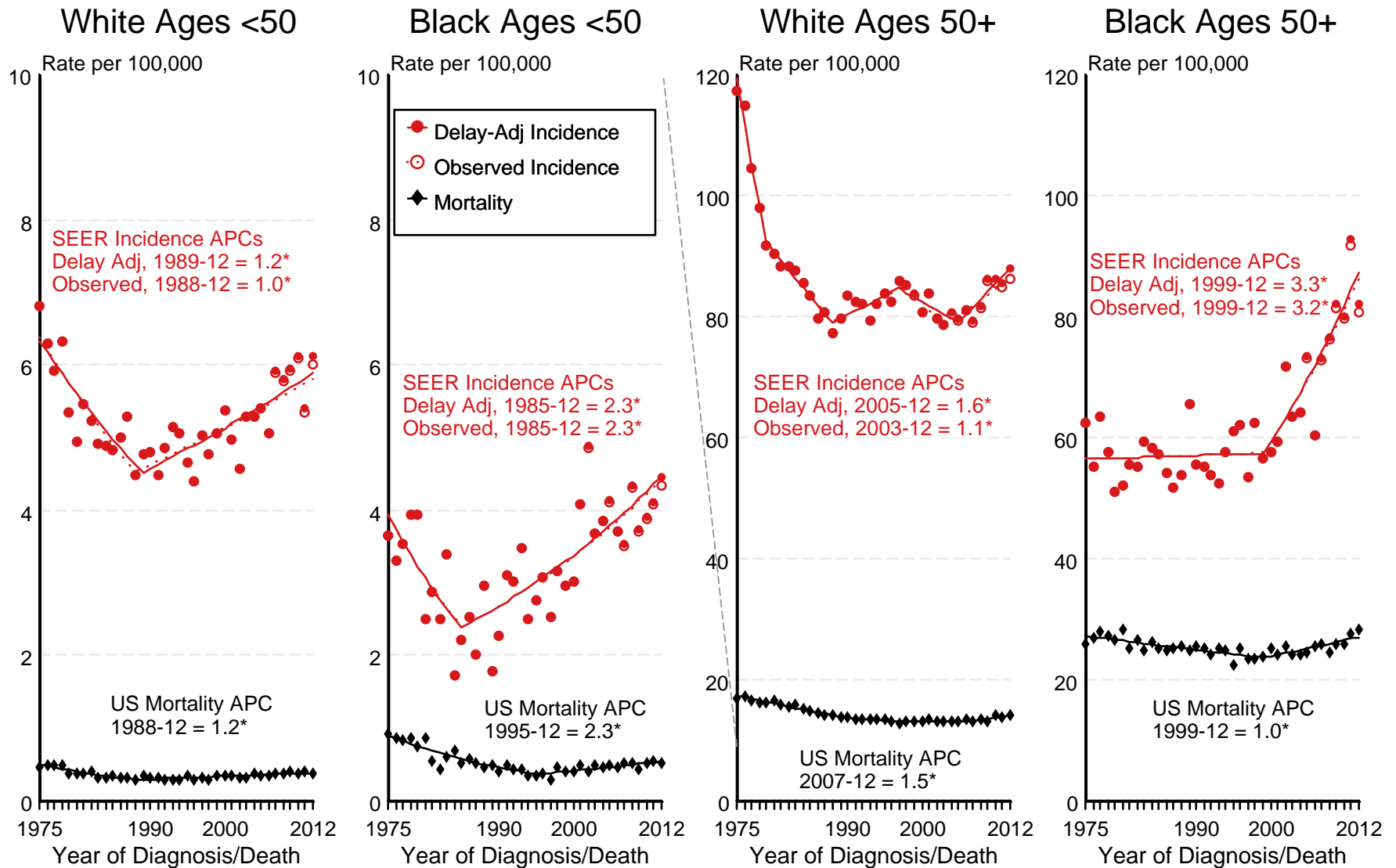
Regression lines and APCs are calculated using the Joinpoint Regression Program Version 4.2.0, April 2015, National Cancer Institute.

The APC is the Annual Percent Change for the regression line segments. The APC shown on the graph is for the most recent trend.

* The APC is significantly different from zero ($p < 0.05$).

Figure 7.2

SEER Observed Incidence, SEER Delay Adjusted Incidence and US Death Rates^a Cancer of the Corpus and Uterus, NOS, by Age and Race



Source: SEER 9 areas and US Mortality Files (National Center for Health Statistics, CDC).

^a Rates are age-adjusted to the 2000 US Std Population (19 age groups - Census P25-1103).

Regression lines and APCs are calculated using the Joinpoint Regression Program Version 4.2.0, April 2015, National Cancer Institute.

The APC is the Annual Percent Change for the regression line segments. The APC shown on the graph is for the most recent trend.

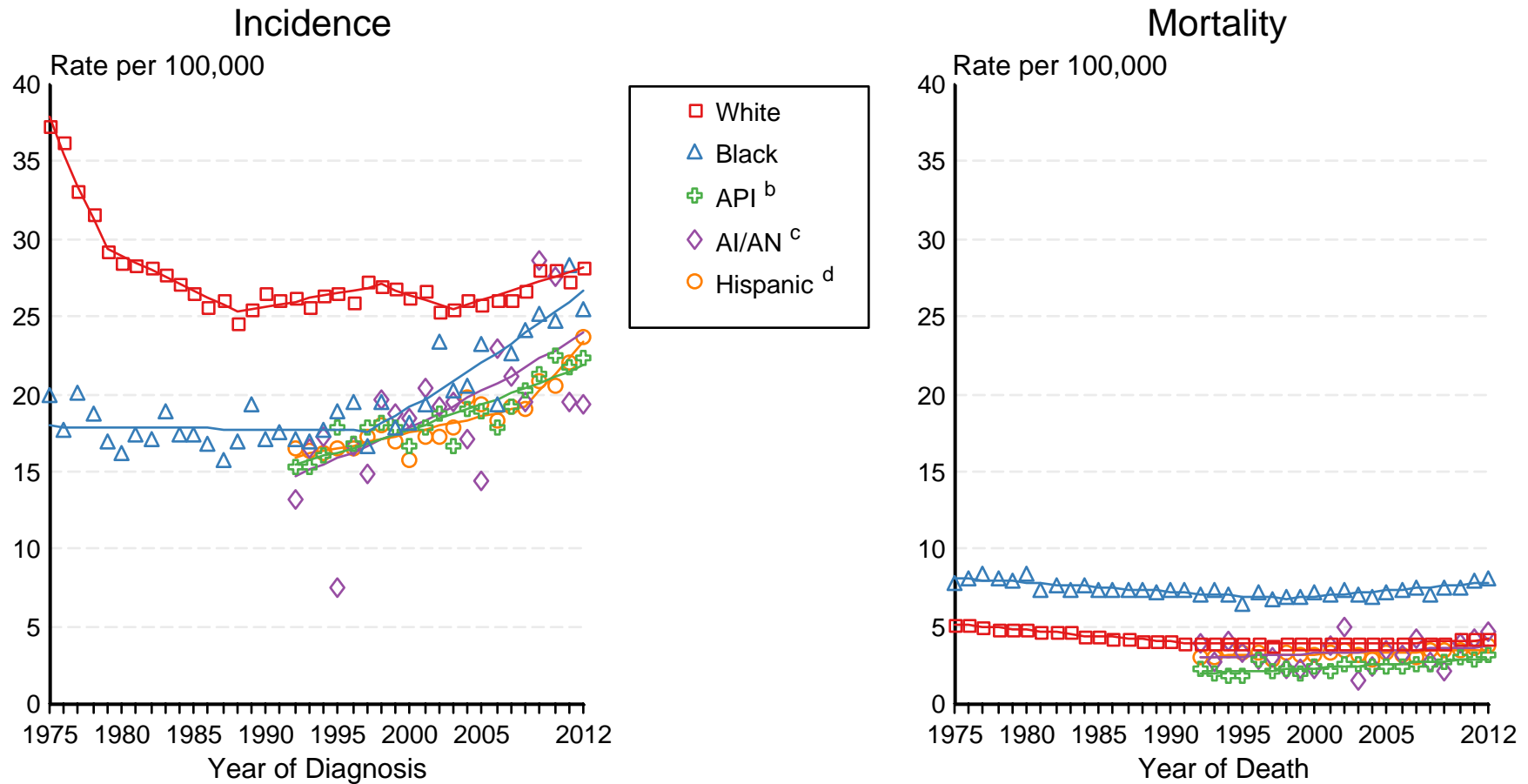
* The APC is significantly different from zero ($p < 0.05$).

Figure 7.3

SEER Incidence and US Death Rates^a Cancer of the Corpus and Uterus, NOS

Joinpoint Analyses for Whites and Blacks from 1975-2012

and for Asian/Pacific Islanders, American Indians/Alaska Natives and Hispanics from 1992-2012



Source: Incidence data for whites and blacks are from the SEER 9 areas (San Francisco, Connecticut, Detroit, Hawaii, Iowa, New Mexico, Seattle, Utah, Atlanta). Incidence data for Asian/Pacific Islanders, American Indians/Alaska Natives and Hispanics are from the SEER 13 Areas (SEER 9 Areas, San Jose-Monterey, Los Angeles, Alaska Native Registry and Rural Georgia). Mortality data are from US Mortality Files, National Center for Health Statistics, CDC.

^a Rates are age-adjusted to the 2000 US Std Population (19 age groups - Census P25-1103).

Regression lines are calculated using the Joinpoint Regression Program Version 4.2.0, April 2015, National Cancer Institute. Joinpoint analyses for Whites and Blacks during the 1975-2012 period allow a maximum of 5 joinpoints. Analyses for other ethnic groups during the period 1992-2012 allow a maximum of 3 joinpoints.

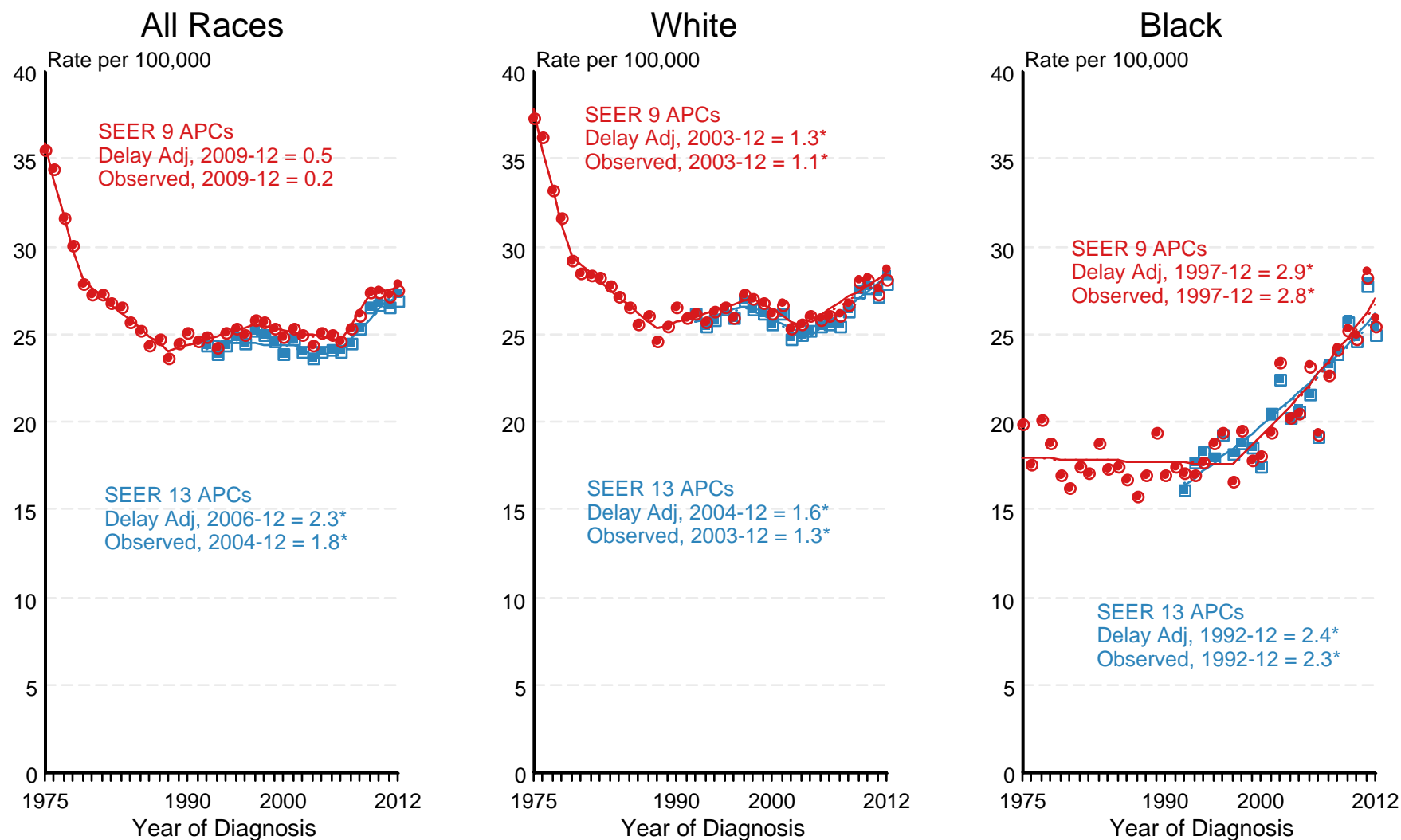
^b API = Asian/Pacific Islander.

^c AI/AN = American Indian/Alaska Native. Rates for American Indian/Alaska Native are based on the CHSDA(Contract Health Service Delivery Area) counties.

^d Hispanic is not mutually exclusive from whites, blacks, Asian/Pacific Islanders, and American Indians/Alaska Natives. Incidence data for Hispanics are based on NHIA and exclude cases from the Alaska Native Registry. Mortality data for Hispanics exclude cases from New Hampshire and Oklahoma.

Figure 7.4

SEER Observed Incidence and SEER Delay Adjusted Incidence Rates^a SEER 9 Areas Compared to SEER 13 Areas Cancer of the Corpus and Uterus, NOS, by Race



● SEER 9 Delay-Adj. Incidence ○ SEER 9 Observed Incidence ■ SEER 13 Delay-Adj. Incidence □ SEER 13 Observed Incidence

Source: SEER 9 areas and SEER 13 areas.

^a Rates are age-adjusted to the 2000 US Std Population (19 age groups - Census P25-1103).

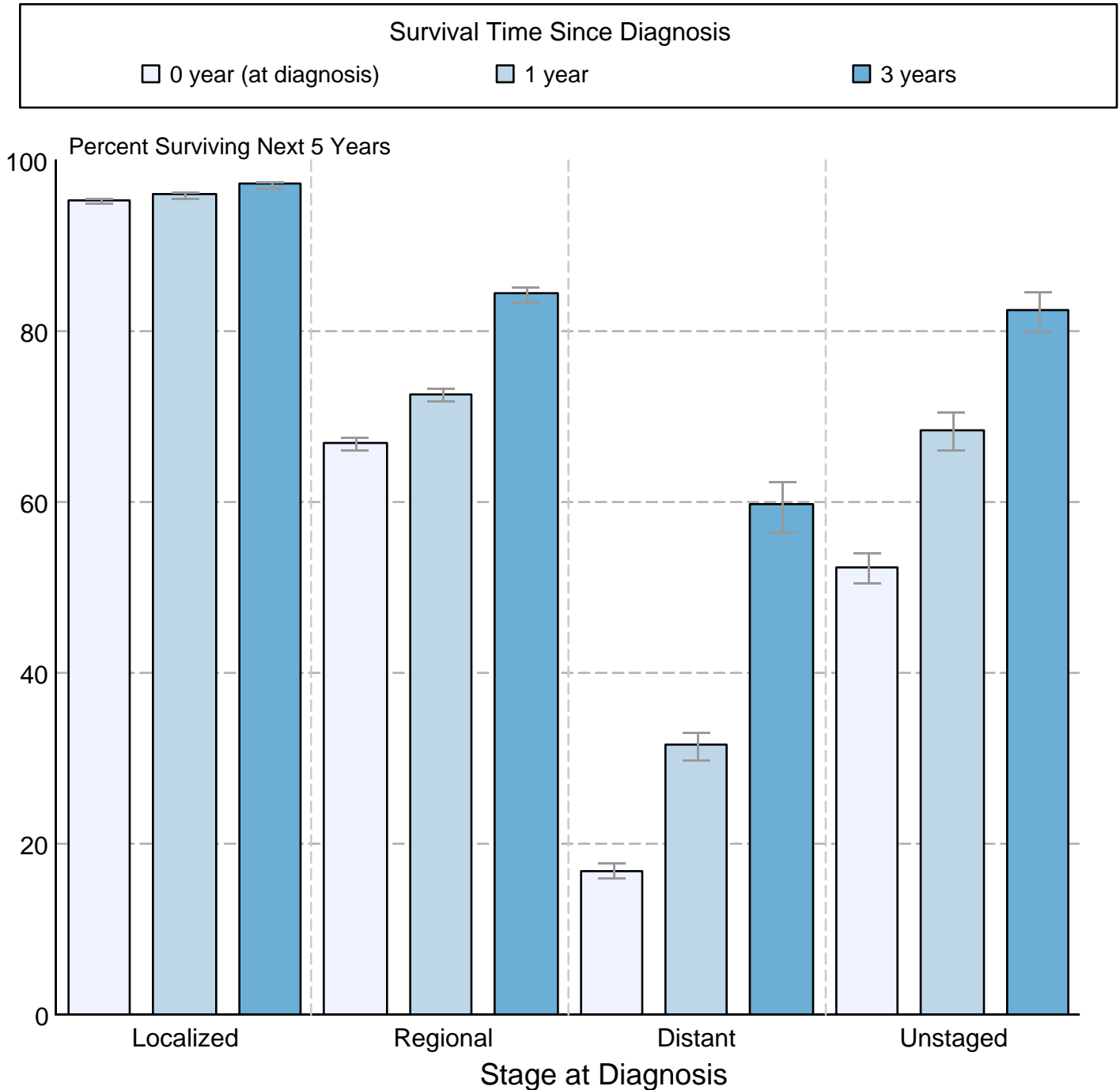
Regression lines and APCs are calculated using the Joinpoint Regression Program Version 4.2.0, April 2015, National Cancer Institute.

The APC is the Annual Percent Change for the regression line segments. The APC shown on the graph is for the most recent trend.

* The APC is significantly different from zero ($p < 0.05$).

Figure 7.5

Cancer of the Corpus and Uterus, NOS
5-Year SEER Conditional Relative Survival and
95% Confidence Intervals
 Probability of surviving the next 5 years given the cohort
 has already survived 0, 1, or 3 years
 1998-2011 by stage at diagnosis



Source: SEER 18 areas (San Francisco, Connecticut, Detroit, Hawaii, Iowa, New Mexico, Seattle, Utah, Atlanta, San Jose-Monterey, Los Angeles, Alaska Native Registry, Rural Georgia, California excluding SF/SJM/LA, Kentucky, Louisiana, New Jersey and Georgia excluding ATL/RG). California excluding SF/SJM/LA, Kentucky, Louisiana, New Jersey and Georgia excluding ATL/RG contribute cases for diagnosis years 2000 and later. The remaining 13 SEER Areas contribute cases for the entire time period. Percent surviving is not shown if based on less than 25 cases. Confidence intervals are not shown if length of the confidence interval is greater than 5 times the standard error.