

Table 1.24
Age-Adjusted SEER Incidence Rates and Trends for the Top 15 Cancer Sites^a by Race/Ethnicity
Both Sexes

All Races	Rate ^b		APC ^c	All Sites	Rate ^b		APC ^c	All Sites	Rate ^b		APC ^c
	2008-2012	2003-2012			2008-2012	2003-2012			2008-2012	2003-2012	
All Sites	454.8	-0.7*		All Sites	463.3	-0.7*		All Sites	478.0	-1.1*	
Breast	67.2	0.0		Breast	68.1	-0.1		Prostate ^f	91.2	-2.4*	
Prostate ^f	62.7	-2.4*		Lung and Bronchus	60.2	-1.8*		Breast	70.8	0.5	
Lung and Bronchus	58.7	-1.9*		Prostate ^f	60.0	-2.7*		Lung and Bronchus	67.0	-2.1*	
Colon and Rectum	42.4	-2.8*		Colon and Rectum	41.5	-2.9*		Colon and Rectum	52.3	-2.8*	
Melanoma of the Skin	21.6	1.2*		Melanoma of the Skin	25.6	1.2*		Kidney and Renal Pelvis	18.1	2.3*	
Urinary Bladder	20.3	-0.9*		Urinary Bladder	22.2	-0.9*		Pancreas	15.7	-0.3	
Non-Hodgkin Lymphoma	19.7	-0.3		Non-Hodgkin Lymphoma	20.6	-0.3		Non-Hodgkin Lymphoma	14.6	-0.4	
Kidney and Renal Pelvis	15.6	1.5*		Kidney and Renal Pelvis	16.1	1.5*		Corpus and Uterus, NOS ^f	13.6	2.6*	
Thyroid	13.5	5.4*		Thyroid	14.3	5.4*		Myeloma	12.8	0.7*	
Corpus and Uterus, NOS ^f	13.4	1.3*		Leukemia	14.0	0.2		Urinary Bladder	12.6	-0.6	
Leukemia	13.3	0.2		Corpus and Uterus, NOS ^f	13.6	1.1*		Stomach	10.9	-2.2*	
Pancreas	12.4	0.7*		Pancreas	12.3	0.9*		Leukemia	10.6	-0.3	
Oral Cavity and Pharynx	11.0	0.5*		Oral Cavity and Pharynx	11.5	0.9*		Liver & IBD ^g	9.8	3.2*	
Liver & IBD ^g	8.2	3.1*		Liver & IBD ^g	7.2	3.8*		Oral Cavity and Pharynx	9.3	-2.3*	
Stomach	7.4	-1.1*		Brain and ONS ^g	7.1	-0.5*		Thyroid	8.0	4.9*	
Asian/Pacific Islander	Rate ^b		APC ^c	All Sites	Rate ^b		APC ^c	All Sites	Rate ^b		APC ^c
	2008-2012	2003-2012			2008-2012	2003-2012			2008-2012	2003-2012	
All Sites	306.8	-0.9*		All Sites	319.7	-1.3*		All Sites	349.9	-1.0*	
Breast	53.1	1.0*		Breast	44.1	-0.1		Prostate ^f	50.7	-3.6*	
Lung and Bronchus	37.1	-1.5*		Colon and Rectum	40.3	-1.6*		Breast	49.4	0.1	
Colon and Rectum	36.1	-2.2*		Lung and Bronchus	39.9	-3.9*		Colon and Rectum	35.8	-2.2*	
Prostate ^f	32.3	-4.6*		Prostate ^f	29.8	-4.7*		Lung and Bronchus	30.4	-2.4*	
Liver & IBD ^g	13.7	-1.3*		Kidney and Renal Pelvis	18.8	-0.3		Non-Hodgkin Lymphoma	17.8	0.0	
Non-Hodgkin Lymphoma	13.6	-0.1		Liver & IBD ^g	13.6	1.7		Kidney and Renal Pelvis	15.4	1.2*	
Thyroid	13.2	5.2*		Non-Hodgkin Lymphoma	12.6	0.2		Liver & IBD ^g	12.5	2.7*	
Stomach	11.2	-3.6*		Corpus and Uterus, NOS ^f	10.5	1.8		Thyroid	11.5	5.3*	
Corpus and Uterus, NOS ^f	10.9	2.6*		Pancreas	9.9	-2.1		Urinary Bladder	11.2	-1.4*	
Pancreas	9.9	1.0*		Stomach	9.5	-2.0		Pancreas	11.1	-0.1	
Urinary Bladder	9.0	-1.6*		Oral Cavity and Pharynx	8.8	2.5		Corpus and Uterus, NOS ^f	11.0	2.2*	
Kidney and Renal Pelvis	8.2	1.3		Urinary Bladder	8.5	-0.9		Stomach	10.9	-2.1*	
Leukemia	7.8	0.0		Thyroid	8.5	6.2*		Leukemia	10.5	0.1	
Oral Cavity and Pharynx	7.6	-0.7		Leukemia	8.4	1.3		Oral Cavity and Pharynx	6.8	1.1*	
Ovary ^{fh}	5.1	-1.2*		Ovary ^{fh}	5.5	-2.1		Ovary ^{fh}	5.9	-1.4*	

Source: SEER 18 areas (San Francisco, Connecticut, Detroit, Hawaii, Iowa, New Mexico, Seattle, Utah, Atlanta, San Jose-Monterey, Los Angeles, Alaska Native Registry, Rural Georgia, California excluding SF/SJM/LA, Kentucky, Louisiana, New Jersey and Georgia excluding ATL/RG).

^a Top 15 cancer sites selected based on 2008-2012 age-adjusted rates for the race/ethnic group.

^b Rates are per 100,000 and age-adjusted to the 2000 US Std Population (19 age groups - Census P25-1130).

^c The APC is the Annual Percent Change over the time interval.

Trends are based on rates age-adjusted to the 2000 US Std Population (19 age groups - Census P25-1130).

^d Rates for American Indian/Alaska Native are based on the CHSDA (Contract Health Service Delivery Area) counties.

^e Hispanic is not mutually exclusive from whites, blacks, Asian/Pacific Islanders, and American Indians/Alaska Natives.

Incidence data for Hispanics are based on NHIA and exclude cases from the Alaska Native Registry.

^f The rates for sex-specific cancer sites are calculated using the population for both sexes combined.

^g IBD = Intrahepatic Bile Duct. ONS = Other Nervous System.

^h Ovary excludes borderline cases or histologies 8442, 8451, 8462, 8472, and 8473.

* The APC is significantly different from zero (p<.05).

- Statistic not shown. Rate based on less than 16 cases for the time interval. Trend based on less than 10 cases for at least one year within the time interval.

Table 1.25
Age-Adjusted SEER Incidence Rates and Trends for the Top 15 Cancer Sites^a by Race/Ethnicity

			Males					
All Races			White			Black		
	Rate ^b	APC ^c		Rate ^b	APC ^c		Rate ^b	APC ^c
	2008-2012	2003-2012		2008-2012	2003-2012		2008-2012	2003-2012
All Sites	516.6	-1.3*	All Sites	519.8	-1.3*	All Sites	590.1	-2.1*
Prostate	137.9	-2.9*	Prostate	130.4	-3.2*	Prostate	214.5	-2.9*
Lung and Bronchus	70.1	-2.6*	Lung and Bronchus	70.3	-2.5*	Lung and Bronchus	90.9	-2.9*
Colon and Rectum	48.9	-3.1*	Colon and Rectum	47.8	-3.3*	Colon and Rectum	61.2	-3.0*
Urinary Bladder	35.8	-1.0*	Urinary Bladder	39.0	-1.0*	Kidney and Renal Pelvis	25.1	1.7*
Melanoma of the Skin	28.2	1.5*	Melanoma of the Skin	33.0	1.4*	Urinary Bladder	21.4	-0.3
Non-Hodgkin Lymphoma	23.9	-0.2	Non-Hodgkin Lymphoma	24.9	-0.2	Non-Hodgkin Lymphoma	17.8	-0.8
Kidney and Renal Pelvis	21.3	1.5*	Kidney and Renal Pelvis	21.9	1.5*	Pancreas	17.2	-0.3
Leukemia	17.0	0.0	Leukemia	17.9	0.0	Liver & IBD ^f	16.2	3.4*
Oral Cavity and Pharynx	16.5	0.5*	Oral Cavity and Pharynx	17.1	0.9*	Myeloma	15.1	0.1
Pancreas	14.0	0.8*	Pancreas	14.0	0.9*	Oral Cavity and Pharynx	14.6	-2.4*
Liver & IBD ^f	12.7	3.2*	Liver & IBD ^f	11.2	3.8*	Stomach	14.6	-3.5*
Stomach	10.1	-1.4*	Stomach	9.2	-0.9*	Leukemia	13.5	-0.6
Myeloma	7.9	1.3*	Brain and ONS ^f	8.4	-0.4	Larynx	8.8	-3.3*
Brain and ONS ^f	7.7	-0.4	Esophagus	8.0	-0.3	Esophagus	7.6	-5.0*
Esophagus	7.6	-1.0*	Myeloma	7.5	1.4*	Brain and ONS ^f	4.9	0.2
Asian/Pacific Islander			American Indian/Alaska Native^d			Hispanic^e		
	Rate ^b	APC ^c		Rate ^b	APC ^c		Rate ^b	APC ^c
	2008-2012	2003-2012		2008-2012	2003-2012		2008-2012	2003-2012
All Sites	325.4	-2.1*	All Sites	340.8	-1.8*	All Sites	395.0	-1.9*
Prostate	74.0	-4.8*	Prostate	67.1	-5.0*	Prostate	114.7	-4.0*
Lung and Bronchus	49.0	-2.3*	Lung and Bronchus	47.6	-3.7*	Colon and Rectum	43.3	-2.4*
Colon and Rectum	42.2	-2.2*	Colon and Rectum	46.3	0.0	Lung and Bronchus	37.9	-3.3*
Liver & IBD ^f	20.9	-1.2	Kidney and Renal Pelvis	24.8	1.0	Non-Hodgkin Lymphoma	20.6	0.3
Non-Hodgkin Lymphoma	16.6	0.1	Liver & IBD ^f	19.9	1.3	Kidney and Renal Pelvis	20.2	0.6
Urinary Bladder	15.8	-1.6*	Urinary Bladder	15.6	-1.0	Urinary Bladder	19.6	-1.5*
Stomach	14.5	-3.9*	Non-Hodgkin Lymphoma	14.6	1.1	Liver & IBD ^f	19.1	2.8*
Kidney and Renal Pelvis	11.6	1.6	Oral Cavity and Pharynx	13.2	4.5	Stomach	14.2	-2.4*
Oral Cavity and Pharynx	11.0	-0.1	Stomach	12.3	-4.1	Leukemia	12.6	-0.3
Pancreas	10.8	0.4	Pancreas	11.1	-	Pancreas	11.9	0.1
Leukemia	9.8	0.3	Leukemia	10.1	2.8	Oral Cavity and Pharynx	10.1	1.1
Thyroid	6.2	6.4*	Esophagus	4.9	-	Myeloma	7.3	0.7
Myeloma	4.6	0.9	Testis	4.8	-	Brain and ONS ^f	5.8	-2.0*
Brain and ONS ^f	4.3	0.3	Myeloma	4.6	-	Esophagus	5.2	-1.2
Esophagus	3.6	-2.8	Larynx	4.3	-	Testis	4.9	2.8*

Source: SEER 18 areas (San Francisco, Connecticut, Detroit, Hawaii, Iowa, New Mexico, Seattle, Utah, Atlanta, San Jose-Monterey, Los Angeles, Alaska Native Registry, Rural Georgia, California excluding SF/SJM/LA, Kentucky, Louisiana, New Jersey and Georgia excluding ATL/RG).

^a Top 15 cancer sites selected based on 2008-2012 age-adjusted rates for the race/ethnic group.

^b Rates are per 100,000 and age-adjusted to the 2000 US Std Population (19 age groups - Census P25-1130).

^c The APC is the Annual Percent Change over the time interval.

Trends are based on rates age-adjusted to the 2000 US Std Population (19 age groups - Census P25-1130).

^d Rates for American Indian/Alaska Native are based on the CHSDA (Contract Health Service Delivery Area) counties.

^e Hispanic is not mutually exclusive from whites, blacks, Asian/Pacific Islanders, and American Indians/Alaska Natives.

Incidence data for Hispanics are based on NHIA and exclude cases from the Alaska Native Registry.

^f IBD = Intrahepatic Bile Duct. ONS = Other Nervous System.

* The APC is significantly different from zero (p<.05).

- Statistic not shown. Rate based on less than 16 cases for the time interval. Trend based on less than 10 cases for at least one year within the time interval.

Table 1.26
Age-Adjusted SEER Incidence Rates and Trends for the Top 15 Cancer Sites^a by Race/Ethnicity

Females

All Races	Rate ^b		APC ^c	All Sites	Rate ^b		APC ^c	All Sites	Rate ^b		APC ^c
	2008-2012	2003-2012			2008-2012	2003-2012			2008-2012	2003-2012	
All Sites	411.2	-0.1		All Sites	423.9	-0.1		All Sites	401.2	-0.2	
Breast	124.8	0.1		Breast	127.9	0.0		Breast	124.4	0.7*	
Lung and Bronchus	50.2	-1.2*		Lung and Bronchus	52.7	-1.2*		Lung and Bronchus	50.8	-1.3*	
Colon and Rectum	37.1	-2.6*		Colon and Rectum	36.3	-2.6*		Colon and Rectum	46.0	-2.8*	
Corpus and Uterus, NOS	25.1	1.6*		Corpus and Uterus, NOS	25.8	1.4*		Corpus and Uterus, NOS	24.0	2.9*	
Thyroid	20.0	5.5*		Thyroid	21.3	5.5*		Pancreas	14.4	-0.3	
Melanoma of the Skin	16.8	0.7		Melanoma of the Skin	20.2	0.8		Kidney and Renal Pelvis	12.8	2.8*	
Non-Hodgkin Lymphoma	16.3	-0.5*		Non-Hodgkin Lymphoma	17.1	-0.5*		Non-Hodgkin Lymphoma	12.1	-0.1	
Ovary ^g	12.1	-1.6*		Ovary ^g	12.8	-1.6*		Thyroid	11.8	5.3*	
Pancreas	11.0	0.6*		Kidney and Renal Pelvis	11.1	1.3*		Myeloma	11.2	1.1	
Kidney and Renal Pelvis	10.8	1.3*		Leukemia	10.9	0.3		Ovary ^g	9.8	-1.4*	
Leukemia	10.4	0.3		Pancreas	10.8	0.7*		Cervix Uteri	9.2	-3.1*	
Urinary Bladder	8.7	-1.3*		Urinary Bladder	9.4	-1.2*		Leukemia	8.5	0.1	
Cervix Uteri	7.7	-1.5*		Cervix Uteri	7.7	-1.0*		Stomach	8.4	-0.9	
Oral Cavity and Pharynx	6.3	0.2		Oral Cavity and Pharynx	6.4	0.6*		Urinary Bladder	6.9	-1.5	
Brain and ONS ^f	5.4	-0.8*		Brain and ONS ^f	5.9	-0.7*		Oral Cavity and Pharynx	5.2	-2.3*	
Asian/Pacific Islander				American Indian/Alaska Native ^d				Hispanic ^e			
	Rate ^b	APC ^c		Rate ^b	APC ^c		Rate ^b	APC ^c			
	2008-2012	2003-2012		2008-2012	2003-2012		2008-2012	2003-2012			
All Sites	297.5	0.1		All Sites	308.8	-0.8		All Sites	322.2	-0.2	
Breast	96.3	0.9*		Breast	82.0	0.0		Breast	92.1	0.2	
Colon and Rectum	31.3	-2.2*		Colon and Rectum	35.7	-3.1*		Colon and Rectum	30.0	-2.0*	
Lung and Bronchus	28.5	-0.3		Lung and Bronchus	34.5	-4.1*		Lung and Bronchus	25.1	-1.3*	
Corpus and Uterus, NOS	19.9	2.6*		Corpus and Uterus, NOS	19.8	2.1		Corpus and Uterus, NOS	20.7	2.4*	
Thyroid	19.3	4.9*		Kidney and Renal Pelvis	13.9	-1.9		Thyroid	18.1	5.5*	
Non-Hodgkin Lymphoma	11.3	-0.4		Thyroid	12.9	6.9*		Non-Hodgkin Lymphoma	15.5	-0.3	
Ovary ^g	9.4	-1.2*		Non-Hodgkin Lymphoma	11.1	-1.2		Kidney and Renal Pelvis	11.6	2.0*	
Pancreas	9.3	1.5*		Ovary ^g	10.0	-2.1		Ovary ^g	11.0	-1.1	
Stomach	8.8	-3.3*		Pancreas	8.9	-2.6		Pancreas	10.3	-0.2	
Liver & IBD ^f	7.9	-1.4		Liver & IBD ^f	8.4	2.2		Cervix Uteri	9.9	-4.4*	
Leukemia	6.3	-0.4		Stomach	7.5	1.5		Leukemia	8.9	0.4	
Cervix Uteri	6.3	-3.2*		Cervix Uteri	7.5	-1.2		Stomach	8.4	-1.8*	
Kidney and Renal Pelvis	5.5	0.8		Leukemia	7.2	0.6		Liver & IBD ^f	7.0	2.4*	
Oral Cavity and Pharynx	4.9	-1.4		Oral Cavity and Pharynx	5.2	-		Urinary Bladder	5.1	-1.6*	
Urinary Bladder	4.0	-1.5		Melanoma of the Skin	4.5	-		Myeloma	4.8	-0.7	

Source: SEER 18 areas (San Francisco, Connecticut, Detroit, Hawaii, Iowa, New Mexico, Seattle, Utah, Atlanta, San Jose-Monterey, Los Angeles, Alaska Native Registry, Rural Georgia, California excluding SF/SJM/LA, Kentucky, Louisiana, New Jersey and Georgia excluding ATL/RG).

^a Top 15 cancer sites selected based on 2008-2012 age-adjusted rates for the race/ethnic group.

^b Rates are per 100,000 and age-adjusted to the 2000 US Std Population (19 age groups - Census P25-1130).

^c The APC is the Annual Percent Change over the time interval.

Trends are based on rates age-adjusted to the 2000 US Std Population (19 age groups - Census P25-1130).

^d Rates for American Indian/Alaska Native are based on the CHSDA(Contract Health Service Delivery Area) counties.

^e Hispanic is not mutually exclusive from whites, blacks, Asian/Pacific Islanders, and American Indians/Alaska Natives.

Incidence data for Hispanics are based on NHIA and exclude cases from the Alaska Native Registry.

^f IBD = Intrahepatic Bile Duct. ONS = Other Nervous System.

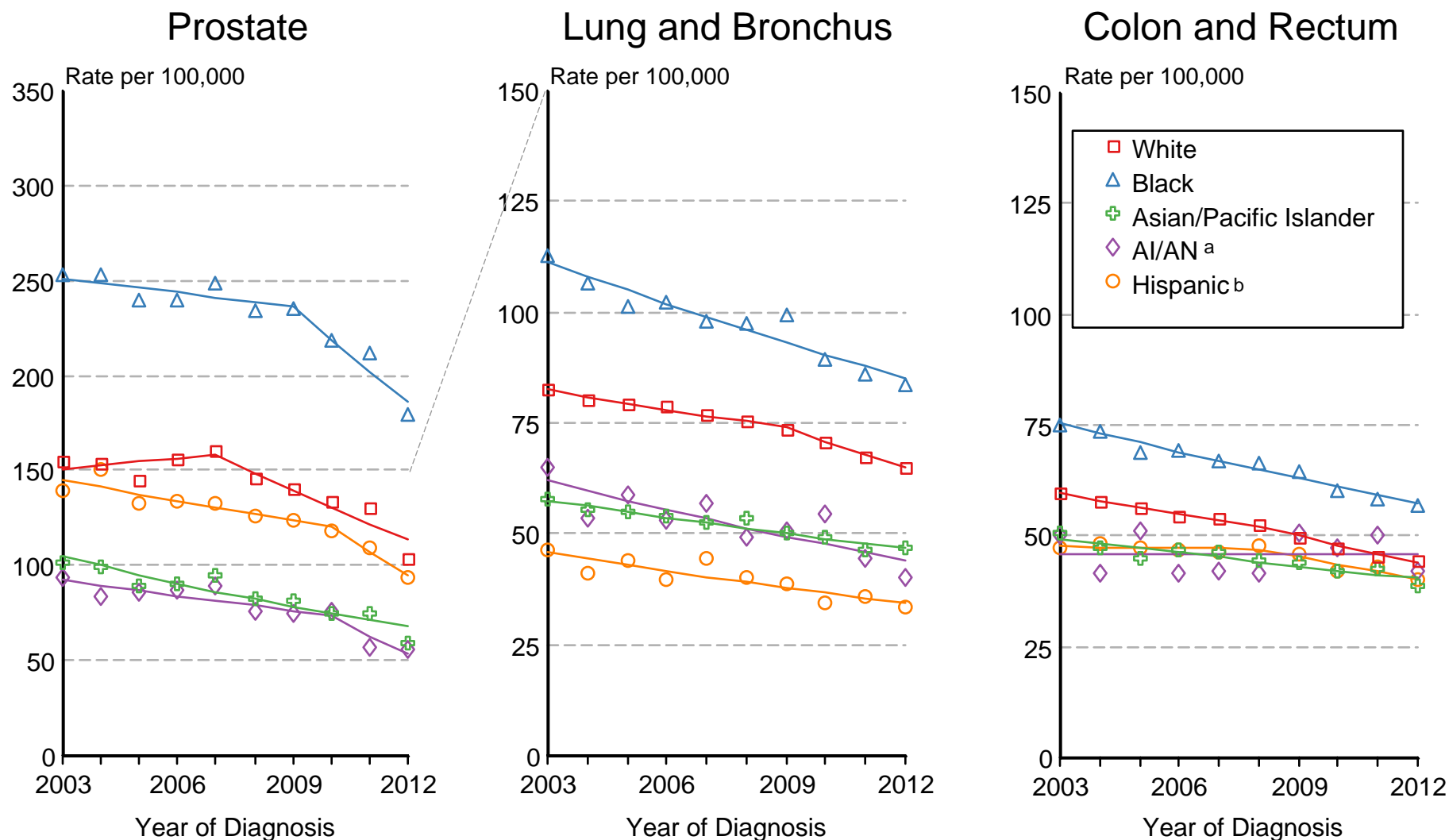
^g Ovary excludes borderline cases or histologies 8442, 8451, 8462, 8472, and 8473.

* The APC is significantly different from zero (p<.05).

- Statistic not shown. Rate based on less than 16 cases for the time interval. Trend based on less than 10 cases for at least one year within the time interval.

Figure 1.13

SEER Incidence 2003-2012 Males by Race/Ethnicity



Source: SEER 18 areas (San Francisco, Connecticut, Detroit, Hawaii, Iowa, New Mexico, Seattle, Utah, Atlanta, San Jose-Monterey, Los Angeles, Alaska Native Registry, Rural Georgia, California excluding SF/SJM/LA, Kentucky, Louisiana, New Jersey and Georgia excluding ATL/RG).

Rates are age-adjusted to the 2000 US Std Population (19 age groups - Census P25-1103).

Regression lines are calculated using the Joinpoint Regression Program Version 4.2.0, April 2015, National Cancer Institute.

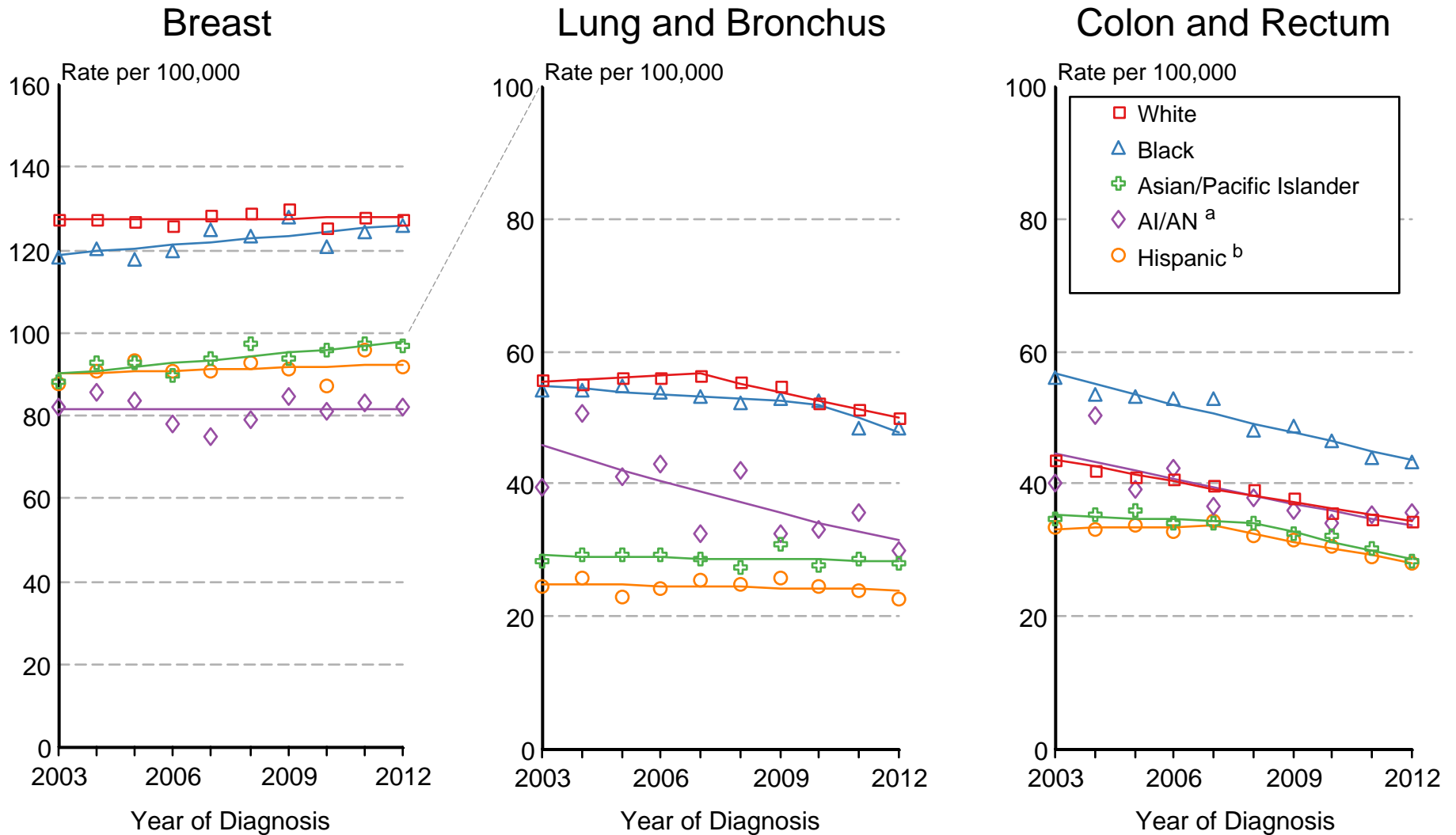
^a Incidence rates for American Indian/Alaska Native (AI/AN) are based on the CHSDA (Contract Health Service Delivery Area) counties.

^b Hispanic is not mutually exclusive from whites, blacks, Asian/Pacific Islanders, and American Indians/Alaska Natives.

Incidence data for Hispanics are based on NHIA and exclude cases from the Alaska Native Registry.

Figure 1.14

SEER Incidence 2003-2012 Females by Race/Ethnicity



Source: SEER 18 areas (San Francisco, Connecticut, Detroit, Hawaii, Iowa, New Mexico, Seattle, Utah, Atlanta, San Jose-Monterey, Los Angeles, Alaska Native Registry, Rural Georgia, California excluding SF/SJM/LA, Kentucky, Louisiana, New Jersey and Georgia excluding ATL/RG). Rates are age-adjusted to the 2000 US Std Population (19 age groups - Census P25-1103).

Regression lines are calculated using the Joinpoint Regression Program Version 4.2.0, April 2015, National Cancer Institute.

^a Incidence rates for American Indian/Alaska Native (AI/AN) are based on the CHSDA (Contract Health Service Delivery Area) counties.

^b Hispanic is not mutually exclusive from whites, blacks, Asian/Pacific Islanders, and American Indians/Alaska Natives. Incidence data for Hispanics are based on NHIA and exclude cases from the Alaska Native Registry.