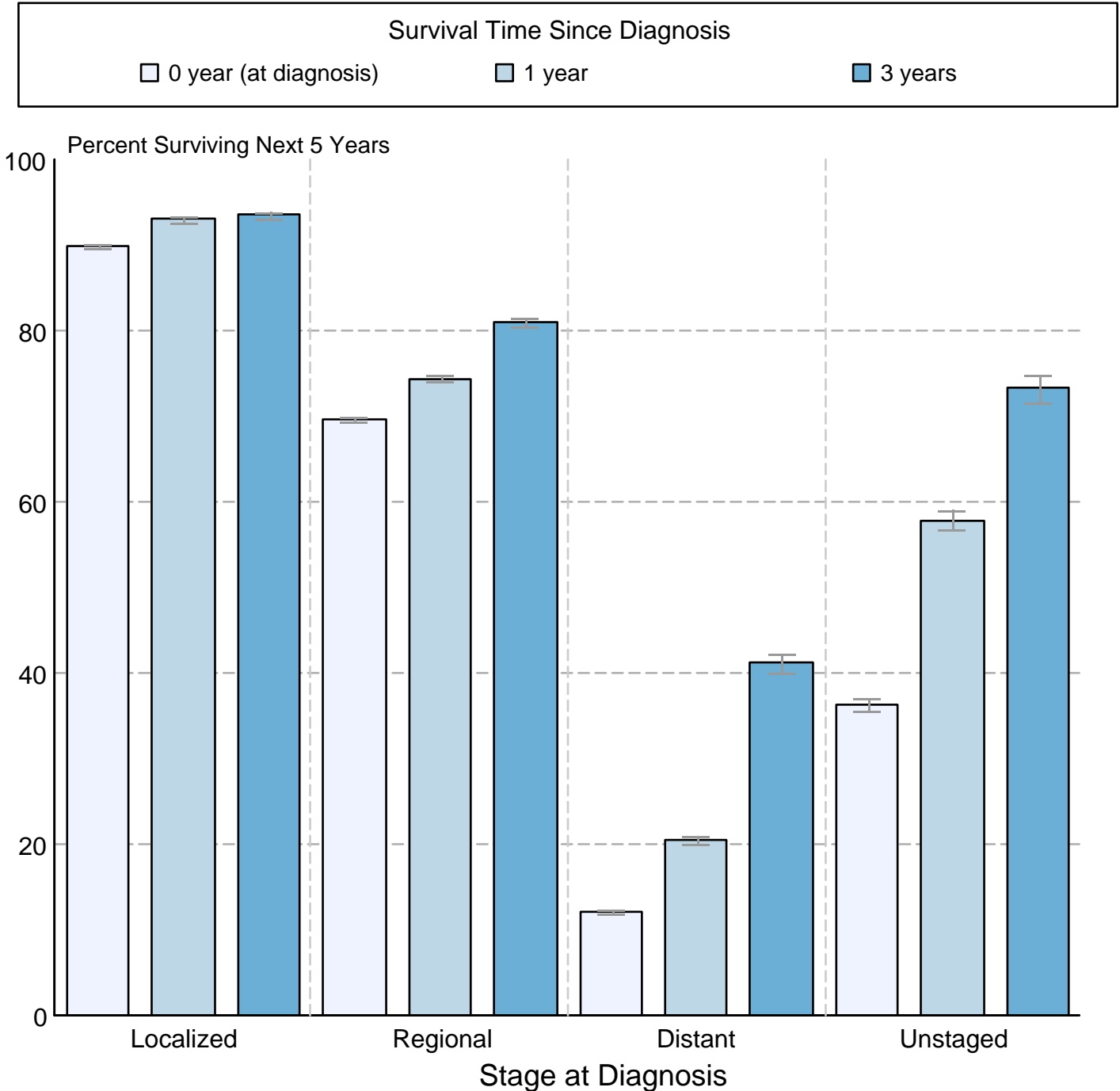


Figure 6.5

Cancer of the Colon and Rectum 5-Year SEER Conditional Relative Survival and 95% Confidence Intervals Probability of surviving the next 5 years given the cohort has already survived 0, 1, or 3 years 1998-2012 by stage at diagnosis



Source: SEER 18 areas (San Francisco, Connecticut, Detroit, Hawaii, Iowa, New Mexico, Seattle, Utah, Atlanta, San Jose-Monterey, Los Angeles, Alaska Native Registry, Rural Georgia, California excluding SF/SJM/LA, Kentucky, Louisiana, New Jersey and Georgia excluding ATL/RG). California excluding SF/SJM/LA, Kentucky, Louisiana, New Jersey and Georgia excluding ATL/RG contribute cases for diagnosis years 2000 and later. The remaining 13 SEER Areas contribute cases for the entire time period. Percent surviving is not shown if based on less than 25 cases. Confidence intervals are not shown if length of the confidence interval is greater than 5 times the standard error.