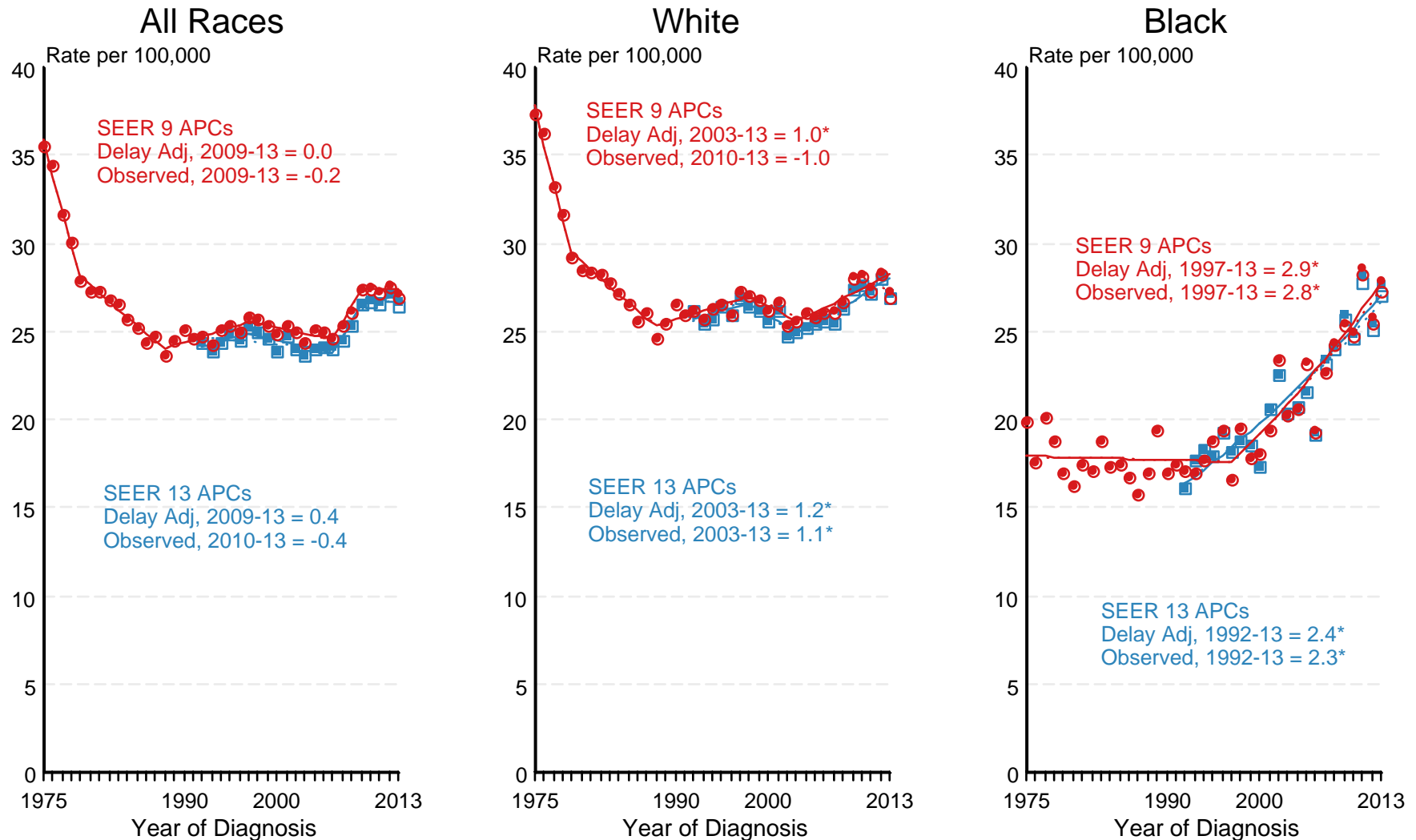


Figure 7.4

# SEER Observed Incidence and SEER Delay Adjusted Incidence Rates<sup>a</sup> SEER 9 Areas Compared to SEER 13 Areas Cancer of the Corpus and Uterus, NOS, by Race



● SEER 9 Delay-Adj. Incidence    ○ SEER 9 Observed Incidence    ■ SEER 13 Delay-Adj. Incidence    □ SEER 13 Observed Incidence

Source: SEER 9 areas and SEER 13 areas.

<sup>a</sup> Rates are age-adjusted to the 2000 US Std Population (19 age groups - Census P25-1103).

Regression lines and APCs are calculated using the Joinpoint Regression Program Version 4.3.0.0, April 2016, National Cancer Institute.

The APC is the Annual Percent Change for the regression line segments. The APC shown on the graph is for the most recent trend.

\* The APC is significantly different from zero ( $p < 0.05$ ).