

Table 13.1
LeukemiaTrends in SEER Incidence^{ab} and U.S. Mortality^c Using the Joinpoint Regression Program,
1975-2013 With up to Five Joinpoints, 1992-2013 With up to Four Joinpoints,
Both Sexes by Race/Ethnicity

	JP Trend 1		JP Trend 2		JP Trend 3		JP Trend 4		JP Trend 5		JP Trend 6		AAPC ^d	
	Years	APC	Years	APC	Years	APC	Years	APC	Years	APC	Years	APC	2004-13	2009-13
<u>SEER 9 Delay-Adjusted Incidence^a, 1975-2013</u>														
All Races	1975-07	0.3*	2007-13	2.4*									1.7*	2.4*
White	1975-04	0.4*	2004-13	1.7*									1.7*	1.7*
Black	1975-13	0.3*											0.3*	0.3*
<u>SEER 13 Delay-Adjusted Incidence^b, 1992-2013</u>														
All Races	1992-05	0.3*	2005-13	1.4*									1.3*	1.4*
White	1992-04	0.4*	2004-13	1.5*									1.5*	1.5*
Black	1992-13	0.8*											0.8*	0.8*
<u>SEER 9 Observed Incidence^a, 1975-2013</u>														
All Races	1975-13	0.3*											0.3*	0.3*
White	1975-13	0.4*											0.4*	0.4*
Black	1975-13	0.0											0.0	0.0
<u>SEER 13 Observed Incidence^b, 1992-2013</u>														
All Races	1992-13	0.2*											0.2*	0.2*
White	1992-13	0.4*											0.4*	0.4*
White NH ^{ef}	1992-13	0.4*											0.4*	0.4*
Black	1992-13	0.2											0.2	0.2
Black NH ^{ef}	1992-13	0.2											0.2	0.2
API ^e	1992-13	-0.2											-0.2	-0.2
AI/AN ^{eg}	1992-13	1.7											1.7	1.7
Hispanic ^f	1992-13	0.5*											0.5*	0.5*
<u>U.S. Cancer Mortality^c, 1975-2013</u>														
All Races	1975-80	0.6	1980-88	-0.6*	1988-91	0.7	1991-01	-0.6*	2001-13	-1.0*			-1.0*	-1.0*
White	1975-80	0.5	1980-88	-0.7*	1988-91	0.7	1991-01	-0.4*	2001-13	-0.9*			-0.9*	-0.9*
Black	1975-93	0.5*	1993-13	-1.3*									-1.3*	-1.3*
<u>U.S. Cancer Mortality^c, 1992-2013</u>														
All Races	1992-01	-0.5*	2001-13	-1.0*									-1.0*	-1.0*
White	1992-01	-0.4*	2001-13	-0.9*									-0.9*	-0.9*
White NH ^{ef}	1992-01	-0.3*	2001-13	-0.8*									-0.8*	-0.8*
Black	1992-13	-1.2*											-1.2*	-1.2*
Black NH ^{ef}	1992-13	-1.1*											-1.1*	-1.1*
API ^e	1992-13	-0.7*											-0.7*	-0.7*
AI/AN ^{eg}	1992-13	-0.3											-0.3	-0.3
Hispanic ^f	1992-96	2.3	1996-11	-0.9*	2011-13	3.6							0.1	1.4

Joinpoint Regression Program Version 4.3.0.0, April 2016, National Cancer Institute. (<http://surveillance.cancer.gov/joinpoint/>).

The APC is the Annual Percent Change based on rates age-adjusted to the 2000 US Std Population (19 age groups - Census P25-1130).

Trends are from the SEER 9 areas (San Francisco, Connecticut, Detroit, Hawaii, Iowa, New Mexico, Seattle, Utah, and Atlanta).

Trends are from the SEER 13 areas (SEER 9 Areas, Los Angeles, San Jose-Monterey, Rural Georgia, and the Alaska Native Registry).

Trends are from US Mortality Files, National Center for Health Statistics, Centers for Disease Control and Prevention.

The AAPC is the Average Annual Percent Change and is based on the APCs calculated by Joinpoint.

API - Asian/Pacific Islander, AI/AN - American Indian/Alaska Native, NH - Non-Hispanic

Hispanic and Non-Hispanic are not mutually exclusive from whites, blacks, Asian/Pacific Islanders, and American Indians/Alaska

Natives. Incidence data for Hispanics and Non-Hispanics are based on NHIA and exclude cases from the Alaska Native Registry.

The Hispanic and Non-Hispanic mortality trends exclude deaths from New Hampshire and Oklahoma.

Data for American Indian/Alaska Native are based on the CHSDA (Contract Health Service Delivery Area) counties.

* The APC/AAPC is significantly different from zero (p<.05).

- Joinpoint regression line analysis could not be performed on data series.

Table 13.2
LeukemiaTrends in SEER Incidence^{ab} and U.S. Mortality^c Using the Joinpoint Regression Program,
1975-2013 With up to Five Joinpoints, 1992-2013 With up to Four Joinpoints,
Males by Race/Ethnicity

	JP Trend 1		JP Trend 2		JP Trend 3		JP Trend 4		JP Trend 5		JP Trend 6		AAPC ^d	
	Years	APC	Years	APC	Years	APC	Years	APC	Years	APC	Years	APC	2004-13	2009-13
<u>SEER 9 Delay-Adjusted Incidence^a, 1975-2013</u>														
All Races	1975-06	0.2*	2006-13	1.8*									1.5*	1.8*
White	1975-99	0.1	1999-13	1.0*									1.0*	1.0*
Black	1975-13	0.3											0.3	0.3
<u>SEER 13 Delay-Adjusted Incidence^b, 1992-2013</u>														
All Races	1992-06	0.2	2006-13	1.4*									1.2*	1.4*
White	1992-13	0.7*											0.7*	0.7*
Black	1992-13	0.8*											0.8*	0.8*
<u>SEER 9 Observed Incidence^a, 1975-2013</u>														
All Races	1975-13	0.1*											0.1*	0.1*
White	1975-13	0.2*											0.2*	0.2*
Black	1975-13	0.0											0.0	0.0
<u>SEER 13 Observed Incidence^b, 1992-2013</u>														
All Races	1992-13	0.1											0.1	0.1
White	1992-13	0.1											0.1	0.1
White NH ^{ef}	1992-13	0.2*											0.2*	0.2*
Black	1992-13	0.2											0.2	0.2
Black NH ^{ef}	1992-13	0.3											0.3	0.3
API ^e	1992-13	-0.2											-0.2	-0.2
AI/AN ^{eg}	1992-13	2.2											2.2	2.2
Hispanic ^f	1992-13	0.3											0.3	0.3
<u>U.S. Cancer Mortality^c, 1975-2013</u>														
All Races	1975-80	0.5	1980-87	-0.7*	1987-95	0.1	1995-13	-0.9*					-0.9*	-0.9*
White	1975-80	0.4	1980-87	-0.8*	1987-95	0.2	1995-13	-0.8*					-0.8*	-0.8*
Black	1975-91	1.0*	1991-13	-1.2*									-1.2*	-1.2*
<u>U.S. Cancer Mortality^c, 1992-2013</u>														
All Races	1992-02	-0.6*	2002-13	-1.0*									-1.0*	-1.0*
White	1992-13	-0.7*											-0.7*	-0.7*
White NH ^{ef}	1992-13	-0.7*											-0.7*	-0.7*
Black	1992-13	-1.2*											-1.2*	-1.2*
Black NH ^{ef}	1992-13	-1.1*											-1.1*	-1.1*
API ^e	1992-13	-0.6*											-0.6*	-0.6*
AI/AN ^{eg}	1992-13	0.1											0.1	0.1
Hispanic ^f	1992-13	-0.4*											-0.4*	-0.4*

Joinpoint Regression Program Version 4.3.0.0, April 2016, National Cancer Institute. (<http://surveillance.cancer.gov/joinpoint/>).^a The APC is the Annual Percent Change based on rates age-adjusted to the 2000 US Std Population (19 age groups - Census P25-1130).
^b Trends are from the SEER 9 areas (San Francisco, Connecticut, Detroit, Hawaii, Iowa, New Mexico, Seattle, Utah, and Atlanta).^c Trends are from the SEER 13 areas (SEER 9 Areas, Los Angeles, San Jose-Monterey, Rural Georgia, and the Alaska Native Registry).^d Trends are from US Mortality Files, National Center for Health Statistics, Centers for Disease Control and Prevention.^e The AAPC is the Average Annual Percent Change and is based on the APCs calculated by Joinpoint.^f API - Asian/Pacific Islander, AI/AN - American Indian/Alaska Native, NH - Non-Hispanic

Hispanic and Non-Hispanic are not mutually exclusive from whites, blacks, Asian/Pacific Islanders, and American Indians/Alaska Natives. Incidence data for Hispanics and Non-Hispanics are based on NHIA and exclude cases from the Alaska Native Registry.

The Hispanic and Non-Hispanic mortality trends exclude deaths from New Hampshire and Oklahoma.

^g Data for American Indian/Alaska Native are based on the CHSDA (Contract Health Service Delivery Area) counties.

* The APC/AAPC is significantly different from zero (p<.05).

- Joinpoint regression line analysis could not be performed on data series.

Table 13.3
LeukemiaTrends in SEER Incidence^{ab} and U.S. Mortality^c Using the Joinpoint Regression Program,
1975-2013 With up to Five Joinpoints, 1992-2013 With up to Four Joinpoints,
Females by Race/Ethnicity

	JP Trend 1		JP Trend 2		JP Trend 3		JP Trend 4		JP Trend 5		JP Trend 6		AAPC ^d	
	Years	APC	Years	APC	Years	APC	Years	APC	Years	APC	Years	APC	2004-13	2009-13
<u>SEER 9 Delay-Adjusted Incidence^a, 1975-2013</u>														
All Races	1975-07	0.3*	2007-13	2.5*									1.7*	2.5*
White	1975-04	0.4*	2004-13	1.8*									1.8*	1.8*
Black	1975-13	0.3											0.3	0.3
<u>SEER 13 Delay-Adjusted Incidence^b, 1992-2013</u>														
All Races	1992-13	0.8*											0.8*	0.8*
White	1992-13	0.9*											0.9*	0.9*
Black	1992-13	0.7*											0.7*	0.7*
<u>SEER 9 Observed Incidence^a, 1975-2013</u>														
All Races	1975-13	0.3*											0.3*	0.3*
White	1975-13	0.4*											0.4*	0.4*
Black	1975-13	0.0											0.0	0.0
<u>SEER 13 Observed Incidence^b, 1992-2013</u>														
All Races	1992-13	0.3*											0.3*	0.3*
White	1992-13	0.5*											0.5*	0.5*
White NH ^{ef}	1992-13	0.5*											0.5*	0.5*
Black	1992-13	0.2											0.2	0.2
Black NH ^{ef}	1992-13	0.2											0.2	0.2
API ^e	1992-13	-0.1											-0.1	-0.1
AI/AN ^{eg}	1992-13	1.7											1.7	1.7
Hispanic ^f	1992-13	0.7*											0.7*	0.7*
<u>U.S. Cancer Mortality^c, 1975-2013</u>														
All Races	1975-80	0.7	1980-99	-0.4*	1999-13	-1.2*							-1.2*	-1.2*
White	1975-80	0.7	1980-00	-0.4*	2000-13	-1.1*							-1.1*	-1.1*
Black	1975-93	0.4	1993-13	-1.2*									-1.2*	-1.2*
<u>U.S. Cancer Mortality^c, 1992-2013</u>														
All Races	1992-00	-0.5*	2000-13	-1.2*									-1.2*	-1.2*
White	1992-00	-0.4*	2000-13	-1.1*									-1.1*	-1.1*
White NH ^{ef}	1992-00	-0.3	2000-13	-1.1*									-1.1*	-1.1*
Black	1992-13	-1.2*											-1.2*	-1.2*
Black NH ^{ef}	1992-13	-1.1*											-1.1*	-1.1*
API ^e	1992-13	-0.7											-0.7	-0.7
AI/AN ^{eg}	1992-13	-0.9											-0.9	-0.9
Hispanic ^f	1992-13	-0.5*											-0.5*	-0.5*

Joinpoint Regression Program Version 4.3.0.0, April 2016, National Cancer Institute. (<http://surveillance.cancer.gov/joinpoint/>).

The APC is the Annual Percent Change based on rates age-adjusted to the 2000 US Std Population (19 age groups - Census P25-1130).

Trends are from the SEER 9 areas (San Francisco, Connecticut, Detroit, Hawaii, Iowa, New Mexico, Seattle, Utah, and Atlanta).

Trends are from the SEER 13 areas (SEER 9 Areas, Los Angeles, San Jose-Monterey, Rural Georgia, and the Alaska Native Registry).

Trends are from US Mortality Files, National Center for Health Statistics, Centers for Disease Control and Prevention.

The AAPC is the Average Annual Percent Change and is based on the APCs calculated by Joinpoint.

API - Asian/Pacific Islander, AI/AN - American Indian/Alaska Native, NH - Non-Hispanic

Hispanic and Non-Hispanic are not mutually exclusive from whites, blacks, Asian/Pacific Islanders, and American Indians/Alaska

Natives. Incidence data for Hispanics and Non-Hispanics are based on NHIA and exclude cases from the Alaska Native Registry.

The Hispanic and Non-Hispanic mortality trends exclude deaths from New Hampshire and Oklahoma.

Data for American Indian/Alaska Native are based on the CHSDA (Contract Health Service Delivery Area) counties.

* The APC/AAPC is significantly different from zero (p<.05).

- Joinpoint regression line analysis could not be performed on data series.

Table 13.4
LeukemiaDelay-adjusted SEER Incidence^a Rates by Year, Race and Sex

Year of Diagnosis:	All Races			Whites			Blacks		
	Total	Males	Females	Total	Males	Females	Total	Males	Females
1975	12.80	16.93	9.96	13.10	17.49	10.10	11.58	16.33	8.47
1976	13.55	18.49	10.21	13.84	19.12	10.31	11.37	14.32	9.39
1977	12.74	16.34	10.22	13.20	17.04	10.52	10.15	13.61	7.72
1978	12.87	17.25	9.79	13.54	18.30	10.26	9.16	11.42	7.47
1979	12.56	16.79	9.70	13.03	17.56	10.02	10.60	13.52	8.64
1980	12.93	17.36	9.85	13.28	17.91	10.12	12.18	16.11	9.47
1981	12.38	16.47	9.65	12.65	17.03	9.82	12.27	14.47	10.37
1982	13.15	18.23	9.71	13.50	18.77	9.95	10.75	15.16	7.91
1983	13.15	17.81	9.91	13.48	18.43	10.07	12.48	15.95	10.06
1984	13.01	17.11	10.12	13.47	17.98	10.35	10.68	11.87	9.61
1985	13.38	17.78	10.38	13.75	18.30	10.64	12.32	17.03	9.30
1986	12.84	17.54	9.51	13.39	18.38	9.92	10.23	13.20	8.09
1987	13.36	17.76	10.33	13.80	18.47	10.61	12.57	17.60	9.26
1988	12.97	17.52	9.70	13.42	18.29	9.99	11.55	14.03	9.42
1989	13.47	17.69	10.49	14.00	18.33	11.00	11.26	15.80	8.11
1990	12.92	17.35	9.80	13.54	18.27	10.26	11.45	15.03	8.89
1991	13.08	16.81	10.25	13.71	17.77	10.60	10.81	12.09	9.98
1992	13.06	17.55	9.81	13.65	18.71	10.02	10.68	13.91	8.42
1993	13.09	17.10	10.08	13.66	18.03	10.36	11.68	15.29	9.14
1994	13.09	17.00	10.21	13.78	17.93	10.74	9.86	12.71	7.78
1995	13.62	17.80	10.51	14.50	18.91	11.23	9.97	13.69	7.42
1996	13.19	17.04	10.42	13.78	17.85	10.87	10.77	14.00	8.73
1997	13.24	17.65	10.03	14.06	18.74	10.67	10.67	14.23	8.29
1998	13.23	17.22	10.28	14.02	18.11	10.98	10.02	14.44	7.27
1999	12.87	17.19	9.68	13.51	17.99	10.16	10.62	14.18	8.32
2000	13.76	17.85	10.69	14.46	18.81	11.20	11.77	13.78	10.27
2001	14.44	18.78	11.17	15.38	19.88	11.98	11.93	14.60	10.07
2002	13.64	18.03	10.33	14.73	19.41	11.16	9.00	11.89	7.00
2003	13.70	17.95	10.47	14.48	19.08	10.97	11.48	14.95	9.00
2004	13.94	18.16	10.74	14.65	19.02	11.25	13.00	17.84	9.94
2005	14.01	18.38	10.64	14.94	19.84	11.11	11.60	13.15	10.47
2006	14.14	17.73	11.46	15.21	18.85	12.48	11.42	15.61	8.54
2007	13.86	18.23	10.54	14.97	19.57	11.40	10.23	14.19	7.78
2008	14.52	18.91	11.08	15.48	20.11	11.79	11.38	15.51	8.39
2009	14.25	18.39	11.04	15.19	19.59	11.68	11.73	15.93	8.94
2010	15.09	19.80	11.51	16.18	21.13	12.33	11.61	15.51	9.26
2011	15.48	19.92	11.90	16.47	21.12	12.68	13.30	16.00	11.13
2012	15.59	19.78	12.30	16.67	20.93	13.25	13.15	16.81	10.69
2013	15.81	20.35	12.21	17.12	21.85	13.31	12.78	16.65	9.92

Additional information on the model used to delay-adjust SEER Incidence rates can be found at [\(http://surveillance.cancer.gov/delay/\)](http://surveillance.cancer.gov/delay/).

^a SEER 9 areas (San Francisco, Connecticut, Detroit, Hawaii, Iowa, New Mexico, Seattle, Utah, and Atlanta). Rates are per 100,000 and are age-adjusted to the 2000 US Std Population (19 age groups - Census P25-1130).

- Delay-adjusted rate is not shown for observed rates based on less than 16 cases for the time interval.

Table 13.5
LeukemiaAge-adjusted SEER Incidence^a Rates by Year, Race and Sex

Year of Diagnosis:	All Races			Whites			Blacks		
	Total	Males	Females	Total	Males	Females	Total	Males	Females
1975-2013	13.39	17.58	10.31	14.06	18.51	10.78	11.09	14.39	8.82
1975	12.80	16.93	9.96	13.10	17.49	10.10	11.58	16.33	8.47
1976	13.55	18.49	10.21	13.84	19.12	10.31	11.37	14.32	9.39
1977	12.74	16.34	10.22	13.20	17.04	10.52	10.15	13.61	7.72
1978	12.87	17.25	9.79	13.54	18.30	10.26	9.16	11.42	7.47
1979	12.56	16.79	9.70	13.03	17.56	10.02	10.60	13.52	8.64
1980	12.93	17.36	9.85	13.28	17.91	10.12	12.18	16.11	9.47
1981	12.38	16.47	9.65	12.65	17.03	9.82	12.27	14.47	10.37
1982	13.15	18.23	9.71	13.50	18.77	9.95	10.75	15.16	7.91
1983	13.15	17.81	9.91	13.48	18.43	10.07	12.48	15.95	10.06
1984	13.01	17.11	10.12	13.47	17.98	10.35	10.68	11.87	9.61
1985	13.38	17.78	10.38	13.75	18.30	10.64	12.32	17.03	9.30
1986	12.84	17.54	9.51	13.39	18.38	9.92	10.23	13.20	8.09
1987	13.36	17.76	10.33	13.80	18.47	10.61	12.57	17.60	9.26
1988	12.97	17.52	9.70	13.42	18.29	9.99	11.55	14.03	9.42
1989	13.47	17.69	10.49	14.00	18.33	11.00	11.26	15.80	8.11
1990	12.92	17.35	9.80	13.54	18.27	10.26	11.45	15.03	8.89
1991	13.08	16.81	10.25	13.71	17.77	10.60	10.81	12.09	9.98
1992	13.06	17.55	9.81	13.65	18.71	10.02	10.68	13.91	8.42
1993	13.09	17.10	10.08	13.66	18.03	10.36	11.68	15.29	9.14
1994	13.09	17.00	10.21	13.78	17.93	10.74	9.86	12.71	7.78
1995	13.62	17.80	10.51	14.50	18.91	11.23	9.97	13.69	7.42
1996	13.19	17.04	10.42	13.78	17.85	10.87	10.77	14.00	8.73
1997	13.24	17.65	10.03	14.06	18.74	10.67	10.67	14.23	8.29
1998	13.23	17.22	10.28	14.02	18.11	10.98	10.02	14.44	7.27
1999	12.87	17.19	9.68	13.51	17.99	10.16	10.62	14.18	8.32
2000	13.76	17.85	10.69	14.46	18.81	11.20	11.77	13.78	10.27
2001	14.44	18.78	11.17	15.38	19.88	11.98	11.93	14.60	10.07
2002	13.64	18.03	10.33	14.73	19.41	11.16	9.00	11.89	7.00
2003	13.70	17.95	10.47	14.48	19.08	10.97	11.48	14.95	9.00
2004	13.94	18.16	10.74	14.65	19.02	11.25	13.00	17.84	9.94
2005	13.88	18.20	10.55	14.79	19.63	11.01	11.48	13.02	10.36
2006	13.88	17.38	11.27	14.90	18.46	12.24	11.18	15.28	8.36
2007	13.48	17.70	10.27	14.52	18.97	11.07	9.88	13.70	7.52
2008	13.98	18.18	10.70	14.85	19.27	11.33	10.90	14.82	8.05
2009	13.58	17.47	10.56	14.40	18.54	11.10	11.08	15.04	8.46
2010	14.24	18.63	10.91	15.19	19.79	11.61	10.88	14.53	8.68
2011	14.37	18.42	11.11	15.19	19.41	11.74	12.24	14.68	10.26
2012	14.14	17.85	11.22	14.99	18.75	11.98	11.80	15.04	9.62
2013	13.82	17.71	10.73	14.80	18.82	11.55	11.03	14.38	8.54

^a SEER 9 areas (San Francisco, Connecticut, Detroit, Hawaii, Iowa, New Mexico, Seattle, Utah, and Atlanta). Rates are per 100,000 and are age-adjusted to the 2000 US Std Population (19 age groups - Census P25-1130).
- Statistic not shown. Rate based on less than 16 cases for the time interval.

Table 13.6
Acute Lymphocytic Leukemia

Age-adjusted SEER Incidence^a Rates by Year, Race and Sex

Year of Diagnosis:	All Races			Whites			Blacks		
	Total	Males	Females	Total	Males	Females	Total	Males	Females
1975-2013	1.37	1.58	1.18	1.45	1.67	1.25	0.86	0.99	0.74
1975	0.93	1.12	0.76	0.99	1.23	0.78	-	-	-
1976	1.08	1.29	0.93	1.09	1.34	0.91	0.79	-	-
1977	1.10	1.30	0.91	1.17	1.38	0.96	-	-	-
1978	1.03	1.24	0.83	1.11	1.33	0.90	-	-	-
1979	1.02	1.18	0.88	1.08	1.20	0.97	-	-	-
1980	1.12	1.40	0.88	1.16	1.47	0.90	0.73	-	-
1981	1.24	1.31	1.18	1.30	1.39	1.23	0.95	-	-
1982	1.23	1.50	0.99	1.30	1.56	1.05	-	-	-
1983	1.29	1.52	1.08	1.39	1.64	1.18	0.80	-	-
1984	1.32	1.49	1.20	1.35	1.50	1.24	0.92	-	-
1985	1.30	1.55	1.09	1.35	1.62	1.12	-	-	-
1986	1.30	1.67	0.96	1.38	1.82	0.96	0.77	-	-
1987	1.32	1.48	1.19	1.35	1.54	1.19	0.89	-	1.15
1988	1.40	1.79	1.07	1.44	1.84	1.12	0.98	-	-
1989	1.62	1.82	1.43	1.69	1.90	1.49	1.03	-	-
1990	1.42	1.76	1.16	1.52	1.85	1.29	0.57	-	-
1991	1.38	1.72	1.05	1.51	1.94	1.09	0.86	-	-
1992	1.35	1.59	1.14	1.40	1.73	1.09	0.91	-	-
1993	1.26	1.41	1.09	1.37	1.57	1.14	0.82	-	-
1994	1.19	1.48	0.93	1.28	1.59	1.01	0.68	-	-
1995	1.50	1.81	1.20	1.61	1.88	1.34	0.98	1.32	-
1996	1.38	1.56	1.20	1.46	1.65	1.25	0.85	-	-
1997	1.33	1.51	1.16	1.44	1.60	1.28	0.79	0.98	-
1998	1.46	1.61	1.31	1.57	1.69	1.44	0.93	1.16	-
1999	1.31	1.48	1.15	1.40	1.56	1.24	0.68	-	-
2000	1.40	1.51	1.29	1.52	1.61	1.45	0.87	-	-
2001	1.47	1.67	1.26	1.59	1.83	1.35	0.68	-	-
2002	1.50	1.79	1.20	1.65	2.00	1.29	0.62	-	-
2003	1.43	1.67	1.22	1.48	1.70	1.27	0.78	0.97	-
2004	1.55	1.70	1.40	1.67	1.94	1.39	1.12	-	1.43
2005	1.58	1.88	1.29	1.66	1.94	1.38	0.97	1.18	-
2006	1.45	1.63	1.28	1.51	1.64	1.39	0.97	1.42	-
2007	1.52	1.68	1.38	1.60	1.72	1.50	0.95	1.06	-
2008	1.50	1.85	1.15	1.67	2.02	1.32	0.91	1.32	-
2009	1.47	1.60	1.35	1.57	1.73	1.42	0.96	1.08	0.85
2010	1.46	1.56	1.35	1.58	1.66	1.51	0.97	1.10	0.85
2011	1.77	1.89	1.65	1.93	2.00	1.86	1.35	1.69	1.02
2012	1.46	1.51	1.42	1.59	1.61	1.58	1.12	1.45	0.89
2013	1.58	1.76	1.40	1.70	1.88	1.51	0.91	1.32	-

^a SEER 9 areas (San Francisco, Connecticut, Detroit, Hawaii, Iowa, New Mexico, Seattle, Utah, and Atlanta). Rates are per 100,000 and are age-adjusted to the 2000 US Std Population (19 age groups - Census P25-1130).
- Statistic not shown. Rate based on less than 16 cases for the time interval.

Table 13.7
Chronic Lymphocytic Leukemia

Age-adjusted SEER Incidence^a Rates by Year, Race and Sex

Year of Diagnosis:	All Races			Whites			Blacks		
	Total	Males	Females	Total	Males	Females	Total	Males	Females
1975-2013	4.79	6.65	3.42	5.18	7.20	3.70	3.77	5.33	2.70
1975	4.35	5.92	3.27	4.48	6.12	3.39	4.82	7.06	3.23
1976	4.57	6.76	3.10	4.77	7.17	3.16	4.26	6.58	2.95
1977	4.18	5.72	3.13	4.37	5.96	3.31	3.81	5.78	2.46
1978	4.46	5.94	3.45	4.76	6.43	3.62	3.33	3.64	3.07
1979	4.06	5.69	2.94	4.32	6.09	3.13	3.06	4.16	-
1980	4.52	6.30	3.33	4.69	6.54	3.46	4.51	7.06	2.89
1981	4.27	6.30	2.90	4.46	6.63	3.05	3.82	5.41	2.47
1982	4.30	6.14	3.01	4.50	6.39	3.18	3.77	6.65	-
1983	4.45	6.41	3.13	4.68	6.79	3.25	4.21	6.11	3.03
1984	4.43	6.30	3.12	4.72	6.82	3.29	3.45	4.46	2.65
1985	4.49	6.21	3.30	4.79	6.62	3.53	4.11	6.15	2.87
1986	4.50	6.33	3.24	4.87	6.84	3.54	2.79	4.18	-
1987	4.66	6.81	3.07	4.95	7.26	3.28	4.03	6.14	2.45
1988	4.54	6.46	3.14	4.76	6.87	3.26	4.43	5.32	3.53
1989	4.70	6.44	3.47	4.99	6.90	3.67	3.91	5.15	3.04
1990	4.61	6.30	3.42	4.91	6.76	3.63	4.56	6.25	3.43
1991	4.60	6.18	3.43	4.99	6.79	3.64	3.40	3.75	3.15
1992	4.61	6.73	3.16	5.04	7.42	3.42	3.21	4.96	2.08
1993	4.45	6.14	3.17	4.72	6.54	3.36	4.52	6.79	2.89
1994	4.60	6.11	3.45	5.03	6.68	3.82	3.19	4.13	2.32
1995	4.54	6.42	3.18	4.96	7.00	3.49	3.39	5.34	2.06
1996	4.72	6.35	3.55	5.16	6.88	3.92	3.52	5.36	2.26
1997	4.50	6.08	3.30	4.91	6.61	3.63	3.57	5.18	2.52
1998	4.22	5.96	2.97	4.65	6.52	3.28	2.85	3.73	2.29
1999	4.17	6.05	2.76	4.51	6.51	3.00	3.87	6.00	2.60
2000	4.64	6.51	3.22	5.13	7.24	3.50	3.35	4.31	2.72
2001	5.29	7.33	3.77	5.84	8.07	4.17	3.91	4.89	3.20
2002	5.08	7.15	3.53	5.69	7.99	3.97	3.05	4.35	2.10
2003	5.32	7.38	3.78	5.85	8.16	4.11	4.33	6.14	3.06
2004	5.49	7.60	3.90	5.98	8.10	4.35	4.95	8.16	2.80
2005	5.35	7.66	3.57	5.95	8.61	3.85	3.98	4.83	3.40
2006	5.69	7.52	4.33	6.31	8.23	4.86	4.44	6.64	3.00
2007	5.28	7.39	3.67	5.93	8.18	4.17	2.98	4.65	2.07
2008	5.42	7.25	4.02	6.01	7.91	4.55	3.78	5.77	2.33
2009	5.24	7.22	3.68	5.79	7.92	4.06	3.83	5.47	2.81
2010	5.37	7.49	3.76	5.92	8.14	4.20	3.52	5.22	2.46
2011	5.23	7.02	3.79	5.72	7.68	4.12	4.02	4.98	3.30
2012	5.04	6.74	3.70	5.54	7.29	4.12	3.61	4.79	2.84
2013	4.82	6.60	3.40	5.35	7.28	3.78	3.89	5.56	2.64

^a SEER 9 areas (San Francisco, Connecticut, Detroit, Hawaii, Iowa, New Mexico, Seattle, Utah, and Atlanta). Rates are per 100,000 and are age-adjusted to the 2000 US Std Population (19 age groups - Census P25-1130).
- Statistic not shown. Rate based on less than 16 cases for the time interval.

Table 13.8
Acute Myeloid Leukemia

Age-adjusted SEER Incidence^a Rates by Year, Race and Sex

Year of Diagnosis:	All Races			Whites			Blacks		
	Total	Males	Females	Total	Males	Females	Total	Males	Females
1975-2013	3.59	4.45	2.98	3.65	4.55	3.03	3.16	3.78	2.77
1975	3.43	4.17	2.98	3.48	4.28	2.99	2.49	3.37	2.02
1976	3.50	4.43	2.87	3.53	4.46	2.91	2.56	-	2.64
1977	3.51	4.19	3.05	3.64	4.40	3.14	1.87	-	-
1978	3.42	4.43	2.69	3.53	4.59	2.78	2.70	3.47	2.13
1979	3.32	4.04	2.85	3.36	4.17	2.85	3.39	3.40	3.37
1980	3.14	4.10	2.43	3.17	4.11	2.49	2.88	3.28	2.53
1981	3.16	3.99	2.64	3.22	4.11	2.69	3.07	3.22	2.89
1982	3.42	4.79	2.60	3.47	4.90	2.63	2.50	3.22	2.09
1983	3.21	4.22	2.53	3.17	4.28	2.41	2.93	3.02	2.92
1984	3.30	4.06	2.73	3.35	4.17	2.77	2.35	2.10	2.44
1985	3.33	4.15	2.87	3.25	4.02	2.84	3.78	5.06	2.99
1986	3.00	3.91	2.40	2.95	3.85	2.38	3.21	4.04	2.68
1987	3.02	3.97	2.47	3.03	4.00	2.46	3.05	4.73	2.12
1988	3.03	3.79	2.51	3.07	3.87	2.56	2.79	3.14	2.49
1989	3.19	4.00	2.61	3.29	4.02	2.78	2.22	3.79	-
1990	3.04	3.91	2.43	3.12	4.06	2.46	2.55	3.02	2.19
1991	3.33	3.93	2.88	3.38	3.90	2.98	3.34	4.53	2.59
1992	3.22	3.85	2.76	3.28	4.03	2.75	3.05	2.99	3.05
1993	3.45	4.31	2.86	3.52	4.45	2.86	2.48	2.62	2.55
1994	3.46	4.14	3.02	3.48	4.25	2.97	2.94	3.24	2.77
1995	3.66	4.17	3.31	3.81	4.32	3.45	2.62	2.62	2.73
1996	3.47	4.35	2.90	3.47	4.30	2.94	3.21	4.05	2.73
1997	3.53	4.61	2.77	3.66	4.82	2.85	3.02	3.83	2.55
1998	3.92	4.94	3.20	4.06	5.06	3.32	3.05	4.64	2.11
1999	3.73	4.51	3.18	3.85	4.63	3.30	3.03	3.45	2.76
2000	4.05	4.95	3.41	4.05	4.96	3.39	4.41	4.88	4.01
2001	4.06	4.95	3.39	4.20	5.00	3.61	3.45	4.08	3.00
2002	3.64	4.59	2.98	3.79	4.79	3.11	2.91	3.31	2.67
2003	3.60	4.49	2.96	3.67	4.60	3.02	3.33	3.52	2.96
2004	3.42	4.15	2.93	3.50	4.22	3.00	3.39	4.31	3.01
2005	3.59	4.24	3.17	3.64	4.38	3.19	3.52	3.47	3.64
2006	3.54	4.11	3.14	3.66	4.22	3.25	2.84	3.34	2.57
2007	3.54	4.38	2.97	3.65	4.48	3.08	3.41	4.52	2.72
2008	3.82	4.68	3.19	3.86	4.85	3.09	3.07	3.78	2.74
2009	3.64	4.43	3.08	3.77	4.66	3.10	3.15	4.04	2.55
2010	4.21	5.33	3.40	4.41	5.63	3.49	3.33	4.47	2.61
2011	4.20	5.13	3.47	4.23	5.15	3.50	4.25	4.57	3.99
2012	4.56	5.59	3.76	4.67	5.70	3.86	3.84	4.44	3.43
2013	4.44	5.37	3.77	4.60	5.46	3.99	4.13	5.10	3.40

^a SEER 9 areas (San Francisco, Connecticut, Detroit, Hawaii, Iowa, New Mexico, Seattle, Utah, and Atlanta). Rates are per 100,000 and are age-adjusted to the 2000 US Std Population (19 age groups - Census P25-1130).
- Statistic not shown. Rate based on less than 16 cases for the time interval.

Table 13.9
Chronic Myeloid Leukemia

Age-adjusted SEER Incidence^a Rates by Year, Race and Sex

Year of Diagnosis:	All Races			Whites			Blacks		
	Total	Males	Females	Total	Males	Females	Total	Males	Females
1975-2013	1.79	2.36	1.36	1.81	2.40	1.38	1.80	2.36	1.40
1975	1.98	2.93	1.33	2.00	3.01	1.31	1.94	-	-
1976	1.93	2.48	1.55	1.90	2.45	1.52	1.86	2.58	-
1977	1.68	2.08	1.39	1.69	2.14	1.37	1.84	-	-
1978	1.71	2.26	1.34	1.74	2.28	1.39	1.43	-	-
1979	1.87	2.48	1.43	1.89	2.50	1.45	1.94	2.80	-
1980	1.70	2.06	1.46	1.73	2.10	1.51	1.48	-	-
1981	1.64	1.97	1.41	1.59	1.90	1.39	2.38	3.00	1.81
1982	1.68	2.16	1.35	1.65	2.19	1.31	1.75	-	1.79
1983	1.69	2.23	1.33	1.64	2.15	1.32	2.51	3.44	1.85
1984	1.68	2.40	1.18	1.63	2.41	1.10	2.58	2.61	2.59
1985	1.97	2.76	1.43	2.00	2.80	1.47	2.06	2.89	-
1986	1.68	2.19	1.29	1.71	2.25	1.31	1.54	-	-
1987	1.88	2.32	1.58	1.90	2.38	1.58	2.14	2.88	-
1988	1.91	2.54	1.50	1.92	2.59	1.49	2.08	2.88	-
1989	1.70	2.22	1.35	1.68	2.18	1.35	2.21	3.12	-
1990	1.76	2.47	1.24	1.75	2.50	1.20	2.63	3.66	1.95
1991	1.88	2.44	1.47	1.91	2.55	1.46	1.56	-	1.75
1992	1.76	2.16	1.47	1.80	2.22	1.49	1.49	1.73	-
1993	1.92	2.53	1.48	1.95	2.52	1.55	2.28	3.56	-
1994	1.86	2.47	1.42	1.90	2.48	1.50	1.70	2.57	-
1995	1.90	2.56	1.38	1.96	2.69	1.39	1.59	2.09	-
1996	1.81	2.45	1.35	1.80	2.51	1.27	2.06	2.54	1.83
1997	1.87	2.68	1.30	1.94	2.74	1.37	1.67	2.53	-
1998	1.66	1.95	1.43	1.73	1.98	1.54	1.61	2.31	1.20
1999	1.80	2.49	1.28	1.77	2.44	1.28	1.72	2.30	1.26
2000	1.79	2.34	1.36	1.81	2.33	1.41	1.55	1.72	1.33
2001	1.79	2.35	1.38	1.84	2.36	1.45	1.97	2.83	1.36
2002	1.63	2.08	1.30	1.66	2.11	1.33	1.13	-	-
2003	1.65	2.22	1.19	1.74	2.34	1.25	1.44	2.11	-
2004	1.79	2.53	1.23	1.86	2.63	1.26	1.51	2.06	1.11
2005	1.69	2.27	1.23	1.77	2.37	1.29	1.75	2.44	1.29
2006	1.83	2.39	1.41	1.93	2.50	1.50	1.61	2.17	1.16
2007	1.69	2.31	1.20	1.79	2.48	1.22	1.41	1.83	1.14
2008	1.83	2.33	1.43	1.84	2.27	1.51	1.80	2.48	1.21
2009	1.79	2.36	1.34	1.78	2.27	1.39	1.89	2.94	1.23
2010	1.84	2.47	1.35	1.82	2.46	1.32	1.86	2.12	1.74
2011	1.91	2.54	1.39	2.00	2.69	1.42	1.60	1.95	1.29
2012	1.85	2.26	1.53	1.88	2.30	1.56	2.03	2.72	1.53
2013	1.84	2.46	1.33	1.91	2.58	1.35	1.55	1.90	1.39

^a SEER 9 areas (San Francisco, Connecticut, Detroit, Hawaii, Iowa, New Mexico, Seattle, Utah, and Atlanta). Rates are per 100,000 and are age-adjusted to the 2000 US Std Population (19 age groups - Census P25-1130).
- Statistic not shown. Rate based on less than 16 cases for the time interval.

Table 13.10
LeukemiaAge-adjusted U.S. Death^a Rates by Year, Race and Sex

Year of Death:	All Races			Whites			Blacks		
	Total	Males	Females	Total	Males	Females	Total	Males	Females
1975-2013	7.64	10.25	5.84	7.83	10.53	5.98	6.70	8.86	5.30
1975	8.09	10.98	6.16	8.27	11.28	6.29	6.58	8.57	5.15
1976	8.10	10.88	6.19	8.27	11.19	6.28	6.76	8.49	5.48
1977	8.11	10.84	6.26	8.27	11.11	6.34	6.82	8.76	5.51
1978	8.02	10.83	6.15	8.19	11.06	6.28	6.70	9.25	4.94
1979	8.26	11.06	6.41	8.43	11.36	6.52	6.99	8.90	5.68
1980	8.36	11.21	6.46	8.54	11.51	6.56	7.05	9.09	5.67
1981	8.10	10.89	6.24	8.24	11.16	6.31	7.11	8.92	5.86
1982	8.19	11.04	6.31	8.33	11.29	6.39	7.14	9.36	5.67
1983	8.11	10.93	6.26	8.24	11.19	6.32	7.22	9.21	5.90
1984	8.08	10.68	6.37	8.23	10.91	6.47	7.08	9.16	5.69
1985	8.07	10.77	6.31	8.23	10.97	6.44	7.08	9.62	5.42
1986	7.96	10.71	6.16	8.10	10.97	6.23	7.25	9.26	5.91
1987	7.80	10.31	6.14	7.91	10.50	6.20	7.24	9.41	5.85
1988	7.83	10.60	6.00	7.95	10.79	6.08	7.24	9.83	5.58
1989	7.95	10.62	6.15	8.07	10.75	6.26	7.36	10.34	5.45
1990	7.98	10.71	6.18	8.10	10.90	6.26	7.44	9.96	5.83
1991	7.99	10.50	6.32	8.12	10.64	6.44	7.45	10.05	5.80
1992	7.96	10.71	6.13	8.11	10.94	6.24	7.16	9.41	5.68
1993	7.93	10.66	6.09	8.04	10.84	6.16	7.36	9.76	5.77
1994	7.85	10.57	6.03	8.00	10.78	6.13	7.12	9.59	5.54
1995	7.90	10.80	5.98	8.04	11.03	6.05	7.17	9.75	5.53
1996	7.84	10.53	6.05	7.97	10.71	6.13	7.46	10.09	5.90
1997	7.71	10.42	5.89	7.89	10.68	6.01	6.83	9.23	5.29
1998	7.58	10.11	5.82	7.72	10.31	5.91	7.04	9.37	5.55
1999	7.68	10.22	5.96	7.87	10.47	6.09	6.74	8.78	5.43
2000	7.69	10.28	5.91	7.89	10.54	6.05	6.71	9.07	5.27
2001	7.64	10.19	5.88	7.83	10.46	6.02	6.74	8.80	5.41
2002	7.54	10.18	5.73	7.75	10.46	5.85	6.73	8.91	5.38
2003	7.45	10.02	5.63	7.68	10.37	5.76	6.54	8.47	5.30
2004	7.29	9.81	5.52	7.47	10.04	5.64	6.77	8.94	5.39
2005	7.26	9.82	5.46	7.50	10.14	5.63	6.07	8.11	4.78
2006	7.23	9.70	5.46	7.48	9.97	5.66	6.27	8.84	4.70
2007	7.08	9.54	5.33	7.30	9.86	5.46	6.19	8.07	5.05
2008	7.09	9.54	5.33	7.32	9.83	5.49	6.27	8.65	4.78
2009	7.06	9.53	5.25	7.31	9.86	5.41	6.05	8.14	4.71
2010	6.91	9.25	5.20	7.16	9.58	5.37	5.75	7.46	4.59
2011	6.95	9.28	5.24	7.18	9.60	5.39	5.99	7.74	4.85
2012	6.82	9.21	5.07	7.08	9.56	5.22	5.77	7.56	4.62
2013	6.74	9.08	5.02	7.02	9.41	5.22	5.68	7.69	4.36

^a US Mortality Files, National Center for Health Statistics, Centers for Disease Control and Prevention. Rates are per 100,000 and are age-adjusted to the 2000 US Std Population (19 age groups - Census P25-1130).
- Statistic not shown. Rate based on less than 16 cases for the time interval.

Table 13.11
LeukemiaSEER Incidence^a and U.S. Death^b Rates, Age-Adjusted and Age-Specific Rates, by Race and Sex

	All Races			Whites			Blacks		
	Total	Males	Females	Total	Males	Females	Total	Males	Females
<u>SEER Incidence</u>									
<u>Age at Diagnosis</u>									
Age-Adjusted Rates, 2009-2013									
All ages	13.5	17.3	10.5	14.3	18.2	11.1	10.8	13.8	8.7
Under 65	6.7	7.9	5.6	7.1	8.3	5.9	5.4	6.3	4.6
65 and over	60.5	82.3	44.7	63.9	86.8	47.1	48.0	65.8	37.0
All ages (IARC world std) ^c	9.7	12.0	7.8	10.3	12.6	8.3	7.6	9.3	6.2
Age-Specific Rates, 2009-2013									
<1	4.8	4.4	5.1	4.8	4.1	5.5	3.5	3.9	-
1-4	9.2	9.4	9.1	10.3	10.3	10.3	4.5	4.9	4.1
5-9	4.3	4.9	3.8	4.8	5.4	4.1	2.6	2.6	2.5
10-14	3.3	3.6	2.9	3.4	3.7	3.1	2.6	3.1	2.0
15-19	3.1	3.6	2.5	3.4	4.1	2.8	1.6	1.8	1.4
20-24	2.6	3.0	2.2	2.8	3.3	2.4	1.9	1.8	2.0
25-29	2.8	3.1	2.4	2.9	3.3	2.6	2.2	2.3	2.2
30-34	3.5	3.8	3.1	3.5	4.0	3.0	2.9	3.1	2.7
35-39	4.3	4.9	3.7	4.4	5.0	3.8	4.4	4.9	3.9
40-44	5.6	6.5	4.8	5.8	6.6	4.8	5.6	6.6	4.7
45-49	7.8	9.0	6.7	8.0	9.2	6.8	6.9	8.0	5.9
50-54	11.8	14.3	9.4	12.3	14.9	9.7	10.0	12.1	8.1
55-59	16.8	21.2	12.7	17.6	21.9	13.4	13.9	18.2	10.2
60-64	25.7	32.9	19.1	27.1	34.8	19.9	21.1	25.1	17.8
65-69	38.3	50.0	28.0	40.5	52.8	29.3	31.7	41.1	24.4
70-74	52.1	68.4	38.5	55.0	72.0	40.4	42.6	54.5	33.9
75-79	68.0	92.4	49.2	72.4	97.4	52.7	55.6	80.8	39.3
80-84	83.0	115.6	60.9	87.5	121.0	64.5	62.8	92.8	46.3
85+	87.5	126.7	67.6	92.3	134.7	70.7	65.2	86.3	56.5
<u>U.S. Mortality</u>									
<u>Age at Death</u>									
Age-Adjusted Rates, 2009-2013									
All ages	6.9	9.3	5.2	7.1	9.6	5.3	5.8	7.7	4.6
Under 65	2.0	2.4	1.6	2.0	2.4	1.6	2.1	2.5	1.7
65 and over	40.9	57.1	29.7	42.7	59.5	30.9	31.9	43.6	24.9
All ages (IARC world std) ^c	3.9	5.1	3.0	4.1	5.3	3.1	3.5	4.6	2.8
Age-Specific Rates, 2009-2013									
<1	0.6	0.5	0.6	0.6	0.6	0.6	0.5	-	-
1-4	0.7	0.7	0.7	0.7	0.7	0.7	0.6	0.5	0.6
5-9	0.5	0.6	0.4	0.5	0.6	0.5	0.4	0.4	0.3
10-14	0.6	0.7	0.6	0.7	0.7	0.6	0.5	0.6	0.5
15-19	0.8	0.9	0.6	0.8	1.0	0.6	0.6	0.7	0.4
20-24	0.9	1.1	0.8	1.0	1.1	0.8	0.8	0.9	0.7
25-29	0.9	1.1	0.8	1.0	1.1	0.8	0.9	1.2	0.6
30-34	1.1	1.3	0.9	1.1	1.3	0.9	1.2	1.5	0.9
35-39	1.3	1.5	1.1	1.3	1.5	1.1	1.5	1.8	1.2
40-44	1.6	1.8	1.5	1.6	1.8	1.5	2.0	2.3	1.7
45-49	2.4	2.7	2.1	2.4	2.7	2.1	2.6	3.1	2.1
50-54	3.7	4.3	3.1	3.6	4.3	3.0	4.3	5.1	3.6
55-59	5.8	7.2	4.5	5.9	7.3	4.6	6.5	8.1	5.1
60-64	10.4	13.5	7.6	10.7	13.9	7.7	10.6	13.6	8.2
65-69	17.7	23.5	12.5	18.2	24.2	12.8	16.7	22.9	11.9
70-74	29.2	39.5	20.5	30.5	41.3	21.2	25.0	32.7	19.5
75-79	44.8	61.7	31.7	46.8	64.3	33.0	35.9	48.9	27.6
80-84	63.2	89.3	45.6	66.1	92.8	47.6	46.3	66.0	35.7
85+	84.0	122.1	65.2	87.9	127.9	67.9	56.2	76.8	48.0

^a SEER 18 areas. Rates are per 100,000 and are age-adjusted to the 2000 US Std Population (19 age groups - Census P25-1130), unless noted.

^b US Mortality Files, National Center for Health Statistics, Centers for Disease Control and Prevention.

^c Rates are per 100,000 and are age-adjusted to the 2000 US Std Population (19 age groups - Census P25-1130), unless noted.

- Rates are per 100,000 and are age-adjusted to the IARC world standard population.

- Statistic not shown. Rate based on less than 16 cases for the time interval.

Table 13.12
Lymphocytic Leukemia

SEER Incidence^a Rates, Age-Adjusted and Age-Specific Rates, by Race and Sex

	All Races			Whites			Blacks		
	Total	Males	Females	Total	Males	Females	Total	Males	Females
<u>Acute Lymphocytic Leukemia</u>									
<u>Age at Diagnosis</u>									
Age-Adjusted Rates, 2009-2013									
All ages	1.7	1.9	1.5	1.9	2.1	1.7	1.0	1.2	0.9
Under 65	1.7	1.9	1.5	1.9	2.1	1.7	1.0	1.2	0.8
65 and over	1.6	1.9	1.3	1.6	2.0	1.4	1.1	1.2	1.1
All ages (IARC world std) ^b	2.1	2.3	1.9	2.3	2.5	2.1	1.1	1.3	1.0
Age-Specific Rates, 2009-2013									
<1	2.0	1.5	2.5	2.0	1.4	2.6	-	-	-
1-4	7.8	7.9	7.7	8.9	8.8	9.0	3.3	3.6	3.0
5-9	3.7	4.1	3.2	4.1	4.7	3.5	2.0	2.0	2.1
10-14	2.2	2.5	2.0	2.4	2.5	2.2	1.7	2.3	1.2
15-19	1.7	2.2	1.2	2.0	2.6	1.4	0.7	0.9	-
20-24	1.0	1.3	0.7	1.2	1.5	0.8	0.4	-	-
25-29	0.7	1.0	0.5	0.9	1.1	0.6	-	-	-
30-34	0.7	0.8	0.6	0.7	0.9	0.5	0.5	-	-
35-39	0.7	0.8	0.6	0.8	0.9	0.7	-	-	-
40-44	0.7	0.8	0.6	0.8	0.9	0.6	0.5	-	-
45-49	0.9	1.0	0.8	1.0	1.1	0.9	0.4	-	-
50-54	0.8	0.9	0.7	0.8	0.9	0.7	0.7	-	-
55-59	1.0	1.2	0.9	1.1	1.1	1.0	1.1	1.5	-
60-64	1.4	1.4	1.3	1.4	1.5	1.4	1.1	-	-
65-69	1.4	1.5	1.3	1.5	1.8	1.3	1.0	-	-
70-74	1.5	1.7	1.3	1.6	1.8	1.4	-	-	-
75-79	1.7	1.9	1.5	1.8	2.1	1.6	-	-	-
80-84	1.9	2.6	1.5	1.9	2.4	1.5	-	-	-
85+	1.5	2.2	1.2	1.6	2.3	1.2	-	-	-
<u>Chronic Lymphocytic Leukemia</u>									
<u>Age at Diagnosis</u>									
Age-Adjusted Rates, 2009-2013									
All ages	4.6	6.3	3.3	5.0	6.7	3.5	3.4	4.9	2.4
Under 65	1.5	2.0	1.0	1.6	2.1	1.1	1.0	1.4	0.7
65 and over	26.4	36.6	18.9	28.2	38.9	20.3	19.9	29.1	14.2
All ages (IARC world std) ^b	2.8	3.8	1.9	3.0	4.0	2.1	2.1	2.9	1.4
Age-Specific Rates, 2009-2013									
<1	-	-	-	-	-	-	-	-	-
1-4	-	-	-	-	-	-	-	-	-
5-9	-	-	-	-	-	-	-	-	-
10-14	-	-	-	-	-	-	-	-	-
15-19	-	-	-	-	-	-	-	-	-
20-24	-	-	-	-	-	-	-	-	-
25-29	-	-	-	-	-	-	-	-	-
30-34	0.1	0.2	-	0.1	0.2	-	-	-	-
35-39	0.3	0.4	0.3	0.3	0.4	0.3	-	-	-
40-44	0.9	1.1	0.7	0.9	1.1	0.7	0.7	1.2	-
45-49	1.9	2.4	1.5	2.1	2.6	1.6	1.4	1.8	1.0
50-54	4.3	5.7	2.9	4.6	5.9	3.2	2.9	4.1	1.9
55-59	7.1	9.6	4.7	7.6	10.2	5.1	4.5	6.3	2.9
60-64	11.1	15.0	7.6	12.0	16.1	8.1	8.0	10.4	5.9
65-69	17.2	23.4	11.6	18.2	24.5	12.4	13.6	19.4	9.1
70-74	23.2	31.7	16.1	24.7	33.5	17.1	18.0	24.2	13.5
75-79	29.9	40.9	21.3	32.5	43.8	23.6	21.2	33.7	13.0
80-84	35.2	49.0	25.8	37.8	52.4	27.7	25.9	40.2	18.1
85+	36.9	53.8	28.3	39.4	57.7	30.1	28.7	39.5	24.3

^a SEER 18 areas. Rates are per 100,000 and are age-adjusted to the 2000 US Std Population (19 age groups - Census P25-1130), unless noted.

^b Rates are per 100,000 and are age-adjusted to the IARC world standard population.

- Statistic not shown. Rate based on less than 16 cases for the time interval.

Table 13.13
Myeloid Leukemia

SEER Incidence^a Rates, Age-Adjusted and Age-Specific Rates, by Race and Sex

	All Races			Whites			Blacks		
	Total	Males	Females	Total	Males	Females	Total	Males	Females
<u>Acute Myeloid Leukemia</u>									
<u>Age at Diagnosis</u>									
Age-Adjusted Rates, 2009-2013									
All ages	4.1	5.0	3.4	4.2	5.2	3.5	3.6	4.3	3.1
Under 65	1.9	2.0	1.8	2.0	2.1	1.8	1.8	1.9	1.7
65 and over	19.1	25.4	14.7	20.0	26.5	15.3	15.9	21.0	12.8
All ages (IARC world std) ^b	2.8	3.2	2.4	2.9	3.4	2.5	2.5	2.8	2.2
Age-Specific Rates, 2009-2013									
<1	1.5	1.5	1.4	1.5	1.4	1.6	-	-	-
1-4	1.1	1.1	1.0	1.0	1.0	1.0	1.0	1.0	1.1
5-9	0.4	0.5	0.4	0.5	0.5	0.5	-	-	-
10-14	0.7	0.8	0.7	0.7	0.8	0.6	0.7	-	-
15-19	1.0	0.9	1.0	1.0	1.0	1.0	0.5	-	-
20-24	1.0	1.0	1.0	1.1	1.0	1.1	0.9	0.7	1.1
25-29	1.1	1.1	1.1	1.1	1.1	1.1	1.0	-	1.3
30-34	1.5	1.5	1.5	1.5	1.5	1.5	1.3	1.4	1.3
35-39	1.6	1.7	1.5	1.6	1.7	1.5	1.7	1.8	1.6
40-44	1.9	2.0	1.9	1.9	1.9	1.9	2.1	2.0	2.1
45-49	2.5	2.4	2.5	2.5	2.4	2.5	2.4	2.5	2.4
50-54	3.4	3.7	3.2	3.5	3.8	3.3	3.5	3.9	3.1
55-59	4.6	5.3	4.0	4.7	5.3	4.1	4.5	5.4	3.6
60-64	7.8	9.2	6.4	8.1	9.6	6.7	6.7	7.9	5.7
65-69	11.9	14.5	9.6	12.7	15.6	10.1	9.0	11.2	7.3
70-74	17.1	21.2	13.6	17.8	22.4	13.9	15.5	17.5	14.0
75-79	22.1	29.5	16.4	22.9	30.3	17.1	20.9	29.7	15.2
80-84	27.0	37.2	20.2	28.0	38.2	20.9	20.8	30.9	15.3
85+	25.3	37.1	19.3	26.3	39.0	19.9	17.8	23.4	15.4
<u>Chronic Myeloid Leukemia</u>									
<u>Age at Diagnosis</u>									
Age-Adjusted Rates, 2009-2013									
All ages	1.8	2.3	1.3	1.8	2.3	1.4	1.6	1.9	1.4
Under 65	1.0	1.2	0.8	1.0	1.1	0.8	1.0	1.2	0.9
65 and over	7.1	9.9	5.1	7.5	10.4	5.4	5.5	7.2	4.5
All ages (IARC world std) ^b	1.2	1.5	0.9	1.2	1.5	1.0	1.2	1.4	1.0
Age-Specific Rates, 2009-2013									
<1	0.4	0.6	-	0.4	-	-	-	-	-
1-4	0.1	-	-	-	-	-	-	-	-
5-9	-	-	-	-	-	-	-	-	-
10-14	0.2	0.2	0.1	0.2	0.2	-	-	-	-
15-19	0.2	0.3	0.2	0.2	0.2	0.2	-	-	-
20-24	0.4	0.5	0.4	0.4	0.5	0.4	0.4	-	-
25-29	0.6	0.8	0.5	0.7	0.8	0.5	0.6	-	-
30-34	0.8	1.0	0.7	0.8	1.0	0.6	0.7	-	-
35-39	1.1	1.3	0.9	1.1	1.3	0.9	1.3	1.4	1.2
40-44	1.4	1.6	1.1	1.4	1.7	1.1	1.5	1.8	1.3
45-49	1.6	1.9	1.3	1.5	1.8	1.2	1.9	2.1	1.6
50-54	2.0	2.3	1.6	2.0	2.4	1.6	1.9	2.1	1.7
55-59	2.4	2.7	2.1	2.4	2.7	2.1	2.6	3.0	2.2
60-64	3.2	4.0	2.5	3.2	4.1	2.4	3.6	3.6	3.5
65-69	4.8	6.2	3.6	4.9	6.3	3.6	5.3	6.2	4.7
70-74	6.0	7.9	4.3	6.4	8.4	4.6	4.1	6.0	2.8
75-79	8.0	11.5	5.4	8.5	12.2	5.6	5.8	7.7	4.6
80-84	9.8	13.8	7.1	10.4	14.4	7.6	6.8	8.2	5.9
85+	10.1	15.2	7.5	10.6	16.0	7.9	6.8	-	5.5

^a SEER 18 areas. Rates are per 100,000 and are age-adjusted to the 2000 US Std Population (19 age groups - Census P25-1130), unless noted.

^b Rates are per 100,000 and are age-adjusted to the IARC world standard population.

- Statistic not shown. Rate based on less than 16 cases for the time interval.

Table 13.14
Leukemia

5-Year Relative and Period Survival (Percent) by Race, Sex, Diagnosis Year and Age

	All Races			Whites			Blacks		
	Total	Males	Females	Total	Males	Females	Total	Males	Females
5-Year Relative Survival (Percent)									
Year of Diagnosis:									
1960-1963 ^a	-	-	-	14	-	-	-	-	-
1970-1973 ^a	-	-	-	22	-	-	-	-	-
1975-1977 ^b	34.2	33.0	35.6	34.6	33.6	35.8	33.4	30.4	36.7
1978-1980 ^b	36.0	35.0	37.4	36.7	35.8	38.0	28.2	27.3	29.3
1981-1983 ^b	37.3	36.9	37.8	38.0	37.8	38.4	33.9	33.4	34.3
1984-1986 ^b	40.5	40.1	41.1	41.6	41.3	42.0	32.7	31.5	34.1
1987-1989 ^b	42.9	44.0	41.3	43.9	45.5	41.8	35.0	32.7	37.8
1990-1992 ^b	45.2	44.6	46.0	46.4	46.2	46.7	35.9	30.9	41.3
1993-1995 ^b	47.5	48.3	46.3	48.5	49.4	47.4	41.3	41.6	40.9
1996-1998 ^b	48.2	48.4	47.9	49.5	49.4	49.6	38.6	39.0	38.0
1999-2001 ^b	50.7	51.7	49.5	51.8	52.7	50.5	43.2	44.2	42.1
2002-2005 ^b	58.5	59.2	57.7	59.4	60.1	58.5	52.7	54.5	50.6
2006-2012 ^b	62.7 ^e	64.1 ^e	60.8 ^e	63.5 ^e	64.7 ^e	62.0 ^e	57.5 ^e	60.1 ^e	54.0 ^e
5-Year Period Survival (Percent) ^{cd}									
2012	60.6	61.5	59.4	61.0	61.8	60.0	55.3	56.5	54.1
5-Year Relative Survival (Percent), 2006-2012 ^c									
Age at Diagnosis:									
Ages <45	74.1	73.9	74.4	75.1	74.5	76.0	66.4	67.5	65.1
Ages 45-54	68.7	70.4	66.2	70.1	71.6	68.0	59.4	61.3	56.8
Ages 55-64	67.2	67.8	66.2	67.8	68.2	67.1	57.3	57.5	56.6
Ages 65-74	57.0	57.1	56.7	57.7	57.4	58.0	47.8	48.3	47.2
Ages 75+	39.1	39.3	38.9	40.0	40.0	39.9	28.8	29.7	28.0
Ages <65	70.6	70.9	70.1	71.5	71.5	71.4	62.2	63.1	60.9
Ages 65+	46.8	47.7	45.6	47.5	48.1	46.6	38.4	40.0	36.8

^a Based on End Results data from a series of hospital registries and one population-based registry.^b SEER 9 areas (San Francisco, Connecticut, Detroit, Hawaii, Iowa, New Mexico, Seattle, Utah, Atlanta).

Based on follow-up of patients into 2013.

^c SEER 18 areas (San Francisco, Connecticut, Detroit, Hawaii, Iowa, New Mexico, Seattle, Utah, Atlanta, San Jose-Monterey, Los Angeles, Alaska Native Registry, Rural Georgia, California excluding SF/SJM/LA, Kentucky, Louisiana, New Jersey and Georgia excluding ATL/RG).

Based on follow-up of patients into 2013.

^d Period survival provides a 2012 estimate of survival by piecing together the most recent conditional survival estimates from several cohorts. It is computed here using three year calendar blocks (2010-2012: 0-1 year survival), (2009-2011: 1-2 year survival), (2008-2010: 2-3 year survival), (2007-2009: 3-4 year survival), (2006-2008: 4-5 years survival).^e The difference between 1975-1977 and 2006-2012 is statistically significant (p<.05).^f The standard error is between 5 and 10 percentage points.^g The standard error is greater than 10 percentage points.

- Statistic could not be calculated due to fewer than 25 cases during the time period.

Table 13.15
Lymphocytic Leukemia

5-Year Relative and Period Survival (Percent) by Race, Sex, Diagnosis Year and Age

	All Races			Whites			Blacks		
	Total	Males	Females	Total	Males	Females	Total	Males	Females
<u>Acute Lymphocytic Leukemia</u>									
5-Year Relative Survival (Percent)									
Year of Diagnosis:									
1975-1977 ^a	40.6	36.9	45.6	40.8	37.4	45.7	33.5 ^e	-	-
...									
1984-1986 ^a	52.0	49.1	56.1	52.8	49.3	57.8	36.0 ^e	43.5 ^e	27.3 ^e
1987-1989 ^a	54.3	53.7	55.0	54.8	54.7	54.9	44.7 ^e	42.0 ^e	47.1 ^e
1990-1992 ^a	58.0	54.5	63.1	57.7	54.9	62.0	57.1 ^e	50.4 ^e	63.3 ^e
1993-1995 ^a	60.1	57.9	63.4	59.7	57.9	62.3	53.2 ^e	45.9 ^e	63.8 ^e
1996-1998 ^a	65.4	64.3	66.9	66.3	64.2	68.9	55.6 ^e	59.1 ^e	50.2 ^e
1999-2001 ^a	63.5	63.4	63.5	64.8	65.3	64.2	56.0 ^e	48.8 ^e	63.0 ^e
2002-2005 ^a	67.3	66.2	69.0	67.2	66.0	69.1	63.1	62.4 ^e	63.9 ^e
2006-2012 ^a	70.7 ^d	70.7 ^d	70.7 ^d	71.9 ^d	71.5 ^d	72.4 ^d	62.8 ^d	64.1	59.4 ^e
5-Year Period Survival (Percent) ^{bc}									
2012	68.3	68.6	68.0	68.4	68.6	68.1	65.7	69.4	60.1
5-Year Relative Survival (Percent), 2006-2012 ^b									
Age at Diagnosis:									
Ages <45	79.6	78.7	80.9	80.1	79.0	81.5	74.7	74.8	74.3
Ages 45-54	33.5	36.6	29.7	33.0	35.9	29.1	27.7 ^e	37.3 ^f	-
Ages 55-64	24.9	21.9	28.3	25.7	22.3	29.4	9.7 ^e	15.9 ^f	-
Ages 65-74	22.5	23.9	21.0	22.1	23.7	20.3	-	-	-
Ages 75+	6.9	8.8	4.2	6.6	7.9	4.9	-	-	-
Ages <65	72.6	72.1	73.3	72.9	72.3	73.7	67.7	69.4	64.6
Ages 65+	15.6	17.1	14.1	15.3	16.6	13.7	-	-	-
<u>Chronic Lymphocytic Leukemia</u>									
5-Year Relative Survival (Percent)									
Year of Diagnosis:									
1975-1977 ^a	67.1	64.7	70.3	67.9	65.4	71.2	56.9 ^e	55.1 ^e	59.0 ^e
...									
1984-1986 ^a	72.3	71.1	73.9	72.6	71.4	74.3	67.0 ^e	64.4 ^e	68.4 ^e
1987-1989 ^a	72.7	72.6	72.8	73.8	73.9	73.6	58.1	55.5 ^e	61.5 ^e
1990-1992 ^a	74.0	71.7	77.3	75.2	73.0	78.3	52.6	44.4 ^e	60.9 ^e
1993-1995 ^a	77.0	76.9	77.1	78.1	78.0	78.3	63.3	64.0 ^e	62.1 ^e
1996-1998 ^a	75.3	73.7	77.5	76.3	74.8	78.3	58.1	51.5 ^e	66.0 ^e
1999-2001 ^a	78.2	77.6	79.0	78.9	78.2	80.0	65.7	64.5 ^e	66.1 ^e
2002-2005 ^a	84.1	83.4	85.1	84.5	83.7	85.7	77.8	75.9	80.3 ^e
2006-2012 ^a	85.1 ^d	85.4 ^d	84.6 ^d	85.1 ^d	85.4 ^d	84.6 ^d	82.0 ^d	82.1 ^d	81.4 ^d
5-Year Period Survival (Percent) ^{bc}									
2012	82.4	82.5	82.2	82.4	82.6	82.1	72.0	70.0	74.7
5-Year Relative Survival (Percent), 2006-2012 ^b									
Age at Diagnosis:									
Ages <45	92.7	92.6	92.6	91.8	91.0	92.6	93.2	97.2	-
Ages 45-54	93.4	92.9	94.0	94.4	93.7	95.7	77.7	80.6	72.6 ^e
Ages 55-64	89.9	89.1	91.4	89.7	88.9	91.0	83.4	79.5	89.4
Ages 65-74	85.2	83.2	88.3	85.5	83.3	88.9	73.8	71.2	76.8
Ages 75+	70.6	70.7	70.6	70.8	71.0	70.6	54.0	51.3 ^e	56.3 ^e
Ages <65	91.1	90.4	92.2	91.1	90.4	92.4	82.4	81.7	83.0
Ages 65+	77.3	77.0	77.6	77.4	77.1	77.8	64.9	62.9	67.0

^a SEER 9 areas (San Francisco, Connecticut, Detroit, Hawaii, Iowa, New Mexico, Seattle, Utah, Atlanta).

Based on follow-up of patients into 2013.

^b SEER 18 areas (San Francisco, Connecticut, Detroit, Hawaii, Iowa, New Mexico, Seattle, Utah, Atlanta, San Jose-Monterey, Los Angeles, Alaska Native Registry, Rural Georgia, California excluding SF/SJM/LA, Kentucky, Louisiana, New Jersey and Georgia excluding ATL/RG).

Based on follow-up of patients into 2013.

^c Period survival provides a 2012 estimate of survival by piecing together the most recent conditional survival estimates from several cohorts. It is computed here using three year calendar blocks (2010-2012: 0-1 year survival), (2009-2011: 1-2 year survival), (2008-2010: 2-3 year survival), (2007-2009: 3-4 year survival), (2006-2008: 4-5 years survival). The difference between 1975-1977 and 2006-2012 is statistically significant (p<.05).

^d The standard error is between 5 and 10 percentage points.

^e The standard error is greater than 10 percentage points.

^f - Statistic could not be calculated due to fewer than 25 cases during the time period.

Table 13.16
Myeloid Leukemia

5-Year Relative and Period Survival (Percent) by Race, Sex, Diagnosis Year and Age

	All Races			Whites			Blacks		
	Total	Males	Females	Total	Males	Females	Total	Males	Females
<u>Acute Myeloid Leukemia</u>									
5-Year Relative Survival (Percent)									
Year of Diagnosis:									
1975-1977 ^a	6.2	5.5	7.0	5.8	5.4	6.2	10.1	8.2	11.7
...									
1984-1986 ^a	10.6	9.2	12.3	10.2	8.9	11.8	9.8	6.7	12.9
1987-1989 ^a	11.4	9.1	14.1	11.3	9.6	13.2	9.2	4.4	15.7 ^e
1990-1992 ^a	13.7	12.6	15.1	13.4	12.2	14.9	13.5	12.9	13.9
1993-1995 ^a	16.2	14.9	17.5	15.4	14.2	16.8	21.5	20.6 ^e	22.0
1996-1998 ^a	17.0	16.0	18.3	15.7	14.4	17.2	22.1	25.2	18.2
1999-2001 ^a	19.2	18.8	19.7	18.7	17.7	19.9	19.3	24.8	14.2
2002-2005 ^a	24.0	21.4	26.9	23.8	21.1	27.0	24.5	24.5	24.4
2006-2012 ^a	26.8 ^d	26.8 ^d	26.7 ^d	25.9 ^d	25.8 ^d	26.0 ^d	29.6 ^d	29.8 ^d	29.3 ^d
5-Year Period Survival (Percent) ^{bc}									
2012	27.6	26.6	28.9	27.1	26.0	28.5	31.0	30.4	31.6
5-Year Relative Survival (Percent), 2006-2012 ^b									
Age at Diagnosis:									
Ages <45	57.2	55.2	59.2	58.0	55.8	60.4	52.0	49.9	53.7
Ages 45-54	41.0	39.5	42.6	41.9	40.0	44.1	37.6	35.4	39.4 ^e
Ages 55-64	30.3	30.3	30.3	31.0	30.5	31.5	21.9	24.6	18.9
Ages 65-74	12.1	11.7	12.6	12.2	11.8	12.7	11.6	11.1	12.0
Ages 75+	2.2	1.8	2.6	2.4	2.0	2.8	0.9	0.0	1.2
Ages <65	44.8	43.0	46.8	45.1	43.0	47.6	41.1	39.5	42.8
Ages 65+	6.3	6.3	6.3	6.4	6.4	6.3	6.1	6.2	6.0
<u>Chronic Myeloid Leukemia</u>									
5-Year Relative Survival (Percent)									
Year of Diagnosis:									
1975-1977 ^a	21.8	19.3	25.1	20.5	18.4	23.4	27.7 ^e	21.6 ^e	35.5 ^e
...									
1984-1986 ^a	22.4	20.2	25.6	22.9	20.2	26.8	21.4	20.3 ^e	22.2 ^e
1987-1989 ^a	30.4	30.7	30.0	30.3	31.1	29.4	33.3 ^e	28.1 ^e	41.3 ^e
1990-1992 ^a	30.7	29.6	32.2	30.3	30.0	30.6	34.9 ^e	25.5 ^e	44.9 ^e
1993-1995 ^a	35.4	35.2	35.8	35.2	35.1	35.2	35.6 ^e	32.8 ^e	40.2 ^e
1996-1998 ^a	37.1	37.7	36.2	37.9	37.6	38.3	31.0	30.4 ^e	31.4 ^e
1999-2001 ^a	47.1	45.5	49.3	45.8	44.0	48.3	48.1 ^e	48.1 ^e	48.1 ^e
2002-2005 ^a	55.4	54.3	57.1	53.8	53.0	55.1	61.0	61.0 ^e	60.8 ^e
2006-2012 ^a	65.9 ^d	65.8 ^d	66.1 ^d	65.2 ^d	64.8 ^d	65.7 ^d	64.7 ^d	66.2 ^{de}	62.6 ^{de}
5-Year Period Survival (Percent) ^{bc}									
2012	67.1	66.3	68.2	66.5	65.8	67.4	67.7	68.6	66.6
5-Year Relative Survival (Percent), 2006-2012 ^b									
Age at Diagnosis:									
Ages <45	87.7	86.6	89.3	89.2	87.8	91.3	75.8	74.5	76.8
Ages 45-54	83.7	80.7	88.1	84.8	82.4	88.1	81.9	78.2 ^e	86.2 ^e
Ages 55-64	74.8	72.0	79.2	75.0	71.9	80.2	67.3	61.0 ^e	71.9 ^e
Ages 65-74	55.5	53.1	58.9	55.3	52.8	58.9	52.1 ^e	49.8 ^e	53.3 ^e
Ages 75+	27.9	27.1	28.7	27.6	25.9	29.0	23.1 ^e	21.4 ^f	22.3 ^e
Ages <65	82.5	80.3	85.8	83.3	80.9	86.9	74.9	71.9	77.9
Ages 65+	40.1	39.8	40.5	39.6	38.8	40.4	39.0	40.1 ^e	37.4 ^e

^a SEER 9 areas (San Francisco, Connecticut, Detroit, Hawaii, Iowa, New Mexico, Seattle, Utah, Atlanta).
Based on follow-up of patients into 2013.

^b SEER 18 areas (San Francisco, Connecticut, Detroit, Hawaii, Iowa, New Mexico, Seattle, Utah, Atlanta, San Jose-Monterey, Los Angeles, Alaska Native Registry, Rural Georgia, California excluding SF/SJM/LA, Kentucky, Louisiana, New Jersey and Georgia excluding ATL/RG).
Based on follow-up of patients into 2013.

^c Period survival provides a 2012 estimate of survival by piecing together the most recent conditional survival estimates from several cohorts. It is computed here using three year calendar blocks (2010-2012: 0-1 year survival), (2009-2011: 1-2 year survival), (2008-2010: 2-3 year survival), (2007-2009: 3-4 year survival), (2006-2008: 4-5 years survival).
The difference between 1975-1977 and 2006-2012 is statistically significant (p<.05).

^d The standard error is between 5 and 10 percentage points.

^e The standard error is greater than 10 percentage points.

- Statistic could not be calculated due to fewer than 25 cases during the time period.

Table 13.17
LeukemiaSEER^a Relative Survival (Percent)
By Year of Diagnosis

All Races, Males and Females

Year of Diagnosis

	1975- 1979	1980- 1984	1985- 1989	1990- 1994	1995	1996	1997	1998	1999	2000	2001	2002	2003	2004	2005	2006	2007	2008	2009	2010	2011	2012
Survival Time																						
1-year	60.8	62.6	64.8	66.8	68.0	68.1	67.8	66.5	65.9	66.8	70.5	72.0	73.0	74.8	73.9	76.1	76.5	76.2	76.9	77.6	78.5	78.1
2-year	50.1	52.5	55.3	57.4	58.8	59.8	59.7	57.8	58.2	58.8	62.8	64.6	65.9	67.4	68.1	70.0	70.1	69.7	70.1	71.6	71.8	
3-year	43.7	46.5	49.6	52.7	54.1	55.2	54.8	53.8	54.6	54.9	58.7	61.6	62.0	63.9	64.4	66.7	66.9	65.9	67.5	68.0		
4-year	38.8	41.7	45.5	49.0	50.6	51.7	50.8	50.0	51.5	51.7	56.5	59.3	59.1	61.5	62.3	63.9	64.5	63.2	64.7			
5-year	34.6	37.6	42.3	46.0	48.0	48.5	48.2	47.9	48.2	49.6	54.0	57.4	57.0	59.2	60.6	61.8	62.9	61.0				
6-year	31.4	35.0	39.9	43.5	45.6	46.3	45.6	45.8	46.1	48.2	52.1	55.6	55.1	56.7	58.8	59.7	61.2					
7-year	29.1	32.5	37.1	40.9	44.1	44.9	43.7	44.2	44.3	47.0	50.7	53.9	53.0	55.5	57.3	57.9						
8-year	27.0	30.3	34.9	38.7	41.5	43.6	43.0	42.8	42.8	45.4	49.2	53.0	51.2	54.0	55.4							
9-year	25.0	28.5	32.9	37.2	40.4	41.8	41.7	41.7	41.9	44.5	47.9	51.3	50.0	52.3								
10-year	23.7	26.9	31.6	35.9	38.8	40.4	40.4	40.6	40.4	43.4	46.7	49.8	48.0									
11-year	22.4	25.7	29.9	34.6	37.6	39.6	38.6	39.3	39.0	42.1	45.4	48.4										
12-year	21.2	24.5	28.8	33.5	36.9	38.4	37.5	38.5	38.1	41.4	44.3											
13-year	20.4	23.6	27.9	32.5	36.5	37.9	36.8	37.4	37.0	39.9												
14-year	19.7	22.9	27.2	31.7	35.4	36.8	36.6	36.4	36.5													
15-year	19.2	22.2	26.7	31.2	35.0	35.7	36.0	35.2														
16-year	18.5	21.4	26.0	30.5	34.7	35.5	35.9															
17-year	18.0	20.6	25.6	29.8	33.7	35.0																
18-year	17.6	20.1	25.2	29.3	32.6																	
19-year	17.1	19.4	24.7	28.9																		
20-year	16.6	19.0	24.4																			

^a Based on the SEER 9 areas (San Francisco, Connecticut, Detroit, Hawaii, Iowa, New Mexico, Seattle, Utah, and Atlanta).

Table 13.18
LeukemiaSEER^a Relative Survival (Percent)
By Year of Diagnosis

All Races, Males

Year of Diagnosis

	1975- 1979	1980- 1984	1985- 1989	1990- 1994	1995	1996	1997	1998	1999	2000	2001	2002	2003	2004	2005	2006	2007	2008	2009	2010	2011	2012
Survival Time																						
1-year	60.4	62.8	65.5	67.9	69.2	69.6	68.7	66.6	66.7	68.6	72.7	72.9	74.0	76.5	75.9	76.6	77.7	76.9	78.6	78.6	79.8	78.8
2-year	49.4	52.4	56.1	58.2	60.4	61.5	60.9	58.3	58.9	60.6	64.6	64.9	66.6	68.4	69.9	70.1	71.4	70.8	71.9	73.1	73.3	
3-year	42.7	46.0	49.9	53.1	55.5	57.2	55.0	54.4	55.1	56.9	60.5	62.0	62.4	65.0	66.2	66.7	68.4	67.0	69.0	70.0		
4-year	37.7	41.1	45.9	49.4	51.6	53.3	50.4	50.3	51.8	53.5	57.8	59.3	59.7	62.3	64.7	64.0	66.1	64.1	66.6			
5-year	33.4	37.1	42.9	46.1	48.1	49.4	47.6	48.2	47.8	51.9	54.9	56.8	57.3	59.8	62.6	61.7	64.5	62.2				
6-year	30.3	34.3	40.4	43.5	45.1	47.0	45.7	45.8	45.9	50.4	52.5	54.8	55.1	57.0	60.4	59.2	62.6					
7-year	27.7	31.8	37.3	40.8	43.8	45.6	43.6	44.1	43.7	49.3	51.0	52.5	52.9	55.9	58.9	57.6						
8-year	25.4	29.4	35.3	38.4	41.6	44.4	42.8	42.7	42.0	47.2	49.5	51.3	50.7	54.4	56.6							
9-year	23.2	27.5	33.2	37.0	40.3	42.2	41.8	41.6	41.2	45.8	48.1	50.0	49.3	52.0								
10-year	21.9	26.0	31.6	35.7	38.2	40.5	41.0	40.6	39.7	44.8	46.7	48.2	47.0									
11-year	20.5	24.9	30.2	34.5	37.6	39.6	38.8	38.9	38.0	43.7	45.4	46.5										
12-year	19.3	24.2	29.0	33.3	37.0	38.8	37.7	38.0	37.2	43.0	44.5											
13-year	18.6	23.4	28.3	32.4	36.6	38.6	37.1	36.4	35.9	41.3												
14-year	17.9	22.7	27.7	31.3	35.6	37.5	36.7	35.4	35.3													
15-year	17.4	22.1	26.9	30.8	35.1	36.7	36.2	34.4														
16-year	16.8	21.2	26.3	30.2	34.6	36.4	35.8															
17-year	16.4	20.4	25.9	29.5	33.7	36.1																
18-year	15.9	19.9	25.6	28.8	32.2																	
19-year	15.4	19.2	25.3	28.6																		
20-year	14.6	18.7	24.9																			

^a Based on the SEER 9 areas (San Francisco, Connecticut, Detroit, Hawaii, Iowa, New Mexico, Seattle, Utah, and Atlanta).

Table 13.19
LeukemiaSEER^a Relative Survival (Percent)
By Year of Diagnosis

All Races, Females

Year of Diagnosis

	1975- 1979	1980- 1984	1985- 1989	1990- 1994	1995	1996	1997	1998	1999	2000	2001	2002	2003	2004	2005	2006	2007	2008	2009	2010	2011	2012
Survival Time																						
1-year	61.3	62.3	63.8	65.5	66.4	66.2	66.6	66.5	64.6	64.3	67.4	70.8	71.6	72.6	71.2	75.5	75.0	75.2	74.5	76.3	76.7	77.2
2-year	50.9	52.7	54.2	56.4	56.7	57.5	58.0	57.1	57.3	56.4	60.5	64.3	64.9	66.1	65.6	69.9	68.3	68.2	67.6	69.6	69.7	
3-year	45.1	47.1	49.2	52.2	52.3	52.7	54.4	53.1	53.9	52.1	56.3	60.9	61.4	62.4	61.8	66.6	65.0	64.3	65.4	65.4		
4-year	40.2	42.4	44.9	48.5	49.2	49.6	51.4	49.6	51.1	49.3	54.7	59.2	58.2	60.3	58.9	63.8	62.4	62.0	62.1			
5-year	36.1	38.3	41.4	45.8	47.8	47.2	48.9	47.5	48.9	46.5	52.8	58.1	56.5	58.3	57.6	61.9	60.6	59.5				
6-year	32.8	36.0	39.2	43.5	46.1	45.4	45.6	45.7	46.3	45.4	51.4	56.4	55.0	56.2	56.5	60.3	59.1					
7-year	31.0	33.4	36.7	40.9	44.4	44.0	43.8	44.4	45.0	43.7	50.3	55.8	53.2	54.8	54.9	58.3						
8-year	29.0	31.5	34.4	39.0	41.3	42.6	43.3	42.8	43.8	42.7	48.8	55.2	51.9	53.4	53.6							
9-year	27.3	29.9	32.6	37.5	40.6	41.3	41.3	41.9	42.9	42.7	47.5	53.0	50.8	52.6								
10-year	25.9	28.1	31.5	36.2	39.6	40.2	39.6	40.4	41.4	41.5	46.5	51.7	49.4									
11-year	24.8	26.8	29.4	34.6	37.5	39.5	38.2	39.7	40.3	40.0	45.2	50.9										
12-year	23.5	24.9	28.4	33.7	36.8	37.9	37.2	39.1	39.3	39.4	44.1											
13-year	22.8	23.8	27.5	32.8	36.1	36.9	36.5	38.5	38.5	38.0												
14-year	22.1	23.1	26.6	32.1	35.1	35.8	36.2	37.8	37.9													
15-year	21.4	22.4	26.3	31.7	34.9	34.4	35.8	36.1														
16-year	20.7	21.6	25.7	30.9	34.9	34.1	35.8															
17-year	20.2	20.9	25.1	30.3	33.7	33.5																
18-year	19.8	20.4	24.7	29.9	33.0																	
19-year	19.3	19.7	24.0	29.4																		
20-year	19.0	19.4	23.7																			

^a Based on the SEER 9 areas (San Francisco, Connecticut, Detroit, Hawaii, Iowa, New Mexico, Seattle, Utah, and Atlanta).

Table 13.20
Leukemia

Risk of Being Diagnosed With Cancer in 10, 20 and 30 Years,
Lifetime Risk of Being Diagnosed with Cancer Given Alive and Cancer-Free at Current Age, and
Lifetime Risk of Dying from Cancer Given Alive at Current Age
Both Sexes, 2011-2013 By Race/Ethnicity

Race/ Ethnicity	Current Age	Risk of Being Diagnosed with Cancer				Risk of Dying from Cancer	Race/ Ethnicity	Current Age	Risk of Being Diagnosed with Cancer				Risk of Dying from Cancer
		+10 yrs	+20 yrs	+30 yrs	Ever				+10 yrs	+20 yrs	+30 yrs	Ever	
All Races	0	0.06	0.09	0.12	1.49	0.86	Asian/ Pacific Islander	0	0.06	0.08	0.10	0.99	0.65
	10	0.03	0.06	0.10	1.45	0.87		10	0.03	0.05	0.08	0.94	0.65
	20	0.03	0.07	0.13	1.42	0.86		20	0.02	0.05	0.09	0.92	0.64
	30	0.04	0.11	0.24	1.41	0.86		30	0.03	0.07	0.14	0.90	0.64
	40	0.07	0.21	0.48	1.38	0.86		40	0.04	0.12	0.26	0.88	0.63
	50	0.14	0.43	0.86	1.35	0.86		50	0.08	0.22	0.47	0.85	0.62
	60	0.30	0.77	1.16	1.28	0.87		60	0.15	0.40	0.67	0.79	0.60
	70	0.52	0.98	-	1.11	0.83		70	0.27	0.55	-	0.69	0.56
80	0.61	-	-	0.78	0.69	80	0.34	-	-	0.50	0.44		
White	0	0.06	0.10	0.13	1.56	0.90	American Indian/ Alaska Native ^a	0	0.05	0.09	0.13	1.06	0.49
	10	0.03	0.06	0.10	1.51	0.90		10	0.03	0.08	0.13	1.02	0.49
	20	0.03	0.07	0.14	1.49	0.90		20	0.05	0.10	0.15	0.99	0.49
	30	0.04	0.11	0.25	1.47	0.89		30	0.05	0.10	0.21	0.96	0.49
	40	0.07	0.22	0.51	1.44	0.89		40	0.05	0.16	0.36	0.93	0.49
	50	0.15	0.45	0.91	1.41	0.90		50	0.11	0.32	0.58	0.91	0.49
	60	0.32	0.80	1.22	1.34	0.90		60	0.22	0.50	0.79	0.86	0.50
	70	0.55	1.02	-	1.15	0.87		70	0.32	0.66	-	0.73	0.46
80	0.64	-	-	0.81	0.72	80	0.45	-	-	0.56	0.44		
Black	0	0.03	0.05	0.07	1.05	0.62	Hispanic ^b	0	0.07	0.11	0.14	1.25	0.69
	10	0.02	0.04	0.07	1.03	0.63		10	0.04	0.07	0.12	1.20	0.69
	20	0.02	0.05	0.11	1.02	0.62		20	0.03	0.08	0.14	1.16	0.69
	30	0.04	0.10	0.21	1.01	0.62		30	0.04	0.11	0.21	1.14	0.68
	40	0.06	0.18	0.40	1.00	0.62		40	0.06	0.17	0.35	1.10	0.67
	50	0.12	0.35	0.66	0.97	0.62		50	0.11	0.30	0.59	1.06	0.66
	60	0.26	0.60	0.84	0.93	0.62		60	0.20	0.51	0.85	0.99	0.65
	70	0.41	0.70	-	0.81	0.59		70	0.34	0.71	-	0.87	0.61
80	0.42	-	-	0.59	0.49	80	0.47	-	-	0.67	0.49		

Devcan 6.7.4, August 2016, National Cancer Institute (<http://surveillance.cancer.gov/devcan/>).

Source: Incidence data are from the SEER 18 areas (San Francisco, Connecticut, Detroit, Hawaii, Iowa, New Mexico, Seattle, Utah, Atlanta, San Jose-Monterey, Los Angeles, Alaska Native Registry, Rural Georgia, California excluding SF/SJM/LA, Kentucky, Louisiana, New Jersey, and Georgia excluding ATL/RG). Mortality data are from the NCHS public use data file for the total US.

^a Underlying incidence and mortality data for American Indian/Alaska Native are based on the CHSDA (Contract Health Service Delivery Area) counties.

^b Hispanic is not mutually exclusive from whites, blacks, Asian/Pacific Islanders, and American Indians/Alaska Natives. Underlying incidence data for Hispanics are based on NHIA and exclude cases from the Alaska Native Registry.

- Statistic could not be calculated.

A percent of 0.00 represents a value that is below 0.005.

Table 13.21
Leukemia

Risk of Being Diagnosed With Cancer in 10, 20 and 30 Years,
Lifetime Risk of Being Diagnosed with Cancer Given Alive and Cancer-Free at Current Age, and
Lifetime Risk of Dying from Cancer Given Alive at Current Age
Males, 2011-2013 By Race/Ethnicity

Race/ Ethnicity	Current Age	Risk of Being Diagnosed with Cancer				Risk of Dying from Cancer	Race/ Ethnicity	Current Age	Risk of Being Diagnosed with Cancer				Risk of Dying from Cancer
		+10 yrs	+20 yrs	+30 yrs	Ever				+10 yrs	+20 yrs	+30 yrs	Ever	
All Races	0	0.06	0.10	0.13	1.77	1.03	Asian/ Pacific Islander	0	0.06	0.09	0.12	1.17	0.78
	10	0.04	0.07	0.11	1.73	1.04		10	0.03	0.06	0.09	1.12	0.78
	20	0.03	0.07	0.15	1.70	1.03		20	0.03	0.06	0.10	1.09	0.77
	30	0.04	0.12	0.29	1.69	1.03		30	0.03	0.08	0.17	1.07	0.77
	40	0.08	0.25	0.59	1.67	1.04		40	0.05	0.14	0.31	1.05	0.76
	50	0.17	0.53	1.07	1.65	1.05		50	0.09	0.26	0.57	1.02	0.75
	60	0.39	0.97	1.46	1.58	1.07		60	0.18	0.50	0.82	0.96	0.74
	70	0.68	1.25	-	1.40	1.05		70	0.35	0.70	-	0.85	0.70
80	0.81	-	-	1.02	0.90	80	0.43	-	-	0.63	0.56		
White	0	0.06	0.10	0.13	1.85	1.07	American Indian/ Alaska Native ^a	0	0.08	0.11	0.16	1.20	0.56
	10	0.04	0.07	0.12	1.81	1.08		10	0.03	0.08	0.12	1.14	0.56
	20	0.03	0.08	0.16	1.78	1.08		20	0.05	0.09	0.13	1.11	0.56
	30	0.05	0.13	0.30	1.76	1.08		30	0.04	0.08	0.19	1.09	0.56
	40	0.08	0.26	0.62	1.75	1.08		40	0.04	0.16	0.38	1.08	0.57
	50	0.18	0.56	1.12	1.72	1.10		50	0.12	0.36	0.64	1.09	0.59
	60	0.40	1.02	1.53	1.65	1.12		60	0.26	0.57	0.98	1.06	0.62
	70	0.71	1.30	-	1.45	1.10		70	0.36	0.85	-	0.95	0.60
80	0.85	-	-	1.06	0.94	80	0.71	-	-	0.85	0.55		
Black	0	0.04	0.06	0.07	1.18	0.69	Hispanic ^b	0	0.07	0.11	0.15	1.46	0.82
	10	0.02	0.04	0.08	1.17	0.70		10	0.04	0.08	0.13	1.41	0.82
	20	0.02	0.05	0.13	1.16	0.70		20	0.04	0.09	0.16	1.37	0.81
	30	0.04	0.11	0.25	1.16	0.70		30	0.05	0.12	0.24	1.34	0.81
	40	0.08	0.22	0.49	1.15	0.71		40	0.07	0.19	0.41	1.31	0.80
	50	0.15	0.43	0.81	1.13	0.71		50	0.12	0.35	0.71	1.27	0.80
	60	0.32	0.74	1.02	1.09	0.72		60	0.24	0.62	1.03	1.21	0.80
	70	0.54	0.89	-	0.99	0.71		70	0.43	0.89	-	1.10	0.77
80	0.56	-	-	0.72	0.61	80	0.61	-	-	0.88	0.66		

Devcan 6.7.4, August 2016, National Cancer Institute (<http://surveillance.cancer.gov/devcan/>).

Source: Incidence data are from the SEER 18 areas (San Francisco, Connecticut, Detroit, Hawaii, Iowa, New Mexico, Seattle, Utah, Atlanta, San Jose-Monterey, Los Angeles, Alaska Native Registry, Rural Georgia, California excluding SF/SJM/LA, Kentucky, Louisiana, New Jersey, and Georgia excluding ATL/RG). Mortality data are from the NCHS public use data file for the total US.

^a Underlying incidence and mortality data for American Indian/Alaska Native are based on the CHSDA (Contract Health Service Delivery Area) counties.

^b Hispanic is not mutually exclusive from whites, blacks, Asian/Pacific Islanders, and American Indians/Alaska Natives. Underlying incidence data for Hispanics are based on NHIA and exclude cases from the Alaska Native Registry.

- Statistic could not be calculated.

A percent of 0.00 represents a value that is below 0.005.

Table 13.22
Leukemia

Risk of Being Diagnosed With Cancer in 10, 20 and 30 Years,
Lifetime Risk of Being Diagnosed with Cancer Given Alive and Cancer-Free at Current Age, and
Lifetime Risk of Dying from Cancer Given Alive at Current Age
Females, 2011-2013 By Race/Ethnicity

Race/ Ethnicity	Current Age	Risk of Being Diagnosed with Cancer				Risk of Dying from Cancer	Race/ Ethnicity	Current Age	Risk of Being Diagnosed with Cancer				Risk of Dying from Cancer
		+10 yrs	+20 yrs	+30 yrs	Ever				+10 yrs	+20 yrs	+30 yrs	Ever	
All Races	0	0.06	0.08	0.11	1.24	0.72	Asian/ Pacific Islander	0	0.05	0.07	0.09	0.84	0.54
	10	0.03	0.05	0.08	1.20	0.72		10	0.02	0.04	0.06	0.79	0.54
	20	0.02	0.06	0.11	1.17	0.71		20	0.01	0.04	0.08	0.77	0.54
	30	0.03	0.09	0.20	1.15	0.71		30	0.03	0.06	0.12	0.76	0.53
	40	0.06	0.17	0.38	1.13	0.71		40	0.04	0.10	0.22	0.74	0.53
	50	0.11	0.33	0.67	1.09	0.70		50	0.06	0.18	0.38	0.71	0.52
	60	0.22	0.58	0.91	1.03	0.70		60	0.12	0.33	0.55	0.66	0.50
	70	0.40	0.76	-	0.88	0.66		70	0.21	0.44	-	0.57	0.45
80	0.47	-	-	0.63	0.55	80	0.27	-	-	0.41	0.37		
White	0	0.06	0.09	0.12	1.30	0.74	American Indian/ Alaska Native ^a	0	0.03	0.06	0.11	0.94	0.43
	10	0.03	0.06	0.09	1.25	0.74		10	0.03	0.08	0.14	0.92	0.44
	20	0.03	0.06	0.12	1.22	0.74		20	0.05	0.11	0.17	0.89	0.43
	30	0.03	0.09	0.21	1.20	0.73		30	0.06	0.12	0.23	0.85	0.43
	40	0.06	0.17	0.39	1.17	0.73		40	0.06	0.16	0.33	0.80	0.42
	50	0.12	0.34	0.70	1.14	0.73		50	0.11	0.28	0.53	0.77	0.42
	60	0.23	0.61	0.96	1.06	0.72		60	0.18	0.44	0.64	0.70	0.40
	70	0.42	0.80	-	0.92	0.69		70	0.29	0.51	-	0.57	0.36
80	0.49	-	-	0.65	0.57	80	0.28	-	-	0.36	0.38		
Black	0	0.03	0.04	0.06	0.93	0.56	Hispanic ^b	0	0.06	0.10	0.13	1.09	0.60
	10	0.02	0.04	0.07	0.92	0.57		10	0.04	0.06	0.10	1.03	0.60
	20	0.02	0.05	0.10	0.90	0.56		20	0.03	0.07	0.12	1.00	0.59
	30	0.03	0.08	0.17	0.89	0.56		30	0.04	0.09	0.18	0.97	0.58
	40	0.05	0.14	0.33	0.87	0.56		40	0.06	0.14	0.30	0.94	0.57
	50	0.09	0.28	0.54	0.84	0.55		50	0.09	0.25	0.50	0.90	0.56
	60	0.21	0.48	0.70	0.81	0.55		60	0.16	0.42	0.70	0.83	0.55
	70	0.31	0.56	-	0.69	0.52		70	0.28	0.58	-	0.72	0.50
80	0.34	-	-	0.52	0.42	80	0.37	-	-	0.53	0.38		

Devcan 6.7.4, August 2016, National Cancer Institute (<http://surveillance.cancer.gov/devcan/>).

Source: Incidence data are from the SEER 18 areas (San Francisco, Connecticut, Detroit, Hawaii, Iowa, New Mexico, Seattle, Utah, Atlanta, San Jose-Monterey, Los Angeles, Alaska Native Registry, Rural Georgia, California excluding SF/SJM/LA, Kentucky, Louisiana, New Jersey, and Georgia excluding ATL/RG). Mortality data are from the NCHS public use data file for the total US.

^a Underlying incidence and mortality data for American Indian/Alaska Native are based on the CHSDA (Contract Health Service Delivery Area) counties.

^b Hispanic is not mutually exclusive from whites, blacks, Asian/Pacific Islanders, and American Indians/Alaska Natives. Underlying incidence data for Hispanics are based on NHIA and exclude cases from the Alaska Native Registry.

- Statistic could not be calculated.

A percent of 0.00 represents a value that is below 0.005.

Table 13.23
Leukemia

SEER Incidence and U.S. Mortality
Age-Adjusted Rates and Trends^a
By Race/Ethnicity and Sex

SEER Incidence	SEER 18 Areas ^b			SEER 13 Areas ^b			SEER 9 Areas ^b		
	Rate 2009-2013			Trend 2004-2013 ^c			Trend 2004-2013 ^d		
	Rate per 100,000 persons			AAPC (%)			AAPC (%)		
RACE/ETHNICITY	Total	Males	Females	Total	Males	Females	Total	Males	Females
All Races	13.5	17.3	10.5	0.2*	0.1	0.3*	0.3*	0.1*	0.3*
White	14.3	18.2	11.1	0.4*	0.1	0.5*	0.4*	0.2*	0.4*
White Hispanic ^e	11.0	13.3	9.2	0.5*	0.3	0.7*	-	-	-
White Non-Hispanic ^e	14.6	18.7	11.2	0.4*	0.2*	0.5*	-	-	-
Black	10.8	13.8	8.7	0.2	0.2	0.2	0.0	0.0	0.0
Asian/Pacific Islander	7.7	9.6	6.2	-0.2	-0.2	-0.1	-	-	-
Amer Ind/Alaska Nat ^f	8.2	9.7	7.2	1.7	2.2	1.7	-	-	-
Hispanic ^e	10.6	12.8	8.8	0.5*	0.3	0.7*	-	-	-
<u>U.S. Mortality^g</u>									
	Rate 2009-2013			Trend 2004-2013 ^h					
	Rate per 100,000 persons			AAPC (%)					
RACE/ETHNICITY	Total	Males	Females	Total	Males	Females			
All Races	6.9	9.3	5.2	-1.0*	-1.0*	-1.2*			
White	7.1	9.6	5.3	-0.9*	-0.7*	-1.1*			
White Hispanic ^e	5.2	6.5	4.2	0.2	-0.3	-0.4*			
White Non-Hispanic ^e	7.2	9.8	5.3	-0.8*	-0.7*	-1.1*			
Black	5.8	7.7	4.6	-1.2*	-1.2*	-1.2*			
Asian/Pacific Islander	4.0	5.1	3.1	-0.7*	-0.6*	-0.7			
Amer Ind/Alaska Nat									
Total U.S.	3.6	4.8	2.7	-1.2*	-1.0	-1.5*			
CHSDA Counties	4.5	6.2	3.3	-0.3	0.1	-0.9			
Non-CHSDA Counties	2.5	3.3	2.0	-2.1*	-2.0	-2.1			
Hispanic ^e	4.9	6.2	4.0	0.1	-0.4*	-0.5*			

The AAPC is the Average Annual Percent Change over the time interval. The AAPCs are calculated by the Joinpoint Regression Program Version 4.3.0.0, April 2016, National Cancer Institute.

- Statistic not shown. Rate based on less than 16 cases for the time interval.

Trend based on less than 10 cases for at least one year within the time interval.

a Rates are age-adjusted to the 2000 US Std Population (19 age groups - Census P25-1130). Trends are based on rates age-adjusted to the 2000 US Std Population (19 age groups - Census P25-1130).

b The SEER 9 areas are San Francisco, Connecticut, Detroit, Hawaii, Iowa, New Mexico, Seattle, Utah, and Atlanta.

The SEER 13 areas comprise the SEER 9 areas plus San Jose-Monterey, Los Angeles, the Alaska Native Registry, and Rural Georgia.

The SEER 18 areas comprise the SEER 13 areas plus California excluding SF/SJM/LA, Kentucky, Louisiana, New Jersey, and Georgia excluding ATL/RG.

c The 2004-2013 AAPC estimates are based on a Joinpoint analysis with up to 4 Joinpoints over diagnosis years 1992-2013.

d The 2004-2013 AAPC estimates are based on a Joinpoint analysis with up to 5 Joinpoints over diagnosis years 1975-2013.

e Hispanic and Non-Hispanic are not mutually exclusive from whites, blacks, Asian/Pacific Islanders, and American Indians/Alaska Natives. Incidence data for Hispanics and Non-Hispanics are based on NHIA and exclude cases from the Alaska Native Registry. The 2004-2013 Hispanic and Non-Hispanic mortality trends exclude deaths from New Hampshire and Oklahoma.

f Incidence data for American Indian/Alaska Native are based on the CHSDA (Contract Health Service Delivery Area) counties.

g US Mortality Files, National Center for Health Statistics, CDC.

h The 2004-2013 mortality AAPCs are based on a Joinpoint analysis using years of death 1992-2013.

* The APC is significantly different from zero (p<.05).

Table 13.24
LeukemiaAge-Adjusted SEER Incidence Rates^a
By Registry, Race and Sex

	All Races			Whites			Blacks		
	Total	Males	Females	Total	Males	Females	Total	Males	Females
<u>SEER Incidence Rates^a, 2009-2013</u>									
California	12.58	16.10	9.73	13.47	17.21	10.41	10.71	13.90	8.22
Greater Bay Area	12.59	16.15	9.79	14.43	18.53	11.15	11.47	15.39	8.53
San Francisco-Oakland	12.39	15.78	9.79	14.31	18.18	11.28	11.55	15.42	8.73
San Jose-Monterey	12.90	16.77	9.74	14.55	18.99	10.86	10.66	14.92	-
Los Angeles	12.13	15.63	9.36	13.17	16.95	10.10	10.27	13.36	8.13
Greater California	12.77	16.28	9.89	13.31	16.91	10.33	10.73	13.44	8.26
Connecticut	15.11	19.72	11.53	15.49	20.14	11.87	10.02	11.44	8.69
Detroit	14.92	19.79	11.34	15.75	20.77	11.97	11.80	15.43	9.40
Georgia	12.96	16.45	10.42	13.82	17.49	10.99	10.84	13.76	9.17
Atlanta	12.62	16.21	10.18	13.73	17.55	10.97	11.18	14.31	9.33
Rural Georgia	12.79	14.71	11.06	13.89	16.26	11.04	10.81	-	-
Greater Georgia	13.14	16.63	10.54	13.88	17.53	11.00	10.62	13.32	9.10
Hawaii	11.87	14.88	9.46	14.94	18.18	11.94	-	-	-
Iowa	15.69	19.86	12.37	15.68	19.86	12.35	13.78	15.53	12.01
Kentucky	15.32	19.69	12.00	15.36	19.73	12.04	11.55	14.97	9.17
Louisiana	12.91	16.30	10.36	14.05	17.56	11.35	9.95	12.70	8.07
New Jersey	14.53	18.83	11.20	14.77	19.06	11.40	10.39	13.66	8.29
New Mexico	12.52	15.63	9.83	12.44	15.49	9.79	7.76	-	-
Seattle-Puget Sound	15.32	19.76	11.67	16.01	20.45	12.30	14.33	19.36	9.73
Utah	13.33	16.82	10.31	13.44	16.88	10.47	-	-	-
SEER 9 Areas ^b	14.03	18.01	10.90	14.91	19.06	11.59	11.42	14.72	9.13
SEER 13 Areas ^b	13.55	17.43	10.50	14.58	18.69	11.27	11.10	14.36	8.84
SEER 18 Areas ^b	13.51	17.32	10.52	14.27	18.23	11.10	10.76	13.80	8.65

^a Rates are per 100,000 and are age-adjusted to the 2000 US Std Population (19 age groups - Census P25-1130)^b The SEER 9 areas are San Francisco, Connecticut, Detroit, Hawaii, Iowa, New Mexico, Seattle, Utah and Atlanta.

The SEER 13 areas comprise the SEER 9 areas plus San Jose-Monterey, Los Angeles, the Alaska Native Registry and Rural Georgia.

The SEER 18 areas comprise the SEER 13 areas plus California excluding SF/SJM/LA, Kentucky, Louisiana, New Jersey and Georgia excluding ATL/RG.

- Statistic not shown. Rate based on less than 16 cases for the time interval.

Table 13.25
LeukemiaAge-Adjusted SEER Death Rates^a
By Registry, Race and Sex

	All Races			Whites			Blacks		
	Total	Males	Females	Total	Males	Females	Total	Males	Females
<u>SEER Death Rates^a, 2009-2013</u>									
California	6.52	8.49	5.03	7.00	9.14	5.36	6.25	7.71	5.16
Greater Bay Area	5.97	7.81	4.63	6.62	8.66	5.12	6.56	9.10	4.76
San Francisco-Oakland	5.91	7.71	4.65	6.57	8.60	5.11	6.41	8.84	4.72
San Jose-Monterey	6.06	7.98	4.62	6.67	8.71	5.13	7.44	-	-
Los Angeles	6.49	8.43	5.05	7.06	9.36	5.33	6.22	7.16	5.58
Greater California	6.73	8.75	5.17	7.07	9.17	5.44	6.06	7.43	4.90
Connecticut	6.80	9.42	4.90	7.02	9.80	4.97	4.79	5.18	4.55
Detroit	6.81	9.47	4.98	7.08	9.97	5.06	5.82	7.25	4.87
Georgia	6.46	8.73	4.87	6.75	9.16	5.01	5.66	7.26	4.58
Atlanta	5.99	8.01	4.65	6.36	8.55	4.81	5.60	7.42	4.49
Rural Georgia	6.88	9.93	4.84	7.08	9.00	-	-	-	-
Greater Georgia	6.66	8.99	5.00	6.88	9.35	5.08	5.73	7.02	4.73
Hawaii	5.34	6.97	4.08	5.42	6.90	4.08	-	-	-
Iowa	7.16	9.66	5.34	7.25	9.74	5.45	-	-	-
Kentucky	7.63	10.62	5.56	7.71	10.74	5.61	6.60	9.07	5.10
Louisiana	7.16	9.68	5.37	7.27	9.81	5.41	6.77	9.27	5.16
New Jersey	6.46	8.80	4.82	6.95	9.54	5.10	4.63	5.78	3.94
New Mexico	5.95	7.82	4.42	6.22	8.16	4.60	-	-	-
Seattle-Puget Sound	6.67	8.94	4.99	6.94	9.22	5.24	7.74	9.22	6.47
Utah	5.90	7.64	4.51	5.99	7.73	4.61	-	-	-
SEER 9 Areas ^b	6.41	8.61	4.81	6.77	9.10	5.03	5.80	7.46	4.69
SEER 13 Areas ^b	6.42	8.55	4.85	6.84	9.16	5.11	5.90	7.48	4.84
SEER 18 Areas ^b	6.62	8.83	4.99	6.99	9.35	5.24	5.87	7.50	4.76
Total U.S.	6.89	9.27	5.16	7.15	9.60	5.32	5.84	7.71	4.63

^a US Mortality Files, National Center for Health Statistics, Centers for Disease Control and Prevention. Rates are per 100,000 and are age-adjusted to the 2000 US Std Population (19 age groups - Census P25-1130).

^b The SEER 9 areas are San Francisco, Connecticut, Detroit, Hawaii, Iowa, New Mexico, Seattle, Utah and Atlanta. The SEER 13 areas comprise the SEER 9 areas plus San Jose-Monterey, Los Angeles, the Alaska Native Registry and Rural Georgia. The SEER 18 areas comprise the SEER 13 areas plus California excluding SF/SJM/LA, Kentucky, Louisiana, New Jersey and Georgia excluding ATL/RG.

- Statistic not shown. Rate based on less than 16 cases for the time interval.

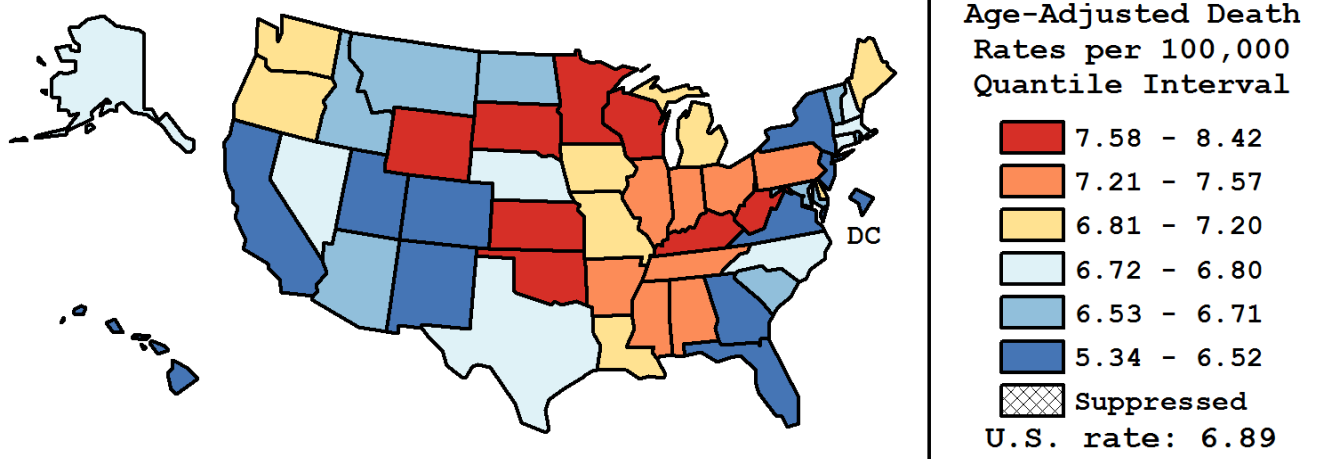
Table 13.26
Leukemia

Age-Adjusted Cancer Death^a Rates By State, All Races, 2009-2013

Males and Females

State	Rate	SE	Rank(CI) ^d	PD
TOTAL U.S.	6.89	0.02		
High Five States				
Wyoming	8.42	0.54	01(01,28)	22.10 ^c
Wisconsin	7.96	0.16	02(01,11)	15.52 ^c
South Dakota	7.88	0.42	03(01,33)	14.37
Oklahoma	7.78	0.20	04(01,19)	12.91
West Virginia	7.68	0.26	05(01,27)	11.35
Low Five States				
Colorado	6.41	0.17	47(25,49)	-7.01
New Mexico	5.95	0.23	48(33,51)	-13.65
Utah	5.90	0.24	49(34,51)	-14.44
D.C.	5.61	0.45	50(23,51)	-18.57 ^c
Hawaii	5.34	0.26	51(47,51)	-22.51 ^c

State	Rate	SE	Rank(CI) ^d	PD	State	Rate	SE	Rank(CI) ^d	PD
Alabama	7.49	0.17	11(02,25)	8.65	Montana	6.59	0.34	39(08,50)	-4.41
Alaska	6.72	0.57	32(01,51)	-2.58	Nebraska	6.79	0.26	27(08,48)	-1.47
Arizona	6.59	0.14	38(22,48)	-4.36	Nevada	6.74	0.23	29(11,48)	-2.23
Arkansas	7.57	0.22	09(01,26)	9.83	New Hampshire	6.73	0.30	30(06,49)	-2.36
California	6.52	0.06	41(30,47)	-5.43	New Jersey	6.46	0.12	46(28,48)	-6.35
Colorado	6.41	0.17	47(25,49)	-7.01	New Mexico	5.95	0.23	48(33,51)	-13.65
Connecticut	6.80	0.18	26(15,47)	-1.30	New York	6.52	0.08	43(29,48)	-5.44
Delaware	6.88	0.37	24(02,49)	-0.22	North Carolina	6.73	0.12	31(21,45)	-2.42
D.C.	5.61	0.45	50(23,51)	-18.57 ^c	North Dakota	6.67	0.41	34(03,50)	-3.22
Florida	6.51	0.07	44(29,47)	-5.60	Ohio	7.24	0.11	16(08,27)	5.06
Georgia	6.46	0.12	45(27,48)	-6.32	Oklahoma	7.78	0.20	04(01,19)	12.91
Hawaii	5.34	0.26	51(47,51)	-22.51 ^c	Oregon	6.97	0.18	22(09,43)	1.14
Idaho	6.67	0.29	35(09,50)	-3.31	Pennsylvania	7.25	0.10	15(08,26)	5.21
Illinois	7.44	0.11	13(04,22)	7.97	Rhode Island	6.66	0.33	36(07,50)	-3.40
Indiana	7.46	0.15	12(03,24)	8.15	South Carolina	6.71	0.17	33(18,47)	-2.72
Iowa	7.16	0.20	20(05,38)	3.85	South Dakota	7.88	0.42	03(01,33)	14.37
Kansas	7.67	0.22	06(01,24)	11.19	Tennessee	7.37	0.15	14(04,26)	6.87
Kentucky	7.63	0.18	08(01,22)	10.75	Texas	6.80	0.08	25(21,39)	-1.29
Louisiana	7.16	0.18	21(05,36)	3.84	Utah	5.90	0.24	49(34,51)	-14.44
Maine	7.19	0.30	19(02,46)	4.23	Vermont	6.65	0.43	37(02,51)	-3.49
Maryland	6.56	0.15	40(22,48)	-4.83	Virginia	6.52	0.13	42(25,48)	-5.44
Massachusetts	6.78	0.14	28(18,45)	-1.68	Washington	6.89	0.14	23(14,41)	0.00
Michigan	7.19	0.11	18(08,29)	4.30	West Virginia	7.68	0.26	05(01,27)	11.35
Minnesota	7.64	0.16	07(01,21)	10.77	Wisconsin	7.96	0.16	02(01,11)	15.52 ^c
Mississippi	7.50	0.22	10(01,28)	8.72	Wyoming	8.42	0.54	01(01,28)	22.10 ^c
Missouri	7.20	0.15	17(06,33)	4.45					



^a US Mortality Files, National Center for Health Statistics, Centers for Disease Control and Prevention. Rates are per 100,000 and are age-adjusted to the 2000 US Std Population (19 age groups - Census P25-1130).

^b Difference between state rate and total U.S. rate is statistically significant ($p < .0002$).

^c Absolute percent difference between state rate and total U.S. rate is 15% or more.

^d Rank of state level death rate and the 95% confidence intervals (low, high) for the rank.

SE Standard error of the rate.

PD Percent difference between state rate and total U.S. rate.

- Statistic not shown. Rate based on less than 16 cases for the time interval.

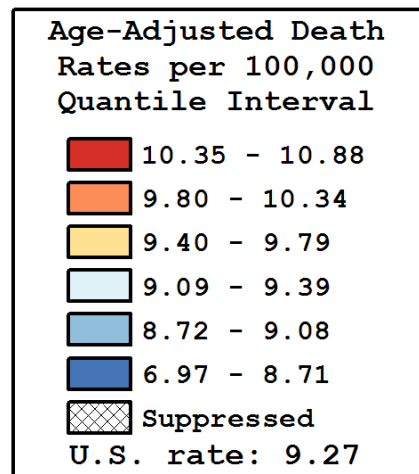
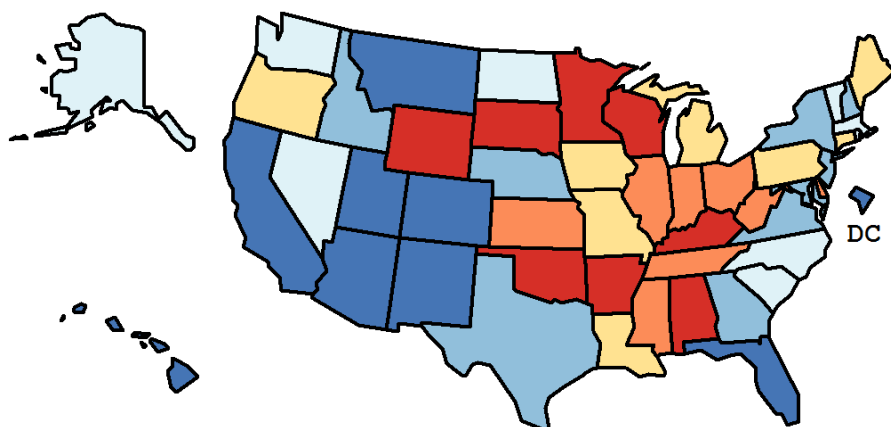
Table 13.27
Leukemia

Age-Adjusted Cancer Death^a Rates By State, All Races, 2009-2013

Males

State	Rate	SE	Rank(CI) ^d	PD
TOTAL U.S.	9.27	0.04		
High Five States				
Wyoming	10.88	0.93	01(01,47)	17.44 ^c
Wisconsin	10.88	0.28	02(01,16)	17.37 ^c
Arkansas	10.87	0.40	03(01,20)	17.30 ^c
Kentucky	10.62	0.34	04(01,23)	14.63
South Dakota	10.61	0.73	05(01,44)	14.48
Low Five States				
Colorado	8.40	0.29	47(26,50)	-9.32
New Mexico	7.82	0.40	48(32,51)	-15.62 ^c
D.C.	7.70	0.84	49(08,51)	-16.89 ^c
Utah	7.64	0.41	50(36,51)	-17.59 ^c
Hawaii	6.97	0.45	51(45,51)	-24.78 ^c

State	Rate	SE	Rank(CI) ^d	PD	State	Rate	SE	Rank(CI) ^d	PD
Alabama	10.41	0.32	07(01,26)	12.29	Montana	8.42	0.57	46(11,51)	-9.09
Alaska	9.27	1.02	27(01,51)	-0.01	Nebraska	8.96	0.46	35(07,50)	-3.32
Arizona	8.63	0.23	44(26,49)	-6.88	Nevada	9.13	0.40	32(07,48)	-1.47
Arkansas	10.87	0.40	03(01,20)	17.30 ^c	New Hampshire	8.95	0.54	36(05,50)	-3.36
California	8.49	0.10	45(36,48)	-8.34	New Jersey	8.80	0.21	40(23,48)	-5.03
Colorado	8.40	0.29	47(26,50)	-9.32	New Mexico	7.82	0.40	48(32,51)	-15.62 ^c
Connecticut	9.42	0.33	24(07,45)	1.69	New York	8.95	0.14	37(24,45)	-3.38
Delaware	9.82	0.68	16(01,49)	5.98	North Carolina	9.17	0.22	29(16,44)	-1.04
D.C.	7.70	0.84	49(08,51)	-16.89 ^c	North Dakota	9.22	0.73	28(01,51)	-0.53
Florida	8.71	0.12	43(30,47)	-6.00	Ohio	9.88	0.19	14(06,28)	6.58
Georgia	8.73	0.23	42(23,48)	-5.74	Oklahoma	10.48	0.35	06(01,25)	13.12
Hawaii	6.97	0.45	51(45,51)	-24.78 ^c	Oregon	9.44	0.32	23(07,44)	1.89
Idaho	8.95	0.51	38(06,50)	-3.44	Pennsylvania	9.65	0.17	20(10,32)	4.14
Illinois	10.05	0.19	13(04,26)	8.51	Rhode Island	9.16	0.60	30(02,50)	-1.10
Indiana	9.83	0.26	15(04,32)	6.06	South Carolina	9.28	0.31	26(10,46)	0.18
Iowa	9.66	0.35	19(03,43)	4.26	South Dakota	10.61	0.73	05(01,44)	14.48
Kansas	10.34	0.40	09(01,31)	11.61	Tennessee	10.17	0.27	12(02,27)	9.76
Kentucky	10.62	0.34	04(01,23)	14.63	Texas	9.08	0.14	34(22,43)	-2.05
Louisiana	9.68	0.33	18(04,41)	4.45	Utah	7.64	0.41	50(36,51)	-17.59 ^c
Maine	9.49	0.52	22(02,48)	2.40	Vermont	9.39	0.79	25(01,51)	1.39
Maryland	8.77	0.27	41(20,49)	-5.40	Virginia	8.87	0.23	39(21,48)	-4.24
Massachusetts	9.09	0.24	33(16,46)	-1.95	Washington	9.13	0.25	31(14,46)	-1.41
Michigan	9.65	0.20	21(08,34)	4.14	West Virginia	10.20	0.46	11(01,37)	10.10
Minnesota	10.39	0.29	08(01,24)	12.08	Wisconsin	10.88	0.28	02(01,16)	17.37 ^c
Mississippi	10.26	0.41	10(01,33)	10.68	Wyoming	10.88	0.93	01(01,47)	17.44 ^c
Missouri	9.79	0.26	17(05,34)	5.69					



^a US Mortality Files, National Center for Health Statistics, Centers for Disease Control and Prevention. Rates are per 100,000 and are age-adjusted to the 2000 US Std Population (19 age groups - Census P25-1130).

^b Difference between state rate and total U.S. rate is statistically significant ($p < .0002$).

^c Absolute percent difference between state rate and total U.S. rate is 15% or more.

^d Rank of state level death rate and the 95% confidence intervals (low, high) for the rank.

SE Standard error of the rate.

PD Percent difference between state rate and total U.S. rate.

- Statistic not shown. Rate based on less than 16 cases for the time interval.

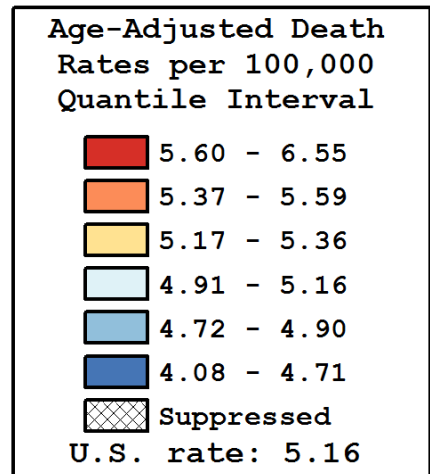
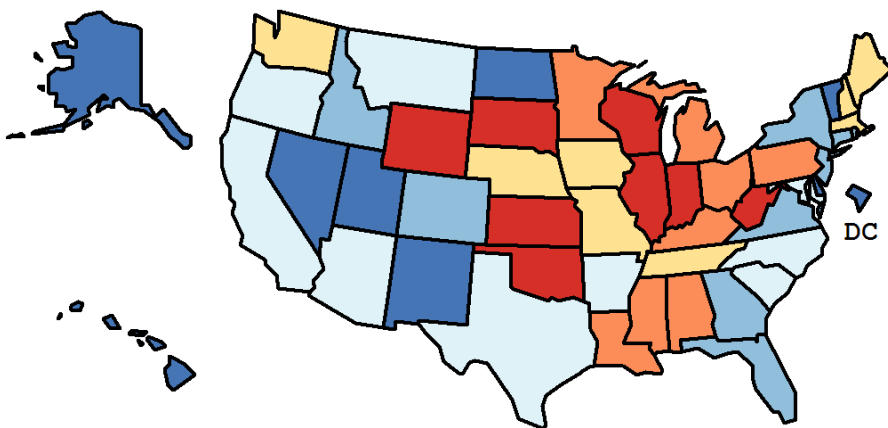
Table 13.28
Leukemia

Age-Adjusted Cancer Death^a Rates By State, All Races, 2009-2013

Females

State	Rate	SE	Rank(CI) ^d	PD
TOTAL U.S.	5.16	0.02		
High Five States				
Wyoming	6.55	0.65	01(01,43)	26.94 ^c
West Virginia	5.87	0.31	02(01,33)	13.84
Indiana	5.80	0.17	03(01,21)	12.50
Oklahoma	5.78	0.23	04(01,27)	12.01
Wisconsin	5.76	0.18	05(01,24)	11.75
Low Five States				
Alaska	4.52	0.63	47(01,51)	-12.36
Utah	4.51	0.28	48(17,51)	-12.56
New Mexico	4.42	0.27	49(21,51)	-14.24
D.C.	4.30	0.51	50(03,51)	-16.62 ^c
Hawaii	4.08	0.32	51(30,51)	-20.79 ^c

State	Rate	SE	Rank(CI) ^d	PD	State	Rate	SE	Rank(CI) ^d	PD
Alabama	5.48	0.19	13(02,36)	6.23	Montana	5.11	0.41	27(01,51)	-0.89
Alaska	4.52	0.63	47(01,51)	-12.36	Nebraska	5.20	0.30	23(02,48)	0.80
Arizona	4.98	0.16	32(12,47)	-3.50	Nevada	4.71	0.26	44(11,51)	-8.64
Arkansas	5.16	0.24	25(03,48)	0.10	New Hampshire	5.18	0.36	24(01,50)	0.41
California	5.03	0.07	30(19,41)	-2.40	New Jersey	4.82	0.13	38(21,49)	-6.53
Colorado	4.87	0.19	36(13,49)	-5.52	New Mexico	4.42	0.27	49(21,51)	-14.24
Connecticut	4.90	0.20	34(13,50)	-4.99	New York	4.80	0.09	39(27,48)	-6.85
Delaware	4.67	0.40	45(03,51)	-9.34	North Carolina	5.09	0.13	28(12,44)	-1.34
D.C.	4.30	0.51	50(03,51)	-16.62 ^c	North Dakota	4.71	0.47	43(02,51)	-8.57
Florida	4.77	0.08	42(29,48)	-7.43	Ohio	5.38	0.12	14(05,31)	4.38
Georgia	4.87	0.14	37(19,48)	-5.60	Oklahoma	5.78	0.23	04(01,27)	12.01
Hawaii	4.08	0.32	51(30,51)	-20.79 ^c	Oregon	5.07	0.21	29(06,48)	-1.66
Idaho	4.78	0.33	41(04,51)	-7.22	Pennsylvania	5.55	0.11	11(03,24)	7.60
Illinois	5.64	0.12	08(02,22)	9.44	Rhode Island	4.87	0.37	35(02,51)	-5.51
Indiana	5.80	0.17	03(01,21)	12.50	South Carolina	4.92	0.19	33(12,49)	-4.59
Iowa	5.34	0.23	18(02,45)	3.47	South Dakota	5.71	0.47	06(01,48)	10.65
Kansas	5.70	0.26	07(01,33)	10.62	Tennessee	5.36	0.17	17(03,37)	3.98
Kentucky	5.56	0.21	10(01,35)	7.89	Texas	5.13	0.09	26(14,39)	-0.48
Louisiana	5.37	0.20	16(02,41)	4.10	Utah	4.51	0.28	48(17,51)	-12.56
Maine	5.33	0.34	19(01,49)	3.37	Vermont	4.52	0.47	46(02,51)	-12.34
Maryland	5.01	0.17	31(10,47)	-2.85	Virginia	4.80	0.15	40(21,49)	-6.87
Massachusetts	5.22	0.16	21(07,42)	1.26	Washington	5.20	0.17	22(06,43)	0.90
Michigan	5.37	0.13	15(05,34)	4.12	West Virginia	5.87	0.31	02(01,33)	13.84
Minnesota	5.59	0.19	09(01,30)	8.31	Wisconsin	5.76	0.18	05(01,24)	11.75
Mississippi	5.53	0.25	12(01,40)	7.23	Wyoming	6.55	0.65	01(01,43)	26.94 ^c
Missouri	5.28	0.17	20(04,41)	2.42					



^a US Mortality Files, National Center for Health Statistics, Centers for Disease Control and Prevention. Rates are per 100,000 and are age-adjusted to the 2000 US Std Population (19 age groups - Census P25-1130).

^b Difference between state rate and total U.S. rate is statistically significant ($p < .0002$).

^c Absolute percent difference between state rate and total U.S. rate is 15% or more.

^d Rank of state level death rate and the 95% confidence intervals (low, high) for the rank.

SE Standard error of the rate.

PD Percent difference between state rate and total U.S. rate.

- Statistic not shown. Rate based on less than 16 cases for the time interval.

Table 13.29
LeukemiaEstimated United States Cancer Prevalence Counts^a on January 1, 2013
By Race/Ethnicity, Sex and Years Since Diagnosis

Years Since Diagnosis		0 to <5	5 to <10	10 to <15	15 to <20	20 to <25	25 to <30	0 to <21 ^e	0 to <38 ^e	>=38 ^g	Complete ^h
<u>Race</u>	<u>Sex</u>										
All Races ^b	Both Sexes	124,326	80,785	49,405	31,735	19,435	12,358	298,813	328,477	5,498	333,975
	Males	72,087	46,052	27,849	17,875	10,823	6,755	170,703	186,605	2,414	189,019
	Females	52,239	34,733	21,556	13,860	8,612	5,603	128,110	141,872	3,084	144,956
White ^b	Both Sexes	106,763	71,231	44,054	28,247	17,433	11,168	261,586	288,470	4,601	293,071
	Males	62,036	40,744	24,844	15,958	9,861	6,173	149,845	164,453	1,683	166,136
	Females	44,727	30,487	19,210	12,289	7,572	4,995	111,741	124,017	2,918	126,935
Black ^b	Both Sexes	9,870	5,670	2,937	1,913	1,095	603	21,121	22,581	813	23,394
	Males	5,543	3,137	1,528	995	531	291	11,531	12,182	384	12,566
	Females	4,327	2,533	1,409	918	564	312	9,590	10,399	429	10,828
Asian/ Pacific Islander ^c	Both Sexes	3,092	2,081	1,379	+	+	+	7,675	+	+	+
	Males	1,826	1,143	791	+	+	+	4,354	+	+	+
	Females	1,266	938	588	+	+	+	3,321	+	+	+
Hispanic ^d	Both Sexes	11,855	7,822	5,310	+	+	+	29,226	+	+	+
	Males	6,686	4,562	2,816	+	+	+	16,563	+	+	+
	Females	5,169	3,260	2,494	+	+	+	12,663	+	+	+

Estimated prevalence percent^a on January 1, 2013, of the SEER^c population diagnosed in the previous 21 years
By Age at Prevalence, Race/Ethnicity and Sex

Age at Prevalence		Age Specific (Crude)									Age-Adjusted ^f	
		All Ages	0-9	10-19	20-29	30-39	40-49	50-59	60-69	70-79	80+	All Ages
<u>Race</u>	<u>Sex</u>											
All Races ^c	Both Sexes	0.0839%	0.0322%	0.0608%	0.0475%	0.0300%	0.0452%	0.0850%	0.1711%	0.2882%	0.3378%	0.0815%
	Males	0.0979%	0.0333%	0.0665%	0.0527%	0.0338%	0.0540%	0.1052%	0.2217%	0.3813%	0.4509%	0.1003%
	Females	0.0702%	0.0311%	0.0550%	0.0420%	0.0262%	0.0366%	0.0656%	0.1254%	0.2123%	0.2702%	0.0656%
White ^c	Both Sexes	0.0961%	0.0361%	0.0692%	0.0542%	0.0333%	0.0480%	0.0927%	0.1895%	0.3239%	0.3766%	0.0906%
	Males	0.1114%	0.0363%	0.0753%	0.0596%	0.0376%	0.0567%	0.1139%	0.2431%	0.4256%	0.5017%	0.1108%
	Females	0.0808%	0.0359%	0.0627%	0.0484%	0.0289%	0.0390%	0.0718%	0.1394%	0.2389%	0.3009%	0.0733%
Black ^c	Both Sexes	0.0470%	0.0166%	0.0273%	0.0287%	0.0211%	0.0383%	0.0586%	0.1165%	0.1826%	0.2128%	0.0523%
	Males	0.0540%	0.0182%	0.0311%	0.0320%	0.0228%	0.0462%	0.0750%	0.1518%	0.2389%	0.2579%	0.0643%
	Females	0.0407%	0.0150%	0.0233%	0.0255%	0.0197%	0.0313%	0.0442%	0.0890%	0.1433%	0.1907%	0.0432%
Asian/ Pacific Islander ^c	Both Sexes	0.0431%	0.0262%	0.0511%	0.0314%	0.0212%	0.0343%	0.0465%	0.0665%	0.1013%	0.1096%	0.0436%
	Males	0.0512%	0.0308%	0.0551%	0.0364%	0.0234%	0.0421%	0.0579%	0.0832%	0.1309%	0.1678%	0.0531%
	Females	0.0356%	0.0214%	0.0469%	0.0264%	0.0191%	0.0273%	0.0368%	0.0527%	0.0783%	0.0740%	0.0357%
Hispanic ^d	Both Sexes	0.0548%	0.0363%	0.0695%	0.0527%	0.0314%	0.0416%	0.0560%	0.0982%	0.1585%	0.1623%	0.0616%
	Males	0.0613%	0.0378%	0.0756%	0.0603%	0.0396%	0.0481%	0.0629%	0.1216%	0.1751%	0.2272%	0.0717%
	Females	0.0482%	0.0347%	0.0632%	0.0445%	0.0227%	0.0349%	0.0494%	0.0780%	0.1463%	0.1233%	0.0528%

^a US 2013 cancer prevalence counts are based on 2013 cancer prevalence proportions from the SEER registries and 1/1/2013 US population estimates based on the average of 2012 and 2013 population estimates from the US Bureau of the Census. Prevalence was calculated using the First Malignant Primary Only for a person.

^{b c d} Statistics based on (b) SEER 9 Areas (c) SEER 13 Areas excluding the Alaska Native Registry

(d) NHIA for Hispanic for SEER 13 Areas excluding the Alaska Native Registry.

^e Maximum limited-duration prevalence: 38 years for 1975-2013 SEER 9 data; 21 years for 1992-2013 SEER 13 data (excluding the Alaska Native Registry) used to calculate prevalence for Hispanics and Asian Pacific Islanders.

^f Percentages are age-adjusted to the 2000 US Standard Population (19 age groups - Census P25-1130) by 5-year age groups.

^{g h i} (g) Cases diagnosed more than 38 years ago were estimated using the completeness index method (Capocaccia et. al. 1997, Merrill et. al. 2000). (h) Complete prevalence is obtained by summing 0 to <38 and >=38. (i) Age-specific completeness index was approximated using empirical data from historical Connecticut tumor registry.

- Statistic not shown. Statistic based on fewer than 5 cases estimated alive in SEER for the time interval.

+ Not available.

Table 13.30
Acute Lymphocytic Leukemia

Estimated United States Cancer Prevalence Counts^a on January 1, 2013
By Race/Ethnicity, Sex and Years Since Diagnosis

Years Since Diagnosis		0 to <5	5 to <10	10 to <15	15 to <20	20 to <25	25 to <30	0 to <21 ^e	0 to <38 ^e	>=38 ^g	Complete ^h
<u>Race</u>	<u>Sex</u>										
All Races ^b	Both Sexes	17,063	13,626	11,827	10,122	8,389	6,522	57,873	74,508	3,347	77,855
	Males	9,316	7,652	6,474	5,589	4,617	3,505	31,895	40,643	1,752	42,395
	Females	7,747	5,974	5,353	4,533	3,772	3,017	25,978	33,865	1,595	35,460
White ^b	Both Sexes	14,355	11,393	10,366	8,768	7,380	5,787	49,494	64,481	+	+
	Males	7,757	6,370	5,649	4,848	4,126	3,130	27,213	35,154	+	+
	Females	6,598	5,023	4,717	3,920	3,254	2,657	22,281	29,327	+	+
Black ^b	Both Sexes	1,492	1,151	701	679	508	360	4,346	5,150	+	+
	Males	904	700	363	351	247	187	2,455	2,846	+	+
	Females	588	451	338	328	261	173	1,891	2,304	+	+
Asian/ Pacific Islander ^c	Both Sexes	762	712	544	+	+	+	2,570	+	+	+
	Males	430	384	334	+	+	+	1,451	+	+	+
	Females	332	328	210	+	+	+	1,119	+	+	+
Hispanic ^d	Both Sexes	5,285	3,777	2,870	+	+	+	14,642	+	+	+
	Males	2,989	2,253	1,484	+	+	+	8,356	+	+	+
	Females	2,296	1,524	1,386	+	+	+	6,286	+	+	+

Estimated prevalence percent^a on January 1, 2013, of the SEER^c population diagnosed in the previous 21 years
By Age at Prevalence, Race/Ethnicity and Sex

Age at Prevalence		Age Specific (Crude)									Age-Adjusted ^f	
		All Ages	0-9	10-19	20-29	30-39	40-49	50-59	60-69	70-79	80+	All Ages
<u>Race</u>	<u>Sex</u>											
All Races ^c	Both Sexes	0.0186%	0.0272%	0.0515%	0.0343%	0.0094%	0.0055%	0.0043%	0.0046%	0.0041%	0.0019%	0.0192%
	Males	0.0212%	0.0278%	0.0563%	0.0393%	0.0117%	0.0061%	0.0049%	0.0045%	0.0044%	0.0026%	0.0212%
	Females	0.0162%	0.0265%	0.0464%	0.0291%	0.0071%	0.0049%	0.0037%	0.0047%	0.0038%	0.0014%	0.0172%
White ^c	Both Sexes	0.0211%	0.0310%	0.0591%	0.0404%	0.0117%	0.0059%	0.0047%	0.0049%	0.0040%	0.0017%	0.0222%
	Males	0.0237%	0.0311%	0.0642%	0.0459%	0.0146%	0.0067%	0.0053%	0.0047%	0.0048%	0.0019%	0.0243%
	Females	0.0185%	0.0310%	0.0539%	0.0346%	0.0088%	0.0051%	0.0042%	0.0051%	0.0033%	0.0016%	0.0200%
Black ^c	Both Sexes	0.0096%	0.0120%	0.0220%	0.0177%	0.0031%	0.0033%	0.0018%	0.0041%	-	-	0.0089%
	Males	0.0113%	0.0134%	0.0258%	0.0202%	0.0037%	0.0031%	0.0021%	0.0035%	-	-	0.0100%
	Females	0.0080%	0.0104%	0.0181%	0.0152%	0.0025%	0.0036%	0.0015%	0.0046%	-	-	0.0077%
Asian/ Pacific Islander ^c	Both Sexes	0.0131%	0.0212%	0.0411%	0.0207%	0.0044%	0.0049%	0.0037%	0.0028%	0.0045%	0.0026%	0.0142%
	Males	0.0155%	0.0236%	0.0451%	0.0253%	0.0049%	0.0054%	0.0050%	0.0033%	-	0.0069%	0.0160%
	Females	0.0108%	0.0186%	0.0370%	0.0161%	0.0039%	0.0045%	0.0027%	0.0024%	0.0073%	-	0.0125%
Hispanic ^d	Both Sexes	0.0270%	0.0317%	0.0604%	0.0401%	0.0124%	0.0077%	0.0063%	0.0070%	0.0072%	-	0.0233%
	Males	0.0305%	0.0328%	0.0652%	0.0470%	0.0163%	0.0092%	0.0077%	0.0050%	-	-	0.0258%
	Females	0.0235%	0.0305%	0.0554%	0.0325%	0.0084%	0.0062%	0.0049%	0.0087%	0.0091%	-	0.0205%

^a US 2013 cancer prevalence counts are based on 2013 cancer prevalence proportions from the SEER registries and 1/1/2013 US population estimates based on the average of 2012 and 2013 population estimates from the US Bureau of the Census.

^b Prevalence was calculated using the First Malignant Primary Only for a person.

^c Statistics based on (b) SEER 9 Areas (c) SEER 13 Areas excluding the Alaska Native Registry

^d (d) NHIA for Hispanic for SEER 13 Areas excluding the Alaska Native Registry.

^e Maximum limited-duration prevalence: 38 years for 1975-2013 SEER 9 data; 21 years for 1992-2013 SEER 13 data (excluding the Alaska Native Registry) used to calculate prevalence for Hispanics and Asian Pacific Islanders.

^f Percentages are age-adjusted to the 2000 US Standard Population (19 age groups - Census P25-1130) by 5-year age groups.

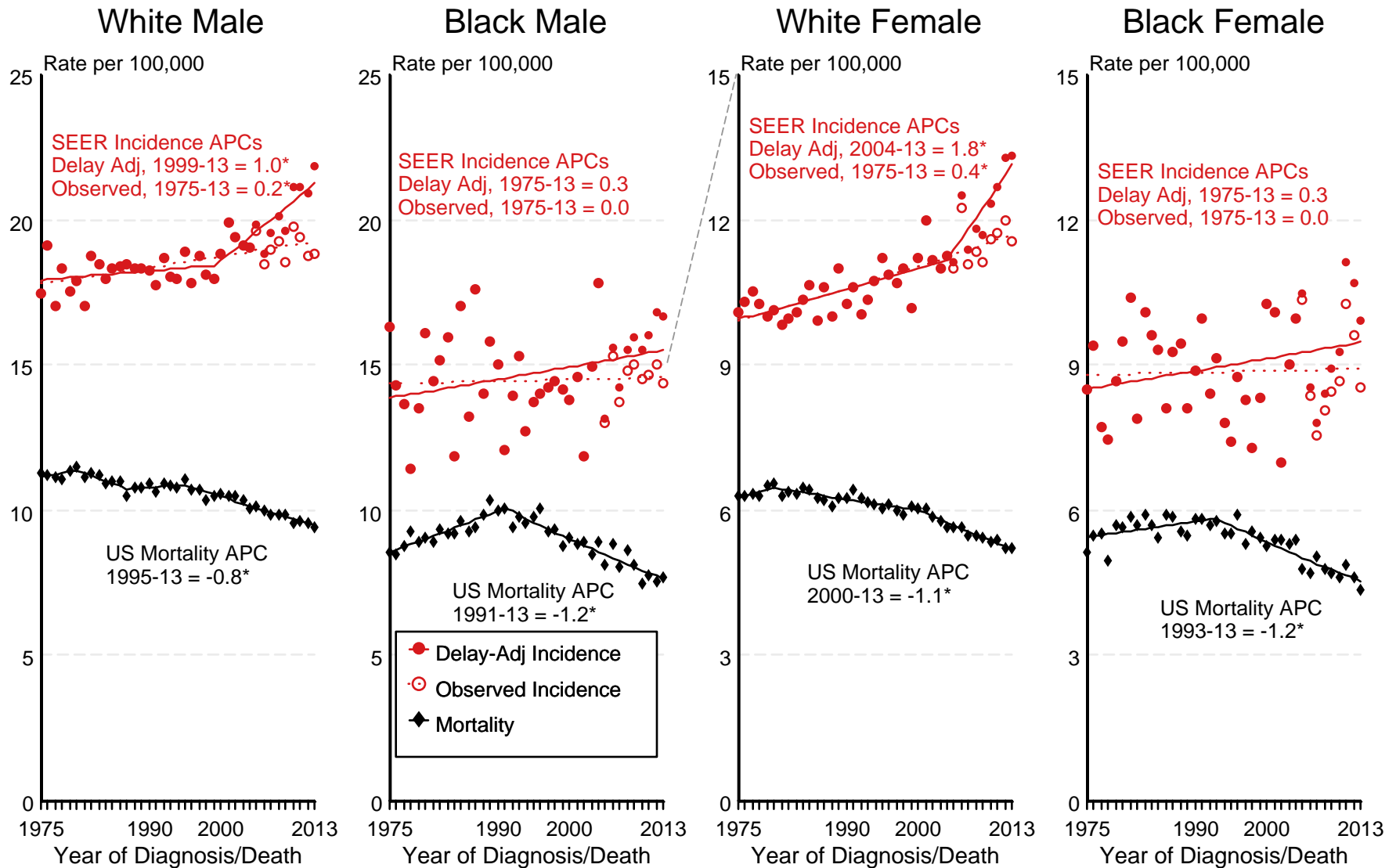
^g (g) Cases diagnosed more than 38 years ago were estimated using the completeness index method (Capocaccia et. al. 1997, Merrill et. al. 2000). (h) Complete prevalence is obtained by summing 0 to <38 and >=38. (i) Age-specific completeness index was approximated using empirical data from historical Connecticut tumor registry.

- Statistic not shown. Statistic based on fewer than 5 cases estimated alive in SEER for the time interval.

+ Not available.

Figure 13.1

SEER Observed Incidence, SEER Delay Adjusted Incidence and US Death Rates^a Leukemia, by Race and Sex



Source: SEER 9 areas and US Mortality Files (National Center for Health Statistics, CDC).

^a Rates are age-adjusted to the 2000 US Std Population (19 age groups - Census P25-1103).

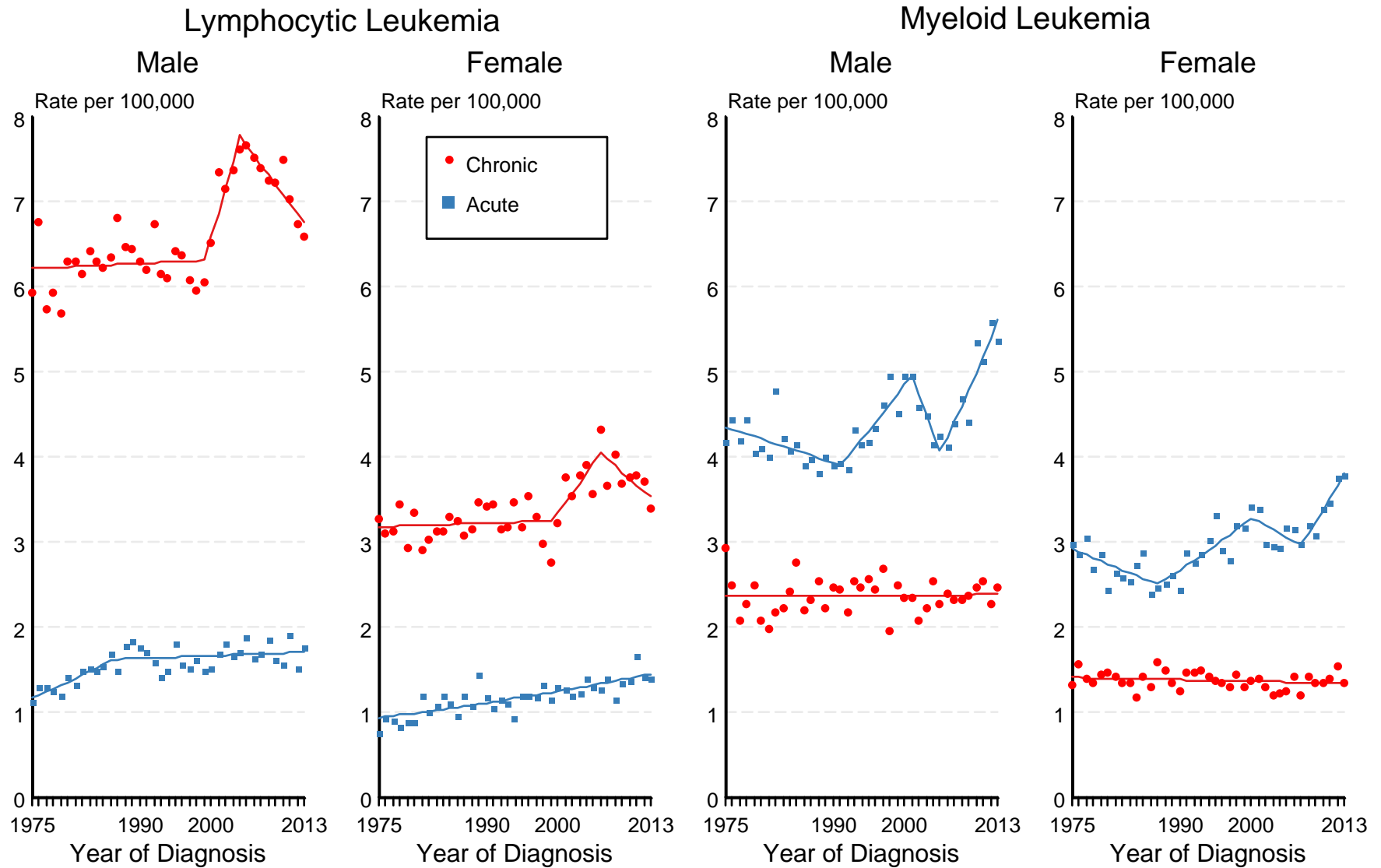
Regression lines and APCs are calculated using the Joinpoint Regression Program Version 4.3.0.0, April 2016, National Cancer Institute.

The APC is the Annual Percent Change for the regression line segments. The APC shown on the graph is for the most recent trend.

* The APC is significantly different from zero ($p < 0.05$).

Figure 13.2

SEER Observed Incidence Rates^a Lymphocytic and Myeloid Leukemia (Acute and Chronic), by Sex



Source: SEER 9 areas.

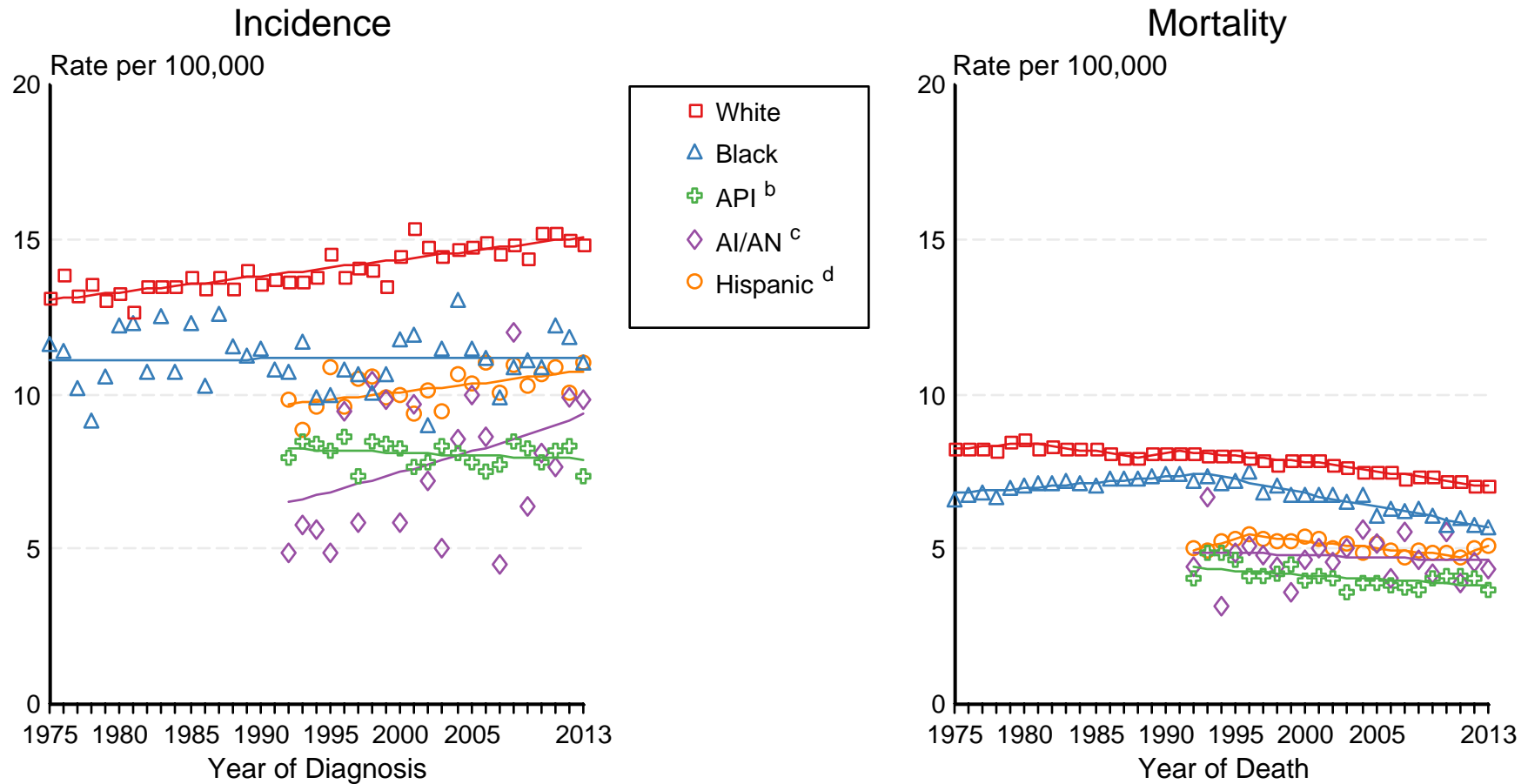
^a Rates are age-adjusted to the 2000 US Std Population (19 age groups - Census P25-1103).

Regression lines and APCs are calculated using the Joinpoint Regression Program Version 4.3.0.0, April 2016, National Cancer Institute.

Figure 13.3

SEER Incidence and US Death Rates^a Leukemia, Both Sexes

Joinpoint Analyses for Whites and Blacks from 1975-2013
and for Asian/Pacific Islanders, American Indians/Alaska Natives and Hispanics from 1992-2013

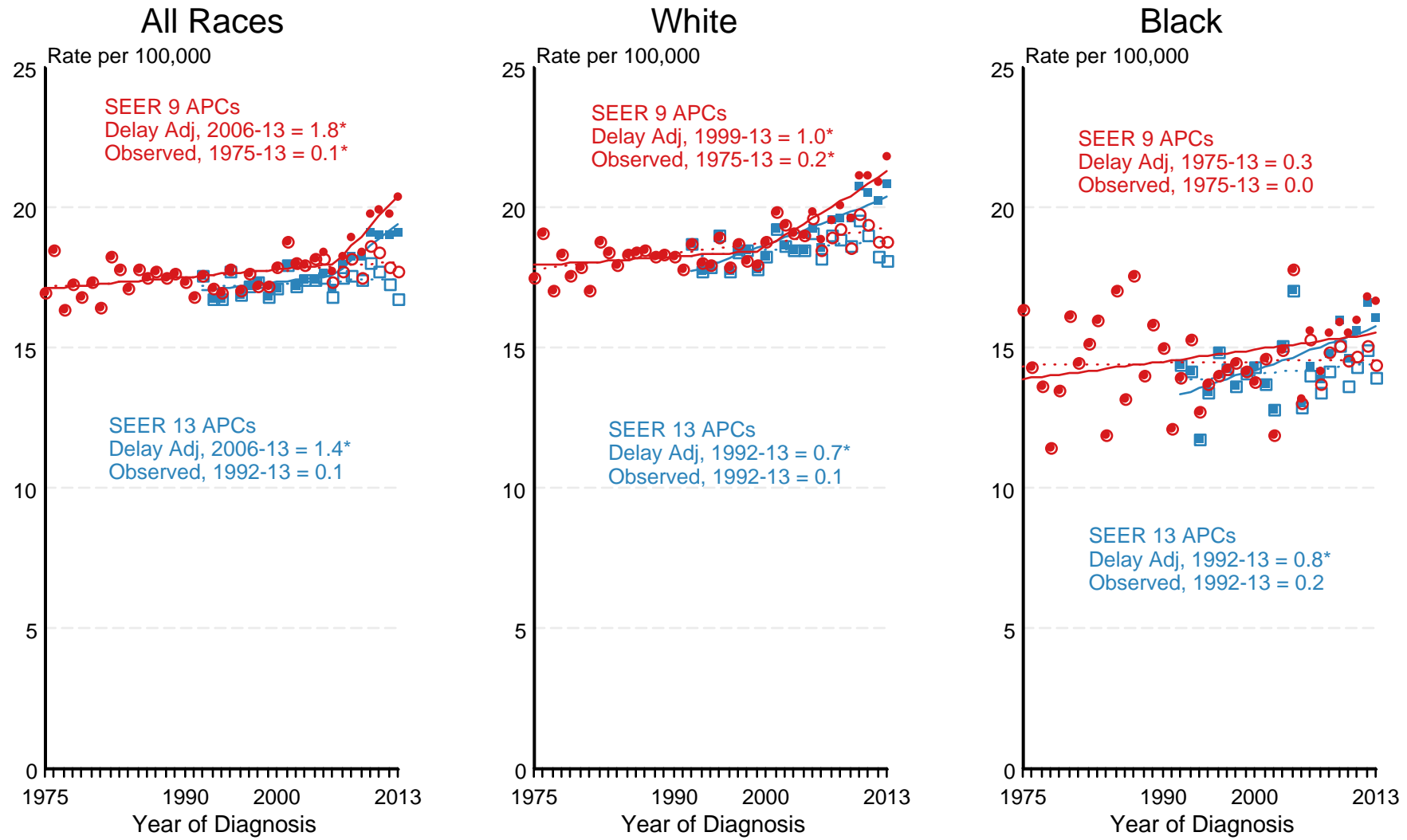


Source: Incidence data for whites and blacks are from the SEER 9 areas (San Francisco, Connecticut, Detroit, Hawaii, Iowa, New Mexico, Seattle, Utah, Atlanta). Incidence data for Asian/Pacific Islanders, American Indians/Alaska Natives and Hispanics are from the SEER 13 Areas (SEER 9 Areas, San Jose-Monterey, Los Angeles, Alaska Native Registry and Rural Georgia). Mortality data are from US Mortality Files, National Center for Health Statistics, CDC.

- ^a Rates are age-adjusted to the 2000 US Std Population (19 age groups - Census P25-1103). Regression lines are calculated using the Joinpoint Regression Program Version 4.3.0.0, April 2016, National Cancer Institute. Joinpoint analyses for Whites and Blacks during the 1975-2013 period allow a maximum of 5 joinpoints. Analyses for other ethnic groups during the period 1992-2013 allow a maximum of 4 joinpoints.
- ^b API = Asian/Pacific Islander.
- ^c AI/AN = American Indian/Alaska Native. Rates for American Indian/Alaska Native are based on the CHSDA(Contract Health Service Delivery Area) counties.
- ^d Hispanic is not mutually exclusive from whites, blacks, Asian/Pacific Islanders, and American Indians/Alaska Natives. Incidence data for Hispanics are based on NHIA and exclude cases from the Alaska Native Registry. Mortality data for Hispanics exclude cases from New Hampshire and Oklahoma.

Figure 13.4

SEER Observed Incidence and SEER Delay Adjusted Incidence Rates^a SEER 9 Areas Compared to SEER 13 Areas Leukemia, Male, by Race

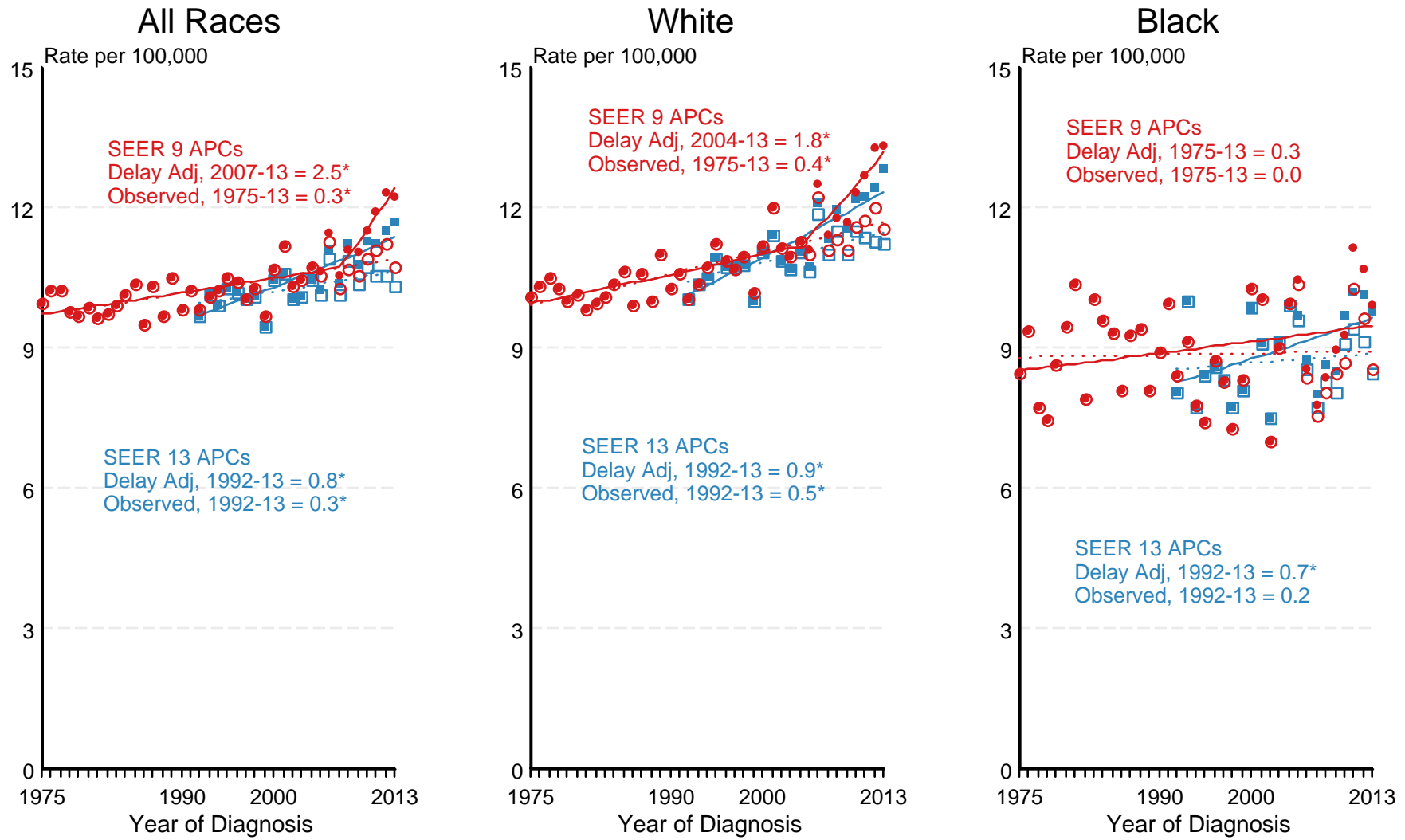


● SEER 9 Delay-Adj. Incidence
 ○ SEER 9 Observed Incidence
 ■ SEER 13 Delay-Adj. Incidence
 □ SEER 13 Observed Incidence

Source: SEER 9 areas and SEER 13 areas.
^a Rates are age-adjusted to the 2000 US Std Population (19 age groups - Census P25-1103).
 Regression lines and APCs are calculated using the Joinpoint Regression Program Version 4.3.0.0, April 2016, National Cancer Institute.
 The APC is the Annual Percent Change for the regression line segments. The APC shown on the graph is for the most recent trend.
 * The APC is significantly different from zero ($p < 0.05$).

Figure 13.5

SEER Observed Incidence and SEER Delay Adjusted Incidence Rates^a SEER 9 Areas Compared to SEER 13 Areas Leukemia, Female, by Race



● SEER 9 Delay-Adj. Incidence
 ○ SEER 9 Observed Incidence
 ■ SEER 13 Delay-Adj. Incidence
 □ SEER 13 Observed Incidence

Source: SEER 9 areas and SEER 13 areas.
^a Rates are age-adjusted to the 2000 US Std Population (19 age groups - Census P25-1103).
 Regression lines and APCs are calculated using the Joinpoint Regression Program Version 4.3.0.0, April 2016, National Cancer Institute.
 The APC is the Annual Percent Change for the regression line segments. The APC shown on the graph is for the most recent trend.
 * The APC is significantly different from zero ($p < 0.05$).