

Table 19.1
Non-Hodgkin Lymphoma

Trends in SEER Incidence^{ab} and U.S. Mortality^c Using the Joinpoint Regression Program,
1975-2013 With up to Five Joinpoints, 1992-2013 With up to Four Joinpoints,
Both Sexes by Race/Ethnicity

	JP Trend 1		JP Trend 2		JP Trend 3		JP Trend 4		JP Trend 5		JP Trend 6		AAPC ^d	
	Years	APC	Years	APC	Years	APC	Years	APC	Years	APC	Years	APC	2004-13	2009-13
<u>SEER 9 Delay-Adjusted Incidence^a, 1975-2013</u>														
All Races	1975-91	3.6*	1991-09	0.7*	2009-13	-1.5							-0.3	-1.5
White	1975-90	3.8*	1990-07	0.8*	2007-13	-0.8*							-0.3	-0.8*
Black	1975-94	4.6*	1994-13	0.5									0.5	0.5
<u>SEER 13 Delay-Adjusted Incidence^b, 1992-2013</u>														
All Races	1992-09	0.6*	2009-13	-1.4									-0.3	-1.4
White	1992-09	0.6*	2009-13	-1.5									-0.3	-1.5
Black	1992-13	0.6*											0.6*	0.6*
<u>SEER 9 Observed Incidence^a, 1975-2013</u>														
All Races	1975-91	3.6*	1991-09	0.6*	2009-13	-2.1*							-0.6	-2.1*
White	1975-90	3.8*	1990-07	0.8*	2007-13	-1.3*							-0.6*	-1.3*
Black	1975-95	4.4*	1995-13	0.2									0.2	0.2
<u>SEER 13 Observed Incidence^b, 1992-2013</u>														
All Races	1992-09	0.5*	2009-13	-2.0*									-0.6	-2.0*
White	1992-09	0.6*	2009-13	-2.2*									-0.7	-2.2*
White NH ^{ef}	1992-07	0.8*	2007-13	-1.2*									-0.6*	-1.2*
Black	1992-97	4.0*	1997-00	-4.3	2000-04	3.9	2004-13	-1.0*					-1.0*	-1.0*
Black NH ^{ef}	1992-97	3.8*	1997-00	-4.2	2000-04	4.0	2004-13	-0.9					-0.9	-0.9
API ^e	1992-13	0.2											0.2	0.2
AI/AN ^{eg}	1992-13	1.7*											1.7*	1.7*
Hispanic ^f	1992-10	0.6*	2010-13	-2.9									-0.6	-2.0
<u>U.S. Cancer Mortality^c, 1975-2013</u>														
All Races	1975-91	2.5*	1991-97	1.6*	1997-06	-3.1*	2006-13	-2.2*					-2.4*	-2.2*
White	1975-91	2.5*	1991-97	1.6*	1997-06	-3.1*	2006-13	-2.2*					-2.4*	-2.2*
Black	1975-96	2.7*	1996-13	-2.4*									-2.4*	-2.4*
<u>U.S. Cancer Mortality^c, 1992-2013</u>														
All Races	1992-97	1.7*	1997-06	-3.1*	2006-13	-2.2*							-2.4*	-2.2*
White	1992-97	1.7*	1997-06	-3.1*	2006-13	-2.2*							-2.4*	-2.2*
White NH ^{ef}	1992-97	1.9*	1997-06	-3.1*	2006-13	-2.3*							-2.5*	-2.3*
Black	1992-96	2.6	1996-13	-2.3*									-2.3*	-2.3*
Black NH ^{ef}	1992-96	3.0	1996-13	-2.3*									-2.3*	-2.3*
API ^e	1992-13	-1.9*											-1.9*	-1.9*
AI/AN ^{eg}	1992-13	-0.6											-0.6	-0.6
Hispanic ^f	1992-97	3.1*	1997-03	-3.6*	2003-13	-1.3*							-1.3*	-1.3*

Joinpoint Regression Program Version 4.3.0.0, April 2016, National Cancer Institute. (<http://surveillance.cancer.gov/joinpoint/>).

The APC is the Annual Percent Change based on rates age-adjusted to the 2000 US Std Population (19 age groups - Census P25-1130).

Trends are from the SEER 9 areas (San Francisco, Connecticut, Detroit, Hawaii, Iowa, New Mexico, Seattle, Utah, and Atlanta).

Trends are from the SEER 13 areas (SEER 9 Areas, Los Angeles, San Jose-Monterey, Rural Georgia, and the Alaska Native Registry).

Trends are from US Mortality Files, National Center for Health Statistics, Centers for Disease Control and Prevention.

The AAPC is the Average Annual Percent Change and is based on the APCs calculated by Joinpoint.

API - Asian/Pacific Islander, AI/AN - American Indian/Alaska Native, NH - Non-Hispanic

Hispanic and Non-Hispanic are not mutually exclusive from whites, blacks, Asian/Pacific Islanders, and American Indians/Alaska

Natives. Incidence data for Hispanics and Non-Hispanics are based on NHIA and exclude cases from the Alaska Native Registry.

The Hispanic and Non-Hispanic mortality trends exclude deaths from New Hampshire and Oklahoma.

Data for American Indian/Alaska Native are based on the CHSDA (Contract Health Service Delivery Area) counties.

* The APC/AAPC is significantly different from zero ($p < .05$).

- Joinpoint regression line analysis could not be performed on data series.

Table 19.2
Non-Hodgkin Lymphoma

Trends in SEER Incidence^{ab} and U.S. Mortality^c Using the Joinpoint Regression Program,
1975-2013 With up to Five Joinpoints, 1992-2013 With up to Four Joinpoints,
Males by Race/Ethnicity

	JP Trend 1		JP Trend 2		JP Trend 3		JP Trend 4		JP Trend 5		JP Trend 6		AAPC ^d	
	Years	APC	Years	APC	Years	APC	Years	APC	Years	APC	Years	APC	2004-13	2009-13
<u>SEER 9 Delay-Adjusted Incidence^a, 1975-2013</u>														
All Races	1975-91	4.2*	1991-13	0.3*									0.3*	0.3*
White	1975-90	4.4*	1990-09	0.6*	2009-13	-1.2							-0.2	-1.2
Black	1975-94	5.5*	1994-13	-0.3									-0.3	-0.3
<u>SEER 13 Delay-Adjusted Incidence^b, 1992-2013</u>														
All Races	1992-13	0.2											0.2	0.2
White	1992-95	2.7	1995-98	-2.1	1998-09	0.8*	2009-13	-1.4					-0.2	-1.4
Black	1992-13	-0.1											-0.1	-0.1
<u>SEER 9 Observed Incidence^a, 1975-2013</u>														
All Races	1975-91	4.2*	1991-10	0.4*	2010-13	-2.6							-0.6	-1.9
White	1975-90	4.4*	1990-09	0.6*	2009-13	-1.9*							-0.5	-1.9*
Black	1975-94	5.5*	1994-13	-0.5									-0.5	-0.5
<u>SEER 13 Observed Incidence^b, 1992-2013</u>														
All Races	1992-10	0.2*	2010-13	-2.2									-0.6	-1.6
White	1992-95	2.7	1995-98	-2.0	1998-09	0.7*	2009-13	-2.1*					-0.5	-2.1*
White NH ^{ef}	1992-09	0.5*	2009-13	-1.7									-0.5	-1.7
Black	1992-13	-0.3											-0.3	-0.3
Black NH ^{ef}	1992-13	-0.3											-0.3	-0.3
API ^e	1992-13	0.3											0.3	0.3
AI/AN ^{eg}	1992-13	0.8											0.8	0.8
Hispanic ^f	1992-13	0.1											0.1	0.1
<u>U.S. Cancer Mortality^c, 1975-2013</u>														
All Races	1975-91	2.7*	1991-97	1.6*	1997-06	-2.9*	2006-13	-2.0*					-2.2*	-2.0*
White	1975-96	2.5*	1996-13	-2.5*									-2.5*	-2.5*
Black	1975-96	2.7*	1996-13	-2.5*									-2.5*	-2.5*
<u>U.S. Cancer Mortality^c, 1992-2013</u>														
All Races	1992-97	1.7*	1997-06	-2.9*	2006-13	-2.0*							-2.2*	-2.0*
White	1992-97	1.7*	1997-06	-2.8*	2006-13	-1.9*							-2.1*	-1.9*
White NH ^{ef}	1992-97	1.7*	1997-13	-2.5*									-2.5*	-2.5*
Black	1992-96	2.7	1996-13	-2.4*									-2.4*	-2.4*
Black NH ^{ef}	1992-96	3.0	1996-13	-2.3*									-2.3*	-2.3*
API ^e	1992-13	-2.1*											-2.1*	-2.1*
AI/AN ^{eg}	1992-13	-0.4											-0.4	-0.4
Hispanic ^f	1992-96	4.5	1996-03	-3.9*	2003-13	-0.9							-0.9	-0.9

Joinpoint Regression Program Version 4.3.0.0, April 2016, National Cancer Institute. (<http://surveillance.cancer.gov/joinpoint/>).

The APC is the Annual Percent Change based on rates age-adjusted to the 2000 US Std Population (19 age groups - Census P25-1130).

Trends are from the SEER 9 areas (San Francisco, Connecticut, Detroit, Hawaii, Iowa, New Mexico, Seattle, Utah, and Atlanta).

Trends are from the SEER 13 areas (SEER 9 Areas, Los Angeles, San Jose-Monterey, Rural Georgia, and the Alaska Native Registry).

Trends are from US Mortality Files, National Center for Health Statistics, Centers for Disease Control and Prevention.

The AAPC is the Average Annual Percent Change and is based on the APCs calculated by Joinpoint.

API - Asian/Pacific Islander, AI/AN - American Indian/Alaska Native, NH - Non-Hispanic

Hispanic and Non-Hispanic are not mutually exclusive from whites, blacks, Asian/Pacific Islanders, and American Indians/Alaska

Natives. Incidence data for Hispanics and Non-Hispanics are based on NHIA and exclude cases from the Alaska Native Registry.

The Hispanic and Non-Hispanic mortality trends exclude deaths from New Hampshire and Oklahoma.

Data for American Indian/Alaska Native are based on the CHSDA (Contract Health Service Delivery Area) counties.

* The APC/AAPC is significantly different from zero ($p < .05$).

- Joinpoint regression line analysis could not be performed on data series.

Table 19.3
Non-Hodgkin Lymphoma

Trends in SEER Incidence^{ab} and U.S. Mortality^c Using the Joinpoint Regression Program,
1975-2013 With up to Five Joinpoints, 1992-2013 With up to Four Joinpoints,
Females by Race/Ethnicity

	JP Trend 1		JP Trend 2		JP Trend 3		JP Trend 4		JP Trend 5		JP Trend 6		AAPC ^d	
	Years	APC	Years	APC	Years	APC	Years	APC	Years	APC	Years	APC	2004-13	2009-13
<u>SEER 9 Delay-Adjusted Incidence^a, 1975-2013</u>														
All Races	1975-88	3.0*	1988-04	1.4*	2004-13	-0.6*							-0.6*	-0.6*
White	1975-88	3.0*	1988-04	1.4*	2004-13	-0.7*							-0.7*	-0.7*
Black	1975-04	2.9*	2004-13	-0.2									-0.2	-0.2
<u>SEER 13 Delay-Adjusted Incidence^b, 1992-2013</u>														
All Races	1992-04	1.4*	2004-13	-0.6*									-0.6*	-0.6*
White	1992-04	1.4*	2004-13	-0.5									-0.5	-0.5
Black	1992-98	5.3*	1998-13	0.6*									0.6*	0.6*
<u>SEER 9 Observed Incidence^a, 1975-2013</u>														
All Races	1975-88	3.0*	1988-04	1.4*	2004-13	-0.9*							-0.9*	-0.9*
White	1975-88	3.0*	1988-04	1.5*	2004-13	-1.0*							-1.0*	-1.0*
Black	1975-04	2.9*	2004-13	-0.6									-0.6	-0.6
<u>SEER 13 Observed Incidence^b, 1992-2013</u>														
All Races	1992-04	1.4*	2004-13	-0.9*									-0.9*	-0.9*
White	1992-04	1.4*	2004-13	-0.9*									-0.9*	-0.9*
White NH ^{ef}	1992-04	1.5*	2004-13	-1.0*									-1.0*	-1.0*
Black	1992-98	5.5*	1998-13	0.4									0.4	0.4
Black NH ^{ef}	1992-98	5.4*	1998-13	0.5									0.5	0.5
API ^e	1992-13	0.2											0.2	0.2
AI/AN ^{eg}	1992-13	2.4*											2.4*	2.4*
Hispanic ^f	1992-13	0.7*											0.7*	0.7*
<u>U.S. Cancer Mortality^c, 1975-2013</u>														
All Races	1975-94	2.2*	1994-97	0.8	1997-13	-3.1*							-3.1*	-3.1*
White	1975-94	2.2*	1994-97	0.8	1997-13	-3.1*							-3.1*	-3.1*
Black	1975-96	2.7*	1996-13	-2.3*									-2.3*	-2.3*
<u>U.S. Cancer Mortality^c, 1992-2013</u>														
All Races	1992-94	3.0*	1994-97	0.7	1997-00	-2.7*	2000-04	-3.8*	2004-13	-2.8*			-2.8*	-2.8*
White	1992-94	3.3*	1994-97	0.6	1997-00	-2.5*	2000-03	-4.3*	2003-13	-2.8*			-2.8*	-2.8*
White NH ^{ef}	1992-94	4.0*	1994-97	0.6	1997-00	-2.5*	2000-03	-4.3*	2003-13	-2.9*			-2.9*	-2.9*
Black	1992-97	1.8	1997-13	-2.4*									-2.4*	-2.4*
Black NH ^{ef}	1992-97	2.1	1997-13	-2.3*									-2.3*	-2.3*
API ^e	1992-13	-1.7*											-1.7*	-1.7*
AI/AN ^{eg}	1992-01	5.6	2001-13	-4.5*									-4.5*	-4.5*
Hispanic ^f	1992-97	2.9	1997-13	-2.1*									-2.1*	-2.1*

Joinpoint Regression Program Version 4.3.0.0, April 2016, National Cancer Institute. (<http://surveillance.cancer.gov/joinpoint/>).

The APC is the Annual Percent Change based on rates age-adjusted to the 2000 US Std Population (19 age groups - Census P25-1130).

Trends are from the SEER 9 areas (San Francisco, Connecticut, Detroit, Hawaii, Iowa, New Mexico, Seattle, Utah, and Atlanta).

Trends are from the SEER 13 areas (SEER 9 Areas, Los Angeles, San Jose-Monterey, Rural Georgia, and the Alaska Native Registry).

Trends are from US Mortality Files, National Center for Health Statistics, Centers for Disease Control and Prevention.

The AAPC is the Average Annual Percent Change and is based on the APCs calculated by Joinpoint.

API - Asian/Pacific Islander, AI/AN - American Indian/Alaska Native, NH - Non-Hispanic

Hispanic and Non-Hispanic are not mutually exclusive from whites, blacks, Asian/Pacific Islanders, and American Indians/Alaska

Natives. Incidence data for Hispanics and Non-Hispanics are based on NHIA and exclude cases from the Alaska Native Registry.

The Hispanic and Non-Hispanic mortality trends exclude deaths from New Hampshire and Oklahoma.

Data for American Indian/Alaska Native are based on the CHSDA (Contract Health Service Delivery Area) counties.

* The APC/AAPC is significantly different from zero ($p < .05$).

- Joinpoint regression line analysis could not be performed on data series.

Table 19.4
Non-Hodgkin Lymphoma

Delay-adjusted SEER Incidence^a Rates by Year, Race and Sex

Year of Diagnosis:	All Races			Whites			Blacks		
	Total	Males	Females	Total	Males	Females	Total	Males	Females
1975	11.07	12.89	9.59	11.61	13.49	10.11	6.36	7.31	5.31
1976	11.22	12.82	10.06	11.65	13.27	10.51	6.04	7.45	5.03
1977	11.18	12.93	9.82	11.64	13.52	10.20	6.64	7.23	6.10
1978	11.92	14.26	10.12	12.47	14.74	10.74	7.15	9.46	5.17
1979	12.53	14.21	11.21	12.99	14.59	11.77	8.46	11.95	5.91
1980	12.62	15.01	10.81	12.97	15.26	11.22	8.77	10.89	7.20
1981	13.58	15.90	11.81	14.06	16.34	12.35	7.42	10.59	4.98
1982	13.39	15.56	11.61	14.02	16.42	12.05	10.27	10.22	10.01
1983	13.99	16.62	11.95	14.63	17.52	12.40	10.28	10.88	9.62
1984	15.20	18.29	12.79	15.97	19.10	13.55	9.46	12.52	6.92
1985	15.51	18.39	13.17	16.28	19.24	13.86	9.95	11.96	8.43
1986	15.91	19.43	13.01	16.82	20.56	13.75	10.66	13.13	8.52
1987	16.74	20.79	13.42	17.70	22.14	14.00	10.40	10.55	9.95
1988	17.25	21.33	14.08	18.21	22.42	14.90	11.58	15.79	8.49
1989	17.35	21.65	13.84	18.35	23.02	14.50	11.62	14.17	9.72
1990	18.50	22.97	14.81	19.33	23.93	15.50	13.92	17.63	11.02
1991	18.80	23.73	14.60	19.68	24.80	15.30	14.03	18.72	10.37
1992	18.62	23.04	14.94	19.55	23.94	15.83	13.68	18.87	9.65
1993	18.86	23.47	15.01	19.65	24.29	15.72	14.11	19.37	9.78
1994	19.95	24.96	15.80	20.68	25.58	16.56	14.43	21.52	8.77
1995	19.97	25.41	15.42	20.67	26.15	16.01	16.70	23.54	11.38
1996	19.42	24.23	15.48	20.26	25.19	16.19	15.46	19.19	12.30
1997	19.98	24.51	16.44	20.87	25.20	17.46	16.34	24.16	10.84
1998	19.61	22.95	16.84	20.57	23.98	17.74	14.49	16.96	12.54
1999	19.96	24.59	16.33	20.90	25.47	17.28	14.38	18.42	11.31
2000	19.79	24.32	16.11	20.92	25.64	17.05	13.92	18.23	10.73
2001	19.99	24.38	16.44	20.79	25.42	17.03	16.01	18.33	13.92
2002	20.21	24.19	17.08	21.31	25.49	17.95	14.45	17.10	12.45
2003	20.76	25.04	17.51	21.88	26.30	18.45	16.11	19.72	13.59
2004	21.39	25.87	17.94	22.32	26.80	18.83	18.48	24.03	14.47
2005	20.88	25.64	17.07	22.04	26.79	18.18	16.82	20.10	14.15
2006	20.57	24.80	17.29	21.81	26.13	18.40	16.45	21.05	13.02
2007	21.36	26.26	17.45	22.65	27.69	18.52	15.80	19.33	13.12
2008	21.03	25.86	17.09	21.90	26.92	17.74	17.10	19.20	15.20
2009	21.02	25.35	17.52	22.11	26.79	18.19	15.46	18.81	13.00
2010	21.56	26.80	17.30	22.46	27.54	18.29	17.93	23.43	13.55
2011	20.08	24.60	16.51	21.02	25.70	17.28	14.77	17.73	12.58
2012	20.59	25.21	16.84	21.55	26.28	17.65	17.06	19.53	14.86
2013	20.17	24.72	16.48	21.31	26.00	17.42	15.85	18.52	13.83

Additional information on the model used to delay-adjust SEER Incidence rates can be found at <http://surveillance.cancer.gov/delay/>.

^a SEER 9 areas (San Francisco, Connecticut, Detroit, Hawaii, Iowa, New Mexico, Seattle, Utah, and Atlanta).
Rates are per 100,000 and are age-adjusted to the 2000 US Std Population (19 age groups - Census P25-1130).
- Delay-adjusted rate is not shown for observed rates based on less than 16 cases for the time interval.

Table 19.5
Non-Hodgkin Lymphoma

Age-adjusted SEER Incidence^a Rates by Year, Race and Sex

Year of Diagnosis:	All Races			Whites			Blacks		
	Total	Males	Females	Total	Males	Females	Total	Males	Females
1975-2013	18.27	22.41	15.00	19.03	23.27	15.65	13.89	17.36	11.17
1975	11.07	12.89	9.59	11.61	13.49	10.11	6.36	7.31	5.31
1976	11.22	12.82	10.06	11.65	13.27	10.51	6.04	7.45	5.03
1977	11.18	12.93	9.82	11.64	13.52	10.20	6.64	7.23	6.10
1978	11.92	14.26	10.12	12.47	14.74	10.74	7.15	9.46	5.17
1979	12.53	14.21	11.21	12.99	14.59	11.77	8.46	11.95	5.91
1980	12.62	15.01	10.81	12.97	15.26	11.22	8.77	10.89	7.20
1981	13.58	15.90	11.81	14.06	16.34	12.35	7.42	10.59	4.98
1982	13.39	15.56	11.61	14.02	16.42	12.05	10.27	10.22	10.01
1983	13.99	16.62	11.95	14.63	17.52	12.40	10.28	10.88	9.62
1984	15.20	18.29	12.79	15.97	19.10	13.55	9.46	12.52	6.92
1985	15.51	18.39	13.17	16.28	19.24	13.86	9.95	11.96	8.43
1986	15.91	19.43	13.01	16.82	20.56	13.75	10.66	13.13	8.52
1987	16.74	20.79	13.42	17.70	22.14	14.00	10.40	10.55	9.95
1988	17.25	21.33	14.08	18.21	22.42	14.90	11.58	15.79	8.49
1989	17.35	21.65	13.84	18.35	23.02	14.50	11.62	14.17	9.72
1990	18.50	22.97	14.81	19.33	23.93	15.50	13.92	17.63	11.02
1991	18.80	23.73	14.60	19.68	24.80	15.30	14.03	18.72	10.37
1992	18.62	23.04	14.94	19.55	23.94	15.83	13.68	18.87	9.65
1993	18.86	23.47	15.01	19.65	24.29	15.72	14.11	19.37	9.78
1994	19.95	24.96	15.80	20.68	25.58	16.56	14.43	21.52	8.77
1995	19.97	25.41	15.42	20.67	26.15	16.01	16.70	23.54	11.38
1996	19.42	24.23	15.48	20.26	25.19	16.19	15.46	19.19	12.30
1997	19.98	24.51	16.44	20.87	25.20	17.46	16.34	24.16	10.84
1998	19.61	22.95	16.84	20.57	23.98	17.74	14.49	16.96	12.54
1999	19.96	24.59	16.33	20.90	25.47	17.28	14.38	18.42	11.31
2000	19.79	24.32	16.11	20.92	25.64	17.05	13.92	18.23	10.73
2001	19.99	24.38	16.44	20.79	25.42	17.03	16.01	18.33	13.92
2002	20.21	24.19	17.08	21.31	25.49	17.95	14.45	17.10	12.45
2003	20.76	25.04	17.51	21.88	26.30	18.45	16.11	19.72	13.59
2004	21.39	25.87	17.94	22.32	26.80	18.83	18.48	24.03	14.47
2005	20.83	25.59	17.04	21.99	26.74	18.14	16.76	20.03	14.10
2006	20.49	24.71	17.22	21.71	26.02	18.32	16.34	20.92	12.94
2007	21.23	26.10	17.35	22.51	27.52	18.40	15.66	19.16	13.00
2008	20.87	25.65	16.96	21.72	26.69	17.59	16.87	18.94	14.99
2009	20.82	25.11	17.34	21.87	26.51	17.98	15.21	18.50	12.78
2010	21.31	26.49	17.09	22.18	27.19	18.06	17.62	23.00	13.33
2011	19.77	24.23	16.26	20.67	25.27	16.99	14.43	17.30	12.29
2012	20.16	24.69	16.48	21.05	25.67	17.23	16.54	18.92	14.42
2013	19.51	23.89	15.94	20.51	25.01	16.77	15.15	17.70	13.22

^a SEER 9 areas (San Francisco, Connecticut, Detroit, Hawaii, Iowa, New Mexico, Seattle, Utah, and Atlanta). Rates are per 100,000 and are age-adjusted to the 2000 US Std Population (19 age groups - Census P25-1130).
- Statistic not shown. Rate based on less than 16 cases for the time interval.

Table 19.6
Non-Hodgkin Lymphoma

Age-adjusted U.S. Death^a Rates by Year, Race and Sex

Year of Death:	All Races			Whites			Blacks		
	Total	Males	Females	Total	Males	Females	Total	Males	Females
1975-2013	7.18	8.99	5.85	7.48	9.33	6.11	4.87	6.26	3.87
1975	5.63	6.92	4.65	5.83	7.15	4.82	3.74	4.83	2.92
1976	5.71	6.87	4.83	5.94	7.14	5.03	3.54	4.54	2.76
1977	5.77	6.88	4.92	5.96	7.10	5.10	3.89	4.89	3.12
1978	5.93	7.30	4.90	6.15	7.53	5.12	3.90	5.40	2.81
1979	5.95	7.40	4.88	6.18	7.70	5.08	3.65	4.50	2.98
1980	6.23	7.47	5.29	6.47	7.74	5.52	3.99	5.15	3.12
1981	6.16	7.38	5.27	6.40	7.66	5.47	3.98	5.00	3.25
1982	6.55	7.98	5.49	6.83	8.29	5.74	4.12	5.23	3.29
1983	6.66	8.11	5.58	6.92	8.39	5.85	4.30	5.79	3.23
1984	6.76	8.15	5.75	7.05	8.50	6.01	4.19	5.28	3.39
1985	7.06	8.80	5.80	7.34	9.17	6.02	4.62	5.57	3.87
1986	7.31	8.98	6.05	7.59	9.25	6.33	4.95	6.64	3.70
1987	7.26	8.81	6.10	7.56	9.12	6.38	4.73	6.30	3.62
1988	7.52	9.28	6.24	7.82	9.59	6.53	5.01	6.82	3.72
1989	7.83	9.73	6.43	8.12	10.04	6.71	5.33	7.10	4.07
1990	7.87	9.97	6.34	8.16	10.32	6.58	5.39	7.13	4.17
1991	8.19	10.15	6.74	8.50	10.52	7.00	5.70	7.17	4.61
1992	8.22	10.30	6.69	8.53	10.66	6.96	5.64	7.23	4.45
1993	8.25	10.14	6.86	8.57	10.45	7.17	5.69	7.53	4.40
1994	8.63	10.75	7.10	9.00	11.20	7.41	5.54	6.82	4.56
1995	8.72	10.81	7.16	9.09	11.21	7.49	5.79	7.62	4.45
1996	8.75	10.94	7.14	9.09	11.29	7.46	6.21	8.25	4.74
1997	8.88	11.03	7.25	9.21	11.35	7.57	6.34	8.45	4.87
1998	8.69	10.85	7.10	9.03	11.27	7.38	5.99	7.50	4.89
1999	8.32	10.36	6.85	8.67	10.71	7.18	5.65	7.44	4.41
2000	8.17	10.20	6.70	8.54	10.63	7.01	5.20	6.61	4.17
2001	7.91	9.98	6.42	8.21	10.31	6.68	5.61	7.28	4.47
2002	7.65	9.66	6.19	7.97	10.04	6.44	5.41	6.88	4.41
2003	7.38	9.40	5.92	7.69	9.81	6.13	4.94	5.83	4.27
2004	7.09	8.94	5.73	7.38	9.28	5.96	5.01	6.23	4.13
2005	6.95	8.87	5.56	7.24	9.22	5.79	4.77	6.11	3.81
2006	6.74	8.48	5.44	7.01	8.78	5.66	4.92	6.27	3.93
2007	6.59	8.36	5.26	6.86	8.67	5.49	4.52	5.77	3.62
2008	6.41	8.20	5.09	6.71	8.56	5.33	4.31	5.48	3.45
2009	6.30	8.12	4.93	6.56	8.42	5.13	4.49	6.15	3.41
2010	6.14	7.83	4.85	6.37	8.11	5.04	4.57	5.84	3.64
2011	6.03	7.85	4.64	6.29	8.17	4.83	4.36	5.74	3.39
2012	5.91	7.62	4.61	6.17	7.95	4.80	4.26	5.38	3.48
2013	5.70	7.37	4.44	5.94	7.66	4.62	4.11	5.27	3.32

^a US Mortality Files, National Center for Health Statistics, Centers for Disease Control and Prevention.
Rates are per 100,000 and are age-adjusted to the 2000 US Std Population (19 age groups - Census P25-1130).
- Statistic not shown. Rate based on less than 16 cases for the time interval.

Table 19.7
Non-Hodgkin Lymphoma

SEER Incidence^a and U.S. Death^b Rates, Age-Adjusted and Age-Specific Rates, by Race and Sex

	All Races			Whites			Blacks		
	Total	Males	Females	Total	Males	Females	Total	Males	Females
<u>SEER Incidence</u>									
<u>Age at Diagnosis</u>									
Age-Adjusted Rates, 2009-2013									
All ages	19.5	23.7	16.1	20.4	24.8	16.9	14.6	17.6	12.2
Under 65	9.2	10.9	7.5	9.4	11.1	7.7	9.0	11.1	7.1
65 and over	90.9	112.6	75.4	96.7	119.2	80.3	53.0	62.6	47.2
All ages (IARC world std) ^c	12.9	15.5	10.6	13.5	16.1	11.1	10.5	12.7	8.6
Age-Specific Rates, 2009-2013									
<1	-	-	-	-	-	-	-	-	-
1-4	0.7	0.8	0.5	0.7	0.8	0.5	0.6	-	-
5-9	1.2	1.6	0.7	1.1	1.6	0.6	1.2	1.6	0.9
10-14	1.3	1.7	1.0	1.3	1.7	1.0	1.5	1.7	1.2
15-19	1.8	2.4	1.1	1.8	2.4	1.1	1.6	2.4	0.8
20-24	2.5	3.1	1.9	2.5	3.1	2.0	2.7	3.9	1.5
25-29	3.4	3.9	2.9	3.3	3.8	2.7	4.2	4.9	3.6
30-34	4.9	5.7	4.0	4.7	5.4	4.0	6.3	7.7	5.0
35-39	7.1	8.3	5.9	7.0	8.2	5.7	9.2	11.2	7.4
40-44	9.9	11.7	8.0	10.0	11.8	8.1	10.8	13.0	8.9
45-49	14.5	17.1	11.9	14.9	17.4	12.4	15.1	19.4	11.3
50-54	21.5	25.5	17.7	22.3	26.4	18.2	20.7	24.6	17.1
55-59	30.0	35.0	25.3	31.3	36.1	26.6	26.1	33.7	19.6
60-64	43.8	51.9	36.4	46.0	54.4	38.2	34.4	41.3	28.8
65-69	63.9	75.6	53.6	67.7	79.3	57.1	45.4	50.2	41.7
70-74	82.5	99.2	68.5	88.4	105.6	73.8	48.3	56.9	42.0
75-79	105.2	128.9	87.1	112.2	136.7	93.0	63.1	73.4	56.5
80-84	119.3	147.7	100.1	127.5	157.7	106.6	61.7	71.7	56.2
85+	110.4	153.6	88.6	115.7	160.8	92.7	52.1	72.3	43.8
<u>U.S. Mortality</u>									
<u>Age at Death</u>									
Age-Adjusted Rates, 2009-2013									
All ages	6.0	7.7	4.7	6.3	8.1	4.9	4.4	5.7	3.5
Under 65	1.5	2.0	1.1	1.5	2.0	1.0	1.8	2.3	1.3
65 and over	37.2	47.8	29.8	39.2	50.2	31.4	22.2	28.8	18.4
All ages (IARC world std) ^c	3.2	4.2	2.5	3.4	4.3	2.5	2.7	3.5	2.1
Age-Specific Rates, 2009-2013									
<1	-	-	-	-	-	-	-	-	-
1-4	0.0	-	-	-	-	-	-	-	-
5-9	0.1	0.1	0.0	0.1	0.1	-	-	-	-
10-14	0.1	0.1	0.1	0.1	0.1	0.1	-	-	-
15-19	0.2	0.2	0.1	0.1	0.2	0.1	0.2	0.2	0.2
20-24	0.3	0.4	0.2	0.3	0.4	0.2	0.3	0.4	0.3
25-29	0.4	0.5	0.3	0.4	0.5	0.3	0.7	1.0	0.5
30-34	0.6	0.7	0.4	0.5	0.7	0.4	0.8	1.2	0.5
35-39	0.8	1.0	0.6	0.7	0.9	0.5	1.4	1.8	1.1
40-44	1.2	1.6	0.9	1.2	1.6	0.8	1.9	2.1	1.7
45-49	2.0	2.6	1.5	2.0	2.5	1.4	2.7	3.4	2.0
50-54	3.4	4.6	2.3	3.4	4.6	2.3	4.2	5.8	2.8
55-59	5.9	7.8	4.1	6.0	7.9	4.2	6.0	8.0	4.2
60-64	9.9	12.9	7.1	10.2	13.3	7.2	9.4	12.7	6.6
65-69	15.9	20.2	12.1	16.6	21.1	12.5	12.6	15.3	10.6
70-74	26.0	32.8	20.1	27.4	34.5	21.2	18.4	23.9	14.4
75-79	40.1	50.6	31.9	42.4	53.3	33.7	23.9	30.3	19.9
80-84	59.1	76.3	47.4	62.3	80.1	50.0	33.1	45.5	26.4
85+	77.3	101.9	65.1	81.6	107.1	68.9	36.1	47.1	31.7

^a SEER 18 areas. Rates are per 100,000 and are age-adjusted to the 2000 US Std Population (19 age groups - Census P25-1130), unless noted.

^b US Mortality Files, National Center for Health Statistics, Centers for Disease Control and Prevention.

^c Rates are per 100,000 and are age-adjusted to the 2000 US Std Population (19 age groups - Census P25-1130), unless noted.

- Rates are per 100,000 and are age-adjusted to the IARC world standard population.

- Statistic not shown. Rate based on less than 16 cases for the time interval.

Table 19.8
Non-Hodgkin Lymphoma

5-Year Relative and Period Survival (Percent) by Race, Sex, Diagnosis Year and Age

	All Races			Whites			Blacks		
	Total	Males	Females	Total	Males	Females	Total	Males	Females
5-Year Relative Survival (Percent)									
Year of Diagnosis:									
1960-1963 ^a	-	-	-	31	31	31	-	-	-
1970-1973 ^a	-	-	-	41	39	43	-	-	-
1975-1977 ^b	46.5	45.6	47.5	46.8	46.3	47.3	48.6	42.6	55.3 ^g
1978-1980 ^b	47.9	46.0	49.8	47.8	46.2	49.5	51.3	47.3	56.7
1981-1983 ^b	50.6	50.2	50.9	50.8	50.5	51.1	49.5	49.2	49.8
1984-1986 ^b	51.6	50.1	53.3	52.0	50.6	53.6	46.8	44.5	49.9
1987-1989 ^b	50.9	47.6	54.9	51.3	48.1	55.2	46.0	41.7	51.0
1990-1992 ^b	50.7	46.6	55.7	51.5	47.5	56.4	42.2	38.2	47.7
1993-1995 ^b	52.5	48.7	57.4	53.2	49.7	57.6	42.1	35.7	54.0
1996-1998 ^b	58.8	57.0	60.9	59.4	57.6	61.4	54.6	53.0	56.9
1999-2001 ^b	63.9	61.4	66.9	64.9	62.8	67.5	55.7	48.9	63.8
2002-2005 ^b	70.2	68.8	71.7	71.5	70.5	72.6	63.3	59.3	67.9
2006-2012 ^b	72.6 ^f	71.7 ^f	73.7 ^f	73.6 ^f	72.9 ^f	74.5 ^f	65.2 ^f	61.3 ^f	69.2 ^f
5-Year Period Survival (Percent) ^{cd}									
2012	71.4	69.9	73.1	71.8	70.4	73.6	65.6	63.4	67.9
Stage Distribution (%) 2006-2012 ^{ce}									
All Stages									
Number of cases	94,683	51,367	43,316	78,649	42,785	35,864	7,765	4,170	3,595
Percent	100%	100%	100%	100%	100%	100%	100%	100%	100%
Localized	28	27	29	27	27	28	28	25	31
Regional	15	15	15	15	15	15	15	14	15
Distant	50	51	48	50	52	48	51	55	47
Unstaged	8	7	8	7	7	8	6	6	7
5-Year Relative Survival (Percent), 2006-2012 ^c									
Age at Diagnosis:									
Ages <45	81.6	79.4	85.1	83.4	81.0	87.4	69.1	67.1	72.2
Ages 45-54	79.0	76.0	83.3	80.8	78.1	84.7	64.2	60.0	70.1
Ages 55-64	76.0	73.2	79.7	77.1	74.5	80.6	65.5	60.3	71.9
Ages 65-74	70.8	68.2	73.8	71.5	69.0	74.4	63.6	55.5	70.3
Ages 75+	55.1	53.1	56.7	55.7	53.3	57.6	47.0	41.4	49.6
Ages <65	78.4	75.8	82.1	79.8	77.3	83.4	66.5	62.8	71.5
Ages 65+	62.4	60.7	63.9	62.9	61.2	64.5	56.6	50.4	60.4
Stage ^e :									
All Stages	70.7	69.2	72.4	71.3	69.9	72.9	63.6	60.0	67.5
Localized	82.6	82.3	83.0	83.0	82.9	83.1	78.2	74.1	81.8
Regional	74.4	73.3	75.6	75.0	74.2	76.0	67.7	65.5	69.7
Distant	63.1	61.5	65.1	64.2	62.6	66.2	54.5	52.1	57.6
Unstaged	69.6	67.6	71.6	68.3	66.2	70.5	63.3	59.6	66.2

^a Based on End Results data from a series of hospital registries and one population-based registry.

^b SEER 9 areas (San Francisco, Connecticut, Detroit, Hawaii, Iowa, New Mexico, Seattle, Utah, Atlanta).

Based on follow-up of patients into 2013.

^c SEER 18 areas (San Francisco, Connecticut, Detroit, Hawaii, Iowa, New Mexico, Seattle, Utah, Atlanta, San Jose-Monterey, Los Angeles, Alaska Native Registry, Rural Georgia, California excluding SF/SJM/LA, Kentucky, Louisiana, New Jersey and Georgia excluding ATL/RG).

Based on follow-up of patients into 2013.

^d Period survival provides a 2012 estimate of survival by piecing together the most recent conditional survival estimates from several cohorts. It is computed here using three year calendar blocks (2010-2012: 0-1 year survival), (2009-2011: 1-2 year survival), (2008-2010: 2-3 year survival), (2007-2009: 3-4 year survival), (2006-2008: 4-5 years survival).

^e Stage at diagnosis is classified using SEER Summary Stage 2000. Stage distribution percentages may not sum to 100 due to rounding.

^f The difference between 1975-1977 and 2006-2012 is statistically significant ($p < .05$).

^g The standard error is between 5 and 10 percentage points.

^h The standard error is greater than 10 percentage points.

- Statistic could not be calculated due to fewer than 25 cases during the time period.

Table 19.9
Non-Hodgkin Lymphoma

SEER^a Relative Survival (Percent)
By Year of Diagnosis

All Races, Males and Females

Year of Diagnosis

	1975- 1979	1980- 1984	1985- 1989	1990- 1994	1995	1996	1997	1998	1999	2000	2001	2002	2003	2004	2005	2006	2007	2008	2009	2010	2011	2012
Survival Time																						
1-year	70.2	73.0	71.3	70.4	70.2	73.2	75.6	76.7	77.4	77.3	78.7	81.0	80.3	81.1	81.6	81.0	81.6	84.0	83.9	84.2	83.3	84.0
2-year	60.2	63.7	62.8	62.2	61.7	65.8	68.5	70.0	71.0	71.4	73.3	76.0	75.6	76.0	77.2	76.9	77.4	78.9	79.4	79.4	79.5	
3-year	54.6	58.5	58.2	57.7	57.4	62.0	64.8	66.3	66.9	67.8	70.0	73.1	73.0	73.5	74.7	74.5	74.9	76.0	77.1	77.2		
4-year	50.5	54.6	54.3	54.4	54.6	58.6	62.1	63.5	64.4	65.4	68.0	71.1	71.5	71.4	72.8	72.6	73.0	74.2	75.3			
5-year	46.8	50.7	51.0	51.6	51.9	56.0	59.4	60.9	62.0	63.8	65.9	69.2	69.9	70.1	71.4	70.5	71.1	72.5				
6-year	43.6	47.5	48.3	49.2	49.8	54.1	57.1	58.3	59.4	62.0	64.6	68.0	68.2	68.7	70.2	68.8	70.0					
7-year	40.8	45.0	45.8	46.9	47.8	52.1	55.1	56.4	57.7	60.4	62.8	66.2	67.0	67.1	68.2	67.2						
8-year	38.5	42.8	43.4	45.0	46.3	50.4	52.8	55.1	56.2	58.8	61.2	65.0	65.6	66.5	66.7							
9-year	36.6	40.8	41.4	43.4	45.1	49.3	51.4	53.4	54.7	57.4	59.8	63.9	64.6	64.7								
10-year	35.0	38.9	39.8	42.0	44.2	48.0	50.0	52.1	53.5	56.2	58.8	63.1	63.1									
11-year	33.5	37.4	38.4	40.5	43.2	46.6	48.6	50.9	52.5	54.6	57.9	61.7										
12-year	32.3	35.9	36.9	39.5	42.1	45.6	48.0	50.0	51.1	53.3	56.6											
13-year	31.4	34.7	35.7	38.3	41.3	44.8	46.7	49.0	49.9	51.8												
14-year	30.2	33.5	34.7	37.1	40.4	44.2	45.4	48.3	48.7													
15-year	28.8	32.2	33.5	36.4	39.6	43.6	44.4	47.2														
16-year	27.9	31.1	32.7	35.5	39.0	43.5	43.0															
17-year	27.3	30.3	32.1	34.7	38.5	42.7																
18-year	26.7	29.5	31.3	33.9	37.5																	
19-year	26.0	28.7	30.5	33.1																		
20-year	25.1	27.9	30.1																			

^a Based on the SEER 9 areas (San Francisco, Connecticut, Detroit, Hawaii, Iowa, New Mexico, Seattle, Utah, and Atlanta).

Table 19.10
Non-Hodgkin Lymphoma

SEER^a Relative Survival (Percent)
By Year of Diagnosis

All Races, Males

Year of Diagnosis

	1975- 1979	1980- 1984	1985- 1989	1990- 1994	1995	1996	1997	1998	1999	2000	2001	2002	2003	2004	2005	2006	2007	2008	2009	2010	2011	2012
Survival Time																						
1-year	69.4	72.7	68.9	67.1	66.6	71.2	74.7	74.9	75.8	76.5	77.6	80.6	79.6	80.1	81.0	81.0	81.4	83.5	82.7	83.6	83.6	83.8
2-year	59.4	63.7	60.5	58.2	58.3	63.6	67.1	68.2	69.1	70.3	71.2	75.2	74.8	75.4	76.1	76.5	77.8	77.7	78.0	78.6	79.5	
3-year	53.4	58.0	55.7	53.7	54.5	59.8	63.8	64.5	64.4	66.7	67.9	72.0	72.5	72.6	73.0	73.6	75.3	75.0	75.5	76.3		
4-year	49.3	53.9	51.6	50.4	51.5	56.1	61.0	61.9	61.5	63.9	65.6	70.0	70.8	70.0	70.9	71.4	73.3	73.1	73.4			
5-year	45.4	50.1	48.2	47.6	48.5	53.6	58.2	59.1	59.0	61.7	63.5	67.9	68.8	68.7	69.7	68.9	70.9	71.9				
6-year	42.6	46.6	45.5	45.5	46.8	51.0	56.1	56.4	56.2	60.2	61.9	66.7	66.8	67.4	68.2	67.0	69.5					
7-year	39.9	44.2	43.1	43.6	44.8	49.1	54.2	54.4	54.6	58.6	60.0	65.2	65.6	65.3	66.6	65.1						
8-year	37.8	42.0	40.9	41.7	43.2	47.4	52.0	53.2	53.5	56.6	58.1	63.7	64.3	64.7	64.7							
9-year	35.7	40.1	39.1	40.1	42.2	46.4	50.4	51.3	52.3	55.2	57.1	62.8	63.1	62.9								
10-year	34.0	38.0	37.7	39.1	41.5	45.4	48.8	50.2	51.5	54.1	55.9	61.7	61.5									
11-year	32.8	36.3	36.4	38.0	40.7	43.7	47.5	49.2	50.7	52.6	54.5	60.2										
12-year	31.9	35.2	35.1	37.1	39.4	42.6	47.0	48.0	49.8	51.3	53.5											
13-year	30.7	34.2	34.2	36.1	38.8	41.9	45.4	46.5	49.0	50.0												
14-year	29.4	33.0	33.2	34.9	37.6	41.3	44.2	45.9	47.9													
15-year	28.0	31.9	32.3	34.3	36.7	40.8	43.3	45.1														
16-year	27.1	30.7	31.5	33.2	35.9	40.8	42.3															
17-year	26.5	29.9	30.8	32.5	35.6	40.3																
18-year	26.0	29.3	30.2	31.8	34.8																	
19-year	25.5	28.7	29.3	31.1																		
20-year	24.9	27.9	29.1																			

^a Based on the SEER 9 areas (San Francisco, Connecticut, Detroit, Hawaii, Iowa, New Mexico, Seattle, Utah, and Atlanta).

Table 19.11
Non-Hodgkin Lymphoma

SEER^a Relative Survival (Percent)
By Year of Diagnosis

All Races, Females

Year of Diagnosis

	1975- 1979	1980- 1984	1985- 1989	1990- 1994	1995	1996	1997	1998	1999	2000	2001	2002	2003	2004	2005	2006	2007	2008	2009	2010	2011	2012
Survival Time																						
1-year	71.0	73.4	74.0	74.7	75.1	75.8	76.7	78.6	79.2	78.2	80.0	81.4	81.0	82.2	82.4	80.9	81.9	84.6	85.3	85.0	82.8	84.1
2-year	61.1	63.7	65.6	67.2	66.3	68.7	70.1	72.0	73.3	72.7	75.7	76.8	76.5	76.7	78.4	77.3	77.1	80.3	81.1	80.6	79.4	
3-year	55.9	58.9	61.1	62.8	61.4	64.9	66.1	68.4	69.9	69.2	72.6	74.3	73.6	74.6	76.7	75.5	74.5	77.3	79.0	78.3		
4-year	51.9	55.2	57.6	59.5	58.8	61.8	63.4	65.3	68.0	67.4	70.9	72.4	72.3	73.0	75.0	73.9	72.8	75.4	77.6			
5-year	48.2	51.3	54.3	56.7	56.3	59.0	60.7	62.9	65.6	66.4	68.8	70.7	71.2	71.6	73.4	72.4	71.3	73.3				
6-year	44.6	48.4	51.7	53.9	53.8	57.9	58.3	60.3	63.3	64.3	67.8	69.4	69.9	70.2	72.4	70.8	70.5					
7-year	41.7	45.8	49.0	51.1	51.7	55.9	56.2	58.5	61.3	62.5	66.2	67.2	68.6	69.2	70.1	69.6						
8-year	39.2	43.7	46.3	49.1	50.3	54.1	53.9	57.3	59.4	61.4	64.8	66.6	67.1	68.4	69.0							
9-year	37.5	41.6	44.3	47.5	48.9	52.8	52.7	55.7	57.6	60.2	63.1	65.2	66.3	66.8								
10-year	36.0	39.8	42.4	45.8	47.7	51.3	51.5	54.1	56.0	58.6	62.3	64.6	64.9									
11-year	34.2	38.5	40.9	43.8	46.6	50.2	49.9	52.7	54.5	57.0	61.9	63.3										
12-year	32.9	36.8	39.0	42.4	45.7	49.3	49.2	52.2	52.7	55.7	60.3											
13-year	32.1	35.2	37.5	41.0	44.6	48.4	48.3	51.6	50.8	53.9												
14-year	31.0	34.0	36.5	39.9	43.9	47.7	46.8	51.0	49.4													
15-year	29.7	32.5	34.9	39.0	43.3	47.0	45.7	49.5														
16-year	28.7	31.5	34.2	38.4	43.1	46.4	43.7															
17-year	28.2	30.6	33.6	37.6	42.4	45.6																
18-year	27.4	29.8	32.7	36.6	40.8																	
19-year	26.5	28.7	32.0	35.6																		
20-year	25.4	28.0	31.2																			

^a Based on the SEER 9 areas (San Francisco, Connecticut, Detroit, Hawaii, Iowa, New Mexico, Seattle, Utah, and Atlanta).

Table 19.12

Non-Hodgkin Lymphoma

Number of Cases

By SEER Location and Year of Diagnosis, 1975-2013

All Races, Males, All Ages

Year of Diagnosis

SEER Location	1975- 1979	1980- 1981	1982- 1983	1984- 1985	1986- 1987	1988- 1989	1990- 1991	1992- 1993	1994- 1995	1996- 1997	1998- 1999	2000- 2001	2002- 2003	2004- 2005	2006- 2007	2008- 2009	2010- 2011	2012- 2013
SEER 9 ^b	5,222	2,506	2,704	3,176	3,627	3,991	4,568	4,729	5,324	5,256	5,261	5,556	5,772	6,218	6,392	6,677	6,962	7,000
SEER 9 except SF-Oakland	4,285	2,088	2,267	2,603	2,819	3,089	3,505	3,694	4,158	4,246	4,363	4,509	4,817	5,201	5,392	5,606	5,813	5,956
San Francisco-Oakland SMSA ^c	937	418	437	573	808	902	1,063	1,035	1,166	1,010	898	1,047	955	1,017	1,000	1,071	1,149	1,044
San Francisco City/County	245	96	123	210	326	393	467	410	450	353	213	256	220	283	219	215	239	224

Age-Adjusted Cancer Incidence Rates^a

By SEER Location and Year of Diagnosis, 1975-2013

All Races, Males, All Ages

Year of Diagnosis

SEER Location	1975- 1979	1980- 1981	1982- 1983	1984- 1985	1986- 1987	1988- 1989	1990- 1991	1992- 1993	1994- 1995	1996- 1997	1998- 1999	2000- 2001	2002- 2003	2004- 2005	2006- 2007	2008- 2009	2010- 2011	2012- 2013
SEER 9 ^b	13.4	15.5	16.1	18.3	20.1	21.5	23.3	23.3	25.2	24.4	23.8	24.4	24.6	25.7	25.4	25.4	25.4	24.3
SEER 9 except SF-Oakland	13.2	15.4	16.1	18.1	18.8	20.0	21.6	21.8	23.6	23.5	23.5	23.5	24.4	25.6	25.4	25.2	25.1	24.5
San Francisco-Oakland SMSA ^c	14.7	15.8	16.0	19.4	26.7	28.4	31.7	30.5	33.5	28.8	25.1	28.6	25.5	26.6	25.6	26.2	26.6	23.3
San Francisco City/County	14.3	14.4	17.6	29.3	44.4	51.9	61.0	52.3	57.4	44.6	27.4	32.5	26.9	35.4	26.5	25.5	27.2	25.1

^a Rates are per 100,000 males and are age-adjusted to the 2000 US Std Population (19 age groups - Census P25-1130).^b The SEER 9 areas are San Francisco-Oakland SMSA, Connecticut, Detroit, Hawaii, Iowa, New Mexico, Seattle, Utah and Atlanta.^c The San Francisco-Oakland SMSA represents 15% of all persons in the SEER areas. For this age group, all SEER areas may not be generalizable to the United States for Non-Hodgkin Lymphoma.

- Statistic not shown. Rate based on less than 4 cases for the time interval.

Table 19.13

Non-Hodgkin Lymphoma

Number of Cases

By SEER Location and Year of Diagnosis, 1975-2013

All Races, Males, Ages 0-19

Year of Diagnosis

SEER Location	1975- 1979	1980- 1981	1982- 1983	1984- 1985	1986- 1987	1988- 1989	1990- 1991	1992- 1993	1994- 1995	1996- 1997	1998- 1999	2000- 2001	2002- 2003	2004- 2005	2006- 2007	2008- 2009	2010- 2011	2012- 2013
SEER 9 ^b	223	87	108	91	94	85	100	89	120	105	104	119	127	106	106	142	133	152
SEER 9 except SF-Oakland	191	78	95	82	80	77	86	74	107	84	93	100	115	89	87	114	118	127
San Francisco- Oakland SMSA ^c	32	9	13	9	14	8	14	15	13	21	11	19	12	17	19	28	15	25
San Francisco City/County	9	<4	<4	<4	<4	<4	<4	<4	<4	<4	<4	<4	<4	<4	<4	5	<4	5

Age-Adjusted Cancer Incidence Rates^a

By SEER Location and Year of Diagnosis, 1975-2013

All Races, Males, Ages 0-19

Year of Diagnosis

SEER Location	1975- 1979	1980- 1981	1982- 1983	1984- 1985	1986- 1987	1988- 1989	1990- 1991	1992- 1993	1994- 1995	1996- 1997	1998- 1999	2000- 2001	2002- 2003	2004- 2005	2006- 2007	2008- 2009	2010- 2011	2012- 2013
SEER 9 ^b	1.2	1.2	1.6	1.4	1.4	1.3	1.5	1.3	1.7	1.4	1.4	1.5	1.6	1.4	1.3	1.8	1.7	1.9
SEER 9 except SF-Oakland	1.2	1.3	1.6	1.4	1.4	1.3	1.5	1.2	1.7	1.3	1.4	1.5	1.7	1.3	1.3	1.6	1.7	1.8
San Francisco- Oakland SMSA ^c	1.4	1.0	1.5	1.0	1.6	0.9	1.5	1.6	1.3	2.1	1.1	1.8	1.2	1.7	1.9	2.7	1.4	2.4
San Francisco City/County	2.3	-	-	-	-	-	-	-	-	-	-	-	-	-	-	4.0	-	4.0

^a Rates are per 100,000 males aged 0-19 and are age-adjusted to the 2000 US Std Population (19 age groups - Census P25-1130).

^b The SEER 9 areas are San Francisco-Oakland SMSA, Connecticut, Detroit, Hawaii, Iowa, New Mexico, Seattle, Utah and Atlanta.

^c The San Francisco-Oakland SMSA represents 15% of all persons in the SEER areas. For this age group, all SEER areas may not be generalizable to the United States for Non-Hodgkin Lymphoma.

- Statistic not shown. Rate based on less than 4 cases for the time interval.

Table 19.14

Non-Hodgkin Lymphoma

Number of Cases

By SEER Location and Year of Diagnosis, 1975-2013

All Races, Males, Ages 20-54

Year of Diagnosis

SEER Location	1975- 1979	1980- 1981	1982- 1983	1984- 1985	1986- 1987	1988- 1989	1990- 1991	1992- 1993	1994- 1995	1996- 1997	1998- 1999	2000- 2001	2002- 2003	2004- 2005	2006- 2007	2008- 2009	2010- 2011	2012- 2013
SEER 9 ^b	1,464	687	723	958	1,211	1,411	1,764	1,830	2,089	1,767	1,606	1,692	1,623	1,717	1,652	1,690	1,667	1,575
SEER 9 except SF-Oakland	1,208	563	588	730	827	922	1,193	1,294	1,483	1,323	1,269	1,323	1,309	1,405	1,380	1,398	1,396	1,313
San Francisco-Oakland SMSA ^c	256	124	135	228	384	489	571	536	606	444	337	369	314	312	272	292	271	262
San Francisco City/County	58	29	34	105	215	288	333	303	317	224	105	115	111	111	86	75	72	71

Age-Adjusted Cancer Incidence Rates^a

By SEER Location and Year of Diagnosis, 1975-2013

All Races, Males, Ages 20-54

Year of Diagnosis

SEER Location	1975- 1979	1980- 1981	1982- 1983	1984- 1985	1986- 1987	1988- 1989	1990- 1991	1992- 1993	1994- 1995	1996- 1997	1998- 1999	2000- 2001	2002- 2003	2004- 2005	2006- 2007	2008- 2009	2010- 2011	2012- 2013
SEER 9 ^b	6.9	7.9	8.2	10.4	12.4	13.5	15.9	15.6	16.9	13.8	12.1	12.3	11.7	12.3	11.6	11.8	11.5	10.9
SEER 9 except SF-Oakland	6.9	7.8	8.1	9.7	10.3	10.9	13.1	13.4	14.4	12.3	11.5	11.5	11.2	11.9	11.5	11.6	11.5	10.8
San Francisco-Oakland SMSA ^c	6.9	8.4	8.9	13.9	22.6	26.4	29.5	26.7	29.8	21.2	15.5	16.4	13.9	14.1	12.3	13.0	11.7	11.2
San Francisco City/County	6.7	8.8	9.4	27.2	56.5	71.5	81.3	72.4	74.4	50.7	23.0	25.2	23.9	24.8	19.4	16.2	15.0	14.5

^a Rates are per 100,000 males aged 20-54 and are age-adjusted to the 2000 US Std Population (19 age groups - Census P25-1130).

^b The SEER 9 areas are San Francisco-Oakland SMSA, Connecticut, Detroit, Hawaii, Iowa, New Mexico, Seattle, Utah and Atlanta.

^c The San Francisco-Oakland SMSA represents 15% of all persons in the SEER areas. For this age group, all SEER areas may not be generalizable to the United States for Non-Hodgkin Lymphoma.

- Statistic not shown. Rate based on less than 4 cases for the time interval.

Table 19.15

Non-Hodgkin Lymphoma

Number of Cases

By SEER Location and Year of Diagnosis, 1975-2013

All Races, Males, Ages 55+

Year of Diagnosis

SEER Location	1975- 1979	1980- 1981	1982- 1983	1984- 1985	1986- 1987	1988- 1989	1990- 1991	1992- 1993	1994- 1995	1996- 1997	1998- 1999	2000- 2001	2002- 2003	2004- 2005	2006- 2007	2008- 2009	2010- 2011	2012- 2013
SEER 9 ^b	3,535	1,732	1,873	2,127	2,322	2,495	2,704	2,810	3,115	3,384	3,551	3,745	4,022	4,395	4,634	4,845	5,162	5,273
SEER 9 except SF-Oakland	2,886	1,447	1,584	1,791	1,912	2,090	2,226	2,326	2,568	2,839	3,001	3,086	3,393	3,707	3,925	4,094	4,299	4,516
San Francisco- Oakland SMSA ^c	649	285	289	336	410	405	478	484	547	545	550	659	629	688	709	751	863	757
San Francisco City/County	178	65	88	104	109	105	132	106	130	126	106	141	108	169	131	135	164	148

Age-Adjusted Cancer Incidence Rates^a

By SEER Location and Year of Diagnosis, 1975-2013

All Races, Males, Ages 55+

Year of Diagnosis

SEER Location	1975- 1979	1980- 1981	1982- 1983	1984- 1985	1986- 1987	1988- 1989	1990- 1991	1992- 1993	1994- 1995	1996- 1997	1998- 1999	2000- 2001	2002- 2003	2004- 2005	2006- 2007	2008- 2009	2010- 2011	2012- 2013
SEER 9 ^b	45.1	52.2	54.0	59.6	63.3	67.2	70.1	70.6	76.1	80.0	81.1	83.1	85.8	90.0	90.0	88.7	89.5	85.6
SEER 9 except SF-Oakland	44.0	52.1	54.4	60.1	62.0	66.7	68.7	69.2	74.4	79.6	81.3	81.2	85.8	90.1	90.3	88.8	88.4	86.7
San Francisco- Oakland SMSA ^c	50.8	52.8	52.0	57.1	70.2	70.3	77.3	78.3	85.4	82.1	80.1	93.2	85.4	89.4	88.4	88.5	95.2	79.6
San Francisco City/County	48.2	44.6	59.8	72.7	73.9	75.7	93.4	74.7	91.4	87.2	72.7	93.4	69.0	104.7	76.4	76.3	89.0	78.0

^a Rates are per 100,000 males aged 55+ and are age-adjusted to the 2000 US Std Population (19 age groups - Census P25-1130).

^b The SEER 9 areas are San Francisco-Oakland SMSA, Connecticut, Detroit, Hawaii, Iowa, New Mexico, Seattle, Utah and Atlanta.

^c The San Francisco-Oakland SMSA represents 15% of all persons in the SEER areas. For this age group, all SEER areas may not be generalizable to the United States for Non-Hodgkin Lymphoma.

- Statistic not shown. Rate based on less than 4 cases for the time interval.

Table 19.16
Non-Hodgkin Lymphoma

Risk of Being Diagnosed With Cancer in 10, 20 and 30 Years,
Lifetime Risk of Being Diagnosed with Cancer Given Alive and Cancer-Free at Current Age, and
Lifetime Risk of Dying from Cancer Given Alive at Current Age
Both Sexes, 2011-2013 By Race/Ethnicity

Race/ Ethnicity	Current Age	Risk of Being Diagnosed with Cancer				Risk of Dying from Cancer	Race/ Ethnicity	Current Age	Risk of Being Diagnosed with Cancer				Risk of Dying from Cancer
		+10 yrs	+20 yrs	+30 yrs	Ever				+10 yrs	+20 yrs	+30 yrs	Ever	
All Races	0	0.01	0.02	0.05	2.10	0.75	Asian/ Pacific Islander	0	0.01	0.02	0.05	1.84	0.73
	10	0.02	0.05	0.10	2.11	0.76		10	0.02	0.04	0.08	1.85	0.74
	20	0.03	0.09	0.20	2.10	0.76		20	0.03	0.07	0.15	1.83	0.74
	30	0.06	0.17	0.41	2.09	0.77		30	0.04	0.12	0.28	1.82	0.74
	40	0.12	0.35	0.80	2.06	0.77		40	0.08	0.24	0.56	1.79	0.74
	50	0.24	0.70	1.36	1.99	0.78		50	0.16	0.48	1.00	1.73	0.74
	60	0.49	1.18	1.73	1.86	0.78		60	0.33	0.86	1.37	1.61	0.73
	70	0.79	1.41	-	1.55	0.75		70	0.57	1.12	-	1.37	0.69
80	0.83	-	-	1.03	0.63	80	0.66	-	-	0.96	0.56		
White	0	0.01	0.02	0.05	2.20	0.79	American Indian/ Alaska Native ^a	0	0.01	0.02	0.04	1.63	0.49
	10	0.02	0.04	0.10	2.21	0.80		10	0.01	0.03	0.07	1.64	0.50
	20	0.03	0.08	0.20	2.20	0.80		20	0.01	0.05	0.13	1.63	0.50
	30	0.06	0.17	0.42	2.19	0.81		30	0.04	0.12	0.25	1.65	0.51
	40	0.12	0.37	0.84	2.16	0.81		40	0.08	0.22	0.55	1.64	0.52
	50	0.25	0.74	1.44	2.09	0.82		50	0.15	0.50	0.96	1.63	0.53
	60	0.51	1.25	1.82	1.95	0.82		60	0.37	0.87	1.41	1.59	0.55
	70	0.84	1.48	-	1.63	0.78		70	0.57	1.18	-	1.39	0.54
80	0.88	-	-	1.07	0.66	80	0.84	-	-	1.12	0.47		
Black	0	0.01	0.02	0.06	1.29	0.44	Hispanic ^b	0	0.01	0.02	0.04	2.13	0.76
	10	0.02	0.05	0.12	1.30	0.45		10	0.01	0.04	0.08	2.14	0.76
	20	0.03	0.11	0.22	1.29	0.45		20	0.02	0.07	0.17	2.14	0.77
	30	0.08	0.19	0.40	1.28	0.45		30	0.05	0.15	0.38	2.13	0.77
	40	0.12	0.33	0.63	1.22	0.45		40	0.10	0.33	0.75	2.10	0.77
	50	0.22	0.53	0.88	1.15	0.45		50	0.23	0.66	1.31	2.03	0.77
	60	0.34	0.72	0.96	1.02	0.44		60	0.45	1.13	1.69	1.88	0.75
	70	0.45	0.74	-	0.81	0.41		70	0.75	1.37	-	1.58	0.71
80	0.42	-	-	0.52	0.33	80	0.79	-	-	1.05	0.58		

Devcan 6.7.4, August 2016, National Cancer Institute (<http://surveillance.cancer.gov/devcan/>).

Source: Incidence data are from the SEER 18 areas (San Francisco, Connecticut, Detroit, Hawaii, Iowa, New Mexico, Seattle, Utah, Atlanta, San Jose-Monterey, Los Angeles, Alaska Native Registry, Rural Georgia, California excluding SF/SJM/LA, Kentucky, Louisiana, New Jersey, and Georgia excluding ATL/RG). Mortality data are from the NCHS public use data file for the total US.

^a Underlying incidence and mortality data for American Indian/Alaska Native are based on the CHSDA (Contract Health Service Delivery Area) counties.

^b Hispanic is not mutually exclusive from whites, blacks, Asian/Pacific Islanders, and American Indians/Alaska Natives. Underlying incidence data for Hispanics are based on NHIA and exclude cases from the Alaska Native Registry.

- Statistic could not be calculated.

A percent of 0.00 represents a value that is below 0.005.

Table 19.17
Non-Hodgkin Lymphoma

Risk of Being Diagnosed With Cancer in 10, 20 and 30 Years,
Lifetime Risk of Being Diagnosed with Cancer Given Alive and Cancer-Free at Current Age, and
Lifetime Risk of Dying from Cancer Given Alive at Current Age
Males, 2011-2013 By Race/Ethnicity

Race/ Ethnicity	Current Age	Risk of Being Diagnosed with Cancer				Risk of Dying from Cancer	Race/ Ethnicity	Current Age	Risk of Being Diagnosed with Cancer				Risk of Dying from Cancer
		+10 yrs	+20 yrs	+30 yrs	Ever				+10 yrs	+20 yrs	+30 yrs	Ever	
All Races	0	0.01	0.03	0.07	2.36	0.86	Asian/ Pacific Islander	0	0.01	0.03	0.06	2.11	0.84
	10	0.02	0.06	0.12	2.37	0.87		10	0.02	0.05	0.09	2.12	0.85
	20	0.04	0.10	0.23	2.36	0.87		20	0.03	0.07	0.16	2.10	0.85
	30	0.07	0.20	0.47	2.36	0.88		30	0.04	0.14	0.33	2.09	0.85
	40	0.14	0.41	0.92	2.33	0.88		40	0.10	0.29	0.68	2.06	0.85
	50	0.28	0.81	1.56	2.26	0.89		50	0.20	0.59	1.21	2.00	0.85
	60	0.57	1.37	1.99	2.13	0.90		60	0.41	1.06	1.64	1.87	0.84
	70	0.93	1.66	-	1.82	0.87		70	0.70	1.34	-	1.60	0.80
80	1.03	-	-	1.27	0.75	80	0.80	-	-	1.11	0.67		
White	0	0.01	0.03	0.06	2.46	0.90	American Indian/ Alaska Native ^a	0	0.01	0.03	0.05	1.73	0.60
	10	0.02	0.05	0.12	2.47	0.91		10	0.02	0.04	0.08	1.74	0.61
	20	0.03	0.10	0.23	2.46	0.91		20	0.02	0.06	0.14	1.73	0.61
	30	0.06	0.20	0.48	2.46	0.92		30	0.05	0.12	0.24	1.75	0.63
	40	0.14	0.42	0.96	2.43	0.92		40	0.08	0.20	0.57	1.75	0.64
	50	0.29	0.85	1.64	2.37	0.93		50	0.13	0.52	0.98	1.76	0.66
	60	0.60	1.45	2.10	2.24	0.94		60	0.43	0.93	1.51	1.79	0.69
	70	0.99	1.74	-	1.91	0.91		70	0.60	1.28	-	1.61	0.69
80	1.09	-	-	1.32	0.78	80	0.99	-	-	1.47	0.67		
Black	0	0.01	0.03	0.07	1.38	0.49	Hispanic ^b	0	0.01	0.03	0.05	2.34	0.85
	10	0.02	0.06	0.15	1.40	0.50		10	0.02	0.04	0.10	2.35	0.86
	20	0.04	0.13	0.27	1.39	0.50		20	0.03	0.08	0.20	2.35	0.86
	30	0.09	0.23	0.47	1.37	0.50		30	0.05	0.17	0.42	2.34	0.87
	40	0.14	0.39	0.72	1.32	0.50		40	0.12	0.37	0.84	2.32	0.87
	50	0.26	0.60	0.96	1.23	0.50		50	0.26	0.74	1.47	2.25	0.87
	60	0.38	0.78	1.02	1.08	0.49		60	0.51	1.28	1.92	2.11	0.87
	70	0.51	0.81	-	0.89	0.46		70	0.87	1.59	-	1.80	0.83
80	0.49	-	-	0.61	0.39	80	0.95	-	-	1.24	0.70		

Devcan 6.7.4, August 2016, National Cancer Institute (<http://surveillance.cancer.gov/devcan/>).

Source: Incidence data are from the SEER 18 areas (San Francisco, Connecticut, Detroit, Hawaii, Iowa, New Mexico, Seattle, Utah, Atlanta, San Jose-Monterey, Los Angeles, Alaska Native Registry, Rural Georgia, California excluding SF/SJM/LA, Kentucky, Louisiana, New Jersey, and Georgia excluding ATL/RG). Mortality data are from the NCHS public use data file for the total US.

^a Underlying incidence and mortality data for American Indian/Alaska Native are based on the CHSDA (Contract Health Service Delivery Area) counties.

^b Hispanic is not mutually exclusive from whites, blacks, Asian/Pacific Islanders, and American Indians/Alaska Natives. Underlying incidence data for Hispanics are based on NHIA and exclude cases from the Alaska Native Registry.

- Statistic could not be calculated.

A percent of 0.00 represents a value that is below 0.005.

Table 19.18
Non-Hodgkin Lymphoma

Risk of Being Diagnosed With Cancer in 10, 20 and 30 Years,
Lifetime Risk of Being Diagnosed with Cancer Given Alive and Cancer-Free at Current Age, and
Lifetime Risk of Dying from Cancer Given Alive at Current Age
Females, 2011-2013 By Race/Ethnicity

Race/ Ethnicity	Current Age	Risk of Being Diagnosed with Cancer				Risk of Dying from Cancer	Race/ Ethnicity	Current Age	Risk of Being Diagnosed with Cancer				Risk of Dying from Cancer
		+10 yrs	+20 yrs	+30 yrs	Ever				+10 yrs	+20 yrs	+30 yrs	Ever	
All Races	0	0.01	0.02	0.04	1.87	0.67	Asian/ Pacific Islander	0	0.00	0.01	0.04	1.61	0.65
	10	0.01	0.03	0.08	1.88	0.67		10	0.01	0.03	0.07	1.62	0.66
	20	0.02	0.07	0.17	1.87	0.67		20	0.03	0.06	0.13	1.61	0.66
	30	0.05	0.15	0.35	1.86	0.68		30	0.04	0.10	0.24	1.59	0.66
	40	0.10	0.30	0.68	1.82	0.68		40	0.07	0.21	0.45	1.56	0.66
	50	0.21	0.60	1.17	1.76	0.68		50	0.14	0.39	0.82	1.51	0.65
	60	0.41	1.01	1.50	1.63	0.68		60	0.26	0.70	1.16	1.40	0.64
	70	0.66	1.21	-	1.34	0.65		70	0.46	0.95	-	1.20	0.60
80	0.70	-	-	0.87	0.55	80	0.56	-	-	0.85	0.49		
White	0	0.00	0.02	0.04	1.95	0.70	American Indian/ Alaska Native ^a	0	0.00	0.01	0.02	1.56	0.41
	10	0.01	0.03	0.08	1.97	0.71		10	0.01	0.02	0.05	1.57	0.41
	20	0.02	0.07	0.17	1.96	0.71		20	0.01	0.04	0.12	1.56	0.41
	30	0.05	0.15	0.36	1.95	0.71		30	0.04	0.11	0.27	1.57	0.42
	40	0.10	0.31	0.72	1.91	0.71		40	0.07	0.24	0.54	1.56	0.42
	50	0.21	0.63	1.24	1.85	0.71		50	0.17	0.48	0.94	1.54	0.43
	60	0.43	1.07	1.59	1.71	0.71		60	0.33	0.81	1.33	1.44	0.45
	70	0.71	1.27	-	1.41	0.68		70	0.54	1.11	-	1.24	0.45
80	0.73	-	-	0.91	0.57	80	0.74	-	-	0.91	0.36		
Black	0	0.01	0.02	0.04	1.21	0.41	Hispanic ^b	0	0.00	0.01	0.03	1.95	0.68
	10	0.01	0.03	0.09	1.22	0.42		10	0.01	0.03	0.07	1.97	0.69
	20	0.02	0.08	0.18	1.21	0.42		20	0.02	0.06	0.15	1.96	0.69
	30	0.06	0.16	0.33	1.20	0.41		30	0.04	0.13	0.33	1.95	0.69
	40	0.10	0.28	0.56	1.15	0.41		40	0.09	0.29	0.67	1.92	0.69
	50	0.18	0.47	0.80	1.08	0.41		50	0.21	0.58	1.17	1.85	0.68
	60	0.31	0.67	0.91	0.97	0.40		60	0.39	1.00	1.51	1.70	0.67
	70	0.41	0.69	-	0.76	0.37		70	0.65	1.21	-	1.41	0.63
80	0.38	-	-	0.48	0.30	80	0.68	-	-	0.92	0.50		

Devcan 6.7.4, August 2016, National Cancer Institute (<http://surveillance.cancer.gov/devcan/>).

Source: Incidence data are from the SEER 18 areas (San Francisco, Connecticut, Detroit, Hawaii, Iowa, New Mexico, Seattle, Utah, Atlanta, San Jose-Monterey, Los Angeles, Alaska Native Registry, Rural Georgia, California excluding SF/SJM/LA, Kentucky, Louisiana, New Jersey, and Georgia excluding ATL/RG). Mortality data are from the NCHS public use data file for the total US.

^a Underlying incidence and mortality data for American Indian/Alaska Native are based on the CHSDA (Contract Health Service Delivery Area) counties.

^b Hispanic is not mutually exclusive from whites, blacks, Asian/Pacific Islanders, and American Indians/Alaska Natives. Underlying incidence data for Hispanics are based on NHIA and exclude cases from the Alaska Native Registry.

- Statistic could not be calculated.

A percent of 0.00 represents a value that is below 0.005.

Table 19.19
Non-Hodgkin Lymphoma

SEER Incidence and U.S. Mortality
Age-Adjusted Rates and Trends^a
By Race/Ethnicity and Sex

SEER Incidence	SEER 18 Areas ^b			SEER 13 Areas ^b			SEER 9 Areas ^b		
	Rate 2009-2013			Trend 2004-2013 ^c			Trend 2004-2013 ^d		
	Rate per 100,000 persons			AAPC (%)			AAPC (%)		
RACE/ETHNICITY	Total	Males	Females	Total	Males	Females	Total	Males	Females
All Races	19.5	23.7	16.1	-0.6	-0.6	-0.9*	-0.6	-0.6	-0.9*
White	20.4	24.8	16.9	-0.7	-0.5	-0.9*	-0.6*	-0.5	-1.0*
White Hispanic ^e	18.3	21.5	15.8	-0.6	0.2	0.7*	-	-	-
White Non-Hispanic ^e	20.9	25.4	17.1	-0.6*	-0.5	-1.0*	-	-	-
Black	14.6	17.6	12.2	-1.0*	-0.3	0.4	0.2	-0.5	-0.6
Asian/Pacific Islander	13.5	16.5	11.1	0.2	0.3	0.2	-	-	-
Amer Ind/Alaska Nat ^f	12.9	14.6	11.6	1.7*	0.8	2.4*	-	-	-
Hispanic ^e	17.7	20.7	15.3	-0.6	0.1	0.7*	-	-	-
<u>U.S. Mortality^g</u>									
	Rate 2009-2013			Trend 2004-2013 ^h					
	Rate per 100,000 persons			AAPC (%)					
RACE/ETHNICITY	Total	Males	Females	Total	Males	Females			
All Races	6.0	7.7	4.7	-2.4*	-2.2*	-2.8*			
White	6.3	8.1	4.9	-2.4*	-2.1*	-2.8*			
White Hispanic ^e	5.4	6.7	4.4	-1.1*	-0.7	-1.9*			
White Non-Hispanic ^e	6.3	8.1	4.9	-2.5*	-2.5*	-2.9*			
Black	4.4	5.7	3.5	-2.3*	-2.4*	-2.4*			
Asian/Pacific Islander	4.0	4.9	3.3	-1.9*	-2.1*	-1.7*			
Amer Ind/Alaska Nat									
Total U.S.	3.2	4.1	2.5	-3.4*	-1.5	-5.2*			
CHSDA Counties	4.5	5.7	3.5	-0.6	-0.4	-4.5*			
Non-CHSDA Counties	1.7	2.2	1.3	2.2	4.4	-4.7*			
Hispanic ^e	5.1	6.3	4.2	-1.3*	-0.9	-2.1*			

The AAPC is the Average Annual Percent Change over the time interval. The AAPCs are calculated by the Joinpoint Regression Program Version 4.3.0.0, April 2016, National Cancer Institute.

- Statistic not shown. Rate based on less than 16 cases for the time interval.

Trend based on less than 10 cases for at least one year within the time interval.

a Rates are age-adjusted to the 2000 US Std Population (19 age groups - Census P25-1130). Trends are based on rates age-adjusted to the 2000 US Std Population (19 age groups - Census P25-1130).

b The SEER 9 areas are San Francisco, Connecticut, Detroit, Hawaii, Iowa, New Mexico, Seattle, Utah, and Atlanta.

The SEER 13 areas comprise the SEER 9 areas plus San Jose-Monterey, Los Angeles, the Alaska Native Registry, and Rural Georgia.

The SEER 18 areas comprise the SEER 13 areas plus California excluding SF/SJM/LA, Kentucky, Louisiana, New Jersey, and Georgia excluding ATL/RG.

c The 2004-2013 AAPC estimates are based on a Joinpoint analysis with up to 4 Joinpoints over diagnosis years 1992-2013.

d The 2004-2013 AAPC estimates are based on a Joinpoint analysis with up to 5 Joinpoints over diagnosis years 1975-2013.

e Hispanic and Non-Hispanic are not mutually exclusive from whites, blacks, Asian/Pacific Islanders, and American Indians/Alaska Natives. Incidence data for Hispanics and Non-Hispanics are based on NHIA and exclude cases from the Alaska Native Registry. The 2004-2013 Hispanic and Non-Hispanic mortality trends exclude deaths from New Hampshire and Oklahoma.

f Incidence data for American Indian/Alaska Native are based on the CHSDA (Contract Health Service Delivery Area) counties.

g US Mortality Files, National Center for Health Statistics, CDC.

h The 2004-2013 mortality AAPCs are based on a Joinpoint analysis using years of death 1992-2013.

* The APC is significantly different from zero (p<.05).

Table 19.20
Non-Hodgkin Lymphoma

Age-Adjusted SEER Incidence Rates^a
By Registry, Race and Sex

	All Races			Whites			Blacks		
	Total	Males	Females	Total	Males	Females	Total	Males	Females
<u>SEER Incidence Rates^a, 2009-2013</u>									
California	18.68	22.79	15.32	19.62	23.89	16.07	14.16	16.58	12.09
Greater Bay Area	19.98	24.72	16.04	21.96	27.15	17.51	16.28	19.47	13.52
San Francisco-Oakland	19.98	25.11	15.77	22.07	27.77	17.25	15.90	19.28	13.01
San Jose-Monterey	20.04	24.04	16.59	21.81	26.11	17.99	19.11	21.25	17.00
Los Angeles	18.47	22.35	15.36	19.96	23.94	16.67	14.05	17.07	11.73
Greater California	18.33	22.31	15.05	18.83	22.93	15.43	13.27	14.73	11.83
Connecticut	20.96	25.26	17.67	21.29	25.68	17.87	14.17	16.82	12.34
Detroit	21.56	26.48	17.77	23.31	28.35	19.35	15.60	19.57	12.71
Georgia	17.74	21.74	14.56	18.77	22.78	15.42	14.32	17.74	11.92
Atlanta	18.81	23.50	15.21	20.39	25.59	16.18	16.21	19.28	13.81
Rural Georgia	14.69	16.27	13.49	17.25	18.30	15.62	8.72	-	-
Greater Georgia	17.26	20.99	14.25	18.22	21.87	15.14	13.05	16.55	10.68
Hawaii	18.05	21.79	14.87	20.90	23.73	17.69	-	-	-
Iowa	22.09	26.68	18.48	22.13	26.65	18.58	15.59	18.48	13.83
Kentucky	20.76	25.39	17.08	20.96	25.40	17.44	15.82	22.03	11.13
Louisiana	19.86	23.96	16.55	21.52	25.64	18.12	14.83	18.38	12.05
New Jersey	21.16	25.44	17.83	22.33	26.77	18.83	14.04	16.40	12.15
New Mexico	15.25	17.32	13.50	15.30	17.46	13.47	10.46	14.45	-
Seattle-Puget Sound	22.04	27.16	17.69	22.66	27.86	18.23	17.97	19.62	15.90
Utah	18.86	23.34	15.05	19.13	23.74	15.20	-	-	-
SEER 9 Areas ^b	20.30	24.87	16.61	21.25	25.92	17.40	15.77	19.03	13.22
SEER 13 Areas ^b	19.84	24.21	16.31	20.99	25.50	17.27	15.38	18.57	12.89
SEER 18 Areas ^b	19.51	23.73	16.10	20.45	24.76	16.90	14.57	17.63	12.17

^a Rates are per 100,000 and are age-adjusted to the 2000 US Std Population (19 age groups - Census P25-1130)

^b The SEER 9 areas are San Francisco, Connecticut, Detroit, Hawaii, Iowa, New Mexico, Seattle, Utah and Atlanta.

The SEER 13 areas comprise the SEER 9 areas plus San Jose-Monterey, Los Angeles, the Alaska Native Registry and Rural Georgia.

The SEER 18 areas comprise the SEER 13 areas plus California excluding SF/SJM/LA, Kentucky, Louisiana, New Jersey and Georgia excluding ATL/RG.

- Statistic not shown. Rate based on less than 16 cases for the time interval.

Table 19.21
Non-Hodgkin Lymphoma

Age-Adjusted SEER Death Rates^a
By Registry, Race and Sex

	All Races			Whites			Blacks		
	Total	Males	Females	Total	Males	Females	Total	Males	Females
<u>SEER Death Rates^a, 2009-2013</u>									
California	5.69	7.27	4.48	6.12	7.87	4.77	4.39	5.39	3.62
Greater Bay Area	5.73	7.55	4.34	6.44	8.66	4.71	4.90	5.95	4.11
San Francisco-Oakland	5.74	7.76	4.19	6.42	8.93	4.46	4.96	5.96	4.23
San Jose-Monterey	5.72	7.16	4.63	6.47	8.18	5.14	-	-	-
Los Angeles	5.60	6.91	4.60	6.09	7.48	4.98	4.63	5.58	3.90
Greater California	5.71	7.33	4.46	6.04	7.78	4.69	3.86	5.03	2.95
Connecticut	5.56	7.22	4.35	5.66	7.33	4.43	3.86	5.72	2.76
Detroit	6.70	8.83	5.14	7.20	9.44	5.52	5.00	6.81	3.79
Georgia	5.44	7.32	4.11	5.92	7.80	4.54	3.85	5.46	2.83
Atlanta	5.02	7.19	3.66	5.45	7.96	3.79	4.07	5.33	3.33
Rural Georgia	6.06	8.65	4.17	7.13	8.82	5.78	-	-	-
Greater Georgia	5.61	7.37	4.29	6.07	7.74	4.76	3.72	5.46	2.53
Hawaii	5.40	7.10	4.04	5.56	6.81	4.28	-	-	-
Iowa	6.73	8.78	5.27	6.75	8.79	5.29	6.58	-	-
Kentucky	6.89	8.94	5.38	7.07	9.09	5.56	4.27	7.02	2.53
Louisiana	6.56	8.75	4.87	6.97	9.04	5.33	5.03	7.29	3.38
New Jersey	5.61	7.33	4.41	6.00	7.82	4.69	3.76	5.15	2.96
New Mexico	4.95	6.13	3.97	4.98	6.18	3.96	-	-	-
Seattle-Puget Sound	6.40	8.12	5.07	6.61	8.49	5.13	4.92	4.53	4.90
Utah	5.69	7.01	4.62	5.83	7.20	4.73	-	-	-
SEER 9 Areas ^b	5.94	7.75	4.58	6.24	8.15	4.78	4.55	5.96	3.58
SEER 13 Areas ^b	5.85	7.53	4.59	6.23	8.03	4.84	4.57	5.87	3.66
SEER 18 Areas ^b	5.87	7.60	4.58	6.24	8.04	4.86	4.32	5.85	3.26
Total U.S.	6.01	7.75	4.69	6.26	8.05	4.88	4.36	5.66	3.45

^a US Mortality Files, National Center for Health Statistics, Centers for Disease Control and Prevention. Rates are per 100,000 and are age-adjusted to the 2000 US Std Population (19 age groups - Census P25-1130).

^b The SEER 9 areas are San Francisco, Connecticut, Detroit, Hawaii, Iowa, New Mexico, Seattle, Utah and Atlanta. The SEER 13 areas comprise the SEER 9 areas plus San Jose-Monterey, Los Angeles, the Alaska Native Registry and Rural Georgia. The SEER 18 areas comprise the SEER 13 areas plus California excluding SF/SJM/LA, Kentucky, Louisiana, New Jersey and Georgia excluding ATL/RG.

- Statistic not shown. Rate based on less than 16 cases for the time interval.

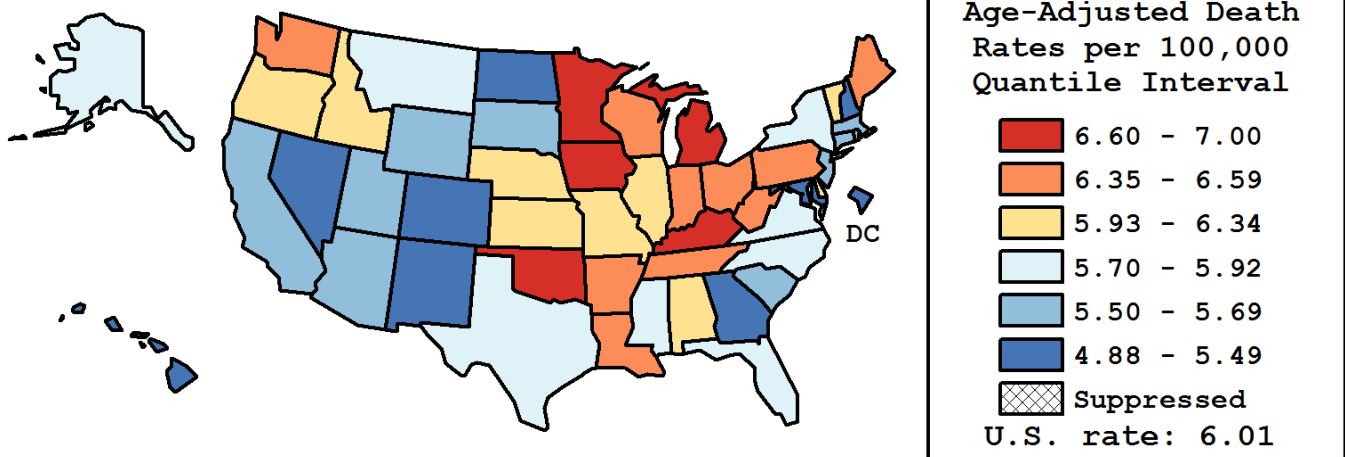
Table 19.22
Non-Hodgkin Lymphoma

Age-Adjusted Cancer Death^a Rates By State, All Races, 2009-2013

Males and Females

State	Rate	SE	Rank(CI) ^d	PD
TOTAL U.S.	6.01	0.02		
High Five States				
Minnesota	7.00	0.16	01(01,11)	16.48 ^c
Kentucky	6.89	0.17	02(01,17)	14.76
Michigan	6.86	0.11	03(01,11)	14.29
Iowa	6.73	0.19	04(01,22)	12.11
Oklahoma	6.69	0.18	05(01,22)	11.46
Low Five States				
Hawaii	5.40	0.26	47(19,51)	-10.10
Maryland	5.36	0.13	48(30,51)	-10.83
Colorado	5.28	0.15	49(32,51)	-12.17
New Mexico	4.95	0.21	50(37,51)	-17.53 ^c
D.C.	4.88	0.42	51(19,51)	-18.77 ^c

State	Rate	SE	Rank(CI) ^d	PD	State	Rate	SE	Rank(CI) ^d	PD
Alabama	6.14	0.15	22(07,35)	2.24	Montana	5.77	0.31	28(05,51)	-3.91
Alaska	5.86	0.53	26(01,51)	-2.49	Nebraska	6.18	0.25	21(03,44)	2.94
Arizona	5.56	0.13	38(25,49)	-7.44	Nevada	5.49	0.21	43(21,51)	-8.55
Arkansas	6.59	0.20	08(01,25)	9.66	New Hampshire	5.43	0.27	46(19,51)	-9.57
California	5.69	0.06	33(26,43)	-5.26	New Jersey	5.61	0.11	37(25,48)	-6.55
Colorado	5.28	0.15	49(32,51)	-12.17	New Mexico	4.95	0.21	50(37,51)	-17.53 ^c
Connecticut	5.56	0.16	39(22,50)	-7.51	New York	5.72	0.07	31(24,43)	-4.79
Delaware	6.10	0.34	23(01,49)	1.49	North Carolina	5.76	0.11	29(22,44)	-4.06
D.C.	4.88	0.42	51(19,51)	-18.77 ^c	North Dakota	5.46	0.37	44(09,51)	-9.17
Florida	5.75	0.07	30(23,42)	-4.22	Ohio	6.58	0.10	09(02,19)	9.56
Georgia	5.44	0.11	45(29,50)	-9.40	Oklahoma	6.69	0.18	05(01,22)	11.46
Hawaii	5.40	0.26	47(19,51)	-10.10	Oregon	6.34	0.17	16(03,29)	5.60
Idaho	6.32	0.28	18(01,43)	5.26	Pennsylvania	6.49	0.09	11(04,21)	8.04
Illinois	6.21	0.10	20(11,28)	3.32	Rhode Island	5.52	0.30	42(13,51)	-8.06
Indiana	6.59	0.14	07(01,22)	9.68	South Carolina	5.68	0.15	36(20,48)	-5.37
Iowa	6.73	0.19	04(01,22)	12.11	South Dakota	5.69	0.34	35(04,51)	-5.34
Kansas	6.34	0.20	17(02,32)	5.47	Tennessee	6.46	0.14	14(02,24)	7.54
Kentucky	6.89	0.17	02(01,17)	14.76	Texas	5.85	0.07	27(22,39)	-2.65
Louisiana	6.56	0.17	10(01,24)	9.29	Utah	5.69	0.24	34(15,50)	-5.30
Maine	6.46	0.28	13(01,38)	7.55	Vermont	6.32	0.42	19(01,49)	5.21
Maryland	5.36	0.13	48(30,51)	-10.83	Virginia	5.92	0.12	25(17,40)	-1.52
Massachusetts	5.54	0.12	40(25,49)	-7.72	Washington	6.35	0.14	15(04,26)	5.65
Michigan	6.86	0.11	03(01,11)	14.29	West Virginia	6.59	0.24	06(01,27)	9.76
Minnesota	7.00	0.16	01(01,11)	16.48 ^c	Wisconsin	6.48	0.14	12(02,24)	7.93
Mississippi	5.70	0.19	32(18,49)	-5.13	Wyoming	5.54	0.44	41(03,51)	-7.72
Missouri	6.01	0.13	24(14,39)	0.08					



^a US Mortality Files, National Center for Health Statistics, Centers for Disease Control and Prevention. Rates are per 100,000 and are age-adjusted to the 2000 US Std Population (19 age groups - Census P25-1130).

^b Difference between state rate and total U.S. rate is statistically significant ($p < .0002$).

^c Absolute percent difference between state rate and total U.S. rate is 15% or more.

^d Rank of state level death rate and the 95% confidence intervals (low, high) for the rank.

SE Standard error of the rate.

PD Percent difference between state rate and total U.S. rate.

- Statistic not shown. Rate based on less than 16 cases for the time interval.

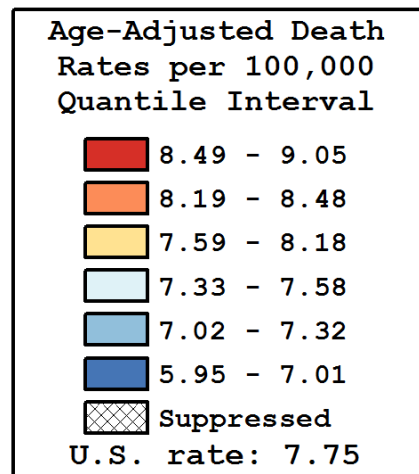
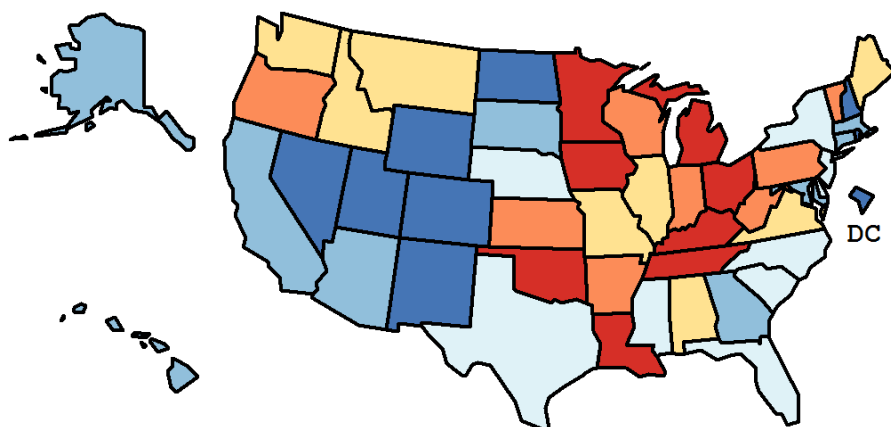
Table 19.23
Non-Hodgkin Lymphoma

Age-Adjusted Cancer Death^a Rates By State, All Races, 2009-2013

Males

State	Rate	SE	Rank(CI) ^d	PD
TOTAL U.S.	7.75	0.03		
High Five States				
Michigan	9.05	0.20	01(01,12)	16.76 ^c
Minnesota	9.01	0.27	02(01,15)	16.32 ^c
Kentucky	8.94	0.31	03(01,19)	15.40 ^c
Iowa	8.78	0.33	04(01,22)	13.24
Louisiana	8.75	0.31	05(01,21)	12.87
Low Five States				
Wyoming	6.53	0.74	47(02,51)	-15.69 ^c
Rhode Island	6.44	0.50	48(17,51)	-16.85 ^c
North Dakota	6.32	0.60	49(15,51)	-18.39 ^c
New Mexico	6.13	0.35	50(35,51)	-20.95 ^c
D.C.	5.95	0.72	51(14,51)	-23.28 ^c

State	Rate	SE	Rank(CI) ^d	PD	State	Rate	SE	Rank(CI) ^d	PD
Alabama	7.71	0.27	20(08,43)	-0.50	Montana	7.62	0.54	24(01,50)	-1.72
Alaska	7.18	0.86	37(01,51)	-7.29	Nebraska	7.53	0.42	27(04,49)	-2.78
Arizona	7.06	0.21	40(22,49)	-8.95	Nevada	6.97	0.35	44(17,50)	-10.09
Arkansas	8.23	0.34	15(01,39)	6.21	New Hampshire	6.90	0.47	45(12,51)	-10.96
California	7.27	0.10	35(25,44)	-6.16	New Jersey	7.33	0.19	33(19,46)	-5.38
Colorado	6.74	0.26	46(25,51)	-12.97	New Mexico	6.13	0.35	50(35,51)	-20.95 ^c
Connecticut	7.22	0.29	36(17,49)	-6.86	New York	7.38	0.13	32(21,43)	-4.73
Delaware	7.50	0.58	28(01,50)	-3.21	North Carolina	7.46	0.19	30(17,44)	-3.78
D.C.	5.95	0.72	51(14,51)	-23.28 ^c	North Dakota	6.32	0.60	49(15,51)	-18.39 ^c
Florida	7.41	0.11	31(21,42)	-4.35	Ohio	8.55	0.18	07(02,19)	10.27
Georgia	7.32	0.21	34(18,47)	-5.49	Oklahoma	8.63	0.32	06(01,25)	11.38
Hawaii	7.10	0.45	39(07,51)	-8.37	Oregon	8.34	0.30	12(01,29)	7.68
Idaho	7.67	0.47	23(02,49)	-0.96	Pennsylvania	8.45	0.16	10(03,20)	8.98
Illinois	8.04	0.17	19(08,29)	3.71	Rhode Island	6.44	0.50	48(17,51)	-16.85 ^c
Indiana	8.48	0.24	09(01,24)	9.47	South Carolina	7.58	0.27	25(11,45)	-2.20
Iowa	8.78	0.33	04(01,22)	13.24	South Dakota	7.04	0.57	41(06,51)	-9.09
Kansas	8.26	0.35	13(01,38)	6.56	Tennessee	8.53	0.25	08(01,23)	10.12
Kentucky	8.94	0.31	03(01,19)	15.40 ^c	Texas	7.55	0.13	26(18,39)	-2.54
Louisiana	8.75	0.31	05(01,21)	12.87	Utah	7.01	0.39	43(14,51)	-9.49
Maine	8.18	0.48	17(01,44)	5.55	Vermont	8.22	0.73	16(01,49)	6.02
Maryland	7.04	0.24	42(21,49)	-9.14	Virginia	7.69	0.22	22(11,41)	-0.80
Massachusetts	7.14	0.22	38(21,48)	-7.91	Washington	8.08	0.23	18(04,32)	4.27
Michigan	9.05	0.20	01(01,12)	16.76 ^c	West Virginia	8.25	0.41	14(01,40)	6.40
Minnesota	9.01	0.27	02(01,15)	16.32 ^c	Wisconsin	8.37	0.25	11(02,26)	7.97
Mississippi	7.49	0.35	29(08,48)	-3.29	Wyoming	6.53	0.74	47(02,51)	-15.69 ^c
Missouri	7.69	0.23	21(11,43)	-0.78					



^a US Mortality Files, National Center for Health Statistics, Centers for Disease Control and Prevention. Rates are per 100,000 and are age-adjusted to the 2000 US Std Population (19 age groups - Census P25-1130).

^b Difference between state rate and total U.S. rate is statistically significant ($p < .0002$).

^c Absolute percent difference between state rate and total U.S. rate is 15% or more.

^d Rank of state level death rate and the 95% confidence intervals (low, high) for the rank.

SE Standard error of the rate.

PD Percent difference between state rate and total U.S. rate.

- Statistic not shown. Rate based on less than 16 cases for the time interval.

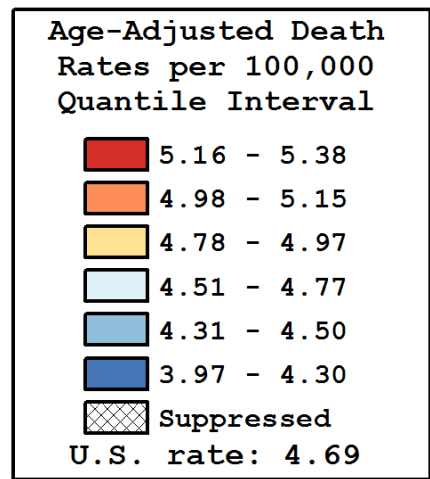
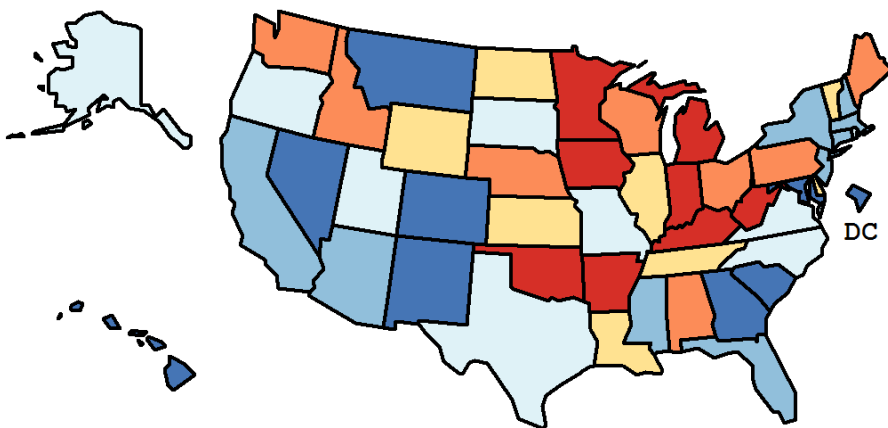
Table 19.24
Non-Hodgkin Lymphoma

Age-Adjusted Cancer Death^a Rates By State, All Races, 2009-2013

Females

State	Rate	SE	Rank(CI) ^d	PD
TOTAL U.S.	4.69	0.02		
High Five States				
Kentucky	5.38	0.20	01(01,23)	14.89
Minnesota	5.38	0.18	02(01,23)	14.89
West Virginia	5.35	0.29	03(01,33)	14.19
Arkansas	5.35	0.24	04(01,28)	14.17
Iowa	5.27	0.23	05(01,29)	12.53
Low Five States				
Georgia	4.11	0.13	47(32,51)	-12.22
D.C.	4.08	0.50	48(01,51)	-13.04
Colorado	4.07	0.18	49(28,51)	-13.25
Hawaii	4.04	0.30	50(17,51)	-13.80
New Mexico	3.97	0.26	51(24,51)	-15.26 ^c

State	Rate	SE	Rank(CI) ^d	PD	State	Rate	SE	Rank(CI) ^d	PD
Alabama	4.99	0.18	15(02,37)	6.51	Montana	4.26	0.37	44(04,51)	-9.02
Alaska	4.56	0.64	31(01,51)	-2.81	Nebraska	5.11	0.30	11(01,43)	8.99
Arizona	4.34	0.15	41(23,50)	-7.50	Nevada	4.23	0.25	45(15,51)	-9.74
Arkansas	5.35	0.24	04(01,28)	14.17	New Hampshire	4.32	0.32	42(06,51)	-7.72
California	4.48	0.07	35(25,44)	-4.49	New Jersey	4.41	0.12	37(22,49)	-5.90
Colorado	4.07	0.18	49(28,51)	-13.25	New Mexico	3.97	0.26	51(24,51)	-15.26 ^c
Connecticut	4.35	0.19	40(16,51)	-7.22	New York	4.50	0.09	34(23,44)	-3.93
Delaware	4.97	0.42	17(01,51)	6.04	North Carolina	4.53	0.13	33(18,46)	-3.35
D.C.	4.08	0.50	48(01,51)	-13.04	North Dakota	4.78	0.46	24(01,51)	2.00
Florida	4.40	0.08	39(25,47)	-6.12	Ohio	5.13	0.12	10(02,25)	9.49
Georgia	4.11	0.13	47(32,51)	-12.22	Oklahoma	5.17	0.21	08(01,32)	10.37
Hawaii	4.04	0.30	50(17,51)	-13.80	Oregon	4.74	0.20	26(05,45)	1.20
Idaho	5.10	0.34	12(01,47)	8.75	Pennsylvania	5.04	0.11	14(04,27)	7.45
Illinois	4.89	0.11	19(07,32)	4.36	Rhode Island	4.73	0.36	27(01,51)	1.03
Indiana	5.23	0.16	06(01,26)	11.53	South Carolina	4.30	0.17	43(20,51)	-8.27
Iowa	5.27	0.23	05(01,29)	12.53	South Dakota	4.64	0.41	28(01,51)	-0.99
Kansas	4.84	0.23	22(02,46)	3.32	Tennessee	4.87	0.16	21(04,39)	3.91
Kentucky	5.38	0.20	01(01,23)	14.89	Texas	4.55	0.09	32(21,43)	-2.98
Louisiana	4.87	0.19	20(03,42)	3.92	Utah	4.62	0.28	29(03,51)	-1.47
Maine	5.15	0.32	09(01,45)	9.94	Vermont	4.81	0.48	23(01,51)	2.55
Maryland	4.15	0.16	46(27,51)	-11.45	Virginia	4.60	0.14	30(14,46)	-1.81
Massachusetts	4.41	0.14	38(21,49)	-5.92	Washington	4.99	0.16	16(02,33)	6.37
Michigan	5.21	0.13	07(01,24)	11.16	West Virginia	5.35	0.29	03(01,33)	14.19
Minnesota	5.38	0.18	02(01,23)	14.89	Wisconsin	5.06	0.17	13(02,30)	7.99
Mississippi	4.45	0.23	36(11,51)	-5.10	Wyoming	4.94	0.56	18(01,51)	5.30
Missouri	4.77	0.16	25(06,42)	1.80					



^a US Mortality Files, National Center for Health Statistics, Centers for Disease Control and Prevention. Rates are per 100,000 and are age-adjusted to the 2000 US Std Population (19 age groups - Census P25-1130).

^b Difference between state rate and total U.S. rate is statistically significant ($p < .0002$).

^c Absolute percent difference between state rate and total U.S. rate is 15% or more.

^d Rank of state level death rate and the 95% confidence intervals (low, high) for the rank.

SE Standard error of the rate.

PD Percent difference between state rate and total U.S. rate.

- Statistic not shown. Rate based on less than 16 cases for the time interval.

Table 19.25
Non-Hodgkin LymphomaEstimated United States Cancer Prevalence Counts^a on January 1, 2013
By Race/Ethnicity, Sex and Years Since Diagnosis

Years Since Diagnosis		0 to <5	5 to <10	10 to <15	15 to <20	20 to <25	25 to <30	0 to <21 ^e	0 to <38 ^e	>=38 ^g	Complete ^h	
Race	Sex											
All Races ^b	Both Sexes	208,024	147,198	93,446	53,791	29,696	17,350	522,304	561,810	7,726	569,536	
	Males	112,213	75,991	48,589	28,402	15,226	9,437	275,343	296,343	4,074	300,417	
	Females	95,811	71,207	44,857	25,389	14,470	7,913	246,961	265,467	3,652	269,119	
White ^b	Both Sexes	177,772	129,114	82,376	47,190	26,689	15,706	454,266	490,081	8,097	498,178	
	Males	96,367	67,062	42,958	24,852	13,724	8,505	240,356	259,429	4,601	264,030	
	Females	81,405	62,052	39,418	22,338	12,965	7,201	213,910	230,652	3,496	234,148	
Black ^b	Both Sexes	17,916	11,753	7,007	4,000	1,905	1,053	41,985	44,379	657	45,036	
	Males	9,210	5,685	3,495	2,144	951	608	21,173	22,442	275	22,717	
	Females	8,706	6,068	3,512	1,856	954	445	20,812	21,937	382	22,319	
Asian/ Pacific Islander ^c	Both Sexes	6,610	4,003	2,560	+	+	+	14,811	+	+	+	
	Males	3,504	2,073	1,331	+	+	+	7,733	+	+	+	
	Females	3,106	1,930	1,229	+	+	+	7,078	+	+	+	
Hispanic ^d	Both Sexes	17,016	10,193	6,238	+	+	+	37,304	+	+	+	
	Males	8,761	5,202	3,274	+	+	+	19,291	+	+	+	
	Females	8,255	4,991	2,964	+	+	+	18,013	+	+	+	

Estimated prevalence percent^a on January 1, 2013, of the SEER^c population diagnosed in the previous 21 years
By Age at Prevalence, Race/Ethnicity and Sex

Age at Prevalence	All Ages	Age Specific (Crude)									Age-Adjusted ^f	
		0-9	10-19	20-29	30-39	40-49	50-59	60-69	70-79	80+	All Ages	
Race	Sex											
All Races ^c	Both Sexes	0.1453%	0.0032%	0.0122%	0.0261%	0.0470%	0.1000%	0.2003%	0.3794%	0.6058%	0.7099%	0.1377%
	Males	0.1555%	0.0042%	0.0166%	0.0316%	0.0550%	0.1164%	0.2326%	0.4283%	0.6806%	0.8179%	0.1581%
	Females	0.1354%	0.0021%	0.0077%	0.0203%	0.0390%	0.0837%	0.1694%	0.3353%	0.5448%	0.6453%	0.1199%
White ^c	Both Sexes	0.1630%	0.0031%	0.0128%	0.0274%	0.0484%	0.1067%	0.2145%	0.4077%	0.6658%	0.7634%	0.1481%
	Males	0.1736%	0.0043%	0.0178%	0.0333%	0.0561%	0.1247%	0.2487%	0.4554%	0.7442%	0.8736%	0.1693%
	Females	0.1524%	0.0020%	0.0077%	0.0211%	0.0402%	0.0881%	0.1806%	0.3632%	0.6002%	0.6968%	0.1290%
Black ^c	Both Sexes	0.0927%	0.0036%	0.0112%	0.0258%	0.0541%	0.0949%	0.1718%	0.2952%	0.3768%	0.3583%	0.1037%
	Males	0.0985%	0.0034%	0.0139%	0.0327%	0.0678%	0.1074%	0.1989%	0.3454%	0.3815%	0.3716%	0.1161%
	Females	0.0875%	0.0038%	0.0083%	0.0191%	0.0421%	0.0839%	0.1482%	0.2560%	0.3735%	0.3517%	0.0932%
Asian/ Pacific Islander ^c	Both Sexes	0.0908%	0.0032%	0.0106%	0.0191%	0.0317%	0.0609%	0.1261%	0.2405%	0.3636%	0.5004%	0.0885%
	Males	0.0983%	0.0046%	0.0132%	0.0216%	0.0355%	0.0679%	0.1475%	0.2748%	0.4244%	0.6218%	0.1037%
	Females	0.0841%	0.0017%	0.0078%	0.0165%	0.0283%	0.0547%	0.1077%	0.2123%	0.3164%	0.4260%	0.0765%
Hispanic ^d	Both Sexes	0.0716%	0.0030%	0.0101%	0.0207%	0.0327%	0.0790%	0.1516%	0.2929%	0.4728%	0.5580%	0.1070%
	Males	0.0729%	0.0034%	0.0131%	0.0248%	0.0385%	0.0890%	0.1702%	0.3041%	0.4833%	0.6015%	0.1155%
	Females	0.0702%	0.0025%	0.0069%	0.0163%	0.0266%	0.0685%	0.1338%	0.2832%	0.4651%	0.5319%	0.0993%

^a US 2013 cancer prevalence counts are based on 2013 cancer prevalence proportions from the SEER registries and 1/1/2013 US population estimates based on the average of 2012 and 2013 population estimates from the US Bureau of the Census. Prevalence was calculated using the First Malignant Primary Only for a person.

^{b c d} Statistics based on (b) SEER 9 Areas (c) SEER 13 Areas excluding the Alaska Native Registry

(d) NHIA for Hispanic for SEER 13 Areas excluding the Alaska Native Registry.

^e Maximum limited-duration prevalence: 38 years for 1975-2013 SEER 9 data; 21 years for 1992-2013 SEER 13 data (excluding the Alaska Native Registry) used to calculate prevalence for Hispanics and Asian Pacific Islanders.

^f Percentages are age-adjusted to the 2000 US Standard Population (19 age groups - Census P25-1130) by 5-year age groups.

^{g h i} (g) Cases diagnosed more than 38 years ago were estimated using the completeness index method (Capocaccia et. al. 1997, Merrill et. al. 2000). (h) Complete prevalence is obtained by summing 0 to <38 and >=38. (i) Age-specific completeness index was approximated using empirical data from historical Connecticut tumor registry.

- Statistic not shown. Statistic based on fewer than 5 cases estimated alive in SEER for the time interval.

+ Not available.

Table 19.26
All Lymphoid Neoplasms With Detailed Non-Hodgkin Lymphoma Subtypes^a
SEER^b Incidence Rates and Annual Percent Change by Age at Diagnosis

All Races, Both Sexes, 2004-2013

Site	All Ages			Ages 0-19			Ages 20-64			Ages 65+		
	Rate	Count	APC	Rate	Count	APC	Rate	Count	APC	Rate	Count	APC
Lymphoid Neoplasm	35.9	305,874	-0.4*	5.9	14,053	0.3	23.6	129,762	-0.6*	161.2	162,059	-0.3
1 Hodgkin Lymphoma	2.7	23,173	-1.5*	1.2	2,903	-0.5	3.2	16,148	-1.3*	4.1	4,122	-2.9*
2 Non-Hodgkin lymphoma	32.2	274,206	-0.2	4.7	11,024	0.3	19.9	110,735	-0.4*	151.7	152,447	-0.1
2(a) Non-Hodgkin lymphoma, B-cell	29.7	253,038	0.1	3.6	8,581	2.4*	18.0	100,428	-0.1	143.3	144,029	0.2
2(a) 1. Precursor Non-Hodgkin lymphoma, B-cell	1.4	11,706	3.2*	2.9	6,914	2.4*	0.7	3,563	3.9*	1.2	1,229	5.8*
2(a) 2. Mature Non-Hodgkin lymphoma, B-cell	26.8	228,787	-0.3	0.7	1,559	2.5*	16.6	92,753	-0.5*	133.8	134,475	-0.2
2(a) 2.1. Chronic/Small/Prolymphocytic/ Mantle B-cell Non-Hodgkin lymphoma	6.6	56,488	-1.4*	0.0	26	-	3.3	19,130	-1.2*	37.1	37,332	-1.4*
2(a) 2.1.1. Chronic/Small lymphocytic leukemia/lymphoma	5.8	49,480	-1.7*	0.0	23	-	2.9	16,551	-1.5*	32.7	32,906	-1.8*
2(a) 2.1.2. Prolymphocytic leukemia, B-cell	0.0	201	-4.9*	-	-	-	0.0	56	-	0.1	142	-4.7*
2(a) 2.1.3. Mantle-cell lymphoma	0.8	6,807	1.3*	0.0	0	-	0.4	2,523	0.8	4.3	4,284	1.5*
2(a) 2.2. Lymphoplasmacytic lymphoma/ Waldenstrom macroglobulinemia	0.6	5,304	-1.2*	-	-	-	0.3	1,595	-2.4*	3.7	3,706	-0.8
2(a) 2.2.1. Lymphoplasmacytic lymphoma	0.3	2,371	-0.1	-	-	-	0.1	704	-1.4	1.7	1,666	0.4
2(a) 2.2.2. Waldenstrom macroglobulinemia	0.3	2,933	-2.2*	-	-	-	0.2	891	-3.2*	2.0	2,040	-1.8*
2(a) 2.3. Diffuse large B-cell lymphoma (DLBCL)	7.0	59,315	0.4	0.3	654	0.7	4.6	25,301	-0.2	33.2	33,360	0.7*
2(a) 2.3.1. DLBCL, NOS ^c	6.9	58,652	0.3	0.3	623	0.4	4.5	24,775	-0.4	33.1	33,254	0.7*
2(a) 2.3.2. Intravascular large B-cell lymphoma	0.0	89	-	0.0	0	-	0.0	40	-	0.0	49	-
2(a) 2.3.3. Primary effusion lymphoma	0.0	107	-	0.0	0	-	0.0	78	-	0.0	29	-
2(a) 2.3.4. Mediastinal large B-cell lymphoma	0.1	467	8.5*	0.0	31	-	0.1	408	8.7*	0.0	28	-
2(a) 2.4. Burkitt lymphoma/leukemia	0.4	3,464	0.1	0.3	700	4.1*	0.4	1,990	-1.2	0.8	774	0.1
2(a) 2.5. Marginal-zone lymphoma (MZL)	2.0	16,802	0.5	0.0	94	-	1.3	7,006	0.5	9.7	9,702	0.4
2(a) 2.5.1. Splenic MZL	0.2	1,480	-0.2	0.0	0	-	0.1	576	0.2	0.9	904	-0.4
2(a) 2.5.2. Extranodal MZL, MALT ^c type	1.2	9,999	0.9	0.0	62	-	0.8	4,473	0.8	5.4	5,464	0.9
2(a) 2.5.3. Nodal MZL	0.6	5,323	-0.2	0.0	32	-	0.3	1,957	-0.2	3.3	3,334	-0.3
2(a) 2.6. Follicular lymphoma	3.6	31,110	-2.1*	0.0	68	-	2.9	15,897	-2.5*	15.1	15,145	-1.8*
2(a) 2.7. Hairy-cell leukemia	0.3	2,582	-0.2	-	-	-	0.3	1,644	0.3	0.9	937	-0.9
2(a) 2.8. Plasma cell neoplasms	6.3	53,685	1.0*	-	-	-	3.5	20,174	1.1*	33.4	33,499	1.0*
2(a) 2.8.1. Plasmacytoma	0.4	3,439	2.2*	-	-	-	0.3	1,670	2.2*	1.7	1,759	2.1
2(a) 2.8.2. Multiple myeloma/ plasma-cell leukemia	5.9	50,246	1.0*	-	-	-	3.2	18,504	1.0*	31.6	31,740	1.0*
2(a) 2.9. Heavy chain disease	0.0	37	-	-	-	-	0.0	16	-	0.0	20	-
2(a) 3. Non-Hodgkin lymphoma, B-cell, NOS ^c	1.5	12,545	5.3*	0.0	108	-	0.7	4,112	5.1*	8.3	8,325	5.4*

The APC is the Annual Percent Change over the time interval.

^a Morton LM, Turner JJ, Cerhan JR, Linet MS, Treseler PA, Clarke CA, Jack A, Cozen W, Maynadié M, Spinelli JJ, Costantini AS, Rüdiger T, Scarpa A, Zheng T, Weisenburger DD. Proposed classification of lymphoid neoplasms for epidemiologic research from the Pathology Working Group of the International Lymphoma Epidemiology Consortium (InterLymph). *Blood*. 2007;110:695-708.

^b SEER 18 areas (San Francisco, Connecticut, Detroit, Hawaii, Iowa, New Mexico, Seattle, Utah, Atlanta, San Jose-Monterey, Los Angeles, Alaska Native Registry, Rural Georgia, California excluding SF/SJM/LA, Kentucky, Louisiana, New Jersey and Georgia excluding ATL/RG).

^c NOS = Not otherwise specified. MALT = Mucosa-associated lymphoid tissue. NK = Natural killer.

* The APC is significantly different from zero (p<.05).

- Statistic not shown. Rate based on less than 16 cases for the time interval.

Trend based on less than 10 cases for at least one year within the time interval.

Table 19.26 - continued
 All Lymphoid Neoplasms With Detailed Non-Hodgkin Lymphoma Subtypes
 SEER^b Incidence Rates and Annual Percent Change by Age at Diagnosis

All Races, Both Sexes, 2004-2013

Site	All Ages			Ages 0-19			Ages 20-64			Ages 65+		
	Rate	Count	APC	Rate	Count	APC	Rate	Count	APC	Rate	Count	APC
2(b) Non-Hodgkin lymphoma, T-cell	2.1	18,167	0.0	0.8	1,791	0.8	1.8	9,365	-0.2	7.0	7,011	0.0
2(b) 1. Precursor Non-Hodgkin lymphoma, T-cell	0.1	854	-	0.2	411	-	0.1	380	-	0.1	63	-
2(b) 2. Mature Non-Hodgkin lymphoma, T-cell	2.0	17,210	1.4*	0.6	1,377	8.7*	1.7	8,933	1.1	6.9	6,900	0.4
2(b) 2.1. Mycosis fungoides/Sezary syndrome	0.5	4,296	1.3*	0.1	122	-	0.5	2,514	0.7	1.6	1,660	1.8*
2(b) 2.1.1. Mycosis fungoides	0.5	4,157	1.2	0.1	122	-	0.5	2,470	0.6	1.5	1,565	1.7*
2(b) 2.1.2. Sezary syndrome	0.0	139	-	0.0	0	-	0.0	44	-	0.1	95	-
2(b) 2.2. Peripheral T-cell lymphoma	1.2	9,900	-0.2	0.2	399	-0.6	0.9	5,000	-0.4	4.5	4,501	0.1
2(b) 2.2.1. Peripheral T-cell lymphoma, NOS ^c	0.4	3,550	0.8	0.0	65	-	0.3	1,689	0.9	1.8	1,796	0.7
2(b) 2.2.2. Angioimmunoblastic T-cell lymphoma	0.2	1,272	1.5	-	-	-	0.1	492	-0.8	0.8	777	2.6
2(b) 2.2.3. Subcutaneous panniculitis-like T-cell lymphoma	0.0	123	-	0.0	21	-	0.0	74	-	0.0	28	-
2(b) 2.2.4. Anaplastic large cell lymphoma, T-cell or null-cell type	0.2	1,914	-3.2*	0.1	241	-3.1	0.2	1,082	-2.3	0.6	591	-4.3*
2(b) 2.2.5. Hepatosplenic T-cell lymphoma	0.0	84	-	-	-	-	0.0	63	-	-	-	-
2(b) 2.2.6. Enteropathy-type T-cell lymphoma	0.0	119	-	0.0	0	-	0.0	58	-	0.1	61	-
2(b) 2.2.7. Cutaneous T-cell lymphoma, NOS ^c	0.2	1,953	0.7	0.0	30	-	0.2	1,061	0.7	0.9	862	0.5
2(b) 2.2.8. Primary cutaneous anaplastic large cell lymphoma	0.1	885	-2.2	0.0	29	-	0.1	481	-3.0	0.4	375	-1.7
2(b) 2.3. Adult T-cell leukemia/lymphoma	0.2	1,834	12.4*	0.4	830	14.4*	0.1	744	12.8*	0.3	260	4.6
2(b) 2.4. NK ^c /T-cell lymphoma, nasal-type/aggressive NK ^c -cell leukemia	0.1	697	2.0	0.0	24	-	0.1	476	2.5	0.2	197	2.0
2(b) 2.5. T-cell large granular lymphocytic leukemia	0.0	176	-	-	-	-	0.0	68	-	0.1	107	-
2(b) 2.6. Prolymphocytic leukemia, T-cell	0.0	307	3.6	-	-	-	0.0	131	-	0.2	175	3.4*
2(b) 3. Non-Hodgkin lymphoma, NOS ^c , T-cell	0.0	103	-	-	-	-	0.0	52	-	0.0	48	-
2(c) Non-Hodgkin lymphoma, unknown lineage	0.4	3,001	-18.4*	0.3	652	-	0.2	942	-	1.4	1,407	-
2(c) 1. Precursor lymphoblastic leukemia/lymphoma, unknown lineage	0.1	1,199	-22.1*	0.3	635	-	0.1	309	-	0.2	255	-
2(c) 2. Prolymphocytic leukemia, unknown lineage	0.0	95	-	-	-	-	0.0	27	-	0.1	66	-
2(c) 3. Non-Hodgkin lymphoma, NOS ^c , unknown lineage	0.2	1,707	-	-	-	-	0.1	606	-	1.1	1,086	-
2(*) 1. Total precursor lymphoma/leukemia ^d	1.6	13,759	-1.1*	3.4	7,960	-1.5*	0.8	4,252	-0.7	1.5	1,547	0.1
3 Composite Hodgkin lymphoma and Non-Hodgkin lymphoma	0.0	249	22.7*	-	-	-	0.0	132	-	0.1	111	-
4 Lymphoid neoplasm, NOS ^c	1.0	8,246	-5.0*	0.1	120	-	0.5	2,747	-4.8*	5.3	5,379	-5.4*

The APC is the Annual Percent Change over the time interval.

^a Morton LM, et al. Proposed classification of lymphoid neoplasms for epidemiologic research from the Pathology Working Group of the International Lymphoma Epidemiology Consortium (InterLymph). *Blood*. 2007;110:695-708.

^b SEER 18 areas (San Francisco, Connecticut, Detroit, Hawaii, Iowa, New Mexico, Seattle, Utah, Atlanta, San Jose-Monterey, Los Angeles, Alaska Native Registry, Rural Georgia, California excluding SF/SJM/LA, Kentucky, Louisiana, New Jersey and Georgia excluding ATL/RG).

^c NOS = Not otherwise specified. MALT = Mucosa-associated lymphoid tissue. NK = Natural killer.

^d Total precursor lymphoma/leukemia is comprised of categories 2(a)1., 2(b)1., and 2(c)1.

* The APC is significantly different from zero (p<.05).

- Statistic not shown. Rate based on less than 16 cases for the time interval.

Trend based on less than 10 cases for at least one year within the time interval.

Table 19.27
All Lymphoid Neoplasms With Detailed Non-Hodgkin Lymphoma Subtypes^a
SEER^b Incidence Rates and Annual Percent Change by Age at Diagnosis

All Races, Males, 2004-2013

Site	All Ages			Ages 0-19			Ages 20-64			Ages 65+		
	Rate	Count	APC	Rate	Count	APC	Rate	Count	APC	Rate	Count	APC
Lymphoid Neoplasm	44.4	170,501	-0.3	6.8	8,174	0.1	28.1	75,839	-0.7*	205.8	86,488	-0.1
1 Hodgkin Lymphoma	3.1	12,673	-1.3*	1.3	1,566	0.3	3.5	8,934	-1.2*	5.1	2,173	-2.5*
2 Non-Hodgkin lymphoma	40.2	153,352	-0.1	5.4	6,527	-0.2	24.0	65,193	-0.5*	194.1	81,632	0.2
2(a) Non-Hodgkin lymphoma, B-cell	37.0	140,909	0.2	4.1	4,923	1.9*	21.6	59,006	-0.3	183.1	76,980	0.4
2(a) 1. Precursor Non-Hodgkin lymphoma, B-cell	1.5	6,368	2.9*	3.1	3,782	1.4	0.8	1,987	4.5*	1.4	599	6.7*
2(a) 2. Mature Non-Hodgkin lymphoma, B-cell	33.7	127,862	-0.2	0.9	1,061	3.4*	20.0	54,632	-0.7*	171.6	72,169	0.0
2(a) 2.1. Chronic/Small/Prolymphocytic/ Mantle B-cell Non-Hodgkin lymphoma	9.2	34,539	-1.3*	-	-	-	4.4	12,509	-1.3*	52.4	22,016	-1.4*
2(a) 2.1.1. Chronic/Small lymphocytic leukemia/lymphoma	7.9	29,622	-1.7*	-	-	-	3.8	10,607	-1.6*	45.3	19,002	-1.8*
2(a) 2.1.2. Prolymphocytic leukemia, B-cell	0.0	135	-2.9	-	-	-	0.0	39	-	0.2	95	-
2(a) 2.1.3. Mantle-cell lymphoma	1.3	4,782	1.2	0.0	0	-	0.7	1,863	0.7	6.9	2,919	1.5
2(a) 2.2. Lymphoplasmacytic lymphoma/ Waldenstrom macroglobulinemia	0.8	3,079	-1.3	-	-	-	0.3	924	-2.3*	5.2	2,154	-1.0
2(a) 2.2.1. Lymphoplasmacytic lymphoma	0.4	1,315	-0.1	0.0	0	-	0.1	379	-2.3	2.2	936	0.6
2(a) 2.2.2. Waldenstrom macroglobulinemia	0.5	1,764	-2.2*	-	-	-	0.2	545	-2.4*	2.9	1,218	-2.1*
2(a) 2.3. Diffuse large B-cell lymphoma (DLBCL)	8.5	32,475	0.6*	0.3	379	3.0	5.7	15,185	-0.3	40.5	16,911	1.2*
2(a) 2.3.1. DLBCL, NOS ^c	8.5	32,155	0.6	0.3	368	2.5	5.6	14,936	-0.4	40.3	16,851	1.2*
2(a) 2.3.2. Intravascular large B-cell lymphoma	0.0	42	-	0.0	0	-	0.0	21	-	0.1	21	-
2(a) 2.3.3. Primary effusion lymphoma	0.0	97	-	0.0	0	-	0.0	75	-	0.1	22	-
2(a) 2.3.4. Mediastinal large B-cell lymphoma	0.0	181	-	-	-	-	0.1	153	-	0.0	17	-
2(a) 2.4. Burkitt lymphoma/leukemia	0.6	2,513	-0.5	0.4	538	3.1	0.6	1,523	-1.9	1.1	452	0.1
2(a) 2.5. Marginal-zone lymphoma (MZL)	2.1	7,884	0.5	0.1	67	-	1.2	3,383	0.2	10.5	4,434	0.5
2(a) 2.5.1. Splenic MZL	0.2	704	-0.1	0.0	0	-	0.1	282	0.4	1.0	422	-0.4
2(a) 2.5.2. Extranodal MZL, MALT ^c type	1.2	4,576	0.6	0.0	40	-	0.8	2,092	0.4	5.8	2,444	0.6
2(a) 2.5.3. Nodal MZL	0.7	2,604	0.4	0.0	27	-	0.4	1,009	-0.3	3.7	1,568	0.5
2(a) 2.6. Follicular lymphoma	3.9	15,497	-2.1*	0.0	55	-	3.0	8,238	-3.1*	16.8	7,204	-1.3*
2(a) 2.7. Hairy-cell leukemia	0.5	2,047	-0.5	-	-	-	0.5	1,330	0.1	1.7	716	-1.3*
2(a) 2.8. Plasma cell neoplasms	7.9	29,804	1.2*	-	-	-	4.1	11,531	1.0*	43.4	18,268	1.3*
2(a) 2.8.1. Plasmacytoma	0.5	2,136	1.7*	-	-	-	0.4	1,074	1.6	2.5	1,058	1.8
2(a) 2.8.2. Multiple myeloma/ plasma-cell leukemia	7.4	27,668	1.2*	-	-	-	3.7	10,457	1.0*	40.9	17,210	1.3*
2(a) 2.9. Heavy chain disease	0.0	24	-	-	-	-	-	-	-	-	-	-
2(a) 3. Non-Hodgkin lymphoma, B-cell, NOS ^c	1.8	6,679	5.4*	0.1	80	-	0.9	2,387	5.1*	10.2	4,212	5.4*

The APC is the Annual Percent Change over the time interval.

^a Morton LM, Turner JJ, Cerhan JR, Linet MS, Treseler PA, Clarke CA, Jack A, Cozen W, Maynadié M, Spinelli JJ, Costantini AS, Rüdiger T, Scarpa A, Zheng T, Weisenburger DD. Proposed classification of lymphoid neoplasms for epidemiologic research from the Pathology Working Group of the International Lymphoma Epidemiology Consortium (InterLymph). *Blood*. 2007;110:695-708.

^b SEER 18 areas (San Francisco, Connecticut, Detroit, Hawaii, Iowa, New Mexico, Seattle, Utah, Atlanta, San Jose-Monterey, Los Angeles, Alaska Native Registry, Rural Georgia, California excluding SF/SJM/LA, Kentucky, Louisiana, New Jersey and Georgia excluding ATL/RG).

^c NOS = Not otherwise specified. MALT = Mucosa-associated lymphoid tissue. NK = Natural killer.

* The APC is significantly different from zero (p<.05).

- Statistic not shown. Rate based on less than 16 cases for the time interval.

Trend based on less than 10 cases for at least one year within the time interval.

Table 19.27 - continued
 All Lymphoid Neoplasms With Detailed Non-Hodgkin Lymphoma Subtypes
 SEER^b Incidence Rates and Annual Percent Change by Age at Diagnosis

All Races, Males, 2004-2013

Site	All Ages			Ages 0-19			Ages 20-64			Ages 65+		
	Rate	Count	APC	Rate	Count	APC	Rate	Count	APC	Rate	Count	APC
2(b) Non-Hodgkin lymphoma, T-cell	2.7	10,833	0.0	1.0	1,237	0.1	2.1	5,605	-0.1	9.4	3,991	0.1
2(b) 1. Precursor Non-Hodgkin lymphoma, T-cell	0.1	593	-	0.2	299	-	0.1	259	-	0.1	35	-
2(b) 2. Mature Non-Hodgkin lymphoma, T-cell	2.6	10,184	1.5*	0.8	936	8.3*	2.0	5,320	1.3	9.3	3,928	0.5
2(b) 2.1. Mycosis fungoides/Sezary syndrome	0.6	2,456	1.1	0.0	60	-	0.5	1,411	0.8	2.3	985	1.0
2(b) 2.1.1. Mycosis fungoides	0.6	2,376	1.0	0.0	60	-	0.5	1,385	0.6	2.2	931	0.8
2(b) 2.1.2. Sezary syndrome	0.0	80	-	0.0	0	-	0.0	26	-	0.1	54	-
2(b) 2.2. Peripheral T-cell lymphoma	1.5	5,794	-0.1	0.2	245	-2.1	1.1	3,015	-0.2	6.0	2,534	0.2
2(b) 2.2.1. Peripheral T-cell lymphoma, NOS ^c	0.6	2,120	1.0	0.0	41	-	0.4	1,070	1.2	2.4	1,009	0.8
2(b) 2.2.2. Angioimmunoblastic T-cell lymphoma	0.2	681	2.5*	-	-	-	0.1	284	1.3	0.9	394	3.1
2(b) 2.2.3. Subcutaneous panniculitis-like T-cell lymphoma	0.0	41	-	-	-	-	0.0	24	-	-	-	-
2(b) 2.2.4. Anaplastic large cell lymphoma, T-cell or null-cell type	0.3	1,169	-3.3*	0.1	151	-	0.3	671	-3.3	0.8	347	-2.4
2(b) 2.2.5. Hepatosplenic T-cell lymphoma	0.0	58	-	-	-	-	0.0	41	-	-	-	-
2(b) 2.2.6. Enteropathy-type T-cell lymphoma	0.0	64	-	0.0	0	-	0.0	29	-	0.1	35	-
2(b) 2.2.7. Cutaneous T-cell lymphoma, NOS ^c	0.3	1,150	0.6	0.0	18	-	0.2	633	0.2	1.2	499	0.6
2(b) 2.2.8. Primary cutaneous anaplastic large cell lymphoma	0.1	511	-2.7	0.0	16	-	0.1	263	-1.9	0.6	232	-3.4
2(b) 2.3. Adult T-cell leukemia/lymphoma	0.3	1,226	12.5*	0.5	611	12.8*	0.2	483	13.2*	0.3	132	-
2(b) 2.4. NK ^c /T-cell lymphoma, nasal-type/aggressive NK ^c -cell leukemia	0.1	449	1.6	0.0	19	-	0.1	309	1.7	0.3	121	-
2(b) 2.5. T-cell large granular lymphocytic leukemia	0.0	85	-	0.0	0	-	0.0	26	-	0.1	59	-
2(b) 2.6. Prolymphocytic leukemia, T-cell	0.0	174	6.0*	-	-	-	0.0	76	-	0.2	97	-
2(b) 3. Non-Hodgkin lymphoma, NOS ^c , T-cell	0.0	56	-	-	-	-	0.0	26	-	0.1	28	-
2(c) Non-Hodgkin lymphoma, unknown lineage	0.4	1,610	-	0.3	367	-	0.2	582	-	1.6	661	-
2(c) 1. Precursor lymphoblastic leukemia/lymphoma, unknown lineage	0.2	673	-	0.3	356	-	0.1	179	-	0.3	138	-
2(c) 2. Prolymphocytic leukemia, unknown lineage	0.0	56	-	-	-	-	0.0	16	-	0.1	39	-
2(c) 3. Non-Hodgkin lymphoma, NOS ^c , unknown lineage	0.2	881	-	-	-	-	0.1	387	-	1.2	484	-
2(*) 1. Total precursor lymphoma/leukemia ^d	1.8	7,634	-1.7*	3.7	4,437	-2.8*	0.9	2,425	-0.7	1.8	772	0.9
3 Composite Hodgkin lymphoma and Non-Hodgkin lymphoma	0.0	138	-	-	-	-	0.0	79	-	0.1	54	-
4 Lymphoid neoplasm, NOS ^c	1.2	4,338	-4.7*	0.1	76	-	0.6	1,633	-5.8*	6.4	2,629	-4.7*

The APC is the Annual Percent Change over the time interval.

^a Morton LM, et al. Proposed classification of lymphoid neoplasms for epidemiologic research from the Pathology Working Group of the International Lymphoma Epidemiology Consortium (InterLymph). *Blood*. 2007;110:695-708.

^b SEER 18 areas (San Francisco, Connecticut, Detroit, Hawaii, Iowa, New Mexico, Seattle, Utah, Atlanta, San Jose-Monterey, Los Angeles, Alaska Native Registry, Rural Georgia, California excluding SF/SJM/LA, Kentucky, Louisiana, New Jersey and Georgia excluding ATL/RG).

^c NOS = Not otherwise specified. MALT = Mucosa-associated lymphoid tissue. NK = Natural killer.

^d Total precursor lymphoma/leukemia is comprised of categories 2(a)1., 2(b)1., and 2(c)1.

* The APC is significantly different from zero (p<.05).

- Statistic not shown. Rate based on less than 16 cases for the time interval.

Trend based on less than 10 cases for at least one year within the time interval.

Table 19.28
All Lymphoid Neoplasms With Detailed Non-Hodgkin Lymphoma Subtypes^a
SEER^b Incidence Rates and Annual Percent Change by Age at Diagnosis

All Races, Females, 2004-2013

Site	All Ages			Ages 0-19			Ages 20-64			Ages 65+		
	Rate	Count	APC	Rate	Count	APC	Rate	Count	APC	Rate	Count	APC
Lymphoid Neoplasm	29.1	135,373	-0.6*	5.1	5,879	0.5	19.3	53,923	-0.4	129.5	75,571	-0.8*
1 Hodgkin Lymphoma	2.4	10,500	-1.8*	1.1	1,337	-1.4	2.8	7,214	-1.4*	3.4	1,949	-3.6*
2 Non-Hodgkin lymphoma	25.9	120,854	-0.3	3.9	4,497	1.0	16.0	45,542	-0.1	121.5	70,815	-0.5*
2(a) Non-Hodgkin lymphoma, B-cell	24.0	112,129	0.0	3.2	3,658	3.1*	14.5	41,422	0.1	115.1	67,049	-0.2
2(a) 1. Precursor Non-Hodgkin lymphoma, B-cell	1.3	5,338	3.7*	2.7	3,132	3.6*	0.6	1,576	3.1*	1.1	630	5.1*
2(a) 2. Mature Non-Hodgkin lymphoma, B-cell	21.4	100,925	-0.5*	0.4	498	0.6	13.3	38,121	-0.3	107.0	62,306	-0.6*
2(a) 2.1. Chronic/Small/Prolymphocytic/ Mantle B-cell Non-Hodgkin lymphoma	4.6	21,949	-1.7*	-	-	-	2.2	6,621	-1.1	26.1	15,316	-1.9*
2(a) 2.1.1. Chronic/Small lymphocytic leukemia/lymphoma	4.2	19,858	-1.9*	-	-	-	2.0	5,944	-1.3*	23.6	13,904	-2.2*
2(a) 2.1.2. Prolymphocytic leukemia, B-cell	0.0	66	-	-	-	-	0.0	17	-	0.1	47	-
2(a) 2.1.3. Mantle-cell lymphoma	0.4	2,025	1.0	0.0	0	-	0.2	660	1.0	2.4	1,365	1.0
2(a) 2.2. Lymphoplasmacytic lymphoma/ Waldenstrom macroglobulinemia	0.5	2,225	-1.4	-	-	-	0.2	671	-2.5	2.7	1,552	-0.9
2(a) 2.2.1. Lymphoplasmacytic lymphoma	0.2	1,056	-0.1	-	-	-	0.1	325	0.3	1.3	730	-0.3
2(a) 2.2.2. Waldenstrom macroglobulinemia	0.2	1,169	-2.4*	-	-	-	0.1	346	-4.3*	1.4	822	-1.6
2(a) 2.3. Diffuse large B-cell lymphoma (DLBCL)	5.8	26,840	0.0	0.2	275	-2.4	3.6	10,116	0.0	28.2	16,449	0.0
2(a) 2.3.1. DLBCL, NOS ^c	5.7	26,497	-0.1	0.2	255	-2.5	3.5	9,839	-0.3	28.1	16,403	0.0
2(a) 2.3.2. Intravascular large B-cell lymphoma	0.0	47	-	0.0	0	-	0.0	19	-	0.0	28	-
2(a) 2.3.3. Primary effusion lymphoma	-	-	-	0.0	0	-	-	-	-	-	-	-
2(a) 2.3.4. Mediastinal large B-cell lymphoma	0.1	286	9.7*	0.0	20	-	0.1	255	10.5*	-	-	-
2(a) 2.4. Burkitt lymphoma/leukemia	0.2	951	1.6	0.1	162	-	0.2	467	1.6	0.6	322	-1.1
2(a) 2.5. Marginal-zone lymphoma (MZL)	1.9	8,918	0.5	0.0	27	-	1.3	3,623	0.7	9.1	5,268	0.4
2(a) 2.5.1. Splenic MZL	0.2	776	0.1	0.0	0	-	0.1	294	-0.1	0.8	482	0.1
2(a) 2.5.2. Extranodal MZL, MALT ^c type	1.2	5,423	1.1	0.0	22	-	0.8	2,381	1.2	5.2	3,020	1.1
2(a) 2.5.3. Nodal MZL	0.6	2,719	-0.6	-	-	-	0.3	948	0.0	3.1	1,766	-0.9
2(a) 2.6. Follicular lymphoma	3.3	15,613	-2.1*	-	-	-	2.7	7,659	-1.9*	13.8	7,941	-2.3*
2(a) 2.7. Hairy-cell leukemia	0.1	535	0.1	0.0	0	-	0.1	314	1.3	0.4	221	-1.9
2(a) 2.8. Plasma cell neoplasms	5.0	23,881	0.7	-	-	-	2.9	8,643	1.1	26.2	15,231	0.5
2(a) 2.8.1. Plasmacytoma	0.3	1,303	2.9*	-	-	-	0.2	596	3.4	1.2	701	2.2
2(a) 2.8.2. Multiple myeloma/ plasma-cell leukemia	4.8	22,578	0.6	-	-	-	2.7	8,047	1.0	25.0	14,530	0.4
2(a) 2.9. Heavy chain disease	-	-	-	0.0	0	-	-	-	-	-	-	-
2(a) 3. Non-Hodgkin lymphoma, B-cell, NOS ^c	1.2	5,866	5.1*	0.0	28	-	0.6	1,725	5.1*	6.9	4,113	5.1*

The APC is the Annual Percent Change over the time interval.

^a Morton LM, Turner JJ, Cerhan JR, Linet MS, Treseler PA, Clarke CA, Jack A, Cozen W, Maynadié M, Spinelli JJ, Costantini AS, Rüdiger T, Scarpa A, Zheng T, Weisenburger DD. Proposed classification of lymphoid neoplasms for epidemiologic research from the Pathology Working Group of the International Lymphoma Epidemiology Consortium (InterLymph). *Blood*. 2007;110:695-708.

^b SEER 18 areas (San Francisco, Connecticut, Detroit, Hawaii, Iowa, New Mexico, Seattle, Utah, Atlanta, San Jose-Monterey, Los Angeles, Alaska Native Registry, Rural Georgia, California excluding SF/SJM/LA, Kentucky, Louisiana, New Jersey and Georgia excluding ATL/RG).

^c NOS = Not otherwise specified. MALT = Mucosa-associated lymphoid tissue. NK = Natural killer.

* The APC is significantly different from zero (p<.05).

- Statistic not shown. Rate based on less than 16 cases for the time interval.

Trend based on less than 10 cases for at least one year within the time interval.

Table 19.28 - continued
 All Lymphoid Neoplasms With Detailed Non-Hodgkin Lymphoma Subtypes
 SEER^b Incidence Rates and Annual Percent Change by Age at Diagnosis

All Races, Females, 2004-2013

Site	All Ages			Ages 0-19			Ages 20-64			Ages 65+		
	Rate	Count	APC	Rate	Count	APC	Rate	Count	APC	Rate	Count	APC
2(b) Non-Hodgkin lymphoma, T-cell	1.6	7,334	0.0	0.5	554	2.2	1.4	3,760	-0.3	5.2	3,020	-0.2
2(b) 1. Precursor Non-Hodgkin lymphoma, T-cell	0.1	261	-	0.1	112	-	0.0	121	-	0.0	28	-
2(b) 2. Mature Non-Hodgkin lymphoma, T-cell	1.5	7,026	1.1*	0.4	441	8.9*	1.3	3,613	0.7	5.1	2,972	0.2
2(b) 2.1. Mycosis fungoides/Sezary syndrome	0.4	1,840	1.4	0.1	62	-	0.4	1,103	0.7	1.2	675	2.6
2(b) 2.1.1. Mycosis fungoides	0.4	1,781	1.3	0.1	62	-	0.4	1,085	0.6	1.1	634	2.6
2(b) 2.1.2. Sezary syndrome	0.0	59	-	0.0	0	-	0.0	18	-	0.1	41	-
2(b) 2.2. Peripheral T-cell lymphoma	0.9	4,106	-0.3	0.1	154	-	0.7	1,985	-0.7	3.4	1,967	0.0
2(b) 2.2.1. Peripheral T-cell lymphoma, NOS ^c	0.3	1,430	0.7	0.0	24	-	0.2	619	0.5	1.4	787	0.7
2(b) 2.2.2. Angioimmunoblastic T-cell lymphoma	0.1	591	0.4	0.0	0	-	0.1	208	-3.4	0.7	383	2.4
2(b) 2.2.3. Subcutaneous panniculitis-like T-cell lymphoma	0.0	82	-	-	-	-	0.0	50	-	0.0	18	-
2(b) 2.2.4. Anaplastic large cell lymphoma, T-cell or null-cell type	0.2	745	-2.6*	0.1	90	-	0.2	411	-0.3	0.4	244	-7.0*
2(b) 2.2.5. Hepatosplenic T-cell lymphoma	0.0	26	-	-	-	-	0.0	22	-	-	-	-
2(b) 2.2.6. Enteropathy-type T-cell lymphoma	0.0	55	-	0.0	0	-	0.0	29	-	0.0	26	-
2(b) 2.2.7. Cutaneous T-cell lymphoma, NOS ^c	0.2	803	1.0	-	-	-	0.2	428	1.3	0.6	363	0.4
2(b) 2.2.8. Primary cutaneous anaplastic large cell lymphoma	0.1	374	-2.1	-	-	-	0.1	218	-4.2	0.2	143	0.2
2(b) 2.3. Adult T-cell leukemia/lymphoma	0.1	608	12.3*	0.2	219	-	0.1	261	11.5*	0.2	128	-
2(b) 2.4. NK ^c /T-cell lymphoma, nasal-type/aggressive NK ^c -cell leukemia	0.1	248	2.8	-	-	-	0.1	167	-	0.1	76	-
2(b) 2.5. T-cell large granular lymphocytic leukemia	0.0	91	-	-	-	-	0.0	42	-	0.1	48	-
2(b) 2.6. Prolymphocytic leukemia, T-cell	0.0	133	-	0.0	0	-	0.0	55	-	0.1	78	-
2(b) 3. Non-Hodgkin lymphoma, NOS ^c , T-cell	0.0	47	-	-	-	-	0.0	26	-	0.0	20	-
2(c) Non-Hodgkin lymphoma, unknown lineage	0.3	1,391	-	0.2	285	-	0.1	360	-	1.2	746	-
2(c) 1. Precursor lymphoblastic leukemia/lymphoma, unknown lineage	0.1	526	-	0.2	279	-	0.0	130	-	0.2	117	-
2(c) 2. Prolymphocytic leukemia, unknown lineage	0.0	39	-	-	-	-	-	-	-	0.0	27	-
2(c) 3. Non-Hodgkin lymphoma, NOS ^c , unknown lineage	0.2	826	-	-	-	-	0.1	219	-	1.0	602	-
2(*) 1. Total precursor lymphoma/leukemia ^d	1.5	6,125	-0.2	3.1	3,523	0.1	0.7	1,827	-0.8	1.3	775	-0.9
3 Composite Hodgkin lymphoma and Non-Hodgkin lymphoma	0.0	111	-	-	-	-	0.0	53	-	0.1	57	-
4 Lymphoid neoplasm, NOS ^c	0.8	3,908	-5.1*	0.0	44	-	0.4	1,114	-3.3*	4.5	2,750	-6.2*

The APC is the Annual Percent Change over the time interval.

^a Morton LM, et al. Proposed classification of lymphoid neoplasms for epidemiologic research from the Pathology Working Group of the International Lymphoma Epidemiology Consortium (InterLymph). Blood. 2007;110:695-708.

^b SEER 18 areas (San Francisco, Connecticut, Detroit, Hawaii, Iowa, New Mexico, Seattle, Utah, Atlanta, San Jose-Monterey, Los Angeles, Alaska Native Registry, Rural Georgia, California excluding SF/SJM/LA, Kentucky, Louisiana, New Jersey and Georgia excluding ATL/RG).

^c NOS = Not otherwise specified. MALT = Mucosa-associated lymphoid tissue. NK = Natural killer.

^d Total precursor lymphoma/leukemia is comprised of categories 2(a)1., 2(b)1., and 2(c)1.

* The APC is significantly different from zero (p<.05).

- Statistic not shown. Rate based on less than 16 cases for the time interval.

Trend based on less than 10 cases for at least one year within the time interval.

Table 19.29
All Lymphoid Neoplasms With Detailed Non-Hodgkin Lymphoma Subtypes^a

SEER^b 5-Year Relative Survival (Percent) by Age at Diagnosis

All Races, Both Sexes, 2006-2012

Site	Count	All Ages		Ages 0-19		Ages 20-64		Ages 65+	
		Percent (95% C.I.)	Percent (95% C.I.)	Percent (95% C.I.)	Percent (95% C.I.)	Percent (95% C.I.)			
Lymphoid Neoplasm	175,423	69.9 (69.6 , 70.1)	90.1 (89.4 , 90.7)	77.3 (77.0 , 77.7)	59.4 (58.9 , 59.9)				
1 Hodgkin Lymphoma	14,954	86.2 (85.6 , 86.9)	96.9 (95.8 , 97.6)	90.2 (89.5 , 90.9)	54.3 (51.3 , 57.3)				
2 Non-Hodgkin lymphoma	156,176	68.7 (68.4 , 69.1)	88.2 (87.4 , 89.0)	75.7 (75.3 , 76.1)	60.1 (59.6 , 60.7)				
2(a) Non-Hodgkin lymphoma, B-cell	144,111	69.1 (68.8 , 69.4)	88.8 (87.8 , 89.6)	76.5 (76.1 , 76.9)	60.7 (60.1 , 61.2)				
2(a) 1. Precursor Non-Hodgkin lymphoma, B-cell	7,914	68.6 (67.4 , 69.8)	88.4 (87.3 , 89.4)	38.9 (36.5 , 41.3)	17.3 (13.7 , 21.2)				
2(a) 2. Mature Non-Hodgkin lymphoma, B-cell	129,173	69.2 (68.8 , 69.5)	89.9 (87.8 , 91.7)	78.0 (77.6 , 78.4)	60.9 (60.4 , 61.5)				
2(a) 2.1. Chronic/Small/Prolymphocytic/ Mantle B-cell Non-Hodgkin lymphoma	30,939	78.4 (77.6 , 79.1)	- (- , -)	86.7 (85.8 , 87.5)	72.6 (71.5 , 73.7)				
2(a) 2.1.1. Chronic/Small lymphocytic leukemia/lymphoma	27,182	81.5 (80.7 , 82.3)	- (- , -)	89.6 (88.7 , 90.4)	76.1 (74.9 , 77.2)				
2(a) 2.1.2. Prolymphocytic leukemia, B-cell	97	43.2 (29.8 , 55.9)	- (- , -)	52.8 (31.9 , 70.0)	37.0 (20.6 , 53.6)				
2(a) 2.1.3. Mantle-cell lymphoma	3,660	55.9 (53.6 , 58.1)	- (- , -)	68.3 (65.3 , 71.0)	45.5 (42.2 , 48.6)				
2(a) 2.2. Lymphoplasmacytic lymphoma/ Waldenstrom macroglobulinemia	2,806	82.0 (79.4 , 84.4)	- (- , -)	89.8 (87.0 , 92.0)	77.2 (73.3 , 80.6)				
2(a) 2.2.1. Lymphoplasmacytic lymphoma	1,273	77.7 (73.6 , 81.2)	- (- , -)	85.3 (80.6 , 89.0)	72.7 (66.8 , 77.8)				
2(a) 2.2.2. Waldenstrom macroglobulinemia	1,533	85.7 (82.1 , 88.6)	- (- , -)	93.2 (89.5 , 95.6)	80.9 (75.5 , 85.2)				
2(a) 2.3. Diffuse large B-cell lymphoma (DLBCL)	33,755	62.0 (61.3 , 62.6)	88.3 (84.7 , 91.0)	71.2 (70.4 , 72.0)	52.5 (51.4 , 53.6)				
2(a) 2.3.1. DLBCL, NOS ^c	33,322	61.8 (61.2 , 62.5)	89.2 (85.6 , 91.9)	71.1 (70.2 , 71.9)	52.5 (51.4 , 53.6)				
2(a) 2.3.2. Intravascular large B-cell lymphoma	54	51.3 (33.4 , 66.5)	- (- , -)	59.2 (35.1 , 76.9)	44.2 (20.7 , 65.5)				
2(a) 2.3.3. Primary effusion lymphoma	54	23.1 (11.6 , 37.0)	- (- , -)	23.8 (11.1 , 39.1)	- (- , -)				
2(a) 2.3.4. Mediastinal large B-cell lymphoma	325	83.9 (78.1 , 88.2)	69.4 (43.8 , 85.1)	86.8 (81.0 , 90.9)	- (- , -)				
2(a) 2.4. Burkitt lymphoma/leukemia	2,202	60.2 (57.9 , 62.4)	89.7 (86.4 , 92.1)	56.9 (53.9 , 59.7)	36.4 (30.4 , 42.5)				
2(a) 2.5. Marginal-zone lymphoma (MZL)	9,414	89.7 (88.5 , 90.8)	98.5 (89.7 , 99.8)	93.1 (91.9 , 94.2)	86.3 (84.2 , 88.2)				
2(a) 2.5.1. Splenic MZL	831	85.6 (80.8 , 89.2)	- (- , -)	85.6 (79.8 , 89.8)	85.4 (78.1 , 90.4)				
2(a) 2.5.2. Extranodal MZL, MALT ^c type	5,667	93.9 (92.4 , 95.1)	97.8 (85.0 , 99.7)	96.0 (94.6 , 97.0)	91.6 (88.6 , 93.9)				
2(a) 2.5.3. Nodal MZL	2,916	82.7 (80.3 , 84.8)	- (- , -)	88.9 (86.2 , 91.1)	77.4 (73.6 , 80.7)				
2(a) 2.6. Follicular lymphoma	17,971	87.5 (86.7 , 88.2)	97.3 (80.1 , 99.7)	91.7 (90.9 , 92.4)	81.6 (80.0 , 83.1)				
2(a) 2.7. Hairy-cell leukemia	1,511	92.6 (89.9 , 94.5)	- (- , -)	96.8 (94.6 , 98.1)	81.4 (73.4 , 87.2)				
2(a) 2.8. Plasma cell neoplasms	30,545	48.4 (47.6 , 49.2)	- (- , -)	61.4 (60.3 , 62.5)	38.1 (37.1 , 39.2)				
2(a) 2.8.1. Plasmacytoma	1,893	66.8 (63.7 , 69.6)	- (- , -)	77.9 (74.4 , 81.0)	51.4 (46.0 , 56.4)				
2(a) 2.8.2. Multiple myeloma/ plasma-cell leukemia	28,652	47.2 (46.4 , 48.0)	- (- , -)	60.0 (58.8 , 61.1)	37.5 (36.4 , 38.6)				
2(a) 2.9. Heavy chain disease	30	59.8 (34.0 , 78.3)	- (- , -)	- (- , -)	- (- , -)				
2(a) 3. Non-Hodgkin lymphoma, B-cell, NOS ^c	7,024	68.4 (66.8 , 70.0)	92.7 (83.1 , 96.9)	76.2 (74.1 , 78.1)	63.2 (60.8 , 65.5)				

^a Morton LM, Turner JJ, Cerhan JR, Linet MS, Treseler PA, Clarke CA, Jack A, Cozen W, Maynadié M, Spinelli JJ, Costantini AS, Rüdiger T, Scarpa A, Zheng T, Weisenburger DD. Proposed classification of lymphoid neoplasms for epidemiologic research from the Pathology Working Group of the International Lymphoma Epidemiology Consortium (InterLymph). *Blood*. 2007;110:695-708.

^b SEER 18 areas (San Francisco, Connecticut, Detroit, Hawaii, Iowa, New Mexico, Seattle, Utah, Atlanta, San Jose-Monterey, Los Angeles, Alaska Native Registry, Rural Georgia, California excluding SF/SJM/LA, Kentucky, Louisiana, New Jersey and Georgia excluding ATL/RG).

^c NOS = Not otherwise specified. MALT = Mucosa-associated lymphoid tissue. NK = Natural killer.

- Statistic not displayed due to less than 25 cases.

Table 19.29 - continued
All Lymphoid Neoplasms With Detailed Non-Hodgkin Lymphoma Subtypes^a

SEER^b 5-Year Relative Survival (Percent) by Age at Diagnosis

All Races, Both Sexes, 2006-2012

Site	Count	All Ages		Ages 0-19		Ages 20-64		Ages 65+	
		Percent (95% C.I.)	Percent (95% C.I.)	Percent (95% C.I.)	Percent (95% C.I.)	Percent (95% C.I.)	Percent (95% C.I.)		
2(b) Non-Hodgkin lymphoma, T-cell	10,585	65.1 (63.9 , 66.2)	86.5 (84.3 , 88.4)	68.4 (67.0 , 69.7)	51.4 (49.0 , 53.8)				
2(b) 1. Precursor Non-Hodgkin lymphoma, T-cell	498	66.1 (61.6 , 70.2)	87.5 (82.6 , 91.1)	50.1 (43.0 , 56.7)	7.5 (1.3 , 21.2)				
2(b) 2. Mature Non-Hodgkin lymphoma, T-cell	10,034	65.2 (64.0 , 66.3)	86.2 (83.6 , 88.4)	69.3 (67.9 , 70.7)	52.1 (49.7 , 54.5)				
2(b) 2.1. Mycosis fungoides/Sezary syndrome	2,507	90.1 (87.9 , 91.9)	94.8 (76.6 , 98.9)	92.1 (89.9 , 93.8)	85.5 (79.6 , 89.8)				
2(b) 2.1.1. Mycosis fungoides	2,429	91.7 (89.5 , 93.5)	94.8 (76.6 , 98.9)	93.0 (90.8 , 94.7)	88.7 (82.5 , 92.8)				
2(b) 2.1.2. Sezary syndrome	78	35.9 (21.2 , 50.8)	- (- , -)	47.8 (26.8 , 66.2)	20.8 (4.6 , 44.8)				
2(b) 2.2. Peripheral T-cell lymphoma	5,623	57.7 (56.0 , 59.2)	83.6 (78.4 , 87.7)	65.1 (63.2 , 67.0)	43.5 (40.7 , 46.3)				
2(b) 2.2.1. Peripheral T-cell lymphoma, NOS ^c	1,928	38.9 (36.2 , 41.5)	69.5 (52.3 , 81.6)	46.0 (42.4 , 49.5)	28.5 (24.4 , 32.6)				
2(b) 2.2.2. Angioimmunoblastic T-cell lymphoma	753	43.7 (39.3 , 48.0)	- (- , -)	55.4 (49.0 , 61.3)	34.2 (28.3 , 40.2)				
2(b) 2.2.3. Subcutaneous panniculitis-like T-cell lymphoma	74	88.4 (76.9 , 94.4)	- (- , -)	88.8 (73.2 , 95.6)	- (- , -)				
2(b) 2.2.4. Anaplastic large cell lymphoma, T-cell or null-cell type	1,145	59.6 (56.2 , 62.8)	84.9 (78.1 , 89.7)	65.0 (60.9 , 68.8)	30.9 (23.8 , 38.2)				
2(b) 2.2.5. Hepatosplenic T-cell lymphoma	52	26.6 (14.4 , 40.5)	- (- , -)	29.0 (14.4 , 45.3)	- (- , -)				
2(b) 2.2.6. Enteropathy-type T-cell lymphoma	59	13.2 (4.6 , 26.6)	- (- , -)	8.8 (0.9 , 28.3)	16.6 (3.6 , 37.7)				
2(b) 2.2.7. Cutaneous T-cell lymphoma, NOS ^c	1,088	83.8 (80.3 , 86.7)	96.2 (75.5 , 99.5)	88.1 (84.3 , 91.0)	76.3 (70.0 , 81.4)				
2(b) 2.2.8. Primary cutaneous anaplastic large cell lymphoma	524	89.5 (84.5 , 93.0)	- (- , -)	95.1 (90.7 , 97.4)	78.0 (65.1 , 86.6)				
2(b) 2.3. Adult T-cell leukemia/lymphoma	1,210	62.0 (58.5 , 65.2)	86.7 (83.4 , 89.4)	41.0 (35.0 , 46.9)	14.8 (7.4 , 24.7)				
2(b) 2.4. NK ^c /T-cell lymphoma, nasal-type/aggressive NK ^c -cell leukemia	435	43.2 (37.6 , 48.7)	- (- , -)	43.4 (37.2 , 49.4)	39.1 (26.3 , 51.6)				
2(b) 2.5. T-cell large granular lymphocytic leukemia	99	68.8 (56.6 , 78.3)	- (- , -)	78.8 (62.7 , 88.5)	57.8 (39.4 , 72.4)				
2(b) 2.6. Prolymphocytic leukemia, T-cell	160	13.6 (7.1 , 22.4)	- (- , -)	18.3 (8.9 , 30.3)	9.0 (1.9 , 22.9)				
2(b) 3. Non-Hodgkin lymphoma, NOS ^c , T-cell	53	38.1 (24.8 , 51.4)	- (- , -)	51.0 (31.8 , 67.3)	- (- , -)				
2(c) Non-Hodgkin lymphoma, unknown lineage	1,480	59.4 (56.5 , 62.2)	86.2 (82.1 , 89.4)	57.5 (52.7 , 62.0)	44.1 (39.1 , 49.0)				
2(c) 1. Precursor lymphoblastic leukemia/lymphoma, unknown lineage	609	65.0 (60.9 , 68.8)	86.5 (82.4 , 89.7)	39.4 (31.1 , 47.6)	21.7 (13.5 , 31.2)				
2(c) 2. Prolymphocytic leukemia, unknown lineage	44	51.2 (34.1 , 66.0)	- (- , -)	- (- , -)	42.2 (23.1 , 60.1)				
2(c) 3. Non-Hodgkin lymphoma, NOS ^c , unknown lineage	827	55.6 (51.5 , 59.6)	- (- , -)	65.1 (59.4 , 70.3)	48.3 (42.5 , 53.9)				
2(*) 1. Total precursor lymphoma/leukemia ^d	9,021	68.3 (67.2 , 69.3)	88.3 (87.3 , 89.3)	40.1 (38.0 , 42.3)	17.8 (14.6 , 21.3)				
3 Composite Hodgkin lymphoma and Non-Hodgkin lymphoma	117	67.8 (55.4 , 77.5)	- (- , -)	77.9 (64.1 , 86.9)	44.6 (20.8 , 65.9)				
4 Lymphoid neoplasm, NOS ^c	4,176	50.0 (48.0 , 51.9)	84.6 (73.2 , 91.4)	61.9 (59.1 , 64.5)	41.0 (38.3 , 43.7)				

^a Morton LM, Turner JJ, Cerhan JR, Linet MS, Treseler PA, Clarke CA, Jack A, Cozen W, Maynadié M, Spinelli JJ, Costantini AS, Rüdiger T, Scarpa A, Zheng T, Weisenburger DD. Proposed classification of lymphoid neoplasms for epidemiologic research from the Pathology Working Group of the International Lymphoma Epidemiology Consortium (InterLymph). Blood. 2007;110:695-708.

^b SEER 18 areas (San Francisco, Connecticut, Detroit, Hawaii, Iowa, New Mexico, Seattle, Utah, Atlanta, San Jose-Monterey, Los Angeles, Alaska Native Registry, Rural Georgia, California excluding SF/SJM/LA, Kentucky, Louisiana, New Jersey and Georgia excluding ATL/RG).

^c NOS = Not otherwise specified. MALT = Mucosa-associated lymphoid tissue. NK = Natural killer.

^d Total precursor lymphoma/leukemia is comprised of categories 2(a)1., 2(b)1., and 2(c)1.

- Statistic not displayed due to less than 25 cases.

Table 19.30
All Lymphoid Neoplasms With Detailed Non-Hodgkin Lymphoma Subtypes^a

SEER^b 5-Year Relative Survival (Percent) by Age at Diagnosis

All Races, Males, 2006-2012

Site	All Ages		Ages 0-19		Ages 20-64		Ages 65+	
	Count	Percent (95% C.I.)	Percent (95% C.I.)	Percent (95% C.I.)	Percent (95% C.I.)	Percent (95% C.I.)	Percent (95% C.I.)	
Lymphoid Neoplasm	97,136	69.4 (69.0 , 69.8)	89.7 (88.8 , 90.6)	75.6 (75.2 , 76.1)	59.0 (58.2 , 59.7)			
1 Hodgkin Lymphoma	8,168	85.4 (84.4 , 86.3)	96.7 (95.2 , 97.8)	88.7 (87.7 , 89.6)	54.3 (50.0 , 58.4)			
2 Non-Hodgkin lymphoma	86,731	68.3 (67.9 , 68.8)	88.0 (86.9 , 89.0)	74.1 (73.6 , 74.6)	59.6 (58.9 , 60.4)			
2(a) Non-Hodgkin lymphoma, B-cell	79,652	68.8 (68.3 , 69.2)	88.5 (87.2 , 89.7)	75.1 (74.5 , 75.6)	60.2 (59.4 , 61.0)			
2(a) 1. Precursor Non-Hodgkin lymphoma, B-cell	4,284	68.6 (67.0 , 70.2)	87.9 (86.4 , 89.3)	38.5 (35.3 , 41.7)	19.3 (14.0 , 25.2)			
2(a) 2. Mature Non-Hodgkin lymphoma, B-cell	71,668	68.9 (68.4 , 69.4)	90.5 (87.9 , 92.5)	76.4 (75.9 , 77.0)	60.6 (59.7 , 61.3)			
2(a) 2.1. Chronic/Small/Prolymphocytic/ Mantle B-cell Non-Hodgkin lymphoma	18,803	77.4 (76.4 , 78.3)	- (- , -)	85.5 (84.4 , 86.5)	70.9 (69.4 , 72.4)			
2(a) 2.1.1. Chronic/Small lymphocytic leukemia/lymphoma	16,158	81.0 (79.9 , 82.0)	- (- , -)	88.7 (87.5 , 89.8)	75.0 (73.3 , 76.5)			
2(a) 2.1.2. Prolymphocytic leukemia, B-cell	67	48.5 (30.9 , 64.0)	- (- , -)	61.6 (34.5 , 80.3)	40.5 (20.4 , 59.8)			
2(a) 2.1.3. Mantle-cell lymphoma	2,578	55.5 (52.8 , 58.1)	- (- , -)	67.6 (64.2 , 70.9)	43.9 (40.0 , 47.8)			
2(a) 2.2. Lymphoplasmacytic lymphoma/ Waldenstrom macroglobulinemia	1,598	81.9 (78.2 , 84.9)	- (- , -)	88.4 (84.5 , 91.4)	77.4 (72.0 , 81.9)			
2(a) 2.2.1. Lymphoplasmacytic lymphoma	683	77.9 (72.2 , 82.6)	- (- , -)	84.0 (77.3 , 88.8)	73.4 (65.0 , 80.1)			
2(a) 2.2.2. Waldenstrom macroglobulinemia	915	84.9 (79.9 , 88.7)	- (- , -)	91.3 (85.6 , 94.8)	80.6 (73.1 , 86.2)			
2(a) 2.3. Diffuse large B-cell lymphoma (DLBCL)	18,472	62.0 (61.0 , 62.9)	89.8 (85.1 , 93.0)	69.0 (67.9 , 70.1)	52.7 (51.1 , 54.3)			
2(a) 2.3.1. DLBCL, NOS ^c	18,267	62.0 (61.1 , 62.9)	90.3 (85.6 , 93.5)	69.0 (67.9 , 70.1)	52.8 (51.2 , 54.4)			
2(a) 2.3.2. Intravascular large B-cell lymphoma	27	39.2 (16.8 , 61.1)	- (- , -)	- (- , -)	- (- , -)			
2(a) 2.3.3. Primary effusion lymphoma	50	23.4 (11.6 , 37.7)	- (- , -)	22.6 (10.4 , 37.7)	- (- , -)			
2(a) 2.3.4. Mediastinal large B-cell lymphoma	128	79.0 (68.1 , 86.5)	- (- , -)	84.4 (73.1 , 91.2)	- (- , -)			
2(a) 2.4. Burkitt lymphoma/leukemia	1,586	62.1 (59.4 , 64.7)	89.4 (85.7 , 92.3)	57.7 (54.3 , 60.9)	36.2 (27.6 , 44.7)			
2(a) 2.5. Marginal-zone lymphoma (MZL)	4,353	89.6 (87.7 , 91.2)	100.0 (- , -)	92.4 (90.5 , 93.9)	86.5 (83.2 , 89.1)			
2(a) 2.5.1. Splenic MZL	378	88.5 (81.2 , 93.0)	- (- , -)	83.4 (74.7 , 89.4)	89.9 (80.5 , 94.9)			
2(a) 2.5.2. Extranodal MZL, MALT ^c type	2,561	93.8 (91.3 , 95.6)	100.0 (- , -)	95.5 (93.3 , 97.0)	91.5 (86.1 , 94.9)			
2(a) 2.5.3. Nodal MZL	1,414	82.0 (78.4 , 85.0)	- (- , -)	88.0 (84.0 , 91.1)	76.4 (70.3 , 81.3)			
2(a) 2.6. Follicular lymphoma	8,896	86.5 (85.3 , 87.6)	96.5 (75.8 , 99.6)	90.2 (89.0 , 91.3)	80.5 (78.0 , 82.7)			
2(a) 2.7. Hairy-cell leukemia	1,224	93.1 (90.1 , 95.3)	- (- , -)	96.5 (93.8 , 98.0)	83.7 (74.4 , 89.8)			
2(a) 2.8. Plasma cell neoplasms	16,714	49.3 (48.2 , 50.3)	- (- , -)	60.8 (59.4 , 62.2)	39.2 (37.7 , 40.7)			
2(a) 2.8.1. Plasmacytoma	1,172	67.6 (63.7 , 71.2)	- (- , -)	76.5 (72.2 , 80.3)	53.2 (45.8 , 60.1)			
2(a) 2.8.2. Multiple myeloma/ plasma-cell leukemia	15,542	47.9 (46.8 , 49.0)	- (- , -)	59.2 (57.7 , 60.7)	38.4 (36.9 , 40.0)			
2(a) 2.9. Heavy chain disease	-	- (- , -)	- (- , -)	- (- , -)	- (- , -)			
2(a) 3. Non-Hodgkin lymphoma, B-cell, NOS ^c	3,700	66.6 (64.3 , 68.9)	91.9 (79.4 , 96.9)	73.3 (70.4 , 76.0)	60.9 (57.3 , 64.3)			

^a Morton LM, Turner JJ, Cerhan JR, Linet MS, Treseler PA, Clarke CA, Jack A, Cozen W, Maynadié M, Spinelli JJ, Costantini AS, Rüdiger T, Scarpa A, Zheng T, Weisenburger DD. Proposed classification of lymphoid neoplasms for epidemiologic research from the Pathology Working Group of the International Lymphoma Epidemiology Consortium (InterLymph). *Blood*. 2007;110:695-708.

^b SEER 18 areas (San Francisco, Connecticut, Detroit, Hawaii, Iowa, New Mexico, Seattle, Utah, Atlanta, San Jose-Monterey, Los Angeles, Alaska Native Registry, Rural Georgia, California excluding SF/SJM/LA, Kentucky, Louisiana, New Jersey and Georgia excluding ATL/RG).

^c NOS = Not otherwise specified. MALT = Mucosa-associated lymphoid tissue. NK = Natural killer.

- Statistic not displayed due to less than 25 cases.

Table 19.30 - continued
All Lymphoid Neoplasms With Detailed Non-Hodgkin Lymphoma Subtypes^a

SEER^b 5-Year Relative Survival (Percent) by Age at Diagnosis

All Races, Males, 2006-2012

Site	All Ages		Ages 0-19		Ages 20-64		Ages 65+	
	Count	Percent (95% C.I.)	Percent (95% C.I.)	Percent (95% C.I.)	Percent (95% C.I.)	Percent (95% C.I.)		
2(b) Non-Hodgkin lymphoma, T-cell	6,288	64.2 (62.7 , 65.7)	86.9 (84.3 , 89.1)	65.7 (63.9 , 67.5)	50.4 (47.1 , 53.6)			
2(b) 1. Precursor Non-Hodgkin lymphoma, T-cell	350	65.6 (60.2 , 70.5)	86.0 (79.9 , 90.3)	47.5 (39.0 , 55.5)	- (- , -)			
2(b) 2. Mature Non-Hodgkin lymphoma, T-cell	5,914	64.2 (62.6 , 65.7)	87.2 (84.2 , 89.7)	66.7 (64.8 , 68.5)	51.1 (47.8 , 54.4)			
2(b) 2.1. Mycosis fungoides/Sezary syndrome	1,389	88.3 (85.0 , 90.9)	100.0 (- , -)	90.9 (87.7 , 93.3)	81.8 (73.1 , 87.9)			
2(b) 2.1.1. Mycosis fungoides	1,341	90.3 (86.9 , 92.8)	100.0 (- , -)	91.9 (88.8 , 94.2)	85.7 (76.4 , 91.5)			
2(b) 2.1.2. Sezary syndrome	48	31.3 (13.7 , 50.8)	- (- , -)	- (- , -)	14.3 (1.0 , 43.7)			
2(b) 2.2. Peripheral T-cell lymphoma	3,285	56.3 (54.2 , 58.4)	82.7 (75.9 , 87.8)	62.3 (59.6 , 64.8)	43.2 (39.3 , 47.0)			
2(b) 2.2.1. Peripheral T-cell lymphoma, NOS ^c	1,176	38.6 (35.1 , 42.2)	72.0 (49.9 , 85.6)	44.6 (40.0 , 49.1)	28.5 (23.1 , 34.2)			
2(b) 2.2.2. Angioimmunoblastic T-cell lymphoma	396	40.2 (34.1 , 46.1)	- (- , -)	49.2 (40.5 , 57.3)	31.6 (23.3 , 40.2)			
2(b) 2.2.3. Subcutaneous panniculitis-like T-cell lymphoma	29	83.2 (62.5 , 93.1)	- (- , -)	- (- , -)	- (- , -)			
2(b) 2.2.4. Anaplastic large cell lymphoma, T-cell or null-cell type	701	57.1 (52.8 , 61.2)	85.7 (77.0 , 91.3)	60.7 (55.4 , 65.6)	29.5 (20.5 , 39.0)			
2(b) 2.2.5. Hepatosplenic T-cell lymphoma	36	26.5 (12.1 , 43.4)	- (- , -)	34.1 (16.1 , 53.0)	- (- , -)			
2(b) 2.2.6. Enteropathy-type T-cell lymphoma	29	19.3 (6.0 , 38.1)	- (- , -)	- (- , -)	- (- , -)			
2(b) 2.2.7. Cutaneous T-cell lymphoma, NOS ^c	622	83.7 (79.0 , 87.5)	- (- , -)	87.2 (81.9 , 91.1)	75.8 (67.1 , 82.4)			
2(b) 2.2.8. Primary cutaneous anaplastic large cell lymphoma	296	88.8 (81.5 , 93.3)	- (- , -)	95.1 (89.5 , 97.8)	77.1 (59.4 , 87.8)			
2(b) 2.3. Adult T-cell leukemia/lymphoma	836	66.5 (62.4 , 70.2)	88.4 (84.6 , 91.3)	44.1 (36.9 , 51.1)	5.0 (0.4 , 19.9)			
2(b) 2.4. NK ^c /T-cell lymphoma, nasal-type/aggressive NK ^c -cell leukemia	280	42.7 (36.0 , 49.3)	- (- , -)	41.0 (33.5 , 48.4)	40.4 (24.0 , 56.2)			
2(b) 2.5. T-cell large granular lymphocytic leukemia	39	59.0 (39.3 , 74.2)	- (- , -)	- (- , -)	- (- , -)			
2(b) 2.6. Prolymphocytic leukemia, T-cell	85	17.7 (8.3 , 29.9)	- (- , -)	21.4 (8.8 , 37.5)	14.2 (3.2 , 33.0)			
2(b) 3. Non-Hodgkin lymphoma, NOS ^c , T-cell	-	- (- , -)	- (- , -)	- (- , -)	- (- , -)			
2(c) Non-Hodgkin lymphoma, unknown lineage	791	58.0 (54.0 , 61.7)	84.4 (78.4 , 88.8)	55.8 (49.7 , 61.5)	39.9 (32.7 , 47.1)			
2(c) 1. Precursor lymphoblastic leukemia/lymphoma, unknown lineage	340	62.9 (57.3 , 67.9)	84.0 (78.0 , 88.5)	38.5 (28.0 , 48.9)	21.3 (10.5 , 34.6)			
2(c) 2. Prolymphocytic leukemia, unknown lineage	-	- (- , -)	- (- , -)	- (- , -)	- (- , -)			
2(c) 3. Non-Hodgkin lymphoma, NOS ^c , unknown lineage	433	54.3 (48.6 , 59.6)	- (- , -)	62.9 (55.6 , 69.4)	43.8 (35.2 , 52.1)			
2(*) 1. Total precursor lymphoma/leukemia ^d	4,974	68.1 (66.6 , 69.5)	87.6 (86.2 , 88.8)	39.7 (36.9 , 42.6)	18.9 (14.2 , 24.1)			
3 Composite Hodgkin lymphoma and Non-Hodgkin lymphoma	71	77.1 (60.9 , 87.3)	- (- , -)	81.1 (64.9 , 90.3)	- (- , -)			
4 Lymphoid neoplasm, NOS ^c	2,166	49.0 (46.3 , 51.6)	84.6 (69.5 , 92.6)	58.1 (54.5 , 61.6)	39.7 (35.7 , 43.7)			

^a Morton LM, Turner JJ, Cerhan JR, Linet MS, Treseler PA, Clarke CA, Jack A, Cozen W, Maynadié M, Spinelli JJ, Costantini AS, Rüdiger T, Scarpa A, Zheng T, Weisenburger DD. Proposed classification of lymphoid neoplasms for epidemiologic research from the Pathology Working Group of the International Lymphoma Epidemiology Consortium (InterLymph). Blood. 2007;110:695-708.

^b SEER 18 areas (San Francisco, Connecticut, Detroit, Hawaii, Iowa, New Mexico, Seattle, Utah, Atlanta, San Jose-Monterey, Los Angeles, Alaska Native Registry, Rural Georgia, California excluding SF/SJM/LA, Kentucky, Louisiana, New Jersey and Georgia excluding ATL/RG).

^c NOS = Not otherwise specified. MALT = Mucosa-associated lymphoid tissue. NK = Natural killer.

^d Total precursor lymphoma/leukemia is comprised of categories 2(a)1., 2(b)1., and 2(c)1.

- Statistic not displayed due to less than 25 cases.

Table 19.31
All Lymphoid Neoplasms With Detailed Non-Hodgkin Lymphoma Subtypes^a

SEER^b 5-Year Relative Survival (Percent) by Age at Diagnosis

All Races, Females, 2006-2012

Site	All Ages		Ages 0-19		Ages 20-64		Ages 65+	
	Count	Percent (95% C.I.)	Percent (95% C.I.)	Percent (95% C.I.)	Percent (95% C.I.)	Percent (95% C.I.)	Percent (95% C.I.)	
Lymphoid Neoplasm	78,287	70.4 (70.0 , 70.8)	90.5 (89.5 , 91.5)	79.8 (79.3 , 80.3)	59.9 (59.2 , 60.6)			
1 Hodgkin Lymphoma	6,786	87.3 (86.3 , 88.2)	97.0 (95.4 , 98.0)	92.0 (91.1 , 92.9)	54.2 (49.9 , 58.3)			
2 Non-Hodgkin lymphoma	69,445	69.3 (68.8 , 69.7)	88.6 (87.2 , 89.8)	78.0 (77.4 , 78.6)	60.7 (59.9 , 61.4)			
2(a) Non-Hodgkin lymphoma, B-cell	64,459	69.5 (69.0 , 70.0)	89.1 (87.6 , 90.4)	78.7 (78.0 , 79.3)	61.1 (60.4 , 61.9)			
2(a) 1. Precursor Non-Hodgkin lymphoma, B-cell	3,630	68.6 (66.8 , 70.3)	89.1 (87.4 , 90.5)	39.4 (35.8 , 42.9)	15.4 (10.8 , 20.8)			
2(a) 2. Mature Non-Hodgkin lymphoma, B-cell	57,505	69.5 (69.0 , 70.1)	88.7 (84.7 , 91.8)	80.3 (79.6 , 80.9)	61.3 (60.5 , 62.1)			
2(a) 2.1. Chronic/Small/Prolymphocytic/ Mantle B-cell Non-Hodgkin lymphoma	12,136	79.9 (78.7 , 81.1)	- (- , -)	89.0 (87.7 , 90.3)	75.0 (73.2 , 76.6)			
2(a) 2.1.1. Chronic/Small lymphocytic leukemia/lymphoma	11,024	82.3 (81.0 , 83.5)	- (- , -)	91.2 (89.8 , 92.4)	77.5 (75.6 , 79.1)			
2(a) 2.1.2. Prolymphocytic leukemia, B-cell	30	32.3 (14.9 , 51.2)	- (- , -)	- (- , -)	- (- , -)			
2(a) 2.1.3. Mantle-cell lymphoma	1,082	56.9 (52.7 , 61.0)	- (- , -)	70.2 (64.2 , 75.4)	48.4 (42.6 , 54.0)			
2(a) 2.2. Lymphoplasmacytic lymphoma/ Waldenstrom macroglobulinemia	1,208	82.3 (78.3 , 85.6)	- (- , -)	91.5 (87.2 , 94.4)	76.8 (70.9 , 81.6)			
2(a) 2.2.1. Lymphoplasmacytic lymphoma	590	77.3 (71.2 , 82.3)	- (- , -)	86.6 (79.1 , 91.5)	71.9 (63.1 , 79.0)			
2(a) 2.2.2. Waldenstrom macroglobulinemia	618	86.8 (81.2 , 90.8)	- (- , -)	95.1 (89.6 , 97.7)	81.3 (72.7 , 87.4)			
2(a) 2.3. Diffuse large B-cell lymphoma (DLBCL)	15,283	62.0 (61.0 , 63.0)	86.0 (79.8 , 90.4)	74.6 (73.3 , 75.8)	52.2 (50.8 , 53.7)			
2(a) 2.3.1. DLBCL, NOS ^c	15,055	61.6 (60.6 , 62.6)	87.4 (81.1 , 91.7)	74.2 (72.9 , 75.4)	52.2 (50.7 , 53.6)			
2(a) 2.3.2. Intravascular large B-cell lymphoma	27	63.0 (38.7 , 79.9)	- (- , -)	- (- , -)	- (- , -)			
2(a) 2.3.3. Primary effusion lymphoma	-	- (- , -)	- (- , -)	- (- , -)	- (- , -)			
2(a) 2.3.4. Mediastinal large B-cell lymphoma	197	86.3 (79.7 , 90.9)	- (- , -)	88.2 (81.5 , 92.5)	- (- , -)			
2(a) 2.4. Burkitt lymphoma/leukemia	616	55.1 (50.6 , 59.3)	90.3 (82.7 , 94.7)	54.3 (48.2 , 60.0)	34.5 (27.0 , 42.2)			
2(a) 2.5. Marginal-zone lymphoma (MZL)	5,061	89.8 (88.1 , 91.2)	- (- , -)	93.9 (92.2 , 95.1)	86.2 (83.4 , 88.5)			
2(a) 2.5.1. Splenic MZL	453	81.8 (74.9 , 87.0)	- (- , -)	87.5 (79.0 , 92.7)	77.2 (66.2 , 85.1)			
2(a) 2.5.2. Extranodal MZL, MALT ^c type	3,106	94.0 (92.0 , 95.6)	- (- , -)	96.2 (94.4 , 97.5)	91.7 (87.7 , 94.4)			
2(a) 2.5.3. Nodal MZL	1,502	83.1 (79.8 , 85.9)	- (- , -)	89.7 (85.8 , 92.6)	78.3 (73.2 , 82.5)			
2(a) 2.6. Follicular lymphoma	9,075	88.4 (87.3 , 89.4)	- (- , -)	93.3 (92.3 , 94.2)	82.5 (80.3 , 84.4)			
2(a) 2.7. Hairy-cell leukemia	287	89.9 (82.3 , 94.4)	- (- , -)	97.2 (92.4 , 99.0)	73.2 (54.4 , 85.3)			
2(a) 2.8. Plasma cell neoplasms	13,831	47.3 (46.2 , 48.4)	- (- , -)	62.3 (60.6 , 63.9)	37.0 (35.5 , 38.5)			
2(a) 2.8.1. Plasmacytoma	721	65.4 (60.4 , 70.0)	- (- , -)	80.3 (74.1 , 85.2)	48.5 (40.8 , 55.8)			
2(a) 2.8.2. Multiple myeloma/ plasma-cell leukemia	13,110	46.3 (45.1 , 47.5)	- (- , -)	61.0 (59.3 , 62.7)	36.5 (34.9 , 38.0)			
2(a) 2.9. Heavy chain disease	-	- (- , -)	- (- , -)	- (- , -)	- (- , -)			
2(a) 3. Non-Hodgkin lymphoma, B-cell, NOS ^c	3,324	70.4 (68.0 , 72.6)	- (- , -)	80.1 (77.1 , 82.8)	65.3 (62.0 , 68.4)			

^a Morton LM, Turner JJ, Cerhan JR, Linet MS, Treseler PA, Clarke CA, Jack A, Cozen W, Maynadié M, Spinelli JJ, Costantini AS, Rüdiger T, Scarpa A, Zheng T, Weisenburger DD. Proposed classification of lymphoid neoplasms for epidemiologic research from the Pathology Working Group of the International Lymphoma Epidemiology Consortium (InterLymph). *Blood*. 2007;110:695-708.

^b SEER 18 areas (San Francisco, Connecticut, Detroit, Hawaii, Iowa, New Mexico, Seattle, Utah, Atlanta, San Jose-Monterey, Los Angeles, Alaska Native Registry, Rural Georgia, California excluding SF/SJM/LA, Kentucky, Louisiana, New Jersey and Georgia excluding ATL/RG).

^c NOS = Not otherwise specified. MALT = Mucosa-associated lymphoid tissue. NK = Natural killer.

- Statistic not displayed due to less than 25 cases.

Table 19.31 - continued
All Lymphoid Neoplasms With Detailed Non-Hodgkin Lymphoma Subtypes^a

SEER^b 5-Year Relative Survival (Percent) by Age at Diagnosis

All Races, Females, 2006-2012

Site	All Ages		Ages 0-19		Ages 20-64		Ages 65+	
	Count	Percent (95% C.I.)	Percent (95% C.I.)	Percent (95% C.I.)	Percent (95% C.I.)	Percent (95% C.I.)		
2(b) Non-Hodgkin lymphoma, T-cell	4,297	66.3 (64.5 , 68.0)	85.3 (80.7 , 88.8)	72.2 (70.1 , 74.2)	52.5 (49.0 , 55.8)			
2(b) 1. Precursor Non-Hodgkin lymphoma, T-cell	148	67.1 (58.6 , 74.2)	92.0 (81.8 , 96.6)	55.7 (42.7 , 67.0)	- (- , -)			
2(b) 2. Mature Non-Hodgkin lymphoma, T-cell	4,120	66.5 (64.7 , 68.3)	83.7 (78.3 , 87.9)	73.2 (71.0 , 75.2)	53.0 (49.6 , 56.4)			
2(b) 2.1. Mycosis fungoides/Sezary syndrome	1,118	92.1 (89.0 , 94.3)	91.4 (64.6 , 98.2)	93.5 (90.2 , 95.7)	88.3 (82.3 , 92.3)			
2(b) 2.1.1. Mycosis fungoides	1,088	93.3 (90.1 , 95.5)	91.4 (64.6 , 98.2)	94.2 (90.9 , 96.3)	90.0 (83.9 , 93.9)			
2(b) 2.1.2. Sezary syndrome	30	42.7 (20.2 , 63.6)	- (- , -)	- (- , -)	- (- , -)			
2(b) 2.2. Peripheral T-cell lymphoma	2,338	59.4 (56.9 , 61.7)	84.8 (75.3 , 90.8)	69.3 (66.3 , 72.1)	43.4 (39.2 , 47.5)			
2(b) 2.2.1. Peripheral T-cell lymphoma, NOS ^c	752	38.9 (34.8 , 43.0)	- (- , -)	48.2 (42.4 , 53.8)	28.1 (22.1 , 34.3)			
2(b) 2.2.2. Angioimmunoblastic T-cell lymphoma	357	47.0 (40.7 , 53.1)	- (- , -)	62.8 (53.5 , 70.7)	35.8 (27.7 , 44.1)			
2(b) 2.2.3. Subcutaneous panniculitis-like T-cell lymphoma	45	91.1 (74.7 , 97.1)	- (- , -)	89.1 (67.2 , 96.7)	- (- , -)			
2(b) 2.2.4. Anaplastic large cell lymphoma, T-cell or null-cell type	444	63.4 (57.9 , 68.4)	82.9 (69.5 , 90.8)	71.5 (65.0 , 77.0)	32.6 (21.5 , 44.1)			
2(b) 2.2.5. Hepatosplenic T-cell lymphoma	-	- (- , -)	- (- , -)	- (- , -)	- (- , -)			
2(b) 2.2.6. Enteropathy-type T-cell lymphoma	30	10.2 (2.0 , 26.6)	- (- , -)	- (- , -)	- (- , -)			
2(b) 2.2.7. Cutaneous T-cell lymphoma, NOS ^c	466	83.9 (78.5 , 88.1)	- (- , -)	89.3 (83.6 , 93.1)	74.3 (63.4 , 82.4)			
2(b) 2.2.8. Primary cutaneous anaplastic large cell lymphoma	228	90.4 (82.3 , 94.9)	- (- , -)	94.5 (87.5 , 97.6)	78.8 (56.5 , 90.5)			
2(b) 2.3. Adult T-cell leukemia/lymphoma	374	51.8 (45.4 , 57.8)	81.6 (73.4 , 87.5)	34.4 (24.0 , 45.0)	20.9 (10.8 , 33.3)			
2(b) 2.4. NK ^c /T-cell lymphoma, nasal-type/aggressive NK ^c -cell leukemia	155	43.7 (33.7 , 53.3)	- (- , -)	48.2 (37.6 , 58.0)	37.1 (18.2 , 56.2)			
2(b) 2.5. T-cell large granular lymphocytic leukemia	60	75.0 (58.6 , 85.7)	- (- , -)	82.4 (62.5 , 92.3)	63.8 (37.5 , 81.4)			
2(b) 2.6. Prolymphocytic leukemia, T-cell	75	8.9 (2.1 , 22.2)	- (- , -)	13.5 (2.8 , 32.8)	6.4 (0.5 , 24.3)			
2(b) 3. Non-Hodgkin lymphoma, NOS ^c , T-cell	29	35.6 (18.7 , 53.0)	- (- , -)	- (- , -)	- (- , -)			
2(c) Non-Hodgkin lymphoma, unknown lineage	689	61.1 (56.8 , 65.2)	88.5 (82.3 , 92.7)	60.2 (52.3 , 67.3)	47.1 (40.6 , 53.3)			
2(c) 1. Precursor lymphoblastic leukemia/lymphoma, unknown lineage	269	67.6 (61.4 , 73.0)	89.7 (83.6 , 93.6)	40.9 (27.8 , 53.5)	21.9 (10.8 , 35.5)			
2(c) 2. Prolymphocytic leukemia, unknown lineage	26	54.1 (28.4 , 74.1)	- (- , -)	- (- , -)	- (- , -)			
2(c) 3. Non-Hodgkin lymphoma, NOS ^c , unknown lineage	394	57.1 (50.9 , 62.9)	- (- , -)	69.2 (59.3 , 77.1)	51.5 (44.0 , 58.4)			
2(*) 1. Total precursor lymphoma/leukemia ^d	4,047	68.5 (66.9 , 70.1)	89.2 (87.7 , 90.6)	40.6 (37.3 , 43.9)	16.8 (12.5 , 21.6)			
3 Composite Hodgkin lymphoma and Non-Hodgkin lymphoma	46	55.4 (36.4 , 70.9)	- (- , -)	72.3 (45.4 , 87.6)	- (- , -)			
4 Lymphoid neoplasm, NOS ^c	2,010	51.1 (48.2 , 53.9)	84.3 (61.5 , 94.1)	67.4 (63.0 , 71.4)	42.1 (38.4 , 45.7)			

^a Morton LM, Turner JJ, Cerhan JR, Linet MS, Treseler PA, Clarke CA, Jack A, Cozen W, Maynadié M, Spinelli JJ, Costantini AS, Rüdiger T, Scarpa A, Zheng T, Weisenburger DD. Proposed classification of lymphoid neoplasms for epidemiologic research from the Pathology Working Group of the International Lymphoma Epidemiology Consortium (InterLymph). Blood. 2007;110:695-708.

^b SEER 18 areas (San Francisco, Connecticut, Detroit, Hawaii, Iowa, New Mexico, Seattle, Utah, Atlanta, San Jose-Monterey, Los Angeles, Alaska Native Registry, Rural Georgia, California excluding SF/SJM/LA, Kentucky, Louisiana, New Jersey and Georgia excluding ATL/RG).

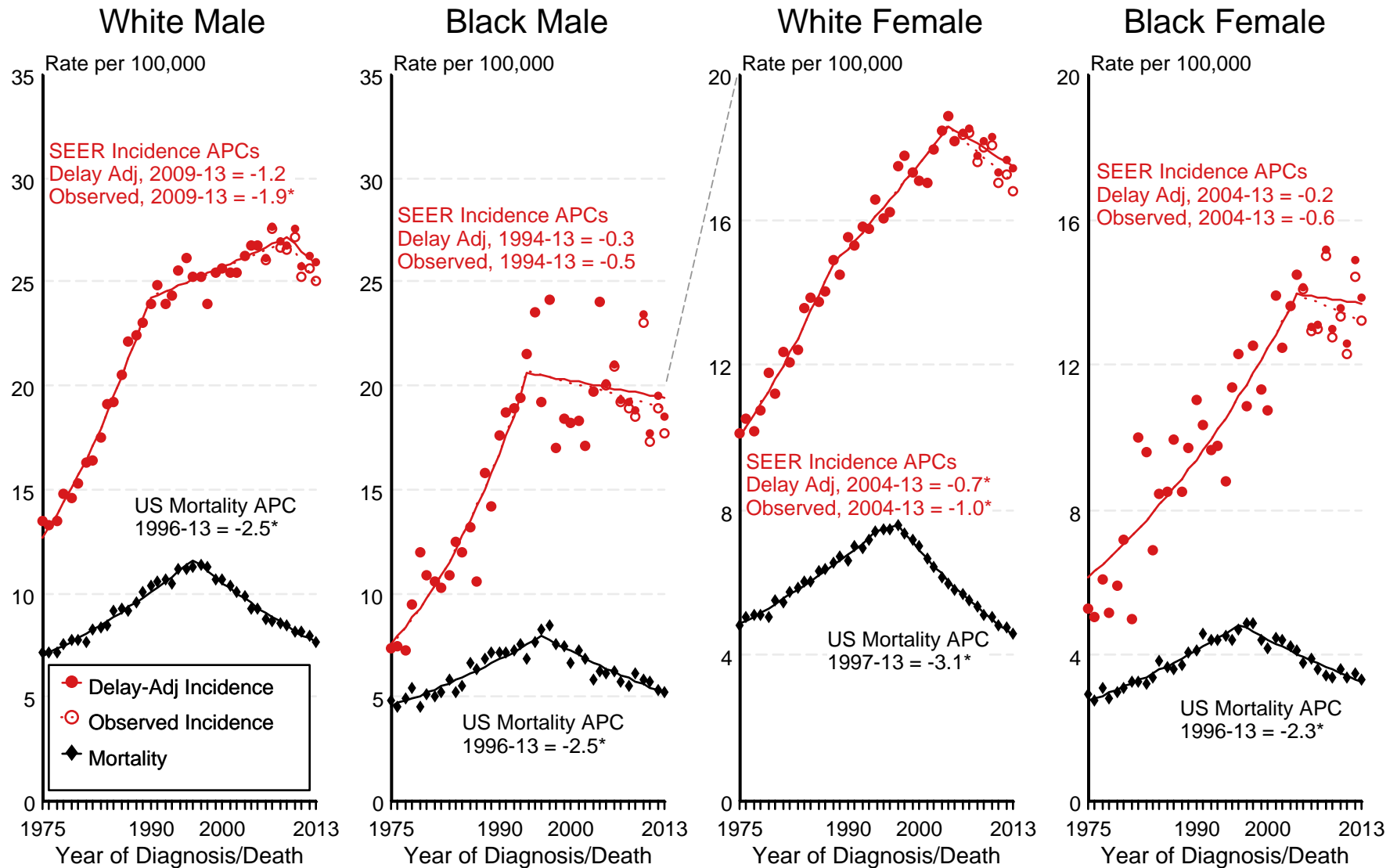
^c NOS = Not otherwise specified. MALT = Mucosa-associated lymphoid tissue. NK = Natural killer.

^d Total precursor lymphoma/leukemia is comprised of categories 2(a)1., 2(b)1., and 2(c)1.

- Statistic not displayed due to less than 25 cases.

Figure 19.1

SEER Observed Incidence, SEER Delay Adjusted Incidence and US Death Rates^a Non-Hodgkin Lymphoma, by Race and Sex



Source: SEER 9 areas and US Mortality Files (National Center for Health Statistics, CDC).

^a Rates are age-adjusted to the 2000 US Std Population (19 age groups - Census P25-1103).

Regression lines and APCs are calculated using the Joinpoint Regression Program Version 4.3.0.0, April 2016, National Cancer Institute.

The APC is the Annual Percent Change for the regression line segments. The APC shown on the graph is for the most recent trend.

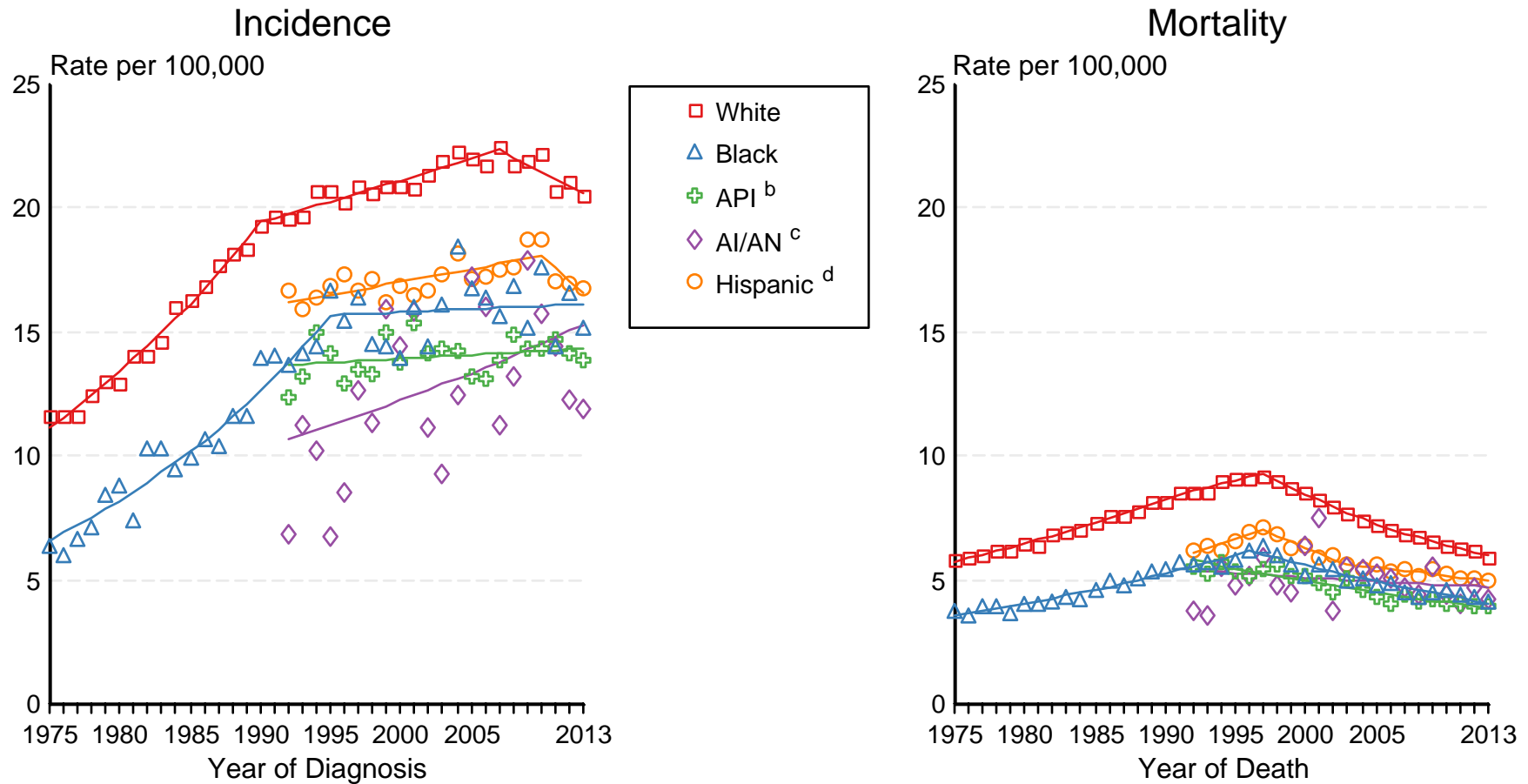
* The APC is significantly different from zero ($p < 0.05$).

Figure 19.2

SEER Incidence and US Death Rates^a Non-Hodgkin Lymphoma, Both Sexes

Joinpoint Analyses for Whites and Blacks from 1975-2013

and for Asian/Pacific Islanders, American Indians/Alaska Natives and Hispanics from 1992-2013



Source: Incidence data for whites and blacks are from the SEER 9 areas (San Francisco, Connecticut, Detroit, Hawaii, Iowa, New Mexico, Seattle, Utah, Atlanta). Incidence data for Asian/Pacific Islanders, American Indians/Alaska Natives and Hispanics are from the SEER 13 Areas (SEER 9 Areas, San Jose-Monterey, Los Angeles, Alaska Native Registry and Rural Georgia). Mortality data are from US Mortality Files, National Center for Health Statistics, CDC.

^a Rates are age-adjusted to the 2000 US Std Population (19 age groups - Census P25-1103).

Regression lines are calculated using the Joinpoint Regression Program Version 4.3.0.0, April 2016, National Cancer Institute. Joinpoint analyses for Whites and Blacks during the 1975-2013 period allow a maximum of 5 joinpoints. Analyses for other ethnic groups during the period 1992-2013 allow a maximum of 4 joinpoints.

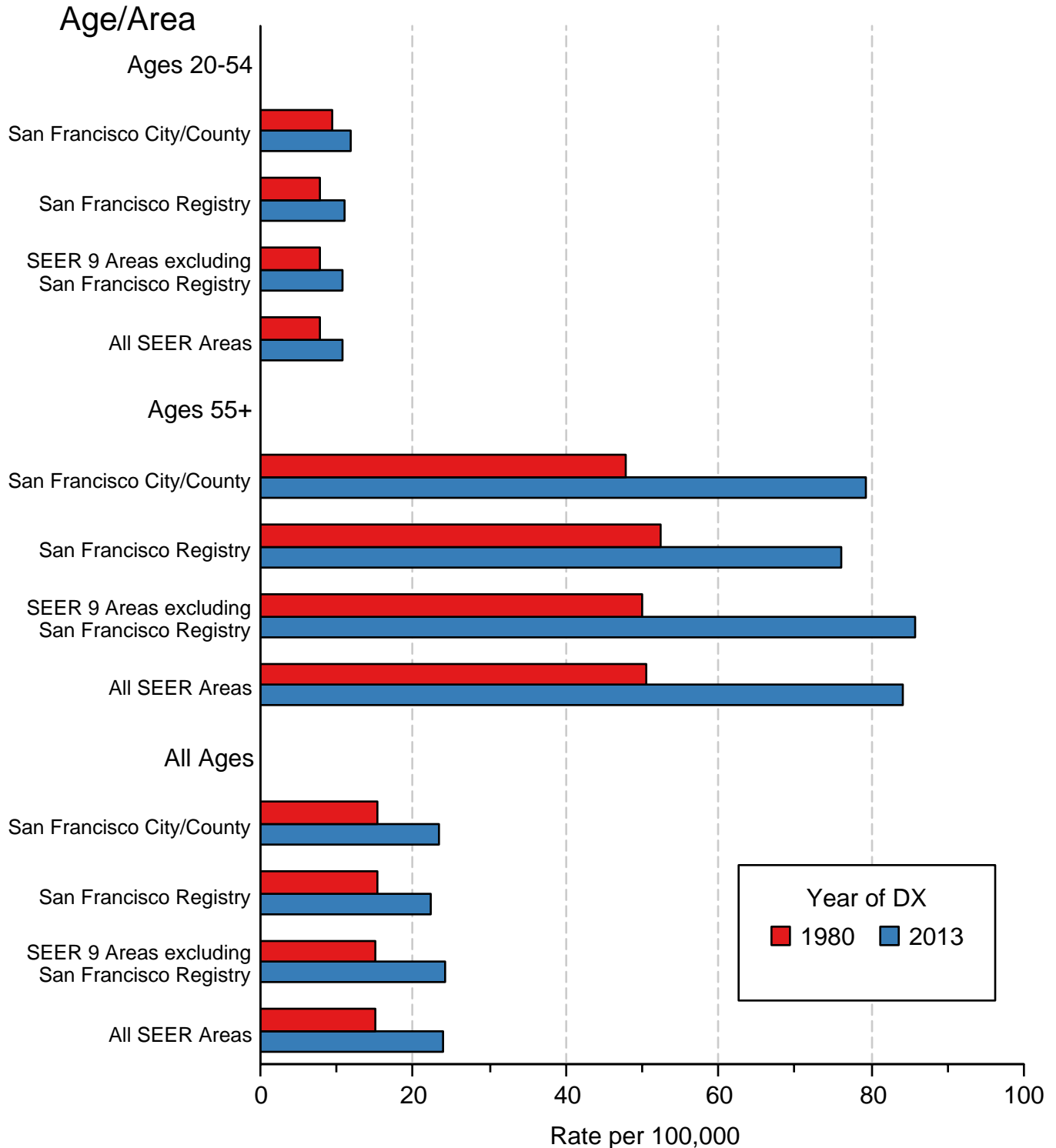
^b API = Asian/Pacific Islander.

^c AI/AN = American Indian/Alaska Native. Rates for American Indian/Alaska Native are based on the CHSDA(Contract Health Service Delivery Area) counties.

^d Hispanic is not mutually exclusive from whites, blacks, Asian/Pacific Islanders, and American Indians/Alaska Natives. Incidence data for Hispanics are based on NHIA and exclude cases from the Alaska Native Registry. Mortality data for Hispanics exclude cases from New Hampshire and Oklahoma.

Figure 19.3

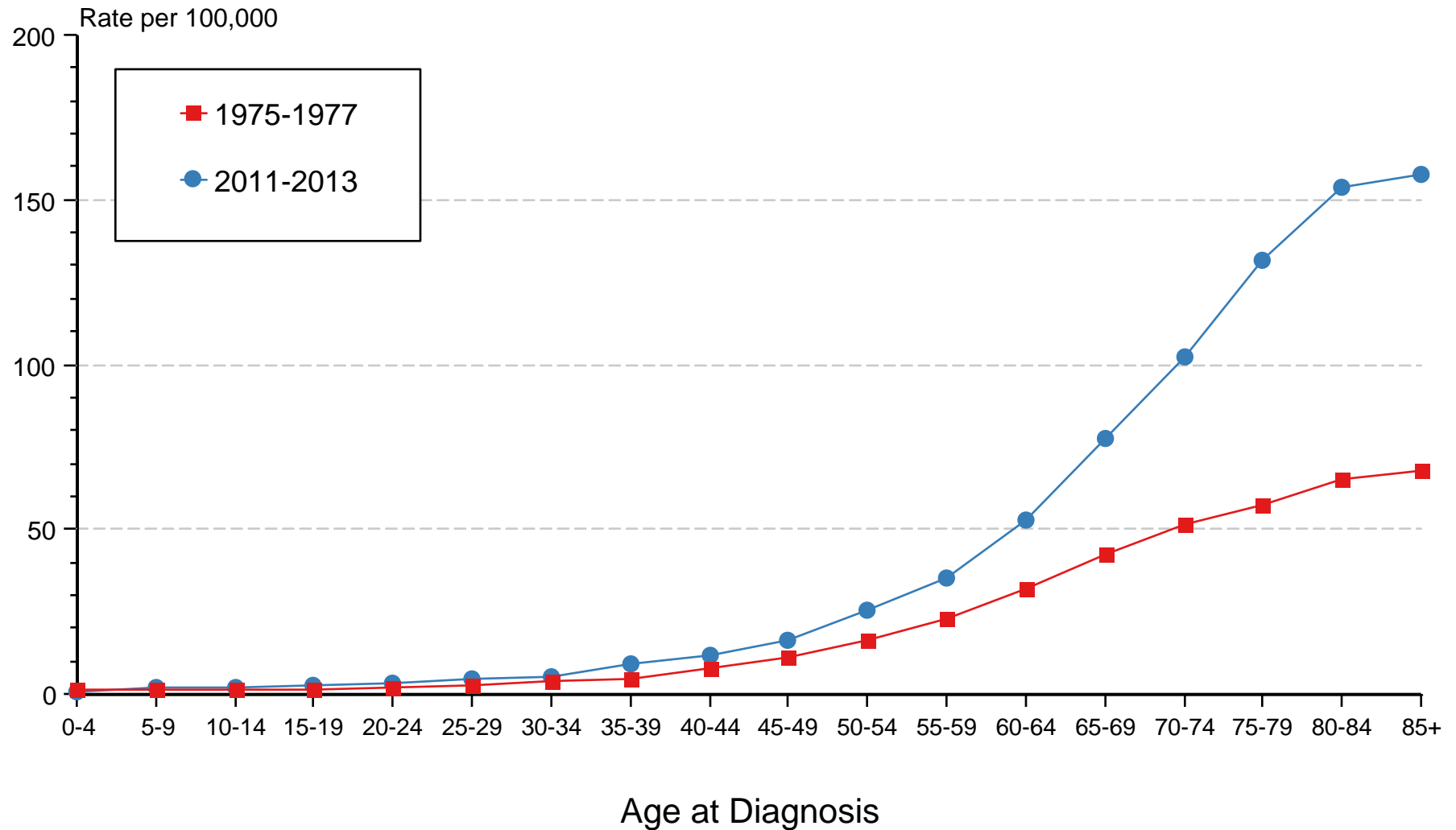
Non-Hodgkin Lymphoma Incidence Rates, 1980 vs 2013 Males by Age at Diagnosis and SEER area



Source: SEER 9 areas. Rates are age-adjusted to the 2000 US Standard Population (19 age groups - Census P25-1103).

Figure 19.4

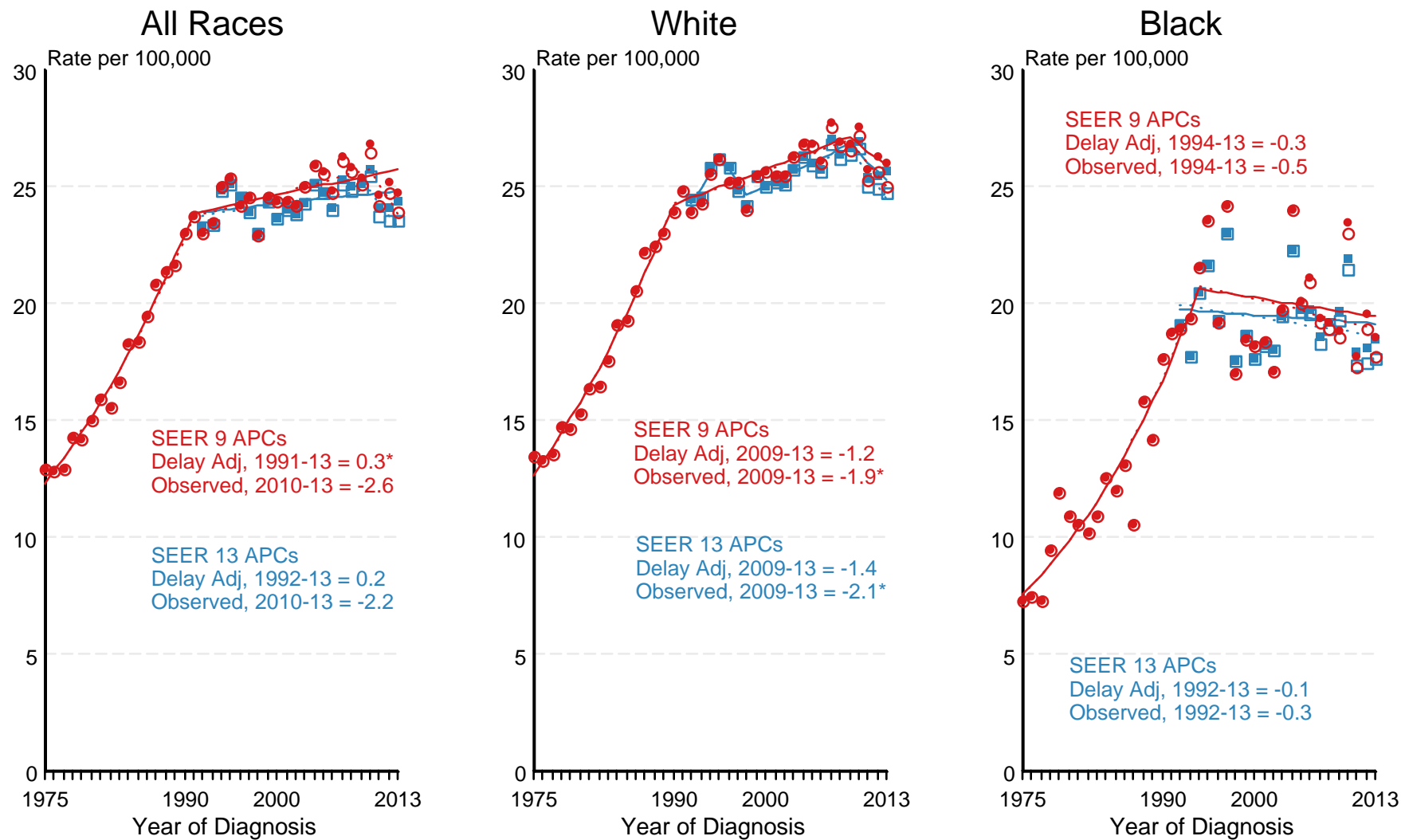
Non-Hodgkin Lymphoma SEER Incidence by Age 1975-1977 vs 2011-2013 All Races, Males



Source: SEER 9 areas. Rates are age-adjusted as appropriate to the 2000 US Std Population (19 age groups - Census P25-1103).

Figure 19.5

SEER Observed Incidence and SEER Delay Adjusted Incidence Rates^a SEER 9 Areas Compared to SEER 13 Areas Non-Hodgkin Lymphoma, Male, by Race



● SEER 9 Delay-Adj. Incidence ○ SEER 9 Observed Incidence ■ SEER 13 Delay-Adj. Incidence □ SEER 13 Observed Incidence

Source: SEER 9 areas and SEER 13 areas.

^a Rates are age-adjusted to the 2000 US Std Population (19 age groups - Census P25-1103).

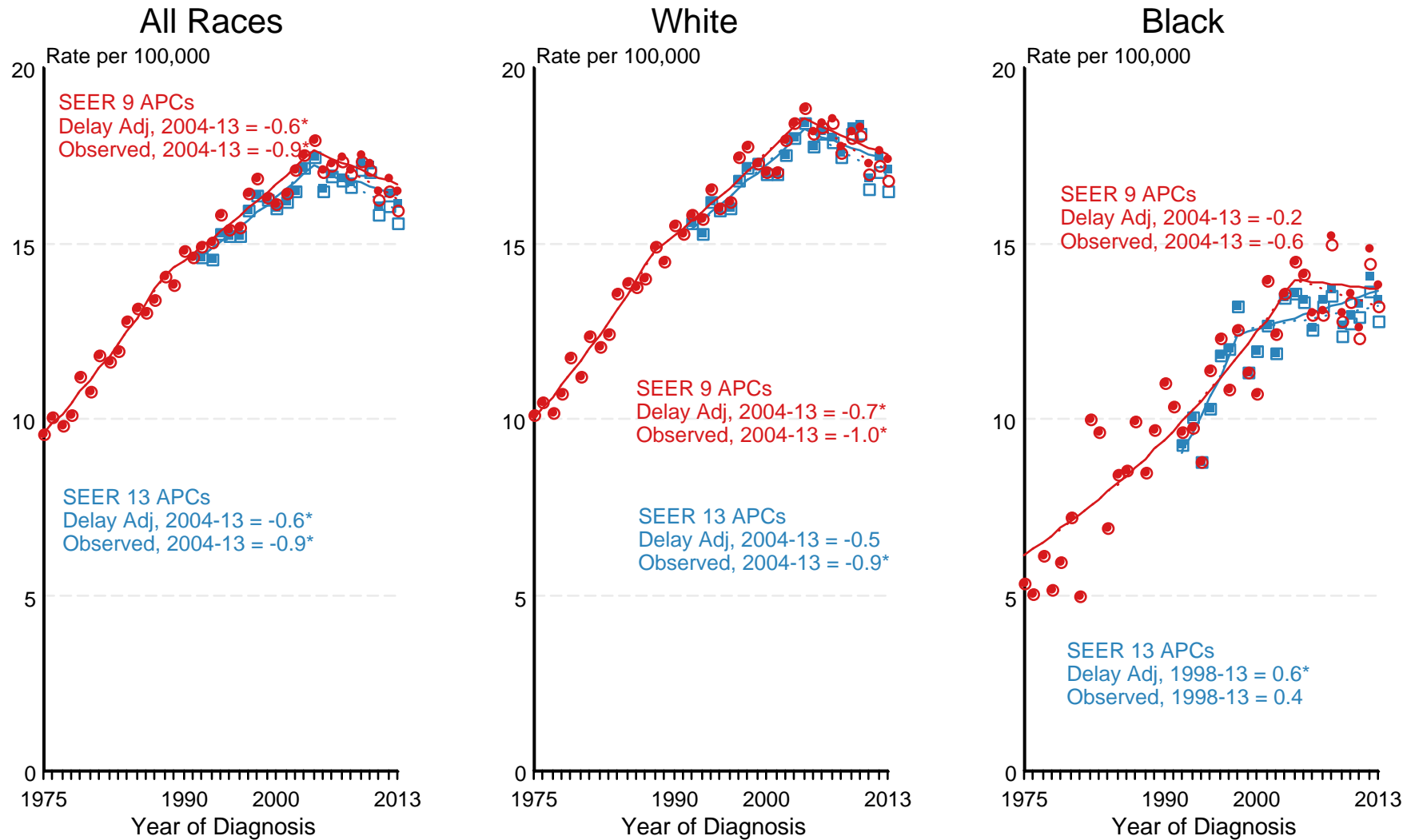
Regression lines and APCs are calculated using the Joinpoint Regression Program Version 4.3.0.0, April 2016, National Cancer Institute.

The APC is the Annual Percent Change for the regression line segments. The APC shown on the graph is for the most recent trend.

* The APC is significantly different from zero ($p < 0.05$).

Figure 19.6

SEER Observed Incidence and SEER Delay Adjusted Incidence Rates^a SEER 9 Areas Compared to SEER 13 Areas Non-Hodgkin Lymphoma, Female, by Race



● SEER 9 Delay-Adj. Incidence
 ○ SEER 9 Observed Incidence
 ■ SEER 13 Delay-Adj. Incidence
 □ SEER 13 Observed Incidence

Source: SEER 9 areas and SEER 13 areas.

^a Rates are age-adjusted to the 2000 US Std Population (19 age groups - Census P25-1103).

Regression lines and APCs are calculated using the Joinpoint Regression Program Version 4.3.0.0, April 2016, National Cancer Institute.

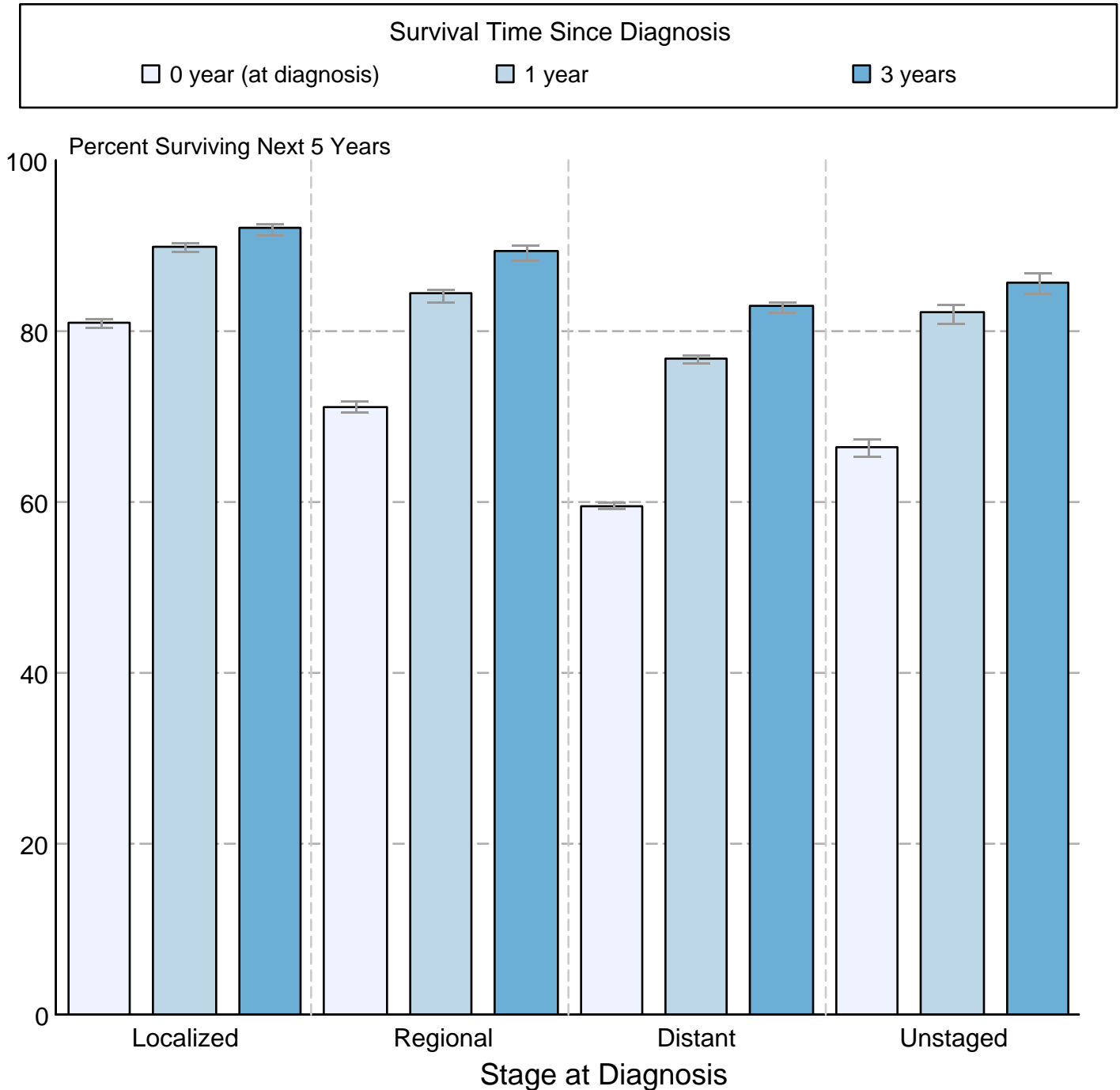
The APC is the Annual Percent Change for the regression line segments. The APC shown on the graph is for the most recent trend.

* The APC is significantly different from zero (p < 0.05).

Figure 19.7

Non-Hodgkin Lymphoma 5-Year SEER Conditional Relative Survival and 95% Confidence Intervals

Probability of surviving the next 5 years given the cohort
has already survived 0, 1, or 3 years
1998-2012 by stage at diagnosis



Source: SEER 18 areas (San Francisco, Connecticut, Detroit, Hawaii, Iowa, New Mexico, Seattle, Utah, Atlanta, San Jose-Monterey, Los Angeles, Alaska Native Registry, Rural Georgia, California excluding SF/SJM/LA, Kentucky, Louisiana, New Jersey and Georgia excluding ATL/RG). California excluding SF/SJM/LA, Kentucky, Louisiana, New Jersey and Georgia excluding ATL/RG contribute cases for diagnosis years 2000 and later. The remaining 13 SEER Areas contribute cases for the entire time period. Percent surviving is not shown if based on less than 25 cases. Confidence intervals are not shown if length of the confidence interval is greater than 5 times the standard error.