

Table 1.24
Age-Adjusted SEER Incidence Rates and Trends for the Top 15 Cancer Sites^a by Race/Ethnicity
Both Sexes

All Races	Rate ^b		APC ^c	All Sites	Rate ^b		APC ^c	All Sites	Rate ^b		APC ^c
	2009-2013	2004-2013			2009-2013	2004-2013			2009-2013	2004-2013	
All Sites	448.7	-0.9*		All Sites	457.4	-0.9*		All Sites	470.2	-1.3*	
Breast	67.2	0.0		Breast	68.0	-0.1		Prostate ^f	86.7	-3.4*	
Prostate ^f	59.0	-3.6*		Lung and Bronchus	58.8	-2.0*		Breast	71.2	0.5	
Lung and Bronchus	57.3	-2.1*		Prostate ^f	56.3	-3.9*		Lung and Bronchus	65.0	-2.4*	
Colon and Rectum	41.0	-2.9*		Colon and Rectum	40.1	-3.0*		Colon and Rectum	50.7	-2.9*	
Melanoma of the Skin	21.8	0.9*		Melanoma of the Skin	25.9	0.9*		Kidney and Renal Pelvis	18.1	1.6*	
Urinary Bladder	20.1	-1.3*		Urinary Bladder	22.0	-1.2*		Pancreas	15.5	-0.6	
Non-Hodgkin Lymphoma	19.5	-0.5*		Non-Hodgkin Lymphoma	20.4	-0.6*		Non-Hodgkin Lymphoma	14.6	-0.7	
Kidney and Renal Pelvis	15.6	1.1*		Kidney and Renal Pelvis	16.1	1.1*		Corpus and Uterus, NOS ^f	14.0	2.7*	
Thyroid	13.9	4.7*		Thyroid	14.7	4.7*		Myeloma	13.2	1.0*	
Corpus and Uterus, NOS ^f	13.5	1.2*		Leukemia	14.3	0.4		Urinary Bladder	12.6	-1.0*	
Leukemia	13.5	0.4		Corpus and Uterus, NOS ^f	13.7	0.9*		Leukemia	10.8	0.4	
Pancreas	12.4	0.6*		Pancreas	12.4	0.7*		Stomach	10.6	-2.5*	
Oral Cavity and Pharynx	11.1	0.6*		Oral Cavity and Pharynx	11.6	0.9*		Liver & IBD ^g	10.0	2.6*	
Liver & IBD ^g	8.4	2.8*		Liver & IBD ^g	7.5	3.6*		Oral Cavity and Pharynx	9.2	-2.0*	
Stomach	7.4	-1.1*		Brain and ONS ^g	7.1	-0.5*		Thyroid	8.3	4.5*	
Asian/Pacific Islander	Rate ^b		APC ^c	All Sites	Rate ^b		APC ^c	All Sites	Rate ^b		APC ^c
	2009-2013	2004-2013			2009-2013	2004-2013			2009-2013	2004-2013	
All Sites	302.8	-1.1*		All Sites	320.0	-1.3*		All Sites	344.6	-1.3*	
Breast	53.5	0.9*		Breast	43.7	-0.6		Breast	49.5	0.2	
Lung and Bronchus	36.7	-1.5*		Colon and Rectum	40.9	-1.3*		Prostate ^f	47.3	-4.7*	
Colon and Rectum	34.8	-2.6*		Lung and Bronchus	38.9	-3.6*		Colon and Rectum	34.7	-2.6*	
Prostate ^f	30.1	-5.5*		Prostate ^f	28.4	-5.1*		Lung and Bronchus	29.7	-2.4*	
Thyroid	13.6	4.6*		Kidney and Renal Pelvis	18.6	-0.7		Non-Hodgkin Lymphoma	17.7	-0.4	
Liver & IBD ^g	13.5	-2.0*		Liver & IBD ^g	12.9	0.0		Kidney and Renal Pelvis	15.4	0.8	
Non-Hodgkin Lymphoma	13.5	-0.1		Non-Hodgkin Lymphoma	12.9	-0.2		Liver & IBD ^g	12.9	2.0*	
Corpus and Uterus, NOS ^f	11.1	2.3*		Corpus and Uterus, NOS ^f	11.3	3.2		Thyroid	11.9	4.5*	
Stomach	11.0	-3.6*		Stomach	10.4	-1.0		Corpus and Uterus, NOS ^f	11.4	2.3*	
Pancreas	10.0	0.5*		Pancreas	9.7	-3.0		Pancreas	11.1	-0.3	
Urinary Bladder	8.8	-1.8*		Oral Cavity and Pharynx	9.1	3.4*		Urinary Bladder	11.1	-1.9*	
Kidney and Renal Pelvis	8.1	1.4		Thyroid	8.8	5.0*		Stomach	10.6	-2.2*	
Leukemia	7.7	-0.1		Leukemia	8.2	0.2		Leukemia	10.6	0.3	
Oral Cavity and Pharynx	7.7	-0.4		Urinary Bladder	8.1	-1.8		Oral Cavity and Pharynx	6.7	0.3	
Ovary ^{fh}	5.1	-0.8		Ovary ^{fh}	5.6	-1.9		Myeloma	6.0	0.3	

Source: SEER 18 areas (San Francisco, Connecticut, Detroit, Hawaii, Iowa, New Mexico, Seattle, Utah, Atlanta, San Jose-Monterey, Los Angeles, Alaska Native Registry, Rural Georgia, California excluding SF/SJM/LA, Kentucky, Louisiana, New Jersey and Georgia excluding ATL/RG).

^a Top 15 cancer sites selected based on 2009-2013 age-adjusted rates for the race/ethnic group.

^b Rates are per 100,000 and age-adjusted to the 2000 US Std Population (19 age groups - Census P25-1130).

^c The APC is the Annual Percent Change over the time interval.

^d Trends are based on rates age-adjusted to the 2000 US Std Population (19 age groups - Census P25-1130).

^e Rates for American Indian/Alaska Native are based on the CHSDA (Contract Health Service Delivery Area) counties.

^e Hispanic is not mutually exclusive from whites, blacks, Asian/Pacific Islanders, and American Indians/Alaska Natives.

^f Incidence data for Hispanics are based on NHIA and exclude cases from the Alaska Native Registry.

^f The rates for sex-specific cancer sites are calculated using the population for both sexes combined.

^g IBD = Intrahepatic Bile Duct. ONS = Other Nervous System.

^h Ovary excludes borderline cases or histologies 8442, 8451, 8462, 8472, and 8473.

* The APC is significantly different from zero (p<.05).

- Statistic not shown. Rate based on less than 16 cases for the time interval. Trend based on less than 10 cases for at least one year within the time interval.

Table 1.25
Age-Adjusted SEER Incidence Rates and Trends for the Top 15 Cancer Sites^a by Race/Ethnicity

			Males					
All Races			White			Black		
	Rate ^b	APC ^c		Rate ^b	APC ^c		Rate ^b	APC ^c
	2009-2013	2004-2013		2009-2013	2004-2013		2009-2013	2004-2013
All Sites	504.5	-1.7*	All Sites	508.2	-1.7*	All Sites	571.8	-2.4*
Prostate	129.4	-4.0*	Prostate	121.9	-4.3*	Prostate	203.5	-3.8*
Lung and Bronchus	67.9	-2.7*	Lung and Bronchus	68.1	-2.7*	Lung and Bronchus	87.3	-3.1*
Colon and Rectum	47.1	-3.1*	Colon and Rectum	46.0	-3.3*	Colon and Rectum	59.2	-3.0*
Urinary Bladder	35.3	-1.4*	Urinary Bladder	38.5	-1.3*	Kidney and Renal Pelvis	25.0	1.1
Melanoma of the Skin	28.5	1.2*	Melanoma of the Skin	33.5	1.1*	Urinary Bladder	21.2	-0.8
Non-Hodgkin Lymphoma	23.7	-0.4*	Non-Hodgkin Lymphoma	24.8	-0.4*	Non-Hodgkin Lymphoma	17.6	-1.1
Kidney and Renal Pelvis	21.4	1.1*	Kidney and Renal Pelvis	21.9	1.1*	Pancreas	17.2	-0.3
Leukemia	17.3	0.3	Leukemia	18.2	0.2	Liver & IBD ^f	16.4	2.6*
Oral Cavity and Pharynx	16.7	0.7*	Oral Cavity and Pharynx	17.4	1.0*	Myeloma	15.7	0.7
Pancreas	14.1	0.6*	Pancreas	14.1	0.7*	Oral Cavity and Pharynx	14.4	-2.0*
Liver & IBD ^f	13.0	2.8*	Liver & IBD ^f	11.6	3.5*	Stomach	14.0	-3.4*
Stomach	10.0	-1.5*	Stomach	9.1	-1.1*	Leukemia	13.8	0.2
Myeloma	8.2	1.3*	Brain and ONS ^f	8.3	-0.6*	Larynx	8.7	-3.4*
Brain and ONS ^f	7.6	-0.5*	Esophagus	7.9	-0.8*	Esophagus	7.2	-4.5*
Esophagus	7.4	-1.4*	Myeloma	7.7	1.4*	Brain and ONS ^f	4.9	1.4*
Asian/Pacific Islander			American Indian/Alaska Native ^d			Hispanic ^e		
	Rate ^b	APC ^c		Rate ^b	APC ^c		Rate ^b	APC ^c
	2009-2013	2004-2013		2009-2013	2004-2013		2009-2013	2004-2013
All Sites	317.3	-2.3*	All Sites	338.5	-1.6*	All Sites	382.9	-2.4*
Prostate	68.9	-5.7*	Prostate	63.9	-5.4*	Prostate	106.9	-5.0*
Lung and Bronchus	47.9	-2.1*	Lung and Bronchus	48.6	-2.1	Colon and Rectum	41.3	-3.0*
Colon and Rectum	41.2	-2.1*	Colon and Rectum	46.2	-0.1	Lung and Bronchus	36.6	-3.4*
Liver & IBD ^f	20.8	-1.7*	Kidney and Renal Pelvis	25.1	1.3	Non-Hodgkin Lymphoma	20.7	0.0
Non-Hodgkin Lymphoma	16.5	-0.1	Liver & IBD ^f	18.5	-0.4	Kidney and Renal Pelvis	20.1	0.1
Urinary Bladder	15.5	-1.8*	Non-Hodgkin Lymphoma	14.6	-0.6	Liver & IBD ^f	19.5	1.9*
Stomach	14.3	-4.0*	Urinary Bladder	14.4	-2.0	Urinary Bladder	19.4	-2.2*
Kidney and Renal Pelvis	11.7	2.0*	Stomach	13.5	-2.0	Stomach	13.5	-3.2*
Oral Cavity and Pharynx	11.1	0.5	Oral Cavity and Pharynx	13.2	4.6	Leukemia	12.8	0.2
Pancreas	11.0	0.3	Pancreas	10.9	-	Pancreas	11.8	-0.6
Leukemia	9.6	0.0	Leukemia	9.7	0.1	Oral Cavity and Pharynx	10.0	0.2
Thyroid	6.5	5.8*	Myeloma	5.2	-	Myeloma	7.5	0.9
Myeloma	4.7	0.7	Esophagus	5.0	-	Brain and ONS ^f	5.7	-1.7*
Brain and ONS ^f	4.3	0.8	Testis	4.9	-	Thyroid	5.0	3.9*
Esophagus	3.4	-4.8*	Melanoma of the Skin	4.2	-	Testis	5.0	2.3*

Source: SEER 18 areas (San Francisco, Connecticut, Detroit, Hawaii, Iowa, New Mexico, Seattle, Utah, Atlanta, San Jose-Monterey, Los Angeles, Alaska Native Registry, Rural Georgia, California excluding SF/SJM/LA, Kentucky, Louisiana, New Jersey and Georgia excluding ATL/RG).

^a Top 15 cancer sites selected based on 2009-2013 age-adjusted rates for the race/ethnic group.

^b Rates are per 100,000 and age-adjusted to the 2000 US Std Population (19 age groups - Census P25-1130).

^c The APC is the Annual Percent Change over the time interval.

Trends are based on rates age-adjusted to the 2000 US Std Population (19 age groups - Census P25-1130).

^d Rates for American Indian/Alaska Native are based on the CHSDA (Contract Health Service Delivery Area) counties.

^e Hispanic is not mutually exclusive from whites, blacks, Asian/Pacific Islanders, and American Indians/Alaska Natives.

Incidence data for Hispanics are based on NHIA and exclude cases from the Alaska Native Registry.

^f IBD = Intrahepatic Bile Duct. ONS = Other Nervous System.

* The APC is significantly different from zero (p<.05).

- Statistic not shown. Rate based on less than 16 cases for the time interval. Trend based on less than 10 cases for at least one year within the time interval.

Table 1.26
Age-Adjusted SEER Incidence Rates and Trends for the Top 15 Cancer Sites^a by Race/Ethnicity

Females

All Races	Rate ^b		APC ^c	All Sites	Rate ^b		APC ^c	All Sites	Rate ^b		APC ^c
	2009-2013	2004-2013			2009-2013	2004-2013			2009-2013	2004-2013	
All Sites	409.9	-0.2		All Sites	422.5	-0.2		All Sites	400.5	-0.3	
Breast	125.0	0.2		Breast	128.0	0.1		Breast	125.2	0.6*	
Lung and Bronchus	49.4	-1.5*		Lung and Bronchus	51.8	-1.4*		Lung and Bronchus	50.0	-1.5*	
Colon and Rectum	36.0	-2.7*		Colon and Rectum	35.2	-2.7*		Colon and Rectum	44.8	-3.0*	
Corpus and Uterus, NOS	25.4	1.4*		Corpus and Uterus, NOS	26.0	1.1*		Corpus and Uterus, NOS	24.6	2.9*	
Thyroid	20.6	4.8*		Thyroid	21.9	4.8*		Pancreas	14.2	-0.8	
Melanoma of the Skin	16.9	0.4		Melanoma of the Skin	20.4	0.4		Kidney and Renal Pelvis	12.8	2.0*	
Non-Hodgkin Lymphoma	16.1	-0.7*		Non-Hodgkin Lymphoma	16.9	-0.8*		Thyroid	12.4	5.0*	
Ovary ^g	11.9	-1.7*		Ovary ^g	12.5	-1.8*		Non-Hodgkin Lymphoma	12.2	-0.3	
Pancreas	11.0	0.5*		Leukemia	11.1	0.4		Myeloma	11.5	1.2	
Kidney and Renal Pelvis	10.7	0.9		Kidney and Renal Pelvis	11.1	0.9		Ovary ^g	9.6	-1.1*	
Leukemia	10.5	0.4		Pancreas	10.9	0.7*		Cervix Uteri	8.9	-2.5*	
Urinary Bladder	8.6	-1.6*		Urinary Bladder	9.2	-1.5*		Leukemia	8.7	0.4	
Cervix Uteri	7.5	-1.7*		Cervix Uteri	7.5	-1.5*		Stomach	8.1	-1.7	
Oral Cavity and Pharynx	6.2	0.0		Oral Cavity and Pharynx	6.4	0.4		Urinary Bladder	6.9	-1.9*	
Brain and ONS ^f	5.4	-0.5		Brain and ONS ^f	6.0	-0.4		Oral Cavity and Pharynx	5.2	-2.1*	
Asian/Pacific Islander				American Indian/Alaska Native ^d				Hispanic ^e			
	Rate ^b	APC ^c		Rate ^b	APC ^c		Rate ^b	APC ^c		Rate ^b	APC ^c
	2009-2013	2004-2013		2009-2013	2004-2013		2009-2013	2004-2013		2009-2013	2004-2013
All Sites	296.7	-0.1		All Sites	310.7	-0.9*		All Sites	321.9	-0.2	
Breast	97.3	0.9*		Breast	81.2	-0.5		Breast	92.4	0.3	
Colon and Rectum	29.8	-3.1*		Colon and Rectum	36.8	-2.3*		Colon and Rectum	29.4	-2.2*	
Lung and Bronchus	28.5	-0.6		Lung and Bronchus	32.0	-5.1*		Lung and Bronchus	24.8	-1.3*	
Corpus and Uterus, NOS	20.3	2.3*		Corpus and Uterus, NOS	21.3	3.4		Corpus and Uterus, NOS	21.4	2.5*	
Thyroid	19.9	4.2*		Thyroid	13.6	7.0*		Thyroid	18.6	4.6*	
Non-Hodgkin Lymphoma	11.1	-0.2		Kidney and Renal Pelvis	13.3	-3.3		Non-Hodgkin Lymphoma	15.3	-0.7	
Ovary ^g	9.3	-0.7		Non-Hodgkin Lymphoma	11.6	-0.3		Kidney and Renal Pelvis	11.5	1.6*	
Pancreas	9.3	0.8		Ovary ^g	10.4	-1.9		Ovary ^g	10.6	-1.7*	
Stomach	8.5	-3.2*		Pancreas	8.6	-4.0		Pancreas	10.4	0.0	
Liver & IBD ^f	7.6	-2.5*		Liver & IBD ^f	8.1	0.1		Cervix Uteri	9.4	-4.5*	
Leukemia	6.2	-0.2		Stomach	8.0	0.5		Leukemia	8.8	0.2	
Cervix Uteri	6.2	-3.1*		Cervix Uteri	7.7	-0.8		Stomach	8.5	-1.0	
Kidney and Renal Pelvis	5.4	0.4		Leukemia	7.2	0.9		Liver & IBD ^f	7.4	2.3*	
Oral Cavity and Pharynx	4.9	-1.7		Oral Cavity and Pharynx	5.7	-		Urinary Bladder	5.0	-1.6*	
Urinary Bladder	3.9	-1.3		Myeloma	4.8	-		Myeloma	4.9	-0.5	

Source: SEER 18 areas (San Francisco, Connecticut, Detroit, Hawaii, Iowa, New Mexico, Seattle, Utah, Atlanta, San Jose-Monterey, Los Angeles, Alaska Native Registry, Rural Georgia, California excluding SF/SJM/LA, Kentucky, Louisiana, New Jersey and Georgia excluding ATL/RG).

^a Top 15 cancer sites selected based on 2009-2013 age-adjusted rates for the race/ethnic group.

^b Rates are per 100,000 and age-adjusted to the 2000 US Std Population (19 age groups - Census P25-1130).

^c The APC is the Annual Percent Change over the time interval.

Trends are based on rates age-adjusted to the 2000 US Std Population (19 age groups - Census P25-1130).

^d Rates for American Indian/Alaska Native are based on the CHSDA(Contract Health Service Delivery Area) counties.

^e Hispanic is not mutually exclusive from whites, blacks, Asian/Pacific Islanders, and American Indians/Alaska Natives.

Incidence data for Hispanics are based on NHIA and exclude cases from the Alaska Native Registry.

^f IBD = Intrahepatic Bile Duct. ONS = Other Nervous System.

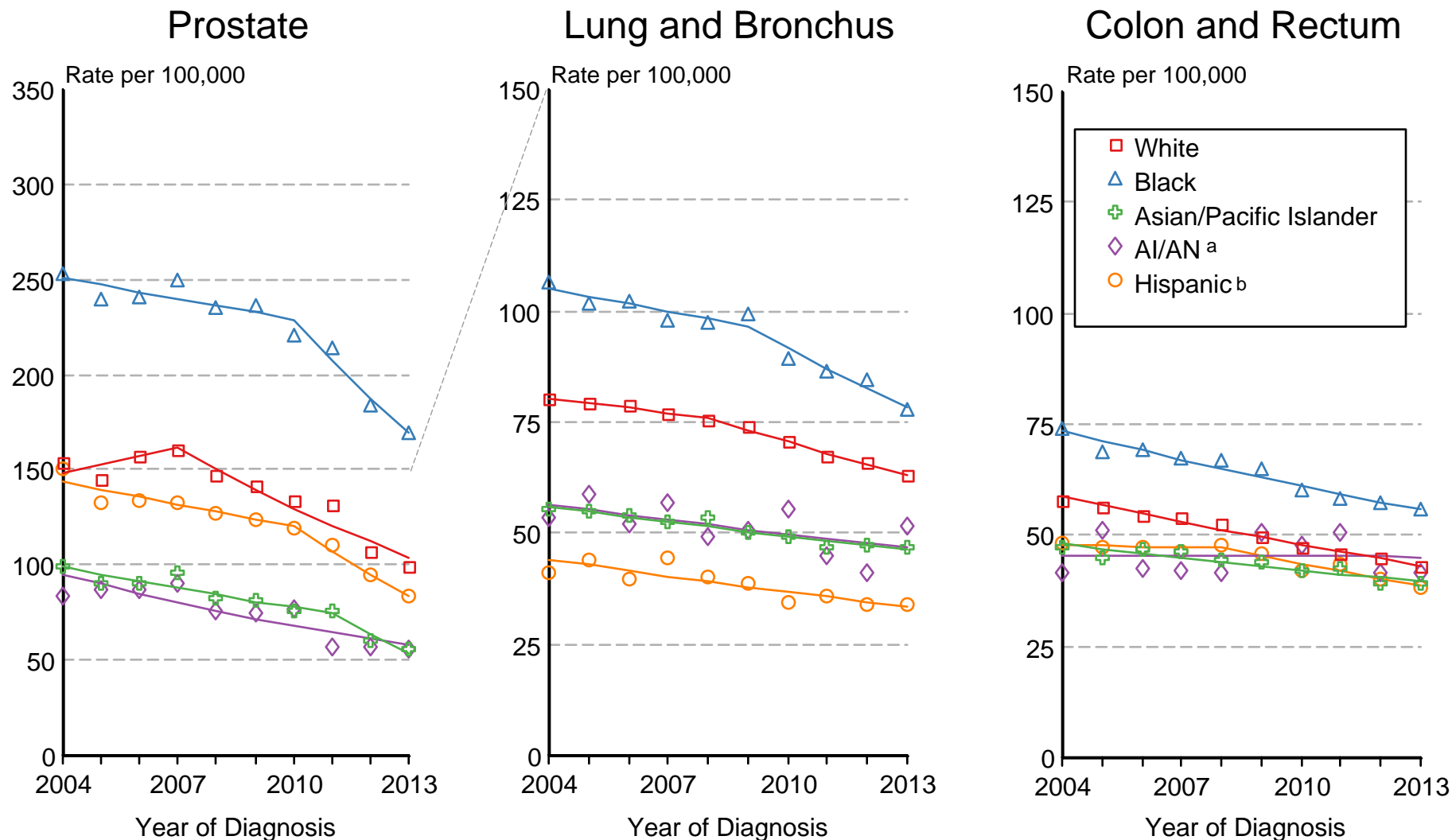
^g Ovary excludes borderline cases or histologies 8442, 8451, 8462, 8472, and 8473.

* The APC is significantly different from zero (p<.05).

- Statistic not shown. Rate based on less than 16 cases for the time interval. Trend based on less than 10 cases for at least one year within the time interval.

Figure 1.13

SEER Incidence 2004-2013 Males by Race/Ethnicity



Source: SEER 18 areas (San Francisco, Connecticut, Detroit, Hawaii, Iowa, New Mexico, Seattle, Utah, Atlanta, San Jose-Monterey, Los Angeles, Alaska Native Registry, Rural Georgia, California excluding SF/SJM/LA, Kentucky, Louisiana, New Jersey and Georgia excluding ATL/RG).

Rates are age-adjusted to the 2000 US Std Population (19 age groups - Census P25-1103).

Regression lines are calculated using the Joinpoint Regression Program Version 4.3.0.0, April 2016, National Cancer Institute.

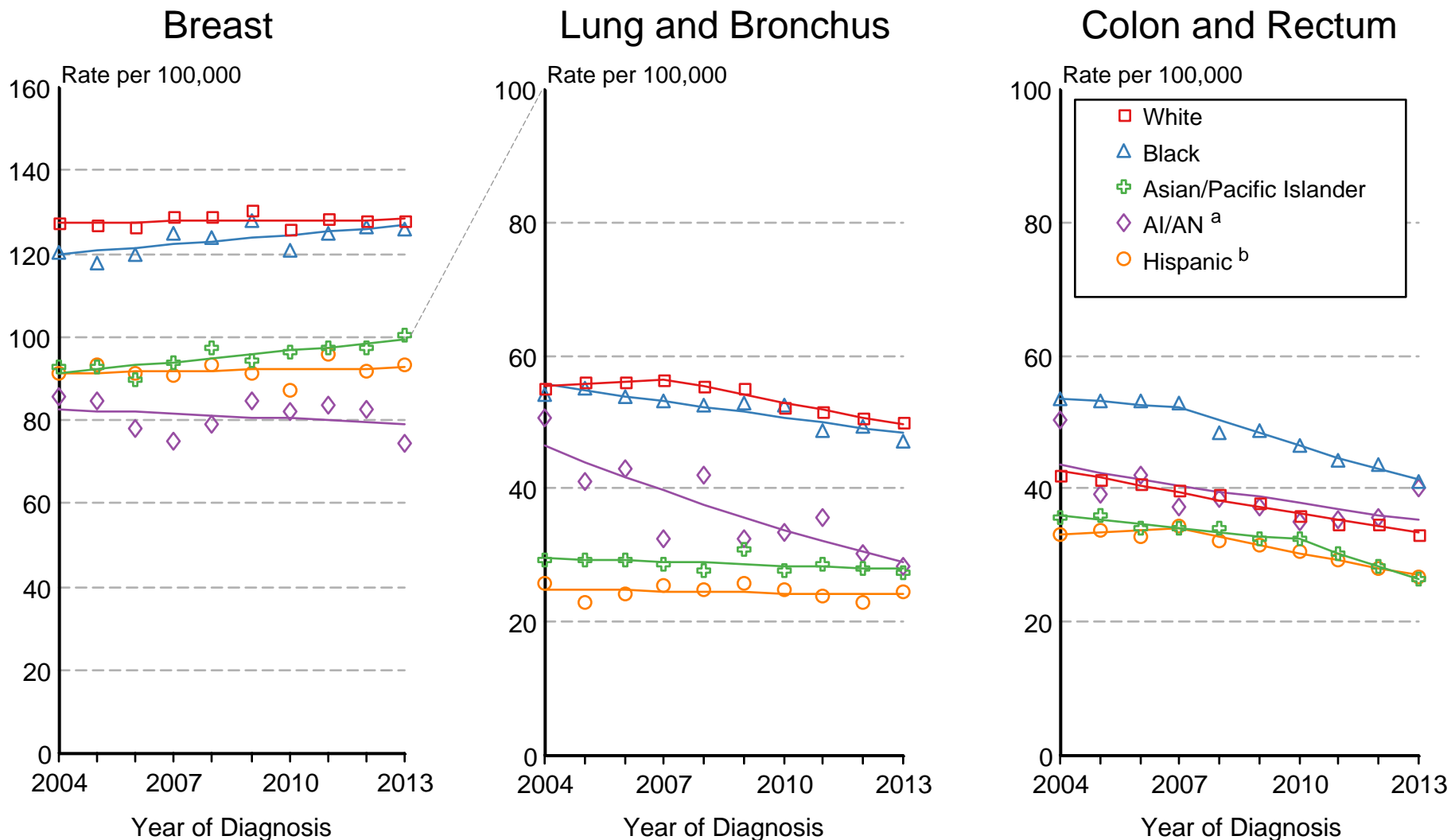
^a Incidence rates for American Indian/Alaska Native (AI/AN) are based on the CHSDA (Contract Health Service Delivery Area) counties.

^b Hispanic is not mutually exclusive from whites, blacks, Asian/Pacific Islanders, and American Indians/Alaska Natives.

Incidence data for Hispanics are based on NHIA and exclude cases from the Alaska Native Registry.

Figure 1.14

SEER Incidence 2004-2013 Females by Race/Ethnicity



Source: SEER 18 areas (San Francisco, Connecticut, Detroit, Hawaii, Iowa, New Mexico, Seattle, Utah, Atlanta, San Jose-Monterey, Los Angeles, Alaska Native Registry, Rural Georgia, California excluding SF/SJM/LA, Kentucky, Louisiana, New Jersey and Georgia excluding ATL/RG). Rates are age-adjusted to the 2000 US Std Population (19 age groups - Census P25-1103).

Regression lines are calculated using the Joinpoint Regression Program Version 4.3.0.0, April 2016, National Cancer Institute.

^a Incidence rates for American Indian/Alaska Native (AI/AN) are based on the CHSDA (Contract Health Service Delivery Area) counties.

^b Hispanic is not mutually exclusive from whites, blacks, Asian/Pacific Islanders, and American Indians/Alaska Natives.

Incidence data for Hispanics are based on NHIA and exclude cases from the Alaska Native Registry.