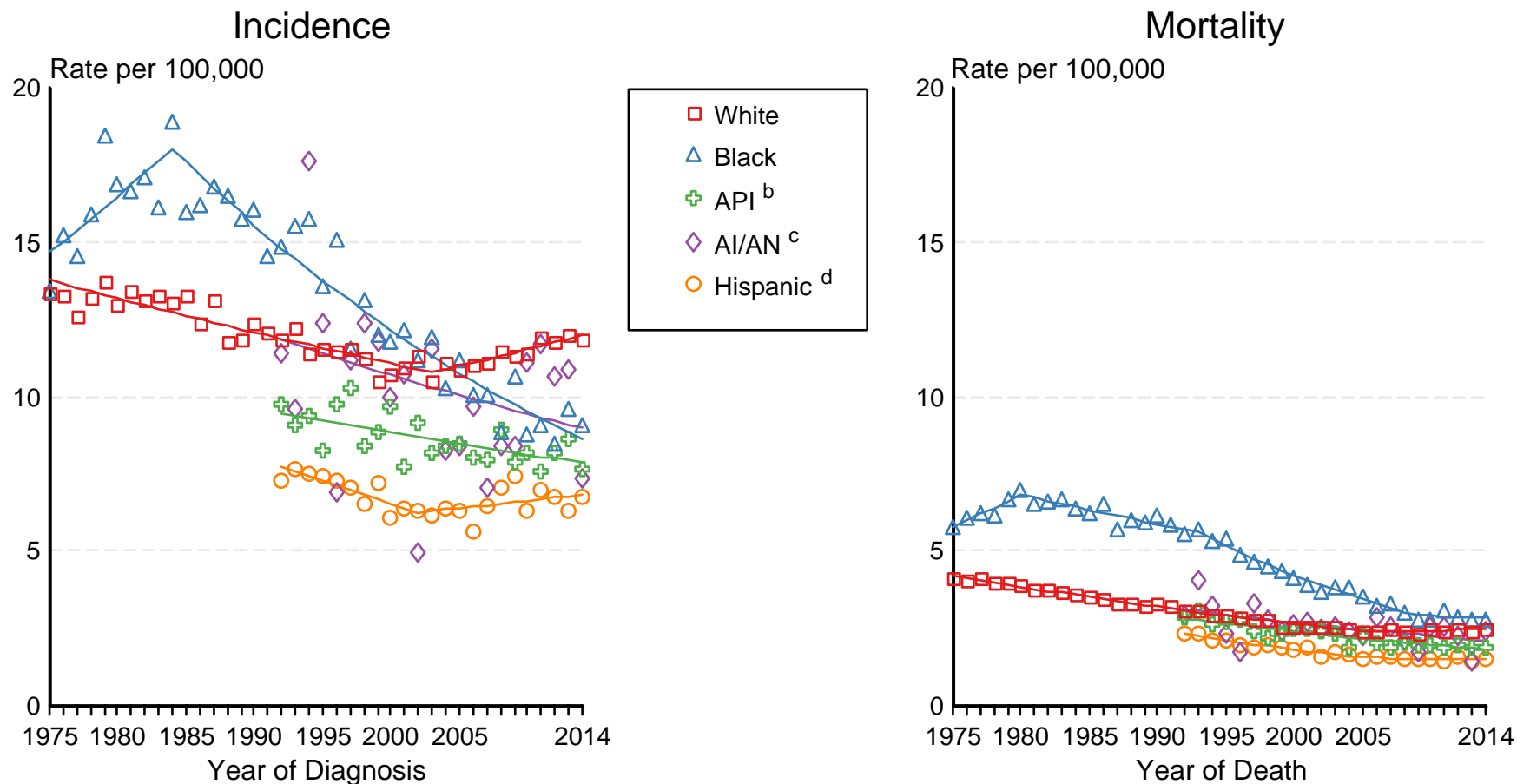


Figure 20.2

SEER Incidence and US Death Rates^a Cancer of the Oral Cavity and Pharynx, Both Sexes

Joinpoint Analyses for Whites and Blacks from 1975-2014
and for Asian/Pacific Islanders, American Indians/Alaska Natives and Hispanics from 1992-2014

and for Asian/Pacific Islanders, American Indians/Alaska Natives and Hispanics from 1992-2014



Source: Incidence data for whites and blacks are from the SEER 9 areas (San Francisco, Connecticut, Detroit, Hawaii, Iowa, New Mexico, Seattle, Utah, Atlanta). Incidence data for Asian/Pacific Islanders, American Indians/Alaska Natives and Hispanics are from the SEER 13 Areas (SEER 9 Areas, San Jose-Monterey, Los Angeles, Alaska Native Registry and Rural Georgia). Mortality data are from US Mortality Files, National Center for Health Statistics, CDC.

^a Rates are age-adjusted to the 2000 US Std Population (19 age groups - Census P25-1103).

Regression lines are calculated using the Joinpoint Regression Program Version 4.4, January 2017, National Cancer Institute. Joinpoint analyses for Whites and Blacks during the 1975-2014 period allow a maximum of 5 joinpoints. Analyses for other ethnic groups during the period 1992-2014 allow a maximum of 4 joinpoints.

^b API = Asian/Pacific Islander.

^c AI/AN = American Indian/Alaska Native. Rates for American Indian/Alaska Native are based on the CHSDA(Contract Health Service Delivery Area) counties.

^d Hispanic is not mutually exclusive from whites, blacks, Asian/Pacific Islanders, and American Indians/Alaska Natives. Incidence data for Hispanics are based on NHIA and exclude cases from the Alaska Native Registry. Mortality data for Hispanics exclude cases from New Hampshire and Oklahoma.