

Table 6.1
Cancer of the Colon and Rectum (Invasive)

Trends in SEER Incidence^{ab} and U.S. Mortality^c Using the Joinpoint Regression Program,
1975-2014 With up to Five Joinpoints, 1992-2014 With up to Four Joinpoints,
Both Sexes by Race/Ethnicity

	JP Trend 1		JP Trend 2		JP Trend 3		JP Trend 4		JP Trend 5		JP Trend 6		AAPC ^d	
	Years	APC	Years	APC	Years	APC	Years	APC	Years	APC	Years	APC	2005-14	2010-14
<u>SEER 9 Delay-Adjusted Incidence^a, 1975-2014</u>														
All Races	1975-85	0.8*	1985-95	-1.8*	1995-98	1.5	1998-08	-2.3*	2008-12	-4.0*	2012-14	0.4	-2.5*	-1.9*
White	1975-85	0.8*	1985-95	-2.0*	1995-98	1.6	1998-08	-2.5*	2008-11	-4.8*	2011-14	-0.6	-2.6*	-1.6*
Black	1975-80	3.3*	1980-04	-0.2	2004-14	-3.3*							-3.3*	-3.3*
<u>SEER 13 Delay-Adjusted Incidence^b, 1992-2014</u>														
All Races	1992-95	-2.1*	1995-98	1.6	1998-08	-2.2*	2008-12	-4.0*	2012-14	-0.4			-2.6*	-2.2*
White	1992-95	-2.2*	1995-98	1.7	1998-08	-2.4*	2008-12	-4.2*	2012-14	0.4			-2.6*	-1.9*
Black	1992-04	-0.1	2004-14	-3.3*									-3.3*	-3.3*
<u>SEER 9 Observed Incidence^a, 1975-2014</u>														
All Races	1975-85	0.8*	1985-95	-1.8*	1995-98	1.5	1998-08	-2.3*	2008-11	-4.6*	2011-14	-1.3	-2.7*	-2.1*
White	1975-85	0.8*	1985-95	-2.0*	1995-98	1.6	1998-08	-2.5*	2008-11	-4.9*	2011-14	-1.0	-2.8*	-2.0*
Black	1975-80	3.3*	1980-04	-0.2	2004-14	-3.5*							-3.5*	-3.5*
<u>SEER 13 Observed Incidence^b, 1992-2014</u>														
All Races	1992-95	-2.1*	1995-98	1.6	1998-08	-2.2*	2008-12	-4.1*	2012-14	-0.9			-2.8*	-2.5*
White	1992-95	-2.2*	1995-98	1.7	1998-08	-2.4*	2008-12	-4.3*	2012-14	-0.2			-2.8*	-2.3*
White NH ^{ef}	1992-95	-2.2*	1995-98	1.8	1998-08	-2.5*	2008-12	-4.3*	2012-14	0.3			-2.7*	-2.0*
Black	1992-03	-0.1	2003-08	-2.2*	2008-14	-4.6*							-3.8*	-4.6*
Black NH ^{ef}	1992-03	-0.1	2003-09	-2.3*	2009-14	-4.8*							-3.7*	-4.8*
API ^e	1992-02	-0.3	2002-14	-2.6*									-2.6*	-2.6*
AI/AN ^{eg}	1992-14	-0.2											-0.2	-0.2
Hispanic ^f	1992-07	0.0	2007-14	-3.1*									-2.4*	-3.1*
<u>U.S. Cancer Mortality^c, 1975-2014</u>														
All Races	1975-84	-0.5*	1984-02	-1.8*	2002-05	-3.8*	2005-14	-2.5*					-2.5*	-2.5*
White	1975-84	-0.7*	1984-02	-1.9*	2002-05	-3.9*	2005-14	-2.4*					-2.4*	-2.4*
Black	1975-90	0.7*	1990-02	-0.9*	2002-14	-3.1*							-3.1*	-3.1*
<u>U.S. Cancer Mortality^c, 1992-2014</u>														
All Races	1992-02	-1.8*	2002-05	-3.8*	2005-14	-2.5*							-2.5*	-2.5*
White	1992-02	-1.9*	2002-05	-3.9*	2005-14	-2.4*							-2.4*	-2.4*
White NH ^{ef}	1992-02	-1.8*	2002-05	-4.0*	2005-14	-2.4*							-2.4*	-2.4*
Black	1992-01	-0.6*	2001-14	-3.0*									-3.0*	-3.0*
Black NH ^{ef}	1992-01	-0.5*	2001-14	-2.9*									-2.9*	-2.9*
API ^e	1992-14	-1.9*											-1.9*	-1.9*
AI/AN ^{eg}	1992-96	8.6	1996-14	-0.7									-0.7	-0.7
Hispanic ^f	1992-01	0.3	2001-14	-1.8*									-1.8*	-1.8*

Joinpoint Regression Program Version 4.4, January 2017, National Cancer Institute. (<https://surveillance.cancer.gov/joinpoint/>).

The APC is the Annual Percent Change based on rates age-adjusted to the 2000 US Std Population (19 age groups - Census P25-1130).

Trends are from the SEER 9 areas (San Francisco, Connecticut, Detroit, Hawaii, Iowa, New Mexico, Seattle, Utah, and Atlanta).

Trends are from the SEER 13 areas (SEER 9 Areas, Los Angeles, San Jose-Monterey, Rural Georgia, and the Alaska Native Registry).

Trends are from US Mortality Files, National Center for Health Statistics, Centers for Disease Control and Prevention.

The AAPC is the Average Annual Percent Change and is based on the APCs calculated by Joinpoint.

API - Asian/Pacific Islander, AI/AN - American Indian/Alaska Native, NH - Non-Hispanic

Hispanic and Non-Hispanic are not mutually exclusive from whites, blacks, Asian/Pacific Islanders, and American Indians/Alaska

Natives. Incidence data for Hispanics and Non-Hispanics are based on NHIA and exclude cases from the Alaska Native Registry.

The Hispanic and Non-Hispanic mortality trends exclude deaths from New Hampshire and Oklahoma.

Data for American Indian/Alaska Native are based on the CHSDA (Contract Health Service Delivery Area) counties.

* The APC/AAPC is significantly different from zero ($p < .05$).

- Joinpoint regression line analysis could not be performed on data series.

Table 6.2
Cancer of the Colon and Rectum (Invasive)

Trends in SEER Incidence^{ab} and U.S. Mortality^c Using the Joinpoint Regression Program,
1975-2014 With up to Five Joinpoints, 1992-2014 With up to Four Joinpoints,
Males by Race/Ethnicity

	JP Trend 1		JP Trend 2		JP Trend 3		JP Trend 4		JP Trend 5		JP Trend 6		AAPC ^d	
	Years	APC	Years	APC	Years	APC	Years	APC	Years	APC	Years	APC	2005-14	2010-14
<u>SEER 9 Delay-Adjusted Incidence^a, 1975-2014</u>														
All Races	1975-85	1.1*	1985-91	-1.2*	1991-95	-3.2*	1995-98	2.1	1998-14	-2.9*			-2.9*	-2.9*
White	1975-86	1.1*	1986-95	-2.3*	1995-98	1.3	1998-07	-2.9*	2007-12	-4.1*	2012-14	0.2	-2.9*	-2.0*
Black	1975-80	4.6	1980-03	0.0	2003-14	-3.1*							-3.1*	-3.1*
<u>SEER 13 Delay-Adjusted Incidence^b, 1992-2014</u>														
All Races	1992-95	-2.6*	1995-98	1.4	1998-08	-2.5*	2008-12	-3.9*	2012-14	-0.8			-2.8*	-2.4*
White	1992-95	-2.8*	1995-98	1.4	1998-08	-2.7*	2008-12	-4.3*	2012-14	-0.3			-2.9*	-2.3*
Black	1992-04	-0.2	2004-14	-3.3*									-3.3*	-3.3*
<u>SEER 9 Observed Incidence^a, 1975-2014</u>														
All Races	1975-85	1.1*	1985-91	-1.2*	1991-95	-3.2*	1995-98	2.2	1998-14	-3.0*			-3.0*	-3.0*
White	1975-86	1.1*	1986-95	-2.3*	1995-98	1.3	1998-07	-2.9*	2007-12	-4.2*	2012-14	-0.5	-3.1*	-2.4*
Black	1975-80	4.6	1980-03	0.0	2003-14	-3.3*							-3.3*	-3.3*
<u>SEER 13 Observed Incidence^b, 1992-2014</u>														
All Races	1992-95	-2.6*	1995-98	1.4	1998-08	-2.5*	2008-12	-4.0*	2012-14	-1.4			-2.9*	-2.7*
White	1992-95	-2.8*	1995-98	1.5	1998-08	-2.7*	2008-12	-4.4*	2012-14	-0.9			-3.1*	-2.7*
White NH ^{ef}	1992-95	-2.9*	1995-98	1.5	1998-08	-2.9*	2008-12	-4.5*	2012-14	-0.2			-3.0*	-2.4*
Black	1992-04	-0.2	2004-14	-3.6*									-3.6*	-3.6*
Black NH ^{ef}	1992-04	-0.2	2004-14	-3.5*									-3.5*	-3.5*
API ^e	1992-01	-0.4	2001-14	-2.4*									-2.4*	-2.4*
AI/AN ^{eg}	1992-14	-0.2											-0.2	-0.2
Hispanic ^f	1992-98	1.4	1998-09	-0.9*	2009-14	-4.0*							-2.6*	-4.0*
<u>U.S. Cancer Mortality^c, 1975-2014</u>														
All Races	1975-78	0.8	1978-85	-0.4*	1985-90	-1.4*	1990-02	-2.0*	2002-05	-4.0*	2005-14	-2.5*	-2.5*	-2.5*
White	1975-79	0.6	1979-87	-0.8*	1987-02	-2.1*	2002-05	-4.2*	2005-14	-2.5*			-2.5*	-2.5*
Black	1975-90	1.2*	1990-02	-0.7*	2002-14	-2.8*							-2.8*	-2.8*
<u>U.S. Cancer Mortality^c, 1992-2014</u>														
All Races	1992-02	-2.0*	2002-05	-4.0*	2005-14	-2.5*							-2.5*	-2.5*
White	1992-02	-2.1*	2002-05	-4.1*	2005-14	-2.5*							-2.5*	-2.5*
White NH ^{ef}	1992-02	-2.1*	2002-05	-4.2*	2005-14	-2.5*							-2.5*	-2.5*
Black	1992-02	-0.7*	2002-14	-2.8*									-2.8*	-2.8*
Black NH ^{ef}	1992-02	-0.7*	2002-14	-2.7*									-2.7*	-2.7*
API ^e	1992-14	-1.9*											-1.9*	-1.9*
AI/AN ^{eg}	1992-96	14.5	1996-14	-0.8									-0.8	-0.8
Hispanic ^f	1992-98	0.8	1998-14	-1.5*									-1.5*	-1.5*

Joinpoint Regression Program Version 4.4, January 2017, National Cancer Institute. (<https://surveillance.cancer.gov/joinpoint/>).

The APC is the Annual Percent Change based on rates age-adjusted to the 2000 US Std Population (19 age groups - Census P25-1130).

Trends are from the SEER 9 areas (San Francisco, Connecticut, Detroit, Hawaii, Iowa, New Mexico, Seattle, Utah, and Atlanta).

Trends are from the SEER 13 areas (SEER 9 Areas, Los Angeles, San Jose-Monterey, Rural Georgia, and the Alaska Native Registry).

Trends are from US Mortality Files, National Center for Health Statistics, Centers for Disease Control and Prevention.

The AAPC is the Average Annual Percent Change and is based on the APCs calculated by Joinpoint.

API - Asian/Pacific Islander, AI/AN - American Indian/Alaska Native, NH - Non-Hispanic

Hispanic and Non-Hispanic are not mutually exclusive from whites, blacks, Asian/Pacific Islanders, and American Indians/Alaska

Natives. Incidence data for Hispanics and Non-Hispanics are based on NHIA and exclude cases from the Alaska Native Registry.

The Hispanic and Non-Hispanic mortality trends exclude deaths from New Hampshire and Oklahoma.

Data for American Indian/Alaska Native are based on the CHSDA (Contract Health Service Delivery Area) counties.

* The APC/AAPC is significantly different from zero ($p < .05$).

- Joinpoint regression line analysis could not be performed on data series.

Table 6.3
Cancer of the Colon and Rectum (Invasive)

Trends in SEER Incidence^{ab} and U.S. Mortality^c Using the Joinpoint Regression Program,
1975-2014 With up to Five Joinpoints, 1992-2014 With up to Four Joinpoints,
Females by Race/Ethnicity

	JP Trend 1		JP Trend 2		JP Trend 3		JP Trend 4		JP Trend 5		JP Trend 6		AAPC ^d	
	Years	APC	Years	APC	Years	APC	Years	APC	Years	APC	Years	APC	2005-14	2010-14
<u>SEER 9 Delay-Adjusted Incidence^a, 1975-2014</u>														
All Races	1975-85	0.3	1985-95	-1.9*	1995-98	1.8	1998-08	-2.0*	2008-12	-4.1*	2012-14	0.4	-2.4*	-1.9
White	1975-85	0.3	1985-95	-2.1*	1995-98	2.0	1998-08	-2.2*	2008-11	-4.7*	2011-14	-0.1	-2.3*	-1.3
Black	1975-05	-0.1	2005-14	-4.1*									-4.1*	-4.1*
<u>SEER 13 Delay-Adjusted Incidence^b, 1992-2014</u>														
All Races	1992-95	-1.8*	1995-98	1.8	1998-08	-1.9*	2008-12	-4.1*	2012-14	-0.1			-2.5*	-2.1*
White	1992-95	-1.7	1995-98	1.8	1998-08	-2.1*	2008-12	-4.1*	2012-14	1.1			-2.3*	-1.5
Black	1992-06	-0.3	2006-14	-4.3*									-3.8*	-4.3*
<u>SEER 9 Observed Incidence^a, 1975-2014</u>														
All Races	1975-85	0.3	1985-95	-1.9*	1995-98	1.8	1998-08	-2.0*	2008-11	-4.7*	2011-14	-1.3	-2.7*	-2.1*
White	1975-85	0.3	1985-95	-2.1*	1995-98	2.0	1998-08	-2.2*	2008-11	-4.8*	2011-14	-0.6	-2.5*	-1.6
Black	1975-05	-0.1	2005-14	-4.3*									-4.3*	-4.3*
<u>SEER 13 Observed Incidence^b, 1992-2014</u>														
All Races	1992-95	-1.8*	1995-98	1.8	1998-08	-2.0*	2008-12	-4.2*	2012-14	-0.6			-2.7*	-2.4*
White	1992-95	-1.7	1995-98	1.8	1998-08	-2.1*	2008-12	-4.2*	2012-14	0.5			-2.5*	-1.9
White NH ^{ef}	1992-95	-1.7	1995-98	1.9	1998-08	-2.2*	2008-11	-4.7	2011-14	-0.7			-2.5*	-1.7
Black	1992-06	-0.3	2006-14	-4.6*									-4.1*	-4.6*
Black NH ^{ef}	1992-06	-0.2	2006-14	-4.6*									-4.1*	-4.6*
API ^e	1992-09	-0.9*	2009-14	-5.3*									-3.4*	-5.3*
AI/AN ^{eg}	1992-14	-0.3											-0.3	-0.3
Hispanic ^f	1992-07	0.0	2007-14	-2.8*									-2.2*	-2.8*
<u>U.S. Cancer Mortality^c, 1975-2014</u>														
All Races	1975-84	-1.0*	1984-01	-1.8*	2001-14	-2.8*							-2.8*	-2.8*
White	1975-84	-1.2*	1984-01	-2.0*	2001-10	-2.9*	2010-14	-1.9*					-2.5*	-1.9*
Black	1975-85	0.7*	1985-01	-0.7*	2001-14	-3.4*							-3.4*	-3.4*
<u>U.S. Cancer Mortality^c, 1992-2014</u>														
All Races	1992-00	-1.7*	2000-14	-2.8*									-2.8*	-2.8*
White	1992-00	-1.8*	2000-14	-2.7*									-2.7*	-2.7*
White NH ^{ef}	1992-00	-1.8*	2000-14	-2.7*									-2.7*	-2.7*
Black	1992-01	-0.7*	2001-14	-3.4*									-3.4*	-3.4*
Black NH ^{ef}	1992-01	-0.6*	2001-14	-3.3*									-3.3*	-3.3*
API ^e	1992-12	-1.5*	2012-14	-8.3									-3.1*	-4.9*
AI/AN ^{eg}	1992-14	-0.3											-0.3	-0.3
Hispanic ^f	1992-02	0.4	2002-14	-2.3*									-2.3*	-2.3*

Joinpoint Regression Program Version 4.4, January 2017, National Cancer Institute. (<https://surveillance.cancer.gov/joinpoint/>).
^a The APC is the Annual Percent Change based on rates age-adjusted to the 2000 US Std Population (19 age groups - Census P25-1130).
^b Trends are from the SEER 9 areas (San Francisco, Connecticut, Detroit, Hawaii, Iowa, New Mexico, Seattle, Utah, and Atlanta).
^c Trends are from the SEER 13 areas (SEER 9 Areas, Los Angeles, San Jose-Monterey, Rural Georgia, and the Alaska Native Registry).
^d Trends are from US Mortality Files, National Center for Health Statistics, Centers for Disease Control and Prevention.
^e The AAPC is the Average Annual Percent Change and is based on the APCs calculated by Joinpoint.
^f API - Asian/Pacific Islander, AI/AN - American Indian/Alaska Native, NH - Non-Hispanic
^f Hispanic and Non-Hispanic are not mutually exclusive from whites, blacks, Asian/Pacific Islanders, and American Indians/Alaska Natives. Incidence data for Hispanics and Non-Hispanics are based on NHIA and exclude cases from the Alaska Native Registry.
^f The Hispanic and Non-Hispanic mortality trends exclude deaths from New Hampshire and Oklahoma.
^g Data for American Indian/Alaska Native are based on the CHSDA (Contract Health Service Delivery Area) counties.
* The APC/AAPC is significantly different from zero (p<.05).
- Joinpoint regression line analysis could not be performed on data series.

Table 6.4
Cancer of the Colon (Invasive) and Cancer of the Rectum (Invasive)

Trends in SEER 9 Observed Incidence^a Using the Joinpoint Regression Program,
1975-2014 With up to Five Joinpoints,
By Race and Sex

		JP Trend 1		JP Trend 2		JP Trend 3		JP Trend 4		JP Trend 5		JP Trend 6		AAPC ^d
		Years	APC	Years	APC	Years	APC	Years	APC	Years	APC	Years	APC	2010-14
<u>SEER 9 Observed Incidence^a for Cancer of the Colon, 1975-2014</u>														
All Races	Both Sexes	1975-85	1.1*	1985-95	-1.6*	1995-01	-0.2	2001-14	-3.2*					-3.2*
All Races	Male	1975-85	1.7*	1985-02	-1.4*	2002-14	-3.5*							-3.5*
All Races	Female	1975-85	0.6*	1985-94	-1.7*	1994-01	0.0	2001-14	-3.0*					-3.0*
White	Both Sexes	1975-85	1.1*	1985-95	-1.9*	1995-98	1.3	1998-08	-2.4*	2008-11	-5.5*	2011-14	-1.2	-2.3*
White	Male	1975-85	1.7*	1985-91	-1.4*	1991-95	-3.1*	1995-98	1.3	1998-04	-2.7*	2004-14	-3.7*	-3.7*
White	Female	1975-85	0.6*	1985-93	-2.1*	1993-01	-0.2	2001-14	-2.9*					-2.9*
Black	Both Sexes	1975-80	3.6*	1980-03	-0.1	2003-14	-3.6*							-3.6*
Black	Male	1975-87	1.8*	1987-03	-0.4	2003-14	-3.5*							-3.5*
Black	Female	1975-04	-0.1	2004-14	-4.2*									-4.2*
<u>SEER 9 Observed Incidence^a for Cancer of the Rectum, 1975-2014</u>														
All Races	Both Sexes	1975-87	-0.3	1987-95	-2.4*	1995-98	2.5	1998-14	-2.2*					-2.2*
All Races	Male	1975-89	-0.3	1989-94	-3.6*	1994-98	1.6	1998-14	-2.5*					-2.5*
All Races	Female	1975-84	-0.2	1984-95	-2.2*	1995-98	2.4	1998-14	-2.1*					-2.1*
White	Both Sexes	1975-85	-0.1	1985-95	-2.3*	1995-98	2.3	1998-14	-2.5*					-2.5*
White	Male	1975-89	-0.3	1989-94	-4.1*	1994-98	1.8	1998-14	-2.8*					-2.8*
White	Female	1975-84	-0.2	1984-95	-2.3*	1995-98	2.2	1998-14	-2.3*					-2.3*
Black	Both Sexes	1975-09	-0.1	2009-14	-5.9*									-5.9*
Black	Male	1975-08	0.0	2008-14	-4.2*									-4.2*
Black	Female	1975-09	-0.1	2009-14	-7.0*									-7.0*

Joinpoint Regression Program Version 4.4, January 2017, National Cancer Institute. (<https://surveillance.cancer.gov/joinpoint/>).
The APC is the Annual Percent Change based on rates age-adjusted to the 2000 US Std Population (19 age groups - Census P25-1130).
Trends are from the SEER 9 areas (San Francisco, Connecticut, Detroit, Hawaii, Iowa, New Mexico, Seattle, Utah, and Atlanta).
The AAPC is the Average Annual Percent Change and is based on the APCs calculated by Joinpoint.
* The APC/AAPC is significantly different from zero (p<.05).
- Joinpoint regression line analysis could not be performed on data series.

Table 6.5
Cancer of the Colon and Rectum (Invasive)

Delay-adjusted SEER Incidence^a Rates by Year, Race and Sex

Year of Diagnosis:	All Races			Whites			Blacks		
	Total	Males	Females	Total	Males	Females	Total	Males	Females
1975	59.54	68.45	53.66	60.19	69.76	54.05	56.85	59.33	54.66
1976	61.34	71.72	54.12	62.14	72.68	55.00	55.04	58.53	51.28
1977	62.39	73.46	54.95	63.18	74.29	55.75	60.69	75.66	51.47
1978	62.03	72.34	55.25	62.77	73.87	55.59	62.11	65.83	60.44
1979	62.37	74.11	54.57	62.94	75.19	54.92	58.57	61.79	56.16
1980	63.75	74.55	56.54	63.94	74.87	56.83	70.83	79.71	64.23
1981	64.24	75.80	56.49	64.86	76.65	57.14	62.83	72.89	55.97
1982	62.79	75.18	54.51	63.44	76.25	55.05	61.25	68.97	55.92
1983	63.66	75.55	55.61	64.24	76.50	56.04	66.79	75.80	61.13
1984	64.80	77.65	56.05	65.81	79.26	56.70	62.46	70.42	58.20
1985	66.30	79.19	57.31	67.18	80.20	58.33	64.06	74.39	56.39
1986	64.18	77.79	54.70	64.57	78.88	54.72	64.66	73.09	58.75
1987	62.72	77.49	52.68	62.90	78.21	52.63	66.28	77.63	59.01
1988	61.37	75.20	51.80	61.55	75.78	51.73	63.00	72.41	56.62
1989	61.70	74.98	52.42	61.94	75.42	52.66	64.52	79.41	54.76
1990	60.70	74.36	51.28	60.66	74.75	51.03	66.87	75.15	61.66
1991	59.48	72.91	50.04	59.28	73.11	49.64	65.65	76.42	58.16
1992	58.00	70.41	49.21	57.81	70.66	48.68	65.66	78.59	57.57
1993	56.79	68.43	48.30	56.31	68.06	47.79	64.49	78.12	55.25
1994	55.63	66.28	47.73	55.37	66.33	47.16	64.44	75.27	57.98
1995	54.05	63.84	46.93	53.70	63.40	46.61	62.04	71.49	55.98
1996	54.78	65.60	46.68	54.74	65.95	46.35	58.63	66.66	53.11
1997	56.40	68.09	47.92	56.36	67.88	47.99	64.58	77.55	56.17
1998	56.80	67.08	49.33	56.68	67.21	49.01	63.31	74.49	56.30
1999	55.48	65.76	47.84	55.28	65.85	47.18	63.21	71.89	58.15
2000	54.13	63.67	46.75	53.74	63.05	46.45	64.38	73.95	58.15
2001	53.60	63.07	46.20	52.97	62.61	45.33	64.35	75.05	57.51
2002	53.17	61.55	46.63	52.28	60.31	45.87	63.26	74.12	56.59
2003	50.81	59.49	43.93	50.21	58.54	43.46	62.64	75.54	54.68
2004	49.90	58.60	43.19	49.06	57.87	42.12	62.47	74.36	54.63
2005	47.82	55.26	41.90	47.38	55.06	41.14	58.32	64.99	54.68
2006	46.90	53.31	41.69	46.16	52.66	40.73	58.18	65.22	53.60
2007	46.45	53.38	40.77	45.58	52.26	40.03	57.79	65.66	52.18
2008	45.36	51.63	40.16	44.56	50.55	39.54	54.99	64.80	47.87
2009	43.39	49.08	38.72	42.12	47.63	37.47	54.02	61.15	49.59
2010	41.08	47.22	36.10	39.80	45.87	34.70	50.03	57.29	45.26
2011	39.82	45.60	35.07	38.74	43.91	34.39	48.46	56.29	43.00
2012	38.99	44.17	34.61	38.16	42.79	34.11	48.25	57.32	41.84
2013	37.80	43.58	32.94	36.67	41.44	32.62	47.36	58.80	39.26
2014	38.93	44.13	34.55	38.28	42.82	34.36	44.20	50.43	39.66

Additional information on the model used to delay-adjust SEER Incidence rates can be found at [\(https://surveillance.cancer.gov/delay/\)](https://surveillance.cancer.gov/delay/).

^a SEER 9 areas (San Francisco, Connecticut, Detroit, Hawaii, Iowa, New Mexico, Seattle, Utah, and Atlanta).
Rates are per 100,000 and are age-adjusted to the 2000 US Std Population (19 age groups - Census P25-1130).

- Delay-adjusted rate is not shown for observed rates based on less than 16 cases for the time interval.

Table 6.6
Cancer of the Colon and Rectum (Invasive)

Age-adjusted SEER Incidence^a Rates by Year, Race and Sex

Year of Diagnosis:	All Races			Whites			Blacks		
	Total	Males	Females	Total	Males	Females	Total	Males	Females
1975-2014	53.26	62.37	46.40	53.30	62.41	46.40	59.00	68.24	52.87
1975	59.54	68.45	53.66	60.19	69.76	54.05	56.85	59.33	54.66
1976	61.34	71.72	54.12	62.14	72.68	55.00	55.04	58.53	51.28
1977	62.39	73.46	54.95	63.18	74.29	55.75	60.69	75.66	51.47
1978	62.03	72.34	55.25	62.77	73.87	55.59	62.11	65.83	60.44
1979	62.37	74.11	54.57	62.94	75.19	54.92	58.57	61.79	56.16
1980	63.75	74.55	56.54	63.94	74.87	56.83	70.83	79.71	64.23
1981	64.24	75.80	56.49	64.86	76.65	57.14	62.83	72.89	55.97
1982	62.79	75.18	54.51	63.44	76.25	55.05	61.25	68.97	55.92
1983	63.66	75.55	55.61	64.24	76.50	56.04	66.79	75.80	61.13
1984	64.80	77.65	56.05	65.81	79.26	56.70	62.46	70.42	58.20
1985	66.30	79.19	57.31	67.18	80.20	58.33	64.06	74.39	56.39
1986	64.18	77.79	54.70	64.57	78.88	54.72	64.66	73.09	58.75
1987	62.72	77.49	52.68	62.90	78.21	52.63	66.28	77.63	59.01
1988	61.37	75.20	51.80	61.55	75.78	51.73	63.00	72.41	56.62
1989	61.70	74.98	52.42	61.94	75.42	52.66	64.52	79.41	54.76
1990	60.70	74.36	51.28	60.66	74.75	51.03	66.87	75.15	61.66
1991	59.48	72.91	50.04	59.28	73.11	49.64	65.65	76.42	58.16
1992	58.00	70.41	49.21	57.81	70.66	48.68	65.66	78.59	57.57
1993	56.79	68.43	48.30	56.31	68.06	47.79	64.49	78.12	55.25
1994	55.63	66.28	47.73	55.37	66.33	47.16	64.44	75.27	57.98
1995	54.05	63.84	46.93	53.70	63.40	46.61	62.04	71.49	55.98
1996	54.78	65.60	46.68	54.74	65.95	46.35	58.63	66.66	53.11
1997	56.40	68.09	47.92	56.36	67.88	47.99	64.58	77.55	56.17
1998	56.80	67.08	49.33	56.68	67.21	49.01	63.31	74.49	56.30
1999	55.48	65.76	47.84	55.28	65.85	47.18	63.21	71.89	58.15
2000	54.13	63.67	46.75	53.74	63.05	46.45	64.38	73.95	58.15
2001	53.60	63.07	46.20	52.97	62.61	45.33	64.35	75.05	57.51
2002	53.17	61.55	46.63	52.28	60.31	45.87	63.26	74.12	56.59
2003	50.81	59.49	43.93	50.21	58.54	43.46	62.64	75.54	54.68
2004	49.90	58.60	43.19	49.06	57.87	42.12	62.47	74.36	54.63
2005	47.82	55.26	41.90	47.38	55.06	41.14	58.32	64.99	54.68
2006	46.87	53.28	41.66	46.13	52.62	40.70	58.06	65.09	53.49
2007	46.39	53.32	40.72	45.51	52.18	39.97	57.55	65.39	51.98
2008	45.27	51.53	40.09	44.47	50.43	39.46	54.66	64.42	47.57
2009	43.28	48.96	38.62	41.99	47.49	37.36	53.59	60.63	49.20
2010	40.95	47.07	35.99	39.65	45.70	34.57	49.54	56.72	44.82
2011	39.66	45.42	34.94	38.57	43.71	34.24	47.90	55.63	42.50
2012	38.77	43.91	34.41	37.91	42.51	33.89	47.55	56.47	41.24
2013	37.45	43.18	32.65	36.29	41.01	32.29	46.44	57.68	38.47
2014	38.27	43.38	33.97	37.52	41.98	33.68	42.90	48.93	38.51

^a SEER 9 areas (San Francisco, Connecticut, Detroit, Hawaii, Iowa, New Mexico, Seattle, Utah, and Atlanta). Rates are per 100,000 and are age-adjusted to the 2000 US Std Population (19 age groups - Census P25-1130).
- Statistic not shown. Rate based on less than 16 cases for the time interval.

Table 6.7
Cancer of the Colon (Invasive)

Age-adjusted SEER Incidence^a Rates by Year, Race and Sex

Year of Diagnosis:	All Races			Whites			Blacks		
	Total	Males	Females	Total	Males	Females	Total	Males	Females
1975-2014	38.34	43.26	34.70	38.36	43.31	34.68	45.08	51.04	41.26
1975	41.35	45.40	38.91	41.73	46.13	39.15	42.83	44.14	41.64
1976	43.04	47.75	39.94	43.44	48.20	40.38	43.08	43.60	41.91
1977	43.95	49.51	40.35	44.64	50.04	41.16	45.39	58.33	37.66
1978	43.84	49.10	40.59	44.10	49.84	40.63	47.72	48.94	47.69
1979	43.77	50.21	39.60	44.10	51.03	39.69	44.68	45.73	43.84
1980	45.57	50.67	42.34	45.58	50.88	42.33	55.19	58.35	52.85
1981	45.47	51.32	41.73	45.88	51.91	42.13	46.85	50.60	44.36
1982	45.76	53.45	40.68	46.08	54.10	40.85	48.27	52.48	45.19
1983	46.10	53.00	41.63	46.39	53.43	41.86	50.26	58.65	45.25
1984	46.50	54.57	41.30	47.01	55.55	41.56	48.75	54.18	46.05
1985	47.87	55.06	42.93	48.38	55.61	43.60	50.01	57.49	44.33
1986	46.79	54.38	41.56	47.05	55.17	41.49	49.36	55.41	45.46
1987	45.25	54.43	39.18	45.16	54.51	39.10	51.42	59.99	45.73
1988	44.31	52.61	38.66	44.29	52.88	38.42	48.79	54.02	45.32
1989	44.38	52.45	38.96	44.47	52.49	39.18	49.00	60.41	41.70
1990	44.19	51.99	38.92	44.06	52.01	38.75	52.14	57.98	48.56
1991	43.59	51.84	37.90	43.29	51.85	37.39	51.74	57.75	47.67
1992	42.30	49.65	37.24	42.04	49.75	36.70	51.04	60.45	45.43
1993	41.60	48.95	36.32	41.06	48.61	35.67	51.16	60.58	45.02
1994	40.85	46.95	36.36	40.62	47.04	35.81	50.12	57.06	46.30
1995	39.67	45.08	35.86	39.31	44.67	35.48	48.88	55.18	45.36
1996	39.39	45.41	34.88	39.31	45.84	34.41	44.68	48.54	42.13
1997	41.09	48.37	35.97	41.09	48.24	36.12	49.27	59.13	42.65
1998	41.08	46.86	37.08	40.94	47.09	36.61	48.00	54.98	44.25
1999	39.82	45.50	35.67	39.59	45.47	35.11	48.57	54.88	45.02
2000	39.37	44.45	35.47	38.97	43.92	35.14	51.02	57.38	47.05
2001	39.25	44.15	35.51	38.83	43.87	34.90	49.14	56.17	44.74
2002	38.71	43.33	35.13	37.93	42.23	34.51	49.69	57.26	45.00
2003	36.97	41.47	33.38	36.57	40.68	33.17	47.88	57.10	42.33
2004	36.35	41.42	32.55	35.78	40.99	31.80	47.64	55.35	42.66
2005	34.48	38.03	31.70	34.23	38.04	31.14	44.55	49.03	42.45
2006	33.99	37.38	31.23	33.50	36.93	30.62	44.95	49.58	41.87
2007	33.10	36.23	30.59	32.73	35.84	30.24	42.35	46.31	39.37
2008	32.76	35.98	30.10	32.43	35.59	29.79	40.40	45.95	36.42
2009	30.95	33.43	28.93	30.23	32.73	28.10	39.45	44.10	36.93
2010	28.97	32.30	26.30	28.25	31.54	25.48	36.09	40.33	33.49
2011	28.11	30.99	25.74	27.41	29.96	25.25	35.88	41.22	32.26
2012	27.64	29.98	25.68	27.24	29.20	25.51	35.55	41.29	31.61
2013	26.54	29.17	24.35	25.89	27.91	24.19	34.67	41.74	29.74
2014	26.87	29.16	24.97	26.46	28.38	24.87	32.65	35.90	30.09

^a SEER 9 areas (San Francisco, Connecticut, Detroit, Hawaii, Iowa, New Mexico, Seattle, Utah, and Atlanta). Rates are per 100,000 and are age-adjusted to the 2000 US Std Population (19 age groups - Census P25-1130).
- Statistic not shown. Rate based on less than 16 cases for the time interval.

Table 6.8
Cancer of the Rectum (Invasive)

Age-adjusted SEER Incidence^a Rates by Year, Race and Sex

Year of Diagnosis:	All Races			Whites			Blacks		
	Total	Males	Females	Total	Males	Females	Total	Males	Females
1975-2014	14.92	19.11	11.70	14.94	19.11	11.73	13.92	17.20	11.60
1975	18.18	23.05	14.75	18.46	23.63	14.89	14.02	15.19	13.01
1976	18.30	23.97	14.18	18.70	24.48	14.63	11.96	14.93	9.37
1977	18.44	23.94	14.60	18.54	24.26	14.59	15.30	17.33	13.81
1978	18.19	23.25	14.66	18.67	24.03	14.96	14.39	16.89	12.76
1979	18.60	23.89	14.97	18.84	24.16	15.23	13.90	16.06	12.31
1980	18.18	23.88	14.20	18.36	23.98	14.51	15.65	21.36	11.38
1981	18.76	24.48	14.76	18.99	24.73	15.01	15.99	22.30	11.61
1982	17.02	21.73	13.83	17.36	22.15	14.19	12.98	16.49	10.73
1983	17.56	22.54	13.98	17.85	23.07	14.18	16.54	17.15	15.89
1984	18.30	23.08	14.74	18.80	23.72	15.15	13.71	16.24	12.15
1985	18.43	24.13	14.38	18.80	24.59	14.73	14.05	16.90	12.06
1986	17.39	23.41	13.13	17.52	23.72	13.23	15.31	17.68	13.28
1987	17.47	23.06	13.49	17.74	23.70	13.53	14.87	17.64	13.29
1988	17.07	22.59	13.14	17.26	22.90	13.30	14.21	18.38	11.30
1989	17.32	22.52	13.45	17.47	22.93	13.47	15.52	19.00	13.05
1990	16.51	22.37	12.36	16.60	22.74	12.28	14.73	17.16	13.10
1991	15.88	21.07	12.14	15.99	21.25	12.25	13.91	18.68	10.50
1992	15.70	20.75	11.97	15.77	20.91	11.99	14.62	18.14	12.14
1993	15.19	19.48	11.98	15.25	19.44	12.12	13.32	17.54	10.22
1994	14.78	19.33	11.37	14.75	19.29	11.35	14.32	18.21	11.68
1995	14.38	18.76	11.07	14.39	18.73	11.12	13.16	16.31	10.63
1996	15.39	20.18	11.79	15.43	20.11	11.93	13.95	18.12	10.99
1997	15.30	19.71	11.95	15.27	19.65	11.87	15.31	18.42	13.52
1998	15.72	20.22	12.25	15.74	20.12	12.40	15.31	19.52	12.05
1999	15.66	20.26	12.18	15.69	20.38	12.07	14.64	17.01	13.13
2000	14.76	19.22	11.28	14.77	19.12	11.31	13.36	16.57	11.10
2001	14.35	18.92	10.70	14.13	18.74	10.43	15.21	18.88	12.77
2002	14.46	18.21	11.50	14.35	18.08	11.36	13.57	16.86	11.59
2003	13.83	18.02	10.54	13.64	17.85	10.29	14.75	18.44	12.35
2004	13.55	17.18	10.64	13.28	16.89	10.32	14.83	19.01	11.97
2005	13.34	17.23	10.21	13.15	17.02	10.00	13.77	15.96	12.22
2006	12.88	15.90	10.44	12.62	15.69	10.08	13.10	15.51	11.62
2007	13.29	17.08	10.13	12.78	16.34	9.73	15.20	19.08	12.60
2008	12.51	15.56	9.99	12.03	14.85	9.67	14.26	18.47	11.15
2009	12.33	15.53	9.69	11.77	14.76	9.26	14.14	16.53	12.27
2010	11.97	14.77	9.69	11.40	14.17	9.09	13.45	16.39	11.33
2011	11.56	14.43	9.19	11.16	13.75	8.99	12.01	14.41	10.24
2012	11.13	13.93	8.74	10.67	13.31	8.37	12.00	15.18	9.63
2013	10.91	14.02	8.30	10.40	13.10	8.10	11.76	15.95	8.73
2014	11.41	14.21	8.99	11.06	13.60	8.81	10.25	13.03	8.42

^a SEER 9 areas (San Francisco, Connecticut, Detroit, Hawaii, Iowa, New Mexico, Seattle, Utah, and Atlanta).
Rates are per 100,000 and are age-adjusted to the 2000 US Std Population (19 age groups - Census P25-1130).
- Statistic not shown. Rate based on less than 16 cases for the time interval.

Table 6.9
Cancer of the Colon and Rectum (Invasive)

Age-adjusted U.S. Death^a Rates by Year, Race and Sex

Year of Death:	All Races			Whites			Blacks		
	Total	Males	Females	Total	Males	Females	Total	Males	Females
1975-2014	21.31	25.56	18.27	21.06	25.31	18.00	26.30	31.69	22.82
1975	28.09	32.84	24.96	28.30	33.24	25.06	26.79	30.09	24.55
1976	28.58	33.34	25.44	28.74	33.76	25.45	28.23	31.16	26.26
1977	28.19	33.21	24.87	28.34	33.49	24.97	27.61	31.44	24.92
1978	28.54	33.75	25.13	28.70	34.12	25.17	27.91	31.20	25.66
1979	28.15	33.56	24.63	28.25	33.92	24.57	28.16	31.57	25.96
1980	28.05	33.74	24.35	28.12	33.99	24.32	28.81	33.18	25.89
1981	27.52	32.95	23.97	27.53	33.16	23.85	28.93	32.83	26.32
1982	27.24	32.96	23.55	27.21	33.11	23.42	29.11	33.71	26.12
1983	27.12	33.08	23.23	27.13	33.32	23.11	28.67	32.90	25.82
1984	27.35	33.02	23.61	27.30	33.12	23.49	29.58	34.65	26.22
1985	26.93	32.66	23.11	26.75	32.74	22.77	30.49	34.10	28.04
1986	26.16	32.05	22.31	26.00	32.01	22.07	29.82	35.36	26.35
1987	25.89	31.91	21.95	25.68	31.85	21.63	29.85	35.10	26.48
1988	25.28	31.08	21.46	25.08	31.04	21.16	29.18	34.29	25.88
1989	25.01	30.80	21.16	24.70	30.52	20.82	30.05	36.37	26.07
1990	24.65	30.77	20.64	24.25	30.43	20.18	30.77	37.64	26.59
1991	24.01	29.64	20.30	23.63	29.35	19.85	30.02	35.80	26.50
1992	23.62	29.32	19.85	23.25	28.99	19.42	29.47	36.23	25.43
1993	23.31	28.56	19.77	22.88	28.18	19.28	29.77	35.84	26.04
1994	22.92	28.28	19.28	22.50	27.89	18.84	29.04	35.66	24.88
1995	22.59	27.65	19.14	22.11	27.16	18.64	29.54	36.30	25.47
1996	21.86	26.71	18.51	21.39	26.29	17.98	28.59	34.52	24.86
1997	21.47	26.23	18.11	20.95	25.68	17.59	28.84	35.07	24.80
1998	21.19	25.62	18.03	20.68	25.13	17.48	28.31	33.90	24.78
1999	20.93	25.48	17.75	20.43	24.99	17.20	28.51	34.50	24.70
2000	20.67	25.08	17.50	20.16	24.46	17.02	28.15	34.98	23.88
2001	20.16	24.37	17.12	19.61	23.83	16.52	27.75	33.39	24.26
2002	19.76	24.01	16.63	19.24	23.39	16.13	27.08	33.73	22.96
2003	19.15	23.18	16.19	18.61	22.62	15.62	26.64	32.49	22.92
2004	18.10	21.81	15.34	17.61	21.28	14.85	25.01	30.64	21.41
2005	17.56	21.22	14.83	17.00	20.60	14.27	25.13	30.87	21.45
2006	17.28	20.70	14.73	16.77	20.04	14.27	24.43	31.28	20.30
2007	16.91	20.23	14.36	16.43	19.66	13.90	23.56	29.29	19.87
2008	16.46	19.64	13.98	15.96	18.99	13.54	22.84	28.73	18.95
2009	15.81	19.06	13.28	15.37	18.57	12.84	21.89	26.98	18.54
2010	15.51	18.75	12.99	15.04	18.15	12.57	21.50	27.45	17.62
2011	15.11	18.06	12.77	14.64	17.51	12.33	21.08	26.16	17.70
2012	14.69	17.59	12.37	14.30	17.05	12.05	19.89	25.43	16.18
2013	14.47	17.36	12.13	14.14	16.88	11.88	19.30	24.63	15.69
2014	14.11	16.86	11.89	13.83	16.43	11.68	18.53	23.15	15.30

^a US Mortality Files, National Center for Health Statistics, Centers for Disease Control and Prevention. Rates are per 100,000 and are age-adjusted to the 2000 US Std Population (19 age groups - Census P25-1130).
- Statistic not shown. Rate based on less than 16 cases for the time interval.

Table 6.10
Cancer of the Colon and Rectum (Invasive)

SEER Incidence^a and U.S. Death^b Rates, Age-Adjusted and Age-Specific Rates, by Race and Sex

	All Races			Whites			Blacks		
	Total	Males	Females	Total	Males	Females	Total	Males	Females
<u>SEER Incidence</u>									
<u>Age at Diagnosis</u>									
Age-Adjusted Rates, 2010-2014									
All ages	40.1	46.0	35.1	39.3	45.0	34.4	48.7	56.4	43.2
Under 65	18.0	20.3	15.8	17.3	19.5	15.1	23.1	25.8	20.8
65 and over	192.6	223.8	168.8	191.4	221.6	168.0	225.5	267.6	198.3
All ages (WHO world std) ^c	29.0	33.3	25.3	28.3	32.4	24.6	36.1	41.6	31.9
Age-Specific Rates, 2010-2014									
<1	-	-	-	-	-	-	-	-	-
1-4	-	-	-	-	-	-	-	-	-
5-9	-	-	-	-	-	-	-	-	-
10-14	0.2	0.1	0.2	0.2	-	0.2	-	-	-
15-19	0.5	0.4	0.5	0.5	0.5	0.6	0.4	-	-
20-24	1.1	1.1	1.1	1.2	1.2	1.1	0.8	0.8	0.8
25-29	2.6	2.6	2.6	2.7	2.7	2.6	2.3	2.1	2.4
30-34	5.2	5.3	5.2	5.4	5.4	5.4	5.3	4.8	5.7
35-39	9.4	9.7	9.2	9.6	9.9	9.2	10.2	9.7	10.6
40-44	17.6	18.2	16.9	17.4	18.2	16.6	19.8	19.8	19.7
45-49	31.4	33.5	29.3	30.3	32.4	28.2	39.1	41.2	37.1
50-54	58.4	65.4	51.6	55.2	62.3	48.2	74.8	81.1	69.2
55-59	68.7	80.9	57.1	65.0	76.5	53.8	95.3	112.3	80.5
60-64	92.9	112.3	75.1	88.1	105.8	71.4	129.3	157.0	106.7
65-69	128.6	155.0	105.2	122.9	147.8	100.3	174.9	211.7	146.3
70-74	167.5	198.4	141.6	164.2	194.2	138.5	211.9	254.2	181.3
75-79	208.7	240.4	184.1	209.4	240.8	184.5	246.4	276.4	226.8
80-84	257.4	291.2	234.3	260.7	291.6	239.1	273.1	344.3	233.5
85+	282.6	321.0	262.9	287.6	327.0	267.3	274.4	314.6	257.6
<u>U.S. Mortality</u>									
<u>Age at Death</u>									
Age-Adjusted Rates, 2010-2014									
All ages	14.8	17.7	12.4	14.4	17.2	12.1	20.0	25.3	16.5
Under 65	4.9	5.8	4.0	4.6	5.5	3.7	7.3	8.8	6.0
65 and over	83.2	99.9	70.8	81.8	97.8	69.8	108.1	139.5	88.8
All ages (WHO world std) ^c	9.9	11.9	8.2	9.6	11.5	7.9	13.8	17.4	11.3
Age-Specific Rates, 2010-2014									
<1	-	-	-	-	-	-	-	-	-
1-4	-	-	-	-	-	-	-	-	-
5-9	-	-	-	-	-	-	-	-	-
10-14	-	-	-	-	-	-	-	-	-
15-19	0.0	0.0	-	0.0	-	-	-	-	-
20-24	0.2	0.2	0.2	0.2	0.2	0.2	0.3	0.3	0.2
25-29	0.5	0.5	0.4	0.4	0.5	0.4	0.6	0.6	0.5
30-34	1.1	1.2	1.0	1.0	1.2	0.9	1.5	1.6	1.5
35-39	2.2	2.5	2.0	2.2	2.5	1.9	2.9	3.3	2.6
40-44	4.3	4.8	3.7	4.2	4.7	3.7	5.7	6.5	4.9
45-49	8.1	9.3	7.0	7.7	8.8	6.7	11.7	13.8	9.8
50-54	13.9	16.3	11.6	13.1	15.4	10.7	21.1	24.6	17.9
55-59	20.3	24.9	16.0	19.1	23.5	14.9	31.3	38.8	24.9
60-64	29.8	37.1	23.0	28.2	35.2	21.6	46.3	58.2	36.6
65-69	41.0	51.1	32.0	39.3	48.8	30.7	63.6	82.4	49.0
70-74	58.6	72.8	46.6	57.0	70.6	45.3	82.6	108.9	63.8
75-79	83.7	101.7	69.5	82.4	99.5	68.7	110.8	145.9	88.3
80-84	117.6	139.8	102.4	116.0	137.3	101.0	149.3	192.7	125.7
85+	186.1	214.1	172.0	186.2	213.4	172.4	206.5	256.0	186.5

^a SEER 18 areas. Rates are per 100,000 and are age-adjusted to the 2000 US Std Population (19 age groups - Census P25-1130), unless noted.

^b US Mortality Files, National Center for Health Statistics, Centers for Disease Control and Prevention.

^c Rates are per 100,000 and are age-adjusted to the 2000 US Std Population (19 age groups - Census P25-1130), unless noted.

- Rates are per 100,000 and are age-adjusted to the world (WHO 2000-2025) standard million.

- Statistic not shown. Rate based on less than 16 cases for the time interval.

Table 6.11
Cancer of the Colon (Invasive) and Cancer of the Rectum (Invasive)
SEER Incidence^a Rates, Age-Adjusted and Age-Specific Rates, by Race and Sex

	All Races			Whites			Blacks		
	Total	Males	Females	Total	Males	Females	Total	Males	Females
<u>Cancer of the Colon</u>									
<u>Age at Diagnosis</u>									
Age-Adjusted Rates, 2010-2014									
All ages	28.2	31.3	25.8	27.7	30.6	25.3	36.3	40.9	33.1
Under 65	11.1	12.1	10.1	10.6	11.5	9.6	15.7	17.0	14.7
65 and over	146.9	163.9	133.9	146.4	162.6	133.9	178.2	205.9	160.1
All ages (WHO world std) ^b	19.9	22.1	18.1	19.4	21.5	17.6	26.4	29.7	24.0
Age-Specific Rates, 2010-2014									
<1	-	-	-	-	-	-	-	-	-
1-4	-	-	-	-	-	-	-	-	-
5-9	-	-	-	-	-	-	-	-	-
10-14	0.2	0.1	0.2	0.2	-	0.2	-	-	-
15-19	0.4	0.4	0.4	0.4	0.4	0.5	-	-	-
20-24	0.8	0.8	0.7	0.8	0.9	0.8	0.5	-	-
25-29	1.7	1.6	1.7	1.7	1.7	1.8	1.5	1.4	1.6
30-34	3.2	3.2	3.2	3.4	3.3	3.5	3.2	2.9	3.5
35-39	5.6	5.6	5.6	5.6	5.8	5.4	6.6	5.8	7.4
40-44	10.5	10.3	10.7	10.2	10.1	10.2	13.7	13.4	14.0
45-49	18.7	19.1	18.2	17.7	18.1	17.2	27.0	27.5	26.6
50-54	34.2	37.2	31.2	32.2	35.4	29.0	47.9	51.3	44.7
55-59	42.7	48.5	37.2	40.2	45.7	34.9	64.7	74.0	56.6
60-64	61.3	71.2	52.1	57.6	66.9	48.9	93.5	107.2	82.4
65-69	89.6	104.5	76.5	85.5	99.0	73.3	131.3	158.3	110.4
70-74	124.9	141.8	110.6	122.5	139.0	108.3	165.7	190.8	147.5
75-79	160.1	177.3	146.8	160.8	177.5	147.5	198.9	217.5	186.7
80-84	203.9	220.9	192.3	208.0	222.5	197.8	216.2	266.5	188.3
85+	229.9	251.4	218.9	234.2	256.8	222.6	227.5	252.0	217.3
<u>Cancer of the Rectum</u>									
<u>Age at Diagnosis</u>									
Age-Adjusted Rates, 2010-2014									
All ages	11.8	14.8	9.4	11.6	14.4	9.1	12.4	15.5	10.2
Under 65	6.9	8.2	5.7	6.7	7.9	5.5	7.4	8.8	6.1
65 and over	45.7	59.9	34.9	45.0	59.0	34.1	47.4	61.7	38.1
All ages (WHO world std) ^b	9.1	11.3	7.2	8.9	10.9	7.0	9.6	11.9	7.9
Age-Specific Rates, 2010-2014									
<1	-	-	-	-	-	-	-	-	-
1-4	-	-	-	-	-	-	-	-	-
5-9	-	-	-	-	-	-	-	-	-
10-14	-	-	-	-	-	-	-	-	-
15-19	0.1	-	-	0.1	-	-	-	-	-
20-24	0.3	0.3	0.3	0.4	0.4	0.4	-	-	-
25-29	0.9	1.0	0.9	0.9	1.0	0.8	0.8	-	0.9
30-34	2.0	2.1	2.0	2.0	2.0	1.9	2.1	1.9	2.2
35-39	3.8	4.1	3.6	4.0	4.1	3.8	3.5	3.9	3.2
40-44	7.0	7.9	6.2	7.2	8.0	6.3	6.0	6.4	5.7
45-49	12.7	14.4	11.0	12.6	14.3	10.9	12.0	13.7	10.5
50-54	24.2	28.1	20.3	23.0	26.8	19.2	26.9	29.7	24.4
55-59	25.9	32.4	19.9	24.7	30.8	18.9	30.6	38.3	23.8
60-64	31.6	41.1	23.0	30.5	38.9	22.5	35.8	49.8	24.3
65-69	39.0	50.5	28.7	37.4	48.8	26.9	43.5	53.3	36.0
70-74	42.7	56.6	31.0	41.8	55.2	30.2	46.3	63.5	33.8
75-79	48.6	63.1	37.4	48.6	63.3	37.0	47.5	58.9	40.0
80-84	53.5	70.3	42.0	52.8	69.1	41.3	56.9	77.8	45.2
85+	52.7	69.6	44.0	53.4	70.3	44.7	46.9	62.7	40.3

^a SEER 18 areas. Rates are per 100,000 and are age-adjusted to the 2000 US Std Population (19 age groups - Census P25-1130), unless noted.

^b Rates are per 100,000 and are age-adjusted to the world (WHO 2000-2025) standard million.

- Statistic not shown. Rate based on less than 16 cases for the time interval.

Table 6.12
Cancer of the Colon and Rectum (Invasive)

5-Year Relative and Period Survival (Percent) by Race, Sex, Diagnosis Year, Stage and Age

	All Races			Whites			Blacks		
	Total	Males	Females	Total	Males	Females	Total	Males	Females
5-Year Relative Survival (Percent)									
Year of Diagnosis:									
1960-1963 ^a	-	-	-	-	-	-	-	-	-
1970-1973 ^a	-	-	-	-	-	-	-	-	-
1975-1977 ^b	49.8	49.0	50.6	50.1	49.3	50.7	44.6	43.3	45.9
1978-1980 ^b	51.2	50.2	52.2	51.6	50.6	52.5	45.4	43.4	46.9
1981-1983 ^b	54.0	53.8	54.2	54.4	54.4	54.3	46.5	42.9	49.5
1984-1986 ^b	57.7	57.7	57.6	58.4	58.5	58.3	48.4	47.5	49.0
1987-1989 ^b	59.6	59.6	59.3	60.0	60.5	59.5	52.3	49.9	54.5
1990-1992 ^b	61.2	61.0	61.3	61.9	61.7	62.1	52.9	54.4	51.5
1993-1995 ^b	59.9	59.8	60.0	60.5	60.3	60.6	51.7	51.3	52.1
1996-1998 ^b	62.4	62.4	62.5	63.0	62.8	63.2	53.9	55.1	52.9
1999-2001 ^b	65.1	66.1	64.1	66.5	67.4	65.7	54.1	55.4	53.0
2002-2006 ^b	66.0	65.9	66.0	67.0	67.4	66.6	57.0	54.5	59.1
2007-2013 ^b	66.3 ^f	66.1 ^f	66.6 ^f	67.1 ^f	67.0 ^f	67.3 ^f	58.8 ^f	57.5 ^f	60.1 ^f
5-Year Period Survival (Percent) ^{cd}									
2013	64.6	64.0	65.2	65.2	64.7	65.7	57.9	55.7	59.9
Stage Distribution (%) 2007-2013 ^{ce}									
All Stages									
Number of cases	208,289	107,713	100,576	161,464	84,055	77,409	25,682	12,499	13,183
Percent	100%	100%	100%	100%	100%	100%	100%	100%	100%
Localized	39	39	39	39	39	39	38	37	38
Regional	35	35	35	36	36	36	32	32	32
Distant	21	21	21	21	21	20	25	26	24
Unstaged	4	4	5	4	4	5	5	4	5
5-Year Relative Survival (Percent), 2007-2013 ^c									
Age at Diagnosis:									
Ages <45	68.5	66.2	70.9	70.1	67.8	72.6	59.7	55.0	63.8
Ages 45-54	70.8	69.2	72.9	71.8	70.2	73.8	63.2	59.5	67.2
Ages 55-64	67.8	67.0	69.0	68.6	67.7	69.8	60.6	59.0	62.4
Ages 65-74	67.4	66.4	68.6	67.9	67.2	68.7	59.4	55.3	63.5
Ages 75+	56.5	55.9	56.9	57.7	57.0	58.3	46.4	44.6	47.3
Ages <65	69.0	67.7	70.7	69.9	68.6	71.7	61.5	58.7	64.5
Ages 65+	61.3	61.3	61.3	62.0	62.1	62.0	53.3	51.1	54.9
Stage ^e :									
All Stages	64.9	64.5	65.2	65.5	65.2	65.8	57.9	55.7	59.9
Localized	89.9	89.1	90.7	90.2	89.3	91.2	86.2	84.2	88.0
Regional	71.3	71.1	71.4	72.0	71.9	72.0	65.0	62.7	67.1
Distant	13.9	12.9	14.9	14.4	13.5	15.5	10.2	8.9	11.4
Unstaged	35.4	38.5	32.6	31.8	35.1	28.9	39.8	40.9	38.8

^a Based on End Results data from a series of hospital registries and one population-based registry.

^b SEER 9 areas (San Francisco, Connecticut, Detroit, Hawaii, Iowa, New Mexico, Seattle, Utah, Atlanta).

Based on follow-up of patients into 2014.

^c SEER 18 areas (San Francisco, Connecticut, Detroit, Hawaii, Iowa, New Mexico, Seattle, Utah, Atlanta, San Jose-Monterey, Los Angeles, Alaska Native Registry, Rural Georgia, California excluding SF/SJM/LA, Kentucky, Louisiana, New Jersey and Georgia excluding ATL/RG).

Based on follow-up of patients into 2014.

^d Period survival provides a 2013 estimate of survival by piecing together the most recent conditional survival estimates from several cohorts. It is computed here using three year calendar blocks (2010-2012: 0-1 year survival), (2009-2011: 1-2 year survival), (2008-2010: 2-3 year survival), (2007-2009: 3-4 year survival), (2006-2008: 4-5 years survival).

^e Stage at diagnosis is classified using SEER Summary Stage 2000. Stage distribution percentages may not sum to 100 due to rounding.

^f The difference between 1975-1977 and 2007-2013 is statistically significant ($p < .05$).

^g The standard error is between 5 and 10 percentage points.

^h The standard error is greater than 10 percentage points.

- Statistic could not be calculated due to fewer than 25 cases during the time period.

Table 6.13
Cancer of the Colon (Invasive)

5-Year Relative and Period Survival (Percent) by Race, Sex, Diagnosis Year, Stage and Age

	All Races			Whites			Blacks		
	Total	Males	Females	Total	Males	Females	Total	Males	Females
5-Year Relative Survival (Percent)									
Year of Diagnosis:									
1960-1963 ^a	-	-	-	43	42	44	34	32	35
1970-1973 ^a	-	-	-	49	47	50	37	36	38
1975-1977 ^b	50.6	50.1	51.1	50.9	50.5	51.3	44.7	44.0	45.3
1978-1980 ^b	52.3	51.3	53.2	52.4	51.3	53.4	48.9	47.5	49.8
1981-1983 ^b	55.2	55.6	54.8	55.4	56.2	54.8	48.5	44.7	51.5
1984-1986 ^b	58.3	58.8	57.8	59.0	59.6	58.5	49.1	48.9	49.3
1987-1989 ^b	60.2	60.7	60.7	60.7	61.4	59.9	52.4	50.7	53.8
1990-1992 ^b	62.0	62.3	61.7	62.8	63.1	62.4	53.4	54.6	52.3
1993-1995 ^b	59.8	60.2	59.5	60.5	60.7	60.2	51.1	51.2	51.0
1996-1998 ^b	62.1	62.4	61.9	62.9	62.9	62.8	53.6	55.8	51.8
1999-2001 ^b	64.9	66.1	63.7	66.6	67.9	65.5	52.5	53.7	51.5
2002-2006 ^b	65.1	65.0	65.2	66.2	66.6	66.0	55.6	53.4	57.4
2007-2013 ^b	65.4 ^f	65.4 ^f	65.4 ^f	66.5 ^f	66.4 ^f	66.7 ^f	56.2 ^f	56.7 ^f	55.7 ^f
5-Year Period Survival (Percent) ^{cd}									
2013	63.7	63.3	64.0	64.6	64.3	64.9	56.3	55.0	57.4
Stage Distribution (%) 2007-2013 ^{ce}									
All Stages									
Number of cases	144,817	71,394	73,423	112,587	55,904	56,683	18,732	8,784	9,948
Percent	100%	100%	100%	100%	100%	100%	100%	100%	100%
Localized	38	38	37	38	39	38	34	35	34
Regional	36	36	37	36	36	37	34	34	35
Distant	22	22	22	22	22	21	27	28	27
Unstaged	4	4	4	4	3	4	4	4	4
5-Year Relative Survival (Percent), 2007-2013 ^c									
Age at Diagnosis:									
Ages <45	67.2	65.2	69.1	69.6	67.4	71.8	57.1	53.5	59.9
Ages 45-54	68.5	67.5	69.5	70.0	69.0	71.3	59.5	57.1	61.7
Ages 55-64	66.6	66.5	66.8	67.7	67.4	68.0	59.0	58.8	59.1
Ages 65-74	67.6	66.9	68.3	68.2	67.8	68.8	59.5	56.5	62.2
Ages 75+	57.8	57.0	58.3	59.2	58.3	59.9	47.5	46.0	48.3
Ages <65	67.3	66.7	68.1	68.7	68.0	69.7	58.9	57.7	60.2
Ages 65+	61.8	61.8	61.9	62.8	62.7	62.8	53.7	52.2	54.7
Stage ^e :									
All Stages	64.1	64.0	64.1	65.0	65.0	65.1	56.4	55.3	57.3
Localized	90.7	90.0	91.5	91.3	90.4	92.3	86.3	85.1	87.3
Regional	71.7	71.7	71.7	72.3	72.3	72.2	66.7	65.6	67.5
Distant	13.6	12.8	14.5	14.3	13.5	15.1	9.5	8.2	10.7
Unstaged	27.0	31.4	23.5	24.3	28.9	20.6	31.0	35.4	27.7

^a Based on End Results data from a series of hospital registries and one population-based registry.

^b SEER 9 areas (San Francisco, Connecticut, Detroit, Hawaii, Iowa, New Mexico, Seattle, Utah, Atlanta).

Based on follow-up of patients into 2014.

^c SEER 18 areas (San Francisco, Connecticut, Detroit, Hawaii, Iowa, New Mexico, Seattle, Utah, Atlanta, San Jose-Monterey, Los Angeles, Alaska Native Registry, Rural Georgia, California excluding SF/SJM/LA, Kentucky, Louisiana, New Jersey and Georgia excluding ATL/RG).

Based on follow-up of patients into 2014.

^d Period survival provides a 2013 estimate of survival by piecing together the most recent conditional survival estimates from several cohorts. It is computed here using three year calendar blocks (2010-2012: 0-1 year survival), (2009-2011: 1-2 year survival), (2008-2010: 2-3 year survival), (2007-2009: 3-4 year survival), (2006-2008: 4-5 years survival).

^e Stage at diagnosis is classified using SEER Summary Stage 2000. Stage distribution percentages may not sum to 100 due to rounding.

^f The difference between 1975-1977 and 2007-2013 is statistically significant (p<.05).

^g The standard error is between 5 and 10 percentage points.

^h The standard error is greater than 10 percentage points.

- Statistic could not be calculated due to fewer than 25 cases during the time period.

Table 6.14
Cancer of the Rectum (Invasive)

5-Year Relative and Period Survival (Percent) by Race, Sex, Diagnosis Year, Stage and Age

	All Races			Whites			Blacks		
	Total	Males	Females	Total	Males	Females	Total	Males	Females
5-Year Relative Survival (Percent)									
Year of Diagnosis:									
1960-1963 ^a	-	-	-	38	36	41	27	28	27
1970-1973 ^a	-	-	-	45	43	48	30	20	40
1975-1977 ^b	48.1	47.0	49.5	48.3	47.3	49.4	44.4	41.4	46.8
1978-1980 ^b	48.9	48.4	49.5	49.7	49.3	50.1	34.6	33.5	35.5
1981-1983 ^b	51.4	50.2	52.8	52.0	51.0	53.2	40.3	38.1	42.5
1984-1986 ^b	56.3	55.6	57.1	57.0	56.4	57.7	45.9	43.4	48.2
1987-1989 ^b	58.1	57.9	58.4	58.7	58.9	58.4	52.3	47.7	56.9
1990-1992 ^b	59.2	58.4	60.2	59.9	59.0	61.0	51.2	53.7	48.5
1993-1995 ^b	60.1	59.0	61.5	60.6	59.5	61.9	53.8	51.4	56.4
1996-1998 ^b	63.2	62.4	64.2	63.5	62.8	64.4	55.0	53.6	56.2
1999-2001 ^b	65.8	66.1	65.4	66.5	66.5	66.4	59.2	60.1	58.2
2002-2006 ^b	68.1	67.8	68.4	68.9	69.2	68.4	61.1	57.6	64.4
2007-2013 ^b	68.6 ^f	67.5 ^f	70.0 ^f	68.5 ^f	68.1 ^f	69.0 ^f	65.5 ^f	59.1 ^f	72.6 ^f
5-Year Period Survival (Percent) ^{cd}									
2013	66.6	65.3	68.3	66.5	65.5	67.8	62.2	57.5	67.6
Stage Distribution (%) 2007-2013 ^{ce}									
All Stages									
Number of cases	63,472	36,319	27,153	48,877	28,151	20,726	6,950	3,715	3,235
Percent	100%	100%	100%	100%	100%	100%	100%	100%	100%
Localized	43	42	44	42	41	43	46	43	50
Regional	33	34	32	35	36	34	27	29	24
Distant	18	19	17	19	19	18	20	22	18
Unstaged	5	5	6	5	4	6	7	6	7
5-Year Relative Survival (Percent), 2007-2013 ^c									
Age at Diagnosis:									
Ages <45	70.4	67.7	73.7	70.9	68.4	73.8	64.6	57.3	72.5
Ages 45-54	74.3	71.5	78.1	74.3	71.8	77.7	70.3	63.3	78.9
Ages 55-64	70.0	67.8	73.6	70.2	68.3	73.4	64.6	59.3	71.8
Ages 65-74	66.9	65.3	69.4	67.0	65.8	68.7	59.3	51.4	68.5
Ages 75+	51.7	52.5	50.8	52.1	52.8	51.3	41.4	39.3	42.7
Ages <65	71.7	69.2	75.4	71.8	69.6	75.2	67.0	60.7	74.9
Ages 65+	59.7	60.0	59.3	59.7	60.3	59.0	51.9	47.3	56.0
Stage ^e :									
All Stages	66.7	65.5	68.2	66.5	65.8	67.6	62.0	56.7	67.9
Localized	88.2	87.5	89.0	87.9	87.3	88.5	86.0	82.5	89.3
Regional	70.3	70.0	70.6	71.2	71.3	71.1	59.3	54.8	65.1
Distant	14.6	13.2	16.5	14.9	13.5	16.8	12.6	11.2	14.6
Unstaged	49.5	48.7	50.4	45.5	44.7	46.4	53.2	47.8	57.9

^a Based on End Results data from a series of hospital registries and one population-based registry.

^b SEER 9 areas (San Francisco, Connecticut, Detroit, Hawaii, Iowa, New Mexico, Seattle, Utah, Atlanta).

Based on follow-up of patients into 2014.

^c SEER 18 areas (San Francisco, Connecticut, Detroit, Hawaii, Iowa, New Mexico, Seattle, Utah, Atlanta, San Jose-Monterey, Los Angeles, Alaska Native Registry, Rural Georgia, California excluding SF/SJM/LA, Kentucky, Louisiana, New Jersey and Georgia excluding ATL/RG).

Based on follow-up of patients into 2014.

^d Period survival provides a 2013 estimate of survival by piecing together the most recent conditional survival estimates from several cohorts. It is computed here using three year calendar blocks (2010-2012: 0-1 year survival), (2009-2011: 1-2 year survival), (2008-2010: 2-3 year survival), (2007-2009: 3-4 year survival), (2006-2008: 4-5 years survival).

^e Stage at diagnosis is classified using SEER Summary Stage 2000. Stage distribution percentages may not sum to 100 due to rounding.

^f The difference between 1975-1977 and 2007-2013 is statistically significant ($p < .05$).

^g The standard error is between 5 and 10 percentage points.

^h The standard error is greater than 10 percentage points.

- Statistic could not be calculated due to fewer than 25 cases during the time period.

Table 6.15
Cancer of the Colon and Rectum (Invasive)

SEER^a Relative Survival (Percent)
By Year of Diagnosis

All Races, Males and Females

Year of Diagnosis

	1975- 1979	1980- 1984	1985- 1989	1990- 1994	1995	1996	1997	1998	1999	2000	2001	2002	2003	2004	2005	2006	2007	2008	2009	2010	2011	2012	2013
Survival Time																							
1-year	74.0	77.1	80.0	80.9	79.5	81.3	80.3	82.0	82.3	81.9	83.1	83.3	82.4	83.5	84.0	83.6	84.0	84.7	84.3	84.2	83.7	84.1	84.0
2-year	63.0	66.8	71.1	72.4	71.3	73.3	72.4	74.5	74.5	74.4	75.6	76.8	75.8	76.6	77.0	77.1	77.2	78.3	77.3	77.2	76.7	76.3	
3-year	56.8	60.5	65.7	67.2	65.8	68.6	67.2	69.4	70.0	70.2	71.1	72.2	70.8	71.6	72.5	72.1	72.4	73.3	72.4	72.0	71.7		
4-year	53.0	56.4	61.8	63.3	62.0	65.0	64.2	66.3	66.9	66.9	68.2	69.0	67.7	68.3	68.8	68.4	69.1	70.0	68.8	68.6			
5-year	50.4	53.7	59.3	60.7	59.7	62.5	61.5	63.3	64.5	64.8	66.1	66.3	65.4	65.8	66.2	66.2	66.7	67.3	66.4				
6-year	48.6	51.8	57.6	59.0	57.3	61.3	59.8	61.4	63.0	63.0	64.1	64.4	63.5	63.9	64.5	64.6	64.6	65.4					
7-year	47.4	50.3	56.0	57.4	55.5	60.2	58.8	60.1	61.9	61.6	62.2	63.0	62.1	62.8	62.9	62.8	63.2						
8-year	46.4	49.3	55.0	56.2	54.9	59.4	57.9	59.3	60.6	60.2	61.3	62.0	61.4	61.7	61.8	61.6							
9-year	45.8	48.4	54.1	55.4	54.6	58.7	57.2	58.0	59.8	59.5	60.3	60.8	60.2	60.9	61.1								
10-year	45.1	47.8	53.3	54.6	53.9	58.1	56.4	57.3	59.2	58.9	59.6	60.4	59.0	60.0									
11-year	44.5	47.2	52.8	54.1	53.0	57.5	55.6	56.4	58.5	58.0	59.1	59.6	58.1										
12-year	44.1	46.7	52.4	53.5	52.3	57.4	55.2	56.2	57.9	57.5	58.2	58.6											
13-year	43.7	46.4	51.7	53.0	51.6	56.8	54.9	55.7	57.6	57.0	57.6												
14-year	43.2	45.9	51.4	52.6	51.1	55.9	54.1	55.5	56.9	56.5													
15-year	42.8	45.6	50.9	52.2	50.5	55.3	53.4	55.4	56.4														
16-year	42.4	45.2	50.6	52.2	49.9	54.8	52.6	55.1															
17-year	42.0	44.7	50.0	51.5	49.5	53.8	52.1																
18-year	41.5	44.4	49.7	51.0	48.8	53.7																	
19-year	41.5	43.9	49.4	50.4	48.0																		
20-year	41.3	43.7	49.0	49.8																			
21-year	40.9	42.9	49.0																				
22-year	40.6	42.5	48.8																				
23-year	40.1	42.3	48.3																				
24-year	39.7	41.9	47.6																				
25-year	39.5	41.4	47.3																				
26-year	39.0	40.9																					
27-year	38.5	40.6																					
28-year	38.4	40.0																					
29-year	37.9	39.9																					
30-year	37.5	39.5																					

^a Based on the SEER 9 areas (San Francisco, Connecticut, Detroit, Hawaii, Iowa, New Mexico, Seattle, Utah, and Atlanta).

Table 6.16
Cancer of the Colon and Rectum (Invasive)

SEER^a Relative Survival (Percent)
By Year of Diagnosis

All Races, Males

Year of Diagnosis

	1975- 1979	1980- 1984	1985- 1989	1990- 1994	1995	1996	1997	1998	1999	2000	2001	2002	2003	2004	2005	2006	2007	2008	2009	2010	2011	2012	2013
Survival Time																							
1-year	74.0	78.0	81.0	81.7	81.0	82.6	81.3	82.1	83.4	83.6	85.1	83.2	83.2	84.5	84.6	84.7	85.4	86.3	85.5	85.5	84.1	84.7	84.4
2-year	63.0	67.2	72.4	73.3	72.6	75.0	73.6	74.4	75.2	76.3	77.4	76.6	76.3	77.9	77.9	78.2	78.4	79.3	78.5	78.4	77.1	77.0	
3-year	56.3	60.6	66.7	67.9	66.9	69.7	68.2	68.8	70.5	72.0	72.8	72.0	71.1	72.5	73.1	72.9	73.4	74.0	73.3	72.9	71.3		
4-year	52.1	56.2	62.4	63.5	63.1	65.3	65.2	65.4	67.5	68.9	69.9	68.7	67.8	69.1	68.8	68.7	69.6	70.3	69.3	68.7			
5-year	49.4	53.3	59.7	60.5	60.0	62.4	62.3	62.4	64.9	66.0	67.3	65.7	65.4	66.2	65.8	66.5	66.8	67.6	66.6				
6-year	47.2	51.2	57.8	58.6	57.3	61.0	60.3	60.1	63.7	63.7	65.0	63.5	62.9	64.2	63.7	64.6	64.4	65.4					
7-year	45.9	49.5	56.2	56.8	55.7	59.8	59.6	58.7	62.5	61.9	63.1	61.7	61.5	62.6	61.5	63.0	62.8						
8-year	44.8	48.4	55.3	55.3	55.1	59.4	58.3	57.4	61.1	60.0	62.4	60.4	60.3	61.5	60.5	61.6							
9-year	44.1	47.5	54.3	54.5	54.6	58.9	57.4	56.2	60.0	59.7	61.4	59.4	59.0	60.8	59.7								
10-year	43.3	46.7	53.6	53.6	53.9	58.0	56.7	55.5	59.1	58.6	60.5	59.3	57.6	59.8									
11-year	42.8	46.1	53.1	53.1	53.1	57.3	55.8	54.5	58.5	57.8	59.6	58.4	56.6										
12-year	42.1	45.7	52.5	52.7	52.2	57.0	55.6	54.0	57.8	57.1	59.0	57.2											
13-year	41.7	45.4	51.9	51.9	51.7	56.6	55.2	53.5	57.2	56.7	58.2												
14-year	41.0	44.7	51.8	51.4	50.7	55.7	54.5	53.1	56.2	56.2													
15-year	40.8	44.5	51.1	50.9	49.8	55.4	54.3	53.0	56.0														
16-year	40.3	44.3	51.1	50.9	49.2	55.2	53.1	52.8															
17-year	39.7	43.7	50.6	50.5	48.9	54.1	52.0																
18-year	39.4	43.4	50.2	49.8	47.9	54.1																	
19-year	39.3	42.9	49.9	49.5	47.2																		
20-year	39.2	42.6	49.4	49.0																			
21-year	38.9	41.7	49.3																				
22-year	38.4	41.2	49.3																				
23-year	38.1	40.9	48.7																				
24-year	37.7	40.4	48.0																				
25-year	37.2	40.1	47.5																				
26-year	36.4	39.3																					
27-year	35.9	38.9																					
28-year	35.7	38.5																					
29-year	35.3	38.3																					
30-year	34.4	37.5																					

^a Based on the SEER 9 areas (San Francisco, Connecticut, Detroit, Hawaii, Iowa, New Mexico, Seattle, Utah, and Atlanta).

Table 6.17
Cancer of the Colon and Rectum (Invasive)

SEER^a Relative Survival (Percent)
By Year of Diagnosis

All Races, Females

Year of Diagnosis

	1975- 1979	1980- 1984	1985- 1989	1990- 1994	1995	1996	1997	1998	1999	2000	2001	2002	2003	2004	2005	2006	2007	2008	2009	2010	2011	2012	2013
Survival Time																							
1-year	73.9	76.3	79.0	80.0	78.0	79.9	79.3	82.0	81.2	80.2	81.0	83.4	81.7	82.5	83.4	82.5	82.5	83.1	83.0	82.9	83.3	83.4	83.5
2-year	63.0	66.4	69.8	71.6	70.0	71.6	71.1	74.6	73.9	72.5	73.7	77.1	75.3	75.3	76.0	76.0	75.9	77.3	76.1	76.0	76.3	75.5	
3-year	57.4	60.3	64.6	66.4	64.6	67.4	66.2	70.0	69.5	68.5	69.3	72.4	70.5	70.6	71.9	71.3	71.3	72.6	71.4	71.1	72.1		
4-year	53.8	56.6	61.2	63.0	60.8	64.7	63.1	67.2	66.2	64.9	66.5	69.3	67.6	67.5	68.9	68.1	68.5	69.7	68.3	68.4			
5-year	51.4	54.1	58.9	60.9	59.4	62.7	60.6	64.1	64.1	63.5	64.7	66.8	65.3	65.3	66.6	65.8	66.6	67.1	66.2				
6-year	49.8	52.3	57.2	59.5	57.3	61.5	59.2	62.7	62.4	62.4	63.2	65.4	64.2	63.5	65.4	64.5	64.9	65.4					
7-year	48.7	51.0	55.7	58.1	55.4	60.6	57.9	61.4	61.3	61.3	61.3	64.2	62.8	63.0	64.3	62.7	63.6						
8-year	47.9	50.1	54.6	57.1	54.7	59.4	57.6	61.0	60.1	60.4	60.1	63.6	62.4	62.0	63.2	61.6							
9-year	47.3	49.4	53.9	56.3	54.5	58.5	57.0	59.9	59.5	59.3	59.2	62.1	61.4	61.0	62.7								
10-year	46.7	48.7	53.1	55.5	53.8	58.0	56.0	59.1	59.3	59.2	58.7	61.5	60.4	60.2									
11-year	46.1	48.2	52.5	55.0	53.0	57.7	55.4	58.3	58.4	58.2	58.6	60.8	59.8										
12-year	45.9	47.7	52.3	54.4	52.4	57.6	54.7	58.3	57.9	57.7	57.3	60.0											
13-year	45.5	47.4	51.4	54.1	51.6	56.9	54.4	57.9	57.9	57.1	56.9												
14-year	45.1	47.0	51.0	53.8	51.4	56.1	53.6	57.6	57.5	56.8													
15-year	44.6	46.6	50.5	53.4	51.2	55.2	52.3	57.6	56.8														
16-year	44.2	45.9	50.1	53.4	50.6	54.5	51.9	57.2															
17-year	44.0	45.7	49.5	52.6	50.0	53.4	51.9																
18-year	43.4	45.3	49.2	52.2	49.4	53.0																	
19-year	43.4	44.8	48.9	51.3	48.7																		
20-year	43.1	44.6	48.5	50.5																			
21-year	42.7	44.0	48.4																				
22-year	42.5	43.6	48.1																				
23-year	41.9	43.4	47.8																				
24-year	41.6	43.2	47.2																				
25-year	41.5	42.5	47.1																				
26-year	41.2	42.3																					
27-year	40.7	42.0																					
28-year	40.7	41.4																					
29-year	40.1	41.4																					
30-year	40.0	41.1																					

^a Based on the SEER 9 areas (San Francisco, Connecticut, Detroit, Hawaii, Iowa, New Mexico, Seattle, Utah, and Atlanta).

Table 6.18
Cancer of the Colon and Rectum (Invasive)

Risk of Being Diagnosed With Cancer in 10, 20 and 30 Years,
Lifetime Risk of Being Diagnosed with Cancer Given Alive and Cancer-Free at Current Age, and
Lifetime Risk of Dying from Cancer Given Alive at Current Age
Both Sexes, 2012-2014 By Race/Ethnicity

Race/ Ethnicity	Current Age	Risk of Being Diagnosed with Cancer				Risk of Dying from Cancer	Race/ Ethnicity	Current Age	Risk of Being Diagnosed with Cancer				Risk of Dying from Cancer
		+10 yrs	+20 yrs	+30 yrs	Ever				+10 yrs	+20 yrs	+30 yrs	Ever	
All Races	0	0.00	0.00	0.02	4.32	1.82	Asian/ Pacific Islander	0	0.00	0.00	0.02	4.49	1.89
	10	0.00	0.02	0.10	4.36	1.84		10	0.00	0.02	0.08	4.53	1.90
	20	0.02	0.10	0.34	4.37	1.85		20	0.01	0.08	0.28	4.53	1.91
	30	0.08	0.32	0.90	4.39	1.86		30	0.06	0.27	0.79	4.54	1.91
	40	0.25	0.83	1.74	4.37	1.86		40	0.21	0.73	1.62	4.50	1.91
	50	0.60	1.53	2.79	4.23	1.85		50	0.53	1.43	2.57	4.35	1.88
	60	0.99	2.33	3.50	3.87	1.79		60	0.93	2.11	3.33	3.95	1.81
	70	1.52	2.85	-	3.27	1.66		70	1.27	2.58	-	3.24	1.69
80	1.80	-	-	2.36	1.42	80	1.57	-	-	2.36	1.49		
White	0	0.00	0.00	0.03	4.23	1.78	American Indian/ Alaska Native ^a	0	0.00	0.01	0.02	4.33	1.82
	10	0.00	0.03	0.10	4.27	1.80		10	0.00	0.02	0.10	4.37	1.84
	20	0.02	0.10	0.33	4.28	1.81		20	0.02	0.10	0.32	4.39	1.85
	30	0.08	0.31	0.86	4.30	1.82		30	0.08	0.30	0.83	4.44	1.88
	40	0.24	0.80	1.66	4.27	1.83		40	0.23	0.77	1.61	4.47	1.92
	50	0.57	1.46	2.71	4.14	1.81		50	0.57	1.44	2.89	4.42	1.94
	60	0.95	2.27	3.45	3.79	1.75		60	0.94	2.50	3.70	4.15	1.89
	70	1.50	2.84	-	3.23	1.63		70	1.78	3.16	-	3.68	1.78
80	1.82	-	-	2.35	1.40	80	1.88	-	-	2.59	1.53		
Black	0	0.00	0.00	0.02	4.46	2.10	Hispanic ^b	0	0.00	0.00	0.02	4.19	1.82
	10	0.00	0.02	0.10	4.55	2.14		10	0.00	0.02	0.08	4.23	1.83
	20	0.02	0.10	0.38	4.57	2.15		20	0.02	0.07	0.25	4.24	1.84
	30	0.08	0.37	1.11	4.61	2.17		30	0.06	0.24	0.74	4.25	1.85
	40	0.29	1.05	2.17	4.62	2.19		40	0.18	0.68	1.54	4.23	1.85
	50	0.78	1.95	3.29	4.50	2.18		50	0.51	1.39	2.57	4.13	1.84
	60	1.29	2.75	3.76	4.08	2.11		60	0.92	2.15	3.31	3.79	1.79
	70	1.78	3.00	-	3.39	1.95		70	1.36	2.64	-	3.17	1.66
80	1.79	-	-	2.36	1.67	80	1.61	-	-	2.27	1.42		

Devcan 6.7.5, April 2017, National Cancer Institute (<https://surveillance.cancer.gov/devcan/>).

Source: Incidence data are from the SEER 18 areas (San Francisco, Connecticut, Detroit, Hawaii, Iowa, New Mexico, Seattle, Utah, Atlanta, San Jose-Monterey, Los Angeles, Alaska Native Registry, Rural Georgia, California excluding SF/SJM/LA, Kentucky, Louisiana, New Jersey, and Georgia excluding ATL/RG). Mortality data are from the NCHS public use data file for the total US.

^a Underlying incidence and mortality data for American Indian/Alaska Native are based on the CHSDA (Contract Health Service Delivery Area) counties.

^b Hispanic is not mutually exclusive from whites, blacks, Asian/Pacific Islanders, and American Indians/Alaska Natives. Underlying incidence data for Hispanics are based on NHIA and exclude cases from the Alaska Native Registry.

- Statistic could not be calculated.

A percent of 0.00 represents a value that is below 0.005.

Table 6.19
Cancer of the Colon and Rectum (Invasive)

Risk of Being Diagnosed With Cancer in 10, 20 and 30 Years,
Lifetime Risk of Being Diagnosed with Cancer Given Alive and Cancer-Free at Current Age, and
Lifetime Risk of Dying from Cancer Given Alive at Current Age
Males, 2012-2014 By Race/Ethnicity

Race/ Ethnicity	Current Age	Risk of Being Diagnosed with Cancer				Risk of Dying from Cancer	Race/ Ethnicity	Current Age	Risk of Being Diagnosed with Cancer				Risk of Dying from Cancer
		+10 yrs	+20 yrs	+30 yrs	Ever				+10 yrs	+20 yrs	+30 yrs	Ever	
All Races	0	0.00	0.00	0.02	4.49	1.91	Asian/ Pacific Islander	0	0.00	0.00	0.02	4.96	2.04
	10	0.00	0.02	0.10	4.54	1.93		10	0.00	0.02	0.08	5.00	2.05
	20	0.02	0.10	0.35	4.56	1.94		20	0.02	0.08	0.31	5.01	2.06
	30	0.08	0.33	0.99	4.59	1.96		30	0.06	0.30	0.92	5.02	2.06
	40	0.26	0.93	1.98	4.59	1.97		40	0.24	0.87	1.97	4.99	2.06
	50	0.69	1.78	3.13	4.47	1.96		50	0.64	1.76	3.09	4.84	2.04
	60	1.18	2.64	3.79	4.09	1.90		60	1.17	2.55	3.81	4.38	1.96
	70	1.72	3.06	-	3.42	1.76		70	1.52	2.89	-	3.52	1.80
80	1.92	-	-	2.43	1.49	80	1.72	-	-	2.50	1.57		
White	0	0.00	0.00	0.03	4.39	1.87	American Indian/ Alaska Native ^a	0	0.00	0.01	0.02	4.04	1.83
	10	0.00	0.02	0.10	4.44	1.89		10	0.01	0.02	0.09	4.08	1.86
	20	0.02	0.10	0.35	4.45	1.90		20	0.01	0.09	0.26	4.10	1.88
	30	0.08	0.33	0.95	4.48	1.91		30	0.08	0.26	0.82	4.18	1.92
	40	0.25	0.89	1.89	4.48	1.93		40	0.18	0.76	1.68	4.23	1.97
	50	0.65	1.69	3.03	4.36	1.92		50	0.61	1.58	3.00	4.26	2.01
	60	1.12	2.57	3.71	4.00	1.86		60	1.06	2.63	3.84	4.01	1.99
	70	1.70	3.03	-	3.37	1.72		70	1.85	3.29	-	3.49	1.82
80	1.92	-	-	2.41	1.46	80	2.08	-	-	2.37	1.46		
Black	0	0.00	0.00	0.02	4.55	2.25	Hispanic ^b	0	0.00	0.00	0.02	4.52	2.05
	10	0.00	0.02	0.09	4.65	2.30		10	0.00	0.02	0.08	4.57	2.07
	20	0.02	0.09	0.38	4.68	2.32		20	0.02	0.07	0.26	4.58	2.07
	30	0.08	0.37	1.20	4.75	2.36		30	0.06	0.25	0.80	4.61	2.09
	40	0.30	1.15	2.45	4.80	2.39		40	0.19	0.75	1.77	4.61	2.10
	50	0.89	2.25	3.64	4.71	2.39		50	0.58	1.62	2.99	4.52	2.10
	60	1.53	3.09	4.05	4.30	2.33		60	1.11	2.56	3.76	4.19	2.05
	70	2.00	3.22	-	3.53	2.17		70	1.64	3.00	-	3.49	1.91
80	1.97	-	-	2.48	1.89	80	1.81	-	-	2.46	1.61		

Devcan 6.7.5, April 2017, National Cancer Institute (<https://surveillance.cancer.gov/devcan/>).

Source: Incidence data are from the SEER 18 areas (San Francisco, Connecticut, Detroit, Hawaii, Iowa, New Mexico, Seattle, Utah, Atlanta, San Jose-Monterey, Los Angeles, Alaska Native Registry, Rural Georgia, California excluding SF/SJM/LA, Kentucky, Louisiana, New Jersey, and Georgia excluding ATL/RG). Mortality data are from the NCHS public use data file for the total US.

^a Underlying incidence and mortality data for American Indian/Alaska Native are based on the CHSDA (Contract Health Service Delivery Area) counties.

^b Hispanic is not mutually exclusive from whites, blacks, Asian/Pacific Islanders, and American Indians/Alaska Natives. Underlying incidence data for Hispanics are based on NHIA and exclude cases from the Alaska Native Registry.

- Statistic could not be calculated.

A percent of 0.00 represents a value that is below 0.005.

Table 6.20
Cancer of the Colon and Rectum (Invasive)

Risk of Being Diagnosed With Cancer in 10, 20 and 30 Years,
Lifetime Risk of Being Diagnosed with Cancer Given Alive and Cancer-Free at Current Age, and
Lifetime Risk of Dying from Cancer Given Alive at Current Age
Females, 2012-2014 By Race/Ethnicity

Race/ Ethnicity	Current Age	Risk of Being Diagnosed with Cancer				Risk of Dying from Cancer	Race/ Ethnicity	Current Age	Risk of Being Diagnosed with Cancer				Risk of Dying from Cancer
		+10 yrs	+20 yrs	+30 yrs	Ever				+10 yrs	+20 yrs	+30 yrs	Ever	
All Races	0	0.00	0.01	0.03	4.15	1.74	Asian/ Pacific Islander	0	0.00	0.00	0.01	4.10	1.77
	10	0.00	0.02	0.10	4.19	1.76		10	0.00	0.01	0.07	4.13	1.78
	20	0.02	0.10	0.33	4.20	1.76		20	0.01	0.07	0.26	4.13	1.78
	30	0.08	0.31	0.81	4.20	1.76		30	0.06	0.25	0.67	4.13	1.78
	40	0.23	0.74	1.50	4.16	1.77		40	0.19	0.61	1.32	4.08	1.78
	50	0.52	1.30	2.46	4.01	1.75		50	0.43	1.15	2.13	3.94	1.75
	60	0.82	2.04	3.25	3.66	1.69		60	0.73	1.74	2.94	3.59	1.69
	70	1.35	2.69	-	3.14	1.58		70	1.06	2.33	-	3.02	1.60
80	1.72	-	-	2.31	1.38	80	1.46	-	-	2.26	1.44		
White	0	0.00	0.01	0.03	4.08	1.71	American Indian/ Alaska Native ^a	0	0.00	0.00	0.03	4.59	1.78
	10	0.01	0.03	0.10	4.12	1.72		10	0.00	0.03	0.11	4.62	1.81
	20	0.02	0.10	0.32	4.12	1.73		20	0.02	0.11	0.37	4.63	1.81
	30	0.08	0.30	0.78	4.12	1.73		30	0.09	0.35	0.85	4.66	1.83
	40	0.23	0.71	1.44	4.08	1.73		40	0.27	0.78	1.54	4.66	1.85
	50	0.49	1.24	2.39	3.93	1.71		50	0.53	1.32	2.78	4.54	1.86
	60	0.78	1.99	3.21	3.60	1.66		60	0.83	2.38	3.59	4.24	1.79
	70	1.33	2.68	-	3.12	1.55		70	1.72	3.06	-	3.79	1.73
80	1.74	-	-	2.31	1.36	80	1.75	-	-	2.70	1.56		
Black	0	0.00	0.00	0.02	4.39	1.98	Hispanic ^b	0	0.00	0.00	0.02	3.91	1.62
	10	0.00	0.02	0.10	4.47	2.01		10	0.00	0.02	0.08	3.95	1.64
	20	0.02	0.10	0.38	4.48	2.02		20	0.02	0.07	0.24	3.95	1.64
	30	0.08	0.36	1.02	4.49	2.03		30	0.06	0.23	0.67	3.94	1.64
	40	0.28	0.95	1.93	4.47	2.03		40	0.17	0.62	1.33	3.91	1.64
	50	0.69	1.70	2.99	4.32	2.02		50	0.45	1.17	2.20	3.79	1.62
	60	1.08	2.47	3.53	3.91	1.95		60	0.75	1.81	2.94	3.45	1.57
	70	1.61	2.84	-	3.28	1.80		70	1.15	2.37	-	2.92	1.47
80	1.68	-	-	2.28	1.55	80	1.48	-	-	2.14	1.30		

Devcan 6.7.5, April 2017, National Cancer Institute (<https://surveillance.cancer.gov/devcan/>).

Source: Incidence data are from the SEER 18 areas (San Francisco, Connecticut, Detroit, Hawaii, Iowa, New Mexico, Seattle, Utah, Atlanta, San Jose-Monterey, Los Angeles, Alaska Native Registry, Rural Georgia, California excluding SF/SJM/LA, Kentucky, Louisiana, New Jersey, and Georgia excluding ATL/RG). Mortality data are from the NCHS public use data file for the total US.

^a Underlying incidence and mortality data for American Indian/Alaska Native are based on the CHSDA (Contract Health Service Delivery Area) counties.

^b Hispanic is not mutually exclusive from whites, blacks, Asian/Pacific Islanders, and American Indians/Alaska Natives. Underlying incidence data for Hispanics are based on NHIA and exclude cases from the Alaska Native Registry.

- Statistic could not be calculated.

A percent of 0.00 represents a value that is below 0.005.

Table 6.21
Cancer of the Colon and Rectum (Invasive)

SEER Incidence and U.S. Mortality
Age-Adjusted Rates and Trends^a
By Race/Ethnicity and Sex

SEER Incidence	SEER 18 Areas ^b			SEER 13 Areas ^b			SEER 9 Areas ^b		
	Rate 2010-2014			Trend 2005-2014 ^c			Trend 2005-2014 ^d		
	Rate per 100,000 persons			AAPC (%)			AAPC (%)		
RACE/ETHNICITY	Total	Males	Females	Total	Males	Females	Total	Males	Females
All Races	40.1	46.0	35.1	-2.8*	-2.9*	-2.7*	-2.7*	-3.0*	-2.7*
White	39.3	45.0	34.4	-2.8*	-3.1*	-2.5*	-2.8*	-3.1*	-2.5*
White Hispanic ^e	35.0	41.5	29.9	-2.4*	-2.6*	-2.1*	-	-	-
White Non-Hispanic ^e	40.2	45.9	35.3	-2.7*	-3.0*	-2.5*	-	-	-
Black	48.7	56.4	43.2	-3.8*	-3.6*	-4.1*	-3.5*	-3.3*	-4.3*
Asian/Pacific Islander	33.8	40.2	28.8	-2.6*	-2.4*	-3.4*	-	-	-
Amer Ind/Alaska Nat ^f	41.1	45.5	37.5	-0.2	-0.2	-0.3	-	-	-
Hispanic ^e	33.9	40.0	29.1	-2.4*	-2.6*	-2.2*	-	-	-
<u>U.S. Mortality^g</u>									
	Rate 2010-2014			Trend 2005-2014 ^h					
	Rate per 100,000 persons			AAPC (%)					
RACE/ETHNICITY	Total	Males	Females	Total	Males	Females			
All Races	14.8	17.7	12.4	-2.5*	-2.5*	-2.8*			
White	14.4	17.2	12.1	-2.4*	-2.5*	-2.7*			
White Hispanic ^e	12.3	15.8	9.7	-1.6*	-1.3*	-2.1*			
White Non-Hispanic ^e	14.6	17.3	12.3	-2.4*	-2.5*	-2.7*			
Black	20.0	25.3	16.5	-3.0*	-2.8*	-3.4*			
Asian/Pacific Islander	10.3	12.4	8.8	-1.9*	-1.9*	-3.1*			
Amer Ind/Alaska Nat									
Total U.S.	11.7	14.0	10.0	-1.5*	-1.9*	-1.0*			
CHSDA Counties	16.4	19.5	14.0	-0.7	-0.8	-0.3			
Non-CHSDA Counties	6.5	8.0	5.6	-1.9*	-2.9*	-1.6*			
Hispanic ^e	11.7	15.0	9.2	-1.8*	-1.5*	-2.3*			

The AAPC is the Average Annual Percent Change over the time interval. The AAPCs are calculated by the Joinpoint Regression Program Version 4.3.0.0, April 2016, National Cancer Institute.

- Statistic not shown. Rate based on less than 16 cases for the time interval.

Trend based on less than 10 cases for at least one year within the time interval.

a Rates are age-adjusted to the 2000 US Std Population (19 age groups - Census P25-1130). Trends are based on rates age-adjusted to the 2000 US Std Population (19 age groups - Census P25-1130).

b The SEER 9 areas are San Francisco, Connecticut, Detroit, Hawaii, Iowa, New Mexico, Seattle, Utah, and Atlanta.

The SEER 13 areas comprise the SEER 9 areas plus San Jose-Monterey, Los Angeles, the Alaska Native Registry, and Rural Georgia.

The SEER 18 areas comprise the SEER 13 areas plus California excluding SF/SJM/LA, Kentucky, Louisiana, New Jersey, and Georgia excluding ATL/RG.

c The 2005-2014 AAPC estimates are based on a Joinpoint analysis with up to 4 Joinpoints over diagnosis years 1992-2014.

d The 2005-2014 AAPC estimates are based on a Joinpoint analysis with up to 5 Joinpoints over diagnosis years 1975-2014.

e Hispanic and Non-Hispanic are not mutually exclusive from whites, blacks, Asian/Pacific Islanders, and American Indians/Alaska Natives. Incidence data for Hispanics and Non-Hispanics are based on NHIA and exclude cases from the Alaska Native Registry. The 2005-2014 Hispanic and Non-Hispanic mortality trends exclude deaths from New Hampshire and Oklahoma.

f Incidence data for American Indian/Alaska Native are based on the CHSDA (Contract Health Service Delivery Area) counties.

g US Mortality Files, National Center for Health Statistics, CDC.

h The 2005-2014 mortality AAPCs are based on a Joinpoint analysis using years of death 1992-2014.

* The APC is significantly different from zero (p<.05).

Table 6.22
Cancer of the Colon (Invasive) and Cancer of the Rectum (Invasive)

SEER Incidence
Age-Adjusted Rates and Trends^a
By Race/Ethnicity and Sex

Cancer of the Colon <u>SEER Incidence</u>	SEER 18 Areas ^b			SEER 13 Areas ^b			SEER 9 Areas ^b		
	Rate 2010-2014			Trend 2005-2014 ^c			Trend 2005-2014 ^d		
	Rate per 100,000 persons			AAPC (%)			AAPC (%)		
RACE/ETHNICITY	Total	Males	Females	Total	Males	Females	Total	Males	Females
All Races	28.2	31.3	25.8	-3.1*	-3.3*	-3.0*	-3.2*	-3.5*	-3.0*
White	27.7	30.6	25.3	-3.1*	-3.4*	-2.8*	-3.0*	-3.7*	-2.9*
White Hispanic ^e	24.1	27.4	21.6	-2.6*	-2.9*	-2.3*	-	-	-
White Non-Hispanic ^e	28.4	31.3	26.0	-3.0*	-3.3*	-2.9*	-	-	-
Black	36.3	40.9	33.1	-3.9*	-3.7*	-4.3*	-3.6*	-3.5*	-4.2*
Asian/Pacific Islander	22.1	25.0	19.8	-3.0*	-2.9*	-3.8*	-	-	-
Amer Ind/Alaska Nat ^f	29.0	30.7	27.6	-0.6	-0.7	-0.5	-	-	-
Hispanic ^e	23.3	26.4	21.0	-2.7*	-3.0*	-2.4*	-	-	-
Cancer of the Rectum <u>SEER Incidence</u>	SEER 18 Areas ^b			SEER 13 Areas ^b			SEER 9 Areas ^b		
RACE/ETHNICITY	Rate 2010-2014			Trend 2005-2014 ^c			Trend 2005-2014 ^d		
	Rate per 100,000 persons			AAPC (%)			AAPC (%)		
Total	Males	Females	Total	Males	Females	Total	Males	Females	
All Races	11.8	14.8	9.4	-2.2*	-2.4*	-2.1*	-2.2*	-2.5*	-2.1*
White	11.6	14.4	9.1	-2.4*	-2.7*	-2.2*	-2.5*	-2.8*	-2.3*
White Hispanic ^e	10.9	14.1	8.3	-0.9*	-1.1*	-0.9*	-	-	-
White Non-Hispanic ^e	11.8	14.6	9.4	-2.5*	-2.8*	-2.3*	-	-	-
Black	12.4	15.5	10.2	-3.4*	-3.0*	-4.0*	-3.3*	-2.8*	-4.0*
Asian/Pacific Islander	11.7	15.2	9.0	-1.8*	-1.4*	-2.7*	-	-	-
Amer Ind/Alaska Nat ^f	12.1	14.8	9.8	0.5	0.8	0.1	-	-	-
Hispanic ^e	10.6	13.6	8.1	-1.0*	-1.2*	-0.9*	-	-	-

The AAPC is the Average Annual Percent Change over the time interval. The AAPCs are calculated by the Joinpoint Regression Program Version 4.3.0.0, April 2016, National Cancer Institute.

- Statistic not shown. Rate based on less than 16 cases for the time interval.

Trend based on less than 10 cases for at least one year within the time interval.

a Rates are age-adjusted to the 2000 US Std Population (19 age groups - Census P25-1130). Trends are based on rates age-adjusted to the 2000 US Std Population (19 age groups - Census P25-1130).

b The SEER 9 areas are San Francisco, Connecticut, Detroit, Hawaii, Iowa, New Mexico, Seattle, Utah, and Atlanta.

The SEER 13 areas comprise the SEER 9 areas plus San Jose-Monterey, Los Angeles, the Alaska Native Registry, and Rural Georgia.

The SEER 18 areas comprise the SEER 13 areas plus California excluding SF/SJM/LA, Kentucky, Louisiana, New Jersey, and Georgia excluding ATL/RG.

c The 2005-2014 AAPC estimates are based on a Joinpoint analysis with up to 4 Joinpoints over diagnosis years 1992-2014.

d The 2005-2014 AAPC estimates are based on a Joinpoint analysis with up to 5 Joinpoints over diagnosis years 1975-2014.

e Hispanic and Non-Hispanic are not mutually exclusive from whites, blacks, Asian/Pacific Islanders, and American Indians/Alaska Natives. Incidence data for Hispanics and Non-Hispanics are based on NHIA and exclude cases from the Alaska Native Registry.

f Incidence data for American Indian/Alaska Native are based on the CHSDA (Contract Health Service Delivery Area) counties.

* The APC is significantly different from zero (p<.05).

Table 6.23
Cancer of the Colon and Rectum (Invasive)

Age-Adjusted SEER Incidence Rates^a
By Registry, Race and Sex

	All Races			Whites			Blacks		
	Total	Males	Females	Total	Males	Females	Total	Males	Females
<u>SEER Incidence Rates^a, 2010-2014</u>									
California	37.10	42.48	32.61	36.78	41.94	32.38	45.81	52.33	40.86
Greater Bay Area	36.06	40.57	32.27	35.94	39.74	32.65	45.51	49.64	42.34
San Francisco-Oakland	36.96	41.63	33.04	36.55	40.17	33.35	46.60	52.31	42.26
San Jose-Monterey	34.31	38.59	30.73	34.88	39.02	31.43	38.27	33.74	42.78
Los Angeles	37.96	44.22	32.95	36.76	42.71	31.89	46.93	54.63	41.52
Greater California	37.11	42.40	32.60	37.07	42.32	32.54	45.09	51.90	39.53
Connecticut	38.79	44.39	34.26	38.25	43.75	33.77	42.34	50.31	37.14
Detroit	42.30	48.49	37.51	39.91	45.65	35.31	51.47	60.23	45.54
Georgia	41.42	48.89	35.62	39.06	46.18	33.26	48.63	57.96	42.43
Atlanta	39.41	47.16	33.62	35.98	42.58	30.71	45.81	56.54	38.99
Rural Georgia	48.85	53.08	45.84	37.80	42.02	33.65	67.52	74.00	64.27
Greater Georgia	42.39	49.79	36.56	40.35	47.73	34.30	50.16	58.41	44.48
Hawaii	43.45	51.32	36.47	39.35	42.14	36.04	35.96	47.58	-
Iowa	45.35	51.73	39.82	45.26	51.58	39.77	48.27	49.84	46.38
Kentucky	50.00	59.29	42.42	49.65	59.04	41.97	55.22	62.76	49.47
Louisiana	47.78	55.96	41.38	44.59	52.49	38.20	57.17	66.73	50.38
New Jersey	42.31	47.89	37.84	42.45	48.36	37.63	45.43	50.74	41.79
New Mexico	33.93	39.40	29.27	33.66	38.87	29.20	29.84	28.36	31.63
Seattle-Puget Sound	37.21	41.79	33.36	36.87	41.04	33.31	37.42	43.94	31.10
Utah	31.36	35.50	27.72	31.01	35.24	27.28	51.48	57.51	43.18
SEER 9 Areas ^b	38.96	44.51	34.35	37.94	42.90	33.71	46.73	54.93	40.97
SEER 13 Areas ^b	38.57	44.17	33.95	37.48	42.58	33.16	46.91	54.71	41.43
SEER 18 Areas ^b	40.06	46.01	35.15	39.29	45.03	34.45	48.69	56.38	43.23

^a Rates are per 100,000 and are age-adjusted to the 2000 US Std Population (19 age groups - Census P25-1130)

^b The SEER 9 areas are San Francisco, Connecticut, Detroit, Hawaii, Iowa, New Mexico, Seattle, Utah and Atlanta.

The SEER 13 areas comprise the SEER 9 areas plus San Jose-Monterey, Los Angeles, the Alaska Native Registry and Rural Georgia.

The SEER 18 areas comprise the SEER 13 areas plus California excluding SF/SJM/LA, Kentucky, Louisiana, New Jersey and Georgia excluding ATL/RG.

- Statistic not shown. Rate based on less than 16 cases for the time interval.

Table 6.24
Cancer of the Colon and Rectum (Invasive)

Age-Adjusted SEER Death Rates^a
By Registry, Race and Sex

	All Races			Whites			Blacks		
	Total	Males	Females	Total	Males	Females	Total	Males	Females
<u>SEER Death Rates^a, 2010-2014</u>									
California	13.51	15.96	11.54	13.55	16.01	11.54	20.03	23.82	17.23
Greater Bay Area	12.20	14.31	10.49	12.30	14.36	10.61	18.28	21.39	16.10
San Francisco-Oakland	12.64	14.96	10.76	12.65	14.95	10.71	18.40	22.06	15.92
San Jose-Monterey	11.33	13.10	9.93	11.67	13.31	10.41	17.46	16.72	17.68
Los Angeles	13.83	16.55	11.70	13.47	16.05	11.41	20.89	25.43	17.77
Greater California	13.82	16.26	11.83	13.93	16.46	11.86	20.10	23.40	17.37
Connecticut	11.90	13.82	10.38	11.81	13.69	10.31	14.32	18.35	11.75
Detroit	15.50	18.32	13.45	14.29	16.85	12.37	20.64	25.63	17.36
Georgia	15.46	19.46	12.57	14.22	17.79	11.45	19.97	26.81	16.00
Atlanta	15.03	19.59	11.99	13.19	16.88	10.59	19.09	26.62	14.88
Rural Georgia	20.09	25.83	16.69	15.88	18.60	13.96	28.35	44.18	20.85
Greater Georgia	15.64	19.42	12.77	14.61	18.21	11.73	20.34	26.30	16.73
Hawaii	13.79	17.55	10.65	13.38	14.88	11.99	-	-	-
Iowa	16.27	19.24	13.91	16.20	19.19	13.84	20.40	19.61	20.79
Kentucky	17.18	20.88	14.24	17.06	20.81	14.08	20.48	23.08	18.12
Louisiana	17.88	21.76	14.93	16.13	19.47	13.53	23.32	29.49	19.05
New Jersey	15.16	18.23	12.82	15.12	17.99	12.90	19.30	25.97	14.95
New Mexico	14.00	17.27	11.28	13.99	17.23	11.27	18.27	-	19.49
Seattle-Puget Sound	12.73	14.95	10.87	12.78	14.92	10.94	15.88	20.09	12.95
Utah	11.31	13.04	9.73	11.11	12.76	9.60	23.27	-	-
SEER 9 Areas ^b	13.67	16.30	11.58	13.34	15.75	11.37	18.74	23.64	15.55
SEER 13 Areas ^b	13.62	16.22	11.56	13.27	15.65	11.33	19.36	24.22	16.15
SEER 18 Areas ^b	14.41	17.22	12.19	14.13	16.80	11.97	20.16	25.36	16.66
Total U.S.	14.76	17.69	12.42	14.37	17.18	12.09	20.01	25.28	16.46

^a US Mortality Files, National Center for Health Statistics, Centers for Disease Control and Prevention. Rates are per 100,000 and are age-adjusted to the 2000 US Std Population (19 age groups - Census P25-1130).

^b The SEER 9 areas are San Francisco, Connecticut, Detroit, Hawaii, Iowa, New Mexico, Seattle, Utah and Atlanta. The SEER 13 areas comprise the SEER 9 areas plus San Jose-Monterey, Los Angeles, the Alaska Native Registry and Rural Georgia. The SEER 18 areas comprise the SEER 13 areas plus California excluding SF/SJM/LA, Kentucky, Louisiana, New Jersey and Georgia excluding ATL/RG.

- Statistic not shown. Rate based on less than 16 cases for the time interval.

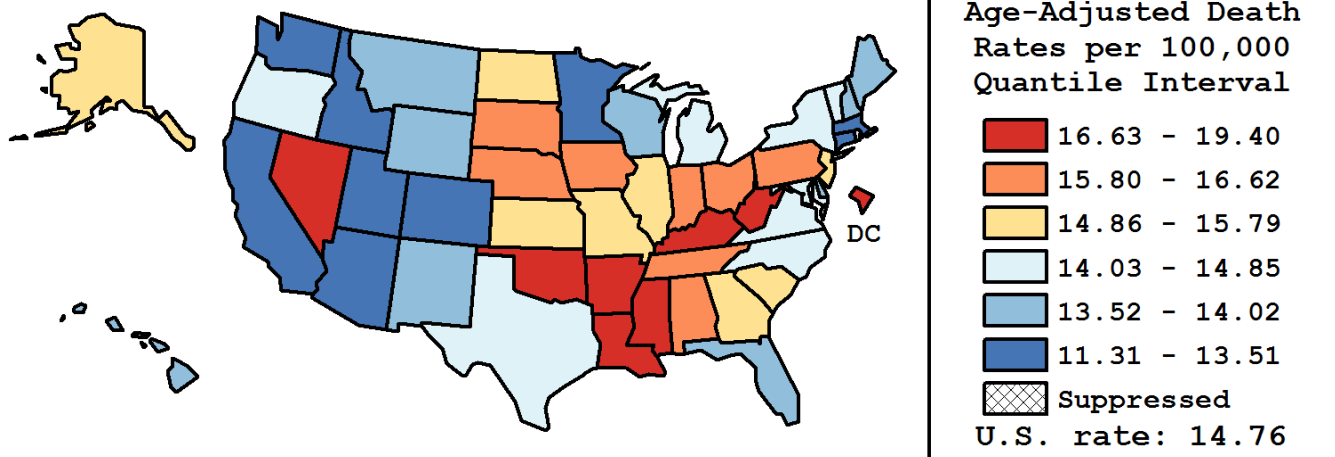
Table 6.25
Cancer of the Colon and Rectum (Invasive)

Age-Adjusted Cancer Death^a Rates By State, All Races, 2010-2014

Males and Females

State	Rate	SE	Rank(CI) ^d	PD
TOTAL U.S.	14.76	0.03		
High Five States				
Mississippi	19.40	0.35	01(01,02)	31.47 ^c
West Virginia	18.18	0.39	02(01,07)	23.20 ^c
Louisiana	17.88	0.27	03(02,07)	21.15 ^c
Arkansas	17.81	0.33	04(02,08)	20.70 ^c
Kentucky	17.18	0.27	05(03,12)	16.40 ^c
Low Five States				
Minnesota	13.15	0.21	47(36,49)	-10.89 ^c
Washington	13.03	0.19	48(39,49)	-11.70 ^c
Colorado	12.63	0.23	49(42,50)	-14.44 ^c
Connecticut	11.90	0.24	50(49,51)	-19.39 ^c
Utah	11.31	0.32	51(50,51)	-23.36 ^c

State	Rate	SE	Rank(CI) ^d	PD	State	Rate	SE	Rank(CI) ^d	PD
Alabama	16.47	0.25	10(05,19)	11.58 ^c	Montana	13.54	0.47	42(24,49)	-8.27
Alaska	15.77	0.82	19(02,43)	6.83	Nebraska	16.12	0.40	13(05,24)	9.23
Arizona	13.21	0.19	46(37,49)	-10.49 ^c	Nevada	16.84	0.36	07(03,18)	14.13 ^c
Arkansas	17.81	0.33	04(02,08)	20.70 ^c	New Hampshire	13.65	0.42	39(25,49)	-7.51
California	13.51	0.08	43(36,46)	-8.47	New Jersey	15.16	0.17	24(17,28)	2.69
Colorado	12.63	0.23	49(42,50)	-14.44 ^c	New Mexico	14.00	0.35	35(23,48)	-5.16
Connecticut	11.90	0.24	50(49,51)	-19.39 ^c	New York	14.18	0.11	31(27,39)	-3.93
Delaware	13.61	0.51	41(23,49)	-7.79	North Carolina	14.08	0.16	33(27,41)	-4.58
D.C.	16.69	0.75	08(02,29)	13.06 ^c	North Dakota	15.31	0.62	22(05,43)	3.71
Florida	13.62	0.10	40(34,45)	-7.71	Ohio	16.32	0.16	11(07,17)	10.57 ^c
Georgia	15.46	0.19	21(14,25)	4.77	Oklahoma	16.85	0.29	06(03,15)	14.18 ^c
Hawaii	13.79	0.41	37(23,49)	-6.57	Oregon	14.16	0.25	32(24,43)	-4.06
Idaho	13.35	0.40	44(27,49)	-9.54	Pennsylvania	15.88	0.14	16(11,22)	7.61
Illinois	15.79	0.15	17(11,23)	7.01	Rhode Island	14.38	0.48	28(16,47)	-2.54
Indiana	16.03	0.21	14(08,22)	8.59	South Carolina	15.50	0.24	20(12,26)	5.04
Iowa	16.27	0.30	12(06,22)	10.21 ^c	South Dakota	16.00	0.57	15(04,29)	8.43
Kansas	15.26	0.31	23(12,30)	3.42	Tennessee	16.62	0.22	09(05,16)	12.64 ^c
Kentucky	17.18	0.27	05(03,12)	16.40 ^c	Texas	14.76	0.11	26(22,30)	0.03
Louisiana	17.88	0.27	03(02,07)	21.15 ^c	Utah	11.31	0.32	51(50,51)	-23.36 ^c
Maine	13.88	0.40	36(23,49)	-5.94	Vermont	14.23	0.61	29(13,49)	-3.59
Maryland	14.44	0.22	27(23,38)	-2.16	Virginia	14.21	0.18	30(25,40)	-3.69
Massachusetts	13.25	0.19	45(37,49)	-10.22 ^c	Washington	13.03	0.19	48(39,49)	-11.70 ^c
Michigan	14.85	0.16	25(20,30)	0.59	West Virginia	18.18	0.39	02(01,07)	23.20 ^c
Minnesota	13.15	0.21	47(36,49)	-10.89 ^c	Wisconsin	14.02	0.21	34(26,43)	-4.99
Mississippi	19.40	0.35	01(01,02)	31.47 ^c	Wyoming	13.72	0.68	38(16,50)	-7.04
Missouri	15.79	0.21	18(10,23)	6.95					



^a US Mortality Files, National Center for Health Statistics, Centers for Disease Control and Prevention. Rates are per 100,000 and are age-adjusted to the 2000 US Std Population (19 age groups - Census P25-1130).

^b Difference between state rate and total U.S. rate is statistically significant ($p < .0002$).

^c Absolute percent difference between state rate and total U.S. rate is 10% or more.

^d Rank of state level death rate and the 95% confidence intervals (low, high) for the rank.

SE Standard error of the rate.

PD Percent difference between state rate and total U.S. rate.

- Statistic not shown. Rate based on less than 16 cases for the time interval.

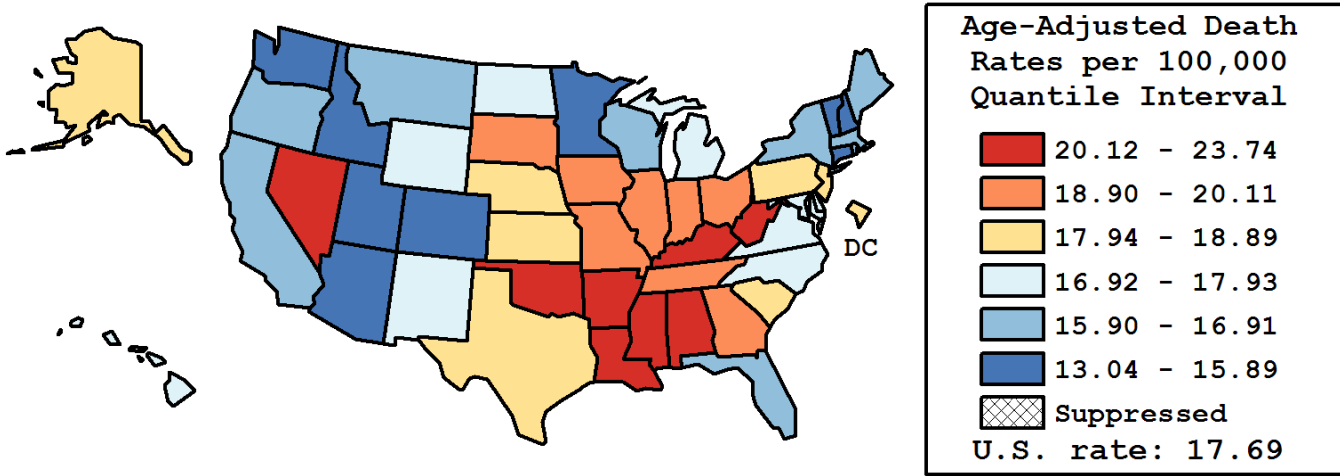
Table 6.26
Cancer of the Colon and Rectum (Invasive)

Age-Adjusted Cancer Death^a Rates By State, All Races, 2010-2014

Males

State	Rate	SE	Rank(CI) ^d	PD
TOTAL U.S.	17.69	0.05		
High Five States				
Mississippi	23.74	0.60	01(01,03)	34.21 ^c
West Virginia	22.12	0.66	02(01,09)	25.05 ^c
Arkansas	21.77	0.55	03(01,10)	23.04 ^c
Louisiana	21.76	0.47	04(01,08)	23.00 ^c
Kentucky	20.88	0.45	05(02,13)	18.02 ^c
Low Five States				
Washington	15.16	0.31	47(39,49)	-14.32 ^c
Colorado	14.53	0.37	48(43,51)	-17.88 ^c
New Hampshire	13.96	0.65	49(40,51)	-21.08 ^c
Connecticut	13.82	0.39	50(46,51)	-21.89 ^c
Utah	13.04	0.51	51(48,51)	-26.31 ^c

State	Rate	SE	Rank(CI) ^d	PD	State	Rate	SE	Rank(CI) ^d	PD
Alabama	20.58	0.43	07(02,15)	16.34 ^c	Montana	16.16	0.76	40(21,49)	-8.66
Alaska	18.50	1.36	21(02,48)	4.57	Nebraska	18.53	0.64	20(07,36)	4.76
Arizona	15.57	0.31	45(35,48)	-12.02 ^c	Nevada	20.21	0.58	08(02,21)	14.24 ^c
Arkansas	21.77	0.55	03(01,10)	23.04 ^c	New Hampshire	13.96	0.65	49(40,51)	-21.08 ^c
California	15.96	0.14	41(35,45)	-9.82	New Jersey	18.23	0.30	24(15,30)	3.03
Colorado	14.53	0.37	48(43,51)	-17.88 ^c	New Mexico	17.27	0.59	30(16,44)	-2.39
Connecticut	13.82	0.39	50(46,51)	-21.89 ^c	New York	16.91	0.19	34(27,39)	-4.44
Delaware	17.08	0.87	32(11,48)	-3.46	North Carolina	17.32	0.28	29(22,37)	-2.08
D.C.	18.60	1.25	19(02,47)	5.15	North Dakota	17.93	1.01	25(05,47)	1.33
Florida	16.32	0.17	39(32,44)	-7.75	Ohio	19.82	0.26	10(06,17)	12.04 ^c
Georgia	19.46	0.33	12(07,22)	9.97	Oklahoma	20.63	0.48	06(02,15)	16.60 ^c
Hawaii	17.55	0.69	28(12,44)	-0.78	Oregon	16.58	0.41	35(25,46)	-6.29
Idaho	15.89	0.65	43(25,49)	-10.18 ^c	Pennsylvania	18.89	0.24	17(11,24)	6.77
Illinois	19.12	0.26	15(10,23)	8.08	Rhode Island	16.38	0.79	38(18,49)	-7.40
Indiana	19.28	0.36	13(07,24)	9.00	South Carolina	18.69	0.41	18(10,29)	5.66
Iowa	19.24	0.49	14(06,26)	8.73	South Dakota	19.80	0.96	11(02,34)	11.91 ^c
Kansas	18.41	0.52	22(10,33)	4.06	Tennessee	20.11	0.37	09(04,17)	13.67 ^c
Kentucky	20.88	0.45	05(02,13)	18.02 ^c	Texas	18.30	0.19	23(17,28)	3.43
Louisiana	21.76	0.47	04(01,08)	23.00 ^c	Utah	13.04	0.51	51(48,51)	-26.31 ^c
Maine	16.46	0.67	36(20,48)	-6.94	Vermont	15.77	0.98	44(16,51)	-10.87 ^c
Maryland	17.58	0.37	27(19,37)	-0.65	Virginia	17.04	0.31	33(23,41)	-3.71
Massachusetts	15.90	0.32	42(32,47)	-10.14 ^c	Washington	15.16	0.31	47(39,49)	-14.32 ^c
Michigan	17.67	0.27	26(20,34)	-0.12	West Virginia	22.12	0.66	02(01,09)	25.05 ^c
Minnesota	15.18	0.34	46(38,49)	-14.22 ^c	Wisconsin	16.44	0.34	37(28,45)	-7.09
Mississippi	23.74	0.60	01(01,03)	34.21 ^c	Wyoming	17.12	1.11	31(06,49)	-3.25
Missouri	19.09	0.36	16(08,25)	7.89					



^a US Mortality Files, National Center for Health Statistics, Centers for Disease Control and Prevention. Rates are per 100,000 and are age-adjusted to the 2000 US Std Population (19 age groups - Census P25-1130).

^b Difference between state rate and total U.S. rate is statistically significant ($p < .0002$).

^c Absolute percent difference between state rate and total U.S. rate is 10% or more.

^d Rank of state level death rate and the 95% confidence intervals (low, high) for the rank.

SE Standard error of the rate.

PD Percent difference between state rate and total U.S. rate.

- Statistic not shown. Rate based on less than 16 cases for the time interval.

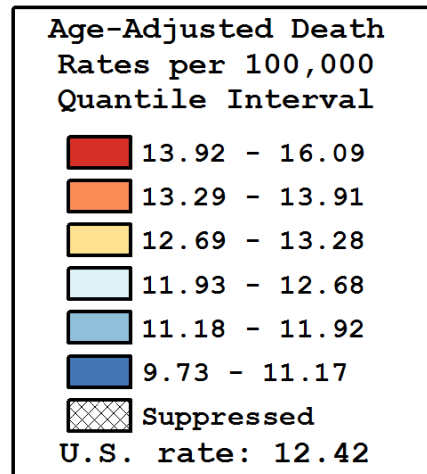
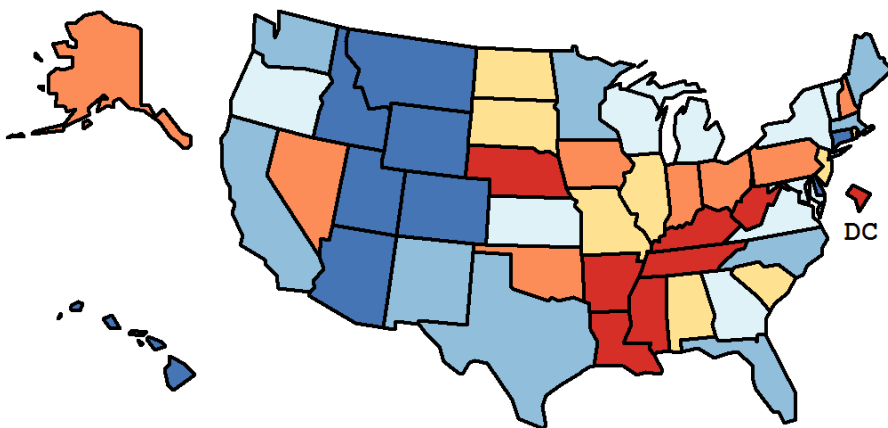
Table 6.27
Cancer of the Colon and Rectum (Invasive)

Age-Adjusted Cancer Death^a Rates By State, All Races, 2010-2014

Females

State	Rate	SE	Rank(CI) ^d	PD
TOTAL U.S.	12.42	0.04		
High Five States				
Mississippi	16.09	0.42	01(01,05)	29.53 ^c
D.C.	15.47	0.96	02(01,24)	24.61 ^c
West Virginia	15.01	0.48	03(01,15)	20.83 ^c
Louisiana	14.93	0.34	04(01,10)	20.23 ^c
Arkansas	14.64	0.40	05(01,16)	17.86 ^c
Low Five States				
Delaware	10.83	0.60	47(24,51)	-12.78 ^c
Hawaii	10.65	0.50	48(29,51)	-14.20 ^c
Wyoming	10.62	0.82	49(18,51)	-14.48 ^c
Connecticut	10.38	0.29	50(41,51)	-16.44 ^c
Utah	9.73	0.41	51(45,51)	-21.62 ^c

State	Rate	SE	Rank(CI) ^d	PD	State	Rate	SE	Rank(CI) ^d	PD
Alabama	13.28	0.30	17(07,28)	6.94	Montana	11.14	0.59	44(21,51)	-10.26 ^c
Alaska	13.54	1.03	13(01,48)	9.07	Nebraska	14.16	0.50	07(02,24)	14.06 ^c
Arizona	11.17	0.24	43(33,49)	-10.07 ^c	Nevada	13.80	0.44	11(02,27)	11.11 ^c
Arkansas	14.64	0.40	05(01,16)	17.86 ^c	New Hampshire	13.31	0.56	16(03,36)	7.16
California	11.54	0.10	37(33,45)	-7.11	New Jersey	12.82	0.21	23(14,30)	3.23
Colorado	11.09	0.29	46(32,50)	-10.69 ^c	New Mexico	11.28	0.43	41(25,50)	-9.17
Connecticut	10.38	0.29	50(41,51)	-16.44 ^c	New York	12.11	0.14	30(24,37)	-2.48
Delaware	10.83	0.60	47(24,51)	-12.78 ^c	North Carolina	11.61	0.20	36(28,46)	-6.52
D.C.	15.47	0.96	02(01,24)	24.61 ^c	North Dakota	13.14	0.76	20(02,46)	5.77
Florida	11.35	0.13	39(34,47)	-8.64	Ohio	13.62	0.19	12(06,22)	9.66
Georgia	12.57	0.22	28(17,34)	1.22	Oklahoma	13.81	0.35	10(04,24)	11.21 ^c
Hawaii	10.65	0.50	48(29,51)	-14.20 ^c	Oregon	12.19	0.32	29(18,43)	-1.87
Idaho	11.13	0.51	45(24,51)	-10.34 ^c	Pennsylvania	13.53	0.17	14(07,22)	8.94
Illinois	13.26	0.18	18(09,25)	6.74	Rhode Island	12.91	0.59	22(04,42)	3.93
Indiana	13.44	0.26	15(07,25)	8.19	South Carolina	12.94	0.30	21(09,32)	4.22
Iowa	13.91	0.37	09(03,23)	12.01 ^c	South Dakota	12.82	0.69	24(04,47)	3.22
Kansas	12.58	0.38	27(11,39)	1.29	Tennessee	13.96	0.26	08(03,20)	12.40 ^c
Kentucky	14.24	0.32	06(02,19)	14.64 ^c	Texas	11.92	0.14	34(26,39)	-4.04
Louisiana	14.93	0.34	04(01,10)	20.23 ^c	Utah	9.73	0.41	51(45,51)	-21.62 ^c
Maine	11.84	0.49	35(18,49)	-4.69	Vermont	12.68	0.77	25(04,49)	2.13
Maryland	12.10	0.26	31(22,42)	-2.54	Virginia	11.96	0.23	33(24,42)	-3.67
Massachusetts	11.30	0.23	40(32,49)	-9.03	Washington	11.20	0.24	42(32,49)	-9.78
Michigan	12.66	0.20	26(16,32)	1.98	West Virginia	15.01	0.48	03(01,15)	20.83 ^c
Minnesota	11.46	0.26	38(28,48)	-7.72	Wisconsin	12.09	0.26	32(21,42)	-2.68
Mississippi	16.09	0.42	01(01,05)	29.53 ^c	Wyoming	10.62	0.82	49(18,51)	-14.48 ^c
Missouri	13.20	0.26	19(08,28)	6.31					



^a US Mortality Files, National Center for Health Statistics, Centers for Disease Control and Prevention. Rates are per 100,000 and are age-adjusted to the 2000 US Std Population (19 age groups - Census P25-1130).

^b Difference between state rate and total U.S. rate is statistically significant ($p < .0002$).

^c Absolute percent difference between state rate and total U.S. rate is 10% or more.

^d Rank of state level death rate and the 95% confidence intervals (low, high) for the rank.

SE Standard error of the rate.

PD Percent difference between state rate and total U.S. rate.

- Statistic not shown. Rate based on less than 16 cases for the time interval.

Table 6.28
Cancer of the Colon and Rectum (Invasive)

Estimated United States Cancer Prevalence Counts^a on January 1, 2014
By Race/Ethnicity, Sex and Years Since Diagnosis

WARNING: The Prevalence Estimates presented on this page utilize a different tumor selection criteria from previous CSR releases and are NOT directly comparable to estimates from previous CSR releases.
Please see the Prevalence Comparison Chapter of this CSR for more information.

Years Since Diagnosis		0 to <5	5 to <10	10 to <15	15 to <20	20 to <25	25 to <30	0 to <22 ^a	0 to <39 ^e	>=39 ^g	Complete ^h
<u>Race</u>	<u>Sex</u>										
All Races ^b	Both Sexes	446,441	319,009	228,355	137,927	83,797	48,939	1,201,178	1,300,487	16,760	1,317,247
	Males	229,635	159,865	114,830	67,339	40,339	22,114	605,736	648,116	5,747	653,863
	Females	216,806	159,144	113,525	70,588	43,458	26,825	595,442	652,371	11,013	663,384
White ^b	Both Sexes	363,299	267,148	194,848	118,139	72,840	42,989	1,003,907	1,091,218	14,709	1,105,927
	Males	187,417	135,938	99,119	57,994	35,512	19,784	510,501	548,326	5,095	553,421
	Females	175,882	131,210	95,729	60,145	37,328	23,205	493,406	542,892	9,614	552,506
Black ^b	Both Sexes	53,349	33,575	22,080	13,237	7,330	4,103	128,116	136,362	1,259	137,621
	Males	26,365	14,630	9,824	5,882	3,149	1,404	59,294	62,057	414	62,471
	Females	26,984	18,945	12,256	7,355	4,181	2,699	68,822	74,305	845	75,150
Asian/ Pacific Islander ^c	Both Sexes	20,589	13,269	8,423	5,055	+	+	48,554	+	+	+
	Males	10,854	6,775	4,172	2,526	+	+	24,902	+	+	+
	Females	9,735	6,494	4,251	2,529	+	+	23,652	+	+	+
Hispanic ^d	Both Sexes	35,578	21,761	12,252	7,109	+	+	78,442	+	+	+
	Males	18,706	11,410	6,149	3,637	+	+	40,763	+	+	+
	Females	16,872	10,351	6,103	3,472	+	+	37,679	+	+	+

Estimated prevalence percent^a on January 1, 2014, of the SEER^c population diagnosed in the previous 22 years
By Age at Prevalence, Race/Ethnicity and Sex

Age at Prevalence		All Ages	0-9	10-19	20-29	Age Specific (Crude)					Age-Adjusted ^f	
						30-39	40-49	50-59	60-69	70-79	80+	All Ages
<u>Race</u>	<u>Sex</u>											
All Races ^c	Both Sexes	0.3403%	-	0.0008%	0.0054%	0.0284%	0.1147%	0.3768%	0.8154%	1.6896%	2.8467%	0.3182%
	Males	0.3482%	-	0.0006%	0.0051%	0.0278%	0.1211%	0.4084%	0.9426%	1.9905%	3.2770%	0.3657%
	Females	0.3325%	-	0.0009%	0.0056%	0.0290%	0.1084%	0.3465%	0.7005%	1.4432%	2.5874%	0.2811%
White ^c	Both Sexes	0.3568%	-	0.0009%	0.0059%	0.0301%	0.1136%	0.3614%	0.7806%	1.6906%	2.9142%	0.3162%
	Males	0.3645%	-	0.0006%	0.0055%	0.0292%	0.1183%	0.3919%	0.9052%	1.9942%	3.3302%	0.3627%
	Females	0.3492%	-	0.0012%	0.0062%	0.0310%	0.1089%	0.3311%	0.6640%	1.4353%	2.6600%	0.2790%
Black ^c	Both Sexes	0.2896%	-	-	0.0033%	0.0238%	0.1236%	0.4400%	1.0366%	1.9164%	2.7235%	0.3530%
	Males	0.2823%	-	-	0.0032%	0.0234%	0.1323%	0.4534%	1.1619%	2.1699%	3.2933%	0.4010%
	Females	0.2962%	-	-	0.0034%	0.0241%	0.1160%	0.4283%	0.9386%	1.7399%	2.4411%	0.3221%
Asian/ Pacific Islander ^c	Both Sexes	0.3016%	-	-	0.0038%	0.0227%	0.1060%	0.3809%	0.8114%	1.4931%	2.4804%	0.2922%
	Males	0.3186%	-	-	0.0037%	0.0232%	0.1181%	0.4350%	0.9586%	1.7946%	2.9036%	0.3442%
	Females	0.2860%	-	-	0.0038%	0.0222%	0.0953%	0.3344%	0.6910%	1.2579%	2.2203%	0.2529%
Hispanic ^d	Both Sexes	0.1482%	-	0.0003%	0.0040%	0.0219%	0.0821%	0.2976%	0.6885%	1.3301%	2.0488%	0.2484%
	Males	0.1518%	-	-	0.0038%	0.0219%	0.0837%	0.3114%	0.8000%	1.6652%	2.5364%	0.2957%
	Females	0.1446%	-	-	0.0043%	0.0219%	0.0804%	0.2843%	0.5918%	1.0800%	1.7541%	0.2138%

- ^a US 2014 cancer prevalence counts are based on 2014 cancer prevalence proportions from the SEER registries and 1/1/2014 US population estimates based on the average of 2013 and 2014 population estimates from the US Bureau of the Census.
^{b c d} Prevalence was calculated using the first invasive tumor for each cancer site diagnosed during the previous 39/22 years. Statistics based on (b) SEER 9 Areas (c) SEER 13 Areas excluding the Alaska Native Registry
^e (d) NHIA for Hispanic for SEER 13 Areas excluding the Alaska Native Registry.
^f Maximum limited-duration prevalence: 39 years for 1975-2014 SEER 9 data; 22 years for 1992-2014 SEER 13 data (excluding the Alaska Native Registry) used to calculate prevalence for Hispanics and Asian Pacific Islanders.
^{g h i} Percentages are age-adjusted to the 2000 US Standard Population (19 age groups - Census P25-1130) by 5-year age groups. (g) Cases diagnosed more than 39 years ago were estimated using the completeness index method (Capocaccia et. al. 1997, Merrill et. al. 2000). (h) Complete prevalence is obtained by summing 0 to <39 and >=39. (i) Age-specific completeness index was approximated using empirical data from historical Connecticut tumor registry.
- Statistic not shown. Statistic based on fewer than 5 cases estimated alive in SEER for the time interval.
+ Not available.

Table 6.29

Cancer of the Colon And Rectum (Invasive)

Percent Distribution and Counts by Histology among Histologically Confirmed Cases, 2010-2014
Both Sexes by Race

Histology ^a	All Races		White		Black		Asian/Pacific Islander		American Indian/ Alaska Native ^b		Hispanic ^c	
	Count	Percent	Count	Percent	Count	Percent	Count	Percent	Count	Percent	Count	Percent
Carcinoma	178,732	99.4%	138,841	99.5%	21,843	99.4%	14,829	99.4%	1,056	99.5%	19,622	99.4%
Epidermoid carcinoma ^d (8051-8131)	1,143	0.6%	979	0.7%	119	0.5%	21	0.1%	-	-	99	0.5%
Squamous cell carcinoma (8070-8078,8083-8084)	1,100	0.6%	947	0.7%	114	0.5%	20	0.1%	-	-	96	0.5%
Adenocarcinoma (8050,8140-8147, 8160-8162,8180-8221, 8250-8507,8520-8551,8560, 8570-8574,8576,8940-8941)	166,401	92.6%	130,503	93.5%	19,644	89.4%	13,717	91.9%	967	91.1%	18,191	92.1%
Adenocarcinoma, NOS (8140)	114,519	63.7%	89,598	64.2%	13,534	61.6%	9,858	66.0%	701	66.1%	12,632	64.0%
Adenocarcinoma in adenomatous polyp (8210)	15,339	8.5%	11,877	8.5%	1,752	8.0%	1,305	8.7%	107	10.1%	1,397	7.1%
Adenocarcinoma in villous adenoma (8261)	3,614	2.0%	2,895	2.1%	411	1.9%	261	1.7%	-	-	499	2.5%
Mucinous adenocarcinoma (8470-8473,8480,8482)	11,462	6.4%	9,412	6.7%	1,194	5.4%	743	5.0%	51	4.8%	1,376	7.0%
Mucin-producing adenocarcinoma (8481)	1,337	0.7%	1,048	0.8%	183	0.8%	96	0.6%	-	-	142	0.7%
Signet ring adenocarcinoma (8490)	2,061	1.1%	1,682	1.2%	214	1.0%	145	1.0%	-	-	236	1.2%
Other adenocarcinomas ^e	18,069	10.1%	13,991	10.0%	2,356	10.7%	1,309	8.8%	84	7.9%	1,909	9.7%
Other specific carcinomas (8012-8015,8030-8046, 8150-8155,8170-8175, 8230-8249,8508,8510-8513, 8561-8562,8575,8580-8671)	9,757	5.4%	6,240	4.5%	1,908	8.7%	995	6.7%	62	5.8%	1,176	6.0%
Neuroendocrine carcinoid (8240-8245)	7,135	4.0%	4,317	3.1%	1,511	6.9%	792	5.3%	54	5.1%	918	4.6%
Other ^f	2,622	1.5%	1,923	1.4%	397	1.8%	203	1.4%	-	-	258	1.3%
Unspecified, Carcinoma, NOS (8010-8011, 8020-8022)	1,431	0.8%	1,119	0.8%	172	0.8%	96	0.6%	23	2.2%	156	0.8%

Source: SEER 18 areas (San Francisco, Connecticut, Detroit, Hawaii, Iowa, New Mexico, Seattle, Utah, Atlanta, San Jose-Monterey, Los Angeles, Alaska Native Registry, Rural Georgia, California excluding SF/SJM/LA, Kentucky, Louisiana, New Jersey and Georgia excluding ATL/RG).

Percents may not sum to 100 due to rounding.

^a Excludes Kaposi Sarcoma, mesothelioma, lymphomas, leukemias, myelomas, lymphoreticular, and immunoproliferative diseases.

^b Estimates for American Indian/Alaska Native are based on the CHSDA(Contract Health Service Delivery Area) counties.

^c Hispanic is not mutually exclusive from whites, blacks, Asian/Pacific Islanders, and American Indians/Alaska Natives.

^d Underlying incidence data for Hispanics are based on NHIA and exclude cases from the Alaska Native Registry.

^e Epidermoid carcinoma includes squamous, basal, and transitional cell carcinomas.

^f Includes histologies 8050, 8141-8147, 8160-8162, 8180-8204, 8211-8221, 8250-8260, 8262-8264, 8270-8463, 8500-8507, 8514, 8520-8551, 8560, 8570-8574, 8576, 8940-8941.

^f Includes histologies 8012-8015, 8030-8046, 8150-8155, 8170-8175, 8230-8231, 8246-8249, 8508, 8510-8513, 8561-8562, 8575, 8580-8671.

- Statistic not shown due to fewer than 16 cases during the time period.

Table 6.29 - continued

Cancer of the Colon And Rectum (Invasive)

Percent Distribution and Counts by Histology among Histologically Confirmed Cases, 2010-2014
Both Sexes by Race

Histology ^a	All Races		White		Black		Asian/Pacific Islander		American Indian/ Alaska Native ^b		Hispanic ^c	
	Count	Percent	Count	Percent	Count	Percent	Count	Percent	Count	Percent	Count	Percent
Sarcoma and other soft tissue tumors (8680-8713,8800-8921, 8990-8991,9040-9044, 9120-9136,9150-9252, 9370-9373,9540-9582)	121	0.1%	95	0.1%	16	0.1%	-	-	-	-	20	0.1%
Other specific types (8720-8790,8930-8936, 8950-8983,9000-9030, 9060-9110,9260-9365, 9380-9539)	282	0.2%	187	0.1%	47	0.2%	46	0.3%	-	-	34	0.2%
Unspecified (8000-8005)	614	0.3%	453	0.3%	65	0.3%	43	0.3%	-	-	72	0.4%
Total ^d	179,749	100.0%	139,576	100.0%	21,971	100.0%	14,926	100.0%	1,061	100.0%	19,748	100.0%

Source: SEER 18 areas (San Francisco, Connecticut, Detroit, Hawaii, Iowa, New Mexico, Seattle, Utah, Atlanta, San Jose-Monterey, Los Angeles, Alaska Native Registry, Rural Georgia, California excluding SF/SJM/LA, Kentucky, Louisiana, New Jersey and Georgia excluding ATL/RG).

Percents may not sum to 100 due to rounding.

^a Excludes Kaposi Sarcoma, mesothelioma, lymphomas, leukemias, myelomas, lymphoreticular, and immunoproliferative diseases.

^b Estimates for American Indian/Alaska Native are based on the CHSDA(Contract Health Service Delivery Area) counties.

^c Hispanic is not mutually exclusive from whites, blacks, Asian/Pacific Islanders, and American Indians/Alaska Natives.

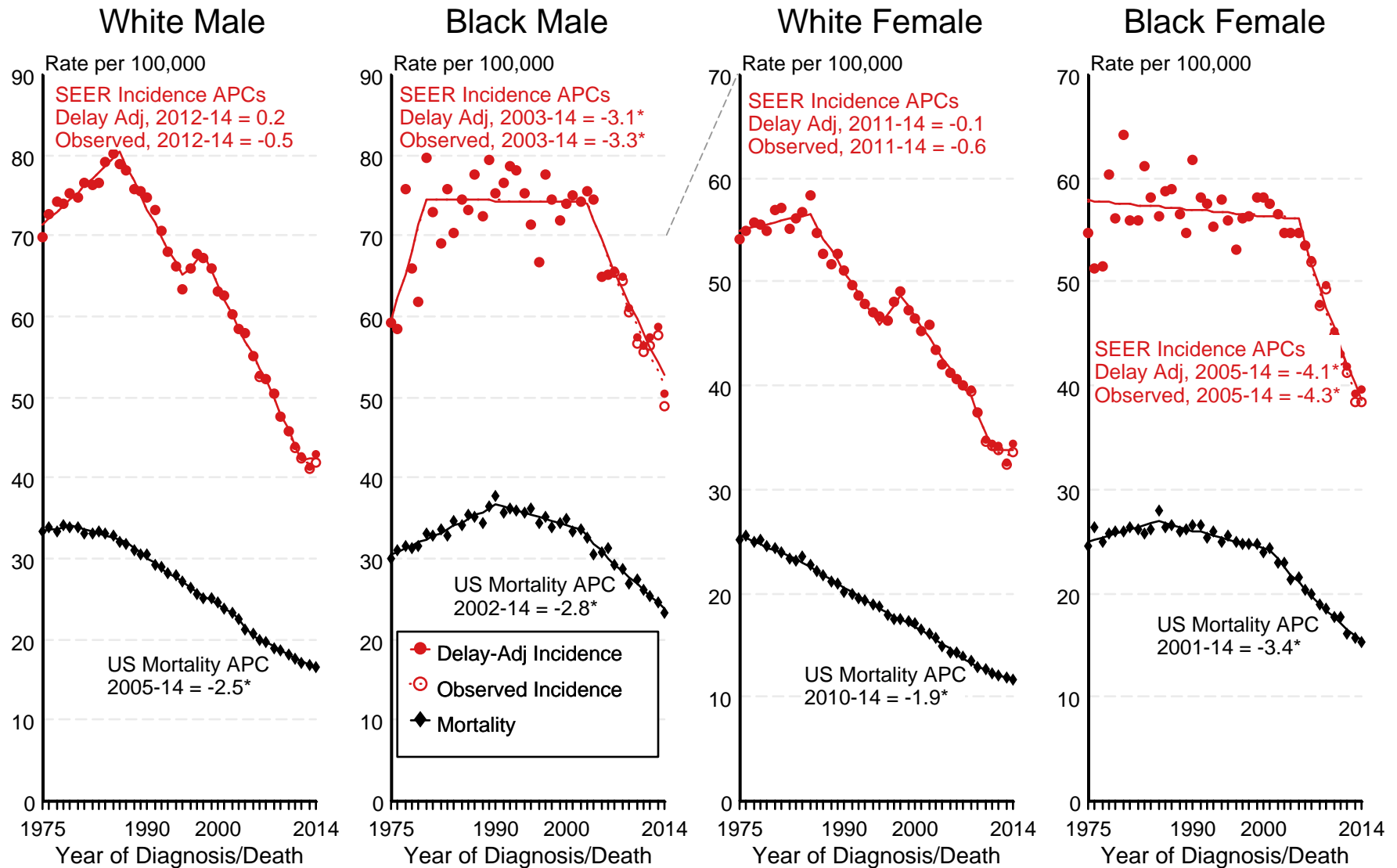
Underlying incidence data for Hispanics are based on NHIA and exclude cases from the Alaska Native Registry.

^d Total includes carcinoma cases from the previous page.

- Statistic not shown due to fewer than 16 cases during the time period.

Figure 6.1

SEER Observed Incidence, SEER Delay Adjusted Incidence and US Death Rates^a Cancer of the Colon and Rectum, by Race and Sex



Source: SEER 9 areas and US Mortality Files (National Center for Health Statistics, CDC).

^a Rates are age-adjusted to the 2000 US Std Population (19 age groups - Census P25-1103).

Regression lines and APCs are calculated using the Joinpoint Regression Program Version 4.4, January 2017, National Cancer Institute.

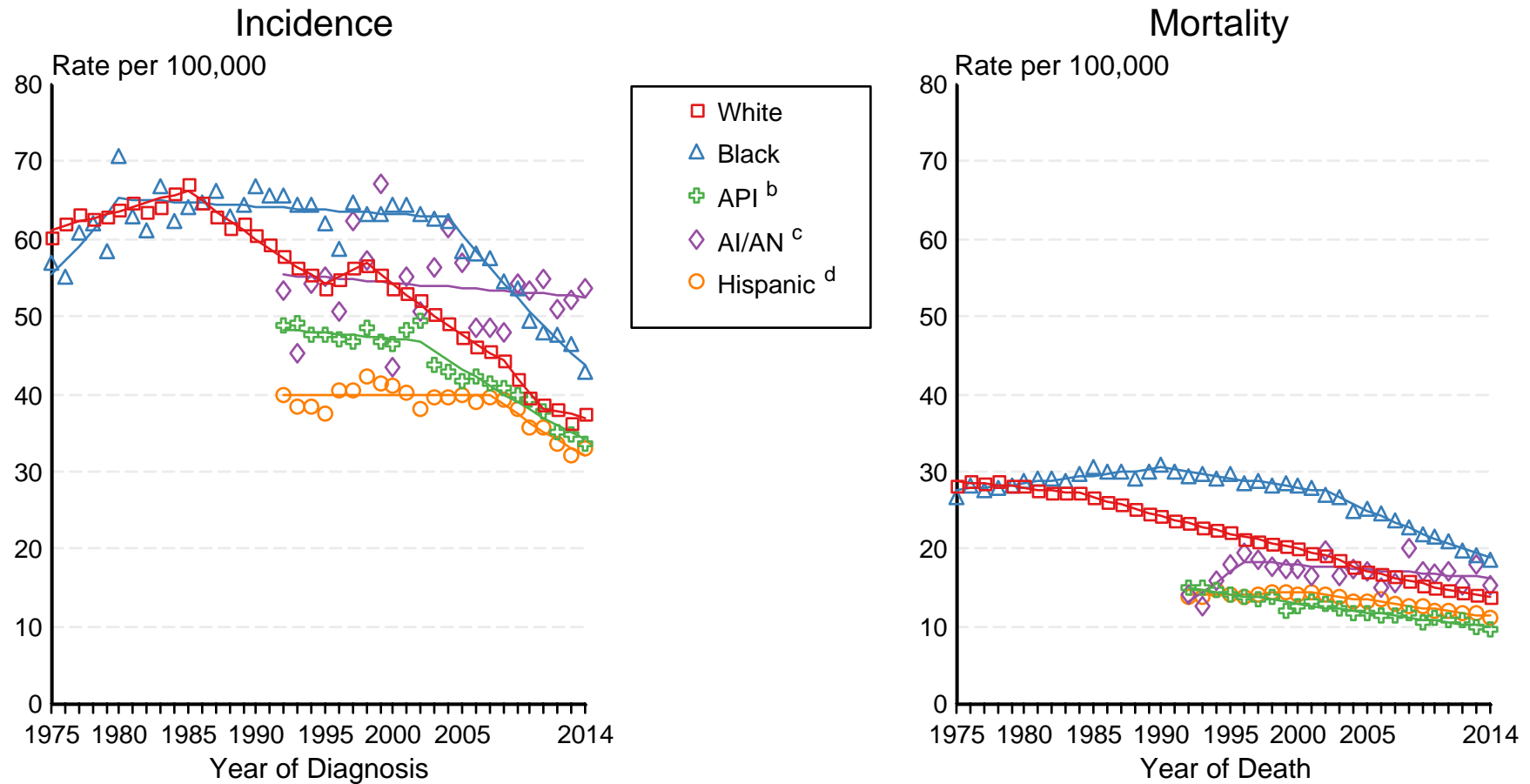
The APC is the Annual Percent Change for the regression line segments. The APC shown on the graph is for the most recent trend.

* The APC is significantly different from zero ($p < 0.05$).

Figure 6.2

SEER Incidence and US Death Rates^a Cancer of the Colon and Rectum, Both Sexes

Joinpoint Analyses for Whites and Blacks from 1975-2014
and for Asian/Pacific Islanders, American Indians/Alaska Natives and Hispanics from 1992-2014

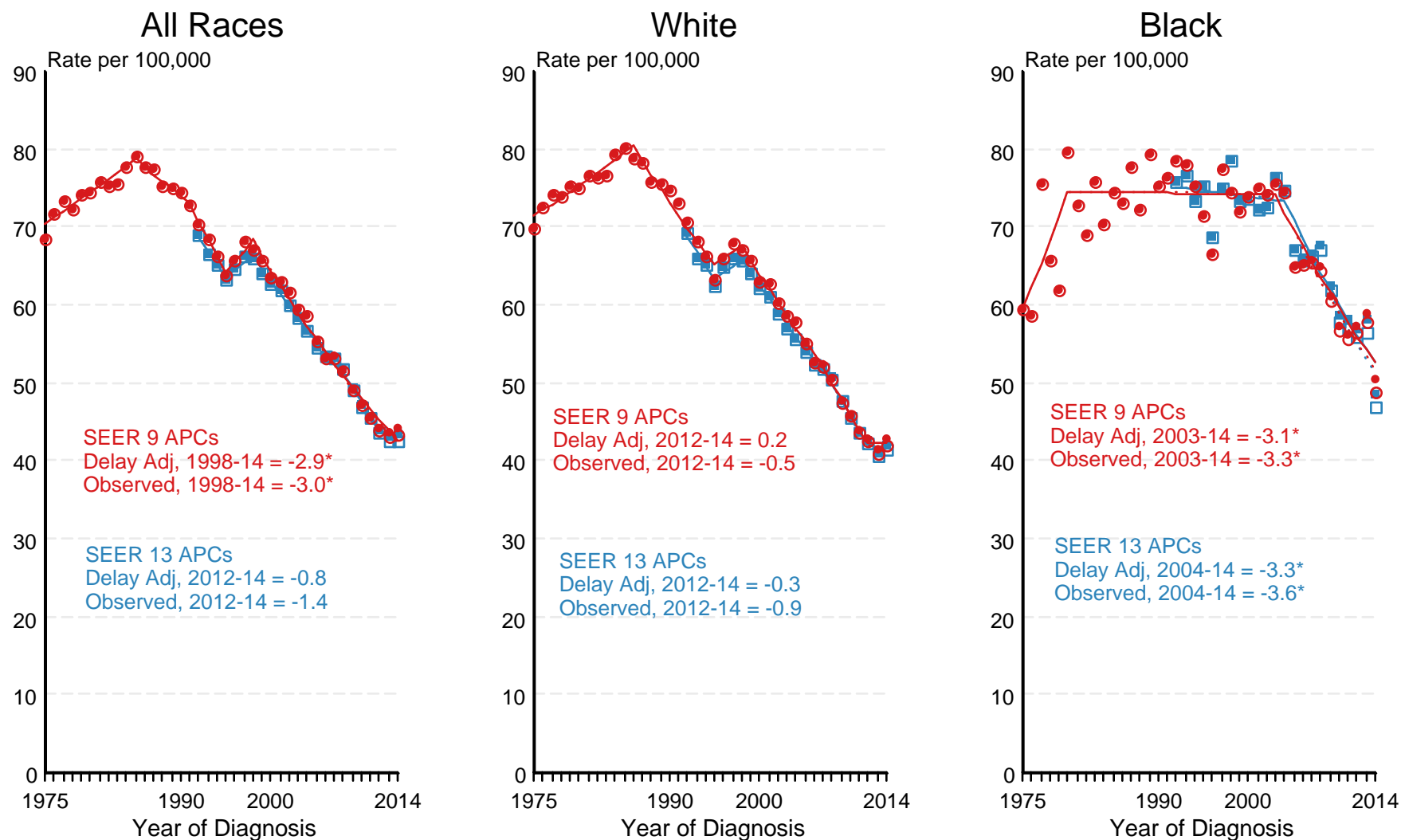


Source: Incidence data for whites and blacks are from the SEER 9 areas (San Francisco, Connecticut, Detroit, Hawaii, Iowa, New Mexico, Seattle, Utah, Atlanta). Incidence data for Asian/Pacific Islanders, American Indians/Alaska Natives and Hispanics are from the SEER 13 Areas (SEER 9 Areas, San Jose-Monterey, Los Angeles, Alaska Native Registry and Rural Georgia). Mortality data are from US Mortality Files, National Center for Health Statistics, CDC.

- ^a Rates are age-adjusted to the 2000 US Std Population (19 age groups - Census P25-1103). Regression lines are calculated using the Joinpoint Regression Program Version 4.4, January 2017, National Cancer Institute. Joinpoint analyses for Whites and Blacks during the 1975-2014 period allow a maximum of 5 joinpoints. Analyses for other ethnic groups during the period 1992-2014 allow a maximum of 4 joinpoints.
- ^b API = Asian/Pacific Islander.
- ^c AI/AN = American Indian/Alaska Native. Rates for American Indian/Alaska Native are based on the CHSDA(Contract Health Service Delivery Area) counties.
- ^d Hispanic is not mutually exclusive from whites, blacks, Asian/Pacific Islanders, and American Indians/Alaska Natives. Incidence data for Hispanics are based on NHIA and exclude cases from the Alaska Native Registry. Mortality data for Hispanics exclude cases from New Hampshire and Oklahoma.

Figure 6.3

SEER Observed Incidence and SEER Delay Adjusted Incidence Rates^a SEER 9 Areas Compared to SEER 13 Areas Cancer of the Colon and Rectum, Male, by Race



● SEER 9 Delay-Adj. Incidence ○ SEER 9 Observed Incidence ■ SEER 13 Delay-Adj. Incidence □ SEER 13 Observed Incidence

Source: SEER 9 areas and SEER 13 areas.

^a Rates are age-adjusted to the 2000 US Std Population (19 age groups - Census P25-1103).

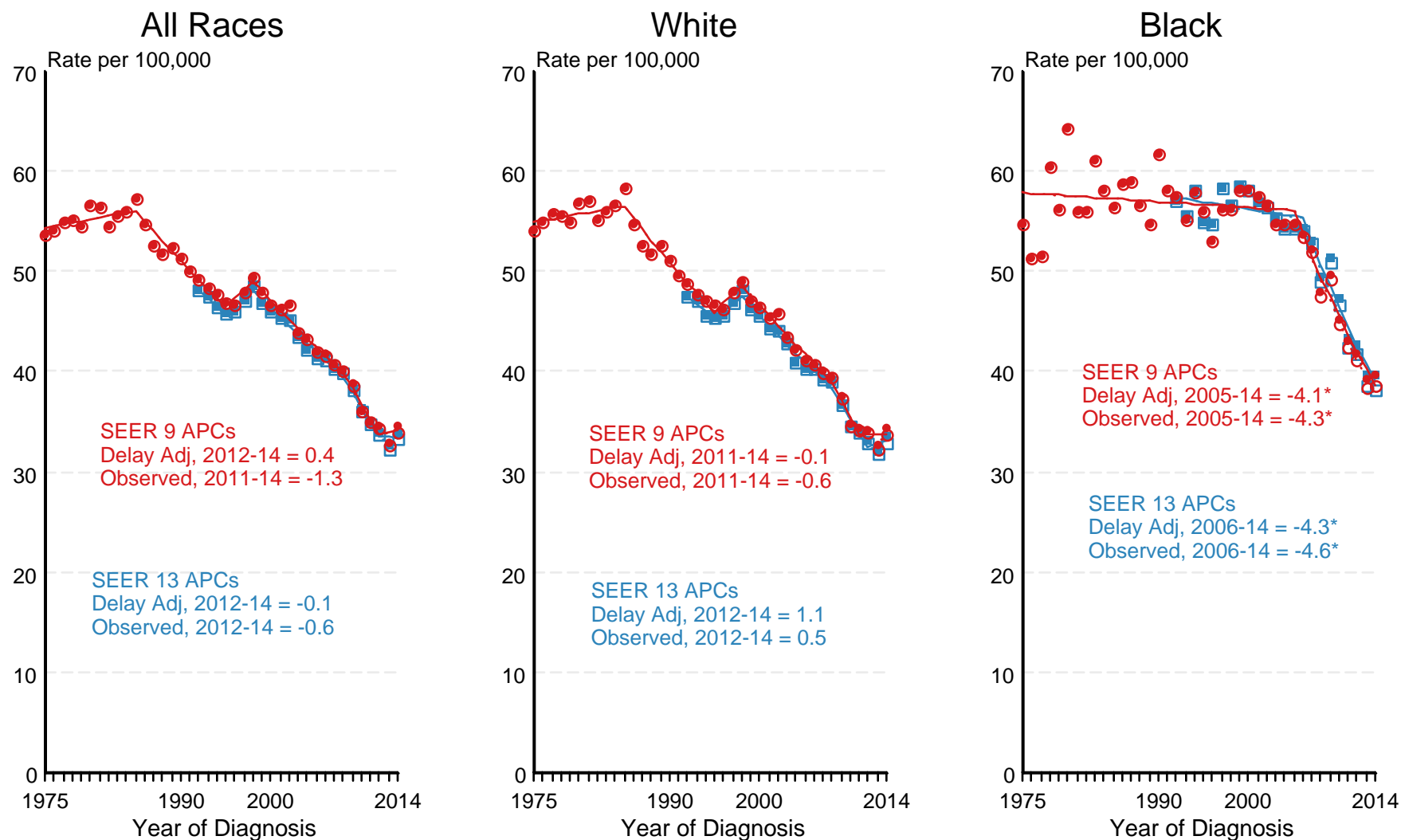
Regression lines and APCs are calculated using the Joinpoint Regression Program Version 4.4, January 2017, National Cancer Institute.

The APC is the Annual Percent Change for the regression line segments. The APC shown on the graph is for the most recent trend.

* The APC is significantly different from zero ($p < 0.05$).

Figure 6.4

SEER Observed Incidence and SEER Delay Adjusted Incidence Rates^a SEER 9 Areas Compared to SEER 13 Areas Cancer of the Colon and Rectum, Female, by Race



● SEER 9 Delay-Adj. Incidence
 ○ SEER 9 Observed Incidence
 ■ SEER 13 Delay-Adj. Incidence
 □ SEER 13 Observed Incidence

Source: SEER 9 areas and SEER 13 areas.

^a Rates are age-adjusted to the 2000 US Std Population (19 age groups - Census P25-1103).

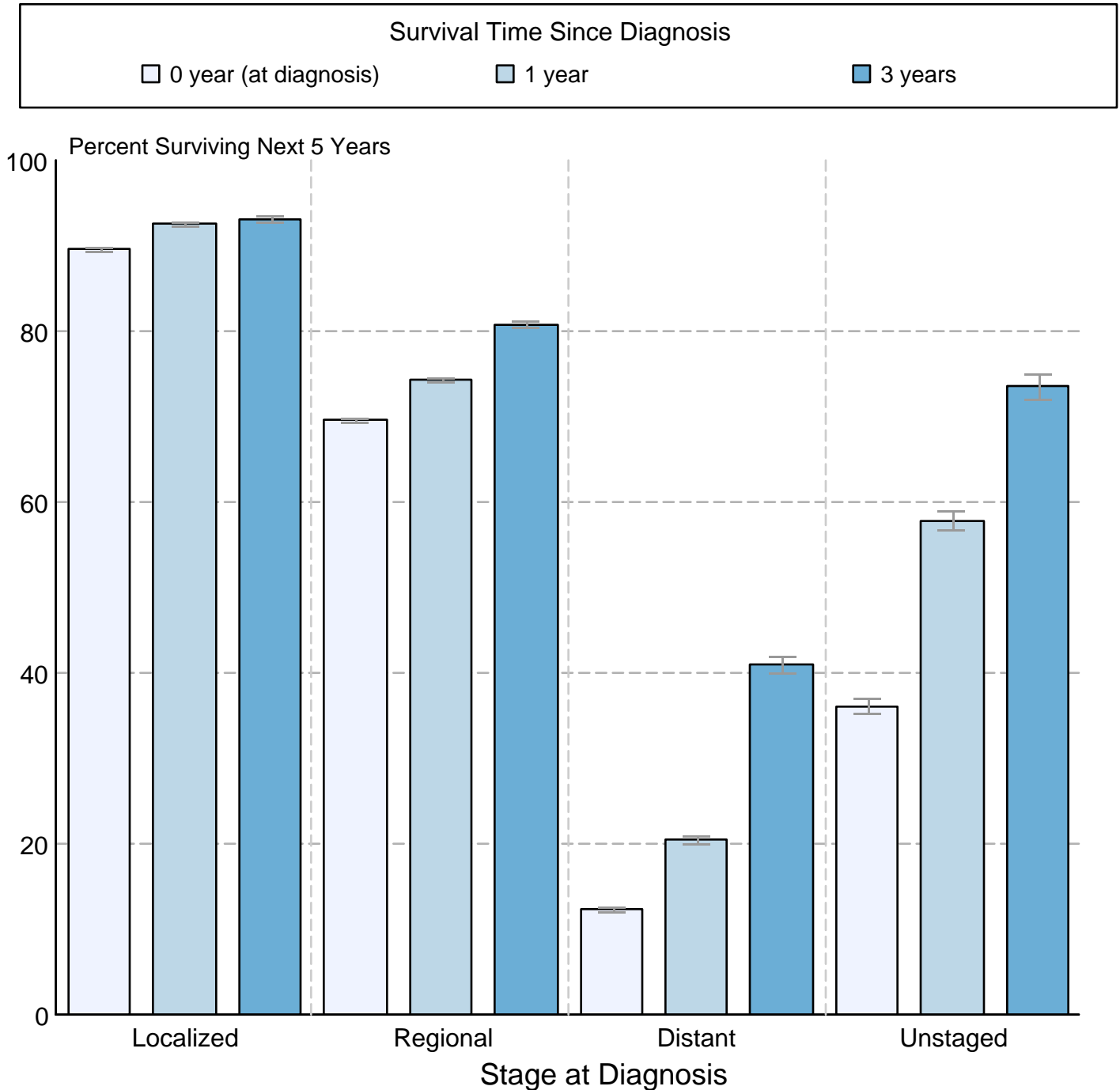
Regression lines and APCs are calculated using the Joinpoint Regression Program Version 4.4, January 2017, National Cancer Institute.

The APC is the Annual Percent Change for the regression line segments. The APC shown on the graph is for the most recent trend.

* The APC is significantly different from zero ($p < 0.05$).

Figure 6.5

Cancer of the Colon and Rectum 5-Year SEER Conditional Relative Survival and 95% Confidence Intervals Probability of surviving the next 5 years given the cohort has already survived 0, 1, or 3 years 1998-2013 by stage at diagnosis



Source: SEER 18 areas (San Francisco, Connecticut, Detroit, Hawaii, Iowa, New Mexico, Seattle, Utah, Atlanta, San Jose-Monterey, Los Angeles, Alaska Native Registry, Rural Georgia, California excluding SF/SJM/LA, Kentucky, Louisiana, New Jersey and Georgia excluding ATL/RG). California excluding SF/SJM/LA, Kentucky, Louisiana, New Jersey and Georgia excluding ATL/RG contribute cases for diagnosis years 2000 and later. The remaining 13 SEER Areas contribute cases for the entire time period. Percent surviving is not shown if based on less than 25 cases. Confidence intervals are not shown if length of the confidence interval is greater than 5 times the standard error.