

Table 9.1
Hodgkin LymphomaTrends in SEER Incidence^{ab} and U.S. Mortality^c Using the Joinpoint Regression Program,
1975-2014 With up to Five Joinpoints, 1992-2014 With up to Four Joinpoints,
Both Sexes by Race/Ethnicity

	JP Trend 1		JP Trend 2		JP Trend 3		JP Trend 4		JP Trend 5		JP Trend 6		AAPC ^d	
	Years	APC	Years	APC	Years	APC	Years	APC	Years	APC	Years	APC	2005-14	2010-14
<u>SEER 9 Delay-Adjusted Incidence^a, 1975-2014</u>														
All Races	1975-89	0.3	1989-01	-0.8*	2001-07	2.0	2007-14	-2.0*					-1.1*	-2.0*
White	1975-89	0.6*	1989-01	-1.0*	2001-07	2.1	2007-14	-2.3*					-1.3*	-2.3*
Black	1975-14	1.1*											1.1*	1.1*
<u>SEER 13 Delay-Adjusted Incidence^b, 1992-2014</u>														
All Races	1992-01	-0.2	2001-07	1.4	2007-14	-2.0*							-1.2*	-2.0*
White	1992-02	-0.2	2002-07	1.7	2007-14	-2.4*							-1.5*	-2.4*
Black	1992-14	0.9*											0.9*	0.9*
<u>SEER 9 Observed Incidence^a, 1975-2014</u>														
All Races	1975-03	-0.2*	2003-06	3.1	2006-14	-1.9*							-1.3	-1.9*
White	1975-89	0.6*	1989-01	-1.0*	2001-07	2.0	2007-14	-2.5*					-1.5*	-2.5*
Black	1975-14	1.0*											1.0*	1.0*
<u>SEER 13 Observed Incidence^b, 1992-2014</u>														
All Races	1992-07	0.5*	2007-14	-1.7*									-1.2*	-1.7*
White	1992-02	-0.2	2002-07	1.7	2007-14	-2.6*							-1.7*	-2.6*
White NH ^{ef}	1992-07	0.6*	2007-14	-2.5*									-1.8*	-2.5*
Black	1992-14	0.8*											0.8*	0.8*
Black NH ^{ef}	1992-14	0.8*											0.8*	0.8*
API ^e	1992-96	-8.6	1996-01	11.0	2001-14	0.1							0.1	0.1
AI/AN ^{eg}	-	-											-	-
Hispanic ^f	1992-14	0.0											0.0	0.0
<u>U.S. Cancer Mortality^c, 1975-2014</u>														
All Races	1975-79	-6.5*	1979-98	-3.5*	1998-10	-2.3*	2010-14	-5.4*					-3.7*	-5.4*
White	1975-79	-6.3*	1979-97	-3.6*	1997-10	-2.2*	2010-14	-5.6*					-3.7*	-5.6*
Black	1975-14	-2.9*											-2.9*	-2.9*
<u>U.S. Cancer Mortality^c, 1992-2014</u>														
All Races	1992-94	-7.6	1994-10	-2.4*	2010-14	-5.3*							-3.7*	-5.3*
White	1992-94	-8.2	1994-10	-2.3*	2010-14	-5.5*							-3.7*	-5.5*
White NH ^{ef}	1992-10	-2.5*	2010-14	-5.9*									-4.0*	-5.9*
Black	1992-14	-2.8*											-2.8*	-2.8*
Black NH ^{ef}	1992-14	-2.7*											-2.7*	-2.7*
API ^e	1992-14	-1.9*											-1.9*	-1.9*
AI/AN ^{eg}	-	-											-	-
Hispanic ^f	1992-14	-2.4*											-2.4*	-2.4*

Joinpoint Regression Program Version 4.4, January 2017, National Cancer Institute. (<https://surveillance.cancer.gov/joinpoint/>).

The APC is the Annual Percent Change based on rates age-adjusted to the 2000 US Std Population (19 age groups - Census P25-1130).

Trends are from the SEER 9 areas (San Francisco, Connecticut, Detroit, Hawaii, Iowa, New Mexico, Seattle, Utah, and Atlanta).

Trends are from the SEER 13 areas (SEER 9 Areas, Los Angeles, San Jose-Monterey, Rural Georgia, and the Alaska Native Registry).

Trends are from US Mortality Files, National Center for Health Statistics, Centers for Disease Control and Prevention.

The AAPC is the Average Annual Percent Change and is based on the APCs calculated by Joinpoint.

API - Asian/Pacific Islander, AI/AN - American Indian/Alaska Native, NH - Non-Hispanic

Hispanic and Non-Hispanic are not mutually exclusive from whites, blacks, Asian/Pacific Islanders, and American Indians/Alaska

Natives. Incidence data for Hispanics and Non-Hispanics are based on NHIA and exclude cases from the Alaska Native Registry.

The Hispanic and Non-Hispanic mortality trends exclude deaths from New Hampshire and Oklahoma.

Data for American Indian/Alaska Native are based on the CHSDA (Contract Health Service Delivery Area) counties.

* The APC/AAPC is significantly different from zero (p<.05).

- Joinpoint regression line analysis could not be performed on data series.

Table 9.2
Hodgkin LymphomaTrends in SEER Incidence^{ab} and U.S. Mortality^c Using the Joinpoint Regression Program,
1975-2014 With up to Five Joinpoints, 1992-2014 With up to Four Joinpoints,
Males by Race/Ethnicity

	JP Trend 1		JP Trend 2		JP Trend 3		JP Trend 4		JP Trend 5		JP Trend 6		AAPC ^d	
	Years	APC	Years	APC	Years	APC	Years	APC	Years	APC	Years	APC	2005-14	2010-14
<u>SEER 9 Delay-Adjusted Incidence^a, 1975-2014</u>														
All Races	1975-98	-0.7*	1998-14	0.2									0.2	0.2
White	1975-14	-0.4*											-0.4*	-0.4*
Black	1975-14	0.6*											0.6*	0.6*
<u>SEER 13 Delay-Adjusted Incidence^b, 1992-2014</u>														
All Races	1992-14	0.1											0.1	0.1
White	1992-14	0.0											0.0	0.0
Black	1992-14	1.1*											1.1*	1.1*
<u>SEER 9 Observed Incidence^a, 1975-2014</u>														
All Races	1975-14	-0.4*											-0.4*	-0.4*
White	1975-14	-0.4*											-0.4*	-0.4*
Black	1975-14	0.5*											0.5*	0.5*
<u>SEER 13 Observed Incidence^b, 1992-2014</u>														
All Races	1992-07	0.5*	2007-14	-1.3*									-0.9*	-1.3*
White	1992-14	-0.1											-0.1	-0.1
White NH ^{ef}	1992-14	0.0											0.0	0.0
Black	1992-14	0.9*											0.9*	0.9*
Black NH ^{ef}	1992-14	1.0*											1.0*	1.0*
API ^e	1992-14	1.6*											1.6*	1.6*
AI/AN ^{eg}	-	-											-	-
Hispanic ^f	1992-14	-0.4											-0.4	-0.4
<u>U.S. Cancer Mortality^c, 1975-2014</u>														
All Races	1975-96	-4.0*	1996-14	-2.5*									-2.5*	-2.5*
White	1975-96	-4.1*	1996-14	-2.4*									-2.4*	-2.4*
Black	1975-14	-3.2*											-3.2*	-3.2*
<u>U.S. Cancer Mortality^c, 1992-2014</u>														
All Races	1992-94	-10.2	1994-14	-2.5*									-2.5*	-2.5*
White	1992-94	-10.5	1994-14	-2.4*									-2.4*	-2.4*
White NH ^{ef}	1992-14	-2.7*											-2.7*	-2.7*
Black	1992-14	-3.1*											-3.1*	-3.1*
Black NH ^{ef}	1992-14	-3.0*											-3.0*	-3.0*
API ^e	1992-14	-2.2											-2.2	-2.2
AI/AN ^{eg}	-	-											-	-
Hispanic ^f	1992-14	-2.5*											-2.5*	-2.5*

Joinpoint Regression Program Version 4.4, January 2017, National Cancer Institute. (<https://surveillance.cancer.gov/joinpoint/>).

The APC is the Annual Percent Change based on rates age-adjusted to the 2000 US Std Population (19 age groups - Census P25-1130).

Trends are from the SEER 9 areas (San Francisco, Connecticut, Detroit, Hawaii, Iowa, New Mexico, Seattle, Utah, and Atlanta).

Trends are from the SEER 13 areas (SEER 9 Areas, Los Angeles, San Jose-Monterey, Rural Georgia, and the Alaska Native Registry).

Trends are from US Mortality Files, National Center for Health Statistics, Centers for Disease Control and Prevention.

The AAPC is the Average Annual Percent Change and is based on the APCs calculated by Joinpoint.

API - Asian/Pacific Islander, AI/AN - American Indian/Alaska Native, NH - Non-Hispanic

Hispanic and Non-Hispanic are not mutually exclusive from whites, blacks, Asian/Pacific Islanders, and American Indians/Alaska

Natives. Incidence data for Hispanics and Non-Hispanics are based on NHIA and exclude cases from the Alaska Native Registry.

The Hispanic and Non-Hispanic mortality trends exclude deaths from New Hampshire and Oklahoma.

Data for American Indian/Alaska Native are based on the CHSDA (Contract Health Service Delivery Area) counties.

* The APC/AAPC is significantly different from zero (p<.05).

- Joinpoint regression line analysis could not be performed on data series.

Table 9.3
Hodgkin LymphomaTrends in SEER Incidence^{ab} and U.S. Mortality^c Using the Joinpoint Regression Program,
1975-2014 With up to Five Joinpoints, 1992-2014 With up to Four Joinpoints,
Females by Race/Ethnicity

	JP Trend 1		JP Trend 2		JP Trend 3		JP Trend 4		JP Trend 5		JP Trend 6		AAPC ^d	
	Years	APC	Years	APC	Years	APC	Years	APC	Years	APC	Years	APC	2005-14	2010-14
<u>SEER 9 Delay-Adjusted Incidence^a, 1975-2014</u>														
All Races	1975-07	0.4*	2007-14	-2.0									-1.5	-2.0
White	1975-07	0.4*	2007-14	-2.3									-1.7	-2.3
Black	1975-14	1.7*											1.7*	1.7*
<u>SEER 13 Delay-Adjusted Incidence^b, 1992-2014</u>														
All Races	1992-14	-0.2											-0.2	-0.2
White	1992-08	0.3	2008-14	-2.9*									-1.8*	-2.9*
Black	1992-14	0.5											0.5	0.5
<u>SEER 9 Observed Incidence^a, 1975-2014</u>														
All Races	1975-07	0.4*	2007-14	-2.2*									-1.6*	-2.2*
White	1975-07	0.4*	2007-14	-2.5*									-1.9*	-2.5*
Black	1975-14	1.7*											1.7*	1.7*
<u>SEER 13 Observed Incidence^b, 1992-2014</u>														
All Races	1992-14	-0.3											-0.3	-0.3
White	1992-08	0.3	2008-14	-3.1*									-2.0*	-3.1*
White NH ^{ef}	1992-07	0.5	2007-14	-3.2*									-2.4*	-3.2*
Black	1992-14	0.4											0.4	0.4
Black NH ^{ef}	1992-14	0.5											0.5	0.5
API ^e	1992-14	1.9*											1.9*	1.9*
AI/AN ^{eg}	-	-											-	-
Hispanic ^f	1992-14	0.5											0.5	0.5
<u>U.S. Cancer Mortality^c, 1975-2014</u>														
All Races	1975-84	-4.9*	1984-14	-2.8*									-2.8*	-2.8*
White	1975-85	-4.8*	1985-14	-2.7*									-2.7*	-2.7*
Black	1975-14	-2.5*											-2.5*	-2.5*
<u>U.S. Cancer Mortality^c, 1992-2014</u>														
All Races	1992-14	-3.0*											-3.0*	-3.0*
White	1992-14	-2.9*											-2.9*	-2.9*
White NH ^{ef}	1992-09	-2.5*	2009-14	-6.5*									-4.7*	-6.5*
Black	1992-14	-2.6*											-2.6*	-2.6*
Black NH ^{ef}	1992-14	-2.4*											-2.4*	-2.4*
API ^e	-	-											-	-
AI/AN ^{eg}	-	-											-	-
Hispanic ^f	1992-14	-2.3*											-2.3*	-2.3*

Joinpoint Regression Program Version 4.4, January 2017, National Cancer Institute. (<https://surveillance.cancer.gov/joinpoint/>).

The APC is the Annual Percent Change based on rates age-adjusted to the 2000 US Std Population (19 age groups - Census P25-1130).

Trends are from the SEER 9 areas (San Francisco, Connecticut, Detroit, Hawaii, Iowa, New Mexico, Seattle, Utah, and Atlanta).

Trends are from the SEER 13 areas (SEER 9 Areas, Los Angeles, San Jose-Monterey, Rural Georgia, and the Alaska Native Registry).

Trends are from US Mortality Files, National Center for Health Statistics, Centers for Disease Control and Prevention.

The AAPC is the Average Annual Percent Change and is based on the APCs calculated by Joinpoint.

API - Asian/Pacific Islander, AI/AN - American Indian/Alaska Native, NH - Non-Hispanic

Hispanic and Non-Hispanic are not mutually exclusive from whites, blacks, Asian/Pacific Islanders, and American Indians/Alaska

Natives. Incidence data for Hispanics and Non-Hispanics are based on NHIA and exclude cases from the Alaska Native Registry.

The Hispanic and Non-Hispanic mortality trends exclude deaths from New Hampshire and Oklahoma.

Data for American Indian/Alaska Native are based on the CHSDA (Contract Health Service Delivery Area) counties.

* The APC/AAPC is significantly different from zero (p<.05).

- Joinpoint regression line analysis could not be performed on data series.

Table 9.4
Hodgkin Lymphoma

Delay-adjusted SEER Incidence^a Rates by Year, Race and Sex

Year of Diagnosis:	All Races			Whites			Blacks		
	Total	Males	Females	Total	Males	Females	Total	Males	Females
1975	3.09	3.86	2.40	3.23	3.91	2.64	2.58	4.41	1.10
1976	2.76	3.37	2.24	2.88	3.44	2.41	2.57	3.91	1.39
1977	2.98	3.61	2.46	3.27	3.93	2.71	1.68	1.91	1.39
1978	2.80	3.41	2.32	3.07	3.70	2.58	1.47	2.01	1.02
1979	2.93	3.91	2.08	3.09	4.05	2.27	2.86	4.68	1.41
1980	2.77	3.31	2.27	2.98	3.53	2.48	1.82	2.07	1.54
1981	2.92	3.58	2.34	3.23	3.92	2.62	1.43	1.94	0.98
1982	2.92	3.50	2.45	3.13	3.67	2.69	2.58	3.15	2.04
1983	3.02	3.72	2.39	3.33	4.00	2.70	2.11	3.85	0.96
1984	3.06	3.72	2.47	3.38	4.01	2.79	2.07	3.31	1.12
1985	2.97	3.50	2.50	3.31	3.84	2.83	1.74	2.26	1.27
1986	2.73	3.33	2.22	2.91	3.50	2.41	2.27	2.80	1.90
1987	3.04	3.71	2.50	3.34	4.00	2.78	2.12	2.78	1.54
1988	3.10	3.59	2.67	3.43	3.99	2.94	1.94	1.93	1.93
1989	3.06	3.68	2.54	3.36	3.97	2.85	2.16	3.15	1.37
1990	3.06	3.51	2.63	3.30	3.83	2.78	3.02	3.23	2.81
1991	3.03	3.50	2.60	3.35	3.84	2.90	2.40	2.70	2.08
1992	2.87	3.11	2.69	3.06	3.23	2.93	2.66	2.71	2.61
1993	2.86	3.27	2.50	3.09	3.49	2.75	2.96	3.64	2.46
1994	2.86	3.15	2.60	3.15	3.49	2.82	2.15	2.41	1.99
1995	2.76	3.22	2.36	3.05	3.51	2.65	2.32	2.93	1.78
1996	2.86	3.32	2.42	3.14	3.63	2.69	2.46	3.19	1.83
1997	2.82	2.95	2.70	3.07	3.22	2.92	2.54	2.32	2.72
1998	2.79	3.11	2.53	3.13	3.45	2.86	2.15	2.46	1.89
1999	2.86	3.08	2.69	3.10	3.23	3.02	2.58	3.14	2.12
2000	2.82	3.30	2.37	3.06	3.54	2.62	2.42	3.03	1.87
2001	2.57	2.95	2.23	2.73	3.12	2.37	2.48	3.17	1.98
2002	2.95	3.27	2.70	3.15	3.44	2.91	2.95	3.23	2.77
2003	2.72	3.12	2.37	3.01	3.46	2.61	2.42	2.82	2.23
2004	2.95	3.06	2.89	3.12	3.20	3.09	3.17	3.25	3.13
2005	3.02	3.51	2.62	3.24	3.73	2.84	3.18	3.49	2.90
2006	3.01	3.32	2.70	3.22	3.50	2.93	3.17	3.94	2.51
2007	3.19	3.68	2.74	3.46	3.91	3.04	3.35	4.12	2.70
2008	2.96	3.38	2.58	3.22	3.60	2.87	3.09	3.69	2.57
2009	2.95	3.21	2.71	3.24	3.50	3.01	2.67	3.25	2.15
2010	2.81	3.27	2.38	3.03	3.54	2.56	2.58	3.13	2.11
2011	2.75	3.19	2.35	2.92	3.36	2.52	2.95	3.53	2.42
2012	2.74	3.05	2.45	2.94	3.27	2.62	2.85	2.91	2.76
2013	2.69	3.10	2.33	2.84	3.20	2.54	2.91	3.64	2.28
2014	2.83	3.32	2.38	2.99	3.46	2.56	3.07	3.62	2.57

Additional information on the model used to delay-adjust SEER Incidence rates can be found at [\(https://surveillance.cancer.gov/delay/\)](https://surveillance.cancer.gov/delay/).

^a SEER 9 areas (San Francisco, Connecticut, Detroit, Hawaii, Iowa, New Mexico, Seattle, Utah, and Atlanta). Rates are per 100,000 and are age-adjusted to the 2000 US Std Population (19 age groups - Census P25-1130).

- Delay-adjusted rate is not shown for observed rates based on less than 16 cases for the time interval.

Table 9.5
Hodgkin Lymphoma

Age-adjusted SEER Incidence^a Rates by Year, Race and Sex

Year of Diagnosis:	All Races			Whites			Blacks		
	Total	Males	Females	Total	Males	Females	Total	Males	Females
1975-2014	2.89	3.34	2.49	3.13	3.58	2.73	2.56	3.11	2.10
1975	3.09	3.86	2.40	3.23	3.91	2.64	2.58	4.41	-
1976	2.76	3.37	2.24	2.88	3.44	2.41	2.57	3.91	-
1977	2.98	3.61	2.46	3.27	3.93	2.71	1.68	1.91	-
1978	2.80	3.41	2.32	3.07	3.70	2.58	1.47	2.01	-
1979	2.93	3.91	2.08	3.09	4.05	2.27	2.86	4.68	-
1980	2.77	3.31	2.27	2.98	3.53	2.48	1.82	2.07	1.54
1981	2.92	3.58	2.34	3.23	3.92	2.62	1.43	1.94	-
1982	2.92	3.50	2.45	3.13	3.67	2.69	2.58	3.15	2.04
1983	3.02	3.72	2.39	3.33	4.00	2.70	2.11	3.85	-
1984	3.06	3.72	2.47	3.38	4.01	2.79	2.07	3.31	-
1985	2.97	3.50	2.50	3.31	3.84	2.83	1.74	2.26	-
1986	2.73	3.33	2.22	2.91	3.50	2.41	2.27	2.80	1.90
1987	3.04	3.71	2.50	3.34	4.00	2.78	2.12	2.78	1.54
1988	3.10	3.59	2.67	3.43	3.99	2.94	1.94	1.93	1.93
1989	3.06	3.68	2.54	3.36	3.97	2.85	2.16	3.15	1.37
1990	3.06	3.51	2.63	3.30	3.83	2.78	3.02	3.23	2.81
1991	3.03	3.50	2.60	3.35	3.84	2.90	2.40	2.70	2.08
1992	2.87	3.11	2.69	3.06	3.23	2.93	2.66	2.71	2.61
1993	2.86	3.27	2.50	3.09	3.49	2.75	2.96	3.64	2.46
1994	2.86	3.15	2.60	3.15	3.49	2.82	2.15	2.41	1.99
1995	2.76	3.22	2.36	3.05	3.51	2.65	2.32	2.93	1.78
1996	2.86	3.32	2.42	3.14	3.63	2.69	2.46	3.19	1.83
1997	2.82	2.95	2.70	3.07	3.22	2.92	2.54	2.32	2.72
1998	2.79	3.11	2.53	3.13	3.45	2.86	2.15	2.46	1.89
1999	2.86	3.08	2.69	3.10	3.23	3.02	2.58	3.14	2.12
2000	2.82	3.30	2.37	3.06	3.54	2.62	2.42	3.03	1.87
2001	2.57	2.95	2.23	2.73	3.12	2.37	2.48	3.17	1.98
2002	2.95	3.27	2.70	3.15	3.44	2.91	2.95	3.23	2.77
2003	2.72	3.12	2.37	3.01	3.46	2.61	2.42	2.82	2.23
2004	2.95	3.06	2.89	3.12	3.20	3.09	3.17	3.25	3.13
2005	3.02	3.51	2.62	3.24	3.73	2.84	3.18	3.49	2.90
2006	3.00	3.32	2.70	3.22	3.50	2.92	3.16	3.93	2.51
2007	3.18	3.67	2.74	3.45	3.90	3.03	3.33	4.10	2.68
2008	2.95	3.37	2.57	3.20	3.59	2.86	3.06	3.66	2.55
2009	2.93	3.20	2.70	3.23	3.48	3.00	2.63	3.21	2.12
2010	2.79	3.25	2.37	3.02	3.52	2.54	2.53	3.07	2.08
2011	2.73	3.17	2.33	2.90	3.34	2.50	2.89	3.46	2.37
2012	2.71	3.02	2.43	2.91	3.24	2.59	2.80	2.85	2.71
2013	2.66	3.07	2.31	2.80	3.16	2.50	2.85	3.56	2.23
2014	2.78	3.26	2.34	2.93	3.39	2.51	2.95	3.49	2.47

^a SEER 9 areas (San Francisco, Connecticut, Detroit, Hawaii, Iowa, New Mexico, Seattle, Utah, and Atlanta).
Rates are per 100,000 and are age-adjusted to the 2000 US Std Population (19 age groups - Census P25-1130).
- Statistic not shown. Rate based on less than 16 cases for the time interval.

Table 9.6
Hodgkin LymphomaAge-adjusted U.S. Death^a Rates by Year, Race and Sex

Year of Death:	All Races			Whites			Blacks		
	Total	Males	Females	Total	Males	Females	Total	Males	Females
1975-2014	0.60	0.75	0.47	0.63	0.78	0.50	0.51	0.68	0.38
1975	1.31	1.69	1.00	1.35	1.73	1.04	1.07	1.50	0.72
1976	1.17	1.50	0.90	1.20	1.52	0.94	0.97	1.44	0.60
1977	1.14	1.45	0.87	1.18	1.49	0.90	0.92	1.20	0.69
1978	1.06	1.35	0.82	1.10	1.38	0.87	0.76	1.17	0.44
1979	0.97	1.27	0.71	1.00	1.31	0.74	0.76	1.06	0.51
1980	0.98	1.23	0.76	1.01	1.27	0.80	0.75	1.09	0.48
1981	0.93	1.15	0.74	0.96	1.19	0.76	0.74	0.88	0.62
1982	0.88	1.09	0.70	0.92	1.15	0.72	0.70	0.78	0.62
1983	0.85	1.09	0.65	0.88	1.13	0.68	0.64	0.90	0.45
1984	0.86	1.18	0.60	0.88	1.19	0.63	0.79	1.18	0.47
1985	0.77	0.98	0.58	0.78	1.00	0.60	0.71	0.96	0.51
1986	0.78	1.00	0.58	0.80	1.04	0.60	0.65	0.85	0.49
1987	0.74	0.96	0.56	0.77	0.98	0.58	0.67	0.94	0.46
1988	0.67	0.88	0.50	0.69	0.91	0.51	0.59	0.75	0.48
1989	0.71	0.92	0.54	0.73	0.94	0.56	0.66	0.92	0.47
1990	0.66	0.85	0.50	0.69	0.88	0.52	0.56	0.81	0.36
1991	0.65	0.83	0.51	0.66	0.83	0.51	0.67	0.89	0.49
1992	0.65	0.83	0.50	0.67	0.86	0.52	0.58	0.77	0.45
1993	0.61	0.79	0.47	0.63	0.80	0.50	0.57	0.83	0.39
1994	0.56	0.66	0.47	0.56	0.66	0.48	0.55	0.73	0.41
1995	0.55	0.67	0.44	0.56	0.68	0.46	0.53	0.73	0.36
1996	0.53	0.64	0.44	0.55	0.65	0.46	0.47	0.63	0.36
1997	0.53	0.62	0.46	0.54	0.63	0.47	0.54	0.67	0.43
1998	0.48	0.61	0.36	0.49	0.62	0.37	0.48	0.66	0.33
1999	0.51	0.63	0.41	0.53	0.66	0.43	0.41	0.55	0.30
2000	0.46	0.55	0.39	0.48	0.57	0.41	0.35	0.42	0.30
2001	0.47	0.56	0.38	0.48	0.59	0.39	0.42	0.52	0.35
2002	0.47	0.58	0.38	0.49	0.60	0.41	0.40	0.57	0.27
2003	0.46	0.55	0.39	0.48	0.57	0.41	0.36	0.47	0.27
2004	0.43	0.55	0.34	0.44	0.57	0.35	0.40	0.47	0.34
2005	0.42	0.51	0.36	0.43	0.51	0.37	0.42	0.55	0.32
2006	0.44	0.56	0.33	0.45	0.57	0.35	0.41	0.56	0.30
2007	0.41	0.51	0.33	0.43	0.53	0.35	0.36	0.45	0.29
2008	0.37	0.45	0.31	0.39	0.47	0.33	0.33	0.39	0.28
2009	0.40	0.48	0.32	0.41	0.49	0.34	0.39	0.48	0.30
2010	0.38	0.49	0.29	0.40	0.51	0.31	0.30	0.36	0.26
2011	0.36	0.47	0.27	0.37	0.48	0.28	0.35	0.50	0.24
2012	0.34	0.42	0.27	0.35	0.43	0.28	0.33	0.41	0.26
2013	0.32	0.40	0.25	0.34	0.42	0.26	0.28	0.34	0.24
2014	0.31	0.40	0.24	0.32	0.40	0.25	0.31	0.42	0.23

^a US Mortality Files, National Center for Health Statistics, Centers for Disease Control and Prevention. Rates are per 100,000 and are age-adjusted to the 2000 US Std Population (19 age groups - Census P25-1130).
- Statistic not shown. Rate based on less than 16 cases for the time interval.

Table 9.7
Hodgkin LymphomaSEER Incidence^a and U.S. Death^b Rates, Age-Adjusted and Age-Specific Rates, by Race and Sex

	All Races			Whites			Blacks		
	Total	Males	Females	Total	Males	Females	Total	Males	Females
<u>SEER Incidence</u>									
<u>Age at Diagnosis</u>									
Age-Adjusted Rates, 2010-2014									
All ages	2.6	2.9	2.3	2.7	3.1	2.4	2.6	3.1	2.2
Under 65	2.4	2.7	2.1	2.5	2.8	2.3	2.7	3.2	2.2
65 and over	3.8	4.7	3.0	4.1	5.1	3.3	2.5	2.8	2.3
All ages (WHO world std) ^c	2.5	2.8	2.2	2.6	2.9	2.4	2.5	3.0	2.2
Age-Specific Rates, 2010-2014									
<1	-	-	-	-	-	-	-	-	-
1-4	0.1	-	-	-	-	-	-	-	-
5-9	0.4	0.6	0.2	0.4	0.5	0.2	0.6	0.8	-
10-14	1.1	1.3	0.9	1.2	1.4	1.0	1.1	1.2	1.1
15-19	3.0	3.1	3.0	3.4	3.3	3.4	2.2	2.5	1.9
20-24	4.1	4.0	4.3	4.5	4.3	4.6	3.3	3.1	3.5
25-29	4.0	3.9	4.0	4.2	4.1	4.4	3.8	4.4	3.3
30-34	3.5	3.7	3.2	3.7	3.9	3.5	3.7	4.2	3.3
35-39	2.8	3.0	2.6	2.9	3.1	2.7	3.7	4.2	3.3
40-44	2.7	3.2	2.1	2.7	3.3	2.2	3.7	4.7	2.8
45-49	2.4	3.0	1.8	2.5	3.0	1.9	3.3	4.4	2.3
50-54	2.4	3.1	1.7	2.4	3.0	1.7	3.4	4.4	2.4
55-59	2.5	3.2	1.8	2.6	3.4	1.9	2.7	3.5	1.9
60-64	2.7	3.1	2.3	2.9	3.4	2.4	3.2	3.4	3.0
65-69	3.0	3.8	2.3	3.2	4.0	2.5	3.1	3.4	2.9
70-74	3.8	4.5	3.1	4.1	4.9	3.4	2.7	3.4	-
75-79	4.5	5.6	3.7	5.0	6.2	4.0	2.1	-	-
80-84	4.2	5.4	3.4	4.5	5.6	3.7	-	-	-
85+	3.5	4.7	2.9	3.8	5.2	3.0	-	-	-
<u>U.S. Mortality</u>									
<u>Age at Death</u>									
Age-Adjusted Rates, 2010-2014									
All ages	0.3	0.4	0.3	0.4	0.4	0.3	0.3	0.4	0.2
Under 65	0.2	0.2	0.1	0.2	0.2	0.1	0.2	0.3	0.2
65 and over	1.4	1.9	1.1	1.5	1.9	1.2	0.9	1.2	0.7
All ages (WHO world std) ^c	0.3	0.3	0.2	0.3	0.3	0.2	0.3	0.3	0.2
Age-Specific Rates, 2010-2014									
<1	-	-	-	-	-	-	-	-	-
1-4	-	-	-	-	-	-	-	-	-
5-9	-	-	-	-	-	-	-	-	-
10-14	-	-	-	-	-	-	-	-	-
15-19	0.0	0.0	0.0	0.0	0.1	-	-	-	-
20-24	0.1	0.2	0.1	0.2	0.2	0.1	0.1	-	-
25-29	0.2	0.3	0.2	0.2	0.3	0.2	0.3	0.3	0.3
30-34	0.3	0.3	0.2	0.3	0.3	0.2	0.4	0.4	0.3
35-39	0.2	0.3	0.2	0.2	0.3	0.2	0.4	0.4	0.3
40-44	0.2	0.3	0.2	0.2	0.3	0.2	0.2	0.3	-
45-49	0.3	0.3	0.2	0.3	0.3	0.2	0.4	0.5	0.2
50-54	0.3	0.4	0.2	0.3	0.4	0.2	0.4	0.6	-
55-59	0.4	0.5	0.3	0.4	0.5	0.3	0.5	0.6	0.5
60-64	0.5	0.6	0.4	0.5	0.7	0.4	0.5	0.7	0.3
65-69	0.8	1.0	0.5	0.8	1.1	0.6	0.6	1.0	-
70-74	1.1	1.5	0.8	1.2	1.6	0.9	0.8	1.0	0.8
75-79	1.5	1.9	1.2	1.6	1.9	1.4	0.8	1.4	-
80-84	2.3	2.8	1.9	2.4	3.0	2.0	1.1	-	1.3
85+	2.2	3.2	1.7	2.3	3.3	1.8	1.5	-	1.1

^a SEER 18 areas. Rates are per 100,000 and are age-adjusted to the 2000 US Std Population (19 age groups - Census P25-1130), unless noted.

^b US Mortality Files, National Center for Health Statistics, Centers for Disease Control and Prevention.

^c Rates are per 100,000 and are age-adjusted to the 2000 US Std Population (19 age groups - Census P25-1130), unless noted.

- Rates are per 100,000 and are age-adjusted to the world (WHO 2000-2025) standard million.

- Statistic not shown. Rate based on less than 16 cases for the time interval.

Table 9.8
Hodgkin Lymphoma

5-Year Relative and Period Survival (Percent) by Race, Sex, Diagnosis Year and Age

	All Races			Whites			Blacks		
	Total	Males	Females	Total	Males	Females	Total	Males	Females
5-Year Relative Survival (Percent)									
Year of Diagnosis:									
1960-1963 ^a	-	-	-	40	34	48	-	-	-
1970-1973 ^a	-	-	-	67	66	69	-	-	-
1975-1977 ^b	71.8	69.9	74.3	72.1	70.1	74.6	70.1	68.5 ^g	73.3 ^g
1978-1980 ^b	71.7	70.3	73.5	71.8	69.8	74.3	70.6	74.7 ^g	63.1 ^g
1981-1983 ^b	74.2	72.9	75.8	74.6	73.7	75.6	71.8	69.6 ^g	75.9 ^g
1984-1986 ^b	78.3	76.5	80.6	78.8	76.9	81.2	74.9	76.0 ^g	72.1 ^g
1987-1989 ^b	79.2	76.6	82.5	79.7	76.8	83.3	72.3	70.9 ^g	74.0 ^g
1990-1992 ^b	81.7	79.3	84.7	82.9	81.1	85.0	74.2	64.9	84.3
1993-1995 ^b	81.7	79.2	84.6	82.2	80.0	84.7	78.3	74.0	83.0
1996-1998 ^b	85.1	84.4	85.9	85.7	84.4	87.3	81.1	84.2	77.7
1999-2001 ^b	85.1	82.8	87.9	85.7	84.0	87.8	81.6	75.3	89.8
2002-2006 ^b	87.1	86.2	88.1	88.1	87.6	88.7	82.5	77.9	86.8
2007-2013 ^b	88.3 ^f	87.0 ^f	89.8 ^f	88.9 ^f	88.0 ^f	89.8 ^f	85.0 ^f	81.2 ^f	89.7 ^f
5-Year Period Survival (Percent) ^{cd}									
2013	87.1	86.4	88.1	87.3	86.9	87.8	84.3	80.7	88.5
Stage Distribution (%) 2007-2013 ^{ce}									
All Stages									
Number of cases	14,839	8,117	6,722	11,934	6,541	5,393	1,883	1,022	861
Percent	100%	100%	100%	100%	100%	100%	100%	100%	100%
Localized	16	17	14	15	17	14	18	19	18
Regional	40	35	46	41	36	48	31	26	38
Distant	40	44	35	39	43	34	48	53	42
Unstaged	4	4	4	4	4	4	2	2	3
5-Year Relative Survival (Percent), 2007-2013 ^c									
Age at Diagnosis:									
Ages <45	94.0	93.1	95.0	94.8	94.4	95.4	88.0	84.2	92.4
Ages 45-54	87.2	85.0	90.6	88.2	86.5	90.9	82.7	77.9	90.0
Ages 55-64	78.2	79.0	77.0	78.8	80.3	76.5	69.4	64.7 ^g	73.9 ^g
Ages 65-74	67.0	65.5	68.8	67.0	64.5	70.1	65.1 ^g	78.5 ^h	52.1 ^h
Ages 75+	44.5	44.0	44.4	44.9	43.8	45.1	46.0 ^h	-	44.8 ^h
Ages <65	91.1	90.0	92.5	91.8	91.2	92.7	85.2	81.2	89.8
Ages 65+	56.7	56.6	56.8	56.7	55.6	57.8	59.9 ^g	72.2 ^g	49.8 ^g
Stage ^e :									
All Stages	86.4	85.6	87.4	86.6	86.1	87.3	83.5	80.7	86.7
Localized	92.2	92.9	91.0	92.1	93.1	90.5	91.7	90.3	92.9
Regional	93.1	92.4	93.7	93.3	92.8	93.9	90.2	89.3	90.7
Distant	77.9	77.9	77.8	77.8	78.4	76.8	76.4	73.3	81.1
Unstaged	82.1	79.5	84.6	81.4	78.4	84.6	70.9 ^g	-	-

^a Based on End Results data from a series of hospital registries and one population-based registry.

^b SEER 9 areas (San Francisco, Connecticut, Detroit, Hawaii, Iowa, New Mexico, Seattle, Utah, Atlanta).

Based on follow-up of patients into 2014.

^c SEER 18 areas (San Francisco, Connecticut, Detroit, Hawaii, Iowa, New Mexico, Seattle, Utah, Atlanta, San Jose-Monterey, Los Angeles, Alaska Native Registry, Rural Georgia, California excluding SF/SJM/LA, Kentucky, Louisiana, New Jersey and Georgia excluding ATL/RG).

Based on follow-up of patients into 2014.

^d Period survival provides a 2013 estimate of survival by piecing together the most recent conditional survival estimates from several cohorts. It is computed here using three year calendar blocks (2010-2012: 0-1 year survival), (2009-2011: 1-2 year survival), (2008-2010: 2-3 year survival), (2007-2009: 3-4 year survival), (2006-2008: 4-5 years survival).

^e Stage at diagnosis is classified using SEER Summary Stage 2000. Stage distribution percentages may not sum to 100 due to rounding.

^f The difference between 1975-1977 and 2007-2013 is statistically significant (p<.05).

^g The standard error is between 5 and 10 percentage points.

^h The standard error is greater than 10 percentage points.

- Statistic could not be calculated due to fewer than 25 cases during the time period.

Table 9.9
Hodgkin Lymphoma

SEER^a Relative Survival (Percent)
By Year of Diagnosis

All Races, Males and Females

Year of Diagnosis

	1975- 1979	1980- 1984	1985- 1989	1990- 1994	1995	1996	1997	1998	1999	2000	2001	2002	2003	2004	2005	2006	2007	2008	2009	2010	2011	2012	2013
Survival Time																							
1-year	86.9	89.4	90.7	92.1	92.8	91.6	93.6	94.6	91.0	92.4	94.0	92.8	93.2	91.4	93.5	92.4	93.4	94.7	92.2	91.9	93.6	94.5	93.8
2-year	80.8	83.6	86.3	87.7	88.6	88.1	90.9	90.5	87.7	90.6	90.7	89.8	92.2	89.5	91.0	90.1	92.5	92.7	89.6	90.6	92.3	92.7	
3-year	76.5	80.0	82.9	85.1	86.5	86.8	89.3	88.3	85.5	88.7	88.4	88.4	89.9	87.3	90.4	88.9	90.7	91.6	88.2	89.6	91.1		
4-year	73.6	77.4	80.5	83.2	83.4	84.6	88.4	86.6	84.2	87.9	86.6	86.1	88.1	86.1	89.6	88.5	89.0	90.6	87.1	88.5			
5-year	71.4	74.8	79.0	81.6	82.2	83.2	87.2	84.9	83.5	86.4	85.2	85.1	87.5	85.9	88.5	88.2	88.4	90.4	85.4				
6-year	69.0	72.3	77.4	80.0	80.1	81.7	85.9	83.8	82.2	85.6	84.3	84.7	87.0	84.9	88.0	86.9	86.9	89.5					
7-year	67.1	70.6	75.1	78.6	78.9	80.0	85.2	83.0	80.9	84.8	84.3	83.3	86.3	84.3	87.4	86.3	85.1						
8-year	65.0	69.3	74.0	77.8	78.4	79.3	84.7	82.4	80.0	83.8	83.8	82.4	85.6	83.4	85.8	86.2							
9-year	63.0	67.9	73.2	76.8	77.2	78.2	84.4	81.4	79.1	83.0	82.8	81.3	84.7	83.0	85.5								
10-year	61.7	66.8	72.6	76.0	76.6	76.7	83.8	80.2	78.2	83.0	81.8	80.5	84.4	82.7									
11-year	60.4	65.8	71.6	75.5	75.6	75.7	83.3	79.6	78.0	82.8	81.3	79.0	83.9										
12-year	59.4	64.6	70.8	74.7	75.5	74.9	82.8	79.2	77.6	82.3	81.2	78.2											
13-year	58.7	63.8	69.6	74.0	75.4	74.3	81.7	78.9	76.4	82.0	79.4												
14-year	57.5	62.6	68.6	73.6	75.4	73.5	80.1	78.4	76.3	81.3													
15-year	56.4	61.8	67.4	73.0	75.3	73.1	79.3	77.1	75.6														
16-year	55.7	60.8	66.7	72.5	75.0	73.1	79.0	77.0															
17-year	54.7	59.4	66.2	71.9	74.6	72.4	77.8																
18-year	53.8	58.6	65.5	71.3	73.7	72.1																	
19-year	53.2	58.0	64.8	70.3	73.7																		
20-year	52.1	56.9	64.1	69.8																			

^a Based on the SEER 9 areas (San Francisco, Connecticut, Detroit, Hawaii, Iowa, New Mexico, Seattle, Utah, and Atlanta).

Table 9.10
Hodgkin Lymphoma

SEER^a Relative Survival (Percent)
By Year of Diagnosis

All Races, Males

Year of Diagnosis

	1975- 1979	1980- 1984	1985- 1989	1990- 1994	1995	1996	1997	1998	1999	2000	2001	2002	2003	2004	2005	2006	2007	2008	2009	2010	2011	2012	2013
Survival Time																							
1-year	85.9	89.4	89.8	91.2	92.2	92.7	92.1	94.3	89.3	90.8	92.9	90.8	93.0	89.5	93.5	91.5	92.6	93.4	93.1	90.3	92.6	93.7	91.9
2-year	80.2	83.6	84.7	85.9	88.0	88.6	89.5	91.0	86.1	88.4	89.1	88.2	92.2	88.2	90.9	89.0	91.6	91.4	89.5	89.4	91.5	91.9	
3-year	75.3	80.3	81.3	83.0	85.1	87.1	87.4	88.8	83.6	85.4	86.5	86.7	89.9	86.2	90.2	88.5	89.4	90.6	87.9	87.7	90.3		
4-year	71.7	77.2	78.3	80.8	81.0	85.1	86.9	86.5	82.8	83.7	85.1	84.8	86.8	85.7	88.9	87.4	87.7	89.1	87.0	87.0			
5-year	69.2	74.1	76.5	79.1	80.2	83.0	85.8	84.5	82.5	81.8	83.7	83.7	86.1	85.7	87.8	87.1	86.9	89.1	84.7				
6-year	66.5	71.5	74.6	77.2	78.8	81.9	83.5	83.6	80.5	80.9	82.1	83.0	86.1	83.7	87.0	85.5	85.0	88.0					
7-year	64.3	69.7	71.9	76.0	77.6	79.7	82.9	82.3	78.7	80.2	81.8	81.1	85.1	83.5	85.9	85.2	83.0						
8-year	62.4	68.3	70.5	74.9	76.5	78.6	82.2	81.8	77.5	79.1	81.4	80.0	84.2	82.6	83.2	85.2							
9-year	60.0	67.1	69.3	73.9	75.3	77.6	82.2	80.4	76.1	78.8	79.6	79.1	82.8	82.6	83.0								
10-year	58.9	65.8	68.6	73.3	75.3	75.3	81.0	78.3	75.2	78.7	78.2	78.5	82.2	81.7									
11-year	57.5	64.8	67.2	72.6	74.3	74.2	80.4	77.7	75.2	77.9	77.3	75.9	81.6										
12-year	56.4	63.4	66.1	71.9	74.2	72.6	80.3	77.2	74.2	77.2	77.0	75.2											
13-year	55.8	62.8	64.5	71.0	74.2	72.0	78.5	77.1	71.7	76.6	75.7												
14-year	54.4	61.4	63.3	70.6	74.2	70.7	76.8	76.0	71.5	75.5													
15-year	53.2	60.7	62.1	69.9	74.2	70.1	75.8	73.3	70.4														
16-year	52.5	59.7	61.2	69.5	74.2	70.1	75.4	73.2															
17-year	51.2	58.3	60.8	68.8	74.2	69.7	74.4																
18-year	50.2	57.3	60.0	68.1	73.0	69.1																	
19-year	49.6	56.8	59.4	67.4	73.0																		
20-year	48.6	55.5	58.5	67.1																			

^a Based on the SEER 9 areas (San Francisco, Connecticut, Detroit, Hawaii, Iowa, New Mexico, Seattle, Utah, and Atlanta).

Table 9.11
Hodgkin Lymphoma

SEER^a Relative Survival (Percent)
By Year of Diagnosis

All Races, Females

Year of Diagnosis

	1975- 1979	1980- 1984	1985- 1989	1990- 1994	1995	1996	1997	1998	1999	2000	2001	2002	2003	2004	2005	2006	2007	2008	2009	2010	2011	2012	2013
Survival Time																							
1-year	88.2	89.5	91.8	93.0	93.7	90.0	95.1	94.9	92.9	94.5	95.3	95.2	93.4	93.4	93.4	93.4	94.5	96.1	91.4	93.8	94.7	95.6	96.4
2-year	81.6	83.7	88.3	89.9	89.3	87.4	92.3	89.8	89.5	93.6	92.7	91.6	92.2	90.9	91.1	91.3	93.4	94.1	89.7	92.2	93.2	93.6	
3-year	78.1	79.7	85.0	87.6	88.1	86.3	91.3	87.6	87.5	93.1	90.8	90.2	90.0	88.4	90.6	89.4	92.4	92.9	88.5	91.7	92.1		
4-year	76.2	77.6	83.2	86.0	86.5	84.0	89.8	86.5	85.7	93.1	88.5	87.5	89.6	86.3	90.4	89.4	90.7	92.4	87.2	90.5			
5-year	74.4	75.7	82.1	84.7	84.6	83.6	88.5	85.3	84.4	92.6	87.1	86.7	89.1	86.2	89.3	89.3	90.2	91.6	86.1				
6-year	72.3	73.4	80.9	83.4	81.8	81.5	88.5	84.0	84.0	92.0	86.9	86.5	88.1	85.8	89.2	88.5	89.2	91.1					
7-year	70.8	71.8	79.2	81.7	80.6	80.5	87.7	83.6	83.2	91.1	86.9	85.7	87.8	85.0	89.1	87.4	87.8						
8-year	68.5	70.6	78.4	81.3	80.6	80.1	87.2	83.1	82.7	90.4	86.9	84.9	87.2	84.1	89.0	86.8							
9-year	66.9	68.9	78.1	80.4	79.4	78.9	86.6	82.6	82.2	88.6	86.7	83.5	87.0	83.2	88.5								
10-year	65.4	68.1	77.6	79.4	78.2	78.4	86.5	82.2	81.4	88.6	86.6	82.7	86.9	83.2									
11-year	64.3	67.1	77.2	78.9	77.4	77.5	86.1	81.7	80.9	88.6	86.5	82.3	86.7										
12-year	63.5	66.2	76.8	78.0	76.9	77.4	85.1	81.2	80.9	88.6	86.5	81.3											
13-year	62.6	65.1	76.1	77.6	76.1	77.1	84.9	80.8	80.9	88.6	84.2												
14-year	61.6	64.2	75.1	77.1	76.1	76.8	83.4	80.8	80.9	88.6													
15-year	60.8	63.3	74.0	76.6	75.9	76.8	82.8	80.8	80.9														
16-year	60.0	62.3	73.5	76.0	75.7	76.8	82.4	80.8															
17-year	59.4	61.0	72.8	75.5	75.1	75.8	81.4																
18-year	58.6	60.2	72.4	74.9	74.3	75.6																	
19-year	57.9	59.5	71.5	73.8	74.1																		
20-year	56.8	58.8	71.1	73.0																			

^a Based on the SEER 9 areas (San Francisco, Connecticut, Detroit, Hawaii, Iowa, New Mexico, Seattle, Utah, and Atlanta).

Table 9.12
Hodgkin Lymphoma

Risk of Being Diagnosed With Cancer in 10, 20 and 30 Years,
Lifetime Risk of Being Diagnosed with Cancer Given Alive and Cancer-Free at Current Age, and
Lifetime Risk of Dying from Cancer Given Alive at Current Age
Both Sexes, 2012-2014 By Race/Ethnicity

Race/ Ethnicity	Current Age	Risk of Being Diagnosed with Cancer					Risk of Dying from Cancer	Race/ Ethnicity	Current Age	Risk of Being Diagnosed with Cancer					Risk of Dying from Cancer
		+10 yrs	+20 yrs	+30 yrs	Ever	+10 yrs				+20 yrs	+30 yrs	Ever			
All Races	0	0.00	0.02	0.06	0.21	0.03	Asian/ Pacific Islander	0	0.00	0.01	0.04	0.11	0.02		
	10	0.02	0.06	0.09	0.21	0.03		10	0.01	0.04	0.05	0.11	0.02		
	20	0.04	0.07	0.09	0.19	0.03		20	0.03	0.04	0.05	0.10	0.02		
	30	0.03	0.06	0.08	0.15	0.03		30	0.02	0.03	0.03	0.07	0.02		
	40	0.03	0.05	0.07	0.12	0.03		40	0.01	0.02	0.02	0.05	0.02		
	50	0.02	0.05	0.08	0.10	0.03		50	0.01	0.02	0.03	0.05	0.02		
	60	0.03	0.06	0.08	0.08	0.03		60	0.01	0.02	0.04	0.04	0.02		
	70	0.03	0.06	-	0.06	0.03		70	0.02	0.03	-	0.03	0.02		
80	0.03	-	-	0.03	0.02	80	0.02	-	-	0.02	0.02				
White	0	0.00	0.02	0.07	0.22	0.04	American Indian/ Alaska Native ^a	0	0.00	0.01	0.01	0.15	0.01		
	10	0.02	0.06	0.10	0.22	0.04		10	0.01	0.01	0.02	0.16	0.01		
	20	0.04	0.07	0.10	0.20	0.04		20	0.00	0.01	0.02	0.15	0.01		
	30	0.03	0.06	0.08	0.16	0.04		30	0.01	0.01	0.03	0.15	0.01		
	40	0.03	0.05	0.08	0.13	0.03		40	0.01	0.02	0.04	0.15	0.01		
	50	0.02	0.05	0.08	0.10	0.03		50	0.02	0.04	0.09	0.14	0.01		
	60	0.03	0.06	0.08	0.08	0.03		60	0.03	0.08	0.13	0.14	0.01		
	70	0.04	0.06	-	0.06	0.03		70	0.06	0.12	-	0.13	0.01		
80	0.03	-	-	0.03	0.02	80	0.09	-	-	0.09	0.01				
Black	0	0.00	0.02	0.05	0.19	0.03	Hispanic ^b	0	0.00	0.02	0.04	0.21	0.05		
	10	0.02	0.05	0.09	0.19	0.03		10	0.02	0.04	0.06	0.21	0.05		
	20	0.03	0.07	0.10	0.18	0.03		20	0.03	0.05	0.06	0.19	0.05		
	30	0.04	0.07	0.10	0.15	0.03		30	0.02	0.04	0.06	0.16	0.05		
	40	0.03	0.06	0.09	0.11	0.02		40	0.02	0.04	0.07	0.15	0.05		
	50	0.03	0.05	0.07	0.08	0.02		50	0.02	0.05	0.10	0.13	0.05		
	60	0.03	0.04	0.05	0.05	0.02		60	0.03	0.08	0.11	0.11	0.05		
	70	0.02	0.03	-	0.03	0.01		70	0.05	0.08	-	0.09	0.05		
80	0.02	-	-	0.02	0.01	80	0.04	-	-	0.04	0.03				

Devcan 6.7.5, April 2017, National Cancer Institute (<https://surveillance.cancer.gov/devcan/>).

Source: Incidence data are from the SEER 18 areas (San Francisco, Connecticut, Detroit, Hawaii, Iowa, New Mexico, Seattle, Utah, Atlanta, San Jose-Monterey, Los Angeles, Alaska Native Registry, Rural Georgia, California excluding SF/SJM/LA, Kentucky, Louisiana, New Jersey, and Georgia excluding ATL/RG). Mortality data are from the NCHS public use data file for the total US.

^a Underlying incidence and mortality data for American Indian/Alaska Native are based on the CHSDA (Contract Health Service Delivery Area) counties.

^b Hispanic is not mutually exclusive from whites, blacks, Asian/Pacific Islanders, and American Indians/Alaska Natives. Underlying incidence data for Hispanics are based on NHIA and exclude cases from the Alaska Native Registry.

- Statistic could not be calculated.

A percent of 0.00 represents a value that is below 0.005.

Table 9.13
Hodgkin Lymphoma

Risk of Being Diagnosed With Cancer in 10, 20 and 30 Years,
Lifetime Risk of Being Diagnosed with Cancer Given Alive and Cancer-Free at Current Age, and
Lifetime Risk of Dying from Cancer Given Alive at Current Age
Males, 2012-2014 By Race/Ethnicity

Race/ Ethnicity	Current Age	Risk of Being Diagnosed with Cancer				Risk of Dying from Cancer	Race/ Ethnicity	Current Age	Risk of Being Diagnosed with Cancer				Risk of Dying from Cancer
		+10 yrs	+20 yrs	+30 yrs	Ever				+10 yrs	+20 yrs	+30 yrs	Ever	
All Races	0	0.00	0.03	0.06	0.23	0.04	Asian/ Pacific Islander	0	0.00	0.02	0.05	0.13	0.03
	10	0.02	0.06	0.09	0.23	0.04		10	0.02	0.04	0.06	0.13	0.03
	20	0.04	0.07	0.10	0.21	0.04		20	0.03	0.04	0.05	0.12	0.03
	30	0.03	0.06	0.09	0.17	0.04		30	0.01	0.03	0.04	0.09	0.03
	40	0.03	0.06	0.09	0.14	0.04		40	0.01	0.03	0.03	0.07	0.03
	50	0.03	0.06	0.09	0.11	0.04		50	0.01	0.02	0.04	0.06	0.03
	60	0.03	0.07	0.09	0.09	0.03		60	0.01	0.03	0.05	0.05	0.02
	70	0.04	0.07	-	0.07	0.03		70	0.02	0.05	-	0.05	0.02
80	0.03	-	-	0.04	0.02	80	0.03	-	-	0.03	0.02		
White	0	0.00	0.03	0.06	0.24	0.04	American Indian/ Alaska Native ^a	0	0.00	0.01	0.01	0.14	0.01
	10	0.02	0.06	0.10	0.24	0.04		10	0.01	0.01	0.02	0.14	0.01
	20	0.04	0.07	0.10	0.22	0.04		20	0.00	0.02	0.03	0.13	0.01
	30	0.03	0.06	0.09	0.18	0.04		30	0.01	0.02	0.04	0.13	0.02
	40	0.03	0.06	0.09	0.15	0.04		40	0.01	0.03	0.05	0.12	0.02
	50	0.03	0.06	0.10	0.12	0.04		50	0.02	0.04	0.07	0.11	0.02
	60	0.03	0.07	0.10	0.10	0.04		60	0.03	0.06	0.10	0.11	0.02
	70	0.05	0.07	-	0.07	0.03		70	0.03	0.09	-	0.09	0.02
80	0.04	-	-	0.04	0.02	80	0.08	-	-	0.09	0.03		
Black	0	0.00	0.02	0.06	0.22	0.03	Hispanic ^b	0	0.00	0.02	0.05	0.23	0.06
	10	0.02	0.06	0.10	0.22	0.03		10	0.02	0.04	0.07	0.23	0.06
	20	0.04	0.08	0.12	0.20	0.03		20	0.02	0.05	0.07	0.22	0.06
	30	0.04	0.09	0.12	0.17	0.03		30	0.02	0.05	0.07	0.19	0.06
	40	0.05	0.08	0.11	0.13	0.03		40	0.02	0.05	0.08	0.17	0.06
	50	0.04	0.07	0.08	0.09	0.02		50	0.03	0.06	0.12	0.15	0.06
	60	0.03	0.04	0.05	0.05	0.02		60	0.04	0.10	0.13	0.13	0.06
	70	0.02	0.03	-	0.03	0.02		70	0.07	0.10	-	0.11	0.05
80	0.01	-	-	0.01	0.01	80	0.04	-	-	0.05	0.04		

Devcan 6.7.5, April 2017, National Cancer Institute (<https://surveillance.cancer.gov/devcan/>).

Source: Incidence data are from the SEER 18 areas (San Francisco, Connecticut, Detroit, Hawaii, Iowa, New Mexico, Seattle, Utah, Atlanta, San Jose-Monterey, Los Angeles, Alaska Native Registry, Rural Georgia, California excluding SF/SJM/LA, Kentucky, Louisiana, New Jersey, and Georgia excluding ATL/RG). Mortality data are from the NCHS public use data file for the total US.

^a Underlying incidence and mortality data for American Indian/Alaska Native are based on the CHSDA (Contract Health Service Delivery Area) counties.

^b Hispanic is not mutually exclusive from whites, blacks, Asian/Pacific Islanders, and American Indians/Alaska Natives. Underlying incidence data for Hispanics are based on NHIA and exclude cases from the Alaska Native Registry.

- Statistic could not be calculated.

A percent of 0.00 represents a value that is below 0.005.

Table 9.14
Hodgkin Lymphoma

Risk of Being Diagnosed With Cancer in 10, 20 and 30 Years,
Lifetime Risk of Being Diagnosed with Cancer Given Alive and Cancer-Free at Current Age, and
Lifetime Risk of Dying from Cancer Given Alive at Current Age
Females, 2012-2014 By Race/Ethnicity

Race/ Ethnicity	Current Age	Risk of Being Diagnosed with Cancer					Risk of Dying from Cancer	Race/ Ethnicity	Current Age	Risk of Being Diagnosed with Cancer					Risk of Dying from Cancer
		+10 yrs	+20 yrs	+30 yrs	Ever	+10 yrs				+20 yrs	+30 yrs	Ever			
All Races	0	0.00	0.02	0.06	0.19	0.03	Asian/ Pacific Islander	0	0.00	0.01	0.03	0.09	0.02		
	10	0.02	0.06	0.09	0.19	0.03		10	0.01	0.03	0.05	0.09	0.02		
	20	0.04	0.07	0.09	0.17	0.03		20	0.02	0.04	0.05	0.08	0.02		
	30	0.03	0.05	0.06	0.13	0.03		30	0.02	0.02	0.03	0.06	0.02		
	40	0.02	0.04	0.06	0.10	0.03		40	0.01	0.01	0.02	0.04	0.02		
	50	0.02	0.04	0.06	0.08	0.03		50	0.01	0.01	0.02	0.03	0.02		
	60	0.02	0.05	0.07	0.07	0.02		60	0.01	0.02	0.03	0.03	0.02		
	70	0.03	0.05	-	0.05	0.02		70	0.01	0.02	-	0.03	0.02		
80	0.03	-	-	0.03	0.02	80	0.01	-	-	0.02	0.02				
White	0	0.00	0.02	0.07	0.20	0.03	American Indian/ Alaska Native ^a	0	0.00	0.00	0.01	0.17	0.01		
	10	0.02	0.07	0.10	0.20	0.03		10	0.00	0.01	0.01	0.17	0.01		
	20	0.04	0.07	0.09	0.18	0.03		20	0.00	0.00	0.01	0.17	0.01		
	30	0.03	0.05	0.07	0.13	0.03		30	0.00	0.00	0.01	0.16	0.01		
	40	0.02	0.04	0.06	0.11	0.03		40	0.00	0.02	0.04	0.17	0.01		
	50	0.02	0.04	0.07	0.09	0.03		50	0.01	0.04	0.11	0.17	0.01		
	60	0.02	0.05	0.07	0.07	0.03		60	0.02	0.10	0.16	0.17	0.01		
	70	0.03	0.05	-	0.05	0.02		70	0.08	0.15	-	0.16	0.01		
80	0.03	-	-	0.03	0.02	80	0.09	-	-	0.10	0.00				
Black	0	0.00	0.02	0.05	0.17	0.02	Hispanic ^b	0	0.00	0.02	0.04	0.18	0.04		
	10	0.02	0.05	0.08	0.17	0.02		10	0.02	0.04	0.06	0.18	0.04		
	20	0.03	0.06	0.08	0.15	0.02		20	0.03	0.04	0.06	0.17	0.04		
	30	0.03	0.05	0.07	0.12	0.02		30	0.02	0.03	0.05	0.14	0.04		
	40	0.02	0.04	0.07	0.10	0.02		40	0.01	0.03	0.06	0.12	0.04		
	50	0.02	0.04	0.06	0.07	0.02		50	0.02	0.04	0.08	0.11	0.04		
	60	0.03	0.04	0.06	0.06	0.02		60	0.03	0.06	0.09	0.09	0.04		
	70	0.02	0.04	-	0.04	0.01		70	0.04	0.06	-	0.07	0.04		
80	0.02	-	-	0.02	0.01	80	0.03	-	-	0.04	0.03				

Devcan 6.7.5, April 2017, National Cancer Institute (<https://surveillance.cancer.gov/devcan/>).

Source: Incidence data are from the SEER 18 areas (San Francisco, Connecticut, Detroit, Hawaii, Iowa, New Mexico, Seattle, Utah, Atlanta, San Jose-Monterey, Los Angeles, Alaska Native Registry, Rural Georgia, California excluding SF/SJM/LA, Kentucky, Louisiana, New Jersey, and Georgia excluding ATL/RG). Mortality data are from the NCHS public use data file for the total US.

^a Underlying incidence and mortality data for American Indian/Alaska Native are based on the CHSDA (Contract Health Service Delivery Area) counties.

^b Hispanic is not mutually exclusive from whites, blacks, Asian/Pacific Islanders, and American Indians/Alaska Natives. Underlying incidence data for Hispanics are based on NHIA and exclude cases from the Alaska Native Registry.

- Statistic could not be calculated.

A percent of 0.00 represents a value that is below 0.005.

Table 9.15
Hodgkin Lymphoma

SEER Incidence and U.S. Mortality
Age-Adjusted Rates and Trends^a
By Race/Ethnicity and Sex

SEER Incidence	SEER 18 Areas ^b			SEER 13 Areas ^b			SEER 9 Areas ^b		
	Rate 2010-2014			Trend 2005-2014 ^c			Trend 2005-2014 ^d		
	Rate per 100,000 persons			AAPC (%)			AAPC (%)		
	Total	Males	Females	Total	Males	Females	Total	Males	Females
RACE/ETHNICITY									
All Races	2.6	2.9	2.3	-1.2*	-0.9*	-0.3	-1.3	-0.4*	-1.6*
White	2.7	3.1	2.4	-1.7*	-0.1	-2.0*	-1.5*	-0.4*	-1.9*
White Hispanic ^e	2.3	2.7	2.0	0.1	-0.4	0.5	-	-	-
White Non-Hispanic ^e	3.0	3.3	2.7	-1.8*	0.0	-2.4*	-	-	-
Black	2.6	3.1	2.2	0.8*	0.9*	0.4	1.0*	0.5*	1.7*
Asian/Pacific Islander	1.3	1.6	1.1	0.1	1.6*	1.9*	-	-	-
Amer Ind/Alaska Nat ^f	1.3	1.4	1.3	-	-	-	-	-	-
Hispanic ^e	2.2	2.6	1.9	0.0	-0.4	0.5	-	-	-
U.S. Mortality ^g									
	Rate 2010-2014			Trend 2005-2014 ^h					
	Rate per 100,000 persons			AAPC (%)					
	Total	Males	Females	Total	Males	Females			
RACE/ETHNICITY									
All Races	0.3	0.4	0.3	-3.7*	-2.5*	-3.0*			
White	0.4	0.4	0.3	-3.7*	-2.4*	-2.9*			
White Hispanic ^e	0.4	0.6	0.3	-2.3*	-2.4*	-2.1*			
White Non-Hispanic ^e	0.3	0.4	0.3	-4.0*	-2.7*	-4.7*			
Black	0.3	0.4	0.2	-2.8*	-3.1*	-2.6*			
Asian/Pacific Islander	0.2	0.2	0.1	-1.9*	-2.2	-			
Amer Ind/Alaska Nat	-	-	-	-	-	-			
Total U.S.	-	-	-	-3.8	-	-			
CHSDA Counties	-	-	-	-	-	-			
Non-CHSDA Counties	-	-	-	-	-	-			
Hispanic ^e	0.4	0.5	0.3	-2.4*	-2.5*	-2.3*			

The AAPC is the Average Annual Percent Change over the time interval. The AAPCs are calculated by the Joinpoint Regression Program Version 4.3.0.0, April 2016, National Cancer Institute.

- Statistic not shown. Rate based on less than 16 cases for the time interval.

Trend based on less than 10 cases for at least one year within the time interval.

^a Rates are age-adjusted to the 2000 US Std Population (19 age groups - Census P25-1130). Trends are based on rates age-adjusted to the 2000 US Std Population (19 age groups - Census P25-1130).

^b The SEER 9 areas are San Francisco, Connecticut, Detroit, Hawaii, Iowa, New Mexico, Seattle, Utah, and Atlanta.

The SEER 13 areas comprise the SEER 9 areas plus San Jose-Monterey, Los Angeles, the Alaska Native Registry, and Rural Georgia.

The SEER 18 areas comprise the SEER 13 areas plus California excluding SF/SJM/LA, Kentucky, Louisiana, New Jersey, and Georgia excluding ATL/RG.

^c The 2005-2014 AAPC estimates are based on a Joinpoint analysis with up to 4 Joinpoints over diagnosis years 1992-2014.

^d The 2005-2014 AAPC estimates are based on a Joinpoint analysis with up to 5 Joinpoints over diagnosis years 1975-2014.

^e Hispanic and Non-Hispanic are not mutually exclusive from whites, blacks, Asian/Pacific Islanders, and American Indians/Alaska Natives. Incidence data for Hispanics and Non-Hispanics are based on NHIA and exclude cases from the Alaska Native Registry. The 2005-2014 Hispanic and Non-Hispanic mortality trends exclude deaths from New Hampshire and Oklahoma.

^f Incidence data for American Indian/Alaska Native are based on the CHSDA (Contract Health Service Delivery Area) counties.

^g US Mortality Files, National Center for Health Statistics, CDC.

^h The 2005-2014 mortality AAPCs are based on a Joinpoint analysis using years of death 1992-2014.

* The APC is significantly different from zero (p<.05).

Table 9.16
Hodgkin Lymphoma

Age-Adjusted SEER Incidence Rates^a
By Registry, Race and Sex

	All Races			Whites			Blacks		
	Total	Males	Females	Total	Males	Females	Total	Males	Females
<u>SEER Incidence Rates^a, 2010-2014</u>									
California	2.31	2.66	2.00	2.50	2.85	2.17	2.56	3.10	2.06
Greater Bay Area	2.37	2.75	2.03	2.70	3.09	2.31	3.14	4.05	2.29
San Francisco-Oakland	2.45	2.83	2.11	2.78	3.23	2.36	3.29	4.03	2.64
San Jose-Monterey	2.24	2.60	1.90	2.56	2.85	2.26	-	-	-
Los Angeles	2.30	2.65	1.99	2.49	2.88	2.16	2.52	2.76	2.31
Greater California	2.31	2.65	1.98	2.45	2.79	2.13	2.36	2.95	1.76
Connecticut	3.39	3.75	3.09	3.51	3.88	3.19	2.80	3.26	2.41
Detroit	3.10	3.65	2.60	3.44	3.98	2.95	2.54	3.07	2.05
Georgia	2.45	2.65	2.27	2.41	2.51	2.34	2.65	3.13	2.25
Atlanta	2.51	2.94	2.16	2.45	2.93	2.03	2.78	3.18	2.46
Rural Georgia	2.83	-	-	-	-	-	-	-	-
Greater Georgia	2.39	2.49	2.31	2.40	2.36	2.46	2.45	2.96	2.02
Hawaii	1.73	2.00	1.51	2.74	2.90	2.63	-	-	-
Iowa	3.09	3.64	2.56	3.09	3.65	2.55	-	-	-
Kentucky	2.67	3.13	2.23	2.71	3.18	2.26	2.61	2.69	2.47
Louisiana	2.76	3.03	2.52	2.85	2.99	2.73	2.56	3.00	2.14
New Jersey	3.18	3.58	2.83	3.39	3.77	3.07	2.79	3.19	2.47
New Mexico	2.38	2.84	1.99	2.47	2.87	2.14	-	-	-
Seattle-Puget Sound	2.69	3.19	2.20	2.74	3.19	2.31	3.51	4.56	2.31
Utah	2.48	2.67	2.30	2.52	2.67	2.38	-	-	-
SEER 9 Areas ^b	2.73	3.15	2.35	2.91	3.33	2.53	2.81	3.29	2.37
SEER 13 Areas ^b	2.59	2.99	2.23	2.78	3.18	2.41	2.77	3.25	2.35
SEER 18 Areas ^b	2.58	2.94	2.25	2.73	3.07	2.41	2.64	3.11	2.22

^a Rates are per 100,000 and are age-adjusted to the 2000 US Std Population (19 age groups - Census P25-1130)

^b The SEER 9 areas are San Francisco, Connecticut, Detroit, Hawaii, Iowa, New Mexico, Seattle, Utah and Atlanta.

The SEER 13 areas comprise the SEER 9 areas plus San Jose-Monterey, Los Angeles, the Alaska Native Registry and Rural Georgia.

The SEER 18 areas comprise the SEER 13 areas plus California excluding SF/SJM/LA, Kentucky, Louisiana, New Jersey and Georgia excluding ATL/RG.

- Statistic not shown. Rate based on less than 16 cases for the time interval.

Table 9.17
Hodgkin Lymphoma

Age-Adjusted SEER Death Rates^a
By Registry, Race and Sex

	All Races			Whites			Blacks		
	Total	Males	Females	Total	Males	Females	Total	Males	Females
<u>SEER Death Rates^a, 2010-2014</u>									
California	0.37	0.49	0.28	0.41	0.53	0.31	0.34	0.46	0.26
Greater Bay Area	0.29	0.39	0.22	0.36	0.44	0.31	-	-	-
San Francisco-Oakland	0.28	0.42	0.17	0.35	0.51	0.23	-	-	-
San Jose-Monterey	0.31	0.33	0.31	0.38	-	0.44	-	-	-
Los Angeles	0.38	0.52	0.27	0.42	0.56	0.32	0.34	-	-
Greater California	0.40	0.52	0.30	0.42	0.55	0.31	0.48	-	-
Connecticut	0.28	0.35	0.22	0.28	0.36	0.21	-	-	-
Detroit	0.38	0.51	0.27	0.41	0.48	0.34	0.34	-	-
Georgia	0.37	0.54	0.26	0.37	0.53	0.26	0.40	0.56	0.28
Atlanta	0.31	0.50	-	0.32	0.55	-	0.32	-	-
Rural Georgia	-	-	-	-	-	-	-	-	-
Greater Georgia	0.39	0.54	0.30	0.39	0.53	0.31	0.39	0.54	-
Hawaii	0.27	-	-	-	-	-	-	-	-
Iowa	0.33	0.41	0.27	0.34	0.43	0.27	-	-	-
Kentucky	0.25	0.29	0.21	0.26	0.32	0.20	-	-	-
Louisiana	0.44	0.48	0.42	0.49	0.49	0.49	0.33	-	-
New Jersey	0.32	0.40	0.25	0.36	0.44	0.28	0.25	-	-
New Mexico	0.32	0.47	-	0.35	0.50	-	-	-	-
Seattle-Puget Sound	0.25	0.28	0.23	0.27	0.31	0.25	-	-	-
Utah	0.25	0.35	-	0.26	0.35	-	-	-	-
SEER 9 Areas ^b	0.30	0.40	0.21	0.32	0.42	0.23	0.30	0.40	0.21
SEER 13 Areas ^b	0.32	0.42	0.23	0.34	0.44	0.27	0.32	0.45	0.22
SEER 18 Areas ^b	0.34	0.44	0.26	0.37	0.46	0.29	0.33	0.46	0.25
Total U.S.	0.34	0.43	0.26	0.35	0.45	0.28	0.31	0.41	0.24

^a US Mortality Files, National Center for Health Statistics, Centers for Disease Control and Prevention. Rates are per 100,000 and are age-adjusted to the 2000 US Std Population (19 age groups - Census P25-1130).

^b The SEER 9 areas are San Francisco, Connecticut, Detroit, Hawaii, Iowa, New Mexico, Seattle, Utah and Atlanta. The SEER 13 areas comprise the SEER 9 areas plus San Jose-Monterey, Los Angeles, the Alaska Native Registry and Rural Georgia. The SEER 18 areas comprise the SEER 13 areas plus California excluding SF/SJM/LA, Kentucky, Louisiana, New Jersey and Georgia excluding ATL/RG.

- Statistic not shown. Rate based on less than 16 cases for the time interval.

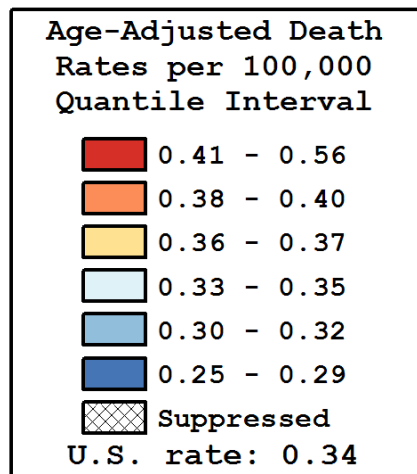
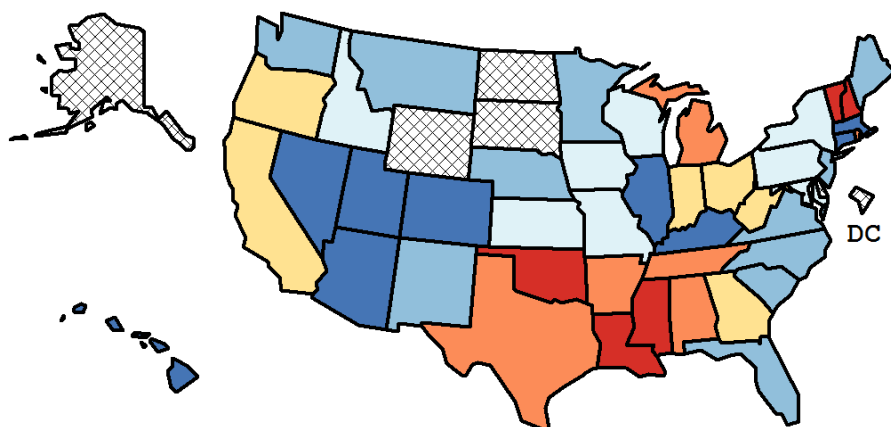
Table 9.18
Hodgkin Lymphoma

Age-Adjusted Cancer Death^a Rates By State, All Races, 2010-2014

Males and Females

State	Rate	SE	Rank(CI) ^d	PD
TOTAL U.S.	0.34	0.00		
High Five States				
Vermont	0.56	0.13	01(01,44)	64.60 ^c
Louisiana	0.44	0.04	02(01,29)	30.26 ^c
New Hampshire	0.42	0.08	03(01,45)	23.22 ^c
Mississippi	0.41	0.05	04(01,40)	20.58 ^c
Oklahoma	0.41	0.05	05(01,38)	20.30 ^c
Low Five States				
Arizona	0.28	0.03	41(14,45)	-17.40 ^c
Nevada	0.28	0.05	42(05,45)	-18.77 ^c
Hawaii	0.27	0.06	43(02,45)	-20.81 ^c
Utah	0.25	0.05	44(07,45)	-25.97 ^c
Kentucky	0.25	0.03	45(18,45)	-26.50 ^c

State	Rate	SE	Rank(CI) ^d	PD	State	Rate	SE	Rank(CI) ^d	PD
Alabama	0.38	0.04	10(01,40)	10.87	Montana	0.31	0.08	33(01,45)	-8.23
Alaska	-	-	-(-,-)	-	Nebraska	0.32	0.06	28(01,45)	-5.86
Arizona	0.28	0.03	41(14,45)	-17.40 ^c	Nevada	0.28	0.05	42(05,45)	-18.77 ^c
Arkansas	0.38	0.05	11(01,43)	10.30	New Hampshire	0.42	0.08	03(01,45)	23.22 ^c
California	0.37	0.01	14(04,26)	9.46	New Jersey	0.32	0.03	30(08,44)	-6.89
Colorado	0.29	0.03	39(08,45)	-15.45 ^c	New Mexico	0.32	0.05	29(01,45)	-6.36
Connecticut	0.28	0.04	40(07,45)	-16.93 ^c	New York	0.35	0.02	20(06,36)	2.12
Delaware	-	-	-(-,-)	-	North Carolina	0.32	0.03	27(08,43)	-5.81
D.C.	-	-	-(-,-)	-	North Dakota	-	-	-(-,-)	-
Florida	0.31	0.02	34(16,42)	-8.74	Ohio	0.37	0.02	17(03,36)	7.47
Georgia	0.37	0.03	12(02,36)	9.81	Oklahoma	0.41	0.05	05(01,38)	20.30 ^c
Hawaii	0.27	0.06	43(02,45)	-20.81 ^c	Oregon	0.37	0.04	15(01,43)	8.35
Idaho	0.35	0.07	18(01,45)	3.65	Pennsylvania	0.33	0.02	25(08,40)	-2.94
Illinois	0.29	0.02	38(17,45)	-14.14	Rhode Island	0.39	0.08	07(01,45)	14.62
Indiana	0.37	0.03	13(02,38)	9.54	South Carolina	0.32	0.04	31(04,45)	-7.07
Iowa	0.33	0.04	24(02,45)	-1.80	South Dakota	-	-	-(-,-)	-
Kansas	0.34	0.05	22(01,45)	0.85	Tennessee	0.40	0.03	06(01,34)	17.73 ^c
Kentucky	0.25	0.03	45(18,45)	-26.50 ^c	Texas	0.38	0.02	08(02,26)	12.97
Louisiana	0.44	0.04	02(01,29)	30.26 ^c	Utah	0.25	0.05	44(07,45)	-25.97 ^c
Maine	0.30	0.06	36(02,45)	-12.85	Vermont	0.56	0.13	01(01,44)	64.60 ^c
Maryland	0.35	0.03	21(03,42)	1.74	Virginia	0.32	0.03	32(07,44)	-7.25
Massachusetts	0.29	0.03	37(11,45)	-13.48	Washington	0.30	0.03	35(08,45)	-10.95
Michigan	0.38	0.03	09(02,33)	12.31	West Virginia	0.37	0.06	16(01,45)	7.95
Minnesota	0.32	0.03	26(04,44)	-4.70	Wisconsin	0.35	0.03	19(02,42)	2.56
Mississippi	0.41	0.05	04(01,40)	20.58 ^c	Wyoming	-	-	-(-,-)	-
Missouri	0.34	0.03	23(03,44)	-0.89					



^a US Mortality Files, National Center for Health Statistics, Centers for Disease Control and Prevention. Rates are per 100,000 and are age-adjusted to the 2000 US Std Population (19 age groups - Census P25-1130).

^b Difference between state rate and total U.S. rate is statistically significant ($p < .0002$).

^c Absolute percent difference between state rate and total U.S. rate is 15% or more.

^d Rank of state level death rate and the 95% confidence intervals (low, high) for the rank.

SE Standard error of the rate.

PD Percent difference between state rate and total U.S. rate.

- Statistic not shown. Rate based on less than 16 cases for the time interval.

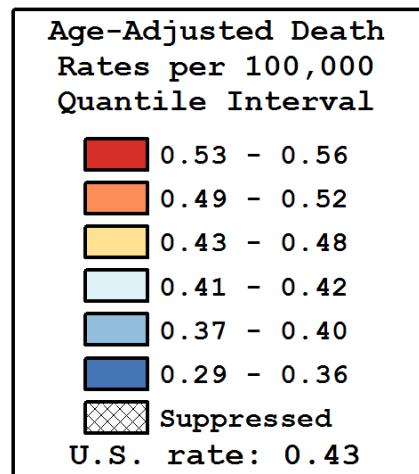
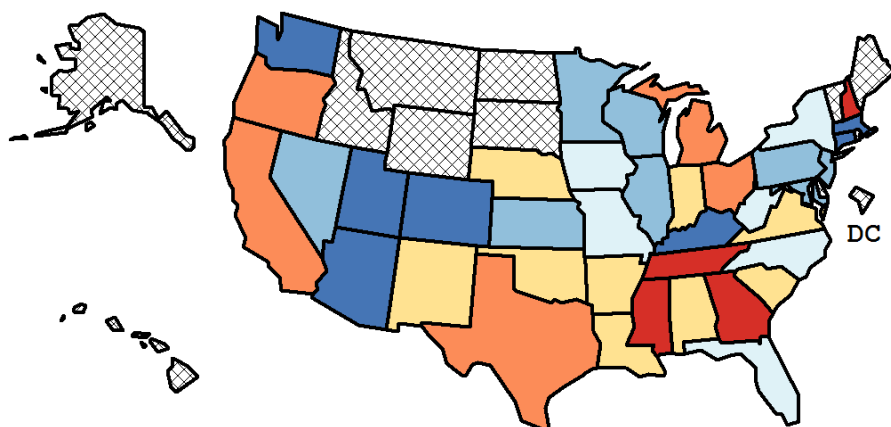
Table 9.19
Hodgkin Lymphoma

Age-Adjusted Cancer Death^a Rates By State, All Races, 2010-2014

Males

State	Rate	SE	Rank(CI) ^d	PD
TOTAL U.S.	0.43	0.01		
High Five States				
New Hampshire	0.56	0.14	01(01,39)	29.28 ^c
Mississippi	0.55	0.09	02(01,36)	27.64 ^c
Tennessee	0.54	0.06	03(01,29)	24.13 ^c
Georgia	0.54	0.05	04(01,27)	23.65 ^c
Oregon	0.52	0.07	05(01,35)	20.19 ^c
Low Five States				
Connecticut	0.35	0.06	35(05,39)	-20.14 ^c
Arizona	0.34	0.05	36(11,39)	-21.21 ^c
Colorado	0.33	0.06	37(08,39)	-23.34 ^c
Washington	0.33	0.04	38(13,39)	-23.96 ^c
Kentucky	0.29	0.05	39(14,39)	-33.10 ^c

State	Rate	SE	Rank(CI) ^d	PD	State	Rate	SE	Rank(CI) ^d	PD
Alabama	0.48	0.07	12(01,37)	9.85	Montana	-	-	-(-,-)	-
Alaska	-	-	-(-,-)	-	Nebraska	0.46	0.10	15(01,39)	7.02
Arizona	0.34	0.05	36(11,39)	-21.21 ^c	Nevada	0.37	0.08	32(02,39)	-14.24
Arkansas	0.44	0.08	18(01,39)	2.45	New Hampshire	0.56	0.14	01(01,39)	29.28 ^c
California	0.49	0.02	08(02,22)	13.43	New Jersey	0.40	0.04	27(05,39)	-8.70
Colorado	0.33	0.06	37(08,39)	-23.34 ^c	New Mexico	0.47	0.10	14(01,39)	7.57
Connecticut	0.35	0.06	35(05,39)	-20.14 ^c	New York	0.42	0.03	20(08,35)	-3.82
Delaware	-	-	-(-,-)	-	North Carolina	0.42	0.04	21(04,37)	-3.88
D.C.	-	-	-(-,-)	-	North Dakota	-	-	-(-,-)	-
Florida	0.41	0.03	22(08,35)	-4.76	Ohio	0.49	0.04	09(01,30)	12.16
Georgia	0.54	0.05	04(01,27)	23.65 ^c	Oklahoma	0.48	0.07	13(01,38)	9.45
Hawaii	-	-	-(-,-)	-	Oregon	0.52	0.07	05(01,35)	20.19 ^c
Idaho	-	-	-(-,-)	-	Pennsylvania	0.39	0.03	30(09,38)	-10.83
Illinois	0.39	0.04	29(09,38)	-10.56	Rhode Island	-	-	-(-,-)	-
Indiana	0.48	0.06	11(01,35)	10.52	South Carolina	0.45	0.06	16(01,38)	4.52
Iowa	0.41	0.07	23(01,39)	-5.48	South Dakota	-	-	-(-,-)	-
Kansas	0.39	0.08	31(01,39)	-11.00	Tennessee	0.54	0.06	03(01,29)	24.13 ^c
Kentucky	0.29	0.05	39(14,39)	-33.10 ^c	Texas	0.51	0.03	07(01,22)	18.14 ^c
Louisiana	0.48	0.07	10(01,37)	11.05	Utah	0.35	0.08	34(02,39)	-19.59 ^c
Maine	-	-	-(-,-)	-	Vermont	-	-	-(-,-)	-
Maryland	0.40	0.06	26(03,39)	-7.94	Virginia	0.45	0.05	17(02,37)	2.58
Massachusetts	0.36	0.05	33(06,39)	-15.96 ^c	Washington	0.33	0.04	38(13,39)	-23.96 ^c
Michigan	0.51	0.05	06(01,27)	18.56 ^c	West Virginia	0.41	0.10	24(01,39)	-6.00
Minnesota	0.40	0.06	25(03,39)	-7.18	Wisconsin	0.39	0.05	28(04,39)	-10.53
Mississippi	0.55	0.09	02(01,36)	27.64 ^c	Wyoming	-	-	-(-,-)	-
Missouri	0.42	0.05	19(02,38)	-2.96					



^a US Mortality Files, National Center for Health Statistics, Centers for Disease Control and Prevention. Rates are per 100,000 and are age-adjusted to the 2000 US Std Population (19 age groups - Census P25-1130).

^b Difference between state rate and total U.S. rate is statistically significant ($p < .0002$).

^c Absolute percent difference between state rate and total U.S. rate is 15% or more.

^d Rank of state level death rate and the 95% confidence intervals (low, high) for the rank.

SE Standard error of the rate.

PD Percent difference between state rate and total U.S. rate.

- Statistic not shown. Rate based on less than 16 cases for the time interval.

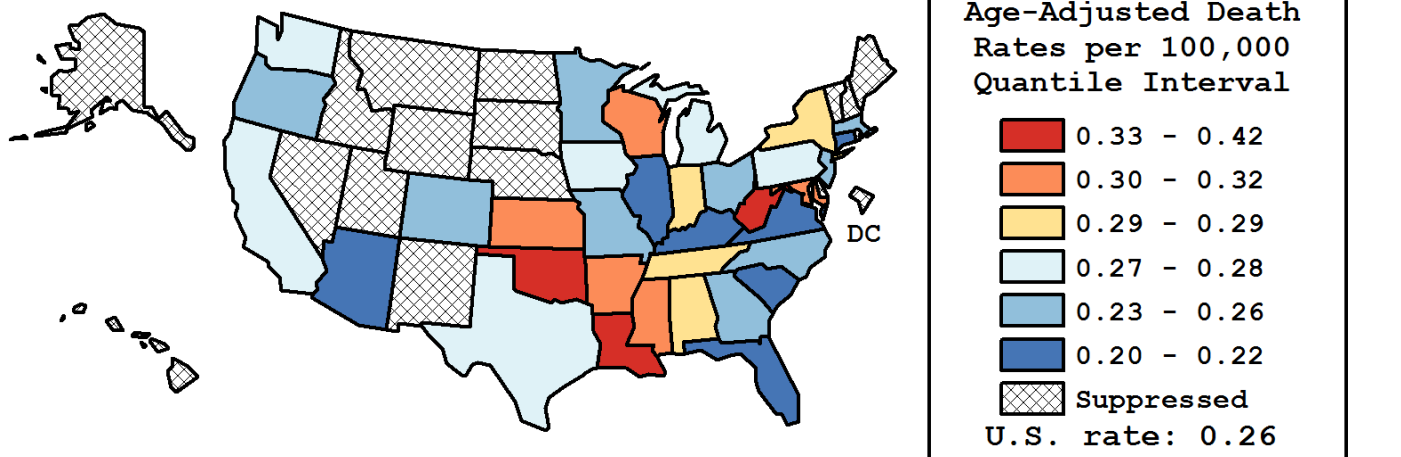
Table 9.20
Hodgkin Lymphoma

Age-Adjusted Cancer Death^a Rates By State, All Races, 2010-2014

Females

State	Rate	SE	Rank(CI) ^d	PD
TOTAL U.S.	0.26	0.01		
High Five States				
Louisiana	0.42	0.06	01(01,17)	59.95 ^c
Oklahoma	0.37	0.06	02(01,29)	39.50 ^c
West Virginia	0.33	0.08	03(01,34)	25.21 ^c
Arkansas	0.32	0.06	04(01,34)	21.67 ^c
Kansas	0.32	0.07	05(01,34)	20.60 ^c
Low Five States				
Connecticut	0.22	0.05	30(03,34)	-16.10 ^c
Virginia	0.22	0.03	31(06,34)	-16.23 ^c
Illinois	0.21	0.02	32(12,34)	-18.18 ^c
Kentucky	0.21	0.04	33(04,34)	-19.22 ^c
South Carolina	0.20	0.04	34(06,34)	-24.29 ^c

State	Rate	SE	Rank(CI) ^d	PD	State	Rate	SE	Rank(CI) ^d	PD
Alabama	0.29	0.05	09(01,34)	12.03	Montana	-	-	-(-,-)	-
Alaska	-	-	-(-,-)	-	Nebraska	-	-	-(-,-)	-
Arizona	0.22	0.03	28(05,34)	-14.52	Nevada	-	-	-(-,-)	-
Arkansas	0.32	0.06	04(01,34)	21.67 ^c	New Hampshire	-	-	-(-,-)	-
California	0.28	0.02	16(05,26)	5.31	New Jersey	0.25	0.03	23(04,34)	-5.13
Colorado	0.25	0.04	24(02,34)	-5.69	New Mexico	-	-	-(-,-)	-
Connecticut	0.22	0.05	30(03,34)	-16.10 ^c	New York	0.29	0.02	11(03,27)	10.25
Delaware	-	-	-(-,-)	-	North Carolina	0.24	0.03	26(06,34)	-10.12
D.C.	-	-	-(-,-)	-	North Dakota	-	-	-(-,-)	-
Florida	0.22	0.02	29(13,34)	-15.95 ^c	Ohio	0.26	0.03	20(04,33)	-0.70
Georgia	0.26	0.03	22(03,34)	-2.25	Oklahoma	0.37	0.06	02(01,29)	39.50 ^c
Hawaii	-	-	-(-,-)	-	Oregon	0.24	0.05	25(02,34)	-9.04
Idaho	-	-	-(-,-)	-	Pennsylvania	0.28	0.03	13(03,30)	8.02
Illinois	0.21	0.02	32(12,34)	-18.18 ^c	Rhode Island	-	-	-(-,-)	-
Indiana	0.29	0.04	10(01,33)	11.66	South Carolina	0.20	0.04	34(06,34)	-24.29 ^c
Iowa	0.27	0.05	17(01,34)	4.53	South Dakota	-	-	-(-,-)	-
Kansas	0.32	0.07	05(01,34)	20.60 ^c	Tennessee	0.29	0.04	12(01,33)	9.63
Kentucky	0.21	0.04	33(04,34)	-19.22 ^c	Texas	0.28	0.02	14(04,28)	7.33
Louisiana	0.42	0.06	01(01,17)	59.95 ^c	Utah	-	-	-(-,-)	-
Maine	-	-	-(-,-)	-	Vermont	-	-	-(-,-)	-
Maryland	0.30	0.04	08(01,33)	12.79	Virginia	0.22	0.03	31(06,34)	-16.23 ^c
Massachusetts	0.24	0.03	27(04,34)	-10.43	Washington	0.28	0.04	15(02,33)	6.68
Michigan	0.27	0.03	18(03,33)	2.34	West Virginia	0.33	0.08	03(01,34)	25.21 ^c
Minnesota	0.26	0.04	19(02,34)	-0.51	Wisconsin	0.31	0.04	06(01,32)	18.78 ^c
Mississippi	0.30	0.06	07(01,34)	14.20	Wyoming	-	-	-(-,-)	-
Missouri	0.26	0.04	21(02,34)	-0.73					



^a US Mortality Files, National Center for Health Statistics, Centers for Disease Control and Prevention. Rates are per 100,000 and are age-adjusted to the 2000 US Std Population (19 age groups - Census P25-1130).

^b Difference between state rate and total U.S. rate is statistically significant ($p < .0002$).

^c Absolute percent difference between state rate and total U.S. rate is 15% or more.

^d Rank of state level death rate and the 95% confidence intervals (low, high) for the rank.

SE Standard error of the rate.

PD Percent difference between state rate and total U.S. rate.

- Statistic not shown. Rate based on less than 16 cases for the time interval.

Table 9.21
Hodgkin LymphomaEstimated United States Cancer Prevalence Counts^a on January 1, 2014
By Race/Ethnicity, Sex and Years Since Diagnosis

WARNING: The Prevalence Estimates presented on this page utilize a different tumor selection criteria from previous CSR releases and are NOT directly comparable to estimates from previous CSR releases.
Please see the Prevalence Comparison Chapter of this CSR for more information.

Years Since Diagnosis		0 to <5	5 to <10	10 to <15	15 to <20	20 to <25	25 to <30	0 to <22 ^a	0 to <39 ^e	>=39 ^g	Complete ^h
<u>Race</u>	<u>Sex</u>										
All Races ^b	Both Sexes	39,181	37,092	29,500	26,209	22,731	18,266	150,508	191,404	12,661	204,065
	Males	21,282	19,650	15,011	13,302	11,264	8,973	78,467	99,213	6,276	105,489
	Females	17,899	17,442	14,489	12,907	11,467	9,293	72,041	92,191	6,385	98,576
White ^b	Both Sexes	32,465	31,096	25,477	23,275	20,628	16,903	129,008	167,254	14,017	181,271
	Males	17,813	16,489	13,064	11,866	10,226	8,207	67,556	86,656	7,318	93,974
	Females	14,652	14,607	12,413	11,409	10,402	8,696	61,452	80,598	6,699	87,297
Black ^b	Both Sexes	4,843	4,645	2,991	2,400	1,752	1,095	16,438	18,488	960	19,448
	Males	2,515	2,385	1,379	1,179	871	634	8,233	9,564	666	10,230
	Females	2,328	2,260	1,612	1,221	881	461	8,205	8,924	294	9,218
Asian/ Pacific Islander ^c	Both Sexes	1,082	869	650	311	+	+	3,028	+	+	+
	Males	550	450	345	154	+	+	1,538	+	+	+
	Females	532	419	305	157	+	+	1,490	+	+	+
Hispanic ^d	Both Sexes	4,709	3,627	2,655	1,962	+	+	13,685	+	+	+
	Males	2,533	1,971	1,537	1,002	+	+	7,465	+	+	+
	Females	2,176	1,656	1,118	960	+	+	6,220	+	+	+

Estimated prevalence percent^a on January 1, 2014, of the SEER^c population diagnosed in the previous 22 years
By Age at Prevalence, Race/Ethnicity and Sex

Age at Prevalence		All Ages	0-9	10-19	20-29	Age Specific (Crude)					Age-Adjusted ^f	
						30-39	40-49	50-59	60-69	70-79	80+	All Ages
<u>Race</u>	<u>Sex</u>											
All Races ^c	Both Sexes	0.0404%	0.0007%	0.0102%	0.0396%	0.0664%	0.0697%	0.0524%	0.0423%	0.0421%	0.0328%	0.0402%
	Males	0.0430%	0.0011%	0.0112%	0.0395%	0.0644%	0.0732%	0.0593%	0.0520%	0.0505%	0.0387%	0.0427%
	Females	0.0379%	0.0003%	0.0092%	0.0397%	0.0683%	0.0662%	0.0458%	0.0336%	0.0352%	0.0292%	0.0379%
White ^c	Both Sexes	0.0461%	0.0006%	0.0111%	0.0452%	0.0764%	0.0801%	0.0588%	0.0480%	0.0477%	0.0377%	0.0458%
	Males	0.0488%	0.0009%	0.0122%	0.0446%	0.0733%	0.0829%	0.0658%	0.0587%	0.0570%	0.0437%	0.0482%
	Females	0.0434%	0.0003%	0.0100%	0.0457%	0.0797%	0.0773%	0.0518%	0.0380%	0.0400%	0.0340%	0.0437%
Black ^c	Both Sexes	0.0363%	0.0009%	0.0101%	0.0313%	0.0619%	0.0688%	0.0549%	0.0374%	0.0357%	0.0207%	0.0375%
	Males	0.0379%	0.0016%	0.0100%	0.0294%	0.0610%	0.0740%	0.0650%	0.0428%	0.0418%	0.0315%	0.0400%
	Females	0.0348%	-	0.0101%	0.0332%	0.0626%	0.0643%	0.0460%	0.0331%	0.0315%	0.0153%	0.0354%
Asian/ Pacific Islander ^c	Both Sexes	0.0157%	0.0008%	0.0056%	0.0213%	0.0273%	0.0223%	0.0157%	0.0121%	0.0148%	0.0088%	0.0150%
	Males	0.0167%	0.0016%	0.0068%	0.0251%	0.0256%	0.0228%	0.0163%	0.0128%	0.0195%	0.0139%	0.0162%
	Females	0.0148%	-	0.0043%	0.0175%	0.0289%	0.0218%	0.0151%	0.0116%	0.0111%	0.0057%	0.0140%
Hispanic ^d	Both Sexes	0.0254%	0.0008%	0.0098%	0.0293%	0.0398%	0.0387%	0.0360%	0.0372%	0.0481%	0.0313%	0.0280%
	Males	0.0274%	0.0012%	0.0118%	0.0311%	0.0385%	0.0418%	0.0417%	0.0447%	0.0550%	0.0452%	0.0309%
	Females	0.0234%	-	0.0077%	0.0274%	0.0411%	0.0355%	0.0305%	0.0307%	0.0429%	0.0229%	0.0255%

- ^a US 2014 cancer prevalence counts are based on 2014 cancer prevalence proportions from the SEER registries and 1/1/2014 US population estimates based on the average of 2013 and 2014 population estimates from the US Bureau of the Census.
^{b c d} Prevalence was calculated using the first invasive tumor for each cancer site diagnosed during the previous 39/22 years. Statistics based on (b) SEER 9 Areas (c) SEER 13 Areas excluding the Alaska Native Registry
^e (d) NHIA for Hispanic for SEER 13 Areas excluding the Alaska Native Registry.
^f Maximum limited-duration prevalence: 39 years for 1975-2014 SEER 9 data; 22 years for 1992-2014 SEER 13 data (excluding the Alaska Native Registry) used to calculate prevalence for Hispanics and Asian Pacific Islanders.
^{g h i} Percentages are age-adjusted to the 2000 US Standard Population (19 age groups - Census P25-1130) by 5-year age groups. (g) Cases diagnosed more than 39 years ago were estimated using the completeness index method (Capocaccia et. al. 1997, Merrill et. al. 2000). (h) Complete prevalence is obtained by summing 0 to <39 and >=39. (i) Age-specific completeness index was approximated using empirical data from historical Connecticut tumor registry.
- Statistic not shown. Statistic based on fewer than 5 cases estimated alive in SEER for the time interval.
+ Not available.

Table 9.22
All Lymphoid Neoplasms With Detailed Hodgkin Lymphoma Subtypes^a

SEER^b Incidence Rates and Annual Percent Change by Age at Diagnosis

All Races, Both Sexes, 2005-2014

Site	All Ages			Ages 0-19			Ages 20-64			Ages 65+		
	Rate	Count	APC	Rate	Count	APC	Rate	Count	APC	Rate	Count	APC
Lymphoid Neoplasm	36.0	312,514	-0.3*	6.0	14,191	0.4	23.6	132,078	-0.6*	161.6	166,245	-0.3
1 Hodgkin Lymphoma	2.7	23,244	-1.8*	1.2	2,913	-1.0	3.1	16,192	-1.6*	4.0	4,139	-2.8*
1(a) Classical Hodgkin lymphoma	2.5	21,886	-2.2*	1.1	2,711	-1.7*	3.0	15,250	-2.0*	3.8	3,925	-3.1*
1(a)1. Lymphocyte-rich/mixed cellularity/ lymphocyte-depleted	0.4	3,600	-4.1*	0.1	323	-1.0	0.4	2,317	-3.5*	0.9	960	-6.2*
1(a)1.1 Lymphocyte-rich	0.1	745	-3.9	0.0	68	-	0.1	505	-3.0	0.2	172	-5.1
1(a)1.2 Mixed cellularity	0.3	2,582	-3.6*	0.1	237	1.5	0.3	1,668	-3.5*	0.7	677	-5.8*
1(a)1.3 Lymphocyte-depleted	0.0	273	-8.4*	0.0	18	-	0.0	144	-	0.1	111	-
1(a)2. Nodular sclerosis	1.5	12,449	-3.8*	0.8	1,955	-3.3*	1.8	9,176	-3.5*	1.3	1,318	-6.0*
1(a)3. Classical Hodgkin lymphoma, NOS ^c	0.7	5,837	2.8*	0.2	433	5.7*	0.7	3,757	3.1*	1.6	1,647	1.3
1(b) Nodular lymphocyte predominant Hodgkin Lymphoma	0.2	1,358	4.8*	0.1	202	8.1*	0.2	942	4.7*	0.2	214	2.1
2 Non-Hodgkin lymphoma	32.3	280,967	-0.1	4.7	11,140	0.6	19.9	113,078	-0.3*	152.5	156,749	-0.1
3 Composite Hodgkin lymphoma and Non-Hodgkin lymphoma	0.0	334	29.8*	-	-	-	0.0	166	-	0.2	160	-
4 Lymphoid neoplasm, NOS ^c	0.9	7,969	-5.0*	0.1	130	-	0.5	2,642	-5.5*	5.0	5,197	-5.1*

^a The APC is the Annual Percent Change over the time interval.

Morton LM, Turner JJ, Cerhan JR, Linet MS, Treseler PA, Clarke CA, Jack A, Cozen W, Maynadié M, Spinelli JJ, Costantini AS, Rüdiger T, Scarpa A, Zheng T, Weisenburger DD. Proposed classification of lymphoid neoplasms for epidemiologic research from the Pathology Working Group of the International Lymphoma Epidemiology Consortium (InterLymph). *Blood*. 2007;110:695-708.

^b SEER 18 areas (San Francisco, Connecticut, Detroit, Hawaii, Iowa, New Mexico, Seattle, Utah, Atlanta, San Jose-Monterey, Los Angeles, Alaska Native Registry, Rural Georgia, California excluding SF/SJM/LA, Kentucky, Louisiana, New Jersey and Georgia excluding ATL/RG).

^c NOS = Not otherwise specified.

* The APC is significantly different from zero (p<.05).

- Statistic not shown. Rate based on less than 16 cases for the time interval.

Trend based on less than 10 cases for at least one year within the time interval.

Table 9.23
 All Lymphoid Neoplasms With Detailed Hodgkin Lymphoma Subtypes^a
 SEER^b Incidence Rates and Annual Percent Change by Age at Diagnosis

All Races, Males, 2005-2014

Site	All Ages			Ages 0-19			Ages 20-64			Ages 65+		
	Rate	Count	APC	Rate	Count	APC	Rate	Count	APC	Rate	Count	APC
Lymphoid Neoplasm	44.6	174,877	-0.3	6.8	8,243	0.3	28.1	77,233	-0.7*	206.9	89,401	-0.1
1 Hodgkin Lymphoma	3.1	12,825	-1.7*	1.3	1,591	-0.7	3.5	9,013	-1.5*	5.0	2,221	-2.9*
1(a) Classical Hodgkin lymphoma	2.8	11,888	-2.2*	1.2	1,426	-1.8*	3.2	8,366	-2.0*	4.8	2,096	-3.0*
1(a)1. Lymphocyte-rich/mixed cellularity/ lymphocyte-depleted	0.5	2,265	-3.4*	0.2	232	0.5	0.6	1,539	-3.3*	1.1	494	-5.0*
1(a)1.1 Lymphocyte-rich	0.1	436	-4.1*	0.0	53	-	0.1	310	-3.2	0.2	73	-
1(a)1.2 Mixed cellularity	0.4	1,670	-2.8*	0.1	169	3.3	0.4	1,135	-3.2*	0.8	366	-4.2*
1(a)1.3 Lymphocyte-depleted	0.0	159	-	-	-	-	0.0	94	-	0.1	55	-
1(a)2. Nodular sclerosis	1.5	6,281	-4.1*	0.8	964	-3.6*	1.8	4,615	-3.8*	1.6	702	-5.8*
1(a)3. Classical Hodgkin lymphoma, NOS ^c	0.8	3,342	2.3*	0.2	230	3.5	0.8	2,212	3.1*	2.1	900	0.3
1(b) Nodular lymphocyte predominant Hodgkin Lymphoma	0.2	937	4.7*	0.1	165	9.2*	0.3	647	5.3*	0.3	125	-2.6
2 Non-Hodgkin lymphoma	40.4	157,677	-0.1	5.5	6,568	0.4	24.0	66,562	-0.5*	195.5	84,547	0.1
3 Composite Hodgkin lymphoma and Non-Hodgkin lymphoma	0.0	185	-	-	-	-	0.0	98	-	0.2	82	-
4 Lymphoid neoplasm, NOS ^c	1.1	4,190	-4.9*	0.1	79	-	0.6	1,560	-6.3*	6.1	2,551	-4.8*

The APC is the Annual Percent Change over the time interval.

^a Morton LM, Turner JJ, Cerhan JR, Linet MS, Treseler PA, Clarke CA, Jack A, Cozen W, Maynadié M, Spinelli JJ, Costantini AS, Rüdiger T, Scarpa A, Zheng T, Weisenburger DD. Proposed classification of lymphoid neoplasms for epidemiologic research from the Pathology Working Group of the International Lymphoma Epidemiology Consortium (InterLymph). *Blood*. 2007;110:695-708.

^b SEER 18 areas (San Francisco, Connecticut, Detroit, Hawaii, Iowa, New Mexico, Seattle, Utah, Atlanta, San Jose-Monterey, Los Angeles, Alaska Native Registry, Rural Georgia, California excluding SF/SJM/LA, Kentucky, Louisiana, New Jersey and Georgia excluding ATL/RG).

^c NOS = Not otherwise specified.

* The APC is significantly different from zero (p<.05).

- Statistic not shown. Rate based on less than 16 cases for the time interval.

Trend based on less than 10 cases for at least one year within the time interval.

Table 9.24
All Lymphoid Neoplasms With Detailed Hodgkin Lymphoma Subtypes^a

SEER^b Incidence Rates and Annual Percent Change by Age at Diagnosis

All Races, Females, 2005-2014

Site	All Ages			Ages 0-19			Ages 20-64			Ages 65+		
	Rate	Count	APC	Rate	Count	APC	Rate	Count	APC	Rate	Count	APC
Lymphoid Neoplasm	29.1	137,637	-0.5*	5.2	5,948	0.6	19.3	54,845	-0.4	129.2	76,844	-0.7*
1 Hodgkin Lymphoma	2.4	10,419	-1.9*	1.1	1,322	-1.5	2.8	7,179	-1.7*	3.3	1,918	-2.8*
1(a) Classical Hodgkin lymphoma	2.3	9,998	-2.2*	1.1	1,285	-1.6	2.7	6,884	-1.9*	3.1	1,829	-3.3*
1(a)1. Lymphocyte-rich/mixed cellularity/ lymphocyte-depleted	0.3	1,335	-5.2*	0.1	91	-	0.3	778	-4.0*	0.8	466	-7.3*
1(a)1.1 Lymphocyte-rich	0.1	309	-3.7	-	-	-	0.1	195	-2.9	0.2	99	-
1(a)1.2 Mixed cellularity	0.2	912	-5.1*	0.1	68	-	0.2	533	-4.0*	0.5	311	-7.6*
1(a)1.3 Lymphocyte-depleted	0.0	114	-	-	-	-	0.0	50	-	0.1	56	-
1(a)2. Nodular sclerosis	1.4	6,168	-3.5*	0.8	991	-3.0	1.8	4,561	-3.2*	1.1	616	-6.4*
1(a)3. Classical Hodgkin lymphoma, NOS ^c	0.6	2,495	3.2*	0.2	203	7.7*	0.6	1,545	3.1*	1.3	747	2.0
1(b) Nodular lymphocyte predominant Hodgkin Lymphoma	0.1	421	4.6*	0.0	37	-	0.1	295	3.2	0.2	89	-
2 Non-Hodgkin lymphoma	25.9	123,290	-0.2	4.0	4,572	1.1	16.0	46,516	0.0	121.6	72,202	-0.5*
3 Composite Hodgkin lymphoma and Non-Hodgkin lymphoma	0.0	149	-	-	-	-	0.0	68	-	0.1	78	-
4 Lymphoid neoplasm, NOS ^c	0.8	3,779	-4.9*	0.0	51	-	0.4	1,082	-4.3*	4.2	2,646	-5.5*

^a The APC is the Annual Percent Change over the time interval.

Morton LM, Turner JJ, Cerhan JR, Linet MS, Treseler PA, Clarke CA, Jack A, Cozen W, Maynadié M, Spinelli JJ, Costantini AS, Rüdiger T, Scarpa A, Zheng T, Weisenburger DD. Proposed classification of lymphoid neoplasms for epidemiologic research from the Pathology Working Group of the International Lymphoma Epidemiology Consortium (InterLymph). *Blood*. 2007;110:695-708.

^b SEER 18 areas (San Francisco, Connecticut, Detroit, Hawaii, Iowa, New Mexico, Seattle, Utah, Atlanta, San Jose-Monterey, Los Angeles, Alaska Native Registry, Rural Georgia, California excluding SF/SJM/LA, Kentucky, Louisiana, New Jersey and Georgia excluding ATL/RG).

^c NOS = Not otherwise specified.

* The APC is significantly different from zero (p<.05).

- Statistic not shown. Rate based on less than 16 cases for the time interval.

Trend based on less than 10 cases for at least one year within the time interval.

Table 9.25
All Lymphoid Neoplasms With Detailed Hodgkin Lymphoma Subtypes^a

SEER^b 5-Year Relative Survival (Percent) by Age at Diagnosis

All Races, Both Sexes, 2007-2013

Site	All Ages		Ages 0-19		Ages 20-64		Ages 65+	
	Count	Percent (95% C.I.)	Percent (95% C.I.)	Percent (95% C.I.)	Percent (95% C.I.)	Percent (95% C.I.)	Percent (95% C.I.)	
Lymphoid Neoplasm	178,161	70.2 (69.9 , 70.5)	90.2 (89.5 , 90.9)	77.8 (77.4 , 78.1)	59.8 (59.3 , 60.3)			
1 Hodgkin Lymphoma	14,839	86.4 (85.7 , 87.1)	96.6 (95.5 , 97.4)	90.0 (89.3 , 90.7)	56.7 (53.7 , 59.7)			
1(a) Classical Hodgkin lymphoma	13,979	85.9 (85.2 , 86.6)	96.4 (95.2 , 97.3)	89.8 (89.0 , 90.5)	54.5 (51.4 , 57.6)			
1(a)1. Lymphocyte-rich/mixed cellularity/ lymphocyte-depleted	2,263	82.6 (80.5 , 84.4)	97.4 (93.7 , 99.0)	88.1 (86.1 , 89.9)	57.5 (51.4 , 63.2)			
1(a)1.1 Lymphocyte-rich	457	89.6 (85.1 , 92.8)	100.0 (- , -)	93.0 (88.5 , 95.8)	68.9 (51.2 , 81.3)			
1(a)1.2 Mixed cellularity	1,645	83.0 (80.6 , 85.1)	96.4 (91.4 , 98.6)	88.0 (85.5 , 90.1)	59.3 (51.9 , 65.9)			
1(a)1.3 Lymphocyte-depleted	161	58.0 (48.9 , 66.0)	- (- , -)	72.5 (61.7 , 80.7)	26.6 (14.3 , 40.7)			
1(a)2. Nodular sclerosis	8,229	90.5 (89.7 , 91.3)	96.3 (94.8 , 97.3)	92.6 (91.8 , 93.4)	59.5 (54.4 , 64.3)			
1(a)3. Classical Hodgkin lymphoma, NOS ^c	3,487	76.9 (75.1 , 78.6)	95.9 (91.9 , 98.0)	83.5 (81.6 , 85.2)	46.3 (41.1 , 51.3)			
1(b) Nodular lymphocyte predominant Hodgkin Lymphoma	860	94.9 (92.1 , 96.7)	100.0 (- , -)	93.9 (90.5 , 96.1)	90.4 (81.0 , 95.3)			
2 Non-Hodgkin lymphoma	159,174	69.1 (68.8 , 69.4)	88.5 (87.7 , 89.3)	76.2 (75.8 , 76.6)	60.4 (59.9 , 61.0)			
3 Composite Hodgkin lymphoma and Non-Hodgkin lymphoma	148	72.5 (62.3 , 80.4)	- (- , -)	81.8 (70.4 , 89.2)	52.5 (32.0 , 69.5)			
4 Lymphoid neoplasm, NOS ^c	4,000	50.2 (48.3 , 52.2)	85.2 (75.4 , 91.3)	63.5 (60.6 , 66.1)	40.1 (37.3 , 42.8)			

^a Morton LM, Turner JJ, Cerhan JR, Linet MS, Treseler PA, Clarke CA, Jack A, Cozen W, Maynadié M, Spinelli JJ, Costantini AS, Rüdiger T, Scarpa A, Zheng T, Weisenburger DD. Proposed classification of lymphoid neoplasms for epidemiologic research from the Pathology Working Group of the International Lymphoma Epidemiology Consortium (InterLymph). *Blood*. 2007;110:695-708.

^b SEER 18 areas (San Francisco, Connecticut, Detroit, Hawaii, Iowa, New Mexico, Seattle, Utah, Atlanta, San Jose-Monterey, Los Angeles, Alaska Native Registry, Rural Georgia, California excluding SF/SJM/LA, Kentucky, Louisiana, New Jersey and Georgia excluding ATL/RG).

^c NOS = Not otherwise specified.

- Statistic not displayed due to less than 25 cases.

Table 9.26
All Lymphoid Neoplasms With Detailed Hodgkin Lymphoma Subtypes^a

SEER^b 5-Year Relative Survival (Percent) by Age at Diagnosis

All Races, Males, 2007-2013

Site	All Ages		Ages 0-19	Ages 20-64	Ages 65+
	Count	Percent (95% C.I.)	Percent (95% C.I.)	Percent (95% C.I.)	Percent (95% C.I.)
Lymphoid Neoplasm	99,036	69.6 (69.2 , 70.0)	89.9 (89.0 , 90.8)	76.0 (75.6 , 76.5)	59.1 (58.4 , 59.8)
1 Hodgkin Lymphoma	8,117	85.6 (84.6 , 86.5)	96.3 (94.6 , 97.4)	88.8 (87.8 , 89.7)	56.6 (52.2 , 60.6)
1(a) Classical Hodgkin lymphoma	7,521	84.8 (83.8 , 85.8)	95.8 (93.9 , 97.1)	88.4 (87.3 , 89.4)	54.0 (49.6 , 58.3)
1(a)1. Lymphocyte-rich/mixed cellularity/ lymphocyte-depleted	1,432	84.1 (81.5 , 86.3)	97.9 (93.3 , 99.4)	88.1 (85.4 , 90.3)	56.9 (48.3 , 64.7)
1(a)1.1 Lymphocyte-rich	279	89.2 (83.3 , 93.0)	100.0 (- , -)	91.8 (85.2 , 95.5)	63.0 (39.5 , 79.4)
1(a)1.2 Mixed cellularity	1,061	85.0 (82.0 , 87.5)	97.1 (90.9 , 99.1)	88.7 (85.6 , 91.2)	59.6 (49.2 , 68.5)
1(a)1.3 Lymphocyte-depleted	92	58.1 (45.6 , 68.6)	- (- , -)	67.5 (53.0 , 78.4)	32.7 (14.3 , 52.6)
1(a)2. Nodular sclerosis	4,099	89.4 (88.2 , 90.6)	95.6 (93.2 , 97.2)	91.5 (90.2 , 92.6)	59.4 (52.0 , 66.1)
1(a)3. Classical Hodgkin lymphoma, NOS ^c	1,990	75.7 (73.2 , 78.0)	94.0 (86.5 , 97.4)	81.8 (79.2 , 84.0)	45.6 (38.6 , 52.4)
1(b) Nodular lymphocyte predominant Hodgkin Lymphoma	596	95.4 (91.8 , 97.4)	100.0 (- , -)	94.0 (89.8 , 96.5)	92.8 (76.1 , 98.0)
2 Non-Hodgkin lymphoma	88,734	68.6 (68.2 , 69.0)	88.4 (87.3 , 89.4)	74.6 (74.1 , 75.1)	59.7 (59.0 , 60.4)
3 Composite Hodgkin lymphoma and Non-Hodgkin lymphoma	85	78.9 (65.2 , 87.6)	- (- , -)	81.3 (68.0 , 89.5)	- (- , -)
4 Lymphoid neoplasm, NOS ^c	2,100	48.8 (46.0 , 51.4)	84.7 (72.2 , 91.9)	58.6 (54.9 , 62.2)	38.6 (34.6 , 42.6)

^a Morton LM, Turner JJ, Cerhan JR, Linet MS, Treseler PA, Clarke CA, Jack A, Cozen W, Maynadié M, Spinelli JJ, Costantini AS, Rüdiger T, Scarpa A, Zheng T, Weisenburger DD. Proposed classification of lymphoid neoplasms for epidemiologic research from the Pathology Working Group of the International Lymphoma Epidemiology Consortium (InterLymph). *Blood*. 2007;110:695-708.

^b SEER 18 areas (San Francisco, Connecticut, Detroit, Hawaii, Iowa, New Mexico, Seattle, Utah, Atlanta, San Jose-Monterey, Los Angeles, Alaska Native Registry, Rural Georgia, California excluding SF/SJM/LA, Kentucky, Louisiana, New Jersey and Georgia excluding ATL/RG).

^c NOS = Not otherwise specified.

- Statistic not displayed due to less than 25 cases.

Table 9.27
All Lymphoid Neoplasms With Detailed Hodgkin Lymphoma Subtypes^a

SEER^b 5-Year Relative Survival (Percent) by Age at Diagnosis

All Races, Females, 2007-2013

Site	All Ages		Ages 0-19		Ages 20-64		Ages 65+	
	Count	Percent (95% C.I.)	Percent (95% C.I.)	Percent (95% C.I.)	Percent (95% C.I.)	Percent (95% C.I.)	Percent (95% C.I.)	
Lymphoid Neoplasm	79,125	70.9 (70.5 , 71.3)	90.6 (89.5 , 91.6)	80.2 (79.7 , 80.7)	60.5 (59.8 , 61.2)			
1 Hodgkin Lymphoma	6,722	87.4 (86.4 , 88.4)	97.0 (95.4 , 98.0)	91.5 (90.5 , 92.4)	56.8 (52.4 , 61.0)			
1(a) Classical Hodgkin lymphoma	6,458	87.1 (86.1 , 88.1)	96.9 (95.3 , 98.0)	91.5 (90.4 , 92.4)	54.9 (50.4 , 59.2)			
1(a)1. Lymphocyte-rich/mixed cellularity/ lymphocyte-depleted	831	79.9 (76.3 , 83.1)	96.1 (84.8 , 99.0)	88.1 (84.5 , 90.8)	57.6 (48.4 , 65.7)			
1(a)1.1 Lymphocyte-rich	178	90.1 (81.5 , 94.9)	- (- , -)	94.2 (87.5 , 97.3)	73.2 (44.8 , 88.6)			
1(a)1.2 Mixed cellularity	584	79.0 (74.6 , 82.8)	94.7 (79.7 , 98.7)	86.4 (81.8 , 89.9)	58.6 (47.8 , 67.9)			
1(a)1.3 Lymphocyte-depleted	69	56.5 (43.5 , 67.5)	- (- , -)	80.4 (62.7 , 90.3)	19.2 (6.9 , 36.1)			
1(a)2. Nodular sclerosis	4,130	91.6 (90.5 , 92.6)	96.8 (94.9 , 98.0)	93.7 (92.6 , 94.7)	59.6 (52.2 , 66.2)			
1(a)3. Classical Hodgkin lymphoma, NOS ^c	1,497	78.5 (75.7 , 81.0)	97.9 (93.5 , 99.3)	85.9 (83.0 , 88.3)	47.0 (39.1 , 54.4)			
1(b) Nodular lymphocyte predominant Hodgkin Lymphoma	264	93.7 (87.8 , 96.8)	100.0 (- , -)	93.5 (86.2 , 97.0)	87.0 (70.8 , 94.5)			
2 Non-Hodgkin lymphoma	70,440	69.8 (69.3 , 70.2)	88.7 (87.3 , 89.9)	78.5 (78.0 , 79.1)	61.2 (60.5 , 61.9)			
3 Composite Hodgkin lymphoma and Non-Hodgkin lymphoma	63	62.1 (44.7 , 75.4)	- (- , -)	82.0 (58.0 , 93.0)	- (- , -)			
4 Lymphoid neoplasm, NOS ^c	1,900	51.9 (49.0 , 54.8)	86.4 (66.7 , 94.8)	70.5 (66.2 , 74.3)	41.4 (37.6 , 45.1)			

^a Morton LM, Turner JJ, Cerhan JR, Linet MS, Treseler PA, Clarke CA, Jack A, Cozen W, Maynadié M, Spinelli JJ, Costantini AS, Rüdiger T, Scarpa A, Zheng T, Weisenburger DD. Proposed classification of lymphoid neoplasms for epidemiologic research from the Pathology Working Group of the International Lymphoma Epidemiology Consortium (InterLymph). *Blood*. 2007;110:695-708.

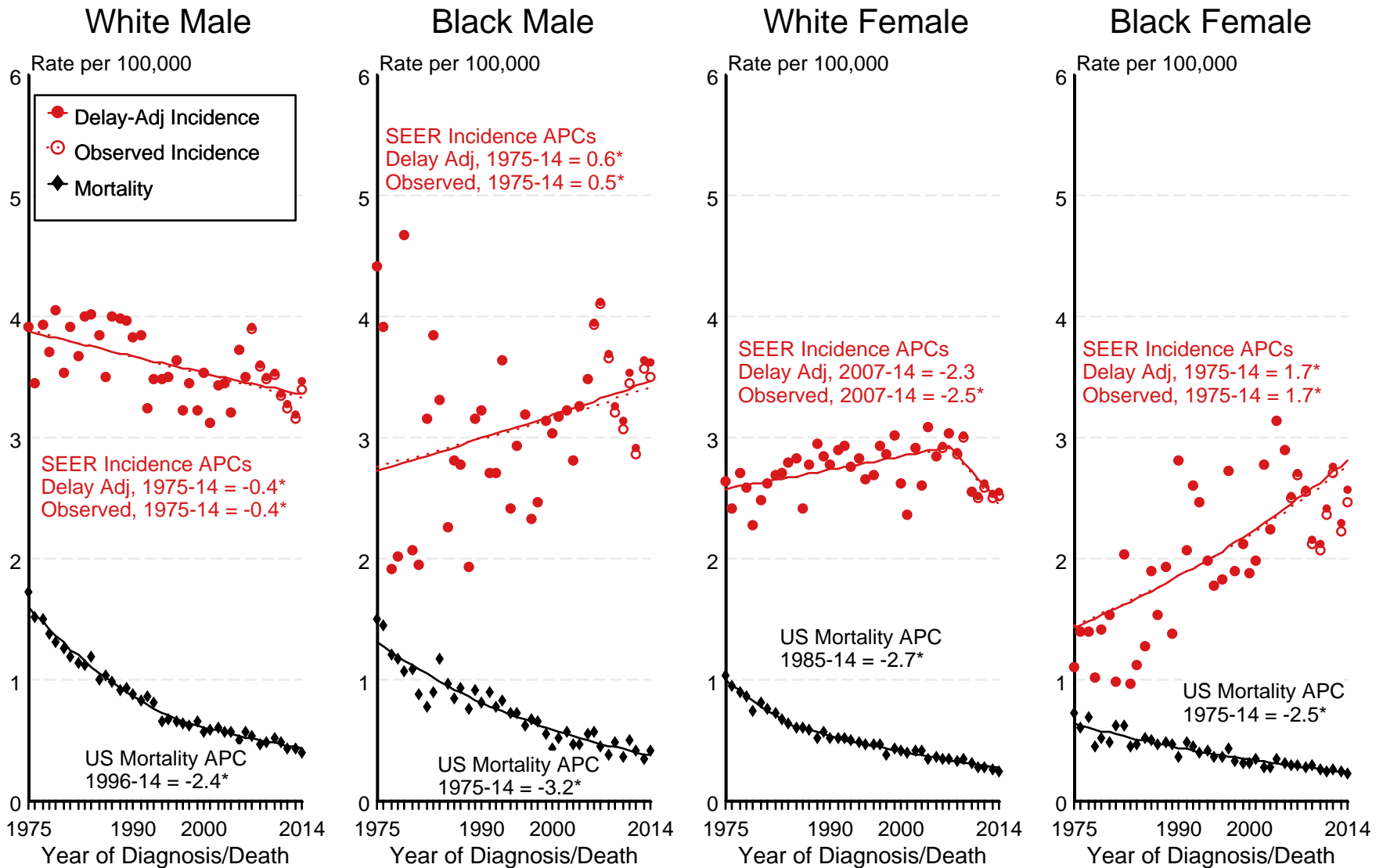
^b SEER 18 areas (San Francisco, Connecticut, Detroit, Hawaii, Iowa, New Mexico, Seattle, Utah, Atlanta, San Jose-Monterey, Los Angeles, Alaska Native Registry, Rural Georgia, California excluding SF/SJM/LA, Kentucky, Louisiana, New Jersey and Georgia excluding ATL/RG).

^c NOS = Not otherwise specified.

- Statistic not displayed due to less than 25 cases.

Figure 9.1

SEER Observed Incidence, SEER Delay Adjusted Incidence and US Death Rates^a Hodgkin Lymphoma, by Race and Sex



Source: SEER 9 areas and US Mortality Files (National Center for Health Statistics, CDC).

^a Rates are age-adjusted to the 2000 US Std Population (19 age groups - Census P25-1103).

Regression lines and APCs are calculated using the Joinpoint Regression Program Version 4.4, January 2017, National Cancer Institute.

The APC is the Annual Percent Change for the regression line segments. The APC shown on the graph is for the most recent trend.

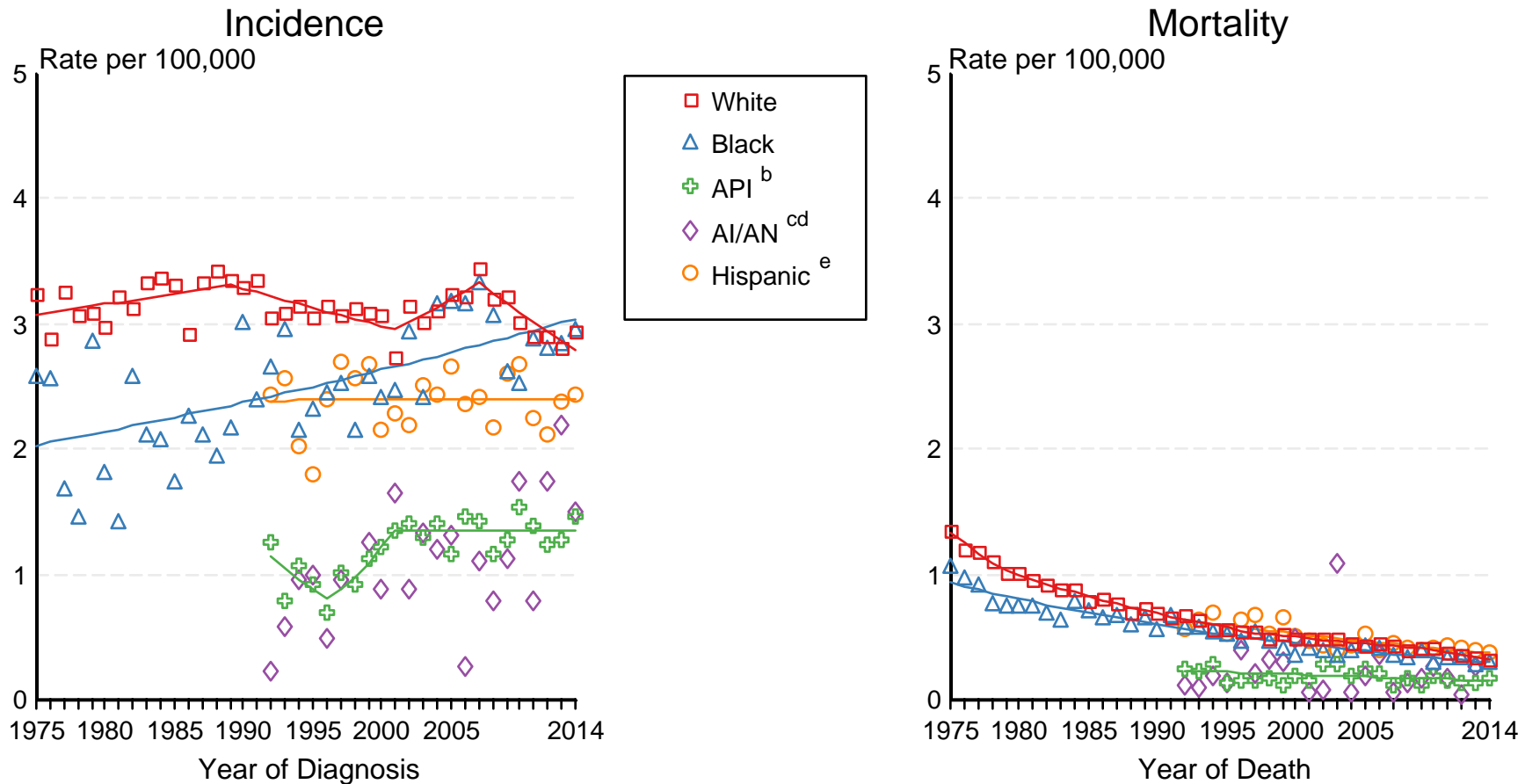
* The APC is significantly different from zero ($p < 0.05$).

Figure 9.2

SEER Incidence and US Death Rates^a Hodgkin Lymphoma, Both Sexes

Joinpoint Analyses for Whites and Blacks from 1975-2014

and for Asian/Pacific Islanders, American Indians/Alaska Natives and Hispanics from 1992-2014



Source: Incidence data for whites and blacks are from the SEER 9 areas (San Francisco, Connecticut, Detroit, Hawaii, Iowa, New Mexico, Seattle, Utah, Atlanta). Incidence data for Asian/Pacific Islanders, American Indians/Alaska Natives and Hispanics are from the SEER 13 Areas (SEER 9 Areas, San Jose-Monterey, Los Angeles, Alaska Native Registry and Rural Georgia). Mortality data are from US Mortality Files, National Center for Health Statistics, CDC.

^a Rates are age-adjusted to the 2000 US Std Population (19 age groups - Census P25-1103).

Regression lines are calculated using the Joinpoint Regression Program Version 4.4, January 2017, National Cancer Institute. Joinpoint analyses for Whites and Blacks during the 1975-2014 period allow a maximum of 5 joinpoints. Analyses for other ethnic groups during the period 1992-2014 allow a maximum of 4 joinpoints.

^b API = Asian/Pacific Islander.

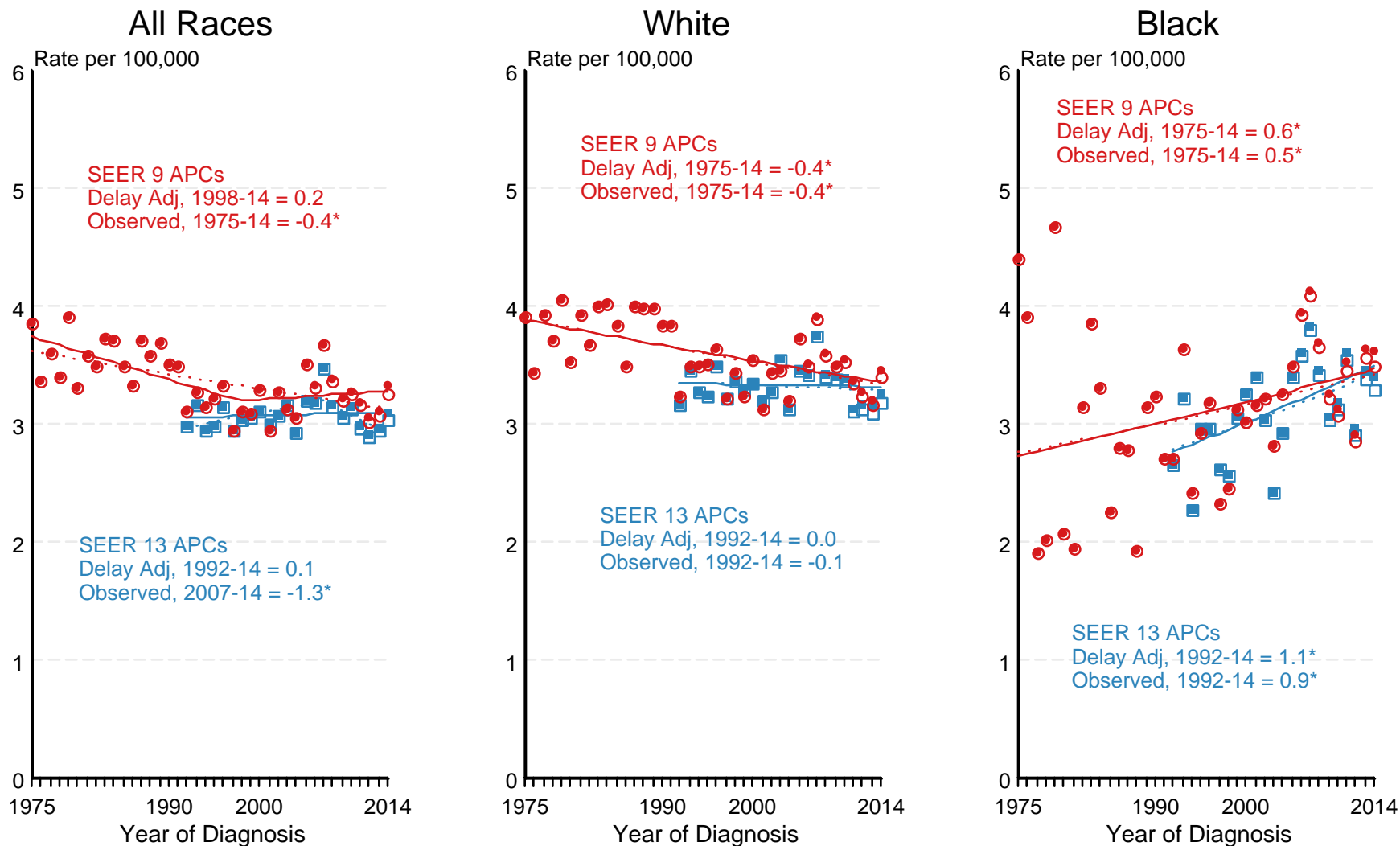
^c AI/AN = American Indian/Alaska Native. Rates for American Indian/Alaska Native are based on the CHSDA(Contract Health Service Delivery Area) counties.

^d Joinpoint could not fit a regression line for American Indian/Alaska Native Incidence due to insufficient data.

^e Hispanic is not mutually exclusive from whites, blacks, Asian/Pacific Islanders, and American Indians/Alaska Natives. Incidence data for Hispanics are based on NHIA and exclude cases from the Alaska Native Registry. Mortality data for Hispanics exclude cases from New Hampshire and Oklahoma.

Figure 9.3

SEER Observed Incidence and SEER Delay Adjusted Incidence Rates^a SEER 9 Areas Compared to SEER 13 Areas Hodgkin Lymphoma, Male, by Race

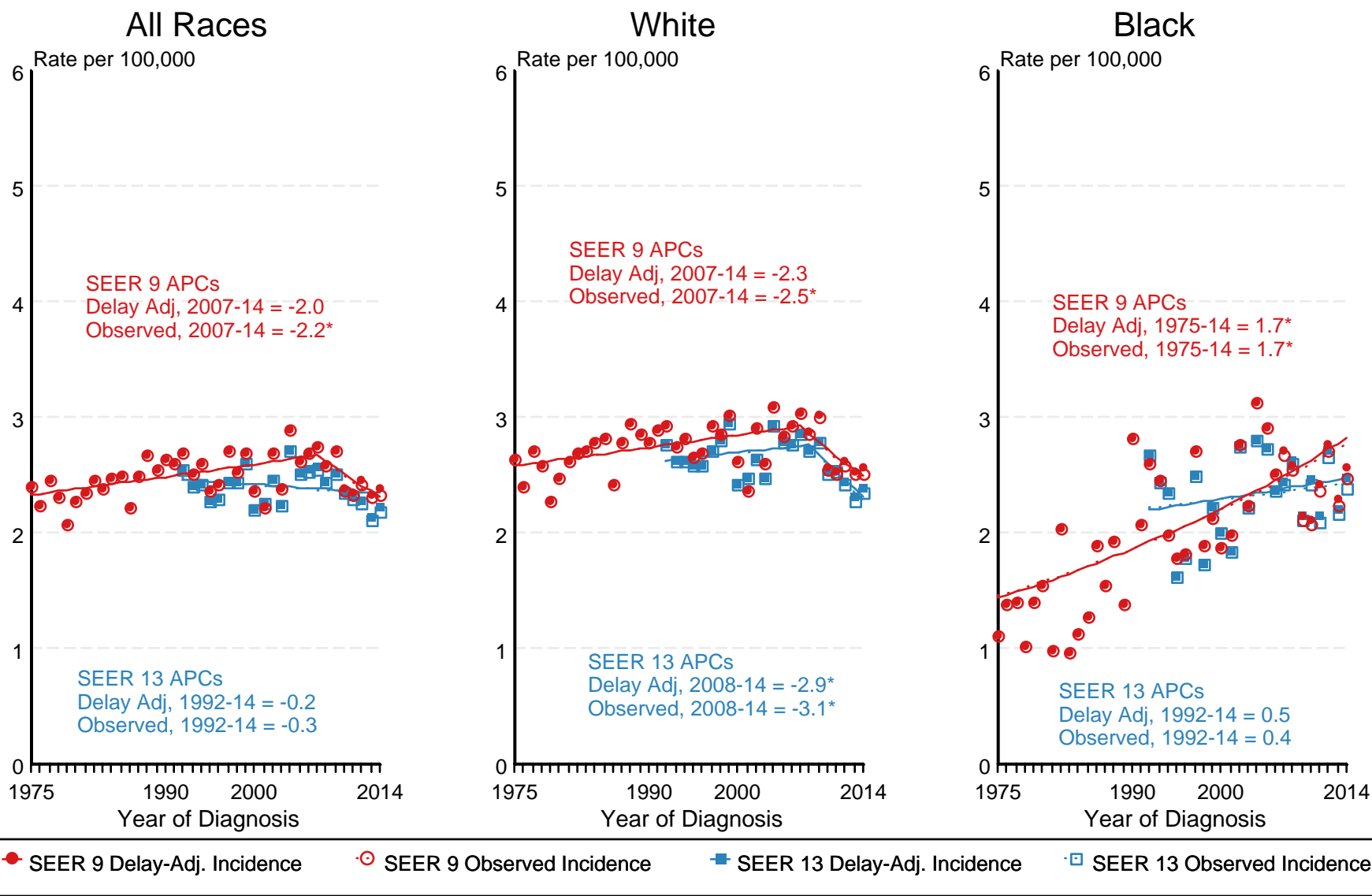


● SEER 9 Delay-Adj. Incidence
 ○ SEER 9 Observed Incidence
 ■ SEER 13 Delay-Adj. Incidence
 □ SEER 13 Observed Incidence

Source: SEER 9 areas and SEER 13 areas.
^a Rates are age-adjusted to the 2000 US Std Population (19 age groups - Census P25-1103).
 Regression lines and APCs are calculated using the Joinpoint Regression Program Version 4.4, January 2017, National Cancer Institute.
 The APC is the Annual Percent Change for the regression line segments. The APC shown on the graph is for the most recent trend.
 * The APC is significantly different from zero ($p < 0.05$).

Figure 9.4

SEER Observed Incidence and SEER Delay Adjusted Incidence Rates^a SEER 9 Areas Compared to SEER 13 Areas Hodgkin Lymphoma, Female, by Race



Source: SEER 9 areas and SEER 13 areas.

^a Rates are age-adjusted to the 2000 US Std Population (19 age groups - Census P25-1103).

Regression lines and APCs are calculated using the Joinpoint Regression Program Version 4.4, January 2017, National Cancer Institute.

The APC is the Annual Percent Change for the regression line segments. The APC shown on the graph is for the most recent trend.

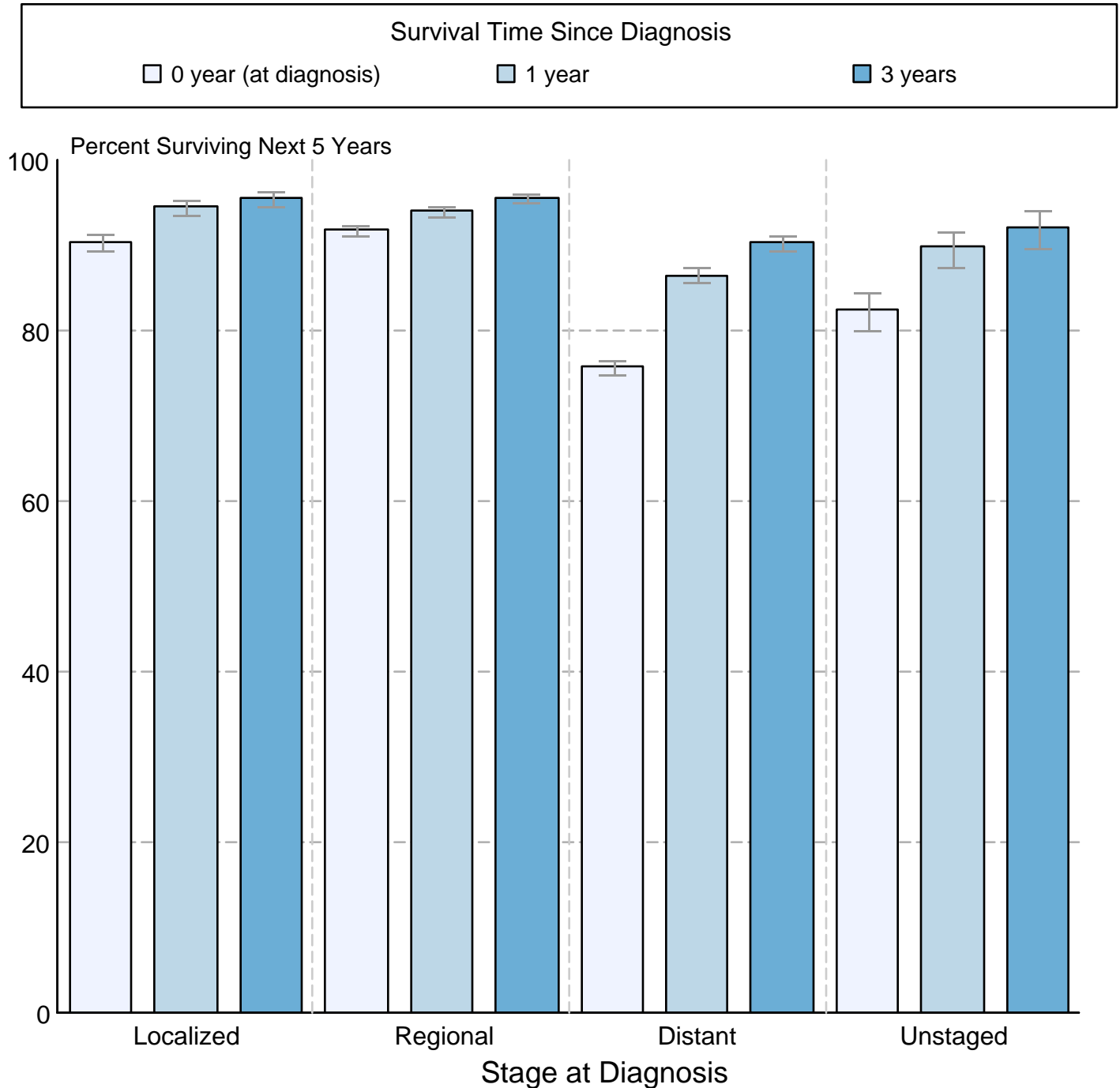
* The APC is significantly different from zero ($p < 0.05$).

Figure 9.5

Hodgkin Lymphoma

5-Year SEER Conditional Relative Survival and 95% Confidence Intervals

Probability of surviving the next 5 years given the cohort
has already survived 0, 1, or 3 years
1998-2013 by stage at diagnosis



Source: SEER 18 areas (San Francisco, Connecticut, Detroit, Hawaii, Iowa, New Mexico, Seattle, Utah, Atlanta, San Jose-Monterey, Los Angeles, Alaska Native Registry, Rural Georgia, California excluding SF/SJM/LA, Kentucky, Louisiana, New Jersey and Georgia excluding ATL/RG). California excluding SF/SJM/LA, Kentucky, Louisiana, New Jersey and Georgia excluding ATL/RG contribute cases for diagnosis years 2000 and later. The remaining 13 SEER Areas contribute cases for the entire time period. Percent surviving is not shown if based on less than 25 cases. Confidence intervals are not shown if length of the confidence interval is greater than 5 times the standard error.