

Table 1.24
Age-Adjusted SEER Incidence Rates and Trends for the Top 15 Cancer Sites^a by Race/Ethnicity
Both Sexes

	All Races		White		Black		
	Rate ^b 2010-2014	APC ^c 2005-2014	Rate ^b 2010-2014	APC ^c 2005-2014	Rate ^b 2010-2014	APC ^c 2005-2014	
All Sites	442.7	-1.1*	451.8	-1.1*	459.3	-1.5*	
Breast	67.0	0.0	67.8	-0.1	Prostate ^f	80.7	-4.5*
Lung and Bronchus	55.8	-2.3*	57.3	-2.2*	Breast	71.1	0.5
Prostate ^f	54.7	-4.8*	52.1	-5.2*	Lung and Bronchus	63.0	-2.5*
Colon and Rectum	40.1	-2.8*	39.3	-2.8*	Colon and Rectum	48.7	-3.3*
Melanoma of the Skin	22.3	1.1*	26.6	1.1*	Kidney and Renal Pelvis	18.0	1.0
Urinary Bladder	19.8	-1.2*	21.7	-1.2*	Pancreas	15.5	-0.5
Non-Hodgkin Lymphoma	19.5	-0.5*	20.4	-0.6*	Non-Hodgkin Lymphoma	14.6	-0.3
Kidney and Renal Pelvis	15.6	0.7	16.1	0.7	Corpus and Uterus, NOS ^f	14.0	2.3*
Thyroid	14.2	4.0*	14.9	3.9*	Myeloma	13.2	0.8
Leukemia	13.7	0.5*	14.5	0.4	Urinary Bladder	12.5	-0.9*
Corpus and Uterus, NOS ^f	13.6	1.2*	13.8	0.9*	Leukemia	10.9	1.2*
Pancreas	12.5	0.5*	12.5	0.6*	Stomach	10.2	-3.0*
Oral Cavity and Pharynx	11.2	0.7*	11.7	1.0*	Liver & IBD ^g	10.1	2.5*
Liver & IBD ^g	8.6	2.6*	7.8	3.4*	Oral Cavity and Pharynx	9.1	-1.5*
Stomach	7.3	-0.9*	7.0	-0.5*	Thyroid	8.7	4.4*
	Asian/Pacific Islander		American Indian/Alaska Native ^d		Hispanic ^e		
	Rate ^b 2010-2014	APC ^c 2005-2014	Rate ^b 2010-2014	APC ^c 2005-2014	Rate ^b 2010-2014	APC ^c 2005-2014	
All Sites	298.8	-1.2*	316.0	-1.4*	All Sites	340.6	-1.3*
Breast	54.1	0.9*	44.1	0.0	Breast	49.8	0.1
Lung and Bronchus	35.7	-1.8*	41.1	-0.6	Prostate ^f	43.7	-5.6*
Colon and Rectum	33.8	-2.8*	37.4	-3.8*	Colon and Rectum	33.9	-2.5*
Prostate ^f	27.5	-6.4*	26.5	-6.3*	Lung and Bronchus	28.8	-2.5*
Thyroid	13.7	3.3*	17.2	-3.2*	Non-Hodgkin Lymphoma	17.8	-0.2
Non-Hodgkin Lymphoma	13.5	0.2	13.3	2.2	Kidney and Renal Pelvis	15.4	0.6
Liver & IBD ^g	13.2	-2.2*	12.1	-2.0	Liver & IBD ^g	13.2	1.9*
Corpus and Uterus, NOS ^f	11.2	2.1*	10.6	0.5	Thyroid	12.3	4.2*
Stomach	10.6	-3.2*	10.5	0.8	Corpus and Uterus, NOS ^f	11.6	2.5*
Pancreas	10.0	0.5	9.6	-2.9	Pancreas	11.1	-0.2
Urinary Bladder	8.7	-1.9*	9.3	5.0*	Urinary Bladder	11.0	-1.7*
Kidney and Renal Pelvis	8.2	0.5	8.9	1.4	Leukemia	10.6	0.2
Leukemia	7.8	0.5	8.5	-0.4	Stomach	10.5	-1.7*
Oral Cavity and Pharynx	7.7	-0.5	8.1	0.7	Oral Cavity and Pharynx	6.6	0.1
Ovary ^{fh}	5.2	-0.7	5.1	-3.6	Myeloma	6.1	0.9

Source: SEER 18 areas (San Francisco, Connecticut, Detroit, Hawaii, Iowa, New Mexico, Seattle, Utah, Atlanta, San Jose-Monterey, Los Angeles, Alaska Native Registry, Rural Georgia, California excluding SF/SJM/LA, Kentucky, Louisiana, New Jersey and Georgia excluding ATL/RG).

^a Top 15 cancer sites selected based on 2010-2014 age-adjusted rates for the race/ethnic group.

^b Rates are per 100,000 and age-adjusted to the 2000 US Std Population (19 age groups - Census P25-1130).

^c The APC is the Annual Percent Change over the time interval.

^d Trends are based on rates age-adjusted to the 2000 US Std Population (19 age groups - Census P25-1130).

^e Rates for American Indian/Alaska Native are based on the CHSDA (Contract Health Service Delivery Area) counties.

^e Hispanic is not mutually exclusive from whites, blacks, Asian/Pacific Islanders, and American Indians/Alaska Natives.

^f Incidence data for Hispanics are based on NHIA and exclude cases from the Alaska Native Registry.

^f The rates for sex-specific cancer sites are calculated using the population for both sexes combined.

^g IBD = Intrahepatic Bile Duct. ONS = Other Nervous System.

^h Ovary excludes borderline cases or histologies 8442, 8451, 8462, 8472, and 8473.

* The APC is significantly different from zero (p<.05).

- Statistic not shown. Rate based on less than 16 cases for the time interval. Trend based on less than 10 cases for at least one year within the time interval.

Table 1.25
Age-Adjusted SEER Incidence Rates and Trends for the Top 15 Cancer Sites^a by Race/Ethnicity

			Males					
All Races			White			Black		
	Rate ^b	APC ^c		Rate ^b	APC ^c		Rate ^b	APC ^c
	2010-2014	2005-2014		2010-2014	2005-2014		2010-2014	2005-2014
All Sites	492.4	-2.0*	All Sites	497.1	-2.0*	All Sites	549.7	-2.8*
Prostate	119.8	-5.2*	Prostate	112.8	-5.6*	Prostate	188.7	-4.8*
Lung and Bronchus	65.7	-2.9*	Lung and Bronchus	65.9	-2.9*	Lung and Bronchus	83.7	-3.1*
Colon and Rectum	46.0	-3.0*	Colon and Rectum	45.0	-3.1*	Colon and Rectum	56.4	-3.4*
Urinary Bladder	34.9	-1.4*	Urinary Bladder	38.1	-1.4*	Kidney and Renal Pelvis	25.0	0.7
Melanoma of the Skin	29.2	1.3*	Melanoma of the Skin	34.4	1.3*	Urinary Bladder	21.0	-0.6
Non-Hodgkin Lymphoma	23.7	-0.4*	Non-Hodgkin Lymphoma	24.8	-0.4*	Non-Hodgkin Lymphoma	17.6	-0.4
Kidney and Renal Pelvis	21.4	0.7	Kidney and Renal Pelvis	21.9	0.7	Pancreas	17.0	-0.4
Leukemia	17.6	0.4	Leukemia	18.5	0.2	Liver & IBD ^f	16.7	2.5*
Oral Cavity and Pharynx	16.9	0.9*	Oral Cavity and Pharynx	17.6	1.1*	Myeloma	15.9	0.8
Pancreas	14.2	0.6*	Pancreas	14.2	0.7*	Oral Cavity and Pharynx	14.2	-1.3*
Liver & IBD ^f	13.3	2.5*	Liver & IBD ^f	11.9	3.1*	Leukemia	14.0	1.5*
Stomach	9.9	-1.3*	Stomach	9.0	-0.9*	Stomach	13.6	-3.5*
Myeloma	8.3	1.2*	Brain and ONS ^f	8.3	-0.5*	Larynx	8.5	-2.6*
Brain and ONS ^f	7.5	-0.5*	Myeloma	7.8	1.3*	Esophagus	6.9	-4.9*
Esophagus	7.3	-1.3*	Esophagus	7.7	-0.7	Brain and ONS ^f	4.8	0.0
Asian/Pacific Islander			American Indian/Alaska Native^d			Hispanic^e		
	Rate ^b	APC ^c		Rate ^b	APC ^c		Rate ^b	APC ^c
	2010-2014	2005-2014		2010-2014	2005-2014		2010-2014	2005-2014
All Sites	308.6	-2.5*	All Sites	331.4	-2.0*	All Sites	372.2	-2.6*
Prostate	62.9	-6.6*	Prostate	59.9	-6.5*	Prostate	98.3	-5.9*
Lung and Bronchus	46.4	-2.5*	Lung and Bronchus	46.9	-2.9*	Colon and Rectum	40.0	-3.1*
Colon and Rectum	40.2	-2.2*	Colon and Rectum	45.5	-0.5	Lung and Bronchus	35.3	-3.6*
Liver & IBD ^f	20.2	-2.0*	Kidney and Renal Pelvis	22.9	-1.8	Non-Hodgkin Lymphoma	20.7	-0.2
Non-Hodgkin Lymphoma	16.7	0.1	Liver & IBD ^f	18.7	2.3	Kidney and Renal Pelvis	20.2	0.1
Urinary Bladder	15.2	-2.1*	Urinary Bladder	14.9	-0.7	Liver & IBD ^f	19.7	1.5*
Stomach	14.0	-3.3*	Stomach	13.7	-0.7	Urinary Bladder	19.3	-1.7*
Kidney and Renal Pelvis	11.7	0.9	Non-Hodgkin Lymphoma	13.2	-3.8	Stomach	13.0	-2.9*
Oral Cavity and Pharynx	11.1	0.0	Oral Cavity and Pharynx	13.0	2.0	Leukemia	12.9	0.0
Pancreas	11.0	0.3	Pancreas	11.1	-	Pancreas	11.8	-0.4
Leukemia	9.7	0.7	Leukemia	9.8	1.4	Oral Cavity and Pharynx	9.8	0.3
Thyroid	6.6	5.1*	Testis	5.4	4.9	Myeloma	7.7	1.5
Myeloma	4.7	0.1	Esophagus	5.1	-	Brain and ONS ^f	5.7	-1.4*
Brain and ONS ^f	4.4	0.4	Myeloma	5.0	-	Thyroid	5.2	3.6*
Esophagus	3.5	-3.0	Melanoma of the Skin	4.3	-	Testis	5.1	2.6*

Source: SEER 18 areas (San Francisco, Connecticut, Detroit, Hawaii, Iowa, New Mexico, Seattle, Utah, Atlanta, San Jose-Monterey, Los Angeles, Alaska Native Registry, Rural Georgia, California excluding SF/SJM/LA, Kentucky, Louisiana, New Jersey and Georgia excluding ATL/RG).

^a Top 15 cancer sites selected based on 2010-2014 age-adjusted rates for the race/ethnic group.

^b Rates are per 100,000 and age-adjusted to the 2000 US Std Population (19 age groups - Census P25-1130).

^c The APC is the Annual Percent Change over the time interval.

Trends are based on rates age-adjusted to the 2000 US Std Population (19 age groups - Census P25-1130).

^d Rates for American Indian/Alaska Native are based on the CHSDA (Contract Health Service Delivery Area) counties.

^e Hispanic is not mutually exclusive from whites, blacks, Asian/Pacific Islanders, and American Indians/Alaska Natives.

Incidence data for Hispanics are based on NHIA and exclude cases from the Alaska Native Registry.

^f IBD = Intrahepatic Bile Duct. ONS = Other Nervous System.

* The APC is significantly different from zero (p<.05).

- Statistic not shown. Rate based on less than 16 cases for the time interval. Trend based on less than 10 cases for at least one year within the time interval.

Table 1.26
Age-Adjusted SEER Incidence Rates and Trends for the Top 15 Cancer Sites^a by Race/Ethnicity

Females

	All Races		White		Black	
	Rate ^b 2010-2014	APC ^c 2005-2014	Rate ^b 2010-2014	APC ^c 2005-2014	Rate ^b 2010-2014	APC ^c 2005-2014
All Sites	408.7	-0.2*	421.5	-0.2*	397.4	-0.4*
Breast	124.9	0.2	127.7	0.0	125.1	0.6*
Lung and Bronchus	48.4	-1.7*	50.8	-1.6*	49.0	-1.7*
Colon and Rectum	35.1	-2.7*	34.4	-2.6*	43.2	-3.3*
Corpus and Uterus, NOS	25.7	1.4*	26.3	1.1*	24.8	2.5*
Thyroid	21.0	4.0*	22.4	4.0*	14.3	-0.7
Melanoma of the Skin	17.3	0.6	20.9	0.7	13.0	4.8*
Non-Hodgkin Lymphoma	16.0	-0.6*	16.9	-0.7*	12.6	1.1
Ovary ^g	11.7	-1.8*	12.2	-2.0*	12.2	0.0
Pancreas	11.1	0.4*	11.3	0.4	11.4	0.7
Kidney and Renal Pelvis	10.7	0.5	11.0	0.5	9.4	-1.3*
Leukemia	10.7	0.4	11.0	0.5*	8.8	0.8
Urinary Bladder	8.4	-1.4*	9.1	-1.3*	8.7	-2.3*
Cervix Uteri	7.4	-1.6*	7.4	-1.5*	7.8	-2.7*
Oral Cavity and Pharynx	6.2	0.0	6.4	0.4	6.8	-1.6*
Brain and ONS ^f	5.3	-0.6	5.9	-0.4	5.1	-2.1*

	Asian/Pacific Islander		American Indian/Alaska Native ^d		Hispanic ^e	
	Rate ^b 2010-2014	APC ^c 2005-2014	Rate ^b 2010-2014	APC ^c 2005-2014	Rate ^b 2010-2014	APC ^c 2005-2014
All Sites	296.1	-0.2	308.9	-0.8	323.3	-0.1
Breast	98.5	1.0*	82.2	0.2	93.1	0.2
Colon and Rectum	28.8	-3.4*	37.5	-0.4	29.1	-2.0*
Lung and Bronchus	27.9	-0.8	30.4	-5.0*	24.2	-1.4*
Corpus and Uterus, NOS	20.5	2.2*	19.9	0.9	21.9	2.7*
Thyroid	19.9	2.8*	14.1	4.9*	19.3	4.4*
Non-Hodgkin Lymphoma	11.1	0.2	12.7	-4.5*	15.4	-0.1
Ovary ^g	9.5	-0.7	11.1	-0.5	11.5	1.0
Pancreas	9.2	0.7	9.5	-3.3	10.6	-1.6*
Stomach	8.0	-3.3*	8.6	1.4	10.5	-0.1
Liver & IBD ^f	7.6	-2.5*	8.3	-4.4*	9.1	-4.4*
Leukemia	6.3	0.2	8.1	2.0	8.8	0.3
Cervix Uteri	6.1	-2.9*	7.7	-0.5	8.5	-0.3
Kidney and Renal Pelvis	5.5	0.0	6.8	0.2	7.6	2.8*
Oral Cavity and Pharynx	5.0	-1.3	5.5	-	4.9	0.2
Urinary Bladder	3.9	-1.5	5.2	-	4.9	-1.9*

Source: SEER 18 areas (San Francisco, Connecticut, Detroit, Hawaii, Iowa, New Mexico, Seattle, Utah, Atlanta, San Jose-Monterey, Los Angeles, Alaska Native Registry, Rural Georgia, California excluding SF/SJM/LA, Kentucky, Louisiana, New Jersey and Georgia excluding ATL/RG).

^a Top 15 cancer sites selected based on 2010-2014 age-adjusted rates for the race/ethnic group.

^b Rates are per 100,000 and age-adjusted to the 2000 US Std Population (19 age groups - Census P25-1130).

^c The APC is the Annual Percent Change over the time interval.

Trends are based on rates age-adjusted to the 2000 US Std Population (19 age groups - Census P25-1130).

^d Rates for American Indian/Alaska Native are based on the CHSDA (Contract Health Service Delivery Area) counties.

^e Hispanic is not mutually exclusive from whites, blacks, Asian/Pacific Islanders, and American Indians/Alaska Natives.

Incidence data for Hispanics are based on NHIA and exclude cases from the Alaska Native Registry.

^f IBD = Intrahepatic Bile Duct. ONS = Other Nervous System.

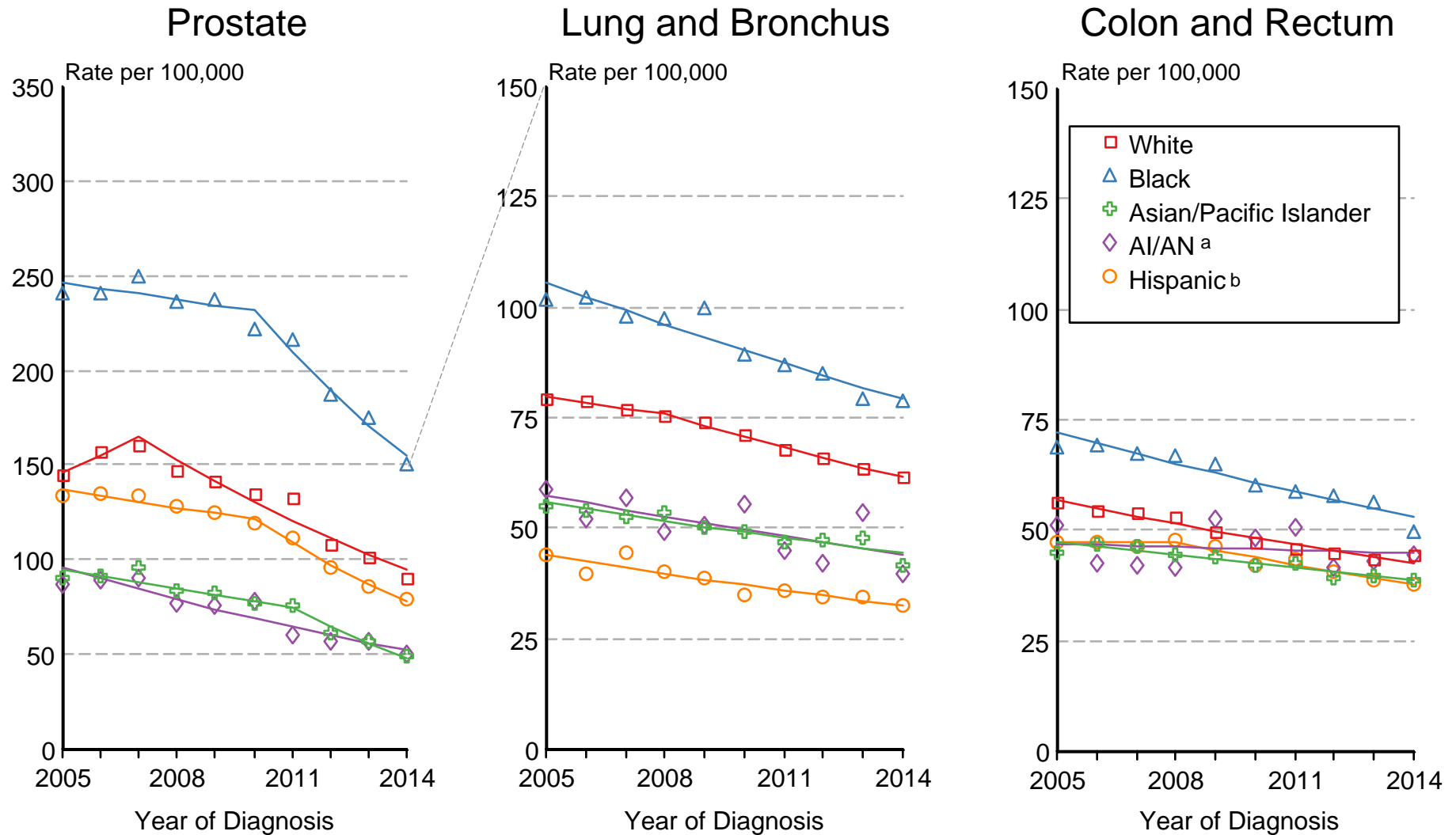
^g Ovary excludes borderline cases or histologies 8442, 8451, 8462, 8472, and 8473.

* The APC is significantly different from zero (p<.05).

- Statistic not shown. Rate based on less than 16 cases for the time interval. Trend based on less than 10 cases for at least one year within the time interval.

Figure 1.13

SEER Incidence 2005-2014 Males by Race/Ethnicity



Source: SEER 18 areas (San Francisco, Connecticut, Detroit, Hawaii, Iowa, New Mexico, Seattle, Utah, Atlanta, San Jose-Monterey, Los Angeles, Alaska Native Registry, Rural Georgia, California excluding SF/SJM/LA, Kentucky, Louisiana, New Jersey and Georgia excluding ATL/RG).

Rates are age-adjusted to the 2000 US Std Population (19 age groups - Census P25-1103).

Regression lines are calculated using the Joinpoint Regression Program Version 4.4, January 2017, National Cancer Institute.

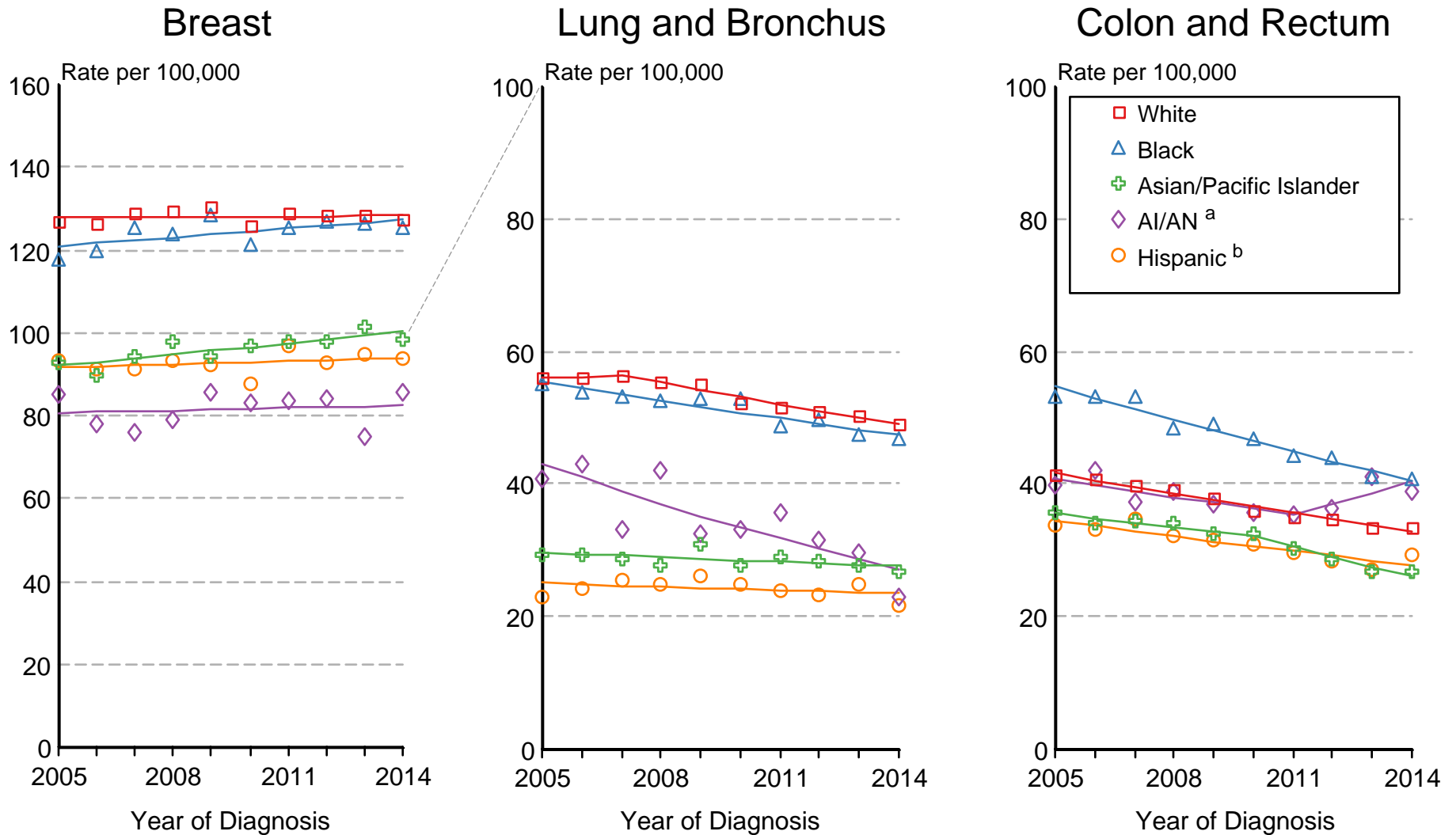
^a Incidence rates for American Indian/Alaska Native (AI/AN) are based on the CHSDA(Contract Health Service Delivery Area) counties.

^b Hispanic is not mutually exclusive from whites, blacks, Asian/Pacific Islanders, and American Indians/Alaska Natives.

Incidence data for Hispanics are based on NHIA and exclude cases from the Alaska Native Registry.

Figure 1.14

SEER Incidence 2005-2014 Females by Race/Ethnicity



Source: SEER 18 areas (San Francisco, Connecticut, Detroit, Hawaii, Iowa, New Mexico, Seattle, Utah, Atlanta, San Jose-Monterey, Los Angeles, Alaska Native Registry, Rural Georgia, California excluding SF/SJM/LA, Kentucky, Louisiana, New Jersey and Georgia excluding ATL/RG). Rates are age-adjusted to the 2000 US Std Population (19 age groups - Census P25-1103).

Regression lines are calculated using the Joinpoint Regression Program Version 4.4, January 2017, National Cancer Institute.

^a Incidence rates for American Indian/Alaska Native (AI/AN) are based on the CHSDA (Contract Health Service Delivery Area) counties.

^b Hispanic is not mutually exclusive from whites, blacks, Asian/Pacific Islanders, and American Indians/Alaska Natives.

Incidence data for Hispanics are based on NHIA and exclude cases from the Alaska Native Registry.