

Table 1.24
Age-Adjusted SEER Incidence Rates and Trends for the Top 15 Cancer Sites^a by Race/Ethnicity
Both Sexes

	All Races		White		Black	
	Rate ^b 2011-2015	APC ^c 2006-2015	Rate ^b 2011-2015	APC ^c 2006-2015	Rate ^b 2011-2015	APC ^c 2006-2015
All Sites	439.2	-1.2*	448.8	-1.2*	453.4	-1.7*
Breast	67.5	0.0	68.1	-0.1	76.4	-5.2*
Lung and Bronchus	54.6	-2.4*	56.1	-2.4*	72.0	0.3
Prostate ^f	51.5	-5.7*	48.9	-6.2*	61.4	-2.6*
Colon and Rectum	39.4	-2.7*	38.8	-2.6*	47.6	-3.3*
Melanoma of the Skin	22.8	1.5*	27.3	1.5*	18.3	0.7
Urinary Bladder	19.5	-1.3*	21.5	-1.3*	15.5	-0.5
Non-Hodgkin Lymphoma	19.4	-0.5*	20.3	-0.7*	14.4	-0.2
Kidney and Renal Pelvis	15.9	0.5*	16.3	0.5*	14.3	2.1*
Thyroid	14.5	3.3*	15.3	3.2*	13.4	0.8
Leukemia	13.8	0.3	14.6	0.2	12.3	-0.8*
Corpus and Uterus, NOS ^f	13.8	1.2*	14.0	1.0*	11.0	0.9
Pancreas	12.6	0.5*	12.6	0.6*	10.5	2.5*
Oral Cavity and Pharynx	11.3	0.6*	11.9	0.9*	10.1	-2.8*
Liver & IBD ^g	8.8	2.5*	8.0	3.1*	9.0	-1.6*
Stomach	7.2	-0.9*	7.1	-0.4	8.9	4.2*
	Asian/Pacific Islander		American Indian/Alaska Native ^d		Hispanic ^e	
	Rate ^b 2011-2015	APC ^c 2006-2015	Rate ^b 2011-2015	APC ^c 2006-2015	Rate ^b 2011-2015	APC ^c 2006-2015
All Sites	297.9	-1.2*	315.1	-0.9*	336.3	-1.1*
Breast	55.3	1.1*	44.4	0.5	50.0	0.5
Lung and Bronchus	35.6	-1.6*	41.8	0.4	40.9	-6.1*
Colon and Rectum	33.0	-2.9*	37.3	-2.7*	33.5	-2.2*
Prostate ^f	25.9	-7.0*	24.3	-6.9*	27.8	-2.5*
Thyroid	14.0	2.6*	17.2	-3.1*	17.5	-0.2
Non-Hodgkin Lymphoma	13.6	0.0	13.5	0.9	15.9	1.0*
Liver & IBD ^g	13.1	-2.0*	11.8	-1.9	13.3	1.7*
Corpus and Uterus, NOS ^f	11.4	1.9*	10.4	-0.2	12.5	4.0*
Stomach	10.3	-3.0*	10.2	0.2	11.9	3.1*
Pancreas	10.0	0.2	9.3	-1.9	11.2	0.2
Urinary Bladder	8.6	-1.5*	9.3	4.4*	10.8	-1.6*
Kidney and Renal Pelvis	8.5	0.7	9.0	1.2	10.6	-0.2
Leukemia	7.8	0.1	8.8	0.2	10.2	-1.6*
Oral Cavity and Pharynx	7.8	0.0	8.3	1.1	6.5	-0.2
Ovary ^{fh}	5.3	-0.4	5.8	4.5	6.2	1.2

Source: SEER 18 areas (San Francisco, Connecticut, Detroit, Hawaii, Iowa, New Mexico, Seattle, Utah, Atlanta, San Jose-Monterey, Los Angeles, Alaska Native Registry, Rural Georgia, California excluding SF/SJM/LA, Kentucky, Louisiana, New Jersey and Georgia excluding ATL/RG).

^a Top 15 cancer sites selected based on 2011-2015 age-adjusted rates for the race/ethnic group.

^b Rates are per 100,000 and age-adjusted to the 2000 US Std Population (19 age groups - Census P25-1130).

^c The APC is the Annual Percent Change over the time interval.

Trends are based on rates age-adjusted to the 2000 US Std Population (19 age groups - Census P25-1130).

^d Rates for American Indian/Alaska Native are based on the CHSDA (Contract Health Service Delivery Area) counties.

^e Hispanic is not mutually exclusive from whites, blacks, Asian/Pacific Islanders, and American Indians/Alaska Natives.

Incidence data for Hispanics are based on NHIA and exclude cases from the Alaska Native Registry.

^f The rates for sex-specific cancer sites are calculated using the population for both sexes combined.

^g IBD = Intrahepatic Bile Duct. ONS = Other Nervous System.

^h Ovary excludes borderline cases or histologies 8442, 8451, 8462, 8472, and 8473.

* The APC is significantly different from zero (p<.05).

- Statistic not shown. Rate based on less than 16 cases for the time interval. Trend based on less than 10 cases for at least one year within the time interval.

Table 1.25
Age-Adjusted SEER Incidence Rates and Trends for the Top 15 Cancer Sites^a by Race/Ethnicity

			Males					
All Races			White			Black		
	Rate ^b	APC ^c		Rate ^b	APC ^c		Rate ^b	APC ^c
	2011-2015	2006-2015		2011-2015	2006-2015		2011-2015	2006-2015
All Sites	483.0	-2.2*	All Sites	488.5	-2.2*	All Sites	535.0	-3.1*
Prostate	112.6	-6.0*	Prostate	105.7	-6.5*	Prostate	178.3	-5.5*
Lung and Bronchus	63.8	-3.1*	Lung and Bronchus	63.9	-3.1*	Lung and Bronchus	81.2	-3.4*
Colon and Rectum	45.2	-2.8*	Colon and Rectum	44.4	-2.9*	Colon and Rectum	55.5	-3.3*
Urinary Bladder	34.3	-1.5*	Urinary Bladder	37.6	-1.5*	Kidney and Renal Pelvis	25.3	0.7
Melanoma of the Skin	29.8	1.6*	Melanoma of the Skin	35.2	1.6*	Urinary Bladder	20.6	-0.8
Non-Hodgkin Lymphoma	23.6	-0.4*	Non-Hodgkin Lymphoma	24.7	-0.5*	Non-Hodgkin Lymphoma	17.5	-0.1
Kidney and Renal Pelvis	21.7	0.5	Kidney and Renal Pelvis	22.2	0.5	Liver & IBD ^f	17.3	2.6*
Leukemia	17.6	0.3	Leukemia	18.6	0.2	Pancreas	16.9	-0.4
Oral Cavity and Pharynx	17.1	0.8*	Oral Cavity and Pharynx	18.0	1.1*	Myeloma	15.9	0.4
Pancreas	14.4	0.5*	Pancreas	14.4	0.6*	Leukemia	14.0	0.5
Liver & IBD ^f	13.6	2.3*	Liver & IBD ^f	12.2	2.8*	Oral Cavity and Pharynx	14.0	-1.8*
Stomach	9.8	-1.2*	Stomach	8.9	-0.9*	Stomach	13.6	-3.3*
Myeloma	8.4	1.2*	Brain and ONS ^f	8.3	-0.5*	Larynx	8.3	-3.2*
Brain and ONS ^f	7.5	-0.6*	Myeloma	7.9	1.2*	Esophagus	6.4	-5.3*
Thyroid	7.3	3.5*	Thyroid	7.8	3.4*	Brain and ONS ^f	4.8	-0.5
<hr/>			<hr/>			<hr/>		
Asian/Pacific Islander			American Indian/Alaska Native ^d			Hispanic ^e		
	Rate ^b	APC ^c		Rate ^b	APC ^c		Rate ^b	APC ^c
	2011-2015	2006-2015		2011-2015	2006-2015		2011-2015	2006-2015
All Sites	303.5	-2.6*	All Sites	325.6	-1.7*	All Sites	362.9	-2.6*
Prostate	59.1	-7.2*	Prostate	54.8	-7.1*	Prostate	91.8	-6.5*
Lung and Bronchus	45.9	-2.3*	Lung and Bronchus	45.4	-2.4*	Colon and Rectum	39.7	-2.7*
Colon and Rectum	39.3	-2.7*	Colon and Rectum	45.1	0.2	Lung and Bronchus	34.1	-3.5*
Liver & IBD ^f	20.2	-1.8*	Kidney and Renal Pelvis	22.6	-3.3*	Kidney and Renal Pelvis	20.7	0.5
Non-Hodgkin Lymphoma	16.7	0.1	Liver & IBD ^f	18.5	0.3	Non-Hodgkin Lymphoma	20.2	-0.5
Urinary Bladder	15.0	-1.9*	Urinary Bladder	14.7	-1.5	Liver & IBD ^f	19.8	1.3*
Stomach	13.6	-3.0*	Stomach	13.7	-0.1	Urinary Bladder	18.9	-1.9*
Kidney and Renal Pelvis	12.2	1.1	Non-Hodgkin Lymphoma	12.9	-2.5	Leukemia	12.8	-0.3
Oral Cavity and Pharynx	11.1	-0.1	Oral Cavity and Pharynx	12.3	0.9	Stomach	12.8	-2.7*
Pancreas	11.0	0.2	Pancreas	11.3	-	Pancreas	12.0	-0.2
Leukemia	9.7	0.1	Leukemia	10.6	2.7	Oral Cavity and Pharynx	9.6	-0.3
Thyroid	7.0	4.4*	Myeloma	6.2	-	Myeloma	7.6	1.2
Myeloma	4.9	0.7	Testis	5.6	5.2	Brain and ONS ^f	5.7	-0.6
Brain and ONS ^f	4.3	-0.5	Esophagus	5.1	-	Testis	5.3	2.6*
Esophagus	3.3	-2.3	Melanoma of the Skin	5.0	-	Thyroid	5.3	3.5*

Source: SEER 18 areas (San Francisco, Connecticut, Detroit, Hawaii, Iowa, New Mexico, Seattle, Utah, Atlanta, San Jose-Monterey, Los Angeles, Alaska Native Registry, Rural Georgia, California excluding SF/SJM/LA, Kentucky, Louisiana, New Jersey and Georgia excluding ATL/RG).

^a Top 15 cancer sites selected based on 2011-2015 age-adjusted rates for the race/ethnic group.

^b Rates are per 100,000 and age-adjusted to the 2000 US Std Population (19 age groups - Census P25-1130).

^c The APC is the Annual Percent Change over the time interval.

Trends are based on rates age-adjusted to the 2000 US Std Population (19 age groups - Census P25-1130).

^d Rates for American Indian/Alaska Native are based on the CHSDA (Contract Health Service Delivery Area) counties.

^e Hispanic is not mutually exclusive from whites, blacks, Asian/Pacific Islanders, and American Indians/Alaska Natives.

Incidence data for Hispanics are based on NHIA and exclude cases from the Alaska Native Registry.

^f IBD = Intrahepatic Bile Duct. ONS = Other Nervous System.

* The APC is significantly different from zero (p<.05).

- Statistic not shown. Rate based on less than 16 cases for the time interval. Trend based on less than 10 cases for at least one year within the time interval.

Table 1.26
Age-Adjusted SEER Incidence Rates and Trends for the Top 15 Cancer Sites^a by Race/Ethnicity

Females

All Races	Rate ^b		APC ^c	All Sites	Rate ^b		APC ^c	All Sites	Rate ^b		APC ^c
	2011-2015	2006-2015			2011-2015	2006-2015			2011-2015	2006-2015	
All Sites	409.9	-0.2*		All Sites	423.1	-0.2*		All Sites	397.8	-0.4*	
Breast	126.0	0.2		Breast	128.6	0.0		Breast	126.9	0.4	
Lung and Bronchus	47.8	-1.8*		Lung and Bronchus	50.2	-1.7*		Lung and Bronchus	47.9	-1.8*	
Colon and Rectum	34.5	-2.6*		Colon and Rectum	34.0	-2.4*		Colon and Rectum	41.9	-3.4*	
Corpus and Uterus, NOS	26.0	1.4*		Corpus and Uterus, NOS	26.6	1.2*		Corpus and Uterus, NOS	25.4	2.3*	
Thyroid	21.4	3.3*		Thyroid	22.8	3.2*		Pancreas	14.3	-0.4	
Melanoma of the Skin	17.7	1.3*		Melanoma of the Skin	21.5	1.3*		Thyroid	13.4	4.6*	
Non-Hodgkin Lymphoma	15.9	-0.7*		Non-Hodgkin Lymphoma	16.8	-0.8*		Kidney and Renal Pelvis	12.8	0.6	
Ovary ^g	11.6	-1.8*		Ovary ^g	12.1	-1.9*		Non-Hodgkin Lymphoma	12.1	-0.2	
Pancreas	11.2	0.5*		Leukemia	11.4	0.1		Myeloma	11.6	0.9	
Kidney and Renal Pelvis	10.9	0.3		Kidney and Renal Pelvis	11.3	0.4		Ovary ^g	9.3	-1.4*	
Leukemia	10.8	0.2		Pancreas	11.1	0.6*		Leukemia	9.0	1.3*	
Urinary Bladder	8.3	-1.4*		Urinary Bladder	8.9	-1.4*		Cervix Uteri	8.4	-2.6*	
Cervix Uteri	7.4	-1.4*		Cervix Uteri	7.4	-1.2*		Stomach	7.7	-2.6*	
Oral Cavity and Pharynx	6.3	0.1		Oral Cavity and Pharynx	6.5	0.2		Urinary Bladder	6.7	-1.2*	
Brain and ONS ^f	5.4	-0.3		Brain and ONS ^f	6.0	-0.2		Oral Cavity and Pharynx	5.1	-1.3	
Asian/Pacific Islander				American Indian/Alaska Native^d				Hispanic^e			
	Rate ^b	APC ^c		Rate ^b	APC ^c		Rate ^b	APC ^c		APC ^c	
	2011-2015	2006-2015		2011-2015	2006-2015		2011-2015	2006-2015		2006-2015	
All Sites	298.3	-0.1		All Sites	311.4	-0.2		All Sites	322.9	0.3*	
Breast	100.6	1.2*		Breast	82.6	0.6		Breast	93.7	0.6*	
Lung and Bronchus	28.0	-0.8		Colon and Rectum	39.2	0.7		Colon and Rectum	28.6	-1.7*	
Colon and Rectum	28.0	-3.2*		Lung and Bronchus	31.2	-3.2		Lung and Bronchus	23.2	-1.5*	
Corpus and Uterus, NOS	20.8	1.9*		Corpus and Uterus, NOS	19.6	-0.1		Corpus and Uterus, NOS	22.5	3.3*	
Thyroid	20.2	2.2*		Thyroid	14.3	4.9*		Thyroid	19.6	4.3*	
Non-Hodgkin Lymphoma	11.1	-0.1		Kidney and Renal Pelvis	13.0	-2.5		Non-Hodgkin Lymphoma	15.3	0.2	
Ovary ^g	9.6	-0.3		Non-Hodgkin Lymphoma	10.8	-1.6		Kidney and Renal Pelvis	11.9	1.6*	
Pancreas	9.2	0.2		Ovary ^g	9.0	-5.0*		Pancreas	10.5	0.6	
Stomach	7.9	-3.1*		Liver & IBD ^f	8.9	2.0		Ovary ^g	10.4	-1.2	
Liver & IBD ^f	7.4	-2.2*		Cervix Uteri	8.1	1.7		Cervix Uteri	8.9	-3.6*	
Leukemia	6.4	-0.1		Pancreas	7.8	-5.8*		Leukemia	8.8	-0.3	
Cervix Uteri	6.1	-2.2*		Stomach	7.3	0.3		Stomach	8.3	-0.2	
Kidney and Renal Pelvis	5.6	0.0		Leukemia	6.5	-1.0		Liver & IBD ^f	7.7	2.6*	
Oral Cavity and Pharynx	5.1	0.2		Oral Cavity and Pharynx	6.1	-		Myeloma	5.0	1.0	
Urinary Bladder	3.9	-0.1		Myeloma	5.5	-		Urinary Bladder	4.8	-1.4*	

Source: SEER 18 areas (San Francisco, Connecticut, Detroit, Hawaii, Iowa, New Mexico, Seattle, Utah, Atlanta, San Jose-Monterey, Los Angeles, Alaska Native Registry, Rural Georgia, California excluding SF/SJM/LA, Kentucky, Louisiana, New Jersey and Georgia excluding ATL/RG).

^a Top 15 cancer sites selected based on 2011-2015 age-adjusted rates for the race/ethnic group.

^b Rates are per 100,000 and age-adjusted to the 2000 US Std Population (19 age groups - Census P25-1130).

^c The APC is the Annual Percent Change over the time interval.

Trends are based on rates age-adjusted to the 2000 US Std Population (19 age groups - Census P25-1130).

^d Rates for American Indian/Alaska Native are based on the CHSDA (Contract Health Service Delivery Area) counties.

^e Hispanic is not mutually exclusive from whites, blacks, Asian/Pacific Islanders, and American Indians/Alaska Natives.

Incidence data for Hispanics are based on NHIA and exclude cases from the Alaska Native Registry.

^f IBD = Intrahepatic Bile Duct. ONS = Other Nervous System.

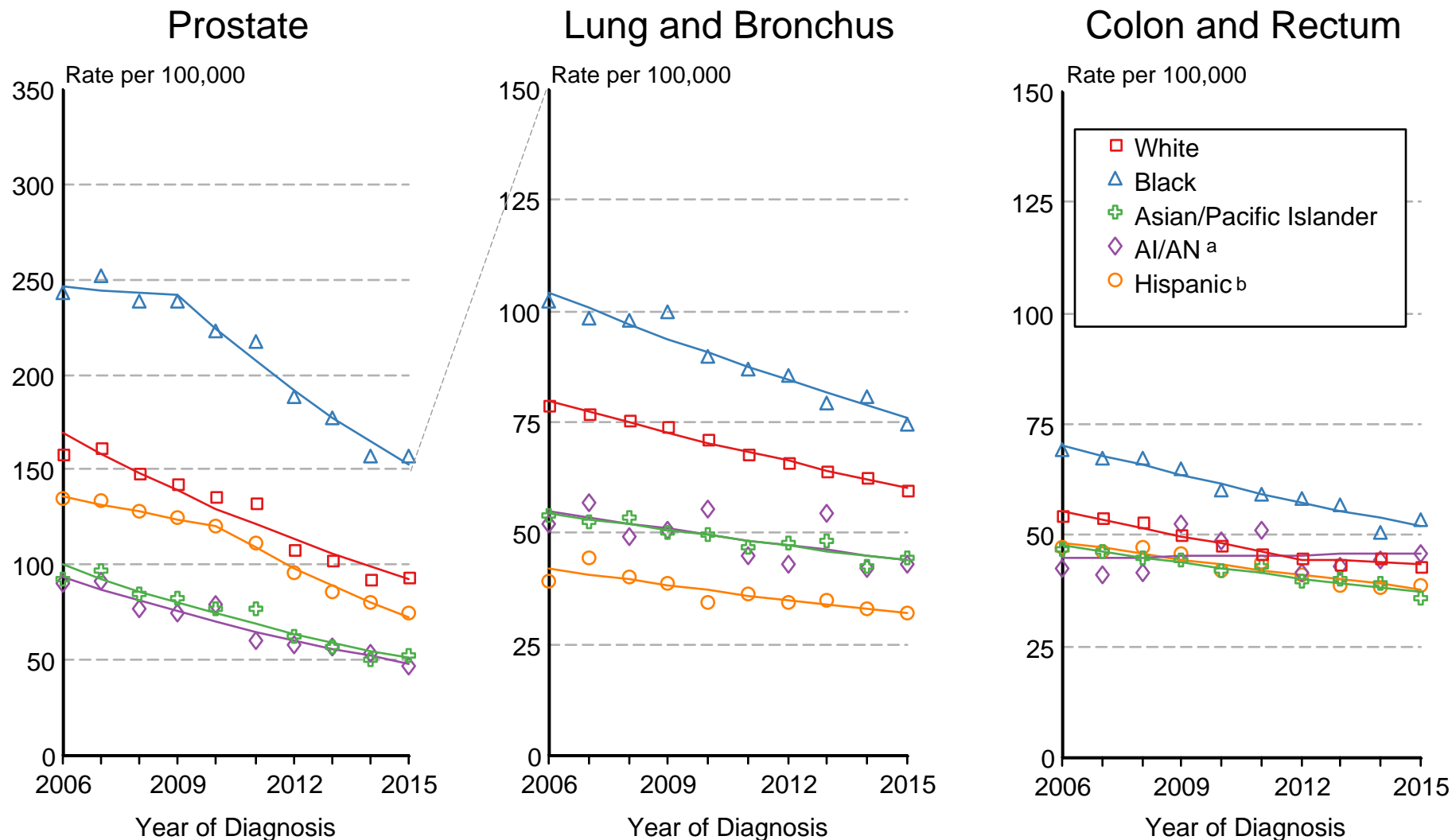
^g Ovary excludes borderline cases or histologies 8442, 8451, 8462, 8472, and 8473.

* The APC is significantly different from zero (p<.05).

- Statistic not shown. Rate based on less than 16 cases for the time interval. Trend based on less than 10 cases for at least one year within the time interval.

Figure 1.13

SEER Incidence 2006-2015 Males by Race/Ethnicity



Source: SEER 18 areas (San Francisco, Connecticut, Detroit, Hawaii, Iowa, New Mexico, Seattle, Utah, Atlanta, San Jose-Monterey, Los Angeles, Alaska Native Registry, Rural Georgia, California excluding SF/SJM/LA, Kentucky, Louisiana, New Jersey and Georgia excluding ATL/RG).

Rates are age-adjusted to the 2000 US Std Population (19 age groups - Census P25-1103).

Regression lines are calculated using the Joinpoint Regression Program Version 4.6, February 2018, National Cancer Institute.

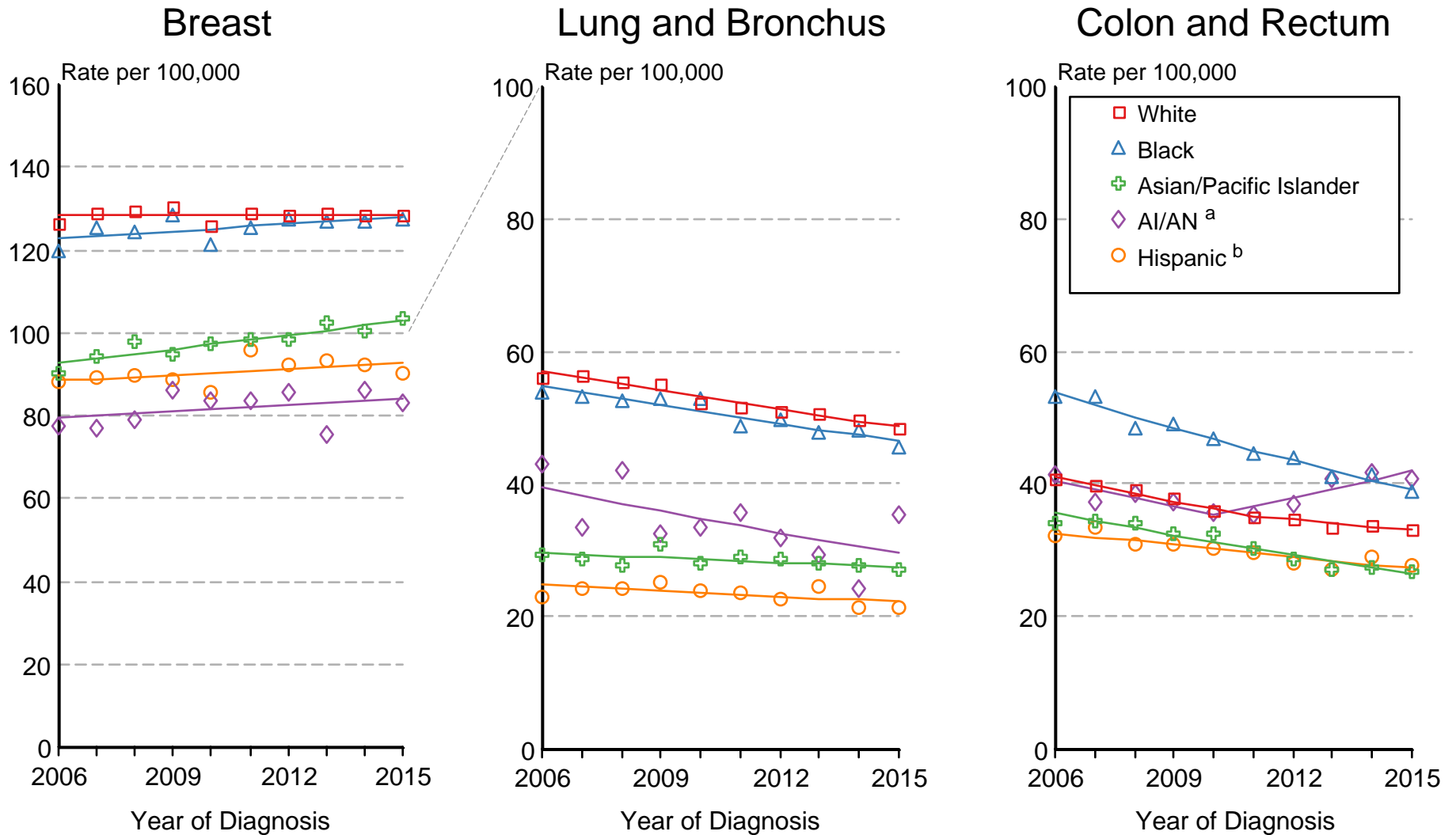
^a Incidence rates for American Indian/Alaska Native (AI/AN) are based on the CHSDA (Contract Health Service Delivery Area) counties.

^b Hispanic is not mutually exclusive from whites, blacks, Asian/Pacific Islanders, and American Indians/Alaska Natives.

Incidence data for Hispanics are based on NHIA and exclude cases from the Alaska Native Registry.

Figure 1.14

SEER Incidence 2006-2015 Females by Race/Ethnicity



Source: SEER 18 areas (San Francisco, Connecticut, Detroit, Hawaii, Iowa, New Mexico, Seattle, Utah, Atlanta, San Jose-Monterey, Los Angeles, Alaska Native Registry, Rural Georgia, California excluding SF/SJM/LA, Kentucky, Louisiana, New Jersey and Georgia excluding ATL/RG). Rates are age-adjusted to the 2000 US Std Population (19 age groups - Census P25-1103).

Regression lines are calculated using the Joinpoint Regression Program Version 4.6, February 2018, National Cancer Institute.

^a Incidence rates for American Indian/Alaska Native (AI/AN) are based on the CHSDA (Contract Health Service Delivery Area) counties.

^b Hispanic is not mutually exclusive from whites, blacks, Asian/Pacific Islanders, and American Indians/Alaska Natives.

Incidence data for Hispanics are based on NHIA and exclude cases from the Alaska Native Registry.