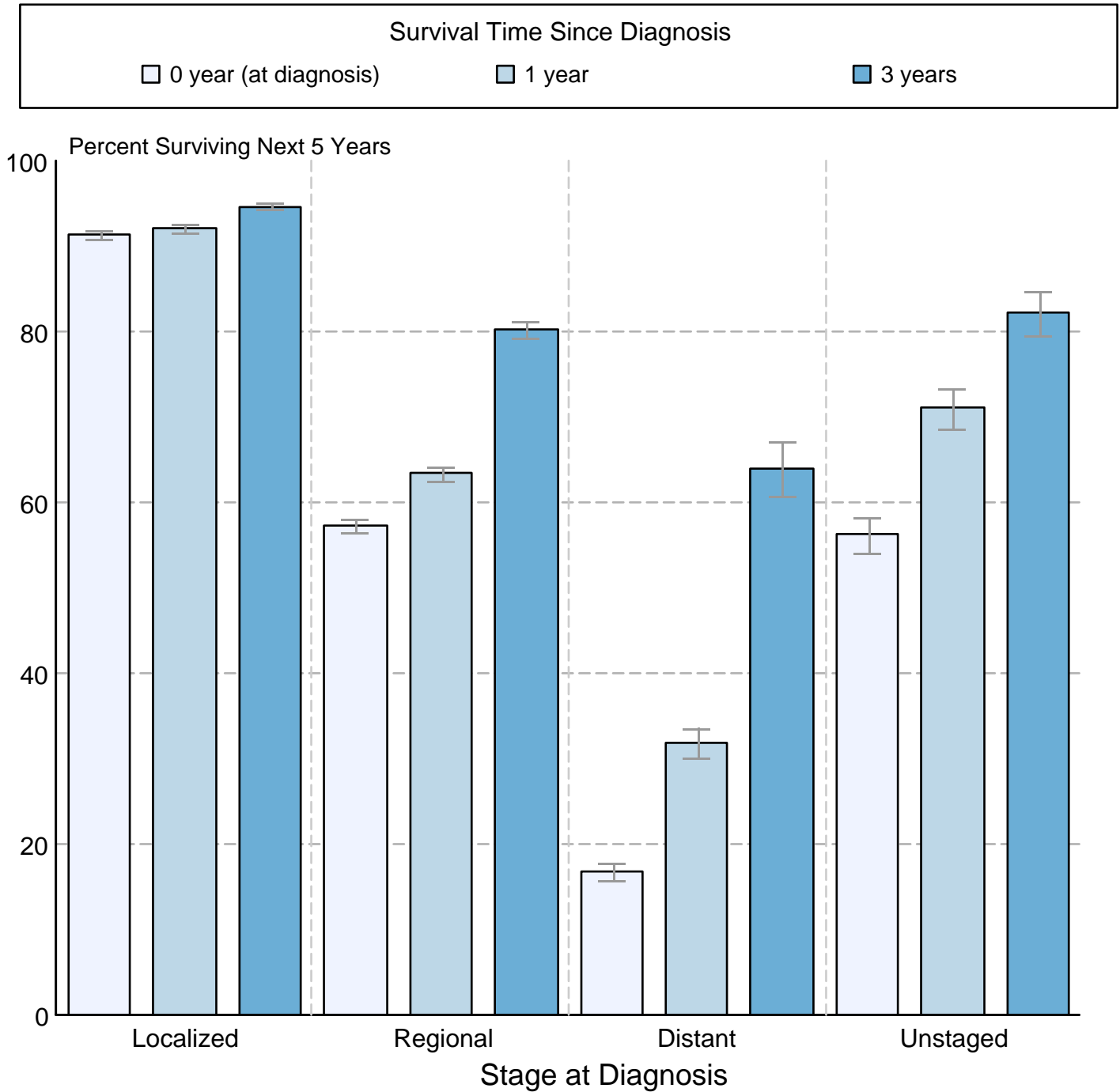


Figure 5.4

**Cancer of the Cervix Uteri**  
**5-Year SEER Conditional Relative Survival and**  
**95% Confidence Intervals**  
 Probability of surviving the next 5 years given the cohort  
 has already survived 0, 1, or 3 years  
 2000-2015 by stage at diagnosis



Source: SEER 18 areas (San Francisco, Connecticut, Detroit, Hawaii, Iowa, New Mexico, Seattle, Utah, Atlanta, San Jose-Monterey, Los Angeles, Alaska Native Registry, Rural Georgia, California excluding SF/SJM/LA, Kentucky, Louisiana, New Jersey and Georgia excluding ATL/RG).  
 Percent surviving is not shown if based on less than 25 cases.  
 Confidence intervals are not shown if length of the confidence interval is greater than 5 times the standard error.