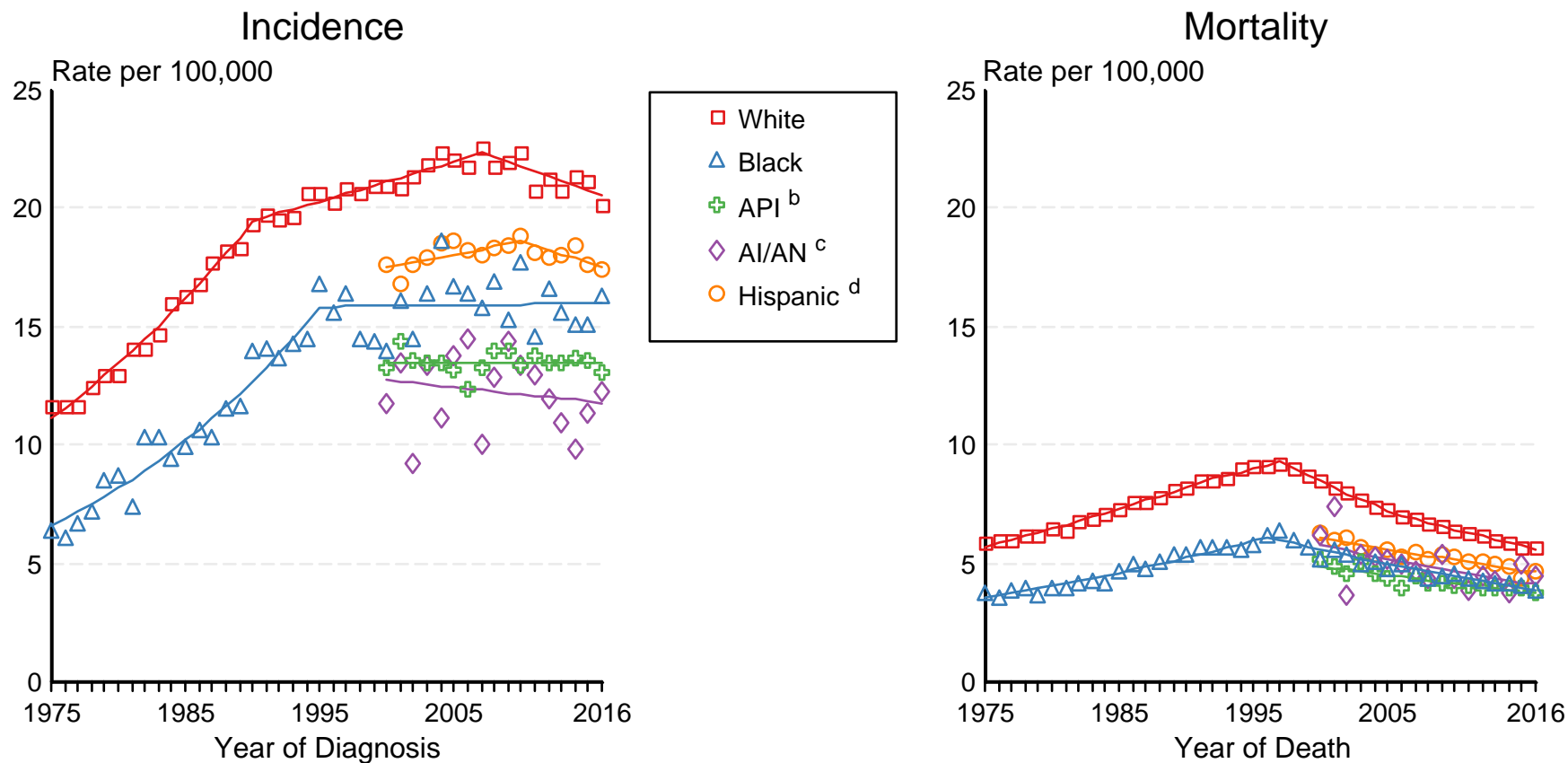


Figure 19.2

SEER Incidence and US Death Rates^a Non-Hodgkin Lymphoma, Both Sexes

Joinpoint Analyses for Whites and Blacks from 1975-2016

and for Asian/Pacific Islanders, American Indians/Alaska Natives and Hispanics from 2000-2016



Source: Incidence data for whites and blacks are from the SEER 9 areas (San Francisco, Connecticut, Detroit, Hawaii, Iowa, New Mexico, Seattle, Utah, Atlanta). Incidence data for Asian/Pacific Islanders, American Indians/Alaska Natives and Hispanics are from the SEER 21 areas (SEER 9 areas, San Jose-Monterey, Los Angeles, Alaska Native Registry, Rural Georgia, California excluding SF/SJM/LA, Kentucky, Louisiana, New Jersey, Georgia excluding ATL/RG, Idaho, New York and Massachusetts).

Mortality data are from US Mortality Files, National Center for Health Statistics, CDC.

^a Rates are age-adjusted to the 2000 US Std Population (19 age groups - Census P25-1103).

Regression lines are calculated using the Joinpoint Regression Program Version 4.7, February 2019, National Cancer Institute. Joinpoint analyses for Whites and Blacks during the 1975-2016 period allow a maximum of 5 joinpoints. Analyses for other ethnic groups during the period 2000-2016 allow a maximum of 3 joinpoints.

^b API = Asian/Pacific Islander.

^c AI/AN = American Indian/Alaska Native. Rates for American Indian/Alaska Native are based on the Purchased/Referred Care Delivery Area (PRCDA) counties.

^d Hispanic is not mutually exclusive from whites, blacks, Asian/Pacific Islanders, and American Indians/Alaska Natives. Incidence data for Hispanics are based on NHIA and exclude cases from the Alaska Native Registry.