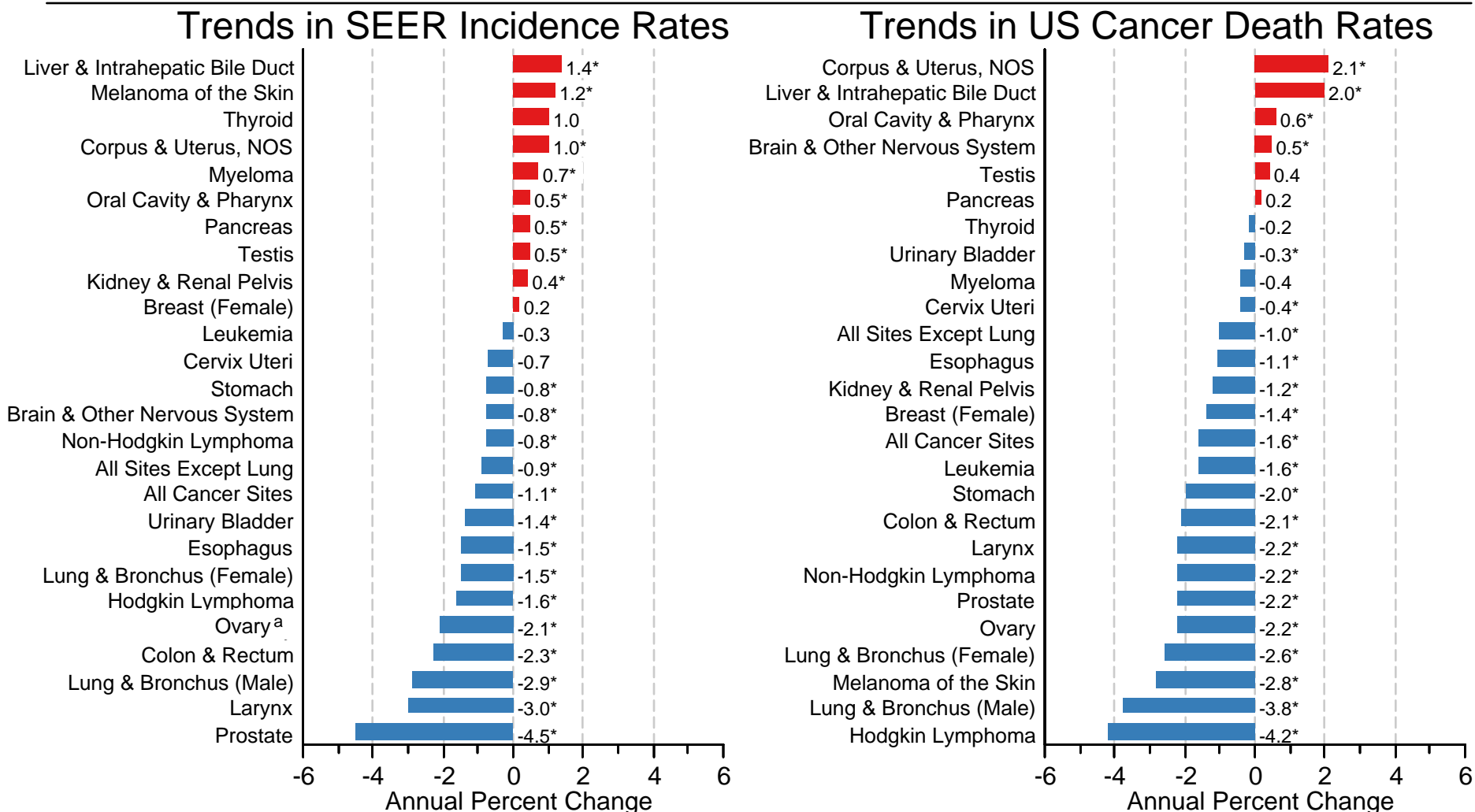


Figure 1.4

# Trends in SEER Incidence and US Death Rates by Primary Cancer Site 2008-2017



Source: SEER 21 areas (San Francisco, Connecticut, Detroit, Hawaii, Iowa, New Mexico, Seattle, Utah, Atlanta, San Jose-Monterey, Los Angeles, Alaska Native Registry, Rural Georgia, California excluding SF/SJM/LA, Kentucky, Louisiana, New Jersey, Georgia excluding ATL/RG, Idaho, New York and Massachusetts) and US Mortality Files, National Center for Health Statistics, Centers for Disease Control and Prevention.

Underlying rates are per 100,000 and age-adjusted to the 2000 US Std Population (19 age groups - Census P25-1103).

For sex-specific cancer sites, the population was limited to the population of the appropriate sex.

\* The APC is significantly different from zero ( $p < .05$ ).

<sup>a</sup> Ovary excludes borderline cases or histologies 8442, 8451, 8462, 8472, and 8473.