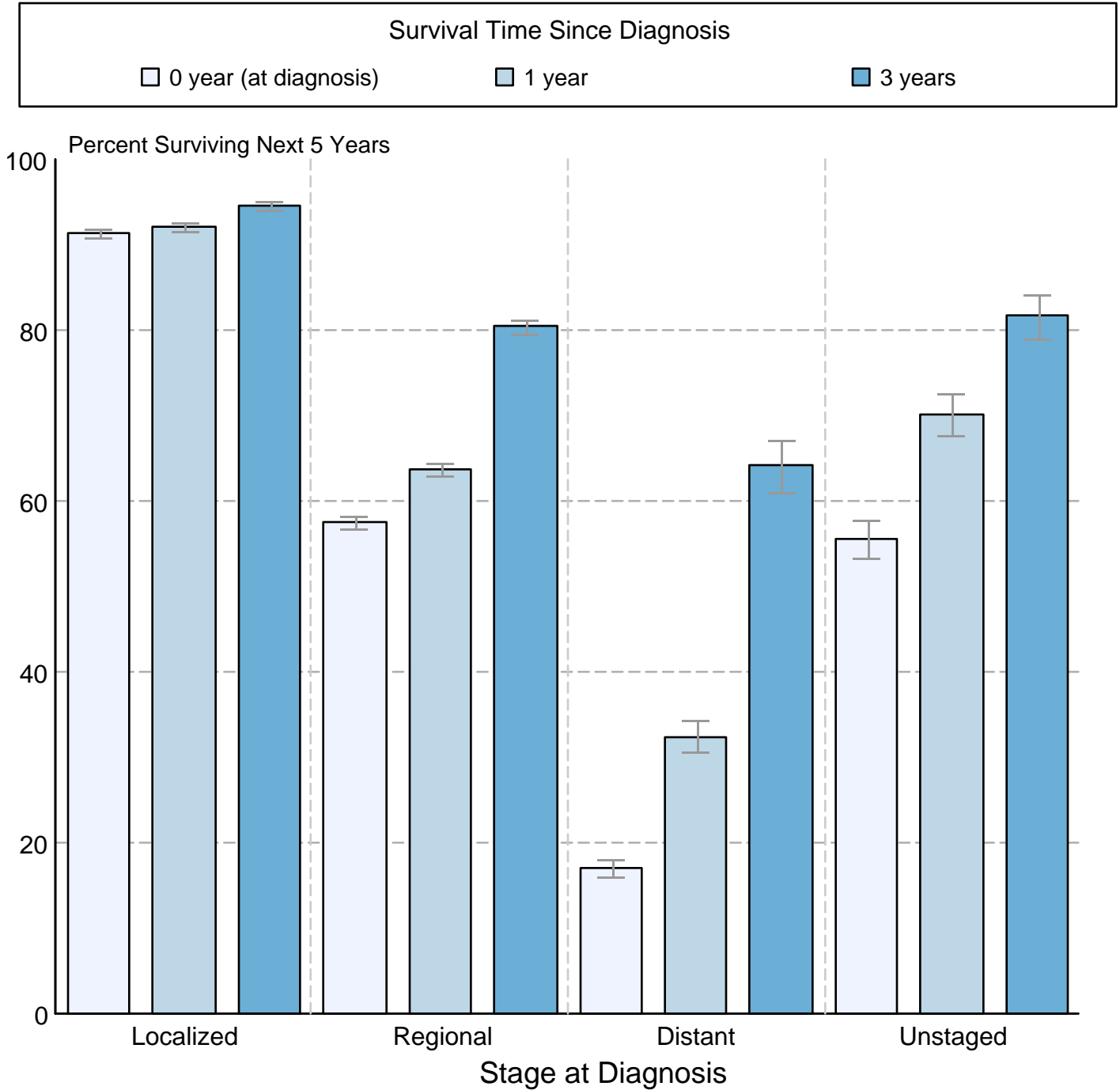


Figure 5.4

Cancer of the Cervix Uteri 5-Year SEER Conditional Relative Survival and 95% Confidence Intervals Probability of surviving the next 5 years given the cohort has already survived 0, 1, or 3 years 2000-2015 by stage at diagnosis



Source: SEER 18 areas (San Francisco, Connecticut, Detroit, Hawaii, Iowa, New Mexico, Seattle, Utah, Atlanta, San Jose-Monterey, Los Angeles, Alaska Native Registry, Rural Georgia, California excluding SF/SJM/LA, Kentucky, Louisiana, New Jersey and Georgia excluding ATL/RG).
Percent surviving is not shown if based on less than 25 cases.
Confidence intervals are not shown if length of the confidence interval is greater than 5 times the standard error.