

Table 1.26  
Age-Adjusted U.S. Death Rates and Trends for the Top 15 Cancer Sites<sup>a</sup> by Race/Ethnicity  
Both Sexes

	All Races		White		Black	
	Rate <sup>b</sup> 2013-2017	APC <sup>c</sup> 2008-2017	Rate <sup>b</sup> 2013-2017	APC <sup>c</sup> 2008-2017	Rate <sup>b</sup> 2013-2017	APC <sup>c</sup> 2008-2017
All Sites	158.3	-1.6*	159.0	-1.4*	181.7	-2.1*
Lung and Bronchus	40.2	-3.2*	41.0	-3.1*	42.3	-3.6*
Colon and Rectum	13.9	-2.1*	13.6	-2.0*	18.5	-2.8*
Breast	11.3	-1.6*	10.9	0.3*	16.2	-1.7*
Pancreas	11.0	0.2	10.9	-1.6*	14.0	-3.0*
Prostate <sup>f</sup>	7.8	-1.5*	7.4	-1.3*	13.3	-0.3*
Liver & IBD <sup>g</sup>	6.6	2.0*	6.7	-1.5*	8.4	1.4*
Leukemia	6.4	-1.6*	6.2	2.3*	6.2	-0.4
Non-Hodgkin Lymphoma	5.5	-2.2*	5.7	-2.1*	5.4	-2.0*
Brain and ONS <sup>g</sup>	4.4	0.5*	4.8	0.6*	5.3	-3.4*
Urinary Bladder	4.4	-0.3*	4.6	-0.1	5.0	2.0*
Esophagus	3.9	-1.1*	4.2	-0.6*	4.0	-1.6*
Ovary <sup>f</sup>	3.8	-2.4*	3.9	-2.5*	3.6	-1.3*
Kidney and Renal Pelvis	3.7	-1.2*	3.8	-1.0*	3.5	-2.1*
Myeloma	3.3	-0.4	3.0	-0.4	3.5	-0.3
Stomach	3.1	-2.0*	2.8	-2.6*	3.2	-4.6*
	Asian/Pacific Islander		American Indian/Alaska Native <sup>d</sup>		Hispanic <sup>e</sup>	
	Rate <sup>b</sup> 2013-2017	APC <sup>c</sup> 2008-2017	Rate <sup>b</sup> 2013-2017	APC <sup>c</sup> 2008-2017	Rate <sup>b</sup> 2013-2017	APC <sup>c</sup> 2008-2017
All Sites	98.9	-1.4*	144.2	-1.4*	112.3	-1.2*
Lung and Bronchus	22.2	-2.3*	33.4	-3.2*	17.6	-3.1*
Colon and Rectum	9.6	-2.3*	15.8	-1.8	11.1	-1.9*
Liver & IBD <sup>g</sup>	9.1	-1.6*	10.6	2.0*	9.3	0.9*
Pancreas	7.6	-0.4	8.9	1.0	8.5	-0.2
Breast	6.4	0.1	8.1	0.3	7.8	-1.0*
Stomach	5.2	-2.9*	7.7	-1.3	6.4	-1.8*
Non-Hodgkin Lymphoma	3.8	-1.5*	5.5	-3.5*	5.0	-1.7*
Leukemia	3.6	-1.7*	4.8	-1.1	4.7	-2.0*
Prostate <sup>f</sup>	3.5	-1.4*	4.2	-1.4	4.6	-1.2*
Ovary <sup>f</sup>	2.5	-1.0	4.0	-2.8	3.5	-0.2
Brain and ONS <sup>g</sup>	2.2	2.1*	3.5	-0.7	3.0	1.2*
Oral Cavity and Pharynx	2.0	0.6	3.4	-0.2	2.9	-1.7*
Corpus and Uterus, NOS <sup>f</sup>	1.8	2.9*	3.2	1.9	2.7	-0.4
Kidney and Renal Pelvis	1.7	-2.0*	2.7	1.0	2.3	0.3
Urinary Bladder	1.7	-0.5	2.5	-0.9	2.2	2.4*

Source: US Mortality Files, National Center for Health Statistics, Centers for Disease Control and Prevention.

<sup>a</sup> Top 15 cancer sites selected based on 2013-2017 age-adjusted rates for the race/ethnic group.

<sup>b</sup> Rates are per 100,000 and age-adjusted to the 2000 US Std Population (19 age groups - Census P25-1130).

<sup>c</sup> The APC is the Annual Percent Change over the time interval.

Trends are based on rates age-adjusted to the 2000 US Std Population (19 age groups - Census P25-1130).

<sup>d</sup> Rates for American Indian/Alaska Native are based on the Purchased/Referred Care Delivery Area (PRCDA) counties.

<sup>e</sup> Hispanic is not mutually exclusive from whites, blacks, Asian/Pacific Islanders, and American Indians/Alaska Natives.

<sup>f</sup> The rates for sex-specific cancer sites are calculated using the population for both sexes combined.

<sup>g</sup> IBD = Intrahepatic Bile Duct. ONS = Other Nervous System.

\* The APC is significantly different from zero (p<.05).

- Statistic not shown. Rate based on less than 16 cases for the time interval. Trend based on less than 10 cases for at least one year within the time interval.

Table 1.27  
Age-Adjusted U.S. Death Rates and Trends for the Top 15 Cancer Sites<sup>a</sup> by Race/Ethnicity

			Males					
All Races			White			Black		
	Rate <sup>b</sup>	APC <sup>c</sup>		Rate <sup>b</sup>	APC <sup>c</sup>		Rate <sup>b</sup>	APC <sup>c</sup>
	2013-2017	2008-2017		2013-2017	2008-2017		2013-2017	2008-2017
All Sites	189.5	-1.8*	All Sites	189.6	-1.7*	All Sites	227.3	-2.7*
Lung and Bronchus	49.3	-3.8*	Lung and Bronchus	49.4	-3.7*	Lung and Bronchus	58.8	-4.3*
Prostate	19.1	-2.2*	Prostate	17.9	-2.0*	Prostate	37.9	-3.7*
Colon and Rectum	16.6	-2.2*	Colon and Rectum	16.2	-2.2*	Colon and Rectum	23.2	-2.8*
Pancreas	12.7	0.3*	Pancreas	12.7	0.4*	Pancreas	14.9	-0.2
Liver & IBD <sup>f</sup>	9.6	1.7*	Liver & IBD <sup>f</sup>	9.0	2.0*	Liver & IBD <sup>f</sup>	13.2	1.1*
Leukemia	8.6	-1.8*	Leukemia	8.9	-1.6*	Stomach	7.8	-3.2*
Urinary Bladder	7.5	-0.4*	Urinary Bladder	8.0	-0.3*	Myeloma	7.5	-0.6
Non-Hodgkin Lymphoma	7.1	-2.0*	Esophagus	7.4	-0.7*	Leukemia	7.0	-2.7*
Esophagus	7.0	-1.2*	Non-Hodgkin Lymphoma	7.4	-2.0*	Kidney and Renal Pelvis	5.4	-0.8
Kidney and Renal Pelvis	5.4	-1.1*	Brain and ONS <sup>f</sup>	5.8	0.5*	Urinary Bladder	5.3	0.0
Brain and ONS <sup>f</sup>	5.4	0.4	Kidney and Renal Pelvis	5.6	-1.0*	Esophagus	5.3	-5.1*
Myeloma	4.1	-0.5*	Melanoma of the Skin	4.1	-2.7*	Non-Hodgkin Lymphoma	5.2	-1.6*
Stomach	4.1	-2.3*	Myeloma	3.9	-0.5*	Oral Cavity and Pharynx	4.5	-2.0*
Oral Cavity and Pharynx	3.9	0.9*	Oral Cavity and Pharynx	3.9	1.3*	Brain and ONS <sup>f</sup>	3.2	0.5
Melanoma of the Skin	3.5	-2.9*	Stomach	3.6	-2.3*	Larynx	3.0	-3.2*
Asian/Pacific Islander			American Indian/Alaska Native <sup>d</sup>			Hispanic <sup>e</sup>		
	Rate <sup>b</sup>	APC <sup>c</sup>		Rate <sup>b</sup>	APC <sup>c</sup>		Rate <sup>b</sup>	APC <sup>c</sup>
	2013-2017	2008-2017		2013-2017	2008-2017		2013-2017	2008-2017
All Sites	117.3	-1.8*	All Sites	173.1	-1.5*	All Sites	136.2	-1.6*
Lung and Bronchus	29.3	-2.9*	Lung and Bronchus	40.1	-3.8*	Lung and Bronchus	24.2	-4.0*
Liver & IBD <sup>f</sup>	13.5	-1.5*	Colon and Rectum	19.4	-0.2	Prostate	15.8	-2.2*
Colon and Rectum	11.5	-2.4*	Prostate	18.7	-1.8	Colon and Rectum	14.2	-2.0*
Prostate	8.6	-1.7*	Liver & IBD <sup>f</sup>	14.8	1.5	Liver & IBD <sup>f</sup>	13.3	0.7*
Pancreas	8.2	-0.4	Pancreas	10.3	1.8	Pancreas	9.4	-0.7
Stomach	6.7	-3.4*	Kidney and Renal Pelvis	8.2	-1.8	Stomach	6.4	-2.4*
Non-Hodgkin Lymphoma	4.9	-0.7*	Stomach	6.3	-1.5	Non-Hodgkin Lymphoma	5.9	-1.6*
Leukemia	4.8	-0.5	Esophagus	6.2	-0.4	Leukemia	5.8	-1.4*
Oral Cavity and Pharynx	3.1	1.2	Non-Hodgkin Lymphoma	5.5	0.7	Kidney and Renal Pelvis	5.0	0.2
Urinary Bladder	2.8	-0.9	Leukemia	5.1	-4.2	Urinary Bladder	3.9	0.2
Esophagus	2.8	-1.0	Urinary Bladder	4.2	1.3	Esophagus	3.7	-2.6*
Kidney and Renal Pelvis	2.6	-2.2*	Myeloma	3.6	0.5	Brain and ONS <sup>f</sup>	3.5	0.9*
Brain and ONS <sup>f</sup>	2.6	1.3	Oral Cavity and Pharynx	3.5	0.5	Myeloma	3.4	-0.4
Myeloma	2.0	-1.4	Brain and ONS <sup>f</sup>	2.8	-2.2	Oral Cavity and Pharynx	2.4	0.4
Soft Tissue including Heart	1.0	-0.3	Larynx	1.7	-	Larynx	1.4	-3.0*

Source: US Mortality Files, National Center for Health Statistics, Centers for Disease Control and Prevention.

<sup>a</sup> Top 15 cancer sites selected based on 2013-2017 age-adjusted rates for the race/ethnic group.

<sup>b</sup> Rates are per 100,000 and age-adjusted to the 2000 US Std Population (19 age groups - Census P25-1130).

<sup>c</sup> The APC is the Annual Percent Change over the time interval.

Trends are based on rates age-adjusted to the 2000 US Std Population (19 age groups - Census P25-1130).

<sup>d</sup> Rates for American Indian/Alaska Native are based on the Purchased/Referred Care Delivery Area (PRCDA) counties.

<sup>e</sup> Hispanic is not mutually exclusive from whites, blacks, Asian/Pacific Islanders, and American Indians/Alaska Natives.

<sup>f</sup> IBD = Intrahepatic Bile Duct. ONS = Other Nervous System.

\* The APC is significantly different from zero (p<.05).

- Statistic not shown. Rate based on less than 16 cases for the time interval. Trend based on less than 10 cases for at least one year within the time interval.

Table 1.28  
Age-Adjusted U.S. Death Rates and Trends for the Top 15 Cancer Sites<sup>a</sup> by Race/Ethnicity

## Females

All Races	Rate <sup>b</sup>		APC <sup>c</sup>	All Sites	Rate <sup>b</sup>		APC <sup>c</sup>	All Sites	Rate <sup>b</sup>		APC <sup>c</sup>
	2013-2017	2008-2017			2013-2017	2008-2017			2013-2017	2008-2017	
All Sites	135.7	-1.4*		All Sites	136.4	-1.3*		All Sites	153.4	-1.6*	
Lung and Bronchus	33.2	-2.6*		Lung and Bronchus	34.5	-2.5*		Lung and Bronchus	31.1	-2.9*	
Breast	20.3	-1.4*		Breast	19.8	-1.4*		Breast	27.6	-1.6*	
Colon and Rectum	11.8	-2.1*		Colon and Rectum	11.5	-1.9*		Colon and Rectum	15.2	-2.9*	
Pancreas	9.6	0.0		Pancreas	9.4	0.1		Pancreas	12.0	-0.4	
Ovary	6.9	-2.2*		Ovary	7.1	-2.2*		Corpus and Uterus, NOS	8.6	2.3*	
Corpus and Uterus, NOS	4.8	2.1*		Leukemia	5.0	-1.5*		Ovary	6.0	-1.9*	
Leukemia	4.8	-1.6*		Corpus and Uterus, NOS	4.5	1.9*		Myeloma	5.3	-0.3	
Non-Hodgkin Lymphoma	4.2	-2.5*		Non-Hodgkin Lymphoma	4.4	-2.5*		Liver & IBD <sup>f</sup>	4.8	2.1*	
Liver & IBD <sup>f</sup>	4.0	2.4*		Brain and ONS <sup>e</sup>	3.9	0.6*		Leukemia	4.3	-1.4*	
Brain and ONS <sup>f</sup>	3.6	0.6*		Liver & IBD <sup>f</sup>	3.8	2.7*		Stomach	3.6	-3.9*	
Myeloma	2.6	-0.5		Kidney and Renal Pelvis	2.4	-1.4*		Cervix Uteri	3.4	-2.9*	
Kidney and Renal Pelvis	2.3	-1.5*		Myeloma	2.4	-0.6		Non-Hodgkin Lymphoma	3.2	-1.6*	
Cervix Uteri	2.3	-0.4*		Urinary Bladder	2.2	-0.3		Urinary Bladder	2.4	-0.9	
Stomach	2.2	-1.8*		Cervix Uteri	2.2	0.2		Kidney and Renal Pelvis	2.2	-2.2*	
Urinary Bladder	2.1	-0.5*		Stomach	1.9	-1.6*		Brain and ONS <sup>f</sup>	2.2	0.8	
Asian/Pacific Islander				American Indian/Alaska Native <sup>d</sup>				Hispanic <sup>e</sup>			
	Rate <sup>b</sup>	APC <sup>c</sup>		Rate <sup>b</sup>	APC <sup>c</sup>		Rate <sup>b</sup>	APC <sup>c</sup>			
	2013-2017	2008-2017		2013-2017	2008-2017		2013-2017	2008-2017			
All Sites	85.6	-1.1*		All Sites	123.0	-1.4*		All Sites	95.5	-0.8*	
Lung and Bronchus	16.9	-1.6*		Lung and Bronchus	28.4	-2.5*		Breast	14.0	-0.8*	
Breast	11.4	0.2		Breast	14.6	0.4		Lung and Bronchus	12.7	-1.8*	
Colon and Rectum	8.1	-2.4*		Colon and Rectum	13.0	-3.4*		Colon and Rectum	8.7	-1.8*	
Pancreas	7.1	-0.3		Pancreas	7.8	0.4		Pancreas	7.8	0.2	
Liver & IBD <sup>f</sup>	5.6	-1.7*		Liver & IBD <sup>f</sup>	7.1	2.7		Liver & IBD <sup>f</sup>	6.0	1.2*	
Ovary	4.4	-0.9		Ovary	6.3	-0.4		Ovary	5.2	-1.4*	
Stomach	4.1	-2.2*		Stomach	3.6	-0.3		Corpus and Uterus, NOS	4.0	2.6*	
Corpus and Uterus, NOS	3.2	3.0*		Kidney and Renal Pelvis	3.4	-5.8*		Stomach	4.0	-1.0*	
Non-Hodgkin Lymphoma	3.0	-2.5*		Corpus and Uterus, NOS	3.4	2.1		Leukemia	3.8	-1.2*	
Leukemia	2.6	-3.3*		Non-Hodgkin Lymphoma	3.2	-3.4		Non-Hodgkin Lymphoma	3.7	-2.4*	
Brain and ONS <sup>f</sup>	1.9	3.0*		Leukemia	3.0	-2.0		Cervix Uteri	2.6	-0.8	
Cervix Uteri	1.8	-0.3		Myeloma	3.0	2.5		Brain and ONS <sup>f</sup>	2.6	1.5*	
Myeloma	1.2	-0.3		Cervix Uteri	2.5	-5.4*		Kidney and Renal Pelvis	2.2	-1.0	
Oral Cavity and Pharynx	1.1	-0.7		Brain and ONS <sup>f</sup>	2.4	0.7		Myeloma	2.2	-0.6	
Kidney and Renal Pelvis	1.1	-1.4		Urinary Bladder	1.7	-		Urinary Bladder	1.3	0.3	

Source: US Mortality Files, National Center for Health Statistics, Centers for Disease Control and Prevention.

<sup>a</sup> Top 15 cancer sites selected based on 2013-2017 age-adjusted rates for the race/ethnic group.

<sup>b</sup> Rates are per 100,000 and age-adjusted to the 2000 US Std Population (19 age groups - Census P25-1130).

<sup>c</sup> The APC is the Annual Percent Change over the time interval.

Trends are based on rates age-adjusted to the 2000 US Std Population (19 age groups - Census P25-1130).

<sup>d</sup> Rates for American Indian/Alaska Native are based on the Purchased/Referred Care Delivery Area (PRCDA) counties.

<sup>e</sup> Hispanic is not mutually exclusive from whites, blacks, Asian/Pacific Islanders, and American Indians/Alaska Natives.

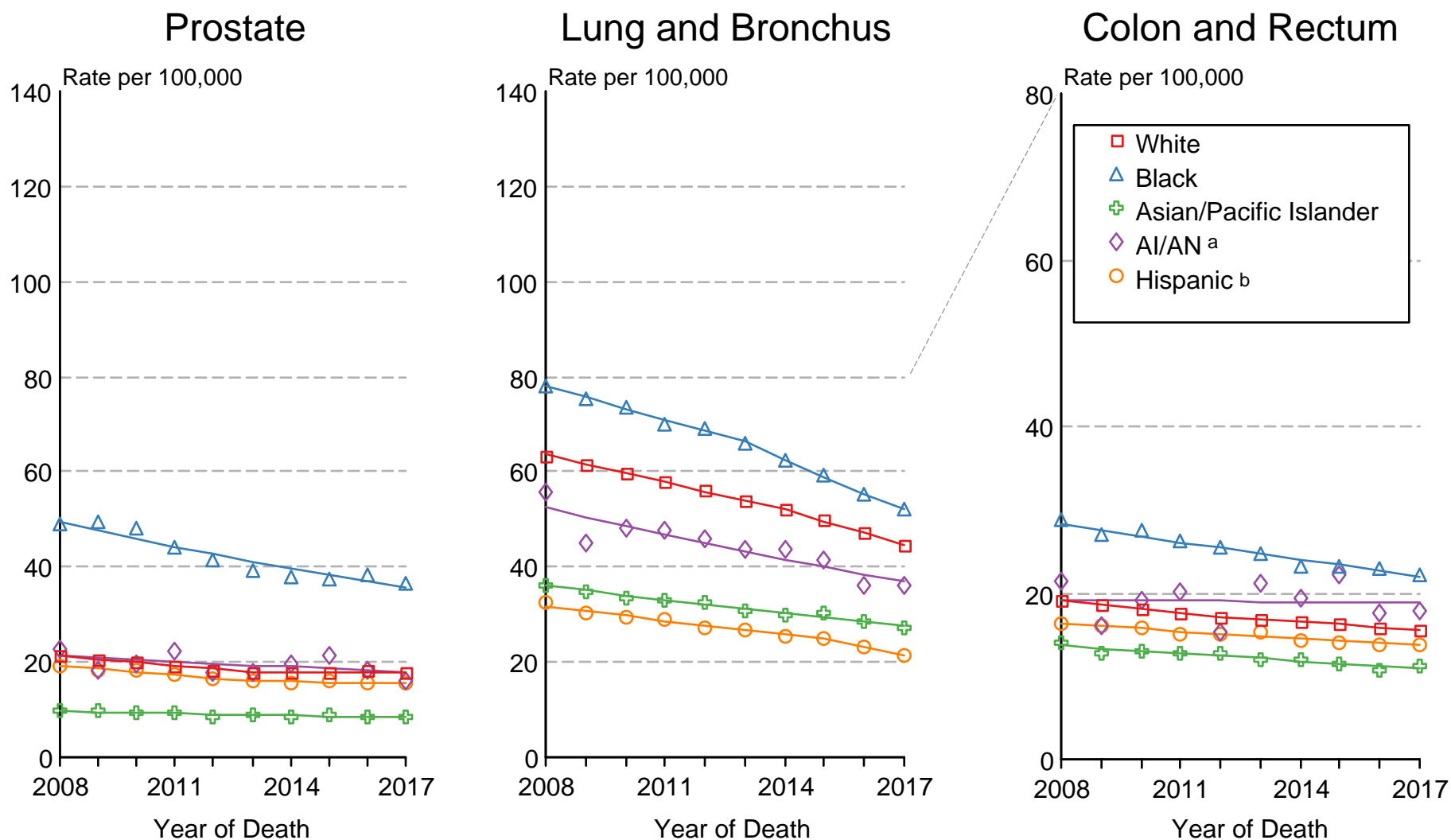
<sup>f</sup> IBD = Intrahepatic Bile Duct. ONS = Other Nervous System.

\* The APC is significantly different from zero (p<.05).

- Statistic not shown. Rate based on less than 16 cases for the time interval. Trend based on less than 10 cases for at least one year within the time interval.

Figure 1.15

# US Mortality 2008-2017 Males by Race/Ethnicity



Source: US Mortality Files, National Center for Health Statistics, Centers for Disease Control and Prevention.

Rates are age-adjusted to the 2000 US Std Population (19 age groups - Census P25-1103).

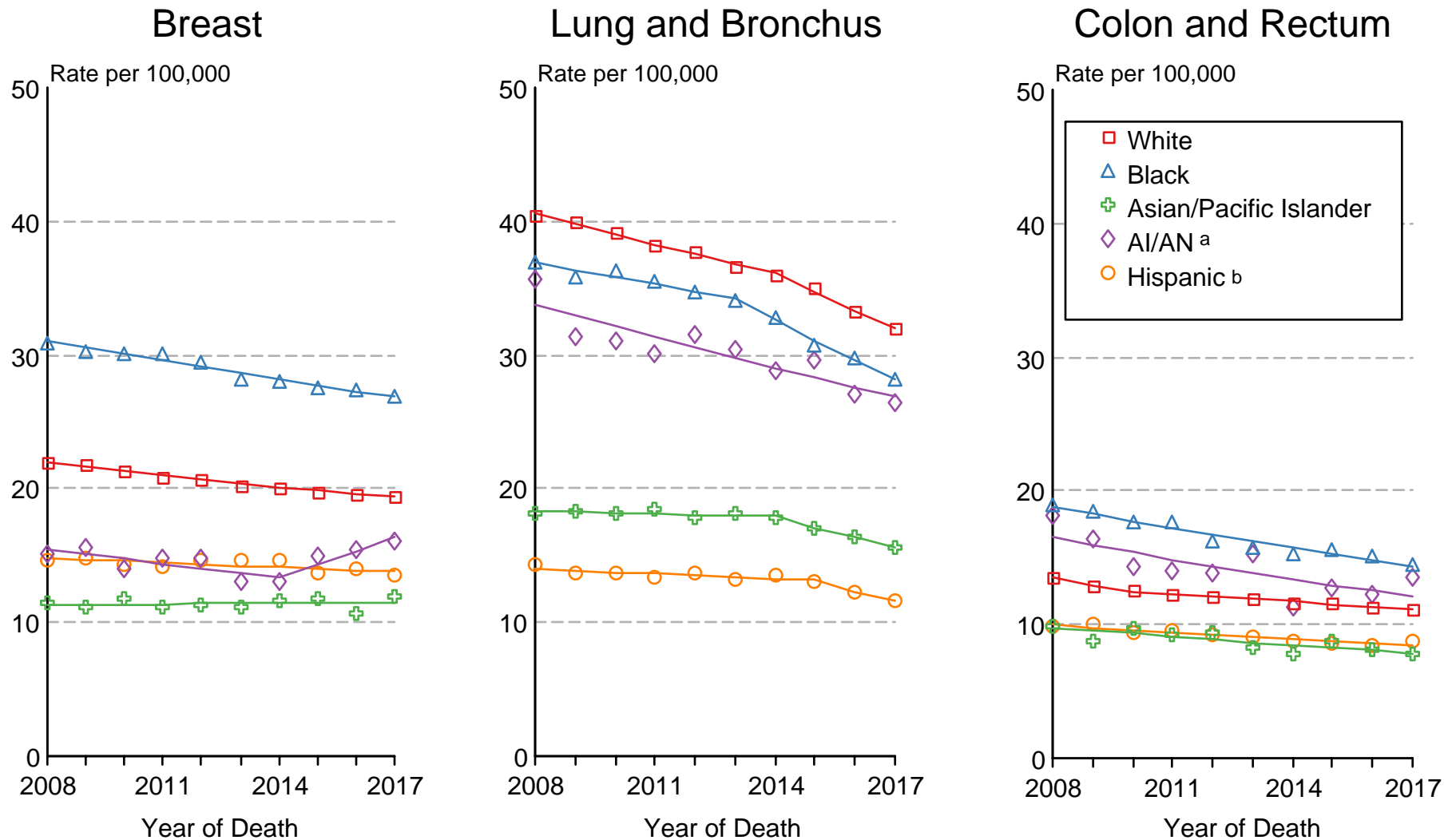
Regression lines are calculated using the Joinpoint Regression Program Version 4.8, April 2020, National Cancer Institute.

<sup>a</sup> Mortality rates for American Indian/Alaska Native (AI/AN) are based on the CHSDA (Contract Health Service Delivery Area) counties.

<sup>b</sup> Hispanic is not mutually exclusive from whites, blacks, Asian/Pacific Islanders, and American Indians/Alaska Natives.

Figure 1.16

# US Mortality 2008-2017 Females by Race/Ethnicity



Source: US Mortality Files, National Center for Health Statistics, Centers for Disease Control and Prevention. Rates are age-adjusted to the 2000 US Std Population (19 age groups - Census P25-1103).

Regression lines are calculated using the Joinpoint Regression Program Version 4.8, April 2020, National Cancer Institute.

<sup>a</sup> Mortality rates for American Indian/Alaska Native (AI/AN) are based on the CHSDA (Contract Health Service Delivery Area) counties.

<sup>b</sup> Hispanic is not mutually exclusive from whites, blacks, Asian/Pacific Islanders, and American Indians/Alaska Natives.