

Coding Guidelines

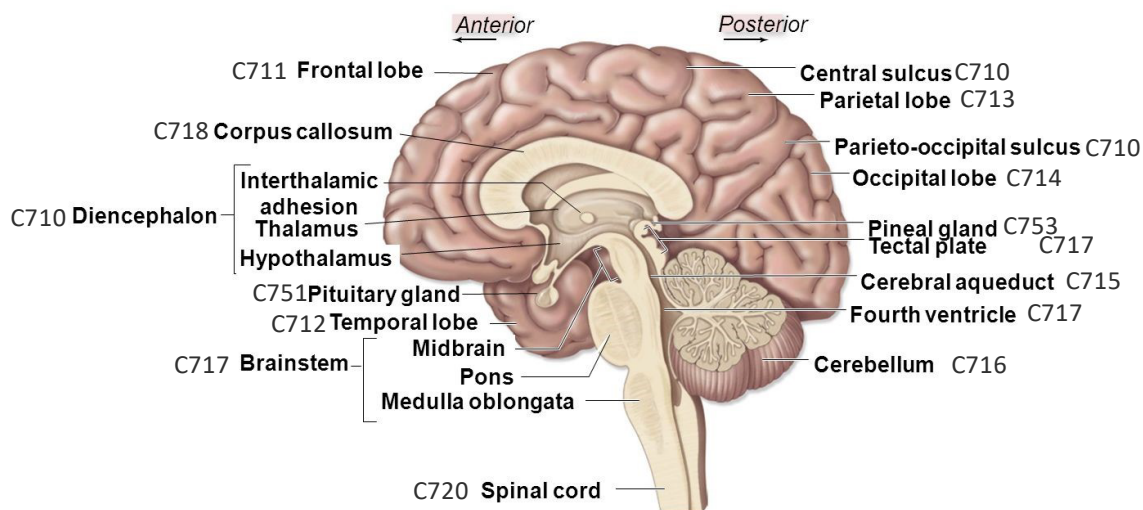
Brain [and Other Parts of Central Nervous System] Meninges C700-C709, Brain C710-C719, Spinal Cord, Cranial Nerves and Other Parts of Central Nervous System C720-C729

Reportability

- Report high-grade astrocytoma with piloid features (HGAP) (9421/3) as of 01/01/2023
- Report pilocytic astrocytoma/juvenile pilocytic astrocytoma as 9421/1 for all CNS sites as of 01/01/2023

Primary Site

Brain and Associated Structures with Topography Codes

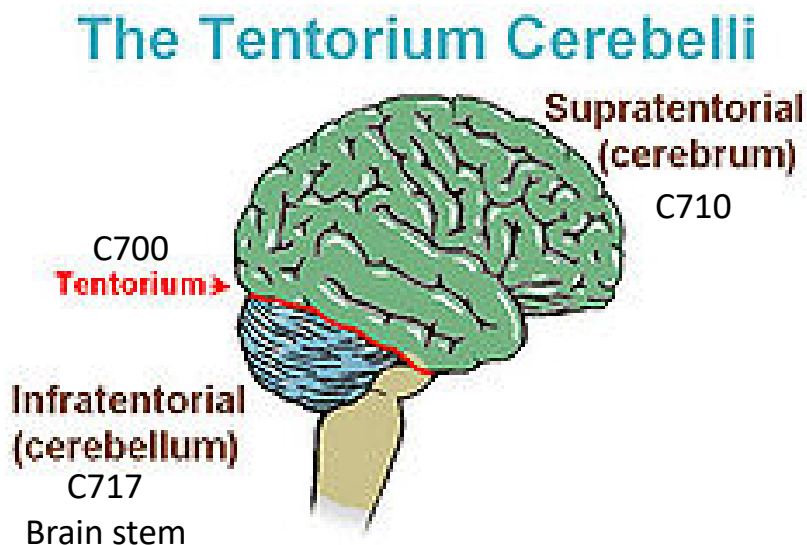


Extra-axial: Outside the brain parenchyma

Intra-axial: Within the brain

Tentorium C700

A fold of the dura mater which separates the cerebellum from the cerebrum, divides the cranial cavity into supratentorial and infratentorial spaces.



Supratentorial, NOS C710

Supratentorial subsites

- All subsites coded C711-C715
- Primary site C710 (excluding hypothalamus, pallium, thalamus)
- Anterior cranial fossa (C719)
- Corpus callosum (C718)
- Middle cranial fossa (C719)
- Tapetum (C718)
- Suprasellar (C719)

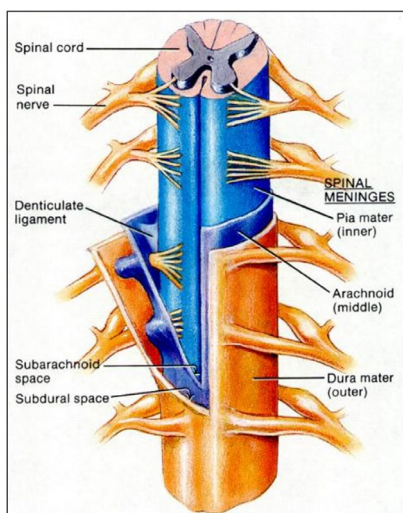
Infratentorial, NOS C717

Infratentorial subsites

- All subsites coded C716-C717
- Hypothalamus (C710)
- Pallium (C710)
- Posterior cranial fossa (C719)
- Thalamus (C710)

Supratentorial and Infratentorial subsites are based on Summary Stage 2018.

Spinal Meninges C701 and Nerve Roots C720



Intradural: Within the dura, within the meninges

Extradural: Outside the dura, outside the meninges

Intramedullary: Within the spinal cord

Extramedullary: Outside the spinal cord

Histology

Code low grade neuroepithelial neoplasm to 9413/0 (Dysembryoplastic neuroepithelial tumor).

Laterality

Meningioma

Assign code **4** (Bilateral involvement, lateral origin unknown; stated to be single primary) when

- **One** meningioma extends to both right and left sides

AND

- It is **not** possible to determine whether the meningioma originated on the left or the right

Assign code **5** (Midline tumor) when

- The meningioma originates in the midline